

\*

2009



### R/V DAN MOORE STATION LOG

VESSEL (1)	STATION (2-5)	CRUISE NO. (6-8)	MO. (9-14)	DAY	YEAR	GRID (15-17)	LATITUDE (18-21)	LONGITUDE (22-25)				
M	2099	031	06	14	72	19A5	3344	76.51				
DEPTH (26-29)		SUR. TEMP. (30-31)		BTM TEMP. (32-33)		AIR TEMP (34-35)		BAROMETER (36-38)		BT (39)	WIND DIR. (40-41)	WIND SPD. (42-43)
0021		26		—		25		023		N	S	15
S.C. (44)	WEA. (45-46)	BTM TYPE (47-48)		BTM REG (49)	GEAR TYPE (50-51)		GEAR SIZE (52-54)		OP (55)	TM. START (56-57)		MIN. FISHED (58-60)
1	PC	SA		S	ST		066		—	06		060
RIG (61-62)	TOTAL FINFISH (63-67)		TOTAL CRUSTACEANS (68-71)			TOTAL SHELLFISH (72-75)			TOTAL OTHER (76-80)			
01	00068		0001			—			—			

RIG (61-62)	TOTAL FINFISH (63-67)		TOTAL CRUSTACEANS (68-71)			TOTAL SHELLFISH (72-75)			TOTAL OTHER (76-80)		
—	—		—			—			—		

POSITION	LATITUDE	LONGITUDE	LORAN		DEPTH fms	C/C	TIME ON STATION	
			346	577			PO	DO
START	33° 44'	76° 51'	2306	4759	21		0532	0535
FINISH	33° 43'	76° 54'	2347	4762	22		0635	0642

LENGTH WARF	SHIFT RPM	PITCH	GEAR DATA:
150	1009/5	50	

SPECIAL MODIFICATIONS

---



---



---

OPERATIONAL COMMENTS

---



---



---

OBSERVATIONS

---



---



---



---



---



---

Digitized by the Internet Archive  
in 2017 with funding from  
IMLS LG-70-15-0138-15

<https://archive.org/details/danmoore209900unse>

R/V DAN MOORE SPECIES LIST - FINFISH

STATION NUMBER 2099

Total 500 lbs  
Lbs

CODE	SPECIES	NO.	WEIGHT	SIZE
	Alosa aestivalis			100 lbs
	Alosa pseudoharengus			
	Alosa sapidissima			
	Bairdella chrysur			
	Brevoortia tyrannus			
	Carcharias taurus			
	Centropristes straitus			
	Centropristes philadelphicus			
	Citharichthys arctifrons			
	Clupea harengus			
	Cynoscion nebulosus			
	Cynoscion regalis			
	Etrumeus sadina			
	Lagodon rhomboides			
	Larimus fasciatus			Sponges - coral - and rock - 200 lbs.
	Leiostomus xanthurus			Heart Urchins - Tr
	Lophius americanus			
	Menticirrhus americanus			
	Menticirrhus littoralis			Spanish Lobster - 1 - 1/2 Lb
	Menticirrhus saxatilis			
	Micropogon undulatus			Big red stars - 1
	Monocanthus hispidus	✓	4 lbs	
	Mustelus canis			
	Orthopristis chrysopterus			
	Paralichthys dentatus			
	Paralichthys lethostigma			
	Peprilus alepidotus			
	Peprilus paru			
	Pomatomus saltatrix			
	Poronotus triacanthus			
	Prionotus carolinus			
	Prionotus evolans			
	Raja eglanteria			
	Raja erinacea			
	Raja garmani			
	Roccus saxatilis			
	Scomberomorus cavalla			
	Scomberomorus maculatus			
	Sphaeroides maculatus			
	Stenotomus chrysops			
	Synodus foetens			
	Squalus acanthias			
	Squatina dumerili			
	Urophycis regius			
	Black grunt - Haemulon album	50	1	3 lbs
	Trigger fish - Balistes carolinensis			1
	Alutera schaefferii	5	4 lbs	
	Burr fish - Chilomycterus schaefferii			1 - 1/2 Lb.
	Dactylopterus volitans		1	3 lbs
	Fistularia tobaccaria		1	2 lbs

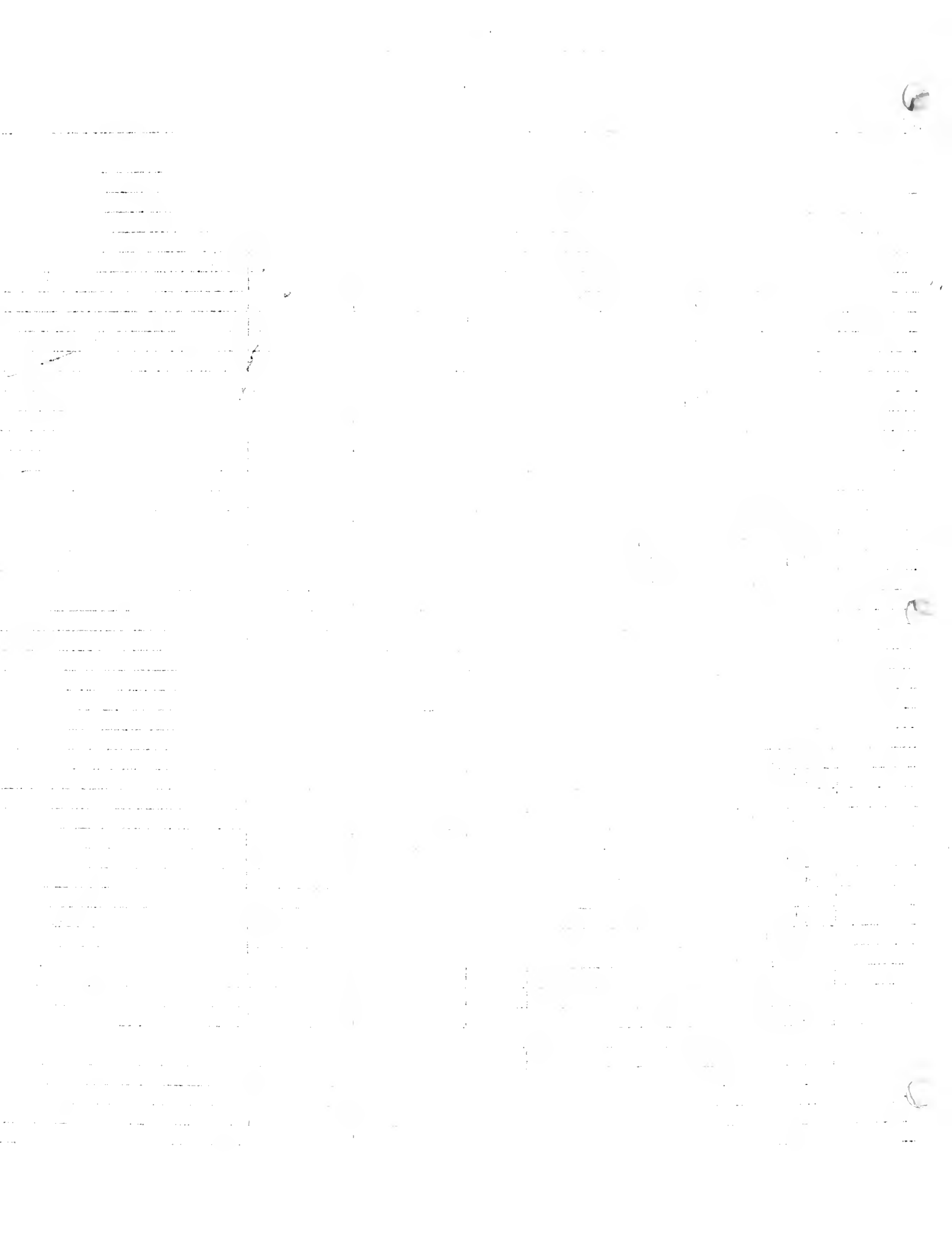
Scorpion Fish - few - 2Lb

Angel fish - 1

Snake - Trachinocephalus myops 1

Red Porgy - Pagrus sedecim - 50 lbs

Beef Butter fish - Chaetodon sedentarius - 1 - Tr



2011

