





E. BIBL. RADCL.



*Moncure Biddle*

Exceedingly rare

EX LIBRIS  
MUSEI  
HISTORICIS  
MUSEI  
HISTORICIS



DELINEATIONS  
OF  
EXOTICK PLANTS

CULTIVATED IN THE  
ROYAL GARDEN  
AT KEW.

DRAWN AND COLOURED, AND THE BOTANICAL CHARACTERS  
DISPLAYED ACCORDING TO THE LINNEAN SYSTEM,

BY FRANCIS BAUER,  
BOTANICK PAINTER TO HIS MAJESTY.

PUBLISHED BY  
W. T. AITON,  
HIS MAJESTY'S GARDENER AT KEW.

LONDON:  
PRINTED BY W. BULMER AND CO.  
FOR GEORGE NICOL, BOOKSELLER TO HIS MAJESTY,  
PALL-MALL.  
1796.



BRITISH MUSEUM

EXOTIC PLANTS

ROYAL GARDENS

HERBARIUM

BY

W. T. AINSWORTH

LONDON



TO

THE QUEEN'S MOST EXCELLENT MAJESTY.

*Permit the son of a father deceased in the service of his King, a son, who was allowed, at an early age, to assume the charge his father had enjoyed, not on account of any pretensions he was able to exhibit, but from the mere motion of Royal Benevolence, to lay at Your Majesty's feet an humble effort to imitate his father's example, and to prove himself not wholly unworthy of the favours he has already received.*

*The dying lips of his father were closed with expressions of gratitude to his Sovereign; his son, more conscious of the munificence of his Royal Master, than confident of his abilities to deserve its continuation, feels secure of nothing, except that his tribute of thankfulness will not be exceeded even by the gratitude of his deceased father.*

*He means not, however, to substitute thankfulness for industry, or gratitude for activity; but he looks forward, with an ardent hope, that, by a full exertion of every energy of mind in planning, and of every exertion of labour in executing the duties he has been permitted to undertake, he may in due time deserve, if nature has endowed him with sufficient faculties, those favours, which the unsolicited benevolence of his Sovereign has been graciously pleased to bestow upon him, who will ever consider it his chief happiness to be able to prove himself*

Your MAJESTY'S most loyal Subject,

and most dutiful Servant,

W. T. AITON.



LIBRIS-MILITARI

LIBRARY OF THE  
MILITARY DEPARTMENT

1864



## PREFACE.

A VARIETY of circumstances have concurred, since the publication of the *Hortus Kewensis*, by which the number of curious plants, cultivated in the Royal Gardens at Kew, have received material increase; Mr. Masson, who has travelled as a Botanist, at his Majesty's expense, for twenty-five years, was never so fortunate in furnishing abundance of fresh seeds and living plants, as during his last mission to the Cape of Good Hope. The settlement of a colony on the coast of New South Wales has opened to us a fresh source of botanical wealth, in a climate nearly congenial to our own; and of this a large share has been transmitted to Kew, by Arthur Philip, Esq. the Governor. William Bligh, Esq. Commander of his Majesty's ship Providence, who was sent to the South Seas for the purpose of carrying the Bread-fruit from thence to the British colonies in the West Indies, and had orders to replace such of the useful plants, as might die during the passage, or be deposited in the places of their destination, by such curious plants as the gardeners attending the expedition could procure, has also been enabled to place in Kew Gardens some hundreds of species, natives of the East or of the West Indies, which had never before been seen in Europe.

No events, however, have so materially tended to the increase of the Royal Collection, as that decided preference which our most gracious Queen has of late condescended to bestow upon the science of Botany, and the rapid progress her Majesty and the Princesses, her daughters, have made in the most difficult parts of that pleasing study; the nobility and gentry of England have, since this was known, more than ever attached themselves to a pursuit, honoured by the interesting patronage of their beloved Queen; individuals have vied with each other in presenting to Kew Garden such plants as they thought likely to make an acceptable addition to the Collection: Commanders of ships have employed the leisure of their homeward bound passages in taking care of the vegetable produce of the climates they had visited, anxious to furnish, on their return, any degree of increase to her Majesty's amusements. The Directors of the East India and of the Sierra Leone Companies have forwarded to Kew such plants as their servants



abroad were able to procure for them; and the Government of Jamaica has sent a public present to his Majesty of plants collected in that Island.

Amidst the uniform protection which the Royal Owner of these gardens has constantly afforded to every species of science, Botany had not a right to expect more than its proportional share; the increase of conveniences of every kind in Kew garden has, however, by his Majesty's royal favour, kept equal pace with the increase of plants; new houses have been built, upon a most ample scale, and of a most convenient construction: the garden itself has lately received a considerable addition of space; and the whole has been laid out, under his Majesty's immediate direction, in a manner so commodious, that it is not only capable of containing the whole of the present Collection with ease, but of receiving all such additions as may probably be made to it, for several years to come.

Under circumstances so uncommonly fortunate to a gardener, whose chief pride centers in the healthiness of his plants, and whose best pleasure is deduced from the pursuit of his profession, it has been thought proper, to make preparations for publishing a new edition of the *Hortus Kewensis*; and, in the mean time, to present the public with the work to which this is prefixed, intended to be annually continued, provided it meets with a favourable reception, as long as the excellent draughtsman, who has undertaken the execution of it, can be prevailed upon to remain in England, for that purpose.

It will appear singular, at first sight, that engravings of plants should be published without the addition of botanical descriptions of their generic and specific characters; but it is hoped, that every Botanist will agree, when he has examined the plates with attention, that it would have been an useless task to have compiled, and a superfluous expence to have printed, any kind of explanation concerning them; each figure is intended to answer itself every question a Botanist can wish to ask, respecting the structure of the plant it represents; the situation of the leaves and flowers are carefully imitated, and the shape of each is given in a magnified, as well as in a natural size. The internal structure of the flower, respecting the shape and the comparative size of its



PREFACE.

iii

component parts, is also, in all cases, carefully displayed; nothing therefore appears to be wanting but the synonyms of such authors as may have before described it, and the specific difference by which each species is technically distinguished from all others of the same genus; for these the reader is referred to the intended edition of the *Hortus Kewensis*, where every plant published in this number will be inserted by the name engraved under it; and where descriptions of each, if found necessary to distinguish them from plants of which proper descriptions or figures have not been published, will be given at length.

LIBRIS-PALEO





*Erica viscaria* L.

*Erica viscaria* L.

*Erica viscaria* L.

LIBRERIA





*Erica hibernica* L.

From Beauvois del.

Mackenzie sculp.







*Erica althiana?*

*Princ. Batis del.*

*Enligné par G. W. Wood, Jan 18 1890.*

*Mackenzie sculp.*







J. Bauer del.

*Erica longifolia*!

M. G. S. sculp.

LIBRARY





*Erica umbellata?*

*Franz Bauer del.*

*Stadenii sculp.*

Publ. in Bot. Beech. 1825. p. 100.







*Erica fascicularis.*

*Ernie. Bauer del.*

*Muhlenberg sculp.*

LIBRARI





*Erica Monsonia*

*Franc. Bauer del.*

*Mackenzie sculp.*

LIBRARY





*Erica grandiflora.*

*Frans. Bauer del.*

*Stadenius sculp.*







*Erica Plukenetiana?*

Franc. Bauer del.

Macbride sculp.

Printed by G. B. Whittell, London.

LIBRARY





*Cyca Sabana?*

*James Smith del.*

*James Smith sculp.*







*Erica saffordii*.

*Fernald, Bot. Soc. Lond.*

*Mackenzie sculp.*

LIBRIS-2117





*Erica conspicua.*

*Erasm. Bauer del.*

*Mackenzie sculp.*





*Erica cruenta* L.

*Linnaeus del.*

*Mackenzie sculp.*







*Erica maritima*!

Frans. Bauer del.

Machenzie sculp.







*Erica mucosa*

Franc. Bauer del.

Mackenzie sculp.

Published by W. & A. G. Leitch, 1841





*Erica arvetaria*

*Bauer del.*

*Madenius sculp.*







*Erica glutinosa?*

Franc. Bauer del.

Alchermis sculp.







*Cyrtus comosa.*



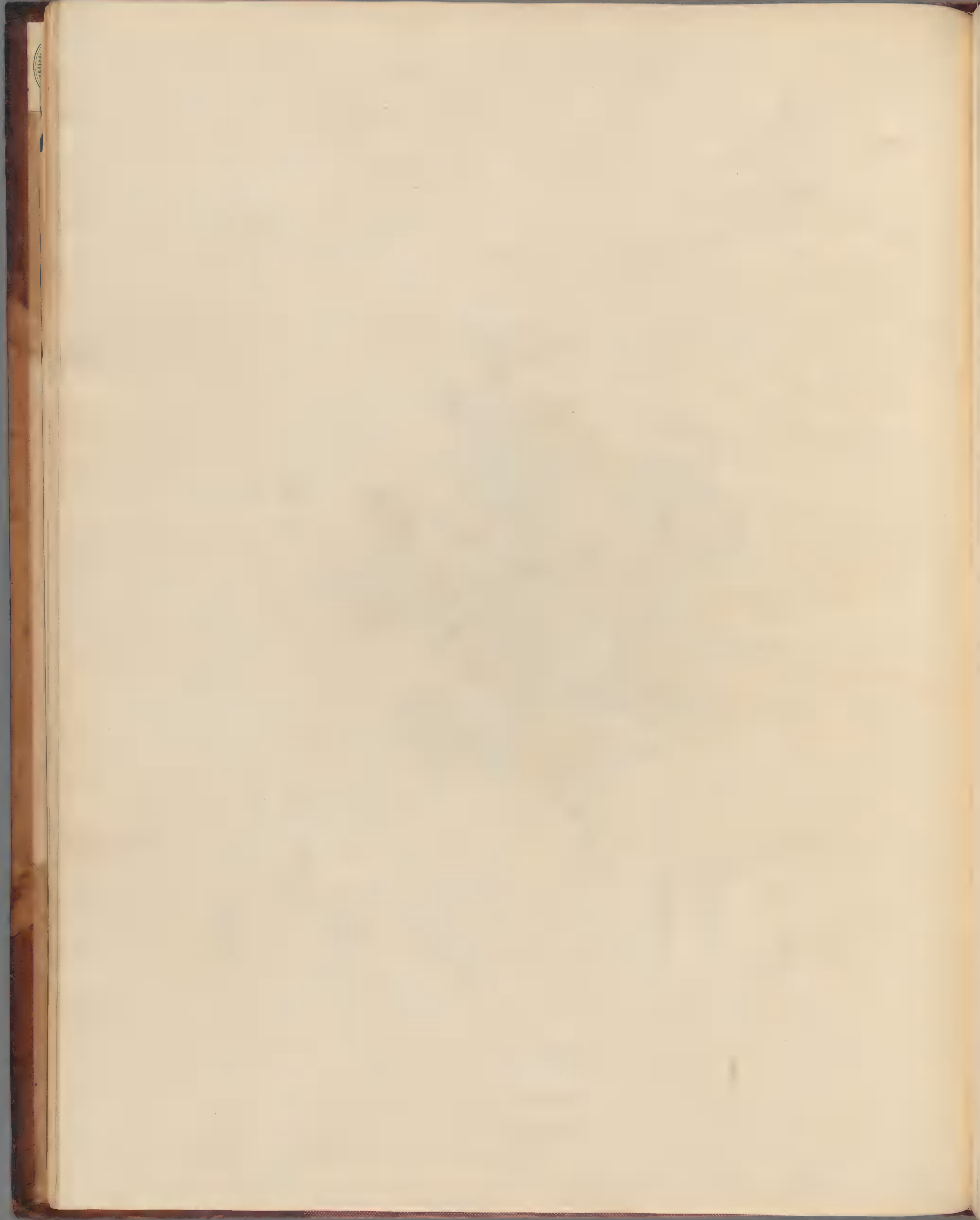


*Erica taxifolia?*

*Prout Bonnet del.*

*Hooker sculp.*



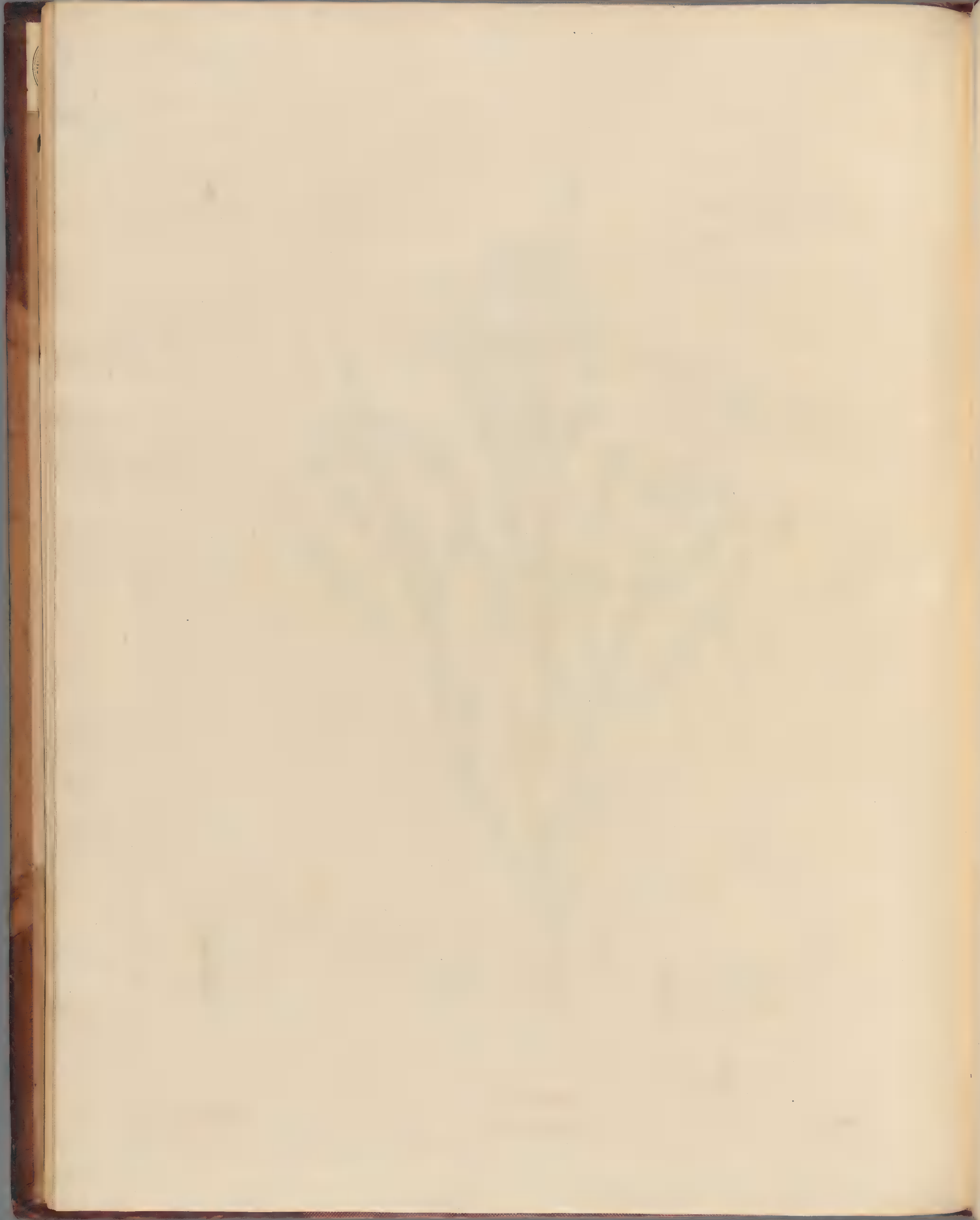




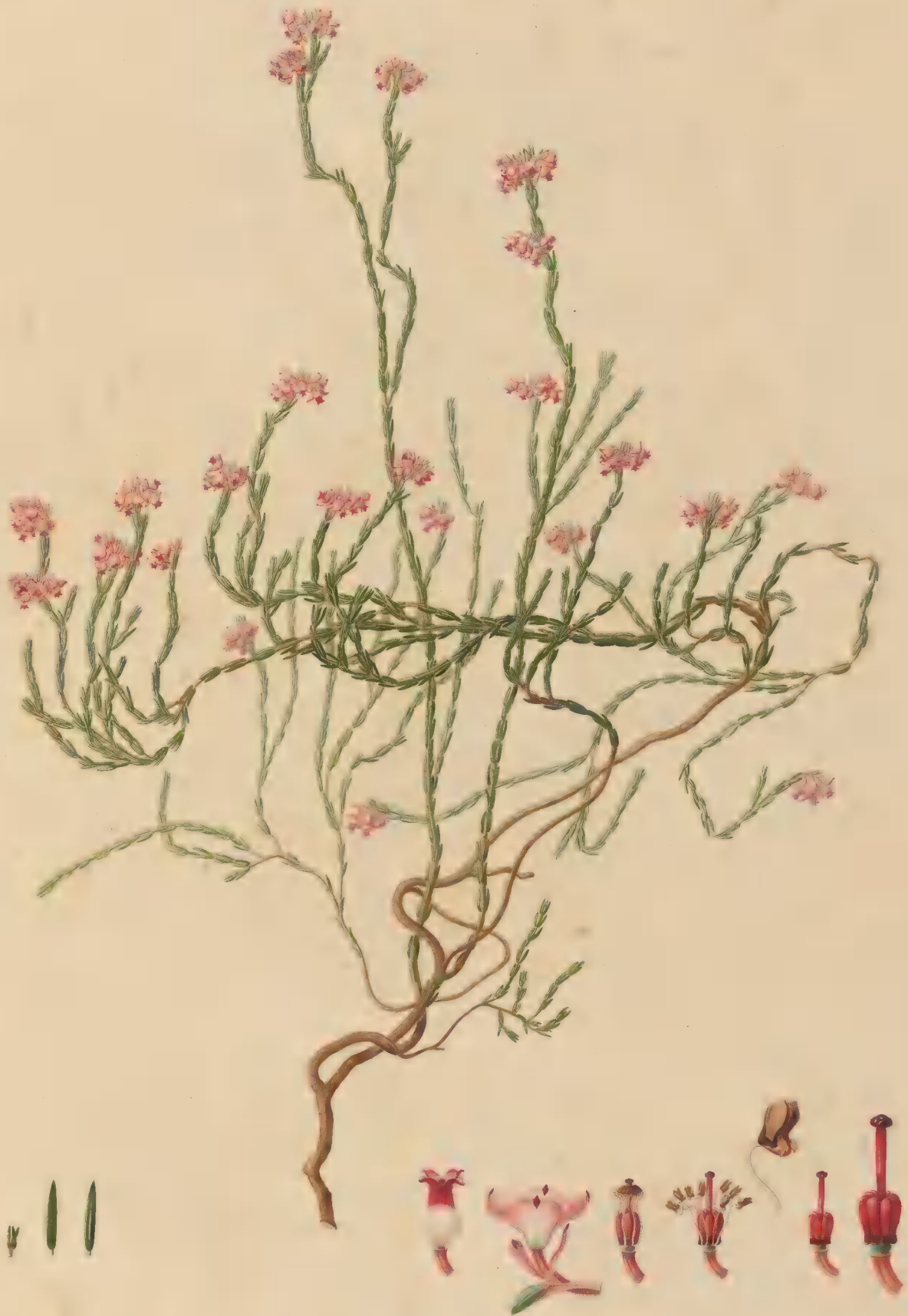
*Erica Mafsoni?*

*Franco & Bauer del.*

*Mackenzie sculp.*







*Coriaria coriifolia.*

*Frans. Bauer del.*

*Macdonald sculp.*



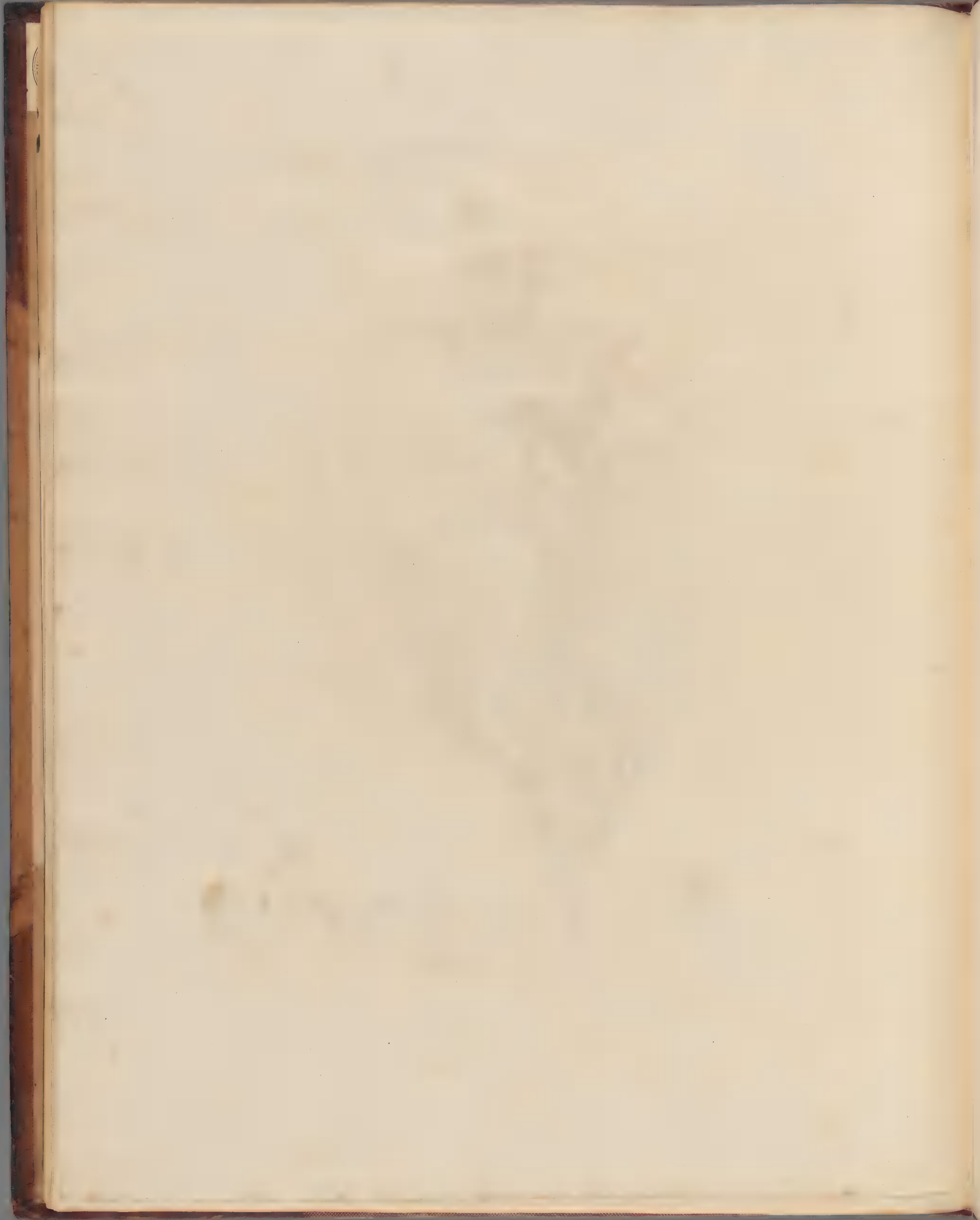


*Erica lucida.*

*Sm. & Sowerb.*

*Mackenzie sculp.*



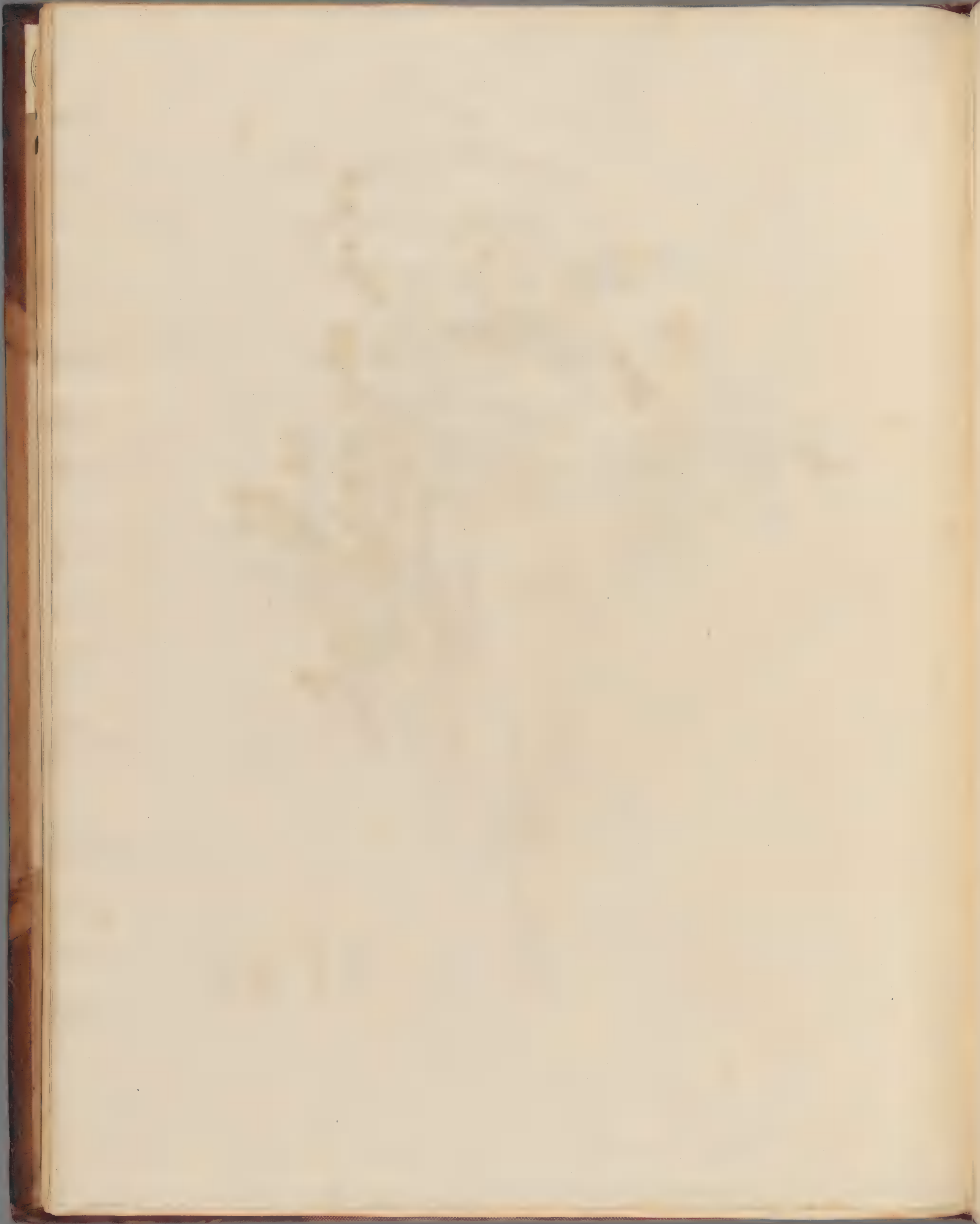




*Erica ramentacea*

*Pinus. Baines del.*

*Thalassia sculp.*



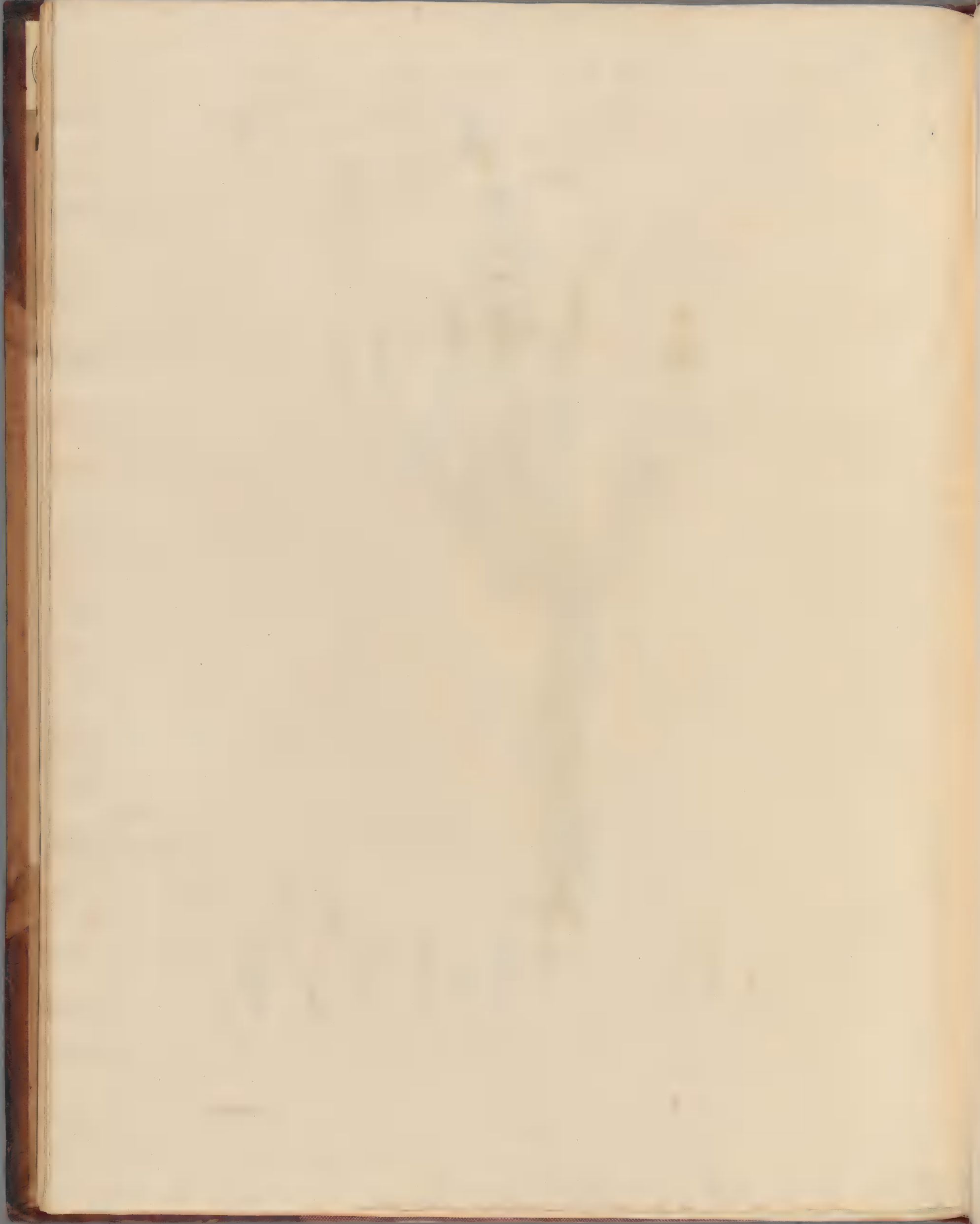




*Erica Peana.*

*Frans. Bauer del.*

*H. Bauer sculp.*





*Eriua coccinea.*

*Trimm. Bauer del.*

*Macdonald sculp.*







*Erica vestita*

Simon, Bot. del.

Herb. J. B. G.







*Erica pyramidalis.*

*Frax. Borealis*

*Frax. Borealis*



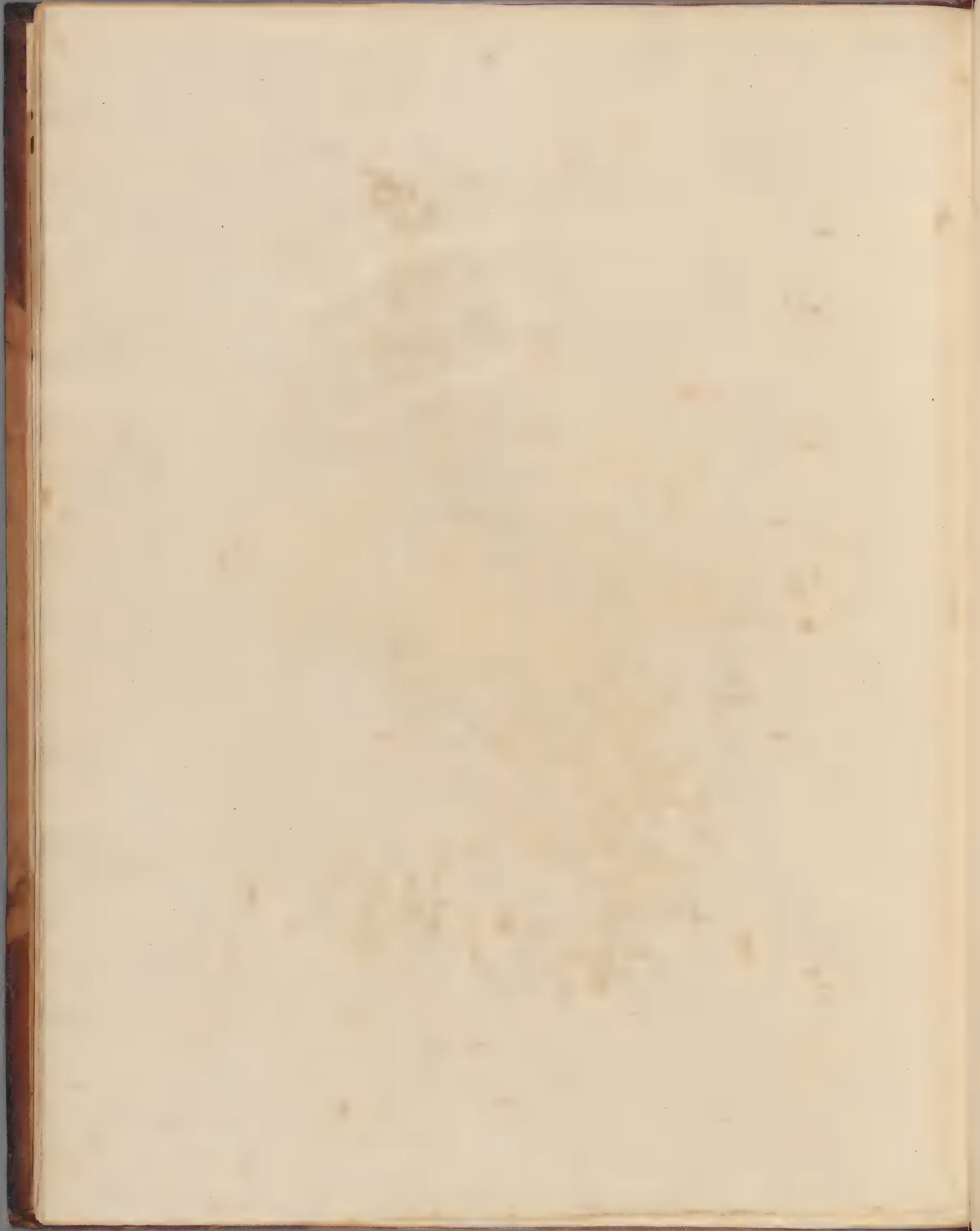


*Conium maculatum*

*Pinus Bainesii*

*Asplenium platyneuron*



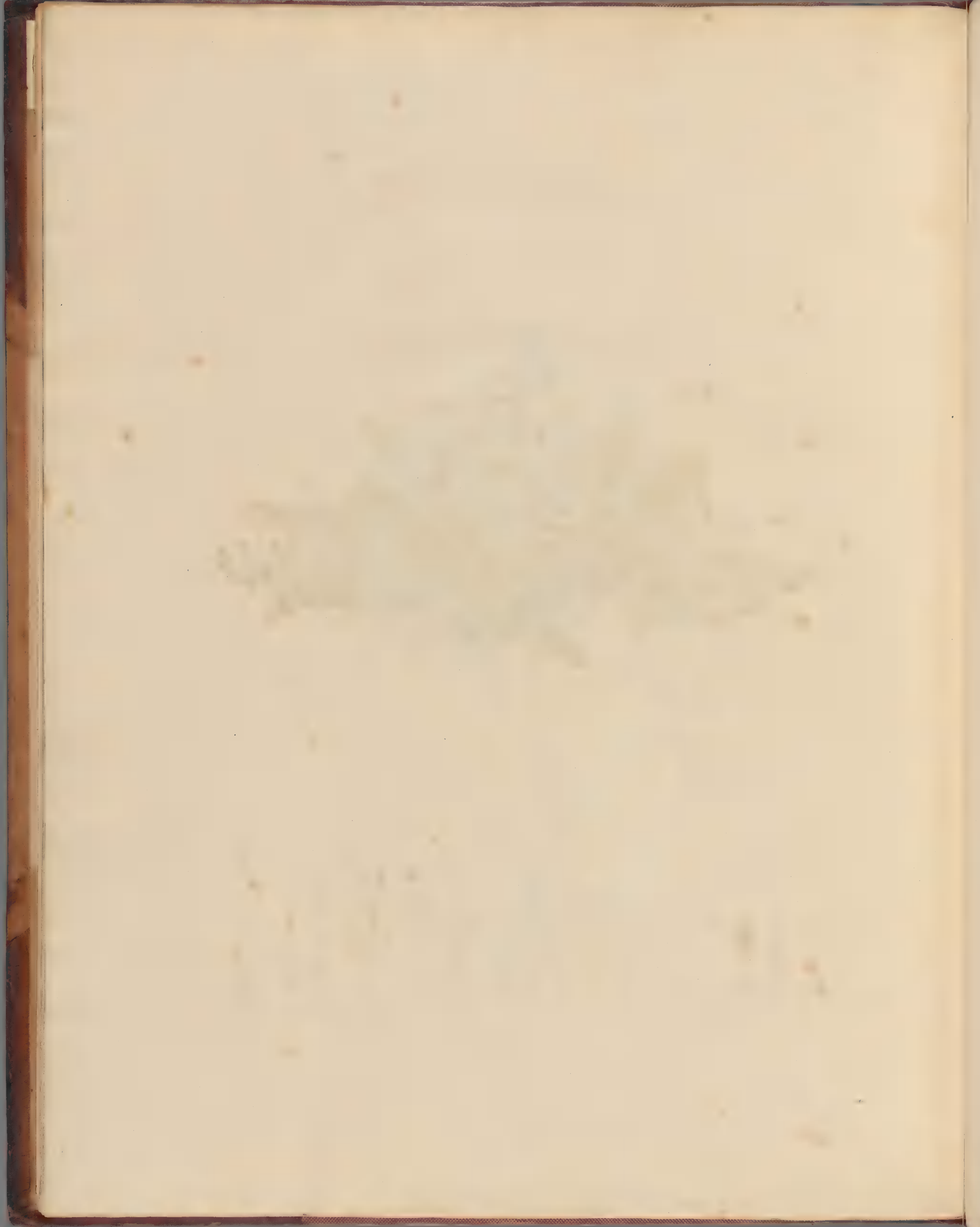




*Erica Banksii*

*Ferd. Bauer del.*

*Ferd. Bauer sculp.*





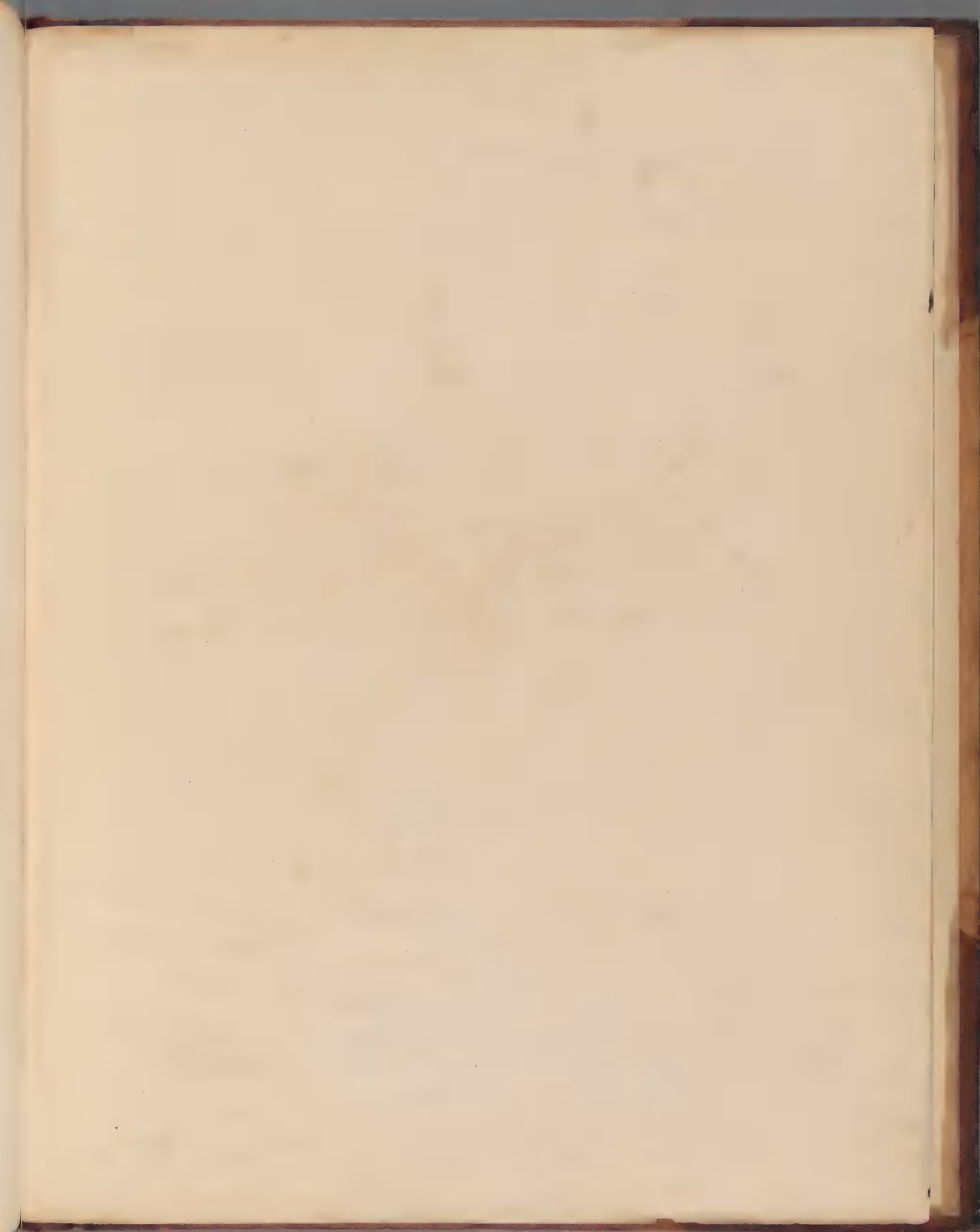


*Erica corinthoides.*

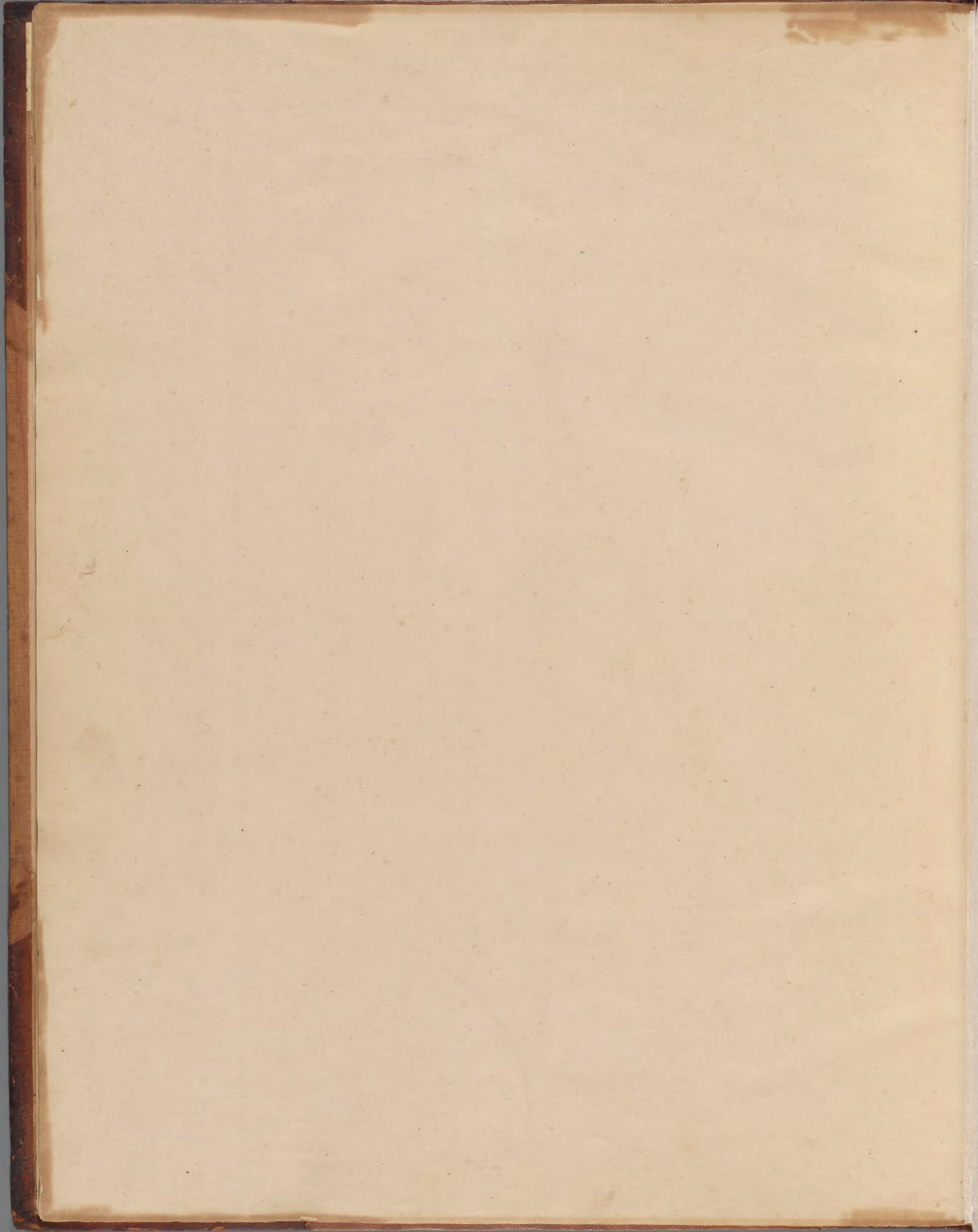
*Frau Bauer del.*

*Mackenzie coll.*









complete  
pp. 101-102  
H. G. W.

2162







BAUER

PLANTS AT

KEW GARDEN