



THE UNIVERSITY
OF ILLINOIS
LIBRARY

590.5

FI

v.7

BIOLOGY

Return this book on or before the
Latest Date stamped below. A
charge is made on all overdue
books.

U. of I. Library

DEC 12 1940

DEC 2 1941

AUG 3 1951

NOV 23 1956

MAR 23 1967

WASHER
11 70 0000
WASHER

FIELD MUSEUM OF NATURAL HISTORY.

PUBLICATION 139.

ZOÖLOGICAL SERIES.

VOL. VII, No. 8.

DESCRIPTION OF TWO
NEW PULMONATE MOLLUSKS

WITH A LIST OF OTHER SPECIES FROM THE
SOLOMON ISLANDS, COLLECTED BY
DR. GEORGE A. DORSEY.

BY

WILLIAM HEALEY DALL, D. SC.

CHARLES B. CORY,

Curator of Department of Zoölogy.



CHICAGO, U. S. A.

February, 1910.

The collection of shells upon which the present paper is based were secured by Dr. George A. Dorsey in the Solomon Islands. They were sent to Dr. Wm. H. Dall, Curator Division of Mollusks, U. S. National Museum, who has kindly identified them and prepared the following list for publication in which two species are described as new.

C. B. CORY.

F I
v. 7⁸

DESCRIPTIONS OF TWO NEW PULMONATE MOLLUSKS
WITH A LIST OF OTHER SPECIES FROM THE
SOLOMON ISLANDS, COLLECTED BY
DOCTOR G. A. DORSEY

BY WILLIAM HEALEY DALL, D. Sc.
CURATOR DIVISION OF MOLLUSKS, U. S. NAT. MUSEUM

The authorities of Field Museum of Natural History having requested me to report upon a small collection of shells made in the Solomon Islands by Dr. G. A. Dorsey of that institution, I have done so with some interest since the region is even now only partially explored.

The land shells are naturally of the most interest, since the marine shells for the most part belong to the widely distributed Indo-Pacific fauna, while of land shells each well isolated island may be expected to furnish a little group of peculiar species.

LAND SHELLS

Nanina nitidissima E. A. Smith.

A single bleached specimen, agreeing extremely well with Smith's figure and description, was obtained in the interior of Bougainville Island.

Papuina xanthochila Pfeiffer.

About a dozen of this very attractive species were obtained with the preceding. The shell is of a greenish white and the reflected lip of a rich orange color.

Papuina adonis Angas.

With the last, as were the following:

Papuina mendana Angas.

Papuina meta Pfeiffer, var. *bicolor* Pilsbry.

Papuina hargreavesi Angas.

Papuina yulensis Brazier var.

Papuina (sp. juv., resembling the young of **P.**) **hargreavesi** Angas.
Lihir Island, near New Ireland.

Chloritis (Sulcobasis) bougainvillei Pfeiffer.

Several weathered specimens were obtained from the interior of Bougainville Island.

Chloritis (Sulcobasis) camaratus n. sp.

Nine specimens found with the last.

Chloritis quercinus Reeve?

One dead and imperfect specimen, resembling this species, from the interior of Bougainville Island.

Placostylus dorseyi n. sp.

A single specimen was received from Anair Island near New Ireland.

Pythia pyramidata Reeve.

One specimen from eighteen miles north of Cape St. George, New Ireland; a large number of all ages from Anair Island near New Ireland; and eight specimens from Namatanai, New Ireland.

This species varies in color from waxen white through all degrees of mottling by chestnut brown, to chestnut brown or blackish all over. The character of the lamellæ of the aperture is, however, apparently quite constant.

Leptopoma callichloros Tapparone-Canefri.

A single specimen which seems to be extremely close to if not identical with this species was obtained in the interior of Bougainville Island.

Leptopoma pumilum Tapparone-Canefri.

Three specimens of what appears to be this species were collected at Lihir Island, near New Ireland.

MARINE SHELLS

Bullaria adamsi Menke.

Three specimens from Namatanai, New Ireland.

Terebra evoluta Deshayes, var.?

One worn and bleached specimen, perhaps of this species, from the coast of New Ireland.

Cancellaria asperella Lamarck.

One specimen from the coast of New Ireland.

Solenosteira fumosa Dillwyn.

Two specimens with the preceding.

Drupa ricinus Linné.

One immature specimen from Lihir Island.

Thais hippocastanea Linné.

One specimen from Anair Island, New Ireland.

Cypræa isabella Linné.

Two worn specimens from New Ireland.

Cypræa lynx Linné.

Two badly worn specimens from Lihir Island, near New Ireland.

Strombus campbelli Gray.

One specimen from the coast of New Ireland.

Potamides palustris Linné.

Four specimens from Namatanai, New Ireland.

Cerithium morus Lamarck.

Two specimens from Namatanai.

Planaxis sulcatus Born.

Two specimens with the preceding.

Faunus ater Linné.

Interior of Bougainville Island, Solomon Islands, three specimens.

Tectarius bullatus Martyn.

Numerous specimens from Anair Island, near New Ireland.

Natica tessellata Philippi.

Five specimens from Namatanai, New Ireland.

Polinices sebæ Souleyet.

Two specimens with the preceding.

Polinices mammilla Linné.

One young specimen with the preceding.

Turbo margaritaceus Linné.

Two specimens from Anair Island, New Ireland.

Cardinalia virgata Gmelin.

One specimen with the preceding.

Clanculus bathyraphe E. A. Smith.

One immature specimen from Namatanai, New Ireland.

Nerita versicolor Gmelin.

One specimen from Anair Island near New Ireland.

Nerita signata Macleay.

Two specimens at Namatanai, New Ireland.

Nerita aurantia Recluz.

One specimen from Anair Island, near New Ireland.

Neritina petiti Recluz.

Eighteen miles north of Cape St. George, New Ireland. One specimen.

Neritina strigillata Lamarck.

A large number of specimens from eighteen miles north of Cape St. George, New Ireland, and two miles west of Warapu, New Guinea. This species revels in variety of color pattern to an almost incredible extent, as shown by the present large series.

Neritina cornea Linné.

Four specimens from two miles west of Warapu, New Guinea.

Neritina pulligera Linné.

Two specimens from eighteen miles north of Cape St. George, New Ireland.

Barbatia sp. indet.

One worn valve from Anair Island near New Ireland.

Asaphis deflorata Linné.

One young valve with the preceding.

Tellina scobinata Linné.

One valve from Namatanai, New Ireland.

DESCRIPTIONS OF THE NEW SPECIES

Placostylus (Leucocharis) dorseyi n. sp. Plate IV, figure 1.

Type No. 11254, F. M. N. H.; Anair Island, Solomon Islands.

Shell small, thin, pale straw-color over a subtranslucent basis, with about five whorls; apex as usual in the group, the punctate nepionic shell of about three quarters of a whorl, glassy, the sculpture abruptly changing to fine, sharp, moderately close spiral striæ which cover the rest of the shell, being more or less interrupted by the lines of growth and more sparsely distributed toward the periphery of the whorls; spire subacute, the whorls slightly rounded, somewhat attenuated, with an ample umbilical pit half covered by the reflexed pillar; aperture elongate-ovate, the margin thin, sharp, distinctly reflected; pillar not twisted nor thickened; body with a thin transparent glaze, the outer lip slightly ascending at the posterior commissure.

Length of shell 20.0; of last whorl 14.0; of aperture 10.0; max. diameter 10.5 mm.

A single specimen was collected at Anair Island near New Ireland, Solomon Islands, by Mr. G. A. Dorsey, after whom the species is named. The only species I find described which is at all comparable with *P. dorseyi* is the *P. pancheri* Crosse, from New Caledonia, which is nearly twice as large and has a brown columella except in the white variety *candida* from the same locality.

This is by far the smallest and most delicate species of *Placostylus* known and presents a remarkable contrast to the large coarse forms which make up the mass of the genus.

Chloritis (Sulcobasis) camaratus n. sp. Plate IV, figures 2-4.

Type No. 11255, F. M. N. H.; Bougainville, Solomon Islands.

Shell usually uniform chestnut brown, sometimes paler near the apex; nepionic shell worn in all the specimens, but apparently only slightly wrinkled in harmony with the lines of growth; whorls five and a half, separated by a strongly marked suture, between the coils of which the whorl is markedly convex; periostracum thin and fugacious, originally rather profusely furnished with long rather stout hairs or threadlike prominences beneath each one of which there is a marked rather large shallow punctation on the surface of the shell; usually only traces of the periostracum and hairs remain in sheltered places; other sculpture consists of fine regular concentric striation in harmony with the lines of growth, covering the whole shell, and a few irregular basal sulci usually only visible near the umbilicus behind the reflected lip; spire rather elevated, base rounded, somewhat flattened on the part opposite the aperture; umbilicus small, gyrate, overshadowed in part by the reflected columellar lip; aperture slightly descending, rounded, simple, with a moderately reflected lip, thickest and most extended at the pillar; body with a slight wash of callus which, with the reflected lip, hardly differs in color from the rest of the shell; interior of the aperture whitish.

Dimensions of nine specimens in millimeters:

Height	Max. Diameter
25.0	31.0
26.5	35.0
31.0	31.5
28.5	32.5
33.0	36.0
34.0	37.0
32.5	38.0
32.5	37.0
33.0	39.5
Average, 30.6	35.2

Collected in the interior of Bougainville Island, Solomon Islands, by Mr. G. A. Dorsey.

This is quite unlike either of the two other species known from this island. *C. bougainvillei* is much larger, proportionately depressed, and conspicuously malleated. *C. quercinus* is smaller, much more depressed, and of quite different form.

The salient characters are the fine incremental sulci, which are

usually lighter against a darker ground because a trace of the paler periostracum remains in them, and the rotundity of the upper part of the whorls which is reflected in the evenly arcuate upper part of the outer lip. The specimens vary more or less in size as the measurements indicate, but the number of the whorls remains constant.

The name of this species is derived from the Greek *κάμαρα*, an arch; not the Latin *camera*, a chamber.

Besides the above Mr. Dorsey obtained from Lake Lanao, Mindanao, Philippine Islands, collected near Camp Kerthley by Mrs. Mary Strong Clemens, the following forms of *Vivipara* for which that lake is noted, and which have been recently described by Dr. Paul Bartsch in the Proceedings of the National Museum from other collections.

Vivipara partelloi Bartsch.

Vivipara mearnsii Bartsch.

Vivipara pagodula Bartsch.

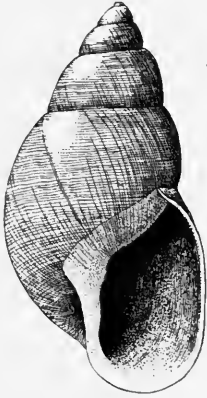
Vivipara lanaoënsis Bartsch.

Vivipara lanaoënsis var. **kappa** Bartsch.

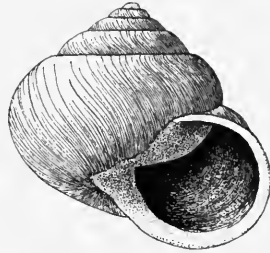
Vivipara lanaoënsis var. **gamma** Bartsch.

Vivipara lanaoënsis var. **eta** Bartsch.

Vivipara clemensæ Bartsch.



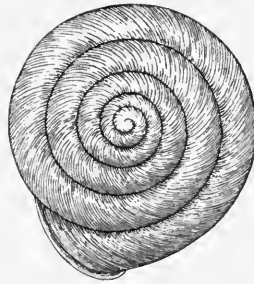
1



2



3



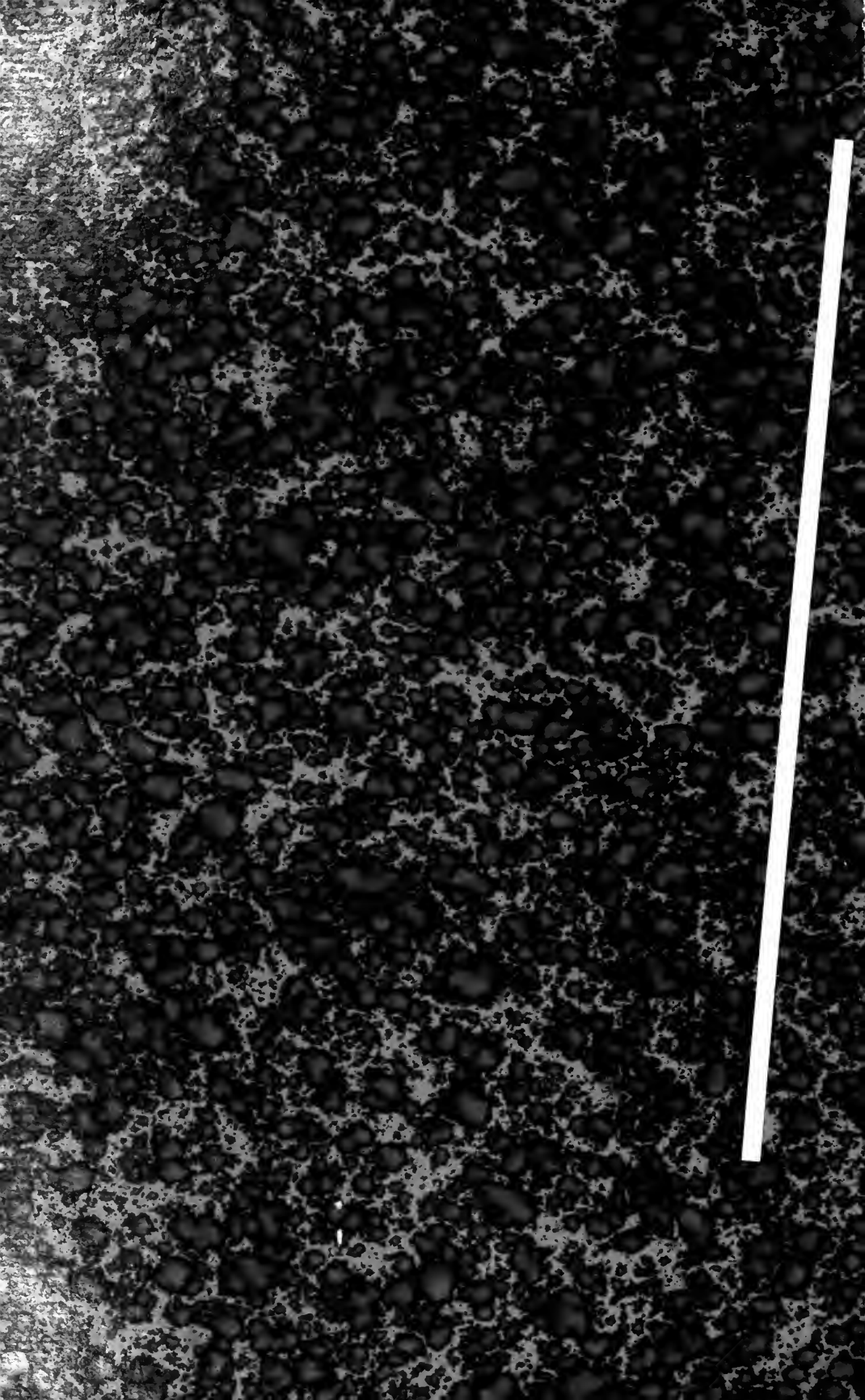
4

1. *PLACOSTYLUS (LEUCOCHARIS) DORSEYI* Dall. No. 11254, Field Museum Natural History.

2, 3, 4. *CHLORITIS (SULCOBASIS) CAMARATUS* Dall. No. 11255, Field Museum Natural History.









UNIVERSITY OF ILLINOIS-URBANA

590.5F1 C001
FIELDIANA, ZOOLOGYSCHGO
7 1905



3 0112 009379915