

In Photo P. 25. 1865. 65-100



2 Birds

A DESCRIPTION

S. F. BAIRD.

OF

SIXTEEN NEW SPECIES

OF

NORTH AMERICAN BIRDS,

DESCRIBED IN THE ANNALS

OF THE

NEW YORK LYCEUM.

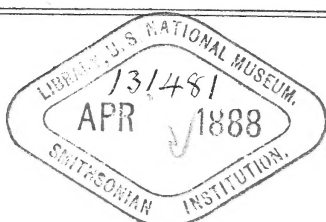
OF

NATURAL HISTORY.

BY JACOB P. GIRAUD, Jr.

COLLECTED IN TEXAS, 1838.

Deposit of S. F. BAIRD.



NEW YORK.

GEORGE F. NESBITT, PRINTER, TONTINE BUILDING,
CORNER OF WALL AND WATER STREETS.

1841.

(See Auk, 1921, 3151)
only 50 copies printed

f Q L
681
652
R B
S I

In adding to my collection a number of specimens of various genera and species received from Texas, I discovered many of those species procured by Dr. Townsend and others during their "journey across the Rocky Mountains," which induces me to believe that many of those species that visit the Columbia River, pass the winter in Texas. Figured and described in Audubon's American Ornithology.

Harris's Woodpecker,
Picus Harrisii, Audubon.

Red Shafted Woodpecker,
Colaptes Mexicanus, Swainson,
Picus Mexicanus, Audubon.

Black Headed Grosbeak,
Coccyborus Melanocephalus, Swainson,
Fringilla Melanocephalus, Audubon.

Evening Grosbeak,
Coccothraustes Vespertina, Swainson and Richardson,
Fringilla Vespertina, Cooper, Bonaparte, Audubon.

Crimson Fronted Finch,
Pyrrhula Frontalis, Bonaparte and Nuttall,
Fringilla Frontalis, Audubon.

Western Blue Bird,
Sialica occidentalis, Townsend and Audubon.

Say's Fly Catcher,
Tyrannula Saya, Swainson and Richardson,
Muscicapa Saya, Bonaparte, Nuttall, Audubon.

Rocky Mountain Fly Catcher
Tyrannula Nigricans, Swainson,
Muscicapa Nigricans, Audubon.

Audubon's Wood Warbler,
Sylvia Audubonii, Townsend and Audubon.

Yellow Headed Troopial,
Angelaius Xanthocephalus, Swainson and Richardson,
Icterus Xanthocephalus, Bonaparte, Nuttall, and Audubon.

Artic Blue Bird,
Sialia Artica, Swainson, Nuttall, Audubon.

Violet Green Swallow,
Hirundo Thalassinus, Swainson,
Hirundo Thalassina, Audubon.

Townsend's Wood Warbler,
Sylvicola Townsendii, Nuttall,
Sylvia Townsendii, Audubon.

Hermit Wood Warbler,
Sylvicola Occidentalis Townsend,
Sylvia Occidentalis, Audubon.

Arkansas Fly Catcher,
Tyrannus Verticalis, Say,
Muscicapa Verticalis, Audubon, Bonaparte, Nuttall.

Brown Song Finch,
Fringilla Crinerea, Gmel and Audubon.

Oregon Snow Bird,
Fringilla Oregona, Townsend and Audubon.

With the present heretofore undescribed species, which I have the gratification of introducing into the American Fauna.

Measurement taken from dried Specimens.

J. P. GIRAUD, Jr.

Icterus Auduboni.
uscicapa Texensis.
 " *Lawrencii*
 " *Fulvifrons*
ylvia Halseti
uscicapa De Rhami.
 " *Bellii*
orus Leucotis.
ringilla Texensis.
ora Calericulata.
uscicapa Leucomus
 " *Brasieri*
 " *Rubrifrons.*
ylvia Olivacea
rtia albifrons
landa minor

3. *Icterus melanocephalus* Wagl. Lin 1829. 756. (Cassm Pr. A. N. S. IV. 90. 1848)
 5. *Vireo caryocarpus*
 7. ——— *Tyrannula barbinotus* Sw.? Syn.
 9. ——— *Tyrannula affinis* Sw. Syn.
 11. ———
 13. ——— *Setophaga miniata* Sw.? 2d cont.
 15. ——— " *Rufifrons* Sw.? ~~Black~~
 17. ——— " *Rubra* Sw.
 19. ——— *Chrysomitris merulans* Sw. Syn. ~~merulans~~ ~~Black~~
 21. ———
 23. ——— *Setophaga picta* Sw.? 3rd ill.
 25. ——— " *auricapilla* Sw.? ~~Black~~
 27. ———
 29. ——— *Thryothorus merulans*
 31. ———
 33. ———

AUDUBON'S ORIOLE,

ICTERUS AUDUBONII.

Entire head, throat and foreneck black, with a few points of black extending on the breast; lower plumage yellow, wings and tail black, third and fourth quill equal and longest, second and fifth about equal, sixth longer than the third; primaries attenuated on the outer webs, margined with white; secondaries edged with yellowish-white; back, rump and upper tail-coverts greenish-yellow; lateral tail-feathers short, middle feathers longest. Length 8 5-8, wing from flexure 4 inches, tarsus 1 inch, acute behind, bill along the ridge 10-12, gap 11-12, middle toe and claw 11-12.

TEXAN FLY CATCHER,

MUSCICAPA TEXENSIS.

Muscicapa texanensis. *Brisson*, 11. 404, 1760
" " *Gm.* 227. no 12. 1788
" *LaVa.* *Trill.* 62. *Ann. Rept.* pl. 41.
Mus

Head proportionately small, body large; tail long, consisting of twelve broad feathers; bill strong, broad at the base, slightly declinate at the tip of the upper mandible, bristles at the base; nostrils partially concealed by a few recumbent feathers, a broad band of white crossing the forehead extending the entire length of head; crown, cheeks, lore and sides of the neck dusky; throat and fore-neck pure white; back, scapulars and rump brown, deeply tinged with green; wings brown, margined in the outer webs with greenish-yellow; upper tail-coverts brown, breast, abdomen, sides, vent and under tail-coverts lemon color; shafts, secondaries white, primaries brown; second and third quill equal and longest, fourth and fifth a little shorter, sixth longer than the first; tail brown, margined with pale green; shafts white and strong, slightly emarginate or nearly even; upper tail-coverts brown, margined with pale green; a concealed patch of bright vermillion on the top of the head, bill dark horn color, lighter below; length along the ridge 1-2 inch, gap 8-12, tarsus, feet and claws strong, scutellate; length from bill to end of tail 7 1-4 inches, wings from flexure 4 inches, tarsus 3-4, lateral toes equal and free, middle toe and claw 3-4, hind toe 6 1-2 inches.



Western Flycatcher.

Drawn by A. H. S. Taylor Esq.

N. Carrier, 225 E. 1st St. N.Y.

Western Flycatcher.

LAWRENCE'S FLY CATCHER.

MUSCICAPA LAWRENCEI.

Tyrannula Barbraeides? Sw. *Syn. Mex. Birds*.

Third and fourth quill about equal and longest; first, half an inch shorter than the second, fifth longer than the second, sixth shorter; upper plumage dull brown, inclining to olive on the back, darkest on the crest; outer webs, primaries commencing on the second quill, partially margined with rufus, secondaries the entire length; secondary and lesser coverts tipped with the same; throat, fore-neck and breast cinerious; rest of lower plumage yellow, wings and tail brown; the latter consisting of twelve broad feathers margined with rufus; bill strong, declinate at the tip, broad at the base, long bristles, dark horn color, nostrils partially concealed; tarsus, feet and toes covered with scutella, toes slender. Bill along the ridge $8\frac{1}{2}$ -12, gap 1 inch, tarsus $9\frac{1}{2}$ -12, wings from flexure 3 4-12 inches, length from bill to end of tail 6 5-12.

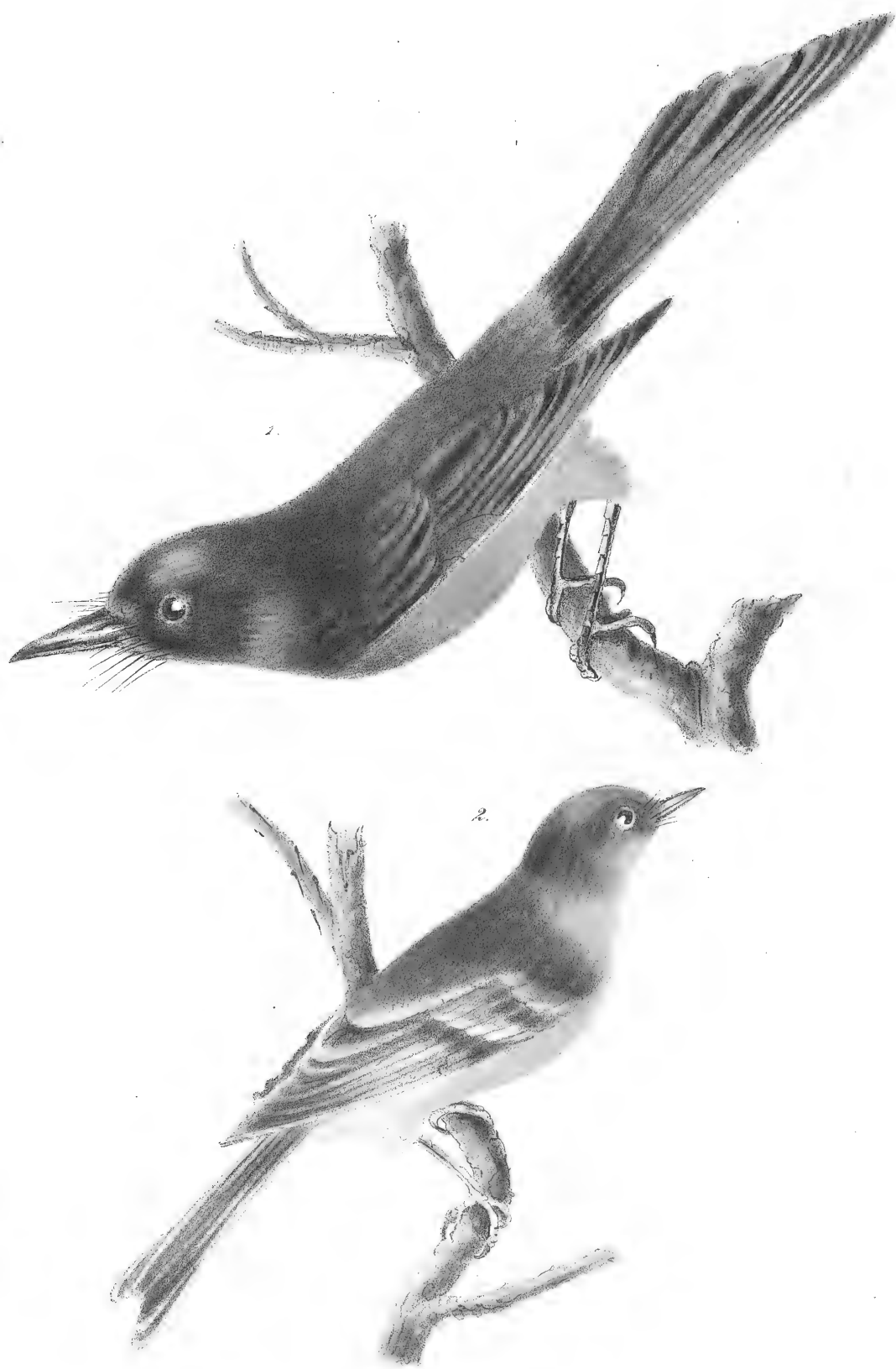
This species named after George Lawrence, Esq., of this city.

7

BUFF BREASTED FLY
CATCHER,

MUSCICAPA FULVIFRONS.

Head rather long, neck short, body slender; tarsus and feet weak, plumage loose, crested; bill short, depressed, broad at the base, nostrils open, upper mandible declinate at the tip, horn color, dark above, whitish below, bristles at the base; eye encircled with yellowish-white; shafts brown, second and third quill about equal and longest, fourth a little shorter, sixth and first equal; upper part brown, tinged with yellowish; wings brown; outer web, first primarie white, secondaries broadly edged with pale white on the outer webs; secundarie and first row, small coverts broadly tipped with pale brown; tail brown, emarginate, outer web first feather, white; lower plumage deep buff, lightest on the throat and fore-neck; under tail-coverts white, tinged with pale yellow; claws weak, arched, compressed, acute. Length from bill to the end of tail 4 9-12, wings from flexure 2 8-12, tarsus 7-12, bill along the ridge 1-3, gap 6½-12.



1. Lawrence's Flycatcher.
2. Buff-breasted Flycatcher.

Tyrannula ~~*abundant*~~
~~*affinis*~~

Drawn by J. H. E. Esq.

Engraved by J. Spruce St. N.Y.

HALSEY'S WARBLER,

SYLVIA HALSEII.

Head small, bill slender, broader than high at the base; tarsus, feet and toes slender, claws weak, much compressed, arched, acute; tail moderate, slightly rounded, feathers rather pointed; forehead dusky, a spot of yellow at the base of upper mandible, a broad streak of white commencing over the eye extending beyond the head, cheeks brown, throat white; sides of the body spotted with dusky-grey, rest of lower parts white, upper plumage slate color, tinged with olive on the back. Wings and tail brown, primaries edged with white on both inner and outer webs; secondaries more broadly edged with the same, secondary and first row, small coverts broadly tipped with white forming two distinct bands on the wings; shafts brown, second quill longest, third a little shorter, first and fourth about equal; inner webs, outer two tail-feathers pure white, an oblong spot of brown commencing midway on the outer webs, increasing as it continues to the end, outer web slightly edged with white midway third feather, inner web an oblong spot of white. Bill along the ridge 5-12, gap 3-4, tarsus $8\frac{1}{4}$ -12, middle toe and claw $6\frac{1}{2}$ -12, wing from flexure 2 1-2 inches, length 5 inches.

This species I have named after Abraham Halsey, Esq., President of the Brooklyn Lyceum of Natural History.

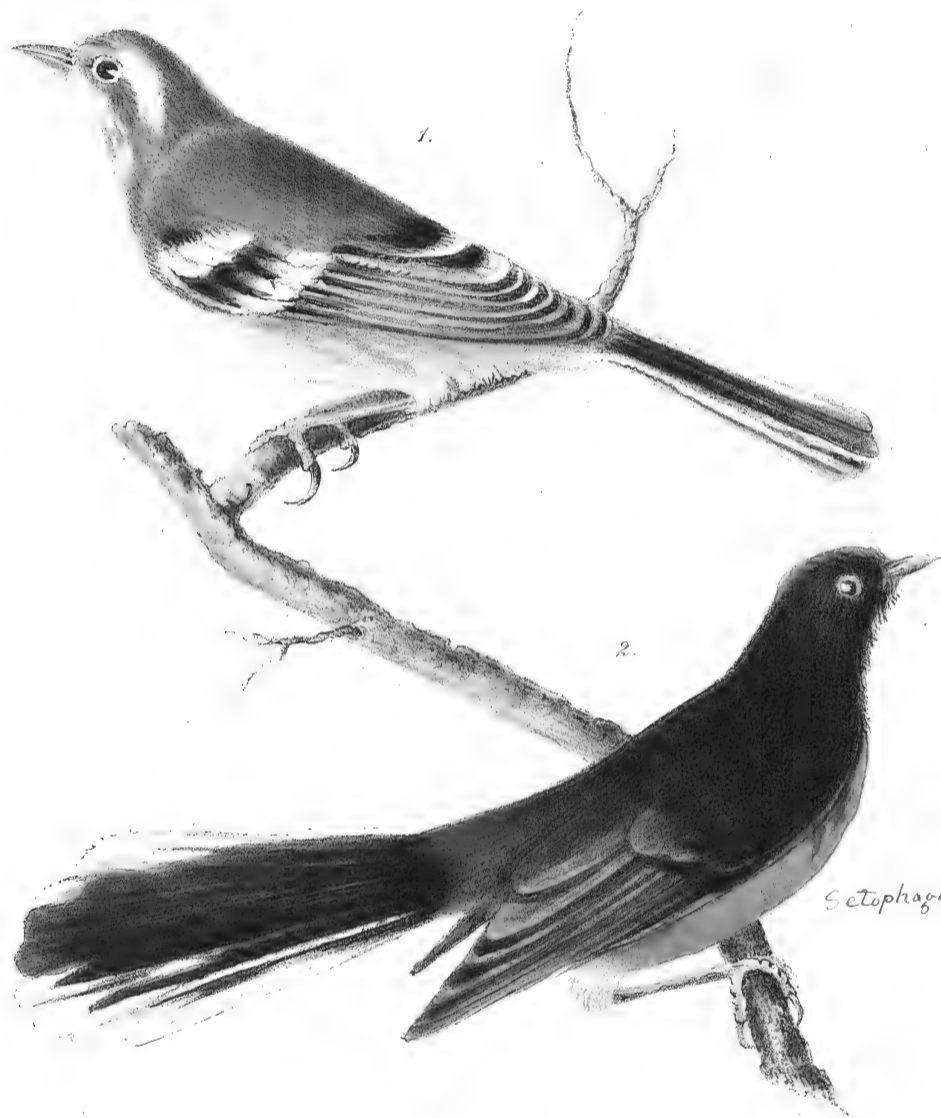
DERHAM'S FLY CATCHER,

MUSCICAPA DERHAMII.

Setophaga miniata. Sw. 24 Cent. 293. *Synopsis American Birds*. No. 12. 1827.

Head small, tail long, rounded, consisting of twelve rather broad feathers; toes slender, claws very much compressed, arched, acute, hind toe strongest; bill rather short, depressed at the base, bristles extending nearly to the tip, nostrils partially concealed by feathers. Forehead and loreal space black; crown and occiput chesnut-brown spotted with dusky, upper plumage slate color; wings and tail brown, the latter darkest; outer four tail-feathers spotted with white, first more so, fourth least; fourth quill a little longer than the third and fifth, which are about equal; shafts brown, throat and foreneck black, sides dusky, breast and abdomen light red; under tail-coverts black at the base, terminating with white; upper tail-coverts dark brown, tipped with slate color. Length from bill to end of tail 5 inches, wings from flexure 2 7-12, tarsus 8-12, middle toe and claw 6½-12, hind toe strongest, bill along the ridge 4-12, gap 6-12.

This species I have named in memory of the lamented Cassimere H. Derham.



Setophaga miniata

Setophaga miniata Sw. C. W. 4
 in Mus. 1/2 in. 1/2
 1/2 in. 1/2

1. Halcyon Warbler
2. Derahms Flycatcher

Drawn by J. H. E. E. E.

N. Carrier Lib. 2. Spruce St. NY

BELL'S FLY CATCHER,

MUSCICAPA BELLI.

Head rather large, flattened above; bill moderate, nostrils partially concealed; tail graduated, consisting of twelve narrow feathers, rather pointed; a line of yellow commencing at the base of upper mandible, passing over the eye entire length of the head; some of the feathers black on the inner webs, giving the appearance of a line of black directly above, separated in front by a small spot of black; crown, cheeks, and a spot before the eye chesnut-brown; throat, breast, and abdomen yellow; sides tinged with greenish-olive, under tail-coverts and vent yellow; entire upper plumage olivaceous; wings and tail brown, margined with green; third and fourth quill equal, second and sixth about equal; shafts brown; toes moderate; claws compressed, arched, acute; hind toe strongest; bill along the ridge 5½-12, gap 7-12, length 4 inches; wings from flexure, 3 inches; tarsus 10-12, acute behind, middle toe and claw 8-12, plumage loose, soft and blended.

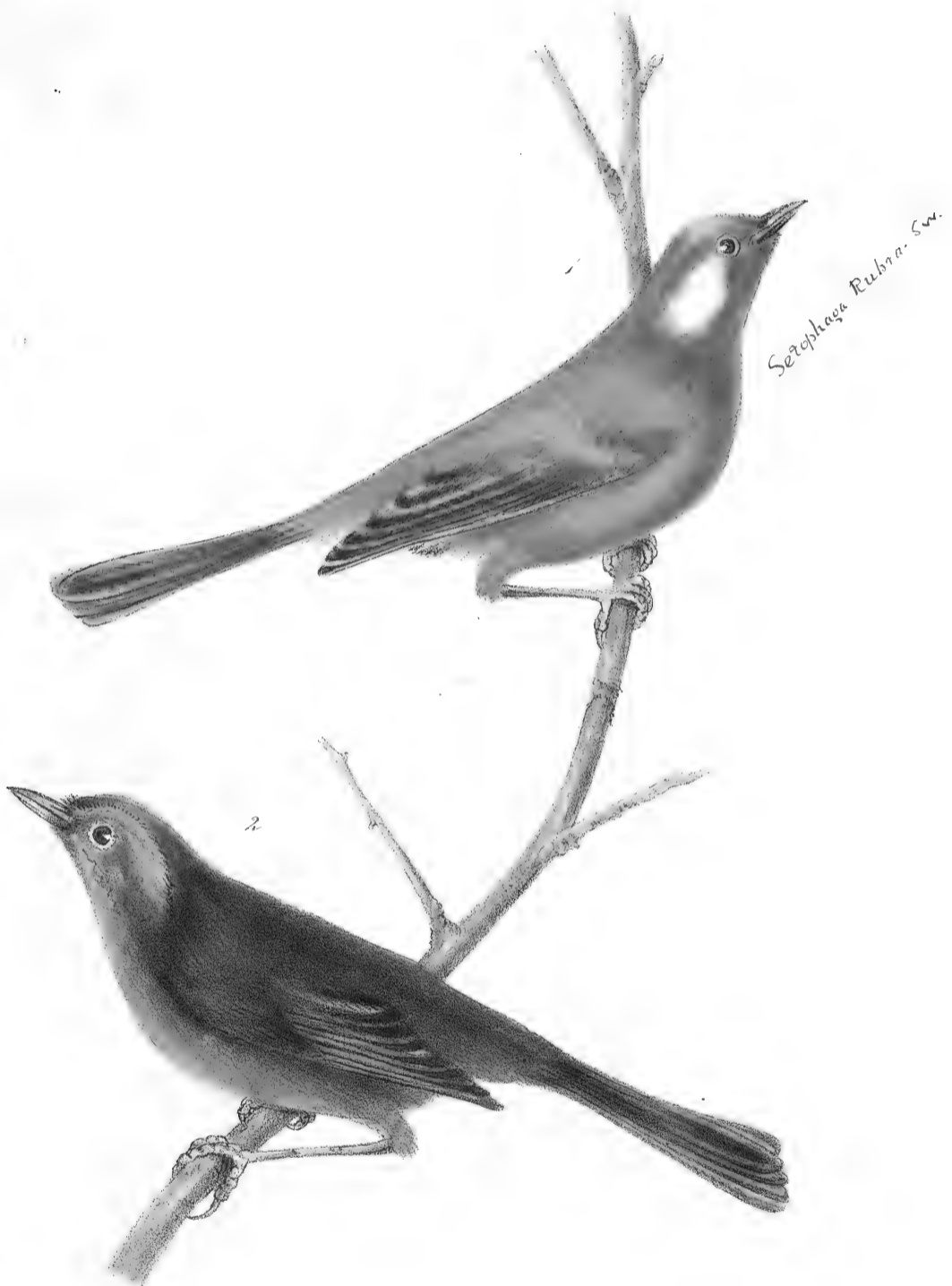
This species I have named after John G. Bell, Esq., of this city; devoted to natural history.

WHITE CHEEKED TITMOUSE.

PARUS LEUCOTIS.

Setophaga rubra. Sw. Syn. Cent. 292.

Head rather large, roundish; neck short; nostrils covered by bristly feathers; tail rather long, consisting of twelve feathers graduated; entire upper and lower plumage red, darkest on the back; cheeks satin white, wings and tail brown, margined on the outer webs with dark red; third and fourth quill about equal and longest, fifth longer than the second, sixth longer than the first; bill horn color, lighter below, bristles at the base. Length along the back 1-3, gap 1-2 inch, tarsus, feet and claws slender; claws arched, compressed, acute; length 4 9-10, wing from flexure 2 1-2, tarsus 8½-12 inches.



1. White checked Titmouse
2. Bell's Flycatcher.

Drawn by A. Audubon, Esq.

N. Currier lith. & Spruce St. N.Y.

TEXAN FINCH.

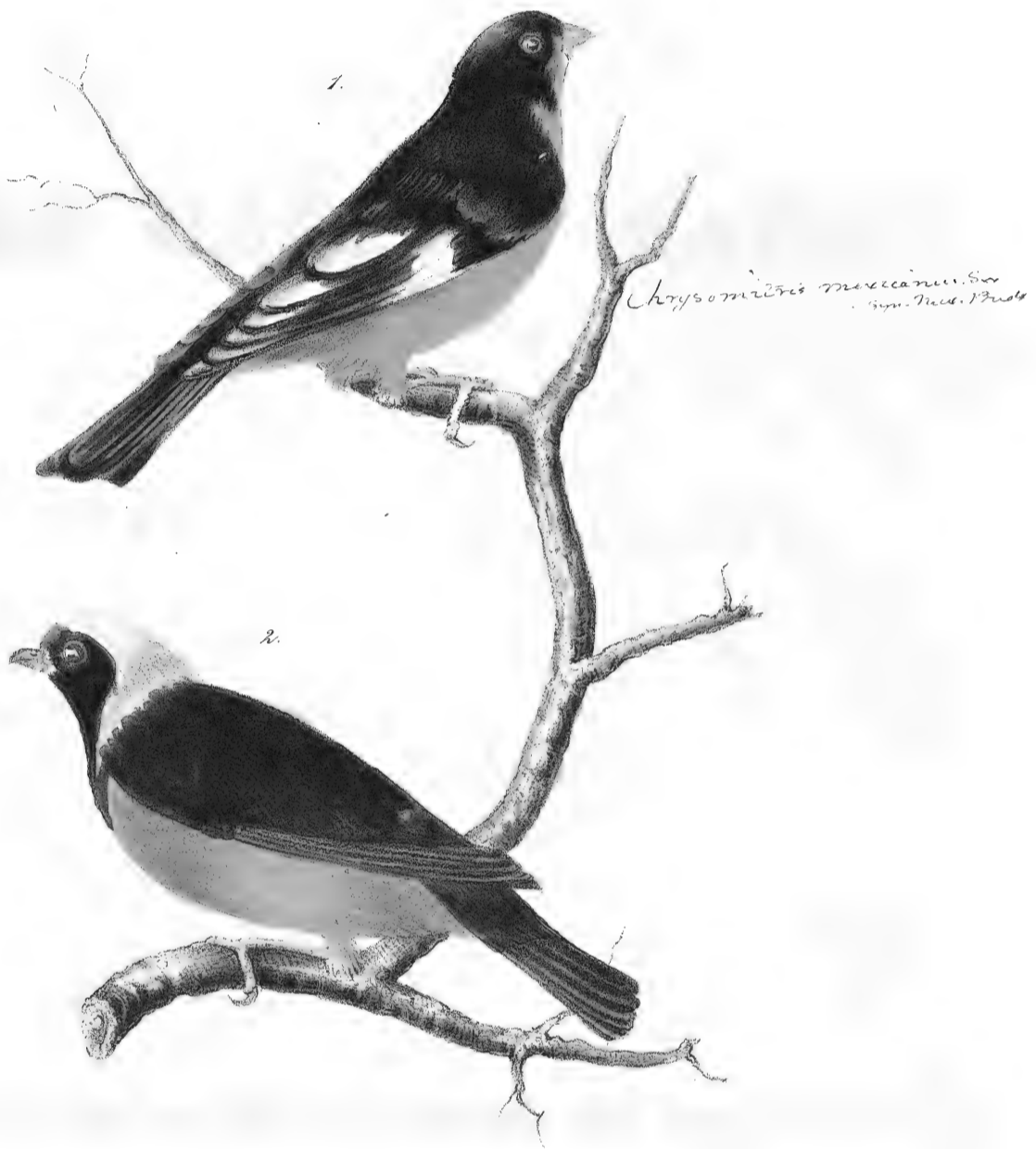
FRINGILLA TEXENSIS.

Bill short, robust, conical, head ovate; neck short; body compact; nostrils concealed by feathers; second and third quill longest and equal, first scarcely shorter; head, back, scapulars and upper tail-coverts black, glossy, with a few touches of yellow; rump white, intermixed with black; wings and tail blackish-brown, a spot of white on the primaries, commencing on the third quill; secondaries broadly edged with white, tipped with the same; secondary coverts tipped with pale yellowish-white, a spot of white on the inner webs of the three lateral tail-feathers extending about two thirds the length; tail nearly even; the entire lower plumage yellow. Length from bill to end of tail 4 inches, wings from flexure 2 4-12, tarsus 6-12, middle toe, rather longer, hind toe strongest, lateral toes equal, the outer connected as far as the first joint; bill on the back 4-12, gap 4³/₄-12.

AZURE CAPPED MANAKIN,

PIPRA GALERICULATA.

Bill short, stout, broad at the base, dorsal line arched; head ovate, neck short; body compact, tail short, slightly emarginate; second and third quill equal and longest, first longer than the fourth; forehead chesnut-brown edged with black; cheeks, throat and fore-neck dark glossy blue; crown, occiput and hind neck, with a line extending around on the fore-neck bright azure blue; upper plumage dark glossy blue, Iris; lower parts chesnut-brown, lightest on the sides; wings and tail dark brown, margined with blue; bill bluish, nostrils visible; feet covered with scutella, toes rather slender, claws compressed, arched. Middle toe and claw 7-12; outer, connected as far as the first joint and a little larger than the inner; tarsus $6\frac{1}{2}$ -12, bill along the ridge $3\frac{1}{2}$ -12, gap 5-12, length from bill to end of the tail 4 5-12, wings from flexure 2 7-12 inches.



1. Mexican Finch
2. Azure Capped Manakin.

Drawn by J. E. H. Esq.

J. C. Currier lith. & Spruce St. N.Y.

THE
JOURNAL OF
JAMES
MILNE
1841-1842

The following is a list of the
names of the persons who
were present at the
meeting of the
Committee of the
Board of Directors
of the
Bank of the
City of New York
on the 1st day of
January 1841.

WHITE SHOULDERED FLY CATCHER.

MUSCICAPA LEUCOMUS.

Selophaga pitta Sw. *Jour. U. L.* ^{ser.} *pl. 54.*

Head small, bill rather short, depressed, slightly declinate at the tip; tail long, rounded, consisting of twelve rather broad feathers; entire upper plumage black; throat and fore-neck black, a few red feathers concealed beneath; sides black, flanks dusky, breast and abdomen bright red; vent dusky-grey; under tail-coverts black at the base, terminating with white; wings and tail blackish-brown, tail darkest; outer webs, three lateral feathers pure white, a spot of brown on the inner webs near the base, extending on the third feather nearly to the end; second, third and fourth quill, equal and longest; fifth a little longer than the first; secondaries and first row, small coverts pure white, forming a conspicuous patch on the wings; outer web, first primaries edged with white, a few of the secondaries edged with the same. Bill along the ridge 4-12, gap 1-2 inch, tarsus 8-12, middle toe and claw 7-12, length from bill to end of the tail 5 1-2, inches, wings from flexure 2 10-12.

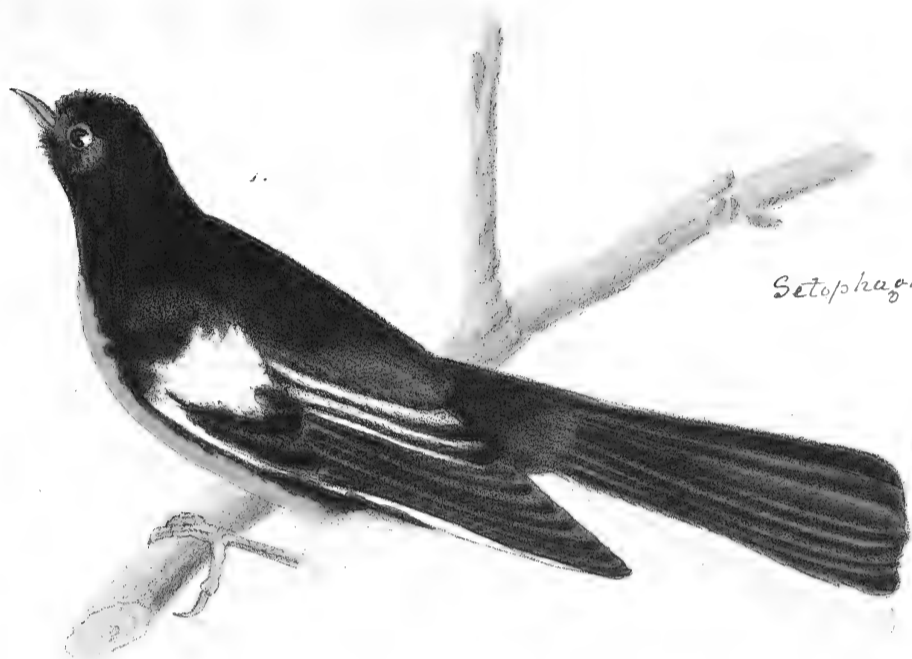
BRAZIER'S FLY CATCHER.

MUSCICAPA BRASIERII.

Setophaga auricapilla Sw.
2 1/4 (incl. Bill).

Head rather large; body rather slender, plumage loose; bill broad at the base, rather strong; nostrils partially concealed, eye encircled with pale yellow; upper mandible slightly declinate at the tip, bristles at the base; tarsus and toes slender, claws weak, arched, compressed, acute; hind toe strongest; tail slightly rounded or graduated, consisting of twelve rather pointed feathers; third and fourth quill about equal and longest, fifth longer than the second, sixth longer than the first; fore-head and loreal space pale yellow, intermixed with dusky; a line of black passing over the head on the hind-neck; middle space orange, changing to greenish-yellow as it extends on the hind-neck; cheeks and sides of the neck greenish-yellow; back, scapulars, rump and upper tail-coverts olivaceous; wings and tail brown, margined on the outer webs with greenish; the entire lower plumage yellow. Bill horn color, lighter below; length along the back 5-12, gap 7-12, tarsus 10½-12, middle toe and claw 6½-12, wings from flexure 24-12, length from bill to end of tail 5 inches.

This species I have named after Phillip Brasier, Esq., Brooklyn, Long Island.



Setophaga ruticilla Sw. Zool. ill.



1. White shouldered Flycatcher.
2. Brasier's Flycatcher.

Drawn by A. H. S. L. S. L.

At Carrier 10th. 2. Spence St. N. Y.

RED FRONTED FLY CATCHER.

MUSCICAPA RUBRIFRONS.

Head moderate; body slender; bill horn color, lightest below, upper mandible broadest, slightly declinate at the tip; fore-head and loreal space light red, crown, occiput and cheeks black, eye encircled with red; back, scapulars and tail-coverts ashy-grey, rump white; wings and tail brown, slightly margined with ashy-grey, primary shafts light brown, third quill longest, second and fourth about equal, first longer than the fifth, tail even, slightly attenuated or pointed; throat and fore-neck red, fading as it extended on the breast, sides of the body dusky-grey, rest of lower plumage white, length from bill to end of tail 4 inches, wing from flexure 2 7-12, tarsus 8-12, middle toe and claw 7-12, tarsus and toes slender, claws arched, much compressed; acute ridge 4-12, gap 6-12.

OLIVE BACKED WARBLER,

SYLVIA OLIVACEA.

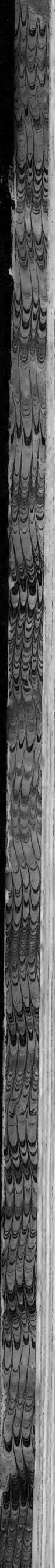
Second and third quill about equal and longest, fourth a little shorter, first and fifth about equal; head, throat, breast, neck and hind neck dull ochre, inclining to olive as it extends on the back; upper plumage ashy-grey, tinged with olivaceous; abdomen soiled white, tinged with greenish-yellow; lore and a line behind the eye black, broadest at the termination; wings brown, margined with white on the inner webs; outer, greenish-yellow, lesser coverts tipped with white, secondary coverts edged with greenish-yellow on the outer webs, paler at the tips, forming two distinct bands on the wings; a spot of white on the primaries commencing on the fourth quill beyond the coverts; vent and under tail-coverts, soiled white; tail brown, slightly forked, margined with greenish-yellow, an oblong spot of white on the outer three feathers extending nearly to the ends on the inner webs; a small spot of white on the fourth feather near the end; bill black above, lighter at the base of lower mandible, slightly notched; tarsus and toes slender, claws arched, compressed, acute. Length from bill to the end of tail 5 3-8 inches, wings from flexure 3 1½-12, bill along the back 5-12, gap 7-12, tarsus 9½-12, middle toe and claw 8-12.



1. Red-fronted Flycatcher.
2. Olive-backed Flycatcher.

Drawn by J. Halsey Eng.

W. Currier Edt. A. Spruce St. A.M.



THE GREAT EAST

CHAPTER I

THE GREAT EAST, the most fertile and populous of all the world's regions, is a vast and varied land, stretching from the icy north to the burning south. Its mountains are high and rugged, its rivers are long and winding, and its plains are fertile and rich. The people who live here are of many different races and languages, but they are all united by a common love of life and a common desire for progress. In the north, the people are brave and hardy, and they live in small, isolated communities. In the south, the people are more numerous and more civilized, and they live in large, bustling cities. The Great East is a land of great beauty and great wealth, and it is a land that has the potential to become a great power in the world.

WHITE THROATED WREN.

CERTHIA ALBIFRONS.

Thryothorus niveolatus Gray.
not ill.

Bill slightly arched, shorter than the head; wings rather broad and rounded; first quill very short, fourth longest, fifth and third scarcely shorter, second, quarter inch shorter than the third; upper plumage dark brown, darkest on the head, the feathers tipped with light brown giving it a spotted appearance; throat, fore-neck and breast pure white, abdomen reddish-brown, flanks and vent darker, bared with dusky, wings spotted with brown, faintly bared with dusky; tail and coverts light brown, broadly bared with black, tail rather long, broad and rounded; nostrils long and open. Bill along the back 8-12, gap 11-12, claws compressed, arched, acute; tarsus 3-4, length 5 3-8, wings from flexure 2 1-2 inches.



Thryothorus mexicanus. Sw.

White-throated Wren

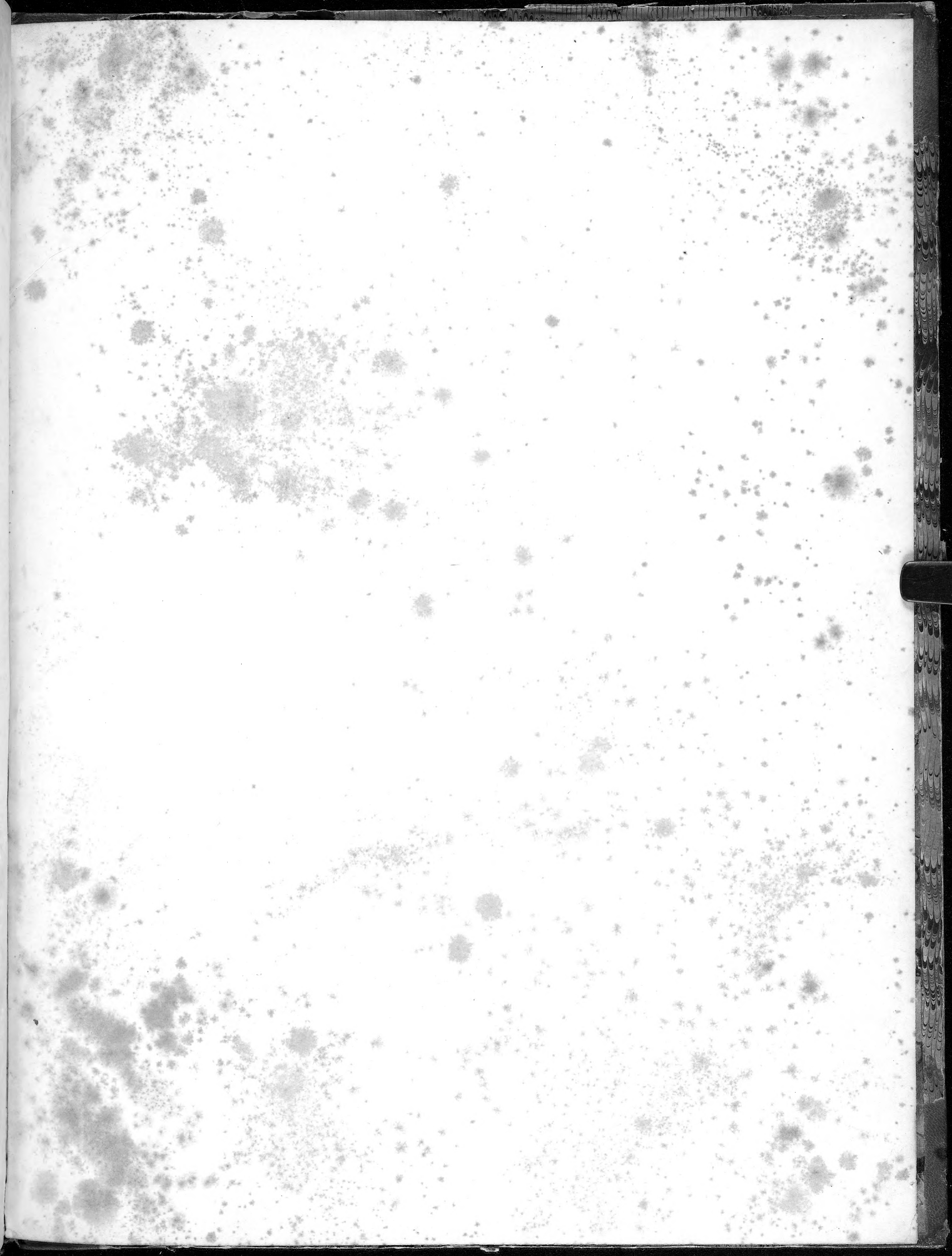
Drawn by J. Handley Esq.

N. Currier lith. 2 Spruce St. N.Y.

LESSER SHORE LARK,

ALAUDA MINOR.

Forehead pale yellow, a line of the same passing over the eye; crown black; occiput and hind neck reddish-brown; a few black pointed feathers on the lateral part of the head; a broad line of black commencing at the base of the upper mandible, passing down on the sides of the neck; throat light yellow, with a broad black patch on the lower neck; sides reddish-brown; breast white, spotted with brown; rest lower plumage white; back and wings brown; outer primarie, edged with white; second and third quill equal and longest, first a little shorter; longer than the fourth; secondaries, tipped with white, lesser coverts reddish-brown, tipped with white; secundarie coverts tipped with the same; upper tail-coverts reddish-brown; tail dark brown, two middle feathers lighter; outer webs, lateral tail-feathers, margined with white. Length from bill to end of tail $6\frac{1}{2}$ inches; wings from flexure 3 11-12, tarsus $9\frac{1}{2}$ -12, hind toe $8\frac{1}{2}$ -12, middle toe 8-12, bill on the back 5-12, along the gap 8-12.







SMITHSONIAN INSTITUTION LIBRARIES

3 9088 00317242 6
crlsrb f01681.G52
A description of sixteen new species of