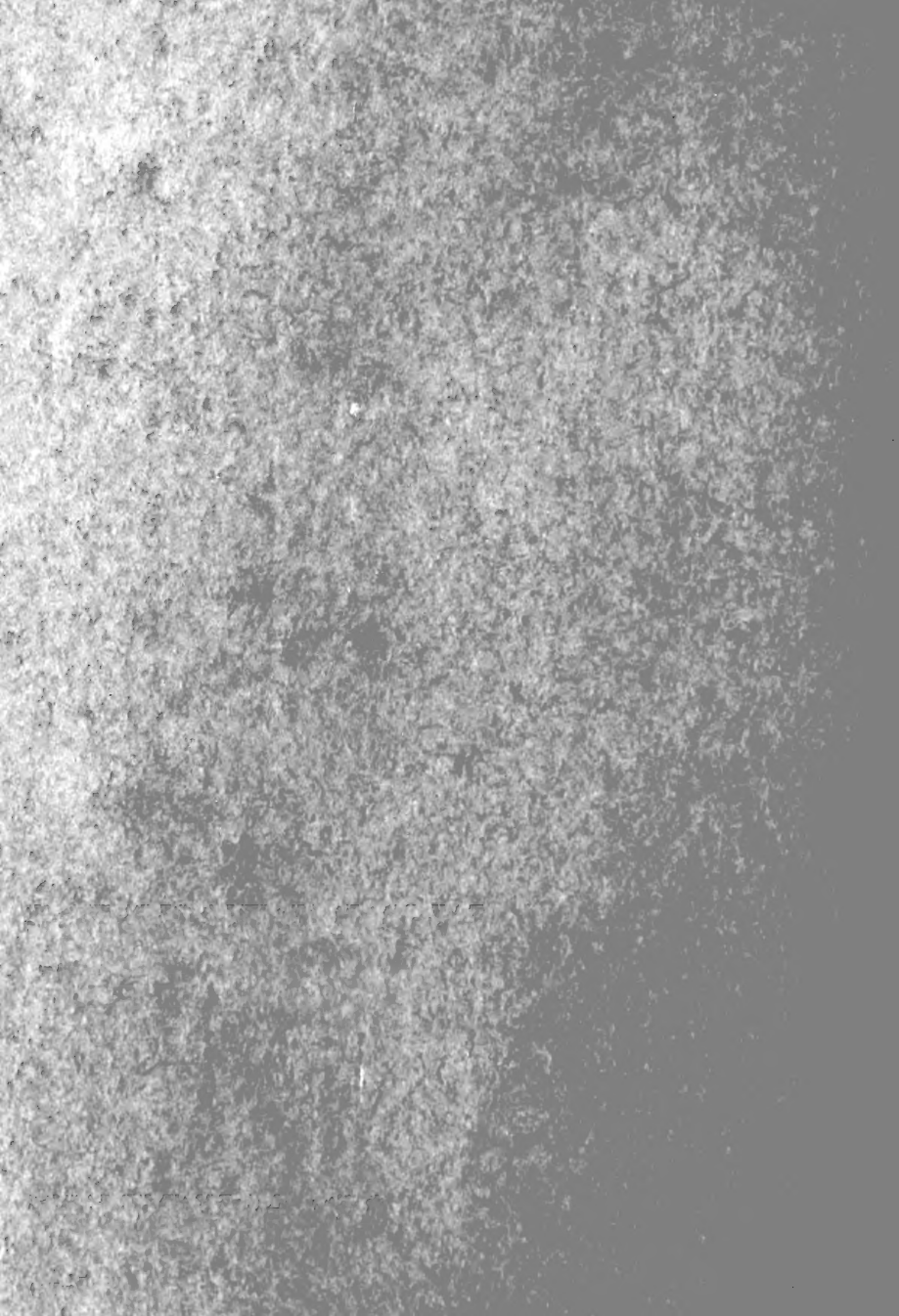


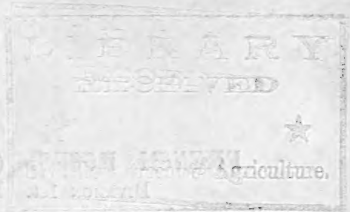
## Historic, archived document

Do not assume content reflects current scientific knowledge, policies, or practices.



62,39

dup



1850.

A DESCRIPTIVE CATALOGUE  
OF SELECTED

# ROSES AND PÆONIES,

Cultivated by the Proprietor on part of the Nursery Grounds of  
**CHARLES F. PUTNAM,**

Half a mile north from the Essex Rail Road Depot, and for sale by

**FRANCIS PUTNAM,**

**AT HIS BOOK AND SEED STORE, No. 186 1-2 ESSEX ST.,  
SALEM, MASS.,**

Where also can be found a large variety of **CAMELIAS, GREEN HOUSE** and **ORNAMENTAL GARDEN PLANTS**, with a full assortment of **Garden and Flower Seeds, Bouquets, Wreaths, and Cut Flowers.**

Orders will also be received at the above named Store, for **Fruit Trees, Norway Spruces, Larches, Horse Chesnuts, Mountain Ashes,** and other **Ornamental Trees, Buck Thorns, Pear Stocks, &c.**

**STRAWBERRIES** and **RASPBERRIES** of different kinds, and **ASPARAGUS ROOTS**—all of which can be supplied, in any quantity required, from the Nursery of **C. F. Putnam.**

## PROVENCE ROSES, (*Rosa Centifolia.*)

- b* Cabbage Provence large, globular, rose color, fine old variety.
- Flora's Riches delicate rose, of very regular form.
- a* Rachel large, globular, very handsome rose.

## MOSS ROSES.

- Luxemburg dark crimson, free bloomer, of vigorous growth.
- Princess Royal dark crimson, semi-double, but blooms profusely.
- a* Princess Adelaide clear rose, very fine, great luxuriance, flowers in large clusters.
- b* Single crimson expanded, crimson, vigorous, blossoming abundantly.

**FRENCH ROSES.** (*Rosa Gallica*.) in two divisions.

DIVISION 1st. Flowers self-colored or shaded.

- |          |                    |                                             |
|----------|--------------------|---------------------------------------------|
| <i>a</i> | Beaute parfaite    | compact, crimson rose, fine.                |
|          | Bizarre Marbree    | compact, crimson rose, superb.              |
|          | Boula de Nanteuil  | crimson, beautiful and large.               |
|          | Cambroune          | large, crimson purple, showy and fine.      |
|          | Carangeon          | large, blush with rose centre, good form.   |
|          | Cynthia            | light pink, large and fine.                 |
| <i>a</i> | Eclatante          | bright scarlet crimson.                     |
| <i>c</i> | Fanny Parissot     | globular, large, blush, buds beautiful.     |
|          | Feu Brillante      | compact, bright scarlet crimson, very fine. |
|          | Julie              | large, light rose.                          |
|          | Latour d' Auvergne | shaded crimson, large and beautiful.        |
| <i>b</i> | Nestor             | shaded rose.                                |
| <i>b</i> | Oriflamme          | compact, bright scarlet.                    |
|          | Reboul             | large, cherry color, very attractive.       |

**FRENCH ROSES.** 2d Division.

Flowers marbled, spotted or striped.

- |          |                  |                                                 |
|----------|------------------|-------------------------------------------------|
|          | Aglae Adanson    | large rose spotted with white.                  |
| <i>b</i> | Berangere        | compact, small, deep rose, spotted.             |
|          | D'Arcet          | rose, marbled with white.                       |
| <i>a</i> | Donna Sol        | compact, red spotted with flesh.                |
| <i>b</i> | Duc de Nemours   | light crimson violet.                           |
| <i>c</i> | Duc d'Orleans    | red, spotted with white.                        |
|          | Euphrasie        | rose, spotted with white, outward petals blush. |
|          | Fornarina        | rose, spotted and marbled.                      |
|          | Giselle          | rose, spotted with white.                       |
| <i>a</i> | Ne Plus Ultra    | light rose, marbled with white.                 |
|          | New Village Maid | compact, white striped with pink.               |
| <i>b</i> | Tullie           | large, marbled purple.                          |

**HYBRID PROVENCE ROSES.**

- |          |                     |                                                    |
|----------|---------------------|----------------------------------------------------|
|          | Aspasie             | blush, nearly white, beautiful.                    |
| <i>a</i> | Blanchfleur         | white, regular in shape, one of the best.          |
| <i>a</i> | Duc d'Angouleme     | rose, large, regular and fine.                     |
| <i>a</i> | Eugenie Dessausais  | delicate rosy pink, in clusters, fine.             |
| <i>a</i> | Helene Maret        | white, with a light straw colored centre.          |
| <i>a</i> | La Calaisienne      | delicate rosy pink, large, beautiful and distinct. |
|          | La Ville de Londres | rose, very large and fine.                         |
|          | La Volupte          | deep rose, very regular and fine.                  |
| <i>a</i> | Madame L'Abbey      | brilliant dark rose, elegant.                      |
|          | Madame Campan       | large, rose shaded, fine.                          |
| <i>a</i> | Rose Devigne        | pale pink, elegant.                                |
|          | Semilassa           | deep rosy red.                                     |

**HYBRID PROVENCE.** 2d Division.

Flowers marbled, spotted and striped.

- |          |                       |                                             |
|----------|-----------------------|---------------------------------------------|
| <i>b</i> | Elize Leker           | rose, beautifully spotted and marbled.      |
| <i>b</i> | Odette de Champdivers | light rose, spotted, handsome.              |
|          | Salmacis              | blush, with rosy centre, spotted, distinct. |

**HYBRID CHINA.**

- |          |                    |                     |
|----------|--------------------|---------------------|
| <i>b</i> | Ancelin            | large, bright rose. |
|          | A Odeur d'Anisette | delicate rosy pink. |

<i>c</i>	Auzou	rich crimson rose.
<i>b</i>	Belle et Mince	shaded rose, of free growth.
	Belle Parabere	fine crimson, showy and vigorous.
<i>a</i>	Belzunce	large, bright deep pink, in clusters, fine.
<i>c</i>	Cerisette	bright cherry color, an old but good variety.
<i>b</i>	Coccinea superba	brilliant crimson, fine and showy.
<i>c</i>	D'Audigne de Blanchaie	globular, shaded purple, a good old variety.
<i>a</i>	Duke of Sussex	compact, large, shaded rose, excellent.
	Emperor Probus	deep crimson rose, fine.
<i>a</i>	Eucharis	brilliant rose, imbricated, regular and showy.
	Earl Talbot	large purple rose.
<i>c</i>	George the 4th	globular, brilliant crimson velvet, very fine.
	Gloire d'une Parterre	large, full rose, showy.
<i>c</i>	Hybrid Stadtholder	blush, a well known good variety.
<i>b</i>	Kleber	red and purple, fine.
<i>c</i>	La Tourterelle	beautiful dove color.
	Leopoldine d'Orleans	bright crimson, fine.
<i>a</i>	Leopold de Beauremont	beautiful delicate rose, very fine.
	Leroy	delicate light rose, very fine.
	Madam Mortier	bright beautiful velvet crimson.
	Madam Pisaroni	light rose, early, vigorous and very hardy.
<i>b</i>	Madam Plantier	very fine, pure white.
<i>b</i>	Malesherbes	compact, small, crimson with light shade.
<i>b</i>	Mary Stuart	bright red.
<i>c</i>	Paricot	beautiful crimson velvet, of free growth.
<i>b</i>	Petit Pierre	bright rosy purple, vigorous.
	Richelieu	large, rose, very fine.
	Roi de Prusse	bright crimson purple, fine.
<i>c</i>	Velours Episcopal	deep red, showy.
<i>c</i>	Victoire des Hyrides	very dark crimson velvet.
<i>c</i>	Victor Tracy	large dark crimson.
<i>c</i>	Violet de Belgique	dark violet.

### HYBRID BOURBON ROSES.

	Andrienx	bright rose, fine.
	Belle de St. Cyr	bright rose, of regular form.
<i>c</i>	Celine	expanded, rose, showy, very vigorous.
<i>b</i>	Capt. Sissolet	brilliant rose.
<i>a</i>	Charles Duval	large, rose color, very beautiful.
<i>a</i>	Coupe d'Hebe	delicate rose, of exquisite form, unsurpassed.
<i>a</i>	Elize Mercœur	light rose, centre red, large and fine.
	Franklin	globular, large, red tinged with lilac, very fine.
<i>b</i>	Glorieux	large, deep blush, blooming in clusters.
	Great Western	globular, large, bright crimson, very attractive.
	Hortensia	very delicate pink, distinct and elegant.
	Paul Perras	brilliant rose.

### DAMASK ROSES. (Rosa Damascena.)

	Duke of Cambridge	large, deep rose, very fine and vigorous.
<i>c</i>	Imperatrice	large, cherry rose.
<i>a</i>	Semiramis	large, rosy blush, distinct and fine.

### ROSA ALBA.

<i>a</i>	Blush Hip	delicate blush, very fine and very hardy.
----------	-----------	-------------------------------------------

**SCOTCH ROSES.** (*Rosa Spinossissima.*)

c	Erebus	pink.
c	Floribunda	blush, very double, handsome.
	Irene	light clear yellow, fragrant, ornamental and popular.
c	Sulphur	straw color.
c	Venus	purple crimson.
c	William the 4th	small, full, white pretty.
c	Yellow	bright yellow.

**AUSTRIAN BRIARS.** (*Rosa Lutea* )

c	Globe yellow	clear yellow.
b	Harrison	fine bright yellow.
a	Persian yellow	best yellow known.
c	Single yellow	bright yellow.

**BOURSAULT ROSES.** (*Rosa Alpina.*)

b	Amadis	splendid deep crimson, very showy.
c	Blush	globular, blush.
c	Gracilis	light pink.
b	Inermis	light red, large and showy.
c	Purple	old variety.

Boursault Roses are very hardy, of great luxuriance, and admirably adapted for ornamental hedges and screens. They can be grown to a great height. The 1st and 4th varieties are particularly recommended.


**PRAIRIE OR MICHIGAN ROSES.** (*Rosa Rubifolia.*)

	Baltimore Belle	blush white, in beautiful clusters.
c	Common Michigan	single pink, (frequently sold here as Queen.)
	Pallida	light blush, double and fine.
	Perpetual	deep pink, sometimes blooms in Autumn.
	Queen of the Prairies	bright rose, fine form, elegant.
	Superba	light rose.

The Prairie Roses are extremely beautiful when trained, and are all climbers of great luxuriance.

The Nursery of Roses from which the foregoing catalogue has been carefully selected, now contains about 500 varieties; having been kept down to that number by discarding, within a few years, quite as many kinds, most of which, although new and costly, were not considered worthy of cultivation.

A great many Roses have been omitted in this list, because the stock of them fit for present delivery, was small. Several of these are very fine, and can be furnished at reasonable prices—in no case exceeding a dollar per plant, and generally at the same prices per dozen as specified on the last page of the catalogue.

 Roses marked A are 75 cents; those marked B 37½ cents; those marked C 25 cent.; and the unnumbered are 50 cents.

# PEONIES.

These have now become indispensable to every garden. Some of them begin to bloom with the Tulips, while others finish with the Summer Roses; a good collection thus keeping up a beautiful display for about two months. They are all hardy, and admirably adapted to the climate of our most northern states; growing well in almost all situations, and even flourishing under the shade of trees.

## TREE PEONIES. (*Pæonia arborea* or *Moutan*.)

		<i>Price.</i>
Alba punicea	white with purple at base of the petals, new,	\$4 00
Albida purpurea	white, shaded with purple do	4 00
Argentæa	white, with purple base, large do	5 00
Banksii	changeable purple, fine old variety	75
do	larger plants	1 50
Banksii purpurea	darker than the preceding, but seldom blossoms	50
Josephine Imperatrice.	larger and darker than Banksii, fine	5 00
Lucida	white, with the base of the petals purple, new	5 00
Pallida	blush very slightly marked with purple, new	5 00
Phœnicia major	large, dark changeable purple do	5 00
Purpurea semiplena	changeable purple, not equal to Banksii do	1 00
R 221	rose color	2 00
Rosea papaveracea	single, purple shaded	1 00
Rosea plena	semi-double, rose	2 00

## HERBACEOUS PEONIES.

Albiflora Sinensis	white, single	25
Alba Sulphurea	white, centre yellow, a week earlier than <i>Whitleii</i> , beautiful and new	} 2 00
Anemone flora Striata	dark pink, centre flesh and pink	1 00
Carnea alba	flesh changing to white new	75
Carnea lutea	flesh with saffron centre do	2 00
Carnea rosea	delicate flesh or light pink, expanded do	2 00
Concinnæ	rosy pink, cupped, with tufted centre do	2 00
Eribescens	delicate light pink do	1 00
Expansa	white, single but showy	37
Formosa	white, of most regular and beautiful form, very fine	2 00
Fragrans	rose, fragrant, a fine old variety	25
Grandiflora carnea plena	white, very large and full, excellent	1 00
Glomerata	light rosy crimson, tufted centre new	1 50
Great Western	dark crimson, very large do	3 00
Heriartiana	pink, centre pink and yellowish white, pretty	1 00
Humei	rose, very large, an excellent old variety	25
Imbricata	white, of regular and fine form new	2 00
Kermesina	deep rosy crimson do	1 00
Lactiflora	white do	1 00
Lutea alba	white, with yellowish centre, tall and showy	50
Lutea variegata	flesh, centre yellowish flesh	1 00
Papaveriflora	white, large, compact, superb	2 00
Phœnice	rosy crimson, tufted centre new	1 00
Pottsii	bright dark crimson, showy	50
Pulcherrima	pink, with yellowish white centre	75
Purpurea expansa	rosy purple, large, expanded do	75
Purpurea plena	shaded rosy pink do	1 00

Reevesii	delicate blush pink, beautiful	50
Richardsonii	white, single, rather fragrant	37
Rosea alba grandiflora	mixed rose and white, large and showy	new 1 00
Rosea alba variegata	pink, centre shaded and variegated	do 1 00
Rosea expansa	dark pink, expanded	do 1 00
Rosea luteola	light rose, centre yellowish pink, attractive	do 1 00
Rosea rubra	rosy pink shaded, rather showy	do 75
Rosea versicolor	delicate light shaded pink	do 2 00
Speciosa striata	pink, centre flesh, slightly striped	1 00
Victoire Modeste	rose with saffron centre, large, very tall and popular	1 00
Whiteii	white, very fine old variety	25
Officialis Anemoneflora	scarlet crimson, single but splendid	75
do Baxteri	single, scarlet	37
do carnea	double, changeable flesh colored, old but fine	37
do fulgens	single, bright crimson	25
do purpurea	single, bright purple	25
do rosea plena	double, bright rose, an excellent old variety	25
do rosea simplex	single, rose	25
do rubens	single, red	25
do Sabinii	single, bright crimson	37
do splendens	do do	37
Paradoxa	single, crimson	25
do fimbriata	double, dark crimson	25
Siberica	single white	25
Tennifolia	single, bright crimson, the earliest	25
do insignis	single, bright red	25
Villosa	single, light purple	25
Uniflora	single, white	25

## DISCOUNT FROM CATALOGUE PRICES.

When one dozen different varieties of Roses or Pæonies are ordered, 15 per cent.

do two do	do	do	do	do	do	20	do
do three do	do	do	do	do	do	25	do
do four do	do	do	do	do	do	30	do
do 100 plants	do	do	do	do	do	40	do

When the choice is left to the proprietor, the following assortments will be sold at the prices annexed, viz :

1 dozen beautiful Summer Roses	(price per catalogue 75 cts. each)	for	\$6 00
1 do do do	( do do 50 do )		4 00
1 do do do	( do do 37 do )		3 00
1 do do do	( do do 25 do )		2 00
1 do double Prairie			4 00
1 do common Michigan			1 50
1 do Hybrid Perpetual, Bourbon, Noisette, Tea and China,		4 00 to	6 00
1 do Boursault, Amadis and Inermis			3 00
100 do do do			20 00
1 dozen do Blush, Gracilis and Purple			2 00
1 do Rosa Manetti, highly recommended for stocks by Mr. Rivers			3 00
100 do do			20 00

One of each of the different Herbaceous Pæonies and Banksii Tree } 28 00  
 Pæony, 56 varieties, for }





**Permalife®**  
pH 8.5