

## **Historic, archived document**

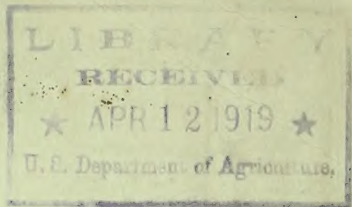
Do not assume content reflects current scientific knowledge, policies, or practices.





62,57

Sup?



No. 14.

JAMES R. PITCHER,

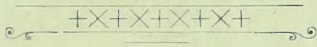
W. A. MANDA

# DESCRIPTIVE CATALOGUE

—OF—

# New and Rare

# PLANTS.



THE UNITED STATES NURSERIES,

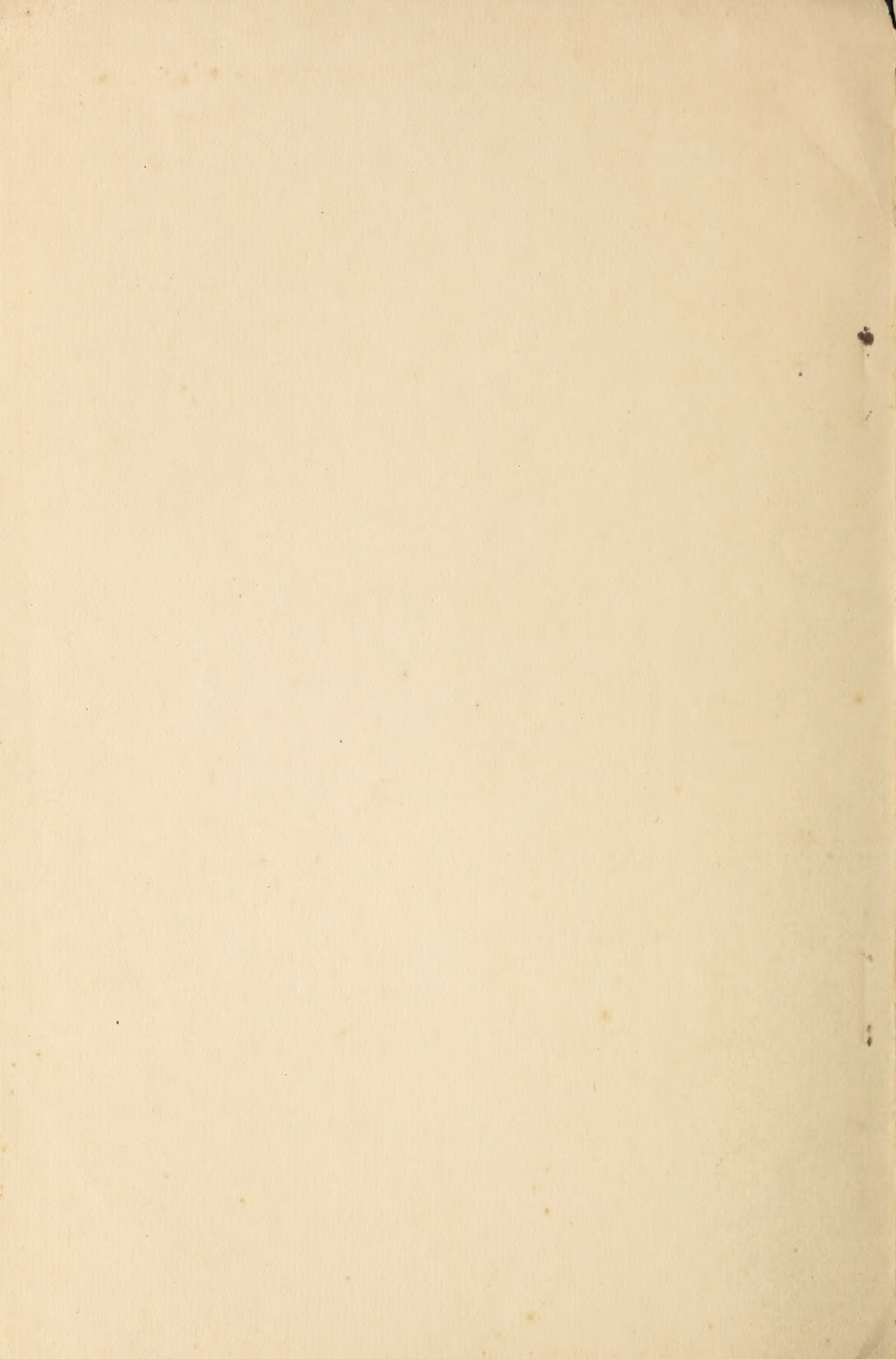
SHORT HILLS,  
New Jersey,  
U. S. A.

Cable Address,  
Pitcher, New York.

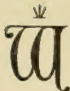
European Branch,  
HEXTABLE,  
SWANLEY, KENT,  
England.

Cable Address,  
Manda, Hextable.

MARCH, 1891.





 WE TAKE pleasure in handing you herewith our ILLUSTRATED CATALOGUE OF NEW AND RARE PLANTS.

We publish numerous other catalogues at intervals, all of which are sent without charge to any one interested in plants and flowers. The following are now in print, and will be forwarded on application:

DESCRIPTIVE CATALOGUE OF CHRYSANTHEMUMS and SINGLE DAHLIAS.

PRICE-LIST OF HARDY PERENNIALS.

PRICE-LIST OF ORCHIDS.

PRICE-LIST OF CYPRIPEDIUMS.

Having recently added the Bulb and Seed Business to our extensive Plant Establishment, we shall issue during the coming season the following New Catalogues.

Descriptive and Illustrated Catalogue of Bulbs, and Flower and Vegetable Seeds for autumn planting, with full directions for their culture.

Descriptive and Illustrated Catalogue of Flower and Vegetable Seeds and Bulbs for spring planting, with full cultural directions.

We have also in preparation, to be issued shortly:

Price-list of Stove and Greenhouse Plants.

Descriptive Catalogue of Implements and general Garden Requisites.

As will be appreciated, considerable expense is attached to the printing and posting of these Catalogues, and while we wish them placed in the hands of every lover of plants and flowers, the expense of publication precludes their promiscuous distribution. If you are interested in flowers and plants, whether for the greenhouse or the open ground, we would be glad to receive notice to that effect, on receipt of which we will enter your name in our address book and send catalogues as published.

PITCHER & MANDA,

UNITED STATES NURSERIES,

SHORT HILLS, N. J



No. 14.

JAMES R. PITCHER,

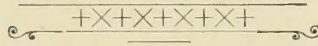
W. A. MANDA,

DESCRIPTIVE CATALOGUE

—OF—

New and Rare

PLANTS.



THE UNITED STATES NURSERIES,

SHORT HILLS,

New Jersey,

U. S. A.

Cable Address.

Pitcher, New York.

European Branch,

HEXTABLE,

SWANLEY, KENT,

England.

Cable Address,

Manda, Hextable.

.....  
MARCH, 1891.



**T**HE United States Nurseries are situated in Short Hills, N. J., on the D., L. & Western R.R., only seventeen miles from New York City. Frequent trains leave from foot of Christopher or Barclay St.

For time table see below.

The European branch is situated at Hextable, Swanley, Kent, Eng.

We are pleased to see visitors at any time. A personal visit will facilitate selection of plants and afford an opportunity of seeing the extent of our Nurseries.

**TERMS:** Accounts are made up monthly. Our patrons are requested to remit by checks, express, or P. O. Money Orders or currency in registered letters, as we cannot be responsible for moneys sent in unregistered letters. From UNKNOWN correspondents either a remittance or reference is requested with each order.

**NO CHARGES** are made for boxes, packing or delivery to the railroad or express office. All plants are carefully packed and may be safely forwarded to any part of the globe.

**ORDERS** are solicited at as early a date as possible, that we may have ample time for their execution. Please write plainly Name, Post-office, Express office, and any other necessary information as to the best method of forwarding.

**ADVICES OF SHIPMENT**, together with the invoice, are sent the same day goods are forwarded.

**COMPLAINTS**, if any, should be made on receipt of goods; we promise prompt and just treatment of all claims presented. (We guarantee safe arrival of Plants sent by Express, but can not be responsible for plants sent by Freight.)

**HEAD GARDENERS AND ASSISTANTS.** We have on our register names of several practical and trusty men for above positions, and will be happy to recommend them to any lady or gentleman requiring their services.

#### TIME TABLE.

##### TRAINS FROM NEW YORK LEAVE CHRISTOPHER OR BARCLAY STREET FERRY

7:30, 8:40, 10:10. 11:10 A.M.

1:30, 2:30, 4:00, 4:30, \*4:30, \*5:20, 5:40, \*6:00, 6:10, 6:30, 8:00, 9:15, 10:15, 11:30, 12:00 P.M.

##### ARRIVE AT SHORT HILLS.

8:40, 9:47, 11:17, 12:19 A.M.

2:37, 3:39, 5:09, 5:23, 5:37, 6:15, 6:30, 6:43, 6:58, 7:18, 7:40, 9:12F, 10:20, 11:20, 12:36 P.M., 1,07<sup>†</sup> A.M.

##### TRAINS TO NEW YORK LEAVE SHORT HILLS.

6:58, 7:24, \*7:48, \*7:53, \*8:29<sup>‡</sup>, 8:50, 9:50, 10:20 A.M.

12:15F, 1:44, 3:00, 5:08<sup>‡</sup>, 6:58F, 8:34, 11:09, 11:55 P.M.

##### ARRIVE AT NEW YORK, CHRISTOPHER OR BARCLAY STREET FERRY.

8:00, 8:30, 8:40, 8:50, 9:20, 9:50, 11:00, 11:30, 12:10 A.M.

1:20, 2:50, 4:10, 6:20, 8:05, 9:40, 11:35, 12:55 P.M.

<sup>†</sup> Wednesday and Saturday only.

<sup>‡</sup> Mails for New York close 8:25 A.M., 12 M., 3:30 and 6:40 P.M.

Mails for Short Hills arrive 8:24 A.M., and 4:30 P.M.

\* Express.

F Flag trains.

Connections may also be made at Newark for Short Hills



## PREFACE.

This catalogue is devoted to New and Rare Plants only, the majority being of our own introduction and raising. These novelties are all of sterling merit, and deserve to be grown extensively.

Beside these, we have numerous other desirable plants of the different classes, of which we publish special catalogues which will be forwarded on application.

Descriptive catalogues of Chrysanthemums and Single Dahlias.

Price list of Hardy Perennials.

Price-list of Stove and Greenhouse Plants.

Price list of Orchids.

Price-list of Cypripediums.

---

## New Department.

### Seed and Bulb Warehouse.

We have added this to our extensive establishment, and will be happy to send catalogues of same on application.







ASPIDIUM VIRIDESCENS.



BEGONIA ARTHUR MALET.





DRACAENA LINDENII.



PHOENIX ROEBELINII.





NEW - PTERIS. *Victoriae*



CYPRIPEDIUM ARNOLDIANUM.

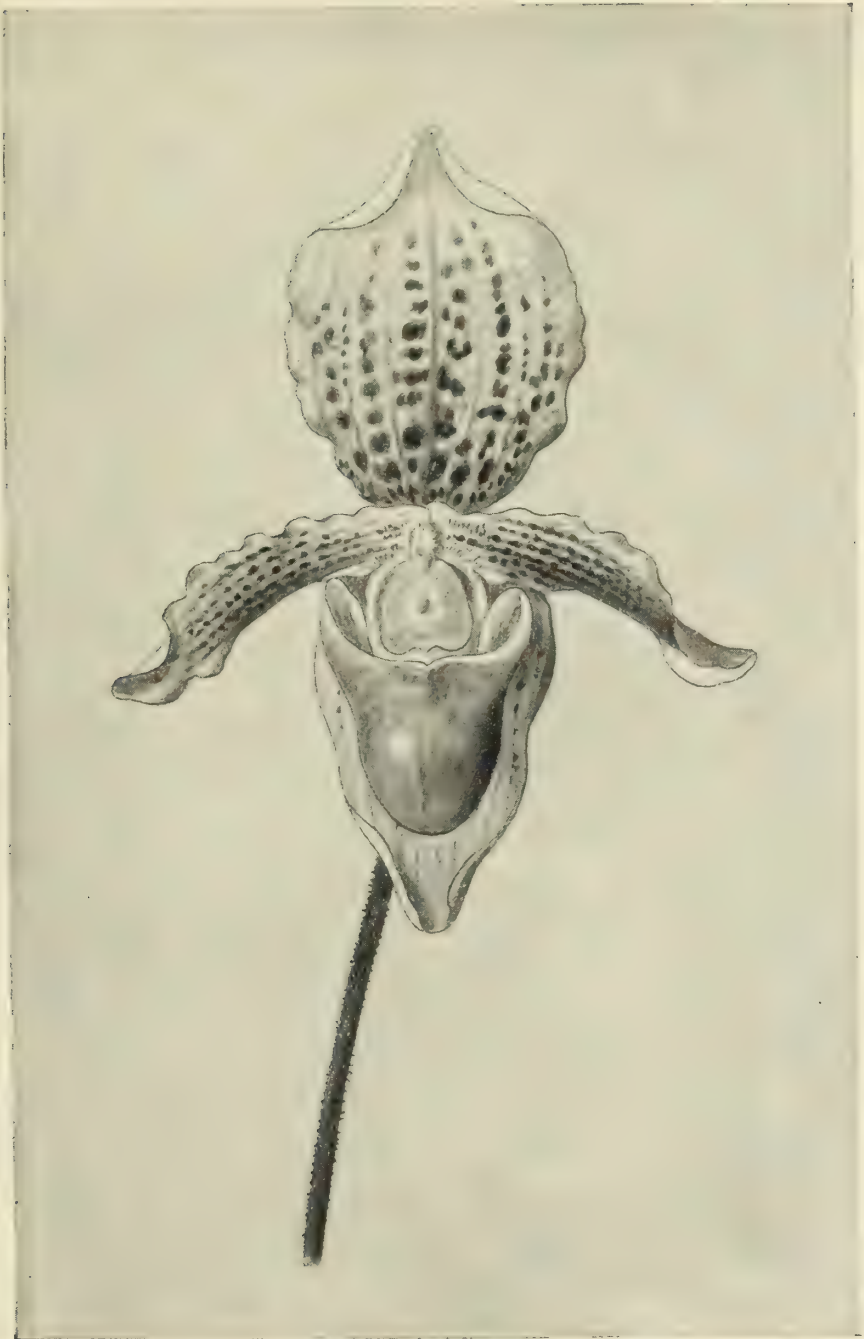


CYPRIPEDIUM MASEREELIANUM.





CYPRIPEDIUM INSIGNE AMESIANUM.



CYPRIPEDIUM INSIGNE VAR. BROWNL.



CYPRIPEDIUM INSIGNE VAR. EYERMANII.





CYPRIPEDIUM INSIGNE MANDEVILLIANUM.



CYPRIPEDIUM INSIGNE NITENS.



CYPRIPEDIUM MAGNIFLORUM.





CYPRIPEDIUM PAVONINUM INVERSUM.



PHLOX "THE PEARL."



THE WABAN.



## STOVE AND GREENHOUSE PLANTS.

To this class of plants we devote the entire new range of greenhouses, comprising 20 spacious houses. Our stock of Palms, and Foliage and Flowering Plants is unsurpassed in quality as well as in quantity.

Write for our price-list of Stove and Greenhouse Plants.  
Among the novelties we offer :

### ADIANTUM MONOCHLAMYS.

One of the neatest of the Maiden Hair Ferns, with finely denticulated pinnules.

Price, each.....\$1.00

### ANANASSA COCHIN-CHINENSIS.

Distinct variety in the way of the variegated Pine Apple, from which it differs in color.

Price.....\$3.00, \$5.00 and upwards.

### ANTHURIUM CLARKIANUM.

A new hybrid Anthurium of great merit. The leaves are large and broad, while the flower spathe is of a clear salmon rose color, in shape resembling *A. Andreanum*.

Price.....\$10.00 and \$15.00

### ANTHURIUM RAYNOLDIANUM.

Another grand hybrid between *A. Ferrierense* × *A. Andreanum*. The leaves and color of the spathe is that of the former, while the shape is the same as *A. Andreanum* much enlarged.

Price.....\$10.00 and \$15.00

### ASPARAGUS COMMORIENSIS.

Much finer and more robust growing plant than *A. plumosus*, which species it somewhat resembles.

Young plants..... \$2.00

### ASPARAGUS DECUMBENS.

New and distinct species that may be used for training as well as for hanging baskets.

Price, per plant ..... \$2.50 to \$4.00

### ASPIDIUM AMABILE.

A fine fern with dark green, shining fronds; very hardy and useful for decoration.

Price, each.....\$1.00

### ASPIDIUM VIRIDESCENS.

A fine large growing species with bipinnate fronds of grass green color. The pinnae are crenated, giving the plant a graceful appearance

Price, each.....\$1.00 and \$2.00

### BEGONIA ARTHUR MALET.

A fine variety in the style of *B. metallica*, but with leaves of rich crushed strawberry color.

Price, each..... 50

### BEGONIA LUCIE CLOSSON.

A beautiful variety with richly colored leaves.

Price, each..... 50

### BEGONIA LOUIS CLOSSON.

A fine variety of Rex type, with the darkest and finest colored foliage; very fine and distinct.

Price, each..... 50

## CARNATION "AMERICAN FLAG."

This is a sport of the popular variety, Portia (Brilliant). It has the same good habit and quality.

The ground color is bright red, striped with white very regularly, and giving it a most unique appearance among the perpetual flowering Carnations.

Price, each .....	\$ 40
Three for .....	1.00
Twelve for .....	3.00

## LIZZIE MCGOWAN CARNATION.

The finest white variety in cultivation, of good and compact habit, stiff stem, and free flowering. The flowers are very large and of perfect shape and substance. This splendid variety has received several prizes at various exhibitions, and is considered by everyone to be the finest white perpetual Carnation in existence.

Price, each .....	\$ 40
Three for .....	1.00
Twelve for .....	3.00

## CUPHEA LLAVAE.

A grand flowering plant forming large masses covered with flowers. The individual flowers are large, the tube being bright red, the opening of which is purplish blue, while the protruding pollen masses are white, making a very strong and rare combination of color. This is a very useful plant for flower beds, baskets, etc.

Price, each .....	\$ 50
Per dozen .....	4.00

## DRACAENA ALSACE LORRAINE.

Grand upright growing variety. Stronger and larger growing than *D. terminalis*, coloring easily, and much finer in every way.

Price, each .....	\$1.50 to \$2.00
-------------------	------------------



### DRACAENA ARGENTEA STRIATA.

A rare plant with small leaves beautifully lined with large silvery bands.

Price, each .....\$7.00

### DRACAENA M<sup>ME</sup>. HAINE.

Fine sturdy grower, with reflexing green leaves beautifully lined with yellow.

Price, each..... .. \$1.50 to \$2.00

### DRACAENA LINDENII.

One of the finest of decorative plants. Of free and sturdy growth, with broad reflexed leaves which are beautifully variegated. No collection can afford to be without this plant.

Price, each..... ..\$2.00 and \$3.00

### DRACAENA NEO-CALEDONICA.

A splendid addition to plants for decorative purposes. The leaves of this plant are of a light metallic color, very large and hard; it is indeed the best *Dracaena* for decorative purposes.

Fine plants..... ..\$3.50  
Specimens..... ..5.00 to 7.00

### PHOENIX ROEBELINII.

Very rare and fine palm forming compact tufts of growths. The fronds are very fine, resembling *Cocos Weddeliana* more than a *Phoenix*. Price on application.

### PTERIS VICTORIAE.

One of the grandest Ferns ever introduced, originally discovered by L. Forsterman. The foliage is neatly divided, the sterile fronds being much broader than the fertile ones. The middle of the frond is beautifully variegated with silvery white, giving the plant a most unique appearance.

Price, each..... .. \$2.00 and \$3.00

## PTERIS WALLICHIANA.

A large growing species producing large fronds of light green color. Very distinct and ornamental plant.

Price.....\$1.50 and \$2.00

## NEW ROSE.

## CLIMBING PERLE DES JARDINS.

A grand Rose of American origin, being a sport of the well known "Perle des Jardins." This new variety is a strong growing climber and very free flowerer, while the flowers are delightfully fragrant. A fine plant for conservatories.

Price, each.....\$1.50

Per dozen.....12.00

## NEW ROSE.—THE WABAN.

A magnificent Rose, being a sport of Catherine Mermet and resembling it in every way except in color, which is a rich, bright clear pink, and will certainly prove a very valuable acquisition to the cut flower trade. It has already received the Silver Medal of the Massachusetts Horticultural Society, also Certificates of Merit from each of the Societies in this country and in Canada where it has been exhibited. It is indeed THE ROSE of the season.

Plants will be ready for distribution on April 15, 1891. Orders booked now will be filled in strict rotation.

Price, each.....\$1.50 and \$2.00

Per dozen.....12.00 and 18.00

## SONERILLA ORIENTALIS.

A very ornamental stove plant of recent introduction.

Price, each.....\$2.00

## ORCHIDS.

A grand stock of all the choicest kinds in all leading varieties. Hundreds of thousands of plants to select from.

Write for price-lists and also "Orchids for Beginners."

### LAELIA ARNOLDIANA.

A very useful introduction resembling *L. Gouldiana* and *L. autumnalis*, but much freer in growth and flowering. The stem bears from 5 to 15 large, rich rosy colored flowers from October to December. Very useful plant for cutting purposes.

Price, each .....\$3.00, \$5.00, \$7.00 and \$10.00

### LAELIA AUTUMNALIS. VAR. ALBA (VERA).

A grand variety, having all its parts *pure white* save the yellow crest on the lip. A chaste and beautiful plant. Price on application.

### LAELIA AUTUMNALIS. VAR. FOSTERMANII.

This fine variety differs from the true *alba* in having the segments as well as lip slightly tinged with pink.

Price.....\$15.00 and \$25.00 and upwards.



## CYPRIPEDIUMS.

Our collection is acknowledged to be the largest in the world, while of the most popular kinds thousands of plants are cultivated. We are fortunate to offer for the first time the following hybrids and varieties of special merit :

### CYPRIPEDIUM ARNOLDIANUM.

(VEITCHII  $\times$  CONCOLOR.)

Leaves 4 inches long by 2 inches wide, light green with hieroglyphic-like tessellation of dark green, stem 4 to 5 inches high, dark brown with white short down.

Flower large, measuring nearly 4 inches across the petals. Dorsal sepal nearly round, slightly recurved on the sides, lemon colored at the base, which color extends upwards. The veins are of vinous purple, slightly shading over the ground color. The lower sepal is of the same color, only the veins are not so pronounced. Petals 2 inches long, very broad, the inner portion lemon color, while the outer portion is washed with vinous purple ; three fourths of the inner surface is covered all over with dark crimson spots as in *C. Veitchii*. The lip is long, with narrow opening, bright lemon yellow at the base and deep vinous purple veins and dottings in the upper part. The column is light green.

The staminode is slightly horse shoe shaped, lemon yellow with purple border.

Awarded Silver Medal by the Massachusetts Horticultural Society. Price on application.

### CYPRIPEDIUM MASEREELIANUM.

Leaves green and long, resembling those of *Spicerianum*. Stem 12 to 15 inches long, dark, slightly downy.

Dorsal sepal very large, folded back at its base, and forming an almost orbicular top ; the base is of a rich green for about a quarter of an inch, while the remainder of the flower is pure white with rich purple spots in regular lines. Lower sepal, pale green. Petals rather short, undulated green with blackish spots.

Lip large and light green with brown shading. Staminode very light green with lilac tint.

A grand hybrid; one of the finest of its section and much superior to *C. Lceanum superbum*. Price on application.

#### CYPRIPEDIUM INSIGNE AMESIANUM.

Flower same size and shape as *Maulei*, with very broad white margin, while the green lower part is beautifully shaded with brown, the whole flower being void of any spotting whatever. Price on application.

#### CYPRIPEDIUM INSIGNE ARNOLDIANUM.

Flower shape of *Maulei* but much larger, beautifully twisted and moulded, both dorsal sepal as well as the petals, the ends of the latter being twisted backward. The whole flower has a rich hue, while the dorsal sepal has a clear white broad margin, the few small spots being confined to the lower green portion. Price on application.

#### CYPRIPEDIUM INSIGNE VAR. BROWNII.

Flower large, of a livid green, spotted on the petals, while the dorsal sepal, which is heavily spotted with large blotches, has a coronet-like white blotch at the apex. Very bold and distinct variety.

Price.....\$25.00 and upwards.

#### CYPRIPEDIUM INSIGNE VAR. CORRUGATA.

This variety is in all respects the same as the type with the exception of the lip, which is folded like corrugated iron, presenting an odd appearance.

Price, each.....\$5.00 to \$7.00

#### CYPRIPEDIUM INSIGNE COWPERIANUM.

Flower of peculiar shape, dorsal sepal as in *albo-marginatum*, petals very long, lip short and broad. The whole flower is of a greenish-yellow hue, save the white margin which extends all around the dorsal sepal, and a few spots at the base of it.

Price.....\$25.00

## CYPRIPEDIUM INSIGNE CUTTINGIANUM.

Flower very large and fine, of light green, with broad dorsal sepal of which the upper portion is white with numerous light violet spots. Price on application.

## CYPRIPEDIUM INSIGNE VAR. EYERMANII.

Flower, size and shape as the type. The color is a beautiful light greenish yellow, while the dorsal sepal has a broad white top and only a few indistinct spots at the base. Very distinct variety, resembling *C. insigne* var. *Sanderae*. Price on application.

## CYPRIPEDIUM INSIGNE GILMOREANUM.

Flower large and bold as in *Chantinii*, the dorsal sepal very large, white margin with large reddish-brown spots through the middle, and smaller ones on the sides. The lower sepal has brown streaks in six rows. Price on application.

## CYPRIPEDIUM INSIGNE MANDEVILLIANUM.

Flowers size and shape of the *albo-marginatum* type, having white margin on the top of the dorsal sepal, into which the regular and close lines of spots merge. The petals also are thickly covered with small spots in regular rows. Price on application.

## CYPRIPEDIUM INSIGNE VAR. NITENS.

Stronger in growth than the type. Flower very large, of a uniform yellowish tint, while the broad dorsal sepal has a broad white margin and rich brown purple spots arranged in irregular rows. This fine variety has a striking resemblance to the hybrid of the same name.

Price .....\$25.00

## CYPRIPEDIUM HARRISIANUM VAR. PITCHERIANUM.

Very fine variety, having the dorsal sepal nearly flat, of a beautiful vinous purple color, and approaching in beauty the well known *C. Harrisianum superbum*.

Price.....\$10.00 to \$15.00 and upwards.



### CYPRIPEDIUM MAGNIFLORUM.

This is a grand species with long, broad, green leaves. The stem is many flowered, 2 to 3 feet high. Flowers very large; dorsal sepal long pointed, arching, light yellowish green; lower sepal broader and of the same color. Petals long, undulated and twisted, green with light rosy margin; lip very large and long, inflated, yellowish in color. A grand species for hybridizing purposes. Price on application.

### CYPRIPEDIUM PAVONINUM INVERSUM.

(VENUSTUM  $\times$  BOXALL)

Leaves broader and heavier, markings, flower and shape same as Pavoninum, with the exception of the color. The dorsal sepal is pointed, almost flat, with apple-green ground color, over which is a heavy shading of blackish brown; the border of same is pure white; lower sepal green. Petals slightly curved, green, shaded, lined and spotted in the upper portion with dark brown. Lip light green with darker green veins. The whole flower shines as if varnished. Price on application.

### CYPRIPEDIUM PITCHERIANUM.

The late Prof. Reichenbach in describing this hybrid said, "this is, at all events, a most surprising and gorgeous flower, not only excellent in color but also uncommon in size." It is a cross between *Cypridium Harrisianum superbum*  $\times$  *C. Spicerianum*. The leaves are shorter and lighter than *C. Harrisianum*. The peduncle is strong and stiff, slightly hairy. The dorsal sepal is very large, the ground color being white with a deep Indian-red mid-line; the largest portion of the lower part is beautifully shaded with Indian purple. The petals are green, decorated with light purple brown, and lines of Indian purple spots are to be seen. The lip is very blunt and angled, reddish brown with a yellowish inferior part. The staminode is green, washed with brownish purple.

This grand hybrid has been dedicated to Mr. Jas. R. Pitcher, Short Hills, N. J. Price on application.

## CHRYSANTHEMUMS.

We make a specialty of these popular plants, and our stock is the most complete in the country. We have originated and introduced many of the finest kinds including Mrs. Alpheus Hardy.

### The New Set of 1891.

The following varieties have been raised at the Nurseries, and comprise a fine addition to the already numerous varieties. We will offer good strong plants the 1st of March at the following prices :

- Single plants .....\$1 00  
 The set of 12 plants ..... 10 00
- Astoria (131). Stout grower, perfectly double, petals irregularly twisted in every direction, good substance ; deep rose pink color.
- Atlanta (165). Fine high flower with loose, somewhat twisted petals, of good substance ; beautiful delicate mauve color.
- Colorado (287). Fine high flower with very broad flat petals ; light chrome yellow color.
- Delaware (185). Large flower, very double, anemone centre ; color white, light pale yellow near the centre. The best anemone variety.
- Dr. Chas. B. Brigham (218). Large full flower, flat petals ; color pure white. Fine grower.
- John Dyer (184). Good strong grower, broad petals of extra substance, perfectly double ; color chrome yellow striped entire length of petals with fine red lines.
- Josephine Schlicht (118). Good sized flower, rather flat, showing centre ; color white in centre, beautiful pink around the edges. Very light and beautiful variety.
- Michigan (202). Double flower of rich magenta color ; very floriferous.
- Ontario (167). Fine incurved flower showing centre ; bright chrome yellow color. Very free flowering.

- Oswego (163). Good stiff stem, fine double flower ; creamy white color tinged with lemon yellow in the centre.
- Tyro (80). Good stout grower, high flower, very broad petals of light fawn color.
- W. W. Lunt (84). Large massive double flower, lemon yellow color ; very effective. Early orders solicited.

### The Single Set.

The majority of the numerous visitors who visited our Chrysanthemum Show at Short Hills, admired these beautiful varieties, and requested us to offer a set of 15 of the finest selected from several hundreds. They are very useful, especially for pot plants, as they are much easier grown, and produce the flowers in great abundance.

The following varieties will be sent out the 1st of March at the following prices :

Single plants .....	85
The set of 15 plants.....	\$10 00

- Catawba (133). Single flower with curiously shaped and cut petals. Large and strong growing ; rose and pink color.
- Chicopee (240). Very large flower composed of flat petals. The colors are magenta inside, while the outer side is fawn color.
- Cohasset (161). Semi-double flower, tubular flowers opening at the ends ; color deep pink on the inside, light Naples yellow on the outer side and edges of petals.
- Daisy (130). Fine single flower of pure white color, very symmetrical and artistic shape.
- Jumbo (310). Enormous large flower with long tubular petals, showing centre ; fawn color. light red at the ends.
- Mariposa (85). Semi-double, very early floriferous variety ; light chrome yellow color.
- Minerva (136). Single flower composed of needle-like tubular petals ; light pink color, ends of petals a deeper shade of pink.
- Moravia (222). Loose single flower, white in centre and graduated into light mauve tint.
- Mrs. G. B. Topham (215). Very large semi-double flower, broad petals ; color white tinted on the edge with lavender.



- Orizaba (246). Large massive flower showing centre. Good stiff petals of bright chrome yellow color.
- Stella (450). Fine flower with long pointed petals of beautiful soft rose color.
- Tuscola (363). Semi-double flat flower, tubular petals, longly spatulated; very delicate light yellow color.
- Ulysses (97). Flower opening flat and incurving afterward, large yellow eye, growing on stout stems, color magenta outer side deep lilac.
- Washita (207). Semi-double flat flower, tubular petals longly spatulated: deep chrome yellow color.
- Wichita (148). Single deep rosy pink; very free. Early orders solicited.

#### CHRYSANTHEMUM LOUIS BOEHMER.

One of our introductions of last season. It closely resembles the Mrs. Alpheus Hardy, except in color, which is a deep pink inside and silvery pink or lilac on the outside. This variety is a strong grower, and quite an acquisition to the new type of hairy Chrysanthemums.

Single plants	60
Dozen	\$6 00

For general collection see our Descriptive Catalogue of Chrysanthemums and Single Dahlias.

## HARDY PLANTS.

Of these old fashioned favorites we grow several acres, and our collection is the most extensive in cultivation.

For the general collection see our price list of Hardy Perennials.

### AZALEA RUSTICA.

Under this name are included several varieties of hardy Hybrid Azaleas, with double flowers which have great lasting qualities. They are perfectly hardy, and can also be easily forced under glass.

Price, each .....	\$2 75
Set of 10 Varieties .....	25 00

Aida. Very double, pale rose flowers, the upper petals bordered with darker rose, and blotched with very dark rose.

Il Tasso. Clear reddish flowers reflexed with light rose.

Freya. Stout habit, double mauve-white flowers, petals tipped with lilac, tube yellowish.

Hora. Yellow rosè flowers, petals flaked with carmine red.

Mecene. White with rosy lilac border, yellow in the tube.

Norma. Flesh colored flowers shaded with clear rose.

Phebe. Middle sized trusses of nankeen flowers, perfect shape and nicely imbricated.

Virgile. Pale yellow flowers with slight yellow streaks in the middle.

Phidias. Upper petals rosy-white with yellow shade, and deep yellow in the tube.

Praxitele. White, slightly shaded with yellow in the centre, pale rose on the upper segments.

### CAMPANULA PERSICIFOLIA ALBA GRANDIFLORA.

This is a grand improvement over the type, having bells twice the size of the ordinary *C. persicifolia*, and pure white in color. A grand plant for border, also for cut flower purposes.

Price, each .....	50
Dozen .....	\$4 50

## CAMPANULA PERSICIFOLIA ALBA PLENA.

A beautiful plant with pure white, perfectly double flowers of lasting qualities.

Price, each .....	25
Dozen .....	\$2 50

## DELPHINIUM BELLADONNA.

Of dwarf habit, forming a bush of spikes of the most beautiful sky blue color. Excellent for cutting, borders or beds.

Price, each .....	30
Dozen .....	\$3 00

## ERIGERON SPECIOSUS SUPERBUS.

This is a grand plant for borders as well as for cut flower purposes. It grows 2 to 3 feet in height, bearing large trusses of large heads of flowers that are of a rich rose color.

Price, each .....	35
Dozen .....	\$3 00

## HELIANTHUS GRANDIPLenus.

An improved variety of the old multiflorus fl. pl. The flowers are bright golden yellow, in shape resembling a Chrysanthemum. Perfectly hardy.

Price, each .....	30
Dozen .....	\$3 00

## HELIANTHUS RIGIDUS PLENUS.

A semi-double form of the useful dwarf sunflower, and one worthy of general culture,

Price, each .....	35
Dozen .....	\$3 50

## HYPERICUM MOSERIANUM.

A fine flowering hardy shrub, growing 1 to 2 feet high, and producing very large yellow flowers of fine substance and perfect round form. This fine shrub is in flower from early Summer to late Fall.

Price, each .....	75c. and \$1 00
-------------------	-----------------

## IRIS CAROLINIANA (S. WATSON).

A fine species discovered by W. A. Manda, in 1885, in North Carolina. The leaves are long and arching, with a red base. Stems 3 feet high, bearing several large, light blue flowers in June.

Price, each ..... 50

## LILIUM DALMATICUM.

The Black Lily from Dalmatia. It belongs to the Martagon group, and sends up a long spike of its rich colored flowers.

Price, each ..... 50

Dozen ..... \$4 00

## PHLOX "THE PEARL."

One of the finest of the paniced section. The stems are 2 feet in height, bearing very large spikes of pure white flowers which do not shatter. Excellent for cutting purposes.

Price, each ..... 30

Dozen ..... \$3 00

## SPIRAEA JAPONICA GRANDIFLORA.

A great improvement on the old form, producing a large truss of white flowers. Very lasting when cut.

Price, each ..... 30

Dozen ..... \$3 00

## YUCCA FILAMENTOSA FOL. VAR.

This is a handsomely variegated variety of the popular hardy plants, and quite an addition to our gardens.

Price ..... \$2 00



---

We beg to acquaint our patrons that we have added  
to our Nurseries an extensive

Seed,

Bulb

AND

Implement

Department.

---





New Chrysanthemum.

**NIVEUS.**

Three-fourths Natural Size.







