

Historic, archived document

Do not assume content reflects current scientific knowledge, policies, or practices.

1898

DESCRIPTIVE CATALOGUE OF
CALIFORNIA FLOWERS

MRS THEODOSIA B. SHEPHERD
BOTANY LABORATORY

VENTURA-BY-THE-SEA,
CALIFORNIA

GROWER
OF
PLANTS
SEEDS
BULBS
PALMS
CACTI
ETC.



MRS. THEODOSIA B. SHEPHERD.

MRS. THEODOSIA B. SHEPHERD'S

Descriptive Catalogue

...OF...

CALIFORNIA 

**FLOWERS, PLANTS
SEEDS, BULBS**

Palms, Orchids and Cacti



**VENTURA-BY-THE-SEA
CALIFORNIA**

To Flower Loving Friends and Patrons.



A CORDIAL greeting and best wishes for a happy and a prosperous year. It is with pleasure I send you my catalogue for 1898, and trust that the many beautiful things listed will find a welcome in your gardens. I would especially call to your attention my **rare new Begonias** that are not to be found elsewhere. They are very much admired by all who see them growing, and cannot fail to delight all lovers of these beautiful plants. **The New Giant Eschscholtzias "The Golden West"** is well worth a place in any flower garden. The flowers are gorgeous beyond description.

My **Cosmos** is "**finest in the world**" and everyone is delighted with it, who has the pleasure of seeing it in blossom. Soliciting a share of your orders, I am,

Yours sincerely,

THEODOSIA B. SHEPHERD.



Please Read Carefully.

The plants, seeds and bulbs offered in this catalogue are, with few exceptions, grown in my own greenhouses and gardens. The plants are started from vigorous outdoor stock, and should, in consequence, be the more satisfactory for growing in house, garden or greenhouse. Many of the novelties are offered by no one else, and others have originated here which are now disseminated far and wide.

Every precaution is used to prevent any mistake in the names of plants. I never intentionally send out a plant under a wrong name.

The greatest pains are taken in packing, and I am prepared to ship plants to any part of the country by mail, freight or express.

When ordering, always state how plants shall be shipped.

No plant order filled for less than \$1.00 unless 10 cents extra is sent for postage. Seed orders are filled to any amount.

Should plants be received in bad condition, report should be made at once, and I will replace them. Any complaint must be made within *ten days* after receipt of plants.

My catalogue is free to all customers. The price is ten cents to all new applicants, and if they order stock, they may deduct the amount from their first order.

If plants and seeds give good satisfaction, any expressions of appreciation will be gladly received.

Customers may select 25 cents' worth of seeds extra on all seed orders.

I will send 25 cents' worth of plants, **my own selection**, on each Dollar sent for plants.

SECOND SELECTION.

Always make a second selection of plants to be sent in case stock should be out of varieties desired.

I pay postage on small plants without soil. Large plants or plants with soil, sent by express or freight at customer's expense.

If it is desired to have large plants, heavy bulbs, or cacti sent by mail, sufficient postage extra must be sent to prepay charges, or I will advance the same, and customer may remit when plants are received.

Please write orders on a separate sheet from letter.

DESCRIPTIVE CATALOGUE

Novelties and Specialties in Flower Seeds.

Grand Novelty — Mrs. Shepherd's New Giant Eschscholtzias.

"Golden West."

See Illustration on Covers.

Grand New Eschscholtzias, developed from E. Maritima, a pretty variety, having light canary-yellow flowers with an orange blotch at the base of each petal, forming a Maltese cross in the centre. The original flowers measured two inches across.

The flowers of these new giants measured from 4 to 6 inches in diameter; they have very large overlapping petals, often delicately waved at the edges. They are beautifully and variously formed; some are flat and wide open, some saucer-shaped, others very deep with flaring edges.

In some the orange blotch almost suffuses the whole flower, in others it runs into the yellow in fine penciled lines, others again have an orange centre with a margin of clear yellow, while the Maltese cross in some of the flowers is very distinct.

Words are inadequate to describe the wondrous beauty of these magnificent flowers; their intense and shining color, immense size and lovely forms, call forth the most enthusiastic expression of admiration.

They are especially adapted to the eastern climate, owing to their early and long-continued season of blooming, which united to their brilliant beauty makes them invaluable for bedding plants. 20 cts. per pkt.

COSMOS, NEW IMPROVED YELLOW.

I offer this season the Yellow Cosmos much improved. The flowers are twice as large as they were the first year; the petals are broad and the flowers much finer in form; the plants are more upright; they attain a height of two feet and begin blooming a few weeks after the seeds are planted, and soon form a mass of brilliant yellow that continues the entire summer; plants that commenced to bloom in May continued all through this summer and until as late as November and December. For a mass of color they are invaluable, and very effective. 10 cts. pkt.

NEW GIANT FRINGED COSMOS.

This charming new cosmos has beautifully lacinated petals and forms a fine contrast to the plain varieties. The colors are rich dark red, clear beautiful pink and snowy white. 10c. each. The three varieties 20 cts.

NEW GIANT CREAM WHITE COSMOS.

A variety having beautiful, overlapping, plain-edged petals, very large flowers, creamy white in color and perfect in form; the plants are very symmetrical in shape. 10c. pkt.

One packet of each of the five above varieties for 25 cts.

NEW BLACK FOLIAGE HELIOTROPE.

It is with pleasure I offer seeds of two new heliotropes; "Egypt" and "Midnight," a dusky pair, most appropriately named; the stems are black as ink, the foli-

age a beautiful bronzy green, so dark as to be almost black. Midnight has a fine tree-like habit that is very distinct, while Egypt is round and bushy with lustrous foliage, resembling thick crepe. The flowers of both are beautiful shades of bluish purple, variegated with white and lighter purple; both are extremely handsome, and the seeds can be depended upon to bring fine dark leaved varieties. 15 cts. per pkt.

CAPE FUCHSIA.

"Phygellus Capensis," a distinct new species, blooming from May to late autumn. It bears long spikes of showy, scarlet, drooping, tubular flowers. Will grow anywhere. Entirely different from any other variety. Very showy. Grows readily from seed. 10 cts. per pkt.

TWO GIANT PEAS FROM AUSTRALIA.

Sesbania Grandiflora.

Sesbania, *Rosea* and *Alba*, are natives of West Australia. They of the Leguminosæ or pea family, and one of the largest species in existence; each raceme has usually four of its immense flowers, individually about three inches long, the standards are ovate, wings long, and calyx about three-quarters of an inch deep, the plant has elegantly pinnate leaves, each having 10 to 30 pairs of leaflets. 15 cts. per pkt. 25 cts. for the two.

Dwarf Sweet Pea.—Burpee's PINK Cupid.

This little wonder, like the original "Cupid," hails from California, having been discovered by C. C. Morse & Co., to whom W. Atlee Burpee paid \$1,500 cash for the exclusive ownership when there were only 1,060 seeds in existence. It grows only 6 or 8 inches high, spreading from the root, a foot to 18 inches around, it shoots up flower stems about 6 inches long, which bear in full bloom at once three to four handsome blossoms the standard is bright rose-pink, the wings pure white or light pink the flower very beautifully formed. It is a very charming plant and seems to meet with great enthusiasm wherever it has been tried. It is especially fine for pot plants or for borders outside. It is said that no novelty of recent introduction has such brightness, beauty, and grace as Burpee's Pink Cupid. It is delightfully fragrant, and will be admired by every one who sees it. 25 cts. per pkt. of twelve seeds.

SOLANUM RECEMIGERUM.

The Red Currant Solanum.

A very pretty trailing plant closely allied to the old-fashioned cherry tomato, though very refined in flowers and foliage the latter are small and grow in racemes, and are followed by brilliant fruits that resemble long stems of currants; they not infrequently have side branches, and attain the length of 6 or 8 inches, the color is a clear bright red; the individual fruits range from the size of a large pea to the very smallest size. The fruits hang on the plant for months, and the contrast in the brilliant scarlet and bright green foliage is very striking; it grows well out-of-doors or in the conservatory; is very useful for hanging baskets; can be grown outside where the plant attains considerable size; at the coming of frost the branches can be cut and used for decoration, keeping for weeks; it is completely covered with the bright fruits, and is very effective. 10 cts. per pkt.

SEVEN GRAND NOVELTIES FROM AUSTRALIA.

The following seven beautiful novelties come to me very highly recommended by an enthusiastic flower lover in Australia. Introduced last season, but still rare. Description below as given by my correspondent:

Kennedya Nigricans.—40 ft. Our well-known and popularly hardy evergreen native creeper. Its rapid growth and wonderful hardness should give it a place wherever a good thick impenetrable evergreen screen is wanted. It will cover a screen 20 feet high in two or three years if well watered. The flowers are quite inconspicuous, being yellow and black. I know of nothing in the whole range of evergreen climbers to beat our native *K. nigricans* for the above purpose. It will climb 40 or 50 feet if encouraged. Soak seed in warm water over night and plant in a hole of good soil where wanted permanently, or sow in a box of fine soil with fibrous matter in it 3 to 4 inches apart so the seedlings can be taken up nearly whole and planted. 10 cts. per pkt.

Kennedya Monophylla Lilacina.—15 ft. This also is a native evergreen. The leaves are rather prettier than the *K. nigricans*, but its great beauty consists in its perfect cloud of the loveliest lilac-blue flowers drooping gracefully, and covering

the screen or pillar on which it is growing with a lilac sheet. It is in bloom from June till August, winter months, when its rare beauty is extremely valued. Though a lovely evergreen climber, it is not to be compared with the Nigricans for making a dense growth. Its bloom is its glory. 10c. pkt.

Both stand heat and drought splendidly. One packet of each of these Kennedys for 15 cts. Sow in autumn or spring.

Genista Monosperma Pendula.—Shrub, 8 to 10 ft. The Cape Broom is fast becoming a favorite for its graceful pendulous streamers of pure white bloom, that may be likened to a bridal veil when the shrub is in full flower; easily grown, and flowering the second season from seed if well nourished. One of the handsomest flowering shrubs in cultivation. 10 cts. per pkt.

Rosella Hibiscus.—This is the celebrated wild fruit of Queensland. After the blossoms have fallen the fleshy scarlet seed pods are gathered and made into delicious jams, jellies, sauces, pies, tarts, etc. The fruit is also dried for winter use. The flavor of the jam is the nearest approach to red currant of anything I know, and hardly distinguishable from it except that the consistency is different and the color brighter. It has a delightful acid flavor. As it is a native of a sub-tropical country, like Queensland, it should do in many countries where the favorite old red currant, or similar fruits, cannot possibly be grown, and should prove an excellent substitute. Even as far south as Melbourne the plant will mature its fruit if raised under glass early and planted out after fear of frost is over. It fruits the first year from seed. 10 cts. per pkt.

Boronia Negastigma.—A charming annual, growing from 2 to 3 feet high; it forms a beautiful round plant, and gives flowers of a pretty purple color having the most exquisite fragrance; it is esteemed the best of all the 9,000 odd indigenous Australian plants for its fragrance. Acres of it are grown around the colonial cities for the sale of the plants in pots and for cut flowers. My correspondent writes me that it has been the fashion in the flower world there for two or three seasons. 15 cts. per pkt.

Tecoma Smithii.—This beautiful tecoma has been offered in the east already, but it is yet rare. It makes a beautiful pot plant, but in Australia it grows to the height of 15 or 20 feet in a few years, and is always in bloom. It has beautiful cut foliage, fine for bouquets; the flowers are two inches long, a rich lemon-yellow shading to dark orange. They are bell shaped. Plants bloom continuously. 10 cts. per pkt.

Himalaya Fairy (Mischanthus Nepalense).—Of all the grasses I have seen this is by far the most beautiful. I first saw this in the autumn of 1894, when staying with friends in the Himalaya Mountains, and brought back a small bunch of plumes. It has been exceedingly admired by all who have seen it. The beauty of the lovely golden-yellow plumes can hardly be described. They have to be seen to be properly appreciated. This novelty is offered in Australia before being catalogued in Europe, and I can only wonder that collectors have missed this beauty. I have plumes two years old that are in perfect condition; it does not shed its seed or discolor. It is a perennial, of very easy culture from seed, either outside or in pots. The foliage is as fine as the ordinary Eulalias. 10 cts. per pkt.

General List of Flower Seeds.

ASTER, Peony-Flowered Perfection. Splendid mixed. 10 cts. pkt.

Victoria. Splendid mixed. 10 cts. pkt. Two sorts. 15 cts.

ALGERIAN STRANGER. A stately plant of the Mullein family, with large dark green wrinkled foliage, growing to the height of 4 or 5 feet. It sends up long spikes with numerous flower buds, at first of a reddish yellow, and afterwards a pretty canary color, shining like satin and folded like squares. The fully opened flowers are saucer-shaped, and have velvety brown spots in the centre. It blooms for months without intermission and is very decorative and showy. 5 cts. pkt.

ABUTILON. Choice mixed. 10 cts. pkt. Extra choice mixed, 15 cts.

AMARYLLIS. Defiance, 20 cts. pkt. Formosissima, 10 cts. pkt. Splendid mixed seedlings, 15 cts. pkt. **Belladonna Major**, 10 cts. pkt. **Belladonna Minor**, 10 cts. pkt. A collection of the mixed seeds, large pkt. 25 cts. As these seeds lose their vitality soon, I offer them only from June to January. Plant in boxes in sifted sphagnum; when sprouted prick out and plant in soil.

- AQUILEGIA Cœrulea.** Double blue columbine, 10 cts. pkt. **Crysantha**, golden-yellow, with long spurs, 10 cts. pkt. **New White**, very beautiful, with long spurs, 10 cts. pkt. Three sorts, 20 cts. Splendid mixed, 10 cts.
- ANTIGONON Leptopus.** A magnificent climber, rivaling the bougainvillea in color and abundance of its flowers; the foliage is very handsome and the flowers, which are the most exquisite shade of pink, are produced in tendril-like racemes 10 to 12 inches in length; their profusion and beauty elicits the most enthusiastic admiration. 10 cts. pkt.
- ALOES.** These interesting plants are very easily grown from seed, and often bring new and handsome varieties. Splendid mixed. 15 cts. pkt.
- AGAPANTHUS Umbellatus, or Blue African Lily.** 10 cts. pkt.
- Blue African Lily with Variegated Foliage.** A variety having very handsome foliage, white, striped with green. 10 cts. pkt.
- ARISTOLOCHIA Elegans.** Handsome climber, with pretty foliage. It grows from 10 to 30 feet high, and if trained on the piazza, or against a house, the effect is charming. Large purple, white and yellow flowers. 10 cts. pkt.
- BEGONIA REX.** These seeds are saved from a very choice collection of beautiful Rex Begonias; every flower has been carefully cross-fertilized. Splendid mixed. 15 cts. pkt.
- BEGONIA, FIBROUS—New California Strain.** The seeds offered in this mixture are saved from my grand new begonias, and from hybridized flowers of many of the best-named varieties. They will be sure to bring some very beautiful sorts. The plants from which they are saved are of very strong robust growth, with beautiful foliage and splendid large flowers. 25 cts. pkt.
- BEGONIA, Fibrous Varieties.** Lovers of begonias will take the greatest pleasure in growing them from seed, as they are intensely interesting from the time the tiny things sprout till they become blooming plants. This seed is raised from a splendid collection. 10 cts. pkt.
- B. Semperflorens Hybrida.** Anyone can succeed with these begonias. The seeds germinate readily, and plants begin blooming when only 2 inches high. They form beautiful round plants, about 18 inches high, and are a perfect mass of bloom from one year's end to the other. The foliage is shining and glossy, frequently tinged with bright red, and the flowers are of various lovely shades: some pure white, some blush, others light pink, white with a pink edge, white centre and margin flushed with red, and other charming combinations. They are beautiful for bouquets, and fine for pots and for bedding plants. 10 cts. pkt.
- B. Sem. Vernon.** Brilliant scarlet flowers with leaves tinged bronzy red. 10 cts. pkt.
- B. Rubra.** Tall and stately, with coral-red flowers. 10 cts. pkt. 1 pkt. each of the above begonias, 60 cts.
- CHRYSANTHEMUM Latifolium Maximum.** The "Great White Moon Penny Daisy." One of the finest hardy perennials, forming bushy plants two to four feet high, with large pure white flowers three inches across; splendid for decorative purposes and fine for bouquets. 5 cts. pkt.
- CINERARIA.** Very choice mixed. Single, 10 cts. pkt. Double choice mixed, 15 cts. pkt.
- CENTAUREA, Blue Bottle, or Bachelor's Button.** Is one of the most attractive of all hardy annuals, the graceful beauty of its old-fashioned flowers being universally admired. A hardy annual of the easiest growth, and flowers freely; height 2 to 3 feet. 5 cts. pkt.
- CYANUS, Mixed.** Including dark and light blue, purple, pink, rose, white, etc. 5 cts. pkt.
- C. Kaiser Wilhelm.** Of a rich deep blue color. 5 cts. pkt.
- C. New double, mixed colors.** So perfect that fully 80 per cent. of the flowers are double and semi-double. 10 cts. pkt.
- C. New Dwarf Blue Victoria.** The compact and bushy plants, 6 to 9 inches high, present a mass of foliage and profusion of graceful azure-blue flowers. In full bloom one month after sowing seed. 10 cts. pkt.
- CANARY BIRD VINE.** A rapid growing summer climber, with very pretty foliage and golden-yellow flowers, resembling a canary bird with expanded wings. 5 cts. pkt.
- CALLA LILY.** 5 cts. pkt. **Calla, spotted leaf**, 10 cts. pkt.



GROUP OF NEW FANCY COSMOS.

Mrs. Shepherd's Grand New Fancy Cosmos.

"THE FINEST COSMOS IN THE WORLD."

The following is an extract from an interview with W. Atlee Burpee, the well-known Philadelphia Seedsman, taken from the Los Angeles Evening Express:

"I have just been visiting in Ventura the gardens of Mrs. Theodosia B. Shepherd of that point. Mrs. Shepherd has the finest cosmos in the world. It has *never been equaled*. She has developed it herself from a small flower, two inches across, to monster blossoms from four to five inches in diameter. I counted *thirty-five varieties* in her gardens yesterday. Mrs. Shepherd is quick to see possibilities and *is developing some wonderful things* in her gardens."



NEW MARGUERITE COSMOS.

A customer, Mrs. M. F. C. Pearce, of Louisiana, writes, April 17th:

"My cosmos from seeds you sent me were planted in the garden early in March and now, not three feet high, three are in bloom. Can you beat this?" May 27th the same customer writes: "My cosmos from your seed are still blooming, not one of the plants five feet high, no limbs have split and fallen, as in so many other cosmos."

NEW EARLY BLOOMING.—Grand Fancy Cosmos. The flowers are surpassingly beautiful. In the mixture are immense flowers, measuring from $4\frac{1}{2}$ to 5 inches across, in white, pink, mauve and crimson. Some are shaped like single camellias, but larger and more beautiful; some of the crimson ones could almost be taken for single dahlias; other white ones have plaited petals prettily fringed, and resemble the *Romneya Coulterii*, or California Tree Poppy. Some are star-shaped. The petals are plain in some flowers; in others pinked, toothed or fringed, and beautifully overlapping. The colors range from pure white through shades of pink and red. The latter are in dark rich shades of red, shades heretofore unknown in cosmos. Some white ones are delicately flushed or flecked with pink or mauve, and very beautiful flowers in pink and mauve have a dark red ring around the eye. The daintiest white, pink and flushed, have lacinated petals, fringed to the centre of the flower, and resemble *Marguerites*, but are more beautiful and esthetic. The giant white are especially handsome, with very large, broad petals, flowers of great substance, almost as chaste and lovely as lilies. 10 cts. pkt.

GIANT RED, PINK and WHITE COSMOS—Separate. Flowers of perfect form, great size and beauty; measuring $4\frac{1}{2}$ to 5 inches across. Extra selected. 10 cts. pkt.

"TINTS OF DAWN"—New and distinct varieties. The flowers with a white ground, finely flecked or flushed with delicate pink; some are flushed much darker around the eye than others; they are variously formed and very beautiful. 10 cts. pkt.

"NEW MARGUERITE" COSMOS—Mixed. One of the prettiest and daintiest varieties imaginable; the flowers measure from $2\frac{1}{2}$ to 3 inches across; the petals are deeply and irregularly lacinated or fringed; the flowers resemble *Marguerites*, but are much more esthetic and beautiful. 10 cts. pkt. The three above 25 cts.

C. **"Mammoth Perfection."** Double the size of the old variety. **"Erlinda"** (white.) **"Roseta"** (pink,) 10 cts. each; two sorts 15 cts.; mixed mammoth perfection, 5 cts. pkt.

Calliopsis Lanceolata Grandiflora.

"CALIFORNIA SUNBEAMS."

These loveley improved varieties are much larger than any heretofore offered; the flowers are beautifully formed. Some saucer-shaped, others flat, some exquisitely incurved, while others are like great buttercups. The petals are broad, with pinked, toothed or irregularly fringed edges. Some are very light yellow, others a deeper shade, darker around the eye—all so fine, it is difficult to say which is most beautiful. 10 cts. pkt.

C. **Golden Wave.** Very bushy and compact, covered with hundreds of beautiful golden flowers with small dark centres. Annual. 5 cts. pkt.

COLEUS. There are few seeds more easily grown than coleus. A packet of seed will bring many new and pretty varieties. They can be planted in cigar boxes, and transplanted when the second leaves are formed, into larger boxes. When three or four inches high they can be potted off or transplanted into the garden. Splendid mixed 10 cts. pkt.

CANNA, "Good Venture" Strain. Saved from a beautiful collection of very fine large seedlings of my own. The plants range from 22 inches to $3\frac{1}{2}$ feet in height, they have very large flowers, of grand colors—splendid yellow, rich orange, spotted red, deep carmine, flaming scarlet deeply margined with gold, salmon-red streaked with copper, and cardinal. Some flowers have four or five petals. The foliage is rich and handsome, various shades of green, dark red streaked with greenish yellow, plain green and dark maroon. Splendid mixed, 10 cts. pkt.

C. **"MADAM CROZY."** One of the very best. 10 cts. pkt.

GRAND NEW CANNA "QUEEN CHARLOTTE." All the magnificent cannas that have ever been offered have been grown from seed, and new varieties may be expected. Queen Charlottte is a lovely variety, bright scarlet, with a very broad golden-yellow margin. 10 cts. pkt.

"ALPHONSE BOUVIER." Best Crimson Canna. The finest of its color. 10 cts. pkt.

"MADAME ALLEMAGNY." Rare Orange Canna. A rare and lovely canna, very distinct; having short broad petals of a rich orange-yellow, closely spotted with velvety brown spots, entirely different from any other yellow canna, 10 cts. pkt. One pkt. each of the above cannas 35 cts.

Pour boiling water on the seeds and soak two or three days before planting.

CASSIA Artemisoides. This fine plant is very distinct and beautiful, different from anything else commonly seen in our gardens. It branches near the ground, forming a round bush 3 or 4 feet high. The flowers are yellow, on slender stems. The skeleton-like foliage is of a silvery gray green, and has a clondlike effect, which is very attractive. It is fine for decoration, very handsome for single specimens, and would be very picturesque as a border for a driveway, a dividing line or hedge. It makes a very pretty pot plant. 15 cts. pkt.; 2 pkts. 25 cts.

CHRYSANTHEMUM, Perennial Varieties. No flowers from seed reward the amateur better than the perennial chrysanthemums; they are very easily grown and bloom the first season, making handsome plants, completely covered with blossoms; the taste for big flowers only, is on the wane, and a desire for graceful and artistic forms is being awakened. The seeds offered are saved from my splendid collection and cannot fail to give satisfaction. 15 cts. pkt.

CALENDULA, or Pot Marigold. Splendid mixed. 5 cts. pkt.

CELOSIA, Ostrich Feather. One of the most beautiful and showy annuals, that has been introduced for years, and that deserves all the praise that has been given it. It is exquisitely beautiful on close examination, and at a distance is a mass of brilliant color. It blooms when only twelve inches high, and in California keeps its splendor till late December. Crimson and orange color, 10 cts. each; 15 cts. for the two.

CANDYTUFT, "Empress." Pure white. 5 cts. pkt.

CAMPANULA, Canterbury Bells "Cup and Saucer." Very choice mixed. 5 cts. pkt.

CARNATIONS, California Beauties. Carnations grow to the greatest perfection in California. Their magnificent flowers, long stems, beautiful forms, rich colors, and delightful fragrance, make them wonderfully attractive. The seeds offered are from the famous Redondo and Ingleside strains, where the finest carnations in California are grown. 25 cts. pkt.

C. Marguerite. A charming strain that blooms the first year from seed. Though not as fragrant and beautiful as the monthly carnation, yet it is very satisfactory and popular. 10 cts. pkt.

CYCLAMEN Giganteum. Giant flowered cyclamen. Splendid flowers of great beauty. Pure white, 20 cts. pkt., red, 20 cts. pkt., mixed, 15 cts. pkt.

CALIFORNIA WILD CONVULVULUS. This native morning glory is not offered in any of our catalogues, but it is a charming climber, very distinct, and very easily grown. It is not the wild morning glory that is considered such a "pest," which has a very small flower and small foliage. It grows very rapidly, and has numerous long, wiry stems. At intervals of three inches there is one heart-shaped leaf $2\frac{3}{4}$ inches or more long by $2\frac{1}{2}$ broad at upper part. The leaf stems are from 2 to 4 inches long. From the axils of the leaves come two to three flowers on stems 3 to 7 inches long. They have a pretty green calyx, from which proceed charming creamy white flowers, with greenish rays on the inside and purplish ones on the outside. The flowers stay out all day, and the vine is extremely graceful and beautiful; a fine bloomer; flowers $2\frac{1}{2}$ to 3 inches across. 10 cts. pkt.

DAHLIA. New large flowering dwarf single. The most showy and effective single dahlias ever offered. They grow from 2 to $2\frac{1}{2}$ feet high and begin blooming when not over one foot high. The flowers are very large and beautifully shaped, with very broad petals, of every imaginable shade of crimson, scarlet, terra cotta, yellow and orange, scarlet blazed with gold, and all the above colors beautifully variegated, others are pure snowy white. Everyone should grow them as they cannot fail to be delighted with them. 10 cts. pkt.

DAHLIA. Tall single varieties mixed. 5 cts. pkt.

D. "Imperialis." The most beautiful of all dahlias. It grows 10 to 12 feet high, and bears panicles of elegant, lily-like flowers, measuring 8 inches from tip to tip of petals. The color is a very delicate mauve, almost white, veined with old-pink, and with a ring of pink around the orange-yellow center. It blooms from seed the first year. 15 cts. pkt.

DAHLIA MONARCH. A grand cactus dahlia of the richest, deepest shade of red, a most magnificent color. It measures 6 inches across, and is so striking as to attract universal attention. Very fine for bouquets. 10 cts. pkt.

PURE WHITE CACTUS DAHLIA CONSTANCE. A very lovely snowy white variety. 10 cts. pkt.

CACTUS DAHLIA. Splendid mixed. 10 cts. pkt.; one pkt. each, three varieties, 25 cts.

DIANTHUS. Splendid new varieties from South Japan. After a trial of these new dianthus, I can send them out with the highest praise; the flowers are very large, many of them most exquisitely fringed, the petals charmingly crinkled. The range of colors is very fine and the combinations varied and beautiful. The shades of red are rich in the extreme, and the contrast between the light and dark shades is very effective; the colors range from pure white through shades of pink and red to the darkest velvety crimson and black. A bed of them is a gorgeous sight. 10 cts. pkt.

D. Chinensis. Double and single, choice mixed. 5 cts. pkt.



ROW OF DAHLIA IMPERIALIS.

ERYTHRINA Crista Galli, or "Coral Tree." A splendid shrub or tree that attains great size in California. Its spikes of large pea-shaped flowers are grand. It can be wintered in the cellar in the east. 15 cts. pkt.

ESCHSCHOLTZIA Hunnemannia. A lovely new perennial plant that will please every one. It has the beautiful foliage of the Eschscholtzia, enlarged, and develops into an herbaceous shrub two and one-half feet high, adorned with large jonquil-yellow flowers on stems twelve inches long. These blossoms are cup-shaped, with broad overlapping crinkled petals. The bright orange stamens are in fine contrast with the clear yellow flower. Seeds planted in spring make blooming plants by autumn, and once in bloom, continue to flower for months, being especially fine during the winter. The flowers keep for two weeks in water. 15 cts. pkt.

E. "California Poppy." Choice mixed. 5 cts. pkt.

FUCHSIAS. Saved from my beautiful collection of named fuchsias. Fuchsias bloom from seed in about six months or a year, and are very interesting for the amateur. The plants are better bloomers than those grown from cuttings, and a new variety from seed gives great pleasure. 15 cts. pkt.

FREESIA. Choice mixed, 5 cts. pkt.

FERNS. Choice mixed. 10 cts. pkt.

F. Alsophyla Australis, or **Australian Tree Fern.** 10 cts. pkt.

GAILLARDIA, "**James Kelway.**" A beautiful giant flowering gaillardia, with magnificent flowers measuring five or six inches across, of the brightest scarlet with a golden margin and fringed edges. A most persistent and perpetual bloomer. 10 cts. pkt.

GREVILLEA Robusta, or "**Silk Oak.**" One of the most valuable decorative plants. It grows readily from seed, and in a short time develops into a most beautiful fern-like plant, with the advantage of being strong hardy and persistent. Its fine, laciniated leaves grow out from the central stem in every direction, each one resembling the frond of some elegant fern. It is much used, even in California, for stage decoration, and makes lovely house plants. Plants started from seed in spring form nice strong plants by autumn. 10 cts. pkt.

GERANIUM Zonale, Large. These new varieties of geraniums, with beautiful large round flowers in white, crimson, scarlet, pink, rose, salmon, etc., often give lovely new varieties from seed. The seed offered is from the very choicest and best new sorts. 15 cts. pkt. Good mixed, 5 cts. pkt.

G. Tricolor. The seeds offered below are saved from the beautiful geraniums, "Mrs. Pollock," "Glen Eyre," "Beauty," "Happy Thought," and "Sunset." In these charming plants all the colors of the rainbow are represented. Extra choice mixed 15 and 25 cts. pkt.

G. Lady Washington. In California these magnificent pelargoniums grow to the greatest perfection. Seeds offered, are saved from a very fine collection of beautiful varieties. 15 cts. pkt.

G. Double Ivy. Splendid mixed. 15 cts. pkt.

One packet each of the above geraniums, 40 cts.

GENISTA, "**Eldorado.**" A very pretty genista of spreading habit that is completely covered with long spikes of soft golden-yellow flowers all the year. 10 cts. pkt.

NEW MORNING GLORY, Imperial Japanese. A bewitching new class of morning glories from Japan. The flowers are of enchanting beauty, charming in shape and form, and of such infinite variety of shades and markings that it is almost impossible to describe them. There are said to be over 300 distinct varieties. They frequently measure six inches in diameter. The colors vary from pure white through blues and purples to almost black, from delicate blush to brilliant carmine; there are ash grays and browns, gorgeous copper and bronze, with combinations of colors bewildering to think of. Some are mottled and striped, streaked, penciled and bordered; they are double and single, ruffled and frilled, scalloped edges and plain, altogether, the most fantastic, original, dainty, brilliant and interesting flowers that have made their appearance for many a day. The constant wonder is, as each flower opens, what combination further can be developed. Every one can grow them, and those who want something charming and new to anticipate through the blooming season should have them. 10 cts. pkt.

Gasterias. Very choice mixed. 10 cts. pkt.

Double Morning Glory, "**White Tassel.**" This might be called an "All-Day Glory," as it remains open during the entire day. It is white, very double and fringed, with delicate purple marks in the centre of the flower. Sometimes there are several rows of fringed petals outside of the flower. In other flowers the centre is very double. It is a charming thing, and resembles a dainty white tassel. Plants from seed give a large percentage of double flowers. 10 cts. pkt.

HARDENBERGIA Alba. This beautiful plant, though not new, is still rare. It has handsome foliage and exquisite white flowers. It blooms from January till the last of March. The flowers appear at the axis of the leaves, and the entire plant is covered with spikes of small, round snowy white, pea-shaped blossoms. The stems are very slender, and the spikes of bloom are from three to five inches long. It is our loveliest white winter-blooming shrub, and would be invaluable in the East for cut flowers. The seeds are slow to germinate and should be soaked for twenty-four hours in water, with a few drops of camphor added (which is said to hasten the germination of seeds.) 15 cts. pkt.

HELIOTROPE. Very few people know that heliotrope is very easily raised from seed and that young plants come into bloom very early. Those who grow flowers should have the great pleasure of testing them. All varieties mixed. 5 cts. pkt.

H. Lemoine's Hybrids. The flowers of these varieties are larger than the ordinary heliotrope; the foliage is also larger, and the trusses immense, often six inches across, and very beautiful shades of purple. Splendid mixed. 10 cts. pkt.

IPOMŒA, "Heavenly Blue." A beautiful annual morning glory. The flowers are in large airy clusters, and are of that indescribable heavenly blue so rarely seen in flowers. The throat is yellow inside, spreading softly into blue; the flowers measure four and one-half to five inches across, and about ten o'clock in the morning no lovelier sight can be imagined than this lovely vine, the great profusion of flowers almost rendering the foliage invisible. Every one who sees it for the first time is filled with delight at its beauty, exclaiming: "That is the loveliest thing I ever saw." In order to enjoy the beauty of this plant as early in the season as possible, success depends on cultivating the seedlings in the following manner: Having been potted off singly in small thumb-pots, in light, sandy soil, and being well rooted through (pot-bound), they ought to be shifted to large pots, using, of course, the same light soil. In these pots the plants must remain until they show their flower-buds, hardening them off in the meantime; once they show these, the plants may be planted out in the open ground, but also in light, sandy soil, where they will continue to produce their flowers freely. If the plants are cultivated in very rich soil, they will attain enormous dimensions and produce a most luxuriant foliage, but hardly any flowers until very late. 10 cts. pkt.

I. Learii. "Blue Dawn" flower. The flowers are of the most intense violet-blue, with reddish purple rays, and are six inches across; there is nothing of its color that exceeds in richness the flowers of "Ipomœa Learii." 10 cts. pkt.

LATHYRUS Splendens. "The Pride of California." The most magnificent of native climbing plants. A splendid hardy perennial pea, with fine foliage and a profusion of large pea-shaped blossoms of deep, rich, velvety crimson in clusters of ten or more. The buds are a charming rose-pink, and the contrast of buds and blossoms is most pleasing. No description can do justice to this lovely climber; it draws forth expressions of admiration from all who see it. Always scarce. 25 cts. pkt.

LARKSPUR, "American Banner." A lovely new annual larkspur, growing one and one-half to two feet high, branching out like a candelabra and bearing long spikes of large double flowers an inch or more across, a charming blending of color—rosy crimson, with stripes of indigo-blue and white, some petals being dotted with blue; and rose marked with blue, and some are light and dark blue in charming combinations, a veritable floral American flag. 10 cts. pkt.

LOBELIA, "Crystal Palace Gem Compacta." Fine for borders; deep, beautiful blue; very dwarf. Finest mixed, 5 cts. pkt.

L. Erinus. Varieties. Choice mixed, 5 cts. pkt.

MESEMBRYANTHEMUM. Fine for borders; will thrive in a dry climate with very little water; easily grown from seed. Splendid mixed, 10 cts. pkt. Separate colors, six varieties, 10 cts. pkt.

MIGNONETTE. Choice mixed, 5 cts. pkt. **Giant White Upright,** fine for bouquets and for decoration. 5 cts. pkt. **Golden Queen.** A fine variety, with flowers of a golden hue. 5 cts. pkt.

MARIGOLD, French Gilt-Edged. Splendid large double flowers, four inches across; velvety brown, edged with yellow. 10 cts. pkt.

M. "Little Brownie." A charming, compact little marigold, from five to six inches high, producing a fine effect in masses, and unrivaled for borders. It begins blooming very early and in great abundance, and blooms until very late in the season. The duration of the flowers and the great resistance of the plant to drought is marvelous. If it is so dry that the foliage disappears, the flowers are still perfect. They are vivid yellow or gold, each petal marked with a large spot of brownish red. 5 cts. pkt.

MAURANDYA. An old and very pretty climber, with gloxinia-shaped flowers and dainty pointed heart-shaped foliage. Choice mixed, 5 cts. pkt.

MANDEVILLA SUAVEOLENS Grandiflora. See description in plant list. 10 cts. pkt.

- NASTURTIIUM, New Dwarf Tom Thumb.** "Gay and Festive" mixture. This is a most beautiful strain of Dwarf Nasturtiums. There is a marvelous range of new shades. I have counted thirty distinct varieties growing in the field. Clear, golden-yellow, salmon-pink, dark red, golden-brown, all shades of yellow variegated with red and brown, canary color, terra cotta, orange and black, with all combinations, making a most brilliant showing. No one can fail to be pleased with them. 5 cts. pkt.
- X. Empress of India.** Dark foliage and deep scarlet flowers; one of the finest varieties grown. 5 cts. pkt.
- LOBB'S NASTURTIUMS.** New "Good Venture" mixture. (Tall.) No one can fail to be delighted with this new California mixture. Of unusually vigorous growth, with beautiful foliage and splendid large flower in the richest and most beautiful colors, it is superb, and contains many entirely new varieties. 5 cts. pkt.
- N. "Scarlet and Gold."** (Tall.) A new variety, with pretty golden foliage and brilliant scarlet flowers. 5 cts. pkt.
- PANSIES, Henderson's Highland, Mixed Colors.** Grown by the most celebrated pansy specialist in Scotland. Their merit consists in uniformity of clear, distinct markings, high colors, great substance, perfect form and largest size. 25 cts. pkt.
- Bugnot's Large Stained, Mixed Colors.** A celebrated French strain of extra large size, choicest colors, and with beautiful broad blotches and delicate pencillings; a very shy seeder; the ground colors are generally white or very light, bringing the elegant and distinctive markings in strong relief. 50 cts. pkt.
- Mammoth Butterfly.** A strain of pansy which, for variety and beauty, has never been excelled. Of matchless forms, colors and markings, with flowers half as large again as ordinary pansies. They will both astonish and delight "Pansy Fanciers." 10 cts. pkt.
- Giant Trimardeau.** These are remarkably large pansies, which, for size of flower and robust growth, eclipse by all odds any known strain. 15 cts. pkt.
- Phlox Drummondii.** There can be no stronger proof of the value and beauty of phlox than the extent to which it is grown. For beds and massing nothing can surpass these beautiful annuals. They produce immense trusses of large brilliant flowers of numberless hues throughout the summer. 1½ ft. high. Choice mixed. 5 cts. pkt.
- P. Star of Quedlinburg.** Flowers are of regular star-like form. Plant of compact habit, bearing large umbels of flowers. Mixed colors. 10 cts. pkt.
- PETUNIAS, Giant Emperor.** The flowers, of the largest size, are extremely velvety, of great substance, and are particularly noted for richness and depth of coloring. They are plain edged, average about four inches in diameter, and while embracing some light colors, even pure white, they are specially distinguished for such shades as violet, rich blue and deep garnet. 10 cts. pkt.
- P. Giants of California.** The giants of California bear gigantic flowers often five inches and more in diameter, of an astonishing variety of colors. They embrace every conceivable shade of crimson, pink, lavender, pure white, etc. One of the chief points of excellence is the deep throat and diversity of veinings in the throat. Many of the flowers have a clear yellow throat, while others have a pure vegetable black one, so deep that it seems to show no veining. 15 cts. pkt.
- P. New Fringed Hybrid.** The loveliest petunias of all, with charming fringed flowers of exquisite form and beautiful colors. Splendid mixed. 15 cts. pkt.
- P. Hybrida Grandiflora.** Fringed and plain edge; all kinds. Choice mixed, 10 cts. pkt.
- P. New Steel Blue.** Clematis-flowered. A beautiful variety from Europe, of a lovely dark steel-blue. Flower shaped like Clematis Jackmanni. Perfectly distinct. 10 cts. pkt.
- P. New Double Fringed.** The grandest double petunias ever offered; perfectly round double flowers, exquisitely fringed. Pure white, pale bluish lavender, pink, deep rose, variegated, all shades imaginable. About 40 per cent. come double. Splendid mixed, 35 cts. pkt. One pkt. of each petunia, 75 cts.
- POPPIES, Oriental Hybrids.** Grand, hardy, perennial, poppies. The flowers average six to nine inches across. The colors are splendid pink, blotched with purple; blood red, blotched black; glowing scarlet; reddish orange; salmon, etc. 15 cts. pkt.

- POPPY Iceland.** The fragrant, elegant, crushed, satin-like flowers are produced in never-ending succession from the beginning of June to October. The flowers last quite a week if cut as soon as opened. They are white, yellow, scarlet and crimson. Mixed, 10 cts. pkt.
- P. Danebrog.** Large, bright scarlet, with a white cross in the centre. 5 cts. pkt.
- P. Chamois Rose.** Most exquisite color, beautiful chamois-rose. 5 cts. pkt.
- P. Fairy Blush.** A charming variety, with immense globular, perfectly double flowers, which measure from ten to twelve inches in circumference. The petals are elegantly fringed and pure white, except at the tips, which are a rosy cream color. The flowers at a little distance have the effect of large white feathery balls, overcast with a rosy shade. Each plant has from three to five of these magnificent flowers open at one time, and lasting longer than those of any other poppy. 10 cts. pkt.
- P. Snowdrift.** A most exquisite snowy white poppy, with beautiful fringed petals; very double. 5 cts. pkt.
- P. Mikado.** Pure white, and brilliant crimson-scarlet; big, double and exquisitely fringed. 5 cts. pkt.
- P. "Irresistible."** This grand poppy received its name because every one who saw it wanted it, and to some it proved irresistible. They carried away the flowers in triumph, saying: "I had to have them, they were so beautiful." It grows five feet or more in height, the flowers are immense and perfectly round. The color is a beautiful red, and petals fringed. It is the most showy and largest poppy I have ever seen. It came volunteer in my garden for two or three years, improving each year, till it at last became irresistible. 10 cts. pkt.
- P. New Fatal.** The most beautiful and dainty of all poppies, in every conceivable shade of red, pink, maroon and white, self and variegated, double and single, large and small flowers. One begins to wonder as they open what the next combination will be, there are so many and such pretty ones. No one can fail to be charmed with them. 10 cts. pkt.
- P. Tulip-Flowered.** A new poppy of great brilliancy and beauty, having a flower which in shade and color resembles a great flaming tulip. Its color is most intense scarlet, and it blooms at least two weeks earlier than any other poppy. 5 cts. pkt. One pkt. each variety, 40 cts.
- PIMELEA Decussata.** One of the most perfect and beautiful flowering shrubs in existence. The handsome round plant is very striking, even without flowers; but when in full bloom, as it is most of the year, it is a thing of beauty and delights every one who sees it. From every branch terminal clusters of charming pink flowers come forth, so that the whole plant seems gemmed with the dainty color. The foliage is extremely pretty, and the contrast between it and the flowers is most pleasing. It makes a beautiful bedding plant, and is fine for the greenhouse or as a house plant. 15 cts. pkt.
- PASSIFLORA, Scarlet.** The beautiful red Passion Vine of California. 15 cts. pkt.
- P. "Constance Elliot."** Pure white passion flower. 10 cts. pkt.
- P. Edulis.** The edible passion vine. It has pretty white flowers; the corona or fringe surrounding the centre is beautifully crinkled. It bears a very pleasant flavored edible fruit. 10 cts. pkt. 3 varieties 20 cts.

PALM and BANANA SEEDS.

- Musa Ensete or Abyssinian Banana.** The most tropical of all the bananas, grown only for its foliage, the leaves are very broad and long, a shining green with a wide, dark red midrib. 5 seeds 10 cts. \$1.50 per 100 seeds.
- Seaforthia Elegans.** One of the most beautiful and graceful of all palms. 6 seeds 10 cts. 25 seeds 25 cts.
- California Fan Palm.** 10 cts. pkt.
- Chamærops Humilis.** A very pretty dwarf fan palm. 10 cts. pkt.

ROSE SEEDS.

A Rare Mixture of Tea Roses, Noisettes and Hybrid Varieties.

Try a package of this splendid mixture and grow your own roses from seed. Every new rose that is offered is grown from seed, or occasional sports. You do not have to wait forever to know what your seeds are going to bring forth, for a Tea Rose is so anxious to bloom that it will often put out buds when only a few inches

high; the buds should be pinched off until it attains some size, and has strength to give to flowers. The mixture that I offer is saved from a splendid collection of the very best roses of many classes, and the butterflies and bees have busied themselves all season fertilizing the flowers, and no one knows what lovely roses may result from their labors. 10 cts. pkt. Extra large pkt. 25 cts.; 75 cts. per oz.

The Dawson Rose, A Pretty Rambler. A charming rambling rose, having clusters of lovely semi-double pink flowers with a white centre; they grow in long wreaths and are perfectly exquisite. 10 cts. pkt.

Little Midget or Baby Roses. Dainty little roses, dwarf and climbing, single and semi-double, in shades of pink, cream-white, and white; very fragrant. 10 cts. pkt.

Wichuraiana or "Memorial Rose." A pure white single rose, about 1½ inches across, with yellow stamens, delightfully fragrant, the foliage is small and shining, very handsome; is a wonderful grower, and will run over the ground or trail on verandas in perfect festoons; the shoots grow 30 or 40 feet in a season; when covered with its snowy white flowers it is "a sight to behold." 10 cts. pkt.

Single Cherokee. The True Variety. One of the most æsthetic and beautiful of all roses; large, wide open, snowy white, single flowers, five inches across, with yellow stamens; handsome, shining foliage. 10 cts. pkt.

SALVIA SPLENDENS. The most brilliant scarlet bedding plant known: fine also for pot plants. 10 cts. pkt.

STOCKS "Cut and Come Again." or Princess Alice. The best white stock grown, snowy white flowers. 10 cts. pkt.

S. Giant Perfection. Too much cannot be said in praise of Giant Perfection Stocks. All who have ever seen them bloom are delighted with them. Their growth is strong, and the magnificent spikes of very large double flowers are superb. The colors are white, old rose, mauve, pink, straw, purple, red and flesh. They are fine bloomers, and give 85 per cent. double flowers. Each color separate, 10 cts.; mixed, 5 cts. One pkt. each, 50 cts.

S. Large fl. German Dwarf. A beautiful dwarf type of many charming colors. Splendid mixed, 10 cts. pkt.

S. Large Fl. Dwarf Violet-Blue. A perfectly lovely stock that every one likes. 10 cts. pkt. One pkt. of all the above stocks, 60 cts.

SCABIOSA, "Fiery Scarlet." The lovely new large flowering scabiosa are a great improvement over old sorts in the beautiful new colors of the flowers and large size of the florets. They are invaluable for cut flowers, as they last a long time and do not droop easily. In California they are perennial and bloom without intermission winter and summer. 10 cts. pkt.

S. "Beautiful Rose." A charming companion to the above, with splendid large flowers of a fine soft pink. 10 cts. pkt.

S. "Dainty Mauve." An entirely new shade. Exquisite. 10 cts. pkt. Three sorts 20 cts. Splendid new sorts mixed, 10 cts. pkt.

SOLANUM Betaceum, or Tomato Tree. A fine ornamental tree or shrub, a native of South America, which is now receiving a good deal of attention under the name of "The Brazilian Melon Fruit." The foliage is large and handsome, the branches spreading. The fruit which hangs pendant in clusters below the foliage, is the size of a large egg, of a beautiful orange-salmon color when ripe. 10 cts. pkt.; three pkts. 25 cents.; ¼ oz. \$1.25. For further description see Plant Novelties and Specialties.

SWAINSONA ALBA. A charming shrub, very popular in the east, with finely divided foliage and long spikes of snowy white pea-shaped blossoms; invaluable for cut flowers and most ornamental in the garden, fine for the conservatory. The seeds germinate very slowly, and should be soaked before planting. 15 cts. pkt.

SCHINUS MOLLE, "California Pepper Tree." 10 cts. pkt.

STAPELIA. Choice mixed, 10 cts. pkt.

THE AUSTRALIAN PEA VINE. This climber, though well known in California, is not listed in any of the eastern catalogues. It has great powers of endurance, standing heat and drought with impunity, and should be hardy in the east. It is invaluable where rapid growth and an impenetrable screen are desired. The seeds germinate readily, and the plants grow very rapidly, beginning to bloom when quite young; the foliage is very pretty and graceful; the flowers are pea-shaped, the buds pink, when full blown the flowers are pink shaded mauve; the plant is completely covered with blossoms in California at all times. 10 cts. pkt.

NEW SWEET PEAS.

NEW SWEET PEA "CUPID" The Floral Wonder. Who can resist Cupid, the little "God of Love?" Surely not flower lovers, when he comes with snowy wings, bearing creamy white standards, with a wealth of delightful perfume. Cupid is a charming dwarf sweet pea, which grows only five inches high; the pretty little vine is completely covered with large snowy white flowers, deliciously fragrant; it makes wonderfully attractive pot plants and a lovely border plant for the garden. 10 cts. pkt.

GRAY FRIAR, is a most beautiful watered-purple on white ground, the heaviest coloring being on the back of standard. The flowers are of a hooded form, which, with its unusual coloring, suggested the name. The flowers, of large size, are borne three and four on a stem. They are perfectly beautiful in a bouquet when bunched alone, giving a decidedly gray effect.

RAMONA. Grand flowers of very large size and improved hooded form. It is a vigorous grower and bears three or four flowers to the stem. Its coloring is delicately beautiful; a creamy white, daintily splashed with pale pink on standard and wings. 10 cts. pkt.

JUANITA (pronounced Wah-nee-ta) bears fine large flowers of the improved hooded form. Color pure white delicately lined and striped with pale lavender. The plant is a vigorous grower and free bloomer; the seed is small, brown, spotted with black. 10 cts. pkt.

Celestial. Lovely azure-blue. 10 cts. pkt.

Blushing Beauty. Soft pink, suffused with lilac. 10 cts. pkt.

Venus. Lovely salmon-buff, shaded rosy pink. 10 cts. pkt.

The seven beautiful new varieties for 40 cts.

Lemon Queen. Pink, flushed yellow. 5 cts. pkt.

Royal Robe. Pink.

Blanche Burpee. White. 10 cts. pkt.

Mrs. Gladstone. A lovely soft pink.

Mrs. Sankey. Beautiful white, tinged blush.

Primrose. Pale primrose-yellow.

Countess of Radnor. Pale lavender, a lovely variety.

Delight. White, slightly crested with crimson.

Boreatton. Very dark maroon, shining like satin, grand.

Duchess of Edinburgh. Scarlet and crimson.

Apple Blossoms. Bright rose and pink, very beautiful.

Blanche Ferry. Pink and white, always charming.

Splendor. Superb bright rose, shaded crimson.

Orange Prince. Orange, salmon and bright pink. Grow in partial shade.

Alba Magnifica. Pure white.

Fairy Queen. White and pink. Red and white striped.

Fire Fly. A deep brilliant scarlet.

Imperial Blue. Blue, shaded mauve.

Emily Henderson. Beautiful snowy white.

Queen of England. Very fine, pure white.

Double White. Very beautiful, with occasional double flowers.

Double Mixed. From best double varieties. 5 cts. pkt., except where noted 10 cts per oz. Twenty-one varieties, 75 cts. Splendid mixed, 5 cts. pkt.

TACSONIA, Von Volexmi. A tropical climber belonging to the same family as the passion vine, but much handsomer, and with larger, richer-colored flowers, and a long tube at the back of the flower. This beautiful variety is always rare. The flowers are deep crimson, and hang from thread-like stems twelve inches or more in length. 25 cts. pkt.

T. Buchani. Pink tacsonia. A lovely light pink variety, of most vigorous growth. A wonderful bloomer. It bears an edible fruit. 10 cts. pkt.

- TACSONIA Sutherlandia.** Is of vigorous habit of growth, with handsome three-lobed foliage, strong of texture, of a rich dark green color. The flowers measure four inches across. Color, exquisite carmine-rose, shading darker in the centre, with a tiny purple fringe around the throat. The back of the petals is a light pea-green. The tube measures $1\frac{1}{2}$ inches in length, stem of flower $2\frac{1}{2}$ inches, so that the flowers stand well out from the foliage. It is a fine bloomer, rivaling even its parent, the scarlet passion vine, so noted for the profusion and magnificence of its flowers. 10 cts. pkt. Three varieties, 35 cts.
- TRITOMA Nobilis.** A most splendid tritoma, easily grown from seed. The flowers are bright scarlet, tipped with golden-yellow. 10 cts. pkt.
- TECOMA Velutina.** A beautiful shrub, with large gloxinia-like flowers. 10 cts. pkt.
- T. Mackenji.** A grand new climber, of rapid growth and graceful habit. The foliage is very handsome, and the long trailing branches are covered from May to October with large spikes of exquisite pink gloxinia-shaped flowers, the throat veined with darker shades of pink. A most showy, beautiful and satisfactory flower, and easily grown. 10 cts. pkt.
- T. or Bignonia Tweediana.** A charming vine with beautiful foliage and large golden-yellow flowers. 10 cts. pkt. Three sorts, one pkt. each, 25 cts.
- VERBENA Mammoth.** Nothing can exceed the beauty of these splendid Giant Flowering verbenas, which each year bear witness to the wonderful qualities of Southern California soil and climate, in the great size and beauty of the flowers. Pure white, pink and scarlet, separate, 15 cts. pkt.; two pkts. 25 cts. Splendid mixed, 10 cts. pkt.; two pkts. 15 cts.
- ZINNIAS.** New "Curled and Crested." This splendid strain is all that is claimed for it. The large curled and crested petals give a softness and beauty to the flowers, that is most charming. The form and colors are beautiful, and have none of the stiffness of the old-fashioned zinnias. 5 cts. pkt.

Novelties and Specialties in Plants.

Two Charming New Dwarf Abutilons.

These two new varieties are very compact in growth, and make handsome plants. The flowers are lovely, very large and flaring, with short petals, and are most beautifully cupped; they produce flowers by the score both summer and winter.

INFANTA EULALIA. This is a perfect gem; the flowers are an exquisite light pink.

WM. MCKINLEY. Like the above, except in color, which is a clear yellow. These two abutilons make a lovely pair of plants; they both begin to bloom when only a few inches high. 25 cts. each; 40 cts. for the two.

ABUTILON SAVITSI.

This is a grand novelty, and a very decided improvement on *Souv. de Bonn*. The leaves are heavily marked with a pure silvery white. The variegations are exceedingly beautiful, making it a fine decorative plant. There is no abutilon that can compare with it for striking beauty. It is still very scarce. 50 cts. each.

NEW SEEDLING ABUTILON—"Beautiful Bells."

A very distinct and handsome variety which forms tree-like plants and bears beautiful flowers (Beautiful Bells) on long thread-like stems; the color on the outside of the flower is a dark brownish maroon, inside orange, veined a dark red; the flowers are flaring and the petals overlap, and roll back at the edges in a very pretty manner. 25 cts. each. The four abutilons above for \$1.

MRS. SHEPHERD'S GRAND NEW TREE BEGONIAS.

Brilliant Leaves and Magnificent Flowers.

Words are inadequate to describe the beauty of these new begonias as they appear in my lathhouses and greenhouses.

They are of the Otto Hecker and Pres. Gaulin type, but greatly superior in every way. All have large oblong leaves and immense panicles of very large flowers in shades of pink and red. They are tree-like, strong and robust, sending up a great number of canes to the height of six or eight feet. The foliage is a yellowish or bronzy green, exquisitely beautiful in texture, and has a shining silken lustre. The difference between the various plants consists in size and shape of leaves, and the brilliant colors with which they are, at various times, tinged or illuminated; they change in the different stages of growth. *The shades of color are bronzy red, terra cotta, old rose, delicate pink, wine color, copper, yellow feathered green, and other blendings indescribable. The underside of the leaves is a rich wine color, claret, terra cotta, and in some varieties they are charmingly flushed with these lovely colors.* Though giants in size there is not the least suggestion of coarseness about them. The leaves measure frequently 15 inches in length, by 7½ across. The young foliage is often spotted with silver. Owing to the great demand for these begonias my stock is still very limited. The following are crosses from Gloria de Juoy by Rubra.

BEGONIA AFTERGLOW. A perfectly lovely variety with very large leaves, that in their changes remind one of the glowing tints of the sky after sundown. It is a very vigorous grower and bears a profusion of flowers in immense clusters; the pistilate flowers have scarlet ovaries and shaded rose colored petals; the leaves are at times dotted with silver sport. Plants from 2½-inch. pots, 50 cts. each.

BEATRICE. Truly a stately plant, with graceful arching branches and beautiful lustrous foliage, that changes in all stages of growth like autumn leaves; they are a bright terra-cotta red underneath and handsomely spotted with silver above. The flowers hang in long drooping graceful panicles, bright scarlet with rose colored petals. This begonia, delights everyone. Small plants \$1. Ready April 15.

YOSEMITE. A grand plant with a very stately habit; leaves large, slightly drooping, having a lustre like changeable silk. The flowers are in very large clusters, and are a lovely light pink, a very vigorous grower. Plants from 2½-inch. pots, 50 cts.

BEGONIA KATHLEEN. A very tropical looking begonia, of the same type as others of this cross, but having the largest foliage of any; the leaves are immense, dark red underneath, dark shining green above and closely covered with large silver dots; the large cluster of flowers are a rich, dark shining red. Plants from 2½-inch pots, 50 cts.

BEGONIA MANZINITA. A very pretty variety, with the darkest leaves of any of the set; flowers in large cluster, a charming shade of light pink. Plants from 2½-inch pots, 50 cts.

NEW BEGONIA ROSENGOLD. A very handsome variety, tall growing, with large clusters of rose colored flowers, and rich changeable foliage, dark red underneath, and frequently turning golden shades feathered with green above. A very lovely variety. Plants from 2½-inch. pots, 50 cts.

BEGONIA ENCHANTRESS. This charming variety has very large, shining, dark, green leaves with dark red edge, very delicately waved, underneath they are rich shining wine color; the young foliage is a coppery green, shaded with terra cotta, the foliage when old is also brilliant; it has immense clusters of very large flowers of a beautiful, rich rose color, shaded red. 50 cts. each.

BEAUTY. This variety has very large, dark leaves, having four points; the texture is exquisite, like changeable silk, and waved at edges; the young foliage is old pink, veined green, changing to darker colors, A grand variety. \$1.00 each.

ATALA. Large leaves with three rather blunt points, dotted with large and small silver spots; mulberry-red underneath; young foliage a dark bronzy red. Flowers bright pink. A splendid grower. 35 cts. each.

BRILLIANT. Very long leaves with three sharp points; intense bright red underneath; young foliage is illuminated with a bronzy copper, veined and feathered green, changing to brighter color. Splendid panicles of flowers of deep coral-red. 35 cts each.

"AUTUMN LEAF." The foliage of this variety, which is smaller than the others, is flushed underneath and veined with red; *the young foliage is old pink, shaded darker and veined with green*; the flowers are very large and of a beautiful deep pink. A very satisfactory variety. 25 and 50 cts.

DAPHNE. More dwarf in habit than the others, and grows in a bushy form. The leaves are red underneath and a light satiny green above, oblong, with one long point and lightly pointed above the lobe. The young foliage is a golden-copper color, veined with green. It is a splendid bloomer being completely covered with panicles of shaded lovely pink flowers. A charming variety. 50 cts.

"HEART'S DELIGHT." This lovely begonia will delight the heart of any lover of green leaves, with three points, edges delicately fluted and edged with dark red, underneath, changeable reddish-green veined red. The flowers are a pure coral-red, the pistillate flowers two inches long, and two inches from tip to tip across the petals. 25 cts. each.

FLAMMARION. A very rich looking plant, with the darkest foliage of any. The leaves are a deep green, mulberry-red underneath, the leaf stem also very dark. The deep crimson flowers are in large panicles, and the plant is never without flowers. It is of robust growth and is selected at once as one of the handsomest of these new varieties. 35 cts. each.

IANTHE. Of very strong habit, with handsome, large foliage, the leaves with four points, rich olive-green, surface of leaves like changeable silk, underside flushed and veined dark red. Very rich, shining, waxen, deep red flowers. Always in bloom and very striking. 35 to 50 cts.

ERNANI. A tall stately plant, of magnificent habit, with splendid foliage. An old well established plant will throw up canes to the height of eight feet, and form an imposing sight, with its splendid leaves and grand panicles of elegant flowers hanging from long stems. The foliage is beautiful at all times, the young growth being very bright, in striking contrast with the older growth. 35 to 50 cts.

"HER ROYAL HIGHNESS." This begonia is of more branching habit than the other varieties. The large handsome foliage with its lustrous green leaves lined with red, is very beautiful; but when the graceful panicles of waxen pink flowers hang beneath, it is one of the sweetest and prettiest of the galaxy. 50 cts. each.

"FAIR ROSAMOND." A splendid, stately begonia, that sends up strong canes to the height of 6 or 8 feet. The leaves are a lustrous, changeable bronzy green above, and a rich winecolor underneath. They measure 15 inches in length by 7½ in width and are oblong in shape, running to one long point, with three smaller points on the upper side. The young foliage is a bright red, sometimes spotted with silver. The magnificent panicles of exquisite waxen flowers hang from long stems and are of a deep rose-red color, shaded lighter rose. The pistillate flowers measure 2½ inches in length. Small plants 25, 35 and 50 cts. each.

☞ I have a number of others of the same type and just as beautiful, which I do not offer in catalogue, at 25 cts. each, for good strong plants. In ordering, please make a second or third choice, as I may be out of some varieties.

Read what a friend writes of Begonia Ernani and Fair Rosamond.

SANTA BARBARA, CAL., Oct. 24, 1897.

"DEAR FRIEND:—I must tell you what a delight our 'Ernani' Begonia has been to us. Two years ago it was only a rooted cutting two or three inches high, and now there are two tall shoots about six feet high, and several others are coming. Many of the leaves, which are of a lovely satiny texture and changeable green in color, are eleven inches long, and wide in proportion. The clusters of flowers are immense, forty and fifty, large, very large florets in each cluster, of a pale rose color. The effect is perfectly lovely when it is in full bloom. Just now there are five of these clusters coming, so you can imagine what a treat we are anticipating. The plant is seldom entirely out of bloom.

"The 'Fair Rosamond' has been quite as much of a pleasure as the 'Ernani,' and is very beautiful as a companion to the latter, with its rich dark foliage and blossoms. Indeed the foliage is so lovely that it hardly needs the blossoms to make it a 'thing of beauty,' and the blossoms by themselves would be enough." * * *

Yours sincerely,

THEODOSIA WOODS.

NEW BEGONIA "MARJORIE DAW."

Rubra by *Glaucophylla Scandens*:

A most valuable new seedling, which I offer for the first time. It resembles both parents, having rubra's strong growth with climbing habit of *glaucophylla scandens*.

dens; it is a rapid vigorous grower and bears very large clusters of exquisite salmon-pink flowers, that have a shining satin-like gloss. The leaves are thick and broadly lobed on the upper side, running to a sharp point at the end; the joints are rather closely set, and have a light red band above them, the same at the base and the end of the leaf stems; it branches freely and will grow 8 or 10 feet in height. The plants require support when allowed to grow tall. It is a fine bloomer and destined to become very popular. Good strong plants from 2½ inch pots 50 cts., 4 inch pots \$1.

NEW BEGONIA "DEAREST MAE."

This beautiful begonia is a seedling from *odorata alba*. The leaves are much larger than those of the parent plant and are very thick and waxy in texture; looking as if varnished; the young leaves are exquisitely shining and handsomely ruffled at the edges. The flowers are in large panicles, bluish white, lined with pink. The plant is a rapid grower and sends up many stems. It is a fine addition to our shrubby begonias. Plants from 2½ inch pots 35 cts., larger 50 cts.

BEGONIA SAULII.

A very beautiful new begonia from Guatemala. Leaves nearly circular, of a bright polished green; a crimson blotch in the centre of each radiates out half the length of the midribs. Flowers white, tinged with crimson. One of the most distinct of the genus; highly attractive. \$1.

Grand New Giant Begonias.

Seedlings from PINK RUBRA.

The charming mother of these Giant Begonias is completely thrown in the shade by her stately children. Their canes shoot up like stems of bamboo, some of which measure one and one-half inches at the base. The leaves are thick and leathery, and often measure ten inches long by four and one-half across. The flowers which hang on very long, strong stems, 5 to 7 inches in length, are double the size and number of those of the parent. They are prolific bloomers at all stages of growth.

HEBE. Light green foliage. Young leaves spotted with silver. Old leaves often measure 10 by 4½ inches. The plant if allowed will grow 6 to 8 feet high. The flowers are pale pink of an exquisite melting shade, indescribably beautiful, a perfectly lovely begonia. Small plants 50 cts. each.

PRINCESS ALICE. A stately new begonia, that reminds one in its exquisite loveliness of some fair blond princess. On old plants the canes of this begonia, which grow in the Rubra style, sometimes measure 1½ inches in diameter at the base. The foliage is two or three times the size of Rubra; the young growth is pink with silver spots. The older leaves are a light green, at first lined with bright red, which fades later. They are very thick and leathery. The flowers hang in very large panicles, on long, strong stems, and are a most exquisite deep pink. It is always in bloom, and is a noble descendant of that old favorite "Rubra." Still very scarce. 50 cts.

"STRIKING BEAUTY." This begonia is almost the counterpart of the lovely "Princess," with the same habit of growth, and large leathery foliage. The flowers, however, are more the color of Rubra, but it is a Rubra magnified several times, both in flower and foliage, and is the general favorite of all who see it. It makes a beautiful companion to the "Princess." 50 cts.

RUBRA "BAMBOO." The stems of this giant begonia shoot up like canes of bamboo; it has strong, rich foliage, thick and leathery; the bright young foliage is covered with large silver spots; it has immense panicles of bright red flowers on very long, strong stems. 50 cts. each.

RED CORAL. A greatly improved Rubra; leaves much larger, flowers brighter and on very long stems; a fine bloomer. 25 cts. each.

CRIMSON RUBRA. Flowers of a darker shade of red than Rubra, very bright and shining, foliage larger. 20 cts. each.

INCARNATA "CALIFORNIA." A seedling from "Incarnata," much stronger habit, with leaves twice as large, and prettily waved; flowers a deeper shade and much larger, and in larger panicles; a vigorous grower and always in bloom; beautiful for bouquets. 15 cts. each.

All these begonias in Southern California will grow outside in lathhouses and make splendid plants in two or three seasons.

New Hybrid Ever-blooming Cannas.

Everyone should try these magnificent **NEW HYBRID CANNAS**, they are the most beautiful varieties ever offered, and include all the richest and most handsome colors: some are entirely new and all the very finest kinds up-to-date. They grow erect, three to four feet high, and bear immense spikes of splendid large flowers, crimson, scarlet, orange and gold, in many brilliant combinations. They begin to bloom quickly and continue to produce new fresh flowers every day till killed down by frost. They are the grandest and most handsome flowers now known; can be set out as soon as ground is warm or kept in pots, boxes or tubs.

MAIDEN'S BLUSH. New Pedigree Canna, the grandest and most beautiful of Wintzer's latest introductions. Extra large, perfectly formed flowers in immense trusses, and borne on strong, erect stems during the whole season; color clear rose-pink, almost the exact shade of Daybreak carnation. A fine specialty for florists, and sure to be in great demand on account of its lovely color and great masses of bloom. 50 cts.

NEW PEACHBLOW CANNA. (Alba Rosa Grandiflora.) Valuable for the charming combination of rose, pink and sunset tints. 50 cts.

GOLDEN PEARL. The most wonderful dwarf canna yet produced, blooms when only 6 or 7 inches high, flowers 4 inches across; often 5 to 7 petals; bright rich yellow, with deep maroon center. \$1.25.

PHILADELPHIA. Undoubtedly the brightest and most beautiful crimson canna in existence, excels in all other good points. 35 cts.

ALSACE. The nearest pure white canna, pale sulphur-yellow, changing to creamy white; dwarf compact growth, profuse bloomer. 35 cts.

SUNSET. Fine creamy yellow, delicately shaded with lovely sunset tints; the color of the Sunset rose. 75 cts.

ORANGE QUEEN (New). Large handsome flowers, borne in elegant clusters all through the season; color pure rich orange-red; exceedingly beautiful and the finest of this color to date. 35 cts.

NEW PINK CANNA, Pink Ehemanni. (Novelty of '97.) A pure rose-pink, fine habit. The only clear rose-pink yet introduced, very free-blooming; height, 4 feet. The growth is very compact; the habit is excellent; it blooms early *and all the time*, and is in every way a decided acquisition aside from its grand color. Price, 50 cts. each.

NEW MAMMOTH CANNA, AUSTRIA. (Novelty '97.) This Grand Mammoth Canna originated in Southern Italy, from whence it was imported last year. It is of really mammoth size, grows 5 to 6 feet high, with leaves 15 to 18 inches long and 8 to 10 inches broad; the flowers are 6 to 7 inches across and borne erect in large, bold clusters; color pure, deep, golden-yellow, truly magnificent. Nice dry roots. 35 cts. each.

NEW MAMMOTH CANNA, ITALIA. (Novelty '97.) Originated from the same source as Austria, and imported with it; equally as large and similar in every way except color, which is pure deep yellow, with a broad blotch of dark rich maroon in the centre of each petal. **The two Mammoth Cannas, Austria and Italia.** The two, 60 cts.

NEW YELLOW CANNA BURBANK. A beautiful giant canna, developed by Luther Burbank, of Santa Rosa, the well-known originator of new plants. The flowers when fully expanded measure 7 inches across; in color they are a rich, clear, canary-yellow, having very large full petals with fine crimson spots in center of the flower. 50 cts. each.

Six Varieties of Siever's Grand New Carnations.

These splendid carnations are said to be the *largest and finest ever offered*. The flowers are perfect in form, immense in size, and quite new in style and color. The grower, Mr. Siever, claims that they are the "finest in the world," and those who have seen them blooming are enthusiastic in their praises. Orders booked and sent out by April 1st. 25 cts. each, \$2.50 per doz.

Heterocentron Roseum.

A handsome shrub for the house or garden, having pretty wrinkled leaves slightly edged with red, and dainty pink flowers. 10 to 20 cts. each.

New Chrysanthemum with Beautiful Variegated Foliage.

This beautiful new variety is a sport from one of the old varieties of which I lost the name. The foliage is handsomely variegated with creamy yellow; the leaves sometimes are all light, at other times half green and half yellow, while others are distinctly marked with yellow spots. The flowers are very large and double and in color are a yellowish white; it has very broad petals and double to the centre. It is a very handsome and showy variety in the garden, and exceedingly beautiful under glass. 50 cts. each.

New Giant Flowered Heliotropes.

Efforts to improve the heliotrope have been persistently made by experts all over the world for a number of years, and at last these efforts have been successful; realization has surpassed the most ardent expectation. One can scarcely recognize the old garden favorite in its new glorified form. The size of the foliage and its quality is doubled; the habit of the plant is made compact and bushy instead of being scraggy and sprawling; the size of the flowers is magnified beyond belief, specimen heads measuring *ten to fifteen inches across*; the color is better. Price 25 cts. each, 5 for \$1.00.

Himalaya Fairy Grass.

A rare Eulalia from the Himalaya mountains, which bears the most charming golden-yellow plume, that keeps for years, and are invaluable for dried bouquets. For full description see Australian Seed Novelties. Plants 25 cts. to 50 cts. each.

BEAUTIFUL IRIS WITH VARIEGATED FOLIAGE.

A very charming plant, beautiful for pots or the garden; it grows about fifteen inches high, leaves an inch in width, variegated green and white, one-half being green, the other half a lovely cream-white; the foliage does not die down or become discolored, but keeps its brightness all the year; the flowers are very beautiful. 25 cts. each.

NEW DWARF JUSTICIA VELUTINA.

An elegant new plant for pot culture and bedding, begins to bloom when only a few inches high, and continues bearing its beautiful feathery plumes of lovely pink flowers the whole season, and when taken indoors will bloom all winter, too; quite scarce as yet. 20 cts. each.

JUSTICIA FLAVA. (Novelty '97.) Similar to "Velutina," but bright golden flowers. A very handsome and valuable plant for florists. 20 cts. each.

PHYSALIS FRANCHETTI.

"Chinese Lantern Plant."

A beautiful novelty introduced from Japan. A gigantic species of the Winter Cherry; the plant is of sturdy habit, and grows about 1½ feet high; the calyx of the flower is at first green, changing to pure sulphur-yellow, then to bright yellow, then orange, and last of all brilliant orange-scarlet; the long peduncle changes in like manner through shades of yellow to bright scarlet; these changes of color, pale and dark green, sulphur, ochre, orange and scarlet are most striking; the scarlet balloon-like calyxes hang on the stems for months; the fruit is said to be very valuable for household use. 25 cts. each.

GRAND NEW HARDY WHITE PINK.

Her Majesty. The finest white pink yet seen, and the most marvelous novelty of years; has immense flowers, as large as a carnation. Wonderfully free blooming; stout, erect stems; invaluable for cutting; hardy. 20 cts. each.

RUDBECKIA FULGIDA.

This is decidedly the brightest and most showy among the hardy plants in cultivation, and of the easiest culture possible. It will thrive in any situation, preferring a sunny exposure. The plant is compact and bushy, producing numerous stems with hundreds of heads of flowers, the rays of the flowers being a dazzling orange-yellow, while the disk is of a deep rich velvety maroon-brown. This combination of color makes it one of the most striking objects in a flower garden. 25 cts. each.

NEW DOUBLE RUDBECKIA "GOLDEN GLOW."

(Novelty of '97.)

A glorious new plant, and one that will find a place in every garden here and abroad, of fine habit, vigorous growth, with early, continuous and immense blooming quantities; it will be found excellent also for cut flower purposes, inasmuch as the stems are long, and often carry a dozen flowers furnished with beautiful foliage. A large vase filled with these flowers is a beautiful sight. 15 cts. to 25 cts. each; \$1.50 to \$2 per dozen.

GRAND TECOMA VELUTINA.

A magnificent shrub with large clear yellow flowers, measuring 2 inches across and 3 to 4 inches in length; they grow in fine bunches like a bouquet. The foliage is handsome and the plant is always in bloom; is much more showy and has finer flowers than *T. Smithii*. 2½-inch. pots, 35 cts. each.

TACSONIA VON VOLEXMI.

This lovely tacsonia is not new, but is always very rare. It has handsome foliage, and bears deep crimson flowers, 6 inches across; they hang on thread-like stems, 8 to 10 inches in length, which makes them exceedingly graceful and attractive. 35 cts. to 50 cts. each.

PINK VIOLET MAD MILLET.

A lovely violet, not new but always scarce. The flowers are a soft shade pinkish mauve, very beautiful. 15 cts. each; \$1.50 per doz.

VIOLET DE PARME.

A late variety, very double, color a dark, deep purple, the very darkest variety known; foliage very dark also. Very handsome. 15 cts. each; \$1.50 per dozen.

YUCCA ALCEFOLIA VARIEGATA AUREA.

This is one of the most ornamental of yuccas. It has a wide bright yellow band through the centre of the leaf with a narrow light and dark green margin, it is a very beautiful foliage plant, fine for the house or conservatory. It is perfectly hardy in California and makes a splendid specimen outside. 50 cts. to \$1 each. Write for prices of specimen plants.

YUCCA TRICOLOR.

A very beautiful variety, having narrow leaves handsomely variegated pink, green and white in longitudinal stripes. 50 cts. and \$1 each.



HOW TO PLANT. Having enriched the soil with *old*, DECAYED manure, dig a much larger hole than the roots absolutely require; then placing the bush in a natural position, throw some of the best pulverized soil around the roots; lift the bush gently up and down, so that the soil may settle amongst the fibrous roots; then add the remaining soil, gently pressing around the plant with the foot.

When flowers on the bush become decayed, remove them; this encourages new growth for the next blooms.

PRUNING—Should be done in December, January and February; prune back and thin out liberally.

WATERING. The best plan is to dig a ditch among your bushes and run the water into it—the water getting well to the roots by this means; avoid *surface* watering, which in a great many cases bakes the surface, and does not reach the roots.

Four New Hybrid Wichuraiana Roses.

The habit of these new roses is the same as Rose Wichuraiana, or Memorial Rose. The growth is creeping and therefore can be used to cover ground, stems of trees, pillars, trellises, or any other purpose desired, including pot culture. They are hardy, and will stand any climate or exposure, and will thrive in the poorest soil or a gravel bank. The foliage is finely cut, thick, of a leathery substance, bright green, shining as if varnished, not subject to mildew or any insect, but keeps its full beauty until almost Christmas. The flowers are produced in the greatest profusion, so that a two or three-year-old plant will produce several thousand most exquisite flowers, which are deliciously fragrant and last a long time in perfection.

MANDA'S TRIUMPH. (*Manda.*) This grand rose is of free growth, luxuriant foliage, and produces large clusters of double pure white flowers, beautifully imbricated and well formed, two inches in diameter and sweetly scented.

UNIVERSAL FAVORITE. (*Manda.*) This is the most vigorous plant of the set. The long branching shoots are covered with dense, bright green foliage. The double flowers are over two inches in diameter, and of a beautiful rose color, similar to the Bridesmaid, and deliciously fragrant. A grand variety for any purpose.

SOUTH ORANGE PERFECTION. (*Manda.*) This is a gem, growing freely, close to the ground, and having multitudes of the most perfectly formed double flowers, about one and a half inches in diameter, soft blush pink at the tips, changing to white. It lasts a long time in perfection.

PINK ROAMER. (*Manda.*) This is without question a hybrid between the Sweet-brier, and carries these characteristics in bloom, while the growth, which is very rampant, and the luxurious foliage, partake more of the Wichuraiana. The single flowers, which are produced in close heads, are nearly 2 inches in diameter, bright rich pink, with almost a white centre, which lightens up the orange-red stamens, producing an effect which, combined with fragrance, makes it one of the most valuable roses in cultivation.

Taking them together, the set of the four above varieties should be in every garden, and we are sure they will prove more valuable than the celebrated Crimson Rambler, as they are of a much more vigorous growth. 50 cts. each.

LITTLE MIDGET OR BABY RAMBLER ROSE.

This dainty rose, which I offer for the first time, is a most charming addition to the Rambler roses. The individual flowers are single, about an inch across, and grow in large cluster, forming perfect wreaths of flowers from the ground to the ends of the long branches; the flowers are a lovely blush-pink and are exquisitely fragrant, filling the air for quite a distance with their delightful perfume; they are followed by innumerable little berries that turn a brilliant red, making the branches as attractive when in seed as when in flower; the plant can be trained as a climber or grown singly as a specimen; the branches are beautifully arching from the centre outwards. The leaves are medium sized, somewhat resembling the Yellow Rambler in color and style. Small plants 25 cts., larger 50 cts.

WICHURAIANA or MEMORIAL ROSE.

This wonderful new rose will creep closely over the ground, forming a dense mat of very dark green, lustrous foliage, or it can be trained on pillars or arches, where it is very effective and graceful; the foliage is small and extremely pretty; the flowers are produced in lavish profusion in clusters; they are about 2 inches across, pure snowy white, with lovely yellow stamens, and have a delightful fragrance; the branches will grow 20 or 30 feet in a season and are so pliable that they can be trained in any way desired. It is very fine for cemetery decoration, useful for covering fences or walls, fine for verandas and especially adapted for covering rocky slopes or embankments. Small plants 15 cts., larger 25 cts., very strong 50 cts.

CRIMSON RAMBLER. Too much cannot be said in praise of this grand rose. It is a wonderful grower, and in two years will form immense plants at least 20 feet high; it has created a sensation wherever seen. The flowers are produced in pyramidal trusses, 9 inches long and 7 inches across, so it is a mass of glowing crimson; the color is superb and does not fade in the sun; the flowers are small and very double, keeping for several days when cut. The profusion of bloom of this plant is marvelous, over 300 blooms having been counted on one shoot. Plants 15 cts., 25 cts. and 50 cts. each.

YELLOW RAMBLER "AGLAIA." This rose is said to be even more beautiful than the Crimson Rambler; it is a lovely bright yellow, blooms in the same manner as the above named, having as many as 120 to 150 flowers in a bunch; the flowers are very fragrant and last three weeks without fading. Small plants 60 cts. each.

THE DAWSON ROSE. A very pretty pink rambler of rapid growth: bears perfect wreaths of flowers in clusters, semi-double, color a deep pink on the outer half of petals, centre of the flower white, with bright yellow stamens; flowers are followed by bright red berries. A very lovely rose. Plants 15 cts., 25 cts. and 50 cts. each.

I can heartily recommend all the Rambler Roses. Although they bloom but two or three months in the year they are so perfectly lovely that they should be in every collection.

Beautiful New Roses.

ROGER LAMBELIN. One of the most remarkable roses yet offered. The petals are irregular on the edges like a double petunia; the color is glowing crimson throughout, except the edges of the petals, which are all distinctly marked with a white band, forming a sharp contrast and the most unique combination of colors known in roses. The growth is free and vigorous and the fragrance is delightful, equal to the finest of the hardy roses. This is a "novelty" of the most striking order. 50 cts. and \$1 each.

MOSELLA, The Yellow Clothilde Soupert. Mosella is a beautiful, light yellow, shading to a light buff in the centre and creamy white toward the ends of the petals. Like the Soupert, it is dwarf and bushy in habit, but is even more graceful. It blooms in clusters, full, double flowers of large size, and flowers most abundantly. 35 cts. each.

PINK SOUPERT. Pink Soupert inherits all the grand garden qualities of its parent, Clothilde Soupert, and is a clear pink throughout, bright and attractive; the coloring deepens in some flowers to cherry-red, and in others it lessens to light clear pink. The profusion of bloom is wonderful, the whole plant being a mass of flowers. No rose can possibly excel this for outdoor bedding, and none can be more attractive. 15 cts. to 25 cts. each.

INCONSTANT BEAUTY. A wonderful new rose, deriving its name of "Inconstant Beauty" from its quality of producing flowers of different shades on the same plant. The colors vary from crimson to light pink, through shades of tawny red, light yellow with orange and citron-red centre, pale flesh with pink centre, orange-chrome and deep rose, all these colors being frequently seen on one bush at the same time. The beauty of color effects is indescribable. Plant strong and vigorous, flowers full and double. It is a true tea rose, consequently ever-blooming and deliciously fragrant. 25 cts. each.

MAMAN COCHET. The growth is free and vigorous, very free-blooming, flowers of splendid substance and a delightful shade of deep pink. The buds are long and pointed, full and firm, lasting a long time when cut. As the flowers expand, the centre of the rose discloses depths of salmon-pink, with light orange tints, while the older petals lessen to pearl-pink, giving a combination of tints and tones unequalled in their beauty. 25 cts. each.

CORINNA. The tints of color blended in the flowers of this beautiful rose render it so attractive and distinct from all other tea roses that the blooms exhibited have created quite a sensation. They are flesh color, shaded with rose and suffused with tawny copper; large size, full and of excellent shape, very freely produced on strong stems. 25 cts. each.

CHEROKEE ROSE. The true single cherokee rose is one of the most æsthetic flowers in existence. Its beautiful glossy green foliage, and immense snowy white flowers, make it wonderfully attractive. Another variety resembling it but not nearly so handsome, is often sold as the Cherokee. I offer the genuine variety. 15 cts. and 25 cts. each.

Tea Rose.

"Eglantine." Beautiful new white seedling rose.

"Sweet Simplicity." Lovely pink, single rose.

Ruby Gold. Charming new rose. Tawny yellow, shading to old gold; crimson centre, with veins of rosy red and pink; small plants only.

- Waban; or Red Mermet.** A sport from Catharine Mermet, the most popular of all winter-flowering roses. Color carmine-pink, increasing in intensity toward the ends of petals.
- Eliza Savage.** This always scarce rose is one of the best of all white roses, with light green healthy foliage, a beautiful habit of growth, always in bloom, and perfectly exquisite buds and blossoms.
- Ella May.** This is a sport from that grand old variety, Sunset, which it strongly resembles. The flowers are large, fine, full form, very double, and deliciously perfumed. The color is a remarkable shade of rich golden amber.
- Dr. Grill.** Coppery yellow, with fawny rose reflex.
- Countess Anna Thun.** Of immense size, and of the most lovely and perfect form imaginable. Citron-yellow, with coppery and peach centre, shading to salmon and silvery pink.
- Luciole.** A very bright carmine-rose, tinted and shaded with saffron-yellow, the base of petals coppery yellow, back of petals bronze-yellow.
- Marie Lambert.** Pure white. It has been called the White Hermos.
- Comtesse de Frigneuse.** Charming. The buds are long and pointed, not unlike Niphotos in form, and of good size. The color is a deep golden-yellow, with softer shade inside of petal.
- Sappho.** Buds fawn color, suffused with rose, the opening flowers shaded yellow and tawny buff, centres deep, bright yellow, large, full and globular. It produces blooms with extraordinary profusion.
- Marquise de Vivens.** Flowers pale rose, shaded with yellow at the centre, of a delicate and beautiful color; quite single as an open flower, but makes beautiful buds.
- "The Rainbow."** Too much cannot be said in praise of this beautiful rose. It is lovely in bud and blossom, striped and splashed with carmine on a pink ground.
- Madame Hoste.** Creamy white color, deepening to pale yellow in the centre; blooms constantly and profusely, the magnificent flowers are borne on long erect stems.
- The Queen.** A pure white sport from Souvenir d'un Ami. Producing a great abundance of buds and flowers all through the season.
- Mrs. James Wilson.** Similar in shape to Catharine Mermet; pale yellow, tipped with rose-pink.
- Souv. de Victor Hugo.** Large tulip-shaped flowers, delightfully scented and a very fine bloomer; color, lovely citron-red, with beautiful fawn and amber shading.
- Mme. Philemon Cochet.** Has extremely beautiful, heavy foliage, being a fine, rapid grower, and a profuse bloomer, the flower always coming on a long stem; the bloom is large, beautifully formed; color a salmon-blush; splendid bloomer, especially fine in winter.
- Princess Sagan.** This new rose is a most dazzling shade of crimson, shaded scarlet.
- Mme. F. Kruger.** Magnificent large buds, of a rich shade of tawny yellow. 25 cts.
- The Bride.** Beautiful in bud, and in full bloom. Pure white; outside petals sometimes tinted delicate rose.
- Letty Coles.** Soft pink, shaded crimson.
- Papa Gontier.** A grand red tea, of fine crimson shade, distinct fine velvety texture. 25 cts. each.
- Madame Joseph Schwartz.** A beautiful rose; extra large, globular flowers, delicately perfumed and very full; pure white, elegantly tinted and shaded with pale yellow and rose.
- Bon Silene.** Grown by every florist for its highly colored buds; dark crimson-rose, often changing to crimson. The buds are very handsome and produced in great profusion.
- Meteor.** A rich, dark velvety crimson hybrid tea; a free-bloomer and vigorous grower.
- Premium de Charrissiens.** Carmine-rose; perfectly exquisite.
- Safrano.** Apricot-yellow.
- Queen's Scarlet.** Wonderful bloomer, fine.
- Souvenir d'un Ami.** Pink cupped.
- Perle des Jardins.** Golden-yellow, lovely in bud and flower.

- Andre Schwartz.** Beautiful crimson; constant bloomer.
- Catharine Mermet.** Beautiful flesh color, a magnificent rose.
- Niphetos.** Pure snow-white, beautiful buds.
- Louise de la Reve.** Blush, shaded pink.
- Mme. Lambard.** Salmon-pink, beautiful buds; one of the handsomest and most satisfactory roses grown, beautiful in bud and in flower, always in bloom.
- La France.** A grand rose; deep rose-pink, exquisitely fragrant.
- Sunset.** A tawny shade of saffron-yellow, beautiful buds; one of the finest roses grown.
- Triomphe du Luxembourg.** Soft pink. A grand rose.
- Devoniensis** (Magnolia Rose). Beautiful creamy white, with rosy centre; large and double; very fragrant.
- Duchess de Brabant.** Few roses equal this in freedom of flowering; none surpass it in fragrance and vigor. The flowers are somewhat loose when open, but are rich and peculiar in color; color rose, heavily shaded with amber and salmon. Good plants 25 cts. each, five for \$1, twelve for \$2.15.

POLYANTHA or FAIRY ROSES.

- Etoile d'Or.** A beautiful new Polyantha, with miniature buds as perfectly formed as any of our larger roses. The flower is elegantly perfumed. Color, chrome-yellow. 20 cts.
- Perle d'Or.** Peculiar and pleasing shade of reddish salmon; very free-flowering. 20 cts.
- Mademoiselle Cecile Brunner.** Larger flowers than any of the others, perfectly double, and delightfully fragrant; color a rosy pink, on rich, creamy white ground. 20 cts. each; two-year old plants 50 cts. each.
- George Pernet.** It is continually in bloom, the flowers being quite large for this class, a beautiful flat form. The color is a very bright rose, with touches of yellow and passes to peach-blow, with silvery white shadings. The prettiest of all Polyantas. 20 cts. each.

CLIMBING TEA or NOISETTE ROSES.

- Climbing Niphetos.** This new variety is a sport of Niphetos and is identical with it except that it is a strong rampant grower, making shoots 12 to 15 feet in length in a season. A grand pillar rose where it is hardy.
- Climbing Perle des Jardins.** A sport from Perle des Jardins. Climbing Perle is a strong, vigorous climbing tea, with beautiful, large, double, golden-yellow flowers; larger and brighter than Perle.
- Marechal Niel.** Deep sulphur-yellow, large and beautifully formed buds, sweet fragrance, vigorous grower. Should be planted in warm, sunny locations.
- Mme. Alfred Carriere.** Rapid grower, always in bloom; buds and blossoms pearly white, with long stems. No collection is complete without this rose.
- Cloth of Gold.** Golden-yellow.
- White Lamarque.** Pure white.
- Reine Marie Henriette.** Sometimes called red-flowering Glorie Dijon. Color rich crimson, elegantly shaded. Flowers large, full and fine form, very double, very sweet. An extra fine sort.
- James Sprunt.** A grand rose; deep cherry-red, medium size, full, very double and sweet. A strong grower and profuse bloomer.
- W. A. Richardson.** A most unusual shade of orange-yellow; much admired.
- Reve d'Or.** Beautiful in flower and foliage; a rampant grower; saffron-yellow. The best and most satisfactory of all climbing roses.
- Walham Queen.** A strong continuous bloomer; the flowers are large full and sweet. Color a rich scarlet-crimson; very beautiful and a profuse bloomer.
- Glorie Dijon.** A fine old rose, valued for its splendid large flowers, a rich pinkish salmon; always a favorite. 25 cts. to 50 cts. each.
- Five 25-cent roses, \$1.00; five 35-cent roses, \$1.50; five 50-cent roses, \$2.00; all classes. Special rates given on large orders.

HYBRID PERPETUAL ROSES.

Glorie Lyonnaise. One of the most satisfactory of all the hardy roses, of robust habit, throwing up strong canes, covered with rich, healthy foliage; flowers large, white, tinted yellow. The buds and fully opened roses are alike beautiful. It is superb and sure to give satisfaction. Strong young roses, 25 cts.; large 50 cts.

Glorie de Margottin. A red rose that has come to stay. The most satisfactory red hybrid perpetual rose yet introduced; a splendid bloomer is a healthy grower. Color superb, a dazzling crimson, which does not fade or turn purple. *Do not fail to try it.* 25 to 50 cts. each.

Jean Liabaud. Fiery crimson, shaded with black, very dark flowers, large, full, beautifully formed. 30 cts.

Magna Charta. One of the most satisfactory roses of this class for California; vigorous grower, with almost thornless stems, and magnificent large pink flowers, often measuring five inches in diameter. 25 to 50 cents.

Giant of Battles. Brilliant crimson, large, very double, and sweet. One of the finest. 25 cts.

Capt. Christy. Dwarf habit; large, beautiful rose color, exceedingly beautiful. 25 to 50 cts.

Alfred de Rougemont. Dark, rich red. 25 to 50 cts.

Black Prince. Like dark, red velvet. Choice and rare. 25 to 50 cts.

Louis Van Houtte. One of the black velvet roses; always desirable. 25 to 50 cts.

NEW HYBRID TEA ROSES.

Augustine Guinoiseau or **White La France.** Similar to La France in habit, growth and shape of flowers. Color, most delicate blush, changing to pale flesh, almost white; a healthy grower and free bloomer. 25 to 50 cts. each.

Souvenir de Wootton. Color velvety red; perfume which cannot be excelled; continuous flowering qualities; most prolific bloomer, every shoot containing a flower bud; habit exceedingly vigorous; full, open flowers frequently are 6 inches across. 25 to 50 cts.

Duchess of Albany. This variety is identical with the well-known and popular La France, except that its color is a rich, deep, even pink throughout. Splendid 25 to 50 cts. each.

Please state what varieties shall be substituted, in case I should be out of first selection in variety or size.

General Collection of Plants.**ABUTILONS.**

Souv. de Bonn. Silver-edged abutilon. A distinct new variety, with fine foliage, beautifully margined silver-white, and splendid large flowers on long stems. A very showy and ornamental plant. 15 to 25 cts.

Airy Fairy Lilian. Tall, slender habit; flowers like dainty swinging salmon parachutes on brown stems; foliage small; stems veined brown. 10 to 25 cts.

Wild Bells. A lovely variety of weeping or drooping habit, reddish orange flaring flowers, on thread-like stems; beautiful. 10 cts.

Juliet. Of slender growth, branches very spreading, bearing showers of long bell-like, brilliant scarlet flowers of satiny sheen. 15 to 25 cts.

Elaine. Dainty white, flowers resemble harebells, on long stems. 15 to 25 cts.

Thompsonii Pleno. The only double variety. The foliage is beautifully variegated with yellow. The plant grows in fine tree form; flowers very numerous, with long stems, and a charming shade of orange-yellow, veined red. The outside of the flower is plain like other varieties; the inside is filled with thread-like petals; perfectly double and perfect in shape. 15 to 25 cts.

Golden Bells. Large, splendid golden-yellow flowers. 10 to 25 cts. each.

Golden Fleece. Orange-yellow flowers, beautifully crinkled like crepe, free bloomer; long stems, profuse and perpetual bloomer. 10 to 25 cents each.

New Abutilon Primrose. A charming variety of my own, having a light airy habit of growth, very pretty foliage, and lovely primrose-yellow flowers on long stems; they have a bronze-green calyx, that makes a fine contrast with the pale yellow blossoms. 15 cts.

Native Daughter. A seedling. The flowers are very large with crinkled petals of a deep rose color. The inside of the flower is of a lighter shade; the base of the petals a metallic or purplish rose, that reminds one of the charming effect seen in *Cereus Ackermanii*. The flowers grow in clusters and have long stems. The buds are perfectly round, and of a beautiful pea-green color before opening. The contrast of color is very beautiful. 20 cts.

Monte Christo. A new seedling abutilon, with very large flowers, dark orange-red on the outside; inside the flower, rich orange, netted with red. The petals are very broad, and each rolls back on one side, a beautiful contrast between the lining and outside of the flower. It resembles the old variety *Sensation*, but is much richer in color and double its size. A splendid variety. 15 cts. each.

MAGNIFICENT NEW COLEUS.

Nothing can be more beautiful than these gorgeous plants; they are most satisfactory for house plants and do well when bedded out in the garden. My collection embraces a grand variety of the most brilliant colors. New seedlings, many of the older named sorts from other collections, and some splendid new seedlings of my own, many beautifully fringed varieties, some with immense leaves, some with the most exquisite colorings imaginable. Thirty-six very choice varieties. In ordering state colors desired and a selection will be made that cannot fail to please. 10 cts., 15 cts. and 20 cts. each, according to variety and size of plants. \$1.00, \$1.50, and \$2.00 doz.

FIBROUS or SHRUBBY BEGONIAS.

Begonias are my great specialty, and all varieties, new and old, are welcomed and given room. They respond generously to ordinary care, and flourish and bloom outside all the year, many kinds growing to immense size in a few years. The more tender varieties with large foliage do better grown in lathhouses, where they are somewhat screened from sun and winds. I have a very large collection.

Argentea Guttata. The leaves are oblong and pointed, notched and serrated; the colors bronze-purple with silvery markings; flowers white; a good bloomer, and a fine shrubby plant of the easiest culture. 10 to 25 cts.

Snow-Wreath. Dainty, shining foliage and a profusion of snowy white flowers. 10 to 25 cts.

Edmondsoni. Low growing, with thick, shining, dark olive-green foliage, red on the underside; long panicles of airy flowers; great winter bloomer. 10 to 25 cts.

Verschaffeltii. Very large tropical leaves; panicles of pink flowers on long stems. 15 to 50 cts.

Jessie. Handsome shaded foliage and elegant trusses of pink flowers. 20 to 35 cts.

Vernon. Numerous flowers of a brilliant orange-carmine color, foliage glossy red; the staminate flowers with their bright yellow centres contrast admirably with the brilliant red metallic foliage. 10 and 25 cts.

Alba Perfecta Grandiflora. Foliage resembles the well-known *Rubra*, but the flowers are pure white and borne in fine pendant clusters. 10 to 25 cts.

Argyrostigma Picta. Sometimes called "Angels' Wings." Leaves are smooth and thickly covered with clear silver spots, the underside crimson; flowers white, tinged with pink. 10 to 25 cts.

Manicata Aurea. Most beautifully variegated plant; leaves large, glossy, smooth, a delicate shade of green, blotched profusely with bright golden-yellow; flowers bright pink. 35 to 50 cts.

Sandersonii. Coral Begonia; flowers scarlet-crimson, borne in profusion for months at a time. 10 to 20 cents.

Semperflorens Gigantea Rosea. One of the most showy and best begonias. Fine, large foliage. Flowers deep rare red. Perfectly lovely in bud and full bloom. The yellow, quivering stamens form a fine contrast, and add to the great beauty of the flowers. Grows very fast and is always in bloom. 10 to 25 cts.

McBethii. Fine cut foliage; flowers waxy white in panicles; a fine bedding plant. 10 to 25 cts.

Robusta. The clusters of coral-red buds are most beautiful and chaste in appearance. Makes fine bushy plants. 10 to 25 cts.

- Ricinifolia.** Leaf a foot or more in diameter, a rich green, with reddish markings, surface velvety pink; flowers lifted high and spray-like, quite clear of the foliage; very tropical leaves. 20 to 50 cts.
- Fuchsoides Coccinea.** Elegant, free-blooming; resembles *Hybrida Multiflora* in growth; flowers a bright scarlet. 10 to 20 cts.
- Diadema.** Leaf is large and deeply lobed, giving it a tropical appearance; color of leaf, rich olive-green, handsomely spotted with silver. 10 to 20 cts.
- Rubella.** Leaves irregular, blotched red on an olive-green ground, ribs banded with purplish brown, under surface red; flowers borne on long stalks, in large panicles of pink and white. 15 to 35 cts.
- Rubra.** One of the very best. The leaves are a dark green, the color of the flower a dark rose, glossy and wax-like. 10 to 25 cts.
- Sanguinea.** A showy variety with very large leaves, the upper side of which is a rich olive, the under side crimson and of a peculiar leather-like substance; dainty flowers, light rose to white. 25 cts.
- Abundance.** A pretty, dainty new begonia in the style of Charles Roocker, with clusters of pretty rose-colored flowers, a fine bloomer and very satisfactory in every way. 10 to 25 cts.
- Paul Bruant.** One of the handsomest new sorts, with beautiful foliage and large clusters of very handsome pink shades; a splendid and showy begonia. 15 to 20 cts. each.
- Weltoniensis.** Flowers a lovely shade of pink. 10 to 20 cts.
- Weltoniensis Alba.** 10 to 20 cts.
- Zebrina.** Leaves bronzy green, with darker stripes and blotches, underside deep crimson. 15 to 25 cts.
- Gilsoni.** Strong grower, beautiful foliage; large airy panicles of dainty, double, fragrant flowers. The only double begonia of its class. 15 to 40 cts.
- Odorata Alba.** Shining green foliage; large, pure white panicles; delicate fragrant flowers; tall. 10 to 25 cts.
- Odorata Rosea.** Resembling the above; leaves shining green; flowers in immense panicles; deep rose color. 15 to 35 cts.
- Hybrida Multiflora.** Small foliage, completely covered with clusters of rose-pink flowers; very hardy; grows tall. 10 to 20 cts.
- Teuscheri.** One of the choicest of shrubby begonias. It is a strong grower and is constantly covered with large sprays of white drooping flower spikes during the whole summer and fall. It grows to a height of 3 to 4 feet in one season. 10 to 20 cts. each.
- Otto Hacker.** Stiff, upright habit, with large, dark green leaves. Great drooping clusters of coral flowers, produced in bunches of 25 or more. A splendid plant for the parlor or conservatory. 15 to 25 cts. each.
- Margaritæ.** New variety, with leaves like *Metallica*, bronze-green with purplish cast; large trusses of delicate, rose colored flowers. 10 to 25 cts.
- Wettesteinii.** A seedling from *Rubra* and resembling it. The foliage is smaller and shaded pinkish brown. The flowers are a lighter shade of red; very handsome. 10 to 25 cts.
- Compta.** A charming sort, resembling *Zebrina*, but much prettier. The foliage is a most delicate green, veined with silvery lines; underside of the leaves red; small white flowers in large clusters. 15 to 35 cts. each.
- Chas. Roocker.** An extremely pretty variety, with showy, rather small foliage and clusters of light scarlet flowers; a most persistent bloomer. 10 to 25 cts.
- Lobata Variegata.** Prettily lobed light green leaves, spotted white; white flowers. 10 to 25 cts.
- Pink Rubra.** The counterpart of *Rubra*, excepting the flowers, are a beautiful shade of pink, and the foliage brighter and larger. 15 to 25 cts. each.
- Incarnata.** An old variety of rather slender habit, with pretty foliage and airy clusters of pretty pink flowers. Always pretty. 10 to 25 cts.
- Thurstoni.** A very beautiful variety; a seedling from *Metallica*, with thick bronzy, shining green foliage, rich red underneath; very pretty flowers. 15 to 25 cts. each.

- Carolinifolia.** Robust habit, with large, palmated leaves on long foot-stocks; airy panicles of pink flowers on long stems. Very scarce and rare. Small plants 25 cts.; medium, 50 cts.
- Pres. Gaulin.** Resembles Pres. Carnot, but with pink flowers. 15 cts.
- "Pres. Carnot."** Strong grower; dark green foliage, lined red; handsome coral-red flowers. 15 to 25 cts.
- "Smithii."** Dwarf, with a pretty, furzy, dark green foliage, lined dark red; always crowned with charming blush-pink flowers. 10 to 20 cts. each.
- "Mme. de Lesseps."** Beautiful foliage, and handsome large light pink flowers. 15 to 25 cts.
- Springtime.** A seedling from pink Rubra. The young growth is very dark olive-green, spotted with silver and lined with purplish-red. The older leaves are light green with a transparent white edge. The flowers are very numerous, of medium size, greenish white, tinged with pink. It is a very pretty and interesting plant. 15 to 25 cts.
- Foliosa.** A very pretty variety, with small foliage resembling *Hybrida Multiflora*, but much prettier; the leaves being daintily crinkled at the edges. Small drooping pink flowers. 10 to 25 cts. each.
- Snow Maiden.** A begonia of the *semperflorens* type, with beautiful, clear waxen-green stems and foliage, and perfect snow-white flowers. It grows about 2 feet high; is always in bloom, and is invaluable as a pot plant or for cut flowers. It is very easily grown, and so very pure and beautiful that I recommend it to florists and amateurs. 10 and 20 cts. each.
- Pictaviense.** Underside of leaf purplish red; face, bronzy green, dotted silver; flowers in large clusters well above the foliage; an elegant variety, a cross between *Scharfiana* and *Metallica*. 20 cts.
- Haageana.** A seedling from *Scharfiana*; leaves large, bronzy green, and red beneath; flowers very large and similar to *Nitida* in form and color. A grand variety. 20 cts.
- Duchartreii.** Purplish red leaves, blooms in large panicles, somewhat after the style of *Metallica*, but much larger; of glistening texture. 20 cts.
- Alba Picta.** Very small leaves, in handsome branches, dotted silver. 10 cts.
- Mirabunda.** Clear green leaves with silver markings; large pointed leaves of elegant form. 15 to 25 cts.
- Tuberous Begonias.** Everyone can grow Tuberous Begonias, and they are so cheap that they are within the reach of all purses. There is no plant that gives so much gorgeous and elegant beauty for little money and little care. The flowers come in every conceivable shade of red, from the most delicate blush, through shades of pink-salmon, terra cotta, scarlet, crimson, to almost maroon-red; from the palest straw color, through all yellows and shades of orange. Pure white, also, and white variously tinged, bewildering and fascinating to behold. The foliage is very beautiful; the flowers very large. Dry bulbs, 20 cts. each. Assorted colors, \$1.50 per doz. Started in pots, 25 to 35 cts. each; \$2.50 to \$3 per doz.
- Rex Begonias.** Twelve choice varieties. Good plants from 2½-inch pots, 25 cts. each, \$2.50 per doz.; 4-inch pots 50 cents each, \$4.50 per doz.

CARNATIONS.

"THE DIVINE FLOWER."

- Beautiful New Carnation, Anna H. Shaw.** This fine new carnation is named for one of the noble women of America, and in its strength, beauty and sweetness presents much that is shown in her life and character. It is one of the most perfectly healthy and satisfactory carnations I have ever grown. Of rapid growth. In a very short time it forms large, strong plants, full of buds and blossoms, on long stems; the flowers are of medium size, and of perfect form, never bursting; the color is of lovely cream-white, occasionally tinged in the centre with delicate blush; the petals are very daintily toothed on the edges, but not fringed; it has a very delightful fragrance, spicy and sweet; it is a perpetual bloomer and is especially valuable in winter. No one can fail to be delighted with it. Small plants 15 cts.; \$1.50 per doz. Large plants, 25 cts.; \$2.50 per doz.
- New Carnation, Claret.** This new carnation is a rich claret color, a new shade that is quite charming; it is very pretty in form and does not burst. 20 cts. each.

Four Beauties. New Ingleside Carnations.

Almalika, or Mystic Shrine. A lovely flower with very large round crinkled petals, soft pink at the base, shading to a delicate flesh color at the edges, deeply fringed, so much so as to give a veil-like appearance to the entire flower. Deliciously fragrant.

Shell. A finely formed, deeply fringed flower. Color a beautiful shell-pink. Exquisite.

La Neige. Large snowy white flower, full round petals, delicately toothed at edges. Very beautiful.

Africanus. A fine dusky crimson, of perfect form, elegantly fringed.

The above have long stems, are fine bloomers, very fragrant, and do not burst their calyx. 25 cts. each for small plants. The four for 80 cts.

General List of Carnations.

Alaska. Pure snowy white. 15 cts.

American Flag. Scarlet stripes on a white ground. A real 4th of July flower.

Brutus. Very large, blossoms handsome light red, fringed.

Beauty. As its name suggests, this is a perfect beauty; large fringed flower with white ground, handsomely marked or flushed with peach-pink. White edges, beautifully fringed, petals crinkled. 25 cts. each.

Cesar. A seedling from Brutus; very large flowers, blush white marked with light red. One of the best.

Dr. Warder. Fine dark red, beautifully fringed.

Daybreak. Salmon-pink; very large; fine bloomer; grand sort.

Emily Pierson. Rich scarlet-red; fine healthy foliage; grand bloomer; resembles "Pres. Garfield" so as to be almost mistaken for it.

Eldorado. Light yellow, edged pink; fringed.

Golden Gate. Beautiful golden-yellow, full and double; great bloomer.

Helen McGowan. A California seedling. A flower that attracts universal attention; very large and full, deeply fringed; bright reddish scarlet, fringed white. Three inches in diameter.

Lizzie McGowan. Pure white; very handsome; foliage fine and grasslike.

Lydia. An old variety introduced by the late Charles Starr. Salmon, variegated with light red; always handsome.

Miss Joliffe. Also one of the old Starr carnations. Delicate flesh pink.

Mrs. Fisher. A grand white, snowy white flowers on long stems, very large, full and fragrant. 20 cts.

Nellie Lewis. A beautiful light pink, delicately dotted with darker pink; a very pretty flower.

Pretty Brunette. Dark velvety red, beautifully fringed.

Pride of the Pacific. A magnificent carnation with strong healthy foliage and perfect flowers, measuring $3\frac{1}{2}$ inches across; is entirely distinct from any other variety; the petals are very large and the flower is formed like a rose; color a beautiful rose-pink; edges of petals delicately toothed and tinged silvery rose; flowers on long stems, frequently four or five fine ones on one stem at the same time. A most satisfactory carnation in every respect.

Panchita. Very large fine flowers, variegated pink and red, handsomely fringed; very desirable.

Redondo. Pure snowy white, deeply fringed; lovely.

Edith Lawrence. Beautiful rose-pink, handsomely fringed.

Nice young plants of the above, 15 cts. each; \$1.50 per doz. Large strong plants 25 cts.; \$2.50 per doz.

In making selections give second choice in case I should be out of any varieties and should find it necessary to substitute.

CHRYSANTHEMUMS.

This beautiful flower comes in autumn to grace our gardens, when other flowers have had their season; it is so easily grown that anyone can succeed with it. It can be planted any time from April until June; plants should never be allowed to remain in the beds but one season, but should be divided and put into new beds every year. If large flowers and tree-like plants are desired, the new plants should be started from cuttings of the new shoots; these will not sprout from the root, as they do when plants are grown from sprouts. Give rich soil good cultivation and plenty of water; pinch back the main stem when a few inches high, later pinch back the centre of the branches to form bushy plants. Allow one bud to each stem for large flowers.

NEW CHRYSANTHEMUMS.

Tasmania. A very unique and showy variety. Dark crimson petals, striped white, pure white petals intermingled with the others; an entirely new departure. It is not unusual to get flowers evenly divided, one side of the flower white, the other crimson. Price, 25 cts. each.

Emerald Gem. A green Japanese variety. Flowers have been seen in Japan fully six inches across and of perfect form, with sufficient white at the base of each petal to bring the flowers out boldly from the dark foliage. No collection is complete without this unique variety. 35 cts.

MRS. SHEPHERD'S SET OF SEEDLING CHRYSANTHEMUMS.

Grand New Chrysanthemum, Susan B. Anthony. I take great pride in offering this fine new chrysanthemum, named in honor of Susan B. Anthony, one of the grand women of the century. This lovely flower is snowy white, has long stems and is double to the very centre; the petals are broad and long, drooping gracefully from the centre, curling at the ends; it has a fine habit, handsome foliage and is early blooming, continuing for a long time; under glass it is always snowy white, outside, the petals are sometimes prettily lined with pink. It is invaluable for cut flowers. 25 cts. each.

New Aster-Flowered Chrysanthemum, Victoria. This novel variety in habit and shape of the flowers, is exactly like a Victoria Aster: the flower stems are long, and start near the ground growing the same manner as the Victoria Aster. The flowers are double to the centre, color a bright pink, with a clear yellow centre, making a very striking contrast. A very unique and beautiful variety. 20 cts. each.

Theo. B. Shepherd. A seedling of Louis Boehmer grown and named by Miss Ethel Lord of the firm of Lyon & Co., Los Angeles, Cal. A most exquisite variety and a grand bloomer; plant grows about 4 feet high; the flowers are on long stems from the ground up; the color is a lovely violet mauve outside which contrasts beautifully with the mauve-crimson inside; they last a long time and form perfect mauve balls. 20 cts. each.

A Lovely Hairy Variety, Viola. Broad, incurved petals; at first a pinkish mauve changing to a pure violet-mauve. 20 cts.

Miramar. Immense flowers, with very broad petals double to the centre, inside petals incurved, lower petals recurved; color a terra-cotta; crimson inside, light terra-cotta outside; flowers on long stems. 25 cts.

White Wings. A very large semi-double variety, pure waxen white, very chaste and beautiful; petals at first tubular, opening flat and broad and curling at the ends; a most exquisite variety. 25 cts.

Dazzling. Semi-double, like a large daisy; petals very broad, bronzy yellow at first changing to clear yellow with age; very rich and handsome. 10 cts.

Fly-Away. A dainty single variety, very light and airy, centre green and yellow; petals irregular in length, at first tubular, opening into flat points; tubes, terra cotta, points, buff. 10 cts.

Darling. A medium-sized, snowy white variety; blooms late; exquisitely shaped. The exclamation, "Isn't it a darling," gave it the name. 10 cts.

Madonna. A grand new, anemone-flowered variety. The central florets are tubular, an inch long, notched at the rim, forming a centre $1\frac{1}{2}$ to 2 inches across. Ray petals in a double row, very long, standing straight out around the flower. It is of medium height, very early, and flowers are borne on long stems and are pure snowy white. 25 cts.

Firefly. A beautiful bronzy-red, with thread-like petals, in the style of Gold Thread, but larger. The petals are lit up by crossbar lines of yellow, the base of all the petals is yellow. A brilliant, charming flower. 15 cts. each. Set of the above \$1.50.

The two above are seedlings of 1895.

Older Varieties of Chrysanthemums.

Mrs. Maria Simpson. Broad, heavy petals, gracefully incurving; a perfect Japanese variety; color rich chrome-yellow. One of the largest in size. 10 cts.

Philadelphia. Delicate, creamy white, tips of petals tinged sulphur-yellow; beautifully incurved. 15 cts.

Mrs. W. H. Rand. Light golden-yellow; petals fine and twisted like a mass of golden thread. 15 cts.

Tuxedo. Lovely amber. 10 cts.

Crystalina. Pure white flowers, resembles a ball cut from tissue paper. 10 cts.

Jayne. Grand double pink. 10 cts.

Burt Eddy. Large peony-shaped flowers, color silvery rose shading into light magenta, very fine. 10 cts.

Joanna. Fine bronze and old gold; reverse of petals deep crimson. 10 cts.

Major Bonnaffon. Soft, clear yellow, incurving. 10 cts.

Eugene Dailedouze. A grand variety; bright, clear yellow; broad petals, inner ones recurved, outer ones reflexed. 10 cts.

Golden Gate. Splendid spreading flowers; one of the best yellows. 10 cts.

G. F. Moseman. Very large flowers, buff and terra cotta. 10 cts.

Mrs. Andrew Carnegie. Blood-red inside of petals, light crimson outside, large flowers. 10 cts.

Sunset. Grand flower; broad yellow petals, marbled with brown, red and crimson; golden disc. 10 cts.

August Swanson. Immense flower, crimson and chrome yellow. 10 cts.

Omar. Rich, deep, blood-red; splendid flower.

The Queen. Splendid; pure, snowy white. 10 cts.

Mrs. Jerome Jones. Very large, cream-white, fringed pink. 10 cts.

Pitcher & Manda. Flower dahlia-like, bright yellow centre; outer half pure white. 10 cts.

John Lane. Magnificent pink. 10 cts.

Cullingfordii. Brilliant, mahogany crimson. 10 cts.

Elmer D. Smith. Dark cardinal-red inside, outside clear chamois. 10 cts.

Nymphæa. Finely incurved flowers, pure white, sweetly scented. 10 cts.

Lady Playfair. Large flowers; beautiful, pearly pink. 10 cts.

W. R. Smith. Beautiful crimson. 10 cts.

Vivian-Morel. Light rose, creamy white and pink. 10 cts.

Niveus. Grand, snow-white. 10 cts.

W. H. Lincoln. Large; bright yellow. 10 cts.

Kiota. Rich, golden-yellow, round as a ball. 10 cts.

Leopard. Beautiful carmine-purple, spotted with white. 10 cts.

V. H. Hallock. Petals broad and wax-like; exquisite pearly pink. 10 cts.

Princess of Chrysanthemums. A grand variety, very large and double, long tubular petals, shining and waxen, delicate flesh color. 15 cts.

Erminilda. Pure rose-pink. 10 cts.

Domination. Exquisite white. 10 cts.

- Golden Plume.** Drooping petals of a rich golden color, with a tuft of feathery petals in the centre. The best late yellow variety. 10 cts.
- Roslyn.** A superb, clear Mermet, rose-pink; petals thick and heavy. 10 cts.
- Golden Wedding.** The grandest golden-yellow ever introduced. 15 cts.
- G. W. Childs.** Deep velvety crimson. 15 cts.
- Mutual Friend.** Very large and full, pure white. 15 cts.
- Gold Dust.** Golden-yellow, very plume and full. 10 cts.
- Mrs. John IIs.** Ivory-white, of massive build. 15 cts.

OSTRICH-PLUME CHRYSANTHEMUMS.

- Robert M. Gray.** A grand and beautiful variety, very double, incurved flowers; at first a yellowish brown, changing to brownish yellow; the entire flower is covered with a beautiful hairy growth; the color is very rich, making it extremely attractive. It delights everyone. 20 cts.
- Louis Boehmer.** Exquisite silvery pink and deep rose. 10 cts.
- Child of Two Worlds.** Pure snowy white. 10 cts.
- King of Ostrich Plumes.** Deep chrome-yellow, shaded buff and orange. 10 cts.
- Eiderdown.** Large, perfectly double, snow white, incurved, late Japanese variety, covered with glandular hairs as in Louis Boehmer. 10 cts.

NEW FRENCH CANNAS.

- Canna Queen Charlotte.** A splendid new canna from Germany. It has very large scarlet flowers, deeply margined with gold. It grows about $2\frac{1}{2}$ feet high, and, when in full bloom, is a most gorgeous sight. The attention of every one is arrested by its brilliant combination of colors. 15 to 25 cts. each.

Seven Cannas offered below are my own seedlings:

- Florentine.** A magnificent canna. The very large flowers are frequently semi-double—an intense rich crimson color. It grows about $4\frac{1}{4}$ feet high, and when crowned with its enormous spikes of brilliant flowers is handsome enough to tempt any one. 20 cts. each.
- California.** A canna with charming scarlet flowers, bordered with yellow. Resembles "Queen Charlotte." 20 cts.
- Goldilocks.** A clear, rich yellow flower, with very broad petals, sometimes slightly spotted with red. 15 cts.
- Bonnie Doon.** A fine yellow semi-double. Splendid flowers. 15 cts.
- Vesuvius.** A beautiful combination of salmon, streaked with coppery red. Very large, handsome flowers. 20 cts.
- The Rival.** A seedling from Madame Crozy, double the size of the parent flower, and a truly magnificent canna. The flowers are similar in color to Madam Crozy, and bordered with yellow. It is immense in size, and truly a rival to the parent. 20 cts. each.
- Maranta.** A beautiful canna, with very handsome dark foliage, streaked with dark red and yellowish-green. The leaves are so handsome as to resemble a Maranta, and the beautiful crimson, iris-like flowers are dotted with a darker red. A very striking plant. 20 cts. each.

The set of above cannas for \$1.15 to \$2.00 Clumps, 50 cts. to \$1.

OLDER SORTS.

- Mme. Crozy.** The flowers of this well known and popular variety are of a dazzling crimson-scarlet, bordered with golden-yellow. The plant is of a vigorous growth, yet dwarf in habit, rarely exceeding 4 feet in height. Foliage bright green, and very handsome. The flowers are produced on large, branching stems which are closely set with bloom, each stem being really a bouquet in itself. 10 to 25 cts. Clumps, 50 cts.
- President Carnot.** Fine dark foliage, and with crimson flowers, flecked darker red. 10 cts.
- Star of '91.** A pretty dwarf scarlet, edged gold. 10 cts.
- Geoffrey St. Hilaire.** Splendid foliage, streaked maroon and yellowish green; glowing orange-scarlet flowers. 10 to 25 cts.
- Ventura.** A fine seedling of my own; immense spikes of large, graceful flowers, a rich blending of carmine and scarlet. 10 cts.

Mme. Allamagny. One of the best yellows, with short, broad petals of fine orange-yellow, spotted dark red. A rare and scarce variety. 20 cts.

Alphonse Bouvier. This is, all points considered, probably the grandest variety yet introduced. It is a remarkably luxuriant grower, in rich ground attaining a height of 6 to 7 feet. In color, it is of a rich, brilliant crimson, almost approaching scarlet when it opens, changing to a deep, dazzling crimson as the flowers fully develop. 15 to 25 cts.

FUCHSIAS.

Cape Fuchsia, "Phygellus Capensis." A distinct new species, blooming from May to late autumn. It bears long spikes of showy, scarlet, drooping, tubular flowers; Will grow anywhere. Entirely different from any other variety. 10 cts.

BUFFON. A grand variety with immense double flowers. Sepals crimson; corolla pink, finely veined rose; base of petals deep rose. 15 cts.

ESMERALDA. A beauty, very double. Sepal crimson; corolla a most lovely melting shade of violet-mauve, changing to pink; very handsome foliage. 15 cts.

OCTAVE FEULETT. Sepals bright coral-red; corolla loose and flaring, color pinkish violet-mauve; veined deep rose, an exquisite sort. 20 cts.

M. JOULE. Plant of rapid growth. Leaves arranged three at each point, with a drooping, dainty single flower to each leaf. Sepals coral-red; corolla violet mauve, lighter at base of petals, which are veined red, a very abundant bloomer, flowers flaring. 20 cts. The three varieties 50 cts.

Eugene Vercousin. Double. Corolla rosy pink, shading to heliotrope; sepals rosy red. Color new and distinct.

M. Alphonse. Double. Of grand habit; very large recurving sepals of bright scarlet, very large corolla of soft reddish violet.

General Vandever. A splendid single variety, a seedling of my own; of vigorous climbing habit, with large, handsome yellowish green foliage, and immense sprays of very large, single flowers, sometimes semi-double, a fine purple and red. Will grow to the roof of the house in a few years.

Mrs. E. G. Hill. Grand double, rich crimson and white. Immense.

Phenomenal. Splendid dark double; coral-red and dark blue.

Otto. Splendid double scarlet and white. Tree-shape; a most constant bloomer, flowers rich and handsome.

Mme. Vander Strauss. One of the very best old double scarlet and white varieties; always in bloom.

Joseph Rosian. Splendid dark, double scarlet and violet-purple, marked with carmine; grand bloomer.

Black Prince. One of the best old sorts single flowers, with flaring funnel-like corolla; scarlet and purple-carmine.

Earl of Beaconsfield. A splendid grower, rich, light green foliage, and very long orange-scarlet flowers in the greatest profusion; splendid.

Aurora Superba. Beautiful waxy orange-scarlet flowers; truly superb.

Arabella. The best old pink variety, flowers large, sepals clear waxy white, corolla exquisite pink.

Storm King. Perfectly lovely; crimson-scarlet sepals, white corolla, shaded pink. Very double.

Carmelita. A new seedling of my own; a beautiful variety of dwarf habit. Small foliage; grows in round, compact form. Completely covered almost the entire year with charming, dainty, double crimson and white flowers. Stands the sun well and will always give good satisfaction. 10 to 20 cts.

Helene. A seedling from "Fulgens," which it much resembles; of vigorous growth, with long green foliage. The flowers hang in graceful panicles. The individual flowers measure 3 inches in length; color, soft orange-scarlet. Half of the sepals, the pistil and tips of the unopened buds are a beautiful pea green. 10 cts.

"Crimson Trumpets." A seedling from "Corymbiflora" but much prettier, with large waxen flowers of a soft clear rose-red. They measure three inches in length. The arrangement of the petals and sepals is especially pretty. These fuchsias are very easily grown; they bloom constantly. Their large corymbs of long flowers are very showy and are followed by large dark berries. The foliage is large and velvety, the underside veined red. 10 to 25 cts. each.

"Trilby." Very double, the same habit as the rich, dark "Phenomenal," from which it is a seedling. The sepals are a beautiful shining crimson. The petals are very full and gathered to the centre, and attached to the sepals; they are bluish-white, distinctly veined with carmine. The base of all the petals and the centre of the flower are carmine. "Trilby" is the counterpart of "Phenomenal," except in color, and is an especially good winter and fall bloomer. Small plants, 10 cts. each. 10 to 25 cts. each, except where noted. Fifteen 10-cent fuchsias \$1.

CHOICE FERNS.

No collection is complete without these graceful and beautiful plants; they delight in a light rich soil mixed with sand and leaf mould; they like moisture and shade, and when planted in pots should have good drainage.

ADIANTUM WILLIAMSII, or **Golden Maiden Hair Fern**. A very elegant and strong growing variety, with large spreading fronds of yellowish green with a golden powder on the underside; the stems are black; the plants grow 18 inches to 2 feet high, and by their great beauty excite universal admiration; a rare variety. 75 cts. each.

A. Cuneatum. A dainty "Maiden Hair" fern, much used in cut flower work. 20 to 50 cts. each.

A. Gracillimum or **"Mist Fern,"** The finest and most dainty of all Maiden Hair ferns. 25 to 75 cts. each.

A. Bellum. A beautiful variety with tufted fronds. 20 to 50 cts. each.

A. Cuneatum Grandiceps. A beautiful Maiden Hair with long graceful fronds, the ends of which develop into bunching tasseled heads; a lovely variety. 25 to 50 cts. each.

A. Versalense. Another lovely crested Maiden Hair. 25 to 50 cts. each.

A. Formosum. A beautiful Maiden Hair with jet black stems and handsome fronds. 35 to 50 cts. each.

ASPLENIUM Belangeri. A very elegant fern, easily grown, forming new plants on the surface of the old leaves. 15 to 50 cts. each.

MICROLEPIA Hirta Cristata. One of the most lovely of all ferns, with beautiful light green arching fronds, the ends of which are exquisitely crested; nothing could be more beautiful than a fine specimen of this fern. 25, 50, 75 cts. and \$1.50 each.

NEPHROLEPIS Exaltata "SWORD FERN." A splendid extra hardy sort, well adapted for house culture, succeeding with ordinary care with everyone who tries it. The fronds are often four feet long. Fine basket plants, throwing out runners which soon make new plants. 30, 50 cts. to \$1.50 each.

"The Boston Sword Fern," (*Nephrolepis Exaltata Bostontensis*). A variation from the ordinary sword fern, which originated in the vicinity of Boston, where it has been in popular favor for a number of years under the name of Boston Fern. In the vicinity of Boston, no other plant is used so extensively as this graceful Nephrolepis, which differs from the ordinary fern in having much longer fronds, which frequently attain a length of four feet. These fronds arch and droop over very gracefully, on account of which it is frequently called the fountain fern. This drooping habit makes it an excellent plant to grow as a single specimen on a table or pedestal. Good plants 25 cts. each. Strong plants 50 cts. each.

Duffi. A very handsome dwarf species. 15 to 50 cts. each.

Tuberosa. A beautiful large variety of the Sword fern. 25, 50, 75 cts. to \$1.50 each.

PTERIS Argyrea. A tropical species, the fronds of which are beautifully striped with white; a grand ornamental plant of bold and effective appearance. 50 to 75 cts.

P. Tremula. One of the finest ferns for house decoration, growing very rapidly and throwing up large, handsome fronds; makes magnificent specimens; easily grown and very popular. 25 to 75 cts.

P. Cretica Albolineata. A pretty and useful variegated variety; charming. 15 to 25 cts.

P. Serrulata. A well known and pretty fern. 15 cts.

P. Serrulata Cristata. A pretty, crested form of Serrulata. 15 to 50 cts.

ONYCHIUM Japonicum. A delicate Japanese fern, with dark green, glossy leaves; excellent for cutting; height one foot and a half. 25 cts. each.

WOODWARDIA California. A splendid native variety, fine for house, conservatory, or garden, will grow five feet high. 25, 50 cts. and \$1.00.

Three other pretty native ferns, commonly called **"Gold Back," "Coffee"** and **"Lace" Ferns**. Good plants 15 to 25 cts.

SELAGINELLA or **"Club Moss."** Two varieties. 10 to 25 cts.

Set of Six New Seedling Single Geraniums.

- Symphony in Red.** A magnificent geranium, flowers dazzling crimson-scarlet, very velvety and beautifully formed; each individual floret is so arranged as to lie perfectly even, giving a roundness and smoothness to the entire truss that is most unusual; flowers have a large white eye. 25 cts. each.
- Gaiety.** A seedling from Souv. de Miranda, but much handsomer; the flowers are almost a third larger, and even more beautifully variegated than the parent; the white in the lower petals is more clear. 25 cts. each.
- White Pearl.** A pure pearly white, very large, with perfectly round flowers, very large trusses borne on long stems; a valuable addition to the list of white Geraniums. 25 cts. each.
- Fair Maiden.** A very charming companion to Pink Pansy. Outer half of petals bluish white, netted with pink, circle of light salmon-pink in the centre of flower; white eye; flowers are often beautifully shaded and variegated lighter, or darker colors. Foliage dark green, with a broad black zone. 25 cts. each.
- Pink Pansy.** A most charming new variety with large flowers, beautifully marked, resembling a pansy. Centre pure white, surrounded by a circle or halo of bright salmon-pink, outer half of petals light pink, netted or veined with salmon-pink, base of two lower petals veined with light red. Flowers very large, very handsome foliage, with dark rich bronze zone. A most striking variety. 25 cts. each.
- Surprise.** A seedling from Arc-En-Ciel, but much more intense in color; the two upper petals are blotched with velvety scarlet, veined dark red, the edges and three lower ones are a vivid purplish-crimson, clouded at the margin with bright crimson. A very striking variety. 25 cts. each. \$1.25 for the six.

DOUBLE GERANIUMS.

- Bruanti.** Splendid vermilion-red.
- Bed of Gold.** Rich orange-scarlet.
- Crimson Velvet.** Magnificent dark crimson.
- S. A. Nutt.** Fine crimson.
- Athlete or Wonder.** Perfectly immense, brilliant scarlet, semi-double.
- La Favorite.** Pure snowy white.
- Mme. Hoste.** White, shaded salmon-pink.
- Gloria La France.** White, shaded bright rose.
- Pure Pink.** The most lovely light pink imaginable.
10 cts. each, \$1.00 doz. Cuttings 40 cts. a dozen.

SINGLE GERANIUMS.

- Souvenir de Miranda.** Cream-white, distinct rosy pink border.
- Blanche Moulaise.** Salmon edge, bordered white.
- Mrs. E. G. Hill.** Splendid salmon-pink.
- Poet National.** Exquisite shaded pink.
- Pink Pearl.** Pearly pink with round florets.
- Margaret de Layes.** Immense, large snowy white flowers.
- La Vestal.** Beautiful snowy white.
- La Cigne.** Pearly white.
- Dazzler.** Intense scarlet, white eye.
- Dazzler Improved.** Larger flower than the above.
- Bennie Constant.** Immense orange-scarlet flowers, large white eye.
- The Raymond.** Glowing scarlet, immense round trusses.
- Luminary Electrique.** Brilliant crimson, velvety red shadings.
- Arc-En-Ciel.** A beautiful blending of scarlet and crimson-purple.
- Master Christine.** A splendid deep lovely pink, very distinct.
10 cts. each, \$1.00 a dozen. Cuttings 40 cts. a dozen.

BRONZE and Gold.

California. Golden-yellow, brownish red zone. 10 cts.

Marshall McMahon. Golden-yellow foliage, dark chocolate zone. 10 cts.

Exquisite. Foliage brilliant yellow, zone chocolate and red.

Fanny. Golden-yellow foliage, zoned slightly with chocolate, large pink flowers. 15 cts.

Cloth of Gold. Bright yellow foliage, central disc green. 10 cts.

Zulu. Broad bronzy zone, centre and edge of leaf yellow. 15 cts.

Bronze. Seedling, resembling the above, more robust in growth. 15 cts.

King of Bronzes. Splendid variety, with broad reddish brown zone, centre and edge of leaf yellow. 15 cts.

TRICOLOR GERANIUM.

Happy Thought. Bright green foliage, light yellow centre, dark band about the light zone, flowers scarlet.

Mrs. Pollock. Color of leaves bright bronzy red, zone belted with crimson, edged with golden-yellow.

Sunray. Rich golden-yellow intersected with flame, scarlet tints on patches of dark brown.

Glen Eyre Beauty. Leaves variegated white, pink and green with black shadings. 15 cts. each, \$1.35 doz. Cuttings 50 cts. doz.

DOUBLE TRICOLOR.

Mrs. Parker. Leaves deeply margined with silvery white, lightly zoned with black, very pretty double pink flowers.

Hermione. Light green leaves broadly margined with white, zoned with black and pink, double pink flowers.

20 cts. each, two for 30 cts., \$1.50 doz. Cuttings 75 cts. doz.

SILVER LEAVED GERANIUM.

Freak of Nature. Beautiful crinkly leaves, centre creamy white, edged and blotched with dark green, red flowers. 10 cts. each, \$1.00 doz.

Castle Milk. Bright green leaves, edged with white, flowers scarlet.

Either of the above 10 cts. each, \$1.00 doz. Cuttings 50 cts. doz.

Mme. Salleroi. Unsurpassed for massing and bordering, plants grow about 8 inches high, leaves small, clear green, deeply margined with pure white. 10 cts. each, 60 cts. doz., \$5.00 hundred. Cuttings \$2.00 hundred.

DOUBLE IVY LEAVED GERANIUM.

Roi de Wurtemberg. Semi-double, bright scarlet. 20 cts. each.

Souv. de Chas. Turner. Splendid deep pink flowers, feathered with maroon on upper petals.

La Rosiere. Rich salmon-pink.

Mme. Thibaut. Deep rose.

Galilee. Glowing pink, splendid trusses.

Gipsy. Bright scarlet. 20 cts. each.

Joan D'Arc. Double snowy white 10 cts. each, except where noted. Cuttings, 40 cts. per dozen.

SINGLE IVY GERANIUM.

L'Elegante. Ivy shaped leaves, beautifully variegated, pink and white, light pink flowers.

Variegata. An old variety with light green leaves, variegated yellowish green, bright pink flowers, narrow petals, splendid grower.

10 cts. each, \$1.00 doz. Cuttings 35 cts. doz.

Old Mauve. An old variety with shining leaves, with a black zone and mauve flowers, veined red.

Like the above with pretty white flowers. 10 cts. each, 75 cts. doz. Cuttings 35 cts. doz.

HYBRID IVY GERANIUMS.

- Bijou.** Superb scarlet-crimson, fine bedder, double flowers.
Peter Crozy. Magnificent scarlet, immense flowers, very showy.
Le Centaur. Very handsome foliage, beautiful large pink flowers.
 10 cts. each, \$1.00 doz. Cuttings 35 cts. doz.

OTHER VARIETIES OF GERANIUMS.

- Distinction.** A fine dwarf variety, bright green leaves, prettily waved at edges, distinctly banded with a narrow black zone, bright scarlet flowers. 10 cts. each, \$1.00 doz. Cuttings 35 cts. doz.
Apple Scented. Leaves delightfully scented, like apples. Rose Geranium. 10 cts. each, \$1.00 doz.

LADY WASHINGTON GERANIUMS OR PELARGONIUMS.**Four New Varieties.**

- Leonora.** The nearest approach to salmon color in pelargoniums; extra large flowers of grand shape and nicely fimbriated, in color a clear, deep salmon, shaded pink, upper petals grandly blotched crimson-red, with lower petals lightly feathered same shade of color.
Empress of Russia. A seedling from that grand variety, Emperor of Russia, but entirely distinct. Ground color a very light lavender with almost white centre and shading also to white, at edge of petals, each petal with blotch of dark maroon surrounded by crimson-purple.
Anita. A most charming flower of extraordinary size, combining with it great freedom of bloom. Of a lovely shade of brightest rosy pink; upper petals grandly feathered with dark velvety crimson, with an almost white centre.
Inocente. A grand flower of great substance, one half again as large as any other white pelargonium. Inocente, translated, means purity, which well describes the color of this lovely novelty. Of the purest white, extraordinary size, extra number of petals, which are beautifully fimbriated. 50 cts. each. Four new sorts \$1.50.

OLDER VARIETIES.

- Princess Victoria.** One of the most charming varieties of the Regal Section, bearing in the utmost profusion large trusses of semi-double, crispy flowers of a delicate shade of blush-pink. The plant is very floriferous and distinct in color. 50 cts.
Maud Hooper. A charming variety. Of fine, dwarf habit, with flowers of a delicate rosy blush, deepening toward centre of flower, upper petals feathered deep rose. Beautifully fringed and undulated. Very free bloomer. 30 cts.
Double White. A grand semi-double white. A sport from Mme. Thibaut, and exactly like it, except that it is snowy white. Petals elegantly filled. 35 cts.
Mme. Thibaut. The Queen of Pelargoniums. Blotched and marbled rose on white ground; upper petals marked with crimson-maroon; large, white centre, and edges of petals also white. Regal. 30 cts.
Prince of Wales. An exceedingly handsome variety, freely producing good trusses of flowers of a bright vermilion color, with light centre and edge to the petals. 30 cts. Regal.
Madame Vibert. Fine dark maroon blotches, bordered fiery red, the flower entirely edged with rose; vigorous grower; fine habit and free bloomer. 30 cts.
Prince Henry. Soft rosy red, shaded orange and chocolate; broad, white margin and centre; bold flowers of great substance, fine trusses. Raised from Madame Thibaut. 35 cts. Regal.
Emperor of Russia. Extra large flowers; dark maroon, surrounded with crimson-purple, margined with blush-white. A most effective variety. 35 cts. Regal.
Beauty of Oxtou. The upper petals are of a very rich maroon, darkly blotched; under petals very dark crimson, shaded with maroon; light centre; all the petals margined with white. Regal. 25 cts.
Dr. Andre. Pink centre with carmine blotch on upper petals, white throat and edges, most beautifully frilled, or fringed edged variety, enormous flower. Regal. 25 cts.
Dr. Masters. Large, black in centre, margin rich crimson, very large and showy. 35 cts.

- Empress of India.** White, penciled with violet-rose, petals undulated and frilled; very beautiful. Regal. 25 cts.
- Prince George.** Fine fringed white flowers, faintly suffused with blush, all the petals spotted with purple-lake, very handsome and distinct. Regal. 30 cts.
- Black Prince.** One of the darkest varieties; petals undulated, very dark red, blotched black; a very rich, fine sort. 25 to 35 cts. each.
- Mrs. John Saul.** Rich, glowing vermilion, with a light centre, and light margin of the petals; upper petals feathered with crimson. 25 cts.
- Mabel.** Lovely, large, velvety pink with black blotches. 25 and 50 cts.
- Golden Gate.** Magnificent trusses of large, deep salmon-pink flowers, centre shaded with light violet, edged with rose. 25 cts. each.
- Mrs. Ellwood Cooper.** A magnificent large flowering pink variety, with immense flowers; originated in Santa Barbara; 35 cts. each.
- Variegata.** A handsome variegated novelty, white, splashed pink. 35 cts.
- Pink and Maroon.** A very distinct and handsome variety; flowers a rich pink, beautifully marked with maroon and red. 20 cts.
- Washington Improved.** A fine old variety; always in bloom; flowers a rich velvety shade of red, maroon and crimson. 30 cts.
- Pelargoniums,** \$2.00 to \$2.50 per dozen.

Miscellaneous Plants.

ASPIDISTRA LURIDA.

Aspidistra Lurida. One of the most satisfactory and beautiful plants for house decoration; the leaves start from the ground on slender stems, from 4 to 6 inches in length, and are from 8 to 20 inches long, and 4 to 6 inches in width; they are round at the base and pointed at the ends; are thick and leathery and a beautiful green; the flowers are very peculiar in shape and bloom on the surface of the ground; this plant will grow anywhere in the house: needs very little care, excepting to sponge the leaves occasionally and keep supplied with water. Plants with three leaves, 30 cts. Larger, 50 cts. to \$1.00. Extra large plants, \$1.50 to \$2.00.

A. Lurida Variegata. Like the above, except the leaves are beautifully striped white this variety is always very rare; as it is liable to sport back to the plain variety Small plants, 50 cts.

ACHILLEA, "The Pearl." One of the very best white flowered plants for the border. The flowers are borne in the greatest profusion the entire summer on strong erect stems. Pure white in color, somewhat resembling Pompon Chrysanthemum. As a summer cut bloom it is a great acquisition. 15 cts.; two for 25 cts.

CALLIOPSIS Lan. Grandfl. "California Sunbeams." These lovely improved varieties are much larger than any heretofore offered, and have the great recommendation of being early blooming; the flowers are beautifully formed, with very long stems; some saucer-shaped, others flat, some exquisitely incurved while others are great buttercups. The petals are broad, with pinked, toothed or irregularly fringed-like edges. Some are very light yellow, others a deeper shade, darker around the eye—all so fine, it is difficult to say which is most beautiful. They are four inches in diameter. 20 cts. each; \$1.50 per doz.

CONVOLVULUS Mauritanicus. A charming plant with beautiful dark blue flowers, always in bloom and especially lovely for hanging baskets. 10 cts. each.

CHRYSANTHEMUM. Latifolium Maximum. The "Great White Moon Penny Daisy." This is one of the finest hardy perennials, forming bushy plants about 4 feet high, which are literally covered with large, pure white flowers 3 inches across. They are highly prized for cutting purposes, and last in water for fully a week in perfect condition. They flower in the late summer, and are very effective for garden decoration. 15 and 25 cts.

CUPHEA Llave. (The Tri-Colored Cupheæ). The flowers are tubular in shape, about two inches long, and combine three distinct colors in each flower, scarlet, white and blue. In bloom continually. 10 cts. each.

CAMELLIAS. These fine varieties are imported from Japan. Pure white, shell-pink, scarlet and variegated. \$1.25 to \$2.00 each.

Sassankora. A species of camellia which deserves particularly to be known. The flowers are produced from early in September to December. Foliage and flowers much smaller than *Camellia Japonica*. The flowers of many sorts are deliciously fragrant. The following varieties are the choicest. **Early Snow**, white, double, profuse bloomer; **Carmine**, double; **Rose and White**, variegated; **White and Red**, spotted. The single varieties are charming. \$1.25 to \$2.00 each.

DAHPNE Odora Alba. This well-known and exquisitely scented white flowering shrub ought to be in every greenhouse. Same with rosy pink flowers and variegated foliage. 20 cts. each.



SPRAY OF DAHLIAS IMPERIALIS.

DAHLIA Imperialis. (The beautiful "Lily Dahlia.") This stately plant is a distinct species. It attains a height of 10 to 15 feet, and produces through the months of September and October innumerable large, single, drooping, lily-like flowers of a delicate pinkish mauve color. The broad petals are four inches long, and recurve, giving a bell-like appearance. There is a maroon ring around the yellow centre, and a delicate edge around the maroon, making a charming combination of colors. The foliage is spreading and quite large. Nothing can exceed the grace and beauty of these fairy-like blossoms seen from a distance, as they swing and sway in the breeze. Nothing more lovely can be imagined than the delicate effects as one stands at the base of the plants and looks up into the depths of the bell-like flowers. Rare. Blooming tubers 50 cts., 75 cts. and \$1.00

- ERYTHRINA Crista-Galli, or "Coral Tree."** A magnificent shrub, with handsome spikes of large, splendid, pea-shaped flowers, in shades of red and maroon. It makes a fine tree in California, and is most showy and brilliant when in full bloom. In the east it can be taken up and wintered in the cellar, as it is dormant in winter. 25 to 50 cts. each.
- FARFUGIUM Grande.** A very handsome foliage plant, with large, roundish green leaves, handsomely spotted with bright yellow. It makes a fine bedding plant, and likes bright sunshine. 25 to 50 cts. each.
- Variegata Alba.** Like the above, only variegated with irregular white markings. 25 to 50 cts. each.
- FICUS REPENS.** A trailing or creeping variety, with small foliage; useful for baskets. 15 to 25 cts.
- FORGET-ME-NOT.** 10 cts. each.
- HYDRANGEA Otaksa.** Rosy carmine flowers. 15 to 25 cts. each.
- "Hortensis."** The old favorite variety. 15 to 25 cts.
- "Japonica Variegata."** Beautiful light green foliage, elegantly marked with creamy white, flowers pink. Makes a showy house plant. 15 to 25 cts. each.
- Thomas Hogg.** This is the finest of all hydrangeas. It is a more free and abundant bloomer than any other; for the florists and all decorative purposes it will be invaluable. The flowers are all the purest white, of very fine texture, and continue in flower for a great length of time, quite hardy in open ground. 10, 25 to 50 cts.
- HOYA CARNOSA.** Has thick, fleshy leaves, growing moderately fast and bearing umbels of beautiful flesh colored flowers, from which are exuded large drops of honey-like liquid. One of the best plants for house culture, as it stands the extremes of heat and cold better than most plants, and is not easily injured by neglect. 10, 20 cts. to \$1.00.
- Silver Variegated Foliage.** Very handsome, but not as vigorous a grower as above. 35 cts.
- HIBISCUS SINENSIS, Subviolaceous.** Enormous semi-double flowers, rich carmine tinted violet. 25 cts. each.
- Miniatus Semi-Plena.** Large, semi-double, brilliant and attractive, bright vermilion-scarlet; ought to be in every garden, showiest, flower last well. 25 cts. each.
- HYPERICUM, or "St. John's Wort."** A beautiful evergreen shrub, that bears large golden-yellow, satiny flowers, with numerous thread-like stamens. Always in bloom. 15 to 25 cts. each.
- Heliotrope Midnight.** A very beautiful new heliotrope, with black stems, and foliage so dark as to be almost black. One of its most striking characteristics is its pretty flowers, that are charmingly variegated, light and dark purple, and white. The contrast between the dark foliage and the beautiful shades of the flowers make it a very attractive plant. 15 to 25 cts. each.
- Albert Deleaux.** One of the most beautiful varieties in cultivation. The foliage is yellow, marked with green. Very large flowers of a rich, deep purple. 10 to 25 cts. each.
- Other sorts, light and dark. 10 to 25 cts. each.
- IMPATIENS Sultana Hybrida.** Charming plants for pots or for shaded places outside. Always in bloom and always very bright and attractive. Three sorts. 10 to 25 cts.
- Justicia Bicolor.** This plant is in bloom nearly all the year. The flowers are star-shaped, white tipped, crimson maroon, and resemble some species of orchids. 15 cts.
- Justicia Carneae and Rosea.** Good plants for the house and blooming winter and summer. Red and rose. 10 to 20 cts.
- LAURESTINUS Grandiflora.** A great improvement on the old variety; flowers pure white, double the size of the ordinary Laurestinus. 25 cts. each.
- LAGUSTA OVATA.** Fine shrub with spikes of fine, dainty, feathery flowers. that bloom in early spring and summer; white. 25 to 50 cts.
- LINUM FLAVUM.** A lovely perpetual blooming yellow flax, that is sure to please everyone. 10 to 25 cts. each.

LOTUS Pelyorensis, or "**Coral Gem**." A lovely new plant with fine, silvery foliage as dainty and graceful as can be imagined. It is a sweet thing at all times, so light and airy is its habit; but when adorned with its bright coral-red flowers, two inches in length, it is indescribably lovely. 15 cts.

LOBELIA. Golden foliage and lovely blue flowers; the contrast is charming. 10 to 20 cts. each.

Other sorts 10 and 15 cts. each; 75 cts. to \$1.25 per dozen.

LIBONIA "Floribunda". Beautiful dwarf shrub, of compact growth, covered most of the year with pretty scarlet and yellow tubular flowers. Fine for drive ways, for single specimens, or for pot plants. 10 to 25 cts. each.

Lopezia Rosea. Free-growing, red-flowering plants, blooming constantly from November to April. 10 cts. each.

Alba. Same as above; white flowering. 10 cts. each.

Maranta Zebrina. A house plant of unsurpassed beauty; foliage a dark velvety green, with black stripe. 25 to 50 cts.

Several other new sorts of dwarfer growth, at 50 cts.

Marguerites. White and yellow. 10 to 20 cts. each.

PILEA Arborea. (Artillery Plant). A pretty little plant of drooping habit, resembling the fern; it is a fine basket plant.

Grandis. Until it comes to flower you would never suspect that it belongs to the same family as the "artillery plant." It makes a most graceful plant, with large leaves of golden green color. 10 cts. each.

PRIMULA Chinensis. This is the most thankful of all the plants we cultivate for the winter flowers, and the most worthy to be recommended for winter gardening. One plant will yield several hundred flowers, one of the most valuable and beautiful plants in cultivation.

Single varieties pink, white and kermesina. 15, 25 to 40 cts.

PETUNIAS. Choice hybrid varieties, double and single, very beautiful. Plants single, from 2½ inch pots \$1.25 per dozen; double, \$2.00 per doz.

POINSETTIA Pulcherrima. A splendid ornamental winter-blooming plant, with splendid, large, fine scarlet bracts at the ends of the branches, surrounding the inconspicuous flowers. 15 to 25 cts. each.

Double Flowering. The bracts of this new kind are gathered into clusters, which fill up the center. It is strikingly gorgeous, of a most brilliant and vivid scarlet color. 50 cts.

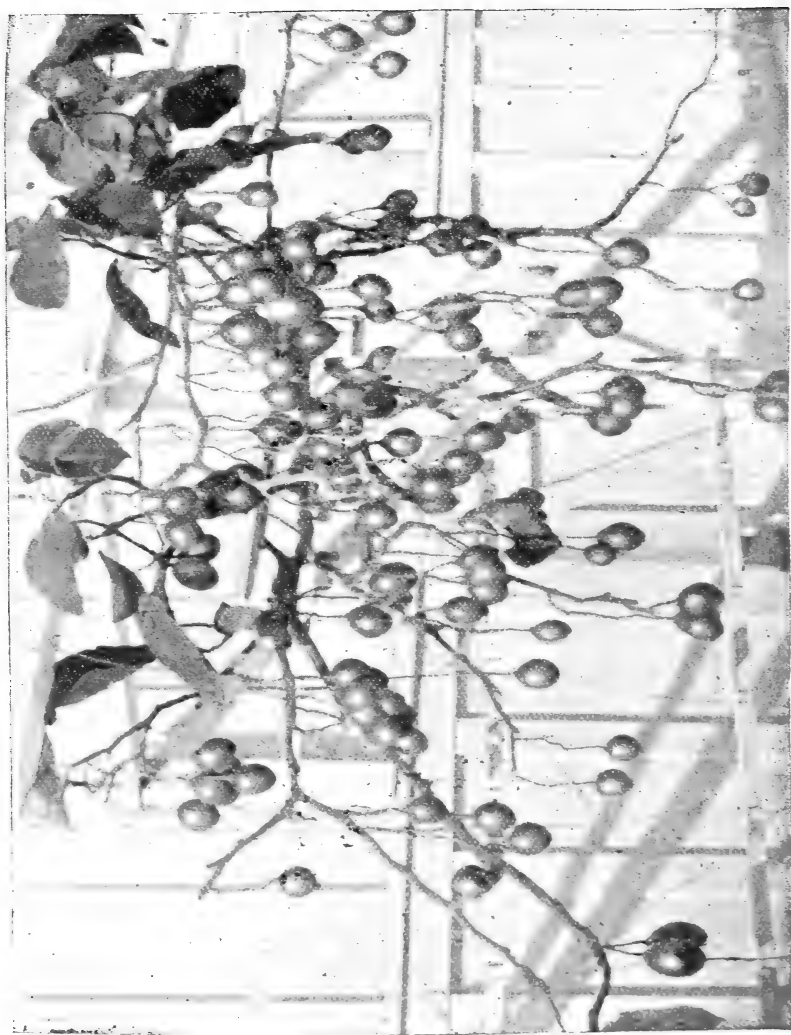
PLUMBAGO Capensis. A beautiful shrub, with lovely light blue flowers, always in bloom. It grows ten or twelve feet high in California, forming immense plants, and should be cut back occasionally to induce new growth. 15 to 25 cts. each.

Capensis Alba. Like the above, but pure snowy white. 15 to 25 cts. each.

STREPTOSOLEN Jamesonii. From Central America, similar in growth to the Browallias, the leaves being deep green, of a very compact, bushy habit, flowering very profusely in numerous trusses, the flowers of bright orange, changing to a deep cinnabar-red. It commences to flower early in March, and continues quite full throughout the year. One of our most effective and showy plants. 15 and 25 cts. each.

STROBILANTHES Dyerianus. This plant will undoubtedly become universally popular, on account of its brilliant and exquisite coloring, its extraordinarily easy growth and usefulness as a decorative plant. It surpasses the finest coleus, begonias or bertolonias in the exquisite coloring of the leaves, besides which the long racemes of lovely violet blossoms, with which the plant is covered in mid-winter, greatly enhance its value, beauty and usefulness. The undulation on the surface of the foliage is furnished with a bluish metallic hue, shading into light rose, with a light green margin. It will prove a valuable acquisition, both as a bedding and decorative plant. 15 to 25 cts.

STEVIA Variegata. One of the most effective silver variegated foliage plants, contrasting well with any other plant. 10 to 25 cts. each.



BRANCH OF SOLANUM BETACEUM IN FRUIT.

THE SOUTH "AMERICAN TOMATO TREE."

(CYPHOMANDRA.)

SOLANUM Betaceum. A fine ornamental tree or shrub, a native of South America, which is now receiving a good deal of attention under the name of "The Brazilian Melon Fruit." This most valuable addition to our list of fruits is as yet but little known in this country, a few people here and there having a specimen for ornament. When its value as a fruit is once fully appreciated, acres will be planted to it. It bears from seed the second season, and a young plant set out in the spring grows six feet high and comes into bearing by Christmas. The foliage is large and handsome, the branches spreading. The fruit, which hangs pendant in clusters below the foliage, is the size of a large egg, of a beautiful orange-salmon color when ripe. It has a delicious sub-acid taste, slightly resembling the tomato. It is delicious raw, served with sugar and cream, or cooked as sauce, and for jelly or jam is very fine. It will keep for weeks, as it does not bruise on account of its very tough skin and the solid nature of the fruit covering the seeds, which are like those of the tomato. The fruit is so handsome it would sell readily at sight, and if shipped East during the holidays would be immensely popular. In Ceylon and India it is extensively grown, and is known as the "Poor Man's Fruit." It is a showy plant for house and conservatory and a most beautiful plant in the garden. Plants, 15, 25 and 50 cts. each. Special rates on quantity. Seeds per pkt. 10 cts.

TRITOMA Nobilis or "Torch Lily." Truly a noble variety of this showy plant. the foliage is long and graceful; the strong flower stems rise to a height of six or eight feet, and are thickly set for twelve or fifteen inches with waxy coral-red flowers, tipped with yellow. A small plant forms a magnificent clump in a year or two. Plants, 15 to 25 cts. each; strong clumps, \$1.00; seeds, 15 cts. pkt.

TRADESCANTIA Multicolor. This is a remarkable variety of tradescantia, in that its pretty striped leaves show every tint of silver, bronze-green, pinkish crimson, rose and grey, in their markings. An extra fine basket plant as it stands dust, dryness, and extremes of temperature. Indeed, the Wandering Jew will stand more abuse, and look cheerful under it, than any other plant we know of. 10 cts. each.

VIOLETS.

Give violets partial shade, and divide them when they become crowded; each year apply a liberal top-dressing of good rotten manure, which will add greatly to their size and luxuriance.

"California." This new violet is all that has been claimed for it, and is immensely popular wherever it is grown; it has fine healthy foliage, is a prolific bloomer; flowers are on very long stems and indescribably beautiful; a lovely bluish purple; very large. 10 cts. each; 50 cts. doz.; \$3.00 per 100.


Princess of Wales. Of hardy vigorous growth, the plants are wonderfully free-flowering, with stems from ten to twelve inches long; large green leaves of a thick, leathery texture. The grand single flowers, of a true violet-blue color that does not fade, are of round, symmetrical form, almost as large as pansies, and of the richest, most delicious fragrance. 15 cts. each; \$1.00 doz.

Swanley White. A snowy white double violet, very large and fragrant. Strong plants. 50 cts. doz.; 4 doz. \$1.00; \$2.25 per 100.

Queen Victoria. A very large single purple violet. Foliage large and handsome; very robust habit. The flower has a small orange center and is very pleasing. 10 cts. each; 3 for 25 cts.; 60 cts. doz.

Marie Louise. A beautiful light blue, very double; blooms very early and is very sweet. One of the very best. 50 cts. doz.; 4 doz. \$1.00; \$2.25 per 100.

Single Dark Blue. Perpetual violet, very dainty and sweet. 5 cts. each; 35 cts. doz.

 In ordering please make a second choice of plants to be substituted, as I am sometimes out of varieties, and there is always a loss of time in writing for instructions.

CLIMBING PLANTS.

ASPARAGUS Plumosus Nanus. This charming, dainty climber has branches which are finer than the fronds of the most delicate fern, and spread out in all directions. In Southern California it grows luxuriantly outside. It is a beautiful vine for the house and very pretty in hanging baskets. Is invaluable for bouquets, and is very æsthetic for the decoration of rooms, either in its green or dry state. Small plants, 25 cts. Strong, 50 to 75 cts. and \$1.50.

- A. Tenuissimus.** Resembling the above, but with a filmy, feathery growth. Also very valuable as a pot plant, or for decoration and bouquets. 25 and 50 cts. each.
- A. SPRENGERI.** This very beautiful new trailing vine is one of the most valuable introductions sent out in many years. It grows very rapidly and forms handsome plants in a short time. The branches all start from the roots and in the open ground on old plants, attain a height of six feet or more. For several months in the year it is wreathed with innumerable white flowers that grow in spikes from 1½ to 4 inches in length; the fragrance is delightful. For mixing with cut flowers or for decorative purposes it is unequalled. It is one of the prettiest plants imaginable for hanging baskets, or to trail from brackets or shelves. 15, 25 to 50 cts. each.



ASPARAGUS PLUMOSUS NANUS.

AMPELOPSIS Veitchii. Sometimes called "Boston Ivy" and "Japan Ivy." Entirely hardy in the most exposed places, attaining a height of 20 to 30 feet in two or three years, clinging to stones, brick or wood-work with the greatest tenacity. For covering dead trees, gate posts, boundary walls, etc., it has no equal. In the summer the foliage is a rich shade of green, but in the fall it assumes the most gorgeous tints of scarlet, crimson and orange, so dazzling as to be seen at a great distance. 15 to 50 cts.

Royalii. The most beautiful of all the ampelopsis. The old foliage is large, dark-green, leathery. The new growth is a shining bright red, foliage small and hangs in long, beautiful festoons, or creeps in long wreaths. The contrast in color and size of the new and old growth makes it very effective. It is gorgeous in autumn. 15 to 25 cts. each.

Tricolor. Small foliage, prettily variegated with white and pink, beautiful for hanging baskets. It grows well outside and is very handsome in bouquets. 25 cts. each.

ANTIGONON Leptopus. A magnificent climber, rivaling the bougainvillea in color and abundance of its flowers; the foliage is very handsome and the flowers, which are the most exquisite shade of pink, are produced in tendril-like racemes ten to twelve inches in length; their profusion and beauty elicit the most enthusiastic admiration. 25 to 50 cts.

ARISTOLOCHIA ELEGANS.

A rapid growing vine, bearing large and elegant flowers of a rich purple color ornamented throughout with irregular branched markings of a creamy white, and having a golden-yellow eye surrounded by rich velvety purple. Its blossoms are produced in great profusion, even on small plants, and are entirely free from any objectionable odor. 25 to 50 cts.

AKEBIA Quinata. A very beautiful, perfectly hardy, fast-growing Japan vine, with magnificent foliage, producing flowers in large clusters, of chocolate purple color, possessing a most delicious perfume. Unsurpassed for covering trellises and verandas, the foliage never being attacked by insects. 15 to 35 cts. each.

A Quartette of Grand Bignonias.

Venusta. Nothing can exceed the magnificence of this brilliant climber in Southern California; it is evergreen, has handsome foliage, with large clusters of trumpet-shaped, orange-salmon flowers at the axil of every leaf; graceful branches hang like long wreaths, and the effect is wonderfully gorgeous; it is the most beautiful of all climbers, and is very effective for decoration; blooms through the winter and spring months. 25, 50 and 75 cts. each.

Magnifica. As the flowers of *Bignonia venusta* begin to wane, this variety, truly called "Magnifica," comes on in its beauty; it has shining green foliage and long, drooping branches. The large flowers are maurandya-like, of a soft violet shade, beautifully veined with purple and black; blooms through the spring and summer. 25 to 50 cts. each.

Siderafolia. The next bignonia on the list follows in the wake of *Magnifica*; a summer and fall bloomer, with the most rampant growth of all vines; the flowers come out in spikes, buds quite round, flowers gloxinia-like, of velvety texture, soft cream color, lined with yellow, exceedingly beautiful and graceful. 25 to 50 cts. each.

Tweediana. A charming variety, with smaller foliage than other sorts, which sends out tendrils with tiny feet that attach themselves to any support, causing the vine to cling perfectly flat against a surface, like the ivy. I have seen the roof of an old house completely covered with this vine, its dainty sprays falling over the eaves, the whole a mass of canary-yellow, gloxinia-like flowers, wonderful to behold. 25 to 50 cts. each.

BOUGAINVILLEA.

Named after the French navigator, De Bougainville. Gorgeous plants, comprising some of the most striking climbers in cultivation. In Southern California they grow to the greatest perfection; they are shrubby climbers, making rapid growth; they bloom nearly every month in the year. Their great beauty is in the brilliant bracts which surround the small tubular flower; they are of a brilliant magenta-rose. The long branches are a perfect mass of color.

Glabra. One of the most brilliant flowering climbers in existence, and one that attracts all eyes and calls forth more admiration than any other. The foliage is shining green, the plant always covered with brilliant magenta-rose bracts, that enclose the dainty flowers. Fine for greenhouse, or outside, in Southern California. 35 cts. to \$1.00.

Spectabilis. Of much more robust habit than the above; foliage furzy on underside; the long branches are furzy, and have strong thorns; the bracts exceedingly brilliant and very deep color. Small plants, 50 cts.

CAMPSIDIUM Filicifolium. Very graceful, hard-wooded and rapidly growing fern-like creeper, from the Fiji Islands. 10 to 25 cts. each.

CLIANTHUS PUNECEUS, or Parrot's Beak. A magnificent scandent shrub, having long, spreading branches, and handsome, light green pinnate foliage. Remarkable for its large, showy flowers, borne in auxiliary racemes, of the most brilliant crimson-scarlet color, resembling in shape a parrot's bill. It is a native of New Zealand, and is often called the "Glory Pea." from its beautiful flowers. It grows well outside in California, and is especially fine for planting on the back wall of a conservatory. It is not new, but deserves to be more generally known. 15 and 25 cts. each.

GERMAN, or Parlor Ivy. A very rapid-growing variety, with smooth, glossy, light-green leaves and pretty yellow flowers. 10 to 25 cts. each.

IPOMŒA. "Heavenly Blue." Plants of this lovely climber ready April 1st. For description, see Seed List. 15 cts. each. \$1.50 per doz.

Learii. "Blue Dawn" Flower. The flowers are the most intense violet-blue, with reddish-purple rays, and are 6 inches across; there is nothing of its color that exceeds in richness the flowers of "Ipomœa Learii." 15 cts. each. \$1.50 per doz.

RHYNOSPERMUM Jasminoides. A fine climber; thick, dark green shining foliage, and clusters of exquisitely sweet, pure white flowers. Ready April 1st.

JASMINUM Gracillimum. A rare and beautiful variety: snow white flowers, larger and finer than others. Ready May 1st. 25 to 50 cts.

Poeticum. A very rapid grower, with fine, glossy foliage, covered through the spring, and summer with a perfect cloud of airy, starry blossoms. 15 and 25 cts.

South Carolina. A very graceful climber, with golden yellow flowers. 25 cts. each.

MANDEVILLA SUAVEOLENS. "Grandiflora." A grand improvement on the old mandevilla, from which it is a seedling; one of the most chaste and beautiful climbers we have; it is a very rapid grower, with handsome foliage, graceful habit, and is completely covered with its snowy white flowers through the spring and summer months; the flowers are in clusters of a pure, snowy white, delightfully perfumed, like the jasmine, each flower measures $2\frac{1}{2}$ inches across and somewhat resembles the single tuberosa, but is much larger and more beautifully formed. No one who has once seen a large plant of this fine climber in the height of its beauty will ever forget it. Ready April 1st. 25 to 35 cts.

PASSIFLORA Scarlet. One of California's most brilliant climbers. It will, in three years, reach the tops of the tallest trees, completely taking possession. With its handsome foliage and vivid scarlet flowers it is wonderfully effective. 25 to 40 cts. each.

Violacea. A very desirable variety with dark maroon-red flowers. 15 to 25 cts. each.

Eduilis. Very handsome passion flower, white and blue, the corona white and crinkled; rich, glossy foliage; edible fruit of a deep purple color. 25 cts. each.

SMILAX. 10 to 25 cts. each.

SOLANUM Wendlandi. Has immense panicles of large violet-blue flowers, $2\frac{1}{2}$ to 3 inches across, sometimes over a hundred in a cluster. It is indescribably lovely, and is one of those plants that sell at sight. It is a rapid grower, of very easy cultivation. 15 to 25 cts.

SOLLYA Heterophyllia. A slender, twining, evergreen shrub of great beauty, with handsome glossy green foliage, and charming flowers of the most exquisite deep blue. 25 cts.

JASMINOIDES Variegata. This lovely climber, though not new, is rarely seen. The foliage is light green, irregularly margined with creamy white. It has all the good qualities of the plain variety, being just as free blooming and habit of growth, but with such beautiful foliage as to attract attention at once. It does equally well in the greenhouse or outside. A location that has shade part of the day gives a delicacy to the foliage and greatly enhances its beauty. 15 and 25 cts. each.

TECOMA Mackenii (rosea). "When I visited Grahamstown in 1887, T. Mackenii was one of the most strikingly beautiful of the many plants I saw there. The finest specimens had taken possession of an old trunk of *Erythrina caffra* and had formed a great sheaf of shoots 10 feet through and 15 feet high. It was not even in an enclosure, but stood on a piece of waste ground by the side of the road. I saw it in full flower, and there were hundreds of very large racemes of trumpet-shaped flowers quite 3 inches long and broad, colored bright rosy lilac, with a few darker pencillings and a blotch of yellow in the throat. The mass was a glorious picture, such as I had never seen made by any Bignoniaceous plant."—W. Watson. 25 cts.

Jasminoides Alba. A beautiful variety like the old T. *Jasminoides*, except that the foliage is a lighter shade of green, and the flowers pure white, with a pale yellow throat. They are also larger, of heavier texture, and the lobes of the flower tube are fuller and overlap each other, giving a soft effect that is very beautiful. Young plants 50 cts.; large \$1.00.

Jasminoides. A very handsome climber and always admired. Glossy foliage, and clusters of large flaring, trumpet-like flowers, white with maroon-red throat, and pink with a red throat. White, 25 cts.; pink, 30 cts.

TACSONIA, "Sutherlandia." It is of vigorous habit, with handsome, large, shining three-lobed foliage, of strong texture, and a rich dark green. The flowers measure 4 inches across. Color, an exquisite carmine-rose, shading darker in the centre, with a tiny purple fringe around the throat. It is a fine bloomer, rivaling even its parent, the Scarlet Passion Vine, so noted for the profusion and magnificence of its flowers. 25 to 50 cts. each.

Exoniensis. One of the most magnificent climbers in existence. The foliage is handsome, a glossy green; plant grows very rapidly, covering arbors, or screens in a single season: climbs to the top of high trees and is always full of blossoms; the color of the flowers is a very deep rose: they measure six inches across, the tube is three inches long, and the stem two or three inches in length. 35 to 50 cts. each.

Mollissima. A strong growing variety with pretty light pink flowers, followed by large yellow edible seed pods. 15 to 25 cts. each.

Palms, Dracænas, Etc.

BRAHEA Edulis. A new variety of Fan Palm from Guadeloupe Island. Large plants, \$2.00 to \$5.00 each; small, 35 cts.

Filamentosa. The hardy California Fan Palm, a most vigorous growing plant; foliage very regular, of a bright green, deeply and regularly pinnated, the margins of each being covered with hair-like, long filaments, giving them a remarkable appearance from other Fan Palms. They are beautiful decorative plants in all respects, either for in or outdoor use. Small, 25 cts. each. Plants 1 to 1½ feet, 50 cts. each; plants, 2 to 2½ feet, \$1.00 each; extra large plants, \$2.00 to \$3.00 each.

Glaucæ, Blue Palm. A very ornamental Fan Palm of robust habit. The leaves are a blue-green, glaucous beneath. New and rare. Small, 25 to 50 cts.; fine specimen plants, \$3.00 to \$5.00 each.

CORYPHA Australis, Livistona. A very hardy Australian Palm; foliage dark green, very symmetrically and regularly slit, the segments partly doubled from base of petioles or leaf-stock, which is thickly armed with crooked spines. Strong plants 75 cts. each; plants 2 to 5 feet high, \$1.50 to \$3.50 each.

CHAMÆROPS Humilis. A Fan Palm with dwarf habit; it is a native of Southern Europe; very hardy. A splendid specimen for the lawn. Small plants, 25 cts. each; plants 1 to 1½ feet high, 75 cts. to \$1.50 each.

PHŒNIX Canariensis. The handsomest and hardiest of the Date Palm family. Being a rapid grower, it soon develops into beautiful specimens, with pinnate, dark green leaves from 6 to 12 feet long, the divisions linear, lance-shape, very much pointed. It is fully as hardy as the native Fan Palm, and differing widely from that variety in its habit of growth, color and style of foliage. A finer contrast cannot readily be imagined when the two are planted either opposite or alternately in rows. Small plants, 50 cts. to \$1.50 each.

Tenuis. This is a very hardy Date Palm, very desirable and elegant, bright sea-green. Small plants, 25 cts. each.

RHAPIS Flabelliformis. China and Japan. A hardy little Cane Palm, which suckers from the roots like the bamboo, and forms a dense clump of canes. A delicate and graceful little plant, only 3 or 4 feet in height when full grown. Unexcelled for home decoration. 75 cts. to \$3 each.

SEAFORTHIA Elegans. The leaves dark green, the leaf stems rather stout at their base, pinnate, lanceolate; and narrow bifid at the apex, the whole plant perfectly smooth, on a cylindrical, smooth whitish green stem. A most elegant species. Plants 2 to 3 feet high, \$1.50 to \$3.00 each.

- ARALIA Papyrifera.** "Chinese Rice Paper Plant." A stately decorative plant, with large ricinus-like foliage. The young growth is silvery, the old a dark green; very tropical. 25 to 50 cts. each.
- DRACENA Indivisa.** A fine plant for outdoor planting in California, and much in use for lawns, avenues and parks. The small plants are fine for window decoration. Small plants, 25 cts. each; large 75 cts. to \$1.50 each.
- Australis.** Like the above, except the leaves are much broader. Both varieties are exceptionally fine for vases, for home or hall decoration. Small plants, 25 cts.; large, 50, 75 cts. and \$1.50 each.
- LOQUAT, or Japanese Plum.** A most beautiful ornamental tree that bears delicious fruit. It is admirably adapted for house culture. The foliage is very handsome; the young leaves are a silvery light green, the old foliage dark green. It could be made almost as useful as *Ficus Elastica*, and is much cheaper. 35 to 50 and 75 cts. each.
- PEPPER TREE.** Small, 15 to 25 cts. each.
- Musa Ensete.** The noblest of all foliage plants is this great Abyssinian Banana. The leaves are magnificent, broad, long, and very massive; a beautiful green, with a broad crimson midrib. Fine plants, one to two to three feet high. 50, 75 cts., \$1.00 to \$1.50.

Ornamental Grasses, Bamboo, Etc.

- ARUNDO DONAX Variegata.** A grand and stately reed, with very broad corn-like foliage, beautifully striped creamy white and light green. It forms grand clumps and grows eight to ten feet high. 25 cts. each; clumps, 50 cts.
- PAPYRUS Antiquorus.** Or "Egyptian Paper Reed." The most elegant, graceful and stately of all decorative reeds. It grows in creeping rhizomes on the surface of the ground, and sends up reed-like stems, which on old plants rise from eight to ten feet high, crowned with a tuft or umbel of long wiry grass that falls gracefully above and around the stem. It is an aquatic, but in Southern California grows to perfection, if watered occasionally. It makes a beautiful plant for greenhouse decoration, planted in tubs or bedded, having an effect no other plant can give. 15 and 25 cts. each; clumps, 35 cts.
- CYPERUS Alternifolius or "Umbrella Grass."** A most useful and beautiful decorative plant, with slender stems, surmounted by alternate leaves so arranged as to resemble the frame of an open umbrella; as beautiful and ornamental for home decoration as a palm. Small plants, 15 and 25 cts.; \$1.50 to \$2.50 per dozen; clumps, 50 and 75 cts. each. Fine for cut decorations.
- Alternifolius Gracilis.** A charming dwarf variety of umbrella grass, that does not grow over 18 inches high. It makes a fine pot-plant and is very pretty in the garden. 20 cts. each; clumps, 50 cts.
- Distans.** A very beautiful variety of this ornamental grass, a great addition to the list of rapid growing decorative plants. The slender stems are crowned with alternate leaves about $\frac{1}{2}$ an inch wide and about 4 inches long, that lie perfectly flat, and are surmounted by a tuft of dainty, wiry grass, with stems 2 or 3 inches long, tipped with the seeds or flowers. It is much handsomer than the old variety and will doubtless be very popular when generally known. 25 and 50 cts. each.
- CAREX Japonica Variegata.** An exquisite grass, that will find a place among ferns, palms and dracenas. Its slender arching, green foliage is edged with white, and its elegant habit gives it a place that cannot be equaled by any other plant. It will grow anywhere, forming a beautiful clump outside, or a stately plant indoors. It stands neglect and a heated atmosphere and is not easily damaged. A plant that will please everyone. 25 cts. each.
- RUBY Grass.** A dainty grass with red flowers. 20 cts. each; seeds, 10 cts. pkt.
- CHENILE Grass.** That came to me without a name. The flower stems grow about two feet high and are surmounted by a fringe-like head that droops gracefully around. When dry it looks exactly like prettily shaded, long, brown chenille tassels, and is charming for vases. It is very pretty in the garden. 15 and 20 cts.
- BAMBOOS.** Bamboos are exceedingly ornamental for the garden, sending up the slender canes of feathery growth in splendid groups. They are destined to be extensively cultivated in California for their useful qualities as well as for their beauty. For cut decorations in halls or in dwellings they are very effective. I offer six fine sorts at 25 and 50 cts. each; \$3.00 to \$5.00 a dozen.

Metake. A large-leaved, rather dwarf-growing variety, attains a height of 7 feet, grows erect, stems thickly tufted, but entirely covered with sheaths of the leaves, Native of Japan. Price, 25 to 50 cts. each.

Common Giant. Grows to the height of 25 to 40 feet. I recommend this useful bamboo for windbreaks. The stems can be used for ornamental and useful purposes; for fences, plant stakes and many other ways. 35 to 50 cts. each. The time for planting bamboos is in the spring.

Striped. Foliage green and white, stems yellow, with alternate sections of green up and down the stem. 75 cts.



STEMS OF PAPYRUS.

Huro-Chiku. "Black stemmed Bamboo." One of the most beautiful. Stems 1 to 2 inches in diameter. 50 to 75 cts. each. Three other fine tall varieties, 35 and 50 cts. each.

Silver Variegated. A dwarf-growing variety, leaves handsomely variegated with silvery white. 25 cts. each. Two other pretty dwarf sorts. 25 to 50 cts. each.

PHORMIUM Tenax, or Variegated New Zealand Flax. A *grand decorative plant of most stately habit*. The leaves are two to four inches broad. They have dark red edges and are beautifully striped, yellow and bluish green. They are showy pot plants, ranking with palms and dracenas, and make a grand clump on a lawn. 50, 75 cts. and \$1.25 each.

Phormium Tenax. Like the above except the leaves are plain blue-green, edged red. Very beautiful. 20, 25, 50 cts. and \$1.50 each.

Choice Bulbs.

BEAUTIFUL AMARYLLIS.

Rare and Lovely Varieties.

Few bulbs are more satisfactory or more easily grown than Amaryllis, and the taste for them is on the increase. A fine collection of Amaryllis and Crinums will give a succession of bloom the entire year. They are hardy in California, where they give a brilliant show in the gardens nearly every month. *The white seedlings marked with shades of red* are especially beautiful, many of them have extra petals, and in nearly all of them the petals are daintily fluted at the edges. They rival lilies in their exquisite beauty. The red ones are also very fine. The bulbs are all blooming sizes, the more expensive ones having bloomed several years. I will make up collections of amaryllis for those who write me desiring them, giving special discounts.

Grand New Seedlings. Fine blooming bulbs, some with a white ground, lined, feathered or penciled with delicate shades of red; petals daintily fluted; others are handsome shades of red, marked with white, and maroon fluted edges; others have broad, flaring flowers, bright cherry-red. 50 cts. each; 3 for \$1.25; per dozen, \$3.00.

Small Seedlings. 10 cts. each, 75 cts. per dozen.

Form clubs and send for some of these beautiful amaryllis.

Aulica. "Lily of the Palace." Summer and autumn bloomer. Handsome evergreen foliage, large, spreading flower of a rich crimson-scarlet, lined and penciled, white and maroon, greenish yellow center. 35, 50 cts. and \$1.00 each; monster bulbs, \$1.50 each; \$3.00, \$5.00 and \$9.00 per dozen, postpaid.

Defiance. A magnificent variety, with rich, broad foliage, shaded red. The flower stems are tall and bear from 6 to 8 splendid, large crimson flowers, heavily lined with white and maroon. Deliciously fragrant. This is one of the handsomest and most satisfactory of all amaryllis. It blooms at intervals during the year, grows fast, and is easily cultivated. 30, 50, 75 cts. and \$1.00 each; extra large bulbs, \$1.50 each; \$3.00, \$4.00 and \$8.00 per dozen.

Oriflame. White, beautifully penciled with red; very large, spreading flower. \$1.00 each.

Johnsonii. A fine old variety, always desirable. Flowers a rich crimson-scarlet, marked with white. 30 cts. each.

Formosissima. or "Jacobean Lily." A distinct variety, brilliant scarlet, with long petals which droop in a most graceful manner. The flowers are large. It is a fine bloomer, blooming at intervals during the year when well established. 15 and 25 cts.; \$1.25, \$2.25 per dozen. Seedlings, 25 to 40 cts. per dozen.

Longifolia Alba. (Crinum.) A beautiful plant, producing very large bulbs. Foliage a light pea-green and very long. Two sorts, a beautiful greenish white, and a pinkish white, shaded brown. Bulbs, 10, 15 and 25 cts.; monster bulbs, 50 cts. Add 5 cts. per bulb for postage on large bulbs of the three above.

Amaryllis Belladonna Major. The beautiful Belladonna lily is a lovely flower and cannot fail to be more popular the more its beauty and good qualities become known. It is of easy cultivation, comes into flower about the last of June. Large bulbs throw up three or four stems two feet high, surmounted by eight to ten exquisite pink lily-like flowers, having a delightful fragrance. The flowers remain beautiful for two or three weeks, which renders them invaluable for cut flowers or decoration. They can be kept dormant and forced like all other bulbs; the foliage dies down a few weeks before the flower stems shoot up. 15 and 25 cts. each. Monster bulbs, 50 cts. each.

Belladonna Minor. Like the above, only the flower stem is shorter, and the flowers have a white centre; petals beautifully feathered pink; they bloom the latter part of August and September. 35 and 50 cts. each.

Small Seedlings of two of the above, 30 to 50 cts. per dozen.

CRINUMS.

These magnificent flowering bulbs are closely related to amaryllis and pancratium; are of easy culture.

Fimbriatum. (Nassau, or Milk and Wine Lily). A strong grower, not particular as to soil. Flowers in umbels, very large and showy, striped white and carmine, 3 to 4 inches in diameter. Exceedingly choice and desirable. Very large bulbs, 50 cts. Add 5 cts. for postage.

- Kirkii.** Beautiful fine sort. The flowers are large, pure white, with a reddish purple stripe on the outside of each petal, which, showing through, gives the flower a pink tinge on the inside; some ten to fifteen of these large flowers are produced at the top of a tall, purple spike, and have frequently two or more spikes of bloom from the bulb during the season. In addition the foliage is very handsome, the numerous wavy-edged leaves forming a perfect rosette. This plant has created a sensation wherever seen. Very large bulbs, 75 cts. each. Add 5 cts. for postage.
- C.** A variety which I have had some years without the name. Bulbs are very large. Flowers are a beautiful shade of pink. 25, 50 and 75 cts. each.
- C.** A rare crinum, with immense bulbs weighing several pounds. Very broad foliage, with a large number of beautiful white flowers with pink spikes through each petal. They increase very slowly. \$2.00 to \$3.00 each.

WEIMAR, TEXAS, October 28, 1897.

Dear Mrs. Shepherd:—I received my bulbs in splendid condition and to say I am much pleased with your selection and the size of the bulbs does not express it. I am just delighted with them. I am sure the bloom from such bulbs must be fine. * * * I appreciate the white Crinum and the seedling Empress of India. Respectfully,

MRS M. A. WILLS.

Rare Succulent Plants.

Agaves, Aloes, Cacti, Echeverias, Etc.

No class of plants is more curious than the above. Their varied forms and exquisite flowers appeal to those who love the beautiful and original in nature. There is constant pleasure in cultivating them, and those who once get the "craze" for them may rest assured they will be possessed with a desire for every new variety that appears.

AGAVES.

Variable. A grand agave that sports, rarely giving two plants alike. The leaves of the original plant are yellow, bordered with green. The sports are yellow, beautifully marked, clouded or striated blue-green. Some plants are clouded blue and yellow; all are very beautiful. Small plants, 30 cts. each. 50 cts. per pair. Larger sizes, 50, 75 cts. and \$1.00 each. 75 cts., \$1.25, \$1.75 per pair. Specimens, \$2.50 to \$5.00 each.

Americana Variegata. Variegated Century Plant. Centre of leaf green, bordered with yellow.

I have a large stock of this fine variety in many sizes. Prices, 10, 20, 35 cts. to \$1.00 each. Specimens from \$1.00 to \$5.00.

Victoria. "Queen Victoria Century Plant." A grand sort of compact growth, which resembles a handsome incurved rosette. The leaves are rigid, curved inward, and curiously marked with narrow, pure white zig-zag stripes. Small plants, 50 cts.

Gilbeyi. Very handsome; short, broad, shining leaves, with variegated edges and purplish grey thorns; very rare. Small, 50 cts.

Shawii. Very stiff, green leaves, purplish grey. 25 to 50 cts.

Marguerita. Beautiful, shining leaves, with handsome, brownish-red thorns; very distinct. Small, 50 cts.

Xylacantha. Handsome, greyish-green leaves, having flat-grey thorns. very distinct and interesting. Small, \$1.00.

ALOES.

Interesting plants, with great diversity of foliage and splendid showy flowers; colors red and yellow.

Variegata or "Pheasant Aloe." Leaves spotted, resembling the breast of a pheasant. Leaves spirally arranged; flower spikes covered with beautiful wax-like red flowers. 15, 25, 75 cts. to \$1.00 each.

Fruiticosa. One of the best, with light green, serrated, recurved leaves. Flower spikes grow two to three feet high and are a magnificent brilliant red, very showy; winter bloomer. 15, 25, 50, 75 cts. and \$1.00 each.

Grandidentata. Thick, fleshy, broad, light green, transparent foliage, dotted with large, light green spots. It bears large spikes of handsome, coral-red flowers. 10, 25, 35, 50 and 75 cts. each.

Grandidentata Var. A rare novelty in the style of *Grandidentata*, except the leaves are often striped or striated creamy white; sometimes one-half of the leaves are white. A beautiful plant, and especially handsome in bloom, the contrast of flowers and leaves is so fine. Very scarce and rare. Small plants 50 cts.

Mitroëformis. Dark, handsome, green leaves, edged with pretty yellow thorns; beautiful red flowers. Rare. 10, 25, 50, 75 cts. and \$1.25 each.

A dwarf variety, with light green leaves, edged with thorns; very showy red flowers. Always pretty. 10, 20, 35, and 50 cts. each.

Scopelania. Long, upright, yellowish-green foliage and handsome yellow flowers. Rare. Plants, 25, 50 and 75 cts.

COTYLEDONS.

Edulis. Long, round, green leaves; pretty pink flowers. A native variety, popularly called "Finger Tips." 10 to 25 cts. each.

Attenuata or "Fairy Finger Tips." Another native variety of dwarf habit, resembling the above; fine for beds, borders, alsopots and baskets; it produces panicles of pretty yellowish, or rose-purple flowers. 10 to 25 cts. each.

Lineata. A very pretty native variety. 10, 25, 50 cts.

Lanceolata. A plant that does well under good treatment, producing a spike of red flowers. The lanceolate flat leaves sometimes of a dull crimson color, but commonly green. 35 cts. each.

DYCKIA.

Very handsome plants, having dark shining green foliage; underside of leaves grey, texture, very tough and persistent. Make fine pot plants. Three varieties. 25 cts. to \$1.00.

EUPHORBIAS.

Very peculiar plants; some thorny, some with slender stems without leaves; some with large foliage; others as if carved out of hard wood; all interesting.

Granti. Quite distinct; leaves large and handsomely variegated. It grows to be almost a tree; very stately. 15, 25 and 50 cts. each.

Splendens or "Crown of Thorns" plant. An interesting plant having showy scarlet flowers. Cuttings 5 to 10 cts. Plants 25 to 50 cts.

Abyssinica. A very pretty shrubby variety having bluish green leaves; very handsome flowers. 35 cts. each.

Candelabra. A most handsome, slender stemmed variety of tree-like and very bushy growth. 15 to 50 cts. Cuttings 5 to 10 cts.

Tirucalli. Upright growth, resembling *E. Candelabra*. 25 cts.

ECHEVERIAS.

Echeverias are among the most useful succulent plants. They make a fine display of various colors, stand drought and ill-usage with impunity, and are, so to speak, ever living. A leaf placed in sand will produce many little plants. For fancy beds they are unapproachable; their long spikes of brilliantly colored flowers are very attractive. They can even be grown by any child.

Hoveyii. Or the "Opal" *Echeveria*; exceedingly beautiful, with leaves of a lovely bluish opal tint, white, bluish green and pink striped. It sports, giving leaves of different shapes, changing and mixing its colors variously; pretty yellow flowers. Small plants 15 cts.; larger 25 to 50 cts.. small, extra selected, 50 cts. each; large \$1.00.

Metallica. A grand variety, with large foliage of a beautiful pearly lavender-pink color, a changeable metallic shade, that is a fine contrast to the tall spikes of the waxen red flowers, with pinkish stems. Small plants, 25 cts. each; larger, 50 cts.

Secunda. Low-growing light green rosettes, fine for borders; pretty red flowers. 5, 10 and 15 cts. each; 50, 75 cts. and \$1.00 per doz.

Secunda Glauca. Resembling the above, but prettier, with glaucous green leaves; bright red flowers. 5, 10, 15 and 20 cts. each; 50, 75 cts. and \$1.25 per doz.
Four other choice sorts 10 to 25 cts. each.

GASTERIAS.

Resembling aloes, and of somewhat the same habit of growth. Leaves mostly tongue-shaped, some short, others long; all beautifully marked with raised white spots, fine scarlet flowers, lined and tipped green. Four beautiful varieties, 15 to 50 cts. each. Showy specimens, 75 cts. and \$1.00 each.

HAWORTHIAS.

Dainty little aloe-like plants of pretty and interesting forms; some with translucent leaves that are very beautiful. Easy to grow. Five sorts, 15 cts. to 50 cts. each; 5 for \$1.00.

KLEINIA.

Articulata. Or "Candle Plant." Large, round, fleshy stems of a pretty frosted appearance, distinctly marked with curious designs; foliage cut like ivy, and prettily tinted purple underneath; inconspicuous yellow flowers. 10 to 20 cts.; cuttings, 5 cts.

Spiculosa. Tall growing species, stems about eighteen inches high, and not fleshy. Leaves are terete in shape, resembling those of *Othonna* or "Pickle Plant," only larger and two or more inches long. The whole plant is of a bluish color. 10 to 25 cts.; cuttings 5 cts.

MESEMBRYANTHEMUMS.

From *mesembria* midday, and *anthemon* a flower; referring to the flowers opening on sunny days. The leaves are variable in shape, sometimes thick and fleshy, sometimes round and resembling the portulaca; frequently they are most curiously formed. The flowers are white, blush, pink, rose, bronze-red, crimson, magenta, and various shades of yellow. The petals of the flower radiate from the center like the tentacles of the sea-anemone, and have a beautiful satin-like gloss. They measure from three-quarters of an inch to three inches in diameter. They are fascinating plants and interesting to collectors. They will grow in any soil, and love the hot sun and are especially suited to hot climates and for covering hillsides or bare places, or drooping over banks or for borders. Cuttings root in sand very freely. Anyone can start them, thus securing collections very cheap. A plant in full bloom is so completely covered with flowers as to be perfectly dazzling. Ten varieties. 15 to 50 cts. each. Cuttings of nine sorts 50 cts. Cuttings per hundred \$3.00; per twenty-five 75 cts.

ROCHEA FALCATA.

Very interesting fleshy leaves of a light frosted green, that look as if they had been pressed together. Splendid brilliant scarlet flowers. Small plants 15 to 25 cts.; larger, 50 cts.

RHIPSALIS.

Or, "Mistletoe Cactus." Very peculiar plants. Some have long, fleshy, whip-like branches, and white berries similar to mistletoe; some resemble *mesembryanthemums*, and some are mistaken for *epiphyllums*. The flowers are small, but produced in great abundance. Six sorts, 15 to 50 cts. each.

STAPELIA, OR "STARFISH CACTUS."

Very curious plants, with fleshy leaves and flowers shaped like a star-fish.

Variegata. Flowers buff-yellow, spotted maroon-red. 10 to 25 cts.

Grandiflora. A rare variety, with very large star-shaped flowers; color of a rich maroon-red, covered with long reddish hairs. 15, 25, and 50 cts. each.
Two other sorts. 15 and 25 cts. each.

SEDUM.

Six pretty sorts, 10 to 20 cts. each.

SEMPERVIVUM.

Barbatum. A beautiful and rare variety, with thick, furzy, light-green leaves, forming a very loose but regular rosette, deeply depressed at the center. The leaves are narrow at the base and broad at the ends, with a point in the center. The pores of the leaf are distinctly visible underneath the surface, which gives a fine effect. Small plants, 25 cts.; large, \$1.00 by express.

Canariensis. A rather loose rosette; leaves thick, dark green, lighter at base, with a tiny red edge, finely toothed, with occasional brown lines. 25 and 50 cts. each.

Two other choice sorts. The above are especially fine for house plants.

YUCCA.

Aloefolia Variegata. This handsome plant is always scarce and rare as it can only be propagated by cuttings at the expense of the mother plants; it grows with one stiff central stem, the long sharp-pointed leaves are closely set around the stem and are handsomely variegated, the center green, margin yellow and pale green; it makes magnificent specimens in California, growing to the height of six feet or more. Small plants 50 cts.; larger \$1.00 to \$5.00.

CACTI.

There is scarcely a month in the year that a fine show of flowers cannot be had from a collection of cacti. About the middle of February the Mamillarias put forth their dainty circles of flowers, and are soon followed by the Echinopsis with their large, satiny, funnel-shaped blooms, after which the brilliant Phyllocactus bursts into bloom. The grand night bloomers, *C. grandiflora*, *C. McDonaldi* and *Phyllocactus latifrons* commence blossoming in April. The Echinocactus comes on about the same time. All through the months of August, September and October, *C. triangularis* opens its magnificent flowers. So that with a collection containing a variety, cacti can be had in bloom nearly all the year. I will take pleasure in selecting large or small collections for customers who prefer to leave it to me. Choice collection of a dozen pretty varieties, sent by mail, \$2.00 to \$5.00; two dozen choice-varieties, \$5.00 to \$9.00. Extra large plants, prices on application.

ANHALONIUM.

Williamsii. The top of the plant is round, without any spines. Root long and turnip-shaped; a very curious cactus indeed, and extremely attractive; flowers pale rose. "Dumpling" and "Turnip" Cactus are names given to it. Prefers a sandy soil. Price 20 to 50 cts.

ASTROPHYTUM.

Myriostigma. (Bishop's Hood.) This, at a glance, appears to be scarcely a living plant; so regular, rigid, and unplant-like is its form, that one might imagine it had been carved from a piece of stone, beautifully spotted all over. The flowers, produced near the summit of the stem, generally several together, open early in the day, expanding on each succeeding day for nearly a week. Plants will also continue bearing flowers from June to September. 75 cts. to \$3.00.

CEREUS.

Triangularis. (Night bloomer.) One of the most curious of this interesting family. Outside it grows to immense proportions, and if planted near a dwelling the branches will flatten themselves against the side of the house, sending out long white roots on each side which attach themselves tightly until the stems become hardened, when they loosen and hang like heavy gray strings. The flowers are superb; immense in size, of a fine creamy white, with magnificent clusters of silky stamens and a large light yellow pistil. Blooming plants, 25, 50, 75 cts., and \$1.00 up to \$5.00 each. Cuttings, 10 to 20 cts.

Grandiflorus. This magnificent night-blooming cereus produces large flowers nearly a foot across, the sepals dark brown outside, yellowish within, the petals pure white. Flowers begin to open between 7 and 8 o'clock in the evening, and are fully open by midnight, beginning to fade in five or six hours. Of great beauty, with strong, sweet fragrance. 15, 50 cts. and \$1.00 each. Cuttings, 5 to 15 cts.

Macdonaldæ. Stems cylindric, creeping or climbing, branched, slender; night-blooming; flowers 12 to 14 inches across; sepals brown, red and yellow; petals delicate white. 15, 25 cts. and \$1.00 each.

Flagelliformis. Or "Rat-Tail Cactus." Very slender stems, about $\frac{1}{2}$ inch in diameter; of pendulous habit, fine for grafting on *C. colubrinus*; pretty in baskets. Bright, rosy colored flowers. 15, 25 and 50 cts. each.

Colubrinus. A tall, robust column-like cactus of very rapid growth. It bears innumerable beautiful flowers, with light pinkish brown sepals and creamy white petals that are delicately recurved. 25 cts. to \$1.00 each. Cuttings, 10 to 25 cts. each.

Splendens. A tall variety, resembling the above, but with flowers one-third larger; stem and sepals deep brownish red, petals creamy white, flowers funnel-shaped.
= Both of these cacti bloom at night and are fine bloomers. They are especially useful for grafting. 25 cts. to \$1.00 each. Cuttings, 15 cts.

Emoryii. Or "Velvet Cactus." A beautiful upright-growing variety, with light green stems, covered with shining, transparent golden spines of various lengths. The young growth resembles the prettiest green velvet, with a golden tint. It is very beautiful. The flowers are pale yellow and inconspicuous, but the plant is very handsome. Plants 25 cts. to \$1.00 each. Cuttings 10 to 25 cts. each.

Dr. Regal. One of the climbing varieties, resembling *C. grandiflorus*, only the flowers are larger. Cuttings, 10 cts. Plants, 15, 25 cts. and \$1.00.

Tortuosus. The stems of this plant are of a dark purplish black color, spines long and dark, except on young growth, then nearly red. A fine plant on account of its grotesque growth; from Buenos Ayres. 50 cts. to \$2.00 each.

Nyctacalus. A splendid night bloomer. 25 cts. Cuttings 15 cts.

Rostratus. A slender climber, with magnificent flowers like *Cereus grandiflorus* 25 to 75 cts. Cuttings, 10 cts.



CEREUS TRIANGULARIS.

EPIPHYLLUMS.

Or "Lobster Cactus." From November to March Epiphyllums, or "Lobster Cactus," are lovely to behold. Their exquisite, drooping fuchsia-like flowers are so profuse that a large plant resembles a miniature crimson fountain. There are many varieties, early, medium and late bloomers, so that they can be had in succession for months. Six fine sorts. Grafted plants, 75 cts., \$1.00 to \$3.00 each.

Truncatum. Fine rose-colored flowers, with a white throat. 20 to 50 cts.

Laneritum Alba. Lovely pink and white. 20 to 50 cts.

Violaceum. Violet-purple. 15 to 25 cts.

Superbum. Coppery red, white throat, edged and shaded rose; beautiful. 25 cts.

Sulphureum. Salmon-rose, white throat, lined and edged with deep rose. 25 cts. each.

"Gaertner's Cactus." Or "Easter Cactus." The flowers resemble in shape and color the Phyllocactus; they are of a dazzling scarlet, with white stamens and filaments. 50 cts. Cuttings, 10 cts. each, excepting the Easter Cactus.

MAMILLARIAS.

These are beautiful little plants, the spines embrace all the colors of the rainbow, while the flowers of many are large as well as brilliant, the seed pods (delicate colored berries) remain for many months, making them doubly attractive. They can be grown anywhere and in any kind of soil, if the pots are well drained.

Nivea. Most beautiful species, covered with fine white spines; rare and beautiful. Pretty flowers, follow by red berries. 25 to 50 cts. each. Rare.

Pulsilla. Very dainty, with soft silvery spines. 15 to 25 cts.

- Macromeris.** Large tubercles, and large pink flowers; very showy. Grows in clusters. 25 to 75 cts.
- Micromeris.** A charming variety, with fine white spines, closely set, resembling a plush-covered button. 25 cts. each.
- Minima.** Delicate little spines of rapid growth; large yellow flowers; spines soft and pretty. 15 to 25 cts.
- Lasianantha.** A lovely little cactus, covered with spines resembling feathers; one of the most curious of all cacti. 25 to 50 cts. each.
- Goodrichii.** Fine gray plant, with fine hooked spines; flowers yellowish, with red midribs, followed by very handsome red berries. 25 to 75 cts. each.
- Supertexta or Elegans.** This plant is deserving of its name, being covered with white spines; the four central spines protruding evenly all over the plant, make it one of the most beautiful of the Mamillaria, and should be in every collection. 50 cts. to \$1.00 each.
- Spinosissima.** Has the appearance of a round brush. The fine hairs are of an attractive reddish yellow color, and the plant is a good grower. 50 cts.
- Candida.** An exceedingly beautiful plant with a profusion of soft, delicate, white spines, often assuming a decided *pink* shade; flowers flesh color and large. 50 cts.
- Applanata.** Large plants, bearing pretty flowers, followed latter by coral-red berries, which are more than an inch in length, and remain in bloom on the plant for nearly a year; interesting. 50 cts.
- Erecta.** Upright grower, single stems, spines amber color; flowers yellow; one of the most showy mamillarias. 50 cts.
- Nuttalli.** This hardy species is found in many parts of the United States, and is perfectly hardy. It bears large flowers in profusion, which are of a greenish yellow color. Plants made large masses in a short time; a very good sort. Price, 35 to 75 cts.
- Uncinata.** The spines are all turned downward, strong and sharp; flowers white, striped with purplish brown. Price, 50 to 75 cts.
- Tuberculosa.** A pretty and well-defined species of the mountain region. Stems, 2 to 5 inches high, often with globose branches at the base. Flowers very pale purple, about 1 inch in diameter; berry oval, elongated, and sometimes almost cylindrical, red; an odd sort. Price, 25 to 50 cts.

ECHINOPSIS.

This group of species includes a number of plants at one time considered to be related to the Echinocacti, but which are readily separated from that genus by the long tubular or funnel-like flowers produced from the side of the stem, instead of near the summit, as in the Hedgehog Cactus.

- Eyriesii.** One of the best known of the species, and one of the most beautiful when in flower. Stem very regularly globular. Flowers six to eight inches long, like a curved funnel, and four to five inches across the mouth, formed by numerous tapering white petals spreading symmetrically. The delicious fragrance possessed by the flowers is very powerful and most pleasing. 25, 50 cts. to \$1.00 each.
- Mulleri.** One of the most beautiful and valuable Cacti, because of its large, elegant, satiny pink flowers. It is a splendid bloomer, and the flowers are very large and beautiful. It grows very rapidly, and blooms the second year, beginning in early spring and blooming at intervals for months. 15, 25, 50 cts. and \$1.00. \$1.50, \$2.00 and \$3.00 per doz.

ECHINOCEREUS.

Easily characterized by the regularity and beauty of spines, the dwarfish, cylindrical stems, and brilliancy of coloring. The flowers last for a long period, the plants are profuse bloomers, and comparatively hardy and easy of culture. The fruits are mostly edible, of a pleasant acidity, often assuming rich tints that render them quite ornamental.

- Berlandieri.** A low-growing recumbent plant, slender stems, four-angled, with short spines. The sweetly fragrant flowers are nearly four inches across, bright purple and showy. An elegant species. 30 cts.
- Cespitosus.** The beautiful Lace Cactus, with ivory-white network of spines. A perfect gem. 15 to 50 cts.
- Regidisimus.** The "Rainbow Cactus," so widely advertised, is noted for the differently colored spines, which range from creamy white to deep crimson, usually in alternate rings around the plant. This network of brilliantly colored spines renders the plant ornamental at all times, but when crowned with a circlet of large crimson flowers, four inches across, with a white center, the plant is truly gorgeous. 25 cts. to \$1.00 each.

- Enneacanthus.** Fine plant, with beautiful, large, reddish-purple flowers. 25 cts. to \$1.00 each.
- Pectinatus.** One of the prettiest and best bloomers; pure white spines and brilliant purplish-pink flowers. 15 cts. to \$1.00 each.
- Englemanni.** A fine sort, with handsome spines and large, beautiful flowers, very brilliant. 35, 75 cts. to \$1.50 each.
- Dasycanthus.** The geographical range of this species is quite limited, hence it requires a great deal of trouble to procure it. Stems, 5 to 10 inches high and 2 to 4 inches in diameter, densely covered by gray or reddish spines. Flowers very large and numerous, measuring 3 inches or more across; very showy, externally greenish yellow, with center of sepals red; petals bright yellow. 20, 35, 50, 75 cts. each according to size.

ECHINOCACTUS.

- Capricornis.** Very distinct, as though carved out of gray wood, spotted with white, beautiful, large yellow flowers always rare. 35 to 50 cts.
- Poselgerianus.** Very rare; plant bluish-green, with black spines, flowers delicate purple. 35 to 75 cts. each.
- Viridescens.** A rather low-growing Echinocactus, usually 4 to 5 inches high, 9 or 10 inches in diameter, and generally simple, but sometimes (only when wounded or burned over by fire) they branch from the base and form quite a pile of prickly balls. Flowers greenish; 1½ inches long. The spines are beautiful when wet. 25, 50 cts. to \$3.00.
- Coptogonus.** Wavy ribs, very curious, flowers freely, very handsome. 75 cts. to \$1.50 each.
- Cornigerus.** The broadest spined Echinocactus known; color blood-red; admired by every one that sees it; fine bloomer. 50 cts. to \$1.00 each.
- Scheerii.** An elegant little plant, 1½ to 2 inches in diameter radial spines, straight or recurved, ivory-white, central spines black, an inch long, hooked. Flowers green, an inch long. 25 to 50 cts.
- Lophothele.** A lovely plant. Tubercles prominent, quadrangular, resembling those of some Mamillaria; spines few, flat, soft, strongly recurved, covered with a silvery down. Flowers two to three inches in diameter, pale sulphur-yellow, with a deep band of maroon at base of the petals; flowers at intervals throughout the year. 50 cts.
- Leonti.** This extra fine species blooms in August and September. Flowers inches in length; petals lemon-yellow, with a brownish tint along the midrib. Amateurs always consider this one of the most valuable cacti, on account of its numerous and beautiful spines; an extra sort, indeed, which is the pride of every collector, and if a beautiful plant is wanted this is the one to get; fruit almost the size of a lemon. Plant perfectly hardy. 50 cts. to \$3.00 each.
- Texensis.** Very low, cushion-like plants, with but few strong spines; flowers yellowish rose, followed by large brilliant red seed-pods, extremely ornamental; most attractive cactus we have, both in appearance and bloom. 25 to 50 cts. each.

OPUNTIA.

- Microdasys.** The prettiest of all opuntia, with handsome, pear-shaped leaves, of a fine green, dotted with tufts of small golden spines that resemble tufts of velvet. The contrast is very beautiful. 25, 50, 75 cts. and \$1.00 each. Cuttings, 10 to 25 cts. each.
- Monacantha Variegata.** A beautiful plant, the pear-shaped points of which are beautifully variegated white and green; young growth pink. 25, 50 and 75 cts. each. Four other opuntias, cuttings, 10 to 20 cts. each. Six other choice varieties, cuttings, 10 to 25 cts. each.

PELECYPHORA.

- Pectinata.** Delicate little species resembling *Mamillaria micromeris*; rare in collection. 75 cts.

PHYLLOCACTUS.

The most gorgeous and satisfactory of all the cactus family. A large plant will frequently carry fifty to a hundred buds and blossoms. The leaves are flat or triangular in shape, of various shades of green, sometimes shaded with dark red. The plants attain a height of four or five feet, and from every eye of their severely plain and unattractive leaves come forth suddenly and mysteriously small buds, which develop into large flowers five or six inches across; often these flowers almost over-

lap each other, and they are of such wonderful brilliancy as to fairly dazzle the eyes. Some are clear scarlet and cup-shaped; others are deep crimson, with throats of metallic purple and long silken stamens, either pink or white. Sometimes the pollen is pink; on others white. Then there are pale yellow, pink, and cream-colored flowers, exquisitely lovely in form and color. The Phyllos begin to bloom in February, and come on during the spring and summer months, the time of blooming depending upon the varieties. If I could grow but one class of cactus, Phyllos would be my choice. The secret of having blooming plants is to take cuttings from wood that has bloomed; it will then flower at the proper time the next season.

Ackermanii. One of the handsomest. The flowers are 6 to 8 inches across, of a rich satiny scarlet or crimson, produced in profusion; well named the King Cactus. 15, 25, 50 and 75 cts.; cuttings 10 cts.

Anguliger. One of the most distinct of all the Phyllocacti. The deep notches are cut all along the leaves like the teeth of a large saw. The flowers are composed of a curved tube 6 inches long, spreading out at the top to the width of 6 inches, and surrounded by a whorl of pure white petals. A winter bloomer of the most delicious fragrance, very rare. 20, 50 and 75 cts.; cuttings, 10 cts.

Latifrons. The "Queen Cactus" is the largest of the genus, growing 8 to 10 feet high, robust in habit; the stem 4 to 5 inches broad, flat, crenated; night-blooming. The flowers a beautiful creamy white; sepals and tube of a reddish hue. 25 cts. to \$1.50; cuttings, 5 to 20 cts.

Wrayi. A grand flowering sort; flowers 5 inches long by 8 inches across; brown outside, yellow within; petals yellowish white; fragrant when first open. 15, 25 cts. to \$1.00; cuttings, 10 cts.

Jenkinsoni or "Case Knife" Cactus. One of the oldest varieties, with flat stems and numerous handsome light scarlet flowers, about 3 or 4 inches long. It blooms when very small, and from every eye. A very satisfactory variety. 10, 20, 50, 75 cts. and \$1.00 each; cuttings, 5 to 15 cts.

Alice Wilson. Very large, elegant scarlet flowers, exquisitely shaded metallic purple. Small blooming plants 50 and 75 cts. each; cuttings, 25 cts.

Orange Gem. Resembling the above. The foliage has a rich yellow tint. A grand sort. 50 cts.; cuttings, 25 cts.

Refulgens. Most beautiful flaring scarlet flowers, shaded metallic purple. 50 cts. each; cuttings, 25 cts.

Speciosissimus. Embracing all the colors of the rainbow. 25, 50, 75 cts. and \$1.00 each; cuttings, 10 cts.

Crenatus. Extra fine; petals clear cream color, sepals brownish-green. Very free bloomer; strong, robust, upright grower; 25 to 50 cts.; cuttings, 10 cts.

Kampmanni. Flowers exquisite shape, large, purple carmine. 50 cts.

Kermesinus Magnus. Scarlet flowers; 8 to 12 inches across. Small plants 50 cts. charming. 25 and 50 cts.; cuttings, 10 cts.

Tettanus. Inside violet, outside purple; very showy and rich in appearance. 50 cts.

Albus Superbus. Extra large white flowers. 75 cts.

Phyllanthoides. Bright rose, streaked with white, shaded dark red. Small plants, 75 cts.

Alexandrina. Beautiful violet color, extra large fine flowers. 50 cts.

Bollwilleriana. Carmine-scarlet flowers, 5 inches in diameter; a good grower. 50 cts.

I can furnish fine specimens of many cacti; among others, grafted plants of various kinds, which will be ready in April. I have a magnificent stock of Colubrinus, Triangularis and Grandiflora, for grafting, etc. Can furnish rare collections to order. Collection, my selection, 8 kinds, small plants, \$1.00; 18 kinds ditto, \$2.00; 30 kinds small plants, \$5.00.

PILOCEREUS.

Senilis. "Old Man Cactus." A cylindric-stemmed plant which in Mexico attains a height of 20 to 25 feet, with a diameter of 10 to 12 inches. The stem is furnished at very short distances with tufts of white spines, surrounded with numerous long, flexible, white hairs, resembling the gray hairs of an old man's head, but curious to say, the young plants usually have more white hair than old ones. Small plants, 3 to 4 inches, 50 cts. each; 4 to 6 inches, 65 cts. each; specimens, 8 to 10 inches, \$2.50.

I have made every effort to name the Caeti and Succulents listed correctly, but as there is no authority to seek for information, it is almost impossible to be positive of all the varieties. There are so many varieties of Phyllos bearing resemblances to each other it is difficult to always identify.

PERESKIA.

Aculeata. The Barbadoes Gooseberry or Bald Apple. A cactus with leaves like an orange tree, excellent and mostly used for grafting, and also for growing on rafters in a greenhouse. Planted direct in the ground it will make prodigious growth in a season. When it attains height and strength many different kinds of cacti can be grafted on it, and curious effects produced. Strong cuttings for grafting 10 cts., 60 cts. per doz.

CACTUS SEED.

I offer some very choice cactus seed which can be easily grown by any one having patience and enthusiasm; these seeds germinate readily and are interesting in all stages.

They should be planted in boxes filled with sand, and kept covered with glass until plants are well established; they should never be allowed to become dry, nor ever be overwatered.

Very Choice Hybridized Seed of cereus and phyllos mixed. Small pkt. 35 cts. 2 pkts. 50 cts.

Cereus Triangularis. 15 cts.

Colubrinus. 15 cts.

Mamillarias. Choice mixed, 15 cts.

Echinocereus. Choice mixed, 15 cts.

Echinocactus. Choice mixed, 15 cts.

Epiphyllum. Choice mixed, 25 cts.

Phyllocactus. Hybridized, 50 cts.

Cereus Colubrinus. Hybridized, 25 cts.

Cereus Tortuosus. 20 cts.

Very Choice Mixed. All sorts, 15 cts.

All of the above varieties for \$1.75.

Echinocactus Polyacistus. A new variety with beautiful spines of a lovely pinkish purple. Very rare. 25 seeds, 25 cts.; 10 seeds, 15 cts.

CACTI FROM SEED.—It is a delight to watch their growth from the time that the seed sprouts, until it develops into a spiny ball or column, and sends out its satiny blossoms. Cactus seeds are all sizes; from the size of a small pea to a grain of mustard seed. They should be planted in pots, half filled with potsherds or gravel, with a couple of inches of sand. The seeds should be planted on top of the sand, and well watered and kept covered with glass. They generally sprout within ten days or a month. It is surprising to see the size of a plant that has come from a very small seed. They are beautiful little things; the most delicate colors, pale green, soft pink or pale yellow, and pure white; round or oval, dotted over the surface of the ground, resembling gems.

Giant Night-Blooming Cereus.

(TRIANGULARIS.)

One of the curiosities of Southern California is the monster Cactus *Cereus Triangularis*, which clammers over the corner and on to the roof of our home in Ventura. The first few years of its growth, it was content to wander over the ground around the house, but about ten years ago it became ambitious and began its journey skyward; it starts from the ground with three stems, the largest of which measures six inches in circumference; they branch 2 and 3 feet from the ground, soon after which the branches become so numerous and interlaced, that it is impossible to count or follow them. They are very large and heavy and triangular in shape, measuring eight inches diameter; the plant has had its own way from the beginning and is a perfect exemplification of the old adage, "Given an inch and take an ell," for it has almost entirely taken the L of the house, and bids fair, if not disturbed, to take possession of the main building as well. The great branches flatten themselves against the wood, sending out as they go innumerable yellow adventitious roots sometimes nine feet long, oftentimes forming a network like lace; by these, it clings to the wood until the branches are hardened, at which time it becomes independent; then the roots loosen, turn grey and hang like long strings. Some of these roots have of late grown through the woodwork and plaster, and found their way into the upper rooms. The branches are massed around the verandas, under the cornice and on the peak of the roof, where they stand up from the other side of the house like a pair of large deer horns. In the branches are initials, cut by the children of the family several years ago, which are still plainly visible; for years innumerable families of linnets have seen the light of day and have gone on their way rejoicing, from the great cactus; occasionally their peace has been disturbed by an adventurous cat, that has scaled the labyrinth of branches in search of a dainty tit-bit.

About the first of July, the large buds make their appearance, and the magnificent flowers come into bloom soon after; they begin opening at five in the evening and

by eight are fully expanded; they measure twelve inches from stem to tip of petals; the flower stems are covered with large yellowish green scales; the sepals are a greenish yellow, the petals creamy white, an inch across; they have a satiny sheen, that is very beautiful; the throat of flower is lined with a mass of silken stamens, while lie like a skein of floss on one side; lying in them and rising above is the pistil, surmounted by a velvety star of greenish yellow, making a fine contrast.

All through the summer and fall months, these exquisite silken blossoms come and go; on days when the sun is hid, they often remain open until noon, and have been taken at a distance for white gulls, by strangers.

As one gazes at this huge mass of tangled branches and grey strings, he can but marvel at the mystery of the plant, for mysterious is the coming forth each year of such exquisite beauty from an exterior so rugged and unpromising.

I will send, postpaid, a large cutting 12 inches long of this cactus, that will bloom the first year, and some of the long grey strings, for 50 cts.; small, 25 cts.

POT POURRI LA FRANCE.

This delightful pot pourri for rose jars, is composed principally of the petals of that sweetest of all roses the La France, to which is added delicious spices and odors, making a compound that rivals in fragrance the "perfumes of Araby." If the rose jar is open for a few moments the room will be filled with its delightful odor, at other times it should be kept tightly closed. 50 cts. per oz., 3 oz. \$1.25.

HOUSE PLANTS.

There is nothing more satisfactory for a house plant than *Aspidistra lurida*; it is very showy and will stand for months in any part of the house, requiring only an occasional watering and sponging of the foliage; the two varieties of New Zealand Flax make very stately plants for the house. Palms and *Dracenas* are also invaluable for this purpose. *Begonias* are also very satisfactory; a fine specimen of my new tree *Begonia*, when grown in a bay window, where the light can shine through the beautiful leaves and exquisite flowers, is lovely beyond description.

Hanging Baskets, Window Boxes and Rustic Pots.

The window boxes and pots are made of the bark of the Fan Palm, and are very pretty and effective. I furnish these filled with plants, at reasonable prices. Hanging baskets with plants from 75 cts. to \$3.00 each.

Window Boxes. Very pretty ones can be made of boxes covered with rice matting, or art matting banded with bamboo, or with bark of the California Fan Palm, banded with stems of the palm leaves. I furnish bamboo, and palm bark for the purpose, or boxes made up on application.

Great care should be exercised in setting out plants. Many choice things are lost by not being planted firmly in the ground. Never set out a plant when the soil is too wet, or it will pack; it should be mellow and crumbly. The roots of plants should be spread carefully if without soil; if balled, they should be loosened a little around the ball to induce them to grow outward. After pulverizing the soil around the plant, press it firmly with the foot, after which water thoroughly and deep. When the water has settled around the plant cover with dry soil. Watch the plant carefully until well established and see that the soil does not become porous through evaporation and the air dry up the roots. Small plants should be carefully shaded till established.

When plants from pots are set in the ground, the outer roots should be loosened to grow into the new soil, which, if packed against a ball of matted roots, will prevent growth and cause the plant to die slowly.

Everyone who cultivates a garden should have some favorite flower, and bring it to its highest state of perfection; learn how to hybridize, and bring into existence new varieties of the old favorite.

It is a very pretty idea to have a little white garden off by itself, where white flowers are cultivated only, and if there is room and time, a pink, red, or blue bed in proximity will add greatly to the effect.

ASPARAGUS PLUMOSUS NANUS. I furnish cut strings and sprays of this beautiful decorative plant. See page 48. Sprays 15 to 18 inches long, 75 cts. per doz., \$5.00 per 100; 3 to 15 inches long, 40 cts. per doz., \$3.00 per 100; 5 to 6 inches long, \$1.00 per 100. Beautiful strings from 20 to 30 cts. per yard, according to the length of sprays. Strings are from 5 to 8 feet in length. These are very beautiful for bouquets and table decorations, and keep their beauty for months; handsome for festooning over pictures.

GRAND NEW ESCHSCHOLTZIA:
"GOLDEN WEST"

GORGEOUS

BEYOND

DESCRIPTION.

