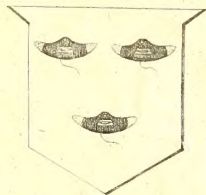




ROBERT JAMES SHUTTLEWORTH B.S.Q.



108
1799
1799

Esper, Eugene J. B.

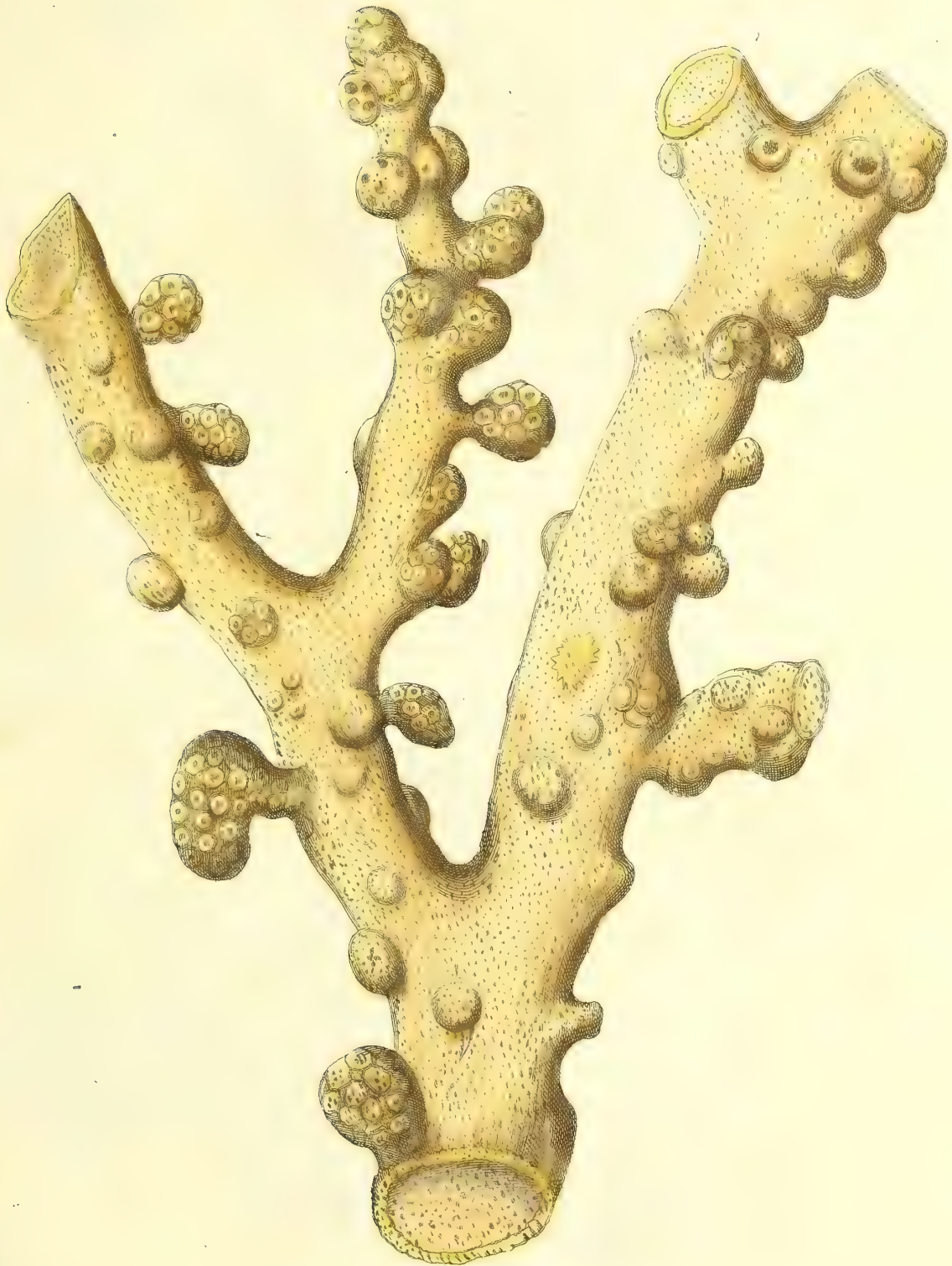
Die pflanzliche Welt in Abbildungen

Atlas

QL
376
E77
1791
C.1
L. 118
S. 118



Alcyonium arboreum.
Linn. *Sp.* 1. Pall. *Sp.* 3.

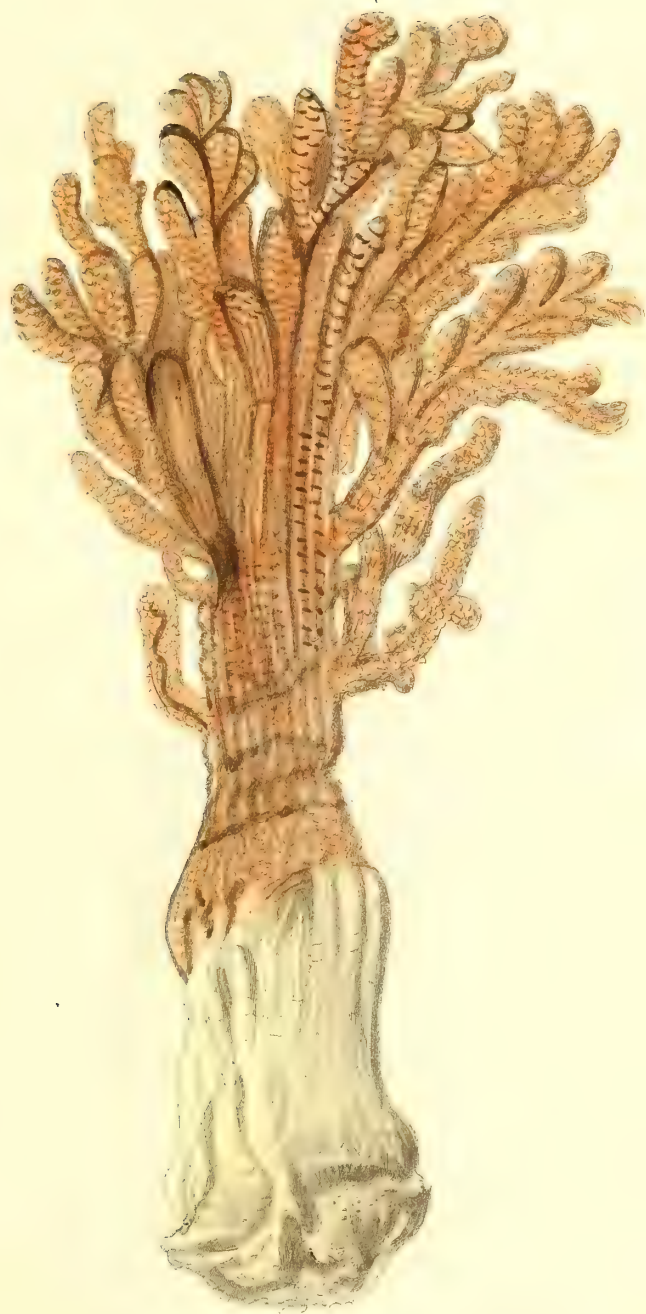


Alcyonium arboreum .
album .





Truncus radicalis Alcyonii arborei.



Alcyonium exos, Linn sp 2.
Alcyonium palmatum Pall. 224. sp. 4.



Alcyonium spongiosum.

Nögel sc.



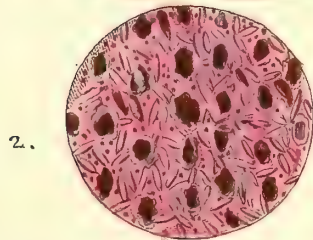
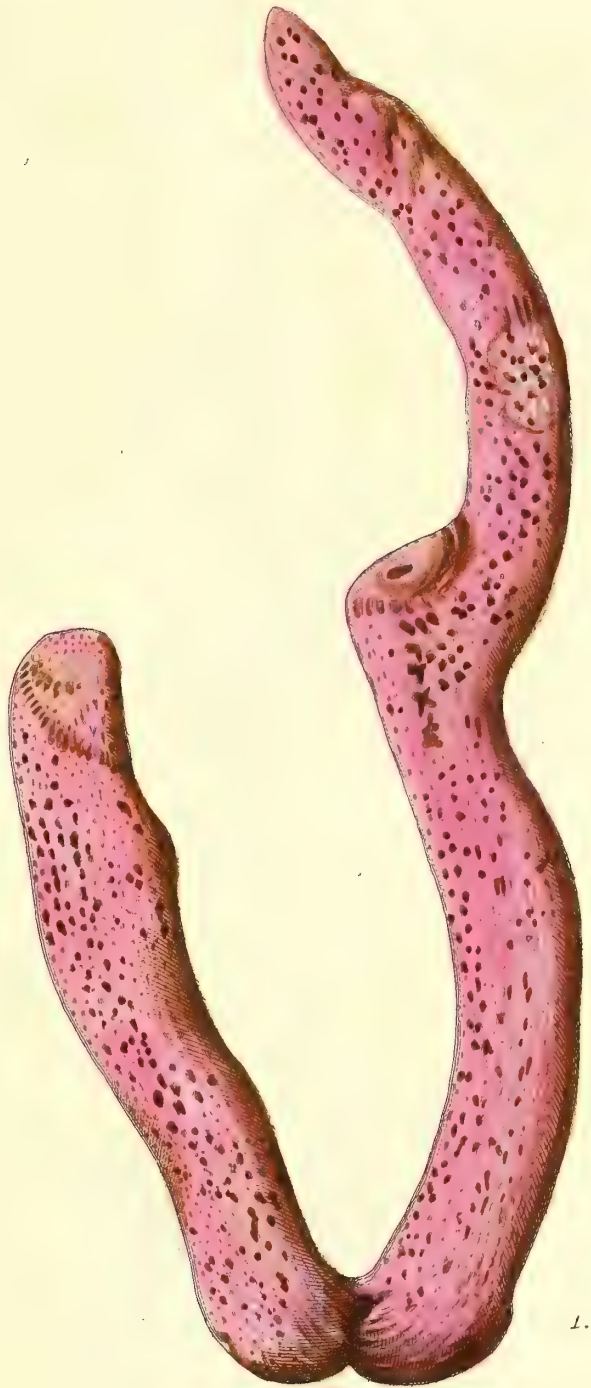
fig. 2.



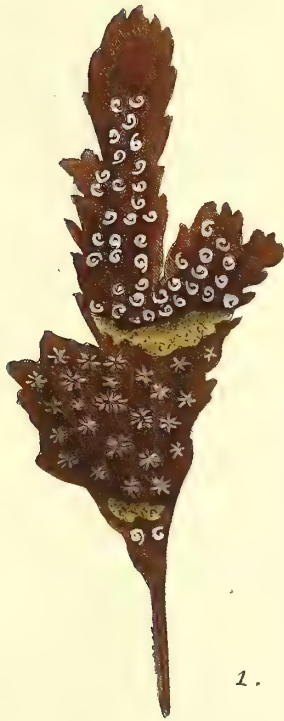
fig. 2.

Alcyonium truncatum.

Nogel. sc.



Alcyonium asbestinum.
Pall. nr. 200. (Sp. 1.)



1.



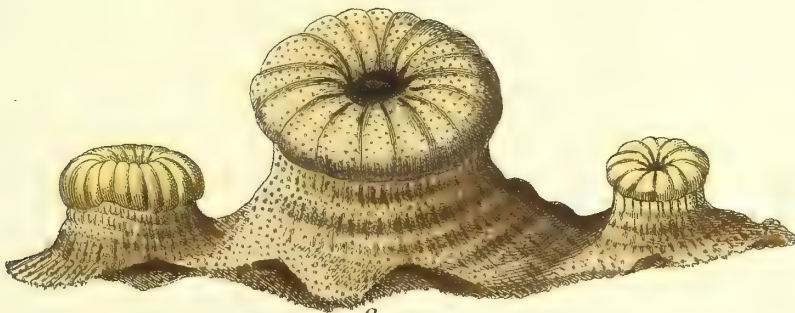
2.

Alcyonium Schlosferi.
Liui: sp. 6. Pall. nr. 200. (sp. 9.)

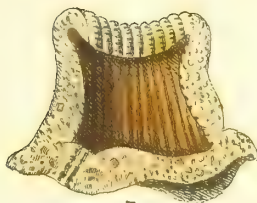
1000



1.

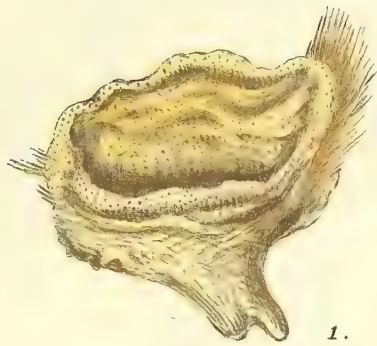


2.

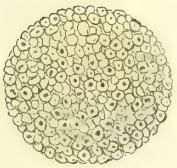


3.

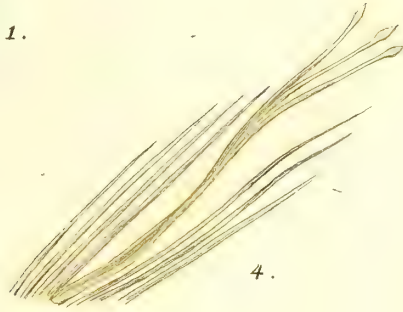
Alcyonium mammillosum.



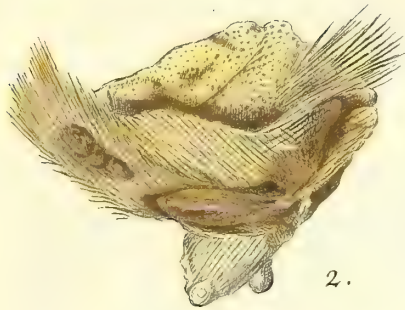
1.



3.



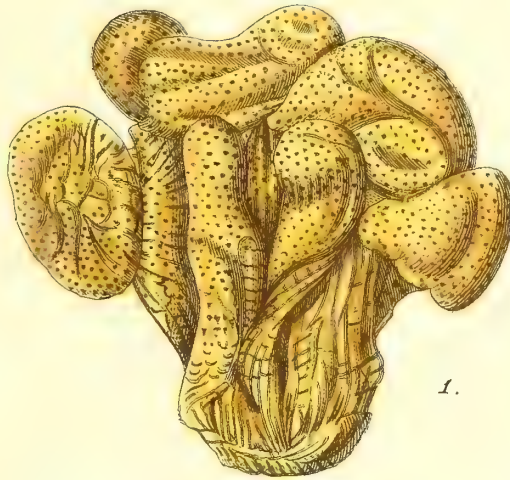
4.



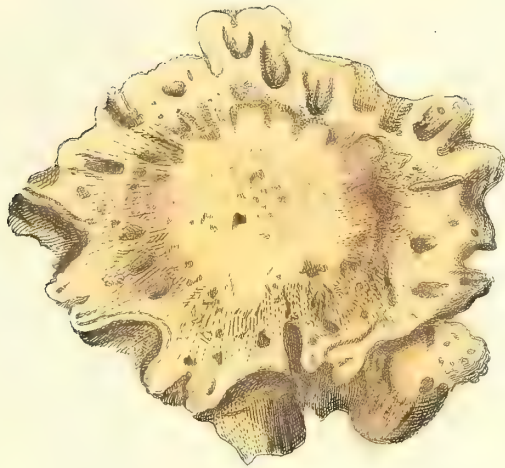
2.

Alcyonium Bursa.

Pall. nr. 206. (Sp. 7).



Alcyonium Pulmo.



1.



2.

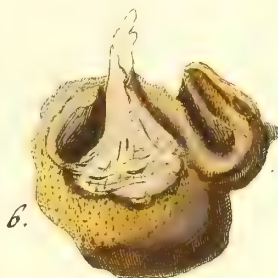
Alcyonium radiatum.



Aleyonium tubulosum.



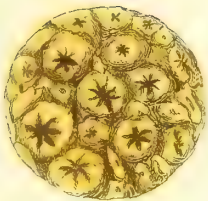
Alcyonium bulbosum.



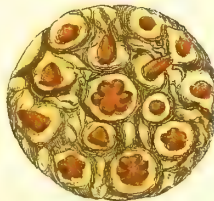
Alcyonium tuberosum.



1.



3.



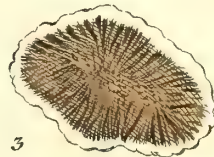
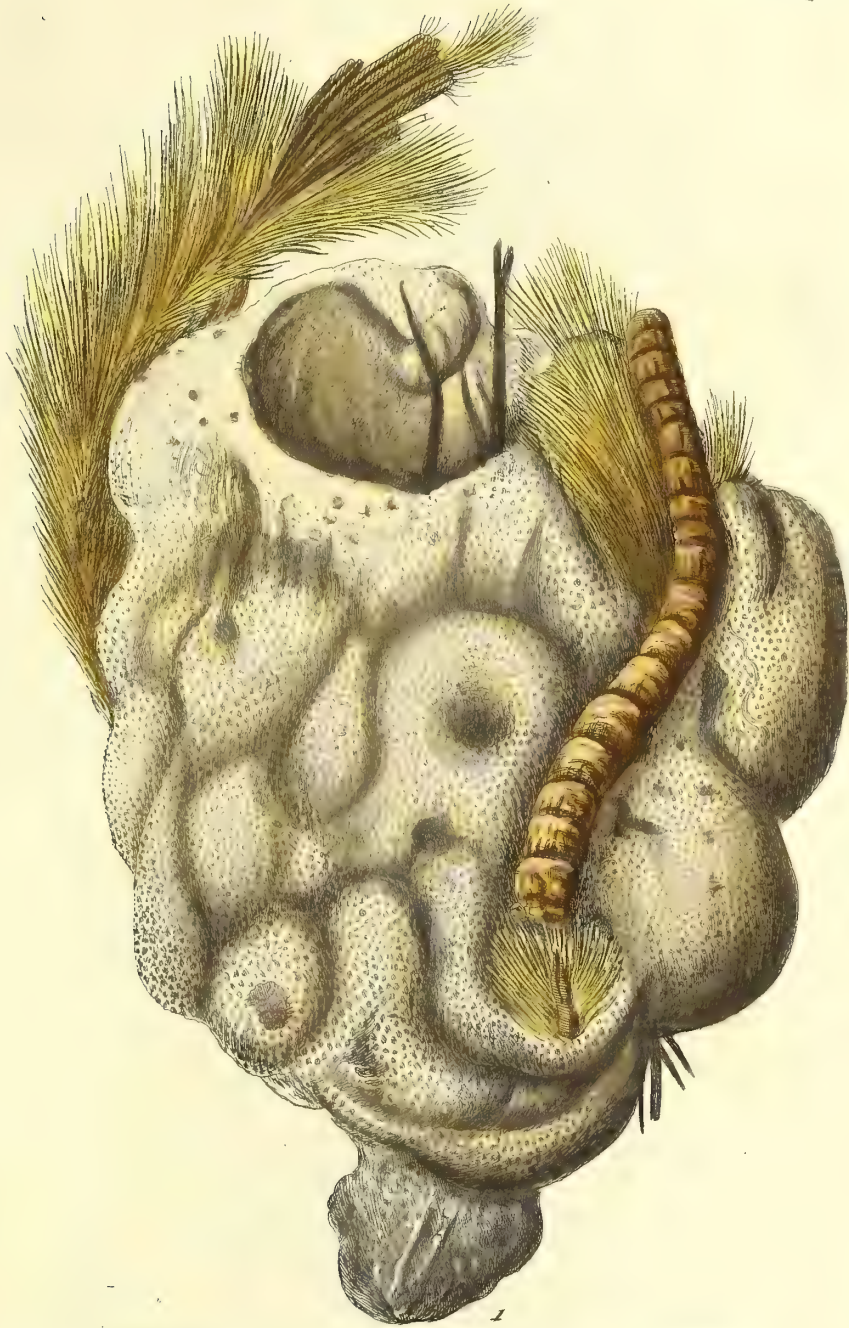
4.



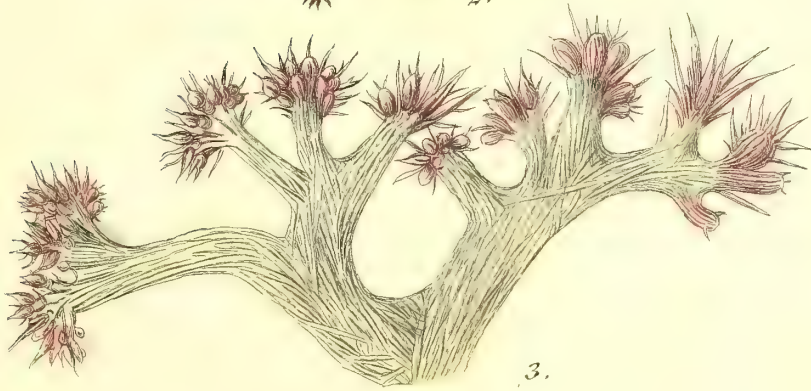
2.

Alcyonium laciniatum.

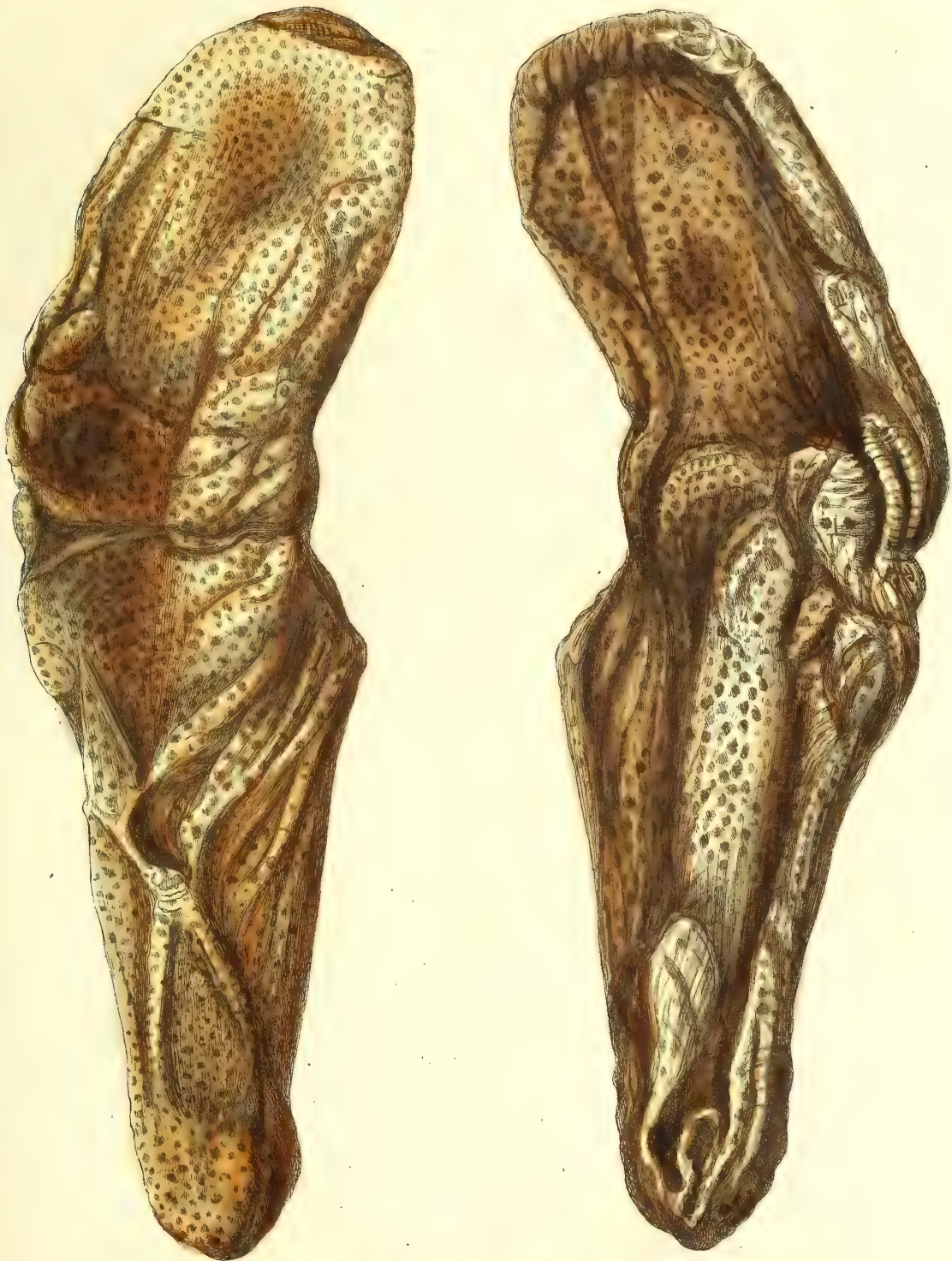




Alcyonium incrustans.



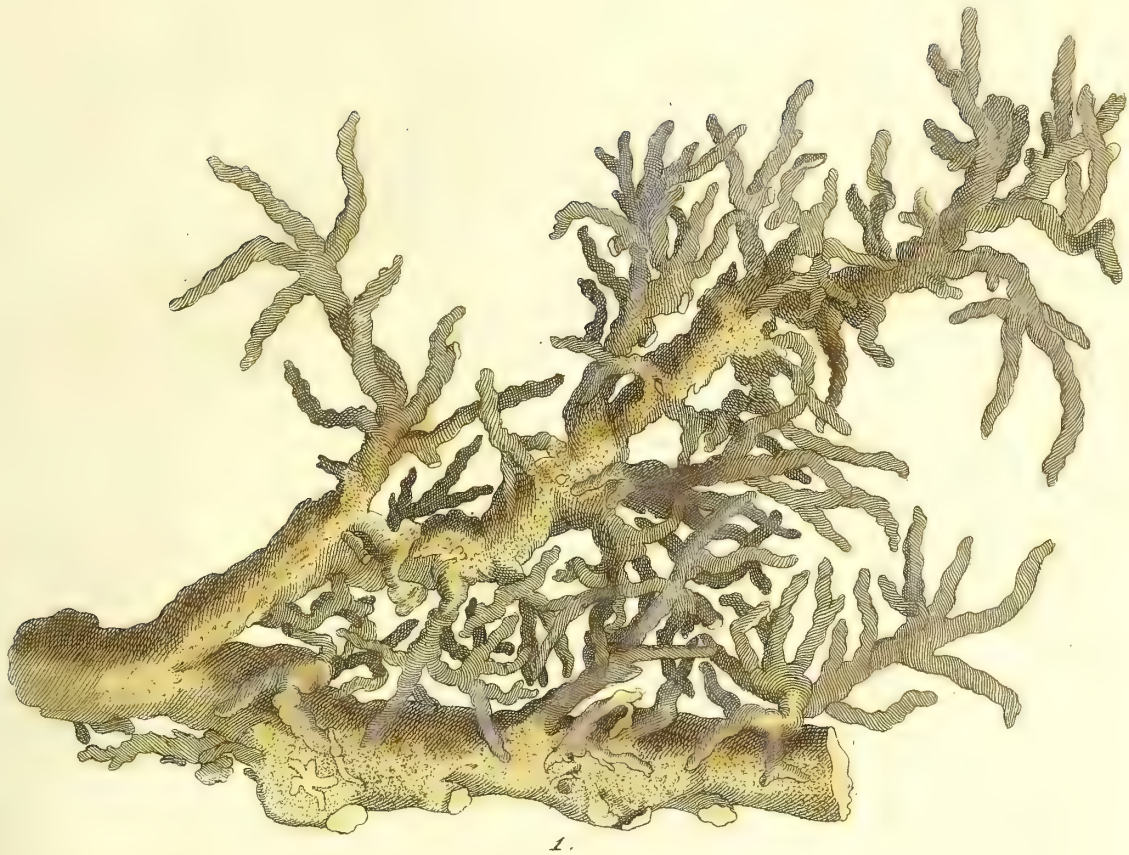
Alcyonium floridum.



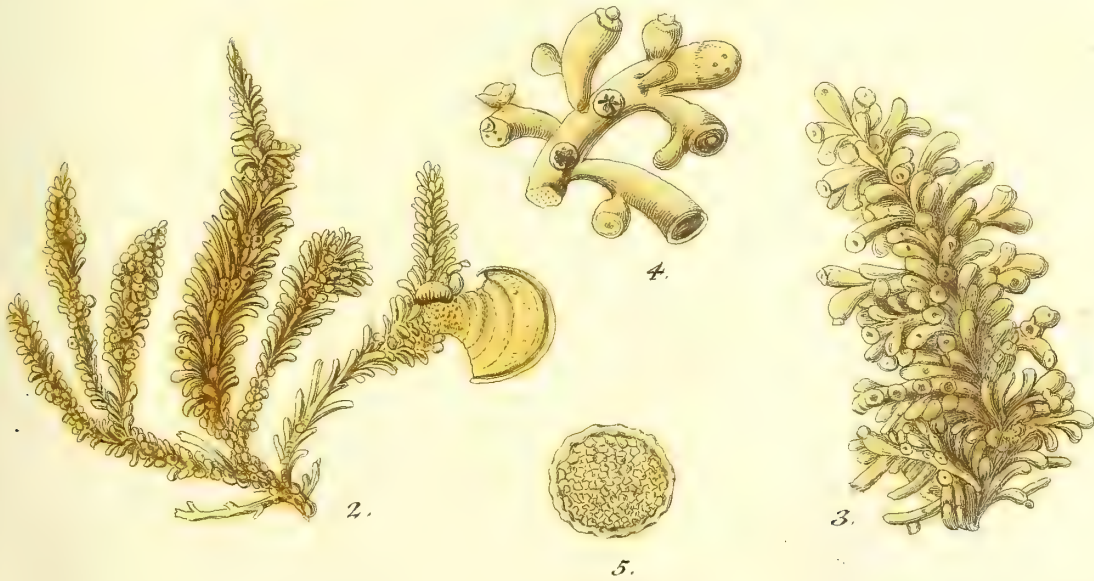
1.

2.

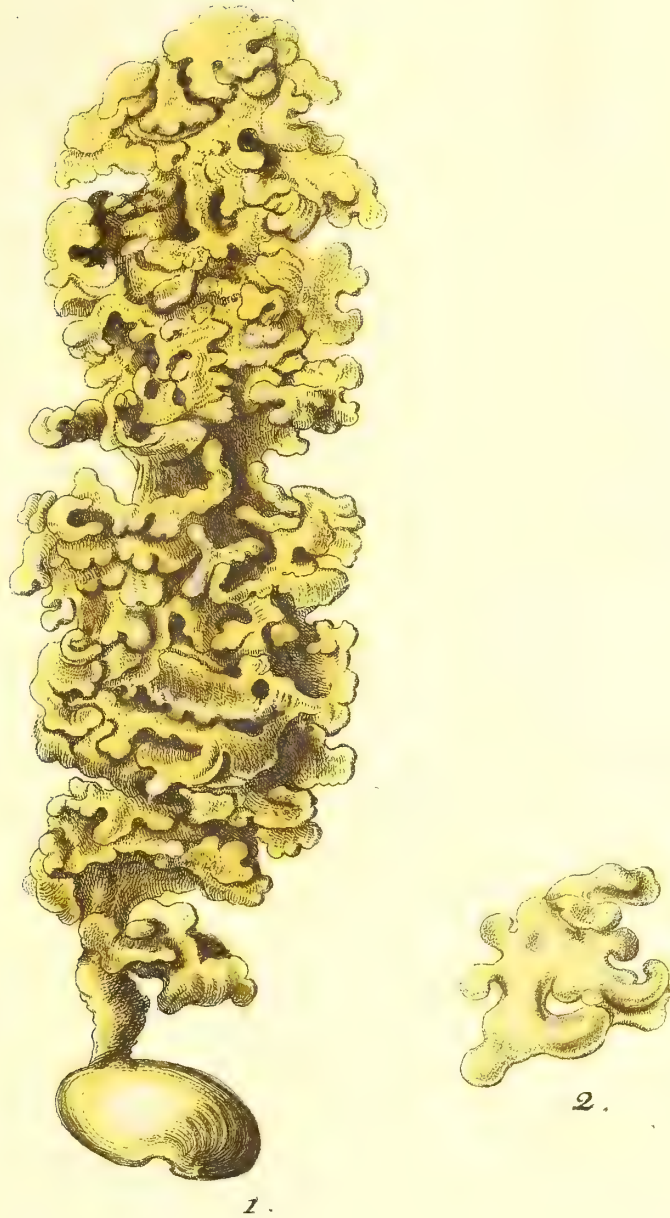
Alcyonium coriaceum.



1.



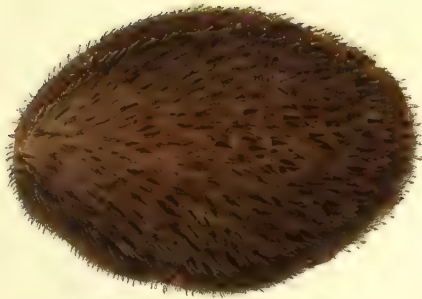
Alcyonium gelatinosum.
Linn. *Sp.* 11. Pall. *nr.* 207. Sp. 8.



Alcyonium gelatinosum.



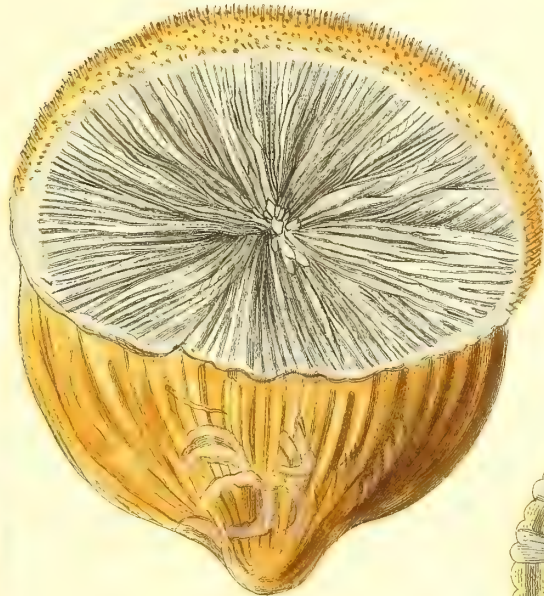
Alcyonium molle.



1.



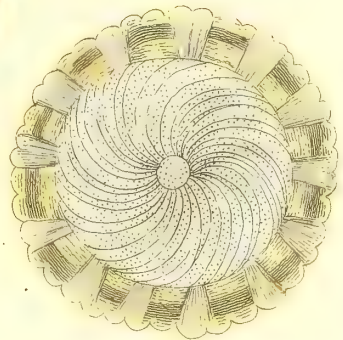
2.



3.



4.



5.



6.



7.



8.

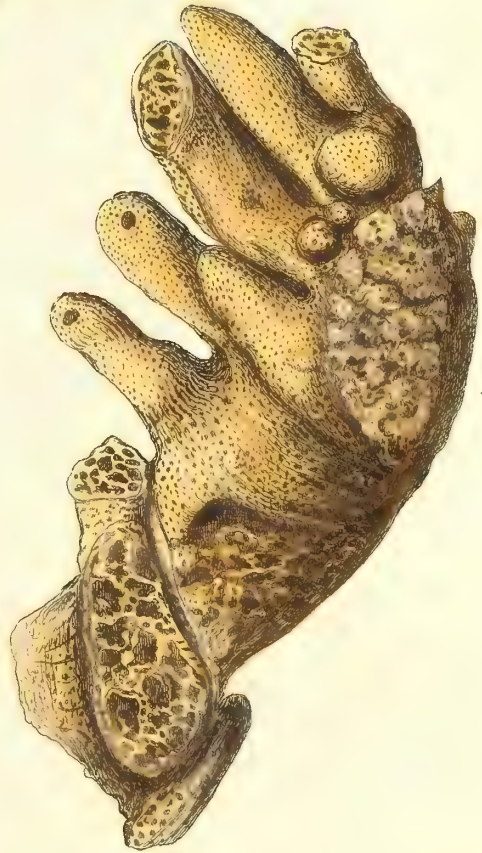
Aleyonium Lyncurium Linn. *sp.* 7. Alc.
aurantium Pall. nr. 210. *sp.* 11.



Alcyonium Ficus.
Linn Sp. 10. Pall. nr. 209.



1.

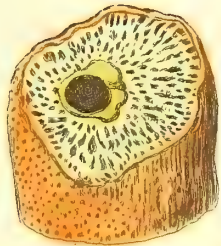


2.

Alcyonium Manus diaboli.
Var. 1. 2. Linn. XII. sp. 12.



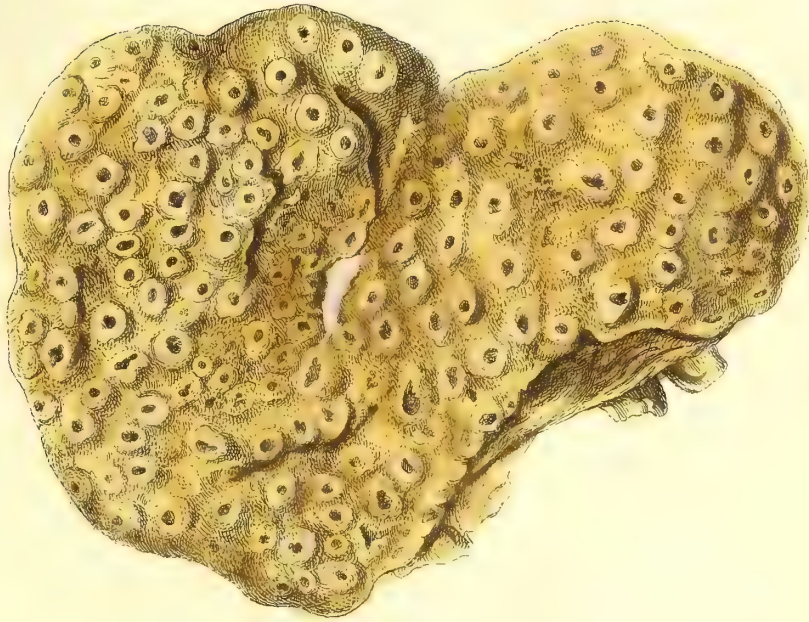
1.



2.

Alcyonium Manus diaboli.

Var. 3.



1.



2.

Alcyonium tuberculatum.



Alcyonium granulatum.



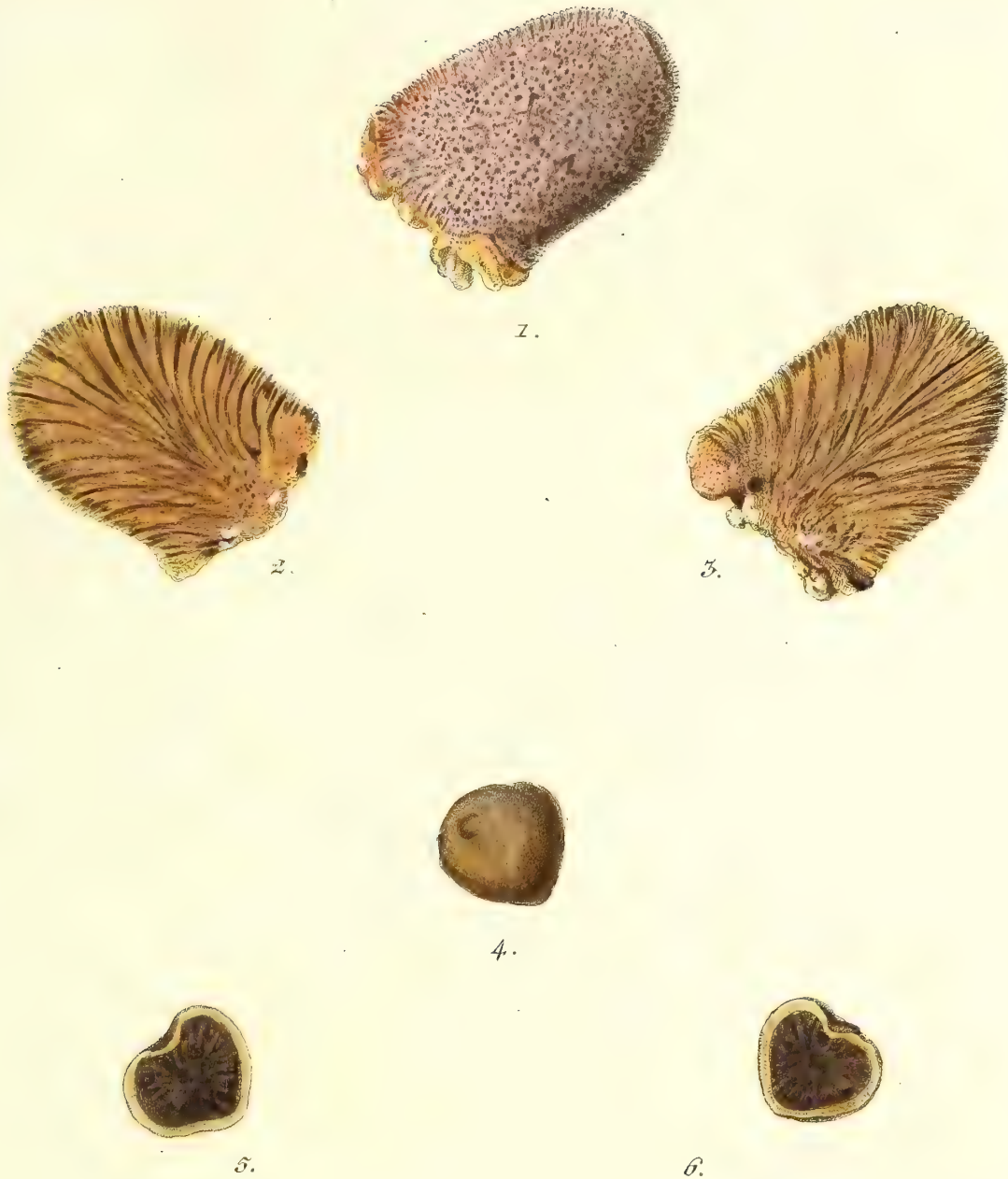
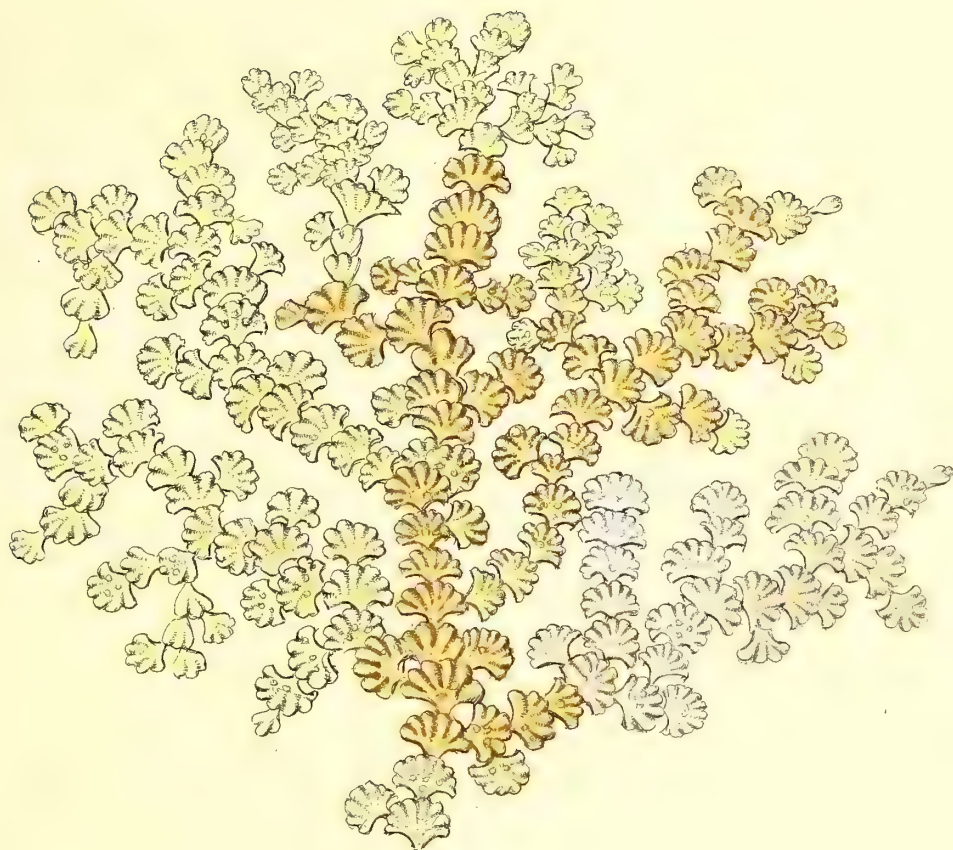
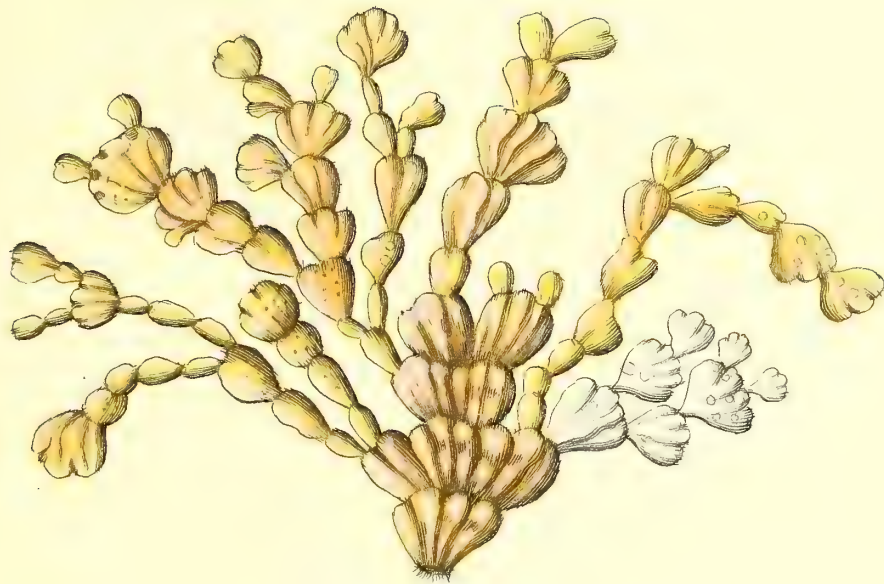


Fig. 1. 2. 3. *Alcyonium Cydonium*.
Linn. sp. 9.

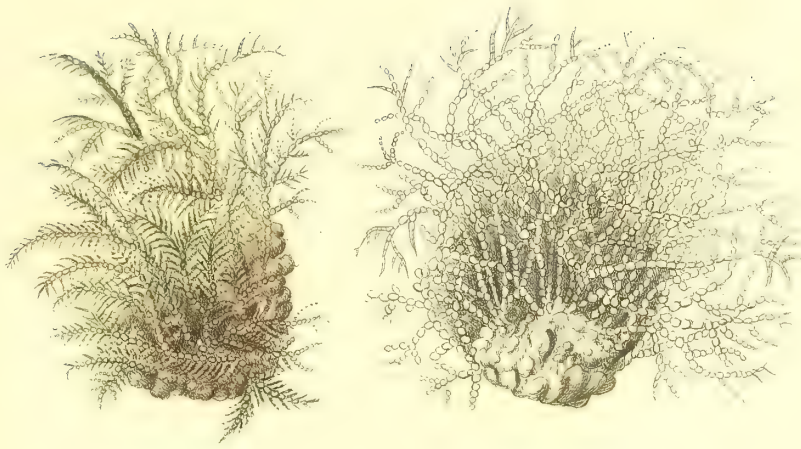
Fig. 4. 5. 6. *Alcyonium Buerfa*. Linn.



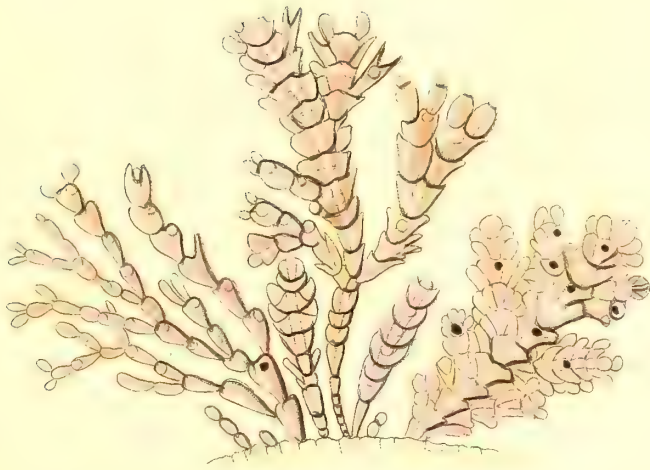
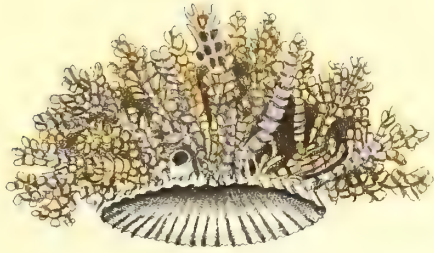
Corallina Opuntia
Linn. *sp.* 2. Pall. *sp.* 2.



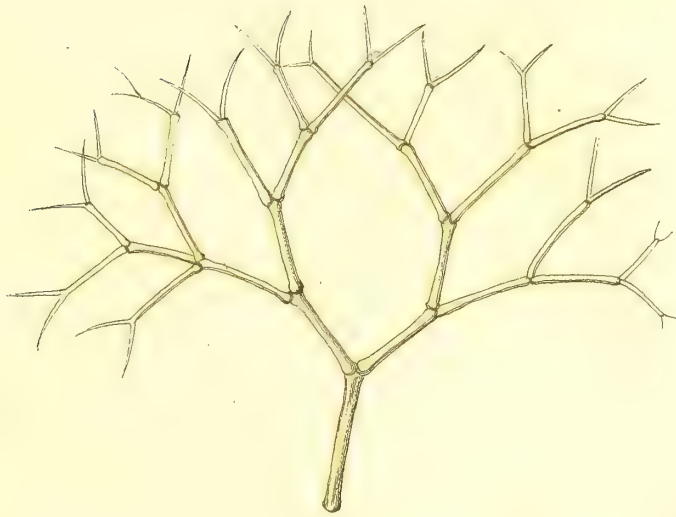
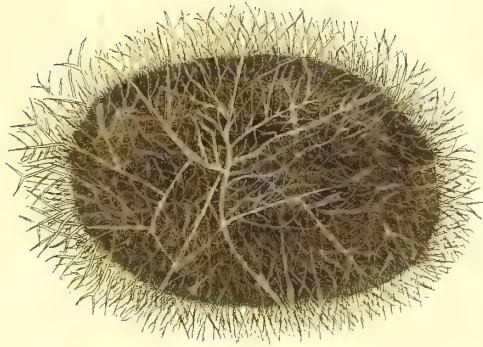
Corallina crassa.



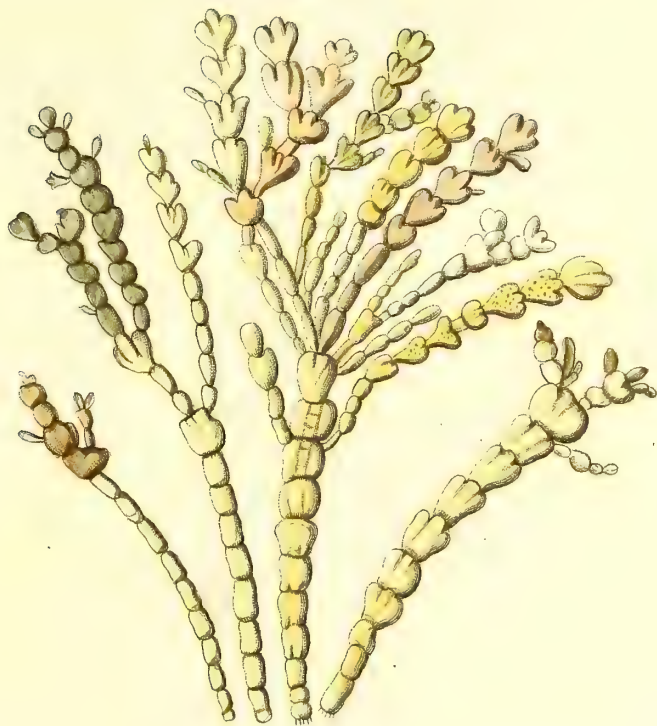
Corallina officinalis.
Linn. *sp.* 2. Pall. *sp.* 4.



Corallina squamata Linn. Var. officin. β .



Corallina fragilissima Linn. *sp.* 5.
Corallina rigens Pall. *sp.* 11.



Corallina nodularis.
Pall. sp. 3.

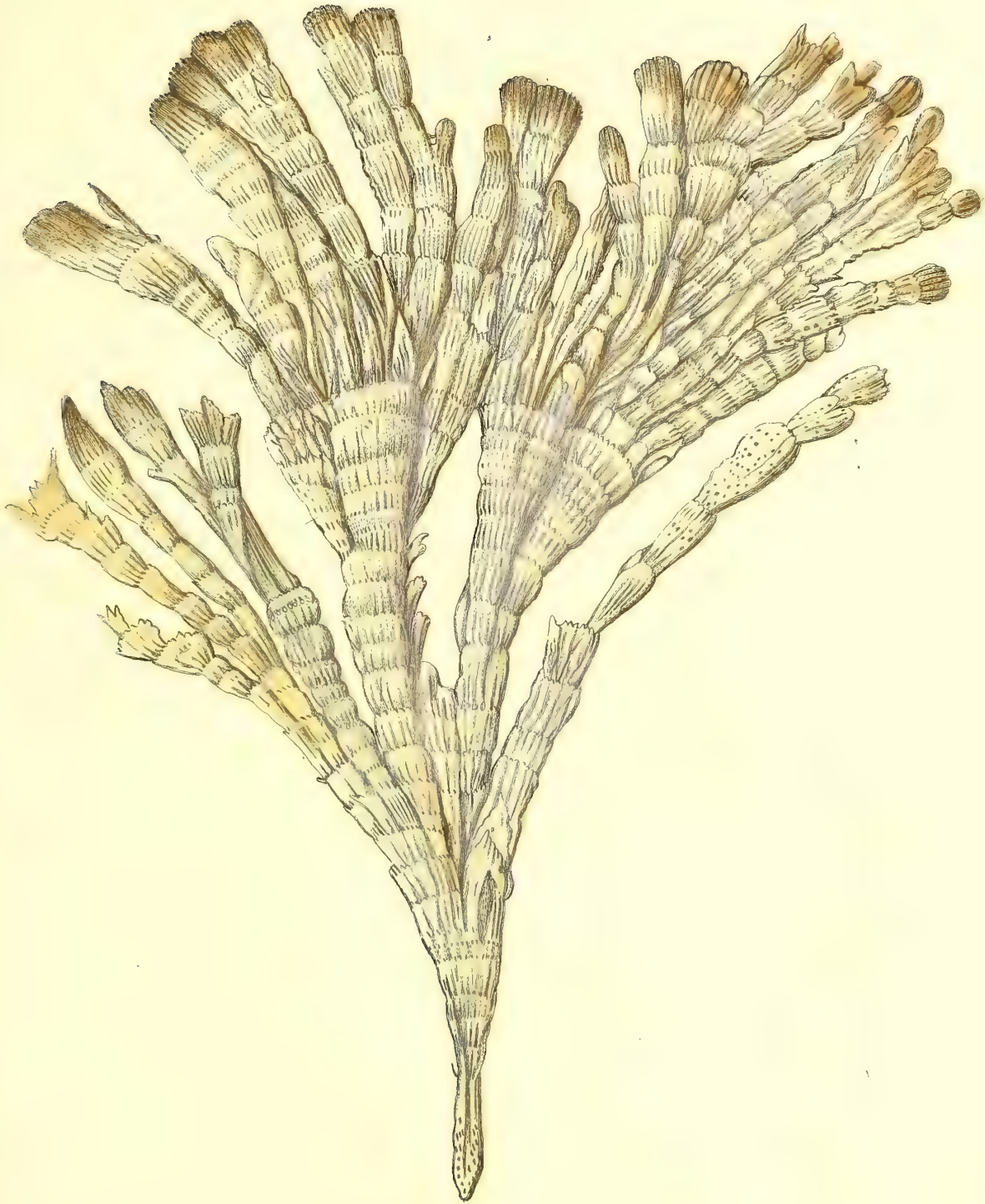


1.

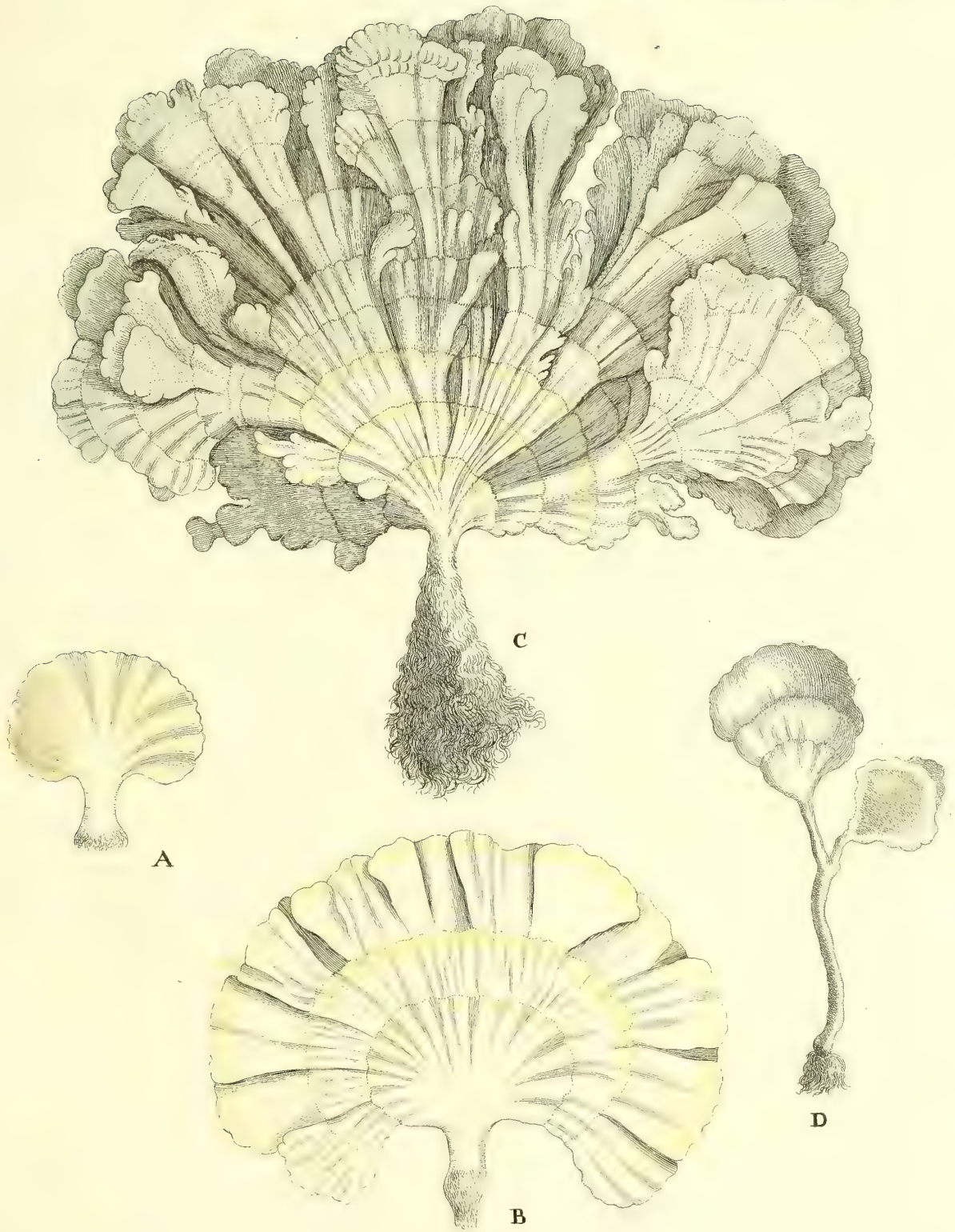


2.

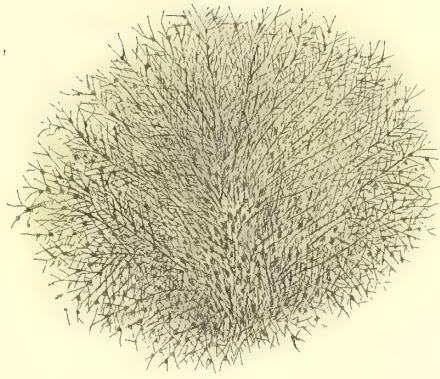
Corallina cupressina.



Corallina pavonia.
Pall. *sp. 1.*



Corallina pavonia Variet.



1.



3.



2.

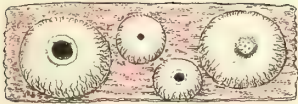
Corallina Spermophoros.



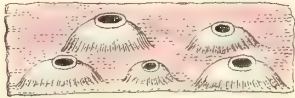
Corallina discoidea.



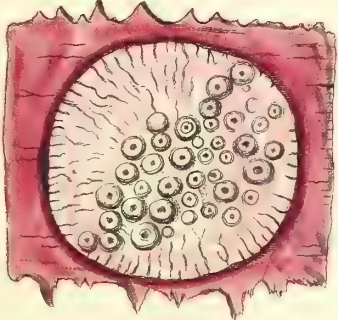
1.



3



4.



2.

Corallina membranacea.

Der
Fortsetzungen
der
Pflanzenthiere
Dritte Lieferung.

Bögen: J, K, L, M, N halb.

Tafeln: achtzehn, als zu dem Geschlecht der

Isis; Tab. IX, aurantia. 1 Tafel.

Madrepora; Tab. LVIII. A, foliosa, SEB. Tab. LVIII. B, foliosa. ELLIS-SOLAND.
Tab. LXXIV, Crater, PALL. Tab. LXXV und LXXVI, patinaeformis.
Tab. LXXVII, ampliata. Tab. LXXVIII, undata. Tab. LXXIX,
intersepta. 8 Tafeln.

Cellepora; Tab. XI, cornuta. 1 Tafel.

Gorgonia; XLVI, succinea. PALL. 1 Tafel.

Antipathes; Tab. X, myriophylla. Tab. XI, reticulata. 2 Tafeln.

Alcyonium; Tab. I. A. arboreum album. 1 Tafel.

Tabularia; Tab. XI, fistulosa. 1 Tafel.

Corallina; Tab. X, spermophoros. 1 Tafel.

Sertularia; Tab. XXI, halecina. LINN. 1 Tafel.

Petrificata; Tab. VI, (Madrep. f.), flexuosa. LINN. 1 Tafel.

In dieser dritten Lieferung sind die sämtliche voraus gelieferte Tafeln
der Madreporen beschrieben, als:

Tab. Madrep. LVIII, aus der siebenten Lieferung.

----- LIX, LX, LXI, LXII, LXIII, aus der neunten Lieferung.

----- LIV. B, LIX. A, LXIV, LXV, aus der eilften Lieferung.

----- LXVI, aus der zwölften Lieferung.

----- XXXIII. A, XXXIII. B, LXVII, LXVIII, LXIX, LXX,
LXXI, aus der ersten Lieferung der Fortsetzung.

----- XLV. A, XLVI. A, LXXII, LXXIII, aus der zweyten Liefe-
rung der Fortsetzung.

----- LVIII. A, LIX. B, LXXIV, LXXV, LXXVI, LXXVII,
LXXVIII, LXXIX, aus dieser dritten Fortsetzung; zu-
sammen 29 Tafeln.

Nürnberg,
in der Kaspeschen Handlung. 1795.

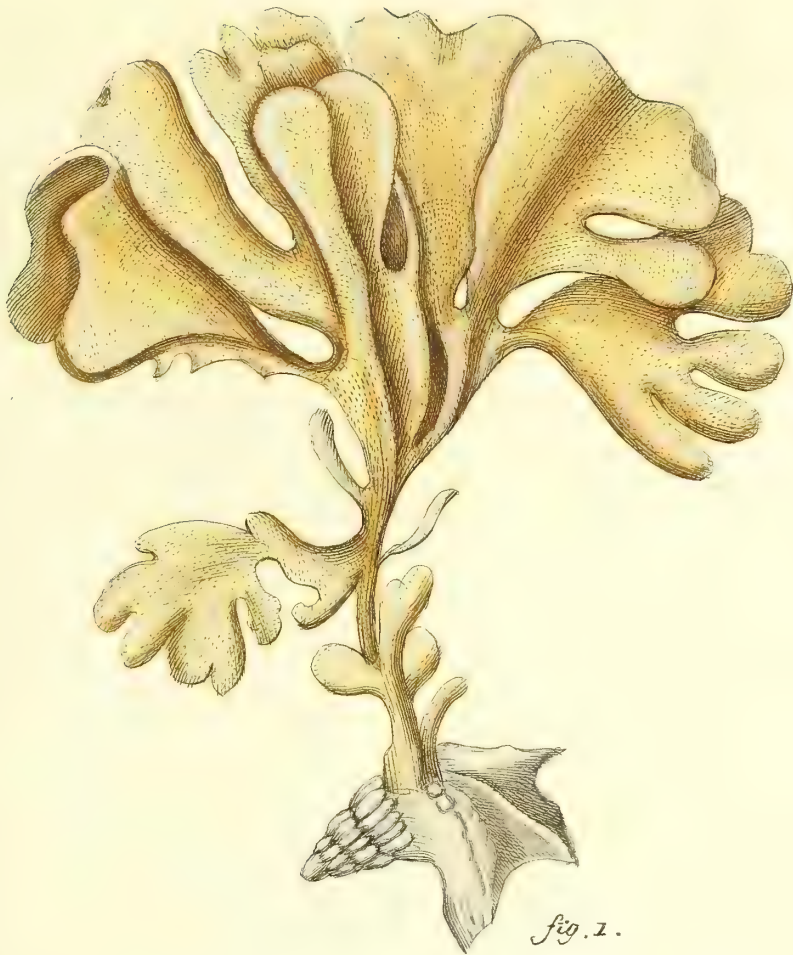


fig. 1.



fig. 2.

Flustra foliacea. Linn. Gen. 344. sp. 1. Eschara foliacea
Pall. Gen. 2. sp. 12.

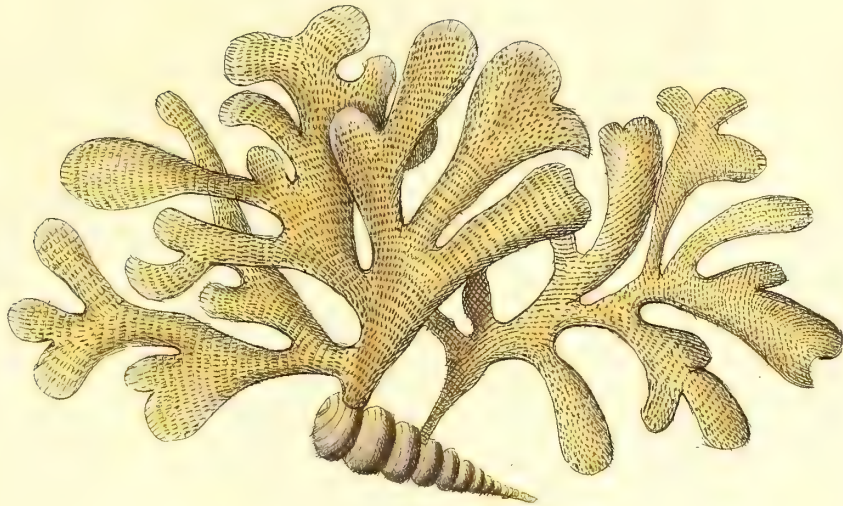


fig. 1.

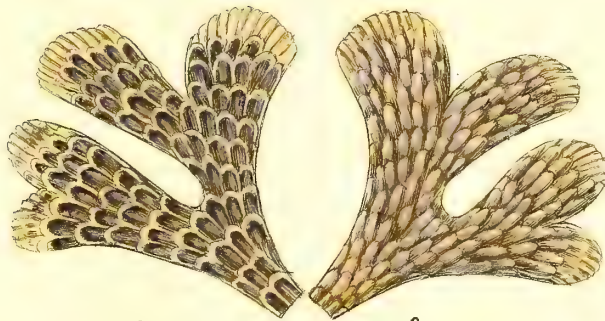


fig. 2.

fig. 3.

Flustra papyracea, Linn. sp. 4. Echara papyracea
Pall. sp. 15.



fig. 1.

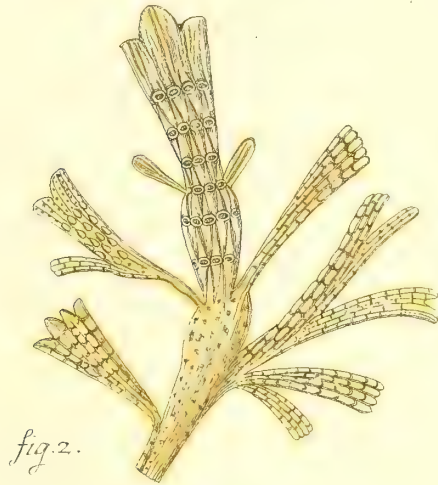


fig. 2.

Flustra truncata. Linn. sp. z. Eschara securifrons.
Pallas. sp. 16.



fig. 1.

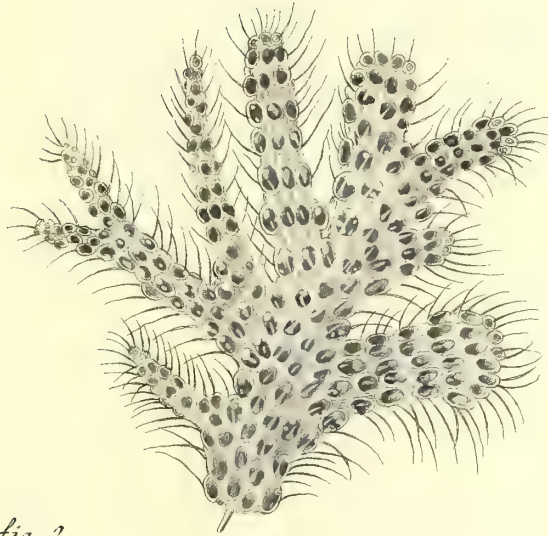


fig. 2.

Flustra pilosa, Linn. *sp.* 3.
Eschara pilosa Pall. *sp.* 11. (15.)



fig. 1.

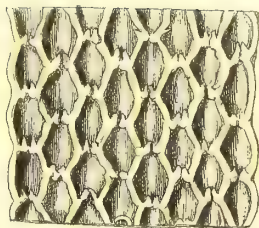
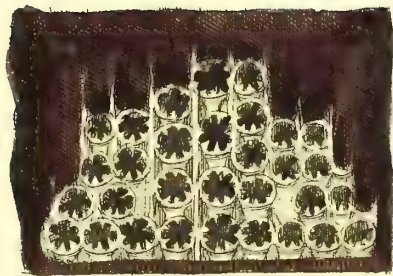
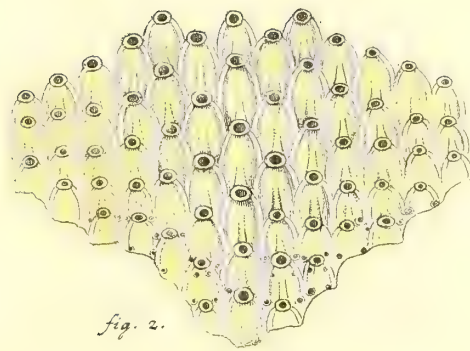


fig. 2.

Flustra membranacea, Linn *Sp.* 5.



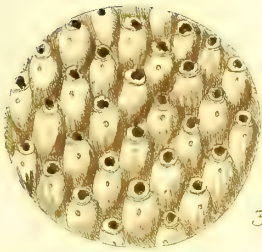
Flustra lineata Linn :
Spec. 6.



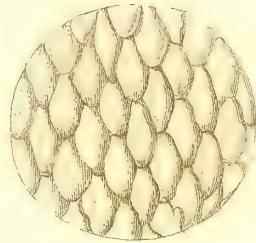
Flustra coriacea.



1.



3.

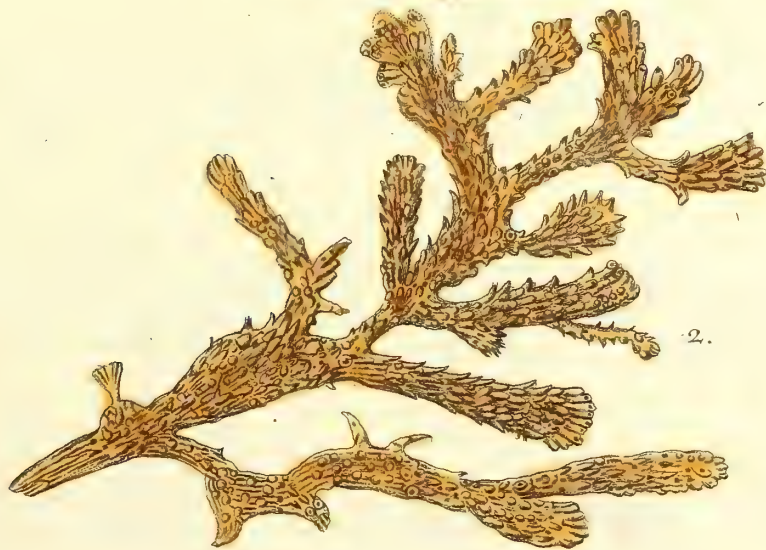


4.



2.

Flustra frondosa.



Flustra tubulosa.



fig. 1.

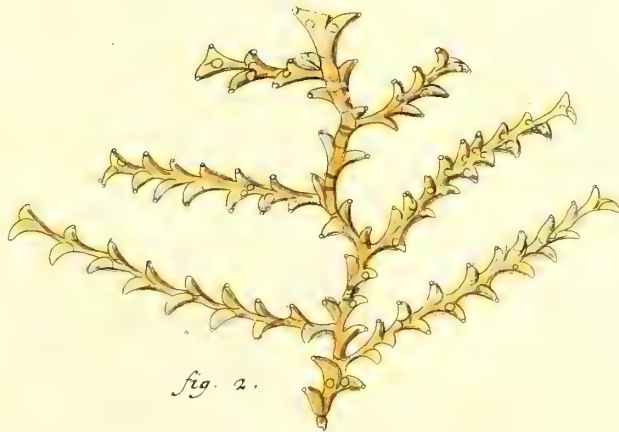


fig. 2.

Sertularia abietina Linn. Gen. 347 sp. 5.
Pall. Gen. 6. sp. 18. p. 81.



Sertularia falcata.
Linn. *sp. ii.* Pall. *nr. 90. sp.*



Sertularia cupressina.
Linn. *sp. 6.* Pall. nr. *sg. sp. 26.*



Sertularia operculata Linn. sp. 3. - *S. usneoides* Pall.
nr. 80. sp. 17.



Sertularia myriophyllum.
Linn. *Sp.* 10. Pall. *nr.* 96. [*Sp.* 33.]



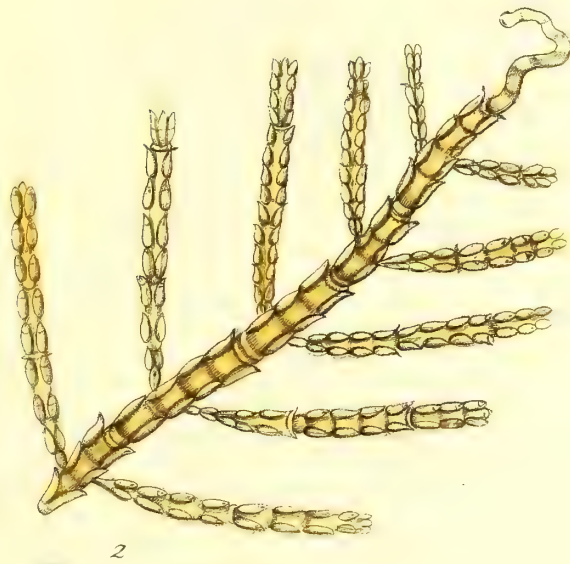
Sertularia polyzonias Linn. sp. 25.

S. ericoides Pall. nr. 76. sp. 13.

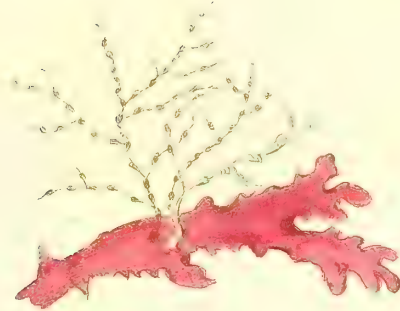


Sertularia Pluma Linn. *Sp.* 12.

Pall. *nr.* 93. *Sp.* 30.



Sertularia articulata.



1.



2.

Sertularia lendigera.
Linn. *sp.* 20. Pall. *nr.* 73. [*sp.* 10.]



Sertularia pumila
Linn. *Sp.* 2. Pall. *nr.* 79. *Sp.* 16.



1.



3.

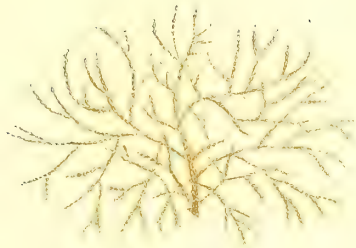
2.

4.

Sertularia rugosa.
Linn. sp. 7. Pall. nr. 75. (sp. 12.)



Sertularia ericoides.
Pall. nr. 76. Sp. 13.



1.

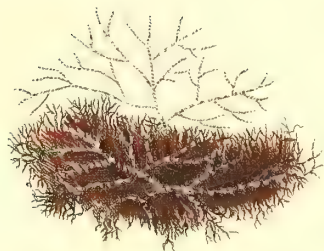


2.

3.

Sertularia neritina Linn. *Sp.* 5.

Cellularia neritina Pall. *nr.* 25.

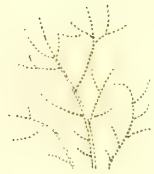


1.

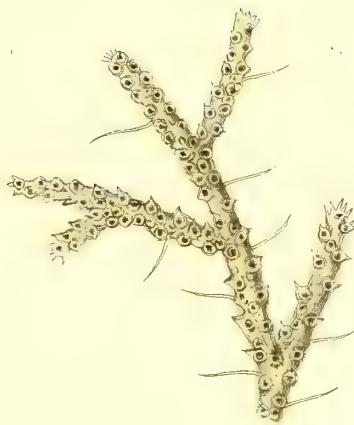


2.

Sertularia ciliata. Linn. *sp.* 38.
Cellularia Pall. *nr.* 32.



1.

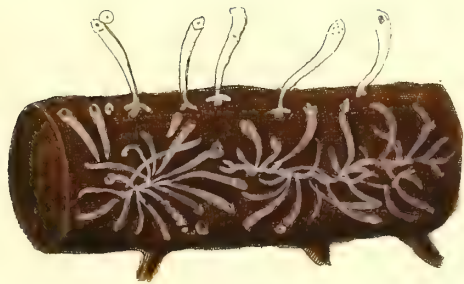


2.



3.

Sertularia scruposa. Linn. *sp.* 35.
Cellularia scruposa. Pall. *nr.* 30.



Sertularia anguina. Linn. *Sp.* 42.
Cellularia anguina. Pall. *no.* 36.



1.



2.

Sertularia reptans.
Linn. *Sp.* 36. *Cellul. reptans* Pall. *nr.* 31.



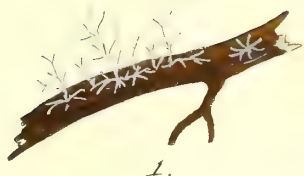
1.



2.

3.

Sertularia eburnea.
Linn. sp. 39. Cellul. eburn. Pall. nr. 33.



Sertularia cornuta.
Linnaeus p. 40. *Cellularia falcata*. *Pallas* nr. 34.



Sertularia rosacea Linn. Sp. 1. 1. *Nigellastrum*,
Pall. nr. 70.

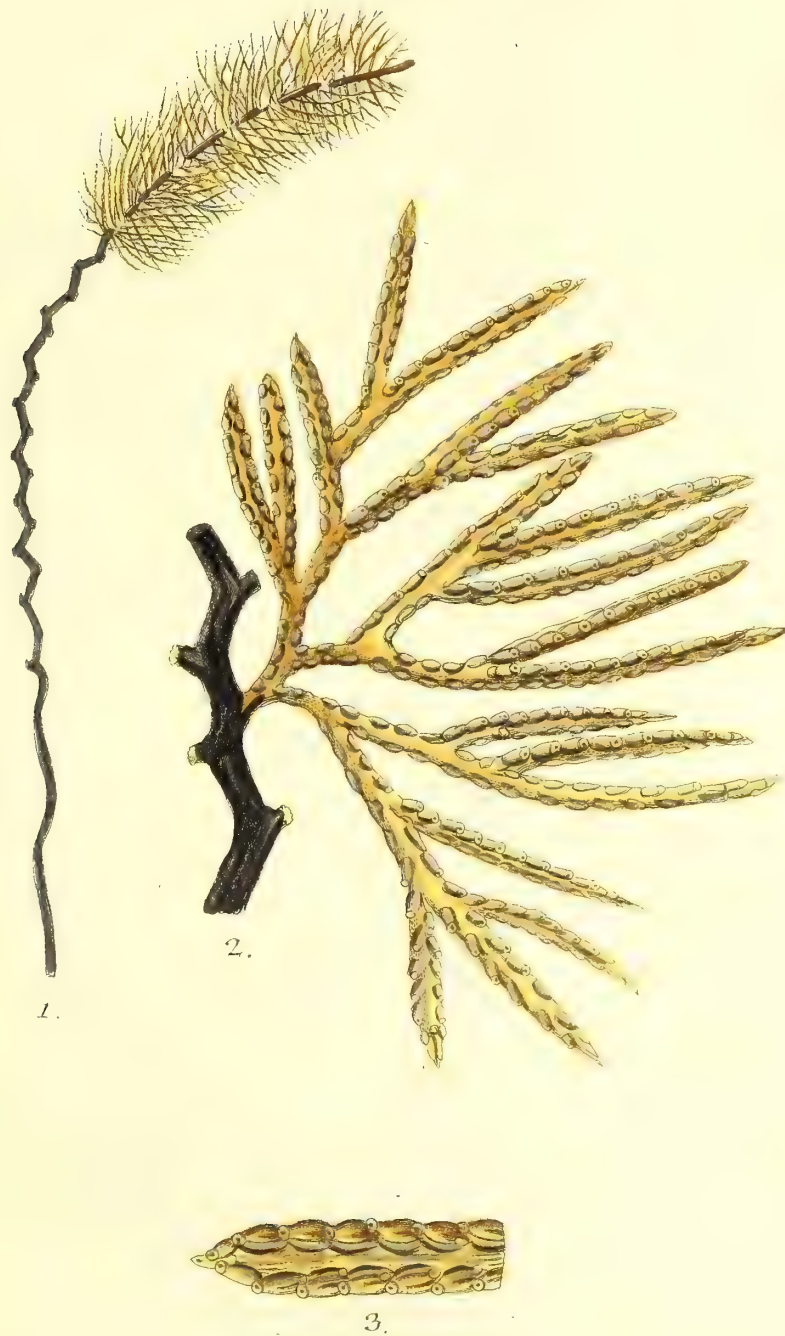


1.

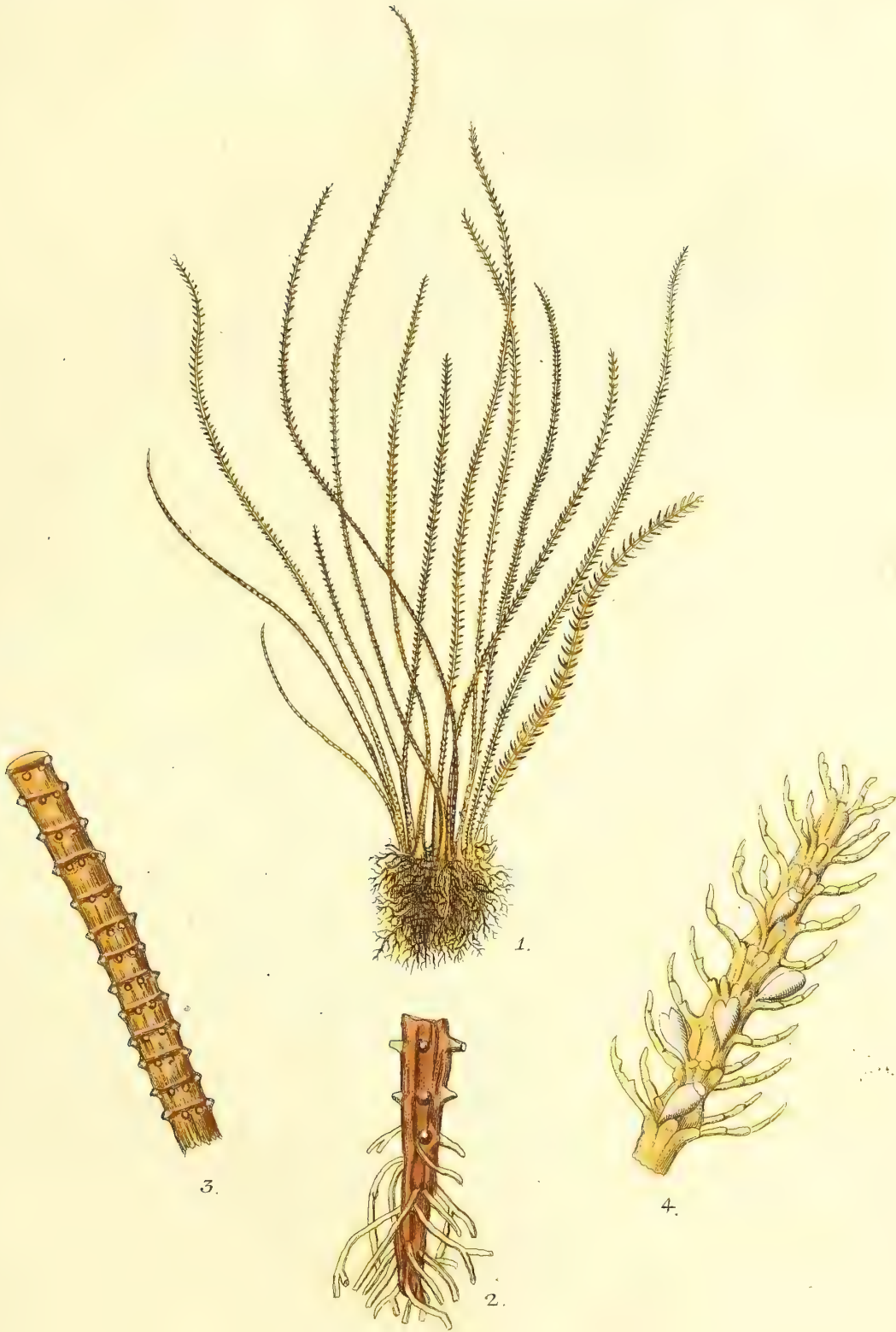


2.

Sertularia halecina.
Linn. *Sp.* 8. Pall. *nr.* 75. *Sp.* 1.

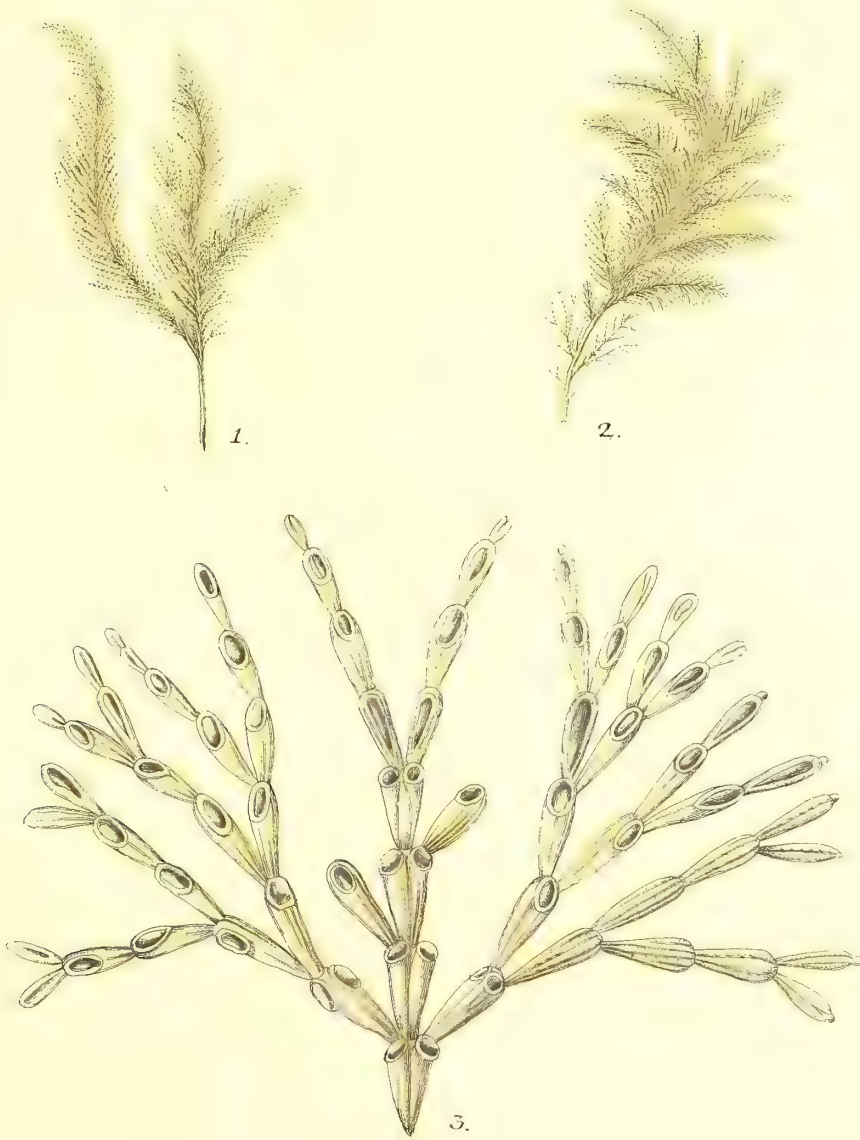


Sertularia Thuja.
Linn. *sp. g.* Pall. nr. 88. *sp. 25.*



Sertularia antennina.

Linna. *sp.* 14. Pall. nr. 91.



Sertularia loriculata.
Linn. *Sp.* 31. Pall. nr. 22.



1.



2.



3.

Sertularia Pennaria.
Linn. *sp.* 26.



Sertularia verticillata.



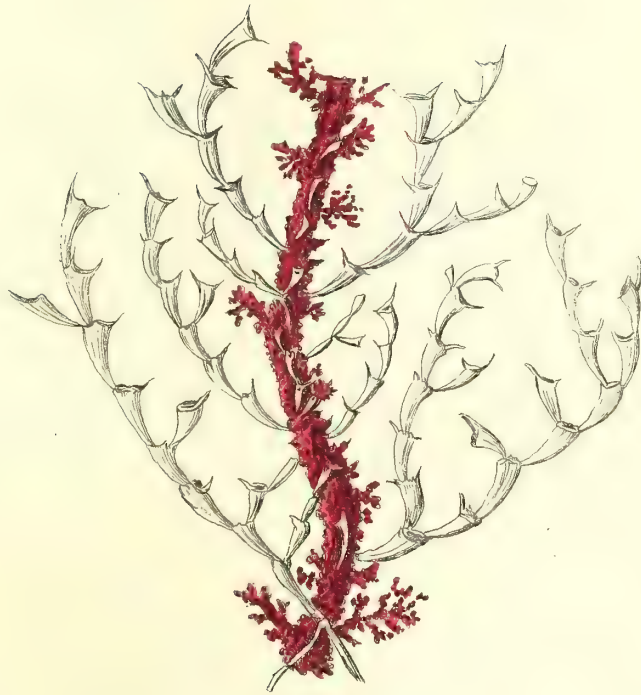
Sertularia argentea.
Linn. *Sp. 6.* 3.



Sertularia spinosa.
Linna. sp. 23. Pall. nr. 65. S. fericea.

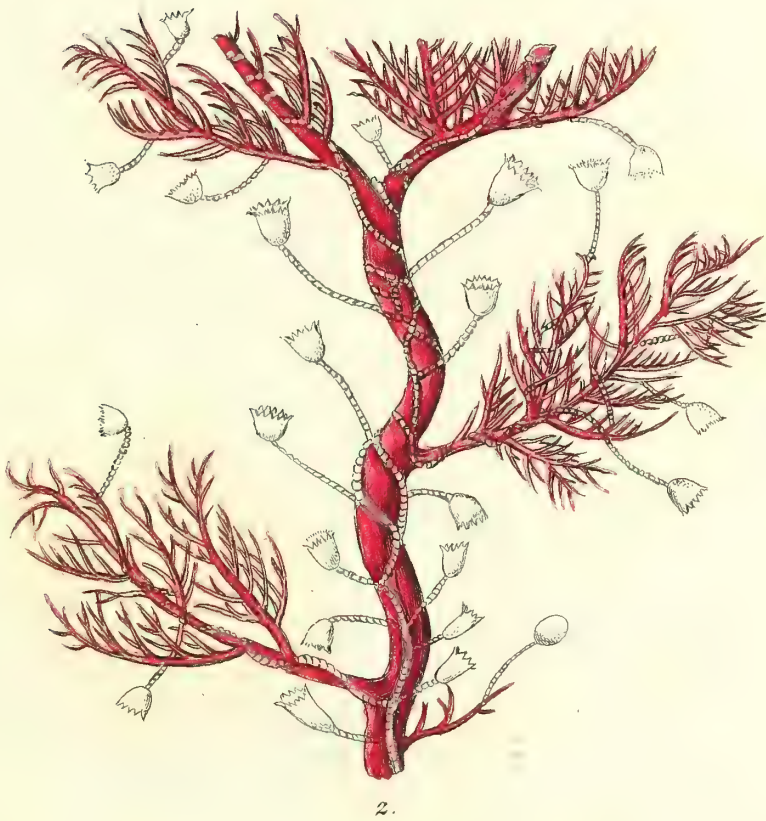
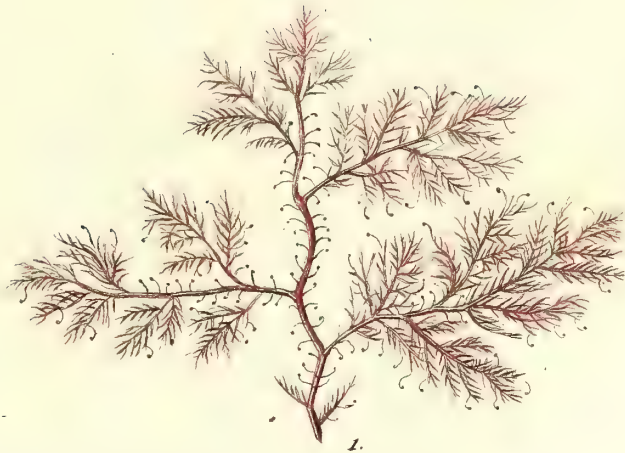


1.



2.

Sertularia loricata. Linn. *sp.* 41.
Cellularia chelata. Pall. *nr.* 35.



Sertularia volubilis Linn. *Sp. 16.* [*S. uniflora.*]
Pall. *nr. 70.*



Sertularia muricata.



Sertularia quadridentata.

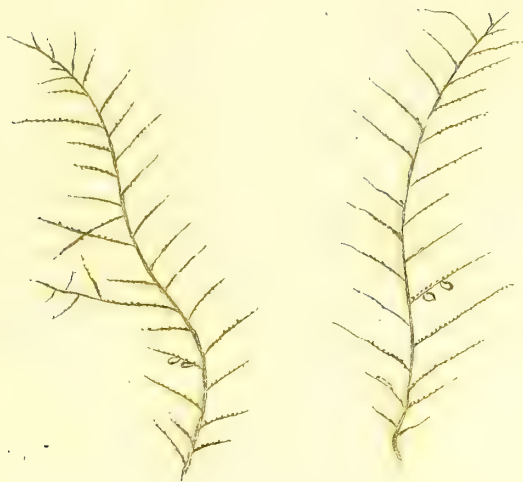




Sertularia confervaeformis.

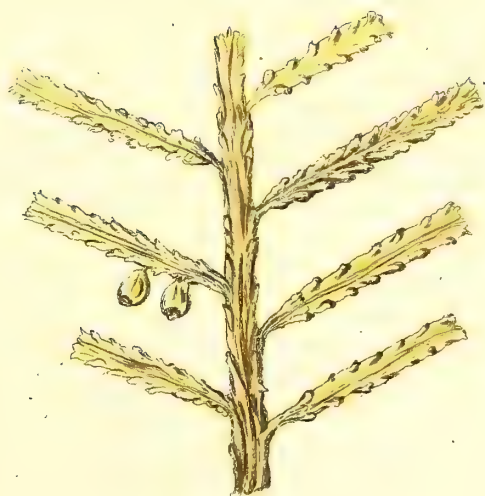


Sertularia fruticosa.



1.

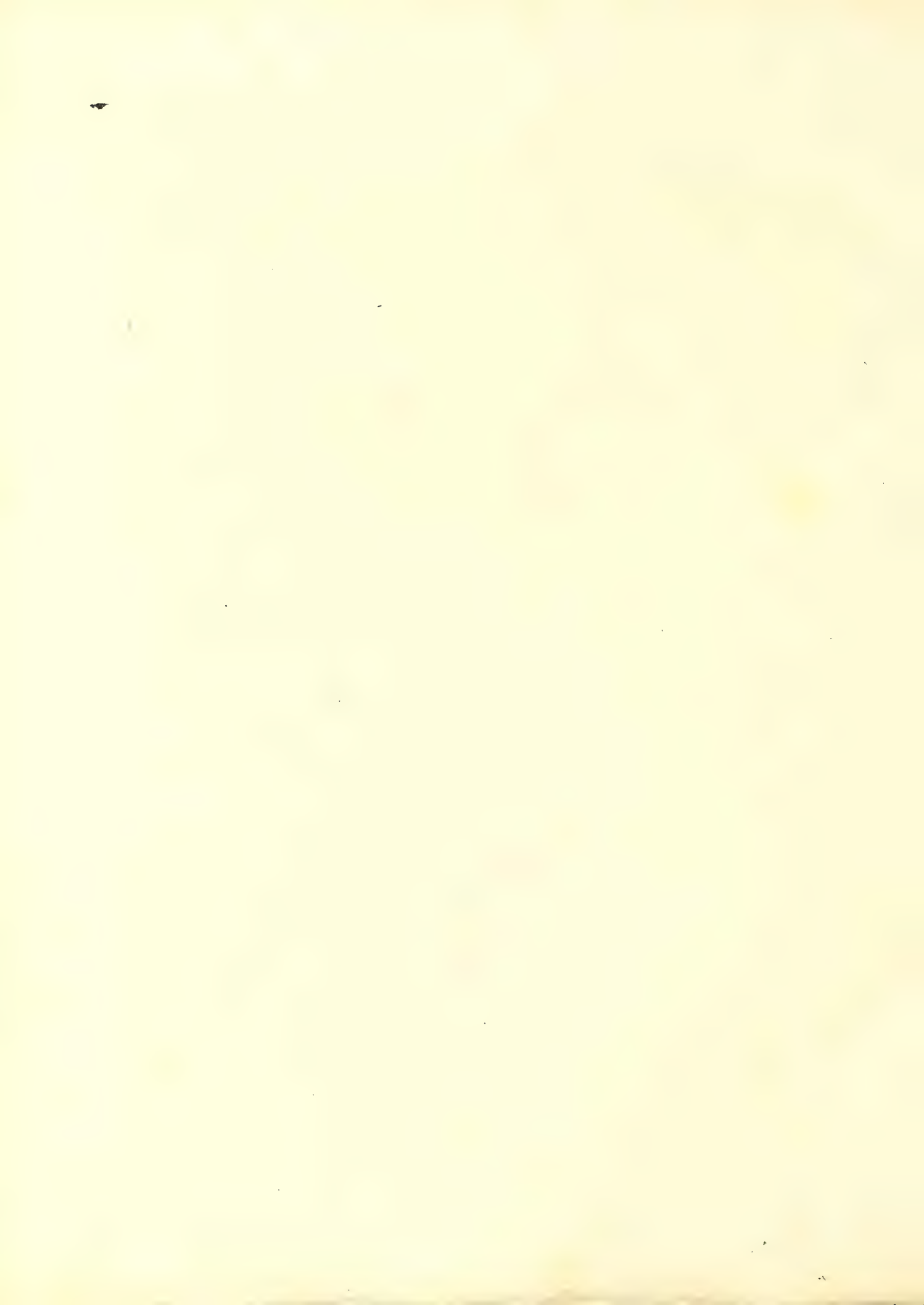
2.



3.

Sertularia Lichenastrum.

Linn. Sp. 27.



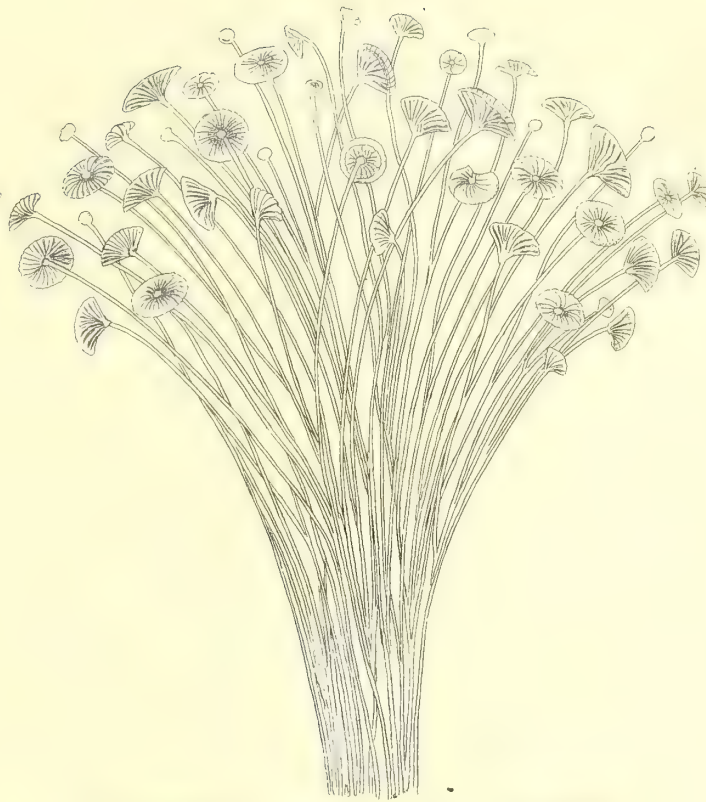


fig. 1.

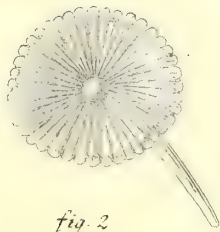


fig. 2.

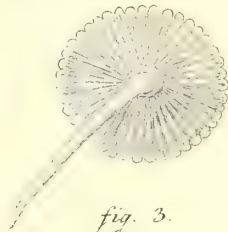


fig. 3.

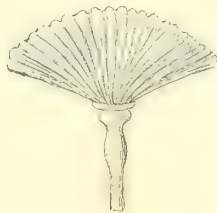
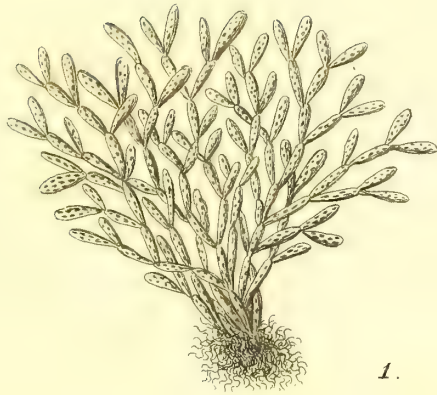
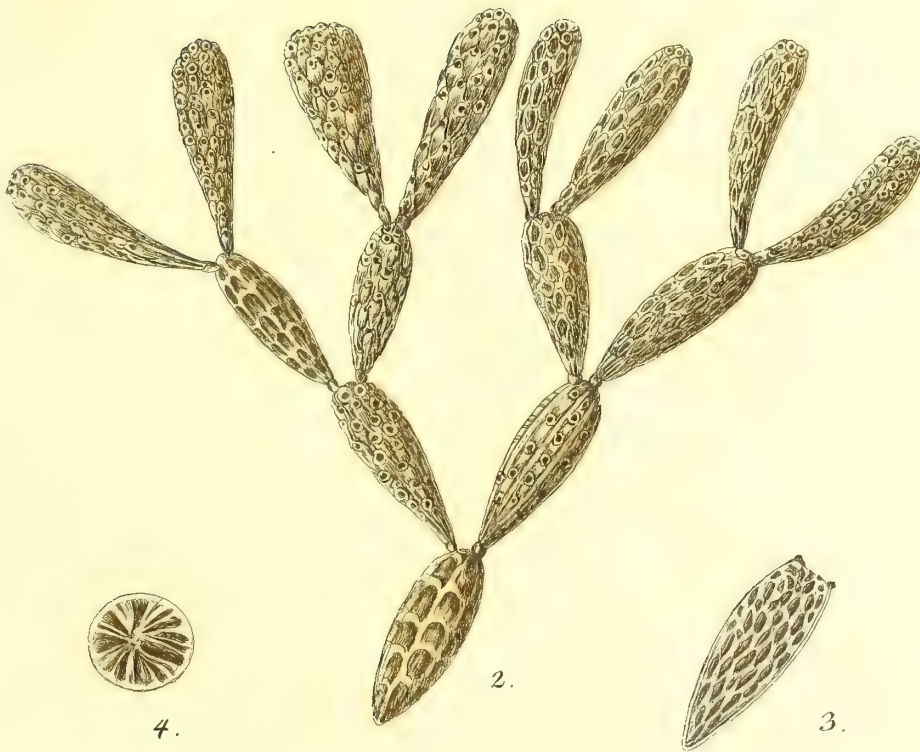


fig. 4.

Tubularia Acetabulum. Linn. Gen. 345. Sp. 6.
Corallina Androface. Pall. Sp. 13.



1.



2.



4.

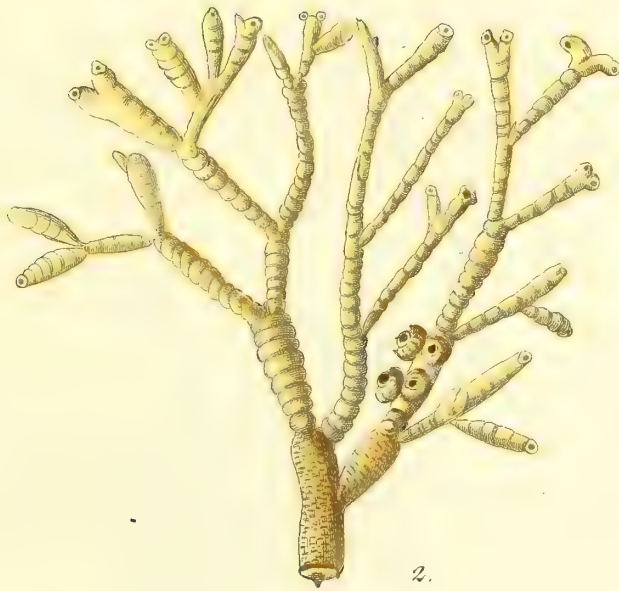


3.

Tubularia fistulosa, Linn. sp. 3. *Cellularia faticornis*, Pall. nr. 21.

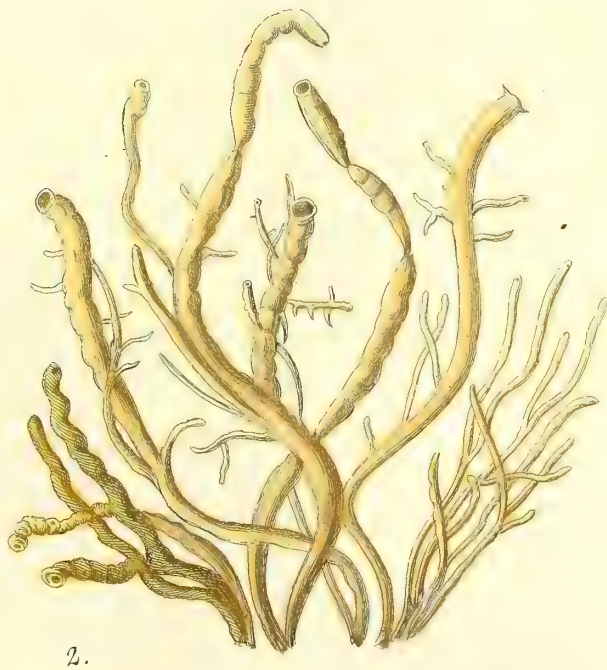
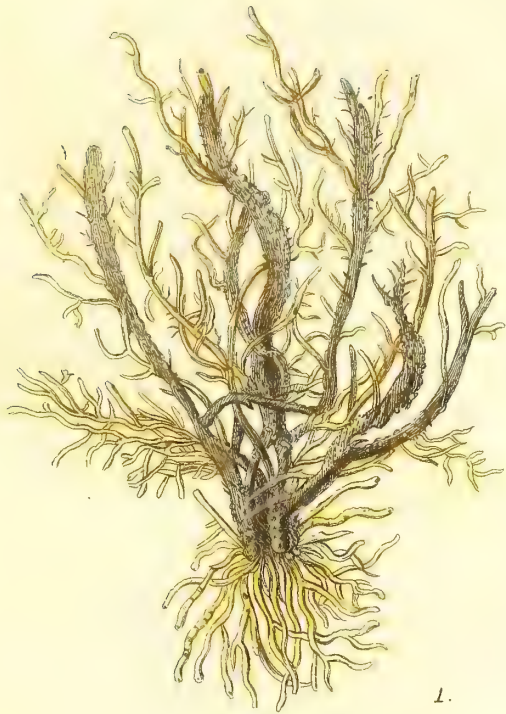


1.



2.

Tubularia fragilis Linn. *sp.* 4.
Corallina tubulosa Pall. *sp.* 12.



Tubularia muscoides.
Linn. *Sp.* 5. Pall. *nr.* 39. *Sp.* 3.



Tab. II. Fig. III.



Tab. II. Fig. IV.



A.



B.

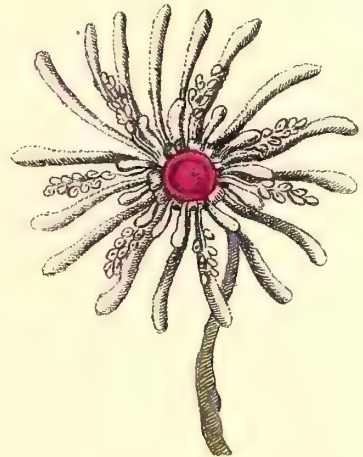
Tab. III. Fig. II.



Tab. III. Fig. III.

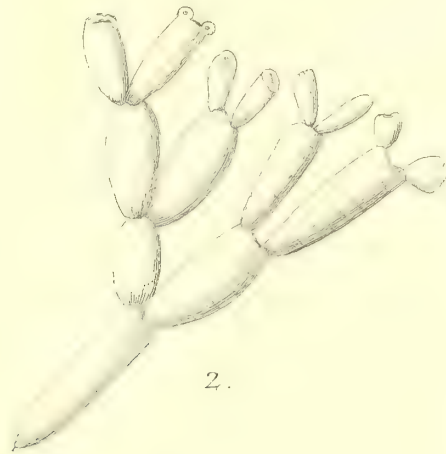
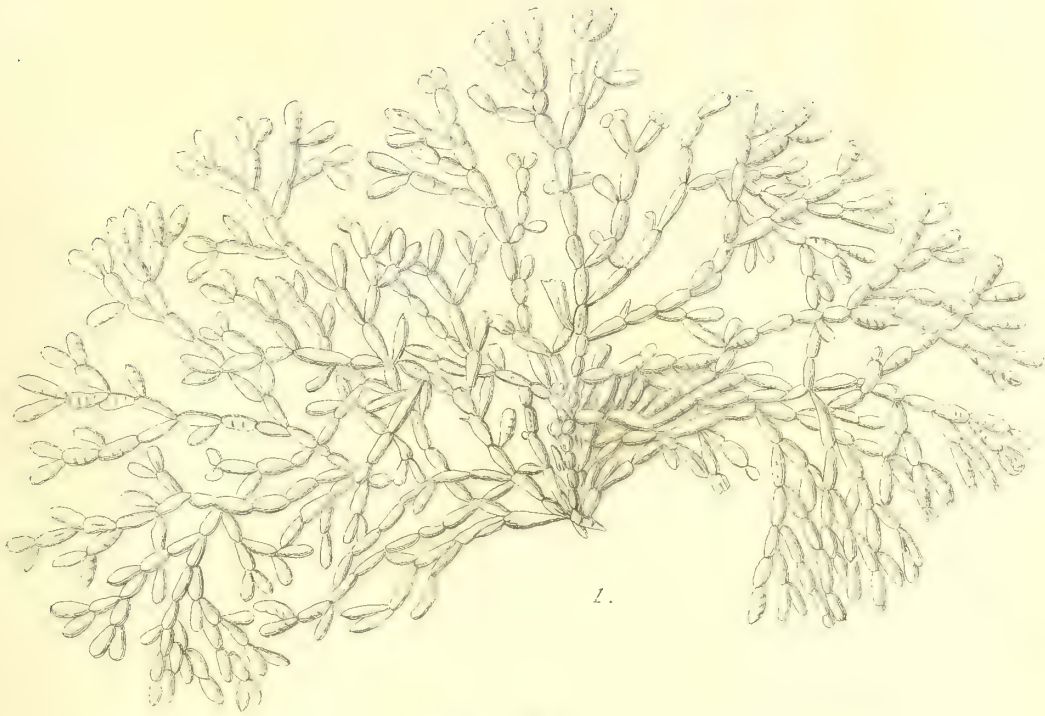


Tab. V. D.

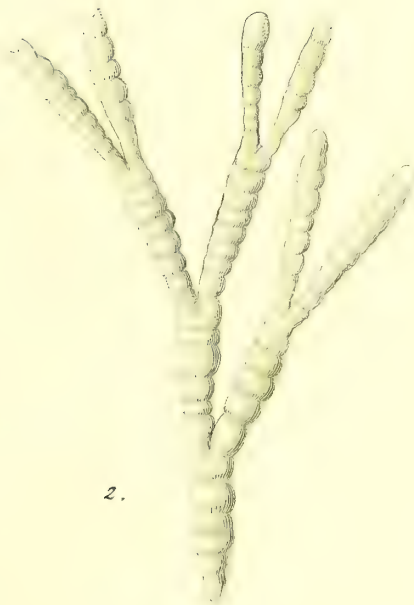


Tab. III. Fig. IV.

Polypi Tubulariae muscoidis.



Tubularia obtusata. Ellis.



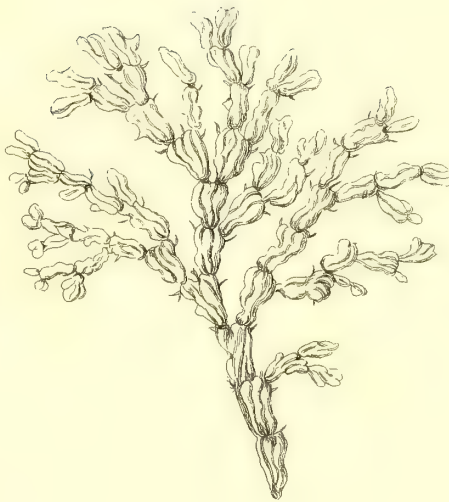
Tubularia dichotoma.



1.



2.

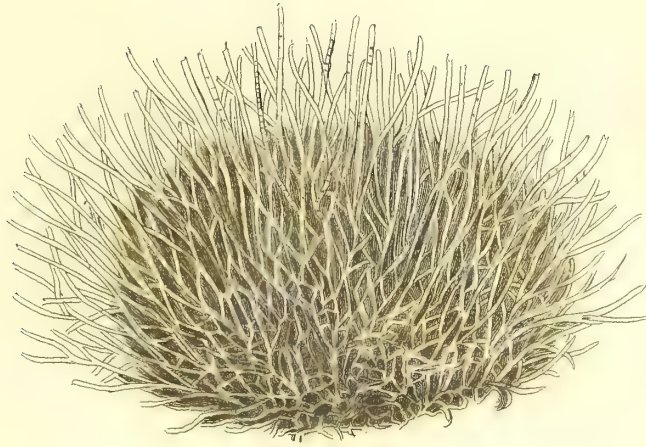


3.

Tubularia cirrata.



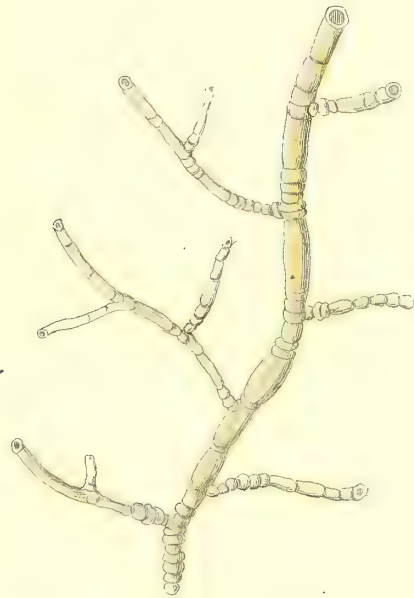
Tubularia splachnea.
Linn. sp. 7.



1.

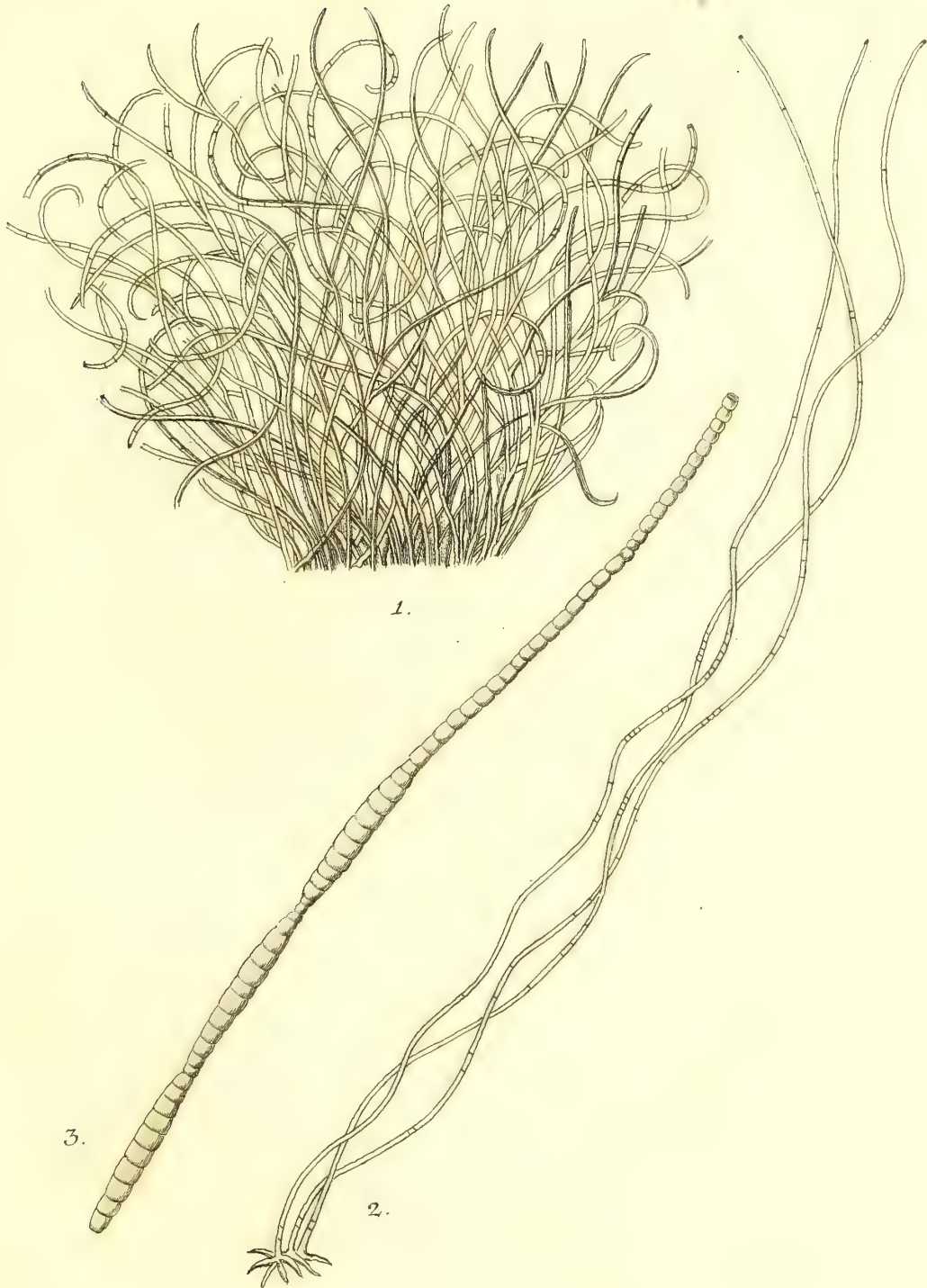


2.



3.

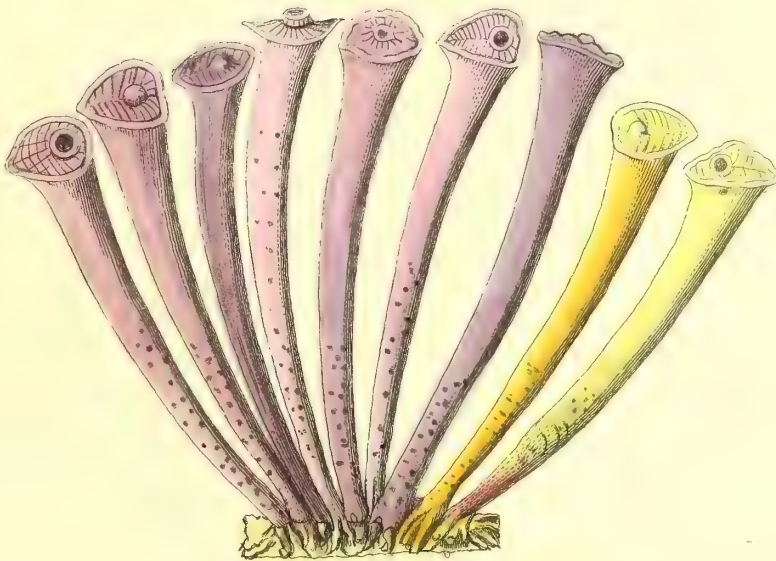
Tubularia ramosa Linn. *Sp.* 2. trichoides Pall.
nr. 41. Sp. 5.



Tubularia simplicissima.



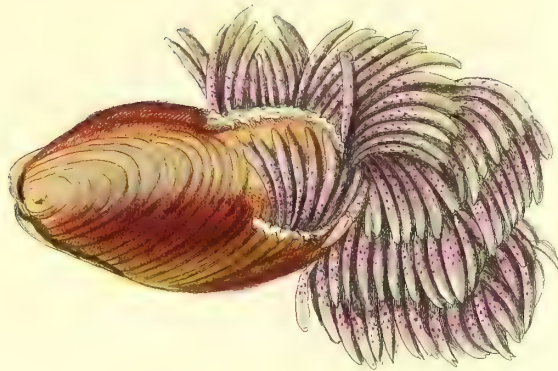
1.



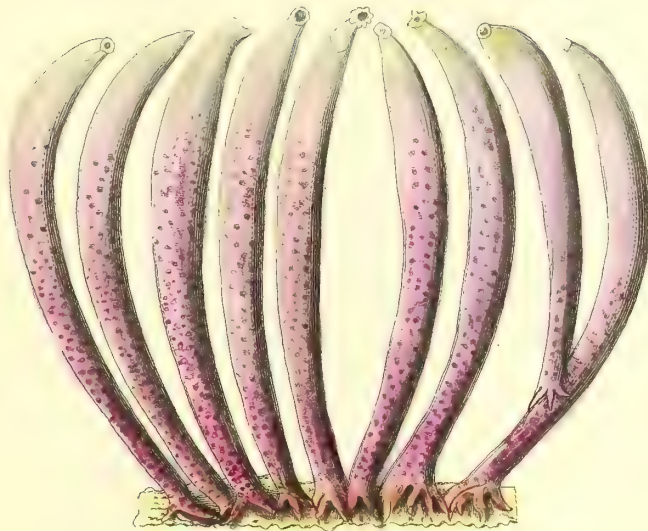
2.

Tubulãria fistulosa.

1.

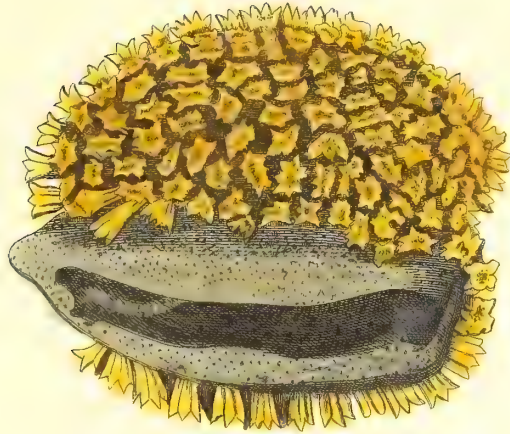


2.



Tubularia tubulata.

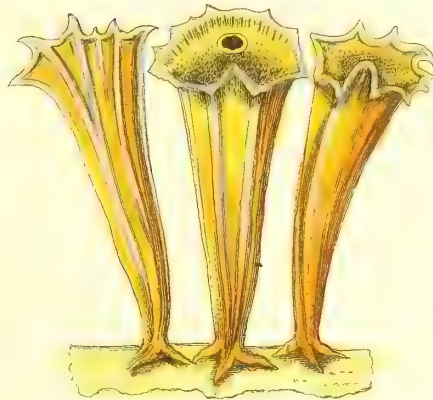
1.



2.



3.



Tubularia angulosa.



1



2

3

4

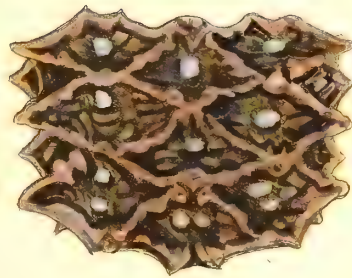
Tubularia compressa.



Tubularia bullata.



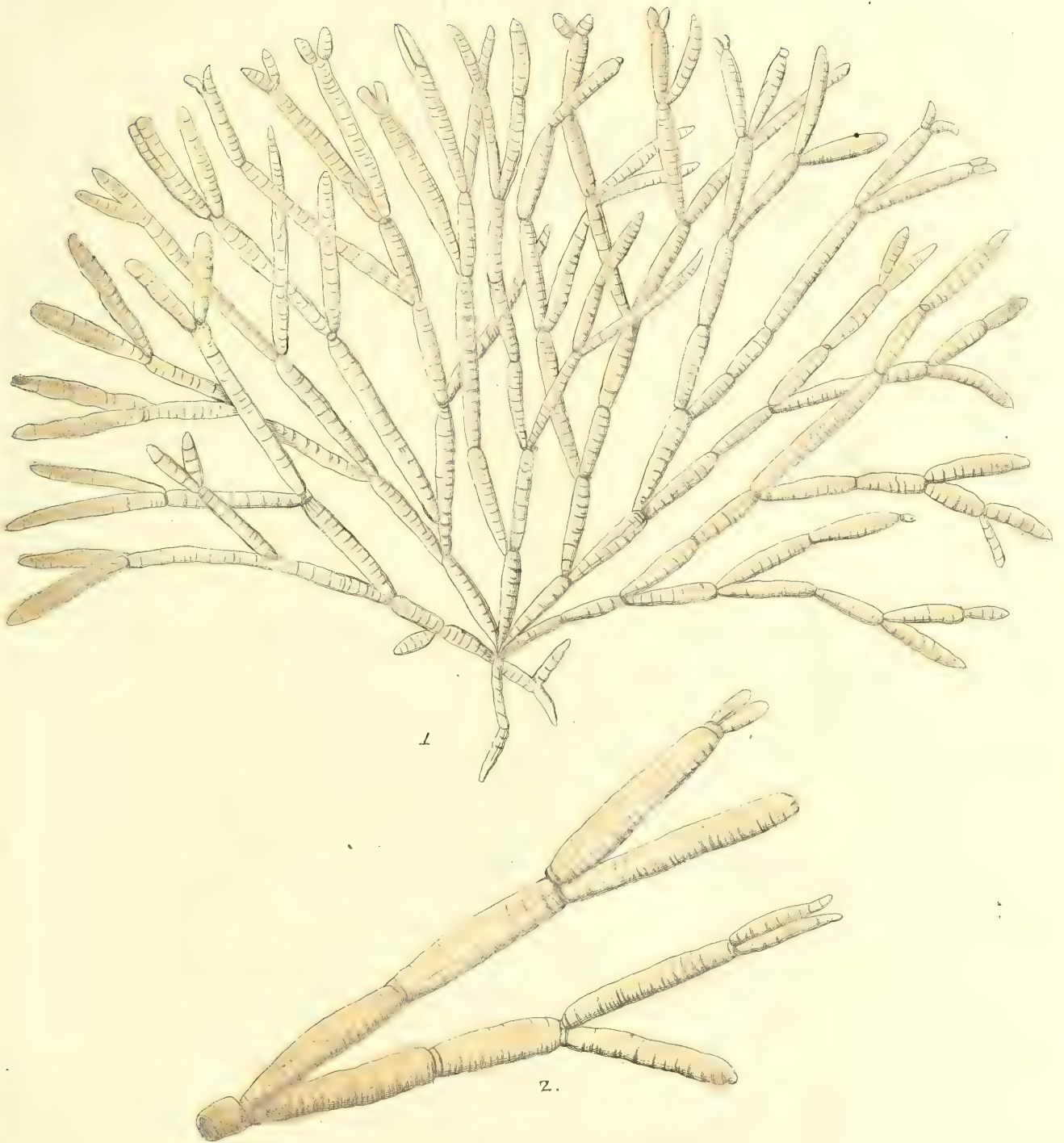
1.



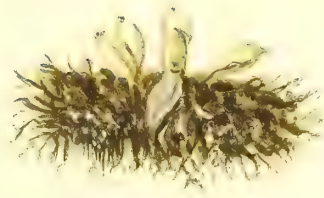
2.

Tubularia clathrata.





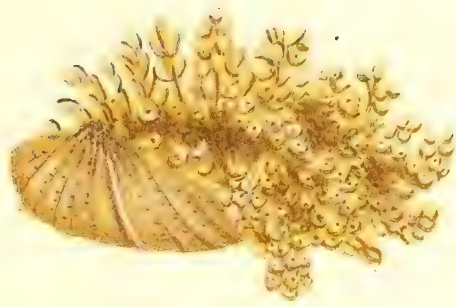
Tubularia umbellata.



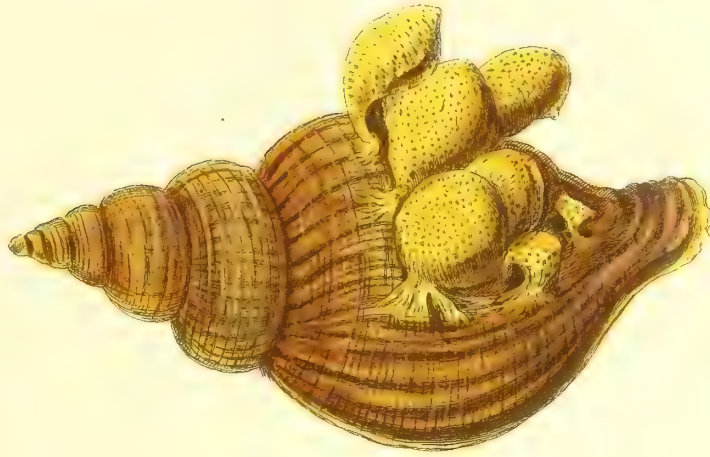
Tubularia triquetra.



Tubularia botryoides.



Tubularia globulifera.



1.



2.



4.

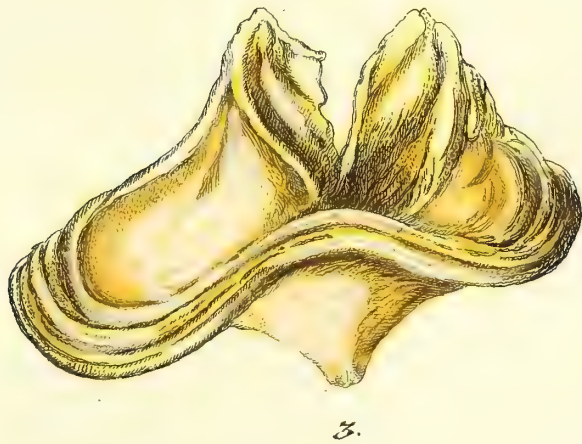
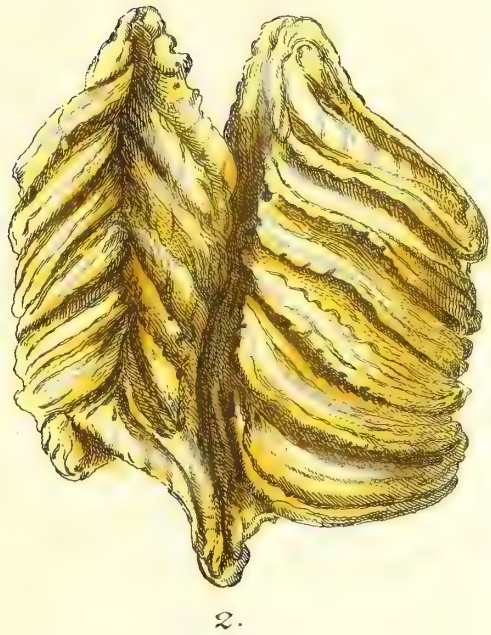


3.

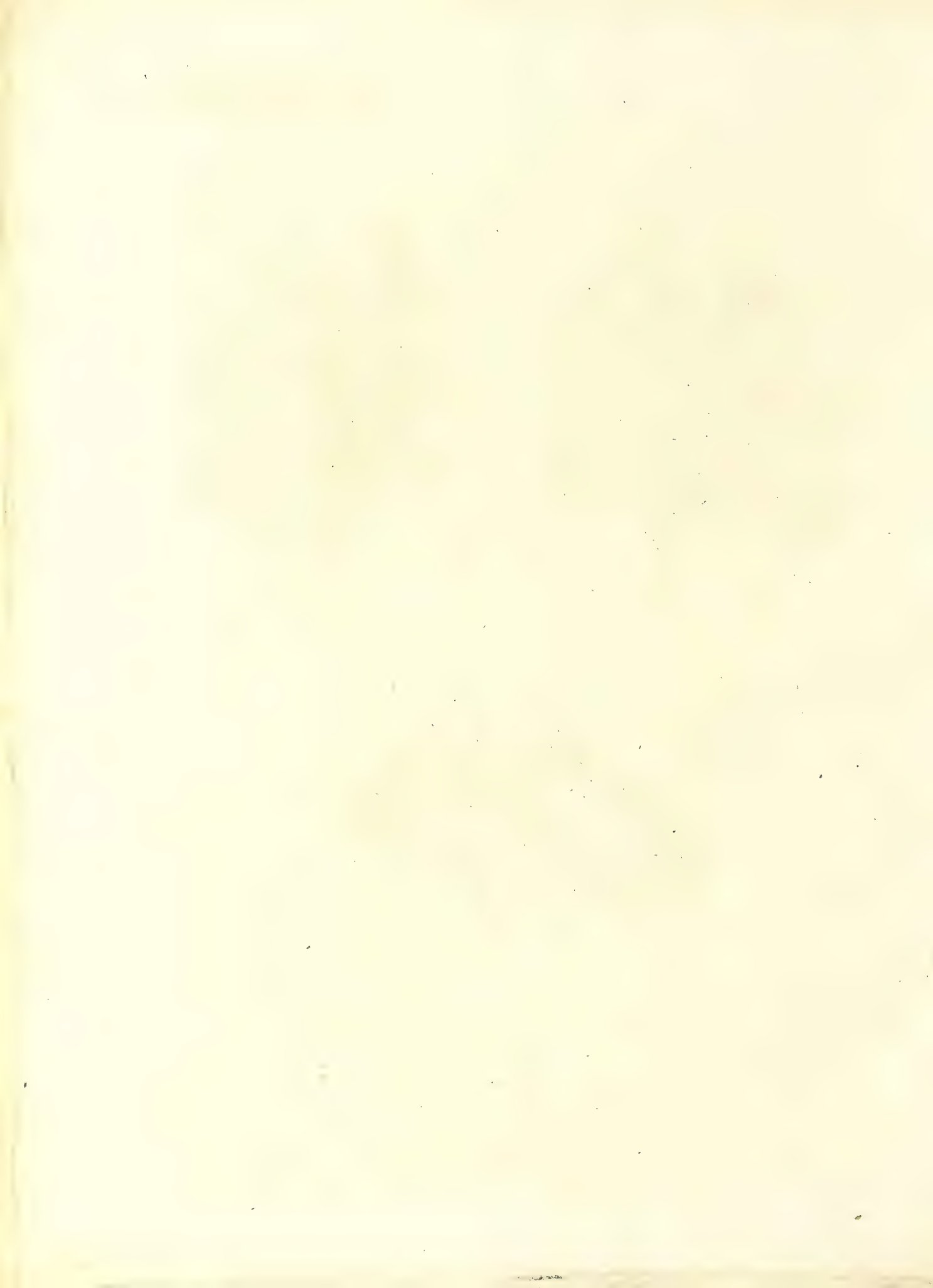
Tubularia cochleaeformis.

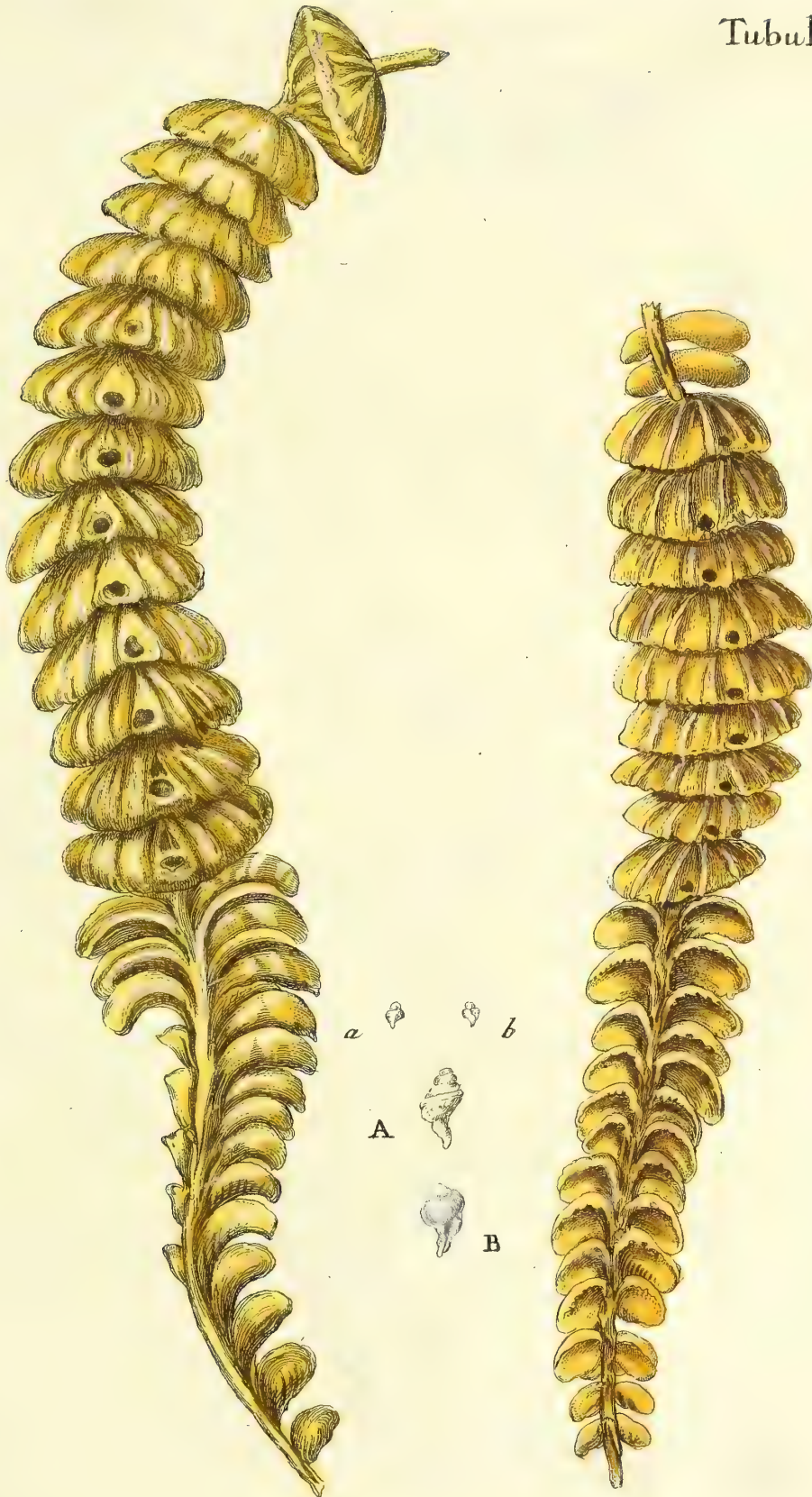


Tubularia clavata.



Tubularia clavata.
Varietas.





Tubularia sphaeroidea.

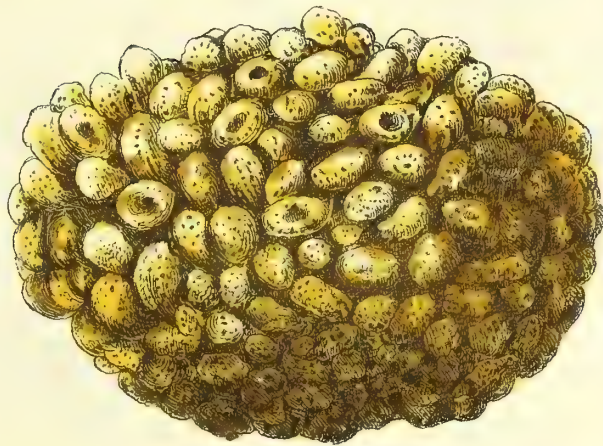




Tubularia tessellata.



1



2



Tubularia pilaeformis.



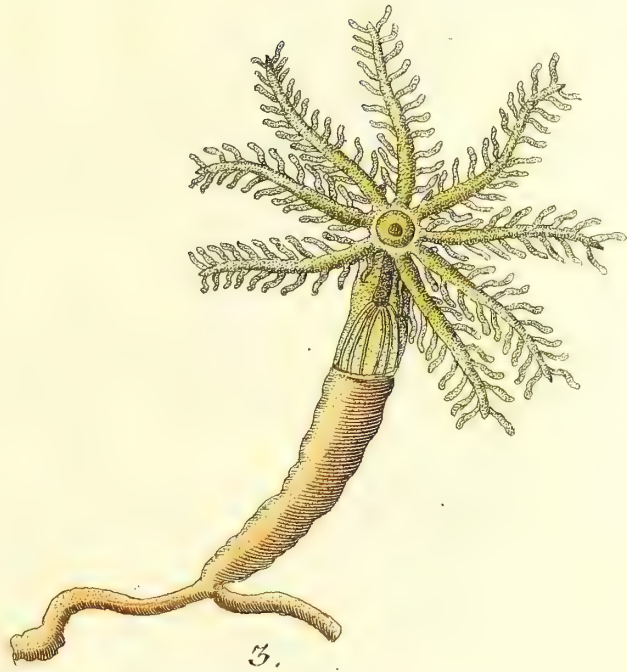
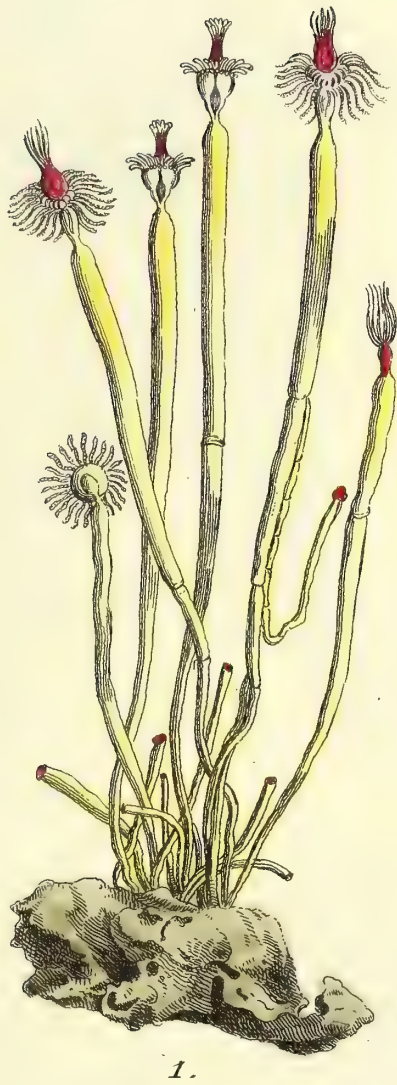


Fig. 1. Tubularia indivisa. Linn. XII. Sp. 1.

XIII. Sp. 1. [2.]

Fig. 2. 3. Tubularia cornucopiae.

Linn. XIII. Sp. 1. [9.]



fig. 2.



fig. 1



fig. 4.

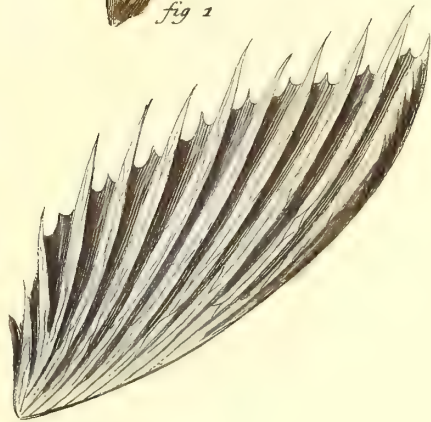
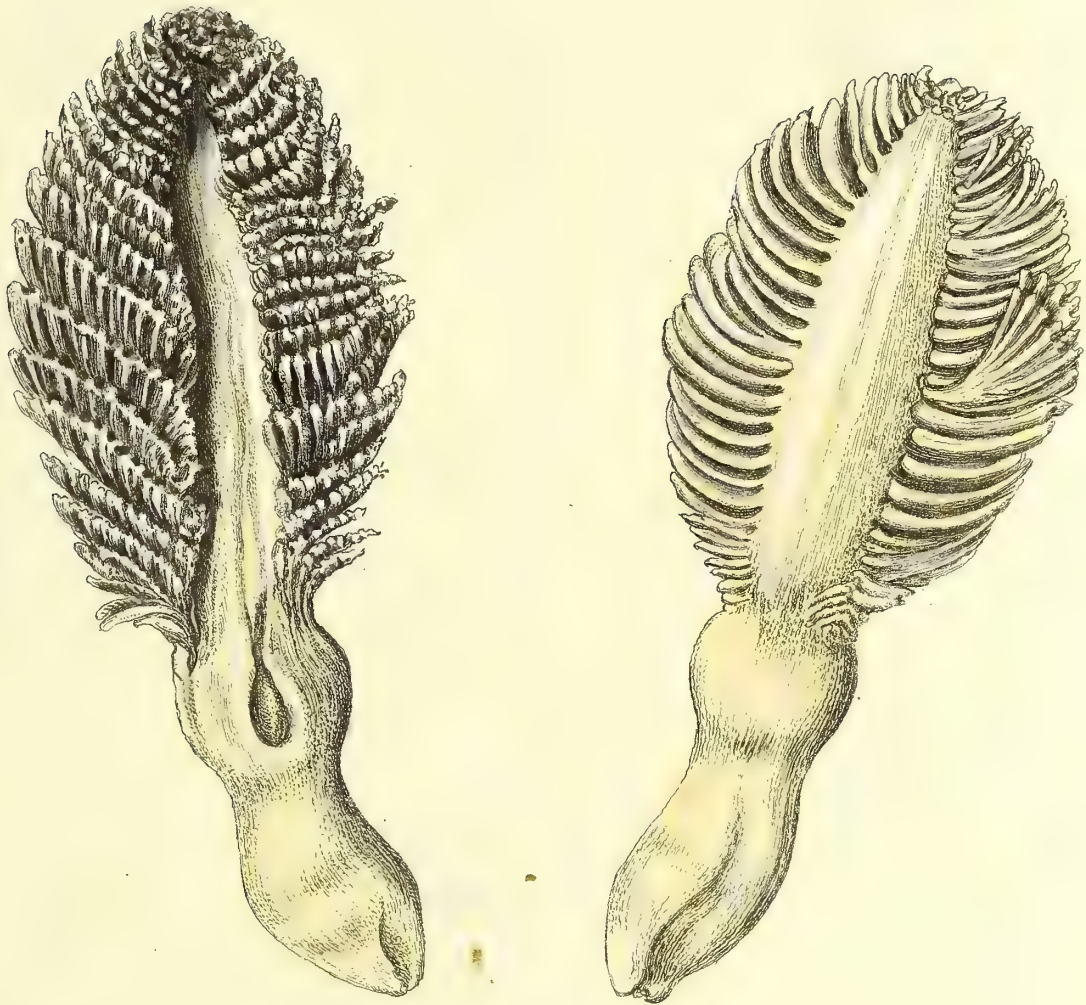


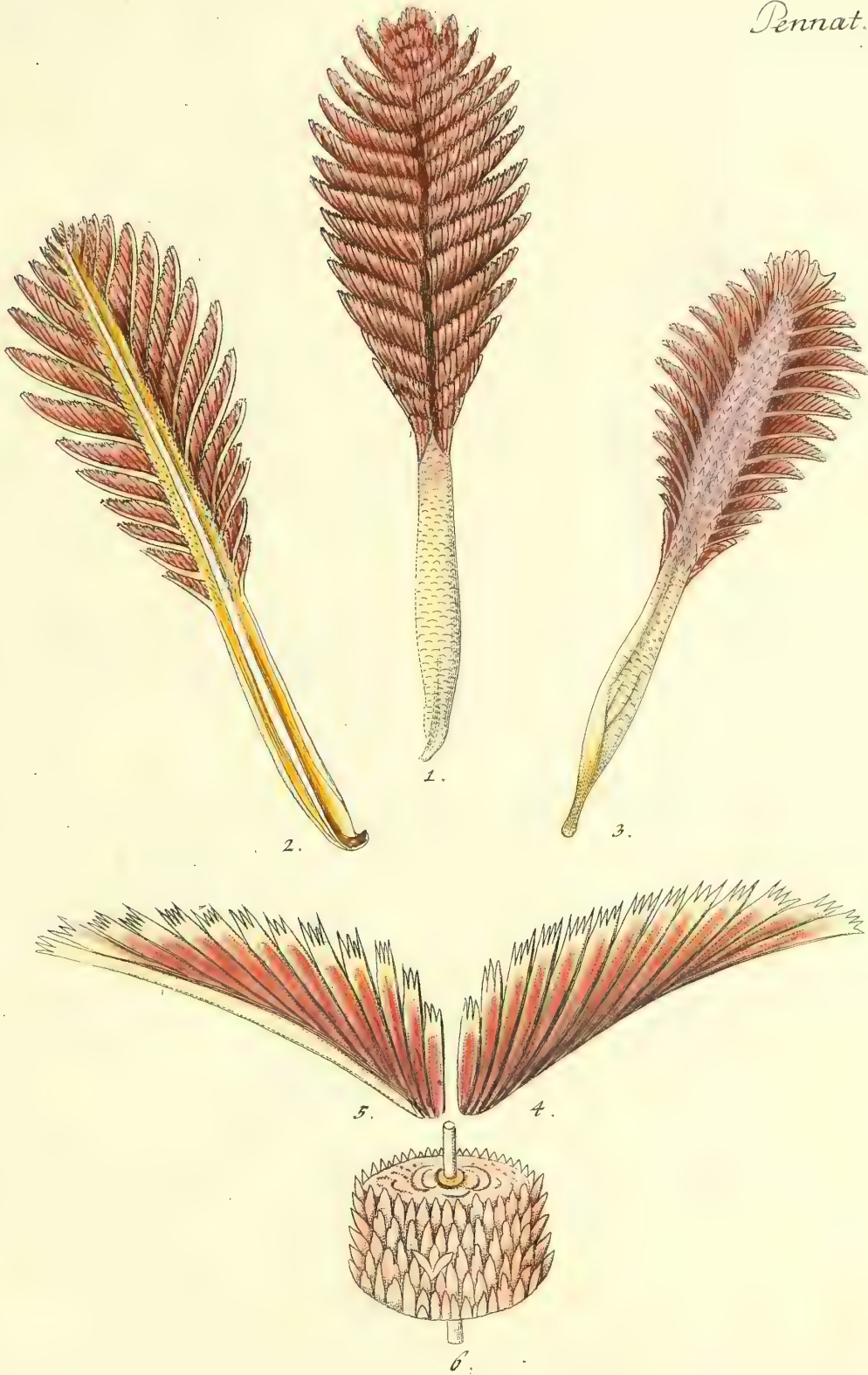
fig. 3.

Pennatula Linn. Gen. 350. Sp. 1. *grisea*.
Pall. Gen. 14. Sp. 3. (214).

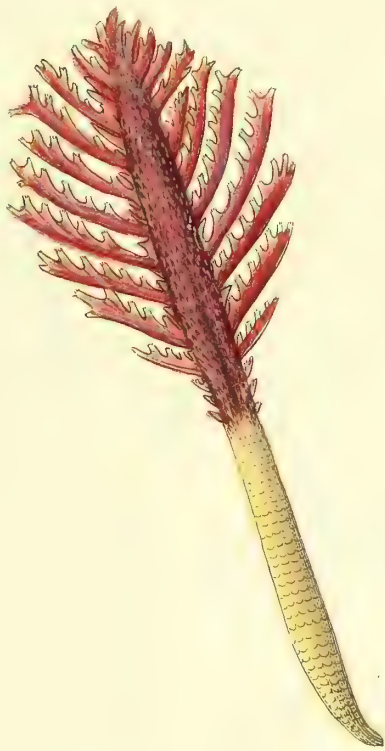




Pennatulula grisea.
in Spiritu vini conservata.



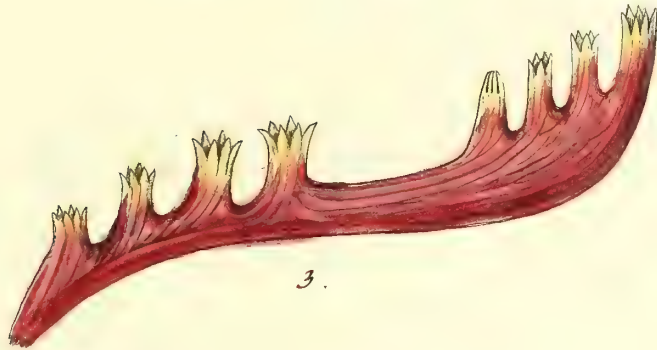
Pennatula rubra. Linn. sp. 4. Pall. 215. (Sp. 4).



1.



2.



3.

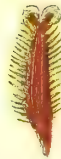
Pennatula phosphorea Linn. sp. 2.



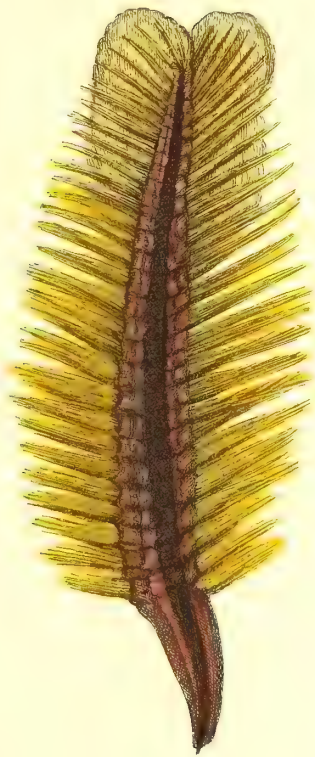
Pennatula iuncea.
Pall. nr. 217. sp.[6.]



1.



2.



3.

Pennatula Sagitta.

Linn. *sp.* 6.



1.



2.



3.

Pennatula alba.



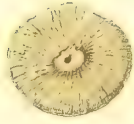
Pennatula setacea.



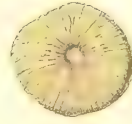


Pennatula argentea.
Ellis Solander.

Petrificata. Tab. I. Madrep. Tab. 1.



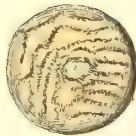
1.



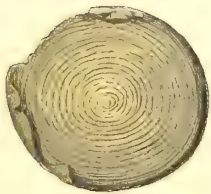
2.



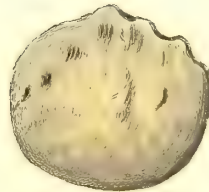
3.



4.



5.



6.

Fig. 1. 2. Madrepora Porpita Linn. sp. 1. Fig. 3.
repraesentatio major. Fig. 4. 5. 6. Opercula cochlearum petrificata.



1.



2.



3.

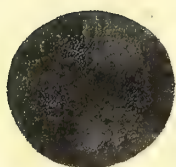


4.

Madrepora turbinata Linn. *sp.* 6. — Madre-
pora trochiformis Pall. *sp.* 176. C.



Madreporae turbinatae Varietates.
S. rami petrificati Hydus Hippuris.

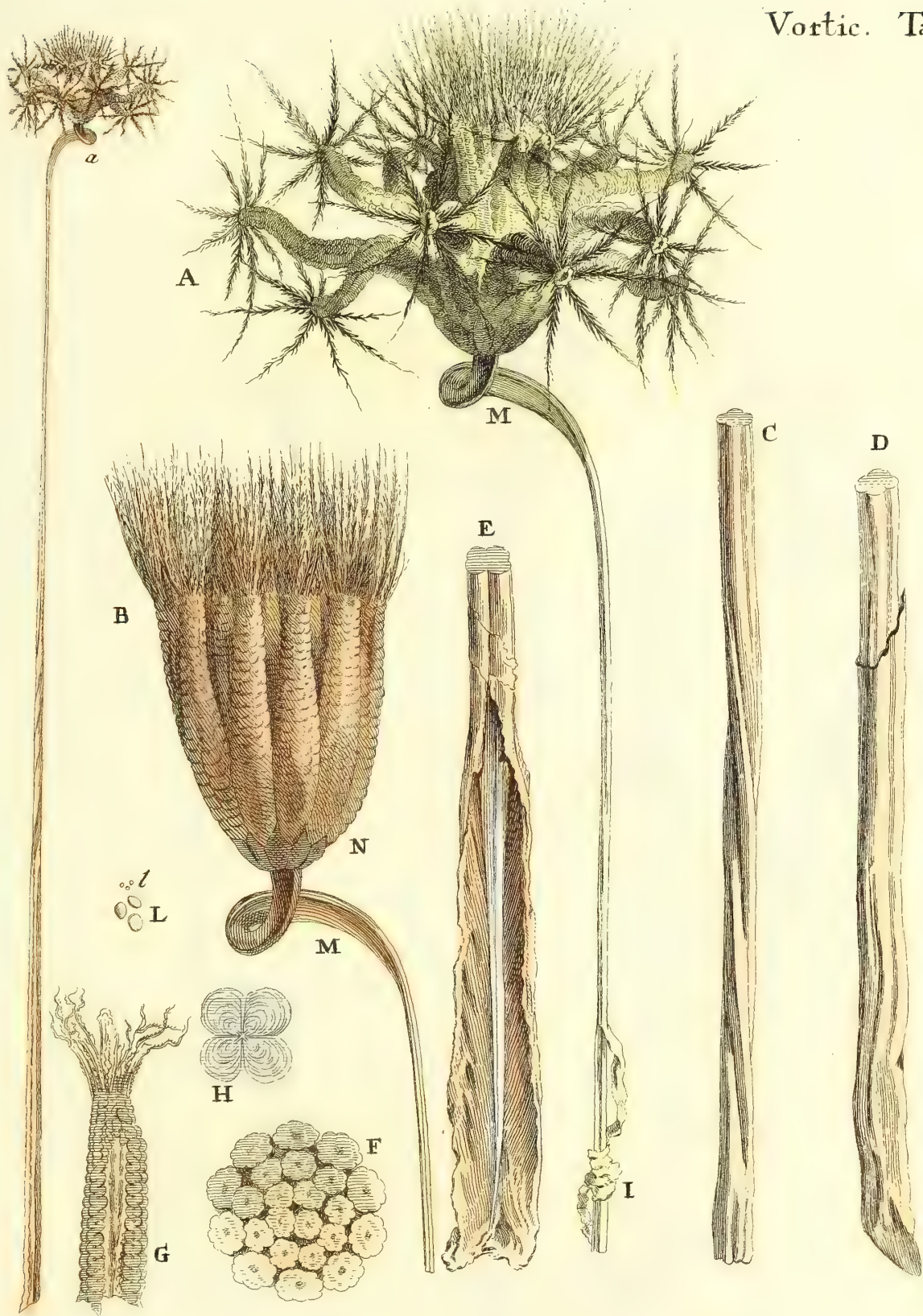


1.



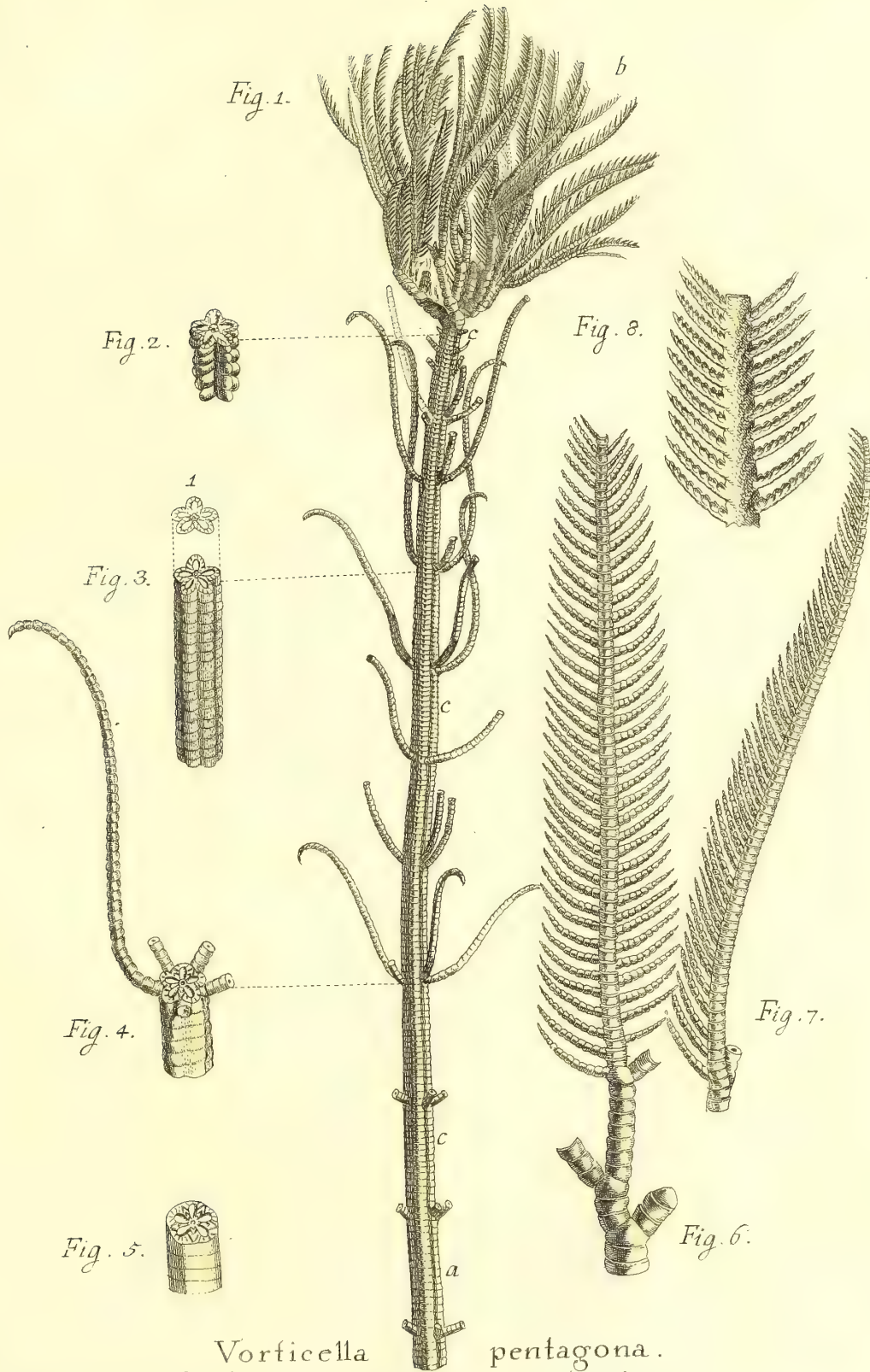
2.

Vorticella polypina,
Linn. gen. 348. sp. 2.

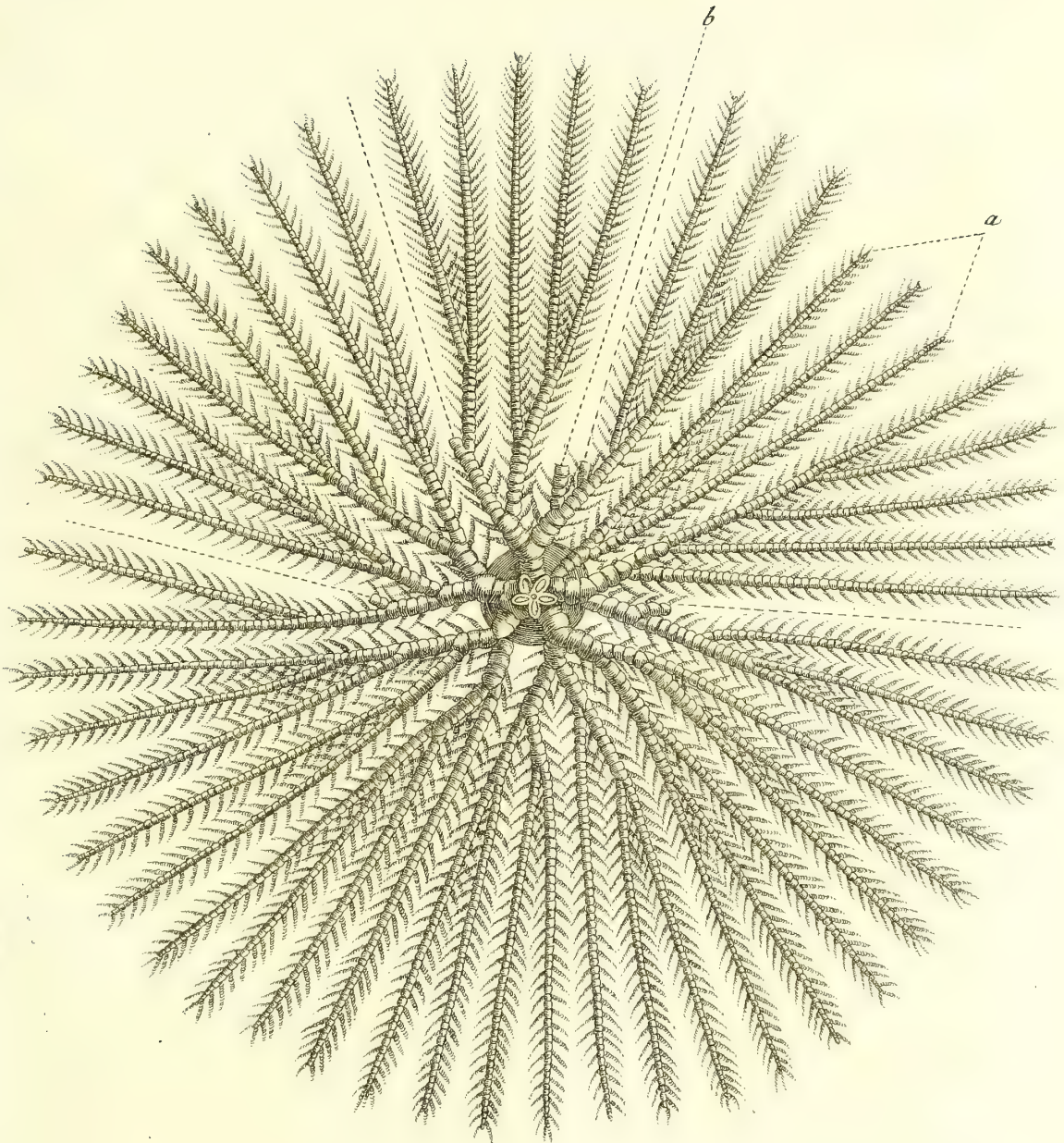


Vorticella Encrinus.

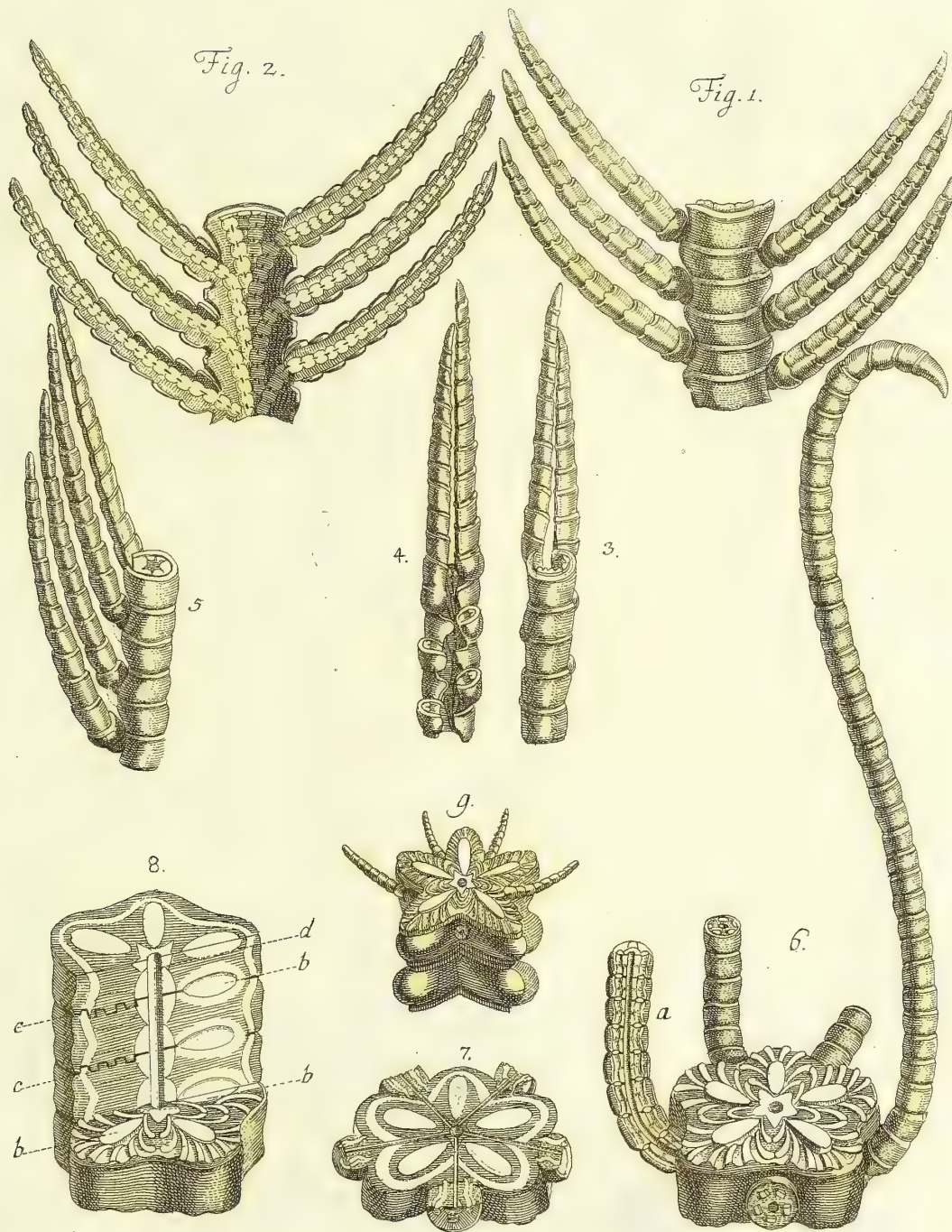
Linn. *sp. 1.* Pall. Pennatula Encrinus. *sp. 1. nr. 212.*



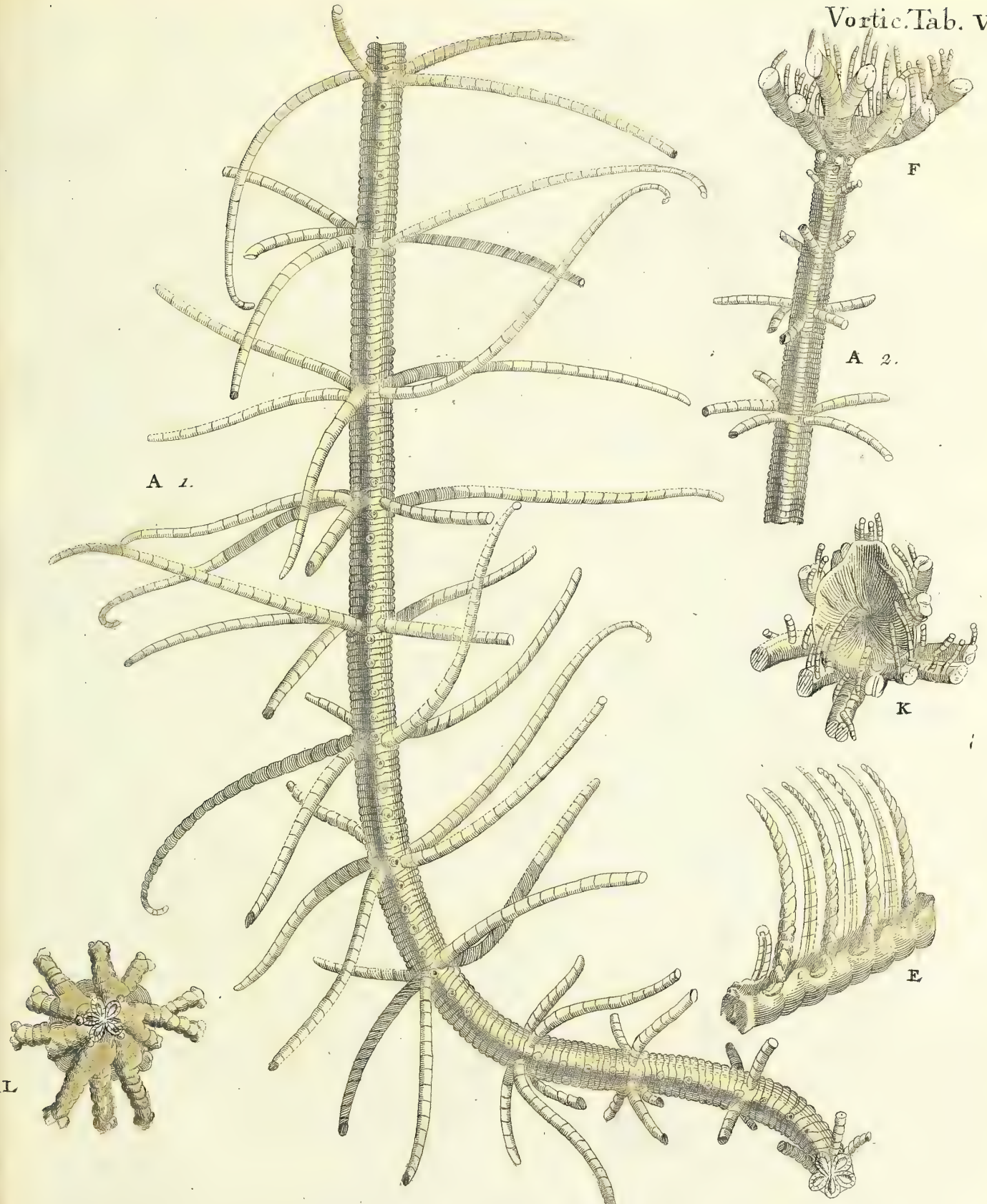
Vorticella pentagona.
Ilis Aleria Linn. sp. s. — Pentacrinus.
Secundum repraesentationem Gueffardi.



Vorticella pentagona.
Secundum repraes. Guettardi.



Vorticella pentagona.
Secundum repraesentationem, Guettardi. Partium
repraesentationem, maiorem.

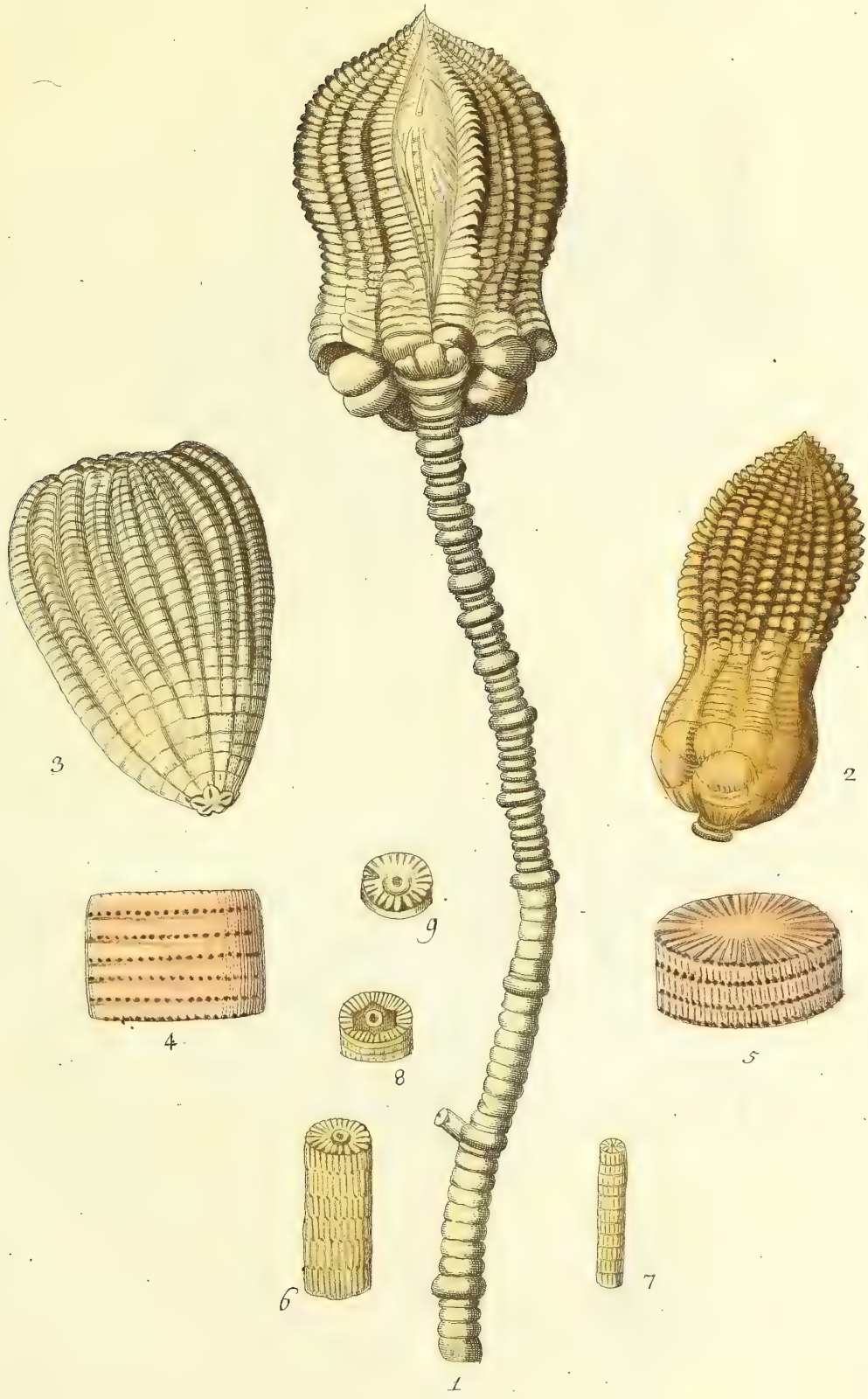


Vorticella pentagona.
secundum repraes. Elkifii



Vorticena pentagona.
Pentacrinites secundum repræsent. Davila.

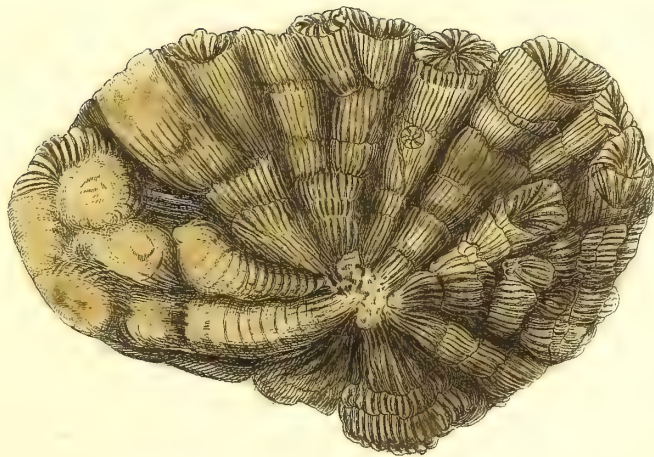




Vorticella rotularis.
Encrinites ∞.



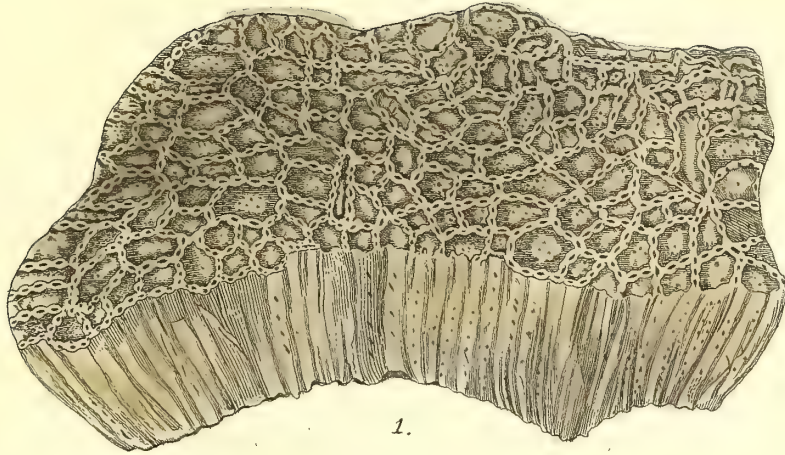
1.



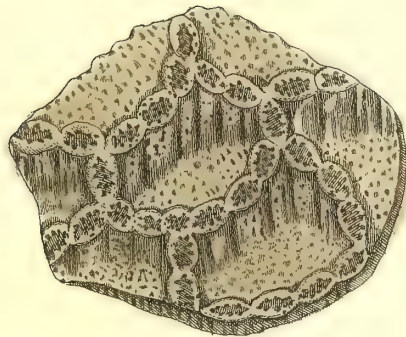
2.

Madrepora truncata.

Linn. *Sp.* 24.



1.

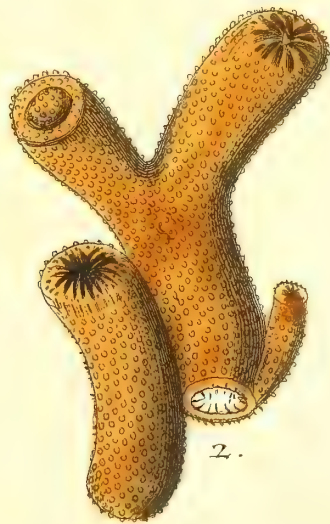


2.

Millepora catenularia.
Linn.



1.



2.

Madrepora flexuosa .
Linn *Sp.* 29. Pall. nr. 184. [*Sp.* 25]





Ordnung

der zu diesem ersten Theil der Fortsetzungen gehörigen
Tafeln.

1) Zu dem Geschlecht der Madrepora. Sterncoralle.

Vierte Lieferung. Madrep. Tab. XXXII. bis XXXVI.

Erste Lieferung der Fortsetzung, als in der Ordnung einzuschalten

Tab. Madr. XXXIII. A, und XXXIII. B.

Fünfte Lief. Madr. Tab. XXXVII. bis XLIII.

Sechste Lief. Madrep, Tab. XLIV. bis LV.

Achte Lieferung, einzuschalten Tab LIV. A. desgleichen aus der

Eilften Lief. Tab. Madr. LIV. B. LIX. A. ferner aus der

Zwoten Lief. der Fortsetzung, Madr. Tab. XLV. A, XLVI. A.

dann aus der

Dritten Lief. der Forts. Madr. Tab. LVIII. A, und LVIII. B.

Siebente Lief. Madr. Tab. LVI. bis Tab. LVIII.

Neunte Lief. Madr. Tab. LIX. bis LXIII.

Zehente Lief. — — —

Eilfte Lief. Madr. Tab. LXIV. und LXV.

Zwölfte Lief. Tab. LXVI.

Erste Lief. der Fortsetzung. Tab. Madrep. LXVII, bis LXXI.

Zweyte Lief. der Fortsetz. Madr. Tab. LXXII, und LXXIII.

Dritte Lief. der Fortsetz. Madr. Tab. LXXIV, bis LXXIX.

Vierte Lief. der Fortsetz. Madr. Tab. LXXX, bis LXXXIII.

Fünfte Lief. der Fortsetz. — —

Sechste Lief. der Fortsetz. — —

Siebente Lief. der Fortsetz. — —

Achte Lief. der Fortsetz. — —

2) Zu dem Geschlecht der Millepora. Punctcoralle.

Sechste Lief. Tab. Millep. XVIII bis XX.

Siebente Lief. Tab. Millep. XXI.

Achte Lief. Tab. XXII.

Neunte Lief. — — —

Zehente Lief. — — —

Eilfte Lief. — — —

Zwölfte Lief. Tab. Millep. XXIII.

Erste

Erste Lieferung der Fortsetzung —
Zweite Lief. der Forts. Tab. Millep. XXIV.
Dritte und vierte Lief. der Forts. —
Fünfte Lief. und Forts. Tab. Millep. XXV bis XXVII.
Sechste, siebente und achte Lief. —

3) Zu dem Geschlecht der Cellepora. Zellencoralle.

Zehente Lief. Tab. Cellep. VII.
Elfte Lief. Tab. Cellep. VIII bis X.
Erste und zweite Lief. der Forts. —
Dritte Lief. der Forts. Tab. Cellep. XI.
Vierte bis achte Lief. der Forts. —

4) Zu dem Geschlecht der Gorgonia. Horncoralle.

Zwölfte Lief. Gorg. Tab. XXXIX. A.
Zehente Lief. Gorg. Tab. XL.
Elfte Lief. Gorg. Tab. XLI.
Zehente Lief. Gorg. Tab. XLII.
Zwölfte Lief. Gorg. Tab. XLIII bis XLV.
Erste und zweyte Lief. der Forts. —
Dritte Lief. der Forts. Gorg. Tab. XLVI.
Vierte Lief. der Forts. —
Fünfte Lief. der Forts. Gorg. Tab. XLVII.
Sechste Lief. der Forts. Gorg. Tab. XLVIII.
Siebente Lief. der Forts. Gorg. Tab. XLIX.
Achte Lief. der Forts. Gorg. Tab. L.

5) Zu dem Geschlecht der Antipathes. Stachelcoralle.

Dritte Lief. der Forts. Antip. Tab. X. und XI.
Vierte und fünfte Lief. der Forts. —
Sechste Lief. der Forts. Antip. Tab. XII.
Siebente Lief. der Forts. —
Achte Lief. der Forts. Antip. Tab. XIII.

6) Zu dem Geschlecht der Saugschwämme. Spongia.

Erste Lief. der Forts. Tab. Spong. L.
Zweite bis vierte Lief. der Forts. —
Fünfte Lief. der Forts. Spong. Tab. LI und LII.
Sechste Lief. der Forts. Spong. Tab. LIII und LIV.
Siebente Lief. der Forts. Spong. Tab. LV bis LVIII.
Achte Lief. der Forts. Spong. Tab. LIX und LX.





