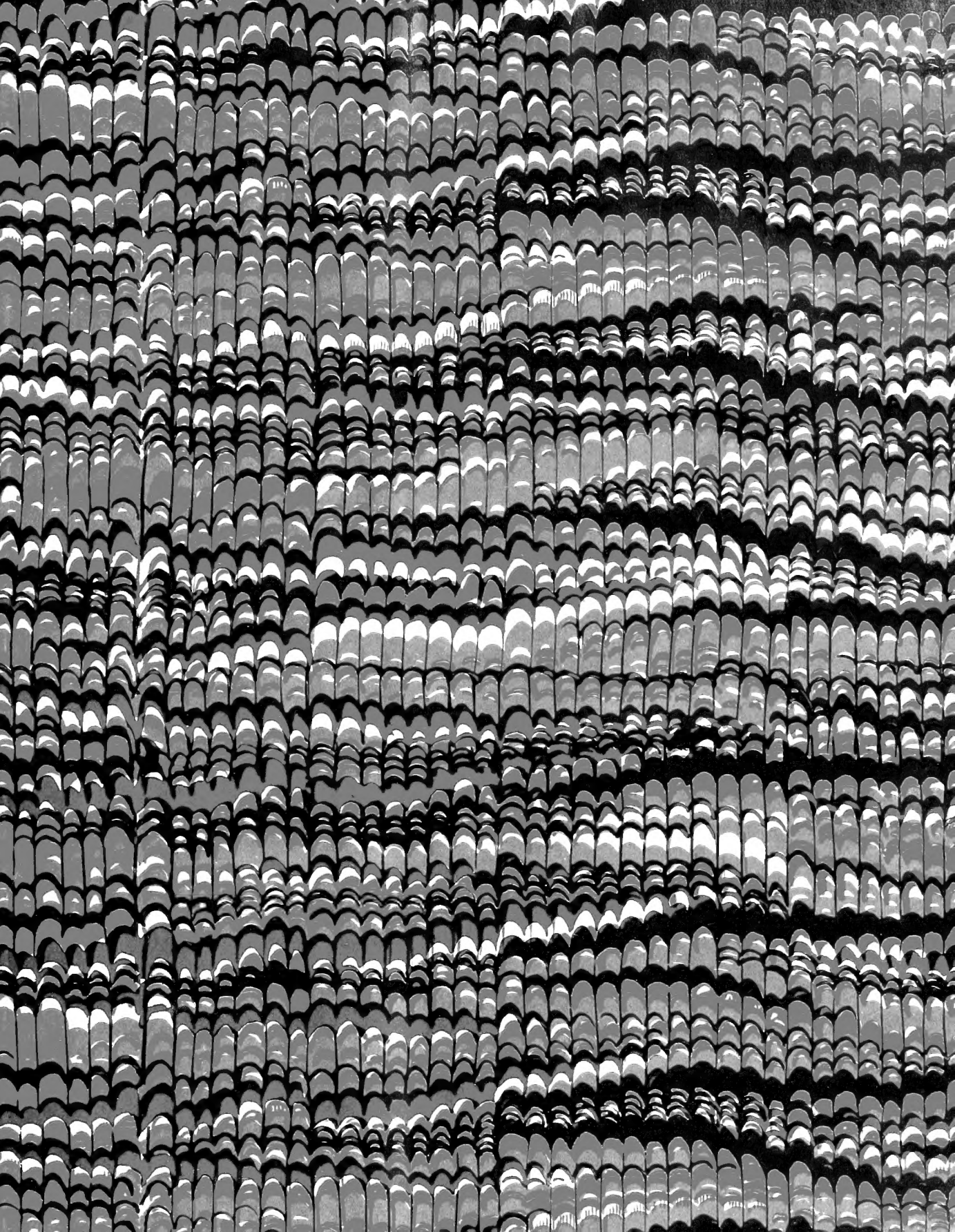






COLLECTION  
OF  
WILLIAM SCHAUUS  
©  
PRESENTED  
TO THE  
NATIONAL MUSEUM  
MCMV









Insects

Plates

vol. 2.

Q6  
555  
A1 E77  
1929  
[plates, v. 2]  
SCHUBB









Sphinx europ:  
*Legitim: Sp. 1. ocellata.*

I. F. Volkart sc.





Sphinx: europ:  
*Legitim: Sp. 2. Populi.*





fig. 1.



fig. 2.



fig. 3.

fig. 4.



fig. 5.

Sphinx: europ:  
*Legitim. Sp. 3. Tiliae.*





fig. 1.

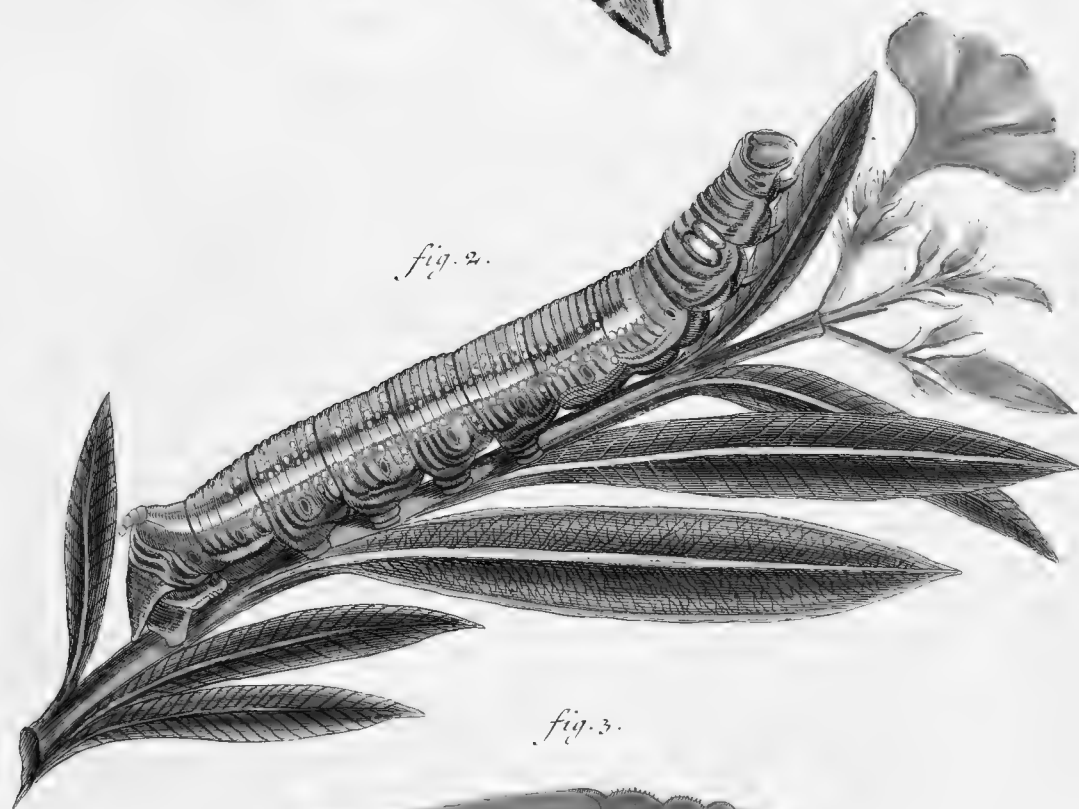


fig. 2.

fig. 3.



Sphinx: europ:  
*Legitim . Sp. 5. Nerii.*





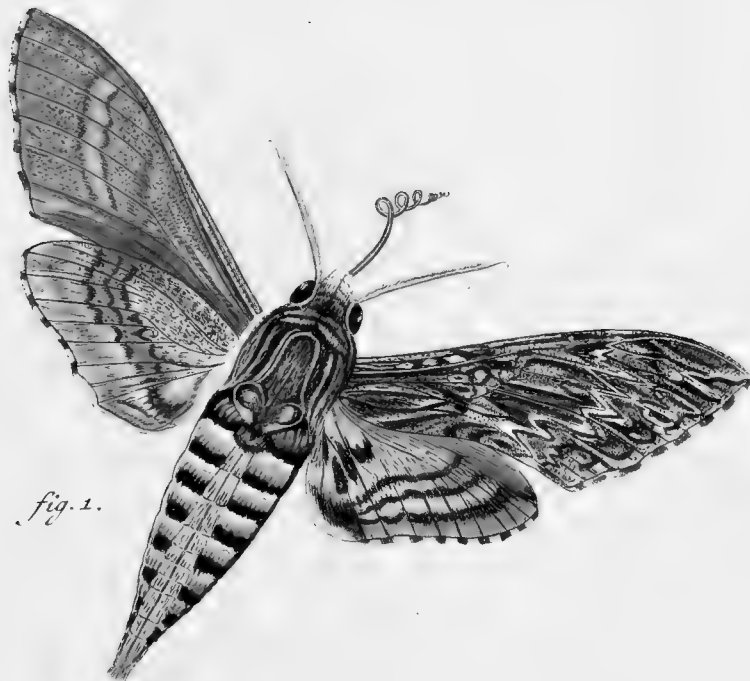


fig. 1.

fig. 2.

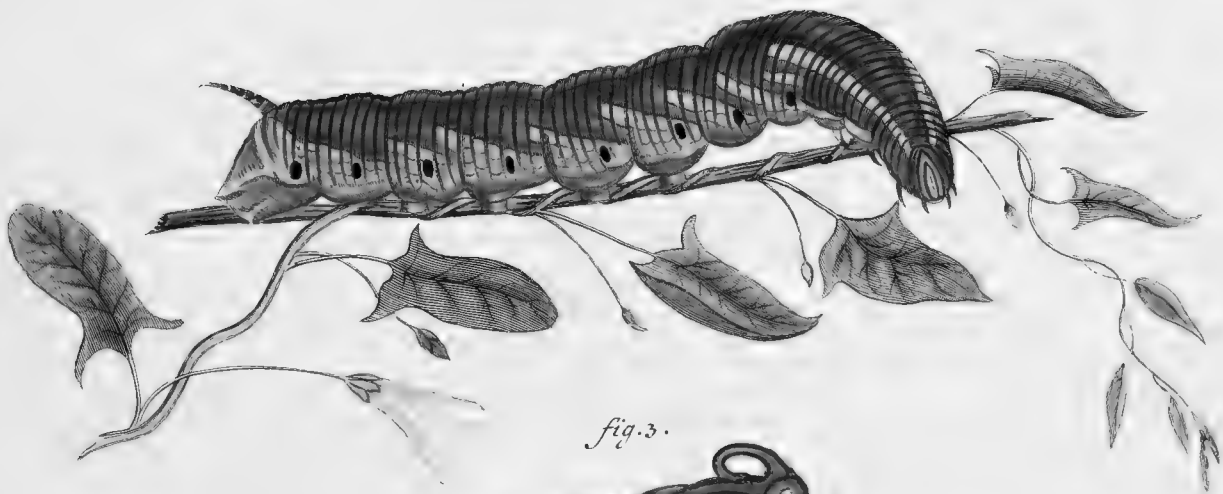


fig. 3.



Sphinx: europ:  
*Legitim. alis integr. anc simpl. Sp. 6. Convolvuli.*



fig. 1.



fig. 2.



fig. 3.



Sphinx: europ:  
*Legitim. alis integr. ano Simpl. Sp. 8. Ligustri.*

*J.F. Valckart sc.*



fig. 1.



fig. 2.



fig. 3.



Sphinx: europ:  
*Legitim. alis integr. ano simpl. Sp. g. Atropos.*





fig. 4.



fig. 1.



fig. 2.



fig. 3.

Sphing: europ:

*Legitim. al: integr. ano simpl. . Fig. 1. 2. 3. Celerio*

*Fig. 4. Variet:*

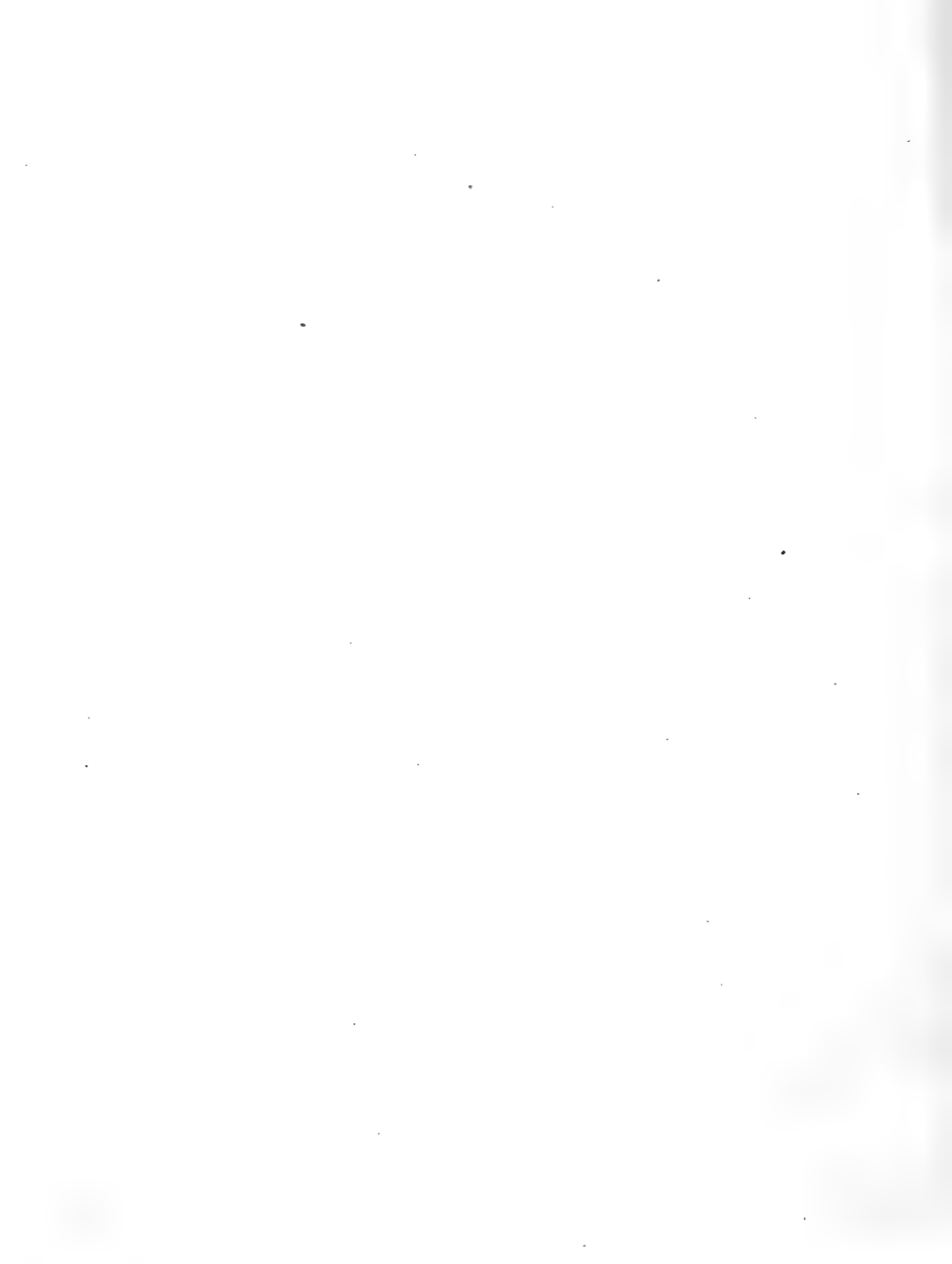






fig. 1.



fig. 2.

fig. 3.

fig. 4.

Sphinx: europ:  
*Legitim: alis integr. ano Simpl. Sp. 17. Elpenor.*



fig. 1.



fig. 2.



fig. 3.



Sphinx: europ:

*Alis integr. ano Simpl.*

*Sp. 18. Porcellus.*





Fig. 1.



Fig. 2.

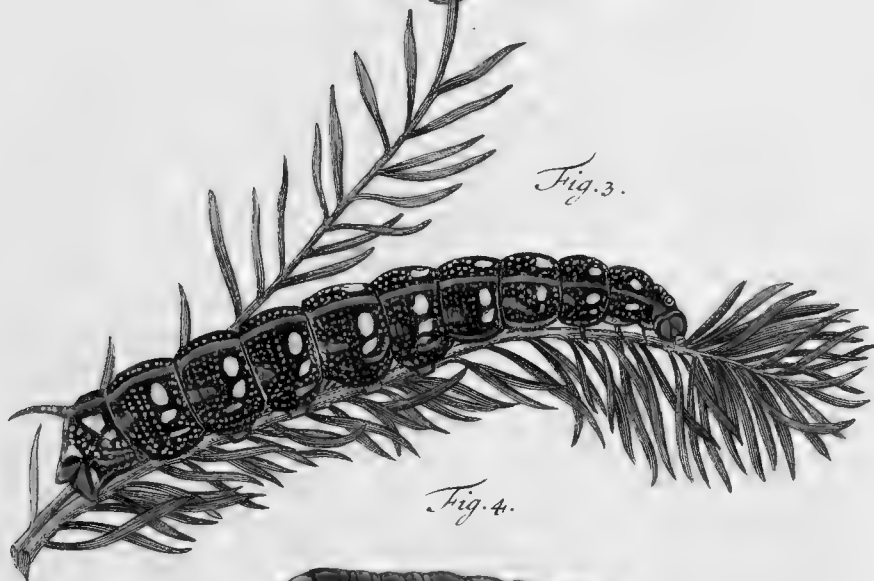


Fig. 3.

Fig. 4.

Sphing: europ:

*Legitim: al: integr. ano Simpl. Sp. 19. Euphorbiae*

IE. Volckart sc.



Fig. 1.



Fig. 2.

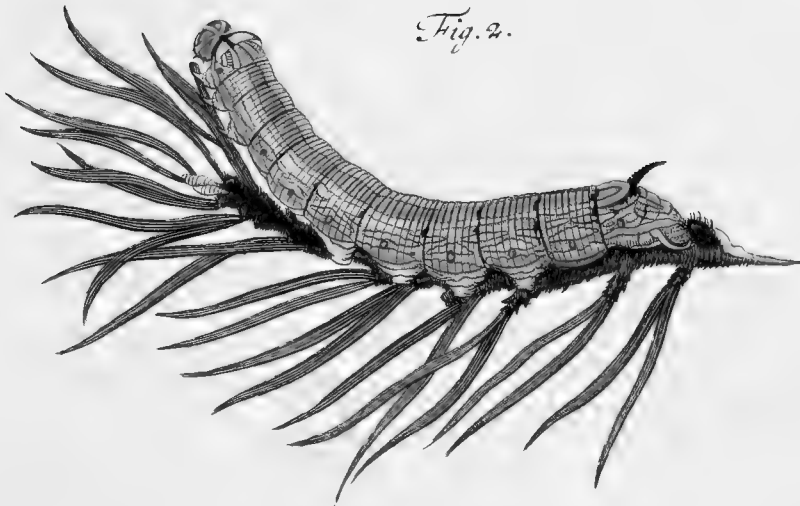


Fig. 3.



Sphinx: europ:

Legitim: al. integr. ano Simpl: Sp. 22. Pinastri. ~

L.F. Volckart sc.





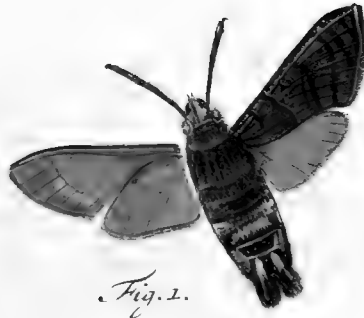


Fig. 1.



Fig. 2.

Fig. 3.



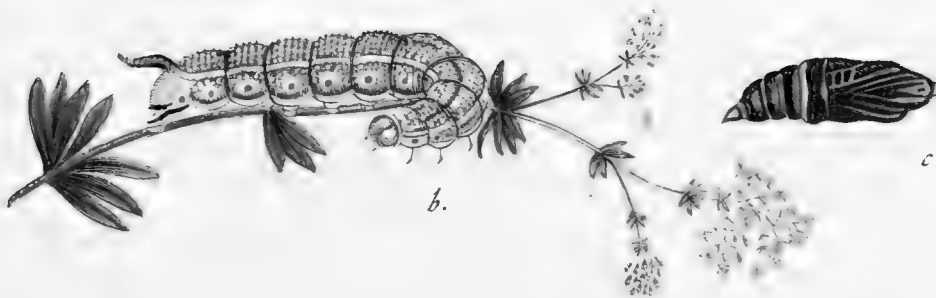
Sphing: europ:

*Legitim. alis integr. ano barbato. Sp. 27. Stellatarum.*





fig. 1. a.



b.

c.



fig. 2.

**Sphing: europ:**

*Legitim. alis integr. ano barb. Fig. 1. a. b. c. fuciformis Sp. 28. Fig. 2. apiformis. Sp. 29.*





Fig. 1.



Fig. 2.



Fig. 3.

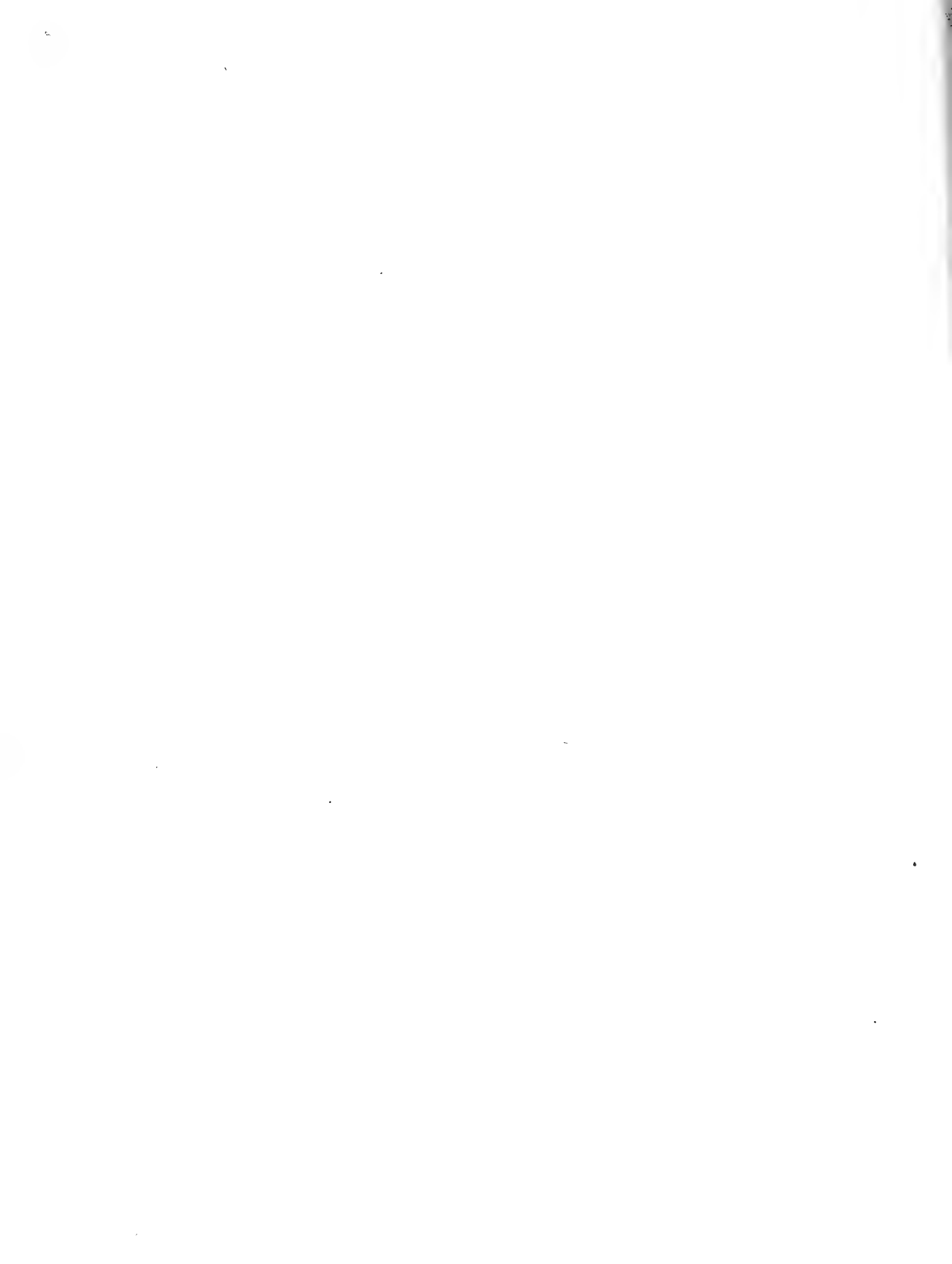


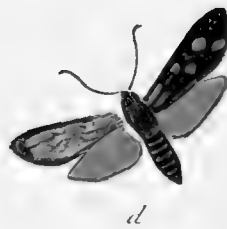
Fig. 3\*

Sphing: europ:

Legitim. alis intygr. ano barb. Fig. 1. culiciformis Sp. 32. Fig. 2.  
vispiformis. Sp. 31. Fig. 3. tipuliformis Sp. 32. Fig. 3\* repraesentat,  
totie eiusdem maior.

L.F. Volckart sc.





Sphinx: europ:  
*Afcitae. Filipendulae. Sp. 34. a. larva . b. puppa. c. crisalis.*  
*d. P. mas. e. foem . f. varietas ex Italia .*







fig. 1.



fig. 2.



fig. 3.



fig. 4. a.



fig. 4. b.

Sphing: europ:

*Adscitae.* Fig. 1. mas. Fig. 2. foem. *Phegia* Sp. 35. Fig. 3. *Ephialtes* Sp. 36.  
Fig. 4. 4. *Caffra.* Sp. 37. (a) mas. (b) Variet.





*fig. 1. a.*



*fig. 1. b.*



*fig. 2. a.*

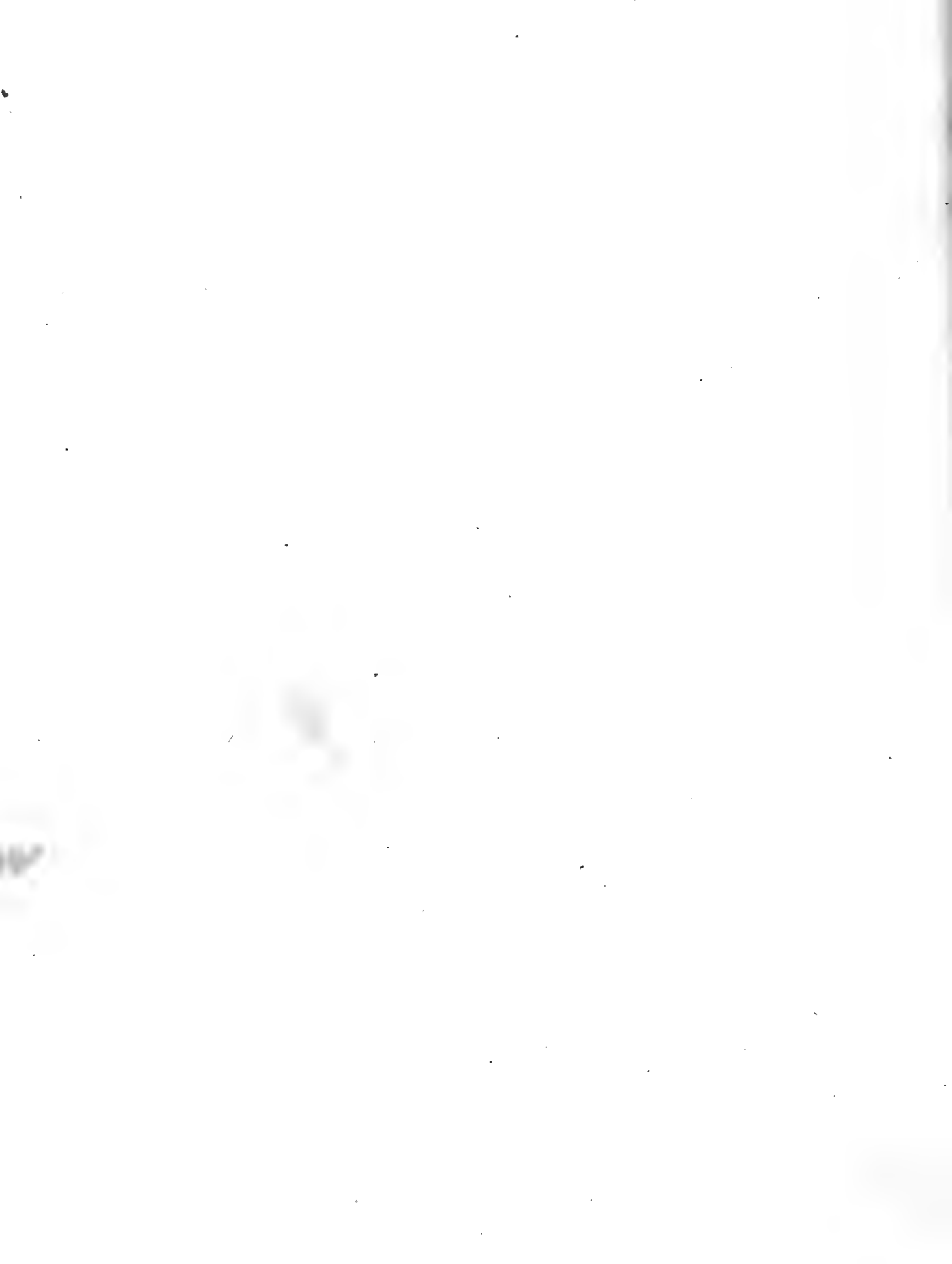


*fig. 2. b.*

**Sphing: europ:**

*Adscitae. Fig. 1. a. foem. b. mas. Fausta. Sp. 42. Fig. 2. a. mas. b. foem. Statice. Sp. 47.*

*J.F. Völkart sc.*





Sphinx: europ:  
*Legit: al. ang. Quercus.*





Sphing:europ:  
*Legitim alis ang. Oenotherae.*

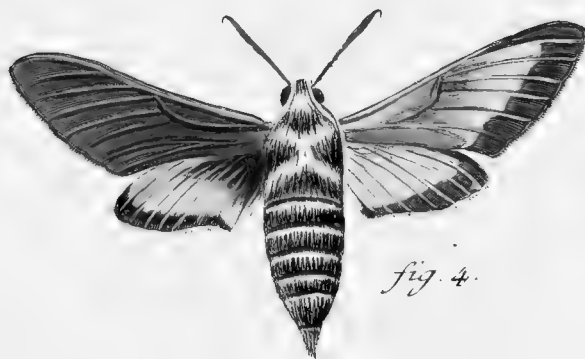






Spling: europ:  
*Legitim: al: integr: Galii.*





Sphing: europ:

Fig. 1. Sphinx Indiae orient: vulgo Varietas Sph. Celerio. (Tab: VIII). Fig. 2. Varietas Sph. Populi. (Tab. II.) Fig. 3. Variet: Sph. Tiliae (Tab. III.) Fig. 4. Sph. Leptim: alis integr. Vespertilio.





Fig. 1

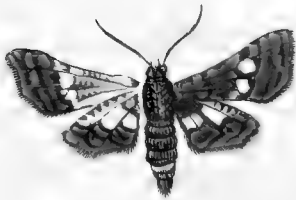


Fig. 1 \*



Fig. 2.



Fig. 3.

**Sphing:europ:**

Fig. 1. Legit:alis ang. Fenestrina. Fig. 1.\* repraesentatio eiusdem maior.  
Fig. 2. Legit. al. integr. ano barb: Bombyliiformis. Fig. 3. Legit.  
al: integr. ano. barb: Oestriiformis.





*fig. 1. a.*



*fig. 1. b.*



*fig. 2. a.*



*fig. 2. b.*



*fig. 3. a.*



*fig. 3. b.*

**Sphinx: europ:**

*Adscitae. Fig. 1. Ionicerae. a. mas. b. foem. Fig. 2. Pilosellae. a. mas. b. foem.  
Fig. 3. Scabiosae. a. mas. b. foem.*







*Sphingium europaeum*:

*Adscitae*. Fig. 1. *Achilleae*. a. mas. b. foem. Fig. 2. ♀ *Peucedani*. c. *chrysalis*.

γ. γ. *larvae*. δ. *puppa*. Fig. 3. *Variet. Lonicerae* (Tab. XXIV. Fig. 1.)

Walwert fca.

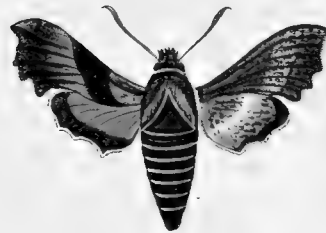




*fig. 1.*



*fig. 3.*



*fig. 2.*

Sphinx: europ:

*Legit. al. ang. Fig. 1. Quercus mas. (Tab. XIX.) Fig. 2. 3. Oenotherae  
Varietates. (Tab. XX.)*

*J. G. Sturm sc.*





Sphinx: europ:

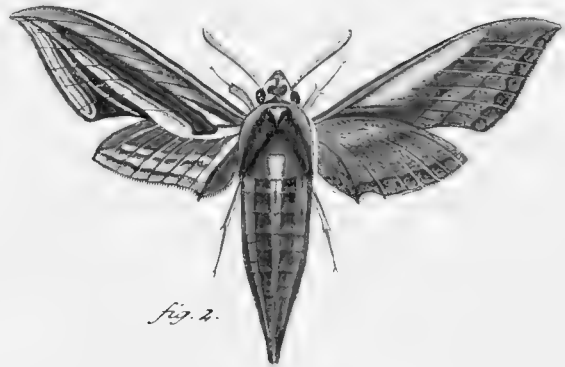
*Legitim al. ang. Fig. 1. Larva. Fig. 2. Neriü mas. (Tab. IV.) Fig. 3. Leg. al. int. an. simpl. Elpenor. Variet.*

*J. G. Sturm. sc.*





*fig. 1.*



*fig. 2.*



*fig. 3.*

Sphing:europ:

*Legit. al. int. an. Simp. Fig. 1. Celerio mas. (Tab. VIII. XXII.) Fig. 2. Celaeno  
Leg. al. int. an. barb. Fig. 3. Stellatarum Variet.*

*J.G. Sturm sc.*







*fig. 1.*



*fig. 2.*



*fig. 3.*



*fig. 4.*



*fig. 5.*

*Sphingum europ:*

*Legitim. al. int. an. barb. Fig. 1. Asiliformis. Fig. 2. mas. Fig. 3. foem. Apiformis.*  
*(Tab. XIV.) Fig. 4. mas Fig. 5. foem. Sireciformis.*





*fig. 1.*



*fig. 2.*



*fig. 3.*



*fig. 4.*

Sphing: europ:

*Legitim. al. int. an. barb. Fig. 1. Tenebriformis. Fig. 2. Chrysidiformis.*

*Fig. 3. Tenthradiniiformis. Fig. 4. Spheciiformis.*





fig. 1.



fig. 2.



fig. 3.



fig. 4.



fig. 5.



fig. 6.

Sphing: europ:

*Legitim. al. int. an. barb. Fig. 1. mas. Fig. 2. foemina Conopiformis.*  
*Fig. 3. mas. Fig. 4. foem. Cynipiformis. Fig. 5. mas. Fig. 6. foem. Tipuliformis. Variet*





fig. 1.



fig. 2.



fig. 3.



fig. 4.



fig. 5.



fig. 6.

Sphinx: europ:

*Legit. al. int. an. barb. Fig. 1. mas. Fig. 2. foem. Empyiformis. Fig. 3. mas. Fig. 4. foem. Formicaeformis. Fig. 5. mas. Fig. 6. foem. Muscaeformis.*







*fig. 1.*



*fig. 2.*



*fig. 3.*



*fig. 4.*

Sphing: europ:

*Adscitae. Fig. 1. Acacus. Fig. 2. Coronillae. Fig. 3. Trigonellae.*  
*Fig. 4. Variet. eiusd.*





*fig. 1.*



*fig. 2.*



*fig. 3.*



*fig. 4.*



*fig. 5.*

Sphing: europ:

*Adsc. Fig. 1. Phegeae Var. (Tab. XVII.) Fig. 2. Lavandulae Fig. 3. Polygalae.  
Fig. 4. mas. Fig. 5. foem. Trifolii.*

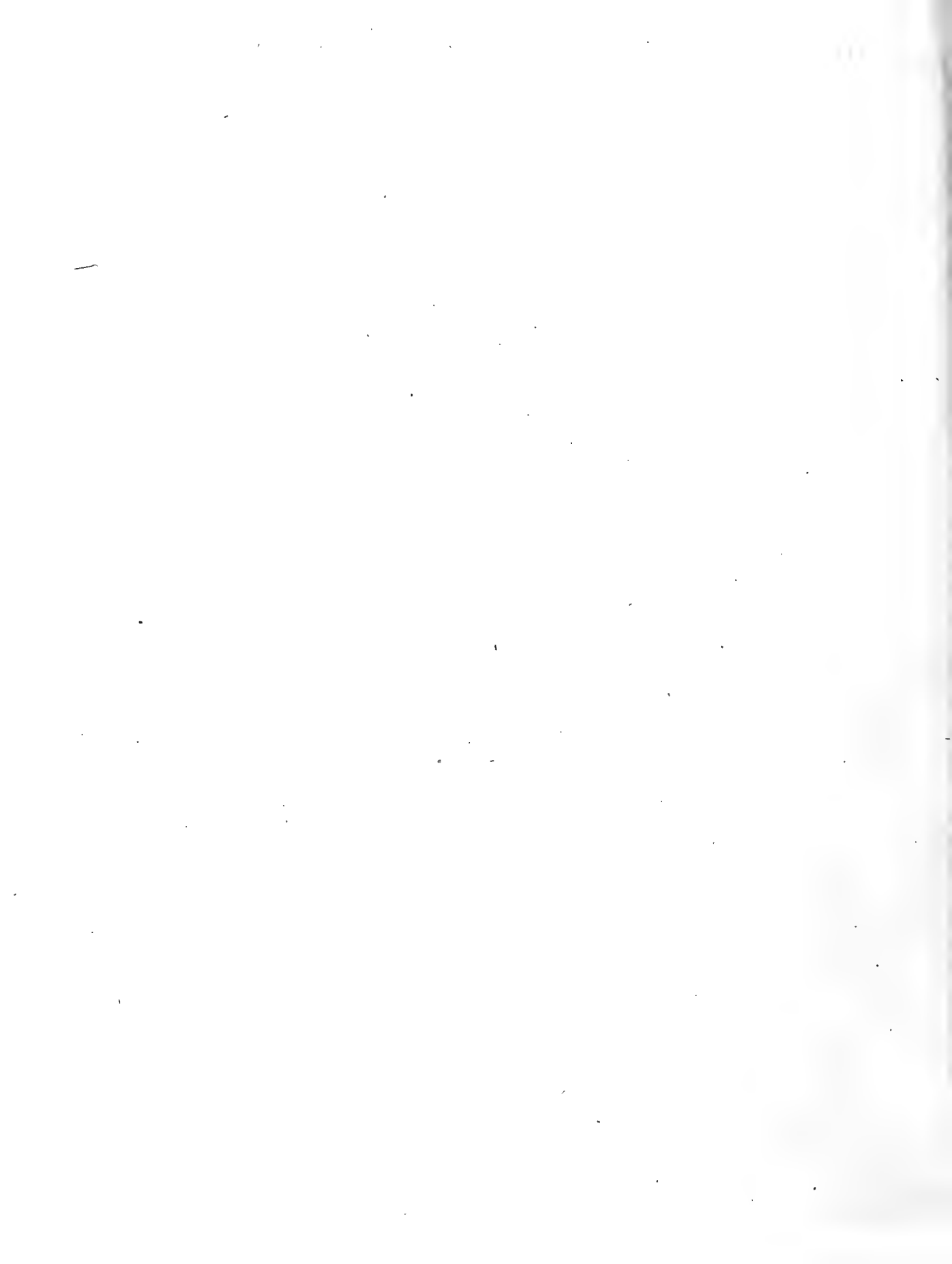




fig. 1.



fig. 2.



fig. 3.



fig. 4.



fig. 5.



fig. 6.

*Sphinx* europ.

*Adfc* fig. 1. *Loti*. fig. 2. *mas*. fig. 3. *foem*. *Pruni* fig. 4. *Infau*ta.

*Lin Sp.* 43. fig. 5. *foem*. fig. 6. *mas* *Appendiculatu* J. K. Naer



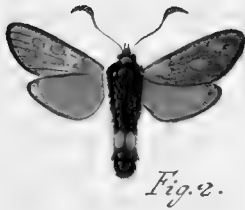


*Sphingium europ.*

Fig. 1. *Adsc. Flavicola*. fig. 2. larva. fig. 3. chrys. mas. fig. 4. chrys. foem. *Sphingis Apiformis* s. (Tab. XIV. XXIX.) Fig. 5. 6. Variet. larvarum. *Sph. Stellatarum*. (Tab. XIII.) Fig. 7-11. Ovipara *Sphingium*. fig. 7. *Liquifre*. (Tab. VI.) fig. 8. *Filipendulae*. (Tab. XVI.) fig. 9. *Pinastris*. (Tab. XII.) fig. 10. *Populi*. (Tab. II.) fig. 11. *Apiformis*. (Tab. XIV. XXIX.)







Sphinxum europ.

Fig. 1. Chrysanthem. Fig. 2, mas, fig 3, fem, fig 4, maris Variet. Cynarae. Fig. 5, mas  
fig. 6, fem. Athamantae. Fig. 7. Tipuliformis. Variet. annulis abdominis cingulis duobus.





*Fig. 1.*



*fig. 2.*



*Fig. 3.*

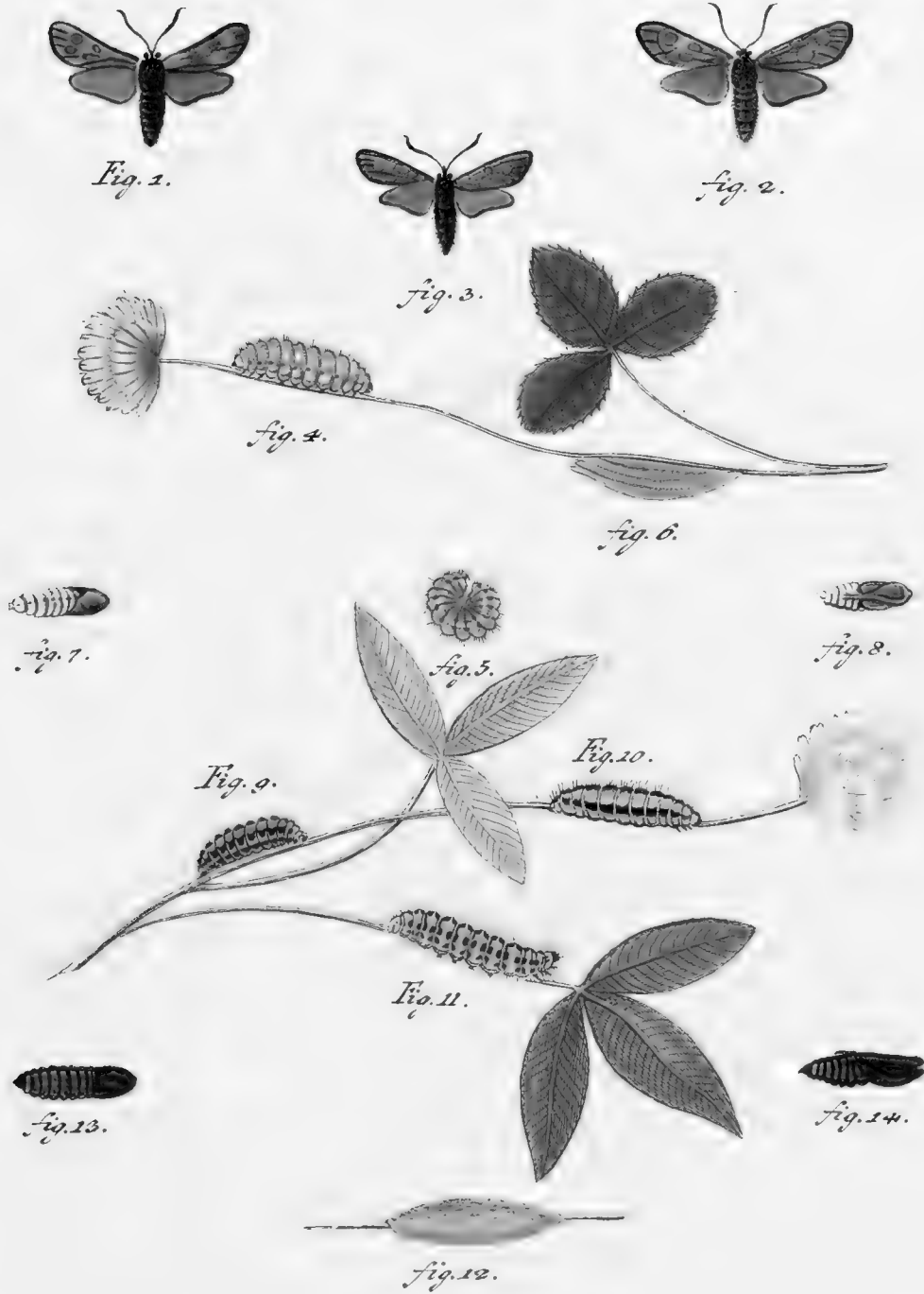


*Fig. 4.*

*Sphinx* europ.

*Fig. 1, mas, fig. 2, fem. Hippophæes. Fig. 3, Rhamnus Hippophæes rhamnoidis. Fig. 4, tineiformis.*





*Sphing. europ.*

*Ad c* Fig. 1, mas, fig. 2, fem. fig. 3, variet, fig. 4, 5, larvae, fig. 6, folliculus, fig. 7, 8, chrysalides, Melilothi. Fig. 9, 10, 11, larvae. fig. 12, folliv. fig. 13, 14, chrysalid. Loniceræ.

(Tab. XXIV. Suppl. 6)

I. C. Bock sc





Sphing. europ.

Fig. 1, mas. Fig. 2, foem. Rhadamanthus. Fig. 3, 4, larvae,  
 Fig. 5, chrysalis. Fig. 6, follic. Pilosellae (Tab. XXIV. Suppl. 6.) Fig. 7,  
 mas, Fig. 8, foem. trimaculata.







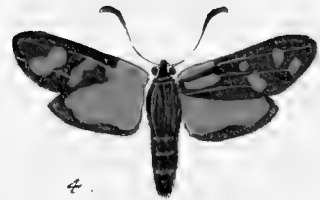
1.



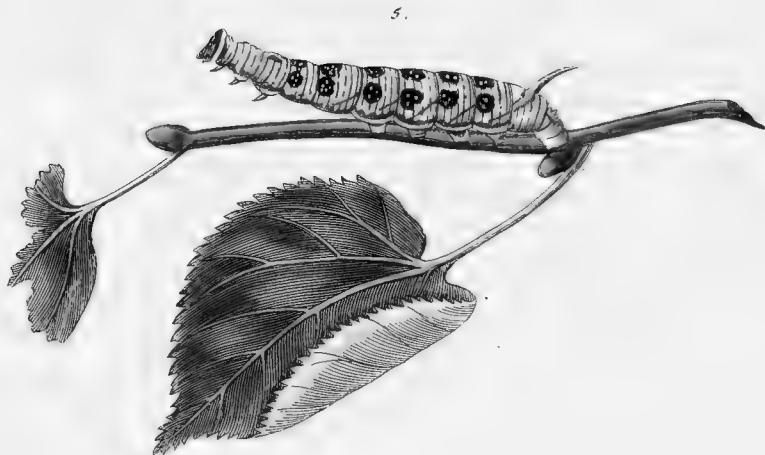
2.



3.



4.



5.

*Sphinxum europ.*  
Fig. 1. mas, fig. 2 foem. sph. adsc: Exulans. Fig. 2 mas *Sphinxis* Lavandulae  
(Tab. XXXIV. Cont. IX.) Fig. 4. *Sphinx* Filipendulae maior. Fig 5 Larvae *Sphinxis*  
Tiliae Varietas. (Tab. III.)





1



4



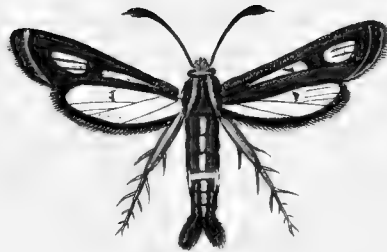
2



3



5



6

*Sphinx* europ.

*Fig. 1. Legit. Spiraeae. Fig. 2. mas. fig. 3. foem. fig. 4. Var. tdsc. Onobrychis.*

*Fig. 5. Leucopiformis.*

*G. F. Volkart sc.*

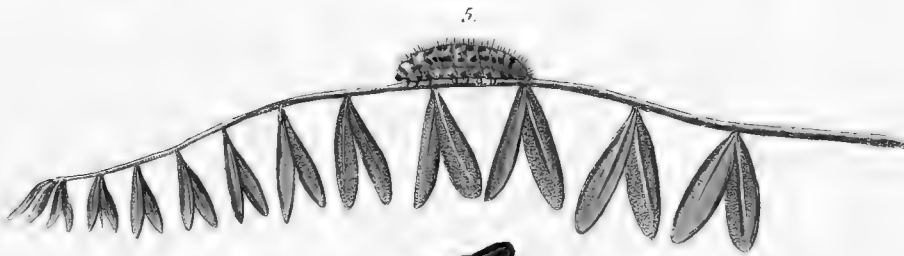
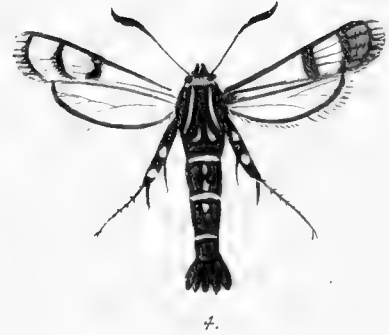




Sching. europ.

Adfc. *Fig. 1. mas. fig. 2. foem. Millefolii. Fig. 3. mas. fig. 4. foem. Brizae. Fig. 5. mas. fig. 6. foem. Globulariae.*



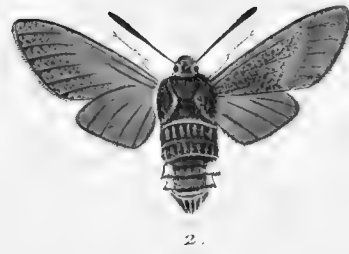
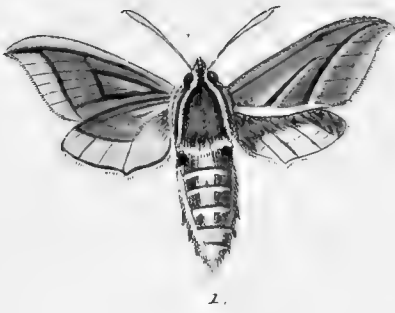


Sphing: europ.

Fig. 1. Anthraciformis, fig. 2. minor: repraes. Fig. 3. Bibioniformis. fig. 4. mai: repraes. Fig. 5. Larva, fig. 6, 7. folliculi, fig. 8. chrysalis fig. 9. imaginis Variet. Carneolica. Fig. 10. Pilosellae Variet.







Sphing. europ.

Fig. 1. Elpenor Variet. (Tab. IX). Fig. 2. Croatica. Fig. 3. Sphing. Celerio. (Tab. VIII.) Fig. 4. 5. larvae, fig. 6. chryf. Sph. Phegaeae (Tab. XVII.)





*Sping. europ.*

*Fig. 1. Onobrychis. Var. Fig. 2. Laeta Fig. 3, 4, 5, 6. Larvae, fig. 7. Chry. Livornica (Tab. VIII.)*





Sphinx europ.

Fig. 1. Leait. Chalciiformis. fig. 2. repraes. maior. Fig. 3. Phegeus. fig. 4. Iphimedeia. Fig. 5. Gorgon. Fig. 6. 7. larvae, fig. 8. annulerum larvæ repraes. maior, fig. 9. fellie, fig. 10. chryf. Pruni (Tab. XXXV.)















