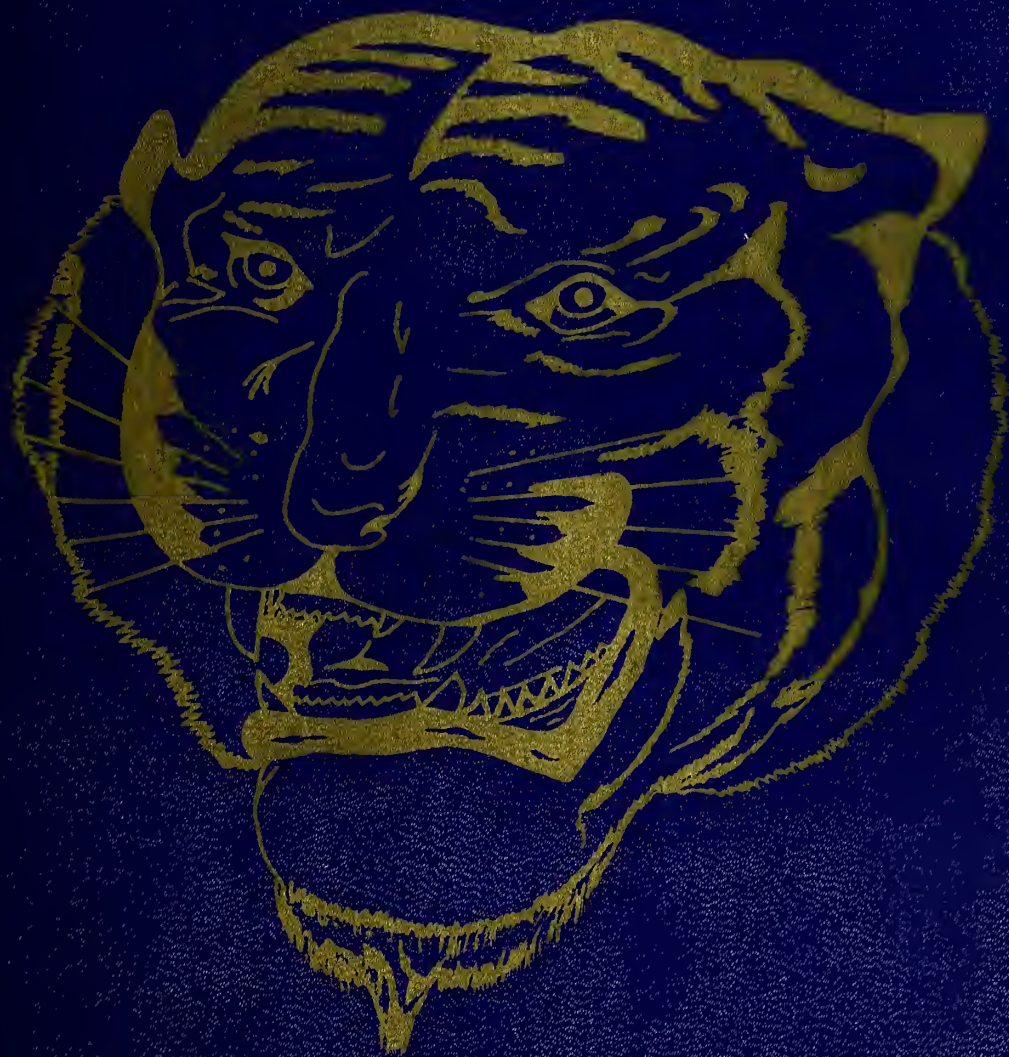


Dillardite



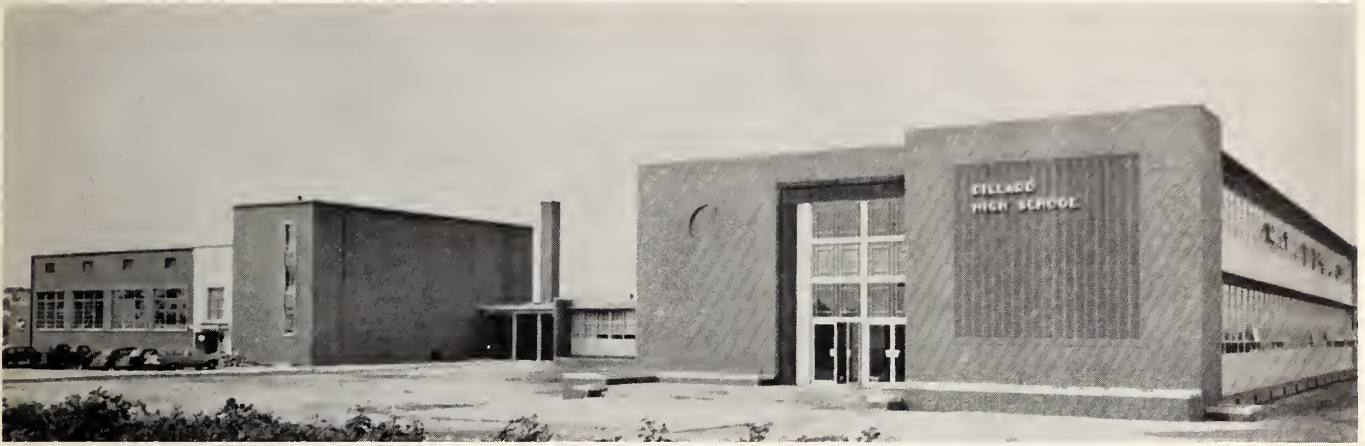
1

9

5

8

Our Alma Mater



We believe in our school as an institution so organized and carried on as to give boys and girls a triple training that is necessary for a well-rounded life.

We believe firmly in the coordinate training of the head, the heart, and the hand, for though each one is necessary, neither can be of great use alone.

We believe that a life worth living must embody mental satisfaction, industrial pursuits, and a spiritual outlook, therefore, our various subjects and activities have been so planned and selected by us and our elders as to ultimately develop one or more sides of our educational triangle.

We pledge that in all our endeavors we shall strive to grow mentally, physically, and spiritually strong, for we know that only such a triple development can make a real life, and in the final analysis a true American Citizen.

SLOGAN: "Let's Have The Best School" (by Lucy B. Thompson, '28)

* * * * *

ALMA MATER "The Blue And Gold"

Lift happy voices, praises unfold
Hail to the Blue and Gold
Let songs of gladness rise to the sky
For Dear Old Dillard High.
And strive to show, as on we go,
Ability and power.
To do the right with all our might
Through every changing hour.
With hope and loyalty and courage
Our lives shall e'er be blest;
And ever for our Alma Mater
We will work, we will do our best.
As on we go, our aim shall grow,
Our cheers will ever cry
To do the right with all our might
For Thee, Dear Dillard High

-Thelma I. Johnson



OFFICE STAFF
Willette B. Starke, Clerk

Contents

- I OUR ALMA MATER
- II DEDICATION
- III ADMINISTRATION And FACULTY
- IV CLASSES
- V ORGANIZATIONS
- VI ATHLETICS
- VII SENIORS
- VIII PATRONS



Foreword

The year 1957-58 was one of the most enjoyable years of all our high school days, because of the splendid changes, higher hopes for everyone, and the experience of entering a new high school.

It can hardly be expected that this Memory Book will give you all the facts and happenings of the 1957-58 school year. The most we can expect is a few glimpses of passed actions . . . some of the people . . . some of the places . . . and some of the events.

As we turn these pages, let us remember that the mind is a wonderful machine, it need only be refreshed. This Memory Book tends to clarify the people, places, and events as they were.

ERNESTINE FLOWERS, Editor-in-Chief



Dedication

A
LIFETIME
OF
SERVICE

HUGH VICTOR BROWN, Principal

TO THE STAFF:

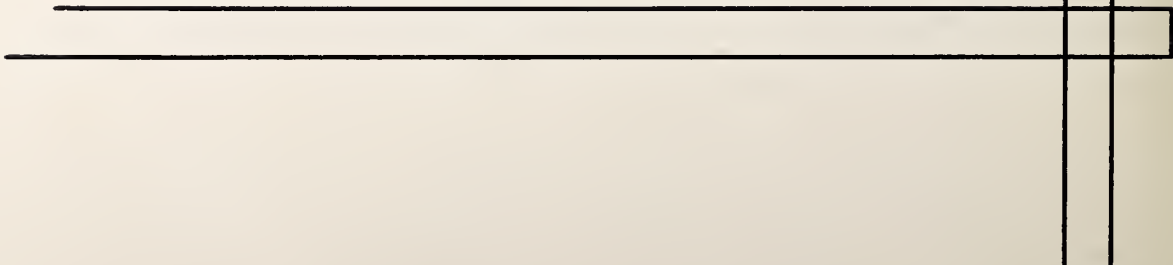
In this, my final year, as your principal, I am happy to join with you in the publishing of your Memory Book.

For years to come you will look upon this book with a great deal of interest as you wend your way through the avenues of life.

It is my hope that the events chronicled in this book are indicative of the future service you may render to your fellow man.

Sincerely yours,

Hugh V. Brown, Principal



Book Staff



Editor
WILLIAM STARKE

Editor-In-Chief
ERNESTINE FLOWERS

Assistant Editor
BARBARA CLARKE

Art Editor
KENNETH HOLT

Secretary
GERALDINE BUNCH

Business Manager
JAMES HOUSE

Assistant Business Manager
RUSSELL MITCHELL

Make-Up Editor
ANGELINE ROWE

Circulation Manager
BARBARA HOWELL

Bookkeeper
CATHERINE DENT

Advertising Manager
PAUL BARNES

Advisor
NEIL A. STITT

Typists
CARL HAYES
BARBARA HOWELL
ROBERT PAUL BEST
DAVID BALDWIN

Photographers
MARY FLOWERS
PEARLIE HEATH
DORIS HEATH
JOHNNY SAVAGE



Administration



HUGH VICTOR BROWN
(Principal)
B. S. , Hampton Institute
M. S. , Hampton Institute



EDWARD HOUSE
(Supervisor)
A. B. , Johnson C.
Smith University
M. A. , University
of Connecticut

DORIS L. BROWN
(Librarian)
A. B. , B. S. , Library Science
Shaw University
M. A. , New York University
North Carolina College



Guidance

DOROTHY W. HARDY
A. B. , North Carolina College
M. A. , Columbia University



Physical
Education
Department

TWILLE T. BELLAMY
B. S. , Shaw University



P. T. A. Officials

MRS. GENEVA HAMILTON
MRS. SALLIE JONES
MRS. MAMIE SIMMONS, President
MRS. Z. W. BORAH



Faculty



Department of Mathematics

JAMES E. GREEN

A. B. , Clark University

B. D. , Gammon Theological Seminary

WALTER TAYLOR

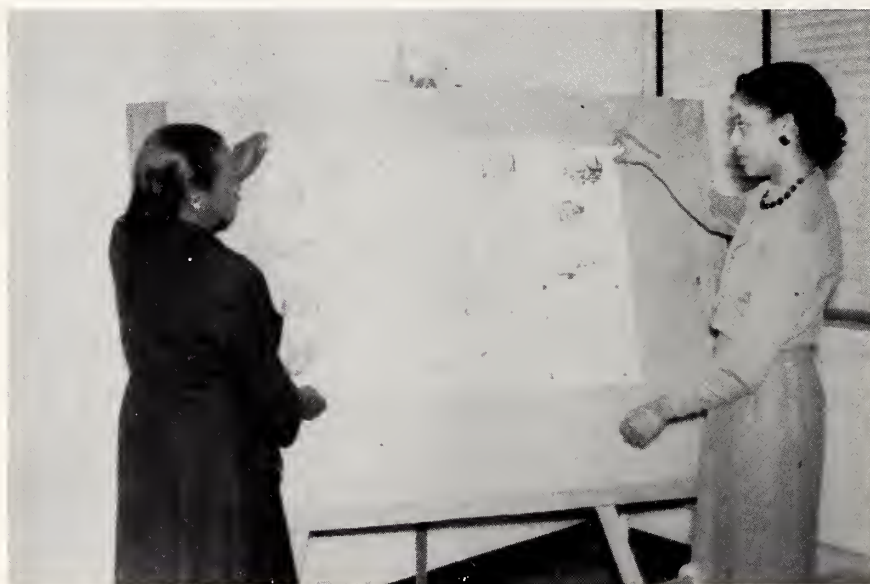
B. S. , Shaw University and N. C. College

RUBY A. SILER

B. S. , North Carolina College

LEOLA T. HARRIS

B. S. , Shaw University



Foreign Language Department

MINNIE K. JACKSON

B. A. , Shaw University

SALLIE E. JONES

B. A. , St. Augustine's
College

English Department

MILDRED FENNEL

B. A. , Howard University and
Columbia University

SALLIE E. JONES

B. A. , St. Augustine's College

ESTHER J. MCGHEE

B. A. , Shaw University

M. A. , Howard University

DOROTHY W. HARDY

A. B. , North Carolina College

M. A. , Columbia University

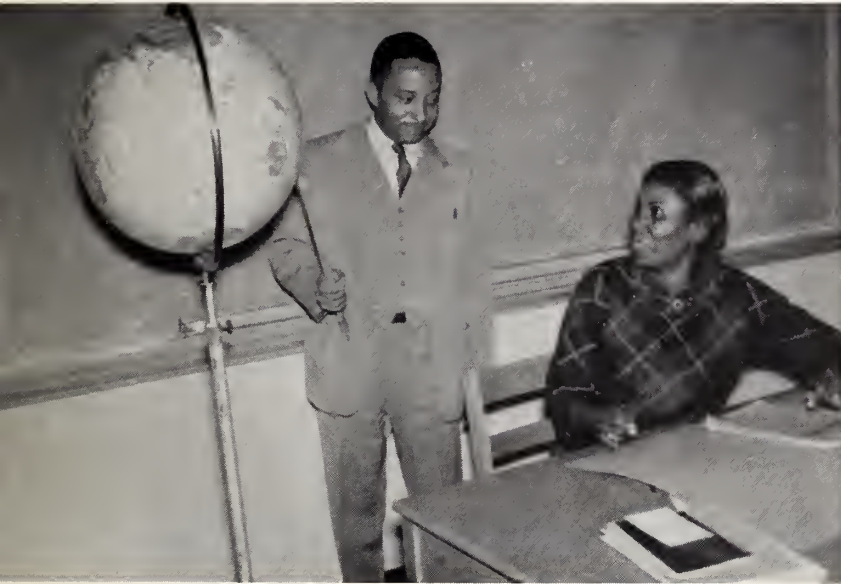
ALMA W. MINNIS

A. B. , Virginia State College

M. A. , Hampton Institute



Faculty



Social Studies Department

JOSIE B. CARR

A. B. , Shaw University

M. A. , University of Michigan

HENRY W. JOHNSON

B. S. , Hampton Institute

New York University



Science Department

HATTIE HUGHES

B. S. , Shaw University

ALTON B. PARKER

B. S. , Livingstone
College

M. S. , North Carolina
College

JOHN H. WOOTEN

B. S. , A&T College

Music Department

THELMA I. JOHNSON

B. S. , Hampton Institute

Juilliard School of Music

Berkshire Music Centre

EDMUND B. HUGHES

B. S. , West Virginia State College

NEIL A. STITT

B. A. , St. Augustine's College

Sherman Square Studios

of New York

M. S. , University of Pennsylvania



Faculty



Home Economics Department

ELIZA O. SMITH

B. S. , North Carolina College

JACQUELINE WILLIAMS

B. S. , Hampton Institute



Department of
Business Education

NEIL A. STITT

B. A. , St. Augustine's
College

M. S. , University
of Pennsylvania

ARLENA J. RIGGSBEE

B. S. , Hampton
Institute

Wayne University
N. C. College

Department of Trades

TIMOTHY PARKS

B. S. , A&T College

HERMAN B. LUCAS

B. S. , Hampton Institute

WILLIAM P. SILER

B. S. , A&T College

GARDNER W. BROWN

B. S. , Hampton Institute



Freshmen



SECTION PRESIDENTS: 1. Jessie Phillips 2. Dorothy Jean Cox 3. Cheryl Lewis 4. Leroy Jackson
5. William Rich 6. Joseph Gaynor 7. James H. Ayers.

Sophomores



President, Thomas Gill; Vice President, Milton Durham; Secretary, Dorothy Woodard; Treasurer, Linda Powell.

Juniors



President, Thomas Griffen; Vice President, Ralph Williams; Secretary, Shirley Henderson; Assistant Secretary, Gloria Smith; Chaplain, Hattie Davis; Treasurer, Walter Barnes; Business Manager, Donald Blue; Parliamentarian, Hattie Simmons; Sergeant-at-Arms, Clifton Hunter.

Student Organization



President, James House; Vice President, William Starke; Secretary, Barbara Jean Howell; Assistant Secretary, Rosa Coor; Treasurer, Paul Barnes; Sergeant-at-Arms, David Armstrong; Chaplain, David Baldwin; Parliamentarian, Bobby Williams.

Dramatics Classes



"Why the Chimes Rang" "The Family" "Dust of the Road" "Consolation" "Distant Thunder" "Miss Tilly's Chair" "The Clock and the Calendar" "Sorry Wrong Number" "Take a Letter Please"

Band



President, Laura Thomas; Vice President, Johnny Savage; Secretary, Clara Dale Simmons; Assistant Secretary, Azzie Lewis; Treasurer, Greather Savage; Business Manager, Lorenza Thronton; Sergeant-at-Arms, Cornell Reid; Reporter, Thelma Coley.

Glee Club



David Baldwin, President; Neil A. Stitt, Director; Thelma Johnson, Accompanist; Henrietta Johnson, Assistant Accompanist.

Honor Society



Seniors: Annie R. Lynn, Barbara Clarke, Beatrice Newsome, William Starke, Robert P. Best, James E. House, David Baldwin, Ray Gavin, Mildred Isler, Estella Coley, Laura Thomas.

Girl Scouts



President, Dorothy Lynn; Vice President, Clara Dale Simmons; Secretary, Barbara Parks; Assistant Secretary, Greather Savage; Treasurer, Faye Robinson; Chaplain, Mamie Isler; Parliamentarian, Gloria Tate; Sergeant-at-Arms, Hattie Simmons; Business Manager, Rosa Lewis; Reporter, Sybil Scott.

Hi-Y Club



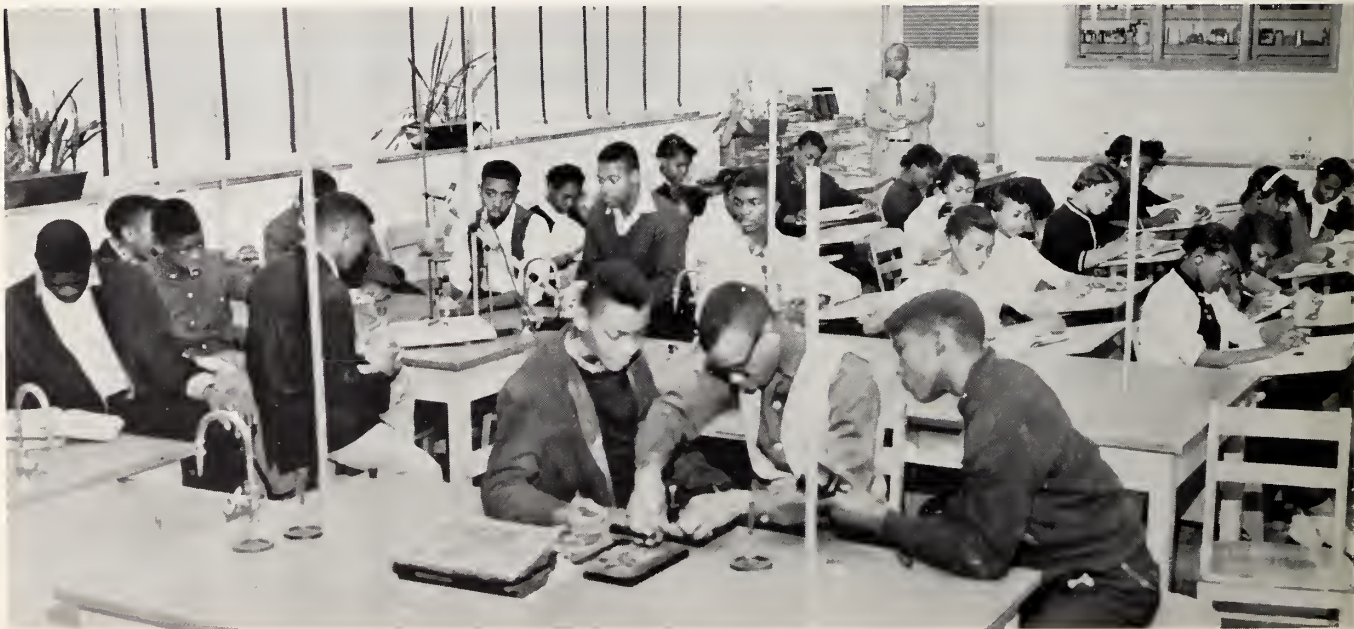
President, Charles Foye; Vice President, Charles Jacobs; Secretary, Daniel Faïson; Assistant Secretary, William Yelverton; Treasurer, Alvin Atkins; Chaplain, Edward Atkinson.

Press Club



President, Annie Lynn; Vice President, Bernistine Parks; Secretary, Gloria Smith; Treasurer, James House.

Science Club



President, Ray Gavin; Vice President, Robert Best; Treasurer, Ernell Savage.

Library Staff



Annie Davis, Gladys Barnes, Louise Seaberry, Lila Smith, Doris L. Brown, Librarian.

School Bank Staff



Geraldine Bunch, Bertie Jacobs, Ernestine Merriweathers, and James Earl House. Neil A. Stitt, Advisor.



Our Team



Cheerleaders



*At
The
Game*



Coaches



Senior Advisors



NEIL A. STITT



SALLIE E. JONES



ARLENA J. RIGGSBEE



HATTIE M. HUGHES

Seniors



Class of '58

On September 3, 1952, a group of boys and girls, from different sections of the city, assembled in the Dillard High School auditorium - eager to be enlisted as THE GRAMMAR GRADE OF DILLARD HIGH SCHOOL.

After enlistment we began to get acquainted with the teachers and the fact that for the first time in schooling we were to begin changing classes. After getting accustomed to the changes taking place, we began to work very hard because we wanted to uphold the name of Dillard High Grammar Grades!

With the election of officers, we began to work hard for "Promotion Day" which meant that we were to enter high school. In high school it was harder to get along with each other because we thought we were the greatest! But our principal talked to us and told us that we must work hard to continue our education in high school. His talk set the pace for our studying and reading more each day.

During Freshman Year we were able to take a part in our Student Government, Student Day Activities, and all school activities. We were also able to voice our opinions about the school as a whole - our new HANDBOOKS assured us of this right. From the handbook we learned that high school prepares one for any field in life that he might choose to enter, and that high school does not say who can or cannot enter college, but it prepares all students if they are willing to cooperate with the teachers.

As Sophomores we continued to work hard because we were well on the way to the Junior Class. During our sophomore year Jean Swinson was crowned "Miss Homecoming." We had James House, David Baldwin, Jean Swinson, and Barbara Clarke to win "The World Peace Speaking Contest."

It goes without saying that the Junior-Senior Prom, the writing of Term Papers, and our Junior Play, "Happy Days" (Directed by Miss S. E. Jones) were the outstanding events of our Junior Year. Thelma Moses and Ray Gavin will surely remember having the leading roles in the play.

The promotion from the Junior Class to Senior Class was most impressive, because we moved into a modern and spacious building, leaving the old building to be named "West Elm Street Junior High" with Mr. E. K. Harris as principal. As Seniors, we journeyed to A&T College for the Annual "Senior Day" activities. Barbara Howell was elected "Miss Student Council," and Barbara Clarke and Angeline Rowe were her attendants. David Baldwin wrote the class song, and James House served a successful year as president of the student organization.

Now, as a token of our esteem for Dillard, we leave behind a stage fully equipped with modern furniture; and carry with us a jovial spirit of high school days - - - for DEAR OLE DILLARD WE LOVE!

Unveiling



CLASS COLORS: Blue and White

CLASS FLOWER: Red Carnation

MOTTO: Success Awaits at the Laborer's Gate

"DILLARD HIGH SCHOOL - FAREWELL"

(Tune: Andante Movement of Tschaikowsky's 6th Symphony)

-by David Baldwin

1. Our Alma Mater, we'll ne'er forget, nor our teachers and friends, so dear.
We'll shape for all a world of peace, And of our task, we will have no fear.
Mighty thoughts within us swell.
Thus, we wish you well.

2. We have completed high school days, happy days - the best in life,
Which are filled with hopes and high resolve, often mingled with tears
and strife.
We have dreamed of life, anew; Where future skies are blue.

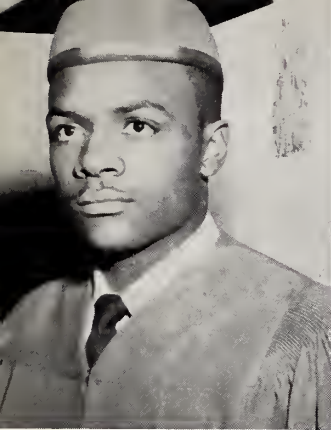
Chorus: Dillard High, farewell to you, as we go into land anew,
We will remember, as we leave, many blessings we've received.
Now and forever; though paths will sever, our hearts will cling to you.
As we leave you, never deceive you, we lift your banner high and true.

Ending: We lift your banner high and true;

DILLARD, FAREWELL TO YOU!

Superlatives

| | | |
|-------------------|----------------|-------------------|
| William Starke | ATTRACTIVE | Catherine Dent |
| Carl Hayes | BOASTFUL | Mary E. Flowers |
| William Flowers | COURTEOUS | Annie Davis |
| Charles Foye | DELIGHTFUL | Geraldine Bunch |
| David Baldwin | ELEGANT | Mamie Rich |
| James House | FRIENDLY | Margie Monk |
| Rufus Miles | GABBIEST | Mary Flowers |
| William James | HUMOROUS | Pearlie Heath |
| Robert P. Best | INTELLIGENT | Annie Lynn |
| Paul Barnes | JEALOUS | Pearlie Heath |
| Alvin Atkins | KIND | Angeline Rowe |
| James G. Suggs | LIKEABLE | Barbara Howell |
| Johnny Savage | MODEST | Barbara Clarke |
| Ray Gavin | NEATEST | Geraldine Bunch |
| Robert Wellington | | Angeline Rowe |
| Kennon Hamilton | OBEDIENT | Geraldine Bunch |
| James House | POPULAR | Ernestine Flowers |
| Kenneth Holt | QUIET | Gloria Barnes |
| Daniel Faison | RELIGIOUS | Gladys Barnes |
| Haywood Williams | STUDIOUS | Azzie Lewis |
| Bobby Williams | TALLEST | Ernestine Flowers |
| Willie B. Vinson | UNDERSTANDABLE | Ella Strickland |
| George Jordan | VIVACIOUS | Jean Swinson |
| Elroy Coley | WITTIST | Barbara Flowers |
| James McKeithan | X-CITING | Rosa Coor |
| Eugene Yelverton | YOUNG | Estella Coley |
| David Armstrong | ZEALOUS | Laura Thomas |
| David Armstrong | HANDSOME | |
| James House | ALL-ROUND | Barbara Howell |
| Ray Gavin | BEST DRESSED | Geraldine Bunch |
| Joseph Foreman | BEST ATHLETE | Ernestine Flowers |
| Leslie Yelverton | BASHFUL | Barbara Black |
| David Baldwin | TALENTED | Ida R. Benton |
| Haywood Williams | SHORTEST | Beatrice Newsome |



FRANK WHITFIELD, President
Dramatic Club; Science Club; Varsity.
Aim: Electronics Engineer

ERNESTINE FLOWERE (Tyne-Babie),
Vice President
Cheerleader; Glee Club; Commercial Club.
Aim: Commercial Teacher

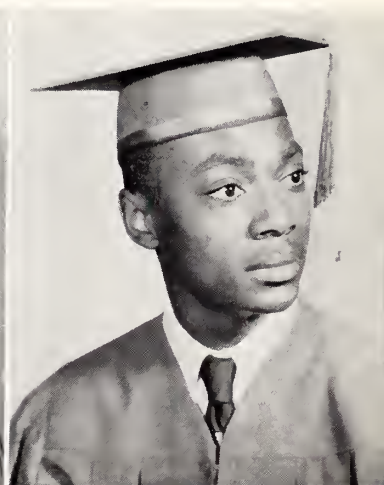


BARBARA JEANNE HOWELL, Secretary
Band; Dramatics; Commercial Club; Press
Club; Dillard High News.
Aim: Certified Public Accountant

JEAN DELORES SWINSON (Deanie), Asst. Sec.
Dramatic Club; Cheerleader; Miss Home-
coming.
Aim: Elementary Teacher

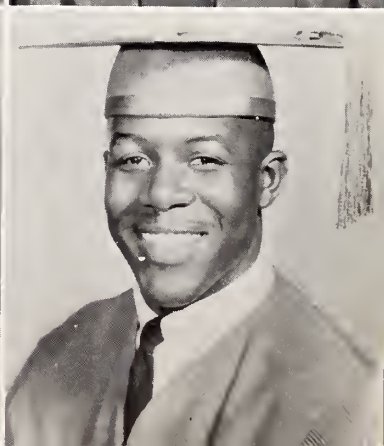
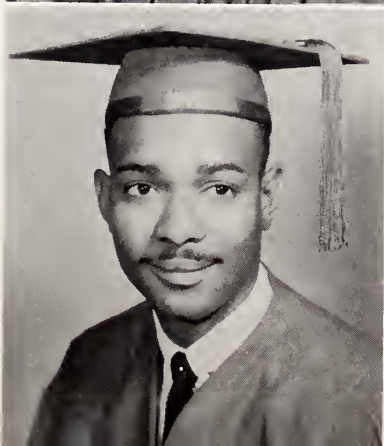
AZZIE LEE LEWIS (Pig), Treasurer
Band; Dramatics; Science.
Aim: Registered Nurse

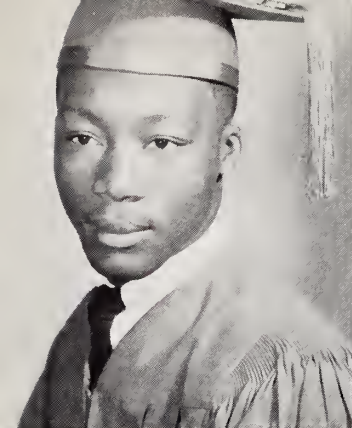
CARL EDWARD HAYES, Chaplain
Press Club; Library Club.
Aim: Elementary Teacher



ALVIN FLOYD ATKINS (Kaline), Bus. Mgr.
Science Club; Hi-Y.
Aim: Dietician

DAVID ARMSTRONG (Shine), Sgt. -at-Arms
Football; Baseball; Basketball; Student Coun-
cil.
Aim: Professional Athlete





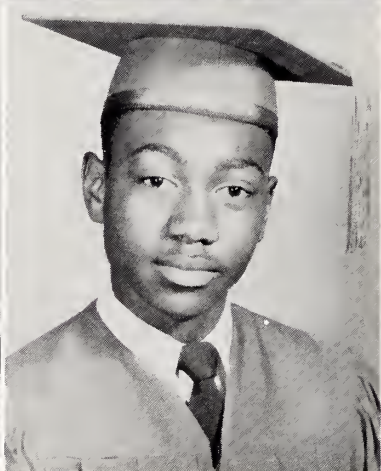
DAVID McWALLACE BALDWIN (Davedo)
Glee Club; Dramatics; Press Club; Messenger; SC Chaplain; Class Poet and Song Writer.

Aim: Musician

GLADYS BARNES (Gladiolo)

Dramatics; Glee Club; Secretary to Supervisor; Soloist.

Aim: Secretary



GLORIA JEAN BARNES
Dramatics, Bible Club.

Aim: Photographer

JAMES BARNES (Weasel)

Band; Explorer; Safety Patrol.

PAUL LAWRENCE BARNES

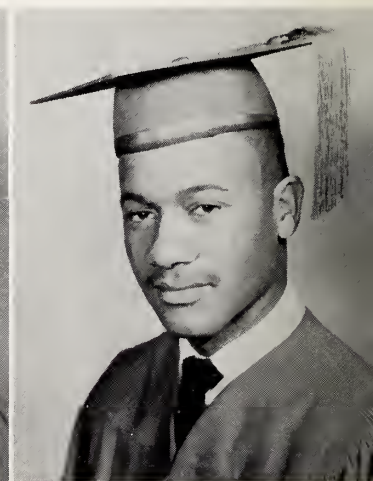
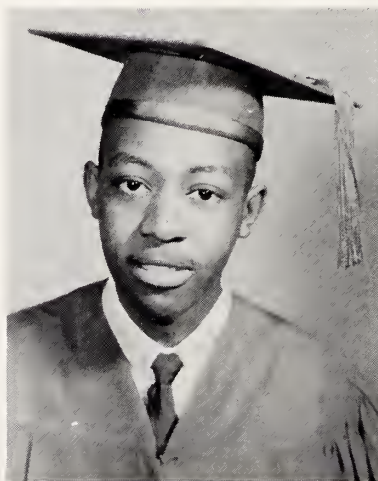
Explorer; SC Treasurer; Press Club; Baseball; Glee Club; Sports Editor.

Aim: Electronics Technician

THADDEUS BARNES (Tommy Dorsey)

Band.

Aim: Musician



IDA RUTH BENTON

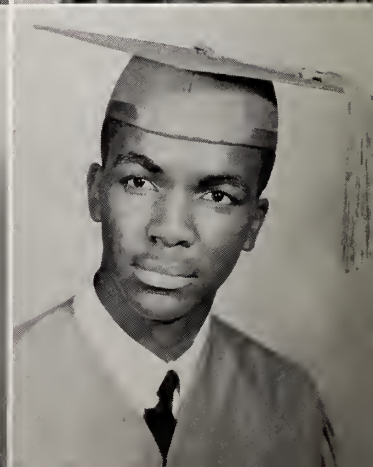
Glee Club.

Aim: Physiotherapist

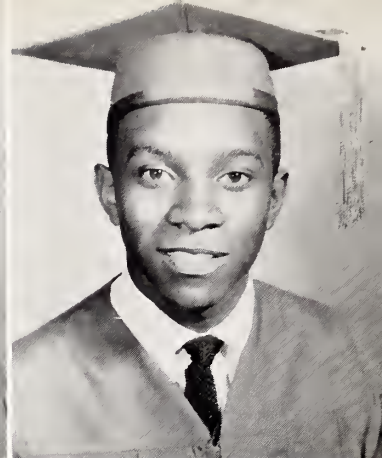
ROBERT PAUL BEST

Explorer; Science Club; Honor Society; Band.

Aim: Aeronautical Engineer

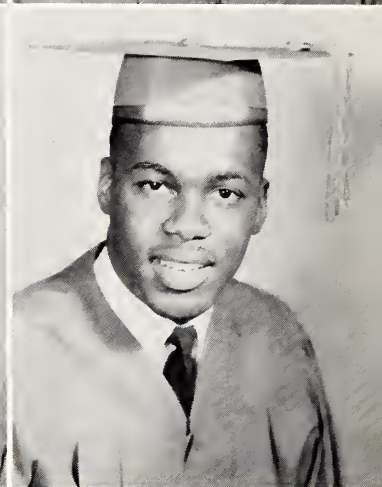
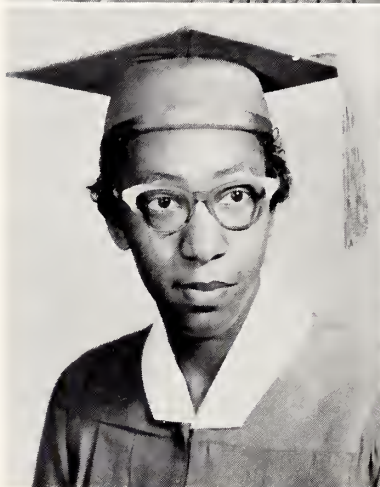


BARBARA JEAN BLACK
Bible Club.
Aim: Secretary

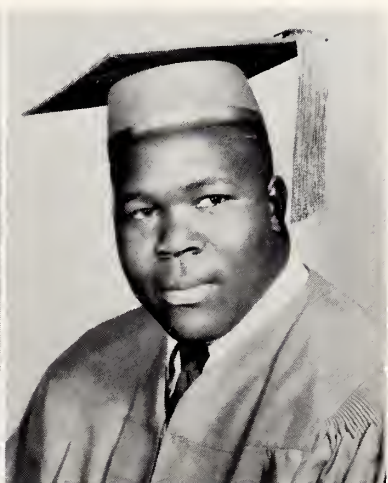


CEDRIC BRASWELL
Varsity.
Aim: College

JOYCE EARL BROADHURST (Sis)
Bible Club.
Aim: Nurse

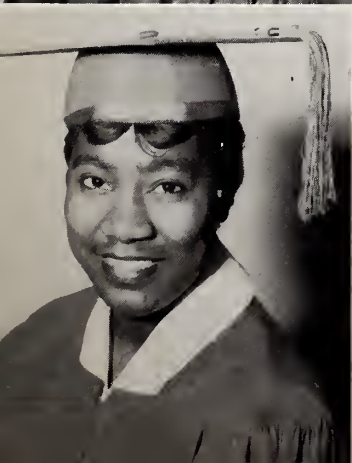


CHRISTOPHER COLUMBUS BROWN (CC)
Football; Hi-Y Club.
Aim: Contractor



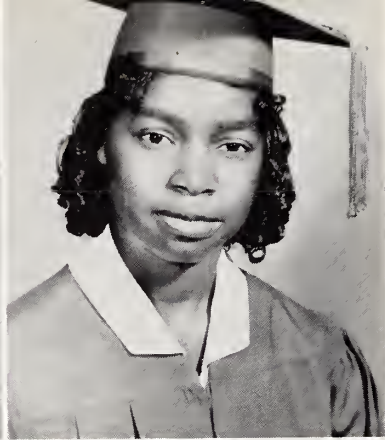
GERALDINE BUNCH
Commercial Club; 12-2 Secretary; School
Bank Cashier.
Aim: Secretary

ALBERT BUTLER (Moose)
Varsity Club; Football.
Aim: Bricklayer, Professional Athlete



LILLIAN BRYANT (Sis)
Dramatic Club; Tri-Hi-Y; Glee Club; Jun-
ior Class Secretary.
Aim: Surgical Nurse

BARBARA ANN CLARKE (BC)
Tri-Hi-Y; Dramatics; Honor Society; 12-3
Assistant Secretary.
Aim: Private Secretary



CHRISTINE COLEY (Spookie)
Press Club; Tri Hi-Y; Dramatics.
Aim: Nurse

ESTELLA VIRGINIA COLEY (Shortie)
FTA Club; Commercial Club; Honor Society.
Aim: Teacher



MARY ALICE CONNOR (Mae)
Commercial Club; Dramatics.
Aim: Business Education

ROSA MARIE COOR
Dance Group; Majorette; Band; Cheerleader;
Press Club.
Aim: Teacher

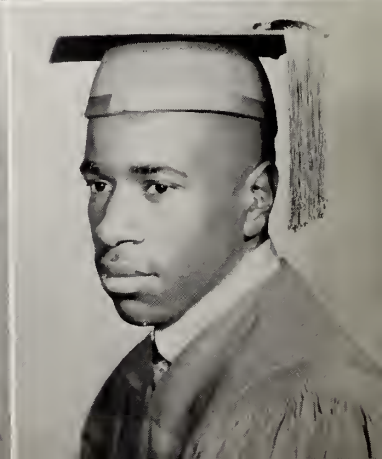
ZELDA MAE COX
Tri Hi-Y; Dramatics; Dance Group.
Aim: Nurse

BESSIE BEULAH LEE DANIELS
Tri Hi-Y.
Aim: Nurse



ANNIE DAVIS
NHA Club; Tri Hi-Y; Commercial Club.
Aim: Secretary

ARTHUR DAVIS (Chuck)
Basketball.
Aim: Commercial Artist



JAMES MELVIN HARPER

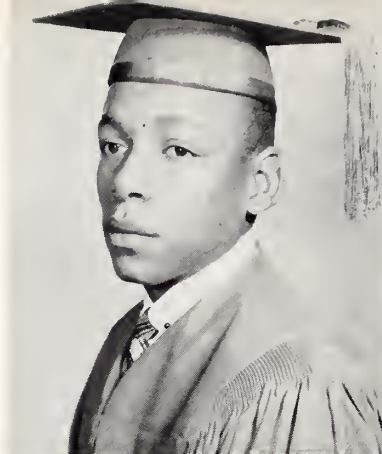
Library; Explorer.

Aim: Lawyer

MARY ODESSA DAVIS (Baby Sister)

Commercial Club; Science Club; Dramatics;
Junior Class Play.

Aim: Secretary



CATHERINE DENT (Cat)

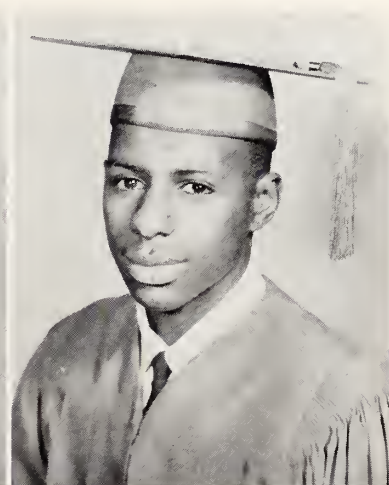
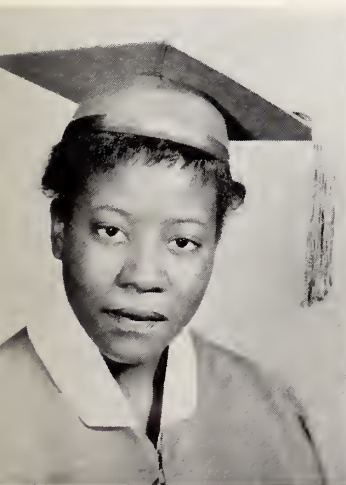
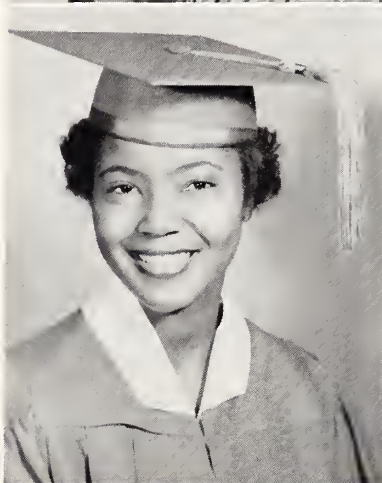
Dramatics; Band; Cheerleader; Majorette;
Junior Oratorical.

Aim: Business Teacher

DORCAS EATMON (Dot)

Bible Club; Dramatics; Glee Club.

Aim: Nurse



THELMA IRENE EDWARDS

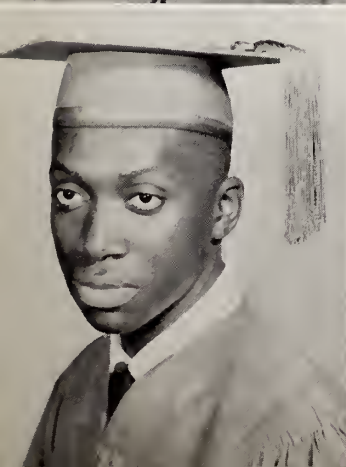
Science Club; Glee Club; Press Club.

Aim: Telephone Operator

WILLIAM EDWARDS (Bookie Steve)

Football; 9th and 10th Grade President;
Explorer; Hi-Y.

Aim: Marine Corps



DANIEL ALTON FAISON, JR. (Woody)

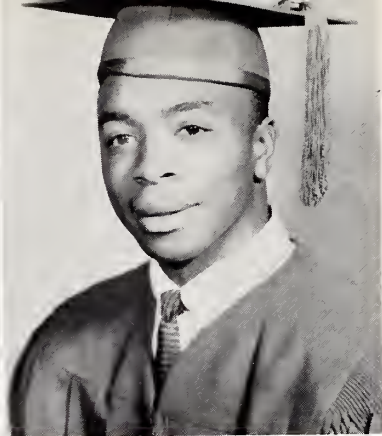
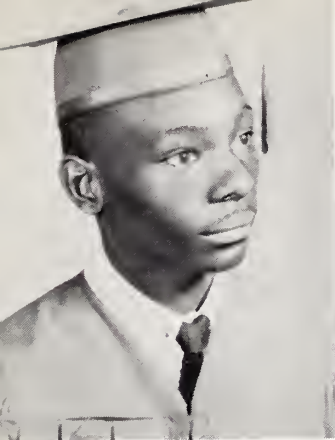
Hi-Y; Commercial; 12-3 Chaplain.

Aim: Carpenter

EDNA GRAY FAISON

Tri Hi-Y Club.

Aim: Elementary Teacher



JIMMIE FAISON (Crow)
Explorer; Hi-Y; Football.
Aim: Brick Mason

WILLIAM FIELDS (Champ)
Football; Dramatics; Explorer.
Aim: Prize Fighter

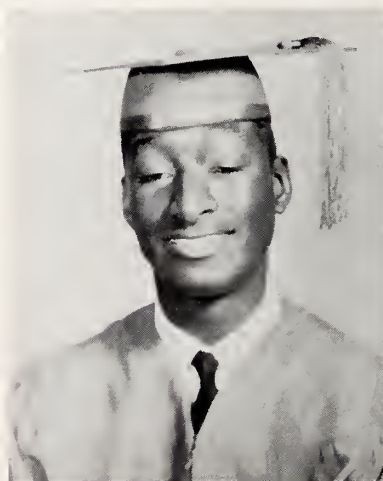


BARBARA JEAN FLOWERS (Barb)
Glee Club.
Aim: Nurse

MARY ELLEN FLOWERS (E11)
Science Club; Dramatics; Cheerleader.
Aim: Physical Education Teacher

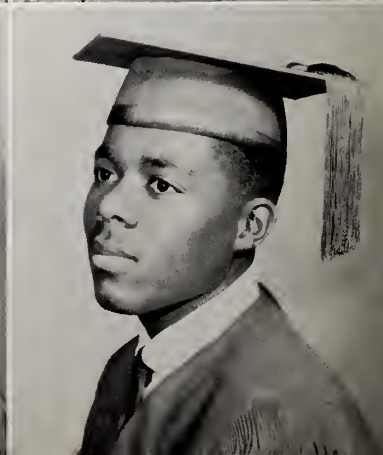
WILLIAM RAY FLOWERS
Library Club; Debate Club.
Aim: Foreign Language Teacher

JOSEPH FOREMAN
Varsity.

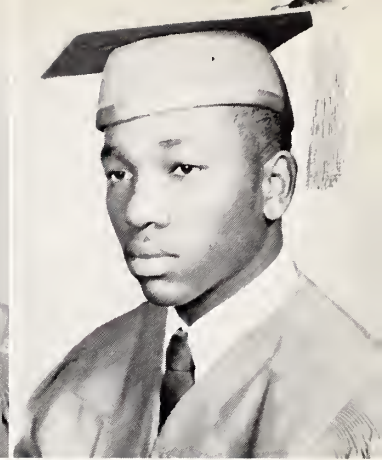
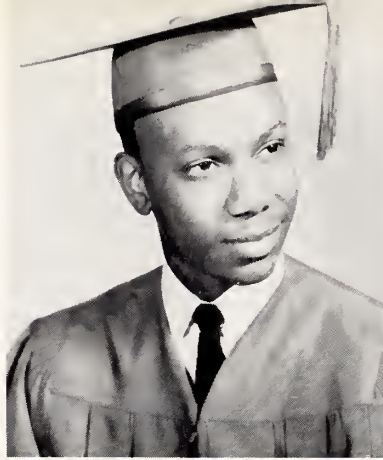


MINNIE FORTE (Sis)
Tri Hi-Y; Dramatics; Bible Club.
Aim: Housewife

CHARLES FOYE
Hi-Y Club President.
Aim: President of a Big Firm

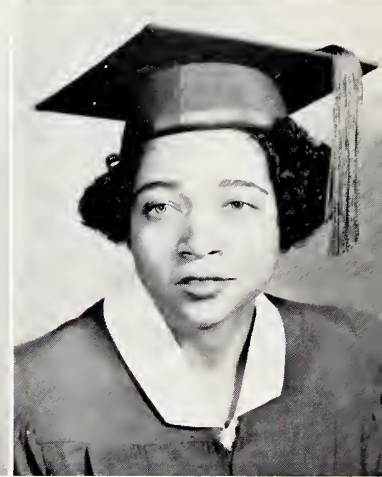


RAY HOWARD GAVIN
Science Club; Honor Society President; Junior Oratorical Contest.
Aim: Scientist

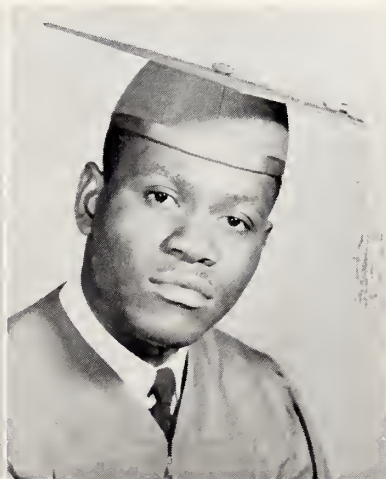


ROBERT GLASBY
Band; Baseball Team; Football.
Aim: Pilot

GERALDINE HALL (Gerald)
Press Club.
Aim: Nursing

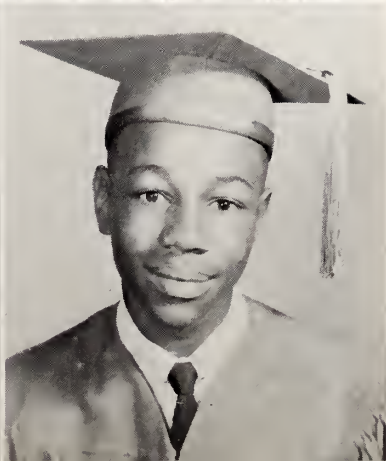


MARIAN HALL (Mutt)
Tri Hi-Y; NHA; Press Club.
Aim: Elementary Teacher



ERNEST HAMILTON (Hamp)
Basketball and Baseball.
Aim: Brick Mason

LAFAYETTE HAMILTON (Coot)
Dramatics; Safety Club; Biography Club.
Aim: Postman



KENNON HAMILTON (Wise Guy)
Safety Club.
Aim: Brick Mason

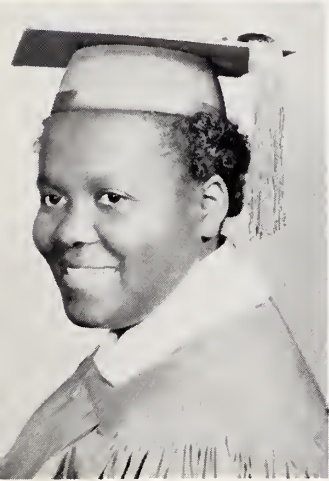
WILLIAM EARL HAMILTON (Hamp)
Dramatics; Hi-Y; Baseball Team.
Aim: College

Picture
Not
Available



THADDEUS HAYES (Flash)
Glee Club.
Aim: Music Teacher (Not pictured)

DORIS LOUISE HEATH (Dot)
Glee Club; Dramatics; Biography Club;
Memory Book Staff.
Aim: Nurse

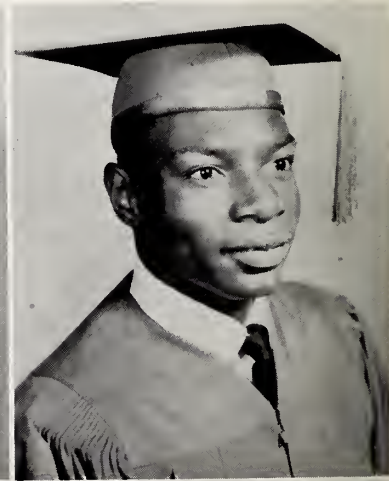


PEARLIE MAE HEATH (Mae Louise)
Dramatics; Glee Club; Oratorical Club.
Aim: Telephone Operator

JAMES CHARLES HINES (JC)
Varsity; Explorer; Basketball; Football.

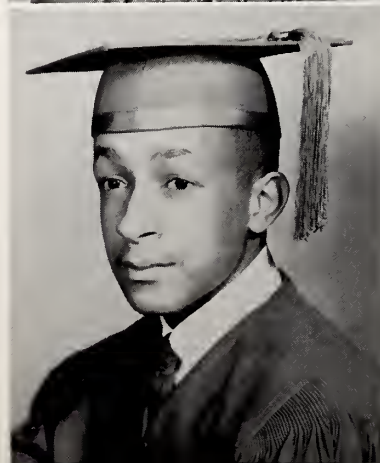
GLORIA JEAN HOBBS (Jean)
Dramatics; Press Club.
Aim: Secretary

KENNETH HOLT
Safety Club; Hi-Y; Memory Book Artist.
Aim: Commercial Artist

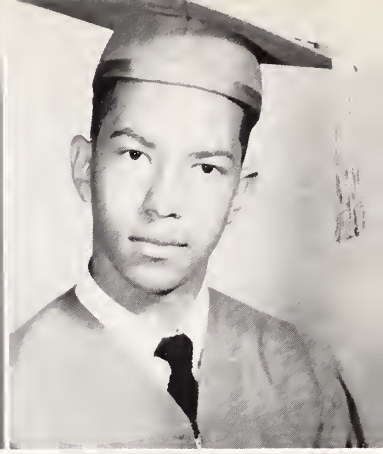


JAMES EARL HOUSE (Eckenberge)
Explorer; National Honor Society; Band;
Glee Club; SC President.
Aim: General Surgeon or Engineer

MILDRED ISLER (Mil)
Tri Hi-Y; Commercial; Honor Society.
Aim: Commercial Teacher

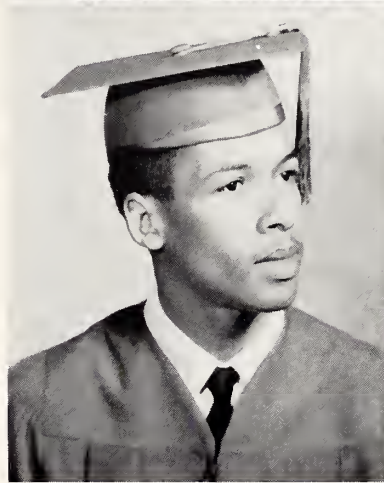


GERALDINE ELIZABETH JACKSON (Mitt)
Band; Cheerleader; Dramatics; Commercial.
Aim: Secretary

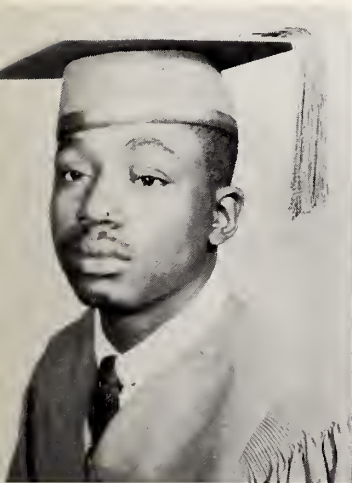


CHARLES JACOBS
Hi-Y Club.
Aim: Engineer

CLEO JACOBS
Band; Football.
Aim: Army

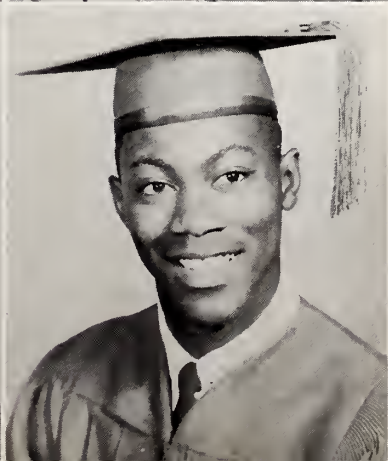


ROSA JACOBS
Dramatics; Glee Club.
Aim: Elementary Teacher



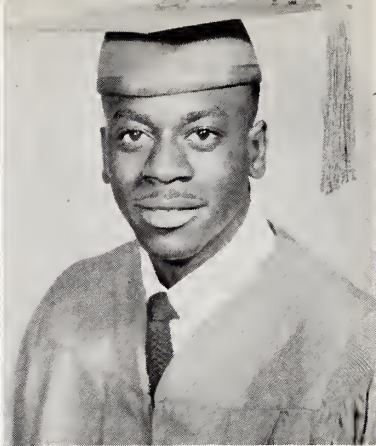
WILLIAM JAMES (Pig)
Varsity.
Aim: Policeman

SHIRLEY MAE JONES (Shirl)
Press Club; NHA; Cheerleader.
Aim: Secretary



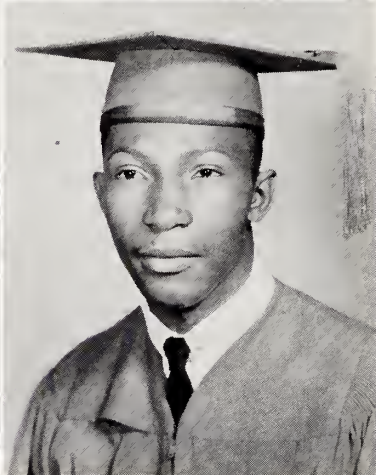
WILLIE JONES
Dramatics; Glee Club.
Aim: High School Professor

GEORGE RAY JORDAN (Fish Reel)
Football; Basketball; Baseball.
Aim: Marine Corps



HELEN GRACE KENNON
Tri Hi-Y Club.
Aim: Secretary

IRA LEE KING (Ike)
Hi-Y Club; Explorer.
Aim: Teacher

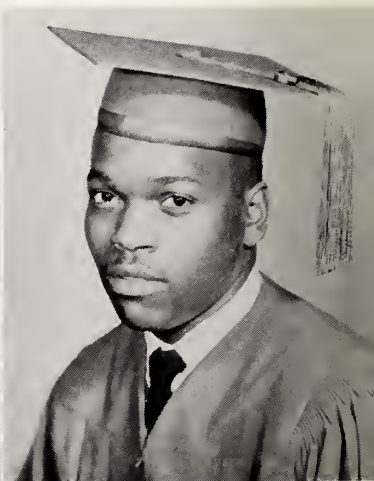


BESSIE MAE LANGSTON (Bess)
Bible Club; Dramatics; NHA.
Aim: Nurse

HERBERT LEWIS (Moe)
Glee Club; Basketball.
Aim: Singer

VELMA LEWIS (Vel)
Tri Hi-Y; NHA.
Aim: Dancer

JOE E. LEWIS (Speedy)
Basketball.
Aim: Artist

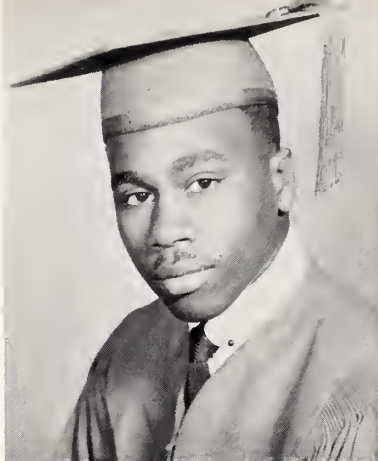


ANNIE RUTH LYNN (Ann)
Dramatics; Student Council; Press Club;
Honor Society; D. Hi News Editor.
Aim: Teacher

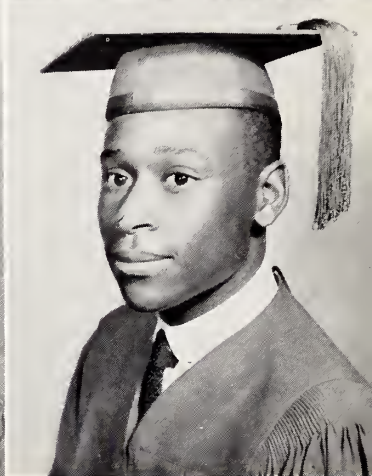
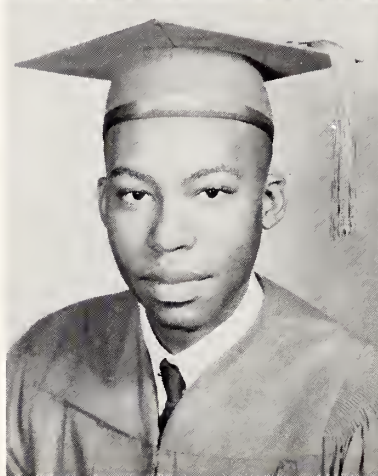
ARRAIMA LEWIS (I)
Dramatics; Dance Group; Press Club.
Aim: Teacher



JAMES McKEITHAN (Key Hole)
Dramatics; Basketball; Carpentry.
Aim: Boxer

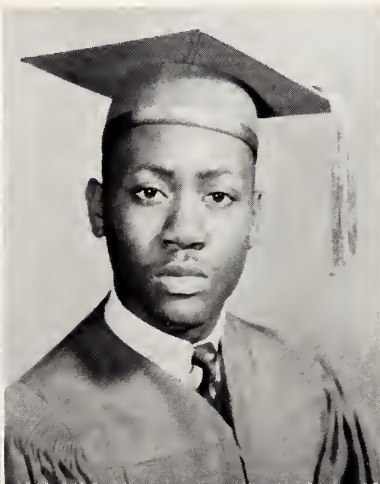


DOROTHY ANN MIDDLETON (Dot)
Dramatics; FTA; Student Council; Oratorical Club.
Aim: Nurse



RUFUS MILES, JR. (Tick)
Hi-Y Club.
Aim: Radio Technician

RUSSELL MITCHELL (Mitch)
Hi-Y; Dramatics; Arts and Crafts Club.
Aim: Dentist



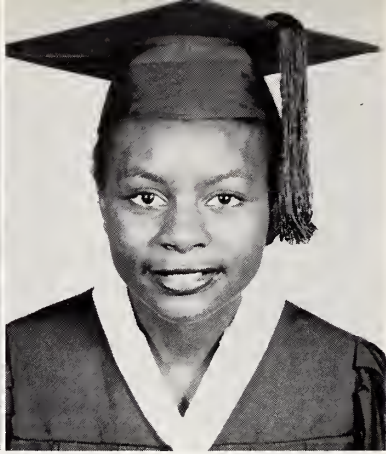
MARGIE LEE MONK (Dump)
FTA Club; Dramatics; Band; Monitor; Oratorical Club.
Aim: Elementary Teacher

JAMES PRESTON MORGAN (Boe)
Hi-Y; Varsity; Baseball; Football.
Aim: Businessman



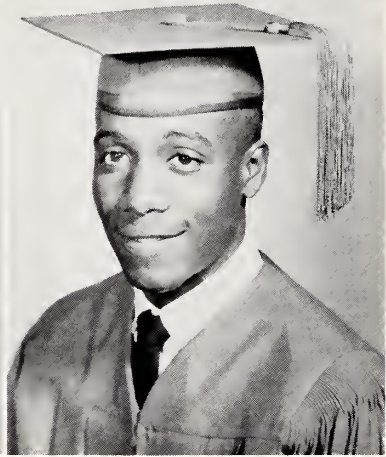
THELMA LOUISE MOSES
Dance Group; Junior and Senior Plays.
Aim: Actress

JACOB MUSGRAVE, JR. (Chubby)
Safety Patrol; Science Club; Political Science Club; Football.
Aim: Electronics Engineer



BEATRICE NEWSOME
 Debate Club; Commercial Club.
 Aim: Secretary

GRACE NORMAN
 FTA; Dramatics.
 Aim: Teacher

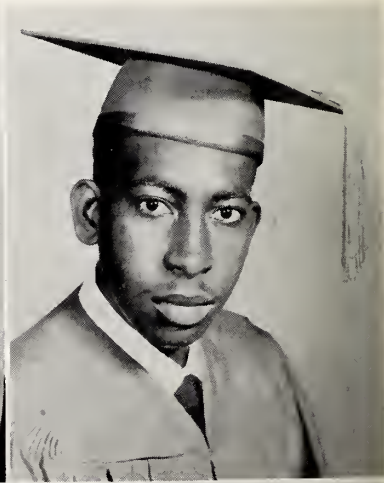


BERNESTINE PARKS (Teen)
 Dance Group; NHA; Press Club; Student
 Council; Cheerleader.
 Aim: Commercial Education

ROY PETTIWAY (Bud)
 Motor Club; Varsity; Football.
 Aim: Bricklayer

CHRISTINE RAIFORD (Chris)
 Commercial Club; Tri Hi-Y; Band.
 Aim: Stenographer

NATHANIEL REID
 Motor Club; Hi-Y
 Aim: Carpenter



MAMIE INEZ RICH (Dale)
 Dramatics; NHA; Bible Club.
 Aim: Business Education

ANGELINE ROWE (Lene)
 Commercial Club; NHA; Press Club; Miss
 Homecoming Attendant.
 Aim: Elementary Teacher



ANNIE LEE ROYAL (Pulgar)

Bible Club.

Aim: Waitress

HELEN DELORES RYALS

NHA; Glee Club.

Aim: Nurse



ROBERT EDWARD SAULS (Babe)

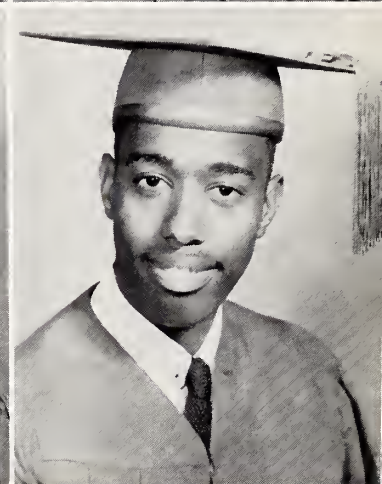
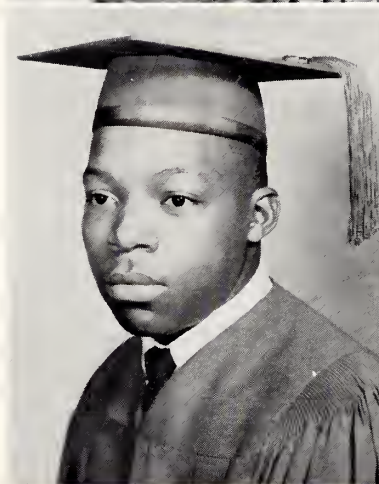
Safety Club.

Aim: Bricklayer

JOHNNY EDWARD SAVAGE

Band; Science Club; 12-3 Vice Prexy.

Aim: Jet Pilot



ELASSIE SMITH

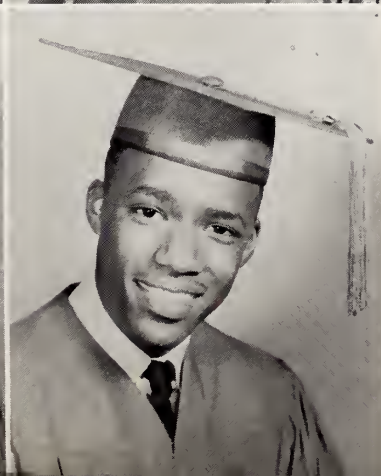
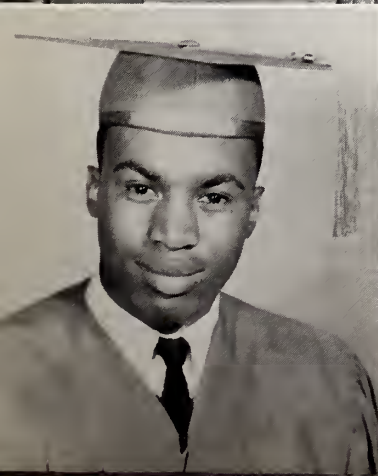
Glee Club; Dramatics; World Peace Speaker.

Aim: Private Secretary

LILA BELL SMITH

FTA; Junior Oratorical.

Aim: Beautician



LONNIE SMITH (Monday)

Basketball; Safety Club.

Aim: Photographer

WILLIAM CARTER STARKE (Bill)

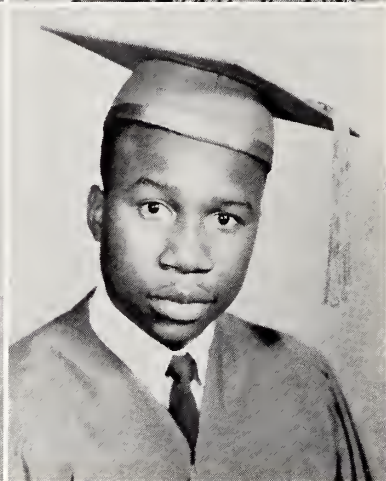
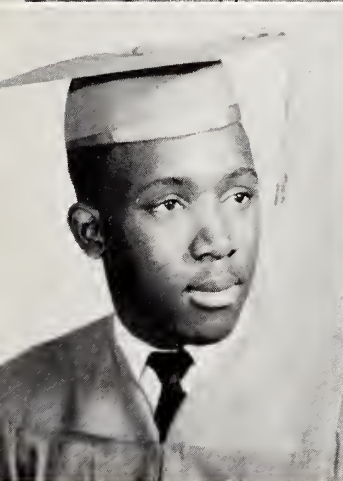
Glee Club; Junior Play; 12-3 Prexy.

Aim: Chemist



ELLA JOYCE STRICKLAND
Glee Club; Bible Club.
Aim: Nurse

EDNA EARL SUGGS
Tri Hi-Y; Dramatics.
Aim: Secretary

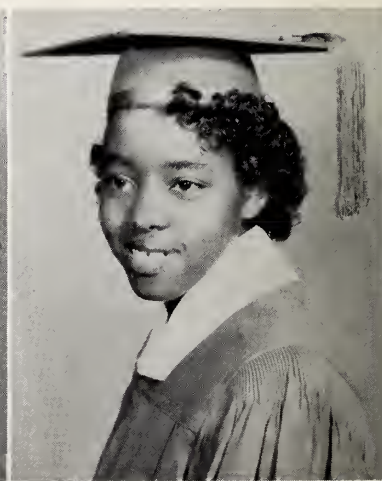


JAMES ROGER SUGGS (Buck)
Explorer; Hi-Y Club.
Aim: Air Force

WILLIAM EARL SWIFT
Hi-Y Club; Varsity.
Aim: Marines

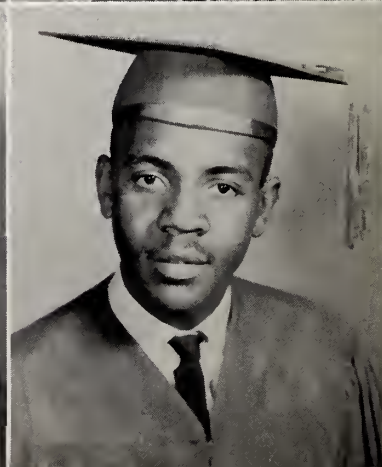
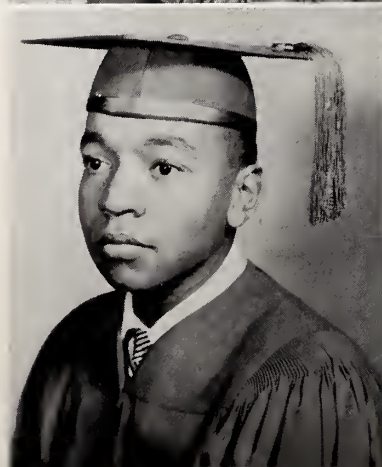
LAURA JEAN THOMAS (Wawa)
Tri Hi-Y; Dramatics; Honor Society; Cheer-
leader; Oratorical Club; 12-1 Secretary.
Aim: Musician

FREDA MOYE THORNTON
Dramatics; Glee Club.
Aim: To work

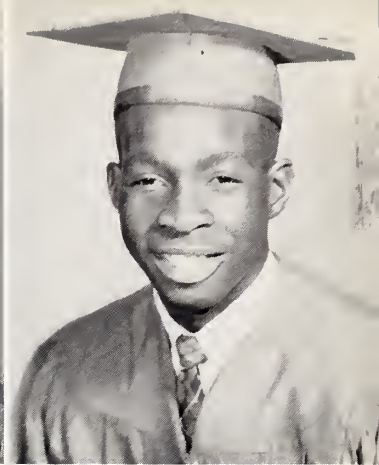


LYSANDER DEMETRIUS UZZELL (Jap)
Science Club; Bible Club; Basketball.
Aim: Coach

WILLIE B. VINSON (Bec)
Band.
Aim: Brick Mason

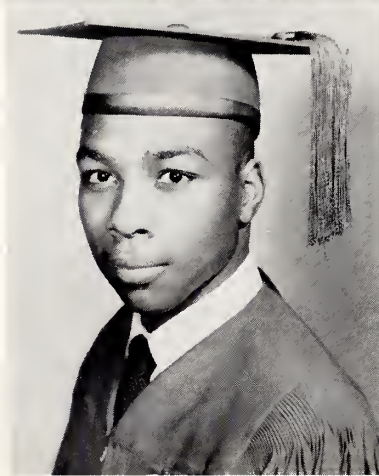


DOREATHA WATSON
Dance Group; Dramatics.
Aim: Seamstress



ROBERT WELLINGTON (Bob Steel)
Hi-Y Club.
Aim: Soldier

JAMES A. WHITFIELD (United)
Political Science Club.
Aim: Engineer



DORIS LEE WADE
Dance Group; Cheerleader; Tri Hi-Y; French Club; Band.
Aim: Secretary



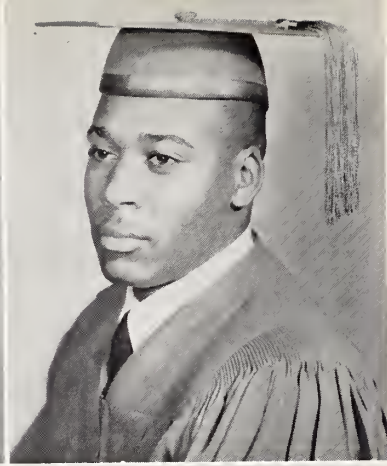
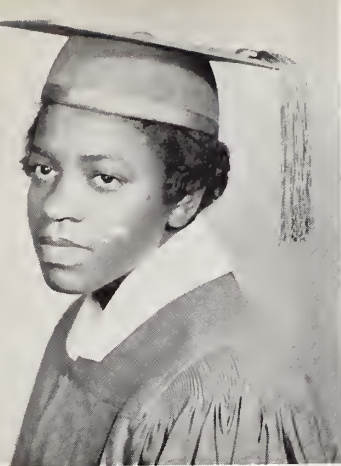
BERTHA WALLS (Best)
NHA; Band.
Aim: Housewife

HAYWOOD WILLIAMS
Science Club; Safety Club.
Aim: Engineer



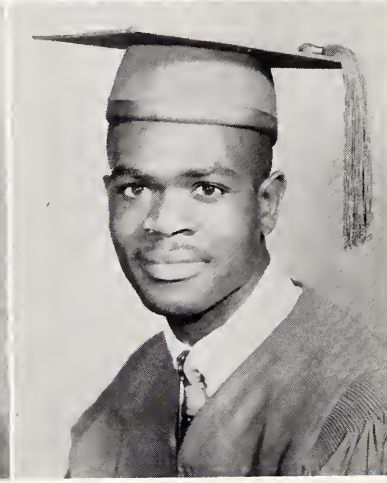
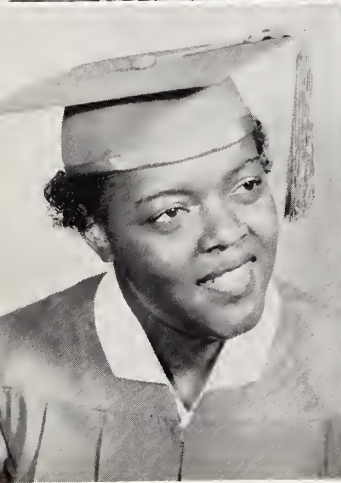
BOBBY RAY WILLIAMS (Pancho)
Hi-Y Club; Class Prexy; Glee Club; Student Council.
Aim: Private Citizen

ANNIE MARGARET WOODARD (Butterball)
Dramatics.
Aim: Beautician



ANNIE WHITE (Sister)
Glee Club.
Aim: Nurse

LESLIE WEIL YELVERTON (Gilt)
Hi-Y; Debate Club; Motor Club.
Aim: Professional Ball Player



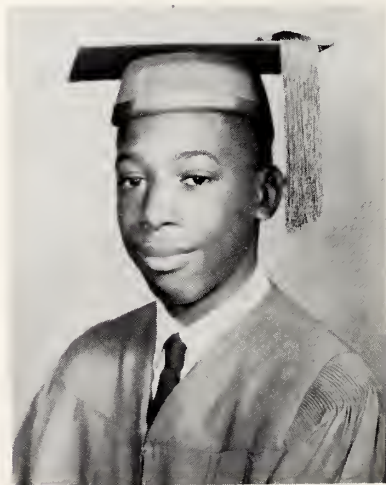
ROSALIND JOHNICE WOOTEN (Big Roz)
Glee Club.
Aim: Registered Nurse

MOSES WORRELL (Paladin)
Explorer; Science; Band.
Aim: Electrician

EUGENE YELVERTON (Sweet Boy)
Hi-Y Club; Debate.
Aim: Scientist

Not Pictured:

- * DONALD PARKS
- ** GERALDINE ADAMS
- SHIRLEY KORNEGAY
- NANNETTE STOKES
- GERALDINE LEWIS
- ** ROBERT HAYES
- * JAMES WARREN



Note: * Mid-term Graduate
** Dropped

Last Will and Testament

This WILL has been carefully inspected and approved by the members of the Senior Class of Dillard High School; and as active members of the Senior Class, we hereby declare that this will shall become effective upon the day of graduation:

Witnessed: JEAN SWINSON BERNESTINE PARKS
LAURA THOMAS DORIS HEATH
Norary Public: ERNESTINE FLOWERS

Mamie Rich wills her shape to Betty Fennell
Ray Gavin wills his intelligence to Eddie Newsome
Ernest Hamilton wills his tallness to Milford Austin
David Baldwin wills his voice to Robert Barnes
Kenneth Holt wills his art talent to Paul Starke
Azzie Lewis wills her ability to play the clarinet to Carol Chatman
Jean Swinson wills her joking ability to Henry Loftin
Laura Thomas wills her cornet to Doris Eatmon
Geraldine Bunch wills her neatness to Doris Best
Bernestine Parks wills her ability to dance to Litha Baldwin
James House wills his leadership ability to Earl Glenn
Pearlie Heath wills her fatness to Carolyn Barnes
Robert Best wills his typing ability to Gloria Tate
Christopher Brown wills his carpentry to Rudolph Benton
David Armstrong wills his baseball suit to Thomas Lawson
Albert Butler wills his football helmet to Clinton Hunter
James Hines wills his basketball scores to Lloyd Hayes
Ira King wills his demerits to Adolph Royal
Mary Flowers wills her cheerleader uniform to Mamie Isler
Barbara Clarke wills her shorthand ability to Margaret Johnson
Angeline Rowe wills her office duties to Dorothy Lynn
Catherine Dent wills her dramatic talent to Henry Marsh
Russell Mitchell wills his women to Jessie Townsend
Barbara Howell wills her bookkeeping ability to Clara D. Simmons
Bobby Williams wills his good looks to Van Allen Moses
James McKeithan wills his good hair to Alvin Scott
Beatrice Newsome wills her hair to Julia Best
Margie Monk wills her shyness to Emma Brown
Alvin Atkins wills his mustache to Leonard Atkinson

Annie Ruth Lynn wills her red corduroy skirt to Barbara Parks
Ernestine Flowers wills her legs to Betty Fennell
Estella Coley wills her shortness to Edna Green
Ella Strickland wills her nice shape to Mae Gloria Ford
Haywood Williams wills his small feet to Leroy Seegars
Gloria Barnes wills her pony tail to Janet Holloman
Barbara Flowers wills her tallness to Lorene Lewis
The Hamilton Boys will their patrol duty to Felix Ashford
Gladys Barnes wills her cooperation to Helen Peacock
Mildred Isler wills her noisiness to Alice James
Ida Ruth Benton wills her voice to Delois Durante
Thaddeus Barnes wills his ability to play the trombone to Clarence Swinson
Charles Foye wills his filibustering ability to Haywood Crawford
Carl Hayes wills his pride to Andrew Best
Paul Barnes wills his ability to stay out of the office to Ralph Jacobs
Geraldine Jackson wills her stockings to Arlene Lewis
Roger Fields wills his bus duties to Rudolph Sherrod
Frank Whitfield wills brick masonry to John Williams
James Morgan wills his baseball ability to Clifton Durante
William James wills his good humor to Ralph Howell
Christine Raiford wills her slim waist line to Rosa Brown
Elassie Smith wills her shorthand ability to her sister
Shirley Jones wills her cute face to Alene Adams
Mary Davis wills her conversation ability to Irene Summers
Gloria Hobbs wills her slimness to Betty Atkinson
William Starke wills his dodging demerits to Leslie Rowe
Doris Heath wills her soft voice to Alice James

The senior class joins in a hearty voice to all who are left behind to enjoy such a wonderful building and teachers, the continued spirit to keep DILLARD "out front" in every undertaking; that they will leave her portals, as we, singing "DEAR OLE DILLARD WE LOVE."

The Senior Class



Prophecy

IN THE FUTURE YOU WILL SEE *****

DAVID BALDWIN in the Chicago Civic Opera House
CATHERINE DENT as a lawyer
BARBARA CLARK as a housewife
BARBARA HOWELL as a Certified Public Accountant
BERNESTINE PARKS as a stenographer for the Supreme Court
PEARLIE HEATH teaching in high school
AZZIE LEWIS as a registered nurse
DORIS HEATH as a nurse at King's County Hospital
RAY GAVIN launching his satellite
LAURA THOMAS as a leading songwriter
JOHNNY SAVAGE making his trip to the moon
GLADYS BARNES as one of the leading missionaries
ELLA STRICKLAND as a housewife
ROBERT BEST as a Professor at Howard University
LILA SMITH as a beautician
WILLIAM JAMES as President of A. B. C. Store
ANGELINE ROWE as clerk typist at Dillard High School
IDA BENTON as a technologist
PAUL BARNES as an Electronics Technician
DOROTHY MIDDLETON as a registered nurse at Duke Hospital
JEAN SWINSON as a teacher at Atkin High School
THELMA EDWARDS as a telephone operator
ANNIE WOODARD as a housewife
JAMES HOUSE as top surgeon at Wayne Memorial Hospital
SHIRLEY JONES as a secretary
HELEN KENNON as a secretary
MINNIE FORTE as a housewife
MARY CONNOR as a housewife
LILLIAN BRYANT as a surgical nurse
GRACE NORMAN as a housewife
GERALDINE HALL as a nurse
DORETHA WATSON as a housewife
EDNA SUGGS as a business teacher
MARY FLOWERS as a Physical Education teacher
CHARLES JACOBS as an artist
KENNETH HOLT as a cartoonist
ALVIN ATKINS as a hotel manager
NATHANIEL REID as a restaurant owner
ANNIE WOODARD as a successful civic worker
JACOB MUSGRAVE as an inventor
CEDRIC BRASWELL as a used car dealer
CLEO JACOBS as a movie star
HERBERT LEWIS as an athlete
THADDEUS HAYES as "Mr. John Q. Public"
SALLIE THORNTON as a star of T. V.
BESSIE DANIELS as "Woman of the Year"
ROSA JACOBS as an outstanding church worker
ZELDA COX as a case worker

A Rhyme in Time —

Geraldine Adams will marry a million
Rosalind Wooten will make a million
Arramia Lewis will be first to marry
Helen Ryals will be sure to tarry
Mary Davis will be first in headlines
Joyce Broadhurst will be first in bylines
Annie Royal will be a star
Velma Lewis will travel far
Rosa Coor will be a heartbreaker
Thelma Moses - a big time faker
Bertha Walls - a big surprise
Annie White - last to get wise
Freda Thornton - a prominent socialite
Christine Coley - a social problemite
Barbara Black - last to show up
Christine Raiford will marry a knight
Dorcas Eatmon is sure to be right
Edna Suggs - Miss Universe
Bessie Langston - always in reverse

Roy Pettiway - first married
Donald Parks - ever harried
David Armstrong - professional athlete
James Whitfield - commander of the fleet
Nathaniel Reid - money-maker
George Jordan - hand shaker
Frank Whitfield - a bachelor
Lonnie Smith - a boy scout counselor
Joe Lewis - a politician
James Barnes - a mortician
Lysander Uzzell - a beachcomber
William Hamilton - a world-wide roamer
Moses Worrell - an entertainer
James Warren - an animal trainer
William Swift - an engineer
Willie Jones - a financier
Jimmie Faison - a physician
Robert Glasby - a musician

Senior Band Members



Barbara Howell, Johnnie Savage, Azzie Lewis, Thaddeus Barnes, Margie Monk, James House, Laura Thomas.

Our Patrons

BUSINESSES:

Anonymous

BARNES' BUSINESS SCHOOL
313 E. Spruce Street

BEN ELLIS STORE
106 E. Walnut Street

BEST & WEST MEN'S SHOP, INC.
127 E. Walnut Street

BUNCH DRUG STORE
144 N. Center Street

CASH DRUG STORE
133 E. Walnut Street

CROCKER'S BAKERY
900 S. Slocumb Street

GOLDSBORO COLORED FLORIST
200 E. Brogden Street

HAMILTON'S FUNERAL HOME
426 S. James Street

HEILIG-MEYERS FURNITURE CO.
138 E. Walnut Street

HOLLOWAY'S BARBEQUE
Phone 9170

HUB DEPARTMENT STORE
105 E. Walnut Street

HUEY'S CITY SERVICE STATION
Highway 117

ISAACS-KAHN FURNITURE CO.
118 N. Center Street

J. C. PENNEY'S DEPARTMENT STORE
109 W. Walnut St.

KADIS CLOTHING STORE
123 E. Walnut Street

LEDER BROS. DEPARTMENT STORE
125 W. Walnut Street

MICKEY'S PASTRY SHOP
212 N. Center Street

NELSON'S PHOTO SHOP
118 S. Center Street

PATE-DAWSON MOTOR CO., INC.
223 N. Center Street

ROBINSON'S DRUG STORE
147 S. Center Street

ROYAL CLOTHING CO.
117 E. Walnut Street

SWINSON'S BEAUTY SHOPPE
607 E. Spruce St.

TALLEY'S PASTRY SHOP
107 E. Mulberry Street

THOMAS OFFICE SUPPLY
110 W. Walnut Street

TOLAR OPTICIAN
110 N. Center Street

TOM R. BEST
119 E. Walnut Street

WORLEY TYPEWRITER EXCHANGE
156 S. Center Street

DILLARD HIGH ALUMNI ASSOCIATION

GOLDSBORO OFFICE SUPPLY CO.
Phone 3538

ROSE'S BEAUTY SHOPPE
Phone 4603

MODERN ARTS STUDIO
704 Church Street
Norfolk 10, Virginia

INDIVIDUALS

Mrs. Allen Aldridge

Mrs. Jasper Altman

Anonymous

Mr. Marvin Badgett

Mr. and Mrs. Kirby Baldwin

Mrs. C. M. Barnes

Mr. Twillie Bellamy

Mr. and Mrs. L. D. Best

Dr. and Mrs. Edward Bizzell

Mrs. Z. W. Borah

Mrs. B. S. Borden

Mrs. A. W. Bostic

Mrs. M. O. Bostic

Mr. and Mrs. Robert Bowden

Miss Joyce Brame

Mrs. Thelma Branch

Mrs. Nellie Brown

Mr. Maurice Brown

Mr. H. V. Brown

Mrs. D. L. Brown

Mr. and Mrs. Raymond Bryant, Jr.

Dr. W. H. Bryant

Miss Eunice Bryant

Mrs. Elnora Bunch
 Mrs. Janet Butler
 Mrs. Ida Worrells Canady
 Mrs. Josie Carr
 Mr. and Mrs. Leroy Clarke
 Mrs. G. F. Council
 Mrs. D. L. Croom
 Mr. and Mrs. V. F. Crowder
 Miss Mary Odessa Davis
 Mrs. G. G. Dortch
 Mrs. M. E. DuBissette
 Mrs. L. M. Durham
 Mrs. Mildred Everette
 Miss Sue Faucette
 Mr. and Mrs. George P. Fennell
 Mrs. Mildred Fennell
 Mrs. R. E. Ferdinand
 Mrs. Samuel Flowers
 Mrs. Minnie Forte
 Mrs. P. M. Foster
 Mr. and Mrs. Moreland Foster
 Mr. William Frazier
 Mrs. N. J. Frederick
 Mrs. S. B. Frederick
 Mr. and Mrs. William Gavin
 Miss Bertha Gavin
 Mrs. Mary Gaynor
 Miss Doretha Gregory
 Mrs. Annie Grant
 Mrs. C. H. Grantham
 Mrs. Mable Hall
 Mrs. Pauline Hamilton
 Miss Janice Hamilton
 Mrs. D. W. Hardy
 Mrs. Leola Harris
 Mrs. C. E. Hatcher
 Mr. Carl Hayes
 Mrs. Rosa N. Hicks
 Mr. John F. Hobbs
 Mr. E. A. House
 Mrs. Cleopatra House
 Mr. and Mrs. E. B. Hughes
 Mr. and Mrs. Bernard S. Hull
 Miss Gladys Hunter
 Mrs. James Lee Isler
 Mr. Leslie Isler
 Mr. John Isler
 Mr. Sam Isler
 Mrs. M. G. Isler
 Mr. Leonard Isler
 Mr. Leander Isler
 Mrs. I. B. Jackson
 Miss Geraldine E. Jackson
 Mrs. Minnie K. Jackson
 Mr. Henry Johnson
 Miss Lenora Johnson
 Mrs. Julia Johnson
 Mr. William Johnson
 Miss S. E. Jones
 Mrs. B. C. Joyner
 Mr. Bruce Kearney
 Mr. J. E. Lane
 Mrs. F. L. Larkin
 Mrs. Mary L. Leach
 Mrs. Vivian Lesesne
 Mrs. H. E. Levin
 Mrs. Mary E. Lewis
 Mrs. Heloise Lofton
 Mr. and Mrs. H. B. Lucas
 Miss A. P. Markham
 Mr. Edwin McClarin
 Mrs. Esther McGhee
 Mr. Aaron McKeithan
 Mrs. Ashley McLamb
 Mrs. A. W. Minnis
 Mr. Willie McNeill
 Mrs. V. E. Morgan
 Mrs. Mary Morrison
 Mr. and Mrs. Hebron Murphy
 Mrs. Cleo Newkirk
 Mr. and Mrs. C. L. Parks
 Mr. Eddie Pearce
 Rev. and Mrs. Charles I. Penick
 Mr. and Mrs. W. M. Reinhardt
 Mrs. B. R. Richardson
 Mrs. A. J. Riggsbee
 Mr. and Mrs. C. E. Richardson
 Mrs. Martel Scott
 Mr. and Mrs. W. P. Siler
 Mrs. Mamie Simmons
 Mrs. W. D. Smith
 Miss E. O. Smith
 Rev. A. R. Smith
 Mr. and Mrs. Calvin Spruill
 Mr. and Mrs. T. L. Starke
 Mrs. W. B. Starke
 Miss Marie Stitt
 Mr. N. A. Stitt
 Miss M. G. Sutton
 Mrs. E. G. Swann
 Mr. and Mrs. Richard Swinson
 Mr. and Mrs. W. C. Taylor
 Mr. Walter Taylor
 Mrs. Ethel Thomas
 Mr. W. C. Todd
 Miss Evelyn Turner
 Rev. Paul Warren, Jr.
 Mrs. R. O. Weathers
 Mrs. Jackie J. Williams
 Mrs. Mattie Williams
 Mr. Ticky Williams
 Mr. and Mrs. S. W. Whittington
 Mrs. Mildred Woodard
 Mr. and Mrs. John A. Wooten
 Mr. John H. Wooten
 Mrs. Louise Wright
 Mrs. Beulah Barnes
 Mrs. Annie McKinney
 Mr. and Mrs. A. G. Richardson
 Rev. E. B. Lipsey

Autographs





*Autographs of
"Top Ten"*

1958

1958

- 1.*
- 2.*
- 3.*
- 4.*
- 5.*
- 6.*
- 7.*
- 8.*
- 9.*
- 10.*



