



# THE DILLARDITE

1917

Sybil Fay Scott  
1205 S. Blount  
Goldboro, N.C.

Hi Sybil,  
It's been nice knowing you for the last number of years. Always remember the good ole days in Glee Club and the night of the Banquet. Much success and happiness to you in the coming years.

Hi Sybil,  
It was very nice knowing you as a Glee Club member of Dillard. I hope you will continue in music.  
A friend  
Dorothy Williams

Always,  
Peggy

Hello Sybil,  
May your life be full of happiness and success.

A Pal always  
Vivian "59"

Hi Sybil  
Let it be indeed a pleasure to know you. Always remember the days "we duck your friend", and that night, add that you were at the fair. A friend always  
Annie Moore B. 6/11  
Phyllis Hunter

Hello Sybil,  
May you have the best success in the years to come.  
A friend  
Cawdy

Dear Sybil,  
you are a  
lovely girl with  
a lovely personality.  
Always keep it  
that way. May the  
Good Lord take a  
likeness to you.  
Hattie

Hi Sybil,  
Here's hoping you  
miss me when I'm  
gone. Good Luck.  
Lyla

Hi Sybil,  
Remember the good  
old days in 3rd period  
Mrs. M. Jackson Latin II  
"A Classmate"  
Norris

Hello Sybil,  
Remember the laughs  
and good times we  
had together. Especially  
when we were the  
McSwigs sisters.  
Bill McSwigs  
Hattie Semmons  
McSwigs

Hi Sybil,  
Remember the pretty  
songs we learned in Glee  
Club. Hope you much  
success in life. Remember  
the door of success is labeled  
"Push".  
A Glee Club Friend  
of '59" Helen Peacock

Hi Sybil,  
Don't forget all  
the parties and  
rides. Never forget  
me and here's  
wishing you much  
success in the future.  
"A friend"  
Mamie Lee

Hi Sybil

Hope you have  
all the luck in  
the near future  
remember the trip the  
Ile Club took and all  
the noise we kept.

A friend  
Odessa

Dear Sybil,  
May your life always  
be as wonderful as you  
are. Remember that  
"Success lies in Honest  
Tail". Don't forget the  
fun we had in Ile Club.

Friends Forever,  
Shirley Jean Henderson  
North Carolina College

Dear Sybil,  
Happiness, Fortune,  
Fame and Success  
shall be yours IN  
this home we call  
"America".  
friend Always,  
heon Archie

Hi Sybil,  
Success is yours  
if you continue  
up and not  
down!! Remember  
the trip to  
Morehead City!

Friends Always,  
Vera

Dear Sybil  
I sorry Carl Marked  
you took up. ~~the~~ <sup>the</sup> ~~all~~  
We own everything don't  
we.  
Isler

Hi Sybil,  
much success  
and happiness in the  
future.  
Remember love is blind,  
but your neighbor ain't. Remember  
Jesse.  
Always a friend,  
Alice

Dear Sybil,  
The success in the all future  
because it will be leaving  
next year also. Good luck  
that is year hope. A friend,  
Grace, Vera

# The 1959 Dillardite

Published by the

SENIOR CLASS of

DILLARD HIGH SCHOOL

Goldsboro, North Carolina

*Junior's  
hands*

*Mamie Lee's  
hand*

*Hand in Hand  
With  
Memories*




## *Foreword*

Through four hard years we, the 1959 seniors, have pushed upward to the level upon which we now stand. We, through our experiences, have learned to cling to that which is good, and for that reason we think ourselves qualified to hold the title "Seniors."

With each passing moment we come closer to the day on which we shall leave the "Blue and Gold." To capture all of our wonderful moments at Dillard High School would be impossible, but we cannot leave without a memento as a stimulant in recalling these our last days.

Here is "The Dillardite." We hope you will cherish it as we in the background have loved preparing it for you. We hope that not only at the present, but in years to come, this book will be a treasured keepsake and that it will recall many happy occasions.

# Dedication



We, the members of the class of '59, dedicate this our yearbook, THE DILLARDITE, to our parents.

With humble gratitude and respect, we dedicate this yearbook to you who have struggled and helped us to achieve the measure of success that we have so far obtained.

We hope that in the years to come we will prove ourselves worthy of your love and confidence by taking our places in this space age as successful citizens, willing to make a contribution to society and to serve humanity.

- Alice James



## *Principal's Message*

### Greetings:

"In the dictionary of youth there is no such word as fail." This quotation aptly applies to you in your efforts to plan and publish an annual. You are to be commended for your determination and persistence to see this project to completion.

On these pages you have recorded for posterity impressions which are sentimental and dear to you and to us. We shall look back on "days at Dillard" with pride and nostalgia as we thumb through this volume in years to come.

Congratulations to the editor, the yearbook staff, and the advisors for your accomplishment and the production of this yearbook. Continue to strive for the tallest heights as you remember Browning's exhortation: "A man's reach should exceed his grasp or what's a heaven for?"

Sincerely yours,

*F. G. Shipman*

F. G. Shipman, Principal

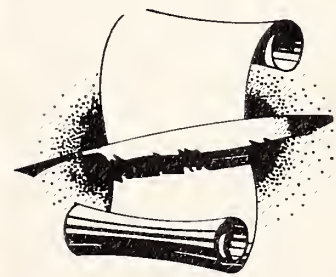




City Schools Supervisor  
MR. EDWARD A. HOUSE



Guidance Counselors  
MRS. DOROTHY W. HARDY and MR. H. B. LUCAS





*Contents*

- I. FACULTY
- II. SENIORS
- III. JUNIORS
- IV. SOPHOMORES
- V. FRESHMEN
- VI. ORGANIZATIONS
- VII. VOCATIONAL EDUCATION
- VIII. ATHLETICS
- IX. FAVORITES
- X. JUNIOR HIGH
- XI. ELEMENTARY
- XII. ADVERTISERS



Faculty



### *Language Department*

SEATED, left to right: Miss Sallie E. Jones, Mrs. Ruby B. Stroud, Mrs. Alma W. Minnis, Mrs. Dorothy W. Hardy. STANDING: Mrs. Dorothy D. Jones, Miss Valeria M. McLean, Mr. James E. Green, Mrs. Minnie K. Jackson.



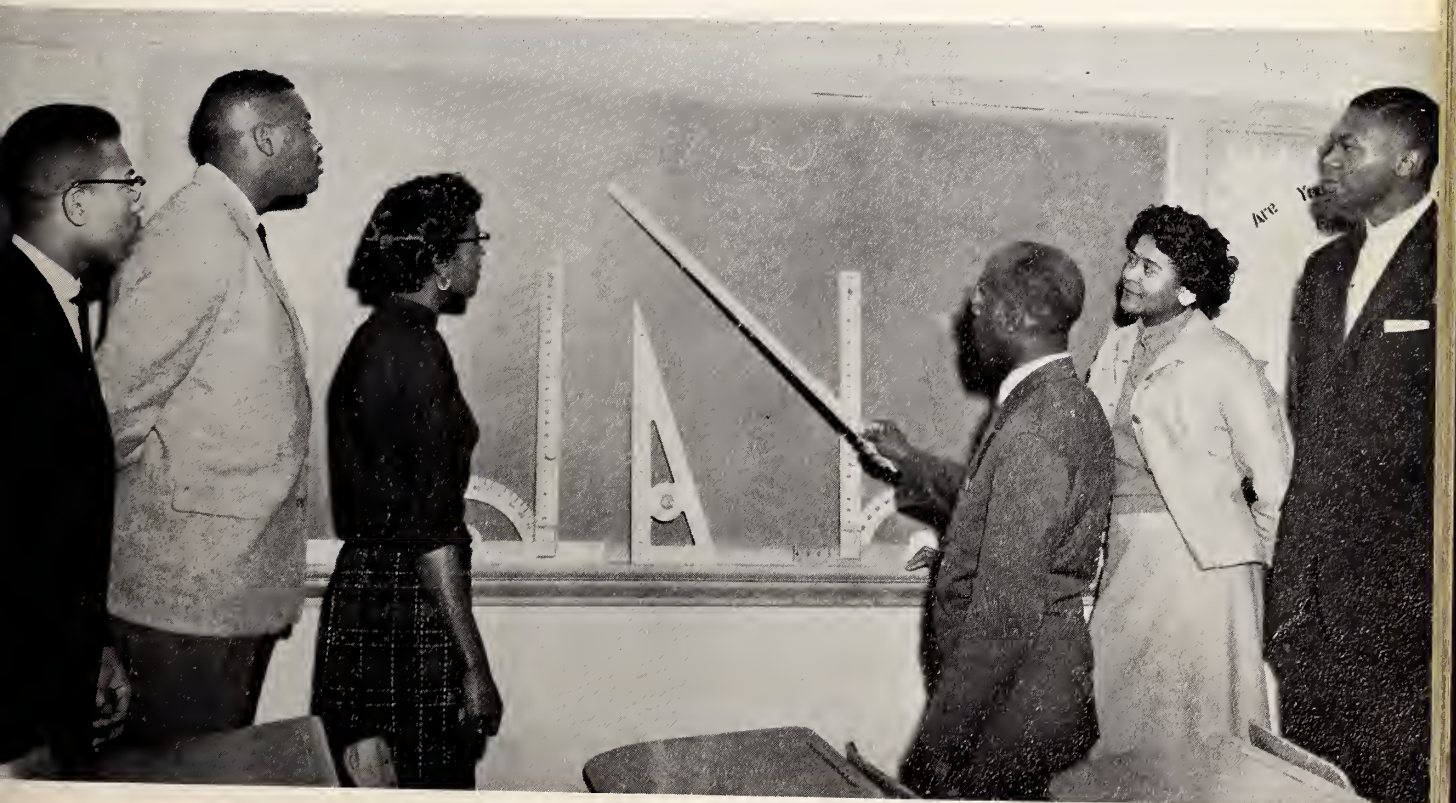
### *Social Studies Department*

Mrs. Ruby B. Stroud, Mr. Edward C. McLean, Mrs. Thelma I. Johnson, Mrs. Josie Boney Carr.



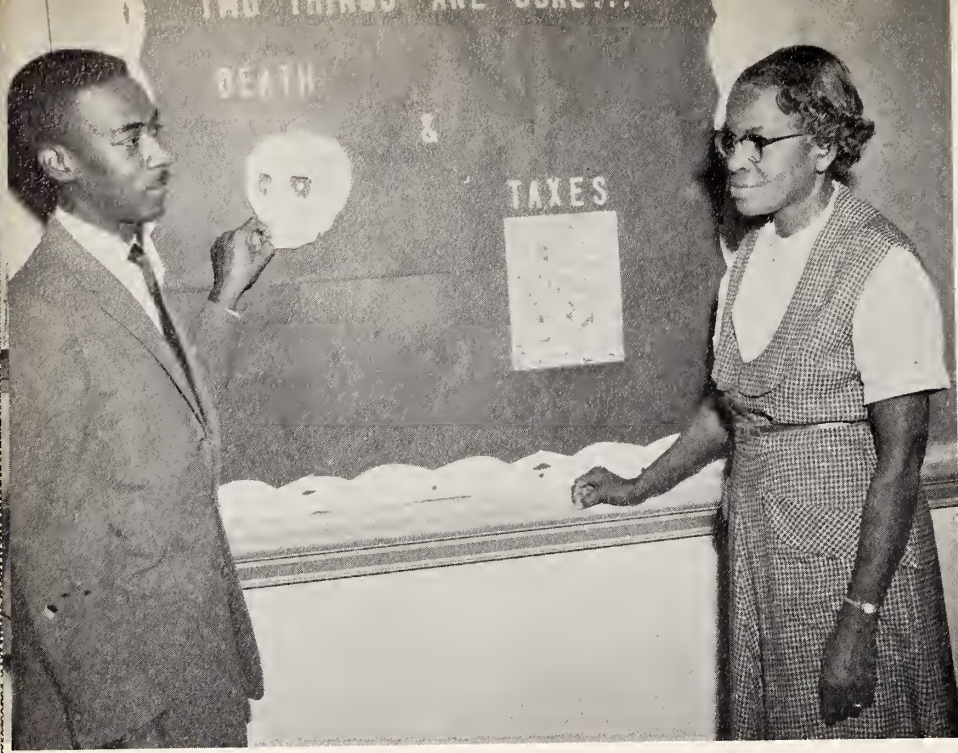
### *Science Department*

Mr. John H. Wooten, Mr. Robert L. Dowery, Mrs. Chanie M. Barnes, Mr. James L. Hall, Mr. Alton B. Parker.



### *Mathematics Department*

Mr. James L. Hall, Mr. Robert L. Dowery, Mrs. Leola T. Harris, Mr. James E. Green, Mrs. Ruby A. Siler, Mr. Herman Sutton.



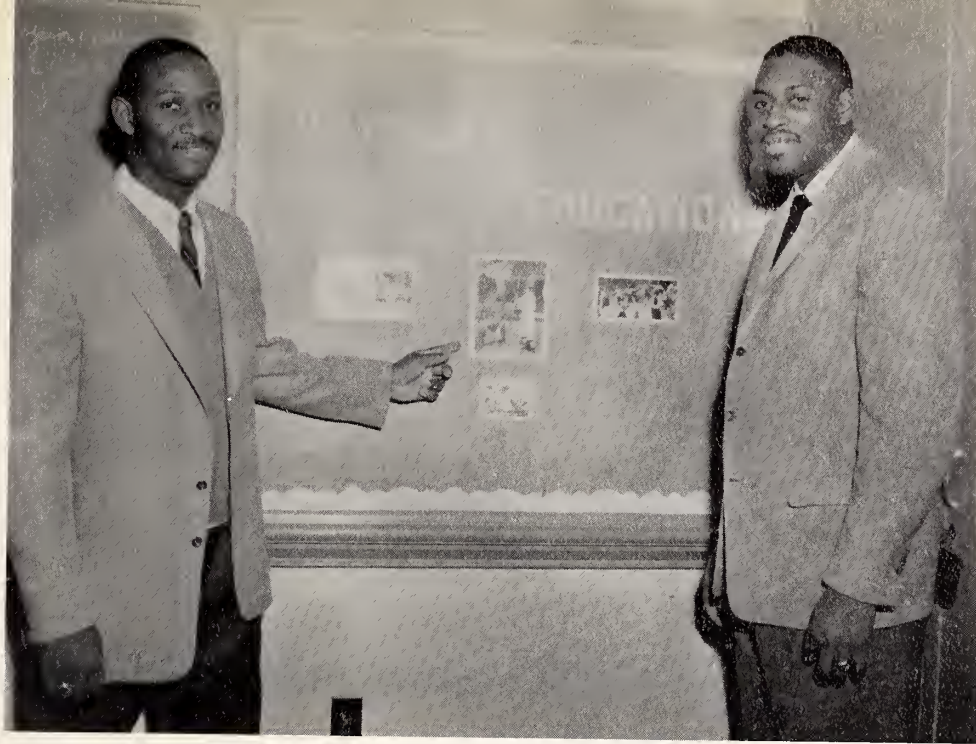
## *Commercial Department*

Mr. Neal A. Stitt  
Miss Arlena J. Riggsbee



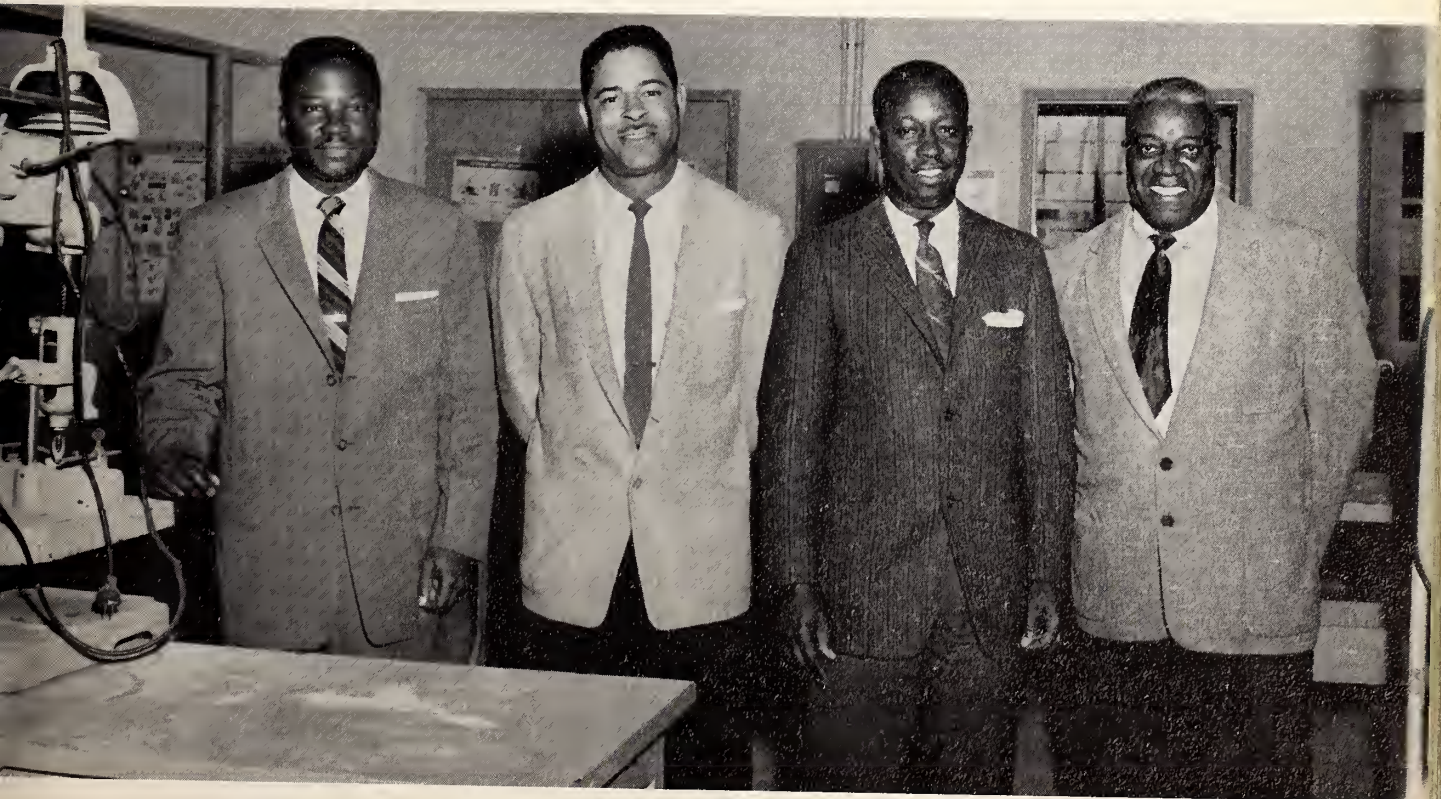
## *Home Economics Department*

Miss Eliza O. Smith  
Miss Catherine E. Sneed



*Physical Education Department*

Mr. T. T. Bellamy  
Mr. Robert L. Dowery



*Vocational Department*

Mr. Pernell G. Wilder, Mr. William P. Siler, Mr. H. B. Lucas, Mr. Timothy Parks.



## *Music Department*

Mrs. Thelma I. Johnson

Mr. Edmond B. Hughes

Mr. Neal A. Stitt



## *Office Staff*

FRONT ROW: Litha Baldwin, Edward Barnes, Ernestine Merriweathers, Mamie Isler, Barbara Stevens, Irene Summers, Norwood Davis. SECOND ROW: Ann Clark, Betty Howard. THIRD ROW: Mrs. Willette Starke, Office Clerk; Mr. F. G. Shipman, Principal; Lessie Townsend, Margaret Johnson.





*Librarian*

Mrs. Doris L. Brown



*Dramatics Department*

Mrs. TheIma Johnson  
Mrs. Josie B. Carr

# *Association of N. C. High School Library Clubs*



BARBARA ANN FORBES



LINDA DARNELL POWELL



MRS. DORIS L. BROWN, Sponsor

Barbara Forbes and Linda Powell serve as officers of the Association of North Carolina High School Library Clubs. Barbara is President and Linda is the Recording Secretary; as well as President of her local Library Club. Both Barbara and Linda, who are members of the Junior Class at Dillard, were elected for the term 1958-1959.

Editor-in-Chief  
 Gloria Jean Smith  
 Assistant Editor-in-Chief  
 Hattie Louise Simmons  
 Managing Editor  
 Alice James  
 Business Manager  
 Walter Barnes  
 Financial Manager  
 Ernestine Merriweathers  
 Advertising Manager  
 Donald Blue  
 Typist  
 Irene Summers  
 Copy Editors  
 Christine Bunch  
 Betty Royal  
 Thomas Griffin



## *"Dillardite" Staff*



Make-Up Editor  
 Ralph Williams  
 Typists  
 Lula Hargrove  
 Martel Scott  
 Emma Connor  
 Shirley Henderson  
 Gloria Tate  
 Helen Peacock  
 Mae Gloria Ford  
 Copy Editors  
 Dorothy Lynn  
 Ann Clark

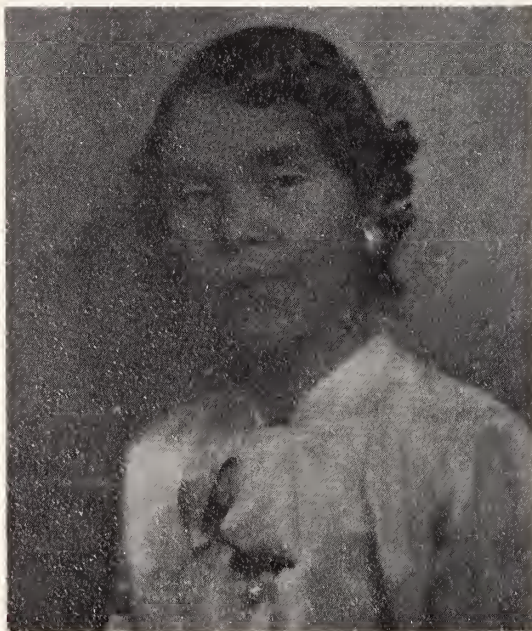
# Senior Class Advisors



MR. ALTON BROOKLYN PARKER  
Chairman



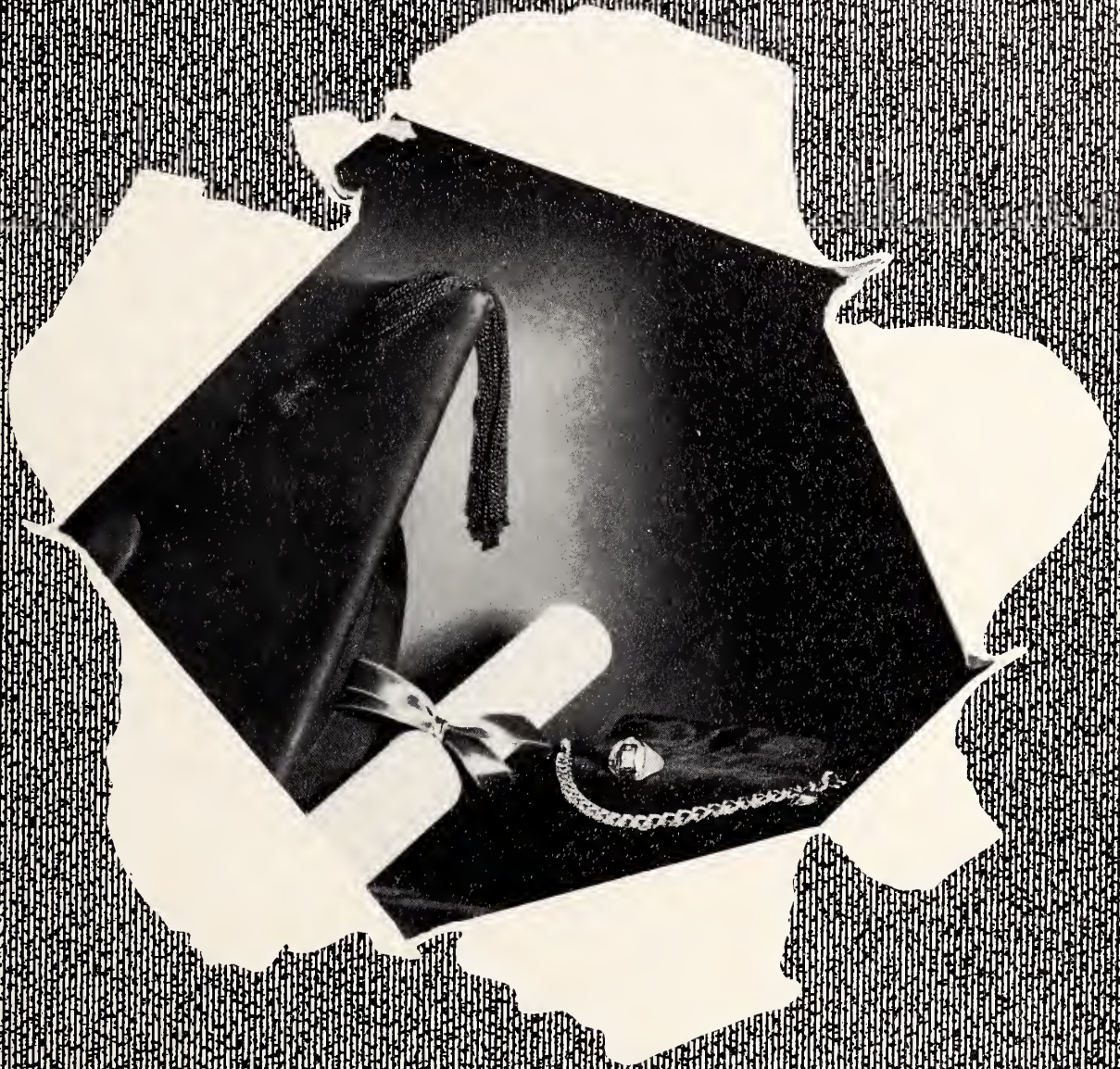
MRS. ALMA WILSON MINNIS  
Yearbook Committee



MRS. THELMA MARGARET JOHNSON  
Yearbook Committee



MR. TWILLIE THOMAS BELLAMY  
Yearbook Chairman



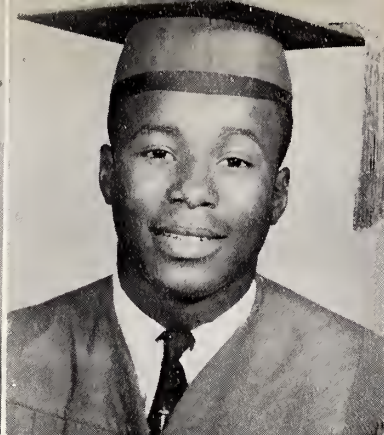
Seniors



*Processional*

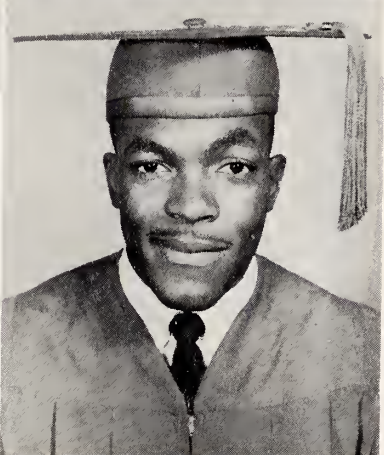
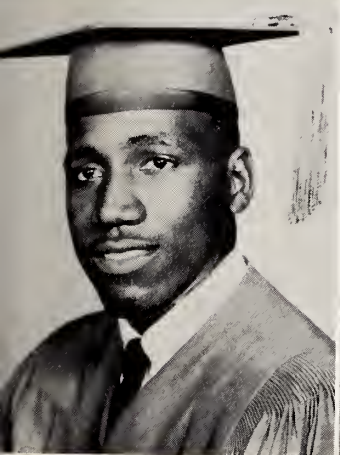
*[The text in this section is extremely faint and illegible, appearing as a dense block of small characters.]*

*[The text in this section is extremely faint and illegible, appearing as a dense block of small characters.]*



BEATRICE GENEVIVA ARRINGTON  
Vice President of Homeroom; Glee Club;  
Student Council Representative.

FELIX A. ASHFORD, JR.  
Motor Club; Safety Club; Football Team.

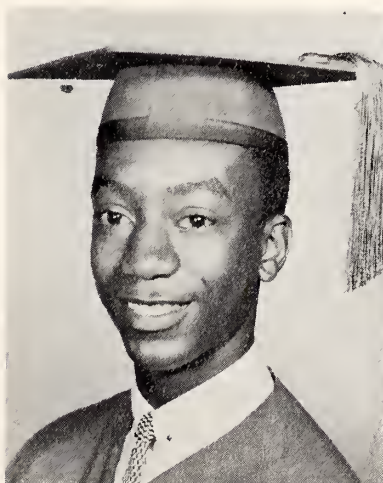


FREDERICK DOUGLAS ATKINSON  
Hi-Y Club; Varsity Club; Football Team.  
Aim: Professional Boxer

LEONARD ATKINSON  
Football Team; Basketball Team; Varsity  
Club; Hi-Y Club; Treasurer of Class.

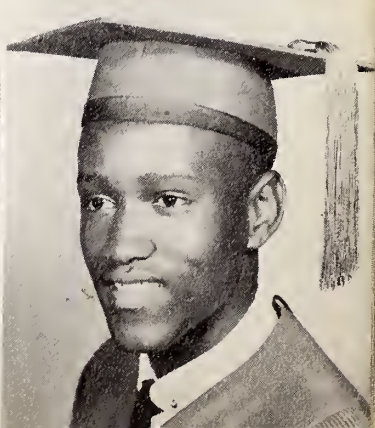
MILFORD AUSTIN (Peter Pan)  
Hi-Y Club; Press Club; Safety Club.

LITHA ALMETRIA BALDWIN (Bug)  
Library Club; Press Club; Glee Club; Stu-  
dent Patrol Officer; Majorette; AKA So-  
rority Cinderella.  
Aim: Private Secretary



CAROLYN BARNES  
Bible Club; Glee Club; Dramatics Club;  
Patrol Club.

WALTER BARNES  
Bible Club; Patrol Club.

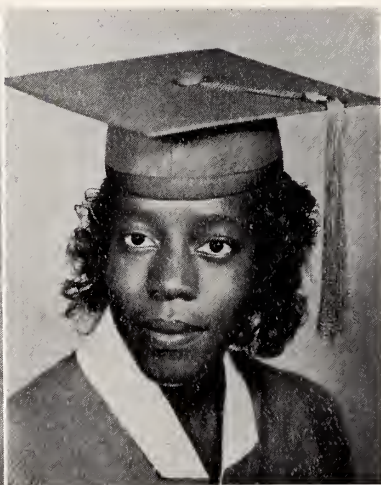
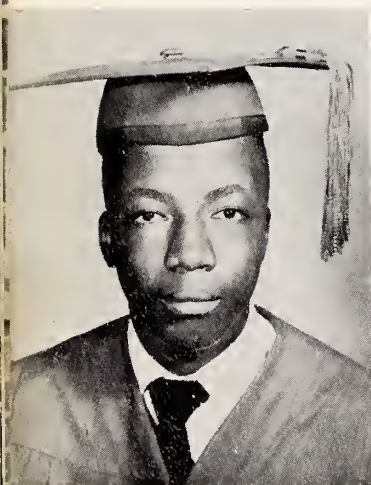
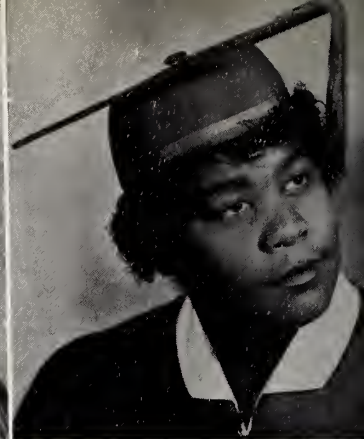
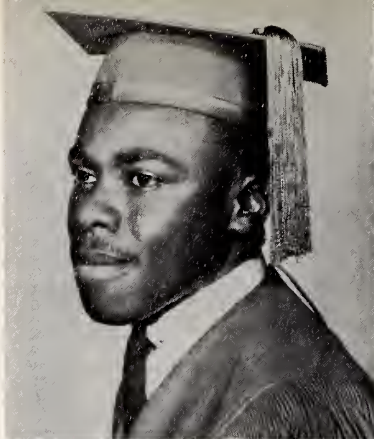


CLAYTON BEAMON  
Hi-Y Club; Senior Hi-Y Club; Safety Club;  
Varsity Club.

GERTHA BELL

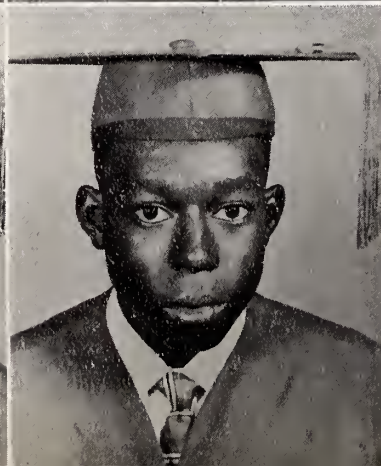
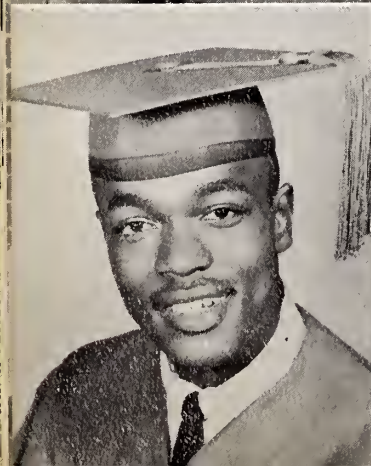
ELLA MAE BENNETT  
Arts and Crafts; Bible Club; Dance Group;  
Dramatics Club; Band.

ANNE CAROLYN BEST (Sister)  
Speech Club; Glee Club; FTA Club; Junior  
Class and Drama Class Plays.  
Aim: Secretary



WILLIAM BLACK

DELOISE BLOUNT (Loise)  
Tri-Hi-Y Club; Dramatics Club.



DONALD BLUE (Don)  
Football Team; National Honor Society;  
Student Council President; Press Club;  
Library Club.  
Aim: Engineering Pilot

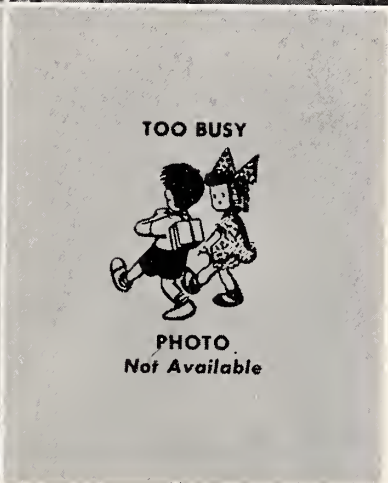
DAVID EARL BOYETTE (Boyetter)  
Press Club.  
Aim: Elementary Teacher





**EMMA LEE BROWN**  
 Dramatics; Member of Library Staff; Student Council Representative.  
 Aim: French Teacher

**ROSA MAE BROWN (Roma)**  
 Secretary of Dramatics Club; Bible Club; Business Manager 9th Grade.  
 Aim: Secretary



**FRANCES ANN BRYANT**  
 Tri-Hi-Y Club; Science Club; Glee Club.  
 Aim: Nurse

**CHARLIE BURDEN**

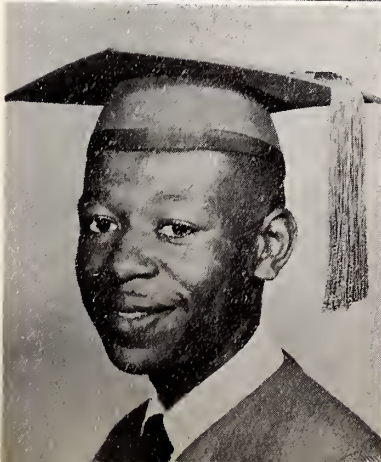
**CHRISTINE BUNCH (Chris)**  
 Press Club; Dramatics Club; Dance Group.  
 Aim: Surgical Nurse

**DORETHA BUTLER (Doe)**  
 Dramatics Club; Dance Group.  
 Aim: Teacher



**PAUL CARRAWAY**  
 Hi-Y Club.  
 Aim: College

**BARBARA JEAN CHESTNUT (Jeanie)**  
 Library Club.  
 Aim: Beautician



**ANN LEROYCE CLARK**

Majorette; Office Staff Member; Glee Club;  
Dance Group; Honor Society; Miss Cinder-  
ella.

Aim: Physical Therapist

**EMMA CONNOR**

Tri-Hi-Y Club; Dramatics Club; Glee Club.

Aim: X-Ray Technician



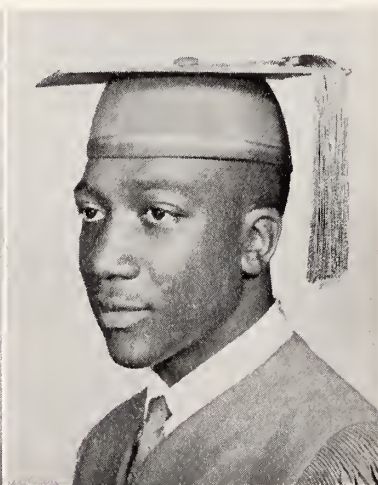
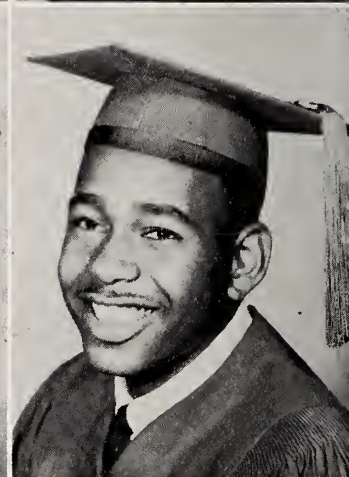
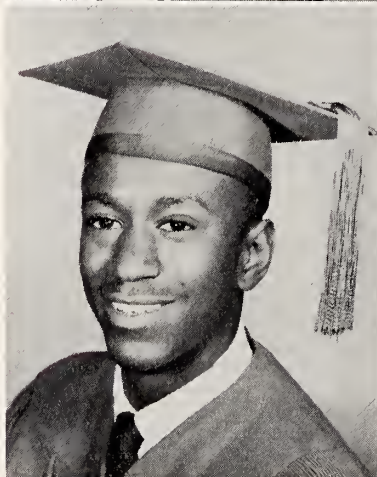
**HAYWOOD CRAWFORD (Ward)**

Varsity Club; Hi-Y Club; Explorers Club;  
Band.

Aim: Athletics Coach

**ELWOOD CROOM (Len)**

Hi-Y Club.



**RUTH ANN DANCEY**

Tri-Hi-Y; Speech Club; FTA Club.

Aim: Nurse

**EDDIE LEE DANIELS**



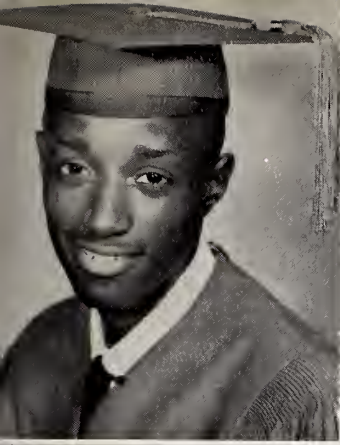
**MABLE LEE DARDEN**

Dramatics Club; Glee Club.

**HATTIE GWENDOLYN DAVIS (Cissie)**

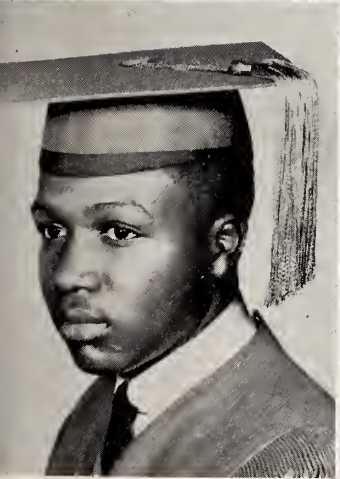
Dramatics Club; Junior Play; Safety Patrol;  
Arts and Crafts Club; Dillard High News.

Aim: Nurse



NATHANIEL DAVIS

ROBERT DAVIS  
Hi-Y Club; Safety Club.  
Aim: Military Career

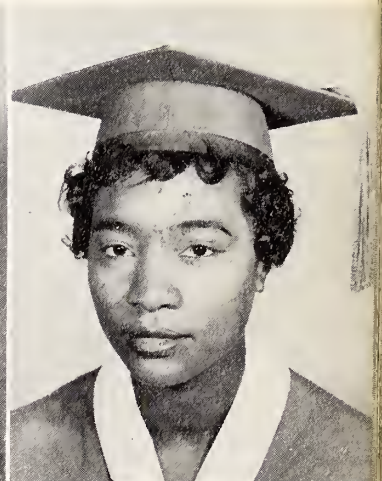


WILLIE GEORGE DAVIS  
Safety Club; Hi-Y Club.

DORIS EATMON (Baba)  
Bible Club; Band Club; Glee Club.  
Aim: Secretary

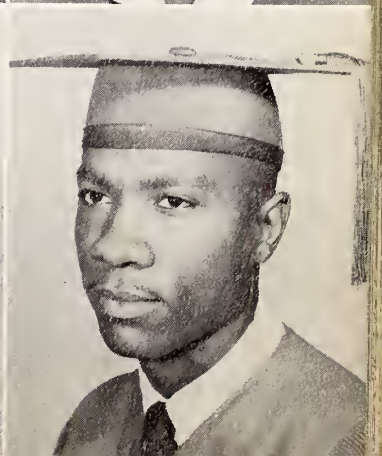
BARBARA EDWARDS (Jenny)  
Dramatics Club; Student Council; Major-  
ette; Glee Club.  
Aim: Secretary

ERMA JEAN EXUM  
Glee Club; Bible Club; Science Club; Com-  
mercial Club.  
Aim: Secretary



BETTY JEAN FENNELL (Bet)  
Dramatics Club; Tri-Hi-Y Club; NHA  
Club.  
Aim: Beautician

BENNIE FLOWERS  
Band Club; Hi-Y Club.

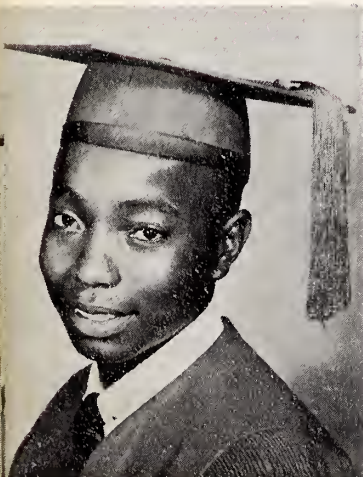
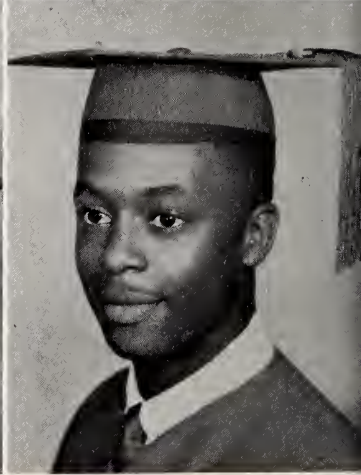
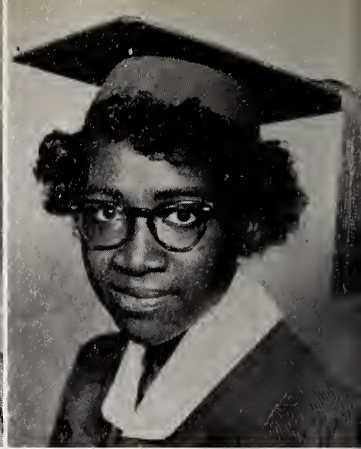
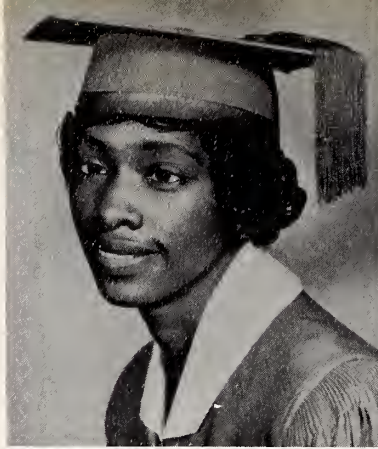


**MAE GLORIA FORD (Glo)**  
 Dramatics Club; NHA; AKA; Sorority  
 Cinderella; Commercial Club.  
 Aim: File Clerk

**EDITH GRAHAM**  
 Secretary of Library Club; Secretary of  
 FTA; Dramatics Club; Student Director  
 of Dramatics Class.  
 Aim: Secretary

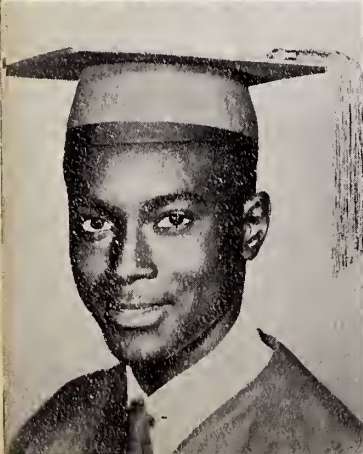
**KAY FRANCES GREENE (Crovoda)**  
 Glee Club; Band; Dramatics Club.  
 Aim: Nurse

**THOMAS GRIFFIN (Tom)**  
 Glee Club; Dramatics Club.  
 Aim: Gospel Singer



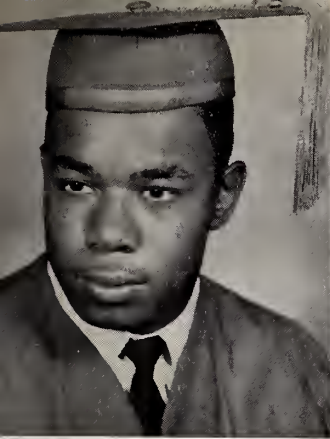
**JESSE HAMM (Bird)**  
 Band; Dance Group; Hi-Y Club.

**QUEEN ESTHER HAM (Queenie)**  
 Dramatics Club; Tri-Hi-Y Club; Speech  
 Club; Debate Club.  
 Aim: Secretary



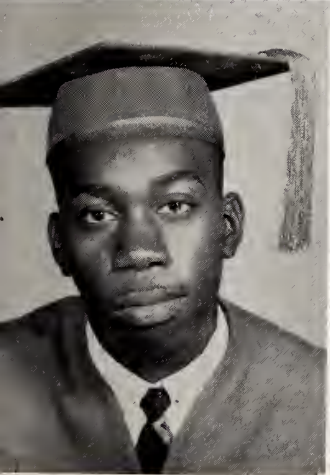
**JAMES ALLEN HAMILTON**  
 Hi-Y Club.  
 Aim: Army

**LULA MAE HARGROVE (Little Lulu)**  
 Dramatics Club; Dance Group; National  
 Honor Society; Yearbook Staff.  
 Aim: Commercial Teacher



CLIFTON HATCH (Clip)  
Hi-Y Club; Varsity Club; Football Team.

WORLEY HATCH  
Hi-Y Club; Football; Baseball.



LLOYD JUNIUS HAYES (Jay)  
Basketball; Captain of Varsity; Bricklaying,  
Stage Committee.  
Aim: Physical Education

VIVIAN HAYES (Viv)  
Student Council; Tri-Hi-Y; NHA Club,  
Glee Club.  
Aim: Secretary

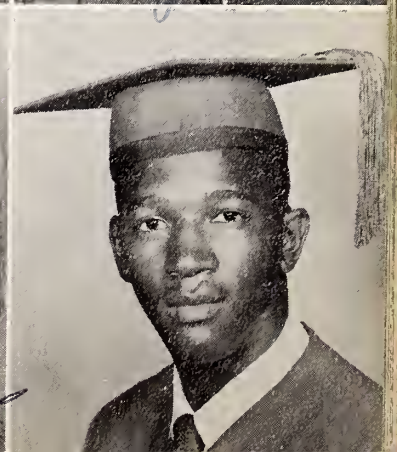
PEGGY ANN HEIGHT (Peggy Sue)  
Dramatics Club; Tri-Hi-Y; NHA Club;  
Glee Club.  
Aim: Secretary

SHIRLEY JEAN HENDERSON (Jean)  
Tri-Hi-Y Club; Glee Club; Member of  
Student Council; AKA Sorority Cinderella.  
Aim: Concert Pianist

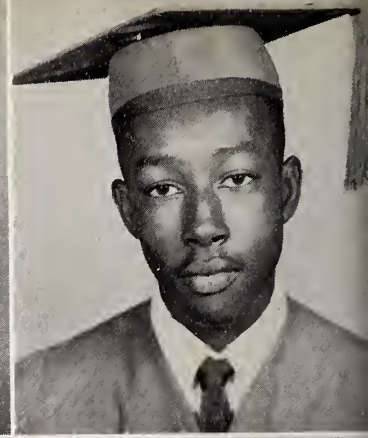


MARGARET HERRING (Fish)  
Dance Group; Member of Student Council;  
AKA Sorority Cinderella; NHA Club.  
Aim: Nurse

CHARLES HILL (Brother)  
Safety Club; Patrol Club.  
Aim: Military Service

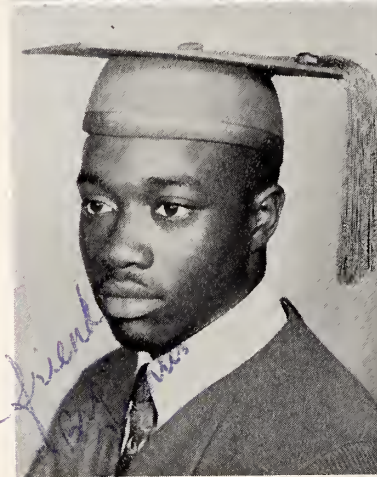


BETTY JEAN HOWARD (Peaches)  
 Dramatics Club; Debate Club; Office Staff;  
 AKA Cinderella.  
 Aim: Secretary or Teacher

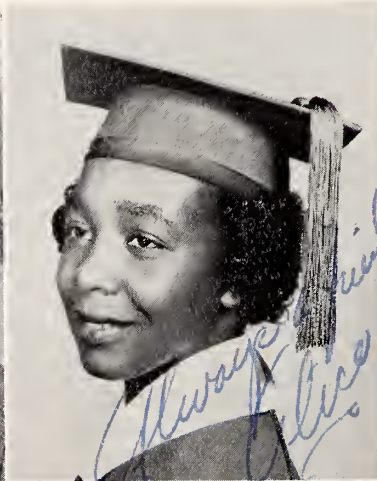
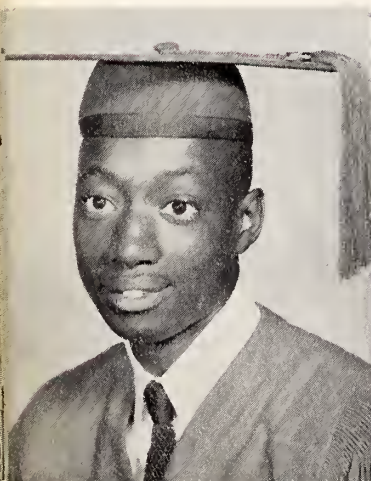


EUGENE HUMPHREY (Bone)  
 Hi-Y Club; Dramatics Club; Band.  
 Aim: To attend Naval Academy

CLINTON HUNTER (Bro)  
 Hi-Y Club; Football Team; Basketball  
 Team.  
 Aim: Teacher of Masonry



MAMIE LEE ISLER (Mimi)  
 Yearbook Staff; Girl Scout; Office Staff;  
 Glee Club; Junior Play; National Honor  
 Society.  
 Aim: Secretary



WILLIE JACKSON  
 Hi-Y Club.

ALICE MERITA JAMES (Rete)  
 Business Manager of Senior Class; Managing  
 Editor of Yearbook; Dramatics Club; Student  
 Council Member; Tri-Hi-Y Club; Oratorical  
 Club Member.  
 Aim: Medical Technician



MARGARET LEE JOHNSON (Flirty)  
 Member of Student Council; FTA Club;  
 Office Staff; Glee Club.

HAZEL DAPHINE JONES (Shortie)  
 National Honor Society Member; Debate  
 Club; Dance Group; Library Club; Tri-  
 Hi-Y Club.  
 Aim: Nurse



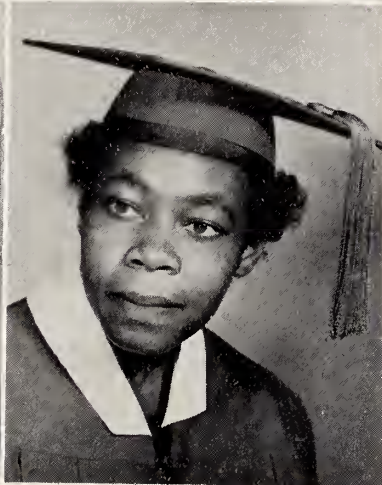
PHOTO  
Not Available



Absent  
PHOTO  
NOT AVAILABLE

WILBERT JONES

GEORGE KATES

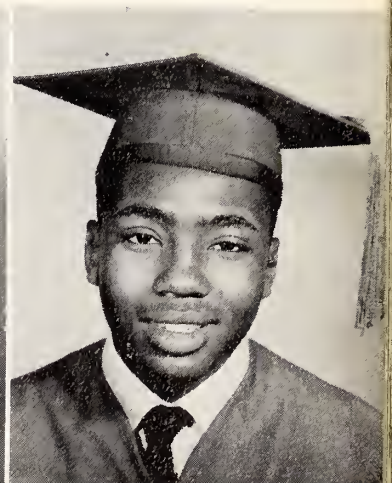


GEORGE KORNEGAY (Pee Wee)  
Safety Club; Glee Club; Hi-Y Club.  
Aim: Architect

MARIAN DWENDOLYN LANE (Dwend)  
Dramatics Club; Tri-Hi-Y Club; News  
Staff; Press Club.  
Aim: Secretary

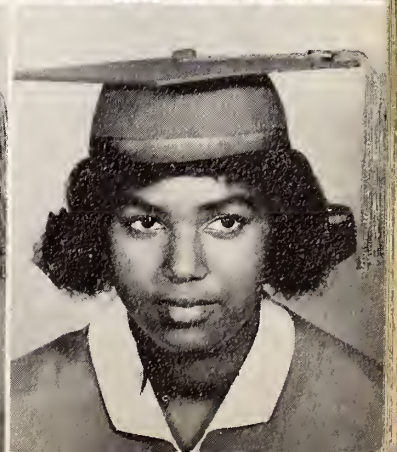
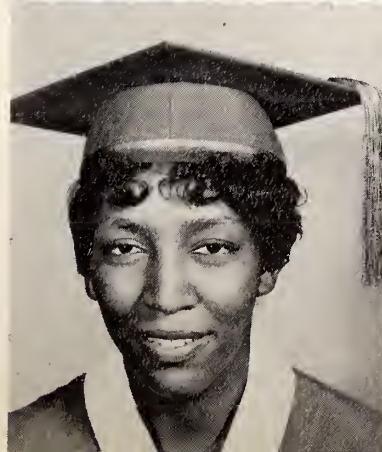
PAULINE LANGSTON  
Dramatics Club; Commercial Club.  
Aim: Secretary

THOMAS LAWSON  
Varsity Club; Hi-Y Club; Basketball; Base-  
ball.

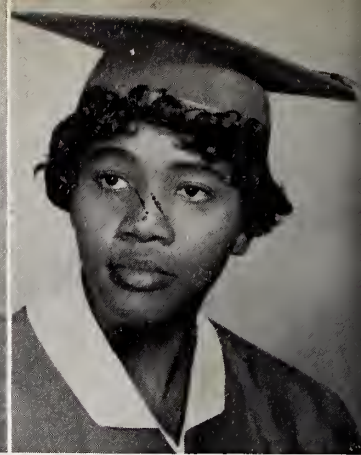
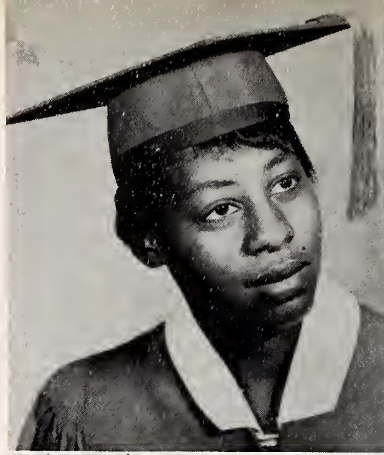


GERALDINE LEWIS (Gerald)  
Tri-Hi-Y Club; Library Club; Glee Club.  
Aim: Cosmetologist

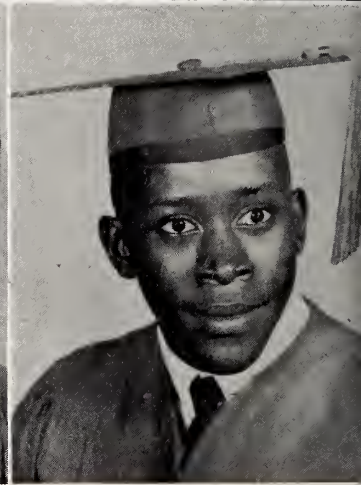
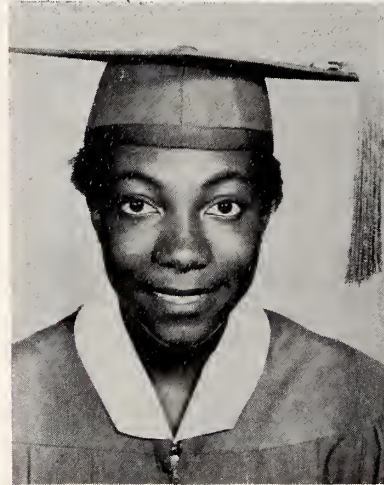
HATTIE LEWIS  
Bible Club; Science Club; National Honor  
Society.  
Aim: Nurse



LILA LANGSTON  
Tri-Hi-Y Club; Bible Club.  
Aim: Nurse

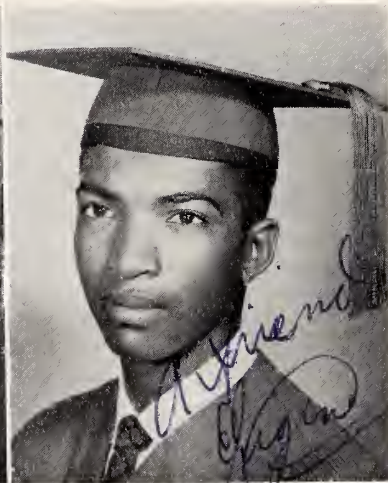
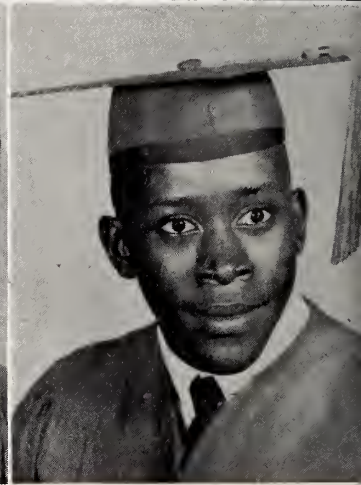
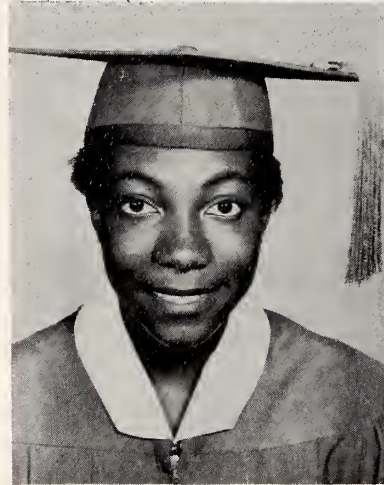


MOZELLA ELIZABETH LEWIS  
Library Club; Glee Club; Lunchroom  
Helper.  
Aim: Nurse



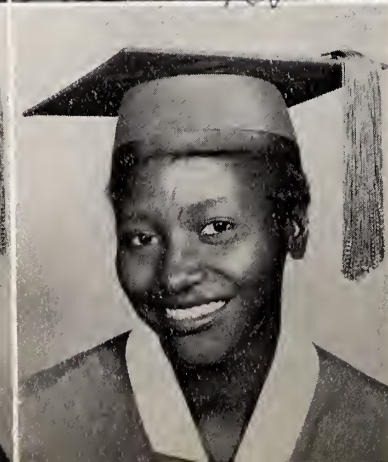
ROSALIE LEWIS (Shortie)  
Tri-Hi-Y Club; Commercial Club; Dance  
Group; Girl Scouts; Glee Club.  
Aim: Women's Air Force

HENRY LOFTIN (Neal)  
Arts and Crafts Club; Hi-Y Club; Varsity  
Club.  
Aim: Teacher



DOROTHY MAE LYNN (Dot) -  
National Honor Society; AKA Sorority  
Cinderella; Majorette; Library Staff;  
Dramatics Club.  
Aim: Drama Teacher

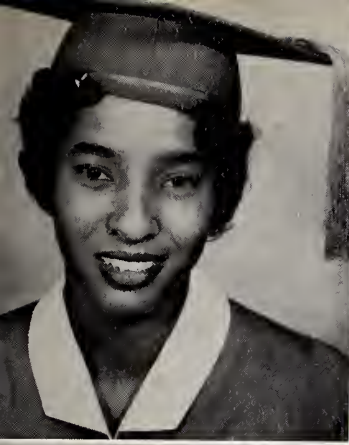
ROBERT EUGENE McKINNIE (Nuki)  
Hi-Y Club; Band; Explorer Club; Glee Club.  
Aim: To go to college



ANNIE McMILLIAN  
Press Club; Dramatics Club; Bible Club.  
Aim: Nurse

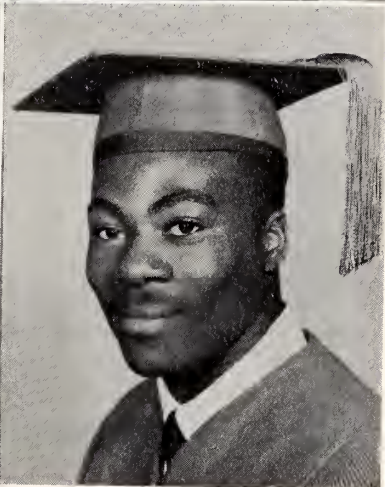
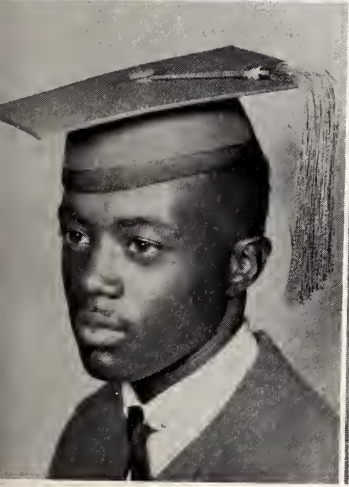
GENEVA MELVIN  
Dramatics Club; NHA Club; Glee Club.  
Aim: Typist





ERNESTINE MERRIWEATHERS (Stine)  
 Debate Club; Business Manager of Dillard  
 High Bank for 2 Years; NHA and Tri-Hi-Y  
 Clubs; News Reporter Yearbook Staff; AKA  
 Cinderella.  
 Aim: Secretary

HELEN MILLER  
 Glee Club; Dramatics Club; Bible Club.

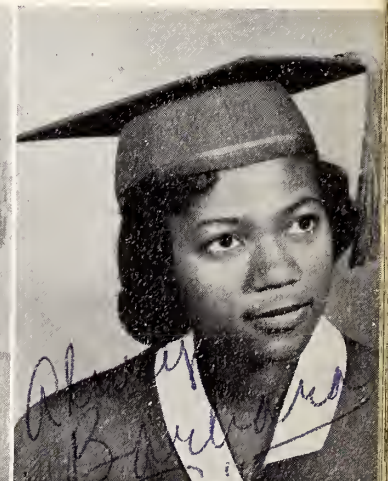
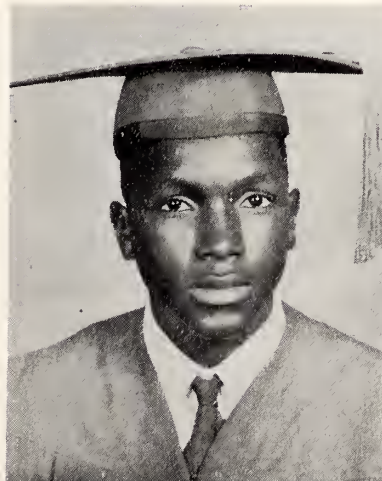


VAN MOSES  
 Hi-Y Club.

JAMES MURRAY

EDDIE NEWSOME, JR. (Foxy)  
 Safety Club; Football.  
 Aim: Army

BARBARA JEAN PARKS  
 Dramatics Club; AKA Cinderella; Flag  
 Girl; Girl Scout; Parliamentarian of 12-4  
 Class.  
 Aim: Elementary Teacher



GLORIA PARKS

SHIRLEY PARKS  
 Bible Club; Glee Club; Dramatics Club.

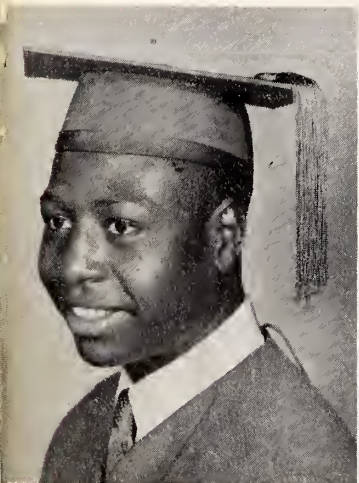
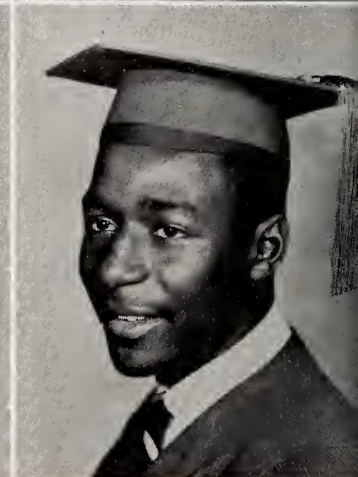
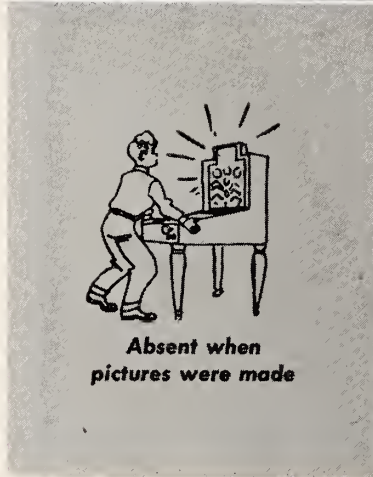
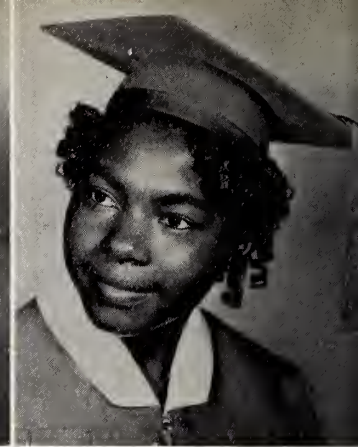


HELEN DELORES PEACOCK (Pea)  
 Student Council Representative; Glee Club;  
 Dance Group; Yearbook Staff; AKA Soror-  
 ity Cinderella.  
 Aim: Secretary

LIZZIE PHILYAW  
 FTA Club; Press Club; Dance Group.  
 Aim: Surgical Nurse

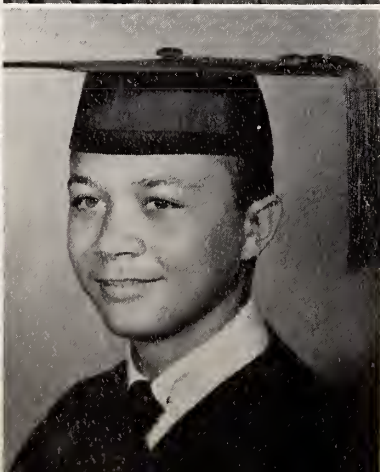
LEON RAIFORD

CARNELL REID  
 Safety Club; Band; Football Team.  
 Aim: Army



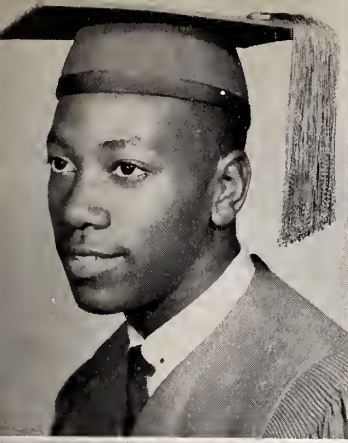
DONELL RICHARDSON  
 Hi-Y Club; Football Team.  
 Aim: Marines

BETTY JEAN ROYALL  
 Library Staff; Bible Club; Yearbook Staff;  
 Honor Society.  
 Aim: Math Teacher or Public Health Nurse



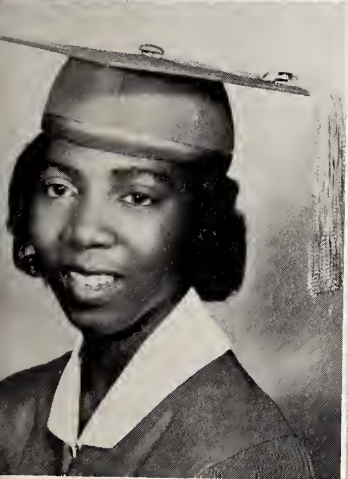
ALICE IRENE SAULS (Wennie)  
 Bible Club; Press Club.  
 Aim: Elementary Teacher

ALVIN MARTEL SCOTT, JR. (Poke)  
 Honor Society; Glee Club; Baseball; Bas-  
 ketball Team; Student Council; Junior  
 Play.  
 Aim: Physical Education Instructor



THEDWOOD RUDOLPH SHERARD (Thed)  
Hi-Y Club; Arts and Crafts Club.  
Aim: Military Career

CHRISTINE SIMMONS  
Library Club; NHA Club; Glee Club; Student Council.  
Aim: Registered Nurse



CLARA DALE SIMMONS (Cladale)  
National Honor Society; Dance Group; Band; Glee Club; Student Council; AKA Cinderella.  
Aim: Business Career

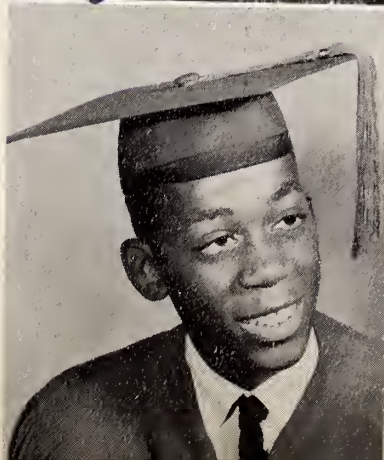
FAYE SIMMONS (Peaches)  
Glee Club; Debate Club; Majorette; Dance Group.  
Aim: Nurse

HATTIE LOUISE SIMMONS (Dreamy Eyes)  
Library Club; Majorette; Glee Club; Honor Society; AKA Cinderella; Secretary of Student Council; Girl Scout.  
Aim: Surgeon

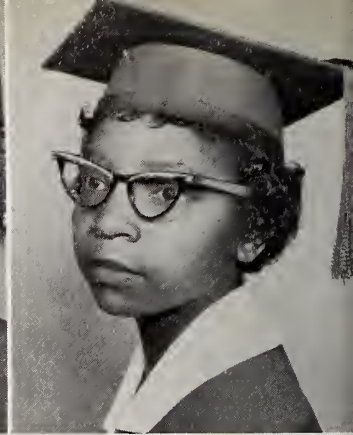
DORA SMITH  
Dramatics Club; Press Club; Speech Club.  
Aim: Secretary

FRANK SMITH  
Science Club.

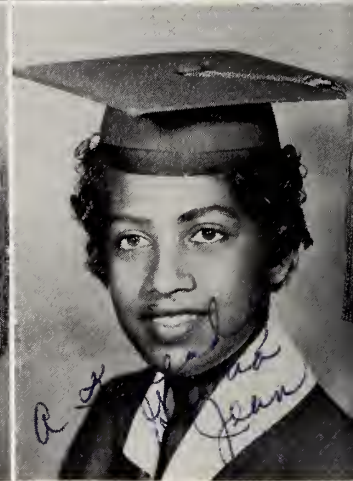
GLORIA JEAN SMITH  
Press Club; Editor of Yearbook; Editor of Dillard Hi News; Honor Society; AKA Sorority Cinderella.  
Aim: Psychologist



SARAH ELIZABETH SMITH (Susie)  
 Dramatics Club; Debate Club; Dance Group.  
 Aim: Secretary

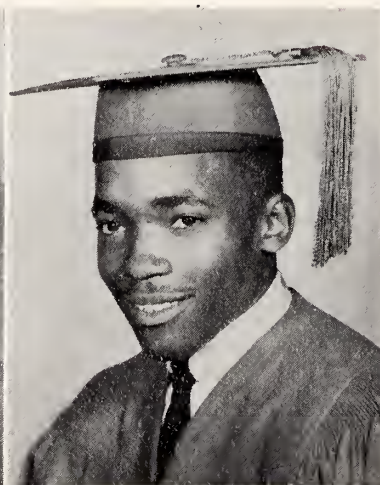


BARBARA STEVENS (Stevie)  
 Dramatics Club; Glee Club; Debating Club.  
 Aim: Nurse



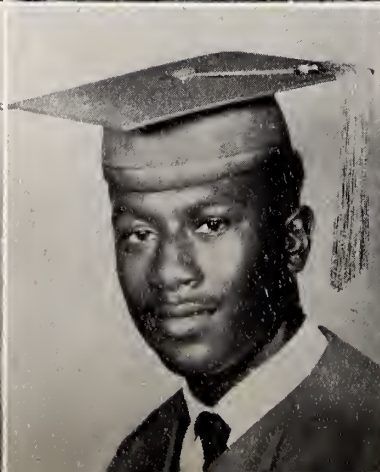
IRENE SUMMERS (Ranie)  
 Tri-Hi-Y Club; Dance Group; Dramatics  
 Club.  
 Aim: Social Worker

GLORIA JEAN TATE (Glo)  
 Band; Glee Club; Student Council; Dance  
 Group; AKA Sorority Cinderella; Year-  
 book Staff; Majorette; Secretary for Super-  
 visor.  
 Aim: Registered Nurse



CALVIN TAYLOR (Sugarfoot)  
 Varsity Club; Basketball Team.

ROLAND TAYLOR (Tate)  
 Dramatics Club; Science Club; Basketball  
 Team.  
 Aim: Professional Boxer



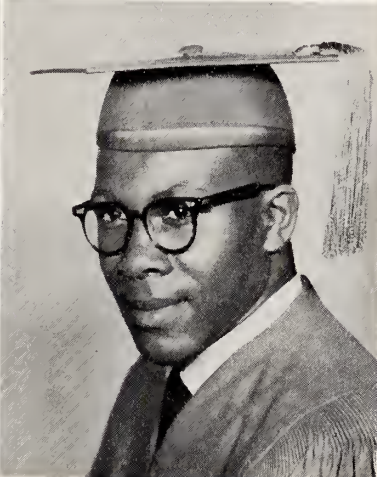
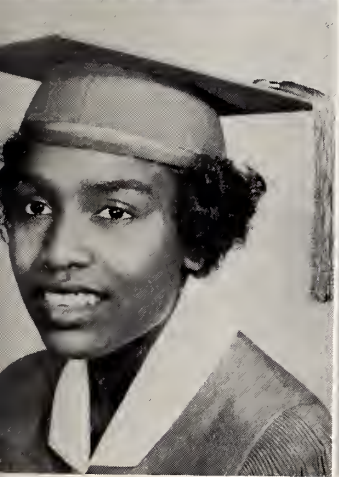
SALLY JEAN THORNTON (Jeanie)  
 Dance Group; Dramatics Club; Glee Club;  
 Majorette.  
 Aim: TV Actress

JESSE TOWNSEND  
 Hi-Y Club; Glee Club; Arts and Crafts;  
 Student Council Representative.  
 Aim: Certified Public Accountant



LESSIE LEE TOWNSEND (Sister)  
Dramatics Club; NHA Club; Student Council Member; Library Club; Office Staff.  
Aim: Office Clerk

LYSANDER UZZELL

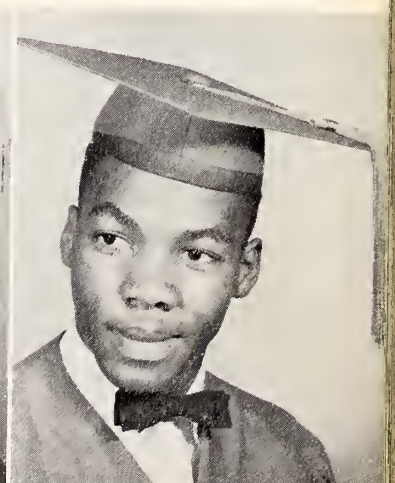
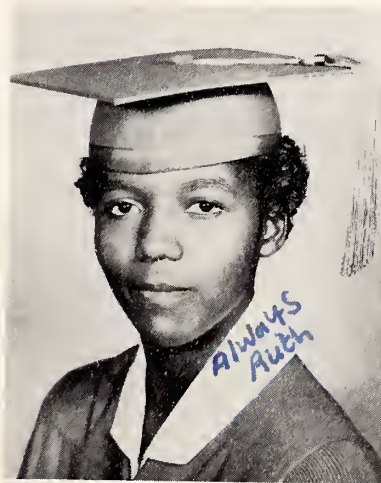


ESTHER WARD  
Glee Club; Press Club; Tri-Hi-Y; Arts and Crafts.  
Aim: Secretary

JOHNAS EDWARD WEEKS  
Motor Club; Football.  
Aim: Armed Services

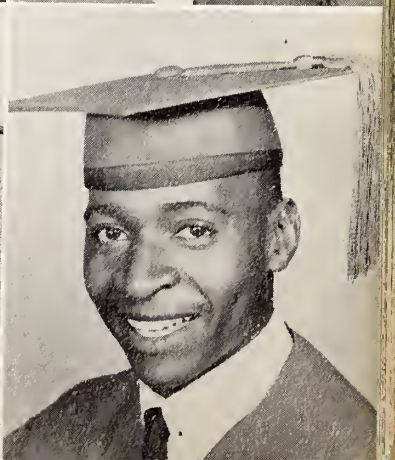
RUTH THOMAS WELLONS  
Debate Club; Bible Club.  
Aim: Physical Education Teacher

ELLSWORTH WHITFIELD (Schoolie)  
Hi-Y Club; Chaplain of Club.  
Aim: Medical Career

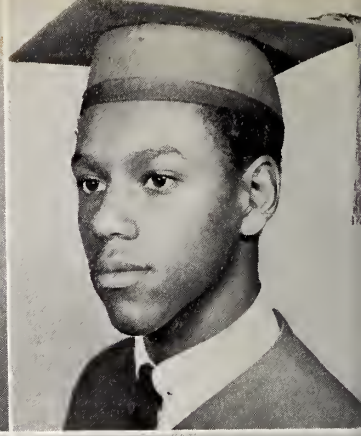


DOROTHY JEAN WILLIAMS (Dot)  
Debate Club; Yearbook Staff; Tri-Hi-Y Club; Glee Club.  
Aim: Secretary

LINWOOD WILLIAMS (Mole)  
Arts and Crafts; Safety Club; Dramatics Club.

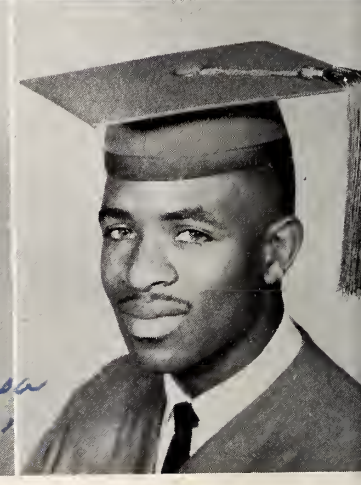


**RALPH NAPOLEON WILLIAMS (Napole)**  
 Dramatics Club; National Honor Society;  
 Press Club; Senior Class President; Year-  
 book Staff; Football; Baseball; Basketball.  
 Aim: Physician

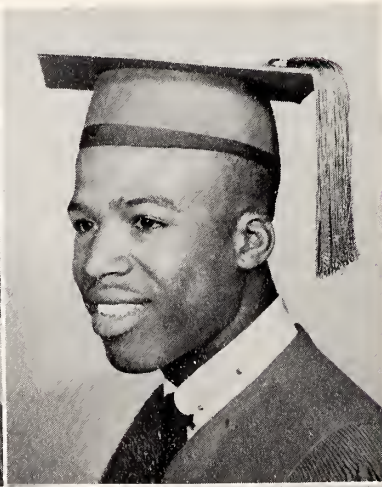
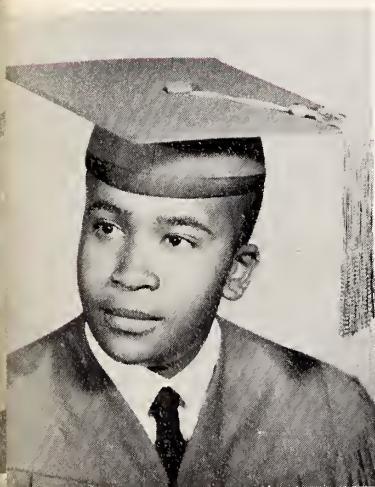


**LAWRENCE WOOTEN (Oten)**  
 Safety Club; Hi-Y Club.  
 Aim: Basketball Trainer

**ODESSA LOUISE WOOTEN (Jean)**  
 Bible Club; Dramatics Club; Glee Club;  
 Cafeteria Staff.  
 Aim: X-Ray Technician



**WILLIAM FLOYD WORRELLS (Baby Floyd)**  
 Hi-Y Club; Varsity Club; Safety Club.  
 Aim: Physical Education Teacher

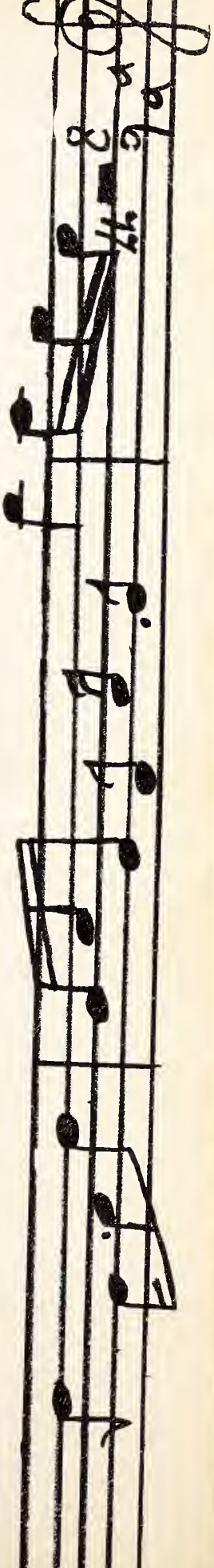
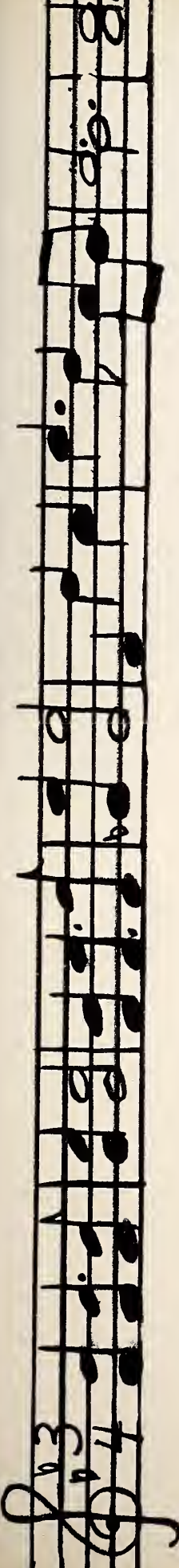


**WILLIE PAUL WORRELLS (Shortie)**  
 Bible Club; Hi-Y Club; Safety Club.

**BOBBY ROYALL (Bob)**  
 School Patrol; Hi-Y Club.  
 Aim: Mechanical Engineer



Absent  
 PHOTO  
 NOT AVAILABLE



*"Our Guiding Light"*

Dillard we love thee - Dillard we trust thee  
Our Guiding Light - for aye

Dear Alma Mater, we love, and give expression  
today,

A guiding light through the years, which  
from our paths, did never stray.

We will not fear the unknown, for you have  
shown us the way,

And though we soon depart;  
Our youthful hearts - will cherish Dillard  
High, always.

Throughout the years, we have shared much  
happiness every hour,  
Within these walls we did strive to gain  
ability and pow'r,  
We will not squander the years, in  
useless effort, inane,  
But shine as Phoebus bright;  
Spreading light - for those who follow  
us, remain.

Our Parents dear, we humbly bow to you,  
We do not know; just how we can show;  
our gratitude so true.

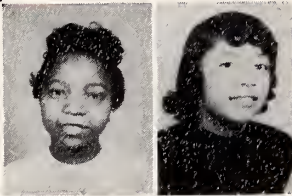
Teachers and friends, God will reward your faith,  
Lest we forget; our multiple debt;  
That must be paid to you.

Dillard we love thee - Dillard we trust thee  
Our Guiding Light - for Aye!!!

# Class Prophecy in Rime



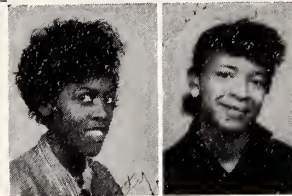
Gloria Smith will have much fame  
Alice James will always entertain



Barbara Stevens will be first to marry  
Dorothy Lynn will be Perry Mason's secretary



Irene Summers will always be a pretender  
Lawrence Wooten, a Public Defender



Betty Fennell will always have friends  
Hattie Simmons will always win



Jesse Hamm, a filibuster-leader  
Shirley Henderson, a music teacher



Ann Clarke will always be late  
Clara Dale Simmons will keep her shape



Faye Simmons will be a movie star  
Martel Scott will travel far

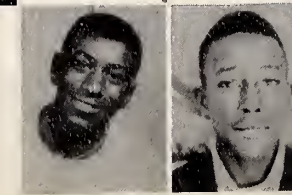
"JUNIO"



Ralph Williams will become a preacher  
Esther Ward, a Sunday School teacher



Thomas Griffin will reign as king  
Mamie Isler will be his Queen

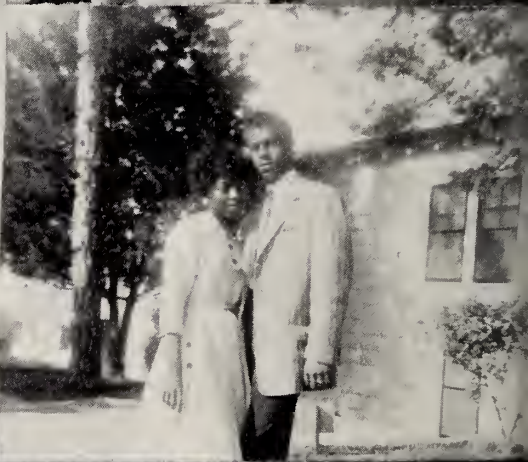
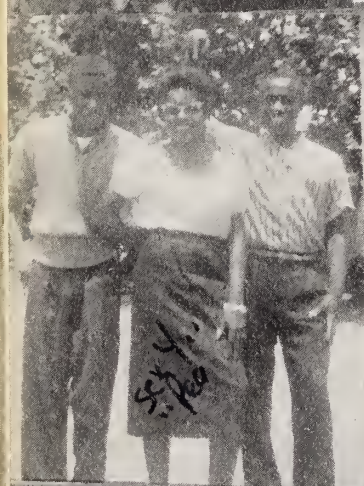
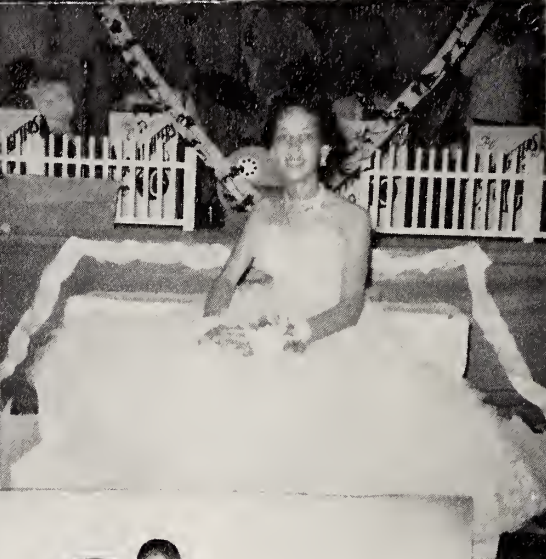


Hayward Crawford will always be fun-mad  
Eugene Humphrey will always look sad





# Activities



# *Alma Mater*

## "BLUE AND GOLD"

Lift happy voices, praises unfold  
Hail to the Blue and Gold.  
Let songs of gladness rise to the sky  
For Dear, old Dillard High  
And strive to show, as on we go  
Ability and power  
To do the right with all our might  
Thru every changing hour.  
With hope and loyalty and courage  
Our lives shall e'er be blest;  
And ever for our Alma Mater  
We will work; we will do our best.  
As on we go, our aim shall grow,  
Our cheers will ever cry  
To do the right with all our might  
For thee, Dear Dillard High.

By Mrs. Thelma I. Johnson

\*\*\*

## *School Creed*

We believe in our school as an institution so organized and carried on as to give boys and girls a triple training that is necessary for a well-rounded life.

We believe firmly in the coordinate training of the head, the heart, and the hand, for though each one is necessary, neither can be of great use alone.

We believe that a life worth living must embody mental satisfaction, industrial pursuits, and a spiritual outlook, therefore, our various subjects and activities have been so planned and selected by us and our elders as to ultimately develop one or more sides of our educational triangle.

We pledge that in all our endeavors we shall strive to grow mentally, physically, and spiritually strong, for we know that only such a triple development can make a real life, and in the final analysis a true American citizen.

## 4 Yrs. in the News

1954

DHS. Eager Freshmen poured into auditorium acclaiming themselves as "Top Students" for the next four years.

Promotion Day ahead, Freshmen work hard - learning teachers, making themselves known among student body, and studying hard.

1954

DHS. Freshmen elect their representatives to the Student Council. This group is STRIVING CONSISTENTLY FOR EXCELLENCE.

1955

DHS. Sophomores elect Hattie Simmons as president - A Banner Year Ahead.

1956

DHS. Thomas Griffin elected to head the Junior Class.

1956-57

DHS. Junior Class is still in the lead. Gloria Smith won 1st place in Oratorical Contest, Donald Blue won 2nd, and Betty Royall won 3rd. Theme: "Oiling The Wheel of Progress."

Clara Simmons heads Prom Committee. Gala affair to be held on May 23rd.

Hattie Simmons wins "Spelling Bee."

Willie Jackson wins first place in National Carpentry Contest.

Willie Davis wins 1st place in State Masonry Contest.

1958

DHS. Ralph Williams heads Seniors as President. Ralph is very active in N. C. Student Council Association.

Seniors take pictures for their yearbook, "The Dillardite."

Hattie Davis is attendant to Homecoming Queen.

Ann Clarke heads float committee for Homecoming Parade.

Dorothy Lynn was elected Varsity Queen by the Varsity Club.

1959

DHS. Senior Class advisors, Mr. Bellamy, Mr. Parker, Mrs. Johnson, and Mrs. Minnis announce plans for Senior Unveiling on February 20th.

Seniors are guided by their motto:  
"THE GOLDEN AGE IS NOT BEHIND US, BUT BEFORE US."

Ann Leroyce Clarke  
- HISTORIAN

# Class Superlatives

Gloria Tate	-----	ATTRACTIVE	
Betty Fennell	-----	BOASTFUL	----- Charles Hill
Shirley Henderson	-----	COURTEOUS	----- Frank Smith
Christine Bunch	-----	DELIGHTFUL	----- Eugene McKinney
Mamie Isler	-----	ELEGANT	----- Walter Barnes
Shirley Henderson	-----	FRIENDLY	----- Thomas Griffin
Clara Simmons	-----	GABBIEST	----- Jesse Townsend
Marian Lane	-----	HUMOROUS	----- Clayton Beamon
Hattie Simmons	-----	INTELLIGENT	----- Ralph Williams
Emma Brown	-----	JEALOUS	----- Ralph Williams
Dorothy Lynn	-----	KIND	----- Walter Barnes
Gloria Smith	-----	LIKEABLE	----- Thomas Griffin
Frances Bryant	-----	MODEST	----- James Hamilton
Mamie Isler	-----	NEATEST	----- William Worrells
Christine Bunch			----- Martel Scott
Sarah Smith	-----	OBEDIENT	----- Eugene Humphrey
Dorothy Lynn	-----	POPULAR	----- Lawrence Wooten
Mable Darden	-----	QUIETEST	----- James Hamilton
Margaret Johnson	-----	RELIGIOUS	----- Walter Barnes
Lula Hargrove	-----	STUDIOUS	----- Willie Jackson
		TALLEST	----- Nathaniel Davis
Gloria Smith	-----	UNDERSTANDABLE	----- Clifton Hatch
Ella Bennett	-----	VIVACIOUS	----- Clayton Beamon
Alice James	-----	WITTIEST	----- Clayton Beamon
Irene Summers	-----	X-CITING	----- Jesse Townsend
Emma Brown	-----	ZEALOUS	----- Ralph Williams
Mamie Isler	-----	ALL-AROUND	----- Donald Blue
Ruth Wellois	-----	ATHLETIC	----- Leonard Atkinson
Christine Bunch	-----	BEST DRESSED	----- Bobby Royall
Gloria Smith	-----	CO-OPERATIVE	----- Donald Blue
Mable Darden	-----	BASHFUL	----- James Hamilton
		HANDSOME	----- Calvin Taylor
Mamie Isler	-----	LIKELY TO SUCCEED	----- Donald Blue
Vivian Hayes	-----	MOST TALENTED	----- Thomas Griffin

CLASS COLORS: Blue and White

MOTTO: "The Golden Age Is Not Behind But Before Us"

FLOWER: Red and White Carnation



# Class Will and Testament

We, the members of the class of nineteen hundred and fifty-nine, in the city of Goldsboro and the state of North Carolina, being in good mental and physical condition do make this our last will and testament, hereby revoking all other wills made by us.

To our principal: Many rewards for the wonderful help he has given us.

To our teachers: We give and bequest our warmest appreciation to be equally divided among them for helping us to get thus far.

To the Class of '60: We leave our senior privileges in hopes that they will use them with all seriousness.

To the Sophomores: We leave Mr. Parker's physics and chemistry in hopes that they will pass.

To the Freshmen: We leave our best wishes and Shakespeare's "MACBETH."

Ann Clark leaves her legs to Betty Worrells.

To Joseph Gaynor, Margaret Johnson leaves her typing ability.

Mae Gloria Ford leaves her talking ability to Alberta Ford.

Litha Baldwin leaves her boot moccasins to Tonie Baldwin.

Gloria Tate leaves to Norma Coley her petite size.

To Pauline Peacock, Barbara Parks leaves her hips.

Hattie Simmons' majorette suit is left to Junette Williams.

To Rochelle Parks, Helen Peacock leaves her stockings.

Margaret Herring wills her seat in physics class to Clarice Newsome.

Ruth Dancy wills her stoutness to Geraldine Harper.

To Robert Barnes, Thomas Griffin wills his talent.

To Leroy Jackson, Lloyd Hayes leaves his basketball ability.

Mamie Isler's band uniform is willed to Lois Simmons.

Clara Simmons leaves her activeness to Ernestine Howell.

Vivian Hayes leaves her musical talent to Lamont Hayes.

Betty Fennell wills her small feet to Cardrina Bowden.

Gloria Smith leaves her journalistic ability to Linda Powell.

Irene Summers leaves her dramatic ability to Nannie Whitley.

Thomas Lawson leaves his football ability to Johnny Holmes.

Erma Exum wills her bookkeeping skill to Shirley Burden.

Odessa Wooten leaves her personality to the future cafeteria girls.

Jesse Hamm wills his ability to dress to Henry Marsh.

Doris Eatmon leaves her typing ability to Cornelia Wilson.

Hazel Jones wills her shortness to Edna E. Green.

Lula Hargrove wills her high scholarship to Delores Durante.

To Jacqueline Barnes, Alice James leaves her talkativeness.

Edith Graham leaves her glasses to Renetta Smith.

To Tommy Fasion, Betty Royal leaves her penmanship.

In witness thereof, we, the members of the class of '59, do set our hand and seal this fifth day of June, in the year of our Lord, one thousand nine hundred and fifty-nine.

The Class of '59

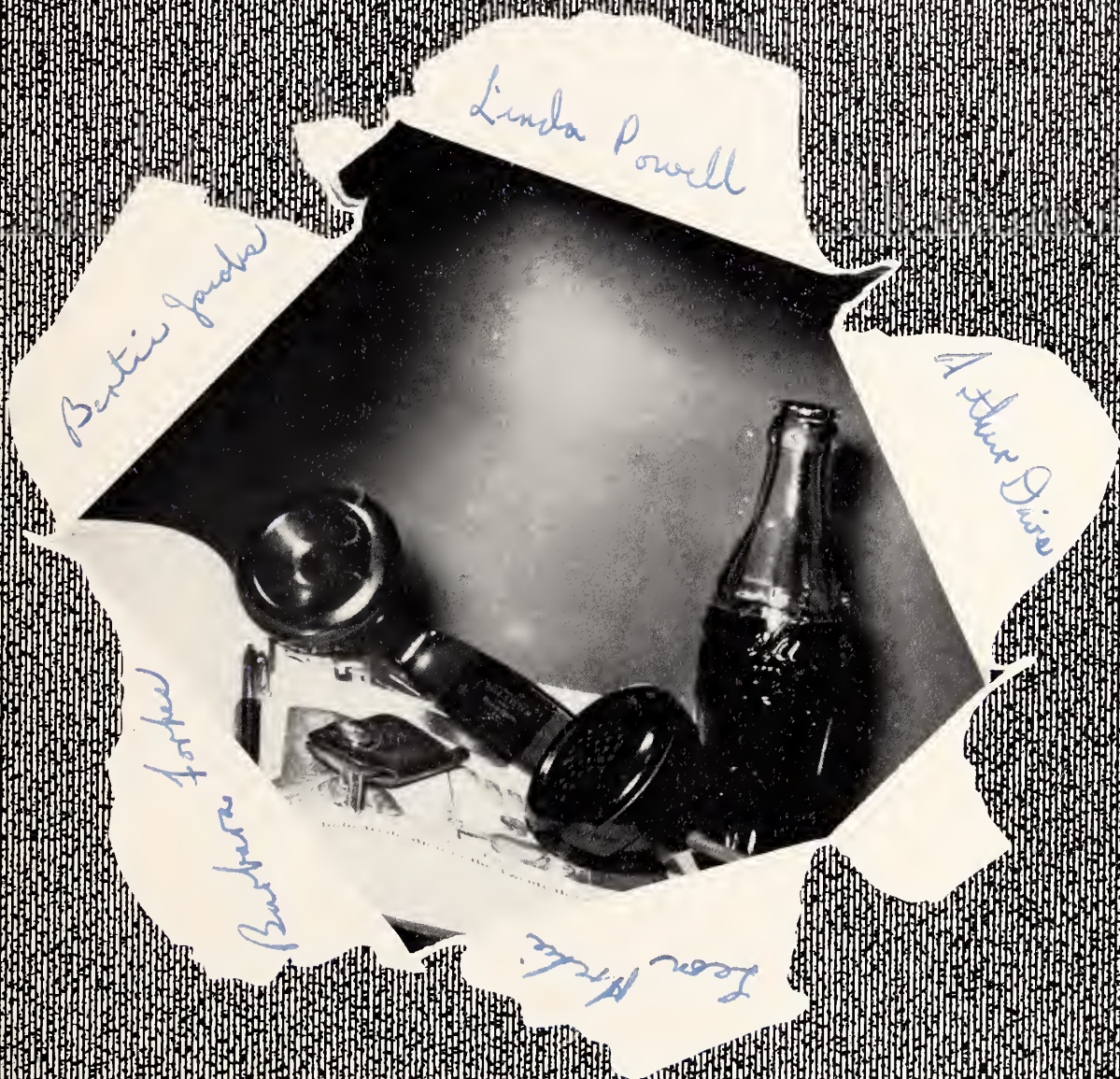
Witnesses:

Shirley Henderson

Gloria Smith

Alice James

Dorothy Lynn - Notary Public



Linda Powell

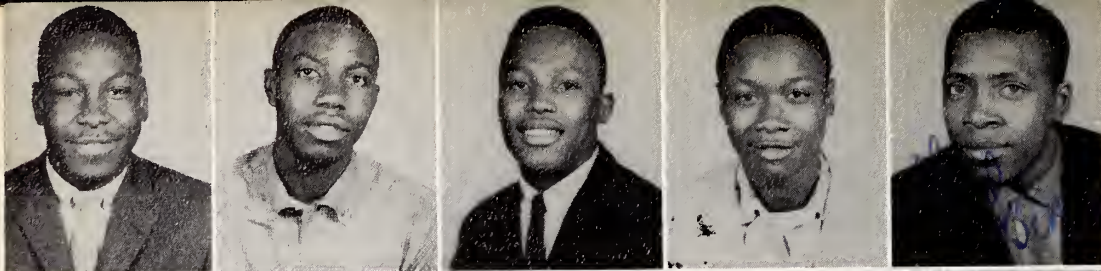
Bertie Jacobs

Arthur Davis

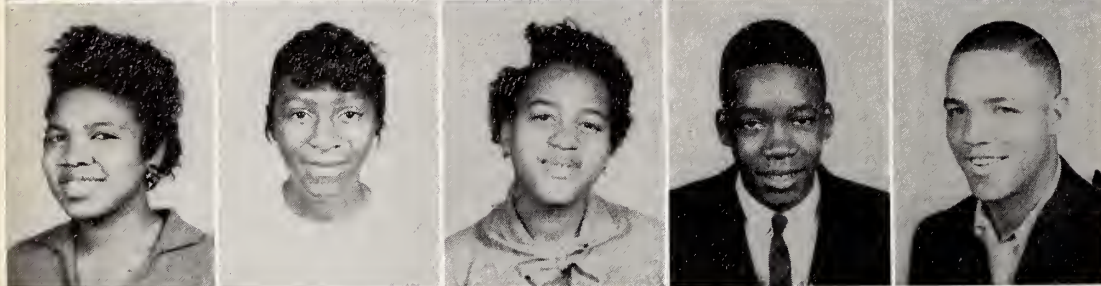
Camera  
Lens

Beer

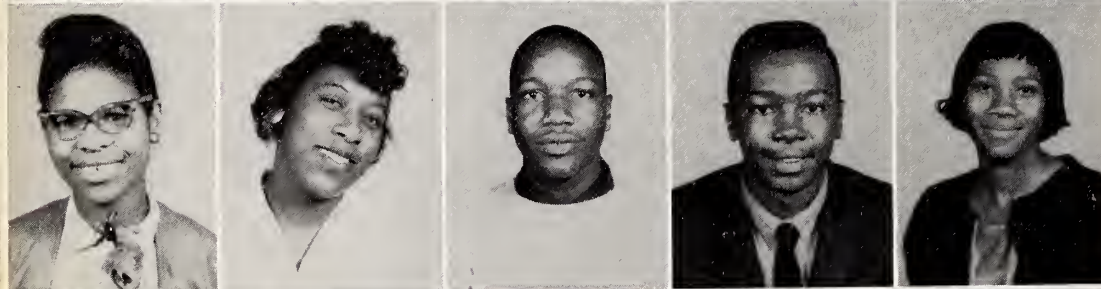
Gifts



LEON ARCHIE  
ROBERT ARTIS  
EDWARD ATKINSON  
JOE ATKINSON  
BENNIE BARNES



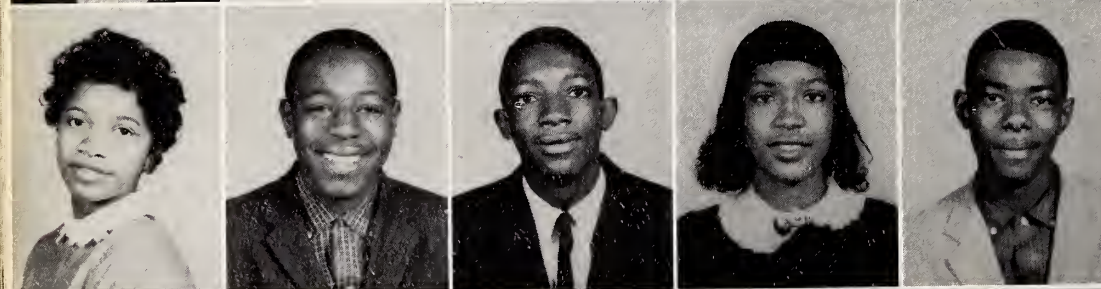
BETTY BARNES  
DORIS BARNES  
EUGENE BARNES  
ELEANOR BARNES  
RUDOLPH BENTON



BARBARA BEST  
MARY BEST  
CLEVELAND BELI  
EDDIE BELL  
MARY BELL



NAOMI BENTON  
MARAGRET BRASWELL  
CAROLYN BROWN  
BEATRICE BRYANT  
BETTY BRYANT



SHIRLEY BURDEN  
CLARENCE CARROWAY  
ROBERT CHAMBERS  
CATHERINE COLEY  
FRANKLIN COLEY



HELEN COLEY  
NORMA COLEY  
THELMA COLEY  
JANIE B. DANIELS  
ARTHUR DAVIS



EDNA DAVIS  
MARION DAVIS  
EMMA DIXON  
MARY DORTCH  
DELORES DURANTE



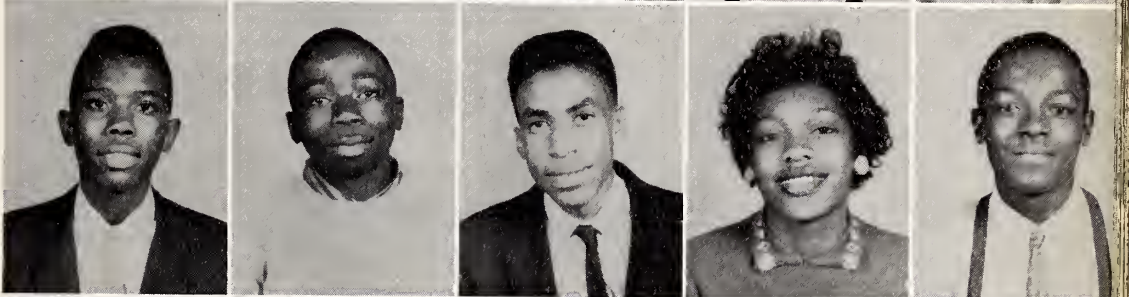
JANET DURHAM  
HAZEL EDWARDS  
MARGARET ELLIS  
JOHN FLOWERS  
MINNIE FLOWERS



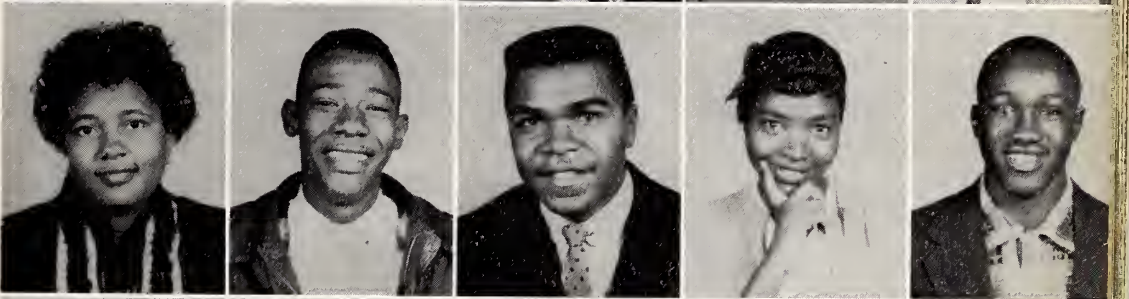
WILLETTE FLOWERS  
BARBARA FORBES  
ALBERTA FORD  
GLORIA FUTRELL  
HOLLIS GAYNOR



THOMAS GILL  
OSMAND GRAY  
WAVERLEY GRAY  
EDNA GREEN  
GERALD HARVEY



MARTHA HERRING  
GEORGE HOBBS  
JAMES HOBBS  
THELMA HOWARD  
CHARLES HOWELL



ERNESTINE HOWELL  
HILDA HOWELL  
CHARLES JACKSON  
BERTIE JACOBS  
NORMAN JOHNSON



ROSA JOHNSON  
HILDA JONES  
PAULINE JONES  
MARGARET JOYNOR  
WILLIAM KELLY



DOLLY KENNON  
WILLIE KINSEY  
BERTHA KORNEGAY  
ETHEL KORNEGAY  
CATHERINE LAMB





WILLIE LEWIS  
JOSEPH LOFTIN  
BARBARA MALLOY  
ELMA McCLARY  
KAYE McINTYRE



ROBERT McKEITHAN  
BOBBIE MELVIN  
GERALDINE MITCHELL  
ESSIE MITNAUL  
GERALDINE MOSES



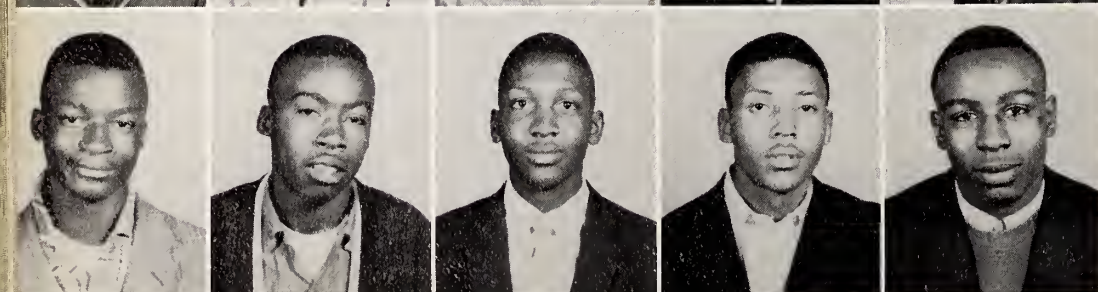
HAROLD MOSES  
CLARICE NEWSOME  
HELENE NEWSOME  
WILLIE PARKS  
JOHN PATTERSON



AMOS POWELL  
LENA RHODES  
WILLIAM RICHARDSON  
ADOLPH ROY ALL  
ROSE RUFFIN



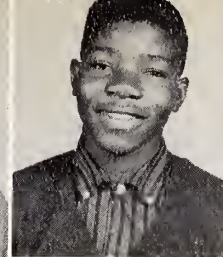
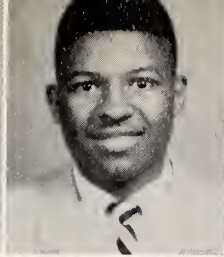
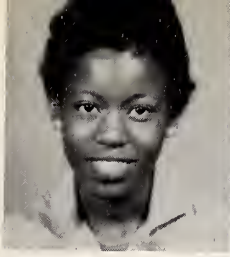
DONZELL RUSSELL  
PEGGY SANDERS  
DORIS SASSER  
EARNELL SAVAGE  
GEORGE SIMMONS



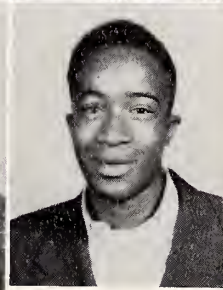
CLARENCE SWINSON  
FRANKLIN TAYLOR  
LORENZO THORNTON  
EARL J. VINSON  
WILLIE WARD



WILLIAM WASHINGTON  
GRACE WEEKS  
NANNIE WHITLEY  
ERNEST WILKINS  
EDNA WILLIAMS



LEE ELLEN WILLIAMS  
 LENDELL WILLIAMS  
 MATTIE WILLIAMS  
 ROBERT WILLIAMS  
 CORNELIA WILSON

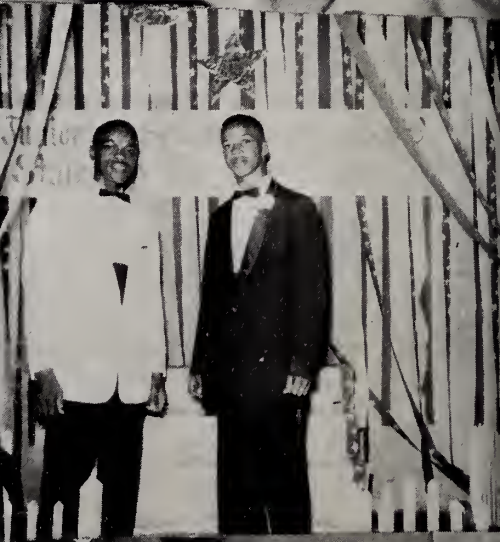


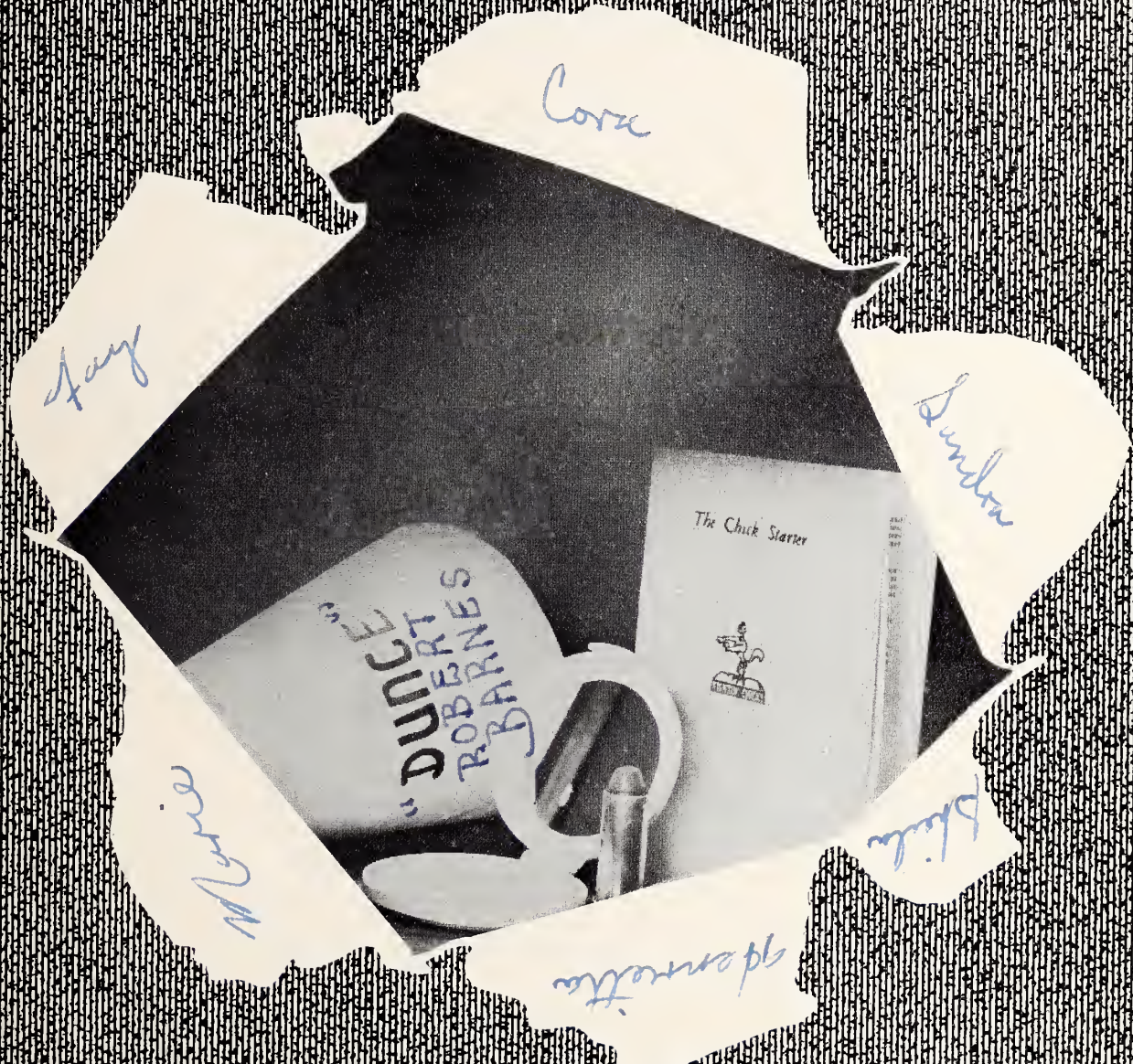
DOROTHY WOODARD  
 BETTYE WORRELLS  
 EDDIE WORRELLS



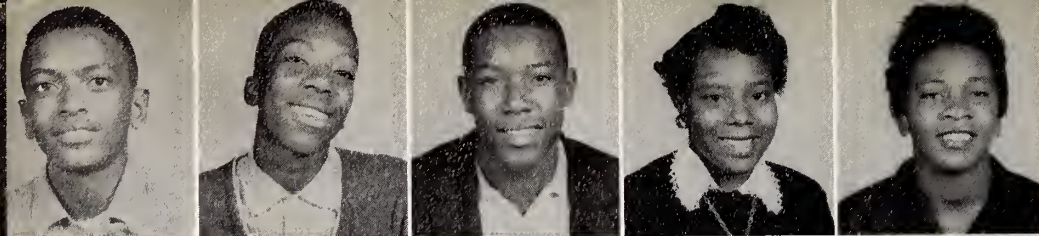
CARRIE LAWSON







Remember



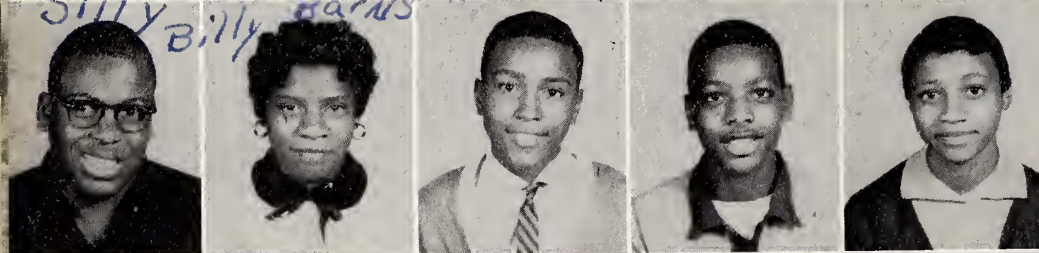
James Alston  
William Alston  
Leroy Armstrong  
Marian Ashford  
Bettye Atkinson



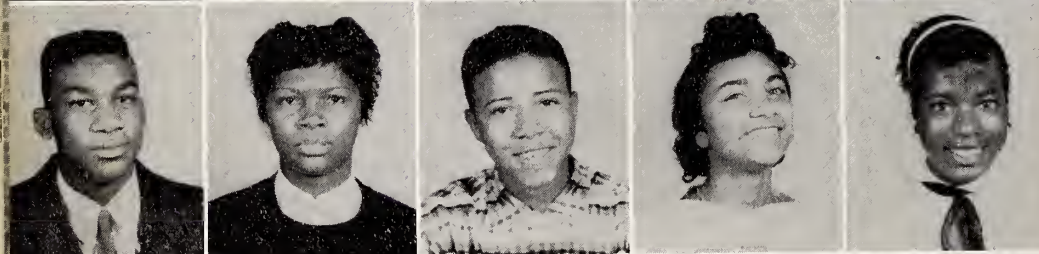
Dallas Atkinson  
Dorothy Atkinson  
Nancy Atkinson  
Shirley Atkinson  
Helen Artis



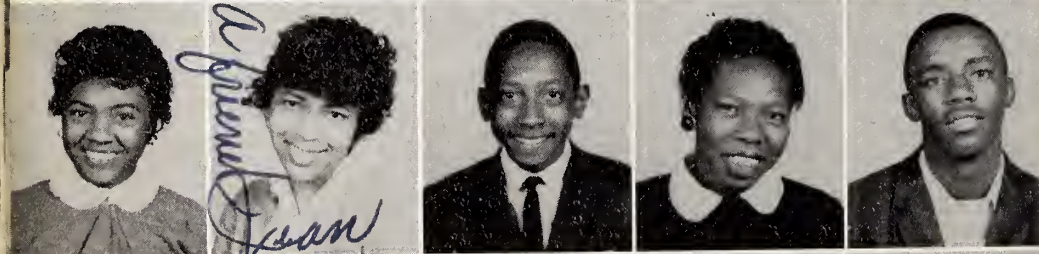
Thomas Austin  
David Baldwin  
Bernetta Barnes  
Binnie Barnes  
Edward Barnes



Robert Barnes  
Shelia Barnes  
Thomas Barnes  
George Batiste  
Etherline Bell



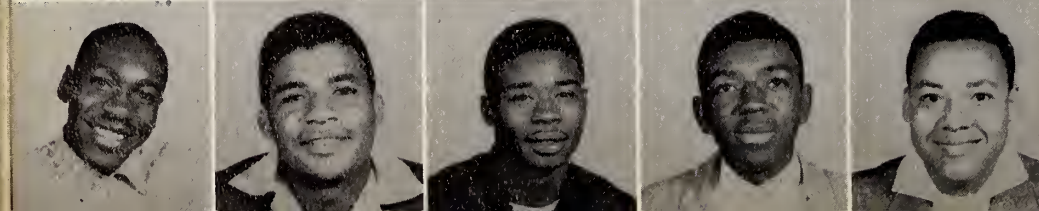
Henry Bell  
Mary Bell  
Andrew Best  
Clida Best  
Dorcas Best



Doris V. Best  
Sandra Best  
Walter Best  
Gloria Blount  
Charles Booth



Bobby Borah  
Shirley Braswell  
Vera Braswell  
Elizabeth Brewer  
David Brown

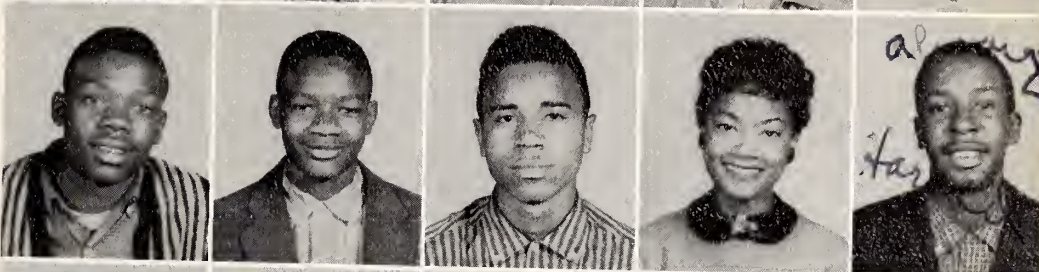


Jesse Brown  
Donnie Bryant  
Leroy Bryant  
Leon Burden  
Daniel Clark

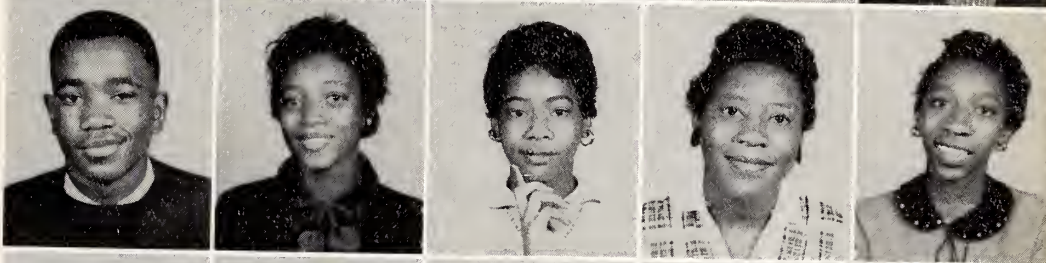
Bruce Coley  
Henry Council  
Dorothy Cox  
Elijah Cox  
Carnell Carden



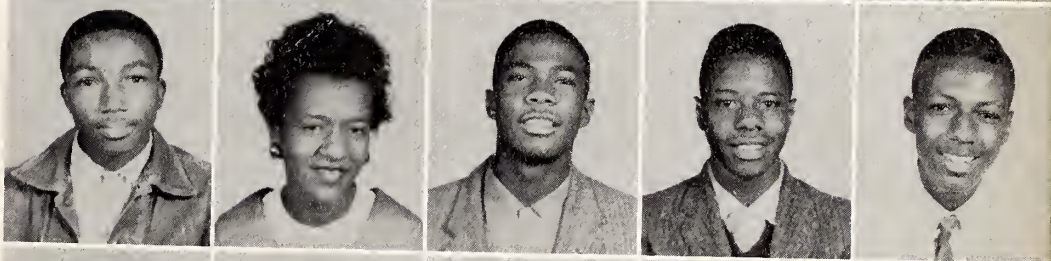
Milford Darden  
J. D. Davis  
Norwood Davis  
Peggy Davis  
Harold Dawson



Willie Dawson  
Marian Dreighton  
Evelyn Edwards  
Maryland Elliot  
Hilda Evans



Leroy Evans  
Cornelia Flowers  
William Flowers  
Grant Ford  
Jimmie Ford

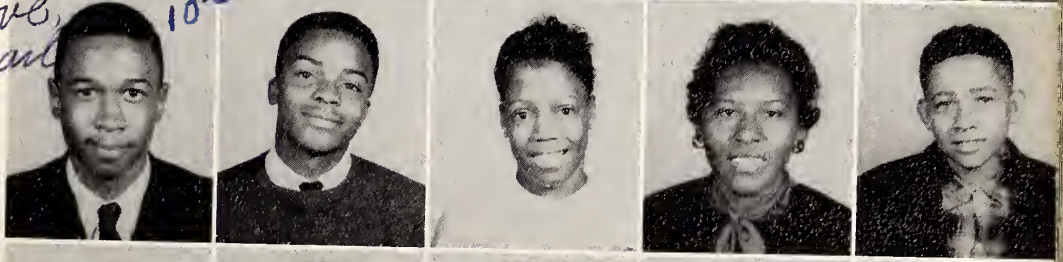


Minnie Ford  
Raiford Ford  
Johnnie Garrett  
Joseph Gaynor  
Clarence George

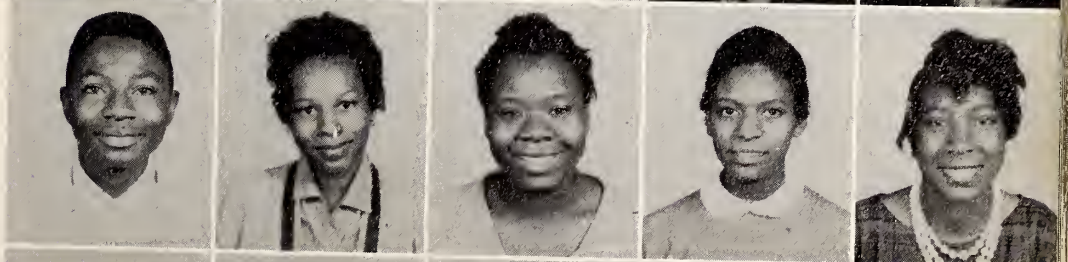


Earl Glenn  
Raiford Griffin  
Mary Hagans  
Betty Hall  
Hugh Hall

*Love Earl 10's*

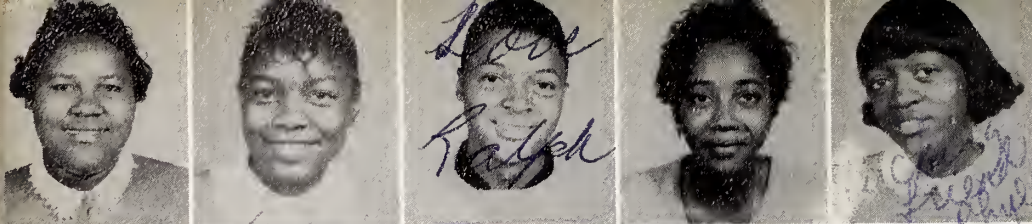


Jimmie Hall  
Joyce Hamilton  
Hattie Hamm  
Geraldine Harper  
Betty Harris

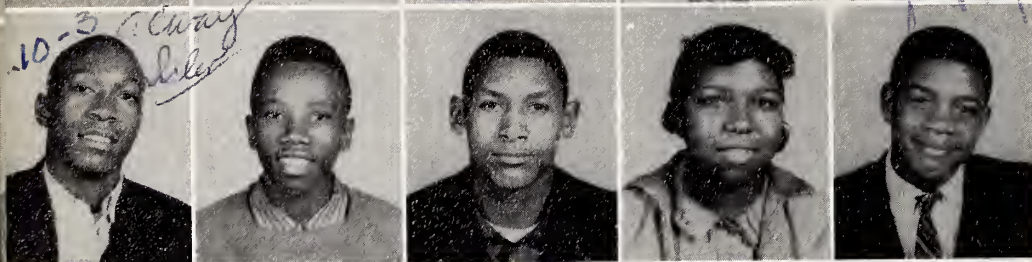


Elizabeth Hatch  
Glen Hayes  
Hattie Hicks  
Christine Hines  
Cora Hogans





Christine House  
Mary Howell  
Ralph Howell  
Edna Humphrey  
Phyllis Hunter



James Isler  
Harry Jackson  
Leroy Jackson  
Annie Jenkins  
Willie Jolly



Andrew Jones  
Bobby Jones  
John Kirk  
Audrey Kornegay  
Jean Langley



Christine Langston  
Noma Leggett  
Annie Lewis  
Betty Lewis  
Cheryl Lewis



Raymond Lewis  
Iris Lofton  
Letha Lucas  
Joyce Martin  
Lonnie McDuffie



William McIntyre  
Samuel Merriweathers  
Mary Miles  
Annie Moses  
Sandra Moses



Mamie Musgrave  
Lillie Parks  
Rochelle Parks  
Samuel Parks  
James Persons



Frances Peterson  
Jessie Phillips  
Marie Pouncey  
Lucy Reddick  
William Rich



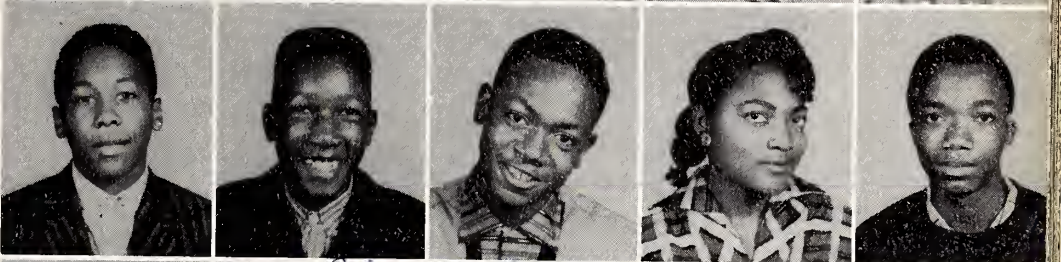
Cleo Richardson  
 Faye Robinson  
 Donald Rogers  
 Janet Rouse  
 Greather Savage



Sybil Scott  
 Leroy Seegars  
 Betty Sherard  
 Edith Simmons  
 Janice Simmons



Albert Smith  
 Bennie Smith  
 Marshall Smith  
 Essie Skinner  
 Phillip Stallings



Samuel Stallings  
 Marjorie Stevens  
 Minnie Stevens  
 Russell Suggs  
 Eula Taylor



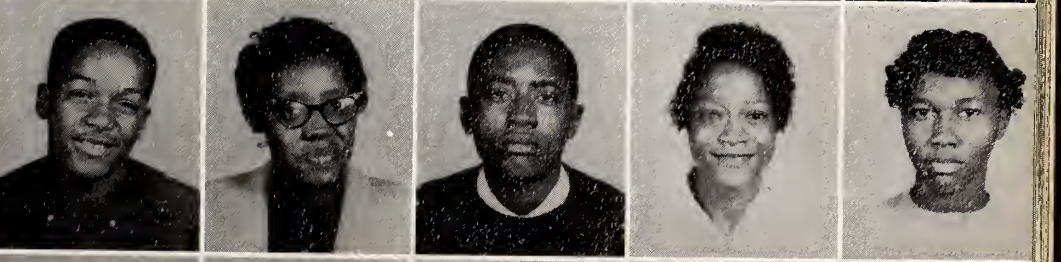
Flora Taylor  
 John Taylor  
 Frances Thomas  
 Ada Thompson  
 Mary Thompson



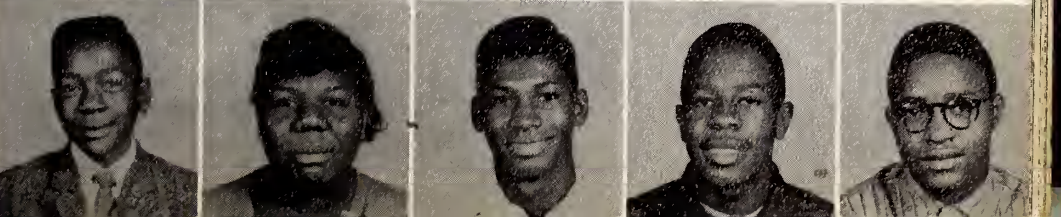
Wilhelmina Thornton  
 Virginia Watson  
 John Whitley  
 Shirley Wilkins  
 Charles Williams



Joseph Williams  
 Junette Williams  
 Lee Conrade Williams  
 Luberta Williams  
 Ruth Williams

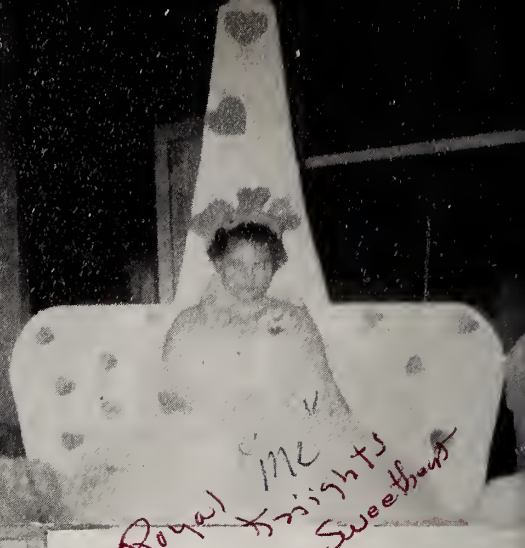


William Woodard  
 Annie Wynbush  
 Jockey Yelverton  
 William Yelverton  
 Charles Young





Hennietta  
"That's me"



Royal Me  
Kings  
Sweetheart



Judy  
in  
'57



Bob  
Joe  
Tom



Yours  
Liz  
Always  
Cora  
Anne  
'58



Judy  
Shirley



Cap



Joyce



"Cheese it,"  
Hennietta  
Judy



Freshmen



READING LEFT TO RIGHT: Robert Adams, Marshall Alston, Allen Anderson, Annie Anderson, Lillie Arrington, Johnny Atkinson, Vernon Ayers, Albert Bailey.  
 SECOND ROW: Liddle Baker, Eugenia Baldwin, Betty Barnes, Dennis Barnes, George Barnes, Jacqueline Barnes, James E. Barnes, James R. Barnes.  
 THIRD ROW: William Bell, Eula Best, Mary Best, Inez Broddie, Faye Borden, Cardrinner Bowden, Mollie Braswell, Nina Braswell.  
 FOURTH ROW: Edna Britt, Helen Broadie, Gloria Brown, Elijah Bryant, Lester Bryant, Mary Bryant, Ruth Bryant, Ralph Burden, Joe F. Campbell.  
 FIFTH ROW: Joe N. Campbell, Mary Carmicheal, Clarence Cherry, Vernell Chestnut, Vivian Coley, Walter Coley, Barbara Cox, Lenora Cox.  
 SIXTH ROW: Mary Crawford, Edwards Crews, Gloria Crews, Annie Darden, Alberta Davis, Betty Davis, Emuel Daye.

READING LEFT TO RIGHT: Edna Dixon, Edward Dowdye, Joyce Dreighton, Dollie Eatmon, Sherldine Edwards, Gloria Exum, Arthur Faison, Lester Faison.

SECOND ROW: Tommie Faison, William Faison, Willie Fennell, Gloria Flanagan, Evelyn Flowers, James Flowers, Wilbert Flowers, Ray Forbes.

THIRD ROW: Bernadette Ford, Rosie Forte, Authur Fryar, Robert Gerald, George Grandy, Carolyn Hamm, Grace Hardy, Frederick, Harris.

FOURTH ROW: Barbara Harvey, Betty Harvey, Alexander Height, Delores Herring, Dorothy Herring, Emma Hill, Floyd Hill, Marion Hill.

FIFTH ROW: Erthel Hines, Harvey Hines, Ralph Hobbs, Charles Holloman, Joan Holloman, Mary Holloman, Johnny Holmes, Delores Horn.

SIXTH ROW: Ethel Jackson, James Jackson, Joseph Johnson, Edward Jones, Johnny Jones, Melvin Jones, William Jones, Wesley Joyner.





FIRST ROW, reading left to right: Harvey Kent, John King, Richard Kirk, Wayne Koonce, Patrica Kornegay, Mary Langley, George Langston, John Lawson.

SECOND ROW: Alice Lewis, Carnell Lewis, Thomas Lewis, Maggie Lofton, Gloria Martin, Henry Marvel, Willie Massey, Roosevelt McCrae.

THIRD ROW: Gladys McCuller, Charles McCullough, Dorothy McKinnon, Cecil McKithan, Leonard Melton, Clemmie Mickens, Rosa Mickens, Clifton Middleton.

FOURTH ROW: Bennie Moore, Eddie Moses, Floyd Newkirk, Herbert Newkirk, Hubert Newkirk, Ethele Newsome, Alberta Parks, Barbara Parks.

FIFTH ROW: Raymond Patterson, Justus Pettaway, James Philyaw, Paul Porter, Albert Powell, Ellen Pridgen, Shirley Randolph, Albert Rawlings.

SIXTH ROW: Annie Roberts, Reynold Roberts, Fred Robertson, Florice Russell, Eddie Sauls, Jimmie Sanders, Leonard Savage, James Scott.

*Jimmy*

READING LEFT TO RIGHT: Janice Shealy, Shirley Sherod, Othello Shores, Carolyn Simmons, Franklin Simmons, Jerry Simmons, Lois Simmons, Alton Smith.

SECOND ROW: Renetta Smith, William Spells, Emma J. Spence, Selma Spicer, Mable Stevens, Wilbert Stevens, Leslie Suggs, Selma Suggs.

THIRD ROW: Gloria Swinson, Raymond Swinson, Betty Taylor, Harriet Thompson, Sandra Thornton, Franklin Ward, Hazel Ward, Thomas Ward.

FOURTH ROW: Clifton Ward, Barbara Washington, Herman Watson, Thomas Weeks, Susan Wellington, Richard White, Earl Whitfield, Gloria Whitfield.

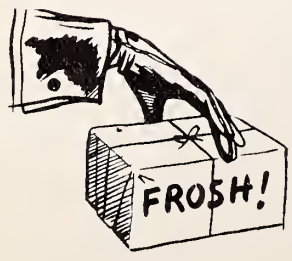
FIFTH ROW: Kirby Whitfield, Mary A. Whitfield, Christine Wiley, Angera Williams, Henry Williams, Josie Williams, Paul Williams, Mary Baker.

SIXTH ROW: Joyce Benton, Frances Best, Jack Best, Willie Borden, Clinton Bryant, Harvey Bryant, Clarence Bynum, Carolyn Coor.

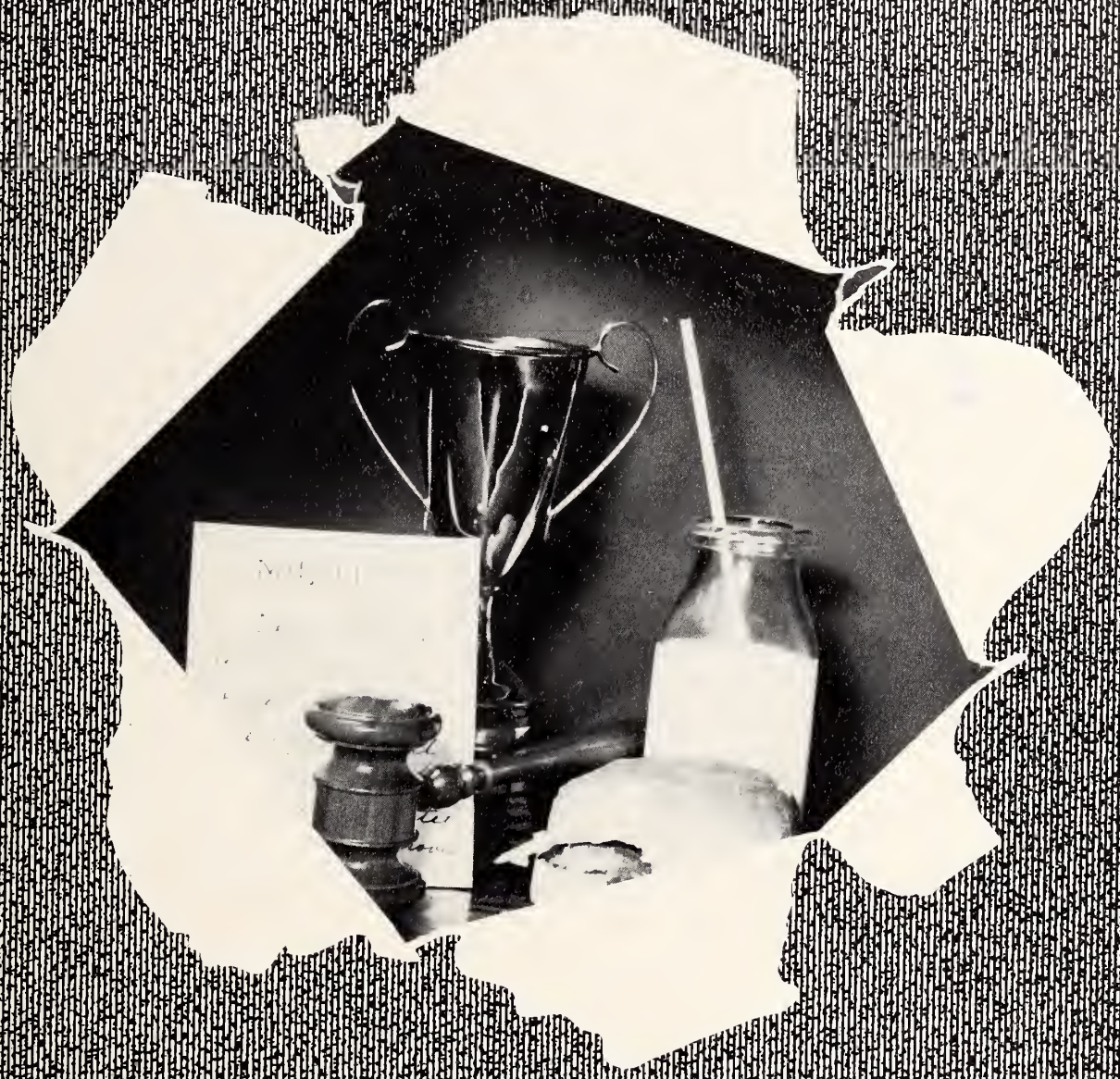




READING LEFT TO RIGHT: Annie Edwards, Juanita Edwards, Nathaniel Edwards, Katherine Flowers, Minnie Flowers, Sandra Grantham, Alberta Hines, Mattie Howard.  
 SECOND ROW: James Lane, Geneva Lewis, Lendora Marsh, Doris McMillian, George Miller, Roger Mitchell, Burnette Murray, Willard Newsome.  
 THIRD ROW: Shirley Norman, Mae G. Raynor, Bobby Simmons, Blanche Skinner, Arthur Solomon.







# Organizations



## Student Council

The Student Council represents the highest form of student participation in the high school. It is composed of bonafide students, whose goal is to solve the problems of the student body and create within the student body the desire to be a better citizenry. The officers of this organization are: President, Donald Blue; Vice President, Alvin M. Scott; Second Vice President, John King; Secretary, Hattie Simmons; Assistant Secretary, (Corresponding Secretary), Gloria Tate; Chaplain, Leroy Seegars; Treasurer, Thomas Gill; Sergeant-at-Arms, Joseph Gaynor; Parliamentarian, Linda Powell; Advisors, Mrs. D. W. Hardy, Mr. J. H. Wooten.





## National Honor Society

The National Honor Society, a national high school organization, gives recognition to outstanding students on the basis of scholarship, leadership, service, and character, and encourages the exploration and development of these qualities.

The chief function of the Chapter is to encourage scholarship. The Rosa Gray Chapter was formed in 1955. Installation ceremonies are performed in the spring and new candidates from the Junior and Senior classes who meet the standards set up by the national organization, are inducted.

1st Row

Edna D. Simmons  
Lula Hangrove  
Mamie Islen  
Hattie Simmons  
Hazel Jones

3rd Row

G.M. Scott, Jr.  
Donald Blue  
Ralph Williams

Second Row

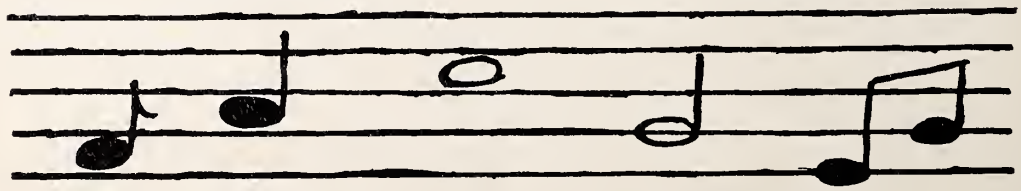
Donathy Lynn  
Betty Royal  
Hattie Lewis  
Gloria Smith  
Ann Clark





## *Glee Club*

THOMAS GRIFFIN - - - - - President  
 MARTEL SCOTT, JR. - - - - - Vice President



HENRIETTA JOHNSON - - - - - Assistant Accompanist  
 MRS. THELMA JOHNSON - - - - - Accompanist  
 NEAL A. STITT - - - - - Director



## *Bible Club*

President, Ella Bennett; Vice President, Helen Miller; Secretary, Betty Sims; Assistant Secretary, Christine House; Treasurer, Benjamin Lindsey; Advisor, Mrs. A. W. Minnis.



## *Future Teachers of America*

President, Christine Langston; Vice President, Geraldine Boyette; Secretary, Flora Taylor; Treasurer, Cleo Richardson; Librarian, Ruth Dancy; Program Committee Chairman, Shirley Randolph; Advisor, Mrs. Valeria M. McLean.



## *Band*

Reporter, Thelma Coley; Sergeant-at-Arms, Herbert Newkirk; President, Clara Simmons; Vice President, William Thornton; Secretary, Helen Coley; Assistant Secretary, Thelma Howard; Band Manager, Harold Dawson; Treasurer, Naomi Benton; Librarian, Cardrina Bowden; Advisor, Mr. Hughes; Assistant Band Director, Franklin Taylor.



## *Cheerleaders*

Captain, Carnelia Wilson; Co-Captain, Carrie Lawson; Secretary, Delores Durante; Assistant Secretary, Kay McIntyre; Treasurer, Annie Lewis; Advisor, Mrs. L. Harris.



## *Dance Group*

President, Betty Davis; Vice President, Catherine Coley; Assistant Secretary, Pauline Peacock; Treasurer, Carrie Lawson; Reporter, Calvin Taylor; Record Librarian, Hattie Hicks; Advisor, Mrs. C. M. Barnes.



## Press Club

President, Gloria Smith; Vice President, Linda Powell; Secretary, Dora Smith; Assistant Secretary, Christine Bunch; Advisor, Mrs. M. K. Jackson.

*Gallantly yours,  
Edell*



## Dramatics Club

President, Emma Brown; Vice President, Doris McMillian; Secretary, Sandra Moses; Treasurer, Ann Hatch; Advisor, Mrs. D. D. Jones.





## *Senior Hi-Y*

President, Thedwood Sherard; Vice President, Lawrence Wooten; Secretary, Waverly Gray; Treasurer, Elwood Croom; Chaplain, Ellsworth Whitfield; Sergeant-at-Arms, James Hobbs; Advisor, Mr. W. P. Siler.



## *Junior Hi-Y*

President, George Herring; Vice President, William Woodard; Secretary, Harvey Ayres; Assistant Secretary, Samuel Merriweathers; Chaplain, Thomas Barnes; Treasurer, Alton Smith; Assistant Treasurer, Marshall Smith; Parliamentarian and Sergeant-at-Arms, Earnest Cherry; Advisor, Mr. H. Sutton.



## *Senior Tri-Hi-Y*

President, Edna Williams; Vice President, Nannie Whitley; Secretary, Margaret Ann Braswell; Assistant Secretary, Virginia Watson; Treasurer, Kaye McIntyre; Chaplain, Peggy Sanders; Reporter, Rose Ruffin; Sergeant-at-Arms, Barbara J. Best; Advisor, Mrs. L. T. Harris.



## *Junior Tri-Hi-Y*

President, Vivian Coley; Vice President, Barbara Parks; Secretary, Shirley Sherard; Assistant Secretary, Bernadette Ford; Treasurer, Mary Carmichael; Sergeant-at-Arms, Lillian Williams; Reporter, Dollie Eatmon; Advisor, Mrs. R. A. Siler.



## *Library Club*

President, Linda Powell; Vice President, Donald Blue; Secretary, Dorothy Lynn; Assistant Secretary, Rose Ruffin; Treasurer, Leon Archie; Reporter, Hazel Jones; Advisor, Mrs. D. L. Brown.



## *Library Staff*

The staff consists of students who are primarily interested in improving the library service in the school. They, themselves, not only enjoy reading, but derive a great deal of pleasure from assisting their schoolmates in finding needed materials. The staffers also enjoy circulating books, cataloging new books, mounting pictures, and in general, all the phases of librarianship.



## *Varsity Club*

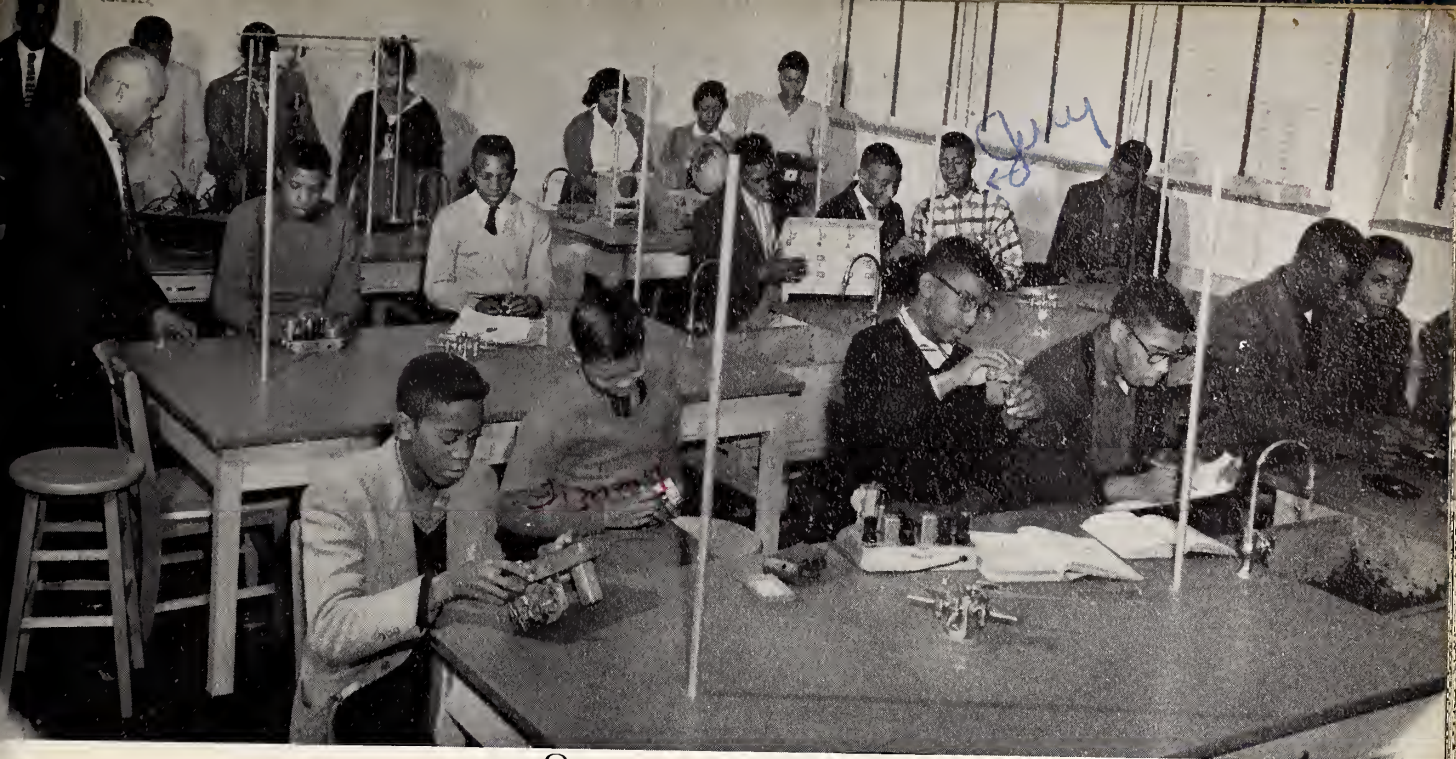
President - - - - - JOE GAYNOR  
 Secretary - - - - - JAMES WHITE  
 Chaplain - - - - - WILLIAM RICH

Vice President - - - - - CLINTON HUNTER  
 Treasurer - - - - - THOMAS LAWSON  
 Sergeant-at-Arms - - - - - CLIFTON HATCH  
 Advisor - - - - - T. T. BELLAMY



## *Dillard Explorer Post 113*

President, Emuel Daye; Vice President, William McIntyre; Secretary, Joseph Johnson; Assistant Secretary  
 Carnell Darden; Treasurer, Henry Van Williams; Advisor, J. H. Wooten.



## *Science Club*

President, Raymond Swinson; Vice President, Arthur Faison; Secretary, Hattie Lewis; Assistant Secretary, Marjorie Williams; Treasurer, Milton Durham; Sergeant-at-Arms, Johnny Jones; Advisor, Mr. A. B. Parker.



## *New Homemakers of America*

President, Lila Bailey; Vice President, Doris McMillian; Secretary, Faye Simmons; Assistant Secretary, Betty Fennell; Treasurer, Vivian Hayes; Song Leader, Peggy Height; Reporter, Emma Brown; Parliamentarian, Dorothy Williams; Advisor, Miss C. E. Sneed.



## *Speech Club*

President, Mary Thompson; Vice President, Edith Simmons; Advisor, Miss S. E. Jones.



## *Bank Staff*

The purpose of the Dillard Bank is to provide a means of inspiring students to save regularly, and to use their savings to defray the expenses of their objectives. One faculty advisor and four student members render this service for the students.



## *Safety Patrol*

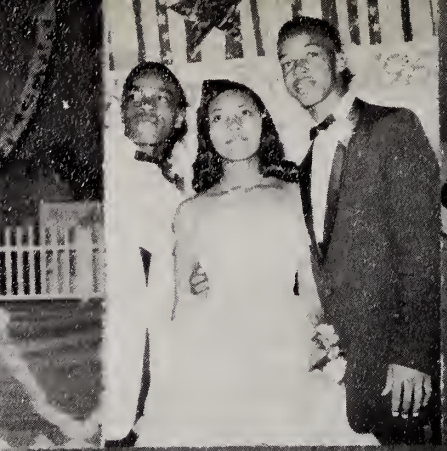
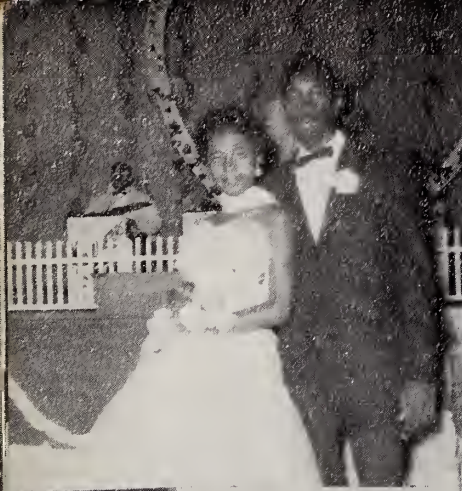
The Safety Patrol is made up of selected boys and girls who are recommended by their advisors. They must maintain high scholarship, good conduct and a good attendance record.

These students help maintain proper school decorum in the buildings and at school activities.



## *Industrial Arts*

Morning Class - Mr. P. G. Wilder, Advisor







# Classes



*Morning Masonry Class*



*Evening Masonry Class*

Group Leader - Clayton Beamon.

Group Captains - Leonard Atkinson, Paul Carraway, Hayward Crawford, Jesse Hamm.

Advisor - Mr. H. B. Lucas.



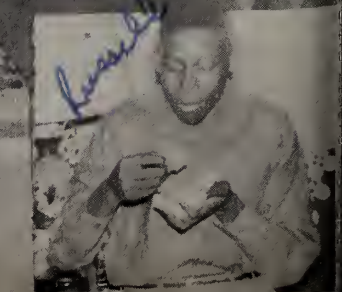
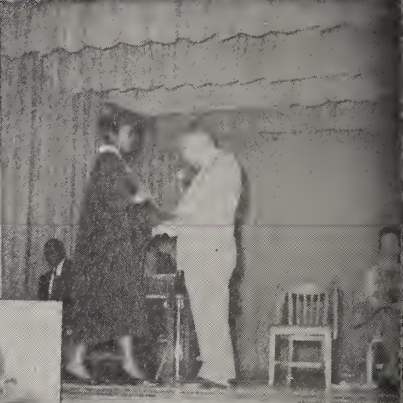
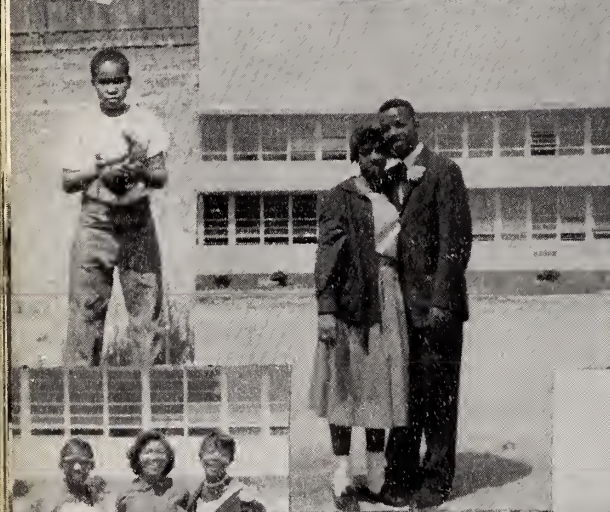
*Morning Carpentry Class*



*Evening Carpentry Class*

Group Leader - Eugene McKinney  
Advisor - Mr. T. L. Parks

# Jr and Senior Prom- Fairway Stars



Basketball  
Lester  
Dowell  
Allen

Baseball  
Ayres  
Armstrong

Football  
White  
Ferguson



Nov. 7

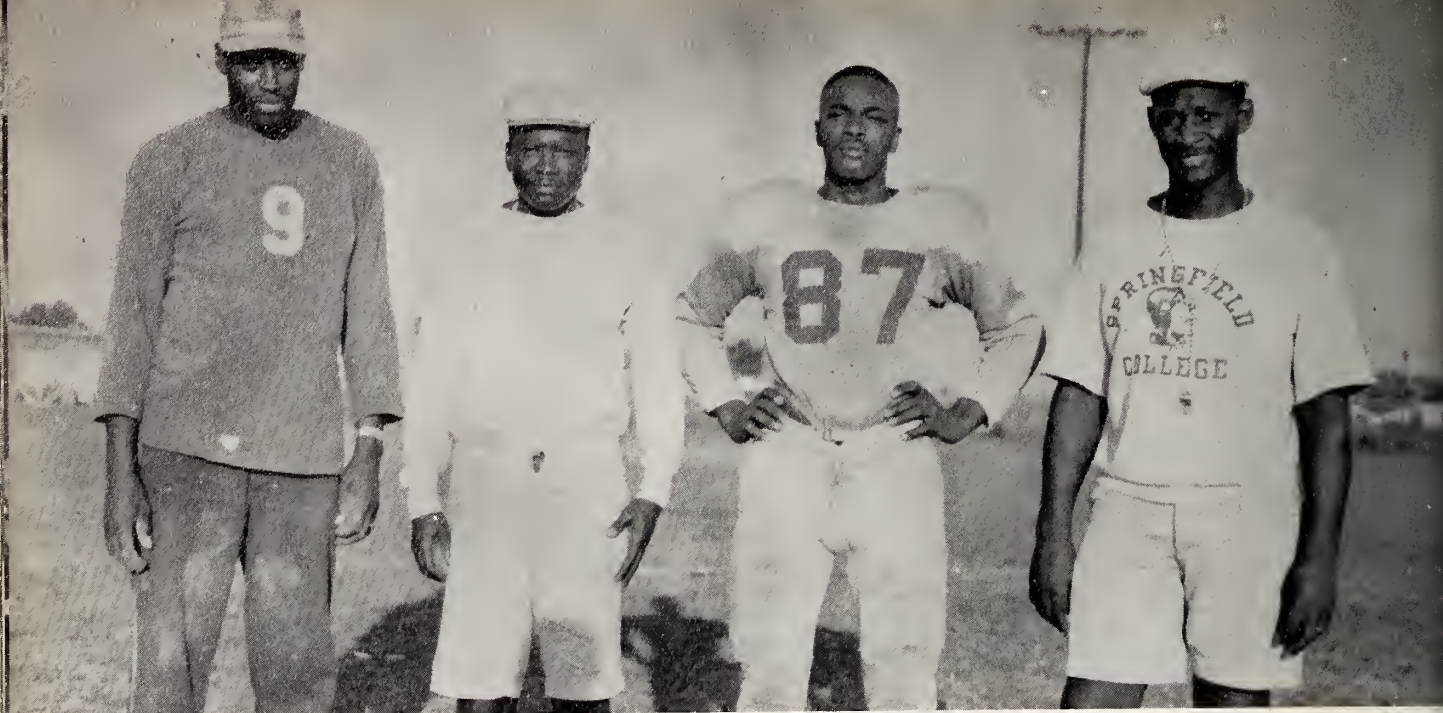
Football  
Nov-0  
Foot-1  
Foot-1

Basketball  
Nov-4  
Foot-6

Basketball  
Nov-9  
Foot-9



# Activities



## Coaching Staff

Assistant Coaches, R. L. Dowery, P. G. Wilder; Captain, Donald Blue; Head Coach, T. T. Bellamy.



## Football Team

DILLARD HIGH SCHOOL FOOTBALL TEAM  
(Tigers)

Coach T. T. Bellamy - Co-Captains Donald Blue and Hollis Gaynor.



## Varsity Basketball

Coach - Mr. R. L. Dowery

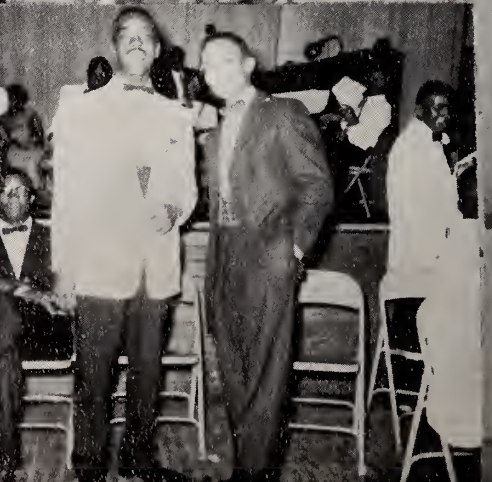
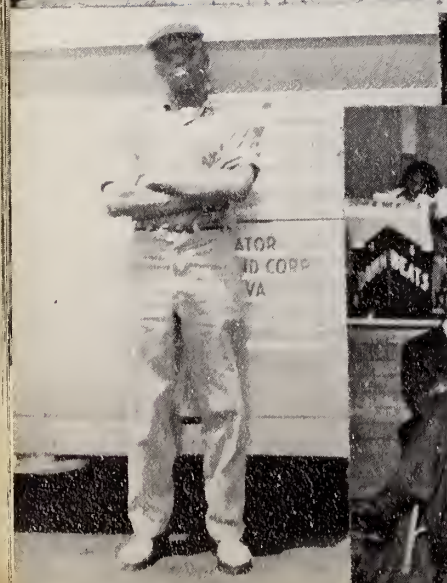
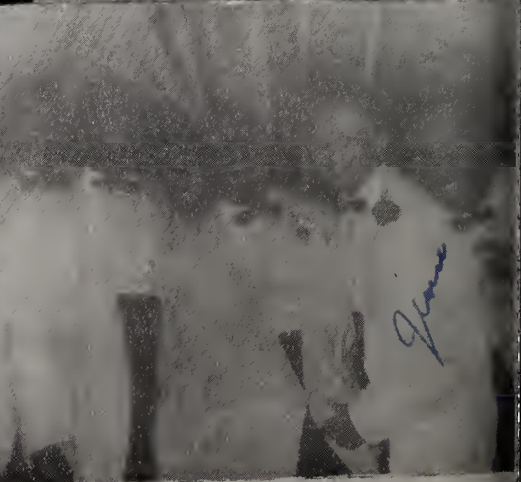
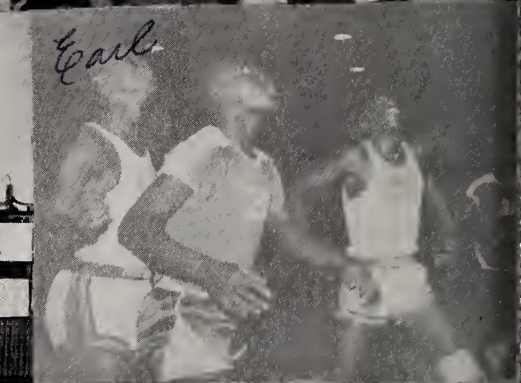
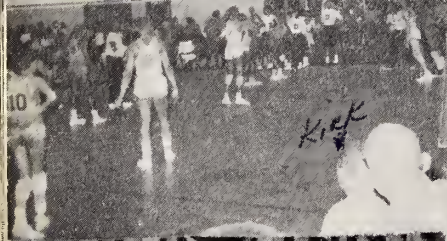
Captain - Lloyd Hayes, Co-Captain - Leonard Atkinson



## Junior Varsity Basketball

Coach - Mr. P. G. Wilder

Captain - Donald Rogers, Co-Captain - Willie Massey







# Favorites

# Miss Homecoming



SYBIL SCOTT



HATTIE DAVIS



GLORIA SWINSON

## *Attendants*

*Miss Varsity*



DOROTHY MAE LYNN

*Miss Royal Knights and Attendants.*



MARIE POUNCEY



LOIS SIMMONS



ADA THOMPSON

*On the  
Formal Side*



MARGARET HERRING



MARIE POUNCEY

*Marie A. Pouncey*



GLORIA SMITH



SYBIL SCOTT



VERLENE BEST



Junior High

# West Elm Junior High



## Student Council

President, George McDaniels; Vice President, Carolyn Robertson; First Vice President, Robert Pate; Secretary, Clara Vinson; Assistant Secretary, Sonja Hobbs; Treasurer, Grace Best; Chaplain, Minnie Baldwin; Parliamentarian, Doris Harper; Sponsor, Mrs. V. F. Sutton.



## Dramatics Club

President, Mary Daniels; Vice President, Erlene Flowers; Secretary, Glennie Becton; Assistant Secretary, Dwight McKinney; Treasurer, Marth Borden; Parliamentarian, Cornell Raynor; Chaplain, Charles Scott; Sponsor, Mrs. Arlena D. Parks.



# Commentary

# Greenleaf School



Dance Group and Glee Club



Mr. A. C. Crowder, Principal  
Girl Scouts, Safety Patrol, Brownies, Student Council, Cub Scouts, Boy Scouts.



# School Street School Activities



R. C. Christian, Principal



A newly organized group is the Student Council composed of two representatives of all the grades.



The Student Patrol provides many opportunities for developing law abiding citizens.

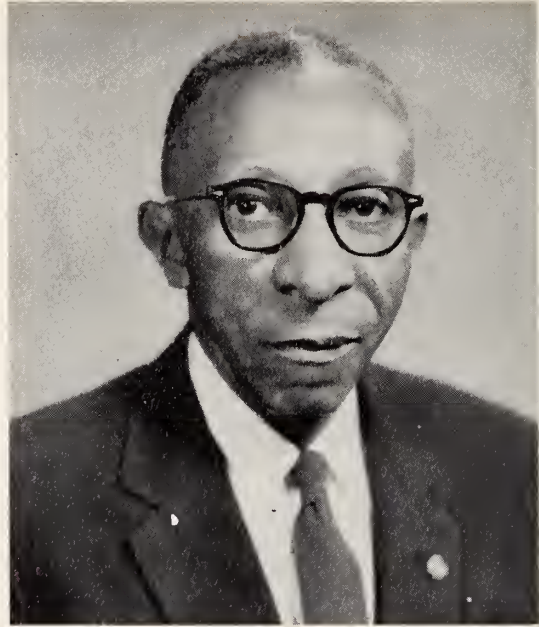
The School Glee Club is presented in concert twice yearly.



# Our Principals



MR. C. K. HARRIS  
West Elm Street Junior High

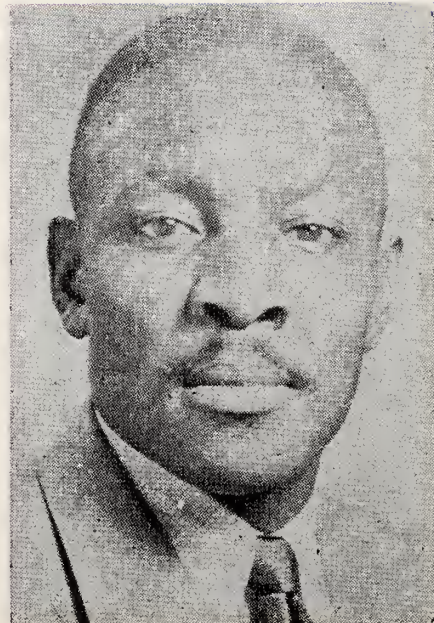


MR. R. C. CHRISTIAN  
School Street School

*Deceased  
May 24, 1959*



MR. W. A. FOSTER  
East End School



MR. A. C. CROWDER  
Greenleaf School



Advertisements

# OUR PATRONS

Mrs. Cherrie Artis  
Mrs. Mary E. Alston  
Mrs. Carrie C. Artis  
Rev. and Mrs. Arnette  
Miss R. L. Atmore  
Mrs. Annie Belton  
Mr. Willie A. Brown  
Mrs. Arabia Bunn  
Dr. W. H. Bryant  
Mr. and Mrs. Thodore Bryant  
Mrs. Vera Bryant  
Mr. and Mrs. Eli Brown  
Mrs. Rena Bryant  
Mrs. Ethel Barnes  
Mr. James Baker  
Miss Minnie Best  
Mr. Junius Best  
Mr. H. V. Brown  
Mr. and Mrs. T. T. Bellamy  
Mr. Willie Barnes  
Miss Ruth Barnes  
Mrs. Rosa Best  
Mrs. Odie Bell  
Mr. and Mrs. Linwood Best  
Mrs. Catherine Barkley  
Mrs. A. W. Bostic  
Miss J. E. Brame  
Miss N. S. Croom  
Mrs. Naomi Cherry  
Mr. R. M. Cooper  
Mrs. A. P. Cox  
Miss Lillian Crawford  
Mr. R. C. Christian  
Rev. R. M. Coley  
Mr. Lemo Clark  
Miss Christine Clark  
Mr. D. F. Clark  
Mr. and Mrs. Leroy Clark  
Mr. and Mrs. A. C. Crowder  
Mr. Foreman Coley  
Mr. John Daniels  
Mrs. Billie Driver  
Mrs. Roxey Davis  
Mr. R. L. Dowery

Mr. Willie E. Daniels  
Rev. and Mrs. Lemon Dudley  
Mrs. R. C. Everette  
Mrs. Doris J. Evans  
Mrs. Annie M. Flower  
Mr. George Henry Fillyaw  
Mr. Roscoe Fillyaw  
Mr. Matthew Fields  
Rev. J. A. Forbes  
Mrs. Gladys Ford  
Miss S. M. Faucette  
Mr. L. J. Foster  
Mr. W. A. Foster  
Mrs. P. M. Foster  
Mrs. A. C. Grant  
Mrs. Maxine Grantham  
Miss Susie Guess  
Mrs. Katie F. Gilchrist  
Bishop and Mrs. G. Griffith  
Mr. Robert Gerald  
Miss Anne Mae Green  
Mr. J. E. Green  
Miss Doretha Gregory  
Mrs. E. R. Hudson  
Mr. Lewyn Hayes  
Mr. David Howell  
Mrs. E. L. Harris  
Mrs. Hattie Harper  
Mr. Percy Hinton, Jr.  
Miss C. E. Hatcher  
Miss Debbie Howard  
Mr. James Hall  
Mrs. M. M. Holloman  
Mrs. O. C. Howard  
Mr. J. C. Hines  
Mrs. Mildred Hines  
Mrs. Mary Houpe  
Mr. and Mrs. Sam Isler  
Mrs. M. K. Jackson  
Mr. James Joyner  
Mrs. Carrie Jacobs  
Mr. Jerry Jones  
Miss S. E. Jones  
Mrs. Elnora F. Jones

Royal Knights

Mrs. Mary L. Keith  
Mrs. Gloria B. Kirk  
Mrs. Anne E. Keith  
Mrs. Annie B. Kennon  
Mrs. Rosa Kornegay  
Mr. Henry Keith  
Mr. A. R. Liggins  
Mrs. George Lee  
Mrs. V. E. Morgan  
Mr. and Mrs. Howard McLean  
Mr. Howard McLean, Jr.  
Mr. James Mazingo  
Mr. and Mrs. Authur Mumford  
Mrs. Minnie McKinney  
Mr. and Mrs. Aaron McKeithan  
Mrs. Hilda Manvel  
Mrs. A. W. Minnis  
Mrs. Virginia Marsh  
Mrs. Annie Malone  
Mrs. Alfred Morrisey  
Miss Valeria McLean  
Mr. Edward C. McLean  
Mr. R. S. McDuffie  
Mr. Edward C. McLean, Jr.  
Mr. Michael Eldred McLean  
Mrs. Cleo Newkirk  
Mrs. Almetria Newkirk  
Mr. Clarence Pate  
Mr. A. B. Parker  
Mrs. Beulah Patterson  
Mr. Roscoe Philyaw  
Mrs. C. L. Parks  
Mr. and Mrs. Arcaster Philyaw  
Mrs. Dora M. Parks  
Mr. and Mrs. Timothy L. Parks  
Mrs. Marion Phillips  
Mr. David Raiford  
Mr. Jacob Raiford  
Mr. A. B. Ried  
Mrs. W. J. Robinson  
Mr. C. E. Richardson

Mrs. Valnolia Scott  
Mr. and Mrs. Martel Scott  
Miss Georga Smith  
Mrs. W. D. Smith  
Mrs. Helen Simmons  
Mrs. Ruby Stevens  
Mr. Gerald Simmons  
Mrs. Louise Shealey  
Mr. Neal A. Stitt  
Mrs. Thomasina Soloman  
Miss Catherine E. Sneed  
Miss Mary E. Simmons  
Mr. Herman Sutton  
Mrs. Edna Earl Simmons  
Mr. and Mrs. F. G. Shipman  
Mr. Mack Slade  
Mr. E. L. Smith  
Mrs. H. P. Thompson  
Mrs. Thelma Taylor  
Mrs. Cassie Tyson  
Mrs. Josephine Thompson  
Mr. Calvin Taylor  
Mrs. Eunice Thompson  
Mr. James Underwood  
Mrs. R. O. Weathers  
Mr. and Mrs. Leroy Williams, Sr.  
Mr. J. H. Wooten  
Mrs. F. I. White  
Miss E. Ward  
Miss L. M. Waters  
Mrs. R. H. Williams  
Mr. Ralph Williams  
Mr. Henry Williams  
Mrs. Queen E. Worrells  
Mr. P. G. Wilder  
Mrs. L. T. Washington  
Mr. and Mrs. Leonard Williams  
Mr. James White  
Miss Rachel White  
Mr. Thomas C. McNeill  
Mr. R. L. Exum  
Miss Catherine Hinton

Compliments of

# SCOTT'S BARBECUE

"It's the Best Ye Ever Tasted"

1201 N. William Street

Goldsboro, N. C.

Free Delivery Service

Phones RE 4-0711 or RE 4-0712

*It's really the best ye ever tasted.  
L. S. Glenn*

Compliments of

**DR. H. F. COFIELD**

DENTIST

201 W. Spruce St.

Goldsboro, N. C.

**BARNES'**

BUSINESS SCHOOL

313 E. Spruce Street

RE 5-3141 P.O. Box 197

Goldsboro, N. C.

Congratulations and  
Best Wishes

**HAMILTON**

FUNERAL HOMES

Goldsboro, Wilson

Smithfield

Compliments of

**DOCK'S**

GRILL AND SUPERETTE

612 W. Pine Street

Short Orders, Sandwiches  
Meats, Vegetables

JAMES MOYE, Proprietor

TOWN & COUNTRY GAS CO., INC.  
L P Bottled Gas  
226 N. Center Street  
Goldsboro, North Carolina  
Kinston Tarboro

Compliments of  
FLAKE'S TIRE COMPANY  
201 N. Center Street  
Goldsboro, North Carolina

SEROTTA'S  
  
For the New and Different

NU SANDWICH SHOP  
Try Our Hot Dogs  
and Hamburgers  
The Best in Town  
404 1/2 S. James Street

**CAROLINA**  
  
SHOE REBUILDERS  
  
"Certified Dr. Scholls'  
Dealer"  
  
124 East Walnut Street  
Goldsboro, North Carolina  
Dial RE-4-4411

Compliments of

*Elma Tibbs*  
+  
*Grace Cammings*  
(owners)

**CONEKINS**

SHOES

HATS

Compliments of  
  
**CHARLOTTE**  
  
LIBERTY MUTUAL INSURANCE  
CO.

Life - Hospitalization

Health and Accident

Offices: Handley Bldg.

E. S. CROW, Dist. Mgr.

Compliments of  
*Herb Archie (Owens)*  
**BRANCH**  
**BANKING & TRUST CO.**

(Member of F. D. I. C.)

Goldsboro, North Carolina

*Glenn*  
*Isle's*  
**SPORTSMEN'S CLUB**

For Fine Entertainment

Admittance - Membership Card

E. Market St.

Phone: WEbester 4-9593

Smithfield, North Carolina

Compliments

of

**TODD'S**

DRIVE-IN CLEANERS

707 East Elm St.

Cleaning

Pressing

Alteration

Repairs

Hat Blocking

Two Hour Service on Request

Dial RE 4-4184 for Pick-Up  
and Delivery

**FIELD'S**

*Glenn's*

RED & WHITE SUPERMARKET

901 S. Slocumb St.  
Goldsboro, N. C.

R. E. "CANNIE" FIELDS  
Manager

NUNN'S ESSO SERVICE

P. O. Box 284  
Goldsboro, N. C.  
John and Elm Sts.

EDWARD'S FRUIT STORE

219 E. Walnut St.  
(Opposite the Courthouse)  
Fruit Baskets for Every Occasion

BEST & WEST MEN'S SHOP

127 E. Walnut St.  
Stetson Hats  
Manhattan Shirts

MOORE'S GROCERY

505 Creech St.  
Goldsboro, N. C.  
Telephone: RE 5-3324

NEWMAN'S ESSO SERVICE

Your Car's Best Friend  
Ash and John Sts.  
Goldsboro, N. C.

FEDERAL OIL COMPANY

239 North John Street  
Phone RE 4-0832  
Goldsboro, N. C.



## CITY

MOTOR SALES

"The Home of New and Used  
Cars"

N. LEAMON GURLEY  
Home Ph. RE-5-3885

FACIE W. WEEKS  
Home Ph. RE-5-3595

Reasonable Financing Rates  
From the Lot

Phone RE-4-0903  
319 North Center St.  
Goldsboro, N. C.

Compliments

of

## HUB

DEPT. STORE

*LEWIS*  
(MANSOURS)

105-107 E. Walnut St.

Goldsboro, N. C.

## SERVICE

DRY CLEANERS  
AND HATTERS

Cor. South James and Elm St.

Dial-----RE-4-4461

Compliments  
of

## AMERICAN BANK

*Member*  
*Osterhead Archive*  
118 E. Walnut St. RE 4-5164

F. D. I. C. -- Member

Compliments of  
MOTOR  
BEARINGS & PARTS  
COMPANY

Compliments of  
PEELE BROTHERS  
Groceries and Feeds  
Telephone RE-4-1780

GRANTHAM'S PLACE  
We Serve With a Smile, Candies  
Soft Drinks, Sandwiches, Ice Cream  
and a Line of Groceries  
616 S. Herman Street

Compliments of  
CENTRAL LUNCH ROOM  
Center Street Goldsboro, N. C.

<p>Compliments of <b>HEILIG-MEYERS</b>  COMPANY  138 E. Walnut St.  Goldsboro, N. C.</p>	<p>Compliments of <b>GARDNER'S</b>  VELVET DAIRY PRODUCTS  Goldsboro, N. C.</p>
<p>Compliments of <b>BEN ELLIS</b>  MEN'S AND BOY'S  STORE</p>	<p><i>E.H. D. Hinson</i> <b>J. Z. HINSON &amp; SON</b>  GROCERY  <i>304 W. Spruce St.</i> 317 E. Elm  Tel. RE 4-<sup>2910</sup>4627</p>
<p>FOOD CENTER "It Pleases Us to Please You" 509 S. George St. Phone RE 4-5461</p>	<p>BUNCH DRUG STORE Center and Mulberry Sts. Phone RE 5-2101 Free Delivery on All Drugs</p>
<p>WISE'S SEAFOOD MARKET 700 E. Elm Street Goldsboro, N. C. Phone RE 4-2475</p>	<p>QUALITY BICYCLE SHOP  209 North John St.  Dial: RE 4-2748</p>

GOLDSBORO INSURANCE  
& REALTY CO.  
203 East Walnut Street  
Goldsboro, North Carolina  
Reliable Insurance Service

GREEN PARROTT  
"Specialized in Home Cooked  
Food"  
Beverages of All Kinds  
Dial Re 4-9897 - Re 5-2845

LULA'S GRILL  
224 South James Street  
Goldsboro, North Carolina  
Re 4-9970

WEIL'S  
Serving Eastern Carolina for  
92 Years

Compliments of  
**SOUTHERLAND**  
FURNITURE CO.  
Your Friendly Furniture Store  
Goldsboro, North Carolina  
112 N. John St. Phone 1055  
RE 4-4011

**CITIZEN'S**  
SAVINGS & LOAN ASSOCIATION  
Insured Savings - Home Loans

**ROGER'S**  
FURNITURE  
14000 Sq. Ft. - Phone Re-4-0641  
New and Used Furniture  
217 N. Center St.  
Goldsboro, N. C.

**WOOTEN**  
OIL & FUEL CO.  
Shell Petroleum Products  
P. O. Box 1007  
Goldsboro, North Carolina  
Re 4-0851  
"Serving This Community for  
Over Thirty Years"

**SAFETY CAB**  
COMPANY  
*Earl F. Weeks (owner)*  
For Dependable Service  
*(Radio Dispatched)*  
318 South James Street  
Dial Re 4-4825

Compliments of  
**BELL-STUART**  
Complete Home Furnishers  
227-229 North John Street  
Goldsboro, North Carolina  
P. O. Box 693  
Dial Re 4-1524

STAR DRY CLEANERS  
 2 Hour Service  
 Pick-Up and Deliver  
 Phone Re 5-4212  
 404 South James Street

WORLEY TYPEWRITER  
 EXCHANGE  
 156 S. Center Street  
 P.O. Box 427  
 Goldsboro, N. C. Re 4-0845

RICHARD'S JEWELERS, INC.  
 106 North Center St.  
 Goldsboro, North Carolina  
 Gifts for All Occasions

- . Watches . Appliances
- . Diamonds . China
- . Silverware . Jewelry
- . Typewriters . Cameras

All Types of Watch and  
 Jewelry Repairing

Compliments

of

*TWO*

**A FRIENDS**

*Earl Glenn*  
*James Lee*

Compliments of

# GOLDSBORO FRANCHISED

NEW CAR AND TRUCK DEALERS ASSN.

Name of Dealer	Make
C. J. Carroll Motor Co.	Plymouth - DeSoto
Dillon-Bell	Studebaker
Cobb Motor Co.	Chevrolet
Community Motors Corp.	Ford
Pate-Dawson Motor Co.	Oldsmobile
J. D. Pike Motor Co.	Plymouth - Chrysler
Central Service Motor Co.	Lincoln - Mercury
Odom Motor Co.	Cadillac - Pontiac
J. M. Edgerton and Sons	Nash - International

Compliments of

**SOUTHERLAND**

SERVICE STATION

Corner Elm and Slocumb Sts.

Goldsboro, N. C.

Compliments of

**POWELL'S**

5¢ TO \$5.00 STORE

600 South Slocumb Street

Goldsboro, N. C.

**AUTOMOTIVE  
WHOLESALEERS  
CO.**

119 East Mulberry Street

Box 1166

RE-5-3236

Goldsboro, N. C.

**W. & W. MOTOR**

SALES  
NEW AND USED CARS

904 S. Slocumb St.

Goldsboro, N. C.

Phone RE-5-1370

H. K. WELLS PAUL WORRELLS  
Co-Owner

**MUSIC & SPORTS**

INC.

"It Pays to Play"

202-204 E. Walnut Street

Goldsboro, North Carolina

We Clothe the Entire Family  
on Easy Weekly or Monthly  
Terms

**KADIS**

123 E. Walnut Street

CHAS. S. NORWOOD, President JOHN R. CRAWFORD, Secretary

## CRAWFORD-NORWOOD

COMPANY, INCORPORATED  
REALTORS

112 S. John St.

Telephone Re 4-4851

Goldsboro, N. C.

### OPEN AIR

MARKET

Choice Meats - Produce  
Staple Fancy Groceries

Wilson Highway

Goldsboro, N. C.

Compliments of  
BARGAIN OUTLET STORE  
107 North John Street  
Goldsboro Re 5-0455

WAYNE POULTRY CO.  
600 N. John St.  
Goldsboro, N. C.  
"We Buy All Farm Products"

HINSON'S P & A  
907 East Elm Street  
Goldsboro, N. C.  
Re 5-3162

NELSON'S PHOTO SHOP  
"Everything Photographic"  
118 S. Center St.  
Goldsboro, N. C.

Compliments of  
COBB'S FRUITS & GROCERY  
STORE  
"We Please to Serve"

WESTINGHOUSE  
DEALER  
Farmer Supply Co.  
118 N. John St.  
Goldsboro, N. C.

## NORTH CAROLINA MUTUAL LIFE INSURANCE COMPANY

CALL OUR LOCAL REPRESENTATIVES:

Miss Ora Sutton  
Miss M. L. Edwards  
Mrs. Virginia Dawson  
Mrs. Ruby Inman  
Jerome Best  
Willie Hampton

Waymond H. Greenfield  
Miss F. L. Oakley, Cashier  
S. A. Harris, Staff Manager  
Lemuel Z. Craft, District Manager

Compliments of

**BELK-TYLER'S**

"Home of Better Values"

126 N. Walnut Street

Goldsboro, N. C.

Compliments of  
**LESSERS WOMEN'S  
APPAREL**  
Goldsboro, N. C.

Compliments of

**GIDDENS JEWELRY STORE**

Goldsboro, N. C.

**EDWARDS YOUNG**

**MEN'S SHOP**

Suits by Botany 500  
Kuppenheimer  
Eager - Hats by Lee  
Stetson

200 N. Center Street

# OUR APPRECIATION

We, the "The Dillardite" staff, wish to thank  
all who helped to make our yearbook a success.

# Autographs

Hi Sybil,  
Always remember  
that Sunday on the  
front porch and the  
James Blackman?  
A friend always  
Jays (Jays)

Hi Sybil,  
Remember the  
good times we had  
in the movies.

Always,  
Marie + James (what)

Hi Sybil,  
Remember the wonderful  
times we had together in the  
movies, on the glee club trips  
and in Ms. Harris's room  
Always a friend,  
Sandra (you)

Hi Sybil  
Always remember  
the wonderful times  
we had together  
in the movies  
and  
in Ms. Harris's room  
Always a friend,  
Sandra (you)

Hi Couz,  
Remember that Sunday  
we ran from all those boys?  
It was fun ducking in that store. (smile)  
We had a better time because you  
were there. Always, "Cousin"  
(now going with "Herbert") (Cora) Anne  
(5/12/59)



Hi Sybil,  
For you there should  
be nothing but the best  
Success Is Yours

a friend  
Margaret (Fiel)

Hi Sybil  
Remember the trip  
to Kingston when you  
and Barbara meet  
some Hobbs. Remember  
when you use to go  
with me. Remember  
the movies every  
Friday evening.

Your everlasty  
friend  
Eugene

Hello Sybil,  
Hope you much  
success in the years to come.

a friend  
Faye (Peaches)

Hi Sybil,  
I been chasing you  
about 7 years now, and  
I haven't succeeded, now  
all I can do is wish you  
much success in the future  
as me, I always remembers me  
and "Success  
awaits at the Labores  
Gate," the Labores  
wish you  
success in  
the future.

Hi Sybil,  
Remember me  
discussing my  
friends in 44  
period.  
Ralph  
"Sid" Always  
Othello  
(Shortie)

Always  
Earl Glenn  
60-61  
Mr. Barrett

Hi Sybil,  
Always remember  
the good times  
we had in  
"Linn & Education"

To Sybil,  
Always let <sup>high</sup> aims and high standards  
be your key to success and I am sure  
that you will succeed with the  
years' enthusiasm that you have.  
Good luck in the near future...  
and "eat hardy".

Always,  
Dorothy Mae Lynn  
May 3, 1955

"Lo Sybil,"

Hi ole Sybil,  
From the Linn  
Rangers & Linn  
Linn  
"Linn"

Remembering always  
the good times we  
had in "Linn"  
Those were the days  
in 8-6, 9-3, 10-3, 11-?  
12-?. Hope much success  
in the future

Say  
Remember the M.  
and Remember the  
put it together and  
Remember  
Me

B.B.

Hi Sybil,  
May you have  
success in life. I hope  
real good in care of "our"  
bank when I leave.

Intellectually,  
Bertie '60

Hi Sybil,  
As you climb  
up the ladder of success  
remember me as a step.  
Good luck, "Junior".  
Always,  
Ralph

Hi Sybil  
The Linn Rangers side Sybil  
and Linn side

Hi Sister  
 Remember all our days  
 and nights at home with  
 the family looking at  
 T. V. This time next year  
 (1960) but I will not be home  
 I can afford to learn everything  
 I can afford to learn everything

Hi Sybil,  
 Remember the  
 good times we had  
 at different parties and  
 at Park's, Gene's, Sheila's, and  
 yours.  
 I love you  
 of course, I love you

Hi Sybil,  
 Remember those good  
 old bank days.  
 "Nitrous oxide"

a friend  
 Linda '60

Hi Sybil,  
 Here's wishing you  
 all the luck in the  
 world. And Remember  
 the good old days at  
 Dillard. Love,  
 Joe

Your Brother  
 Jamie

Hi Sybil,  
 It has been  
 nice knowing you  
 these past years, and  
 I hope you all the success  
 and happiness in the future  
 and you and your pal  
 Margaret  
 Margaret's pal  
 Margaret

Hi Sybil,  
 Always remember  
 our Blue Club days Tuesday  
 and Thursday's. Good singing

Hi Sybil,  
 remember how  
 you know me  
 about car  
 boy: a friend  
 starry

Hi Sybil,  
 Hope you much  
 success in the future.  
 And remember out Latin  
 I and two classes,  
 Ruth

Hi Sybil,  
 I remember that  
 time when  
 we were  
 in  
 the  
 future  
 and  
 you  
 and  
 your  
 pal  
 Margaret  
 and  
 your  
 pal  
 Margaret  
 and  
 your  
 pal  
 Margaret  
 and  
 your  
 pal  
 Margaret

