

Historic, archived document

Do not assume content reflects current scientific knowledge, policies, or practices.

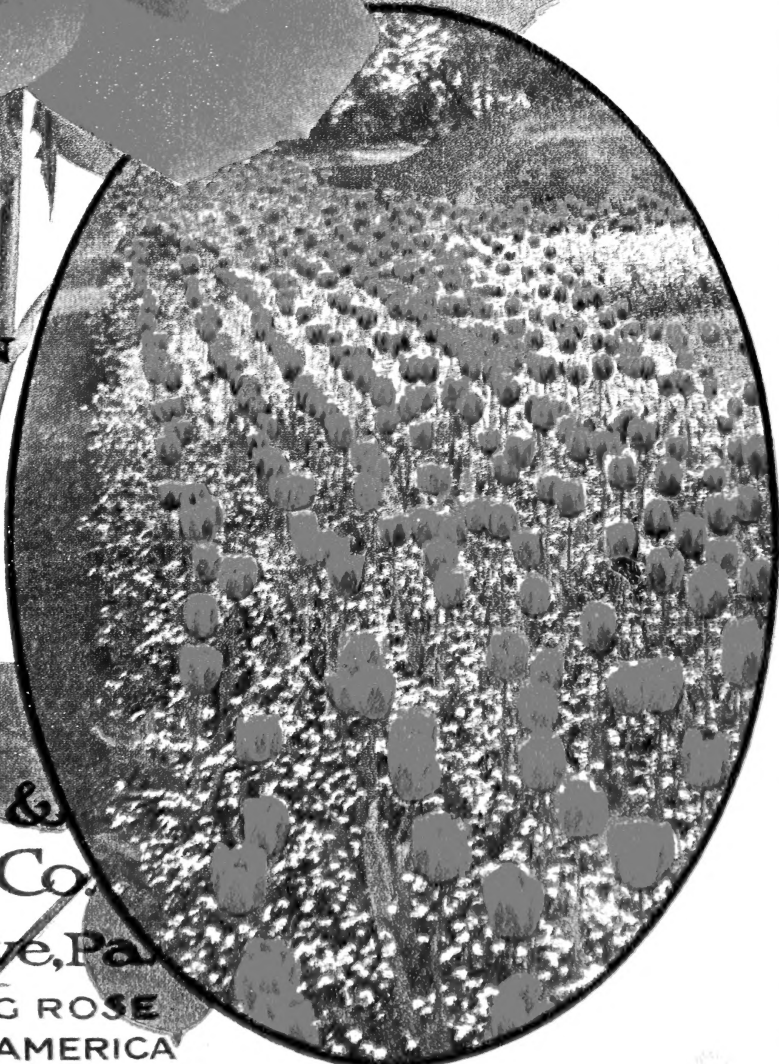


DINGEE GUIDE TO ROSE CULTURE

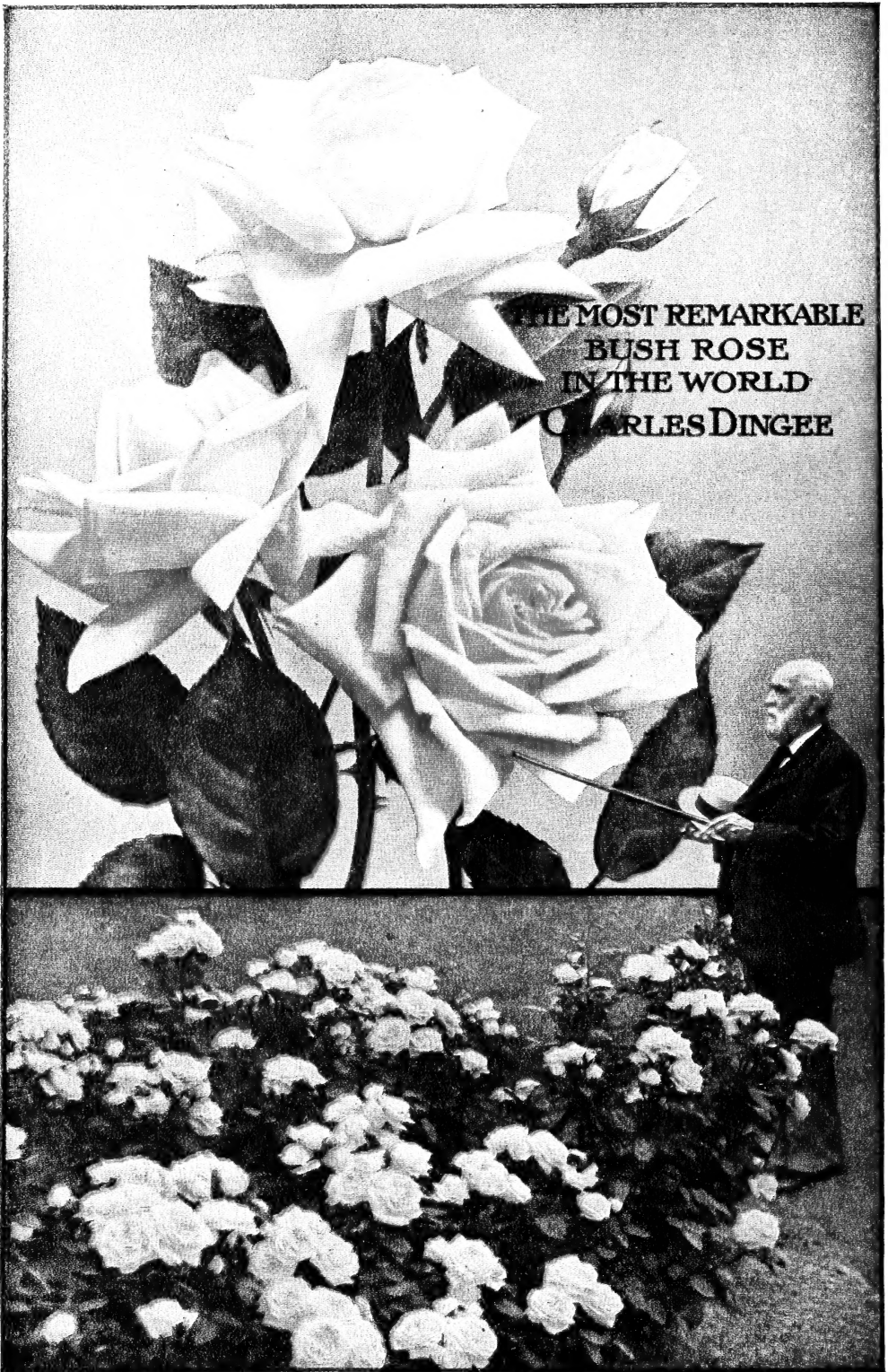
ROSES
AND
BULBS
FOR FALL
PLANTING

RICHMOND
SEE PAGE 15

AUTUMN
1910



The
Dingee &
Conard Co.
West Grove, Pa.
THE LEADING ROSE
GROWERS OF AMERICA



See the description of this great Rose on page 16

DINGEE SPRING-FLOWERING BULBS



THE history of gardening shows that we were among the very first houses in this country to issue a catalogue describing the beauties of the Hyacinth, Tulip, Narcissus and other flowers of the spring-time, and our ever-increasing business shows conclusively that, notwithstanding the increasing numbers of establishments distributing bulbs each fall, we deservedly hold our place at the head of the list.

The reason for this is obvious. Our bulbs have always been grown by the very best growers in Holland and other countries. Our long experience in the business and our favorable foreign connections enable us to command stock far superior to the average dealer. We have always been ready to pay the highest prices in cash for the growers' product, and we stand now just where we have always stood—in a position to demand the very best. And we get it.

Good bulbs are not produced by chance any more than are the good Roses for which the name of Dingee has been famous for over half a century. The same knowledge, care and experience stand back of everything in the finest bulbs for fall planting offered in the present Catalogue. Any bulb, every bulb, either for indoor or outdoor planting, ought to be good. Cheap, poorly cured, undersized bulbs are dear at any price and should be carefully avoided.

DINGEE BULBS are good bulbs in the full meaning of the term. If you would have success with your winter or spring bulbs this season, remember our reputation on Roses and that we are able to give you equally good satisfaction in this other corner of Flora's realm.

The prices at which we sell goods are fixed after painstaking, careful computation of the exact cost of production, and are made to fit the quality of our stock, allowing ourselves a fair, legitimate margin of profit. We are not controlled by the prices in other catalogues, which, in many instances, are the result of haphazard guesswork, and the goods must necessarily be of a quality to fit the prices, for no one will long continue to sell goods at a loss. Bulbs and Roses are just as standard in quality and prices as dress-goods or men's clothing. You can no more buy a high-grade Bulb or Rose at a third-class price than you can buy a silk dress at the price of calico. Invariably you will receive precisely the quality you pay for—hence we say that cheap goods are dear at any price.

For over sixty years, growing Roses on their own roots has been a specialty with us. In this department we lead, both in quantity and quality. **Dingee Roses are famous the world over.** Our list is the most complete in America, both in this line as well as in the hardy shrubs and miscellaneous plants for house culture.

Our terms are cash with order, except when satisfactory bank reference is given, when we will gladly open an account. Goods will be shipped C. O. D., when directed. Money may be sent at our risk by Post-Office Money Order, Express Money Order, money (not stamps) in registered letter. We will be responsible for the safe carriage of money sent us in any of these ways, and, if lost, will give full value. Please do not send stamps unless absolutely necessary. Ten per cent extra should be added to orders going outside of the United States of America or its colonial possessions, as well as Canada and Mexico, to pay the extra cost of packing and postage. To all countries in the Universal Postal Union, goods can be sent by mail.

We always do better than we promise in the way of extra bulbs and plants, so that, when the order will at all afford it, we add to it something gratis, often a choice or new kind. To induce our customers to make up club orders among their friends, we make attractive inducements. The only requirements are that the club shall consist of the complete addresses of five club names, including the clubber, and the order shall amount to not less than \$10 in cash. Write for our terms under these conditions.

Kindly send all orders, money and correspondence plainly addressed to

THE DINGEE & CONARD CO.

West Grove, Pa., U. S. A.

Established, 1850; Incorporated, 1871
The Pioneer Rose Growers of America

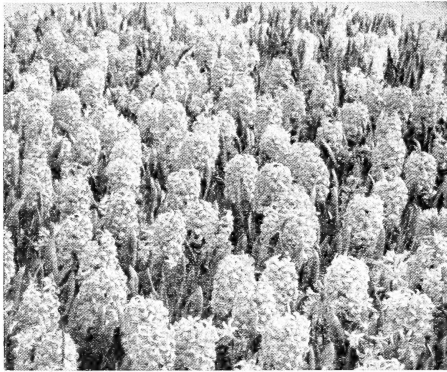
The Truly Wonderful Rose, Charles Dingee

The illustration on the facing page shows in a life-like manner the beauty of the Rose we consider the **One Best Rose in cultivation**. The almost unlimited resources of our great West Grove greenhouses have been severely taxed to propagate enough plants of this remarkable Rose to meet the demand for it, and even now we have not an over-supply. We would call your attention to our magnificent stock of big, two-year-old plants at 50 cts. each, or \$5 per doz., for growing in pots for house decoration, or in the conservatory. No other Rose in our list will give greater satisfaction in this form. We can supply it in all the usual sizes, as heretofore. The Rose is fully described on page 16.

Add 10% to the total amount of your order and we will deliver goods free to any express office in the United States or Canada. This is the most liberal proposition we have ever made.

Dingee Superior Hyacinths

INDOOR CULTURE. Plant in pots or boxes, using ordinary garden soil, any time from September to February. Allow a small portion of the bulb to be exposed above the soil. Water thoroughly and put away in a dark, cool situation until signs of growth commence, then bring into the light and heat. For holiday blooming, pot early in September, and for a succession of bloom, plant at intervals of about two weeks. To grow in water, place the bulbs in glasses and fill with clean water; leave them in a dark, cool cellar until the glass is well filled with roots, then bring to the light.



BED OF DINGEE HYACINTHS

OPEN-GROUND CULTURE. Select a warm, sunny location. Ordinary garden soil enriched with well-rotted stable manure, spaded to a depth of 12 inches will suffice. Plant the bulbs 5 inches deep and 6 or 7 inches apart. Set out any time from September until severe freezing weather. While not required, it is better to give winter protection.

DO NOT BUY SECOND-SIZE, INFERIOR BULBS. DINGEE HYACINTHS are grown by our special growers in Holland, who have been growing them for us for the past

twenty years, and they are the best to be had at any price; each bulb guaranteed to grow and bloom. It takes three years to mature a Hyacinth, and the reason why some dealers can offer bulbs at such ridiculously low prices is that they buy up a lot of two-year-old bulbs the growers, for one reason or other, do not care to carry along to maturity. These can, of course, be sold in this country at much lower prices than honest, properly matured and cured bulbs, such as ours. The result is keen disappointment, and the whole bulb business gets a bad name. Take our word for it,—a two-year-old Hyacinth bulb will not give satisfaction, and that is what you will get if you buy cheap bulbs. Our guaranteed bulbs will please in every particular.

Large exhibition-size bulbs, 20 cts. each, \$2 per doz., \$15 per 100, postage or express prepaid

SINGLE RED AND ROSE

Cardinal Wiseman. Pink; enormous spikes.
Gertrude. Bright rosy red. Very distinct.
Lord Macaulay. Bright red; extra-large spike.
Moreno. Immense; deep pink spikes. Early.
Norma. Beautiful pink; large and early.
Robert Steiger. Crimson; the best of its color.
Roi des Belges. Crimson-scarlet; compact.

SINGLE WHITE AND BLUSH

Alba superbissima. Pure white; large; early.
Baroness van Thuyll. Sand-white. Large; splendid spike; early.
Grandeur a Merveille. Giant spikes; blush-white.
La Franchise. Waxy white; large bells.
L'Innocence. Pure white; large trusses.
Madam Vanderhoop. Early; white; large bells.
Mammoth. Immense spikes; large bells; compact; blush.

SINGLE SHADES, BLUE AND PURPLE

Baron van Thuyll. One of the best deep blues.
Charles Dickens. Lilac center, blending into a darker blue.
Czar Peter. Light porcelain, shaded lavender; enormous; fine.
Grand Maitre. Porcelain-blue; extra large.
King of the Blues. Deep purplish blue; close spike.
Mary. Dark purplish blue; splendid spike.
Queen of the Blues. Exquisite azure-blue; handsome.

SINGLE YELLOW

Ida. Bright glowing, pure yellow; immense.
King of the Yellows. Golden yellow; large and handsome.

Special Offer. Complete set of 23 superb named Single Hyacinth bulbs, exhibition size, sure to bloom, for \$3.50, prepaid.

SINGLE HYACINTHS IN SEPARATE COLORS

These bulbs differ in no way from our exhibition-size bulbs, and are guaranteed to produce a splendid spike of bloom. For bedding effects, for growing in the conservatory, or for winter window culture, these bulbs are bound to give splendid satisfaction.

	Doz.	100		Doz.	100
Pure White and Blush.....	\$1 00	\$7 50	Yellow Shades.....	\$1 00	\$7 50
Red and Rose.....	1 00	7 50	All Colors Mixed.....	1 00	7 50
Blue and Purple Shades.....	1 00	7 50			

Orders for 6 of a kind filled at dozen rates

ALL BULBS ARE SENT POSTPAID UNLESS OTHERWISE NOTED

NAMED DOUBLE HYACINTHS

Splendid, large bulbs, all varieties, 20 cts. each, \$2 per doz., \$15 per 100, postage or express prepaid

DOUBLE RED, ROSE AND PINK

- Kohinoor.** Very dark rose; large spike.
- Bouquet Royal.** Royal in every sense; beautiful rose; dark center.
- Czar Nicholas.** Immense; light pink, shading to rosy blush.
- Lord Wellington.** One of the finest pinks.
- Prince of Orange.** Beautiful dark red. Distinct.
- President Roosevelt.** Beautiful deep pink or rose. Handsome.
- Suzanna Maria.** Early; splendid; dark red.

DOUBLE BLUE AND PURPLE

- Blocksberg.** Considered the best light blue.
- Lord Raglan.** Grand, rich dark blue. Early.
- Othello.** Large and double; nearly black.
- Murillo.** Beautiful deep blue; compact.

DOUBLE WHITE AND BLUSH

- Duchesse de Bedford.** Lovely pure white; very double.
- La Tour d'Auvergne.** One of the best double pure whites.
- La Virginite.** Large, drooping bells of white, delicately shading to blush.
- Non Plus Ultra.** Snow-white. Immense.
- Prince of Waterloo.** Exquisitely fragrant; fine, double, white.

DOUBLE YELLOW

- Bouquet d'Orange.** Distinct; buff-colored. Rare in color.
- Goethe.** Grand, bright yellow; very large.
- Pure d'Or.** Golden yellow; fine spikes.
- Sunflower.** Deep golden yellow; splendid.

DOUBLE HYACINTHS, SEPARATE COLORS

A splendid assortment of named varieties, offered only in colors. We guarantee large, finely matured bulbs which will give splendid satisfaction for bedding and grouping in the open ground as well as for house culture.

	Doz.	100		Doz.	100
Pure White.....	\$1 00	\$7 50	Yellow Shades.....	\$1 00	\$7 50
Red and Blush.....	1 00	7 50	All Colors Mixed.....	1 00	7 50
Blue Shades.....	1 00	7 50	Orders for 6 of a kind filled at dozen rates		

Roman Hyacinths

Exquisite for Christmas blooming. May be grown in pots or glasses the same as Hyacinths.

First-size bulbs, sure to bloom, 5 cts. each, 6 for 25 cts., 50 cts. per doz., \$3.75 per 100, postpaid

- Single White.** Elegant bells of waxy white.
- Single Blue.** Dainty and beautiful.
- Double Dark Pink.** Large bells; handsome and effective.

Special Offer. Set of 3 Named Roman Hyacinths, described above, for 15 cts.; 4 of each, 12 in all, for 40c. postpaid.

Grape Hyacinths

For indoor blooming, plant a few bulbs in a 5-inch pot.

- Improved Blue.** Sky-blue, tipped white. 3 for 5 cts., 15 cts. per doz., 75 cts. per 100, \$6 per 1,000, postpaid.
- Snow-White.** Scarce. 3 for 10 cts., 20 cts. per doz., \$1 per 100, \$8 per 1,000, postpaid.

Special Offer. 6 Improved Blue and 3 Snow-White Grape Hyacinths, 9 in all, for 15 cts., postpaid.

Feathered Hyacinth

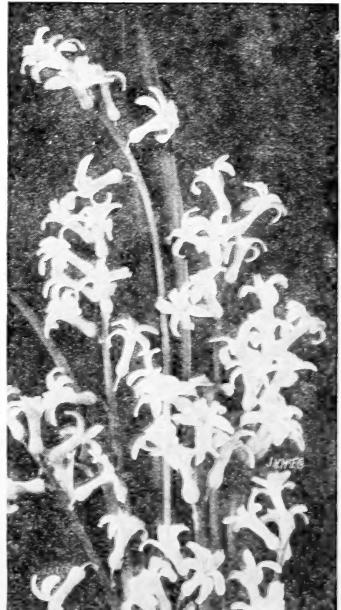
The blue flowers are tinged with red and form feathery plumes which are borne on graceful stems. Succeeds well in the garden or in the house. 4 for 10 cts., 25 cts. per doz., \$1.25 per 100, \$10 per 1,000, postpaid.

Tufted Hyacinth

Deep blue, tassel-like racemes. Plant 6 bulbs in a 5-inch pot. Fine in the open ground. 4 for 10 cts., 25 cts. per doz., \$1.25 per 100, \$10 per 1,000, postpaid.

Wood Hyacinth (Campanulata)

Splendid spikes of bell-shaped, blue and white flowers, 1 to 2 feet high. Plant them amongst shrubbery or in odd corners. 5 cts. each, 50 cts. per doz., postpaid.



ROMAN HYACINTHS

Magnificent Dingee Tulips

Like all Dingee bulbs, our offerings in Tulips are the best, both as regards quality and variety. No "seconds"—each bulb guaranteed to grow and bloom, or your money back. Plant plenty of them—they are so inexpensive; in early spring, almost before the last snows of winter have gone, the gorgeous colors of their flowers will add a wonderful air of cheerfulness to your home surroundings. They are entirely hardy in the open ground, and should be planted about 5 inches deep and 5 inches apart. For indoor culture, plant them 3 inches deep.

EARLY NAMED SINGLE TULIPS

These make a glorious show in beds of one color or of two or more varieties.

Extra-strong, guaranteed bulbs, any 2 for 15c., 75 cts. per doz., \$5 per 100, by mail or express prepaid.

Belle Alliance. Rich glowing scarlet.
Chrysolora. Rich golden yellow.
Cottage Maid. White, edged with rose.
Keizerkroon. Crimson-scarlet, edged yellow.
Lorraine. Grand pure white.
Pottebakker, Yellow. Glowing yellow.
Pottebakker, Scarlet. Brilliant scarlet.
Pottebakker, White. Pure white.
Proserpine. Deep rosy pink.
Yellow Prince. Bright yellow: sweet-scented.
Vermilion Brilliant. Dazzling vermilion.

Single Duc Van Thol Tulips

Very early-flowering; especially satisfactory for all purposes; none better; distinct and effective. In all colors, **Gold-striped, Rose, Scarlet, Vermilion, Violet, White, and Yellow.** Any 2 for 10 cts., 50 cts. per doz., \$3.50 per 100, prepaid.

Special Offer. Set of 18 Tulips named above for 75 cts.; 6 of each, 108 in all, \$4, postpaid.

Mixed Early Single Tulips

This is the finest mixture of bedding Tulips ever offered, and comprises the choicest named kinds, including every known tint and color. Price: large, plump bulbs, guaranteed to grow and bloom, 50 cts. per doz., \$3.50 per 100, \$25 per 1,000, by mail or express, prepaid.



A SMALL GROUP OF DINGEE TULIPS

PARROT TULIPS

Have the most distinct shape and markings of any; the striking, beautiful colors range through all shades of golden yellow, green, crimson-striped, deep crimson, yellow, etc.

Fine, large bulbs, sure to bloom, any 2 for 15 cts., 75 cts. per doz., \$5 per 100, by mail or express prepaid.

Belle Jaune. Pure yellow.
Cafe Brun. Coffee-color and yellow.
Constantinople. Very handsome red.
Markgraaf. Red and orange.
Feu Brillant. Rich glossy crimson.
Monstre Rouge. Deep crimson.
Perfecta. Yellow and red. Extra fine.
Superfine Mixture. All colors.

Sweet-scented Tulip, Florentine Odorata

Also known as Tea Rose Tulip. Rich yellow flowers, deliciously fragrant; splendid for cutting. 2 for 15 cts., 60 cts. per doz., \$3.50 per 100, postpaid.

EARLY DOUBLE TULIPS

Magnificent bulbs, any 2 for 15 cts., 75 cts. per doz., \$5 per 100, by mail or express prepaid

Duc Van Thol, Red and Yellow.
Duke of York. Lovely carmine, edged with white.
Gloria Solis. Deep crimson, bordered with a broad gold band.
La Candeur. Grandest pure white.
Murillo. Beautiful light rose.
Rex rubrorum. The finest deep scarlet.
Salvator Rosa. The grandest of all pink Tulips, flamed white; magnificent.

Scarlet King. Deep, rich glowing scarlet.
Tournesol, Scarlet. Red, edged with yellow.
Tournesol, Yellow. Handsome orange-yellow.

Special Offer. Set of 10 Double Early Named Tulips above for 40 cts.; 6 of each, 60 in all, \$2.25, postpaid.

Mixed Double Early Tulips

UNNAMED VARIETIES

Large, plump bulbs, guaranteed to grow and bloom, 50 cts. per doz., \$3.50 per 100, \$25 per 1,000, postpaid.

DOUBLE LATE-FLOWERING TULIPS

Strong, healthy bulbs, any 2 for 15 cts., 7½ cts. per doz., \$5 per 100, by mail or express prepaid.

- Abbas. Glowing orange-red.
- Blue Flag. Remarkable purplish blue.
- Gloria Mundi. Various shades of brown, crimson and yellow.
- Paeony, Gold. Golden yellow, striped with red.
- Paeony, Red. Superb flowers, deep, glowing red.
- Yellow Rose. Pure golden yellow. Striped foliage.

Special Offer. Set of 6 Double Late-flowering Named Tulips, postpaid, for 25 cts.; 6 of each, 36 in all, \$1.25.



DOUBLE TULIP

Double Late Mixed Tulips UNNAMED VARIETIES

Price, 50 cts. per doz., \$3.50 per 100, \$25 per 1,000, postpaid.

LATE, OR MAY-FLOWERING SINGLE TULIPS

Cottage Garden Tulips

	Each	Doz.	100
Bouton d'Or (Golden Beauty). Golden yellow; long stems; for cutting.	So 08	So 75	\$5 00
Elegans, Red. Long petals, reflexed tip. Crimson-vermilion, yellow center.	10	1 00	8 00
La Merveille. Salmon-rose, shaded orange-red. Sweet-scented; large.	08	75	5 00
Picotée (Maiden's Blush). Recurved petals; white, margin rose-pink.	08	75	5 00
Beauty of America. Cream, tinged pink. Very beautiful.	08	75	5 00
York and Lancaster (Shandon Bells, or Isabella). Silvery white, suffused soft carmine-rose.	08	75	5 00

SPECIAL OFFER. Set of 6 May-flowering Tulips, 35c.; 6 of each, 36 in all, \$2, postpaid

GRAND MIXTURE OF COTTAGE GARDEN TULIPS, made up of dozens of the best varieties, including sweet-scented sorts, 50 cts. per doz., \$3.50 per 100, postpaid

Bybloems and Bizarres

Magnificent flowers of brilliant hues, in solid colors and striped on yellow ground. In one color or mixed, 2 for 10 cts., 50 cts. per doz., \$3.50 per 100, postpaid.

Darwin Tulips

	Each	Doz.	100
Baron de la Tonnaye. Carmine-rose-pink, fading to soft pink.	So 12	\$1 25	\$9 00
Europe (Salmon King). Bright rosy red, white center; beautiful.	12	1 25	9 00
Gretchen (Margaret). Large-flowering; outside soft blush; inside blush-rose.	12	1 25	9 00
Kate Greenaway. Big flower of white, suffused with lilac.	10	1 00	8 00
Maiden's Blush. Carmine-rose, blending to blush-white edge.	15	1 50	12 00
Prince of Haarlem. Brilliant deep salmon, shaded with scarlet.	12	1 25	9 00
The Sultan. Large flower of maroon-black.	10	1 00	8 00

SPECIAL OFFER. Set of 7 Darwin Tulips, 80 cts.; 3 of each, 21 in all, \$2.25, postpaid

SPECIAL MIXTURE OF DARWIN TULIPS, including a wide diversity of colors and shades, 50 cts. per doz., \$3 per 100, postpaid

Gesneriana Tulips, Red and Yellow

TULIPA GESNERIANA. Intense dazzling, glossy crimson, with center of deep blue. Stems 2 to 3 feet.	So 08	So 75	\$5 00
TULIPA, GOLDEN CROWN. (Yellow Gesneriana.) Splendid golden yellow petals edged with orange-red.	08	75	5 00
TULIPA VIRIDIFLORA. The wonderful green Tulip; petals edged with yellow. Curious and beautiful.	08	75	5 00
TULIPA GREIGI (The Royal Tulip). Gorgeous flowers bravely borne up, as if better to display their remarkable color, which is flaming red, transparent, waxy and dazzling. Well named a royal Tulip.	15	1 50	10 00

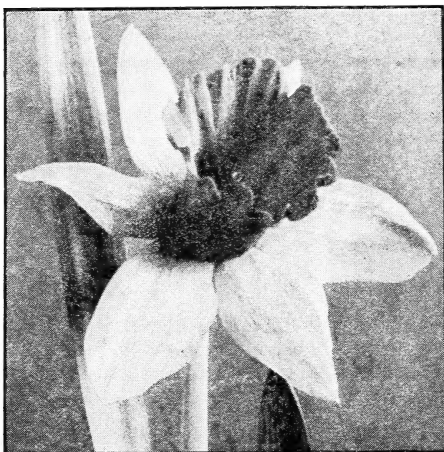
Dingee Narcissus THE DAFFODILS OF SPRING

The Narcissus is most desirable for house or garden culture, and should be treated in the same manner recommended for the hyacinth. Three or four bulbs may be grown in a single pot. In the garden they may be planted in any out-of-the-way place, where they will continue to thrive and bloom year after year without any care or attention. Our bulbs are grown for us by our own special grower on the Isle of Guernsey; they are the best.

First Quality Bulbs sure to bloom. Prices include postage

SINGLE VARIETIES

- Ard Righ** (Irish King). Golden yellow; very early. 15 cts. each, \$1.50 per doz., \$10 per 100.
- Emperor**. Trumpet large; rich yellow, surrounded with deep primrose petals. 10 cts. each, \$1 per doz., \$8 per 100.
- Maximus, or Vase of Beaten Gold**. Very early. Immense flowers of deepest, richest yellow. 10 cts. each, \$1 per doz., \$8 per 100.
- Glory of Leiden**. Long, large, fluted trumpet of rich yellow; full, broad, overlapping petals of bright yellow, borne on strong stems. 25 cts. each, \$2.50 per doz., \$20 per 100.
- Leedsii**. Pure white petals, lemon cup, passing to white. 5 cts. each, 50 cts. per doz., \$3.50 per 100.
- Pseudo, or Lent Lily**. Light yellow cup, with sulphur-white perianth. 5 cts. each, 50 cts. per doz., \$3.50 per 100.
- Stella**. Large white perianth petals, with golden yellow cup, star-shaped. 5 cts. each, 50 cts. per doz., \$3.50 per 100.
- Sir Watkin**. Rich sulphur-yellow; orange-tinted trumpet. 10 cts. each, \$1 per doz., \$8 per 100.
- Trumpet Major**. Extra large; golden yellow trumpet and petals. 5 cts. each, 50 cts. per doz., \$3.50 per 100.
- Pallidus praecox**. White perianth and trumpet. 10 cts. each, \$1 per doz., \$8 per 100.



GLORY OF LEIDEN

DOUBLE VARIETIES

- Orange Phoenix** (Eggs and Bacon). Double white flowers; center orange and white. 5 cts. each, 50 cts. per doz., \$3.50 per 100.
- Von Sion**. Large, double, rich golden yellow trumpet flowers. One of the very best for house culture. Specially selected, double-nosed bulbs, far superior to the average bulbs. 5 cts. each, 50 cts. per doz., \$3.50 per 100.
- Superfine Mixed**. Superb mixture of all sorts, Double and Single and All Colors. 50 cts. per doz., \$3.50 per 100, \$25 per 1,000.
- Special Offer**. Set of 12 Narcissus, single and double, one of each variety, 75 cts.; 3 of each, 36 in all, \$2, postpaid.

POET'S NARCISSUS

- Poeticus**. White flowers with orange cup. 5 cts. each, 50 cts. per doz., \$3 per 100.
- Poeticus flore pleno**. Double, white, sweet-scented flowers. 5 cts. each, 50 cts. per doz., \$3 per 100.
- Poeticus ornatus**. Very large, pure white flowers, beautifully formed eye. 5 cts. each, 50 cts. per doz., \$30 per 100.

POLYANTHUS NARCISSUS

In the open ground should be well protected. Pot any time from October to January. Several bulbs can be grown in a large pot or box. Cover them loosely with $1\frac{1}{2}$ to 2 inches of soil.

- Double Roman**. Large, finely formed flowers; color clear white, with smaller inner petals of pure yellow; early. 5 cts. each, 50 cts. per doz., \$3 per 100.
- Improved Paper-White Grandiflora**. A large-flowering type of "Paper-White," with snow-white flowers of large size and good substance, in immense trusses. Mammoth bulbs, 5 cts. each, 50 cts. per doz., \$3 per 100.
- True White Pearl**. Satiny white flowers, with primrose cups. 10 cts. each, \$1 per doz., \$8 per 100.
- Gloriosus**. Perianth white; cup, orange-yellow. 10 cts. each, \$1 per doz., \$8 per 100.
- Grand Primo**. White, with citron cup. 10 cts. each, \$1 per doz., \$8 per 100.
- Grand Soleil d'Or**. Deep yellow. 10 cts. each, \$1 per doz., \$8 per 100.
- Mixed**. 75 cts. per doz., \$5 per 100.
- Special Offer**. Set of 6 Named Narcissus above, 50 cts.; 6 of each, 36 in all, \$2.50.

ALL NARCISSUS ARE SENT POSTPAID ON RECEIPT OF PRICE

Narcissus corbularia (The Bell-shaped Narcissus,

A charming variety of Narcissus, with bell-shaped flowers of clear golden yellow, and very fragrant. Really one of our very best bulbs for winter blooming indoors and fine for the garden. 10 cts. each, \$1 per doz., \$8 per 100.

JONQUILS

A branch of the Narcissus family, requiring the same treatment. Twelve bulbs in a 6-inch pot will make a wondrous show in the house.

Double. Extra fine; deep yellow. 5 cts. each, 50 cts. per doz., \$3 per 100.

Single. Rich yellow; very fragrant. 5 cts. each, 50 cts. per doz., \$3 per 100.

Campernelle Mixed. Large yellow flowers; rich and very striking. 5 cts. each, 50 cts. per doz., \$3 per 100.



GIANT WHITE NARCISSUS

The Giant White Narcissus

This grand Narcissus is the earliest flowering, blooming for Christmas. Grows with absolute certainty, and produces in lovely clusters immense numbers of pure white flowers. In fragrance is the equal of orange blossoms. Superb.

GROW IT IN WATER.—It succeeds best grown in water. Place sand or gravel in bottom of receptacle in which it is to be grown, firmly imbedding the bulbs; keep well covered with water, and it will soon bloom. It may be grown in soil like a hyacinth, but the best method is in pebbles and water.

To Get the Best Effect.—Several bulbs (not less than six) should be planted together. Give plenty of sunshine. The bulbs we offer are imported direct from France, are large, sound and solid, sure to grow and bloom.

Price, postpaid by mail, 2 for 10 cts., 6 for 25 cts., 40 cts. per doz.

Dingee Winter-Blooming Freesias

One of the most popular winter-blooming bulbs, growing well in ordinary soil and not requiring special knowledge to have success with them. One of the easiest of winter-blooming bulbs for window culture. The color is pure white, lower petals touched with yellow.

Freesias should be planted early for the best results—the earlier the better. We cannot too strongly emphasize this point. The vitality of the bulbs is at its highest early in the season. We have these bulbs grown in tremendous quantities, by our special growers, and are able to offer larger and better quality bulbs than those generally sold. As in other bulbs, *quality* is our motto.



FREESIA

Celebrated Freesia refracta alba Strain

First-size Monster Bulbs. Three years old. 10 cts. each, 3 for 25 cts., 6 for 50 cts., 25 for \$1.50, \$5 per 100, postpaid.

Second Size, Mammoth Bulbs, about 1/2 inch in diameter, 3 for 10 cts., 35 cts. per doz., \$2.50 per 100, postpaid.

Third-Size, Extra-Large, Selected Bulbs, 15 cts. per doz., 50 for 50 cts., 90 cts. per 100, postpaid.

GRAND NEW FREESIA, PURIFY. This variety is a type of pure white Freesia that surpasses in size, floriferousness and purity of color. We offer one size only—**First-Size Bulbs,** at 8 cts. each, 5 for 35 cts., 75 cts. per doz., postpaid.

ANOMATHECA CRUENTA (Scarlet Freesia). Similar in bulb, foliage and habit to the Freesia, but the flowers are brightest scarlet; the lower petals deeply marked. As it grows exactly like a freesia, it can be planted with them. Ours is the true stock, which is very hard to obtain. 5 cts. each, 3 for 10 cts., 25 cts. per doz.

Dingee Marvelous Lilies of All Kinds

Plant the bulbs about 6 to 8 inches deep as early in the fall as possible. We offer none but the best varieties and only large, sound, solid, healthy bulbs, which may be depended upon to grow and bloom.

Batemanii. Grows 3 to 4 feet high; clear apricot-colored flowers. 25 cts. each, \$2.50 per doz., \$18 per 100.

Brownii. Immense, trumpet-shaped flowers, chocolate purplish outside, white inside. 40 cts. each, \$4.50 per doz., \$35 per 100.

Giganteum. Grows 6 to 10 feet high, bearing twelve to twenty flowers; creamy white, with a purple throat. 25 cts. each, \$2.50 per doz., \$18 per 100.

Humboldtii. Color golden yellow, spotted with purple. 30 cts. each, \$3 per doz., \$22 per 100.

Washingtonianum. Delicate, with blossoms freely spotted with black. 30 cts. each, \$3 per doz., \$22 per 100.

LILIUM AURATUM. Magnificent pure white flowers, often measuring a foot across, exquisitely spotted with rose, and rayed and banded with golden yellow in the most beautiful manner. Fine, large, extra-selected blooming bulbs, 25 cts. each, \$2.50 per doz., \$18 per 100. Enormous bulbs, 35 cts. each, \$3.50 per doz., \$24 per 100.

Elegans, Mixed Varieties. The richest hues of yellow, crimson, red and dark red. 25 cts. each, \$2.50 per doz., \$18 per 100.

Philippinensis. From the Philippines, and one of the finest Lilies now known. The flowers are trumpet-shaped, snow-white in color, deliciously fragrant. Perfectly hardy. 25 cts. each, \$2.50 per doz., \$18 per 100.

Pardalinum (Leopard Lily). Large clusters of bright orange-red Lilies, with lighter orange center. 20 cts. each, \$2 per doz., \$12 per 100.

LILIUM SPECIOSUM, or LANCIFOLIUM. Album. Pure white; very fragrant. 20 cts. each, \$2 per doz., \$12 per 100.

Melpomene. Beautiful white, spotted, clouded and bearded with pinkish crimson. 20 cts. each, \$2 per doz., \$12 per 100.

Rubrum. Bright crimson and white flowers in clusters. 20 cts. each, \$2 per doz., \$12 per 100.

Double Tiger Lily. Very double; color fiery red, spotted with black. 20 cts. each, \$2 per doz., \$12 per 100.

Single Tiger Lily. Orange, with intense dark spots. 20 cts. each, \$2 per doz., \$12 per 100.

Croceum. Old orange Lily; orange and black. 30 cts. each, \$3 per doz., \$22 per 100.

Krameri. Entirely distinct. Flowers beautiful soft rose-color. 25 cts. each, \$2.50 per doz., \$18 per 100.



LILIUM AURATUM

Crinum ornatum

This royal member of the Amaryllis family grows freely for the most inexperienced in pots or boxes or in the open ground, producing numerous spikes of large, fragrant lily-like flowers, white, with a deep pink stripe in the center of each petal.

Grows from 1½ to 5 feet high, bearing at frequent intervals a crown of twelve to twenty large blooms. The flowers are heavy in texture and last for weeks; they are deliciously fragrant. Plant in fairly rich, loamy soil in a pot or box, that it may be moved indoors at any time. Give plenty of sunshine, and water frequently. The bulbs we send out are sure to bloom; they are large, sound and solid, and there is no risk, because the bloom is in the bulb. Prices, first size, about 9 to 11 inches, circumference, 30 cts. each, 4 for \$1; second size, about 11 to 13 inches circumference, 40 cts. each, 5 for \$2; enormous bulbs, about 14 to 16 inches circumference, 60 cts. each, 2 for \$1. These prices include postage, which we pay.

Add 10% to the total amount of your order and we will deliver goods free to any express office in the United States or Canada. This is the most liberal proposition we have ever made, and you know just exactly what the plants will cost you delivered to your home.

Japan Easter Lily

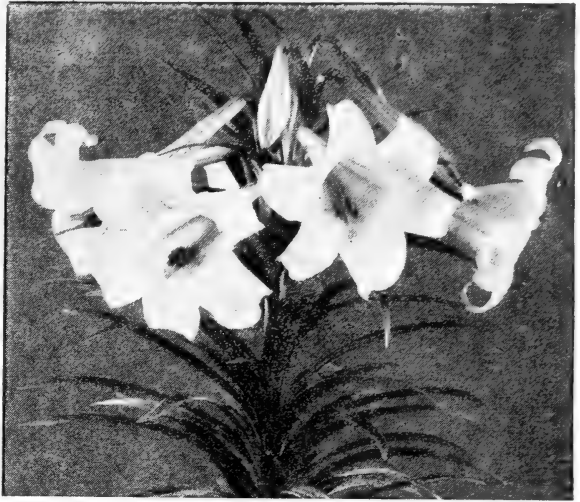
(*Lilium longiflorum*)

Well-known, beautiful, snow-white, fragrant, hardy, garden Lily. Flowers trumpet-shaped, 6 to 8 inches long. Splendid for forcing for winter flowers. Large bulbs, 20 cts. each, 3 for 50 cts.; extra-large bulbs, 25 cts. each, 5 for \$1; enormous-size bulbs, 30 cts. each, 4 for \$1, postpaid.

St. Joseph's Lily

(*Lilium candidum*)

Especially grown and prepared for winter-blooming in pots. The bulbs are of enormous size and will throw up strong stalks crowned with a profusion of pure waxy white Lilies. Large bulbs, 20 cts. each, 3 for 50 cts., 7 for \$1, postpaid.



BERMUDA EASTER LILY

Erythronium

Grandiflorum (The Beautiful Wood-Lily).

Planted in open ground, they are entirely hardy and will found a colony, taking care of themselves. For winter blooming, they are of the easiest culture and sure to bloom freely in midwinter. Color a fine shade of yellow. The bulbs should be potted or planted soon after being received, as they suffer if allowed to remain dry. 2 for 15 cts., 75 cts. per doz., postpaid.

Revolutum. Large, and in color very striking, white, tinged with green. The leaves are narrow, beautifully mottled with brown. Fine bulbs, 12 cts. each, 5 for 50 cts., postpaid.

Camassia

Cusickii. Produces in great racemes, 2 to 3 feet in height, hundreds of pale sky-blue flowers. Equally satisfactory for open-ground cultivation or for planting indoors. 25 cts. each, 5 for \$1, postpaid.

Esculenta. Exceedingly pretty star-like flowers of about 2 inches across. Give the bulbs the same treatment as hyacinths. 3 for 10 cts., 35 cts. per doz., \$2.50 per 100, postpaid.

Mexican Lily

(*Sprekelia formosissima*)

One of the most beautiful of flowers for home decoration, and grows to perfection in a bowl filled with sand or pebbles and water. Not less than three bulbs should be planted to give the best effect. The flowers are gorgeous—magnificent, velvety, deep, scarlet. By planting at different times, a succession of bloom may be had. Large bulbs, 15 cts. each, 4 for 50 cts., 9 for \$1, postpaid.

See the back of the envelope in which this book came to you for special offers on these bulbs.

DINGEE BERMUDA EASTER LILIES

The Easter Lily is a vigorous grower with ordinary attention. Flowers pure white and delightfully perfumed. It is unexcelled as a window plant.

Fill a 6-inch pot closely with soil to the top, plant the bulb, water moderately and put away in a warm place until the roots begin to form. Then transfer to the sitting-room to the warmth and light. Bermuda Easter Lilies may be planted outside. They are hardy in the southern states and will survive northern winters if protected with leaves or litter. They flower in three months from planting.

The bulbs we offer are the true Bermuda Easter Lilies (*Lilium Harrisii*), secured direct from our Bermuda grower, and are the best to be had. We offer only large and healthy bulbs, which will make a vigorous growth and give an abundance of extra-large, magnificent flowers, five to eight on each plant.

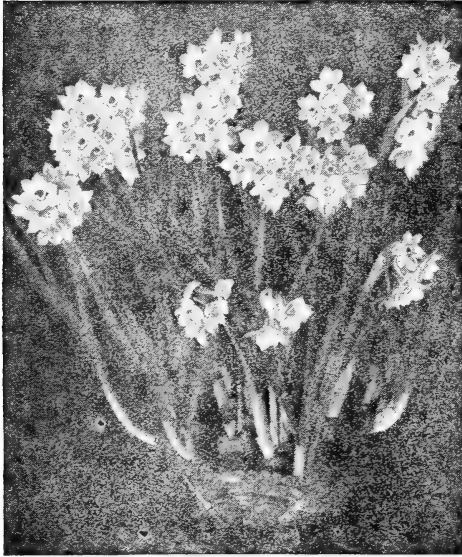
Large Bulbs, Popular Size, producing 3 to 6 flowers, 20 cts. each, 3 for 50 cts., \$2 per doz., postpaid.

Extra-Large Bulbs, producing 8 to 12 flowers, 25 cts. each, 5 for \$1 postpaid.

Bulbs of Enormous Size, producing 12 to 15 flowers, 35 cts. each, 2 for 60 cts., postpaid.

The Cuban Lily (*Scilla Clusii*)

A magnificent winter-blooming bulb. The flowers are star-shaped and are borne in one enormous cluster. Dark blue with golden yellow anthers. Delicious fragrance. After flower fades it is a splendid decorative plant. 20 cts. each, 3 for 50 cts., 7 for \$1, postpaid.



CHINESE SACRED LILY

Chinese Sacred Lily

During the last few years this has become the most popular of the winter-flowering bulbs; ease of culture, certainty of bloom and rare beauty combine to make this a most interesting and satisfactory winter flower. It will thrive in soil, but the favorite method of culture is growing in water and gravel. In four or five weeks it will produce masses of deliciously scented flowers which will prove a delight to all lovers of flowers.

There are many spurious bulbs on the market, but those offered by us are genuine—the largest and finest procurable, imported direct.

Price, extra-large, solid bulbs for immediate bloom, 15 cts. each, 4 for 50 cts., \$1.50 per doz., postpaid. Mammoth bulbs, 25 cts. each, 5 for \$1, postpaid.

Giant Golden Sacred Lily

Large, sweet, golden yellow flowers; hardy, thrive in any window or garden. Blooms quickly and freely in soil, sand or pebbles and water. Beautiful and very fragrant. Large bulbs, 5 cts. each, 50 cts. per doz.

Special Offer. 3 Chinese Sacred Lilies and 3 Giant Golden Sacred Lilies for 50 cts.; 6 of each, 12 in all, for \$1, postpaid. They make a splendid contrast.

Dingee Early-Blooming Crocus

Crocus should be given a rich, dry soil and sunny location. The bulbs should be planted about 3 inches deep; set singly or massed in beds. They are entirely hardy and will bloom and increase each year. A favorite plan is to raise the sod of the lawn with a trowel to the depth of 3 inches, place the bulb beneath the sod and press back into place. Crocus are also great favorites for house culture, giving very satisfactory results. The bulbs we offer are of improved strains of the leading and finest varieties, and are superior as regards both form and color.

FINEST NAMED VARIETIES

15 cts. per doz., \$1 per 100, \$8 per 1,000, postpaid

- Albion. Fine striped; large and good.
- Caroline Chisholm. The best white.
- David Rizzio. Magnificent dark purple.
- Lord Byron. Superb blue.
- Sir Walter Scott. Very distinct; striped.
- Queen Victoria. Splendid pure white.
- Cloth of Gold. Golden orange, suffused with brown.
- Cloth of Silver. Same as the preceding, except the color is beautifully silver-shaded.
- Saffron. Violet-colored, variously striped and fragrant.
- Scotch. Beautifully striped in various colors on white ground.
- Versicolor. Shades of purple to white, veined with purple.

Monster Yellow Crocus

Bulbs very large and flower early; profusion of bloom is remarkable, fifteen to twenty-five large flowers coming from one bulb. 20 cts. per doz., \$1.25 per 100, \$11 per 1,000.

Finest Mixed

10 cts. per doz., 50 cts. per 100, \$4.50 per 1,000, prepaid

- | | |
|---|-------------------------------|
| Mixed White. Different vars. | Mixed Striped. Different var. |
| Mixed Purple and Blue. Different varieties. | Mixed Yellow. Different var. |
| | All Colors, Mixed. Different. |



CROCUS

ALL BULBS ARE DELIVERED POSTPAID UPON RECEIPT OF PRICE

Miscellaneous Bulbs

ALLIUM

Neapolitanum. Plant in the flower-beds for early spring flowers, and in pots for winter blooming. The large clusters of delicate white flowers remain perfect for weeks. Plant three to five bulbs in a 5-inch pot. 2 for 5 cts., 20 cts. per doz., \$1 per 100, postpaid.

Pendulinum. A bulb will produce as many as nine spikes, with five to ten white, bell-shaped pendulous flowers, each petal having a well-defined green stripe down the center. 2 for 10 cts., 50 cts. per doz., postpaid.

Moly. In fine contrast to the above-named sorts; color clear golden yellow. 2 for 10 cts., 50 cts. per doz., postpaid.

BABIANAS

These vary from the brightest blue to the richest carmine, and many of them are very fragrant. Any one can succeed with them, and for pot-culture we know of nothing that will attract greater attention.

Finest Mixed Varieties. 2 for 15 cts., 75 cts. per doz., \$5 per 100.

BRODIAEAS

Extremely showy, half-hardy bulbs, bearing beautiful tubular flowers in clusters on stems 1 to 2 feet high.

Finest Mixed Varieties. Comprising an assortment of all colors, purple, white, blue and red, etc. 6 for 25 cts., 40 cts. per doz., \$3 per 100.

FRITILLARIAS

The habit of growth is lily-like, and, as a pot-plant, the effect is beautiful in the extreme; in fact, it is as beautiful as any lily, while the profusion of flowers is remarkable. Requires about the same treatment as Bermuda Easter Lily, and should not be given too much water. Our bulbs are especially grown for us and are large, plump and sound. They are guaranteed to bloom.

Recurva. Produces numerous large, pendent, bell-shaped flowers, on stems 6 to 10 inches high. Frequently as many as a dozen brilliant scarlet flowers, spotted with orange in the throat, are produced at one time. 10 cts. each, 3 for 25 cts., 7 for 50 cts., 75 cts. per doz., \$5 per 100, postpaid.

Mixed Varieties. This splendid mixture includes a marvelous number of colors—yellow, white, pink, purple, striped, splashed and checkered in the most curious ways. Splendid for pot-culture as well as for the garden border. Entirely hardy. 6 for 20 cts., 35 cts. per doz., \$2.50 per 100, postpaid.

SNOWDROPS (*Galanthus*)

Snowdrops are the first blossoms of spring, coming forth annually with renewed strength and beauty almost before the snow disappears.

Nivalis. Pure white and of graceful appearance. 3 for 5 cts., 15 cts. per doz., \$1 per 100.

Elwesi (Elwes' Giant Snowdrop). Pure white with bright green tube. 2 for 5 cts., 20 cts. per doz., \$1.25 per 100, postpaid.

LILY-OF-THE-VALLEY

One of the most universally known and admired plants. The graceful spikes, with the dainty, pure white bells, are a delight to the eye, and their delicate fragrance is exquisite. Plants succeed almost anywhere, but prefer a partly shaded situation and rich soil. For house culture, plant rather thickly in



LILY-OF-THE-VALLEY

pots or boxes, scattering some moss or other light material over the soil, which must not cover the crown; water well and set away in a dark place. When brought to heat and light after a few weeks, the leaves and flowers will soon appear. Our Lily-of-the-Valley Pips are imported by us direct from Berlin and are far superior to the commercial grades of Dutch or Hamburg Pips usually sold in this country. Ready for delivery in November. Strong-flowering crowns, 3 for 15 cts., 55 cts. per doz., \$3.50 per 100, postpaid.

We have our bulbs all grown by specialists in the different parts of the world best suited to their culture.

GLORY-OF-THE-SNOW

(Chionodoxa)

Luciliae. A lovely flower, producing spikes of beautiful azure-blue, with white center. 2 for 5c., 20c. per doz., \$1.25 per 100, postpaid.

Gigantea. Large flowers. Beautiful light blue with white center. 2 for 5 cts., 25 cts. per doz., \$1.50 per 100, postpaid.

SCILLA SIBIRICA (Præcox Squill)

Equally desirable for planting in the open ground for earliest spring flowers, for in pots for winter blooming. The rich blue flowers are borne in greatest profusion; grown in pots, they will be in bloom from Christmas until April; in the open ground the flowers come almost before the snow is gone. 3 for 5 cts., 15 cts. per doz., 75 cts. per 100, postpaid.

ORNITHOGALUM

Umbellatum (Star of Bethlehem). This lovely flowering bulb is valuable both for pot culture in the house during winter and in the open ground for early spring blooming. Once planted, it will become a permanent and beautiful addition to the garden. In pots, culture is of the simplest. The star-like, white blossoms are borne in great umbels. Fine bulbs, 3 for 10 cts., 35 cts. per doz., \$2.50 per 100. postpaid.

Arabicum. A magnificent variety of winter-flowering bulbs from Arabia. The waxy white flowers have a jet-black center and are produced in long spikes which stand from 18 to 20 inches high. 2 for 15 cts., 60 cts. per doz., postpaid.



AMARYLLIS REGINA

CINNAMON VINE

A very well-known and most valuable climber. Quite hardy and excellently adapted for outdoor cultivation. It produces delicate white flowers in profusion during the winter if grown in a light and sunny window in the house. Roots, 5 cts. each, 7 for 25 cts.

RANUNCULUS

These dwarf-growing bulbous plants are perfectly hardy south of Washington, but should be protected during the winters farther north.

Guernsey Turban, Finest Mixed. Each bulb produces a great number of bright and richly colored double flowers. 4 for 10 cts., 25 cts. per doz., \$1.50 per 100.

French Turban, Finest Mixed. Of vigorous growth, bearing an abundance of gorgeous flowers of largest size. 4 for 10 cts., 25 cts. per doz., \$1.50 per 100.

AMARYLLIS

Regina. Bears magnificent lily-like flowers of large size, in umbels or clusters. These superb flowers are of soft light scarlet color, with white center or throat. Unexcelled for winter-blooming. 20 cts. each, 3 for 50 cts., \$1.75 per doz., postpaid.

Johnsonii (The Royal Lily). Famous as a winter-blooming bulb, because of its easy cultivation and surety to bloom freely and profusely. They bear from two to four flower-spikes at one time, each with four to eight large, velvety crimson flowers, the petals striped through the center with a broad band of pure white. Strong blooming bulbs, 30 cts. each, 4 for \$1; extra large bulbs, 40 cts. each, 3 for \$1, postpaid.

TRILLIUM SESSILE

A hardy perennial of the lily family. It succeeds particularly well in partially shaded situations, where the blossoms increase in beauty year after year. 10 cts. each, 3 for 25 cts., 7 for 50 cts., \$6.50 per 100.

IXIAS

Ixias are admirably adapted for pot culture in the house.

Named varieties, 5 cts. each, 6 for 25 cts.

Craterioides. Bright scarlet; free and early.
Golden Drop. Beautiful rich yellow; eye deep maroon.

Maculosa. Beautiful pink; very vigorous and free.

Snowflake. A true pure white variety; very rare.

Fine Mixed. Including varieties above and others; a splendid assortment. 4 for 10c., 25 cts. per doz.

CALLA LILIES

Grand winter-blooming pot-plant. Easy to grow, free bloomers and superb flowers. Good at all seasons of the year.

20 cts. each, 3 for 50 cts., 7 for \$1, except where noted

Little Gem. Rarely grows over 12 inches high. Snowy white flowers in great profusion. We offer strong pot-plants.

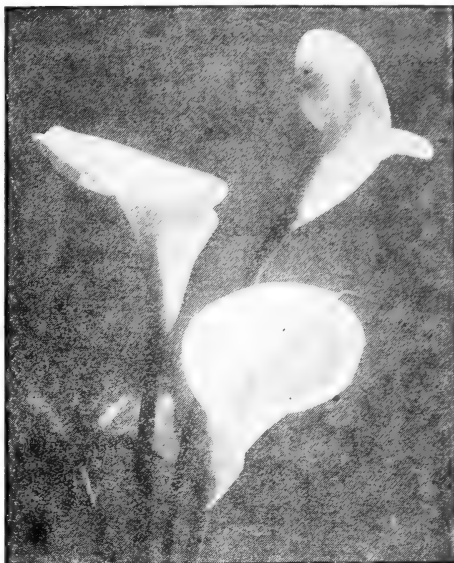
Spotted. Foliage exquisitely dotted with white; very ornamental; white flowers with black throat. We offer strong pot-plants.

Lily of the Nile. The old favorite white Calla. Grand white flowers—chaste and beautiful. Strong plants.

Black (*Arum sanctum*). A native of the holy Land. Flowers very large, often measuring a foot in length. Inside of purplish black color; outside green.

NEW YELLOW. Large, rich flowers, similar to the old white Calla in form; very fragrant. Color golden yellow. 25 cts. each, 5 for \$1, postpaid.

Special Offer. 1 each of the above 5 Calla Lilies, postpaid, for 80 cts.



CALLA LILIES

GIANT PERSIAN CYCLAMEN

The most beautiful and decorative of all pot plants. The foliage is dark olive-green, beautifully variegated with silver and rose. The fairy-like flowers are carried on long stems and produced for several successive months.

We offer the largest size imported bulbs, grown especially for us in Europe, in three separate colors, viz., Rose, White and Crimson, at 20 cts. each, 3 for 50 cts., 6 for \$1, \$2 per doz., or one bulb each of the three colors for 50 cts., postpaid.

Mixed Colors, including a fine assortment of all colors, 20 cts. each, 3 for 50 cts., 7 for \$1, \$1.75 per doz., postpaid.

LACHENALIAS

The foliage of each is marked black and reddish brown.

Luteola. Yellow, beautifully tinged green. 15 cts.

Pendula. Bright scarlet, peculiarly shaded. 15 cts.

Tricolor. Greenish yellow, tipped red. 10c.

TRITELEIA

Uniflora. The pure white, star-shaped blossoms are beautifully lined with azure-blue. Excellent for pots or baskets. Fine bulbs, 2 for 5 cts., 20 cts. per doz., \$1 per 100, postpaid.

Violacea. The blossoms are of a beautiful violet-blue color. 3 for 10 cts., 25 cts. per doz.

OXALIS

These lovely flowers are now among the most popular for hanging baskets, pots and positions calling for graceful and effective flowering plants.

GRAND DUCHESS, New Winter-blooming Oxalis. The finest winter-blooming variety yet introduced, bearing continuously beautifully formed flowers of splendid size and color. **Rose-Pink, White and Lavender,** 5 cts. each, 50 cts. per doz., \$3.50 per 100, postpaid.

Bermuda Buttercup. New. Large-flowering, yellow. 5 cts. each, 50 cts. per doz., \$3.50 per 100.

Bowei. Large, deep pink flowers. 3 for 10 cts., 35 cts. per doz., \$2.50 per 100.

Cernua lutea major. Bright yellow flowers. 5 cts. each, 50 cts. per doz., \$3.50 per 100.

Floribunda rubra. The brightest, showiest red. 5c. each, 50c. per doz., \$3.50 per 100.

Versicolor. Rose and white. 5 cts. each, 50 cts. per doz., \$3.50 per 100.

Special Offer. Set of 6 Named Varieties for 25 cts.

Mixed. A splendid mixture of the best varieties, including the above. 25 cts. per doz., \$2 per 100.

PRETTY FACE (*Calliprora lutea*)

Plants grow about 9 inches high and produce an abundance of fine golden to purplish brown flowers, which are banded with green. Of easiest culture. 6 cts. each, 3 for 15 cts., 50 cts. per doz., \$4 per 100, postpaid.

THE BLUE MILLA

Rich blue, star-shaped flowers in profusion at the end of long, graceful stems. 5 cts. each, 6 for 25 cts., 45 cts. per doz., postpaid.

FANCY-LEAVED CALADIUMS

The splendid large leaves are beautifully spotted, margined and variegated with every imaginable color except blue. They are best suited for pot culture in the house, conservatory or shaded situation. We have one of the finest and largest stocks in the country, which includes all the best kinds. Ready for delivery in January. Extra-large bulbs, 25 cts. each, 3 for 60 cts., 5 for \$1, postpaid.

CALIFORNIA HONEYSUCKLE

The flowers are a beautiful rose-color, a single bulb producing 15 to 30 clusters. 15 cts. each, 2 for 25 cts.; extra-large bulbs, 20 cts. each, 3 for 50 cts., postpaid.

FLORAL FIRECRACKER

The color is deep rich crimson, tipped with greenish white. 5 cts. each, 6 for 25 cts., 45 cts. per doz., postpaid.

IRIS

Anglica. Finest mixed seedlings; splendid for bedding or borders. 4 for 10 cts., 20 cts. per doz.

Spanish, Gold Cup. Bronze and yellow blended. 5 cts. each, 7 for 25 cts.

Spanish, Finest Mixed. Intense and dazzling colors. 3 for 5c., 15c. per doz., 85c. per 100.

Persian (Violet-scented). Different-colored standards; bright yellow keel, with waved edges. Fine for pots. 5 cts. each, 6 for 25 cts., 50 cts. per doz.

Peacock. Pure white, with bright blue spot on each petal. 4 cts. each, 7 for 25 cts., 30 cts. per doz.



ANEMONE

SPARAXIS

This exceedingly handsome class of flowers is well adapted for winter-blooming in the house.

Named varieties, 5 cts. each, 6 for 25 cts.

Angelique. Pure white, yellow eye.

Bicolor lutea. Purple and maroon.

Grandiflora. Crimson, yellow center.

Tricolor. Yellow center, red markings.

Leopard. Pale yellow, brown spot.

Queen Victoria. Blue with white and purple.

Finest Mixed. A mixture of the above and other varieties. 5 for 10 cts., 20 cts. per doz., postpaid.

CALOCHORTUS, or STAR TULIPS

Amoenus. Satiny rose-pink. 8 cts. each, 2 for 15 cts., 5 for 35 cts.

Splendens. Light lavender, shading to lilac. 7 cts. each, 4 for 25 cts., 60 cts. per doz.

Venustus roseus. Rose-colored at top of petals, carmine on back. 6 cts. each, 3 for 15 cts.

Albus (Bell-shaped). Flowers an inch in diameter; perfect globes of pearly white. 6 cts. each, 3 for 15 cts.

Venustus oculatus. White ground inside, with striking eye-like spots, richly colored reddish brown outside. 6 cts. each, 3 for 15 cts.

Mixed, All Varieties. 3 for 10 cts., 30 cts. per doz., \$1.25 for 50, postpaid.

TRITONIA

The colors are very soft and pleasing, ranging from white through salmon, orange and scarlet. A mixture of sixteen best sorts. 3 for 10 cts., 25 cts. per doz.

ANEMONES

Lovely hardy plants, producing brilliantly colored flowers. If planted in the fall, they will bloom in early spring, and if planted in the spring they will bloom during the summer and fall months. Also excellent for pot culture.

Chrysanthemum-flowered. The flowers are large and somewhat resemble a chrysanthemum in shape. Our mixture is made up of the finest varieties. 10 cts. each, 3 for 25 cts., 75 cts. per doz.

French Giant Poppy-flowered. Unsurpassed for pot-culture. The flowers are large, cup-shaped and gorgeously colored. 3 cts. each, 6 for 15 cts., 25 cts. per doz.

Fulgens (The Scarlet Wind Flower). One of the first to appear in the spring. Brilliant vermilion. Excellent for bouquets or vases. 5 cts. each, 6 for 25 cts., 40 cts. per doz.

Finest Holland Double Mixed. 2 for 5 cts., 20 cts. per doz.

The Best Dingee Roses for Fall Planting

BOTH FOR INDOOR AND OUTDOOR CULTURE

Last autumn, for the first time, we advertised a new standard of Roses under the announcement, "A New Way," a part of which we quote:

"We have especially prepared a type of plant not hitherto offered—larger and higher grade than ordinarily, a plant grown in pots 3 and 3½ inches in diameter—a plant that is strongly rooted, in perfect health—in short, the best Rose that can be grown—a typical Dingee Rose—well-bred and high class."

The astonishing results produced by these plants was a wonderful satisfaction to all who planted them, and it has spurred us on to even a greater advance in the propagation of Roses for fall planting either indoors or outdoors. While this new class of plants is considerably higher in price than the ordinary mailing-size plant, Rose-growers were accustomed to buy, they are so infinitely superior as effectually to dispose of any comparison either in quality or price. They are the cheapest, not in price, but compared by results—and results, after all, are what we are willing gladly to pay for.

A structure built on a cheap foundation is short-lived—a Rose business which is built on cheap prices, which means cheap goods, has but a short race to run. The day of the weak "little slips" sold as "Rose plants" has gone, and a new era has dawned in the Rose business. Dealers who are not equipped for the changing of the ways, and who fear the leap from this class of stock into high-class goods, cannot hope to figure as a factor in the Rose-growing world.

We are the leading Rose-growers of America. Roses on their own roots is our specialty. We carry in stock nearly a thousand varieties. There has been a large, unsatisfied demand from planters, both North and South, for the best varieties of Roses suitable for autumn planting outdoors. We propose to satisfy that demand. The important point is plant early. Protect with evergreen boughs, leaves and litter and then these varieties will invariably go through the winter safely. All Roses offered in this book are pot-grown and especially suited for winter blooming indoors, and have been specially selected with that purpose in view. See the pot-plant of Killarney on the back cover.

Their cultivation is extremely simple. Indoors, plant in pots or boxes, water freely, shade them from the direct rays of the sun with newspapers for a few days, then give them as much light and sunshine as possible. Outdoors, give them good, fertile soil, shade from the sun for a few days, and, after the first frost, protect with dead leaves, straw or coarse manure.

The first, or special size, are extra-large plants, grown in 3- and 3½-inch pots, and at prices named will be sent by mail postpaid, or by express, leaving a portion of the soil around the roots, *prepaid*, if 10 per cent is added to the total amount of the order. The two-year-old plants are from 4½- and 5-inch pots. Two-year-old plants by express. Dingee Roses have made the town of West Grove famous—none better and few as good. We invite a test of the truth of this claim.

The Seven Greatest Hybrid Tea Roses Known

In all our 60 years of business we have never been able to offer our friends such a combination of rare excellence in Roses as will be found in the seven varieties immediately following. As the people of old believed there was great force in the mystical seven, and ancient history is full of allusions to the wonderful power of things in groups of seven, so we believe this group of seven Roses has the power to carry unalloyed joy to the heart of every Rose-lover.

That this may be tested, we make the following

Special Offer. 1 plant each of Charles Dingee, Killarney, My Maryland, Richmond, Mrs. Charles Dingee, Rhea Reid and Helen Mills, immense plants, from 3½- and 4-inch pots, \$2.25; two-year-old plants, \$3.25; three- to four-year-old plants, exclusive of Mrs. Charles Dingee, making 6 in all \$5.50. Add 10 per cent to the total amount of your order and we will prepay express charges to any point in the United States or Canada.

My Maryland

This splendid American Rose is destined to become one of the most popular varieties in cultivation. The flowers are large, full and double, and perfectly formed. The color is a most distinct and beautiful pink. One of the really great Roses. Strong, one-year-old plants, 35 cts. each, 3 for \$1, \$3.50 per doz.; two-year-old plants, 50 cts. each, \$5 per doz.; three-year-old plants, \$1 each.



MY MARYLAND ROSE

The remaining six of these seven great Roses will be found on the next page

Charles Dingee

See photographic reproduction in colors, second cover

Charles Dingee Rose blooms continuously, producing immense, deep, double, grandly formed flowers on long, stiff stems, the beauty of which is nothing short of superb. The color is a delicate blending of rose tints in the center, which gradually shade off into pale blush and creamy white. Perfectly hardy in all localities, it is sure to become the most popular Rose of our day, because it is the most beautiful, and for winter culture indoors, in pots or boxes, it cannot be surpassed. It is never out of bloom. **Strong, special-size plants, 35 cts. each, 3 for \$1, \$3.50 per doz.; two-year-old plants, 50 cts. each, \$5 per doz., postpaid. Large, three-year-old plants, on own roots, \$1 each, at purchaser's expense.**

The Famous Irish Rose, Killarney

See the pot-plant in color on fourth cover page

This queen of the Irish Roses excels any other of its class. The bush is strong and upright, with beautiful deep bronzy green foliage, and the Rose is entirely free-blooming, bearing immense long, pointed buds and massive flowers on big, heavy shoots. The color is deep brilliant and sparkling shell-pink, of the most exquisite shade Killarney is unusually hardy and without protection has stood severe winters as far north as Boston. **Strong, one-year-old plants, 35 cts. each, 3 for \$1, \$3.50 per doz., postpaid. Extra-strong, two-year-old plants, on own roots, 50 cts. each, \$5 per doz.; extra-heavy three- and four-year-old plants, \$1 each.**

Richmond

See the flower in full color on the front cover

Wonderfully free-blooming, its immense, fragrant, scarlet-crimson flowers are borne on long, stiff stems, making it a rival of American Beauty, and even more dazzling in appearance. Perfectly hardy, and keeps up a continuous succession of bloom all summer. **Large, one-year-old plants, 35 cts. each, 3 for \$1, \$3.50 per doz., postpaid; two-year-old plants, 50 cts. each, \$5 per doz.; three-year-old plants, \$1 each.**

See page 32 for special offer on Mrs. Charles Dingee, Helen Mills and Rhea Reid

Mrs. Charles Dingee

Introduced and for sale only by The Dingee & Conard Co.

See Rose in color on third cover page

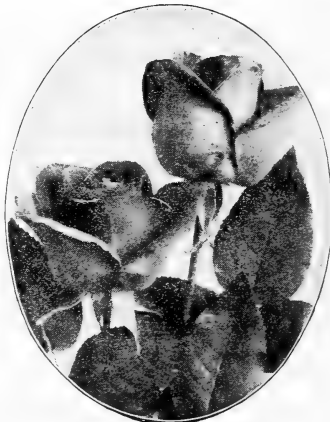
This variety has every quality that belongs to an absolutely first-class Rose, possessing a vigorous constitution that is well-nigh perfect, growing in almost any ordinary soil or situation, forms a beautiful compact bush, has splendid foliage, bearing its immense, full, deep, double flowers on stiff stems with the utmost profusion. The color is **pure golden yellow**, and the form of the flower is magnificent. The most glorious yellow Rose in existence. **Strong plants, from pots 3 and 3½ inches in diameter, 35 cts. each, 3 for \$1, \$3.50 per doz.; extra-heavy, two-year-old plants, 50 cts. each, \$5 per doz. All on own roots.**

Helen Mills

Introduced and for sale only by The Dingee & Conard Co.

See Rose in color on third cover

The flowers are glorious in form, perfectly molded, with large, heavy petals of splendid substance, forming a long, pointed bud, while the open flower is large, full, deep and well filled. The fragrance is delicious beyond description, while the color is an exquisite shade of pink, daintily and peculiarly clouded with lighter shades. It is wonderfully liberal in the number of flowers it bears all summer. **Strong, young plants, from pots 3 and 3½ inches in diameter, 35 cts. each, 3 for \$1, \$3.50 per doz., postpaid; extra-heavy, two-year-old plants, 50 cts. each, \$5 per doz.; large, three-year-old specimen plants, \$1 each. All on own roots.**



RHEA REID ROSES

Rhea Reid

See Rose in color on third cover page

For an all-round garden Rose for outdoor culture this remarkable new Bush Rose has no equal. The color is vivid scarlet-crimson, and the flowers are marvels of beauty—large, bold, and of splendid substance, borne in the greatest profusion during the entire season. **First size, from pots 3 to 3½ inches in diam., 35 cts. each, 3 for \$1, \$3.50 per doz.; two-year-old plants, 50 cts. each, \$5 per doz.; three-year-old plants, \$1 each.**

So confident are we of the quality of the Roses we send out that we guarantee satisfaction in every respect and safe arrival of goods or we will cheerfully refund the money paid for them. You can readily see that you run absolutely no risk in dealing with us. There is no better advertisement than a satisfied customer—and this is the kind we have—thousands of them, to whom the name Dingee is a synonym for the best in Roses.

HYBRID TEA ROSES

This class of Roses has the meritorious advantage of blooming continuously the first year like the Tea Roses, while their large, finely formed flowers and delicious fragrance, diversity of color and constitution to stand severe winters with ordinary protection, make them best for general planting.

American Beauty. One of the grandest and most beautiful Roses known. For immensity in size, rich color, exquisite form and delicious fragrance it stands without an equal. Color is a rich rosy crimson, shaded and veined in charming fashion; fragrance is wonderfully sweet. 35 cts. each

Pink American Beauty (Queen of Edgely). Identical in every way with American Beauty, of which it is an offspring, except in color, which is soft, rich pink, fading still lighter as the flower grows older. Ours is the original stock, not to be had elsewhere. 50 cts. each.

White American Beauty. See Frau Karl Druschki, page 24.

Alice Roosevelt. Splendid for open-ground culture; a very strong grower, bearing masses of lovely, deep, perfectly double, deep rosy crimson flowers.

Antoine Rivoire. Rosy flesh, with yellow ground, shaded with border of carmine. Large and fragrant.

Antoine Verdier. Beautifully shaded bright glowing pink.

Augustine Guinnoisseau. See White La France, page 19.

Aurora. One of the best varieties offered in this book. Beautiful, large, full flowers of bright pink, shading to a paler pink.

Bessie Brown. Hardy and vigorous, producing flowers profusely in the open ground all through the summer. The color is almost pure white, though sometimes flushed with pink.

Betty. Ruddy gold (coppery rose, overspread with golden yellow). It is never out of bloom from early June until cut off by frost.

Cardinal. Deep, rich crimson. Fine for forcing or open ground.

Crimson Crown. Glowing dark crimson with zones of lemon-white at the base of each petal; marveously free-blooming.

Dean Hole. Silvery carmine, shaded salmon; entirely distinct and by far the finest in its way of color.

Duchess of Albany. See Red La France, page 24.

E. F. Cook. Pale primrose-yellow, suffused with pink, as the flower expands.

Etoile de France. (Star of France). The best and sweetest hardy Hybrid Tea Rose of its color. Of truly glorious form and delightful fragrance, while the color is exquisite—a clear red or velvety crimson.

Florence E. Coulthwaite. Deep cream, stippled with bright rose on the inside of the petals; very free-flowering.

Franz Deegan. A great hardy yellow Rose. Splendid flowers of large size, deep and double, with fine petals ranging in color from pronounced yellow to a delicate orange.

General McArthur. Large, double flowers, well formed and of the most vivid crimson-scarlet; very fragrant.

Helena Cambier. The colors range from salmon-rose to coppery rose; very often a handsome saffron hue.



AMERICAN BEAUTY ROSE

Jean Note. Large, full and double, chrome-yellow in the center, deepening to reddish orange.

Gruss an Teplitz. Dazzling crimson. See Virginia R. Cox, page 18.

J. B. Clarke. An intense deep scarlet Rose, shaded blackish crimson, color like the sheen of a plum, often 7 inches in diameter and 5 inches deep

Kaiserin Augusta Victoria. The greatest hardy white Hybrid Tea Rose in existence. The large, full, double flowers are glorious in their perfection. Always in bloom and unexcelled for cutting.

La Galissiere. Of large size, very full and double, and of exquisite form; bright, deep shining pink color; the buds are large, long and full. Blooms continuously.

Laurent Carle. Large, perfectly formed, beautiful buds; velvety carmine.

Prices of all Roses on this page, except where noted, 25 cts. each, any 5 for \$1. Two-year-old plants, 50 cts. each, by express; three-year-old plants, 75 cts. each, by express

Add 10% to the total amount of your order and we will deliver the goods free to any express office in the United States or Canada. This is the most liberal proposition we have ever made.



ETOILE DE FRANCE ROSE

HYBRID TEA ROSES, continued

- Mad. Abel Chatenay.** The best of its color—rosy carmine, with darker shade. It does remarkably well in the open ground, has wonderfully beautiful flowers, which are full, deep and double. Very hardy.
- Madam Caroline Testout.** Flowers and buds large and of elegant form, of a bright satin rose-color, deepening at the center to a clear red.
- Mad. Eugene Marlitt.** Color rich red. It blooms all the time, and is exceedingly hardy.
- Mad. Jules Grolez (Red Kaiserin Augusta Victoria).** A distinct and charming shade of cherry-red; excellent for cutting.
- Mad. Pernet Ducher.** See Yellow La France.
- Mad. Segond Weber.** The long, pointed buds are pink or salmon-flesh, and when fully expanded, deepen until it rivals the American Beauty. Indispensable for growing indoors, for bedding or planting in the open ground.
- Mad. Schwaller.** Blooms in large clusters; large, globular flowers; fine salmon-rose; finely edged violet-carmine, with delightful fragrance.
- Magnafrano.** Extra-large flowers, full, deep and double, deliciously scented. The color is bright, deep shining rose.
- Max Hesdorffer.** A strong, sturdy bush, bearing magnificent rosy pink flowers in great quantities.
- Meteor.** Rich velvety crimson, very striking; both buds and flowers are large, elegantly formed; very double.
- Miss Kate Moulton.** Light pink; very beautiful; habit robust, with heavy foliage, making it a grand Rose for outdoor culture.
- Mrs. A. R. Waddell.** Rosy scarlet, opening rosy salmon, with reverse of petals rosy scarlet.
- Mrs. G. W. Kershaw.** Brilliant intense pink. Free-blooming; splendidly formed buds and flowers.
- Mrs. David Jardine.** Valuable for forcing under glass; also one of the very best garden bush varieties. The blooms are large, of perfect form, bright rosy pink, shading on the outer petals to salmon-pink.
- Mrs. Harvey Thomas.** Carmine, shaded with coppery red, base of petals canary-yellow.
- Mme. Constant Soupert.** Deep golden yellow, tinted and shaded rosy peach.
- Mme. Jenny Gillemot.** Deep saffron-yellow, opening canary, with dark golden shades.
- Mme. Melanie Soupert.** Golden yellow, suffused with faint shades of pink.
- Mme. Philippe Rivoire.** Rich apricot-yellow color, with light yellow center, shaded pale carmine.
- Mme. Simone Beaumez.** Flesh-white, with shining texture; the outer petals are beautifully reflexed.
- Olivia.** A distinct deep rose color, flowers of splendid substance, deep and double, with beautifully formed buds.
- Perle von Godesberg.** Rich canary-yellow, with light saffron shadings.
- Prince of Bulgaria.** Large, and quite full; outer petals superb rosy flesh, with the reflex petals of a slightly lighter tint.
- Queen Beatrice.** A strong and healthy grower and very free-flowering. Delicately fragrant and a splendid keeper, it is ideal for cut-flower purposes.
- Rosemary.** Large, shining silvery pink flowers with immense petals, on stiff, erect stems. It is absolutely double, and entirely distinct from any other variety.
- Souv. de Mme. Ernest Oudin.** Beautiful shade of silvery white, with the petals edged pale heliotrope and shaded light blue.
- Souvenir de Wootton.** Blooms large, full and regular, with leathery petals and exquisite fragrance. Bright magenta-red, passing at the base to violet-crimson, richly shaded.
- Souv. Pres. Carnot.** Large, full, double, well shaped, with heavy, thick, shell-like petals; buds very long and pointed. Delicate rosy blush; fragrant; strong grower and free bloomer.
- Triumph de Pernet Pere.** Large, with broad, thick petals, and long, pointed buds. Clear magenta-red, passing to bright crimson.
- Virginia R. Coxe.** For intense and dazzling crimson there is no other Rose to compare with this. The flowers are large and handsome, moderately double, of splendid substance, and are produced in amazing profusion during the whole of the growing season.
- Viscountess Folkestone.** Double, pale tender flesh; satiny luster, resembling glossy silk; flowers very large and highly double.
- William H. Taft.** Originated in the vicinity of Cincinnati. Salmon-pink, with fine fragrance. Bush is strong and vigorous.

The Popular La France Roses

Pink La France. Lovely shade of silvery pink, tinged with crimson; fragrance delicious; flowers very full and wonderfully beautiful.

White La France (Augustine Guinoisseau). A pure white member of the La France family, having a tinge of rose-blush.

Red La France. (Duchess of Albany). Resembles the Pink La France, but is much deeper in color.

Yellow La France (Mad. Pernet Ducher). Medium size. Bright canary-yellow.

Striped La France. Bright satiny pink, distinctly striped bright rose.

Special Offer of the La France Set.

1 each of the 5 kinds, extra-large plants, for \$1.15.



LA FRANCE ROSE

CLIMBING ROSES

The Blue Rose (Veilchenblau, or Violet-Blue). The easiest way to describe it is to say that it is a Blue Crimson Rambler, bearing immense trusses of semi-double flowers, all the way from 20 to 100 in a cluster; but, instead of the gorgeous crimson flowers we all know so well, similar clusters of exquisitely beautiful cornflower-blue Roses. The foliage is large, healthy, a beautiful shade of green and immune from attacks of insects. The plant is wonderfully strong in growth. Our stock is all propagated from the original stock sent out by the introducer and is guaranteed true to name. First-size plants, from pots 3 to 3½ inches in diameter, 30 cts. each, 4 for \$1; extra-strong, two-year-old plants, 60 cts. each, 2 for \$1; extra-large, three-year-old plants (quantity limited), \$1 each.

Climbing Killarney. A climbing variety of the famous pink Rose, Killarney, the most celebrated Hybrid Tea of its color yet introduced. A strong, rapid grower, growing to perfection in the open ground, throwing up shoots 10 to 15 feet high in a single season, and is entirely hardy. It blooms continuously throughout the season, and bears immense, long-pointed buds, with massive petals, opening into flowers of enormous size; color deep pink.

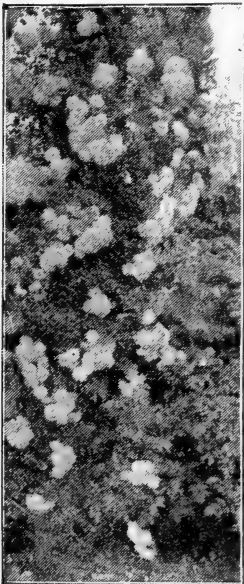
Climbing Clotilde Soupert. An offspring of that famous Rose. Clotilde Soupert, this beautiful hardy, everblooming climber is excellent in every way. Produces clusters of finely formed flowers throughout the entire growing season,—ivory-white, large, round, perfectly double, with beautifully imbricated petals, the odor of which is delightful.

Climbing Meteor. A superb everblooming climbing Rose. A sport from Meteor, famous for its magnificent flowers. True climbing habit, attaining a height of 10 to 15 feet in a single season. Free, persistent bloomer, with magnificently formed, dark velvety crimson buds and flowers.

Climbing Wootton. Perfectly hardy, grows with good vigor, blooms continuously, and produces superb flowers—perfect in beauty and fragrance. The flowers are bright and magenta-red, passing to violet-crimson, richly shaded. The bush is a rampant climber, growing 10 to 15 feet each year.

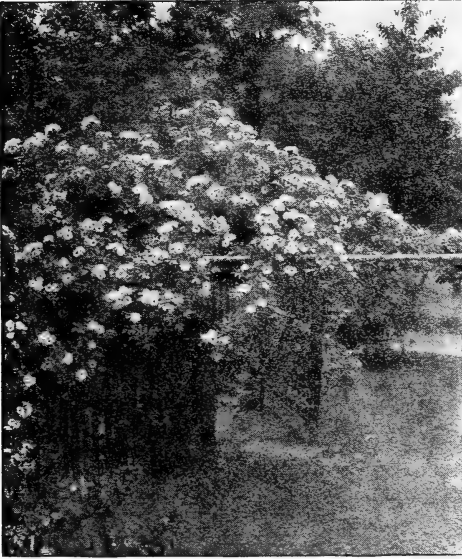
Climbing Helen Gould. (Mme. Driout). Strong-growing, free-blooming, beautiful. The growth is sturdy, the foliage grand, the flowers warm, rosy crimson, sometimes beautifully striped, flamed and shaded in bright carmine over pale rose.

Keystone. Grows more freely than any other climbing Rose, is perfectly hardy everywhere, blooms in wonderful profusion, is absolutely immune from insect attacks, and has a vigor of constitution found in no other kind. The open flower is perfectly double, with buds beautifully formed. It is a deep lemon-yellow Rose, with a fragrance much like that of magnolia blossoms. It readily attains a height of 15 feet in a single season, branching freely, and has always come through the winter without damage, even in the most exposed situations.



BLUE ROSES

Prices on all Roses on this page, except where noted, 25 cts. each, any 5 for \$1. Two-year-old plants, 50 cts. each, by express; three-year-old plants, 75 cts. each, by express



THOUSAND BEAUTIES ROSE

CLIMBING ROSES, continued

Mrs. Robert Peary. The flowers, when open, are of splendid substance, extra-large, deep and double, produced on long, stiff stems like those of a forcing Rose. This Rose is quick-growing, producing shoots 10 to 15 feet high each year, absolutely hardy and is sure to bloom. It is the only pure white Climbing Rose that will give you flowers the first year and throughout the season.

Caution.—Be sure you get the genuine Mrs. Robert Peary. There are many imitations. Our stock is grown from the original.

Thousand Beauties (Tausendschon). Blooming profusely from the beginning of June until the last of July, the flowers appear in large clusters (10 to 15 in a cluster), are of splendid size and quite double. The colors run from delicate balsam or tender rose through the intermediate shades of bright rose and carmine, with white, yellow and various other tints showing. It is a strong grower, with but few thorns, magnificent foliage, impervious against mildew and absolutely hardy.

Dorothy Perkins. Flowers are borne in large clusters, are very double, with prettily crinkled petals; remarkably pretty pointed buds, beautiful clear shell-pink in color, lasting a long time without fading.

Lady Gay. Flowers of a delicate cherry-pink color, which fades to a soft white; deep green foliage. A vigorous grower and perfectly hardy. One of the most charming of all climbers.

Crimson Rambler. One-year plants will attain a height of 10 to 20 feet in a single season, and the second year they will continue to produce a marvelous profusion of rich and glowing crimson flowers in large clusters. It presents a vivid crimson mass of beauty when in full bloom, during June and July. It is absolutely hardy everywhere and is equally desirable for growing in bush form by pegging it down, or as pot-plants.

Philadelphia Crimson Rambler. This now famous variety differs from the old Crimson Rambler in having brighter, deeper and more intense crimson color. Blooming earlier than the Crimson Rambler, it has the additional advantage of being entirely free from mildew. Flowers perfectly double and of excellent substance.

CLIMBING TEA AND NOISSETTE ROSES

Roses of this class are unusually free and continuous in bloom, producing flowers of striking beauty and delicious fragrance. The most of these kinds are strong climbers, especially valuable for training over porches, pillars and trellises, where they can have partial support. The Roses in the list given below marked "H" will be found hardy everywhere, with slight protection; the ones marked "M.H." are moderately hardy and especially valuable for open-ground cultivation south of Philadelphia.

All the Roses in this list are particularly recommended for southern planting

Marechal Niel. M. H. A glorious Rose. Buds and flowers superb; extra-large, double and deliciously perfumed. Deep golden yellow. Blooms with greatest freedom. In the North, they should have very careful protection in open ground during the winter. Large, budded, three-year-old plants, 75c. each.

Chromatella. (Cloth of Gold). M. H. Clear, bright yellow. A most magnificent climbing Rose.

Climbing Devoniensis. H. White, tinged with blush; very sweet. 15 cts. each, 4 for 50 cts., 9 for \$1.

Climbing Perle des Jardins. M. H. Same as the grand old Perle des Jardins, and equally good in every way, but of vigorous, climbing habit. 15 cts. each, 4 for 50 cts.

James Sprunt. M. H. Deep cherry-red, double and sweet.

Gloire de Dijon. H. Rich creamy white, beautifully tinged with amber and pale blush. 15 cts. each, 4 for 50 cts., 9 for \$1.

Reine Marie Henriette. H. Extra-large, finely formed flowers; very large and double; borne in clusters; glowing crimson.

Prices of all Roses on this page, except where noted, 25 cts. each, any 5 for \$1. Two-year-old plants, 50 cts. each, by express, three-year-old plants, 75 cts. each, by express

DINGEE EVERBLOOMING TEA ROSES

While not so hardy as the Hybrid Teas or Hybrid Perpetuals, yet with protection they will live through the winters in almost all sections of the country, except in the extreme North. In the South they are unexcelled. Whether planted in the open ground or used for pot culture, and the fact that one-year-old plants produce a profusion of flowers makes them indispensable to every Rose-lover.

Aline Sisley. Rich shade of violet-red, brightened with crimson-maroon; flowers large, full and double; fragrance very sweet.

Andrew Schwartz (Everblooming Jack). The flowers are large and of excellent substance. Color brilliant scarlet, changing to rich crimson.

Beaute Inconstante. A single bush bears at one time flowers of various colors, ranging from orange to capuchin-red and carmine. The buds are particularly large, beautiful and pointed.

Beauty of Rosemawr. Large, double and very fragrant flowers; colors rich carmine-red, finely veined with creamy white.

Bon Silene. The color is deep rose, changing to pale light rose. In the open ground it grows to perfection, producing large crops of beautiful flowers from early spring until late autumn.

The Bride. There is no other white Rose more satisfactory than the Bride. The buds and flowers are unusually large, well formed and deliciously perfumed. It is of a strong and healthy growth, and a profuse bloomer.

Bridesmaid. Valuable for forcing and does finely in the open ground. Clear dark pink.

Burbank. Large crimson flowers; fragrant.

Coquette de Lyon. The flowers are extra-large, deep and double; color pure canary yellow; a strong, vigorous grower, a constant and steady bloomer.

Cornelia Cook. Pure creamy white, tinged with lemon and blush. Very beautiful; unsurpassed for outdoor culture.

Devoniensis (The Charming Magnolia Rose). Large, very full and double flowers all through the season. The color is creamy white, with rosy centers and very fragrant.

Duchesse de Brabant. A very vigorous and healthy Rose, producing large blossoms which are beautiful in buds or open flower. A fine shade of soft, rosy pink, which deepens to bright rose.

Enfant de Lyon (The Sweet Anise Rose). In color, the flowers are a beautiful creamy rose, delicately shaded with coppery yellow, and very fragrant.

Etoile de Lyon. It blooms freely, producing beautifully formed flowers of a rich golden yellow; extremely hardy.

Freiherr von Marschall. Large, full, beautifully shaped flowers, which are borne in profusion all through the season. The color is bright red.

Gen. Robert E. Lee. The flowers are large, full and very double; color yellow, changing into rich salmon tints as the weather becomes cooler.

Golden Gate. Immense in size, finely formed, with long and beautiful buds. Color rich, creamy white, shaded with golden yellow and clear rose, of indescribable beauty.

Helen Good. The color is a pale yellow, mixed with pink, each petal edged deeper. Very pure and beautiful.

Helen Gould. The most satisfactory Rose of its color ever introduced. Beautiful long, pointed buds and immense, full, perfectly double flowers. Color warm, rosy crimson.

La Princesse Vera. The flowers open beautifully, are large and perfectly formed. The color is rich ivory-white, veined with coppery yellow, and penciled with pale blush.

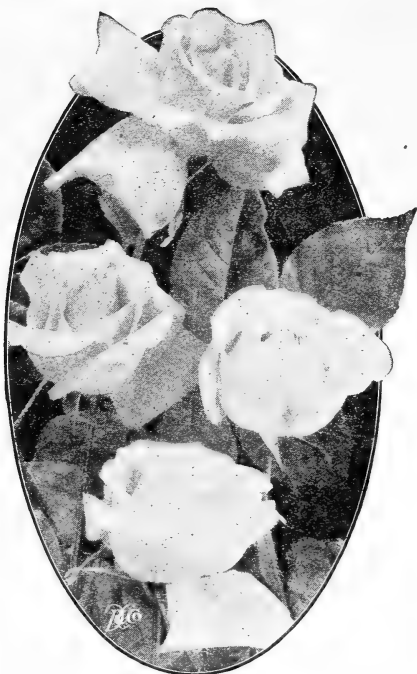
Mad. de Watteville (The Tulip Rose). Magnificent shade of creamy yellow, richly colored with rosy blush; the large petals are bordered with bright crimson, giving it a very striking and beautiful appearance.

Marechal Robert. A constant bloomer, bearing flowers on long, stiff stems. The flowers are full, double and sweet; the color pure white, faintly tinged with blush and yellow.



BON SILENE ROSE

Prices of all Roses on this page, except where noted, 25 cts. each, any 5 for \$1. Two-year-old plants, 50 cts. each, by express; three-year-old plants, 75 cts. each, by express



MAMAN COCHET ROSES

Famous Cochet Roses

Of the many Roses offered in this book, these five superb, hardy, everblooming varieties are unquestionably the best. If you want five of the finest hardy sorts that will produce hundreds of superb flowers throughout the growing season, order the Cochet Set. No matter where you live, they will give you perfect satisfaction.

Pink Maman Cochet. The buds are large, full and firm, elegantly pointed, showing depth and richness as they expand. The superb flowers are clear, rich pink, changing to silvery rose.

White Maman Cochet. Snowy white, with sometimes a faint tinge slightly suggesting pale blush.

Red Maman Cochet (Helen Gould). The flowers are very full, perfectly double; buds long and pointed. Color warm, rosy crimson, hardy everywhere.

Yellow Maman Cochet. A typical Cochet Rose, with gracefully molded buds, and flowers of a deep sulphur-yellow.

Crimson Maman Cochet (Etoile de France). Clear shade of red or crimson-velvet, brightening in center; of exquisite fragrance.

Special Offer of the Cochet Set. 1 each of the 5 colors, strong plants, postpaid, for \$1. Two-year-old plants, 1 of each, 5 in all, \$2.25.

EVERBLOOMING TEA ROSES, continued

Marie Guillot. One of the most reliable white Tea Roses in cultivation, especially for outdoor culture. The color is pure white, sometimes faintly tinged yellow.

Marie Lambert. or **Snowflake.** Large, double creamy white flowers, produced in marvelous profusion. It is unusually hardy and grows very vigorously.

Marie van Houtte. A strong and sturdy grower, blooming constantly, with great freedom. The large, full and double flowers are pale canary-yellow, passing to rich, creamy white, shaded with pale rose.

Marion Dingee. The darkest, richest colored Tea Rose known. Large, finely formed flowers are borne in constant profusion throughout the season. Color deep, brilliant crimson.

Mme. Rene Gerard. The flowers, when open, are bright yellow, and the buds nasturtium-yellow. A most unusual shade.

Mrs. B. R. Cant. A new Rose with large, healthy foliage, and flowers of a rich, warm rosy pink, with silvery center; very double.

Mrs. E. Mawley. An exquisite shade of tender pink. The flowers are beautiful in form and substance and the bush a thrifty grower.

Papa Gontier. Rich cherry-red, passing to clear, glowing crimson. A splendid Rose; one of the best for all purposes, with immense buds and magnificent flowers.

Princess Bonnie. Solid crimson, deep and vivid with a fragrance simply delicious. Always blooming.

Perle des Jardins. Clear golden yellow, of a beautiful shade, and entirely distinct from any other variety; the flowers are large, full, of globular form, with great depth and substance, richly perfumed and very beautiful in every way.

Reine Karola de Saxe. Large, double flower; blush-white, shaded delicate pink. Free.

Safrano. Valued very highly for its beautiful buds and handsome flowers. The color is a bright yellow.

Souvenir de Clairvaux. Bright pinkish rose, shading lighter or darker, according to season; flowers large, full and double, remaining on the bush a long time.

Souv. de Jeanne Cabaud. A very free bloomer producing large, full and double flowers; the outer petals of which are coppery yellow, with apricot and carmine in the center.

Souv. de Pierre Notting. The flowers are very large, well filled and open easily; color apricot-yellow, tinged with golden, and mixed with orange-yellow; edge of petal shaded carmine-rose.

The first Roses ever sent out by mail in this country were grown in the Dingee greenhouses—and we are still first in everything that pertains to the business. Others are trailing after us.

Prices of all Roses on this page, except where noted, 25 cts. each, any 5 for \$1. Two-year-old plants, 50 cts. each, by express; three-year-old plants, 75 cts. each, by express

EVERBLOOMING TEA ROSES, continued

Souvenir d'Un Ami. Deep rosy flesh, beautifully shaded with rich carmine; edges and reverse of petals silver rose.

Sunrise. A strong grower and free bloomer. The color is absolutely new, the buds showing scarlet and yellow to orange and copper; inside of petals, golden yellow.

Sunset. Color rich golden amber or gold, resembling the tints seen in a sunset.

The Queen. Flowers large, double and beautifully formed. Color pure snowy white.

Wm. R. Smith. The soft blending of the salmon-pinks, rose-pinks, and the magnificent flesh tints resemble the blush of a maiden's cheek.

TEA POLYANTHA ROSES

These famous Roses will give absolute satisfaction to every purchaser. They bloom the first year, and will be in bloom every year from early May until severe freezing weather. More than once we have seen them bloom in open ground after a severe snowstorm. There are no Roses like them; certainly none better.

Clotilde Soupert. Known the world over as one of the very best of all Roses. A strong, dwarf grower and a truly wonderful bloomer, producing clusters after clusters of the finest formed flowers. Full and double, and deliciously sweet. The color effect is beautiful—ivory-white shading toward the center to silvery rose.

Pink Soupert. Identical with Clotilde Soupert, except in color of flower, which is

clear, lively pink, and at a distance resembles a carnation.

Mlle. Cecile Bruner. Rosy pink on rich creamy white ground; a great bloomer; very satisfactory for bedding.

Marie Pavie. Medium size, very full and double; borne in large clusters and masses; excellent for cutting; rich, creamy white; finely flushed with carmine-rose; delightfully perfumed.

BABY RAMBLERS, or FAIRY ROSES

All the Baby Ramblers make most beautiful plants for winter home decoration, and thrive luxuriantly in pots.

Pink Baby Rambler, Anny Muller. For dwarf hedges, massing in beds or for single specimens, there is nothing to equal it. Always in bloom, from early spring until severe frosts, producing large clusters of brilliant pink flowers. Valuable in pots. Grows about 15 inches high.

Baby Dorothy (Maman Levasseur). Of dwarf growth, it blooms practically all the time, producing in amazing quantities large clusters or panicles of its beautiful pink flowers, which are full and double, the color of which is almost identical with the flowers of Dorothy Perkins.

Phyllis (Dwarf Polyantha). Considered by many to be the most popular of the Pink Baby Ramblers. The color is beautiful carmine-pink. Grows to a height of 2 feet; very hardy; always in bloom; flowers are produced in continuous succession in large clusters.

The Famous Crimson Baby Rambler. One of the most useful and ornamental Roses yet introduced. It blooms in immense clusters similar to Crimson Rambler, every day in the year, but grows only 20 inches high. The color is clear and brilliant ruby-red; foliage dark and glossy.

White Baby Rambler (Catherine Zeimet). This novel Rose has the characteristics of the other Baby Ramblers, and differs only in the color of its flowers, which is pure white. It also has the true Rose perfume to an unusual degree.

Special Offer of Baby Rambler Set.

1 of each variety, 5 in all, large well-developed plants, \$1.15.

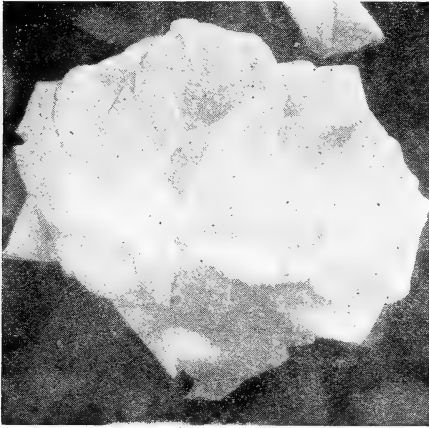


BABY RAMBLER ROSES

Prices of all Roses on this page, except where noted, 25 cts. each, any 5 for \$1. Two-year-old plants, 50 cts. each, by express; three-year-old plants, 75 cts. each, by express

HARDY HYBRID PERPETUAL ROSES

They are of vigorous, upright growth, have large, bold flowers, frequently measuring 5 to 6 inches in diameter, and are deliciously fragrant. These Roses will succeed in any locality and are so hardy that they will live through the severest winters with but a light protection of leaves or coarse manure in the coldest sections.



FRAU KARL DRUSCHKI ROSE

- Gen'l Jacqueminot.** The old standard crimson Rose, with rich velvety flowers. One of the best Roses of the garden for outdoor culture.
- Giant of Battles.** A grand old favorite. One of the best hardy, vivid crimson Roses; large, very double and sweet; recommended for general planting.
- Gloire Lyonnaise.** Blooms almost as freely as a Hybrid Tea, with pointed buds and massive flowers, on long, stiff, heavy shoots. Color rich creamy white, passing, when open, to a pale shade of salmon-yellow, deepest at the center. Absolutely hardy everywhere.
- Paul Neyron.** The largest Rose of all. Bright, shining pink, very full and double, often with two centers. The standard Rose for the garden in color, size and perfume.
- White American Beauty (Frau Karl Druschki)**
An extraordinarily strong grower. Large, heavy foliage and magnificent flowers, immense in size and produced with great freedom on long, stiff stems. The color is marvelously white, without a tinge of yellow or any other shade. Hardy everywhere.
- Mad. Charles Wood.** Begins to bloom almost as soon as planted, and continues all through the season, flowers extra large, double, full and quite fragrant; bright, fiery scarlet, passing to fine, rosy crimson, shaded with maroon; showy and handsome.
- Margaret Dickson.** The flower is of magnificent form, very large in size, color is pure waxy white, without spot or blemish; petals large, well shaped and of great substance.
- Ulrich Brunner.** A great Rose, known to all planters as one of the best in this class. Immense, large, bold flowers, full and globular; rich, glowing crimson, elegantly flamed with scarlet. Hardy and unusually free bloomer. Highly fragrant.
- Baron de Bonstetten.** Large, very full and double flowers of rich, dark red, passing to velvety maroon. Deliciously perfumed and vigorous grower.
- Captain Christy.** Extra-large, full double flowers of an exquisite peachy pink, deepening in color to rosy crimson. Blooms all summer.
- Cheshunt Hybrid.** One of the very best Roses of its color—red shaded with violet. It is very free-flowering; blooms large and full. Very distinct.
- Francois Levet.** One of the best and most satisfactory of all Hybrid Roses; we recommend it highly for general planting. An unusually vigorous grower, and free-blooming. Large, finely made flowers; cherry-pink, delicately shaded carmine and blush. Fragrant. Extra good. Hardy everywhere.

RUGOSA AND BOURBON ROSES

- Sir Thomas Lipton.** The best pure white Rugosa Rose. Strong and vigorous; grows 4 feet high. Flowers perfectly double, pure snow-white. Fragrant, borne on long stems continuously throughout the season. Absolutely hardy everywhere. Splendid for hedging, cemetery and park work.
- Champion of the World.** A free-blooming hardy Bengal China Rose. Flowers of large size; color of lovely clear, deep pink.
- Queen's Scarlet.** Bengal China. A constant and profuse bloomer; color rich, velvety scarlet; very brilliant and striking. Excellent Rose for bedding, either in masses or mixed with other sorts.
- Malmaison.** One of the choicest Bourbon Roses in our collection and unsurpassed for general cultivation. Rich, creamy flesh, distinctly and elegantly shaded clear peachy red, with a rose center.

Prices of all Roses on this page, except where noted, 25 cts. each, any 5 for \$1. Two-year-old plants, 50 cts. each, by express; three-year-old plants, 75 cts. each, by express

Add 10% to the total amount of your order and we will deliver the goods free to any express office in the United States or Canada. This is the most liberal proposition we have ever made.

Ideal Dingee Flowers for Fall Planting

HERBACEOUS PEONIES

Peonies, after once being planted, require little attention and care, thrive almost anywhere, and are absolutely hardy everywhere. They do best in good, rich soil and an open, sunny position, but this is not absolutely necessary. During the growing season they like an occasional, liberal supply of water. They are not troubled with insect pests and, after once becoming firmly established, will take care of themselves, increasing in size and beauty every year.

Double Peonies

35 cts. each, 3 for \$1, \$2 per doz., postpaid, except where noted

- Duchesse de Nemours.** Large, pure white and very fragrant. 50 cts.
- Delicatissima.** Large; purple-rose with salmon center. 50 cts.
- Festiva maxima.** The grandest of all whites. Petals flaked with carmine. 50 cts.
- Achillea.** Pink, fading to blush-white.
- Andre Lauris.** Rosy red; free; late.
- Boadicea.** Large guards, high, center; blush-white, flushed rosy.
- Delacheii.** Velvety purple; late.
- Edulis superba.** Brilliant pink; early.
- Humei.** Very large. Cherry-pink.
- Louis van Houtte.** Violaceous-red.
- M. Andre.** Purplish pink, salmon center.
- Ne Plus Ultra.** Large, rosy purplish guards; salmon straw-colored center. Very fine.
- Whitley.** A pure white. One of the best.

SPECIAL OFFER. Set of 10 varieties of Peonies as above, all but the first three, for \$2.50, postpaid.

HARDY PERENNIAL PHLOX

Diversified and brilliant colors, profuse and continuous bloom and adaptability to almost any situation or soil, places Hardy Phlox in the front rank of hardy perennials.

- 20 cts. each, 3 for 50 cts., \$1.50 for set of 10
- Andreas Hoffer.** Early; pure white.
- Aquilon.** Bright, deep pink.
- Coquelicot.** A fine, pure scarlet.

HARDY CLIMBING VINES

- AKEBIA quinata.** With distinct foliage and fragrant flowers. 15 cts. each, 4 for 50 cts.
- AMPELOPSIS Veitchii.** The well-known Boston or Japanese Ivy. Fine plants, 15 cts. each, 4 for 50 cts., 9 for \$1.
- Virginia.** An excellent climber, rapid growth. Fine plants, 15c. each, 4 for 50c., 9 for \$1.
- CLEMATIS paniculata.** A strong, vigorous climbing vine with pure white flowers borne in great clusters, fairly covering the plants. The fragrance resembles the English Hawthorn blossom. It begins to bloom late in August or early in September. Grows quickly and strongly. Strong pot plants, 15 cts. each, 4 for 50c., 9 for \$1; larger plants, 25 cts. each, 5 for \$1; extra-heavy 3-year-old plants, 50c. each.
- DUTCHMAN'S PIPE** (*Aristolochia Sipho*). Broad, heart-shaped leaves. Large, imported plants, 35 cts. each, 3 for \$1, postpaid.
- ENGLISH IVY.** A splendid evergreen climber; glossy green leaves. 15 cts.; larger size, 20 cts.



HERBACEOUS PEONY

HARDY PHLOX, continued

- Champs Elysees.** Rich purple-crimson.
- Eclairer.** Purplish crimson; large flower.
- Jeanne d'Arc.** Late; pure white.
- Pantheon.** Fine, deep salmon-rose.
- P. Bonnetain.** Rose, overlaid salmon.
- R. P. Struthers.** Brilliant rosy red.
- Von Goethe.** Tyrian rose and carmine.

HERBACEOUS SPIREAS

- Compacta multiflora.** Compact growth; feathery white flowers, in plume-like panicles.
- Astilboides floribunda.** Large plumes of feathery white flowers; splendid for bouquets.
- White Spirea** (*Astilbe Japonica*). Very popular for winter forcing. Splendid in the open ground. Feathery panicles of white flowers.
- Strong, field-grown plants of these varieties, 15 cts. each, 4 for 50 cts., 9 for \$1; larger plants, 20 cts. each, 3 for 50 cts. Set of 3 grand new Spireas, postpaid, for 25 cts. One each, larger plants, postpaid, 50 cts.**
- Plant Peonies, Phlox and Spireas in fall for best results. Not ready until about Oct. 15 to Nov. 1.

- EUONYMUS, Variegated.** Attractive and useful, with silvery foliage. 15 cts.
- HONEYSUCKLES, Chinese Sweet-scented.** White and yellow flowers. 15 cts.; larger size, 20 cts.
- Evergreen Sweet-scented.** Everblooming and fragrant. 15 cts.; larger size, 20 cts.
- Red Coral.** Bright red, trumpet-shaped flowers. 15 cts.; larger size, 20 cts.
- Yellow Coral.** The true golden yellow variety. 20 cts.; larger size, 25 cts.
- Golden-leaved.** Bright yellow foliage and fragrant flowers. 15 cts.; larger size, 20 cts.
- New Halliana.** Flowers pure white, changing to yellow. Evergreen and a constant bloomer. 15 cts.; larger size, 20 cts.
- New Heckrotti.** Flowers clear rose, yellow at the base. 15 cts.; larger size, 25 cts.
- VIRGINIA SILK VINE** (*Periploca Græca*). Highly ornamental, rapid-growing climber, with pale blue flowers. 15 cts.; larger size, 20 cts.

A FEW CHOICE FLOWERING SHRUBS

HYDRANGEA *paniculata grandiflora*. The best and most ornamental of all hardy shrubs. Blooms every year during July and August. The massive cone-shaped flowers often measure 10 inches in length. Splendid for fall planting. Strong, one-year-old, field-grown plants, 15 cts. each, 4 for 50 cts., 10 for \$1; by express, 50 for \$4, \$7 per 100. Two-year-old plants, by express or freight, 25 cts. each, 5 for \$1, \$2 per doz., \$12 per 100. Three-year-old plants, 35 cts. each, 3 for \$1, \$3 per doz.

Red-branched. With dark red branches, producing immense, rose-colored flowers. 20 cts. each, 3 for 50 cts., 7 for \$1.

Thomas Hogg. A pure white, very hardy variety. Highly recommended. 20 cts. each, 3 for 50 cts., 7 for \$1.

SNOWBALL, *Double Japan*. The whole bush in June is loaded with great compact balls of pure white double flowers, borne in such

Snowball, Double Japan, continued

profusion that they almost completely hide the leaves and branches. The foliage is peculiarly crimped and crinkled. Entirely hardy, needing no protection. Field-grown plants, 1-year size, 20 cts. each, 3 for 50 cts., 7 for \$1, postpaid; by express or freight, 50 for \$5, 15 per 100; 2-year, 35 cts. each, 3 for 90 cts., 25 for \$5, by express or freight; 3-year, 50 cts. each, 5 for \$2, \$4 per doz., by express or freight.

Other Hardy Shrubs

We carry a complete assortment of Hardy Flowering Shrubs and Vines, twenty acres of them, all suitable for fall planting. They are described on pages 105 to 108, inclusive, of our "Guide to Rose Culture for 1910." Inquiries as to these shrubs given prompt reply—and special lists cheerfully quoted upon.

DINGEE BEST FLOWER SEEDS FOR FALL PLANTING

HOLLYHOCKS, *Chater's Superb Double*.

Flowers 3 to 4 inches across, of most beautiful colors. Pkt. 10 cts., 3 for 25 cts.

Double Allegheny. The finest mixed strain in existence. Pkt. 10 cts., 3 for 25 cts.

DIGITALIS (*Foxglove*). Tubular flowers of purple, white, yellow and rose in long spikes. Finest mixed. Pkt. 5 cts., 6 pkts. for 25 cts.

DIANTHUS (*Pinks*). Best varieties mixed. Pkt. 5 cts., 1/2 oz. 40 cts., oz. 75 cts.

PERENNIAL PEAS (*Lathyrus latifolius*). All varieties mixed. Pkt. 10 cts., oz. 40 cts.

PERENNIAL PHLOX, *Finest Varieties Mixed*. Pkt. 10 cts., 6 pkts. for 50 cts.

CARNATIONS and PICOTEEES—

Choice Double Mixed. A good selection. Pkt. 10 cts.

Picotée, *Finest Double Mixed*. A splendid strain. Pkt. 10 cts.

SWEET WILLIAM (*Dianthus Barbatus*). Splendid for beds or borders. Many beautiful colors.

Perfection, Single Mixed. Pkt. 10 cts.

Perfection, Double Mixed. Pkt. 10 cts.

DINGEE SUPERB PANSIES, *Imperial German Mixed*. A splendid mixture of over fifty beautiful varieties. Pkt. 10 cts., 3 pkts. for 25 cts., oz. 65 cts.

DINGEE BEDDING PANSIES. This mixture contains the choicest sorts, with large flowers of superb form and color. Pkt. 5 cts., 6 pkts. 25 cts.

SWEET PEAS. A special assortment of Sweet Peas for fall planting. By planting them 6 inches deep in the fall, flowers may be had in early June. Fine, also, for conservatory planting. Pkt. 5 cts., oz., 10 cts., 1/4 lb. 15 cts., lb. 45 cts.

DINGEE SELECTED POT PLANTS FOR HOME DECORATION

Winter-Blooming Carnations

NEW SORTS: Field-grown plants, 30 cts. each, 4 for \$1

Harlowarden. Standard crimson.

Carnegie. Fine scarlet.

Beacon. The foremost scarlet.

White Perfection. Pure white.

White Enchantress. Pure white sport from Enchantress.

STANDARDS: Strong field-grown, 25 cts. each, 10 for \$1.75

Victory. Brilliant scarlet.

Mrs. Thomas W. Lawson. Pink.

Red Riding Hood. Glowing red.

Elbon. Scarlet; double.

Winsor. Clear silvery pink.

Enchantress. Light pink.

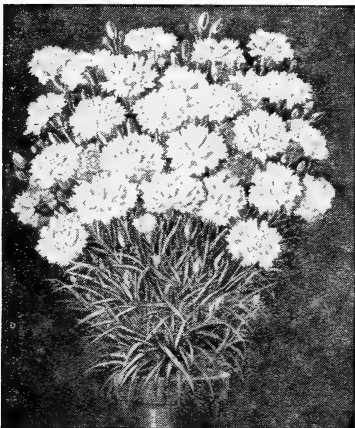
Prosperity. White, mottled pink.

Variogated Lawson. Pink and white.

Pink Enchantress. Lively pink.

Red Lawson. Bright scarlet.

CLERODENDRON Balfouri. Produces an abundance of flowers of bright crimson, surrounded by a pearly white calyx, in striking contrast against the dark green foliage. Likes partial shade. Strong plants, 15 cts. each, 4 for 50 cts.; larger plants, 20 cts. each, 3 for 50 cts.



CARNATION

Add 10% to the total amount of your order and we will deliver the goods free to any express office in the United States or Canada. This is the most liberal proposition we have ever made.

**DINGEE SELECTED POT-PLANTS
FOR HOME DECORATION**

The Best Geraniums

NEW DOUBLE SORTS: Strong plants, 15 cts. each, 4 for 50 cts., 90 cts. for set of 8, postpaid

- Jean Viaud. Semi-double; pink with two white blotches.
- Double New Life. Brilliant red; pure white center.
- E. H. Trego. Dazzling scarlet; extra large.
- Hubert Charron. White center, red border.
- Dr. Despres. Violet, marked vermillion.
- Jean Labor. Purple, tinged red and orange.
- Thomas Meehan. Semi-double; bright magenta.
- Alphonse Ricard. Brilliant orange-red.

STANDARD DOUBLE SORTS: Strong plants, 12 cts. each, 5 for 50 cts., \$1 per doz., postpaid

- Bruant. Rich vermillion-red. Large trusses.
 - Beaute Poitevine. Bright salmon-pink.
 - Countess de Harcourt. Pure snow-white.
 - Double General Grant. Scarlet flowers.
 - Dr. Blanche. Bright orange-red.
 - F. Perkins. Rich carmine flowers.
 - Gladys Spaulding. Brilliant scarlet.
 - Heteranthe. Bright scarlet. Fine.
 - John Doyle. Rich scarlet. Very effective.
 - Le Pilote. Glowing crimson-scarlet.
 - Marvel. Dark red; large and fine.
 - M. Ott. Magneta, shading to pure violet.
 - Mme. Buchner. Snow-white; vigorous.
 - Mrs. Gladstone. Pure white, shaded flesh-pink.
 - Pink Beauty. Deep pink, shading to brighter pink.
 - Rosebud. Scarlet, shaded lilac.
 - R. Roland-Gosselin. Chamois, bordered with rose.
 - S. A. Nutt. Rich, dark crimson. Superb.
- SPECIAL OFFER.** Complete collection of 18 Double Geraniums, named above, \$1.25.

NEW SINGLE SORTS

Strong plants, 15 cts. each, 4 for 50 cts., 10 for \$1, postpaid

- Andrew Lang. Scarlet, with white blotch.
- Crabbe. Cherry-red.
- Southey. Vermillion, with white blotch.
- General Wolseley. Rosy red, blotched white
- Mme. Landry. Semi-double; rich salmon.
- M. P. Morlan. Rosy salmon.
- Mme. L. Moyot. Striped pink and white.

STANDARD SINGLE SORTS

Strong plants, 12 cts. each, 3 for 30 cts., 7 for 60 cts., \$1 per doz., postpaid

- Columbia. Scarlet, shaded white.
- Countess de Blancas. Salmon-pink.
- Dr. Marmoteck. Bright violet.
- Jacquerie. Very dark crimson-scarlet.
- Madame Bruant. White, veined carmine.
- Negus Menelik. Creamy white, pink border.
- Mme. Coralie Bajac. White, bordered carmine.
- La Favorite. Double; snow-white flowers.
- Puritan. White, shaded salmon.
- General T. Lee. White and crimson; large.
- Dryden. Rosy red, white blotches.
- Telegraph. Deep orange-cerise; large.
- Triomphe de Nancy. Carmine, white margins.
- Vincennes. Tender pink.

PELARGONIUMS

15 cts. each, 4 for 50 cts., postpaid

- Lady Washington. Lilac-pink, center carmine.
- New Pansy Pelargonium. Pink and crimson.



MME. BUCHNER GERANIUM

**FANCY-LEAVED AND SWEET-SCENTED
Strong plants, 15 cts. each, 4 for 50 cts.**

- Arbutus. Golden-leaved; pink flowers.
- Happy Thought. Green and white leaves.
- Madame Salleroi. Green, dotted with white.
- Prince Bismarck. Dark bronze.
- Apple-scented. A grand old favorite. Rose-scented. Delightful rose scent. Lemon-scented. Deliciously scented.

Ficus elastica (Rubber Tree)

The thick, glossy foliage is exceedingly attractive, and the plants are singularly free from insect pests. Strong plants, 12 to 15 inches high, 75 cts. each, 2 for \$1.25, postpaid; by express, at purchaser's expense, 60 cts. each, 2 for \$1. Plants 20 to 24 inches high, \$1 each, postpaid; by express, at purchaser's expense, 80 cts. each.

FICUS pandurata. Large-leaved Rubber Plant. Has large, heart-shaped, wax-like, glossy, leathery foliage, with red mid-ribs or veins. Likes rich, sandy soil. Stock limited. Strong, young plants, 35 cts. each, 3 for \$1, postpaid.

**Norfolk Island Pine
(Araucaria excelsa)**

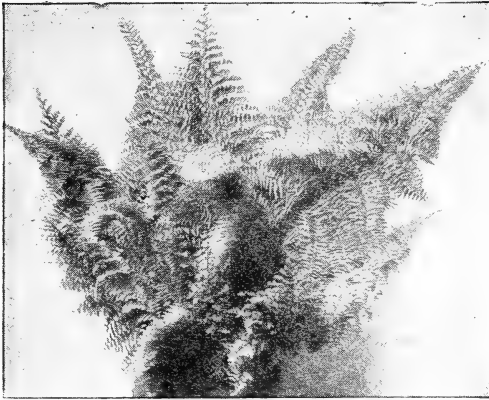
It resembles a miniature evergreen of perfect symmetry and graceful proportions. It is admirably adapted to house culture. The dark green branches are arranged in perfect whorls, presenting a unique and graceful appearance. Strong plants, 8 to 10 inches high, 75 cts. each, postpaid. Large plants, 12 to 15 inches high, from 6-inch pots, \$1 each, by express.

MANETTIA VINE. The wreaths and garlands of brilliant scarlet and orange-colored flowers, interspersed with bright, oblong foliage, present a striking contrast. Keep in a small pot. 15 cts. each, 4 for 50 cts.; larger size, 20 cts. each, 3 for 50 cts.

ACHYRANTHES. Smooth, red foliage, similar to Coleus. 10 cts. each, 6 for 50 cts., 15 for \$1.

Add 10% to the total amount of your order and we will deliver the goods free to any express office in the United States or Canada. This is the most liberal proposition we have ever made.

DINGEE SELECTED POT-PLANTS FOR HOME DECORATION



FERN, NEPHROLEPIS AMERPOHLII

grow from 2 to 5 feet long. Strong plants, 15 cts. each, 4 for 50 cts.; larger plants, from 4-inch pots, 40 cts. each, postpaid.

Jackson Fern. One plant produces more fronds than three or four of an ordinary variety. Strong plants, 15 cts. each, 3 for 50 cts.; handsome plants, from 4-inch pots, 35 cts. each, 2 for 60 cts., postpaid.

Pierson Fern. The fronds grow broad and heavy and are of exceedingly graceful appearance. Strong, young plants, 20 cts. each, 3 for 50 cts.; strong, 4-inch pot-plants 35 cts., each postpaid.

Sword Fern (*Cordata compacta*). Compact, erect-growing, with strong, firm fronds of deep, shining green. Attains a height of 2 feet and arches beautifully. Strong plants, 15 cts. each, 4 for 50 cts.; strong, handsome, 4-inch pot plants, 35 cts. each, 3 for \$1 postpaid.

OTHER FERN-LIKE POT-PLANTS

ASPARAGUS Sprengeri. The long shoots droop most naturally, sending out numerous feathery, emerald-green fronds. Strong plants, 15 cts. each, 4 for 50 cts.; larger size, 20 cts. each.

Plumosus. Resembles the finest lace. Elegant for cutting. 20 cts. each, 4 for 50 cts.; larger size, 25 cts. each.

NEW LACE FERN. A grand decorative Fern of the most distinct type. It is low-growing, bushy, exceedingly graceful and thrives in almost any situation. Strong plants, 20 cts. each, 3 for 50 cts., postpaid.

MAIDENHAIR FERN (*Adiantum cuneatum*). Dainty, odd-shaped leaves on long, slender stems. 20 cts. each, 3 for 50 cts., 7 for \$1, postpaid.

JAPANESE FERN BALLS

Composed of dormant roots and moss, so constructed as to send out leaves of beautiful emerald-green from every point, until the whole is a mass of dainty green fronds. The foliage is delicate and lace-like and of splendid substance.

Soak in water and hang in a shady window, keeping it moist.

Large, dormant balls, 5 inches and over in diameter, 50 cts. each, 5 for \$2, postpaid. 7 to 9 inches in diameter, 60 cts. each, 2 for \$1, postpaid.

AGERATUM, Princess Pauline. Richest blue; dwarf. 15 cts. each, 4 for 50 cts.

White. Pure white. 15 cts. each, 4 for 50 cts.

BOUGAINVILLEA Sanderiana. Camellia-like foliage, and flowers of a dazzling crimson, lasting long. 15 cts. each, 4 for 50 cts.

Dingee Ferns

Nephrolepis Amerpohlilii (Philadelphia Lace Fern). One of the most beautiful Ferns in existence, with handsome fronds of delicate lace. Strong, young plants, 20 cts. each, 6 for \$1; large specimen plants, 50 cts. each, postpaid.

Nephrolepis Scotii (Dwarf Boston Fern). Strong, young plants, 20 cts. each; handsome 4-inch pot plants, 40 cts. each, postpaid.

Nephrolepis elegantissima (Tarrytown Fern). Feathery, plume-like fronds. Strong, young plants, 20 cts. each, 6 for \$1. Strong, handsome plants, from 4-inch pots, 50 cts. each, postpaid.

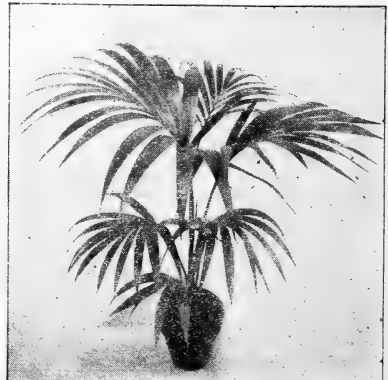
Nephrolepis Whitmanii. A gem among Ferns. A dwarf variety with exquisite, feathery fronds. Strong, young plants, 20 cts. each, 3 for 50 cts. Large plants, 40 cts. each, postpaid.

The Boston Fern. Forms immense bushes of gracefully drooping fronds which

Dingee Palms

KENTIAS. Kentias are unquestionably the grandest of all Palms. *Kentia Belmoreana* is the tallest grower, while *Kentia Forsteriana* has the broadest leaves. Both are exceedingly graceful. Strong plants, 8 to 12 inches high, 25 cts. each, 3 for 65 cts., postpaid; larger plants, 40 cts. each, 2 for 75 cts., postpaid. Large plants, splendid specimens, from 5-inch pots, 60 cts. each, postpaid.

ARECA lutescens. The trunk and stems are golden green, while the gracefully curved leaves are glossy green. Strong plants, 6 to 8 inches high, 25 cts. each, 3 for 60 cts., postpaid. Large plants, 14 to 18 inches high, 60 cts. each, postpaid.



KENTIA

PALMS, continued

COCOS Weddelliana. An erect, graceful grower, furnished freely with broad, green leaves. Splendidly adapted for growing in fern-dishes. Strong plants, 3-inch pots, 35 cts. each, postpaid.

LATANIA Borbonica. The most popular of the fan Palms. It is of remarkable beauty and easiest culture, developing large, deeply divided, fan-shaped leaves. Strong plants, 20 cts. each, 3 for 50 cts.; larger size, 30 cts. each, postpaid. Handsome specimen plants, 15 to 18 inches high, 50 cts. each, by express.

DRACAENA indivisa. Forms Palm-like trees of graceful habit. Strong plants, 15 cts. each, 4 for 50 cts., 9 for \$1.

PHOENIX Canariensis. This is a Date Palm and in the South its fruit matures. Produces fine specimen plants of highly ornamental character, 20 cts. each, 3 for 50 cts.

Roebelinii. The newest, and in every respect the finest and most beautiful Palm grown with the most graceful and beautiful foliage. It is the hardiest and most easily grown of all Palms, and just the one that will succeed in any window. Nothing can surpass it as a decorative plant.

CYCAS revoluta. Heavy, glossy, deep green leaves, growing from a crown. An excellent house plant which will stand any amount of hard usage. Fine large plants, 8 to 12 inches high, 4 to 6 leaves, 75 cts. each, postpaid.

Dingee Flowering Begonias

The foliage is attractive and odd, while, the flowers are exceedingly graceful and beautiful. Their colors include the most brilliant shades of red, yellow, crimson, salmon, etc., and make a display which is hardly equaled by any other class of house-plants.

Price, except where noted: Strong plants, 15 cts. each, 4 for 50 cts., 9 for \$1, postpaid

President Carnot. Coral-red, borne in large panicles.

Rubra. Heavy waxy green leaves, with panicles of coral-colored flowers.

Alba picta. Leaves spotted with silver; white flowers in clusters.

Argentea guttata. Silvery blotched foliage and white flowers in clusters.

Foliosa. Foliage small. Bright pink flowers.

Gloire de Lorraine. The greatest of all Begonias. Grows from 10 to 12 inches high. Throughout the entire winter completely hidden with soft, rosy pink flowers. Strong plants, 40 cts. each.

Hybrida multiflora. Rosy pink flowers.

Metallica. Flowers white; foliage a lustrous bronze.

Marjorie Daw. New Trailing Begonia. Bears great clusters of large, shining pink flowers that droop from long stems.

Sandersonii. Scarlet, shading to crimson. Known as Coral Begonia.

Vernon. Foliage shading to deep bronze; flowers deep red. Always in bloom.

Our house-plants are just like our Roses—the very best it is possible to obtain.

PAINTED LEAF, or REX BEGONIAS

The most beautiful ornamental foliage plants in existence.

Strong plants, 15 cts. each, 4 for 50 cts.; larger size, 20 cts. each, 3 for 50 cts., postpaid

Enfant de Nancy. Silver zone, reddish brown edges.

Grandi. Bright steel zone; light green center; green edge, mottled white, tinged maroon.

Helen Upden. Small silvery leaves and hairy light green stems, under side of leaf red.

Mad. Le Boucq. Entire leaf soft, rosy mauve, of a light silky luster.

Queen Victoria. Silver leaves, with crepe-like texture.

Silver Queen. Apple-green, with olive-green veins extending to edge.

Dingee Choicest Fuchsias

Baby Fuchsia. Dwarf, with an abundance of purple and white flowers.

Speciosa. Orange-scarlet corolla, with white sepals and rose calyx. Everbloomer.

Trophy. Large, purple flowers.

Rozains Patrie. Double white; extra large.

Duke of Albany. Red and white; drooping habit.

Mme. Thebaud. Carmine, bordered white.

Constancy. Bright carmine and white.

Trailing Queen. Wine-colored.

Mrs. C. Blanc. Purple, bright red sepals.

Lovely. Large, semi-double flowers.

Jupiter. Extra large, rich carmine.

Wave of Life. Golden yellow foliage.

PHENOMENAL. Brilliant red; best-blooming, double Fuchsia in existence.

Strong plants of all of the above varieties, sure to thrive and bloom, 10 cts. each, 4 for 35 cts., 6 for 50 cts., postpaid. The entire collection of 13 splendid Fuchsias, postpaid, for \$1.

SANSEVIERA Zealanica. Has long, leathery, sword-like leaves, elegantly marked with bars of silvery gray. Will stand all sorts of neglect. 15 cts. each, 4 for 50 cts.; larger size, 20 cts. each, 3 for 50 cts.



BEGONIA, GLOIRE DE LORRAINE

DINGEE SELECTED POT-PLANTS FOR HOME DECORATION

AMERICAN WONDER LEMON. Large, dark green foliage; handsome, pure white flowers, with yellow stamens, nearly as large as tuberoso blooms, fragrant as orange blossoms. The lemons have a thin rind for such large fruit, and are full of rich, acid juice. Plant in ordinary soil, in a pot or tub, and it will bear each season a fine crop of superb Lemons. Strong plants, 20 cts. each, 3 for 50 cts.; larger size, 25 cts. each, 5 for \$1. Two-year-old plants, 50 cts. each, postpaid.

OTAHEITE ORANGE. A dwarf reproduction of the genuine fruit-bearing Orange tree, the flowers being identical. It flowers and fruits in pots and blooms continuously. Fragrance is delicious. Strong, young plants, 15 cts. each, 4 for 50 cts.; larger size, 25 cts. each, 5 for \$1, postpaid.

STRAWBERRY GUAVA. A magnificent pot plant, blooms and fruits continuously. The Guava has thick, shining, evergreen, camellia-like foliage, with pure white flowers. The fruit is of a beautiful claret-color; the flavor resembles that of the strawberry. Used as a dessert fruit, also for preserving; makes jelly of delicious quality, which brings an enormous price. Blooms and fruits continuously; has buds, flowers or fruit in some stage every day in the year. A magnificent plant for pot or box. Strong, 3-inch pot plants, 20 cts. each, 3 for 50 cts., 7 for \$1, postpaid; 4-inch pot plants, 30c. each, 4 for \$1, postpaid.

ABUTILON. Flowering Maple. Singularly beautiful, and unequalled for decorative purposes. Produces great numbers of lovely bell-shaped flowers.

Souvenir de Bonn. Green leaves edged with a pure white band. 15 cts. each, 4 for 50 cts.; larger size, 20 cts. each.

Savitzii. Green and white, in sharp contrast. 15 cts. each, 4 for 50 cts.; larger size, 20 cts. each.

ALTERNANTHERAS. Very compact; splendid for borders. Two colors, red and yellow, variegated. 10 cts. each, 6 for 50 cts., 15 for \$1.

CROTONS. Splendid pot plants for the piazza or window-garden. Leaves are brilliantly variegated, and present a fine appearance. Extra-large plants, 20 cts. each, 3 for 50 cts., 7 for \$1.

ACALYPHAS. Handsome foliage plants for the window or greenhouse. 15 cts. each, 4 for 50 cts., 9 for \$1.

Triumphans. Red, streaked and dashed green, yellow, white and other colors.

Sanderi. Branches spread widely and throw out long, dazzling, crimson, fluffy spikes; bright green leaves.

Bicolor compacta. Bright green ground margined with wide, regular band of lemon-yellow.

Marginata. The leaves combine almost every color, red, green, bronze, and intermediate shades.

CAREX Japonica. Spray-like foliage, drooping gracefully. The leaf-blades are edged gold. 15 cts. each, 4 for 50 cts.

COLEUS. Grand named and mixed varieties, solid colors, striped, variegated and mottled. When ordering, state color. 10 cts. each, 6 for 50 cts., 15 for \$1.

GENUINE SMYRNA FIG. Imported from the far East. It will winter safely in an ordinary cellar. It will produce three crops in a season. The fruit is large, sweet and almost seedless. Strong plants, 40 cts. each; 4-inch pot plants, 75 cts. each; 6-inch pot plants, \$1 each, by express only.

HELIOTROPE, Madame Bruant. Large, dark lavender-blue flowers of exquisite fragrance, Constant bloomer. 15 cts. each, 4 for 50 cts., 9 for \$1.

CISSUS discolor. Trailing Begonia. Long, heart-shaped leaves, as handsome as Begonia Rex. For trailing over the side of a window-box, or for hanging-basket, or grown on a trellis in pots, it is unsurpassed. Strong plants, 15 cts. each, 4 for 50 cts.; larger size, 20 cts. each, postpaid.

JUSTICIA Velutina. A compact plant, bearing large, pink, leathery flower-heads, which last a long time. 15 cts. each, 4 for 50 cts.

NEW WEEPING LANTANA. Produces its clear lilac-pink flowers in clusters by the hundreds. 15 cts. each, 4 for 50 cts.; larger plants, 20 cts. each, 3 for 50 cts.

CYPERUS alternifolius (Umbrella Plant). Resembles a palm. Can be grown in a bowl, dish or vase, half filled with rich soil, then with water. 15 cts. each, 4 for 50 cts.; larger size, 20 cts. each.

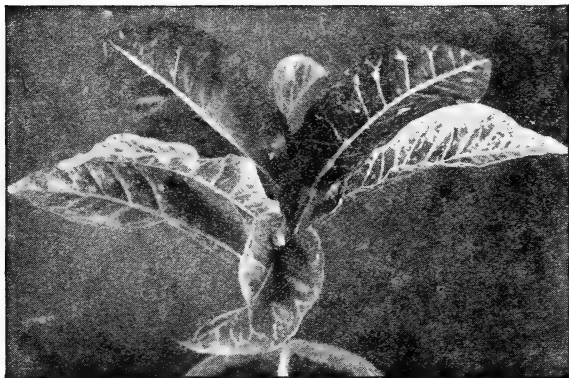
Gracilis. More dwarf than the above variety, with narrower leaves. 15 cts. each, 4 for 50c.

FARFUGIUM grande. Immense clear bright green leaves, heavily blotched with yellow. Large plants, 25 cts. each 5 for \$1.

STROBILANTHES Dyerianus, Royal Purple. Compact plants of most intense metallic purple, with green margin; flowers violet-blue. 15 cts. each, 4 for 50 cts.; larger size, 20 cts. each.

SWAINSONIA alba (White). Pure white flowers, strongly resembling sweet peas; produced in elegant sprays. 15 cts. each, 4 for 50 cts.

Splendens (Pink). Flowers are deep, shining pink. 15 cts. each, 4 for 50 cts.



CROTON

DINGEE SELECTED POT-PLANTS FOR HOME DECORATION

Hibiscus Sinensis

A beautiful class of pot plants, with handsome, glossy foliage and brilliant snowy flowers.

- All varieties, 15 cts. each, 4 for 50 cts., 9 for \$1
- Versicolor. Striped crimson, buff, rose and white.
- Cooperi Tricolor. Foliage beautifully variegated. Flowers crimson, single, very large.
- Miniatus semiplenus. Vermilion-scarlet; petals wavy and recurved.
- Peachblow. Pink, with crimson center.

HOYA carnosa (Wax Plant). The flowers are bluish white, resembling wax, and are borne profusely in large umbels. Very scarce. 25 cts. each, 5 for \$1.

Jessamine

15 cts. each, 4 for 50 cts., 9 for \$1

- Maid of Orleans. Large, double, waxy white flowers of great substance.
- Grand Duke of Tuscany. Everblooming, with large, double, waxy creamy white flowers.
- Confederate (*Rhynchospermum Jasminoides*). Produces masses of pure white flowers; exceedingly fine for trellis or window-garden.
- Cape Jessamine (*Gardenia florida*). Blooms pure white, large, very fragrant. Also large-size plants, 20 cts. each.

OXALIS *Ortgiesi*. Blooms profusely, until it is one enormous cluster of large, star-shaped flowers. 15 cts. each, 4 for 50 cts.; larger size, 20 cts. each.

RUSSELLIA *Lemoinei*. Profuse bloomer the entire year. Droops. Small, wiry branches and small leaves hidden by scarlet tubular flowers. Strong plants, 15 cts. each, 4 for 50 cts.

SALVIA *splendens* (Scarlet Sage). Makes a brilliant blaze of fiery scarlet color; fine for pots. 10 cts. each, 6 for 50 cts., 15 for \$1.

SNAPDRAGON, *Giant White-scented*. A choice plant for pot culture; perpetual bloomer pure white. 15 cts. each, 4 for 50 cts.; larger size, 20 cts. each.

SOLANUM *Rantonnetii*. A neat little bush 2 feet high. The flowers are deep, clear blue, with yellow center. 20 cts. each, 3 for 50 cts.; larger size, 25 cts. each.

VERBENAS. Fine for pots; assorted colors. 10 cts. each, 6 for 50 cts., 15 for \$1.



HIBISCUS

SHOWER OF GOLD (*Genista Canariensis*). When in flower it presents a dense mass of golden yellow. 15 cts. each, 4 for 50 cts.

Violets

- Strong plants, 10 cts. each, 3 for 25 cts., 7 for 50 cts., 15 for \$1, \$6 per 100; larger plants, 20 cts. each, 3 for 50 cts., 7 for \$1, \$12 per 100, postpaid.
- California. The largest; flowers are single, pure, rich violet-blue.
- Farquhar. Lovely deep blue double flowers of delicate fragrance.
- Governor Herrick. Rich, dark purple; stems long and strong. Single.
- Lady Hume Campbell. Deep violet-blue flowers of the daintiest and most refined form. Perfectly double.
- La France. Large, exceptionally fragrant flowers.
- Luxonne. Large flowers of soft violet-purple.
- Princess of Wales. True blue; large and deliciously fragrant; single.
- Swanley White. Pure snow-white, perfectly double; fragrant flowers.

Our New Department of Landscape Gardening

Our Rose business has always been so extensive that we have never had the time to devote the proper attention to the propagation and selling of general nursery stock, shrubs or hardy plants, though we have always grown these in large quantities and are in position to supply any kind of ornamental trees, evergreens, shrubs and hardy plants to those who desire them. We shall be glad to enter into correspondence with any one wishing to add to the comfort and beauty of the home grounds and, even if we are not able to supply everything from our own stock, we are so closely associated with all the best nurseries, in this and foreign countries that, no matter what is needed, we can supply it.

We have also added to our already complete establishment a new department of **Landscape Gardening**, and are at all times in a position to supply plans for the planting of any sized place, whether it be large or small, together with suggestions for the proper plants, trees and shrubs to use. We shall be glad to make plans of this kind for our friends upon receipt of the roughest kind of pencil sketch of their grounds giving measurements, whether we are called upon to supply stock or not. For this service our fee is extremely small, and we invite correspondence upon the subject.

No matter how small the place or how limited the planting, if the properly drawn plan is followed the result is always much more satisfactory than hit-or-miss planting.

CALIFORNIA PRIVET

Conceded to be the best plant for hedging purposes. Remarkable for the beauty of its evergreen foliage and strong, regular, symmetrical growth. The foliage is dark green, very glossy and wax-like. It is not subject to insects or scale attacks, and will stand pruning to any extent at all seasons. First size, 15 to 24 inches, 20 cts. each, 3 for 50 cts., postpaid; \$5 per 100, by express or freight. Second size, 3 to 4 ft., 25 cts. each, 5 for \$1, \$9 per 100, by express or freight. (Orders for 50 filled at 100 rates.)

DINGEE SPECIAL LAWN GRASS SEED

The best Lawn Grass Mixture for general sowing, as proven by careful experiment and comparison. It produces a smooth, velvety green sward of attractive appearance. In preparing the ground for seeding, break it 10 to 12 inches deep with plow or spade and pulverize thoroughly. The surface should be raked perfectly level to prevent the formation of pools after heavy rainfalls. Sow the seed carefully and evenly at the rate of one quart to a space equal to 15 x 20 feet; two bushels will sow one acre. After sowing, cover the seed by raking or harrowing it. Rolling is also in general practice.

The Dingee Lawn Grass Seed is especially recommended for sowing in September or October. Where fall sowing is practiced, a top-dressing of manure is recommended to protect the roots of the young grass during the winter. In the spring, the gross matter should be removed, leaving the surface clean. To renovate lawn, loosen the soil on the bare spots with a steel rake, and, after sowing a liberal quantity of seed, roll or rake again to cover the seed.

By mail, 35 cts. per pound; in bulk, by express, 25 cts. per pound, 20 pounds or more, 20 cts. per pound, or about \$5.40 per measured bushel

INDEX

PAGE	PAGE	PAGE	PAGE
Abutilon.....30	Cocos Weddelliana.....29	Hoya.....31	Phoenix Rœbelini.....29
Acalyphas.....30	Coleus.....30	Hyacinths.....2, 3	Pretty Face.....13
Achyranthes.....27	Crocus.....11	Hydrangea.....26	Privet.....32
Adiantum.....30	Croton.....30	Iris.....14	Ranunculus.....12
Ageratum.....28	Crinum.....8	Ivy, English.....25	Rex Begonias.....29
Akebia quinata.....25	Cuban Lily.....9	Ixias.....12	Roses.....15-24
Allium.....11	Cycas revoluta.....29	Japanese Fern Ball.....28	Rubber Plant.....27
Alternantheras.....30	Cyclamen.....13	Jessamine.....31	Russelia.....31
Amaryllis.....12	Cyperus alternifolia.....30	Jonquils.....7	Salvia.....31
Ampelopsis.....25	Cyperus gracilis.....30	Justicia.....30	Sacred Lily.....2d cover
Anemones.....14	Daffodils.....6, 7	Kentia Palm.....28	Sansevieria.....20
Anomatheca cruenta.....7	Dianthus.....26	Lace Fern.....29	Scarlet Freesia.....7
Araucaria excelsa.....27	Dracæna.....20	Lachenalis.....13	Scarlet Sage.....31
Areca lutescens.....28	Easter Lily.....9	Lantana.....30	Scilla Sibirica.....12
Aristolochia.....25	Erythronium.....9	Latania Borbonica.....29	Scilla Clusii.....9
Asparagus plumosus.....28	Euonymus.....25	Lawn Grass Seed.....31	Shower of Gold.....31
Asparagus Sprengeri.....28	Farfugium.....30	Lemon.....30	Silk Vine.....27
Babianas.....11	Ferns.....28	Lilies, Japan, etc.....8-10	Snapdragon.....31
Begonias.....29	Fern Ball.....28	Lily-of-the-Valley.....11	Snowball.....26
Blue Milla.....17	Ficus.....27	Manettia Vine.....29	Snowdrops.....11
Bougainvillea.....28	Fig.....34	Mexican Lily.....9	Solanum.....31
Brodiaeas.....11	Floral Firecracker.....17	Milla, Blue.....14	Sparaxis.....14
Caladiums.....14	Flower Seeds.....22	Narcissus.....6, 7	Spiræa.....25
Callas.....13	Freesias.....6	Norfolk Island Pine.....27	Sprekelia.....9
Calochortus.....14	Fritillarias.....17	Orange Otahcite.....30	Strobilanthes.....30
Camassia.....9	Fuchsia.....21	Ornithogalum.....12	Swainsonia.....30
Cape Jessamine.....31	Geraniums.....29	Oxalis.....13, 31	Sweet Violets.....31
Carnations.....26	Glory-of-the-Snow.....12	Pansies.....26	Trillium.....12
Carex Japonica.....30	Guava.....30	Peonies.....25	Triteleia.....13
Chinese Sacred Lily.....10	Hardy Climbing Vines.....25	Palms.....28	Tritonia.....14
Chionodoxa.....12	Hardy Perennials.....25	Pelargonium.....27	Tulips.....4, 5, 14
Cinnamon Vine.....12	Heliotrope.....30	Perennials.....25	Verbenas.....31
Cissus Discolor.....30	Hibiscus.....31	Phlox, Hardy.....25, 26	Violets, Sweet.....31
Clematis, Climbing.....25	Honeysuckles, Climbing.....25	Phoenix Canariensis.....29	Virginia Silk Vine.....20
Clerodendron.....25	Honeysuckles, Cal.....14		

THREE EXQUISITE QUEENS OF THE GARDEN

Helen Mills

Lovely, tender pink

Rhea Reid

Royal scarlet-crimson

Mrs. Charles Dingee

Bright golden yellow

Fully described on page 16

Did you ever see three more beautiful Roses than those depicted on the opposite page. Imagine the joy of having these three blooming in your garden! You can have it by taking advantage of our great offer of the transcendent seven Roses on page 15, or we will supply these three alone at the following prices: One plant of each, from pots 3½ to 4 inches in diameter, \$1; 2-year-old plants, \$1.35. All express charges prepaid by us.

Our New Guide to Rose Culture for 1911 will be ready to send out January 1, 1911. It is the acknowledged authority on matters pertaining to the culture of Roses, as well as all other flowers of worth. It will be sent free to customers of the past few years, also to those who order from this catalogue. To others free upon application.

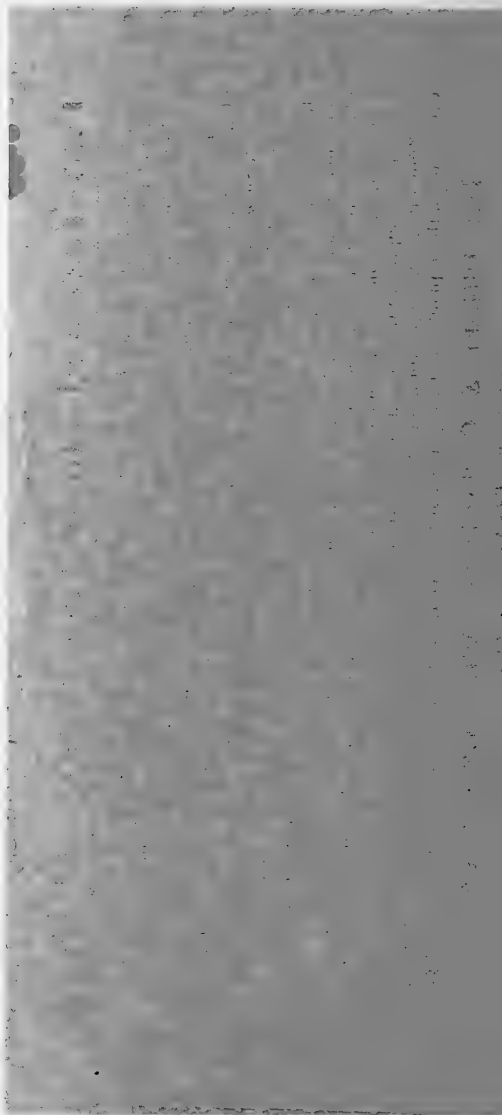
Two-Year and Three-Year Roses Sold Out

Since this book was written and printed, the unprecedented demand for our large two-year and three-year Roses has resulted in our large stock of these sizes being completely sold out. Such a large and continuous demand was totally unexpected. But this shortage need cause no disappointment to our Rose-loving friends, for our faith in the new 25-cent-size plants leads us to predict that they will give such splendid satisfaction that all who plant them will agree with us that they represent the highest type of Rose for general planting now grown.

These 25-cent Roses, listed on pages 17 to 24, are so large that they could honestly be sold as two-year plants. They represent the new size of Roses we have propagated exclusively for this fall's planting. They are strong, lusty, vigorous plants, grown in 3½-inch pots, under conditions which insure unqualified success, both for indoor and outdoor planting, if planted and cared for in the manner outlined on page 15. For growing in pots indoors, we have never sent out better plants; planted in the open ground, they will give an abundant supply of beautiful flowers next year.

Remember, the reputation gained by over 60 years in growing Roses stands behind every one of these plants, and we **guarantee satisfaction, or will refund the money.**

THE DINGEE & CONARD CO., WEST GROVE, PA.





DINGEE

Roses

have made

West Grove

Famous

FROM _____

P. O. _____ STATE _____

DO NOT FORGET STAMP

THE

Dingee & Conard Company.

West Grove, Pa.

THE LEADING
ROSE GROWERS
OF AMERICA

(K. K. 2.)



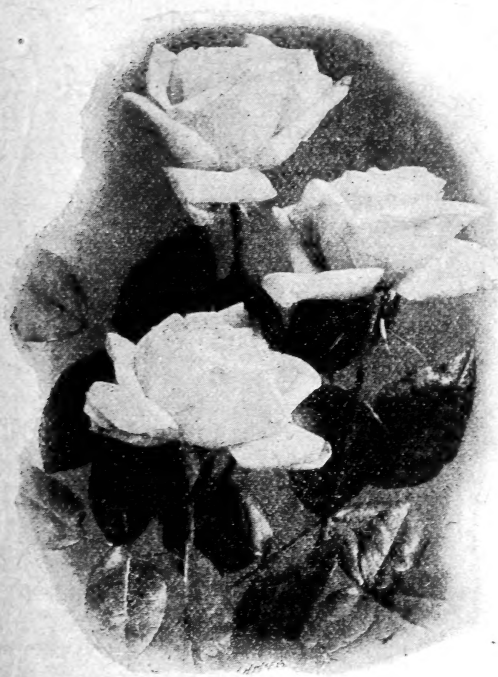
DINGEE BULBS

are good bulbs in the full meaning of the term. If you would have success with your Winter or Spring bulbs this season remember our reputation with Roses, and that we are able to give you equally good satisfaction in this other corner of Flora's realm. If you want the very best at reasonable prices ask for our Fall Catalogue—it's free. This will reach us—:

DINGEE, WEST GROVE, PA.

Special List of Hardy, Own-Root, Dormant, Field-Grown Roses

READY FOR DELIVERY ABOUT OCTOBER 15



WE have now growing in our fields a limited number of big, vigorous Roses—a magnificent list of varieties—which will bring unalloyed joy to those so fortunate as to get their orders in on time. There are not quite 3,000 of them, in the following varieties—merely a trifle compared to the demand there will be for them,—so we will have to carry out the rule of “first come, first served.” Send in your orders at once, and we will reserve the plants for you if you are not too late. Orders will be filled strictly in the order of receipt. After these are gone no more can be had at any price. These are mostly June Roses, now so scarce and eagerly sought after.

These plants are all three-year-old, *on their own roots*, and have been growing in our field for over a year after being grown in pots for two years. They are absolutely hardy everywhere. Do not be misled into buying the department-store Holland-grown, grafted plants, which never live more than a year or two in this country. They will be ready for delivery as soon as they are dormant—about October 15.

No other establishment in the country can make an offer like this—it hasn't the stock; and the ridiculously low figure at which we price these Roses is the greatest bargain ever offered to the rose-lovers of this country. Full descriptions of these beautiful Roses will be found in our catalogue. See other side for a special offer on four of the greatest Roses ever grown.

For this sale only the price of these Rose bushes—“plants” doesn't describe them—is 50 cents each, \$5 per dozen, except the Blue Rose. If you add 10 per cent to the amount of your order, we will send by express prepaid to any point in the U. S. or Canada.

Anna de Diesbach. H. P. Brilliant carmine; extra large and vigorous.

Archduchess Elizabeth of Austria. H. P. Rosy carmine.

Climbing Clotilde Soupert. Climber. White, with silvery rose center.

Countess of Roseberry. H. P. Satiny pink center, deep rose outside.

Empress of India. H. P. Deep crimson, brown shadings.

Eugene Furst. H. P. Velvety crimson, shading to maroon.

Francois Levet. H. P. Cherry pink, with carmine shadings.

General Jacqueminot. H. P. The grand old favorite crimson rose.

Gloire de Margottin. H. P. Clear dazzling red; extra strong.

Glory of Exposition of Brussels. Velvety amaranth.

Jean Liabaud. H. P. Velvety crimson.

Mad. Alfred Carriere. H. P. Rich, creamy white, faintly tinged with yellow.

Mad. Charles Wood. H. P. Fiery scarlet, shading to rosy crimson.

Mad. Masson. H. P. Clear, distinct, bright rose.

Magna Charta. H. P. Rosy red, flushed with violet.

Marchioness of Lorne. H. P. Beautiful, vivid carmine shading.

Mary Washington. Climber. Pure white; very double.

Oakmont. H. P. Peach pink; extra large flower; strong grower.

Pink Rambler. Climber. Magnificent trusses of pink roses.

Pride of Washington. Climber. Amaranth, with rose shading.

Sir Thomas Lipton. Rugosa. White; the best of its kind. Handsome foliage.

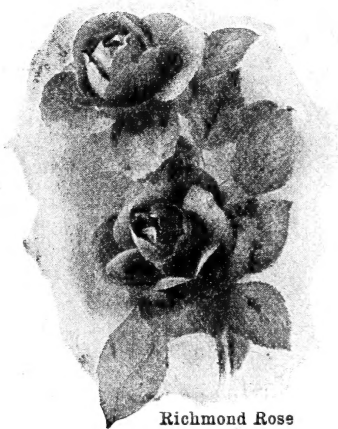
Ulrich Brunner. H. P. Glowing crimson, flushed with scarlet.

Blue Rose (Veilchenblau). The novelty of the century. \$1 each.

Vick's Caprice. H. P. Satiny pink, striped with white and red.

[OVER]

Four of the Most Magnificent Hybrid Tea Roses Ever Introduced



Richmond Rose

THERE are Roses and Roses but these four have never been excelled in all the points which go to make up ideal Roses for the amateur grower. We have these superb Roses in two forms—in immense three- and four-year-old pot-plants, and in massive, lusty, field-grown plants three and four years old, full of strength and vigor. Either form, when planted in the garden, will yield a wonderful return for the money spent and the slight care and attention necessary to bestow upon them.

Fuller descriptions of this "Famous Four" will be found in the book in which this is enclosed.

Richmond Brilliant, shining, blood-red, with exquisite perfume.

Killarney The most exquisite shade of shell-pink. The buds are particularly handsome.

American Beauty Rich glowing crimson, with the petals beautifully shaded and veined. Its perfume is the very quintessence of Rose fragrance. The most popular Rose in existence.

Mrs. David Jardine Bright, rosy pink, with outer petals shading to salmon. One of the finest garden Roses, always in bloom.

These four Roses are not only the finest to be had, but they can be had only of us. No other Rose grower in the country has plants to compare to them, and even our stock is limited. If you wish pot-plants, we can deliver at once, while the field-grown plants will not be ready for delivery until October 15—the ideal time for fall planting. But send in your order for either kind at once. If it is for field-grown plants, we will reserve them for you. Don't delay or you will regret it.

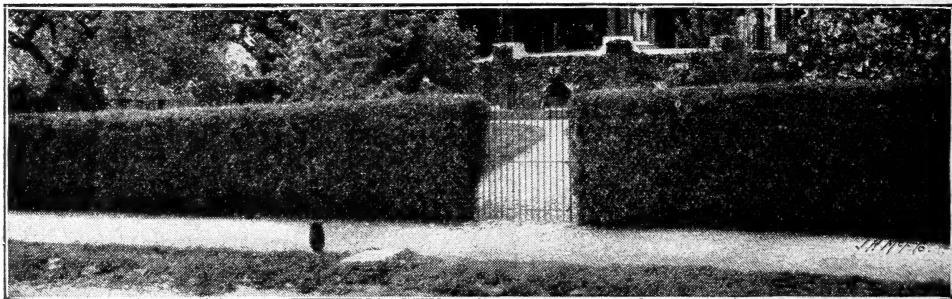
The price of these four varieties is only 80 cents each—mighty low considering the quality of the stock. They are so large that they have to be sent by express, and if you will add 10 per cent to the amount of your order we will prepay charges.

CALIFORNIA PRIVET FOR HEDGES

WE call especial attention to our splendid stock of California Privet, especially prepared for fall planting. The beauty and utility of a Privet Hedge is being appreciated more and more. Surrounding the home grounds, it gives an air of comfort and exclusiveness not possible to get with a mere fence, no matter how fine. It increases the beauty of the home in the same manner as the proper frame increases the beauty of a picture. At the same time, it is cheaper than a fence in first cost, costs absolutely nothing for repairs, and about the time a fence needs to be replaced by a new one, a Privet Hedge is in its full beauty and efficiency.

Our Privet Hedge Plants are extra-vigorous in growth, have been cultivated particularly for hedges, and are furnished with a fully-developed supply of fibrous roots, which will take hold at once in their new location, and push the plants to vigorous, steady growth.

First size, 2-year-old plants, 15 to 24 inches, 20 cts. each, 3 for 50 cts., postpaid; \$5 per 100, by express or freight. Second size, 3-year-old, 3 to 4 feet, 25 cts. each, 5 for \$1. \$9 per 100, by express or freight. (Orders for 50 filled at 100 rates.)



Hedge of California Privet

[OVER]



THEY ARE THE

THEY ARE THE

MRS. CHARLES
DINGER

**THREE SUPERB NEW
HARDY GARDEN BUSH
ROSES**

**THE GREATEST TRIO
EVER OFFERED
HEALTHY, VIGOROUS AND ALWAYS IN BLOOM**

The Great Irish Rose KILLARNEY

The grandest of all
winter-
blooming
Roses for
pot culture

The
Irish
Queen

The Dingee &
Conard Co.

West Grove,
Penna.

THE LEADING
ROSE GROWERS
OF AMERICA

