

HV
410
M3A4
1922

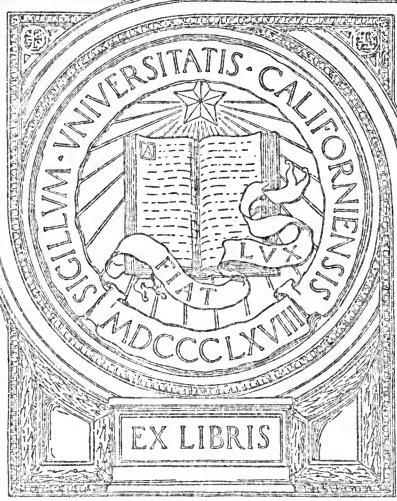
UC-NRLF



5B 288 289

DOCUMENTS
DEPT.

YB 24545



EX LIBRIS

DOCUMENTS
DEPT.

THE GOVERNMENT OF THE PHILIPPINE ISLANDS
DEPARTMENT OF THE INTERIOR
OFFICE OF THE PUBLIC WELFARE COMMISSIONER
MANILA

SEP 22 1924
GIFT

A DIRECTORY

OF

CHARITABLE AND SOCIAL SERVICE
ORGANIZATIONS AND INSTITUTIONS IN THE
CITY OF MANILA

SECOND EDITION
(REVISED)

MANILA
BUREAU OF PRINTING
1922

189829

Digitized by the Internet Archive
in 2007 with funding from
Microsoft Corporation

THE GOVERNMENT OF THE PHILIPPINE ISLANDS
DEPARTMENT OF THE INTERIOR
OFFICE OF THE PUBLIC WELFARE COMMISSIONER
MANILA

A DIRECTORY
OF
CHARITABLE AND SOCIAL SERVICE
ORGANIZATIONS AND INSTITUTIONS IN THE
CITY OF MANILA

SECOND EDITION
(REVISED)

MANILA
BUREAU OF PRINTING
1922

189829

HV 410
M3A4
1922

DOCUMENTS
DEPT.

TO MIND
MINDS LAD

FOREWORD

Like the first, the present edition of the Directory of Charitable and Social Service Organizations and Institutions is published for the use of social workers and laymen. Since the first edition was issued, new agencies have sprung up and the old ones have undergone various changes, making a revision absolutely necessary.

In this directory the agencies are listed under the various functions that they perform in order that it may be easy for any one interested in a case needing special attention to get at the agency which can best handle it. The Index at the end of the directory is arranged alphabetically so as to facilitate looking up any organization or institution about which information is desired.

We have endeavored to include in this edition all the welfare agencies in Manila

and vicinity that we know of, but new agencies may have been organized since we last made the survey. The Office of the Public Welfare Commissioner will be glad to have its attention called to existing agencies that are not found in this directory, in order that it may include them in the next edition.

JOSÉ FABELLA,
Public Welfare Commissioner.

done
1/1/18

TABLE OF CONTENTS

	Page
FOREWORD	3
ASYLUMS	9
City Insane Asylum.....	9
CONSULTATIONS FOR MOTHERS AND CHILDREN: (Puericulture Centers).....	10
Consultorio de Tondo.....	11
Gota de Leche.....	11
Mary J. Johnston Memorial Hospital..	11
Maternity House	12
Santa Ana Child Welfare Center.....	12
Settlement House .Child Welfare Center	12
Singalong Child Welfare Center.....	12
Tondo Child Welfare Center.....	13
DAY NURSERIES.....	13
Singalong Day Nursery.....	14
DEFECTIVES, INSTITUTIONS FOR.....	14
Hospicio de San José (For Defectives)....	14
San Lazaro Hospital (Asylum).....	15
School for the Deaf, Dumb, and the Blind..	16

	Page
DISPENSARIES (General).....	16
American Red Cross Dispensary.....	16
Mary Chiles Christian Hospital Dis- pensary	17
Mary J. Johnston Memorial Hospital Dispensary	17
Philippine General Hospital Dispensary..	18
Philippine Health Service Dispensaries....	18
St. Luke's Hospital Dispensary.....	18
DISPENSARIES (Special).....	19
Philippine Islands Anti-Tuberculosis So- ciety Consultation Service.....	19
San Lazaro Hospital Venereal Clinic.....	19
HEALTH STATIONS.....	20
Intramuros Health Station.....	20
Meisic Health Station.....	20
Paco Health Station.....	21
Sampaloc Health Station.....	21
Tondo Health Station.....	22
HOSPITALS (General).....	22
Chinese General Hospital.....	22
Hospital de San Juan de Dios.....	23
Mary Chiles Christian Hospital.....	23
Philippine General Hospital.....	24
St. Luke's Hospital.....	25
St. Paul's Hospital.....	25
HOSPITALS (Special).....	26
Hospital Español de Santiago.....	26

HOSPITALS (Special)—Continued.	Page
Mary J. Johnston Memorial Hospital.....	26
Maternity House (Hospital).....	27
San Lazaro Hospital.....	28
Santol Tuberculosis Colony.....	28
ORPHANAGES FOR DESTITUTE AND DEPENDENT CHILDREN	29
Asilo de Looban.....	29
Boys' Home.....	30
Hospicio de San José (Orphanage).....	30
House of the Holy Child.....	31
Infant Jesus Orphanage.....	32
Makati Orphanage.....	32
The American Guardian Association.....	33
RELIEF AND PROTECTIVE ASSOCIATIONS.....	33
American Red Cross—Home Service.....	33
Asociación de Damas Filipinas.....	34
Associated Charities of Manila.....	35
Conferencias de Caballeros de la Sociedad de San Vicente de Paul.....	35
Conferencias de Señoras de la Sociedad de San Vicente de Paul.....	36
Liga Nacional Filipina para la Protección de la Primera Infancia.....	37
The Colored American Community League of the Philippine Islands.....	37
Woman's Club of Manila.....	38

	Page
REFORMATORIES	38
City Boys' Reformatory.....	38
City Girls' Reformatory.....	39
SETTLEMENTS	40
Settlement House of the Asociación de Damas Filipinas.....	40
WELFARE ORGANIZATIONS WITH HEADQUARTERS IN THE CITY OF MANILA.....	40
American Red Cross—Philippines Chapter	40
National Federation of Woman's Clubs of the Philippines.....	41
Philippine Health Service.....	43
Philippine Islands Anti-Tuberculosis So- ciety	43
Public Welfare Commissioner, Office of the	44
INDEX	47

A DIRECTORY OF CHARITABLE AND SOCIAL SERVICE ORGANIZATIONS

ASYLUMS

Asylums, as used here, are institutions for the protection, shelter, or relief of destitute and unfortunate persons, such as, insanes, invalids, aged, and orphans.

CITY INSANE ASYLUM (GOVERNMENT)

(Lolomboy, Bocaue, Bulacan)

Has accommodations for free and pay patients of the City of Manila only. Manila pay patients are charged ₱1 per day. Insanes from the provinces may be admitted by special arrangement and by payment of ₱1 per day. Applications should be made to the physician in charge of the Asylum. Visits to the inmates must be authorized by the Secretary to the Mayor of Manila.

Institutions for orphans, *see under* ORPHANAGES, ETC.

Other institutions for insanes, invalids, and aged, *see under* DEFECTIVES.

CONSULTATIONS FOR MOTHERS AND CHILDREN (PUERICULTURE CENTERS)

A puericulture center is an institution, the main purpose of which, is the instruction and training of mothers in the care of children. It has a clinic where children, especially those under two years of age, are examined and treated and where pregnant women receive proper instructions relative to the care of themselves and of their offspring. It has physicians or nurses or licensed midwives and other personnel who instruct or visit women about to be confined, attend to them before or during confinement, and look after the health of the newly born and older children. In some cases, a puericulture center has, in connection with it, a maternity and a community center.

**CONSULTORIO DE TONDO (PRIVATE, RECEIVING
GOVERNMENT SUBVENTION)**

(Of the Liga Nacional Filipina para la Protección de la Primera Infancia, 203 Morga Street, Tondo)

Consultations for mothers and children from 8 to 11 a. m. every Tuesday, Thursday, and Saturday; 4 to 6 p. m. every Wednesday.

**GOTA DE LECHE (PRIVATE, RECEIVING GOVERNMENT
SUBVENTION)**

(851 Lepanto Street, Sampaloc; Tel. 1209)

Free consultations for expectant mothers, mothers, and babies from 4 to 6 p. m. on Tuesdays, Thursdays, and Saturdays. Distributes free of charge pure fresh milk to poor patients; those who can afford to pay are charged from ₱0.05 to ₱1.10 a day.

MARY J. JOHNSTON MEMORIAL HOSPITAL (PRIVATE)

(101 Quesada Street, Tondo; Tel. 9504)

Conducts consultations for mothers and children at any hour daily.

For hospital cases, *see under* HOSPITALS, SPECIAL.

MATERNITY HOUSE (GOVERNMENT)

(350 Isabel Street, Sampaloc; Tel. 2150)

Conducts consultations for expectant mothers, mothers, and children from 8 to 11 a. m. daily except on Sundays and legal holidays.

For hospital cases, *see under* HOSPITALS, SPECIAL.

SANTA ANA CHILD WELFARE CENTER (GOVERNMENT)

(2900 Herran Street, Santa Ana; Tel. 2765)

Consultations from 8 to 11 a. m. every Wednesday and Saturday. Clients should apply directly at the Center.

SETTLEMENT HOUSE CHILD WELFARE CENTER (PRIVATE, RECEIVING GOVERNMENT SUBVENTION)

(834 Rizal Avenue; Tel. 2831)

Consultations from 8 to 11 a. m. every Tuesday and Friday. Applications should be made at the Center.

SINGALONG CHILD WELFARE CENTER (GOVERNMENT)

(1122 San Andres Street, Malate; Tel. 3430)

Consultations from 8 to 11 a. m. on Mondays and Thursdays. Mothers and children should apply directly at the Center.

TONDO CHILD WELFARE CENTER (GOVERNMENT)
(1842 Juan Luna Street, Tondo; Tel. 9565)

Consultations from 8 to 11 a. m. every Monday and Thursday. Applications should be made directly at the Center.

DAY NURSERIES

Day nurseries take care of infants and children of both sexes of pre-school age whose parents must work but cannot afford to hire outside helpers to look after their children during the day while they are away from home.

Admission.—(1) No child is admitted free if its parents or guardians are receiving a wage or salary above ₱30 a month. (2) Parents receiving over ₱30 a month are to pay at least 5 per cent of their income. (3) No child having mental defects or any infectious or contagious diseases can be admitted. (4) Children have to undergo physical examination upon admission. (5) Children stay in the institution usually from 7 a. m. to 6 p. m. every workday.

SINGALONG DAY NURSERY (GOVERNMENT)

(1122 San Andres Street, Malate; Tel. 3430)

Office hours: 7 a. m. to 5 p. m. Applications should be made to the Nurse Matron. Capacity: 10 beds for infants, 40 for children.

INSTITUTIONS FOR DEFECTIVES

The institutions for defectives are for those who, because of physical or mental defects, cannot very well support themselves in the community. Under the term "defectives" are included the insane, the cripple or invalid, the blind, the deaf and the dumb.

HOSPICIO DE SAN JOSÉ (PRIVATE)

(Isla de la Convalecencia, near Ayala Bridge, San Miguel; Tel. 1500)

Admits a very limited number of free and pay women insane cases by special arrangement with the Medical Director. Accepts invalids or cripples. Pay patients are charged from ₱25 to ₱150 per month. Visiting days are on Sundays only from 9 to 10:30

a. m. For pay admissions, apply to the Medical Director from 8 a. m. to 12 noon and from 3 to 6 p. m. daily. For free accommodations, apply to the Most Reverend Archbishop of Manila, 95 Calle Arzobispo, explaining the occasion of application and giving correct address for investigation and answer. For accommodations of orphans or destitutes, *see under* ORPHANAGES, ETC.

SAN LAZARO HOSPITAL (GOVERNMENT)

(1739 Rizal Avenue; Tel. 26)

Accommodates insanes and invalids. Provincial insane cases are admitted without charge upon recommendation of provincial authorities approved by the Director of Health or by order of the courts of justice. Insane patients of the City of Manila can be admitted by paying from ₱25 to ₱60 per month, provided there is place available. The invalid or the aged is admitted upon certification of competent authorities to the effect that the patient is poor, destitute, and

helpless. Visiting days: from 3 to 4 p. m. on Sundays and Thursdays for the insanes, and on Mondays, Wednesdays, and Sundays for the invalids and the aged. For accommodations of hospital cases, *see under* HOSPITALS, SPECIAL.

**SCHOOL FOR THE DEAF, DUMB, AND THE BLIND
(GOVERNMENT)**

(A. Bonifacio Street, formerly Malecon Drive;
Tel. 105)

It is not a charitable institution, but a special school under the Bureau of Education. For admission, see the Principal.

DISPENSARIES (GENERAL)

The following institutions are operating dispensaries which furnish medical and minor surgical treatment to the sick poor in the immediate vicinity in which each is situated.

AMERICAN RED CROSS DISPENSARY (PRIVATE)
(1854 Azcarraga Street; Tel. 1161)

It is open from 2 to 5 p. m. daily except on Sundays and holidays. A nurse is in attendance from 2 to 5 p. m. and a doctor,

from 3 to 5 p. m. For treatment, apply directly at the dispensary. For relief and general welfare work undertaken by the American Red Cross, Philippines Chapter, *see under* RELIEF AND PROTECTIVE ASSOCIATIONS, and *under* GENERAL WELFARE ORGANIZATIONS.

**MARY CHILES CHRISTIAN HOSPITAL DISPENSARY
(PRIVATE)**

(135 Gastambide Street, Sampaloc; Tel. 1373)

For treatment, apply personally at the dispensary from 9 to 11 a. m. daily except on Sundays. Two doctors are always in attendance. Emergency cases cared for at any time.

**MARY J. JOHNSTON MEMORIAL HOSPITAL DISPENSARY
(PRIVATE)**

(101 Quesada Street, Tondo; Tel. 9504)

For treatment, apply personally at the dispensary from 7 a. m. to 12 noon daily except on Sundays and legal holidays. A free milk station is operated from 7 to 10 a. m. daily. For hospital and maternity cases, *see under* HOSPITALS, SPECIAL and *under*

CONSULTATIONS FOR MOTHERS AND CHILDREN.

PHILIPPINE GENERAL HOSPITAL DISPENSARY (GOVERNMENT)

(Taft Avenue, near Herran Street; Tel. 1380)

For treatment, apply personally at the dispensary from 7:30 to 11:30 a. m. and from 2 to 4 p. m. daily except on Saturdays, Sundays, and official holidays. During Saturdays, the dispensary hours are from 7:30 a. m. to 1:30 p. m. only. During the hot season period, beginning April 1st to June 15th, the afternoon clinics at the free dispensary are consolidated into one general clinic which is held daily from 2 to 3 p. m. except on Saturdays, Sundays, and official holidays. For hospital cases, *see under* HOSPITALS, GENERAL.

PHILIPPINE HEALTH SERVICE DISPENSARIES

See under (HEALTH STATIONS.)

ST. LUKE'S HOSPITAL DISPENSARY (PRIVATE)

(1015 Magdalena Street, Trozo; Tel. 797)

For treatment, apply directly at the dispensary from 8 a. m. to 12 noon daily except

on Sundays. For hospital cases, *see under* HOSPITALS, GENERAL.

DISPENSARIES (SPECIAL)

The following dispensaries furnish treatment to infectious cases; such as, tuberculous, venereal, etc.

**PHILIPPINE ISLANDS ANTI-TUBERCULOSIS SOCIETY
CONSULTATION SERVICE (PRIVATE, RECEIVING
GOVERNMENT SUBVENTION)**

(700 Rizal Avenue; Tel. 2874)

For treatment, apply directly at the dispensary from 8 a. m. to 12 noon and from 2 to 4 p. m. except on Saturdays, Sundays, and legal holidays; on Saturdays, from 8 a. m. to 1 p. m.

**SAN LAZARO HOSPITAL VENEREAL CLINIC
(GOVERNMENT)**

(1739 Rizal Avenue; Tel. 26)

For treatment of venereal cases, female patients should apply personally at the clinic from 7 to 9 a. m. daily except on Sundays; male patients should apply at the same place on the same days from 2 to 4 p. m.

HEALTH STATIONS

The Philippine Health Service maintains different health stations in the City of Manila, wherein patients are given medical and minor surgical treatments. Consultation or application should be made directly at each health station.

INTRAMUROS HEALTH STATION (GOVERNMENT)

(Santa Potenciana Building, corner of General Luna and Victoria Streets, Intramuros; Tel. 878)

For residents of Ermita, Intramuros, and Malate, although those of other districts are also treated. For treatment, apply personally at the station from 8 a. m. to 12 noon and from 1 to 4 p. m. daily except on Saturdays, Sundays, and holidays; on Saturdays, from 8 a. m. to 1 p. m.

MEISIC HEALTH STATION (GOVERNMENT)

(2 Felipe II Street, Meisic; Tel. 9623)

For the residents of Binondo, Meisic, Santa Cruz, and San Nicolas, although those of other districts are also treated. For treatment, apply personally at the station

from 8 a. m. to 12 noon and from 1 to 4 p. m. daily except on Saturdays, Sundays, and holidays; on Saturdays, from 8 a. m. to 1 p. m.

PACO HEALTH STATION (GOVERNMENT)

(Plaza Dilao; Tel. 242)

For the residents of Paco, Pandacan, and Santa Ana, although those of other districts are also treated. For treatment, apply personally at the station from 8 a. m. to 12 noon and from 1 to 4 p. m. daily except on Saturdays, Sundays, and holidays; on Saturdays, from 8 a. m. to 1 p. m.

SAMPALOC HEALTH STATION (GOVERNMENT)

(74 Gardenia Street; Tel. 206)

For Sampaloc, Quiapo, Santa Mesa, and San Miguel residents, although those of other districts are also treated. For treatment, apply personally at the station from 8 a. m. to 12 noon and from 1 to 4 p. m. daily except on Saturdays, Sundays, and holidays; on Saturdays, from 8 a. m. to 1 p. m.

TONDO HEALTH STATION (GOVERNMENT)

(270 Moriones Street, Tondo; Tel. 9509)

For Tondo residents, although those of other districts are also treated. For treatment, apply personally at the station from 8 a. m. to 12 noon daily except on Saturdays, Sundays, and holidays; on Saturdays, from 8 a. m. to 1 p. m.

HOSPITALS (GENERAL)**CHINESE GENERAL HOSPITAL (PRIVATE)**

(286 Blumentritt Street, San Lazaro; Tel. 7902)

The institution maintains a general hospital for medical and surgical treatments primarily for Chinese, but other nationalities are also admitted and treated. It will soon conduct a school of nursing. Accommodations: for pay patients, 120 beds; for free patients, 100 beds. Pay patients are charged from ₱2 to ₱7 a day. Visiting days: daily from 9 a. m. to 9 p. m. for pay patients and from 4 to 5 p. m. for free patients. For admission, apply at the hospital, which is open all the time.

HOSPITAL DE SAN JUAN DE DIOS (PRIVATE)

(214 Real Street, Intramuros; Tel. 2550)

Accommodations for 191 beds, 103 of which are for free patients and 88, for pay patients. Pay patients are charged from ₱2.50 to ₱14 a day. It receives medical and surgical cases. It has an ambulance service and conducts a school of nursing. All persons suffering from curable diseases are admitted except lepers and tuberculous persons. Patients must be examined either by hospital or by private physicians before admission. For admission, apply at the hospital, which is always open. Visiting days: Thursdays and Sundays for free patients and every day for pay patients.

MARY CHILES CHRISTIAN HOSPITAL (PRIVATE)

(135 Gastambide Street, Sampaloc; Tel. 1373)

It is a general hospital having accommodations for 80 patients. Pay patients are charged from ₱1.50 to ₱10 a day. The hospital extends charity to the deserving to the extent of its resources. All charity cases must be brought to the personal at-

tention of the Director, who is also the physician in charge of all such cases. Visiting hours: wards, daily—10 to 11 a. m. and 3 to 5 p. m.; private rooms, daily—9 a. m. to 9 p. m. There is a dispensary in connection with the hospital. *See under DISPENSARIES, GENERAL.*

PHILIPPINE GENERAL HOSPITAL (GOVERNMENT)

(Taft Avenue, between Herran and Padre Faura Streets; Tel. 1380)

Accommodations for 460 beds, 365 of which are for free patients and 95, for pay patients. Pay patients are charged for accommodations and subsistence from ₱3 to ₱15 a day. Government employees and their families are given a reduction of $33\frac{1}{3}$ per cent. It maintains a social service and an outside obstetrical free service for the poor inhabitants of Manila. For admission, apply at the hospital where patients are received at any time. Visiting days: daily from 9 a. m. to 9 p. m. for pay patients and from 3 to 4:30 p. m. for free patients. It conducts a school of nursing and main-

tains a free dispensary where poor patients receive treatment. *See under* DISPENSARIES, GENERAL.

ST. LUKE'S HOSPITAL (PRIVATE)

(1015 Magdalena Street, Trozo; Tel. 797)

All patients except those suffering from contagious diseases are admitted. Accommodations for 100 beds, thirty of which are for charity patients and the rest, for pay patients. Pay patients are charged from ₱3 to ₱14 a day. For admission, apply at the hospital where patients are received at any time. Visiting days: daily from 9 a. m. to 9 p. m. for private rooms and from 2 to 3 p. m. for general wards. It conducts a school of nursing and maintains a free dispensary where everybody receives treatment. *See under* DISPENSARIES, GENERAL.

ST. PAUL'S HOSPITAL (PRIVATE)

(98 Gral. Luna Street, Intramuros; Tels. 217 and 1884)

Always open to receive patients. All patients except those suffering from contagious diseases may be admitted on application

personally at the hospital, or by calling up hospital ambulance. Accommodations for 120 beds, ten for free patients in wards and the rest, for patients in private rooms. Pay patients are charged from ₱2 to ₱10 a day. It conducts a school of nursing.

HOSPITALS (SPECIAL)

HOSPITAL ESPAÑOL DE SANTIAGO (PRIVATE)

(1819 Azcarraga Street, corner, Rizal Avenue, Santa Cruz; Tel. 364)

Accommodations are free and only for members of the hospital and their immediate families who are suffering from contagious diseases. Membership is limited to Spaniards, although other nationalities are accepted as honorary members. Entrance fees for Spaniards are ₱50 and for other nationalities, ₱100. All members pay a monthly fee of ₱12. For admission, apply at the hospital at any time.

MARY J. JOHNSTON MEMORIAL HOSPITAL (PRIVATE)

(35 Quesada Street, Tondo; Tel. 9504)

Accommodations for 90 beds, fifty of which are for free patients and forty for

pay patients. Pay patients are charged from ₱1 to ₱8 per day. Only women and children are admitted. The hospital is for obstetrical and pediatric as well as for surgical and medical cases. For admission, apply to the doctor in charge of the hospital at any time. Visiting hours: from 10 to 11 a. m. and from 3 to 5 p. m. daily. It maintains a general dispensary and conducts consultations for mothers. *See under* DISPENSARIES, GENERAL, and *under* CONSULTATIONS FOR MOTHERS AND CHILDREN.

MATERNITY HOUSE (GOVERNMENT)

(350 Isabel Street, Sampaloc; Tel. 2056)

It is maintained by the Office of the Public Welfare Commissioner. Accommodations are for poor women and children only, although pay patients are sometimes accepted. Applications for admission should be made to the physician in charge at any time. It has a social service department, a child welfare center and a community center. *See under* CONSULTATIONS FOR MOTHERS AND CHILDREN.

SAN LAZARO HOSPITAL (GOVERNMENT)

(1739 Rizal Avenue; Tel. 26)

It is maintained by the Philippine Health Service. Accommodations are for free and pay patients suffering from infectious, contagious or communicable diseases as prescribed by the Director of Health. Pay patients are charged from ₱4 to ₱6 per day. It operates ambulance service. Visitors are allowed to visit patients from 3 to 4 p. m. daily. For admission of insane, invalid, and aged persons, *see under* DEFECTIVES, ETC.

SANTOL TUBERCULOSIS COLONY (PRIVATE, RECEIVING GOVERNMENT SUBVENTION)

(Santol Street, Santa Mesa Heights; Tel. 7666)

Always open to receive patients. Accommodations for free and pay patients. Pay patients are charged from ₱2.50 to ₱5 per day. It has cottages of mixed materials and concrete for pay patients. Visiting days: free patients, from 3 to 6 p. m. during working days and from 8 a. m. to 6 p. m. on Sundays and holidays; pay patients, from 8 a. m. to 6 p. m. daily. Ap-

plications should be made to the Secretary of the Antituberculosis Society at 700 Rizal Avenue, Tel. 3742, during office hours from 8 a. m. to 12 noon and from 1 to 4 p. m. daily except on Saturdays, Sundays, and legal holidays. On Saturdays, the Secretary's office hours are from 8 a. m. to 1 p. m. Applications can also be made at the Colony.

**ORPHANAGES FOR DESTITUTE AND
DEPENDENT CHILDREN**

ASILO DE LOOBAN (PRIVATE)

(340 Looban Street, Paco (Casa de San Vicente de Paul); Tel. 1584)

Accommodations are limited and are free for orphaned and destitute girls between 6 and 18 years of age, although those that can afford to pay are charged from ₱5 to ₱20 per month; pay inmates are regularly charged ₱20 per month. Visiting days: from 4 to 6 p. m. on Thursdays and from 9 to 11 a. m. on Sundays. For admission, apply personally to the Mother Superior at the asylum from 7 to 11:30 a. m. and from 3 to 6 p. m. daily.

BOYS' HOME (GOVERNMENT)

(1274 Calle Agno, Malate; Tel. 6632)

It is maintained by the Office of the Public Welfare Commissioner. Accommodations are for orphaned and destitute boys who are about to be discharged from the care and support of the Government. The boys are allowed to do some remunerative work outside of the institution on part time basis. They are placed in homes to board, for adoption, or for wages whenever practicable. Regular visiting day is on every first Sunday of the month between 8 and 11:30 a. m. For admissions, or adoptions, apply at the Office of the Public Welfare Commissioner, 700 Rizal Avenue, from 7:30 a. m. to 12 noon, and from 1:30 to 4 p. m. daily except on Saturdays, Sundays, and legal holidays. On Saturdays, the office hours are from 8 a. m. to 1 p. m. Tel. 2414.

HOSPICIO DE SAN JOSÉ (PRIVATE)

(Isla de la Convalecencia, near Ayala Bridge, San Miguel; Tel. 1500)

Accommodations are for orphaned and destitute boys not over 14 years of age and

girls of any age. The aged are also accepted. A "revolving cradle" (torno) is operated. Accommodations are free, but payments are required from those who can afford to pay. Charges are from ₱25 to ₱60 per month in case of orphaned children, and from ₱30 to ₱60 per month in case of the aged. For pay admissions, apply to the Medical Director of the institution. For free accommodations, apply to the Most Reverend Archbishop of Manila, 95 Calle Arzobispo, explaining the occasion of application and giving correct address for investigation and answer. Visiting days: from 9 to 10:30 a. m. on Sundays only. For accommodations of invalids and insanes, *see under* DEFECTIVES.

HOUSE OF THE HOLY CHILD (PRIVATE)

(1031 Magdalena Street, Trozo; Tel. 8629)

An orphanage for poor and destitute mestiza girls. For admission, apply to either the Superintendent of the institution or to the Bishop of the American Episcopal Church, 567 Isaac Peral Street, Ermita.

INFANT JESUS ORPHANAGE (PRIVATE)

(1020 Plaza Leon XIII, Tondo; Tel. 9547)

Accommodations are free for orphaned and destitute girls, although payments are accepted from those who can afford to pay. Visiting days; the first and the third Sundays of the month, from 8 to 11 a. m. For admission, apply to the Mother Superior in the institution from 8 to 9:30 a. m. daily, except on Sundays.

MAKATI ORPHANAGE (GOVERNMENT)

(Bonifacio Roxas Street, San Pedro Makati, Rizal;
Tel. Long Distance, 1358)

It is maintained by the Office of the Public Welfare Commissioner. Accommodations are limited and are free for orphaned, destitute, neglected, and abandoned boys and girls below 14 years of age. The institution has a complete elementary school. Regular visiting day is on the first Sunday of every month from 8 to 11:30 a. m. For admission and adoption, apply at the Office of the Public Welfare Commissioner, 700 Rizal Avenue, from 7:30 a. m. to 12 noon

and from 1:30 to 4 p. m., daily, except on Saturdays, Sundays, and legal holidays. On Saturdays, office hours are from 8 a. m. to 1 p. m. Tel. 2414.

THE AMERICAN GUARDIAN ASSOCIATION (PRIVATE)
(Room 404, Heacock Building, Manila; Tel. 1688)

Financed by contributions and individual membership fee of ₱10 each per annum. Its purpose is to guard and care for all children wholly or partly of American blood who are without proper protectors. The association receives no support from the Government. There is a Woman's Advisory Board which passes on all cases to come under the protection of the association. For particulars, write or apply personally to the President, Col. Gordon Johnston. Office hours from 8 a. m. to 12 noon and from 2 to 5 p. m.

RELIEF AND PROTECTIVE ASSOCIATIONS

AMERICAN RED CROSS—HOME SERVICE (PRIVATE)
(1854 Azcarraga Street, Santa Cruz; Tel. 1161)

Works with families of soldiers and sailors and disabled service men, coöperates

with other social service agencies in giving material or financial relief to the needy and promotes social service work. Applications should be made directly at the Red Cross office from 8 a. m. to 4:30 p. m. daily except on Sundays and holidays. For dispensaries and general welfare work, *see under* DISPENSARIES and *under* WELFARE ORGANIZATIONS, ETC.

ASOCIACIÓN DE DAMAS FILIPINAS (PRIVATE, RECEIVING GOVERNMENT SUBVENTION)

(834 Rizal Avenue; Tel. 2831)

It is a society for the care of expectant mothers. It dispenses financial or material relief, furnishes aid and gives shelter to the needy and destitute. It maintains a settlement house for the temporary shelter of destitute persons. (*See under* SETTLEMENTS.) Membership of the society is composed of Filipino women who contribute ₱1 up every month. There is a junior membership, composed of all school girls, who contribute ₱.50 per year.

**ASSOCIATED CHARITIES OF MANILA (SEMI-PRIVATE,
RECEIVING GOVERNMENT SUBVENTION)**

(Executive office, 1854 Azcarraga Street; Tel. 3144;
Branch office, 766 Singalong Street, Paco; Tel.
3271)

Formerly an association supported by humanely-minded and public-spirited people of Manila. Now a bureau of civilian relief under the Philippines Chapter American Red Cross. It promotes charitable coöperation and secures knowledge of conditions and needs of applicants in order to help them to be self-supporting. It receives and distributes charitable subscriptions, donations, and funds. Applications for relief should be made to the Secretary from 8 a. m. to 12 noon and from 2 to 4:30 p. m. daily except on Saturdays, Sundays, and legal holidays. On Saturdays, office hours are from 8 a. m. to 12:30 p. m.

**CONFERENCIAS DE CABALLEROS DE LA SOCIEDAD DE
SAN VICENTE DE PAUL (PRIVATE)**

(157 Arzobispo Street, Intramuros; P. O. Box 154)

A Catholic organization of men and young men, which dispenses relief to the poor and

needy, especially to those who are bashful and do not go begging around the city. The Conferencias de San Vicente de Paul occasionally gives money and clothes to the homeless, food to the hungry, and medical aid to the sick. Regulations of the association prohibit its giving publicity to its work. The Conference has organizations all over the world; in Manila there are conferences in fourteen parishes. For particulars, apply to the Concejo General de las Conferencias de San Vicente de Paul, or to P. Manuel M. Sauras, S. J., P. O. Box 154, Manila.

CONFERENCIAS DE SEÑORAS DE LA SOCIEDAD DE SAN VICENTE DE PAUL (PRIVATE)

(157 Arzobispo Street, Intramuros; P. O. Box 154)

It is a Catholic organization which dispenses relief to the poor and needy. It gives money occasionally and clothes to the poor, lodging to the homeless, food to the hungry, and medical aid to the sick. There are in Manila 15 conferences for ladies in 15 different parishes. For particulars, apply to the Concejo General de las Conferencias de

San Vicente de Paul, or to P. Manuel M. Sauras, S. J., P. O. Box 154, Manila.

LIGA NACIONAL FILIPINA PARA LA PROTECCIÓN DE LA PRIMERA INFANCIA (PRIVATE, RECEIVING GOVERNMENT SUBVENTION)

(851 Lepanto Street, Sampaloc)

It gives prenatal and postnatal instructions to mothers on infant care and hygiene and distributes free of any charge milk and extract of tiki-tiki which is furnished free by the Government, to children suffering from infantile beri-beri. It treats sick babies in its dispensary. *See under CONSULTATIONS FOR MOTHERS AND CHILDREN.*

THE COLORED AMERICAN COMMUNITY LEAGUE OF THE PHILIPPINE ISLANDS (PRIVATE)

(Room 4, De la Rama Building, Manila;
P. O. Box 1141; Tel. 3913)

It is an association for public welfare and social service among the colored American community in the Philippines. To extend a helping hand wherever needed regardless of sect, race or creed. To promote and cultivate mutual confidence and acquaintance between the colored community and other

groups of the Philippines for the consideration of their common problems. To assist by advice, service, and finance such members of the Colored American Community League that may need assistance of any kind, but non-members of the community may be assisted. Office hours are from 8 a. m. to 12 noon and from 2 to 6 p. m. daily, except on Sundays and legal holidays.

WOMAN'S CLUB OF MANILA (PRIVATE)

(700 Rizal Avenue; Tel. 3951)

Encourages interest in civic improvement, stimulates intellectual and philanthropic developments, and promotes the unity of reformatory effort in civic, social, and economic conditions. It holds its meeting regularly at the Columbia Club, Isaac Peral, Ermita. For particulars, apply to the Secretary, 700 Rizal Avenue, Manila.

REFORMATORIES

CITY BOYS' REFORMATORY (CITY INSTITUTION)

(San Juan del Monte, Rizal; Tel. Long Distance, City Boys' Reformatory)

Accommodations free for delinquent minors committed by the courts of justice of

Manila. Provincial inmates are charged ₱.80 per day to be paid by the province sending the minor. Visiting days: from 9 to 11 a. m. on Sundays for first-class inmates and on every other Sunday for second-class inmates. Minors may also be admitted for correction upon application to the Mayor, City of Manila, by a private person who will be charged ₱1 per day for each minor committed. Pay inmates may be visited at any time during the day. All inmates wear the same kind of clothes (maong or rayadillo), but pay inmates may wear civilian clothes upon request of person or persons who committed them.

CITY GIRLS' REFORMATORY (CITY INSTITUTION)

(646 Legarda Street, Sampaloc; Tel. 1844)

Accommodations free for delinquent girls below 18 years of age committed by the court of justice of Manila. Provincial delinquent girls are charged ₱.80 a day to be paid by the province sending the delinquent girl. Other misbehaving girls may be admitted upon application by any private

person to the Mayor, City of Manila, and upon payment of ₱1 per day. Visiting days: from 9 to 10 a. m. on second and last Sundays of each month.

SETTLEMENTS

SETTLEMENT HOUSE OF THE ASOCIACIÓN DE DAMAS FILIPINAS (PRIVATE, RECEIVING GOVERNMENT SUBVENTION)

(834 Rizal Avenue; Tel. 2831)

Accommodations free for temporary shelter and relief of needy and destitute infants, girls, and women of all ages and boys below 10 years of age. Charges from ₱5 to ₱40 per month are required from those beneficiaries who are able to pay. Capacity of the house is 50 for regular inmates and 10 for emergency cases. For admission, apply to the Matron at any time.

**WELFARE ORGANIZATIONS WITH HEAD-
QUARTERS IN THE CITY OF MANILA
AMERICAN RED CROSS—PHILIPPINES CHAPTER
(PRIVATE)**

(1854 Azcarraga Street; Tel. 1161)

Office hours from 8 a. m. to 12 noon and from 2 to 4:30 p. m. daily except on Sundays

and legal holidays. It devotes a great deal of effort to health and nursing activities which take up among other things health education, training of public health nurses, and instruction in home hygiene and care of sick; solicits school memberships and promotes coöperation in health and other campaigns and in stimulating interest in international and inter-island correspondence; and prepares for relief work in any major disaster in the Islands. It maintains branches and auxiliaries all over the Archipelago which are supplied with accurate information concerning the Red Cross work. It operates a free dispensary in Manila. (*See under* DISPENSARIES.) It also undertakes actual relief work. (*See under* RELIEF AND PROTECTIVE ASSOCIATIONS). For particulars, apply to the Manager.

**NATIONAL FEDERATION OF WOMAN'S CLUBS OF THE
PHILIPPINES (PRIVATE, RECEIVING GOVERNMENT
SUBVENTION)**

(700 Rizal Avenue; Tel. 3951)

It is an association which promotes interest in civic improvement, intellectual

advancement, economic independence, and mutual coöperation among women. It holds a convention in Manila annually. It maintains a provincial club extension, having its offices at 700 Rizal Avenue, where a secretary, who is also the Secretary of the federation, is employed to carry on the various correspondence work with the provincial clubs. The Executive Committee is the directing power, and it meets at any specified time upon the request of the President or the Secretary. Office hours are from 8 a. m. to 12 noon and from 1 to 4 p. m. daily, except on Saturdays, Sundays, and legal holidays. On Saturdays, the office hours are from 8 a. m. to 1 p. m. The members of the federation are established woman's clubs. Other women organizations, except those of religious or political character, can also become members. Applications for membership should be made to the Secretary.

PHILIPPINE HEALTH SERVICE (GOVERNMENT)

(Santa Potenciana Building, corner of General Luna, and Victoria Streets, Intramuros; Tel. 878)

It is a Government office which looks after the protection of the health of the people throughout the Philippines. It operates dispensaries (*see under* DISPENSARIES), conducts hospitals in Manila (*see under* HOSPITALS, SPECIAL), and in the provinces, and maintains sanitary divisions in the Islands. It prevents the spread of infectious diseases and supervises and controls activities pertaining to hygiene and sanitation. For particulars, apply to the Director of Health from 8 a. m. to 12 noon and from 1 to 4 p. m. daily, except on Saturdays, Sundays, and legal holidays. On Saturdays, office hours are from 8 a. m. to 1 p. m.

**PHILIPPINE ISLANDS ANTI-TUBERCULOSIS SOCIETY
(PRIVATE, RECEIVING GOVERNMENT SUBVENTION)**

(700 Rizal Avenue; Tel. 3742)

Its primary purpose is to combat tuberculosis through the dissemination of litera-

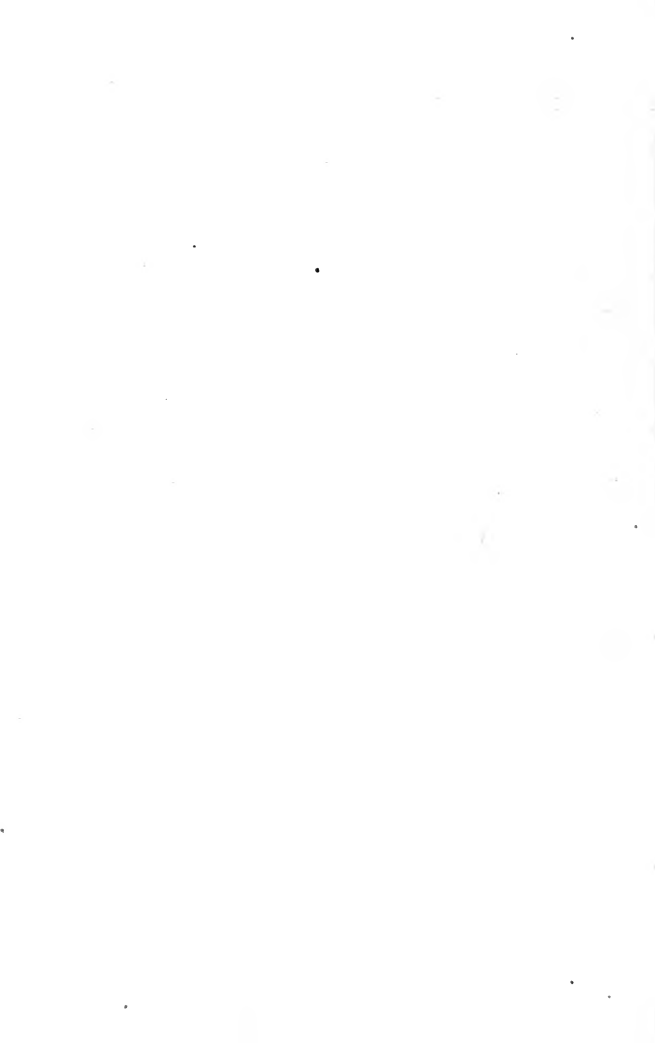
ture and other papers on how to prevent and cure tuberculosis. It maintains a free consultation service and a tuberculosis sanatorium. (*See under* DISPENSARIES, SPECIAL and *under* HOSPITALS, SPECIAL.) It raises funds through membership fees and by means of donations by private individuals as well as by the Government. For particulars, apply or write to the Secretary. Office hours are from 8 a. m. to 12 noon and from 1 to 4 p. m. daily, except Saturdays, Sundays, and legal holidays. On Saturdays, office hours are from 8 a. m. to 1 p. m.

**PUBLIC WELFARE COMMISSIONER, OFFICE OF THE
(GOVERNMENT)**

(700 Rizal Avenue; Tel. 2414)

It was established to coördinate and regulate public and private organizations interested in public welfare and social service work; to investigate, promote, coördinate, inspect, and regulate all work related with maternity and child hygiene and welfare; to operate maternity hospitals, puericulture centers; to maintain orphanages; to super-

wise and control reformatories; and to aid financially, or otherwise, private institutions doing charitable work. For particulars, apply in person or write to the Public Welfare Commissioner. Office hours are from 7:30 to 12 noon and from 1:30 to 4 p. m. daily, except on Saturdays, Sundays, and legal holidays. On Saturdays, office hours are from 8 a. m. to 1 p. m.



INDEX

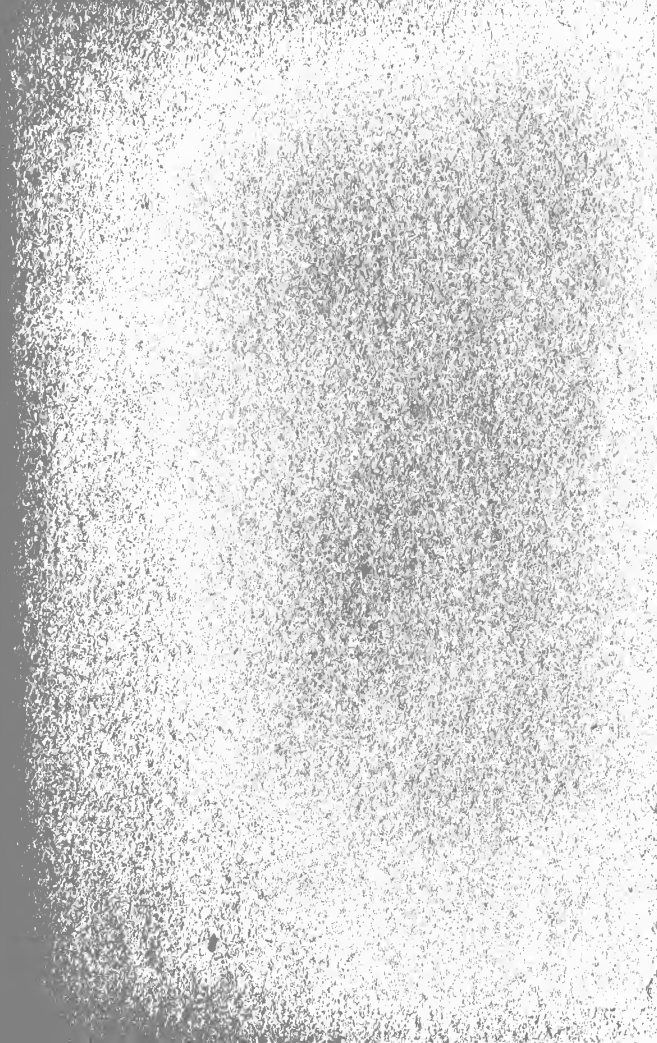
	Page
American Guardian Association.....	33
American Red Cross Dispensary.....	16
American Red Cross—Home Service.....	33
American Red Cross—Philippines Chapter.....	40
Asilo de Looban.....	29
Asociación de Damas Filipinas.....	34
Associated Charities of Manila.....	35
Asylums	9
Boys' Home.....	30
Chinese General Hospital.....	22
City Boys' Reformatory.....	38
City Girls' Reformatory.....	39
City Insane Asylum.....	9
Colored American Community League of the Philippine Islands, The	37
Conferencias de Caballeros de la Sociedad de San Vicente de Paul.....	35
Conferencias de Señoras de la Sociedad de San Vicente de Paul.....	36
Consultations for Mothers and Children (Pue- riculture Centers).....	10
Consultorio de Tondo (Liga Nacional).....	11

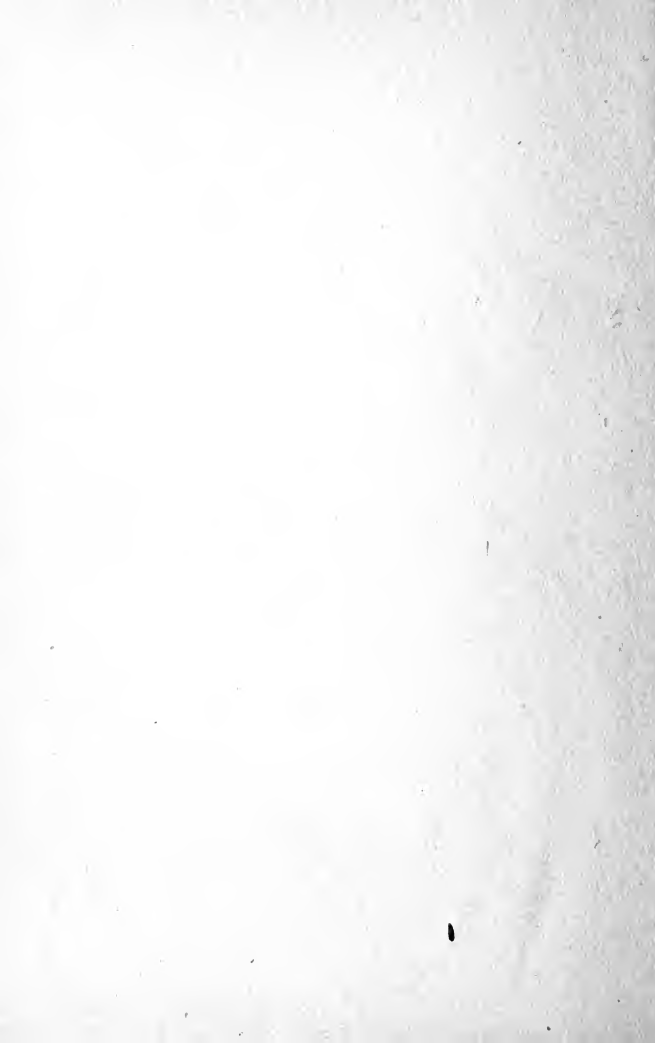
	Page
Day Nurseries.....	13
Defectives, Institutions for.....	14
Dispensaries (General)	16
Dispensaries (Special).....	19
Gota de Leche.....	11
Health Stations.....	20
Hospicio de San José (For Defectives).....	14
Hospicio de San José (Orphanage).....	30
Hospital de San Juan de Dios.....	23
Hospital Español de Santiago.....	26
Hospitals (General).....	22
Hospitals (Special).....	26
House of the Holy Child.....	31
Infant Jesus Orphanage.....	32
Intramuros Health Station.....	20
Liga Nacional Filipina para la Protección de la Primera Infancia.....	37
Makati Orphanage.....	32
Mary Chiles Christian Hospital.....	23
Mary Chiles Christian Hospital Dispensary....	17
Mary J. Johnston Memorial Hospital.....	26
Mary J. Johnston Memorial Hospital (Consul- tations for Mothers and Children).....	11
Mary J. Johnston Memorial Hospital Dis- pensary	17
Maternity House (Consultations for Mothers and Children).....	12
Maternity House (Hospital).....	27

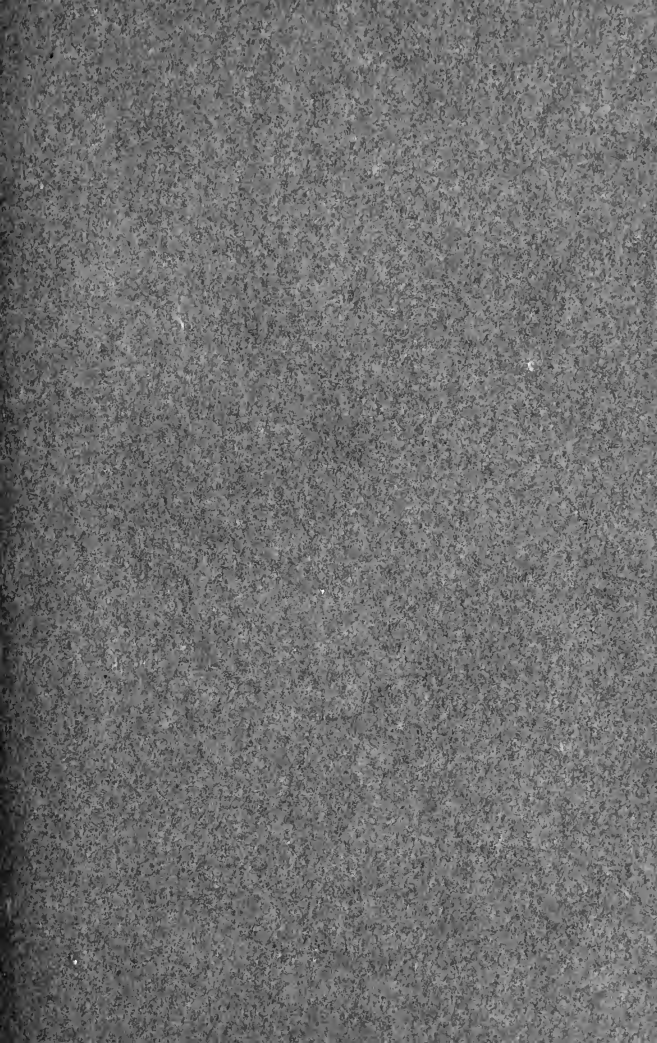
	Page.
Meisic Health Station.....	20
National Federation of Woman's Clubs of the Philippines	41
Orphanages for Destitute and Dependent Children	29
Paco Health Station.....	21
Philippine General Hospital.....	24
Philippine General Hospital Dispensary.....	18
Philippine Health Service.....	43
Philippine Health Service Dispensaries.....	18
Philippine Islands Anti-Tuberculosis Society..	43
Philippine Islands Anti-Tuberculosis Society Consultation Service.....	19
Public Welfare Commissioner, Office of the...	44
Reformatories	38
Relief and Protective Associations.....	33
Sampaloc Health Station.....	21
San Lazaro Hospital.....	28
San Lazaro Hospital (Asylum).....	15
San Lazaro Hospital Venereal Clinic.....	19
Santa Ana Child Welfare Center.....	12
Santol Tuberculosis Colony.....	28
School for the Deaf, Dumb, and the Blind.....	16
Settlement House Child Welfare Center.....	12
Settlement House of the Asociación de Damas Filipinas	40
Settlements	40
Singalong Child Welfare Center.....	12

	Page
Singalong Day Nursery.....	14
St. Luke's Hospital.....	25
St. Luke's Hospital Dispensary.....	18
St. Paul's Hospital.....	25
Tondo Child Welfare Center.....	13
Tondo Health Station.....	22
Welfare Organizations with Headquarters in the City of Manila.....	40
Woman's Club of Manila.....	38









RETURN TO the circulation desk of any
University of California Library
or to the

NORTHERN REGIONAL LIBRARY FACILITY
Bldg. 400, Richmond Field Station
University of California
Richmond, CA 94804-4698

ALL BOOKS MAY BE RECALLED AFTER 7 DAYS

- 2-month loans may be renewed by calling
(510) 642-6753
 - 1-year loans may be recharged by bringing
books to NRLF
 - Renewals and recharges may be made 4
days prior to due date.
-

DUE AS STAMPED BELOW

SENT ON ILL

APR 27 2000



Ms. 18991

18991

A4

18991

THE UNIVERSITY OF CALIFORNIA LIBRARY

