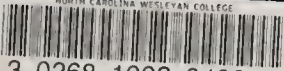


NORTH CAROLINA WESLEYAN COLLEGE

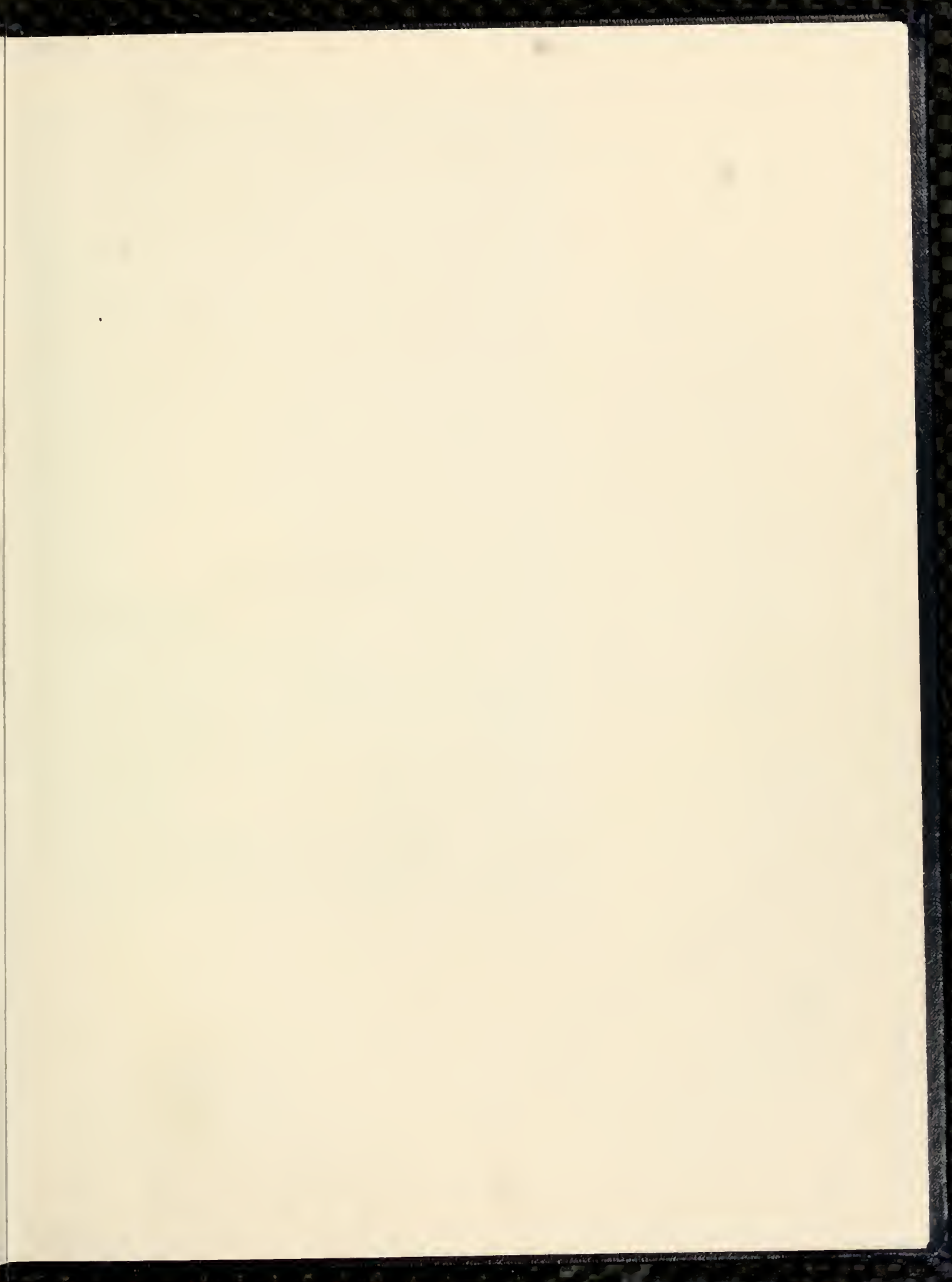


3 0268 1003 0400 2

The Dissenter  
Nineteen Eighty Six

*You're  
Somebody*











### YOU'RE SOMEBODY

Are you somebody at North Carolina Wesleyan College?

What do YOU think?

Fact is, EVERYONE is somebody at Wesleyan, whether in class, out of class, commuter, resident, cafeteria worker, or baseball player. That's just the way Wesleyan is.

To the faculty members, who are able to teach small classes and provide more individualized attention, every student at every desk is someone different with unique abilities and problems.

In the dorm, among friends, watching TV, hanging out, no one walks around nameless or faceless. Whether the fun is all-night talks or smuggling certain items past the RA, it's easy to become part of a group you identify with.

Those groups also exist for the commuter, as well as the resident. Clubs, fraternities, sororities, intramurals and campus publications give anyone an opportunity for personal expression plus the sense of contributing something back to the college.

People are everywhere: in the hall, in the dorm, in class, on the playing field. It's not hard to meet them, or for them to meet you. It's not hard to be somebody at Wesleyan.

Dissenter 1985-86

North Carolina Wesleyan College

301 North By-Pass

Rocky Mount, North Carolina

Founded in 1956

Associated with The United Methodist Church

Published by The Delmar Company

*You're Somebody At . . .  
Wesleyan*









*You're Somebody At . . .  
Camp Wesleyan*

N.C. WESLEYAN COLLEGE LIBRARY





Gary Appleton and Charlie Davis enjoy a leisurely walk on campus.



Lori Lees and Beth Hodsdon enjoy the cookout with friends during Spring Fling.



Tom Wessel and some Alpha Delta Chi brothers act out Robert Palmer's "Addicted to Love" video in their own unique way at the Airband contest during Spring Fling.





Donna Smith and Ellen Skiles study in front of Edgecombe on a nice afternoon.

*You're Somebody in . . .  
the Student Body*

# 

Fire engines, limousines . . . and the Rocky Mount Community Bank on a flatbed truck? Nothing unusual — just part of Wesleyan's first-ever Homecoming Parade.

The parade was one of several additions to the annual Homecoming festivities in October. Almost all of the student organizations contributed to populate about 20 vehicles for a twice-over circuit of the campus. Three real-live fire engines, with lights flashing and sirens wailing, arrived from the Stony Creek Fire Department to help celebrate the special event. The Admissions Office showed up in fancy red convertibles, while the fraternities, sororities and other student organizations dressed up whatever cars were available. The cheerleaders copped the best-float award.

The airband/lip synch contest also debuted during the Homecoming weekend. The contest attracted many strange individuals to the Garber Hall stage, jumping and gyrating and moving their lips to popular hit tunes. The novelty of the event drew a larger-than-expected crowd and caused one student to comment, "I've never seen so many people at Wesleyan in one place."

North Hall led but the rain won out at the Wild & Wacky Wesleyan Games. Refereed by an uncommonly good-looking Jean Edge, the games pitted the four dorms against each other in contests of skill and accomplishment. Although North Hall led the contest after the three-legged run, the sack race and the balloon toss, rain fell and washed out the tricycle race.

Traditional activities, such as the dance at the Elks Lodge and the pig pickin', tied the whole weekend together.



Pi Epsilon members Laura Stuis, Sonji Grant, Cindy Bovee and Daniel Wright show pride by entering their float in the Homecoming Parade.



Ron Bove pauses for a picture at the Pig Pickin' during Homecoming.



1985 Homecoming queen, Lori Blackburn rides to the Homecoming soccer games in the Homecoming parade with Tami Hults, candidate, and Anita Bailey, 1984 Homecoming queen.



The Alpha Delta Chi brothers get a ride to the Homecoming soccer games on their float in the Homecoming Parade.



Homecoming queen contestants, Kim Huskins and Debbie Bounds anticipate the Homecoming procession while riding to the soccer field in the Homecoming Parade.



Nikki Berry and Dewey Clark: What a lovely pair.

*You're Somebody At . . .  
Homecoming*



Sue Witt and Forrest Dalton enjoy the dancing and atmosphere of the Elks club during the Homecoming dance.



Mainstream rocks the night away at the Homecoming dance.



The Cheerleaders winning float carries them to the Homecoming soccer games to cheer the teams on.



1985's Homecoming Queen  
Lori Blackburn







Aisha Ahmed greets guests and collects money at the entrance of the Elks club during the Homecoming dance.



Homecoming queen Lori Blackburn gets a hug from her escort, Brian Goggins.

Nu Gamma Phi escorts some of their little sisters in the Homecoming parade to the Homecoming soccer games.



Homecoming queen contestant, Tamarra Oates is escorted to the stage by her escort Derek Edwards.

Troy Butler enjoys the Homecoming pig picking with his friends at the patio.

*You're Somebody in . . .  
Homecoming*

# WINTER BALL

A ritzy, glitzy, high-flying evening of glamor was seen at Wesleyan's first Winter Ball, held at the Carleton House in Rocky Mount. The night of dinner and dance caused the men to break out their tuxedos and led the ladies to show off their beautiful evening dresses. (After seeing friends in their T-shirts and jeans every day it was, well, nice to see how good they looked all dressed up.)

White cloths draped over the dinner tables and the soft glow of candlelight enhanced the atmosphere. A photographer circled the room taking pictures that everyone wanted to see.

Although the evening was officially over at 12:30 a.m., some enthusiastic souls took out a suite in the hotel and carried the party upstairs. Quite a night.



Nikki Berry enjoying her dinner.



RESIDENT DIRECTORS: Dorothy Phifer, Jim Van Roekel, and Pamela Derrick having a "ball."





The girls lookin' good at the Wesleyan Winter Ball.



Craig Wisniewsky and Tiena Gaskins:  
What a pair!

Libby Birdsong and Doc Berry — It's  
not hard to understand why you're  
smiling, Doc.



*You're Somebody At . . .  
Wesleyan's Winter Ball*



# SPRING FLING

Beach Party: postponed.

April blew into town with a chill and fouled up several plans for Wesleyan's annual Spring Fling. Luckily, the weather turned warm later and allowed several events to take place.

An outdoor concert by "Full House" was moved inside but its Top 40 sounds warmed up the crowd. The Beach Party, though, was canceled. Later, on a warmer day, Lori Blackburn and Chris Holbrook were named the Mudfest Queen and King. Even though the ring of spectators drew further and further back as the Mudfest went on, some lucky bystanders were dragged in and joined the contest as it raged on.

But the Beach Party: still canceled.

Another airband contest drew outstanding performers: Sigma Pi took home a \$75 first prize for their "Superbowl Shuffle," the Blues Brothers took second, and Will Allen's striptease was hard to forget, though many tried.

The Beach Party? Yup. Canceled.



Surfs up for the Spring Fling Mudfest.



Onlookers await the start of the 1986 Mudfest.

Craig and Ken "Blues." The Blues Brothers do it again.





Steve, Anne, Timmy and Mary aren't worried about mud, they'll SHOUT it out.



Charlie Georges & Band rock the crowd at the lip sync contest.



Kim and Randy getting into the music.



Look out Chicago, here comes the Wesleyan Bear Shuffle.

*You're Somebody in . . .  
Spring Fling*

Chris Holbrook enjoys the "thrill of victory" at the Spring Fling Mudfest.



Libby and Lori load up.

Some of the girls enjoy the Spring Fling picnic lunch.







Ron Bove prepares to ride off into the sunset on his trusty steed, Wendy Elks.



"Hi-ho silver," screams Lori Lees as Bob Berges heads for the finishing line.



A favorite pastime of most students at Wesleyan: **EATING!**

*You're Somebody At . . .  
Spring Fling*

# CAMPUS LIFE

Tina, Julie, and Krystal find time to spend with a special friend.

At Wesleyan, just about everybody knows everybody else. It's a well-known fact that few secrets can be kept in this small town atmosphere. But living in this small community, this network of people has its advantages. Like when you need to find a "missing" friend, it's not long before someone will say "Oh yeah, I saw him walking down towards Student Life." And when you're craving a sub from Farm Fresh, all you have to do is knock on a few doors and you've got a car load of people ready to join you for a midnight snack.

There is a special kind of camaraderie on this small campus. Sometimes people joke about "Camp Wesleyan."

But Wesleyan is a place where students feel close to each other, and learn together while having fun.



Shamil Salah checks to make sure everything is tied down.

Graham prepares for the long distance throw.



"I just don't know," says Sleepy as he counsels Kenny Anderson.







Mike Hilton, "The next Beethoven?"



Brian Goggin and Jayne Jones enjoy the North Dorm Toga Party.



Wendy Elks finds Kori Townsend to be a comfortable bed rest.



Scott, Craig, Tim, Kenny — A Soccer Tradition.

*You're Somebody in . . . .  
Campus Life*

# RESIDENCE LIFE



"Let me show you my house!" exclaims Penny Brown.



Russell and Anthony take a time out from practicing in the gym.



Mike calling, "Mom, I need money!"



Helen still prays for elevators!





The girls posing for Cosmopolitan.



North Hall dorm council: Could we have the check please?



South Hall dorm council: Ron, Bruce, and Rick are excited about the whole thing.

*You're Somebody in . . .  
Residence Life*



# RESIDENCE LIFE



Postmaster Ron Bove slots letters from home and beyond into student mail boxes early in the a.m.



A cold drink on a cool day is just fine for Sue, Mary and Jimmy, relaxing at the Spring Fling.



Russell asks a suspicious John for a little more Coppertone.





Is Patti Duggan coming or going?



These are some of the dangerous characters attracted by Wesleyan's annual Spring Fling.



Mine's chocolate—What's yours?



Jane likes Kenny T-H-I-S much.

*You're Somebody in . . .  
Residence Life*



# DORM PARTIES



Robbie and Lori dance the night away.



Joe checks to make sure the luau is going okay.



Gary supports the party idea strongly.



Bill and Katie celebrate the luck of the Irish.

# LATE NIGHTERS



Tom and Barry prepare to pig out on a sub at Farm Fresh.



Wendy congratulates Sleepy as she confers his degree in Criminal Justice.

The guys from South call this party a Success.

*You're Somebody in . . .  
Campus Life*



# RECREATIONAL ACTIVITIES

"Superbasketball ... substitute ... here we go ... jump shop." Sound familiar? Anyone who ever visited Wesleyan's game room would instantly recognize those words that emanate from the Superbasketball video game. The game room was a favorite place to hang out before and after meals for video junkies, or just for people who want to play a game of ping pong or pool.

For students who enjoy more physical activities, there was always something going on. Like a pick-up game of football or tennis baseball around Nash or a softball game in front of Edgecombe.

The co-ed softball game between the two opposite ends of campus proved to be a favorite event. The rivalry continued as Nash and North Halls battled it out on the softball field against South and Edgecombe. The game came down to the final inning, and South-Edgecombe prevailed, taking home the winning team's prize: Homecoming tee-shirts!

Special rules like having the guys and girls hold hands as they ran the bases together make the game a fun way of continuing the competition between the rival ends of campus.



Brian, Bill and Robbie pose for publicity shots.



The refined South-Edgecombe co-ed softball team.

The equally refined Nash-North co-ed softball team.



Terry Ward stares in disbelief while acting as ref for the inter-dorm three-legged race competition at Homecoming.



Robbie watches his grand slam fly over Nash Hall.





Tony awaits the moment of truth.



Students dance to the sounds of "Full House" during Spring Fling.

Greg figures it's a lot easier to play video basketball than the live action.

*You're Somebody in . . .  
Campus Life*



# RECREATIONAL ACTIVITIES



Kenny Bowers has fun on his skateboard.



Scott Preston shows off his batting style.



Derek Francis tries his hand at Ms. PAC-MAN.



Tony Honeycutt gets ready for a move.

Jack Martine changes sports to pick up a softball game.



Jessie Crickett takes a break between strokes.



Jean Edge at her best—refereeing the Wacky Wesleyan Day events.



Derek Francis searches for just the right channel on the big-screen TV.

*You're Somebody in . . .  
Campus Life*



# RESIDENT ASSISTANTS NASH



NASH RESIDENT ASSISTANTS: Derek Francis, Felipe Kaisin, Andy Wright, Mike Walters.



Thomas Taylor involved in his RA training.



Rohan Naraine working on his folder.



Dave "Red" Bailey telling Derek Francis a story.



## RESIDENT ASSISTANTS NORTH

NORTH RESIDENT ASSISTANTS: Cheryl Tuttle,  
Kim Ross, Kim Huskins, Terry Hardison, Helen Carr.



Terry Hardison tells Dorothy Phifer about the  
well-dressed RA.



Kim Huskins and Cheryl Tuttle welcome  
Spring.

*You're Somebody in . . .  
Campus Life*



# RESIDENT ASSISTANTS EDGECOMBE



Edgcombe RA's taking a break. Liz Carroll, Kori Townsend, Cindy Bovee, Wendy Elks.

Lisa Nelson looking for some more pictures for her collage at the RA Retreat.



Cindy Bovee explaining what Pamela Derrick is wearing at an RA Retreat Activity.



Liz Carroll and Cindy Bovee listening attentively to what Jim VanRoekel has to say.

# RESIDENT ASSISTANTS SOUTH



SOUTH RESIDENT ASSISTANTS: Daniel Wright, Jim Hart, Mike Gouge, David Ford, and Resident Director George Morse.



Joe Ganci and David Ford having fun at the RA Retreat.



John Hartigan serving Jim Hart and Mike Gouge at the RA Dinner.



Daniel Wright, George Morse, David Gruver taking a break at the RA Retreat.

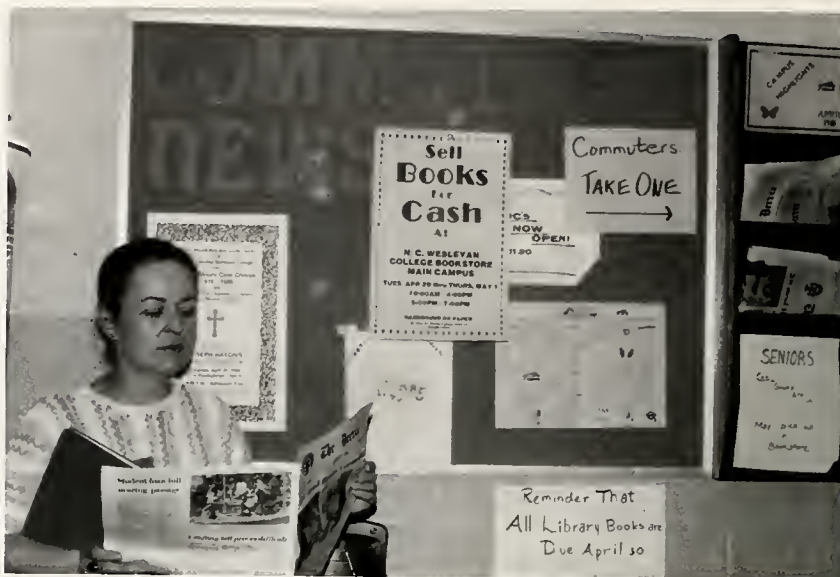
*You're Somebody in . . .  
Campus Life*



# COMMUTERS

Commuter students don't have to deal with campus power outages, waking up only to find that there's no hot water in the residence hall, or eating cafeteria food. But they do have to face high gas bills, the monotonous drive down 301 by-pass, traffic, and finding a place to hang out between classes. And it can be difficult for commuters to get to know other students since they lack the immediate companionship that resident students find in the dorms.

It may be more challenging for commuting students to get involved on campus and make friends, but many commuters make the extra effort. During the past year, commuters contributed a great deal to various campus organizations including Phi Beta Lambda, the Student Activities Committee, and **The Decree**.



Dixie Blume catches up on the news.



Ann Margaret Rowland curls up to study between classes.



Steve Lancaster and Darlene Mims wave at the crowds during the Homecoming Parade.



Mae Hinton and Rene Lindsay improve the patio appearance.



Jessica Morton checks the index for reference.



Pensive Pat Conner while studying in Doc's.

*You're Somebody in . . . .  
Campus Life*





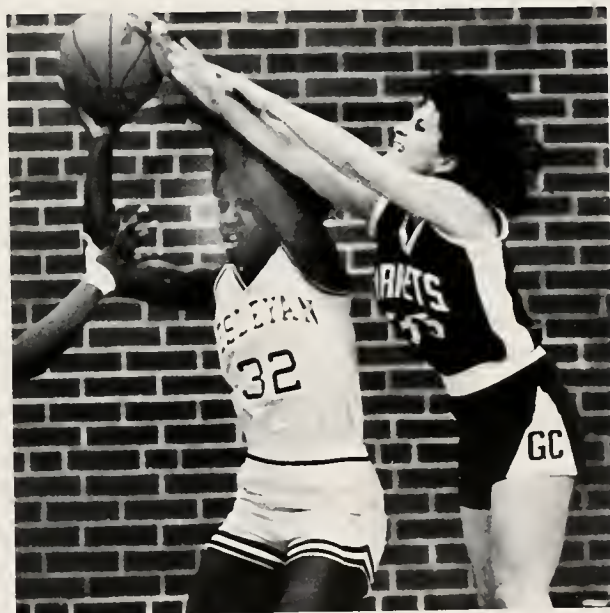
Mary D'Eredita going for the spike.



Lloyd Watts decides to take the ball off his opponents hand.



Safe!



Robin Brooks goes for the rebound.

*You're Somebody in . . .  
Sports*



# MEN'S SOCCER

Under head coach Tony Ferrell, the men's soccer team racked up another winning season—going 12-6-1 and finishing second in the Dixie Conference. The Bishops started off the season stumbling to a 1-3 record before recovering and posting four wins in a row.

The winning record for the season was even more impressive since the Bishops suffered losses to Division I clubs such as: Old Dominion, William & Mary and Duke. The Bishops also lost to eventual Division III national champion UNC-Greensboro.

Individual-wise, two Bishops earned post-season honors. Senior Scott Preston became the first N.C. Wesleyan soccer player ever to earn All-American honors while sophomore Greg Armand picked up All-South notices.

Sept. 6	defeated	N.J. Tech	1-0#
Sept. 7	lost	Lynchburg	2-0#
Sept. 10	lost	Duke	3-0
Sept. 13	lost	Greensboro	1-0
Sept. 17	defeated	Pembroke St.	4-2
Sept. 21	defeated	Pfeiffer	3-2%
Sept. 22	defeated	E. Carolina	3-0%
Sept. 25	defeated	Methodist	1-0
Sept. 28	lost	Old Dominion	5-0*
Sept. 29	lost	William & Mary	1-0*
Oct. 5	defeated	Roanoke	3-1
Oct. 8	defeated	Va. Wesleyan	1-0
Oct. 12	tied	Christopher N.	2-2
Oct. 15	defeated	Francis Marion	5-0
Oct. 26	defeated	St. Andrew	4-0
Oct. 27	defeated	High Point	2-1
Oct. 30	defeated	Averett	4-3
Nov. 2	lost	UNC-Greensboro	3-1
Nov. 5	defeated	East Carolina	4-1

#Blue Ridge Tournament in Lynchburg, Va.

%N.C. Wesleyan Invitational in Rocky Mount, NC

\*Harbor Front Classic in Norfolk, Va.



Llans Thelwell fights to gain control.



Mike Morgan goes for the side line save.





1985 NCWC MEN'S SOCCER TEAM: Front Row: Left to Right: Will Allen, John Golding, Craig Wisniewsky, Scott Preston. Second Row: Mike Morgan, Derek Francis, Doug Nesbitt, Bill Tully, Ken Bulkin, Llans Thelwell. Third Row: Charles Georges, Jason Barrios, Shamil Salah, Tom Mitchell, Eric Schrieber, Dwight Campbell, Keith Bauer, James Harris, Gary Divelbiss, Willie Crawford. Back Row: Jim Hart, Kenny Bowers, Tom Wessel, Mark Crum, Greg Armand, Graham Stewart, John Duggan, Tim Duffy.



Team huddles up for a strategy session.

*You're Somebody in . . .  
Men's Soccer*



# WOMEN'S SOCCER

First-year coach Roland Paiva found the combination of a rugged schedule and the loss of many key players a tough duo to handle as the Bishops finished the women's soccer season at 4-8.

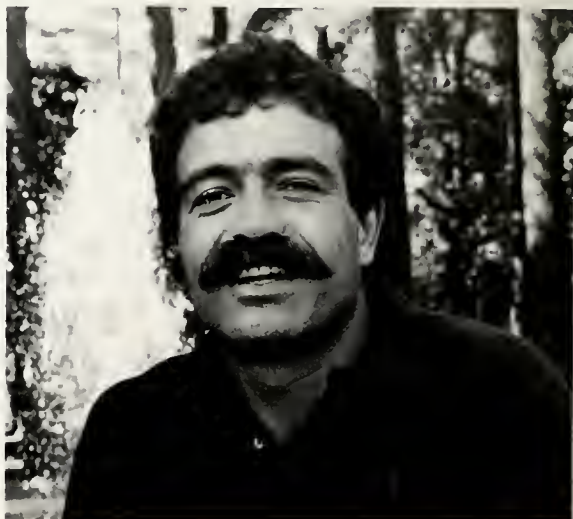
N.C. Wesleyan found the going tough as three quality Division I teams dotted the schedule, and other fine Division II and III clubs were close behind.

Chris Shaltis provided the scoring punch for the Bishops as she racked up nine goals and three assists on the season. All-Dixie Conference standout Mary Berry was second on the club in scoring with four goals and four assists. Another All-Conference performer, Anne Benson, provided the Bishops their solid defense.

Sept. 7	defeated	Warren Wilson College	6-0
Sept. 11	lost	Randolph-Macon	1-0
Sept. 18	lost	Methodist College	5-1
Sept. 25	lost	N.C. State	7-0
Sept. 27	lost	Barry University	7-0
Oct. 5	defeated	Virginia Wesleyan	5-3
Oct. 9	defeated	Guilford	4-2
Oct. 12	lost	Methodist College	5-0
Oct. 23	lost	Virginia Methodist	2-1
Oct. 26	lost	Radford	10-0
Oct. 31	defeated	Guilford	4-1
Nov. 3	lost	U. of Maryland	7-0



Christine Shaltis making the effort for control of the ball.



Head Coach Roland Paiva.



1985 NCWC WOMEN'S SOCCER TEAM: Front Row: Left to Right: Sara Livelsburger, Sue Witt, Tressa Simmons, Dora Los, Lisa Nelson, Kori Townsend, Christine Shaltis. Back Row: Coach—Roland Paiva, Anne Benson, Mary Berry, Sue Miller, Patty Duggan, Julie Koenecke, Manager—Mike Truby.



Sue Witt trying to maintain control of the dribble.

*You're Somebody in . . .  
Women's Soccer*



# VOLLEYBALL

It was a disappointing season for the volleyball squad as the Bishops posted a 4-24 record, but yet managed to stay out of the Dixie Conference cellar.

The Bishops posted wins over Averett in the Dixie Conference during the season, but racked up a handful of close losses to other conference schools.

Junior Mary D'Eredita was named the team's Most Valuable Player as the former All-Dixie Conference player sparked the Bishops' offense all season.

D'Eredita and Sharon Fitzpatrick were two of the conference leaders in digs during the season while Ann Wright was a leader in blocks.

Sept.11	defeated	Averett	15-12 15-8 3-15 15-1
Sept.13	lost	Guilford	15-3 15-6
Sept.13	lost	Elon	15-9 8-15 15-8
Sept.16	lost	UNC-G	15-7 15-2 15-4
Sept.18	lost	ECU	15-6 15-4 15-4
Sept.21	lost	M. Wash.	15-4 15-3
Sept.21	lost	Gettysburg	15-5 16-14
Sept.21	lost	W. Mary	15-4 15-1
Sept.23	lost	GC	15-6 15-6 15-11
Sept.25	lost	CNC	15-11 15-10 15-7
Sept.28	lost	Meredith	15-9 15-2
Sept.28	defeated	Salem	15-7 15-4
Sept.28	no decision	Methodist	15-10 4-15
Oct. 1	defeated	Averett	15-10 15-7 15-3
Oct. 2	lost	UNC-G	15-10 15-3 15-9
Oct. 3	lost	Meredith	15-11 15-12 15-5
Oct. 4	lost	St. Andrews	15-6 15-10 15-7
Oct. 8	lost	Methodist	15-10 11-15 15-6 15-12
Oct. 10	lost	CNC	14-16 15-11 15-6 15-7
Oct. 15	lost	ECU	15-1 7-15 15-11 12-15 15-2
Oct. 17	lost	Methodist	15-13 15-5 13-15 11-15 15-7
Oct. 21	lost	St. Andrews	15-5 15-7 15-11
Oct. 24	lost	GC	15-3 15-7 15-8
Oct. 24	defeated	Meredith	15-12 16-14
Oct. 25	lost	UNC-Asche.	15-2 15-12
Oct. 25	lost	Winthrop	14-16 15-12 15-7
Oct. 25	lost	Baptist	15-4 15-11
Oct. 26	lost	UNC-W	15-4 15-11
Nov. 1	lost	CNC	15-11 15-10 15-2



Tammy Pace gets behind the ball for a good dig.



Wendy Elks making the extra effort at the net.



1985 NCWC VOLLEYBALL TEAM: Front Row: Left to Right: Julie Zimmer, Ann Wright, Dody Johnson, Tammy Pace, Debbie Ward. Back Row: Joy Roy, Wendy Elks, Sharon Fitzpatrick, Mary D'Eredita, Coach—Diane Scherzer.



Coach Scherzer looking on with amazement.

Mary D'Eredita showing her power and style.

*You're Somebody in . . . .  
Volleyball*



# MEN'S BASKETBALL

The Battling Bishops' basketball team racked up a 20-win season under first-year coach Jeff Reynolds, and captured the regular season title in Dixie Conference play.

Led by senior Daniel Wright and freshman Chris Bratcher, the Bishops rolled through conference play—clinching the title with a 69-59 win over St. Andrews in the season's finale.

However, in post-season play the Bishops were not so lucky. In the Dixie Conference Tournament, the Bishops were dropped by Christopher Newport in the finals. Then, N.C. Wesleyan was overlooked for NCAA Tournament play.

Individual-wise, Wright became the N.C. Wesleyan all-time leading scorer while fellow senior Jack Martine finished as the No. 3 scorer.

Nov. 22	defeated	Castleton State	64-59@
Nov. 23	defeated	Salisbury State	71-60@
Nov. 25	lost	Mary Washington	64-59
Nov. 29	defeated	Shepherd College	71-52#
Nov. 30	lost	St. Paul's	61-59#
Dec. 4	defeated	Methodist College	72-54
Dec. 6	defeated	St. Mary's	80-58%
Dec. 7	lost	Furman	93-90 2OT %
Dec. 13	defeated	Newport News	72-58c
Dec. 14	defeated	Mt. Olive	64-56c
Jan. 7	defeated	Va. Wesleyan	72-59
Jan. 9	lost	UNC-Greensboro	59-58
Jan. 11	defeated	Newport News	81-62
Jan. 14	defeated	C. Newport	75-57
Jan. 18	lost	St. Andrews	55-52
Jan. 21	defeated	Greensboro College	53-38
Jan. 23	defeated	Va. Wesleyan	62-52
Jan. 25	defeated	Averett	77-64
Jan. 29	defeated	UNC-Greensboro	72-59
Feb. 1	defeated	Mary Washington	81-69
Feb. 5	defeated	Greensboro College	67-55
Feb. 8	lost	Averett	59-57
Feb. 11	defeated	C. Newport	58-57
Feb. 13	defeated	Methodist	68-53
Feb. 15	defeated	St. Andrews	69-59
Feb. 19	defeated	Greensboro College	77-55*
Feb. 21	defeated	UNC-Greensboro	82-65*
Feb. 22	lost	C. Newport	57-45*

@ W&L Tournament, Lexington, Va.

# Newport News Tourney, Newport News, Va.

% Wesleyan Invitational Rocky Mount, N.C.

c Pickle Classic, Mount Olive, N.C.

\* DIAC Tournament, Laurinburg, N.C.



John Brackett flying high for the rebound.



Chris Bratcher taking control of the ball as David Ford looks on.



Douglas Hunt reaches high to obtain his goal.





1985-86 NCWC MEN'S BASKETBALL TEAM: Front Row: Left to Right. Manager—Wesley Stanley, David Gruver, Jack Martine, David Ford, Chris Bratcher, Chris Hughes, Statistician Tom Rivers. Back Row: Assistant Coach—Stephan Allen, Russell Shrewsbury, Douglas Hunt, Lloyd Watts, Chuck Hoffman, John Brackett, Mark Radford, Daniel Wright, Anthony Washington, Coach—Jeff Reynolds.



Coach Reynolds sending in instructions from the bench.

Daniel Wright playing strong defense for Wesleyan.

*You're Somebody in  
Men's Basketball*



# WOMEN'S BASKETBALL

North Carolina Wesleyan women's basketball squad wrapped up its best season ever on its 10th anniversary—posting a 15-9 record.

The Bishops also had their best finish ever in post-season play as N. C. Wesleyan was the runner-up in the Dixie Conference Tournament—knocking off nationally ranked Virginia Wesleyan in the semifinals. Junior Robin Brooks paced the Bishops all season as she averaged 20.3 points per game and grabbed 10.7 rebounds. She was among the national leaders in both categories during the season. Brooks was also named first team All-Dixie Conference.

Head coach Laura Ferrell guided the Bishops to the Lady Flames Tournament title to start off the season, and got inspired play from Bev Armstrong and Cynthia Jones during the season on the offensive end.

@Nov. 22	defeated	Bowie State	OT	75-70
@Nov. 23	defeated	Liberty U.		69-66
Dec. 4	defeated	Methodist		61-60
Dec. 6	defeated	Emory and Henry		66-62
Dec. 7	lost	Roanoke		73-54
Dec. 7	lost	Va. Wesleyan		71-57
Jan. 9	lost	Liberty U.		70-59
Jan. 11	defeated	Averett		92-53
Jan. 14	lost	Campbell		75-54
Jan. 16	defeated	St. Andrews		57-48
Jan. 18	defeated	Mt. Olive		75-70
Jan. 21	lost	C. Newport		70-60
Jan. 23	lost	Va. Wesleyan		93-70
Jan. 26	lost	UNC-Greensboro		85-82
Jan. 29	defeated	Averett		91-46
Feb. 4	defeated	Greensboro C.		75-55
Feb. 6	defeated	St. Andrews		79-69
Feb. 11	defeated	C. Newport		75-58
Feb. 13	defeated	Methodist		72-62
Feb. 15	lost	UNC-Greensboro		86-59
#Feb. 18	defeated	Greensboro C.		71-49
#Feb. 21	defeated	Va. Wesleyan		75-67
#Feb. 22	lost	C. Newport		66-62

@Lady Flames Tourney in Lynchburg, Va.

# Dixie Conference Tournament



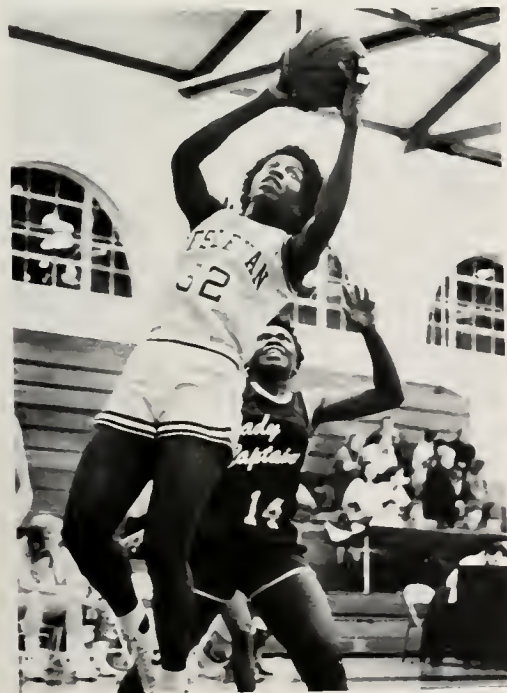
Penny Brown with a drive to the basket.



Robin Brooks and Gordon Finney before the 1-on-1 challenge.



1985-86 NCWC WOMEN'S BASKETBALL TEAM: Front Row: Left to Right: Paulette Turner, Carla Winstead, Penny Brown, Christine Shaltis, Beverly Armstrong. Back Row: Robin Brooks, Jackie Butler, Pamela Miller, Terri Turner, Cynthia Jones.



Cynthia Jones and Penny Brown team up on defense to get the ball.

Robin Brooks going for two.

*You're Somebody in . . .  
Women's Basketball*



# BASEBALL

Head Coach Mike Fox led the Battling Bishops' baseball team to another record-breaking season as N.C. Wesleyan posted a school-record 39 wins on the season.

With an overall mark of 39-7, the Bishops posted a number of top wins over the season including wins over Division I clubs such as Duke, Wake Forest, UNC-Charlotte and UNC-Wilmington.

Led by catcher Paul Prisco, who batted .406 with 14 homers, the Bishops batted a fine .325 as a team with Roy Hill setting a record for most doubles in a season with 22.

On the mound, Mike Siciliano and Frankie Moore paced the Bishops all season with a 9-2 and 11-2 record respectively.

For Fox in his fourth year at NCW, his career record with the Bishops was boosted to an outstanding 146-34-2.

The Bishops also earned their sixth consecutive trip to NCAA post-season play—losing out in the South Regional in Fayetteville.



Gary Ormsby sliding into home.

Kevin Rose turns a double play against Virginia Wesleyan.



Jim Provenzano takes a cut as fans and players look on.

Jim Provenzano comes up with the ball at first as Virginia Wesleyan player runs by.







Sitting—Front: Kenny Anderson, Jesse Crockett, James Anderson, Paul Prisco, Mike Eckert, Larry Thompson, Ricardo Chaparro, Benji Barbour, Richard Derricot, Kevin Rose, Russell Dail, Roy Hill, Dennis Lynch, Charlie Flowers, Jim Provenzano, Sleepy Thomas Taylor, Gene Sanguinetti, Garry Ormsby, Gary Blackwell, Mark Silletti, Charles Davis, David Ferrell, Bob O'Brien, Coach Mike Fox. Back: Gary Appleton, Frankie Moore, Mike Siciliano.



James Anderson avoids a pitch inside.

*You're Somebody in . . .  
Baseball*



# SOFTBALL

Coming off a losing season in 1985, the North Carolina Wesleyan softball squad rebounded for a 23-15 year and bolted into the national rankings. Rolling out to a fast start, the Bishops were ranked 19th in the nation in a mid-season poll and rode the arms of pitchers Sharon Fitzpatrick and Debbie Bounds to a 20-9 Dixie Conference record.

In the hitting department, Debbie Ward paced the Bishops with a .397 average while freshman Dody Johnson batted .353 in leading N.C. Wesleyan in RBI's with 32.

First-year coach Diane Scherzer turned in a banner coaching effort on the season as she molded a small squad of 10 players into a winning combination.



Sharon Fitzpatrick going for a base hit.

No play at the plate and the run scores.



Coach Scherzer: "Well, that's the way we say it in Wisconsin."





1986 NCWC SOFTBALL TEAM: Front Row: Left to Right: Debbie Bounds, Kathy Deyo, Cindy Harrison, Katie Larkin, Nancy Barra. Back Row: Coach Scherzer, Wendy Elks, Dody Johnson, Sharon Fitzpatrick, Debbie Ward, Marge Piasta.



Nancy Barra warming up for a game.

*You're Somebody in . . . .  
Softball*



# TENNIS

After going winless last year, the men's tennis team racked up a 2-11 record this season under first-year coach Chris LaLonde.

Despite the record, the Bishops knocked off Division II Elizabeth City State and beat conference foe Methodist College while losing a few close matches.

A strong cast of players occupying the 1-2-3 spots kept the Bishops competitive all season with seniors Barry Nethercutt and Billy White and sophomore Tom Rivers.



Tom Rivers and Barry Nethercutt take a break between matches.



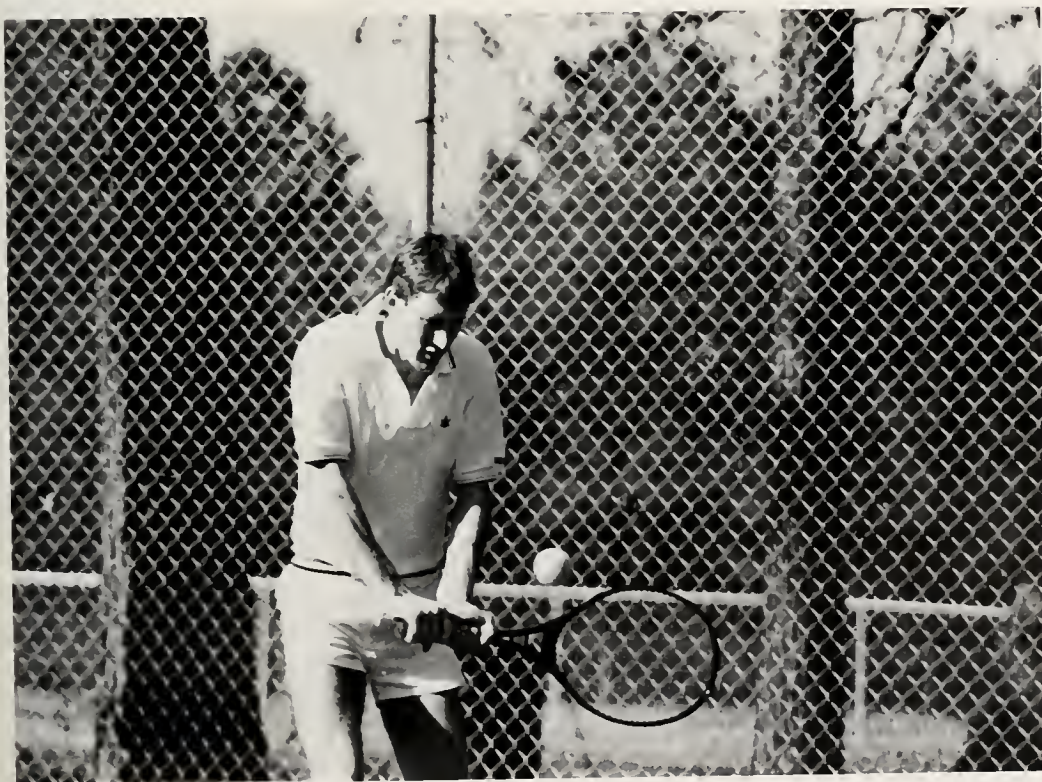
Pete prepares to return a shot.



Mike Trubey slams a forehand.



Tom Rivers finesses a forehand volley.



Barry Nethercutt concentrates on a backhand return.

*You're Somebody in . . . .  
Tennis*



# CHEERLEADERS

A very talented and enthusiastic cheerleading squad kept spirits high during Wesleyan basketball games. This year's squad, larger than in recent years, worked many long hours perfecting difficult stunts and jazzy dance routines. The girls managed to work together successfully throughout the cheering season to prepare not only for the rigors of performing chants, stunts, and cheers throughout the basketball games, but also for the cheerleading competition. All the squad's hard work paid off, as the cheerleaders captured an impressive runner-up trophy in the competition.



Wesleyan Cheerleaders are excited about their runner-up performance in the Conference Cheerleading Competition.

The Cheerleading Squad along with advisor Rachel Dormagen display their pride along with the trophy they won in the cheerleading competition.





1985-86 NCWC CHEERLEADING SQUAD: Front Row: Left to Right: Lesley Freeman, Rhonda Sharpe, Diane Ciasca. Middle Row: Libby Birdsong, Lori Lees, Krystal Crutchfield. Back Row: Beth Hodsdon, Suzanne Payne.



Cheerleaders showing off their style and good form.

Cheerleaders awaiting the score of their performance.

*You're Somebody in . . .  
Cheerleading*



# ATHLETIC BANQUET

The 1985-86 Athletic Banquet was held April 23rd in the campus cafeteria. Coach Fox, Athletic Director, began the evening. He repeatedly praised the overall effectiveness of the program and how proud he and all of the coaches were of all Wesleyan athletes. Students from all nine varsity sports were present. Each coach spoke on his/her respective team and made various awards. The night was full of memories for many students and coaches. Scottie Preston became NCWC's first men's soccer All-American. He was also named MVP. Basketball Coach Jeff Reynolds was named DIAC Coach of the Year in his first year at Wesleyan. The big awards of the evening went to:

Jackie Butler and Llans Thelwell; Female and Male Student Athletes of the Year and to Robin Brooks and Mike Siciliano; Female and Male Athletes of the Year. MVP awards were presented to: Mary D'Eredita/Volleyball; Cathy Deyo/Softball; Patty Duggan/Women's Soccer; Robin Brooks/Women's Basketball; Billy White/Tennis; Lloyd Watts/Men's Basketball; Scottie Preston/Men's Soccer; and Lesley Freeman/Cheerleading.





Robin Brooks—Female Athlete of the Year; Llans The)well—Male Student Athlete; Jackie Butler—Female Student Athlete; Mike Siciliano—Male Athlete of the Year.



Coach Mike Fox presents the Male Athlete of the Year Award to Mike Siciliano.

Wesleyan Athletes enjoying the Athletic Banquet.



**MOST VALUABLE PLAYERS:** Front Row: Left to Right: Mary D'Eredita—Volleyball, Kathy Deyo—Softball, Patty Duggan—Women's Soccer, Leslie Freeman—Cheerleader, Robin Brooks—Women's Basketball. Back Row: Scott Preston—Men's Soccer, Bill White—Men's Tennis, Lloyd Watts—Men's Basketball.

*You're Somebody in . . .  
Athletic Banquet*





Daniel Wright going for a goal as  
opponents hopelessly look on.



Bill Tully in action.



Coach Laura Ferrell instructing her team.



Wendy Elks showing determination.



Safe or Out?



Lloyd Watts helping out.

*You're Somebody in . . .  
Athletics*





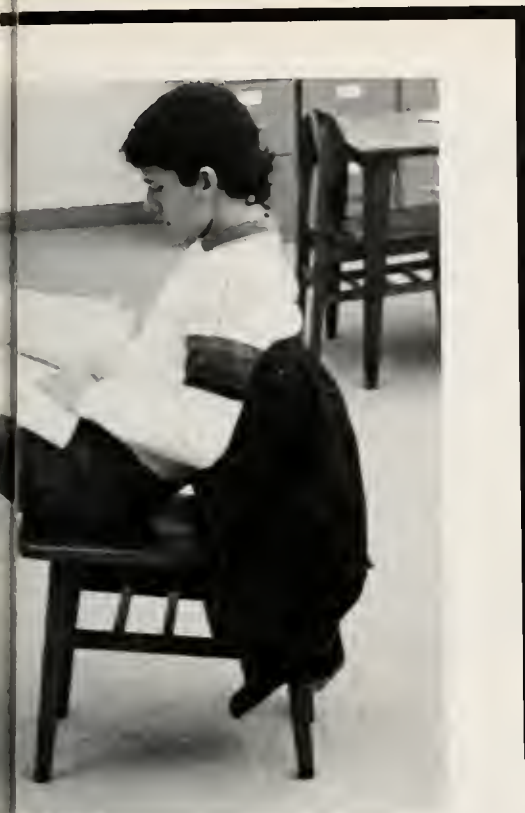
Craig Wisniewsky finds the best position for serious study.



Is it this music or the material that has Crystal holding her head?



A very typical Braswell lobby huddle



"It's a proud moment," says Rohan.

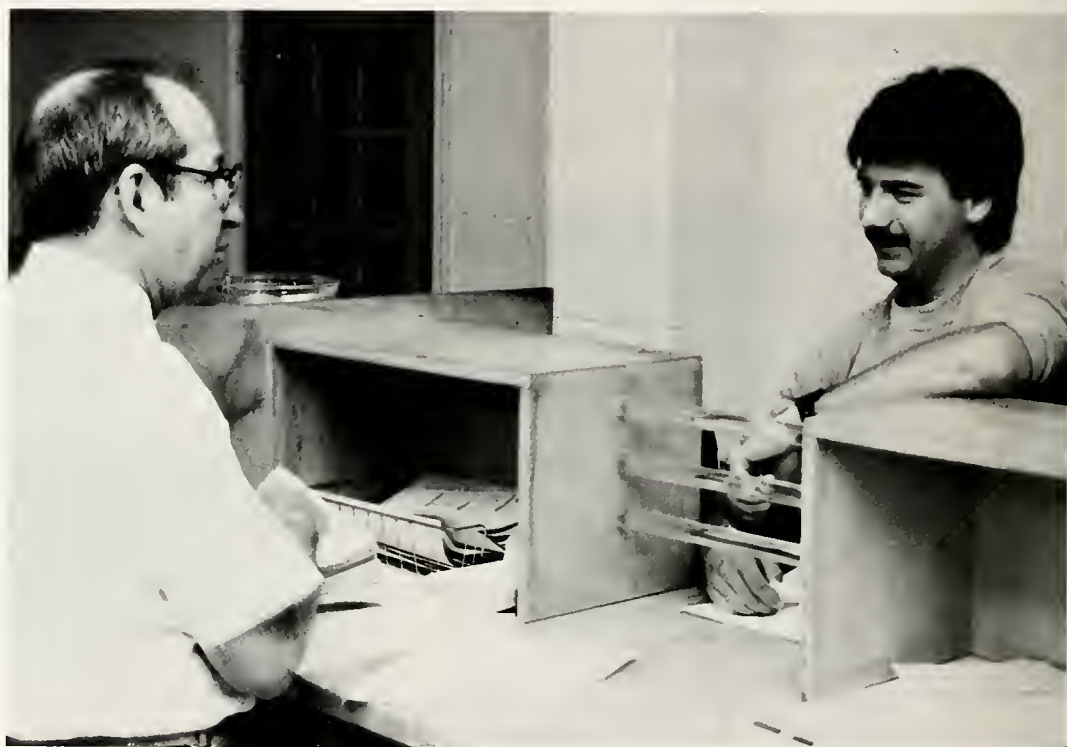
*You're Somebody in . . .  
Academics*



# REGISTRATION



... and wait!



Brian settles up with Mr. Kirkland.

# ORIENTATION



Kathy Deyo and Felicia Kennedy make name tags.



Steve Lancaster looks after his recruits.



Lisa Cummings checks in new freshmen.

*You're Somebody in . . . .  
Academics*



# FOUNDERS' DAY CONVOCATION



Don Scalf and Jean Edge celebrate service awards.

Gail Felton, alumnus and Founders' Day Speaker.



# HOTEL AND FOOD SERVICE



Jim Provenzano learns the hard way



Sue Witt and Stacy Schofield probe the mysterious.



Ron Epps enters data.

*You're Somebody in . . .  
Academics*



# FALL THEATRE



The Importance of Being Earnest by Oscar Wilde and directed by Chuck Ackerman. Cast members; Mike Brown, Claire Gilchrist, Tami Hults, Steve McEachern, Deena Monchick, Sara Shepard, and Tim Taylor.

# SPRING THEATRE



Come Blow Your Horn by Neil Simon and directed by Chuck Ackerman. Cast: Mike Brown, Bobby Price, Joy Roy, Sara Shepard, Pat Vyas, and Julie Zimmer.

*You're Somebody in . . .  
Academics*



# MUSIC



Jansen, Belvin, and Rodman trio



Ron Rodman and friends rock Doc's



Showalter, Belvin, and Rodman

# CHORAL MUSIC



The Wesleyan Singers



Karen Carney rehearses Jaycee Chadwick  
and Liza Papich



Hernan Murno conducts

*You're Somebody in . . .  
Academics*



# HONORS CONVOCATION



Recipients of Who's Who In American Colleges and Universities



Donna Smith accepts People's Bank award in business administration and economics.



Marsha Sharpe receives Algernon Sydney Sullivan Award from Dr. Petteway



Mike Dolliver, president of Sigma Pi, accepts Student Life Organization of the year award from Dr. McKita.



Dean Fritz presents the physical education award to Ron Bove.

The President's Cup awardee, Cheryl Tuttle

*You're Somebody in . . .  
Academics*



# CAREER DAY



One of the many representatives confers with a student on career opportunities.



Dr. Fritz and students inspect Black and Decker display.



Dixie Blume at IRS display



Wendy Elks, Ron Bove, and Dr. Fritz look over materials.

*You're Somebody in . . .  
Academics*



## ALUMNI GIVE VAN



Wesleyan Alumni turn over keys to van for student trips.

## DOC BERRY



Doc Berry exults over new snack bar equipment.

## REGISTRATION



Computers play a big part in registration but ...



... it still begins on paper.

*You're Somebody in ...  
Academics*



## FACES AROUND



# CAMPUS



*You're Somebody in . . . .  
Wesleyan*



## FACES AROUND



# CAMPUS



*You're Somebody in . . . .  
Wesleyan*



## FACES AROUND



# CAMPUS



*You're Somebody in . . .  
Wesleyan*



## FACES AROUND



# CAMPUS



*You're Somebody in . . . .  
Wesleyan*





Wesleyan Ambassador Nikki Berry takes a visiting student on a tour of the library.



Alpha Delta Chi Fraternity President Steve Scalzi announces the names of their new pledges in the cafeteria.

Sigma Pi brothers and their new pledges





Sigma Phi Delta Sisters celebrate Rusb with a clown party.

*You're Somebody in . . . .  
Organizations*



# WESLEYAN AMBASSADORS

The Ambassadors worked through the Admissions Office and provided voluntary assistance in guiding prospective students through the campus. They also served as hosts and hostesses during Fall and Spring Visitation days.



# OΔK

Omicron Delta Kappa, the National Leadership Honorary, sponsored several activities including a forum on student retention, and a discussion of Alice Walker's *The Color Purple*.





## ΦΗΣ

Phi Eta Sigma, the national college scholastic honor society for freshmen, raised \$200 in order to provide tutors for NCWC students in eight different academic areas. Eleven new members were inducted to bring the total membership to thirty-three.



## NCAE

The student program of NCAE is an organization for prospective teachers. The group had 17 members this year. Activities included participation in state workshops, attending the annual convention, and sponsoring an Education Week activity.

*You're Somebody in . . .  
Organizations*



## ΦΒΛ

Phi Beta Lambda, the national business organization, planned a full schedule of activities for the year, including raising money for the Diabetes Association, donating food and clothing to the needy, and sponsoring several speakers.



Left to right; Suzanne Payne, Donna Smith, Terry Ward (advisor), Cathy Johnson, George Morse, Susan Hale, Dell Lewis.

## IFC

The Interfraternity Council took on an active leadership role in coordinating the activities of the Greek organizations. Their efforts were especially helpful during Rush, as the Greek fraternities and sororities experienced one of the most successful rush weeks in recent years.



Left to right; David Lanlois, Bryan Clayback, Mark Crum, Elizabeth Carroll, Mike Dolliver.



## WCF and BSU

Wesleyan Christian Fellowship and the Baptist Student Union have traditionally been small groups of students involved in sharing the ideals of Christian Fellowship. WCF activities included a student/faculty volleyball game and Hunger Awareness week. Both WCF and BSU met for lunch in the cafeteria after chapel each Tuesday.



Left to right; Dora Los, Lori Blackburn, Jayne Jones, Libby Birdsong, Hope Brown

## STUDENT ACTIVITIES COMMITTEE

The Student Activities Committee helped to plan campus-wide social and recreational activities for the Wesleyan Community. Events planned by the committee included the Welcome Back Dance, Homecoming Week Activities, the Wesleyan Winter Ball, and Spring Fling.

*You're Somebody in . . .  
Organizations*



# SIS



Members of SIS havin' fun. Good friends, good times for Debbie Bounds, Jayne Jones, Dody Johnson, Kim Breheim, Katie Larkin, Dora Los, and Kim Huskins.



New members of Sisters in Society, a Wesleyan service organization in its second year, receive roses following initiation. Front: Beth Hodsdon, Joy Roy, Lesley Freeman. Back: Cindy Bovee, Kim Breheim, Nikki Berry, Cindy Harrell.

# VFY



Cindy Bovee, Kori Townsend, and Daniel Wright at the Volunteers for Youth all-night lock-in in the gym. Getting any sleep?



Lori Lees and her friend in VFY getting ready for a little sleep during the lock in.



Dody Johnson saying goodnight.

*You're Somebody in . . . .  
Organizations*



# AΔX

The brotherhood of ALPHA DELTA CHI, established in 1967, was organized for the purpose of promoting student interest in college and community projects. In the spring semester, the brothers sponsored a very successful Rock-A-Thon to raise money for the Rocky Mount-Nash Mental Health Center. During the football season, Alpha Delta Chi is known for selling hot dogs within the dorms. Next year, the brothers are planning to get involved in a variety of campus and community events.



Where are the pledges?

Little sister Elaine Palmer anxiously awaits donations for our Rock-A-Thon.



Steve and Marge enjoying the party.





Bottom Row: Cindy Braley, Marge Piasta, Laura Stuis (holding Brutus), Anne Benson, Elaine Palmer, Steve Scalzi. Middle: Chuck Adams, John Hartigan, Mark Crum, Joe Ganci, Bryan Clayback, and Will Allen. Top: Jim Hart, Tom Wessel, Charlie Georges, and Jason Barrios.



The AΔX gang at dinner.



Off to Saga.

*You're Somebody in . . .  
Alpha Delta Chi*







Julie Koenecke and Greg Williams getting close at Nu Gamma Phi party.



Mike Trubey, Pete Bosen, Greg Williams, and Mark Immler prepare for Rush.

Little Sisters Joy Roy and Nikki Berry arm in arm.



James Harris and Greg Williams: Is it morning already?

*You're Somebody in . . .  
Nu Gamma Phi*



# ΠΕ

Pi Epsilon, Wesleyan's first sorority, was founded in 1968 to give its members opportunities to get involved in campus and community events. Last year, Pi Epsilon catered for campus events, collected clothes for donation, and hosted a variety of Movie Nights. Among the members, there are sisters who have been named to the National Dean's List, Who's Who in American Colleges and Universities, and are on the Wesleyan Dean's List. Next year, Pi Epsilon is planning to get involved in more campus and community events.

Pi Epsilon Sisters announce the pledge class of 1986. L to R: Lisa Nelson, Jo Anne Strickland, Sonji Grant sitting on Laura Stuis, Aisha Ahmed, Liz Carroll, Penny Brown (pledge), Cindy Bovee.



Pi Epsilon Little Brothers showing off with style. L to R: Daniel Wright, Will Allen, Joe Ganci, Daryll Smalls.



Laura Stuis and Cindy Bovee cleaning up after a ΠΕ movie night.



Everyone wants to get into the picture at Pi Epsilon's Annual Christmas Party. L to R: Aisha Ahmed, Joe Ganci. Back L to R: Liz Carroll, Jo Anne Strickland, Will Allen, Lisa Nelson, Laura Stuis.



Pi Epsilon helps out at the Special Olympics. Lisa "Spook" Hendricks, Sonji "Shorty Rock" Grant, Sue "Plunger" Witt, Lisa "Inspector 13" Nelson, Lou "Crusher" Ziglar, Tami "Ewok" Pace, Daniel "Bear" Wright.



The Pi E-Mobile is all decorated for the Homecoming Parade. L to R: Marnie Ayers (spectator), Liz "J.R." Carroll, Daniel "Bear" Wright, Cindy "Instigator" Bovee.

The REAL Aisha "Mamma Mia" Ahmed.



Laura "Waste It" Stuis on the phone AGAIN!!!

*You're Somebody in . . . .  
Pi Epsilon*



# ΣΦΔ

Sigma Phi Delta Sorority, founded with the purpose of establishing a sisterhood to encourage friendship and the sharing of common life goals, celebrated its 15th year on the Wesleyan campus. The sorority's 1985-86 activities included Rocky Mount community service projects, hosting the annual Wesleyan Women's Tea, and raising funds through carnation sales.



Sigma Phi Delta sisters pose with their new pledges after the cafeteria announcement.



Kim Ross, Lori Lees, Sara Livelsberger, and Kristal Crutchfield clowning around.



Lori Lees and Diane Ciasca show that Sigma Phi Delta love.



Sigma Phi Delta Sweetheart Paul Prisco shows off his new jersey.



Sorority advisors Eleanor Petteway and Mo Bauer.



If you're going to be surrounded, this is the way to go.

Lori Lees and Sara Livelsberger at Sigma Phi Delta Rush party.



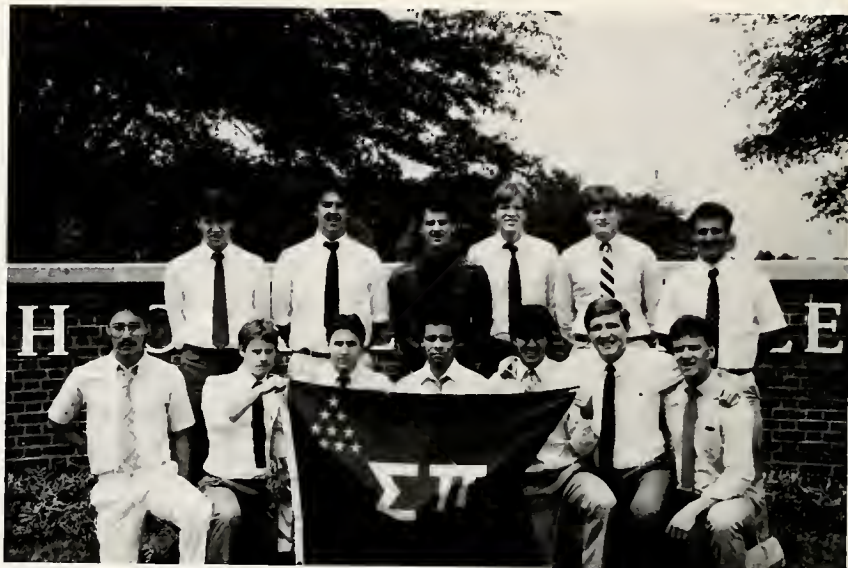
Sigma Phi Delta President Kim Ross being goofy.

*You're Somebody in . . .  
Sigma Phi Delta*



# ΣΠ

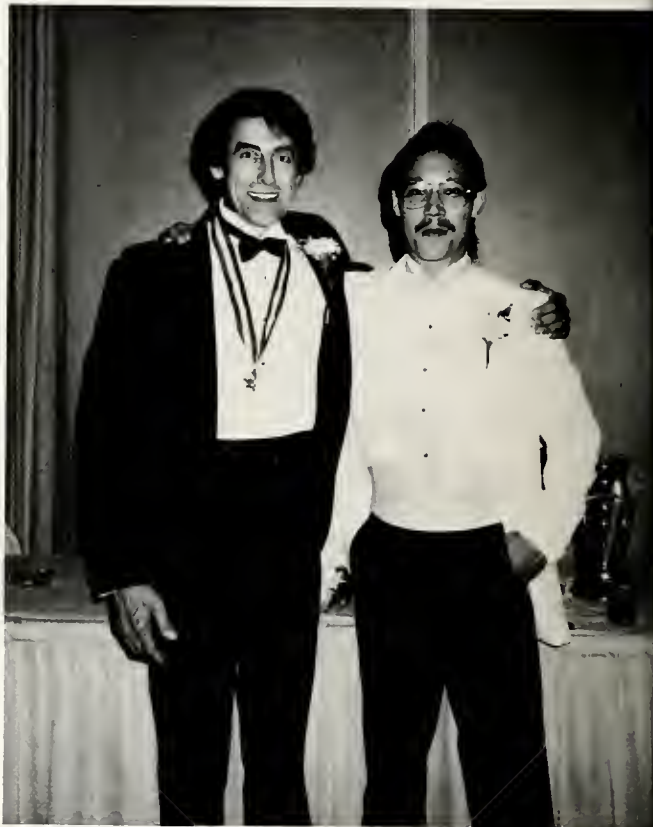
Sigma Pi, Zeta Sigma Chapter, became Wesleyan's first national fraternity on April 5, 1986 as they were installed as the Zeta Sigma Chapter on the Wesleyan College campus. The fraternity had its beginnings as the Pi Kappa Omega fraternity and with hard work—including many community service projects—achieved the status it has today. The fraternity, which received the Student Life Organization of the Year award, promotes brotherhood, leadership, and general enthusiasm for Wesleyan Student Life.



Front Row left to right: Mike Hilton, Jeff Gates, Tom Stubblefield, Bobby Price, Frank Warecke, Bill McGee, Robbie Pollock. Back Row: Mike Dolliver, Mike Ciasca, Barry Nethercutt, Robert Bumgardner, Jamie Thorne, Mike Walters.



Sigma Pi President Mike Dolliver



Mike Hilton and Sigma Pi National President



Sigma Pi Brothers pose with National officers at the National Chartering Banquet held at the Carleton House on April 5, 1986.



Sigma Pi Little Sisters proudly display the flag of the fraternity.

*You're Somebody in . . .  
Sigma Pi*





Lori Lees in a quiet moment.



Stacy's afraid she's going to get a shot!



Mike Gouge hard at work.

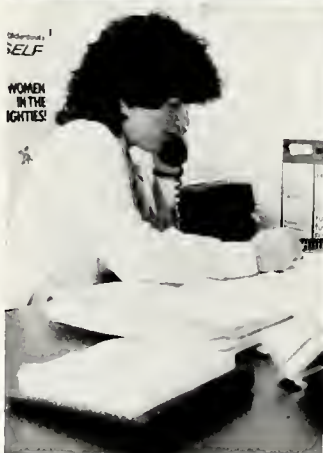


Steve and Elaine during Alpha Delta Chi's beach weekend at Atlantic Beach.

*You're Somebody in . . .  
Wesleyan*



# FACULTY AND ADMINISTRATION



Curtis O. Batchelor  
Buildings and Grounds

Lionel L. Bishop  
Data Processing

Jane T. Batts  
Data Processing

Joyce K. Bonomo  
Public Information

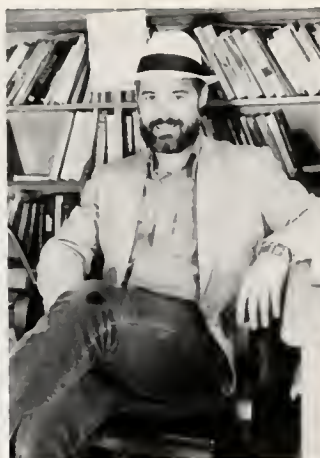
Dr. Raymond E. Bauer  
Physical Education

Dr. Marshall Brooks  
Education

Charles F. Ackerman  
Theatre

Erwin "Doc" Berry  
Food Service and Hotel Management

Michael E. Brown  
Staff Writer



Laura Cave  
Business

Jennifer L. Cherry  
Secretary

Edilberto T. Buencamino  
Computer Studies

Debra B. Chilton  
Business Office

Dr. Karen R. Carney  
Music

Dewey G. Clark  
Admissions

Dr. Christian B. Carstens  
Psychology

Patricia A. Cerjan  
Education

Dr. George B. Connell  
Philosophy

*You're Somebody in . . .  
Faculty and Administration*





Rachel T. Dormagen  
College Store

Dr. Paul J. deGategno  
English

Pamela W. Derrick  
Director of Housing

Richard B. Dollar  
Development

Ronald L. Edwards  
Office Services

Jean B. Edge  
Physical Education

Larue L. Elliott  
Cooperative Education



Laura B. Ferrell  
Coach

Dr. Linda J. Flowers  
English

Vickie M. Faircloth  
Secretary

T. Anthony Ferrell  
Coach

Edna C. Farmer  
Librarian

Dr. Kenneth V. Finney  
History

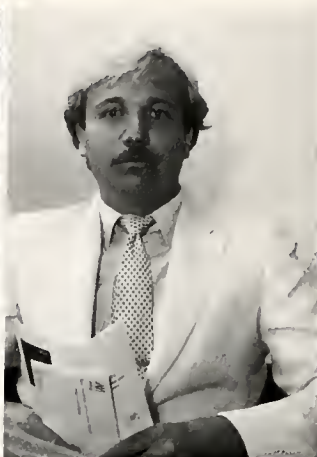
Dr. Steven Ferebee  
English

Ann King Fleming  
Admissions

C. Michael Fox  
Athletic Director

*You're Somebody in . . . .  
Faculty and Administration*





Francis R. Harrison  
Mathematics

Joyce D. Kestler  
Admissions

Dr. Stephen E. Fritz  
Dean of the College

Hilda Hawkins  
Secretary

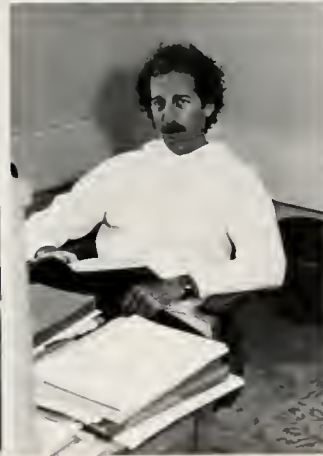
Dr. Douglas J. Goodwin  
Business Administration

Dr. Allen S. Johnson  
History and Geography

Dorothy D. Grant  
Supervisor/Purchasing

Dr. David A. Jones  
History

Ray Kirkland  
Vice President for Finance



Dr. Carleton P. McKita  
Dean of Student Life

Virgie R. Morehart  
Cashier

Dr. Robert E. Little  
Criminal Justice

Wilma K. McClure  
Biology

Valerie L. Meicher  
Cooperative Education

Elaine M. Lytton  
Mathematics

Patricia D. McKenzie  
Switchboard

Dr. Randolph B. Monchick  
Criminal Justice

*You're Somebody in . . .  
Faculty and Administration*





Portia Morris  
Administrative Assist.—  
Financial Aid



Susan W. Morris  
Assistant to the Dean



Hernan Murno  
Music



Dr. Himanshoo V. Navangul  
Chemistry



Dr. Kim W. Nordquest  
Chemistry



Melvin J. Oliver, Jr.  
Business Administration

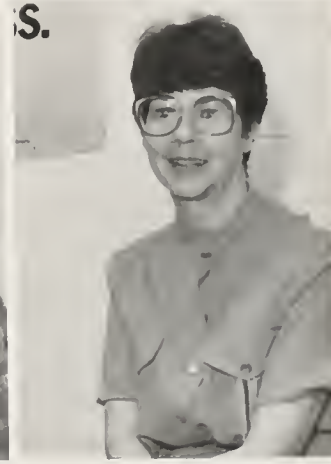


Katherine M. Owens  
Evening and Extension



Carl A. Pagles  
Dean of Admissions





Dr. Barbara Perry-Sheldon  
Education

Marilyn Riggs  
Secretary

Rowland A. Paiva  
Coach

Dorothy A. Phifer  
Director of Student Activities

Ronald W. Rodman  
Music

Sylvia C. Parker  
Development

Carolyn E. Quigley  
Secretary

Corbitt B. Rushing  
Politics

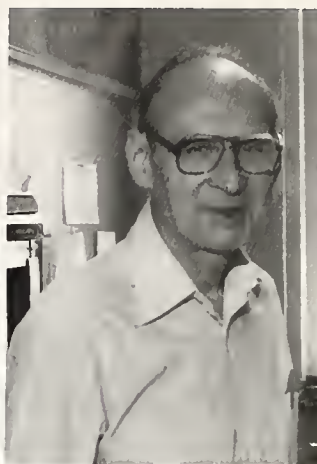
Claire Parham  
Adjunct Instructor of French

Jeffrey Lee Reynolds  
Coach

Donald L. Scaff  
Physical Education

*You're Somebody in . . .  
Faculty and Administration*





Diane Scherzer  
Coach

Betty D. Smith  
Controller

Janice W. Stump  
College Nurse

Dr. Arch W. Sharer  
Biology

Dr. Leverett T. Smith, Jr.  
English

Richard G. Simon  
Financial Aid

James A. Spruell  
Computer Studies

Lisa M. Singletary  
Learning Resource Center

Dr. Mary Lou Steed  
Sociology—Anthropology

C. Clifton Sullivan  
Registrar





Dianne H. Taylor  
Librarian

Dr. Rexford F. Tucker  
Religion

William Roy Wadsworth  
Maintenance



Jackie Y. Walters  
Assistant to Registrar



Robert R. Walton  
Biology

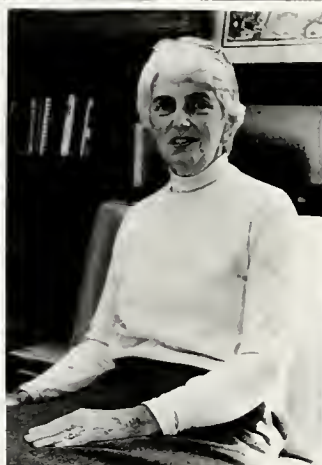
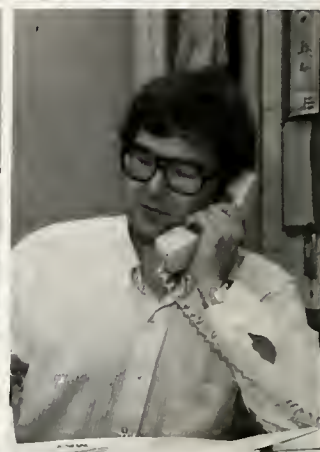
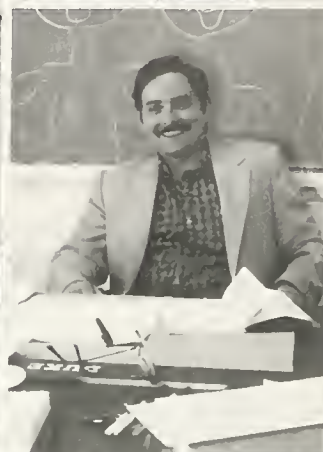


Daisy A. Thorp  
Art

James L. Van Roekel  
Campus Security

*You're Somebody in . . .  
Faculty and Administration*





Carolyn L. Whitener  
Secretary

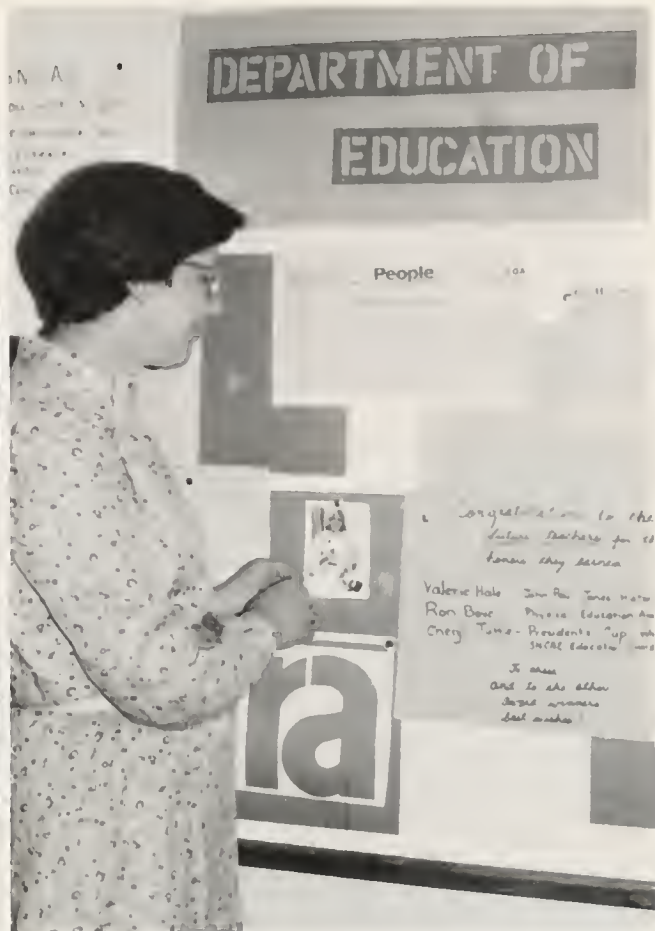
Anne B. Wilgus  
Librarian

Terry J. Ward  
Accounting

Dr. Mark W. Wethington  
Campus Minister

Dr. Richard L. Watson  
History

Randy Wheeless  
Sports Information Director



C. Omer Williams  
Buildings and Grounds

Dr. Dolores N. Wood  
Education

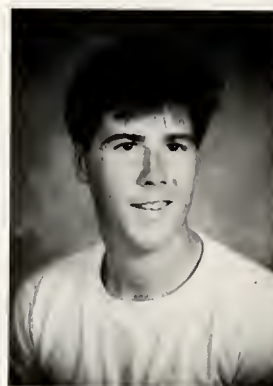
Col. Edward J. Wiltrakis  
Mathematics

Virginia P. Wooten  
Assistant to the President

*You're Somebody in . . .  
Faculty and Administration*



# SENIORS



Chuck Adams



Aisha Ahmed



John Alford



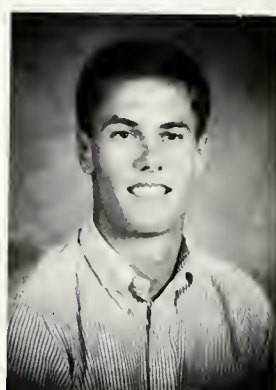
Laura Alford



William Allen



Aubrey Backus



Paul Bauer



Jay Bedsworth



Bruce Belvin



Libby Birdsong



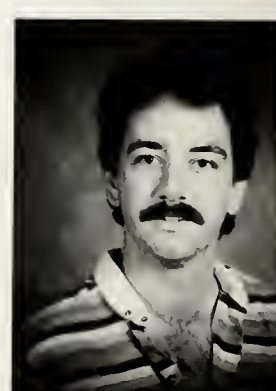
Kurt Bishop



Ron Bove



Linda Bradley



Lee Brickhouse



Cladye Britton



Mike Cavin



Bryan Clayback



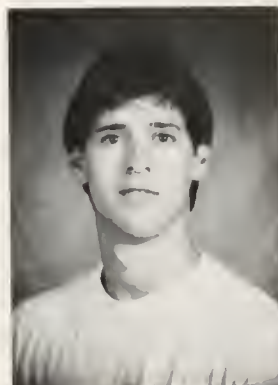
Marian Conger



Charles Davis



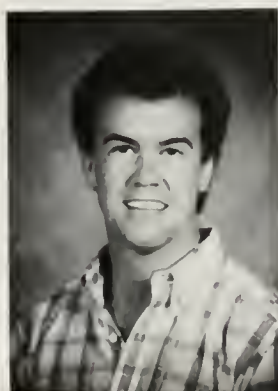
Andrew Dill



Steve Durelli



Rose Edmonds



Don Fish



Chaz Foley



Telisa Foots



David Ford



Tom Stubblefield says. "Knight Rider, eat your heart out."

*You're Somebody in . . .  
the Student Body*





Andy Forrester



Catherine Gibson



Rose Godwin



John Golding



Carrie Graham



Gwen Griffin



Donald Grigley



Mark Griseck



Rohan Naraine tells us the proper way to set off a fire extinguisher.



John Haggerty



Lucretia Hanks



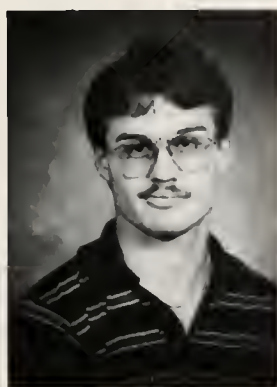
Chuck Hill



Michael Hilton



Naomi Howard



Donald Humphrey



Patricia Jansen



Cathy Johnson



Teresa Jones



Judy Keel



James Kelley



Philippe Kaisin



Felicia Kennedy



Barbara Langley



Students and parents mingle after the Graduation ceremonies.



Ambler Lanier



Jack Martine

*You're Somebody in . . .  
the Student Body*





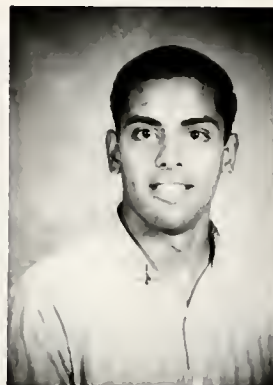
"And that friends is what Wesleyan's all about," smiles David Ford.



Landis Medders



Joe Misura



Rohan Naraine



Benjamin Nelms



Barry Nethercutt



Mayumi Noda



Jim Oglesby



Jeffrey Ormond



Ben Parrott



William McKette

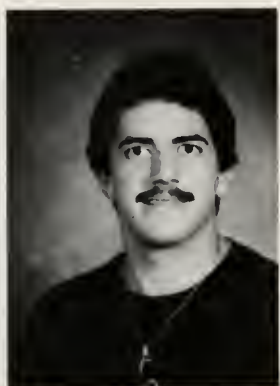


Reginald Ponder



Scott Preston





Jim Provenzano



John Resico



George Revis



Bruce Rice



Mary Richardson



Sheila Rosh



Kim Ross



Malinda Sanders



Steve Scalzi



Elisabeth Schweins



"Here we go again," is the way Jeff Ormond feels about this delicacy.



Marsha Sharpe



Sarah Shepard

*You're Somebody in . . .  
the Student Body*

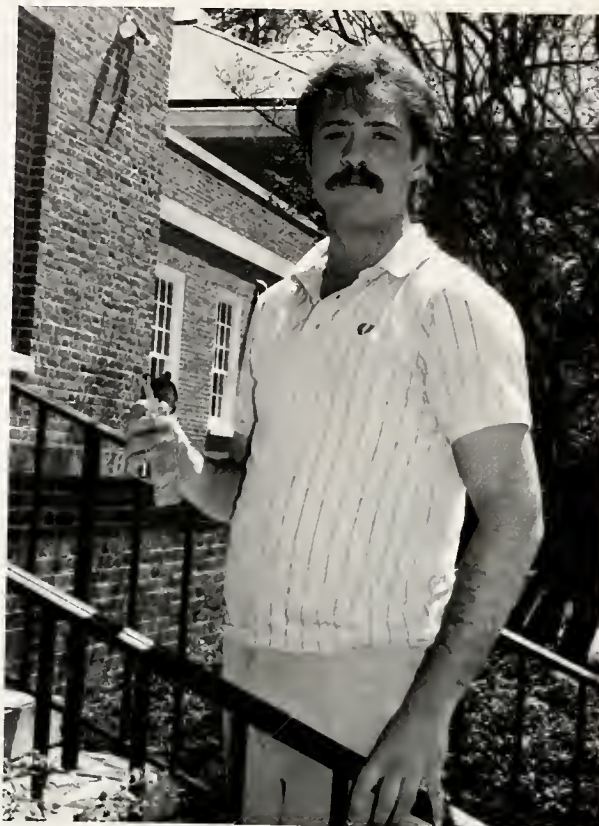




Hung-Yueh Shiao



Ellen Skiles



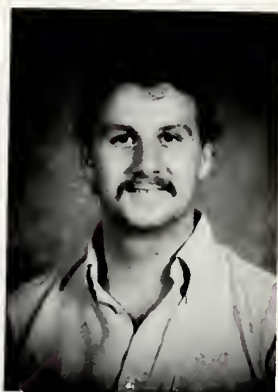
Don Grigley gets ready to open up new doors at Wesleyan.



Michael Siciliano



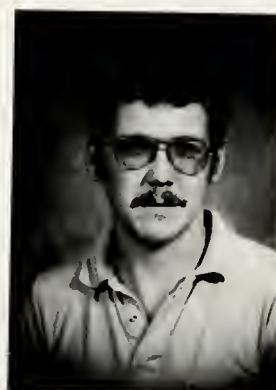
Adam Slawski



Phillip R. Sikes



Donna Smith



William Smith



Brad Smock



Nina Solomon



Kevin Speight



JoAnne Strickland



Tom Stubblefield





Thomas W. Taylor



Tim Taylor



Robert Thomas



Cheryl Tuttle



Pathik Vyas



William White



Gary Wilson



Jacque Winslow



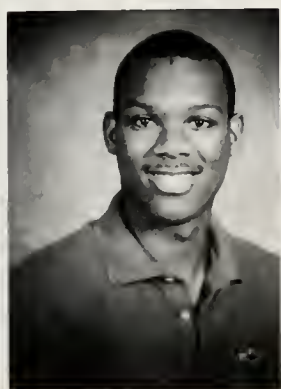
Craig Wisniewsky



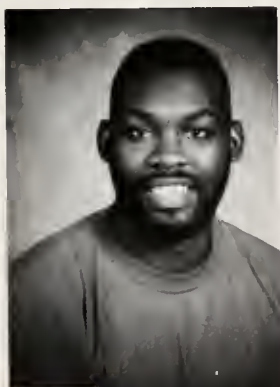
Beverly Woodcock



Philippe Kaisin smiles as he chats with Jim VanRoekel and Dewey Clark.



Daniel Wright



Tony Wright

*You're Somebody in . . .  
the Student Body*



# GRADUATION 1986



"We're off to see the wizard."



It just doesn't get any better than this.

And they said it couldn't be done!



Isn't that sweet.

Roland Flint converses with Dr. Petteway.

And now the real test begins.

*You're Somebody in . . . .  
Graduation*





Doctor Bauer and Paul Bauer—"More Bauer to ya!"



Jimmy O. poses with sweetheart.



Judge Phil Carlton watches Donna Smith exit with her degree.



Steve shares happy moment with Elaine.

The Wesleyan Singers brighten up graduation.



Dean Fritz calls roll for graduation.



Cheryl Tuttle—"Is my hair messed up???"

*You're Somebody in . . .  
Graduation*





"And you thought I couldn't type," smiles Kim Huskins.

# JUNIORS

Jaridan Ali  
Gary Appleton



Beverly Armstrong  
David Bailey  
Canora Baker



John Bishop  
Lori Blackburn  
Dixie Blume  
Scott Booker  
Cindy Bovee



Nesa Brown  
Penny Brown  
Ken Bulkin  
Jackie Butler  
Troy Butler



Elizabeth Carol  
Hurshell Cassell, Jr.  
Julian Chadwick  
Eddie Coats  
Anita Cooper





Kathy Crickmore  
Lisa Cummings  
Ellen Davis  
Whitney Davis  
Mark Davis



Jessica Denton  
Kathy Deyo  
Mike Dolliver  
Patricia Duggan  
Franklin Edmondson



Charles Flowers  
Derek Francis  
Jennifer Furman  
Joe Ganci  
Tiena Gaskins



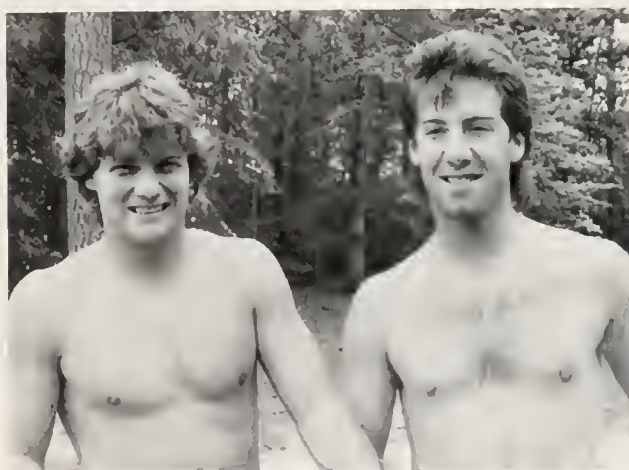
Brian Goggins  
William Griffin



Dave Gruver  
Susan Hale



Terry Hardison



Bill Tully and Kenny Bulkin flaunt their athletic bodies.

*You're Somebody in . . .  
the Student Body*





Vera Hardy  
Randy Hams



John Hicks  
Roy Hill



Marsha Hester  
Barbara Hicks



Charles Hoffman  
Tami Hults



Hattie Hunt  
Kimberly Huskins



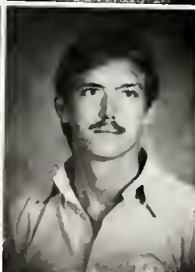
Mark Immler  
David Jackson



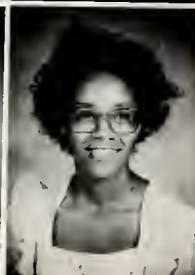
Jayne Jones  
Susan King



Valerie Kistler  
Jean Lawrence



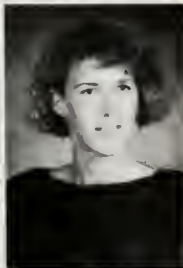
Lynne Lynch  
Randy Mabe



Steve MacEachern  
Angela Martin



Deborah Michalski  
Thomas Mitchell  
Angela Mizelle  
Ivin Moody  
Krystie Moore



George Morse  
Elizabeth Nelson  
Ida Nicholson  
Garry Ormsby  
Suzanne Payne



Robbie Pollock  
John Pridgen  
Paul Prisco  
Kevin Rose



Randy Sands  
Gene Sanguinetti  
Gregory Sheppard



Theresa Simmons  
Marvin Smith



Theresa Smith



Bill McGee and Brian Goggins prepare to go back for seconds.

*You're Somebody in . . .  
the Student Body*





Laura-Lee Spedding  
Robert Spencer



Tracie Stong  
Sherry Taylor  
Thomas Taylor



Llans Thelwell  
Shannon Tomlinson  
Blair Trembley  
Bill Tully  
Vicky Turner



Matt Warren  
Sandra Warren  
Lloyd Watts  
Bridgite Whitley  
Bettie Whitehead



Frankie Whitehead  
Greg Williams  
Tenecia Woolfolk



Doug Yearwood  
Marion Young



Cindy Harrell reads a letter  
from a friend.

# SOPHOMORES



Nourhan Ali  
Kenneth Anderson  
Greg Armand



Nancy Barra  
Keith Bauer  
Anne Benson



Wendy Elks smiles as she heads to the cafeteria to see what awaits her.



Sean Booker  
Peter Bosen  
Debbie Bounds  
Allan Boyd  
John Brackett



Kimberly Breheim  
Robin Brooks  
Lisa Brumble  
Sharon Campbell  
Helen Carr



Windy Chambless  
Dienne Ciasco  
Mary Corchnoy  
Willie Crawford

*You're Somebody in . . .  
the Student Body*



Mark Crum  
Forest Dalton  
Donald Denotter  
Walter Early  
Mike Eckert



Derek Edwards  
Wendy Elks  
Ronald Epps  
Kelly Farmer  
David Fieldman



Sharon Fitzpatrick  
Tim Frick  
Julia Futrell  
Elizabeth Garris



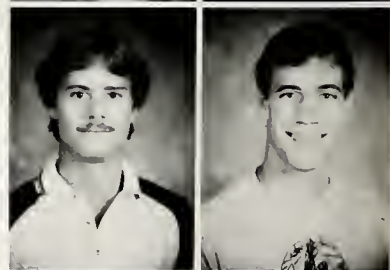
My name is Sharon Fitzpatrick and this is my friend, Joanne Strickland.



Edwin Garrison  
Elizabeth Gasperini



Jeff Gates  
Don Gatton



Charles Georges  
Claire Gilchrest





Sonji Grant  
Steve Green  
Barry Guthrie  
Valerie Hales  
Gregory Harlow



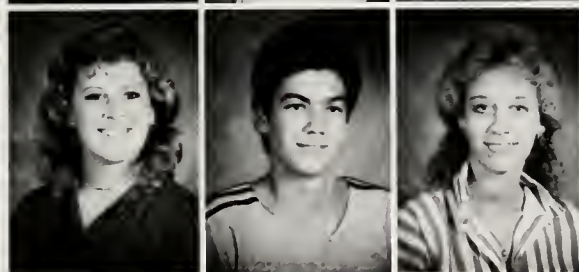
Cynthia Harrell  
Lisa Harrison  
James Higgins  
Richard C. Hill



Mae B. Hinton  
Charles Hockaday  
Albert Jones  
Debbie Jones



Henry Jordan  
Michele Kennedy  
Kelly Kent



Kate Larkin  
Kelly Leary  
Lori Lees



Dell Lewis



"Do you think Pam will let me keep him in my room," ponders Tiena Moody.

*You're Somebody in . . .  
the Student Body*





Eric Schrieber shows the grace and poise for playing frisbee.

Sara Livelsberger  
William Long



Bill McGee  
Sharon McGee



Darlene Mims  
Joel Moore



Nikki Newsome  
Tamara Oates  
Chris O'Sullivan  
Karyn Parker  
Joel Pearce



Marge Piasta  
Jonas Pittman  
Nancy Porris  
Robert Ramsey  
Tom Rivers



Ann-Margaret Rowland  
Sheila Schonenberger  
Anne Schaffer  
Christine Shaltis  
Ashraf Shehadeh





Rich Skowrenski  
Daryl Smalls  
Joseph Stallings  
Wesley Stanley  
Tim Steger



Laura Stuis  
H. Gene Taylor  
Larry Thompson



Jamie Thorn  
Kori Townsend  
Mike Truhey



Hi, my name is Dianne Ciasca, welcome to the office of Student Life.



Terri Turner  
Debbie Ward  
Sharon Ward



Sylvia Whitley  
Stephen Wiggins  
Russell Williams



Dave Williams takes a test—A normal part of academic life.



Chauncey Williamson  
Troy Winstead  
Gloria Woodard

*You're Somebody in . . .  
the Student Body*



# FRESHMEN



Joy Roy brushes up on reading for class.

James Anderson  
Benjamin Barbour



Deborah Barnes  
Donna Barnes  
Jason Barrios



Amessha Battle  
Robert Berges  
Margaret Berry  
Mary Berry  
Russell Bowen



Kenny Bowers  
Christopher Bratcher  
Hope Brown  
Robert Bumgardner  
Dwight Campbell



Hugh Cannady  
Sandra Casterlow  
Ricardo Chaparro  
Mike Ciasca  
Donna Clifton





Caroline Cole  
Patricia Conner



Julie Corey  
Jodi Crawford  
Peter Crichton



Randy Wisniewsky takes time to study  
while enjoying the sun.



Courtney Crickmore  
Jessie Crockett  
Krystal Crutchfield  
Ray Cutchins  
John Davenport



Emmett Deavers  
Richard Derricott  
Gary Davilbiss  
Tim Duffy  
John Duggan



Jeffrey Durante  
Deborah Elias  
William Elliott



Lesley Freeman  
Caroline Gardner

*You're Somebody in . . .  
the Student Body*



James Getty  
Mike Gouge  
Angie Harris  
James Harris  
Jim Hart



Dawn Hass  
Gay Hendricks  
Jerry Hise  
John Hobbs  
Beth Hodsdon



Chris Holbrook



Anthony Honeycutt

Sue Witt and very possessive friend.



Christopher Hughes  
Douglas Hunt  
John Jansen  
Dolores Johnson  
Cynthia Jones



Jason Jones  
Martha Jones  
Julie Koenecke  
Kristi Leopard  
Theodora Los





Dennis Lynch  
Livid Manicio  
William Marlowe



Sandra McDaniel  
Jennifer McGregor  
Hannah McMillan



Yolanda Mercer  
Pamela Miller  
Susan Miller



Jodi Crawford and Joe Ganci take time  
out from a dance.



Deena Monchick  
John Morgan  
Bettie Newnam  
Luis Nicotra



Sheppard Norfleet  
Robert O'Brien  
Joyce Odorn  
Gregory Ohree



Chris Ostling  
Tammy Pace  
Kenneth Perry

*You're Somebody in . . .  
the Student Body*



Angela Pittman  
Bobby Price  
Emily Proctor  
Mark Radford  
Erin Reid



Chris Hughes gives lessons in jump rope.

Ronnie Richardson  
Thurman Richardson  
Joyce Roy



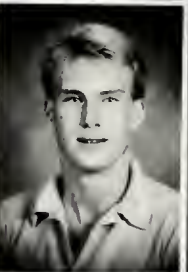
Anthony Russo  
Shamil Salah  
Stacey Schofield



Eric Schreiber  
Rhonda Sharpe  
Richard Showalter



Russell Shrewsbury  
Mark Silletti  
Lee Smelcer



Andrea Smith  
Robert Smith  
Graeme Stewart  
Jennifer Tharrington  
Christopher Trent





Chris Bratcher, taking notes?

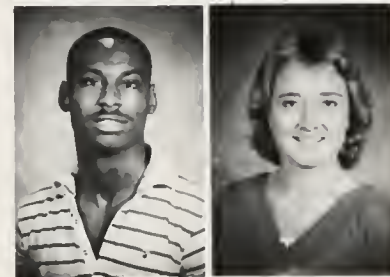
Paulette Turner  
Christopher Walters



Frank Warecke  
Tracey Warren



Anthony Washington  
Teresa Watkins



Ken Weeks  
Tom Wessel  
Joylette Whitaker  
Sam Whitehurst  
Leslie Williams



Debbie Wingfield  
Carla Winstead  
Suzanne Witt  
Andrew Wright  
Elizabeth Wright



John Wright  
William Yarborough  
Lou Ziglar  
Julie Zimmer

*You're Somebody in . . .  
the Student Body*






THE 1985-1986 DISSENTER  
IS DEDICATED TO  
DR. S. BRUCE PETTEWAY  
PRESIDENT OF THE COLLEGE  
1975 TO 1986



*You're Somebody in . . .  
Our Thoughts*





With all the powers of your body concentrated in the  
hand on the tiller,  
All the powers of your mind concentrated on the goal  
beyond the horizon,  
You laugh as the salt spray catches your face in the  
second of rest  
Before a new wave—  
Sharing the happy freedom of the moment with those  
who share your responsibility.  
So—in the self-forgetfulness of concentrated attention—  
the door opens for you into a pure living intimacy,  
A shared, timeless happiness,  
Conveyed by a smile,  
A wave of the hand.

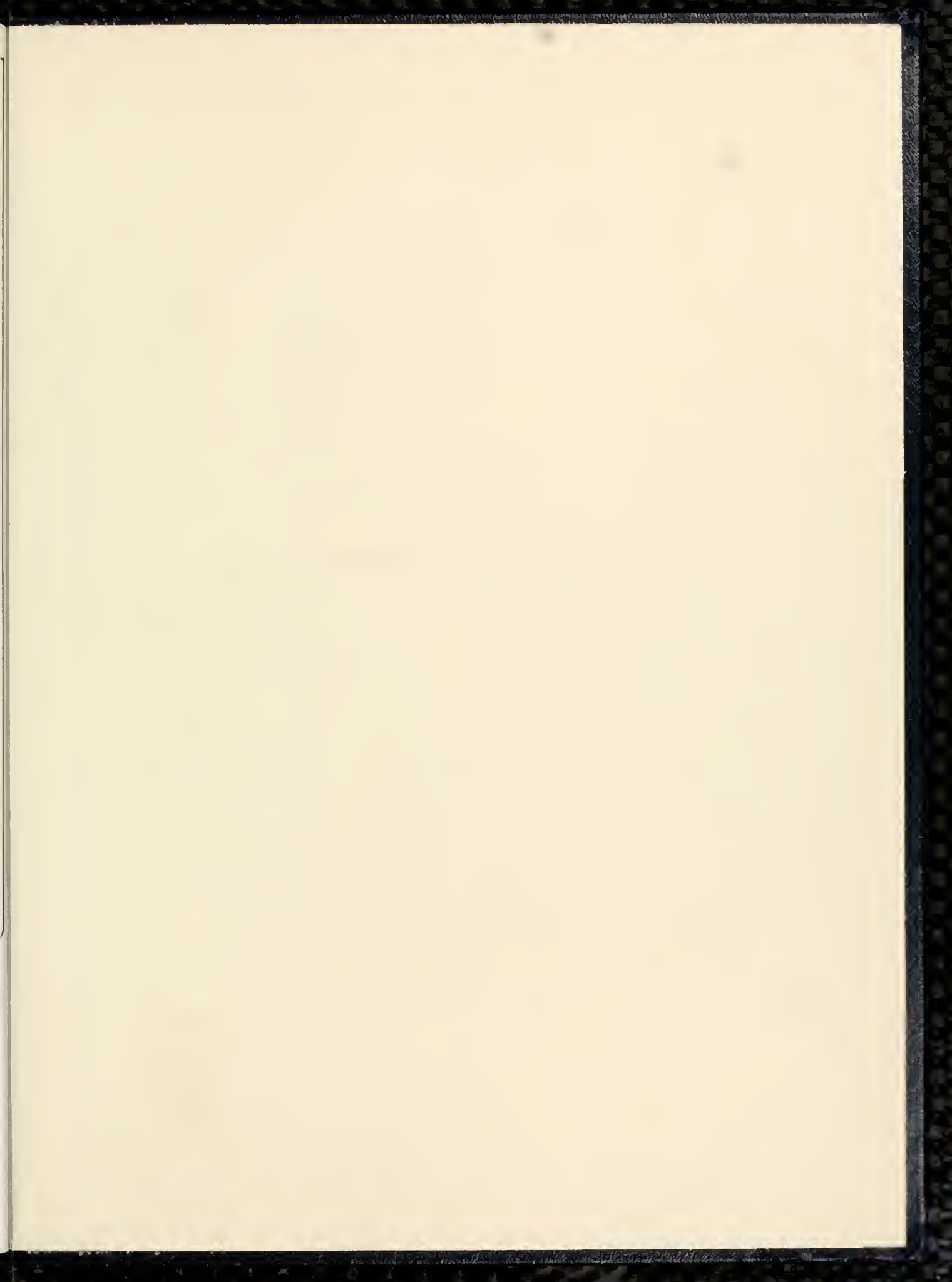
Thanks to those who have taught me this. Thanks to the days which have taught  
me this.

"Markings"—Dag Hammarskjöld

Elizabeth Carroll—Editor

We are grateful to all those who assisted in the completion of the annual. A special thanks goes to Mike Brown whose writing, photos and dark room were so important, and to Cindy Bovee, Kori Townsend, J.C. Chadwick and to the Student Life staff.

*You're Somebody in . . .  
The Future*







0  
378.756  
W512y  
1986 71734  
North Carolina Wesleyan College  
Yearbook



