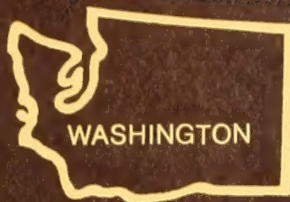


Historic, archived document

Do not assume content reflects current scientific knowledge, policies, or practices.



PACIFIC
NORTH
WEST
 FOREST AND RANGE
 EXPERIMENT STATION

USDA FOREST SERVICE RESEARCH NOTE

PNW-277

July 1976

DIURNAL TEMPERATURE REGIMES OF LOGGED AND UNLOGGED MIXED
 CONIFER STANDS ON ELK SUMMER RANGE

by

Paul J. Edgerton, *Wildlife Biologist*

and

Burt R. McConnell,^{1/} *Principal Wildlife Biologist*

PSW FOREST AND RANGE
 EXPERIMENT STATION
 FEB 16 1977
 STATION LIBRARY COPY

ABSTRACT

Temperature profiles for unlogged, partial-cut, and clearcut stands showed that removal of all or a portion of the tree canopy resulted in cooler nights and warmer days. Range of temperature extremes was greatest in the clearcut and least in the unlogged stand. Differences in canopy cover between the unlogged and partial-cut stands were relatively small, but there was a noticeable difference in thermal regimes. Daytime temperatures in the partial-cut stand were warmer, but nocturnal temperatures were somewhat cooler than in the unlogged stand. These differences influence selection of thermal cover by elk.

KEYWORDS: Temperature -)partial cutting, temperature -)clear-cutting, temperature (-wildlife habitat, Rocky Mountain elk.

^{1/} Burt R. McConnell is now with Pacific Southwest Forest and Range Experiment Station, Institute of Pacific Islands Forestry, Honolulu, Hawaii.

Logging is dramatically changing the character of Rocky Mountain elk (*Cervus canadensis nelsoni*)^{2/} summer ranges in mixed conifer forests of northeastern Oregon. Biologists are concerned that increased human activity coupled with the rapid harvest of old-growth timber stands, which provide essential cover for hiding and thermal comfort, will significantly lower the suitability of these ranges for elk. Research is underway in several Western States to determine animal response to different timber management practices and to develop alternatives that will insure a balance of suitable habitats.

Influence of the temperature regime on ungulate behavior is well known (Beall [in press], Loveless 1967, Moen 1973). Elk respond to environmental temperatures in various ways (e.g., changes in orientation, posture, or activity), but selection of cover is probably the most effective means of adjusting the balance between heat loss and heat production. The importance of protective cover during winter is well documented, but

the use of cover for thermal comfort in summer is not fully appreciated. There is a need for environmental data to better understand the influence of silvicultural treatments on elk behavior. This note compares diurnal temperature patterns in adjacent unlogged, clearcut, and partial-cut mixed conifer stands during the June-September period.

THE AREA

The study area is located approximately 12 miles (19 km) west of Troy, Oregon (latitude 45°56', longitude 117°36'), at 4,000-foot (1 200-m) elevation. Annual precipitation is estimated to be 30-40 inches (75-100 cm) and occurs mainly as winter snow and spring and fall rains. Topography is a gently rolling plateau bounded by deep canyons. Elk, or their signs, are observed frequently from early May through late November. Physical characteristics of the study sites are listed in table 1.

The unlogged study site (fig. 1) was a representative 200-year-old, mixed conifer stand approximately 820

Table 1--*Characteristics of temperature profile study sites in a mixed conifer forest, northeastern Oregon*

Site	Aspect	Slope	Stand basal area	Stand density	Canopy cover (stand average)
		Percent	ft ² /acre (m ² /ha)	Stems/acre (stems/ha)	Percent
Unlogged	SE	14	229 (52.6)	401 (1 000.8)	94
Clearcut	ESE	12	0	0	0
Partial-cut	ESE	15	171 (39.2)	430 (1 178.7)	83

^{2/} Sources for scientific nonmenclature are Little (1953), Hitchcock et al. (1955-69), and Ingles (1965).

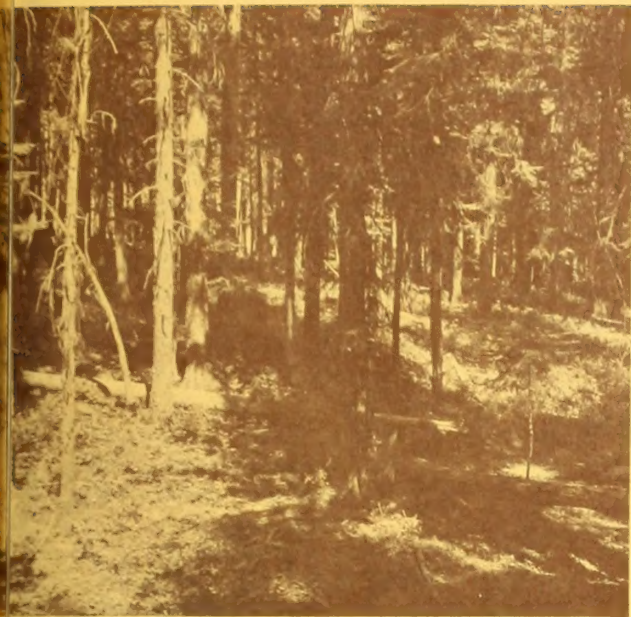


Figure 1.--Unlogged study site.



Figure 2.--Clearcut study site.

feet (250 m) wide surrounding a 39-acre (15.8-ha) clearcut (fig. 2). It is dominated by grand fir (*Abies grandis*), with lesser amounts of western larch (*Larix occidentalis*), Douglas-fir (*Pseudotsuga menziesii*), Engelmann spruce (*Picea engelmannii*), lodgepole pine (*Pinus contorta*), and occasional ponderosa pine (*Pinus ponderosa*). The understory is mostly big huckleberry (*Vaccinium membranaceum*). Several other low shrubs, many shade-tolerant forbs, and occasional sedges and grasses are also present.

After logging in 1963-64, slash and cull logs were left untreated in the clearcut and the unit was planted with ponderosa pine and seeded to grass.

The nearby partial-cut site (fig. 3) was part of an extensive tract of mixed conifer forest selectively logged in 1964. Only the larger trees were removed, so the harvest was relatively light. In addition, the stand had a wider distribution of ages than the unlogged area, so scattered groups of smaller trees remained

undisturbed after logging. Disturbance of soil and vegetation was not as extensive as in the clearcut; invasion by seral forbs and shrubs was largely confined to spur roads, deck areas, and skid trails.



Figure 3.--Partial-cut study site.

METHODS

Temperatures were recorded during the 1967 and 1969 growing seasons at the center of 2-acre (0.81-ha) plots located at comparable midslope positions in each study site. Thermographs were placed 18 inches (45.7 cm) above the forest floor in small shelters similar to those designed by Hungerford (1957). The data were taken at the top of the shrub-herb

understory primarily to supplement a companion plant succession study; temperatures at midbody height of standing animals would be expected to be slightly cooler and less variable. No statistical analyses were made because of sample size limitations, but the consistent thermal patterns in figure 4 suggest that reasonable comparisons between treatments can be supported.

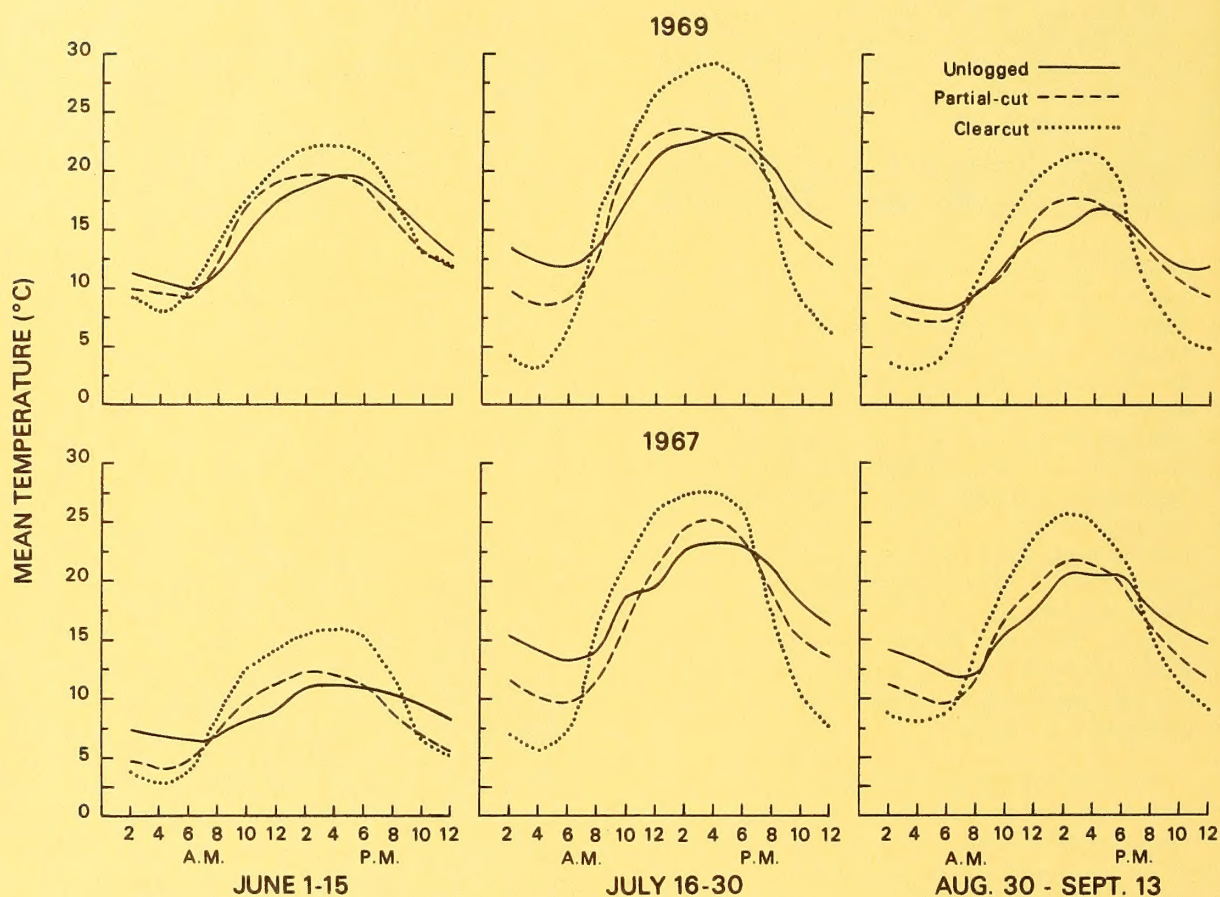


Figure 4.--Diurnal temperature profiles for unlogged, partial-cut, and clearcut mixed conifer forest, northeastern Oregon.

RESULTS AND DISCUSSION

Diurnal temperature patterns for representative early-, mid-, and late-summer periods are summarized in figure 4. Seasonal differences are clearly reflected. In early summer, average temperatures are cooler, with frequent periods of cloudiness and precipitation. As the summer progresses, the frequency of precipitation declines. Days are quite warm, but nocturnal temperatures drop quickly due to clear skies and low humidity. By late summer and early fall, daytime maximums are lower, and unsettled weather increases.

As figure 4 shows, the relationships between temperature profiles on the three sites were consistent throughout the seasons. Temperature extremes were greatest in the clearcut and least in the unlogged stand. Tree canopies of the timbered sites reduced both incoming and outgoing radiation, thereby moderating these environments. This effect was most pronounced during midsummer under clear skies; during early summer, differences were minimized by clouds which limited radiation loss.

The difference in canopy cover between the unlogged and partial-cut sites was relatively small, yet there was a noticeable difference in thermal regimes. Daytime temperatures in the partial-cut stand were warmer, but nocturnal temperatures were somewhat cooler than in the unlogged stand. Geiger (1965) explains that most of the radiation exchange in forests with unbroken canopies occurs at crown tops because the canopy prevents significant penetration by sun and wind. In logged or thinned forests, gaps in the canopy allow greater daytime heating and air circulation near the forest floor. Conversely, at night, heat radiated from the forest floor escapes more quickly to the open sky. Silvicultural prescriptions, such as the shelterwood or seed tree systems, that remove a much

greater portion of the canopy would be expected to create environments with temperature profiles approaching that of the clearcut.

General observations indicate that old-growth mixed conifer stands of suitable size and distribution are a necessary component of elk summer range in northeastern Oregon. Edgerton (1972) reported that 5 years after logging, elk pellet group densities were highest in the clearcut and lowest in the partial-cut area. Forage was the obvious attraction in the clearcut. The adjoining unlogged area lacked preferred forage plants, and the presence of numerous well-used bedding areas and trails indicated that its primary value was concealment and thermal comfort for resting animals. The partial-cut stand provided neither optimum forage nor cover during this period.

Figure 4 suggests that the comparatively stable environment of unlogged stands is probably an important factor in habitat selection by elk. Thus, during cold, wet periods in the spring and fall, elk undoubtedly seek shelter in these stands to minimize loss of body heat. On warm summer days, cooler temperatures are the obvious attraction. This is confirmed by telemetry studies^{3/} in an adjacent area which showed that during the summer, elk used clearcut areas at night but preferred the security and milder temperatures of dense conifer stands during the day. Movement of elk between habitats generally occurred during warming and cooling periods in the early mornings and evenings.

^{3/} Personal communication with R. J. Pedersen, Oregon Department of Fish and Wildlife, January 1976.

LITERATURE CITED

- Beall, Robert C.
[In press.] Wintering elk habitat selection in relation to thermal radiation. *In* Transactions of the elk-logging-roads symposium. James Peek, ed. Univ. Idaho, Moscow.
- Edgerton, Paul J.
1972. Big game use and habitat changes in a recently logged mixed conifer forest in northeastern Oregon. *West. Proc. 52d Annu. Conf. West. Assoc. State Game & Fish Comm.*, p. 239-246. Portland, Oreg.
- Geiger, Rudolf.
1965. The climate near the ground. p. 316-321. Harvard Univ. Press, Cambridge, Mass.
- Hitchcock, C. Leo, Arthur Cronquist, Marion Ownbey, and J. W. Thompson.
1955-69. Vascular plants of the Pacific Northwest. 5 vols. Univ. Wash. Press, Seattle.
- Hungerford, Kenneth E.
1957. A portable instrument shelter for ecological studies. *Ecology* 38(1):150-151.
- Ingles, Lloyd G.
1965. Mammals of the Pacific States: California, Oregon, and Washington. p. 425. Stanford Univ. Press, Stanford, Calif.
- Little, Elbert L., Jr.
1953. Check list of native and naturalized trees of the United States (including Alaska). U.S. Dep. Agric., Agric. Handb. 41, 472 p. Washington, D.C.
- Loveless, C. M.
1967. Ecological characteristics of a mule deer winter range. *Colo. Game, Fish & Parks Dep. Tech. Bull.* 20, p. 88-94.
- Moen, Aaron N.
1973. Wildlife ecology: an analytical approach. 458 p. W. H. Freeman and Co., San Francisco, Calif.

The mission of the PACIFIC NORTHWEST FOREST AND RANGE EXPERIMENT STATION is to provide the knowledge, technology, and alternatives for present and future protection, management, and use of forest, range, and related environments.

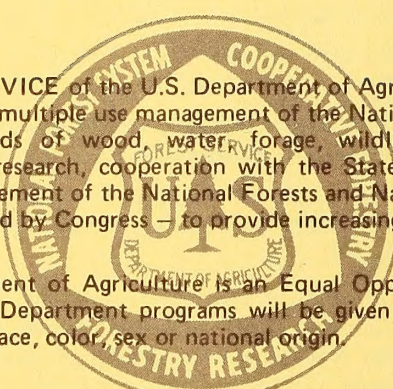
Within this overall mission, the Station conducts and stimulates research to facilitate and to accelerate progress toward the following goals:

1. Providing safe and efficient technology for inventory, protection, and use of resources.
2. Developing and evaluating alternative methods and levels of resource management.
3. Achieving optimum sustained resource productivity consistent with maintaining a high quality forest environment.

The area of research encompasses Oregon, Washington, Alaska, and, in some cases, California, Hawaii, the Western States, and the Nation. Results of the research are made available promptly. Project headquarters are at:

Fairbanks, Alaska	Portland, Oregon
Juneau, Alaska	Olympia, Washington
Bend, Oregon	Seattle, Washington
Corvallis, Oregon	Wenatchee, Washington
La Grande, Oregon	

*Mailing address: Pacific Northwest Forest and Range
Experiment Station
P.O. Box 3141
Portland, Oregon 97208*

The seal of the U.S. Forest Service is a circular emblem. It features a central shield with a tree and a plow. The shield is surrounded by the text "FOREST SERVICE" and "DEPARTMENT OF AGRICULTURE". The outer ring of the seal contains the words "NATIONAL FOREST SYSTEM" at the top and "FORESTRY RESEARCH" at the bottom. The seal is partially obscured by the text of the first paragraph.

The FOREST SERVICE of the U.S. Department of Agriculture is dedicated to the principle of multiple use management of the Nation's forest resources for sustained yields of wood, water, forage, wildlife, and recreation. Through forestry research, cooperation with the States and private forest owners, and management of the National Forests and National Grasslands, it strives — as directed by Congress — to provide increasingly greater service to a growing Nation.

The U.S. Department of Agriculture is an Equal Opportunity Employer. Applicants for all Department programs will be given equal consideration without regard to race, color, sex or national origin.