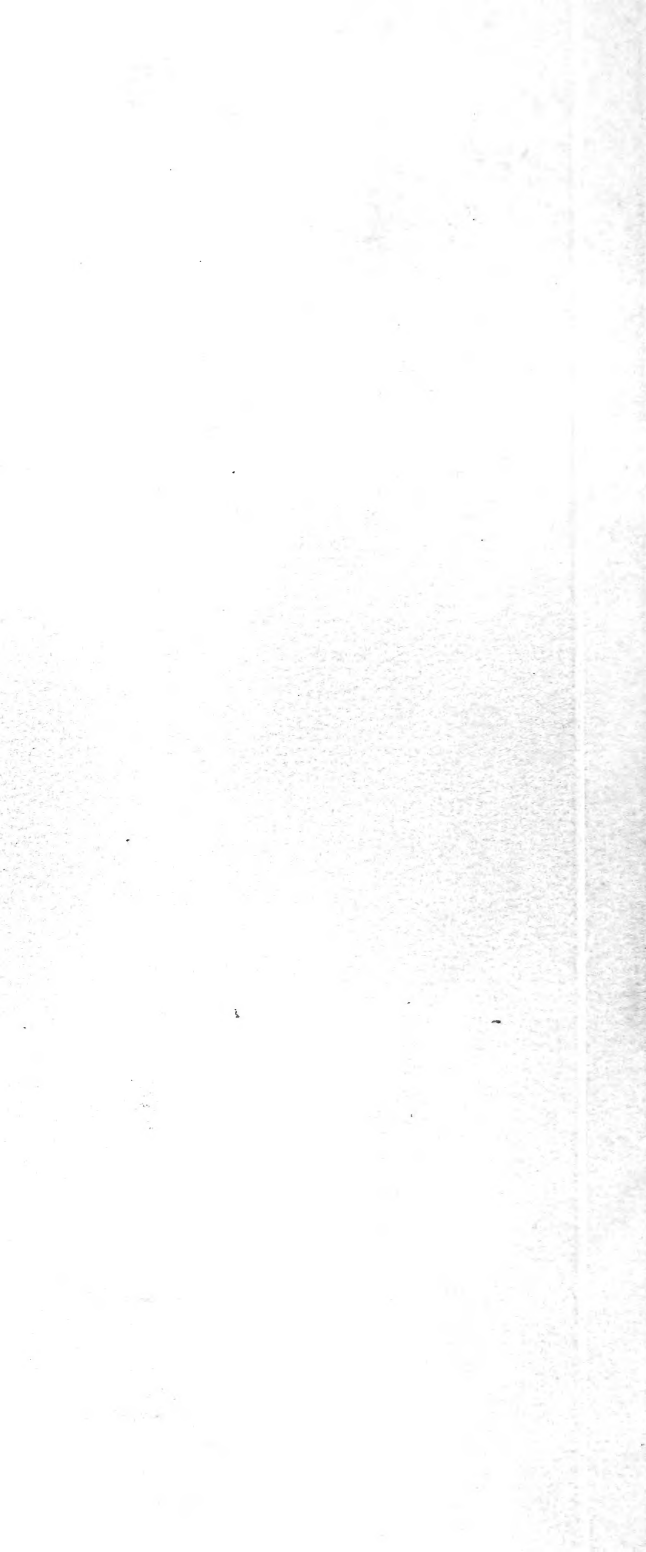


## Historic, archived document

Do not assume content reflects current scientific knowledge, policies, or practices.



INDEXED

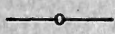
# THE DIXIE PLANTER

LIBRARY  
 RECEIVED  
 —○— JAN 12 1931 ★  
 U. S. Department of Agriculture.

## *Ornamentals*

## *Fruits*

**FALL 1930**



# THE HOWARD-HICKORY CO.

*Landscape Gardeners*

*Nurserymen*

HICKORY, NORTH CAROLINA

**North Carolina Orthopaedic  
Hospital**

Gastonia, N. C.

Nov. 6, 1929.

Howard-Hickory Co.

Hickory, N. C.

Dear Mr. Howard:—

A few years ago your Company put out some very nice shrubbery for us at the Hospital. In the meantime, we have done some more building here and need a little more shrubbery to set off the premises.

Could you have someone stop by and give us an estimate of our needs in shrubbery at the present time? We have a limited sum to apply to it but if your Company furnishes us as good shrubbery and puts it out as tastefully as they did formerly we would like to purchase another lot. Would it be convenient for some one to call here Tuesday, Nov. 12?

Sincerely,

O. E. MILLER, M. D.

(The additional planting was done in December.)

# The Howard-Hickory Co.

## Organization

More than a quarter of a century in the nursery business and over ten years at Hickory, is the record of the management of The Howard-Hickory Co. Connected with the Company are some of the leading business men of Hickory—bankers, merchants and manufacturers.

The members of our landscape staff have had broad experience. We are prepared to make plans for small home grounds and large estates, to furnish all required plant material, and to plant the trees and shrubs if desired.

The men on our planting force know trees and plants; they know how to grow them in the fields so they will give best results on your grounds and in your orchards. The guarantee printed elsewhere in this price-list shows that The Howard-Hickory Co. has the utmost confidence in its stock and its ability to fill all contracts entrusted to them.

### The Trees and Shrubs We Sell

All natural things—soil, climate, and rainfall—seem to favor this locality as a growing station for nursery stock. Important in themselves, they must be aided by trained workers in the fields. Budding and grafting demand skill; planting, cultivating, pruning cannot be left to ordinary help. In all these processes we employ trained men, thus producing stock that is not surpassed by any grown in the South.

### Service to Customers

We shall be glad to offer suggestions for arranging the ground about the new home, as well as changing existing plantings. If definite plans are required, our Landscape Department is prepared to give complete service to home-owners. Write us for full particulars.

In most cases it is advisable to have our men plant the trees and shrubs on your grounds. The cost of this service is nominal, but it is an assurance that the work will be properly done and that the stock will be given the best possible start.

## Coniferous Evergreens

12 FOR THE PRICE OF 10

Each

<b>Biota, (Thuja orientalis).</b> Chinese Arborvitae. Free open growth, unless pruned; makes a tree when planted in the open.	
2 to 2½ ft.....	1.75
2½ to 3 ft.....	2.50
3 to 3½ ft.....	3.00
3½ to 4 ft.....	3.75
4 to 5 ft.....	4.50
5 to 6 ft.....	6.50
6 to 7 ft.....	9.00
<b>Biota aurea conspicua.</b> Erect, medium, compact grower; intense golden foliage.	
1½ to 2 ft.....	3.00
2 to 2½ ft.....	3.75
<b>Biota aurea nana.</b> Berckmans' Golden Dwarf Arborvitae. Bright golden foliage; used largely in formal plantings.	
15 to 18 ins.....	2.00
<b>Biota bonita.</b> Dwarfish, roundish; light green.	
15 to 18 ins.....	2.25
<b>Biota, Blue-green.</b> Rather fast grower; broadly pyramidal; foliage fine, steel blue.	
2½ to 3 ft.....	2.50
3 to 3½ ft.....	3.50
<b>Biota daly nana.</b> Somewhat dwarfish, formal; broadly pyramidal.	
15 to 18 ins.....	1.75
1½ to 2 ft.....	2.25
2 to 2½ ft.....	2.75
2½ to 3 ft.....	3.25
<b>Biota excelsa.</b> Deep green; dwarfish, formal.	
2 to 2½ ft.....	3.00
<b>Biota, Gracilis.</b> Very dwarf; foliage light green; fine texture.	
10 to 12 ins.....	1.25
12 to 15 ins.....	1.50
15 to 18 ins.....	2.00
<b>Biota mayhewiana.</b> Very similar to above, except more upright.	
15 to 18 ins.....	1.50
2½ to 3 ft.....	3.00
<b>Biota pyramidalis.</b> Pyramidal Chinese Arborvitae. Grows compact and shapely with practically no pruning.	
2½ to 3 ft.....	3.25
3 to 3½ ft.....	4.00
3½ to 4 ft.....	5.00
4 to 5 ft.....	7.50
5 to 6 ft.....	9.00
<b>Biota pyramidalis bakeri.</b> Baker's Pyramidal Chinese Arborvitae. Holds its green color well in the winter. Easily pruned to desired shape.	
1½ to 2 ft.....	1.50
2 to 2½ ft.....	2.00
2½ to 3 ft.....	2.50
3 to 3½ ft.....	3.25
3½ to 4 ft.....	4.50

### Coniferous Evergreens, (Continued)

**Biota, Rosedale.** Compact. Very attractive fluffy blue foliage. Medium dwarf.

1½ to 2 ft..... 2.00

**Biota semperaurescens.** Somewhat similar to "Aurea conspicua," except faster grower, and not quite so golden.

1½ to 2 ft..... 2.25

2½ to 3 ft..... 3.50

3 to 3½ ft..... 4.25

**Biota, Texana Glauca.** Fine steel blue foliage, deepening to purple in winter; broadly pyramidal after a few years' growth.

4 to 5 ft..... 6.50

5 to 6 ft..... 7.50

6 to 7 ft..... 9.50

**Cedrus deodara.** Indian Cedar. Grows in open pyramidal form. Feathery foliage, blueish green.

1½ to 2 ft..... 2.00

2 to 2½ ft..... 2.50

2½ to 3 ft..... 3.25

3 to 4 ft..... 4.00

4 to 5 ft..... 5.00

5 to 6 ft..... 6.50

**Cedrus libani.** Cedar of Lebanon. Supposed to be the same species that was used in building the Temple.

1½ to 2 ft..... 3.00

2 to 2½ ft..... 4.00

**Cephalotaxus fastigiata.** False Yew. Upright, compact, slender; dark green foliage; grows very slowly.

1½ to 2 ft..... 2.50

**Cryptomeria japonica.** Tall, free grower; should be used as specimen only.

4 to 5 ft..... 3.00

5 to 6 ft..... 5.00

6 to 7 ft..... 7.50

**Juniperus communis.** English Juniper. Light green foliage; columnar; medium grower; very desirable. See illustration page 18.

2½ to 3 ft..... 2.50

3 to 3½ ft..... 3.00

3½ to 4 ft..... 3.75

4 to 4½ ft..... 5.00

4½ to 5 ft..... 6.50

**Juniperus communis ashfordi.** Ashford Juniper. Short silver-grey foliage; graceful and compact.

1½ to 2 ft..... 2.00

2 to 2½ ft..... 3.00

2½ to 3 ft..... 4.00

3 to 3½ ft..... 5.00

3½ to 4 ft..... 6.50

### Coniferous Evergreens, (Continued)

**Juniperus communis hibernica.** Irish Juniper.  
Upright; columnar. One of the oldest varieties of conifers.

1½ to 2 ft.....	1.75
2 to 2½ ft.....	2.00
2½ to 3 ft.....	2.50
3 to 3½ ft.....	3.25
3½ to 4 ft.....	4.50

**Juniperus douglasi aurea.** Low-spreading form; foliage light golden yellow.

15 to 18 ins. spread.....	2.25
1½ to 2 ft. spread.....	3.00
2 to 2½ ft. spread.....	3.50

**Juniperus excelsa stricta.** Spiny Greek Juniper.  
Broadly pyramidal, medium size; bright green foliage throughout the year.

2 to 2½ ft.....	3.00
2½ to 3 ft.....	4.00
3 to 3½ ft.....	6.00

**Juniperus japonica sylvestris.** Small tree; open growth. Mixed grey-green foliage; decidedly different.

1½ to 2 ft.....	2.00
2 to 2½ ft.....	2.75
2½ to 3 ft.....	3.50
3 to 3½ ft.....	5.00

**Juniperus lup-toni.** Cone-shaped, medium grower; light green foliage.

1½ to 2 ft.....	2.00
3 to 3½ ft.....	4.00

**Juniperus nana.** Slightly erect; used on banks; bronze-grey foliage.

1½ to 2 ft. spread.....	1.50
2 to 2½ ft. spread.....	2.00
2½ to 3 ft. spread.....	2.50

**Juniperus nana prostrata.** Lies almost flat.  
1½ to 2 ft. spread..... 1.75  
(A few extra large ones)

**Juniperus oblonga pendula.** Medium height, broad columnar; drooping branches; light green foliage.

2½ to 3 ft.....	2.50
3 to 3½ ft.....	3.25
3½ to 4 ft.....	4.00
4 to 4½ ft.....	5.00

**Juniperus pfitzeriana.** Pfitzer's Juniper. Semi-spreading; grey-green foliage. The best of its type.

15 to 18 ins. spread.....	2.25
1½ to 2 ft. spread.....	2.75
2 to 2½ ft. spread.....	3.50

(A few extra large ones)

**Juniperus sabina.** Spreading type; dark green foliage.

12 to 15 ins.....	1.50
15 to 18 ins.....	2.00



### Coniferous Evergreens, (Continued)

**Juniperus suecica.** Swedish Juniper. Columnar; grey-green foliage. Will probably supersede Irish Juniper in time.

12 to 15 ins.....	2.00
15 to 18 ins.....	2.75
2½ to 3 ft.....	5.00
3 to 3½ ft.....	6.50

**Juniperus virginiana glauca.** Blue Cedar. Irregular in habit.

3 to 4 ft.....	7.50
4 to 5 ft.....	9.00

(A few extra large ones)

**Picea excelsa.** Norway Spruce. Tall grower; standard tree type. The best spruce for general use.

15 to 18 ins.....	1.50
1½ to 2 ft.....	2.00
2 to 2½ ft.....	2.50
2½ to 3 ft.....	3.00
3 to 3½ ft.....	4.00
3½ to 4 ft.....	5.50

**Picea pungens semi-glauca.** Colorado Blue Spruce. The new growth has a decided bluish tinge, later turning almost green.

1½ to 2 ft.....	3.50
2 to 2½ ft.....	4.50
2½ to 3 ft.....	6.00

**Retinospora filifera.** Thread-branched Japanese Cypress. Medium grower; long slender foliage.

1½ to 2 ft.....	2.50
2 to 2½ ft.....	3.50
2½ to 3 ft.....	5.00

**Retinospora obtusa.** Hinoki Cypress. Open, free growth, finally making large plant when set in open.

3 to 3½ ft.....	4.00
3½ to 4 ft.....	4.50
4 to 5 ft.....	6.00

**Retinospora obtusa gracillis.** Graceful Japanese Cypress. Dwarfish, compact, yet somewhat loose growth. A rich green color.

15 to 18 ins.....	1.75
1½ to 2 ft.....	2.25
2 to 2½ ft.....	2.50

**Retinospora obtusa crippsi.** Bright golden color the year 'round. Medium grower.

12 to 15 ins.....	2.50
15 to 18 ins.....	3.50
1½ to 2 ft.....	5.00

**Retinospora pisifera.** Pea-fruited Cypress. Rapid grower; broadly pyramidal; foliage deep green.

2 to 2½ ft.....	2.50
2½ to 3 ft.....	3.00
3 to 4 ft.....	4.00
4 to 5 ft.....	5.50

**Coniferous Evergreens, (Continued)**

<b>Retinospora pisifera aurea.</b> Same as preceding except slightly golden color.	
2½ to 3 ft.....	3.50
3 to 3½ ft.....	4.50
<b>Retinospora plumosa.</b> Plume-like Japanese Cypress. Medium grower; forms a dense cone of fine texture.	
1½ to 2 ft.....	1.75
2 to 2½ ft.....	2.25
2½ to 3 ft.....	3.00
3 to 3½ ft.....	3.50
3½ to 4 ft.....	4.25
4 to 4½ ft.....	5.00
4½ to 5 ft.....	6.50
5 to 5½ ft.....	7.50
5½ to 6 ft.....	9.00
<b>Retinospora plumosa aurea.</b> Golden Plume-like Japanese Cypress. Same as above except slightly dwarf and golden.	
1½ to 2 ft.....	2.00
2 to 2½ ft.....	3.00
2½ to 3 ft.....	3.75
3 to 3½ ft.....	4.50
3½ to 4 ft.....	5.25
4 to 5 ft.....	7.00
5 to 6 ft.....	8.00
<b>Retinospora plumosa aurea nana.</b> Dwarf Golden Plume-like Japanese Cypress.	
15 to 18 ins.....	2.25
<b>Retinospora squarrosa veitchi.</b> Veitch's Silver Cypress. Slow growth; broadly pyramidal; heavy, silver-grey foliage.	
1½ to 2 ft.....	3.00
2 to 2½ ft.....	4.00
2½ to 3 ft.....	5.00
3 to 3½ ft.....	6.25
3½ to 4 ft.....	7.50
<b>Retinospora squarrosa veitchi sulphurea.</b> Sulphur tinted foliage; feathery and dense; broadly pyramidal.	
12 to 15 ins.....	2.50
15 to 18 ins.....	3.00
2 to 2½ ft.....	4.00
<b>Thuja occidentalis.</b> American arborvitae. Erect, somewhat pyramidal; free grower; bronze winter color.	
2 to 2½ ft.....	2.00
2½ to 3 ft.....	2.50
3 to 3½ ft.....	3.00
3½ to 4 ft.....	3.50
4 to 4½ ft.....	4.25
4½ to 5 ft.....	5.00
5 to 6 ft.....	6.50
<b>Thuja occidentalis aurea lutea.</b> George Peabody's Golden Arborvitae. Dwarfish, yet open growth; conspicuous golden foliage.	
2 to 2½ ft.....	2.50
2½ to 3 ft.....	3.00
3 to 3½ ft.....	3.75
3½ to 4 ft.....	5.00

## Coniferous Evergreens, (Continued)

<b>Thuja occidentalis conica densa.</b> Globular; compact; slightly larger than Globe American Arborvitae.	
1½ to 2 ft.....	2.50
2 to 2½ ft.....	3.25
<b>Thuja occidentalis ellwangeriana.</b> Tom Thumb Arborvitae. Low, spreading; fluffy soft foliage; bronze in winter.	
15 to 18 ins. high.....	1.75
1½ to 2 ft. high.....	2.50
2 to 2½ ft. high.....	3.00
<b>Thuja occidentalis filicoides.</b> Fern-like Pyramidal Arborvitae. Medium grower; beautiful fern-like foliage.	
1½ to 2 ft.....	2.50
2 to 2½ ft.....	3.25
2½ to 3 ft.....	4.00
3 to 3½ ft.....	5.50
<b>Thuja occidentalis globosa.</b> Globe American Arborvitae. Compact, dwarf grower. Bronze winter color.	
15 to 18 ins. spread-height.....	1.75
1½ to 2 ft. spread-height.....	2.50
<b>Thuja occidentalis hoveyi.</b> Roundish, somewhat open growth; larger than either globosa or conica densa; bronze in winter. See cut, page 18.	
1½ to 2 ft.....	1.50
2 to 2½ ft.....	2.00
2½ to 3 ft.....	3.00
<b>Thuja occidentalis pyramidalis.</b> Pyramidal American Arborvitae. Narrow, columnar shape; a leader. See illustration, page 18.	
2 to 2½ ft.....	2.50
2½ to 3 ft.....	3.00
3 to 3½ ft.....	4.00
3½ to 4 ft.....	5.00
4 to 4½ ft.....	6.50
<b>Thuja occidentalis wareana.</b> Siberian Arborvitae. Slow growing, dark rich green foliage; slightly bronze in winter.	
15 to 18 ins. spread-height.....	2.00
1½ to 2 ft.....	2.75
<b>Thuja occidentalis woodwardi.</b>	
2 to 2½ ft.....	2.50
2½ to 3 ft.....	3.50
<b>Tsuga canadensis.</b> Common Canadian Hemlock. Tree type; light green foliage; graceful; does well in partial shade.	
2½ to 3 ft.....	4.25
3 to 3½ ft.....	5.00
3½ to 4 ft.....	6.50

2 to 2½ feet means that the plant will be 2 feet and over, but under 2½ feet. The same applies to other sizes.

## Broad-leaved Evergreens

12 for the price of 10.

	Each	10
<b>Abelia grandiflora.</b> White, bell-shaped flowers, with a pinkish tinge, from June to frost.		
12 to 18 ins.....	.75	\$ 6.
1½ to 2 ft.....	1.25	\$10.
2 to 3 ft.....	1.75	\$15.
<b>Aucuba japonica aurea maculata.</b> Gold Dust Plant. Large green leaves with golden spots. Requires partial shade.		
12 to 15 ins.....	2.00	
15 to 18 ins.....	2.50	
1½ to 2 ft.....	3.00	
2 to 2½ ft.....	3.50	
<b>Azalea amoena.</b> Dwarf, bushy; coppery foliage; pink flowers in spring. Does best in partial shade.		
8 to 10 ins. spread-height.....	1.50	
10 to 12 ins. spread-height.....	2.25	
12 to 15 ins. spread-height.....	2.75	
<b>Azalea, cataleya.</b> Shell pink.		
8 to 10 ins. spread-height.....	3.00	
<b>Azalea hinodegiri.</b> Larger leaves than Amoena; bright red flowers in early spring; very desirable.		
6 to 8 ins. spread-height.....	1.50	
8 to 10 ins. spread-height.....	2.25	
12 to 15 ins.....	2.75	
<b>Azalea ledifolia alba.</b> Large white flowers in spring. Rather open growth.		
10 to 12 ins.....	1.50	
12 to 15 ins.....	2.00	
<b>Azalea macrantha.</b> Very large single red blooms in early summer, nestling among the leaves.		
8 to 10 ins. spread-height.....	1.75	
10 to 12 ins. spread-height.....	2.00	
12 to 15 ins. spread-height.....	2.50	
<b>Azalea, Peach Bloom.</b>		
10 to 12 ins.....	3.50	
<b>Berberis wilsonae.</b> Brilliant fall coloring. Drops its leaves in extreme seasons.		
15 to 18 ins.....	1.75	
1½ to 2 ft.....	2.25	
2 to 2½ ft.....	3.00	
<b>Crataegus pyracantha lalandi.</b> Upright; small, boxwood-like foliage. White flowers in spring; orange-scarlet berries in late summer and fall.		
3 to 4 ft.....	3.25	
4 to 5 ft.....	4.25	
5 to 6 ft.....	5.50	
<b>Crataegus pyracantha yunnanensis.</b> Chinese fire-thorn. Bushy, spreading growth; small white flowers in the spring, bright red berries in the fall. Very few thorns.		
2 to 3 ft.....	3.00	
<b>Elæagnus reflexa.</b> Foliage dark green above; mottled brown beneath. Free grower.		
2 to 3 ft.....	1.75	
3 to 4 ft.....	2.50	

### Broad-leaved Evergreens, (Continued)

<b>Euonymus carrieri.</b> Dwarfish. Orange berries in fall.	
15 to 18 ins.....	1.75
1½ to 2 ft.....	2.25
<b>Euonymus japonica.</b> Upright, compact grower; rich, glossy green foliage; red berries after several years' growth.	
2 to 2½ ft.....	2.00
2½ to 3 ft.....	2.50
<b>Euonymus japonica compacta.</b> Same as above except more compact.	
1½ to 2 ft.....	2.00
2 to 2½ ft.....	3.00
<b>Euonymus radicans.</b> Good foliage. Half climber.	
1½ to 2 ft.....	2.50
<b>Euonymus radicans vegetus.</b> Red berries in fall. Half climber.	
2 to 2½ ft. heavy.....	4.00
<b>Euonymus seiboldi (patens).</b> Orange-red berries in abundance in the fall. Sheds its foliage in some sections.	
1½ to 2 ft.....	2.50
2 to 2½ ft.....	3.00
<b>Hedera helix.</b> English Ivy. Evergreen vine.	
2-year.....	.75
<b>Ilex crenata.</b> Japanese Holly. Small glossy green leaves.	
15 to 18 ins.....	2.00
<b>Ilex opaca, Howardi.</b> Originated in Florida. An improved form of American Holly which bears red berries even when planted singly.	
3 to 4 ft.....	4.00
4 to 5 ft.....	5.00
<b>Ilex vomitoria.</b> Yaupon Holly. Leaves small, oblong. Scarlet berries in the winter.	
3½ to 4 ft.....	4.75
4 to 4½ ft.....	5.50
<b>Jasminum floridum.</b> Italian Jasmine. Bright green arching branches; bright yellow flowers throughout the summer. Drops its foliage extreme seasons.	
15 to 18 ins.....	1.00
1½ to 2 ft.....	1.25
2 to 3 ft.....	1.50
<b>Laurocerasus caroliniana.</b> Cherry Laurel. Medium, spreading evergreen shrub with broad, shiny, light green foliage.	
2 to 3 ft.....	2.50
3 to 4 ft.....	3.25
4 to 5 ft.....	4.00
<b>Laurocerasus officinalis.</b> English Laurel. Leaves dark green, 3 to 5 inches long, 1½ to 2 inches wide; grows freely.	
1½ to 2 ft.....	2.00
2 to 2½ ft.....	3.00
2½ to 3 ft.....	4.25
3 to 3½ ft.....	5.50

### Broad-leaved Evergreens, (Continued)

**Laurocerasus schipkaensis.** A dwarfish form of English Laurel, and more spreading. Very hardy against cold.

15 to 18 ins.....	3.00
1½ to 2 ft.....	4.00

**Ligustrum amurense.** Evergreen Privet, pruned for landscape work. Desirable in the shrubbery border to give some evergreen effect.

2 to 3 ft.....	1.00
3 to 4 ft.....	1.25
4 to 5 ft.....	1.50

**Ligustrum aureum.** Manda's Golden Privet.

1½ to 2 ft.....	2.00
2 to 2½ ft.....	2.50

**Ligustrum japonicum.** Japanese Privet. Rapid grower. White flowers; blue-black berries.

2 to 3 ft.....	2.00
3 to 4 ft.....	2.50
4 to 5 ft.....	3.00

**Ligustrum jap. macrophyllum.** Leaves long and wide, dark green; very rapid grower.

2 to 3 ft.....	2.50
3 to 4 ft.....	3.50

**Ligustrum lucidum.** Dark bottle-green foliage; white flowers; black berries. Widely used in landscape plantings in the South.

1½ to 2 ft.....	2.50
2 to 2½ ft.....	3.25
2½ to 3 ft.....	4.25

**Ligustrum, Upright.** Foliage very similar to Lucidum.

1½ to 2 ft.....	2.00
2 to 2½ ft.....	2.50

**Lonicera fragrantissima.** First Breath of Spring. Will shed in zero weather, except the new growth.

2 to 3 ft.....	.75
3 to 4 ft.....	1.00
4 to 5 ft.....	1.25

**Lonicera nitida.** Dwarf grower; small glossy green leaves. Will winter-kill in extreme weather.

12 to 15 ins.....	2.00
-------------------	------

**Magnolia grandiflora.** Evergreen tree; large dark green foliage; very fragrant large white blooms.

2 to 3 ft.....	2.25
3 to 4 ft.....	3.25
4 to 5 ft.....	4.50

**Mahonia aquifolium.** Oregon Hollygrape. Medium grower; upright. Foliage various shades of green, crimson, bronze and orange. Yellow bell-like flowers in the early spring.

15 to 18 ins.....	2.00
1½ to 2 ft.....	2.50

## Broad-leaved Evergreen (Continued)

**Nandina domestica.** Japanese Nandina. Upright grower with numerous reed-like stems; foliage glossy green tinged with red; small white flowers followed by large clusters of red berries, which are retained until after Christmas.

15 to 18 ins.....	1.50
1½ to 2 ft.....	2.00
2 to 2½ ft.....	2.50
2½ to 3 ft.....	3.00

**Osmanthus aquifolium.** Holly-leaved Osmanthus. Slow grower; prickly, dark green foliage.

15 to 18 ins.....	2.00
1½ to 2 ft.....	2.50
2 to 2½ ft.....	4.00

**Photinia serrulata.** Large shrub; new growth reddish, later dark green.

15 to 18 ins.....	2.00
1½ to 2 ft.....	3.00

**Viburnum rhytidophyllum.** Leather-leaved Viburnum. Rough, dark green foliage; clusters of small white bloom in early summer.

1½ to 2 ft.....	3.00
2 to 2½ ft.....	3.75

**Yucca filamentosa.** Adam's Needle. Long spikes of white flowers in June. Should be largely used.

2 yr.....	.60
-----------	-----



The trees are fine, the people are pleased and will want more next season.

R. D. HOLLAND, Surry, Va.

Please have your salesman come to see me at once. I have a friend who has seen my shrubbery and is interested in having his yard planted right away.

T. A. SNYDER, Salisbury, N. C.

Your concern having been highly recommended by Mr. W. O. Riddick of Azalea, N. C., I am writing to ask you that you mail me your catalogue of shrubbery, etc., and also advise me the best time to plant shrubbery.

JNO. T. WATKINS, Big Stone Gap, Va.

## Index of Shrubs

Albizzia julibrissin.....	20
Amorpha fruticosa.....	16
Amygdalus pumila.....	14
Aronia arbutifolia.....	22
Azalea yodogawa.....	14
Berberis thunbergi.....	22
Berberis thunbergi atropurpurea.....	20
Buddleia.....	20
Callicarpa purpurea.....	22
Calycanthus floridus.....	14
Caryopteris mastacanthus.....	21
Caragana arborescens.....	15
Cercis.....	14
Clethra alnifolia.....	20
Cornus florida.....	13
Cydonia japonica.....	13
Deutzia.....	16
Desmodium.....	21
Euonymus alatus.....	22
Forsythia.....	13
Hibiscus syriacus.....	21
Hydrangea arb. grandiflora.....	20
Hydrangea paniculata grandiflora.....	21
Hypericum.....	20
Jasminum nudiflorum.....	13
Lagerstroemia indica.....	21
Lonicera fragrantissima.....	13
Lonicera gr. rosea.....	15
Lonicera heckrotti.....	17
Lonicera maacki.....	22
Lonicera morrowi.....	15
Lonicera ruprechtiana.....	15
Lonicera tatarica.....	15
Lonicera tatarica alba.....	15
Magnolia purpurea.....	13
Malus, Dbl. fl. Crab.....	14
Philadelphus.....	17
Physocarpus op. aurea.....	15
Prunus pissardi.....	17
Prunus, Dbl. fl. Cherry.....	14
Prunus, Dbl. fl. Peach.....	14
Punica granatum rubra.....	20
Rhus cotinus.....	17
Rosa rugosa.....	17
Rosa F. J. Grootendorst.....	17
Salix caprea.....	13
Salvia greggi.....	17
Sorbus americana.....	22
Spiraea anthony waterer.....	17
Spiraea billardi.....	17
Spiraea prunifolia fl. pl.....	13
Spiraea reevesiana.....	15
Spiraea thunbergi.....	13
Spiraea vanhouttei.....	15
Symphoricarpos.....	22
Syringa.....	14
Viburnum dentatum.....	22
Viburnum opulus sterile.....	17
Vitex microphilla.....	20
Weigela.....	16



## Flowering Shrubs—Deciduous

Listed in approximate order of blooming period.

100 assorted flowering shrubs of good size, depending on variety, for \$50; 12 of any of them for the price of 10.

### Very Early Spring

Each

**Jasminum nudiflorum.** January Jasmine. Willowy limbs, covered with yellow flowers before the leaves appear.

1½ to 2 ft..... .75

**Lonicera fragrantissima.** Early Fragrant Honeysuckle. First Breath of Spring. Free grower; rather spreading; semi-evergreen.

2 to 3 ft..... .75

3 to 4 ft..... 1.00

4 to 5 ft..... 1.25

**Salix caprea.** Pussy Willow. Makes a small, very bushy tree.

4 to 5 ft..... 1.00

5 to 6 ft..... 1.25

### Early Spring

**Spiraea prunifolia fl. pl.** Bridal Wreath. Stems loaded with double white flowers; upright.

2 to 3 ft..... 75

**Spiraea thunbergi.** Dwarf grower; a mass of white flowers before the leaves appear.

1½ to 2 ft..... .60

2 to 3 ft..... .75

3 to 4 ft..... .90

**Forsythia spectabilis.** Upright habit, branches spreading and arching; very large blooms. Undoubtedly the best of the family.

2 to 3 ft..... .75

3 to 4 ft..... .90

**Forsythia intermedia.** Medium growing Golden Bell.

2 to 3 ft..... .75

**Forsythia viridissima.** Golden Bell. Bright golden-colored flowers in profusion. Free grower.

2 to 3 ft..... .75

**Forsythia suspensa fortunei.** Fortune's Modified Drooping Goldenbell.

2 to 3 ft..... .75

3 to 4 ft..... .90

**Cydonia japonica.** Fire Bush. Japanese Quince. Abundant red flowers.

15 to 18 ins..... .60

1½ to 2 ft..... .75

**Cornus florida.** Native White Dogwood.

2 to 3 ft..... 1.00

3 to 4 ft..... 1.50

4 to 5 ft..... 2.00

**Magnolia purpurea.** Large purple flowers before the leaves come. A dwarf tree.

2 to 2½ ft..... 3.00

**Cornus florida rubra.** Red-flowering Dogwood.

2 to 3 ft..... 5.00

## Spring Flowering Shrubs

- Amygdalus nana pumila.** (*Prunus japonica*).  
Flowering Almond. Numerous small, double  
pink flowers all along the stem. Dwarf, com-  
pact.  
1½ to 2 ft..... .75  
2 to 3 ft..... .90
- Malus, Betchel's.** Double-flowering Crab. Pink;  
late flowering.  
3 to 4 ft..... 1.50
- Malus floribunda.** Single, pink, early; spreading.  
3 to 4 ft..... 1.50
- Malus scheideckeri.** Double; pink.  
2 to 3 ft..... 1.50
- Prunus kofugen.** Rose-flowering Japanese  
Cherry. Double, deep pink; upright.  
3 to 4 ft..... 5.00
- Prunus naden.** Rose-flowering Japanese Cherry.  
Double, pink; late; vigorous.  
3 to 4 ft..... 5.00
- Prunus rosea.** Rose-flowering Japanese Cherry.  
Double, rose; late; vigorous; spreading.  
3 to 4 ft..... 5.00
- Prunus persica rubra.** Red double-flowering  
Peach.  
3 to 4 ft..... 1.00
- Calycanthus floridus.** Sweet Shrub. Very frag-  
rant, dark purple blooms.  
2 to 3 ft..... .75
- Cercis canadensis.** Native Red-bud or Judas Tree.  
Heart-shaped leaves, purplish-red flowers.  
Makes a small tree.  
2 to 3 ft..... .75  
3 to 4 ft..... .90  
4 to 5 ft..... 1.25
- Cercis japonica.** Dwarf Japanese Red-bud.  
Great profusion of purple-red flowers.  
15 to 18 ins..... .75
- Azalea amoena and hinodegiri.** See Broad-leav-  
ed Evergreens.
- Azalea yodogawa.** Double, fragrant, deep lilac  
flowers, as large and full as a carnation.  
12 to 15 ins..... 2.00
- Syringa persica.** Persian Lilac. Upright grow-  
er, narrow foliage.  
2 to 3 ft..... .90
- Syringa persica rothomagensis.** Slender arching  
branches; small leaves; very conspicuous  
purple flowers.  
1½ to 2 ft..... .75
- Syringa, Marie le Graye.** Single White Lilac.  
1½ to 2 ft..... 1.00  
2 to 3 ft..... 1.25
- Syringa vulgaris.** Common Purple Lilac. An old  
favorite of childhood days. A good grower  
2 to 3 ft..... .75
- Syringa japonica.** A small tree lilac.  
4 to 5 ft..... 1.50

## Spring Flowering Shrubs (Continued)

<b>Physocarpus opulifolia aurea.</b> Golden Ninebark. Golden foliage; small white flowers. Vigorous open growth.	
2 to 3 ft.....	.75
3 to 4 ft.....	.90
<b>Lonicera morrowi.</b> Morrow's spreading Honeysuckle. Medium growing shrub of spreading habit. Small leaves; small white blooms in profusion.	
2 to 3 ft.....	.75
<b>Lonicera grandiflora rosea.</b> Medium grower. Pink bloom.	
1½ to 2 ft.....	.60
2 to 3 ft.....	.75
<b>Lonicera ruprechtiana.</b> Manchurian Honeysuckle. Rather small white flowers, turning golden, followed by an abundant crop of red berries.	
2 to 3 ft.....	.75
3 to 4 ft.....	.90
<b>Lonicera tatarica.</b> Pink flowers followed by red berries.	
2 to 3 ft.....	.75
3 to 4 ft.....	.90
<b>Lonicera tatarica alba.</b> White flowers followed by red berries; not quite as free growing as above.	
3 to 4 ft.....	.60
4 to 5 ft.....	.75
5 to 6 ft.....	.90
<b>Spiraea reevesiana.</b> (Cantoniensis) Graceful, arching habit. Retains leaves until late. Heavy umbels of white flowers.	
3 to 4 ft.....	.90
<b>Spiraea vanhouttei.</b> Drooping graceful growth; white flowers in great profusion.	
2 to 3 ft.....	.60
3 to 4 ft.....	.75
<b>Mahonia aquifolium.</b> See Broad-leaved Evergreens.	
<b>Caragana arborescens.</b> Siberian Pea-tree. Many small white blooms; makes a small tree.	
2 to 3 ft.....	.75
3 to 4 ft.....	.90

We are highly pleased with the shrubbery that you placed at our Model Home.

PARKS REALTY CO., Statesville, N. C.

My shrubbery I bought from your nursery is doing fine, said to be the prettiest in town.

N. E. FARRAR, Pamplin, Va

Please send me a catalogue and make me best price on 500 one-year-old peach trees. The 500 trees I bought from you some five years ago had a fine crop of beautiful peaches last year.

J. H. PERRY, Creedmoor, N. C.

## Late Spring Flowering Shrubs

- Deutzia gracilis.** Dwarf grower, dense, bushy; mass of white flowers in early spring.  
12 to 15 ins..... .60
- Deutzia lemoinei.** Medium grower; large white flowers borne in cone-shaped heads.  
15 to 18 ins..... .60
- Deutzia Magnifica.**  
2 to 3 ft..... .75  
3 to 4 ft..... .90
- Deutzia parviflora.** Slender arching branches; rather dwarfish. Abundance of pink flowers; spreading.  
15 to 18 ins..... .60
- Deutzia scabra, Pride of Rochester.** Double large, white flowers, tinged with pink in great abundance. Heavy grower.  
3 to 4 ft..... .60  
4 to 5 ft..... .75  
5 to 6 ft..... .90
- Deutzia crenata rosea plena.** An abundance of rose-colored flowers; thrifty, upright grower.  
3 to 4 ft..... .75  
4 to 5 ft..... .90
- Weigela candida.** Pure white flowers. Upright grower.  
2 to 3 ft..... .75
- Weigela Eva Rathke.** Red flowering; spreading growth. Foliage green in the summer, turning to a reddish purple in the fall.  
1½ to 2 ft..... .75  
2 to 3 ft..... .90
- Weigela hendersoni.** Light crimson; flowers in abundance; rather upright, medium grower.  
2 to 3 ft..... .75  
3 to 4 ft..... .90
- Weigela lavalley.** Bright, rosy-red or crimson; very floriferous; thrifty grower.  
2 to 3 ft..... .75
- Weigela nana variegata.** Rose-colored flowers; golden tinted variegated foliage; graceful habit.  
1½ to 2 ft..... .60  
2 to 3 ft..... .75
- Weigela rosea.** Rose colored flowers. Upright heavy grower, retaining its foliage until late.  
2 to 3 ft..... .75  
3 to 4 ft..... .90
- Weigela vanhouttei.** Thrifty grower; flowers broad and flat, deep rosy red with orange markings in the throat.  
2 to 3 ft..... .75
- Azalea macrantha.** See Broad-leaved Evergreens.

## Early Summer Flowering Shrubs

- Abelia grandiflora.** See Broad-leaved Evergreens.
- Yucca filamentosa.** See Broad-leaved Evergreens.
- Lonicera heckrotti.** Everblooming Honeysuckle. Climber; flowers lilac-pink on the outside, yellow inside, continuously throughout the summer and early fall.  
3 yr..... .75
- Rosa rugosa.** Rugose or rough foliage; red flowers almost continuously, followed by red fruit. Gorgeous fall coloring.  
12 to 18 ins..... .60  
1½ to 2 ft..... .75
- Rosa R. J. Grootendorst.** A dwarf rugosa-like shrubby rose. Blooms practically all summer; red.  
2 to 3 ft..... 1.00
- Philadelphus coronarius.** Sweet Syringa. White flowers; heavy grower.  
2 to 3 ft..... .60  
3 to 4 ft..... .75  
4 to 5 ft..... .90
- Philadelphus coronarius grandiflorus.** Very large single white flowers; tall, free grower; large leaves.  
2 to 3 ft..... .60  
3 to 4 ft..... .75  
4 to 5 ft..... .90
- Philadelphus nivalis.**  
2 to 3 ft..... .60  
3 to 4 ft..... .75
- Philadelphus virginialis.**  
2 to 3 ft..... .90
- Prunus pissardi.** Purple-leaf Plum. Bears some fruit, but is used mainly for its attractive foliage.  
4 to 5 ft..... 1.00
- Spiraea anthony waterer.** Dwarf, bushy; bright red flowers in large clusters all summer if kept pruned and growing.  
15 to 18 ins..... .60  
1½ to 2 ft..... .75
- Spiraea billardi.** Racemes of pink flowers, borne at end of stem. Medium grower.  
2 to 3 ft..... .60  
3 to 4 ft..... .75
- Salvia greggi.** Small red blooms over an extended period. Dwarf grower; good for borders.  
15 to 18 ins..... .75
- Rambler Roses.**
- Rhus cotinus.** Smoak bush. A large shrub with delicate smoak-like purplish bloom.  
2 to 3 ft..... 1.00
- Viburnum opulis sterile.** Old-fashioned Snowball.  
1½ to 2 ft..... .75

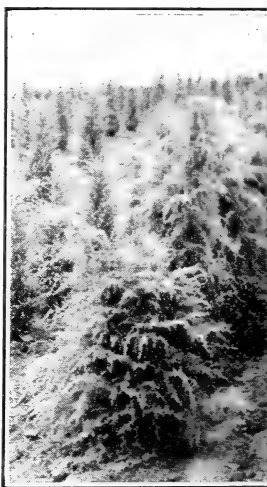


THUJA OCC. PYRAMIDALIS. PYRAMIDALIS.

---

Frequent transplanting, shearing and cultivating is what made these look so nice. We have many other varieties.

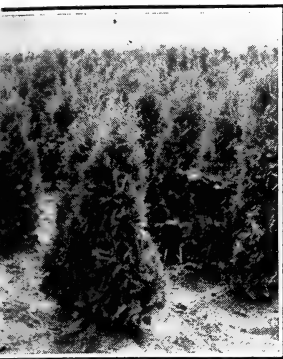
---



JUN



THUJA OCC. HOVEYI. HOVEY'S A...



---

---

A few scenes around the Nursery. Many similar ones can be observed in our 150-acre place.

---

---

ARBORVITAE



JUNIPERUS COMMUNIS. ENGLISH JUNIPER



---

---

Such quality stock as this will be used in planting your place. Come see it. Visitors welcome every week day.

---

---

ARBORVITAE







THUJA OCC. PYRAMIDALIS. PYRAMIDAL ARBORVITAE

---

A few scenes around the Nursery. Many similar ones can be observed in our 150-acre place.

---

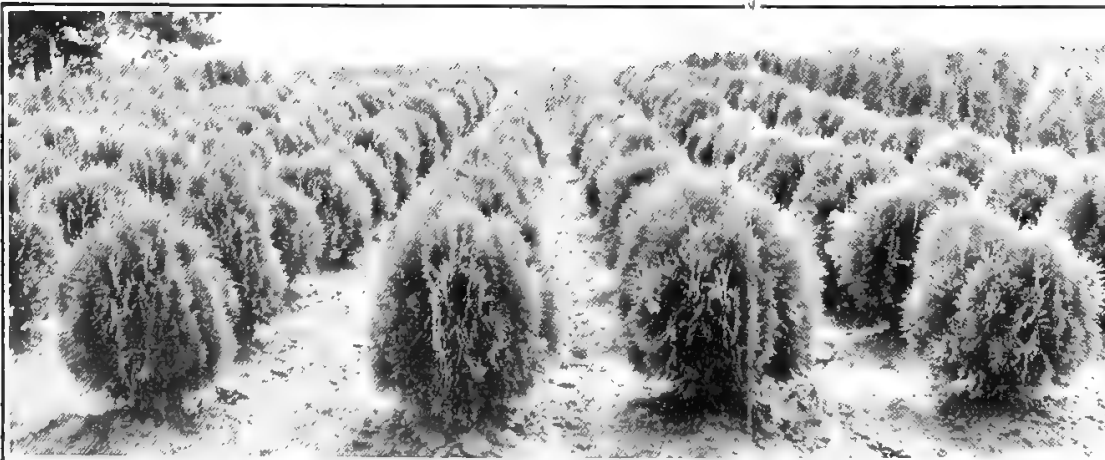
---

Frequent transplanting, shearing and cultivating is what made these look so nice. We have many other varieties.

---



JUNIPERUS COMMUNIS. ENGLISH JUNIPER



THUJA OCC. HOVEYI. HOVEY'S ARBORVITAE

---

Such quality stock as this will be used in planting your place. Come see it. Visitors welcome every week day.

---

## Summer Flowering Shrubs

- Abelia grandiflora.** See Broad-leaved Evergreens.
- Amorpha fruticosa.** False indigo. Fine, feathery foliage; dark violet-purple flowers.  
4 to 5 ft..... .90
- Berberis thunbergi atropurpurea.** Red-leaved Japanese Barberry. When planted in full sun the leaves are a brilliant red all summer, followed by red berries in fall and early winter.  
15 to 18 ins..... 1.00  
1½ to 2 ft..... 1.25
- Albizzia julibrissin.** Mimosa. Covered with light pink blooms for more than two weeks in summer; very striking.  
4 to 5 ft..... 2.00  
5 to 6 ft..... 2.50  
6 to 7 ft..... 3.00
- Hypericum moserianum.** St. John's Wort. Dwarf shrub of fine texture; golden flowers; long blooming period in midsummer.  
2-year ..... .90
- Hypericum henryi.** Abundance of bright yellow flowers throughout a long blooming period. Medium grower.  
1½ to 2 ft..... .90
- Hydrangea arborescens grandiflora alba.** Hills of Snow. Flat white blooms in panicles all summer if in partial shade and if kept growing.  
1½ to 2 ft..... .75
- Punica granatum rubra.** Red-flowering Pomegranate.  
2 to 3 ft..... .90
- Rosa rugosa.** See page 17.
- Vitex microphilla.** Dwarf Chaste Tree. Lilac-blue flowers in late summer.  
2 to 3 ft..... .75
- Buddleia davidi.** Butterfly bush. Long spikes of fragrant purple flowers.  
2 yr., 2 to 3 ft..... .75
- Clethra alnifolia.** Sweet Pepper Bush. Dwarfish. Wands of fragrant white flowers in late summer. Planted under windows, it gives a pleasing odor throughout the house.  
1½ to 2 ft..... .75  
2 to 3 ft..... .90
- Lonicera heckrotti.** See page 17.
- Jasminum floridum.** See Broad-leaved Evergreens.

## Late Summer and Early Fall Flowering Shrubs

- Caryopteris mastacanthus.** Blue Spirea. Clusters of showy, light-blue flowers.  
15 to 18 ins..... .75
- Desmodium penduliflorum.** Drooping branches, covered with rose-purple flowers in summer.  
2 yr..... .75
- Hibiscus Syriacus.** Althea. Rose of Sharon. A family of upright, tall-growing shrubs,—used as a background in the shrubbery border.
- Hibiscus Ardens.** Double; rich purple, changing to lavender.  
2 to 3 ft..... .60  
3 to 4 ft..... .75
- Hibiscus Coelestis.** Single; violet-purple, prominent white pistils.  
2 to 3 ft..... .75
- Hibiscus paeoniflorus.** Semi-double; light pink with red center, prominent pistils.  
2 to 3 ft..... .60  
3 to 4 ft..... .75
- Hibiscus rubis.** Very large; single; red.  
3 to 4 ft..... .75
- Hibiscus Lady Stanley.** Semi-double; light pink, with darker veins at center on inside, outer petals splotched with light red.  
2 to 3 ft..... .60  
3 to 4 ft..... .75
- Hibiscus Boule de Feu.** "Ball of Fire." Double; red; numerous medium sized blooms.  
2 to 3 ft..... .60  
3 to 4 ft..... .75  
4 to 5 ft..... .90
- Hibiscus anemonaeflorus.** Large, semi-double; rose-red. Latest to bloom.  
2 to 3 ft..... .60  
3 to 4 ft..... .75
- Hydrangea paniculata grandiflora.** Large white, conical flowers, bronzing in fall.  
1½ to 2 ft..... .60
- Lagerstroemia indica rubis.** Red Crape Myrtle. Upright grower, making a small tree or a very large bushy shrub, which is completely covered with a mass of red crape-like flowers.  
3 to 4 ft..... 1.25  
4 to 5 ft..... 1.50
- Lagerstroemia indica rosea.** Rose-pink Crape Myrtle. Same as above except as to color.  
2 to 3 ft..... 1.00  
3 to 4 ft..... 1.25

## Flowering Shrubs

### Berries and Fall Coloring

- Aronia arbutifolia.** Red Chokeberry. Gorgeous fall coloring, red berries which persist very late. The best plant that we know for berries except Nandina.  
 1½ to 2 ft..... .75
- Berberis thunbergi.** Japanese Barberry. Thorny; abundance of red berries in fall and winter; very fine fall color.  
 15 to 18 ins..... .60  
 1½ to 2 ft..... .75  
 2 to 2½ ft..... .90
- Callicarpa purpurea.** Beauty Fruit. Dwarf grower; abundance of purple berries, on arching branches.  
 15 to 18 ins..... .60  
 1½ to 2 ft..... .75
- Euonymus alatus.** Winged Burningbush. Upright tree-like grower. Brilliant fall coloring; red berries.  
 3 to 4 ft..... 1.00
- Lonicera maacki.** Small white flowers in the summer, abundance of red berries in the fall and early winter; large free grower.  
 2 to 3 ft..... .75
- Sorbus americana.** Mountain Ash. A large shrub or small tree; great clusters of orange-scarlet berries.  
 3 to 4 ft..... 1.50
- Symphoricarpos racemosus.** Snowberry. Flowers small, white or light pink in summer. Large white berries in fall.  
 1½ to 2 ft..... .60  
 2 to 3 ft..... .75
- Symphoricarpos vulgaris.** Coralberry. Stems loaded with dark red berries in fall and winter.  
 2 to 3 ft..... .60
- Viburnum dentatum.** Arrow-wood. Good in shady location and will thrive in wet soil; glossy green leaves; black berries.  
 2 to 3 ft..... 1.00  
 3 to 4 ft..... 1.25
- Ilex.** See Broad-leaved Evergreens.
- Ligustrum japonicum.** See Broad-leaved Evergreens.
- Ligustrum lucidum.** See Broad-leaved Evergreens.
- Nandina domestica.** See Broad-leaved Evergreens.

## HEDGE PLANTS

- Ligustrum amurense.** Amoor River Privet. Evergreen.  
 3 to 4 ft. 2-yr..... \$10 per 100
- Privet is always cut back before shipping.



A Home Planted by us in Gastonia, N. C.



A Community Planting in Kenworth, Hickory.



*Photinia Serrulata*. A Coming Plant for this Section.

## Shade Trees

	<b>Each</b>
<b>Ash, Mountain.</b> <i>Sorbus americana</i> . A small tree or large shrub, producing large clusters of orange-red berries.	
3 to 4 ft.....	1.50
<b>Ash, European Mountain.</b> <i>Sorbus aucuparia</i> . Round headed and a little larger growing than the American species; white flowers, followed by red berries.	
6 to 8 ft.....	2.50
8 to 10 ft.....	3.50
<b>Elm, American.</b> ( <i>Ulmus Americana</i> ). Heads high; fine for street trees. Recently pruned.	
8 to 10 ft.....	3.00
10 to 12 ft.....	3.50
12 to 14 ft.....	5.00
(A few larger ones)	
<b>Golden Rain Tree.</b> ( <i>Koelruteria</i> .) Not to be confused with Japan Varnish Tree.	
4 to 5 ft.....	2.00
<b>Hackberry.</b> <i>Celtis mississippiensis</i> .	
5 to 6 ft.....	1.50
<b>Linden, American.</b> Basswood. ( <i>Tilia Americana</i> ). Medium grower; large leaves; fragrant yellow flowers.	
6 to 8 ft.....	3.00
8 to 10 ft.....	4.00
(A few larger ones)	
<b>Maple, Manitoba.</b> Box Elder. ( <i>Acer negundo</i> ). Rapid growth when established, and makes a large tree.	
6 to 8 ft.....	1.50
8 to 10 ft.....	2.00
10 to 12 ft.....	3.00
<b>Maple, Norway.</b> ( <i>Acer platanoides</i> ). Dark green foliage; ropundish symmetrical head; medium size tree when grown.	
6 to 7 ft.....	2.50
7 to 8 ft.....	3.00
8 to 10 ft.....	4.00
10 to 12 ft.....	5.00
(A few larger ones)	
<b>Maple, Red.</b>	
(A few large ones)	
<b>Maple, Silver.</b> ( <i>Acer dasycarpum</i> ). Very light foliage; rather open medium size, of rapid growth.	
6 to 8 ft.....	1.50
8 to 10 ft., 1¼ to 1½ in. cal.....	1.75
10 to 12 ft., 2 to 2½ in. cal.....	3.00
12 to 14 ft., 2½ to 3 in. cal.....	5.00
<b>Maple, Sugar.</b> ( <i>Acer saccharum</i> ). Very tall grower, stately. The fall color is gorgeous and always attracts attention.	
6 to 7 ft.....	2.00
8 to 10 ft., 1¼ to 1½ in. cal.....	3.00
10 to 12 ft., 1½ to 2 in. cal.....	4.00
10 to 12 ft., 2 to 2½ in. cal.....	5.50
12 to 14 ft., 2½ to 2¾ in. cal.....	7.50

## Shade Trees, (Continued)

**Oak, Pin.** (*Quercus palustris*). Symmetrical pyramidal crown; drooping branches, rapid grower in good soil. The foliage is quite similar to that of our native White Oak.

6 to 7 ft.....	2.00
8 to 10 ft.....	3.50

(A few larger ones.)

**Oak, Water.** (*Quercus nigra aquatica*). Finally develops into a symmetrical, round-headed tree of good size.

10 to 12 ft., 1½ to 2 in. cal.....	4.00
------------------------------------	------

(A few larger ones)

**Oak, Willow.** *Quercus phellos*. Narrow willow-like leaves. (These trees will be pruned to stakes before shipping to insure their living.)

8 to 10 ft., 1½ to 2 in. cal.....	5.00
10 to 12 ft., 2 to 2½ in. cal.....	6.50
12 to 14 ft., 2½ to 3 in. cal.....	8.00

**Poplar, Lombardy.** (*Populus nigra italica*). Tall quick grower; columnar in outline. Very useful in landscape work.

8 to 10 ft.....	1.50
10 to 12 ft., 1½ to 1¾ in. cal.....	2.00

**Poplar, Volga.** (*Populus berolinensis*). Very similar to Lombardy Poplar in every way.

10 to 12 ft. 1¼ to 1½ in. cal.....	2.00
------------------------------------	------

**Sycamore.** (*Platanus americana*). Wide-spreading, symmetrical; rapid growing; light-colored bark and foliage.

6 to 7 ft.....	1.50
7 to 8 ft.....	2.00
8 to 10 ft., 1¼ to 1½ in. cal.....	2.50
10 to 12 ft., 1¾ to 2 in. cal.....	3.50
12 to 14 ft., 2 to 2½ in. cal.....	4.50
12 to 14 ft., 2½ to 3 in. cal.....	6.00
14 to 16 ft., 3½ to 4 in. cal.....	9.00

**Tulip Tree.** (*Liriodendron tulipifera*). Large, rapid growing, rather upright tree; tulip-like flowers.

6 to 8 ft.....	1.50
8 to 10 ft.....	2.25
10 to 12 ft., 2 to 2½ in. cal.....	4.00
12 to 14 ft., 2½ to 3 in. cal.....	6.00

(A few larger ones)

**Umbrella Tree, Texas.** (*Melia azedarach umbra-culiformis*). A quick growing, round-headed little tree. All heavily branched.

3 to 4 ft.....	1.50
4 to 5 ft.....	2.25
5 to 6 ft.....	3.50

**Walnut.** Common black.

8 to 10 ft.....	2.00
10 to 12 ft.....	3.00

## Roses

Field-grown, \$1 each; \$10 per dozen

All are everbloomers except those indicated. After much searching, we believe these are the best for our section.

### White

**Edel.** White with faintest ivory shading toward base. Very large, double, opens well in all weathers. Very vigorous grower; free bloomer.

**Frau Karl Druschki** (White American Beauty; Snow Queen.) Large, paper-white flowers. Strong grower.

**Kaiserin Auguste Viktoria.** Pure white with shadings of primrose-yellow.

**White Maman Cochet.** Large creamy white flowers, faintly tinged with blush.

### Pink

**Columbia.** Large, true pink deepening as it opens to a glowing pink.

**Mrs. Chas. Bell.** A sport from Radiance; same vigorous growth and free blooming habit. Shell pink, with salmon shading at base.

**Orleans.** A huge bouquet of geranium-pink flowers, centers of white. Bedder.

**Pink Maman Cochet.** Light pink, shaded with salmon, outer petals splashed with bright rose; large and full.

**Radiance.** Brilliant rose-pink buds, opening to well-formed shining flowers, globular in shape.

**Willowmere.** Rich shrimp-pink, shaded yellow in the center; strong grower.

### Red

**Chas. K. Douglass.** Flaming scarlet, flushed velvety crimson. Bud large, long, pointed; vigorous grower.

**Etoile de France.** A lovely shade of clear crimson. Very fragrant.

**Edith Cavell.** Dwarf Polyantha type. Similar to Orleans except deep red.

**Mme. Edourd Herriot.** Coral-red shaded yellow at base. Bud large, long-pointed; not very lasting.

**Red Radiance.** Deep rose-red flowers of globular shape. Strong grower.



**Roses, (Continued)****Yellow Roses**

**Luxembourg.** Rich orange-yellow, with coppery shadows and creamy yellow tips.

**Lady Hillingdon.** Clear apricot-yellow. Buds of remarkable quality and good size.

**Climbers**

**Marechal Niel.** Deep golden yellow, with rich tea fragrance.

**Climbing Etoile de France.** Clear crimson, very fragrant; a free bloomer.

**Climbing Kaisirin.** Pure white with shadings of primrose-yellow.

**Climbing Killarney.** Long pointed buds, opening to bright, sparkling, pink flowers. Vigorous grower and blooms freely.

**Climbing Red Radiance.** A good bloomer, identical with the bush variety except it climbs.

**Ramblers****Bloom only once a year**

**American Pillar.** Large apple-blossom-pink flowers, with white eyes, yellow stamens.

**Bess Lovett.** Flowers bright red, of good size. Very fragrant. Glossy foliage.

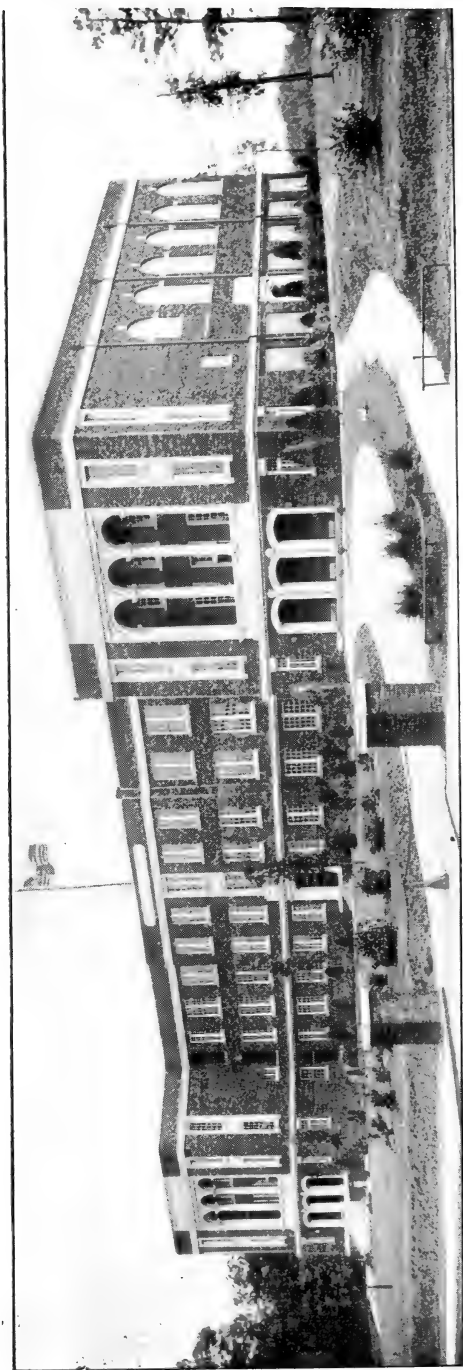
**Dr. W. Van Fleet.** Flowers very large, flesh-pink on outer surface, rosy centers.

**Excelsa.** Red flowers borne in large clusters of small blooms. Glossy foliage.

**Gardenia.** Bright yellow, cream color when open. Very fragrant. Excellent foliage.

**Paul's Scarlet.** Blooms vivid scarlet shaded crimson, persisting some time.

**Silver Moon.** Flowers very large, pure white with yellow stamens, followed by red berries.



HICKORY HIGH SCHOOL. PLANTED BY HOWARD-HICKORY

## The Home Orchard

Well-planned home grounds will certainly contain a few fruit trees and berry plants. On the large suburban prospects a considerable area should be devoted to fruits. It is entirely practicable to raise all that will be needed by the immediate family and probably have some to dispose of to the neighbors or through the markets. Possibly a strawberry bed could be laid out at one side of the garden, and this luscious fruit not only be served during the strawberry season, but had in reasonable abundance during the late summer and fall by using the ever-bearing variety.

Do you know that the twelve great Southern States grow only sixteen apples out of every hundred produced in the whole United States? And that the peaches are even less in quantity? We folks in the South should do better than this. We ought to grow more apples, more peaches, more pears—more fruit of all kinds. We have a favorable climate, good soil, can ship quickly and ordinarily there is help enough to harvest the crops when at their best. It is a good time to plant that orchard you have been thinking about.

Doesn't breakfast taste better when you have fresh berries or peaches? And is dinner complete without fruit? Your garden will supply all the fresh fruit your family may need from day to day in summer, and a reasonable surplus for preserving. Ask us to help you in selecting the sorts that will fit your needs.

### Number of Trees or Plants Required Per Acre When Planted Various Distances Apart

1 foot apart each way .....	43,560
3 feet apart each way .....	4,840
5 feet apart each way .....	1,742
10 feet apart each way .....	435
12 feet apart each way .....	302
15 feet apart each way .....	193
20 feet apart each way .....	108
30 feet apart each way .....	48
40 feet apart each way .....	27
50 feet apart each way .....	17

If it is desired to plant a certain number of feet apart in the rows, and have the rows a different number of feet apart, then multiply the distance in feet between the rows by the distance apart the plants are in the rows, the product of which divided into 43,560 will give the number of trees, etc., required per acre.

## Peaches

	Each	10	25	50	100
3 to 4 ft.....	.50	\$4	\$10	\$17	\$30
4 to 5 ft.....	.75	\$6	\$12	\$22	\$40

**Ask for quotations in larger quantities.**

Listed in order of ripening, from the latter part of May until October. While the exact date of ripening will vary according to altitude, soil and moisture conditions, the general sequence of ripening will remain as herein indicated.

### May

**Mayflower.** Earliest to ripen. Latest bloomer; seldom killed by frost. A beautiful red, juicy Peach. Flesh white. Semi-cling.

### June

**Victor.** Early. Medium size; creamy white with a red blush. The flesh creamy white, melting, juicy. Semi-cling.

**Red Bird.** Early. Fruit very large with handsome red blush. The flesh is creamy white, very firm; cling; heavy bearer.

**Greensboro.** Early. Heavy bearer; flesh white; juicy; semi-cling. Tender and sweet when fully ripe.

**Early Rose.** Large; pointed; solid red. Flesh white, shaded red and purple; very firm. Heavy bearer; good shipper, clingstone.

### July

**Carman.** Midseason. Fruit large, nearly solid red. Flesh creamy white and of good quality. A regular and heavy bearer. Semi-cling.

**Slappey.** Midseason. Medium to large; pointed, rich yellow. Flesh deep yellow, tender, of the highest quality. Freestone.

**Hiley.** Midseason. Heavy bearer. Fruit medium size, nearly solid red, freestone. A standard commercial variety.

**Belle (Belle of Georgia.)** Medium to large; white with red cheek. Flesh white, tender, juicy. A heavy bearer. Freestone.

**Chinese Cling.** Large, globular, creamy white, marbled with red in the sun. Flesh tender, white, red at stone; juicy and melting. Flavor delicious. Cling.

### August Peaches

**Elberta.** The standard yellow freestone peach, known everywhere Peaches are grown as the old reliable for home, market and canning purposes.

## August Peaches (Continued)

**Greenville Cling.** Deep golden yellow skin, red cheek, flesh yellow, firm. Very fine.

**J. H. Hale.** Late. Very large; beautiful; globular in shape, with rich yellow color overspread with red. A yellow freestone, with clingstone texture. Heavy bearer.

**Augbert.** "August Elberta." Large, oval, yellow; flesh yellow, firm, stained with red at pit; fine grained, juicy, good flavor. Freestone.

**Late Crawford.** Large; yellow. Flesh deep yellow, red at stone; good quality. Freestone.

**Matthews.** Very large, roundish, golden yellow with crimson cheek. Flesh yellow, firm, juicy, of good flavor.

**Brackett.** Very large; orange-yellow, tinged with carmine. Flesh deep yellow; juicy, sweet and of the best quality. Freestone.

## September

**Heath Cling.** (White Heath). Beautiful, white cling Peach, tinged with purple. Flesh firm, waxy, adheres closely to the stone. Delicious flavor and aroma.

**Salway.** Very late; light yellow, tinged with chocolate red. Flesh deep yellow with red near stone. Rich, juicy, sweet. Freestone.

**Wonderful.** Very large, roundish, golden yellow, richly shaded with carmine. Flesh yellow, red at pit. Freestone.

**Stinson Oct.** Cling; creamy-white, shaded with dark purplish-red on the sunny side; very juicy, mildly sub-acid; medium size.

## Figs

75 cts. each

**Celeste (Celestial.)** A small, early, purple Fig ripening in July. Fruit very rich and sweet. The best for preserving.

**Brunswick.** Very large, early, pear-shaped; greenish yellow with violet-brown next the sun. Flesh tinged with red, very tender; tree fairly hardy and a good bearer.

**Brown Turkey.** Large, brownish red, pear-shaped. Flesh amber colored, firm and of excellent quality. Bush dwarfish, hardy.

## Apricots

\$1 each

**Early Golden.** The best sort we know, but often killed by late frost.

## Apples

4 to 5 feet, 75 cts. each; \$7 per 10

### Early Summer

**Early Harvest.** Medium, roundish, oblate. Skin smooth, pale yellow. Flesh white, rich, tender, juicy, subacid. Delicious for dessert or cooking. Tree large, spreading, productive.

**Yellow Transparent.** Medium; clear, waxy white, becoming pale yellow when mature. Flesh white, very tender, subacid and of excellent flavor. Tree dwarfish, erect, hardy and very productive.

**Liveland.** Yellow, marked with light red; extra good quality.

**Red Astrachan.** Origin Russia. Large, roundish, oblate. Color nearly solid red. Flesh white, crisp, quite acid. Ripens a few days after Early Harvest.

**Red June.** Medium, oblong, conical; dark red; flesh tender, mild, subacid. Has a ripening period of about six weeks.

### Midsummer Apples

**Horse.** An old-fashioned home variety. Large, varying from oblate to round; ribbed; yellow. Flesh yellow, subacid. Tree vigorous and productive. A summer cooking Apple.

### Fall

**Bonum.** Medium, uniform, roundish oblate; beautiful solid red, speckled with russet dots. Flesh tender, juicy rich, mild, subacid and of the finest quality. Tree vigorous, upright, an early and heavy bearer.

**Buckingham.** Large to very large; irregular; oblate conical. Beautifully striped and splashed with red. Flesh very tender, juicy, subacid, sprightly, good. Tree hardy, very productive; late fall and early winter.

**Grimes.** Deep yellow with russet dots; very good to best.

### Winter

**Ben Davis.** Medium to large, roundishly conical, handsomely striped with red. Skin tough, waxy. It bears when anything does. Dessert quality poor but a good cooking apple. Tree healthy, vigorous and a most abundant bearer.

**Delicious.** Medium to large, conical, ribbed. Beautiful dark red, shading to yellow at apex. Flesh fine grained, tender and juicy. Flavor truly delicious. Heavy bearer.

**Jonathan.** Small to medium. Brilliant dark red. Flesh white, very juicy, fine grained and sprightly subacid. Grows best at a high altitude.

## Apples, (Continued)

**Rome Beauty.** Large, handsomely mottled with dark red. Flesh yellowish, tender, juicy, subacid. Tree moderate grower. Late bloomer; very productive, good market sort.

**Stayman.** Medium to large, conical, regular; mostly overspread with red. Flesh fine-grained, juicy, subacid, flavor excellent. Tree good grower, heavy bearer. Seedling of Winesap. One of the very best Apples for all purposes.

**Winesap.** Needs no description. The old standard red Apple that everyone knows and judges by.

**Yates.** Small winter Apple, oblate in shape covered with dark red stripes. Flesh yellow, juicy, spicy, subacid. Great bearer and good keeper. Succeeds well in cotton belt.

## Pears

\$1 each

### Listed in the Order of Ripening Period

**Early Harvest.** Medium, oval, regular. Yellow with attractive blush. A good market sort. Tree vigorous, hardy and productive.

**Bartlett.** Medium to large, clear yellow. Flesh white, fine grained, tender, melting, juicy, with a rich musky flavor. Late summer.

**Seckel.** Small, roundish ovate, yellowish brown with russet red cheek. Flesh buttery, very juicy, rich and spicy. The standard for quality in Pears. Short stocky grower.

**Duchess (Duchesse d'Angouleme).** Large, blunt pear shaped, greenish russet. Flesh buttery, juicy and of excellent flavor.

**Le Conte.** Large with smooth yellow skin. Quality fair. Valuable for canning and preserving. Tree very vigorous and productive.

**Garber.** Large, russet brown, of same class as Le Conte and Keiffer. Ripens earlier than Keiffer and of somewhat better quality.

**Keiffer.** Large, handsome, bright yellow with reddish tinge in the sun. Fruit valuable for canning and preserving. Tree very vigorous and productive. Resistant to blight.

## Plums

\$1 each

**Red June.** Early. Ripens with early peaches. Fruit heart-shaped; medium to large; bright red; very handsome. Flesh yellow, firm, meaty and fine flavored. Semi-cling. Tree vigorous, spreading, enormous bearer. A fine dessert and canning variety.

**Abundance.** Early. Medium to large; round oblong; greenish amber in color, turning to bright red. Flesh rich yellow, very juicy and sweet; cling. Tree very upright, an early and heavy bearer.

**Satsuma.** Midseason. Large; round oblong. Skin dark red, speckled with greenish dots. Flesh very firm, blood-red, of good flavor. Clingstone. Excellent for canning. A long keeper.

**Damson, Shropshire.** Improved blue, for preserving.

## Cherries

\$1 each

Sweet

**Early Purple.** Medium, round heart-shaped; dark red becoming nearly black; flesh dark, tender, rich, juicy, sweet. One of the best early Cherries.

**Governor Wood.** Early, large, roundish, heart-shaped, light yellow shaded with red. Flesh tender, juicy, sweet rich delicious flavor. Tree large, vigorous grower. Very productive.

**Tartarian.** Very large, heart-shaped, deep purplish black. Flesh tender, juicy, mild and sweet. Tree vigorous, upright, and very productive.

## Sour

**Richmond.** Early, of medium size, roundish, light red and very sour. Fruit growing in pairs. Tree hardy, healthy, vigorous and productive.

**Montmorency.** Large, round, bright red, acid. Tree hardy and a great bearer. Fruits early. A good market variety.

**May Duke.** Large heart-shaped. Red, becoming nearly black when fully ripe. Very juicy and melting, rich, acid, excellent.

## Walnut

**Walnut, Black.** The tree that produces the large black walnuts you knew when a child.

6 to 8 ft.....	1.50
8 to 10 ft.....	2.00



## Pecans

	Each
3 to 4 feet.....	\$1.50
4 to 5 feet.....	2.00
5 to 6 feet.....	2.50
6 to 7 feet.....	3.00
7 to 8 feet.....	4.00

**Stuart.** Nut large, full meated; shell rather thick. Tree an upright grower. The most reliable bearer of all the standard varieties of Pecans. Best variety for northern planting.

**Schley.** Nut longish, pointed; very thin shelled, bursting with meat. Kernel rich, oily and sweet and of the highest quality. Tree a vigorous, upright grower, slightly spreading. The aristocrat of Pecans.

## Grapes

Listed in the Order of Ripening Period  
50 cts. each; \$4.50 for 10; \$35 per 100

**Moore's Early.** Bunches medium, berries large, black with blue bloom. Quality medium. Ripens about ten days before Concord.

**Lutie.** Bunches medium, berries brownish red; sweet and good. Does especially well in the South. Useful for home and nearby market. Vine vigorous, hardy and productive.

**Delaware.** Bunches small, very compact; shouldered; berries small, clear light red; thin skinned and of the finest quality. Ripens a few days before Concord.

**Niagara.** Bunches very large, compact and handsome; berries greenish white; quality excellent. Vine very vigorous and productive; the best of the white Grapes for home or market.

**Concord.** The standard for American black Grapes, both in vine and fruit. Grown successfully over a wide range. Vine vigorous, hardy and heavy bearing.

**Catawba.** Bunches long and loose. Berries rich amber-red. Flesh tender and juicy with rich spicy flavor. A splendid home and shipping variety.

## Muscadine Grapes

75 cts. each

**Scuppernong.** Southern type of Grape, resistant to black-rot; needs no spray. Bunches small, irregular. Berries large, bronzy yellow and dotted and splashed with russet. Flesh firm, juicy and of excellent flavor. An ideal home fruit for the South.

**James.** One of the largest fruited of the Muscadines. Bunches large and Grapes retentive to the stem. Berries large, purplish black and of excellent flavor. Late.

## Strawberries

\$2 for 100; \$8.50 for 500; \$15 per 1,000

**Progressive.** Everbearing. The crowns are bunchy and make few runners. A home garden sort rather than a commercial bearer. Needs high culture, rich soil and abundant moisture to keep up a succession of good berries during the summer.

**Premier.** (Howard.) "Immensely productive, bearing through a long season. Beautiful, uniform, rich red to the center; delicious quality, firm; nearly frost-proof."

**Klondyke.** Shapely, uniform, rich dark red. Flesh firm, juicy and fine flavored. The plants are tall, vigorous and make strong runners. Yields and ships well. A leading commercial sort.

**Lady Thompson.** Uniform berries, rich pink color. A heavy producer and good plant-maker. A leading commercial variety in the South.

**Bubach.** Midseason. Imperfect bloomer; another variety must be planted close by. Large, rather flat; bright red; firm, a good shipper. One of the best.

**Aroma.** Late. Large, uniform, conical; light red. Plants vigorous and heavy producers.

**Gandy.** Very late. Large, regular, conical. Fruit firm, bright glossy crimson, flavor excellent. Plants vigorous and heavy producers.

## Berries

\$2 for 10; \$12 per 100

**Cuthbert Raspberry.** Fruit medium to large, late, rich crimson, of very fine quality. Bushes vigorous, hardy and very productive. Does best in mountains or in cool climate.

**St. Regis Raspberry.** Early sort of medium size that does well at lower altitudes and in the South. It is called "everbearing" because it fruits from new canes that keep coming as long as soil and moisture conditions are favorable. Good for the home garden.

**Gregg Raspberry.** Blackcap. Large, roundish, black. Flesh firm, moderately juicy and sweet. A strong grower and heavy bearer. The best of the blackcap berries. Does best in cool climates and at high altitudes.

**Early Harvest Blackberry.** Very early, medium; roundish oblong; tender, very juicy; sweet.

**Lucretia Dewberry.** Fruit very large; coreless, glossy black, tender, juicy, subacid. Vines trailing, vigorous, thorny. Needs trellising.

## GUARANTEE

We exercise the greatest care possible to keep our varieties of fruits true, and hold ourselves in readiness to reship any trees or plants that may prove otherwise, or refund the original sum of money paid therefor, if reported to us within five years from date of order. It is mutually agreed that we are not further responsible in any case.

We agree to resupply at one half price f. o. b. shipping point trees and plants sold at retail prices that may die within one year from date of shipment from causes other than abuse or neglect, provided the account is paid promptly, and if the item is then in stock; if not credit of like amount to be allowed on any other stock selected to take its place.

When you have us to do the planting of ornamentals, for which there is an extra charge, any plants that die from causes other than abuse or neglect the first season when set in the ground will be resupplied free once, f. o. b. nursery, if the item is then in stock; if not, credit of like amount to be allowed on any stock selected to take its place, when reported to us, if account is paid promptly.



## STATE OF NORTH CAROLINA DEPARTMENT OF STATE

RALEIGH

J. A. HARTNESS,  
SECRETARY OF STATE

May 22, 1929

The Howard-Hickory Co., Nurserymen,  
Landscape Gardeners,  
Hickory, N. C.

Gentlemen:

I take this opportunity to endorse your company as one of the best nurserymen and landscape gardeners in the country. My dealings with you in the past years have been imminently satisfactory and your shrubbery and work are of the highest order and I feel that one of the notable things in your favor is your willingness to always guarantee the life of your shrubbery as well as your work. And when I removed to Raleigh and had occasion to sell my place I had no hesitancy in saying that the plantings done by your company greatly enhanced the value of my property and thereby, I was enabled to sell the property at an advantage and satisfactory price.

Very truly yours,

*J. A. Hartness*

JAH:F

## Planting School Grounds Is A Delightful Specialty

---

On the 24th of October I am going to make a talk on School Ground Planting and Improvement in North Carolina, before the National Council of School House Builders, in New York,—at Rochester.

If you can do so, please take a picture of the Longview School, as it is now. I think you have given here a very wonderful demonstration of this sort of thing. I hope you can find a photographer who can do this, and if so I shall appreciate it more than I can tell you.

JOHN J. BLAIR,

Director School House Plans,

Raleigh, N. C.

---

I don't know whether or not Mr. Richardson has written you about how we feel about our shrubbery, so I thought I'd write you.

To say that we are delighted is expressing it too mildly. We had our P. T. A. meeting last week and after we adjourned all the members made a tour of the grounds and inspected the shrubs and evergreens, and were lavish in their praise, not only over the improvement of the appearance of the grounds but also of the size and quality of the shrubs. We feel that you sent us a fine lot of shrubbery and I'm sure it will be a fine advertisement for your concern.

MRS. J. T. JONAS, (Marion High School.)