



# The Dobsonian



E. Sheffield



Digitized by the Internet Archive  
in 2019 with funding from  
North Carolina Digital Heritage Center

<https://archive.org/details/dobsonian195600dobs>

# *The Dobsonian of 1956*



Presented by the SENIOR CLASS  
of DOBSON HIGH SCHOOL  
Dobson, North Carolina





"Hail, Alma Mater, we sing to thee,  
Enshrined forever in our memory!"





Thy living spirit leads us in the ways  
of truth:



To thee, Alma Mater, rise the songs  
of youth."





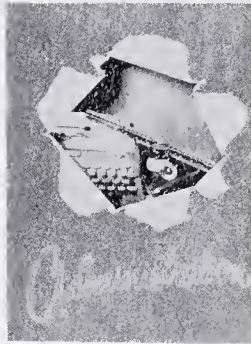


## *Dedication*

For the many services rendered to our class and to our school while he was principal, for his consideration and understanding, for his interest in us, which was constant and genuine, we, the seniors of 1956, dedicate this edition of our yearbook to Mr. J. S. Gentry, Superintendent of Surry County Schools.

# Contents

ADMINISTRATION



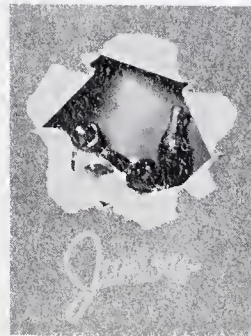
FACULTY



SENIORS



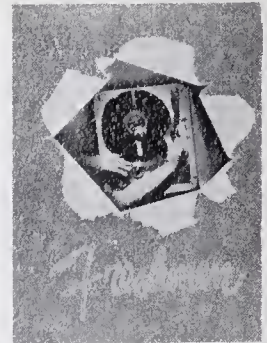
JUNIORS



SOPHOMORES



FRESHMEN



FAVORITES



ORGANIZATIONS



ATHLETICS



ACTIVITIES



ADVERTISERS





Administration



G.R. MOTSINGER, Principal  
B.A., Wake Forest College



MARGARET MELTON  
School Secretary



School Board

- J. HERMON COE, Chairman
- LEMUEL ATKINS
- HOWARD WILMOTH
- FRANK FREEMAN (No Picture)
- BRYAN WHITE (No Picture)



Faculty



EVELYN BURRUS HOLYFIELD  
A.B., Meredith College  
English, French



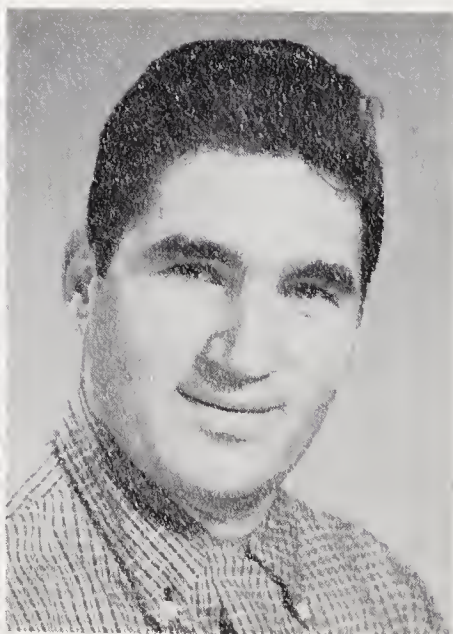
RUTH HALSEY FREEMAN  
A.B., Virginia Intermont  
Emory and Henry  
University of Virginia  
English, Librarian

OMA SHEW NORMAN  
B.S., A.S.T.C.  
Science

RACHEL FREEMAN  
A.B., University of North  
Carolina  
City College, New York  
Columbia University  
Business Education



ROBERT BERNARD DAVIS  
B.A., A.S.T.C.  
Social Studies, Typing



EDWARD DENNEHY  
B. Ed., Connecticut State  
Teachers College  
University of Miami  
Physical Education, Math

P. G. BOLICH  
A. B., Duke University  
English, History



F. B. MADISON  
Driver Training  
Physical Education



CLARA SMITH FREEMAN  
B. S., W. C. U. N. C.  
Science

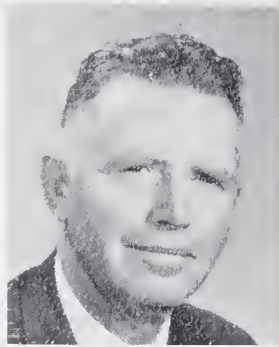
NANCY ROGERS McCANN  
B. S., Winthrop College  
Music

RUTH GIBSON COMER  
B. S., Meredith College  
Home Economics

W. B. WHITE  
B. S., M. S., N. C. State College  
Agriculture



# *Elementary Faculty*



E. L. REECE  
Eighth Grade

J. L. THOMPSON  
Eighth Grade

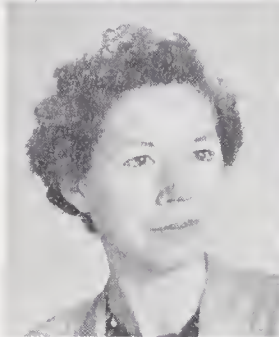
MARGARET B. ADAMS  
Eighth Grade



IRENE BARDEN DAVIS  
Seventh Grade

ELIZABETH W. MOORE  
Seventh Grade

MARGARET BUNN SMITH  
Sixth Grade



LOREE VENABLE JOHNSON  
Sixth Grade

MARY M. STONE  
Fifth Grade

ELIZABETH COCKERHAM  
Fifth Grade



MARTHA C. COOPER  
Fifth Grade

ANNIE LAURIE McMILLAN  
Fourth Grade

NANNIE C. RIGGS  
Third Grade



MARY FREEMAN  
Third Grade

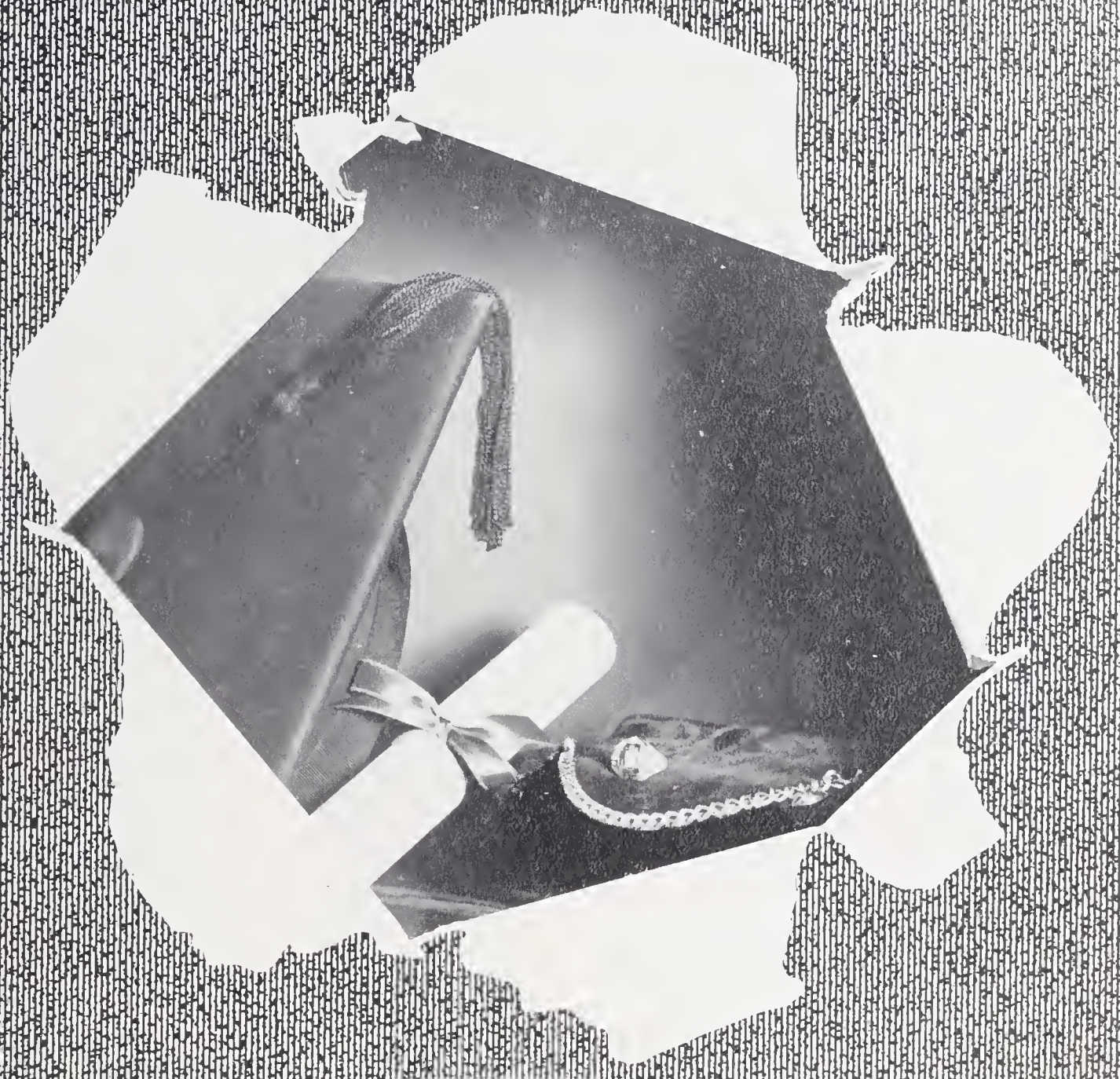
MARGARET J. AUTREY  
Second Grade

MYRTLE C. MOORE  
First Grade

No Pictures

- ETHEL M. FOLGER - - - - - Fourth Grade
- ELIZABETH F. BOLICH - - - - - Second Grade
- BLANCHE N. FOLGER - - - - - Second Grade
- FANNIE M. THOMPSON - - - - - First Grade
- EDYTHE REECE - - - - - First Grade





Seniors



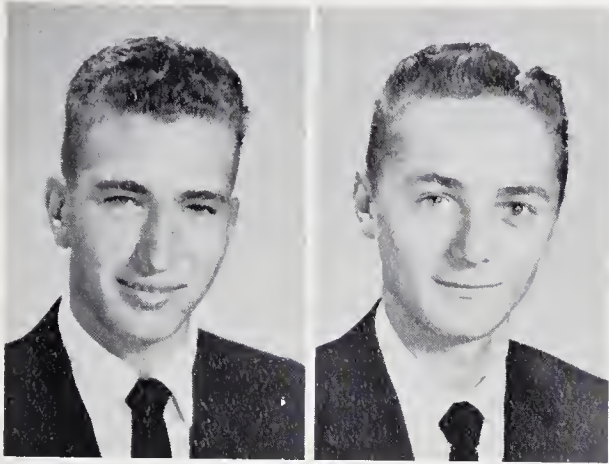
## *Senior Officers*

JAMES ROBERT SPOON - - - - - President

JANE THOMPSON - - - - - Vice President

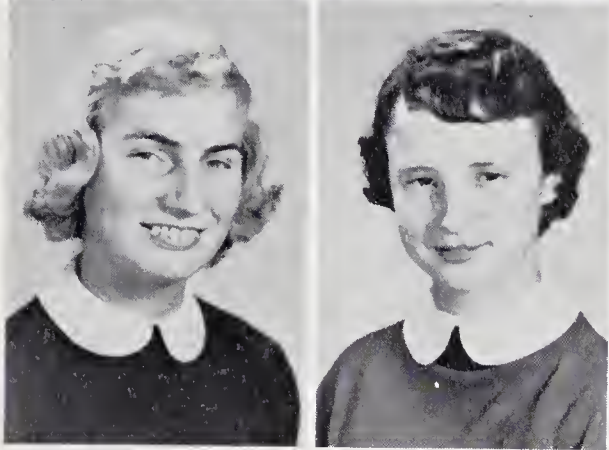
BOBBY HODGES - - - - - Treasurer

LIBBY DOCKERY - - - - - Secretary



LEE FRANKLIN BARNES  
 FFA 1, 2, 3, 4, Vice President 3; Basketball 3, 4; Wildlife, President 2; Folk Dancing Club 3; Boys' Home Economics Club 1; 4-H Club 1, 2; Bus Driver 3, 4; Superlative; Monogram Club, Treasurer 4; Teen-Age Club 4.

IVEY GREY BRENDEL  
 Annual Staff 4; FFA 1, 2, 3, 4; Wildlife Club 2; Folk Dancing Club 3; Boys' Home Economics Club 1; Honor Roll 1; Aviation Club 1, 2; Honor Society 3, 4; Teen-Age Club 4; Hi-Y 4.



IMOGENE BRINDLE  
 Dramatics Club 4; Folk Dancing 3; 4-H Club 1; Journalism Club 3; Honor Roll 2, 3, 4; Arts and Crafts Club 2; Paper Staff 3, 4; Girls' Agriculture Club 1.

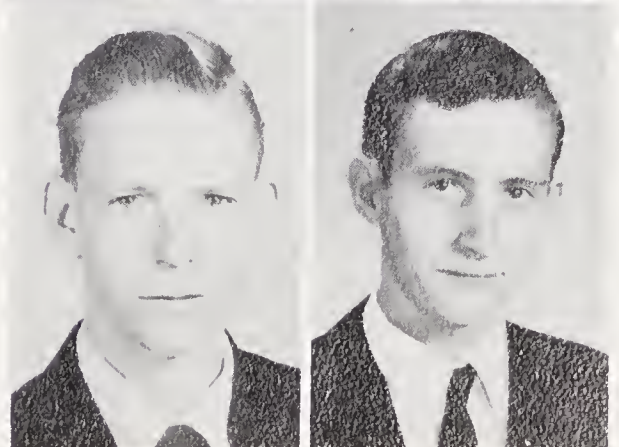
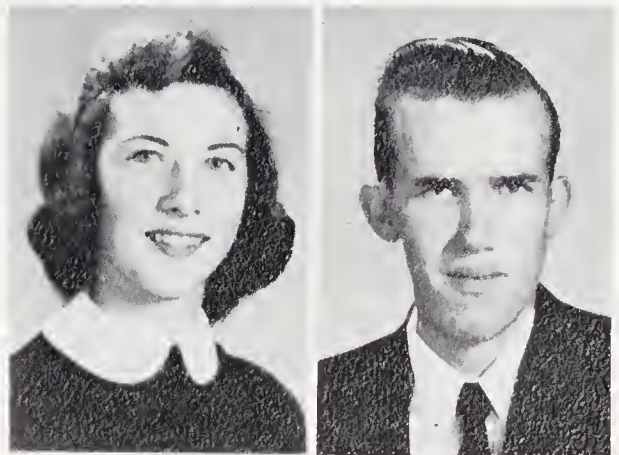
SHELBY JEAN BURCH  
 FHA 1; JV Basketball 2; Dramatics Club 4; Folk Dancing Club 2, 3; Glee Club 1; Honor Roll 2, 3, 4; Girls' Agriculture Club 1.

BLANCHE MAE CAVE  
 Library Club 2, 3, 4; Girls' Agriculture Club 1; Library Club 3, 4, Secretary 4.

DARYL PHILMON CAVE  
 FFA 1, 2, 3, 4, Treasurer 4; Wildlife 1, 2; Boys' Home Economics Club 1; 4-H Club 1, 2, 3, 4; Substitute Bus Driver 2, 3, Driver 4; Photography Club 3, 4; FFA Surry Federation Crops Contest Winner 4.

CHARLES RAY CHEEK  
 FFA 1, 2; Wildlife 1; Folk Dancing Club 3; Boys' Home Economics Club 1; 4-H Club 1, 2, 3; Substitute Bus Driver 3, 4; Emily Post Club 2; Teen-Age Club 4; Hi-Y Club 4, Reporter 4.

LEONARD RAY CHILDRESS  
 Wildlife Club 3, 4, President 4; Emily Post Club 1, 2; FFA 1, 2, 3, 4.



JIMMY JOHNSON COLLINS

Class Treasurer 2, 3; FFA 1, 2; Basketball 3; Football 3; Wildlife Club 1; Boys' Home Economics Club 3; Bus Driver 3, 4; Class Play 3; Aviation Club 2; Superlative; Dramatics Club, Treasurer 2; Honor Roll 2, 3; Honor Society 3, 4; Teen-Age Club 4; Future Teachers Club 3, 4; Hi-Y, Treasurer 4.

BARBARA COMER DAVIS

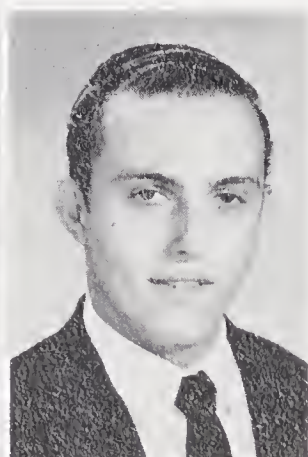
Annual Staff 3; FHA 1, 2, 3, 4, Historian 3, Reporter 4; Basketball 2; Softball 2; Track 1; Folk Dancing Club 2; Glee Club 1; Class Play 3; Superlative; Honor Roll 1, 2, 3, 4; Honor Society 3, 4; Paper Staff 2, 3, 4; Photography Club 1; Dramatics Club 4.

LIBBY ANN DOCKERY

Honor Society 3, 4; Annual Staff 4; Class Song Leader 1, Secretary 3, 4; FFA 1, 2, 3, 4, Secretary 1, Reporter 3, Song Leader 4; Basketball 2; Folk Dancing Club 2; 4-H Club 1; Cheerleading Club 1, 3, 4, Secretary 3; Cheerleader 1, 3, 4; Glee Club 1, 4, President 4; Superlative; Honor Roll 1, 2, 3, 4; Paper Staff 2, 3; Monogram Club 4; Teen-Age Club 4; Senior Representative 4.

MAGDALENE DRAUGHN

Girls' Agriculture Club 1; Folk Dancing Club 2, 3; Teen-Age Club 4; Photography 4; FHA 4.

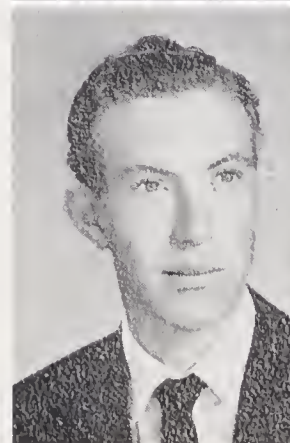


JONNYE SUE HANEY

Honor Society 3, 4; Honor Roll 1, 2, 3, 4; Annual Staff 4; FHA 1, 2, 3, 4; Class Play 3; Cheerleading Club 3; Superlative; Tri-Hi-Y 4; Photography Club 1; Teen-Age Club 4; Future Teachers Club 3, 4, Reporter 4.

ALVIN WILSON HARDY

FFA 1, 2, 3, 4; Wildlife Club 1; Boys' Home Economics Club 1; Aviation Club 2; Photography Club 3, 4.

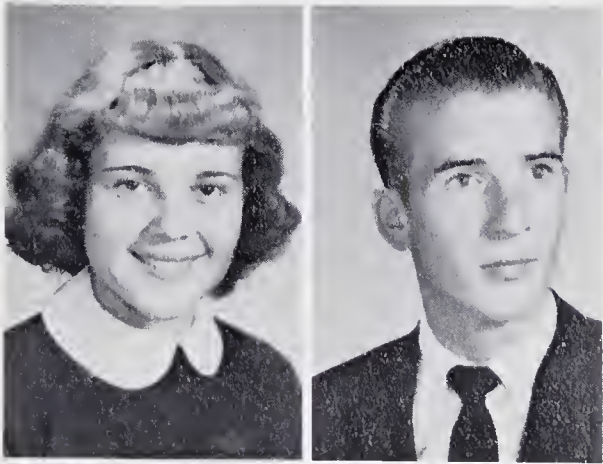


WILBUR EUGENE HARDY

Honor Society 3, 4; FFA 2; Photography Club, Vice President 3; Superlative; Teen-Age Club 4; Hi-Y 4, President 4; Aviation Club 2; Class Play 3; Honor Roll 1, 2, 3, 4.

JOHN D. HARRISON

FFA 1, 2, 3, 4, Secretary 3, 4; Folk Dancing Club 4; Boys' Home Economics Club 1; 4-H Club 1, 2, 3, 4; Substitute Bus Driver 3, 4; Aviation Club 2; Photography Club 4; FFA Surry Federation Crops Contest Winner 4.

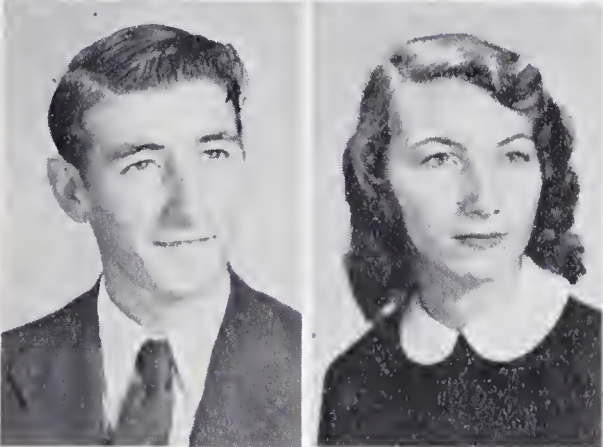


BETTY JEAN HEMRIC

Honor Society 3, 4; Honor Roll 1, 2, 3, 4; Superlative; Paper Staff 4; Girls' Agriculture Club 1; Library Guild 4; Tri-Hi-Y Treasurer 4; Class Play 3; Glee Club 2; 4-H Club 1, 2; Folk Dancing Club 2, 3; Annual Staff 4; Class President 2, Vice President 3; FHA 1, 2, 3.

ROBERT BRYAN HODGES

Beulah High School 1, 2: FFA 1, 2; Basketball 1, 2. Dobson High School 3, 4: Class Treasurer 4; FFA 3, Sentinel 3; Basketball 3, 4; Football 3, 4; Folk Dancing Club 3; 4-H Club 3, 4, President 4; Bus Driver 3, 4; Superlative; Paper Staff 4; Monogram Club, Vice President 4.



JERRY GRADY ISAACS

FFA 1, 2, 3, 4, Sentinel 1; Baseball 3, 4; Wildlife Club 2; Folk Dancing Club 3; Boys' Home Economics Club 1; 4-H Club 1, 2, 3, 4; Bus Driver 3, 4; Aviation Club 1; Hi-Y 4.

LOIS JEAN JENKINS

FHA 1, 2; JV Basketball 3; Girls' Agriculture Club 1, 2; Folk Dancing Club 1; Glee Club 1; Library Club 2, 3, 4.

WILHEMINA JOHNSON

JV Basketball 2, 3; Softball 1, 2; Dramatics Club 4; Folk Dancing 2, 3; 4-H Club 1, 2; Glee Club 1, 2, 3; Girls' Agriculture Club 1; Teen-Age Club 4.

RAYVENA CORRENNIA KEY

FFA 1, 2, 3, 4, Vice President 3, President 4; Dramatics Club 2; Folk Dancing Club 4; Cheerleader 4; Journalism Club 4; Honor Roll 1, 2, 3, 4; Paper Staff 2, 3, 4; Homecoming Queen Attendant 4; Girls' Agriculture Club 2; Teen-Age Club 4; JV Basketball 1; Honor Society 3, 4.

PHYLLIS ARLENE KIDD

FHA 1, 2, 3; Folk Dancing Club 2; 4-H Club 1; Glee Club 4; Class Play 3; Cheerleading Club 1; Superlative; Honor Roll 1, 2, 3, 4; Honor Society 3, 4; Paper Staff 4; Photography Club President 1; Teen-Age Club 4; Future Teachers Club, Treasurer 4; Tri-Hi-Y 1, 4; Bus Captain 3, 4.

WILFRED LEE McCRAW

FFA 1, 2, 3, 4; Boys' Home Economics Club 1; Aviation Club 2; Library Club 3, 4; Photography Club 1.



JIMMY D. McLAURIN

Mooresville High School 1, 2; Football 1, 2; Basketball 1, 2; 4-H Club 1. Greenville Senior High School 3; Dobson High School 3, 4; Annual Staff 4; Basketball 3, 4; Football 4; Baseball 3, 4; Folk Dancing Club 3; 4-H Club, Vice President 4; Superlative; Monogram Club 4; Teen-Age Club, President 4; Hi-Y, Vice President 4.

VERNA MAYE MONEY

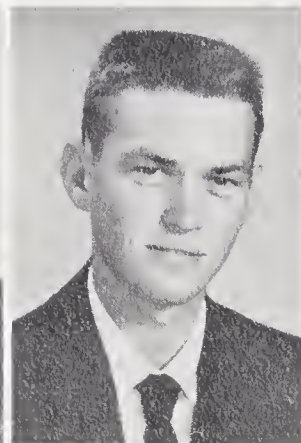
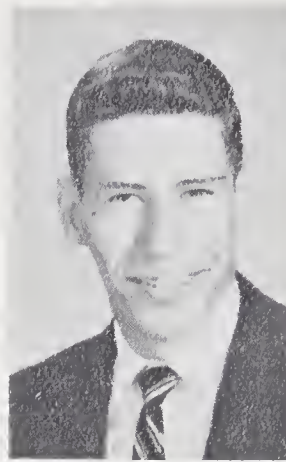
FHA 4; Folk Dancing 2, 3; 4-H Club 2, 3; Glee Club 1, 2, 3; Photography Club 4; Girls' Agriculture Club 1.

ADA KATHLEEN MOSER

FHA 1, 4; Softball 2, 3, 4; Basketball 2; Folk Dancing 2; 4-H Club 1; Glee Club 2; Cheerleading Club 1, 3; Tri-Hi-Y 4; Cheerleader 1, 3; Journalism Club 3; Paper Staff 4; Superlative; Library Club 4; Teen-Age Club 4.

HAROLD GORDON MYERS

Annual Staff 4; Class Reporter 3, 4; FFA 1, 4, Reporter; Football 3; Dramatics Club 1, 3, 4, Song Leader 1, Vice President 3, President 4; Folk Dancing Club 2; 4-H Club 1; Glee Club 1, 4; Class Play 3; Journalism Club 2; Superlative; Marshal 1; Honor Roll 1, 2, 3, 4; Honor Society 3, 4; Library Club 4; Future Teachers Club 4; County Newspaper Correspondent 4.



OLGA SUE NORMAN

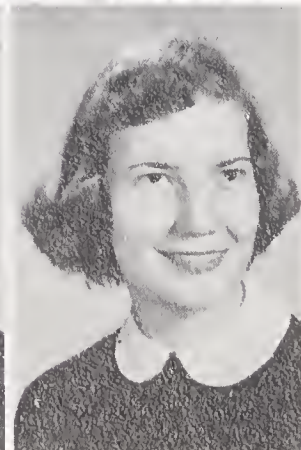
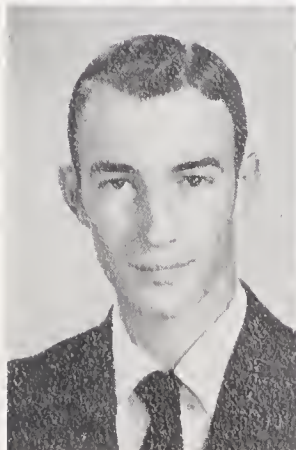
FHA 1, 2, 4; Folk Dancing Club 2, 3; 4-H Club 1; Glee Club 1, 2; Photography Club 4, President; Girls' Agriculture Club 1; Teen-Age Club 4.

TOMMY BAILEY PAYNE

FFA 1, 2, 3, 4; Wildlife 3; Boys' Home Economics Club 1; Bus Driver 3, 4; Library Club 2; Teen-Age Club 4; Hi-Y Club 4.

HARRY DEAN POINDEXTER

FFA 1, 2, 3, 4; Baseball 3, 4; Wildlife Club 1; Folk Dancing Club 3; Aviation Club 1, 2; Teen-Age Club 4; Hi-Y 4.



MARY RUTH SHELTON

Annual Staff 4; FHA 1, 2, 3, 4; Basketball 2, 3, 4; Softball 2, 3, 4; Dramatics Club 1, 2; Folk Dancing Club 2, 3; Glee Club 1, 2, 3; Cheerleading Club 1, 2; Superlative; Paper Staff 4; Tri-Hi-Y, Reporter 4; Teen-Age Club 4; 4-H Club 1, 2, 3, 4, Song Leader 3, 4, County Song Leader 3; Cheerleader 3.



SHELVEY JEAN SIMMONS

Annual Staff 1, 3; FHA 1; Class Secretary 2; Folk Dancing 3; Glee Club 1, 2, 3; Cheerleading Club 2, 3, 4, Secretary-Treasurer 4; Cheerleader 3, 4; Superlative 4; Honor Roll 1, 2, 3, 4; Honor Society 3, 4; Paper Staff 3, 4, Co-Editor 4; Monogram Club 4; Girls' Agriculture Club 1; Future Teachers Club 3, 4, Secretary 4; Class Speller 1, 2, 3, 4.

MARIE SIMPSON

Franklin High School 3: FHA; 4-H Club; Glee Club Cheerleading Club; Commercial Club; Paper Staff. Dobson High School 1, 2, 4: FHA 1, 2, 4; 4-H Club 2; Glee Club 1, 2; Cheerleading Club 1, 2, 4; Cheerleader 2, 4, Chief 4; Honor Roll 2, 4; Monogram Club 4; Teen-Age Club 4.

COY CALDWELL SMITH

FFA, Vice President 2; Basketball 2, 3, 4; Football 3, 4, Captain 4; Wildlife Club 1; Folk Dancing Club 3; 4-H Club 1, 2, 3, 4; Dus Driver 3, 4; Aviation Club 2; Superlative; Library Club 4; Monogram Club 4; Photography Club 2, 3; Teen-Age Club 4; Track 1, 2.

BONNIE MAE SNOW

FFA 1, 2, 3, 4; Softball 2, 4; Folk Dancing Club 2, 3; 4-H Club 1, 2, 3, 4; Glee Club 1, 2, 3; Cheerleading Club 1, 2; Paper Staff 4; Tri-Hi-Y Club 4; Teen-Age Club 4; Dramatics Club 2.

HELEN WILLYS SNOW

Honor Society 3, 4; Annual Staff 4; Class Reporter 4; FHA 1, 2, 3, 4, Historian 2, Treasurer 4; Basketball 2; Softball 2; Dramatics 2; 4-H Club 1, 2, 3, Chaplain 3; Glee Club 1, 2, 3, 4, Vice President 4; Class Play 3; Cheerleading Club 3, 4, Vice President 4; Cheerleader 3, 4; Honor Roll 1, 2, 3, 4; Monogram Club 4; Girls' Agriculture Club 1; Teen-Age Club 4; Future Teachers Club 3.

DONESE JANE SOUTHARD

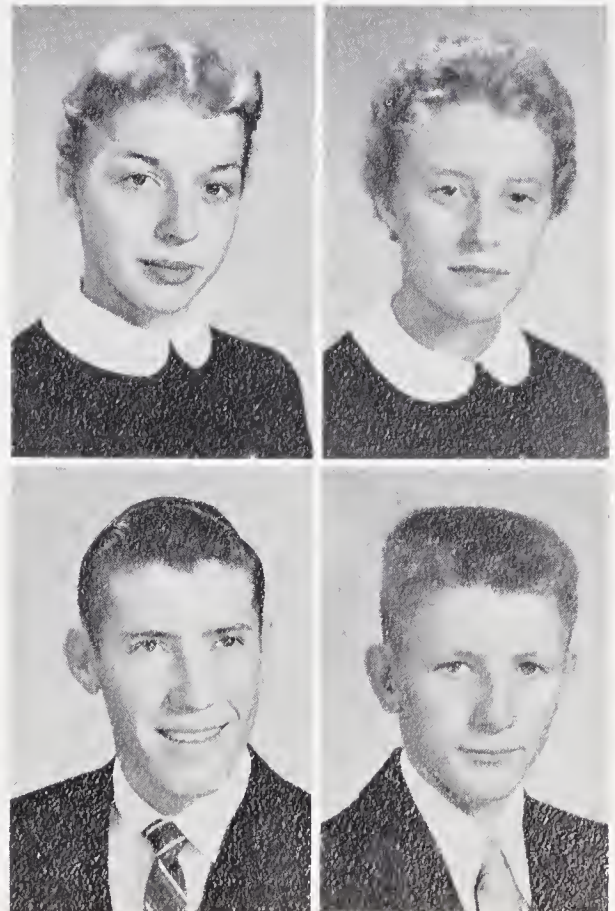
Dramatics Club 2; Folk Dancing Club 3; Glee Club 2; Honor Roll 1, 2, 3, 4; Honor Society 3, 4; Paper Staff 4; Tri-Hi-Y Chaplain 4; Library Guild 4; Girls' Agriculture Club 1; Teen-Age Club 4; FHA 1, 2, 3.

JAMES ROBERT SPOON

Honor Society 3, 4; Honor Roll 1, 2, 3, 4; Annual Staff 3, 4, Editor 4; Paper Staff 4; Class President 3, 4; Dramatics Club 1, 2; Folk Dancing Club 3; Glee Club 1; Superlative; Marshal 1, 2, 3; Class Play 3; Cheerleading Club 3; 4-H Club 1; Halloween King 4; Hi-Y Secretary 4; Substitute Bus Driver 3, 4; Football 3; FFA 1, 2; Basketball Scorekeeper 3, 4; Teen-Age Club 4.

JOHNNY ALLEN THOMAS

Softball 1; 4-H Club 1; Library Club 1, 2, 4; Photography Club 3.



JANE ANNE THOMPSON

Annual Staff 3, 4, Assistant Editor 4; Class Officer 1, 3, 4; Honor Roll 1, 2, 3, 4; Honor Society 2, 3, 4, President 4; Marshal 1, 2, Chief 3; Superlative; Teen-Age Club 4; Tri-Hi-Y Club, Vice President 4; Journalism Club 3; Folk Dancing Club 3; Dramatics Club, Song Leader 2; Glee Club 1, Pianist 3; JV Cheerleader 1, 2; Class Play 3; Paper Staff 3, 4; FHA Song Leader 1, Historian 2, County Vice President 3, Parliamentarian 4; School Sports Correspondent for Winston-Salem Journal 4; Halloween Queen 3, 4.

CHARLES ALONZO TILLEY

FFA 1, 2, 3, 4, President 2, Vice President 3; Track 2; Wildlife Club 1, 2; Dramatics Club 3; Folk Dancing Club 1, 2; Honor Roll 1, 2, 3, 4; Honor Society 2, 3, 4.

CATHERINE JOYCE WAGNER

Annual Staff 4; FHA 1, 2, 4; Folk Dancing Club 3; Cheerleading Club 2, 3, Reporter 3; Cheerleader 4; Journalism Club 2; Superlative; Honor Roll 1, 2, 3, 4; Honor Society 3, 4; Paper Staff 2; Girls' Agriculture Club 1; Teen-Age Club 4.

PEGGY JUNE WALL

Emily Post Club 1; Library Club 2, 3, 4; Vice President 4.

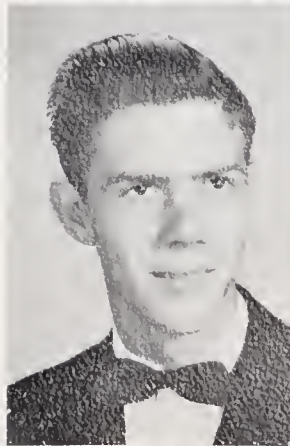


JUANITA MAE WHITE

Annual Staff 4; FHA 1; Dramatics Club 4; Folk Dancing Club 3; Journalism Club 3; Honor Roll 1, 2, 3, 4; Honor Society 3, 4; Arts and Crafts Club 2; Paper Staff 3, 4; Girls' Agriculture Club 1.

FRANKLIN ROOSEVELT WHITE

Basketball 1, 2, 3, 4, Co-Captain 4; Football 3, 4; Track 1, 2, 3; Bus Driver 1, 2, 3, 4; Aviation Club 1; Superlative; Monogram Club, President 4; Teen-Age Club 4.



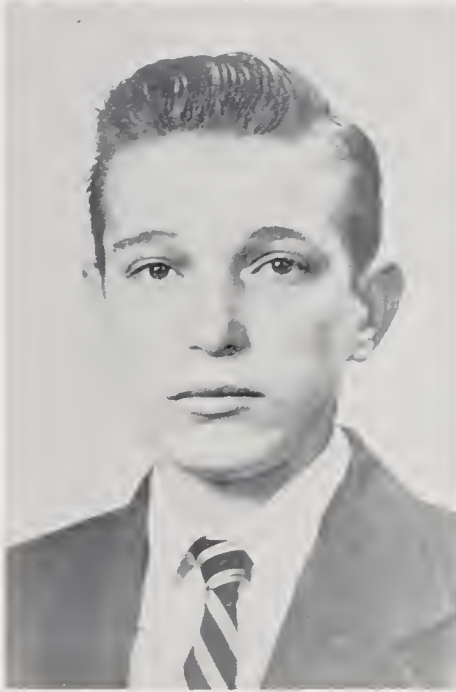
FRED GREY WILMOTH

FFA 1, 2, 3, 4; Wildlife Club 1, 2; Boys' Home Economics Club 1; 4-H Club 1, 2, 3, 4; Bus Driver 4; Substitute 3; Library Club 2, 3; Photography Club 4; Surry Federation Crops Contest Winner 4.

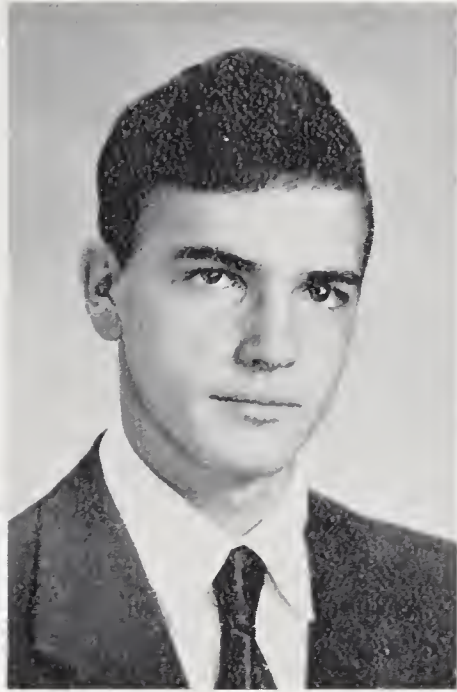
FRANCES LUCILLE WOOD

Annual Staff 4; FHA 1, 2, 4; Dramatics Club 4; Folk Dancing 2, 3; 4-H Club 1, 2; Glee Club 1, 2; Girls' Agriculture Club 1; Teen-Age Club 4; Honor Roll 4.





ROBERT GRAY WOODRING  
FFA 1, 2, 3, 4; Boys' Home Economics Club 1; Aviation Club 2; Library Club 3, 4; Photography Club 1.



JOSEPH FRANKLIN WRIGHT  
FFA 1, 2, 3, 4, Reporter 4; Baseball 1, 2; Folk Dancing Club 3; 4-H Club 1, 2, 3, 4; Substitute Bus Driver 2, 4; Glee Club 4; Aviation Club 1; Journalism Club 3; Paper Staff 3; Photography Club 2; Teen-Age Club 4; Hi-Y Reporter 4.



TROY THOMAS WRIGHT  
FFA 1, 2; Basketball 1, 2, 3, 4, Captain 4; Baseball 2, 3, 4; Track 1, 2; Bus Driver 3, Substitute Driver 2, 4; Monogram Club 4; Photography Club 3; Teen-Age Club 4.

Mascots



JAN HEMRIC

TOMMY MARION



## SENIOR SNAPS

1. Lost!
2. "Early bird gets the worm."
3. Cold nose.
4. Brains unlimited...
5. "Sweet Sue--That's you."
6. Bring on the boys.
7. Tennis anyone?
8. The great pretenders.
9. Where's that girl?
10. Can't catch me!
11. My knee hurts.
12. I want'a play.
13. Where's that girl?
14. Are they looking?
15. Tee! Hee!
16. He's cute!
17. I think he'll come??
18. People are funny.
19. Two faced.
20. Snap it - this ground is cold.
21. "Nature Lover."
22. They left me.
23. Naughty ladies of Shady Lane.
24. Dressed up..no place to go.
25. Shady characters.



*Quinn's*

# Junior Officers



FRANKLIN BODE - - - - - President

JOSIE MARION - - - - - Secretary

WILSON TILLEY - - - - - Vice President

PEGGY SMITH - - - - - Treasurer

PATSY BATES  
GERALDINE BENGE  
FRANKLIN BODE  
GUYNER CAVE



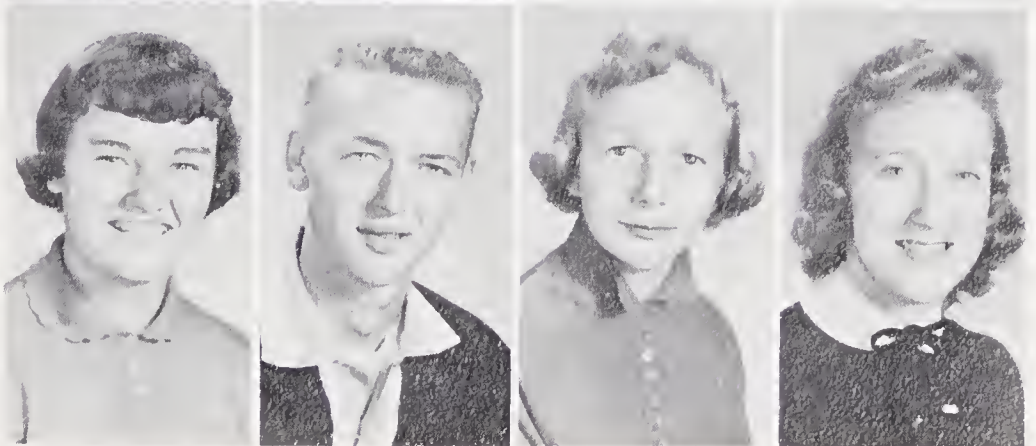
MAXINE COE  
JIM COLLINS  
PATRICIA COLLINS  
JEAN CORDER

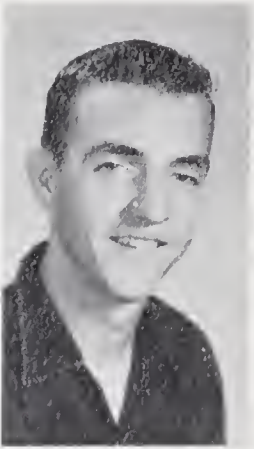
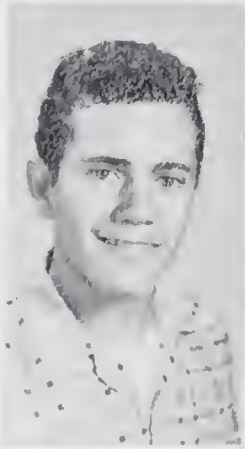


FRANCES EDWARDS  
LAURA EDWARDS  
BARBARA FREEMAN  
LIONEL GILLESPIE

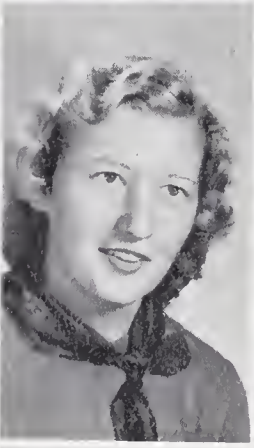


TREVA GILLESPIE  
ROGER GWYN  
CAROLYN HAMLIN  
JEANENE HARDY





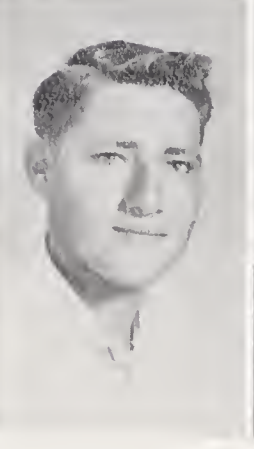
TERRY HARDY  
 JAMES HIATT  
 HARLEY HODGES  
 OLIVER HUDSON



SADIE HUTCHINS  
 BARBARA ISAACS  
 ARTIS JOHNSON  
 BETTY LAWRENCE

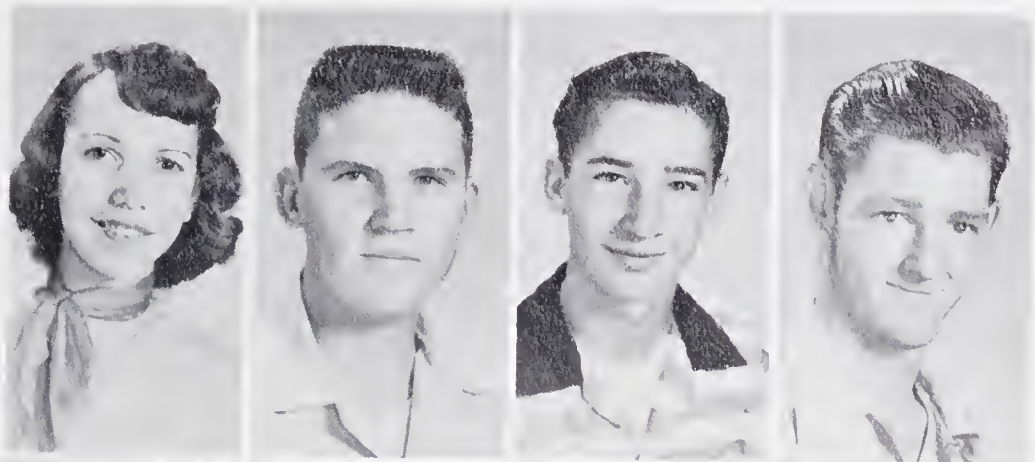


OLIN LINVILLE  
 MADELEINE LONG  
 DELLA MARION  
 JOSIE MARION

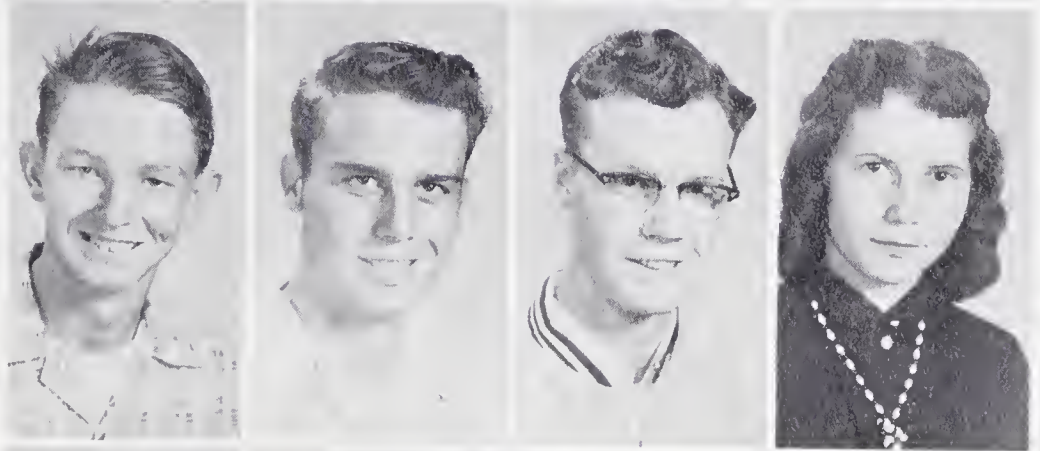


LOLA MARION  
 ROY MARION  
 JACKIE MARTIN  
 ELSIE McCRAW

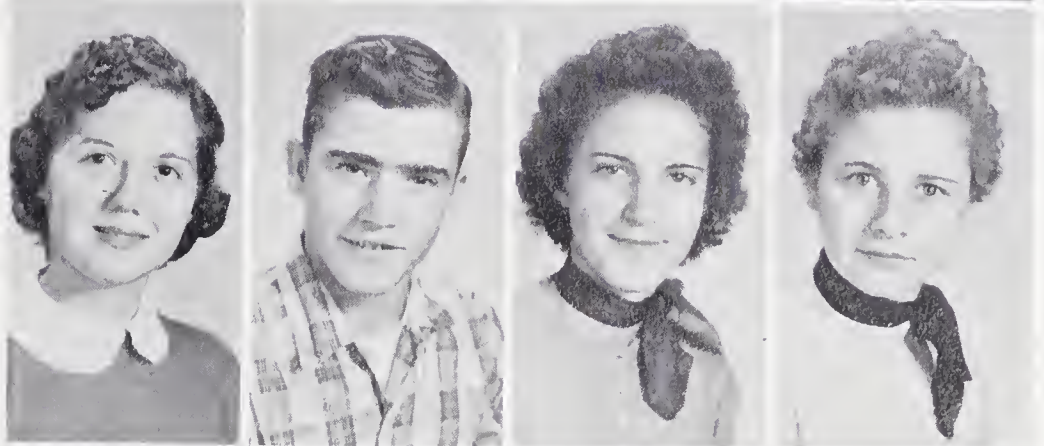
LAUREAN MOORE  
ROBERT PHILLIPS  
LARRY RECTOR  
TROY REEVES



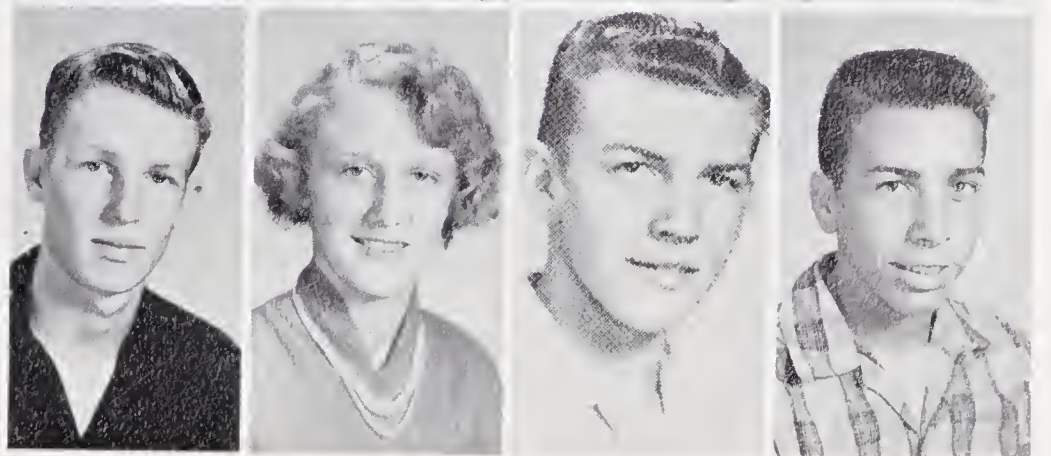
JUNIOR SHUMATE  
HOBERT SIMPSON  
TROY SIMPSON  
PEGGY SMITH

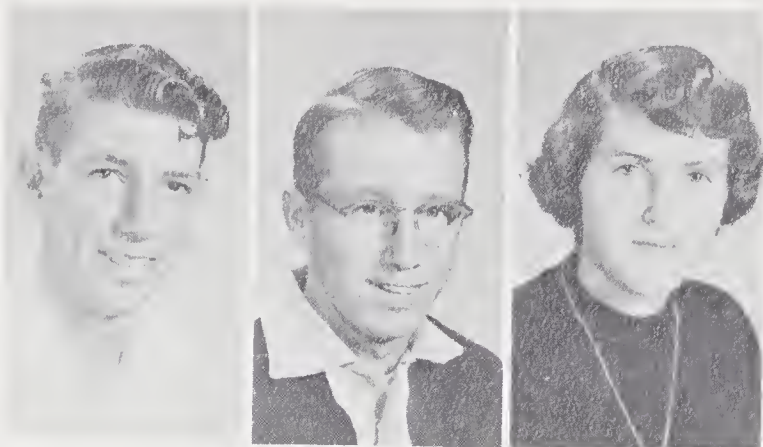


HILDA SNOW  
BILL SPRINKLE  
DOROTHY STANLEY  
BARBARA STEWART



WILSON TILLEY  
REBECCA WALL  
JIMMY WELCH  
BILLY WHITAKER





LARRY WHITE  
ALFRED WILMOTH  
ROSEMARY WILMOTH

*In Memoriam*

GLEND A DONESE WHITE  
Born... September 20, 1939  
Died... November 10, 1955







Remember

## *Sophomore Officers*

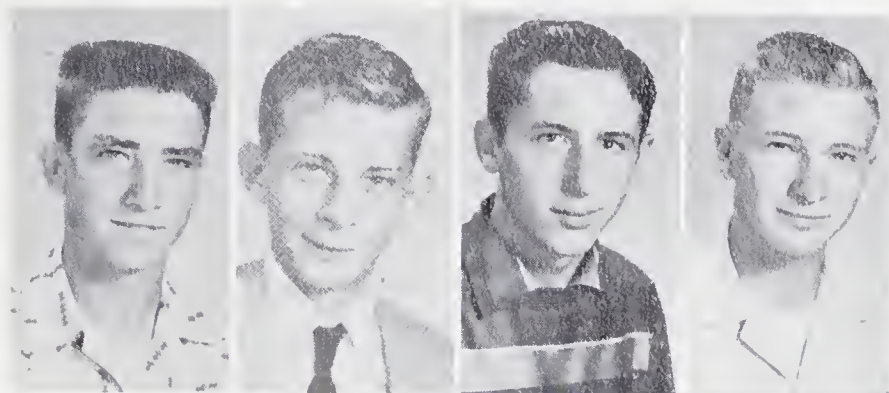


Edward Hyatt - - - - - President

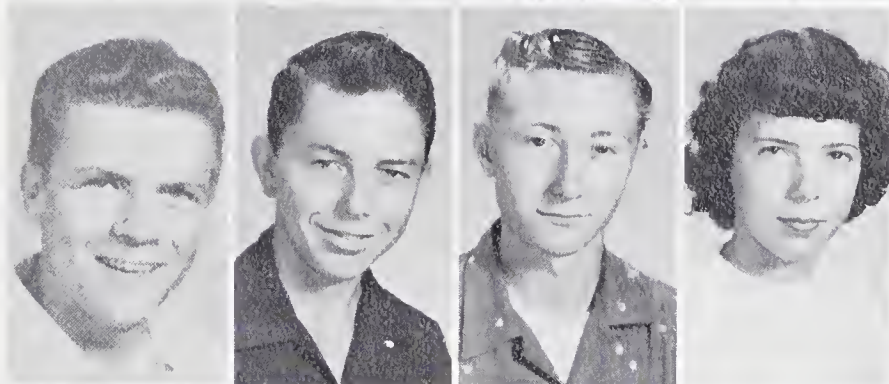
Walter Fulk - - - - - Vice President

Audrey Woodruff - - - - - Secretary and Treasurer

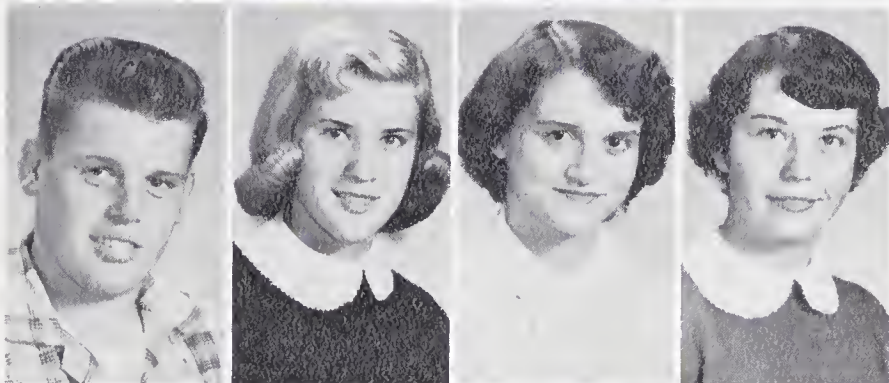
Bobby Adams  
Jimmy Atkins  
Roy Lee Atkins  
Donald Badgett



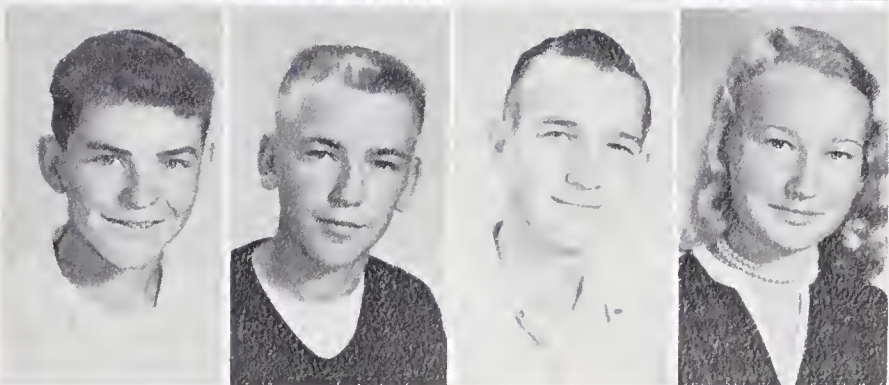
Harold Barber  
Jimmy Bingman  
James Bledsoe  
Faye Branch



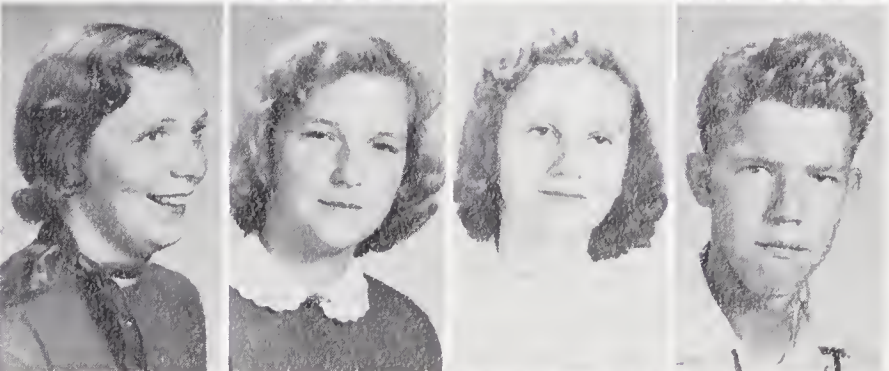
J. W. Branch  
Carlene Brendle  
Betty Jean Brendle  
Edna Brendle



Van Brindle  
Jacob Cave  
Johnny Cave  
Peggy Ann Cave

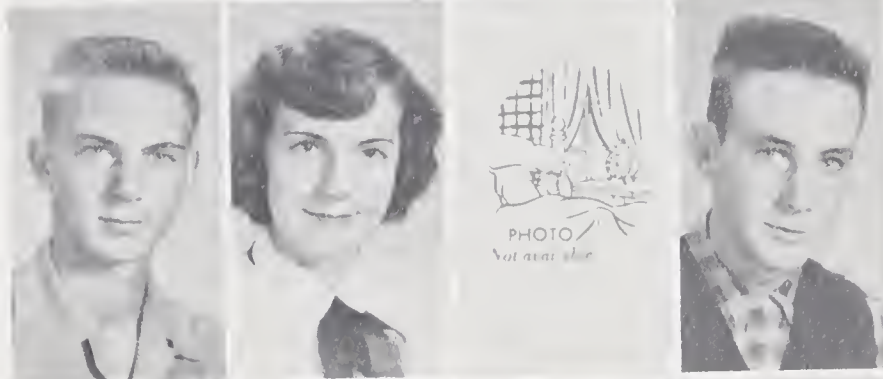


Phyllis Chappell  
Betty Lou Cheek  
Madelene Childress  
J. C. Cook





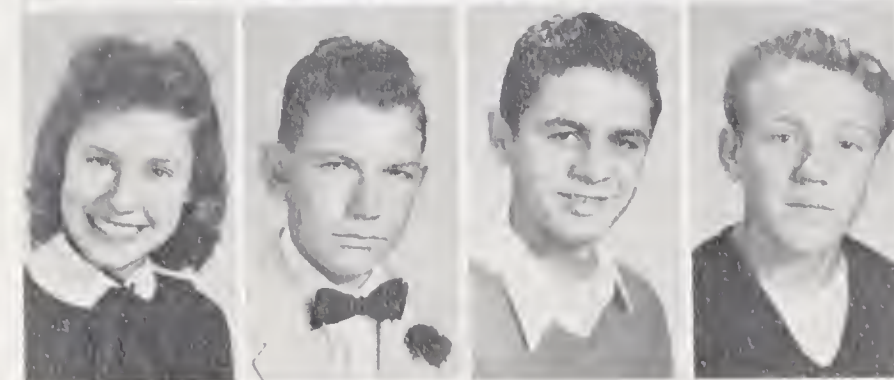
Georgia Draughn  
Mary Ellen Draughn  
Ruth East  
Wayne Edmonds



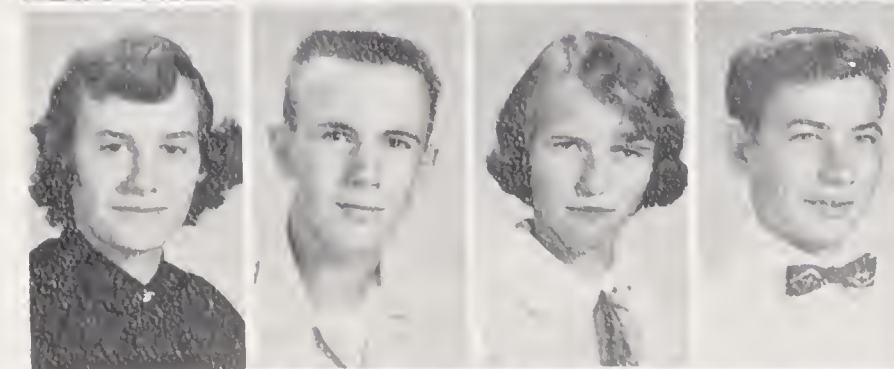
Harry Folger  
Annie Lou Fowler  
Guy Freeman  
Walter Fulk



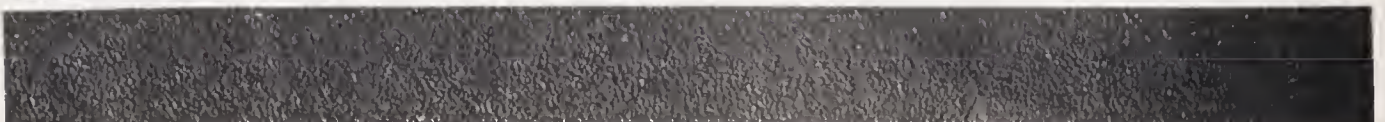
Johnny Gabbard  
Barbara Galyean  
Brenda Hamlin  
Hazel Hamlin



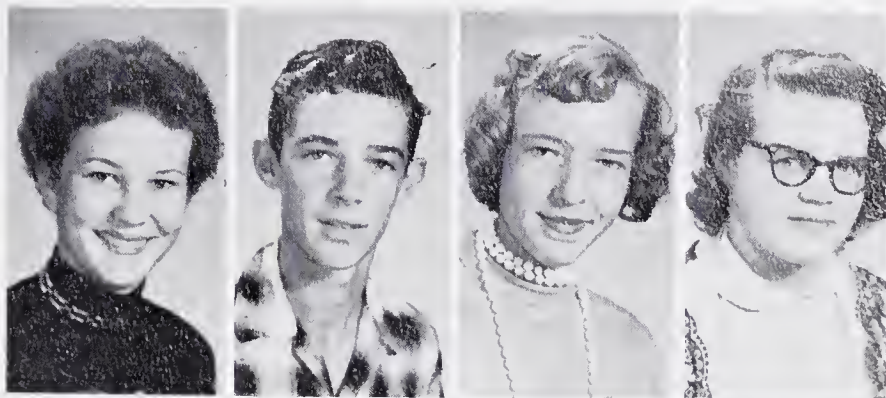
Barbara Hardy  
Billy Hardy  
Grover Haymore  
Jackie Hemric



Wilma Hiatt  
Edward Hyatt  
Barbara Hutchens  
Dickie Isaacs



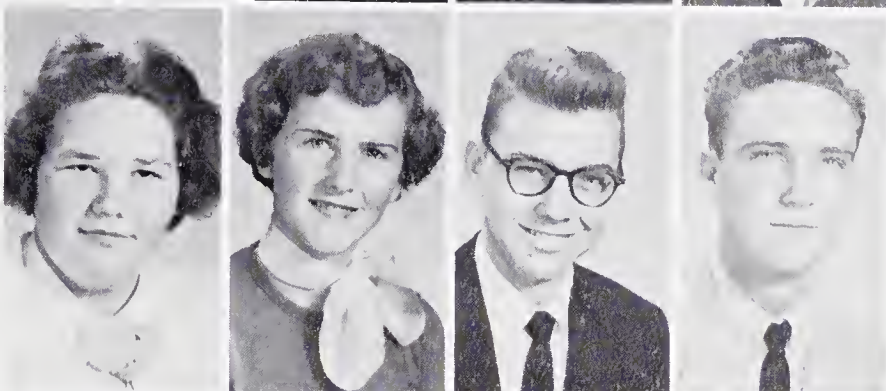
Janice Jenkins  
 Jimmy Jenkins  
 Betty Johnson  
 Vallie Johnson



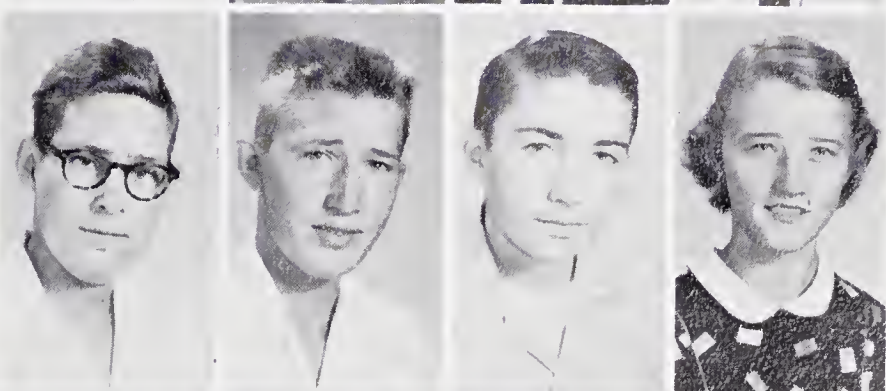
Ivey Jean Lewis  
 Jeanettie Marshall  
 Rita McMillan  
 Joe Frank Nations



Carol Nester  
 Nellie Payne  
 Freddie Rosendahl  
 Dean Scott

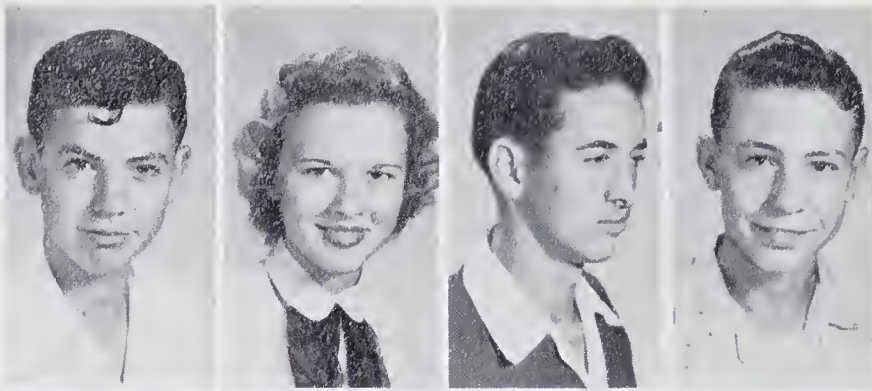


Harry Simpson  
 Delmar Snow  
 Larry Snow  
 Lucille Sprinkle

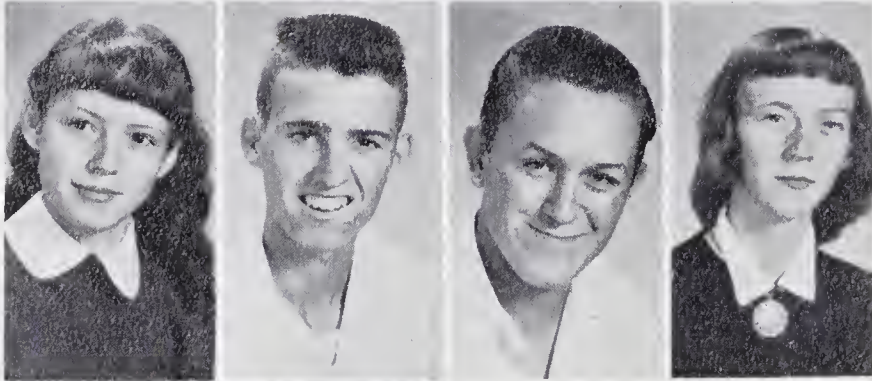


Bruce Stanley  
 Shirley Stanley  
 DeWayne Stewart  
 Betty Lou Watson





Billy White  
 Carolee White  
 G.L. White, Jr.  
 Gray White



Imogene White  
 Don Wilmoth  
 Delmar Wood  
 Shirley Wood



Audrey Woodruff  
 Mary York

## *Junior and Sophomore Snapshots*

Where's my ball? Just friends... Ha!  
 Anytime... Are my hands right?  
 Tarzan... My dress is getting dirty.  
 You got me covered. Just resting...  
 Y'all come... I like you (sigh), too.  
 Well, I never! Wanta play? Now,  
 I tell you... Are they following us?  
 Had a nice time... Cloudy up here...  
 Why don't they leave me alone?!  
 Hands off!... Let's go!!!





BY *William*

# *Freshman Officers*



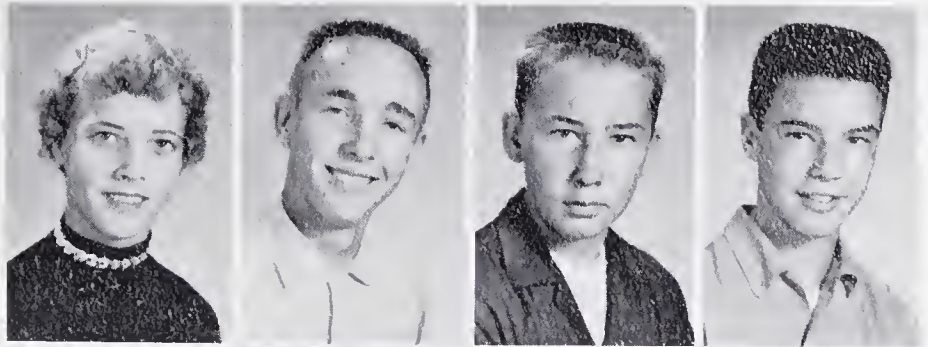
Debbie Weimar - - - - - President

Ray Alberty - - - - - Vice President

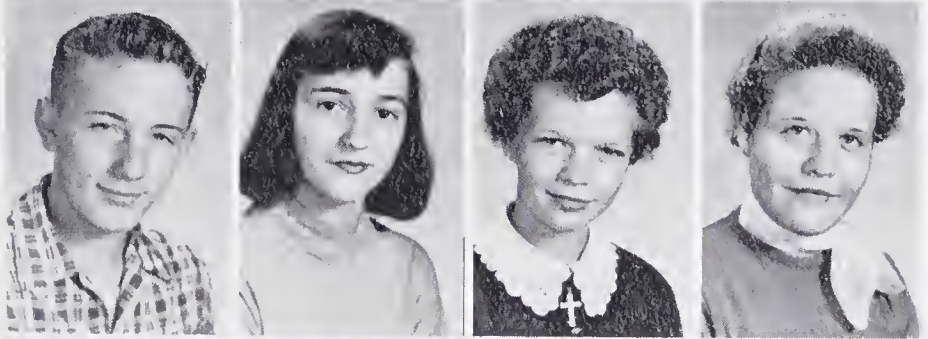
Joe Bill Hemric - - - - - Secretary and Treasurer



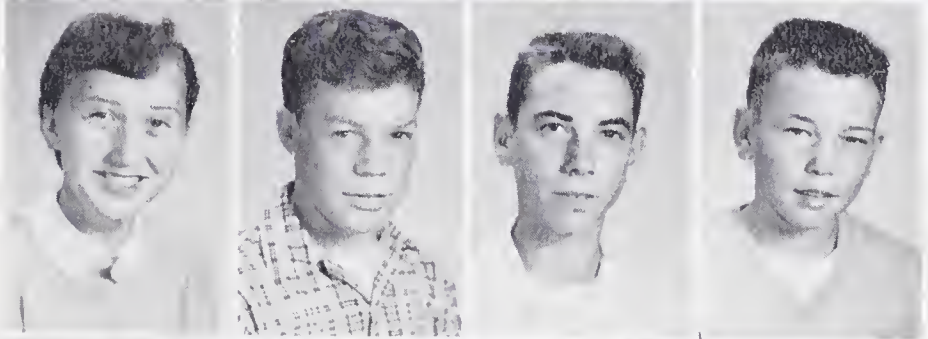
Virginia Adams  
 J. B. Alberty  
 N. E. Alberty  
 Ray Alberty



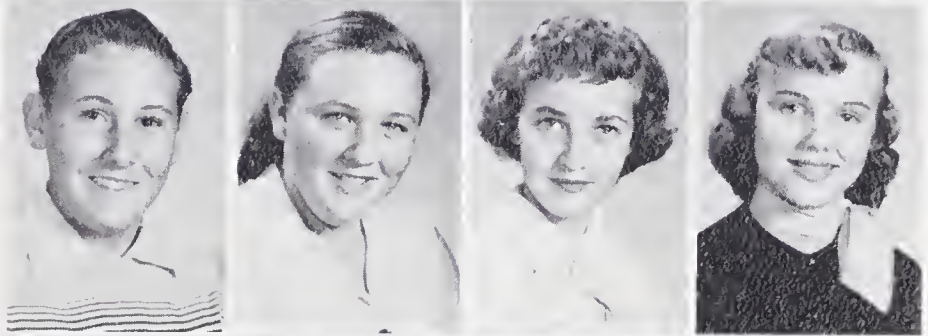
Jesse Atkins  
 Faye Baker  
 Lois Barber  
 Lucy Beane



Gaynell Bledsoe  
 Harold Branch  
 Billy Gray Burton  
 Roger Cave



Larry Chaney  
 Mary Ann Chappell  
 Barbara Coe  
 Nellie Coe



Allen Collins  
 Bill Combs  
 Betty Lou Davis  
 Wade Davis



Brenda Dobbins  
 Clyde Draughn  
 Pauline Draughn  
 Allen Fowler





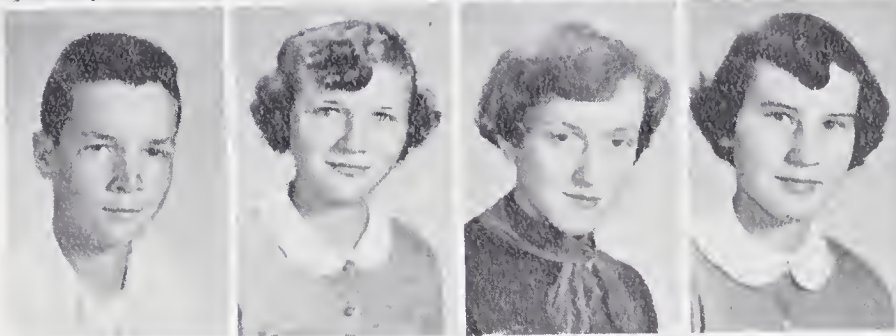
Wendell Fowler  
Billie Jo Freeman  
Bobby Freeman  
Johnny Freeman



Mildred Freeman  
Willie Freeman  
Billy Gray Gillespie  
Aligene Gilley



Robert Cleve Hamlin  
Avanell Hardy  
Frances Haynes  
Joe Bill Hemric



Leon Holyfield  
Elizabeth Hutchens  
Vena Jenkins  
Arlene Jones

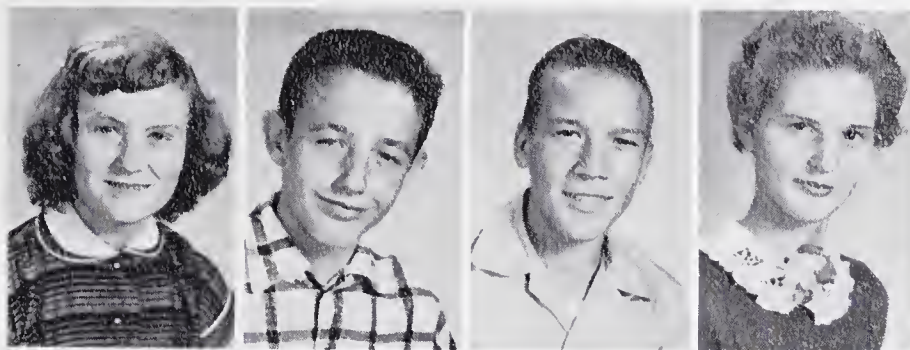


Geneva Marion  
Delmar McCraw  
Mary Lou McMillan  
Wanda Mitchell

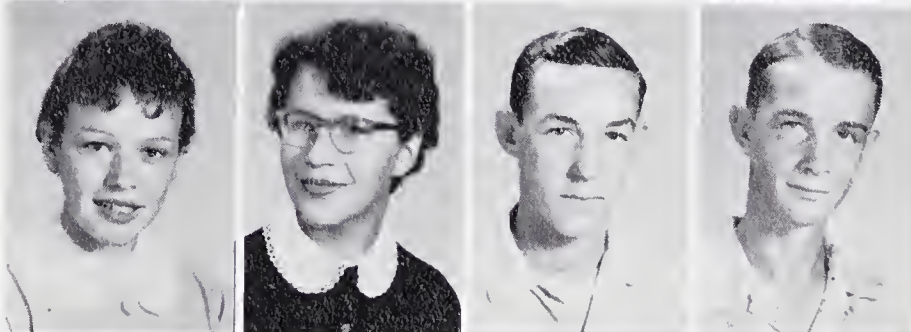


H.C. Mooney  
Bill Moore  
Bonnie Nixon  
Carol Parker

Susie Poindexter  
 Charlie Price  
 J. D. Shelton  
 Shelby Shew



Annie Ruth Snow  
 Molly Snow  
 P. D. Snow  
 Weidon Snow



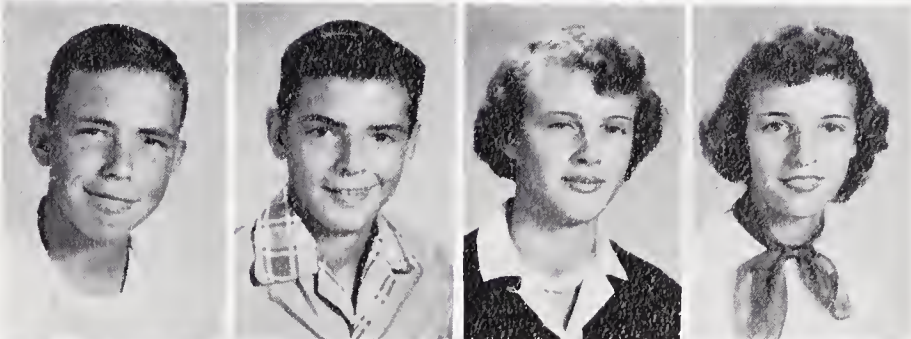
Arlin Stanley  
 Helen Stanley  
 Joyce Stanley  
 Jack Wall



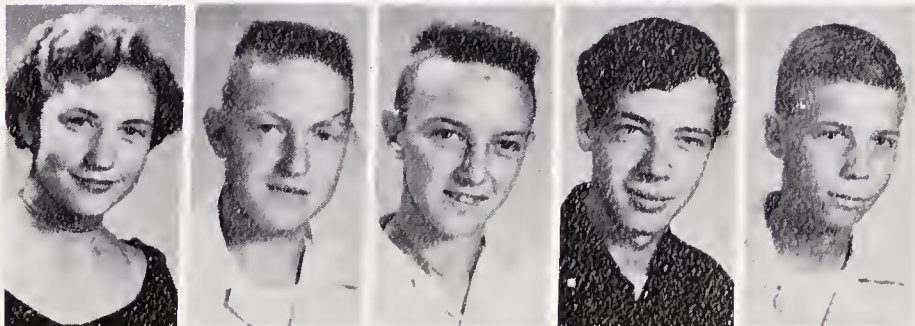
Patty Wall  
 Debbie Weimar  
 Estelle Whitaker  
 J. R. Whitaker



Billy White  
 Billy Lee White  
 Carolyn White  
 Eleanor White



Sylvia White  
 Teddy White  
 Daniel Wilmoth  
 Johnny Wood  
 Buddy Wright



## *Class Spellers of 1955*



### CLASS SPELLERS

Barbara White, Twelfth Grade; Shelvey Simmons, Eleventh Grade; Patsy Bates, Tenth Grade; Hazel Hamlin, Ninth Grade; Barbara Hardy, Eighth Grade; Faye Pike, Seventh Grade; Elaine Edmonds, Sixth Grade; Alton Bledsoe, Fifth Grade; Clyde Hamlin, Third Grade.



Handwritten text in a cursive script, possibly reading "Handwritten" or a similar word, located at the bottom of the page.



*Most Courteous*

JIMMY McLAURIN - JONNYE SUE HANEY



*Most Dependable*

PHYLLIS KIDD - FRANK BARNES



*Best All-Around*

JAMES ROBERT SPOON - BARBARA COMER DAVIS





*Most Athletic*

ROOSEVELT WHITE - MARY RUTH SHELTON



*Most Likely to Succeed*

SHELVEY SIMMONS - WILBUR HARDY



*Most Talented*

HAROLD MYERS - LIBBY DOCKERY



*Most Original*

JIMMY COLLINS - KATHLEEN MOSER COLLINS



*Most Intellectual*

WILBUR HARDY - JANE THOMPSON



*Most Popular*

BETTY HEMRIC - BOBBY HODGES



*Most Attractive*

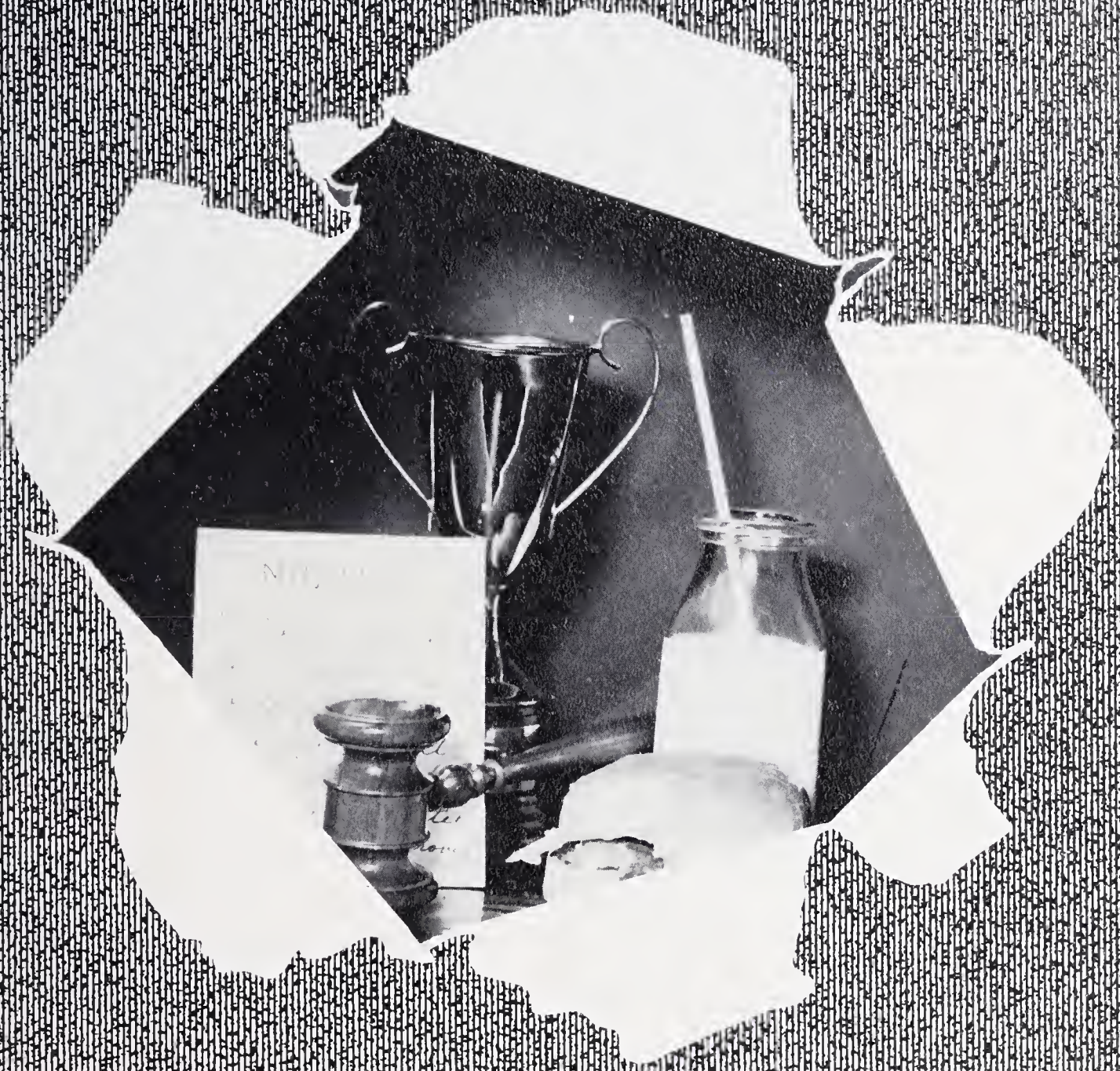
COY SMITH - CATHERINE WAGNER



RAYVENA KEY  
"Doris Day"

HELEN SNOW  
"Dinah Shore"





Organization

James Robert Spoon  
 Editor  
 Jane Thompson  
 Assistant Editor



## *The Dobsonian*

Mary Ruth Shelton - - - - - Sports Editor  
 Harold Myers - - - - - Sports Editor  
 Juanita White - - - - - Club Editor

Bobby Freeman  
 Freshman Editor  
 Barbara Hardy  
 Sophomore Editor  
 Jeanene Hardy  
 Junior Editor  
 Jonnye Sue Haney  
 Senior Editor





Business Manager  
 Libby Dockery  
 Assistant Business  
 Managers  
 Betty Hemric  
 Jimmy McLaurin  
 Helen Snow  
 Betty Lawrence

Miss Holyfield - - - - - Sponsor  
 Mr. Davis - - - - - Sponsor

*Staff*

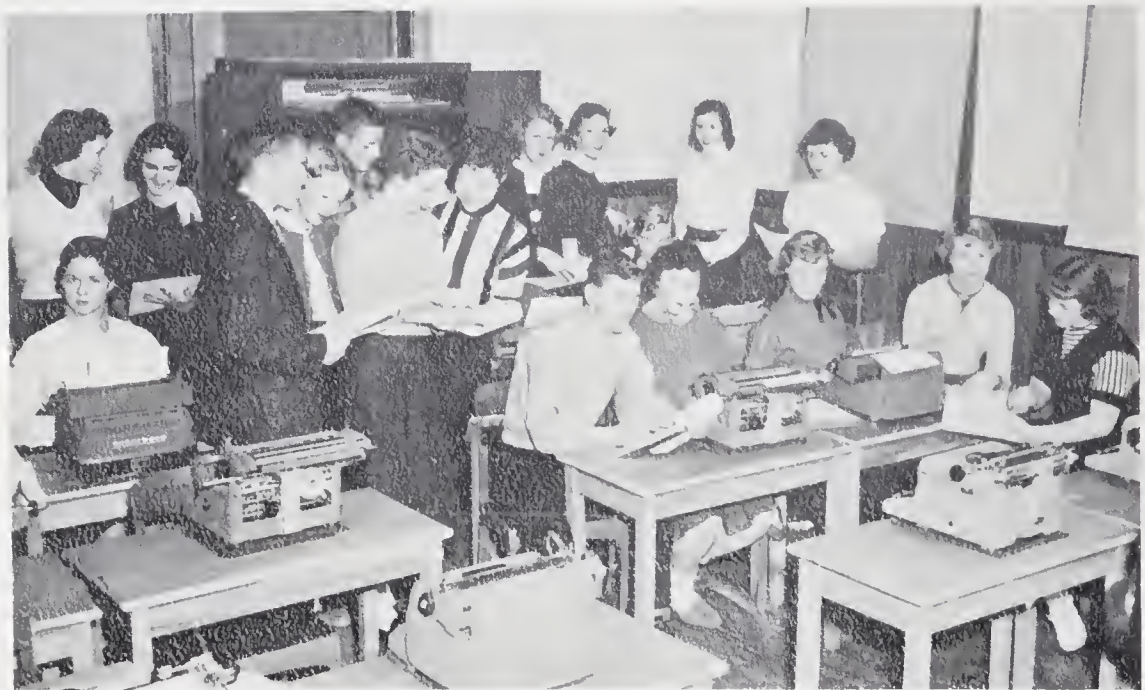


Frances Wood  
 Typist  
 Catherine Wagner  
 Typist  
 Grey Brendle  
 Typist



Barbara Comer Davis - - - - - Co-Editor  
 Shelvey Simmons - - - - - Co-Editor  
 Mr. Davis - - - - - -Faculty Advisor

*The Dobsonian Paper Staff*



Hilda Snow, Jeanene Hardy, Dorothy Stanley, James Robert Spoon, Helen Snow, Franklin Bode, Barbara Stewart, Jane Thompson, Rebecca Wall, Mary Ruth Shelton, Imogene Brindle, Kathleen Collins, Juanita White, Harold Myers, Bonnie Snow, Donese Southard, Rayvena Key, Betty Hemric.

## *National Honor Society*



Standing: James Robert Spoon, Betty Hemric, Jane Thompson, President; Libby Dockery, Wilbur Hardy. First row: Barbara Comer Davis, Shelvey Simmons, Rayvena Key, Catherine Wagner, Elsie McCraw, Dorothy Stanley, Hilda Snow, Barbara Stewart. Second row: Jonnye Sue Haney, Donese Southard, Phyllis Kidd, Juanita White, Laura Edwards, Artis Johnson, Patricia Collins, Carolyn Hamlin, Betty Lawrence. Third row: Helen Snow, Grey Brendle, Harold Myers, Charles Tilley, Frances Edwards, Patsy Bates, Treva Gillestie, Rosemary Wilmoth, Jeanene Hardy, Jim Collins.

### *Marshals*

Jane Thompson, Chief  
James Robert Spoon  
Jeanene Hardy  
Jim Collins  
Freddy Rosendahl  
Barbara Hardy



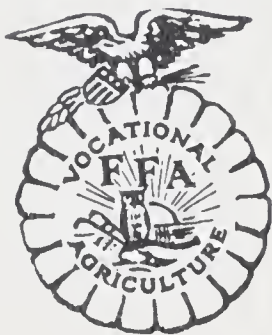


*F.H.A.*



Rayvena Key - - - - - President  
 Betty Lou Lawrence - - - - - Vice President  
 Hilda Snow - - - - - Secretary  
 Helen Snow - - - - - Treasurer

*F.F.A.*



Charles Tilley - - - - - President  
 Frank Barnes - - - - - Vice President  
 John D. Harrison - - - - - Secretary  
 Daryl Cave - - - - - Treasurer

## Tri-Hi-Y



Audrey Woodruff, Betty Hemric, Jane Thompson, Barbara Hardy, President; Mary Ruth Shelton, Hilda Snow, Barbara Stewart, Donese Southard, Madalene Childress, Mary York, Jean Corder, Barbara Davis, Carolyn White, Bonnie Snow, Rosemary Wilmoth, Peggy Cave, Rita McMillan, Annie Snow, Wilma Hiatt, Elsie McCraw, Carol Nester, Jeannette Marshall, Brenda Hamlin, Arlene Jones, Patsy Bates, Phyllis Kidd, Miss Holyfield, Sponsor; Kathleen Collins, Laurean Moore, Estelle Whitaker, Helen Stanley, Jonnye Sue Haney, Barbara Freeman, Annie Fowler, Artis Johnson.



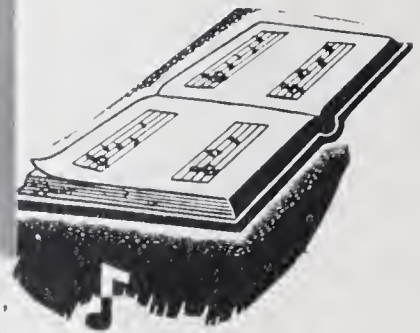
## Hi-Y



Wilbur Hardy, Jimmy McLaurin, James Robert Spoon, Jimmy Collins, Edward Hiatt, Roy Marion, Larry Snow, Alfred Wilmoth, Larry White, Harold Barber, Jacob Cave, Tommy Payne, Bobby Adams, Dean Poindexter, Jerry Isaacs, Ray Cheek, Grey Brendle, Wayne Edmonds, Walter Fulk, Troy Simpson, Donald Wilmoth, Jimmy Atkins, Mr. Davis, Sponsor.



## Glee Club



Mrs. McCann, Jonnye Sue Haney, Helen Snow, Phyllis Kidd, Libby Dockery, Annie Snow, Aligcne Gilley, Rita McMillan, Arlene Jones, Estelle Whitaker, Wilma Hiatt, Ivey Jean Lewis, Patty Wall, Franklin Bode, Billy White, Bobby Freeman, Billy Lee White, Buddy Wright, Hazel Hamlin, Franklin Wright.

## Dramatics



Mrs. Freeman, Sponsor; Harold Myers, President; Jeanene Hardy, Nellie Payne, Jim Collins, Frances Wood, Patricia Collins, Juanita White, Billy Hardy, Richard Isaacs, Lucy Branch, Shelby Burch, Imogene Brendle, John D. Harrison, Wanda Mitchell, Frances Edwards, Doris Cave, Treva Gillespie, Betty Lawrence, Lionel Gillespie, Avanelle Hardy, Faye Baker, Billy White, Harry Folger, Freddy Rosendahl, Lola Marion, Geneva Marion, Pauline Draughn, Vena Jenkins, Bettye Watson, Bonnie Nixon, Robert Phillips, Rebecca Wall, Madeleine Long, Imogene White, Lucille Sprinkle, Peggy Smith, Debbie Weimar.



## *Bus Drivers*



First row: Troy Wright, Frank Barnes, Roosevelt White, Bobby Hodges, Jim Collins, Daryl Cave, Roger Gwyn, Jerry Isaacs, John D. Harrison, Jimmy Collins, Tommy Payne, Jackie Martin, Troy Simpson, Ray Cheek, Franklin Wright, Coy Smith, James Robert Spoon.



## *Driver Training*

Mr. Madison, Instructor; Jane Thompson, Olin Linville, Guyner Cave, Tommy Payne, Delmer Wood, Carolee White, Betty Jean Brendle, Robert Woodring, Jim Collins, Catherine Wagner, Dorothy Stanley, Barbara Stewart, Franklin Bode, Harry Simpson.



*Future  
Teachers  
Club*



Mrs. Adams, Mrs. Bolich, Advisors; Jimmy Collins, Harold Myers, Brenda Hamlin, Wanda Mitchell, Shirley Stanley, Frances Haynes, Debbie Weimar, Shelvey Simmons, Betty Lawrence, Patsy Bates, Laurean Moore, Phyllis Kidd, Barbara Hardy, Jonnye Sue Haney, Annie Ruth Snow, Mary Ellen Draughn, Audrey Woodruff, Annie Lou Fowler, Nellie Payne, Carolyn White, Geneva Marion, Janice Jenkins.

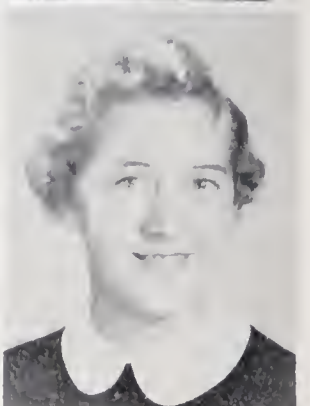
OFFICERS

Betty Lawrence - - - - - President

Janice Jenkins - - - - - Vice President

Shelvey Simmons - - - - - Secretary

Phyllis Kidd - - - - - Treasurer



## Library Club



Blanche Cave, President; Peggy Wall, Mary Ellen Draughn, Aligene Gilley, Eleanor White, Mildred Freeman, Harry Simpson, Miss Freeman, Sponsor; Van Brindle, Lois Jenkins, Lucy Beane, Barbara Hutchens, Ted White, Mary Ann Chappell, Betty Lou Davis, Mary Lou McMillan, Donald Badgett, Johnny Cave, Guy Freeman, Olin Linville, Hobart Simpson, Robert Woodring, Johnny Thomas, Billy Lee White, Wilfred McCraw, Wilson Tilley, Joe Bill Hemric, Carol Parker, Shirley Wood.

## Photography Club



Sue Norman, President; Edna Brendle, Barbara Isaacs, Guyner Cave, Josie Marion, Alvin Hardy, Verna Money, Laura Edwards, Billy White, Ray Alberty, Charlie Price, Clyde Draughn, Betty Cheek, Daryl Cave, Bobby Freeman, Fred Wilmoth, Joe Frank Nations, Jackie Martin, Junior Shumate, DeWayne Stewart, Geraldine Bengé, Magdalene Draughn, Betty Jean Brendle, Joe Callahan, Carlene Brendle, Carolee White, Shirley Stanley, John D. Harrison, Billy Whitaker, Mr. Madison, Sponsor.



## *High School Library Guild*



Hobert Simpson, Olin Linville, Mary Ellen Draughn, Jackie Martin, Robert Phillips, Dickie Isaacs, Phyllis Chappell, Shirley Wood, Mrs. Ruth Freeman, Sponsor; Doris Cave, Barbara Hardy, Donese Southard, Betty Hemric, Derothy Stanley.

## *Elementary Library Guild*



Mrs. Aubrey Moore, Sponsor;  
The Seventh Grade students.

## Wildlife Club



Leonard Childress, President; Roger Cave, J. B. Alberty, Daniel Wilmoth, Johnny Freeman, H. C. Mooney, Larry Chaney, Robert C. Hamlin, Allen Collins, Mr. Bolich, Sponsor; Grover Sizemore, Harold Branch, Buddy Wright, Bill Combs, Wendell Fowler, Willie Freeman.



## Cheerleading Club



First row: Janice Jenkins, Shelby Shew, Georgia Draughn, Carolyn Hamlin, Maxine Coe. Second row: Helen Snow, Shelvey Simmons, Marie Simpson, Libby Dockery, President; Rayvena Key. Third row: Lois Barber, Patty Wall, Lucy Bean, Frances Haynes, Barbara Freeman, Elizabeth Hutchens, Sylvia White, Dorothy Stanley, Mrs. Norman, Sponsor.



*4-H Club*



Mr. Thompson, Advisor; Bobby Hodges, President; Jimmy McLaurin, Vice President; Bobby Freeman, Secretary; Harry Folger, Reporter; Mary Ruth Shelton, Song Leader.

*Teen-Age  
Club*



Jimmy McLaurin, President; Jeanene Hardy, Vice President; Audrey Woodruff, Secretary; Pauline Draughn, Treasurer; Libby Dockery, Bobby Hodges, Hilda Snow, Freddie Rosendahl, Debbie Weimar, Class Representatives.



Nov. 7

*Champions*



ROOSEVELT WHITE  
Left End



JIMMY McLAURIN  
Right End



COY SMITH  
Fullback



MR. DENNEHY - Coach  
WADE DAVIS - Tackle  
DONALD LEE WILMOTH - Halfback



JIM COLLINS  
Center



ROY LEE ATKINS  
Halfback



OLIN LINVILLE  
Halfback



TROY WRIGHT  
Halfback





J. W. BRANCH  
Right Guard



JAMES BLEDSOE  
End

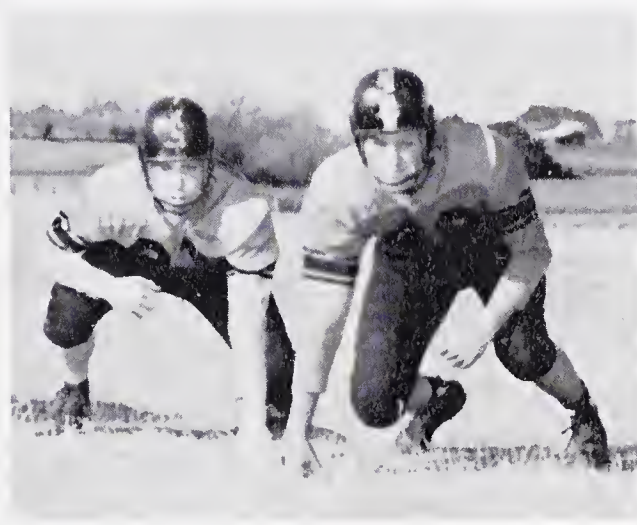


BOBBY HODGES  
Quarterback

*Dobson  
Tigers*



N. E. ALBERTY  
Guard



BILLY WHITE  
Guard  
DELMER WOOD  
Tackle



RAY ALBERTY  
Quarterback



JESSE ATKINS  
Center



BOBBY FREEMAN  
Tackle



*J.V.  
Football  
Squad*



First row: Larry Slauwter, Don Draughn, Garry Kidd, Billy Nixon, C. W. Haney, Larry Davis, Larry Barker, Thomas Snow, Wayne Atkins, Max Smith. Second row: Roger Cave, Joe Callahan, Charlie Price, J. B. Alberty, John Bode, Larry Snow, Joe Bill Hemric, Manager; Mr. Dennehy, Coach.



*Monogram  
Club*



First row: Jackie Hemrich, Shelvey Simmons, Marie Simpson, Helen Snow, Mary Ruth Shelton, Libby Dockery, Jeanene Hardy, J. W. Branch. Second row: Mr. Dennehy, Sponsor; Wade Davis, Jimmy McLaurin, Jessie Atkins, James Bledsoe, Bobby Freeman, Billy White, Jim Collins. Third row: Roy Lee Atkins, Frank Barnes, Olin Linville, Franklin Bode.



*Girls'  
Basketball  
Team*

First row: Treva Gillespie, Carlene Brendle, Mary Ruth Shelton, Vena Jenkins, Nellie Payne. Second row: Gaynell Bledsoe, Audrey Woodruff, Jeanene Hardy, Brenda Hamlin, Shirley Stanley. Third row: Mr. Madison, Coach; Barbara Hardy, Betty Lou Watson, Elsie McCraw, Rosemary Wilmoth, Barbara Stewart, Manager.

*Cheerleaders*



Marie Simpson, Chief; Libby Dockery, Helen Snow, Shelvey Simmons, Janice Jenkins, Rayvena Key, Shelby Shew, Nellie Coe, Carolyn Hamlin, Maxine Coe, Georgia Draughn.

*Boys'  
Basketball  
Team*



First row: Roosevelt White, Frank Barnes, Jim Collins, James Bledsoe, Olin Linville, Jimmy McLaurin, Roy Lee Atkins. Second row: Oliver Hudson, Manager; Franklin Bode, Harry Folger, Jessie Atkins, Bobby Hodges, Troy Wright, Billy Hardy, Coy Smith, Mr. Dennehy, Coach.



*Starting  
Line-Up*

Roosevelt White, Frank Barnes, Jimmy McLaurin, Bobby Hodges, Troy Wright, Mr. Dennehy.

## *Boys' Basketball Record 1955-1956*

DOBSON		OPPONENTS
50	Boonville	39
64	Shoals	23
47	Pilot Mountain	34
63	Copeland	42
46	Beulah	36
48	Yadkinville	30
65	White Plains	47
76	Lowgap	36
61	Franklin	67
57	Beulah	44
69	Westfield	47
59	Boonville	40
47	White Plains	34
62	Pilot Mountain	42
48	Yadkinville	35
50	Mountain Park	56
52	Flat Rock	48
55	Mountain Park	53





*Activities*



*High School King and Queen*

JAMES ROBERT SPOON - JANE THOMPSON



## *Junior-Senior Banquet*



"The Four Knights"

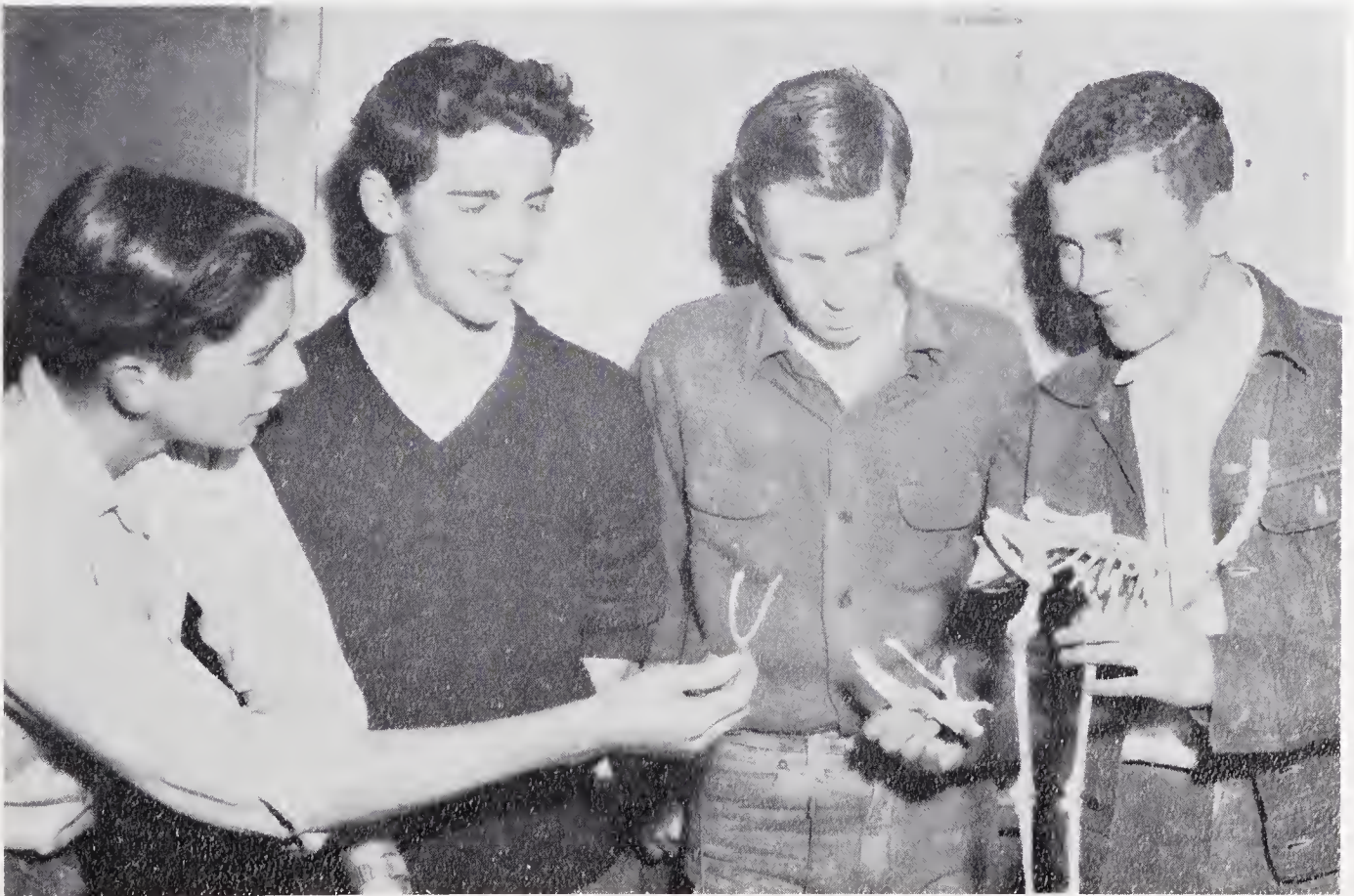
Coy Smith, Troy Wright  
Bobby Hodges, Roosevelt White



"Jack Webb" - "Eddie Fisher"

James Robert Spoon  
Harold Myers

Exhibit for Science Fair in Greensboro.



Larry Rector, Harley Hodges, Wilson Tilley, Terry Hardy.



### *Cafeteria Staff*

Mrs. Callahan, Mrs. Wolfe, Mrs. Harris, Shirley Simpson, Bernice Simpson.



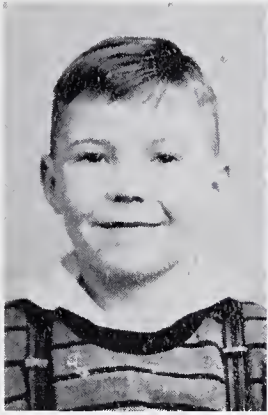
### *Store Workers*

Nellie Payne  
Betty Lou Watson

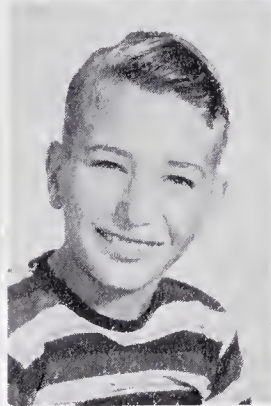
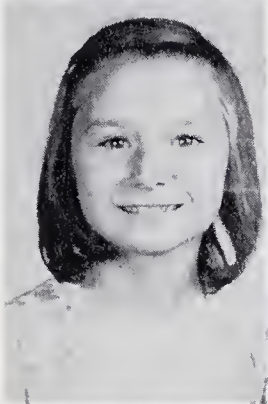
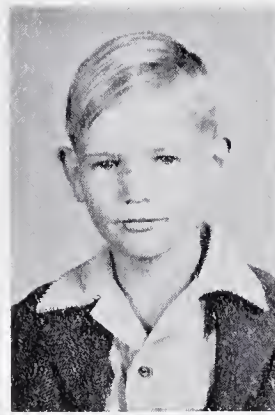
### *Janitor*

Mr. Jenkins





*Dobson  
Seniors  
???*







*Contour*

Luck and Success

to the

Class of '56

From

**MAYO  
SPRUCE**

Underwear - Sportswear - Sleepwear

Products of Washington Mills Co.



WORKMEN'S FEDERAL SAVINGS AND LOAN ASSOCIATION

Safety

Availability

Convenience

Liberal Dividends

Ask About Our Four Point Savings Program . . .

*Niblock Typewriter Company*

*Authorized Agent for*

UNDERWOOD TYPEWRITERS - ADDING & ACCOUNTING MACHINES

H. G. NIBLOCK  
PHONE 7013

675 W. FOURTH ST.  
WINSTON-SALEM, N. C.

CECIL GORDON'S  
Groceries and Service

Phone 3375



Dobson, N. C. Highway 601

# THE SURRY COUNTY LOAN & TRUST COMPANY

Dobson, N. C.

Mount Airy, N. C.



There Are Larger Banks but None Safer.

Complete Banking Service



*Just Good Food!*

## GREEN OAKS

RESTAURANT

Home of Fine Foods  
MRS. SAM MARTIN, Prop.  
Dobson, N. C.

## BEASLEY

CLEANERS

For the Best in Service  
Phone 3305  
Dobson, N. C.

## THE FAIR STORE

Fair and Square  
Outfitters for the Family  
Phone 1442  
Mount Airy, N. C.

## TAYLOR

WAREHOUSE CO.  
Winston-Salem, N. C.  
  
Two Warehouses  
Taylor's No. I  
Taylor's No. II  
  
A Sale Every Day at  
TAYLOR'S

## H & W

GULF SERVICE  
666 N. Bridge St.  
Elkin, N. C.  
Phone 385  
  
Operated by  
RICHARD HARDY  
BEAMER WOOD

## H & L

EQUIPMENT COMPANY  
Allis Chalmers - New Holland  
and New Idea Farm Equipment

Sales - Parts and Service

Dobson, N. C.





# Spainhour's

Elkin's Quality Department Store

Compliments of

## R & G

HARDWARE

Paints and  
Supplies

Electrical  
Appliances

Phone 3575

Dobson, N. C.

## DAVIS BROTHERS

IMPLEMENT CO.

Your Minneapolis -  
Moline Dealer

Phone 2305

Dobson, N. C.

## ALBERTY'S

STORE

Fertilizer - Feed - Seed  
and Groceries

Phone 3415

Dobson, N. C.



### DOBSON DRUG STORE

DEPENDABLE DRUGS-REASONABLE PRICES

Phone 3285

Dobson, N. C.

## SOUTHARD

HATCHERY

Quality Chicks

Poultry Supplies

Phone 3125

Dobson, N. C.

*W. M. White*

GENERAL MERCHANDISE

Dobson, N. C.

*Leonard's*

Since 1893

Diamonds - Watches  
Gifts

Mount Airy, N. C.



Pay Cash

Pay Less

J. C. PENNEY  
COMPANY, INC.

Mount Airy, N. C.

FOWLER

MOTOR CO.

Mount Airy, N. C.



*Your*



DEPENDABLE  
DRUGGIST

WOLFE'S DRUG STORE

Mount Airy, N. C.

TODD-HARRIS TRACTOR CO., INC.

SALES



SERVICE

Phone 3475

Dobson, N. C.

# THE FIRST NATIONAL BANK

Established 1893

Member FDIC

Mount Airy, North Carolina

W. E. WOOD AND SON  
BARBER SHOP

Your Appearance Is Our  
Business

Dobson, N. C.

Compliments of

## BEN'S

GRILL

Route 4

Mount Airy, N. C.

Compliments of  
**BROWN'S**

WAREHOUSE

Winston-Salem, N. C.

## DRAUGHN'S

TEXACO SERVICE

A Complete Line  
of Products

Phone 9655

Dobson, N. C.

*Latest fashions*

## F. Rees

MEN AND BOYS' STORE

Mount Airy, N. C.



# Herff-Jones

## COMPANY

World's Largest Manufacturer of Class Rings

Indianapolis 7, Indiana

E. W. PADDISON, Representative

Phone 325

Mount Airy, North Carolina

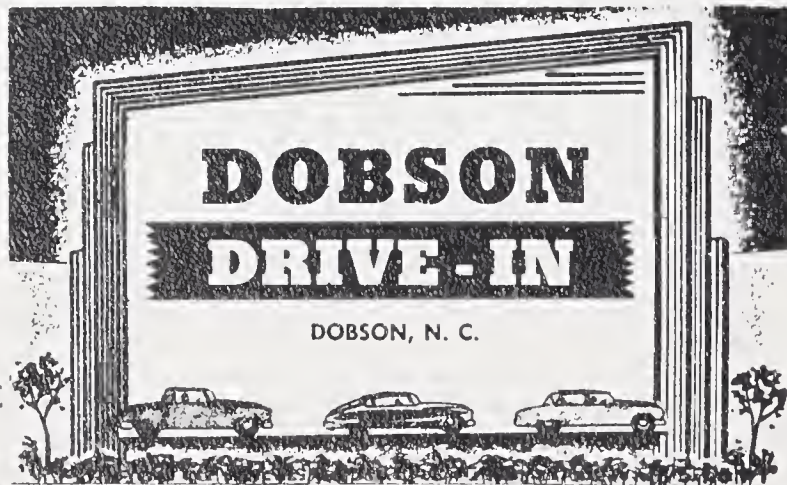
Chatham Makes Good Blankets

# CHATHAM

MANUFACTURING COMPANY

Elkin, North Carolina

Your  
Favorite  
Spot



for  
Fine  
Movies

Compliments of  
**SEALTEST**

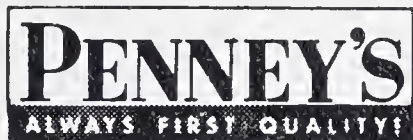
MILK & ICE CREAM

Visit Our Modern Dairy Bar

2221 Patterson Ave.

Phone 2-4161

Winston-Salem, N. C.



Pay Cash

Pay Less

J. C. PENNEY  
COMPANY, INC.

Elkin, N. C.

CROUSE TEXACO SERVICE  
620 North Bridge Street  
Elkin, N. C.



F-W CHEVROLET CO., INC.  
for Economical Transportation

Elkin,



N. C.

Wrecker Service

Day Phone 255  
Night Phone 775

ELKIN - JONESVILLE  
BUILDING & LOAN  
ASSOCIATION

Save for Your Future

Elkin, N. C.

Sell Your Tobacco  
at

LIBERTY  
Phone 2-5332

DIXIE  
Phone 5-1318

FARMERS  
Phone 2-9640

WAREHOUSES  
Winston-Salem, N. C.

THREE SALES EVERY DAY

JOE PELL, JR.  
MOSS JOYNER

Proprietors  
JOE BOULDIN, Auctioneer

F. P. JOYCE  
BILL SHEETS

# SURRY-YADKIN

ELECTRIC MEMBERSHIP CORP.

"Owned by Those We Serve"

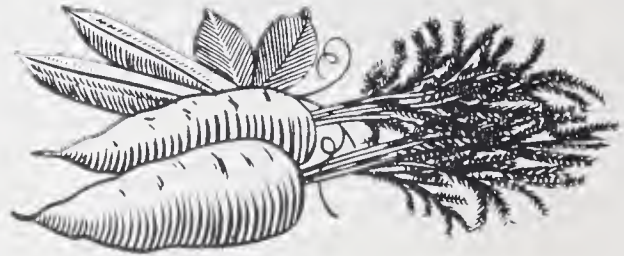
Serving 6,800 Homes in Five Counties

PHILCO - CORNETT'S TV

Factory Supervised  
Service

Phone 2571

HODGES GROCERY  
Groceries and Meats



Rt. 1, Dobson, N. C.  
Phone 9111

DOWN TOWN BARBER SHOP

Open From 6:30 A. M. Until  
6:00 P. M.

Friday - 6:30 A. M. Until  
6:30 P. M.

Saturday - 6:30 A. M. Until  
8:30 P. M.

Shower Bath

D. O. KEY AND S. F. TAYLOR,  
Managers  
Elkin, N. C.

*Betty's*

BEAUTY SHOP

BETTY STEWART, Owner

A Complete Beauty Service

"For Those Who Care"

Phone 2595  
Dobson, N. C.

## THE BANK OF ELKIN

ELKIN, N. C.

Member Federal Deposit Insurance Corp.

CRISSMAN'S  SERVICE

"A Complete Line of Esso Products"  
TIRES & BATTERIES

Phone 3266

Dobson, N. C.

SERVICE WHEN  
YOU NEED IT



HYLTON SUPPLY COMPANY,  
INC.

Next to the Post Office  
Housewares - Appliances  
Hardware

Phone 237  
Mt. Airy, N. C.



FRIGIDAIRE

*Maytag*

Compliments of

*Graham-Click*  
5-10¢ STORE

Elkin's Popular Variety Store

Elkin, N.C.

Mount Airy's First

Department Store

JACKSON  
BROTHERS

CARL W.  
STEELE

JEWELER

Watches - Diamonds  
China - Crystal - Silver

Phone 699

Mount Airy, N. C.



JACKSON  
COMPANY

Groceries - Meats

Phone 2185

Dobson, N. C.

Compliments of

*Sunny*

INSURANCE AGENCY

J. T. THREATTE    W. FRANK COMER    GRAHAM BRASINGTON

Dobson, North Carolina

ALLISON TREE  
SERVICE STATION  
Groceries - Gas and Oil  
Phone 2132



Highway 601    Dobson, N. C.

Phone 2576    Dobson, N. C.

**THOMPSON'S**

HATCHERY

Quality Chicks - Security Feeds

Farm Supplies

A Good Drug Store

**ABERNETHY'S**

PHARMACY

The Rexall Store

Elkin, North Carolina

VILLAGE MARKET

Quality Groceries  
at Lowest Prices



Phone 2585    Dobson, N. C.

AUSTIN - BLACKWELDER FURNITURE CO., INC.

"The Home of Quality Furniture for Less Money"

Dobson, N. C.

Phone 2451



Compliments of

*Moody*  
FUNERAL HOME

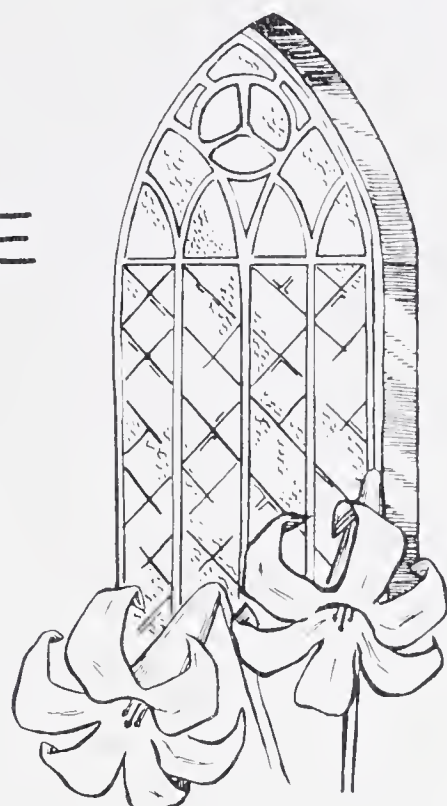
Mount Airy, North Carolina

Est. 1902

Complete Funeral and  
Ambulance Service

WADE C. MOODY

DENNIS W. MOODY



HAYES

CASH MERCANTILE

Fresh Meats  
Groceries and Feeds  
Dobson, N. C.

The Friendly Store

Phone 2516

Compliments of  
COOK & JOHNSON ESSO SERVICE

Elkin,

N. C.

Phone

251



WILLIAM D.  
WEIMAR

INC.

Manufacturers of Narrow Fabrics

Dobson, North Carolina

JESSUP-  
BROWN

SHOE STORE

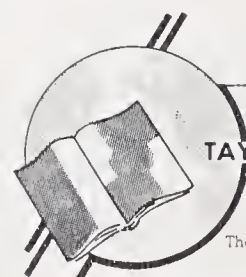
Headquarters for Teenage Shoes

All Sizes - All Prices

Mount Airy, N. C.







LITHOGRAPHED BY

**TAYLOR PUBLISHING CO.**

DALLAS • TEXAS

The Best Yearbooks are TAYLOR-MADE







