

DOE WAH JACK



1926



*Gressi & Pinaplow*

EX-  
LIBRIS







# THE DOE-WAH-JACK

NINETEEN HUNDRED  
AND TWENTY-SIX



VOLUME THREE

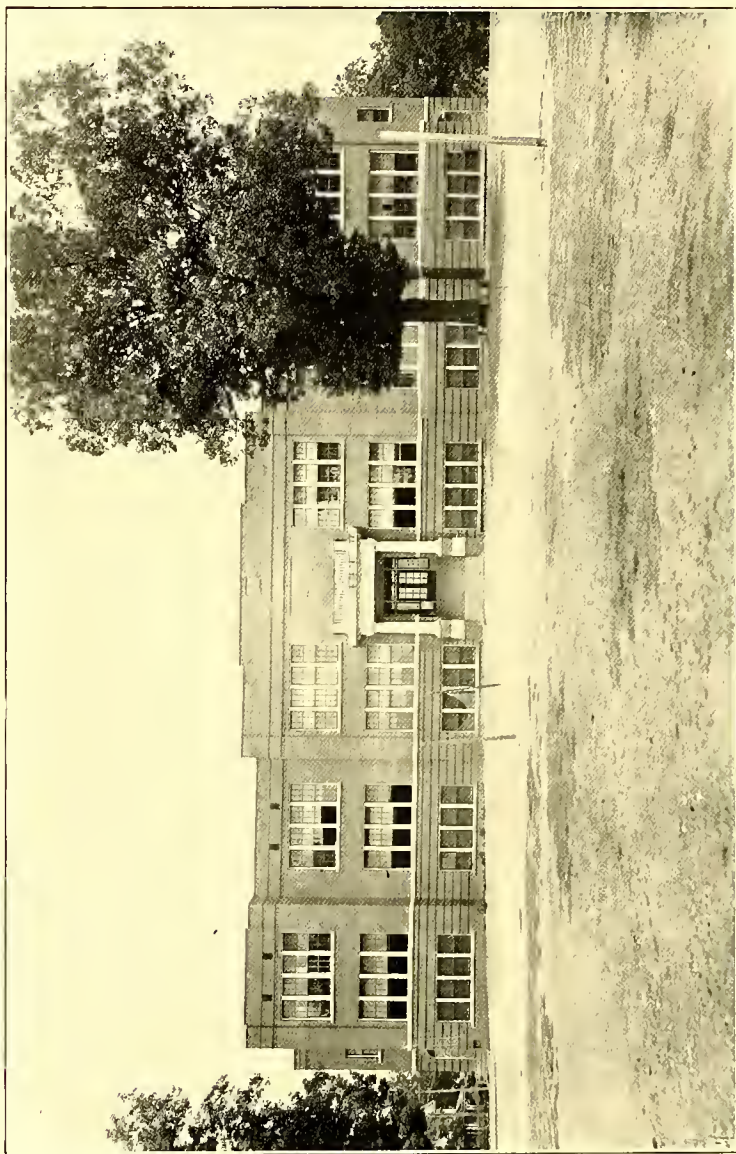
THE YEAR BOOK OF THE  
BURLINGTON HIGH SCHOOL  
BURLINGTON, N. C.

PUBLISHED BY THE SENIOR CLASS

PRESSES OF  
THE SEEMAN PRINTERY INCORPORATED  
DURHAM, N. C.



MR. E. C. LEONARD



BURLINGTON HIGH SCHOOL





## *Contents*

- I SCHOOL
- II CLASSES
- III ORGANIZATIONS
- IV SPORTS
- V FEATURES
- VI JOKES
- VII ADVERTISEMENTS





MR. J.P. MONTGOMERY



MR. F.L. WILLIAMSON-CHAIRMAN



MR. D.R. FONVILLE



MR. C.M. HORNER



DR. J.P. SPOON



MRS. T.D. COOPER



MR. R.W. BARNWELL

# BOARD OF EDUCATION



## Board of Education

**B**URLINGTON has always been fortunate in her Board of Education. The personnel of this body is at present as follows: Mr. F. L. Williamson, Chairman, M. J. P. Montgomery, Treasurer, Mrs. T. D. Cooper, Mr. R. W. Barnwell, Mr. C. M. Horner, Dr. J. P. Spoon, and Mr. D. R. Fonville. They give unstintingly of their time and thought to the improvement and advancement of our schools.

The enrollment for the present year is as follows:

High School . . . . .	362
Broad St. Elementary . . . . .	529
Maple Avenue School . . . . .	413
Fisher Street School . . . . .	397
<hr/>	
Total . . . . .	1701
Colored School . . . . .	425
<hr/>	
Grand Total . . . . .	2126

It was again necessary at the beginning of the present term to rent the building belonging to Mr. Ernest Murray on Ruffin Street, in which at present are housed one room of the first grade and one room of the third grade. This building has seven rooms, and they will probably all be in use next year. The time is, therefore, close at hand when it will be necessary for the city to vote more bonds with which to put the fourth building which will be erected in the first ward. The site was secured at the same time the Fisher Street and Maple Avenue Schools were erected.

According to observers outside of Burlington our schools take high rank, and are among those leading in library facilities, the health program and physical education, modern school cafeterias, the teaching of thrift, the organization and classification of pupils to meet individual needs, visual education, cleanliness and beautification of buildings and grounds, and a thorough-going business-like system of school accounting and financing. All accounts are carefully audited the first of July each year, and a full report is published. The schools have for several years more than lived within their income and have thus reduced the small indebtedness which accumulated during the war period when costs increased faster than income from taxes.

March 30, 1926.



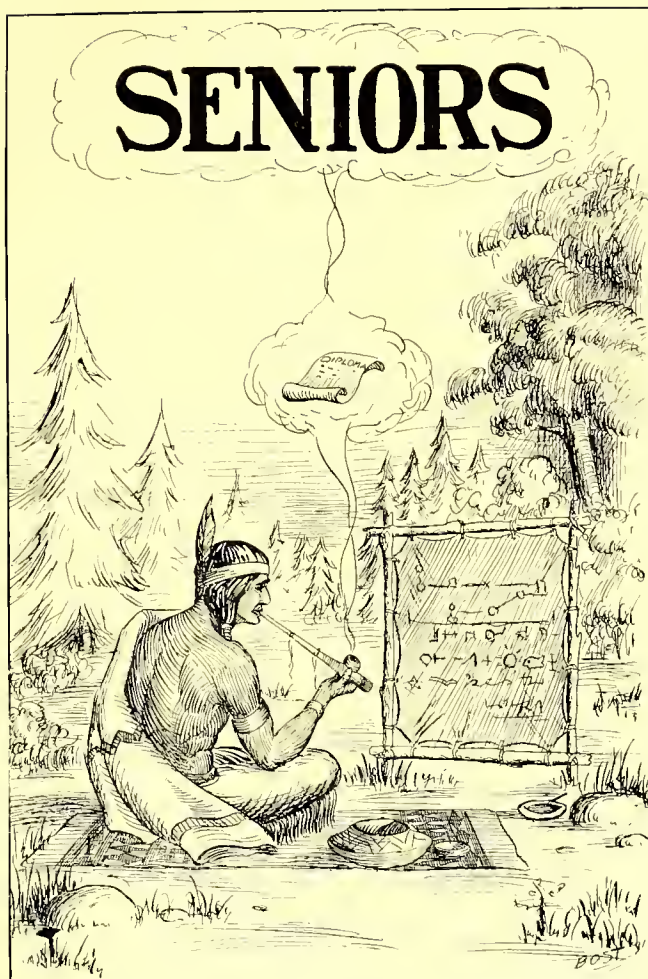


CHESTER C. HAWORTH  
Superintendent Burlington City Schools, 1918—











## The Circus Day Parade

The circus is in town today  
And all the children leave their play  
They run this way; they run that way  
Because it is a circus day.

They hear a drum go bum, bum, bum  
Then all the kids say "Come, come, come,"  
The Seniors even run to see  
The camel, lion and monkey.

They then select for their mascot  
Jo-har, the camel, from the lot.  
They choose him for his strength and pride  
Endurance, poise, patience beside.

NINA MEBANE '26.

Motto: "Lend a Hand"

Colors: Green and White

Flower: White Rose

### Officers

VERNON JONES.....	President
HERMAN HILL KING.....	Vice-President
EDITH HOLT.....	Secretary
THOMAS BRADSHAW.....	Treasurer
MARGARET BROWN.....	Historian
MARY ALYSE SMITH.....	Poet
HERMAN HILL KING.....	Prophet
EDITH HOLT.....	Prophetess
VIRGIL WINDHAM.....	Testator



Best wishes -  
W.D. Halfacre



WILLIAM D. HALFACRE  
Principal Burlington High School, 1923—

Don't forget your  
first teacher -  
a Kea Carroll.

DOE-WAH-JACK



Miss Emily Young  
HOME ECONOMICS



Miss Elizabeth Fulton  
MUSIC



Miss Edith Carroll  
ENGLISH



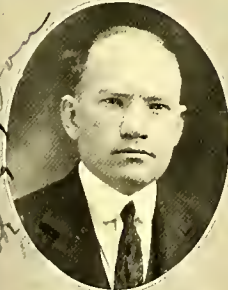
Miss Ruth Barbee  
HOME ECONOMICS



Mr. C.C. Haworth  
SUPERINTENDENT



Miss Aura Holton  
ENGLISH



Mr. J.V. Dabbs  
DIRECTOR PHYSICAL ED.



Miss Elizabeth Scarborough  
LATIN



Mr. M.Z. Rhodes  
MATHEMATICS

FACULTY

1926

Polly W. Kramham [ Yes, I'll be right here to sign all the year slips with you. Hope you are, too. ]



## *Our School*

Of all the schools we know,  
There's none so good as ours.  
All others rank below  
When they're compared with ours.

Our game we've played so well  
With but a single aim,  
Although we shout and yell  
"Always to play the game."

Our teachers are the best,  
And, this is plainly seen,  
They'll always lead the rest  
For to the right they lean.

Our school spirit's the stuff,  
It makes us win success;  
We falter not, nor bluff,  
Just work for B. H. S.

Our Classmates are more kind  
Than any in the State.  
True friends we here will find,  
And tasks, to make us great.

In all, there's this to say,  
Our school's the best of schools.  
And day by day we're gay  
Because, our School, it rules.

MARIE ALYSE SMITH, '26





*Good luck with  
best wishes  
always  
Lillian*

# DOE-WAH-JACK



Miss Gertrude Shepard  
MATHEMATICS



Mr. T. E. McBane  
CIVICS



Miss Annie Webster  
LATIN AND MATH.



Miss Adelaide Morrow  
FRENCH



Mr. W. D. Halfacre  
PRINCIPAL



Miss Attrice Kernodle  
HISTORY



Dr. P. C. Brittle  
SCHOOL PHYSICIAN



Miss Lois Cates  
NURSE



Mr. E. C. Leonard  
SCIENCE

*All good wishes  
to you.  
Lillian McBane*

FACULTY



## 1926



## Foreword

THE PURPOSES of the "Doe-Wah-Jack" Staff of 1926 have been many, and in presenting to you the third volume of the "Doe-Wah-Jack," we hope that, at least, some of these have been accomplished. We sincerely hope that by this book the present students will be made to realize more fully the opportunities and charms of the present before it become the past; that to former students fond recollections and sweet memories of their High School days will be recalled; and that the volume will stand forth among the future students as a memorial and a record of the achievements of the class of 1926. Hoping that these purposes will be realized, we present to the students and friends of our school the third volume of the "Doe-Wah-Jack."



© 1926 A. A. C.



DEDICATION

TO

MR. E. C. LEONARD

WHOSE MANY YEARS OF FAITHFUL LABOR, WHOSE  
UNDIVIDED INTEREST IN EVERY STUDENT, AND  
WHOSE EVER-READY HELP IN SOLVING ALL PROBLEMS,  
HAS WON FOR HIM AN IMPORTANT PLACE  
IN OUR SCHOOL LIFE, AS WELL AS THE ADMIRATION  
AND RESPECT OF THE PUPILS, WE RESPECTFULLY

DEDICATE THE THIRD VOLUME OF

**The Doe-Wah-Jack**



WALTER VERNON JONES  
"RUNT"

"Rare compound of quality, noble and true,  
A plenty of wit and good sense, too."

Assistant Business Manager Doe-Wah-Jack '25; Business Manager Doe-Wah-Jack '26; Athenian Literary Society '23, '25; President Masquers Dramatic Club '26; President Literary Lights Club '26; President Class '25; Class Marshall '25; Varsity Football '24, '25; Captain Football '25; Varsity Basketball '24, '25, '26; Varsity Tennis '23, '24, '25, '26; Captain Tennis '25; Manager Tennis '26; Class Basketball '23, '24, '25, '26.

HERMAN HILL KING  
"JUDGE"

"A loyal heart, a strong mind,  
A nobler friend, you'll never find."

Glee Club '26; Masquers Dramatic Club '26; Band '26; Class Prophet '26; Excelsior Literary Society '23; Euphonian Literary Society '24; Athenian Literary Society '25.

EDITH ELIZABETH HOLT  
"EDIE"

"Sparkling eyes and a smiling face,  
A loveliness that is full of grace."

Secretary Phalo Literary Society '23, '24; Tennis Club '23, '24, '25, '26; Philomean Literary Society '25; Basketball '26; Glee Club '26; Secretary Little Theatre Dramatic Club '25; President Little Theatre Dramatic Club '26; Class Secretary '26; Class Prophetess '26.

THOMAS RENNESEALER BRADSHAW  
"TOM"

"What is admired by the whole human race  
Is the eternal cheerfulness on this man's face."

Football '25; Baseball '26; Class Baseball '23, '24, '25, '26; Class Marshall '25; Treasurer Senior Class '26; Cheer Leader '26; Hi-Y Vice-President '26; Glee Club '26; Excelsior Literary Society '25; Euphonian Literary Society '23.

EVERETT J. ALLRED  
"EB"

"Slow and steady, but ever helpful in the game of life."

Athenian Literary Society '25; Art Club '26; Philosophical Science Club '26; Class Volley-Ball '26; Class Baseball '26.



Wishing you  
success in  
life.  
Always,  
"Jud"

Here's to one  
of my dear little  
high school friends  
Edie, Holt

Hope you  
are all  
well.

Hilda

forget

Best o' luck to  
you always.  
Dorothy B.



### HILDA MAUDE AMICK

"HILLIE"

"You'll always find her true and just,  
A girl whom all will love and trust."

Secretary and Treasurer Philomean Literary Society '24; Hesperian Literary Society '25; Little Theatre Dramatic Club '26; Secretary Le Cercle Francais '25.

### RAYMOND BELL

"PHOTO"

"The world would be mine if I just had time to  
take care of it."

Athenian Literary Society '24, '25; Glee Club '26; President Philosophical Science Club '25; President Masquers Dramatic Club '26.

### SWANNIE MAE BLACK

"SHORTY"

"Happy am I, from care I'm free,  
Why aren't they all contented like me?"

Philomean Literary Society '23, '24, '25; Vice-President Philomean Literary Society '25; Little Theatre Dramatic Club '26; Dialectic Literary Club '26; Secretary Dialectic Literary Club '26.

### DOROTHY MAE BRITTLE

"DOT"

"Tis the music you play, and the grades you make  
That make us do everything for your sake."

Phalo Literary Society '24; Hesperian Literary Society '25; Olympian Latin Club '25, '26; Secretary Olympian Latin Club '25; High School Orchestra '25, '26.

### MARGARET ETHEL BROWN

"MART"

"She is true to her word, work and her friends."

Alvin Literary Society '25; Le Cercle Francais '26; Literary Lights '26; Class Historian '26.



CLARA LOUISE CLAPP

"CLARISSA"

*"If ye are sad,  
Then seek her."*

Phalo Literary Society '23, '24; Philomean Literary Society '25; Secretary and Treasurer Philosophical Science Club '25; First Critic Le Cercle Francais '25.

ROY HARRIS CLARK

"SON"

*"I dare do all that may become a man."*

Athenian Literary Society '23, '24, '25; Philosophical Science Club '26; Debating Club '26.

RUTH CAROLINE COLE

"RUFUS"

*"Success is sure to be,  
To one so faithful as she."*

Phalo Literary Society '23, '24, '25; Vice-President Phalo Literary Society '25; Olympian Latin Club '25; Press Reporter Stage Steppers Dramatic Club '26; President Le Cercle Francais '26.

HALLIE CARLEEN CRUTCHFIELD

"SHAGG"

*"With her brown eyes and little smiles  
Success will carry her miles and miles."*

Glee Club '23, '26; Phalo Literary Society '25, '26; Masquers Dramatic Club '26.

BENJAMIN FRANKLIN DELOATCH, JR.

"BENNY"

*"Three-fifths of him genius and the rest sheer bluff."*

Philosophical Science Club '26; Le Cercle Francais '26; Manager Volley-Ball Team '26.



*! apt!  
"Rufus"*





### GUY BERNARD EPHLAND

#### "CAMERA"

*"There are no ladies left, I have 'em all."*

Hi-Y Club '23, '24, '25, '26; President Hi-Y Club '25; Euphonian Literary Society '23, '24; Treasurer Excelsior Literary Society '25; Clee Club '24, '25, '26; Varsity Baseball '24, '25, '26; Varsity Football '25; Varsity Basketball '24, '25, '26; Varsity Track '25, '26; Class Basketball '23, '24, '25, '26; Class Baseball '23, '24, '25, '26.

### MAXWELL BROOKS FOGLEMAN

#### "MAXINE"

*"A jolly good fellow was he  
So blythe, and gay, and free."*

Literary Society '22; Excelsior Literary Society '24; Class Volley-Ball '23, '24; Class Baseball '25; President Art Club '26.

### NAT FOWLER

#### "INSECT"

*"I will stand up for what I think is right,  
Let the results come."*

Vice-President Class '25; Athenian Literary Society '23, '24, '25; President Dialectic Literary Club '26; Athletic Editor "Doe-Wah-Jack" '26; Hi-Y Club '23, '24, '25; Clee Club '24, '25, '26; Class Basketball '23, '24, '25; Class Baseball '23, '24, '25, '26; Varsity Football '24, '25; Varsity Basketball '24, '25, '26; Captain Basketball '26; Varsity Baseball '24, '25, '26.

### ELMA JOYCE FOX

*"And still the wonder grows,  
That one small head can carry all she knows."*

Phalo Literary Society '23, '24; Alvin Literary Society '25; Le Cercle Francais '26; William J. Bryan Forensic Club '26.

### EUGENE RUSSEL GLOSSON

#### "BOB MUCILAGE"

*"Idle slow, and unconcerned,  
He went to class and sometimes learned"*

Euphonian Literary Society '25; Philosophical Science Club '26; Hi-Y Club '26; Varsity Baseball '25, '26; Varsity Football '24, '25.

RUBY MOZEL GOINS

"RUBY DO"

"A smile on her lips and a word for each friend."

Phalo Literary Society '23, '24; Philomean Literary Society '25; Glee Club '26; Masquers Club '26; Varsity Basketball '25, '26.

RUTH GREESON

"ROOKY"

"Joyously I follow laughter's path,  
And now and then indulge in Math."

Philomean Literary Society '22, '23; Alvin Literary Society '24; La Cercle Francais '26; Glee Club '26.

JAMES EDWARD HALL

"PEE WEE"

"From the day you're born till the day you ride in a hearse,  
There's nothing so bad that it couldn't be worse."

Euphonian Literary Society '23; Vice-President Excelsior Literary Society '25; President Philosophical Science Club '26; Varsity Football '24, '25; Varsity Baseball '24, '25, '26; Class Baseball '23, '24, '25, '26; Manager Basketball '26; Glee Club '26.

ZETTIE IVER HALL

"SCROOCHY"

"She, with a heart of purest gold,  
Will always do what she is told."

Phalo Literary Society '23, '24; Philomean Literary Society '25; First Censor Dialectic Literary Club '25; President Dialectic Literary Club '26; Little Theatre Dramatic Club '26.

ALLIE EDNA GANELLE HAWN

"DUCK"

"A sweet, heart-lying cheerfulness,  
Like springtime of the year,  
Seemed ever on her steps to wait—  
No wonder she was dear."

Phalo Literary Society '23, '24; Alvin Literary Society '25; Stage Steppers Dramatic Club '26; Olympian Latin Club '25, '26.



May Foster  
2 hills  
upon  
my  
acorn  
y- - -

Leaf of  
always

May Duck be  
in your path  
way  
away  
Allie  
"



# CORA ELIZABETH HINSHAW

"LIZ"

"The world looks better  
From behind a smile."

Phalo Literary Society '23; Alvin Literary Society '25; Girls' Athletic Association '25; Girls' Track '25; Basketball '25; Science Club '26; Masquers Club '26.

# ROBERT EDWARD LEE HOLT, JR.

"SPEED"

"The most precious things are often done up in small packages."

Treasurer Athenian Literary Society '25; Tennis Club '23, '24, '25; Euphonian Literary Society '24, '25; Humorous Editor "Doe-Wah-Jack" '26; Latin Club '26; Vice-President Latin Club '26; Tennis '26.

# MILDRED MIRIAN HOLT

"CHILLIE"

"Her eyes are blue her lips are true,  
All told, her faults are few."

Phalo Literary Society '23, '24; Vice-President Hesperian Literary Society '25; Treasurer Dialectic Literary Club '26; President Latin Club '25; Secretary and Treasurer Latin Club '26; Vice-President Masquers Club '26; Class Historian '24, '25; Literary Editor "Doe-Wah-Jack" '26; Manager Training '25; School Marshal '25; Varsity Tennis '24, '25, '26; Manager Tennis '25; Manager Basketball '26; Assistant cheer-leader '26.

# ALICE DREWERY HOMEWOOD

"SUNSHINE"

"Ambition rules her brain, and love her heart."

President Plalomean Literary Society '25; Vice-President Le Cercle Francais '26; President Stage Steppers Dramatic Club '26; Press Reporter Stage Steppers Dramatic Club '25.

# MARY FOSTER HORNE

"MARIE"

"To know her is to love her."

Phalo Literary Society '23; Class Basketball '24; Tennis Association '24, '25; Hesperian Literary Society '25; Girls' Athletic Association '25; Little Theatre Dramatic Club '26; Dialectic Literary Club '26.

LILLIAN LOUISE ISLEY

"TUNCE"

"A live heart lives long."

Phalo Literary Society '23, '24; Glee Club '25;  
Alvin Literary Society '25; Le Cercle Francais  
'26; Little Theatre Dramatic Club '26.

RANDOLPH ISLEY

"SPUD"

"A hon among the ladies is a terri-bull thing."

Euphonian Literary Society '23, '25; High  
School Band '26; Edison Science Club '26; Class  
Volley-Ball '26; Class Baseball '26.

ANNIE LEE IVEY

"IVY"

"When hearts are true  
Few words will do."

Phalo Literary Society '23, '24; Alvin Literary  
Society '25; Le Cercle Francais '26; Little  
Theatre Dramatic Club '26.

THOMAS HURIEGN KNOTT

"TOMMY NOT"

"A smile; a whisper;  
And I have won."

Athenian Literary Society '22, '23; Euphonian  
Literary Society '24, '25; Hi-Y Club '23, '24, '25,  
'26; Vice-President Hi-Y Club '25; Class Cheer  
Leader '22, '23; Class Volley-Ball '24, '25;  
Class Baseball '22, '23, '24, '25; Assistant Cheer  
Leader '25, '26; Glee Club '23, '24, '25, '26;  
Tennis Club '23, '24.

W. H. MAY, JR.

"H"

"Most girls like the kind of "Sheik"  
Who does his sheiking six times a week."

Class Basketball '22, '23; Athenian Literary  
Society '23, '24, '25; Stage Steppers Dramatic  
Club '26; President Edison Science Club '26;  
School Marshall '25; Tennis Team '24, '25, '26;  
Class Baseball '23, '24.







NINA LOUISE MEBANE

"NICK"

*A still tongue makes a wise head."*

Literary Lights '26; President Le Cercle Fran-  
cais '26.

DAVID MOORE

"DAVE"

*"Silence is golden, then why talk."*

Philosophical Science Club '25; Art Club '25.

RUTH ERMA MORTON

"RE"

*"Modest and sweet, calm and sincere."*

Glee Club '23, '24; Phalo Literary Society '23;  
Philomean Literary Society '24; Secretary and  
Treasurer Philosophical Science Club '26; Le  
Cercle Francais '26.

KERMIT LEROY NEESE

"K"

*"I do the day's work."*

Athenian Literary Society '23, '24; Secretary  
Athenian Literary Society '24; Euphonian Lit-  
erary Society '25; Vice-President Euphonian  
Literary Society '24; Hi-Y Club '24, '25, '26;  
Secretary Hi-Y Club '25; Corresponding Sec-  
retary Hi-Y Club '26; Debating Club '26; Sec-  
retary Debating Club '25; Representative  
Declamation Contest at Guilford '23, '24.

GORDON FRANKLIN NOAH

"ARK"

*"Come work, I am not afraid of thee."*

Euphonian Literary Society '22, '23, '24;  
William J. Bryan Debating Club '25; Glee Club  
'25; Tennis '26; Varsity Basketball '23, '24;  
Assistant Manager Track '24; Varsity Track  
'23, '25, '26.

BERNICE FILMORE OAKLEY

"Tis the songs you sing and the smiles you wear  
That make the sunshine everywhere."

Philomean Literary Society '23, '24; Hesperian  
Literary Society '25; Masquers Dramatic Club  
'26; Glee Club '25, '26; Hiking Club '25.

JONAH PARRISH

"WHALE"

"If he will, he will and you may depend on it,  
If he won't, he won't and there's an end on it."

Hi-Y Club '25; Art Club '25.

TESSIE VIRGINIA PAUL

"TESS"

"The most precious parcels are often done up in  
small packages."

Phalo Literary Society '23, '24, '25; Vice-  
President Phalo Literary Society '24; Le Cercle  
Francais '26; Little Theatre Dramatic Club '26.

TULA BEATRICE PAUL

"TUDIE"

"Determination rules her mind  
And ne'er so true a friend you'll find."

Phalo Literary Society '23, '24, '25; Vice-  
President Little Theatre Dramatic Club '26;  
Vice-President Le Cercle Francais '26; First  
Critic Senior Class '26.

RICHARD M. POTTER

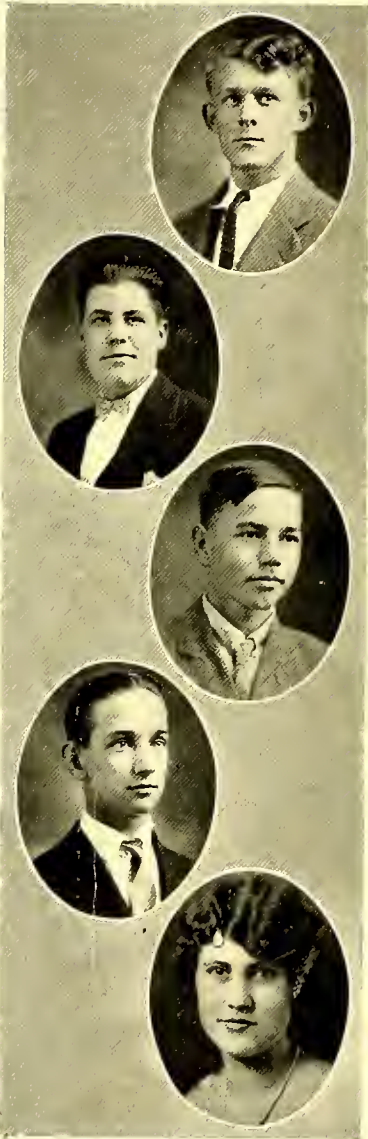
"WANey"

"The bull is mightier than the bullet."

Euphonian Literary Society '23, '25; Olympian  
Latin Club '25; Philosophical Science Club  
'26; Little Theatre Dramatic Club '26; Class  
Baseball '26; Class Volley-ball '25, '26; Sec-  
retary of the "Spud" Club '26; Class Tennis '25.



Best wishes  
to you, Fred,  
may you someday  
be a senior.  
Richard  
Potter



# WILLIAM WALTER QUALLS

## "SPEEDY WILLIAM"

*"Hitch your wagon to a star;  
Fly among the clouds."*

Euphonian Literary Society '23; Excelsior Literary Society '25; Le Cercle Français '26; Hi-Y Club '26; Secretary Hi-Y Club '25; Class Baseball '25, '26; Class Volley-Ball '26; Track '24, '25, '26.

# THOMAS BEATTY RECTOR

## "JIM DUNN"

*"And may there be no sadness of farewell,  
When we embark."*

Athenian Literary Society '25; Treasurer Hi-Y Club '26; Masquers Club '26; Volley-Ball '25, '26; Captain Volley-Ball '26; Class Censor '25.

# ASHBY ROBERTSON

## "PEDRO"

*"They say there are more able men, but I will have  
to get my glasses."*

Euphonian Literary Society '23, '24; Athenian Literary Society '25; Edison Science Club '26; B. H. S. Band '26.

# SAMUEL VANCE SIMPSON

## "SALESMAN SAM"

*"Wit and humor belong to the genius alone."*

Excelsior Literary Society '25; Hi-Y Club '26; Class Baseball '25, '26.

# MARIE ALYSE SMITH

## "A"

*"As sweet and musical as bright Apollo's lute."*

Phalo Literary Society '23, '24; Philomean Literary Society '25; First Censor Junior Class '25; Olympian Latin Club '25; Girls' Glee Club '23, '24, '25, '26; Tennis Association '25; Vice-President Little Theatre Dramatic Club '26; Pianist B. H. S. Orchestra '26; Secretary and Treasurer B. H. S. Orchestra '26; Class Poet '26.

# DURWARD TURRENTINE STOKES

"D"

"Long may we journey before we find another heart so manly or so kind."

Euphonian Literary Society '23, '24; Secretary Euphonian Literary Society '24; Secretary Athenian Literary Society '25; Press Reporter Athenian Literary Society '25; Tennis Club '23, '24; Band '25, '26; Orchestra '26; Vice-President Orchestra '26; Little Theatre Dramatic Club '26; President Little Theatre Dramatic Club '26; Press Reporter Little Theatre Dramatic Club '26; Assistant Editor-in-Chief "Doe-Wah-Jack" '25; Editor-in-Chief "Doe-Wah-Jack" '26.

# ANNIE RICE TATE

"RICY ANNE"

"A smile for all she meets,  
A charm to make each memory sweet."

Philomean Literary Society '23, '24; Alvin Literary Society '25; Art Club '26; Little Theatre Dramatic Club '26; Basketball '26.

# KENT B. THOMPSON

"BEEFY"

"As full of spirit as the month of May."

Athenian Literary Society '21, '22; Excelsior Literary Society '24; Science Club '26; Glee Club '26; Second Censor Science Club '26; Varsity Football '23, '24, '25.

# WILLIAM REED THOMPSON

"COWBRAN"

"None but himself can be his parallel."

Hi-Y Club '24, '25, '26; Excelsior Literary Society '25; Edison Science Club '26; Secretary and Treasurer Edison Science Club '25; Vice-President Edison Science Club '26; Varsity Basketball '25, '26; Class Baseball '24, '25, '26.

# MILDRED INEZ TROLLINGER

"KIP"

"With her smiles in B. H. S.,  
She has surely won success."

Phalo Literary Society '23, '24; Secretary and Treasurer Phalo Literary Society '24; Hesperian Literary Society '25; Little Theatre Dramatic Club '26; Orchestra '26; Class basketball '25, '26; Track '25; Hiking Club '26; Girls' Athletic Association '25.





*-2/  
 nappies  
 on. Be royal  
 H.S. and  
 over the  
 7. 10.  
 ing's Windham*



VIRGIL MOORE WINDHAM

"BOOB"

"Where duty calls 'thou must';  
The youth replies, 'I can.'"

Treasurer Euphonian Literary Society '25;  
Treasurer Art Club '26; Philosophical Science  
Club '26; Class Volley-Ball '26; First Censor  
Senior Class '26.



JAMES WALLER WORKMAN

"BIG LIP"

"Who needeth a workman?"

Euphonian Literary Society '23, '24, '25; Vice-  
President Euphonian Literary Society '25; Press  
Reporter Dialectic Literary Club '26; Secretary  
Class '25; Hi-Y Club '24; Glee Club '24; '25,  
'26; Baseball Squad '24; Varsity Baseball '25;  
Football Squad '24; Varsity Football '25; Basket-  
ball Squad '25.



HOWARD DAVID WRIGHT

"BARNEY O'FIELD"

"Oh! Those heart breaking brown eyes!"

Glee Club '25, '26; Athenian Literary Society  
'25; Philosophical Science Club '26; Basketball  
'25; Captain Class Volley-Ball '26.



HAROLD GORDON WADDELL

"SLIM"

"He is firm, strong, bold, and steady  
When there's work to do,  
He is always ready."

Athenian Literary Society '22; Excelsior Lit-  
erary Society '24; Vice-President Excelsior Lit-  
erary Society '25; Treasurer Hi-Y Club '26; Pre-  
sident Edison Science Club '25; President Class  
'25; Varsity Football '25; Varsity Basketball  
'26; Baseball '26.

LOUISE WADDELL

"LU"

*"A smile for all, a greeting glad,  
An amiable, jolly way she had."*



J. THEODORE WELSH

"TED"

*"Much learning is in competition with sleep."*

B. H. S. Band '26; Glee Club '26.



LACEY TROY WEST

"SINCERE WEST"

*"Some talk seldom, some talk never,  
But Lacey, like a brook, goes on forever."*

Euphonian Literary Society '24, '25; Second Critic Literary Lights '25; President Literary Lights '26; Treasurer Le Cercle Francais '25; Track '25; Varsity Track '26; Football '25; Varsity Basketball '26; Class Baseball '24, '25, '26; Class Volley-Ball '25, '26.



FLOYD WILLIAM WHITFIELD

"DEACON"

*"Far may we search before we find a heart so  
manly or so kind."*

Athenian Literary Society '22, '23, '24; Euphonian Literary Society '24, '25; Football '24, '25; Varsity Football '25; Baseball '24, '25, '26; Varsity Baseball '25, '26; Varsity Track '23, '24, '25; Band '25, '26; Orchestra '25, '26; Secretary Band '26; Glee Club '25.



**In Memoriam**

---

**FINLEY RIKE COBLE**

May 1, 1908

May 12, 1923

---

**FRANK BENNETT SPOON**

August 17, 1907

September 15, 1923



## Senior Class History

IN SEPTEMBER, 1922, one hundred and twenty young people enlisted in the Burlington General Army of Education. Mr. Donald Van Noppen was commander-in-chief, and they opened their campaign to conquer everything with which they came in contact.

The first campaign was under Generals Annie Webster, Flossie Kersey and R. S. Ratney. Bertha White was made colonel, and Robert Councilman lieutenant-colonel, while the major was Waller Workman.

With these efficient officers the army began to conquer all obstacles.

Two fatalities, beloved fellow soldiers, Finley Coble and Bennett Spoon grieved their comrades much.

During the first year the forces gained many honors. In one campaign they defeated a very strong regiment, the Juniors, in a fight for Basketball. The army this year furnished a major official of the Varsity Tennis Troop, and an unheard of number of star runners, jumpers, discers, etc., at the track meet which is an annual event even in times of war.

The entire army, after nine months of strenuous drill, was released on a three month's furlough for rest and recreation.

After these three months of fun and merry-making, they returned to camp September 12, 1923. Again the army was organized. Mr. William D. Halfacre was elected commander-in-chief. Robert Councilman was made colonel, Kendall Shoffner lieutenant-colonel, and Hazel Thompson major. This year the troops did splendid work. They gained honors in every campaign, and were on the field in every battle.

Another campaign was opened in the fall of 1924, great struggles lay ahead of these brave soldiers. They made Hal Waddell colonel, Nat Fowler lieutenant-colonel, Hazel Thompson major, and Waller Workman sergeant. The entire army fought faithfully to win in every contest of arms and brain. Some of the most stirring contests were fought on football and basketball fields. The soldiers fought with great courage and bravery and were especially successful in football encounters.

But that period was not spent entirely in fighting. The entire Junior Regiment was called to discuss many problems. One was a banquet which they were to give to the Senior Division. Every officer, and every private did his duty in this, whether it were kitchen police duty, lecture work, or merely standing at attention ready to run errands for higher officers. It is needless to say all attended this banquet in full dress uniform.

The troops, after a long, and tiresome siege, departed from Camp High School for their summer furlough with light and happy hearts, realizing that they would next year be promoted to the Senior Brigade.

The fall of 1925 found the troops ready to begin their last struggle for knowledge of scientific and literary tactics, and promotion in the High School Army. They choose Vernon Jones for the colonel, Almond Durham lieutenant-colonel, Hazel Thompson major, and Edith Holt







# DOE-WAH-JACK

Sergeant. Since then they have had many hard battles and sieges. A few privates, also lieutenant-colonel Almond Durham, and major Hazel Thompson have dropped from the ranks. These officers having dropped out, it was necessary to choose new ones. Herman Hill King was chosen lieutenant-colonel, and Thomas Bradshaw major. The army still presses forward hoping soon to capture Diploma. The Senior Division has been well represented in athletic maneuvers, social encounters, and all educational conflicts.

Especially in athletics have they been noted for distinguished service and winning victories. A number of medals in Track have been won, and several men have broken state records. The class has had men on the firing line of the football field through their entire High School training.

While not in battle or in drill these soldiers have found time for some recreations other than athletics. For the pleasure and enjoyment of other fellow soldiers, they have, during their last year, attempted some Amateur Dramatics and presented very creditable performances, the greatest of which was "Daddy Long Legs."

They have also put out this Annual, which is itself a living memorial to their literary achievements.

Now as the seizing of the Diploma draws nearer and nearer, the entire battalion is about to be retired from the active Army of dear old B. H. S., and bid farewell to the commander-in-chief, all the Generals, and subordinate officers.

The army is grateful to them for their kindness, and generosity, and for the way in which they have led this great educational campaign which has resulted in complete victory.

MARGARET BROWN, '26.



## *Senior Class Poem*

We've come to the end of our School career  
And days we hold so dear;  
We've come to end a four year's course  
To which we've put much force.

We've labored hard through thick and thin  
To strive, to gain, to win;  
And now that tasks are finished here,  
We face the world with cheer.

To those who've guided on our way,  
To smiles that brightened day,  
Our heart's devotion we will give  
And say—"Long may they live."

Here's to our class of Twenty-six  
The grandest bunch that's mixed.  
Our hearts we leave with B. H. S.  
To go to our recess.

We'll ere be true to green and white  
We'll always boldly fight,  
"Manum auxilia dare,"  
We bow on humble knee.

There's just one school we call our own,  
Fond memories have grown;  
Wherever fate decrees our home,  
May we her name enthrone.

So to our friends and class mates true  
We bid a last adieu,  
And with the shedding of a tear  
We leave our school so dear.

MARIE ALYSE SMITH, '26.





Dorothy Brittle  
MOST CADABLE



Guy Ephland  
MOST COURTEOUS



Waller Workman  
BEST SPORT



Nat Fowler  
BEST ATHLETE (BOY)

# AS THE JUNIORS SEE THE SENIORS



Ruby Goins  
BEST ATHLETE (GIRL)



Thomas Bradshaw  
HANDSOMEST



Mildred Trollinger  
MOST ENERGETIC



W.H. May  
MOST ORIGINAL



Zettie Hall  
MOST GENEROUS



Ashby Robertson  
BEST INFORMED



Mildred Holt  
BEST ALL-ROUND GIRL



Vernon Jones  
BEST ALL-ROUND BOY



Alyse Smith  
MOST ATTRACTIVE



Virgil Windham  
MOST DETERMINED

## AS THE JUNIORS SEE THE SENIORS



Durward Stokes  
BEST SCHOOL-SPIRITED



James Hall  
HAPPIEST



Edward Holt  
MOST POPULAR BOY



Swannie Black  
MOST POPULAR GIRL



Hal Waddell  
MOST INFLUENTIAL



Edith Holt  
PRETTIEST





## Class Prophecy

I ALMOST wish that I had never waked. The thing was as clear as light. Days and nights I had worried and pondered over the terrible problem of making prophecies for fifty-eight seniors. Now it was all solved. As I was walking in the garden thinking of this, I became very tired and sat down to rest. Here, I fell asleep.

A beautiful little lady with a golden wand in her hand, and a crown on her head, danced in and took her place on a throne of roses. After her, little winds from the North, South, East and West came dancing in. These little people were gowned in marvelous robes of silver with long flowing sleeves. As they ran out, there dropped from their sleeves beautiful yellow and green leaves. These were gathered up in little silver baskets by the followers of the Queen and brought to her throne. One by one she picked them up and read.

1930 BURLINGTON, N. C.—Through his matrimonial success Vernon Jones has become proprietor of the Front Street Service Station.

1945 WASHINGTON, D. C.—Durward Stokes, after a somewhat brilliant career in college and as a lawyer, has become the first man of the nation.

1940 CHICAGO—Sears, Roebuck & Co. have been slowly failing since Kermit Neese, V. Simpson, and H. Waddell founded their rival mail-order house.

1928 GREENSBORO, N. C.—Kent Thompson is working with J. V. Lindley. He has produced several remarkable hybrids. The most famous of these is custard pie, a cross between the egg plant and the milkweed.

1950 BURLINGTON, N. C.—The Junior College for ladies is rapidly winning fame with Zettie Hall, president; Nina Mebane, math director; and Allie Hawn, Latin teacher.

1940 BURLINGTON, N. C.—Dr. Howard Wright and Dr. Beatty Rector have offices in the First National Bank building. Mr. Wright has become a dentist. Mr. Rector is practicing medicine. They think they have found a cure for "Charlestonitis."

1932 HOLLYWOOD—

EDITH HOLT AND TOM BRADSHAW

in

"THE DIAMOND FROM THE SKY"

The latest picture filmed

Director ED. HOLT

Photographer RAYMOND BELL

1933 EUROPE—Dorothy Brittle is a great opera violinist making her debut in Europe.

1930 BURLINGTON, N. C.—Waller Workman, Guy Ephland and Theodore Welch have just retired from business as multi-millionaires. They made their fortunes in tooth picks, which they sold by the carload for kindling.

1945 NEW YORK—Virgil Windham is one of the most famous artists of the times. He is painting the cover designs for all the magazines except Whiz Bang.

1935—Alyse Smith is a Metropolitan Opera Star, now touring the country, giving public concerts of her own.





1936 FALL RIVER, MASS.—After a tour of the old country preparing herself to be a teacher, Mildred Holt has returned to enter a brilliant matrimonial career.

1932 BURLINGTON, N. C.—Ashby Robertson and Gordon Noah have discovered a fifth dimension which rivals Einstein's theory. They were always good in geometry.

1930 BURLINGTON, N. C.—Randolph Isley and William Qualls have written a song which has made them famous. The title of that piece of music is "Will The Chewing Gum Keep its Flavor on the Bed Post Over Night?"

1935—Richard Potter has written many books. He ranks with Alfred Noyes and O'Henry.

1935—Mlle. Alice Homewood and Louise Isley are joint owners of the hat shop; "Belles Chapeaux." They cater only to the "Upper Four Hundred."

1940 NEW YORK—The greatest discovery ever known in modern science. Floyd Whitfield, Max Fogleman and Everette Allred have succeeded in demonstrating to the world the difference between  $H_2O$  and  $NH_4H_2O$  (water and ammonium hydroxide).

1935 NEW YORK—Mildred Trollinger and Annie Rice Tate are owners of the famous Trollinger-Tate Tea Shop in Times Sq., N. Y.

1930—Nat Fowler, Eugene Glosson, and Reid Thompson are playing football with Red Grange. Grange is beginning to fear his team will get the best of him.

1930—Ruth Greeson is traveling upon her bridal tour around the world.

1937—Herman Hill King is famed the world over for his latest geometry book known as "The Cheaper Way."

1930 BALTIMORE—Ruth Cole and Bernice Oakley are head nurses at Johns Hopkins Hospital.

1940—Swannie Black, Mary Horne, and Tessie Paul are traveling, enjoying life in ease and luxury.

1931 BURLINGTON HIGH SCHOOL—Ruby Goins head of music department; Tula Paul, French instructress; Margaret Brown, History. Loyal to B. H. S. all.

1930—James Hall has become an organ grinder and is using W. H. May for his monkey.

1930—Clara Clapp has purchased Clegg's Fashion Shop. Beauty Parlor in the rear run by Carleen Crutchfield.

1931 GLEN RAVEN FACULTY—

Principal, Benjamin De Loatche  
Physical Director, Elizabeth Hinshaw  
French, Hilda Amick  
Geometry, Annie Ivey

1940—Ruth Morton and Elma Fox have converted many lost souls since they became missionaries to Japan.

1930—Roy Clark is now the head of the largest furniture factory in Graham.

1936—Lacey West joined the navy ten years ago and has been sailing around the world ever since.

1935—Thomas Knott has been successful on Wall Street. He is the pied piper of Manhattan.

A rumble of thunder awoke me. Alone upon the ground I sat, and mused,  
"Can it be true, all this that I have seen? Then happy let us be to part to go  
our ways, happy indeed that we are called students of '26, illustrious some,  
happy more, and loyal all."

EDITH HOLT, Prophetess  
H. HILL KING, Prophet





## *Last Will and Testament*

WE, THE CLASS of 1926, of the Burlington High School, having come to an end of our long life in a peaceful and undisturbed state of, what we have always been pleased to call, our mind, in accordance with the unwritten laws of this school, do hereby give and bequeath and devise all our worldly goods and possessions, with all appurtenances and hereditaments thereunto belonging, as seemeth wise and fitting in our judgment, without taking advice or counsel from anyone, and without being influenced in the least by past favors or disfavor, past kindness or unkindness

### ARTICLE I

To our much cherished and loved faculty, we leave our good grades and good behavior to be bestowed upon that class which shall take our place—if there be such.

### ARTICLE II

To the Junior Class, we leave our Senior privileges, which, of course, are many, our Senior dignity, and the pleasure of putting out a year book. This class has by three years unfaithful work not proved that they need the above mentioned.

To the Sophomores, we bequeath our marvelous ability to grasp things quickly and easily, especially in the lunch room.

To the Freshmen, we leave all our spelling pads in order that they, by perusing the splendid grades found in them, may become inspired to attain such excellence.

### ARTICLE III

Mary Horne, Annie Rice Tate and Bernice Oakley leave their innocent and solemn looks to Rachael Johnston, Mary Lee Stadler and Pauline Brown, respectively.

Margaret Brown and Zettie Hall regretfully leave their foolish pranks, especially on French class, to Ruth Younger and Lounse Scott.

Kent Thompson and Everett Allred bequeath their extra weight to Linwood Hall and Dwight Lankford to hold said legatees down on windy days.

Ed Holt, at a slight sacrifice, leaves his overwhelming size to Fulton Fox in order that the said legatee may be large enough to wear long trousers in the graduation exercises of 1927.

"Chilly" Holt, Ruby Goins and Mildred Trollingier leave their basketball prowess to Clara Sharpe, Nesbit Hanford and Lula Sharpe.

Ramon Bell bequeaths his good standing with Mr. Leonard to Howard Moore. The said legatee will find this of much value if he studies physics.

Eugene Glosson, Waller Workman and Thomas Knott leave their excessive knowledge of English to Pryor Fonville, Monroe Bennett and Tulis Moran.

Swannie Black and Alice Homewood bequeath their beauty accessories, including compacts to Erma Love and Annie Brown.

Willie Qualls leaves his noted and speedy way of turning corners to George Kernodle.

Tula Paul and Carleen Crutchfield will their pep and liveliness to anyone who wishes it. All the Juniors need it in class, but can easily spare it at other times.

Vance Simpson leaves his extraordinary friendly disposition and his standing with the girls to Edward Gregg.

Roy Clark very sorrowfully leaves his interest in formal argument to Paul Cobb.





Hilda Amick and Clara Clapp bequeath their smiles and chumminess to Louise Scott and Cleo Stewart.

Alyse Smith bequeaths to Mary Price her place as piano soloist in the State Musical Contest at Greensboro, on condition that she practice ten hours a day.

Gordon Noah and Floyd Whitfield regretfully leave their places as assistant janitors to anyone who is capable of holding such position.

Edith Holt bequeaths one of her smiles to Hazel Pickett to be used as long as it will last.

Thomas Bradshaw bequeaths his position as cheer leader to Frank Mitchell.

Nina Mebane, Elizabeth Hinshaw and Ruth Greeson, after careful consideration, have decided to leave their French books to any of the Juniors who do not want them.

Benjamin De Loatche, Lacey West and Hal Waddell leave their places in the volley-ball court to Morris Burke, Edward Guthrie and Jule Holt. It is hoped that the said legatees may someday attain such heights of perfection as the deceased ones.

Louise Isley and Annie Ivey will their interest in French to Mary Waddell and Lucille Moore.

James Hall, Nat Fowler and Reid Thompson leave their basketball ability to Scott White, Walter Sharpe and Harrison Goodman.

Guy Ephlind, Theodore Welch and Max Fogleman bequeath their excellent standing among the girls to Ernest Gross, William Bowman and William Shoffner.

Elma Fox leaves her extremely loud voice to Kathleen Coley. The said legatee will find this very useful when answering questions on history class.

W. H. May wills his excellent way of losing books to Neblette Crowson. Calling at the office for lost books will be a source of much pleasure to the legatee.

Howard Wright, after much consideration and deliberation has decided that he needs all his knowledge and possessions and will make no formal will at present.

Ruth Cole leaves her place in the French Club to Olivia Stadler.

Ashby Robertson bequeaths his brains to the science class upon the condition that the class waits until his demise before making any disposition of them.

Herman Hill King wills his power to dream and create newfangled ideas to William Burke.

Tessie Paul leaves her happy memories of B. H. S. to Verdie Hay. If the said legatee forgets the said memories, she will not be in a terrible predicament.

Richard Potter and Randolph Isley leave their notorious way of making and losing friends to Eldred Foster and Bruce Andrews.

Vernon Jones wills his position as Business Manager of the annual to Kern Lee Thompson.

Ruth Morton leaves her everlasting smiles to Drusilla Shoffner.

Kermit Neese bequeaths his delight in keeping and in telling secrets to Charlie Clapp.

Dorothy Brittle leaves her position in the orchestra as violinist to Rockie Lee Taylor with the request that she keep her violin in excellent tune with the snare drum.

Durward Stokes wills his position as Editor-in-Chief of the Annual to Arnold Qualls.

Beatty Rector wills his favorite delight (teasing the girls) to Almon Oldham.

Allie Hawn leaves her boundless vocabulary (a gift from a last year's senior) to Pearl Warlick.

In testimony whereof, we hereby appoint as executor of this, our last will and testament, Mr. W. D. Halfacre, with the understanding that anyone failing to abide by any of the provisions of this document will be severely punished by having to wash the boards.

We do hereby subscribe our names and affix our seal, this the third day of June, the Year of our Lord, one thousand nine hundred and twenty-six.

CLASS OF '26

Witness:

MR. LOUIS A. SHARPE

VIRGIL WINDHAM, *Testator.*







## Can You Imagine—

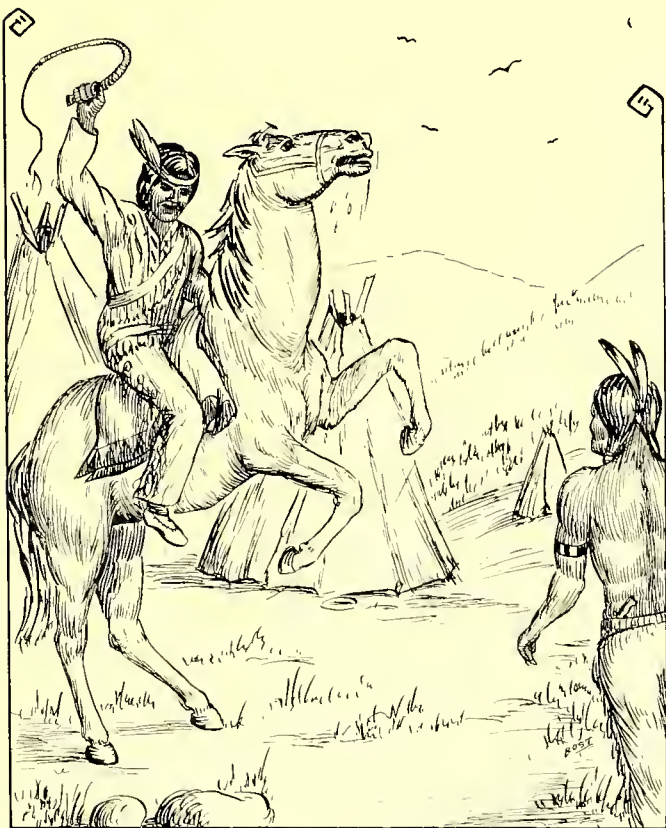
Hilda Amick drinking Coca-Cola?  
Swannie Black eating a 15c. lunch?  
Everett Allred doing the Charleston?  
Clara Clapp with a boyish bob?  
Raymond Bell passing a pretty girl and not taking her picture?  
Ruby Goins toe-dancing?  
Zettie Hall powdering her nose in school?  
Roy Clark talking sensibly?  
Nat Fowler quoting poetry?  
Max Fogleman getting a passing mark in Physics?  
Elizabeth Hinshaw at a symphony concert?  
Eugene Glosson talking himself hoarse?  
Edith Holt standing on her head?  
Mildred Holt refusing to go to ride?  
Randolph Isley driving with both hands during a date?  
Edward Holt averaging 90?  
Mary Horne as a cheer leader?  
Nina Mebane at the Acme after 9:30?  
Tula Paul flunking on French?  
Vernon Jones buying gas at Front Street Service Station?  
Alyse Smith with her hair mussed?  
Kermit Neese wearing a red necktie?  
Richard Potter with his tie straight?  
Annie Rice Tate falling down stairs?  
Dorothy Brittle attracting attention by loud talking?  
Willie Qualls driving in a funeral procession?  
Margaret Brown with yellow hair?  
Ruth Cole as a bareback rider?  
Beatty Rector robbing a bank?  
Vance Simpson as Rudolph Valentino?  
Carleen Crutchfield sleeping in English class?  
Elma Fox getting UNS for talking?  
Kent Thompson not talking?  
Ruth Greeson winning a swimming race?  
Reid Thompson having a date?  
Alice Homewood accused of speeding?  
Louise Isley riding a bicycle?  
Floyd Whitfield attending a bridge party?  
Howard Wright playing a piccol?  
Waller Workman refusing an invitation to the weinnie stand?  
Annie Ivey singing "Marcheta"  
Thomas Bradshaw forgetting to curl his hair?  
Allie Hawn interested in Gray's "Elegy"?  
Bernice Oakley writing poetry?  
Benjamin De Loache in a dress suit?  
Tessie Paul reading "Whiz Bang"?  
Mildred Trollinger refusing to look at a new boy?  
Miss Morrow a chorus girl?  
Mr. Leonard teaching in a college for young ladies?  
Ruth Morton in the "Follies"?  
Guy Ephland singing a solo?  
Herman Hill King with Tom Bradshaw's hair?  
James Hall worrying?  
Thomas Knott failing to create a sensation?  
W. H. May working?  
Gordon Noah in love?  
Ashby Robertson wearing a stiff collar?  
Durward Stokes riding alone?  
Hal Waddell arguing with Miss Morrow?  
Theodore Welch refusing to talk?  
Lacey West not shooting bull?  
Virgil Windham reading "Police Gazette"?



1926



# JUNIORS



Lippewas.  
 11 of them  
 mostly men



JUNIOR CLASS



## Junior Class

Colors: Purple and Gold

Flower: White Rose Bud

Motto: "Non Sibi Sed Omnibus."

### Officers

President—DWIGHT LANKFORD

Vice-President—MARY PRICE

Secretary—OLIVIA STADLER

Treasurer—ANNIE BROWN

### Members

AMICK, CHARLES  
ANDREWS, BRUCE  
BENNETT, MONROE  
BRADSHAW, LOIS  
BROWN, ANNIE  
BROWN, PAULINE  
BRYAN, DACE  
BURKE, WILLIAM  
CATES, MADELINE  
CLAPP, CHARLIE  
CLAYTOR, ANNIE  
COBLE, LUCY  
COLE, LUCILLE  
COLEY, KATHLEEN  
CROWSON, NEBBETTE  
DIXON, PAULINE  
EPHLAND, JUANITA  
FIX, ELEANOR  
FOGLEMAN, GENEVA  
FONVILLE, PRYOR  
FOSTER, ELDRED  
FOX, FULTON  
GREGG, EDWARD  
GREGG, VELNA

GROSS, ERNEST  
GUTHRIE, EDWARD  
HALL, CLARA  
HALL, LINWOOD  
HAY, VERDIE  
HILL, JOSEPHINE  
HOFFMAN, FRED  
HORNADAY, NELLIE DACE  
JOHNSTON, RACHEL  
KECK, GEORGE  
LANKFORD, DWIGHT  
LOVE, ERMA  
LOY, CASPER  
MONTGOMERY, VIRGINIA  
MOORE, EULALIA  
MOORE, LUCILLE  
MORAN, TULIS  
MURPHY, EVELYN  
NOAH, MARY  
PERRY, HATTIE  
PICKETT, HAZEL  
PRICE, MARY  
QUALLS, ARNOLD

RICHMOND, HASSIE  
RUDD, GERTIE  
RUDD, LEONE  
SCOTT, LOUISE  
SELLARS, BESSIE MAE  
SHARPE, CLARA  
SHARPE, LULA  
SHOFFNER, DRUSILLA  
SPOON, WAYNE  
STADLER, MARY LEE  
STADLER, OLIVIA  
STUART, CLEO  
STOCKARD, HELEN  
TAYLOR, ROCKIE LEE  
THOMPSON, GERTRUDE  
THOMPSON, KERN LEE  
TYSON, EDNA  
WADDELL, MARY  
WARLICK, PEARL  
WHEELY, WILLIE  
WHITE, DAN SCOTT  
WHITE, KATHERINE  
YOUNGER, RUTH







## Junior Class History

The class of '27 has taken one step farther into the mystic realms of Education.

Our fold was herded together in the fall of '23. As our shepherd, Kern Lee Thompson was very wisely chosen. Without the guiding influence and untiring efforts of Miss Webster, Miss Morrow, and Mr. Rainey, who were our first teachers in high school, our efforts would have been fruitless.

In our second year we were heralded as Sophomores. The fresh and green feeling that was so noticeable during our first year, was gradually becoming a thing of the past. As our leader, Arnold Qualls proved most competent in every respect, and was indeed a credit to the class. That year we had as our teachers Misses Scarborough, Carroll, and Mr. Rhodes, whose never failing efforts helped us.

We began to realize too, that merely being in high school was not honor enough for our class—and wished to impress on others our very real importance. (We had long realized this, of course!) and so the class of '27 became known as a group of people, interested in the same things and willing to work to put things across. There were several class picnics, parties, etc.

The third year we returned more experienced than ever. The spirit of cooperation had been developed until each realized that he had a very important part to take in the events of the year. We have as our worthy Leader, Dwight Lankford, and as our teachers, Miss Kernodle and Mr. Rhodes, who have proved themselves true members of '27.

The outstanding event in every Junior Class history is the Junior-Senior Banquet. The Juniors of '27 initiated a precedent with regard to this standing celebration. Realizing that the Banquet would be more truly a class affair if the class as a whole helped prepare for it, the Juniors staged on the night of February 12, 1926, a Valentine Party. A play, carnival attractions, booths, refreshments and general fun characterized the party.

Our very happy stay here has enriched our lives. Our activities have been rather mild, yet we have had the predominating idea of "Not for one's self, but for all", always written deep in our minds. We realized that we must make an enviable record for '27. We have given to the major sports, Lula Sharpe, Clara Sharpe, Lucille Cole, Olivia Stadler, Kathleen Coley, Josephine Hill, Scott White, Edward Guthrie, Casper Loy, Fred Hoffman, Kern Lee Thompson and Dwight Lankford, who not only have made a name for themselves, but have carved in the Athletic Hall of fame a name for our class.

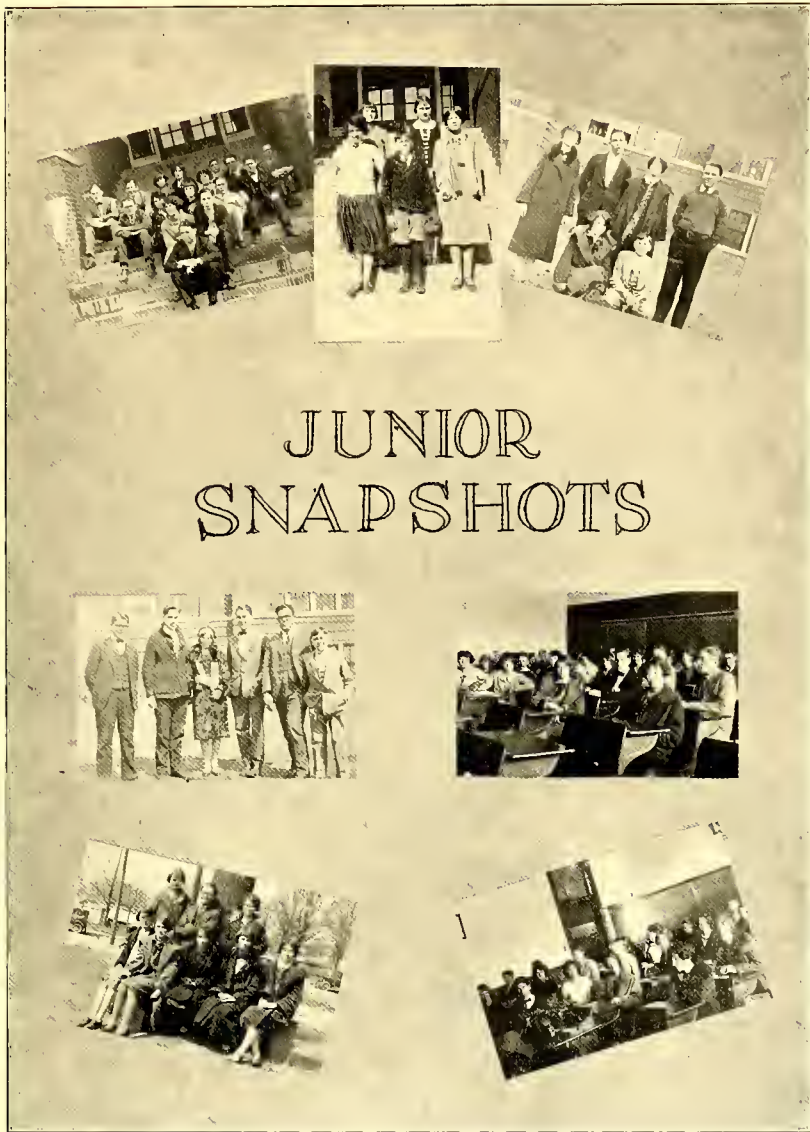
The Musical Clubs also draw heavily from the Junior Class, as is proved by a glance at the personnel of the orchestra where the names of Rockie Lee Taylor, William T. Burke, President, Linwood Hall, Charles Amick, Jr., Pryor Fonville and Dwight Lankford are prominent. As for dramatics, numbers of the Junior members have long since grown accustomed to the smell of grease paint, and the glare of the foot lights.

Since we first organized, we have had only one to succumb to the charms of the opposite sex, at least so seriously as to venture into the sea of matrimony.

We are now venturing forth to a broader field, which is the turning point in our educational lives,—the Senior Class. To a Senior there is a touch of regret in the knowledge that he must soon leave his Alma Mater—but to the Juniors there is only pure joy in the knowledge that next year, they will be Seniors.

ELEANOR M. FIX, '27.





JUNIOR  
SNAPSHOTS



## Junior Jokes

KATHLEEN COLEY: "How do you like that new course, Clara?"

CLARA SHARPE: "Oh, it's a mighty fine course. Why, before I started I knew nothing about it and now I know twice as much."

GEORGE KECK: "There's a town in Massachusetts named for you."

DACE BRYAN (proudly): "Yes, what is its name?"

GEORGE: "Marblehead."

MISS FULTON (at Glee Club practice): "What are pauses?"

ERNEST GROSS: "I know. They grow on cats."

DWIGHT LANKFORD: "Look. Our captain is going to kick the goal?"

MARY LEE STADLER: "What did the goal do?"

"This is a dirty trick," said the frog as he stood on his head in a mud puddle.

MADELINE CATES (to oculist): "I've broken my glasses. Do I have to be examined all over again?"

OCULIST: "No, just your eyes."

SCOTT WHITE: "So, you're so smart, tell me how the leaves of a book stay together?"

MONROE BENNETT: "Oh, they're bound to do that."

LITTLE BOY: "Grandpa, make a noise like a frog."

GRANDPA: "Why, son?"

LITTLE BOY: "Because daddy said we'd get \$100,000 when you croaked."

MISS KERNODLE (to class): "Fighting, you know, never gets a person anywhere."

WILLIAM BURKE: "Oh, yes, Miss Kernodle, it does sometimes, it gets a person in my pop's undertaking house."

JOSEPHINE HILL: "Isn't this a horrible photo of me?"

CLARA SHARPE: "Yes, but a very good likeness."

At a high school examination Mr. Rhodes asked, "Does this question embarrass you?"

"Not at all, sir," replied Fred Hoffman, "not at all. It is quite clear. It is the answer that bothers me."

MONROE BENNETT (in lunch room): "Waiter, there is sand in this bread."

PAULINE BROWN (acting as waitress): "Yes sir. That's to keep the butter from sliding off."

OFFICER (to Mr. Halfacre in parked auto): "Don't you see that sign, 'Fine for parking?'"

MR. HALFACRE: "Yes, officer, I see and heartily agree with it."

MR. MCBANE: "What is your opinion of Lincoln?"

LINWOOD HALL: "It's a good car but I like a Packard better."

GERTRUDE THOMPSON: "Mr Leonard was telling about Grand Canyon today. He said it took millions of years for that great abyss to be carved out."

"Well, well," said Mary Price, "I never knew it was a government job."



# SOPHMORES





*I hope you will enjoy this year at P.S. 1.  
 You may have a very good year - it is up to you.  
 I hope you will enjoy this year at P.S. 1.  
 You may have a very good year - it is up to you.  
 I hope you will enjoy this year at P.S. 1.  
 You may have a very good year - it is up to you.*

# DOE-WAH-JACK



SOPHOMORE CLASS

1926

# DOE-WAH-JACK

## Sophomore Class

Motto: "B<sup>2</sup> and B Y's."

Flower: Pink Rose

Colors: Pink and White

### Officers

President—JULE HOLT

Vice-President—SARA MURRAY

Secretary—GEORGE KENNEY

Treasurer—BRINSON ROUSE

### Members

ANGEL, VIRGIE  
ANTHONY, GEORGE  
ATWATER, LUTHER  
BALDWIN, CHARLIE  
BENSON, NELL  
BLACK, BENSON  
BOWDEN, DOROTHY  
BRAXTON, SCOTT  
BOWMAN, WILLIAM  
BLANCHARD, MABEL  
BOLAND, INA BANKS  
BRITTLE, ELIZABETH  
BRIGHT, DOROTHY  
BROOKS, MARY JOYCE  
BROWNING, GERTRUDE  
BURKE, MORRIS  
CATES, KATHLEEN  
CATES, MINWAL  
CATES, DOROTHY  
COBLE, MARHTA  
COBB, PAUL  
FAUCETTE, ELMER  
FOGLEMAN, MARY LOU  
FOSTER, STAFFORD  
GOODES, BENJAMIN  
GOODMAN, HARRISON

GARRISON, FERN  
HANFORD, NESBIT  
HINSHAW, MARVIN  
HOLT, JULE  
HARMON, OLENA  
HENSLEY, BEULAH  
HORNER, ELIZABETH  
HORNER, WINSTEAD  
HORNER, VIRGINIA  
HOPKINS, GAINES  
IRELAND, BLANCHE  
JONES, LEON  
JONES, PERRY  
JORDON, MYRTLE  
KENNY, GEORGE  
KIRKMAN, ELIZABETH  
LASLEY, WILLIAM  
MACOMSON, RUTH  
MAY, JACK  
MURRAY, SARA  
MOORE, KEITH  
MORTON, VIRGINIA  
MONTGOMERY, EDNA  
MEACHEM, HENRY  
McMILLIAN, MARY  
McKINNEY, ANNIE

MITCHELL, FRANK  
MOORE, HOWARD  
PRITCHETT, FRANCES  
QUAKENBUSH, FANNIE  
ROSS, ROBERT LEE  
ROUSE, BRINSON  
RIDDLE, MARGARET  
ROGERS, ELIZABETH  
SHOFFNER, WILLIAM  
SHOFFNER, VICTOR  
SHARPE, WALTER  
STANFIELD, ERWINE  
STOKES, MARTHA LOU  
SULLIVAN, JAMES  
TEAGUE, MILDRED  
THORNBURG, MABEL  
THOMPSON, DOROTHY  
TRUITT, HERMAN  
TYSON, THOMAS  
VERNON, JOHN  
WHITTED, NELLIE MAE  
WARD, VIOLET  
WALTERS, JENNIE FRANCES  
WALKER, MARGARET  
WOODSON, GLADYS  
WEST, ALICE

1926



## Sophomore Class History

FOR SEVEN years the present Sophomore class was busy gathering material and laying the foundation for its Building of Knowledge. As the materials and foundation determine the durability of a structure, they endeavored to secure the best materials in all points and to construct the firmest foundation possible. On September 10, 1924, they started in the Freshman year. They selected the following as officers or overseers, because they seemed most capable; Walter Sharpe, president; William Bowman, vice-president; William Shoffner, secretary; Martha Lou Stokes, secretary; Margaret Riddle and Nell Benson as historians. Misses Webster and Holton and Mr. McBane were Counselors and Architects. The carpenters thought "B2 and B Y's" to be a fitting and lasting motto. They selected pink and white as their colors, and a pink rose as the flower.

That year's work consisted mostly of framework into which went Algebra, English, Science, Latin, Civics, Spelling, Music and Sewing. Most every member succeeded with his part, thanks to the Counselors; and if any became tired and discouraged, the musical members cheered them, or the athletes lent a strong arm as aid. The builders worked hard all year without much diversion, so, when the hot summer sun began beating down upon them, they decided to have a vacation.

On September 9, 1925, after three month's rest, they started back to work with vigor and vim. This year Misses Carroll, Scarborough and Shepherd were counselors. The class was organized anew with the name of Sophomore. Jule Holt was elected president; Sara Murray, vice-president; George Kenney, secretary; Brinson Rouse, treasurer; Walter Sharpe, first critic; Nell Benson, historian.

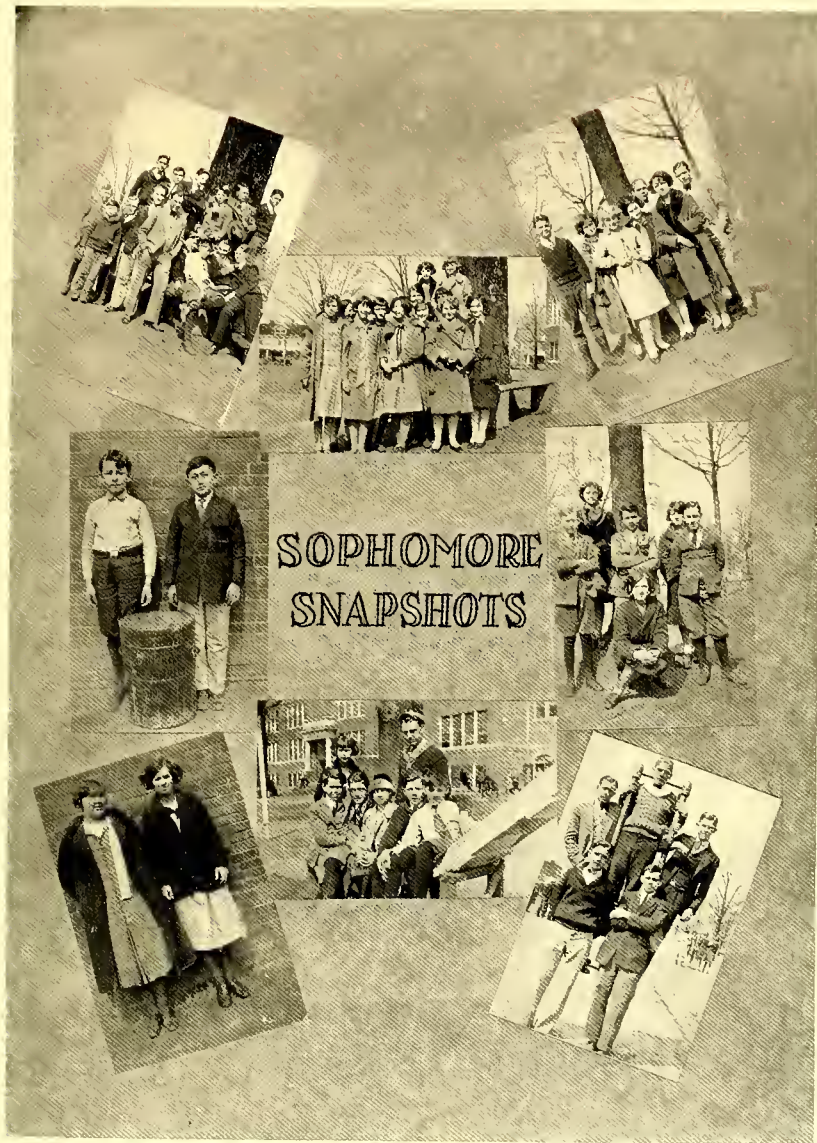
Those who had failed in their former work found, much to their regret, that they would have to repeat at least a part of the grade. Those who had done their part well started on building plans for that year. They decided to put the outside covering, such as the roof, and outside wall, and also to start on the interior work. Some of the same materials were used in the Sophomore year as were used in the Freshman year. These included Algebra, English, Spelling, Science, Latin, History, Music and Home Economics. They have nearly finished this phase of their work.

Very soon the workers will take a rest and start into their Junior Year, in which they will start finishing their structure. In the Senior class they will probably finish their structure. This useful Building of Knowledge, will deteriorate and crumble, like any other building, if not kept repaired, but College and a life career will serve as repairs in this case.

NELL BENSON, '28







SOPHOMORE  
SNAPSHOTS



## Sophomore Jokes

MISS BARBEE: "Martha, what is a grapefruit?"

MARTA COBLE: "It's a lemon that's been given a chance and has taken advantage."

VICTOR SHOFFNER (examining new building): "What are those stairs for?"

LUTHER ATWATER: "That's the fire escape."

VICTOR: "Yes, but where do the people get out?"

SCOTT WHITE: "What's an usher?"

JULE HOLT: "The guy who takes the leading part in the theaters."

BILL BOWMAN: "Leon, why is it I manage to get more sleep than you?"

LEON JONES: "You have more classes than I."

"Twinkle, twinkle, little star,  
Just above the trolley car.  
If the car should jump the track,  
Would I get my nickel back?"

What would we do if—  
Mabel Thornburg should speak without permission?  
Walter Sharpe should hand in his Latin paper?  
Jack May should sit still two minutes in succession?  
Keith Moore should stop chewing licorice?

MISS KERNODLE: "Keith, is there anything that you can do better than anyone else?"

KEITH MOORE: "Yes'm, I can read my own writing."

EDNA MONTGOMERY: "Gee, I'm glad you're in my class."

MARGARET WALKER: "Why?"

EDNA: "Now I won't be the biggest dumbell."

The following letter was written by Bob Ross to a company which manufactures corn syrup:  
"Dear Sirs: Tho' I have taken six cans of your corn syrup, my feet are no better than when I started."

BILL LASLEY: "Have you heard the Dago song?"

HENRY MEACHEM: "How do the words go?"

BILL: "Dago wild, simply wild over me."

HICKEY MITCHELL: "Bennie, how do you like my new electric hat?"

BENNIE BLACK: "How do you get electric?"

HICKEY: "I charge it."

MR. DABBS (on math class): "Jack, your adding is terrible. Now if you had three dollars, and your father gave you thirteen dollars, what would you have?"

JACK MAY (sleepily): "A spasm."

ELIZABETH KIRKMAN (at basketball game): "Why didn't they make that fellow in white knickers get off the court?"

BLANCE IRELAND: "That's the referee. He watches all the plays."

ELIZABETH: "Well, why didn't he let them play instead of taking the ball from them so often?"

DOROTHY THOMPSON: "Isn't that hoy friend of yours from Penn State?"

RUTH MACOMSON: "No, state pen."

# FRESHMEN



North or south  
 east or west  
 if you reorganize  
 my success.

# DOE-WAH-JACK



FRESHMAN CLASS

And still having dates with  
 \_\_\_\_\_? Always goes (as  
 they say) to the  
 store.



## 1926



But wait to  
 you always  
 remember

But in fact [ PAGE 54 ]

Begin the  
 in + success  
 in + success  
 in + success

## Freshman Class

Motto: "We're Not On Top But Climbing."

Flower: Sweet-pea

Colors: Silver and Rose

## Officers

President—CARLOS PENNINGTON

Vice-President—JOHN WHITLEY

Secretary and Treasurer—HELEN FOWLER

Marshall—EDWARD QUINN

## Members

ALLEN, HARVEY  
AMICK, LEDMUN  
ANOTHONY, ROBERT  
APPLE, FLETCHER  
BAILEY, ROY  
BARNWELL, FRANCES  
BENNETT, HOWARD  
BIVENS, CLARA  
BOLAND, WILLS  
BOONE, ERNEST, JR.  
BOONE, MARGARET  
BROWN, RACHEL  
BURKE, CARL  
BURKE, KEITH  
CATES, MILDRED  
CATES, NELLIE  
CHAPMAN, DOROTHY  
CHAPMAN, JOHN  
COBLE, GROVER  
COBLE, WADE  
COBLE, YANKEY  
COBLE, MARGARET  
COMBS, ETHEL  
COOK, J. D.  
CRUTCHFIELD, DACE  
DAVIS, MARY NELL  
DAVIS, TREVA  
DIXON, ALYSSES  
DORSETTE, IRIS  
ELKINS, ERMA LEE  
ERVIN, GERTRUDE  
FAUCETTE, THELMA  
FOGLEMAN, RALPH  
FOSTER, ALDROW  
FOWLER, HELEN  
GANT, JOSEPH  
GARNER, FOY  
GARRISON, CLIFTON  
HALL, GHILAN  
HALL, IRVING  
HALL, MYRTLE  
HANFORD, MARVIN

HART, PAULINE  
HARGROVE, DEWEY  
HARMON, CHARLIE  
HAY, EUNICE  
HAYES, NELL  
HINSHAW, MARGARET  
HOGAN, SARAH FRANCES  
HOGAN, THELMA  
HOLT, FRANK  
HOLT, VERA LEE  
HOLT, W. K., JR.  
HORNADAY, F. D.  
HORNE, ANNA LEE  
HORNER, HADLEY  
HORNER, HELEN  
HOWELL, EUGENIA  
INGLE, CLYDE  
ISLEY, CARLYSLE  
ISLEY, EUPHA  
ISLEY, VERA  
JONES, LOUIS  
JORDON, LUCILLE  
JORDON, SUE  
KERNODLE, GEORGE  
KING, CORINA  
KING, MARGARET  
KNOTT, EDGAR  
LAWS, EDWINA  
LAYTON, AGNES  
LEATH, ELIZABETH  
LOVE, GLADYS  
LOVE, RALPH  
LOY, JULIA MAY  
MEADOR, MADELINE  
MEBANE, ALLEN  
MONTGOMERY, LUCILLE  
MOORE, BONNER  
MOORE, WILLIAM  
MCADAMS, HARVEY  
MCINTYRE, LOUISE  
MCMILLAN, NAOMI  
NICHOLS, JAMES  
OVERMAN, FRANKLIN

PATRUM, JUANITA  
PAUL, HOWARD  
PENNINGTON, CARLOS  
PERKINS, ANAN  
PHILLIPS, OSCAR  
POLLARD, LOUISE  
QUINN, EDWARD  
REDDEN, RALPH  
ROBERTS, MILDRED  
ROBERTSON, NETTA COOK  
ROSEMOND, MARY ELIZABETH  
ROYSTER, FRANCES  
RUDD, MARY  
SCOTT, MAXINE  
SELLARS, ELIZABETH  
SELLARS, MARTHA  
SEXTON, ANNA BELL  
SMITH, ALSON  
SMITH, ALVIS  
SMITH, HAROLD  
SMITH, MARY LOUISE  
SPOON, BANNER  
STAUNTON, ELNA  
TERRELL, EDNA  
THOMPSON, GRACE  
TICKLE, PAULINE  
TILLMAN, BEN  
TROLLINGER, HAROLD  
WALKER, EDWIN  
WALTERS, ALFRED  
WALTERS, SELMA  
WALTON, RUTH  
WARLICK, SAM  
WEST, HARVEY  
WEST, HERMAN  
WHICHARD, MARSHALL  
WHITFIELD, DON  
WHITLEY, JOHN  
WHITT, COLLIE  
WHITT, LAWRENCE  
WILLIS, ROBERT  
YARBOROUGH, JOSEPH





## *Freshman Class History*

ON SEPTEMBER 10, 1925, the class of '29, one hundred twenty one strong, set sail on the sea of knowledge, with Miss Webster, Miss Holton and Mr. McBane as their captains.

Before starting on the voyage, the class elected as their leaders: Carlos Pennington, president; John Whitley, vice-president; Helen Fowler, secretary and treasurer.

The ship slowly moved out of the harbor with its banner of Silver and Rose fluttering in the ocean breeze. Its motto, "We're not on the top, but climbing," was the pass word of the crew.

The first six weeks of the storm were braved, though at times some of the crew seemed in peril.

Many storms arose on the wild ocean. Latin, with all its blackness and terrible looks, frightened many of the crew, but the captains gave advice and aid and told them to study harder. Arithmetic appeared as a puzzle, and could not be worked by many, but soon it was overcome by most of the crew.

Many of the crew were washed overboard by the Latin and Arithmetic storms, and were lost at sea. However, others have been picked up at different points to maintain the yearly roll. Athletics, and different school activities have encouraged many.

The members of the crew are standing on the deck of the ship viewing the island of summer vacation which lies in the distance. The storms have passed over. The sun has come out with all its glory, and the ship is nearing the harbor where rest, food and water may be had. After their minds have rested, the crew will set sail for the harbor of Sophomore Class, with their motto "We're not on the top, but climbing."

JOHN WHITLEY, '29.

WILLIS BOLAND, '29.







## *The Class of '29*

As Freshmen we've started in High School,  
With little experience or "rep".  
But one thing can be said for us,  
We're full of ambition and pep.

Next year we'll be Soph'mores, important,  
We hope, too, that then we'll know more,  
So that when we are jolly Juniors  
We'll have knowledge and spirit galore.

Oh, joy! We'll be dignified Seniors,  
In nineteen and twenty-nine.  
We hope we'll look like the Seniors  
With their airs of importance so fine.

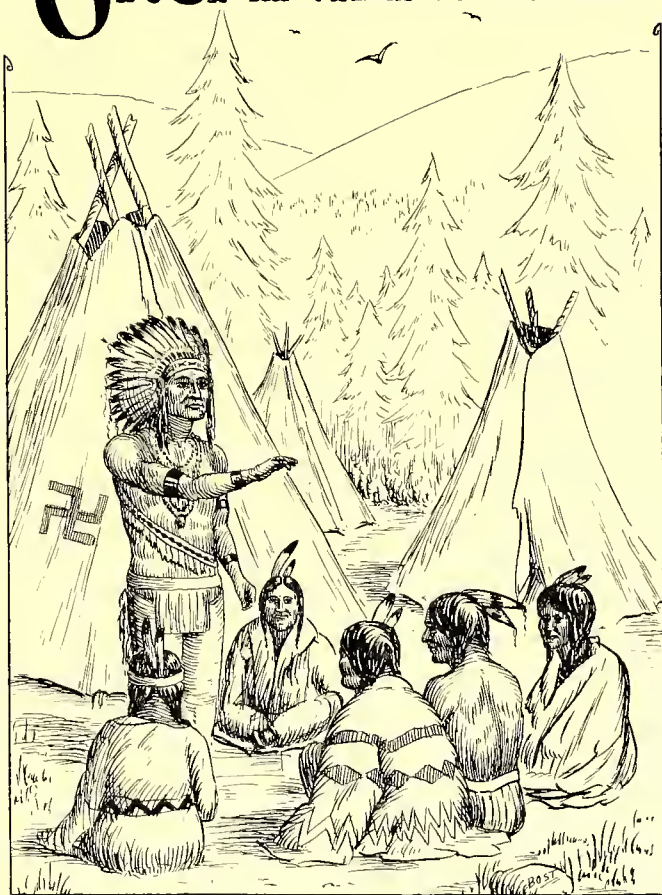
Meanwhile, we will pledge to our High School  
Three good years of true loyalty,  
Endeavor, and effort untiring.  
We pledge her our faith, you see.

And then with our bouquet of sweet peas,  
With our banner of silver and rose,  
Although near the top, we'll keep climbing,  
As far as dear B. H. S. goes.

NETTA COOK ROBERTSON, '29.



# ORGANIZATIONS







## William J. Bryan Forensic Club

Flower American Beauty Rose

Motto: "Veni, Vidi, Vici."

Colors: Black and Gold

### Officers

Term 1925

President . . . . .	KERN LEE THOMPSON
Vice-President . . . . .	JOHN WHITLEY
Secretary and Treasurer . . . . .	KERMIT NEESE
Publicity Secretary . . . . .	CHARLES AMICK, JR.

Term 1926

President . . . . .	JOHN WHITLEY
Vice-President . . . . .	EDWARD GREGG
Secretary and Treasurer . . . . .	CHARLES AMICK, JR.
Publicity Secretary . . . . .	OSCAR PHILLIPS

### Members

AMICK, CHARLES JR.  
ANDREWS, BRUCE  
APPLE, FLETCHER  
BAILEY, ROY  
CLARK, ROY  
DABBS, MR. J. V.  
(Second Sponsor)  
GOODIS, BENJAMIN  
GREGG, EDWARD

HORNER, HADLEY  
NEESE, KERMIT  
NOAH, GORDON  
PAUL, HOWARD  
PHILLIPS, OSCAR  
POWELL, JESSE  
STANFIELD, ERWIN  
SULLIVAN, JAMES  
THOMPSON, KERN LEE

TRUITT, HERMAN  
VERNON, JOHN  
WARLICK, SAM  
WEBSTER, MISS  
(First Sponsor)  
WHITFIELD, DON  
WHITLEY, JOHN  
WHITT, LAWRENCE



## Literary Lights

Flower: Jonquil

Motto: "Aim High But Reach Higher."

Colors: Olive and Gold

### Officers

#### Term 1925

President..... VERNON JONES  
 Vice-President..... ERMA LOVE  
 Secretary..... HAZEL PICKETT  
 Treasurer..... JUANITA EPHLAND  
 Press-Reporter..... RACHEL JOHNSTON

#### Term 1926

President..... LACEY WEST  
 Vice-President..... JOSEPHINE HILL  
 Secretary..... RACHEL JOHNSTON  
 Treasurer..... MARTHA COBLE  
 Press-Reporter..... ERMA LOVE

### Members

BOWDEN, DOROTHY  
 BROWN, MARGARET  
 BROWN, PAULINE  
 BROWN, RACHEL  
 CHAPMAN, JOHN  
 COBLE, MARTHA  
 COLEY, KATHLEEN  
 CRUTCHFIELD, DACE  
 DAVIS, TREVA  
 EPHLAND, JUANITA  
 GERRINGER, LEO  
 GLENN, HOWARD  
 HENDERSON, GEORGE

HILL, JOSEPHINE  
 HINSHAW, MARVIN  
 JOHNSTON, RACHEL  
 KECK, GEORGE  
 LEATH, ELIZABETH  
 LOVE, ERMA  
 MCKINNEY, ANNIE  
 MCMILLIAN, NINA  
 MOORE, EULALIA  
 PICKETT, HAZEL  
 QUAKENBUSH, FANNIE  
 RICHMOND, HASSIE

ROUSE, BRINSON  
 RUDD, LEONE  
 SCARBOROUGH, MISS  
 (Sponsor)  
 SCOTT, PHYLIS  
 THORNBURG, MABEL  
 WALTERS, JENNIE FRANCES  
 WAY, SADIE  
 WEST, ALICE  
 WEST, LACEY  
 WHEELLEY, WILLIE  
 WHITT, COLLIE



## The Dialectic Literary Club

Motto: "Build for Character and Not for Fame."

Flower: Pink Rose

Colors: Rose and Silver

### Officers

Term 1925

President	NAT FOWLER
Vice-President	GERTRUDE THOMPSON
Secretary	SWANNIE BLACK
Treasurer	MILDRED HOLT

Term 1926

President	ZETTIE HALL
Vice-President	ERNEST GROSS
Secretary	MARY LOU FOGLEMAN
Treasurer	HATTIE PERRY

### Members

ALLEN, HARVEY  
BLACK, SWANNIE  
BOLAND, INA BANKS  
BOWMAN, BILL  
BROWNING, GERTRUDE  
CATES, MADELINE  
CHAPMAN, DOROTHY  
COBLE, GROVER  
DAVIS, MARY NELL  
ERVIN, GERTRUDE  
FAUCETTE, ELMER  
FAUCETTE, THELMA  
FOGLEMAN, MARY LOU  
FOSTER, STAFFORD  
FOWLER, NAT  
FOX, FULTON  
GARNER, FOY  
GROSS, ERNEST  
HALL, ERWIN  
HALL, ZETTIE

HART, PAULINE  
HAYS, NELL  
HINSHAW, MARGARET  
HOGAN, THELMA  
HOLT, MILDRED  
HOLT, VERA  
HORNE, MARY  
HCFIMAN, FRED  
ISLEY, CARLYSLE  
ISLEY, PHILIP  
JONES, PERRY  
KING, MARGARET  
KIRKMAN, ELIZABETH  
LASLEY, BILL  
LAYTON, AGNES  
MACOMSON, RUTH  
MAY, JACK  
McBANE, MR. (Sponsor)  
MEADOW, MADELINE  
MITCHELL, FRANK

MOORE, BONNER  
MURPHY, EVELYN  
PERRY, HATTIE  
PRICE, MARY  
REDDEN, RALPH  
RUDD, MARY  
SCOTT, MAXINE  
SPOON, WAYNE  
STADLER, MARY LEE  
STOKES, MARTHA LOU  
THOMPSON, GERTRUDE  
THOMPSON, GRACE  
THOMPSON, KERN LEE  
TICKLE, PAULINE  
TILLMAN, BEN  
WALKER, WILLA  
WALTERS, SELMA  
WOODSON, GLADYS  
WORKMAN, WALLER



# 1926







## Art Club

### Officers

Term 1925	
President	CLARA SHARPE
Vice-President	VIRGIL WINDHAM
Secretary	ELEANOR FIX
Treasurer	FRANK HOLT
Press-Reporter	ARNOLD QUALLS

Term 1926	
President	MAX FOGLEMAN
Vice-President	ARNOLD QUALLS
Secretary	LUCILLE COLE
Treasurer	VIRGIL WINDHAM
Press-Reporter	ELEANOR FIX

### Members

ALLRED, EVERETT  
 ANGEL, VERGIE  
 ANTHONY, GEORGE  
 BARNWELL, FRANCES  
 BENSON, NELL  
 BLANCHARD, MABEL  
 BRAXTON, SCOTT  
 BRIGHT, DOROTHY  
 BROWN, RACHEL  
 CATES, MINWAL  
 CATES, NELLIE  
 COLE, LUCILLE  
 DIXON, ALYSSES  
 DORSETTE, IRIS  
 FIX, ELEANOR  
 FOGLEMAN, MAX  
 GARRISON, CLIFTON  
 GLENN, HOWARD  
 GOODMAN, HARRISON

HANDEORD, NESBIT  
 HOLT, FRANK  
 HOGAN, SARA FRANCES  
 HORNER, HADLEY  
 HORNER, HELEN  
 INGLE, CLYDE  
 IRELAND, BLANCHE  
 KENNY, GEORGE  
 KERNODLE, Miss (Sponsor)  
 LEATH, ELIZABETH  
 LOY, JULIA MAY  
 MEACHEM, HENRY  
 MONTGOMERY, LUCILLE  
 MOORE, DAVID  
 MOORE, WILLIAM  
 MORAN, TULIS  
 PATRUM, JUANITA  
 QUALLS, ARNOLD  
 QUAKENBUSH, FANNIE

ROBERTSON, NETTA COOK  
 ROYSTER, FRANCES  
 RUDD, GERTIE  
 RUDD, LEONE  
 SCOTT, LOUISE  
 SCOTT, PHYLIS  
 SHARPE, CLARA  
 SIMPSON, VANCE  
 SMITH, ALVIS  
 SMITH, BILL  
 SMITH, SAMUEL  
 TERRELL, EDNA  
 THOMAS, GEORGE  
 TATE, ANNIE RICE  
 TYSON, THOMAS  
 WINDHAM, VIRGIL  
 WALTERS, ALFRED  
 WARD, VIOLET





## Le Cercle Francais

Flower: Fleur de Lis

Motto: "L'arbre Se Connait Au Fruit."

Colors: Violet et Blanc

### Les Officiers

*Pour 1925*  
 Le President ..... RUTH COLE  
 Le Vice-President ..... ALICE HOMEWOOD  
 Le Secretaire ..... HILDA AMICK  
 Le Tresorier ..... LACEY WEST  
 Rapporteur des Journaux ..... NEBLETTE CROWSON

*Pour 1926*  
 Le President ..... NINA MEBANE  
 Le Vice-President ..... TULA PAUL  
 Le Secretaire ..... OLIVIA STADLER  
 Le Tresorier ..... ARNOLD QUALLS  
 Rapporteur des Journaux ..... NEBLETTE CROWSON

### Mademoiselles

AMICK, HILDA  
 BRADSHAW, LOIS  
 BROWN, ANNIE  
 BROWN, MARGARET  
 CLAPP, CLARA  
 COBLE, LUCY  
 COLE, RUTH  
 FOGLEMAN, GENEVA  
 FOX, ELMA

GREESON, RUTH  
 HOMEWOOD, ALICE  
 HORNADAY, NELLIE DACE  
 ISLEY, LOUISE  
 IVEY, ANNIE  
 MEBANE, NINA  
 MONTGOMERY, VIRGINIA  
 MOORE, LUCILLE  
 MORTON, RUTH

MORROW, ADELAIDE  
 (Maitaine)  
 PAUL, TESSIE  
 PAUL, TULA  
 RICHMOND, HASSIE  
 STADLER, OLIVIA  
 TYSON, EDNA  
 WHITE, KATHERINE  
 YOUNGER, RUTH

### Messieurs

CLAPP, CHARLIE  
 CROWSON, NEBLETTE  
 DE LOATCHE, BENJAMIN

FOSTER, ELDRED  
 QUALLS, ARNOLD

QUALLS, WILLIAM  
 WEST, LACEY



## Latin Club

Motto: "Qui Non Proficat, Deficit."

Flower: Pansy

Colors: Purple and White

### Officers

Term 1925

President . . . . .	MILDRED HOLT
Vice-President . . . . .	EDWARD HOLT
Secretary and Treasurer . . . . .	GERTRUDE THOMPSON
Press-Reporter . . . . .	NEBLETTE CROWSON

Term 1926

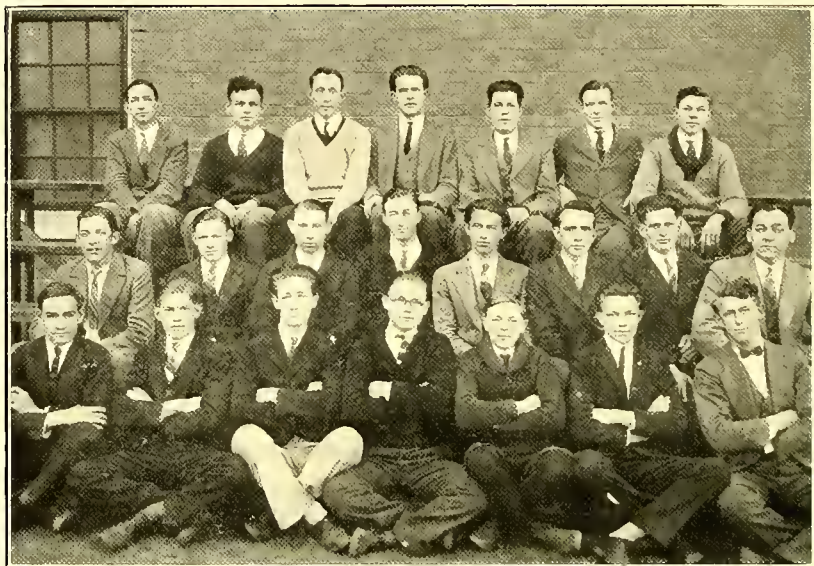
President . . . . .	SCOTT WHITE
Vice-President . . . . .	EDWARD HOLT
Secretary and Treasurer . . . . .	MILDRED HOLT
Press-Reporter . . . . .	NEBLETTE CROWSON

### Members

BALDWIN, CHARLIE  
 BARNWELL FRANCES  
 BENSON, NELL  
 BOLAND, WILLIS  
 BRIGHT, DOROTHY  
 BRITTLE, DOROTHY  
 CATES, NELLIE  
 COLE, MARGARET  
 CROWSON, NEBLETTE  
 DORSETT, IRIS  
 HARMON, OLEANA  
 HARGROVE, DEWEY  
 HAWN, ALLIE  
 HAY, EUNICE  
 HINSHAW, MARVIN  
 HOLT, EDWARD  
 HOLT, FRANK

HOLT, MILDRED  
 HOLT, VERA  
 HOLT, W. K.  
 HORNER, ELIZABETH  
 HORNER, HELEN  
 HORNER, WINSTEAD  
 HOWELL, EUGENIA  
 ISLEY, THOMAS  
 ISLEY, VERA  
 LOVE, GLADYS  
 LOVE, RALPH  
 MOORE, BONNER  
 MOORE, KEITH  
 NOAH, MARY  
 OLDHAM, ALMON  
 PERKINS, ANAN  
 RIDDLE, MARGARET

ROGERS, ELIZABETH  
 SCARBOROUGH, MISS  
 (Sponsor)  
 SELLARS, BESSIE MAE  
 SELLARS, MARTHA  
 SMITH, ALFRED  
 SMITH, HAROLD  
 THOMPSON, GERTRUDE  
 THORNBURG, MABEL  
 WADDELL, MARY  
 WALTERS, JENNIE FRANCES  
 WALTON, RUTH  
 WHITE, KATHERINE  
 WHITE, SCOTT  
 WHITFIELD, DON  
 WHITTED, NELLIE MAE  
 WILLIS, ROBERT



## Senior Hi-Y Club

*Motto:* "Character Through Service."

*Slogan:* "Clean Living, Clean Athletics, Clean Scholarship, Contagious Christian Character."

*Purpose:* To create, maintain, and extend throughout the school and community, high standards of Christian character.

### Officers

	<i>Term 1925</i>	
<i>President</i>	.....	GUY B. EPHLAND
<i>Vice-President</i>	.....	THOMAS KNOTT
<i>Secretary</i>	.....	WILLIAM QUALLS
<i>Treasurer</i>	.....	BEATTY RECTOR

	<i>Term 1926</i>	
<i>President</i>	.....	EDWARD GUTHRIE
<i>Vice-President</i>	.....	THOMAS BRADSHAW
<i>Secretary</i>	.....	DAN S. WHITE
<i>Treasurer</i>	.....	HAL WADDELL

### Members

ANDREWS, BRUCE  
BENNETT, MONROE  
BRADSHAW, THOMAS  
BRYAN, DACE  
BURKE, MORRIS  
EPHLAND, GUY  
GLOSSON, EUGENE  
GREGG, EDWARD

GUTHRIE, W. EDWARD  
HALFACRE, MR. (Sponsor)  
HOFFMAN, FRED  
HORNER, WINSTEAD  
JONES, LEON  
KNOTT, THOMAS  
MOORE, KEITH  
NEESE, KERMIT

OLDHAM, ALMON  
QUALLS, WILLIAM  
RECTOR, BEATTY  
SIMPSON, VANCE  
THOMPSON, REID  
TRUITT, HERMAN  
WADDELL, HAL  
WHITE, DAN S.



1926







## Junior Hi-Y Club

Flower Lily

Motto: "Builders of Character."

Color White and Gold

### Officers

Term 1925  
 President . . . . . JOHN WHITLEY  
 Vice-President . . . . . ROBERT ANTHONY  
 Secretary and Treasurer . . . . . JOSEPH GANT

Term 1926  
 President . . . . . FRANKLIN OVERMAN  
 Vice-President . . . . . EDGAR KNOTT  
 Secretary and Treasurer . . . . . KEITH BURKE

### Members

ANTHONY, ROBERT  
 BAILEY, RAY  
 BENNETT, HOWARD  
 BURKE, CARL  
 BURKE, KEITH  
 COBLE, YANKEY  
 COOK, J. D.  
 DABBS, MR. J. V. (Sponsor)

FOGLEMAN, RALPH  
 FOSTER, ALDROW  
 GANT, JOSEPH  
 HARGROVE, DEWEY  
 HARMON, CHARLIE  
 HORNER, HADLEY  
 JONES, LEWIS

KNOTT, EDGAR  
 OVERMAN, FRANKLIN  
 SPOON, BONNER  
 WALKER, EDWIN  
 WALTERS, ALFRED  
 WHITT, LAWRENCE  
 WHITLEY, JOHN





## Masquers

Colors: Black and White

Motto: "Lead Dramatics."

Emblem: The Mask

### Officers

President . . . . .  
Vice-President . . . . .  
Secretary . . . . .  
Treasurer . . . . .  
Press-Reporter . . . . .

Term 1925

VERNON JONES  
MILDRED HOLT  
SARA MURRAY  
ERMA LOVE  
HERMAN HILL KING

Term 1926

President . . . . . RAYMOND BELL  
Vice-President . . . . . JOSEPHINE HILL  
Treasurer . . . . . WILLA WALKER  
Secretary . . . . . VELNA GREGG  
Press-Reporter . . . . . HATTIE PERRY

### Members

BELL, RAYMOND  
BIVINS, CLARA  
BOONE, MARGARET  
BOWDEN, DOROTHY  
BROOKS, MARY JOYCE  
BROWN, PAULINE  
CATES, DOROTHY  
CATES, KATHLEEN  
CATES, MILDRED  
CHAPMAN, JOHN  
CLAYTOR, ANNIE  
COBLE, MARTHA  
COLEY, KATHLEEN  
CRUTCHFIELD, CARLEEN  
DAVIS, TREVA  
EPHLAND, JUANITA  
FOWLER, HELEN  
GARNER, FOY

GARRISON, FERN  
GOINS, RUBY  
GREGG, VELNA  
HILL, JOSEPHINE  
HINSHAW, ELIZABETH  
HOLT, MILDRED  
HOLTON, MISS AURA  
(Sponsor)  
HORNER, VIRGINIA  
JOHNSTON, RACHEL  
JONES, VERNON  
JORDON, MYRTLE  
KING, CORINA  
KING, HERMAN HILL  
LAWS, EDWINA  
LOVE, ERMA  
MEADOR, MADELINE  
MOORE, EULALIA

MURRAY, SARA  
MCKINNEY, ANNIE  
MCMILLIAN, MARY  
OAKLEY, BERNICE  
PERRINS, ANAN  
PERRY, HATTIE  
PICKETT, HAZEL  
PRITCHETT, FRANCES  
RECTOR, BEATTY  
SELLARS, ELIZABETH  
SHARPE, LULA  
SHOFFNER, DRUSILLA  
TEAGUE, MILDRED  
WALKER, WILLA  
WARLICK, PEARL  
WEST, ALICE



# 1926





## Little Theater Dramatic Club

Motto: "All the World's a Stage."

### Officers

Term 1925

President.....DURWARD STOKES  
 Vice-President.....TULA PAUL  
 Secretary and Treasurer.....EDITH HOLT  
 Press-Reporter.....MARTHA LOU STOKES

Term 1926

President.....EDITH HOLT  
 Vice-President.....ALYSE SMITH  
 Secretary and Treasurer.....MARY NELL DAVIS  
 Press-Reporter.....DURWARD STOKES

### Members

AMICK, HILDA  
 BLACK, SWANNIE  
 BOLAND, INA BANKS  
 BOWMAN, WILLIAM  
 BROWNING, GERTRUDE  
 CARROLL, MISS EDITH E.  
 (Sponsor)  
 CATES, MADELINE  
 DAVIS, MARY NELL  
 ERWIN, GERTRUDE  
 FAUCETTE, THELMA  
 FOGLEMAN, GENEVA  
 FOGLEMAN, MARY LOU  
 FOX, FULTON  
 HALL, CLARA  
 HALL, ZETTIE

HAY, VERDIE  
 HAYES, NELL  
 HINSHAW, MARGARET  
 HOLT, EDITH  
 HORNE, ANNIE LEE  
 HORNE, MARY  
 MACOMSON, RUTH  
 MONTGOMERY, EDNA  
 MONTGOMERY, LUCILLE  
 MORTON, VIRGINIA  
 MURPHY, EVELYN  
 PAUL, TESSIE  
 PAUL, TULA  
 POTTER, RICHARD  
 PRICE, MARY  
 ROSEMOND, MARY ELIZABETH

RUDD, MARY  
 SCOTT, MAXINE  
 SMITH, ALYSE  
 STADLER, MARY LEE  
 STAUNTON, EDNA  
 STEWART, CLEO  
 STOCKARD, HELEN  
 STOKES, DURWARD  
 STOKES, MARTHA LOU  
 TATE, ANNIE RICE  
 THOMPSON, DOROTHY  
 THOMPSON, GRACE  
 TROLLINGER, MILDRED  
 WALKER, MARGARET  
 WALTERS, SELMA  
 WOODSON, GLADYS



## Stage Steppers Dramatic Club

Motto: "Take the Stairs to Success: the Elevator is Not Running."

Flower: White Rose

Colors: Green and White

### Officers

*Term 1925*  
 President ..... HAZEL THOMPSON  
                                         CLARA SHARPE  
 Vice-President ..... ANNIE BROWN  
 Secretary ..... KERN LEE THOMPSON  
 Treasurer ..... NELLIE DACE HORNADAY

*Term 1926*  
 President ..... ALICE HOMEWOOD  
 Vice-President ..... KERN LEE THOMPSON  
 Secretary ..... BESSIE MAE SELLARS  
 Treasurer ..... LUCILLE COLE

### Members

ANGEL, VIRGIE  
 BLANCHARD, MABEL  
 BOLAND, WILLIS  
 BRADSHAW, LOIS  
 BROWN, ANNIE  
 CATES, MINWAL  
 COBLE, LUCY  
 COBLE, WADE  
 COLE, LUCILLE  
 COLE, MARGARET  
 COLE, RUTH  
 DIXON, ALYSSE  
 ELKINS, ERMA LEE  
 FOGLEMAN, RALPH  
 HAWN, ALLIE

HAY, EUNICE  
 HENSLEY, BEULAH  
 HOMEWOOD, ALICE  
 HORNADAY, NELLIE DACE  
 HORNADAY, F. D.  
 HORNER, ELIZABETH  
 HOWELL, EUGENIA  
 IRELAND, BLANCHE  
 ISLEY, EUPHA  
 ISLEY, VERA  
 JORDAN, LUCILLE  
 MAY, W. H.  
 NOAH, MARY  
 PATRUM, JUANITA  
 POLLARD, LOUISE

RIDDLE, MARGARET  
 ROYSTER, FRANCES  
 SHARPE, CLARA  
 SELLARS, MARTHA  
 SELLARS, BESSIE MAE  
 SHEPARD, MISS GERTRUDE  
 (Sponsor)  
 SMITH, ALVIS  
 TERRELL, EDNA  
 THOMPSON, KERN LEE  
 TROLLINGER, HAROLD  
 TYSON, EDNA  
 WHITTED, NELLIE MAE  
 YOUNGER, RUTH





## Edison Science Club

### Officers

Term 1925  
 President ..... HAL WADDELL  
 Vice-President ..... W. H. MAY  
 Secretary and Treasurer ..... REID THOMPSON

Term 1926  
 President ..... W. H. MAY  
 Vice-President ..... REID THOMPSON  
 Secretary and Treasurer ..... ASHBY ROBERTSON

### Members

AMICK, LEDMUN  
 ATWATER, AUTHER  
 BENSON, NELL  
 BURKE, CARL  
 BURKE, MORRIS  
 CHAPMAN, DOROTHY  
 COBLE, GROVER  
 COBLE, WADE  
 COOK, J. D.  
 FAUCETTE, ELMER  
 FOSTER, STAFFORD  
 GANT, JOE  
 GOODES, BENJAMIN  
 HALL, IRVIN

HARMAN, CHARLES  
 HORNADAY, F. D.  
 ISLEY, CARLYLE  
 ISLEY, RANDOLPH  
 JONES, PERRY  
 KNOTT, EDGAR  
 LASLEY, BILL  
 LAWES, EDWINA  
 LEONARD, MR. E. C.  
 (Sponsor)  
 LOVE, RALPH  
 LOY, JULIA MAE  
 MAY, JACK

MAY, W. H.  
 MEBANE, ALLEN  
 MITCHELL, FRANK  
 MOORE, WILLIAM  
 PHILLIPS, OSCAR  
 REDDING, RALPH  
 ROBERTSON, ASHBY  
 SPOON, BONNER  
 SULLIVAN, JAMES  
 THOMPSON, REID  
 TILLMAN, BEN  
 WADDELL, HAL  
 YARBOROUGH, GEORGE





## Philosophical Science Club

### Officers

*Term 1925*  
 President . . . . .  
 Vice-President . . . . .  
 Secretary and Treasurer . . . . .

RAYMOND BELL  
 JAMES HALL  
 CLARA CLAPP

*Term 1926*  
 President . . . . . JAMES HALL  
 Vice-President . . . . . DACE BRYAN  
 Secretary and Treasurer . . . . . RUTH MORTON

### Members

ALLRED, EVERETT  
 ANTHONY, GEORGE  
 APPLE, FLETCHER  
 BELL, RAYMOND  
 BRAXTON, SCOTT  
 BRYAN, DACE  
 CATES, DOROTHY  
 CLAPP, CLARA  
 CLAPP, CHARLIE  
 CLARK, ROY  
 COBB, PAUL  
 COBLE, YANKEY  
 DeLOATCH, BENJAMIN  
 GLOSSON, EUGENE  
 GOODMAN, HARRISON  
 GUTHRIE, EDWARD

HALL, JAMES  
 HINSHAW, ELIZABETH  
 HOGAN, SARA  
 HOLT, EDWARD  
 HOLT, JULE  
 HOLT, W. K.  
 JONES, LOUIS  
 KENNY, GEORGE  
 KERNODLE, GEORGE  
 MONTGOMERY, VIRGINIA  
 MOORE, DAVID  
 MOORE, HOWARD  
 MOORE, LUCILLE  
 MORAN, TULIS  
 MORTON, RUTH  
 NICHOLS, JAMES

PAUL, HOWARD  
 PENNINGTON, CARLOS  
 PERKINS, FREEMAN  
 POTTER, RICHARD  
 SCOTT, LOUISE  
 SMITH, HAROLD  
 SMITH, ALLSON  
 THOMPSON, DOROTHY  
 THOMPSON, KENT  
 WALKER, EDMUND  
 WARLICK, SAM  
 WHEELLEY, WILLIE  
 WILLIS, ROBERT  
 WINDHAM, VIRGIL  
 WRIGHT, HOWARD



## The B. H. S. Band

Mr. M. Z. RHODES, Director

### Officers

President . . . . .	LINWOOD HALL	Manager . . . . .	WALTER SHARPE
Secretary . . . . .	FLOYD WHITFIELD	Assistant Manager . . . . .	CHARLES AMICK, JR.

### Roster

WINIFRED PAUL, Cornet  
 WILLIAM SHOFFNER, Cornet  
 ASHBY ROBERTSON, Cornet  
 JOHN VERNON, Cornet  
 LEDNUM AMICK, Cornet  
 CLIFTON GARRISON, Cornet  
 ALMON McIVER, Cornet  
 THOMAS ROUSE, Cornet  
 LYMAN JAMES, Cornet  
 JOHN TAYLOR, Cornet

WALTER SHARPE, Cornet  
 PRYOR FONVILLE, Clarinet  
 VICTOR SHOFFNER, Clarinet  
 LINWOOD HALL, Clarinet  
 CHARLES AMICK, JR., Clarinet  
 WILLIAM BURKE, Saxophone  
 BENSON BLACK, Saxophone  
 ROBERT ROSS, Trombone  
 WADE SHOFFNER, Trombone

RALPH LOVE, Trombone  
 FLOYD WHITFIELD, Trombone  
 DURWARD STOKES, Baritone  
 THEODORE WELCH, Baritone  
 ALLEN MEBANE, B Flat Bass  
 DWIGHT LANKFORD, Tuba  
 HERMAN HILL KING, Alto  
 ALFRED WALTERS, Alto  
 RANDOLPH ISLEY, Bass Drums  
 HENRY MEACHEM, Snare Drums



## Orchestra

MR. RHODES, *Director*

### Officers

Vice-President Secretary and Treasurer	President DURWARD STOKES ALYSE SMITH	WILLIAM BURKE Manager Assistant Manager DWIGHT LANKFORD ROCKIE LEE TAYLOR
-------------------------------------------	--------------------------------------------	---------------------------------------------------------------------------------------

ALYSE SMITH, Piano  
 ROCKIE LEE TAYLOR, 1st Violin  
 DOROTHY BRITTLE, 1st Violin  
 LOUISE POLLARD, 2nd Violin  
 LUTHER ATWATER, 2nd Violin  
 LUCILLE JORDAN, 2nd Violin

GHILAN HALL, Cello  
 WALTER SHARPE, Cornet  
 LINWOOD HALL, 1st Clarinet  
 PRYOR FONVILLE, 2nd Clarinet  
 VICTOR SHOFNER, 2nd Clarinet  
 WILLIAM BURKE, Saxophone

BENSON BLACK, Saxophone  
 FLOYD WHITFIELD, Trombone  
 DWIGHT LANKFORD, Tuba  
 DURWARD STOKES, Drums  
 MILDRED TROLLINGER, Assistant  
 Drummer.





## Boys' Glee Club

MISS ELISABETH FULTON, *Director*

### Members

#### 1st Tenors

BELL, RAYMOND  
HOLT, JULE  
KING, HERMAN HILL

NOAH GORDON  
ROSS, ROBERT

SHARPE, WALTER  
SHOFFNER, WILLIAM  
WELCH, THEODORE

#### 2nd Tenors

ALLEN, HARVEY  
FOGLEMAN, MAX

FOWLER, NAT  
JONES, LEON  
KERNODLE, GEORGE

PENNINGTON, CARLOS  
WRIGHT, HOWARD

#### Baritones

BRADSHAW, THOMAS  
KNOTT, THOMAS

MOORE, HOWARD  
SPOON, WAYNE

TROLLINGER, HAROLD  
WORKMAN, WALLER

#### Basses

BENNETT, MONROE  
COBB, PAUL

EPHLAND, GUY  
GROSS, ERNEST

HALL, JAMES  
THOMPSON, KENT





## Girls' Glee Club

MISS ELISABETH FULTON, *Director*

### Members

#### *1st Sopranos*

BOONE, MARGARET  
GARRISON, FERN  
GOINS, RUBY  
HANFORD, NESBIT  
HOLT, EDITH  
HORNE, ANNIE LEE  
HORNER, VIRGINIA

JORDAN, MYRTLE  
KING, CORINA  
LEATH, ELIZABETH  
MORTON, VIRGINIA  
MURRAY, SARAH  
ROGERS, ELIZABETH  
ROSEMAND, MARY E.  
RUDD, GERTIE

SHOFFNER, DRUSILLA  
SMITH, ALYSE  
STADLER, OLIVIA  
TAYLOR, ROCKIE LEE  
TEAGUE, MILDRED  
WALKER, MARGARET  
WARD, VIOLET

#### *2nd Sopranos*

BROOKS, MARY JOYCE  
HALL, GHILAND  
HARMON, OLENA  
HINSHAW, TRESSIE

McMILLAN, NAOMI  
OAKLEY, BERNICE  
ROBERTSON, NETTA COOK

SELLARS, ELIZABETH  
SMITH, MARY LOUISE  
STAUNTON, ELNA  
WADDELL, MARY

#### *Altos*

BIVINS, CLARA  
CATES, MILDRED  
CATES, KATHLEEN  
CRUTCHFIELD, CARLEEN  
FIX, ELEANOR

FOWLER, HELEN  
GREENSON, RUTH  
HALL, CLARA  
HAY, VERDIE  
LOVE, GLADYS

MONTGOMERY, EDNA  
PRITCHARD, FRANCES  
STOCKARD, HELEN  
STUART, CLEO  
WARLICK, PEARL

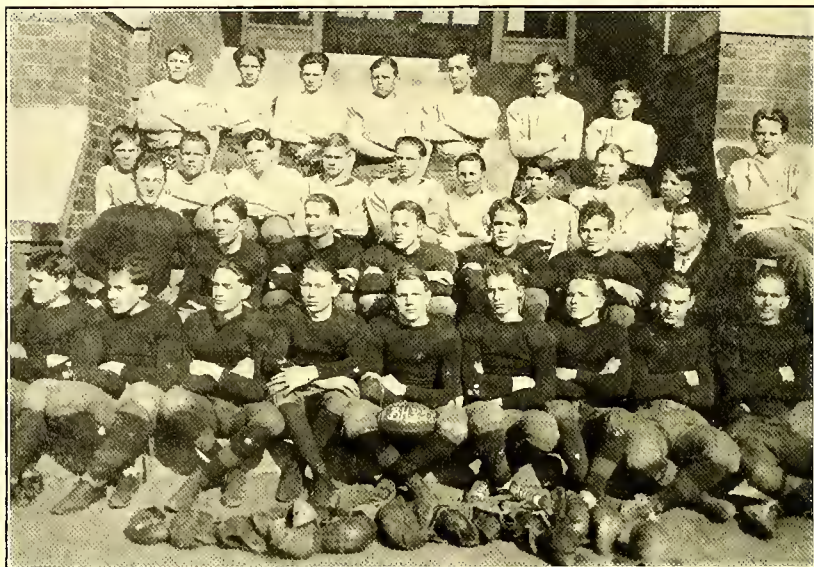


1926



# SPORTS





## Personnel of B. H. S. Football Team

Mr. T. E. McBane, *Coch*  
 WORKMAN, I. g.  
 KENNY, I. t.  
 GLOSSON, I. t.  
 GUTHRIE, I. g.  
 WHITE, c.  
 BRADSHAW, I. c.  
 FOWLER, I. c.  
 JONES, V., q. b.  
 EPHLAND, I. h.  
 HALL, I. h.  
 WHITFIELD, f. b.

WALTER, SHARPE, *Manager*  
 ROUSE, sub. c.  
 FONVILLE, sub. g.  
 THOMPSON, sub. q. b.  
 LANKFORD, sub. t.  
 WADDELL, sub. t.  
 HOLT, J., sub. c.  
 HOLT, W. K., sub. g.  
 WEST, sub. e.  
 BENNETT, sub. e.  
 MITCHELL, sub. h.  
 BLACK, sub. h.  
 JONES, P., sub. g.

VERNON JONES, *Captain*  
 GANT, sub. h.  
 TILLMAN, sub. g.  
 MAY, sub. e.  
 ANTHONY, sub. g.  
 HOLT, C., sub. f.  
 BENNETT, sub. e.  
 JONES, L., sub. t.  
 LASLEY, sub. h.  
 LOVE, sub. g.  
 HORNER, sub. g.  
 THOMAS, sub. h.

### FOOTBALL SCHEDULE AND SCORES

B. H. S. . . . .	0	Mebane . . . . .	0
B. H. S. . . . .	0	High Point . . . . .	18
B. H. S. . . . .	6	Lexington . . . . .	13
B. H. S. . . . .	33	Liberty . . . . .	19
B. H. S. . . . .	6	Reidsville . . . . .	6
B. H. S. . . . .	12	Ashboro . . . . .	6
B. H. S. . . . .	14	Greensboro . . . . .	0
B. H. S. . . . .	71	Opponents . . . . .	62

### CHAMPIONSHIP GAMES

B. H. S. . . . .	0	Mebane . . . . .	0
B. H. S. . . . .	0	Mebane . . . . .	6
B. H. S. . . . .	0	Opponents . . . . .	6



## Football

The Football season started with about thirty-five candidates out for daily practice. The prospects for a winning team looked good, but a few of the most promising candidates dropped out.

During the early part of the season several of the players quit school, which was another great loss to the team. However the faithful ones who remained underwent an intensive training under Coach McBane and made a splendid showing in every game in which they engaged. They met some of the strongest teams of the state, Greensboro, High Point, Reidsville and many others. Although the records for the year do not show all winning scores yet the team feels it no dishonor to have been defeated when they had put forth their best efforts. The experience gained in such encounters will be of material aid to them in putting out a stronger team next year. In a word, they played the game fair and square and won a name in good sportsmanship.





## Girls' Basketball '26

Back Row left to right—Annie Rice Tate, Lucille Cole, Lula Sharpe, Clara Sharpe, captain Ruby Goins, Miss Whitley, coach.

Front Row left to right—Nesbit Hanford, Kathleen Coley, Josephine Hill, Mildred Holt, manager, Cleo Stewart.

### GAMES

B. H. S. ....	50	Gibsonville .....	22
B. H. S. ....	21	Reidsville .....	12
B. H. S. ....	27	Leaksville .....	19
B. H. S. ....	25	Greensboro .....	15
B. H. S. ....	38	Mebane .....	10
B. H. S. ....	38	Gibsonville .....	31
B. H. S. ....	34	High Point .....	35
B. H. S. ....	24	Leaksville .....	34
B. H. S. ....	22	Mebane .....	15
B. H. S. ....	41	Greensboro .....	23
B. H. S. ....	41	Reidsville .....	11
B. H. S. ....	38	High Point .....	20

### CHAMPIONSHIP GAMES

B. H. S. ....	17	Gibsonville .....	10
B. H. S. ....	41	Reidsville .....	18
B. H. S. ....	30	Winston Salem .....	32
B. H. S. ....	478	Opponents .....	307



## Boys' Basketball Squad

Mr. E. C. LEONARD, Coach  
THOMPSON, R., l. g.  
JONES, V., r. g.  
EPHLAND, G., c.  
FOWLER, N., r. f.

JAMES HALL, Manager  
THOMPSON, K. L., l. f.  
KINNEY, G., sub g.  
WHITE, S., sub g.  
HOLT, W. K., sub g.

NAT FOWLER, Captain  
FOSTER, S., sub f.  
WEST, L., sub f.  
ROUSE, B., sub g.  
WADDELL, H., sub c.

### RECORD 1925-1926

B. H. S. ....	35	Gibsonville. ....	34
B. H. S. ....	26	Elon. ....	31
B. H. S. ....	11	Gibsonville. ....	13
B. H. S. ....	7	Elon. ....	16
B. H. S. ....	14	High Point. ....	18
B. H. S. ....	14	Jamestown. ....	24
B. H. S. ....	11	Guilford. ....	25
B. H. S. ....	11	High Point. ....	15
B. H. S. ....	11	Guilford. ....	28
B. H. S. ....	18	Jamestown. ....	26
	158		230

### CHAMPIONSHIP SERIES

B. H. S. ....	14	Greensboro. ....	27
---------------	----	------------------	----

The Boy's Basketball Season started when they met the strong Gibsonville team on the local court December 8, 1925. The game was hotly contested and had to be extended an extra ten minutes before either team could be acclaimed victor. It finally ended in the local team's favor, 35-34. Although this was the only game the team won during the season, it has learned to take defeat in a sportsman-like way. The team was comparatively new because of the loss of four letter men last year.





## The Baseball Squad---1926

MR. T. E. McBANE, Coach  
WHITLEY, C.  
WHITFIELD, P.  
KENNY, f. b.  
HALL, s. b.  
FOWLER, s. s.  
EPFLAND, t. b.

KERN LEE THOMPSON, Manager  
MOORE, r. f.  
GLOSSON, c. f.  
LOY, l. f.  
BENNETT, p.  
WADDELL, sub c. f.  
THOMPSON, K., sub s. b.  
THOMPSON, R., sub t. b.

GEORGE KENNY, Captain  
ANDREWS, p.  
GOODMAN, sub r. f.  
WHITE, sub f. b.  
COOK, sub c.  
FOGELMAN, sub r. f.  
LITTLE BILLY EZZELL, Mascot  
WORKMAN, sub l. f.

### SCHEDULE

March 23	High Point.	here	April 13...	Greensboro	there
March 26.	Leaksville	there	April 16...	Chapel Hill.	here
March 31.	Pomona	there	April 20...	Leaksville.	here
April 2	Greensboro.	here	April 23...	High Point.	there
April 6	Pomona	here	April 27...	Reidsville.	here
April 9..	Reidsville.	there	April 30...	Chapel Hill.	there

The Baseball season opened with High Point on the home grounds. The game resulted in a victory for B. H. S. by the score of 6-3. Eight of the last year's regulars are back and with several prospective candidates, Coach McBane expects to put out a championship team. B. H. S. has a reputation of sending good ball players to the big leagues and from present indications it looks as though she is going to send more. The varsity has been equipped with new uniforms and they expect to show their appreciation of them by winning every game on the schedule.

B. H. S. has won the first three games played. High Point being defeated by the score 6-3 Pomona being defeated 22-4. Greensboro, our worst enemy, received the small end of a 10-5 score.





## Boys' Track Team--Season 1926

The track squad under the coaching of Mr. J. V. Dabbs is rapidly developing into a championship team. With seven of last year's squad back the prospects of a successful season look good. In past years B. H. S. has been noted for its track teams and possesses seven trophy cups which have been won permanently. She expects to win more.

Last year a squad composed of four Seniors and one Junior won the State Tournament at Wake Forest College. All schools were limited to a squad of five men.

### MEMBERS OF TRACK SQUAD

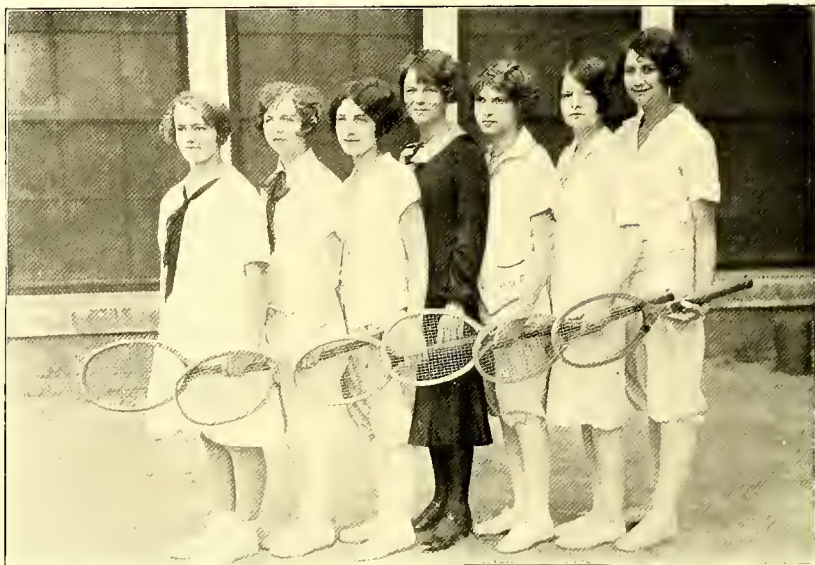
Mr. J. V. Dabbs, *Coach*

BENNETT, MONROE  
BURKE, MORRIS  
EPHLAND, GUY B.  
GOODEN, BENJAMINE  
HARMON, CHARLES

HINSHAW, MARVIN  
HOFFMAN, FRED  
JONES, LEON  
LOY, CASPER  
NOAH, GORDON  
QUALLS, WILLIAM

SHARPE, WALTER  
SHOFFNER, WILLIAM  
TILLMAN, BEN  
WALTERS, ALFRED  
WEST, LACEY





## Girls' Tennis Squad

MARGARET HINSHAW  
MILDRED HOLT

MISS WHITLEY, Coach  
ERMA LOVE  
SARA MURRAY

MARY PRICE  
CLARA SHARPE, Manager

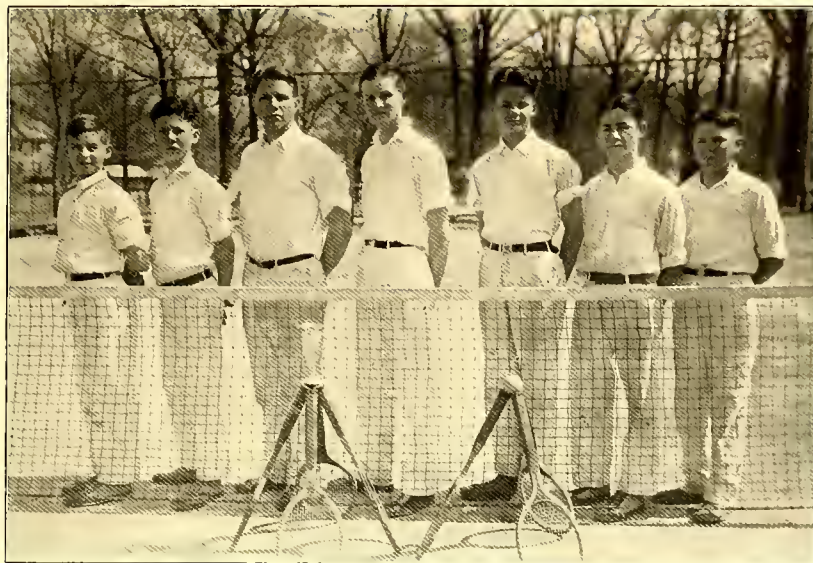
Tennis is becoming more popular yearly among the girls of the student body. This Season's practice began early with approximately seventy girls signing up to play. It was near impossible to picture such a large squad, so an elimination series was played with the six girls pictured above defeating all of their opponents.

This year's schedule will include matches with Winston-Salem, Greensboro, High Point and others. Indications are that the season will be one of success.



1926





## Tennis Squad

MAY, JACK  
VERNON, JOHN

MR. E. C. LEONARD, *Faculty Manager*

JONES, VERNON, *Manager*  
MAY, W. H., JR.  
SHARPE, WALTER

HOLT, EDWARD  
JONES, PERRY

The Tennis team this year has shown more interest and enthusiasm than any preceding year, due probably to the fact that the Physical Education Department has arranged that about seventy-five pupils play during each week. The interest thus aroused will assure us winning teams in the future.

Although the team has not done any spectacular winning of matches, they have been able to hold their opponents to a low score. In the State Tournament, while they did not get to the finals, they held the winning team to a lower score than any other team.

Four members of the present squad will form the nucleus for a winning team in 1927.



## *How Did You Die?*

Did you tackle the trouble that came your way  
With a resolute heart and cheerful?  
Or hide your face from the light of day  
With a craven soul, and fearful?  
Oh, a trouble's a ton—or a trouble's an ounce,  
Or a trouble is what you make it.  
It isn't the fact you're hurt that counts,  
But only, how did you take it?

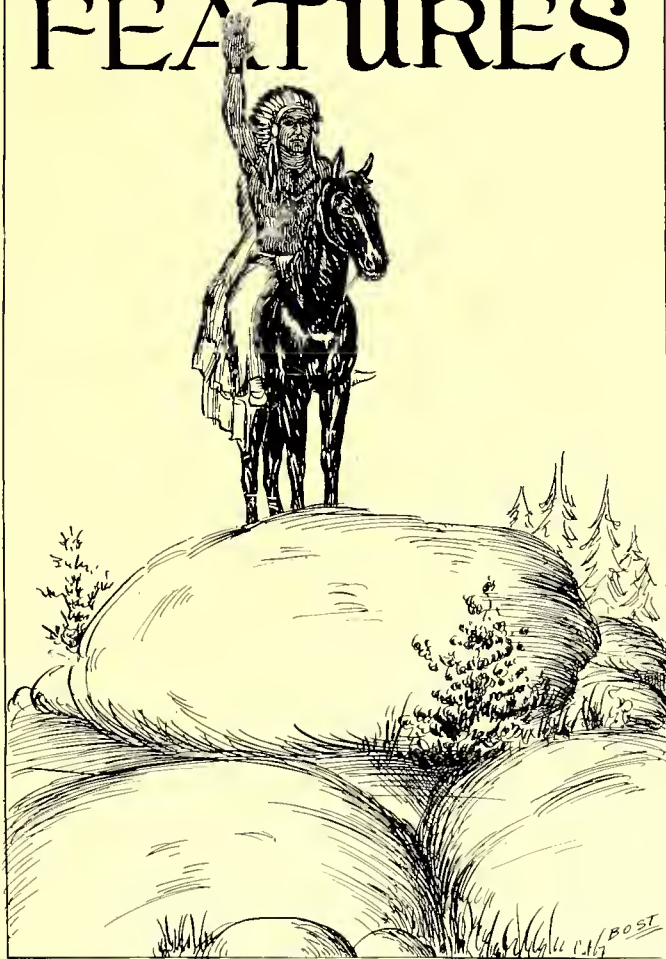
You are beaten to earth. Well, well, what of that?  
Come up with a smiling face.  
It's nothing against you to fall down flat—  
But to lie there—that's disgrace!  
The harder you're thrown, the higher you'll bounce!  
Be proud of the blackened eye!  
It isn't the fact you're licked that counts,  
But how did you fight, and why?

And though you be done to death, what then?  
If you've battled the best you could,  
If you've played your part in the world of men,  
The Critic will call it good.  
Death comes with a crawl—or he comes with a pounce—  
But, whether he's slow or spry—  
It isn't the fact you're dead that counts,  
But only, how did you die?

EDMUND VANCE COOKE.



# FEATURES







Durward Stokes  
EDITOR-IN-CHIEF



Arnold Qualls  
ASST. EDITOR-IN-CHIEF

DOE-WAH-JACK STAFF

19

26



Vernon Jones  
BUSINESS MANAGER



Kern Lee Thompson  
ASST. BUSINESS MANAGER



Mildred Holt  
LITERARY EDITOR



Nat Fowler  
BOYS' ATHLETIC EDITOR

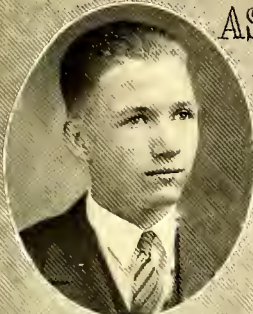


Ruby Goins  
GIRLS' ATHLETIC EDITOR



Kermit Neese  
FEATURE EDITOR

ASSOCIATE-STAFF  
MEMBERS  
DOE-WAH-JACK  
1926



Raymond Bell  
SNAPSHOT EDITOR



Edward Holt  
HUMOROUS EDITOR



Carlos Pennington  
FRESHMAN EDITOR



Walter Sharpe  
SOPHOMORE EDITOR



## *The Junior Party*

IN ORDER for the Juniors to have the Junior-Senior Banquet in the Alamance Hotel, it was necessary to have more funds. Their plan was to have a party and charge twenty-five cents for admission.

The party was held near the time of St. Valentine's Day, so the Juniors gave a play which caused the jaws of the spectators to swell and their sides almost to split. The players displayed great talent in dramatic work.

Before and after the play delicious lemonade and candy were sold from a valentine booth. Pretty girls dressed in harmony with St. Valentine's Day sold the lemonade and candy.

Between the acts, and before and after the play, the high school orchestra furnished some of the best music of the season.

In a gypsy tent, at one side of the auditorium, sat Miss Holton, telling the boys and girls what luck they would have in courtship, and the older men and women how long they would live and how much money they would earn. At the other side of the auditorium in an enclosed booth sat Miss Edith Carroll, telling the people the same thing in a most skillful and impressive manner.

Everyone went away smiling and happy, and feeling as if he had got his money's worth.

## *The Junior-Senior Banquet*

The greatest social event of the year was the Junior-Senior Banquet, given by the Juniors of Burlington High School to the Seniors. This was given March the twelfth, nineteen hundred and twenty six.

The banquet was held in the banquet room of the Alamance Hotel. As this was near St. Patrick's Day, everything was decorated in green and white, the Senior colors. The waitresses wore green and white St. Patrick's Day dresses. White roses, the Senior flower, were used in Profusion.

This was one time when every boy had a girl. The couples marched in double file and found their places marked by place cards.

Monroe Bennett proved his ability as toastmaster by his humor and fluent elocution. Everyone who gave toasts spoke very distinctly and proved that the Junior class has some excellent material and many promising platform speakers.

Miss Katherine White, as a fairy dancer, entertained in her charming and graceful way. Her dance was so enjoyed that she was asked to repeat her part on the program.

The high school orchestra furnished music, and the waitresses sang several beautiful songs and gave several old folk dances. It was an evening of real pleasure.

## *The Senior Hi-Y Social*

One of the greatest organizations of the High School is the Hi-Y Club. This Club is composed solely of boys. It is customary each year to have a social or picnic.

The Club decided to entertain the Junior Hi-Y, composed only of boys from the freshman class, in order to give them a hearty welcome into the Senior Hi-Y for the ensuing year. Since, however, it would be impossible to have a successful social without some girls, each boy of the Club was to take some girl to the social, and each member of the Junior Hi-Y was given the same privilege.

On March the nineteenth at eight o'clock practically every member of the two Hi-Y Clubs with his best girl friend was present at the school auditorium.

The president, Edward Guthrie, presided over the assembly. Guy Ephland whole-heartedly welcomed the Junior Hi-Y and the girls to the social. Mr. Dabbs told of the significance of the Hi-Y pin. Kermit Neese told of the purpose and objectives of the Hi-Y. The high school orchestra gave several enjoyable selections at different times through the program.

Immediately after the program a social hour was sponsored by Miss Shepard, Mr. Leonard, and Thomas Bradshaw.

During the social hour each person present was given a favor, which was a rubber come-back ball.

Following the social hour ice cream and cake were served.

Everyone enjoyed the evening of fun and left the "dear old school" with a light heart.

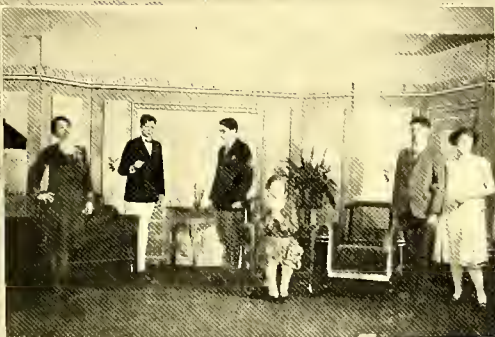






Scene from "Miss Molly"  
Stage Steppers  
Dramatic Club

Scene from "The  
Silver Lining"  
The Little Theatre  
Dramatic Club



Scene from "The  
Trysting Place"  
The Masquers



## Yells



Horse and Wagon,  
Horse and Wagon,  
Team! Team! Team!  
Locomotive, Locomotive,  
Coach! Coach! Coach!

Cheer Burlington Cheer  
Your comrades brave and bold  
Cheer Burlington Cheer  
As you have done of old.  
There'll be a rah, rah, rah  
For every single goal  
There'll be a hot time,  
In the Old town tonight.

Rip, Ray, Rah  
Rip, Ray, Rah  
Burlington! Burlington! Burlington!

Rickety, Rackety, Russ  
We are not allowed to cuss,  
But never the less we must confess  
There's nothing the matter with us!

Burlington High School is going to win the cup!  
Burlington High School go ahead and eat them up!  
Hit that line and knock it down,  
Spread the news all over the town—  
Burlington High School is going to win the cup!

Potatoes, Potatoes  
Twenty cents a peck  
If you are going to beat Burlington  
You got to break your neck

Chicka Lacka, Chicka Lacka,  
Chow, Chow, Chow  
Buma Lacka, Buma Lacka  
Bow, Wow, Wow:  
Bum get a rat trap,  
Bum get a cat trap,  
Bum get a rat rap  
Bigger than a cat trap;  
Ma, Pa, Sister, Bah,  
Burlington! Burlington!  
Rah! Rah! Rah!

Hit 'em right,  
Hit 'em left,  
Hit 'em hard for Mutt and Jeff  
Oh! Boys! Hit 'em!

Strawberry Short Cake  
Huckleberry Pie;  
V-I-C-T-O-R-Y  
Are we in it; Well I guess  
Burlington! Burlington!  
Yes! Yes! Yes!





MR. LEWIS SHARPE  
*Superintendent of Building and Grounds*



## *The Editors' Appreciation*

Now that you, dear reader, have perused the previous pages, we, the Editors, beg the privilege of a parting word. We wish to express to you our feeling at the completion of this book. We expressed in the Foreword our purposes in presenting to you the book, and we have worked hard in order to accomplish these. We sincerely hope that the contents of this book will meet with your approval. To Mr. Halfacre and Mr. Haworth, for their encouragement, advice and indispensable aid; to the members of the faculty for their generous help and suggestions; to the members of the Staff for their untiring and faithful labor; to the student body for their never failing enthusiasm and ready service; to the generous and patronizing business men and women of Burlington for their financial aid and encouragement; and to every one who has in any way helped to make our publication possible, we extend this expression of our deepest appreciation.

To our successors, we extend our best wishes and sincere hopes for success. May each volume of the "DOE-WAH-JACK" stand forth as a better one than any that have gone before. Again we thank you, one and all, for making this volume possible.

THE EDITORS, 1926









## Jokes

K. L. THOMPSON: "Do angels have wings, Ma?"  
MRS. THOMPSON: "Yes, Darling."  
K. L. THOMPSON: "Can they fly?"  
MRS. THOMPSON: "Yes, dear."  
K. L. THOMPSON: "Then, when is the nurse going to fly, Pa called her an angel last night."  
MRS. THOMPSON: "Tomorrow, darling."

COLLEGE PROF.: "Well, I suppose you have been through algebra?"  
W. H. MAY: "Yes, sir, but I went through at night and couldn't see the darn place."

TRAMP: "Would you give me 50c. for a fund to beautify the town?"  
NATIVE: "Well, how are you going to beautify it?"  
TRAMP: "By moving on to the next village."

MISS HOLTON: "How's married life?"  
MR. LEONARD: "Oh, I live like a bird."  
MISS HOLTON: "How's that?"  
MR. LEONARD: "I have to fly for my life."

Richard potter is like a hen, because he seldom finds anything where he laid it yesterday.

A woman has two natures: The one she really is and the one she tells other people about.

Dwight Lankford thinks neology is studied on the front row of a burlesque show.

PEARL WARLICK: "You say he was a fine driver?"  
REID THOMPSON: "Yes. He started from New York and in two minutes he was at the Golden Gates."

Erving Hall said he was so rich that he had matches to burn.

*Poem by ELIZABETH BRITTLE:*  
When doughnuts grow on peanut trees  
And W. H. May is not nutty,  
When bumblebees put powder on their knees,  
Then I'll begin to study.

Mrs. Fowler carried Nat to Belk-Stevens and bought him a tie and put it on him and tied it.  
Nat stood there three days because he thought that he was tied.

SAM WARLICK: "Why don't you put on better shoes? Your father is a shoe maker."  
FLETCHER APPLE: "That's nothing. Your father is a dentist, and you haven't but one tooth."

ERMA LOVE: "I called to see what the Dr. could give me for my tonsils."  
NURSE: "Sorry, Ma'm. We don't buy them here."

MR. MURRAY: "You don't mean that you paid \$150.00 for that gown?"  
SARAH M.: "No, I left that for you to do."

FLOYD WHITFIELD: "My face is my fortune, sir."  
ED GUTHRIE: "How do you get your room rent paid."

ERNEST GROSS—He's so stingy and tight that he would hold a penny in his hand and give Abraham Lincoln the headache.



# Belk-Stevens Company

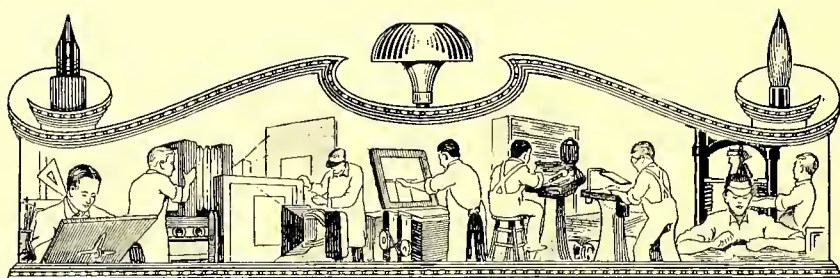
DEPARTMENT STORES

*Dry Goods, Notions, Millinery, Shoes and Clothing*  
*Ladies Ready-to-Wear*

Being one of a chain of thirty-six live and up-to-date department stores we feel like we have helped the people of this and the surrounding communities in many ways. We have always tried to and think that we have offered you many wonderful values during the past six years. We are not satisfied with the past but are tugging and working every day to make our future far superior. Belks' buying power is becoming greater and greater each year, we now have two offices in New York City and one in Paris, France, and in these offices we have men and women who are the very best to be found. These buyers are searching day by day for bigger and better values for each and every store throughout the Belk chain. Remember that we comb the world for good dependable merchandise and blaze the way in value giving.

## Belk-Stevens Company

*"Burlington's Shopping Center"*

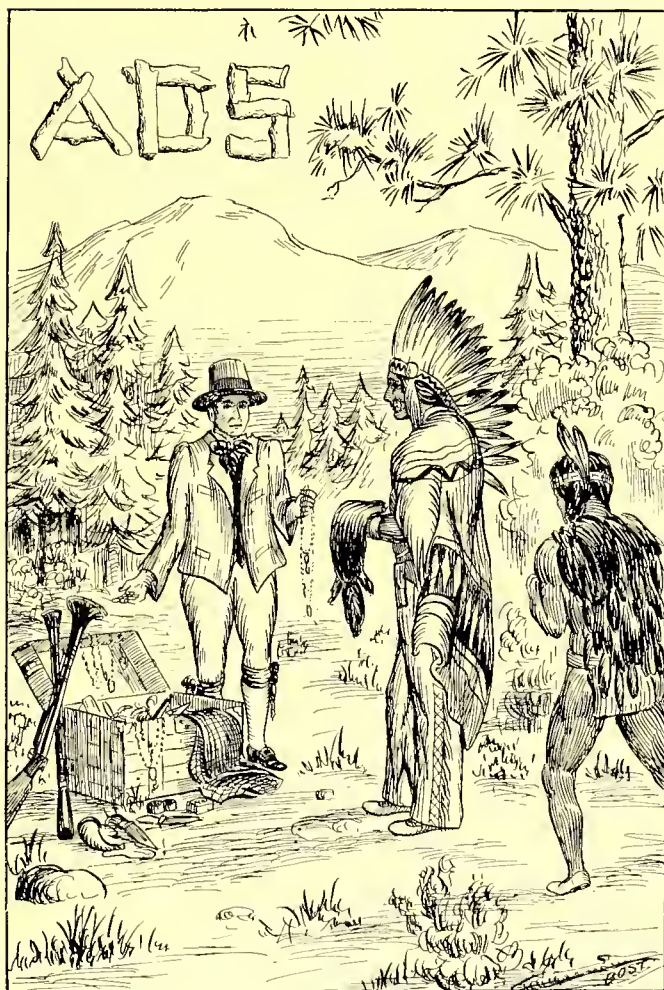


In the planning and production of this Annual it has been a pleasure to work with the Class of 1925-26. We believe that we have been of real service to you, and we appreciate the opportunity. We also believe that our mutual efforts to produce a worthy Annual have not been in vain.

As you go out into Life we can but wish for your success and happiness. Your successors of 1926-27 will find us equally able and willing to share their problems as they take up your work. We hope to know them as well as we have known you. We welcome all inquiries and we are always ready to serve.

## BIERMAN ENGRAVING CO.

DESIGNERS RETOUCHERS HALFTONES ZINC ETCHINGS  
ILLUSTRATORS SHADING TINTS COLOR PLATES EMBOSsing DIES  
COR. CHURCH AND 4TH ST. CHARLOTTE, N. C.  
TELEPHONE 1203





# Ward's **Orange- CRUSH**

*Reg. U.S. Pat. Off*

## Mothers, Know What Your Children Drink



Give them only what is pure and wholesome at meals and in between—Serve them *Orange Crush*. It has real food value.

Made from the real Orange and is recommended by the American Medical Association.

But be sure you get the real *Orange Crush*, it is imitated but it has never been duplicated.

Call for it by the full name and get it in the "Krinkly Bottle" lest you get an inferior substitute.

*Order it by the case.*

## Orange-Crush Bottling Co.

Burlington, N. C.

# Kirk Holt Hardware Company

The Oldest and Largest Hardware House  
in Alamance County



*Wholesale and Retail*

Specializes in

Building Material, Contractors  
and Mill Supplies

Visit Our

China and Household Department



*The Winchester Store*

Telephone No. 2

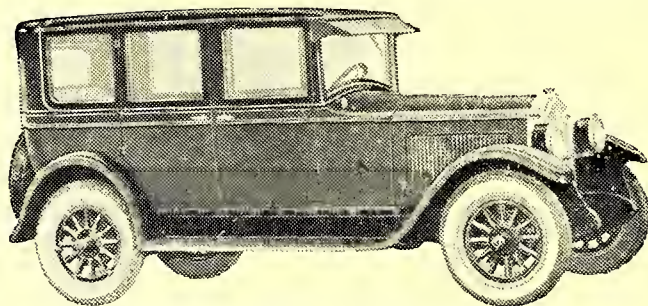
Quality and Quantity

# *Alamance Laundry and Dry Cleaners*

“WE DO IT BETTER”

Phone 560

Burlington, N. C.



**Buick Standard Six Sedan 5 Pas. Model 27**

*“When Better Automobiles are Built,  
Buick will Build Them”*

**C. P. K. MOTOR CO.**

Burlington, N. C.

J. W. Patterson, Mgr.



# May Hosiery Mills

BURLINGTON, N. C.



## B. A. SELLERS AND SONS, INC.



The store that has for forty years sold ladies' and men's ready-to-wear garments, dress goods, and furnishings of the better kind, at prices others charge for the cheaper kind.



## B. A. SELLERS AND SONS, INC.

### THE MONTGOMERY CO.

#### *Shoes*

For the whole family  
and  
Gent's Furnishings

Phone 1006

Worth Street

### LAMM CLOTHING CO.

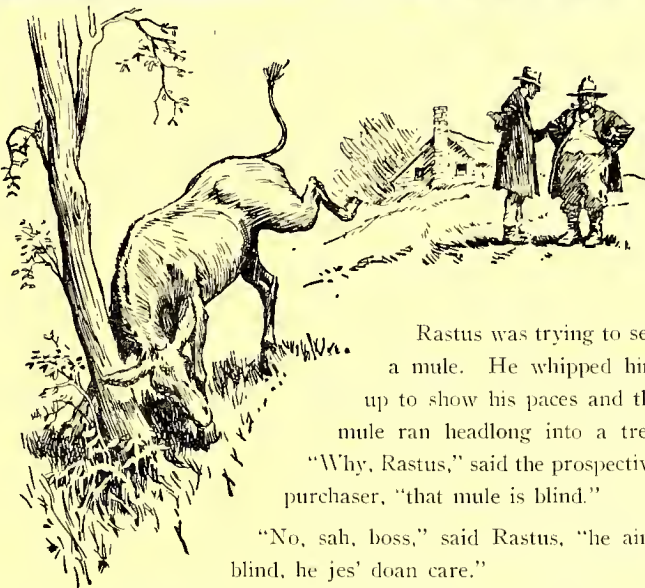


#### *Clothing and Furnishings*

We Sell for Less and Carry the Best



*Try Our Cleaning Department*



Rastus was trying to sell a mule. He whipped him up to show his paces and the mule ran headlong into a tree. "Why, Rastus," said the prospective purchaser, "that mule is blind."

"No, sah, boss," said Rastus, "he ain't blind, he jes' doan care."

It is sometimes hard to judge why people buy their insurance so indifferently. Perhaps they are blind. Perhaps they just don't care. But it has always been our rule to try to protect our customers from their own blindness or carelessness.

We represent the Hartford Fire Insurance company, whose business it is to sell protection. We have been appointed Hartford Agent here to see that the people in and around Burlington are properly protected. The Hartford Fire Insurance Company pays losses promptly and has a hundred year old reputation for fair dealing.

## Alamance Insurance & Real Estate Co.

BURLINGTON, N. C.

Chas. V. Sharpe, Mgr. Insurance Dept.

## Burlington Music Co.

O. W. McCauley, Prop.

SCHOOL BOOKS AND SUPPLIES  
OFFICE SUPPLIES



FRONT STREET

Victrolas and Records - Sheet Music, Etc.

BELOW FIRST SAVINGS BANK

BURLINGTON, N. C.

## Coulter, Cooper and Carr

ATTORNEYS AND COUNSELLORS AT LAW

301-304 FIRST NATIONAL BANK BUILDING

TELEPHONE 1

Burlington, N. C.

## Taxi Service

SEVEN PASSENGER CADILLAC

"YOU DRIVE IT" FORD

CLINTON LEA

Prompt Service

CITY PHONE 777

RESIDENCE PHONE 377

BURLINGTON, N. C.

## Wagner and Carney

MILLINERY

CHS

New Goods in Daily of the Latest Importations

LOCATED AT WHITTED'S

New Piedmont Hotel

A. A. Henderson, Proprietor

*European Plan*

Burlington, North Carolina

Alamance Cafe

*A Good Place To Eat*

Across Street From Alamance Hotel

Phone 890

*"Service Given With a Smile"*

Mrs. G. S. Thompson, Proprietress

Goodman's

THE HOME OF

GOOD CLOTHES

BRYAN'S GROCERY

206 Front Street

A Good Place to Trade

Give us a Trial

Phone 758

We Deliver Anywhere in Town

Front Street Service Station

Phone 241 Burlington, N. C.

*Seiberling All-Tread Tires*  
and

*Vesta Storage Batteries*

Cost Less Per Month Of Service

Boston Tailoring Co.

*Reliable Cleaners and Dyers*

Satisfaction Guaranteed

Phone 608-W.

Nunnally's Fine Candies

at

Burlington Drug Co.

Telephone 244

A Good Store in a Good Town

*Compliments of*

Mebane Shoe Co.

Burlington, N. C.



Telephone 386

Near Post Office

# *Efirds*

Fastest Retailing System in the World

We Sell

*Shoes, Clothing, Dry Goods, and  
Ladies' Ready-to-Wear*

At Prices that Defy Competitors

**Efirds Department Store**

Burlington, N. C.

We Appreciate Your Business

*City Drug Co.*

"On the Corner"

Burlington, N. C.

*The Community Cash  
and Carry Co.*

Always Lowest Prices on

*Staple and Fancy Groceries*

*The Sanitary Shop*

A Good Place to  
Have Your Barber Work Done

Come in and Give Us a Trial

Phone 348-J

Phone 1040

Quality and Service

*The Coffee Shop*

Your Patronage is Welcome  
and Appreciated

*Business Men's Lunch 40c.*

Latham Building, Front Street  
Burlington, N. C.

You will find a complete line of  
sporting goods at this store

When it's sporting goods--  
come to Odell's

Buy At  
**ODELL'S**  
WHERE QUALITY TELLS  
GREENSBORO, N. C.

What's better than safety first?

*A guarantee beforehand!*

Our Guaranteed First Mortgage Real Estate Bonds are one of the few investments on the market today, which bear a written and unqualified guarantee of payment of principal and interest.

They are secured by real estate worth considerably more than the mortgage, and in addition have behind them our Guarantee of \$500,000.00 which would have to be completely wiped out before you could lose a penny.

We have these 6% Guaranteed First Mortgage Real Estate Bonds for sale in denominations of \$100 and up.

**CENTRAL LOAN & TRUST CO.**

**CAPITAL AND SURPLUS \$500,000.00**

W. W. BROWN, Secretary and Manager.

BURLINGTON, N. C.

## ALAMANCE SODA SHOP

Refreshing Drinks  
Magazines · Belle-Meade Sweets

WE INVITE YOUR PATRONAGE

*"A Good Soda Shop"*

## THE HOME BAKERY

*Bread, Cakes, Pies, Pastry*

GOOD AS THE BEST, BETTER  
THAN THE REST

Front Street

BURLINGTON, N. C.

Phone 950

*Get It at the Acme*

## ACME DRUG COMPANY

*Opposite Postoffice*

Phone 474

## *City Laundry*

IT PLEASES US TO PLEASE YOU

*Dry Cleaning, Rough Dry, Damp Wash,  
Family Finish*

PHONE 1026-W

**J.C. Penney Co.**  
*A NATION-WIDE  
INSTITUTION -*  
**INC. DEPARTMENT STORES**

Our 676 Store Buying Power Saves You Money  
Burlington, N. C.

Meet Me At 101 Logan Street or Telephone 272

Where Your Dollar Is Worth While

*The Best Place to Buy*

*General Merchandise, Notions and Groceries*

Our Motto: "A Square Deal to Everybody."

Try us

United Store Company, Inc.

Telephone 272

Burlington, N. C.

101 Logan Street

Phone 132

J. D. & L. B. Whitted Co.

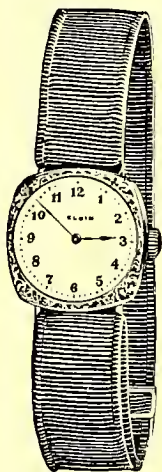
Headquarters for

*Dry Goods, Notions, Ladies Ready-to-Wear,*

*Hosiery, Shoes, Etc.*

Store of Value





## C. F. NEESE

*The Jeweler Since 1870*

DIAMONDS, WATCHES  
AND SILVER



*A Store full of Gifts for the Graduate*

LET US BE YOUR GIFT COUNSELOR

## *Everybody's Store*

When in need of building material, hardware, heating fixtures, plumbing, electrical wiring, electrical motors, electrical appliances of any kind, just call or see Burlington Hardware Company.

*Also for Gas Heaters and Ranges*

---

EVERYBODY'S STORE IS ALWAYS READY TO SERVE YOU

---

BURLINGTON HARDWARE COMPANY

TELEPHONE 174

MAIN STREET

E. S. W. DAMERON

H. J. RHODES

J. S. THOMAS

## DAMERON, RHODES & THOMAS

*Attorneys and Counsellors at Law*

ROOMS 305-6-7-8

FIRST NATIONAL BANK BUILDING

BURLINGTON, N. C.

## CITY BARBER SHOP

MAIN STREET

*The Best Shop in the County*

Cutting Children's and Ladies' Hair is Our Specialty. An Ideal Place  
to Have Your Barber Work Done. Come See Us  
and be Convinced.

Telephone

172

*Compliments of*

## PENDER'S STORES

LOOK FOR THE YELLOW FRONTS

200 W. DAVIS

BURLINGTON, N. C.

## CASH STORE, INC.

701 E. DAVIS STREET

Staple and Fancy Groceries, Fruits, Dry Goods, Notions,  
Feed Stuffs and Poultry

*A Co-operative Business Owned by 135 Burlington People*

Phone Your Orders to 304—We Appreciate Them

# Hanner Service Station

"SERVICE THAT SERVES"

GENERAL AUTO REPAIRING OF ALL KINDS

*No Job too Small—None too Large  
All Work Guaranteed*

WORTH STREET

PHONE 315

## RICH & THOMPSON

*Ambulance Service*

Telephones

Day: 1077, 357

Night: 1077, 618-J, 546-W

*Instant Service Twenty-four Hours  
of the Day*

## Ladies Hosiery

Special attention given to the ladies on matching hosiery to either your dress or shoes. We carry the best nationally known makes including the "Pointex"

## THE VOGUE

W. E. STORY

J. ERWIN MONTGOMERY

EAT

MOTHER'S BREAD

*It's wholesome and good*

Baked by

ALBA SALES CO.

BURLINGTON, N. C.

Fruits Vegetables, Groceries

*Four Dollars Will Do the Work  
of Five!*

What Happens to the Extra Dollar?  
YOU SAVE IT

THE U-SAVE-IT STORE

Main St.

Burlington, N. C.

You Will Find  
**Sinclair Gas**

*Power-Full*

“At all Good Service Stations”

Alamance Service Station

Carolina Petroleum Co.

Five Points Service Station

Midway Service Station

---

**THE VELVET KIND**  
**ICE CREAM**

A Product of Southern Dairies

Ice Cream and Sherbets

Fancy Moulds of all Designs

BURLINGTON, N. C.

PHONE 46

---

**SMARTLY STYLED FROCKS**  
*For The Miss*

“We Cater to Your Wants”

The Store Where Style Predominates

**THE QUALITY SHOPPE**

“Exclusive But Not Expensive”

Main Street

Burlington, N. C.



# *The High School Boys and Girls*

Desire High-Grade Photography as Most Other People. Hence the  
Portraits and Groups Found in this  
Annual were Made by

## ANGLIN

If You also Prefer First-Class Work Come to

### ANGLIN'S STUDIO

BURLINGTON, N. C.

*We also Make a Specialty of Kodak Picture Finishing*

LAW OFFICES OF

## CARROLL & CARROLL

*Attorneys and Counsellors at Law*

ROOMS 1 AND 2, FIRST NATIONAL BANK BUILDING  
CORNER MAIN AND FRONT STREETS  
BURLINGTON, N. C.

*Alamance County's Newest and Most Modern Drug Store*

## Heritage-Wilson Drug Co.

Agents

Penslar Remedies      Johnston Candies

Soda

Prescriptions

Cigars

Phone 87      Just Below National Bank

" SAFETY - SERVICE - SATISFACTION "

BASON & BASON

Millinery

Art Needle Work and Dove

Undermuslin

Phone 59W      Burlington, N. C.

For Prompt Service Use

BURKE'S AMBULANCE

Day Phone  
125

Night Phone  
442 382-J

Eat At  
MID-CITY CAFE

*And Grow Fat  
Home Cooking*

Phone 265      100 Front St.

M. H. Moore, Prop.

Champion  
Grocery  
Company

North Main Street

*Compliments of*  
Stevenson Theatres, Inc.  
  
Carolina and National  
  
Theatres

S. ALLEN HORNE  
*Cleaning and Pressing*  
  
"We Try To Please"  
  
Day Phone 119-W.      Night Phone 354-M.  
  
706 E. Davis Street

TROLLINGER  
"The Florist"  
Flowers For All Occasions  
Orders Receive Prompt  
Attention  
Member Florists Telegraphic Delivery

PHONES { Store 931  
              Night 519      Burlington, N. C.

McKeel & Hargrove Cafe  
"The Home Of Good Eats"  
Cold Drinks and Ice Cream

East Davis Street

Phone 945

DR. E. A. TROXLER

*Dental Surgeon - Orthodontist*

PHONE 586

BURLINGTON, N. C.

CLEANING AND PRESSING

*Satisfaction Guaranteed*

BOONE'S PRESSING DEPARTMENT

PHONE 190

BURLINGTON, N. C.

*Over T. N. Boone's*

1890

1926

FOSTER SHOE COMPANY

*Shoes : Hosiery  
Shoe Repairing*

FOSTER SHOE COMPANY

MAIN STREET

BURLINGTON, N. C.

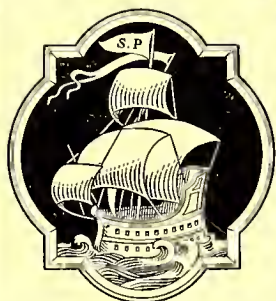
DR. FRANK E. GILLIAM

*Dentist*

*Over Rouse's Jewelry Store*

OFFICE HOURS: 9:00 A. M. TO 5:00 P. M., AND BY APPOINTMENT

PHONE 992



*The* SEEMAN  
PRINTER Y  
INCORPORATED  
*Established 1885*  
DURHAM  
N. C.



ALAMANCE BOOK &  
STATIONERY CO.

*Books, Stationery, Magazines,  
Gifts, Office and School  
Supplies*

East Davis Street. Phone 899  
BURLINGTON, N. C.

ATTENTION MEN

Burlington now has a shop where  
you can equip yourself with the  
latest thing in men's furnishings  
including shoes.

THE VOGUE  
W. E. STOREY  
J. ERWIN MONTGOMERY

FREEMAN DRUG COMPANY

*"The Rexall Store"*

Everything in the Drug line

*Visit our prescription department*

PHONE 20

MAIN STREET

DR. J. P. BRADLEY, MGR.

*When in Burlington Stop At*

ALAMANCE HOTEL

FIRE-PROOF BUILDING

85 ROOMS

85 BATHS











