

# DOE-WAH-JACK 1940

LOCAL HISTORY

SCHOOLS

1940 C.1

Johnny Walker

## ONE LAST SONG

By Vallie Johnson



One more song before we part; And our journey for Success we part;

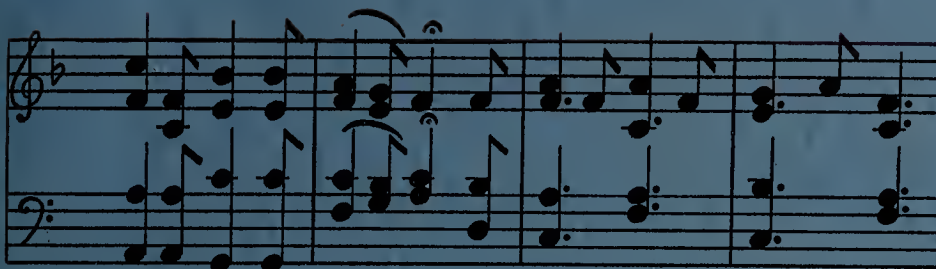


Our hearts are filled with sadness; To leave this place of Joy and Gladness.



One last song for work and fun; And for Joys and Honors we have won;

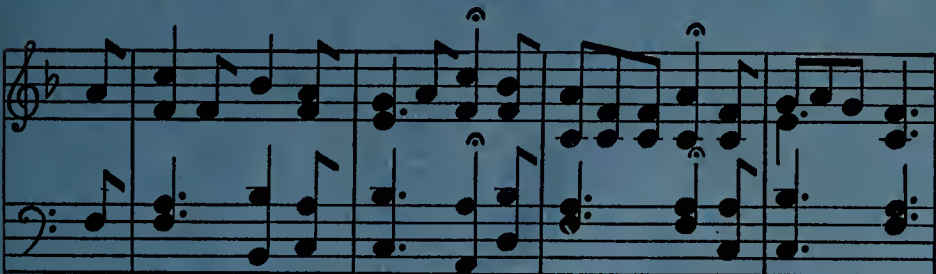
Johnny Walker



Happy songs will echo these, The dearest of our Memories.



One more song and we say "Adieu"; One more song and we start anew;



Up on a road that leads to "Where?" From these carefree days of Alma Mater.

**For Reference**

**Not to be taken**

**from this library**

**MAY MEMORIAL LIBRARY**  
342 S. Spring Street  
Burlington, NC 27215







HELEN GARRISON  
*Editor-in-Chief*

MARGARET SHARPE  
*Assistant Editor*

RALPH PAYNE  
*Business Manager*

WALLACE MAY  
*Advertising Manager*

# DOE WAH JACK of Nineteen Forty

Published by  
THE SENIOR CLASS  
Burlington High School

lots o' luck to  
a nice but  
talkative boy -  
Mrs. Hunter



# ... TO THE STUDENTS

We, the staff of '40 rejoice to present to you, bound in a volume, the living personalities in everyday school life. Through the camera's eye you may observe typical views of B.H.S.



**CONTENTS: Administration . . .**



# OF BURLINGTON HIGH

We have attempted to picture for you scenes of the joyous school days.

If this book helps to renew and keep alive the cherished memories of high school, we the staff of 1940 are well content.



**Activities . . . Athletics . . . Features**



## Dedication

*To Superintendent L. E. SPIKES*

Who, in the four years that he has been with us, has tried so faithfully to uphold and improve the standing of our school in scholarship and general activities, to help all in their race to reach the goal of success, we the Senior Class, because we greatly appreciate his personal interest in us and his efforts in our behalf, do sincerely dedicate this 1940 edition of the DOE-WAH-JACK.





MR. H. G. MCBANE  
*Principal Hillcrest School*

MR. F. M. BIGGERSTAFF  
*Principal Burlington High School*

MR. L. E. SPIKES  
*Superintendent of City Schools*

*Administration*

J. R. Barrett





## Faculty

MRS. W. J. BARKER . . . . .	<i>Visiting Teacher</i>
GRACE BOWEN, A.B., Winthrop College . . . . .	<i>Mathematics</i>
EVELYN CALDWELL, A.B., E.C.T.C. . . . .	<i>Home Economics</i>
MRS. J. A. LONG, JR., A.B. . . . .	<i>Geography, History</i>
ELLA RAE CARROLL, A.B. . . . .	<i>Supervisor Textbooks</i>
ELOISE EFLAND, B.S.S.A., W.C.U.N.C. . . . .	<i>Commercial</i>
MARY LEE FOSTER, A.B., Elon . . . . .	<i>English, Latin</i>
F. R. GARRETT, A.B., High Point College . . . . .	<i>Science, Athletics</i>
MELEDIETH FRAZIER, A.B. . . . .	<i>English</i>
MRS. E. S. GILREATH, A.B., Meredith College . . . . .	<i>History</i>
E. S. GILREATH, A.B., M.A., U.N.C. . . . .	<i>Science</i>
MRS. W. ALBERT GRAHAM, A.B., W.C.U.N.C. . . . .	<i>Latin</i>
E. A. GUNN, A.B., Elon . . . . .	<i>Commercial</i>
MRS. ALTON HALL, A.B., U.N.C., M.A., U. Pa. . . . .	<i>English</i>
ALTON HALL, A.B., U.N.C. . . . .	<i>Mathematics</i>
MRS. H. T. HAMBRIGHT, A.B., Newberry College . . . . .	<i>English</i>
HOYT T. HAMBRIGHT, A.B., Erskine College . . . . .	<i>Science, Athletics</i>
MALCOLM T. HOWELL, B.S., N. C. State . . . . .	<i>Industrial Arts</i>
MRS. J. A. HUNTER, A.B., Bethany College, M.A., Duke, Diploma U. of Grenoble, France . . . . .	<i>French</i>
D. C. HUNTER, A.B., Davidson . . . . .	<i>Coördinator Diversified Occupations</i>
MRS. PAUL JONES, A.B. . . . .	<i>Home Economics</i>
MRS. J. R. KERNODLE, A.B., Elon . . . . .	<i>English, French</i>
MRS. VANCE LATTI, A.B., W.C.U.N.C., M.A., Cornell . . . . .	<i>English, History</i>
EMILY LOFTIN, A.B., Duke, B.L.S., U.N.C. . . . .	<i>Librarian</i>
MRS. W. A. MAYNARD, A.B., W.C.U.N.C. . . . .	<i>Hillcrest Librarian</i>
ADELAIDE MORROW, B.P., W.C.U.N.C. . . . .	<i>English</i>
MILDRED MURRELL, A.B., Duke . . . . .	<i>English, Music</i>
MRS. JOSEPHINE PARKER, A.B. . . . .	<i>Mathematics</i>
MRS. M. W. PLEASANTS, A.B., Winthrop College . . . . .	<i>Mathematics</i>
BLANEY G. RACKLEY, B.S., Wake Forest . . . . .	<i>Science, Athletics</i>
E. F. RHODES, A.B., Elon . . . . .	<i>History, Band</i>
MRS. W. R. SELLARS, Salem College . . . . .	<i>Secretary to Principal</i>
MARY TAYLOR, A.B. . . . .	<i>Mathematics</i>
MRS. D. D. WATSON, A.B., Converse College . . . . .	<i>History</i>
ANNIE G. WEBSTER, Guilford College . . . . .	<i>English, Mathematics</i>
CARRIE B. WILSON, B.S., W.C.U.N.C., M.A., U.N.C. . . . .	<i>Supervisor of Instruction</i>
EVA WISEMAN, B. Mus., Converse College . . . . .	<i>Supervisor of Music</i>
EMILY YOUNG, Southern College, W.C.U.N.C. . . . .	<i>Home Economics</i>

---

# In Memoriam



## WOULD-BE SENIORS

HAROLD GARRISON

PAUL GURGANIUS

## JUNIORS

PEGGY CHEEK

BOBBY BAIN

"Green be the turf above thee,  
Friends of our high school days;  
None knew thee but to love thee  
Nor name thee but to praise."



Smith

Spence

Waynick

Payne

## Senior Class Officers

RALPH PAYNE  
*President*

DORIS WAYNICK  
*Secretary*

HARDY SPENCE  
*Vice President*

LEVI SMITH  
*Treasurer*



REID ROSS ALEXANDER

*"The man that blushes is not quite a brute."*

Baseball 2, 3, 4; Basketball 3, 4; Secretary Home Room 2.

"Reidross"



HOMER G. ALLEN

*"None but himself can be his parallel."*

Student Council Treas. 2.

"Brew"



EDITH EMALYNE AMICK

*"Happy am I; from care, I'm free;  
Why aren't they all contented like me?"*

Glee Club 1, 2, 3, 4; Science Club 2; Operetta 3, 4.

"Edie"

EVELYN MARIE ANDREWS

*"A heart without fear,  
A face full of cheer."*

Glee Club 2, 3; Jr. Red Cross Council 2.

"Mae Boone"



LUCILLE ANGELOS

*"Ambition rules my train, and love my heart."*

Glee Club 1, 2, 3, 4.

"Lucie"

STANLEY ARWOOD

*"Fearless minds climb soonest into crowns."*

Vice Pres. Soph. Class; Student Council; Pres. Home Room 1.  
Rep. 4; National Honor Society 4; Monogram Club 2; Hi-Y Club 4;  
Dramatics Club 1, 4; Barker Manag. Ed. 4.

"Stan"



ORA BEATRICE ASHLEY

*"This friendly lass, with golden hair,  
Possesses traits that are very rare."*

Glee Club 3; Debating Club 2, 3; Dramatics Club 3.

"Be"

JAMES HOWARD ASKEW

*"Not too serious, not too gay,  
But a rare good fellow when it comes to play."*

Soccer 1, 2; Baseball 2; Glee Club 3; Monogram Club 3.

"Sku"



HARRIET ELIZABETH BALL

*"One thing better than success is to be worthy of success."*

Student Council Pres. Home Room 3; Glee Club 1, 2, 3; National  
Honor Society 4; French Club 4; Doe-Wah-Jack, Asst. Lit. Ed. 4.

"Tabby"

MARGARET MAXINE BARE

*"Life was made for love and cheer."*

Glee Club 2, 4; Jr. Red Cross Council 3; Dramatics Club 4.

"Meg"



VIRGINIA INEZ BARNES

*"Fair play is a jewel."*

Glee Club 2, 3.

"Nezy"

MARGARET ELIZABETH BARRETT

*"Ambition has no rest."*

Student Council Sec.-Treas. 2, Pres. Home Room 3; Glee Club  
1, 2, 3, 4; National Honor Society 4.

"Sissie"

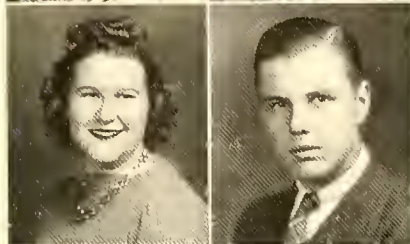




CLARICE MAE BATEMAN

"Nancy"

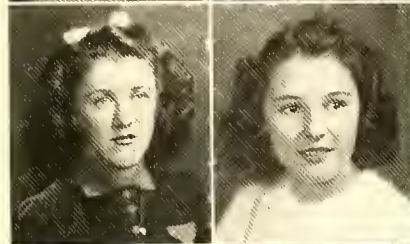
*"A quiet one is always to be admired more than a noisy one."*  
Glee Club 3, 4; Science Club 3.



WILLIAM EARL BELL

"Kayo"

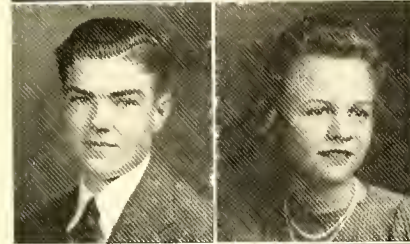
*"The world would be mine if I just had time to take care of it."*  
Soccer 3, 4; Football Manager 4; Monogram Club 1, 2, 3, 4; Golden  
Gloves 1, 2, 3, 4; DOE-WAH-JACK Sports Ed. 4.



EVELYN ELIZABETH BIVENS

"Little Boots"

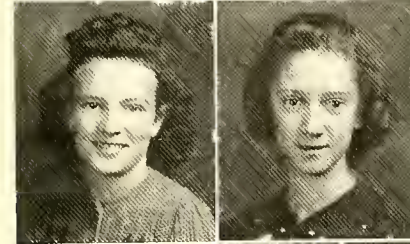
*"A merry heart doeth good like a medicine."*  
Science Club 1, 2; Latin Club 3, 4; Glee Club 1, 2, 3, 4.



JOHN VERNON BLACKWELL

"I ern"

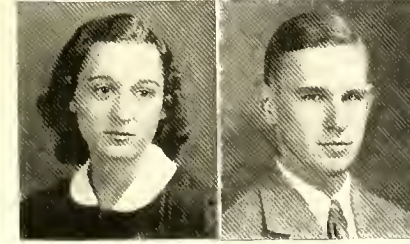
*"Sometimes I set and think,  
And sometimes I just set."*



EDITH IONE BLALOCK

"E-Lie"

*"Much have I seen and known."*  
Soft Ball Captain 3; Student Council Rep. Home Room 3.



MARY GRAHAM BOONE

"Graham"

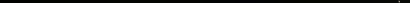
*"Mary, Mary, not contrary,  
But a friend, both loyal and true."*  
Student Council Pres. Home Room 2.



LOY SAMUEL BOWLAND

"Dribble"

*"His ready wit, his cheerful smile  
Make him welcome all the while."*  
Basketball 3, 4; Monogram Club 4.



LUCY VIRGINIA BRAXTON

"Gintz"

*"Sweet and lovely, nice and neat;  
When you know her it is a treat."*  
Glee Club 1, 2, 3, 4.



ESPER MONTGOMERY BROOKS

"Eppy"

*"Heart heart is open as the day; her feelings all are true."*



WILMA JANE BROWN

"Willie"

*"Be true to your work, your word, and your friends."*  
Glee Club 4.



HAZEL LENIOR BURNETT

"Joe"

*"You'll always find her true and just,  
A girl whom all will love and trust."*  
Glee Club 4.



ROBERT DANIEL BYRD

"Bob"

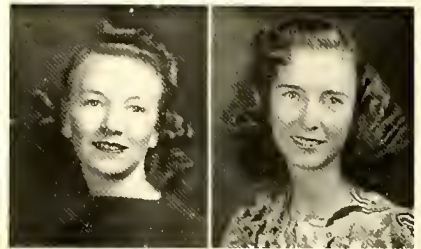
*"Ability, not luck, conquers."*  
Sec. Home Room 2, 3; Student Council 1, Treas. 3; National Honor  
Society 4; Band 3, 4; Hi-Y Club 3, 4; French Club 4; Dramatics Club  
Treasurer 1; Barker Bus. Mgr. 2, Cir. Mgr. 4.

ELSIE LEE CAMPBELL

"Joy"

*"Let it be, it matters not."*

Glee Club 1, 2, 3, 4; Jr. Red Cross Council 1; Science Club 2; Operetta 3, 4.



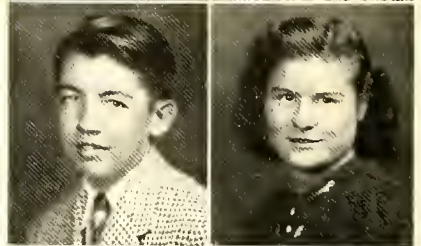
CHRISTINE EUGENIA CANTRELL

"Teeny"

*"Loving and true."*

*"Smiling her way through."*

Glee Club 1, 2, 3, 4.

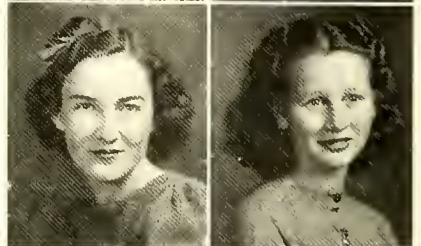


ADRIAN MEREDITH CARROLL, JR.

"Ade"

*"Thou art a fellow of good respect."*

Dramatics Club 2; Library Club 3, Pres. 4; French Club 4; Barker 4.

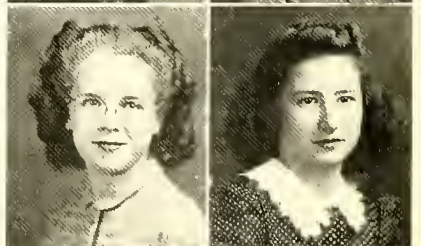


WANDA HOPE CHEEK

"Tonnie"

*"Her hair is not more sunny than her smile."*

Student Council Rep. Home Room 1.

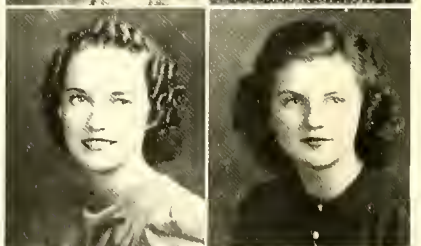


MILDRED COBLE

"Mickey"

*"A merry heart and true."*

Vice Pres. Home Room 3; Band 3, 4; French Club 4.

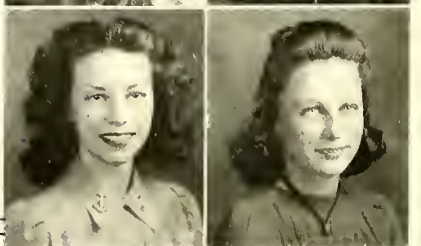


MARGARET EUGENIA COLEY

"Monk"

*"She's true to her work, her word, and her friends."*

Glee Club 2, 3, 4; Science Club 2; Dramatics Club 4.

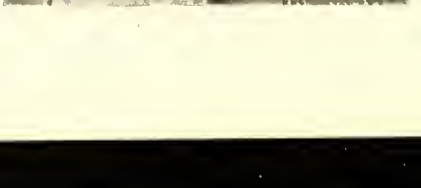


FLORENTINE EDITH COLLINSWORTH

"Tiny"

*"Three lights—the sun, the moon, and him."*

Dramatics Club 2.



ANNIE LAURA CORN

"Punk"

*"A smile for all, a greeting glad,  
An amiable jolly way she had."*

French Club 4.



THELMA FRANCES CRUTCHFIELD

"Speed"

*"You will get as much out of anything as you put into it."*

Vice Pres. Home Room 2, 3; National Honor Society 4; Dramatics Club 1; Doe-Wah-Jack Asst. Bus. Mgr. 4; President Freshman Class.



FRANCES LEATH DAVIS

"Frankie"

*"Virtue alone is the unerring sign of a noble soul."*

Science Club 2; Glee Club 3; French Club 4.



SARAH REBECCA DE LOACHE

"Becky"

*"A merry heart goes all the way."*

Dramatics Club 1, 2; Art Club 2; French Club 4; Jr. Red Cross Council Vice Pres. 4; Doe-Wah-Jack Joke Ed. 4.



JUANITA EVELYN DICKENS

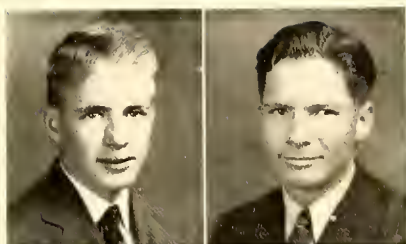
"Wah"

*"Let me bear your love and I'll bear all your cares."*

Hobby Club 4.

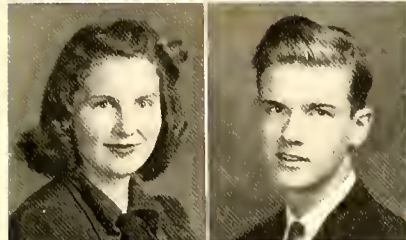






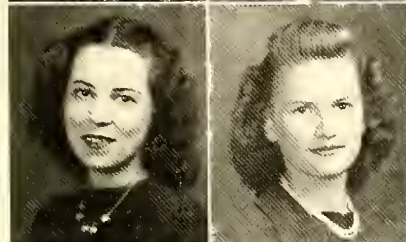
NOEL DILLINGHAM "Nob"  
*"The ladies—heaven bless 'em!"*  
 Sec. Home Room 1; Vice Pres. Home Room 2.

EDGAR LEE DUNN "Freck"  
*"Oh, why should life all labor be?"*



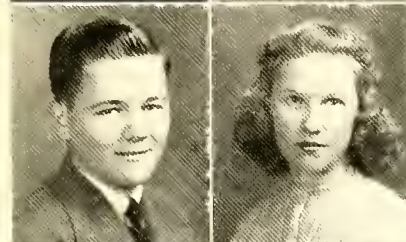
JEAN BARBARA EVANS "Babs"  
*"Her face is fair, She is a good sport*  
*In her heart is love; In whatever she does."*  
 Pres. Freshman Class; Art Club Pres. 2; Dramatics Club 1, 4; Cheer  
 Leader Asst. 4; Student Council Pres. Home Room 4; National  
 Honor Society 4; DOE-WAH-JACK Feature Ed. 4.

KARL EDWARD FITZGERALD "Fitz"  
*"None but the brave deserves the fair."*  
 Student Council President Home Room 4; Glee Club 2; Dramatics  
 Club 1; Hi-Y Club 4; Junior Rotarian 4; DOE-WAH-JACK Asst. Adv.  
 Mgr. 4.



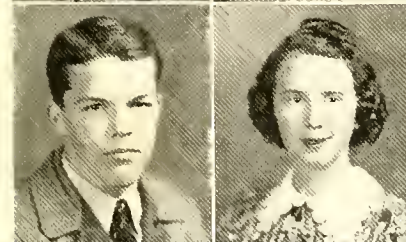
ALICE FRANCES FOGLEMAN "Allie"  
*"The hand that hath made you fair hath made you good."*  
 Vice Pres. Home Room 1.

BESSIE CAROLA FOGLEMAN "Dimp"  
*"She finds joy in everything."*  
 Student Council Pres. Home Room 1; Vice Pres. Home Room 3; Glee  
 Club Treas. 3; Operetta 3; Jr. Red Cross Council 4.



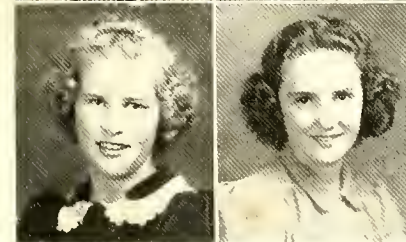
VANCE POWERS FORRESTER "Gootch"  
*"Early to bed and early to rise,*  
*Would spare the fun of little guys."*  
 Student Council Sec. 1; Band 3, 4.

DOROTHY PHILLIPS FOWLER "Dottie"  
*"Fair of figure, fair of face,*  
*Fall of fun and full of grace."*  
 Dramatics Club 1, 4; Glee Club 4, Sec. 2; Student Council Rep.  
 Home Room 2.



JOSEPH FRAZIER "Joc"  
*"Every man is the architect of his own future."*  
 Football 4; Basketball 4; Baseball 4.

VADEN LEE GANT "V's"  
*"A sweeter girl cannot be found."*  
 French Club 4.



MARTHA CATHERA GARNER "Blondie"  
*"A light heart lives long."*  
 Glee Club 1, 2, 3, 4; Science Club 2; Basketball 3, 4.

HELEN FRANCES GARRISON "Hullin"  
*"She's swell, she's sweet;*  
*She's the grandest person you could meet."*  
 Student Council Sec. 1; Sec. Home Room 3, 4; National Honor  
 Society 3, Pres. 4; Jr. Red Cross Council 3; Dramatics Club 1, Sec. 4;  
 DOE-WAH-JACK Asso. Ed. 3, Editor-in-Chief 4; Art Club Sec. 2;  
 Marshal 3.

STALEY FRANK GARRISON, JR.

"Doc"

*"Accept the worst, hope for the best, and take what comes."*

Student Council Treas. 1, Pres. 2; National Honor Society 3, 4; Band 2, 3, 4; Dramatics Club Treas 1, Pres. 2; French Club 4; Debating Club 4; Hi-Y Club 3, Vice Pres. 4; Barker 2, 3, Bus. Mgr. 4; Marshal 3.



BETTY RAE GATTIS

"Bets"

*"My good disposition I prefer to gold."*

Glee Club 1, 2, 3, 4; Jr. Red Cross Council 2; French Club 4; Barker 4.



MARY ELIZABETH GEORGI

"Betty"

*"Always honest, kind and true,*

*A better friend have none of you."*

Glee Club 1; Jr. Red Cross Council 2; Latin Club Treas. 2; Dramatics Club 4; National Honor Society 3, 4; Barker 3, Editor-in-Chief 4; Student Council 4.

LOUIE LEVETTE GLISSON

"Lou"

*"A disposition that is sweet,*

*A smile that knocks you off your feet."*

Glee Club 2.



TROY LEE GREESON

"Chunk"

*"Do your duty and do it well,*

*What more can anyone ask?"*

Glee Club 1; Basketball 2, 3, 4; Soft Ball 3, 4; French Club 4.

HAROLD WILSON HALACHEFF

"Holly"

*"O sleep, it is a blessed thing."*

Monogram Club 4; Football 4.



MARY CLEO HALL

"Butch"

*"My life is like a stroll along a pleasant beach."*

Glee Club 2, 3; Hobby Club 3, 4; Science Club 1; Latin Club 2.

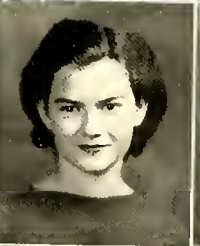
GROVER LEWIS HANDY

"Handy"

*"Quiet am I from day to day,*

*Never having a thing to say."*

Student Council Rep. Home Room 2; Vice Pres. Home Room 3.



RUTH HELEN HARRIS

"Harris"

*"And she smiles in such a way."*

Glee Club 2, 3.

KATHERINE LOUISE HIATT

"Kat"

*"A vivacious girl without a care,*

*Like midnight is her coal black hair."*

Library Club 2, 4, Vice Pres. 3; Dramatics Club 1; Commercial Club 3.



EDWARD MILLARD HICKLIN

"Ed"

*"Generous is he, and courteous, too—*

*Thus we present Edicard to you."*

Baseball 2.

BARRY ROYALL HICKS

"Pilot"

*"He's quiet, ambitious, and very sincere;*

*Nothing at all does he ever fear."*

French Club 4.





WILLIAM THOMAS HINSHAW

*"Ain't it a shame?"*

Junior Basketball 1.

"Butch"

JAMES PHILLIP HOGAN

*"He wears the smile that won't come off."*

Baseball 2; Football 3; Hi-Y Club 4; French Club Treas. 4.

"Flip"

WILMER STROUD HOGAN

*"I make mistakes, but I do not respond to encores."*

Vice Pres. Home Room 1; Band 1; Glee Club 3; Hobby Club 3; Hi-Y Club 4; French Club 4; Football 4; Junior Kiwanian 4; Operetta 3, 4; DOE-WAH-JACK Asst. Adv. Mgr. 4.

"S"



ADA HARDEN HOMEWOOD

*"One who is always dependable is as rare as a valuable gem."*

Glee Club 2, 3; Jr. Red Cross Council 1, Treas. 2, Vice Pres. 3; Library Club 4; Latin Club 3, Pres. 2; Science Club 2; Barker Soc. Ed. 4; DOE-WAH-JACK Typist 4.

"Polly"

JAMES MAXWELL HORNE

*"I speak in a monstrous voice."*

Student Council 2; Vice Pres. Home Room 3, 4; Glee Club 1, 2, Vice Pres. 3, Pres. 4; Jr. Red Cross Council 1, Vice Pres. 2; Hobby Club 3, 4; Debating Club 2, 4; Library Club 1, 2; Dramatics Club 1, 2, Pres. 4; Hi-Y Club 4; Barker 3, 4; Literary Society Pres 1, 2; DOE-WAH-JACK Snapshot Ed. 4.

"Red"



WILLA KING HORNER

*"Faithful, sweet, and sincere  
All through the years."*

Sec. Home Room 1; Vice Pres. Home Room 4; Glee Club 4, Vice Pres. 3; National Honor Society 3, Treas. 4; Library Club 4; Operetta 3; DOE-WAH-JACK Art Ed. 4.

"Willie"



LAVERNE HOWELL

*"Here's to a girl with a heart and a smile,  
That makes the bubble of life worthwhile."*

Basketball 4.

"Verne"



WILMA VERONA HUFFINES

*"For they can conquer who believe they can."*

Glee Club 3; Jr. Red Cross Council 4.

"Wink"



CARL MAXWELL HUFFMAN, JR.

*I do like the girls, ah, me, yes,  
But ask me the girl of mine, ah, me, no."*

Baseball 1, 2; Glee Club 1; Hi-Y Club 4; Band 1, 2, 3, 4; National Honor Society 4; Dramatics Club 2, 4.

"Booster"

WILTON H. HUNT

*"A little nonsense now and then  
Is relished by the best of men."*

Student Council Vice Pres. 1.

"Dick"



EDNA LOUISE ISLEY

*"Thy pathway lies among the stars."*

Student Council Pres. Home Room 2; Glee Club 1, 2, 3, Sec. 4; Jr. Red Cross Council 2; Science Club 2.

"Eddie"

BERNARD GALE ISLEY

*"In his duty prompt at every call."*

Student Council Pres. Home Room 4.

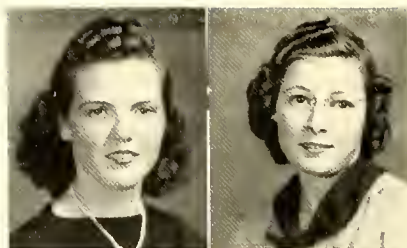
"Butch"

LUONA MAE ISLEY

*"Friendship offers the best in life."*

French Club 4; Glee Club 1, 2, 3, 4.

"Lu"



RUTH LEE ISLEY

*"Do good to your friends to help them;  
To your enemies to gain them."*

Sec. Home Room 3; Student Council Pres. Home Room 4; Jr. Red Cross Council 3; National Honor Society 3, 4.

"Tookie"

FLORENCE EMER JEFFERYS

*"Life is real; life is earnest."*

Sec. Home Room 2.

"Doodle"



NORMAN CLAUDE JEFFERYS

*"Men of few words are the best men."*

"Norm"

OLGA ALBERTA JOHNSON

*"They are never alone who are accompanied with good thoughts."*

Vice Pres. Home Room 3; Glee Club 3, 4.

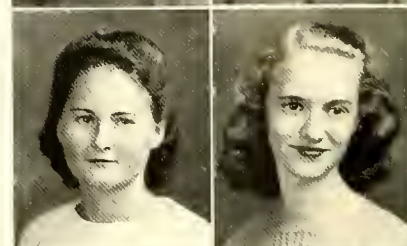
"Berdie"

EUNICE CAROL JOHNSON

*"Thy modesty is a candle to thy mind."*

Home Ec. Club Treas. 1; Student Council Pres. Home Room 2; Vice Pres. Home Room 3; Sec. Home Room 4; Glee Club 3, 4; Dramatics Club 1; Sec. Jun. Class; Operetta 3, 4.

"Fashion-Plate"



ARNOLD RICHARD JOHNSON

*"The world knows nothing of its greatest men."*

Student Council Rep. Home Room 1, 2; Soccer 2; Soft Ball 1, 2; National Honor Society 4.

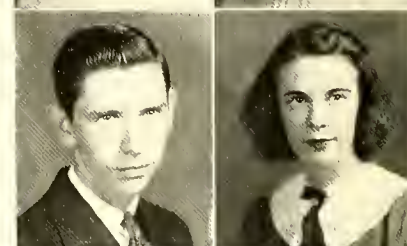
"Dick"

VALLIE JOHNSON

*"Dignified, studious, friendly—  
That's Vallie."*

Glee Club 1, 2, 3, 4; O'Henry Literary Society 2, 3; Nature Study Club 3; Needlework Guild 3; a cappella Choir 3.

"Sonata"



BASAL LAWRENCE JONES

*"I'll be merry, I'll be free, I'll be sad for nobody."*

Vice Pres. Home Room 1; Sec. Home Room 2; Glee Club 3; Hobby Club 2.

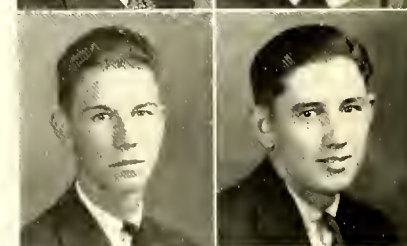
"Nig"

CHARLIE EDMOND JONES

*"Never do today what can be put off until tomorrow."*

Student Council Pres. Home Room 1; Baseball 3, 4.

"Chink"



JOHN JONES, JR.

*"Not at the top, but still climbing."*

Junior Baseball 1, 2.

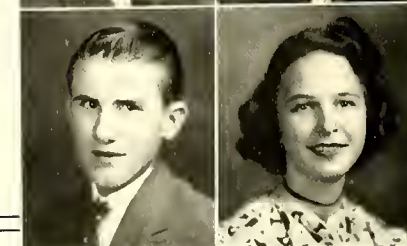
"Johnny"

RACHEL LOU KIMREY

*"A smile for all, a greeting glad,  
An amiable jolly way she had."*

Sec. Home Room 1; Science Club 2; Library Club 4; Glee Club 1, 2, 3, 4.

"Rachel"

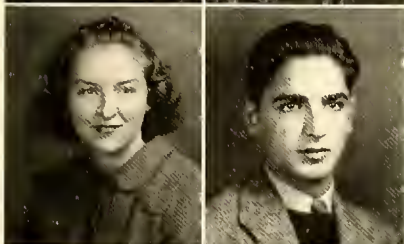




HAZELINE KING

*"The truest approach is just being a friend."*  
Library Club 4; Sec. Home Room 3.

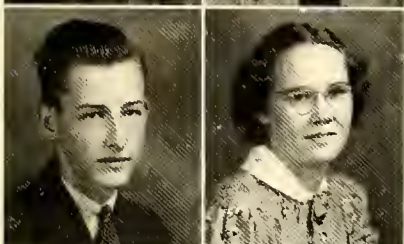
"Hazel"



DOROTHY MAE KIRKMAN

*"She was made of happy thoughts  
And full of wit and laughter."*  
Glee Club Treas. 3, 4; French Club 3, 4.

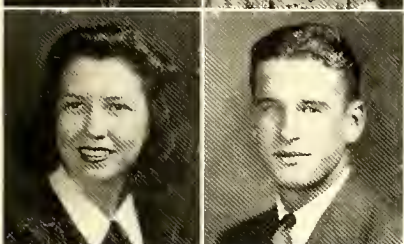
"Dot"



MARJORIE FLOY KIZZIAH

*"Take life as you find it but don't leave it so."*  
Glee Club 2, 3, 4.

"Marge"



WILLIAM EDMUND MICHAEL KOURY

*"A lion among ladies."*  
Student Council Pres. 4, Pres. Home Room 1, 2; National Honor Society 4; Hi-Y Club 3, Pres. 4; Pres. Jun. Class; Pres. Soph. Class.

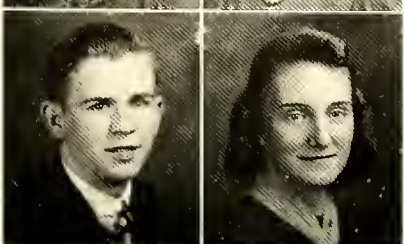
"Kooty"



WILLIAM CALEB LATTA

*"His soft answer turneth away wrath."*  
Baseball 4.

"W. C."



GRACE LEACH

*"Deeds, not words."*  
Soft Ball 1, 2.

"Gracy"



PEG CARROLL LIGHTBOURNE

*"Always ready, willing and able."*  
Glee Club 1, 2, 3, 4; National Honor Society 4; Jr. Red Cross Council President 4; French Club 4.

"Peggy"



GEORGE THOMAS LINEBERRY

*"A sincere friend—a good athlete."*  
Monogram Club 1, 2, 3, 4.

"Razzy"



MARY LOUISE LITTLE

*"To have a friend you must be one."*  
Student Council Pres. Home Room 4; Glee Club 4; National Honor Society 4.

"Weezie"



JOYCE MARIE LLOYD

*"She has hitched her wagon to a star."*  
Glee Club 1, 2, 3, 4; Student Council Pres. Home Room 2.

"Jo"



VERNON BRAXTER LONG

*"He entered without knocking and remained on the same terms."*  
Glee Club 1, 2; Dramatics Club 1; Science Club 1.

"Shorty"



FRANCES VANDERFORD LOVE

*"I will find a way to do the things I say."*  
Glee Club 1, 2, 3, 4; Dramatics Club 1.

"Frankie"

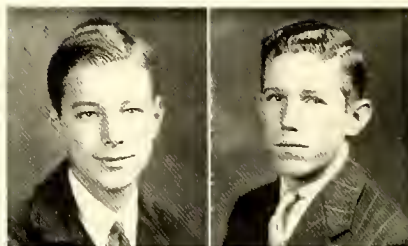


GLENN ROBERT LOVE

*"He doesn't worry, he doesn't fret;  
He's certainly a boy we won't forget."*

Student Council Rep. Home Room 1, 2; Glee Club 1; Lobby Club 1; Hi-Y Club 3, 4; French Club 4.

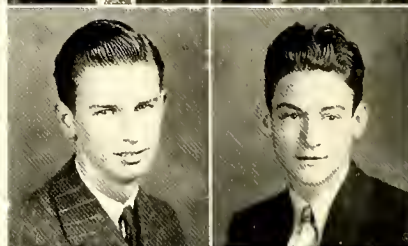
"Lovey"



JOE LOVE

*"If work and pleasure clash,  
Let duty go smash."*

"Joey"



WILLARD TED LOWE

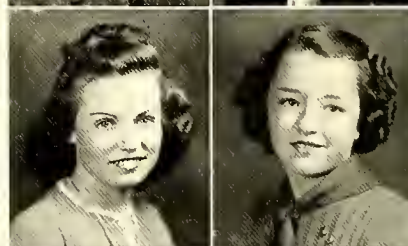
*"I dare do all that may become a man."*

"Theodore"

ECBERT NICHOLAS LOWERY

*"In all labor there is profit."*

"Half Pint"



BESSIE MILDRED LOY

*"Here's to a girl, with a heart and a smile,  
That makes the world worthwhile."*

"Lou Lou"

Glee Club 1, 3, 4; Athletic Club Pres. 2; Sec. Home Room 3.

JESSIE LEOLA MADDREY

*"The silence often of pure innocence  
Persuades when speaking fails."*

"Ola"

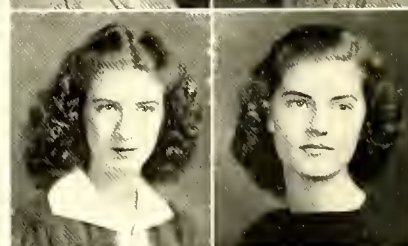
Glee Club 3, 4.

VIRGINIA DARE MANESS

*"Much studying is weariness of the flesh."*

"Jenny"

Glee Club 2.



ALICE BLUE MANGUM

*"She dresses in the prettiest clothes,  
Lovely from head to toe."*

"Blue"

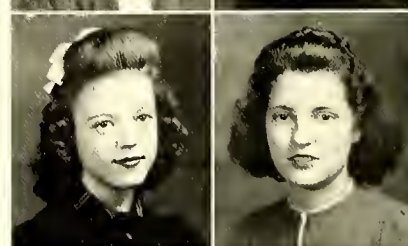
Glee Club 3, 4; National Honor Society 3, 4; Operetta 3, 4; DOE-WAH-JACK Lit. Ed. 4.

JUNE MARIE MANGUM

*"Though girls may go, and girls may come,  
You'll never find a truer chum."*

"July"

Library Club 1, 2, 3, 4.



MARGARET MAE MANN

*"She doesn't say much, but we're glad she's one of us."*

"Meggy"

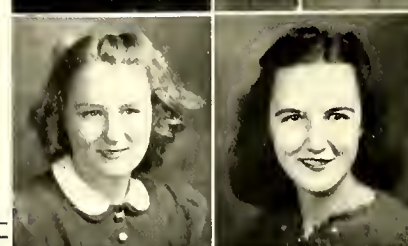
Student Council Rep. Home Room 1; Glee Club 4.

DONNA WEETONA MANSFIELD

*"Chatter, chatter all the while,  
But everybody loves it."*

"Gyp"

Student Council Rep. Home Room 1; Science Club 2; French Club 4.



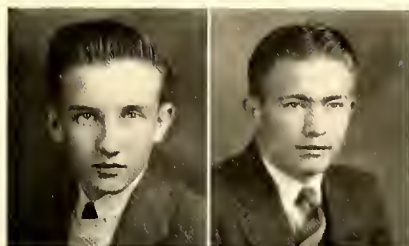
MARIE MAE MATTOS

*"Remember, face the world with a smile."*

"Pat"

Soft Ball 2; French Club 4.





WALLACE PAGE MAY, JR.

"Toonie"

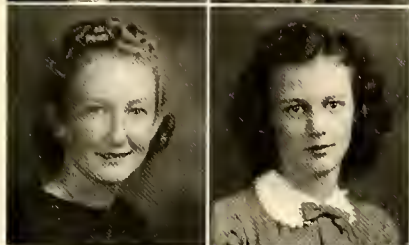
*"Live and learn."*

Dramatics Club 1; French Club 4; Hi-Y Club 4; Doe-Wah-Jack Adv. Mgr. 4.

ELLIS HUBERT MICHAEL

"Mike"

*"Life is not so short but that  
There is time for courtesy."*



CLARA GERTRUDE MOODY

"Sis"

*"She has a voice of gladness and a smile of joy."*

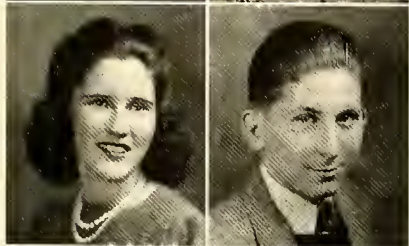
Glee Club 1, 2, 3, 4; Dramatics Club 4.

MARIE MORRIS

"Re"

*"She moves as a goddess, and she  
Looks like a queen."*

Basketball 2; Glee Club 3.



MARY HELEN MORTON

"Sparrow"

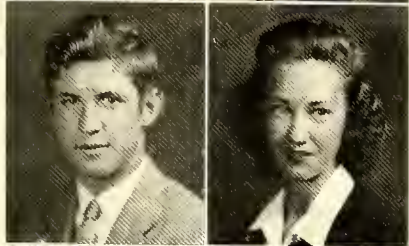
*"Her smile was like a rainbow, flashing from the misty sky."*

Student Council 1, 2; Sec. Home Room 4; Glee Club 2, 3; Science Club 2; Library Club 2.

ALTON DATTIUS MOSER

"Al"

*"Wherever there's a will, there's a way."*



WILLIAM DEOANE MOSER

"De"

*"I leave my character behind me."*

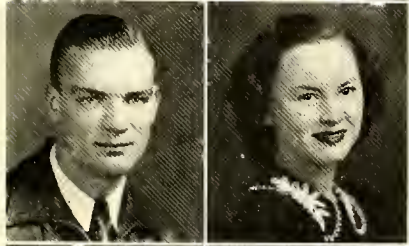
Student Council 1, 3, Vice Pres. 4; Football 3, 4; Baseball 4; Hi-Y Club 3, Sergeant-at-Arms 4; Monogram Club 4; Mgr. Student Store 4.

MAVIS MOSER

"Chatterbox"

*"The girl who wins is the girl who works."*

Vice Pres. Home Room 2; Glee Club 2; National Honor Society 4.



HAMPTON TAYLOR MOSER

"Mose"

*"Roll on gay world, and I will roll with you."*

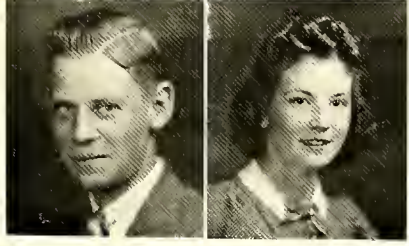
Football 1, 2, Captain 3, 4; Student Council Pres. Home Room 1; Band 1, 2, Pres. 3, 4; Basketball 3, 4; Golden Gloves 1, 2, 3, 4; Monogram Club 1, 2, 3, 4; French Club 3, 4; Latin Club 1; Barker 1.

DOROTHY LEE MOSS

"Dot"

*"Rather be small and cast a light  
Than be large and cast a shadow."*

National Honor Society 4; Latin Club 2, 3.



JAMES OLIVER MURPHY, JR.

"Rookie"

*"He must be measured by his worth."*

Basketball 3; Baseball 3, 4; Vice Pres. Home Room 4; Jr. Red Cross Council 4; Monogram Club 4; Hi-Y Club 3, 4.

DORIS ELLEN MURR

"Dot"

*"Be what you are and nothing more."*

Glee Club 1, 2, 3, 4.

DOROTHY MAE MURRAY

"Punk"

*"A handful of common sense is worth a bushel of learning."*

Dramatics Club 1; Library Club 3, 4.

ELIZABETH BURKE MURRAY

"Lib"

*"The most valuable gifts come  
Sometimes in small packages."*

Library Club 4, Sec. 2; Jr. Red Cross Council 2; Barker Soc. Ed. 4;  
DOE-WAH-JACK Typist 4.

ROBERT A. MYRICK

"Alabama"

*"Courage conquers all things and  
Even strengthens the body."*

Football 1, 2, 3; Basketball 1, 2, 3; Baseball 1; Sec. Home Room  
2; Student Store Mgr. 2; Debating Club 1, 2; Dramatics Club 1.

MAXINE BEACKARD NICHOLSON

"Mackie"

*"Let my deep silence speak for me."*

French Club 4.

AUDREY JANE OAKLEY

"Aurie, Jr."

*"Faint heart n'er won fair lady."*

Glee Club 1, 2; Jr. Red Cross Council 3; Library Club 4.

HUBERT BERNARD OAKLEY

"Nard"

*"He is a quiet kind of a guy.  
So bashful and shy."*

Sec. Home Room 2; Glee Club 2.

VERONA FRANCES PACK

"Rona"

*"Modest and sweet, calm and sincere."*

Glee Club 2, 3, 4; Girl Scouts 4.

MARY FRANCES PATTERSON

"Priss"

*"I know not what the future holds,  
But neither grief nor sorrow shall conquer in my life."*

Home Ec. Club 1, 2; National Honor Society 4.

WILLIAM RALPH PAYNE

"Bill"

*"Ready for anything, be it work or play,  
An all round fellow in every way."*

Football 2, 3; Basketball Mgr. 4; DOE-WAH-JACK Bus. Mgr. 4;  
Treas. Jr. Class; Pres. Senior Class; Junior Rotarian 4; Monogram  
Club 3, 4; Vice Pres. Home Room 3; National Honor Society Vice  
Pres. 3, 4; Hi-Y Club 3, Treas. & Sergeant-at-Arms 4.

ENOLA BROWN PENNINGTON

"Puncher"

*"Like a circle, ending never,  
Does my mirth go on forever."*

Glee Club 1, 2, 3, 4.

FRED CARL PHILLIPS

"Junior"

*"A boy with a bright mind,  
The kind of a boy that's never behind."*

Hi-Y Club 4; French Club 4; Football 4; Monogram Club 4.

SIDA RACHEL PHILLIPS

"Rae"

*"A still tongue makes a wise head."*

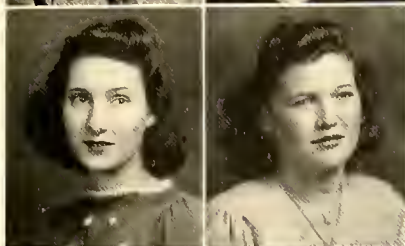
Science Club 2; Glee Club 3, 4; Library Club 3; Dram. Club 4.



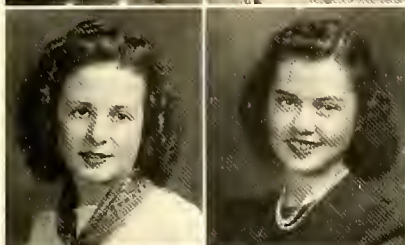




MARVIN CALHOUN PICKARD "Pick"  
*"He must be measured by his worth."*  
 Band 1, 2, 3, 4; Barker 2, 3; Hi-Y Club 1, 2, 3, 4.



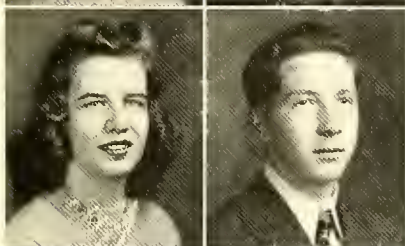
WINONA RUTH PICKARD "Nonkie"  
*"She is herself of best things a collection."*  
 Basketball 3, 4; Band 3, 4; Glee Club 4.



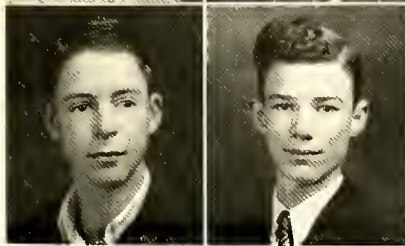
RITA LOUISE PORTERFIELD "Pinkie"  
*"Helpful is she in every way,  
 Any time or any day."*  
 Athletic Club 1; Dramatics Club 2, 4; Sec. Home Room 3; National Honor Society 4.



ALDA LOUISE PRESNELL "Boots"  
*"Take everyone's advice,  
 Then do as you please."*  
 Science Club 2; Glee Club 3; French Club 4.



BARBARA BERNICE PYLES "Bug"  
*"It doesn't pay to worry; things are bound to happen anyway."*  
 Glee Club 1, 3, 4.



ETHEL VIRGINIA RICH "Dimples"  
*"I hate nobody; I am in charity with the world."*  
 Student Council Vice Pres. 1; Glee Club 1, 2, 3, 4; Dramatics Club 4; Science Club 2.



EARNEY LOUISE RIPPY "W'cezie"  
*"Her joys are as deep as the ocean,  
 Her troubles as light as its foam."*  
 Glee Club 3, 4; Dramatics Club 1, 2.



DOROTHEA ROBESON "Thena"  
*"What's mine is yours and what is yours is mine."*  
 Student Council Pres. Home Room 2, 3; Glee Club 3, 4; Dramatics Club 1.



FRANCES MEBANE RONEY "Fran"  
*"Original, friendly, and smart—  
 But with never a thought of tomorrow."*  
 Treas. Home Room 1; Student Council Rep. Home Room 4; Glee Club 4, Librarian 3; French Club 4; Barker 4.



HENRY CARROLL ROYALL "Kinky"  
*"I wish I were a little rock  
 A sittin' on a hill,  
 With nothing to do all day long  
 But just a sittin' still."*  
 French Club 4.



CHARLES ANDREWS RUSH, JR. "Slim"  
*"Honesty is the best policy."*  
 Dramatics Club 1; National Honor Society 4.



EMERSON ESTON SHARPE "Em"  
*"Silent am I all the day through."*  
 Student Council Rep. Home Room 1; Science Club 2; French Club 4.



MARGARET HILDA SHARPE

*"Take it easy, have your fun,  
Let the old world flicker on."*

Sec. Soph. Class; Cheer Leader Asst. 4; Jr. Red Cross Council Sec. 3; National Honor Society 3, Sec. 4; Glee Club 4; Dramatics Club 1, 4, Pres. 2; DOE-WAH-JACK Asst. Ed. 4.

"Didjo"



JOHN FRANK SHERARD, JR.

*"Genius wins something; hard work always."*

Hi-Y Club 4.

"Betsy"



ROY LAFAYETTE SHIRLEN

*"Thoroughness is the key to success."*

Band 1, 2, 3.

"Shirl"

HELEN LOUISE SMITH

*"Look up and not down; Look out and not in;  
Look forward and not back; And lend a hand."*

Student Council Pres. Home Room 3.

"Cindy"



INEZ MAEBELLE SMITH

*"She is no foe to any man,  
But she can talk to beat the band."*

Glee Club 1, 2, 3, 4; Operetta 3, 4; Student Council Pres. Home Room 3.

"Little One"

LEVI SMITH

*"Lots of wit, and loads of fun!  
Everything he does is well done."*

Student Council Pres. Home Room 1, 3; Vice Pres. Home Room 4; Treas. Senior Class; Hi-Y Club 4; French Club 4.

"Teak"



WILLIS RILEY SMITH

*"He has the power, the heart to warm,  
To grieve, to raise, to terrify, to charm."*

Baseball 2, 3, 4; Football 3, 4; Monogram Club 3, 4.

"Jeep"



DONALD EDWARD SNIPES

*"I speak what I think."*

Hobby Club 2, 4, Pres. 3; Hi-Y Club 4.

"Don"

ALONZO WALTER SORRELL

*"I am sure a care is an enemy to life."*

Student Council Treas. 1; Monogram Club 2, 3, 4; Basketball 2, 3, Captain 4.

"Cook"



WALTER HARDY SPENCE

*"A finer boy cannot be found,  
For his knowledge and wit are both profound."*

Student Council Vice Pres. 2; National Honor Society 4; Band 2, 3, 4; French Club Vice Pres. 4; Dramatics Club 1, Vice Pres. 2; Hi-Y Club 3, 4; Jr. Kiwanian 4; Vice Pres. Senior Class.

"Expense"

HALLIE MOZELLE STADLER

*"Her voice, though seldom heard, is quiet."*

Glee Club 3, 4; French Club 4.

"Hal"

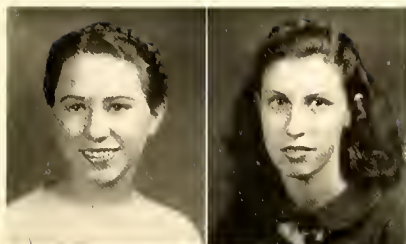
JULIA HYACINTH STEWART

*"God gave man his tongue for a cause,  
So I'll never let mine pause."*

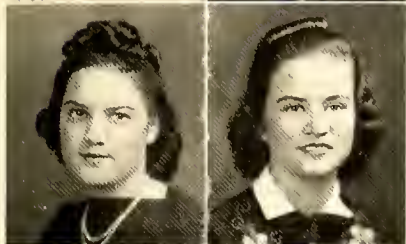
Library Club 2, 3.

"Hygie Bug"

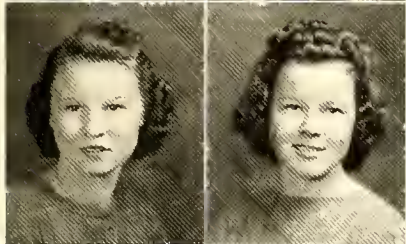




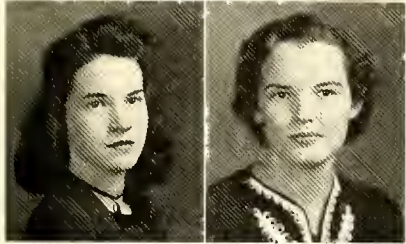
BURCHIE LEONA ST. JOHN "Bert"  
*"Nothing is too high to be reached  
 Or too good to be true."*  
 Dramatics Club 1; Glee Club 1, 2, 3, 4.



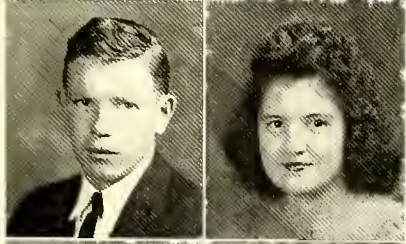
FANNIE PEARL STOREY "Fran"  
*"Silence is deep as Eternity.  
 Speech is shallow as Time."*



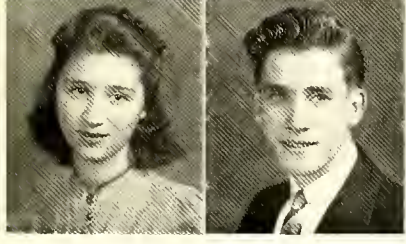
EVELYN KAY STRAUGHN "Eppie Kay"  
*"A face with gladness overspread  
 Soft smiles by human kindness bred."*  
 Student Council Pres. 2; Library Club 3, Treas. 2; Dramatics Club 4.



LUILLA PRISCILLA SURRATT "Pat"  
*"Of all our parts the eyes express  
 The sweetest kind of bashfulness."*  
 Sec. Home Room 1, 4; Hobby Club 4; DOE-WAH-JACK Assl. Art Ed. 4.



FRANCES EUGENE TEMPLE "Frankie"  
*"They who are pleasing themselves  
 Must always please."*



EVA ELIZABETH TERRELL "Eva"  
*"She keeps her tears to herself,  
 Her laughter with others."*  
 Sec. Home Room 4; Glee Club 2, 3; National Honor Society 4.



REBECCA ELAINE TERRELL "Beckie"  
*"And surely we could never forget  
 A girl as sweet as she."*  
 Barker 2; Dramatics Club 2; Glee Club 3; French Club 4.



MINNIE ELIZA TILLMAN "Brown Eyes"  
*"Let it be, it matters not."*  
 Sec. Home Room 3; Glee Club 3.



ETHIELE GLENN TODD "Tay"  
*"We gazed and gazed and still the wonder grew  
 At all the many things he could do."*  
 Glee Club 2, 3, Vice Pres. 4; Hobby Club 3, 4; Monogram Club 4; Football 3, 4.



BETSY TROLLINGER "Bet"  
*"Full of fun, joy and cheer  
 A friend whom all hold dear."*  
 Sec. Home Room 2; Glee Club 1, 2, 3, 4; Treas. Home Room 1; Library Club 4.



MARGARET MARIE TRUITT "Re"  
*"A quiet girl is always to be  
 Admired more than a noisy one."*  
 Glee Club 2, 3, 4; Latin Club 2, 3.



CHARLES RAYFORD TURNER "Ace"  
*"Man is nothing but folly's slave  
 From his cradle to his grave."*  
 Science Club 2; Soft Ball 3; Dramatics Club 3, 4.

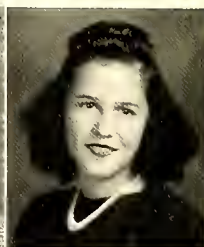


MARVIN EDWIN WALKER

"Yo Yo"

*"As crazy as Dopey, as cute as Doc,  
As mean as Grumpy, but a good old sock."*

Band 1, 2, 3, 4; Hobby Club 2; Student Council Rep. Home Room 3, 4; Cheer Leader Chief 3, 4; Latin Club Treas. 3; Hi-Y Club 3, 4; Dramatics Club 4; Barker 1, 2, Asst. Cir. Mgr. 4; DOE-WAH-JACK Asst. Bus. Mgr. 4.



MARTHA AMANDA WARD

"Mandy"

*"As full of spirit as the month of May."*

Glee Club 2, 4; Band 3, 4; Barker 4; Dramatics Club 1.



CLYDE MAXWELL WARD

"Kayo"

*"Life to me is just a comedy."*

Monogram Club 3, 4; Debating Club 1; Football 3, 4; Boxing Captain 2; Golden Gloves 2, 3.

MARY ELLA WATSON

"L"

*"Fair of figure,  
Fair of face,  
Full of fun  
And full of grace."*

Science Club 2; Debating Club 2; Latin Club 3.



DORIS MELBA WAYNICK

"Melba"

*"She finds joy in everything."*

Student Council Sec. 3; Glee Club 1, 2, 3, 4; DOE-WAH-JACK Typist 4; Marshal 3; Sec. Senior Class; Sec. Student P.T.A.

THOMAS LAVERNE WEATHERLY

"Speck"

*"Laugh and the world laughs with you."*



HELEN FRANCES WEBSTER

"Fran"

*"A good name is better than riches."*

Vice Pres. Home Room 1; Treas. Home Room 3, 4; National Honor Society 4; French Club Sec. 4.

VANDER B. WEST, JR.

"Van"

*"A quitter never wins,  
And a winner never quits."*



GENEVA LORRAINE WHEELLEY

"Neva"

*"Quiet, steadfast and faithful."*

Band 3, 4; French Club 4.

MARTHA ADELE WHITE

"Markie"

*"There's nothing like a school girl giggle."*

Library Club 1.



THOMAS CLINTON WILLIAMS, JR.

"T"

*"Sober, quiet, pensive, and demure,  
One of those friends you're always sure."*

French Club 4.

DORIS ATHELTON WILSON

"Dot"

*"Ne'er doubt me for I'll do my part."*





MINNIE LEE WOOD

"Lea"

*"A smile have I and a greeting for you."*

Glee Club 1, 2, 3; Student Council Rep. Home Room 3; Glee Club Pres. 4; Dramatics Club 4.

BERT HUESTON WOOTEN

"Deacon"

*"Music is something to his ears;  
It was his delight these past years;  
In it he'll find life and a future."*

Student Council Pres. Home Room 1, 2; Glee Club 1, 2, 3, Sec. Treas. 4; Student Store Mgr. 4; Debating Club 4; Library Club 1, 4; Dramatics Club 2, 3, 4; Baseball 3, 4; Hi-Y Club 1, 2, 3, 4; Barker 3; Doe-Wah-Jack Asst. Bus. Mgr. 4.

RACHEL CHRISTINE WRENN

"Rusty"

*"A good true friend and a jolly pal."*

Library Club 2; Glee Club 2, 3, 4; Dramatics Club 4.

IRMA LEE WRIGHTENBERRY

"Formy"

*"Her smiles show her happiness,  
Her friends, her popularity."*

Library Club 4; Barker 4.

BERNICE LEE YEATTS

"Berny"

*"She smiles and smiles and will not sigh."*

Student Council Rep. Home Room 1; Glee Club 1; Debating Club 1; Dramatics Club 1; Basketball Captain 1.

RALPH KENDALL YOUNGER

"Sucker"

*"His soft answer turneth away wrath."*

Barker Cir. Mgr. 2; Hi-Y Club 3, Sec. 4; Student Council Pres. Home Room 3; Debating Club 4; French Club 4.

## Senior Class Poem

Down in the Southland, in the Old North  
State,  
In the Land of the Long Leaf Pine,  
A prosperous city opens wide its gates  
To two hundred Seniors, strong and fine.

This thriving city is Burlington, N. C.,  
"The Hosiery Center of the South," they say,  
Because of the hosiery mills you see,  
Which turn out goods both night and day.

In Burlington there is a High School dear,  
Where happy students work and play,  
And a large group graduates each year  
Into a world where their talents pay.

So now these Seniors, their life must start,  
With the teachings and help of B.H.S.,  
And with courage and strength and a happy  
heart,  
Take up their loads to gain success.

VIRGINIA BRAXTON, *Class Poet.*

## Our Past

Hello everybody! This is your new Radio Commentator. First allow me to introduce myself. Lo and behold! I now present S.tanley A.rwood. P.oet Immortal.

Now for business. Our class entered the portals of Burlington High in 1935. We were 225 strong, the largest bunch of green Freshmen in the school's history. Our leaders were Thelma Crutchfield, President; Deoane Moser, Vice President; Virginia Braxton, Secretary; and Alonzo Sorrell, Treasurer. On our faces was a look of desperate resolve to do or die. However, that year we did not participate very much in school activities because we were kept busy dodging the Sophomores. So "Lead on, Macduff," to the next year!

Ladies and Gents, we now come to an important announcement: For those ingrown toenails use Root Beer. By keeping them drunk you keep them "loose."

In 1936, of the original group, 195 answered the roll call. This time the leaders were: Edmund Koury, President; Stanley Arwood, Vice President; Doris Waynick, Secretary; and Vander West, Treasurer. After we had razzed the Freshmen, we really got down to work. Eight of our number were elected to the Junior National Honor Society. We had several members on the *Barker* and Annual staffs. Besides this, we took an active part in the Student Council and the Social Standards Conference. Thus we early began to show an aptitude in our school careers.

By the way, folks, for that toothache use Root Beer. If the ache is fed enough of it, it will die of drunkenness.

We returned after vacation in the fall of 1938. Our ranks had been depleted to 181, but with the addition of the Hillcrest students we then numbered 210. Edmund Koury was our President; Deoane Moser, Vice President; Eunice Johnson, Secretary; and Ralph Payne, Treasurer. Under their expert guidance, and with the aid of Superintendent L. E. Spikes, Principal F. M. Biggerstaff and the teachers, we rose to great heights. We had a large number of students who rose to fame—Staley Garrison, Elizabeth Georgi, James Horne and Marvin Walker working on the *Barker* staff and Helen Garrison on the Annual staff. Many of our boys won honors in athletics. Deoane Moser, Ralph Payne, Taylor Moser and Max Ward were outstanding in football while Loy Bowland and Alonzo Sorrell triumphed in basketball. Twelve of us were elected to the Senior National Honor Society, and twelve boys were taken into the Hi-Y Club. Some of our boys won honors for themselves in the State Golden Gloves Boxing Tournament. We also won high scholastic honors, Ralph Payne and Eva Terrell winning medals. In Marvin Walker we discovered a very capable and efficient cheer leader. With all these honors heaped upon us we felt very proud and adjourned until the next year.

Flash! Flash! Root Beer will upROOT all your troubles. So "Take a tip and buy a Tip"—er—er, we mean a ROOT BEER.

In 1939 we resumed our studies with light hearts, for the race was nearly run, and so far we'd shown up pretty well. Our leaders this year were Ralph Payne, President; Hardy Spence, Vice President; Doris Waynick, Secretary; and Levi Smith, Treasurer. During the year sixteen of our members were taken into the National Honor Society, with Helen Garrison, President; Ralph Payne, Vice President; Margaret Sharpe, Secretary; and Willa Horner, Treasurer. Twelve more boys were taken into the Hi-Y, with Edmund Koury as President. Two of our fellow-members were chosen as leaders of the Student Government—Edmund Koury, President; and Deoane Moser, Vice President. This year our group promoted the Social Standards Conference. Students who participated in this were Stanley Arwood, Student Chairman, and Staley Garrison, Student Vice Chairman.

Many of our group were outstanding in football, basketball and baseball. Others received appointments to various organizations: Helen Garrison, Editor-in-Chief of the *DOE-WAH-JACK*, with Ralph Payne, Business Manager and Wallace May, Advertising Manager; Elizabeth Georgi, Editor-in-Chief of the *Barker* with the help of Stanley Arwood, Assistant Editor and Staley Garrison, Business Manager, and other efficient staff members. James Horne, Kendall Younger and Staley Garrison have taken an active part in the Debating Club. Other activities in which our class has taken an active part are Band, Glee Clubs, and Dramatics Club.

Well, I think that this about winds up our activities for the four brief, but happy, years of our high school days.

And don't forget! . . . The root of all evil is money, so drown it in ROOT BEER. This is S.A.P. signing off. Thanks for listening!

STANLEY ARWOOD, '40.

## Class Prophecy of 1940

*Words and Music by James Horne*

All rite, folks, close your eyes and hop aboard our Magic Carpet and we'll whiz you into the future. This is the year 1960, twenty years advanced—Time Marches on! As our Carpet breaks through the clouds, we find ourselves on the streets of "Lil Ole New York."

We step off our Carpet and start out for Times Square, and who is the first person we see? A street-peddler selling fake watches, whom we immediately identify as Hardy Spence.

Strolling on our way, we see the World's Largest Building, Sawdust Chapel. This building is owned by a ring of millionaires, Ed Dunn, Joe Frazier, Ed Koury and Grover Handy, who made their fortunes selling doughnut holes.

Next, we drop in the Garrison Bowling Alleys—the first, and, thank goodness the only, female bowling alley. Helen Garrison is its proprietor. Martha Garner, Clarice Bateman, Vaden Cant, Margaret Coley, Edith Collingsworth, Thelma Crutchfield, Juanita Dickens and Elsie Campbell are pin girls. We "howl" a game on Bateman's alley and toss her a four-cent tip. Before leaving, however, we buy a drink from Lucille Angelos, the concession cutie, and it tastes somewhat like Limberger, cheese smells. We inquire as to its manufacturer. It was bottled by the Delite Bottling Company, whose owners are Reid Alexander, Howard Askew, Bobby Byrd and Adrian Carroll. Upon hearing this we can expect no better and soon excommunicate the alleys.

Seeing a sign on a building "Flea Circus," we go inside where we find Stanley Arwood, Staley Garrison and Frank Copeland, owners and star attractions of the show. As an added attraction, they have two midgets, Christine "Tiny" Wrenn and Taylor "Tom Thumb" Moser.

Across the street we see a dance parlor with our old friend, Ed Hicklin, complete with monocle, high hat, spats and a cane, drumming up trade for his Dancing Debonair Dashing Debutante Deluxe Dime-a-Dance Hall. He has acquired an English accent that would make Leslie Howard take a back seat as to the perfection of "rawthers" and "by joves." He tells us his most popular Dime-a-Dance Girls are Jean Evans, Frances Davis, Rebecca De Loache, Laura Corn, Mildred Coble, Wanda Cheek, Hazel Burnette, Wilma Brown and Wilma Huffines. His very popular gigolos are Homer Allen, Karl Fitzgerald, Harold Halacheff, Gale Isley, Carl Huffman and the Hogan Boys.

Next, we buy a ticket from a very pretty girl, "Lizza Beth" Georgi and enter into the movie house. The handsome ushers are Barry Hicks, Vance Forrester, Basal Jones and W. C. Latta. The feature is "Beautiful But Dumb," with Luona Isley as its star. Deoane Sheik, who used to be a Moser, is her leading man. In the supporting cast we see Kat Hiatt as a colored maid; Marie Mattos, a vamp; good-for-nothing foreigner, J. O. Murphy; a ring of female racketeers, Willa Horner, Ruth Harris, Dorothy Fowler, the Fogleman Girls, Maxine Bare, Evelyn Bivens, Mary Boone, Esper Brooks and Inez Barnes; Betty Gattis, a millionaire's daughter; Virginia Braxton, Mrs. Marvin Pickard. Extras are Jean Fay Barton, Edith Amick, Enola Pennington, Margaret Barrett, Evelyn Andrews, Troy Lee Greeson, Cleo Hall, Novel Dillingham, Wilton Hunt, Edna Isley and Beatrice Ashley. The Director is Alton Moser.

The short subject is a Sequel to Mickey Mouse, in which Charlie Jones plays as Mickey (the Rat) Mouse and Marie Morris as Minnie (a fugitive from the Cheese Gang).

A bald-headed man in front of us keeps laughing so loudly we ask him to be quiet. We find that he is Wallace May, Representative of the New York Strawberry Growers' Association. Sitting next to him is his fat wife, who used to be Doris Waynick. The next two rows are filled with little Mays. Sitting back of us are the Vernon Longs of "Hog-calling" fame. The Mrs. was, once upon a time, Frances Love.

The news flashes on the screen and Glenn Love gives the latest dope of the world. We see where notorious "Jersey Joe" Love is captured by Ace G-Man, Ted Lowe. Also where Senator Fred Phillips has boarded the *Sink or Float* for Europe, where Mary Louise Little has discovered the Thirteenth Dimension.

Next morning we truck on down to Harlem where we see a funny-looking guy giving the poolroom window a bath. We recognize him to be Richard Johnson. Going inside, we learn that Robert Myrick is owner. We notice three shady-looking characters over in one corner whom we perceive as W. T. (the Rat) Hinshaw, John (the Snake) Malone and Johnnie (the Wolf) Jones. "Wolf" Jones is trying desperately to get the balls out of the table with a slug.



Down the street we meet a neat-looking couple pushing a baby carriage. Immediately we recognize them to be the Marvin Walkers, who are taking Red, Jr. for a ride. Mrs. Walker, that is, Ada Homewood, is hawling Marvin out. She says, "He wants to ride in the buggy too. There's just not enough room for both my babies."

Just then the fire gong is sounded and up rolls the fire department. Charles Rush, Chief, is drinking a 7UP, trying to get rid of last night's hang-over. Chief Rush has the first crew of fire women the world has ever known. The fighters, Frances Roney, Margaret Sharpe, Vallie Johnson, Alda Presnell, Louise Rippey, Ethel Rich, Dorothea Roberson, Bernice Pyles, Verona Pack, Doris Murr, Helen Morton, and, of course, many masculine volunteers, extinguished the blaze.

Next, we visit the ball park where the Harlem Hots are playing the Black Sox. On the outside we find Emerson Sharpe with a brace and bit boring nice new holes. "Only five cents! Who's next?"

"Razzy" Lineberry is doing the hurling for the Harlem Hots. Among the Celebrities present we see Dorothy Moss, All-Gal Band Leader; T. C. Williams, Dr. Sawbones; Harriet Ball, Mrs. Sawbones; Alice Blue Mangum, Saleslady for Hanes underwear; Donna Mansfield, Principal Speaker at the Graduation Exercises for the Deaf and Dumb School.

Also among the Notables we see Margaret Mann, Saleslady for hairless hairbrushes for bald-headed men; Virginia Maness, All American Door Bell Answerer; Ethiele Todd and Eunice Johnson, who plan to take up where Eddy and Macdonald left off; Ralph Payne, Salesman for Fuller Brushes; Bernard Oakley, President, Vice President and Secretary of the Oakley Factories, Inc.; His wife, Peggy Lightbourne, is Treasurer; Norman Jeffreys, typical Lil Abner; Dorothy Kirkman, Daisy Mae; Frank Sherard, "World's Greatest Chemist"; Rachel Kimrey, Mrs. Sherard; Clara Moody, Mae Lee Miller, Mavis Moser, Ellis Michael, Leola Maddrey and Mildred Loy, all of the Board of Protection of Feeble-minded Goldfish; Ruth Lee Isley, the Movie Star.

The game is interrupted by a news flash. "The Fourth National Bank has been robbed of \$2.31!" This job was pulled by an all-girl band of bandits. They are believed to be led by Florence Jeffreys and Mary Patterson. Other members of the Gang are believed to be Berdie Johnson, Hazeline King, Marjorie Kizziah, Grace Leach and Rachel Phillips. A band of G-Men are on their trail. The G-Men are Captain Hugheston Wooten, Kendall Younger, Vander West, Thomas Weatherly, and Sergeant Max Ward.

As we start to leave the park, we see many familiar faces. Among them we recognize:

Bernice Yeatts, Aviatrix, who is attempting to fly around the world backwards; Irma Wrihtenberry, Saleslady for Spencer Corsets; Doris Wilson, Personality Kid; Minnie Wood, Waitress in Gibson's; Martha Dell White, Designer for ladies' dresses for a nudist camp; Helen Webster, Schoolmarm No. 1; Martha Ward, Blues Singer who is so hot she makes the boards smoke; Mary Watson, Senior history teacher in B.H.S.; Geneva Wheeley, World's Best Clarinet Player; Rebecca Terrell, Mrs. Wade Lowe; Eva Terrell, Artist and Sculptor; Levi Smith and "Jeep" Smith, Manufacturers of Smith Bros. cough drops.

Making our way out of the place as hurriedly as possible, we find ourselves coming down Broadway. We meet Priscilla Surrott who invites us to her little Confectionery Stand.

Donald Snipes is pleading with Policeman Alonzo Sorrell over a ticket. When they have finished, we approach the bald-headed cop and ask him the name of the 213-story building. He tells us it is the Rest-Easy Hotel, owned by Burchie St. John. Inez Smith, Fannie Pearl Storey, Hallie Stadler and Hyacinth Stewart. Roy Shirlen is manager and Betsy Trollinger and Evelyn Straughn are his Private Secretaries.

About half-way up this building we see a light. Of course, our curiosity forces us to ask about the light. This room, we learn, is occupied by an old maid, June Mangum, who has two beds in her room so that she will have twice the chance of finding a man under them.

All rite, folks, climb back on the Carpet, and Presto! . . . we're back in Dear Old B.H.S., in the year 1940. We hope there are no complaints from any members of the Senior Class, but should there be, address your letter to

MR. BOB NOBODY,  
000 N. Empty St.,  
Fooville.

## Last Will and Testament

NORTH CAROLINA  
Alamance County  
Burlington

We, the Senior Class of 1940 of Burlington High School, in the above said State and County, realizing we are to be on our own, being of supposed sound mind, and having a high standard of character, or as good as expected after four continuous years of hard mental labor, hereby make and ordain this our Last Will and Testament.

### ARTICLE I

To the Faculty, we leave the pleasure that is given them each year, to mold the incoming Junior Class into a group with high standards and a loving disposition.

### ARTICLE II

To Mr. Biggerstaff, we leave a larger box in which to put the names of the unruly Juniors because his "little box" has been nearly filled with the names of us Seniors.

### ARTICLE III

To the Juniors, we leave our honored seats in chapel if they agree to be the leading class in B.H.S., and to uphold the "classy" reputations we have set.

To the entire Student Body, we leave the classrooms and auditorium that they might keep the corners and floors clean. We also leave the agony of remaining quiet in chapel and of attempting to appear intelligent.

### ARTICLE V

To Mr. Spikes, we leave a faithful faculty and request that the drudgery of teaching in crowded classrooms be lessened.

### ARTICLE VI

To the incoming Freshmen, we request that they learn our beloved song perfectly and that they use our class flower and motto to make themselves into a Senior Class comparable to ours.

### ARTICLE VII

Certain individuals do bequeath as follows:

Taylor Moser and Marvin Walker leave their places in the band to Worth Stevens and James Campbell.

Ed Koury, his executive position to Nina Garrison, asking her to do her best.

Irma Wrihtenberry, Martha Ward and Hazeline King will their love for Oak Ridge to Louise Baxter, Betty Baker and Jane Lee Murtag who, without a doubt, will make the most of it.

Rebecca De Loache leaves her ability to talk too much to Aetna Bryan.

Bobby Byrd, Barry Hicks and Donna Mansfield leave their French knowledge to any three Juniors who will keep it in circulation.

Alonzo Sorrell, his basketball ability to John Fred Johnson and asks him to use it at its best against Bessemer.

Donald Snipes, his ability to raise arguments in all his classes to David Smith who has tried but hasn't succeeded.

Max Ward leaves his knowledge of practically nothing to Brooks Spence so that he may some day know something.

The Senior Hi-Y boys, their ability to arouse the Student Body to the future Hi-Y boys.

Jean Evans, her slogan "Keep That Girlish Figure" to Marshall Barnwell.

Levi Smith, his permanent wave to Carrold Stearns.

Helen Garrison, her charming personality and that "certain way with the boys" to Betty Holt.

Eunice Johnson leaves her title of "best looking" to Mary Jo Frissell or Josephine Koury—let them fight it out between themselves.

Edna Isley and Ethel Rich bequeath their beauty accessories, including compacts, to Katherine Leath and Pauline Vaughn.

Minnie Wood leaves her short skirts to any Junior who is willing to take up hems.

To Robert King, Hardy Spence leaves his power to dream and build air castles.

Phillip Hogan leaves his happy-go-lucky ways to Bobby Ivey.

Ed Dunn, his "blank mind" to E. C. Qualls.

Hughston Wooten leaves his "handsome" voice to "Buddy" White.

Ada Homewood, her love for basketball players to Elsie Walker.

Stanley Arwood and Louise Porterfield leave their title of "most intellectual" to the two in the Junior Class who are most capable of having such a title.

Karl Fitzgerald and Doris Waynick, their well-supplied wardrobe to Betty Riddle and Jack Moore.

Betsy Trollinger leaves her ability to select styles to Mary Louise Somers.

The remaining Seniors leave their title of "dignified Seniors" to the remaining Juniors.

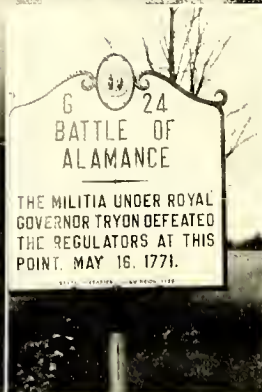
### ARTICLE VIII

In testimony whereof we do appoint Mr. F. M. Biggerstaff as sole executor of this, our Last Will and Testament, asking him to force the said terms and see that they are abided by.

RALPH PAYNE, *Testator*.

### WITNESSES:

Calva S. Sellars  
Alton Hall  
F. M. Biggerstaff



Senior Class Prophet  
Battle of Alamance  
Monument  
Senior Class  
Historian

"Going up"  
Senior Class  
Giftorians  
"Sleepyhead"

Planning Ahead  
Senior Class  
Last Will and Testament  
"Watch the Birdie"  
All Doubled up  
"I Speak my own Message"





## Junior Class Officers

JULIE COOPER  
*Secretary*

NINA GARRISON  
*President*

CATHERINE TOULOUPAS  
*Vice President*

MARGARET FONVILLE  
*Treasurer*





## Junior Class Roll

Chester Adamee	Doris Drake	Mary Kivett	David Smith
Doris Alford	Vaden Easley	Josephine Koury	Dorothy Smith
Opal Allen	Mary Euliss	Pauline Koury	Mary Somers
Irma Allison	William Fairey	Jean Landman	Brooks Spence
Grace Allred	Catherine Faulconer	Flossie Lamberth	Eleanor Stadler
Nellie Mae Allred	Evelyn Ferguson	Maurice Laws	Hilda Staley
Marshall Anthony	Carl Fitch	John Lea	Dorothy Stanford
Homer Arwood	Hellen Fitch	Catherine Leath	Ethel Stanley
Bobby Bain	Helen Fogleman	Sarah Jane Leath	Carroll Stearns
Richard Bair	Margaret Fonville	Eva Lineberry	Worth Stevens
Betty Baker	Edna Foster	Richard Lineberry	Reba St. John
David Ball	Merritt Foushee	David Love	Ed Storey
Vivian Banther	Jane Foushee	Frank Love	Juanita Stowe
Mildred Bare	Hilda Fowler	Tommy Love	Marion Swanigan
Margaret Barger	John Fowler	Mary Lowery	Nellie Sykes
Ruth Barger	Muriel Freedman	Jack Loy	Dorothy Tate
Marcia Barnwell	Mary Jo Frissell	Billie Lucas	Frances Teague
Agnes Barrett	Naomi Furlough	Gladys Mangum	Emogene Thomas
Doris Baynes	Roger Gant	David McAdams	Charles Thomasson
Louise Baxter	Wade Garreth	Elizabeth McAteer	Numa Thompson
Dorothy Bennett	Nina Garrison	Marvin McIver	Pat Thompson
Robert Biller	Harry Gilmore	Tom McKeel	Efird Tickle
Clyde Black	Margaret Glenn	Dorothy McKenzie	Catherine Touloupas
Coy Blackwell	Ruby Greeson	Margarette McLennan	Helen Upright
Robert Blackwell	Harry Gross	Alva Minor	Benny Vaughn
Elizabeth Blalock	Jack Gurganius	Myrtle Mitchell	Bruce Vaughn
Virginia Boswell	Bill Hagood	Norma Mitchell	Louise Vaughn
Argie Lee Brooks	Oscar Hagood	Fred Montgomery	Pauline Vaughn
Vernon Brown	Charles Hall	Jack Moore	Vallie Vaughn
Aetna Bryan	Ozell Hall	Alyse Moran	Ruth Wagner
Mary Burke	Ann Harden	Annie Laurie Moser	Maude Wagoner
Myrtle Burke	Carl Harrell	Mary Frances Moss	Elsie Walker
Valeria Burke	Billy Harvey	Elizabeth Murdock	Florence Walker No. 1
James Campbell	Clinton Hester	Jane Murray	Florence Walker No. 2
Vernelle Cantrell	Billy Higgins	Harold Nall	William Walker
Jack Capes	Frances Hinshaw	Raymond Neese	Woodrow Walker
Betsy Cates	Richard Hogan	Frances Orr	Marjorie Ward
Clyde Cates	Jean Holmes	Edward Overman	Marie Way
Ralph Cates	Betty Holt	Ernest Owens	Hilda Webster
Cecil Caulder	Earl Holt	Allen Parker	J. L. West
Edith Caulder	Edna Holt	Geraldine Perry	Wilton Wheelley
Howard Chandler	Vernie Huffines	Hilda Phillips	Doris Whitaker
Peggy Cheek	Wade Huffman	Helen Poythress	James White
Luther Christopher	Bill Humble	Jack Pritchett	Margaret White
Hilda Cobb	Bernice Hunter	Walker Pruitt	David Whitesell
George Coble	Walker Hunter	E. C. Qualls	Newman Whitesell
Rachel Coble	Luther Ingold	Lena Quesenberry	Frances Whitt
Jimmie Collins	Avril Isley	Faye Rash	Kathryn Wicker
Richard Coley	Media Cobb Isley	Catherine Ray	Adrian Wiggins
Julie Cooper	Bobby Ivey	Hughes Rhodes	Muriel Wiggins
Ralph Cooper	Bill Jobe	Lynette Rich	Delmer Williams
Rhesa Corn	Eris Johnson	Betty Riddle	Douglas Williams
Virginia Councilman	Clyde Johnson	Jean Riley	Joyce Williams
Carleise Coyner	John Johnson	Betty Ross	Helen Williamson
Frances Crawford	Vernon Johnson	Charles Ross	Fannie Wilson
Nellie Creech	Donald King	Brodie Rudd	Kathryn Wilson
Nell Crenshaw	Robert King	Haldean Sharpe	Molean Wilson
Irene Dameron	Verdery King	Stella Shockley	Rita Wilson
Evelyn Day	Louise Kingsland	Christine Shoe	Wendell Wilson
Lola Dickens	Ralph Kirkpatrick	Evangeline Sizemore	S. D. Wood





A Junior Gang

Up-side-down

Yo Yo Mickie  
Four on a Bench  
Dear Old Geometry Class  
Old Glory  
"We Are Seven"

All Ready to Go  
Yi-Y Initiation  
The Friendly Quartet

"Campus Sweethearts"  
See-Saw



## Sophomore Class Officers

EARL HORNER  
*Vice President*

MARGARET McALLEN  
*President*

DELEANO HALL  
*Secretary*

HAZEL SELF  
*Treasurer*



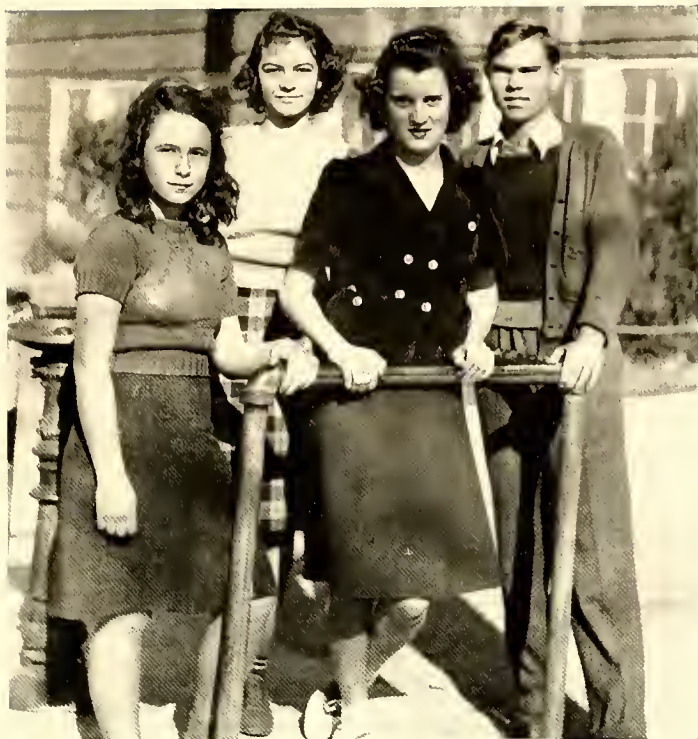




## Sophomore Class Roll

Elizabeth Adams	Agnes Dunn	Warren Lee	Mary Ruth Randolph
Lois Adams	Ruth Evans	Robbie Leonard	Coryn Reynolds
Sarah Albright	Robert Faggart	Minnie Lewis	Vivian Rice
Bobby Anderson	Raymond Ferguson	H. W. Lindley	Vernell Robertson
Arnold Andrews	Betty Fidler	Margaret Lindley	Edna Rogers
Hilda Andrews	N. M. Gilmore	Carl Lindsay	Joe Rogers
Virginia Andrews	Fay Goad	Jacqueline Logan	Evelyn Ross
Laura Jean Askew	Dennis Goodman	Nellie Mae Long	Margaret Rouse
Norman Austin	Clara Mae Graves	Leonard Loy	Fannie Mae Rowe
Joseph Baffa	Margaret Graves	Doris Lyon	Ruby Russell
Janet Baker	Douglas Green	Evelyn Madden	Hazel Self
Louzania Baldwin	Deleano Hall	Harold Mann	William Shannon
Ray Barbec	Warren Hall	Mary Frances Mann	Ben Sharpe
Bernice Barger	Juanita Hammock	Maurice May	Juanita Sharpe
Randolph Barnes	Irma Delle Hargrove	Calvin McAdams	Bonna Shatterly
Frances Barnwell	James Harrell	Ted McAteer	Jean Simpson
Betsy Barrett	Coke Harris	Margaret McAllan	George Skipper
Billy Bason	Glenn Harrison, Jr.	J. D. McLendon	Freeman Smith
Allene Bell	Betty Jean Haynes	Shelton Miles	Rachel Smith
Corina Blanchard	Edna Hickey	Vernon Miles	Mary Snipes
L. C. Blanchard	Virginia Higgins	Forrest Mills	Nellie Mae Stewart
Helen Boles	V. A. Hinshaw, Jr.	Carrie Mize	Earl Stogner
Lucille Bowland	Una Mae Hinshaw	Robert Montgomery	Ruby Storey
Louise Bradley	Frank Holder	Charles Moore	Dottie Stubbs
Eunice Bradner	O. C. Hopkins	Richard Moore	Dorothy Suggs
Mary Bright	Earl Horner	Robert Moore	Clarence Swinney
Mildred Boone	Johnsie Mae Hudson	Thomas Morris	Richard Sykes
Vera Boswell	Annie Pearl Hughes	Erma Morton	Edward Taylor
Dexter Brown	Elmer Huntley	Defoy Moser	Kenneth Taylor
Lloyd Buff	G. B. Isley	Martha Moser	Rachel Taylor
Julius Campbrell	Henry Isley	Mary Moser	Bettie Temple
Maxine Cash	Russell Isley	Donald Murray	Aaron Terrell
Norma Cheek	Wendell Isley	Virginia Neal	James Terrell
John Chrisco	Helen James	Bettie Rae Oakley	Thomas Terrell
Ruby Mae Coble	Alluwee Jones	Carl Oakley	La Verne Thomas
B. F. Coleman	Berkley Jones	Clark Patterson	Elsie Mae Thompson
Inez Coleman	Boyd Jones	Patsy Patton	Paul Thompson
Robert Coleman	Jack Ketner	Richard Payne	Jack Watson
Shirley Cook	Allen King	Betty Pennington	Margie Williams
Dewey Councilman	Melvin King	Maxine Pennington	Dean Williamson
Newman Cox	Parker King	Forest Phibbs	Mabel Wilson
B. F. Crenshaw	Edward Kinney	Cleo Phillips	Evelyn Woodford
George Cross	James Kyles	Richard Phillips	George Wright
Cecil Crutchfield	Corinne Latta	John Pickard	Nellie Young
Lasley Dameron	Norma Laws	Ruth Poteat	Gaynelle Younts
Paul Dixon	Mary Lee	Irene Poythress	





## Freshman Class Officers

CATHERINE COOPER  
*Secretary*

DALLAS HORNE  
*President*

CATHERINE PEGG  
*Treasurer*

NELLIE GRAY MANN  
*Vice President*





## Freshman Class Roll

Kathleen Adamee	Attrice Compton	Jean Haseman
Paul Aiken	Audrey Compton	Jack Hawkins
Ralph Allred	Hyacinth Conklin	Wallace Hawkins
Ruby Andrews	Catherine Cooper	Edward Hensley
Howard Anthony	Wayne Cooper	Joe Hinsdale
Barbara Apple	Margaret Councilman	Dallas Horne
Bobby Ausley	Gene Cox	Nathel Horner
Reid Baliff	Dorothy Cross	Mamie Howerton
Ernest Bare	Pearl Cross	Billie Hudson
Muriel Barger	Floyd M. Crouse	Bob Humble
Thomas Barton	Jacqueline Curl	Jesse Hughes
Howard Black	Ruth Davis	Thomas Hunter
Roger Black	Fern Dickens	Betty Jane Hurley
Geneva Blackwell	Rosella Dixon	Sara Ingie
Lynn Blackwood	Joyce Dodson	Helen Isley
Clifton Boswell	Clyde Dorsett	Jesse Jackson
Christine Bradshaw	Betty Sue Drake	Doris Jarrett
Margaret Brooks	Ema Warren Edwards	Dennis Johnson
Douglas Brown	Elizabeth Ellis	Kathryn Johnson
Elizabeth Brown	Nell Rose Ellis	Warren Johnson
Fred Buff, Jr.	Julia Euliss	Harold Jones
Buck Burke	Walter Euliss	Milford Keck
Wallace Burke	Mickie Faulconer	Clay King
Kendall Butler	Rebecca Ferree	Elbert King
Jack Campbell	Evelyn Ford	Anne Kivett
James Campbell	John Ford	Dottie Lamm
Nannie Lou Campbell	Hal Foster	Erma Lashley
Tulip Carden	Gus Galanes	Merle Lindsay
Helen Carter	Blanche Garner	Ocie Linkous
John Cates	Gaston Gilmore	Daniel Lynch
Roney Cates	Ruby Glasgow	Gilbert Lytle
Louise Catoe	Anderson Glenn	Stuart Loy
Gladys Chandler	Cecil Glosson	W. W. McCullouch, Jr.
Doris Cheek	Odell Gregory	Theresa McLendon
Rebecca Cheek	Wade Griffin	Colleen McKennie
Laura Mae Christopher	Harris Hall	Eleanor D. McPherson
Pearl Clapp	Frances Hanford	Johnnie Madden
Helen Coble	Eula Mae Harrell	Edward Marks
Dean Coleman	Charles Harvey	Willard Martin



C. V. Maness  
 Arline Mangum  
 Nellie Gray Mann  
 Charles Metcalf  
 Ella Rae Miles  
 Doris Mitchell  
 Howard Mitchell  
 Jean Mitchell  
 Willard Moore  
 Helen Morris  
 Helen Moser  
 Mary Moser  
 William Motley  
 Marie Murray  
 Mary Murray  
 Ralph Neighbors  
 Ellis Nicholson  
 Austin Norris  
 Inez Parish  
 Catherine Pegg  
 Jack Phillips  
 John Pickard  
 Marine Pickler  
 Cornelia Rector  
 Wade Redding  
 James Rich

Edith Riggan  
 L. W. Riley  
 James Rogers  
 Grace Ross  
 Marshall Ross  
 Harold Royall  
 Adell Rudd  
 Amy Lou Rush  
 Granvial Saterfield  
 Kathryn Sawyer  
 Irene Scoulas  
 Faye Sellars  
 Leatrice Sharpe  
 Gene Sherard  
 Rachel Shoaf  
 Mary E. Simpson  
 Doris Smith  
 Gordon Smith  
 Jane Smith  
 Ruby Stanfield  
 William Stanfield  
 Kenneth Steele  
 Jerry Strader  
 Annie Margaret Sykes  
 George Sykes

Lawrence Sykes  
 Carl Tapp  
 E. G. Taylor  
 Howard Terry  
 Jimmy Thacker  
 Farrell Todd  
 Robert Toney  
 Loraine Turner  
 William Twiddy  
 Hazel Vaughn  
 Raymond Vanderford  
 Charles Waddell  
 Carl Wagoner  
 Mary Ann Walker  
 Jean Wall  
 Virginia Ward  
 Winfred Ward  
 Elizabeth White  
 Ernest Whitley  
 Edith Wiles  
 Harold Williamson  
 Jack Williamson  
 Charlotte Wilson  
 Willer Wilson  
 Lucille Woodford  
 Edward Wrenn



MASTER FRANKLIN LEE BIGGERSTAFF

"Butch"



## Hillcrest Officers and Publications Assistants



*Seated:* Baldwin, Joyner, Newlin, Cook, Evans.

*Standing:* Murr, Murray, Miss Foster, Stearns, Mr. McBane, Walker.

MR. H. G. McBANE  
*Principal*

MISS MARY LEE FOSTER  
*Annual Sponsor*

### BARKER STAFF

BEN STEARNS, *Circulation Manager*  
DON MURR, *Asst. Circulation Mgr.*

NORA LEE COOK, BILL EVANS  
*Reporters*

### NINTH GRADE

JOHN WALKER, *President*  
GARLAND NEWLIN, *Secretary*

### EIGHTH GRADE

BILL EVANS, *President*  
SARA BALDWIN, *Secretary*

### ANNUAL STAFF

EMILY JOYNER

BETTY JANE MURRAY

TO THAT PURE CARM FRIEND OF MINE  
FROM A JOYFUL PAL  
*Sam from*

*And wishes  
to a pal  
Sam C*

BEST  
WISHES  
TO A PAL  
CHARLES  
BONE  
HEAD



*Ben  
Jordan*

*Glenn  
Rickett*



*John  
Stephens*

Hillcrest

*J. W. Jackson*

## Hillcrest Sophomore Class

Mary Allen	Bill Evans	W. E. Love	Mary Helen Sneed
Allison Avent	Mildred Fogleman	Janet Marks	John Sneed
Denese Baggett	Billy Fogleman	James Merritt	Earl Somers
James Baggett	Fred Frissell	Melvin Minor	Marie Southard
Oliver Bailess	Cecil Gant	David Mitchell	Wade Squires
Sara Baldwin	Cordelia Gant	Harold Mooneyham	John Stevens
Sarah Ball	Nancy Garrison	Irving Mumford	Mary Ruth Surratt
Junior Bass	Earl Heath	Betty Jane Murray	May Taylor
Betty Mae Bernstein	Anna Louise Hensley	Melvin Murray	Elvis Terry
Alvin Bolser	Billie Howard	Frances Newsome	Gertrude Terry
Clyde Bowes	Frank Huffman	Ruth Oakley	Cornell Tickle
Christine Bowman	Dabney Irving	Glenn Pickett	Margaret Tickle
Russell Brammer	Larrie Isley	Nell Presnell	Harold Walton
Hilda Brintle	Harold Isley	C. T. Pyles	William Ward
Marie Bryan	J. W. Jackson	Betsy Rauhut	Fern Warren
Helen Capes	Vivian James	Mary Frances Rudd	W. D. Warren
Dorothy Cline	Leslie Jerrell	Edward Rudder	Honzelle Waynick
Marjorie Coble	<u>Ben Jordan</u>	Roger Scott	Mary Waynick
Nick Collins	Marcine Keply	Vera Shepard	Robert Weston
Dick Cooper	James King	Hazel Shockley	Paul Whitley
Jesse Cornell	Helen Kingsland	Welker Shoe	Ruth Whitesell
Jimmy Cowan	Raymond Kivett	J. C. Simmons	Robbie L. Williams
Billy Crenshaw	Joyce Laster	Joyce Simpson	Tommy Wolfe
A. J. Ellington	Lucy Lea	Bowman Small	Sarah Wright
Dickie Ellis	Geraldine Love	Dickie Smith	Virginia York

Fay Younger

## Hillcrest Freshman Class

Grey Adams	Alton Durham	Seymour Levin	Jean Scott
Louis Allen	Alton Faucette	W. C. Lloyd	Norman Self
Lucy Allison	Amelia Flowers	Vincent Long	June Sellars
Dicky Anderson	Hazel Fogleman	Jean Love	Ralph Shaw
Mary K. Bain	W. T. Foster	Edward McCauley	Bobby Simpson
Jennie L. Barham	Dickie Fowler	Wallace McIver	Kathryn Somers
D. J. Bell	Richard Gant	Edward Milton	Sam Spoon
Claude Blackwell	Nat Garrison	Charles Mitchell	Ben Stearns
Loraine Brammer	C. D. Gattis	Fay Mitchell	Tommy Stratford
Tommy Brooks	Evelyn Harris	Louise Moser	Nellie Upright
Andrew Burgess	Warren Hodgins	Gus Muckenfus	Clinton Vanhoy
Eloise Cheek	George Huffine	Dan Murr	James Wagoner
Kenneth Coble	Jessie Mae Jeffcoat	James W. Murray	John <del>Neal</del> Walker
Ernestine Collins	A. H. Jones	Jimmy Murray	Thelma White
Nora Lee Cook	Irwin Jones	Garland Newlin	Ella Rae Whitesell
Sara Copeland	Ruth Jones	Peggy Peerson	Fay Whitesell
Gene Coyner	Emily Joyner	Helene Perry	Inez Whitesell
Lyle Craven	Lois Leach	Jack Pierce	Peggy Whitesell
Evelyn Dill	Kathryn Leggett	Donald Rhodes	Laura Wood

James Wright

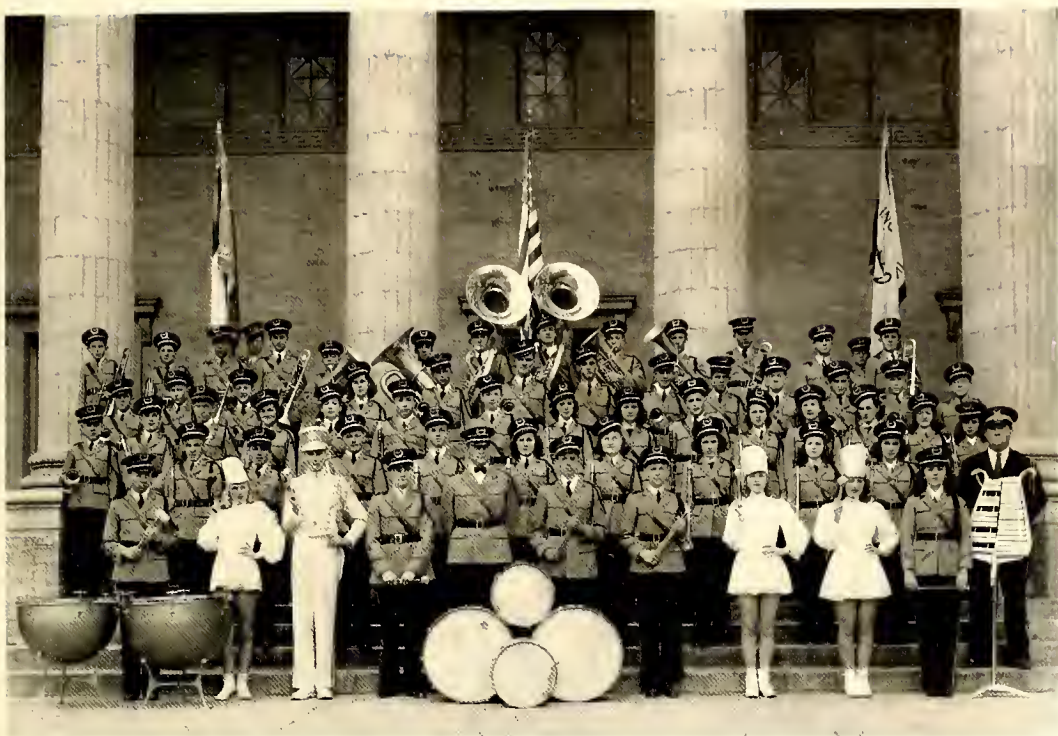




*Peggy  
Engle*

*a Pal, always  
Early*

HILLCREST SNAPS



## High School Band

E. F. RHODES, *Director*

EDWARD ROBERTSON, *Drum Major*

Activities



## The 1940 Doe-Wah-Jack

HELEN GARRISON, *Editor-in-Chief*; MARGARET SHARPE, *Assistant Editor*; RALPH PAYNE, *Business Manager*; HUGHESSTON WOOTEN, THELMA CRUTCHFIELD, *Assistant Business Managers*; ALICE BLUE MANGUM, *Literary Editor*; HARRIET BALL, *Assistant Literary Editor*; WALLACE MAY, *Advertising Manager*; MARVIN WALKER, STROUD HOGAN, KARL FITZGERALD, *Assistant Advertising Managers*; WILLA HORNER, *Art Editor*; PRISCILLA SURRATT, *Assistant Art Editor*; JEAN EVANS, *Feature Editor*; REBECCA DE LOACHE, *Joke Editor*; JAMES HORNE, *Snapshot Editor*; WILLIAM BELL, *Sports Editor*; BETTY RIDDLE, *Junior Assistant*; DELEANO HALL, *Sophomore Assistant*; EDWARD MARKS, *Freshman Assistant*; ADA HOMEWOOD, ELIZABETH MURRAY, DORIS WAYNICK, *Typists*; MISS MARY LEE FOSTER, *Hillcrest Adviser*.



ALTON HALL  
*Adviser*





## The Barker

STAFF: ELIZABETH GEORGI, *Editor-in-Chief*; ELIZABETH BLALOCK, *Assistant Editor*; STANLEY ARWOOD, *Managing Editor*; JOYCE WILLIAMS, *Feature Editor*; ED STOREY, *Sports Editor*; BETTY BAKER, *Exchange Editor*; WILMA BROWN, *Typist*.

BUSINESS: STALEY GARRISON, *Business Manager*; MARY JO FRISSELL, *Assistant Business Manager*; JOSEPHINE KOURY, EMOGENE THOMAS, LOUISE BAXTER, JULIE COOPER, *Advertising Staff*; BOBBY BYRD, *Circulation Manager*; CATHERINE FAULCONER, *Assistant Circulation Manager*; BEN STEARNS, *Hillcrest Circulation*; TOM MURR, *Assistant Circulation*; MISS MARY LEE FOSTER, *Hillcrest Adviser*.

*Reporters*: Betty Riddle, Norma Teague, Mary Louise Somers, Nina Garrison, Muriel Freedman, Elizabeth Murray, Josephine Koury, Margaret Barger, Sara Ingle, Betty Haynes, Rachel Coble, Bernice Hunter, Martha Ward, Carleise Coyner, Mickie Faulconer, Frances Roney, Louise Kingsland, James Horne, Catherine Faulconer, Ada Homewood, Betty Rae Gattis, Vaden Easley, L. W. Riley, Nora Lee Cook, Nat Garrison.



MRS. VANCE LATT  
*Adviser*



## High School Student Council

EDMUND KOURY, *President*  
DEOANE MOSER, *Vice President*

WORTH STEVENS, *Secretary*  
GEORGE CROSS, *Treasurer*

### *Advisers*

MRS. E. S. GILREATH

MRS. J. A. HUNTER

Bobby Anderson, Stanley Arwood, Jack Capes, Adrian Carroll, Gene Cox, Nell Crenshaw, Jean Evans, Karl Fitzgerald, Helen Garrison, Nina Garrison, Staley Garrison, Margaret Glenn, Harold Graves, Betty Holt, Dallas Horne, Willa Horner, Gale Isley, Ruth Lee Isley, Catherine Leath, Ocie Linkous, Mary Louise Little, Daniel Lynch, Alice Blue Mangum, Edward Marks, Mary Frances Moss, Donald Murray, Marie Murray, Ralph Payne, John Pickard, Louise Porterfield, Margaret Sharpe, Mary Snipes, Kenneth Taylor, Catherine Touloupas, Gaynail Younts.

## Hillcrest Student Council

MISS MARY TAYLOR, *Sponsor*  
JAMES WALTER MURRAY, *President*  
LYLE CRAVEN, *Vice President*

DICK COOPER, *Secretary*  
BILL EVANS, *Treasurer*  
NAT GARRISON, *Captain of Patrol*

Donnell Bain, Sarah Baldwin, Betty Mae Berustein, Richard Cheek, Elizabeth Ann Coble, Kenneth Coble, Nora Lee Cook, Dickie Fowler, Fred Frissell, Frances Gregg, Lester Gross, Catherine Holt, Dabney Irving, Harold Isley, Emily Joyner, Helen Kingsland, Ward Lasley, Jean Love, Jimmy Murray, Jackie Pierce, Neil Robertson, J. C. Simmons, June Southerland.





## National Honor Society

### *Officers*

HELEN GARRISON, *President*

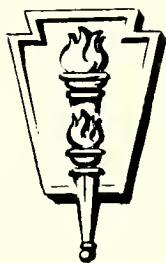
MARGARET SHARPE, *Secretary*

RALPH PAYNE, *Vice President*

WILLA HORNER, *Treasurer*

MRS. W. ALBERT GRAHAM, *Adviser*

### *Members*



Stanley Arwood, Harriet Ball, Margaret Barrett, Robert Byrd, Thelma Crutchfield, Jean Evans, Staley Garrison, Elizabeth Georgi, Carl Huffman, Ruth Lee Isley, Richard Johnson, Edmund Koury, Peggy Lightbourne, Mary Louise Little, Alice Blue Mangum, Mavis Moser, Dorothy Lee Moss, Mary Frances Patterson, Louise Porterfield, Charles Rush, Hardy Spence, Eva Terrell, Helen Webster.



## Senior Hi-Y Club

<i>President</i>	<i>Vice President</i>	<i>Secretary</i>	<i>Treasurer</i>	
KOURY	GARRISON	YOUNGER	PAYNE	
<i>Sergeant-at-Arms</i>				
Fitzgerald	Walker	MOSER	Pickard	Smith
Horne	Phillips	May	Spence	Byrd
Murphy	Arwood	Love	Sherard	Snipes
P. Hogan	S. Hogan	Wooten	Huffman	
<i>Adviser</i>				
MR. D. C. HUNTER				

# Le Cercle Francais

DEVISE: *Vouloir, C'est pouvoir*

MME. HUNTER, *Directrice*

## *Bureau*

M. BOBBY BYRD, *President*      Mlle HELEN WEBSTER, *Secrtaire*  
M. HARDY SPENCE, *Vice President*      M. PHILLIP HOGAN, *Tresarier*

## *Members*

Mlle Harriet Ball	Mlle Margaret Mann
Mlle Laura Corn	Mlle Donna Mansfield
Mlle Frances Davis	Mlle Marie Mattos
Mlle Rebecca De Loache	M. Wallace May
Mlle Vaden Gant	Mlle Maxine Nicholson
M. Staley Garrison	M. Fred Phillips
Mlle Betty Rae Gattis	Mlle Alda Presnell
Mlle Troy Lee Greeson	Mlle Frances Roney
M. Barry Hicks	M. Emerson Sharpe
M. Phillip Hogan	M. Levi Smith
M. Stroud Hogan	Mlle Hallie Stadler
Mlle Liuna Isley	Mlle Rebecca Terrell
Mlle Dorothy Kirkman	Mlle Geneva Wheeley
Mlle Peggy Lightbourne	M. T. C. Williams
M. Kendall Younger	

# Junior Classical League

MRS. W. ALBERT GRAHAM, *Sponsor*

## *Officers*

CARRIE MIZE, *President*      IRMA DELLE HARGROVE, *Secretary*  
MARY MOSER, *Vice President*      NEWMAN COX, *Treasurer*

Elizabeth Adams	Edua Hickey	Erma Morton
Bob Anderson	Una Hinshaw	Virginia Neal
Homer Arwood	Earl Horner	Joe Rogers
L. C. Blanchard	G. H. Isley	Evelyn Ross
Dewey Councilman	H. W. Lindley, Jr.	Margaret Rouse
Lasley Dameron	Margaret McAllan	Richard Sykes
Ruth Evans	Richard Moore	James Terrell
Douglas Greene	Robert Moore	Thomas Terrell
Delcano Hall		Evelyn Woodford





# Hillcrest Playmakers

MISS ADELAIDE MORROW, *Director*

## *Officers*

### *Fall*

JOHN WALKER . . . . . *President* . . . . . NAT GARRISON  
 NAT GARRISON . . . . . *Vice President* . . . . . DICK COOPER  
 BETTY J. MURRAY . . . . . *Secretary* . . . . . MARY H. SNEAD  
 NORA L. COOK . . . . . *Treasurer* . . . . . FRED FRISSELL

### *Spring*

## *Members*

Grey Adams  
 Louis Allen  
 Lucy Allison  
 Mary K. Bain  
 Sara Ball  
 Ann Baldwin  
 Sara Baldwin  
 Betty L. Barnwell  
 Jennie L. Barham  
 Amanda Bell  
 Betty M. Bernstein  
 Clarence Brown  
 W. W. Brown  
 Marie Bryan  
 Elouise Cheek  
 Richard Cheek  
 Elizabeth Coble  
 Sara Copeland  
 Evelyn Dill  
 Amelia Flowers  
 Jean Ferguson  
 Cordelia Gant  
 Frances Gregg  
 Lester Gross

Evelyn Harris  
 Catherine Holt  
 Frank Huffman  
 Irvin Jones  
 Katherine Jones  
 Ben Jordan  
 Raymond Kivett  
 Walker Kivett  
 Patsy Laue  
 Ward Lasley  
 Betsy G. Love  
 Betsy B. Love  
 W. E. Love  
 Wilton Moser  
 Thomas Newlin  
 Jackie Pierce  
 Lea Rosenbloom  
 June Sellars  
 Ann Stevens  
 Evelyn Sweet  
 June Southerland  
 Harold Sutton  
 Honzelle Waynick  
 Fay Younger

*Heir to a  
second "Good Hope"  
AHS*



SCENE FROM "BUDDY" by J. C. McMULLEN  
Play entered in State Dramatics Contest, 1940

Cast

John Neal Walker  
Betty J. Murray  
Nora Lee Cook

Lucy Allison  
June Sellars  
Grey Adams

*Don't forget your "Mom"  
Lots of love to my sister  
Lucy Allison*



## Senior Girls' Glee Club

MISS EVA WISEMAN, *Director*

MINNIE WOOD, *President*  
VERNELLE CANTRELL, *Vice President*  
EVA TERRELL, *Secretary*

DOROTHY KIRKMAN, *Treasurer*  
JULIE COOPER, *Librarian*  
JOSEPHINE KOURY, *Asst. Librarian*

Edith Amick	Virginia Braxton	Luona Isley	Frances Roney
Maxine Bare	Elsie Campbell	Berdie Johnson	Mary Louise Somers
Margaret Barrett	Bessie Fogleman	Marjorie Kizziah	Hallie Stadler
Vallie Johnson	Martha Garner	Rachel Kimrey	Hilda Staley
Clarice Bateman	Willia Horner	Louise Kingsland	Rebecca Terrell
Wilma Brown	Edna Isley	Sarah Jane Leath	Marie Truitt
Christine Cantrell	Ruth Lee Isley	Peggy Lightbourne	Vallie Vaughn
Margaret Coley	Eunice Johnson	Frances Love	Florence Walker No. 1
Carleise Coyner	Mary Louise Little	Leola Maddrey	Christine Wrenn
Virginia Councilman	Joyce Lloyd	Clara Moody	Burchie St. John
Nell Crenshaw	Mildred Loy	Jane Lee Murray	Inez Smith
Dorothy Fowler	Alice Blue Mangum	Verona Pack	Betsy Trollinger
Mary Jo Frissell	Doris Ellen Murr	Rachel Phillips	Martha Ward
Betty Rae Gattis	Winona Pickard	Ethel Rich	Doris Waynick
Lucille Angelos	Betty Holt	Louise Rippy	Margaret Sharpe
Evelyn Bivens	Avril Isley	Dorothea Robertson	Enola Pennington

## Boys' Glee Club

MISS MILDRED MURRELL, *Director*

Paul Aiken	Harry Gilmore	Maurice Laws	O. G. Skipper
Marshall Anthony	James Horne	C. V. Maness	Haldean Sharpe
Douglas Brown	Carl Harrell	Vernon Miles	Thomas Terrell
Vernon Brown	Walker Hunter	Ralph Neighbors	Ethiele Todd
John Cates	Joe Hinsdale	Ellis Nicholson	Bruce Vaughn
Louis Catoe	Dallas Horne	L. W. Riley	Charles Waddell
Raymond Ferguson	Clay King	John Pickard	Jack Williamson
William Fairey	Ralph Kirkpatrick	Gordon Smith	Hughston Wooten
Douglas Green	Warren Lee	David Smith	George Wright
		Buddy White	

## Junior Girls' Glee Club

MISS EVA WISEMAN, *Director*

GLADYS MANGUM, *President*  
DOROTHY STANFORD, *Vice President*  
HILDA FOWLER, *Asst. Librarian*

LYNETTE RICH, *Secretary*  
MARY FRANCES MOSS, *Librarian*

Doris Alford	Rhesa Corn	Pauline Koury	Dorothy Smith
Louzania Baldwin	Doris Drake	Flossie Lambeth	Rheba St. John
Vivian Banther	Evelyn Ferguson	Catherine Leath	Juanita Stowe
Mildred Bare	Edna Foster	Billie Lucas	Dorothy Tate
Ruth Barger	Naomi Furlough	Norma Mitchell	Ruth Wagner
Doris Baynes	Nina Garrison	Elizabeth Murdock	Hilda Webster
Dorothy Beunett	Ruby Greeson	Frances Orr	Doris Whitaker
Virginia Boswell	Vernie Huffles	Geraldine Perry	Joyce Williams
Valeria Burke	Bernice Hunter	Betty Riddle	Helen Williamson
Betsy Cates	Media Isley	Jean Riley	Kathryn Wilson
Edith Caulder	Eris Johnson	Jean Simpson	Molcan Wilson
Hilda Cobb	Mary Kivett	Stella Shockley	



## Sophomore Girls' Glee Club

MISS MILDRED MURRELL, *Director*

Elizabeth Adams	Ruth Evans	Norma Laws	Ruth Poteat
Lois Adams	Betty Fidler	Mary Lee	Edna Rogers
Frances Andrews	Faye Goad	Robbie Leonard	Evelyn Ross
Hilda Andrews	Clara Graves	Margaret Lindley	Fannie Mae Rowe
Laura Askew	Deleano Hall	Doris Lyon	Bonna Shatterly
Margaret Barger	Juanita Hammock	Evelyn Madden	Mary Snipes
Allene Bell	Irma Delle Hargrove	Carrie Mize	Dottie Stubbs
Corrina Blanchard	Betty Jean Haynes	Erma Morton	Dorothy Suggs
Lucille Bowland	Edna Earl Hickey	Martha Moser	Betty Temple
Eunice Bradner	Una Mae Hinshaw	Mary Moser	Elsie Mae Thompson
Ruby Mae Coble	Virginia Higgins	Betty Rae Oakley	Florence Walker
Shirley Cook	Helen James	Betty Jane Pennington	Mable Wilson
Evelyn Day	Corrine Latta	Maxine Pennington	

## Freshman Girls' Glee Club

MISS MILDRED MURRELL, *Director*

Ruby Andrews	Mary Ruth Davis	Ocie Linkous	Leatrice Sharpe
Kathleen Adamee	Betty Sue Drake	Mary Moser	Ruth Smith
Geneva Blackwell	Fern Dickens	Eleanor Dare McPherson	Ruby Lee Stanfield
Ganelle Butler	Joyce Dodson	Helen Moser	Faye Sellars
Helen Cobb	Julia Euliss	Ella Rae Miles	Rachel Shoaf
Hyacinth Conklin	Rebecca Ferree	Doris Mitchell	Mary E. Simpson
Catherine Cooper	Evelyn Ford	Johnnie Madden	Doris Smith
Tulip Carden	Mamie Howerton	Jean Mitchell	Lorraine Turner
Jacqueline Curl	Nathel Horner	Mary Murray	Hazel Vaughn
Helen Carter	Doris Jarrett	Marie Murray	Elizabeth White
Rebecca Cheek	Catherine Johnson	Adell Rudd	Mary Ann Walker
Margaret Councilman	Anne Kivett	Grace Ross	Elizabeth Waggoner
		Edith Wiles	

## Hillcrest Girls' Glee Club

JEAN LOVE  
*President*

KATHRYN SOMERS  
*Secretary*

MRS. ALBERT McDONALD  
*Director*

MISS MARY LEE FOSTER  
*Accompanist*

Jewel Aiken	Elizabeth Dickens	Jane G. Lakey	Jean Scott
Era M. Ashley	Mildred Fogleman	Lucy Lea	Vera Shepherd
Dorothy Ball	Anna L. Hensley	Katherine Leggett	Mildred Simmons
Thelma Bell	Vivian Hodgins	Geraldine Love	Joyce Simpson
Denser Braggett	Ruth E. Huffines	June Loy	Marie Southard
Lorene Brammer	Larry Isley	Fay Mitchell	Mary R. Surratt
Hilda Brintle	Vivian James	Mary N. Murray	Norma R. Taylor
Helen Capes	Jessie M. Jeffcoat	Lucy Nicholson	Margaret Tickle
Dorothy Cline	Aline Jones	Ruth Oakley	Mary F. Turner
Jean Coble	Ruth Jones	Peggy Peerson	Nellie Upright
Marjory Coble	Mary J. Jones	Nell Presnell	Etta Westbrook
Ernestine Collins	Emily Joyner	Betsy M. Raulbut	Fay Whitesell
Gene Coyner	Marcine Kepley	Jean Rhodes	Robbie Williams
Pearl Dean	Helen Kingsland	Mary Rudd	Sara Wright
		Virginia York	





## Dramatics Club

MRS. H. T. HAMBRIGHT, *Sponsor*

### *Officers*

JAMES HORNE  
*President*

HELEN GARRISON  
*Secretary*

NINA GARRISON  
*Vice President*

MARY LOUISE SOMERS  
*Treasurer*

Doris Alford  
Stanley Arwood  
Bobby Bain  
Betty Baker  
Louzania Baldwin  
Maxine Bare  
Mildred Bare  
Marcia Barnwell  
Louise Baxter  
Aetna Bryan  
James Campbell  
Howard Chandler  
Luther Christopher  
Rachel Coble  
Ralph Cooper

Carleise Coyner  
Nell Crenshaw  
Evelyn Day  
Jean Evans  
William Fairey  
Edna Foster  
Dorothy Fowler  
Muriel Freedman  
Mary Jo Frissell  
Elizabeth Georgi  
Ann Harden  
Carl Harrell  
Billy Higgins  
Jean Holmes

Carl Huffman  
Bernice Hunter  
Walker Hunter  
Eris Johnson  
Louise Kingsland  
Josephine Koury  
Jean Landman  
David Love  
Edward Marks  
Myrtle Mitchell  
Clara Moody  
Mary Frances Moss  
Harold Nall  
Edward Overman

Rachel Phillips  
Louise Porterfield  
Lena Bell Quesenberry  
Irene Scoulas  
Margaret Sharpe  
Dorothy Smith  
Marion Swanigan  
Catherine Touloupas  
Raeford Turner  
Marvin Walker  
Kathryn Wilson  
Rita Wilson  
Minnie Wood  
Hugheston Wooten  
Christine Wrenn

## Triangular Debaters

KENDALL YOUNGER   JEAN HOLMES   STALEY GARRISON   JAMES HORNE

RESOLVED: "That the Government Should Own and Operate the Railroads."

## Hillcrest Boys' Glee Club

EARL SOMERS  
*President*

MRS. ALBERT McDONALD  
*Director*

JIMMY COWAN  
*Secretary*

MISS MARY LEE FOSTER  
*Accompanist*

Dickie Anderson  
Billy Crenshaw  
Alton Durham  
Cecil Gant

Dick Gant  
Robert Greeson  
George Huffines  
Seymour Levin

Carland Newlin  
Price Petrea  
Dickie Smith  
Wade Squires  
Tommy Wolfe

John Stevens  
Billy E. Sutton  
Harold Walton  
William Ward





Billy  
Crenshaw

Part of  
Lusk Group  
Dishonored





## High School Library Club

MISS EMILY LOFTIN, *Sponsor*

ADRIAN CARROLL  
*President*

LOIS ADAMS  
*Secretary*

Christine Bradshaw, Betsy Cates, Bill Cook, Catherine Cooper, Julie Cooper, Rosella Dixon, Vaden Easley, Ema Warren Edwards, Helen Fitch, Hilda Fowler, Muriel Freedman, Katherine Hiatt, Jean Holmes, Ada Homewood, Willa Horner, Kathryn Johnson, Rachel Kinrey, Hazeline King, Pauline E. Koury, Sarah Jane Leath, Mildred Loy, Margarette McLennan, June Mangum, Edward Marks, Ella Rae Miles, Jean Mitchell, Dorothy Mae Murray, Elizabeth Murray, Ruth Pack, Maxine Pickler, Betsy Ross, Fannie Mae Rowe, Faye Sellars, Juanita Sharpe, Carl Tapp, Betsy Trollinger, Hazel Vaughn, Maude Wagoner, Margaret White, Dean Williamson, Maude Wilson, Irma Wrightenberry.

## Hillcrest Library Club

MRS. WALTER MAYNARD, *Sponsor*

TOMMY WOLFE  
*President*

JOHN STEVENS  
*Secretary*

Marjorie Coble, Jimmy Cowan, Billy Crenshaw, Cecil Gant, Dick Gant, Dickie Smith, Billy E. Sutton, William Ward.



INDUSTRIAL  
ARTS  
DEPARTMENT



SENIOR  
TYPING  
CLASS



GIRL SCOUTS  
MRS. D. C. HUNTER  
*Leader*  
MISS MILDRED MURRELL  
*Assistant Leader*

## Junior Red Cross Council

MISS ANNIE G. WEBSTER, *Sponsor*

### *Officers*

PEGGY LIGHTBOURNE  
*President*

REBECCA DE LOACHE  
*Vice President*

CLYDE JOHNSON  
*Secretary*

RANDOLPH BARNES  
*Treasurer*

Corina Blanchard  
Vera Boswell  
Argie Lee Brooks  
Jack Campbell  
Ruby Edmonds  
Emma W. Edwards  
Carl Fitch

Bessie Fogleman  
Ruby Greeson  
Wilma Huffines  
Anne Kivett  
Nellie Gray Mann  
Edward Marks

J. O. Murphy  
Ruth Poteat  
Carroll Stearns  
Jerry Strader  
Marie Way  
Florence Walker No. 1  
Mabel Wilson

---

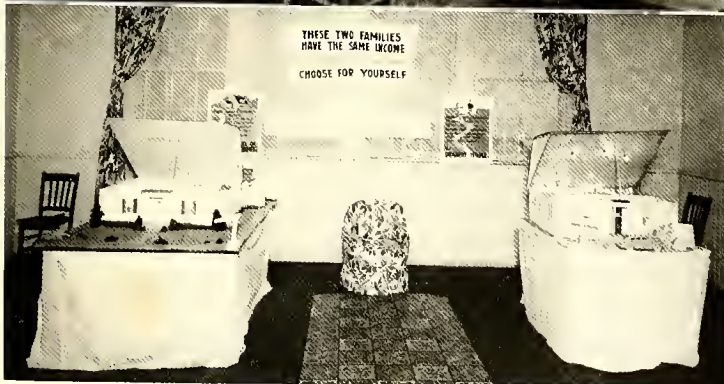
## Home Economics Clothing Laboratory

---

---

## Homemakers' State Fair Exhibit For Alamance County







Hillcrest Homemakers  
High School Cafeteria





COACHES

HOYT T. HAMBRIGHT

BLANEY C. RACKLEY

*Athletics*



## An Appreciation for Our Coaches

To our coaches, Blaney G. Rackley and Hoyt T. Hambright, we take off our hats. You have built up a great athletic program in our school.

We know of your past life at your colleges. Rackley, one of Wake Forest's "Greats," made the quarterback position three years in succession and All-Southern back two years. Hambright, Erskine's gift to Burlington High, was a three-letter man, his lines being football, basketball and baseball.

These two came to us when we needed them most. And now look at the results. May these two be with us many years and do as well as they have so far.

### BAND MAJORETTES



Ross

Glenn

Thomas

Moser



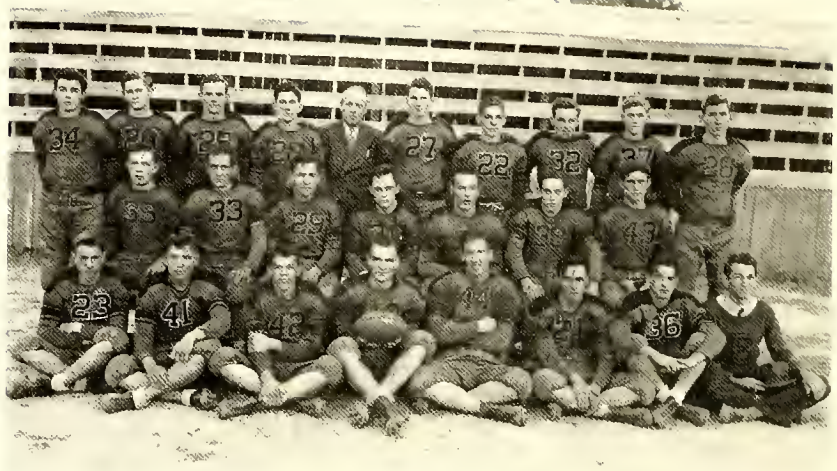
*Melvin  
Minor*

*To my  
pal  
Clinton*



*To A Swell  
Pal + A  
HUSKEY  
Love  
K. Cobbs*

Burlington High Monogram Club  
Hillcrest Monogram Club



## Football

### THE SQUAD

*Front row:* Smith, R. Phillips, Frazier, T. Moser, *Captain*; Miller, Hunter, G. Lineberry, Storey, *Manager*.

*Second row:* Todd, Hagood, Ward, McKeel, McAteer, Payne, D. Moser.

*Standing:* Cheek, Sykes, Taylor, F. Philips, Rackley, *Coach*; R. Lineberry, Halacheff, Thomasson, Jones, Haney.

### 1939 FOOTBALL RESULTS

Greensboro	41	Burlington	6	Mount Airy	33	Burlington	6
Hillsboro	0	Burlington	12	Mills Home	28	Burlington	0
Reidsville	13	Burlington	0	Sanford	8	Burlington	12
Leaksville	0	Burlington	21	Oxford	7	Burlington	7
Lexington	40	Burlington	0	Wilson	6	Burlington	6



The sports of Burlington High this year were supported in a big way by the students. The ticket books went over pretty well but not as well as had been expected.

Football got off to a good start. The boys donned new uniforms in black and gold and also new hoods. These showed up well throughout the playing season.

Led by Captain Taylor Moser, the B.H.S. crew, although not winning all the games, showed that the fighting spirit had not gone from the old Bulldogs.

After football, basketball came rolling along, and the boys looked like a cham-

pionship team, and went far into the state race for top honors. The girls were less successful, this due in the main to inexperience and height. The boys went to the finals in the Third Annual Invitational Tournament.

The baseball boys should have a winning team this season. Their new equipment, together with the hearty support of the student body, should make them feel more determined in their efforts to put Burlington on the map. These boys are going to carry old B.H.S. to Chapel Hill and to the State Championship . . . let's hope.

## The Varsity



*Backfield:* Miller, Frazier, D. Moser, McKeel.  
*Line:* McAteer, Payne, Todd, Ward, Hagood, T. Moser, Hunter.

BOYS' BASKETBALL



GIRLS' BASKETBALL



BASEBALL



## Boys' Basketball

*Back row:* Storey, *Manager*; Alexander, Cates, C. Johnson, Payne, *Assistant Manager*.

*Middle row:* F. Johnson, Bowland, Wiggins, Williams, Frazier.

*Front row:* Hagood, Moser, Sorrell, Euliss, Neese, Thomasson.

## Girls' Basketball

*Back row:* Vaughn, T. R. Greeson, R. Greeson, Garner, Bare.

*Front row:* Touloupas, Ross, Teague, Garrison, *Captain*; Askew, Poteat, Hurley.

## High School Baseball

*Back row:* Graves, *Manager*; Latta, Euliss, Simmons, Tickle, Blackwell.

*Front row:* Lineberry, Jones, Murphy, Smith, Thomasson, Frazier, Cross.





## Soccer

JOHN FOWLER, *Captain*

JAMES MURRAY, *Manager*

*Front row:* Capes, Collins, Hodgins, Fowler, Spoon, Collins, Kidd, Heath.

*Second row:* Evans, White, Wagoner, Stearns, Stratford, Williams, Whitesell, Robertson, Craven, McCauley, Melver.

*Third row:* Garrett, *Coach:* Simpson, Jackson, Gattis, Harvey, Simmons, Cable, Warren, Foster, Burgess, Stone.

*Fourth row:* Squires, Somers, Sneed, Love, Murray, Bain, Blackwell, Horne.

## Hillcrest Basketball



JIMMY MURRAY

*Captain*

TOMMY STRATFORD

*Manager*

*Front row:*

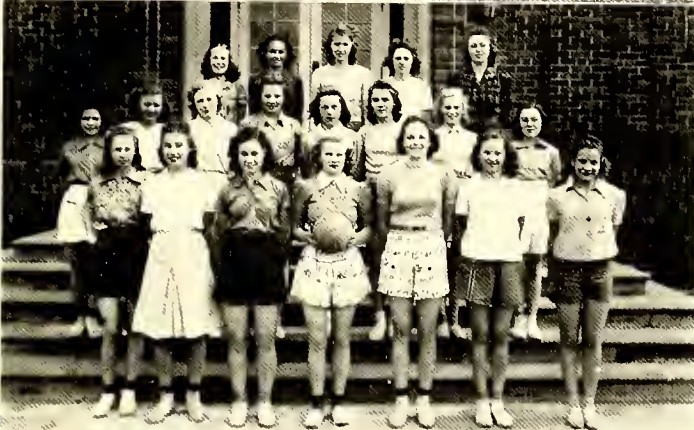
Rhodes  
Squires  
McCauley  
Wagoner  
Anderson  
McIver  
Vanhook

*Second row:*

Walker  
Collins  
Sneed  
Jackson  
Burgess  
Ellington  
Levin

*Standing:*

Garrett, <i>Coach</i>	Craven
Bailess	Murray
Stratford	Simmons
	Milton



## Hillcrest Girls' Soccer

MRS. J. A. LONG, JR.

*Sponsor*

HAZEL FOGLEMAN

*Captain*

JOYCE LASTER

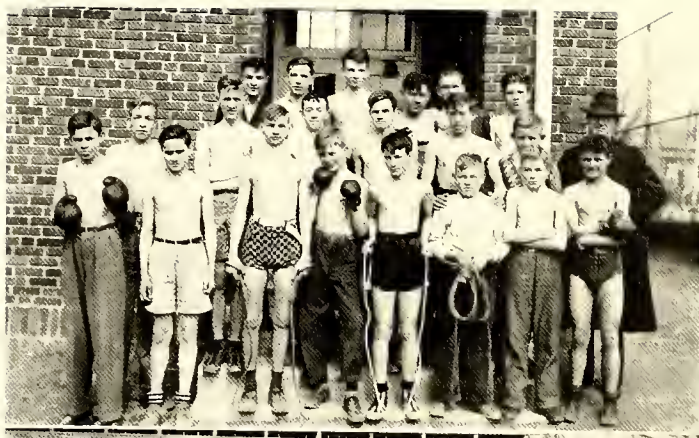
*Co-captain*

LOIS LEACH

*Manager*

Mary Allen  
Helen Capes  
Doris Glosson  
Ruth Jones  
Eleanor Mansfield  
Janet Marks  
Helene Perry  
Hilda Lee Pyles  
Hazel Shockley  
Gertrude Terry  
Fern Warren  
Christine Watson  
Ella Rae Whitesell  
Peggy Whitesell  
Rena Mae Whitesell  
Ruth Whitesell





HILLCREST  
BOXING TEAM



HILLCREST BOYS'  
SOFTBALL TEAM

*Darney  
Darney*



HILLCREST  
PATROL

*So a real sweet boy  
and a good friend  
who is cute  
Love  
Marie*





Walker, Chief

Moser

Sharpe

Riddle

Faulconer

## Cheer Leaders

*Heatwave*



"Fourscore and Seven Years Ago" . . . A Fair Exhibit . . . Ain't that sumpin? . . . The gang's all here . . . A happy Trio . . . Uh-uh! . . . Glee Club rehearsal "Meditation" . . . "Ole Man Ribber" (Kimesville Lake) . . . "How Firm Ye Foundation" . . . "Smoke Gets in Your Eyes" (in room 19).



# Queen and Court and Senior Class Mascots



REBECCA DE LOACHE  
*Queen*

ELIZABETH MURRAY  
ADA HOMEWOOD  
*Attendants*

PATRICIA STEWART  
BOBBY RHODES  
*Mascots*





## Senior Superlatives

### MOST INTELLECTUAL

Stanley Arwood  
Louise Porterfield

### BEST SPORT

Deoane Moser  
Jean Evans

### MOST ORIGINAL

James Horne  
Frances Roney

### BEST-ALL-ROUND

Ralph Payne  
Helen Garrison

### MOST ATHLETIC

Taylor Moser  
Troy Lee Greeson

### MOST TALKATIVE

Stanley Arwood  
Donna Mansfield

### MOST POPULAR

Deoane Moser  
Helen Garrison

### MOST PERSONALITY

Staley Garrison  
Helen Garrison

### MOST MUSICAL

Taylor Moser  
Vallie Johnson



## Senior Superlatives

### BEST LOOKING

Edmund Koury  
Eunice Johnson

### MOST EFFICIENT

Ralph Payne  
Louise Porterfield

### QUIETEST

Emerson Sharpe  
Leola Maddrey

### BIGGEST FLIRT

Karl Fitzgerald  
Irma Wrihtenberry

### CUTEST

Novel Dillingham  
Minnie Wood

### MOST SCHOOL SPIRIT

Marvin Walker  
Margaret Sharpe

### MOST CONCEITED

Staley Garrison  
Margaret Sharpe

### BEST DRESSED

Karl Fitzgerald  
Doris Waynick

### HAPPIEST

Phillip Hogan  
Christine Wrenn



Marie Mattas: I'm going to name my class poem "Confucious Say."  
Donna M.: Goodness! Why?  
Marie: I'll wish I was in China if I don't finish it!

# ELON COLLEGE



**"An Educational Privilege and Financial Opportunity  
for Alamance County Students"**

---

Address

DR. L. E. SMITH, Pres.

ELON COLLEGE, N. C.

---

ATTENTION: Learn more about your local institution of Higher Education  
before you make your plans for College.



Ed Storey: I'm chief of the air force.  
Taylor: You're chief of what air force?  
Ed: I blow up the footballs.

COMPLIMENTS

— of —

# **The City of BURLINGTON**



***The Hosiery Mill Center  
of the South***

Mrs. Hambright: Have you ever had any stage experience?  
Ed Hicklin: Well, I had my leg in a cast once.

## CONGRATULATIONS

With your graduation you enter upon new responsibilities — whether you go on for further training or enter the business world. The future of the state and nation rests with you.

May ambition give you the urge to succeed in your every worthy effort, and may patience and fortitude cheer and protect you as you carve out that fortune which to you means most.

**B. A. SELLARS & SONS, INC.**

**"OVER 68 YEARS DEPENDABLE SERVICE"**

BURLINGTON, NORTH CAROLINA

## ACME DRUG COMPANY

PRESCRIPTION DRUGGISTS

"GET IT AT ACME"

*We Appreciate Your Business*

WHITMAN'S CANDY : EASTMAN KODAKS

TELEPHONE 474

W. D. NOAH

J. I. WHITE

Cop: Hey, boy why drive with one arm?

Karl Fitzgerald: But officer, many an accident was caused when a man released his clutch!

## MAY HOSIERY MILLS

BURLINGTON, NORTH CAROLINA



*Manufacturers of*

## HOSIERY



Full Fashioned and Seamless  
For Ladies and Men

---

## ALAMANCE LUMBER COMPANY, Inc.

J. M. ATWATER, President

H. A. ATWATER, Vice President

D. W. MALONE, Secretary and Treasurer



*Service that Satisfies*



Phone 6

BURLINGTON, NORTH CAROLINA



Deoane: She said she'd be faithful to the end.  
Stanley: That sounds good.  
Deoane: Yes, but I'm the quarterback!

<p>Compliments of</p> <p><b>General Food Store</b></p> <p>Ruffin Street</p> <p>•</p> <p>Phone 948</p> <p>•</p> <p>Burlington, N. C.</p>	<p>Compliments of</p> <p><b>Rufus D. Wilson, Inc.</b></p> <p>•</p> <p><i>Makers of</i></p> <p><b>FINE FULL FASHIONED HOSE</b></p>
<p><i>Quality</i></p> <p><b>Sweaters : Jackets</b></p> <p><i>Bicycles</i></p> <p>•</p> <p><b>Hood Sport Shop</b></p> <p>205 West Front Street</p> <p>Phone 864</p>	<p><b>IDEAL</b></p> <p><b>MERCERIZING</b></p> <p><b>COMPANY</b></p> <p>•</p> <p>Burlington, N. C.</p>
<p>Compliments of</p> <p><b>BOSTON CLEANERS</b></p> <p>•</p> <p>Phone 608</p>	<p><b>BURLINGTON HARDWARE CO.</b></p> <p><i>Dealers in</i></p> <p><i>Hardware</i></p> <p><i>Builders' Supplies</i></p> <p>Visit Our Gift Department</p>

Mrs. Sharp: Mary, we have breakfast promptly at eight a.m.  
New Maid: All right, mam—If I ain't down don't you all wait.

**MELVILLE DAIRY**

*Producers of*  
**THAT RICH JERSEY MILK**

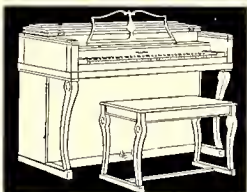
•  
Phone 1600

Compliments of

**LASLEY  
HOSIERY MILLS**

•  
R. K. LASLEY  
*Hosiery*

Nearly  
50  
Years  
Your  
Piano  
Dealer



Also Band and String Instruments

**C. B. ELLIS MUSIC CO.**

**Horne Dry Cleaners**

720 East Davis Street

•  
**SUITS MADE TO  
MEASURE**

•  
PHONE 119

**The "SILVER SLIPPER"**

**SPECIALIZING IN PIT COOKED BARBECUE**

*We Cater to Banquets and Suppers*

D. W. THOMPSON, Manager

PHONE 1682

She: I'm hungry!  
 He: What?  
 She: I said I'm hungry.  
 He: Sure, I'll take you home. This car makes so much noise, I thought you said you were hungry!

**ACME FEED CO., Inc.**

*Manufacturers  
 and  
 Wholesale Distributors*

PHONE 151

BURLINGTON, N. C.

COMPLIMENTS

of

**STUDENT  
 PUBLICATIONS**

BURLINGTON  
 HIGH SCHOOL

**SPRINKLE GASOLINE**

Corner Trade and North Church  
 Street Extended

—  
**Serves - Saves - Sells**  
 —

FAIR PRICES ALWAYS  
 You Are Always WELCOME

*Compliments of*

**SYKES FOUNDRY  
 and  
 MACHINE SHOP**

PHONE 170

ALL OF THE NEWS  
 FIT TO PRINT

NEWS FEATURES  
 AND COMIC STRIPS

Your

**DAILY TIMES-NEWS**

***Congratulations***

Future leadership is intrusted to you

60 : Phones : 1275



Sweet young thing: I love you more than life itself—or any other ten cent magazine.

<p><b>Congratulations</b> to Class of '40 <b>Barnwell Bros., Inc.</b></p>	<p>Compliments of <b>Bus Terminal Grill</b>  <i>"The Home of Fine Food"</i></p>
<p>Compliments of <b>DAVIS NEWS COMPANY</b>  Church Street BURLINGTON, N. C.</p>	<p>Compliments of <b>W. O. PAYNE</b> Standard Oil Company of New Jersey AGENT <i>"Happy Motoring"</i> <b>With</b> <i>Esso and Esso Extra</i></p>
<p><b>INSURED SAVINGS - INVESTMENTS</b> Each account fully insured up to \$5,000  Save - Invest - Own - the First Federal Way Buy - Build - Remodel - Refinance Your Home with "The Home Folks"  <b>First Federal Savings and Loan Association</b> 102 W. Front Street Burlington, N. C.</p>	

If love is blind,  
And lovers can't see;  
Then why the heck  
Don't some one love me!

Compliments to Class of '40

**R. F. KIRKPATRICK & SONS**

**General Contracting**

*Compliments of*

**Alamance  
Bowling Center**

**Alamance Printing Co.**

J. F. SHEETS

GUY B. EPHLAND

Producers of  
**DISTINCTIVE PRINTING  
and  
ENGRAVING**

523 South Main Street Phone 384  
**Burlington, N. C.**

**Jennings M. Bryan**

Complete INSURANCE Service

PHONE 173

509-11 Security Bank Building

**BURLINGTON, N. C.**

Compliments of

**THE JEWEL BOX**

"At the Sign of the  
Bulova Clock"

**Burlington, N. C.**

Doris: Should I marry a man who lies to me?  
Alice B: Dear, do you want to be an old maid?

<p><b>MODERN LAUNDRY</b> <i>and</i> <b>CLEANERS</b></p> <p><i>"A Complete Cleaning Service"</i></p> <p>PHONES 922 - 923 BURLINGTON, N. C.</p>	<p>Compliments of</p> <p><b>TROLLINGER COAL COMPANY</b></p> <p>Domestic, Stoker and Steam <b>COAL</b></p> <p>PHONES 162 - 468 Burlington, N. C.</p>
<p><b>AUTO PARTS &amp; ELECTRIC CO.</b></p> <p>AUTOMOTIVE PARTS <i>and</i> ELECTRICAL SERVICE</p> <p><i>General Repairing and Motor Rebuilding</i></p> <p>Phone 43      Burlington, N. C.</p>	<p>Compliments of</p> <p><b>EAST END BARBER SHOP</b></p> <p><i>"It Pays to Look Well"</i></p> <p>We Appreciate Your Business</p>
<p>Compliments of</p> <p><b>A. D. WAGONER'S GROCERY</b></p> <p><b>Fresh Fruits and Vegetables</b></p> <p>618 Ireland Street <b>PHONE 1980</b></p>	<p><b>BERG'S HOME BAKERY</b> (Incorporated)</p> <p><b><i>Breads, Cakes, Pies and Pastry</i></b></p> <p>PHONE 950 Front Street BURLINGTON, N. C. <b>GOOD AS THE BEST</b></p>



Mr. Gilreath: Name three things that contain starch.  
Bright Boy: Two cuffs and a collar!

**NEESE APPLIANCE CO.**

Grohom, N. C.

*"We sell the best and  
Service the rest"*

**Give Us a Call**

PHONE 1947

**M. B. SMITH**

HEADQUARTERS FOR POPULAR  
PRICED FURNITURE

and

ESTATE HEATROLAS

437 South Main Street

Burlington, N. C.

COMPLIMENTS OF

**7 Up BOTTLING COMPANY**

Burlington, N. C.

PHONE 2107

**Brown's Cafe No. 1**

We Specialize in

**Pit Cooked Barbecue**

**Brunswick Stew**

**Plate Lunches**

Marvin Christopher, Owner

*Compliments of*

**EFIRD'S  
Department Store**

Burlington, N. C.

Mrs. Hall: Henry, how do you account for that "I" on your report?  
Henry: Well, I have an "I" on English and an "eye" on Pauline.

**BURLINGTON  
AUTO COMPANY**



**SALES AND SERVICE  
CARS AND TRUCKS**

*Alamance County's Oldest  
Automobile Dealer*

**COMPLIMENTS  
OF**

**T. N. BOONE**

*The Tailor*

**Burlington, N. C.**

**TROLLINGER'S**

**FLORIST**

**FLOWERS FOR ALL  
OCCASIONS**

Orders Receive Prompt Attention

Members of Florists Telegraph  
Delivery Association

Phones: Store 931 - Night 519  
**Burlington, N. C.**

*Compliments  
of*

**E A R L ' S**

**TEXACO SERVICE**

*Congratulations to the  
Class of 1940*

*Compliments  
of*

**ALAMANCE HOTEL**

*Compliments of*

**Supreme Dry Cleaners**

*Our Modern Method of Cleaning  
and Repairing Insures Long  
Life to Your Clothes*

Phone 1203      309 Fisher Street  
**Burlington, N. C.**

*Satisfaction Guaranteed*

Julie C.: I must discharge my chauffeur. He has nearly killed me twice!  
Josephine: Oh, give him another chance.

**SOMERS & GARRISON,**  
*Realtors*

"We Buy and Sell Real Estate"

**SOMERS & COLTMAN**  
**INSURANCE AGENCY, Inc.**

*"If It's Worth Owning,  
It's Worth Insuring"*

Office—405 Spring Street

**PICKETT HOSIERY**  
**MILLS, Inc.**

*Manufacturers*

**FINE SEAMLESS**  
**HOSIERY**

**MAIN STREET DRUG COMPANY**

**Filling Prescriptions is the Most Important  
Part of Our Business**

***We Appreciate Your Business***

PHONE 20

BURLINGTON, NORTH CAROLINA

**McEWEN KNITTING**  
**COMPANY, Inc.**

Manufacturers of

**FULL FASHIONED**  
**HOSIERY**

Burlington, N. C.

**A. D. PATE AND CO.**

*Reliable*

*Quality Printers*

*Since 1906*

Telephone 216

Burlington, N. C.



Levi: Did you all say grace at breakfast?  
Stroud: No, we ain't scared in the daytime.

All Photographs and Groups in This Annual  
Made by

**ANGLIN STUDIO**

**If It Is a Photo, Give Us a Call**

Portraits, Copying, Commercial Photography, Enlarging  
Expert Kodak Finishing

PHONE 1095

COMPLIMENTS

OF

**STANDARD HOSIERY MILLS**



ALAMANCE, N. C.

Peggy L.: If Indian women are called squaws, what are their children?  
Phillip: Squawkers, silly!

<p><i>Compliments</i></p> <p><i>of</i></p> <p><b>CURRIN &amp; HAY</b></p> <p><b>"MATT and PAT"</b></p>	<p><b>MEBANE SHOE CO.</b></p> <p>Main Street</p> <p><b>Burlington, N. C.</b></p> <p><i>The Place to Buy Good Shoes for the Whole Family—</i></p> <p><i>Gardon Hosiery</i></p> <p><b>"Star Brand Shoes Are Better"</b></p> <p><b>WEAR LONGER—COST LESS</b></p>
<p><i>Compliments of</i></p> <p><b>UNITED DOLLARS STORE</b></p>	<p><b>CAROLINA BARBER SHOP</b></p> <p>W. E. PATILLO, <i>Manager</i></p> <p><i>We Appreciate Your Patronage</i></p> <p>Basement of Walters Building East Front Street</p>
<p><i>Compliments of</i></p> <p><b>ROSENBLOOM'S</b></p> <p><b>MEN'S WEAR</b></p> <p><b>Phone 502</b></p> <p>South Main Street</p>	<p><b>Imperial Barber Shop</b></p> <p><i>Five Barbers To Serve You</i></p> <p>Opposite Alamance Theatre</p> <p><b>PHONE 1580</b></p> <p>WOOD &amp; WILLIAMSON, <i>Props.</i></p>

I eat my peas with honey,  
I've done so all my life,  
It makes my peas taste funny—  
But keeps them on my knife!

<p>COMPLIMENTS of <b>The . . . Ladies Smart Shop</b></p> <p>The Lotest to Wear for Lodies Who Care</p>	<p><i>Compliments of</i></p> <p><b>C. F. NEESE</b></p> <p><i>"Jewelers Since 1870"</i></p>
<p>Compliments of</p> <p><b>McDOWELL MUSIC CLUB</b></p> <p>Mrs. Doisy P. Carrigan Sponsor</p>	<p><b>PIGGLY WIGGLY ANDERSON CO.</b></p> <hr/> <p>GROCERIES FRUITS MEATS VEGETABLES</p> <hr/> <p>South Moin Street</p>
<p><i>Compliments</i>  <i>of</i></p> <p><b>McLELLAN STORES</b> (Incorporated)</p>	<p><b>The World Moves . . . Why Not You?</b></p> <p>PHONE 717</p> <p><b>YELLOW STAR TRANSFER</b> (Incorporated)</p>



Glenn: All I know I owe to you.  
Mrs. Hunter: Oh, don't mention such a mere trifle.

**CHAS. V. SHARPE, Inc.**  
*Insurance of all Kinds*

Phone 383 Burlington, N. C.

PERSONNEL

CHAS. V. SHARPE  
PAUL R. BOWMAN  
J. ED MILLER  
MISS SALLIE MOSER  
MISS EMMA JOHNSTON  
MISS PAULINE PICKARD

**Davis Street Pharmacy**  
PHONE 969

**Burlington Drug Co.**  
243 - Phones - 244

*Wear Lamm's Value First  
Clothes  
for  
Genuine Satisfaction*

**Lamm Clothing Co.**  
Burlington, N. C.

Compliments of

**John J. Henderson**

Attorney-at-Law

Burlington, N. C.

R. W. BARNWELL, Pres.

P. C. BAYLOR, Sec.-Treas.

**PEOPLES INSURANCE AGENCY**  
(Incorporated)

R. F. HALYBURTON, Manager

Phone 957

Burlington, N. C.

Helen G: Did your millionaire uncle remember you in his will?  
Fran: He must have! . . . he left me out.

The . . .

## NATIONAL BANK OF BURLINGTON

Member of Federal Reserve System  
Deposits Insured Up to \$5,000 for Each Account

*2½ Per Cent Interest Paid on Savings*

### "Our Policy — Safety First"

We solicit business, based upon strong financial condition. We render every service possible commensurate with the policies of safe banking.

Yours very truly,

L. J. BLAKEY,  
President and Trust Officer.

Paramount

BEST WISHES

Carolina

NORTH  
CAROLINA  
THEATRES  
Inc.

Alamance

Ade: Dad, what's a court of the last resort?  
Mr. Carroll: Courting an old maid, my boy.

<p>Compliments of</p> <p><b>STRATFORD HOSIERY MILLS</b></p> <p><b>JOHN B. STRATFORD (Brand) HOSIERY</b></p>	<p><b><i>"Part of All You Earn Is Yours to Save"</i></b></p> <p>Save Systematically During Your Productive Years for Old Age Financial Independence</p> <p><b>COMMUNITY FEDERAL SAVINGS AND LOAN ASSOCIATION</b></p> <p>Opposite Post Office PHONE 460 D. C. BRYAN, President R. D. WHITE, Secretary-Treasurer</p>
<p>Compliments of</p> <p><b>THE STATE THEATRE</b></p> <p><b><i>"The Friendly Theatre"</i></b></p> <p>Andrews Street : Phone 1674</p>	<p>Compliments of the</p> <p><b>HOOD SYSTEM INDUSTRIAL BANK</b></p> <p>Burlington, N. C.</p>
<p><b>BLALOCK'S TAILORING SHOP</b></p> <p>East Front Street Burlington, N. C.</p> <hr/> <p><b><i>"WE GIVE YOU FITS"</i></b></p>	<p>Compliments of</p> <p><b>WASHINGTON CAFE</b></p> <p>PRIVATE DINING ROOM FOR BANQUETS</p> <p><b>PHONE 492</b></p> <p>BURLINGTON, N. C.</p>



Colored Woman: Ah wants a ticket fo' Magnolia, Suh.  
Ticket Agent (after ten minutes studying a map): Where is Magnolia, Auntie?  
Auntie: Heah's Magnolia, Suh, a settin' on dis heah suit-case.

<p><b>CLASS OF '40</b></p> <p><b>WE CONGRATULATE YOU</b></p> <p>It Will Pay You to Shop in Our Modern Little Store</p> <p><b>If It's New, We Hove It</b> <b>Toilored to Meosure Clothing</b></p> <p><b>JERRY'S TOGGERY</b> South Main Street</p>	<p><b>Spence-Clapp Motors</b> (Incorporated)</p> <p><i>Your</i> <b>Dodge and Plymouth</b> <i>Dealer</i></p> <p>GENUINE PARTS AND SERVICE</p> <p><b>Burlington, N. C.</b></p>
<p><i>Compliments of</i></p> <p><b>FOSTER SHOE CO.</b></p> <hr/> <p>111 East Davis Street</p> <p><b>Burlington, N. C.</b></p>	<p>COMPLIMENTS of</p> <p><b>GOLDMAN'S</b></p> <hr/> <p><b>SHOES, HOSIERY TOO</b></p> <p><b>Burlington, N. C.</b></p>
<p><b>Alamance Motors, Inc.</b></p> <p><b>Your</b> <b>CHEVROLET</b> <b>Dealers</b></p> <p>PHONE 936</p> <p>Opposite Alamance Hotel <b>Burlington, N. C.</b></p>	<p><b>Tillman's</b></p> <p><i>Congratulates You, the</i> <i>Graduates of 1940</i></p> <p><b>Make Your Gift</b> <b>A Gift of Jewelry</b></p> <p><i>Outstanding Credit Jewelers</i></p> <p><b>301 South Moin Street</b></p>

Lacy: Will you give me a dime for a sandwich?  
Mr. Rackley: Let's see the sandwich.

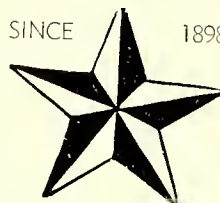
**A CORDIAL WELCOME  
AWAITS YOU  
AT**

**HADLEY'S**

**GRAHAM, NORTH CAROLINA**

SINCE

1898



**JEWELRY FOR ALL**

**COOPER & SANDERS**

Associate: W. Clary Holt

**ATTORNEYS and COUNSELLORS  
AT LAW**

Suite 807 Security Bank Building

**Burlington, N. C.**

**SPOON'S  
GRADE A  
PRODUCTS**

**Phone 411**

**C. A. LEA  
BUS AND TAXI SERVICE**

214 WEST FRONT : PHONE 777

**BURLINGTON, N. C.**

Shipwrecked: Am I too late for breakfast?  
Cannibal: Yes, but you'll do for dinner.

<p>COMPLIMENTS OF</p> <p><b>FIRESTONE AUTO SUPPLY AND SERVICE STORE</b></p> <p>North Main Street PHONE 1941</p>	<p><b>BRYAN'S GROCERY</b></p> <p>The Oldest Grocery in Town</p> <p>PHONES 758 - 116</p> <p>Burlington</p> <p><i>We Deliver</i></p>
<p>COMPLIMENTS OF</p> <p><b>L. E. SPIKES</b></p>	<p><i>Courtesy of the</i></p> <p><b>RICH AND THOMPSON SERVICE</b></p> <p>PHONE 1076</p> <p>Burlington, N. C.</p>
<p><b>J. C. Harris Lumber Company</b></p> <p>Lumber Building Materials</p> <p>Phone 373</p> <p>Burlington, N. C.</p>	<p><b>F. J. STRADER CO.</b></p> <p>WHOLESALE FRUITS and PRODUCE</p> <p>Phones 825 - 826</p> <p>North Main Street</p>



Joe Frazier: Have you heard about the two little worms eating in dead earnest?  
Lib Murray: No?  
Joe: Poor Ernest!

### SHOE REPAIRING

My shop is fully equipped with the most modern machinery, and because of my long experience in this work I know that I can do shoe repairing that will please you.

Let Me Send My Trip Boy for  
Your Shoes Today!

**MODERN SHOE SHOP**  
**"At the Big Gun"**  
WE CALL FOR AND DELIVER • PHONE 1399

Compliments of

## The J. C. Penny Co.

A Notionwide Institution with Over  
Fifteen Hundred Stores in  
Every State in the Union.

WE SERVE MILLIONS OF  
SATISFIED CUSTOMERS  
EACH YEAR.

## ALAMANCE LAUNDRY AND DRY CLEANERS

*"Save a Day the Laundry Way"*

560 — PHONES — 561

BURLINGTON, NORTH CAROLINA

Compliments of

### The Young Men's Shop

*"You Can Dress Better  
For Less"*

at

### The Young Men's Shop

Corner of Davis and  
Worth Street

Compliments of

### V. F. W. LAKE

*"The Best Entertainment"*

SWIMMING

DANCING

PICNICKING

Burlington, N. C.

Confucius say: "Girl who speak volume usually end up on shelf."  
 "When a boy breaks a date, he has to."  
 "When a girl breaks a date, she has two."  
 "Fellow who drive with one hand are headed for aisle of  
 a church. Some walk, some are carried."

Compliments of

**E. C. PEELE**

Electrical Installations  
 and  
 Electrical Appliances



ICE CREAM IN FANCY FORMS

for all occasions—Call for it  
 at Your Favorite Dealer

SOUTHERN DAIRIES : Phone 46

**COBB MOTOR CO.**

Complete or Stap Service Station

**Wrecking Service and  
 General Repair  
 Auto Painting**

Bandy and Fender Repairs

ESSO SERVICE

Burlington, N. C.

Phone 729 : West Davis Street

**Best Wishes**

to

**1940**

**CLASS**



QUALITY WATCH REPAIRING

Compliments of

**ELKINS AND TERRELL  
 MOTOR CO.**

•

**Desoto and Plymouth**

Sales and Service

Used Cars  
 All Makes and Models

N. Main Street Phone 1884

**C.W. McPHERSON, M.D.**

Eye - Ear - Nose  
 Throat

•

PHONES:

Residence, 734 Office, 65

BURLINGTON, N. C.

Hardy: How bad do my eyes have to be to miss this exam?  
Mr. Hall: You saw the door to get in, didn't you?

DRINK

*Coca-Cola*

IN BOTTLES

DELICIOUS AND REFRESHING

BURLINGTON COCA-COLA BOTTLING CO.

SHADY GROVE SODA SHOP



AT THE BIG GUN

Compliments of

O. E. BASS  
HENDERSONVILLE, NORTH CAROLINA

Representing

HERFF-JONES COMPANY : Indianapolis, Indiana



Ed Koury: This 10c piece doesn't ring good!

Marvin Walker: What do you want for a dime—a set of chimes?

**LENOIR-RHYNE COLLEGE**

(Co-Educational)

HICKORY, NORTH CAROLINA

Competent and Experienced Faculty.  
Stands for high educational standards and  
development of Christian character. . . .  
Liberal Arts, Sciences, Teaching, Music,  
and Commercial Courses. . . . Ideal Cli-  
mate, Altitude 1,200 feet above sea level.  
. . . . Fully accredited by the Southern  
Association of Colleges and Secondary  
Schools. . . . Cost \$356 to \$370 per year.  
For catalogue and other information, write

P. E. MONROE, D.D., *President*

Lenoir-Rhyne College, Hickory, N. C.

Summer Session begins June 3

**CONGRATULATIONS**

to the  
Class of '40

**Headquarters for  
College Style Clothes**

**NAPIER-CORNELIUS  
COMPANY**

104 W. Front Street

Burlington, N. C.

**CITY CASH GROCERY**

GROCERIES and  
MEATS

Corner Holt and Fisher

PHONE 1018

**R. O. BROWNING**

**Life and Accident  
Insurance**

Box 48

Rooms 4-5 National Bank Building

Telephone 927

Burlington, N. C.

**OFFICE and SCHOOL  
SUPPLIES**



**ALAMANCE BOOK AND  
STATIONERY CO.**

Across From Post Office

Burlington, N. C.

**LADIES' AND MISSES'  
READY-TO-WEAR**

MILLINERY, LINGERIE and  
ACCESSORIES

**MISS THURSTON'S  
SHOPPE**

*"Correct Feminine Apparel"*

305 S. Main St.

BURLINGTON, N. C.

Hughston: I thought I saw soup on the menu.  
Waiter: You did, but I wiped it off.

WE INVITE YOU TO VISIT OUR NEW



DEPARTMENT STORE : BURLINGTON, N. C.

***Everything to Wear for the Entire Family  
at Lower Prices***

*Autographs*

Dot Fowler: What is the height of happiness?  
Betsy: In my case he's six feet tall.

<p>Compliments of</p> <p><b>OLD HICKORY SERVICE STATION</b></p> <hr/> <p><i>"We Strive to Please"</i></p> <hr/> <p>PHONE 9265</p> <p>Burlington, N. C.</p>	<p>Compliments of</p> <p><b>TOWN TAVERN</b></p> <hr/> <p><i>"The Best Place to Eat"</i></p> <hr/> <p>FRONT STREET</p>
<p>Compliments of</p> <p><b>H. Frank Mitchell, Jr.</b></p> <hr/> <p><b>General Contractor</b></p> <hr/> <p>Burlington, N. C.</p>	<p><i>Congratulations to Burlington High School</i></p> <hr/> <p><b>COBLE FURNITURE COMPANY</b></p> <p>Burlington, N. C.</p> <p>W. Davis Street : Phone 1237</p>
<p><b>ALAMANCE HOT WIENER LUNCH</b></p> <hr/> <p><i>"We Serve the Very Best"</i></p> <hr/> <p>200 West Front Street</p> <p>PHONE 888</p>	<p>Burlington Agent of</p> <p><b>Greensboro Daily News Greensboro Daily Record</b></p> <p>MORNING - EVENING SUNDAY</p> <p>Spring Street - Phone 477</p> <p>A. H. JONES, Manager</p>



Buddy W.: Hey, Beck, some one dropped an anchor on your shoulder.  
Jean E.: Yep, that's what's holding her back!

## Reddy Remarks



### DON'T LIVE IN THE "DARK AGES"

Let "Reddy" show you  
how to graduate into  
Better Living with:

**BETTER LIGHT and  
MODERN ELECTRIC  
APPLIANCES**

**DUKE POWER CO.**

**BIGGER - BETTER**




A big  
cola drink.  
Fine in  
flavor.  
Pure in  
quality.

**5¢**

**WORTH A DIME**

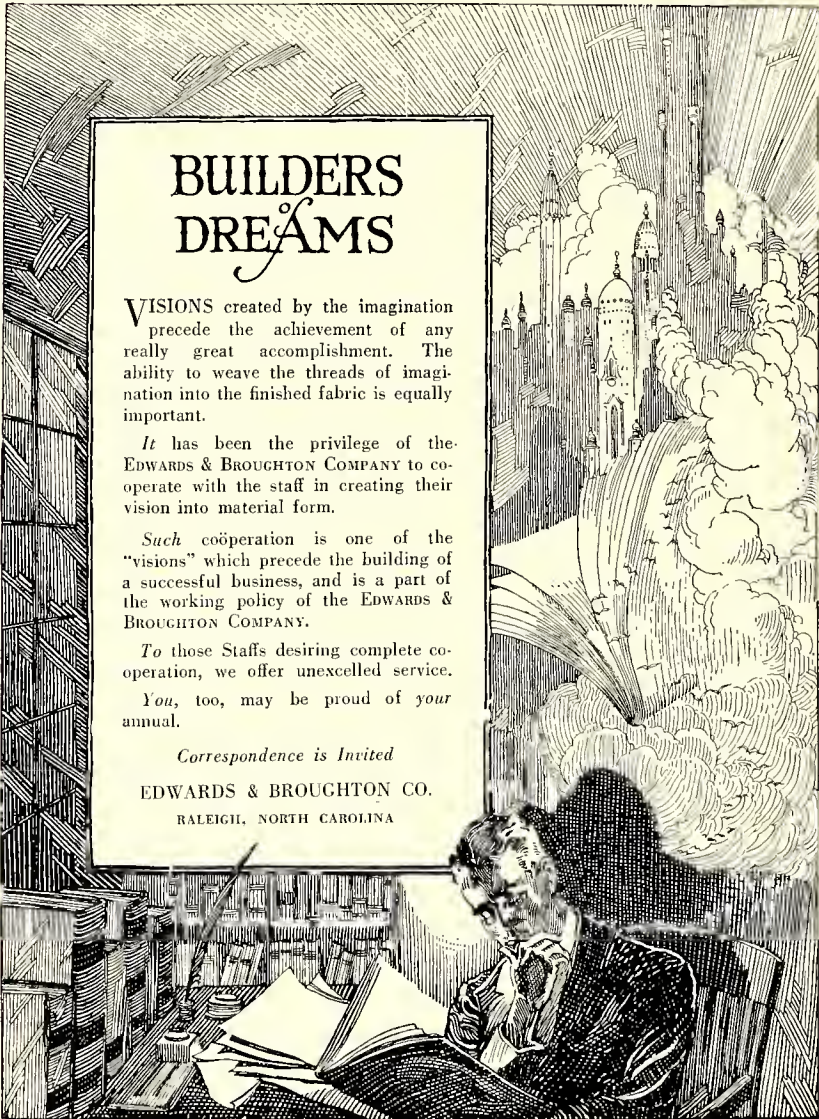
PHONE 1187  
Burlington, N. C.



It's been a  
real pleasure!

The personnel  
and representatives  
of the  
Charlotte Engraving Co.





## BUILDERS DREAMS

VISIONS created by the imagination precede the achievement of any really great accomplishment. The ability to weave the threads of imagination into the finished fabric is equally important.

It has been the privilege of the EDWARDS & BROUGHTON COMPANY to cooperate with the staff in creating their vision into material form.

Such coöperation is one of the "visions" which precede the building of a successful business, and is a part of the working policy of the EDWARDS & BROUGHTON COMPANY.

To those Staffs desiring complete co-operation, we offer unexcelled service.

You, too, may be proud of your annual.

*Correspondence is Invited*

EDWARDS & BROUGHTON CO.  
RALEIGH, NORTH CAROLINA





Reserved





