

Joe Walsh Jack
1941

PL HISTORY
SOLS
141



For Reference

Not to be taken

from this library

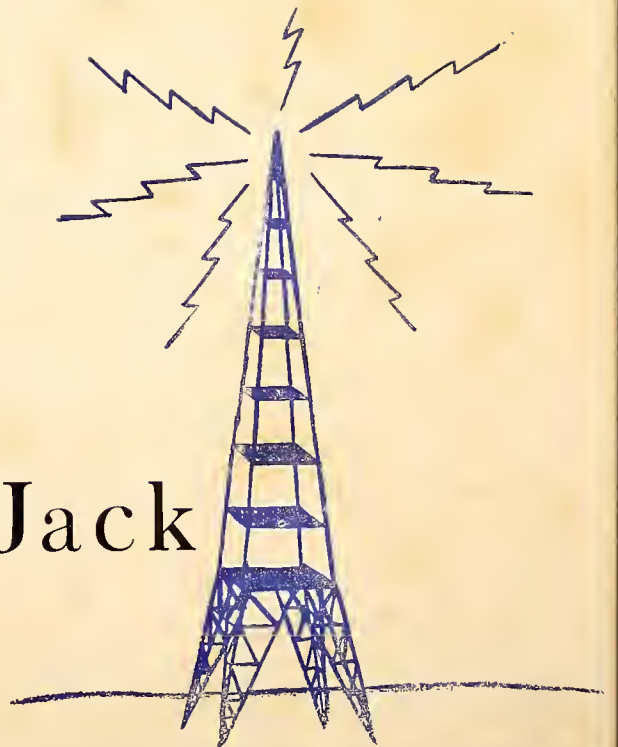
MAY MEMORIAL LIBRARY
342 Spring Street
Burlington, NC 27215

Presenting

THE

1941

Doe-Wah Jack





Smith
Holmes

Chandler
Moss

Editor-in-Chief

JEAN HOLMES

Associate Editor

MARY FRANCES MOSS

Business Manager

HOWARD CHANDLER

Advertising Manager

DOROTHY SMITH

PUBLISHED BY THE SENIOR CLASS OF BURLINGTON HIGH SCHOOL.

The 1941

DOE-WAH-JACK

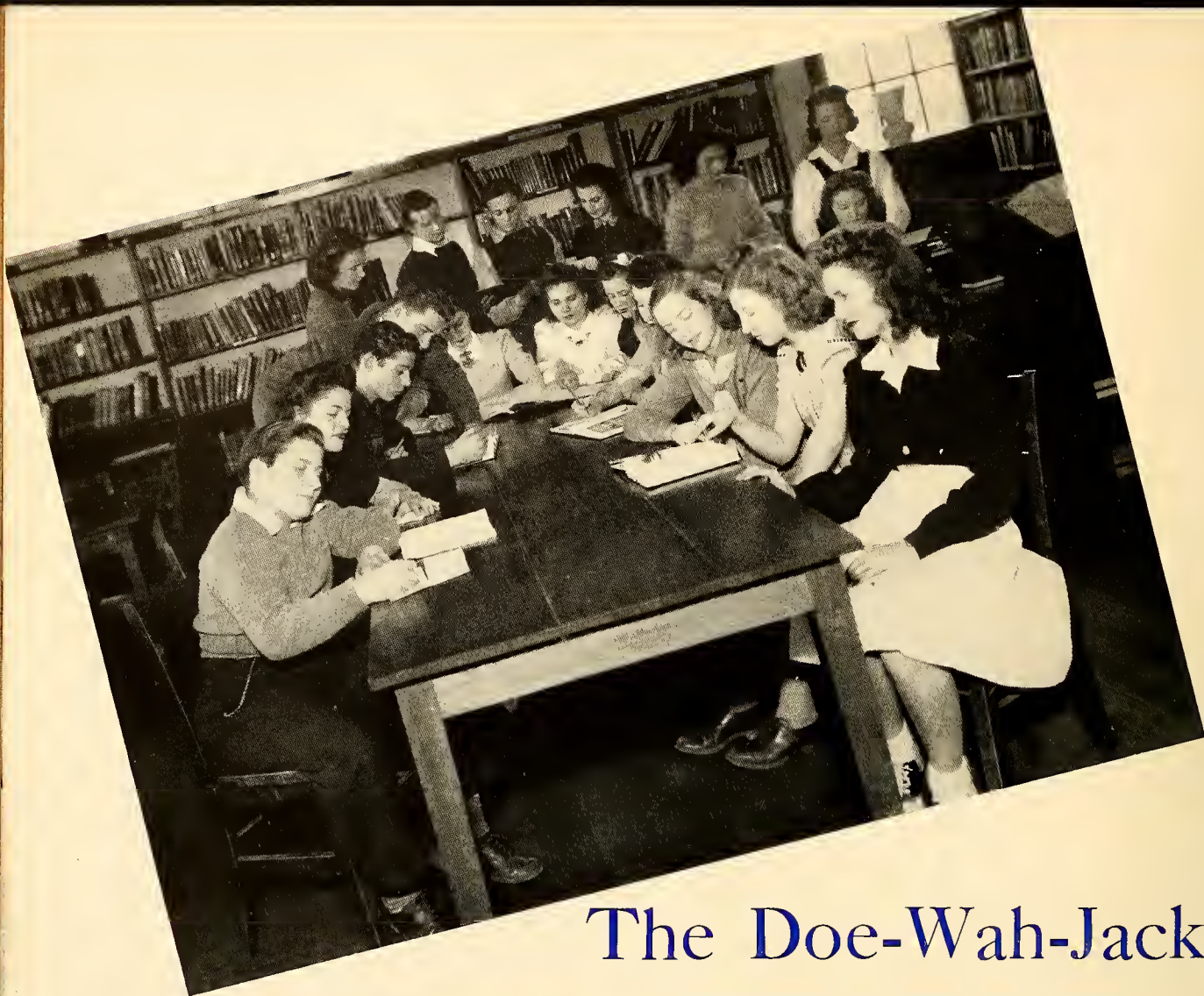
“ . . . LIFE AT

First Stop, B.H.S. . . . Exam Factory
A Co-ed . . . 4 More Co-eds . . . Yea
Team! . . . Cut it out . . . Ain't this
familiar? . . . Let us see, too . . . Eager
Lassies . . . When is it really going to
burn? . . . “Woe is me” . . . Never a
Care . . . School Days . . . Odd man
wins . . . Girl-shy, Bud? . . . O give me
Music! . . . Our Mentors . . . Those
snappy Juniors . . . What are you up
to, now? . . . And he said to me . . .
Seniors, seniors . . . He-haw!! . . . In
the “lab” . . . Good ole B.H.S. . . .
Timid things, aren't they?



BURLINGTON HIGH





The Doe-Wah-Jack

Member Southern Inter-scholastic Press Association.

JEAN HOLMES, *Editor-in-Chief*; MARY FRANCES MOSS, *Assistant Editor*; HOWARD CHANDLER, *Business Manager*; WADE HUFFMAN, *Assistant Business Manager*; DOROTHY SMITH, *Advertising Manager*; DELMER WILLIAMS, *Assistant Advertising Manager*; JANE MURRAY, *Art Editor*; MARGARET FONVILLE, *Assistant Art Editor*; LOUISE KINGSLAND, *Feature Editor*; VIRGINIA BOSWELL, *Assistant Feature Editor*; FLORENCE WALKER, *Kodak Editor*; DAVID BALL, *Assistant Kodak Editor*; BOBBY IVEY, *Joke Editor*; J. L. WEST, *Sports Editor*; CATHERINE TOULoupAS, *Assistant Sports Editor*; DELEANO HALL, *Junior Assistant*; JOHNNY WALKER, *Junior Assistant*; GENE COX, *Sophomore Assistant*; REBECCA HOGAN, *Freshman Assistant*; CATHERINE LEATH, EDNA FOSTER, DOROTHY STANFORD, *Typists*.

Faculty Advisers

MRS. J. A. HUNTER

MR. E. F. RHODES



Huffman, Chandler, Smith, Williams

Barker Staff

Editor-in-Chief, MURIEL FREEDMAN; *Assistant Editor*, NORA LEE COOK; *Managing Editor*, ELIZABETH BLALOCK; *Sports Editor*, ED STOREY; *Business Manager*, JACK PRITCHETT; *Assistant Business Manager*, MARY JO FRISSELL; *Advertising Staff*, JULIE COOPER, LOUISE BAXTER, JOSEPHINE KOURY; *Circulation Manager*, CATHERINE FAULCONER; *Assistant Circulation Manager*, E. C. QUALLS; *Hillcrest Circulation*, BILL EVANS, FRANK HUFFMAN; *Burlington High School Adviser*, MRS. VANCE LATTA, *Hillcrest Adviser*, MISS MARY LEE FOSTER; *Reporters*, MARY SOMERS, JUNE SELLARS, BETTY HAYNES, WOODROW WALKER, EILEEN GEORGI, MARY KATHERINE BAIN, SARA INGLE, CARL TAPP, NINA GARRISON, JOYCE WILLIAMS, PAULINE KOURY, AVRIL ISLEY, BETTY LEVISON, MARGARET WHITE, MARGARET GLENN, BETTY BAKER, MICKIE FAULCONER, L. W. RILEY, EMOGENE THOMAS, BETTY RIDDLE, KENNETH COBLE, BETTY HOLT, BETTY MAE BERNSTEIN, EVELYN SWEET, LEALA CHANDLER, BETTY FIDLER; *Typists*, PAULINE VAUGHN, MARGARET BARGER, BETTY ROSS.



Latta



QUILL AND SCROLL

Elizabeth Blalock
Ed Storey
Muriel Freedman
Nora Lee Cook



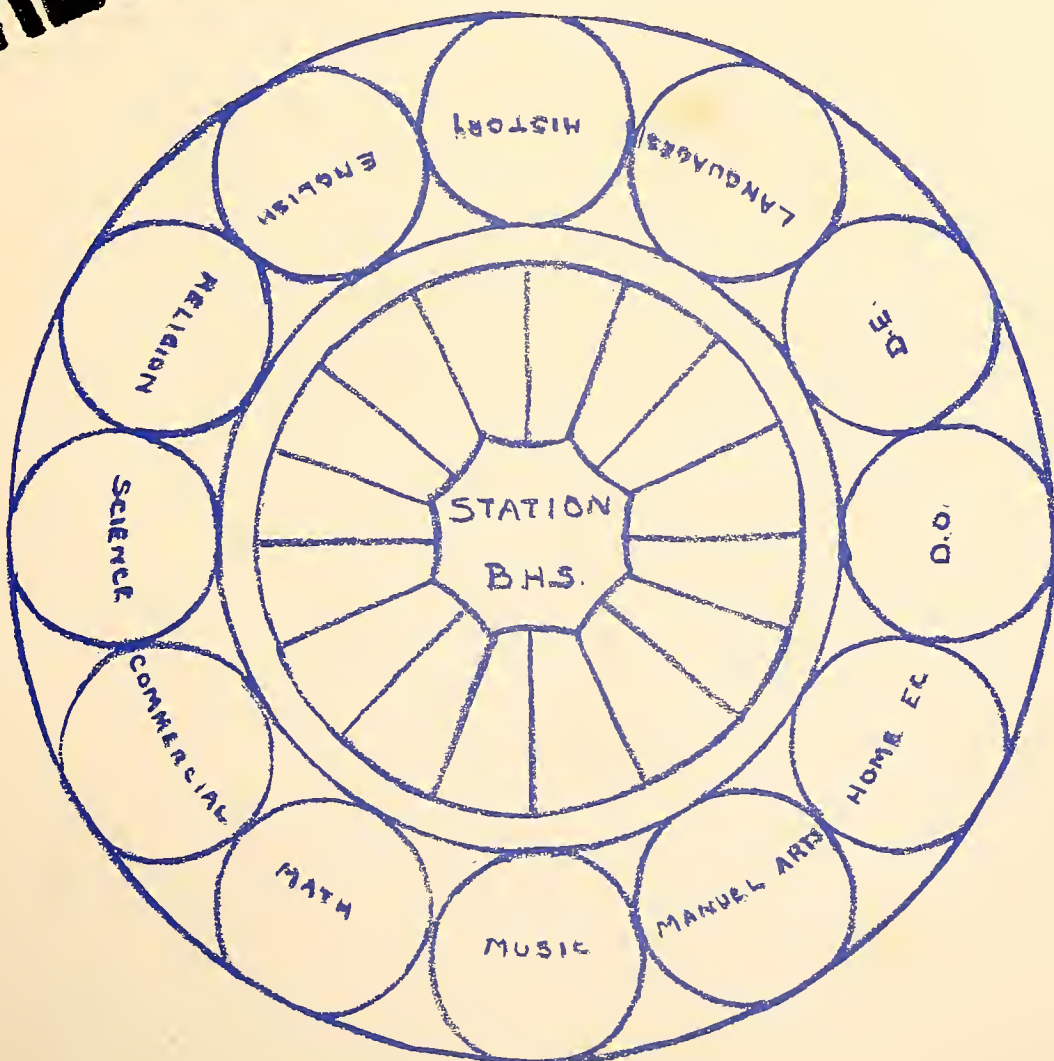


Dedication

TO MRS. W. R. SELLARS

We the Senior Class of 1941 do gratefully dedicate this year's DOE-WAH-JACK for her kind and abundant services which she has so faithfully rendered our school and for her untiring efforts to be a friend to us all. Her winning personality and her gracious manner have won her a place in the heart of every student.

ADMINISTRATION





MR. F. M. BIGGERSTAFF, *Principal Burlington High.*

MR. L. E. SPIKES, *Superintendent Burlington City Schools.*

MR. H. G. MCBANE, *Principal Hillcrest Junior High*

Faculty

MRS. W. J. BARKER, *Visiting Teacher*

JOAN BLISS, A.B. Duke; M.A. Peabody,
English

HERBERT J. BOLIN, JR., B.S. Davidson,
Science, Athletics

F. R. GARRETT, A.B. High Point, *Science,
Athletics*

MRS. E. S. GILREATH, A.B. Meredith, *Social
Studies*

E. S. GILREATH, A.B., M.A. U.N.C., *Science*

MRS. D. C. HUNTER, B.S. Appalachian State
Teachers, *English*

MRS. J. A. HUNTER, A.B. Bethany; M.A.
Duke; University of Grenoble, France,
French

MRS. VANCE LATTA, A.B. W.C.U.N.C.;
M.A. Cornell, *English, Social History*

MRS. JOSEPHINE PARKER, A.B. Guilford, *Mathe-
matics*

MRS. M. W. PLEASANTS, A.B. Winthrop,
Mathematics

E. F. RHODES, A.B. Elon, *Band*



GRACE BOWEN, A.B. Winthrop, *Mathematics*
 ISABELLE BUCKLES, A.B. U.N.C., *Music*
 VIRGINIA CAHOON, B.S.S.A. W.C.U.N.C., *Business Education*
 EVELYN CALDWELL, A.B. E.C.T.C., *Home Economics*
 FLETCHER W. FERGUSON, A.B. U.N.C., *Social Studies*
 MARY LEE FOSTER, A.B. Elon, *English, Latin*
 MELEDIETH FRAZIER, A.B. Salem, *English*
 MRS. W. ALBERT GRAHAM, A.B. W.C.U.N.C., *Latin*
 E. A. GUNN, A.B. Elon; M.A. Wake Forest, *Business Education*
 MRS. H. T. HAMBRIGHT, A.B. Newberry, *English*
 HOYT T. HAMBRIGHT, A.B. Erskine, *Science, Athletics*
 VIRGINIA L. HOUSE, A.B. Mary Baldwin, *English*
 MALCOLM T. HOWELL, B.S. N. C. State, *Industrial Arts*
 D. C. HUNTER, A.B. Davidson, *Coördinator Diversified Occupations*
 MRS. PAUL JONES, A.B. E.C.T.C., *Home Economics*
 EMILY LOFTIN, A.B. Duke; B.L.S. U.N.C., *Librarian*
 MRS. J. A. LONG, JR., A.B. Duke, *Geography, History*
 MRS. W. A. MAYNARD, A.B. W.C.U.N.C., *Hillcrest Librarian*
 WALTER G. McLEOD, A.B. Birmingham Southern; B.D. Duke, *Religion*
 ADELAIDE MORROW, B.P. W.C.U.N.C., *English*
 MILDRED MURRELL, A.B. Duke, *English, Music*
 MARY TAYLOR, A.B. W.C.U.N.C., *Mathematics*
 MRS. D. D. WATSON, A.B. Converse, *Social Studies*
 ANNIE G. WEBSTER, Guilford, *English, Mathematics*
 CARRIE B. WILSON, B.S. W.C.U.N.C.; M.A. U.N.C., *Supervisor of Instruction*
 EVA WISEMAN, B. Music, Converse, *Supervisor of Music*
 EMILY YOUNG, Southern College, W.C.U.N.C., *Home Economics*
 WINNETTE YOUNG, A.B. Bowling Green, *Business Education*



CLASS



FRESHMEN

BOBBY MORTON.....*Vice President*
BETTY LEVISON.....*Secretary*
MARY ANN BARRETT.....*President*
THOMAS LINDLEY.....*Treasurer*

SOPHOMORES

JACK CAMPBELL.....*Treasurer*
CATHERINE COOPER.....*Secretary*
GRANVAL SATTERFIELD.....*President*
LAWRENCE SYKES.....*Vice President*

OFFICERS



SENIOR

NINA GARRISON.....*President*
JEAN HOLMES.....*Vice President*
JULIE COOPER.....*Secretary*
MARGARET FONVILLE.....*Treasurer*

JUNIOR

HAZEL SELF.....*Secretary*
MARY MOSER.....*Treasurer*
RICHARD PHILLIPS.....*President*
DICKIE FOWLER.....*Vice President*

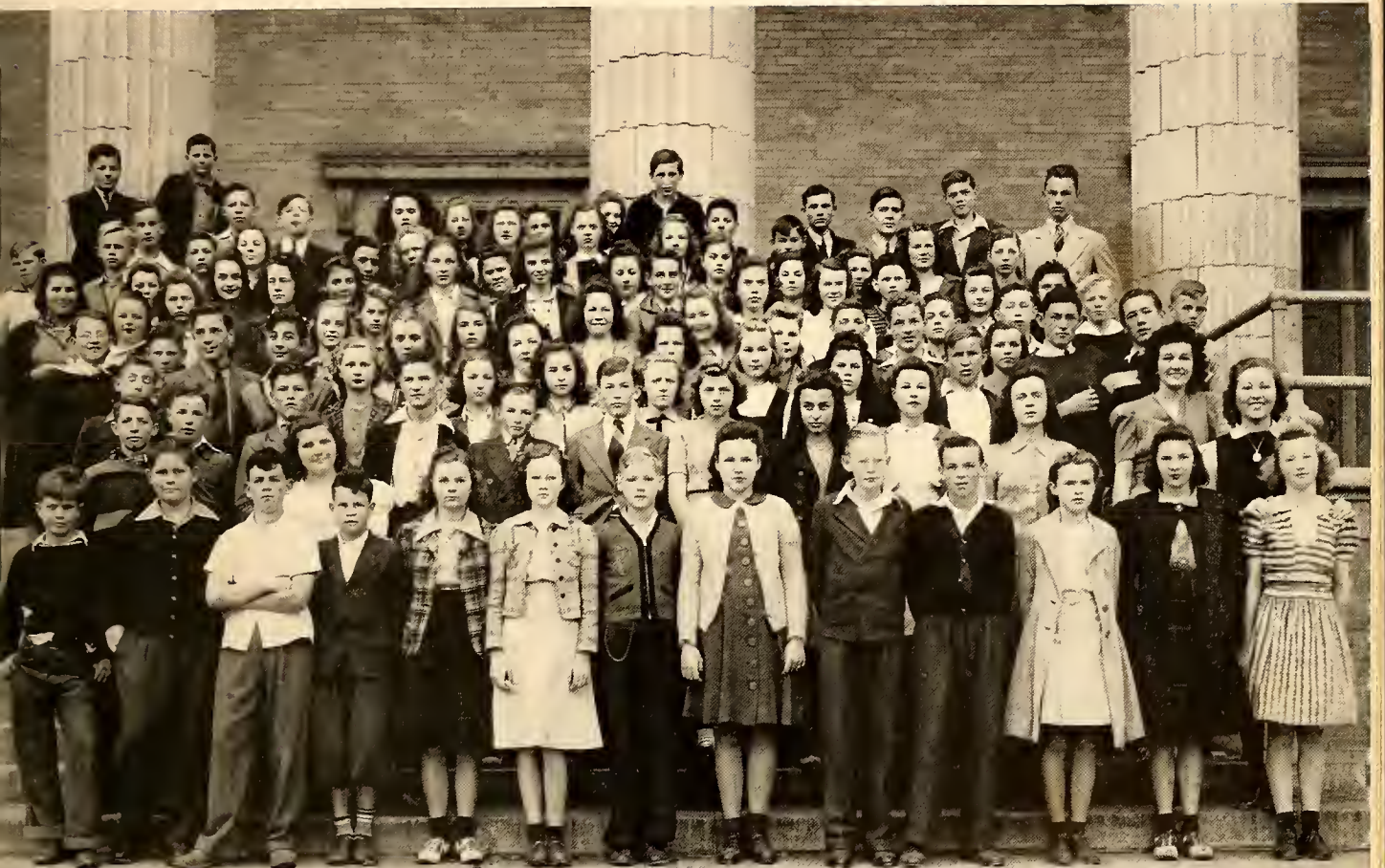
WE ARE THE



Adams, Aiken, Allred, Anderson, M. Andrews, W. Andrews, W. Andrews, Angelos, Bailess, Baker, Ball, Ballard, Barrett, Barton, Bateman, Bayliff, Bayne, Blalock, Blanchard, Bodenheimer, Bowland, Brady, Braddy, Braxton, Bright, Buff, Burgess, Burke, Butler, Campbell, Carpenter, Carden, Cashion, D. Cates, S. Cates, Catoe, Chandler, Chappell, Clark, Coble, Cole, Coleman, M. Coley, S. Coley, E. Conklin, H. Conklin, Curl, Danenberg, Davis, Day, Debruler, Dudleck, Dupree, Durham, D. Farrell, S. Farrell, Fisher, G. Fitch, H. Fitch, Fogleman, Forbis, Fulcher, C. Garner, L. Garner, Garrison, Godwin, B. Grady, M. Grady, Gregory, N. Hall, T. Hall, Hammock, Hartman, Howerton, Hayes, Hearne, Heath, Helm, Hester, C. Hilliard, H. Hilliard, Hinshaw, Hodge, Hogan, Hughes, Ingold, Inman, C. Isley, J. Isley, L. Isley, Ivey, Jackson, H. James, S. James, Jenkins, Kenney, Ketner, Keziah, R. King, R. King, Kinney, J. Kitsinger, R. Kitsinger, Laud, Laster, C. Lee,



FRESHMEN



O. Lee, Leonard, Levison, Lineberry, Lindley, Lipe, F. Long, R. Long, H. Loy, S. Loy, Lyon, C. Mann, G. Mann, Marett, Martindale, McClure, Miles, Mills, A. Mitchell, Montgomery, Moore, Morris, Morton, G. Moser, M. Moser, Moss, Murdock, Nicks, Noble, Nall, Odom, Orr, Parsons, Paul, Payne, Perry, Phillips, C. Pickard, V. Pickard, V. Poole, Powers, Qualls, Ray, Rector, Redding, Reitzel, Rich, Riley, Roach, Robertson, Raby, Roney, Rudd, Ryerson, Sawyer, G. Satterfield, I. Satterfield, Seaman, Sharpe, Shatterly, E. Shoe, Shue, C. Smith, M. Smith, S. Smith, Sorrell, Stadler, Stafford, Stanfield, Steele, Stevenson, St. John, Stone, Straughn, A. Sugg, R. Sugg, Summer, Swangin, E. Sykes, I. Sykes, E. Tate, R. Tate, Teague, Terrell, Tew, Thomas, Toney, C. Wagoner, L. Wagoner, B. Walker, C. Walker, F. Ward, W. Ward, Way, Whitley, Wiggins, Williams, K. Wilson, W. Wilson, Wrenn, Wright, Yarbrough, Young.



AND WE ARE



Adamee, Allred, Andrews, Angelos, Anthony, Apple, Avent, Ball, Barger, Barton, Bason, Boswell, H. Black, R. Black, Blackwood, Blackwell, Brammer, Brooks, Brown, Buff, Butler, Burgass, Burke, J. Campbell, J. Campbell, N. Campbell, Carden, Carten, J. Cates, R. Cates, Catoe, Chandler, D. Check, R. Check, Christopher, Cobb, Coleman, A. Compton, A. Compton, Conklin, Cook, C. Cooper, W. Cooper, Councilman, Cox, D. Cross, P. Cross, Crouse, Curl, E. Davis, R. Davis, Dempsey, Dickens, Dixon, Dodson, Dorsett, Drake, Edwards, E. Ellis, N. Ellis, Euliss, Faucette, Falconer, Ferree, Fogleman, E. Ford, J. Ford, Foster, Fry, Galanes, Garner, Gilmore, Glasgow, Glenn, Gregory, Gerringier, Grigg, Hall, Heath, Hanford, Harrell, Harvey, Haseman, J. Hawkins, W. Hawkins, Hall, Hensley, Hinsdale, Hodgkin, Horne, Horner, Hower-ton, Hughes, Humble, Hurley, Ingle, E. Isley, H. Isley, M. Isley, Jackson, D. Johnson, K. Johnson, W. Johnson, Jones, Jarrett, Ketner, King, Kivett, Lamm, Lasley, Leggett, Lindsey, Loy, Lucas, Lytle,

THE SOPHOMORES



Madden, Maness, Mangum, Mann, Martin, Martindale, McCulloch, McLendon, McKenzie, McPherson, Metcalf, Miles, D. Mitchell, H. Mitchell, J. Mitchell, M. Moore, W. Moore, Morris, H. Moser, M. Moser, Motley, M. Murray, M. Murray, Neighbors, Newsome, Nicholson, Norris, Parrish, Parsons, Pegg, Perry, Phillips, Pickard, Pickler, Price, Rash, Rector, Redding, Reynolds, Riggan, Riley, Rogers, G. Ross, M. Ross, Royall, Rudd, Russell, Satterfield, Sawyer, Sellars, Sharpe, Shaw, Sherard, Shoaf, Simpson, D. Smith, G. Smith, J. Smith, R. Smith, Sneed, R. Stanfield, W. Stanfield, Steele, Strader, A. Sykes, G. Sykes, L. Sykes, Tapp, Terry, A. Terrell, J. Terrell, Todd, Toney, Turner, Twiddy, Vanderford, Vaughn, Watson, Waddell, Walker, Wall, V. Ward, W. Ward, Womble, E. Woodford, L. Woodford, Whitley, Wiles, H. Williamson, J. Williamson, C. Wilson, W. Wilson, Wrenn.



JUNIORS

E. ADAMS
G. ADAMS
L. ADAMS
ALRIGHT
ALLEN



ALLISON
B. ANDERSON
D. ANDERSON
F. ANDREWS
H. ANDREWS



ASKEW
BAIN
BAKER
BARGER
BARIHAM



BARNES
BARNWELL
BARRETT
BASS
A. BELL



D. J. BELL
C. BLANCHARD
L. C. BLANCHARD, JR.
BOONE
BOWLAND



BRADLEY
BRAMMER
BROOKS
BUFF
CASH



E. CHEEK
N. CHEEK
CLAPP
K. COBLE
R. COBLE



COLEMAN
COLLINS
N. COOK
S. COOK
COPELAND



COUNCILMAN
COYNER
CRAVEN
CROSS
DAMERON



DILL
B. DIXON
P. DIXON
DUNN
DURHAM





EVANS
 FAGGART
 FERGUSON
 FIDLER
 FITCH

FLOWERS
 FOWLER
 GARRISON
 GATTIS
 GEORGI

GILMORE
 GOAD
 GOODMAN
 GRAVES
 HALL

HAMMOCK
 HARGROVE
 C. HARRIS
 E. HARRIS
 HARRISON

HAYNES
 HICKEY
 HIGGINS
 HINSHAW
 HOLDER

HORNER
 HOWELL
 HUGHES
 G. H. ISLEY, JR.
 H. ISLEY

R. ISLEY
 W. ISLEY
 JAMES
 JEFFCOAT
 JOHNSON

A. H. JONES, JR.
 A. JONES
 H. JONES
 I. JONES
 R. JONES

JOYNER
 J. KETNER
 L. KETNER
 R. KETNER
 KING

KOURY
 LATTI
 LEACH
 LEE
 LEONARD

JUNIORS

JUNIORS

W. LINDLEY
M. LINDLEY
LINDSAY
LLOYD
LOGAN

L. LONG
V. LONG
LOY
LYON
McADAMS

McALLAN
McATEER
McCAULEY
McINTYRE
McIVER

MADDEN
MANN
C. MAY
M. MAY
S. MILES

V. MILES
MILLS
MITCHELL
MIZE
R. MOORE

ROBT. MOORE
MORRIS
MORTON
D. MOSER
L. MOSER

M. MOSER
MARY MOSER
MUCKINFUSS
MURR
D. MURRAY

J. MURRAY
NEAL
NEESE
B. OAKLEY
C. OAKLEY

PATTERSON
PATON
E. PAYNE
R. PAYNE
PEERSON

B. PENNINGTON
M. PENNINGTON
H. PERRY
M. PERRY
C. PHILLIPS
H. PHILLIPS





R. PHILLIPS
 PIERCE
 PRATER
 RICE
 E. ROGERS

J. ROGERS
 E. ROSS
 J. ROSS
 ROUSE
 ROWE

SCOTT
 H. SELF
 N. SELF
 SELLARS
 B. SHARPE

J. SHARPE
 SIMPSON
 SKIPPER
 F. SMITH
 R. SMITH

SNIPES
 SOMERS
 SPOON
 STAFFORD
 ST. CLAIR

STEARNS
 STEWARD
 STOREY
 STRATFORD
 STUBBS

SUGGS
 TAYLOR
 TEMPLE
 TERRELL
 THOMAS

E. THOMPSON
 P. THOMPSON
 TRENLER
 UPRIGHT
 VANHOY

WADE
 WAGONER
 WALKER
 E. WHITESELL
 F. WHITESELL

WILLIAMS
 WILLIAMSON
 WILSON
 WOOD
 WRIGHTENBERRY
 YOUNTS

JUNIORS



SENIORS

DORIS ALFORD *Dos*
 Dramatics 3, 4; Glee Club
 3; National Honor Society 4;
 Cercle Français.

OPAL ALLEN *Dopey*
 Dramatics 4; Band 4.

IRMA ALLISON *Allie*
 Cercle Français 4.

GRACE ALLRED *Gracie*

NELLIE MAE ALLRED *Dinkie*

ELIZABETH B. BAKER *Betty*
 Dramatics 3, 4; *Barker* 3, 4;
 National Honor Society 4; De-
 bating 4.

LOUZAYNE BALDWIN *Zanie*
 Glee Club 3.

DAVID BALL *Beachie*
 Hi-Y 3, 4, Treasurer 4;
 Cercle Français 4; Glee Club 4.

MILDRED BARE *Cubby*
 Glee Club 3, 4; Basketball
 3, 4; Dramatics 3; Red Cross
 3.

MARGARET BARGER *Bobo*
 Glee Club 3, 4; *Barker* 3,
 4; Girl Scouts 3, 4, Secretary
 4; National Honor Society 4.

MARCIA BARNWELL *March*
 Dramatics 3; Cercle Fran-
 çais 4.

AGNES BARRETT *Aggie*
 Dramatics 4.

LOUISE BAXTER *Big Lou*
 Dramatics 4; *Barker* 3, 4;
 National Honor Society 4.

DORIS BAYNES *D. Baynes*
 Girl Scouts 3, 4, President
 4; Dramatics 4; Cercle Fran-
 çais 4; Honor Society 4; Home
 Room Treasurer 3, 4.

CLYDE BLACK *Ace*
 Cercle Français 4.

ELIZABETH BLALOCK *Lib Barker* 3, 4, Assistant Editor 3, Managing Editor 4; Cercle Français 4; Dramatics 4; Quill and Scroll 4.

VIRGINIA BOSWELL *Penny* Glee Club 3, 4; Dramatics 4; Cercle Français 4; Home Room Secretary 3, 4; DOE-WAH-JACK 4.

ARGIE LEE BROOKS *Margie* Cercle Français 4; Red Cross 4.

VERNON BROWN *Brown* D. E. 4; Glee Club 3.

AETNA BRYAN *Don* Dramatics 3, 4, Secretary 4; Glee Club 4; Cheer Leader 4; Home Room Secretary 4.

LESTER BURKE *Les* D.O. 3, 4.

MYRTLE BURKE *Dippy* Cercle Français 4.

VALERIA BURKE *Nickie* Glee Club 3; Dramatics 4.

MARY BURNS *Burnie*

JAMES CAMPBELL *Shorty* Dramatics 3, 4; N.H.S. 3, 4; Band 3, 4; Home Room Treasurer 3; Valedictorian.

EVELYN V. CANTRELL *Vernell* Glee Club 3, Vice President 3.

JACK CAPES *Jasper* Home Room President 3; Soccer 3, 4.

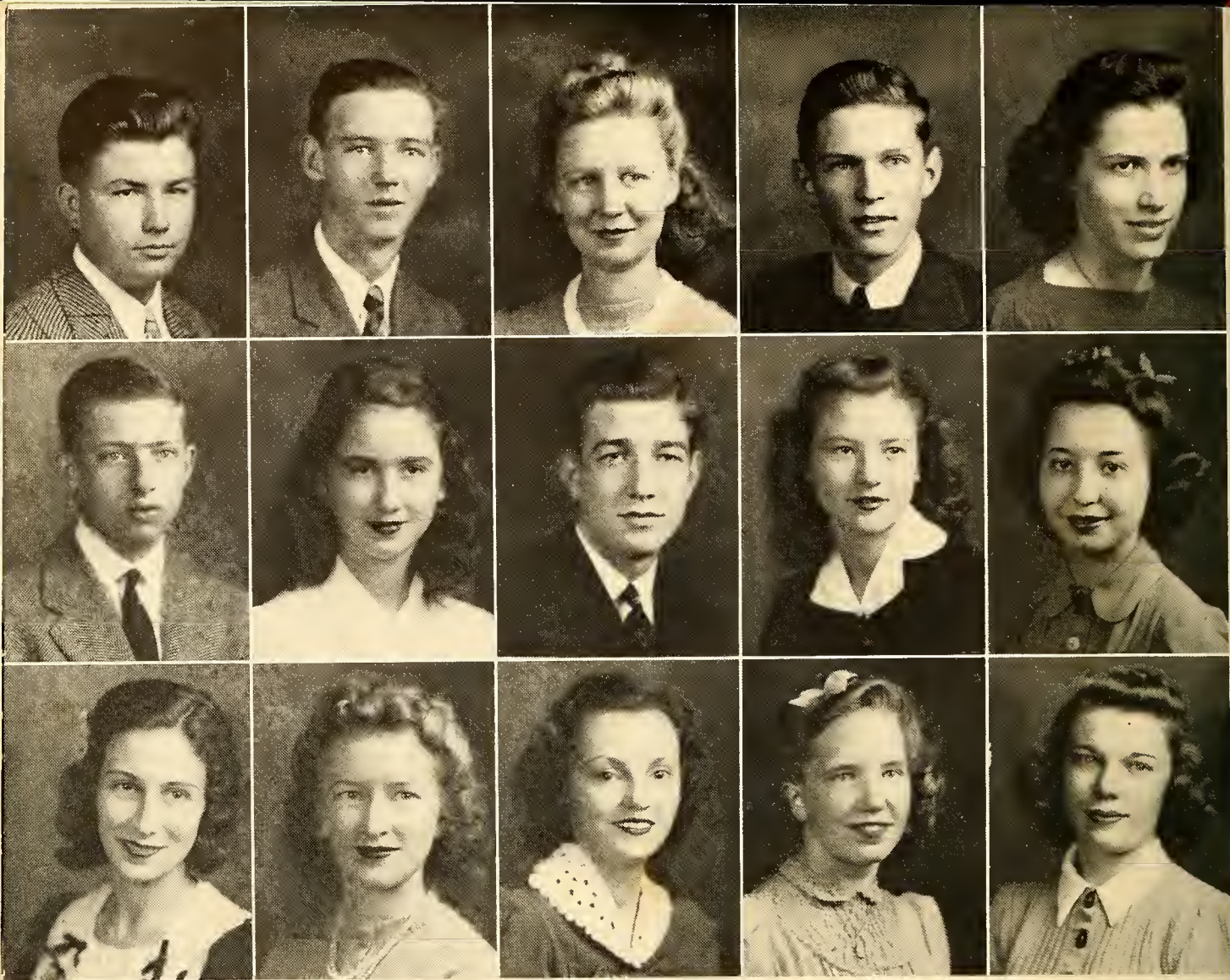
DOROTHY REBECCA CATES *Betsy* Cercle Français 4; Dramatics 4; Glee Club 3, 4.

CLYDE SIDNEY CATES *Sidney*

CECIL W. CAULDER *Stevory* Tennis 4; Baseball 4.

SENIORS





SENIORS

HOWARD CHANDLER *Chick*
 Cerle Français 4; Dramatics 3, 4; DOE-WAH-JACK 4, Bus. Manager 4; Band 3, 4.

CHARLES L. CHRISTOPHER *Luke*
 Dramatics 3; Band 3, 4.

HILDA COBB *Punk*
 Dramatics 3, 4; Glee Club 3, 4; Cerle Français 4.

GEORGE COBLE *G. Coble*
 Band 3, 4; Hi-Y 4; Patrol 4; Red Cross 3; N.H.S.

RACHEL COBLE *Coble*
Barker; Band; National Honor Society; Cerle Français; Dramatics; Student Council; Salutatorian.

JIMMIE COLLINS *Jim*
 Cerle Français 4; Soccer 3, 4.

JULIE COOPER *Judy*
 Dramatics 4; Library 3; Glee Club 3, 4; *Barker* 3, 4; National Honor Society 3, 4; Cerle Français 4; Vice President Home Room 4; Secretary of Junior and Senior Class.

RALPH COOPER *Coop*
 Dramatics 3, 4; Tennis 4.

RHESA CORN *Chick*
 Glee Club 3, 4.

VIRGINIA COUNCILMAN *Ginny*
 Glee Club 3, 4.

CARLEISE COYNER *Piggy*
 Dramatics 3, 4; Glee Club 3, 4; Cerle Français 4; Red Cross 4; *Barker* 3.

FRANCES CRAWFORD *Fennie*
 Cerle Français 4.

NELLIE CREECH *Screech*
 National Honor Society.

NELL CRENSHAW *Nellie*
 Glee Club 3, 4; Dramatics 3, 4; Student Council 3; Cerle Français 4; *Barker* 3.

IRENE DAMERON *Renie*

RUBY DAVIS
Cercle Français 4.

Rube

WILLIAM FAIREY *Baron*
Treasurer Home Room 3;
Dramatics 3, 4; Glee Club 3,
4; Cercle Français 4; Library
Club 4.

MARGARET FONVILLE *Mart*
Honor Society, Pres.; Scouts;
Band; DOE-WAH-JACK; JR.-
SR. Treas.; Cercle Français.

EVELYN DAY *Porky*
Dramatics 3; Glee Club 3.

CATHERINE FAULCONER *Pal*
Barker 3, 4; Dramatics 4;
Band 3, 4; Cheer Leader 3, 4.

EDNA FOSTER *Edd*
Glee Club 3, 4; Dramatics
3, 4; DOE-WAH-JACK 4; Cercle
Français 4.

LALA DICKENS *Dearie*

DORIS DRAKE *Trixie*
Glee Club 3, 4; Dramatics
4; Home Room Secretary 3;
Red Cross 4, Secretary 4.

EVELYN FERGUSON *Wormy*
Glee Club 3.

JANE FOUSHEE *Fuzz*
Red Cross 4; V. Pres. 4;
Cercle Français; Dramatics;
Glee Club; Queen's Court.

HELEN FITCH *Shampoo*
Library 3; Glee Club 4.

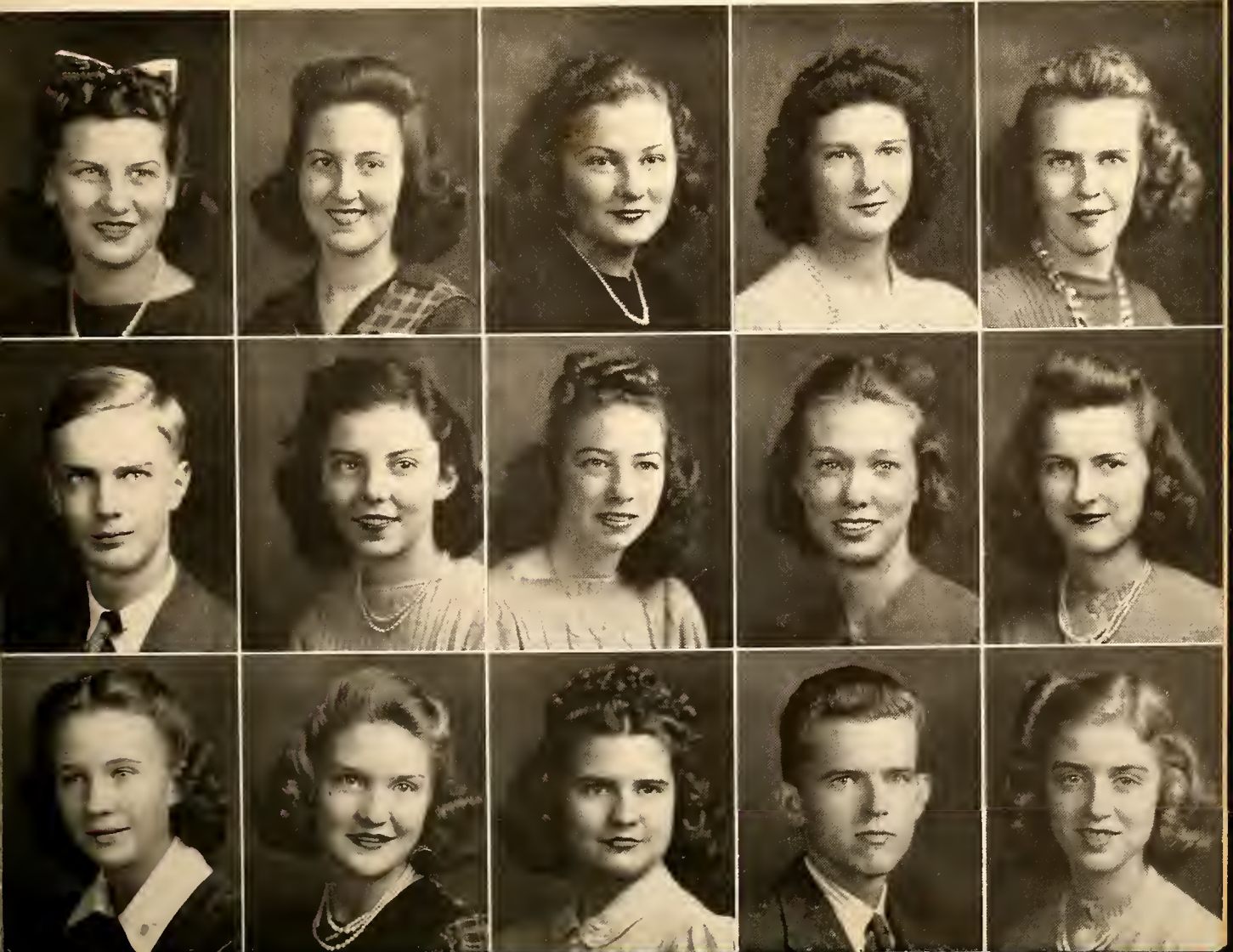
MERRITT FOUSHEE *Limp*
Monogram Club 3, 4; Dra-
matics 4; Band 4; Drum Major
4.

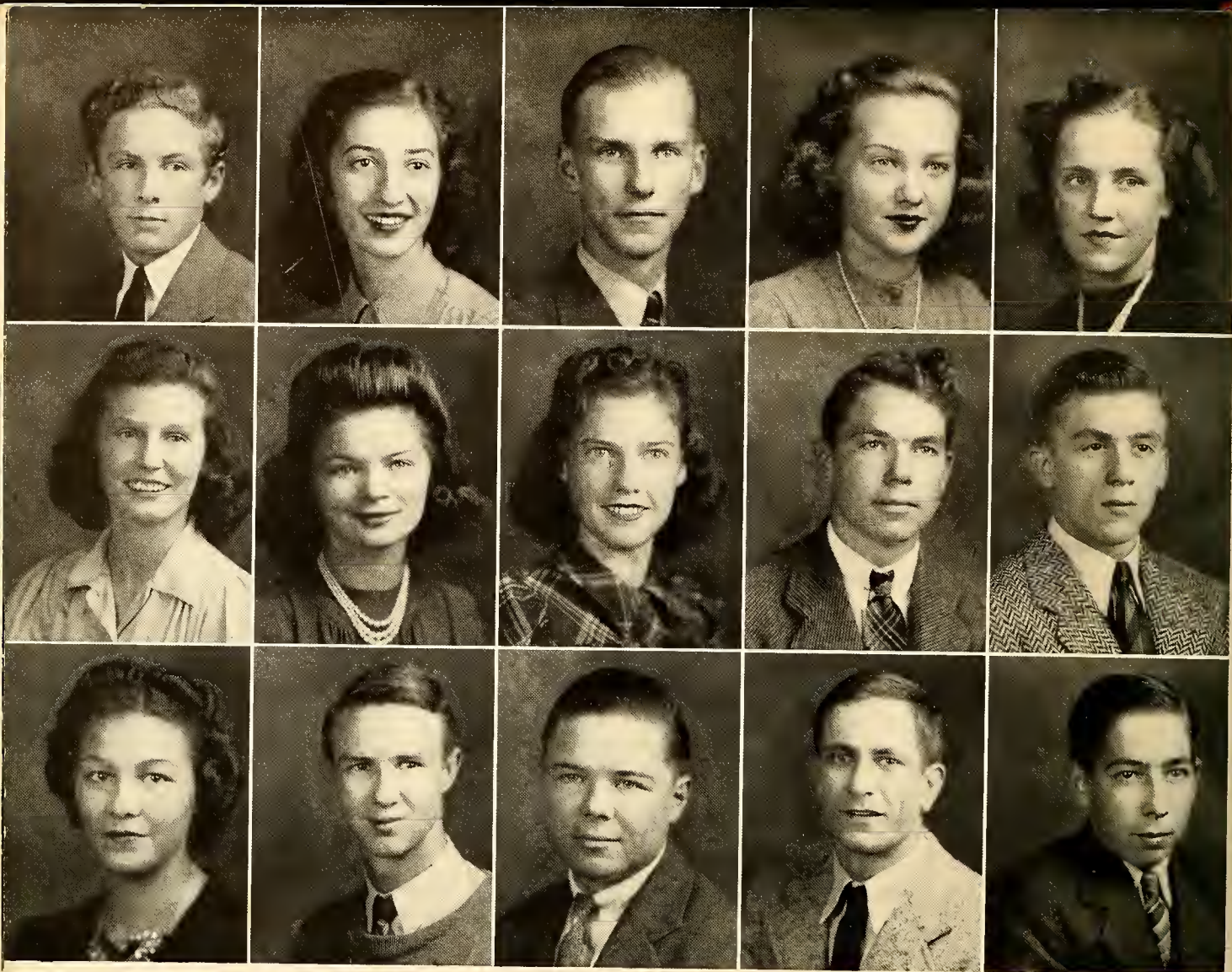
VADEN EASLEY *Gabbie*
Barker 3; Library Club 3, 4.

HELEN FOGLEMAN *Fay*

HILDA FOWLER *Little Girl*
Glee Club 3, 4; Library 3.

SENIORS





SENIORS

JOHN FOWLER *Johnnie*
Soccer 3, 4, Captain 3, 4;
Hi-Y 3, 4; Baseball 3, 4.

MURIEL FREEDMAN *Minky*
Dramatics 3, 4; Library 3;
Quill and Scroll 4; National
Honor Society 3, 4, Vice Pres-
ident 4; Student Council 4;
Barker 3, 4, Editor 4.

P. D. FREEMAN *P. D.*
Band 4.

MARY Jo FRISSELL *Mable*
Glee Club 3, 4; *Barker* 3, 4;
Dramatics 3, 4, Treasurer 4;
National Honor Society 4;
Cercle Français 4; Hi-Y Spon-
sor 4; Marshal 3.

NAOMI FURLOUGH *Toni*
Glee Club 3, 4.

NINA GARRISON *Neena*
Barker; Dramatics; Student
Council; Glee Club; Honor So-
ciety; Cercle Français; Basket-
ball, Captain; President Junior
and Senior Class; Marshal.

LILA GENTRY *Idean*
MARGARET GLENN *Poss*
Student Council 3, 4; Dra-
matics 4; Band 3, 4; *Barker*
4; Home Room President 3.

ROBERT GRAHAM *Ike*
D.O. 3, 4; Student Council
3, 4, President 4; Hi-Y 3, 4,
Secretary 4; Marshal 3.

HAROLD GRAVES *Pest*
Monogram 3, 4; Student
Council 3, 4; Baseball 3, Man-
ager 3; President Home Room.

RUBY GREESON *Woody*
Red Cross 3; Glee Club 3;
Basketball 3, 4.

HAROLD GROSS *Greasy*
Junior Football 4.

JACK GURGANIOUS *Cubby*
D.O. 3, 4.

LACY HAGOOD *Ace*
Football 3, 4; Boxing 3, 4;
Vice President Home Room 3;
Monogram Club 3, 4, President
3, 4.

OSCAR HAGWOOD *Buck*
National Honor Society 3, 4.

CHARLES HALL *Flop*

OZELL HALL *Deacon*
Hobby Club 3; Glee Club 4.

ANN HARDEN *Bug*
Dramatics 3, 4; Assistant
Cheer Leader 3.

CARL HARRELL *Pate*
National Honor Society 3, 4;
Student Council 3, 4; Cercle
Français 4; Library Club 4,
President 4; Glee Club 3, 4;
Dramatics 3, 4; Home Room
Secretary 3, Treasurer 4.

CLINTON HESTER *Clint*
Hi-Y 4; Football 3; Mono-
gram 4.

WILLIAM HIGGINS *Bill*
Dramatics 3.

FRANCES HINSHAW *Frank*
Cercle Français.

RICHARD HOGAN *Dick*

JEAN HOLMES *Yankee*
Dramatics 3; Library, Vice
President 3; National Honor
Society 3, 4; Cercle Français 4;
Debating; DOE - WAH - JACK,
Editor; V. Pres. Senior Class;
Student Council; Sec. S.P.T.A.
4; Marshal 3; Valedictorian.

BETTY HOLT *Holt*
Glee Club 3, 4; Cercle
Français 4; *Barker* 4; Vice
President Home Room 3.

EARL HOLT *Chubby*
Dramatics 3; Manager Base-
ball 3; Assistant Manager Bas-
ketball 3.

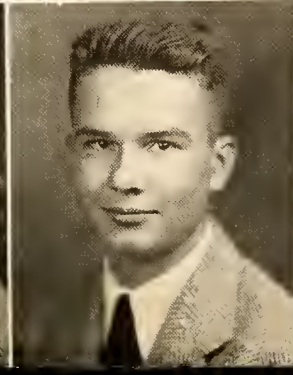
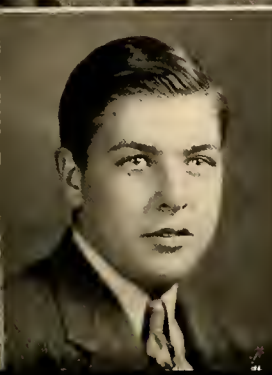
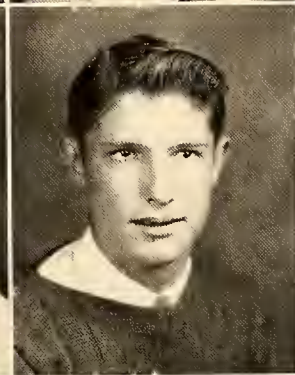
EDNA HOLT *Edna*

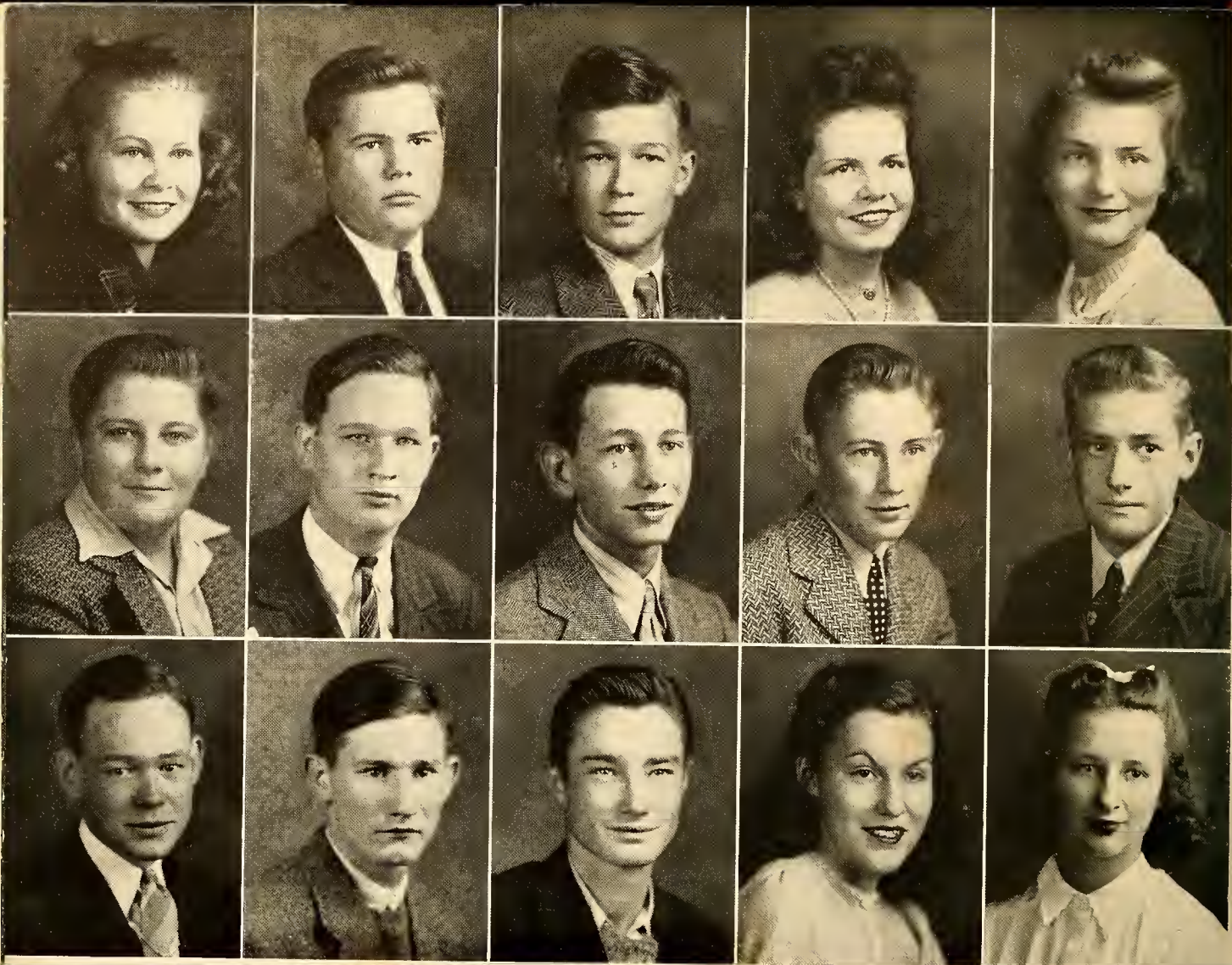
VERNIE HUFFINES *Huff*
Glee Club 3, 4.

WADE HUFFMAN *Huff*
Student Council 4, Vice
President 4; National Honor
Society 4; Hi-Y 4; DOE-WAH-
JACK 4; Marshal 3.

WILLARD HUMBLE *Bill*
Band 3, 4.

SENIORS





SENIORS

BERNICE HUNTER *Dimp*
Dramatics 3, 4; Glee Club
3, 4; *Barker* 3.

JAMES W. HUNTER *Walker*
Dramatics 3, 4; Glee Club
3, 4; Cercle Français 4.

LUTHER INGOLD *Lou*

AVRIL ISLEY *A*
Glee Club 3, 4; Dramatics
4; Cercle Français 4; *Barker*
4.

MEDIA ISLEY *Polly*
Glee Club.

BOBBY IVEY *Lightning*
Hi-Y 3, 4; H. R. President
4, Vice President 3; N.H.S.;
Marshal 3; *DOE-WAH-JACK* 4.

WILLIAM JOBE *Bigun*
Hobby Club 3; Assistant
Manager Basketball 4.

JOHN F. JOHNSON *Bug*
Monogram 3, 4; Basketball
3, 4; Football 4; Cercle Fran-
çais 4.

CLYDE JOHNSON *Doc*
Hi-Y 4; Basketball 3, 4;
Baseball 3, 4; Student Council
4; Home Room Secretary 4,
Vice President 3.

VERNON JOHNSON *Johnnie*

MELVIN KING *Punk*
D.O. 3, 4.

ROBERT KING *Bob*
Assistant Manager Football
3, 4; Manager 4; Manager Bas-
ketball 4.

VERDERY KING *Captain*

LOUISE KINGSLAND *Lou*
Glee Club 3, 4; Dramatics
3, 4; *Barker* 3; National Honor
Society 3, 4; Cercle Français 4,
Vice President 4; *DOE-WAH-*
JACK 4.

MARY KIVETT *Maria*
Glee Club 3, 4; Red Cross 4.

JOSEPHINE KOURY *Josie*
 Dramatics; Glee Club;
 Cercle Français; Student Council;
 Honor Society; DOE-WAH-JACK
 Queen; Vice President
 Home Room; Marshal 3.

PAULINE KOURY *Poler*
 Glee Club 3; Library 3;
 Dramatics 4; *Barker* 3, 4;
 Queen's Court 4.

ADELAIDE LAMBERTH *Putzi*
 Glee Club 3, 4; Cercle
 Français 4.

JEAN LANDMAN *Jane*
 Dramatics 4.

MAURICE LAWS *Alston*
 Glee Club 3, 4; Cercle
 Français 4; Library 4.

CATHERINE LEATH *Kat*
 Student Council 4; Band 3,
 Vice President 3; Glee Club 3,
 4; Library 4; Dramatics 4;
 DOE-WAH-JACK 4; President
 Home Room 3.

SARAH JANE LEATH *Sadie*
 Glee Club 3, 4; Library 3, 4.

JOHN DAVIS LEE *Baloke*
 Dramatics 3; Soccer 3, 4.

EARL LEONARD *Leonard*
 D.O. 3; D.E. 4.

RICHARD LINEBERRY *Little Razy*
 Football 3, 4; Monogram
 4; Student Patrol 4.

FRANK LOVE *Swindell*
 Hi-Y 3, 4; Student Patrol
 4; Debating 4; N.H.S.

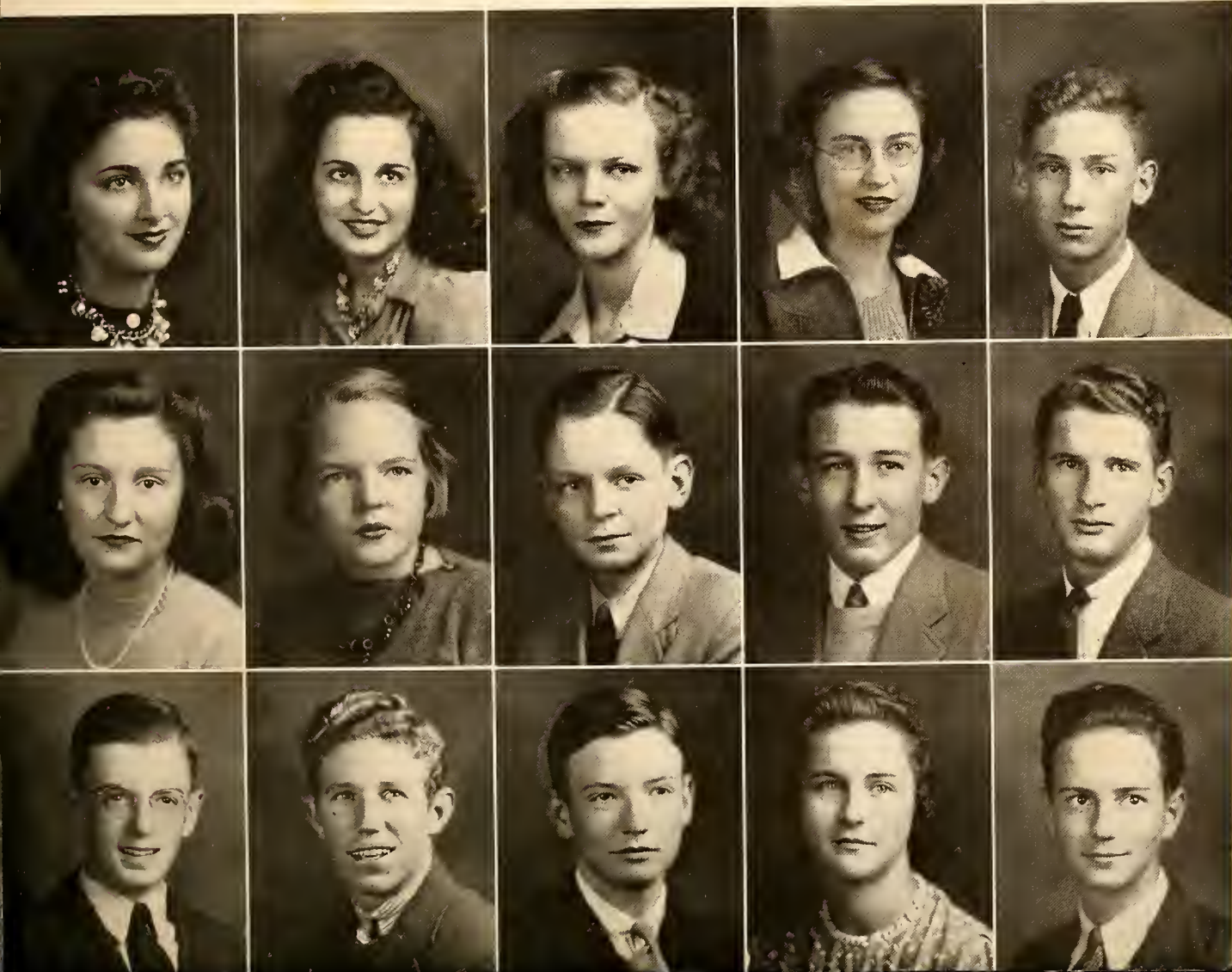
JOE LOVE *Joey*

THOMAS LOVE *Love*
 Band 3.

MARY LOWERY *Mary*

JACK LOY *Pat*
 Hi-Y 4; Student Council 4;
 Band 3, 4; President Home
 Room 4.

SENIORS





SENIORS

BILLIE LUCAS *Bill*
Glee Club 3.

DAVID McADAMS *Mac*
Band 3, 4; *Barker* 3; Tennis
4; Assistant Drum Major 4.

ELIZABETH McATEER *Dollie*
Glee Club 4; Vice President
Home Room 3, 4.

DOROTHY McKENZIE *Dudu*

MARGARETTE McLENNAN *Peggy*
Basketball 3, 4; Library 3;
Dramatics 4; Girl Scouts 4;
Cercle Français 4.

GLADYS MANGUM *Mangu*
Girl Scouts 3; Glee Club 3,
4; Cercle Français 4; National
Honor Society 3, 4, Treasurer
4; Vice President Home Room
4.

JOHN MICHAEL *Shorty*
D.O. 4.

ALVA MINOR *Al*
Football 4; Hi-Y 4; Mono-
gram 4; Home Room Secretary
4.

NORMA MITCHELL *Mitch*
Cercle Français 4; Glee Club
3, 4.

JACK MOORE *Moe*
Band 3, 4; Monogram 4;
Football 4.

ALYSE MORAN *Moran*

ANNIE LAURIE MOSER *Ann*
Cercle Français 4; Home
Room Treasurer 3.

MARY FRANCES MOSS *Frankie*
Glee Club 3, 4; Dramatics
3, 4; Student Council 3; Na-
tional Honor Society 3, 4; Doe-
WAH-JACK 4, Assistant Editor
4; Cercle Français 4, Treasurer
4; President Home Room 3.

ELIZABETH MURDOCK *Peanut*
Glee Club 3, 4.

JANE MURRAY *Jannie*
N.H.S.; Scouts, Sec.; Glee
Club; Cercle Français; Doe-
WAH-JACK; Library; Cheer
Leader; Debating.

HAROLD NALL *Auga*
Dramatics 3, 4; Band 4.

FRANCES ORR *Frankie*
Glee Club 3.

EDWARD OVERMAN *Ed*

ERNEST OWENS *Artie*
Band 3, 4; Cercle Français 4.

RUTH PACK *Rufus*
Girl Scouts 3; Library 3, 4.

LLOYD PRITCHETT *Jack*
Cercle Français; Hi-Y, Vice President; Band; Student Council; *Barker*, Business Manager 4; Chief Marshal 3; N.H.S.

EVERETTE C. QUALLS, JR. *E.C.*
Band 3, 4; *Barker* 3, 4; Cercle Français 4; Dramatics 3, 4; M.C. of Jr. and Sr. Prom. 3.

LENA BELLE QUESENBERRY *Lu Lu*
Dramatics 3, 4.

MARY RANDOLPH *Chigger*
Band 3; Girl Scouts 3.

FAY RASH *Faucus*
Cercle Français 4.

CATHERINE RAY *Cat*
HUGHES RHODES *Buddy*
Hi-Y 4; Cercle Français 4.

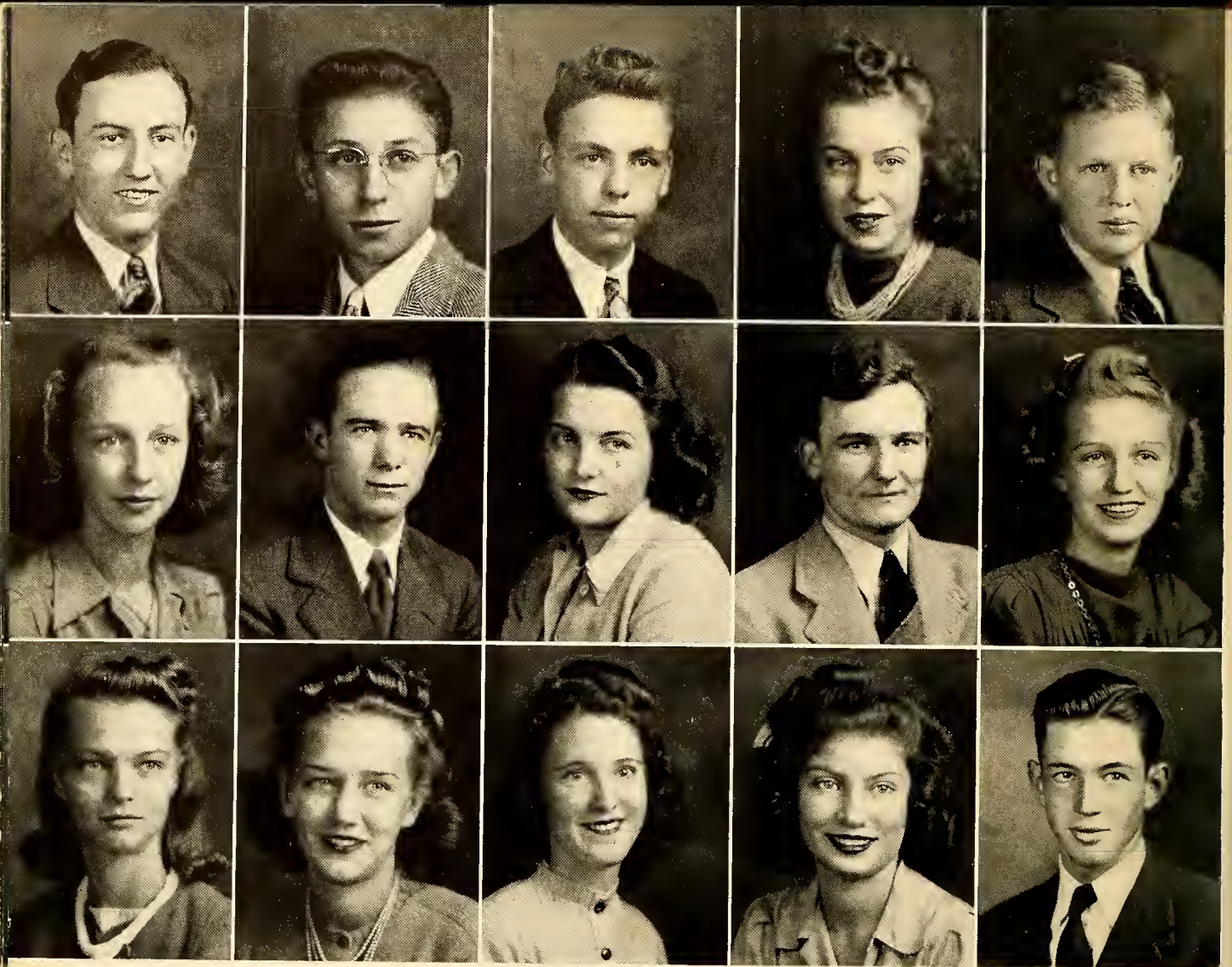
BETTY RIDDLE *Riddle*
Glee Club 3; Band 3, 4; DOE-WAH-JACK 3; *Barker* 3, 4; Cheer Leader 3, 4; Dramatics 4.

LAURA JEAN RILEY *Jean*
Girl Scouts 3, 4; Student Council 4; Glee Club 3, 4; Dramatics 4; *Barker* 3; Assistant Manager Girls' Basketball 4; Assistant Cheer Leader 3.

BETTY ROSS *Betsy*
Library 3, 4; Basketball 3, 4; Glee Club 4; Treasurer Home Room 4.

SENIORS





SENIORS

- | | | | | | |
|--|----------------|--|-----------------|---|----------------|
| CHARLES ROSS | <i>Charlie</i> | DOROTHY SMITH | <i>Dot</i> | ELEANOR STADLER | <i>Abbie</i> |
| | | DOE-WAH-JACK 4; Advertising Manager 4; Dramatics 3, 4, President 4; Glee Club 3; Cercle Français 4; Assistant Manager Basketball 4. | | Dramatics 4; Cercle Français 4; N.H.S. | |
| BRODIE RUDD | <i>Buzz</i> | ROBERT SMITH | <i>Bob</i> | HILDA STALEY | <i>Brat</i> |
| D.O. 4. | | MARY LOUISE SOMERS | <i>Mary Lou</i> | Glee Club 3, 4; Treasurer Home Room 4. | |
| HALDEAN SHARPE | <i>Hal</i> | | | DOROTHY STANFORD | <i>Dot</i> |
| Glee Club 3, 4; Library 4; Dramatics 4; Cercle Français 4. | | Dramatics 3, 4, Treasurer 3, Vice President 4; Glee Club 3, 4, President 4; <i>Barker</i> 3, 4; Cercle Français 4; Vice President Home Room 4. | | Glee Club 4, Vice President 3; Cercle Français 4; DOE-WAH-JACK 4. | |
| EVANGELINE SIZEMORE | <i>Elaine</i> | BROOKS SPENCE | <i>Brookie</i> | ETHEL STANLEY | <i>Lou</i> |
| | | Band 3, 4. | | CARROLD STEARNS | <i>Brother</i> |
| DAVID SMITH | <i>Scribe</i> | REBA ST. JOHN | <i>Stout</i> | Red Cross 3, 4, President 4; Hi-Y 3, 4, President 4; Football 3, 4; Basketball 3; Boxing 3. | |
| Glee Club 3; Cercle Français 4. | | Glee Club 3, 4. | | | |

WORTH STEVENS *Steve*
Hi-Y 3, 4; Band 3, 4.

GARY STEWART *Shorty*
D.O. 3, 4; Vice President
Home Room 3.

EDWIN STOREY *Ed*
Glee Club 3, 4; *Barker* 3, 4;
Quill and Scroll 4; Monogram
3, 4; Debating 3; Manager
Football 3; Manager Basket-
ball 3.

MARION SWANGIN *Swannev*
Dramatics 3, 4; D.O. 4; Stu-
dent Council 4; *Barker* 4;
Commercial 3; President Home
Room 4.

DOROTHY TATE *Dot*
Glee Club 4.

FRANCES TEAGUE *Tig*
Library 3; Dramatics 4;
Cercle Français 4; National
Honor Society 4; *Barker* 3;
Basketball 3, 4, Captain 4.

EMOGENE THOMAS *Em*
Drum Majorette.

GEORGE P. THOMPSON *Pat*
Hi-Y 4; Monogram 4; Foot-
ball 4; Baseball 4.

NUMA THOMPSON *Jake*

CATHERINE TOULOPAS *Cat*
Basketball 3, 4; Student
Council 3; Dramatics 3; Vice
President Junior Class.

HELEN UPRIGHT *Beck*

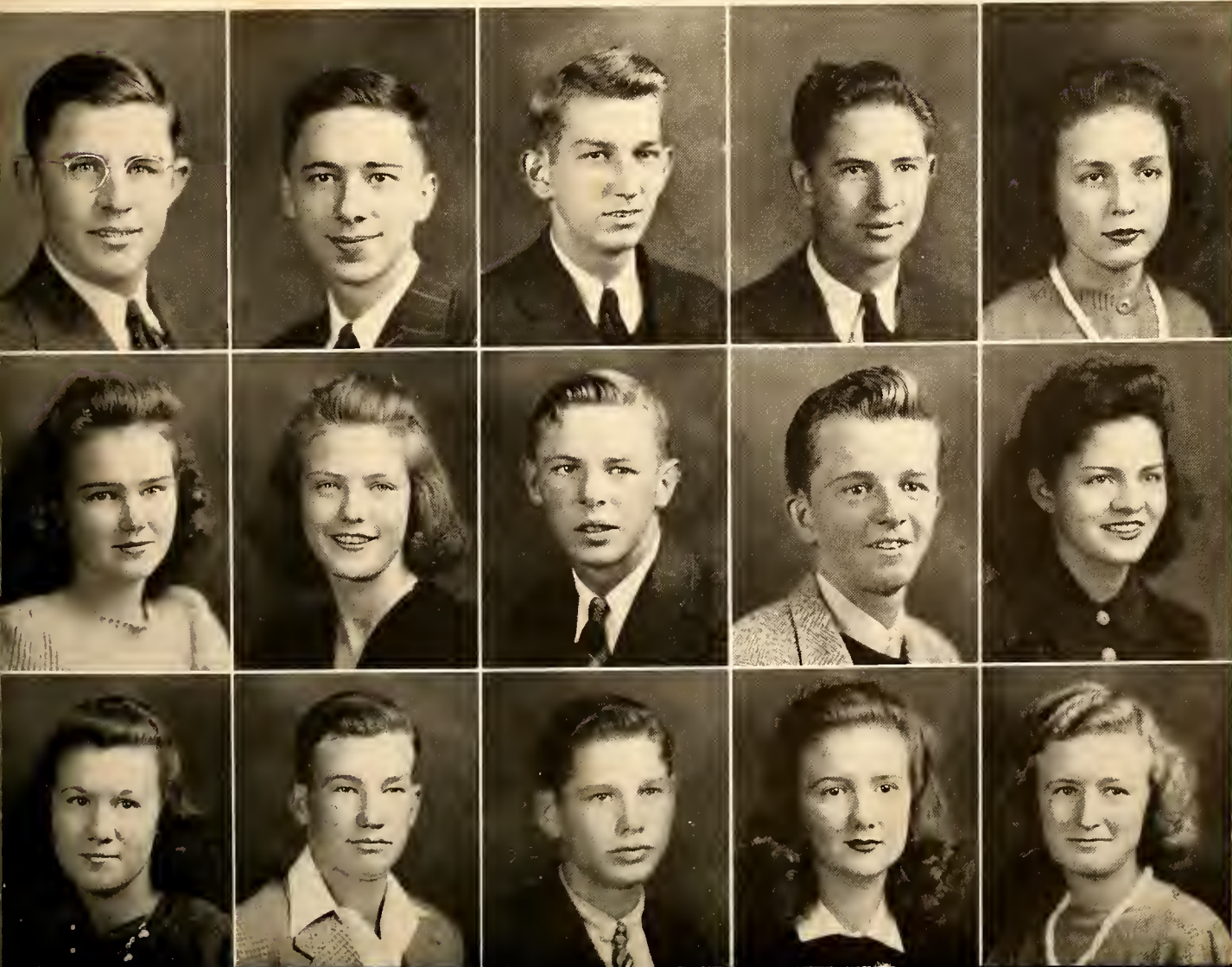
BENNY VAUGHN *Slug*

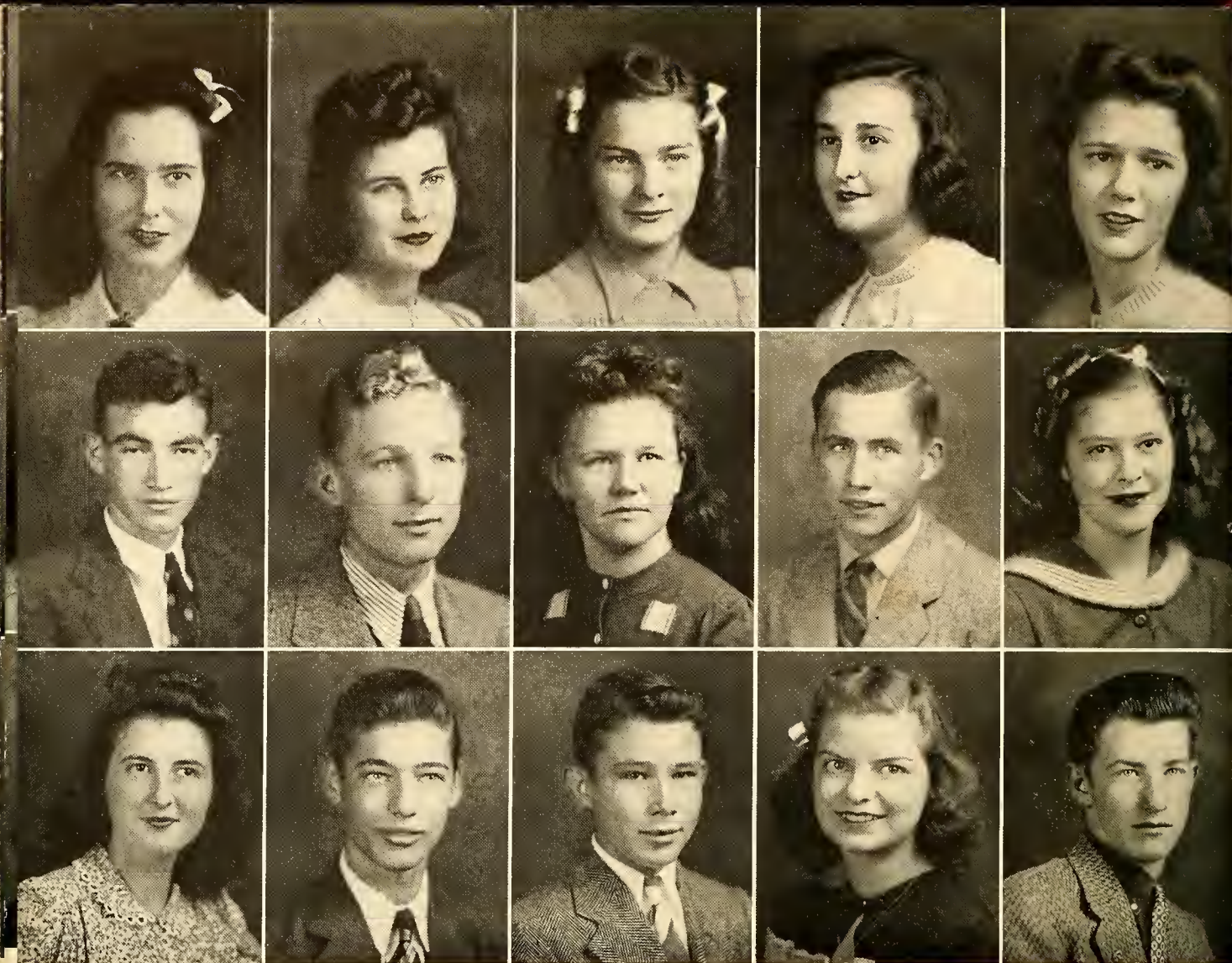
BRUCE VAUGHN *Vaughnie*

MARY LOUISE VAUGHN *Boots*
Cercle Français 4.

PAULINE VAUGHN *Polly*
Girl Scouts 3, 4, Treasurer
3, 4; Dramatics 4; Basketball
3, 4; National Honor Society
3, 4, Secretary 4; *Barker* 4;
Student Council 4; Vice Pres-
ident Home Room 3, President
4.

SENIORS





SENIORS

VALLIE VAUGHN *Vallie*
Glee Club 3, 4; Cercle Français 4.

RUTH WAGNER *Lovie*
Band 3, 4; Glee Club 3; Hobby Club 3, Secretary 3; Dramatics 4.

MAUDE WAGONER *Maudie*
Library 3.

FLORANCE WALKER *Biddy*
Red Cross 3, 4; Glee Club 3, 4; Cercle Français 4; DOE-WAH-JACK 4.

FLORENCE M. WALKER *Flo*
Glee Club 3, 4; Cercle Français 4.

WILLIAM WALKER *Lanky*
Band 3, 4; D.O. 4.

WOODROW WALKER *Chuck*
Band 3, 4; Dramatics 3.

MARJORY WARD *Major*
Cercle Français 4.

MAX WARD *Maxie*
Monogram 4, Secretary 4; Football 3, 4; Boxing 3, 4.

MARIE WAY *Re*
Red Cross 3; Cercle Français 4; National Honor Society 4.

HILDA WEBSTER *Freck*
Glee Club 3, 4.

JOSEPH L. WEST, JR. *J.L.*
Monogram 3, 4; DOE-WAH-JACK 4; Hobby Club 3; Hi-Y 4; National Honor Society 4; Manager Boys' Basketball 3; Manager Football 4.

WILTON WHEELLEY *Burton*
Cercle Français 4; Band 3, 4.

DORIS WHITAKER *Dot*
Latin 4; Glee Club 3, 4.

JAMES WHITE *Buddie*
Hi-Y 3, 4; Dramatics 4; Soccer 3, 4; Glee Club 3.

MARGARET WHITE *White*
Dramatics 3, 4; Library 3,
4; *Barker* 4.

DAVID WHITESELL *Dave*
D.O. 4.

NEWMAN WHITESELL *Monkey*
D.O. 4; Soccer 3.

KATHRYN WICKER *Chicken*
Dramatics 4; Band 4.

ADRIAN WIGGINS *Swish*
Monogram 3, 4, Treasurer
4; Baseball 3, 4; Basketball 3,
4, Captain 4.

DELMER WILLIAMS *Bud*
Soccer 3; Football 4; Bas-
ketball 3, 4; Cercle Français
4, President 4; Student Coun-
cil 4; Band 3, 4; Hi-Y 3, 4;
President Home Room 4; DOE-
WAH-JACK 4; Marshal 3.

JOYCE WILLIAMS *Dimples*
Band 3; Glee Club 3, 4;
Barker 3, 4; Library 3; Girl
Scouts 4; Cercle Français 4;
Dramatics 4.

FANNIE WILSON *Fann*

KATHRYN WILSON *Kat*
Dramatics 3, 4; Glee Club
3.

MOLEAN WILSON *Lean*

RITA WILSON *Reeta*
Dramatics 3; Glee Club 3,
4; Cercle Français 4.

WENDELL WILSON *Wimpy*
Hi-Y 4; Cercle Français 4;
Vice President Home Room 3,
Treasurer 4.

SENIORS



HOLD THAT POSE



Nobody loves us . . . Step on it, sister . . . Personality kids . . . The fairer sex . . .
 Who's Yehudi? . . . Somebody didn't catch it! . . . In a huddle . . . It all comes
 back to me now . . . Watch the birdie . . . It's a tough life . . . Just another leg
 show . . . Fix it pretty . . . Warming the bench . . . Our fairest . . . Blank expression!
 . . . Yum-yum . . . Come and get it.

. . . CLICK! CLICK!



Lonesome? . . . What these men can do! . . . Hot stuff . . . She rules our diet . . .
Don't rush . . . Beauty . . . Rest? . . . Faithful forever . . . "Eva" . . . What a life! . . .
Our pride . . . What's on your mind? . . . Enjoying the game . . . That's got it . . .
Good ole school days.

Prophecy

Oh! Yes, I remember now. It seems that I was in the Chemistry Lab and Mr. Gilreath was mixing a solution of some "H's" and "S's" and then I recall that I walked to the table and leaned over to get a smell of the concoction that he was brewing. After that things seemed hazy but I guess I fell asleep. I just can't get the facts together, but regardless of what happened I opened my eyes in the business section of the thriving metropolis of Burlington, N. C., in the year 1953. After I had regained my composure I found the following things about the Senior Class of 1941.

Opal Allen and Irma Allison are doing a thriving business in the A&A Beauty Shop.

Doris Alford is teaching English diagramming in the local high school.

Grace Allred and Nellie Mae Allred are running a business college; they are the bookkeeping teachers. Margaret Barger is the director of the Girl Scouts here.

Betty Baker has charge of the law office of Capes and Chandler; the latter sells Coca-Cola as a sideline.

David Ball and Jimmie Collins have the best dry cleaning plant in town.

Mildred Bare and Frances Teague play basketball on an industrial league team, of which Nina Garrison is the coach.

Aetna Bryan is still talking having put her talent to work as a lawyer.

Ed Storey is still sitting on the bench with the Burlington High Basketball team. "Yep" he's been there for all these years.

Rachel Coble is teaching Latin at the high school.

Glenn Miller has added Worth Stevens to his trombone section and Ernest Owens to his Sax section. Miller plays nightly at the Bulldog Inn which is run by Wade Huffman and Carrold Stearns.

James Campbell and Jean Holmes are married and are raising geniuses.

Louise Baxter and Pal Faulconer are still talking over Jack Moore.

Ralph Cooper is still in Mr. Gunn's bookkeeping class, he is working on the Collins Practice Set.

Myrtle, Lester, and Valeria Burke run the Burke Cafeteria on Worth Street.

Muriel Freedman and Elizabeth Blalock are on the staff of the *Times News*; Muriel writes the obituary column and Lib is the recipe editor.

Julie Cooper and Carl Harrell are appearing in an opera at the local music hall; the musical score was written by Maurice Laws and Haldean Sharpe.

Louzaine Baldwin, Agnes Barrett, and Marcia Barwell are on the Board of Aldermen.

Doris Baynes and Virginia Boswell are both serving as secretaries in the Burlington Athletic Council; the president is Lacy Hagood, who is the world's champion of the world.

George Coble plays the trumpet in E. C. Qualls' orchestra, which at present is playing at the Alamance Roof Restaurant which is owned by Clyde Beck and Vernon Brown.

Margaret Blalock and Argie Brooks are hostesses on the Greensboro-Burlington Airline.

Hilda Cobb and Carleise Coyner are connected with the Burlington Real Estate Co.

Vernell Cantrell, Frances Crawford, Evelyn Day, and Lala Dickens run a ready-to-wear shop on Holt Street.

Irene Dameron keeps books for Nellie Creech who is head of the Chamber of Commerce.

Doris Drake and Alva Minor are married and have been chosen the happiest couple in the country.

Cecil Caulder and Pat Thompson run a large theater on Worth Street.

Nell Crenshaw and Betty Holt are the best waitresses in the Elite Lunch Stand run by John Fowler and Jane Foushee.

Vaden Easley and Mary Euliss are the entertainers at the Ritz Night Club run by Delmer Williams.

William Fairy, Merritt Foushee, P. D. Freeman, and Charles Hall are tellers in the National Bank, Jack Gurganious was fired for giving away too many samples to his friends.

Evelyn Ferguson and Naomi Furlough are co-owners in the Torrid Canine Stand.

Helen Fogleman, Margaret Fonville, Edna Foster and Ann Hardin are all married to their old beaux and have nice families.

Hilda Fowler, Ruby Greeson, and Edna Holt are employed in May Hosiery Mill as stenographers.

Robert Graham and Charles Ross are running for the state legislature; their managers are Harold Graves and Brodie Rudd.

Mary Jo Frissell is going to State College; she had to be with Karl and he can't get out.

Bernice Hunter broke up with Merritt and works as a waitress in Billy Higgins' Grill.

Oscar Hagwood, Robert King, Bobby Ivey, and Bill Jobe are the owners of a professional baseball team; the members of the club are: Adrian Wiggins, left field; Richard Lineberry, right field; Jack Loy, center field; William Walker first base; James White, second base; Wilton Wheeley, third base; Clyde Johnson, shortstop; Donald King, pitcher; and Leonard Loy, catcher.

Woodrow Walker is the manager of Penders' Grocery store; he always did like to run things.

Florence Walker No. I and II are together and are partners in the Florence Walker Hat Shoppe.

Kathryn, Molean, Rita, and Wendell Wilson are the owners of the Wilson Pawn Shop.

Joyce Williams and Muriel Wiggins are the authors of a current best seller; their publishers are David Smith and Gary Stewart.

Kathryn Wicker, Fannie Wilson, Marie Way, and Marjorie Ward are clerking in Belks' Department Store.

Newman Whitesell and Doris Whitaker are movie stars in a privately owned picture concern. The principal stockholders are Max Ward, Bruce Vaughn, and Robert Smith.

Margaret White and Hilda Webster have started a cosmetic company; their product "Lovey Dovey Creme" was invented by Betty Ross.

Pauline Vallie, and Ruth Vaughn are the head of a committee to elect a woman mayor for Burlington; their slogan is "Move over Men."

Benny Vaughn and Marion Swagin are the proprietors of Romeo, Inc.; they teach shy boys how to pitch woo.

Dorothy Smith and Mary Louise Somers are happy little home makers; Yep, Mose and Sock.

Ruth Wagner, and Maude Wagoner are the owners of the Ladies Detective Agency; their slogan is "Don't watch your husband; let us watch him for you."

Ozell Hall and Frances Hingsaw are running a Woman's Service Bureau whose slogan is "Don't cuss; call us."

Walker Hunter sings in Bill Humble's Band; the orchestra there is under the direction of Luther Ingold. Some of the members of the band are: Paul Isley, Violin; Media Isley, Cello; Mary Kivett, Oboe; Vernie Huffines, Flute; Jack Pritchett, Clarinet; Bossie Lamberth, French Horn; Jean Landman, Tympani; Jane Murray, Second Violin; David McAdams, Third Violin; Frank Love, Arranger.

John Fred Johnson plays professional basketball with the Bearded Wizards; Verdery King is the manager.

Louise Kingsland and Josephine Koury are not living here any more; they are singing in the Metropolitan Opera House in New York City.

Pauline Koury and Sarah Leath are the country's best traveling sales ladies.

The staff of the Paramount Theater includes Manager Earl Leonard, Assistant Manager John Davis Lee, Janitor Hughes Rhodes, Assistant Janitor Angelo Mauti, Assistant Assistant Janitor Fred Montgomery.

The radio station here has taken some of our best talent, the chief announcer is Edward Overman, Harold Nall is the engineer, the news reporter is Nana Thompson, and Evangeline Sizemore is the fashion announcer.

The Carolina Club has a fine floor show and here in the chorus Eva Lineberry, Mary Lowery, Billie Lucas, Elizabeth McAteer, Dorothy Beckwith, Margarette McLennan, and Gladys Mangum.

The cigarette girl is Norma Mitchell and the movie girl is Annie Laurie Moser. Mary Frances Moss will be glad to check your hat for 25 cents.

When you go over into Rose's Dime Store you are sure to see Lib Murdock, Frances Orr, Ruth Pack, Helen Perry, and Lena Quesenberry.

Mary Randolph, Faye Rash, Catherine Ray, Betty Riddle, and Jean Riley are all working as stenographers in a new bank owned by the Government.

Christine Shoe is the matron at the county jail; here Eleanor Stadler is serving six months for trying to disguise herself as a man in order to join the army to see Pic.

Hilda Staley is still going with Junior; they can't get enough nerve to get hitched.

Reba St. John and Dorothy Tate are both engaged in teaching children how to play around.

Ruby Davis who has inherited a million from a rich uncle has gone to Miami for the winter.

Ethel Stanley is a model in a large department store here.

Emogene Thomas and Catherine Touloupas have retired from active life after a fortune selling electric fans to the African natives.

Margaret Glenn has so many beaux that her mother keeps a smallpox sign on the door.

Catherine Leath has moved to Georgia to fulfill her lifelong ambition; to get married.

This old world keeps turning year after year and things go right on happening, but its nice to look back on our high school days and then look at what the seniors of '41 are doing in the gala year of 1953. Well its all prophet and no loss so why worry.

ED STOREY,
Prophet.

Class Song

Hail! and Farewell

Carl Patrik Harrell

Andante ma non troppo

Deep down with-in my heart there is a song
 But sweet have been the hours we've spent with thee
 For life's great ome for--e'er is hap-pli-ness

And now with joy my lips pour forth its praise
 Ah! how our thoughts re--oall it all with pain
 And we are but a few who run the race

For thee dear school your glad and hap-py throng
 When we sail forth up-- on life's sea
 In search of joy of love and sweet success

2nd.

days ne'er may they wane
 which seem a--far our pace

Class Colors: BLUE AND GOLD

Motto: "HITCH YOUR WAGON TO A STAR."

Class Poem

Amongst the oaks I see you there,
 How staunch you stand—for all these years.
 You know the past, you know its cares,
 Its joys, its sorrows, and its tears.

Amid the shadows of your walls,
 Footprints of yesterday remain.
 They tell the story—each recalls
 The lovely past—ne'er to come again.

And now with joy I thee behold,
 Before I start the path of life;
 I'll love thee with all the love my heart can hold,
 Through joy, through love—and even strife.

Just one last glimpse with grief I see,
 Then turn my thoughts away,
 To future things, away from thee,
 Lest all my memories bring tears.

CARL PATRIK HARRELL.

EXTRA BOOK WEEK NEWS EXTRA
 GOOD BOOKS GOOD FRIENDS
BOOK BITZKRIEG BEGINS

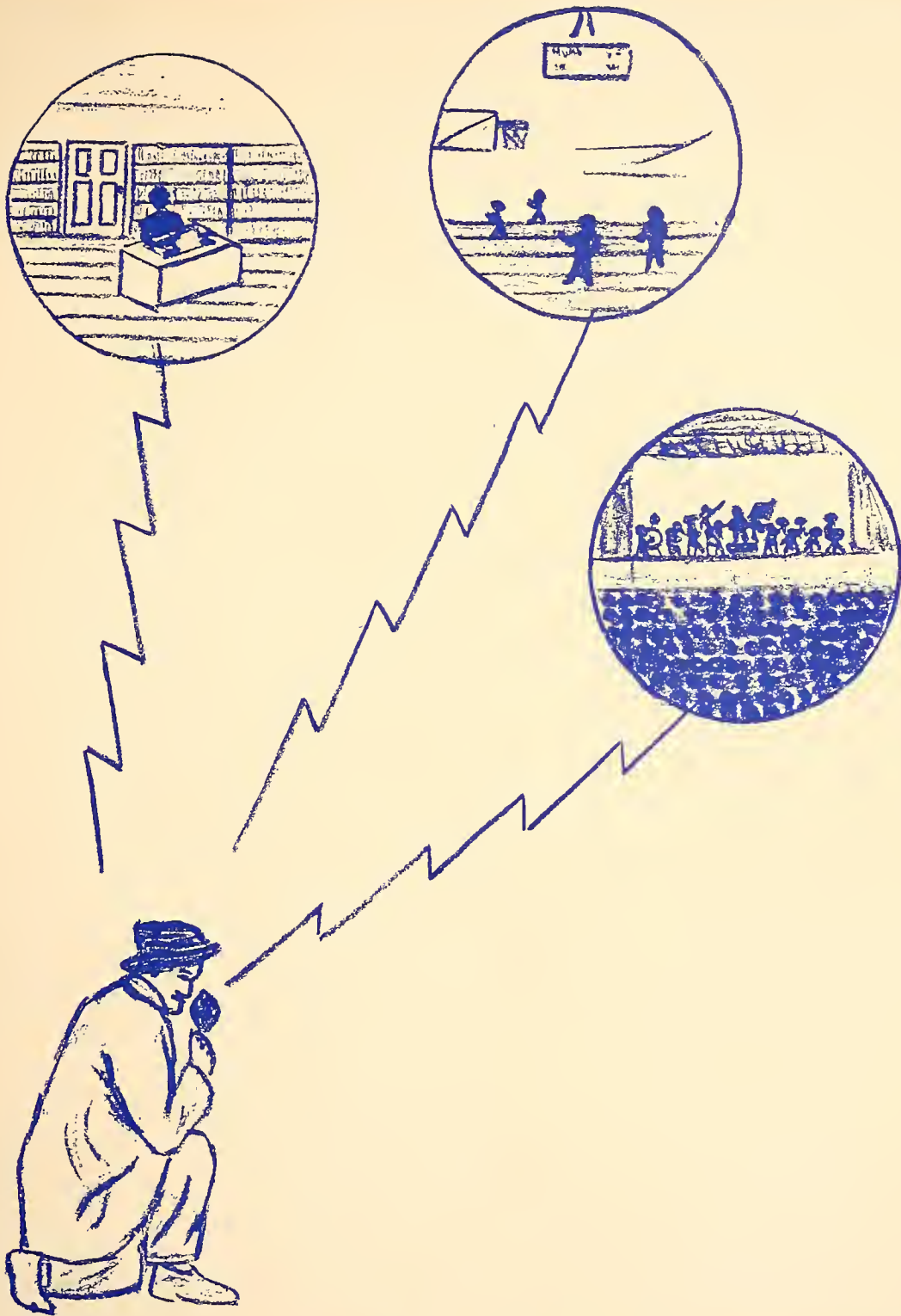
250 NEW BOOKS ADDED TO CAMPAIGN
 FOR GETTING ACQUAINTED WITH NEIGHBORS
 OF WESTERN HEMISPHERE

ENLIST NOW AVOID DRAFT

AMERICAN EDUCATION WEEK PROVES VALUABLE ALLY IN STRUGGLE
 FIFTH COLUMN BOOKS AID IN UPSETTING FIRMGHOLD OF UNACQUAINTANCE WITH NEIGHBORS
 CLAIMS MADE AS BOOKS TROOP INTO ENEMY COUNTRY PARCHMENTISTS CARRY BOOKS AS SECRET WEAPON
 FIERCE AIR BATTLE RAGING AS BOMBY NEW WEAPONS ARRIVE

American Education
 Book Week

Flower: VIOLET



ACTIVITIES

GLEE



Boys

Ball, Bodenheimer, Bowland, Cates, Durham, Fairy, Ferguson, Green, Harrell, Hearne, Hunter, Isley, Jackson, King, Laws, Leonard, Miles, Nall, Neighbors, Nicks, Pickard, Rich, Riley, Sharpe, Smith, Storey, Terrell, Vaughn, Waddell, Williamson.

Senior Girls

Bare, Barger, Baynes, Boswell, Vice President; Bryan, Cobb, Cooper, Corn, Coyner, Crenshaw, Drake, Fitch, Foster, Foushee, Fowler, Frissell, Furlough, Garrison, Holt, Huffines, Hunter, Isley, Kingsland, Kivett, Koury, Lamberth, C. Leath, S. Leath, Mangum, Secretary; McAteer, Mitchell, Moss, Murdock, Perry, Riley, Ross, St. John, Somers, President; Staley, Stanford, Vaughn, F. Walker, F. M. Walker, Webster, Whitaker, Williams, Wilson.



Junior Girls

E. Adams, L. Adams, Allison, Bain, Secretary; Baker, Bowland, Collins, Vice President; Evans, Fiddler, Graves, President; Hall, Haynes, Hickey, Hinshaw,

CLUBS



Jones, Joyner, Koury, Treasurer; Lyon, Mann, Mitchell, Moser, Neal, Patton, Peerson, Pennington, Scott, Sellars, Sharpe, Stafford, Somers, Sykes, Temple, Thompson, Wilson, Wood, Younts.

Sophomore Girls

Adamee, Andrews, Blackwell, Brooks, Butler, Check, Cobb, Coble, Compton, A. Compton, Cooper, Councilman, Curl, Dickens, Drake, Euliss, Hall, Harrecton, Jarrett, Jeffcoat, Kivett, Lindsay, McPherson, McLendon, Mitchell, M. Moser, H. Moser, Moore, Murray, Parson, Pegg, Rudd, Sellars, Sharpe, Shoaf, R. Smith, D. Smith, Stanfield, Wagoner, Walker, Whitesell, Wiles, Wilson.

Freshmen

Allison, Angelos, Allred, Bright, Barrett, Campbell, D. Cates, S. Cates, Catoe, Coble, Coley, Curl, DeBrular, Fogleman, Fulcher, Garner, Hartman, Hilliard, Hogan, Hodge, Hughes, Ingold, Ivey, Ketner, King, Land, Levison, Lineberry, Loy, McLain, K. Miles, L. Miles, Moore, G. Moser, M. Moser, Odom, Orr, Payne, Parsons, Perry, Phillips, Poole, Ray, Rector, Reitzel, Riley, Roache, Robertson, Satterfield, Sarryer, Sharpe, Shoe, Stafford, Stadler, St. John, Sykes, Tate, Tear, Way, B. Walker, C. Walker, Wiggins, Wilson, Whitt, Wright, Young.



Le Cercle Français

We, the members of the Junior Classical League, covenant to hand on the torch of classical civilization to the modern world, for we believe an acquaintance with the civilization of Rome and Greece will help us understand and appraise this world of today which is indebted to ancient civilizations for its government, laws, literature, sculpture, architecture, language and arts.



Junior Classical League

Dévisé: Vouloir, C'est pouvoir

Alford, Allison, Ball, Baker, Barnwell, Baynes, Black, Blalock, Boswell, Burke, Cates, Chandler, Coble, Collins, Cooper, Coyner, Crawford, Crenshaw, Davis, Fairey, Foster, Frissell, Garrison, Harrell, Hinshaw, Holmes, Holt, Hunter, Isley, Johnson, Kingsland, Vice President; Koury, Lamberth, Laws, Mangum, Secretary; Mitchell, Moran, Moser, Moss, Treasurer; Murray, Owens, Pritchett, Qualls, Rhodes, Sharpe, Smith, D. Smith, Somers, Stadler, Stanford, Teague, V. Vaughn, L. Vaughn, F. Walker, F. M. Walker, Ward, Way, Wheeley, Williams, President; R. Wilson, W. Wilson, Mme. Hunter, *Faculty Adviser*.

MEMBERS

Apple, Brooks, Campbell, Cheek, Cooper, Cox, Curl, Falconer, Fidler, Garner, Ingle, President; Isley, King, Kivett, Secretary; Lamm, Lindsey, Mangum, McLendon, Miles, Mitchell, Moore, Moser, Neighbors, Pegg, Riley, Treasurer; Royal, Vice President; Sellars, Sharpe, Sherard, Tapp, Tividy, Vaughn, Wall, Whitaker, Wiles, Wilson, Mrs. W. Albert Graham, *Faculty Adviser*.



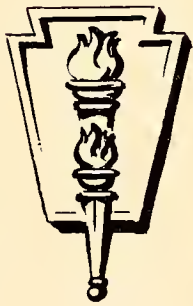
Dramatic Club

Alford, L. Allen, O. Allen, Bain, Baker, Barrett, Barham, Baxter, Baynes, Blalock, Boswell, Bryan, Secretary; Burke, Campbell, Chandler, Check, Cobb, Coble, Cook, J. Cooper, R. Cooper, C. Coyner, G. Coyner, Crenshaw, Dill, Dixon, Fairy, Fiddler, Foster, Foushee, Freedman, Frissell, Treasurer; Garrison, Glenn, Graves, Hall, Harden, Harrell, Harris, B. Hunter, W. Hunter, Isley, Joyner, Kingsland, J. Koury, P. Koury, S. Koury, Leath, McAllan, McLennan, Mize, Morton, Moss, Murray, Nall, Overman, Pearson, Qualls, Quesenbury, Rice, Riddle, Riley, Rouse, Scott, Self, Sellars, Sharpe, Smith, President; K. Somers, M. Somers, Vice President; Stadler, Stubbs, Tate, Teague, Thomas, Vaughn, Wagner, J. White, M. White, Wicker, Williams, Wilson, Wood, Mrs. H. T. Hambright, Director.

Library

Harrell, President; Wilson, Vice President; Flowers, Secretary; Sharpe, Treasurer; Adams, Barham, Easley, Holmes, McIntyre, Mann, Moser, Murray, Neighbors, Rogers, Sharpe, Temple, Williamson, White, Miss Emily Loftin, Sponsor.





Hi-Y

Ball, Treasurer; Coble, Fowler, Graham, Secretary; Hester, Huffman, Ivey, Johnson, Loy, Love, Minor, Pritchett, Vice President; Rhodes, Stearns, President; Stephens, Thompson, West, White, Sergeant-at-Arms; Williams, Wilson, Duncan C. Hunter, *Faculty Adviser*.

National Honor Society

Alford, Baker, Barger, Baxter, Baynes, Campbell, Coble, Cooper, Fonville, President; Freedman, Vice President; Frissell, Garrison, Hagwood, Harrell, Holmes, Holt, Huffman, Kingsland, Koury, Mangum, Treasurer; Moss, Murray, Teague, Vaughn, Secretary; Way, West, Mrs. W. Albert Graham, *Sponsor*.

Not photographed: G. Coble, Creech, Ivey, F. Love, Pritchett, Stadler.



Debating

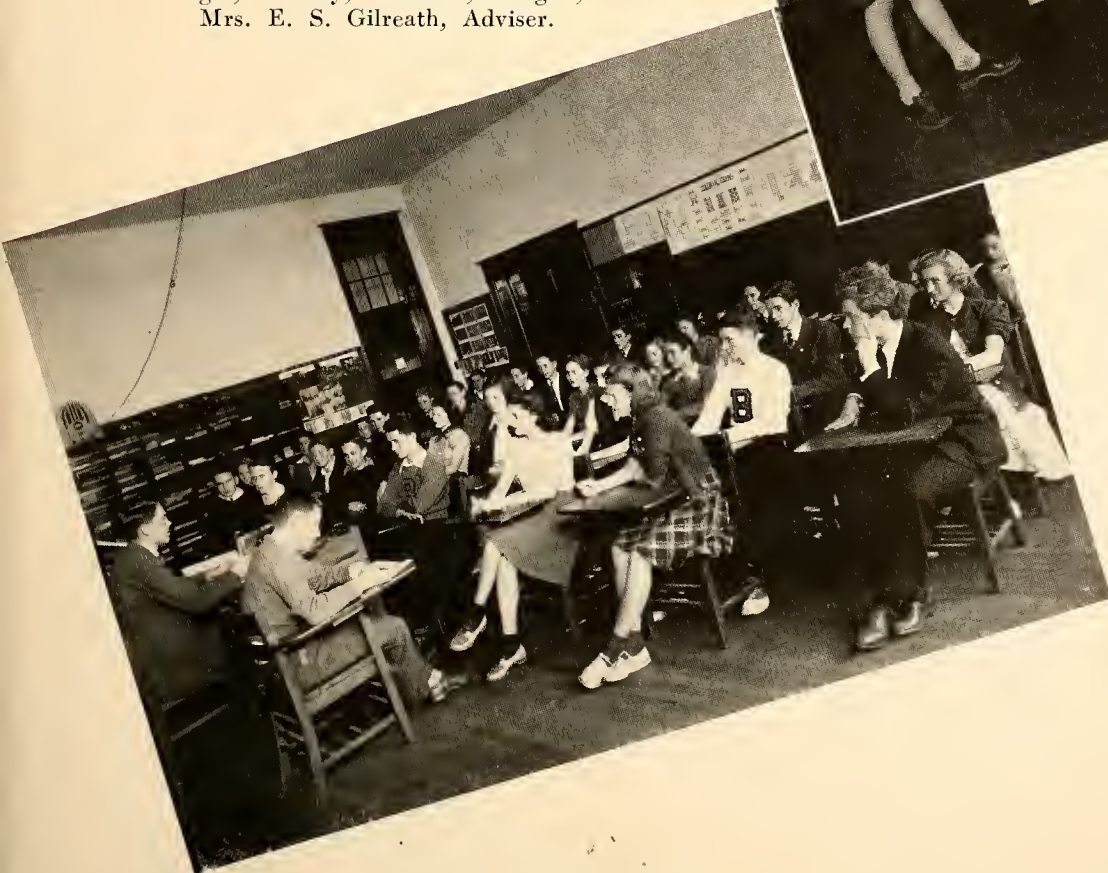
AFFIRMATIVE: Betty Baker, Jane Lee Murray. *Alternate*, Frank Love.

NEGATIVE: Grey Adams, Jean Holmes. *Alternate*, Vivian Seaman.

Mrs. D. D. Watson, Miss Virginia House, *Coaches*.

Student Council

Adams, Anderson, Brady, Coble, Coleman, Cox, Dameron, Secretary; Davis, Edwards, Fonville, Freedman, Garrison, N. Garrison, Glenn, Graham, President; Graves, Harrell, Heath, Hogan, Holmes, Holden, Howell, Huffman, Vice President; Ivey, Koury, Lindsey, Treasurer; Loy, Mitchell, Murray, Pickard, Pritchett, Satterfield, Stearns, Swangin, Twiddy, Williams, Vaughn, Mrs. E. S. Gilreath, Adviser.





Junior Red Cross

Braxton, Clark, Compton, Cook, Coyner, Cross, Drake, Secretary; Foushee, Vice President; Hall, Jackson, Jones, Keziah, A. Kivett, M. Kivett, Mann, McIver, Treasurer; Murray, Perry, Rowe, Seaman, Stearns, President; Sykes, Temple, Walker, Williamson, Miss Webster, *Sponsor*.

Girl Scouts

Barger, P. Vaughn, Copeland, Cheek, Perry, Jeffcoat, Fonville, Fidler, Storey, Albright, Trexler, Loy, Williams, Riley, Baynes, and Miss Bliss, seated.



Home Economics



FRESHMAN
PROJECT.



FIRST HOMEMAK-
ING CLASS OF
BOYS.



MANUAL ARTS



BOOKKEEPING CLASS



Classes

Those friendly young persons, with the cheery smiles, standing behind the counters are Distributive Education students. They are going to school in the morning, learning the fundamentals of their jobs, and in the afternoons they are actually learning to do the job in the local stores. The Distributive Education students are striving to learn more about their merchandise so they can serve you, the consumer, more intelligently, and thus become more useful citizens.

The Diversified Occupations Program made its debut into Burlington High School and the Burlington Community in August 1939. This Program is under the supervision of the State Department of Vocational Education. Students enrolled in this Program are under the local Coördinator and are part-time students in school and part-time employees of local business establishments, receiving credit for their school subjects as well as for training on the job in trades and industry.



DISTRIBUTIVE
EDUCATION



DIVERSIFIED
OCCUPATIONS



JUNIOR BAND



HILLCREST BAND



MR. E. F. RHODES, *Director*
MERRIT FOUSHEE, *Drum Major*



SCENE AT DUKE STADIUM



The Burlington High School Band

The High School Band attended all home football games this year, were guests at the Duke-Georgia Tech game and the Carolina-Appalachian game at Carolina. The group marched in the parade at the Legion Convention in High Point and received an award for marching. They lent a festive air to the Christmas parade in Burlington. In March a public concert was presented in the school auditorium. Several of the bandmembers were entered in the state contest in Greensboro.



HILLCREST SNAPSHOTS



How ya doing . . . Frances? . . . Share and share alike . . . Where's my picture . . . Here I am! . . . Just friends . . . There's that man again . . . Sorta chilly . . . What's up? . . . Let's go . . . This is really work . . . We stick together . . . Ain't he cute? . . . Alma Mater . . . What were you doing at Hillcrest? . . . Happy? . . . What's worrying you? . . . What, still for once . . . What a gang! . . . Same old hen party! . . . These talking gals! . . . Aw foocy! . . . Our own Professor Einstein.

HILLCREST OFFICERS



MELVIN MINOR, Sophomore.....*Secretary-Treasurer*
 FAYE YOUNGER, Sophomore.....*President*
 JUNE SOUTHERLAND, DOE-WAH-JACK
 BILL EVANS, *Barker*
 JIMMY COWAN, DOE-WAH-JACK
 EVELYN SWEET, *Barker*
 FRANK HUFFMAN, *Barker*
 BETTY MAE BERNSTEIN, *Barker*
 MARY HELEN SNEED, DOE-WAH-JACK
 JULIA FRANCES ROSS, Freshman.....*Secretary-Treasurer*
 NEIL ROBERTSON, Freshman.....*President*
 MISS FOSTER, Publications.....*Adviser*



HILLCREST FRESHMEN



Adams, Aiken, Andrews, Ashley, Austin, Bain, Baldwin, Barnwell, A. Bell, T. Bell, Bingenheimer, Bridges, C. Brown, W. Brown, Burch, Burchell, Cates, Cheek, E. Coble, J. Coble, Coleman, Darlington, Dean, Diffie, Doster, Eaton, Elgin, Ellis, Ferguson, Fitch, Freshwater, Glosson, Goodman, Greeson, Gregg, Griffin, Gross, Hall, Harris, Hinson, Hinton, Hodgin, Holt, L. Huffines, R. Huffines, Allen Jones, Allene Jones, C. Jones, K. Jones, Kennedy, Kepley, Kivett, Landrum, Lane, Lakey, Lasley, J. Little, R. Little, Livingston, Long, B. Love, G. Love, Lucas, Madden, Mansfield, Metcalf, B. Mitchell, James Mitchell, J. Mitchell, John Mitchell, R. Mitchell, B. McIntyre, R. McIntyre, Moody, Mooneyham, Moore, Moser, Mumford, Murr, H. Murray, N. Murray, M. Murray, Myers, Naylor, Newlin, Newsome, Nicholson, Parker, Pascal, Pendergraph, Perry, Pickett, Pyles, G. Rhodes, J. Rhodes, Robertson, *President*; Ross, *Secretary*; Rosenbloom, Rudder, Rush, Scoulas, Shaw, Simmons, B. Small, J. Small, B. Smith, W. Smith, Southerland, Steele, Stevens.



HILLCREST SOPHOMORES



Allen, Andrews, D. Baggett, J. Baggett, Bailess, Baldwin, Bernstein, Bowes, Bowman, Brintle, Bryan, Capes, Coble, Cline, Collins, Cooper, Cornell, Cowan, Crenshaw, Diab, Ellington, Evans, B. Fogleman, M. Fogleman, Frissell, Gant, Hensley, Huffman, Irving, H. Isley, L. Isley, Jackson, James, D. Jones, M. Jones, King, Kingsland, Kivett, Laster, Lea, G. Love, E. Love, Merritt, Minor, *Secretary*; Mitchell, Murray, Oakly, Pippin, Presnell, Pyle, Rauhut, Rhodes, Rudd, Scott, Scoulas, Shepherd, Shockley, Shue, Simpson, Simmons, Small, Smith, Sneed, Somers, Southard, Staley, Stevens, Surratt, Tickell, Veach, J. Walker, H. Walker, Ward, Warren, H. Waynick, M. Waynick, Weston, Whitesell, Whitley, Williams, Wolfe, Wright, York, Younger, *President*.



Hillcrest Student Council



Miss Mary Taylor, *Sponsor*; Baggett, Baldwin, Barnwell, Bernstein, Brown, Bryan, *President*; Cheek, Cowan, Dillinger, Fidler, Freshwater, Gregg, *Secretary*; Gross, Greeson, Green, Holt, Hinton, Huffines, Jones, Jordon, Madden, Minor, Moore, Murray, Nicholson, Newlin, *Treasurer*; Robertson, Somers, Stephens, Small, Waynick, York, Younger, *Vice President*.



Hillcrest Patrol

Somers, *Captain*; Greeson, *First Lieutenant*; Cowan, *Second Lieutenant*; Bryan, Cheatham, Cline, Eaton, Ellington, Evans, Huffman, Kingsland, Kivett, Lightbourne, Rhodes, Shaw, Snead.

Hillcrest Glee Clubs

Mrs. Albert McDonald, *Director*; Miss Mary Lee Foster, *Accompanist*; Beckom, Blanchard, Brannock, Bryan, Carter, Check, Crenshaw, Dillinger, Fogleman, Fonville, Gant, Green, Greeson, Griffin, Huffines, Johnson, Maynard, Mitchell, Moore, Petrea, Rhodes, B. Small, J. Small, D. Smith, Carl Smith, Charles Smith, Somers, *President*; Stephens, Sutton, B. Sutton, E. Sutton, H. Sutton, Walton, *Secretary*.

Mrs. Albert McDonald, *Director*; Miss Mary Lee Foster, *Accompanist*; Allen, Andrews, E. Ashley, M. Ashley, Austin, Baggett, E. Bell, T. Bell, Black, Brintle, Burchell, Burke, Carr, E. Coble, *President*; M. Coble, Coleman, Dean, Fogleman, Hamilton, Harris, Hensley, Hodgins, Huffines, James, A. Jones, B. Jones, D. Jones, M. Jones, Jordan, Keply, Helen Kingsland, Hilda Kingsland, Lakey, Landrum, Lea, Love, May, McIntyre, Moore, Murray, Myers, Nicholson, Oakly, Presnell, Pyles, Quinn, Rauhut, Rudd, Rudder, Scoulas, Scott, Shepherd, Simmons, Simpson, Southard, Stack Surrat, Stuckey, Taylor, Terrell, Terry, C. Tickle, M. Tickle, Varner, Wagoner, Way, Westbrooks, Whitesell, M. Williams, L. Williams, *Secretary*; Wright, Yarbrough.

Boys



Girls





PLAYMAKERS

Mrs. W. W. Maynard, *Sponsor*; Allen, E. Ashley, M. Ashley, Bell, Black, Bryan, Cobb, E. Coble, *Vice President*; M. Coble, *President*; Coleman, Fogleman, Green, Hamilton, Harris, Hodgins, Huffman, Johnson, Kingsland, Maynard, Moore, Myers, Pearce, Quinn, Scott, Stack, *Secretary-Treasurer*; Taylor, Terrell, Way, Williams, Yarbrough.



HILLCREST
LIBRARY CLUB



SCENE FROM
PLAYMAKERS



MONOGRAM CLUB



HOMEMAKERS

MONOGRAM CLUB

Adams, Aiken, Blackwell, Bowman, Collins, Cook, Diffie, E. Hinson, G. Hinson, *Secretary*; Huffines, Isley, Lea, Love, Mansfield, Moore, Newsome, *President*; Parrish, Rauhut, Rudd, Surratt, Taylor, Thomas, *Vice President*; Tillman, D. Turner, M. Turner, Wagner, Waynick, Westbrooks, Williams, *Treasurer*.

HILLCREST HOMEMAKERS

Ashley, Barnwell, Bell, Bernstein, Bryan, Cheek, Cline, *Secretary-Treasurer*; E. Coble, J. Coble, M. Coble, Cooper, Eaton, Ellington, Evans, *Vice President*; Fergerson, Gregg, Hinson, Hinton, Holt, Huffman, King, Kingsland, Lasley, B. Love, G. Love, P. Love, Minor, Murray, Newlin, Rhodes, Robertson, Ross, M. Southard, J. Southard, Stephens, Sutton, Sweet, Walker, Weston, Williams, Younger, *President*.



ATHLETICS

Cheer Leaders

DONALD MURRAY, *Head*
 PAL FAULCONER
 JANE MURRAY
 AETNA BRYAN
 BETTY RIDDLE

COACHING STAFF

F. R. GARRETT
 H. J. BOLIN
 JOAN BLISS
 HOYT T. HAMBRIGHT

Athletic Director

F. W. FERGUSON

Sports in Burlington High were most enthusiastically supported by the students this year. Although not as successful as previous seasons the varsity team showed rare spirit in undertaking its tasks.

We welcomed to our high school the addition to our coaching staff. They have shown us their bolstering spirit in aiding us. We take off our hats to Mr. Bolin and Mr. Ferguson, our Varsity Football



coaches and to Miss Joan Bliss, our girls' basketball coach.

In a program which outlines a plan for future stars, a Junior Football squad was originated from the lower class athletes which came through its season with flying colors, winning the majority of its games.

AT BURLINGTON HIGH

Our basketball team had an unusually good season winning top place in our fourth annual basketball tournament, with the girls having a fair season.

Next year will be our big year in sports. We are dropping our old title and assuming the class A conference title.

Burlington vs. Reidsville





Varsity

Front row: Mr. Ferguson, King, R. Cates, Lineberry, Phillips, Hagood, M. Ward, Mr. Bolin.

Second row: Craven, B. Stearns, Williams, Simpson, Walker, Moore, Murray, Minor.

Third row: R. Cates, C. Stearns, Sykes, Thompson, Bell, Blanchard.

Fourth row: Stratford, Jackson, Todd, Bailiss, W. Ware.

Fifth row: Hayes, Terrell.

Junior Football

Mr. Hoyt T. Hambricht, *Coach*. *First row:* Sutton, Isley, Terrell, Coleman, Toney, Taylor, Pyles, Jackson, Mitchell. *Second row:* Cheek, Fitch, Lindsay, Mann, Frissell, Cooper, Jones, Johnson, Councilman. *Third row:* Love, Thomas, Greeson, W. McIver, Lee, M. McIver, Cox, Barbee, B. McAteer. *Fourth row:* T. McAteer, Irving, Grady, Cross, Thomasson, Glenn, Hogan, West, *Manager*. *Not photographed:* Braddy, Simmons, Storey, *Assistant Manager*.

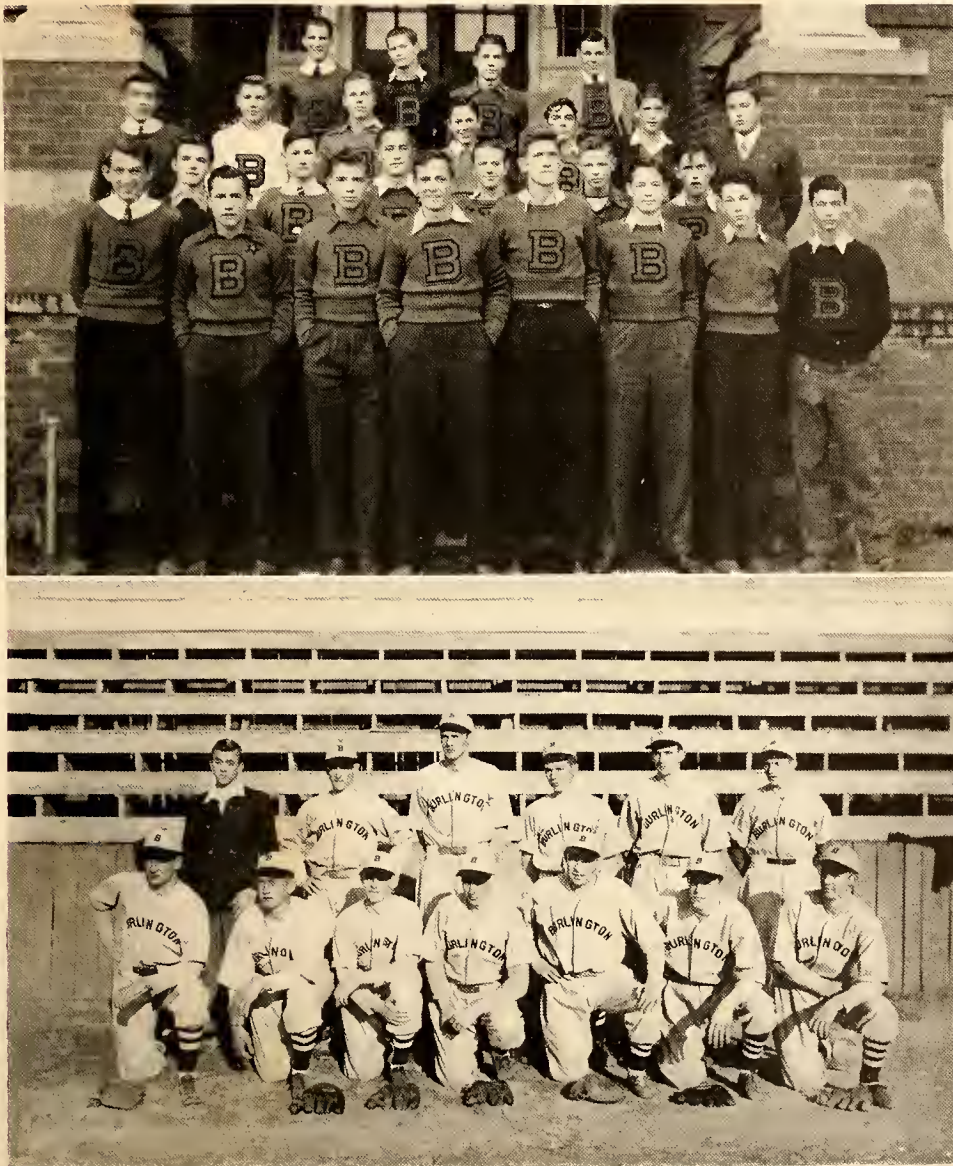


Monogram Club

First row: Storey, Ward, Phillips, Hagood, Wiggins, Cross, Johnson, West.
Second row: B. Stearns, King, Gattis, Walker, Thompson, Terrell. *Third row:* Graves, Todd, Bayliss, Murray, Moore, Williams, Mr. Bolin, *Adviser.* *Last row:* Lineberry, Sykes, Minor, R. Cates.

Baseball

Left to right: Harold Graves, *Manager;* W. C. Latta, Walter, Euliss, H. C. Simmons, Ebird Tickle, Claude Blackwell. *Front row:* George Lineberry, Charles Jones, J. O. Murphy, Willis Smith, Charles Thomasson, Joe Frazier, George Cross.





Girls Basketball

First row: Mr. Ferguson, Miss Bliss, Touloupas, Teague, Captain; P. Vaughn. Second row: Bare, St. Clair, Ross. Third row: Garrison, Hurley, Madden. Fourth row: McLennan, Greeson. Fifth row: H. Vaughn, Smith, Riley, Managers.

Boys Basketball



Front row, left to right: C. Johnson, R. Cates, Gattis, Johnson. Secoud row: Williams, Hagood, Stratford, Neese. Third row: Storey, Wiggins, Jackson, R. Cates. Back row: Wagoner, Manager; Jobe, Assistant Manager.

Hillcrest Girls Soccer

Front row: Sara Baldwin, Fern Warren, Joyce Laster.

Second row: Doris Glosson, Hilda Pyles, Rena Whitesell, Mrs. Long, Coach.

Third row: Gertrude Terry, Christine Watson, Louise Veach.

Fourth row: Mary Allen, Hazel Shockley, Beulah Small.



Hillcrest Boys Soccer



F. R. Garret, *Coach*; Bailess, Bowes, Capes, J. Collins, N. Collins, Evans, Fowler, *Captain*; Gattis, Heath, Hodgins, Isley, Jackson, Jones, Lea, J. Little, R. Little, Madden, Murray, Pickett, Rhodes, Shaw, Simmons, Somers, Small, Smith, Sneed, *Co-Captain*; Sutton, Ward, Warren, Weston, White, Whitesell.



Hillcrest Football

Mrs. D. C. Hunter, *Sponsor*; Brooks, Burch, Cates, Darlington, Dillinger, Fogleman, Fonville, Goodman, Hall, Johnson, Kennedy, King, Livingston, Love, B. McIntyre, R. McIntyre, F. Mitchell, J. Mitchell, J. Mitchell, Montjoy, Mooneyham, Paschall, Pendergraph, Petrea, Rush, Small, Scoulas, Shue, Weayer, Whitesell.



Hillcrest Softball

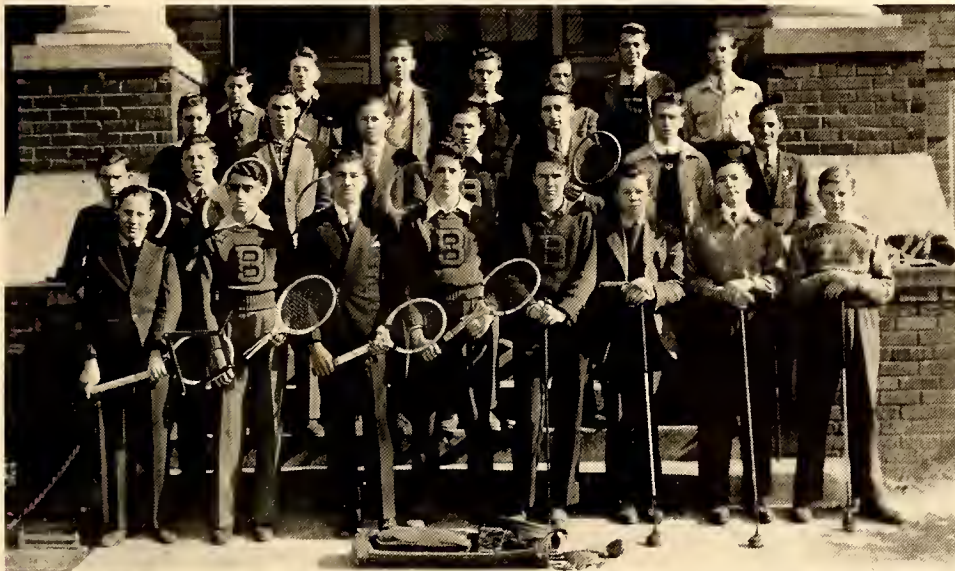
Mrs. Josephine Parker, *Sponsor*; Bell, Bingenheimer, Blanchard, Brarwock, Brown, Campbell, Clapp, Cornell, Doster, Gibson, Greeson, Griffin, Johnson, A. Jones, D. Jones, C. Jones, Long, Lucas, Metcalf, Merritt, Minor, B. Mitchell, J. Mitchell, Moore, Moody, Moser, Perry, Pippin, Robertson, Smith, Walton, Walker, J. Whitley, P. Whitley, White.

Tennis

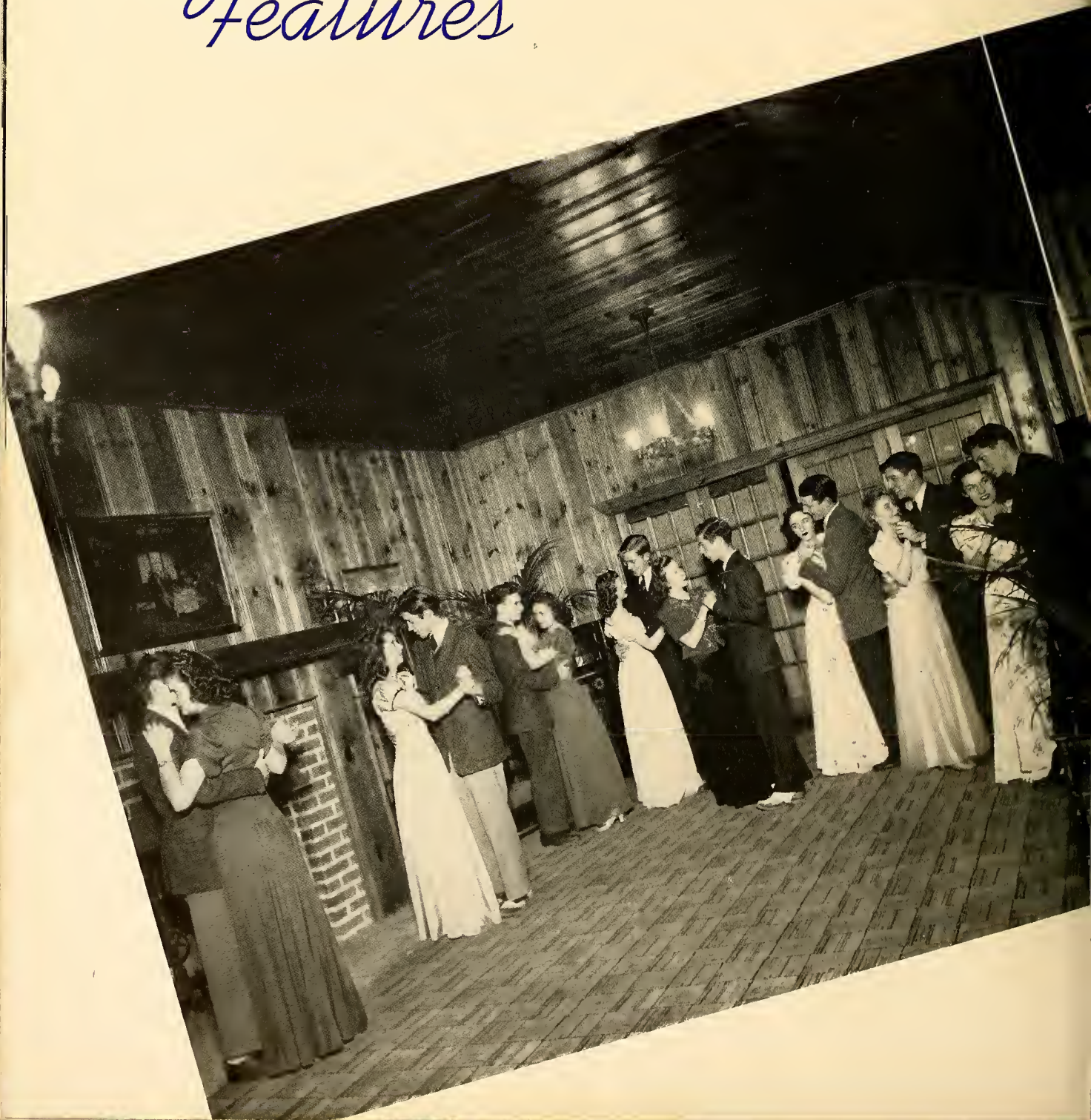
Front row, left to right: Green, Gattis, Cooper, Williams, Gross, Walton, Garrison, D. Rhodes. *Second row:* Terrell, Dameron, Durham, Stratford, R. Moore, Frissell, McAdams, Adams, Bell. *Back row:* Kivett, Brown, Ellington, Caulder, D. Murray, Ed Storey, H. Rhodes.

Track

F. R. Garrett, *Coach*; Bailess, Bingenheimer, Bowes, Buff, Check, Collins, Darlington, Dillinger, Eaton, Ellington, Evans, Fitch, Foushee, Hodgin, Isley, Jackson, Jones, Lashley, Lee, Little, Livingston, Long, Love, Lucas, Madden, Metcalf, Mitchell, Moser, Naylor, Robertson, Scott, Scowles, Shaw, Small, B. Smith, D. Smith, J. Smith, Stephens, B. Sutton, H. Sutton, Ward, Warren, Weston, Whitsell.



Features





WHO'S WHO AT



BURLINGTON HIGH



Best Looking

MARY JO FRISSELL
MARION SWANGIN

Most Talkative

DOROTHY SMITH
E. C. QUALLS

Most Athletic

FRANCES TEAGUE
LACY HAGOOD

Most Popular

MARY JO FRISSELL
CARROLD STEARNS

Most Intellectual

JEAN HOLMES
JAMES CAMPBELL

Most Original

DOROTHY SMITH
ED STOREY

Happiest

MARCIA BARNWELL
BOBBY IVEY

Giftorians

JANE FOUSHEE
JOHNNIE FOWLER

Best All Round

JANE MURRAY
ALVA MINOR

Most Musical

CATHERINE FAULCONER
ERNEST OWENS



WHO'S WHO AT



BURLINGTON HIGH



Quietest

MARY LOWERY
DAVID WHITESELL

Historian

JEAN HOLMES

Last Will and Testament

MURIEL FREEDMAN

Class Prophecy

ED STOREY

Best Sport

FRANCES TEAGUE
JOHN FRED JOHNSON

Most Personality

MARY FRANCES MOSS
ALVA MINOR

Most School Spirit

NINA GARRISON
ED STOREY

Cutest

PAULINE KOURY
BOBBY IVEY

Best Dressed

JANE MURRAY
RALPH COOPER

Most Efficient

JEAN HOLMES
JACK PRITCHETT

Biggest Flirt

ANN HARDEN
CARROLD STEARNS

Mascots

BARBARA JONES
JIMMY HAMBRIGHT



Doe-Wah-Jack Queen



Josephine Koury



Court

Jane Foushee
Pauline Koury

'T WAS A GREAT CLASS



VALEDICTORIANS

JEAN HOLMES
JAMES CAMPBELL

SALUTATORIAN

RACHEL COBLE

IN A GREAT YEAR



Where but in America?

How Your School
Theme of P.-T.A.
Hillcrest Meeting

**FONVILLE CHOSEN
NATIONAL HONOR
SOCIETY LEADER**

Other Officers Elected
Freedman, Vaughn and
Mangum

**14 BOYS RECEIVE
SOCCER AWARDS**

**150 SENIORS GO
TO CHAPEL HILL
FOR SENIOR DAY**



**'The Haunted Gate' Is
Presented at Hillcrest**

**Melver Stands Out
For Local Jayvees**

Rev. Tom A. Sykes

**rs. J. A. Hunter To Sponsor
Doe-Wah-Jack This Year**

**American Education
Week To Be Held
November 10**

for Better Grades

**Hillcrest Student
Council Members
Have Been Chosen**

**DICK COOPER IS
ELECTED HEAD
OF PLAYMAKERS**

**CONSTITUTION
TO BE CHANGED**

**Soccer Eleven
Defeats Allen-Jay**

**Monogram Club
To Have Banquet
On February 24**



In a casual pose are members of the student council who
were actively engaged in revising the constitution. Reading from left
to right: Wade Huffman, Nina Garrison, Bud Phillips, Margaret A.
Robert Graham, and Granival Satterfield.

**New Frontiers of Youth'
Is Theme of Meeting**

**Wade Huffman Will Preside Over
Dramatic Club This Year**

**Season's First Doubleheader
Is Divided With Hillsboro**

**Senior Class Is Working
For New High School**

**To Hold Basketball
Tournament Here**



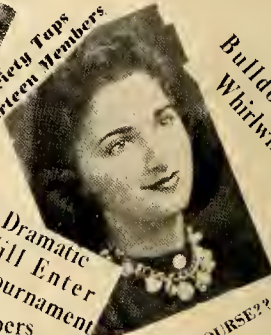
Senior Officers

**Council Organizes
Patrol System**

**Bolin Addresses
Hi-Y Meeting**

**Honor Society Taps
Thirteen Members**

**Bulldogs Smash
Whirlwind Defense**



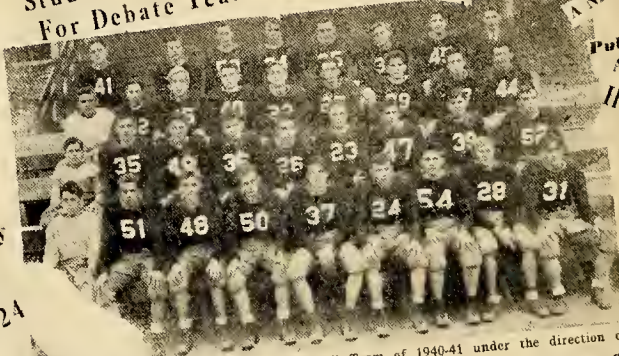
A NEW COURSE??

**Hillcrest Dramatic
Club Will Enter
State Tournament**

**Hi-Y Takes Members
In Chapel Today**

**Students Tryout
For Debate Team**

**Publications Staff
Attends SIPA at W.-I**



Pictured above are the members of the Junior Football Team of 1940-41 under the direction of Coach
Hambricht and John Robertson.

**Homecoming Day
Will Be Observed**

LOOK AHEAD

**B.H.S. Library Will Receive
Honor In National Journal**

**Hillcrest To Give
Operetta Soon**

**Senior Girl Scouts
Make Plans for Year**

**Huffman and Pritchett
Manage Student Store**

**SECOND HOME
GAME PLAYED**

Hits of Hi-Life



Them again? . . . There ain't no justice . . . Two hits and three misses . . . Batter up! . . . Gentlemen invaders . . . What's the matter, brothers . . . J. L. is swamped! . . . Hold that pose . . . The fairest of all . . . He's up, he's down . . . Life is wonderful, isn't it? . . . Conservative young things, aren't they? . . . The long and short of it . . . It must be the Hi-Y . . . Ain't they cute, Walker?



ELON COLLEGE Appreciates **BURLINGTON** and the
Large Number of Day Students that Attend
ELON Each Year.

IF YOU ARE INTERESTED IN ATTENDING ELON COLLEGE PLEASE
CALL OR WRITE THE OFFICE OF THE FIELD SECRETARY. WE
SHALL BE GLAD TO DO OUR BEST FOR YOU.

ELON COLLEGE

An Alamance County Institution

ELON COLLEGE, NORTH CAROLINA

David B.: Wendell Wilson has a good excuse, watching his kid sister.
Jack P. (Knowing that Wendell hasn't a sister): Maybe he was watching someone else's kid sister.

**IMPERIAL
BARBER SHOP**

**Five Barbers to
Serve You**

Opposite Alamance Theatre

PHONE 1580

WOOD & WILLIAMSON, Proprietors

**Direct Sales from Mill to Customer
of Plain and Novelty Dress Fabrics**

*Fine Combed Yarn Gingham
Fast Color Prints and Broadcloth
Ladies' Full Fashioned Silk Hose
Draperies - Upholstery
Unfinished Crepe in Plain and
Novelty Weaves
Men's Shirts - Men's Hose*

E. M. Holt Textile Co.
Plaid Street : Burlington, N. C.

Compliments of

BAMBY

*"It's Policed for
Freshness"*

Compliments of

**STRATFORD
HOSIERY
MILLS**

**John B. Stratford
(Brand) Hosiery**

MODERN SHOE SHOP
"at the Big Gun"
WE CALL FOR AND DELIVER • • PHONE 1399

Burlington, N. C.

Compliments of

Ideal Dry Cleaners

116 Logan Street

PHONE 934

Mr. Gilreath: Class, what is the greatest thing chemistry has given to the world?
Ralph C.: "Peroxide Blonds."

Compliments of

L. W. PRITCHETT, DISTRIBUTOR

for

GULF OIL PRODUCTS

Phone 892 : Burlington, N. C.

CONGRATULATIONS

With your graduation you enter upon new responsibilities . . . whether you go on for further training or enter the business world. The future of the State and Nation rests with you.

May ambition give you the urge to succeed in your every worthy effort, and may patience and fortitude cheer and protect you as you carve out that fortune which to you means most.

B. A. SELLARS & SONS, INC.

"Over 68 Years Dependable Service"

BURLINGTON, NORTH CAROLINA

Mr. Gunn (To Mildred B. standing at window): Sit down.

Mildred B.: Why?

Mr. Gunn: You would feel funny if someone would come by and feed you peanuts.

Call 891 For Your

BIRTHDAY CAKES
WEDDING CAKES
PARTY CAKES
ROLLS : BREAD
CAKES : PIES

**PHIL'S
PASTRY SHOP**

600 South Church Street

**BRYAN'S
GROCERY**

*"The Oldest Grocery Store
Up Town"*

Wonder Why?

SHADY GROVE SODA SHOP

At the Big Gun

FOSTER'S CAFE

Cameron Street

We Make Our Own Ice Cream

**MONTGOMERY WARD
ORDER OFFICE**

SHOP THE MODERN WAY

Use Our Phone Order Service
Phone 2474

Burlington, N. C.

Compliments of

**FAUCETTE
COAL SALES CO.**

Nell C.: Why does a girl wear high heel shoes?
Bobby I.: I don't know.
Nell C.: Because she has been kissed on the forehead so much.

<p>Compliments of</p> <p>BAKER-CAMMACK HOSIERY MILLS, INC.</p>	<p>BEST WISHES FOR SUCCESS TO THE CLASS OF 1941</p> <hr/> <p>CAROLINA PAPER BOX COMPANY</p> <p>Webb Avenue Phone 752</p>
<p>Compliments of</p> <p>E. N. PEARCE</p>	<p>Compliments of</p> <p>Herndon-Taylor Insurance</p>
<p>FLORENCE E. WAGNER MILLINERY</p> <p>Spring Street</p> <p>Next Door to B. A. Sellars</p> <p>PHONE 1685</p>	<p>Compliments of</p> <p>Doyles Jewelry</p> <hr/> <p>Main Street</p> <p>Burlington, N. C.</p>

Louise K.: How long is it from your heel to your toe?
Walker P.: I don't know.
Louise K.: A foot.



ICE CREAM IN FANCY FORMS

for all occasions—call for it
at your favorite dealer.

SOUTHERN DAIRIES

PHONE 46

Compliments of

Tillman's

*Outstanding
Credit Jewelers*

Burlington, N. C.

**R. E. QUINN
AND COMPANY**

*Quality Furniture
For Less Money*

West Davis Street

F. J. Strader Co.

*Wholesale Fruits
and Produce*

PHONES 825 - 826

North Main Street

Compliments of

**Alamance
Bowling Center**

The "Silver Slipper"

Specializing in

**PIT COOKED
BARBECUE**

WE CATER TO BANQUETS
AND SUPPERS

D. W. Thompson, Manager

PHONE 1682

Mr. Gunn (In bookkeeping class): This work sheet is for one year.
Cat. Leath: It ought to b; it takes a year to work it.

**BURLINGTON AUTO
COMPANY**



**SALES AND SERVICE
CARS AND TRUCKS**

*Alamance County's Oldest
Automobile Dealer*

***The World Moves—
Why Not You?***

Phone 717

**YELLOW STAR
TRANSFER**

(Incorporated)

ALAMANCE LUMBER COMPANY, Inc.

J. M. ATWATER, *President*

H. A. ATWATER, *Vice President*

D. W. MALONE, *Secretary and Treasurer*

Service That Satisfies

PHONE 6

BURLINGTON, NORTH CAROLINA

Horne Dry Cleaners

720 East Davis Street

Suits Made to Measure

PHONE 119

*We have it and if we haven't got it
we will get it*

If we can't get it

It's not in town.

Forrester's Grocery

Mr. Anglin (To Mrs. Hunter): Is Mr. Biggerstaff going to be shot at his desk?
Jean H.: Oh! It is as good a place as any.



Reddy Kilowatt

**YOUR ELECTRICAL
SERVANT**

His Wages Are Low

**DUKE
POWER
COMPANY**



Miss Frazier (To her fifth period): Now class, can't you look out of the window and see the fairies in the trees. I can.
Maurice Laws: If you can, you can see better than I can.

**ROCK CREEK
DAIRY**

Grade A Product

PHONE 411

Compliments of

Mary's Hat Shop

*Congratulations to the
Class of 1941*

Compliments of

**LOWE
FUNERAL HOME**

**Your \$\$\$ Will Have More
Cents When You Shop**

at

KING'S DRESS SHOP

Opposite Alamance Hotel

Mebane Shoe Co.

Main Street
Burlington, N. C.

The Place to Buy Good Shoes for
the Whole Family

Gordon Hosiery

"Star Brand Shoes Are Better"

WEAR LONGER—COST LESS

Compliments of

**CAROLINA USED
CAR EXCHANGE**

*"Where Better Used Cars
Can Be Found"*

PERSONNEL

Max Morris Charles Dickens
C. A. Stokes

Marion S. (To Robert G.): Your car is at the door.
Robert G.: Yes, I can hear it knock.

Compliments of

**BUS TERMINAL
GRILL**

"The Home of Fine Food"

CITY DRUG

Rexall Drug Store

Corner of Front and Main Streets

PHONE 312 - 314

Prompt Delivery

NEESE-SHOFFNER FURNITURE CO.

FURNITURE AND HOUSE FURNISHINGS

We carry a complete line at all times
in the BEST of

LUGGAGE, TRUNKS, GLADSTONES, WEEK-END BAGS
and FITTED CASES. PHONE 340.

**WATSON ELECTRICAL
SUPPLY COMPANY**

208 West Andrew Street
PHONE 2633

Compliments of

Aunt Betty's Cafe

Rebecca H.: We sure have a fine landlady. She saved me the tenderest part of chicken.
Dorothy Brook: What part was it?
Rebecca H.: The gravy.



DEPARTMENT STORE

Corner Main and Davis Streets : Burlington, N. C.

"Everything to Wear for the Entire Family at Lower Prices"

We Would Appreciate
Selling Your

CLASS RINGS

—
C. F. NEESE

*Congratulations to the
Class of '41*

LIBERTY
LUNCH

Main Street

PHONE 9135

MAIN STREET DRUG COMPANY

Filling Prescriptions is the Most Important
Part of Our Business

WE APPRECIATE YOUR BUSINESS

PHONE 20

BURLINGTON, NORTH CAROLINA

Earl Heath: I was kicked out of school.

Francis H.: How come?

Earl Heath: I was caught counting my ribs on a biology exam.

**DAVIS STREET
PHARMACY**

PHONE 969

**BURLINGTON
DRUG COMPANY**

243 : PHONES : 244

"We give you fits"

**BLALOCK'S
TAILORING
SHOP**

Morton-Miller, Inc.

Dress Accessories, Linens, Small
House Furnishings, Curtains,
Draperies and Gift Items

Phone 2470

Burlington, N. C.

Compliments of

The Jewel Box

"At the Sign of the Bulova Clock"

Burlington, N. C.

**NEWLIN HARDWARE
COMPANY**

QUALITY HARDWARE

for Home and Farm

All Kinds of
BUILDING MATERIALS

Your Patronage Is Appreciated

PHONE 871 - 872

Compliments of

L. E. SPIKES

Earl Holt (To Mr. Gunn): Do you think it's right to punish people for what they haven't done?

Mr. Gunn: Why no.

Earl Holt: Well, I don't have my homework.

Compliments of

**CAROLINA
BARBER SHOP**

*Six Specialized Barbers
to Serve You*

PHONE 1317

Compliments of

General Food Store

Ruffin Street

PHONE 948

Burlington, N. C.

**Alamance
Hot Wiener Lunch**

*"We Serve the
Very Best"*

200 West Front Street

PHONE 888

Compliments of

**LASLEY
HOSIERY MILLS**

R. K. LASLEY
HOSIERY

**PIGGLY WIGGLY
ANDERSON COMPANY**

Groceries

Fruits

Meats

Vegetables

South Main Street

**Modern Laundry
& Cleaners**

*"A Complete Cleaning
Service"*

PHONES 922 - 923

Burlington, N. C.

Carrold's Grandmother: What is the matter in there?
Carrold S.: Grandpa is showing Dad how to do my homework.

PRINCESS DRESS SHOP

"Known for Values"

South Main Street

PHONE 1343

Burlington, N. C.

**PICKETT HOSIERY
MILLS, INC.**

Manufacturers

**FINE SEAMLESS
HOSIERY**

Sprinkle Gasoline

Corner Trade and North
Church Street Ext.

\$erves-\$aves-\$ells

FAIR PRICES ALWAYS

You Are Always Welcome

Compliments of

DAVIS NEWS CO.

Church Street

Burlington, N. C.

CECIL GANT

General Insurance

**FIRE : AUTOMOBILES
CASUALTY : LIFE**

506-7 National Bank Bldg.

PHONE 1215

Congratulations

To the Class of 1941

**WEBSTER JEWELRY
COMPANY**

*"A Complete Line of Gifts for
Every Occasion"*

213 Trollinger Street

Delmer W.: I came out here to make an honest living.
Native: Well there is not much competition.

COMPLIMENTS
OF
THE CITY
of
BURLINGTON



"THE HOSIERY MILL CENTER
OF THE SOUTH"

Mr. Patterson: Son, how come your report shows low marks?
Clark Patterson: Well you see, Dad, everything is so high these days, I thought it was
time some items were marked low.

**ZIMMERMAN
LUMBER COMPANY**

Building Materials

North Main and Trade Streets
Burlington, N. C.

TELEPHONES 174 and 175

Compliments of

Your Nash Dealer

**TROLLINGER STREET
SERVICE STATION**

PHONE 9299

Melville Dairy

—
***Producers of that
Rich Jersey Milk***

—
PHONE 1600

Gate City Motor Co.

Dealers in

**Chrysler and Plymouth
Motor Cars**

Phone 911 - 912

S. Main St. Burlington, N. C.

Compliments of

Washington Cafe

PRIVATE DINING ROOM
FOR BANQUETS

Phone 492

Burlington, N. C.

Compliments of

E. C. PEELE

223 West Front Street

**Electrical Installations
Electrical Appliances**

and

Lightolier Fixtures

PHONE 1500

Rooster: What are you doing in the cellar?
Hen: I'm laying in a supply of coal.

Compliments of

**Earl's Texaco
Service**

*Congratulations to the
Class of 1941*

**AUTO PARTS &
ELECTRIC COMPANY**

**Automotive Parts
and
Electrical Service**

General Repairing and
Motor Rebuilding

Phone 43 Burlington, N. C.

HADLEY'S "The Jewelers"

• WITH OUR
FORTY YEARS
SPECIALIZED
EXPERIENCE

GRAHAM, N. C.

"ALWAYS SOMETHING NEW"

PHONE 2488

Compliments of

R. E. BOONE

Quality Dry Cleaners



Phone 2101 - 2102

Compliments of

**HOOD SYSTEM
INDUSTRIAL BANK**

Burlington, N. C.

Mrs. Watson: Why don't you answer?
Wade Huffman: I did, I shook my head.
Mrs. Watson: But you don't expect me to hear it rattle away up here.

DRINK

Coca-Cola

IN BOTTLES

Delicious and Refreshing

Burlington Coca-Cola Bottling Co.

Best Wishes

Paramount

Carolina

Alamance

North Carolina Theatres, Inc.

Mary Ivey: When is a doctor most annoyed?
Doris Hortras: I don't know. When?
Mary Ivey: When he is out of patients.

*Wear Lamm's Value First
Clothes
for
Genuine Satisfaction.*

—
LAMM CLOTHING CO.
Burlington, N. C.

*Congratulations to
Burlington High School*

—
**COBLE FURNITURE
COMPANY**

W. Davis St. Burlington, N. C.
Phone 1237

**Sing Lee
Hand-Laundry**

Spring Street

**SOMERS & GARRISON
REALTORS**

"We Buy and Sell Real Estate"

—
**Somers & Coltman
Insurance Agency, Inc.**

*"If it's worth owning
It's worth insuring"*

Office: 405 Spring Street

Compliments of

JOHN J. HENDERSON

ATTORNEY-AT-LAW

Burlington, N. C.

Compliments of

**SUPREME DRY
CLEANERS**

Our modern method of cleaning
and repairing insures long life
to your clothes.

PHONE 1203

309 Fisher Street
Burlington, North Carolina

Satisfaction Guaranteed

Mrs. Hambright: You should write your themes so that even the most ignorant person could read them.

James Campbell: Which one of my themes didn't you understand?

<p>BARKER'S TIRE SERVICE</p> <p><i>Modern Tire Recapping</i></p> <p>PHONE 108 Church and DAVIS</p>	<p><i>Compliments of</i></p> <p>Currin and Hay</p> <p>"Mat and Pat"</p>
<p><i>Compliments of</i></p> <p>THE LADIES SMART SHOP</p> <p><i>"The latest to wear for Ladies who care"</i></p>	<p>Compliments of</p> <p>McLellan Stores</p> <p>(Incorporated)</p>
<p>TROLLINGER'S FLORIST</p> <p><i>Flowers for All Occasions</i></p> <p><i>Members of Florists Telegraph Delivery Association</i></p> <p>Orders Receive Prompt Attention</p> <p>Phones: Store 931—Night 519 Burlington, N. C.</p>	<p>CITY CASH GROCERY</p> <p><i>Groceries and Meats</i></p> <p>Corner Holt and Fisher</p> <p>PHONE 1018</p>

Impatient Diner: Hey, waiter, hey!
Waiter: All right, Sir, but we'll have to send out for it.

Jennings M. Bryan

Complete
Insurance Service

PHONE 173

509-11 Security Bank Building
Burlington, N. C.

Bason and Bason

LADIES' READY-TO-WEAR
MILLINERY, LINGERIE
and NOVELTIES

.113 East Davis Street
Burlington, N. C.

*Office and
School Supplies*



**ALAMANCE BOOK
and
STATIONERY CO.**

Across from Post Office
Burlington, N. C.

**NEAL WRIGHT
JEWELRY**

Diamonds : Jewelry

Hamilton and Elgin Watches
204 South Main
Box 387
PHONE 2242

**W. H. DUNCAN
ESSO STATION**

—
Davis and Church Streets
TELEPHONE 1490

A. D. Pate and Co.

*Reliable
Quality Printers*

Since 1906
TELEPHONE 216
Burlington, North Carolina

Dorothy Kiziah: I didn't have any fun at the seashore. How can I correct that?
Mary Barrett: Get a sweetheart.

Compliments of

**ELKINS AND TERRELL
MOTOR CO.**

DeSoto and Plymouth

Sales and Service Used Cars
All Makes and Models

N. Main Street Phone 1884

Compliments of

Betty Lou Shop

Burlington, N. C.

INSURED SAVINGS—HOME LOANS

EACH ACCOUNT FULLY INSURED UP TO \$5,000

Since 1914 we have faithfully served thousands of local
SAVERS — INVESTORS — BORROWERS

Let the Friendly "Home Folks" Serve You

Assets Over \$1,250,000

First Federal Savings and Loan Association

102 West Front Street

Burlington, N. C.

Congratulations
to the Class of '41

GOLDMAN'S

Shoes, Hosiery too

Burlington, N. C.

Compliments of

**United
Dollar Store**

He: I'm sure that wasn't a marriage license the clerk gave me last month.
She: Why not?
He: Ever since I've been living a dog's life.

**Kirkman Plumbing
Heating Company**

PLUMBING, HEATING and
ELECTRICAL SUPPLIES

Telephone 2-2-4

Compliments of

H. Frank Mitchell, Jr.

General Contractor

Burlington, N. C.

Compliments of

**A. D. WAGONER'S
GROCERY**

*Fresh Fruits and
Vegetables*

618 Ireland Street

PHONE 1980

Alamance Printing Co.

J. T. SHEETS GUY B. EPHLAND

Producers of

*Distinctive Printing
and
Engraving*

523 South Main St. Phone 384

Burlington, N. C.

**J. C. HARRIS
LUMBER CO.**

***Lumber
Building Materials***

PHONE 373

Burlington, North Carolina

Compliments of

O. E. BASS

Hendersonville, North Carolina

Representing

HERFF-JONES COMPANY

Indianapolis, Indiana

Anderson Glenn: How long have you been working for this firm?
Sarah Ingle: Ever since the boss threatened to fire me.

Courtesy of the
**RICH & THOMPSON
SERVICE**

PHONE 1076
Burlington, N. C.

**IDEAL
MERCERIZING
COMPANY**

Burlington, N. C.

*All of the News
Fit to Print*

*News Features and
Comic Strips*

**YOUR
DAILY TIMES-NEWS**

CONGRATULATIONS

Future leadership is entrusted to you

60 — PHONES — 1275

**E. S. WHITE
PHARMACY**

DRUGS : PRESCRIPTIONS

Also

Diamonds : Watches : Jewelry

N. Main Street

**ALAMANCE MOTORS,
Inc.**

Your Chevrolet Dealer

PHONE 936

Opposite Alamance Hotel

Burlington, N. C.

Fay Allred: What is a geyser?

Vivian Seaman: A geyser is a waterfall going up.

Compliments of
Alamance Hotel

Compliments of
Foster Shoe Co.

111 E. Davis Street
Burlington, N. C.

C. A. LEA
BUS AND TAXI SERVICE

214 West Front

Phone 777

BURLINGTON, NORTH CAROLINA

CHAS. V. SHARPE, INC.

PHONE 383

Burlington, North Carolina

PERSONNEL

CHAS. V. SHARPE
PAUL R. BOWMAN
J. ED. MILLER
MISS SALLIE MOSER
MISS EMMA JOHNSTON
MISS PAULINE PICKARD

Congratulations to the
Class of 1941

MOOREFIELD
FLORIST and
DRESS SHOP

Neighbor: How is your son getting along in college?
Father: Getting along well. I just paid three courses: \$10 for Latin, \$10 for Greek,
and \$150 for Scotch.

Compliments of
**Firestone Auto Supply
and Service Stores**

North Main Street
PHONE 1941

Ladies' and Misses' Ready-to-
Wear, Millinery, Lingerie
and Accessories

Miss Thurston's Shoppe

"Correct Feminine Apparel"
305 South Main Street
Burlington, N. C.

**THE TEXTILE
SALES ROOM**

*Upholstery Materials
Men's and Boys' Shirts
Hosiery*

616 Morehead Street
Burlington, N. C.
Phone 1780

Compliments of

**Rosenbloom's
Men's and Boys' Wear**

PHONE 502
S. Main St. Davis St.

Compliments of
The J. C. Penney Co.

A Nationwide Institution with over
Fifteen Hundred Stores in Every
State in the Union

*We Serve Millions of Satisfied
Customers Each Year.*

Congratulations

to
Class of '41

—
BARNWELL BROS., Inc.

Doctor: What you need is an electric bath.

Patient: Nothing doing, Doc, I had an uncle who drowned that way at Sing Sing.

**"PART OF ALL YOU EARN IS
YOURS TO SAVE"**

Save systematically during your
productive years for old age
Financial Independence.

**Community Federal Savings
and Loan Association**

Opposite Post Office Phone 460

D. C. BRYAN, *President*

R. D. WHITE, *Secretary-Treasurer*

Compliments of

T. N. BOONE

The Tailor

Burlington, N. C.

**Quality
Sweaters Jackets
Bicycles**

Hood Sport Shop

205 West Front Street

PHONE 864

M. B. SMITH

HEADQUARTERS FOR POPULAR
PRICED FURNITURE and
ESTATE HEATROLAS

437 South Main Street

Burlington, N. C.

*Congratulations
to the
Class of '41*

KING COTTON MILLS

Compliments of

**EFIRD'S
Department Store**

Burlington, N. C.

Wife: I'm reading a mystery book.
Husband: Why that looks like our household budget.
Wife: It is.

MAY HOSIERY MILLS

BURLINGTON, NORTH CAROLINA

Manufacturers of

HOSIERY

***Full Fashioned and Seamless
For Ladies and Men***

Acme Drug Company

PRESCRIPTION DRUGGISTS

Get It At Acme

We Appreciate Your Business

Whitman's Candy

Eastman Kodaks

Telephone 474

W. D. NOAH

J. I. WHITE

Garland N.: Do you think paper can be used to keep people warm?
Sam Spoon: Yes, the last report card I took home kept my family hot for a week.

<p>Compliments of</p> <p>ECONOMY AUTO SUPPLY, INC.</p> <p>GOODRICH TIRES : TUBES BATTERIES : BICYCLES RADIOS : AUTO ACCESSORIES</p> <p>Easy Terms</p>	<p>Compliments of</p> <p>BURKE FUNERAL HOME</p> <p>403 West Front Street</p> <p>PHONE 125</p>
<p>Cooper and Sanders Associate: W. Clary Holt</p> <p>Attorneys and Counsellors at Law</p> <hr/> <p>Suite 807 Security Bank Bldg. Burlington, N. C.</p>	<p>NATIONALLY ADVERTISED CUSTOM TAILORED CLOTHES MASON - STRAND - DAVIS</p> <p>\$17.50 Up</p> <hr/> <p>MODEL MEN'S SHOP 115 Trollinger Street</p>
<p>M. W. CROWSON</p> <p>Insurance</p> <p>National Bank Building Burlington, N. C.</p>	<p>Compliments of</p> <p>TROLLINGER COAL COMPANY</p> <p>DOMESTIC, STOKER and STEAM COAL</p> <p>Phones 162 - 468 Burlington, N. C.</p>

Miss Frazier (To Robert G.): Now Robert, what are you doing, learning something?
Robert G.: No, ma'am, I'm listening to you.

Cobb Motor Co.

Complete One Stop Service Station

WRECKING SERVICE and
GENERAL REPAIR

Auto Painting
Body and Fender Repairs

Esso Service

Burlington, N. C.

Phone 729 West Davis Street

Compliments of

Town Tavern

The Best Place to Eat

Front Street

ALAMANCE LAUNDRY AND DRY CLEANERS

"Save a Day the Laundry Way"

560 — PHONES — 561

BURLINGTON, NORTH CAROLINA

Compliments of

Gilliams' Poultry

and

Feed Company

We Invite You to Visit Our
Modern Salon

LEONE'S BEAUTY SALON

107½ East Front Street

PHONE 951

"The Hair Style Center"

Mr. Bolin: What is the home of the swallow?
Edna Hickey: It is in the stomach.

ALL PHOTOGRAPHS AND GROUPS IN THIS
ANNUAL MADE BY

ANGLIN STUDIO

If it is a Photo, Give us a call

PORTRAITS, COPYING, COMMERCIAL
PHOTOGRAPHY ENLARGING
EXPERT KODAK FINISHING

Phone 1095

The National Bank of Burlington

Member of Federal Reserve System

DEPOSITS INSURED UP TO \$5,000 FOR EACH ACCOUNT

2½ Per Cent Interest Paid on Savings

“Our Policy—Safety First”

We solicit business, based upon strong financial condition. We render every service possible commensurate with the policies of safe banking.

Yours very truly,

L. J. BLAKEY,

President and Trust Officer.

Farmer: Be this the women exchange?
Woman: Yes.
Farmer: Be ye the woman?
Woman: Yes.
Farmer: Well, then I think that I shall keep Maggie.

Compliments of
DR. WM. C. JEFFCOAT

*Thanks for Your
Patronage*

—
**Castles'
Barber Shop**

501 South Main Street

Compliments to Class of '41

R. F. KIRKPATRICK & SONS


GENERAL CONTRACTING

Compliments of

**Kirk Holt
Hardware**

Compliments of

**GIBSON
ICE CREAM
CO.**



It's been a
real pleasure!

The personnel
and representatives
of the
Charlotte Engraving Co.



BUILDERS DREAMS

VISIONS created by the imagination precede the achievement of any really great accomplishment. The ability to weave the threads of imagination into the finished fabric is equally important.

It has been the privilege of the EDWARDS & BROUGHTON COMPANY to cooperate with the staff in creating their vision into material form.

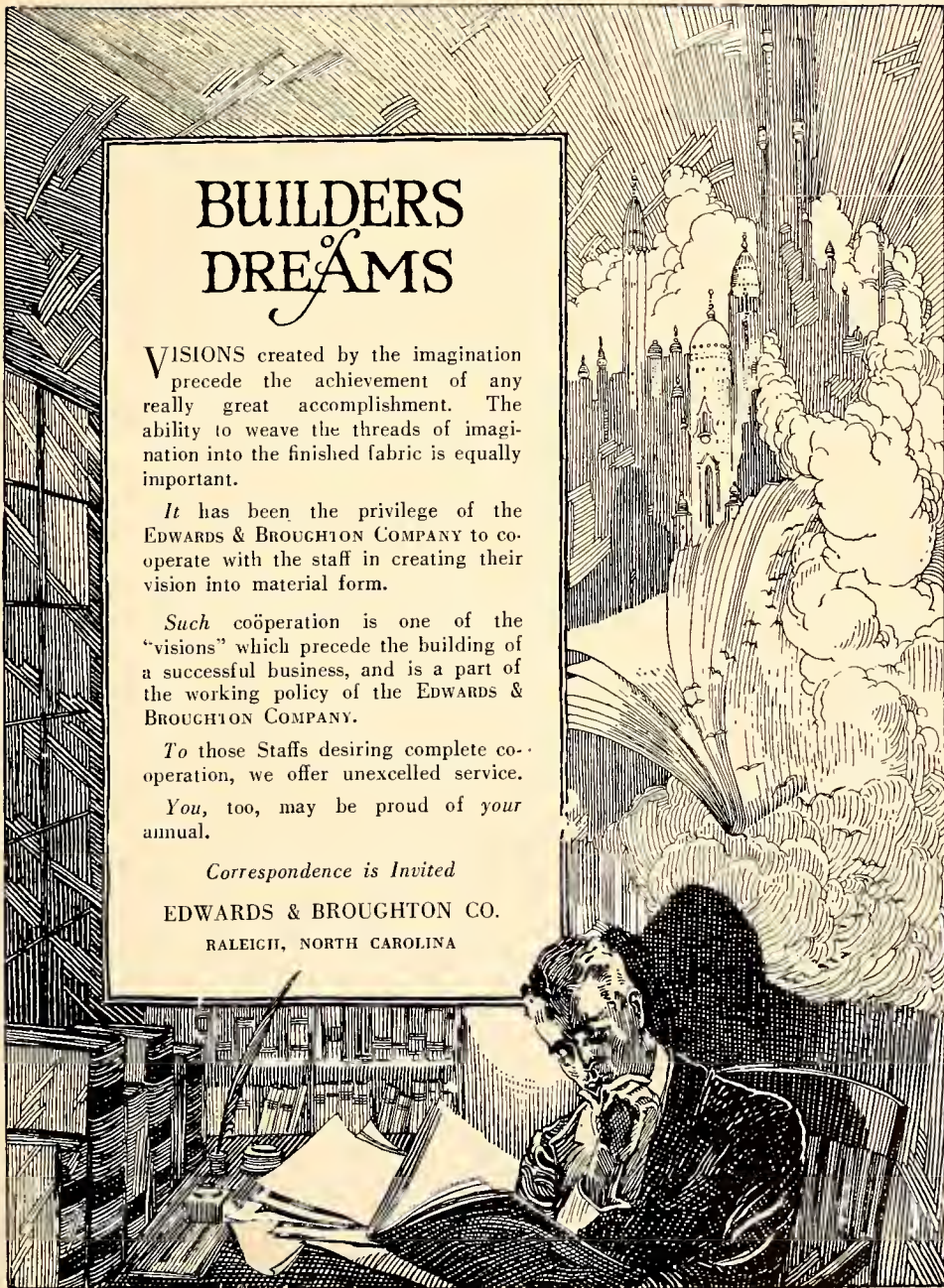
Such cooperation is one of the "visions" which precede the building of a successful business, and is a part of the working policy of the EDWARDS & BROUGHTON COMPANY.

To those Staffs desiring complete cooperation, we offer unexcelled service.

You, too, may be proud of your annual.

Correspondence is Invited

EDWARDS & BROUGHTON CO.
RALEIGH, NORTH CAROLINA



Autographs



