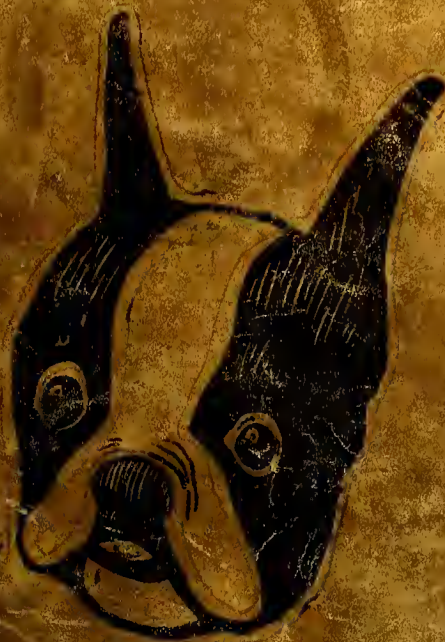


LOCAL  
HISTORY

(mm)



*The* DOE  
WAH  
JACK  
JR. '32

LOCAL  
HISTORY



L. D. Perry Jr.  
Burlington, N.C.  
B. H. S. "35"



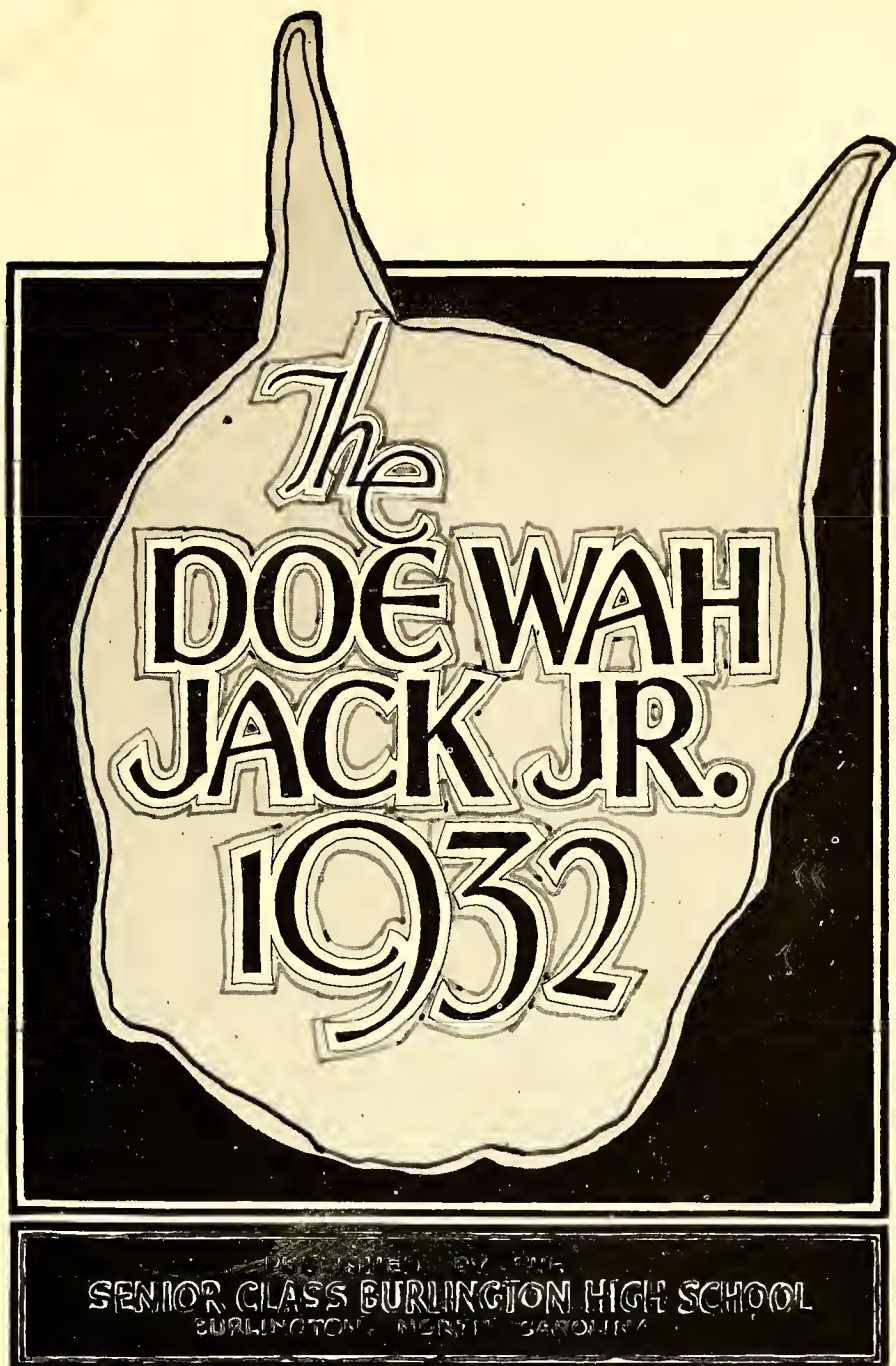
L. D. Perry Jr.  
Burlington, N.C.  
B. H. S. "34" maybe



Digitized by the Internet Archive  
in 2012 with funding from  
University of North Carolina at Chapel Hill

<http://archive.org/details/doewahjackjr1932burl>





SENIOR CLASS BURLINGTON HIGH SCHOOL  
BURLINGTON, NORTH CAROLINA





# FOREWORD

With the publication of this Doe Wah Jack Jr., we are endeavoring to make up in part for the Barker, and to replace after a fashion, the Doe Wah Jack. If now, or in years to come, it will recall to you any pleasant memories, then you will probably forgive its deficiencies, remembering that after all it is the thought back of it rather than the value of it.





TO  
**Our Parents**

In thinking of the debt which we owe to our parents, we believe that we could show our appreciation to them in no better way than by dedicating to them this Doe Wah Jack Jr., which chronicles some of our happiest moments.





# CONTENTS

Book One---*The School*



Book Two---*The Classes*

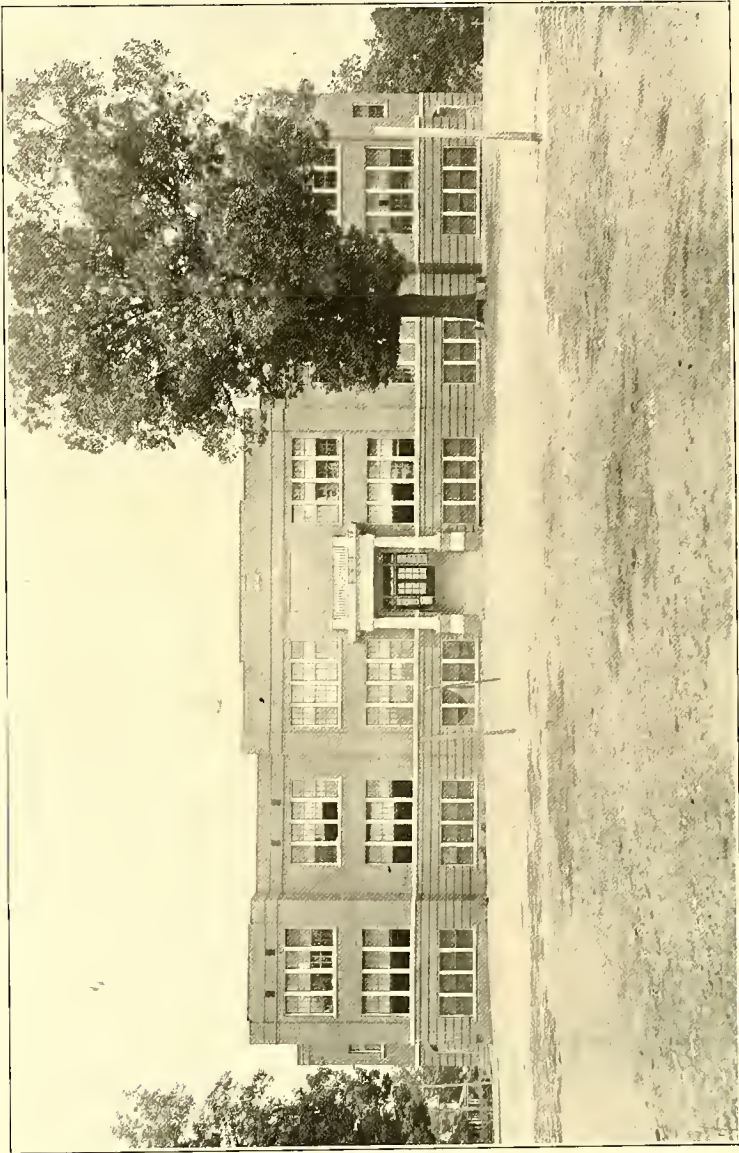


Book Three---*Organizations*



Book Four---*Miscellaneous*





BURLINGTON HIGH SCHOOL



CHESTER C. HAWORTH

*Superintendent of Burlington City Schools*



C. E. BUCKNER

*Principal of Burlington High School*





*9 mess  
just are  
I was  
getting my  
car is  
ready  
1/2*

BURLINGTON HIGH SCHOOL FACULTY

First row: Mr. B. E. Hood, Miss Irene Hester, Mr. Ralph C. Reid, Miss Allie Oliver, and Mr. J. G. Hollingsworth.

Second row: Mr. E. C. Leonard, Miss Virginia E. Hassell, Mrs. Neblette Crowson, Mr. M. Z. Rhodes, Miss Emily Young, and Mr. M. D. Thornburg.

Third row: Miss Attrice Kernodle, Miss Annie Webster, Miss Elizabeth Nicholson, Mrs. Albert Graham, Mr. Howell Gilmer Gabriel, and Mr. C. E. Buckner.

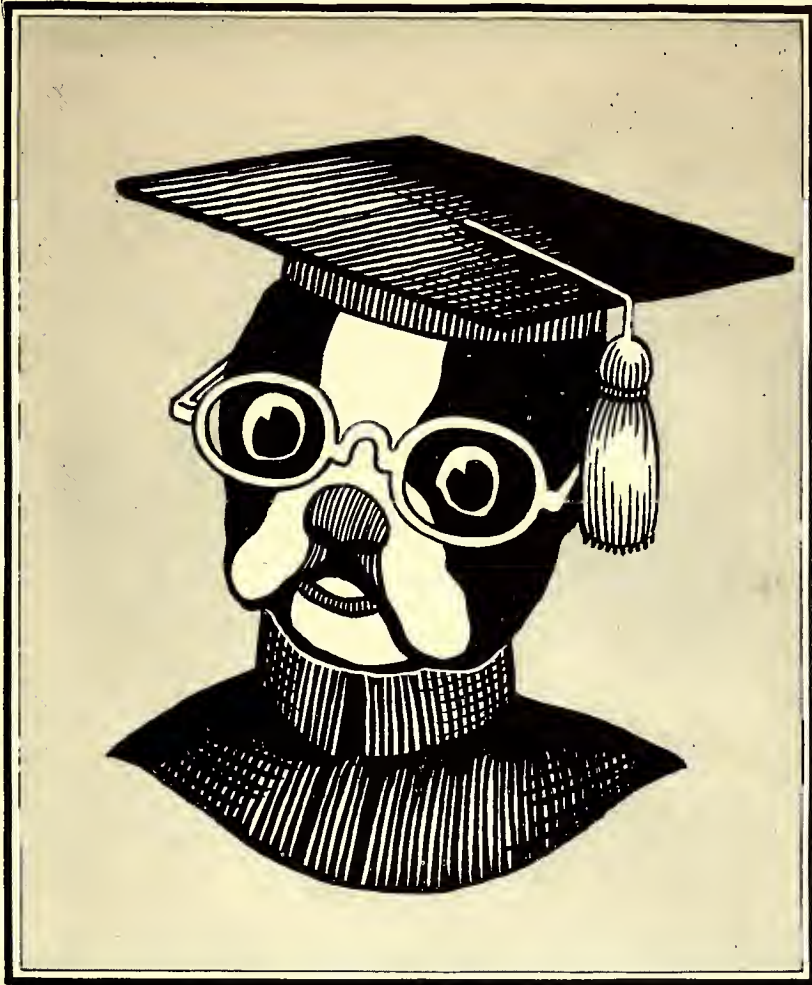




B. H. S. SONG

Burlington High we pledge  
Allegiance now to thee,  
To you we'll ever be true  
Moulder of our destinies.  
We honor you always,  
We love you 'cause you're best  
And so we give praise to you

Three cheers for old B. H. S.  
Long may your banner wave  
A symbol of the right,  
We'll never let it be scarred  
We'll shield it with all our might  
Then hail to you, fair gem  
The brightest and the best  
Once more we sing praise to you  
Three cheers for old B. H. S.



# SENIORS

'32

# *The* DOE WAH JACK JR.



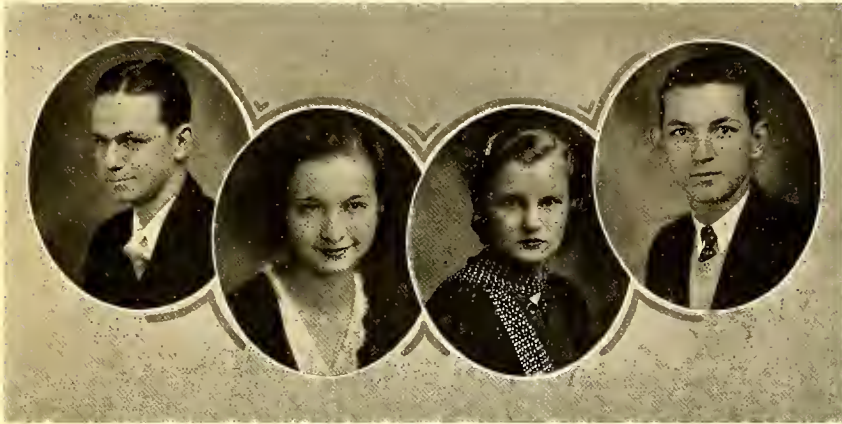
SENIOR MASCOT

Colors .....	Rose and Silver
Flower .....	Sweet Pea
Mascot .....	Miss Kernodle's Lincoln
Motto .....	"Not on top, but climbing"

'32

SENIOR CLASS OFFICERS

Almon McIver .....	President
Elaine Stadler .....	Vice-President
Hazel Boswell .....	Secretary
Banks Fitch .....	Treasurer



CHARLES ALMON McIVER

President Senior Class '32; Vice President Student Council '32; Student Council '30, '31, '32; President Hi-Y '32; Varsity Football '29, '30, '31; Band '26, '27, '28, '29, '30, '31, '32; Orchestra '28, '29, '30, '31, '32; Vice-President Junior Class '31; Editor of Barker '32; President of Orchestra '29, '30, '31, '32; Manager of Baseball '31.

ELAINE STADLER

Class Vice-President '29, '32; Class Historian '29, '30; Dramatic Club '29, '30, '31, '32; Class Basketball '29; Secretary of Dramatic Club '30, '31; Girls Sport Editor of Barker '31; Literary Editor of Barker '32; Latin Club '31; Vice-President Dramatic Club '29, '32; "B" Club '31, '32; Glee Club '31, '32; Class Prophetess '32.

HAZEL VIRGINIA BOSWELL

Secretary of Class '31, '32; Basketball Team '29, '30, '31, '32; Captain of Basketball Team '31, '32; Cheer Leader '31, '32; Dramatic Club '29, '30, '31, '32; Tennis Team '29, '30, '31, '32; Girls Athletic Editor of Doe Wah Jack Jr., '32; Hockey Team '29, '30, '31; Girls Recorder of Points '32; Glee Club '29, '30, '31, '32; School Manager of Tennis '30; Girls "B" Club '31, '32;—President '32.

ROBERT BANKS FITCH

President of Playmaker's Dramatic Club '31; Vice-President of Sophomore Class; Treasurer of Senior Class; President of Dramatic Aces '32; Freshman Editor of Doe-Wah-Jack; Chief Marshall '31; Associate Editor of Barker '31; Testator of Class '32; Sophomore Class Historian; Student Council '29, '30; Glee Club '30, '31, '32; Vice-President of Senior Hi-Y '32; Snapshot Editor of Doe Wah Jack Jr.; President of Glee Club '32.

KENNETH EBBS ANGEL

Senior Hi-Y '31, '32; French Club '31; Class Basketball '31, '32; Class Baseball '30, '31, '32; Basketball '31, '32; Baseball '32; Band '29, '30, '31, '32; Orchestra '29, '30, '31, '32; Secretary-Treasurer Band '31, '32; Treasurer Orchestra '32; Track '29, '30.

THELMA PEARL ANDREWS

Hostess '28, '29, '30, '31; Toy Makers '28, '29; Girl Reserve Club '31, '32.

VIVIAN LOUISE BELL

Girl Scouts '29, '30; Girl Reserves '30; Class Captain Ball '29; Class Hockey '30.

LUCY BENSON

Hostess Club '29, '30; Girl Reserve Club '30.

CARLTON BROWN BOLAND

Band '29, '30, '31, '32; Orchestra '29, '30, '31, '32; French Club '31; Student Council '32; Honor Society '32; Toy Makers Club '29; Glee Club '32.

EDITH VIRGINIA ALEXANDER

Girl Scouts '28, '29; Stage Steppers Dramatic '29, '30, '31; Debating '30, '31, '32.

EDITH ADOIR AUSLEY

Girl Reserves, '29; Dramatic '29, '30, '31, '32; Class Hockey '29; Class Captain Ball '29, '30; Class Tennis '29, '30; Glee Club '30, '31, '32.

RALPH JOSEPH BENNETT

Glee Club '30, '31, '32; French Club '31; Class Baseball '30, '31, '32; Class Basketball '31.

ELIHU BERNARD BERNSTEIN

National Honor Society '31, '32; Secretary and Treasurer '32; Student Council '31, '32; Tennis Team Varsity '31; Captain '32; Boys' 'B' Club '32; Sergeant at Arms; Band and Orchestra '31, '32; Secretary Band '32; Aviation Club '30; Treasurer Senior Hi-Y '29; Debating Club '31; Le Cercle Francais '31; Treasurer '31; Press Reporter of Class '31, '32; Barker Newspaper Staff '31, '32; Magazine Advertising Manager '32.

JOHN ALLEN BOLAND

Hi-Y '29; Bird Club '29; Hi-Y '30; Bird Club '30; Aviation Club '30; President Hi-Y '31; Tennis Team '31; Hi-Y '32; Tennis Team '32.



GEORGE BOSWELL

Band and Orchestra '29, '30, '31, '32; Senior Hi-Y '32.

DOROTHY MAY BOWMAN

Girl Scouts '29; Toy Maker Club '29; Hostess '30; Dramatic Aces '31.

JACK MAXWELL BROWN

Varsity Tennis Team '29, '30, '31, '32; Football Team '31; Basketball '31, '32; National Honor Society '31, '32; Boys' 'B' Club '31, '32; Student Council '31; Senior Hi-Y '32; Junior Hi-Y '29; Class Basketball '29, '30, '31, '32; Class Football '30, '31, '32; Class Tennis '29, '30, '31, '32.

RICHARD BRYAN

Band and Orchestra '29, '30, '31, '32; Glee Club '29, '30; Aviation '30; Bird '30.

WILLIAM ALBERT CADE

Fayetteville High School '29, '30, '31, '32; Senior Hi-Y Dramatic Club '32; Wrestling '32; Tennis, Track '32.

A. WILSON CHEEK

Class President '28, '30, '31; Orchestra '28, '29, '30, '31; Student Council '30, '31; Boy Scout Club '28; Business Manager Barker '32; Debating Club '31; French Club '30; Violin Class '28; Commencement Marshall '31; Dramatic Aces '30, '31, '32.

HAROLD PERRY CLARK

Junior Hi-Y '28, '29.

KILBY COBLE

Junior Hi-Y '28, '29; Class Baseball '28, '29, '30.

ZEBULON VANCE COBLE

Junior Hi-Y Club '29; Senior Hi-Y Club '31; French Club '31; Glee Club '31, '32.

WILLARD COBLE

Girl Scout Club '29; Stage Steps Dramatic '29; Play Makers Dramatic '30; Basketball Team '29, '30; Hockey Team '29, '30; Captain Ball Team '29, '30; Tennis '29; Travel Club '31; Glee Club '32; Commencement Marshal '31.

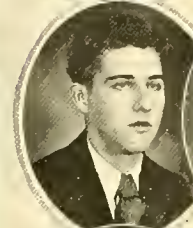


JOE COBLE



JOSEPH WALTER COLE

Band '29; Aviation Club '30, '31; 'B' Club '31, '32; Class Football '29, '30, '31, '32; Class Basketball '29, '30, '31, '32; Captain Class Basketball '31; Class Baseball '29, '30, '31, '32; Class Volley Ball '29, '30; Varsity Football '31, '32; Varsity Basketball '31, '32; Class Track '31, '32.



VELMA COLE

B. H. S. Playmakers '28, '29; Thursday Hostess Club '28, '29; Stage Steppers Dramatic Club '29, '30; Bonne Amie Hostess Club '29, '30; Dramatic Aces '30, '31; Arts and Craft Club '30, '31.

CLEO DOUGLASS COOK

Dramatics '29, '30, '31; Scouts '29, '30; Hockey '29; Captain Ball '30.



CLARA MAE COOPER

Girl Reserve Club '28; Girl Reserve Club '32; Dramatic Aces '29.

ETTA MAY COYNER

Girl Scout, '29; Toy Makers '29; Dramatic Club '30; Secretary and Treasurer Debating Club '31; Student Council '32.



CARL M. CRABTREE

Band '28, '29; Band and Orchestra '29, '30; Aviation Club '29, '30; Band and Orchestra '30, '31; Aviation Club '30, '31; French Club '30, '31; Dramatic Aces '31, '32; Radio Club '31, '32.

MARY KATHERINE DIXON

Girl Scouts '29; Girl Reserve '30, '31; Secretary of Girl Reserve '32; Vice-President of Debating, '32; Girls' Glee Club '32; Treasurer First Semester of Girl 'B' Club '32; Hockey Team '29, '30, '31; Basketball Team '29, '30, '31, '32; Captain Ball Team '29, '30; Tennis '29, '30, '31, '32.



CHARLIE JOHN DURHAM, JR.

Archery Club '29, '30; Junior Hi-Y '29; Senior Hi-Y '30, '31, '32.



JAMES C. DURHAM, JR.

Band '28, '29, '30, '32; Orchestra '28, '29; Hi-Y Club '32; Dramatic Club '31, '32; Class Football '32; Class Track '31, '32; Cheer Leader '32; Glee Club '32; First Censor of class '32; Treasurer Dramatic Club '32; Drum Major '31, '32; Tennis '32.

WILTON KELLY ELDER

Glee Club '32; Le Cercle Français '31; Toy Makers '29.

PAULINE EFFIE FOWLER

Toy Makers Club '29; Dramatic Club '30, '31.

WALTER WILSON GARRISON

Band '28, '29, '30, '31, '32; Treasurer Radio Club '32.

HELEN MAE GLOSSON

Hostess Club '29, '30; Arts and Crafts '31; Girl Reserve '32; Class Hockey '29, '30; Dramatic Club '29; Class Captain Ball '29, '30; Girl Scout '29; Class Tennis '29.

DOROTHY LEE EARLE

Girl Scout '29; Stage Steppers Dramatic '29; Playmakers Dramatic '30; Le Cercle Français '31; Girls' Glee Club '31, '32; Girls' 'B' Club '31, '32; Treasurer 'B' Club '32; Secretary Home Room '32; Class Basketball '29, '30, '32; Class Hockey '29, '30; Class Captain Ball '29, '30, '31; Class Tennis '29.

JOE H. FOGLEMAN

Toy Makers '29; Boy Scout '29; Scribe '30; Junior Hi-Y '29; Senior Hi-Y '31, '32; Corresponding Secretary '32; 'B' Club '32; Varsity and Class Track '30, '31, '32.

CLYDE M. FOWLER

Band '27, '29, '30, '31; Orchestra '29, '30, '31; Marshal '31; Playmakers Dramatic Club '29, '30, '31; Class Football '29, '30, '31, '32; Class Basketball '29, '30, '31, '32; Class Basketball '29, '30, '31, '32; Varsity Football '31, '32; Varsity Baseball '31, '32; Varsity Basketball '32; Student Act Council '32; 'B' Club '31, '32.

RUBY GLOSSON

JOHN W. GLOSSON

Football '29, '30, '31, '32; Basketball '32; Baseball '32; Boxing and Wrestling '32; Track '32; Junior Hi-Y '29; Senior Hi-Y '30, '31, '32; 'B' Club '31, '32; Class Football '29, '30, '31, '32; Class Track '31, '32.





## CATHERINE DELANE GREGG

Basketball Team '29, '30, '31, '32; Dramatic Club '29, '30, '31; Hockey Team '29, '30, '31; Glee Club '31, '32; Captain Ball Team '29, '30; Travel Club '31; Girl Scouts '29; Tennis Team '29, '30.

## BEVERLY HANNA

Glee Club '30, '31, '32; Dramatic Club '30, '31, '32; Hockey Team '29, '30; Basketball Team '29, '30; Manager Basketball Team '29; Manager Captain Ball '29; Captain Ball Team '29; Travel Club '31; Girl Scouts '29; Tennis Team '29, '30, '31.

## CLARENCE E. HART

Art Club '27; Latin Club '27; President Bird Club '31; President Aviation Club '31; Senior Hi-Y '32; Treasurer Home Room '32; Glee Club '32.

## EDWIN HAYES

Boy Scout Club '29; Archery Club '29; Boy Scout Club '30; Senior Hi-Y '32; Boxing '32.

## ROY ALFRED HOGAN

Hi-Y Club '30, '31, '32; Class Football '29, '31, '32; Varsity Football '31, '32; 'B' Club '31, '32; Dramatic Club '32; Varsity Track '32; Class Track '32.

## HELEN GRUBB

Hostess Club '28, '29; Toy Makers Club '28, '29; Dramatic Club '29, '30; Arts and Crafts Club '30, '31; Basketball '30, '31.

## JACK HANNER

Boy Scout Club '28; President of Aviation Club '29; Secretary Aviation Club '29; Business Manager Aviation Club '30; Vice-President Bird Club '30; Secretary Aviation Club '31; Radio Club '31; Radio Club, Group Manager, No. IV '31; Radio Club, Leader of "Radioers" '32.

## J. C. HARVIEL

Vice-President Archery '29; Dramatic Club '29; Orchestra '30, '31, '32; Track '29, '30; Track Squad '32; Senior Hi-Y '31, '32.

## WILLIAM CURTIS HINSHAW

Toy Makers Club '29; Aviation Club '30, '31; Track '31, '32; Class Track '31, '32; Bird Club '29, '30.

## VIRGINIA CAROLYN HOLT

Glee Club '30, '31, '32; Dramatic Club '29, '30; Girl Scouts '29; Patrol Leader; Hockey Team '29, '30; Student Council '29.





HARRY RICHARD HOLT

Dramatic Club '28, '29; Junior Hi-Y Club '28, '29; Vice-President Hi-Y '28; Senior Hi-Y Club '31, '32; Boys' Glee Club '29, '30.

JEWELL GRETCHEN HUNT

Girls' Reserve '29, '30; Dramatic Aces '30, '31; Debating Club '31, '32.

JAMES CLARENCE ISLEY

Reading '27, '28; Band '28, '29; Bird '30, '31; Aviation '30, '31; 'B' Club '32; Baseball '31, '32.

ELMER GARDNER ISLEY

Boys' Glee Club '30, '31; Junior Hi-Y '29; Senior Hi-Y '31; Archery Club '29; Baseball '30, '31; Class Baseball '29, '30, '31, '32; Varsity Track '30; Class Track '29, '30, '31, '32; Varsity Wrestling '31; Class Wrestling and Boxing '31, '32; Class Tennis '29; Class Volley Ball Team '29, '30, '31.

JEANNE ISLEY

Girl Scout Club '29; Playmakers Dramatic Club '30; Le Cercle Francais '31.

ROBERT KERNODLE

Toy Makers Club '29; Band '29; French Club '31; Senior Hi-Y '31, '32; 'B' Club '32; National Honor Society '32; Class Football '29, '30, '31, '32; Varsity Football '31, '32.

TALBERT KING

Class Tennis '29; Orchestra '29, '30, '31, '32; Band '31, '32; Secartores Aenae '30; Stage Steppers Dramatic Club '29; Dramatic Aces '30, '31, '32; Glee Club '30, '32; Honor Society '31, '32; Vice-President Honor Society '31; President Honor Society '32; B. H. S. Representative All Southern H. S. Orchestra '31; B. H. S. Representative All State H. S. Orchestra '32.

ALMA LOUISE LAMM

B. H. S. Playmakers '29; Girl Scout Club '29; Class Basketball '29, '30, '31; Class Hockey '29, '30; Class Tennis '29, '30, '31, '32; Secretary Sophomore Class '30; Student Activities Council '30; Girls' Monogram Club '31, '32; Girls' Reserve '32; Secretary Monogram Club '32; Treasurer Monogram Club '31; Marshal '31.

GEORGIA GLADYS LASHLEY

Toy Makers '28; Hostess Club '29; Toy Makers '29; Hostess '30; Girl Reserve '32.

JERRY MALCOLM LEA

Junior Hi-Y '29; Senior Hi-Y '30; Senior Hi-Y '31; Senior Hi-Y '32; Class Tennis '29, '30.





WILMA LIVINGSTONE  
LINEBERRY

Girl Scouts '29; Dramatic Club  
'30; Le Cercle Francais.



FRANCES JAMES LONG

Girl Scout '29; Toy Makers Club  
'29; Girls' Glee Club '30, '31,  
'32; Le Cercle Francais '31.

THOMAS HOWELL LYON

Archery Club '29; Boy Scout  
Club '29; Aviation Club, '30;  
Scribe Boy '30; Scout Club '30;  
Press Reporter '31; Stage Step-  
pers Dramatic Club '31; Senior Hi-  
Y '32; Boxing '32; Tennis '32.



EDITH MCPHERSON

Girl Scout Club '29; Hockey  
Team '29; Dramatic Club '30,  
'31; Commencement Marshal; Glee  
Club '32.

DOROTHY ELIZABETH  
MALONE

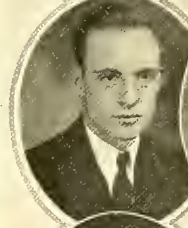
Dramatic Club '29, '30, '31,  
'32; Orchestra '29, '30, '31, '32;  
Basketball '29, '30; Commence-  
ment Marshal '31; Glee Club '32.



MARY ALICE MOSER

Girl Reserves '29, '30, '31, '32;  
Arts and Crafts '31; First Censor  
Home Room '30; First Censor  
Hostess '32.

SHERMAN MOSS



R. VERNELL MURRAY

Varsity Track '29, '30, '31, '32;  
Captain Class Track '29, '30, '31;  
Home Room President '29, '30,  
'32; Scout Club '29, '30; Presi-  
dent Scout Club '30; Vice-Presi-  
dent Bird Club '30; Varsity Foot-  
ball '30, '31; Class Football '29,  
'30, '31, '32; Student Council '29,  
'30, '32; 'B' Club '31, '32;  
Treasurer Student Council '32;  
President Archery Club '30.

HELEN YOUNGER OLDHAM

Dramatic Club '28, '29, '30.



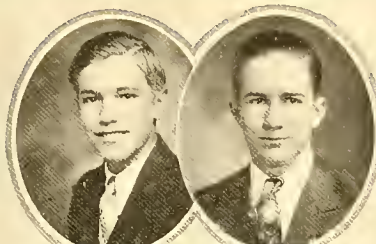
MINNIE MORGAN OLDHAM

Masquers Dramatic Club '26,  
'27; B. H. S. Literary Lights '26,  
'27; Girls' Glee Club '27, '28, '30,  
'31, '32; Secretary Home Room  
10-I First Half Year '30-'31; Dra-  
matic Aces '30.



COY PARRISH

Toy Makers Club '29; Junior Hi-Y '30; Class Boxing '31.



JAMES H. PARROTT

Junior Hi-Y '29; Senior Hi-Y '30, '31, '32; President 9-III '30; Student Council '30; Track Team '30, '31, '32; Baseball Squad '29; Glee Club '30, '31.



HAZEL LUCILE PAUL

Hostess Club '29, '30; Girl Reserves '30; Debating '32.



BLANCHE EVELYN PEGRAM

Girl Scouts '29; Dramatic '29; Glee Club '30, '31, '32.



EDNA LOIS PERRY

Girl Scout '29; Girls' Glee Club '31; Girl Reserves '31; Arts and Crafts '31; President Girl Reserves '32; Basketball '32.



LUCILLE PROCTOR

Dramatics '29, '30; Glee Club '30; Girl Reserves '31; Vice-President Girl Reserves '32.



VIRGINIA RIMMER

Hostess Club '28, '29; Secretary and Treasurer Toy Makers Club '28, '29; Dramatic Club '29, '30; Arts and Crafts '30, '31.



RICHARD A. ROBERTSON

Football '31, '32; Baseball '30, '31, '32; 'B' Club '31, '32; President 'B' Club '32; Senior Hi-Y '32; Science Club '30; Travel Club '29; Junior Hi-Y '31; French Club '31; Class Football '31, '32; Class Baseball '30, '31, '32; Varsity Track '32.



EARL WASHINGTON  
ROBINETTE

Junior Hi-Y '29; Senior Hi-Y '30, '31, '32; Band '30; Assistant Circulation Manager Barker '31.



HAZEL ROGERS

Dramatic Club '29, '30, '31; Girl Reserves '31; Treasurer Girl Reserves '32.





## JOSEPH WILSON ROGERS

Basketball '31, '32; Class Baseball '29, '30, '32; Class Basketball '29, '30, '31, '32; Track '29, '30; Boy Scout Club '29; Senior Hi-Y '30, '31, '32; Dramatic Club '31; Archery Club '29; Band '32; Orchestra '32; Circulation Manager Doe Wah Jack Jr. '32.

## MARY WILEY SCOTT

Dramatic Aces '30, '31, '32; Monogram Club '30, '31, '32; Vice-President Monogram Club '32; Glee Club '30, '31, '32; Toy Makers Club '29; Girl Scout '29; Secretary and Treasurer Girl Scout '29; Advertising Staff of the Barker '31; Advertising Staff of the Doe Wah Jack Jr. '32; Basketball '29, '30, '31; Hockey Team '29, '30, '31; Captain Ball '29, '30, '31.

## KATHERINE ELENORE SIMPSON

Playmakers Dramatic Club '30; Toy Makers Club '29; Girl Scout '29; Le Cercle Francais '31; Secretary Le Cercle Francais '31; Home Room President '32; Student Council '32; National Honor Society '31, '32; Vice President and Treasurer National Honor Society '32; Advertising Staff of Doe Wah Jack Jr. '32; Feature Editor Doe Wah Jack Jr. '32; Historian Senior Class

## VESTER SMALL

President Sophomore Class '29, '30; President Junior Class '30, '31; President Student Council '31, '32; Varsity Baseball '30, '31, '32; President Stage Steppers Dramatic Club '30, '31; Class Baseball '27, '29, '31; Class Football '27, '29, '31.

## GRACE MAE STALEY

Dramatic Club '29, '30; Archery '29, '30, '31, '32; Glee Club '31, '32.

## NANCY MILDRED RONEY

Dramatic Club '29, '30, '31, '32; Archery Club '30; Class Hockey Team '30, '31; Class Basketball '30, '31, '32; Girls' 'B' Club '32; Advertising Staff of Senior Magazine '32.

## CALVA EUGENE SHARPE

Dramatic Club '29, '30; Girl Scouts '29; Secretary Le Cercle Francais '31; Student Council '32; Secretary National Honor Society '32; Latin Club '32.

## VATER SMALL

Girl Scout '28, Patrol Leader '29; Dramatics Censor '30, '31; Vice-President Home Room '31.

## NETTIE MAE SMITH

Class Basketball '29, '30, '31, '32; Manager Class Basketball '30; Playmakers Dramatic Club '30; Class Captain Ball '29, '30; Girls' 'B' Club '31, '32; Vice-President Girls' 'B' Club '32; Hostess Club '29; Class Tennis '29, '30; Girl Scouts '29; Girl Reserves '31, '32; Press Reporter Girl Reserves '32; Class Hockey '29, '30.

## VIRGINIA HOPE SURRATT

Hostess Club '29; Girl Reserves '30, '31, '32; Glee Club '32.





## FRANK E. TILLEY

B. H. S. Home Room President's Council '27, '28, '30, '31; Walter Hines Page Literary Society '30, '31; B. H. S. Dramatic Club '31, '32; Senior Hi-Y Club '31, '32.



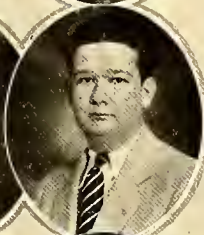
## ETTA MAE THOMPSON

Girl Scout, '28, '29; Stage Steppers Dramatic Club '29, '30; Hostess '30, '31; Debating Club '31, '32.



## ANNIE BOYD TROLLINGER

Basketball Team '29, '30; Captain Ball Team '29, '30; Glee Club '31, '32; Stage Steppers Dramatic Club '29, '30; Dramatic Aces '31, '32; Travel Club '31; Girl Scouts '29; Hockey Team '29, '30; Tennis '29, '30.



## EDMUND HOWARD WADDELL

Eighth Grade Chorus '28; Archery Club '28; Toy Makers Club '29; Bird Club '30, '31; Senior Hi-Y '30, '31; Radio Club '32.

## D. J. WALKER, JR.

Junior Hi-Y '29; Patrol Leader Boy Scout Club '29; Senior Hi-Y '30, '31; Secretary in '32; Critic Latin Club '31; Track Squad '31, '32; Band '30.



## T. ELEANOR WALKER

Hostess Club '28, '29; Toy Makers '28, '29; Dramatic Aces '29, '30; Girl Reserve '29, '30; Arts and Crafts '30, '31; Latin Club '31, '32.

## MILDRED CATHERINE WALKER

Hostess Club '29, '30, '31; Arts and Crafts '31, '32.



## WINFRED WAY

Band and Orchestra '29, '30, '31, '32; 'B' Club '31, '32; Varsity Football '31, '32; Varsity Basketball '31, '32; Varsity Baseball '30, '31, '32; Captain Football '32; Varsity Track '32; Class Football, Basketball, Baseball and Track '29, '30, '31, '32; Class Treasurer '31; President Band '32.

## ANNIE AUGUSTA WEBSTER

Girls' Reserve '29; Hostess Club '29; President of Hostess '31, '32; Dramatic Club '31; Glee Club '32; Hockey Team '29; Captain Ball '31; Basketball '32.



## IDA WEBSTER

Basketball '29, '30, '31, '32; Hockey '29, '30, '31, '32; Captain Ball '30, '31, '32; Hostess '29; Student Council '29, '30, '31, '32; Secretary Student Council '30, '31, '32; Girls' 'B' Club '30, '31, '32; President Girls' 'B' Club '30; National Honor Society '32; President Sophomore Class '30; Girl Scouts '29, '30; Dramatic Club '30.



**In Memoriam**

WADE SHOFFNER

DIED APRIL 3, 1931

*Member of the Class of 1932*



## *Senior Class History*

I shall never forget that day in September when we stormed the high school by our entrance. We were one hundred and twenty-eight typical freshmen. At first we felt like fish out of water and wondered if we really had a place in high school life.

As sophomores, we forgot our feeling of inferiority and began to take part in the school activities. It was during this year that we began taking an active part in athletics. At a cupid's party that year we also discovered our talent for dramatics.

The outstanding feature of our junior year was the junior-senior banquet, which we gave in honor of the seniors. Even though the date for the banquet was the thirteenth, with an efficient toastmaster it went over in a big fashion. Next to the banquet in importance, was the part that we, as juniors, took in establishing a high school newspaper. We felt that part of the Barker's success was due to the co-operation and work on the part of the juniors.

Then, at last we were seniors. Oh, the very word seemed to carry with it such a definite meaning! At the end of our senior year, we learned that Mr. Half-acre, who had guided us through three years of our high school work, was going to leave. In his place, Mr. Buckner has proved a very enthusiastic leader. Of course the junior-senior banquet was again an outstanding feature, with the seniors as guests instead of hosts. This banquet was a surprise too since it had been generally agreed that with the depression the banquet was out of sight. The task of publishing a Doe Wah Jack Jr. was one of the larger tasks which we as seniors set out to accomplish.

Throughout the entire four years our one aim has been working to earn diplomas.

When I think of the class of '32 as a whole, I think of the numerous leaders in so many varied phases of work. As for the four class presidents, we were fortunate in having people who were quite competent and capable of leading, so that we excelled in everything that we really tried to accomplish. Both the boys and girls will be remembered for their part in athletics. The band, orchestra, and glee club were practically composed of the talented members of our class.

With our Lincoln mascot, our worthy motto, "Not on top, but climbing," the class of '32 graduated with their colors, rose and silver, flying high.

KATHERINE SIMPSON,  
Historian

As others see us ~

		
GARDNER ISLEY "HAPPIEST"	EDITH MCPHERSON "BEST ALL-ROUND GIRL"	BERNARD BERNSTEIN "MOST STUDIOUS"
		
WINFRED WAY "MOST ATHLETIC BOY"	CLYDE FOWLER "BEST SPORT"	CATHERINE GREGG "MOST ATTRACTIVE"
		
KATHERINE SIMPSON "MOST DETERMINED"	JEWEL HUNT "BIGGEST FLIRT"	JACK BROWN "MOST INFLUENTIAL"
		
BANKS FITCH "BEST ALL-ROUND BOY"	RICHARD ROBERTSON "MOST POPULAR BOY"	IDA WEBSTER "MOST SCHOOL SPIRITED"
		
GALYA SHARPE "MOST ENERGETIC"	KATHERINE DIXON "MOST ATHLETIC GIRL"	HAZEL BOSWELL "MOST POPULAR GIRL"



## Prophecy of Senior Class

The winds howled with the furiousness of a wild beast while the lightning rent the heavens, setting the elements ablaze. The screech of the owl sounded hideous above the din of the storm, and the low mew of the big black cat was lost in the noises outside.

The old witch sat looking intensely into the eyes of her strange pet. The group which was gathered there stood breathless, awaiting the words which were about to fall from the lips of the old hag.

"Calva, do you believe in fortunes?" Bernard whispered.

"Sh - h - h! She is getting ready to speak."

"My cat," the witch began, "allow your eyes to give up to me the secrets that the years hold for this class of '32. It comes; it comes! I see a huge room, handsomely furnished. Around a large table are gathered a group of dignified business men. It seems to be the meeting of the directors of some large firm. At the head of the table is the president, who is none other than Almon McIver. There are also others whose faces are familiar to this class. They are Vernell Murray, Richard Holt, and Albert Cade. Calva Sharpe, secretary to the president, moves silently about the room.

"This scene grows dim and gives place to a room of immaculate whiteness. Silent, white clad figures move quickly about. One of the most celebrated heroes of the day, who has just returned from a non-stop flight around the world, lies in a serious condition under the knife of Dr. Bernard Bernstein. As the aviator slowly opens his eyes, one may recognize Jack Hanna. Velma Cole, supervisor of the operating room, and Etta May Coyner, technician, assist the illustrious doctor with the operation. The crowded observatory gallery seems to contain familiar faces, among which are Mary Wiley Scott and Joseph Cole, interested young doctors.

"Ah! next I see an art gallery where Carl Crabtree, much discussed artist of the day, is having an exhibit of his works. Some of New York's four hundred are there, including Wilma Lineberry with her millionaire husband. Others who are enjoying the show are: Gardner Isley, Frank Tilley, and Helen Oldham. A number of the spectators are talking.

"There! I hear their conversation now. Hazel Boswell, famous pianist, seems to have captivated her audience with her rendition of one of her own compositions, 'Rain Drops in The Bucket', in which she was ably accompanied by the orchestra, the personnel of which boasts several members of the class of '32. Doris Malone holds the seat of concert mistress; Kenneth Angel and Wilson Garrison are in the clarinet section; Carlton Boland is in the trumpet section; while Wilson Rogers plays the saxophone. Winfred Way wields the baton over that famous organization.

"Now I see John Boland, manager of the Southern Bell Telephone Company, married and settled down. John is leisurely reading the Burlington Times-News. By a glance at the editorial staff, I find that Earle Robinette has risen to the post of editor-in-chief, and is assisted by Richard Robertson, who covers the sports. Grace Staley is society editor. John pauses as he views the classified advertisements which are featuring the opening of a new beauty salon, managed and operated by Vater Small and Minnie Morgan Oldham. Ah! Another important item—George Boswell has taken over the C. G. Phibbs Grocery store. In looking over John's shoulders, another interesting item is visible. Banks Fitch seems to be in constant demand as radio star. His engagement to Miss Edith McPherson has recently been announced, too. Edith is a famous maniquin in Chicago.

"A city of unusual interest next looms before my gaze. Yes, it's Hollywood. A member of your class has become a much worshipped matinee idol. He is known as Clyde (What-a-man) Fowler. Ziegfield has also chosen Blanche Pegram, one of the screen celebrities, as his glorified girl of '36, and she is there making pictures. She and Frances Long are living together, and Frances is accompanist for the Coconut Grove Orchestra. One of the most noted criminal lawyers of the era is in the movie colony. Every one knows Wilson Cheek, who considers his greatest accomplishment to be the discovery of his secretary, Katherine Simpson.

"The scene again changes. I see Catherine Gregg, the recently crowned Miss Universe, and her companion, Annie Boyd Trollinger, who are sailing for Europe. Miss Trollinger has just accepted a position on the Burlington High School faculty, made vacant by the recent resignation of Miss Meledith Frazier. On the same ship, I see Willard Cold who is sailing to enter the Olympic games in Switzerland, where she expects to win many honors for the United States.

"It seems that the United Dollar Store has as its new general manager Gladys Lashley, and her assistants are Thelma Andrews and Clara Mae Cooper. Edna Perry has recently accepted the presidency of McClellans stores and leaves soon for New York to assume her duties. Alma Lamm is in New York buying the fall apparel



for Lamm Clothing Store. She looks surprised over something. I can't imagine what it is about, unless it is that she has just seen John Robert Kernodle, who is head barber in one of the city's most exclusive shops. Edith Ausley is his manicurist.

"Now my cat's eyes reveal a dancing studio where Cleo Cook and James Parrot, the famous dance team, are endeavoring to teach Joe Fogleman the latest steps. Joe has recently come into possession of the B. V. May Hosiery Mills, and seems slightly worried over the \$10,000 order which he expects to get from Roy Hogan, who is manager of Montgomery Ward Chain Stores. It seems that Roy and his hosiery specialist, Dorothy Bowman, can't agree on the style which they want.

"What is this! Aha, a court room! Nettie Mae Smith, famous short story writer, is suing her husband for divorce. D. J. Walker, Jr., is the presiding judge, and Ruby Glosson, a most successful lawyer, is appearing in Nettie Mae's defense.

"Here I have a vision of Burlington High School itself. Jack Brown is filling the chair of principal. Lucile Paul fills Mrs. Graham's place in the Latin department, and Curtis Hinshaw is teaching science. Beverly Hanna, who has just graduated in voice from Graham Conservatory of Music of which Virginia Holt is president, is directing the high school glee clubs.

"I also see a young lady who has established a fleet of airplanes to fly between Burlington and Graham. Yes, she is Mildred Roney. She bought these airplanes to take the place of her well known ford which previously served as a taxi. One of the pilots is Wilton Elder.

"Jimmie Durham is head of the Durham Brothers Co., and J. C. Harviel is playing at Roxy Theater as substitute for Fritz Kriesler, the world-famous violinist.

"J. W. Glosson, I see, is football coach in Mebane High School; while Eleanor Walker, Mary Moser, Helen Grubb, and Lucy Benson are members of the faculty. Clarence Isley is operator at the new Movie Palace in this thriving little city.

"Ralph Bennett is the new manager of the Alamance Laundry, and Charlie Durham has succeeded his father as manager of the Durham Coal Company. I also see Hubert Dickey as a big bottling man in the Lime-Cola Bottling Company, while Thomas Lyon has recently been appointed district manager for Pender's Grocery Company.

"Back to Burlington—one of the most outstanding novelists of the day, Edwin Hayes, is an honored guest in his home town. Jeanne Isley has become assistant pastor at Front Street M. E. Church. The commander of the Burlington Post of the National Guards, Clarence Hart, has recently been honored. Virginia Rimmer is owner of a school bus line which has taken the place of the old city buses.

"Startling as it may sound, Richard Bryan is teaching mathematics at Duke University.

"The more domestic members of the class I see, are the most competent housewives. They are Mae Thompson and Mildred Walker.

"Pauline Fowler, although her name is slightly changed, has joined her husband in San Francisco where they are planning to see the world. Also, I see that Vester Small is catcher for the New York Giants. Dorothy Earle is in New York, too, where she is pianist for Paul Whiteman.

"Due to the recent death of Chief West, Sherman Moss has become his successor as head of the Boy Scouts of America.

"It seems that Vivian Bell has certainly kept the shoe business in the family, for I see her here modelling shoes in Madam's Modiste Shoppe, of which Katherine Dixon and Jewel Hunt are owners. Who is that coming in the door? Why, it's Helen Glosson, who has recently been elected sweetheart of the 120th infantry.

"I see that Zeb Coble has become tennis champion of the south, and is soon to meet Malcolm Lea who was last year's champion of the United States. His manager is Harold Clarke.

"Well, well, Harold Waddell is making the pictures for the Doe Wah Jack Jr. this year. He is also photographer for Lucille Proctor and Hazel Rogers who, with a sister act, are trying to make a hit on Broadway.

Edith Alexander and Hope Surratt seem to be doing missionary work in Africa where Kilby Coble and Joe Coble are doing research work for the museum of Natural History. Annie Webster is quite a humanitarian and is doing wonderful welfare work in Burlington. Coy Parrish, who is in with his brother in the dairy, furnishes milk to the needy. This milk station is financed by Julian Coleman, wealthy philanthropist."

As the high tones of the old witch's voice died away into silence, a profound hush fell upon the class.

"Well, what do you know about that!"

At this exclamation from "Doots" Way, every one turned to look at the witch, but she was not there.

Had it been a dream?



## *Last Will and Testament*

We, the senior class of Burlington High School, in the County of Alamance, State of North Carolina, being of possibly sound mind and memory, but considering the uncertainty of our scholastic existence and the many valuable assets we have, do make and declare this our last will and testament in manner and form following; hereby, revoking all former senior wills at any time heretofore made.

After the payment of our just debts, including our Doe Wah Jack Jr. expenses, we bequeath and devise as follows:

### ARTICLE I

We will and bequeath to our highly esteemed faculty the privilege of using us as shining models of perfection, with the hope that the lower classmen may be inspired to become great.

### ARTICLE II

To the junior class, we leave our many senior privileges, our dignity, and the honor of publishing an annual. To the sophomores, we leave our school loyalty, hoping that they will always maintain this school spirit. To the freshmen, we leave all past notebooks to be sold at auction, and to be exhibited as patterns of excellence. To the on-coming freshmen, we will our good luck in the high school career.

### ARTICLE III

The following individuals do bequeath as follows:

Talbert King wills his boundless vocabulary (from Webster's unabridged dictionary) to Charlotte Love.

Mildred Roney leaves her Ford to B. H. S. It is to be used for charity transportation to and from town.

Alma Lamu and Helen Glosson leave their modesty to Demetrie Ireland.

In order that the students may have as many as they want, Elaine Stadler leaves her "Graham" crackers to the high school cafeteria.

Richard Holt and Richard Bryan leave their good attention on class (while not asleep) to Henry Capes and Jack Leath.

Wilton Elder and Ralph Bennett leave their height to Lynn Durham and John Hall.

Hazel Boswell bequeathes her "safety pins" and "buckets" to Madeline McKeel for amusement in spare time.

Jimmie Durham leaves his library privileges to Mildred Dailey.

Bernard Bernstein, Carlton Boland, John Robert Kernodle, and Joe Coble leave their seats in Mr. Buckner's history class to any one studious enough to get them.

Mary Wiley Scott wills her "Ford" to any person who prefers this particular make.

Calva Sharpe leaves her "Moore heart troubles" to Myrtle Hobby.

Willard Coble wills her history notes to Gladys Sandlin.

Mary Moser replaces Mr. Buckner's "little box" with a larger one, for the convenience of the on-coming senior class.

Vernell Murray, Roy Hogan, Clyde Fowler, and Joseph Cole leave their football ability to Paul Morrow, John Heritage, Aubrey Blanchard, and W. D. Rudd.

Vester Small leaves his executive ability to Hugh Hayes.

Beverly Hanna, Annie Boyd Trollinger, and Catherine Gregg leave Vivian Bell's mirror and comb to Miss Nicholson's third period English class for next year.

John Boland leaves his "kinks" to Graham Gant.

Jack Hanna bequeaths his sweet bass voice to Ralph Goins.

Malcolm Lea and Wilson Cheek leave their barber experiences to Otis Eudy.

Almon McIver and Cleo Cook will their ability to solve geometry problems to Hermon Knott and Evelyn Brown.

Etta May Coyner and Katherine Dixon bequeath their position as Miss Howell's assistants to any junior whom Miss Howell chooses.

Jewell Hunt leaves her title "The Biggest Flirt" to French Cook.

Jack Brown wills his goal shooting ability to Bill Mitchell.

Ruby Glosson, Hope Surratt, Thelma Andrews, and Lucille Proctor will their uproarious ways to June Ausley, Bertha Smith, Helen Cable, and Helen Younger.

Wilma Lineberry leaves her curly blonde hair to Dolly Gorman.

Thomas Lyon and Edwin Hayes leave their collection of western stories to the library to be used as parallel books in English classes.

# The DOE WAH JACK JR.

Nettie Mae Smith leaves her Ford to the school for the convenience of Mr. Reid's science classes.

Julian Coleman, Richard Robertson, Harold Clarke, and Coy Parish leave their brilliancy in French to Mrs. Shaw to bestow upon any pupil lacking such aforesaid brilliancy.

Frank Tilly bequeathes his boxing ability to Francis Riddle.

Vater Small, Minnie Morgan Oldham, Helen Grubb, and Velma Cole bequeath their privilege of leaving school at one o'clock to any one lucky enough to rate it.

Ida Webster wills her position as pianist for the boys' physical education classes to Virginia Kirkman.

Sherman Moss and Wilson Garrison leave their manly size to Max Rogers and Morris Ivey.

Jeanne Isley leaves her title, "Miss Frazier's pet", to Mildred Branson.

Winfred Way bequeathes his athletic ability to George Walton.

Dorothy Bowman leaves her tooth braces to Edlee Cates.

Killy Coble and Curtis Hinshaw leave their blank minds to Allen Patterson and Eugene Goodes.

Vivian Bell wills her giggles to Laura Mae Teer.

Edith Ausley wills her rotund figure to Bailey Miller.

Since Albert Cade is the only one to boast of whispering out loud across the room on Mr. Leonard's class and getting by, he desires to keep this privilege to tell his great, great grandchildren.

Edith McPherson leaves her habit of taking home all stray cats to Louise Horne.

Katherine Simpson leaves her dignity and sagacity to Hilda Lee Heatwole.

Doris Malone leaves her seat in the orchestra to Sallie Mae Andrews.

Grace Staley, Blanche Pegram, Frances Long, and Virginia Holt will their musical ability to Frances Brown, Virginia Faucette, Mary Tuttle Atwater, and Alice Burton Spruce.

Mae Thompson and Annie Webster leave their everlasting smiles to Sara Frances Loy.

Carl Crabtree bequeathes his talent for art to Martin Horner.

Gardner Isley bequeathes his reputation as a pest to C. J. Smith.

J. C. Harviel leaves his trip to Carolina to Thomas Cole.

Banks Fitch leaves his ability for originating nick names to Dickie Coble.

J. W. Glosson wills his good physical education grades to Homer Robinette.

Gladys Lashley, Clara Cooper, and Edith Alexander leave their come-hither eyes to Virginia Thompson and Blondell Newell.

Virginia Rimmer, Edna Perry, Hazel Rogers, and Lucille Paul leave their quick tempers to Wandless Hart and Syble Glenn.

Lucy Benson, Mildred Walker, and Pauline Fowler leave their loud brusque voices to Mabel Hanford and Julia Frances Horne.

Howard Waddell and Clarence Isley leave their jobs as operators of the moving picture machine to Frank Hinshaw and Clarence Mebane.

George Boswell and Hubert Dickey bequeath their monopoly on laziness to Clyde Webster and Bill Ezzelle.

Dorothy Earle wills her privilege of working cross-word puzzles on French class to Doris Rogers.

Kenneth Angel, Zeb Coble, Wilson Rogers, and Earl Robinette bequeath their speechless tongues to Reba Hinsdale and Virginia Herbert.

Charlie Durham leaves his ability to make English talks to Revelle Wingfield.

Clarence Hart leaves his physics' grades and notebook to Irving Hogan.

Helen Oldham bequeathes her formula for reducing to Margaret Spoon.

Joe Fogleman, James Parrott, and D. J. Walker leave their motto, "Where you see one, you see three", to Yale Goodes, Gene Pryor, and T. J. Horner.

Eleanor Walker wills her excess quantity of pep to Elizabeth Gant.

## ARTICLE IV

In testimony to the falseness of this our last will and testament, we do hereby publish our last will and testament, this fourteenth day of March, the year of our Lord, one thousand nine hundred and thirty-two.

Any person who fails to abide by these wills and bequeaths will get his name in the "little box".

Witnesses:

Miss Elizabeth Nicholson  
Mr. E. C. Leonard

CLASS OF '32

BANKS FITCH, Testator



# JUNIORS



# JUNIOR CLASS

Motto: "Don't try dying; die trying"

Colors: Blue and Gold

Flower: Violet

## OFFICERS

President .....	Hugh Hayes
Vice-President .....	Irving Hogan
Secretary .....	Hilda Lee Heatwole
Treasurer .....	Edlee Cates
First Censor .....	Evelyn Brown
Second Censor .....	Jack Leath
Press Reporter .....	Virginia Herbert

## MEMBERS

Amick, Irving  
 Andrews, Sallie Mae  
 Atwater, Mary Tuttle  
 Ausley, June  
 Bailey, Walter  
 Bason, Pauline  
 Bishop, Raymond  
 Blanchard, Ambrey  
 Boone, Christine  
 Boone, Evelyn  
 Branson, Mildred  
 Brown, Evelyn  
 Brown, Frances  
 Cable, Helen  
 Cade, Alma  
 Callahan, Virginia  
 Capes, Henry  
 Cates, Edlee  
 Coble, Dick  
 Coble, Harriett  
 Cole, Thomas  
 Collins, Evelyn

Cook, French  
 Copeland, Mildred  
 Dixon, Margneritte  
 Durham, Lynn  
 Farlow, Bruce  
 Faucette, Virginia  
 Gant, Elizabeth  
 Garmon, Dollie  
 Garner, Edith  
 Garrison, Alonza  
 Gibbs, Richard  
 Gilham, Fletcher  
 Gilmore, Mildred  
 Glenn, Syble  
 Goins, Ralph  
 Goodes, Eugene  
 Goodes, Yale  
 Hall, John  
 Handsell, Ha  
 Hanford, Mabel  
 Hargrove, Clyde  
 Hart, Wandless

Hayes, Hugh  
 Heatwole, Hilda Lee  
 Herbert, Virginia  
 Hickey, Helen  
 Hinsdale, Reba  
 Hobby, Myrtle  
 Hogan, Irving  
 Horne, Julia  
 Horne, Louise  
 Horner, Martin  
 Horner, T. J.  
 Ireland, Demetrie  
 Johnson, Christine  
 Johnson, Willie  
 Jones, Ruth Lee  
 King, Wilson  
 Kirkman, Virginia  
 Knott, Herman  
 Laukford, Wilbur  
 Leath, Jack  
 Love, Charlotte  
 Loy, Christine



# *The* DOE WAH JACK JR.

## JUNIOR CLASS ROLL (Continued)

Maness, Willie  
McCauley, Hallie  
McFayden, Edith  
McKeel, Madeline  
Merritt, Royal  
Morrow, Paul  
Moser, Carl  
Neece, Sara  
Newell, Blondell  
Oldham, Hallie  
Pasehall, William  
Patterson, Allen  
Pender, Louise  
Pennington, Robert  
Petty, L. M.  
Phillips, Louis

Pritchett, Louise  
Rippy, Mabel  
Robinette, Homer  
Rogers, Doris  
Roney, Alma Lee  
Ross, Samuel  
Rudd, Charlie  
Rudd, W. D.  
Sandlin, Gladys  
Sharpe, Lucy  
Shoffner, Clara Mae  
Slater, Dorothy  
Smith, Berta  
Smith, Mabel  
Smithwick, Wilbur  
Sorrell, Lawrence  
Spoon, Mary Kennett

Stewart, Winifred  
Teer, Laura Mae  
Tickle, Clyde  
Tingen, Margaret  
Thompson, Floyd  
Thompson, Otis  
Thompson, Virginia  
Thornton, Thomas  
Webster, Clyde  
Wilkinson, C. G.  
Williams, Willa  
Wingfield, Reville  
Wood, Annie Mae  
Wood, Evelyn  
Woodson, Emma  
Younger, Helen

## *History of The Class of '33*

Is there anyone who does not remember September 24, 1929 when one hundred and forty-six students entered Burlington High School and started climbing the ladder of success? Of course not—such an event as that is one of those unforgettable ones which is recognized throughout the ages!

Under the leadership of our sponsors, Miss Virginia Hassell, Miss Annie Webster, Mr. J. G. Hollingsworth, and Mr. H. G. McBane, as well as our class officers: Paul Morrow, president; Dwight Durham, vice-president; and Irving Hogan, secretary and treasurer, we were started successfully. Our motto, "Don't try dying; die trying," which waived on a blue and gold banner, further encouraged us.

After a successful year we took "time out" for three months, resuming our journey in September 1930.

Though some of our members remained behind to again experience the thrills of a freshman, yet one hundred and twenty-five members were still with the class of '33. This year we elected as our officers Irving Hogan, president; Dick Coble, vice-president; and Hilda Lee Heatwole, secretary-treasurer. Our helpers were Miss Florence Rutherford, Miss Mildred Elrod, and Mr. H. G. Gabriel. This was indeed a successful year for old '33. Did we not gain the silver loving cup given each year to the class excelling in athletics?

A well-earned vacation again came the last of May 1931, and we were given three months rest before continuing our climb up the ladder of success.

On September 7, 1931, one hundred and fifteen members of the class of '33 were ready to resume the climb. This year the class leadership fell to Hugh Hayes, who was elected class president, with the assistance of the other class officers, who were: Irving Hogan, vice-president; Hilda Lee Heatwole, secretary; and Edlee Cates, treasurer. Miss Elizabeth Nicholson, Mr. H. G. Gabriel, and Mr. R. C. Reid were sponsors.

What a grand and glorious feeling to realize that now we were upper classmen! We stood ready to co-operate in all school activities. Although some pessimistic person started a rumor about a depression and made everyone feel rather blue, the juniors went right on working.

Nothing can stop us now. We've started out to reach the top of the ladder and little things like depressions, geometry, and physics can't stand in our way.

Look out depressions, geometry and physics, the class of '33 is coming!

EDLEE CATES.  
Historian



## *Can You Imagine—*

Emma Woodson not giggling?  
Myrtle Hobby a platinum blonde?  
Hugh Hayes in a hurry?  
Julia Frances Horne without "that gift of gab"?  
Willie Maness as a health advertisement?  
Virginia Herbert without that northern brogue?  
Evelyn Collins with nothing to say?  
Hilda Lea Heatwole saying, "I don't know"?  
Evelyn Brown without her slang expressions?  
Lynn Durham as Rudy Vallee?  
Mildred Copeland not dancing in physical education?  
Virginia Faucette not interested in "Fites"?  
Carl Moser forgetting to say "acclamation" at a class meeting?  
Hallie McCauley without that lipstick?  
Irving Hogau not wanting to go to Hillsboro?  
Paul Morrow a football star?  
Frances Brown in the Metropolitan opera?  
T. J. Horner not liking "buckets" and "safety pins"?  
Dick Coble a woman-hater?  
Annie Mae Wood and Dorothy Slater not chumming?  
Laura Mae Teer without that school spirit?  
Dollie Garmon with straight hair?  
Helen Cable unable to prove a theorem in geometry?  
Alma Cade without her dignity?  
Louise Pender a movie star?  
W. D. Rudd a French professor?  
Elizabeth Gant with a boyish bob?  
Demetrie Ireland without that family pride?  
Marguerite Dixon not interested in Angels?  
Aubrey Blanchard not being picked on?  
Pauline Bason and William Paschall as cheer leaders?  
Mildred Gilmore involved in some gossip?  
"Duck" Hargrove not interested in athletics?  
Madeline McKeel refusing to go to Graham?  
Richard Gibbs operating the Paramount theatre?  
Willie Johnson a physical education instructor?  
Mary Tuttle Atwater six feet tall?  
Louise Horne a certain teacher's pet?  
Mabel Hanford not liking the movies?  
Edith McFayden in George White's Scandals?  
Willa Williams not dreaming of "Red" on Geometry?  
Doris Rogers without her modesty?  
Gladys Sandlin having the "jailhouse blues"?  
Reba Hinsdale getting a permanent wave?  
Louis Phillips accustomed to city life?  
Edlee Cates interested in "Royalty"?  
Ila Handsell publishing a play?  
Mabel Smith not "billing and cooing"?  
Lucy Sharpe an underweight?  
French Cook not primping?

The DOE WAH JACK JR.



SOPHOMORES

'32

*hope your  
 class in your future life  
 to know you did it 1931 class  
 to the best*

# The DOE WAH JACK JR.



*in high!*

*Annie Louise*

*As L. Wile  
 Calwag.  
 Ruth*



## SOPHOMORE CLASS

Motto: "Aim high; reach higher"

Colors: Green and White

Flower: White Iris

### OFFICERS

President .....	William Whitley
Vice-President .....	Julia Lloyd
Secretary .....	Hal Dean Holt
Treasurer .....	Frances Manheim
First Censor .....	Annie Hurdle Walker
Second Censor .....	Tom Collins
Historian .....	Julia Lloyd

### SOPHOMORE CLASS ROLL

Adams, Doris  
 Allen, Hilda  
 Andrews, Nell  
Anthony, Ella  
 Askew, Kyle  
 Baker, Helen  
 Barker, Evelyn  
 Baynes, Annie Louise  
Bennette, Gaynelle  
 Berry, Byron  
 Boland, Frances  
 Boland, Mary Louise  
 Boliek, Louise  
 Brandon, Vernon  
 Bryan, Irvin  
 Bulla, Edith  
 Burke, Ethel  
 Burke, Mabel  
 Campbell, Minnie  
 Cates, Myrtle  
 Cates, Mildred  
 Cheek, Catherine  
 Clark, Leon  
 Collins, Tom

Cook, Elizabeth  
 Crutchfield, Homer  
 Daily, Mildred  
 DeBrula, Juanita  
 Dickens, Lee Boyd  
 Edwards, Thurlow  
 Ezzell, William  
 Fogleman, Dorothy  
 Fox, Ruth  
 Freedman, Dottie  
 Fulenwider, Edward  
 Gant, Agnes  
 Gilmore, Gurney  
 Glenn, Edna  
 Glosson, Henry  
 Hall, Emma  
 Hanner, Dorothy  
 Hart, Imogene  
 Hay, Elouise  
 Hayes, Virginia  
 Haynes, Frances  
 Hensley, Fitch  
 Hinshaw, Frank  
 Hinshaw, Ruby Mae

Hodgins, Mary Eleanor  
 Holt, Hal Dean  
 Horne, Charles  
 Horner, Ruth  
Huffines, Alline  
 Isley, Delilah  
 Isley, Genevieve  
 Isley, Helen  
 Ivey, Elizabeth  
 Jobe, J. E.  
 Johnston, Annie Katherine  
 Jones, Java  
Jones, Ruth  
 Lamberth, Jack  
 Lamm, Bertha  
 Lashley, Gurney  
 Lloyd, Julia  
 Long, Helen  
 Long, Matthew  
 Lloyd, Ava  
Mangum, Geraldine  
 Manheim, Frances  
 Mansfield, Dorothy  
 May, Katherine

*Best wishes  
 saying you  
 are better  
 back with  
 me next  
 year*

*Best of love  
 to a great  
 and my  
 very best  
 friend.*

*Tom Collins*



# The DOE WAH JACK JR.



## SOPHOMORE CLASS ROLL (Continued)

McAdams, Lon  
Mebane, Clarence  
Miller, Nell  
Mitchell, Bill  
Moody, John  
Moody, Annie Maude  
Moss, Cleo  
Parker, James  
Pennington, Gurney  
Perry, Annie  
Perry, L. D.  
Perry, Verna  
Pryor, Bernice  
Pryor, Eugene  
Rippy, Elizabeth  
Robbins, Terry  
Robertson, George  
Rogers, Max

Rook, Mabel  
Ross, Lena Mae  
Self, Helen  
Smith, C. J., Jr.  
Spoon, Margaret  
Sullivan, Edna Pearl  
Sumner, Margaret  
Stadler, Hazel  
Stephens, Julia  
Stokes, Robert  
Sykes, Lillian  
Teer, Hazel  
Terrell, Thelma  
Thomas, Beatrice  
Thomas, Christine  
Thomason, Mildred  
Tillman, Flossie Mae  
Tillman, Mary

Troxler, Mildred  
Turner, Virgie  
Walker, Annie Hurdle  
Walker, Dan  
Walker, Harrison  
Walker, Minerva  
Walton, George  
Ward, Frank  
Warlick, Robert  
Way, Clay  
Webster, Doris  
Webster, Dorothy  
Wheely, Lynwood  
Whitley, William  
Whitt, Helen  
Wilson, Hazel  
Wiggins, Vivian  
Wingfield, Vivian

*Remember me and period Latin L.O. Stadler*  
*Remember me and period Latin L.O. Stadler*

*I'm wishing you luck always.*  
*I am Walter*

*Luck and best wishes always to a swell pal Don't forget. Hazeline Teer*

*Remember our dear old Latin Class of '32. Mildred Troxler*

*reads deeply all man fate plays a grand part in your future life.*  
*Remember me*

*Thanks to "dumb Latin student" - I do in Latin. Remembered 2nd period in '32.*  
*George Robinson*  
*Ed. Butterfield*  
*next time in love. J.H.*



*Remember the 12th period English Class "Luck to you all boy."*  
*Davis W.*

*Lots o' Luck and Success to you all*  
*Allene Haffines*



## History of Class of '34

On the third day of September, 1930 A. D., the cruiser "B. H. S.—34" was boarded by 190 reckless adventurous freshmen. The "B. H. S.—34" left the "Port of Ignorance" and began to steam its way to the "Harbor of Knowledge." The ship hoisted its colors of green and white and sailed under the motto, "Aim high; reach higher." The commanding officers on the ship were: John Guy Heritage, president; Irvin Bryan, vice-president; Mary Louise Boland, secretary; and Virginia Hayes, treasurer. The guides and navigators on board the ship were Miss Annie Webster, Mr. B. E. Hood, Miss Virginia Hassell and Mr. J. G. Hollingsworth.

On the fifth of September, 1931 A. D., after having spent three months of pleasant cruising in the "Harbor of Leisure," the "B. H. S.—34" resumed its journey through the "Sea of Ignorance." Many of the crew were left behind and many new members were added to the crew. After a count was made, it was found that there were 126 passengers on board the ship.

This year the ship's commanding officers are: Bill Whitley, president; Julia Lloyd, vice-president; Hal Dean Holt, secretary; and Frances Manheim, treasurer.

Mrs. N. F. Crowson, Mrs. Theodore Shaw, and Mrs. Albert Graham assisted as guides and ship aides. Two of the ship's officers of the preceding year, Miss Mildred Elrod and Miss Florence Rutherford, had changed their names, in the "Harbor of Leisure," to Mrs. Crowson and Mrs. Graham, respectively.

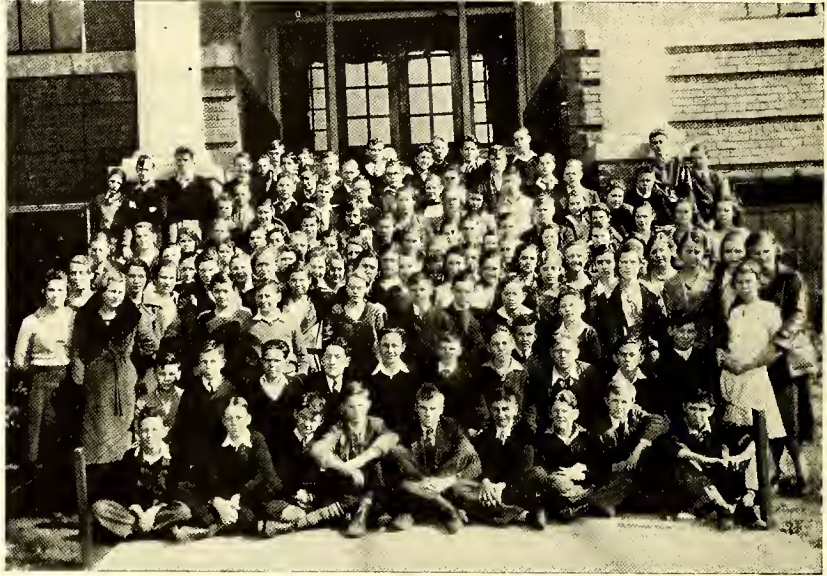
As the "B. H. S.—34" progresses on its journey, it has already weathered a few storms, and its crew has undergone many difficulties; but this only aids in making it more prepared, and the members of the crew are looking forward with eager hopes of seeing the "Harbor of Knowledge" looming up before them, after two more years of cruising through the "Sea of Ignorance."

JULIA LLOYD,  
Historian





# FRESHMEN



#### FRESHMAN CLASS

Motto: "Our faults are stepping stones to success"

Colors: Red and White

Flower: Rose

#### OFFICERS

President .....	Toney Ketner
Vice-President .....	Ernest Patterson
Secretary and Treasurer .....	Louise Whitt
Representative .....	Ruth Holt Anderson

#### FRESHMAN CLASS ROLL

Aldridge, Elizabeth	Campbell, James	Flowers, Travis
Alexander, Arthur	Cates, Howard	Fogleman, Clarence (Jack)
Amick, Nellie Lee	Cates, James	Fogleman, Willard
Anderson, Clara Bond	Chandler, Mary Louise	Foushee, Helen
Anderson, James	Check, Helen	Fox, Ralph
Anderson, Ruth Holt	Childress, Jettie	Freshwater, Dorothy E.
Andrews, Frances Scott	Clapp, William Keith	Frye, Dale
Andrews, Virginia Dare	Coleman, Christine	Gant, Graham
Apple, William	Collins, Jane	Garrison, Charlie
Bailey, Bettie	Conklin, Mordyor	Gibbs, Royce
Bare, Burman	Cook, Fern	Glosson, Henry
Bass, Zenobah	Copeland, Yonau	Glosson, Eugene
Bishop, Florence	Covington, Elmo	Greene, Elizabeth
Boland, Reginald	Cox, John	Greeson, Dora Lee
Bolick, John	Crutchfield, Mary	Gregg, Virginia
Boone, Thomas	Dailey, Helen	Griswold, Minnie
Bost, Hubert	Davis, Allegra	Grubb, Louise
Bost, Maude	Dickey, Elmer	Hall, Vallie
Brannock, Edwin	Durham, Ernestine	Hanna, Hilda
Brannock, Tom	Durham, Marshall	Hanner, Maude Sue
Brown, Ben	Earle, William Sloan	Harvey, Madeline
Buff, Helen	Elder, Boyd Lane	Harviel, Nell
Burke, Vernon	Ezzell, Margaret	Heritage, Martha M.
Burns, James	Faucette, Kenneth	Hinshaw, Alma
Coble, Clyde Wayne	Fitch, Edna Muriel	Hinshaw, Walter



*French Horn*

# The DOE WAH JACK JR.

## FRESHMEN CLASS ROLL (Continued)

Hobgood, Burnell	Morris, Lewis	Smith, Walter
Holt, Verna Dare	Morrow, Daniel Carter	Spoon, Mildred Lea
Hopkins, Clyde	Moser, Dexter	Spoon, Vernon
Horne, Hilda	Moss, Mildred	Spruce, Alice Burton
Horner, A. G.	Murray, Melvin	Stainback, Herbert
Horner, Frances	Noble, Ruth	Steed, Inez
Horner, Jack	Owens, Cleo	Steele, Helen
Hurley, Maxine	Paschall, Roy	Strader, Virginia
Isley, Delilah	Patterson, Ernest	Sykes, Hazel
Ivey, Harrison	Patton, Frances	Sykes, Ruby
Jones, Hillary	Phillips, Mary E.	Thomas, Gibbon
Jones, O. T.	Pickett, Frances	Thompson, A. G.
Jones, Pauline	Pollard, Calloway	Thompson, Mildred
Ketner, Edwin	Pruitt, Charlotte	Thompson, Walter
Ketner, Tony	Pruitt, Jessie	Tillman, Ben
Kirkman, Jr., Earl	Ray, Jr., S. A.	Tingen, Jessie Mae
Koonce, William (Bill)	Redding, Rue	Traynham, Marion
Lashley, Lucille	Redman, Carlene	Turner, Russell
Leath, Alice Kerr	Rice, Louise	Underwood, Virginia
Leath, June Frances	Riddle, Francis	Upright, Pauline
Ledbetter, Doris	Robbins, Frances	Vaughn, George
Love, Evelyn Dale	Roach, Maude	Waddle, George
Loy, John	Roney, John R.	Wagoner, Ervin
Loy, Sarah Frances	Ross, Frances Lucille	Walker, Carrie
Marlie, Marie	Rudd, Eva	Walker, Donald
May, Sarah Lee	Rudd, Harvey	Walker, Ernest
McAdams, Anne	Saunders, Louis	Walker, Josephine
McGraw, Kenneth	Scott, Loman	Walker, Mary Ruth
Meador, Annette	Scott, Pauline	Walters, Charles
Messick, Alice	Sharpe, Maxine	Warren, Edna
Miller, Bailey	Sharpe, Raymond	Waugh, Juanita
Mitchell, Jr., G. C.	Shepherd, Rosa	Webster, Samuel
Moize, Sarah May	Shoemaker, Arnold	Welch, W. G.
Moody, Ralph	Simpson, Elwood	West, Fred
Moore, Anna Lee	Smith, Agnes	Whitt, Garland
Moore, James	Smith, Hettie	Whitt, Louise
Moore, Lawrence	Smith, James	Williams, Ross
Moore, Thomas	Smith, Robert	Winstead, Raymond



## As The Freshmen See Themselves

"Four years of it and the members of our class had accomplished all the great things that the teachers expected them to."

Grandfather was talking to one of his other grandchildren, and, having overheard this much, I knew that an interesting story was in progress and I must hear it.

"What are you talking about, grandfather?" I asked.

"Oh, I'm just telling Jack here about my class in high school. It was a long enough time ago, but we were an unusual class and I remember it. Jack is in the eighth grade now, and you are, too, for that matter. You two'll never help a class to turn out like ours, though, because you young folks now don't work like we did."

My grandfather, Marshall Durham, had been one of those hard working members of the Burlington High School class of 1935. He enjoyed telling stories, and I knew that my brother and I were in for one now.

"When that class started out, we had one hundred and nine girls and one hundred and eight boys. All of the teachers were proud of us and were glad to teach us, because we were a smart bunch. Why! you never caught me talking when the teacher told us not to!

"I remember now when we had our first class meeting—nobody had to tell us what to do; we knew. We elected some good officers, too. There was Tony Ketner whom we elected president—both of you know Mr. Ketner and what he's turned out to be; and he is just one of that two hundred and seventeen students who were in the class of '35. We elected Ernest Patterson vice-president of that wonderful class; and now, you know, he is the president of the "Flyer Sled Company". There is also Louise Whitt, whom we elected secretary and treasurer, and who is now a professor of mathematics at the University of North Carolina.

"We rushed successfully through our freshman year, and finally we became sophomores. What a glorious feeling it was to be able to jeer the freshmen!

"Again this smart class of youngsters lived up to the teachers' expectations. This class was eager and willing to go ahead and learn what it should. The sophomore year went by like a flash, too, with tears over lessons and laughter at the blunders and mistakes of the others.

"After three months of weary vacation, we went happily back to school. We were juniors, the time to which all freshmen look forward."

Grandfather had grown excited over his own relation of the story, but now he settled himself once more and lit his pipe.

"Things actually happened when we were juniors. The teachers had difficulty in keeping up with us, and you bet your life they had some studying to do nights! Some of us finally came to see that we were asking more questions than could be answered, so we took pity on the teachers. But I'm not saying that you boys could be that smart now. You young folks are just not like we were.

"You talk about athletes; we had a class of them. Why, it was just understood that we would win in all the contests! In a football game, when we received the ball, it was as good as a touchdown. And in baseball, we knocked so many pitchers out that the other coaches had the umpires to stop the games.

"One of the happiest times in the junior year, was the junior-senior banquet at which time the juniors entertained the seniors. I can remember well the night we had that banquet. It was in the spring of the year. I took your grandmother to it.

"When autumn came flying in, the class was back to school. We were seniors and the most dignified class in high school. We were first in everything. The greater part of us had already decided what we were going to do when we graduated, and so we didn't have to give much thought to it that year. We knew our minds like you boys don't. They were sane minds we had, too. There is not a one in that class but didn't turn out good. Commencement that year was a big affair. Every single member of that class got a diploma, and there had not been any failures all the way through, either.

"But there; you boys must be tired of hearing this. I guess I couldn't expect you to be like that now."

With the last few words grandfather's voice had grown low and more thoughtful, and now he was once more safe with himself in the land of dreams of the class of 1935.

CARTER MORROW





# DOE-WAH JACK-JR. STAFF 1932

 BERNARD BERNSTEIN ADV. MGR.	 ALMON MCIVER EDITOR	 JOHN BOLAND BUS. MGR.
 WILSON ROGERS CIR. MGR.	 ELAINE STADLER LITERARY EDITOR	 CARL CRABTREE ART EDITOR
 CATHERINE SIMPSON FEATURE EDITOR	 HAZEL BOSWELL GIRLS ATHLETIC EDITOR	 CLYDE FOWLER BOYS ATHLETIC EDITOR
 BANKS FITCH SNAPSHOT EDITOR	 CARTER MORROW FRESHMAN EDITOR	 HELEN WHITT SOPHOMORE EDITOR
 HILDA LEE HEATWALE JUNIOR EDITOR		





#### STUDENT COUNCIL

Miss Attrice Kernodle, Sponsor

#### OFFICERS

President .....	Vester Small
Vice-President .....	Almon Melver
Secretary .....	Ida Webster
Treasurer .....	Bill Whitley

#### MEMBERS

Ketner, Tony  
Boone, Tom  
Patterson, Ernest  
Sykes, Ruby  
Pollard, Calloway  
Moody, Ralph  
Anderson, Ruth Holt  
Whitley, Bill  
Manheim, Frances  
Mebane, Clarence

Edwards, Thurlow  
Lloyd, Julia  
Barker, Evelyn  
Hayes, Hugh  
Lankford, Wilbur  
Hogan, Irving  
Hickey, Helen  
Cates, Edlee  
Teer, Laura Mae  
Thompson, Floyd  
Jones, Ruth Lee

Melver, Almon  
Small, Vester  
Simpson, Katherine  
Fowler, Clyde  
Murray, Vernell  
Bernstein, Bernard  
Sharpe, Calva  
Coyner, Etta May  
Boland, Carlton  
Webster, Ida



## *History of The Student Council*

Upon the request from some of the pupils, Mr. W. D. Halfacre, who was then principal of Burlington High School, gave his approval for the organization of a student council in Burlington High School. This organization, with Miss Kernodle as sponsor and Joe Gant as president, was completed in 1928.

The membership of the council consisted of each home-room president, each class president, five representatives from the senior class, four from the junior class, two from the sophomore class, and one from the freshman class. The greater part of this year was spent in writing a constitution and making preparations for the publication of a student handbook.

In 1929, Thomas Whitley was elected president. Early in the first semester, the constitution was completed and later ratified by the student body. A contest was sponsored by the council to select a school song. The bull-dog was selected for a mascot, and "Perseverance" for the motto. Another contest was held to select a basketball sponsor, and Margaret Boland was elected and crowned in a very impressive ceremony at the first basketball game of the season.

At the opening of the fall term of 1930, the handbooks were ready for distribution. This year, under the leadership of Wilbur Robertson as president, the council turned its attention toward social life in the school. Each class was given permission to have a party in the gymnasium on some evening during the year. A club committee was appointed to take charge of the chartering of all clubs in connection with the school. The council also sponsored the founding of a student's store in the school building, for the convenience of the students. A plan for doing away with the noise in the halls was suggested and given a trial; however, this plan was not successful.

One of the chief goals of the council is to create and maintain a better school spirit. In order to arouse and improve the interest, the student body elects a girl each year to represent the spirit of the high school in the annual installation service of the student council members.

No group can achieve worthy ideals without the proper association of every finer characteristic of each individual. Then it is, that the student council stands as a light, searching out the truth, the fact, the honor, and the manner which compose those finer characteristic in the individual.





*Dear h.t.  
Love  
Agnes*

*Dear S.D.  
Same as  
always  
H.H.*

## DRAMATIC ACES

Mr. Howell G. Gabriel, Sponsor

President .....	Banks Fitch
Vice-President .....	Elaine Stadler
Secretary .....	Virginia Herbert
Treasurer .....	James Durham
First Critic .....	Wilson Cheek
Second Critic .....	Mary Tuttle Atwater
Press Reporter .....	Almon Melver

## MEMBERS

Anderson, Ruth  
Atwater, Mary Tuttle  
Baker, Helen  
Boland, John  
Boswell, Hazel  
Brown, Ben  
Brown, Frances  
Cade, Albert  
Cade, Alma  
Cole, Thomas  
Coble, Dickey  
Crabtree, Carl  
Durham, James  
Durham, Lynn  
Fitch, Banks  
Gant, Agnes  
Gant, Elizabeth

Goodes, Eugene  
Green, Elizabeth  
Hay, Eloise  
Hayes, Hugh  
Heatwole, Hilda Lee  
Herbert, Virginia  
Hobby, Myrtle  
Hogan, Roy  
Horne, Louise  
Horne, Julia Frances  
Horner, Martin  
Horner, Frances  
King, Talbert  
Kirkman, Virginia  
Leath, Jack  
Love, Charlotte

Loy, Sarah Frances  
Malone, Doris  
Manly, Marie  
Melver, Almon  
McKeel, Madeline  
Merritt, Royal  
Moser, Carl  
Newell, Blondell  
Phillips, Louis  
Scott, Mary Wiley  
Spruce, Alice Burton  
Stadler, Elaine  
Teer, Laura  
Tingen, Margaret  
Walker, Annie Hurdle  
Whitt, Louise  
Woodson, Emma



GLEE CLUB

Miss Louise Brockwell, Director

President .....	Banks Fitch
Secretary .....	Hazel Boswell
Publicity Manager .....	Frances Brown





#### SENIOR HI-Y

Mr. C. E. Buckner, Sponsor

#### OFFICERS

##### Term 1931

President ..... Almon McIver  
Vice-President ..... Banks Fitch  
Secretary ..... D. J. Walker, Jr.  
Treasurer ..... Clyde Fowler  
Corresponding Secretary.....Joe Fogleman

##### Term 1932

President ..... Hugh Hayes  
Vice-President ..... Wilbur Lankford  
Secretary ..... Floyd Thompson  
Treasurer ..... Sherman Moss  
Corresponding Secretary.....Joe Fogleman

#### MEMBERS

Angel, Kenneth  
Boswell, George  
Brown, Jack  
Coleman, Julian  
Dickey, Hubert  
Durham, Charlie  
Fitch, Banks  
Fogleman, Joe  
Fowler, Clyde  
Glosson, J. W.  
Harviel, J. C.  
Hayes, Edwin  
Hogan, Roy

Holt, Richard  
Kernodle, John Robert  
Lea, Malcolm  
Lyon, Thomas  
McIver, Almon  
Parrott, James  
Robinette, Earl  
Rogers, Wilson  
Walker, D. J., Jr.  
Boland, John  
Robertson, Richard  
Thompson, Floyd  
Petty, L. M.  
Pennington, Robert

Robinette, Homer  
Wingfield, Revelle  
Goins, Ralph  
Moss, Sherman  
Way, Winfred  
Lankford, Wilbur  
Patterson, Allen  
Hayes, Hugh  
Hart, Clarence  
Cade, Albert  
Durham, James  
Coble, Zeb  
Isley, Gardner



JUNIOR HI-Y

OFFICERS

Term 1931

Sponsor—Mr. M. Z. Rhodes

President ..... George Robertson  
Vice-President ..... Fitch Hensley  
Secretary-Treasurer ..... Dan Walker  
First Censor ..... A. G. Horner  
Second Censor ..... Gurney Pennington

Term 1932

Sponsor—Mr. J. G. Hollingsworth

President ..... Ben Brown  
Vice-President ..... Bill Mitchell  
Secretary-Treasurer ..... Dan Walker  
First Censor ..... Gurney Pennington  
Second Censor ..... Carter Morrow

MEMBERS

Brannock, Edwin  
Brown, Ben  
Bryan, Irving  
Burke, Vernon  
Burns, James  
Cable, Clyde  
Conklin, Mordyor  
Copeland, Yonan  
Dickey, Elmer  
Durham, Marshall  
Earle, Willard  
Elder, Boyd Lane  
Faucette, Kenneth  
Fox, Ralph

Gant, Graham  
Garrison, Charlie  
Hensley, Fitch  
Holt, Hal Dean  
Hicklin, Wilbur  
Horner, Jack  
Jones, O. T.  
Koonce, Bill  
Lashley, Gurney  
Long, Matthew  
Mitchell, Bill  
Mitchell, G. C.  
Moore, James

Morrow, Carter  
Moser, Dexter  
Patterson, Ernest  
Pennington, Gurney  
Robertson, George  
Scott, Loman  
Thomas, Gibbon  
Tillman, Ben  
Waddell, George  
Walker, Dan  
Walker, Donald  
Walker, Harrison  
Walters, Charles  
West, Fred

*Wishing success to a pest*  
*I. B. Bryan*



## GIRL RESERVES

Miss Annie Webster, Sponsor

### OFFICERS

President .....	Edna Perry
Vice-President .....	Lucille Proctor
Secretary .....	Katherine Dixon
Treasurer .....	Hazel Rogers

### MEMBERS

Adams, Doris  
 Allen, Hilda  
 Amick, Nellie  
 Andrews, Nell  
 Andrews, Virginia Dare  
 Barker, Evelyn  
 Bass, Zenobah  
 Bohick, Louise  
 Bost, Maude  
 Bishop, Florence  
 Brewer, Kathleen  
 Bulla, Edith  
 Callahan, Virginia  
 Capes, Myrtle May  
 Cheek, Helen  
 Childress, Jettie  
 Colman, Christine  
 Cooper, Clara  
 Crntchfield, Mary  
 Dailey, Helen  
 Dixon, Katherine  
 Dixon, Margueritte  
 Durham, Ernestine  
 Glenn, Edna  
 Hall, Emma  
 Harvey, Madeline  
 Haynes, Frances  
 Hinshaw, Ruby

Hodgin, Mary Eleanor  
 Hoyt, Verna Dare  
 Huntley, Maxine  
 Isley, Delilah  
 Kates, Mildred  
 Lamm, Alma  
 Lashley, Gladys  
 Leath, Alice  
 Ledbetter, Doris  
 Long, Helen  
 Loy, Ava  
 Lloyd, Julia  
 Love, Evelyn  
 Manheim, Frances  
 May, Sarah Lee  
 McAdams, Ann  
 McFayden, Edith  
 Messick, Alice  
 Miller, Nell  
 Moize, Sarah May  
 Moody, Annie Maude  
 Morris, Esther  
 Moser, Mary  
 Moss, Mildred  
 Perry, Edna  
 Perry, Verna  
 Pickett, Frances  
 Pruitt, Charlotte

Pruitt, Jessie  
 Pryor, Bernice  
 Redman, Carlene  
 Rice, Louise  
 Rippy, Louise  
 Rippy, Elizabeth  
 Rogers, Hazel  
 Rook, Mabel  
 Ross, Lena  
 Sandlin, Gladys  
 Scott, Pauline  
 Sharpe, Maxine  
 Smith, Mabel  
 Smith, Nettie Mae  
 Steed, Inez  
 Steel, Helen  
 Stephens, Julia  
 Sumner, Margaret  
 Sumner, Willie  
 Sykes, Hazel  
 Sykes, Ruby  
 Thomason, Mildred  
 Thompson, Virginia  
 Tillman, Flossie Mae  
 Turner, Virgie  
 Walker, Mary Ruth  
 Walker, Josephine  
 Webster, Dorothy





BOYS' "B" CLUB

Mr. H. G. Gabriel, Sponsor

OFFICERS

Term 1931

President ..... Richard Robertson  
Vice-President ..... Clyde Fowler  
Secretary-Treasurer ..... Winfred Way  
Sergeant-at-Arms ..... Joe Cole

Term 1932

President ..... Richard Robertson  
Vice-President ..... Clyde Hargrove  
Secretary-Treasurer ..... Irving Hogan  
Sergeant-at-Arms .... Bernard Bernstein

MEMBERS

Fowler, Clyde  
Cole, Joe  
Robertson, Richard  
Hargrove, Clyde  
Way, Winfred  
Hogan, Irving  
Hogan, Roy  
Glosson, J. W.  
Brown, Jack

Kernodle, John Robert  
Mitchell, Bill  
Bailey, Walter  
Isley, Clarence  
King, Wilson  
Hayes, Hugh  
Pryor, Gene  
Coble, Dick  
Goodes, Yale  
Horner, T. J.

Horner, Martin  
Bernstein, Bernard  
Moser, Carl  
Fogleman, Joe  
Small, Vester  
Hall, John  
Sorrell, Lawrence  
Capes, Henry  
Melver, Almon.





GIRLS' "B" CLUB  
Miss Allie Oliver, Sponsor

OFFICERS

Term 1931  
President ..... Hazel Boswell  
Vice-President ..... Nettie Mae Smith  
Secretary ..... Alma Lamm  
Treasurer ..... Katherine Dixon  
Sergeant-at-Arms ..... Dorothy Earle

Term 1932  
President ..... Hazel Boswell  
Vice-President ..... Mildred Roney  
Secretary ..... Alma Lamm  
Treasurer ..... Dorothy Earle  
Sergeant-at-Arms ..... Elaine Stadler

MEMBERS

Boswell, Hazel  
Dixon, Katherine  
Earle, Dorothy

Lamm, Alma  
Manheim, Frances  
Roney, Mildred  
Scott, Mary Wiley

Smith, Nettie Mae  
Stadler, Elaine  
Webster, Ida



#### HOSTESS CLUB

Miss Elizabeth Nicholson, Sponsor

#### OFFICERS

##### Junior Hostess Club

President ..... Carrie Stanford Walker  
 Vice-President ..... Hilda Hanna  
 Secretary ..... Mildred Lee Spoon  
 Treasurer ..... Edna Fitch

Flower—Lily of Valley  
 Color—Green and White

##### Senior Hostess Club

President ..... Annie Webster  
 Vice-President ..... Christine Thomas  
 Secretary ..... Gaynell Bennett  
 Treasurer ..... Delilah Isley

Flower—Lilae  
 Color—Orchid and White



*Remember  
a big pe  
- this one  
S. G*

#### AVIATION CLUB

Mr. M. D. Thornburg, Sponsor

#### OFFICERS

President .....	Byron Berry
Vice-President .....	George Waddell
Secretary .....	Terry Robbins

#### MEMBERS

Berry, Byron  
Gillmore, Gurney  
Morris, Lewis

Robbins, Terry  
Smith, Robert

Smith, Walter  
Waddell, George  
Webster, Sam



# RADIO CLUB

Mr. E. C. Leonard, Sponsor

## OFFICERS

President .....	Fletcher Gilliam
Vice-President .....	Tom Boone
Secretary .....	C. G. Wilkinson
Treasurer .....	Wilson Garrison

## MEMBERS

Alexander, Arthur  
Boone, Clarence  
Boone, Tom  
Brannock, Edwin  
Campbell, James  
Cates, Boyd Lee  
Cates, James  
Clapp, Heath  
Cole, Thomas  
Cox, John  
Crabtree, Carl  
Durham, Marshall  
Flowers, Travis

Fox, Ralph  
Garrison, Wilson  
Gilliam, Fletcher  
Hamner, Jack  
Ivey, Harrison  
Ketner, Edwin  
Kirkman, Earl  
Loy, John  
McCraw, Kenneth  
Paschall, William  
Pollard, Calloway  
Riddle, Francis

Robbins, Terry  
Rudd, W. D.  
Saunders, Lewis  
Shoemaker, Arnold  
Smith, Walter  
Smithwick, Wilbur  
Stainback, Herbert  
Stewart, Winifred  
Thompson, A. G.  
Thornton, Thomas  
Waddell, Howard  
Walker, Ernest  
Wilkinson, C. G.





*Handwritten note:*  
 "Bai"  
 Mary

## TRAVEL CLUB

Mrs. Mildred Elrod Crowson, Sponsor

### OFFICERS

#### Term 1931

President ..... Evelyn Boone  
 Vice-President ..... Sallie Mae Andrews  
 Secretary-Treasurer ..... Paul Morrow  
 First Critic ..... Mary Eleanor Hodgkin  
 Second Critic ..... Margaret Sumner  
 Group Captain No. I ..... Martin Horner  
 Group Captain of No. II ..... June Ausley

#### Term 1932

President ..... Paul Morrow  
 Vice-President ..... Willie Johnson  
 Secretary-Treasurer ..... Louise Pritchett  
 First Critic ..... Martin Horner  
 Second Critic ..... Clara Mae Shoffner  
 Group Captain No. I ..... Virginia Faucette  
 Group Captain No. II ..... Ila Handsell

### MEMBERS

Andrews, Sallie Mae  
 Ausley, June  
 Berry, Byron  
 Boland, Mary Louise  
 Boone, Evelyn  
 Bost, Hubert  
 Coble, Harriet  
 Daily, Mildred  
 Faucette, Virginia  
 Freedman, Dottie

Handsell, Ila  
 Haynes, Frances  
 Hodgkin, Mary Eleanor  
 Horner, Martin  
 Ireland, Demetrie  
 Jobe, J. E.  
 Johnson, Willie  
 Jones, Hillery  
 Ketner, Edwin  
 Loy, Christine

Morrow, Paul  
 Parker, James  
 Pritchett, Louise  
 Rogers, Doris  
 Shoffner, Clara Mae  
 Sumner, Margaret  
 Walker, Minerva  
 Walton, George  
 Williams, Ross  
 Wilson, Hazel

*The good things we all and, I hope,  
 you always have luck, happened and  
 later. Well, so long O.K. - P.S. to P.S. is  
 I'll always remember you for  
 L. and the boy comes*



## ARCHERY AND JAVELIN CLUB

Mr. J. G. Hollingsworth, Sponsor

### OFFICERS

President .....	Homer Crutchfield
Vice-President .....	Irving Amick
Secretary and Treasurer .....	Edith Garner
First Censor .....	Madeline McKeel
Second Censor .....	Bill Mitchell

Motto: "Aim straight; shoot straight; live straight"

Colors: Brown and Gold

### MEMBERS

Aldridge, Elizabeth  
 Crutchfield, Mary  
 Garner, Edith  
 Hinshaw, Ruby  
 Johnson, Christine  
 McKeel, Madeline  
 Messick, Alice  
 Pritchett, Louise  
 Sandlin, Gladys  
 Staley, Grace  
 Steel, Helen  
 Scott, Pauline  
 Truitt, Louise  
 Fogleman, Dorothy  
 Ezelle, Margaret  
 Amick, Irving

Rudd, Harvey  
 Parker, James  
 Fulenwider, Edward  
 Clark, Leon  
 Stewart, Winfred  
 Tickle, Clyde  
 Mebane, Clarence  
 Hart, Wandless  
 Thompson, A. G.  
 Wheely, Lynwood  
 Pennington, Robert  
 Horner, A. G.  
 Moser, Dexter  
 Stainback, Herbert  
 Mitchell, G. C.  
 Welch, W. G.  
 Hinshaw, Walter

Walker, Dan  
 Ward, Frank  
 Brown, Tuttle  
 Whitt, Garland  
 Moore, Thomas  
 Copeland, Wanion  
 Patterson, Ernest  
 Winston, Raymond  
 Saunders, Louis  
 Williams, Ross  
 Walker, Harrison  
 Pollard, Calloway  
 Crutchfield, Homer  
 Walton, George  
 Cox, John  
 Mitchell, Bill



# DIALECTIC DEBATING CLUB

Mr. Ralph C. Reid, Sponsor

## OFFICERS

President .....	Sara Neese
Vice-President .....	Katherine Dixon
Secretary-Treasurer .....	Frances Brown
Press Reporter .....	Charlotte Love

## MEMBERS

### ALPHA DELTA GAMMA

Brown, Frances  
Cade, Alma  
Glenn, Syble  
Heatwole, Hilda  
Herbert, Virginia  
Horne, Julia Frances  
Hunt, Jewel  
Moser, Carl (Leader)  
Neese, Sara  
Patterson, Allen  
Paul, Lucille  
Thompson, Mae  
Tingen, Margaret

### BETA DELTA GAMMA

Alexander, Edith  
Burke, Ethel  
Collins, Evelyn  
Dixon, Katherine  
Dixon, Margueritte  
Gant, Elizabeth  
Love, Charlotte  
Moss, Sherman (Leader)  
Oldham, Hallie  
Pender, Louise  
Rudd, Charlie  
Slater, Dorothy  
Wood, Annie Mae





*Katherine May*

## SECUTORES AENEAE

Mrs. Albert Graham, Sponsor

Motto: Alis Suis Volamus

## OFFICERS

Term 1930

First Consul ..... Edlee Cates  
Second Consul ..... Paul Morrow  
Praetor ..... Calva Sharpe  
Quaestor ..... Margaret Tingen  
Aedile ..... Ruth Jones  
Scribe ..... Frances Manheim  
Censor ..... Eugene Goodes

First Consul ..... Reba Hinsdale  
Second Consul ..... Carl Moser  
Praetor ..... Edlee Cates  
Quaestor ..... Doris Rogers  
Aedile ..... Catherine Cheek  
Scribe ..... Virginia Faucette  
Censor ..... Annie Hurdle Walker

## MEMBERS

Anthony, Ella  
Bason, Pauline  
Baker, Helen  
Baynes, Annie Louise  
Cable, Helen  
Cates, Edlee  
Cheek, Catherine  
Faucette, Virginia  
Freedman, Dottie  
Gant, Agnes  
Gant, Elizabeth  
Goodes, Eugene

Hanner, Dorothy  
Handsell, Ila  
Heatwole, Hilda Lee  
Huffines, Allene  
Isley, Genevieve  
Jones, Ruth  
Manheim, Frances  
Morrow, Paul  
May, Katherine  
Moser, Carl  
Neese, Sarah  
Rogers, Doris

Rogers, Max  
Sharpe, Lucy  
Sharpe, Calva  
Stadler, Hazel  
Sullivan, Edna Pearl  
Tingen, Margaret  
Troxler, Mildred  
Walker, Annie Hurdle  
Walker, Eleanor  
Whitt, Helen  
Wingfield, Vivian  
Wood, Evelyn





CARLTON BOLAND



CALVA SHARPE



TALBERT KING



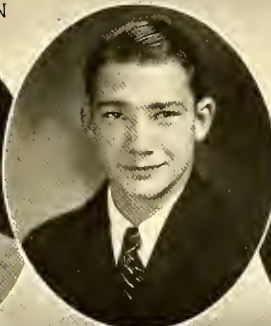
BERNARD BERNSTEIN



JOHN ROBERT KERNODLE



CATHERINE SIMPSON



JACK BROWN



IDA WEBSTER



# ORCHESTRA

Mr. M. Z. Rhodes, Director

## OFFICERS

President .....	Almon McIver
Vice-President .....	Dickey Coble
Secretary .....	Doris Malone
Treasurer .....	Kenneth Angel

## MEMBERS

Talbert King, Violin	Sara Lee May, Violin	Dickey Coble, Saxophone
Doris Malone, Violin	Sara May Moize, Violin	Wilson Rogers, Saxophone
Edward Fulenwider, Violin	Elizabeth Green, Violin	Lynn Durham, Saxophone
Sallie Mae Andrews, Violin	Eleanor Hodgins, Violin	Helen Hickey, Cello
C. G. Wilkinson, Violin	Howard Cates, Violin	George Robertson, Alto
Sara Neese, Violin	Kenneth Angel, Clarinet	Richard Bryan, Trombone
J. C. Harviel, Violin	Bernard Bernstein, Clarinet	Winfred Way, Bass
Thurloew Edwards, Violin	George Boswell, Clarinet	Garney Pennington, Drums
Thelma Terrell, Violin	Almon McIver, Trumpet	Evelyn Boone, Piano
Max Rogers, Violin	Carlton Boland, Trumpet	Samuel Webster, Piano



BAND

Mr. M. Z. Rhodes, Director

OFFICERS

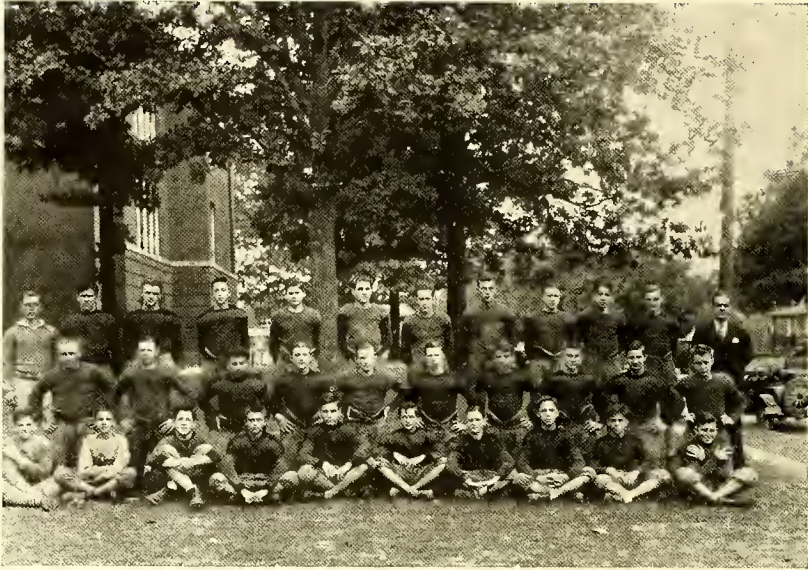
President .....	Winfred Way
Vice-President .....	Carlton Boland
Secretary-Treasurer .....	Kenneth Angel

MEMBERS

James Durham, Drum Major	Wilson Garrison, Clarinet	C. G. Wilkinson, Bass
Almon McIver, Trumpet	Talbert King, Clarinet	Max Rogers, Bass
Carlton Boland, Trumpet	Lynn Durham, Saxophone	Winfred Way, Baritone
Jack Lambeth, Trumpet	Wilson Rogers, Saxophone	Richard Bryan, Trombone
G. C. Mitchell, Trumpet	Dickey Coble, Saxophone	Harrison Walker, Trombone
Williard, Earle, Trumpet	Francis Riddle, Saxophone	Louis Phillips, Trombone
Kenneth Angel, Clarinet	George Robertson, Alto	Martin Horner, Bass Drum
Bernard Bernstein, Clarinet	Kenneth Faucette, Alto	Gurney Pennington, S. Drum
George Boswell, Clarinet	Elmer Dickey, Alto	Robert Warlick, S. Drum
	Thurloew Edwards, Bass	

*We wish to you I know,  
I hope we will be together  
working on our new  
school on our class  
back home*





WINNING FOOTBALL SQUAD

Seated, left to right—Rogers, Alexander, G. C. Mitchell, Walker, A. G. Horner, Bare, J. Horner, Hensley, Moser, Ketner.

Second row—Glosson, Sorrell, Goodes, Coble, T. J. Horner, Pryor, Bailey, B. Mitchell, Goins, M. Horner.

Third row—J. Horner, Manager, King, Hayes, Pennington, Kernodle, Cole, L. Hogan, Hall, Robertson, Hargrove, Farmer, Hood, Coach.

Captain Way, V. Murray, and R. Hogan do not appear in picture.

Hoping you all the luck in the World.  
 May success ring at your door to the end *Here p.*  
 a friend  
 (Willie)  
 Mitchell





BASKETBALL SQUAD

B. E. Hood, Coach

Walter Bailey, Manager

First Row—Glosson, Patterson, Bare, Cox, Walker, Pennington.

Second Row—Way, Rogers, Moser, Horner, Mitchell, Pryor, Fowler, King.

Third Row—Coach Hood, Brown, Angel, Hall, Robertson, Sorrell, Hargrove, Cole, Manager Bailey.



BOXING AND WRESTLING

Thompson, Brown, C. Moss, Hayes, Spoon, Lyon, S. Moss, Thompson, Goodes, Glosson, Ketner, R. C. Reid, Coach, and Sorrell.



TENNIS AND TRACK

Mr. Ralph C. Reid, Track Coach

Tennis—J. Brown, B. Brown, Goodes, Lyon, Cole, Boland, Bernstein, Rogers, Webster, Moser.

Track—Moser, Hayes, Sorrell, Murray, Glosson, Moss, Thompson, Way, Walker,





GIRLS' CHAMPION BASKETBALL AND TENNIS TEAMS

Basketball—Teer, Hinsdale, Loy, Dixon, Horne, Pender, Love, Gorman, Garner.  
Tennis—Brown, Boswell, Lamm,





# May Hosiery Mills

BURLINGTON, N. C.



MANUFACTURERS OF

*Full Fashioned and Seamless*

## HOSIERY

FOR LADIES AND MEN



# Acme Drug Co., Inc.

OPPOSITE POST OFFICE

*Prescription Druggists*

"Get It At Acme"  
We Appreciate Your Business

Whitman's Candy  
Eastman Kodaks

Telephone 474

R. H. ANDREWS

— : —

J. I. WHITE

## A. D. PATE & CO.

BOOK AND COMMERCIAL  
PRINTING

---

QUALITY AND SERVICE

---

TELEPHONE 216

Cor. Davis & Worth

Burlington, N. C.

# Faucette Coal Sales Company

High Grade Domestic And Steam

## COAL

Phone 553

BURLINGTON, N. C.

# Neese-Shoffner Furniture Company

*Furniture, Ruĝs, Trunks  
and Handbaĝs*

Corner Spring and Davis Streets

Phone 340

— : —

Burlington, N. C.

—SEE—  
**R. O. BROWNING**

—FOR—  
**LIFE AND ACCIDENT  
INSURANCE**

Rooms 4 and 5  
First National Bank Building

**BURLINGTON, N. C.**

**PHONE 972**

**"IT PAYS TO LOOK WELL"**

A Visit To Our Shop Is An  
Investment In Good Appearance

Six Skilled Barbers to Serve You

**CAROLINA BARBER  
SHOP**

New Walters Building, Front Street

**W. E. PATILLO, Manager**

**PHONE 1317**

**TERRELL & DAVIS**

Attorneys and Counselors  
At Law



National Bank Building

Phone 1083

**T. J. ROUSE**

Jeweler

Watch Repairing a Specialty



Front St.

Burlington, N. C.



**Carolina Knitting Mills,  
Inc.**

HOSIERY  
MANUFACTURERS

BURLINGTON, N. C.

**Front Street Service  
Station**

Phone 241      Burlington, N. C.

---

Willard Storage Batteries,

PACKARD

Sales and Service

—and—

Sieberling All-Tread Tires

**HADLEYS**

The Jewelers

---

Elgin, Bulova, Illinois,  
Hamilton, Waltham, and  
Helbros Watches

---

GRAHAM, N. C.

**Sunny Side Grocery  
Company**

FANCY AND STAPLE  
GROCERIES

Holt Street

Phone 834

# Smithwick Shoe Shop

305 Worth Street

Where You Get the Best Material and Workmanship at  
The Lowest Prices

**Men's Soles and Goodyear Heels . . . \$1.00**

**Ladies' Soles and Heel Taps . . . . . \$ .85**

We Have Trebled Our Business in 12 Months and  
We Are Thankful to Our Customers

COMPLIMENTS

—OF—

**E. M. HOLT PLAID  
MILLS**

BURLINGTON, N. C.

**BATTERY } SALES  
SERVICE**

We Sell Exide Batteries

We Service All Makes

Our Garage is Equipped to  
Handle Any Job, Large  
or Small

**MOTOR SERVICE  
COMPANY**

Garland F. Huffman, Prop.

207 W. Davis St.

Phone 290

COMPLIMENTS  
OF  
**SOUTHERN FURNITURE  
COMPANY**

BURLINGTON, N. C.

If You Want Satisfaction and  
Prompt Delivery, Call  
**AMERICAN SERVICE  
COMPANY**

For Your  
**ICE**

Phone 148

**TOWER HOSIERY  
MILL**

Manufacturers of  
**HIGH GRADE HOSIERY  
FOR LADIES**

# Five Points Service Station

SHELL GASOLINE, WILLARD STORAGE  
BATTERIES, REPAIR WORK

PHONE 1049

BURLINGTON, N. C.

## M SYSTEM STORE

"Saves For The Nation  
It Serves"

STAPLE AND FANCY  
GROCERIES

HOME OWNED

C. A. and J. A. WILSON

W. Davis St.

Phone 1085

COMPLIMENTS  
—OF—

S. Y. W. HOSIERY  
MILL

Manufacturers of  
MEN'S HOSIERY



**E. S. W. DAMERON**

Attorney at Law

PRACTICE IN STATE AND  
FEDERAL COURTS

306-308 First National Bank Building

BURLINGTON, N. C.

PHONE 786

**JENNINGS M. BRYAN**

ALL KINDS OF  
INSURANCE

509-510 North Carolina Bank Building

PHONE 173

**Lowe Funeral Home, Inc.**

AMBULANCE SERVICE DAY AND NIGHT

**Day Phone 93**

**Night Phone 429**

J. A. LOWE, Manager

## INSTANT AMBULANCE SERVICE!

At Your Call Any Hour of the Day or Night

OUR INVALID CAR HAS REMARKABLY EASY RIDING QUALITIES WHICH  
MINIMIZES NERVE STRAIN AND SHOCK

EVERY PRACTICAL SAFEGUARD IS PROVIDED

We Are Completely Equipped For First Aid and Our Experience Enables Us to  
Render Prompt and Intelligent Service When the Emergency Demands It.

## RICH & THOMPSON AMBULANCE SERVICE

Phone 1077

### KALOS BEAUTY SHOPPE

North Carolina Bank Building

Phone 328



PERMANENT WAVES

That Have "That Natural Look"

### T. N. BOONE

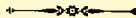
The Tailor



THE BEST PLACE TO BUY  
A SUIT

New Fords 10c a Mile  
After 100 Miles 8c Per Mile

Heavy Cars 15c a Mile  
After 50 Miles 10c Per Mile



**C. A. LEA**  
TAXI & U-DRIVE-IT COMPANY



TELEPHONE 777

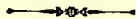
PROMPT SERVICE

25c Taxi Service

City Bus Service

**Rudd, Dixon & Goodman**

"OUTFITTERS FOR THE  
ENTIRE FAMILY"



110-112 East Davis Street

**Burlington, N. C.**

TRY ATLANTIC  
**WHITE  
FLASH** GAS  
FOR PEP AND MILES

**COBB MOTOR COMPANY**

WASHING  
GREASING

WRECKING  
SERVICE

AAA

**R. E. Quinn & Co.**

**QUALITY FURNITURE**

*For Less Money*

**South Main St.**

**Burlington, N. C.**



COMPLIMENTS  
OF  
**ROSENBLOOM'S**

Main St. Burlington, N. C.

**LEO CARR**

Attorney at Law

Fourth Floor First Nat'l Bank Bldg.

Phone 71

Be Wise, Buy Wise, and Economize

**B AND G**

Better Food Stores

and Bank the Difference

FANCY GROCERIES,  
FRUITS, VEGETABLES,  
CHOICE CUTS OF MEAT.

"We Aim To Please"

Where Smiling Service Welcomes You

**B -AND- G**  
GROCERY CO.

615 Webb Ave.

Phone 694

**SHADY GROVE  
SODA SHOP**

—◆◆◆—  
"A Refreshing Place to Get  
Refreshing Drinks"

—◆◆◆—  
TRY OUR CURB SERVICE  
NEAR THE BIG GUN

COMPLIMENTS  
OF  
**IDEAL MERCERIZING  
COMPANY**

BURLINGTON, N. C.

**THE  
JEWEL BOX**



Graduation Gifts Sold on Easy  
Terms at No Extra Cost



301 Main St. Burlington, N. C.

**JOHN A. BAILEY**

Attorney at Law



602 North Carolina Bank Building

PHONE 808

COMPLIMENTS  
OF  
  
BELK-STEVENSON  
COMPANY

Burlington's Predominating Store

DAVIS STREET

BURLINGTON, N. C.

W. H. May, Pres.

J. H. McEwen, Vice-Pres. & Treas.

P. K. Holt, Sec.

# McEWEN KNITTING COMPANY, Inc.

MANUFACTURERS OF

Ladies' Seamless and Full Fashioned

## HOSIERY

BURLINGTON, N. C.



# Alamance Laundry AND Dry Cleaners



*“We Do It Better”*



PHONE 560 and 561

BURLINGTON, N. C.

# **NORTH CAROLINA PUBLIC SERVICE COMPANY**

**"ELECTRICITY—THE SERVANT IN THE HOME"**



**BURLINGTON**

**GRAHAM**

**MEBANE**

CONGRATULATIONS

—AND—

BEST WISHES

BURLINGTON  
HIGH  
SCHOOL

FROM YOUR

PARAMOUNT  
THEATRE

BEST WISHES

ALWAYS



FROM THE

CAROLINA

COMPLIMENTS  
OF

Alamance-Caswell Dental Society



MEMBERS:

DR. J. H. BROOKS  
DR. R. W. BRANNOCK  
DR. J. S. FROST  
DR. L. M. FOUSHEE  
DR. F. E. GILLIAM

DR. J. H. HURDLE  
DR. H. V. MURRAY  
DR. J. B. NEWMAN  
DR. L. G. PAGE  
DR. H. M. PATTERSON

DR. R. A. WILKINS



# PHOTOGRAPHS

LIVE FOREVER

ALL PHOTOGRAPHS AND GROUPS IN THIS  
ANNUAL WERE MADE BY

## ANGLIN'S STUDIO

We Make Photographs That Please



PORTRAITS

ENLARGING

COMMERCIAL PHOTOGRAPHY

MINIATURES

EXPERT KODAK FINISHING

IF IN NEED OF ANYTHING SOLD IN AN UP-TO-DATE  
DEPARTMENT STORE SEE

# Efird's Department Store

"CORRECT MERCHANDISE

—at—

LOW PRICES"



Efird Brothers, Owners of Efird's Department Stores Throughout North  
and South Carolina and Virginia, Were Born, Reared and  
Educated in North Carolina

**CECIL GANT**

**GENERAL  
INSURANCE**

**PHONE 1215**

**409 North Carolina Bank Building**

**C. F. NEESE**

**Jeweler Since 1870**



**GIFTS FOR THE  
GRADUATE**

**D. J. WALKER**

**Attorney and Counselor at Law**

**25 First National Bank Building**

**PHONE 101**

**LAMM'S STYLE  
SHOPPE**

**Ladies' and Misses' Fine Apparel  
and Millinery at Prices You**

**Like to Pay**

**East Davis Street**

**BURLINGTON, N. C.**

We Don't Like to Talk About  
Ourselves But We Make the Best  
Sodas and Sundaes Made

THAT'S WHY THEY ALL COME  
TO OUR STORE

Meet Them Here

**DAVIS STREET  
PHARMACY, Inc.**

Everything in Drug Store Needs  
E. Davis St. Burlington, N. C.

**S. ALLEN HORNE**

Cleaning and Pressing

"WE TRY TO PLEASE"

Day Phone 119-W  
Night Phone 354-M

706 EAST DAVIS STREET

**For School Days**

In All Kinds of Weather

You'll Find

**"Star Brand Shoes  
Are Better"**

**MEBANE SHOE CO.**

Main St. Burlington, N. C.

**25th Anniversary**

**GREEN & McCLURE**

Home of Highest Quality For  
Less Money

Come and See Us Is All We Ask

PHONE 251



**Standard Grocery  
Company, Inc.**



Wholesale Grocers and  
Manufacturers' Agents



Phone 258      Burlington, N. C.

**Equitable Insurance  
Agency, Inc.**



We Write Every Kind of  
Insurance Written



TELEPHONE 821  
BURLINGTON, N. C.

**TROLLINGERS**

*"The Florists"*

FLOWERS FOR ALL OCCASIONS

Orders Receive Prompt Attention

*Member Florists Telegraphic Delivery*

PHONES: STORE 931    NIGHT 519

BURLINGTON, N. C.

# American Glanzstoff Corporation

ELIZABETHTON, TENN.

*Manufacturers of Rayons*



Southern Sales Office In  
North Carolina Bank Building  
BURLINGTON, N. C.

COMPLIMENTS

—OF—

**LADIES' SMART  
SHOP**

Dealers In  
LADIES' READY-TO-WEAR

BURLINGTON, N. C.

**J. W. CATES, Inc.**

Wood, Coal, Fire Brick and Clay,  
Sewer Pipe and Well Curbing

---

BERTHA I. CATES, Manager

BURLINGTON, N. C.

# BELL'S SHOE SHOP

ALL-LEATHER SHOES

—AND—

SHOE REPAIRING

GENTS' FURNISHINGS

710 E. Davis St.

Phone 1080

## MILLER-JONES CO.

THE \$2.99 STORE

SHOES-HOSIERY-RUBBERS

FOR THE

ENTIRE FAMILY

## PENNEY'S EXTRA QUALITY

ADDS NOTHING TO THE  
PRICE!

Penney's is not in business for today only. We expect to be the favored shopping place of your children, their children and their children's children.

That's Why Penney's Emphasizes  
QUALITY

As the Real Test of "Value."

That's why Penney's is more determined than ever to quote low prices—but without sacrifice of quality.

That's why Penney's will be serving the nation with **HONEST VALUES** long after "price-shouting" competition disappears.

**J.C. Penney Co.**  
A NATION-WIDE INSTITUTION  
DEPARTMENT STORES

BURLINGTON, N. C.

COMPLIMENTS  
OF  
**WILSON FINISHING  
MILLS**

BURLINGTON, N. C.

**MISS EVIE GROSS**

Millinery and Other Smart  
Accessories



Main Street  
BURLINGTON, N. C.

Good Looking Men Attract At-  
tention—Clothes Well Pressed,  
Cleaned and Repaired Help to  
Make the Man.

---

WE CAN HELP YOU

---

**R. E. BOONE DRY  
CLEANING CO.**

PHONE 190



# Burlington Drug Co., Inc.

**"The Friendly Store"**

NUNNALLY'S CANDY -:- PARKER FOUNTAIN PENS

**Phone 244**

**Baker-Cammack  
Textile Corporation**



Full Fashioned and  
Seamless Hosiery

**WARLICK'S SHOE  
SHOP**

---

Shoe Repairing That Will  
Please You

---

Located on Front Street

## Kirk Holt Hardware Company

Alamance's Oldest Hardware Store

HEADQUARTERS FOR  
Sporting Goods, Silverware, Mill  
and Builders Supplies

PHONE No. 2

"Quality and Quantity"

CHARLOTTE    NASHVILLE, TENN.  
NEW YORK    DANVILLE, VA.  
And Intermediate Points

## Fidelity Motor Lines, Inc.

Insured Fast Freight Service  
Everywhere

W. E. LOVE, Manager  
Phone 1295    Burlington, N. C.

## Alamance Book And Stationery Co.

Books, Stationery, Magazines, Gifts,

Office and School Supplies

E. Davis Street    Phone 899

BURLINGTON, N. C.

## CASH STORE, Inc.

701 East Davis Street

Staple and Fancy Groceries, Fruits, Dry  
Goods, Notions, Feedstuff,  
and Poultry

NEW MEAT MARKET

Our Success is Your Satisfaction

PHONE YOUR ORDERS TO 1038-1039

**BASON & BASON**

Ladies' Ready-to-Wear

**MILLINERY, LINGERIE**

**AND NOVELTIES**

113 EAST DAVIS STREET

**BURLINGTON, N. C.**

**C. W. McPherson, M. D.**

Eye, Ear, Nose and Throat

PHONE: Res. 329-J—OFFICE 65

Registry Number 1286

**COMPLIMENTS**

**OF**

**CITY BARBER SHOP**

Heritage & Bowman

**BERG'S HOME  
BAKERY, Inc.**

Bread, Cakes, Pies,  
and Pastry

**GOOD AS THE BEST  
BETTER THAN THE REST**

Front Street

Phone 950

**BURLINGTON, N. C.**

COMPLIMENTS  
OF  
B. A. Sellars & Sons, Inc.

Burlington's Modern Department Store

M. B. SMITH

FURNITURE AND HOUSE FURNISHINGS

BURLINGTON, N. C.

## EAT— BE HEALTHY AND HAPPY

At your High School Cafeteria,  
pronounced by many visitors and  
observers to be the best school  
cafeteria in the south.

You get lunch here at less cost  
than it can be prepared at home.  
This has been proved by careful  
calculation.

## LUCILLE BEAUTY SHOPPE

IN SELLARS DEPT. STORE

PHONE 500

"WE STRIVE TO PLEASE"

## Central Engraving Company

*Advertising Artists—Photo-Engravers*

L. D. WHITSETT, JR., Manager



113 SOUTH DAVIE STREET

—:—

TELEPHONE 2-1714

GREENSBORO, NORTH CAROLINA







