

# dragonian

1960









*Gift of Renny Kremer*  
2013

Peggy Jo Bland





*We the Beta Club of 1960 Present*





# *The Dragonian*

## *Editor*

*Faye Goodwin*

## *Business Manager*

*Robert Thomas*

## *Advisor*

*Mrs. Roy Kidd*

## *Table of Contents*

<i>Dedication</i>	<i>5</i>
<i>Administration</i>	<i>6</i>
<i>Faculty</i>	<i>7</i>
<i>Seniors</i>	<i>10</i>
<i>Juniors</i>	<i>25</i>
<i>Sophomores</i>	<i>28</i>
<i>Freshmen</i>	<i>30</i>
<i>Activities</i>	<i>33</i>
<i>Athletics</i>	<i>41</i>
<i>Elementary</i>	<i>57</i>
<i>Ads</i>	<i>69</i>





## *Foreword*

The annual staff of '60 decided that our annual needed some new life, so we began our planning with a "U Can Name the Annual" Contest.

After much discussion we have changed the name to the DRAGONIAN. The staff hopes that this yearbook will be one of the most treasured possessions of your high school days.



D  
E  
D  
J  
E  
A  
T  
J  
O  
N

In our school the Junior sponsor is affectionately known as "Miss Ethel." She has been with us only a few years, but already we have a special place in our memories for her.

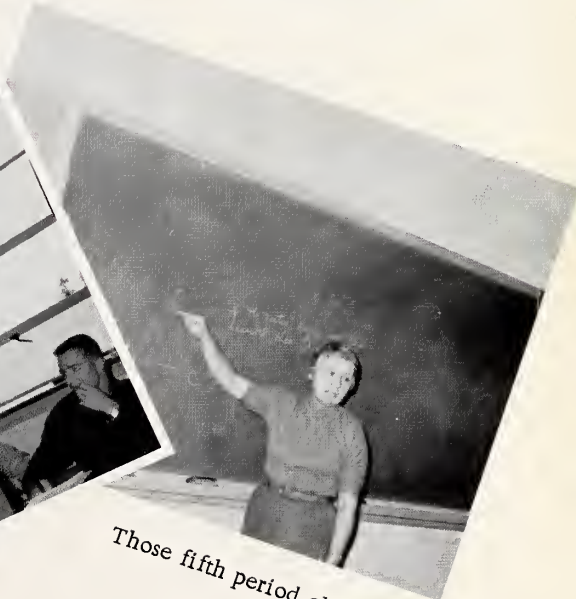
Mrs. Johnston has directed very successful magazine campaigns and supervised the plans for memorable Junior-Seniors. Her efforts for improvements have given us marshal regalia, but we do not wish to remember her for material things. It is because of the knowledge that she has helped us gain and the guidance she has given us, that the Beta Club wishes to dedicate the first DRAGONIAN to Mrs. H. G. Johnston.



Mrs. H. G. Johnston



"Quickly!"



Those fifth period classes!



Juniors  
Magazine Sales  
Peanut Doak

ADMINISTRATOR



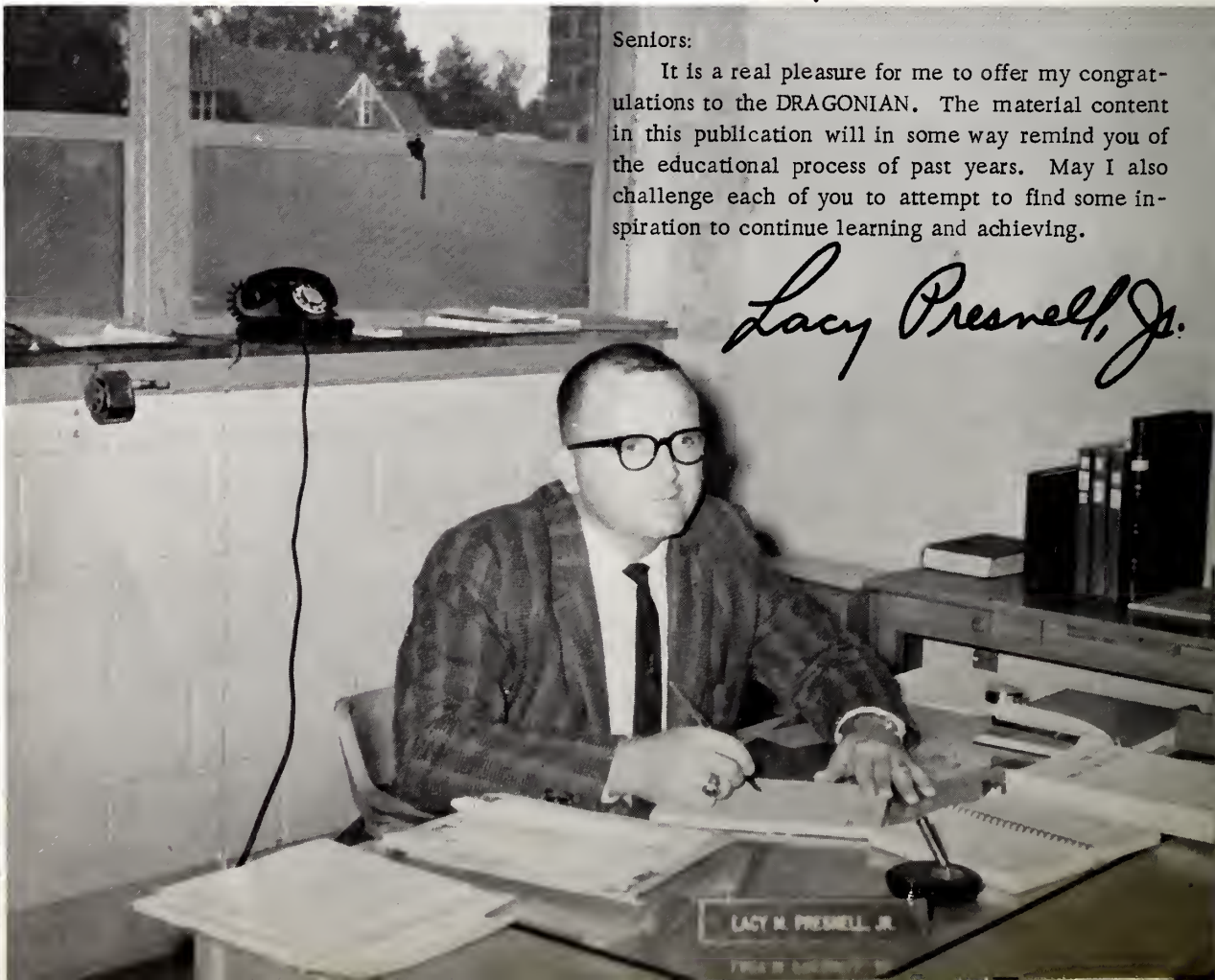
Dear Graduates:

The facts you have learned, the problems you have solved, the themes you have written, and the athletic contests you have won over the past twelve years are not really the most important part of your school careers. They will grow dim through the years; but the reactions, emotions and appreciations developed within you in mastering these subjects and activities will become a part of your personality and character and live throughout the years.

If you have developed the courage to face hardships, the wisdom to solve problems, and the faith to overcome obstacles, you have made much progress.

Finally, if your heart is filled with the joy of serving others, the peace of forgiving and the happiness of loving mankind, then you are truly educated.

*J. Waters*  
71



Seniors:

It is a real pleasure for me to offer my congratulations to the DRAGONIAN. The material content in this publication will in some way remind you of the educational process of past years. May I also challenge each of you to attempt to find some inspiration to continue learning and achieving.

*Lacy Presnell, Jr.*



F  
A  
C  
U  
L  
T  
Y



MRS. CARL YATES  
English



MR. H. G. JOHNSTON  
Agriculture



MRS. ROY KIDD  
French - English



MRS. JAMES  
GROSS  
English  
History

MRS. EUSTACE  
HORTON  
Home Ec.  
Science



MR. HAROLD DAVIS  
Coach - History



MISS DORIS STONE  
Science



MRS. H. G. JOHNSTON  
Math



MR. ADRIAN ALLRED  
Coach - Social Studies



MISS PAULA COUNCIL  
Commercial





"My - what a cute baby!"



Cindy and Mother



Love!

"What's for lunch today?"

"Maestro at work!"



The Lunch-room Staff



"A Nutty Buddy, please."



After lunch.







*Classes . . .*

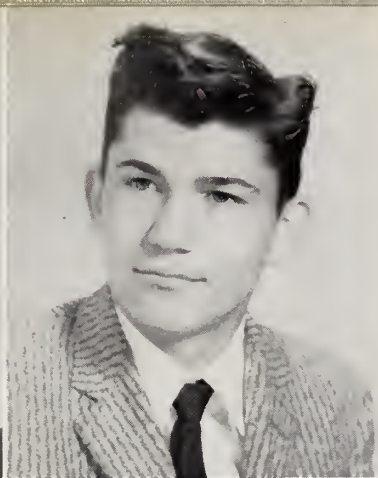


## *Senior Class Officers*

Carl McCollum, Vice President; Carolyn Shaw, Treasurer; Robert Thomas, President; Midge Johnston, Secretary; Danny Beard, Sergeant-at-Arms.

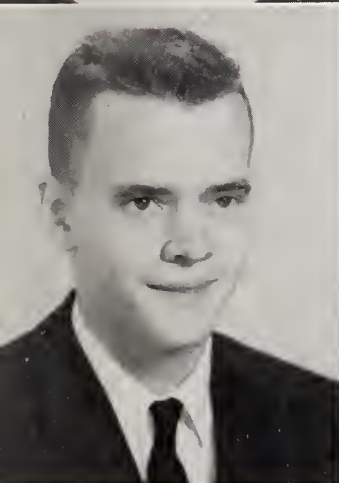
We've spent four years at P. H. S., and here's what we remember best . . . Registration our freshman year . . . The teasing we received from upperclassmen . . . Sewing on those blouses . . . Rushing from P. E. to English half-clothed . . . We finally got store privileges . . . Two sponsors instead of one . . . Mrs. Hester had her "Christmas Tree" . . . We were the loudest group yet. The sophomore year was really fun; all we did was play and run . . . Our biology frogs were invisible . . . Bobby pins made good musical instruments . . . The "cream of the crop" skipped lunch . . . Teddy Bear sponsor . . . Mr. Blankenship and Mr. McGregor left for greener pastures . . . Mr. Dockery moved in . . . Waitresses at Junior-Senior . . . Theme writing became quite a hobby for all of us . . . We were still loud mouths. Now we're Juniors, almost through. One more year, good-bye to you. Selling magazines . . . Hayride where no one was seen but Miss Ethel . . . TV float for Kids' Day . . . Junior-Senior meant a lot of work, but it was well worth it (O-O-O-O-Robert) . . . Seniors gave us an ice cream party . . . Ordered class rings, a great "first" . . . Class Day - we picked daisies, "early in th' mornin'" . . . And they continued to call us loud. Last year here. Our Senior year. Finally all back in one room . . . We took all the prizes - Kids' Day and Halloween . . . The Activity Bus became part of the school . . . Senior Play . . . Third fingers, left hands became adorned with diamonds . . . Class rings . . . Ordering caps, gowns, invitations, and visiting cards . . . Selling stationery . . . Our class got all banged up - black eyes were common . . . Smells came from our chemistry lab, thanks to Senior members . . . Junior-Senior . . . Class Day . . . Graduation . . . The loud mouths say good-bye.





GRACE LEIGH BECKWITH  
 "She put her troubles in a box,  
 sat on the lid - then smiled."  
 F. H. A. 1, 2; Basketball 1; Glee Club 2, 3, 4.

WILLIAM NORMAN ASH  
 "Figures don't mean a thing to him  
 unless they concern women."  
 Football 2, 3, 4; Basketball 2, 3; F. F. A. 1, 2, 3, 4;  
 Track 3, 4; Monogram Club 2, 3, 4.



DANIEL CLAY BEARD, JR.  
 "Questions don't bother me;  
 it's the answers."  
 Baseball 1, 2, 4; Basketball 1, 2, 3, 4; Monogram Club  
 1, 2, 3, 4; Glee Club 1, 2, 3, 4; Class Officer 4.

SARAH EMILY BILLINGS  
 "I can't think of two things, so I  
 think of Wayne and let studies go."  
 Basketball 1, 2; Superlative 4; Majorette 1, 2, 3; F. H. A.  
 1, 2, 4.

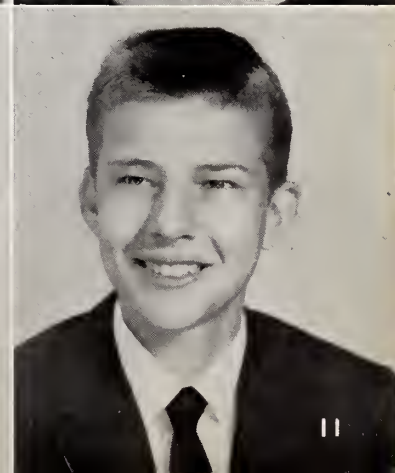
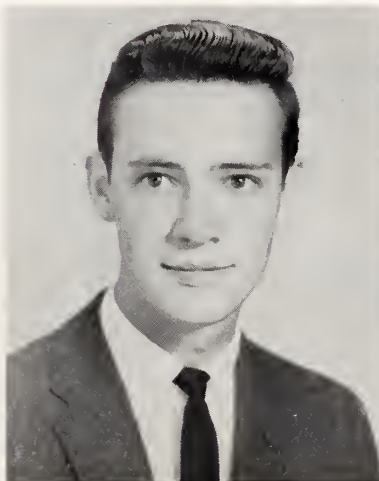
## Seniors

MALCUS THOMAS BEARD  
 "Why take life seriously; you'll  
 never get out of it alive."  
 Glee Club 1, 2, 3, 4; HIGH LIFE Staff 4.

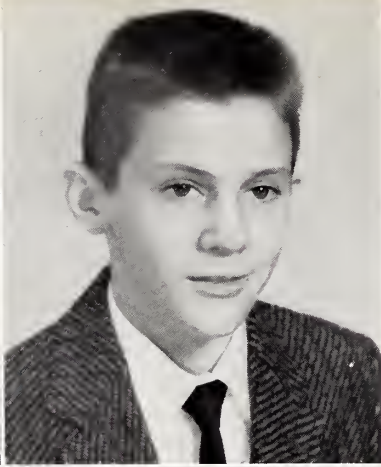
KAY FRANCES BULLINGTON  
 "Take it easy; have your fun;  
 let the old world flicker on."  
 Glee Club 1, 2, 3, 4; F. F. A. 1; Basketball 1; Mono-  
 gram Club 1.

PEGGY ANN CLARK  
 "She studies but she's  
 perfectly normal."  
 F. H. A. 1, 2; Glee Club 1, 2; Music Award 2; Piano 1,  
 2; Basketball 1, 3; Monogram Club 1, 3; History Award  
 3; Recitation Contest 3; HIGH LIFE Staff 4; Beta Club  
 3, 4; Annual Staff 3, 4; Marshal 3, 4; Librarian 4.

DAVID EDWARD BROOKS  
 "Worry and I are strangers."  
 F. F. A. 1, 2, 3, 4; Glee Club 1; Bus Driver 4.







PRISCILLA ANN CREWS

"A girl of a few thousand words."

F. H. A. 1, 2; Softball 1; Basketball 1, 2, 3, 4; Monogram Club 1, 2, 3, 4; Glee Club 1, 2, 3, 4; Beta Club 3, 4; Annual Staff 3, 4; HIGH LIFE Staff 4; Superlative 4; 4-H Club 1, 2.

BARRY EUGENE BURNS

"He says little, but that's no sign that he isn't thinking."

Baseball 1, 2, 3, 4; Monogram Club 1, 2, 3, 4; Basketball 1, 2.

JERRY ARNOLD ELLIS

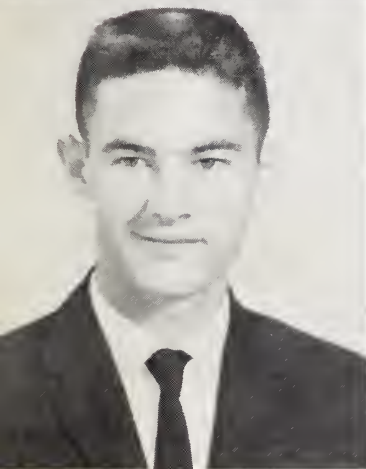
"If school is liberty, give me death."

Baseball 1, 2, 4; Monogram Club 1, 2, 4; Class Officer 3; Bus Driver 3, 4.

BEATRICE HARMON DAVIS

"Make yourself useful to someone."

Glee Club 1; F. H. A. 1, 2.



## Seniors

JAMES WILLIAN EUBANKS

"I have three speeds:  
slow, slower, and stop."

F. F. A. 3, 4; Bus Driver 3, 4; Superlative 4.

REBECCA FAYE GOODWIN

Her heart's like the moon;  
there's a man in it."

F. H. A. 1, 2; Cheerleader 1, 2, 3, 4; Class Officer 1; Glee Club 1; Accompanist 2, 3, 4; Homecoming Court 1, 2; Piano 1, 2, 3, 4; Music Award 2; Monogram Club 1, 2, 3, 4; Beta Club 3, 4; Annual Staff 3, 4; Co-Editor 3; Editor-in-Chief 4; Miss P. H. S. 3; Miss Lee County Fair 3; Chief Cheerleader 4; HIGH LIFE Staff 4; Girls' State 3; Marshal 3, 4; Homecoming Queen 4; Kiwanis Queen 4; Superlative 4.

KAY FRANCES HAYES

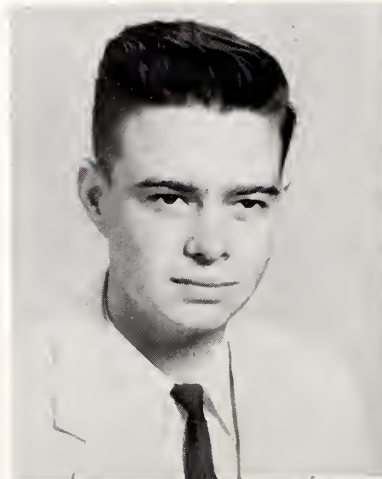
"To worry little, study less;  
this is my idea of happiness."

F. H. A. 3.

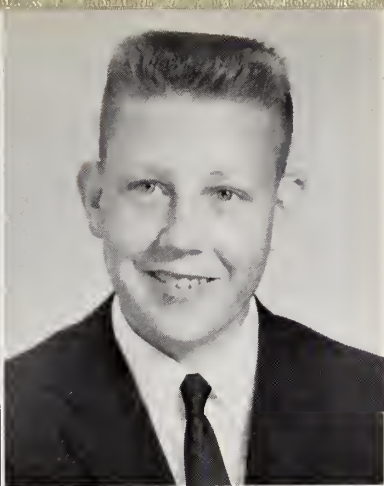
JAMES LEE GRIFFEN

"School breaks up my day so."

Basketball 1, 2, 3, 4; Glee Club 1, 2, 3; F. F. A. 1, 2, 4; Officer 1; Bus Driver 2, 3; Safe Driving Award 3; 4-H Club 1, 2, 3, 4; State Talent Winner 2; Monogram Club 1, 2, 3, 4.

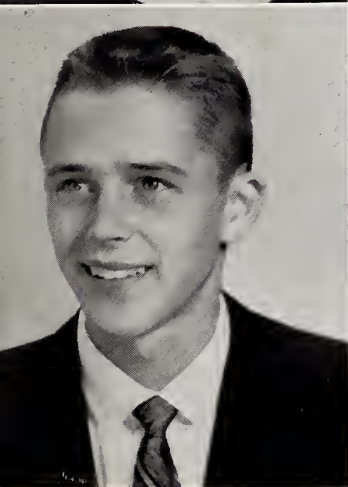






MARY JEAN JOHNSON  
 "I can resist anything but temptation."  
 4-H Club 2; Glee Club 2; F. H. A. 2, 4; Librarian 4.

THOMAS CLIFTON GUNTER  
 "Yes, I study - sometimes."  
 F. F. A. 1, 2, 3, 4; Beef-Judging 3, 4; Baseball 1; 4-H Club 1, 2.



EARL SIDNEY HARBISON  
 "Eat, drink, and be merry, for tomorrow you may die."  
 F. F. A. 1, 2; Public Speaking 2; Glee Club 1, 2, 3.

RAYE MIDYETTE JOHNSTON  
 "I'm fine, as long as gas sells well."  
 Class Officer 2, 4; Marshal 3, 4; Beta Club 3, 4; Annual Staff 3, 4; Class Superlative 4; Miss P. H. S. 4; Glee Club 1, 2, 3, 4; Monogram Club 1, 2, 3, 4; Basketball 1, 2; Cheerleader 3, 4; The HIGH LIFE Staff 4; Homecoming Maid of Honor 1; Basketball Queen 3; Girls' State Citizenship Award 3; F. H. A. 1, 2; F. F. A. Sweetheart 3; Library Assistant 2; Scribblers' Club 1, 2; Recitation Contest 2.

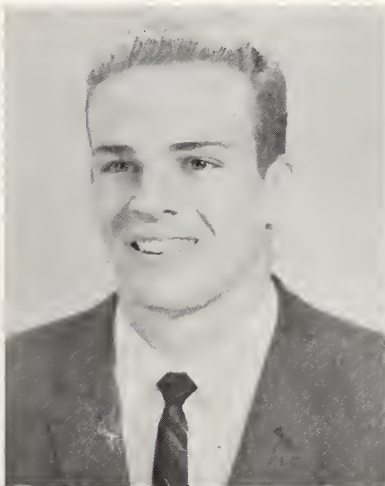
## Nineteen Hundred and Sixty

THOMAS FRANKLIN HENLEY  
 "There are two sides to every question:  
 mine and the teacher's."  
 Basketball 1, 2, 3, 4; Captain 3; Football 1, 2, 3, 4; Co-Captain 3, 4; Baseball 1, 2, 3, 4; Track 3, 4; Monogram Club 1, 2, 3, 4; F. F. A. 1, 2; Beta Club 3, 4; Officer 3; Annual Staff 3, 4; Glee Club 1, 2, 3, 4; Boys' State Lt. Governor 3; Declamation Contest Winner 1; Class Officer 2; Marshal 3, 4; Superlative 4.

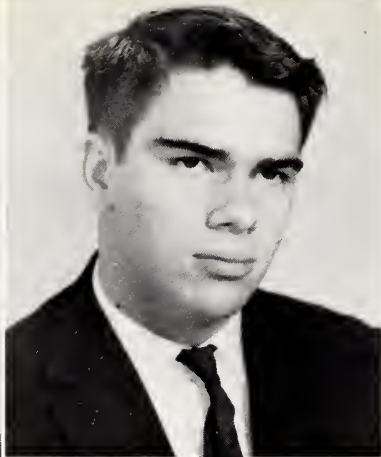
SARAH JANET LASATER  
 "Don't worry work,  
 and it won't worry you."  
 F. H. A. 1, 2.

DONNA FRANCES LUTTERLOH  
 "She burns the midnight oil,  
 but it's usually gasoline."  
 Monogram Club 1, 2, 3, 4; F. H. A. 1, 2, 4; Basketball 1, 2, 3, 4; Glee Club 1, 2, 3, 4; Piano 1, 2, 3, 4; 4-H Club 1, 2, 3, 4; Beta Club 3, 4; Annual Staff 3.

SYDNEY MATTHEW HERNDON  
 "En francais, s'il vous plait."  
 Baseball 1, 2, 3, 4; Basketball 1, 2, 3, 4; Football 1, 2, 3, 4; Co-Captain 3, 4; Monogram Club 1, 2, 3, 4; Superlative 4.

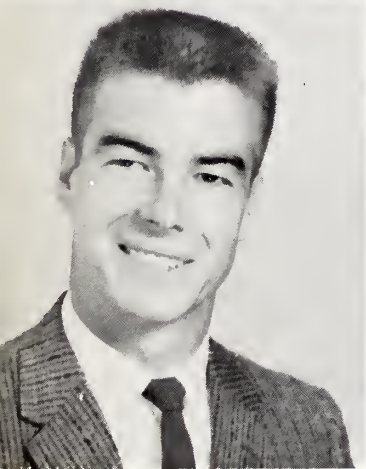






NANCY RUTH MANN  
 "Some people are so big."  
 F. H. A. 1, 2, 4.

LYNN McIVER HILLIARD  
 "When women interfere with your  
 work, quit work."  
 Scribblers' Club 1, 2; F. F. A. 4; 4-H Club 1, 2.



BOBBY KNOX HOLT  
 "Why study, when bluffing  
 is so much fun?"  
 F. F. A. 1, 2, 3, 4; F. F. A. Star Farmer Award 3; Parlia-  
 mentary Procedure 3, 4; F. F. A. Speaking Contest 3;  
 Officer 3, 4; Dairy Judging Team 3, 4.

BARBARA ANN MCGHEE  
 "She may go far but not without GR."  
 Glee Club 1; F. H. A. 1, 2; Softball 1; Basketball 1;  
 Class Officer 1.

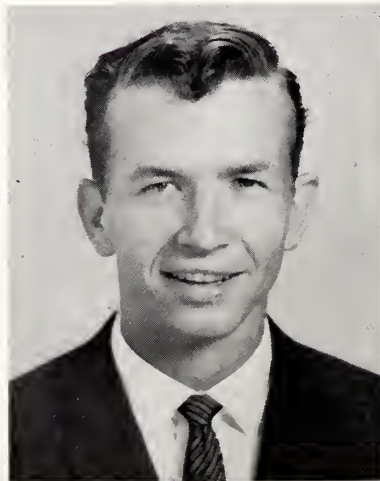
## Seniors

DANIEL WARD HOWARD  
 "Some would have every day a holiday."  
 F. F. A. 1, 2, 3, 4; Glee Club 1, 2, 3, 4; Football 1, 2,  
 4; Bus Driver 3, 4; Safe Driving Award 3; Dairy Judg-  
 ing Team 4; Superlative 4; Kiwanis King 4; Hallo-  
 ween King 1.

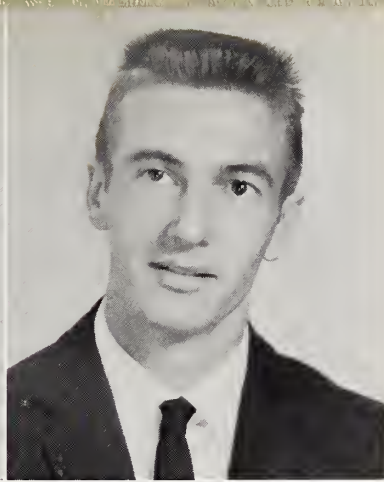
ANN FRAVEL NOOE  
 "Here, there, and everywhere."  
 Basketball 1, 2, 3, 4; Monogram Club 1, 2, 3, 4; Beta  
 Club 3, 4; Glee Club 3, 4; Piano 1, 2, 3, 4; Music  
 Award 2; Annual Staff 3, 4; Literary Editor 4; HIGH  
 LIFE Staff 4; Majorette 1, 2, 3, 4; Head Majorette 3,  
 4; Drum Majorette 4; Girls' State 3; Recitation Con-  
 test 2, 3; Marshal 3, 4; Superlative 4; Chemistry  
 Award 3; V. F. W. Auxiliary Essay Contest School  
 Winner 2, 3; State Winner 2.

RUTH MARIE RHODES  
 "Roll on, World, and I'll roll with you."  
 Glee Club 1, 2, 3, 4; F. H. A. 1; Basketball 1; Recita-  
 tion Contest 2; Monogram Club 1.

GERALD WAYNE HOWARD  
 "Don't smile at me girls; I'm bashful."  
 F. F. A. 1, 2, 3, 4; Officer 2, 3, 4; Tool Judging 2; Par-  
 liamentary Procedure 4; 4-H Club 1, 2; Bus Driver 3,  
 4; Safe Driving Award 3.





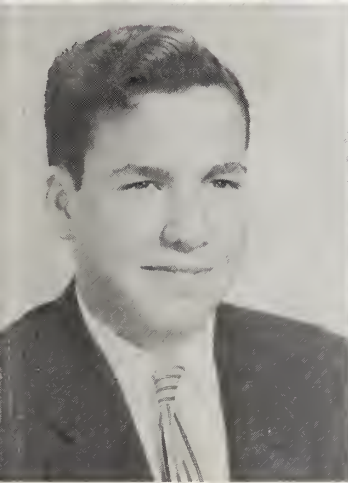


CAROLYN LOUISE SHAW  
 "She is timid and quiet in school,  
 but outside you'd be surprised."  
 Glee Club 1; F. H. A. 1, 2; Monogram Club 3, 4; Beta  
 Club 3, 4; Superlative 4; Class Officer 4; HIGH LIFE  
 Staff 4; Annual Staff 3, 4; Art Editor 4; Piano 1, 2.

WOMACK ELMER KECK  
 "Today is the tomorrow  
 I worried about yesterday."  
 Baseball 1, 3; Monogram Club 1, 3; Beta Club 3, 4;  
 Student Council 3, 4; Officer 4; HIGH LIFE Staff 4;  
 Annual Staff 3, 4; Class Officer 3; Superlative 4.

RUFUS JACKSON MANN  
 "What happens is supposed to be,  
 so nothing ever bothers me."  
 Glee Club 1; 4-H Club 1, 2; Baseball 1; Bus Driver 3,  
 4; Bus Driving Award 3; HIGH LIFE Staff 4.

PATRICIA LOUISE SHORE  
 "Leave silence to the saints;  
 I'm but human."  
 Basketball 1, 2, 4; Monogram Club 1, 2, 4; Glee Club  
 1, 2, 4; F. H. A. 1, 2; 4-H Club 1, 2; Homecoming  
 Court 3.



## Nineteen Hundred and Sixty

WILLIAM HOWARD McALLISTER III

"Girls, girls everywhere  
 and not a one to date."

Beta Club 3, 4; Annual Staff 3, 4; HIGH LIFE Editor  
 4; Boys' State 3; Superlative 4; National Teenage  
 Press Conference 4.

JOYCE ELIZABETH TRIPP

"Red - on - the - head."

Basketball 1, 2; Monogram Club 1; Softball 1;  
 F. H. A. 1.

PHYLLIS MARIE VICKERS

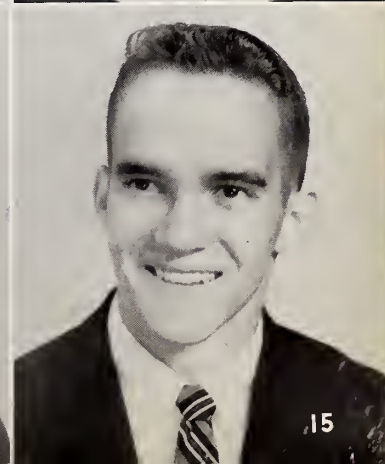
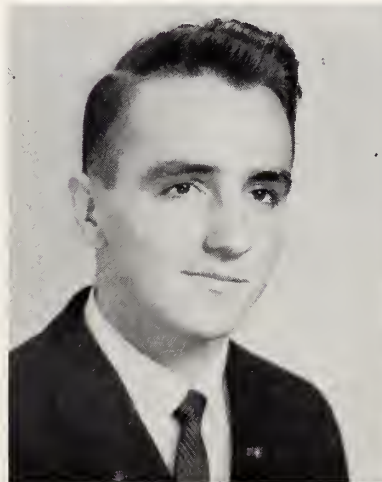
"I have one ambition;  
 not to be an old maid."

F. H. A. 1, 2; Recitation Contest 2; Glee Club 2, 3;  
 Bus Driver 4.

JOHN CARL McCOLLUM

"Be kind to dumb animals,  
 especially women."

Basketball 1, 2; Glee Club 2; Teenage Club Repre-  
 sentative 2; Monogram Club 1, 2; Superlative 4;  
 Class Officer 4; HIGH LIFE Staff 4.





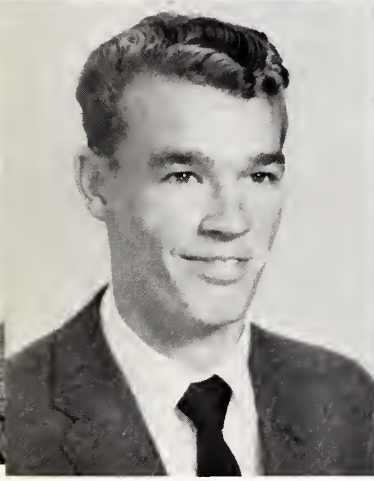


SARAH AILEEN WEBSTER  
 "Why worry? Things are bound  
 to happen anyway."

F. H. A. 1, 2; Beta Club 3, 4; Annual Staff 3, 4; HIGH  
 LIFE Staff 4; Marshal 3, 4; Superlative 4; Piano 2.

EDWARD McBANE PETTY  
 "Nothing in his life will become him,  
 like his leaving it."

F. F. A. 4; Officer 4; Class Officer 3; Beta Club 3, 4;  
 Officer 3, 4; Bus Driver 3, 4; Safe Driving Award 3;  
 Superlative 4; 4-H Club 1, 2; Annual Staff 3, 4; De-  
 clamation Contest 2; Student Council 3.



BERRY MOSES ROBERSON, JR.  
 "Here's a boy of the F. F. A.  
 who raises cain and alfalfa hay."

F. F. A. 1, 2, 4; Track 3.

LYDA GALE WICKER  
 999, 999 (Freckles)

Bus Driver 3, 4; Marshal 3, 4; Softball 1; Basketball 1,  
 2, 3, 4; Recitation Contest 1, 2; Glee Club 1, 2, 3, 4;  
 Class Officer 2, 3, Monogram Club 1, 2, 3, 4; Student  
 Council 3; Beta Club 3, 4; Annual Staff 3, 4; Super-  
 lative 4; Girls' State 3; Piano 1, 2, 3, 4; HIGH LIFE  
 Staff 4.

*Seniors*

JAMES WILLIAM STROWD  
 "A tin can, a loud noise, and  
 he calls it a car."

4-H Club 1, 2; F. F. A. 3, 4; Superlative 4; Bus Driver  
 3, 4; Safe Driving Award 3; Class Officer 2; Dairy  
 Judging Team 4.

FAYDINE WILLIAMS  
 "Laugh, I thought I would die."

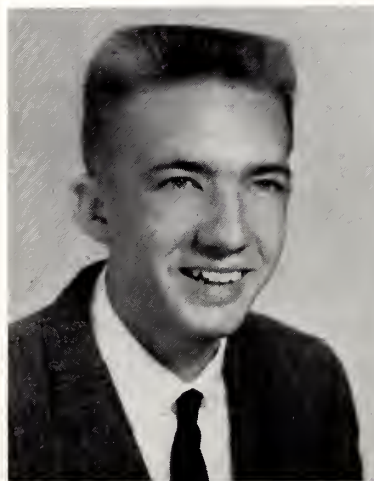
Glee Club 1; F. H. A. 1, 2; Softball 1.

JOLENE WRIGHT  
 "I never worry; I never fret; what  
 I can't remember I just forget."

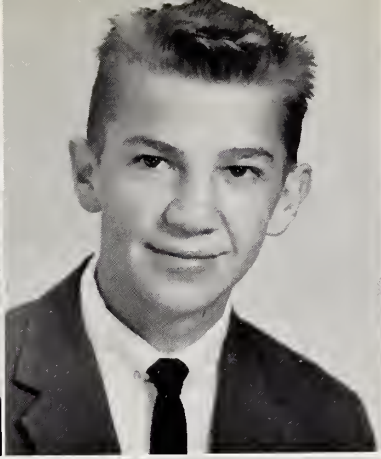
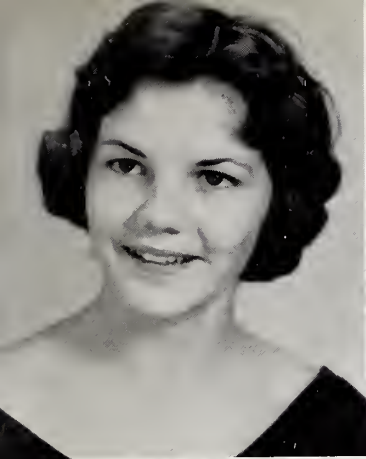
Softball 1; Basketball 1, 2, 3, 4; Co-Captain 3; Mono-  
 gram Club 1, 2, 3, 4; F. H. A. 1, 2; Officer 1; Beta  
 Club 3, 4; Officer 4; Superlative 4; HIGH LIFE Staff  
 4; Annual Staff 3, 4; Teenage Club Representative 2;  
 4-H Club 1, 2; Glee Club 1, 2, 3, 4.

JACKIE LEE SWORD  
 "All great men are dead or dying;  
 I don't feel so well myself."

Scott High School, West Virginia 1, 2; Basketball  
 1, 2; World Geography Club 2; Archery Club 1;  
 Pittsboro High School; F. F. A. 4; Football 4; Bas-  
 ketball 3, 4; Baseball 4; Track 3, 4.







ANN BRYAN YATES

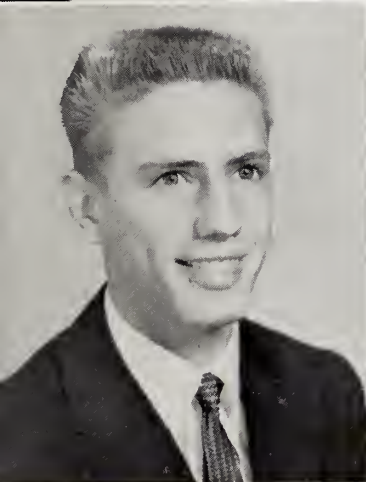
"Those quiet people often deceive you."

Glee Club 1, 2, 3, 4; F.H.A. 1, 2; Officer 1, 2; Class Officer 3; Student Council 3; Beta Club 3, 4; Annual Staff 3, 4; HIGH LIFE Staff 4; Superlative 4.

WILLIAM DERWARD THOMAS

"No work and all play would be nice."

Cheerleader 1, 2; Scribblers' Club 1, 2; Baseball 1; F.F.A. 3, 4; Officer 3, 4; Dairy Judging Team 3; Beef and Swine Judging Team 4; Parliamentary Procedure 3, 4; Monogram Club 1, 2.



ROBERT EUGENE THOMAS

"Girls? I beat them off with clubs."

Football 2, 3, 4; Baseball 1, 2, 3, 4; Basketball 1, 2, 3; Glee Club 1, 2, 3, 4; Piano 1, 2, 3, 4; Monogram Club 1, 2, 3, 4; Declamation Contest 2, 3; Class Officer 4; Beta Club 3, 4; Annual Staff 3, 4; Superlative 4; Marshal 3, 4; Boys' State 3; Citizenship Award 3; Male Scholastic Award 3; Student Council 4.

WILLIAM DAVID WOODY

"The world is no better if we hurry."

# Nineteen Hundred and Sixty

## MASCOTS

Paulette Johnson and Winfred Cheek

Mascots are to Seniors like icing  
is to cake;  
They're small and cute and witty;  
About half of us they'd make.

They'll sleep through Graduation,  
And they'll laugh all through Class  
Day,  
But they'll be in our minds when we  
are old and gray.





SENIOR SUPERLATIVES



BEST ALL-ROUND  
Lyda Gale Wicker  
Tommy Henley



FRIENDLIEST  
Ann Crews  
Edward Petty





**MOST INTELLECTUAL**  
Ann Nooe  
Robert Thomas



**PERSONALITY PLUS**  
Ann Yates  
Carl McCollum





**MOST POPULAR**  
Faye Goodwin  
Jimmy Strowd



**MOST ATHLETIC**  
Jolene Wright  
Mack Herndon

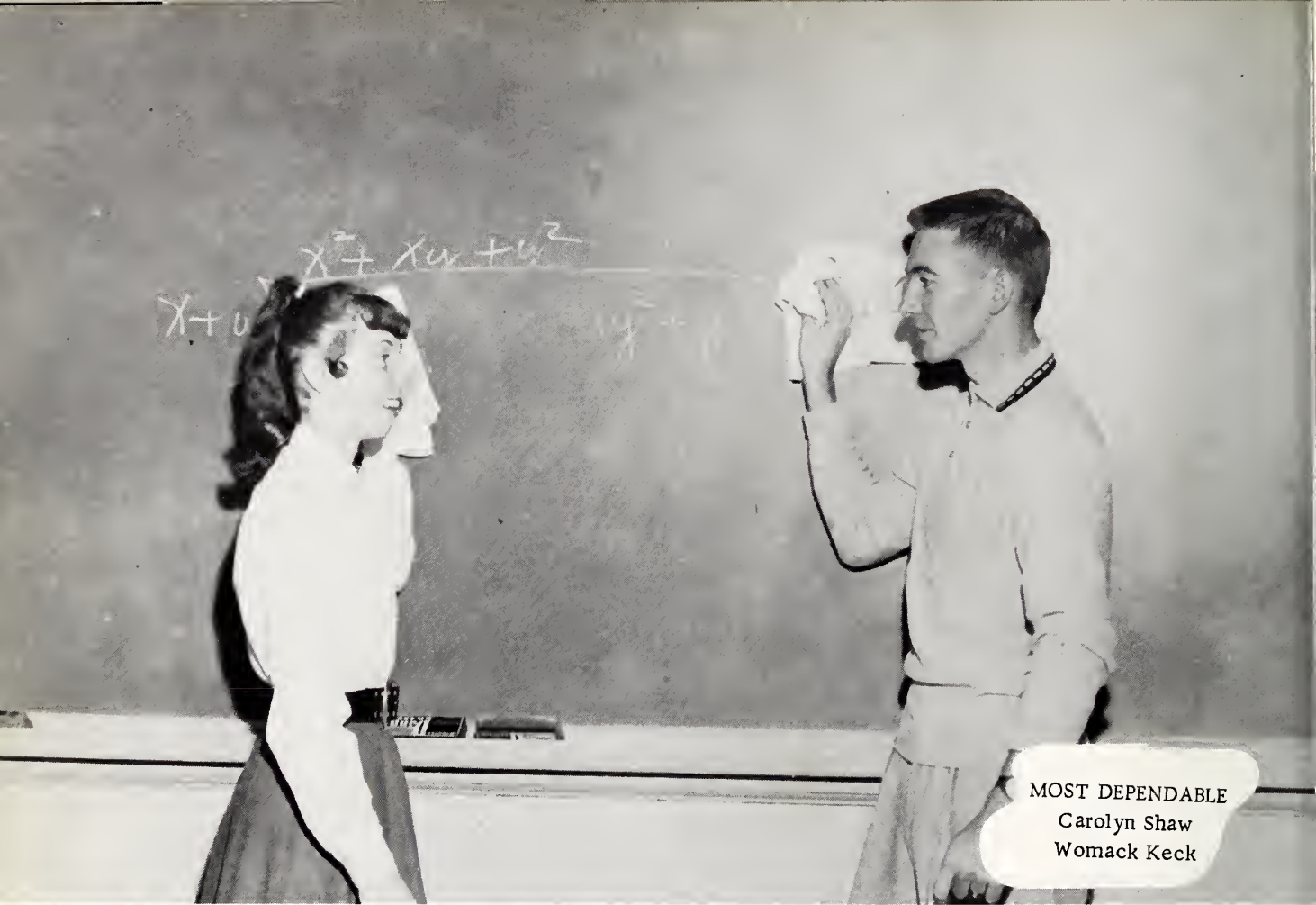




MOST LIKELY TO SUCCEED  
Aileen Webster  
Bill McAllister



BEAU AND BELLE  
Midge Johnston  
Dan Howard



**MOST DEPENDABLE**  
Carolyn Shaw  
Womack Keck



**WITTIEST**  
Emily Billings  
Billy Eubanks



## Marshals

The marshals are eight Juniors who attained the highest averages in high school. This year the marshals proudly wear the regalia which was given to the school by their Class of '60. The marshals are Peggy Ann Clark, Faye Goodwin, Tommy Henley, Midge Johnston, Ann Nooe, Robert Thomas, Aileen Webster, and Lyda Gale Wicker.

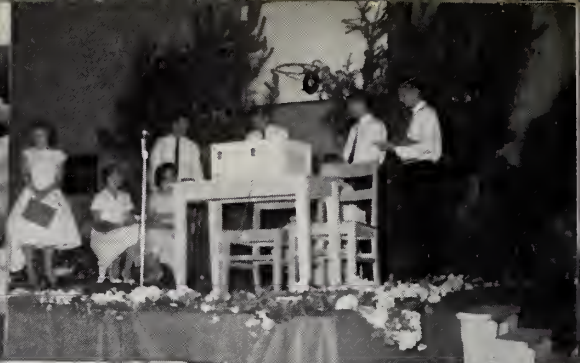


## Boys' and Girls' State

Each year the American Legion and the Auxiliary sends Junior boys and girls to their State-wide program of Boys' and Girls' State. These programs are geared to give the participants a better idea of how government really works.











## Junior Class Officers

Dan Hollingsworth, Sergeant-at-Arms; Faye Crutchfield, Secretary; Bobby Wilson, President; Bonnie Enright, Vice President; Barbara Clark, Treasurer.

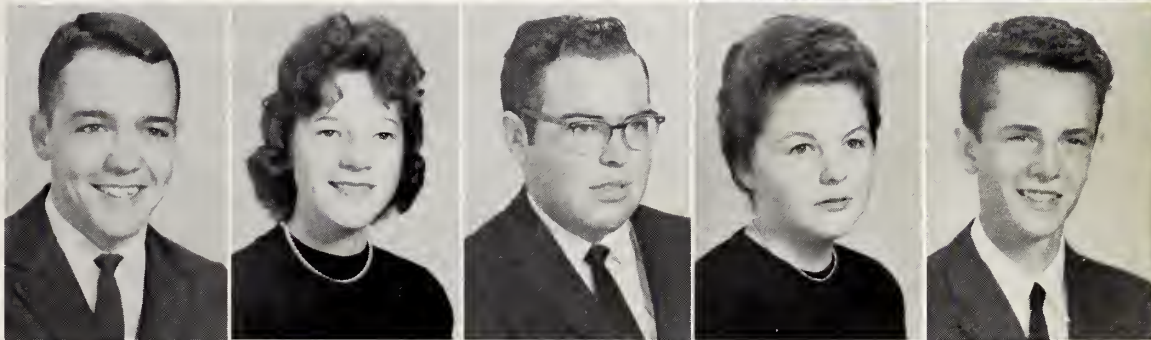
## Juniors



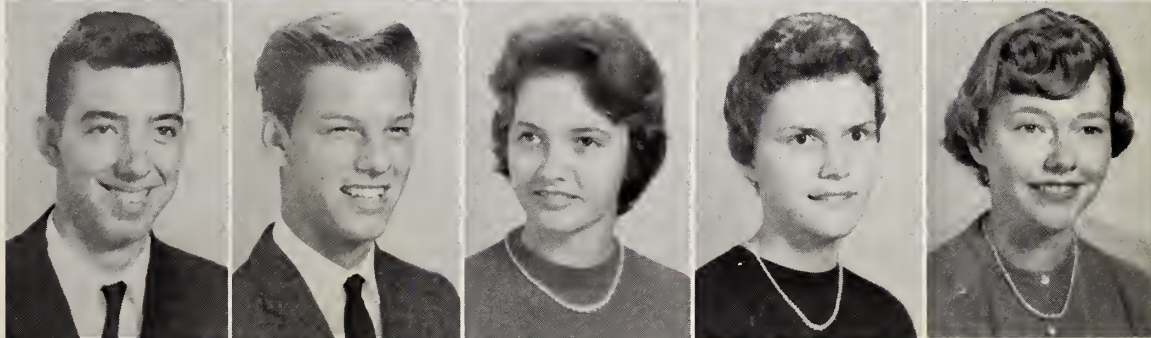
Joyce Ash  
Sally Barrett



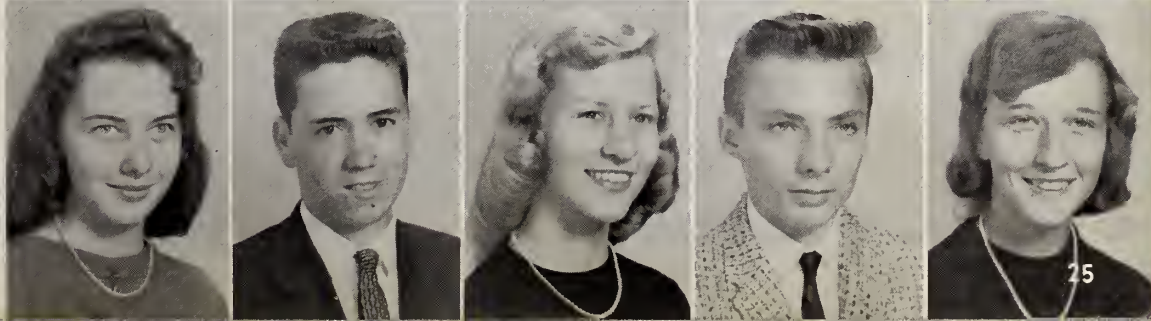
Henry Blair  
Mary Ann Bunker  
Barry Burns  
Carla Butler  
Billy Joe Carroll



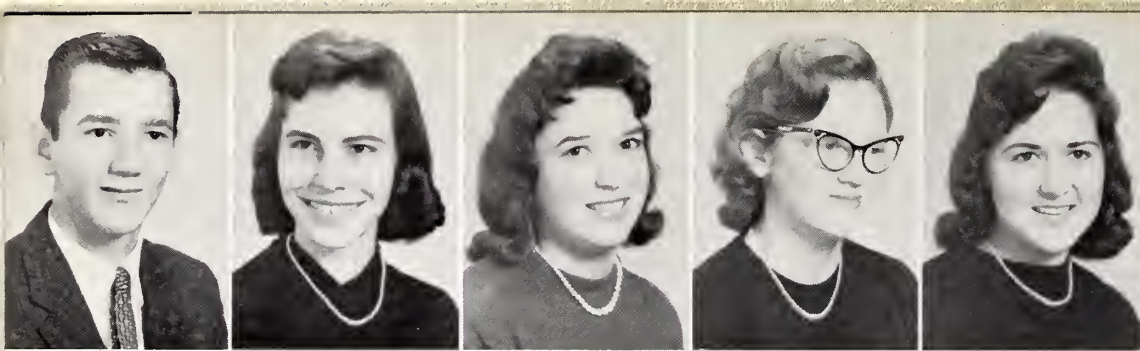
Larry Carroll  
Eddie Carson  
Phyllis Cash  
Ann Churchill  
Barbara Clark



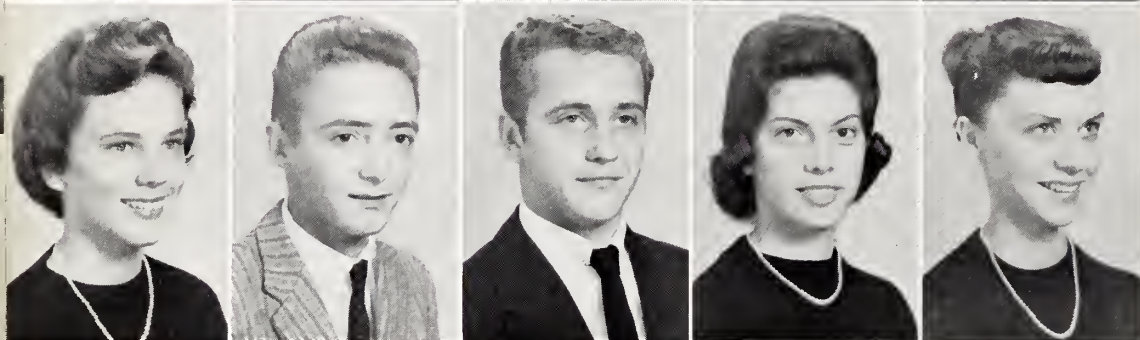
Elizabeth Council  
Frank Crabtree  
Faye Crutchfield  
David Day  
Sandra Dominick







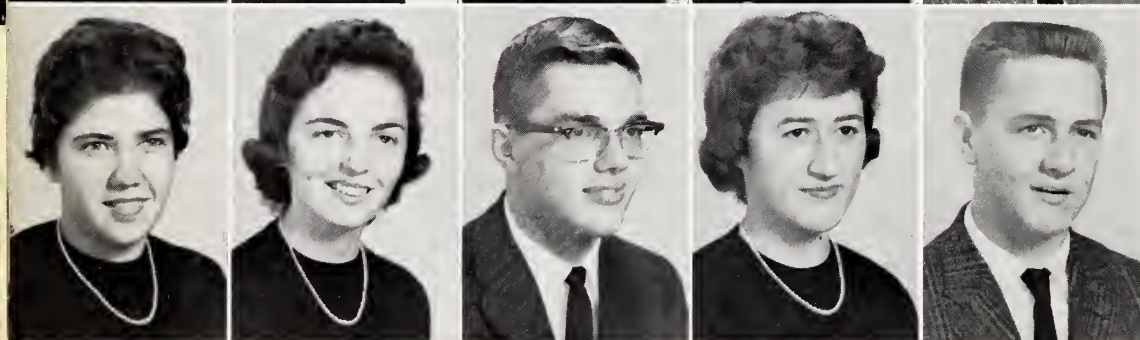
Archie Durham  
Bonnie Enright  
Betty Jean Eubanks  
Carolyn Eubanks  
Wanda Eubanks



Polly Farrell  
Stanley Fish  
Wayne Gaines  
Linda Gainey  
Renalda Glosson



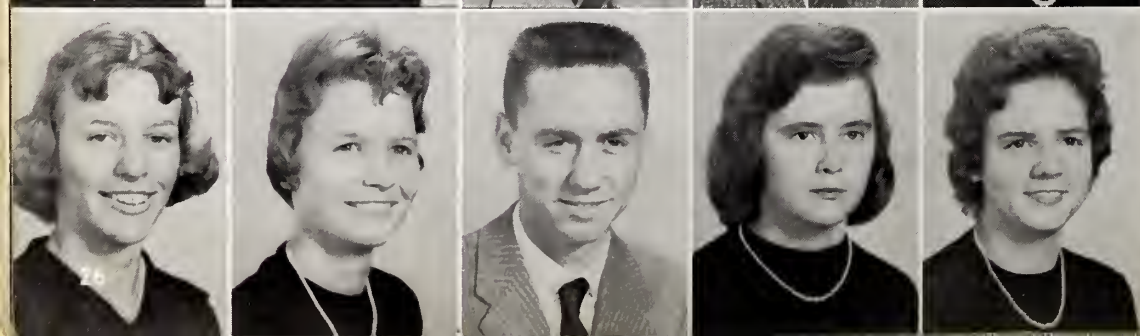
Betty Jane Goodwin  
Barbara Gordon  
Sue Green  
Ann Gunter  
Archie Gunter



Joyce Gunter  
Beatrice Harris  
Corkey Harris  
Nancy Hatley  
John Hearne



Melinda Herndon  
Carolyn Hinton  
Jack Hogan  
Dan Hollingsworth  
Ferne Houser



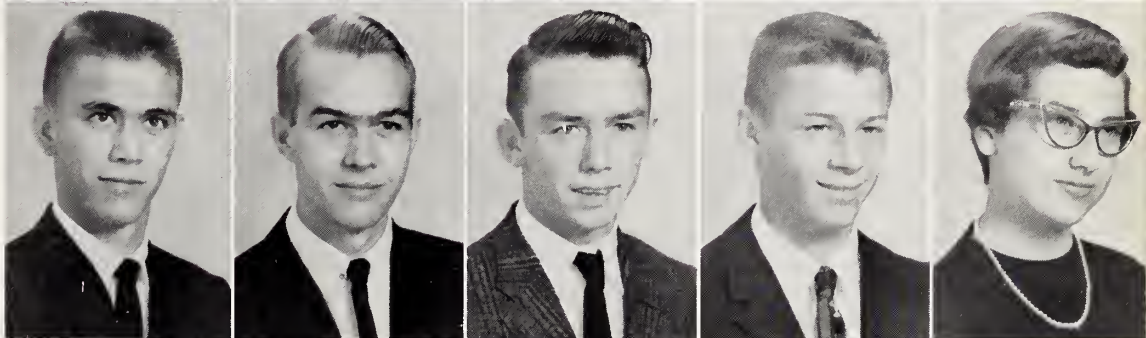
Margie Howard  
Nancy Howard  
Billy Hudson  
Betty Jane Johnson  
Joyce Jones



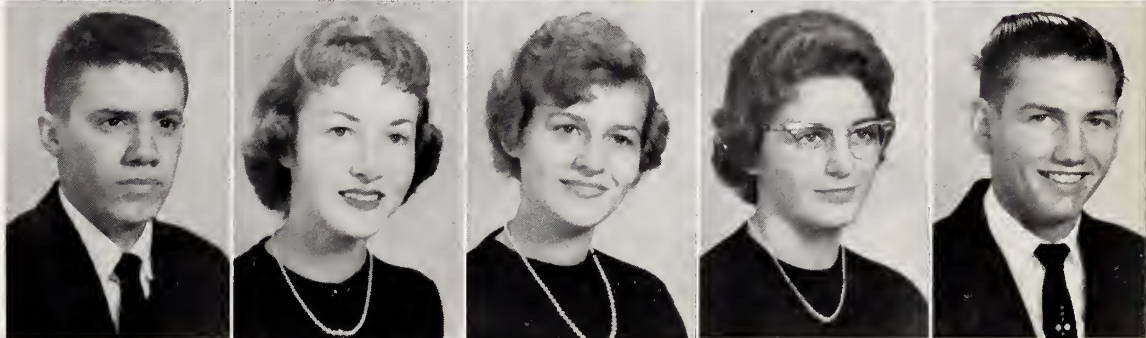
Mae Jones  
 Jerry Justice  
 Jackie Mann  
 Linda Mann  
 Wade McIver



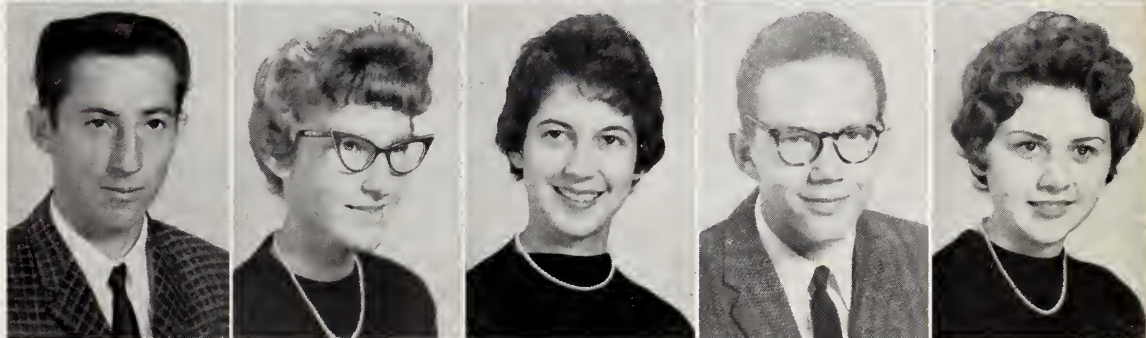
Earl Parker  
 Marshall Parker  
 Jimmy Perkins  
 Clyde Perry  
 Ann Poythress



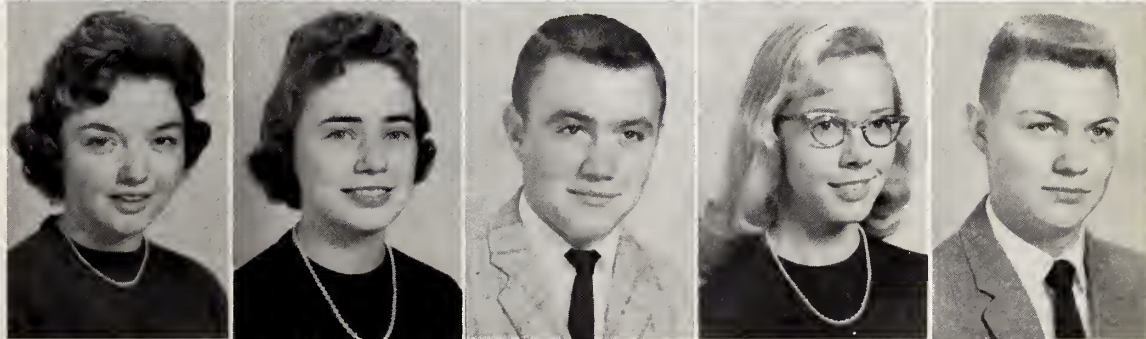
Hill Powell  
 Dorothy Rambeaut  
 Sarah Jean Riddle  
 Betty Roberson  
 Gilbert Sanders



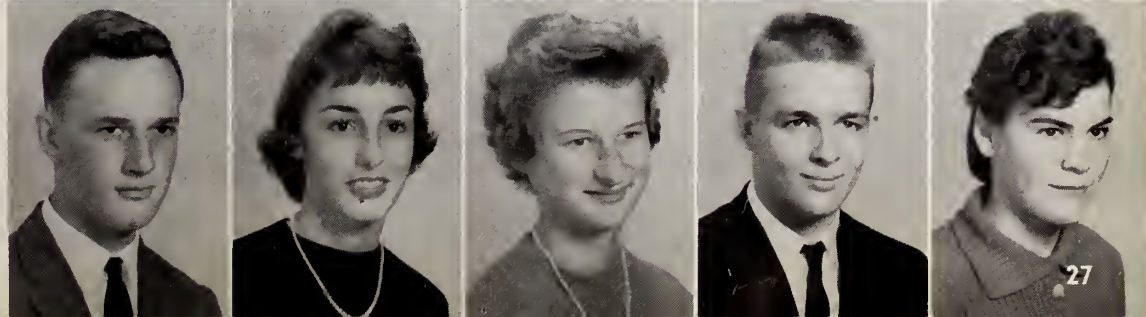
Junior Sexton  
 Carolyn Smith  
 Barbara Snipes  
 Alfred Tatum  
 Carolyn Taylor  
 (In Memoriam  
 1943-1959)



Clarine Thomas  
 Roxie Thomas  
 Curtis Thrift  
 Nellie Webster  
 Bobby White



Jerry Wicker  
 Annabelle Williams  
 Brenda Williams  
 Bobby Wilson  
 Ann Wright



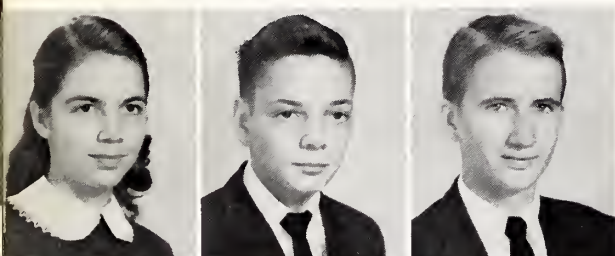


## *Sophomore Class Officers*

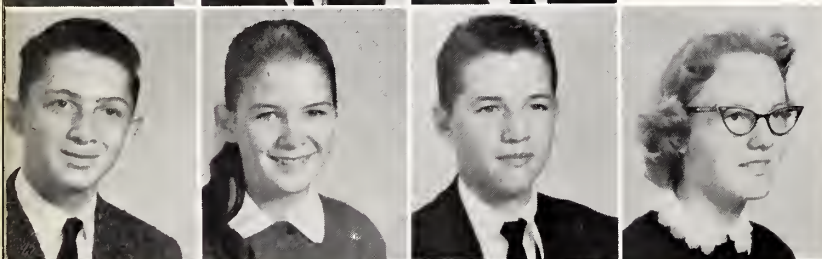
Jane Brown, Vice President; Harry Goodwin, Secretary; Errol Roper, President; Donna Hearn, Treasurer; Hollis Freeman, Sergeant-at-Arms (not pictured).



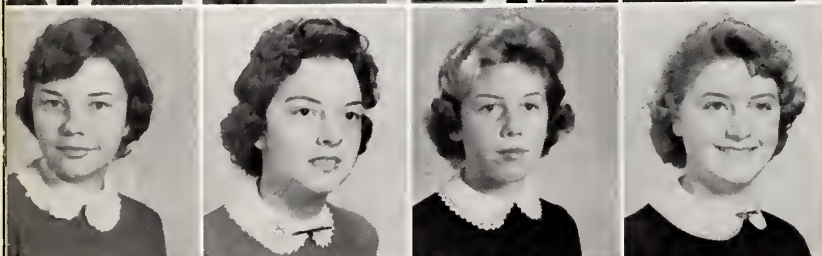
## *Sophomores*



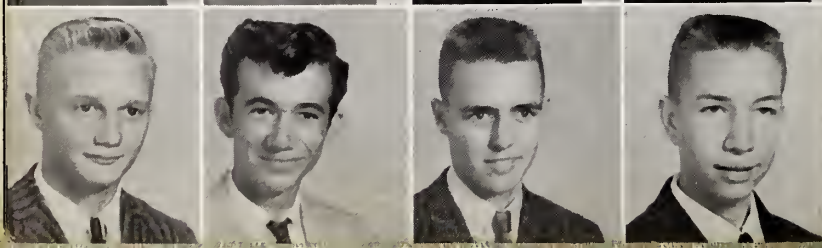
Carolyn Barbee  
Wade Barber  
Bobby Beal



Don Bolejack  
Patsy Branch  
Donald Brooks  
Jane Brown



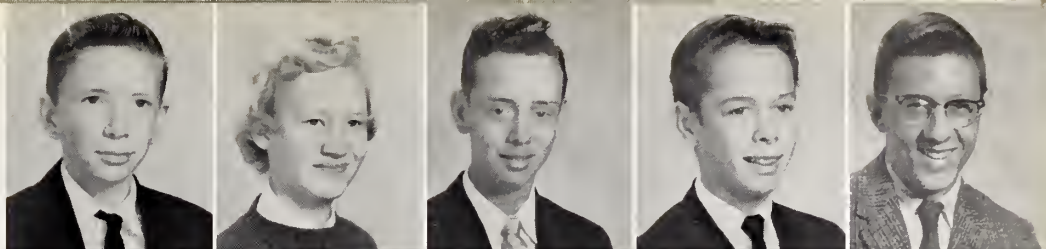
Linda Burnette  
Betty Jean Dean  
Brènda Eubanks  
Gail Fitchett



Hollis Freeman  
Frankie Fuller  
Harry Goodwin  
Larry Goodwin



Ray Goodwin  
 Jo Ann Green  
 Ike Griffin  
 David Hackney  
 Jimmy Hackney



Peggy Harbison  
 Louis Harward  
 Donna Hearne  
 Ruby Heath  
 Myrna Hicks



Elward Horton  
 Rufus Horton  
 Gladys Keck  
 Billy Mann  
 Loyd Mann



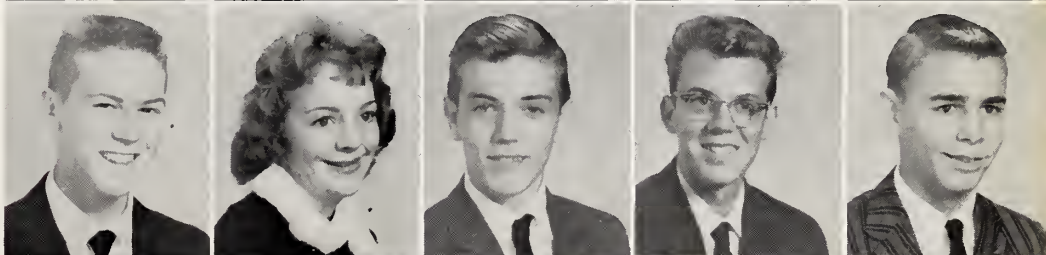
Wallace Mann  
 Manley Newton  
 Leonora Norwood  
 Ruthie Norwood  
 Steve O'Daniel



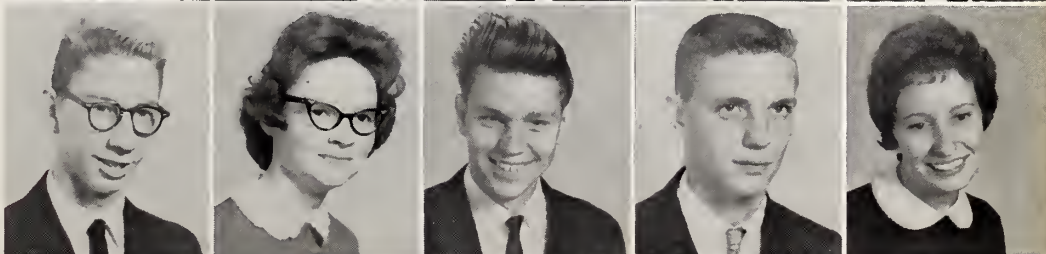
Bobby Parker  
 June Peoples  
 Barbara Petty  
 Carol Poe  
 Francine Ray



Benny Rhodes  
 Emmie Sue Riggsbee  
 Richard Riggsbee  
 Errol Roper  
 Gordon Shannonhouse



David Stephens  
 Phyllis Sturdivant  
 Charles Tucker  
 Gene Tucker  
 Barbara Webster



Glenda Sue White  
 Ronald White  
 Patricia Wilkie  
 Nancy Wilson  
 Mary Sue Womble



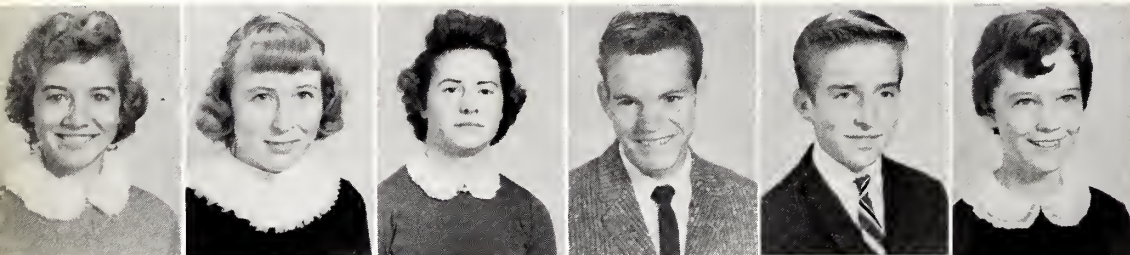




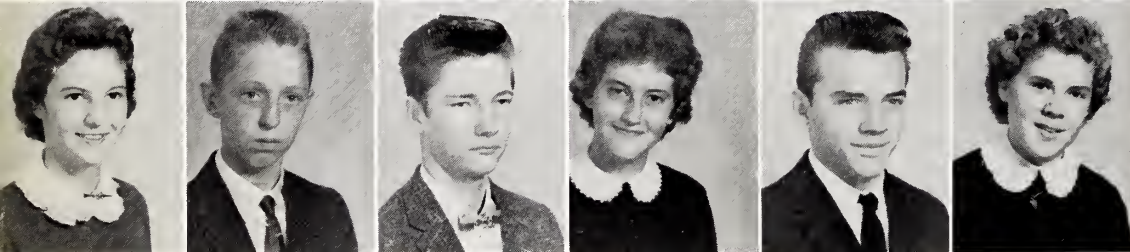
## *Freshman Class Officers*

Joe Manring, Sergeant-at-Arms;  
Gene Griffin, Vice President; Karen  
Mathiesen, Secretary; Billy Gattis,  
President; Jim Camp, Treasurer.

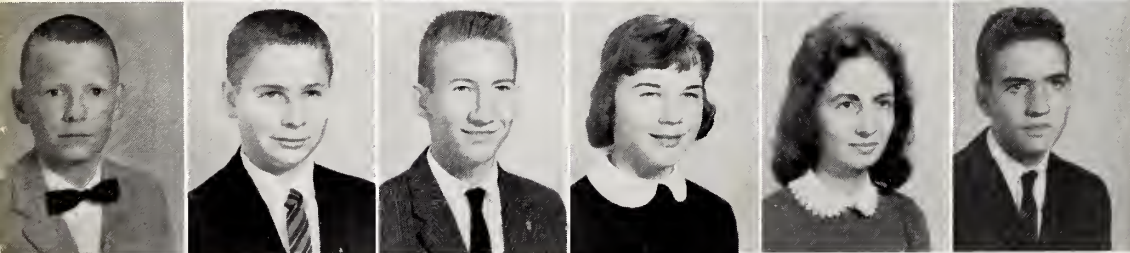
## *Freshmen*



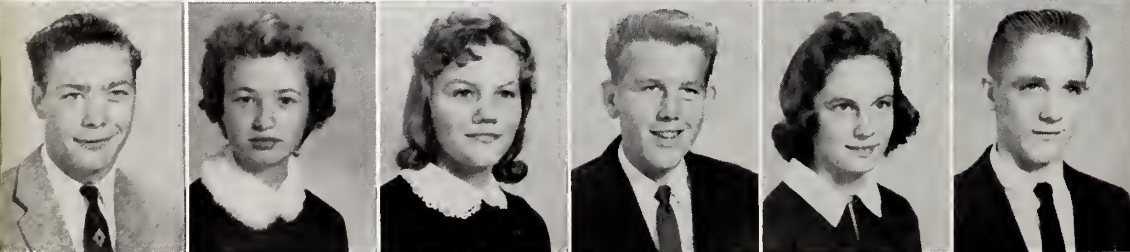
Faye Allan  
Eva Baker  
Estelle Boone  
Charles Bordeaux  
Johnny Bullington  
Ann Burns



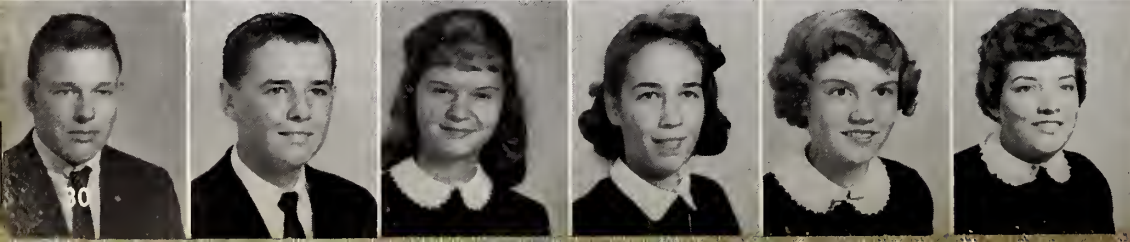
Ginny Burns  
Jim Camp  
Marlon Campbell  
Jane Carpenter  
Leonard Chambers  
Joyce Churchill



Wade Clark  
Wayne Clark  
Cadle Cooper  
Barbara Council  
LaVan Covert  
Tommy Crews

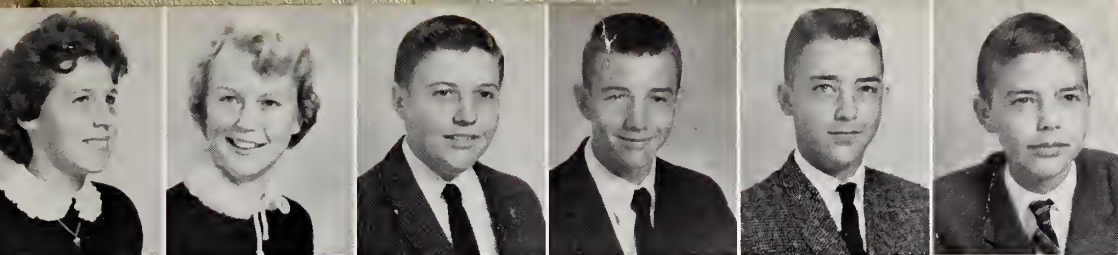


Charles Daniel  
Lillie Daniel  
Lois Davis  
Manly Dawson  
Joyce Enright  
Bernard Farrar

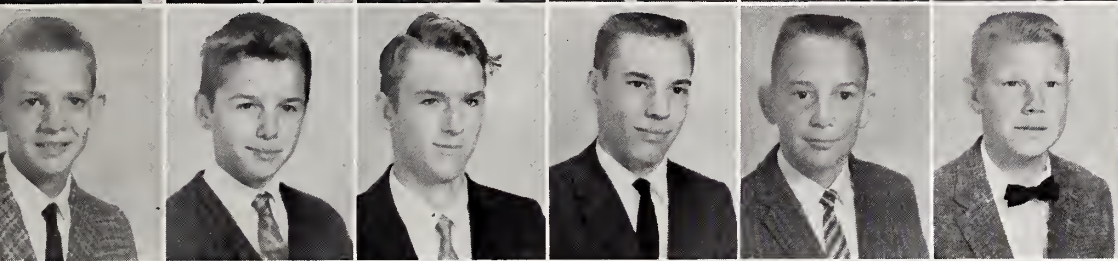


Dale Farrell  
Lacy Farrell  
Sylvia Farrell  
Betty Fearington  
Pam Fitchett  
Jackie Foushee

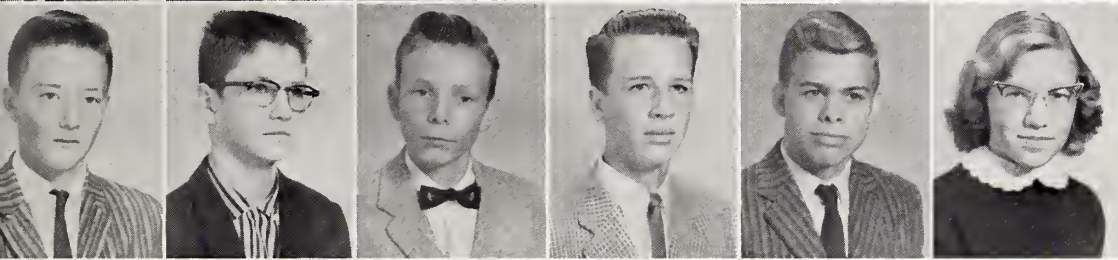




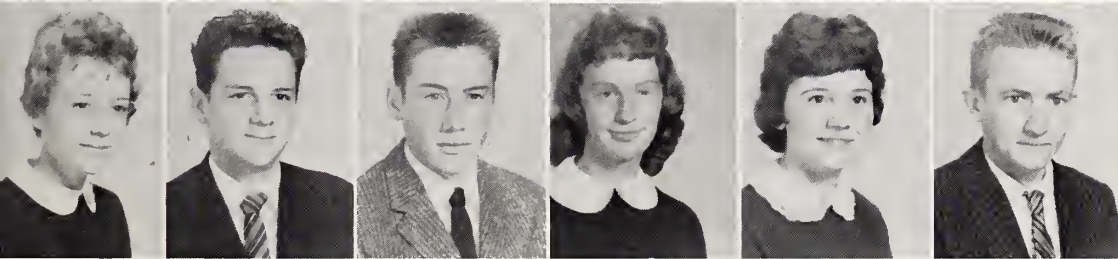
Faye Fuller  
 Thelma Garret  
 Billy Gattis  
 Alan Gooden  
 Lloyd Goodman  
 Wayne Goodman



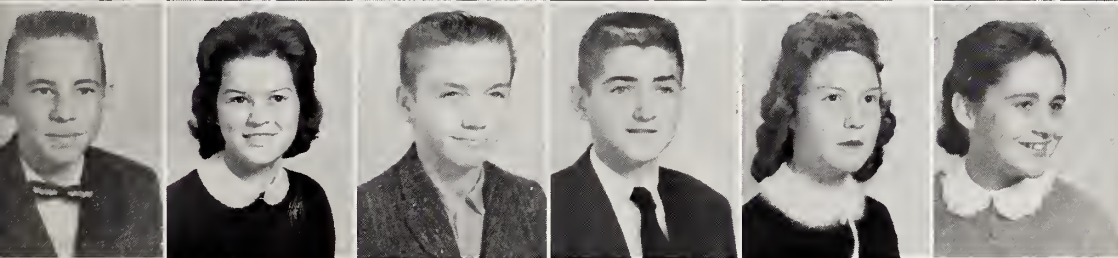
Bunn Goodwin  
 Charlie Green  
 Robert Green  
 Gene Griffin  
 Jimmy Griffin  
 Ray Gunter



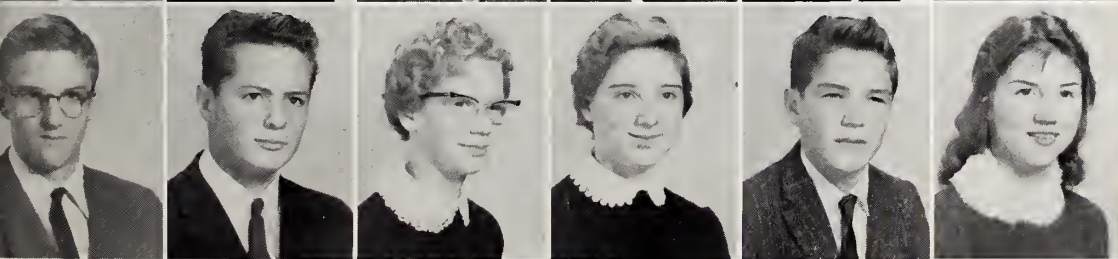
Mike Kellogg  
 Andrew Howard  
 Bobby Hunt  
 James Earl Lasater  
 Henry Lewis  
 Cindy Mann



Kay Mann  
 Tommy Mann  
 Joe Marring  
 Karen Mathiesen  
 Gail McBane  
 Carl McGhee



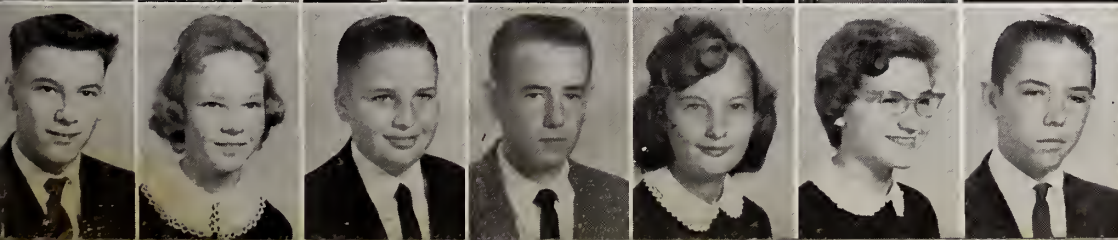
Pete McGhee  
 Pat Meacham  
 Bobby Moore  
 Bret Norwood  
 Dorthy Nunn  
 Mary O'Daniel



Steve Pendergraft  
 Douglas Perry  
 Patsy Perry  
 Bonnie Piercy  
 Wayne Riggsbee  
 Judy Seagroves



Leon Shaw  
 Tony Stephens  
 Lewis Stubbs  
 Sandre Stubbs  
 Beverly Sullivan  
 Sara Ann Thomas  
 Joyce Tilley



Richard Vallee  
 Julia Webster  
 Luther Glenn White  
 Barry Williams  
 Emily Williams  
 Pattie Williams  
 Paul Williams, Jr.





At lunch!



Mr. Dan Johnson  
Piano Teacher



The Break



Mrs. Dolly Perry  
School Secretary



Tom  
and  
Saul

Senior  
Rings



Campus

Mr. Carl Henley  
Student-Teacher



Study, boy!







*Activities . . .*





## *Student Council*

Miss Doris Stone, Advisor; Manley Dawson; Wade Barber; Nancy Howard; Womack Keck, President.

## *Monogram Club*



F. Goodwin, R. Norwood, J. Camp, N. Webster, J. Peoples, M. Herndon, F. Houser, T. Henley, M. Johnston, J. Perkins, A. Nooe, J. Hearne, D. Lutterloh, B. Burns, G. Sanders, B. Wilson, J. Wright, R. Thomas, F. Crutchfield, H. Freeman, B. Williams, C. Shaw, D. Beard, L. Wicker, H. Goodwin, A. Crews, D. Hollingsworth.





MISS PITTSBURGH

Miss P. H. S.  
MIDGE JOHNSTON



# Annual Staff



E. Petty; R. Thomas; W. Keck; P. Clark; C. Shaw; M. Johnston; A. Nooe; J. Wright; F. Goodwin; D. Lutterloh; T. Henley; B. McAllister; A. Webster; L. Wicker; Mrs. Roy Kidd, Advisor; A. Yates; A. Crews.



"And we thought cutting out pictures was child play."



"Work, Drink, and be Merry."



Faye and Ferne  
Editor and Co-Editor





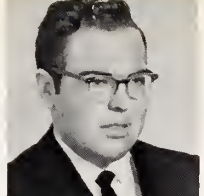
Lyda Wicker



Linda Mann



Ann Nooe



Barry Burns



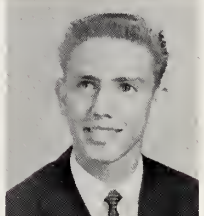
Ann Crews



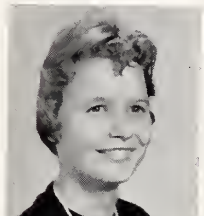
Polly Farrell



Ferne Houser



Robert Thomas



Nancy Howard



Womack Keck

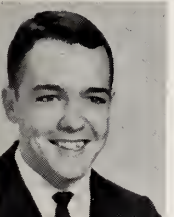
# Beta Club



Faye Goodwin



Jackie Mann



Henry Blair

PRESIDENT

Edward Petty



SECRETARY

Jolene Wright

TREASURER

Bonnie Enright

VICE PRESIDENT

Corky Harris



Tommy Henley



Midge Johnston



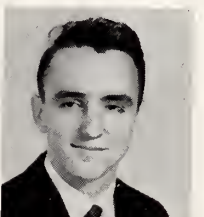
Sally Barrett



Ann Poythress



Carolyn Eubanks



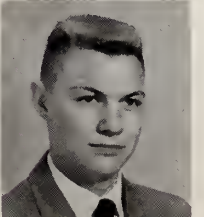
Bill McAllister



Aileen Webster



Donna Lutterloh



Bobby White



Ann Yates



Barbara Clark



Peggy Clark



Carolyn Shaw





## *High Life Staff*

A. Crews; P. Clark; L. Wicker; J. Mann; A. Webster; C. Shaw, News Director; B. McAllister, Editor; C. McCollum, Sports Director; B. Clark, Feature Director; A. Nooe; W. Keck; A. Yates; J. Wright; F. Goodwin; Mrs. Carl Yates, Faculty Advisor; M. Johnston; C. Thomas; M. Beard; C. Taylor; B. Stevens.

## *F. F. A.*

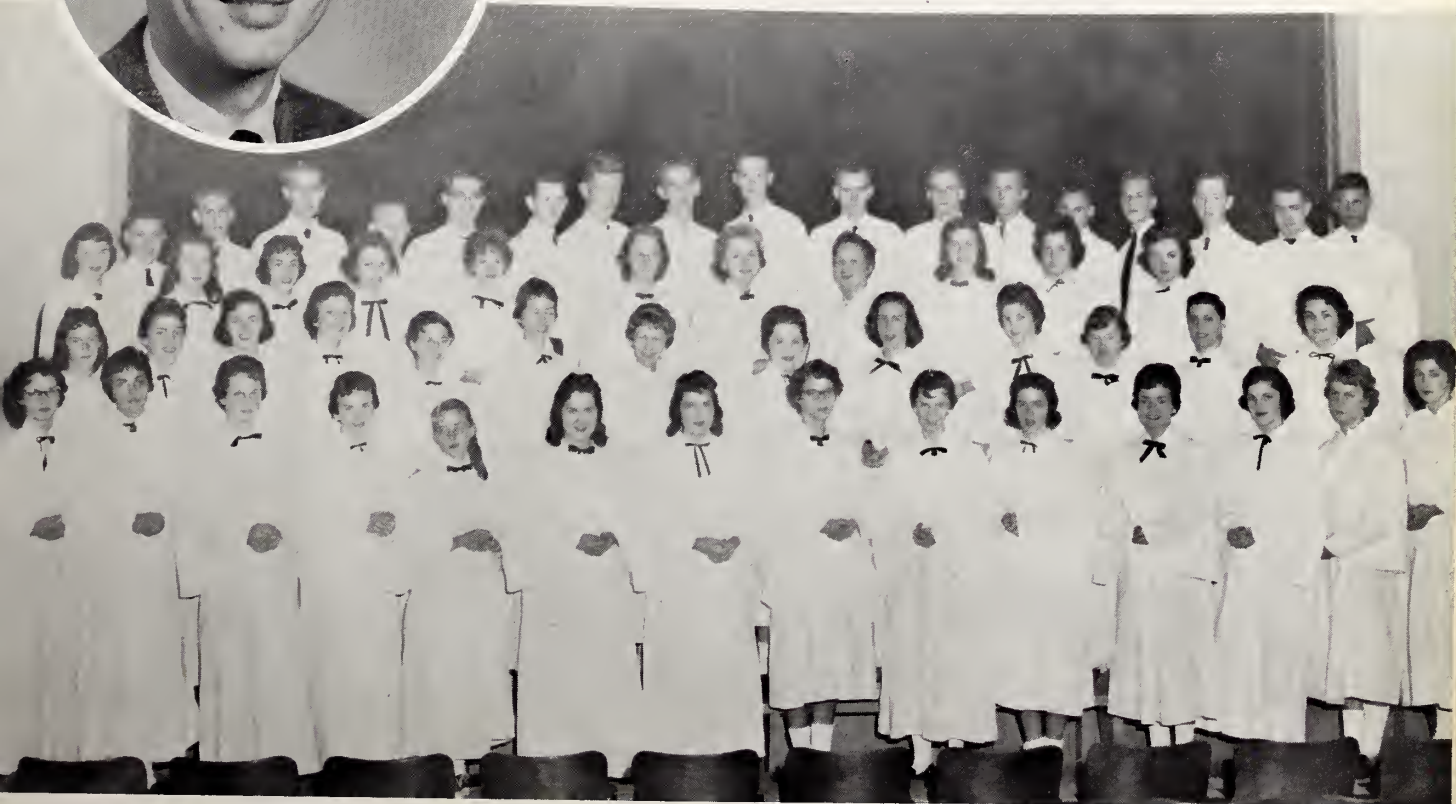
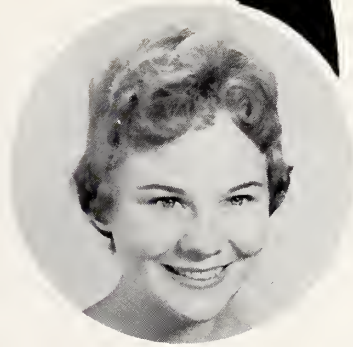
G. Howard, F. Crabtree, E. Petty, M. Johnston, B. Holt, D. Howard, D. Thomas, W. Clark, P. McGhee, D. Day, A. Gunter, B. White, C. McGhee, B. Wilson, C. Green, B. Moore, B. Sullivan, A. Howard, P. Williams, K. Eddins, F. Fuller, B. Beal, D. Perry, W. Riggsbee, W. Clark, L. Chambers, R. Horton, S. Daniels, R. Gunter, T. Mann, E. Horton, B. Eubanks, R. Green, C. Gunter, G. Tucker, R. Riggsbee, D. Brooks, L. Sexton, J. Justice, B. Ash, D. Brooks, B. Parker, L. Hilliard, M. Parker, B. Norwood, B. Farrell, B. Williams, B. Roberson, C. Tucker, L. Harward, R. White, B. Mann, C. Bordeau, L. Goodwin, J. Sword, L. Carroll, S. Pendergraph.





Director  
MR. DAN JOHNSON

Accompanist  
FAYE GOODWIN



R. Rhodes, A. Crews, L. Wicker, J. Wright, N. Webster, W. Eubanks, B. Eubanks, S. Barrett, A. Burns, M. Herndon, M. Johnston, A. Yates, T. Garrett, S. Thomas, K. Mathiesen, K. Bullington, B. Harris, C. Lutterloh, P. Williams, F. Houser, C. Smith, C. Butler, A. Nooe, G. Burns, B. Clark, L. Gainey, G. Beckwith, B. Council, E. Council, A. Williams, P. Cash, S. Riddle, J. Brown, M. Womlbe, J. Peoples, G. White, B. Dean, C. Thomas, B. Gattis, R. Thomas, M. Parker, J. Camp, C. Harris, A. Durham, B. Mann, B. Parker, M. Beard, D. Beard, T. Henley, D. Howard, G. Griffin, E. Lasater, I. Griffin, H. Blair, J. Hackney.



## Librarians



MRS.  
YATES  
Advisor

D. Hearne, M. Beard, A. Gunter, P. Clark, B. Dean, J. Johnson, J. Foushee, G. Fitchett, G. White, A. Williams, B. Petty, S. Dominick, J. Jones, A. Churchill, P. Cash.

## Bus Drivers



B. Goodwin, P. Vickers, S. Barrett, B. Roberson, B. Snipes, W. Eubanks, L. Wicker, G. Howard, S. Green, L. Goodwin, J. Justice, J. Strowd, B. Eubanks, D. Brooks, F. Crabtree, D. Howard, W. Mann, E. Petty, L. Carroll, B. Roberson, K. Bullington, E. Parker, J. Hearne, C. Gunter, J. Ellis, J. Mann.





*Athletics . . .*



C  
H  
E  
E  
R  
L  
E  
A  
D  
E  
R



Ruthie Norwood; Jim Camp; Jenny Burns; Faye Goodwin, Chief; Midge Johnston; Ferne Houser; June Peoples; Nellie Fay Webster.



Pleese make it!



Let's hear that yell!



Everybody yell - Everybody scream!

*Created Spirit . . . Pep! . . . Hey, Dragons*



FOOTBALL 1959



TOMMY HENLEY



Henley was elected by his teammates as Most Valuable Player. He exhibited the qualities of leadership and sportsmanship throughout the season.

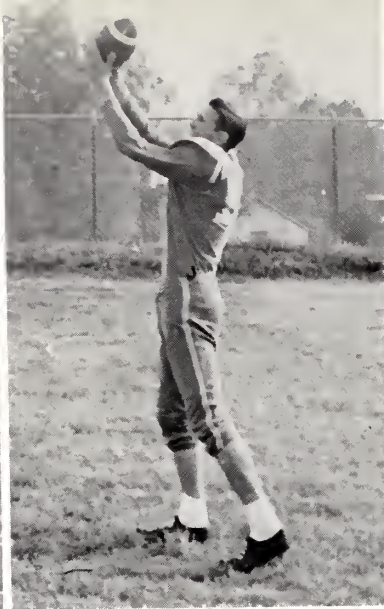


Coach Adrian Allred





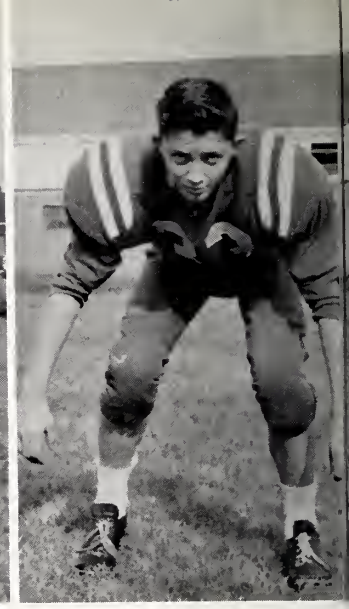
BARRY BURNS



GILBERT SANDERS



JACKIE SWORD



DON

CO-CAPTAIN HERNDON

Mack "Hurricane" Herndon is also a co-captain for the second year of his football career. As a pass receiver Mack has been responsible for Dragon victories. His ability to plow through a tight line means a lot to the team.



SCHE

September 4 - - - - -  
September 11 - - - - -  
September 17 - - - - -  
September 25 - - - - -  
October 1 - - - - -  
October 9 - - - - -  
October 16 - - - - -  
October 25 - - - - -  
October 30 - - - - -  
November 6 - - - - -

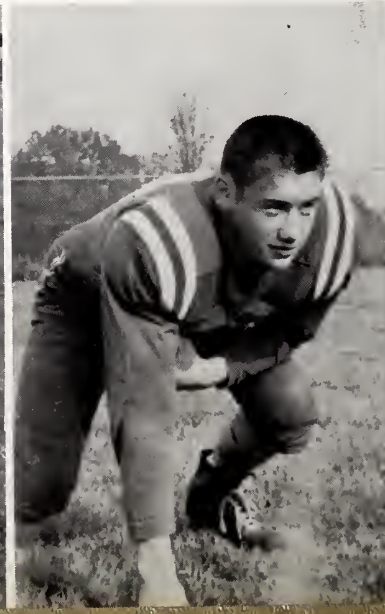
CLYDE PERRY



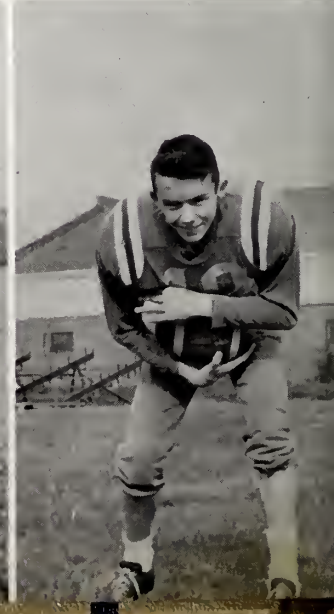
GENE GRIFFIN



JOE MANRING



JIMMY







BOLEJACK



BILLY ASH



ROBERT THOMAS



DAN HOLLINGSWORTH

CHEDULE

- - - - - Fairmont
- - - - - Liberty
- - - - - Randleman
- - - - - Badin
- - - - - Rankin
- - - - - Ramseur
- - - - - Chatham Central
- - - - - Jordan Matthews
- - - - - Angier
- - - - - Sumner



CO-CAPTAIN HENLEY

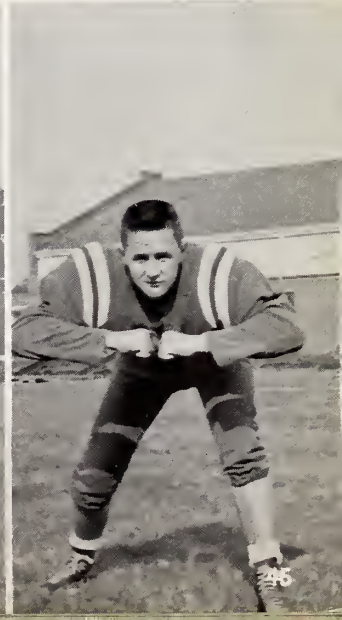
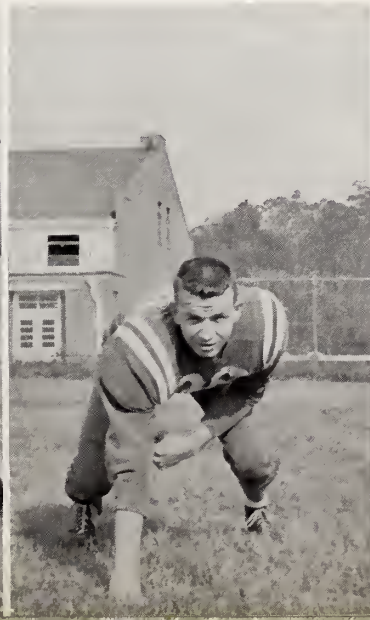
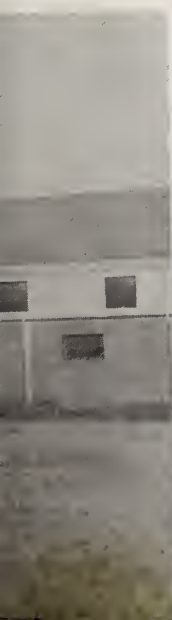
For the second straight year Tommy Henley is a co-captain of the Dragon football squad. He is a valuable player because of his passing and running ability. Often Tommy's kicks add extra points to the Dragon score.

PERKINS

BOBBY WILSON

DAN HOWARD

JOHN HEARNE

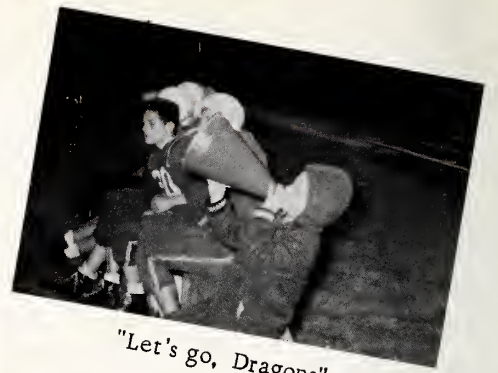




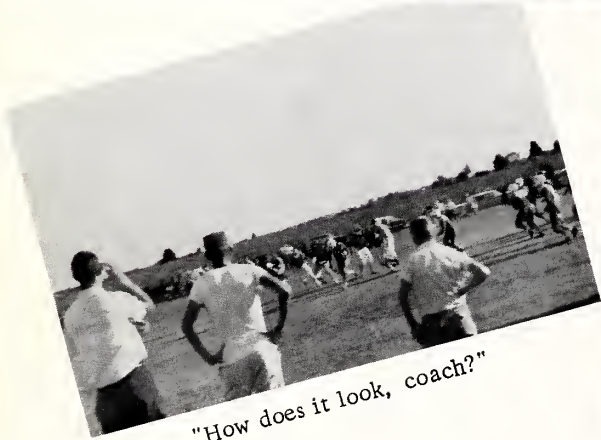


Co-Captains  
Hearndon - Henley

Half-time show



"Let's go, Dragons"



"How does it look, coach?"



"Wonder who it will be?"

D. Hollingsworth, G. Griffin, E. Lasater, B. Burns, G. Sanders, B. Wilson, D. Howard, J. Sword, T. Henley, M. Herndon, J. Perkins, J. Hearne, J. Manring, M. Kellogg, C. Perry, T. Mann, D. Bolejack, B. Ash, R. Thomas.







HOMECOMING QUEEN  
Faye Goodwin

*Court*



SOPHOMORE  
Peggy Harbison



FRESHMAN  
Patricia Meacham



JUNIOR  
Fay Crutchfield





B. Glosson, I. Griffin, R. White, J. Blair, D. White, T. Hughes, V. Farrell, B. Norwood, B. Wachs, K. Bouldin, B. Fearington, J. Smith, C. Tilley, E. Vaughn, M. White, G. Roper, J. A. Webster, J. Johnson, J. Dillieshaw, G. Fitchett, L. Sullivan, B. Thomas, D. Smith, S. Mann, D. Hackney, A. Perkins, B. Sullivan, C. Strowd, W. Barber, R. Moses.



Ann Noe  
Head Majorette



Mr. Roy  
Cole



Dance  
Band

Leonora Norwood, Jackie Foushee, Mary Sue Womble, Phyllis Cash, Carolyn Smith.





# Kids' Day

Senior Float



Kiwanis Queen,  
Faye Goodwin;  
Kiwanis King,  
Dan Howard.

Kiwanis Float

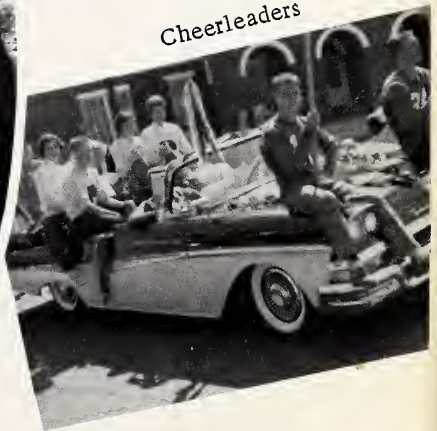


Majorettes

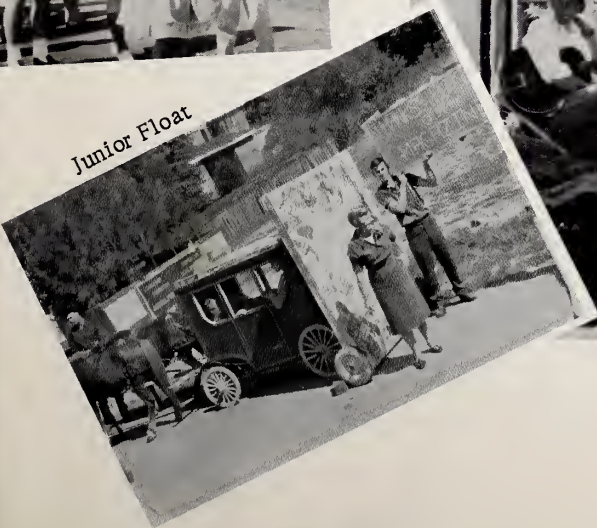
Mascots



Cheerleaders



Junior Float



Freshman Float



Sophomore Float





B  
A  
S  
K  
E  
T  
B  
A  
L  
L  
1  
9  
6  
0



Beard, Dragon Forward, displays action against Jordan Matthews Phantoms.

Coach Harold Davis







"What a night!"



"Oh, for an hour of sleep"



"JUMP, Tommy, JUMP"



"Dignified teachers."



"What happened?"



L. White; J. Camp; J. Griffin, Manager; B. Gattis; L. Shaw; B. Rhodes; I. Griffin; E. Lasater; G. Griffin; L. Goodman; M. Brazington; W. Barber; B. Norwood; B. Williams; M. Beard; B. Parker; T. Crews; D. Hollingsworth; H. Goodwin; B. Wilson; T. Henley; D. Beard; L. Carroll; J. Sword; M. Herndon; R. Thomas; H. Freeman.





DANNY BEARD



TOMMY HENLEY



ROBERT THOMAS



BOBBY WILSON



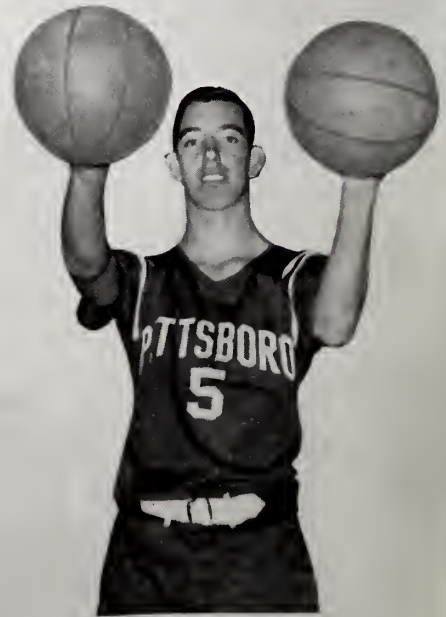
HARRY GOODWIN



HOLLIS FREEMAN



MACK HERNDON

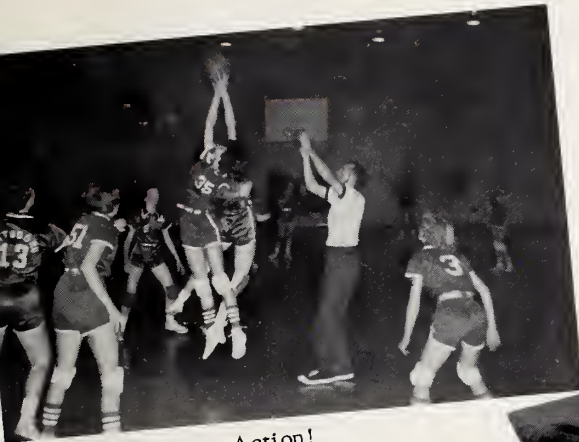


LARRY CARROLL

*... Enthusiasm ... Spirit ... Victory ...*



# Dragonettes



Action!

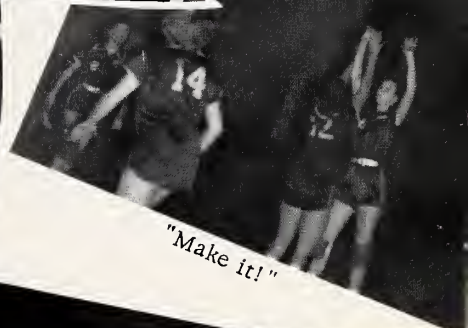


"VICTORY!"

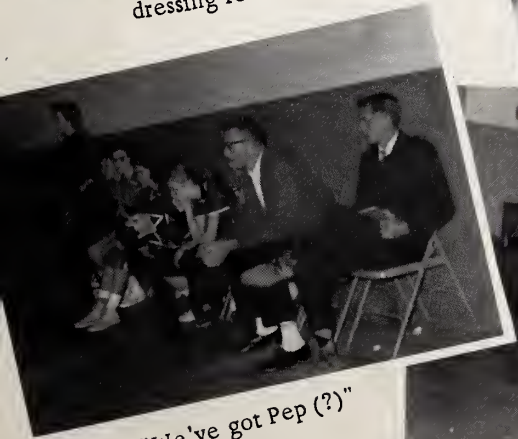
Co-Captains  
Ann Crews  
Lyda Gale Wicker



Secrets in the dressing room!



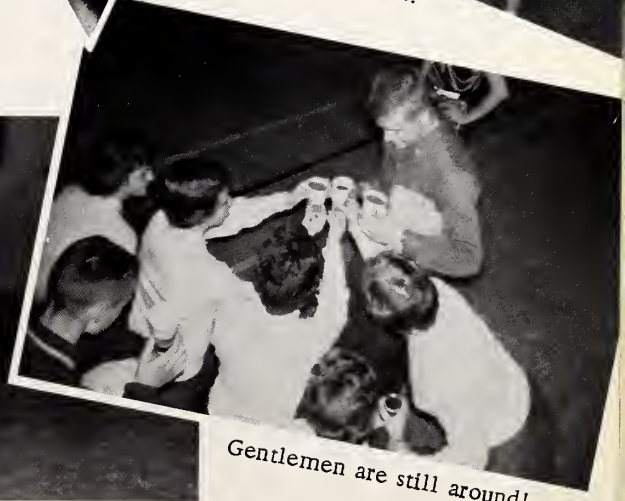
"Make it!"



"We've got Pep (?)"



The starting line up!



Gentlemen are still around!

*Go . . . Fight . . . Win*





A. Nooe; J. Wright; D. Lutterloh; A. Crews; L. Wicker; F. Crutchfield; B. Williams; K. Mann; E. Williams; P. Perry; M. Herndon; P. Fitchett; A. Wright; G. White; L. Norwood; B. Petty; E. Boone; S. Stubbs; S. Thomas; G. Fitchett; M. O'Daniel; A. Burns; K. Mathiesen; J. Mann; B. Snipes; C. Shaw, Manager.

"Rootin',  
Tootin',  
June!"

SCHEDULE

Dec. 1	-----	Deep River
Dec. 4	-----	Greenwood
Dec. 8	-----	Chatham Central
Dec. 11	-----	Jordan Matthews
Dec. 15	-----	Silk Hope
Dec. 18	-----	Moncure
Jan. 5	-----	Rankin
Jan. 8	-----	Deep River
Jan. 12	-----	Bennett
Jan. 15	-----	Randleman
Jan. 19	-----	Sumner
Jan. 22	-----	Chatham Central
Jan. 26	-----	Jordan Matthews
Jan. 29	-----	Silk Hope
Feb. 2	-----	Moncure
Feb. 5	-----	Rankin
Feb. 9	-----	Greenwood
Feb. 12	-----	Bennett
Feb. 16	-----	Randleman
Feb. 18	-----	Sumner



"Hop to it!"



"May the best win."



Assistant Coach Allred





ANN NOOE



LYDA WICKER



ANN CREWS



BRENDA WILLIAMS



BARBARA SNIPES



FAYE CRUTCHFIELD



JOLENE WRIGHT

*... Coach ... Team ... Pep ... Steam.*



B  
A  
S  
E  
B  
A  
L  
L  
1  
9  
5  
9  
✂



G. Sanders, W. Keck, H. Goodwin, B. Stevens, R. Thomas, M. Brazington, H. Freeman, M. Herndon, B. Wilson, T. Henley, J. Perkins, D. Hollingsworth.

1960 SCHEDULE

Pittsboro

vs

- Rankin
- Chatham Central
- Sumner
- Siler City
- Moncure
- Silk Hope
- Randleman
- Bennett



Coach Harold Davis



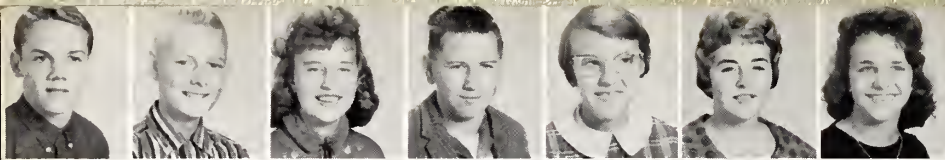
... Kill the Umpire! ...



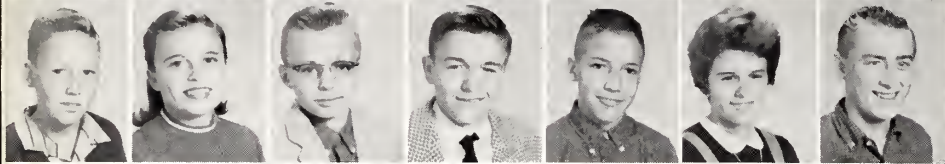


*Elementary . . .*

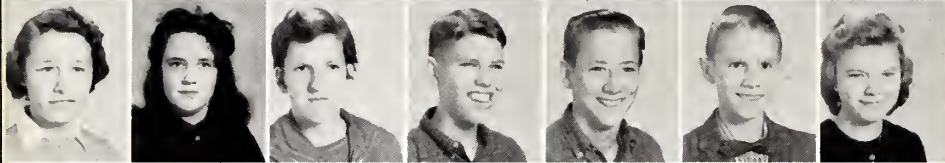




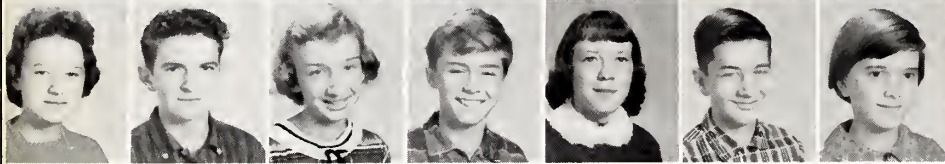
John Blair, Rayford Bland, Virginia Brafford, Billy Burgess, Nancy Carroll, Joy Clifton, Josephine Collins.



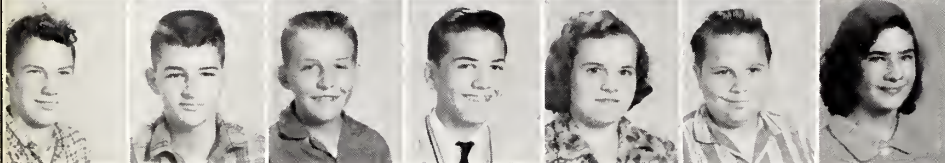
Phillip Cooper, Val Clegg Crawford, Arley Day, George Davis, David Eddins, Ann Harris, Larry Hatley.



Rena Hatley, Joyce Herndon, Elizabeth Hooker, Robert Jackson, Charles Johnson, Tommy Justice, Jennifer Kidd.



Ann Mann, Eddie Mendenhall, Linda McLaurin, Guy Parks, Reba Parker, Roy Peace, Jean Piercy.



Jimmy Roberson, Lee Sullivan, Donald Smith, Arthur Thomas, Carol Williams, Wayne Wright, Etta Mae Ellis.



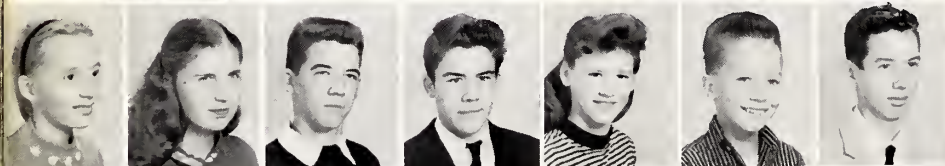
Miss Betty Jo Amick



Mr. Roy Kidd

## *Eighth Grade*

## *Eighth Grade*



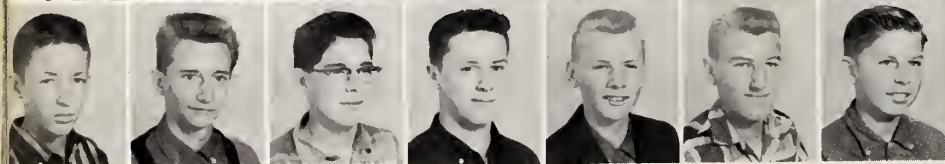
Norma Beal, Alma Lee Brafford, Cary Carpenter, Colon Carpenter, Gayle Carpenter, Johnny Covert, Gary Davis.



Kenneth Ellis, Larry Farrell, James Flynt, Helen Goodman, Ronnie Gunter, Wanda Harris, Norma Hilliard.



Marcia Huntsman, M. Jones, Norris Jones, Linda Johnson, Robert Atlas Johnson, Linda Lashley, Larry Murdock.



Arthur Perkins, Royce Reeves, John Rhodes, Tony Rhodes, Peter Senki, Charles Smith, David Sparrow.



Charles Strowd, Nancy Tripp, Jimmy Williams, Judy Williams, Donald Whithaker.





Susan Barrett, Candace Burns, David Cates, H. B. Clegg, Jr., Kenneth Eubanks, Irene Faircloth, Lydia Farrell.



Evelyn Fuller, Mary Lee Griffin, Roger Goodman, Fred Hamlet, Margaret Hamlet, Donna Harris, Louis Herndon.



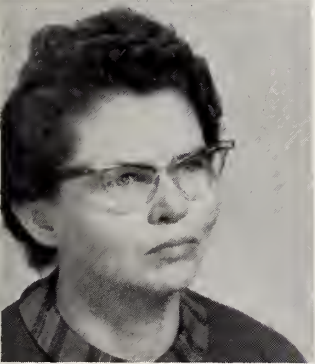
Marina Hicks, Jackie Howard, Janet Hunt, Ronnie Johnson, Bob Knight, Linda Mann, Carlene Meacham.



Peggy Medlin, Larry Newell, Pierre Oldham, Linda Parker, Linda Roberts, Peggy Roberson, Jimmie Riggsbee.



Peggy Shore, Joe Snipes, Bonnie Stone, Charles Thomas, Eugene Vaughn, Charles Whitaker, David Manring.



Mrs. P. R. Jackson



Miss Suzanne Jernigan

## Seventh Grade

## Seventh Grade



J. C. Barrett, Grace Carroll, Le-verne Eubanks.



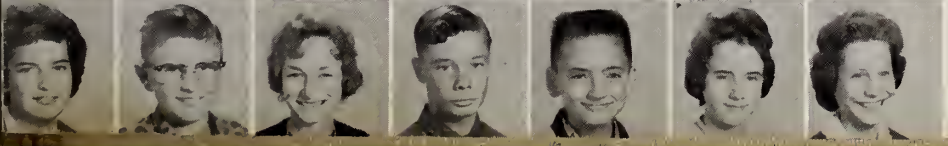
Teddy Farrell, Linda Fields, Mil-ton Fields, Ann Finn, Frank Fou-shee, Ronnie Gaines, Sharon Gil-more.



Archie Hackney, C. W. Harris, Phyllis Harris, Elizabeth Heath, J. W. Hill, Ried Hill, Kenneth Huntsman.

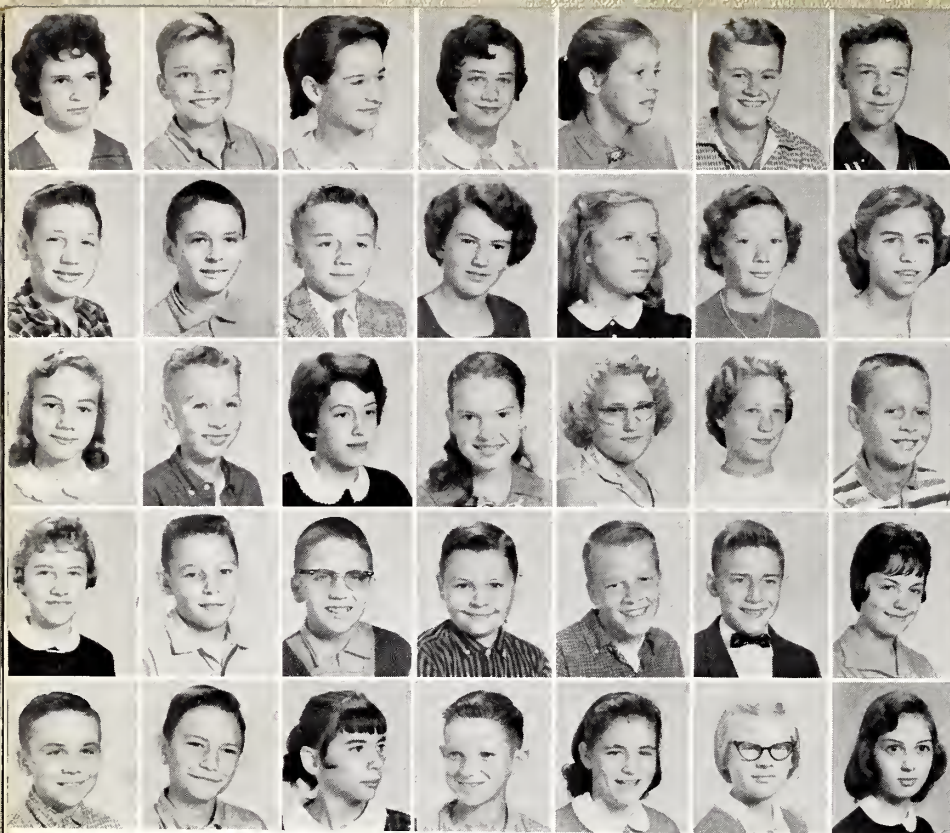


Jo Anne Keck, Jimmy Mitchell, Sarah Partin, Erlene Pendergraph, Mary Ann Perkins, Frona Riddle, Julian Roberson.



Barbara Roberson, Jerry Sanders, Idel Shore, Ronald Stone, Emory Thomas, Ann Wheeler, Frances White.





Martha Burns, David Canine, Bonnie Carpenter, Linda Clark, Valinda Clark, Michael Ellis, Kenneth Ellixson.

Jimmy Gales, Russell Gattis, Billy Gooden, Becky Griffin, Tami Hultman, Patty Kellogg, Barbara Lewis.

Glenette Mann, Manly Mann, Mary Watson Nooe, Linda Nunn, Brenda O'Neal, Bonnie Perry, Bob Thomas.

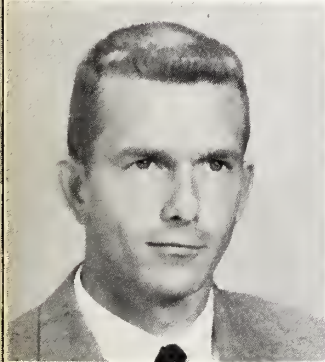
Nancy Thomas, Ronnie Vaughn, Jerry Wasko, Dale Webster, J. A. Webster, David White, Patsy White.

Bruce Williams, Steve Williams, Sarah Wilson, Jimmy Wolfe, Katherine Wright, Joyce Flippin, Becky Crabtree.

Mackie Deaton.

## *Seventh Grade*

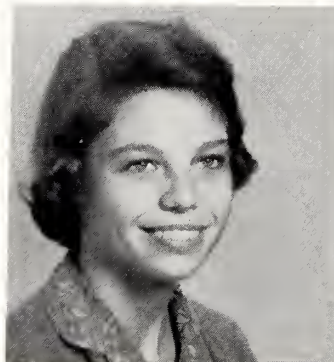
## *Sixth Grade*



Mr. Richard Wilson



Mrs. Peter Reynolds



Laura Andrews, Ronald Bowles, Ken Bouldin.

Johnny Cole, Edward Cooper, Betty Jean Council, Jo Dilleshaw, Louise Ellis, Elsie Sue Flippin, Wayne Foushee.

Earl Gunter, Martha Gunter, Linda Sue Hearne, Frances Jenks, Renny Kremer, Raymond Mann, Ronald Mendenhall.

Kenny Norwood, Rebecca Parker, Judy Ports, Peggy Jo Riddle, Kenneth Ryan, Randy Smith, Michael Thompson.

Louise White, Sheilah Williams, Jamin Wood, Larry Brown, Jimmy Jones, Oren Williams.







Beverly Bland, Tommy Clegg, Mary Davis, Glenda Kay Dixon, Richard Eddins, Randy Ellis, Marvin Eubanks.

Bill Farrell, Susan Gattis, Buddy Glosson, Betty Jean Griffin, George Griffin, Jerry Johnson, Johnny Justice.

Margaret McAllister, Jvaughn Moore, Martha Neal, W. C. Oldham, Jr., Gregory Roper, Ann Straughn, Kathy Thomas.

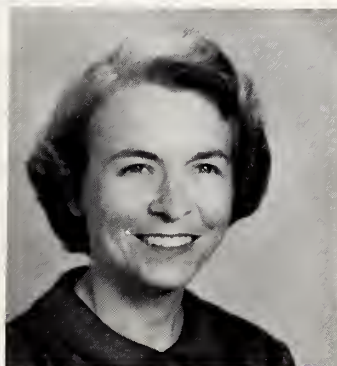
Valinda Thomas, Joe Thompson, Arnold Torbert, Billy Tucker, Bob Wachs, Richard Walters, Michael White.

Teddy Williams, Charles Lutterloh, Carl Fulmer.

## *Sixth Grade*



Mrs. Clyde McCollum



Mrs. Alton Campbell



## *Sixth Grade*

Mike Campbell, Wayne Campbell.

Cliff Carter, Eugene Clark, Frankie Cooper, Marvin Creed, Jimmy Dawson, Brenda Eubanks, Dennis Eubanks.

Florence Gilmore, Mary Tom Griffin, Betty Sue Gunter, Jackie Harmon, Johnny Herndon, Nannie Jenks, Don Johnson.

Glenn Johnson, Joe Justice, Steve Mann, Ronald Moses, Ricky Riddle, Yvonne Shoaf, Jeanette Shore.

Greg Smith, Larry Smith, Sara Jean Taylor, Trudy Tysor, Janice Varner, Jerry Whitaker, Luther Pender.





Dennis Arnold, Betty Sue Boone, Alton Campbell, Freddy Chrisco, Savon Cole, Kenneth Crabtree, Van Creed.

Phyllis Durham, Charles Eubanks, Garry Eubanks, Steve Farrell, Van Farrell, Ricky Frye, Margaret Heath.

Cassie Horton, Larry Jacobs, Patricia Jenks, Gary Johnson, Wincie Jane Johnson, Jimmy Lane, Danny McDaniel.

Edward McLaurin, Nancy Perry, Joe Riggsbee, Randy Roberts, Joanne Smith, Joan Wasko, Billy Williams.

Mitchell Williams, Bob Reeves.

## *Fifth Grade*



Mrs. George Andrews



Mrs. Bobby Lindley

## *Fifth Grade*



Vickie Freeman, Mike Blackwelder, Wayne Brafford.



Debrah Brown, Kendall Bullington, Gwynne Burke, Tim Cooper, Ann Elixson, Barry Ellis, Gorden Eubanks.

Nancy Foushee, Glinda Garrett, James Goodman, Sue Goodman, Jerry Henderson, Rose Hill, Karen Hinds.

Gary Howard, Tommy Hughes, Allie Johnson, George Justice, Archie Lanus, Wesley Petty, Jerry Reeves.

Jean Sanders, Carolyn Snipes, Linda Strickland, Colby Tilley, Jimmy Tilley, Larry Ryan.





Lora Bowling, Lee Buchanan, Andy Canine, Wilma Clark, Samuel Dilleshaw, Larry Downing, Jerry Eubanks.

Stanley Eubanks, Willa Fearington, Douglas Gunter, Leonard Gunter, Annette Heath, Shirley Hill, Kathy Kidd.

David Knight, Janie Mann, Carol Moses, Gail Parks, James Potts, Willis Roberson, Elsbeth Senkiw.

A. B. Taylor, Deborah Vaughan, Charles Wheeler, Elton Wheeler, Carolyn Williams, Stanley Jones, J. D. Reeves.

Brenda Hackney, Hubert O'Daniel.

## *Fifth Grade*



Miss Mabel Cheek



Miss Lina B. Moore

## *Fourth Grade*

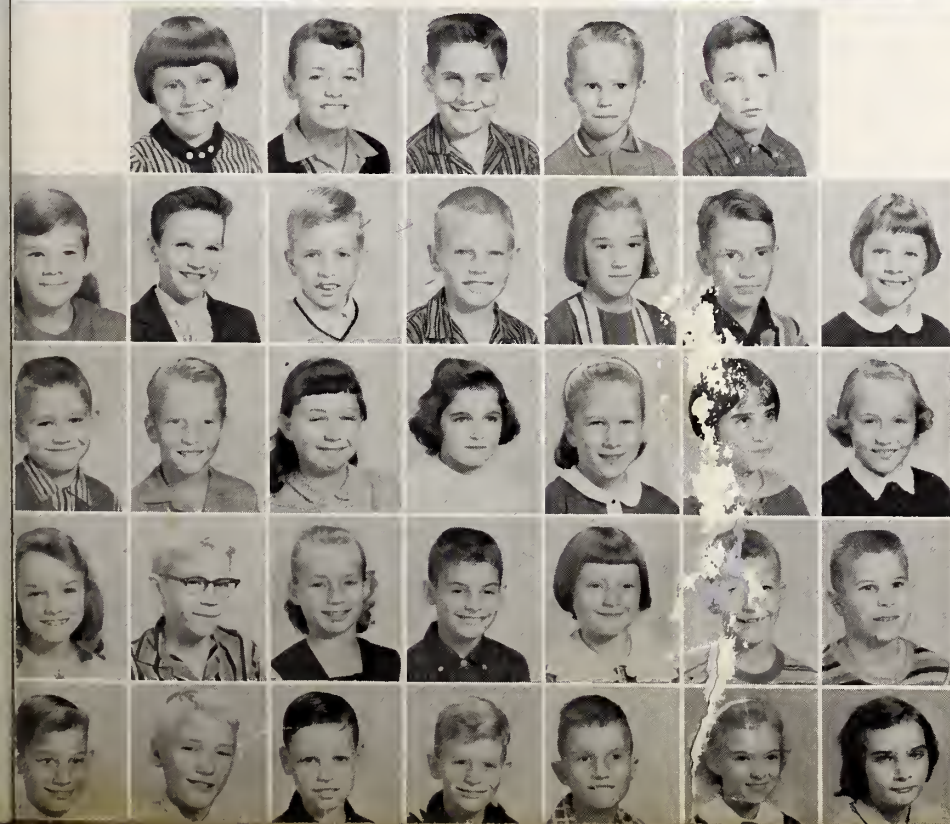
Ada Lynn Andrews, Dennis Andrews, John Atwater, Coy Brewer, Reid Bright.

Patricia Carpenter, Clifton Collins, Bobby Harris, Mike Jackson, Sharon Kellogg, Edward Kremer, Ann London.

Stephen Mann, Timothy Mitchell, Gail Norwood, Mary Norwood, Pamela Parker, Lou Ellen Piercey, Kay Reeves.

Edna Riddle, Chuck Roberts, Emily Roberts, Wayne Sanders, Irmtrawd Sekiw, Lee Smith, Ronald Smith.

Cecil Stone, William Walters, Edward Whitfield, David Womble, David Wood, Linda Tuck, Annie Ellis.







Gary Bowles, Denna Bordeaux, J. E. Campbell, Carolyn Cooper, Ruth Council, George Cooper, Jerry Clark.

Johnny Clark, Lamont Durham, Barbara Davis, Bobby Hackney, Ronnie Hatley, Mike Johnson, Keith Kirchner.

Stuart Lasater, Doris Lashley, Margaret Lanius, Phyllis Mann, Candace Meacham, Linda Faye Oldham, Dennis Parker.

Thomas Parks, Walter Rhodes, Henry Tutor, Donald Vickers, Mary Alice Vaughn, Beverly Vickers, Taylor White.

Ava Wheeler, Kay Webster, Brenda Allen, Ronald Walters.

## *Fourth Grade*



Mrs. Pauline W. Womble



Mrs. Lucille Sears

## *Fourth Grade*

Mary Ann Andrews, Janes Boul-  
din, Cathy Clark.

Judson Dark, Ronnie Ellis, Mat-  
thew Enright, Rupert Eubanks,  
Sadie Ann Farrell, Carol Finn,  
Neil Flynt.

Amanda Gainey, Janes Gordon,  
Diane Howell, Gary Jacques,  
Wanda Kay Jones, David Keck,  
Steve Keck.

Linda Mann, Earle McLaurin, Joan  
Oldham, Mike Phillips, Dan  
Reeves, Junior Roberson, Keith  
Roper.

Martyne Self, D. W. Smith, Scott  
Whitaker, Lillian Wolfe, Patricia  
Wood, Merle Bouldin, Jennifer  
Mann.







Peggy Jo Bland, Dave Blackwelder, Hope Bouldin, Mary Campbell, Carl Collins, Ruth Cotten, Brenda Kay Ellis.

Roy Eubanks, Shirley Eubanks, Jesse Fearrington, Don Fuller, Billy Goodman, Loreene Goodman, Carol Harward.

Tommy Hearne, Steven Hines, Cheryl Hudson, Bruce Ihme, Martha Mann, Mike McAllister, Paul-ette Meacham.

Robert Parks, Polly Parrish, Lacy Presnell, Donnie Riddle, Johnny Shaw, Ava Sue Tripp, Clara Lynn Whitaker.

Keith Allen, Odell Grumble.

## Third Grade



Mrs. W. C. Oldham



Mrs. T. W. McBane

## Third Grade



Brenda Bland, Kathy Brafford, Marie Barrett, Rhonda Buchanan, Charity Clark, Michael Cates.

Donald Cheek, Mike Davenport, Ray Dixon, Janice Flippin, Bennie Gunter, Thomas Griffin, William Gilmore.

Ernest Hinds, Mickey Howell, Patricia Henderson, James May, Larry Mann, Kay Moore, Nancy Neal.

Kay Petty, L. D. Riddle, Esther Wheeler, Jean Jenks, Dona Durham, Betty Joe Shore, Janice Meachem.





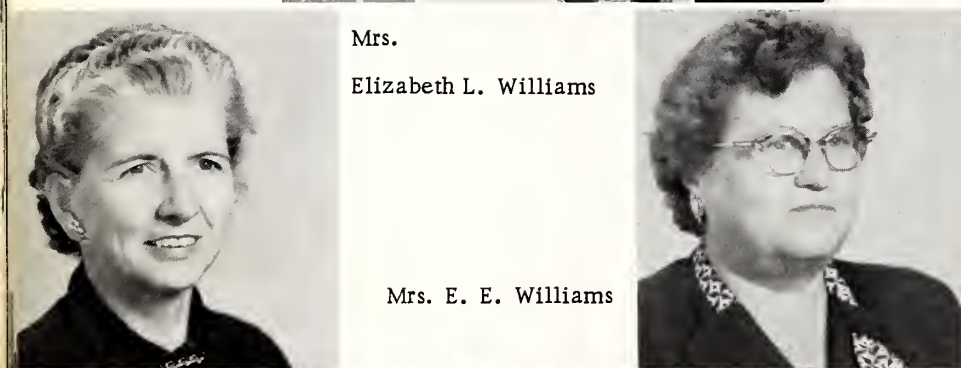
Alana Atwater, Cathy Sue Bolejack, Linda Boone, Vernon Braxton, Fronie Campbell, Danny Lee Chrisco, Donald Cooper.

Gayla Dilleshaw, Edward Duke, Deborah Durham, Rosemond Farrell, Dan Leslie Fields, Daniel Harmon, Stephen Hearne.

Kay Herndon, Elaine Horton, Allen Jenks, Jon Johnson, Bertha Mann, Renee Moore, Teresa McLaurin.

Carolyn Nooe, Jeanine Riddle, Linda Roberson, Donnie Roberson, Arthur Ray Smith, Ruth Sparrow, Russell Thomas.

Bonnie Tysor, Christine Walters, Ellen Mann, Bonita Shropshire.



Mrs.  
Elizabeth L. Williams

Mrs. E. E. Williams

## Third Grade

## Second Grade



Julia Atwater, Shelia Amos, John Bright, Glynn Blackwelder, Lynn Blackwelder, Vivian Dixon.

Kathy Dixon, David Eubanks, Nora Ellis, Dan Farrell, Dianne Farrell, Janet Farrell, Kay Farrell.

Margaret Ferrington, Dally Glosson, Reba Gunter, Frankie Houser, Cathy Jo Harris, Barbara Hackney, Bonnie Hackney.

Kay Jones, Carlis Johnson, Phil McNeill, Cindy Matheison, Lee Pendergraph, Jerry Partin, Sarah Reeves.

Dale Snipes, William Smith, Debra Seagroves, Edward Straughn, Jean Williams, Richard Whitfield, Cherene Whitaker.





Donna Allen, Larry Allen, Gloria Bouldin, Sue Bowles, Linda Burke, Ronald Cheek, Melvin Clark.

Margaret Collins, Kent Cooper, Nonie Farrell, Kathy Gilmore, Jimmy Goodman, Linda Lou Gunter, Sheila Hicks.

Linda Hill, David Jones, Cathy Lassiter, Louise Manring, Robert Manring, Jesse McBane, Linda Mitchell.

Gearl Moses, Donald Parker, Berry Petty, Terry Phillips, Juanita Riddle, Doris Roberson, Kerry Walters.

Gary Wayne Wheeler, Linda Williams, Ray Womble, Danny Enright, Ann Heatherley, Earl Moses, Dick Reeves.

## *Second Grade*



Mrs. Preston Howard



Mrs. Marshall Atwater

## *Combination First and Second Grade*



Joan Campbell, "Butch" Canada, Elbert Clark, Howard Cole, Joe Crawford, Louise Ellis.

Evalyn Griffin, George Hackney, Eddie Haithcock, Chertsey Hinds, Cathy Howell, Stanley Johnson, Tiny Keck.

Marty McBane, Dwight Ryan, Haywood Sanders, Linda Sanders, John Sparrow, Linda Lou Stone, Ricky Tripp.

Terry Tysor, Cathy Vaughn, Norman Whitfield, Jr., Kathy Williams, Wayne Williams, Cynthia Wood, Terry Tuck.





Merwin Arnold, Deitra Carter,  
Jack Clark, Scott Cole, Brenda  
Covert, Cathy Gales, Susan Gale.

Deborah Glosson, Jane Goodman,  
Ted Griffin, Wayne Hackney,  
Charlotte Hearne, Billy Johnson,  
Bruce Keck.

Wayne Meacham, Pamela Mit-  
chell, Sharon Mitchell, David  
Parker, Keith Partin, Gilbert Rid-  
dle, David Roberson.

Bobby Shore, Cathy Tripp, Susan  
Vaughn, Deborah Webster, Biff  
White, Jimmy White, Eddie Wil-  
liams.

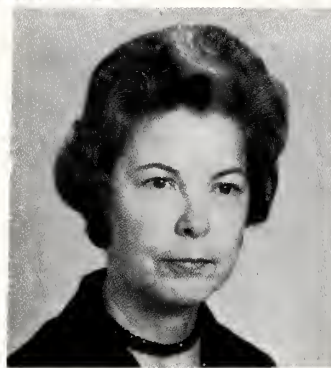
Janet Williams, Vickie Woody,  
Eugene Farrell, Pamela Farrell.



## *First Grade*



Mrs. C. C. Lindley



Mrs. Lina M. Waters

## *First Grade*



Richard Amos, James Arthurs,  
James Atwater, Carlyle Camp-  
bell, Winfred Cheek.

Earl Dawson, Eddie Ellis, Henry  
Goodman, Bob Harris, Stuart Hill,  
Robert Hughes, Ricky Lee Johnson.

Bill Mitchell, Don McNeill, John  
Slate Oldham, Gene Oldham,  
Maurice Sanders, Stephen Wil-  
liams, Pamela Arthurs.

Lolly Blair, Kay Brewer, Ellen  
Davenport, Paulette Johnson,  
Betsy Kidd, Sherry Lewis, Faye  
Moore.

Karen Ratiff, Melissa Reeves,  
Ella Senkiw, Linda Shaw, Harry  
Broadus, Pamela Self.



A  
D  
V  
E  
R  
T  
I  
S  
E  
M  
E  
N  
T  
S

COMPLIMENTS OF

**LOCAL UNION 1931**



Pittsboro, North Carolina





"And only the best go to  
Webster's. . ."

## **WEBSTER'S POULTRY CO.**

Phone KI 2-2021

Pittsboro





Builders

of

Pittsboro High's

**"DRAGON-WAGON"**

SALES



SERVICE

**JIMMIE WRENN, INC.**

Phone KI 2-2731

Pittsboro





COMPLIMENTS OF

**PETE'S MARKET**



COMPLIMENTS  
OF  
**ECONOMY  
FURNITURE CO.**

C. L. SHAW, Proprietor

G. E. Appliances

R. C. A. Radios





SAVE  
WITH  
SAFETY

# BANK OF PITTSBORO

Deposits insured by

The Federal Deposit Insurance Corp.







**A. W. GOLDSTON & SONS  
LUMBER CO.**

Wholesale and Retail

Phone KI 2-5241



# BELK-YATES BECK CO.



"Home of Better Values"





# CITY ELECTRONICS SHOP

Phone KI 2-3291

Western Auto Sales Agency



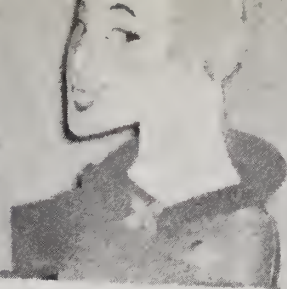


**PITTSBORO FLORIST**

MR. and MRS. JIM FLYNT



W 59  
**FRIGIDAIRE**



**Refrigerator-Freezer**

*You'll feel like a Queen*



**"RONNIE"**  
**MODERN APPLIANCE CENTER**  
Phone KI 2-5511                      Pittsboro





Enjoy Long Meadow Milk and Dairy products--  
produced right here at home on the finest nearby farms.

**LONG MEADOW FARMS**



*Country Fresh*

*Dairy Products*





**COOPER-HARRIS AUTO SALES**  
 "Have Cars - - - Will Haggle!"

**BURNS'  
 SERVICE STATION**



Pittsboro

**DARK'S HATCHERY  
 & FEED CO.**

Quality Chicks  
 Chesterfield Feeds  
 Poultry Supplies

Phone KI 2-4211

Pittsboro

**CHATHAM AUTO  
 & TRACTOR PARTS CO.**

Parts for all Cars,  
 Trucks, and Tractors

Phone SH 2-2117 Siler City

**E. B. STONE FINANCE CO.**

OF LEXINGTON, INC.

Small enough to know you  
 Large enough to serve you

Auto Loans  
 Financing and Refinancing

DWIGHT W. BEANE, Manager  
 Siler City



**W. GORDON BURNS**

ESSO SERVICENTER



Washing

Greasing

Compliments

of

**P. N. OIL CO., INC.**

Siler City, North Carolina

**PIEDMONT POULTRY, INC.**

Baby Chicks and Feed

Phone LYric 7-3746 Bonlee

**C. C. ROUTH MILLS**

Flour - Meal - Feeds  
Baby Chicks and Supplies

Bonlee, North Carolina

Day Phone Night Phone  
LYric 7-3251 LYric 7-3356

**For a sociable weekend:**

**Pepsi**  
in the new *Swirl* bottle



PEPSI-COLA COMPANY - Durham and Burlington





**CHATHAM TIRE SERVICE CO.**

**WILLIS BARRETT**

Conservation Pulpwood Dealer

Pulpwood - Saw Timber

Timber Lands

Moncure Rd.

Approved Forestry Free Marking  
Practices Service

Keep North Carolina Green

**BLAIR HOTEL**

PORTER P. EAVES

Restaurant

Appreciate Your Patronage

Compliments

of

**BO-PEEP GRILL  
ELLIS SHELL SERVICE**

**T. O. SEAWELL — AGENT**

Nationwide

Life - Casualty - Fire

Dial TE 4-2362 Res. EL 4-3592

Apex

North Carolina

Prompt and Courteous

Claim Service



**WILSONVILLE  
SERVICE CENTER**

Route # 2

Apex, North Carolina

**HARRIS AND FARRELL  
GENERAL MERCHANDISE**

Peter's Shoes

Phone KI 2-2694

Bynum, North Carolina

Phone Road Service

**EUBANKS AND FOWLER**



Atlas Tires and Tubes

Pittsboro North Carolina

De Voe Myers  
Paints Water Systems

**HENRY BLAIR**

Hardware - Building Materials

22 Hillsboro St.  
Phone KI 2-3051  
Pittsboro, N. C.



Compliments of  
**BALDWIN STOUT SHOP**  
Ladies' - Infants' - Children's Wearing Apparel





# GRIFFIN SHOE SHOP

Pittsboro

North Carolina

## B. M. HANCOCK

Baby Chicks and Feed

Siler City, North Carolina

## McLAURIN GROCERY

Fancy Groceries - Fresh Meats

Frozen Foods

Fresh Vegetables

Goldston, North Carolina

## MILLER HEATING AND AIR CONDITIONING CO.

Indoor Climate Specialists

Day Phone

LYnwood 8-3535

Goldston

Nite Phone

LYnwood 8-3471

North Carolina

## SILER CITY HARDWARE CO.

Sporting Goods Headquarters

Johnson Sea-Horses

Boats and Trailers

Siler City

North Carolina



**JOHNSON  
COTTON COMPANY**

OF SILER CITY, INC.

"Everything for the Farm  
and Home"

"Cash if you have it.  
Credit if you need it"

**KIRK'S USED CARS**

Clean - Used - Cars

Siler City

North Carolina

Fertilizers      Farm Supplies  
**FARMERS EXCHANGE, INC.**

Siler City, North Carolina

Feed

Seed



**LEWIS BODY SHOP**

Phone Kingswood 2-3971

Body and Fender Repairs

**THOMAS BROTHERS' FURNITURE CO.**

Pittsboro

North Carolina







Compliments of  
**PITTSBORO ICE  
AND FUEL COMPANY**  
U.S. 64 East

Phone KI 2-2231

**BOB'S ESSO**



U.S. 64 East

Phone KI 2-2281

Compliments of



VAUGHN TRACTOR  
& EQUIPMENT CO.

**CHATHAM ELECTRIC CO.**

Contracting - Repairing  
Fixtures - Supplies

7 Hillsboro Street

Phone Pittsboro Phone Siler City  
KI 2-5311 SH 2-3944



**SAM WHITE'S  
TEXACO STATION**



U. S. 64 East

Phones:

Day  
KI 2-3001

Night  
KI 2-5761

**PITTSBORO HATCHERY, INC.**

Finest Quality Chicks

C. M. LINDSEY, JR. and SR.  
Owners

Pittsboro, North Carolina

Compliments  
of

**PITTSBORO POULTRY CO.**

**C. B. PERRY  
GROCERIES-GAS-OIL**

Phone KI 2-3163

Pittsboro, North Carolina



**C. E. JONES CO.**

Bridal Headquarters

Phone KI 2-3941

Pittsboro





Compliments of  
**DEWEY'S RESTAURANT**



D. W. SMITH  
SERVICENTER

Sanford Road

Quality Recapping

One Day Service

Phone Kingswood 2-2221



**ARTHURS' MEN'S STORE**



your key . . .

TO GREATER VALUES

Phone KI 2-4751

Pittsboro, N. C.



# GRIFFIN FUNERAL HOME

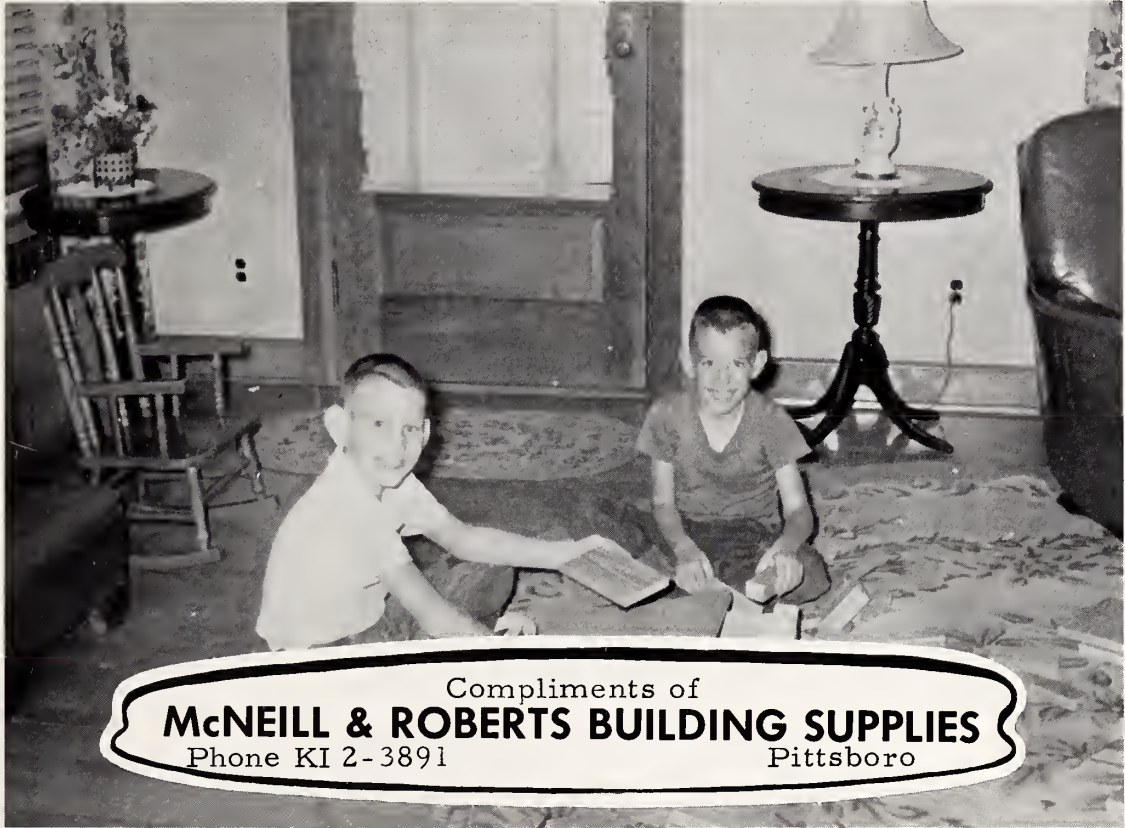
Pittsboro, N. C.



**PITTSBORO DRY CLEANERS**

LACY BURNS

Phone KI 2-3831



Compliments of  
**McNEILL & ROBERTS BUILDING SUPPLIES**  
Phone KI 2-3891 Pittsboro

ARTISTIC WEAVING CO.

# **DIVISION-CHATHAM MILLS, INC.**

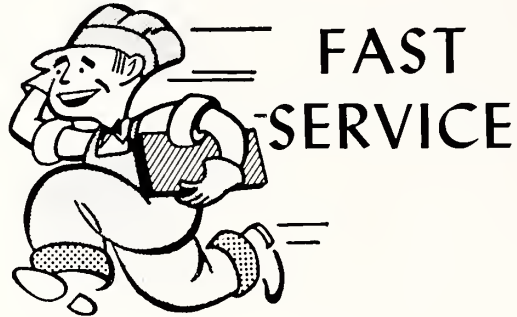
World's Largest Manufacturer of

Women's Labels

Pittsboro, N. C.



# STURDIVANT'S ESSO



Atlas Accessories



Phone KI 2-9381

Road Service



"Save money  
on your shoes"

Visit us!

## PITTSBORO CASH GROCERY

"Where Your Dollar Has More Cents"

Phone KI 2-2611

Pittsboro

Watch Repairs

Jewelry

Fountain Service



## **ROBERTS SODA & JEWELRY SHOP**

**FARRELL'S GULF SERVICE**



Phone KI 2-9491

Compliments

of

**McCRIMMON  
DRUG COMPANY**

Pittsboro, North Carolina



Compliments

of

## WILSON'S BARBER SHOP

ROSCOE WILSON  
EUGENE BARKER

Barbers

Pittsboro, North Carolina

## APEX CLEANING COMPANY

It Makes Us Happy  
to Serve You

Try Our Coin Operated  
"Speed Wash"

Phone EL 4-5251

Apex, N. C.

"Where the engine REALLY belongs!"

IN  
THE  
smart  
CORVAIR



Chevrolet

Oldsmobile

Cadillac

# JUSTICE MOTOR CO.

# W. H. SCOTT'S GROCERY

Fearrington Road

General Merchandise

Groceries, Feed, Fertilizer

Phone EL 4-8321

Apex, North Carolina

CENTRAL CAROLINA

## **FARMERS EXCHANGE, INC.**

"A Better Market"

We Buy and Sell for Farmers

Hotpoint Appliances

Pittsboro, N. C.

Compliments of

## **SANFORD BRICK AND TILE COMPANY**

Colon, N. C.



**CHATHAM BRICK  
& TILE CO., INC.**

home of  
ROMAN BRICK

Office Phone - Sanford  
Gulf, N. C. SPring 3-1211

**W. KOURY COMPANY,  
INC.**

Manufacturers  
Work and Play Clothes

Sanford North Carolina

**SANFORD PRODUCE CO.**

Owned and Operated  
by  
FOUSHEE BROS.

Institutional Foods  
Frozen and Fresh  
Fruits and Vegetables

Sanford North Carolina

**CLARK & EUBANKS  
TEXACO STATION**



Phone KI 2-9464 Pittsboro

**C. E. DURHAM & SON**

"Philco" TV and Appliances

Bynum, North Carolina



Compliments of MATHIESEN CLINIC

**LEWIS COOPER  
BARBER SHOP**

Bynum, North Carolina

**SCHOOL EQUIPMENT,  
INCORPORATED**

Distributor of Quality

School and Institutional

Furniture

Telephone SH 2-3752

P. O. Box 586

Siler City, North Carolina



# LUTTERLOH & WILLIAM DAIRY

Breeders of

Registered Holstein Cattle

Visitors Welcome

Pittsboro, N. C.



Best Wishes

to the

Class of '60



## HENRY'S RESTAURANT

Phone KI 2-2111

Pittsboro

COMPLIMENTS  
OF  
**GENERAL CREOSOTING  
COMPANY**

Gulf, North Carolina

Compliments of  
**DR. MAXINE H. COX**  
Optometrist  
Phone KI 2-3541  
Pittsboro

INSURANCE  
"For Those Who Want the Best"  
Life - Hospital  
Accident - Sickness  
**MALCOLM McNEILL**  
Pittsboro Highway  
Phone SH 2-3615 Siler City

Quality Merchandise  
at YOUR Prices  
**POPE'S FIVE & DIME STORE**  
We Sell only the Best

**LEE BRICK & TILE COMPANY**  
Manufacturers of  
High Grade  
Tunnel Kiln Common  
and Face Brick  
Telephone  
Spring 4-5251  
Spring 4-3756  
Sanford, North Carolina





Chatham Fresh Feeds

Chatham Dog Feed

Purity-Chatham Lily Flour

SILER CITY MILLS, INC.

## W. H. FREEMAN

Pulpwood  
Saw Timber  
Timberland

P. O. Box 27  
Pittsboro, North Carolina

Compliments of



**A. B. SERVICENTER**

Good  
Luck



Whoever you are  
whatever you do



SANFORD BOTTLING CO.

## COMPLIMENTS OF

HOLT SUPPLY CO.  
LEE DRUG STORE  
BOGER'S SHOE STORE  
J. C. PENNEY CO.  
EFIRDS DEPT. STORE  
FABRIC SHOP OF SANFORD  
BUCKNER'S JEWELRY  
JOHNSON'S SERVICE STATION  
BROWNIE-LOU  
ELLIS LADIES' SHOP  
CRANFORD STUDIO  
WRENN & WRENN INSURANCE  
AGENCY  
MONCURE VARIETY STORE  
LOWE'S GROCERY  
THE FABRIC SHOP  
HUNT'S DEPT. STORE  
CHATHAM DAIRY, INC.  
GLEN HANCOCK

Professional Business  
Leaders

DR. J. L. WILLIAMS  
DR. JAMES B. KING  
EDWIN B. HATCH  
HARRY P. HORTON

## UPTOWN BEAUTY SHOP

Where Beauty Meets Fashion  
12 East Salisbury St.

Phone 2-3671                      Pittsboro

### TO THE MERCHANTS

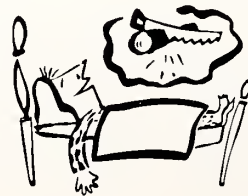
Every year the Annual Staff of Pittsboro High School calls on the merchants for ads to defray the cost of publishing the school annual. The merchants have continued to be most generous in respect to the Beta Club project, and we wish to express our appreciation to them. Thank you merchants for making the DRAGONIAN possible.

*The Annual Staff*





You see that the annual has a new face. We hope you have enjoyed it as much as we enjoyed producing it.



## Autographs

"Peg 'O My Heart!  
You have been a real  
little helper this year -  
especially when it has been  
comes to singing. It has been  
so nice to have you in the  
third grade. Love always,  
Mrs. W.C. Oldham

Shirley Eubanks

Hope Boulden

Carol Harward

Gary Presnell III

Clara Lynn Whitaker

Don Fuller

Billy Parrish

Martha Mann





Michael ...

By ...

...

John ...

...

...



SANTAM  
SALTA

z

Balance

Sally

z

Sally  
Sally

Sally

Sally

Sally  
SALTY



Sally

z

P

Peggy

Sally

z

Sally

Sally

gallus

Peggy Jo Bland

Sally Bland

Names:





















**CHATHAM COMM. LIB.**



7607 0091 065 810 1