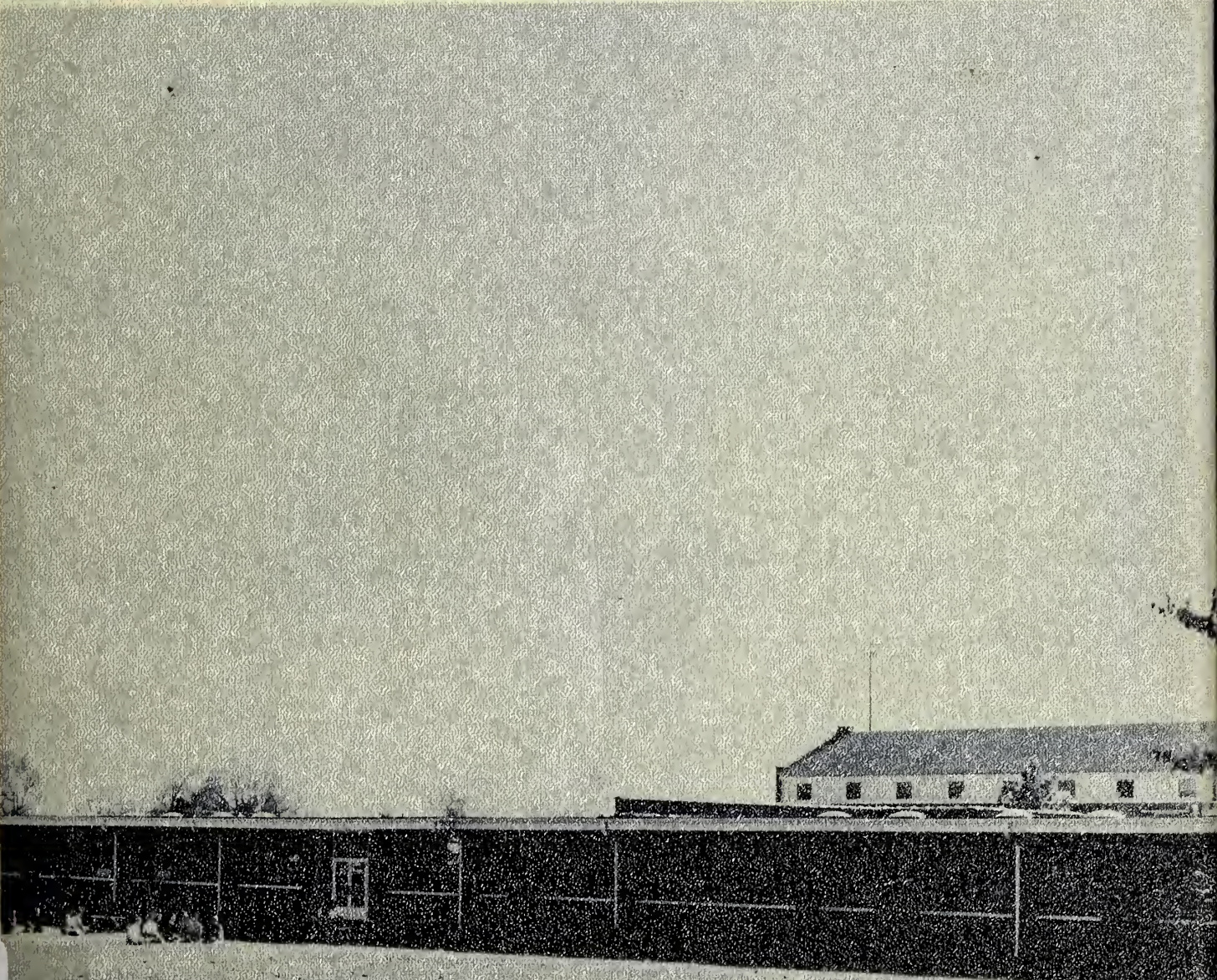


DRAGONIAN



1961

Peggy's Place





*Gift of Renny Kremer
2013*



WE the BETA CLUB of 1961 PRESENT



THE DRAGONIAN

Editor

FERNE HOUSER

Business Manager

HENRY BLAIR

Advisor

MRS. ROY KIDD



TABLE of CONTENTS

Dedication	5
Administration	6
Faculty	7
Seniors	9
Juniors	29
Sophomores	32
Freshmen	35
Activities	38
Athletics	47
Elementary	66
Ads	80



FOREWORD

The annual staff of '61 proudly presents the DRAGONIAN, a treasure chest of memories. We hope that you students will always prize these memories in picture, because this book is a priceless gem.

During our high school years our glee club director has been Mr. Dan Johnson. Since he graduated from P.H.S. only a few years ago, we find it difficult to think of him as a teacher; yet, under his guidance our glee club has become the finest in the county.

His love for music and his willingness to share his talent has created a similar love in the hearts of many. We will not remember him for our glee club alone. It is because of the insight he has helped us gain and the guidance he has given us, that the Beta Club wishes to dedicate the DRAGONIAN to Mr. Dan Johnson.



At work!



A wonderful teacher, director, and friend!



How nice he makes a piano sound!

D
E
D
I
C
A
T
I
O
N

A
D
M
I
N
I
S
T
R
A
T
I
O
N

Dear Graduates:

There has never been a group of young women and men which has experienced as much change during their twelve years in school as the 1961 graduation class. You have been living in a rapidly changing world and your post graduation years will continue to require adjustments to new ideas, changing educational philosophies, and acceptance of social and political trials.

My faith in you persuades me to believe that you are prepared by training and character to meet any challenge of the future.

Many new and untried proposals will be advocated as a way of life for you. Be not deceived by the fact that something is new. Newness does not necessarily denote quality. Neither should we discard because of age. Evaluate both the old and the new. Accept the new which is found to be good but cling to those basic fundamental principles of life that have stood the tests of time.

J. G. Waters



Seniors:

With great pleasure I extend congratulations to the DRAGON-
IAN. May these pages, in which
you seek to tell the pleasant
tales of your school activities,
add happiness to your pilgrimage
and serve as reminders of days
spent at Pittsboro High. May
your quest for knowledge never
cease.

Sincerely,

J. G. Waters



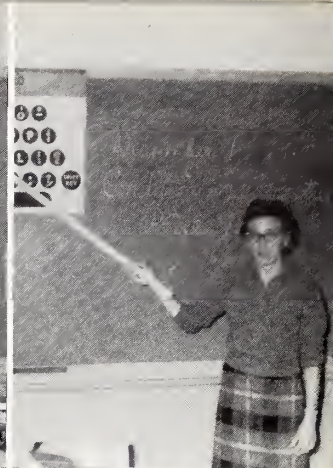
MRS. CARL YATES
English



MR. ADRIAN ALLRED
Science - Coach - Social Studies



MRS. C. C. SHOTTS
Math - Social Studies
Science



MISS PAULA COUNCIL
Commercial
Science

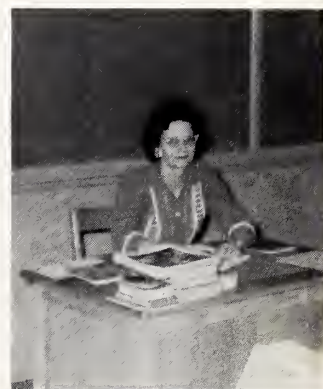
F
A
C
U
L
T
Y



MRS. JOHN BAREFOOT
Science



MRS. EUSTACE HORTON
Home Economics



MRS. TOM ROBERTS
English

MR. HAROLD DAVIS
Coach - History

MRS. ROY KIDD
French - English

MRS. H. G. JOHNSTON
Math

MR. H. G. JOHNSTON
Agriculture





In memoriam of
TOMMIE CAROLYN TAYLOR
(1943-1959)

Carolyn Taylor, friendly, cheerful, warm, artistic, and youthful, left a definite emptiness in our feelings but a lamp of warmth in our hearts. Her sweet memory will linger in our minds and hearts forever, and her cheerful laughter will never be forgotten. The impressions that Carolyn etched upon the heart of each of her classmates will remain even though our Class of '61 will be dismissed.



seniors



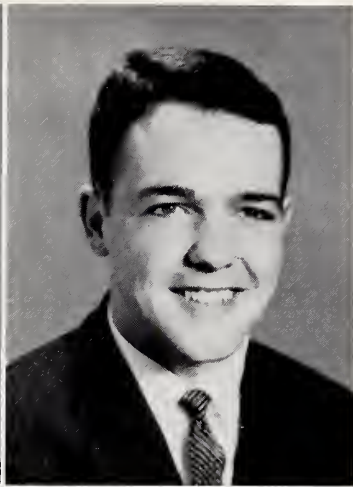
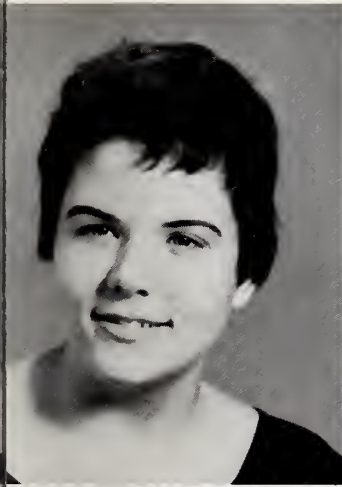
SENIOR CLASS OFFICERS

Elizabeth Council, Secretary; Earl Parker, President; Faye Crutchfield, Treasurer; Frank Crabtree, Sergeant-at-Arms; Marshal Parker, Vice President.



MASCOTS

Kay Taylor and Billy Hamlet



JOYCE HELEN ASH

Basketball 1, 2; Glee Club 1; Library Asst. 2, 3, 4; F.H.A. 1, 2, 4; 4-H Club 1, 2, 3, 4; Medal 2; Superlative 4.

HENRY KIME BLAIR, JR.

Annual Staff 4; Business Manager 4; Band 1; Class Officer 1; Declamation 1; Glee Club 1, 2, 3, 4; Biology Medal 2; Library Asst. 1; Student Council 4; President 4; Bus Driver 4; Marshal 3, 4; Superlative 4; County Representative to Morehead Scholarship Committee 4; County Representative to Youth Fitness Conference 4; Boys' State 3; Beta Club 3, 4.

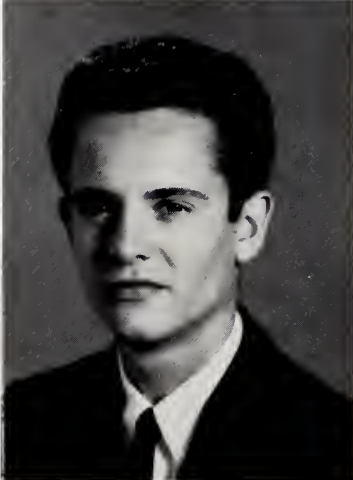


CHARLES BARRY BURNS

Annual 4; Sports Editor 4; Beta Club 3, 4; Football 1, 3, 4; Glee Club 2; High Life 4; Superlative 4; Boys' State 3; Monogram Club 3, 4.

SALLY FRIZELLE BARRETT

Annual Staff 4; Beta Club 3, 4; Class Officer 1; Recitation 1, 2; Glee Club 1, 2, 3, 4; Basketball 1; Librarian 4; High Life 4; F.H.A. 1; 4-H Club 1, 2; Bus Driver 3, 4; Superlative 4; Safe Bus Driver's Award 3.



MARY ANN BUNKER

Librarian 4; High Life 4; F.H.A. 1, 2.

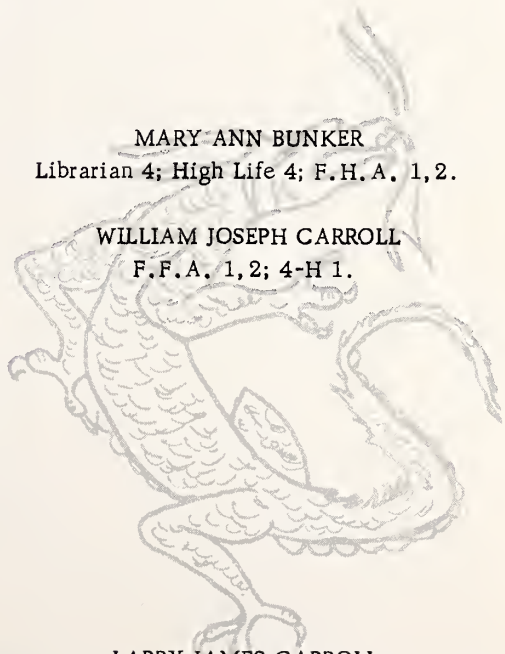
WILLIAM JOSEPH CARROLL

F.F.A. 1, 2; 4-H 1.



LARRY JAMES CARROLL

Basketball 1, 2, 3, 4; F.F.A. 3, 4; Monogram Club 1, 2, 3; Bus Driver 3, 4.



THE SENIOR CLASS 1961

CARLA ANN BUTLER

Piano 1, 2, 3, 4; Glee Club 1, 2, 3, 4; School Paper 4; Girls' State 4.

EDDIE WAYNE CARSON

F.F.A. 1, 2, 3, 4; F.F.A. Officer 1, 4; Parliamentary Procedure Team 4.

CLYDE FRANKLIN CRABTREE

Baseball 3, 4; Class Officer 4; Bus Driver 3, 4; F.F.A. 1, 2, 3, 4; Crop Contest 2, 3, 4; Tool Judging 2; Beef and Swine 3, 4; Parliamentary 3, 4; F.F.A. Officer 3, 4; Ag. Medal 3; Superlative 4.

PHYLLIS MARIAN CASH

Glee Club 1, 3, 4; F.H.A. 1, 2, 3; Library Asst. 1, 2, 3, 4; Majorette 1, 2, 3, 4; Homecoming Court 1; 4-H 1, 2.

ANN ELIZABETH CHURCHILL

Glee Club 4; Library Asst. 3, 4; F.H.A. Officer 2; 4-H Club 4.

DAVID BRUCE DAY

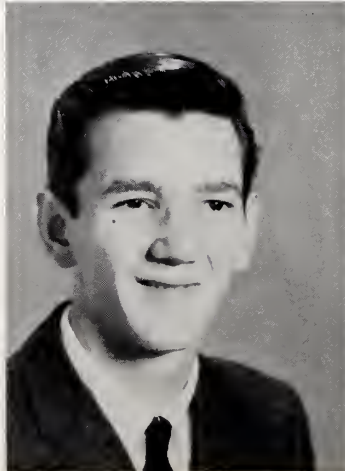
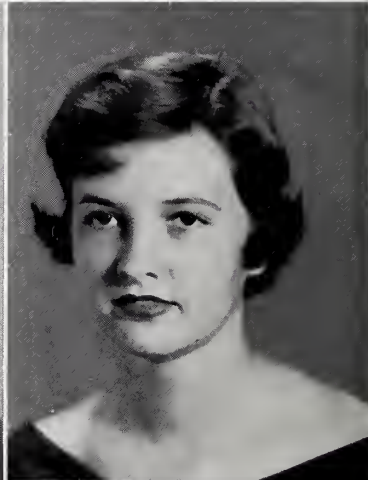
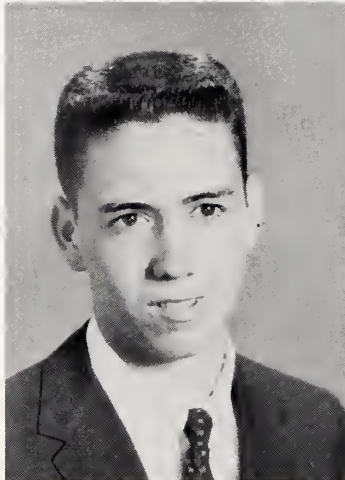
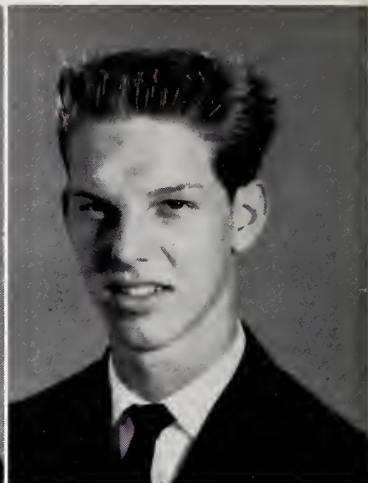
4-H 1, 2, 3; F.F.A. 1, 2, 3, 4; F.F.A. Officer 1, 2, 4; F.F.A. Crop Contest 3.

ARCHIE PHILLIPS DURHAM

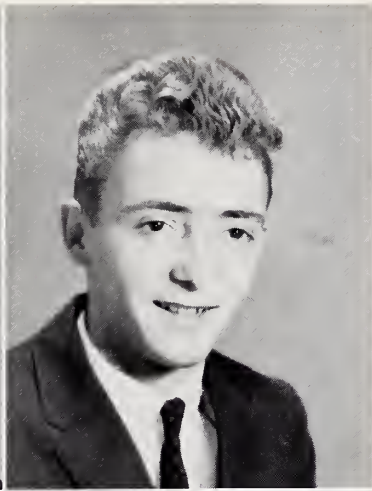
Football 1; Glee Club 1, 2, 3, 4.

BARBARA JEAN CLARK

Annual 4; Beta Club 3, 4; Class Officer 3; Dramatics 1, 2; Glee Club 1, 2, 3, 4; School Paper 3, 4; Beta Officer 3; Marshal 3; Girls' State 3; Piano Medal 2; F.H.A. Officer 2; 4-H 1, 2.

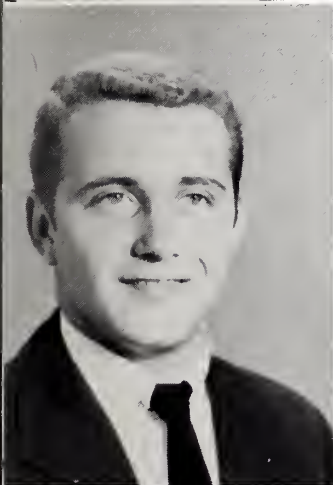


THE SENIOR CLASS 1961



ELIZABETH ANNE COUNCIL
 Annual 4; Beta Club 4; Class Officer 4; Glee Club 3;
 Library Asst. 1; Piano 1; Basketball 1; 4-H Club 1;
 Monogram Club 1.

WAYLAND STANLEY FISH
 Glee Club 1, 2; F. F. A. 1, 2, 4.



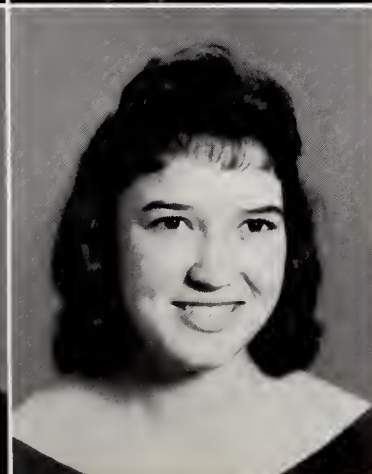
WAYNE MORRIS GAINES
 School Paper 4; Track 3; 4-H Club 1, 2, 3; F. F. A. 1,
 2.

VIRGINIA FAYE CRUTCHFIELD
 Class Officer 1, 3, 4; F. H. A. Officer 1, 2; School Paper
 4; Basketball 1, 2, 3, 4; Senior Superlative 4; Home-
 coming Court 3.



SANDRA FAYE DOMINICK
 Glee Club 1, 2; Library Asst. 3, 4; Softball 3; F. H. A.
 1, 2, 3; 4-H Club 1, 4.

ARCHIE RAY GUNTER
 Bus Driver 3, 4; F. F. A. 2, 3, 4.



"CORKEY" WALTER FRANKLIN HARRIS
 Annual 4; Basketball 1; President Beta Club 3, 4; De-
 clamation Contest 1, 2, 3, 4; Library Asst. 1; Track 3,
 4; School Bus 4; Boys' State 3; 4-H Club 4.

BETTY JEAN EUBANKS
 Glee Club 3; School Paper 4; Monogram Club 1;
 F. H. A. 1, 2, 3; Senior Superlative 4; Softball 3.

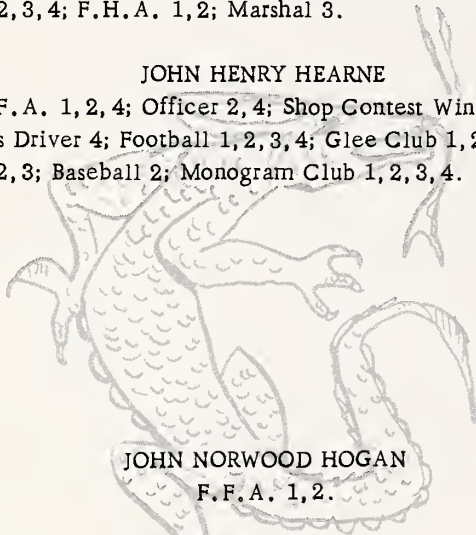
THE SENIOR CLASS 1967

CAROLYN LECRETIA EUBANKS

Annual 4; Beta Club 3, 4; School Paper 4; Recitation 1, 2, 3, 4; F.H.A. 1, 2; Marshal 3.

JOHN HENRY HEARNE

F.F.A. 1, 2, 4; Officer 2, 4; Shop Contest Winner 1; Bus Driver 4; Football 1, 2, 3, 4; Glee Club 1, 2, 4; 4-H 1, 2, 3; Baseball 2; Monogram Club 1, 2, 3, 4.



JOHN NORWOOD HOGAN

F.F.A. 1, 2.

WANDA LOUISE EUBANKS

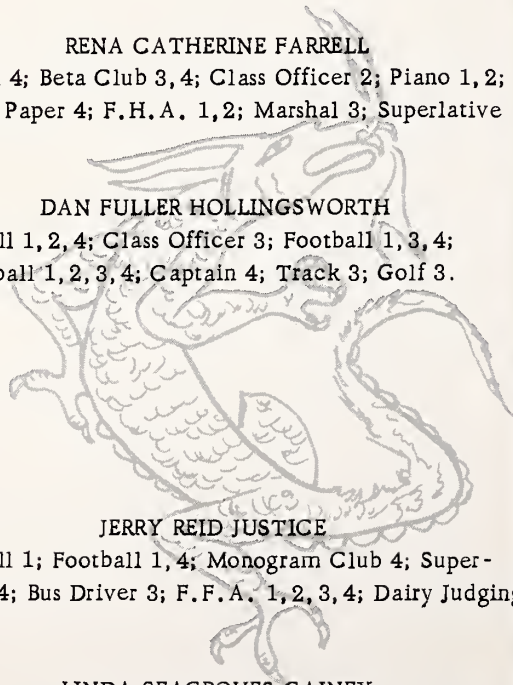
Glee Club 1, 2, 3; Library Asst. 2, 4; F.H.A. 1, 2, 3; 4-H 1, 2; Bus Driver 3, 4; Basketball 1; Piano 1.

RENA CATHERINE FARRELL

Annual 4; Beta Club 3, 4; Class Officer 2; Piano 1, 2; School Paper 4; F.H.A. 1, 2; Marshal 3; Superlative 4.

DAN FULLER HOLLINGSWORTH

Baseball 1, 2, 4; Class Officer 3; Football 1, 3, 4; Basketball 1, 2, 3, 4; Captain 4; Track 3; Golf 3.

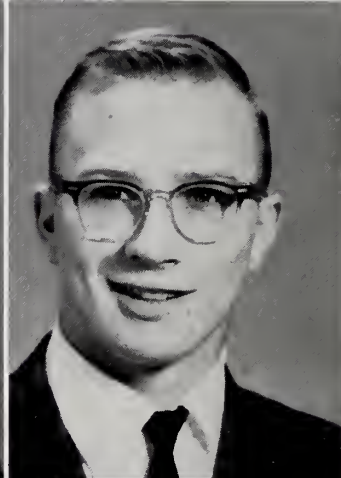
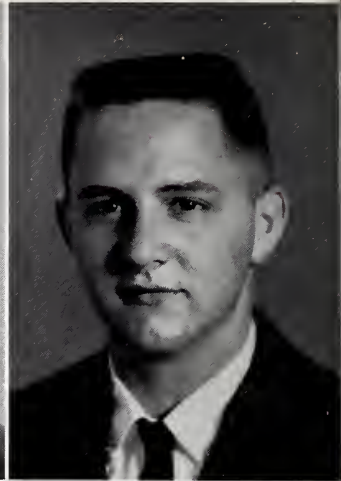


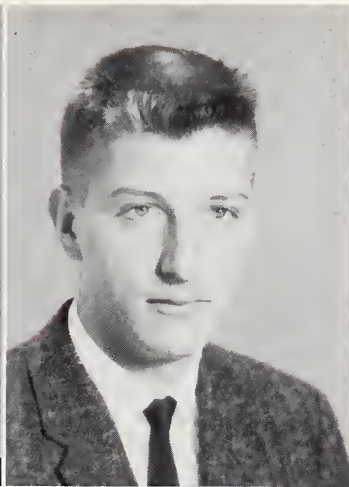
JERRY REID JUSTICE

Baseball 1; Football 1, 4; Monogram Club 4; Superlative 4; Bus Driver 3; F.F.A. 1, 2, 3, 4; Dairy Judging 4;

LINDA SEAGROVES GAINNEY

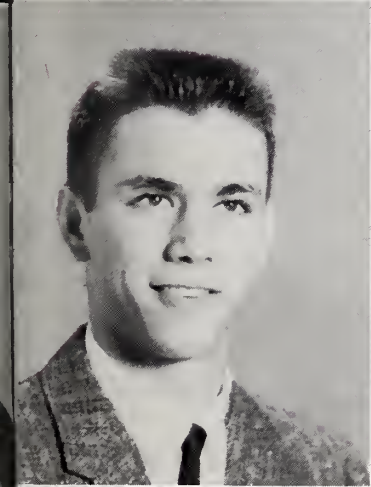
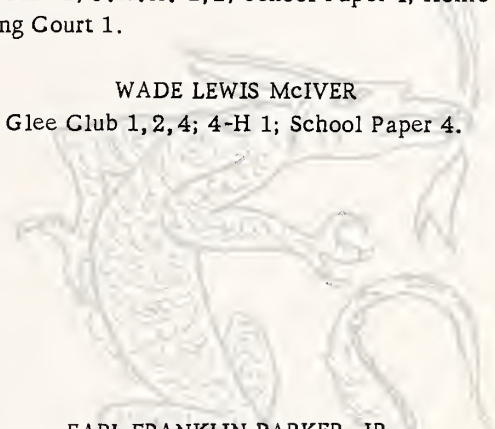
Recitation 1; Monogram 1, 2; Glee Club 1, 2, 3, 4; Basketball 1, 2; 4-H 1; F.H.A. 1, 2.





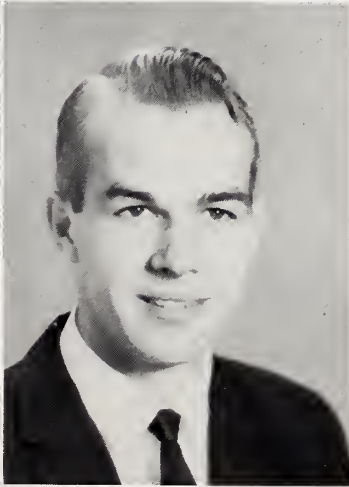
KAY RENALDA GLOSSON
Glee Club 1; F.H.A. 1, 2; School Paper 4; Home-coming Court 1.

WADE LEWIS McIVER
Glee Club 1, 2, 4; 4-H 1; School Paper 4.



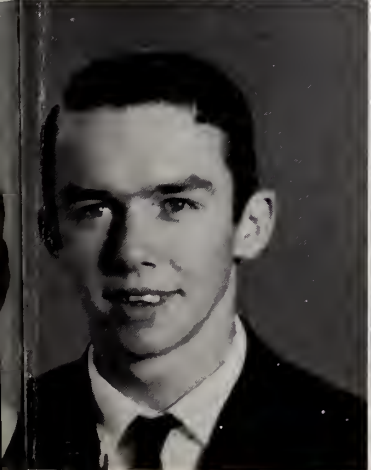
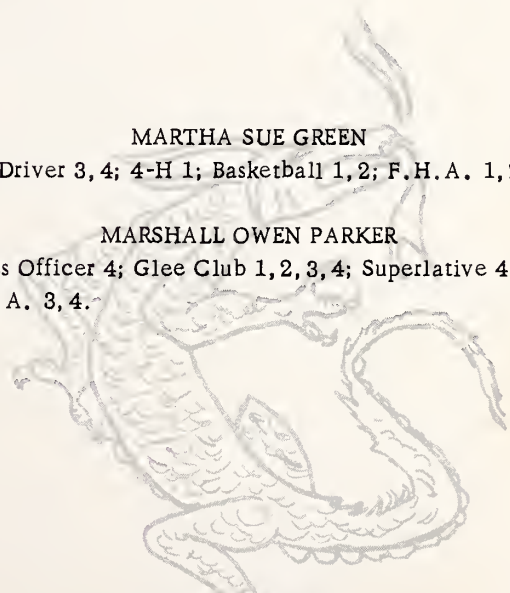
EARL FRANKLIN PARKER, JR.
Class Officer 1, 4; Basketball 1, 2; F.F.A. 1, 2; 4-H 1, 2; Bus Driver 4; Kiwanis King 4; F.F.A. Officer 1, 2.

BARBARA JEAN GORDON
F.H.A. 1, 2; 4-H 1, 2.



MARTHA SUE GREEN
Bus Driver 3, 4; 4-H 1; Basketball 1, 2; F.H.A. 1, 2.

MARSHALL OWEN PARKER
Class Officer 4; Glee Club 1, 2, 3, 4; Superlative 4; F.F.A. 3, 4.



JIMMY DON PERKINS
Baseball 1, 2, 3, 4; Football 1, 2, 3, 4; Co-Captain 4; Monogram Club 1, 2, 3, 4; Class Superlative 4.

MARGARET ANN GUNTER
Glee Club 1, 2, 4; Library Asst. 3, 4; F.H.A. 2; Bus Driver 3, 4; Piano 1, 2; 4-H 1, 2, 3, 4.

NORA BEATRICE HARRIS

Glee Club 1, 2, 3, 4; Monogram Club 1; Library Asst. 1, 2; F.H.A. 1, 2; 4-H 1, 2.

CLYDE BERNICE PERRY, JR.

Football 1, 2, 3, 4.

CLYDE GILBERT SANDERS

Baseball 1, 2; Football 1, 2, 3, 4; Basketball 1, 2; Track 1, 2, 3.

MELINDA ANITA HERNDON

Band 1; Glee Club 1, 2, 3, 4; Library Asst. 1; School Paper 4; F.H.A. 1, 2; Basketball 1, 2, 3, 4; Piano 1; Co-Captain Basketball 4.

BETTY JANE HEARN

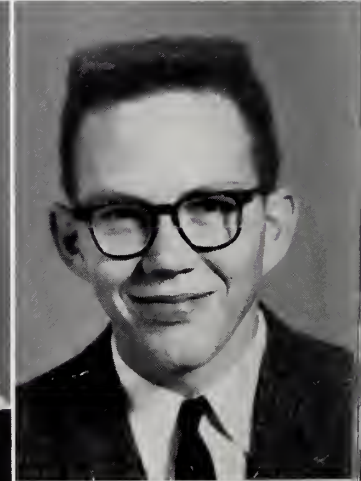
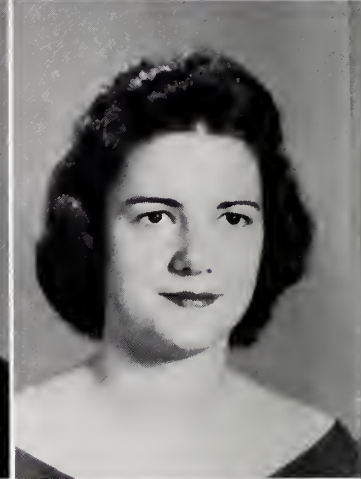
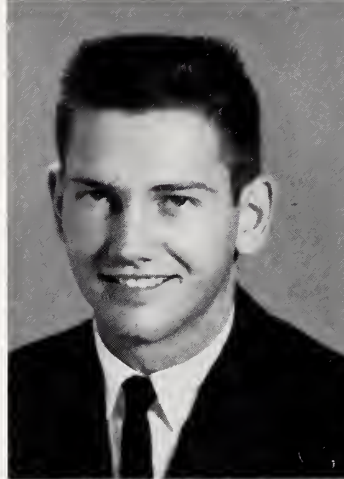
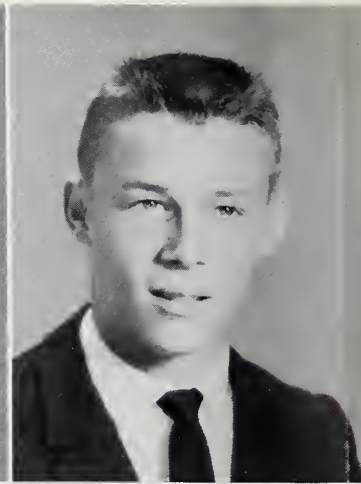
Glee Club 1, 2; 4-H 1, 2; F.H.A. 1, 2, 3; Basketball 1.

ALFRED NORWOOD TATUM

Band 1, 2; Glee Club 4; School Paper 4; Basketball 1, 2.

EDITH FERNE HOUSER

Marshal 3, 4; Beta Club 3, 4; Annual Staff 3, 4; Co-Editor 3; Editor-in-Chief 4; Class Superlative 4; Glee Club 1, 2, 3, 4; Monogram Club 1, 2, 3, 4; Cheerleader 1, 2, 3, 4; Chief Cheerleader 4; The HIGH LIFE Staff 4; Homecoming Queen 4; F.H.A. 1, 2; Officer 1, Scribblers' Club 1, 2; Recitation Contest 1; School Winner 2; County Winner 2; American Legion Essay Contest School Winner 2, 3; State Winner 3; Piano 1, 2; Majorette 1.





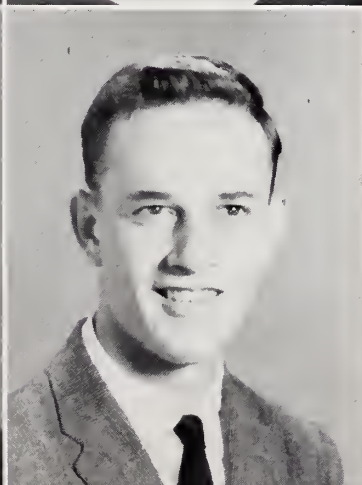
CAROL VIRGINIA HINTON
F.H.A. 4.

CURTIS EUGENE THRIFT
F.F.A. 1,2; 4-H 1,2.



BOBBY TAYLOR WHITE
Beta Club 3; Glee Club 4; School Paper 4; Basketball
1,2.

MARGIE CAROL HOWARD
F.H.A. 1,2; Bus Driver 4.



NANCY CAROL HOWARD
Annual Staff 4; Class Officer 1,2; Beta Club 3,4;
Superlative 4; Student Council 2,3; School Paper 4;
Kiwanis Queen 4; Piano 1,2; Marshal 3.

TED JERRY WICKER
Baseball 2; Class Officer 2; Football 1,4; Glee Club
2,3; 4-H Club 1,2,3,4; Superlative 4; Monogram
Club 4.



BOBBY ROSCOE WILSON
Baseball 1,2; Basketball 1,2,3; Football 1,2,3,4;
Co-Captain 4; All-Conference Team 3,4; All-State
Team 4; Class Superlative 4; F.F.A. 1; Track 2,3,4;
Monogram Club 1,2,3,4; Student Council 3,4; Class
Officer 1,3.

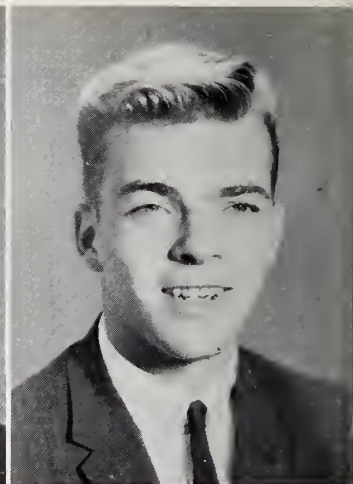
THE SENIOR CLASS 1967

BETTY ROBERSON JOHNSON

Glee Club 1, 2; Piano 1, 2; Librarian 2; Bus Driver 3, 4; 4-H Club 1, 2, 3, 4; Basketball 1; Softball 3, 4.

JAMES HARVEY WINDHAM, JR.

Dramatics 1; Superlative 3; Art Club 1, 2, 3; Photography Club 1, 2; Audio-Visual Club 1.



ALEASE MAE JONES

Basketball 1; 4-H 1, 2; F. H. A. 1, 2, 3.

JOYCE MAE JONES

Glee Club 1, 2, 3; Library Asst. 1, 2, 3; F. H. A. 1; Bus Driver 4; 4-H 1, 2.



LINDA MANN LORBACHER

Beta Club 3, 4; Piano 1; Marshal 3; F. H. A. 1, 2, 4.

HELEN JACQUELYN MANN

Annual 4; Beta Club 3, 4; Recitation 1, 2; Library Asst. 1, 2, 3; Basketball 1, 2, 3; F. H. A. 1, 2, 3; Superlative 4; Monogram Club 1, 2; Homecoming Court 1.

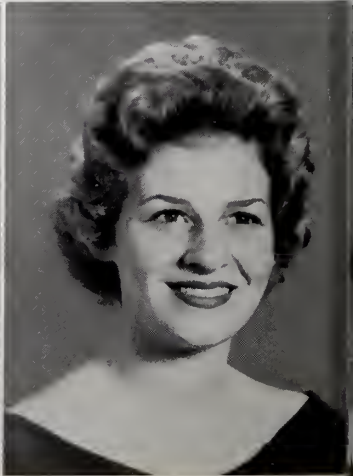


ROBERTA ANNE POYTHRESS

Annual 4; Beta Club 3, 4; Class Officer 3; Dramatics 1, 2; F. H. A. 1, 2; 4-H 1, 2, 3; County 4-H Health Queen 3, 4; U. S. History Medal 3; 4-H Grooming Winner 1, 2; Frozen Foods 4-H Winner 1; VFW Essay Contest Winner 3; Beta Club Officer 4.

SARA JEAN RIDDLE

Dramatics 1, 2, 3, 4; Glee Club 1, 2, 3, 4; Majorette 2; HIGH LIFE Staff 4; F. H. A. 1, 2; Officer 2.



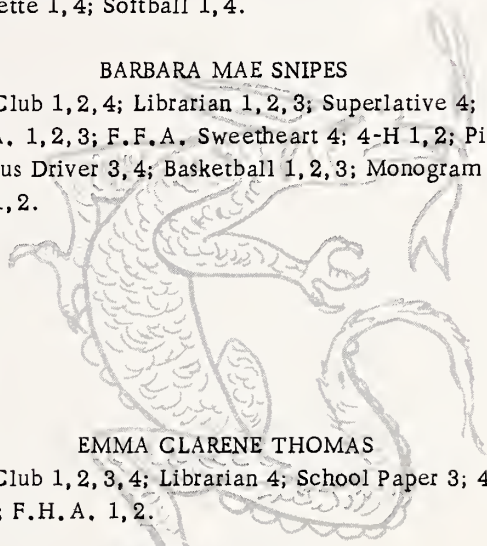


FRANCES CAROLYN SMITH

Glee Club 3, 4; 4-H 1, 2; Majorette 1, 2, 3, 4; Head Majorette 1, 4; Softball 1, 4.

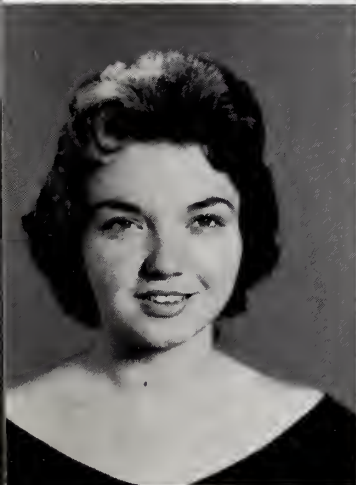
BARBARA MAE SNIPES

Glee Club 1, 2, 4; Librarian 1, 2, 3; Superlative 4; F.H.A. 1, 2, 3; F.F.A. Sweetheart 4; 4-H 1, 2; Piano 1, 2; Bus Driver 3, 4; Basketball 1, 2, 3; Monogram Club 1, 2.



EMMA CLARENE THOMAS

Glee Club 1, 2, 3, 4; Librarian 4; School Paper 3; 4-H 1, 2, 3; F.H.A. 1, 2.



ROXIE ANN THOMAS

Glee Club 1, 2; 4-H 1, 2; Piano 1; Annual Staff 4; Basketball 1; Monogram Club 1; Class Officer 4; Beta Club 4.

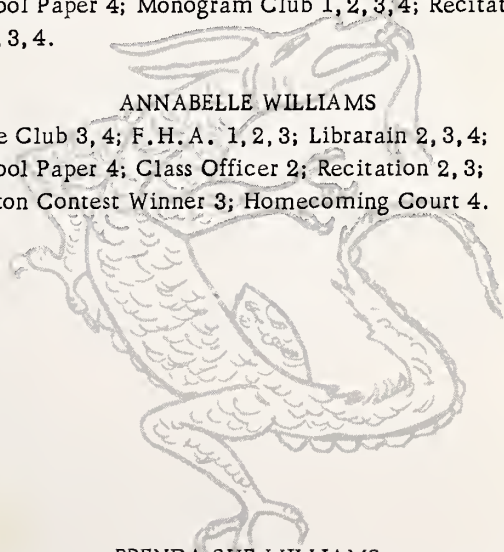
NELLIE FAYDINE WEBSTER

Glee Club 1, 2, 3, 4; Librarian 2; 4-H 1, 2, 3, 4; F.H.A. 1, 2; Majorette 1, 2, 4; Cheerleader 1, 2, 3, 4; Band 1; School Paper 4; Monogram Club 1, 2, 3, 4; Recitation 1, 2, 3, 4.



ANNABELLE WILLIAMS

Glee Club 3, 4; F.H.A. 1, 2, 3; Librarian 2, 3, 4; School Paper 4; Class Officer 2; Recitation 2, 3; Horton Contest Winner 3; Homecoming Court 4.



BRENDA SUE WILLIAMS

Majorette 1; 4-H 1, 2; Glee Club 2, 3; Library Asst. 1, 3, 4; Superlative 4; Basketball 1, 2, 3; Monogram Club 1, 2, 3.



ANN PAGE WRIGHT

Librarian 4; School Paper 4; F.H.A. 1, 2, 3; 4-H 1; Basketball 1, 3, 4; Softball 3; Monogram Club 4.

THE SENIOR CLASS 1967



POLLY F.



CAROLYN S.



JOYCE J.



LINDA G.



ALFRED T.



STANLEY F.



BEATRICE H.



MAE JONES



SALLY B.



BARBARA S.



ROXIE T.



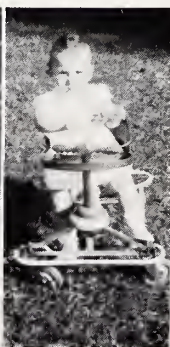
PHYLLIS C.



BARRY B.



BARBARA C.



ANN P.



ANN C.



JACKIE M.



SANDRA D.



BETTY J.



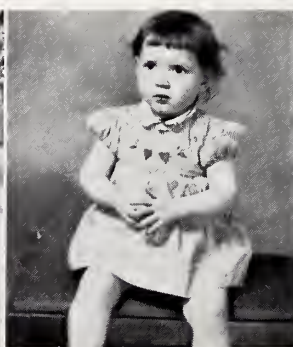
ANN G.



HENRY B.



JOHNNY H.



BETTY E.



JERRY J.



CAROLYN E.



ANN W.



ANNABELLE



CORKEY



JOYCE A.



ELIZABETH C.



RENALDA G.



CLARENE T.



FERNE H.



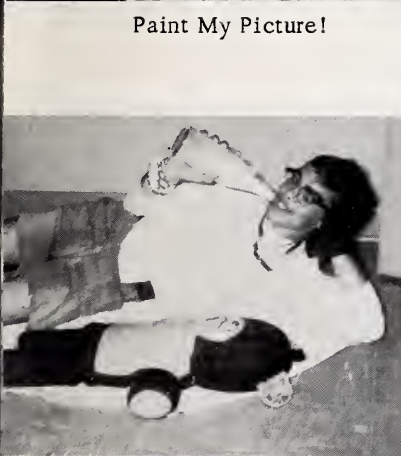
Paint My Picture!



Holidays!



Class Night.



It Tastes Good Too!



I Want To Ride!



First Place At Last!!



Wow!!!



Ouch!!!!



What Do You Mean, On The Floor?

Lights For The Football Field.



Students ?????!



Teacher ?????!



*S
E
N
I
O
R

S
U
P
E
R
L
A
T
I
V
E
S*



*PERSONALITY
PLUS*

NANCY HOWARD
WAYNE GAINES

*BEST
ALL-ROUND*

FERNE HOUSER
BOBBY WILSON



*MOST
DEPENDABLE*

SALLY BARRETT
FRANK CRABTREE



*BEST
SPORT*

BARBARA SNIPES
CLYDE PERRY

*MOST LIKELY
TO SUCCEED*

BARBARA CLARK
BARRY BURNS



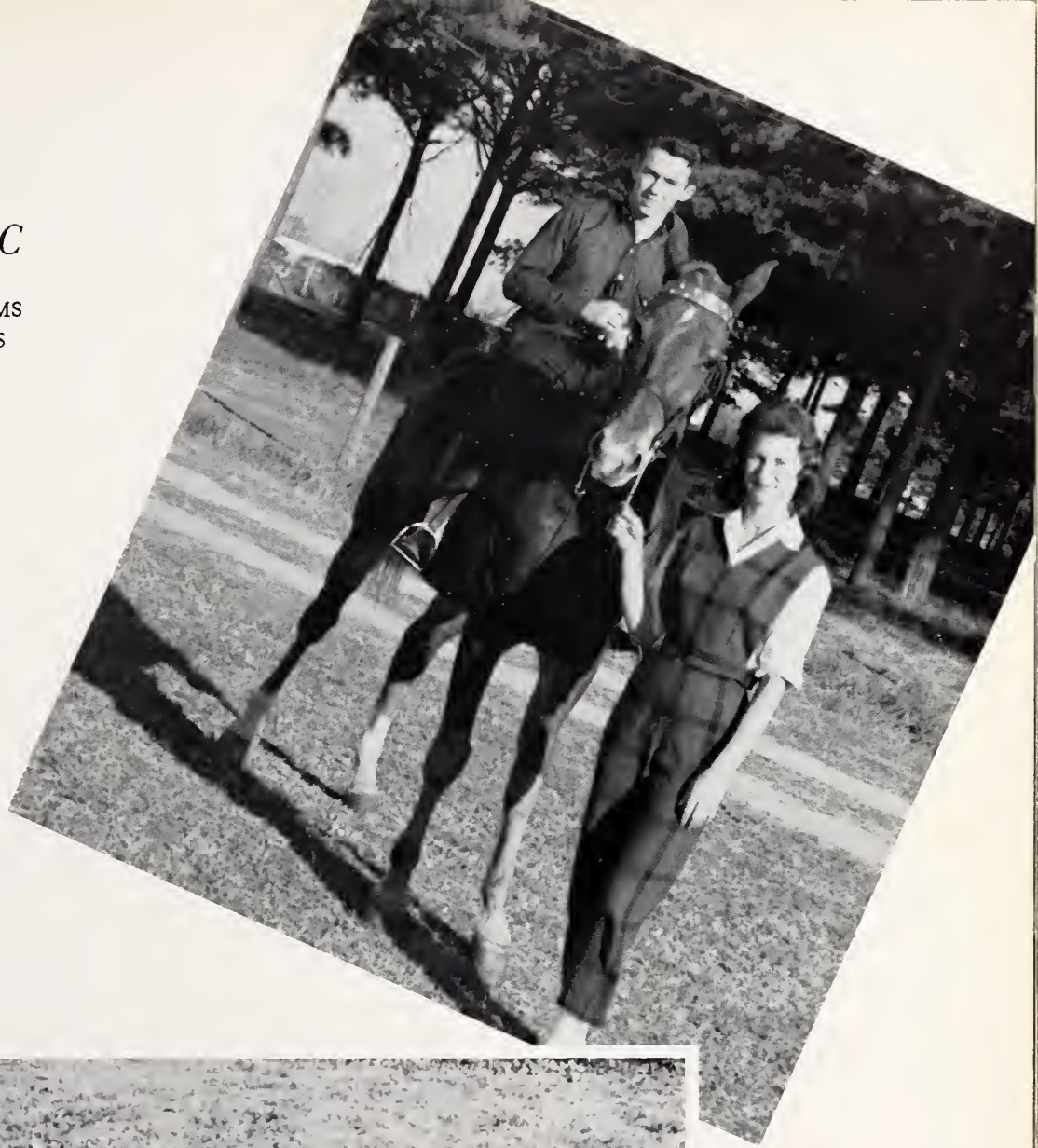
*MOST
INTELLECTUAL*

POLLY FARRELL
HENRY BLAIR



*MOST
ATHLETIC*

BRENDA WILLIAMS
JIMMY PERKINS



FRIENDLIEST

RENALDA GLOSSON
MARSHALL PARKER

*BEAU
AND
BELLE*

BETTY EUBANKS
EARL PARKER

*MOST
POPULAR*

FAYE CRUTCHFIELD
JERRY WICKER



WITTIEST

JOYCE ASHE
JERRY JUSTICE



*MOST
TALENTED*

JACKIE MANN
STANLEY FISH

MARSHALS

The marshals are the eight Juniors who have attained the highest averages in high school. These students preside at the closing exercises of school during their junior year. These activities are Graduation, Class Night, and the Baccalaureate Sermon. The marshals are Nancy Howard, Ann Poythress, Barbara Clark, Henry Blair, Carolyn Eubanks, Linda Lorbacher, Polly Farrell, and Ferne Houser.



BOYS' AND GIRLS' STATE

Every year the American Legion and the Auxiliary sends Junior boys and girls to their state-wide program of Boys' and Girls' State. These programs give the participants a better idea of how government really works.

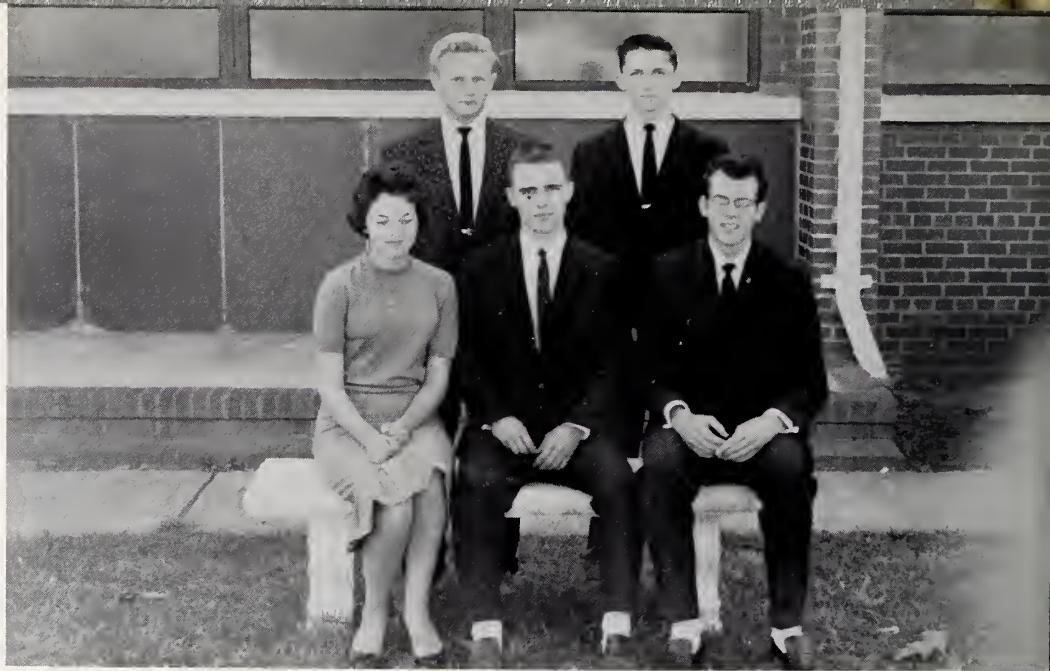




juniors

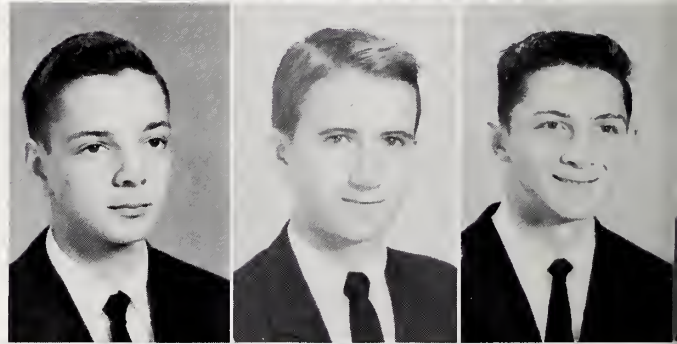
JUNIOR CLASS OFFICERS

Betty Jean Dean, Secretary;
Harry Goodwin, Vice-Pres-
ident; Errol Roper, President;
Don Bolejack, Treasurer;
Hollis Freeman, Sergeant-at-
Arms.

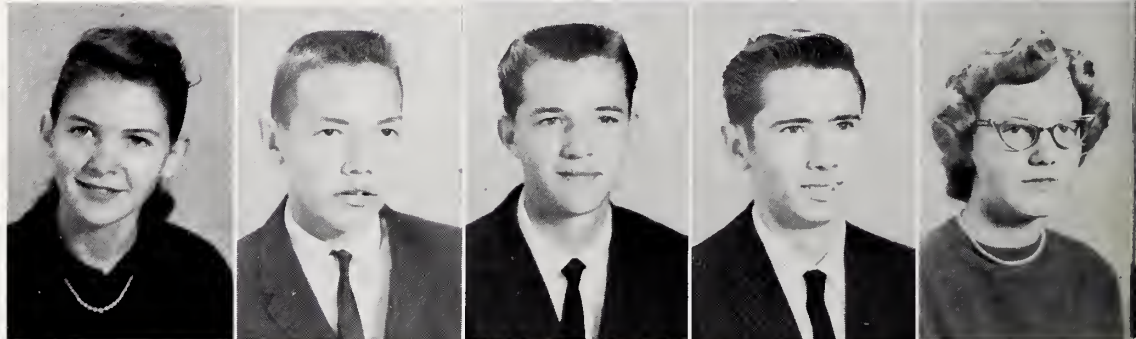


JUNIORS

Wade Barber
Bobby Beal
Don Bolejack



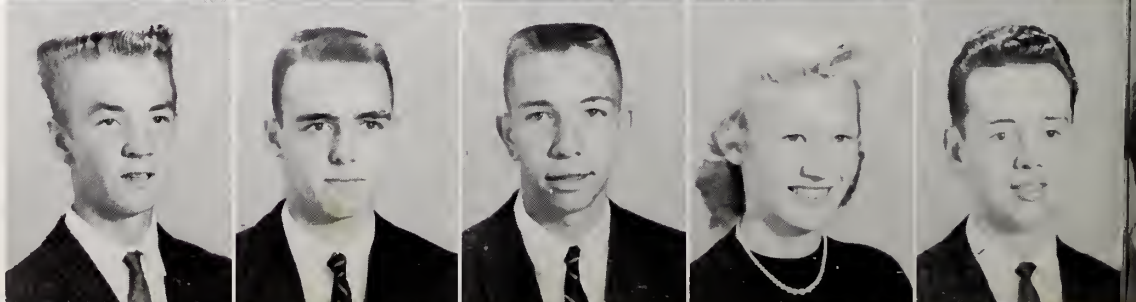
Patsy Branch
Marion Brasington
Donald Brooks
Cecil Brown
Jane Brown



Linda Burnette
Betty Jean Dean
Brenda Eubanks
Gail Fitchett
Hollis Freeman

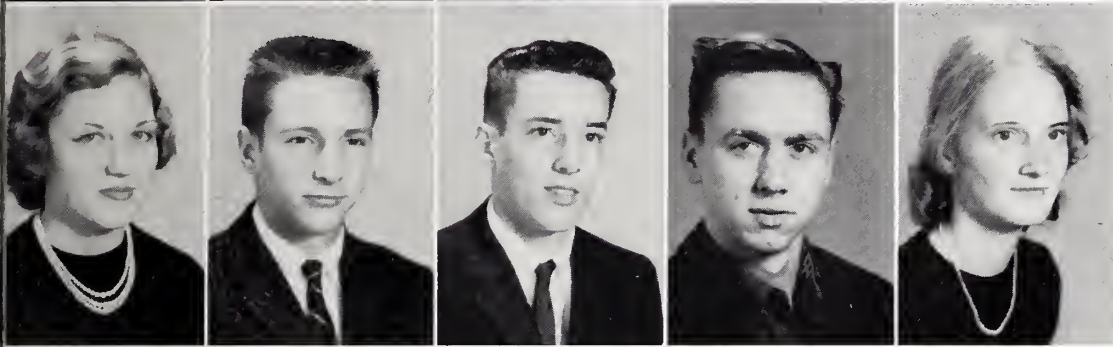


Harold Gaster
Harry Goodwin
Larry Goodwin
Jo Anne Green
Ike Griffin

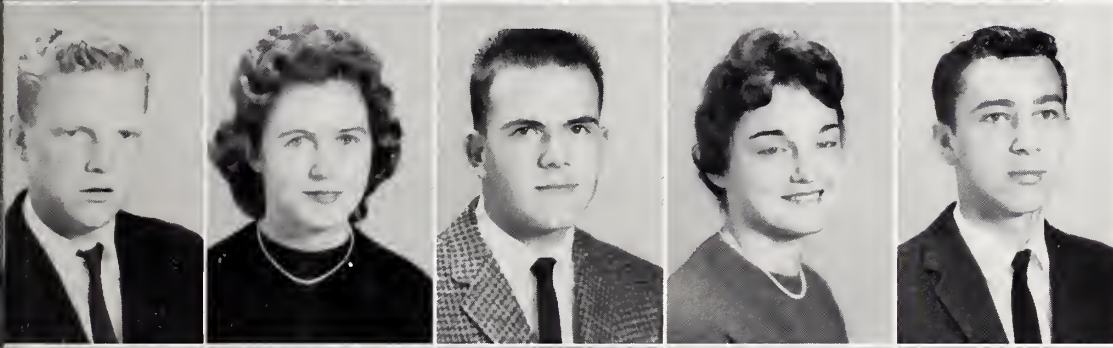




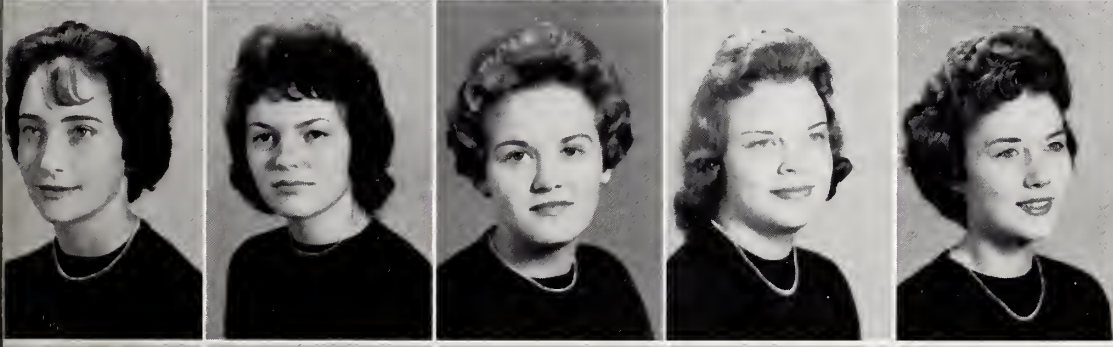
Joyce Gunter
David Hackney
Jimmy Hackney
Peggy Harbison
Donna Hearne



Ruby Heath
Elward Horton
Rufus Horton
Billy Hudson
Gladys Keck



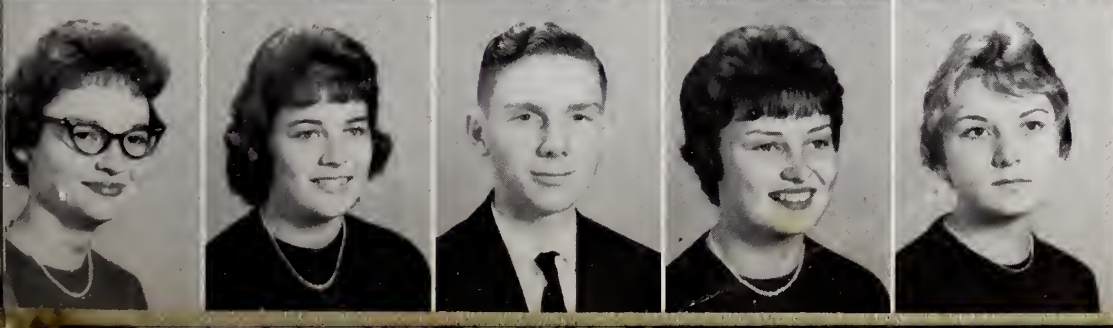
Billy Mann
Glenda Matlock
Manley Newton
Leonora Norwood
Steve O'Daniel



Ruthie Norwood
Carolyn Olive
June Peoples
Barbara Petty
Carol Poe



Francine Ray
Richard Riggsbee
Sue Riggsbee
Errol Roper
Lonnie Sexton



Phyllis Sturdivant
Glenda Sue White
Ronald White
Pat Wilkie
Sue Womble



sophomores

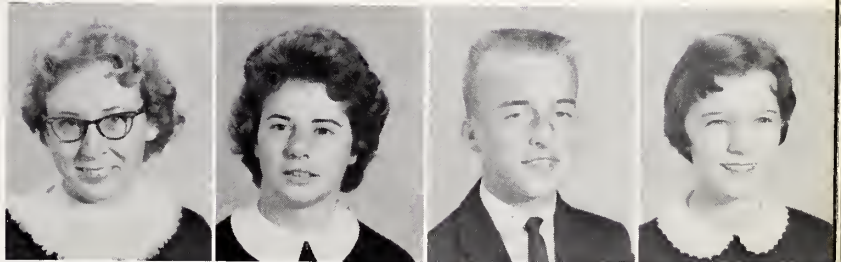
SOPHOMORE CLASS OFFICERS

Luther White, President;
Karen Mathieson, Vice-
President; Johnny Bulling-
ton, Secretary; Gene Grif-
fin, Treasurer; Jim Camp,
Sergeant-at-Arms.

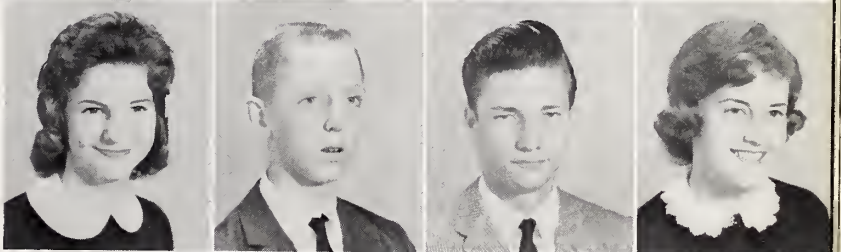


SOPHOMORES

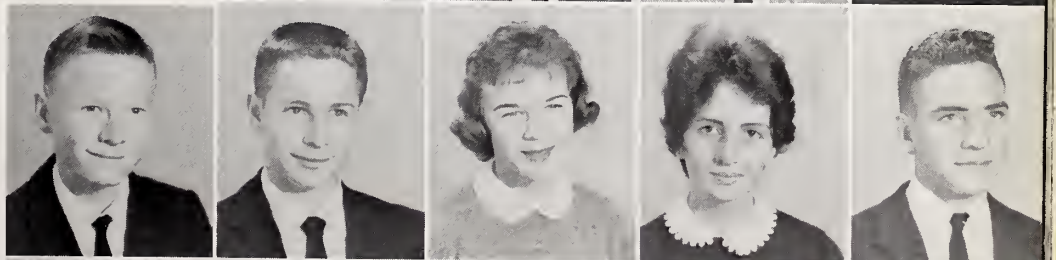
Eva Baker
Estelle Boone
Johnny Bullington
Ann Burns



Ginny Burns
Jim Camp
Marlin Campbell
Jane Carpenter



Wade Clark
Wayne Clark
Barbara Council
La Van Covert
Tommy Crews

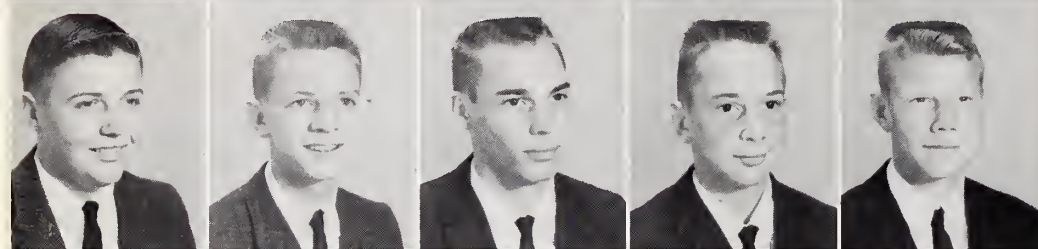


Lillie Daniel
Ken Eddins
Dale Farrell
Lacy Farrell
Sylvia Farrell

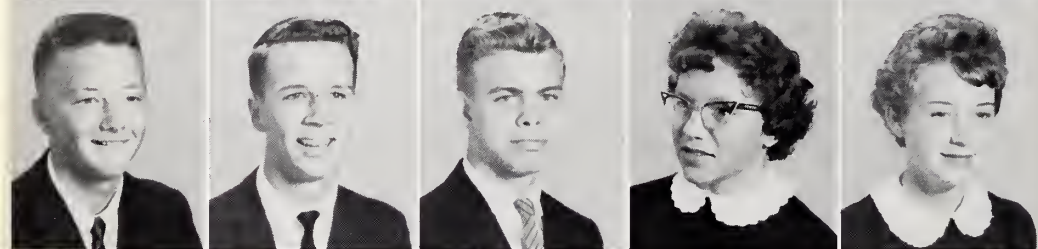




Betty Ann Fearrington
 Pam Fitchett
 Jackie Foushee
 Frankie Fuller
 Thelma Garrett



Billy Gattis
 Bunn Goodwin
 Gene Griffin
 Jimmy Griffin
 Ray Gunter



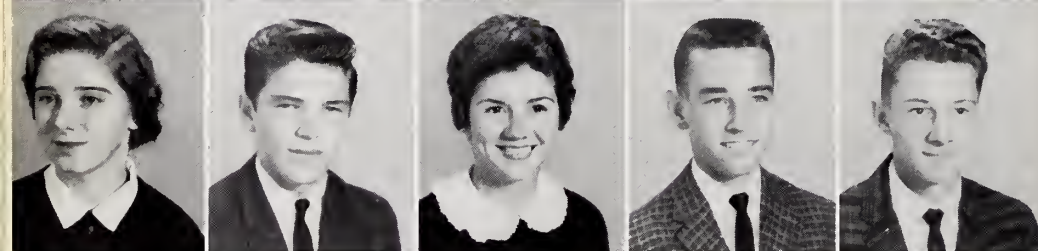
Mike Kellogg
 Earl Lasater
 Henry Lewis
 Cindy Mann
 Kay Mann



Tommy Mann
 Karen Mathiesen
 Gail McBane
 Pat Meacham
 Bobby Moore



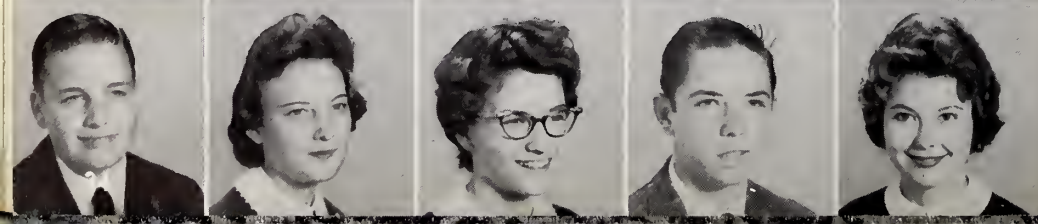
Britt Norwood
 Dorothy Nunn
 Mary O'Daniel
 Doug Perry
 Patsy Perry



Bonny Piercy
 Wayne Riggsbee
 Judy Seagoves
 Leon Shaw
 Tony Stevenson



Sandra Stubbs
 Beverly Sullivan
 Sarah Thomas
 Joyce Tilley
 Julia Webster



Luther White
 Emily Williams
 Patty Williams
 Paul Williams
 Carol Yount



freshmen

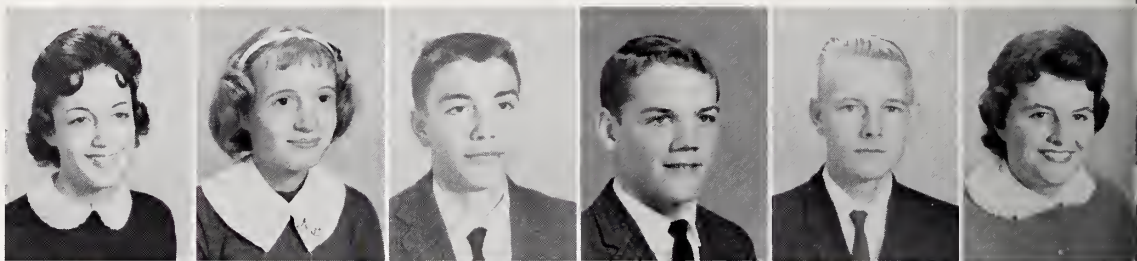
FRESHMAN CLASS OFFICERS

Jennifer Kidd, President;
Patsy Lemons, Vice-Pres-
ident; Linda Lashley, Sec-
retary; Betsy Baldwin; Treas-
urer; Tony Rhodes, Ser-
geant-at-Arms.



FRESHMEN

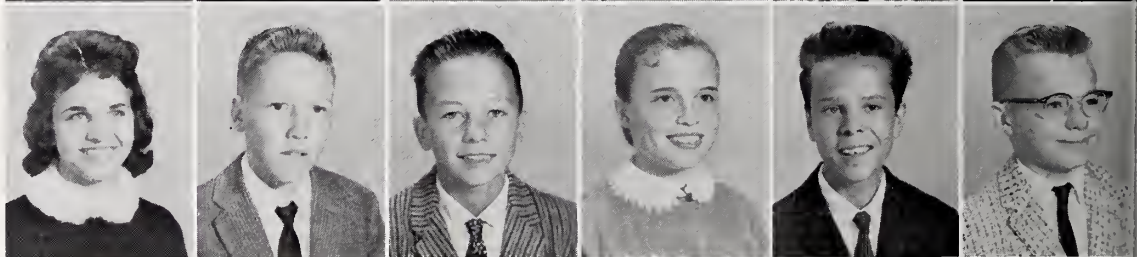
Betsy Baldwin
Norma Beale
Jimmy Beckwith
Johnny Blair
Raeford Bland
Gayle Blaylock



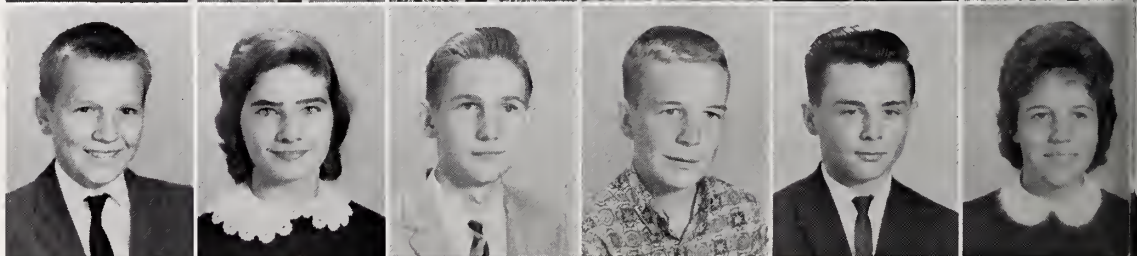
Virginia Brafford
Cary Carpenter
Gail Carpenter
Nancy Carroll
Ray Churchill
Joy Clifton



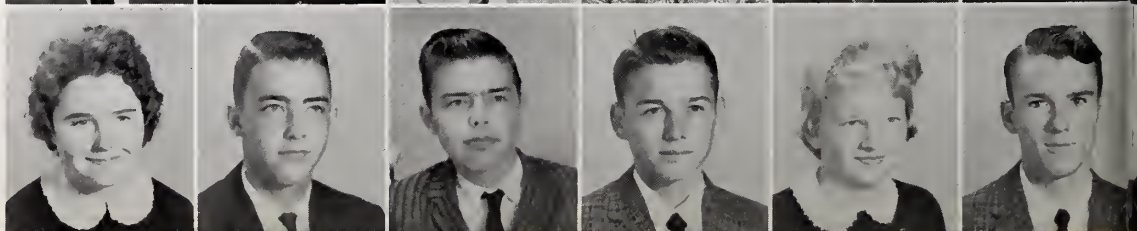
Josephine Collins
Phillip Cooper
Johnny Covert
Clegg Crawford
Harold Darnell
Arley Day

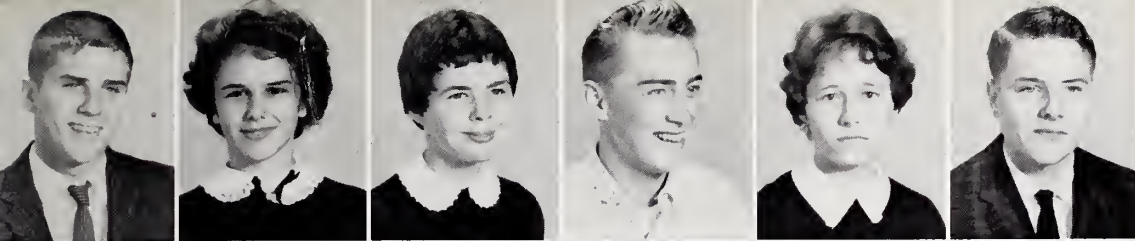


Larry Dominick
Etta Mae Ellis
Kenneth Ellis
Larry Farrell
Jimmy Flynt
Faye Fuller



Helen Goodman
Lloyd Goodman
Wayne Goodman
Charles Green
Judy Green
Robert Green





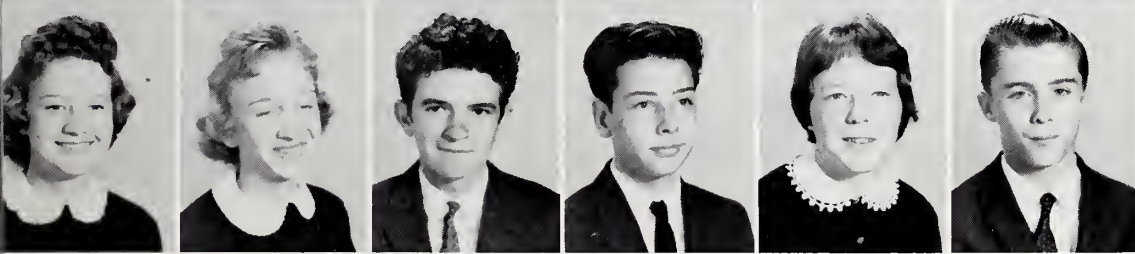
Ronnie Gunter
Ann Harris
Wandra Harris
Larry Hatley
Rena Hatley
Norman Hilliard



Sara Hogan
Elizabeth Hooker
Marcia Huntsman
Robert Jackson
Sammy Jenkins
Morris Jones



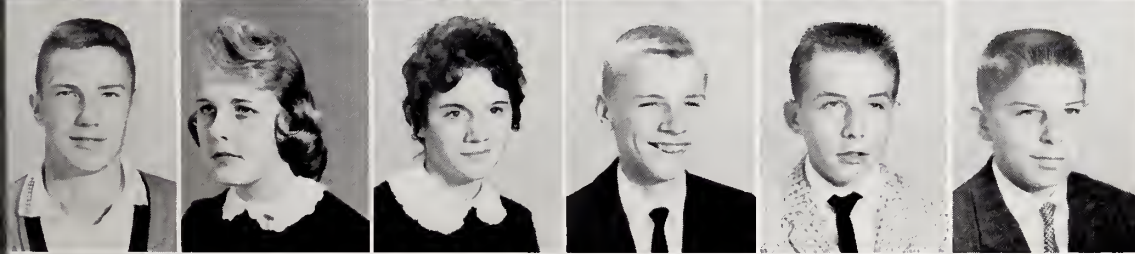
Norris Jones
Tommy Justice
Jennifer Kidd
Linda Lashley
Patsy Lemons
Stuart Lucas



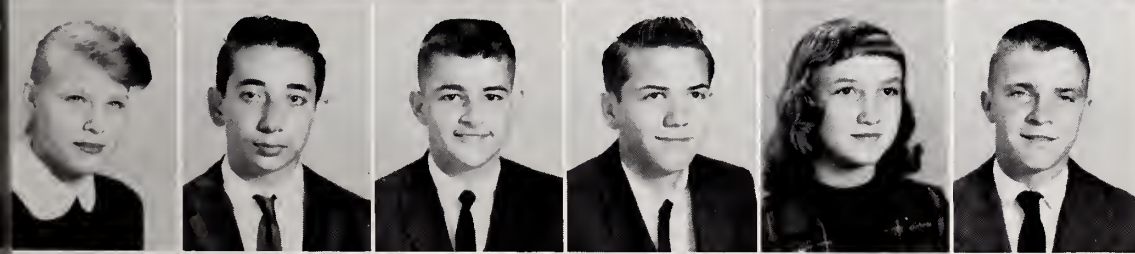
Ann Mann
Linda McLaurin
Eddie Mendenhall
Larry Murdock
Reba Parker
Guy Parks



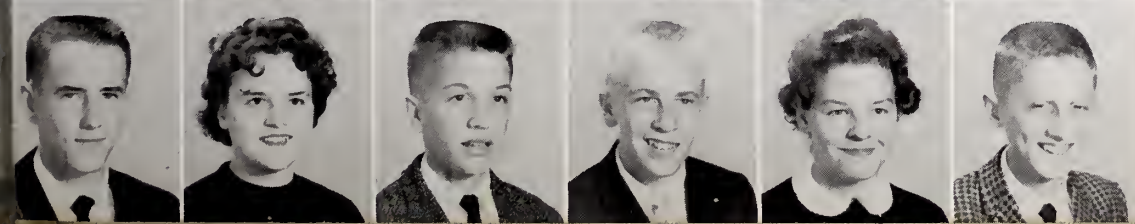
Roy Peace
Steve Pendergraft
Arthur Perkins
Jean Piercy
Royce Reeves
Tony Rhodes



James Roberson
Jimmie Rogers
Linda Seagoves
Peter Senkiv
Donnie Smith
David Sparrow



Louise Staley
Charles Strowd
Lee Sullivan
Arthur Thomas, Jr.
Nancy Tripp
Sherrill West
Barry Williams



Carol Williams
Chris Williams
Jimmy Williams
Judy Williams
Jerry Woods



activities



Miss P.H.S.
PAT MEACHAM

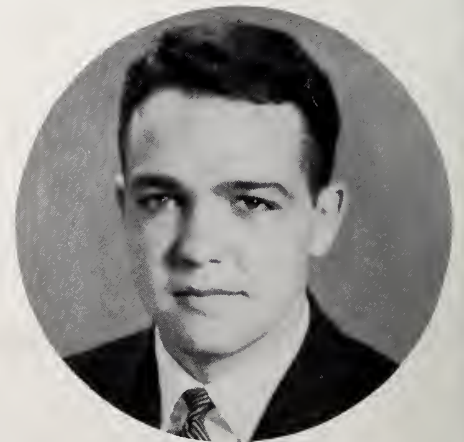


STUDENT COUNCIL

H. Blair; J. Peoples; G. Burns; Mrs. Shotts, Advisor; A. Day; B. Wilson; W. Barber; B. Gattis; J. Woods.

Student Council President,
HENRY BLAIR, JR.

The Student Council started the 1960-61 year at P.H.S. fired with new ambition. Through the cooperation of the faculty and the entire student body the many Student Council activities have been carried through successfully. Certainly a highlight of the school year has been the election of new officers, and the Homecoming Dance will never be forgotten.



At The Polls!



MONOGRAM CLUB

F. Webster, M. Jones, N. Jones, G. McBane, J. Peoples, R. Norwood, G. Burns, F. Houser, H. Freeman, J. Camp, B. Williams, H. Goodwin, D. Bolejack, B. Gattis, M. Kellogg, L. Farrell, B. Farrar, A. Wright, F. Crutchfield, J. Hearne, M. Herndon, C. Perry, J. Justice, M. Brasington, G. Sanders, B. Burns, B. Wilson, G. Griffin, J. Perkins, J. Blair, D. Hollingsworth.



ANNUAL STAFF

Mrs. Roy Kidd, Advisor; J. Mann; S. Barrett; N. Howard; B. Burns; C. Eubanks; B. Clark; L. Lorbacher; A. Poythress; P. Farrell; F. Houser; E. Council; R. Thomas; H. Blair; C. Harris.



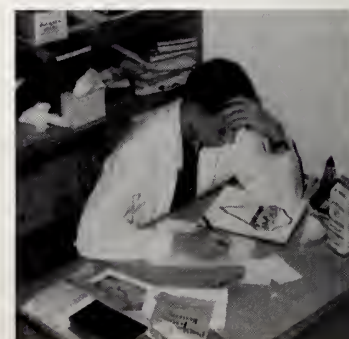
Another mistake!



Money making scheme.



Ferne, Editor-in-Chief



Wade, Co-Editor



Linda Lorbacher

Corkey Harris

Roxie Thomas

Jackie Mann

President

Nancy Howard



BETA CLUB

Barry Burns

Elizabeth Council



Sally Barrett

June Peoples

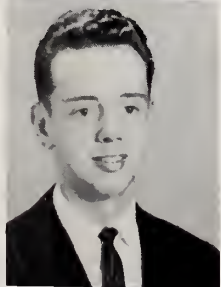


Treasurer

Gail Fitchett

Vice
President

Errol Roper



Ike Griffin

Barbara Clark



Henry Blair

Carolyn Eubanks



Ferne Houser

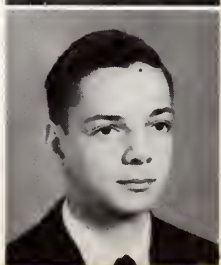
Wade Barber, Jr.



Ann Poythress

Polly Farrell

Secretary



HALLOWEEN ROYALTY



Frankie Houser, Gail McBane, Robert Hughes, J. A. Webster, Sadie Farrell.

HIGHLIFE STAFF



A. Wright; S. Barrett; M. A. Bunker; B. Clark; B. Burns; P. Farrell; C. Eubanks; S. Riddle; M. HERN-
DON; F. Crutchfield; W. McIVER; R. Glosson; C. Butler; F. Webster; F. Houser; N. Howard; W. Gaines;
A. Williams; J. Windham; Mrs. Yates, Faculty Advisor; B. White; A. Tatum.

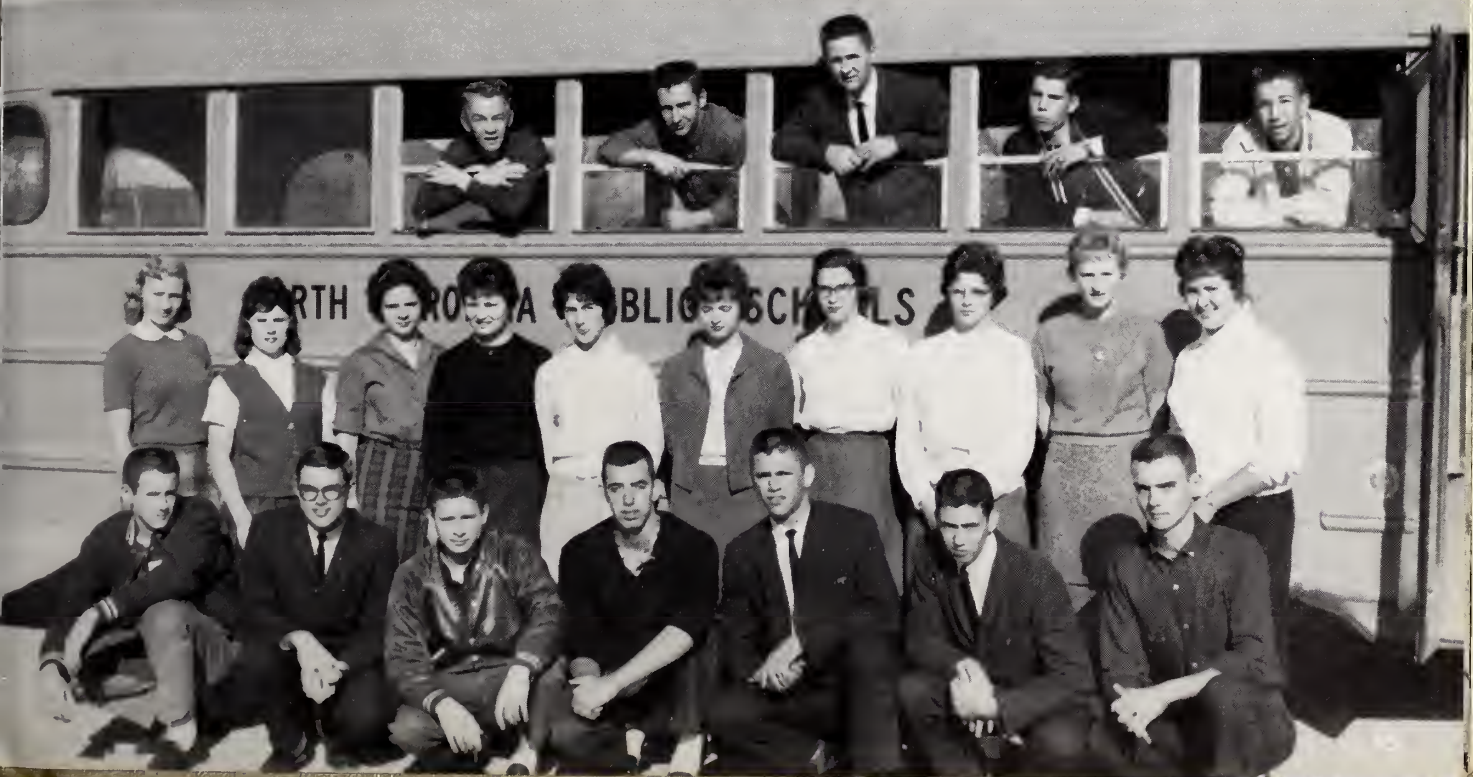


LIBRARY WORKERS and LIBRARIANS

S. Farrell, D. Hearne, C. Poe, W. Eubanks, C. Thomas, A. Gunter, J. Ashe, J. Jones, S. Womble, S. Barrett, G. Matlock, G. White, P. Fitchett, B. J. Dean, M. O'Daniel, A. Wright, B. Sullivan, B. Petty, J. Peoples, A. Churchill, S. Dominick, P. Wilkie, P. Cash, A. Williams, J. Brown, S. Pendergraft, P. Senkiv, M. Bunker.

BUS DRIVERS

B. Williams, C. Harris, W. Clark, L. Carroll, E. Parker, F. Crabtree, W. Mann, W. Eubanks, S. Green, B. J. Johnson, S. Barrett, P. Cash, B. Snipes, P. Wilkie, J. Jones, A. Gunter, J. A. Green, H. Gaster, E. Horton, J. Hearne, A. Gunter, L. Goodwin.





F.F.A.

Mr. H. G. Johnston, Instructor; D. Brooks; E. Carson; J. Hearne; B. Snipes, Sweetheart; E. Parker; F. Crabtree; D. Day; W. Clark; L. Dominick; J. Covert; W. Wright; D. Eddins; L. Farrell; J. Williams; J. Woods; S. Jenkins; T. Stevenson; E. Horton; H. Gaster; L. Sexton; A. Gunter; C. Wilson; P. McGhee; R. Churchill; R. Gunter; D. Perry; M. Parker; R. Peace; B. Moore; W. Clark; R. Reeves; T. Justice; S. Pendergraph; J. Beckwith; D. Whitaker; L. Goodwin; S. Fish; A. Thomas; E. Mendenhall; R. Gunter; B. Norwood; R. Pittman; J. Roberson; C. Brown; W. Riggsbee; L. Hatley; F. Moore; B. Green; W. Mann; B. Beal; R. Horton; B. Briggs; B. Williams; A. Howard; S. Lucas; S. West; L. Carroll; J. Justice; P. Williams; C. Green; B. Farrar.



Mr. Chairman!

How Is That One?



Good Job!



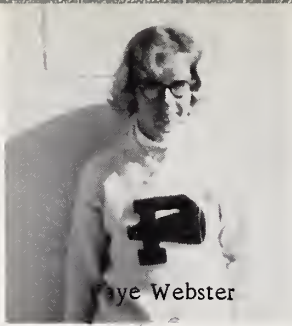


athletics

C
H
E
E
R
L
E
A
D
E
R
S



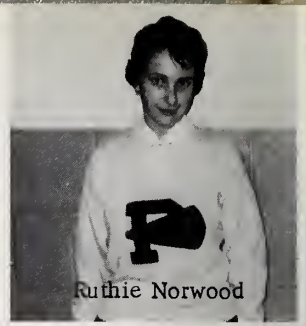
June Peoples



Faye Webster



Ferné Houser, Chief



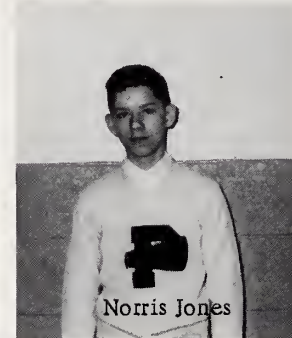
Ruthie Norwood



Ginny Burns



Morris Jones



Norris Jones



Gail McBane



Gail McBane; Faye Webster; Ferné Houser, Chief; Ginny Burns; Ruthie Norwood; Morris Jones; Norris Jones; June Peoples.

A little louder now

Let's go Blue Dragons!



Is this correct?



F
O
O
T
B
A
L
L

1
9
6
0



TOUCHDOWN !!



Co-Captains
BOBBY WILSON
JIMMY PERKINS



COACH ADRIAN ALLRED



CLYDE PERRY



JERRY WICKER



DON BOLEJACK

Co-Captain
JIMMY PERKINS

Perkins, a two-year letter man, plays wingback on our single wing offense. He also proved to be a very capable quarterback in our new "I" formation.



BARRY BURNS



JIMMY FLYNT



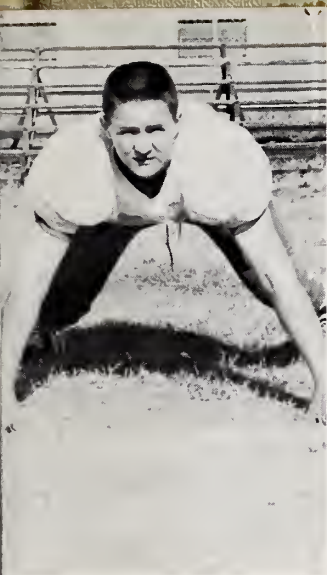
GENE GRIFFIN



SCHE

September	9	- - - - -
September	16	- - - - -
September	23	- - - - -
September	30	- - - - -
October	7	- - - - -
October	14	- - - - -
October	21	- - - - -
October	28	- - - - -
November	4	- - - - -

WINNING



JOHNNY HEARNE



MARION BRASINGTON



DAN HOLLINGSWORTH



GILBERT SANDERS

DULE

- - - - - Liberty
- - - - - Randleman
- - - - - Badin
- - - - - Rankin
- - - - - Ramseur
- - - - - Chatham Central
- - - - - Jordan-Matthews
- - - - - Angier
- - - - - Sumner



Co-Captain
BOBBY WILSON

Wilson, a four year letter man, plays center on the Dragon football team in all offensive plays. Wilson has made the All-Conference Team for two years and had the high honor of being on the Eastern-All State Team of the NEWS AND OBSERVER.

SEASON

60

BERNARD FARRAR



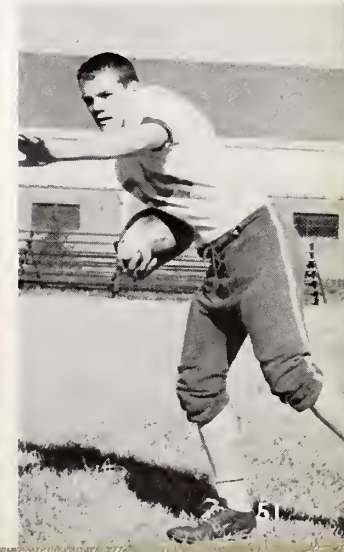
JERRY JUSTICE

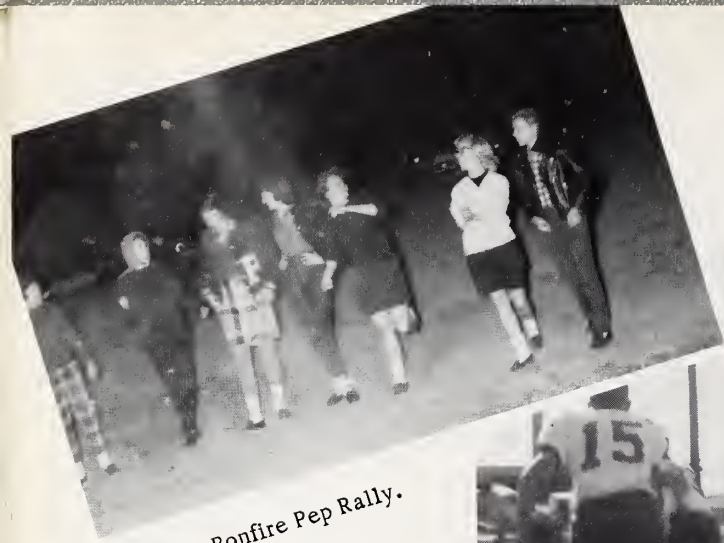


HOLLIS FREEMAN



JOHNNY BLAIR





Bonfire Pep Rally.

The Team Got In A Huddle!



Practice For The Big Game.



The Crowd Was The Greatest!

Surprise!



Look Out!



B. Wilson, D. Hollingsworth, M. Brasington, G. Sanders, B. Burns, J. Justice, A. Perkins, D. Farrell, G. Griffin, J. Perkins, J. Flynt, J. Hearne, B. Farrar, G. Branch, D. Bolejack, J. Blair, C. Perry, C. Strowd, H. Freeman.





BAND and MAJORETTES

Trumpet: N. Flynt; L. Downing; W. Barber; G. Fitchett; E. Roper; D. Smith; R. Stone; B. Thomas; J. A. Webster; J. Wood; T. Hogan; S. Mann; J. Dilleshaw; E. McLaurin. Clarinet: R. Gattis; W. Hollaman; B. Fearington; D. Morris; B. Norwood; B. Wachs; A. Smith; R. Moses. Saxophone: G. Smith; M. White; J. Johnson. Trombone: D. Womble; L. Sullivan; D. White; R. White; T. Hughs; K. Roper. Drums: D. Jenkins; L. Gunter; S. O'Daniel; B. Sullivan; C. Strowd; V. Farrell. Drum Major: I. Griffin.



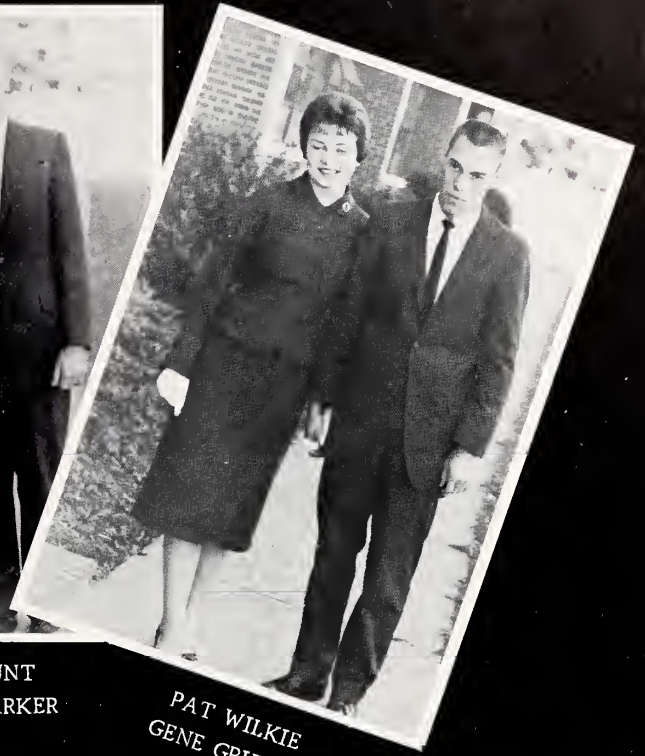
Homecoming Queen, FERNE HOUSER
Escort, BOBBY WILSON



ANNABELLE WILLIAMS
GILBERT SANDERS



CAROL YOUNT
MARSHALL PARKER



PAT WILKIE
GENE GRIFFIN

*HOMECOMING COURT
and ESCORTS.*



RUTHIE NORWOOD
DON BOLEJACK



BETSY BALDWIN
JOHNNY BLAIR



JUDY GREEN
JIMMY BECKWITH

Phyllis Cash



Sue Womble

Glenda Matlock



MAJORETTES



Diane Smith



Amanda Gainey



Jackie Foushee



HEAD MAJORETTE
Carolyn Smith

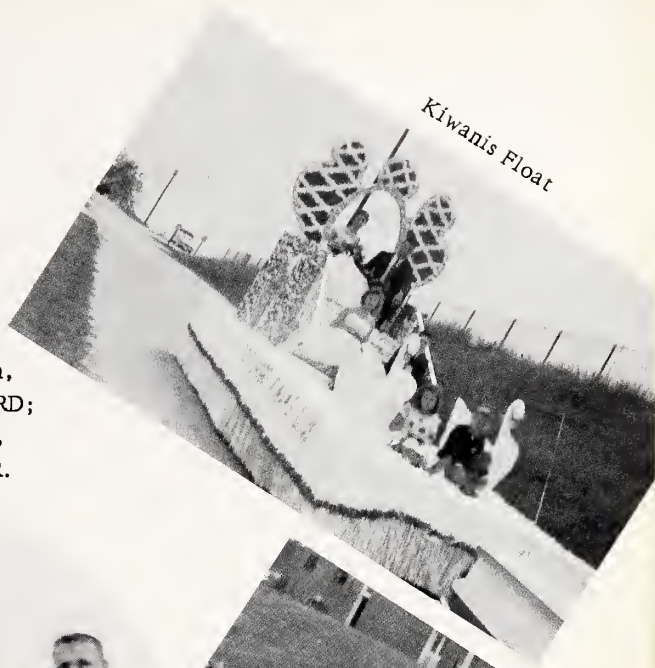


Jimmie Rogers

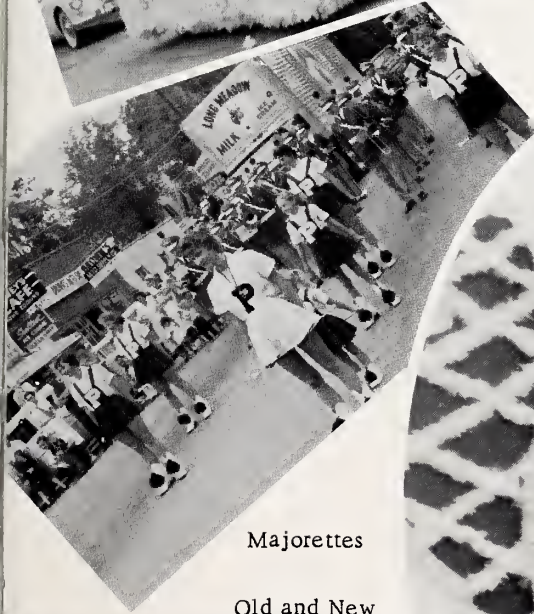
Senior Float



Kiwanis Float

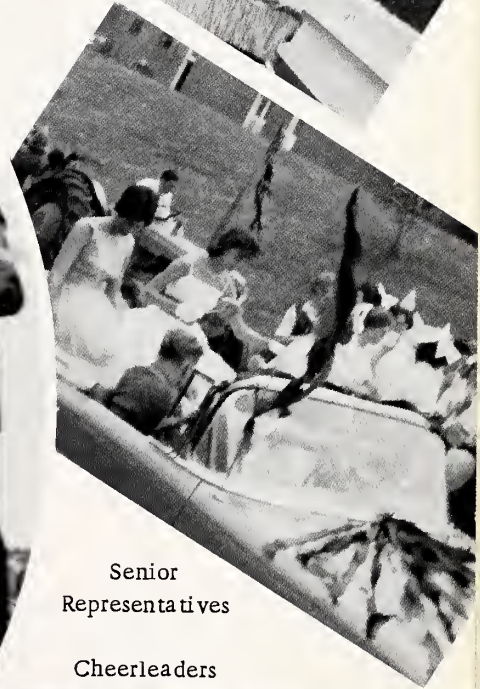


Kiwanis Queen,
NANCY HOWARD;
Kiwanis King,
EARL PARKER.



Majorettes

Old and New



Senior
Representatives

Cheerleaders



Junior Float

F.F.A. Float



AFTER

HOME
IMPROVEMENT



Sophomore Float

B
A
S
K
E
T
B
A
L
L

1
9
6
1



Up in the air!



COACH HAROLD DAVIS



Captain
DAN
HOLLINGSWORTH



Secrets . . .

'60-'61 SCHEDULE

Dec. 2	- - - - -	Deep River
Dec. 9	- - - - -	Bennett
Dec. 13	- - - - -	Silk Hope
Dec. 16	- - - - -	Chatham Central
Dec. 20	- - - - -	Moncure
Jan. 10	- - - - -	Deep River
Jan. 13	- - - - -	Moncure
Jan. 16	- - - - -	Jordan Matthews
Jan. 20	- - - - -	Randleman
Jan. 24	- - - - -	Greenwood
Jan. 27	- - - - -	Bennett
Jan. 31	- - - - -	Silk Hope
Feb. 3	- - - - -	Chatham Central
Feb. 7	- - - - -	Ramseur
Feb. 10	- - - - -	Moncure
Feb. 14	- - - - -	Jordan Matthews
Feb. 17	- - - - -	Randleman



Victory !!!

GO . . . BLUE . . . DRAGONS

H. Freeman, H. Goodwin, D. Hollingsworth, G. Griffin, M. Brasington, B. Williams, J. Beckwith, R. Churchill, J. Blair, R. Jackson, J. Camp, D. Sparrow, L. White, M. Kellogg, R. Gunter, W. Riggsbee, E. Lasater, C. Williams.



DRAGONS



Gene Griffin



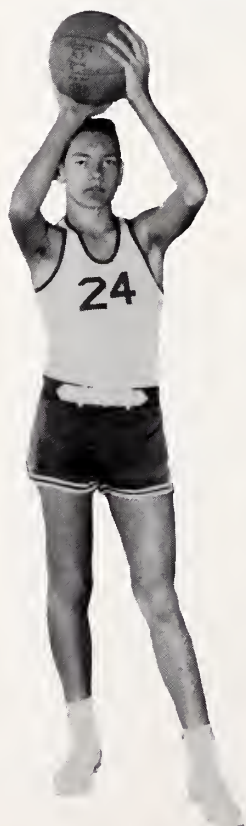
Hollis Freeman



Harry Goodwin



Johnny Blair



Marion Brasington



Dan Hollingsworth



Jim Camp

GO . . . FIGHT . . . WIN . . . DRAGONS

DRAGONETTES



Ann Wright



Melinda Herndon



Faye Crutchfield



Glenda White



Wandra Harris



Leonora Norwood

YEA . . . TEAM . . . FIGHT



M. Huntsman, J. Kidd, A. Harris, B. Council, P. Perry, K. Mathiesen, W. Harris, L. Norwood, G. White, F. Crutchfield, M. Herndon, A. Wright.

Wait!

Score Keepers.

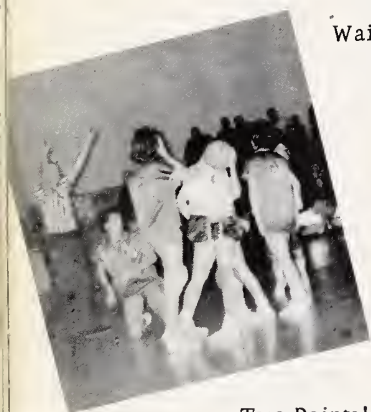
Co-Captains
Melinda
and
Faye

Two Points!

Out of my way!

Oops!

Good Shot!



TRACK
1960

COACH ADRIAN ALLRED



Hustle!



Action!



Easy Does It!



E. Roper, D. Hollingsworth, C. Harris, F. Fuller, E. Lasater, H. Blair, Coach Allred, G. Sanders, J. Ellis, J. Sword, M. Herndon, T. Henley, B. Wilson.



*B
A
S
E
B
A
L
L

1
9
6
0*



Manager Farrell, R. Thomas, A. Gooden, F. Crabtree, G. Griffin, B. Gattis, B. Williams, J. Perkins, M. Herndon, J. Camp, M. Kellogg, H. Goodwin, B. Burns, M. Brasington.



The Line Up!

1, 2, 3 Strikes, You're Out!



Hop To It!



COACH HAROLD DAVIS



Tom and Saul



Now where did I put that chewing gum?



Mr. Roy Cole



Mrs. Joe Torbert
School Secretary



Mrs. Harris



Mrs. Yates



Wild Sophomore!



Between Classes



Contestants

Hungry Seniors



On the Dragon-Wagon

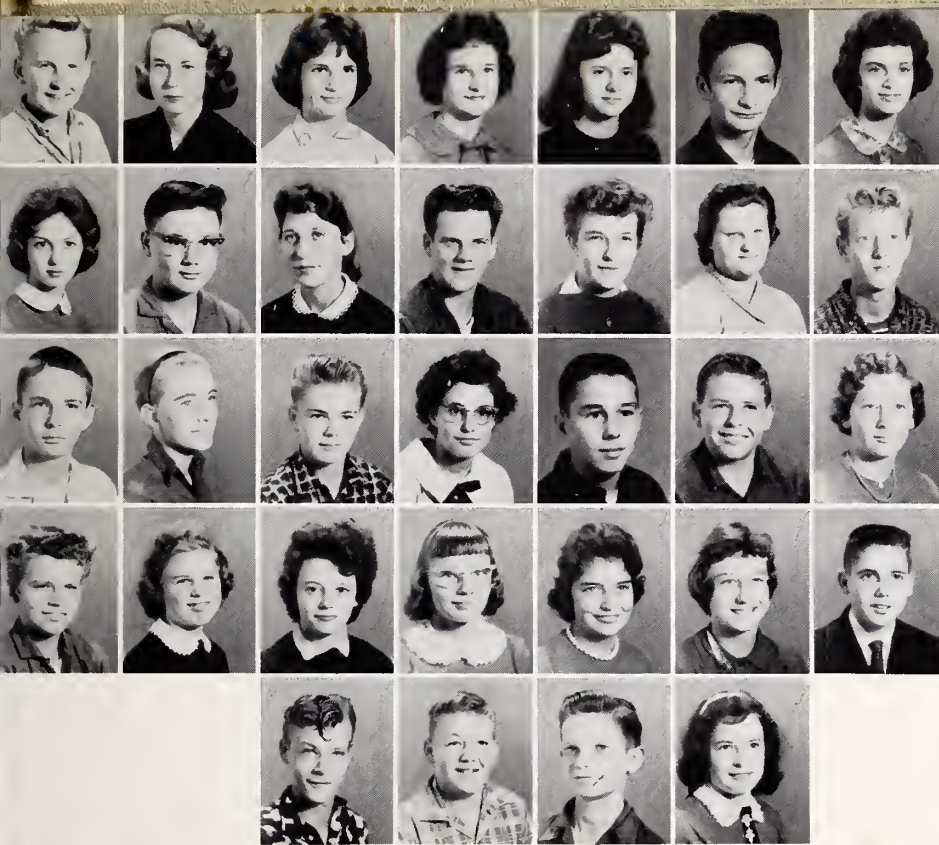


Jobs anyone?





elementary



Kirby Adcock, Margaret Baker, Martha Burns, Bonnie Carpenter, Grace Carroll, Colby Cash, Sharon Copeland.

Rebecca Crabtree, James Currie, Laverne Eubanks, Virgil Farrell, Janet Farrington, Linda Fields, Milton Fields.

Russell Gattis, Donna Harris, Ralph Hearn, Elizabeth Heath, Lewis Herndon, Kenneth Huntsman, Patricia Kellogg.

Larry Newell, Sarah Partin, Erline Pendergraph, Mary Ann Perkins, Barbara Roberson, Peggy Shore, Joe Snipes.

John Staley, Eugene Vaughan, Jimmy Wolf, Betty Wright.



Mrs. Roy Deere

Mrs. Donald Thomas



EIGHTH GRADE

EIGHTH GRADE

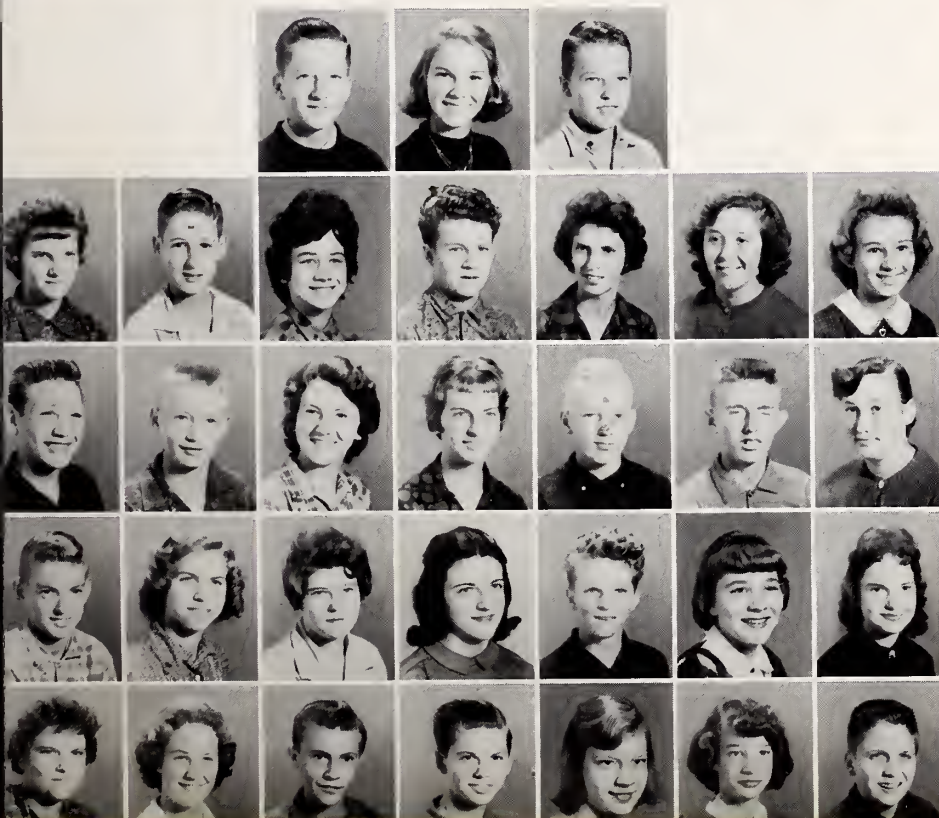
J. C. Barrett, Susan Barrett, Ronnie Calhoun.

Phyllis Cash, David Cates, Linda Clark, Michael Ellis, Linda Farrell, Anne Finn, Evelyn Fuller.

Jimmy Gales, Roger Goodman, Becky Griffin, Sheila Hathaway, Reid Hill, Ronnie Johnson, Joanne Keck.

Bob Knight, Barbara Lewis, Linda Mann, Peggy Lane Medlin, Jimmy Mitchell, Carol Moore, Linda Nunn.

Merrell Pendergraft, Bonnie Perry, Perry Pugh, Jimmy Riggsbee, Peggy Roberson, Bonnie Stone, Jerry Wasko.



Candace Burns, David Canine,
Valinda Clark, H. B. Clegg,
Mackie Deaton, Lydia Ann Farrell,
Teddy Farrell.



Frank Foushee, Mary Lee Griffin,
Fred Hamlet, Margaret Hamlet,
C. W. Harris, Phyllis Harris,
Tami Hultman.



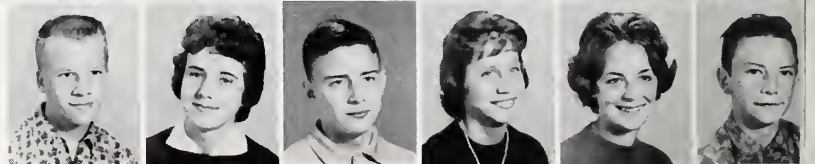
Atlas Johnson, Mary Watson Nooe,
Pierre Oldham, Brenda O'Neal,
Linda Parker, Terry Parker, Frona
Lee Riddle.



Linda Roberts, Ronald Wayne Stone,
Bob Thomas, Nancy Thomas,
Ronnie Vaughn, Richard Waldek,
Dale Webster.



J. A. Webster, Gladys Ann Wheeler,
David White, Frances White, Patsy
White, Steve Williams.



EIGHTH GRADE



Mr. Richard Wilson



Miss Betty Jo Amick

SEVENTH AND EIGHTH GRADE

Kenneth Bouldin, Frankie Cooper,
Joe Dilleshaw, Louise Ellis,
Irene Faircloth, Ronnie Gaines,
Susan Gattis, Betty Sue Gunter.



Jackie Harmon, Dale Horton,
Janet Hunt, Glenette Mann, Manley
Mann, Carlene Meacham, Gregory
Roper.



Ann Straughn, Emory Thomas,
Joe Thompson, Bob Wachs, Dale
Williams, Oren Williams, Katherine
Wright.





Cliff Carter, Randy Ellis, Brenda Eubanks, Mervin Eubanks, Billy Farrell, Donna Goodwin, George Griffin.

Mary Tom Griffin, Martha Gunter, Archie Hackney, J. W. Hill, Worth Holloman, Nannie Jenks, Jerry Johnson.

Joe Justice, Charles Lutterloh, Ronald Mendenhall, J'vaughn Moore, Martha Ann Neal, W. C. Oldham, Lukie Pender.

Jerry Sanders, Larry Smith, Sara Jean Taylor, Michael Thompson, Arnold Torbert, Janice Varner, Richard Walters.

Michael White, Teddy Williams, George Yates.



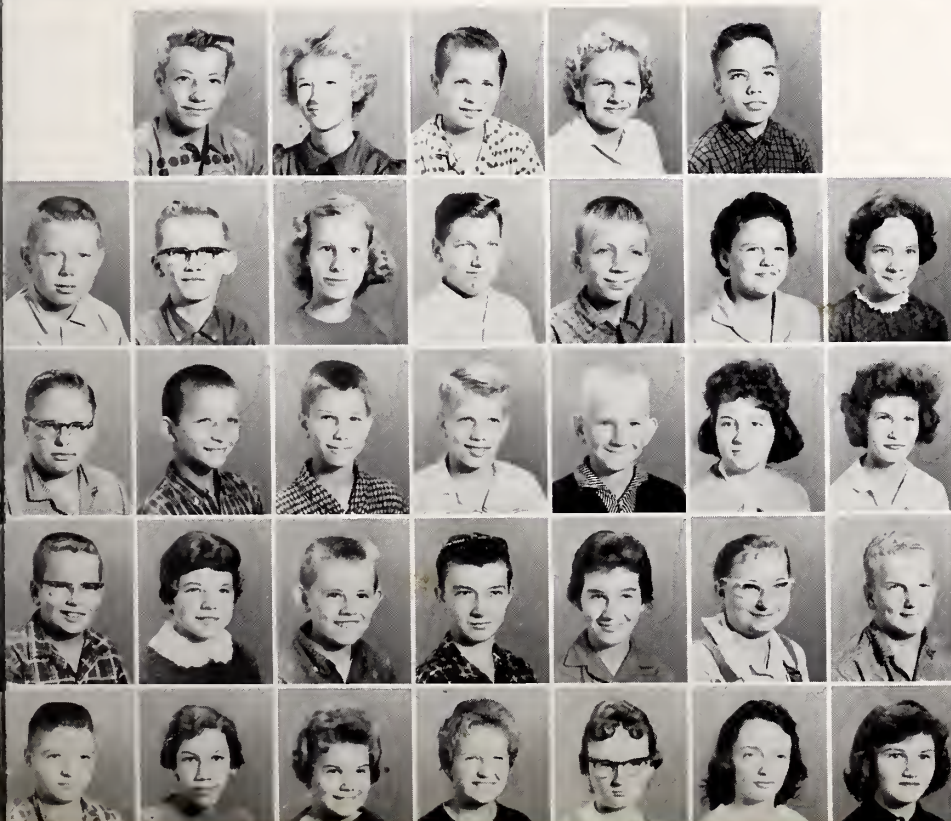
Mr. Alton G. Campbell

Mrs. P. R. Jackson



SEVENTH GRADE

SEVENTH GRADE



Allen Andrews, Beverly Bland, Larry Brown, Sylvia Churchill, Edward Cooper.

Jimmy Dawson, Jimmy Diggs, Glenda Kay Dixon, Richard Eddins, Wayne Foushee, Kathy Gastor, Betty Jean Griffin.

Johnny Herndon, Don Johnson, Johnny Justice, Stanley Long, Steve Mann, Bonnie McCrimmon, Gwen Merritt.

David Morris, Rebecca Parker, Rickey Riddle, Kenneth Ryan, Dare Scott, Lillie Mae Sexton, Randy Smith.

Charles Thomas, Kathy Thomas, Valinda Thomas, Trudy Tyson, Louise White, Shelia Williams, Debby Yates.

Laura Andrews, Douglas Badders,
Ronnie Bowles, Mike Campbell,
Wayne Campbell, Everette Chris-
coe, Eugene Clark.



Tommy Clegg, Johnny Cole, Betty
Jean Council, Marvin Creed, Dennis
Eubanks, Kenneth Eubanks, Trudy
Gastor.



Earl Gunter, Linda Hearne, Tim
Hogan, Frances Jenks, Glenn
Johnson, Jimmy Jones, Sarah Josey.



Renny Kremer, Raymond Mann,
Margaret McAllister, Jerry Moore,
Ronald Moses, Kenneth Norwood,
Peggy Riddle.



Jenette Shore, Gregory Smith,
Jamin Wood, Sharon Woody.



SEVENTH GRADE



Miss Suzanne Jernigan

Mrs. Alton G. Campbell



SIXTH GRADE

Debrah Brown, Lee Buchanan,
Sandra Cash, Freddy Chrisco,
Savon Cole, Samuel Dilleshaw.



Ann Elixson, Stanley Eubanks,
Bonnie Farrell, Van Farrell, Glinda
Garrett, James Goodman, Larry
Goodwin.



Leonard Gunter, Brenda Hackney,
Margaret Heath, Rose Hill, Ronald
Horton, Larry Jacobs, Stanley Jones.

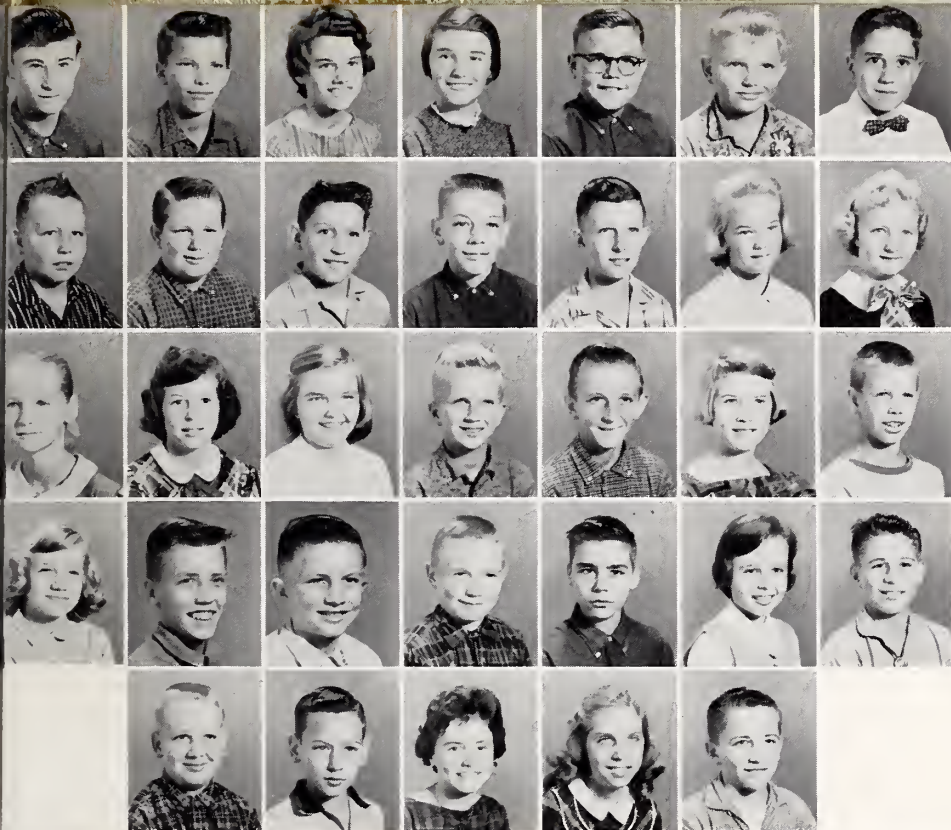


Archie Lanius, Janie Mann, Dan
McDaniel, Gail Parks, Wesley
Petty, James Potts, Bob Reeves.



Larry Ryan, Joanne Smith, Allen
Taylor, Deborah Vaughan, Fred
Waldeck, Charles Wheeler,
Norma Wright.





James Baker, Mike Blackwelder,
Betty Sue Boone, Lora Ann Bowling,
Alton Campbell, Jr., Andy Canine,
Kenneth Crabtree.

Van Creed, Barry Ellis, Charles
Eubanks, Bryan Farrar, Steve
Farrell, Willa Farrington, Vickie
Freeman.

Vivian Green, Shirley Hill, Cassie
Horton, Tommy Hughes, Gary
Johnson, Wincie Jane Johnson,
George Justice.

Kathy Kidd, Billy Kremer, Bobby
Marcinowski, Edward McLaurin,
Derry Moore, Nancy Perry, Jerry
Reeves, Jr.

Joe Riggsbee, Randy Roberts, Jean
Sanders, Joan Wasko, Mitchell
Williams.



Mrs. Clyde McCollum

Mrs. Peter Reynolds



SIXTH GRADE

SIXTH GRADE



Dennis Arnold, Kendall Bullington,
Gwynne Burke, Wilma Clark, Tim
Cooper, Larry Downing.

Garry Eubanks, Jerry Eubanks,
Nancy Foushee, Ricky Frye, Sue
Goodman, Doug Gunter, Annette
Heath.

Jerry Henderson, Karen Hinds,
Patricia Jenks, Allie Johnson,
David Knight, Jimmy Lane, Reid
Markham.

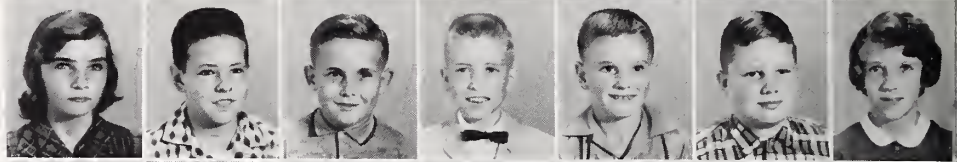
Robert Lewter, Carol Moses,
Herbert O'Daniel, Frankie Pender-
graft, James Reeves, Willis Roberson,
Garry Sears.

Elsbeth Senkiw, Carolyn Snipes,
Carol Triplett, Brenda Walker,
Elton Wheeler, Carolyn Williams,
Gene Womble.

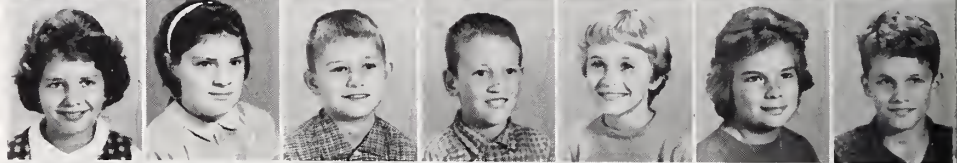
Mary Ann Andrews, John Atwater,
Donna Bordeaux, James Bouldin,
Gary Bowles, Reid Bright, Judson
Dark.



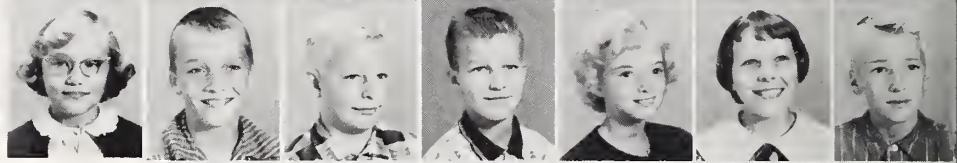
Annie Ellis, Ronnie Ellis, Neil
Flynt, Robert Harris, Danny Jen-
kins, Mike Johnson, Wanda Jones.



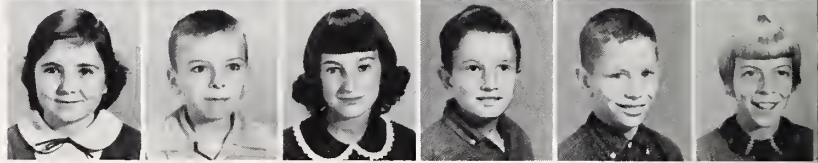
Doris Lashley, Jennifer Mann,
Stephen Mann, Earl McLaurin,
Candace Meacham, Linda Oldham,
Thomas Parks.



Kay Reeves, William Roberson, Jr.,
D. W. Smith III, James Lee Smith,
Linda Tuck, Mary Alice Vaughn,
William Walters.



Ava Lee Wheeler, Mike Windham,
Lillian Wolfe, David Wood,
Ronald Eugene Woody, Barbara
Young.



FIFTH GRADE



Mrs. George Andrews



Miss Mabel Cheek

FIFTH GRADE

Brenda Allen, Dennis Andrews,
Patricia Carpenter, Cathy Clark,
Jerry Clark.



Johnny Clark, Clifton Collins,
George Cooper, Annie Ruth
Council, Gordon Eubanks, Rupert
Eubanks, Edith Hatley.



Ronnie Hatley, Steve Keck, Eddie
Kremer, Margaret Lanus, Ann
London, Gail Norwood, Mary
Norwood.

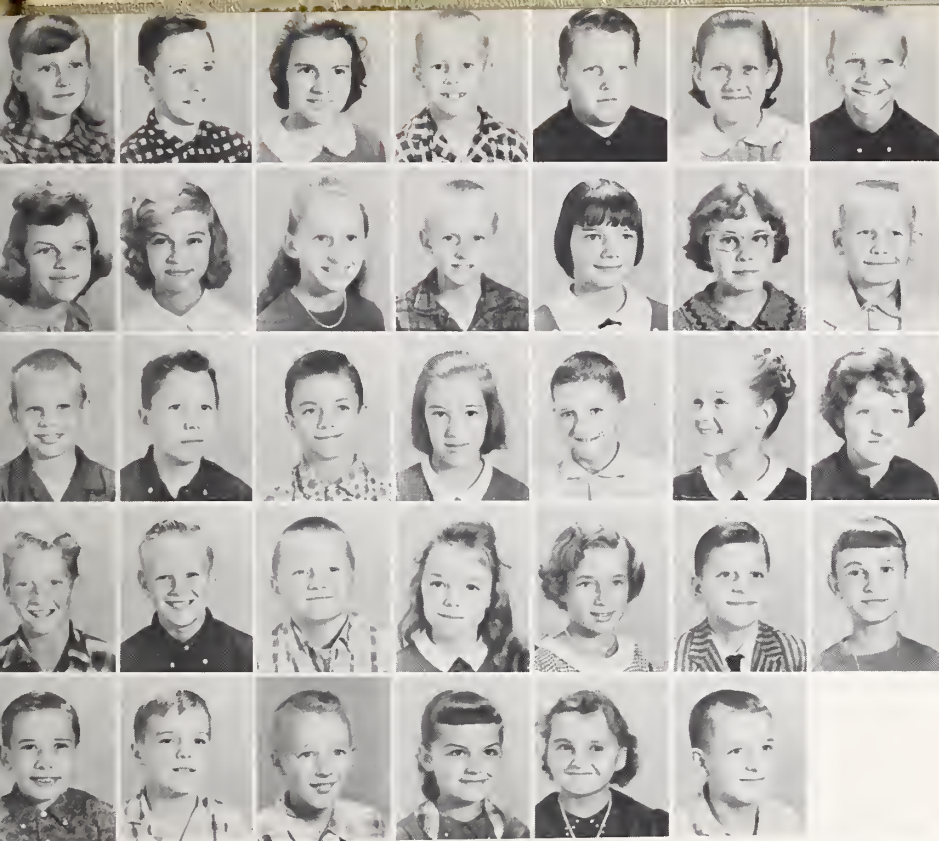


Joan Oldham, Pam Parker, Lou
Ellen Piercey, Dan Reeves, Dan
Robinson, Imtraud Senkiw,
Ronald Smith.



Donald Vickers, Beverly Vickers,
Scott Whitaker, Taylor White,
David Womble, Pam Woods, Pat
Woods.





Ada Lynn Andrews, Carlie Ray Baker, Merle Bouldin, Charles Brewer, J. E. Campbell, Carolyn Cooper, Charles Diggs.

Sadie Farrell, Betty Finn, Amanda Gainey, Ray Green, Bobby Hackney, Martha Hogan, Larry Howard.

Michael Jackson, Gary Jacques, David Keck, Sharon Kellogg, Stuart Lasater, Linda Mann, Phyllis Mann.

Timothy Mitchell, Dennis Parker, James Phillips, Edna Riddle, Emily Roberts, Keith Roper, Jackie Seagroves.

Martyne Self, Johnny Waldeck, Ronald Walters, Kay Webster, Patricia Wood, Billy Wright.



FIFTH GRADE

Mrs. Jimmy Collins

Miss Lina B. Moore

FOURTH GRADE

Alana Atwater, Dave Blackwelder, Brenda Bland, Cathy Bolejack, Mary Campbell, Danny Chrisco, Wilma Chriscoe, Patricia Currie.

David Dalton, Donald Dalton, Gayla Dilleshaw, Deborah Durham, Shirley Eubanks, Roy Eubanks, James Farrar.

Dan Fields, Louene Goodman, James Gordon, Diane Gregory, Thomas Griffin, Benny Gunter, Carol Harward.

Ernest Hinds, Elaine Horton, Stanley Horton, Jean Jenks, Jerry Long, James May, Paulette Meacham.

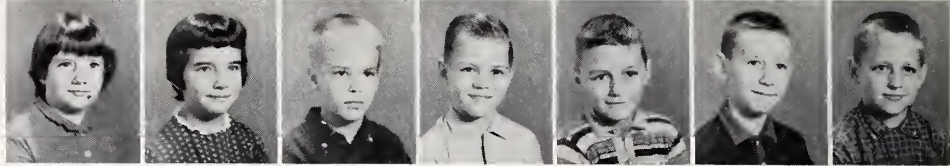
Carolyn Nooe, Robert Parks, Donnie Riddle, Jeanine Riddle, Betty Jo Shore, Arthur Smith, Ted Williams.



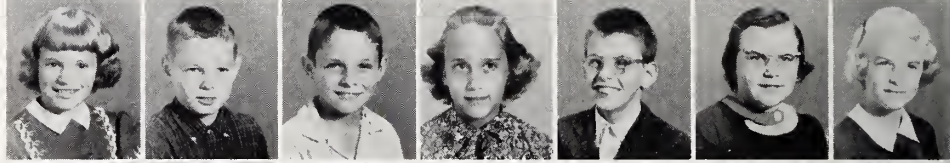
Peggy Bland, Linda Boone, Hope Bouldin, Paul Cash, Don Cooper, Ruth Cotten, Dona Durham.



Rosie Farrell, Sheila Farrell, Jesse Fearrington, Billy Goodman, Danny Harmon, Mike Harward, Tommy Hearne.



Pat Henderson, Vester Horton, Mickey Howell, Cheryl Hudson, Allen Jenks, Bertha Mann, Ellen Mann.



Larry Mann, Joette Markham, Teresa McLaurin, Virginia Moore, Polly Parrish, Kay Petty, Linda Sue Roberson.



Ralph Sanders, Johnny Shaw, Russell Thomas, Bonnie Tysor, Henry Tudor, Debra Wagner, Esther Wheeler.



Clara Lynn Whitaker

FOURTH GRADE

Mrs. Lucille Sears
Mrs. Pauline W. Womble



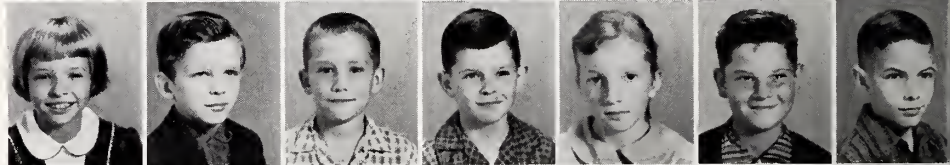
FOURTH GRADE

Keith Allen

John Badders, Marie Barrett, Donnie Bradley, Kathy Brafford, Vernon Braxton, Rhonda Buchanan, Don Cheek.



Charity Clark, Carl Collins, James Davenport, Edward Duke, Brenda Ellis, Ronald Farrell, Don Fuller.



Odell Grumble, Steve Hearne, Kay Herndon, Steven Hinds, Kathy Horton, Bruce Ihme, Martha Mann.



Janet Mason, Mike McAllister, Janice Meacham, Rene Moore, Mike Poe, L. D. Riddle, Donnie Roberson.



Bonita Shropshire, Ruth Sparrows, Cecil Stone, Teresa Titus, Ava Sue Tripp, Christine Walters, Martha Windham.





PITTSBORO PRIMARY BUILDING



Mrs. Marshall Atwater

FIRST GRADE

George Barrett, Mikel Carroll,
Diann Churchill, Larry Crabtree,
Johnny Crisco.

Candy Finn, Scottie Frye, Dennis
Hearne, Edward Hendrix, Joe
Jackson, Danny Lassiter, Frances
Lawrence.

Reid Moore, Brenda Ragan, Gilbert
Riddle, Bobby Roberson, Bobby
Shore, Frankie Snipes, Debra Swaney.

Timothy Taylor, Bobby Tripp,
Shelby Jean Tripp, Stanley Wagner,
Teresa White, Robert Williams,
Stanley Williams.



Steve Barker, Nancy Boone,
Beverly Calhoun, Phyllis Campbell,
Pamela Cash, Elbert Clark, Gerald
Clark.



Thomas Downing, Carolyn Good-
man, Patricia Griffin, George
Hackney, Sharon Hearne, Vickie
Hearne, James Henderson.



Lynn Mann, Marty McBane, Ralph
O'Daniel, Elaine Ratliff, Vickie
Seagrove, Frankie Suttles, Kay
Taylor.



Ronald Triplett, Sylvia Triplett,
Roy Walters, Deborah Williams,
Sarah Wolf, Donald Womble.



FIRST GRADE



Mrs. C. C. Lindley

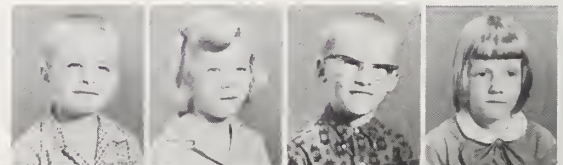


Mrs. Lena M. Waters

FIRST GRADE

(No pictures for Barbara Justice and
Terry Horton)

Glenn Braxton, Carol Capps, Fred
Diggs, Deborah Eubanks.



Jean Farrar, Gene Farrell, Pamela
Farrell, Pat Farrell, Barry Freeman,
Sylvia Griffin, Billy Hamlet.



Rickey Jacques, Denise Kidd, Jo
Lanier, Jack Lassiter, David Mann,
Scott Meredith, James Oldham.



Lisa Parrish, Billy Petty, Dean
Riggsbee, Fred Riggsbee, Martha
Roberts, Leon Williams, Mark
Windham.





Merwin Arnold, Ronald Churchill, Jack Clark, Earl Dawson, Louise Ellis, Katherine Gales, Evalyn Griffin.

Charlotte Hearne, Robert Hughes, Billy Johnson, Paulette Johnson, Jimmy Marcinowski, Bill Mitchell, Sandra Faye Moore.

Gearl Moses, Eugene Oldham, Jerry Poe, Dwight Ryan, Maurice Sanders, Jim Titus, Cathy Tripp.

Diane Tripp, Teresa Tuck, Terry Tysor, Deborah Webster, Robert White, Eddie Williams, Stephen Williams.

SECOND GRADE

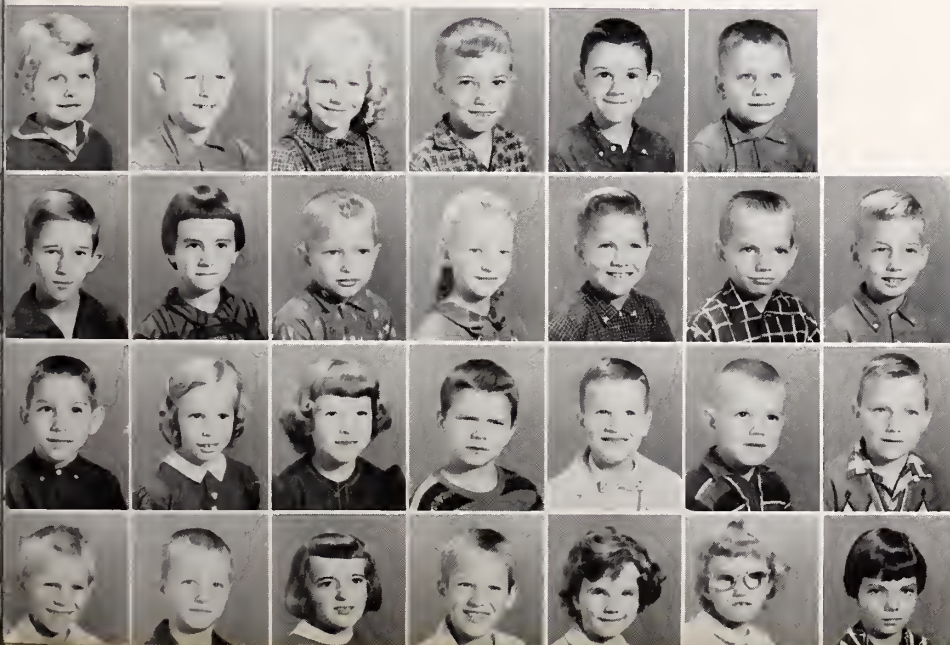


Mrs. Preston Harward

Mrs. Lucille Horton



SECOND GRADE



Deborah Allen, James Arthurs, Pamela Arthurs, Charles Brame, Robert Canada, Danny Chriscoe.

Howard Cole, Brenda Covert, Joe Crawford, Jane Goodman, Henry Goodman, Eddie Haithcock, Bob Harris.

Bruce Keck, Sherry Lewis, Sharon Mitchell, Earl Moses, John Oldham, Kieth Partin, David Roberson.

Eugene Swaney, Hal Wagner, Christine Waldeck, Kerry Walters, Kathy Williams, Cynthia Wood, Vickie Woody.

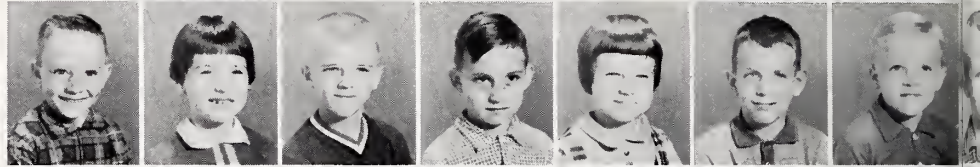
Richard Amos, James Atwater, Lolly Blair, Kathy Breedlove, Kay Brewer, Carlyle Campbell, Deitra Carter.



Winfred Cheek, Scott Cole, Susan Dale, Ellen Davenport, Eddie Ellis, Ted Griffin, Wayne Hackney.



Stuart Hill, Chertsey Hinds, Ricky Johnson, Stanley Johnson, Betsy Kidd, Don McNeill, Wayne Meacham.



Pamella Mitchell, David Parker, Karen Ratliff, Melissa Reeves, Pamela Self, Ella Senkiw, Linda Shaw.



John Sparrow, Ricky Tripp, Susan Vaughn, Jimmy White, Janet Williams.



SECOND GRADE



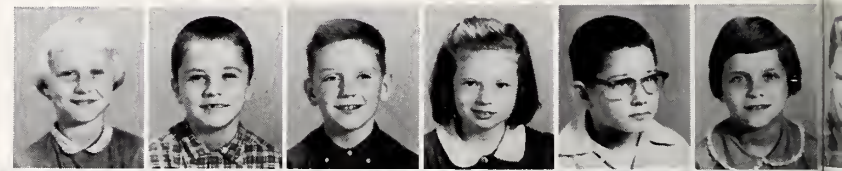
Mrs. E. E. Williams



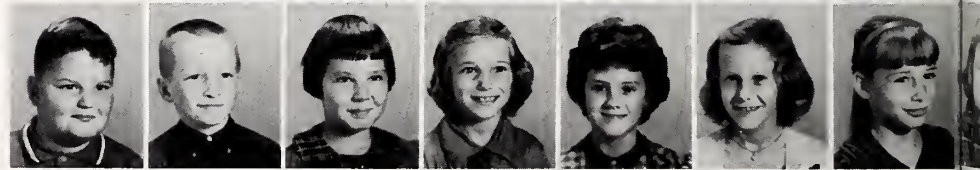
Mrs. T. W. McBane

THIRD GRADE

Donna Allen, Larry Allen, Johnny Bright, Joan Campbell, Ronald Cheek, Margaret Collins.



Kent Cooper, Johnny Diggs, Nora Ellis, Linda Gunter, Reba Gunter, Bonnie Hackney, Linda Hill.



David Jones, Wayne Josey, Beth Markham, Jesse McBane, Donald Ray Merritt, Linda Mitchell, Nancy Neal.



Donald Parker, Sarah Reeves, William Smith, Linda Stone, Kenneth Triplett, Cherene Whitaker, Michael Woody.





Shelia Amos, Glynn Blackwelder, Lynn Blackwelder, Connie Blaylock, Gloria Bouldin, Linda Burke, Melvin Clark.

Cathy Dixon, Ray Dixon, Beth Dominick, Wayne Eubanks, Kay Farrell, Nonie Farrell, Margaret Fearington.

Carey Greene, Cathy Jo Harris, Dan Harris, Ann Heatherley, Carlis Johnson, Tiny Keck, Cathy Lassiter.

Kathy Lassiter, Phil McNeill, Jerry Partin, Dick Reeves, Alice Riddle, Linda Gail Sanders, Dale Snipes.

Edward Straughn, Cathy Ann Vaughn

THIRD GRADE



Mrs. W. C. Oldham

Mrs. Roy Williams



THIRD GRADE



Julia Atwater, Sue Bowles, Michael Cates, Vickie Diggs, Vivian Dixon, Dianne Farrell.

Janet Farrell, Jimmy Goodman, Barbara Hackney, Sheila Hicks, Frankie Houser, Kay Jones, Jimmy Lewter.

Judy Lewter, Louise Manring, Robert Manring, Cindy Mathiesen, Lee Pendergraph, Berry Petty, Doris Roberson.

Debra Seagroves, Bonnie Titus, Alfred Waldeck, Wayne Wheeler, Richard Whitfield, Jean Williams, Ray Womble.



COMPLIMENTS OF

PETE'S MARKET

THOMPSON & VINCENT, INC.

REALTORS

Members:
National Institute of
Real Estate Brokers



Farm Specialists

Timberlands

Appraisals

National Institute of
Farm Brokers

19 Hillsboro St.
Pittsboro, N. C.
KI 2-4771

"LICENSED TO SERVE YOU BEST"



MIDWAY PLUMBING SERVICE

"For Your Every Plumbing Need"

KI 2-5021

Pittsboro, N. C.



SHOP HERE ONCE, YOU'LL SAVE HERE ALWAYS!

Fine Groceries and Meats at Popular Prices!

**PITTSBORO CASH GROCERY
DISCOUNT SHOE CENTER**



BANK OF PITTSBORO



SAVE WITH SAFETY





WEBSTER'S POULTRY CO.



Phone KI 2-2021 Pittsboro





A. W. GOLDSTON AND SONS LUMBER CO.

Wholesale and Retail

Phone KI 2-5241

We Buy Standing Timber

ARTISTIC WEAVING CO.

DIVISION-CHATHAM MILLS, INC.

World's Largest Manufacturer of
Woven Labels

Pittsboro, N. C.

Compliments of

WILSON'S BARBER SHOP

ROSCOE WILSON
EUGENE BARKER
Barbers

Pittsboro, N. C.

Compliments of

PITTSBORO DRY CLEANERS, INC.

LACY R. BURNS, Mgr.



KI 2-3821 Pittsboro, N. C.



Compliments
of

MANN IMPLEMENT

Massey-Ferguson - Oliver
New Holland
Sanford, N. C.
SPring 4-3351



E. B. STONE FINANCE CO.
OF LEXINGTON, INC.

Small Enough to Know You
Large Enough to Serve You

Auto Loans
Financing and Refinancing
DWIGHT W. BEAN, Manager
Siler City

Compliments
of

McCRIMMON DRUG COMPANY

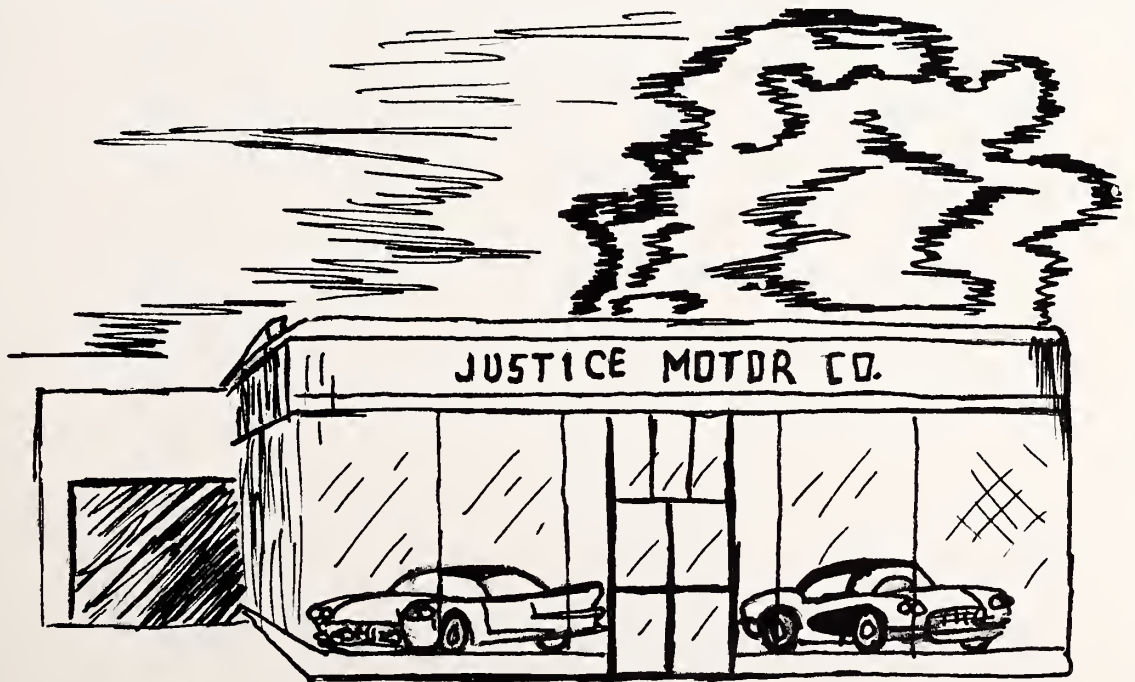
Pittsboro, N. C.

C. B. PERRY

Groceries - Gas - Oil

Phone KI 2-3161

Pittsboro, N. C.



Cadillac

Oldsmobile

Chevrolet

JUSTICE MOTOR CO.

Compliments
of

DR. MAXINE H. COX

OPTOMETRIST

Phone KI 2-3541

Pittsboro

PITTSBORO

BEAUTY SHOP

Phone KI 2-4161

Owner

FRANCES WHITAKER

Sanford Rd.

WILLIS BARRETT
Conservation Pulpwood Dealer

Pulpwood - Saw Timber

Timber Lands

Moncure Road

Approved Forestry Free Marking
Practices Service

Keep North Carolina Green



LEWIS BODY SHOP

Phone KI 2-3971

Body and Fender Repairs

24-Hour Wrecker Service

G. R. WILLIAMS



PURE OIL

SERVICE STATION

Groceries and Service

Gas and Oil

Crankcase Service

Batteries - Accessories - Tires - Tubes

Highway #501 and 15

Phone KI 2-9692





COOPER-HARRIS AUTO SALES

Fertilizers Farm Supplies

FARMERS EXCHANGE, INC.

Siler City, North Carolina

Feed

Seed

W. GORDON BURNS

ESSO SERVICENTER



Washing

Greasing



Compliments of

McNEILL & ROBERTS

BUILDING SUPPLIES

Phone KI 2-3891

Pittsboro

Compliments of



VAUGHN TRACTOR &

EQUIPMENT CO.

W. H. FREEMAN

Pulpwood
Saw Timber
Timberland

P.O. Box 27
Pittsboro, N. C.

Phones:

Day Night
KI 2-3001 KI 2-5761

PITTSBORO HATCHERY, INC.

Finest Quality Chicks
C. M. LINDSEY, JR. AND SR.,
Owners
Pittsboro, N. C.

BETTER GROCERIES



L. M. DURHAM GROCERY

Bynum, N. C.

Compliments of

**PITTSBORO
ICE AND FUEL**

HEARNE'S OLD FASHION

Pit-Cooked Bar-B-Q
Hot Off the Pit

Phone KI 2-3606

40 Years
Experience



Box 45

Bynum, N. C.



Compliments of

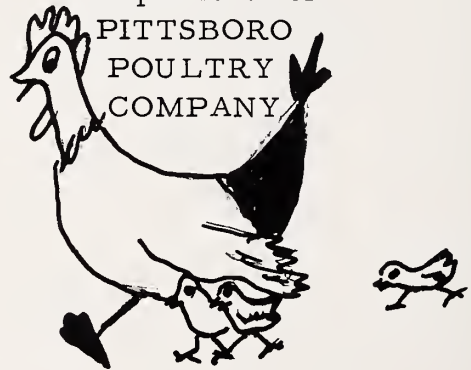
MATHIESEN CLINIC

CHATHAM DAIRIES



Phone KI 2-4021
Pittsboro, N. C.

Compliments of
PITTSBORO
POULTRY
COMPANY



Compliments of

McLAURIN GROCERY
KIRK'S USED CARS
LOWE'S GROCERY
HUNT'S DEPT. STORE
HARRY P. HORTON
and E. B. HATCH
HENDERSON SERVICE STATION
CLARA SEWING SHOP



POPE'S, INC.
of Pittsboro

Quality Merchandise at
Low Prices

We Are Never Undersold

**L. R. SPENCE
CROSSTIE CO.**

KI 2-3924 Pittsboro, N. C.

FARRELL'S GULF SERVICE



Phone KI 2-9491
Pittsboro, N. C.

**TOWN & COUNTRY
SUPERETTE**

Groceries, Produce, and Meats

J. C. CRUTCHFIELD, Owner

Thompson St.
KI 2-4331 Pittsboro, N. C.



LEWIS COOPER

BARBER SHOP

Bynum, North Carolina



Watch Repairs

Jewelry

Fountain Service

**ROBERT'S SODA
AND JEWELRY SHOP**

Pittsboro, N. C.

ARTHUR'S MEN'S STORE

Phone KI 2-4751
Pittsboro, N. C.



your key . . .
TO GREATER VALUES



IS OUR
FIRST
THOUGHT

"Gas for Less"

McIVER SERVICE AND GROCERY

Pittsboro, N. C.

GENERAL  ELECTRIC



ECONOMY FURNITURE CO.

C. L. SHAW, Proprietor

G. E. Appliances

R. C. A. Radios





EDD'S RESTAURANT

Highway 64

SH 2-4411

Compliments

of

PET DAIRY PRODUCTS



**MODERN
APPLIANCE CENTER**

Your G. E. TV Dealer

Frigidaire Appliances

Phone KI 2-5511

Pittsboro



HENRY BLAIR

Hardware - Building Materials
De Voe Paints
Myers Water Systems
Westinghouse Appliances

22 Hillsboro St.

Phone KI 2-3051

Pittsboro, N. C.

PITTSBORO FLORIST

POLLY AND JIM FLYNT

Phone: KI 2-5371

Night KI 2-2852



CITY ELECTRONIC SHOP

Television * Radios
Tape Recorders
Hi-Fi Stereophonic
Appliances
Sales and Repairs

WESTERN AUTO SALES AGENCY

Phone KI 2-3291
102 Hillsboro St.



Be Progressive...
Shop Progressive

Quality Groceries at Low,
Low Prices

When You Shop at Your Friendly

PROGRESSIVE STORE

Pittsboro, N. C.

We Give F. S. Gold Stamps
With Each Purchase Too!

Central Carolina

FARMERS EXCHANGE, INC.

"A Better Market!"

We Buy and Sell for Farmers

Hot Point Appliances

Armstrong Tires

Prest-O-Lite Batteries

Pittsboro, N. C.



HENRY BLAIR LAUNDROMAT

Your Licensed Westinghouse Laundromat



Best Wishes
to Class of '61

HARRIS & FARRELL'S

Groceries
and
Dry Goods

Phone KI 2-2694
Bynum, N. C.

North Carolina's Number 1
Family of Fine Dairy Products

LONG MEADOW FARMS

Call for Home Delivery



Esquire Socks

Holeproof Hosiery

Fruit-of-the-Loom Socks

Bachelors' Friend

Mojud Hosiery - Kayser Hosiery

Schiaparelli Stockings

Phoenix Hosiery for Men and Women

Supp-hose for Men and Women

Manufactured by

**KAYSER-ROTH
HOSIERY COMPANY, INC.**

Burlington

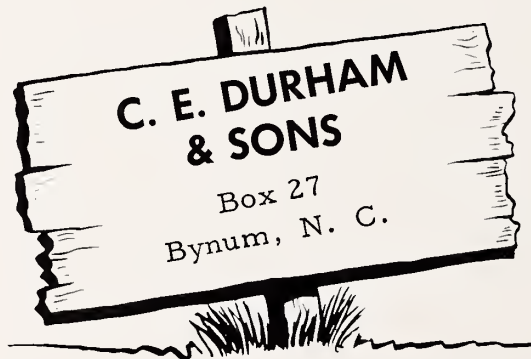
North Carolina



EUBANKS ESSO SERVICENTER

KI 2-2698

Pittsboro, N. C.



GENERAL MERCHANDISE

Dial KI 2-9699



HENRY'S RESTAURANT

Phone KI 2-2111

Pittsboro, N. C.

APEX CLEANING COMPANY

It Makes Us Happy
to Serve You

Try Our Coin Operated
"Speed Wash"

Phone EL 4-5251

Apex, N. C.

We, the annual staff of the '61 DRAGONIAN, wish to express our thanks to the merchants who helped make our annual possible.

The Annual Staff





As you close this Dragonian, your treasure chest, we hope the memories it contains will remain precious to you throughout your life. We, the Annual Staff, had this gem for a year, and it became very dear to us. It is yours now, and we hope you enjoyed it.

THE FOUR YEARS IN HIGH SCHOOL OF THE CLASS OF '61

In the early fall of '57, a mob of awkward, young innocents ventured into the deep, dark realms of P.H.S. There were many moments to remember, but most of all we recall . . . Confusion in arranging schedules . . . Sewing on cotton in Home Ec. and making squirrel boxes in Ag. . . . Green bows, lollipops, and "hopes of riding as seniors" in the Kids' Day Parade . . . The Freshman Christmas party which was so hot that the gym stayed heated for a week. . . We moved into our Sophomore year with pet frogs, worms, grasshoppers, and restless snakes . . . "ERKSURLLY" we were rather QUITE in World History . . . The Jr. Sr. in which some of our girls served as waitresses, wearing kimono's tailored by none other than themselves . . . We bombarded into our Junior year portraying magazine salesmen; we did a pretty good job too . . . We had oodles of fun working each theorem in Geometry with Miss Ethel . . . Our unknowns in Chemistry were unknown to us also . . . Measuring for class rings . . . Our own Jr. - Sr., "en francais" . . . Class Night and the daisy chain . . . Here we are; our Senior and final year at P.H.S. . . . Winning first prize for our Senior float in the Kids' Day Parade . . . Walking (not riding) and licking lollipops as we did so many years ago . . . Ordering invitations, measuring caps and gowns . . . Senior Play . . . Junior-Senior . . . Class Night . . . Graduation of the largest class yet at P.H.S. . . . The Class of '61 says good-bye.



Lots of luck to a
real nice girl. Hope
she keeps up her
good work.

Lots of luck,
Linda,
Boone

Peggy?

You are a real nice girl
and work so well. Hope
you keep the good work.

Lots of Love,
Hope
Bouldin

Peggy,

When you get
married and have twins
Don't call on me for safety
pins.

Clara Lynn

Lots of luck
and lots of love
to a nice friend

Rosie

Lots of luck

Lay

Just think
to
men

When you get married and live
in a tree well and you
are a nut. C. C. D.

Love,
Lay

Best of
luck to a
real nice girl.
Love
Down

^{Peggy}
When I get married
and live down South,
Remember me
And my big mouth,
Wish you lots of luck through school,
Don't let Mrs. Sears call you down
too much, and fail no grades,
Larry Mann

Best of wishes to a real nice girl.
Hope you have good luck always.

Love,
Joette

~~10~~
Peggy
When you get married
and live in China
Remember me in North Carolina

Love
Bonnie Tyson

Peggy,
When you get married and be
the ~~happiest~~ happiest girl
in the world. And have a lot
of children. May you always
remember me.

Love
Linda
Sue

Peggy
A real sweet
girl. Best wishes
always. Dorra

Peggy,

When you married I know you
will have 3 children. But come to
see me and bring your children.

Love

Esther Wheeler

A smart kid who was ~~love~~ love sick
Over and is real cool.

Love,

James Russell Thomas

Peggy Jo Bland

Peggy, you have
been a real
inspiration to me
because of doing your
work so well. Just keep on
"doing well"! I wish for
you much success and
happiness. Mrs. Sears

Peggy,
Best of Luck
Always to a really
sweet girl and my
favorite cousin.

Hold the best of every thing for
you always.
Don't let anything get in
your way in school educate others
with what you have learned.
"Keep up the good work."

BE GOOD ALWAYS!
Don't forget me
how far we are apart.
KEEP UP THE GOOD DIANO
PLAYING TOO.

Your Loving Cousin,
Barbara

When this you see
Remember me.

"Good Luck"
in
1961-62

Don't kick in front of the
Love is blind
the "airit"
but neighbors

Best every body will take
this upside down!

Down!

Remember the girl in the
town
the city.
Remember the girl in the
town
Remember the girl in the
town
Remember the girl in the
town

Peggy Jo Bland

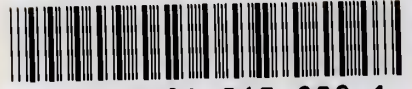
25

9





CHATHAM COMM. LIB.



7607 0091 065 808 1