





Sally Bland Sally Bland

1963





*Gift of Renny Kremer*  
2013



Sally Bland

Sally Bland



*The nineteen hundred and sixty-three*



*Dragonian*

*Produced Annually*

*by the*

*Beta Club*

*of*

*Pittsboro High School*

*Pittsboro, North Carolina*



# Foreword

The members of the annual staff have put many hours of thought and labor into the production of your yearbook. We wish to express our appreciation to the students, the faculty, and the merchants for their co-operation so willingly given to the staff.

It is our hope that the '63 DRAGONIAN will be one of your cherished possessions and that in the coming years you may relive the enjoyable moments which you had at Pittsboro High School.



*Seniors*





*Sports*



*Our Town*







## *Dedication*

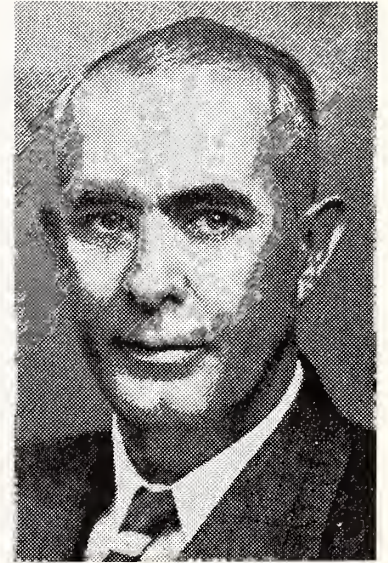
The DRAGONIAN staff wishes to express its sincere appreciation to a beloved teacher who has given her time and interest to each and every student at Pittsboro High. Her services as teacher, friend, counselor, and advisor to our student government have been invaluable. We hereby humbly and respectfully dedicate this, the fourth volume of the DRAGONIAN, to MRS. MARY SHOTTS.







ROY L. KIDD  
Principal



JASON DEYTON  
Superintendent of Schools

*Administration*



LOCAL SCHOOL BOARD  
Thomas L. Reeves, Chairman; Earl Parker, Talmadge Johnson, Lewis Cooper, Roscoe Farrell, Jr., Secretary.

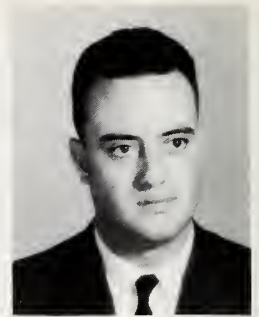
# Faculty

Student-teacher conferences...red marks...dusty boards...pop quizzes...P.T.A.

ADRIAN ALLRED  
B.S., High Point College  
Science and Physical Education  
Athletic Coach



BLAIR E. BEASLEY, JR.  
A.B., Pfeiffer College  
English  
Debate Club, Cheerleaders  
Junior Sponsor



GENE T. BROOKS  
B.S., East Carolina College  
Social Studies and Math  
Freshman Sponsor

FRANK M. HAMILTON  
B.S., Appalachian  
Science  
Science Club  
Sophomore Sponsor

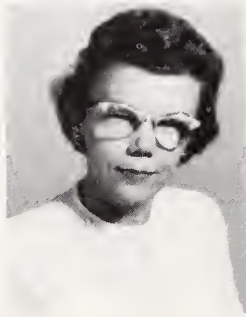


MRS. SALLIE HORTON  
A.B., Meredith College  
Home Economics  
F.H.A.  
Sophomore Sponsor

H. G. JOHNSTON  
B.S., Mississippi State College  
F.F.A.  
School Ground Improvement



MRS. H. G. JOHNSTON  
A.B., W.C.U.N.C.  
Math  
Magazine Campaign  
Junior-Senior Banquet  
Junior Sponsor



MRS. ROY KIDD  
A.B., U.N.C.  
French and English  
Beta Club and DRAGONIAN

MRS. MARY WARD RIGGSBEE  
A.B., U.N.C.  
English and Library  
Dragon Observer  
Senior Sponsor



MRS. MARY A. SHOTTS  
A.B., University of Alabama  
M.A., Columbia University  
Social Studies, Science, Guidance  
Student Council and Astronomy Club  
Freshman Sponsor



MRS. ANNIE W. MAY  
B.S., East Carolina College  
English and Physical Education  
Senior Sponsor



MRS. JIMMY THOMAS  
B.S.S.A., W.C.  
Commercial  
Sophomore Sponsor







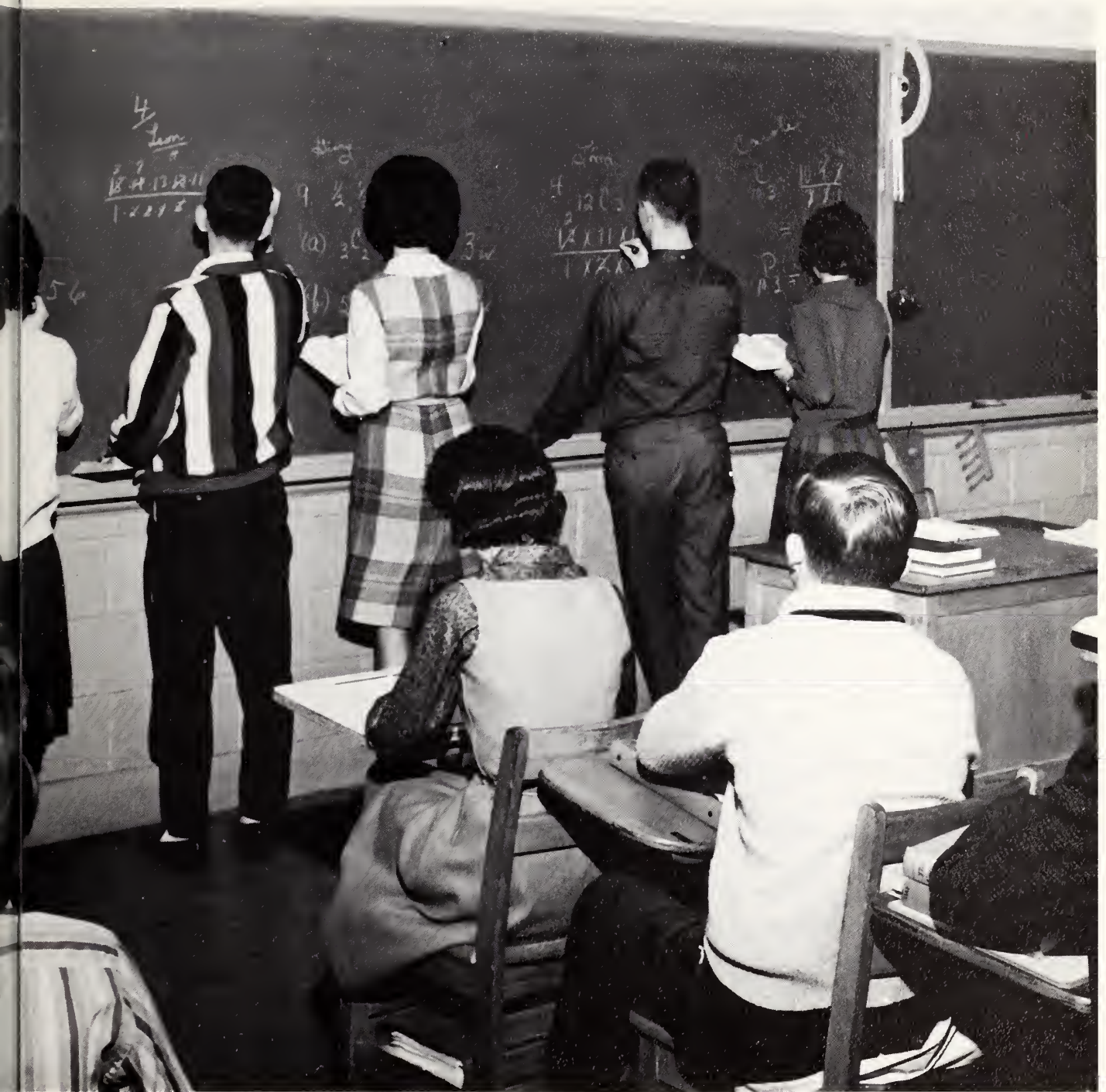
To Mr. J. S. Waters who has faithfully served as teacher, principal, and superintendent in Chatham County for many years, we, the DRAGONIAN staff, wish to express our sincere gratitude.

# Seniors



*These are the  
spent four  
and work*

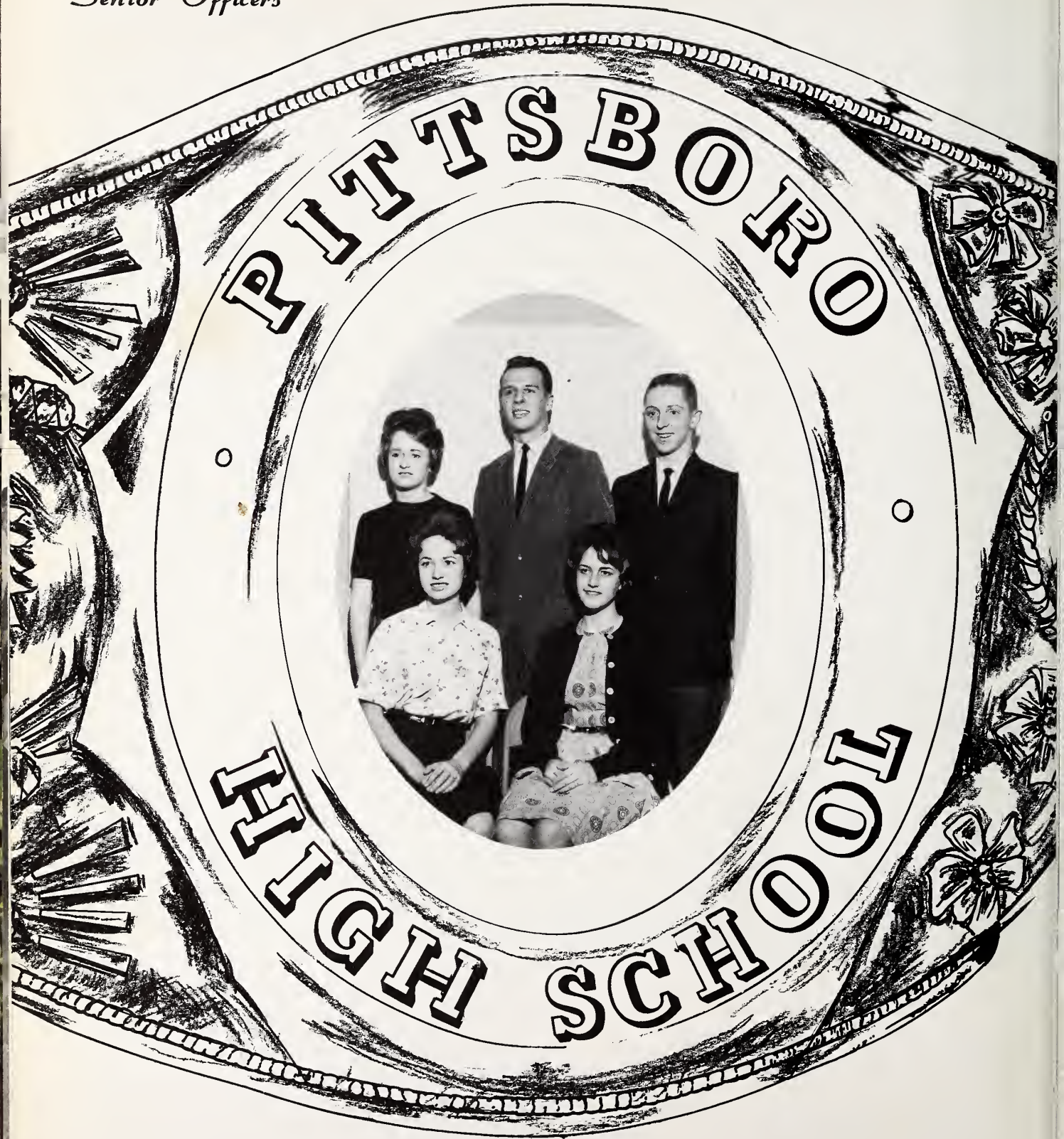




*students who have  
years of fun  
at P.H.S.*



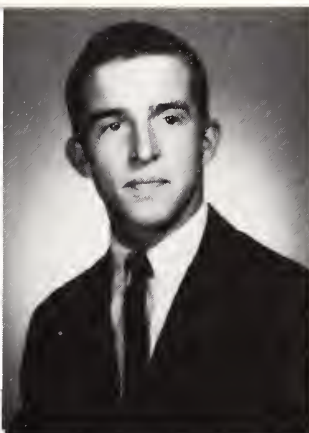
*Senior Officers*



Seated: LILLIE DANIEL, Secretary; JAYNE CARPENTER, Treasurer. Standing: JOYCE TILLY, Vice-President; EARL LASATER, President; JIM CAMP, Sergeant-at-arms.



EVA LOUISE BAKER  
 "Quiet until you know her."  
 4-H Club 1; F.H.A. 2, 3.



JOHN CARL BULLINGTON  
 "Always ready for work and  
 play, preferably play."  
 Football 2, 3, 4; Baseball  
 1, 2, 3, 4; Monogram Club  
 2, 3, 4; Class Sec. 2; Dragon  
 Observer 4; Glee Club 1, 2.

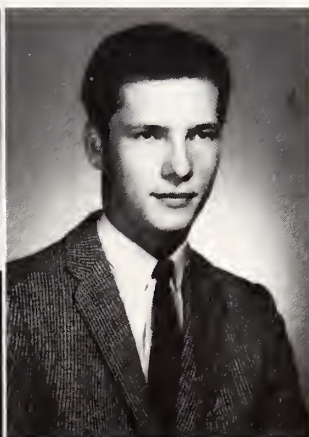
ELIZABETH ANN BURNS  
 "Not really bad—just delight-  
 fully full of mischief."  
 Beta Club 3, 4; Girls' State 3;  
 Recitation 1, 4; Annual Staff  
 4; Dragon Observer 4;  
 Assembly Comm. 3, 4; Su-  
 perlative 4; Glee Club 1, 2,  
 3, 4; French Club 4; Miss  
 P.H.S. 3; Piano 1, 2, 3, 4;  
 Essay Contest 2.



VIRGINIA KATHRYN  
 BURNS  
 "She's a wow!—with brains  
 an' know-how."  
 French Club 4; Cheerleader  
 1, 2, 3, 4, Head 4; Monogram  
 Club 1, 2, 3, 4; Treas. 2;  
 Homecoming Court 3, 4; Beta  
 Club 3, 4; Marshal 3, 4; Class  
 Treas. 3; Annual Staff 4;  
Dragon Observer, Editor 4;  
 Student Council 1, 2, Treas.  
 1; Assembly Comm. 3;  
 Elections Comm. 4; Superla-  
 tive 4; Glee Club 1, 2, 3, 4,  
 Treas. 4.

## 1963

JAMES CLIFTON CAMP  
 "Rebellion against silence."  
 Basketball 2, 3, 4; Baseball  
 1, 2, 3, 4; Golf 3, 4; Cheer-  
 leader 1; Monogram Club  
 1, 2, 3, 4; Class Treas. 1, 2;  
 Sgt. @ arms 4; Dragon Ob-  
 server 4; Student Council 4;  
 House & Grounds Comm. 3;  
 Sports Comm. 4; Superlative  
 4; Glee Club 1, 2, 3, 4; De-  
 bate Club 4.



PAUL MARLON CAMPBELL  
 "Oh why should life, all  
 life, labor be?"  
 Bus Driver 3; Glee Club 4;  
 4-H Club 1; F.F.A. 3; soil  
 judging team.

STELLA JANE CARPENTER  
 "She looks at the world  
 behind a smile."  
 Homecoming Court 2; Beta  
 Club 3, 4; Class Treas. 4;  
 Annual Staff 4; Dragon Ob-  
 server 4; Student Council 4;  
 French Club 4.

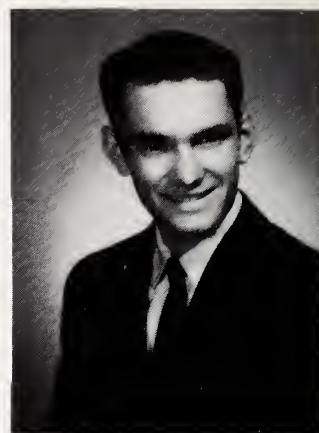


BERNICE WADE CLARK  
 "You ain't heard nothing  
 yet."  
 F.F.A. 1, 2, 3, 4; Chapter  
 Vice-Pres. 3; Chapter Re-  
 porter 4; tool judging 1, 2;  
 Federation winner 1, 2; 3rd  
 in state 1, 2; land judging  
 2, 3, 4; Parliamentary Pro-  
 cedure team 3, 4; Federation  
 winner 3; seed judging 4; 4-H  
 Club 1, 2, 3, 4; Bus Driver 3, 4.

## Seniors



WAYNE PERLAMON CLARK  
 "Young fellows will be young fellows."  
 F.F.A. 1, 2, 3, 4; Chapter Sentinel 3; Chapter Vice-Pres. 4; dairy judging 3, 4; 2nd in state 3; tool judging 1, 2; Fed. winner 1, 2; land judging 3, 4; 4-H Club 1, 2, 3, 4; Bus Driver 2, 3, 4.



WILBUR MICHAEL COOK  
 "Make haste slowly."  
 Football 1, 4; Baseball 2; Monogram Club 4; Dragon Observer 4; North Mecklenburg High School 2, 3.

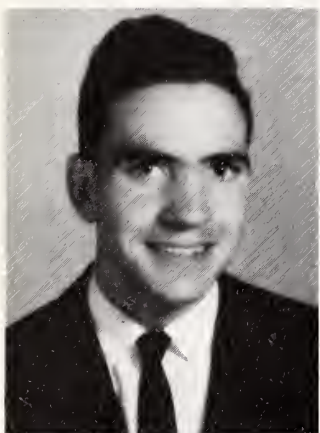


CADLE COOPER  
 "A merry heart goes all the day."  
 Bus Driver 3, 4; F.F.A. 4; Football 2, 3.



BARBARA LEE COUNCIL  
 "An athletic lady with assets so many; if she has faults, we can't think of any."  
 Basketball 3, 4; Beta Club 3, 4; Recitation 2; Annual Staff 4; Superlative 4; Glee Club 1, 2; F.H.A. 3, 4, Pres.; French Club 4; Dragon Observer 4.

## 1963



THOMAS WILLIAM CREWS  
 "Wisely and slow; he stumbleth that runneth fast."  
 Superlative 4.



LILLIE MAE DANIEL  
 "Everyone knows how to express a complaint but few can utter a graceful compliment—it's a matter of practice."  
 Beta Club 3, 4; Recitation 1, 2, 3; Class Sec. 4; Annual Staff 4; Dragon Observer 4; Bus Driver 4; Superlative 4.



BERNARD ANDREW FARRAR  
 "He'd stop St. Peter's roll call to ask a question."  
 Football 2, 3, 4; Baseball 4; Track 2, 3, 4; Monogram Club 2, 3, 4; Superlative 4; F.F.A. 1, 2.



LACY CLIFTON FARRELL  
 "Keep smiling; it makes people think you've been up to something."  
 Baseball mgr. 1, 2; Monogram Club 1, 2, 3, 4; Sgt. @ arms 3; Dragon Observer 4; Sports Comm. 3, 4; Superlative 4; Glee Club 4.





SYLVIA GAYLE FARRELL  
 "Her sparkling brown eyes match her  
 sparkling personality."  
 Basketball 3; Librarian 2; F.H.A. 2, 3.



RICHARD DALE FERRELL  
 "Worry is the interest paid by those who  
 borrow trouble."  
 Football 2, 3, 4; Monogram Club 3, 4; Dragon  
 Observer 4.



PAMELA HOWELL FITCHETT  
 "Sweet manners, kindly deeds for this  
 world and its needs."  
 Beta Club 3, 4; Girls' State 3; Marshal 3, 4;  
 Annual Staff 3, 4, editor; Dragon Observer 4;  
 Student Council 3; Superlative 4; Librarian  
 2; French Club 4; Home Economics Award 1;  
 Piano 1, 2, 3.



BETTY ANN FEARRINGTON  
 "This and a great deal more like it I have  
 had to put up with."  
 Band 1, 2, 3, 4, Sec. -Lib. 4; Beta Club 3, 4;  
 Marshal 3, 4; Annual Staff 4; Dragon Observer  
 4; Superlative 4; Glee Club 4; Science Club  
 3, 4; French Club, Pres. 4; N.S.F., Course  
 3.

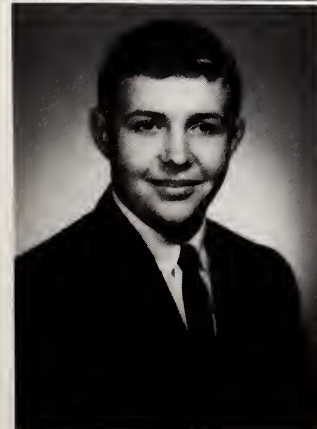
## Seniors



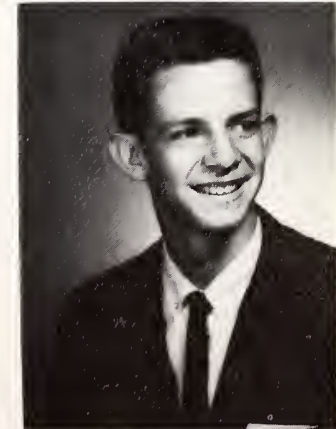
JACKIE MARIE FOUSHEE  
 "A talking machine, always wound up and  
 going."  
 Majorette 1, 2, 3; Superlative 4; Glee Club 4;  
 Librarian 1, 2; 4-H Club 1; F.H.A. 2, 3.



THELMA JANE GARRETT  
 "Blue eyes, blonde hair, happy heart, and  
 little care."  
 Beta Club 3, 4; Marshal 3, 4; Annual Staff 4;  
 Glee Club 1, 2; F.H.A. 2; Softball 1.



BILL HUGHES GATTIS  
 "A winning smile, an excellent friend, an  
 earnest worker and true to the end."  
 Football mgr. 3, 4; Baseball 1, 2, 3, 4; Mono-  
 gram Club 1, 2, 3, 4; Beta Club 3, 4; Boys'  
 State 3; Class Pres. 1; Annual Staff 4; Student  
 Council 1, 2, 3, 4, Sec. 2, Vice-Pres. 3,  
 Pres. 4; Assembly Comm. 3; Superlative 4;  
 Glee Club 1, 2, 3, 4; Science Club 3; French  
 Club 4.

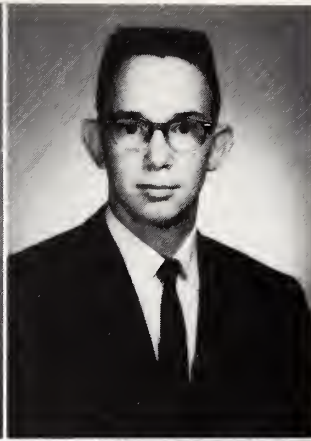


BUNN FRANKLIN GOODWIN  
 "As restless as a windshield wiper."  
 Cheerleader 4; Monogram Club 3, 4; Dragon  
 Observer 4; Elections Comm. 4; Glee Club  
 2, 3, 4; Science Club 3.

GENE EDGAR GRIFFIN

"A wit with dunces; a dunce with wits."

Basketball 1, 2, 3, 4; Football 1, 2, 3, 4; Baseball 1, 2, 3, 4; Track 2, 4; Monogram Club 1, 2, 3, 4; Class Vice-Pres. 1; Class Treas. 2; Dragon Observer 4; Sports Comm. 3; Superlative 4; Glee Club 1, 2, 3, 4; Pres. 4.



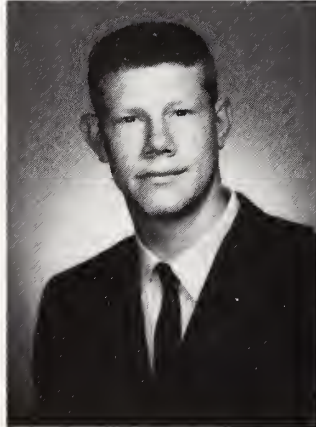
JAMES LEWIS GRIFFIN, JR.  
"The world belongs to energetic; but who wants the world."

Basketball mgr. 1; Football mgr. 1; Track mgr. 1; Monogram Club 1.

RAY LYNDON GUNTER

"Long of limb and sharp of sight, he could become a man of might."

Basketball 2, 4; Bus Driver 3, 4; 4-H Club 1, 2; F.F.A. 1, 2, 3, 4.



THOMAS ANDREW HOWARD

"Thou art a fellow of good respect."

4-H Club 1, 2; F.F.A. 1, 2, 3, 4, officer 1, 2.

1963

JAMES EARL LASATER

"The world stands aside to let anyone pass who knows where he is going."

Basketball 4; Football 1, 3, 4; Track 1, 2, 3, 4; Golf 1, 2, 3, 4; Monogram Club 2, 3, 4; Beta Club 3, 4; Boys' State 3, Lieut. Gov; Marshal 3, 4; Declamation 2, 3, 4; Class Pres. 4; Annual Staff 4; Dragon Observer 4; Sports Comm. 3; Elect. Comm. 4; Superlative 4; Glee Club 1, 2, 3, 4, V.P. 4; Science Club, V.P. 3, Pres. 4; French Club 4; Boys' Nation Sen. 3; Jr. Sci. Symp. 3; Debate Club, V.P. 4; U.N. Spk. Prog. 2, 3, 4.



HENRY VERNELL LEWIS JR.

"I put all my troubles in a pocket with a hole in it."  
Track 2; Science Club 3; F.F.A. 4.

NETTIE CYNTHIA MANN

"The wheel was man's greatest invention until he got behind it."

Basketball 2; Dragon Observer 4; Bus Driver 4; Glee Club 3; 4-H Club 1; F.H.A. 2, 4.



JUANITA KAY MANN

"Sprightly wit--live eyes."  
Cheerleader 3, 4; Monogram Club 3, 4; Homecoming Court 4; Class Sec. 3; Dragon Observer 4; Superlative 4; F.H.A. 2.

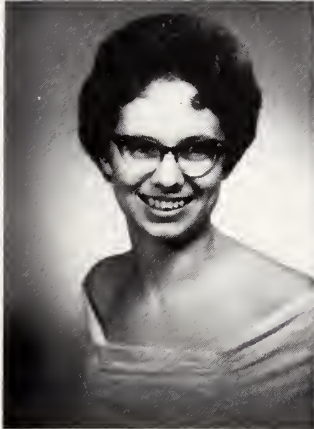


SANDRA STUBBS MANNING  
 "Happy-go-steady look."  
 Glee Club 4; 4-H Club 4;  
 F.H.A. 2, 3.



VELINDA GAIL McBANE  
 "Gloom simply disappears  
 with her around."  
 Cheerleader 2; Monogram  
 Club 2, 3, 4; Dragon Observer  
 4; Assembly Comm. 2;  
 Science Club 3, 4; French  
 Club 4; Chemistry Award 3;  
 Halloween Queen 2.

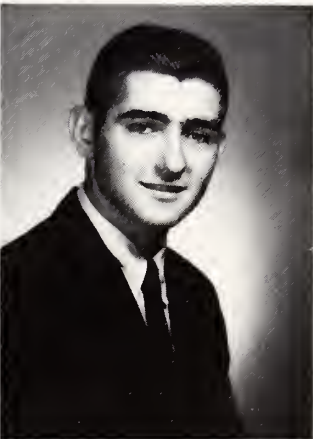
PEGGY SUE McNEIL  
 "All the constitution guaran-  
 tees is the pursuit of happi-  
 ness. You have to catch up  
 with it yourself."  
 Basketball 1; Glee Club 1, 2;  
 Librarian 4; 4-H Club 1;  
 F.H.A. 1; Journalism Club 1;  
 West End High School 1, 2.



ANNIE PATRICIA  
 MEACHAM  
 "Modest and sweet, calm  
 and sincere."  
 Homecoming Court 1, 3; Re-  
 citation 1; Dragon Observer  
 4; Miss P.H.S. 2; Glee Club  
 2, 3, 4.

## 1963

ROBERT WILLIAM MOORE  
 "At engines and crops, he's  
 tops."  
 F.F.A. 1, 2, 3, 4; Reporter 3;  
 Chapter Pres. 4; tool judging  
 1, 2; 3rd in state 1, 2; land  
 judging 2, 3, 4; 2nd in district  
 3; Parliamentary Procedure  
 3, 4; Federation winner 3;  
 dairy judging 3, 4; 1st in dis-  
 trict 3; 2nd in state 3; Bus  
 Driver 2, 3; 4-H club 1, 2;  
 Chatham Co. tractor driving  
 champion 1, 2.



LEWIS BRITT NORWOOD  
 "With engines I have skill,  
 but long words—they kill."  
 Band 1, 2; Bus Driver 3, 4;  
 Librarian 1; F.F.A. 1, 2, 3, 4;  
 officer 3, 4.

DOROTHY ANN NUNN  
 "There's never an angel  
 with red hair."  
 Glee Club 4; Librarian 4;  
 4-H club 1, 2; F.H.A. 2, 3;  
 Softball 1.



MARY CARROLL O'DANIEL  
 "Discretion of speech is  
 more than eloquence."  
Dragon Observer 4; Bus Driver  
 4; Librarian 2; Science Club  
 4; 4-H Club 1; F.H.A. 2, 4;  
 French Club 4.

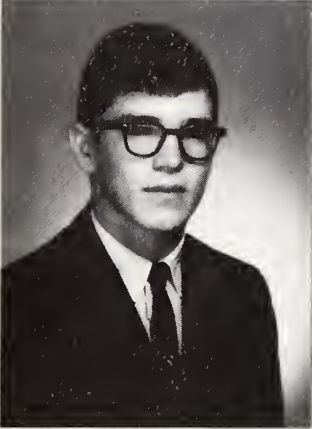
## Seniors



PATRICIA ANN PERRY  
 "A smile has immense face value."  
 Basketball 2; Superlative 4; Glee Club 1, 4;  
 F.H.A. 2, 3.



BONNIE FAYE PIERCY  
 "She blesses us all with her happy smile."  
 Beta Club 3, 4; Girls' State 3; Marshal 3, 4;  
 Annual Staff 4; Dragon Observer 4; Superla-  
 tive 4.

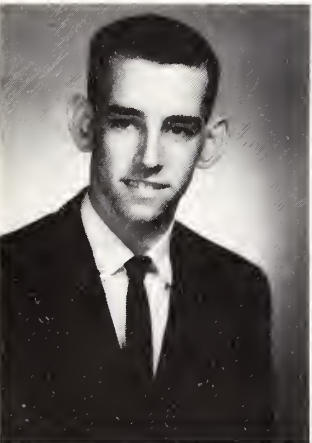


ARNOLD WAYNE RIGSBEE  
 "I'd like to be shy, but girls won't let me."  
 Basketball 3; Football 3, 4; Track 2, 3, 4;  
 Monogram Club 2, 3, 4; Superlative 4; 4-H  
 Club 1, 2; F.F.A. 1, 2.



JUDY CAROL SEAGROVES  
 "A light heart lives long."  
 4-H Club 1, 2; F.H.A. 2.

## 1963



COLON LEON SHAW  
 "Gaze into his eyes and you will see an  
 angel; gaze a little longer and you see a . . ."



TONY ARTHUR STEPHENSON  
 "The world likes a spice of wickedness."  
 Bus Driver 3, 4; F.F.A. 2, 3, 4, officer 2.

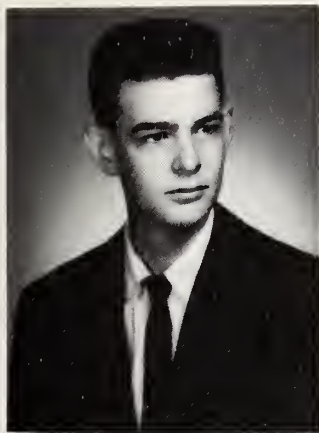


BRENDA DARNELL STRICKLAND  
 "It often shows a fine command of language  
 to say nothing."  
 Glee Club 1; Librarian 4; 4-H Club 1; Central  
 High School, Sanford 1, 2.



LOUIS STUBBS  
 "All a youngster wants out of school is  
 himself."  
 Bus Driver 3, 4; Superlative 4; Glee Club 4;  
 Science Club 4; 4-H Club 1, 2.





BEVERLY SULLIVAN

"When opportunity knocked, he complained of the noise."

Band 1, 2, 3; Librarian 1, 2; F.F.A. 1.



JOYCE ELLEN TILLEY

"Youth means love."

Class Vice-Pres. 3, 4; Dragon Observer 4; Superlative 4; F.F.A. Sweetheart 4.



SARA ANNE THOMAS

"Do your work cheerfully and it is half done."

Glee Club 1, 2, 4; 4-H Club 1; F.H.A. 2, 3.

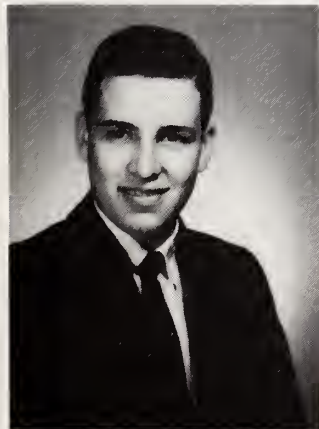


JULIA MEREDITH WEBSTER

"She loves a laddie."

Glee Club 4; Librarian 4; 4-H Club 1, 2; F.H.A. 2, 3.

## Seniors



PAUL WILLIAMS, JR.

"An artist of the 1st degree, his picture is a treat to see."

Superlative 4; Glee Club 4; 4-H Club 1, 2; F.F.A. 1, 2, 4.



LUTHER GLENN WHITE

"It is better, of course, to know useless things than to know nothing."

Basketball 3, 4; Football mgr. 2, 3; Golf 3, 4; Monogram Club 2, 3, 4; Beta Club, Vice-Pres. 3; Pres. 4; Boys' State 3; Marshal 3, 4; Class Pres. 2, 3; Annual Staff 4; Dragon Observer 4; Assembly Comm. 3; Elections Comm. 4; Bus Driver 4; Superlative 4; Glee Club 2, 3, 4; Science Club 3, 4; French Club, Vice-Pres. 4; U.N. Spk. Contest, winner 2.



PATRICIA WILLIAMS WOLFE

"My thoughts no tongue can tell."

Glee Club 1, 2, 3; F.H.A. 2; Piano 1, 2.



CAROLE AVERY YOUNT

"I don't mind living in a man's world as long as I can be a woman in it."

Homecoming Court 2; Band 1; Beta Club 3, 4; Girls' State 3; Marshal 3, 4; Recitation 2, 3, 4; Annual Staff 4; Dragon Observer 4; Social Comm. 4; Bus Driver 4; Glee Club 3, 4; Science Club 3, 4; officer 4; French Club 4; Science Fair winner 3; Wallace-Rose Hill High 1.



MOST DEPENDABLE  
Bernard Farrar  
Lillie Daniel



MOST TALENTED  
Paul Williams  
Bonnie Piercy



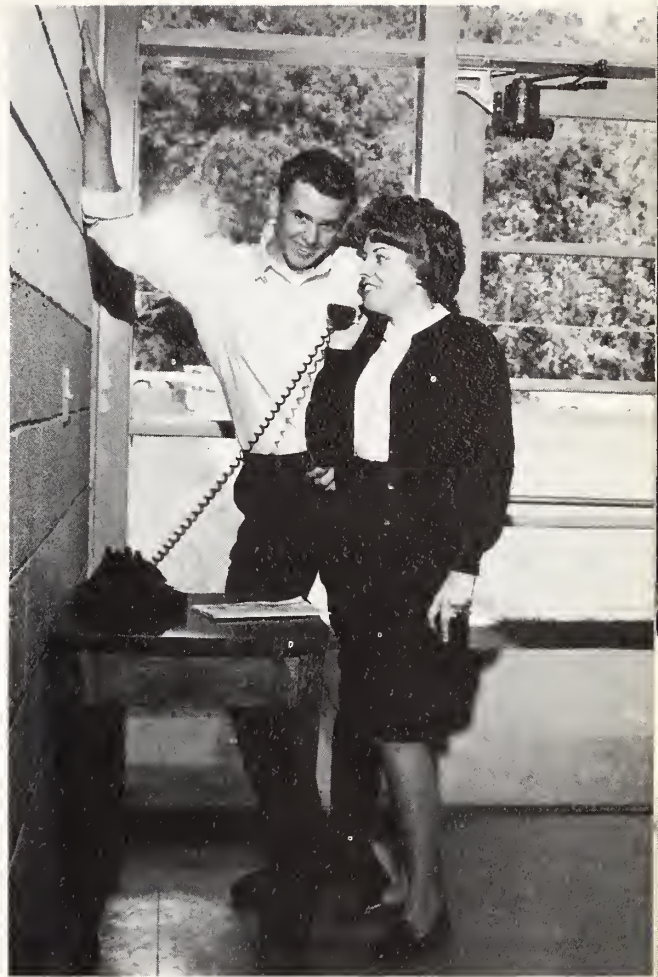
BEST ALL-AROUND  
Bill Gattis  
Ginny Burns



# Superlatives



BEST DRESSED  
Tommy Crews  
Ann Burns



PERSONALITY PLUS  
Lacy Farrell  
Jackie Foushee



MOST POPULAR  
Jim Camp  
Kay Mann





BEAU AND BELLE  
Wayne Rigsbee  
Joyce Tilley



MOST ATHLETIC  
Gene Griffin  
Barbara Council



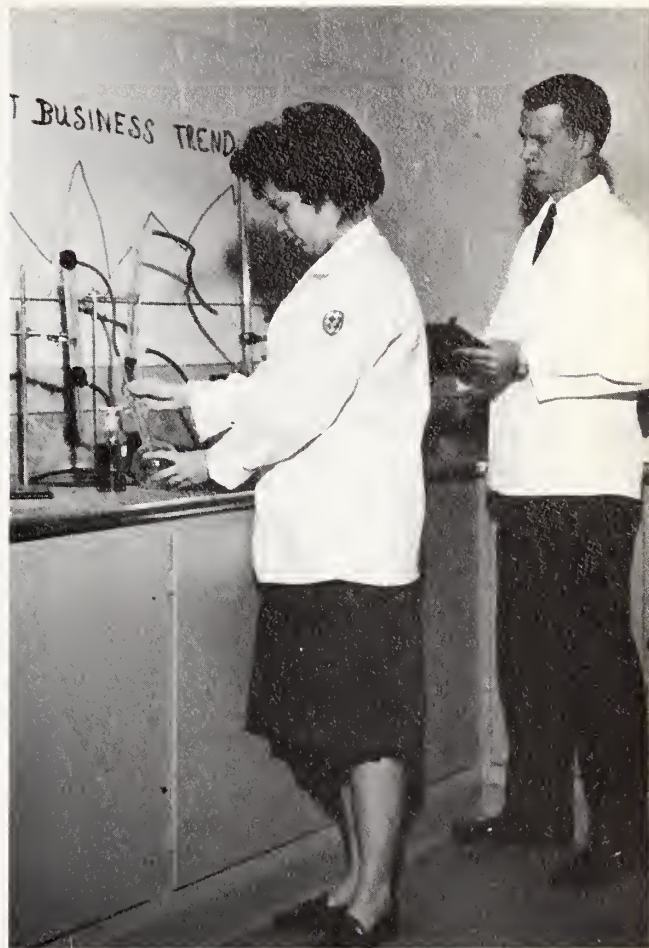
MOST INTELLECTUAL  
Luther White  
Pam Fitchett



# Superlatives



**WITTIEST**  
Louis Stubbs  
Patsy Perry



**MOST LIKELY TO SUCCEED**  
Earl Lasater  
Betty Fearington

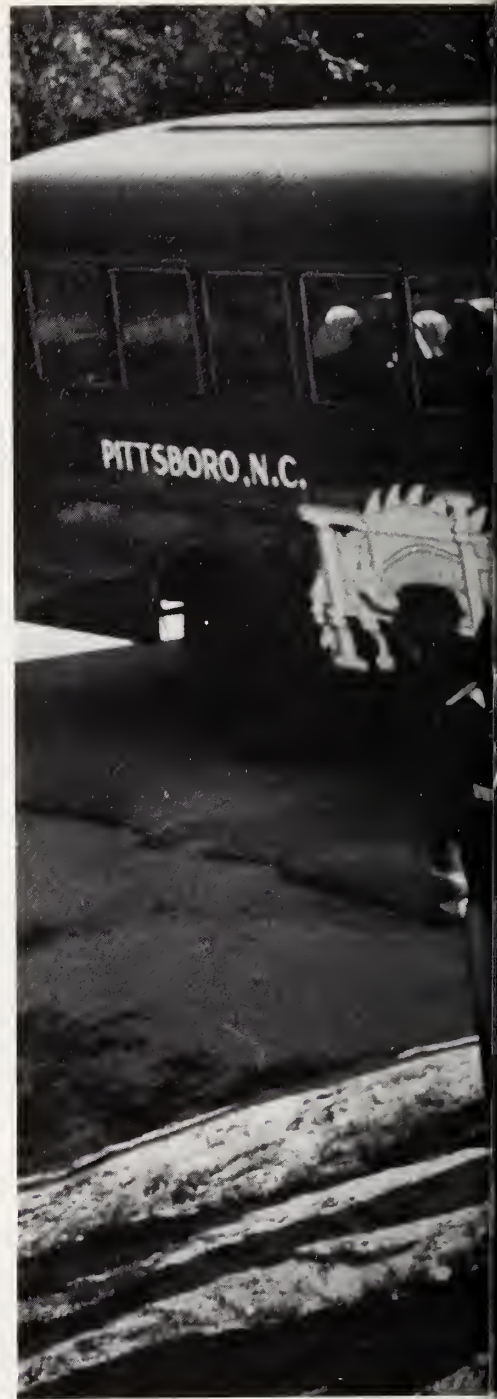


**MASCOTS:** Lydia Riggsbee, Terry Mann

**MARSHALS:** Thelma Garrett, Luther White,  
Betty Fearington, Ginny Burns, Bonnie  
Piercy, Carole Yount, Earl Lasater, Pam  
Fitchett.



# *Activities*



*Recorded here are the pleasant memories  
which have enriched the  
we have*





*of the clubs and organizations  
measure of education  
received.*



# Student Council



BILL GATTIS  
President



JERRY WOODS  
Vice-President



IRENE FAIRCLOTH  
Secretary



BECKY PARKER  
Treasurer

Homeroom Representatives: Jane Carpenter, Senior; Mrs. C. C. Shotts, Council Advisor; Jim Camp, Senior; Debby Yates, Freshman; Beverly Bland, Freshman; W. C. Oldham,

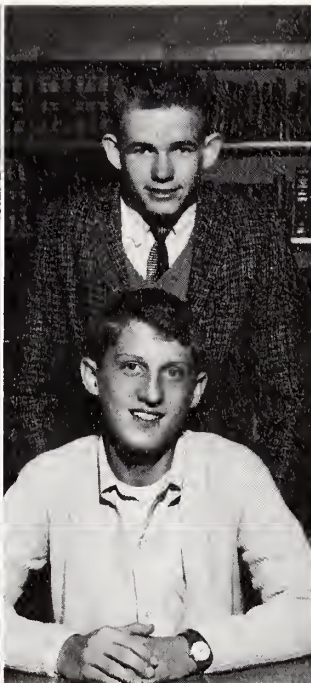
Freshman; Tommy Justice, Junior; Terry Parker, Sophomore; Fred Hamlet, Sophomore; Carlene Meacham, Sophomore; Virginia Brafford, Junior.







Social Committee; Janet Hunt, Carole Yount, chairman; Kay Mann; Mary Lee Griffin; Tony Rhodes.



Publicity Committee: Jerry Woods, chairman; Larry Matlock.



Sports Committee: Phyllis Harris; Betsy Baldwin; Jim Camp, chairman, Clegg Crawford; Lacy Farrell.

Elections Committee: Earl Lasater; Ginny Burns; Luther White, chairman; Bunn Goodwin.



## Committees

House and Grounds Committee: Linda Lashley; Becky Crabtree; Irene Faircloth, chairman; Valinda Clark; Dare Scott; David Morris.

Assembly Committee: Pat Meacham; Carlene Meacham; Jerry Woods, chairman; Frances White; Ann Burns.







PAM FITCHETT  
Editor



ANN BURNS  
Business Manager

## *Dragonian*

BUSINESS STAFF: Carole Yount, Bonnie Piercy, Barbara Council, Ginny Burns, Thelma Garrett.

EDITORIAL STAFF: Bill Gattis, Luther White, Lillie Daniel, Betty Fearington, Jayne Carpenter, Jennifer Kidd, Earl Lasater.







Front row: Lillie Daniel, Ginny Burns, editor; Bunn Goodwin, Pam Fitchett, Bonnie Piercy. Second row: Carole Yount, Dale Farrell, Kay Mann, Bill Gattis, Lacy Farrell, Gene Griffin. Third row: Betty Fearrington, Ann Burns, Luther White, Gail McGane, Johnny Bullington. Fourth row: Jane Carpenter, Joyce Tilley, Patricia Meacham, Mike Cook, Jim Camp. Fifth row: Cindy Mann, Mrs. Baxter Riggsbee, Advisor; Mary O'Daniel, Barbara Council, Earl Lasater.

GINNY BURNS  
Editor-in-Chief



## *Dragon Observer*

ANGUS



Stencil? We haven't done the white sheets yet... What are the margins?... Who cut my article?... Deadlines, deadlines, deadlines... Bunn's daily T.V. review and Mrs. R's P.T.A. report... Oh, goody, we have one page finished!

# Beta Club



Virginia Brafford  
Ann Burns



Ginny Burns  
Jane Carpenter  
Joy Clifton



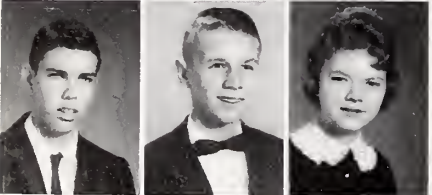
Barbara Council  
Lillie Daniel  
Betty Ann Fearington



Pam Fitchett  
Thelma Garrett  
Bill Gattis



Ann Harris  
Elizabeth Hooker  
Marcia Huntsman



Robert Jackson  
Tommy Justice  
Jennifer Kidd



Earl Lasater  
Linda Lashley  
Ann Mann



Reba Parker  
Bonnie Piercy  
Jimmie Rogers



Jerry Woods  
Carole Yount

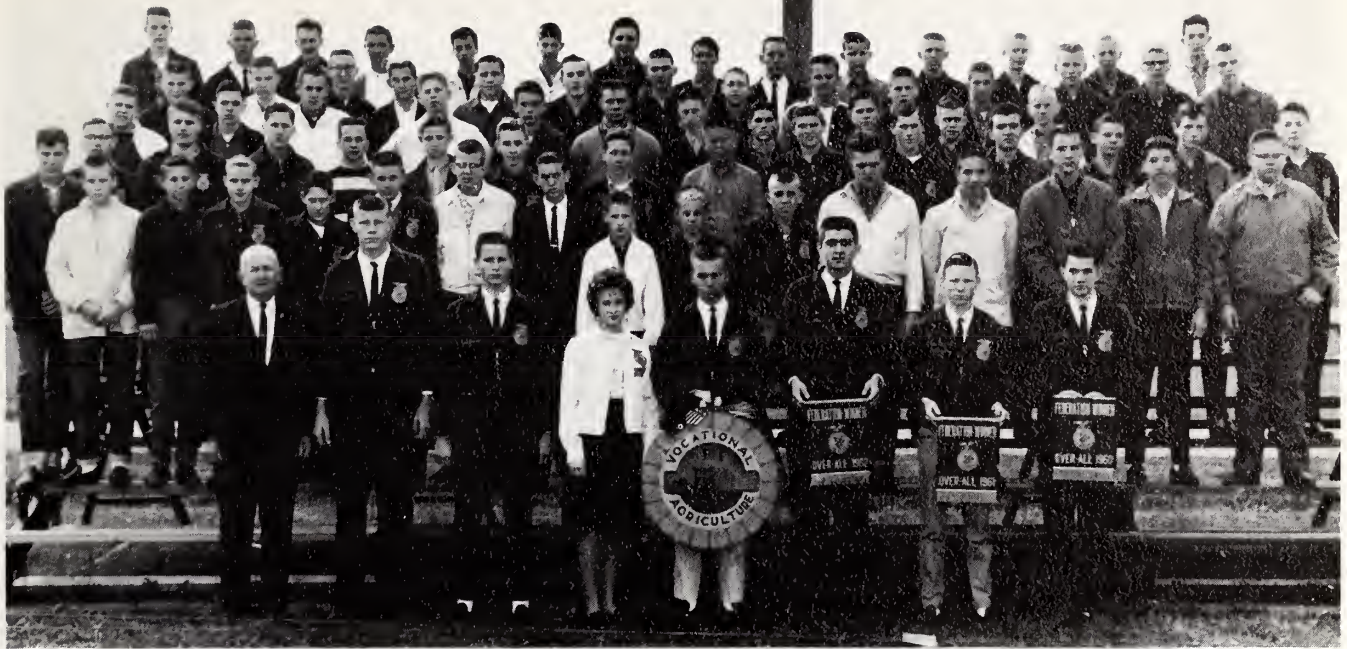


LUTHER WHITE  
President

These are the brains of P.H.S. ??







Mr. H. G. Johnston, Advisor; R. Gunter, Treas ; W. Clark, V-Pres. ; Joyce Tilley, Sweetheart; B. Moore, Pres. ; B. Norwood, Sec. ; W. Clark, Reporter; R. Peace, Sentinel; J. Roberson, L. Dominick, D. Johnson, R. Gaines, D. Cates, L. Matlock, T. Farrell, B. Knight, T. Clegg, L. Pender, W. Foushee, M. Ellis, D. Eddins, R. Eddins, M. Eubanks, J. Herndon, B. McNeil, Norman Hilliard, J. C. Barrett, J. Covert, J. Wolfe, M. Mann, P. Cooper, A. Hackney, J. Sanders, C. Wilson, K. Rayan, R. Mendenhall,

W. Campbell, R. Vaughn, K. Huntsman, C. W. Harris, B. Williams, D. Sparrow, S. Williams, R. Stone, J. Justice, D. Badders, O. Williams, H. Lewis, S. Mann, S. Jenkins, L. Farrell, C. Cooper, K. Ellis, W. Wright, L. Hatley, R. Leslie, B. Thomas, Frankie Cooper, M. Thompson, E. L. Lutterloh, K. Adcock, P. Senkiv, B. Tucker, K. Bouldin, R. Churchill, T. Stephenson, L. Murdock, A. Howard, R. Moses, R. Kremer, J. Johnson, L. Newell, R. Johnson, R. Goodwin, Jimmy Williams, A. Perkins.

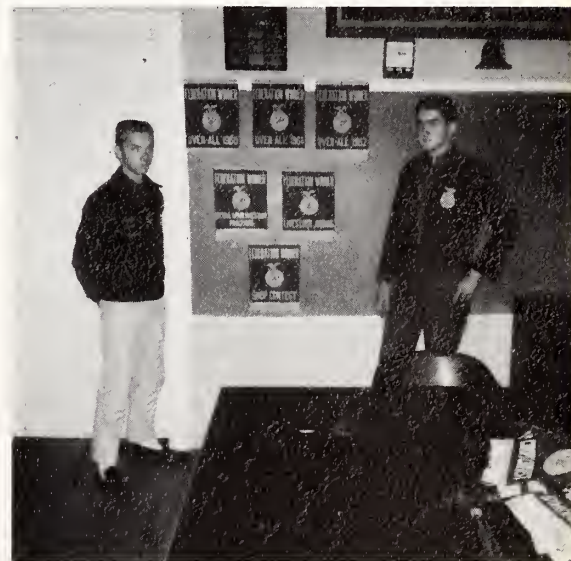
## *Future Farmers of America*



Roy Peace, Sentinel; Ray Gunter, Treasurer; Wayne Clark, Vice-President; Bobby Moore, President; Wade Clark, Reporter; Britt Norwood, Secretary; Mr. H. G. Johnston, Advisor.



H. G. JOHNSTON  
Advisor



F.F.A. Hall of Banners and winners.



# Glee Club

LINDSAY JONES  
Director



"I don't like that pattern"... "Louder boys---er, men"...  
"That's a C, not a G"... "do MANGO WALK"... new  
director and new building... Christmas concert.



A. Burns, B. Griffin, S. Stevens, C. Yount, L. Parker, V. Clark, L. Mann, I. Faircloth, C. Burns, S. Barrett, P. Perry, B. McCrimmon, A. Harris, S. Copeland, P. Riddle, R. Parker, L. Lashley, B. Parker, S. Williams, F. Riddle, M. Griffin, B. Carpenter, P. Shore, M. Pendergraph, P. Meacham, J. Hunt, D. Blue, P. Harris, F. White, L. Eubanks, J. Webster, L. Roberts, G. Carroll, P. Lemons, L. Herne, E. Batts, E. Pendergraph, S. Josey, N. Carroll, A. Straughn, S. Partin, T. Hultman, L. Farrell, B. Roberson, D. Yates, D. Scott, B. Bland, G. Carpenter, D. Goodwin, L. Seagroves, J. Greene, J. Foushee, B. Crabtree, C. Meacham, L. White, D. Nunn, C. Batts, G. Burns, S. Thomas, S. Manning, W. Harris, A. Mann, S. Hathaway, M. Nooe, T. Tysor, P. Lane, D. Morris, L. Jones, G. Roper, B. Gattis, J. Johnson, B. Goodwin, J. Camp, G. Griffin, M. White, L. Farrell, E. Lasater, R. Churchill, R. Williams, L. Stubbs, G. Smith, L. White, R. Bland, T. Parks, D. White, T. Parker, B. Knight, L. Matlock, E. Thomas, H. Clegg.

JENNIFER KIDD  
Pianist



Gene Griffin, President; Earl Lasater, Vice-President; Linda Roberts, Secretary; Ginny Burns, Treasurer.



# Band

New director... entirely new schedule... ta, te, la, lee...  
Honor and minus points... noise and music... squeaky  
reeds and chapped lips... "What does sostenuto mean?"



Lindsay Jones, director. First row: Berry Petty, Mike White, Betty Fearrington, Bob Wachs, Greg Roper, Tommy Hughes. Second row: Neil Flynt, George Cooper, Larry Dowing, Greg Smith, David White, Keith Roper, David Morris, Edward McLaurin (Not pictured).

Officers: First row: Tommy Hughes, treasurer; Greg Roper, Vice-President. Second row: Betty Fearrington, Secretary-librarian; David White, President.





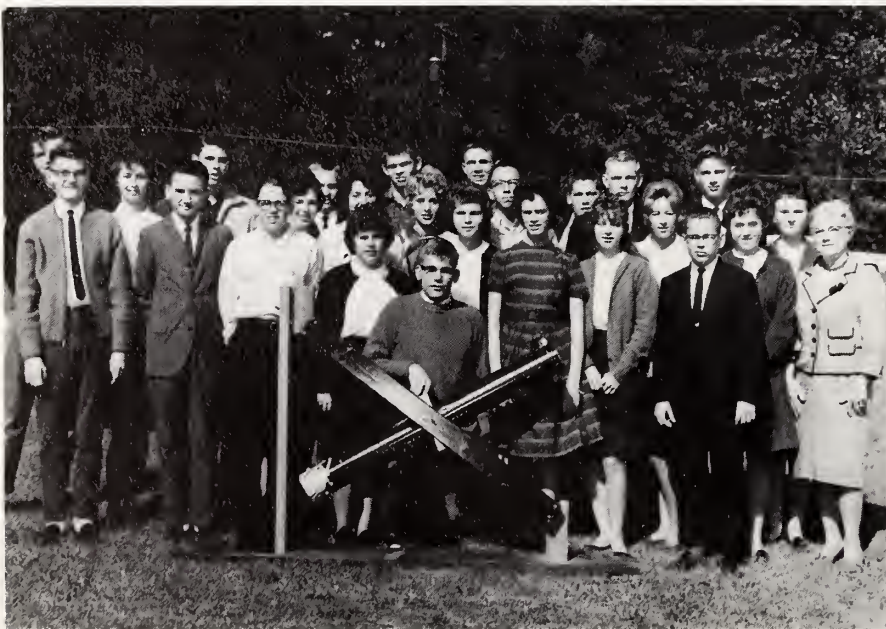
## Science Club

When are we having a meeting?  
Night meeting? Film or report?



Earl Lasater, President; Linda Lashley, Vice-President; Marcia Huntsman, Treasurer; Tami Hultman, Secretary; Frank Hamilton, Advisor; Tony Rhodes, Fred Hamlet, Valinda Clark, Luther White, Gail McBane, Carole Yount, Betty Fearington, Mary O'Daniel, Lewis Stubbs, Tommy Justice, Sheila Hathaway, Linda Fields, Jo Ann Keck, Mary Watson Nooe, Peggy Lane, Candace Burns, Janet Hunt, Carlene Meacham, Becky Crabtree, Carey Carpenter, David Sparrow, Johnny Blair, Charles Strowd, Robert Jackson, Don Smith, James Currie, Raeford Bland, David White, David Canine, Margaret Hamlet, Phyllis Harris, Clegg Crawford, Le Verne Eubanks, Lydia Farrell, Barbara Lewis, Linda Parker, Frona Riddle, David Morris, Jerry Wasko, Emory Thomas, Pierre Oldham, Jerry Woods.

H. B. Clegg, Emory Thomas, Jerry Wasko, Lydia Farrell, Terry Parker, Sharon Copeland, Tammy Hultman, David Morris, Becky Crabtree, Candace Burns, Mary Watson Nooe, Carlene Meacham, Margaret Hamlet, Fred Hamlet, Raeford Bland, Beverly Bland, Margaret McAllister, Louise White, Mrs. Mary Shotts, Advisor; David Canine, Robert Jackson, Worth Holleman, Tommy Justice, Michael Thompson, David White.



## Astronomy Club

Peering through the telescope...  
stars—planets—meteorites... three  
years old... Mrs. Shotts, advisor.



## Debate Team



Newly formed...Mr. B., advisor...  
Wednesday meetings...getting  
pushed for time...States' rights...  
forthcoming debate.

Lydia Farrell, Treasurer; Carlene Meacham, Secretary; Earl Lasater, Vice-President; Fred Hamlet, President. Terry Parker, Jim Camp, Jerry Woods, Dickey Waldeck, Jerry Wasko, Janet Hunt, Irene Faircloth, Mr. Blair Beasley, Advisor; Tami Hultman, Marcia Huntsman, Bonnie McCrimmon, Margaret Hamlet, Margaret McAllister, Mary Watson Nooe, David Canine.

Douglas Perry, Roy Peace, Phil Cooper, Wade Clark, Sammy Jenkins, Charles Strowd, Carole Yount, Mary O'Daniel, Cindy Mann, Patsy Lemons, Lillie Daniel, Tony Stephenson, James Roberson, Jimmy Beckwith, Britt Norwood, Cadle Cooper, Ray Gunter, Louis Stubbs, Luther White.

## Bus Drivers



Arriving too early...not enough  
substitutes...sweeping those orange  
contraptions...trying to keep  
order..."When is payday?"..."I  
want my check"...new unloading  
system.



Very large group...  
"Madame President"  
...Mrs. Horton, ad-  
visor.

L. Farrell, M. Hamlet, C. Burns, L. Farrell, P. Cash, J. Rogers, Mrs. E. Horton, advisor;  
B. Council, President; M. A. Perkins, F. Riddle, B. Lewis, S. Stevens, M. Neil, J. Harmon,  
C. Fletcher, L. Hearme, S. Copeland, P. Riddle, P. Lemons, V. Thomas, V. Clark, L. Lashley,  
S. Williams, S. Josey, B. O'Neil, B. J. Council, M. Daniel, T. Gastor, C. Crawford, C. Mann,  
N. Tripp, M. O'Daniel, E. Hooker, D. Yates, K. Thomas, M. Griffin, C. Fletcher,  
M. McAllister, J. Greene, L. White, L. R. Howard, M. Gunter, D. Scott, P. J. Riddle,  
R. Hatley, L. McLaurin, A. Mann, T. Tysor.

## *Librarians*

Writing those receipts...putting  
books on shelves...stamping  
books...hunting for the cards...  
Mrs. Riggsbee, advisor...new  
books filed thanks to helpful  
mothers.



Mrs. B. Riggsbee, advisor; B. Crabtree, L. Hearme, F. Riddle, E. Batts, D. Blue,  
S. Woody, B. Lewis, C. Batts, L. Parker, S. Partin, G. Carroll, T. Hultman,  
M. McAllister, P. McNeil, L. Fields, B. Strickland, C. Carpenter, L. Dominick,  
M. L. Griffin, T. Clegg, D. Horton, D. Webster, L. R. Howard, B. Griffin,  
M. Thompson, M. Griffin, D. Nunn, W. Harris, J. Webster, T. Tysor, B. Parker,  
J. Hunt, B. McCrimmon.

## *Halloween Royalty*

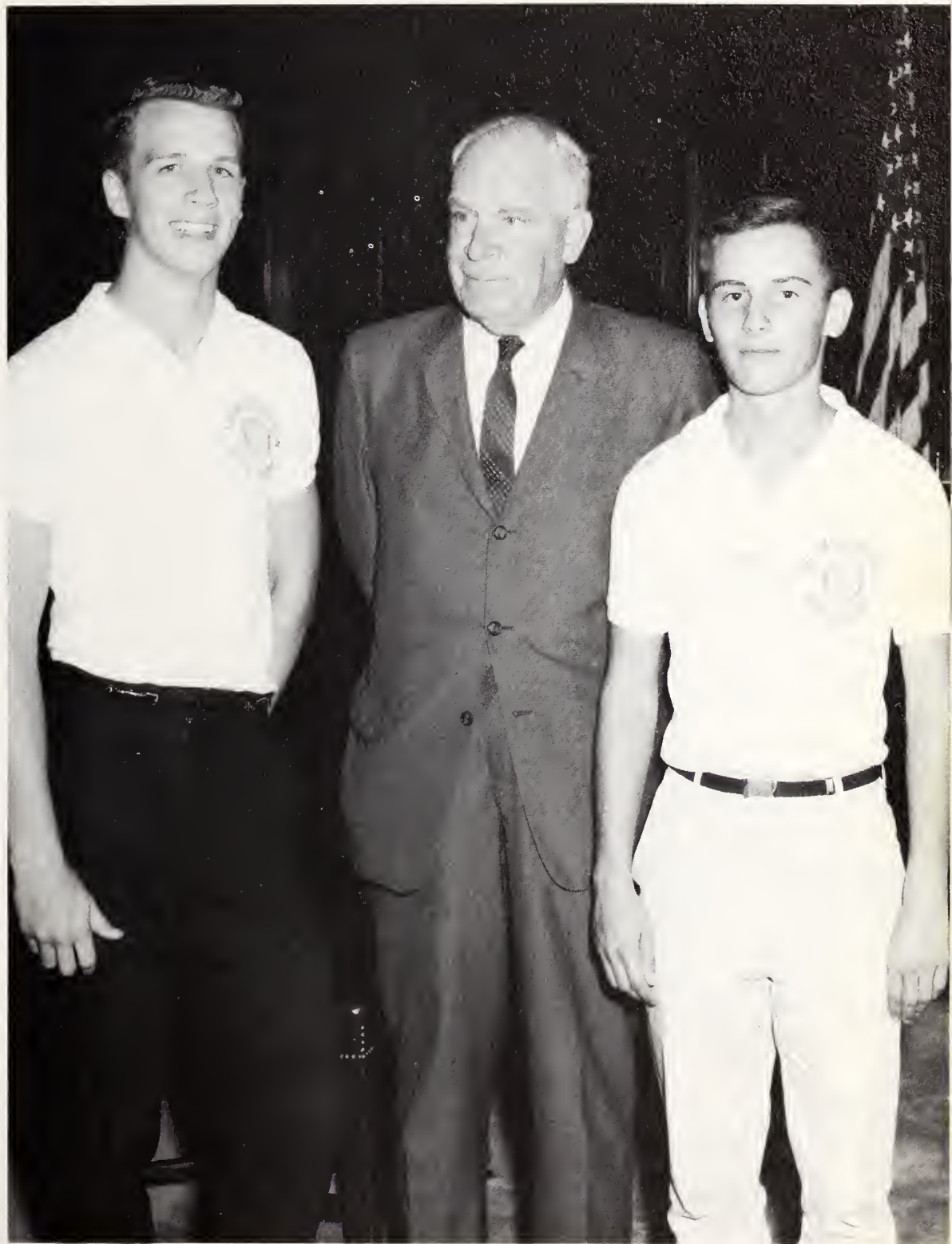
Queen, Janet Hunt;  
King, Jimmy Griffin.

Prince, Johnny Diggs;  
Princess, Beth Markham;  
Primary Princess,  
Amelia Bryan; Primary  
Prince, Ricky Coleman.





*Honors*



*Boys' State*

*Lieutenant Governor*

Lieutenant Governor Earl Lasater  
Governor Jack Bovender  
and SECRETARY OF COMMERCE LUTHER H. HODGES

*Homecoming Court*



GINNY BURNS



KAY MANN



CLEGG CRAWFORD



CARLENE MEACHAM



PHYLLIS HARRIS



DONNA GOODWIN



PATSY WHITE



*Homecoming  
Queen*



BETSY BALDWIN



*Miss P.H.S.*



*Irene Faircloth*

Our lovely Miss P.H.S. has brains, beauty, a sweet smile, and a warm personality. Her interests include many things. We are lucky to have her representing us as our "Miss."





# Boys' and Girls' State

Work, work, work...speaker's notes...all night conventions... "Look to Girls' State and you'll find tomorrow's leaders of mankind (?)"... My name is \_\_\_\_\_ and I'm running for \_\_\_\_\_.



Ann Burns, Bonnie Piercy, Pam Fitchett, Carol Yount, Bill Gattis, Luther White, Earl Lasater.

Luther White, Bill Gattis, Bonnie Piercy, Carole Yount, Ann Burns, Earl Lasater, Pam Fitchett, and GOVERNOR TERRY SANFORD.



# *Sports*



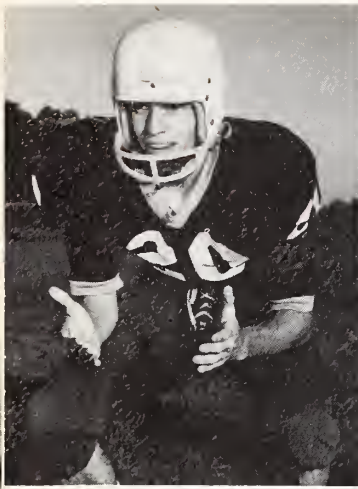
*The sports which have added  
for the spectator and  
in the next*



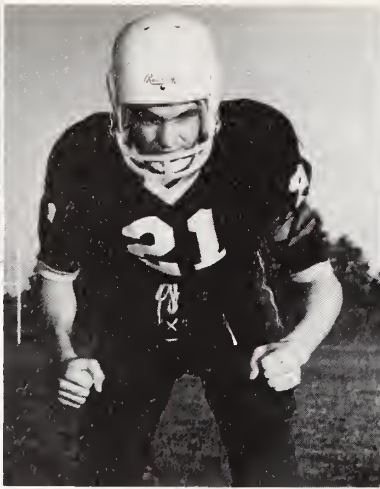


*enjoyment to school life  
participant are captured  
few pages.*

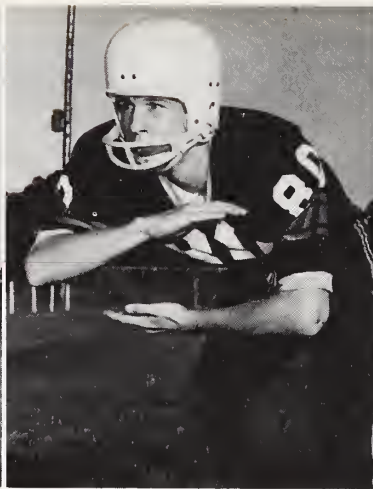




GENE GRIFFIN  
Blocking Back



MIKE COOK  
Guard



EARL LASATER  
End



JOHNNY BULLINGTON  
Guard



BERNARD FARRAR  
End



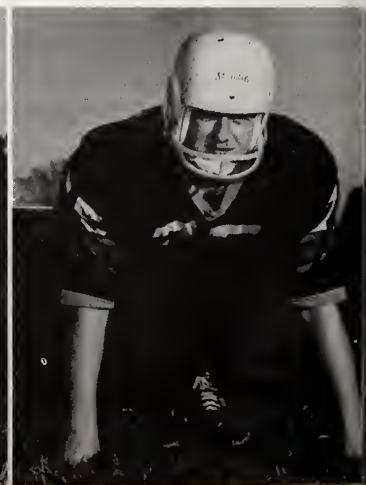
BARRY WILLIAMS  
Kicker



Sitting: Tony Rhodes, Steve Williams, Teddy Farrell, Joe Snipes, J. A. Webster. Kneeling: Dale Farrell, Jimmy Gales, Mike Cook, Joe Thompson. Standing: Johnny Blair, Gene Griffin, Earl Lasater, Jimmy Rigsbee, W. C. Oldham.

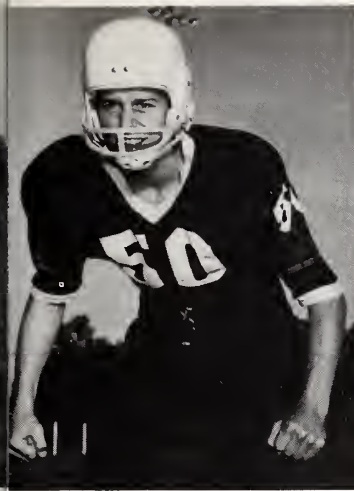
DALE FARRELL  
Tackle

TONY RHODES  
Guard



# Football





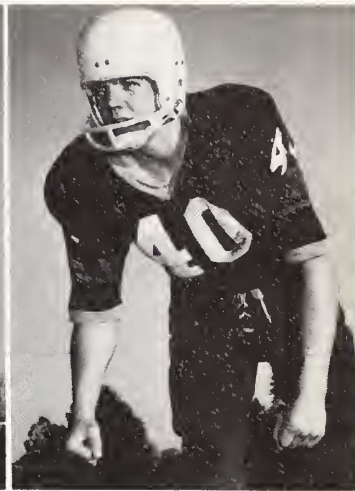
DAVID SPARROW  
Center



JIMMY FLYNT  
Guard



J. A. WEBSTER  
Wingback



JOHNNY BLAIR  
Tailback



Sitting: Louis Herndon, Douglas Badders, Jerry Wasko, Joe Dillishaw, Frank Foushee. Kneeling: Carey Carpenter, Jerry Johnson, Johnny Bullington, Cliff Carter. Standing: Jimmy Flynt, Kirby Adcock, David Sparrow, Barry Williams, Bernard Farrar.



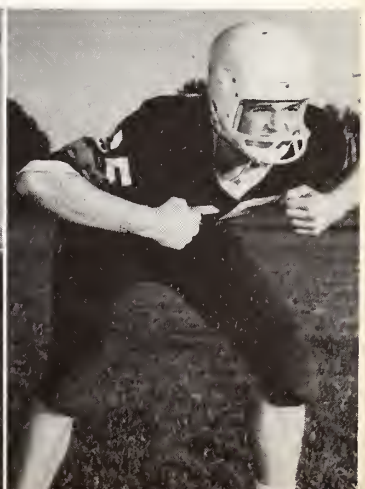
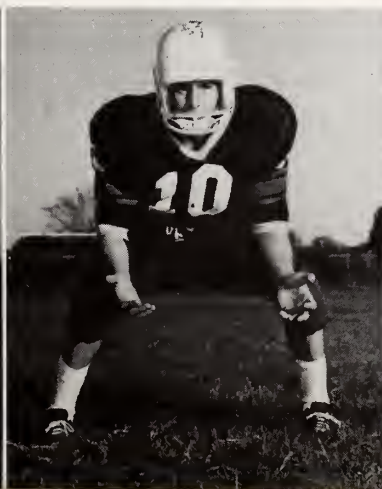
WAYNE RIGSBEE  
Tackle

JIMMY GALES  
Fullback

LOUIS HERNDON  
Wingback

W. C. OLDHAM  
End

JIMMY RIGSBEE  
Tackle





The Blue Dragons, sparked on the most part by Gene Griffin and Johnny Blair and a well balanced forward wall, rolled up a 5-3-2 season record. Although their record was not as good as that of last year and the Mid-Central Conference Championship was lost on the next to the last game of the season, the Dragons still played valiant football.

As for the scoring, Johnny Blair racked a team-leading total of 56 points and Gene Griffin followed with a season total of 30. Much credit must be given to the tough line up front which made this scoring possible and to the defense which fought hard to drag their opponents.

The Blue Dragons will find many familiar names and faces missing from its lineup next session. Gene Griffin, Bernard Farrar, Wayne Rigsbee, Mike Cook, Johnny Bullington, Earl Lasater, and Dale Farrell will not return to the ranks next year.

In all, the season was good, but a few more breaks could have helped the Dragon cause. The prospects for next year look hopeful, and to next year's Dragons go the best of wishes.



Co-captains—Johnny Blair, Gene Griffin, Coach Adrian Allred.

Football Managers—Tommy Clegg, Worth Holleman, Billy Farrell.



COACHES







On the second yard line and GOAL to go!



FOOTBALL SCHEDULE OF PITTSBORO HIGH SCHOOL

		We	They
Siler City	Away	0	14
Lillington*	Away	14	0
Boone Trail*	Away	6	0
Carthage	Home	30	0
Coats*	Home	19	0
Chatham Central*	Away	32	0
Ramseur*	Home	6	6
Rohanon	Home	7	39
Angier*	Home	0	12
Liberty	Away	13	13

\*denotes conference games

Get'im!

Cut'im out. Uh oh, by the shoelaces. Whistle!



# Cheerleaders



Fight, team, fight!

GINNY BURNS  
Head Cheerleader



Ginny Burns, Head Cheerleader; Kay Mann; Bunn Goodwin; Frances White; Phyllis Harris; Sharon Woody; Clegg Crawford; Peggy Jo Riddle; Betsy Baldwin.



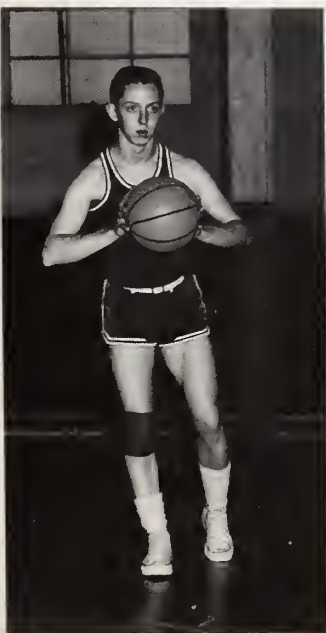
# Basketball



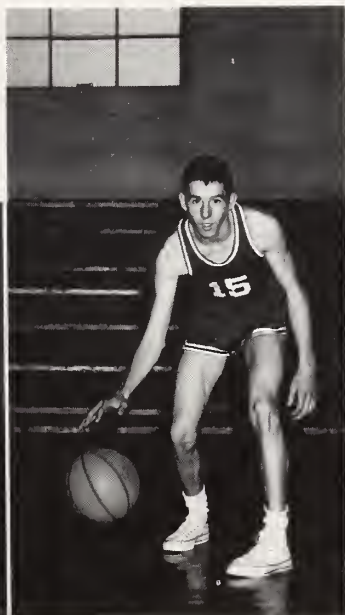
Front row: Jim Camp, Barry Williams, Ray Gunter, Gene Griffin, David Sparrow. Second row: Worth Holleman,

Louis Herndon, Robert Jackson, Earl Lasater, Jimmy Beckwith, Ray Churchill, Luther White, Jimmy Gales.

JIM CAMP  
Co-captain



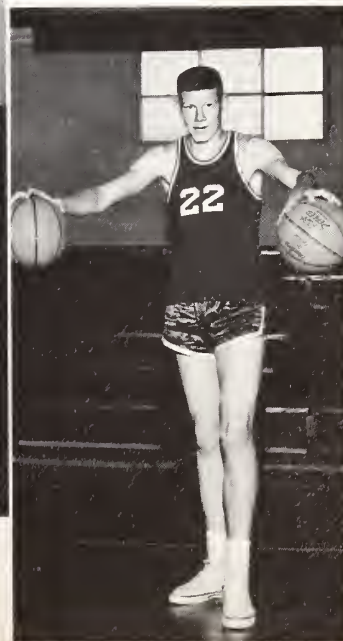
BARRY WILLIAMS  
Co-captain



LOUIS HERNDON

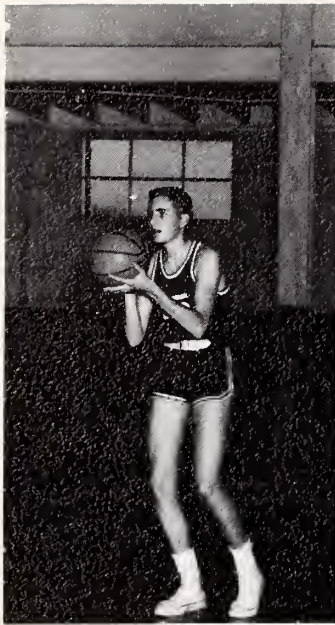


RAY GUNTER



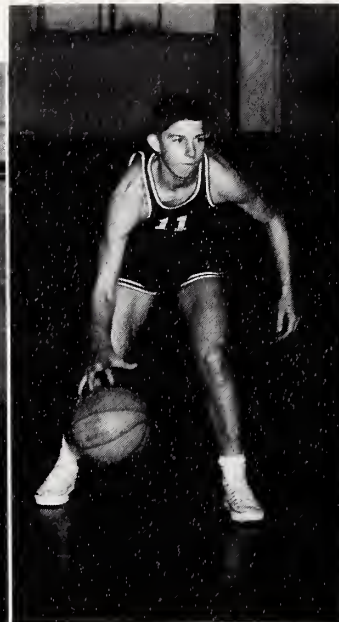


# Dragons under



LUTHER WHITE

JIMMY BECKWITH



DAVID SPARROW

GENE GRIFFIN



## Junior Varsity



Front row: Fred Hamlet, Ted Farrell, Bob Thomas, Bobby McNeil, Bill Farrell; Frank Hamilton, Coach. Second row: Charles Lutterloh, Kenneth Huntsman, David White, W. C. Oldham, Jimmy Riggsbee. Third row: Ronnie Johnson, J. A. Webster, Kirby Adcock, Bob Wachs, David Canine.



*the nets*



Barry Williams and Jim Camp, co-captains, with Coach Adrian Allred.



Coach Jack Shaner and Barbara Council, captain.

*Dragonettes*

ANN HARRIS



WANDRA HARRIS



MARCIA HUNTSMAN



BECKY CRABTREE





Front row: Jimmie Rogers, Donna Goodwin, Marcia Huntsman, Barbara Council, Becky Crabtree, Judy Green.  
 Second row: Margaret Hamlet, Martha Neal, Ann Harris,

Janet Fearrington, Jennifer Kidd, Wandra Harris, Beverly Bland, Ann Straughn, Lydia Farrell.

BARBARA COUNCIL  
 Captain



JUDY GREEN



JENNIFER KIDD



JANET FEARRINGTON



# Baseball Conference Tri-Champs



Back to first for a double play.



One mighty wallop could even the score.

Close play at the plate.



Front row: Bill Gattis, Jim Camp, Louis Herndon, David Sparrow, Steve Williams. Second row: Coach Adrian

## Resumé

The Dragon baseball team pounded its way to one of the tri-championship berths of the Mid-Central Tarheel Conference during the 1962 season. The strong right arm of Mike Kellogg paced the Dragon team to a 5-5 conference record. This year the Dragons will be fielding an experienced team since its loss due to graduation was small. The loss of Mike Kellogg, who has moved away, may hinder the pitching corps somewhat. Pittsboro's hopes are high to repeat the coming season as single conference champs.

Allred, Barry Williams, Johnny Blair, Ronnie Calhoun, Gene Griffin, Johnny Bullington.





# Track



Team and Coach: Dickey Waldeck, Guy Parks, J. A. Webster, Louis Herndon, Bobby McNeil, Fred Hamlet.  
Back row: David Sparrow, Earl Lasater, Wayne Rigsbee,

Jimmy Rigsbee, Bernard Farrar, Johnny Blair, Coach Adrian Allred.

Relay Team: McNeil, Waldeck, Lasater, Rigsbee.

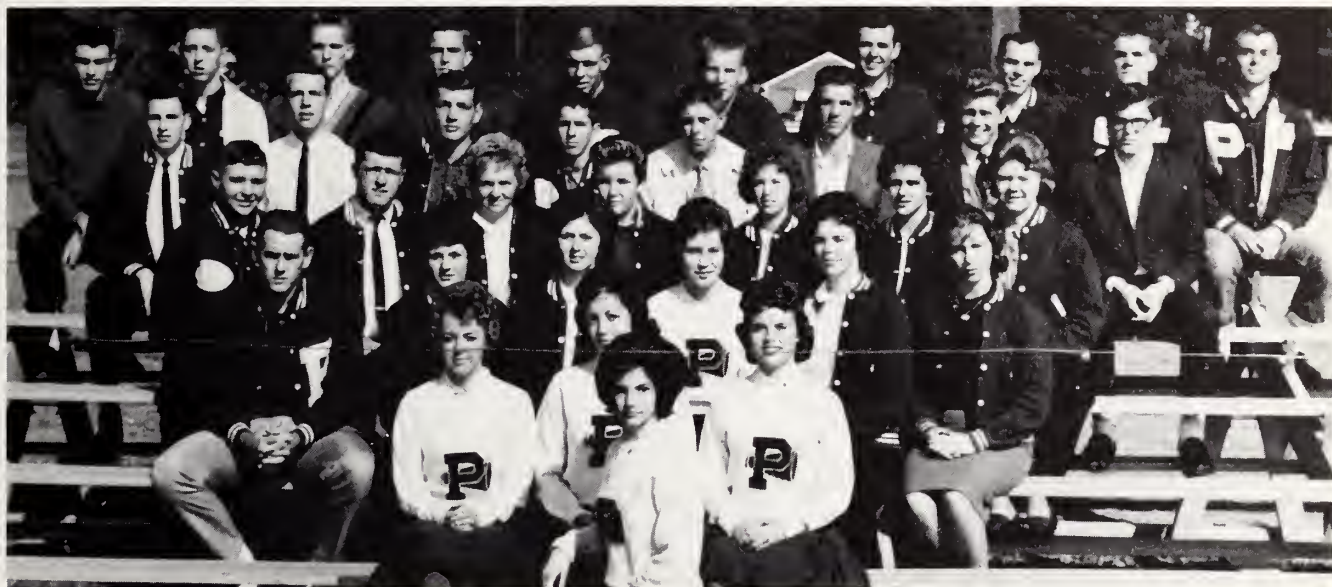
Sprinters: Lasater, 440; Waldeck, 100.



Last track season the warming spring brought on the Pittsboro High cindermen. The team won two of its meets and placed second in the other two. Coach Allred says that hard work will pay off for the athletes this year. With depth in most events and having lost no one off the team, the track men may by all rights take to the cinders with hopes of having PHS's finest season yet.



# Monogram Club



Ginny Burns, Kay Mann, Betsy Baldwin, Clegg Crawford, Barry Williams, Gail McBane, Becky Crabtree, Frances White, Wandra Harris, Marcia Huntsman, Bill Gattis, Tony Rhodes, Judy Green, Janet Fearington, Virginia Brafford, Ann Harris, Jennifer Kidd, Luther White, Earl

Lasater, Jimmy Gales, Louis Herndon, David Sparrow, Carey Carpenter, Guy Parks, Wayne Rigsbee, Jimmy Beckwith, Jim Camp, Bernard Farrar, Johnny Bullington, Dale Farrell, Kirby Adcock, Lacy Farrell, Gene Griffin, Johnny Blair, Jimmy Flynt.



Earl Lasater, Manley Newton, Ike Griffin, Luther White, Jim Camp, Mr. Allred.

## Golf

Our mascot... costume donated by class of '63... Bunn G. is inside.





# Classes



*Here are pictured the underclassmen  
future years at P.H.S.  
those*





*who are looking toward their  
with fond remembrance of  
past.*



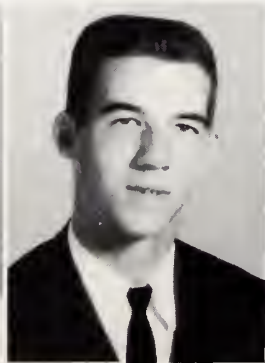
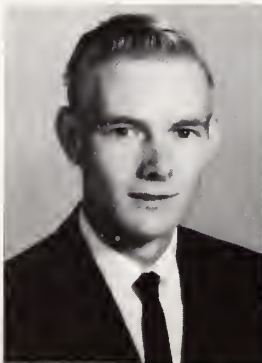
Jimmy Rogers, Vice-President; Ann Mann, Treasurer; Tony Rhodes, Sergeant-at-arms; Betsy Baldwin, Secretary; Ann Harris, President.

## Junior Class

BETSY BALDWIN  
NORMA BEAL  
JIMMY BECKWITH  
JOHNNY BLAIR

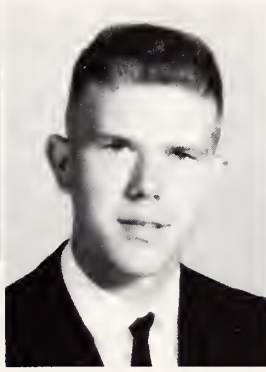


RAEFORD BLAND  
VIRGINIA BRAFFORD  
CAREY CARPENTER  
GAYLE CARPENTER

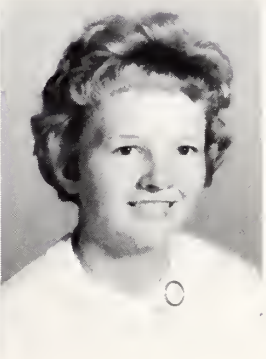
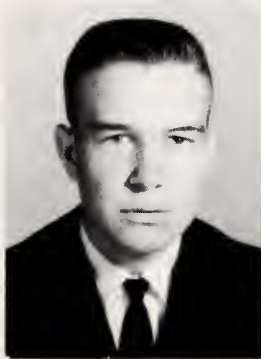




NANCY CARROLL  
 RAY CHURCHILL  
 JOY CLIFTON  
 PHIL COOPER



JOHNNY COVERT  
 CLEGG CRAWFORD  
 LARRY DOMONICK  
 KENNETH ELLIS



LARRY FARREL  
 JIMMY FLYNT  
 JUDY GREEN

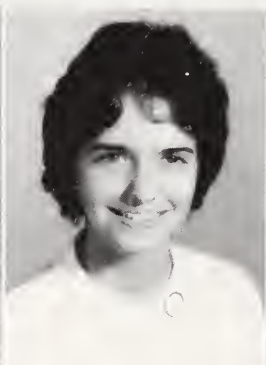
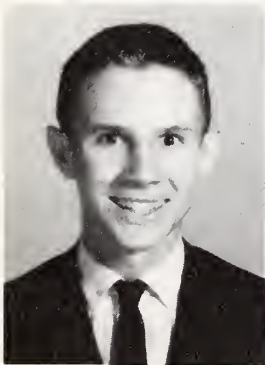
*Junior  
 Class*



ANN HARRIS  
 WANDRA HARRIS  
 RENA HATLEY  
 NORMAN HILLIARD



SARA HOGAN  
 ELIZABETH HOOKER  
 MARCIA HUNTSMAN  
 ROBERT JACKSON



TOMMY JUSTICE  
 JENNIFER KIDD  
 LINDA LASHLEY  
 PATSY LEMONS

ANN MANN  
 LINDA McLAURIN  
 FAYE MORGAN  
 LARRY MURDOCK

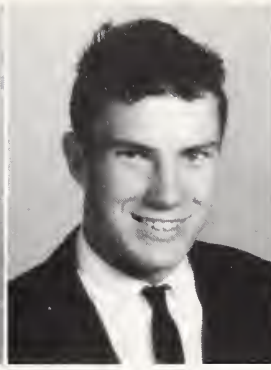


REBA PARKER  
 ROY PEACE  
 ARTHUR PERKINS  
 DOUGLAS PERRY



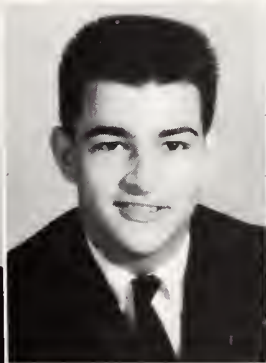
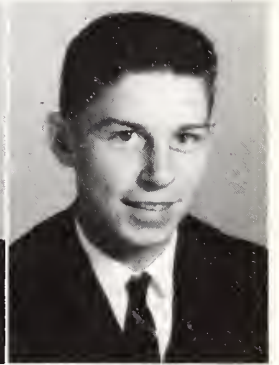
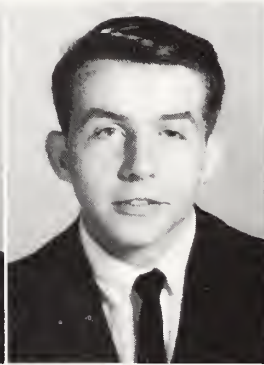
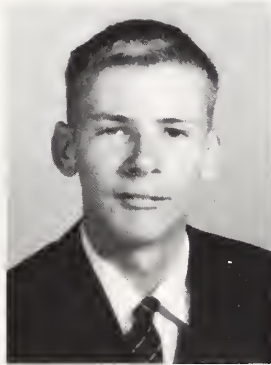


TONY RHODES  
 JAMES ROBERSON  
 JIMMIE ROGERS  
 LINDA SEAGROVES



*Junior  
 Class*

PETER SENKIV  
 DON SMITH  
 DAVID SPARROW



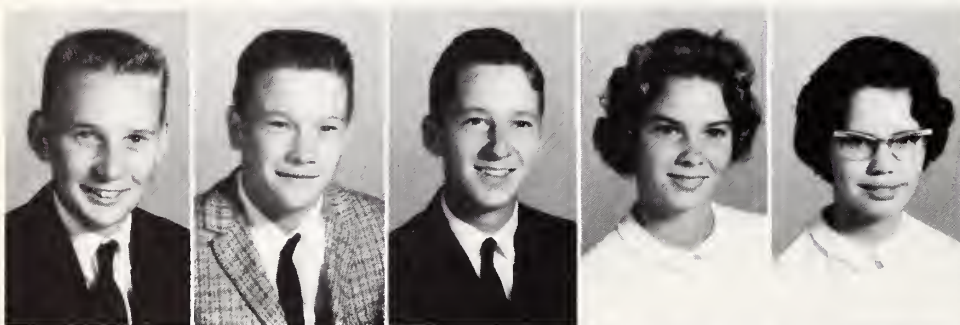
CHARLES STROWD  
 LEE SULLIVAN  
 DOROTHY TYSON  
 JIMMIE WILLIAMS



CAROL WILLIAMS  
 BARRY WILLIAMS  
 JERRY WOODS



Janet Hunt, President; Tami Hultman, Vice-President; J. A. Webster, Sergeant-at-arms; Martha Burns, Secretary; Valinda Clark, Treasurer.



KIRBY ADCOCK  
BOBBY BARBER  
J. C. BARRETT  
SUE BARRETT  
CANDY BATTS



CANDACE BURNS  
MARTHA BURNS  
RONNIE CALHOUN  
DAVID CANINE  
GRACE CARROLL



PHYLLIS CASH  
DAVID CATES  
VALINDA CLARK  
H. B. CLEGG

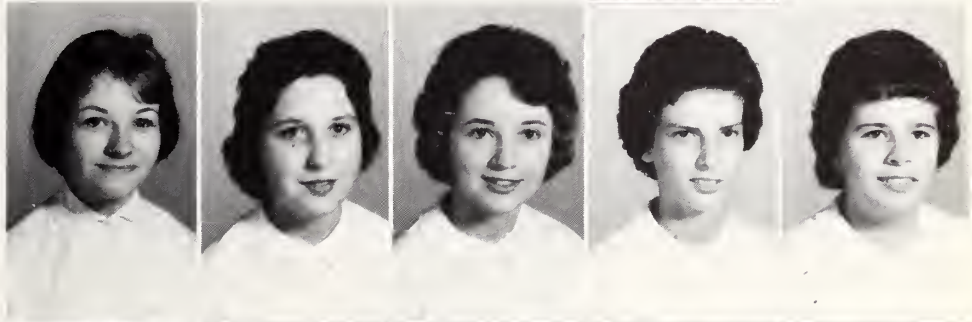


# Sophomores

JO COLLINS  
SHARON COPELAND  
BECKY CRABTREE  
JAMES CURRIE  
MOLLIE DANIEL



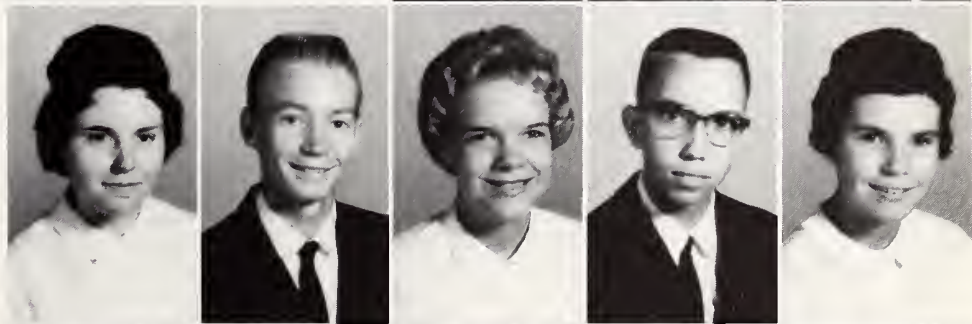
NANCY DANIEL  
LEVERNE EUBANKS  
IRENE FAIRCLOTH  
LINDA FARRELL  
LYDIA FARRELL



JANET FEARRINGTON  
LINDA FIELDS  
FRANK FOUSHEE  
RONNIE GAINES  
JIMMY GALES



HELEN GOODMAN  
ROGER GOODMAN  
MARY LEE GRIFFIN  
FRED HAMLET  
MARGARET HAMLET



PHYLLIS HARRIS  
SHEILA HATHAWAY  
LOUIS HERNDON  
DALE HORTON  
LORA REA HOWARD



# Sophomores



TAMI HULTMAN  
 JANET HUNT  
 KENNETH HUNTSMAN  
 SAMMY JENKINS  
 RONNIE JOHNSON



LEAH JONES  
 JO ANN KECK  
 BOB KNIGHT  
 PEGGY LANE  
 BARBARA LEWIS



GLENETTE MANN  
 LINDA MANN  
 MANLEY MANN  
 LARRY MATLOCK  
 BOBBY McNEIL



CARLENE MEACHAM  
 JIMMY MITCHELL  
 MARY WATSON NOOE  
 LINDA NUNN  
 PIERRE OLDHAM



LINDA PARKER  
 TERRY PARKER  
 GUY PARKS  
 SARAH PARTIN  
 JOHNNY PATTON



# Sophomores

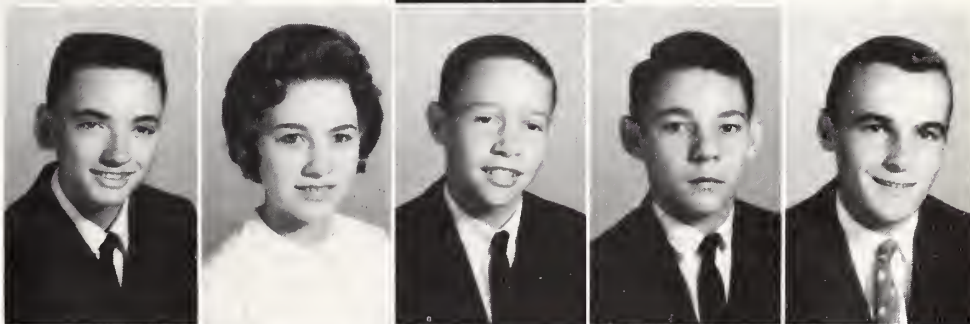
MARY ANNE PERKINS  
 BONNIE PERRY  
 JEAN PIERCY  
 FRONA RIDDLE  
 JIMMY RIGSBEE



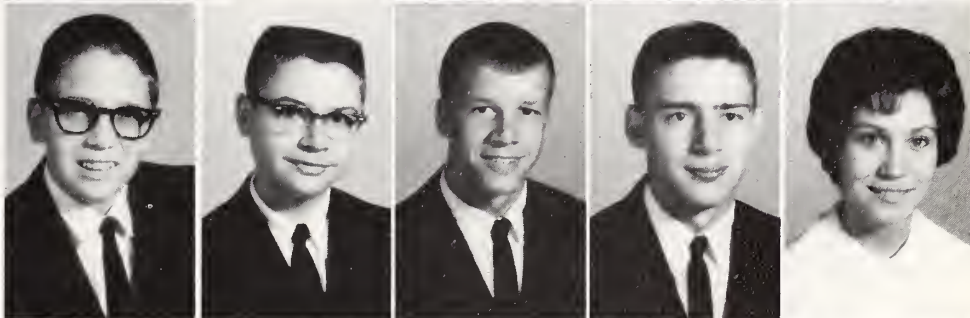
LINDA ROBERTS  
 PEGGY SHORE  
 JOE SNIPE  
 SARAH STEVENS  
 RONALD STONE



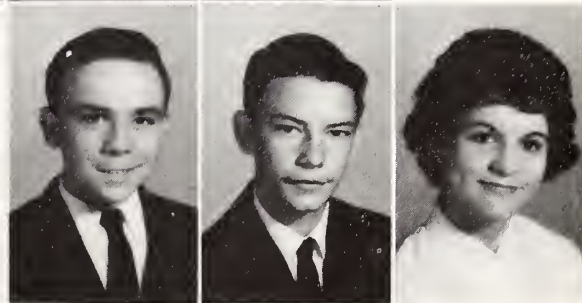
EMORY THOMAS  
 NANCY THOMAS  
 BOB THOMAS  
 RONNIE VAUGHN  
 DICKEY WALDECK



JERRY WASKO  
 DALE WEBSTER  
 J. A. WEBSTER  
 DAVID WHITE  
 FRANCES WHITE



DALE WILLIAMS  
 STEVE WILLIAMS  
 KATHERINE WRIGHT





Standing: W. C. Oldham, President; Worth Holleman, Vice-President; Virgil Farrell, Sergeant-at-arms. Seated: Dorothy Blue, Treasurer; Donna Goodwin, Secretary.



DOUGLAS BADDERS  
EDNA EARL BATT'S  
BEVERLY BLAND  
TERESA BLOUNT  
DOROTHY BLUE  
KENNETH BOULDIN

JUDY CALDWELL  
MIKE CAMPBELL  
WAYNE CAMPBELL  
BONNIE CARPENTER  
CLIFF CARTER  
SYLVIA CHURCHILL

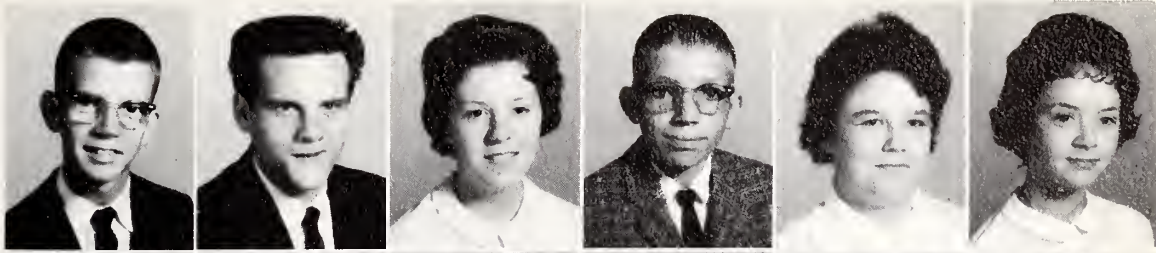
TOMMY CLEGG  
EDWARD COOPER  
FRANKIE COOPER  
BETTY JEAN COUNCIL  
JOE DILLESBROW  
LOUISE ELLIS

MIKE ELLIS  
RANDY ELLIS  
MARVIN EUBANKS  
BILLY FARRELL



# Freshmen

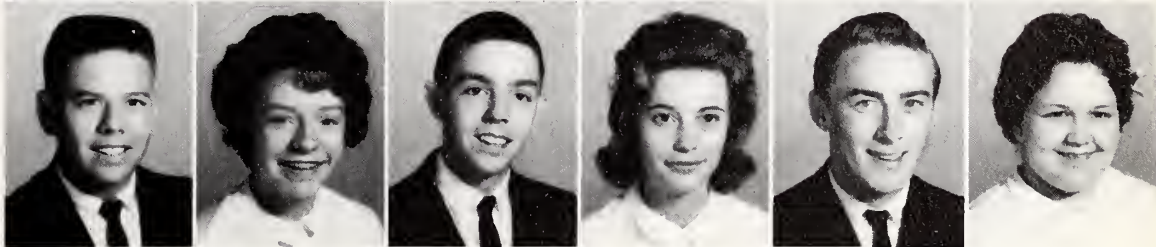
TEDDY FARRELL  
 VIRGIL FARRELL  
 CAROL FLETCHER  
 WAYNE FOUSHEE  
 KATHY GASTER  
 TRUDY GASTER



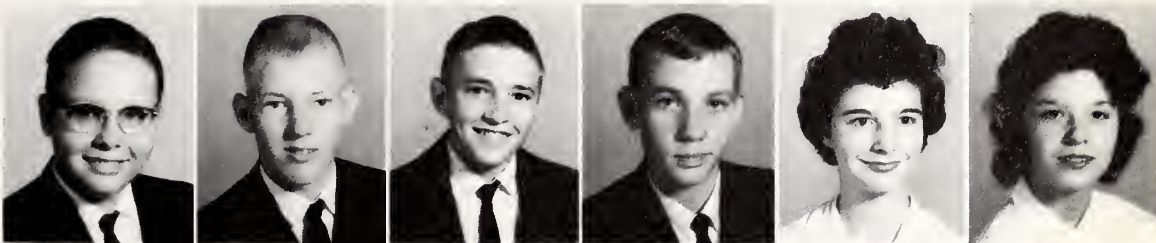
DONNA GOODWIN  
 BECKY GRIFFIN  
 BETTY JEAN GRIFFIN  
 MARY TOM GRIFFIN  
 BETTY GUNTER  
 MARTHA GUNTER



ARCHIE HACKNEY  
 JACQUELINE HARMON  
 C. W. HARRIS  
 DONNA HARRIS  
 LARRY HATLEY  
 LINDA HEARNE



JOHNNY HERNDON  
 REID HILL  
 TIMOTHY HOGAN  
 WORTH HOLLEMAN  
 FRANCES JENKS  
 NANNIE JENKS



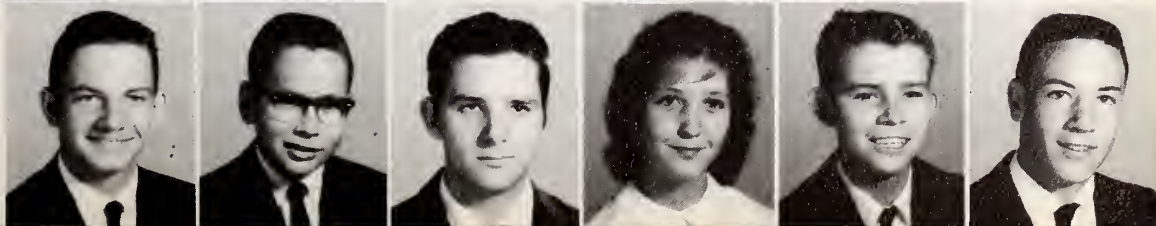
DON JOHNSON  
 JERRY JOHNSON  
 SARAH JOSEY  
 JOE JUSTICE  
 JOHN JUSTICE  
 RENNIE KREMER



CHARLES  
 LUTTERLOH  
 STEVE MANN  
 MARGARET  
 McALLISTER  
 BONNIE McCRIMMON  
 RONALD  
 MENDENHALL  
 GWEN MERRITT



CLIFF MORGAN  
 DAVID MORRIS  
 RONALD MOSES  
 MARTHA NEAL  
 LARRY NEWELL  
 W. C. OLDHAM





# Freshmen



BRENDA O'NEAL  
REBECCA PARKER  
CAROL PARTIN  
LUKE PENDER  
MERRELL  
PENDERGRAFT  
ERLINE  
PENDERGRAFT

KAY RICE  
PEGGY JO RIDDLE  
BARBARA ROBERSON  
PEGGY ROBERSON  
GREG ROPER  
KENNETH RYAN

JERRY SANDERS  
DARE SCOTT  
LILLIE MAE SEXTON  
JEANETTE SHORE  
GREG SMITH  
PATSY STAMEY



BONNIE STONE  
ANN STRAUGHN  
SARA JEAN TAYLOR  
KATHY THOMAS  
VALINDA THOMAS  
JOE THOMPSON

MIKE THOMPSON  
BILLY TUCKER  
TRUDY TYSOR  
BOB WACHS  
ANN WHEELER  
LOUISE WHITE

MIKE WHITE  
PATSY WHITE  
OREN WILLIAMS  
SHEILA WILLIAMS  
TEDDY WILLIAMS  
CAREY WILSON



JIMMY WOLFE  
SHARON WOODY  
DEBBY YATES

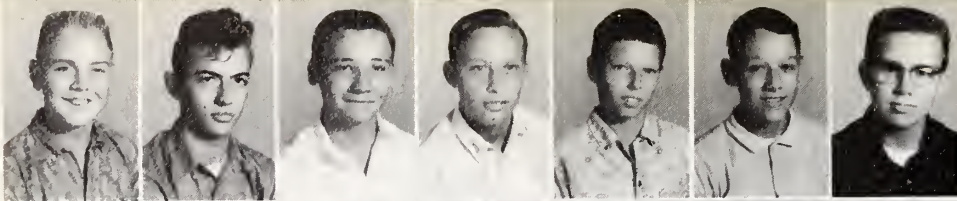


# Elementary

Mrs. Carl Yates is our elementary librarian. Each homeroom has a library period once a week.







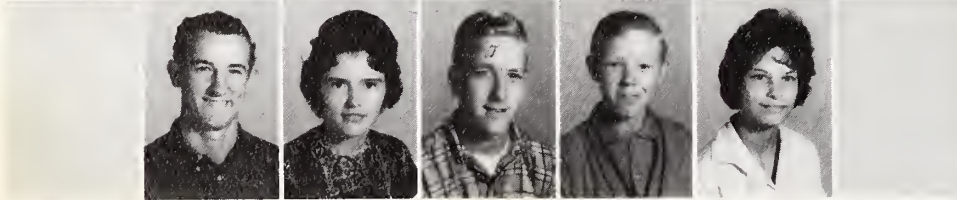
RONNIE BOWLES  
GWYNNE BURKE  
MARVIN CREED  
FREDDY CHRISCO  
DANNY COUNCIL  
LARRY DOWNING  
BARRY ELLIS



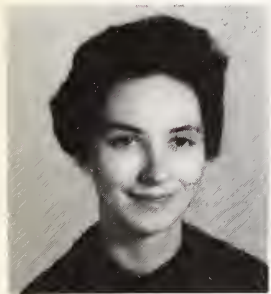
SUE GOODMAN  
DOUG GUNTER  
MARGARET HEATH  
BRENDA HACKNEY  
ALLIE JOHNSON  
GLENN JOHNSON  
BILLY KREMER



KEN LAYTON  
DANNY McDANIEL  
BRENDA MOORE  
CAROL MOSES  
WESLEY PETTY  
BOB REEVES  
J. D. REEVES



WILLIS ROBERSON  
JEAN SANDERS  
COLBY TILLEY  
ELTON WHEELER  
CAROLYN WILLIAMS



MRS. MARY G. COUNTS

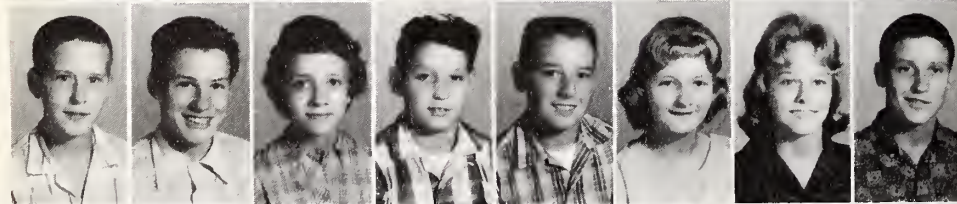


D. S. MAYES

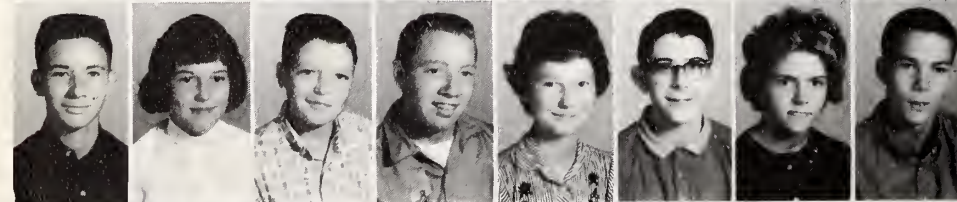
*Eighth*



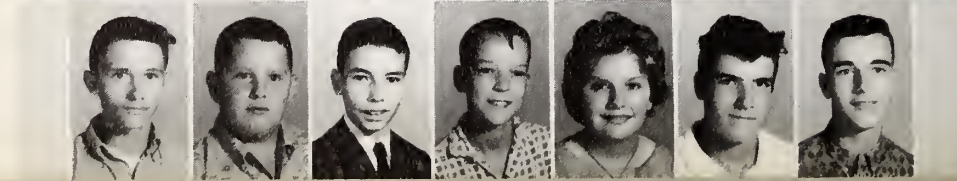
DENNIS ARNOLD  
DEBBIE BROWN  
LEE BUCHANAN  
MARY CALDWELL  
WILMA CLARK  
SAVON COLE  
KENNETH CRABTREE  
VAN CREED



SAMMY DILLESRAW  
FRANCIS EASTER  
ANN ELLIXSON  
CHARLES EUBANKS  
DENNIS EUBANKS  
VICKIE FREEMAN  
GLINDA GARRETT  
EARL GUNTER



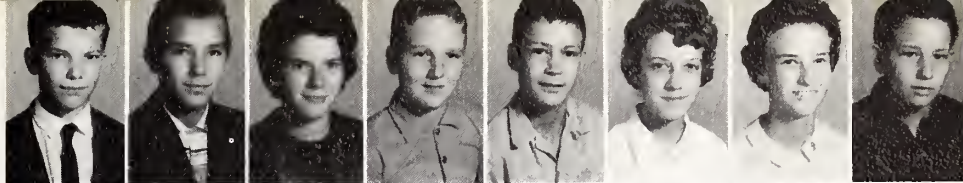
JERRY HENDERSON  
SHIRLEY HILL  
STACY HOLT  
LARRY JACOBS  
FANNIE LOPOSSAY  
REID MARKHAM  
PATRICIA O'DONNELL  
FRANKIE PENDERGRAFT



JAMES POTTS  
GARY SEARS  
NORTON SINGMAN  
ROY STAMEY  
CAROL TRIPLETT  
FRED WALDECK  
GEORGE YATES



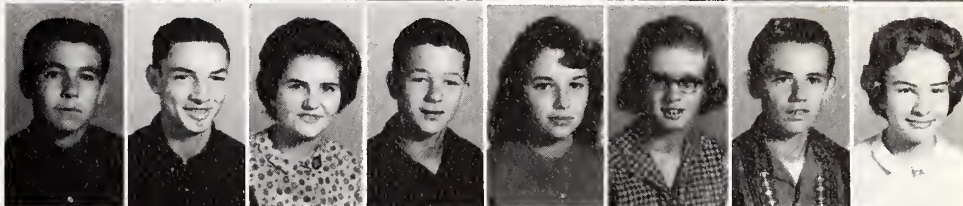
MIKE BLACKWELDER  
WAYNE BRAFFORD  
SANDRA CASH  
TIMMY COOPER  
GARY EUBANKS  
BRENDA EUBANKS  
BONNIE FA RRELL  
VAN FARRELL



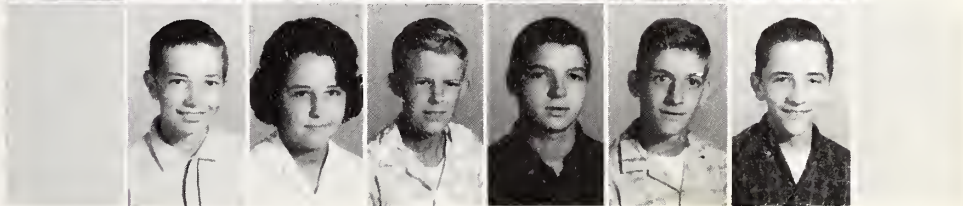
NANCY FOUSHEE  
ANNETTE HEATH  
J. W. HILL  
MELBA HOWARD  
PATRICIA JENKS  
GARY JOHNSON  
STANLEY JONES  
DAVID KNIGHT



JIMMY LANE  
RAYMOND MANN  
JANIE MANN  
KENNY NORWOOD  
GAIL PARKS  
JUDY POTTS  
RICKY RIDDLE  
JOANN SMITH



LARRY SMITH  
CAROLYN SNIPES  
RAY SUTTLES  
CHARLES THOMAS  
JIMMY TILLEY  
MITCHELL WILLIAMS



*Grade*



MISS BETTY JO AMICK

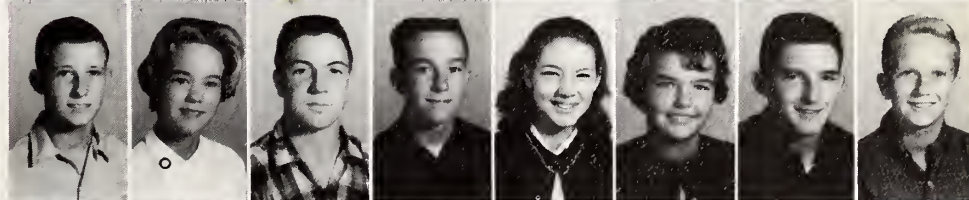


ALTON G. CAMPBELL

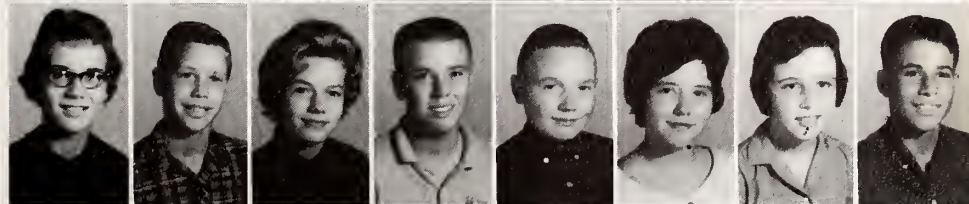
BETTY SUE BOONE  
KENDALL BULLINGTON  
LORA ANN BOWLING  
ALTON CAMPBELL  
ANDY CANINE  
JIMMY DIGGS  
GLENDA KAY DIXON  
BRYAN FARRAR



STEVE FARRELL  
WILLA FEARRINGTON  
JAMES GOODMAN  
GEORGE GRIFFIN  
ROSE HILL  
CASSIE HORTON  
RONALD HORTON  
TOMMY HUGHES



JANE JOHNSON  
GEORGE JUSTICE  
KATHY KIDD  
ROBERT LEWTER  
EDWARD McLAURIN  
J ' VAUGHN MOORE  
NANCY PERRY  
JERRY REEVES



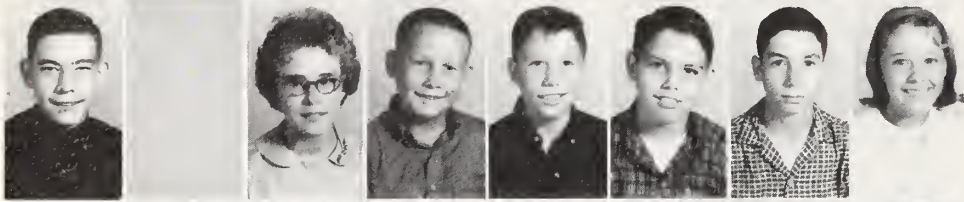
JOE RIGGSBEE  
RANDY ROBERTS  
LARRY RYAN  
ELSBETH SENKIW  
ARNOLD TORBERT  
JOAN WASKO  
JAMIN WOOD



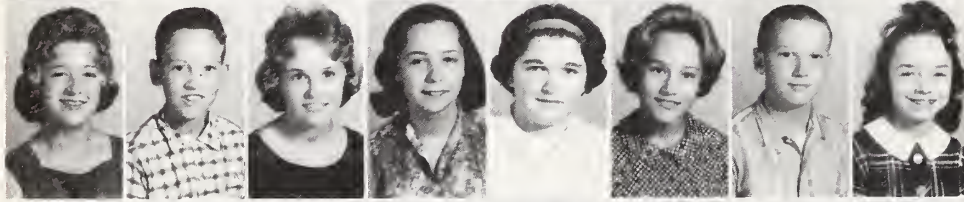




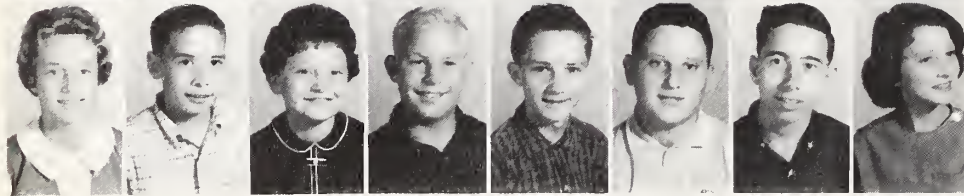
ALAN COUNCIL  
ANNIE RUTH COUNCIL  
CAROLYN COUNCIL  
GEORGE COOPER  
JERRY EUBANKS  
STANLEY EUBANKS  
AMANDA GAINAY  
BOBBY JOE HACKNEY



RONNIE HATLEY  
MARTHA HOGAN  
LARRY HOWARD  
GARY JACQUES  
STEVE KECK  
ALLEN LESLIE  
ANN LONDON



LYNDA MANN  
EARL McLAURIN  
CANDACE MEACHAM  
GAIL NORWOOD  
MARY NORWOOD  
KAY REEVES  
WALTER RHODES  
EDNA RIDDLE



EMILY ROBERTS  
MARTYNE SELF  
IRMTRAUD SENKIW  
D. W. SMITH  
ALLEN TAYLOR  
TAYLOR WHITE  
GENE WOMBLE  
PAMELA WOODS



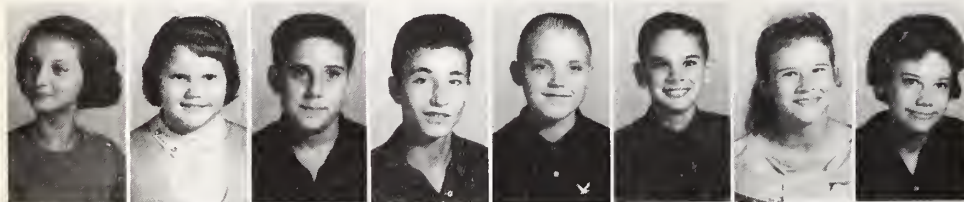
MRS. JOYCE F. JACKSON



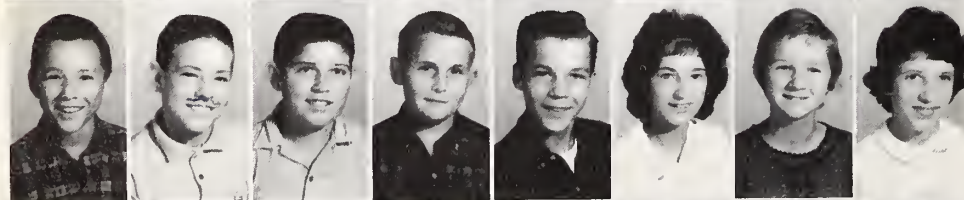
JOHN R. SHANER

*Seventh*

*Grade*



PATRICIA WOODS  
BRENDA ALLEN  
JOHN ATWATER  
LARRY BARNES  
GARY BOWLES  
THOMAS BRIDGMAN  
PATRICIA CARPENTER  
CATHY CLARK



JUDSON DARK  
RONNIE ELLIS  
RUPERT EUBANKS  
NEIL FLYNT  
GEORGE FULLER  
LILLIAN GREEN  
VIVIAN GREEN  
WANDA JONES



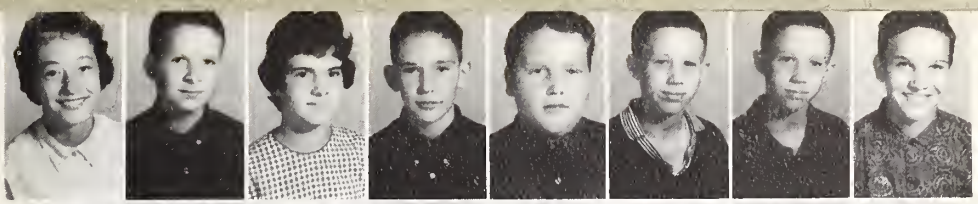
EDDIE KREMER  
STUART LASATER  
ARCHIE LANIOUS  
JENNIFER MANN  
STEVE MANN  
TIM MITCHELL  
LINDA OLDHAM  
MIKE PENDERGRAPH



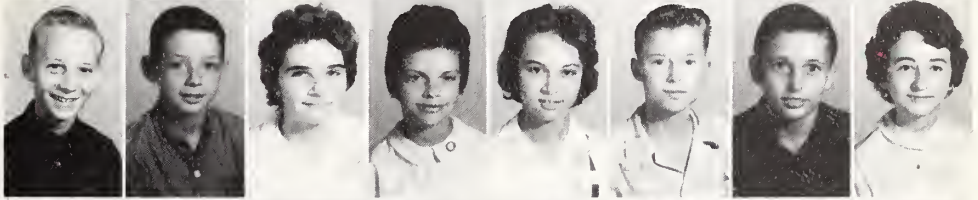
DAN REEVES  
WILLIAM ROBERSON  
LEE SMITH  
LINDA TUCK  
MAY ALICE VAUGHN  
SCOTT WHITAKER  
DAVID WOOD  
RONALD WOODY  
BARBARA JEAN YOUNG



MARY ANN ANDREWS  
 JAMES BOULDIN  
 MERLE BOULDIN  
 REID BRIGHT  
 J. E. CAMPBELL  
 JERRY CLARK  
 JOHNNY CLARK  
 CLIFTON COLLINS



CHARLES DIGGS  
 RANDY EASTER  
 ANNIE ELLIS  
 SADIE FARRELL  
 CAROL FINN  
 LARRY GOODWIN  
 LEONARD GUNTER  
 EDITH HATLEY



LINDA HOLT  
 MIKE JACKSON  
 MIKE JOHNSON  
 MARGARET LANIUS  
 DORIS LASHLEY  
 JOAN OLDHAM  
 DENNIS PARKER  
 TOMMY PARKS



LUELLEN PIERCY  
 KEITH ROPER  
 JACKIE SEAGROVES  
 JOHNNY WALDECK  
 KAY WEBSTER  
 AVA WHEELER  
 DAVID WOMBLE  
 PATRICIA WOOD



*Seventh*



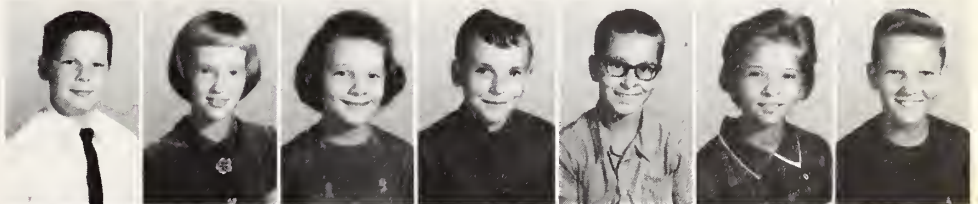
MISS SUZANNE JERNIGAN



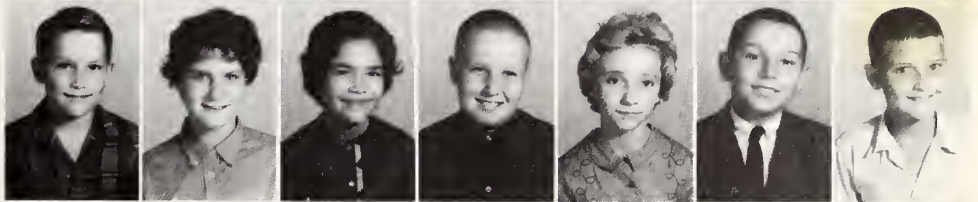
MRS. ALTON CAMPBELL

*Sixth*

KEITH ALLEN  
 ALANA ATWATER  
 VICKIE BOGGS  
 PAUL CASH  
 DON CHEEK  
 CHARITY CLARK  
 DON COOPER



JAMES DAVENPORT  
 GAYLA DILLESKAW  
 SHIRLEY EUBANKS  
 JAMES FARRAR  
 RENA FISH  
 THOMAS GRIFFIN  
 WILLIAM GRUMBLE



BENNY GUNTER  
 ROBERT HARRIS  
 TOMMY HEARNE  
 PAT HENDERSON  
 BILLY LAYTON  
 PAULETTE MEACHAM  
 CAROLYN NOOE



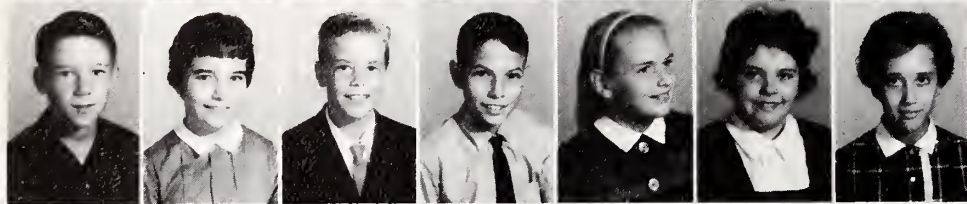
ROBERT PARKS  
 CLAYTON RICE  
 JEANINE RIDDLE  
 LINDA ROBERSON  
 RALPH SANDERS  
 RUSSELL THOMAS  
 BONNIE TYSOR  
 TED WILLIAMS



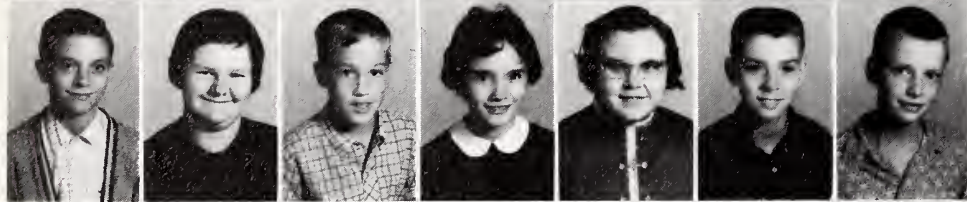




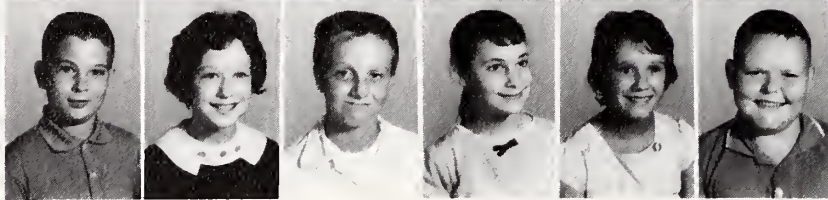
BRENDA BLAND  
CATHY BOLEJACK  
LINDA BOONE  
KATHY BRAFFORD  
VERNON BRAXTON  
COY BREWER  
MARY CAMPBELL



ROY EUBANKS  
SHEILA FARRELL  
JESSE FEARRINGTON  
DON FULLER  
CAROL HARWARD  
KAY HERNDON  
CHERYL HUDSON



DAVID KECK  
CONNIE KERN  
MIKE McALLISTER  
TERESA McLAURIN  
BERTHA MANN  
LARRY MANN  
MIKE POE



JOHNNY SHAW  
BETTY JO SHORE  
ARTHUR SMITH  
TERRI TITUS  
CLARA LYNN WHITAKER  
MIKE WILSON



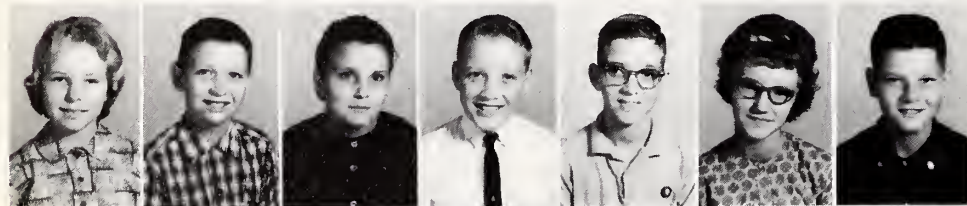
MRS. CLYDE McCOLLUM



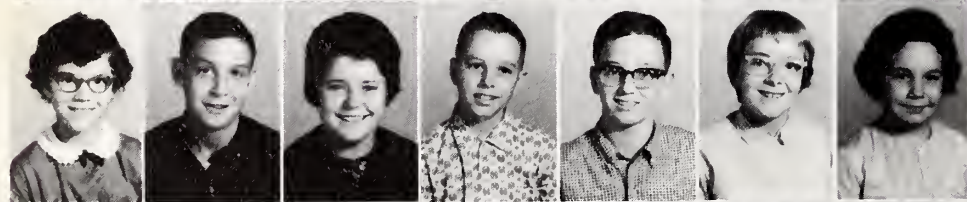
MRS. A. L. McNEILL

*Sixth*

*Grade*



KAY AUSTIN  
JOHN BADDERS  
PATRICIA CURRIE  
DAVID DALTON  
DONALD DALTON  
DONA DURHAM  
RONALD FARRELL



LOVENE GOODMAN  
JAMES GORDON  
DIANE GREGORY  
STANLEY HORTON  
BRUCE IHME  
LUWANA JONES  
MARTHA MANN



JAMES MAY, JR.  
JANICE MEACHAM  
EDDIE MOORE  
JUDY PADGETT  
POLLY PARRISH  
MILLARD PENDERGRAPH  
KAY PETTY



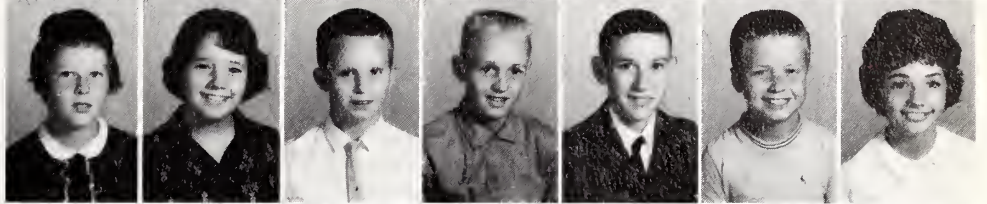
MIKE PHILLIPS  
PATSY PHILLIPS  
L. D. RIDDLE, JR.  
BONITA SHROPSHIRE  
DEBRA WAGNER



MARIE BARRETT  
DAVE BLACKWELDER  
PEGGY JO BLAND  
HOPE BOULDIN  
RHONDA BUCHANAN  
CARL COLLINS  
ED DUKE



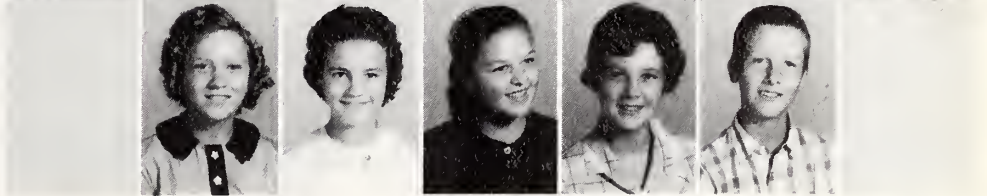
DEBORAH DURHAM  
ROSIE FARRELL  
DAN FIELDS  
ROY GREEN  
MIKE HARWARD  
STEVE HEARNE  
ELAINE HORTON



KATHY HORTON  
DANNY JENKINS  
ELLEN MANN  
JOETTE MARKHAM  
JANET MASON  
LARRY MORGAN  
RENEE MOORE



VIRGINIA KAY MOORE  
TERESA ROBERSON  
RUTH SPARROW  
AVA SUE TRIPP  
HENRY TUDOR



*Sixth*



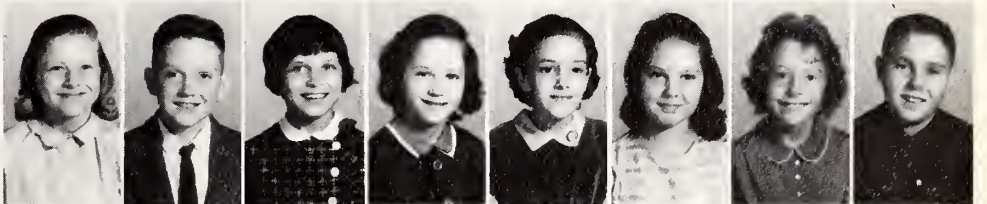
BETTY EMILY THOMAS



MABEL CHEEK

*Fifth*

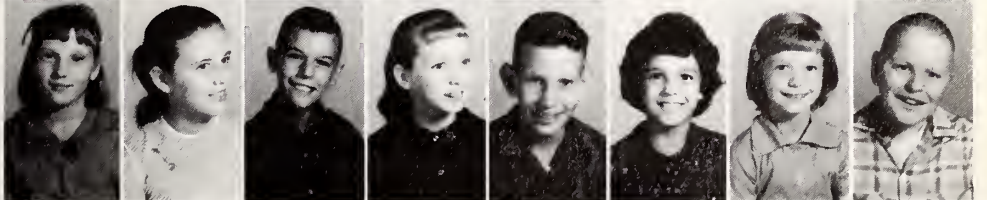
CONNIE BLAYLOCK  
JOHNNY BRIGHT  
MARGARET COLLINS  
KATHY DIXON  
VIVIAN DIXON  
NORA ELLIS  
DIANNE FARRELL  
JIMMY GOODMAN



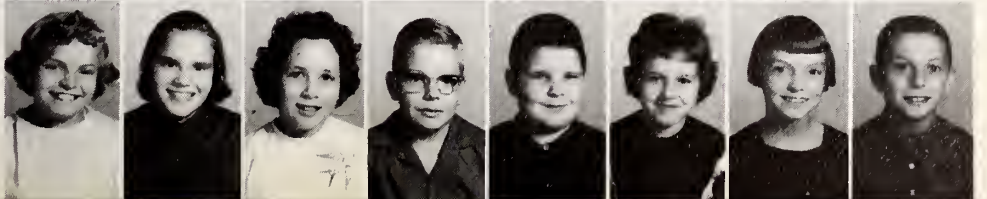
BARBARA HACKNEY  
CATHY JO HARRIS  
DAN HARRIS  
ANN HEATHERLEY  
LINDA HILL  
CARLIS JOHNSON  
KAY JONES  
WAYNE JOSEY



ETTA MAE KECK  
JUDY LEWTER  
JIMMY LEWTER  
BETH MARKHAM  
PHIL McNEILL  
LINDA MITCHELL  
CHARLENE NEAL  
DAVID NORTHCUTT



JOYCE O'DONNELL  
SARAH REEVES  
BONNIE TITUS  
KENNETH TRIPLET  
WAYNE WHEELER  
CHERENE WHITAKER  
JEAN WILLIAMS  
RAY WOMBLE



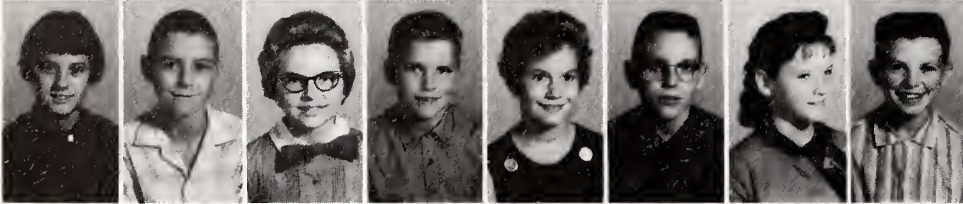




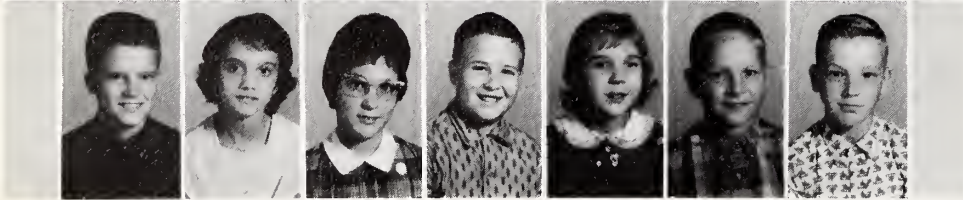
STEPHEN ANDERSON  
 JULIA ATWATER  
 GLORIA BOULDWIN  
 SUE BOWLES  
 LINDA BURKE  
 DANNY CHRISCO  
 MELVIN CLARK  
 KENT COOPER



ANN DANIELS  
 VICKIE DIGGS  
 MARY BETH DOMINICK  
 RAY DIXON  
 BRENDA ELLIS  
 DIXIE KAY FARRELL  
 JANET FARRELL  
 ANDY GASTER



REBA GUNTER  
 DANNY HARMON  
 CHARLOTTE HOWARD  
 DAVID JONES  
 CINDY MATHIESON  
 JESSE McBANE  
 NANCY NEAL  
 JERRY PARTIN



BERRY PETTY  
 LINDA GALE SANDERS  
 DEBRA SEAGROVES  
 WILLIAM SMITH, JR.  
 GERTRUDE WHEELER  
 RICK WHITFIELD  
 ROBERT WOOD



MRS. GEORGE ANDREWS



MRS. J. D. COLLINS

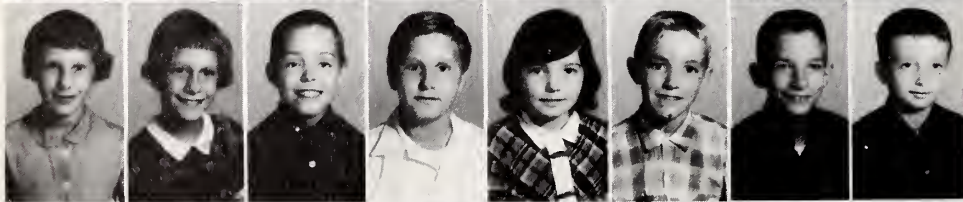
## *Fifth Grade*



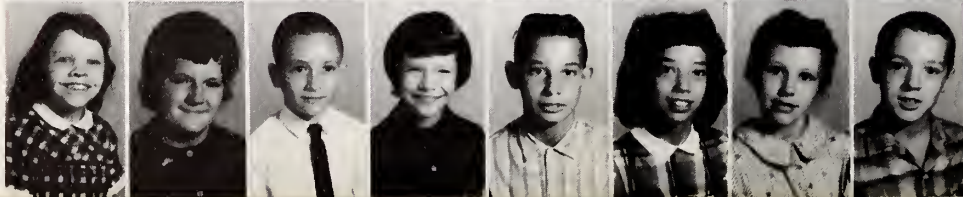
SHELIA AMOS  
 JEAN BIRMINGHAM  
 GLYNN BLACKWELDER  
 LYNN BLACKWELDER  
 JOAN CAMPBELL  
 MICHAEL CATES  
 RONALD CHEEK  
 RUTH COTTON



ROBERT DANIEL  
 JOHN CHARLES DIGGS  
 DAVID EUBANKS  
 NONIE FARRELL  
 MARGARET FEARRINGTON  
 WILLIAM FLETCHER  
 BILLY GOODMAN  
 DONNY GUTHRIE



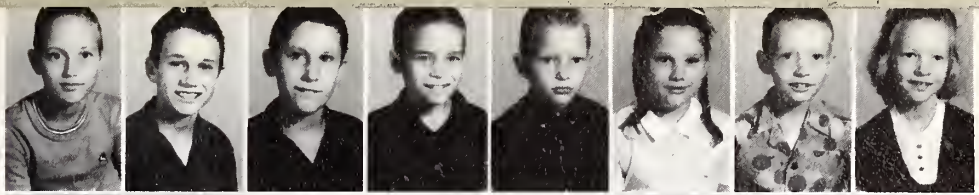
BONNIE HACKNEY  
 FRANKIE HOUSER  
 IRVIN JONES  
 DOYLE LOOPER  
 LOUISE MANRING  
 ROBERT MANRING  
 DONALD PARKER  
 LEE PENDERGRAPH



ALICE RIDDLE  
 DORIS ROBERSON  
 EARL ROBERSON  
 DALE SNIPES  
 CECIL STONE  
 LINDA STONE  
 CATHY VAUGHN  
 ALFRED WALDECK



MERWIN ARNOLD  
CLARENCE BARNES  
TROY BARNES  
DAVID CARTER  
JOE CRAWFORD  
ELLEN DAVENPORT  
DONNIE ELLIS  
JANE GOODMAN



CAREY GREEN  
LINDA LOU GUNTER  
WAYNE HACKNEY  
CHARLOTTE HEARNE  
STUART HILL  
CHARLENE HORTON  
KENT McCULLEN  
BRENDA McGHEE



SANDRA FAYE MOORE  
EARL MOSES  
GENE OLDHAM  
ELLA ANITA SENKIW  
JOHNNY SPARROW  
EDWARD STRAUGHN  
LARRY SUTTLES  
EUGENE SWANEY



WANDA SUE THOMPSON  
TERRY TYSOR  
HAL WAGNER  
CHRISTINE WALDECK  
BRENDA WILLIAMS  
JANET WILLIAMS  
RAEFORD WOOD  
VICKIE WOODY



# Fourth Grade

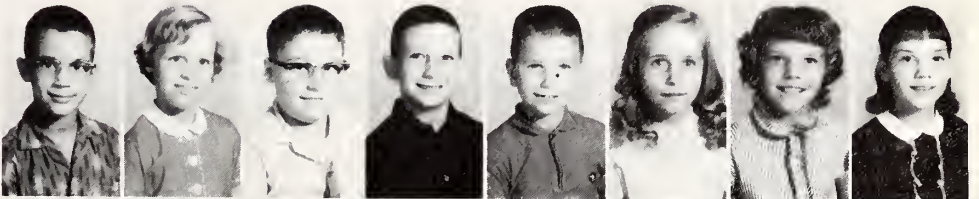


MRS. PAULINE WOMBLE

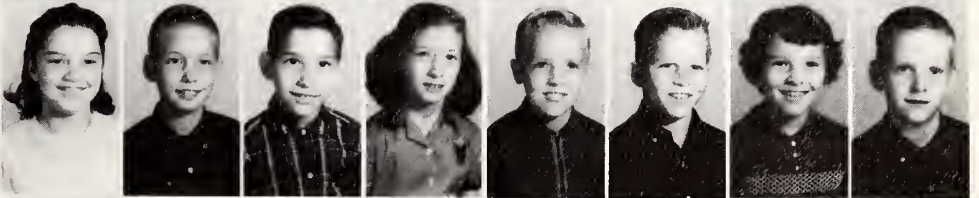


MRS. LUCILLE F. SEARS

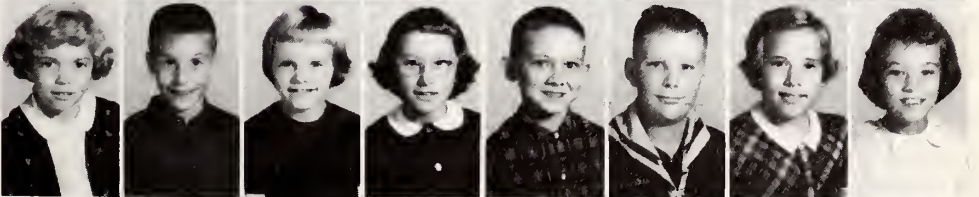
RICHARD AMOS  
KAY BREWER  
ROYCE CHAMBERS  
WINFRED CHEEK  
EDDIE ELLIS  
PAMELA ELLIS  
MARY CATHERINE FULLER  
KATHY GALES



EVALYN GRIFFIN  
BOB HARRIS  
BRUCE KECK  
CATHY LASSITER  
WAYNE MEACHAM  
BILL MITCHELL  
SHARON MITCHELL  
GERALD MOSES



MARGARET O'DONNELL  
DAVID PARKER  
KAREN RATLIFF  
JEAN REAGAN  
DWIGHT RYAN  
MAURICE SANDERS  
PAMELA ANN SELF  
LINDA SHAW



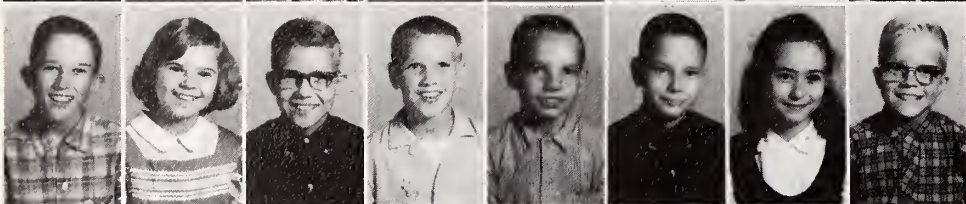
JAMES TITUS  
RICKY TRIPP  
TERESA TUCK  
DEBARAH WEBSTER  
JIMMY WHITE  
ROBERT WHITE  
KATHY WILLIAMS  
STEPHEN WILLIAMS  
MARSHALL WILSON



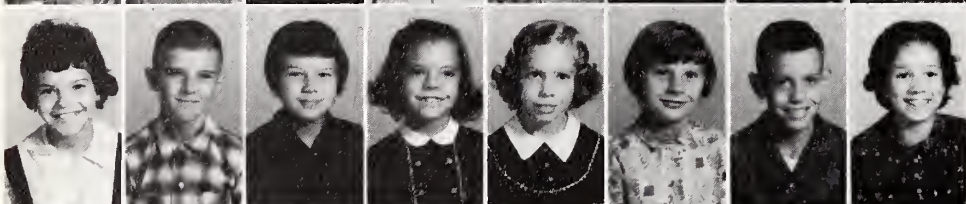




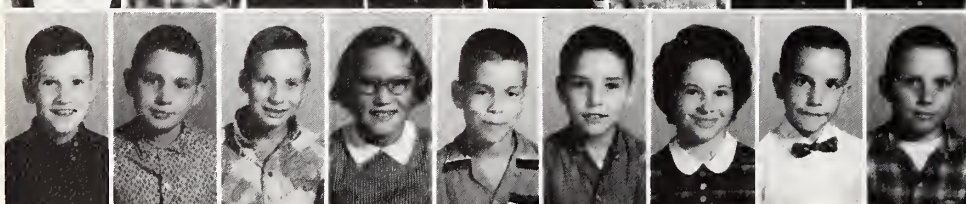
JAMES ARTHURS  
 PAMELA ARTHURS  
 JAMES ATWATER  
 KATHY BAKER  
 LOLLY BLAIR  
 CARLYLE CAMPBELL  
 ROBERT CANADA  
 DEITRA CARTER



HOWARD COLE  
 PAMELA GARDNER  
 HENRY GOODMAN  
 TED GRIFFIN  
 EDDIE HAITHCOCK  
 JIMMY HAMLET  
 SHEILA HICKS  
 ROBERT HUGHES



PAULETTE JOHNSON  
 RICKY JOHNSON  
 BETSY KIDD  
 EVELYN LE MAY  
 SHERRY LEWIS  
 DEBORAH MARKHAM  
 DON McNEILL  
 PAMELA MITCHELL



JOHN OLDHAM  
 JERRY POE  
 DICK REEVES  
 MELISSA REEVES  
 MIKE WOODY  
 EDDIE WILLIAMS  
 CATHY TRIPP  
 EDDIE ROBERSON  
 DAVID ROBERSON



MISS LINA B. MOORE

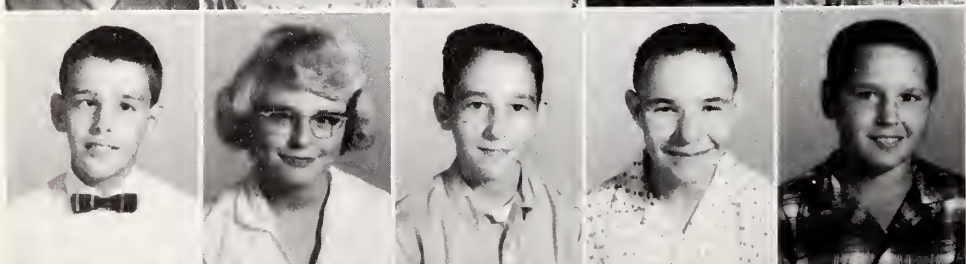


MISS NELLIE G. WHEELER

*Fourth  
 Grade  
 Special  
 Education*



RAY BAKER  
 BARBARA BREEDLOVE  
 KATHY BREEDLOVE  
 EDDIE COTTON  
 VESTER HORTON



ALLEN JENKS  
 JEAN JENKS  
 HUBERT O'DANIEL  
 TOMMY RIDDLE  
 DONNIE ROBERSON



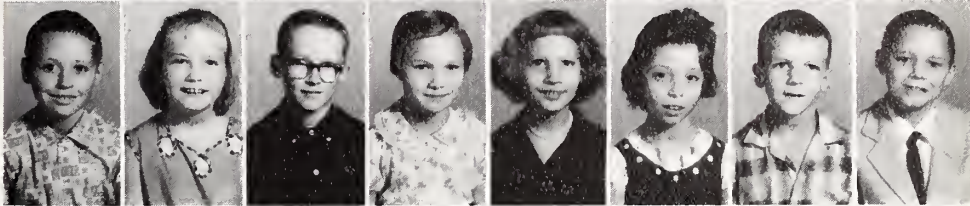
RONNIE STRICKLAND  
 MARJORY TESSNEER  
 CHARLES WHEELER  
 ANN WILLIAMS  
 CYNTHIA WOOD



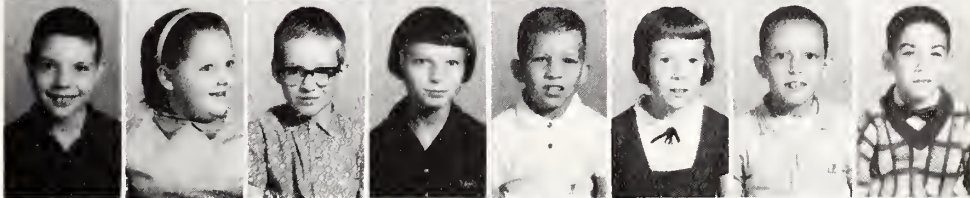
STEVE BARKER  
 DIAN BARNES  
 GEORGE BARRETT  
 SUE BIRMINGHAM  
 CHARLES BRAME  
 PHILIS CAMPBELL  
 MIKE CARROLL  
 RONALD CHURCHILL



LARRY CRABTREE  
 SUE DANIELS  
 FRED DIGGS  
 LOUISE ELLIS  
 JEAN FARRAR  
 CANDY FINN  
 ALVIN FULLER  
 GEORGE HACKNEY



TYNDALL HARRIS  
 VICKIE HEARNE  
 RODNEY JONES  
 FRANCIS LAWRENCE  
 RAY McGHEE  
 MARTHA MITCHELL  
 RALPH O'DANIEL  
 STEVE PATTESON



VICKIE SEAGROVES  
 BOBBY TRIPP  
 DIAN TRIPP  
 STANLEY WAGNER  
 LARRY WILLIAMS  
 SARAH WOLFE  
 DONALD WOMBLE



*Third  
 Grade*



MRS. T. W. McBANE

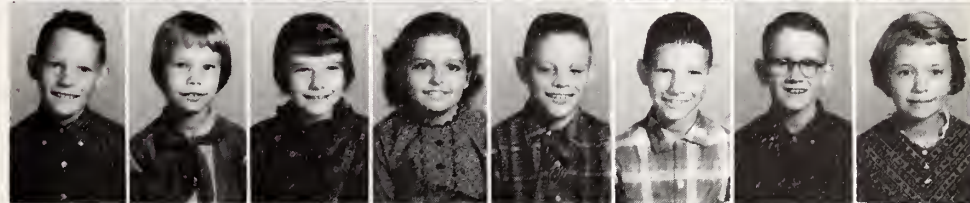


MRS. W. C. OLDHAM

BEVERLY CALHOUN  
 ELBERT CLARK  
 PAMELA FARRELL  
 PATSY GRIFFIN  
 SYLVIA GRIFFIN  
 DEBBIE HAMLET  
 DENNIS HEARNE  
 SHARON HEARNE



RICKY JACQUES  
 BARBARA JUSTICE  
 DENISE KIDD  
 JO LANIER  
 MARTY McBANE  
 REID MOORE  
 JAMES OLDHAM  
 LISA PARRISH



BILLY PETTY  
 SAMMY PHILLIPS  
 DEAN RIGGSBEE  
 FRED RIGGSBEE  
 HAYWOOD SANDERS  
 FRANKIE SNIPES  
 DEBORAH SWAINY  
 KAY TAYLOR



SHELBY TRIPP  
 TERESA WHITE  
 DEBORAH WILLIAMS  
 LEON WILLIAMS  
 PEGGY WILLIAMS  
 ROBERT WILLIAMS  
 ROUSE WILSON







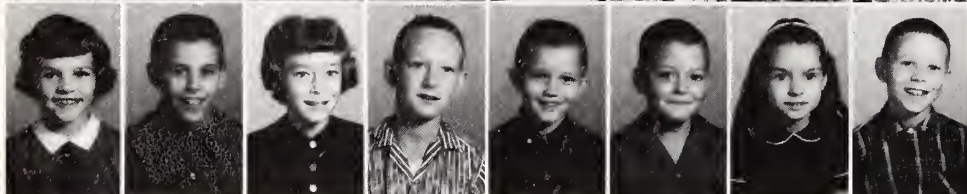
REBECCA ANDERSON  
 GEORGE ANDREWS  
 NANCY BOONE  
 BLENN BRAXTON  
 PAM CASH  
 DIANN CHURCHILL  
 SCOTT COLE  
 BRENDA COVERT



TOMMY DOWNING  
 PAT FARRELL  
 BARRY FREEMAN  
 BILLY HAMLET  
 JAMES HENDERSON  
 EDWARD HOWARD  
 JOE JACKSON  
 JAMES LAYTON



DANNY LOOPER  
 DAVID MANN  
 LYNN MANN  
 JANET McCULLEN  
 PATRICIA NEWTON  
 BONNIE PADGETT  
 JEANETT PADGETT  
 BRENDA RAGAN



ELAINE RATLIFF  
 BOBBY ROBERSON  
 MARTHA ROBERTS  
 BOBBY SHORE  
 TIMOTHY TAYLOR  
 RONALD TRIPLETT  
 SYLVIA TRIPLETT  
 STANLEY WILLIAMS



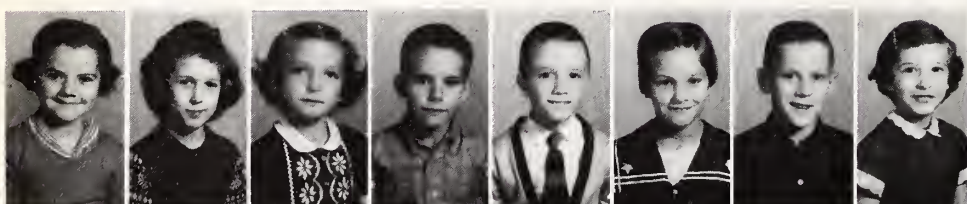
MRS. ROY WILLIAMS



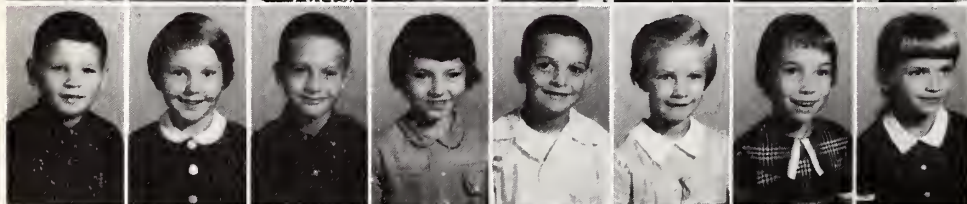
MRS. C. P. HARWARD, JR.

*Third*

*Second*



ELIZABETH BURGESS  
 CYNTHIA CATES  
 ANN CLARK  
 MARK COLE  
 RIGGSBEE COLEMAN  
 ANN ELLIS  
 JERRY EUBANKS  
 CONSTANCE FLETCHER



JEROME GARDNER  
 CAROLYN GOODMAN  
 MILO GOODMAN  
 KATHY GRIFFIN  
 DONALD GRUMBLE  
 JANET HARMON  
 SUSAN HARRIS  
 DIANNE HEARNE



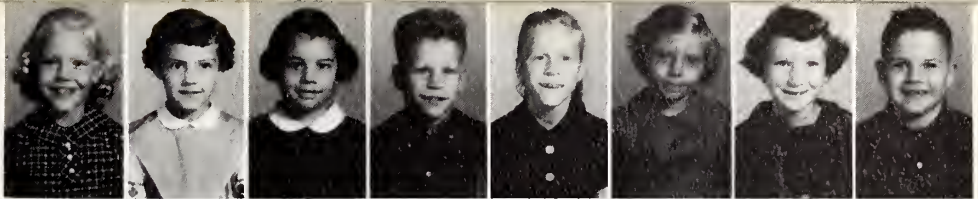
TERRY HORTON  
 JERRY IHME  
 DAVID PATTESON  
 KENNETH PERRY  
 GAIL PETTY  
 RAY PORTER  
 SHARON STUBBS  
 BILLY JOE SUTTLES



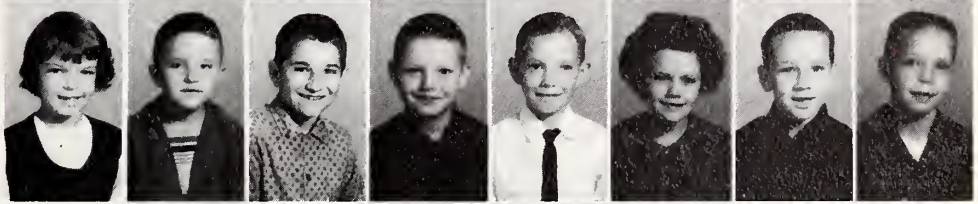
ANN TESSNEER  
 DENNIS THRIFT  
 DENISE TUCK  
 KATHY VICK  
 GARY WHITAKER  
 BRENDA WOOD



JILL ARTHURS  
SALLY BLAND  
JO ANN BOONE  
PAUL BRATTI  
PAULA BRATTI  
AMELIA BRYAN  
SHARON CREEK  
EDDIE CLARK



SYDNEY DOMINICK  
JAMES ELLIS  
SCOTTIE FRYE  
GREGORY GOODWIN  
GREGORY HACKNEY  
DEBRA HATLEY  
TIMOTHY HOLLEMAN  
TERRY HERNDON



HARRY HORTON  
RANDY KECK  
LEE LLOYD  
TIMOTHY LLOYD  
JEFFREY MARKHAM  
PAMELA OAKLEY  
ERIC OLDHAM  
LESLEE RICHARDS



GILBERT RIDDLE  
MILLIE RIDDLE  
MARLENE SEARS  
DIANE SNIPES  
RICKY TORBERT  
BETTY TRIPLETT  
SUSAN WOODY  
MIKE YATE



*Second*



LUCILLE YATES HORTON



MRS. ELIZABETH P. WILLIAMS

*Grade*

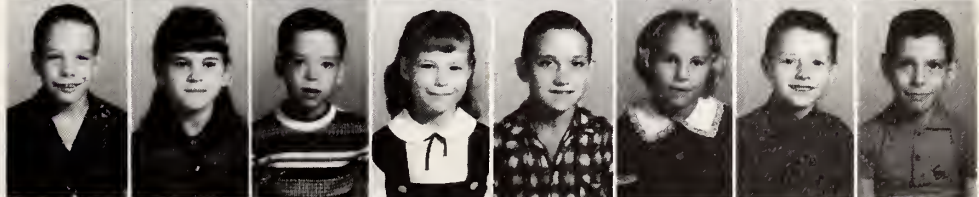
MARLA ARNOLD  
GAIL ASHWORTH  
CATHY BLACKWELDER  
BELINDA BOYKIN  
JANE BREWER  
CHERYL BURNETT  
BOBBY CHAMBERS  
GERALD CLARK



WARRE COCHRAN  
IDA DURHAM  
PATRICIA ELLIS  
GENE FARRELL  
CONNIE FOUSHEE  
JAMES GARNER  
EARL GREEN  
RANDY GRIFFIN



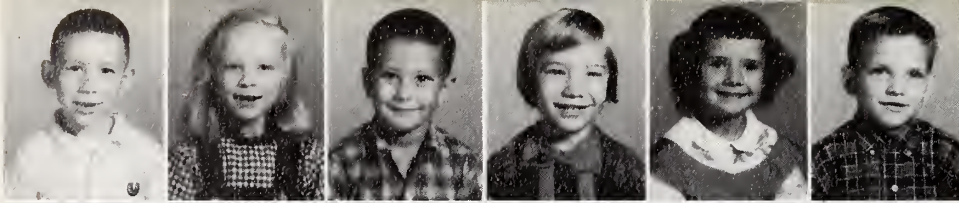
KENNETH HACKNEY  
SUSAN HALL  
JEFF HENNDON  
MATTIE HICKS  
STANLEY JOHNSON  
MARIE JONES  
RONALD LANGLEY  
DANNY LASSITER



PAMELIA LINDLEY  
DONNA MARRING  
CYNTHIA NEAL  
KEITH PARTIN  
ALBERT SANDERS  
DIANNE SMITH  
SYLVIA WHITE  
STEVE WOODY



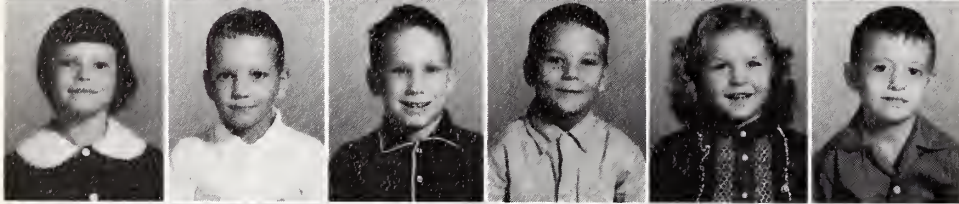




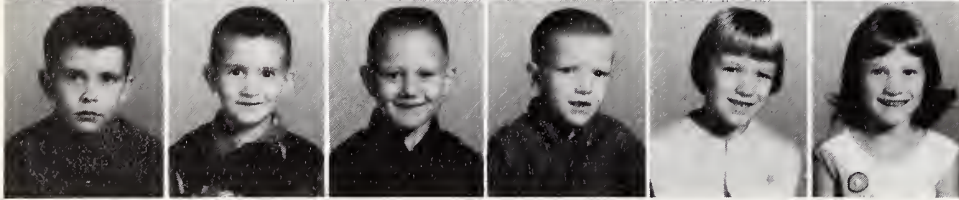
HAROLD BOYKIN  
DARLENE BUCHANAN  
AL BURKS  
CATHY CALDWELL  
CAROLYN CHURCHILL  
RAYMOND COLLINS



PATSY COUNCIL  
ANNETTE FORNES  
RAY GLOSSON  
MIKE JACKSON  
DOUGLAS KELLY  
TONI LYNN



SHARON McCULLEN  
BOBBY McGHEE  
COLBY PARKS  
RANDY PENDERGRAFT  
CAROL SPARROW  
GARY LEE SMITH



OLIN SWEATT  
SHERMAN TAYLOR  
DANNY WILLIAMS  
BOBBY WOOD  
MARY WOOD  
NELLIE WOOD



MRS. MARSHALL ATWATER



MRS. C. C. LINDLEY

# First Grade



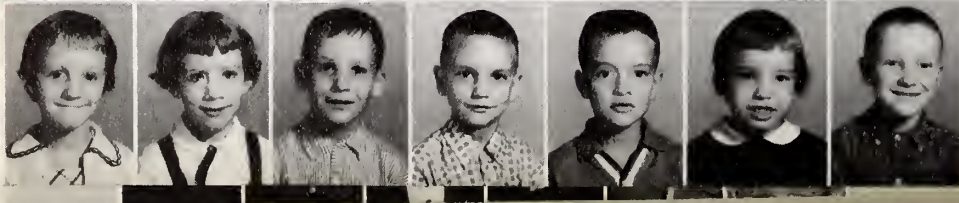
CLINTON BRYAN, III  
RICHARD BURNETTE  
RONALD CARTER  
ARTHUR CLARK  
PAMELA EASTER  
BOBBY GALES



SANDRA GARNER  
NORMA HATHAWAY  
STEVE KELLY  
DEBORAH KREMER  
CATHY LAWRENCE  
TERRY MANN



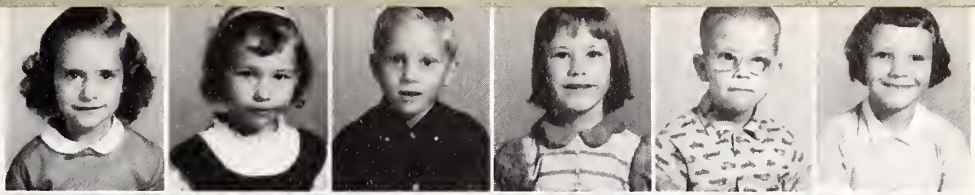
GARRY MEACHAM  
KEITH MEACHAM  
RODNEY MORRIS  
JOHN NEWELL  
DOUGLAS PHILLIPS  
RAFFORD SANDERS  
DOUGLAS SIRLS



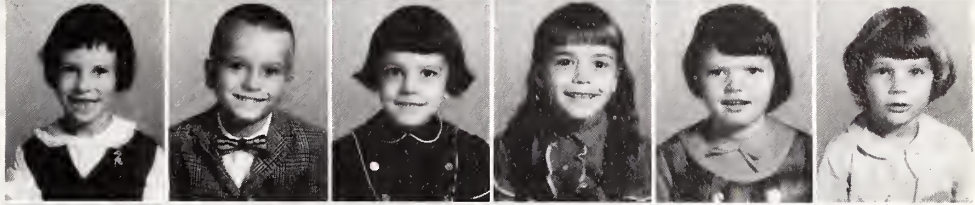
CATHY LYNN SMITH  
JANE THOMAS  
DANIEL TITUS  
BOBBY WILLIAMS  
LEON WILLIAMS  
BRAYTON WILSON  
LACY WOOD



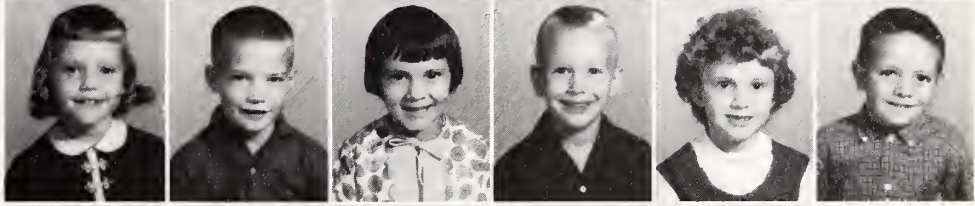
BEVERLY COCHMAN  
 CYNTHIA COOPER  
 JERRY CRAWFORD  
 FRANCIS DANIEL  
 KENNETH FARRELL  
 VIRGINIA FULLER



PATRICIA GREGORY  
 EDDIE GUNTER  
 LILA MARILYN HEATHERLY  
 DIANE KECK  
 DEBRA LAWRENCE  
 SHERRON LYNN MARKHAM



CHARLENE MATHEWS  
 NORMAN MAY  
 BONNIE MCGHEE  
 BUTCH PHILLIPS, II  
 CYNTHIA POE  
 RICKEY RIDDLE



HELEN SMITH  
 PATRICIA STUTTS  
 JANICE SWANEY  
 DAN SYMES  
 EDDIE THOMAS  
 DEBBIE WORLEY



*First Grade*

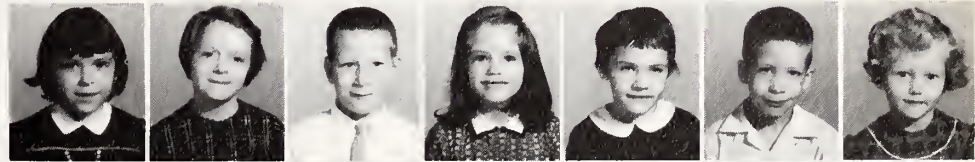


MRS. DOROTHY MILLER



MRS. LENA M. WATERS

LESA BAKER  
 JOAN BOULDIN  
 ANTHONY BRIGHT  
 NELL CANINE  
 SHARON CLARK  
 BILL CLEGG  
 SHARON COOPER



DARLENE COX  
 WILLIAMS DIGGS  
 MARK DONALDSON  
 NANCY FARRAR  
 JOHN FARRELL  
 MARY HARRIS  
 DEBORAH HARWARD



SHARON HOLDER  
 JENEVERETTE HOWARD  
 RICKY HOWARD  
 ROBIN JACQUES  
 DIANNE JONES  
 YVONNE JONES  
 ELAINE MANN



PATRICIA MANN  
 RONNIE MASON  
 KATHY PETTY  
 DEBBIE RAYNOR  
 ANN REEVES  
 LYDIA RIGGSBEE  
 SUSAN ROBERTS



DENISE SEAGROVES  
 ANDY SEYMOUR  
 DANA THOMAS  
 STEVEN WEBSTER  
 DONALD WHITAKER  
 RICHARD WILLIAMS





# Our Town



*The town of Pittsboro has played an  
Pittsboro High School. Pittsboro, we  
High School take our place*





*ever increasing role in the progress of  
salute you, as we, the leaders of Pittsboro  
in the world of tomorrow.*





Supporting...

Better Education

For A Greater Pittsboro

## Local Union 1931-AFL-CIO

Pittsboro, North Carolina

Organized 1933





"Your Money is Safe With Us."

Compliments of

**THE BANK OF PITTSBORO**





## Pittsboro Dry Cleaners

"For the Best in Cleaning."

Lacy R. Burns, Manager

Pittsboro, North Carolina

## Roberts' Soda and Jewelry Shop

Watch Repair - Jewelry - Fountain Service

Pittsboro, North Carolina



"406, 4 in the floor, flop-top—  
Let's go for a ride!"

## Cooper & Harris, Inc.





"Choose Your Furniture Carefully.  
Let Mr. Shaw Help You Furnish Your  
Home From the Front Door To The Back."

## Economy Furniture Co.

C.L. Shaw, Proprietor

Pittsboro, North Carolina



## Pittsboro Florist

"Flowers to Meet Every Need."

Polly and Jim Invite You In.

Pittsboro, North Carolina



# MC CREARY

## Oldham Tire Service

Oldham Brothers - Owners

Your McCreary Tire Dealers

Pittsboro





"Food! If You Can't Get It Here, You Can't Get it."

## Pittsboro Cash Grocery Shoe Discount Center



"Twelve pounds of sirloin tip, coming up."

"How many blocks to your car?"





*Congratulations  
Best Wishes  
all Graduates*

May Your Future Successes Be Greater  
Than Your Wildest Dreams  
and Present Anticipation.

*J. B. Robbins*

**THE HOUSE OF FASHION**

Chapel Hill

North Carolina



Compliments of

## Mathiesen Clinic

Dr. R.S. Jacques and Dr. K.M. Mathiesen  
 "Life is not merely to be alive, but to be well."



## W. Gordon Burns

Esso Servicenter

Washing

Greasing



"Try This For Size."

## Arthurs' Men's Store

Pittsboro, North Carolina





## G. R. Williams Pure Oil Station

Highway 15-501 North

Pittsboro, North Carolina

Phone KI 2-2692

Compliments of  
**Chatham Lanes**

Highway 64 Bypass

Siler City, North Carolina

Featuring 12 AMF Automatic Pinspotters

**BOWL TEN PINS**

America's Fastest Growing Family Sport



Cadillac - Oldsmobile - Chevrolet

## Justice Motor Co.

Pittsboro, North Carolina



Compliments

**WEBSTER POULTRY CO.**







*Saluting the Class of '63*

**A. W. GOLDSTON & SONS  
LUMBER COMPANY**

Pittsboro, North Carolina



"Says He Wants a Mohawk."

## Sun Valley Barber Shop

Highway 64 East

Pittsboro, North Carolina  
Frank Tuck, Barber

## City Electronics Shop

"Your Western Auto Sales Agency."

Pittsboro, North Carolina



# THOMPSON & VINCENT, INC.

REALTORS

Members:  
National Association  
Real Estate Boards

National Institute of  
Farm Brokers



Farm Specialists

Timberlands

Appraisals

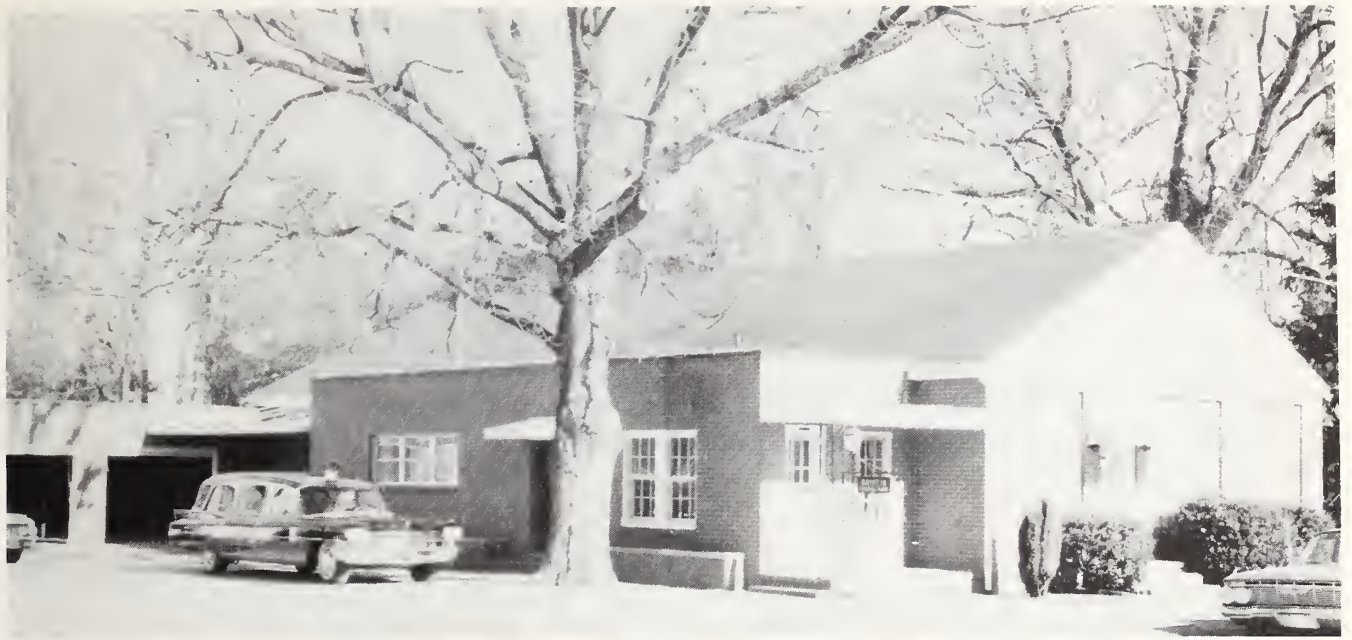
19 Hillsboro St.

Pittsboro, N. C.

KI 2-4771

"LICENSED TO SERVE YOU BEST"





## Griffin Funeral Home

### Andrews-Riggsbee

## Hardware, Tractor, and Implements

Paint, Seed, and Feeds

Carrboro, North Carolina  
Phone Chapel Hill 942-3146

For the Best in Esso Service

Trade at

## Norwood Bros. Esso Servicenters

Number 1

136 West Franklin St.  
Chapel Hill, N.C.  
Phone 942-3771



Number 2

Durham-Chapel Hill Blvd.  
Durham, N.C.  
Phone 489-9474

# THALHIMERS-ELLIS STONE

of

Durham, North Carolina

Invites You To Shop With Us and Enjoy

- \* Complete Shops for Young Ladies
- \* Complete Shops for Young Men
- \* Complete Shops for Dorm Needs





Compliments of  
**HENRY'S RESTAURANT**

Pittsboro, North Carolina

"Three cheeseburgers, five cups of coffee ..."

---

Compliments of  
**GENERAL CREOSOTING CO.**

Gulf, North Carolina



# KAYSER-ROTH HOSIERY COMPANY, INC.

Esquire Socks

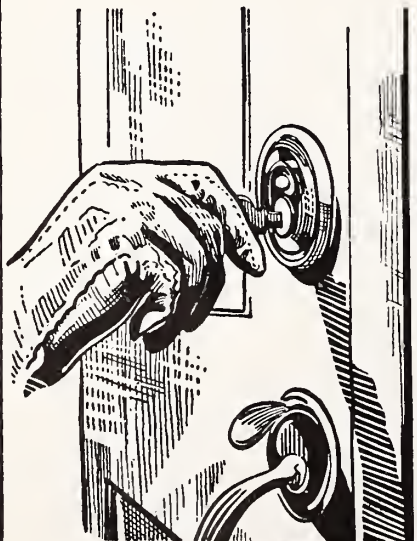
Supp-hose for Men and Women

Burlington

Holeproof Hosiery

North Carolina

## *Enter into a* TOTAL ELECTRIC MEDALLION HOME



*—where Electricity  
does everything!*

- FLAMELESS ELECTRIC HEAT
- FULL HOUSEPOWER WIRING
- TOTAL-ELECTRIC KITCHEN
- DRAMATIC LIGHT FOR LIVING

**CAROLINA POWER & LIGHT COMPANY**

*An investor-owned, taxpaying, public utility company*





## Rupert Eubank's Esso Servicenter

"One Stop Service"  
Highway 15 North  
Pittsboro, North Carolina

## HERFF JONES CO.

Indianapolis, Indiana

MANUFACTURING JEWELERS  
AND STATIONERS

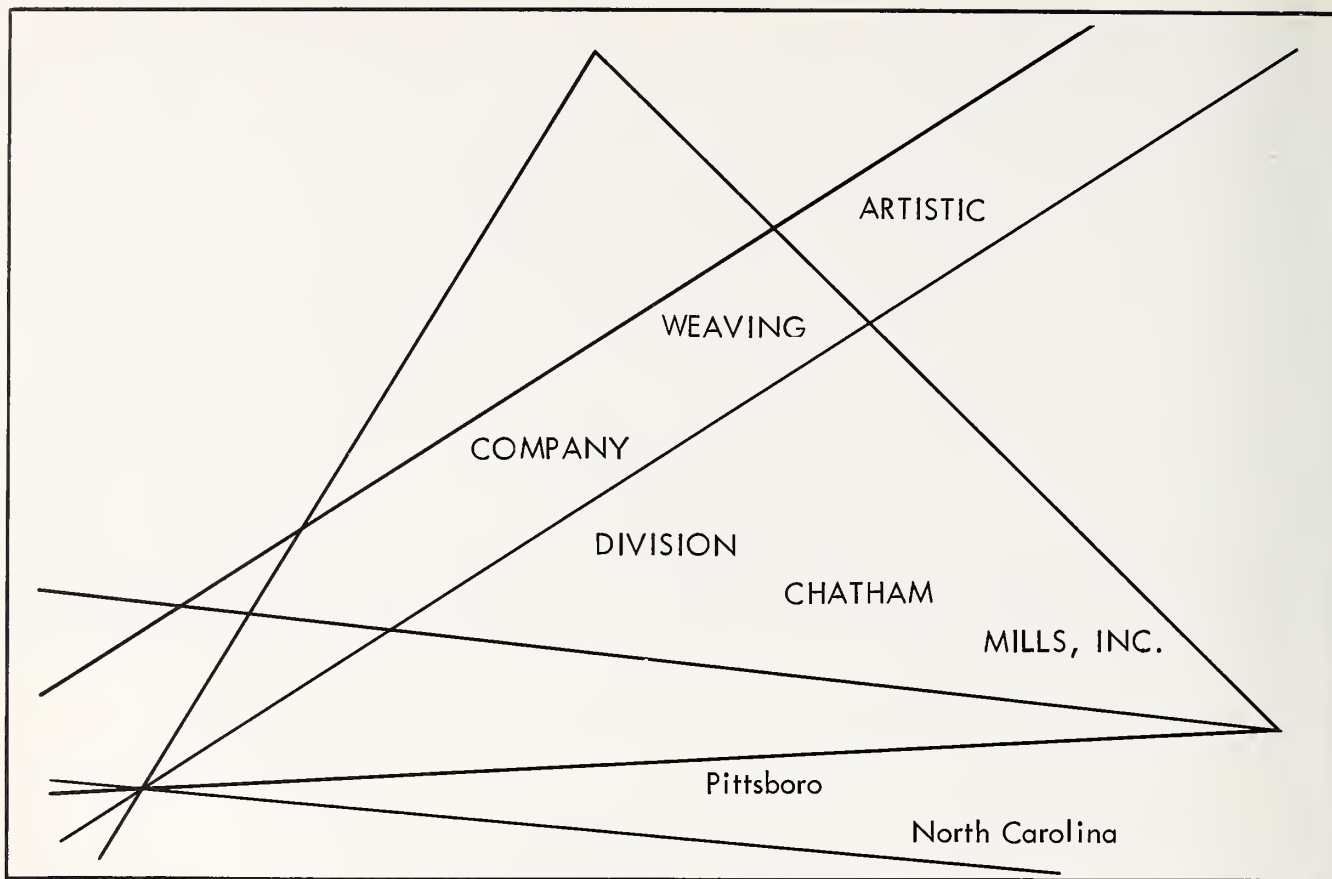
ALLEN BARBEE  
District Representative

Spring Hope, North Carolina

"We're Proud to Manufacture Your  
Class Rings."



..Sweet Nothings...



## GRIFFIN SHOE STORE

Men's Work Clothes  
Shoe Repairs  
Shoe Shines  
Pittsboro, North Carolina

## TOWN SHOP

Ladies' Ready-to-Wear  
Next to the Blair Hotel  
Pittsboro, North Carolina

## HALL'S DEPARTMENT STORE

Dry Goods — Shoes — Notions  
and Ready to Wear  
R. C. Murdock... Owner  
Hillsboro Street  
Pittsboro, North Carolina

## POPE'S, INC.

of Pittsboro  
Quality Merchandise at Low Prices  
We Are Never Undersold





Compliments of  
**HENRY BLAIR**

Hardware - Building Materials  
22 Hillsboro St.  
Pittsboro, North Carolina

Congratulations to the  
Class of '63  
**MCCRIMMON DRUG COMPANY**

Pittsboro, North Carolina



**D. W. SMITH SERVICENTER**

Sanford Road  
Quality Recapping  
One Day Service



Pittsboro Branch of  
**FIRST FEDERAL SAVINGS  
AND LOAN ASSOCIATION  
OF SANFORD**

Pittsboro, North Carolina

**BALDWIN STOUT SHOP**

Ladies' Infants'  
Children's Wearing Apparel  
Pittsboro, North Carolina

**UPTOWN BEAUTY SHOP**

"Where Beauty Meets Fashion"  
12 East Salisbury Street  
Pittsboro, North Carolina

Compliments of  
**PITTSBORO FABRIC SHOP**

"Best Quality Cloth and Notions"



"Well, he just made another A  
in Chemistry."



"Your Dragonian Business Manager  
and Editor"

*Riggsbee-Hinson*  
*Furniture Co., Inc.*

FURNITURE

QUALITY

REASONABLE

*Carrboro, North Carolina*

C. C. ROUTH MILLS

Flour - Meal - Feeds

Baby Chicks and Supplies

Bonlee, North Carolina

McLAURIN GROCERY

Fancy Groceries-Fresh Meats

Frozen Foods

Fresh Vegetables

Goldston, North Carolina

MOTOR SERVICE CO.

General Auto and Truck Repairs

Phone K12-4491

Pittsboro, North Carolina

FARMERS EXCHANGE, INC.

Fertilizers

Farm Supplies

Siler City, North Carolina



E. B. STONE FINANCE CO.

Of Lexington, Inc.

Small enough to know you

Large enough to serve you



Financing and Refinancing  
Dwight W. Beane, Manager  
Siler City

C. P. PERRY

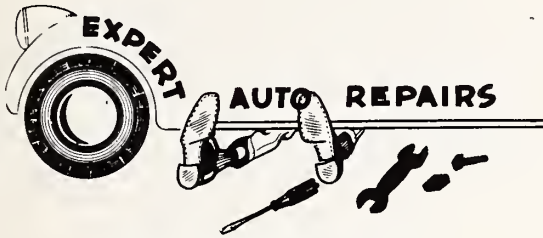
Groceries - Gas - Oil

"A Friend to all P. H. S. Students."

Pittsboro



## LEWIS BODY SHOP



Body and Fender Repairs  
24-Hour Wrecker Service

## CRANFORD STUDIO AND CAMERA SHOP

Portraits - Cameras - Framing  
Siler City, North Carolina



## FARRELL'S GULF SERVICE



"One Stop Service"  
Pittsboro

Say  
Pepsi  
Please



Now It's  
Pepsi  
For Those  
Who  
Think Young!

## WRENN AND WRENN INSURANCE

J. Speight Wrenn     Thomas K. Wrenn

"Providing Satisfactory Insurance"  
Phone SH 2-3451  
Siler City, North Carolina



"Whose fair share of time?"

## JOHNSON COTTON COMPANY of Siler City, Inc.

"Your John Deere Dealer"  
"Cash if you have it;  
Credit if you need it."



## BUILDING MATERIALS



Compliments of  
**McNEILL & ROBERTS**

BUILDING SUPPLIES  
Phone KI 2-3891     Pittsboro

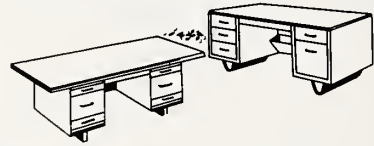


"No, but thanks anyway."

## BOWEN OFFICE EQUIPMENT COMPANY

"An Office Aid For Every Trade"  
Sanford, North Carolina

### OFFICE SUPPLIES



## C. E. DURHAM & SONS

General Merchandise  
Bynum, North Carolina



Compliments of

## HARRIS AND FARRELL'S

General Merchandise  
Bynum, North Carolina

## ORLANDO'S ESSO SERVICE

"IF YOU CAN'T STOP  
SMILE AS YOU GO BY!"

Pittsboro, North Carolina



## COOKE'S FIRESTONE HOME & AUTO

216 East Raleigh Street  
Siler City, North Carolina

## TWIN LAKES GOLF CLUB, INC.

Mann's Chapel Road  
Chapel Hill, North Carolina



## RUTH'S DRIVE IN



Hiway 64 East  
Siler City, North Carolina  
Ruth says, "Drop in anytime."



## FOUR POINT SERVICE STATION

Sam Tyson  
Highway 64 West  
Pittsboro, North Carolina



## PITTSBORO ICE & FUEL CO.

Ice - Coal - Bricks - Blocks  
Sand - Excavating - Road Building  
Fertilizer  
Pittsboro, North Carolina

## Compliments of WOMBLE'S GROCERY

"A Little Bit of Everything"

Pittsboro, North Carolina

## FARMERS EXCHANGE, INC.

Fertilizers Farm Supplies

Pittsboro, North Carolina

## TOWN & COUNTRY

SUPERETTE

Groceries, Produce, and Meats

J. C. CRUTCHFIELD, Owner

Thompson St.  
KI 2-4331 Pittsboro, N. C.

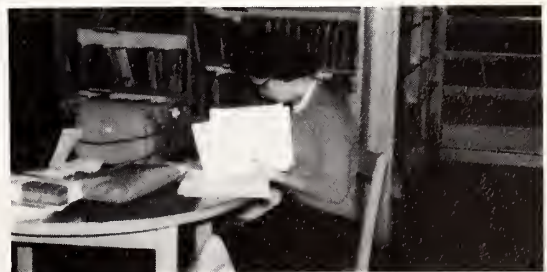


## CLARK & EUBANKS

KI 2-9464  
Pittsboro, North Carolina

Compliments of

## COOPER'S BARBER SHOP



"The Thinker"



"Pick us a tune, Edgar!"

# Spode

THE FINE ENGLISH  
DINNERWARE

C.E. JONES COMPANY  
Pittsboro, North Carolina

## HEARNE'S FREEZER FRESH DRIVE INN

BAR - B - QUE  
Tasty Ice Cream - Fresh Bar-B-Que  
Henry Hearne  
Bynum, North Carolina

## SUN VALLEY GROCERY SELF-SERVICE

Good Gulf Gas & Oils  
Bailey Hackney  
Pittsboro



## WILSONVILLE SERVICE CENTER

Fertilizer - Insecticides

Tires - Groceries - Feeds

Hardware

Route 2

Apex, North Carolina

## MAC'S TYPEWRITER SERVICE

Service on All Business Machines

804 Woodland Avenue  
Sanford, North Carolina  
Tel. 775-2245

## PROGRESSIVE STORES

Save  
\$\$\$



Pittsboro, North Carolina  
Shop and Save  
on Your Food Bill  
We give  
F.S. Gold Stamps, too!

Compliments of

GRIMES JEWELRY CO., INC.  
BUCKNER'S JEWELRY  
HUNTS' DEPARTMENT  
CLAPP BROTHERS IMPLEMENT  
AND TRUCK CO.





"Garrett and Buddy at Your Service."



"Check-Out!"

## PETE'S MARKET

Pittsboro, North Carolina  
Bringing Your Annual to a Close  
and Beginning Their Service For You.

"Lots of Groceries!"



*School*



*Secretary*

Mrs. Joe Torbert



Mrs. John Bell

*Piano*

Mrs. William Starnes



SOL & TOM



FRINCO & PATTY



Mrs. Frank Wachs

*Dieticians*

Mrs. George Yates



*Primary*

*Lunchroom*



*Elementary*  
*Lunchroom*



Mrs. Aaron May



Mrs. Lucille Horton the best teacher I have  
ever had, 2. nd. Grade,

Sally

I know all

the boys go

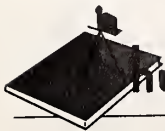
for you, Diane

this is not true 17/12





A PRODUCT OF



**Hunter Publishing**  
COMPANY

333 INDIANA AVENUE  
WINSTON-SALEM, N. C.

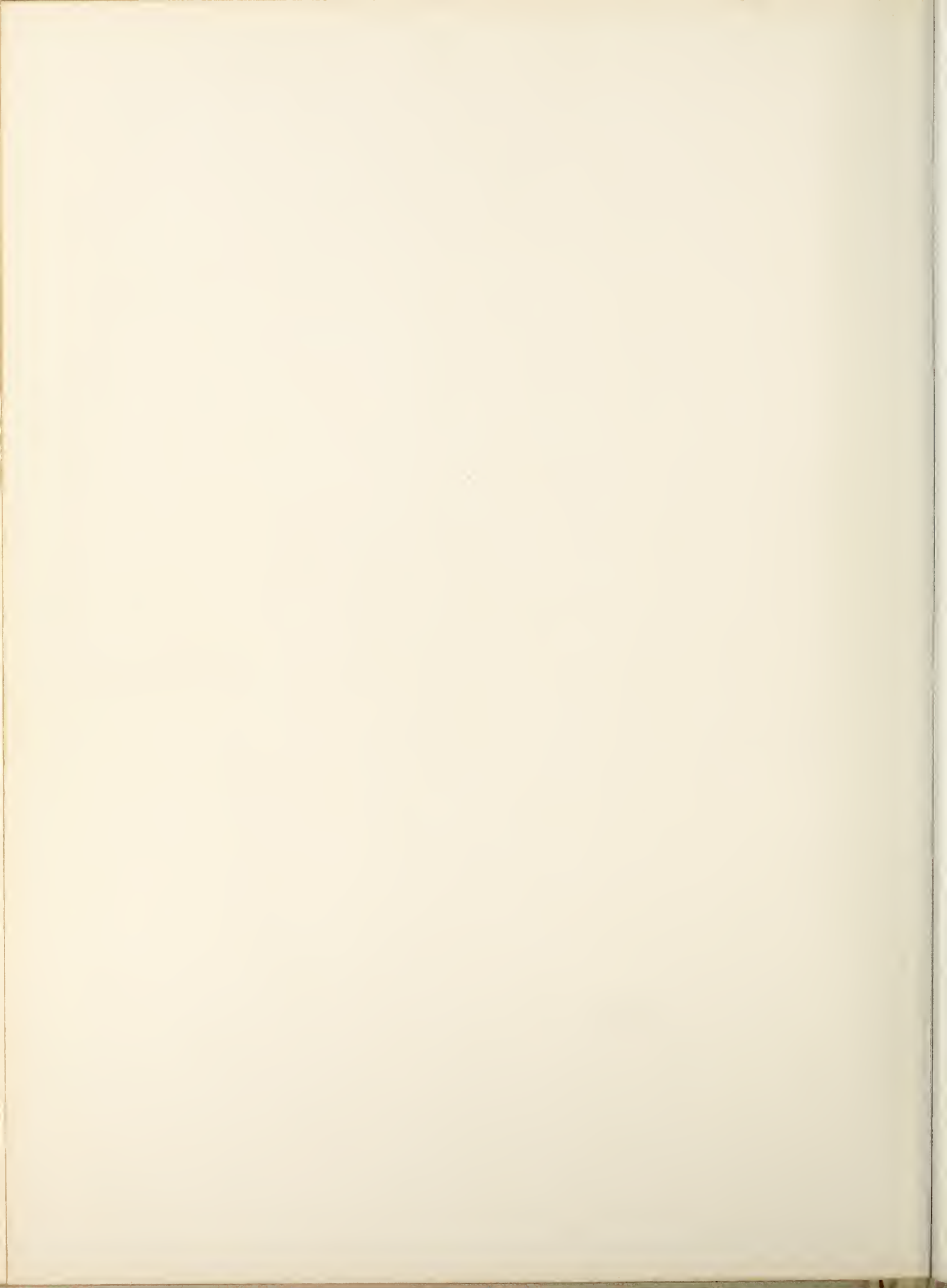






















CHATHAM COMM. LIB.



7607 0091 065 804 0

