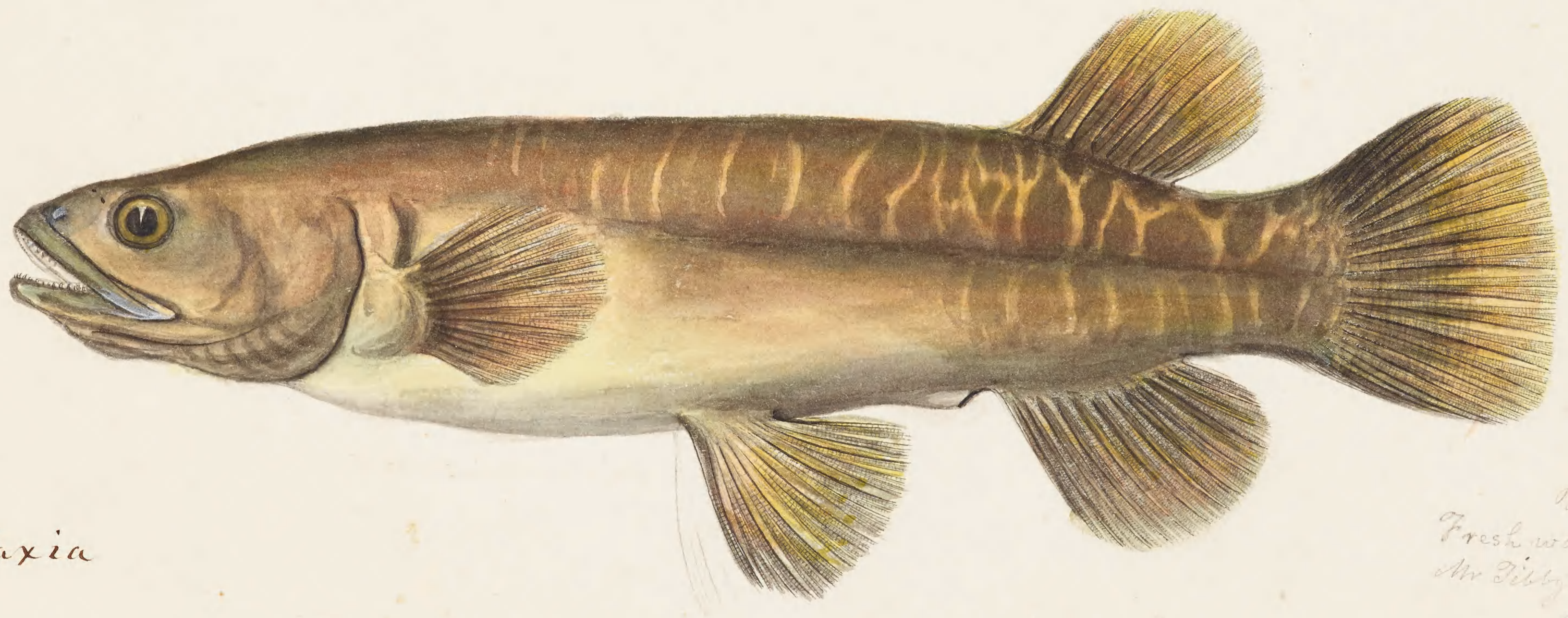


P. 12. 17. 13. 10. 6 15.

Galaxias fasciatus Gray.

Bay of Islands
New Zealand



230

230. Galaxia

Bay of Islands
Fresh water near
Mr Pibby
March 1840

ng. Essid

[Jan 533]

G. fasciatus ?

Note. The dark lines
are all inside of
small dots.

J. Drayton delt
March 1840

Galaxias sp. ?



Waikadie Riv. Bay of Islands, New Zealand.

W 15 | 20 | 25 | 30 | 35 | 40 | 45 | 50 | 55 | 60 | 65 | 70 | 75 | 80 | 85 | 90 | 95 | 100

229



231. *Galaxias maculatus* (Jenyns)

J. Drayton
Orange Harbour
Apr. 1889

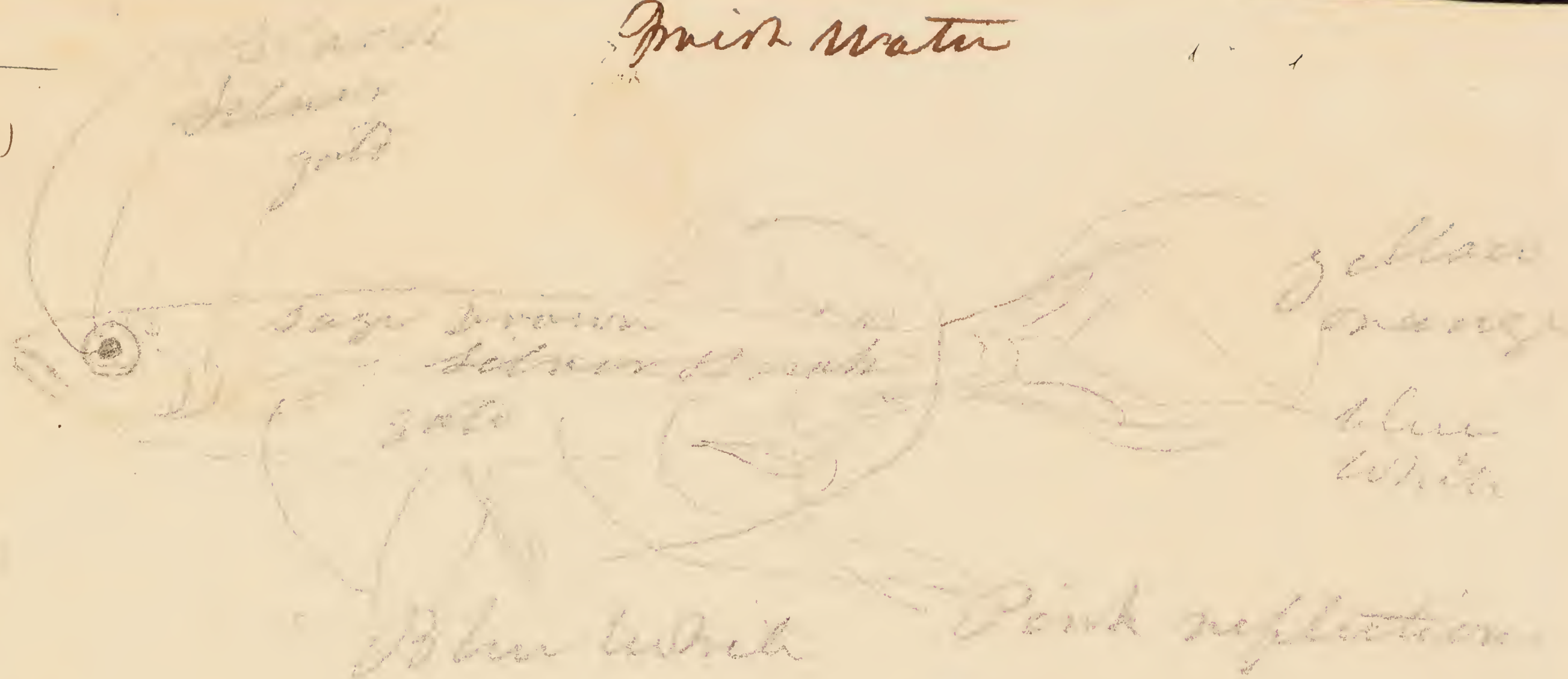
From Fresh water lakes
near Orange Harb.

W. J. Broad

284.

(4 specimens in alcohol)

Milk Water

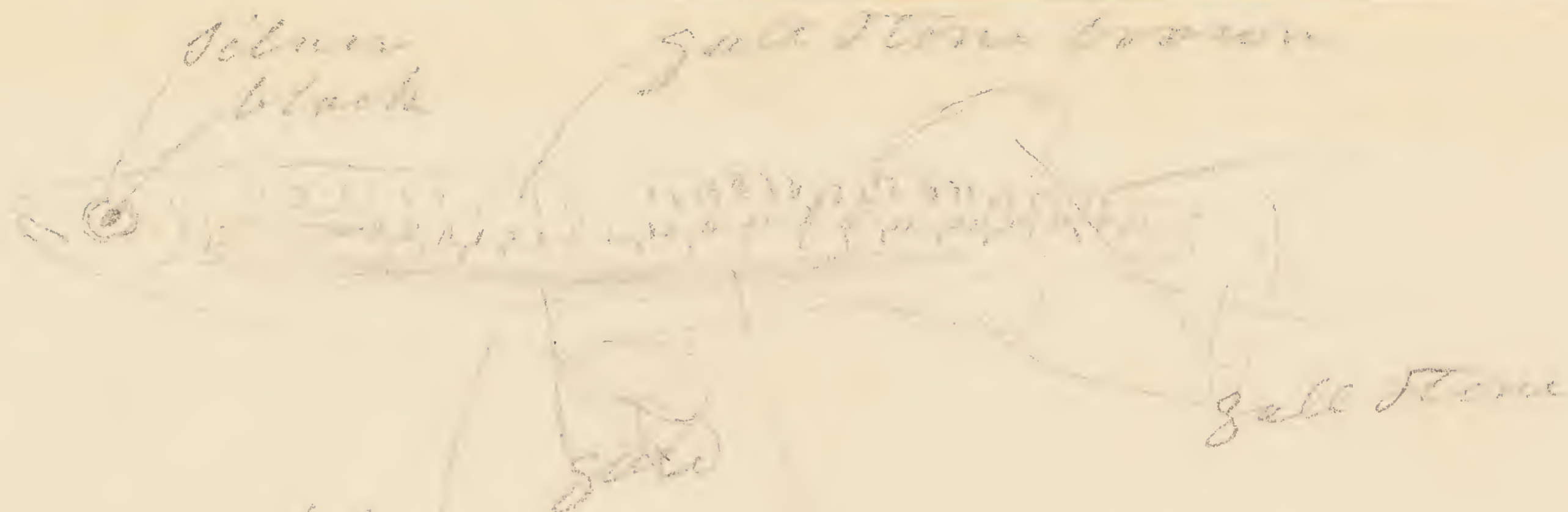


Salmonid

From the Wai Kadia pri
Wai Kadia River

The back has some green in
head down as back to tail
from dorsal & gills

278



laban white

This shade is slaty above
 back a little so
 round above a little so
 but it is rich underneath
 inside

J. Druyter Shew

Bay of Islands
N. Zealand

Jan 654

top shelf

Laban
 River

From the wai Kadi pa
 wai Kadi River

U. S. Expl. Exped.

Cat. no. 230 - Galaxia

- Bay of Islands, New Zealand - (Fresh water)

231 - Galaxia

- Fresh water lakes, near Orange Harbor, Terradel Surgo.

Rejected