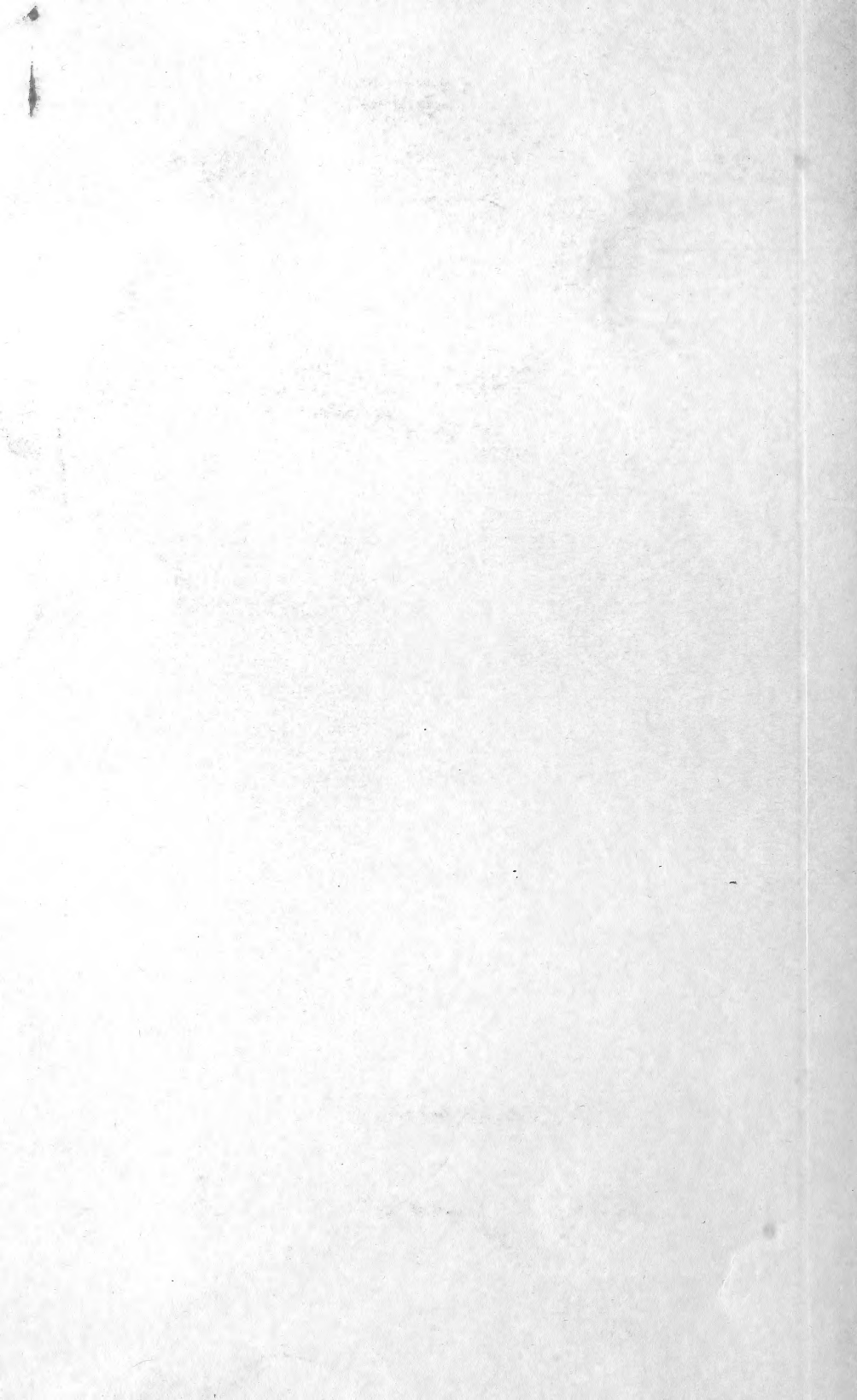


Historic, archived document

Do not assume content reflects current scientific knowledge, policies, or practices.



1879.

1880.

DREER'S
DESCRIPTIVE CATALOGUE
OF
BULBS, PLANTS, ETC.

With Directions for the Culture and Management of Bulbous Roots.



Double French Chrysanthemum Anemones. See page 15.

HENRY A. DREER,

Seedsman and Florist,

714 Chestnut Street, Philadelphia, Pa.

Nurseries and Seed Farm, Riverton, N. J.

S. A. GEORGE & CO., Electrotypers and Printers.

RECEIVED
U.S. Department of Agriculture

TO OUR CORRESPONDENTS.

WE again take pleasure in offering our revised and illustrated CATALOGUE OF BULBS, PLANTS, SMALL FRUITS, ETC., for the Autumn of 1879. Our list will be found to embrace all the leading and most desirable varieties, it being our constant aim to introduce and send out only such that have deserving merits. The Hyacinths will be found worthy of special attention, having been personally selected to secure the essential qualities of size, brilliant colors and free blooming. The single varieties are especially recommended for forcing into early bloom in glasses. The collection of Tulips should not be overlooked; their exceedingly brilliant colored flowers are attractive in every garden or house.

QUALITY OF BULBS.—The past season in Holland having been favorable to the growth and development of the Hyacinth, etc., our customers may depend on receiving the very best roots obtainable. We import direct from the best growers in Holland, which is determined by personal visits to their establishments. Our first and largest importation, which we expect about September 10, by the American Steamship Line, is from growers doing no business in America; this gives us the benefit of the first execution of our orders, and the first choice from their very large stock, while they are obliged to ship our goods at least a fortnight before their home business commences. These importations are entirely different from the refuse sent out by growers having no home trade, who put up their goods in assorted cases for auction, or offer them by the case as cheap, but which are in reality dear, as they are rarely true to name or color, and frequently prove unsound. Many sorts, such as Lilies, Gladiolus and Greenhouse bulbs, are grown at our Nursery, and are of fine quality.

OUR PRICES will be found very low, and in view of the increased cost of mailing we have determined to adhere to old prices, excepting in the delivering of Hyacinths, etc., by the dozen and hundred; a schedule of prices, delivered pre-paid by Express or Mail, will be found below. We only deliver free at our low catalogue price when the bulbs are ordered in large quantities at retail by the price per root. The double increase in cost of mailing Bulbs, etc., since March 3d, 1875, compels us to adopt this rule.

BULBS BY MAIL OR EXPRESS.—All the Bulbs noted in this Catalogue are delivered FREE at the catalogue price per piece, dozen and hundred, excepting Hyacinths, Polyanthus Narcissus, Crown Imperials and Lilies. When ordered at dozen and hundred prices the additional charge of 25 cents per dozen and \$2.00 per hundred should be remitted to partly cover the expense of delivering and insure pre-payment.

PLANTS BY MAIL, POST-PAID.—No order under one dollar will be filled, and only small plants can be sent. By our compact and light system of packing we send to all parts of the country in perfect condition; it is, however, always more satisfactory, when strong plants are desired and a quantity wanted, to forward by Express at the purchaser's expense. Our plant department is deserving of notice. We are continually receiving, propagating, and sending out all the new things as fast as they appear in this country and Europe, at the lowest possible price.

TERMS.—All orders from unknown correspondents must be accompanied by POST-OFFICE ORDER, DRAFT, PRE-PAID EXPRESS REMITTANCE, or instructions to COLLECT ON DELIVERY, by Express. Collection charge to be paid by the purchaser. We decline sending Bulbs, Plants or perishable goods C. O. D. to distant parts, unless the order is guaranteed by your Express Agent, or a part remittance.

A LIBERAL DISCOUNT to all purchasers ordering in quantity, especially when the selection of varieties is left to our choice, and shipped at the expense of the purchaser.

CAUTION.—Do not buy of travelling agents or peddlers. Some of these impostors have represented themselves as our agents.—BEWARE OF THEM. We employ no travelling agents. Send direct to head-quarters, and then you are sure of obtaining a genuine article at a moderate price.

ADDRESSES.—Be particular to write your name distinctly, with Post Office, County and State, also the nearest Express Office, when convenient to receive them in that way. Please notify us of any change of permanent address, in order that we may be able to forward our catalogues with regularity. Address,

HENRY A. DREER,

714 Chestnut Street, Philadelphia, Pa.

WILLIAM F. DREER. }
WILLIAM H. SMITH. }

ASSORTMENTS OF BULBOUS ROOTS AND PLANTS.

No. 1.

FOR GREENHOUSE AND ROOM CULTURE.

Price per assortment, \$10; half assortment, \$5.00.

6 Double Hyacinths, choice named varieties.	6 Persian Ranunculus, choice named.
12 Single " " " " "	6 Double Anemones, " "
12 Single Tulips, Duc Van Tholl "	6 Ixias, " "
6 Double Tulips, named varieties.	6 Oxalis, " "
50 Crocus, 10 choice varieties.	6 Sparaxis, " "
6 Iris, Persian and Pavonia.	2 Cyclamen, " "
6 Jonquils, Double.	2 Tritonias, " "

No. 2.

FOR GARDEN AND HOUSE CULTURE.

Price per assortment, \$10; half assortment, \$5.00.

12 Choice named Hyacinths for forcing.	12 Narcissus, double and single.
6 Mixed Double " " Garden.	12 Snowdrops, " " " "
6 " Single " " " "	6 Ranunculus, assorted colors.
6 " Single Tulips " " "	6 Anemones, " "
6 " Double " " " "	6 Saffron Crocus, Autumn flowering.
6 " Parrot " " " "	6 Lily of the Valley.
12 Duc Van Tholl Tulips, single and double.	2 Lilium Auratum.
50 Crocus, assorted colors.	2 Japan Lilies.
12 Iris, " " " "	2 Crown Imperials.
6 Jonquils, double and single.	4 Fritillaria Meleagris.
6 Polyanthus Narcissus, assorted.	4 Scilla Sibericas.

No. 3.

FOR GARDEN AND HOUSE CULTURE.

Price per assortment, \$3.

6 Named Hyacinths, double and single.	6 Narcissus, assorted.
12 Mixed Tulips, " " " "	6 Snowdrops.
3 Mixed Parrot Tulips.	2 Anemones.
25 Mixed Crocus.	2 Ranunculus.
3 Spanish Iris.	2 Iris Germanica.

The above assortments (*invariably our selection*) will be mailed, upon a remittance (postage pre-paid), to any part of the United States.

Five Dollar Collection of Plants.

We will send, carefully packed, the following varieties (at price named) of Winter-flowering and Ornamental Plants; the varieties to be our selection. These plants are too large to send by mail, and will only be forwarded by express at purchasers' expense:

1 Chinese Azalea, large with buds.	1 Heliotrope.
1 Camellia Japonica, " " "	2 Chinese Primroses, 2 varieties.
2 Bouvardias of sorts.	1 Mahernia Odorata.
1 Flowering Begonia.	3 Winter-flowering Tea Roses.
1 Dracæna.	4 " " Carnations.
1 Calla, or Lily of the Nile.	1 Poinsettia.
1 Abutilon	
1 Hibiscus.	

HENRY A. DREER,

714 Chestnut St., Philadelphia, Pa.

WILLIAM F. DREER, }
WILLIAM H. SMITH. }

HARDY SPRING-FLOWERING BULBOUS ROOTS,

Their Nature and Treatment.

PLANTED FROM OCTOBER TO DECEMBER.

Bulbs belong to a particular division of the vegetable kingdom; they are all, with scarcely a single exception, very ornamental, and hence desirable for the very large size of their flower in proportion to the entire plant, and for the brilliancy of their colors. By far the greater number of bulbs flower in the spring, and produce their flower stems immediately after they begin to grow; and shortly after they have flowered they cease growing and remain dormant and without leaves during the remainder of the year; hence, almost all bulbs require to be planted in the autumn—a fact which most amateurs are apt to overlook, and frequently send their orders out of season. They require a free, dry and somewhat rich soil, into which the roots may penetrate freely. A bulb is essentially a bud, and contains within itself the germs of the leaves and flowers which are to be produced the following season; thus, in one sense, they are of more easy culture than any other class of plants, because the germ being previously formed, and the nourishment being provided in the body of the bulb, it is only necessary to supply heat and moisture to cause them to develop; this is fully exemplified in the *Hyacinth*, *Narcissus*, *Crocus*, early *Tulips*, and some other bulbs, which can be flowered when placed over water in glasses or in wet moss. The *Hyacinth* is the especial favorite for forcing in glasses, and full directions for their management will be found under the head of *Hyacinths*.

SOIL.—The proper compost for *Hyacinths*, *Tulips*, *Crown Imperials*, *Iris*, *Ranunculus*, *Anemones*, *Crocus*, and many other bulbs, is the following: one-third sand, one-third well rotted cow manure, and one-third good garden mould.

TIME OF PLANTING.—The preferable season for planting all hardy bulbs, is from October to December; but they can be set out at any later time, so long as the bulbs remain sound.

DEPTH AND DISTANCE.—*Hyacinths*, large *Lilies* and *Pæonias*, should be planted at the depth of four inches; *Crown Imperials* and *Polyanthus Narcissus*, five inches; *Tulips*, *Double Narcissus*, *Jonquils* and *Colchicums*, three inches; *Bulbous Iris*, *Crocus*, small *Fritillarias*, *Gladiolus Byzantinus* and *Snowdrops*, two inches; *Ranunculus* and *Anemones*, one inch; always measuring from top of the bulb. The rows should be about ten inches apart, and the bulbs to be placed from four to eight inches apart in the rows, according to their size. As the cold weather approaches, give the bed a good covering of leaves, hay, old manure or tan, to prevent the frost from penetrating to the bulbs. Early in the spring, as soon as the shoots are pushing through it, the covering should be carefully removed, and the earth slightly stirred with a garden fork.

TAKING UP AND PRESERVING.—Take up *Bulbous Roots* about a month after the blossom is completely over, in the following manner: when the plants put on a yellowish decayed appearance, take up the roots, cut off the stem and foliage within an inch of the bulbs, but leave the fibres, etc., attached to them; spread them in an airy room for two or three weeks to dry, after which wrap each root carefully in paper, (as the air is very injurious to bulbs,) or cover them with perfectly dry sand.

Bulbs intended for blooming in pots during the winter season, should be planted during the months of October and November, and be left exposed to the open air (covered with a few inches of tan or soil) until they begin to freeze, and then be placed in the greenhouse or a room where fire is usually made. They will need, occasionally, moderate watering until they begin to grow, when they should have an abundance of air in mild weather, and plenty of water from the saucers whilst in a growing state; and should be exposed as much as possible to the sun, air and light to prevent the leaves from growing too long or becoming yellow.

THE HYACINTH.

Among hardy bulbs the Hyacinth stands (deservedly so) foremost on the list; it is not only a general favorite for the garden, but has become exceedingly popular as a winter flower, from the facility with which it may be forced into bloom, either in pots or glasses filled with water. Nothing can be more delightful, either for beauty or fragrance, than a stand of these lovely flowers, in the parlor or drawing-room, during the winter months.

METHOD OF BLOOMING HYACINTHS IN THE WINTER SEASON IN GLASSES.

For this purpose, Single Hyacinths and such as are designated earliest among the Double, are to be preferred. Single Hyacinths are generally held in less estimation than Double ones; their colors, however, are more vivid, and their bells, though smaller, are more numerous; some of the sorts are exquisitely beautiful; they are preferable for flowering in winter to most of the Double ones, as they bloom two or three weeks earlier and are very sweet scented.

Hyacinths intended for glasses should be placed in them during October and November, the glasses being previously filled with pure water, so that the bottom of the bulb may just touch the water; then place them for the first three or four weeks in a dark closet, box or cellar, to promote the shooting of the fibres, which should fill the glasses before exposing them to the sun, after which expose them to the light and sun gradually. If kept too light and warm at first, and before there is sufficient fibre, they will rarely flower well. They will bloom without any sun, but the colors of the flowers will be inferior. To insure vigorous growth a favorable exposure to light and occasional fresh air, when mild, are essential. The water should be changed as it becomes impure; draw the roots entirely out of the glasses, rinse off the fibres in clean water, and wash the inside of the glass well. Care should be taken that the water does not freeze, as it would not only burst the glass, but cause the fibres to decay. Whether the water is hard or soft, is not a matter of much consequence—soft is preferable—but must be perfectly clear to show the fibres to advantage.

Avoid a low water mark in the glasses by keeping it to a level with the base of each bulb. Never place the glasses upon a mantel-piece or shelf within the influence of fire heat during the process of growth. To stimulate and strengthen the growth, dissolve a pinch of sulphate of ammonia occasionally in the water after the bulbs are exposed to light.



THE TREATMENT OF HYACINTHS IN POTS.

For the growth of Hyacinths in pots, the most favorable planting season for early bloom is *September*, and for a succession, at intervals up to *January*. The size of pots is regulated by the space or convenience for placing them; when limited, and a rich massive effect is wished for, those of six or eight inches in diameter are recommended, in which three or four bulbs may be placed, but where more convenience is had, a succession of single or double bulbs in smaller pots may be admitted—two bulbs in each is very effective, and generally preferred; the colors of such may be regulated according to taste. In potting, use the soil as already described, each bulb should remain one-third above the surface of the soil, and the base of each bulb should rest upon a strata of clean river sand. After potting place them where intended to remain, upon a dry surface of ashes or sharp gravel, in the rotation of their intended periods of bloom, (each later potting plunged beyond the previous ones,) and thus arranged, water the whole well to imbed the bulbs firmly within the soil, allowing them to remain until the bulbs and surfaces are again dry (for one or two days); then cover the whole over to the depth of three or four inches with half-dried tan, sawdust, sand or soil, for six or eight weeks, in which position the preparatory root-growth is made, necessary to a vigorous development of their flowerscapes. After the period adverted to, less or more, the first potted bulbs may be taken up, the soil and sediment carefully brushed off, and removed to a gentle hot-bed, or a warm genial greenhouse or room where the bloom will progressively expand, care being taken to screen the leaf-growth made in darkness for a few days. A short difference of a week or fortnight between the periods of potting will produce a corresponding difference in the periods of bloom. They are very effective when massed in Fern Dishes, Window Boxes, or in pots ten inches in diameter and six inches deep, either all of one color or assorted according to fancy.

DOUBLE HYACINTHS,

For Beds and Border culture. Those marked early are suitable for growing in pots and glasses, and force very readily, but are not so early as the single varieties.

Size of Bulbs. Some of the most beautiful varieties of Hyacinths, especially among the double-flowering sorts, produce but small bulbs; but the small size of the bulb does not diminish or increase the size of the spike or the beauty of the flowers.

RED—of various shades.

	EACH		EACH
ALIDA CATHARINA. Delicate satiny rose; earliest, and very double flowers...	25	NOBLE PAR MERITE. Dark rose, pink stripe; earliest, fine spike.....	30
BOUQUET ROYAL. Rose, dark centre...	25	PANORAMA. Bright rose, carmine centre; early, very double.....	25
BOUQUET TENDRE. Dark crimson; early, and superior truss of flowers.....	25	PRINCE D'ORANGE. Bright rose; early, fine pyramidal truss.....	35
CŒUR FIDELE. Pink, with violet eye...	20	PRINCESSE ROYALE. Red, violet centre; early, extra fine truss.....	25
COMTESSE DE LA COSTE. Light rose, with violet centre; early, extra flowers.	20	REGINA RUBRORUM. Red; very early and showy flowers.....	30
CZAR NICHOLAS. Delicate rose; early.	20	REGINA VICTORIA. Dark rose; earliest, very double, extra fine flowers....	20
FREDERICK THE GREAT. Light rose; early, extra large flowers.....	40	ROUGE VERMEIL. Vermilion red; extra.	25
GROSSFURST. Pink, violet centre; very double, large bells.....	25	SANS SOUCI. Bright red; extra fine pyramidal truss.....	35
LORD WELLINGTON. Bright red; early, largest and finest bloom.....	30	SIR JOSEPH PAXTON. Deep crimson; early, extra fine showy flowers.....	35
L'ESPERANCE. Beautiful rose with nanken reflex, very early.....	20	SUSANNE MARIE. Bright, dark rose;	60
LOUIS NAPOLEON. Fine deep red, early	45	TEMPLE D'APOLLON. Light rose; early.	25
MEDEA. Dark rose; late, extra fine.....	25	WILHELM II. Dark red; earliest.....	25
GLORY OF THE NETHERLANDS. Dark red; fine large bells.....	25		

WHITE—of various shades.

	EACH		EACH
ANNA MARIA. Violet centre; early.....	25	LA VIRGINITE. Rose centre; early.....	20
BOUQUET ROYAL. Pure white, large flowers.....	35	LORD CASTLEREAGH. With purple; extra fine flowers.....	30
BUCENTAURUS. Yellow centre; earliest and fine truss.....	25	MATHILDA. Blush; earliest, fine.....	30
CASTOR. Pure; extra fine flowers.....	35	MINERVA. With purple; early.....	25
DUC DE BERRY. Pure white, late.....	35	MISS KITTY. Blush, with violet centre.	30
DUCHESS DE BEDFORD. Pure; early, extra fine flowers.....	30	NANETTE. Pure; early.....	25
GRAND MONARQUE DE FRANCE. Blush with rose centre, immense bells.....	30	NON PLUS ULTRA. With deep violet eye; very double, large bells.....	25
GLORIA FLORUM. With purple; early.	25	PRINCE OF WATERLOO. Pure; early, extra fine large bells and truss.....	35
HEROINE. With yellow eye.....	40	SCEPTRE D'OR. Yellow centre; late... ..	30
JENNY LIND. With purple eye; earliest	25	SULTAN ACHMET. Blush; large bells... ..	25
LA DEESSE. Pure; large truss.....	30	TRIUMPHÉ BLANDINE. Blush; early... ..	30
LA TOUR D'AUVERGNE. Pure; earliest	30	VENUS. Yellow eye; extra fine truss....	35
		VIRGO. Rose centre; early.....	30

BLUE—of various shades.

	EACH		EACH
ALBION. Deep, very double, large pyramidal truss of flowers; late.....	25	LORD WELLINGTON. Deep, with lilac stripe; early, medium truss.....	25
BLOCKSBERG. Porcelain; early, large bells and showy truss.....	25	MADAME MARMONT. Azure, shaded with white; earliest and fine truss.....	40
CHARLES, CROWN PRINCE OF SWEDEN. Dark; early and superb flowers.....	25	MIGNON VAN DRIJFHOUT. Dark; early.	30
COMTE DE ST. PRIEST. Porcelain, superb flowers.....	35	OTHELLO. Shining black, inner petals violet; early, extra fine bloom.....	30
ENVOYE. Light, violet centre; early... ..	25	PASQUIN. Porcelain; early, large.....	30
GARRICK. Deep, shaded with violet; early, extra fine.....	35	POURPRE SUPERBE. Dark purple.....	25
GENERAL ANTINK. Light, shaded with violet; early, fine truss.....	25	PRINCE ALBERT. Black, large flowers; early, extra.....	25
GLOBE TERRESTRE. Light; large.....	30	PRINCE FREDERICK. Lilac; early.....	30
EMPEROR ALEXANDER. Dark; extra fine flowers.....	30	REMBRANDT. Dark; large bells.....	30
KING OF THE NETHERLANDS. Dark; full and compact.....	25	RICHARD STEELE. Azure, violet centre; early and fine.....	25
LAURENS COSTER. Deep, shaded with violet; early, extra large flowers.....	45	RUDOLPHUS. Light; pretty truss.....	25
LORD RAGLAN. Black centre; early....	40	SHAKSPEARE. Porcelain, gray stripe; early, splendid spike.....	30
		VAN REENEN. Porcelain; very fine....	35
		VAN SPEIJK. Lilac, very large flowers; early, extra fine.....	40

DOUBLE HYACINTHS.—Continued. YELLOW—of various shades.

	EACH		EACH
BELLE SOUFRE. Bright; early.....	30	LA GRANDEUR. Golden; large truss.....	40
BOUQUET D'ORANGE. Orange; early....	30	LOUIS D'OR. Bright; early.....	30
CROESUS. Orange, rose centre; late.....	40	OPHIRE D'OR. Bright; late.....	25
GOETHE. Nankeen; early, superior truss.	30	PURE D'OR. Orange; early.....	40
JAUNE SUPREME. Nankeen, white centre; early, large fine flowers.....	40	VAN SPEIJK. Bright, with violet centre: very fine truss.....	40

SINGLE HYACINTHS,

Single Hyacinths are, by some, held in less estimation than double ones; but on a closer acquaintance with their fine qualities, they will be found more deserving of cultivation. They are desirable for their early flowering, especially in pots or glasses; their colors are more brilliant, and they excel the double in their fine odor and greater profusion of bells.

RED—of various shades.

	EACH		EACH
AGNES. Dark rose; bright.....	25	LORD WELLINGTON. Rose, large bells, early and extra fine truss.....	30
AMY. Dazzling carmine; large spike....	20	MADAME HODSON. Crimson, with carmine stripe; showy spike.....	25
ANNA PAULOWNA. Rose; fine truss....	20	MADMOISELLE RACHEL. Brilliant; extra large truss and flowers.....	25
APPELIUS. Crimson; compact spike.....	25	MARIA THERESIA. Deep rose, striped..	25
BELLE ELEONORE. Dark; handsome....	20	MARIA VAN REIGERSBERGEN. Dark, beautiful flowers; early.....	25
CHAPEAU DE CARDINAL. Deep rose, turning to orange; extra fine, early.....	30	MONSIEUR DE FAESCH. Crimson.....	20
COUNT OF NESSELRODE. Dark rose; beautiful large truss, early.....	25	MR. MACAULAY. Deep pink, shading to white edge; superb large truss.....	50
DIEBITSCH SABALKANSKY. Brilliant carmine; late, very showy spike.....	25	NORMA. Pink; early, extra large bells.	25
DUCHESS OF RICHMOND. Bright rose, shaded with white; compact spike.....	30	ORNAMENT DE LA NATURE. Rose; extra fine large bells and truss.....	30
ELDORADO. Bright; perfect form.....	25	PROSPER ALPINI. Crimson; late, superior large truss.....	30
EMMELINE. Pink; very large truss.....	20	REINE DES JACINTHES. Dark, extra fine flowers and compact spike.....	50
GIGANTEA. Pink; large bells, and magnificent truss.....	30	ROBERT STEIGER. Brilliant carmine; early and showy large truss.....	25
GLORY OF THE NETHERLANDS. Pink; very early.....	20	SOLFATARE. Orange-scarlet, with white eye, large spike and extra fine bells....	35
HOMERUS. Bright rose, striped; early and extra fine.....	35	SULTAN'S FAVORITE. Pink; showy spike of flowers.....	25
HONNEUR DE HILLEGOM. Dark; early.	35	UNICA SPECTABILIS. Pink; magnificent flower and large spike.....	30
JOSEPHINE. Dark red, large flowers; early, extra fine truss.....	35	VERONICA. Dark; early, large spike....	25
LA BALEINE. Light rose, large bells and spike.....	25	VON SCHILLER. Deep; extra fine large bells and showy truss.....	50
LA BELLE QUIRINE. Crimson.....	25		
L'AMIE DU CŒUR. Crimson; fine.....	20		
LORD GRAY. Light rose; choice bells, and large truss, earliest.....	30		

WHITE—of various shades.

	EACH		EACH
ALBA MAXIMA. Pure; early, immense bells, and splendid truss of flowers.....	35	JENNY LIND. Pure; early, very handsome spike.....	40
ALBA SUPERBISSIMA. Pure; large.....	25	LA BELLE BLANCHISSEUSE. Pure; large bells.....	30
BARONNESSE VAN DER DUIN. Pure; very fine large flowers.....	30	LA VESTALE. Pure; extra fine truss....	30
BARON VAN THUYLL. Large and beautiful spike of pure white flowers, early.	40	MADAME DE TALLEYRAND. Pure; fine large compact truss of flowers.....	30
BELLE FLEUR. Pure.....	20	MADAME VAN DER HOOP. Pure; large bells and fine spike.....	30
BLANCHARD. Pure; early, long spike..	40	MAMMOTH. Rosy white; large bells.....	30
CLEOPATRA. Blush; large truss of immense bells.....	25	MARY STUART. Pure; extra large bells.	40
CROWN PRINCESS OF HOLLAND. Pure; pretty, compact truss.....	30	MISS AIKIN. Rosy white, large flowers and truss; early.....	35
ELFRIDE. Pinkish reflex; beautiful large bells and truss.....	25	MISS NIGHTINGALE. Pure; extra fine..	40
GRANDEUR A MERVEILLE. Rosy white, large, extra fine truss.....	25	MONTBLANC. Pure, very large flowers; extra fine spike.....	45
GRAND VAINQUEUR. Snow white; extra fine, great profusion of bells.....	30	MOZART. Rosy white; large bells, early.	45
GRANDE VEDETTE. Pure; extra large..	30	MRS. BEECHER STOWE. Pure; very fine showy spike.....	25
		PAIX DE L'EUROPE. Pure; large flowers.	30

SINGLE HYACINTHS.—Continued. WHITE—of various shades.

	EACH		EACH
PUCELLE D'ORLEANS. Pure; fine spike.....	25	STATEN GENERAL. Pure.....	20
QUEEN VICTORIA. Pure; large, compact.....	30	THEMISTOCLES. Pure; fine spike.....	25
REINE D'HOLLANDE. Pure; early.....	30	TULLIA. Pinkish white.....	20
ROUSSEAU. White, pink shaded; early.....	20	VESTA. Rosy white; extra fine bells.....	20
SEMIRAMIS. Rosy white; fine truss.....	20	VOLTAIRE. Blush; large bells and truss.....	25

Blue—of various shades.

	EACH		EACH
ARGUS. Deep, with pure white eye; extra fine large truss.....	25	LA PRECIEUSE. Light; extra fine bells.....	30
BARON VAN THUYLL. Deep; very large spike of beautiful bells, early.....	20	LEONIDAS. Pearl, shaded sky blue; beautiful large bells.....	35
BELLE AFRICAINE. Shiny black.....	30	L'UNIQUE. Beautiful flower of deep purplish amaranth.....	25
BLUE AMARANT. Deep, light stripe.....	30	MARIA. Purple, with deep blue corolla; large, fine-arranged truss.....	40
CAMPER. Light; very early.....	25	MIMOSA. Deep violet, changing to black; extra fine spike.....	25
CHARLES DICKENS. Clear lilac; violet stripe; pyramidal truss.....	20	MONSEIGNEUR VAN VREE. Shining violet; beautiful bells on a short truss.....	50
COURONNE DE CELLE. Porcelain; large.....	25	NIMROD. Light blue, with violet reflex.....	30
EMICUS. Indigo, violet stripe and white eye; early and fine flower.....	20	ORONDATES. Light blue, with distinct ribbon of bright blue; large truss, early.....	25
EMILIUS. Light; early, fine truss.....	30	POLLUX. Porcelain.....	20
EMPEROR FERDINAND. Deep; fine truss.....	25	PORCELAIN SCEPTRE. Pale sky blue, deeply shaded; large spike of flowers.....	30
GENERAL LAURISTON. Azure, with white eye; early, handsome flower.....	30	PRIESTLY. Pearl, very fine truss.....	25
GRAND LILAS. Porcelain, changing to lilac; excellent, large flower.....	30	PRINCE OF SAXE WEIMER. Dark; superior spike of flowers.....	30
GRAND VEDETTE. Porcelain, shaded sky-blue; extra fine spike.....	25	PRINCE WILLIAM I. Shining black on violet ground; pretty truss, early.....	30
HAYDN. Purple, large flowers; extra.....	50	REGULUS. Light, azure-blue stripe.....	25
L'AMIE DU CŒUR. Deep violet; pretty.....	25	UNCLE TOM. Shiny black; extra.....	25
LA NUIT. Glittering black; early, extra large and fine truss.....	25	VOLTAIRE. Azure blue.....	25

YELLOW—of various shades.

	EACH		EACH
ALIDA JACOBA. Clear; compact truss.....	20	L'INTERESSANTE. Deep; large, showy bells and spike.....	35
ANNA CAROLINE. Pale; late.....	35	L'OR D'AUSTRALIE. Pure; extra large.....	35
ENGELINE. Clear; fine spike.....	35	OVERWINNAAR. Clear, compact truss.....	20
FLEUR D'OR. Pure; fine flowers.....	20	RHINOCEROS. Orange; fine flowers.....	25
HEROINE. Bright; late, large bells.....	25	VICTOR HUGO. Bright; beautiful large spike of flowers.....	40
IDA. Deep; large flowers, new, extra.....	50		
KING OF HOLLAND. Orange.....	30		
LA PLUIE D'OR. Pure; fine truss.....	20		

NAMED HYACINTHS.

Very choice varieties, with names and colors—our selection. \$4.00 per doz. \$25 per hundred. Choice varieties, with names and colors—our selection. \$3.00 per dozen. \$20 per hundred. The following varieties have been selected with special reference to producing exact effect in planting in masses or marginal lines, and are extensively used in ornamental gardening.

\$2.00 per dozen. \$14 per hundred, in 20 sorts.

DOUBLE.**SINGLE.**

ALIDA CATHARINA. Delicate satiny rose.
BOUQUET TENDRE. Dark crimson.
CZAR NICHOLAS. Delicate rose.
GROSSFURST. Pink, violet centre.
ANNA MARIA. White, violet centre.
DUCHESS DE BEDFORD. Pure white.
LA VIRGINITE. White, rose centre.
LORD CASTLEREAGH. White, with purple.
ENVOYE. Light blue, violet centre.
GENERAL ANTINK. Blue shaded violet.
KING OF THE NETHERLANDS. Dark blue.
LORD WELLINGTON. Deep blue, lilac stripe.

AMY. Dazzling carmine.
BELLE ELEONORE. Dark red.
ANNA POULOWNA. Rose.
EMMELINE. Pink.
CLEOPATRA. Blush white.
SEMIRAMIS. Rosy white.
THEMISTOCLES. Pure white.
VESTA. Rosy white.
CHARLES DICKENS. Lilac, violet stripe.
EMICUS. Indigo, violet stripe, white eye.
L'AMIE DU CŒUR. Deep violet.
POLLUX. Porcelain blue.

MIXED HYACINTHS.

The following varieties are for out-door culture, in beds, groups, borders, or for florists' cut flowers, grown in pots. Each color embraces many shades, from the lightest to the darkest; purchasers can have them either in double or single varieties, as may be desired.

MIXED HYACINTHS.—*Continued.***SEPARATE COLORS, WITHOUT NAMES.**

15 cents each. \$1.50 per dozen. \$10 per hundred.

Red and pink, of shades, double.	Red and pink, of shades, single.
Blue and porcelain, " "	Blue and porcelain, " "
White and rosy white, " "	White and rosy white, " "
	Yellow, " "

Double Yellow. 20 cents each. \$2.00 per dozen. \$14 per hundred.

EARLY ROMAN HYACINTHS.

The earliest for forcing, for florists' cut flowers, with small spikes of single white bells, bulbs usually producing several spikes. 15 cents. \$1.25 per dozen. \$8.00 per hundred.

MIXED MINIATURE HYACINTHS.

This variety is of interest to those who desire to cultivate them; the bulbs, being small, still produce fine spikes of flowers of various shades and colors, and can be grown in all the ways we recommend for other Hyacinths. 10 cents. \$1.00 per dozen.

MUSK AND OTHER HYACINTHS.

This class is for garden culture, and fine for edging; also adapted for pot culture.

	EACH		EACH
BELGICUS CÆRULEA. Blue.....	8	MUSCARIA MINOR (Musk). Blue and	30
BOTRYOIDES ALBA (Grape). White....	8	yellow; sweet-scented.....	
BOTRYOIDES CÆRULEA (Grape). Blue..	8	PLUMOSUS (Feathered). Purplish blue..	8
MONSTROSUS CÆRULEA. Blue.....	8	Fine for bouquets.....	

HYACINTHS IN PACKAGES.

The following are put up in packages, with names and colors marked, and are lower in price than the same quality of roots when selected from the catalogue. They are all choice, free-blooming varieties.

Packages with colors marked Nos. 6, 7, and 8 are fine unnamed varieties.

No. 1.—\$1.25 per package.

Contains 6 double.

CZAR NICHOLAS. Delicate rose.
REGINA VICTORIA. Dark rose.
ANNA MARIA. White, violet centre.
LA VIRGINITE. White, rose centre.
ENVOYE. Light blue, violet centre.
KING OF THE NETHERLANDS. Dark blue.

No. 2.—\$1.50 per package.

Contains 6 double.

BOUQUET ROYAL. Rose, dark centre.
BOUQUET TENDRE. Dark crimson.
JENNY LIND. White, with purple eye.
PRINCE OF WATERLOO. Pure white.
BLOCKSBERG. Porcelain blue.
MIGNON VAN DRIJFHOUT. Dark blue.

No. 3.—\$1.25 per package.

Contains 6 single.

MARIA THERESIA. Deep rose, striped.
MONSIEUR DE FAESCH. Crimson.
THEMISTOCLES. Pure white.
VESTA. Rosy white.
BLUE AMARANT. Deep blue, light stripe.
LA PRECIEUSE. Light blue.

No. 4.—\$1.50 per package.

Contains 6 single.

LOED GRAY. Light rose.
ROBERT STEIGER. Brilliant carmine.

GRANDEUR A MERVEILLE. Rosy white.
LA VESTALE. Pure white.
MIMOSA. Deep violet changing to black.
ORONDATES. Light blue, with dark stripe.

No. 5.—\$1.50 per package.

Contains 3 double and 3 single.

BOUQUET D'ORANGE. Orange.
LOED WELLINGTON. Deep blue, lilac stripe.
PRINCESSE ROYALE. Red, violet centre.
GRAND VAINQUEUR. Snow white.
KING OF HOLLAND. Orange.
PRINCE OF SAXE WEIMER. Dark blue.

No. 6.—\$1.00 per package.

Contains 6 double.

Red and pink, blue and porcelain, white and rosy white.

No. 7.—\$1.00 per package.

Contains 6 single.

Red and pink, blue and porcelain, white and rosy white.

No. 8.—\$1.00 per package.

Contains 3 double and 3 single.

Red and pink, blue and porcelain, white and rosy white.

Hyacinths when ordered to be sent by mail require a remittance of 20 cents per dozen, or \$1.75 per hundred, additional for postage, but at the prices per single bulb, or in packages, and the assortments (see page 1) are mailed or expressed free to any part of the United States.

TULIPS.



The Tulip is the most celebrated, popular, brilliant (and has always been prized by florists as the most decorative) and showy of spring flowers; and not simply for effect alone, as many of the choice kinds have a delicacy of pencilling and richness of tinting which excel all other plants. They are of easy culture, both in the conservatory or parlor, and the open garden. They will thrive in almost any soil. A sandy soil enriched with rotted cow-manure is, however, preferable; and being perfectly hardy, they can well claim a prominent rank among hardy bulbs.

Their cultivation is yet so limited, that their real beauty is not generally recognized. A few bulbs scattered here and there produce but little effect, but when planted in masses, or in small groups, they become at once grand and brilliant, and eclipse, in real variety of coloring and picturesque effect, almost any other flower. Our collection is unusually fine, embracing all the choicest varieties.

EARLY DWARF DUC VAN THOLL TULIPS.

The Duc Van Tholls are admired for their neat dwarf habit of growth, and brilliant colors. They are the earliest of all Tulips, and are especially adapted for pot culture, for winter blooming. The best effect is produced by planting in large pots, six, twelve, or more bulbs of the different colors.

For early flowers out of doors, they can also be highly recommended, and produce a pretty effect when planted in masses. The varieties are all single, except the Double Red, which is red, yellow bordered, and very attractive.

	EACH.	DOZ.		EACH.	DOZ.
CRIMSON. Lively.....	10	\$1.00	VERMILION. Velvety.....	10	\$1.00
GOLD STRIPED. Beautiful.....	10	1.00	WHITE. Pure.....	15	1.50
ROSE. Satiny.....	10	1.00	YELLOW. Bright.....	15	1.50
SCARLET. Brilliant.....	10	1.00			

SINGLE RED. Yellow bordered. 8 cents. 80 cents per dozen. \$5.50 per 100.

DOUBLE RED. Yellow bordered. 5 cents. 50 cents per dozen, \$3 per 100.

EARLY SINGLE TULIPS.

These are well-known ornaments of the garden, as well as the greenhouse. Forced in pots, they are very gay and fine; and for bedding in mixtures, or in separate colors and sorts, no spring flower is equal to them in brilliancy.

	EACH.	DOZ.		EACH.	DOZ.
ADMIRATION. Dark brown.....	05	\$0.50	EMANUEL. Pure white.....	10	1.00
ALIDA MARIA. White and crimson.	15	1.50	GLOBE DE RIGAUD. Violet, white		
ARTIS. Beautiful vermilion.....	05	0.50	stripe.....	10	\$1.00
BELLE ALLIANCE. Bright scarlet.	08	0.80	GOLDEN PRINCE. Golden yellow..	05	0.50
BRIDE OF HAARLEM. Brilliant			KEISERSKRON. Yellow, with red..	08	0.80
carmine, striped with white.....	15	1.50	LAC VAN RHEIN. Violet, silver edge.	05	0.50
BRUTUS. Scarlet, yellow bordered.	08	0.80	LA PRECIEUSE. Rose and white....	08	0.80
CANARY BIRD. Rich yellow, large.	10	1.00	MILTIADES. Blush white.....	05	0.50
CHAPEAU DE CARDINAL. Scarlet	05	0.50	PARAGON GULDENBLOEM. White,		
CHRYSOLORA. Deep yellow, earliest	10	1.00	striped with yellow.....	05	0.50
CLAREMONT GOLDEN. Red, gold			PAX ALBA. Pure white.....	08	0.80
striped, extra.....	10	1.00	POTTEBAKKER WHITE. Large....	10	1.00
CLAREMONT. Red, silver striped...	08	0.80	POTTEBAKKER YELLOW. Large...	10	1.00
COMMANDANT. Orange red.....	05	0.50	PRINCE OF AUSTRIA. Orange red	10	1.00
COULEUR DE CARDINAL. Deep red,			PROSERPINE. Deep rose, very		
spotted with violet.....	05	0.50	large, and extra fine.....	15	1.50
COULEUR PONCEAU. Crimson.....	05	0.50	ROSA MUNDI. True rose, fine flower.	05	0.50
DUC DE HAARLEM. Red and yellow	08	0.80	ROSE GRISDELIN. Rose, very fine.	05	0.50
DUC D'ORANGE. Gold with orange.	05	0.50	STANDARD GOLDEN. Red and gold.	15	1.50
DUCHESSE DE PARMA. Crimson,			STANDARD SILVER. Red and white.	08	0.80
with orange border.....	05	0.50	THOMAS MOORE. Orange.....	05	0.50

EARLY SINGLE TULIPS.—Continued.

	EACH.	DOZ.		EACH.	DOZ.
VAN DEN VONDEL. Dark red and white, large, extra fine.....	15	\$1.50	WATERLOO. Brilliant scarlet; extra.	05	0.50
VAN DER NEER. Violet, large, fine.	15	1.50	Early Single Tulips, mixed, without names. \$3 per 100.....	05	0.50
VERBOOM. Scarlet, fine form.....	08	0.80	Late Single Tulips (Beiblumen), mixed, white grounds. \$4 per 100.	06	0.60
VERMILION BRILLIANT. Splendid bright vermilion, very fine.....	10	1.00	Late Single Tulips (Bizarden), mixed, yellow grounds. \$4 per 100.	06	0.60
WOUWERMAN. Dark violet, large.	15	1.50	Late Single Tulips (Roses), mixed, white grounds. \$4 per 100.....	06	0.60
WAPEN VAN LEIDEN. White, carmine spotted.....	05	0.50			

PARROT TULIPS.

Large flowers, with fringed edges, most brilliant crimson and yellow, with shades of bright green, curiously intermixed and variegated; unique and picturesque; are fine for borders, and when planted in masses produce a beautiful and striking effect.

	EACH.	DOZ.
ADMIRAL OF CONSTANTINOPLE. Red, streaked with orange.....	06	\$0.60
GLORIOSA. Yellow, striped with red.	06	0.60
PERFECTA. Yellow ground, shaded and spotted with scarlet; feathered....	06	0.60
RUBRO MAJOR. Large red flower.....	30	3.00
MIXED. Of various colors. \$3 per 100.	05	0.50

**EARLY FLOWERING DOUBLE TULIPS.**

This class of Double Tulips can be forced in pots; besides, they are a real ornament for the garden, as their large, early, fine-colored flowers and dwarf habit make them very desirable for bedding, and our list comprises all the best varieties.

	EACH.	DOZ.		EACH.	DOZ.
ALBANO. Rose, merging into white.	10	\$1.00	LEONARD DA VINCI. Crimson and yellow; extra fine flower.....	10	1.00
BLANC BORDE POURPRE. Purple, white bordered.....	05	0.50	MURILLO. Rose, with white; extra.	08	0.80
COURONNE D'OR. Golden yellow..	08	0.80	PURPLE CROWN. Velvety crimson.	05	0.50
COURONNE DES ROSES. Bright rose; very double flower.....	10	1.00	REGINA RUBRORUM. Dark red, striped with creamy yellow.....	15	1.50
DUKE OF YORK. Violet, white edge.	05	0.50	REX RUBRORUM. Bright scarlet...	05	0.50
DUC VAN THOLL. Red, yellow edge.	05	0.50	ROSINE. Rosy lilac; pretty.....	05	0.50
EXTREMITE D'OR. Red, yellow edge.	10	1.00	ROZENKROON. Dark violet, very fine bloom.....	08	0.80
FRANCIS JOSEPH. Crimson and yellow.....	08	0.80	SALVATOR ROSA. Red and rose....	10	1.00
GLORIA SOLIS. Scarlet, orange edge.	05	0.50	TITIAN. Brownish red, yellow edge.	05	0.50
GLORIOSA SUPERBA. Scarlet.....	05	0.50	TOURNESOL. Red, citron edge.....	10	1.00
GRISDELIN SUPERBE. Lilac, with white border.....	10	1.00	TOURNESOL. Yellow, orange reflex.	10	1.00
HELIANTHUS. Brown and yellow.	10	1.00	VELVET GEM. Dark brown, extra fine flower.....	15	1.50
IMPERATOR RUBRORUM. Scarlet.	10	1.00	YELLOW ROSE. Yellow; fragrant.	05	0.50
LA CANDEUR. Pure white; extra.	08	0.80	Early double mixed varieties, \$3 per 100.....	05	0.50
LE BLASON. Rose, white shaded...	08	0.80			

LATE FLOWERING DOUBLE TULIPS.

These are best adapted for planting out in the garden, and will not bear forcing as well as those marked "early." And for a succession, they should be planted in every garden.

	EACH.	DOZ.		EACH.	DOZ.
ADELMONDE. Purple.....	05	\$0.50	MARRIAGE DE MA FILLE. White ground, flaked with cherry red....	10	\$1.00
BELLE ALLIANCE. Violet, with white.....	08	0.80	OVERWINNAAR. Violet, with white stripes.....	10	1.00
BLUE FLAG. Purplish violet.....	08	0.80	PEONIA GOLD. Scarlet, gold stripe.	05	0.50
BUNAPARTE. Salmon red.....	05	0.50	ROSE EGLANTANE. Yellow, varg.	05	0.50
CONSTANTINIA. Yellow and gold.	05	0.50	RED CROWN. Lively carmine.....	05	0.50
COURONNE IMPERIAL. Cherry red, blue reflex, variegated with white.	10	1.00	SALAMANDER. Yellow, red spotted.	05	0.50
GARDE D'HONNEUR. Violet, white striped.....	10	1.00	Late double mixed varieties, \$3 per 100.....	05	0.50
MILTON. Reddish purple.....	05	0.50			



THE CROCUS.

As one of the earliest ornaments of the flower garden, it is a universal favorite, being neat, dwarf and compact, and varied in all the essential shades of color for producing harmony of effect. The principal adaptation of this bulb consists in its suitability for planting near the edge of flower borders, etc., so as not to require removal, or in forming lines or edges entirely of such, which, after blooming, may be removed; as the leaves show maturity of growth by fading in color.

The principal months for planting are October, November and December, in ordinary rich garden soil, placing the bulbs about two inches deep, and four to six inches from the edge; each group of six to eight bulbs being planted in its own relative color, or in blended varieties. These improve for some years if not disturbed. To secure a succession of blooms in pots, commence early in the first-named month with six or eight

bulbs in each well-drained pot, using the same rich soil, and planting about an inch deep, and, thus planted, place the pots on a surface of ashes, covering them over one inch deep with soil, tan, or dry leaf-mould, until the leaves appear through the soil, when they may be removed to the house.

CROCUS—SPLENDID NAMED VARIETIES.

25 cents per dozen. \$1.50 per 100.

WHITE.
 CAROLINE CHISHOLM.
 CHARLOTTE CORDAY.
 COMTESSE DE MORNAY.
 GROSSFURST.
 MONT BLANC.
 VIRGIN QUEEN.

BLUE.
 ALEXANDER.
 BARON VON BRUNOW.
 GRAND VEDETTE.
 NON PLUS ULTRA.
 ORESTES.
 PRINCE ALBERT.

STRIPED.
 ALBION.
 GALLIO.
 LA MAJESTUEUSE.
 MADAME MINA.
 VERSICOLOR ALBERTINE.
 WALTER SCOTT.

CROCUS—FINE ASSORTED VARIETIES.

20 cents per dozen. \$1.00 per 100.

Large White.
 Large Blue.

Large Striped.
 Large Purple.

Large Yellow. Mixed. 15 cts. doz. 80 cts. per 100.
 Cloth of Gold. Saffron. Autumn flowering.

SNOWDROPS.

The pretty Snowdrop, "in habit white and plain," is the first of all flowers to herald the approach of spring. Long before any other flower, it shoots up its slender stem, and displays its white, drooping corols, while the spotless snow still covers the shady recesses of the garden. They flourish well in any soil, and bloom best if not transplanted oftener than every three years. Being dwarf, they should be set near the edge of walks, where they show to advantage. They also flourish well in sand or moss, or in pots or baskets.



	PER DOZ. PER 100.	
Double flowering	50	\$3.00
Single "	25	1.50

LUCOJUM ÆSTIVUM (Large Snow-Flake). Flowers white, with bright green spots, resembling the Snowdrop, but much larger. 10 cents. \$1.00 per dozen.

LILY OF THE VALLEY.

One of the most charming of our spring flowering plants, whose slender stems set with their tiny bells, diffusing a delicious odor, have rendered it a universal favorite. Also largely used for forcing in the winter, for the cut-flower trade.

	EACH. DOZ.		EACH. DOZ.
CONVALLARIA MAJALIS FLORE PLENO. Double, white.....	10	\$1.00	CONVALLARIA MAJALIS. Single, white
CONVALLARIA MAJALIS FOLII VARIEGATIS. Single, white; golden-striped foliage.....	30	3.00	CONVALLARIA MAJALIS. Single, white, fine large pips, 3 years old, selected for forcing; deliverable after Nov. 1st. Per 100, \$3.....
			05 0.50
			06 0.60

NARCISSUS.

All the varieties are extremely hardy and popular as a border flower. The Single Narcissus, of which we give an illustration, is quite an attractive flower, the central cup being of a very different color from the six petals. Some have the petals of a light yellow and the cup orange; others have the petals white and the cup yellow; while the Poet's Narcissus is snowy white, with red cup. The *Double* varieties are very desirable. The well-known Daffodil is of this class. Its true name is *Van Sion*. *Orange Phoenix* is sometimes called Butter-and-Eggs, as the large petals are yellow and the short ones orange.

The Polyanthus Narcissus are very attractive and showy flowers, producing on a tall stem large clusters of white and yellow cup-shaped blossoms, and are particularly admired for their sweet jasmine perfume; they contrast finely with the Hyacinth, for garden, pot, or glass culture, and require the same treatment.



POLYANTHUS NARCISSUS.

Named, \$1.50 per dozen. Mixed, \$1 per dozen.

	EACH		EACH
AURORA. White, orange cup.....	15	GRAND PRIMO. White, citron cup.....	15
BASELMANN MINOR. White, yellow cup.	20	GROSSFURST. White, large citron cup...	15
DEMOCLIDES. White.....	15	LUTEA MAJOR. Yellow.....	15
DOUBLE ROMAN. Double white flowers.	10	PRINCE OF ORANGE. Yellow.....	15
DUBIUS (Paper white). Pure white.....	10	SOLEIL D'OR. Yellow, orange cup.....	15
FAVORITE. Yellow.....	15	STATEN GENERAL. White, citron cup..	15
GLORIOSA. White, orange cup.....	15	Mixed varieties.....	10
GRAND MONARQUE. White, citron cup.	15		25 cents per doz. additional for postage.

DOUBLE NARCISSUS.

Named 8 cents. 80 cents per dozen. Mixed 6 cents. 60 cents per dozen.

ALBA PLENO ODORATO. White; fragrant.	ORANGE PHENIX. Orange and yellow.
INCOMPARABLE. Yellow and orange.	VAN SION (Yellow Daffodil).

SINGLE NARCISSUS.

	EACH.	DOZ.		EACH.	DOZ.
CAMPERNELLE (Great Jonquil).			TRUMPET MAJOR. Golden yellow.	10	\$1.00
Yellow; fragrant.....	05	.50	TRUMPET MINOR. Bright yellow..	10	1.00
POETICUS. White, with red cup... 05	.50		Mixed varieties.....	06	.60

JONQUILLS.

Very fragrant and fine for forcing in pots, also fine for garden culture.

	EACH.	DOZ.		EACH.	DOZ.
Double Yellow. Extra size bulbs...	15	\$1.50	Single Yellow.....	05	.50

IRIS (Fleur-de-Lis).

The Iris is a very extensive and beautiful family. They are splendid for borders. All the varieties here mentioned are hardy, except those marked tender, which are better adapted for pot culture.

	EACH.	DOZ.
English mixed varieties.....	05	\$0.50
Spanish " ".....	05	0.50
Pavonia. White, spotted blue; tender.....	08	0.80
Persian. White and blue; fragrant, tender.	20	2.00
JAPONICA. From Japan; tender.....	50	5.00
KEMPFERI. Mixed varieties.....	20	2.00
PUMILA CÆRULEA. Blue; dwarf.....	10	1.00
SUSIANA. Blush-tinted brown, veined and spotted with black.....	50	5.00
TUBEROSA. Violet, marked with black.....	10	1.00
IBERICA. Red, richly veined and spotted...	50	5.00
RETICULATA. Blue.....	50	5.00



IRIS.—Continued. IRIS GERMANICA.

These are neat, robust, hardy evergreens, with large ornamental flowers of rich and elegantly-blended colors, exquisitely striped with dark violet, purple, or bronzed lines, upon a lighter ground. Not rising more than two or three feet in height, they are admirably adapted for gardens.

20 cents each. \$2.00 per dozen.

- | | |
|--|--|
| <p>BARIENSIS. White, bordered with lilac.
 COMTE DE ST. CLAIR. Pure white, shaded with violet, lower petals purplish violet, netted with white.
 HERICARTIANA. Pale blue, lower petals dark blue and purple.
 HONORABILIS. Orange, lower petals brown.
 JULIETTE. White, violet edge, shaded with blue.
 MADAME CHEREAU. White, edged with violet.</p> | <p>PAJOL. Purplish lilac, lower petals dark.
 PLUTON. Bronzy violet, lower petals lilac.
 RAPHÆL. Nankeen yellow, lower petals purple with white veins.
 SPECTABILIS. Velvety purple, shaded with black.
 VIRGILE. Bronzy red, lower petals reddish lilac, veined with pale yellow.
 VIRGINAL. White, lower petals veined with purple.
 WALNERI. Lilac, lower petals dark blue.</p> |
|--|--|



CROWN IMPERIAL,

A very showy plant; is quite hardy, and when the bulb is once planted in any common garden soil, it needs no other culture. Autumn is the proper season for planting, as the bulbs will not keep long out of the ground. Plant one foot apart, covering them five inches.

	EACH
Double Red.....	\$1.25
Double Yellow.....	1.25
Single Orange.....	.50
Single Red.....	.25
Single, variegated foliage, red.....	.50
Single Yellow.....	.50
Single, mixed, \$2.00 per dozen.....	.20

MINIATURE VARIETIES.

FRITILLARIA MELEAGRIS. Mixed checkered lily. \$1 per dozen10
FRITILLARIA PERSICUM. Large clusters of purple flowers, glaucous blue foliage..	.25

Crown Imperials require 25 cents per dozen additional, for postage.

HERBACEOUS PÆONIES.

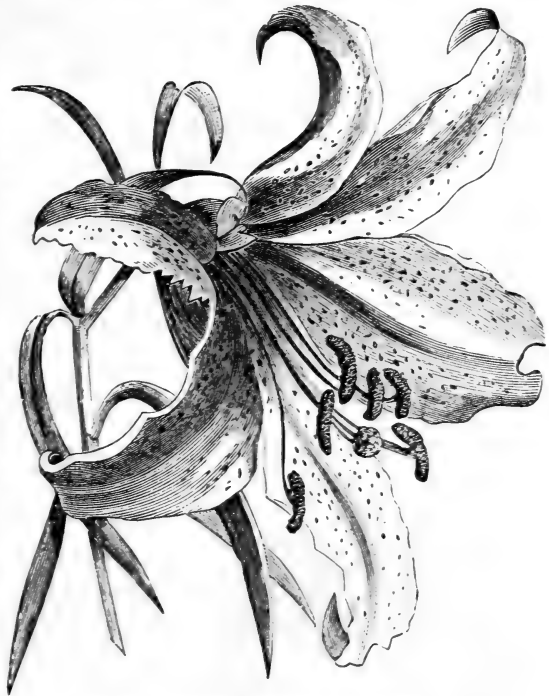
This interesting genus contains many magnificent flowering plants. They are tuberous-rooted and quite hardy. To insure a bloom the first season, it is necessary to plant in the autumn. The following are among the most desirable large flowering, embracing all shades of color, from pure white to a deep crimson; and many varieties are delightfully fragrant.

	EACH		EACH
ALBA PLENA. Double white.....	30	OFFICINALIS RUBRA. Dark crimson...	25
BARON J. D'ROTHSCHILD. Pale rose..	50	POTTSI. Dark crimson.....	25
COMTE DE PARIS. Rose, buff centre...	30	ROSEA DELECTA PULCHRA. Rose, shaded with buff.....	50
DUCHESSÉ D'ORLEANS. Dark rose, tinged with buff.....	30	SULPHUREA. Pale yellow.....	50
FRAGRANS. Dark rose; fragrant.....	25	TENUIFOLIA. Dark crimson; very double and showy, with peculiar fine cut leaves.....	50
HUMEL. Pink; fragrant.....	25	TRICOLOR GRANDIFLORA. Large three-colored flower.....	50
JEANNE D'ARC. Blush white, shaded with rose.....	50	WHITLEYI. Pure white; fragrant.....	25
LINGULATA. Pure white.....	50	12 new French varieties. \$4 per dozen..	50
MAGNIFICA. Of a rosy chamois color...	50	12 choice named varieties of our own selection. \$3 per dozen.	
MODESTE PULCHERIMA. Deep rose, bright, large, showy and distinct.....	50		
OFFICINALIS PURPUREA MAJOR. Large purple flower.....	50		

PÆONIA ARBOREA (Tree Pæonia). From \$1 to \$2, according to size.

LILIUM.

The Lily has always been a favorite flower. Some of the varieties are truly magnificent. The *Lilium Auratum* is the great Lily from Japan, and called the "Golden-banded Lily." This is the king of lilies. The flower is from eight to twelve inches across, composed of six delicate white ivory petals, each being thickly studded with rich chocolate crimson spots, and having a bright golden band through the centre of each petal, with an exquisite vanilla-like perfume. Our *Auratums* are grown on our own nursery grounds, and are fine healthy flowering bulbs. As the bulbs acquire age and strength, the flowers obtain their maximum size and number. Upwards of twelve flowers have been produced on a single stem. It is perfectly hardy in dry soils, and should be planted five inches in depth; also admirably adapted for pot culture. The *Japan Lilies*, *Lilium Lancifolium*, are among the most beautiful and delightfully fragrant, imparting a vanilla perfume, and are suited for either pot culture or the garden; their period of blooming is during the months of July and August. Our list will be found to embrace all the best and leading varieties. They are all hardy, and the bulbs can be planted either in the autumn or spring, although autumn is preferable; and a covering of manure will be found beneficial, but must be removed early in the spring. The ground should be thoroughly drained for Lilies.



LILIUM AURATUM (GOLDEN-BANDED LILY).

	EACH.	DOZ.
AURATUM (Golden-banded Lily). White, with rich crimson spots, and golden band through the centre of each petal. Strong flowering bulbs.....	\$.75	\$7.50
Second size, flowering bulbs.....	.50	5.00
Third size, flowering bulbs.....	.30	3.00
BROWN. With magnificent large foliage, flowers large, white inside, purple outside, and stamens of a rich chocolate color.....	2.50	24.00
BULBIFERUM AURANTIACUM. Orange red; cup-shaped flowers.....	.25	2.50
CANDIDUM FLORE PLENO. A double white variety, very showy.....	.30	3.00
CANDIDUM SIMPLEX. The well-known white garden lily; snow white, fragrant.....	.15	1.50
CANDIDUM FLORE ALBO SPECIOSUM. White, crimson spotted.....	.30	3.00
CANDIDUM FLORE ALBO STRIATUM. White, purple spotted.....	.30	3.00
CHALCEDONICUM (Turk's Cap). Brilliant scarlet recurved blossoms; very effective for bedding.....	.75	8.00
EXCELSUM (Testaceum Isabellinum). Delicate light buff color.....	.50	5.00
FORTUNEI. Rich deep scarlet, spotted with black.....	.50	5.00
HUMBOLDTI (Bloomerianum). Golden yellow, spotted with scarlet brown; flowers drooping on long peduncles; California Lily.....	.75	8.00
LANCIFOLIUM (or Speciosum) ALBUM. Splendid white.....	.40	4.00
LANCIFOLIUM " RUBRUM. White, spotted with crimson; superb.....	.20	2.00
LANCIFOLIUM " PUNCTATUM. White, spotted with delicate salmon; broad petals.....	.75	8.00
LANCIFOLIUM MONSTROSUM (or Speciosum) ALBUM. Pure white; large clusters of flowers.....	.50	5.00
LANCIFOLIUM MONSTROSUM (or Speciosum) RUBRUM. White, crimson spotted; large clusters of beautiful flowers.....	.50	5.00
LONGIFLORA JAPONICA. Large and beautiful, snow-white, trumpet-shaped blossoms; also desirable for forcing as a bouquet flower.....	.15	1.50
PARDALINUM. Yellow and red; beautifully spotted. New California Lily.....	.50	5.00
PARVUM. Rich dark yellow, with red spots.....	.75	8.00

LILIUM.—Continued.

	EACH	DOZ.
SUPERBUM. A beautiful red-spotted drooping lily.....	\$.15	\$ 1.50
THUNBERGIANUM ATROSANGUINEUM MACULATUM. Orange red, blotched.....	.30	3.00
THUNBERGIANUM AUREUM MACULATUM. Very large orange-spotted flowers; the finest dwarf variety, only 10 inches high.....	.30	3.00
TIGRINUM (Tiger Lily). Orange salmon, spotted with black.....	.15	1.50
TIGRINUM FLORE PLENO (Tiger Lily). Orange red, spotted with black; double showy flowers.....	.50	5.00
TIGRINUM SPLENDENS (Tiger Lily). Flowers as large again as the old variety, and of a deeper color.....	.25	2.50
UMBELLATUM ERECTUM. Yellow, with brown and dark orange; very showy....	.25	2.50
UMBELLATUM GRANDIFLORUM. Orange scarlet; very fine, free flowering.....	.30	3.00
UMBELLATUM INCOMPARABLE. Orange scarlet; finest and most showy variety of the above.....	.25	2.50
WASHINGTONIANUM. Flowers erect, white, shaded and spotted with pink and crimson. California Lily.....	.75	8.00
WASHINGTONIANUM PURPUREUM. White, shaded with purple.....	1.00	10.00

Lilies require a remittance of 25 cents per dozen additional, for postage.

MISCELLANEOUS HARDY VARIETIES.

AMARYLLIS LONGIFLORA ALBA. White; long foliage.....	.50	5.00
AMARYLLIS LONGIFLORA ROSEA. Rose; long foliage.....	.50	5.00
AMARYLLIS LUTEA. Yellow; blooms in the autumn.....	.20	2.00
APIOS TUBEROSA. A climber, with fragrant reddish-purple flowers.....	.25	2.50
ARUM DRACUNCULUS (Dragon Plant). Long brownish flowers, foliage resembling a palm.....	.20	2.00
BRODLEA CONGESTA. Showy blue flowers; bloom in the summer.....	.10	1.00
BRODLEA GRANDIFLORA. Large flowered, sky-blue.....	.10	1.00
BULBODIUM VERNUM. Dark purple flowers, resembling the Colchicum.....	.08	.80
COLCHICUM AUTUMNALIS. A pretty species, flowering in November, with violet flowers resembling the Crocus.....	.10	1.00
COLCHICUM AUTUMNALIS ALBUM. A white variety of the above.....	.15	1.50
CORYDALIS BUBOSUM. Red; dwarf, pretty early-flowering plants.....	.15	1.50
DIELYTRA SPECTABILIS (Bleeding Heart). A tuberous-rooted plant; blooms in the spring.....	.25	2.50
FUNKIA JAPONICA ALBA (Day Lily). Pure white, lily-like, fragrant flowers....	.25	2.50
FUNKIA JAPONICA CÆRULEA. Blue flowers.....	.20	2.00
GERANIUM TUBEROSUM. Rosy lilac flowers, and handsome pinnated foliage....	.15	1.50
GLADIOLUS BYZANTINUS. Reddish purple, yellow stripes; planted in November. \$4 per 100.....	.08	.80
GLADIOLUS COLVILLI. Scarlet and purple; fragrant, planted in November; also good for forcing for winter bloom. \$4 per 100.....	.08	.80
GLADIOLUS COMMUNIS ALBUS. White.....	.08	.80
GLADIOLUS COMMUNIS RUBRA. Red.....	.08	.80
GLADIOLUS RAMOSUS. Rose and crimson flowers; also a very showy winter-blooming bouquet flower; by planting at intervals in pots, you can have a succession of bloom from December to April.....	.15	1.50
GLADIOLUS RAMOSUS QUEEN VICTORIA. Crimson, with white throat.....	.15	1.50
HEMEROCALLIS KWANSO FOLII VARIEGATIS FLORE PLENO. From Japan; beautiful variegated foliage and double flowers.....	.50	5.00
HEMEROCALLIS KWANSO, FLORE PLENO. From Japan; double orange-colored flowers.....	.50	5.00
ORNITHOGALUM UMBELLATUM. Silvery white, green outside; opens only in sunshine.....	.15	1.50
ORNITHOGALUM PYRAMIDALE. A spike of white flowers; foliage handsome, blooms in June.....	.30	3.00
SCILLA SIBERICA. Brilliant intense blue flowers, produced on a short, erect spike; fine for pot culture.....	.08	.80
SCILLA HYACINTHOIDES. Beautiful blue flowers.....	.10	1.00
NYMPHÆA ODORATA. One of the best of our native Water Lilies; fragrant, white flowers, but occasionally tinted with pink; for ponds or aquariums.....	.50	5.00

DREER'S GARDEN CALENDAR FOR 1880.

PUBLISHED BY JANUARY 1st,

Is designed to furnish brief practical directions for the cultivation of vegetables, fruits and flowers; also descriptive lists of the best and newest varieties, with numerous engravings and illustrations. Will be mailed to all applicants.

ANEMONES.

These charming hardy spring flowers having brilliant colors are becoming better known, and more popular; both double and single are equally desirable, and no garden should be without them. They are well adapted either for pot or border culture, and planted in masses are most effective. They succeed best in a rich loam, but will thrive in any well-drained, good garden soil, mixed with sand. Plant in October or November, or as soon as the ground can be worked in the spring.

For pot culture fill with any rich porous compost, and good drainage, planting four roots in a six-inch pot, place in a cold frame, or any moderately cool situation, giving very little water until the plants appear, then remove to the green-house or sitting-room window.



DOUBLE ANEMONES.

8 cents each. 80 cents per dozen.

ADMIRAL ZOUTMAN. Blue.
 AGNARIUS. White; very large.
 COULEUR DE SANG. Bright scarlet.
 DUCHESSE DE LORRAINE. Red; large flower.
 FEU SUPERBE. Dazzling fiery red.
 L'ECLAIRE. Large, very fine scarlet.
 ORNAMENT DE LA NATURE. The best dark blue.
 REINE DES PAYS-BAS. White and rose.
 Mixed varieties. 5 cents. 50 cents per dozen.

SINGLE ANEMONES.

8 cents. 80 cents per dozen.

Scarlet.
 HORTENSIS. Red.
 HORTENSIS. Violet.
 Mixed varieties. 5 cents. 50 cents per dozen.

ANEMONE FULGENS. Flowers large, of a dazzling vermilion. 20 cents. \$2 per dozen.

ANEMONE JAPONICA. Dark rose. 20 cents. \$2 per dozen.

DOUBLE FRENCH CHRYSANTHEMUM FLOWERED. Splendid var. mixed. 20 cents. \$2 per doz.

RANUNCULUS.

For symmetry of form and brilliancy of color in almost all the varieties and hues which are recognized among flowers, the Ranunculus is probably unequalled by any other; for its culture it requires a good depth of rich garden soil. The tubers are rather tender, and should be planted out of doors in early spring; they bloom in June. Also, can be grown in pots, and forced into early bloom in the greenhouse, if planted in November or December.

TURKISH.

Named, 5 cents. 50 cents per dozen.

BLACK TURPAN. Blackish brown.
 HERCULES. Pure white.
 MERVEILLEUSE. Orange yellow.

PRINCE DE GALITZIN. Yellow and black.

ROMANO. Bright dazzling red.

SERAPHIQUE D'ALGIER. Light yellow.

TURBAN GRANDIFLORA. Variegated.

Mixed varieties. 5 cents. 40 cents per dozen.

PERSIAN.

Named, 6 cents. 60 cents per dozen.

BELLA DONNA. Violet spotted.

CRAMOISY SUPERBE. Crimson, large flower.

COMMODORE NAPIER. Yellow with brown.

FEUESSAULE. Red and yellow.

JAUNE SUPREME. Deep yellow; extra.

REINE VASTHY. White and rose.

ROSE DES DAMES. Rosy.

Mixed varieties. 5 cents. 50 cents per dozen.

DOUBLE FRENCH. Splendid double varieties; colors mixed. 8 cents. 80 cents per doz.

GREENHOUSE BULBS AND TUBERS.

ACHIMENES.

Showy flowering greenhouse bulbs, blooming profusely from May to October; are most effective when four or more bulbs are planted in each pot; require light, rich soil, plenty of air, and slightly shaded from the sun.

NAMED VARIETIES. 30 cents. \$3 per dozen. Mixed varieties. 20 cents. \$2.00 per dozen.

AMARYLLIS.

Splendid flowering bulbs, suitable for the greenhouse or room culture. They should be grown in pots, well drained, in a soil of equal parts of peat, leaf-mould and loam. They are showy lily-shaped flowers, producing from two to four on a stalk, and bloom early in the spring.

AULICA. Dark crimson, shaded green...	EACH \$2.50	VITTATA. White, striped with bright rose	EACH \$1.50
JOHNSONI. Scarlet, striped with white; very large bloom.....	2.00	Hybrids of Vittata, white ground, striped with red.....	1.50
PRINCE OF ORANGE. Bright orange; large and handsome.....	2.00	Hybrids of Vittata, red ground, striped with white.....	1.25
Choice Hybrids, imported from Ghent...	1.25		

CALADIUMS.

This class of beautiful variegated foliage plants, margined and delicately traced with various rich colors, and elegantly spotted and mottled, are exceedingly handsome when alone or intermingled with other plants. As a decorative plant, they are unequalled, for the greenhouse or conservatory in the summer months. They require a moist, warm temperature; great care must be taken in their earlier stages of growth, to prevent decay of the tubers, or damping off. The tubers can be best preserved during the winter in charcoal dust in a warm room, and must be started, in the spring, in a warm house or hot-bed with bottom heat; also do well planted in a shady situation out of doors in June.

30 cents. \$3.00 per dozen.

AUBER. Green, spotted, white and pink.
 BARON ROTHSCHILD. Green, spotted and veined with orange crimson.
 BEETHOVEN. White, mid-ribs rose.
 BELLEYMEL. Green, mottled with white.
 BICOLOR PICTURATA. Arrow-shaped leaf, with rosy-crimson centre.
 BICOLOR SPLENDENS. Deep crimson, with broad green margin.
 BOHEMICUM. White with gray and pink.
 BRONGNIARTI. Large green and crimson.
 DUC DE RATIBON. Green shaded white, with crimson spots.
 ENCKEL. Green, spotted with pink.
 ENDLICHERIANUM. Green, large rose centre.
 HEMATOSTIGMA. Green, crimson centre.
 HERCULES. Gray centre, and red spots.
 HOULLETTI. White, gray and green.
 LAUCHEANA. Metallic green.
 MAXIME DUVAL. Green veined and spotted with crimson.



MEYERBEER. White, mid-ribs red.
 MILTON. Red veins, gray centre, crimson spots.
 NAPOLEON III. Green, crimson centre.
 NEWMANI. Green, spotted rose.
 REINE VICTORIA. Dark green, spotted with white and crimson.
 ROSSINI. Pale centre, pink ribs, red spots.
 RUBRA MACULATA. Green, orange spots.
 WIGHTI. Light green, crimson and white spots.

ALOCASIA JENNINGSI.

This magnificent plant requires similar treatment to that given to Caladiums. It grows to a height of two feet or more, producing leaves eight to ten inches long, and nearly as wide. The ground color is glaucous green, set off with large oblong blotches of black. 25 cents. \$2.50 per dozen.

CYCLAMEN.



Few plants are more showy than the Cyclamen; blooming in the winter and early spring months in the greenhouse, the flowers being singular in shape, of various colors, with beautiful foliage. The soil should be very light and rich, containing a good part of peat and sand, with well-rotted cow manure. They require frequent watering while growing.

	Each.
COUM. Bright crimson, blotched with violet.....	35
EUROPEUM ALBUM. Pure white.....	30
EUROPEUM ROSEUM. Rose colored.....	36
HEDEREFOLIUM RUBRUM. Rosy purple; large	50
HEDEREFOLIUM ALBUM.....	50
PYRENAICUM ODORATUM. Red; fragrant.....	30
PERSICUM (Aleppicum). White, with crimson centre. \$4 per dozen.....	40
PERSICUM ALBUM. Pure white.....	50
PERSICUM ROSEUM. Rose-colored.....	50
PERSICUM RUBRUM. Deep crimson.....	50
PERSICUM GIGANTEUM. Very large white flowers, violet eye.....	75
PERSICUM MACULATUM VARIEGATUM. Spotted and variegated.....	60

GLOXINIA.

A beautiful early summer-flowering plant for the greenhouse or conservatory, with large bell-shaped flowers, of the most delicate and brilliant colors. There are two varieties, one with erect or upright flowers, and the other with drooping or pendulous ones. The tubers should be planted in February or March, in a rich, light soil, and kept in a warm, moist atmosphere. A selection of the best and latest introductions. 30 cents. \$3 per dozen.

IXIA.

The best season for planting these beautiful flower-bulbs is during the autumn months, for early spring blooming; being small, they are most effective when planted in stores of three, four, or six in each pot of four or six inches in diameter, they are too small to grow as single specimens

Named varieties.....	EACH DOZ. 10 \$1.00	Mixed varieties.....	EACH DOZ. 5 50
----------------------	------------------------	----------------------	-------------------

OXALIS.

These are profuse bloomers, and very attractive in the greenhouse or conservatory during the winter. Plant three or four bulbs in a pot; the pots should be kept near the glass to prevent the foliage from growing too long, and require frequent watering while growing.

Named varieties.....	EACH DOZ. 10 \$1.00	Mixed varieties.....	EACH DOZ. 5 50
CERNUA FL. PL. Double canary yellow, fine large flowers.....			15 1.50

SPARAXIS.

A beautiful class for greenhouse culture, flowering from February until May. Their treatment is similar to the Ixia.

Named varieties.....	EACH DOZ. 10 1.00	Mixed varieties.....	EACH DOZ. 8 80
----------------------	----------------------	----------------------	-------------------

MISCELLANEOUS VARIETIES.

For growing in pots for the greenhouse or conservatory.

ANOMATHECA CRUENTA. Beautiful small brilliant red flowers...	EACH DOZ. 10 \$1.00	TROPEOLUM SPECIOSUM. Fine large scarlet flowers; a slender, rapid-growing climber.....	EACH DOZ. 50
BABIANA. Mixed varieties, showy, and resembling the Ixia.....	10 1.00	TROPEOLUM TRICOLORUM. Scarlet, yellow and black; same as the above.....	60
BABIANA. Named varieties.....	15 1.50	LACHENALIA. Mixed varieties; showy fleshy leaves, and erect stems with racemes of pendent flowers.....	50 5.00
ORNITHOGALUM AUREUM. Flowers splendid golden orange; called the Star of Bethlehem.....	50 5.00	EUCHARIS AMAZONICA. Flowers like pure white stars, 4 inches across, very fragrant. It does well in loam, peat, and a little sand, enriched with old manure	L00 10.00
TRITONIA. Mixed varieties.....	8 80		
TRITONIA. Named varieties.....	10 1.00		

SUMMER AND AUTUMN-FLOWERING BULBS AND TUBERS,

For Planting in the Spring in the Open Ground.

Bulbs are Ready for Delivery in October, and Planted from April to June.

For complete lists, please see "DREER'S GARDEN CALENDAR."

AGAPANTHUS.

UMBELLATUS (African Blue Lily). Each, 50 cts. to \$1.

ALBUS. White. \$1.

FOLIUS VARIEGATUS. Variegated. \$1.

AMARYLLIS.

FORMOSISSIMA (Jacobæa Lily). Scarlet. 25 cts.; \$2.50 per doz.

VALLOTA PURPUREA SUPERBA. Plant in equal parts of peat, leaf-mould and loam, taking care not to over-pot, as they flower better when pot-bound. 30 to 50 cts., according to size of bulb.

AMORPHOPHALLUS RIVIERI. 25 to 75 cts.

CANNA (Indian Shot Plant). 18 choice and distinct varieties, excelling in foliage and flower the older sorts. 25 cts.; \$2.50 per doz.

COLOCASIA, or CALADIUM. 25 and 50 cts., according to size.

BATAVIENSIS. Red stems.

ESCULENTUM. Large green leaves.

DAHLIA. A selected stock of 80 varieties, showing distinct colors, perfect form of flower and good bloomers. 30 cts. each; \$3 per doz.; \$20 per 100.

GLADIOLUS. A choice assortment of 125 varieties of FRENCH HYBRIDS, which are recommended for distinct colors and fine spikes. ASSORTMENTS OF OUR SELECTION. They will be forwarded by mail, *carefully packed*, without additional cost, except those quoted by the hundred, for which \$1 must be added for postage. For varieties and description, see "Dreer's Garden Calendar, for 1879."

No.	Price.
1. 12 varieties named.....	\$1 50
2. 12 " "	2 50
3. 12 " "	5 00
4. 12 mixed varieties.....	75
5. 100 " "	5 00
6. 12 mixed white and light colors.....	1 50
7. 100 " " "	8 00
8. 12 choice seedlings.....	1 00
9. 12 extra "	1 50

MADEIRA, or MEXICAN VINE.

Strong roots of this favorite flowering creeper, 10 cts.; 75 cts. per doz.

TIGRIDIA, or TIGER FLOWER.

15 cts.; \$1.50 per doz.

CONCHIFLORA. Orange.

PAVONIA. Scarlet.

DOUBLE TUBEROSE.

Of this delightfully fragrant flower we annually cultivate upwards of 50,000 first-class bulbs, a large bulk of which are used for forcing to supply the London cut flower demand. We are in a position to furnish first-class bulbs.

DOUBLE. \$1 per doz.; \$6 per 100.

DOUBLE DWARF PEARL. \$1 per doz.; \$6 per 100.

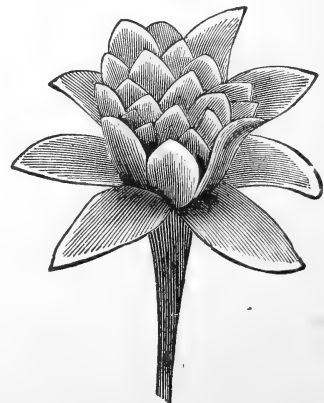
VARIEGATED FOLIAGE. \$2 per doz.

TRITOMA, or RED-HOT POKER.

UVARIA GRANDIFLORA. 25 to 50 cts.



FRENCH HYBRID GLADIOLUS.



DOUBLE DWARF PEARL TUBEROSE.

ORNAMENTAL AND WINTER-BLOOMING PLANTS,

Suitable for the Greenhouse, Conservatory or Window-Garden.

Only the leading varieties are given in this Catalogue; for a complete list and descriptions please see "Dreer's Garden Calendar," mailed on application.

ABUTILON. 25 cts. each; \$2.50 per doz.

AUREUM MACULATA. Variegated foliage.

BOULE DE NIEGE. White.

DARWINI. Buff yellow.

TESSELLATUM. Variegated foliage.

PATTERSONI. Crimson.

ROSEUM. Salmon pink.

VEXILLARIUM AUREUM PICTUM.

WILLIAM FOWLER. Yellow.

ACACIA PUBESCENS. \$1 to \$2.50.

ACALYPHA TRICOLOR. 75 cts.

AGAVE.

AMERICANA, of all sizes. 50 cts. to \$10.

VARIEGATA, of all sizes. 50 cts. to \$10.

VERSCHAFFELTI. Small, \$1. Large, \$5.

ALLAMANDA.

Of sorts. 50 cts. to \$1.

ALOCASIA.

GIBSONI. 30 to 50 cts.

JENNINGSI. 25 cts.

MACRORHIZA VARIEGATA. \$1.

METALLICA. \$1.

ODORATA, or **GIGANTEA.** \$1.

ALYSSUM, SWEET.

DOUBLE WHITE. 20 cts.; \$2 per doz.

ANTHERICUM VITATUM VARIEGATUM.

An elegant greenhouse plant with recurved graceful foliage, which attains a growth of about 3 feet. The leaves are dark-green, beautifully marked with broad stripes and bands of pure white. It produces long spikes of small, star-shaped flowers, which are quite effective. The habit and style of plant resembles the Pandanus Veitchi. It is very useful as a basket plant, or for window-boxes. 25 to 75 cts.

ANTHURIUM SCHERZERIANUM.

\$1 to \$2.

ASPIDISTRA.

ELIOTI. 25 cts.

VARIEGATA. 50 cts.

ARDISIA. 50 to 75 cts.

CRENULATA. Brilliant red berries.

FRUCTO ALBO. White berries.

ROSEA. Rose-colored berries.

ASTILBE JAPONICA (*Spirea Japonica*), 25 to 50 cts.

AUCUBA JAPONICA. Blotched, dark-green and yellow foliage. 25 to 75 cts.

AZALEA INDICA—Chinese Azalea.

Our collection of these beautiful greenhouse plants embraces a large list of the latest and best introductions. No plant is better adapted for parlor or conservatory cultivation; the double white varieties are much esteemed for forcing in winter.

Small blooming plants, 25 cts.; \$2.50 per doz. Medium plants, 50 to 75 cts.; \$5 per doz. Trained standards of symmetrical growth, strong, from \$1 to \$1.50 each; and \$9 to \$15 per doz.

BEGONIA (Ornamental-leaved).

Of great beauty. 12 varieties. 30 cts. each; \$3 per doz.

BEGONIA (Winter-flowering Varieties). 25 cts.; \$2.50 per doz.

FOLIOSA. White flowers.

GLAUCOPHILLA SCANDENS. Pink flowers.

MINIATA. Orange red flowers.

MULTIFLORA. Light rose.

RICHARDSONI. Large pure white flowers.

RUBRA. Flowers scarlet rose.

SAUNDERSONI. Scarlet flowers.

WELTONIENSIS. Fine salmon pink.

ALBA. Pure white.

BLETIA TANKERVILLE.

An easy-growing orchid, producing large showy white, marked with brown, flowers in long spikes. 75 cts. to \$1.50.

BOUVARDIAS. Large plants. 30 cts.; \$3 per doz.

DAVIDSONI. The best white-flowered variety.

ELEGANS. Salmon scarlet. Extra large and fine.

LEIANTHA. Fine scarlet.

CALLA. "Lily of the Nile." 25 to 50 cts.

ÆTHIOPICA. The favorite Easter lily.

NANA. A dwarf-growing variety.

CAPE JASMINES. 25 to 50 cts.

GARDENIA CAMELIA FLORA.

FLORIDA.

FORTUNI.

RADICANS.

CAMELLIA JAPONICA.

The following list comprises the most popular varieties of this favorite winter-plant. The prices vary, according to size, from 75 cts. to \$10.

ALBA PLENA. Double white.

FIMBRIATA. Fringed edges.

ALEXINA. Blush, striped rose.

CALEB COPE. Blush rose.

CANDIDISSIMA. Creamy white.

CHALMEREI. Clear rose.

DUCHESS D'ORLEANS. White, striped with crimson.

DUNLAP'S WHITE.

FEASTI. Delicate salmon and rose.

GILESI. Red and white, fine.

HENRI FAVRE. Salmon rose.

IMBRICATA. Crimson, spotted white.

JEFFERSONI. Deep crimson.

JENNY LIND. White, with occasional flakes of rose.

JOAN D'ARC. Rose, spotted white.

LADY HUME'S BLUSH. Peach color.

LANDRETHI. Beautiful pink.

LELLI. White, with light rose streak.

MAGDALENA LESH. Crimson, spotted with white.

MRS. COPE. White, with pink stripe.

PRINCE ALBERT. Blush, striped.

CAMELLIA JAPONICA.—*Continued.*

QUEEN OF DENMARK. Crimson, shaded with rose.

R. J. DOWNING. Flesh color.

REINE DE FLEURS. Crimson.

SACCO MAGNIFICA. Pale rose.

SARAH FROST. Rosy crimson.

SHERWOODI. Light crimson.

TRICOLOR. Blush, crimson and rose.

WILDERI. Clear rose, fine.

WILLIAM PENN. Dark red.

WILLIAM IV. Fine rose.

CARNATION; Monthly or Remontant.

Select list of varieties, expressly grown and trained for winter-flowering—large plants. 40 cts.; \$4 per doz.

ASTORIA. Yellow, scarlet-striped.

BETSY. Finest scarlet.

COVENT GARDEN. Fine scarlet.

LA BELLE. Fine white.

LA PURITE. Deep carmine, free-flowering.

OTHELLO. Dark crimson.

PETER HENDERSON. Pure white.

PRESIDENT DE GRAW. Pure white, free.

RADEZKY. Striped, bluish and purple.

VARIEGATED LA PURITE. Beautifully variegated and striped.

CESTRUM. Night-blooming Jasmine. 25 cts.

AURANTIACUM. Pure orange.

PARQUI. Greenish-white flowers.

CHRYSANTHEMUM. Large flowering and pompone varieties.

Large plants, 30 cts.; \$3 per doz.

A choice assortment selected from a large collection for their free blooming qualities and distinct colors, for fall and winter-flowering.

CISSUS DISCOLOR. 30 cts.

COLEUS, NEW.—*New Type.* (*Select List.*) 20 cts.; \$2 per doz.

These varieties make very handsome decorative plants for the conservatory, being very rich in color.

EXQUISITE. Brilliant violet carmine leaves, with a broad-lobed green margin.

FASCINATION. Brilliant crimson centre, surrounded with yellow.

GEO. BUNYARD. Dark green, with broad violet rose centre and mid-rib; beautiful.

KENTISH FIRE. Centre of leaf bright vermilion and crimson, deeply serrated; fine.

LORD FALMOUTH. Various shades of crimson, yellow, orange and green.

NOVELTY. Cream-colored centre, margined with yellow, green serrated edge. 50 cts.

ROYALTY. Centre blotched violet carmine, surrounded with chocolate.

COLEUS (Select List). 15 cts.; \$1.50 per doz.

ALBION.

BEAUTY OF WIDMORE.

BRILLIANT.

CHAMELEON.

CROWN JEWELS.

ELDORADO.

EMPRESS OF INDIA.

EXCELLENT.

GOLDEN BEAUTY.

LADY BURRELL, or THE SHAH.

MAROON VELVET.

COLEUS.—*Continued.*

MULTICOLOR.

PICTUS.

QUEEN VICTORIA.

RAINBOW.

VENOSA.

VICTOR LEMOINE.

VERSCHAFFELTI.

ZANZIBAR.

CROTONS.

AUCUBEFOLIUM. 50 cts.

DISRAELI. 50 cts. to \$1.

INTERRUPTUM. 25 to 50 cts.

IRREGULARIS. 50 cts.

JOHANNIS. \$1.

MAXIMUM. 50 cts. to \$1.

OLIVEFORMIS. \$1.

RUBRUM PICTUM. 50 cts. to \$1.

UNDULATUM. \$1.

VARIEGATUM. 25 to 50 cts.

VEITCHI. 50 cts.

WEISMANNI. \$1.

CYPERUS.

ALTERNIFOLIUS. 25 cts.

VARIEGATUS. 50 cts.

CYPRIPEDIUM INSIGNIS. 75 cts.

DAPHNE INDICA ALBA. 50 cts. to \$1.

DIEFFENBACHIA.

BRASILIENSIS. \$1.

PICTA. 25 to 75 cts.

DRACÆNA.

AUSTRALIS. 30 cts.

BRAZILIENSIS. 50 cts. to \$1.50.

COOPERI. 75 cts.

DRACO. 50 cts.

INDIVISA. 30 to 75 cts.

STRICTA. 75 cts.

TERMINALIS. 25 cts. to \$1.50.

VEITCHI. 30 cts. to \$1.

EPIPHYLLUM (Cactus).

Choice sorts, grafted on the Pereskia stock. 75 cts. to \$1.

ERANTHEMUM PULCHELLUM. 30 cts.

EUPATORIUM RIPARIUM. 25 cts.

EUCHARIS AMAZONICA.

Large fragrant pure white flowers, strong. \$1.

FICUS (India Rubber Plant).

CHAUVERI. \$1.50.

ELASTICA. The favorite. 25 cts. to \$2.

PARCELLI. Variegated. \$1.

REFENS (*creeping*). 25 cts.

FERNS AND LYCOPODIUMS. 25 cts.; \$2.50 per doz., except where noted.

ADIANTUM AMABILE.

CONCINNUM LATUM.

CUNEATUM (*Maiden Hair*).

FARLEYENSE. 75 cts. to \$2.

FORMOSUM.

GRACILLIUM. 75 cts.

PUBESCENS.

SANCTÆ CATHAERINÆ. \$1.

TRAPEZIFORMA. 50 cts.

ALSOPHILA AUSTRALIS. \$1.50 to \$3.

CHEILANTHES HIRTA.

CYRTOMIUM FALCATUM. 50 cts.

DAVALLIA MOOREANA. 75 cts.

DICKSONIA ANTARCTICA. \$1.50 to \$3.

GYMNOGRAMMA CHRYSOPHYLLA. 50 cts.

DISSECTA.

PERUVIANA ARGYROPHYLLA. 50 cts.

SULPHUREA. 50 cts.

FERNS, ETC.—Continued.

- LASTREA PATENS.
 LOMARIA CILIATA. 75 cts.
 LYGODIUM SCANDENS. The climbing Japanese fern, of great beauty.
 NEPHROLEPIS DAVALLIODES FURCANS. A strong growing and beautifully crested fern of easy culture. 50 cts. to \$1.
 EXALTATA. 50 cts.
 POLYPODIUM AUREUM.
 PTERIS ARGYREA.
 CRETICA ALBO LINEATA.
 HASTATA.
 PALMATA.
 SERBULATA.
 CRISIATA.
 SITILOBUM CIRCUTARIUM. A splendid fern of easy culture. 50 cts.
 SELAGINELLA (*Lycopodium*).
 ARBOREA.
 CÆSIA.
 CORDATA.
 DENS. 15 cts.; \$1.50 per doz.
 DENTICULATA. 10 cts.; \$1 per doz.
 VARIEGATA. 10 cts.; \$1 per doz.
 INVOLUCRATUM.
 LEPIDOPHYLLUM, or ROCK ROSE.
 VARIEGATUM. Species from Japan (new), forming a green rosette with yellow tips. 30 cts.
 MARTENSI COMPACTA.
 VARIEGATA.
 PLUMOSA.
 PARADOXA.
 RUBRICAULIS.
 SCHOTTI.
 SERPENS.
 WILDENOVI.

FUCHSIA.

We offer a choice collection of single and double corolla varieties. 30 cts.; \$3 per doz. For description and other varieties, see "Dreer's Garden Calendar."

GENISTA FRAGRANS. Orange flowers, very fragrant. 25 cts.

ZONALE GERANIUMS.—Double Flowers.

- The twelve best varieties of recent introduction. 30 cts. each; \$3 per doz.
 BISHOP WOOD. Scarlet and carmine.
 CANDIDISSIMA PLENA. Snow white.
 DEPUTY ANCELON. Violet rose.
 DEPUTY LAFLIZE. Vermilion purple.
 DR. JACOBY. Nankeen salmon.
 ERNEST LAUTH. Rich violet crimson.
 LA CONSTITUTION. Orange salmon.
 LAFAYETTE. Carmine lake.
 MAD. A. BALLET. White.
 MAD. THIBAUT. Pink.
 MONS. BUCHLER. Deepest purplish crimson.
 ROBT. BUIST. Crimson.
 SCINTILLANT. Best scarlet.

ZONALE GERANIUMS.—Single Flowers.

- The twelve best varieties of recent introduction. 20 cts.; \$2 per doz.
 ADAM KOCK. Fiery scarlet.
 B. L. COURIER. Orange red.
 DAZZLER. Scarlet, white eye.
 GEN. SHERMAN. Crimson scarlet.
 JOHN SALTER. Salmon.

ZONALE GERANIUMS.—Continued.

- JULES COBLES. Purplish scarlet.
 MASTER CHRISTINE. Pink.
 MRS. GEORGE SMITH. Salmon.
 PRINCESS OF WALES. Orange salmon.
 PURITY. White.
 REV. MR. ATKINSON. Crimson.
 VICOMTESS DE NADAILAC. Scarlet.
ZONALE GERANIUM.—New Life.
 A novelty which produces single flowers, irregularly striped and splashed with crimson and salmon. 30 cts.

IVY-LEAVED GERANIUMS.—Double Flowers.

Very desirable for winter decorations and pot plants, vases, baskets, etc. 25 cts.; \$2.50 per doz.

- BIJOU. A zonale and ivy hybrid geranium; bright scarlet flowers.
 KENIG ALBERT. Violet rose.
 LUCIE LEMOINE. White tinged.
 LA FIANCEE. Bright lilac.

IVY-LEAVED GERANIUMS.—Single Flowers.

- COCCINEA. Scarlet.
 DOLLY VARDEN. Pink.
 DR. SCHOMBURGK. Mauve.
 DUKE OF EDINBURGH. Variegated foliage.
 EMPEROR. Rose.
 FAVONIA. Carmine.
 L'ELEGANTE. Foliage edged with creamy white.

BRONZE, TRICOLOR, SILVER and SCENTED-LEAF GERANIUMS, and COMPLETE LIST OF SINGLE AND DOUBLE FLOWERING ZONALE AND IVY GERANIUMS, please see "Dreer's Garden Calendar," for 1879.

HELIOTROPE. 15 cts.; \$1.50 per doz.

- CHIEFTAIN. Lilac.
 ETOILE DE MARSEILLE. Bluish purple.
 GRANDIFLORUM. Lilac.
 JULIETTE. Bluish lilac.
 MAD. BLONY. White.
 NELLY. Blush white.
 SNOW WREATH. White.

HOYA CARNOSA. Wax plant. 25 to 50 cts.

CHINESE HIBISCUS. 25 cts.; \$2.50 per doz.

- ROSEA SINENSIS. Large crimson.
 ALBA VARIEGATA. White, variegated foliage.
 AURANTICUM PLENA. Double salmon.
 COOPERI TRICOLOR. Variegated foliage.
 CRUENTUS. Double crimson.
 FOL. VARIEGATA. Yellow mottled.
 GRANDIFLORA. Large rose.
 LUTENS PLENA. Double yellow.
 METALLICUS. Bronzy foliage.
 MINIATUS SEMI-PLENA. Scarlet.
 RUBRA PLENA. Double crimson.
 VIVICANS. Scarlet. 50 cts.

IMANTOPHYLLUM.

- MINIATUM. \$1 to \$2.
 CYRTANTHIFLORUM. \$2.

IXORA.

- BLANDA. White. 50 cts.
 COLEI. 50 cts.
 CROCATA RUTILANS. Salmon. 75 cts.
 JAVANICA. Orange. 50 cts.
 ROSEA. Rose. 50 cts.

JASMINUM.

GRANDIFLORUM. The Catalonian Jasmine; white; fragrant. 25 to 50 cts.

GRAND DUKE OF TUSCANY. Double white. 50 cts.

SAMBAC. White. 50 cts.

MAHERNIA ODORATA.—**Honey-bell.** Very fragrant yellow flowers. 25 cts.

MAGNOLIA FUSCATA. Fragrant. \$1.

MARANTA.

BARAQUINI. 75 cts.

BICOLOR. 50 cts.

FASCIATA. 50 cts.

MAKOYANA. 75 cts.

MICANS. 30 cts.

PRINCEPS. \$1.

REGALIS. \$1.

ROSEA-PICTA. \$1.50.

ZEBRINA. 30 cts.

MYRSIPHYLLUM ASPARAGOIDES.

The well-known SMILAX, used largely in decorating and cut flower work. 25 cts.

MYRTUS COMMUNIS. The favorite sweet-scented myrtle. 50 cts.

OLEA FRAGRANS. Very fragrant olive. \$1.

OLEANDERS.—NERIUM.

ALBUM PLENUM. Double white. 50 cts. to \$1.

ATROPURPUREUM PLENUM. Blood-red crimson. 50 cts.

MADONI GRANDIFLORA. 30 cts.

SPLENDENS. Double pink. 30 cts.

ORANGE MANDARINE. The favorite miniature orange. 50 cts. to \$2.

MYRTLE-LEAVED. \$1 to \$2.

PALM.

The following is a select list of rare and handsome varieties, which can be recommended of easy culture for apartments, conservatory decoration, or vase plants during the summer. The prices vary according to size and scarcity.

ARECA ALBA. White stems. \$5.

AUREA. Golden stems. \$5.

BAUERI. \$5.

LUTESCENS. Fine yellow stems. \$3 to \$6.

RUBRA. Handsome red stems. \$3 to \$6.

VERSCHAFFELTI. One of the most elegant varieties. \$3 to \$10.

CARYOTA URENS. \$1.

CHAMÆDorea AMAZONICA. \$5.

ELEGANS. \$4.

CHAMÆROPS EXCELSA. A handsome fan palm. \$3.

GIESBRECHTI. \$3.

HUMULIS. \$3.

COCOS WEDDELLIANA. One of the most graceful palms. \$5.

CORYPHA AUSTRALIS. (*Australian Fan Palm.*) \$3 to \$5.

CYCAS REVOLUTA. (*Sago Palm.*) \$7.50 to \$10.

DEMONOROPS PALEMANGENSIS. \$7.

JUBEA SPECTABILIS. A magnificent variety. \$3 to \$5.

LATANIA (LIVISTONA) BORBONICA. (*Chinese Fan Palm.*) One of the handsomest. 50 cts. to \$5.

PALM.—*Continued.*

LIVISTONA HOGENDORPL. A fine fan palm. \$4.

OLIVÆFORMIS. A rare fan palm. \$5.

OREODOXA REGIA. \$3.

PHŒNIX DACTYLIFERA. (*The Date Palm.*) \$2.50 to \$8.

RECLINATA. \$3.

SYLVESTRIS. \$3 to \$10.

PRITCHARDIA (BRAHEA) FILIFERA. \$1 to \$3.

PTYCOSPERMA ALEXANDRÆ. \$2.

SEAFORTHIA ELEGANS. \$3 to \$5.

THRINAX ARGENTEA. \$1.

TRITHRINAX MAURITIFORMIS. \$5.

PANDANUS.

UTILIS. Screw Pine. 50 cts. to \$1.

VEITCHI. Handsomely variegated. \$1.50 to \$5.

PELAGONIUMS.

A choice assortment of Spotted, Fancy and Regal varieties. 30 cts.; \$3 per doz.

PÉPEROMIA MACULOSA. 30 cts.

PETUNIA.—Double.

A choice set in good stock plants. 20 cts.; \$2 per doz.

PHORMIMUM (New Zealand Flax).

TENAX. Green. 75 cts.

VEITCHI FOLII AUREO VARIEGATIS.

Very ornamental. \$1 to \$3.

PLEROMA.

ELEGANS. 30 cts.

PURPUREA. 30 cts.

PLUMBAGO.

ALBA. Pure white. 25 cts.

CAPENSIS. Light blue. 25 cts.

LARPENTE. Dark blue. 20 cts.

ROSEA. Rose. 50 cts.

POINSETTIA.

PULCHERRIMA. Bright scarlet bracts. 25 cts. to \$1.

PLENISSIMA. Double dazzling scarlet bracts. \$1 to \$2.

PRIMULA.—Chinese Primrose. 25 cts.; \$2.50 per doz.

ALBA FIMBRIATA. White fringed.

DOUBLE WHITE. 75 cts.

ERECTA SUPERBA. Vermilion.

FILICIFOLIA. Fern-leaved.

KERMESINA. Crimson.

ROSEA FIMBRIATA. Rose fringed.

RHYNOSPERMUM.

JASMINOIDES. White fragrant. 30 cts.

AUREA VARIEGATA. 50 cts.

VARIEGATA. White variegated. 50 cts.

RICHARDIA ALBA MACULATA.

Dwarf calla lily, with spotted leaves. 30 cts.

ROSES.—Winter-flowering.

Of this great favorite we grow a large stock of the best varieties in pots for winter-blooming. A dozen of the best are here given. For a complete list of varieties see "Dreer's Garden Calendar." Extra strong plants, 50 cts.; \$5 per doz. Second size, 30 cts.; \$3 per doz.

BELLA. White.

BON SILENE. Carmine.

CANARIE. Fine yellow.

CORNELIA COOK. Creamy white.

DAVID PRADEL. Carmine shaded rose.

ISABELLA SPRUNT. Sulphur.

MAD. MARGOTTIN. Dark yellow, rose centre.

ROSES.—*Continued.*

MAD. DE WILLEMOZ. Large creamy white.

MARECHAL NIEL. Bright golden yellow.

NIPHETOS. Pure white, long bud.

SAFRANO. Saffron yellow.

SOUVENIR D'UN AMIE. Bright rose, large.

ROSES for training on greenhouse rafters.

LAMARKE. Pure white. 50 cts.

MARECHAL NIEL. Golden yellow, very large buds. 30 cts. to \$1.50, according to size. When these varieties are established in a house by being planted out, they produce an enormous quantity of buds.

SENECIO.—*German or Parlor Ivy.* 15 cts. each; \$1.50 per doz.

MACROGLOSSUS. Metallic green, resembling English Ivy; rapid creeper.

SCANDENS. Light green leaves; rapid creeper.

VARIEGATA. Variegated leaves.

STEPHANOTIS FLORIBUNDA.

Clusters of pure white, fragrant flowers; climber for hot house. 75 cts.

STEVIA.

ODORATA. Compact spikes of fine white fragrant flowers. 25 cts.; \$2.50 per doz.

SERRATA VARIEGATA. Handsome variegated foliage; largely used in ribbon beds. 25 cts.; \$2.50 per doz.

STRELITZIA REGINA. The Queen plant. \$2.50 to \$4.

VERBENAS.

A choice collection of named varieties in good stock plants at this season. \$1 per doz.; \$6 per 100.

VIOLETS, DOUBLE.

These are very essential to winter bouquets; they thrive best in frames near the glass, with little heat, excepting very cold nights. Clumps, 30 cts.; \$3 per doz.

BELLE DE CHATENAY. White, very large and double; a spring flowering variety.

MARIE LOUISE. Deep violet blue, fragrant and free; one of the best.

NEAPOLITAN. Light blue, large and fragrant; good.

ODORATA fl. pl. Double, very dark blue.

QUEEN VICTORIA. Large, single, blue, fragrant and free.

SCHENBRUN. Single, deep blue; fragrant.

WHITE CZAR. Single, white; very free.

GREENHOUSE AND HOTHOUSE CLIMBERS.

The following varieties will be found very useful in training on the rafters, or on wires in the greenhouse or hothouse, for either winter or summer decoration and flowering:

BIGNONIA VENUSTA. Brilliant orange flowers. 50 cts. to \$1.

CISSUS DISCOLOR. Beautiful foliage. 30 cts.

CLERODENDRON BALFOURI.

Calyx pure white; corolla brilliant scarlet. 25 to 75 cts.

FICUS REPENS. A beautiful creeper. 25 cts.

LYGODIUM SCANDENS. The creeping Japanese Fern. 25 cts.

PASSIFLORA.

ALATA. Pale blue, crimson cup. 50 cts.

CERULEA. Blue cup. 50 cts.

DECAISNEANA. Blue, red cup. 50 cts.

PRINCEPS. Scarlet. \$1.

RACEMOSA. 50 cts.

RHYNOSPERMUM.

JASMINOIDES. Pure white, jasmine scented. 50 cts.

AUREA VARIEGATA. 75 cts.

ARGENTEA VARIEGATA. 50 cts.

SENECIO.—*Parlor Ivy.* 15 cts.; \$1.50 per doz.

MACROGLOSSA. Metallic green leaves.

SCANDENS. Light green leaves.

VARIEGATA. Variegated.

SMILAX. The universal favorite. 25 cts.

STEPHANOTIS FLORIBUNDA.

Fragrant white flowers. 75 cts.

TACSONIA VAN VOLXEMI. Rich scarlet. 25 cts.

THUNBERGIA LAURIFOLIA. Pale blue. 50 cts.

TROPEOLUM GEANT DES BATAILLES. Crimson. 25 cts.

PLANTS for HANGING BASKETS, VASES, WARDIAN CASES, FERNERIES AND WINDOW BOXES; suitable for the Winter season.

ABUTILON VEXILLARIUM PICTUM. 25 cts.

ACORUS GRAMINEUS VARIEGATUS. 25 cts.

BEGONIA. Of sorts. 30 cts.

CISSUS DISCOLOR. 30 cts.

DRACENA. Of sorts. 25 cts. to \$1.50.

DIEFFENBACHIA. Of sorts. 25 cts. to \$1.

EUONYMUS RADICANS VARIEGATA. 20 cts.

FERNS. Of sorts. 25 cts.; \$2.50 per doz.

FICUS REPENS. A small-leaved creeper. 25 cts.

HYDROCOTYLE LURIDA. 15 cts.

IVIES. Of sorts. 25 cts.

LINARIA CYMBALLARIA. 15 cts.

LYCOPODIUMS. 15 to 25 cts.

MUHLENBACHIA ROTUNDIFOLIA. 25 cts.

OTHONNA CRASSIFOLIA. 15 cts.

PANICUM VARIEGATUM. 20 cts.

PERISTROPHE ANGUSTIFOLIA AUREA. 20 cts.

REINEKIA CARNEA VARIEGATA. 25 cts.

RUSSELLIA JUNCIA. Scarlet flowers. 25 cts.

SAXIFRAGIA FORTUNI. 20 cts.

TRICOLOR. Very fine. 35 cts.

SENECIO MACROGLOSSUS. 15 cts.

SCANDENS. 15 cts.

VARIEGATA. 15 cts.

TRADESCANTIA AQUATICA. Green. 15 cts.

DISCOLOR. Violet purple leaves, fine for centre plant. 30 cts.

TRADESCANTIA VITTATA. Green, striped white. 15 cts.

ZEBRINA. Dark. 15 cts.

VINCA MAJOR VARIEGATA. 15 cts.

IVIES.

When trained to screens or trellises, are very desirable for vestibule and hall decoration. Their refreshing green foliage will bear any amount of ill-usage.

- N. AUREA MACULATA. 50 cts.
- DIGITATA. 50 cts.
- HELIX. English Ivy. 25 to 50 cts.
- LACINIATUS. Small cut. 50 cts.
- LOBATA. Cut-leaved. 25 cts.

A Complete List of Hardy Flowering Shrubs, Rhododendrons, Azaleas, Honey-suckles, Vines and Creepers will be found in "Dreer's Garden Calendar," mailed on application.

SMALL FRUITS.

STRAWBERRY PLANTS.—POT-GROWN.

Circular of descriptions, how, when and where to plant, will be mailed on application. Pot-grown plants, if planted in the autumn, will give a good crop the following spring. The following choice varieties have been prepared in this way.

- BLACK DEFIANCE. Large dark crimson berry, firm and handsome.
- CHAS. DOWNING. Early, bright crimson, conical, productive.
- JUCUNDA (Knox 700). Glossy crimson, firm, large size; good bearer in some sections.
- MONARCH OF THE WEST. Very large, good flavor; strong grower.
- SETH BOYDEN (Boyden's No. 30). Very large, conical, with neck, dark crimson, firm, melting and sweet; an excellent sort.
- TRIOMPHE DE GAND. Large, conical, sometimes coxcomb scarlet, rich and spicy.
- WILSON. Large, dark, crimson, firm, acid and sprightly.
- POT-GROWN PLANTS. 75 cts. per doz.; \$3 per 100.

LAYER PLANTS

Grown in the ordinary way.

	Doz.	100	1000
Black Defiance.....	25	\$1.50	\$8.00
Champion.....	25	1.50	8.00
Charles Downing.....	25	1.00	6.00
Crescent Seedling.....	25	1.50	6.00
Dr. Warder.....	25	1.50
Great American.....	25	1.50	6.00
Jucunda (Knox 700).....	50	2.00	10.00
Lennig's White.....	25	1.50
Monarch of the West.....	25	1.50	6.00
Seth Boyden (Boyden's No. 30).....	25	1.50	6.00
Sharpless Seedling.....	1.00	3.00	20.00
Triomphe de Gand.....	25	1.50	8.00
Wilson's Albany.....	25	1.00	5.00

Add 25 cts. per 100, when ordered to be sent by mail.

NEW VARIETIES.

SHARPLESS SEEDLING. The largest size, oblong form, clear light red color,

NEW VARIETIES.—Continued.

firm flesh, with a delicate aroma, first in quality; plant vigorous, luxuriant, hardy and prolific.

GREAT AMERICAN. In some locations this has proven a large dark crimson berry, moderately firm and medium in quality. Pot-grown plants of these two sorts, \$1.50 per doz.; \$5 per 100.

GRAPE VINES.—Hardy Varieties.

- One year old vines, 30 cts.; \$3 per doz.
- Two years old, 50 cts.; \$5 per doz.
- AGAWAM (Roger's No. 15). Red.
- AMINIA (Roger's No. 39). Blackish purple.
- BARRY (Roger's No. 43). Black, sweet.
- CATAWBA. Red, covered with lilac bloom.
- CLINTON. Black, berries small, good for wines.
- CONCORD. Black, large berry, sweet and aromatic. This is, without exception, the most valuable grape for general cultivation.
- CREVELING. Small black fruit.
- CRISTINE, or TELEGRAPH.
- DELAWARE. Red, bunches and berries small.
- DIANA. Pale red, medium size, musky flavor.
- EUMELAN. Black, large bunches and berries.
- ESSEX (Roger's No. 41). Black, medium sweet.
- GOETHE (Roger's No. 1). Yellowish green, red on sunny side; excellent table grape.
- HARTFORD PROLIFIC. Black, early.
- IONA. Red, medium berries.
- ISABELLA. Black, large.
- ISRAELLA. Black.
- IVES' SEEDLING. Black, early.
- LINDLEY (Roger's No. 9). Long red bunch.
- MARTHA (White Concord). White, berries large, very sweet, with fine, spicy aroma, vine healthy and hardy.
- MERRIMAC (Roger's No. 19). Black, early.
- SALEM (Roger's No. 53). Light chestnut color, large, sweet and aromatic.
- WILDER (Roger's No. 4). Purplish black, early.

FOREIGN GRAPE-VINES FOR GROWING UNDER GLASS.

A stock of all the best varieties, in good healthy condition, grown in large pots, expressly for graperies. List of varieties mailed on application.

One-year old vines, \$1.25; two-year old vines, \$2.

One-year old vines, extra strong, \$1.50; two-year old vines, extra strong, \$3.

CONOVER'S COLOSSAL ASPARAGUS ROOTS. Strong two-year old roots. \$1.25 per 100; \$8 per 1000.

RHUBARB ROOTS.

MYATT'S LINNÆUS. MYATT'S VICTORIA. These are not seedlings, but propagated from the true varieties. 20 cts.; \$1.50 per doz.; \$10 per 100.

HORSE-RADISH SETS. 75 cts. per 100; \$5 per 1000.

TARRAGON ROOTS. For flavoring. 30 cts.; \$3 per doz.

A complete list of small fruits will be found in Dreer's Garden Calendar, mailed free to all applicants.

BOUQUETS, CUT FLOWERS, ETC.

Among other evidences of refinement and culture is the increasing taste and demand for natural flowers, for the decoration of churches, dinner and supper tables, weddings, funerals, etc. Flowers are acceptable and suitable for every occasion. We having the facilities are prepared to execute orders for every kind of floral device or decoration, having daily a supply at the store. They can be packed so as to carry safely for one or two days' journey by express. In sending your orders mention the latest time that will do to receive the flowers in your town; often we receive the orders after the time they are wanted, or after the express has gone, and then have no opportunity to send in time, hence the disappointment to those sending their orders. The following are a few of the many designs supplied to order:



- BRIDE'S BOUQUETS.** Of choice white flowers, with fine lace papers, or deep lilac fringe, and cord and tassels, \$3 to \$10.
- BRIDESMAID'S BOUQUETS.** With papers and fringe to match in pink, blue, etc., \$2 to \$6.
- HAND BOUQUETS.** For parties, \$2 to \$5.
- BUTTON-HOLE BOUQUETS,** 10 cents to 25 cents.
- TABLE BOUQUETS,** \$3 to \$10.
- FLORAL DESIGNS.** Of various sizes, \$5 to \$30.
- BASKETS.** Of fancy white and gilt work, willow or wire, \$3 to \$15.
- PLATEAUX.** Of elegant design, fancy white and gilt work, willow or wire, \$3 to \$15.

FANCY STRAW WORK. Of various designs, small and large, \$3 to \$15.
FOR FUNERALS. Anchors, crosses, crowns, harps, wreaths, etc., of white flowers, each, from \$3 to \$15.

FRENCH IMMORTElLES, OR EVERLASTING FLOWERS.

In original bunches as imported, 60 cents. Bunches of assorted colors, .75. The following are the colors we import: yellow, green, orange-red, black, spotted, white, rose, solferino, crimson, lilac, blue, and violet.

WREATHS OF WHITE OR COLORED IMMORTElLES.

9 inches diameter, two rows.....	\$1.00	14 inches diameter, three rows.....	\$2.50
10 inches diameter, three rows.....	1.50	15 inches diameter, three rows.....	3.00
12 inches diameter, three rows.....	2.00	15 inches diameter, four rows.....	4.00

CROSSES OF WHITE OR COLORED IMMORTElLES.

6 inches, one row.....	\$.50	12 inches, three rows.....	\$1.75
10 inches, two rows.....	1.00	15 inches, three rows.....	2.00
10 inches, three rows.....	1.50	18 inches, three rows.....	2.50
Crosses on Pedestals, 3 sizes.....			\$2.00, 3.00 and 4.00

DESIGNS IN WHITE OR COLORED IMMORTElLES.

Bouquets, arranged with ornamental grasses, or all grasses, as may be desired.....	\$0.50 to \$5.00
Anchors, 2 sizes.....	2.00 and 3.00
Crowns, two sizes.....	3.00 " 4.00
Faith, Hope, and Charity (Cross, Heart, and Anchor, combined).....	3.50 " 5.00
Harps, 2 sizes. Lyres, 2 sizes.....	each, 3.00 " 4.00
Stars, 2 sizes.....	2.00 " 3.00
Baskets of various sizes and patterns.....	0.50 to 5.00
Fancy Straw Work, of various designs, small and large, filled with immortelles or grasses as may be desired, from.....	2.00 to 10.00

Other designs made to order at short notice.
 A fine assortment of fancy dried grasses constantly on hand.

GRASSES, BOUQUET MATERIALS, DESIGNS, ETC.

ORNAMENTAL GRASSES AND EVERLASTING FLOWERS, of natural colors or dyed, have become almost indispensable articles for Florists' use, as well as amateurs in bouquet making and arranging fancy and ornamental designs for Church, House and Parlor decorations. We offer the following varieties, put up in small bunches all of one color, natural or dyed, as may be desired. Prices for large quantities, or by the pound, given on application.

Pampas Grass Plumes, of a beautiful silvery appearance, 12 to 30 inches long, exclusive of stem, retaining their beauty for years. Ours are the finest California Plumes. They can be sent by mail with safety, and when so ordered, 10 cents extra is required for postage on each plume. When received they should be gently shaken over the hot air of a furnace register, or in front of a fire for a few moments, which will develop their beauty.

EACH. PER DOZ.		EACH. PER DOZ.	
No. 1, Plumes.....	75 \$7.00	No. 3, Plumes.....	40 \$4.00
No. 2, ".....	50 5.00	No. 4, ".....	30 3.00

Grasses, Agrostis Nebulosa and Pulchella, Apera spica venti, Avena Sterilis, (Animated Oats.) Briza maxima, Media and Minor, (Quaking Grass.) Br-mis Brizaeformis, Patulus and Velutinus, Festuca Rigida, Lagurus Ovatus, (Hare's Tail,) Lasiagrostis Argentina, Milium Effusum, and Phalaris Canariensis.

EACH. PER DOZ.		EACH. PER DOZ.	
Natural colors.....	20 \$2.00	Dyed of various colors and bleached white.....	25 \$2.50
Grass Stipa Pennata (Feather Grass), White Natural color.....	each, 25 cts., per doz. \$2.50	dyed of various colors.....	30 " " 3.00
" of mixed varieties and colors.....	per bunch, 50 " " 5.00	" Phragmites or Everglades.....	per plume, 5 to 10 " " 0.60
" Erianthus Ravennae.....	per plume, 5 to 10 cts., per doz. 0.60	" Osecola, or Florida Plumes.....	5 to 15 " per lb. 2.00

" Uniola, or Florida Sea Oats.....	per oz., 10 cts., per lb. \$0.75
Bleached Wheat and Oats.....	per oz., 20 cts., per lb. 2.00
Colored Wheat and Oats.....	per oz., 25 " 2.50
Florida Moss, long and graceful, of a grayish color.....	" 20
French Moss, dyed green, for making up Immortelle work, etc.....	per bunch, 20 cts., per doz bunches 2.00
Fern Leaves Pressed, for decorations of rooms, etc.....	per doz. fronds 25 to 50
" Hartford or Climbing, in beautiful long sprays.....	each 10 cts., per dozen 60
Autumn Leaves, in long sprays, from 4 to 5 ft. long.....	per spray, 50 cts., 5 to 10 " 1.00
" in great variety.....	per doz., 15 to 20, per 100, 50 to 1.00
Statice Incana Hybrida, in beautiful white sprays, and indispensable for making up Grass Bouquets.....	per oz., 20 cts., per lb. 1.50
Lycopodium Greens, of extra quality for making up Bouquets.....	per lb., 20 cts., per bbl. 4.00
Everlasting Flowers, of the following varieties: Acroclinium Roseum and Album, Gomphrena Alba, Aurea and Purpurea, Helichrysum White, Yellow and mixed colors, Rhodantea Alba and Rosea, Statice Yellow and Blue, and Xeranthemum White and Red.....	per dozen, 10 cts., per 100 .50
Cape Flowers, of a beautiful, glossy, silver white.....	per doz., 25 cts., per 100 1.50
" colors dyed.....	30 " 2.00
Twine, very fine, for tying bouquets.....	per lb. .75
Fine Wire, of different sizes for ".....	.35
Wooden Tooth Picks.....	2500 per box .25
Tin Foil, for bouquet handles.....	per lb. .35
Match Sticks 20 in. long, 700, per bundle.....	.50
Bouquet Sticks.....	per 100 .50

Bouquet Papers, Italiens, assorted of different patterns and sizes, with 12 turned down scollops, extra broad laced edging of good, heavy, white paper..... per doz., from \$0.50 to \$2.00

Bouquet Papers, Italiens as above, gilt and silver..... per doz., from 1.50 to 3.00

Bouquet Papers, Pasted Cortons, assorted of different patterns and sizes..... per doz., from .20 to .60

Bouquet Papers, with 3 in. Silk Fringe, White, Pink, and Blue, for bridal Bouquets, 3 sizes..... each 75, \$1.00 and 1.25

Bouquet Holders of heavy, plain, white paper..... per doz., from .25 to .40

Silk Cord and Tassels to match above, each, .75 to 1.00

Glass Tubes, for button-hole Bouquets..... each, 10 cts., per dozen \$1.00

" " " " plain bands..... " 10 " " 1.00

" " " " gilt..... " 15 " " 1.50

" " " " fern leaf fastener..... " 25 " " 2.50

" " " " "..... " 75 " " 7.00

Ladies' Brooch or Flower-holder, fern-frond, bronze..... " 25, 30, 40, 50 and 60 cts.

Wire Baskets, oval, for Cut Flowers, 8, 10, 12, 14 and 16 inches..... " 35, 50 " 60 "

" Table Baskets, round, " 6, 8 and 10 inches..... " 25, 30 " 40 "

" Plateaux, oval, " 12, 14 and 16 inches..... " 15, 20 " 25 "

" Crosses, " 9, 12 and 15 inches..... " 15, 20 " 25 "

" Wreaths, " 8, 10, 12 and 15 inches..... " 15, 20, 25 " 30 "

" Anchors, " 12, 14 and 18 inches..... " 30, 40 " 50 "

" Stars, " 10, 12 and 14 inches..... " 20, 25 " 35 "

" Hearts, " 8, 10 and 12 inches..... " 25, 30 " 35 "

" Crowns, double, " 4, 6 and 8 inches..... " 40, 50 " 75 "

" Harps, " 12 and 15 inches..... " 40 " 50 "

" Lyres, " 12 and 18 inches..... " 50 " 75 "

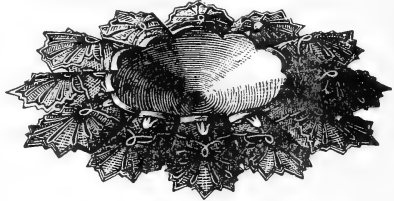
" Faith, Hope & Charity, " 16 and 18 inches..... " 65 " 75 "

Willow Baskets, oval, " 8, 10, 12 and 14 inches..... " 65, 85, \$1.00 \$1.25

" Stands, round, " 6, 8, 10 and 12 inches..... " 60, 75, .90 1.10

" Plateaux, oval, " 10, 12, 14, 16 inches..... " 75, 85, 1.00 1.25

" Plateaux, round, " 10, 12, 14, 16 inches..... " 75, 85, 1.00 1.25



ITALIENS.

Straw Work of various designs, attractive and showy, from..... 1.00 to 8.00

Among the many beautiful designs of straw work, the Sheaf of Wheat or Oats (price \$2 and \$2.50) filled with natural white flowers, is very appropriate for funerals; the price of filling is from \$2 to \$5, according to the season.

Fancy White and Gilt Work—Baskets, Plateaux, Stands, and various other designs, very beautifully made and highly ornamental, from.....

50 to 10.00



PAMPAS GRASS.

HYACINTH GLASSES.

	EACH.	PER DOZ.
Plain porcelain, opaque.....	10	\$1 00
American, flint or clear, blue, green and violet.....	15	1 50
Bohemian, flint or clear, blue, green, purple, small	18	1 75
" flint or clear, blue, green, purple, large	20	2 00
" ruby, amber, and clear, with rose-bud, small	30	3 00
" ruby and amber, large.....	40	4 00
" ruby and amber, engraved and gilt, small.....	45	4 50
" ruby, amber, green and blue, engraved, enameled and gilt, large handsome ornamented glasses.....	60	6 00
" vase-shaped, ruby, green and blue, large	65	6 50
" ruby, green and blue, engraved, enameled and gilt, large	75	7 50
" ruby, green and blue, small	50	5 00
" ruby, green and blue, engraved, enameled and gilt	65	6 50
Belgian, vase-shaped, clear, green, blue and purple.....	25	2 50
Tye's style, flint or clear, blue, green and violet.....	20	2 00

HANGING-BASKETS AND FLOWER-POTS.

ORNAMENTAL LAVA HANGING-BASKETS.

	EACH.
8 to 10 inches in diameter, assorted patterns, with chains.....	from \$0 75 to 1 50
6 to 10 inches in diameter, rustic patterns, with chains.....	" 1 00 to 2 00
9 inches in diameter, fancy patterns, with chains	" 2 00
Fancy patterns, with extra pot for planting, with chains.....	2 00 to 3 00
Imitation of logs, 6, 7, 8, 9 and 15 inches long, with chains.....	75, 1 00, 1 25, 1 50 and 1 75
Wire Hanging-Baskets, 8, 10 and 12 inches.....	each 25, 40 and 50 cts.

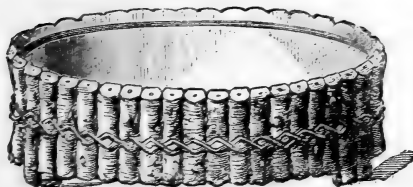
ORNAMENTAL LAVA FLOWER-POTS.

	EACH.
6 inches, with saucer	from \$0 75 to 2 50
9 inches, with saucer.....	1 25
6 inches, with base saucer	75
9 inches, with base saucer.....	1 25
Deer's Head, with base saucer.....	1 00 to 2 00
Fancy patterns of various sizes from.....	75 to 3 00
Fancy open gilt work, with extra inside pot for planting.....	2 50
Fancy Hyacinth, with extra inside pot 7 inches deep, 4½ inches dia.....	doz. 7 50 70
10 to 12 inches, fancy, for large house-plants.....	3 00 3 50

ORNAMENTAL LAVA CROCUS POTS, ETC.

	EACH.
Bee Hives	from \$1 00 to 2 50
Hedgehogs, raw material	1 00
Hedgehogs, colored	1 50 to 3 00
Snowdrop, or Violet Dish	1 00
Rustic Tree Stump, large size	1 00
Rustic Tree Stump, small size.....	80
Large Rustic Bulb or Fern Dish	3 00
Mignonette Window Dish.....	1 00 to 2 00
Large Rustic Plant or Bulb Window Box, 19 inches long	2 00 to 3 00
Large Rustic Plant or Bulb Window Box, imitation of logs, 25 inches long.....	3 50
Vases for the House, of neat patterns, round and diamond shape, 19 in. high, 10 in. diameter, and 11 in. wide, 15 in. long.....	4 00
Window Boxes of the finest English tiles, very ornamental, of various sizes and patterns, each contains a zinc pan for the soil and plants.....	from \$7 00 to 25 00

Terra Cotta Fern Stands for glass shades, which make beautiful small ferneries, and are much in demand. The stand is made with a rim for the shade to rest on.
 Rustic in imitation of wood as per cut, for a 11½ inch shade..... \$2 50
 Rustic in imitation of wood, very ornamental, 11 inch shade..... 2 50
 Rustic ornamented, 9½ inch shade..... 1 50
 Rustic 7 to 9 in. shades, from 75 c. to 1 00
 Dark colored, with grape vine, 9½ inch shade..... 1 75

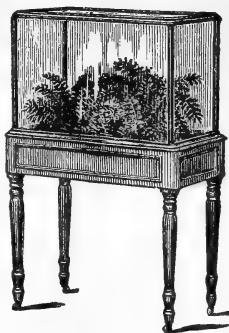


We also have on hand a fine assortment of different sizes and styles, very handsomely ornamented; ranging in price.....from 1 00 to \$3 50
 Glass shades for the above according to size of Fern Dish, each.....from 75 to 2 50
 We also fill the above Fern Dishes with suitable plants for from \$2 to \$5, according to size.

We have also in Stock a complete line of Rustic Work.

WARDIAN CASE.

Made in the best manner and style, of black walnut. Very popular for the growing of plants, ferns, etc., during the winter. The plants being under glass are protected from dust, and require but little care, or water. A movable tray, lined with zinc, contains the pots, or earth; a perfect security against soiling carpets with dirty water; and being upon castors, may be moved about as desired (see figure). The legs can be disconnected, and the whole makes but a small package for transportation.

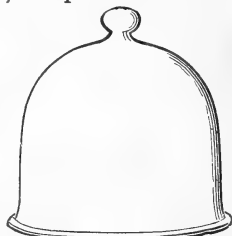


- Size, 4 ft. high, 2½ ft. long, and 20 in. wide, \$25 00
 - We fill this size case, very handsome, for..... 10 00
 - Size, 15 by 20 inches, without feet..... 15 00
 - We fill this size case, very handsome, for..... 8 00
 - Size, 12 by 12 inches, without feet..... 7 00
 - We fill this size case, very handsome, for..... 5 00
 - HEXAGON SHAPE, and beautiful revolving stand... 30 00
 - We fill this size case handsomely for..... 10 00
 - BULB TABLE, the same as figure, without the Glass Cover..... \$12 00
 - We fill this table with hyacinths, tulips, and crocus, beautifully arranged, from \$6 to 10 00
- Decorative flourish* \$1.00 charge is made for packing. *Decorative flourish*
- We also fill Hanging Baskets, Pots, Rustic Stands, etc., with plants to order.

BELL, OR PROPAGATING GLASSES.

Made very strong, with an extra heavy rim at the bottom, clear white flint glass, and of uniform shape as represented by the figure.

- 4 inch, 25 cents, per doz. \$2 50 7 inch, 50 cents, per doz. \$5 00
- 5 " 35 " " " 3 50 8 " 60 " " " 6 00
- 6 " 40 " " " 4 50 10 " \$1 00 " " 10 50



PLANT STANDS.

A useful and cheap folding-stand for arranging plants both in and out doors (see figure). Neatly made and painted green. The frame folds together, making a compact and convenient article for transportation and storage.

- 36 in. high, 40 in. wide, 4 shelves. \$3.50
- 60 in. high, 48 in. wide, 5 shelves. \$5.00
- Chestnut oiled, 34 in. high, 34 in. wide, 3 shelves. \$2.00

WIRE PLANT STANDS.

Light, strong, durable, and very ornamental.

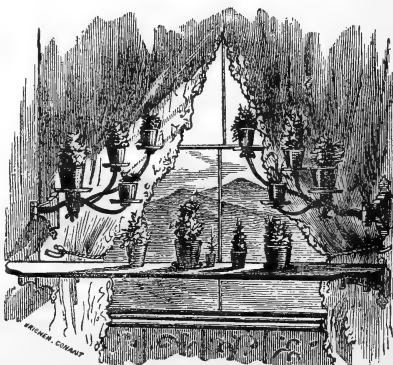
- Half round, three shelves, painted green.....\$5 00
- " " " " fancy, bronzed and green. 6 00
- Square, three shelves, painted green..... 6 00
- " " " " fancy, bronzed and green..... 7 00



IRON FLOWER-POT BRACKETS.

These swing so that they can be easily swung out of the way of the curtain.

NO.		EACH.
1994	5 inch tray, antique.....	\$ 25
1946	4 " " " "	35
45	5 " " " "	40
12a	6 " " " bronze	50
1836	5 " " " blue	50
1882	5 " " " antique.....	50
20	6½ " " " bronze	50
1	5 " " " "	50
1962	6 " " " antique.....	80
13	6 " " " gilt	85
1853	6½ " " " purple	1 00
2090	2 trays, 5½ inch diam., antique.....	90
2146	2 " " 5 " " "	1 00
49	2 " " 5 and 6 in. diam., "	1 00
4	2 " " 5 and 6 in. " bronze.....	1 50
704	2 " " 5 and 6 in. " gilt	2 50



Flower-pot shelves and brackets. 3 feet long (see illustration), each \$1.50 and \$2.50.

WOODEN TRELLISES FOR FLOWER-POTS AND GARDEN.

THESE trellises are in all cases made of reeds painted green, instead of wire. They retain their shape and form better, are much lighter and equally durable. From their peculiar shape, large numbers can be put into a small space; thus making freight charges, even to most distant points, come very low.

No. 0½.	No. 0, wide.	No. 2.	No. 3½.	No. 1.	Verandah.	Fan.
No. 0, wide, 24×8 in. wide, each 15 cts. per doz. \$1.50	No. 0, wide, 24×7½ in. wide " 20 " " 2.00	No. 2, 30×10 in. " 30 " " 3.00	No. 3½, 30×14 " " 40 " " 4.00	No. 1, 42×14 " " 60 " " 6.00	Verandah shape, 2 ft. high, 3 " " " 35 " " 4.00	Ivy shape, 16 in. diameter, each 60 cts. per doz. \$6.00
No. 1, 30×14 " " 40 " " 4.00	No. 2, 42×14 " " 60 " " 6.00	No. 3½, 2 feet high, 35 " " 4.00	No. 1, 3½ " " 65 " " 6.50	Verandah shape, 2 " " " 50 " " 5.00	Ivy " " 3 " " " 35 " " 4.00	Cross " " 3 " " " 65 " " 6.50

BLACK WALNUT TRELLISES FOR POTS AND GARDEN.

These trellises are neatly made and are adjustable, and can be fastened at various widths or heights, according to the size of the plants to be supported; being oiled, are not injured by exposure to the weather.

Diamond	Cross	Lyre	Anchor	Gothic	Star	Arch
Diamond No. 1, 18 in. high, each 20 cts.	No. 2, 24 " " 25 "	No. 1, 16 " " 20 "	No. 2, 21 " " 25 "	No. 1, 21 " " 40 "	No. 2, 27 " " 50 "	No. 1, 18 " " 30 "
Cross No. 1, 16 " " 20 "	No. 2, 21 " " 25 "	Lyre No. 1, 21 " " 40 "	No. 2, 27 " " 50 "	Anchor No. 1, 18 " " 30 "	No. 2, 26 in. high, each 40 cts.	No. 1, 18 " " 20 "
Lyre No. 1, 21 " " 40 "	No. 2, 27 " " 50 "	Anchor No. 1, 18 " " 30 "	No. 2, 36 " " 60 "	Gothic No. 2, 24 " " 25 "	No. 1, 13 " diam " 20 "	No. 2, 16 " " 25 "
Anchor No. 1, 18 " " 30 "	No. 2, 36 " " 60 "	Star No. 1, 30 " high " 50 "	No. 2, 36 " " 60 "	Star No. 2, 16 " " 25 "	No. 1, 30 " " 50 "	No. 2, 36 " " 60 "

TAPERING FLOWER-POT AND GARDEN STICKS.

Made light and of durable wood, painted green. The Dahlia sticks are two-thirds heavier than the others.

1½ ft., tapering, Per doz., 20 cts. Per 100, \$1.25	4 ft. tapering, Per doz., \$.85. Per 100, \$6.00
2 " " " 35 " " 2.25	5 " " " 1.00. " 7.00
2½ " " " 50 " " 3.25	3 " " Dahlia " .85. " 6.00
3 " " " 60 " " 4.00	4 " " " 1.00. " 7.00
3½ " " " 70 " " 5.00	5 " " " 1.25. " 8.50
	6 " " " 1.50. " 10.00

WOODEN PLANT AND TREE LABELS.

Plant 4 in. long, per 100 15 cts. per 1000 \$1.00	Nursery, 12 in. long, per 100 \$1.00 per 1000 \$6.50
" 6 " " 20 " " 1.25	Tree, notched for wire, 4 in. long, " 15 " 1.00
" 8 " " 25 " " 1.50	

EXPANDING ADJUSTABLE FLOWER-POT COVERS.

A convenient article for covering common Pots. They are made of wood, some of the natural colors oiled, others painted and ornamented, with fancy nails; from their construction, they fit pots of several sizes.

Plain colors, 6, 7 and 8 in., each 15, 20 and 25 cts.	Walnut, 6, 7 and 8 in., each 20, 25, 30 and 35 cts.
Fancy " 6, 7 " 8 " " 35, 40 " 45 "	Gilt, 6, 7 " 8 " " 50, 60 " 65 "

EXCELSIOR PUMP AND PORTABLE FIRE-ENGINE.

This compact portable Engine can be used for all horticultural purposes, etc. All its working parts are of brass, and of easy access to the valves, which can be cleaned at any time. It will draw the water from a stream, tank or pail close by or at a distance, of simple construction and easily worked, throwing a continuous stream fifty feet. Price \$8.50.

Aquarius Force Pump. A powerful small pump, throws 8 gallons of water per minute from 50 to 60 feet, drawing the water from a stream, tank, or will lift the water from 20 to 30 feet out of a well. \$10.00.

Bickford's New Garden Pump. Constructed so as to do away with Piston and Stuffing Box, hence no Friction or Leakage as in other pumps. It is easily worked by a lever and fro, throwing a steady stream from forty to fifty feet. It will draw the water from a pail or tank close by, or at a distance. \$6.50

WHALE OIL SOAP.

An Effectual Remedy for Destroying Insects on Plants, Trees, Vines, etc.

For washing down the bark of Trees, Grape Vines, destroying the Aphis or Plant Louse, Slugs on Roses, Thrips on Grape Vines, Mildew, Slugs on Pear Trees. In cans with directions, at 30 cents (by mail 60 cents), 60 cents, and 80 cents each. The last two are not mailable.

CARBOLIC ACID SOAP

Is the natural enemy of the low forms of insect life and parasites of every description. It kills and drives away *Lice, Flies, Fleas, Mosquitoes, Ants, Bugs, Worms, Grubs*, and all kinds of insects that annoy and destroy animals and plants. Per cake, 10 cts., by mail, 20 cts

GISHURST'S COMPOUND FOR DESTROYING INSECTS.

This is extensively used in England and on the Continent for the destruction of the Green, Brown, and Black Fly, Mildew, Thrip, Mealy Bug and Scale. Per box, 75 cents. By mail \$1.

BRIDGEFORD'S ANTISEPTIC LIQUID.

For the removal of all *Parasites, Lichens, and Insects.* Injurious to *Plants, Trees, Shrubs, Vines, etc.*

This preparation is quite distinct from any other already before the public. It is quick, safe and effectual for the destruction of the *Green Fly, Mealy Bug, Thrip, Red Spider, Mildew, Blight and Scale* of every description. It contains nothing deleterious to plants, not even staining the leaves or leaving an unpleasant smell in the house. Its application is so simple that it can be used with safety by the most inexperienced hand. Instructions for application with each bottle. 80 cts. and \$1.25 each. (Not mailable.)

PERUVIAN GUANO—(Pure).

For pot plants and garden purposes. When used as a liquid manure its effect is almost immediate. One pound to 20 gallons of water, and left stand until dissolved. Water the plants once a week with the solution. Put up in tin cans, with directions, 15 cents (by mail 40 cents), 30 cents, and 50 cents each. The last two are not mailable.

BASS, MATS, TOOLS, ETC.

Cuba Bass and Roffea, for tying up plants and vines, budding, etc.....	per lb.	60	and	75
Mats (Russian Bass), for tying, etc., second-hand, first quality...30 cts. each,	per doz.	\$2 50		
Mats " " for covering hot-beds " second " 20 " "	"	2 00		
Tobacco Stems, for fumigating plants. (For machines, see page 30.)	Per lb.	25 cts.		
per sack of 5 bus.....		2 00		
Sphagnum Moss for packing plants; also used for growing Orchids..	per bbl. of 5 bush.	2 00		
Jersey Peat for potting house-plants (to be mixed with the soil).....	per bbl.	2 00		
Saynor's Pruning Knives, various patterns and sizes.....	each,	\$1 25	to	2 00
" Budding " " " " " " "	each,	1 25	to	1 50
Hall & Son and other makers' Pruning Knives, various patterns and sizes,	each,	50	to	1 00
" Budding " " " " " " "	each,	75	to	1 25
West Chester Hand-Pruning Shears, made of the best material, can be used for cutting off good-sized branches.....		1 50		
Hand-Pruning Shears, of different sizes, for pruning Fruit Trees, Grape-Vines, etc.....		1 00	to	3 00
Hand-Pruning Shears, sliding cut (cuts as clean as a knife).....		2 00	to	3 50
Pruning Saws, 14, 16 and 22 inches long.....		1 00,	1 25	and
Water's Improved Tree Pruner, with pole and wire attachment for cutting,	6, 8 and	3 00		
10 feet poles.....		2 50,	2 75	and
Pole Pruning Shears (Averancator), for poles and cord.....		from 2 50 to 7 00		
Long-Handled Lopping Shears, for pruning Trees, etc.....		from 2 50 to 5 00		

BOOKS ON WINDOW-GARDENING, GREENHOUSE, ETC.,

Will be mailed free on receipt of price.

Gardener's Dictionary (G. W. Johnson), an excellent English work, giving the Botanical Names, their origin, etc.....	\$3 50
Leuchar's How to Build and Ventilate Hot-Houses.....	1 50
Rand's Flowers for the Parlor and Garden.....	2 50
" Hardy and Tender Bulbs.....	1 50
" Window Gardener.....	1 25
Randolph's Parlor Gardener.....	1 00
Robinson's Sub-Tropical Garden, English work.....	4 50
Song Bird Fancier (Dreer's).....	20
Window Gardening (H. T. Williams), Elegantly Illustrated.....	1 50
William's (B. S.) Choice Stove and Greenhouse Plants, 2 vols., English works.....	5 00
" " Orchid Growers' Manual, English work.....	2 50
" " Select Ferns and Lycopods, English work.....	2 50

For other books, see *Dreer's Garden Calendar*, which will be mailed to all applicants.

CHOICE FLOWER SEEDS.

Suitable for sowing during the autumn and winter, thereby securing strong plants for flowering during the spring. Most of the varieties are useful for winter bouquets. For full directions, see *Dreer's Garden Calendar*.

	PER PKT.		PER PKT.
ANTIARRHINUM, or Snap-dragon. Mixed..	05	MIMULUS MOSCHATUS. Musk plant.....	10
AQUILEGIA CARYOPHYLLOIDES.....	10	MIMULUS. Choice hybrid varieties, mixed	10
ALYSSUM. White, sweet-scented.....	05	MIMULUS TIGRINUS, fl. pl. Double spotted	25
ACACIA. Choice mixed varieties.....	20	MIGNONETTE. Parson's New White.....	10
AZALEA INDICA. From choice varieties..	25	MIGNONETTE AMELIORATA. Red tint... 05	
AGAPANTHUS UMBELLATUS. Blue (African Lily). Tuberous rooted.....	25	MIGNONETTE. New hybrid spiral.....	20
BROWALLIA ELATA CERULEA. Blue.....	05	MIGNONETTE. Bouquet pyramidal.....	10
BROWALLIA ELATA ALBA. White.....	05	MYOSOTIS ALPESTRIS. Alpine Forget-me-not. Flowers bright blue.....	10
CENTAUREA CANDIDISSIMA. White fol.	25	MYOSOTIS PALUSTRIS. True Forget-me-not. Blue flowers.....	10
CENTAUREA GYMNOCARPA. White fol.	20	PELARGONIUM. Choice fancy varieties..	50
CALCEOLARIA HYBRIDA GRANDIFLORA. Beautiful large self-colored flowers.....	50	POLYANTHUS. Finest English varieties..	25
CALCEOLARIA. Superb spotted or tigered	25	PRIMULA SINENSIS. Choice mixed.....	25
CALCEOLARIA NANA. Dwarf spotted var.	50	PRIMULA ALBA. White fringed edges... 25	
CALCEOLARIA RUGOSA. Shrubby, for bedding; finest mixed varieties.....	50	PRIMULA ALBA RUBRA STRIATA. White, red-striped.....	25
CARNATION. Choice German and French.	50	PRIMULA ROSEA. Deep rose, fringed edges.....	25
CARNATION REMONTANT, or monthly....	50	PRIMULA KERMESINA. Crimson, fringed edges.....	50
CHRYSANTHEMUM INDICUM. Mixed, large flowering varieties	20	PRIMULA ERECTA SUPERBA. Rosy vermilion.....	50
CHRYSANTHEMUM POMPONE. Mixed, small flowering varieties	20	PRIMULA PUNCTATA ELEGANTISSIMA. Velvety crimson, edges spotted white... 50	
CINERARIA. Finest mixed hybrid dwarf..	25	PRIMULA. Fern-leaved. Fringed mixed	25
CINERARIA. Finest mixed hybrid, tall..	20	PRIMULA. Double white fringed.....	50
CYCLAMEN PERSICUM. A charming bulbous-rooted plant; white, crimson eye... 25		PRIMULA. Double crimson fringed... ..	50
CYCLAMEN ATROBURRUM. Extra deep crimson; and ALBUM. Pure white, each	25	PRIMULA PRINCE ARTHUR. A new double carmine variety.....	1 00
CANARY BIRD FLOWER (Tropæolum)....	10	PRIMULA. Double mixed varieties.....	25
CONVOLVULUS CANTABRICUS. Fine for hanging baskets; flowers rosy purple... 10		PRIMULA JAPONICA. Mixed colors.....	50
CONVOLVULUS MAURITANICUS. For hanging baskets and vases.....	10	PASSIFLORA. Mixed varieties.....	20
COLEUS. Choice mixed and golden var..	25	PETUNIA. Dreer's extra choice mottled varieties, \$16.00 per ounce, net.....	20
DELPHINIUM FORMOSUM. Brilliant blue	10	PETUNIA, DREER'S DOUBLE HYBRIDIZED. Fecundated with the greatest care	25
DELPHINIUM IMPERIALE, FLO. PL. New Emperor Larkspur. Variegated colors..	10	PHORMIUM TENAX. New Zealand Flax.	20
DELPHINIUM NUDICAULE. Spikes of dazzling scarlet flowers.....	10	SALVIA SPLENDENS. Scarlet sage.....	10
DIANTHUS. Extra double white, China..	05	SALVIA ARGENTEA. Silvery	10
DIANTHUS HEDDEWEGI DIADEMATUS. Superb double diadem pink.....	10	SALVIA PATENS. Cerulean blue.....	25
DIANTHUS. Finest English Picotee, mixed	25	SMILAX (Myrsiphyllum Asparagoides)... 20	
FERNS. Choice mixed varieties.....	20	\$2.50 per ounce, net. Extensively used by florists for the cut-flower business.	
GLAUCIUM CORNICULATUM. Recurved, silvery leaves deeply cut to the rib.....	10	STOCKS. New large flowering, ten week..	10
GLOXINIA. Choice hybrid varieties.....	25	STOCKS, BOUQUET DWARF. Mixed.....	20
GLOXINIA CRASSIFOLIA. Superb flowers (Erecta, Pendula & Horizontalis), each..	25	STOCKS, PERPETUAL DWARF. Mixed....	10
GYNERIUM. Pampas grass.....	10	STOCKS, INTERMEDIATE, or AUTUMNAL.	10
HELIOTROPE. Several varieties, each....	10	STOCKS, EMPEROR, or PERPETUAL.....	10
HUMEA ELEGANS. A graceful plant.....	10	SWEET WILLIAM. Choice double, mixed.	10
LINARIA CYMBALLARIA (Kenilworth Ivy). For hanging baskets, etc.....	10	SWEET WILLIAM. Auricula-flowered... 10	
LOBELIA ERINUS SPECIOSA. Blue.....	10	TORENIA FOURNIERI. Sky-blue flowers.	20
LOBELIA SNOWFLAKE. Pure white.....	10	TROPEOLUM LOBBIANUM. Free winter blooming vines, miniature flowers, mix.	10
LOBELIA PICTA. Rose, beautiful foliage	20	TROPEOLUM GEANT DES BATAILLES. Crimson, showy flowers.....	10
LOBELIA PUMILA GRANDIFLORA. Blue.	10	TACSONIA VAN VOLKEMI. Crim. scarlet.	25
LOBELIA HETEROPHYLLA. Mixed. Large blue and white flowers.....	10	VERBENA HYBRIDA COCCINEA. Scarlet.	25
LOMARIA CILIATA. Dwarf tree fern.....	25	VERBENA HYBRIDA CANDIDISSIMA. A new pure white variety.....	25
LOMARIA GIBBA. Dwarf tree fern	25	VINCA ROSEA, ALBA and ALBA PURA. Fine for bedding out in the summer, ea.	10
		WALL-FLOWER. Choice German varieties	10

AQUILEGIAS. (Rocky Mountain Columbines.)

Among hardy perennial plants, these may be ranked as the finest, and deserving of cultivation in every garden.

CHRYSANTHA (Golden Spurred). Height 4 feet, producing freely an abundance of bright golden-yellow flowers. Per packet, 20 cents.

CERULEA. The flowers measure 3 inches in diameter; the outer five petals, as well as the long spurs, are of a beautiful violet blue; the inner petals are pure white, forming a pleasing contrast. Per packet, 10 cents.

BALSAMS.

Double White Camellia Flowered. Pure white flowers, very desirable as a bouquet flower. Per packet, 20 cents. \$2 per ounce, net.

CINERARIA FLORE PLENO. (New Double Cineraria.)

This is the beginning of a race of plants which for cut flowers will be unsurpassed. All the colors of the single exist in this new double variety. Per packet, \$1.

APPLE-SCENTED GERANIUM. (Pelargonium Odoratissimum.)

This delightfully fragrant and favorite variety can only be grown from seed, to form a fine plant. We have made a specialty of growing this variety, and offer fresh seed. Soak the seed twelve hours, and sow in light soil, keeping them moist until they germinate. Per packet, 25 cents; five packets for one dollar.

NEW ZONALE GERANIUM. Saved from our choice collection of the newest and best named varieties. Per packet, 20 cents.

NEW ZONALE VARIEGATED GERANIUM. Saved from a celebrated collection of golden and bronze-colored varieties. Per packet, 50 cents.

OUR SUPERB DOUBLE HOLLYHOCKS

Are the admiration of all visitors. Seed saved from the finest double varieties. Seed sown early in autumn will produce plants for blooming next summer. Assorted colors, mixed, per packet, 10 cents.

DREER'S PREMIUM PANSY SEED. (Viola Tricolor Maxima.)

To insure large full blooms, it is necessary to sow in the autumn; full directions will accompany each paper of seed. Per packet, 25 cents; five packets for \$1. \$10 per ounce, net.

IMPORTED VARIETIES.		EACH.	IMPORTED VARIETIES.		EACH.
PANSY, EMPEROR WILLIAM.....	20	PANSY, Purple, white-edged.....	20		
PANSY ODIER. Five-blotched.....	20	PANSY, Pure Yellow.....	20		
PANSY, ROI DES NOIRS.....	20	PANSY, Pure White.....	20		
PANSY, NEW, light blue.....	20	PANSY, Choice mixed. \$5 per oz., net..	20		

PETUNIAS.

DREER'S EXTRA CHOICE. Mottled white and purple, and white and crimson varieties.

We consider this the finest strain of petunias; our collection has always taken the first premium at the Pennsylvania Horticultural Society's Exhibitions. Per packet, 20 cents; six packets for \$1; \$16 per ounce, net.

DREER'S DOUBLE HYBRIDIZED. Fecundated with the greatest care, from our very choice collection, and a fair percentage will prove double. Per packet, 25 cents.

TACSONIA INSIGNIS.

This splendid novelty is remarkable for its handsome foliage and magnificent flowers; of robust, free-flowering habit, a greenhouse evergreen climber, flowers measuring from 6 to 8 inches across, and hang in festoons on long pendant stalks, color crimson, purple shaded, whilst the mouth of the tube is adorned with incurved fringe filaments, which are blue mottled with white. Four seeds, 50 cents.

VERBENAS.

DREER'S STRIPED AMERICAN. Brilliant colors, striped carnation-like, with rose, lilac and purple, on various colored grounds. Seed saved from our splendid collection. Per packet, 25 cents.

EXTRA CHOICE HYBRID VARIETIES. Selected from our newest and finest varieties, and richest colors, which occupied over an acre of ground, and was the admiration of all visitors this season. Per packet, 20 cents. \$5 per ounce, net.

FLOWER SEEDS IN ASSORTMENTS.

	SORTS.	PRT.
CARNATIONS. Finest varieties.....	12	\$1 50
FERNS. Choice varieties. 8 sorts \$1.....	16	2 00
GREENHOUSE PLANTS. Choice selection.....	25	3 00
“ “ “ “.....	12	2 00
HOLLYHOCKS. Superb double English, 6 colors, 65 cents.....	12	1 25
PRIMULA SINENSIS, 6 colors, \$1.....	12	1 50
STOCKS, EMPEROR, or PERPETUAL.....	12	1 00
WALL-FLOWER. Fine German double.....	12	1 25

For prices of flower seed in bulk, see "Dreer's Gardeners' and Florists' Price List," 1879.

DISCOUNT ON FLOWER SEEDS.—We will send Six Dollars' worth of Flower Seeds for a remittance of Five Dollars, excepting those marked by the ounce, and where five or six packets are marked for one dollar, or the assortments, which are all net.

DREER'S

SELECT LIST

OF

STANDARD VEGETABLE SEEDS,

FOR SOWING IN THE AUTUMN,

WHEN ordered to be sent by mail, 16 cents per pound must be added to prepay postage. The varieties in SMALL CAPITALS are for sowing in the autumn. For complete list see *Dreer's Garden Calendar*.

	PER PKT.	PER OZ.	PER LB.
Asparagus, Conover's Colossal	\$0 5	\$0 10	\$0 60
Beet, Bastian's Extra Early Red Turnip	5	15	1 00
" " Half Long Blood	5	15	1 00
" Early Blood Turnip	5	10	75
BROCCOLI, Early Purple Cape	10	50
CABBAGE, EARLY OXHEART (extra fine)	10	30	3 00
" DREER'S LARGE EARLY YORK	10	30	3 00
" EARLY JERSEY WAKEFIELD	10	50	5 00
" Large Flat Dutch (very fine)	10	30	3 00
CAULIFLOWER, DWARF EARLY ERFURT	20	1 50
" LARGE LE NORMAND	20	1 50
" LARGE WALCHEREN	10	75
Carrot, Early Scarlet Horn	5	15	1 25
Celery, Dreer's White Solid	10	30	3 00
" Turner's Dwarf White Solid	5	25	2 50
CORN SALAD, Large Round-Leaved	5	10	80
Cucumber, Early White-Spined	5	10	1 00
" Long Green Turkey	5	15	1 25
" English Prize Varieties	25
Egg Plant, Large Round Purple	10	50
Herbs, Sweet Marjoram, Sage, Summer Savory, and Thyme	each	5	30
KALE, Green Curled Scotch	5	10	1 00
Kohl-Rabi, or Turnip-Rooted Cabbage	10	30	3 00
LETTUCE, Early Dutch Butter Spotted	10	30	3 00
" Early White Cabbage	5	25	2 50
" Hanson (largest and finest head lettuce)	10	40	4 00
Melon, Musk—Netted Citron and Pine Apple	each	5	10
" Turk's Cap, a fine large variety	5	15	1 25
" Ward's Nectar and White Japan	each	5	15
" Casaba, the finest and largest variety	5	15	1 50
Melon, Water—Mountain Sweet	5	10	1 00
" Ice Cream and Orange	each	5	15
Nasturtium, running variety for pickling	5	15	1 50
Okra, Dwarf, Long-podded	5	10	75
Onion, Yellow Strasburg and Red Wethersfield	each	5	15
" Yellow Danvers	5	15	1 50
" White Silver Skin	5	20	2 00
Parsley, Extra Curled	5	10	1 00
Parsnip, Large Sugar, or Hollow-Crowned	5	10	80
Pepper, Large Sweet Bell	10	30	3 00
Pumpkin, Cashaw	5	10	75
Radish, Early Scarlet and White Olive-Shaped	each	5	10
" Early White and Red Turnip-Rooted	each	5	10
" Yellow Turnip-Rooted	5	10	1 00
" Scarlet and White China Winter	each	5	10
Salsafy, or Oyster Plant	10	20	2 00
SPINACH, Large Round and Prickly Seed	each	5	10
Squash, Early Bush, or Patty Pan	5	10	80
" Boston and Hubbard	each	5	15
Tomato, Acme and Paragon	each	20	75
" Fejee Island and Arlington	each	10	30
" Trophy, largest and finest variety	10	50	5 00
Turnip, White Flat Dutch and Purple Top Flat	each	5	10
" Ruta Baga, Yellow Purple Top	5	10	60

MUSHROOM SPAWN, best English imported, per brick, 25 cents; by mail, 50 cents.

ONION SETS, best Philadelphia, white and yellow, per quart, 25 cents; by mail, 50 cents.

Dreer's best mixed LAWN GRASS SEED of 14 pounds to the bushel, \$5.00, by Express; per quart, 85 cents, at which price it is mailed free to any part of the United States.

Our mixture of Lawn Grass Seed, for parks, lawns, etc., is ever, where considered as the best in the country. From two to three bushels is the quantity generally sown to the acre.