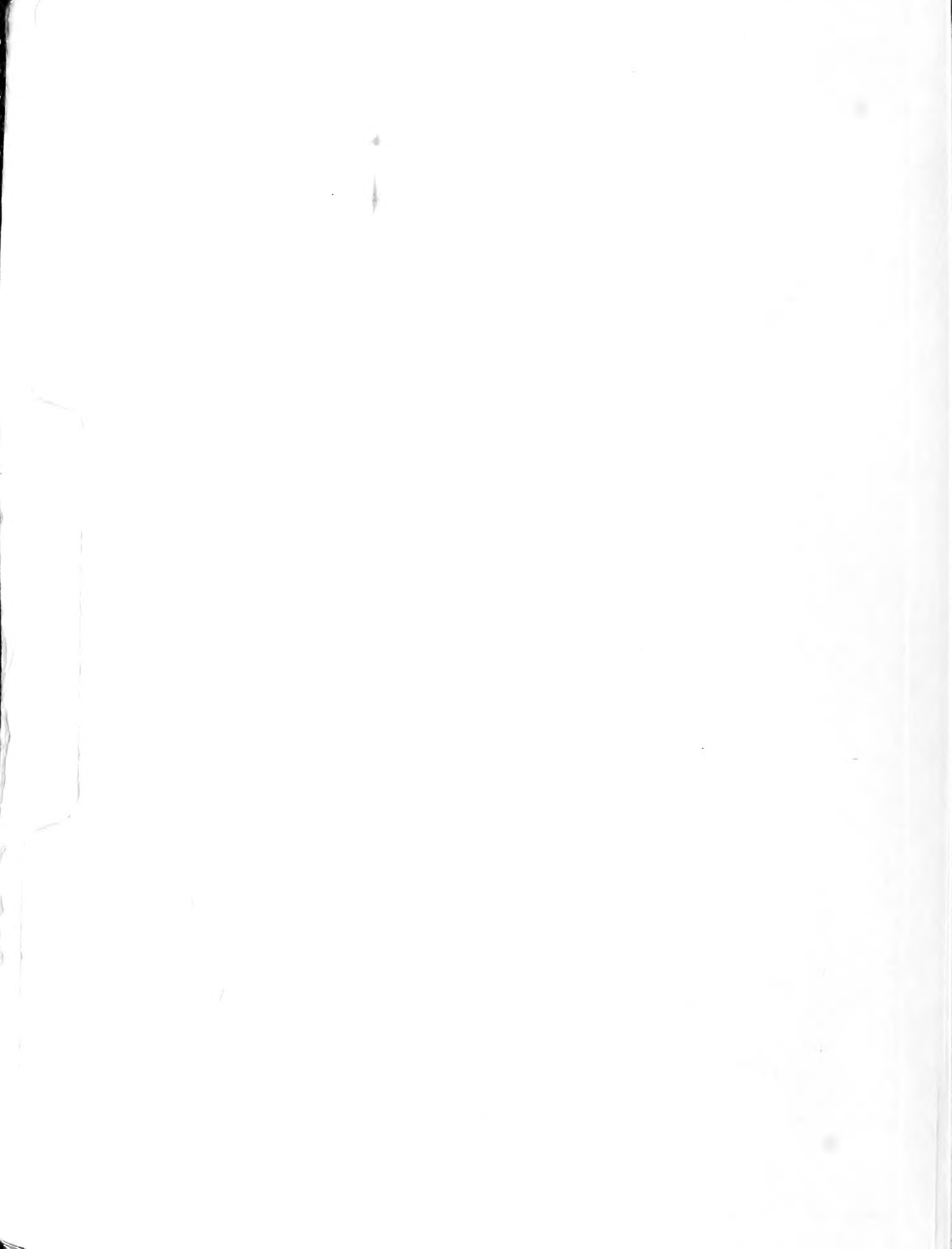


Historic, archived document

Do not assume content reflects current scientific knowledge, policies, or practices.



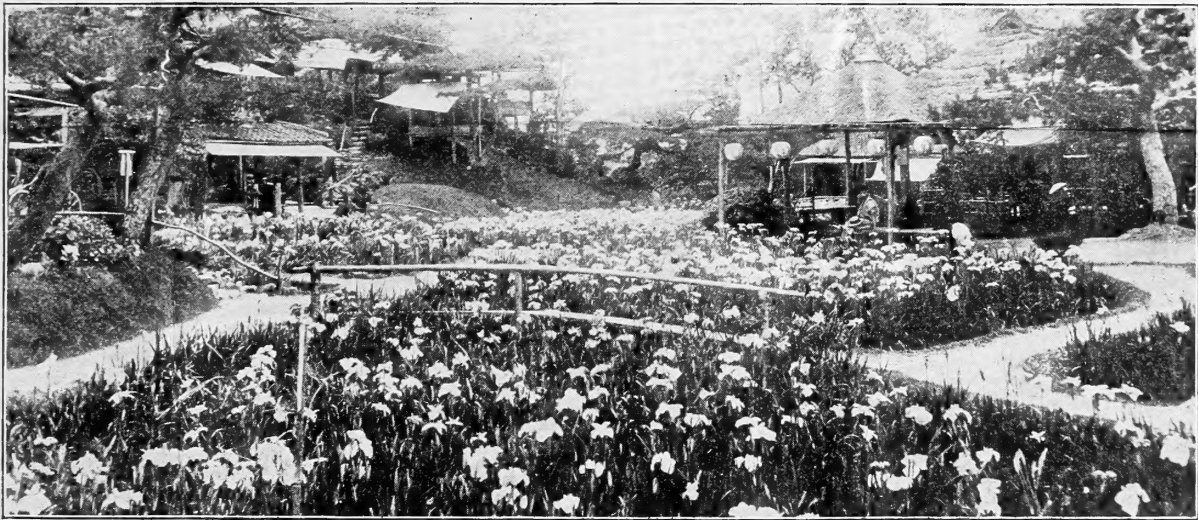
62,73

FALL 1912

Dreer's Imperial Japanese Iris

THESE magnificent Iris are among the most beautiful of our hardy early-summer flowering plants and are destined to become as popular as the hardy Phlox and Paeonies. They are valuable not only as decorative flowering subjects for the garden, but are also very useful as cut flowers.

While generally a deep, wet position is recommended for them, we have had far more satisfactory results where we have grown them in deeply cultivated well-drained ground, which has been well enriched with animal manure and where an abundance of water has been applied during their growing season and particularly during their flowering period.



Our stock of Japanese Iris is very extensive in a splendid assortment of home-grown varieties and can be relied upon for being true to name and description. We supply these in strong liberal divisions of a most satisfactory planting size.

We begin shipping during the latter part of September and we shall be pleased to book your order for delivery at any time after this date.

HENRY A. DREER, INC.

714 Chestnut Street

Philadelphia, Pa.

Please refer to circular number 127 in ordering

DOUBLE FLOWERING OR SIX-PETALED JAPANESE IRIS

- | | | | |
|-----|--|-----|---|
| No. | | No. | |
| 3 | Kosui-No-Iro. Light violet with white veins. | 57 | Hodai. Silvery-gray, suffused and densely veined with violet-purple. |
| 4 | Yomo-No-Umi. A fine free-flowering early double white. | 58 | Mana-Dsuru. A fine, late-flowering white. |
| 5 | Koki-No-Iro. Rich royal-purple with white veinings. | 65 | Ho-O-Jo. Rich velvety-purple with crimson sheen. |
| 8 | Taiheiraku. Ten petals, crimson-purple with yellow centre. | 68 | Fuji-Mine. White, veined with deep purple. |
| 20 | Kuma-Funjin. Silvery-white, with a broad border of magenta-lilac veined with white. | 69 | Waku-Hotei. Pure white, veined throughout with purple; fine late flowering variety. |
| 22 | Sano-Watashi. White, with canary-yellow centre. | 71 | Geishoi. Eight to ten petals; bright crimson-purple with white veinings; full double flower. |
| 24 | Gosetsu-Mai. White, veined and traced throughout with aniline-blue. | 72 | Uji-No-Hotaru. Bright violet-purple, shaded blue. |
| 26 | Uchiiu. Bright purple with crimson sheen. | 91 | Kan-Ran. White; densely veined with rich violet-purple. |
| 44 | Yoshimo. Very large flower; creamy-white, delicately veined with violet. | 95 | Raiden. White ground, densely dotted and blotched violet. |
| 47 | Renjo-No-Toma. Petals peculiarly fluted, light violet with white halo and light veinings. | 105 | Nagano. Rich violet-purple, shaded with blue. |
| 49 | Wakamurasaki. Crimson-purple with dull lilac shadings at base of petals. | 108 | Shimosa. White ground, minutely and densely spotted throughout with bright violet-purple. |

Price, any of the above named varieties, \$1.25 per dozen; \$8.00 per 100; \$70.00 per 1000

Unnamed mixed varieties, 85 cents per dozen; \$6.00 per 100; \$50.00 per 1000

SINGLE FLOWERING OR THREE-PETALED JAPANESE IRIS

- | | | | |
|-----|---|-----|---|
| No. | | No. | |
| 1 | Iso-No-Nami. Silvery-white, veined with violet. | 73 | Shirataki. Silvery-white, border of petals suffused with light Parma-violet. |
| 2 | Tora-Odori. White, faintly traced with violet. | 76 | Mine-No-Yuki. White, veined and dotted throughout with violet-purple. |
| 6 | Date-Dogu. Rich violet-purple with metallic sheen. | 77 | Yayaura. White, occasionally marbled with light violet. |
| 11 | Hano-No-Nishiki. Bright violet-purple, veined with white. | 80 | Bunbudo. Bright violet-purple with darker veinings. |
| 12 | Shippo. Light lilac; densely veined with purple. | 82 | Ari-Ake. Violet-purple, marbled with white. |
| 15 | Gekka-No-Nami. A very early pure white. | 96 | Tebotan. White ground, with prominent violet-blue veinings. |
| 18 | Melran. White, densely marbled and veined with light-violet. | 97 | Shiro-Fungen. Light ground, suffused throughout with bluish-violet. |
| 23 | Yedo-Kagami. Magenta-lilac, veined with white. | 98 | Osakazuki. Light violet mauve with lilac shadings. |
| 43 | Shi-Un-Ryo. Greyish-white, deeply and densely veined and suffused with violet. | 99 | Komanyo. Bright violet, shaded with blue, numerous white veins and markings. |
| 62 | Misutmoshito. Violet-purple, marbled with white. | 100 | Yomo-Zakuru. Light ground color, densely veined and suffused reddish-purple. |
| 67 | Kigan-No-Misao. A late flowering pure white. | | |
| 70 | Kimi-No-Megumi. White, densely veined with purple; late-flowering variety. | | |

Price, any of the above named varieties, \$1.25 per dozen; \$8.00 per 100; \$70.00 per 1000

Unnamed mixed varieties, 85 cents per dozen; \$6.00 per 100; \$50.00 per 1000

GERMAN IRIS

Choice standard varieties which will be supplied in strong divisions

- | | |
|---|---|
| Cherion. Standards lilac-mauve; falls violet-mauve. | Mme. Chereau. Standards and falls pure white; daintily edged with light blue. |
| Edith. Standards light-plumbago-blue; falls purple. | Plicata. Standards and falls bright violet-purple. |
| Gazelle. White frilled rich mauve. | Shakespeare. Standards straw-yellow, veined with burnt umber; falls deep carmine-violet. |
| Honorabilis. Standards golden yellow; falls rich mahogany brown. | Spectabilis. Standards and falls rich violet-purple; the earliest in flower. |
| Johan de Witt. Standards bluish-violet; falls deep violet-purple, veined with white. | Pumila hybrida Cyanca. Early; dwarf growing species; rich royal purple with darker shadings. |
| La Tendresse. Ageratum blue throughout. | |
| Lord Salisbury. Standards amber-white; falls dark violet-purple. | |

Price, any of the above named varieties (strong natural divisions,) \$4.00 per 100; \$25.00 per 1000

Mixed sorts \$3.00 per 100; \$25.00 per 1000