

## Historic, archived document

Do not assume content reflects current scientific knowledge, policies, or practices.



62.70

SEED LABORATORY  
LIBRARY

RECEIVED  
NOV 19 1913



U.S. Department of Agriculture

# DREER'S

## MARKET GARDENERS' WHOLESALE PRICE LIST



DREER'S IMPROVED DEACON LETTUCE



RELIABLE

Vegetable Seeds

Flower Seeds

Garden Requisites

Implements, Etc.



Spring Edition, 1902

# HENRY A. DREER

714 Chestnut Street

PHILADELPHIA, PA.



# DREER'S RELIABLE SEEDS

## FOR MARKET GARDENERS



For sixty-four years it has been the aim and purpose of this house to furnish to Market Gardeners, Seeds that could be thoroughly relied upon. That we have succeeded in gaining the confidence of many thousands of the leading truckers throughout the United States is proven by the fact that we not only gain a large increase in customers each season, but those who have been dealing with us for many years still continue to do so, thereby attesting to the high quality of the seeds we supply.

In order to keep up the reputation we have made by supplying uniformly high-grade seeds, we are constantly on the alert, giving critical inspection to our growing crops, and, wherever possible, making improvements by careful selections of Stock Seeds.

We hope for a continuance of the patronage of our regular customers, and also at least a trial order from those Market Gardeners who have not as yet planted Dreer's Reliable Seeds.

Very truly yours,

HENRY A. DREER.



**Our Seeds are tested.** We will not under any circumstances send out seeds of doubtful character, and for the protection of our customers we invariably make a thorough and critical test of all seeds received from our growers, and they must be of the highest degree of germination. During the summer we also conduct extensive purity tests at our trial grounds at Riverton, N. J., where an out-door test is made of all varieties. Thus we know the quality of our seeds, both as to their germination and purity.

**Seeds postpaid.** At prices quoted in this catalogue, we pay the postage on all orders for ounces and quarter-pounds. Where larger quantity than quarter-pound is ordered, postage must be added at the rate of eight cents per pound, unless the goods are to be sent by freight or express, in which case the purchaser always pays the transportation charges when obtaining goods from railroad or express agent. If Beans and Peas are wanted by mail, add postage at the rate of fifteen cents per quart, and for Sweet Corn add ten cents per quart to prices quoted herein.

**Packing.** No charge is made for boxes or packing, nor for delivery to freight depots or express offices in Philadelphia.

**Special low express rates.** As seeds are now taken, when packed in boxes or bags, by leading express companies at a reduction of twenty per cent. from regular merchandise rates, it is a great advantage to those ordering in quantities, such as pounds and quarts, to have their orders shipped by express. Large quantities can be shipped cheapest by freight, but require a longer time in transit. If the manner of shipment is left to us, we will always use our best judgment in the matter and decide to the interest of the customer.

**Cash with order.** Please send remittance with the order sufficient to cover the whole bill. Remittances should be made by Post-Office Money Order, Drafts on Philadelphia or New York Banks, or Express Money Orders. We disclaim all responsibility when remittances are not made as above directed. Where it is not possible to obtain these, the letter should be registered.

**Non-warranty.** While we take every precaution to have our seeds pure and of the best quality, we do not give any warranty, express or implied, either as to quality, productiveness, or any other condition, and will not be in any way responsible for the crop. Every order for articles named in this catalogue will be accepted on these conditions only.

**Deutsche Correspondenten.**—Alle Bestellungen und Correspondenzen in deutscher Sprache werden mit Sorgfalt ausgeführt.

HENRY A. DREER

LOCK BOX  
1618

714 Chestnut Street  
PHILADELPHIA, PA.



# DREER'S RELIABLE VEGETABLE SEEDS

Especially Selected for Market Gardeners' Use.

## ARTICHOKE—Artischoke.

**Large Green Globe.** The best for general culture. Oz., 25 cts.;  $\frac{1}{4}$  lb., 75 cts.

**Jerusalem Artichoke.** Entirely distinct from the Globe variety, and propagated by and for its tubers. Price of tubers, peck, 75 cts.; bu., \$2.50. Special prices on large quantities.

## ASPARAGUS—Spargel.

**Dreer's Eclipse.** (See illustration.) In Asparagus, the largest stalks are most salable, as they make very handsome and attractive bunches. This variety is the result of a most careful selection and "breeding up" to the large type, yet retaining that delicate light green color and tender quality to be desired. The stalks will frequently measure two inches in diameter and twelve to fifteen inches long, and even in this large state, are most tender and delicious. Oz., 10 cts.;  $\frac{1}{4}$  lb., 20 cts.; lb. 60 cts.; 5 lbs., \$2.50.

## Other Varieties of Asparagus.

	oz.	$\frac{1}{4}$ lb.	1 lb.	5 lbs.
Donald's Elmira . . . . .	5 cts.	15 cts.	50 cts.	\$2 25
Barr's Mammoth . . . . .	5 "	15 "	50 "	2 25
Palmetto . . . . .	5 "	15 "	50 "	2 25
Conover's Colossal . . . . .	5 "	15 "	40 "	1 75
COLUMBIAN MAMMOTH WHITE . . . . .	5 "	15 "	50 "	2 25

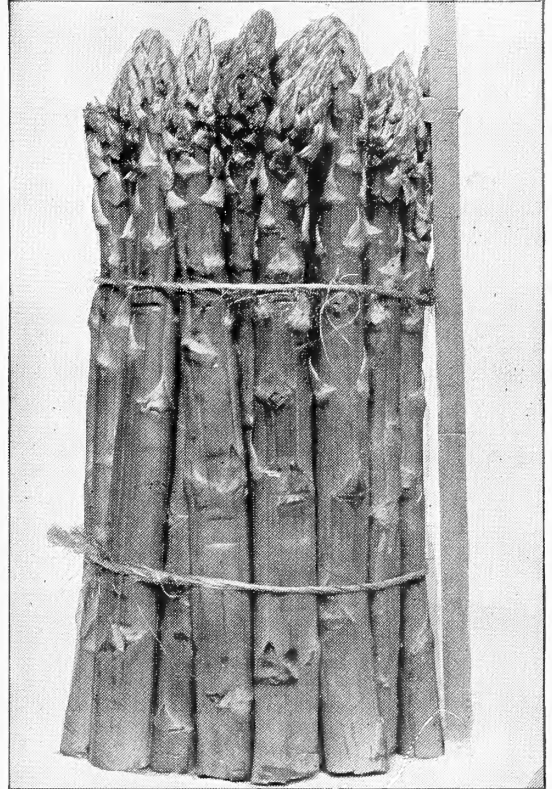
## ASPARAGUS ROOTS.

**STRONG TWO-YEAR-OLD ROOTS.** Add 40c. per hundred extra if sent by mail.

**DREER'S ECLIPSE.** 60 cts. per 100; \$5.00 per 1000.

**Palmetto. Barr's Mammoth. Columbian Mammoth White.** Each 50 cts. per 100; \$4.50 per 1000.

**Conover's Colossal.** 50 cts. per 100; \$4.00 per 1000.



DREER'S ECLIPSE ASPARAGUS.

## BEANS—Dwarf or Bush.

Ger. Krop-Bohnen.

If wanted by mail add 15 cts. per quart for postage.

### Green Podded Varieties.

**Improved Extra Early Red Valentine.** (See illustration.) Our strain of this popular variety is best, pods are round and fleshy, and are ready to pick, under favorable conditions, in 32 days from germination. Qt., 20 cts.; 4 qts., 60 cts.; peck, \$1.00; bu., \$4.00.

**Long Yellow Six Weeks (Flat pod).** Very early and prolific; long green tender pods; matures quickly. Qt., 20 cts.; 4 qts., 60 cts.; peck, \$1.00; bu., \$4.00.

**Extra Early Refugee.** A profuse bearing variety. One of the very best early sorts. Qt., 20 cts.; 4 qts., 60 cts.; peck, \$1.00; bu., \$4.00.

**Early Mohawk.** The hardiest of the early varieties; also good for autumn picking. Qt., 20 cts.; 4 qts., 60 cts.; peck, \$1.00; bu., \$4.00.

**Triumph of the Frames.** Splendid for forcing. Pt., 25 cts.; qt., 40 cts.



IMPROVED EXTRA EARLY RED VALENTINE BEAN.

**BEANS—Green Pod; Dwarf or Bush.**—Continued.

MAMMOTH STRINGLESS GREEN POD BEAN.

**Mammoth Stringless Green Pod.**

(*See cut.*) In this new variety we offer the finest and earliest green pod stringless Bean it has ever been our pleasure to see growing. The plants are very productive, bearing profusely the large and green pods, which are perfectly round, very fleshy and entirely stringless. In quality it is equal to any variety ever offered, and it is a great improvement in every way over the long time favorite "Round-Pod Valentine." The Mammoth Stringless Green Pod is just such a variety as market gardeners have been hoping for. Qt., 25c.; 4 qts., 80c.; peck, \$1.25; bu., \$5.00.

**Burpee's Stringless Green Pod.**

This variety is positively stringless, and remains tender and crisp a long time after maturity. The pods are of pale green, long and straight, perfectly round and meaty, maturing with the earliest of the green-pod varieties. Qt., 25c.; 4 qts., 75c.; peck, \$1.20; bu., \$4.75.

**White Kidney, or Royal Dwarf.**

A superior kind for baking, and also excellent shelled green. Qt., 20c.; 4 qts., 60c.; peck, \$1.00; bu., \$4.00.

**Green Flageolet (*Wonder of France*).**

Used extensively, shelled when in green state. Qt., 25c.; 4 qts., 80c.

**Broad Windsor (*English*).**

Used only as a shelled bean. Pt., 20c.; qt., 35c.

**Boston Pea Bean (*Navy*).**

An excellent variety of very productive habit; for baking they excel all other sorts. Qt., 20c.; 4 qts., 60c.; peck, \$1.00; bu., \$4.00.

**Black Turtle Soup.** Used as a winter-shelled bean, for which it is much esteemed. Qt. 20c.; 4 qts., 60c.; peck, \$1.00; bu., \$4.00.

**White Marrowfat.** Extensively grown for sale as a dry bean for winter use; excellent shelled, either green or dry. Qt., 20c.; 4 qts., 60c.; peck, \$1.00; bu., \$4.00.

**Bush Lima Beans.****Wonder Bush Lima (Dreer's).** (*See*

*cut.*) This is without doubt the earliest and best of the Bush Limas. Seed planted on our experimental grounds on June 29th produced fully matured beans on August 17th, just seven weeks from planting. No other Bush Lima Bean has such a record for earliness. The plants grow dwarf, upright and compact, and are completely covered with large pods, many of which contain four beans which are fully as large as Pole Limas. The beans are flat in shape, and fully equal in flavor to the famous Dreer's Improved Lima, so well and favorably known. Qt., 35c.; 4 qts., \$1.15; peck, \$1.75; bu., \$7.00.

**Dreer's Bush Lima.**

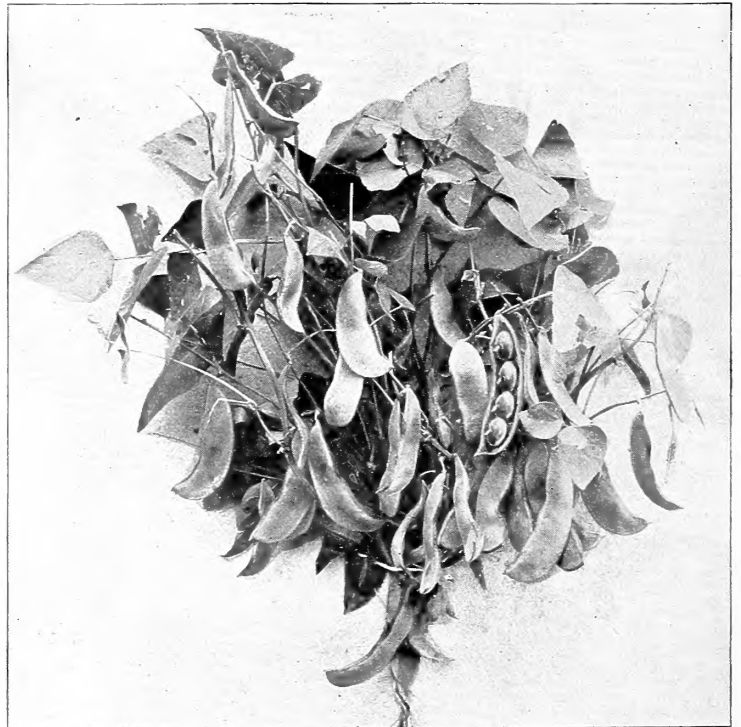
A dwarf variety of the Dreer's Improved Lima, which has been fixed in its character of a bush bean; it is very prolific, single plants often producing from 150 to 200 pods. The beans grow close together in the pods, producing three to four and sometimes five in a pod, and are thick, sweet and succulent, equal in quality and tenderness to Dreer's Pole Lima. Qt., 35c.; 4 qts., \$1.15; peck, \$1.75; bu., \$7.00.

**Burpee's Bush Lima.**

A true bush form of the Large White Lima; requires no poles. Qt., 30c.; 4 qts., \$1.00; peck, \$1.65; bu., \$6.50.

**Henderson's Bush Lima.**

A dwarf variety of the Sieva or Southern Lima; produces enormous crops two weeks earlier than the climbing Limas. The beans of this variety are smallest of any bush Limas. Qt., 30c.; 4 qts., \$1.00; peck, \$1.50; bu., \$6.50.



DREER'S WONDER BUSH LIMA BEAN.

**BEANS—Wax Pod.**

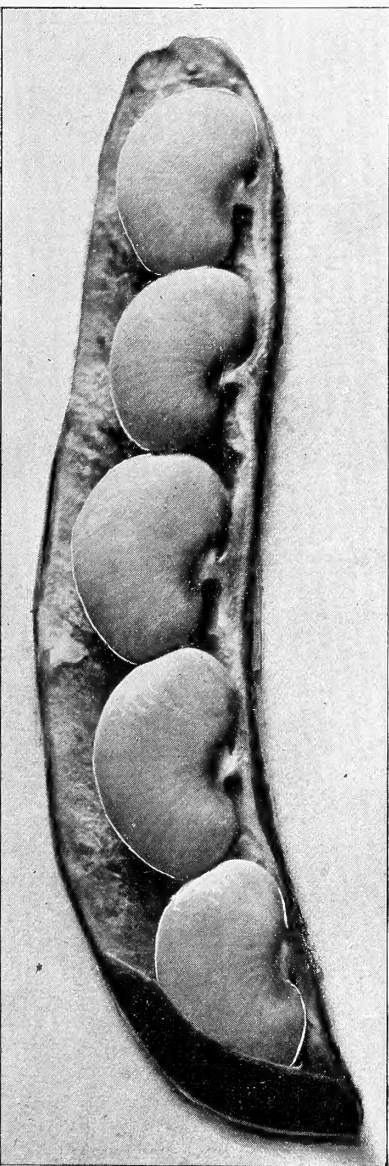
If Beans are wanted by mail add  
15 cents per quart.

**Pencil Pod Wax.** (*See cut.*) Grows more vigorous and taller than Improved Prolific Black Wax. It is very hardy and productive. Pods mature early, and are long, slender, very straight, shaped like a pencil. Qt., 30c.; 4 qts., \$1.00; peck, \$1.50; bu., \$6.00.

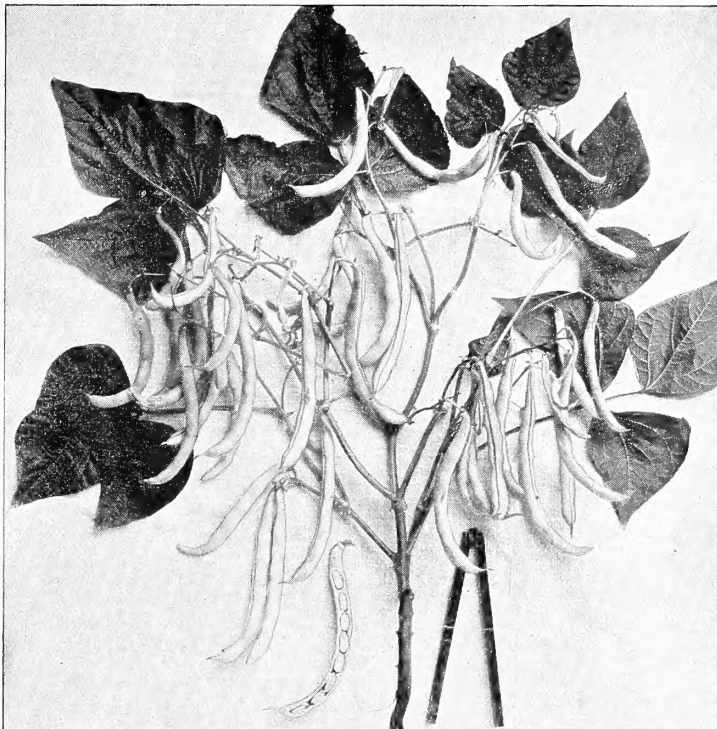
**Round Pod Kidney Wax.** A round pod wax bean fully equal in quality to Wardwell's Wax. Plant grows strong, pods round, stringless and very solid, full of meat. Qt., 35c.; 4 qts., \$1.25; peck, \$2.25.

**Valentine Wax.** The earliest Wax Bean, being even earlier than Refugee Wax. Remarkably free from rust and remains a long time without becoming tough. Qt., 25c.; 4 qts., 80c.; peck, \$1.25; bu., \$5.00.

**Early Refugee Wax.** Pods long, round, of a golden-yellow color. One of the earliest. Qt., 25c.; 4 qts., 80c.; peck, \$1.25; bu., \$5.00.



FORD'S MAMMOTH LIMA BEAN.



PENCIL POD BLACK WAX BEAN.

**Davis Wax.** Pods flat, very long, white, straight and handsome. Qt., 25c.; 4 qts., 80c.; peck, \$1.25; bu., \$5.00.

**Wardwell's Kidney Wax.** One of the best Wax Beans, bearing long, flat pods, of a delicate waxy yellow, stringless and brittle, producing a heavy crop. Qt., 25c.; 4 qts., 80c.; peck, \$1.25; bu., \$5.00.

**Currie's Rust-Proof Wax.** Absolutely rust-proof; pods long, flat, tender and of fine quality. Qt., 20c.; 4 qts., 75c.; peck, \$1.15; bu., \$4.50.

**Improved Rust-Proof Golden Wax.** Pods long, nearly straight, broad, flat and clear yellow. Qt., 25c.; 4 qts., 80c.; peck, \$1.25; bu., \$5.00.

**Improved Prolific Black Wax.** Pods waxy yellow, very tender and productive. Qt., 25c.; 4 qts., 80c.; peck, \$1.25; bu., \$5.00.

**Saddle-Back Wax.** Pod large, long, round, very solid, stringless. Qt., 25c.; 4 qts., 90c.; peck, \$1.50; bu., \$6.00.

**Scarlet Flageolet, or Perfection Wax.** The pods are a rich golden-yellow color and very large, stringless, tender, and of fine flavor. Qt., 25c.; 4 qts., 90c.; peck, \$1.40; bu., \$5.50.

**Yosemite Mammoth Wax.** A giant among beans. Golden-yellow color and absolutely stringless. Qt., 35c.; 4 qts., \$1.30; peck, \$1.75; bu., \$7.00.

**Pole, or Running Beans.—Ger. Stangen-Bohnen.  
WAX POD.**

**Dreer's Golden Cluster.** Bears profusely, golden-yellow pods. Qt., 35c.; 4 qts., \$1.30; peck, \$1.75; bu., \$7.00.

**GREEN POD.**

**Horticultural, or Cranberry.** Very popular old variety. Qt., 30c.; 4 qts., \$1.00; peck, \$1.50; bu., \$6.00.

**White Dutch Case-Knife.** Qt., 30c.; 4 qts., \$1.00; peck, \$1.50; bu., \$6.00.

**White Dutch Runner.** Qt., 30c.; 4 qts., \$1.00; peck, \$1.50; bu., \$6.00.

**Scarlet Runner.** Qt., 30c.; 4 qts., \$1.00; peck, \$1.50; bu., \$6.00.

**White Crease Back.** Qt., 30c.; 4 qts., \$1.20; peck, \$1.65; bu., \$6.50.

**Kentucky Wonder.** Qt., 35c.; 4 qts., \$1.25; peck, \$1.65; bu., \$6.50.

**POLE LIMA BEANS.**

**Siebert's Early Lima.** An improvement on the large lima. Qt., 30c.; 4 qts., \$1.10; peck, \$1.75; bu., \$7.00.

**Early Jersey Lima.** A few days earlier than the large lima. Qt., 30c.; 4 qts., \$1.10; peck, \$1.75; bu., \$7.00.

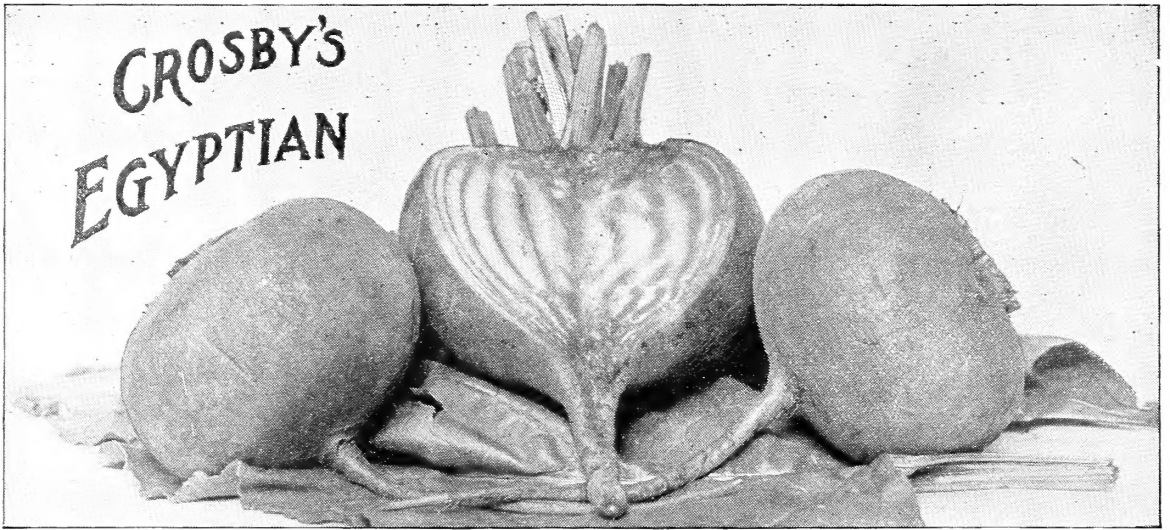
**Dreer's Improved Lima.** A very superior early variety of excellent quality and great productiveness. Qt., 30c.; 4 qts., \$1.10; peck, \$1.75; bu., \$7.00.

**Ford's Mammoth Lima.** (*See cut.*) A choice selection of the large lima. Qt., 30c.; 4 qts., \$1.10; peck, \$1.75; bu., \$7.00.

**King of the Garden Lima.** A vigorous grower. The beans are large and of rich flavor. Qt., 30c.; 4 qts., \$1.00; peck, \$1.65; bu., \$6.50.

**Small Lima, or Sieva.** Qt., 30c.; 4 qts., \$1.00; peck, \$1.65; bu., \$6.50.





**BEETS**—Ger. Salatrube.

**Crosby's Egyptian.** (See cut.) An extra early blood turnip beet for market gardeners' use. It is an improved strain of the old Egyptian Beet, but thicker and smoother. It is extremely early, grows to good size and is of beautiful deep blood color. Tops are small, and quality very good. ¼ lb., 20 cts.; lb., 60 cts.; 10 lbs., \$5.50; bu., \$7.50.

**DREER'S Excelsior.** A splendid extra early blood turnip beet, fully as early as the Crosby's Egyptian, but much finer grained. The skin is smooth and tops very small, making it a good variety for forcing. ¼ lb., 20 cts.; lb., 60 cts.; 10 lbs., \$5.50; bu., \$7.50.

**Sugar Beets.**

	¼ lb.	lb.	5 lbs.
Klein Wanzleben . . . . .	10	30	\$1 25
White Sugar Green-Top . . . . .	10	30	1 25
Imp. Imperial White . . . . .	10	30	1 25
Lane's Improved White . . . . .	10	30	1 25

**Mangel Wurzel.**

	oz.	¼ lb.	lb.	5 lbs.
Mammoth Long Red . . . . .	5	10	30	\$1 25
Golden Tankard . . . . .	5	10	30	1 25
Golden-Yellow Mammoth . . . . .	5	10	30	1 25
Yellow, Orange Globe . . . . .	5	10	30	1 25
Red Globe . . . . .	5	10	30	1 25

**Broccoli.** (Ger. Spargel-Kohl.)

**White Cape.** Large white heads. Oz., 35 cts.; ¼ lb., \$1.25.

**Brussels Sprouts.** (Ger. Rosen-Kohl.)

**Dreer's Select Matchless.** Oz., 15 cts.; ¼ lb., 50 cts.; lb., \$1.50.  
**Long Island Half-Dwarf.** Oz., 20 cts.; ¼ lb., 75 cts.; lb., \$2.50.

**Cardoon.** (Ger. Cardon.)

**Large Smooth Solid.** The best variety. Oz., 20 cts.; ¼ lb., 75 cts.

**Chicory.**

**Common, or Wild.** Oz., 10 cts.; ¼ lb., 25 cts.; lb., 75 cts.  
**Large Rooted.** Oz., 10 cts.; ¼ lb., 25 cts.; lb., 75 cts.

**Chervil.**

**Curled Chervil.** Oz., 10 cts.; ¼ lb., 30 cts.; lb., \$1.00.

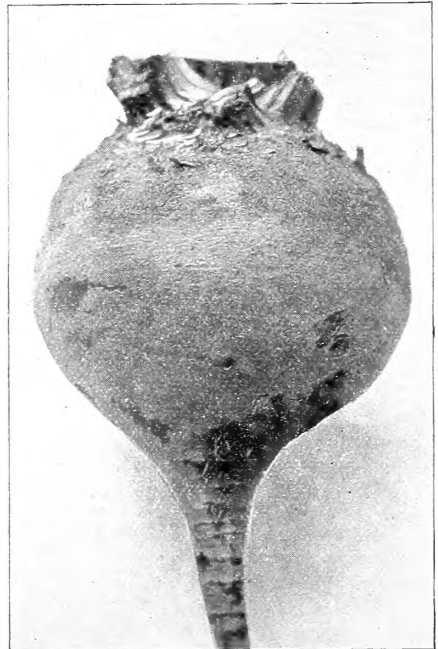
**Cress.** (Ger. Garten und Brunnen Kresse.)

**Extra Curled or Peppergrass.** Oz., 5 cts.; ¼ lb., 15 cts.; lb., 40 cts.  
**Upland Cress.** Oz., 35 cts.; ¼ lb., \$1.20.  
**Erfurt Water-Cress.** Oz., 30 cts.; ¼ lb., \$1.00; lb., \$3.00.

**Arlington Favorite Blood.** A dark-leaved early blood variety, closely following Eclipse in maturing, but of much darker color and superior in quality; perfectly round. ¼ lb., 20 cts.; lb., 60 cts.; 10 lbs., \$5.50; bu., \$7.50.

**Standard Varieties of Beet.**

	¼ lb.	lb.	10 lbs.	bu.
Extra Early Egyptian . . . . .	15	50	\$4 50	
Early Eclipse . . . . .	15	50	4 50	\$6 50
Early Bassano . . . . .	15	45	4 00	
Early Blood Turnip . . . . .	15	45	4 00	5 50
Len'z Turnip . . . . .	15	45	4 00	5 50
Bastian's Ea. Blood Turnip . . . . .	15	45	4 00	5 50
Edmand's Blood Turnip . . . . .	15	50	4 50	6 00
Dewing's Im. Blood Turnip . . . . .	15	45	4 00	5 50
Bastian's Half-Long Blood . . . . .	15	45	4 00	5 50
Long Dark Blood . . . . .	15	45	4 00	
Swiss Chard . . . . .	15	40		



EDMAND'S BLOOD TURNIP BEET.

**CAULIFLOWER.**

Blumenkohl.

**DREER'S Earliest Snow-storm.** (See cut.) A dwarf variety, with short outer leaves, and can be planted close, two feet apart each way. It always makes a fine, large and exceedingly beautiful snowy-white head, much earlier than any other variety. The best variety for forcing.  $\frac{1}{4}$  oz., \$1.50; oz., \$5.00;  $\frac{1}{4}$  lb., \$15.00.

**Dreer's Selected Dwarf Erfurt.** Small-leaved dwarf, for forcing or open ground, producing very solid pure white heads of fine quality.  $\frac{1}{4}$  oz., 75 cts.; oz., \$2.50;  $\frac{1}{4}$  lb., \$8.00.

**Early Snowball.** An extremely early dwarf variety, producing magnificent white heads of fine quality.  $\frac{1}{4}$  oz., 65 cts.; oz., \$2.25;  $\frac{1}{4}$  lb., \$8.00.

**Early Dwarf Erfurt.** An early market variety.  $\frac{1}{4}$  oz., 50 cts.; oz., \$1.50;  $\frac{1}{4}$  lb., \$5.00.

**Late Varieties.**

**Half-Early Paris.** Oz., 60 cts.;  $\frac{1}{4}$  lb., \$1.75.

**Lenormand's Short Stem.** Oz., 60 cts.;  $\frac{1}{4}$  lb., \$2.00.

**Algiers.** Oz., 60 cts.;  $\frac{1}{4}$  lb., \$2.00.

**Veitch's Autumn Giant.** Oz., 50 cts.;  $\frac{1}{4}$  lb., \$1.75.

**Cauliflower and Cabbage Plants—**  
(See page 27.)



DREER'S EARLIEST SNOWSTORM CAULIFLOWER.

**CARROT—Mohr.**

**Dreer's "Perfect" Forcing Carrot.** A fine half-long variety, beautiful bright scarlet, transparent, crisp and almost without heart. Remarkably small top and can be planted very close in frame. Oz., 15c.;  $\frac{1}{4}$  lb., 50c.; lb., \$1.50.

**Improved Rubicon Carrot.** This beautiful half-long carrot was originated in Rhode Island by a reliable grower. It is the result of careful breeding, and in shape and color most desirable. The carrots grow about the same length as the well-known Danvers, but thicker, and are a rich dark orange in color. It is an enormous cropper and a splendid variety for the market gardener. Oz., 10 cts.;  $\frac{1}{4}$  lb., 25 cts.; lb., 90 cts.; 5 lbs., \$4.25.

**Danver's Half-Long Orange.** (See cut.) A rich orange-red variety, very smooth and handsome, producing very large crops. An excellent market variety. Tops are of medium size, and coarsely divided. The roots taper to a blunt point; flesh sweet, crisp and tender. Oz., 10 cts.;  $\frac{1}{4}$  lb., 20 cts.; lb., 70 cts.; 5 lbs., \$3.25.

**Varieties of Carrot.**

**Earliest Short Horn.** The earliest for forcing. Oz., 10 cts.;  $\frac{1}{4}$  lb., 25 cts.; lb., 90 cts.

**Early Scarlet Horn.** Fine grained, good flavor. Oz., 10 cts.;  $\frac{1}{4}$  lb., 25 cts.; lb., 90 cts.

**Half-Long Nantes.** Stump root, orange flesh. Oz., 10 cts.;  $\frac{1}{4}$  lb., 25 cts.; lb., 90 cts.

**Chantenay Half-Long.** Medium early, stump root. Oz., 10 cts.;  $\frac{1}{4}$  lb., 25 cts.; lb., 90 cts.

**Oxheart, or Guerande.** Short and thick, good flavor. Oz., 10 cts.;  $\frac{1}{4}$  lb., 25 cts.; lb., 90 cts.

**Early Half-Long Scarlet.** Pointed root, very productive. Oz., 10 cts.;  $\frac{1}{4}$  lb., 25 cts.; lb., 90 cts.

**Early Half-Long Carentan.** Small tops, good for forcing. Oz., 10 cts.;  $\frac{1}{4}$  lb., 25 cts.; lb., 90 cts.

**Nichol's Imp. Long Orange.** Improved strain of Long Orange. Oz., 10 cts.;  $\frac{1}{4}$  lb., 20 cts.; lb., 70 cts.

**St. Vallery.** Rich orange, fine flavor. Oz., 10c.;  $\frac{1}{4}$  lb., 25c.; lb., 90c.

**Long Orange.** Improved, early, productive, fine shape. Oz., 10 cts.;  $\frac{1}{4}$  lb., 20 cts.; lb., 70 cts.

**Red Altringham.** Long roots, light red color. Oz., 10 cts.;  $\frac{1}{4}$  lb., 20 cts.; lb., 65 cts.

**Large White Belgian.** Flesh and skin pure white. Oz., 5 cts.;  $\frac{1}{4}$  lb., 15 cts.; lb., 40 cts.

**Improved Short White.** Most productive, best for stock. Oz., 10 cts.;  $\frac{1}{4}$  lb., 15 cts.; lb., 40 cts.



DANVER'S HALF-LONG ORANGE CARROT.

## CABBAGE—*Ger. Kohl.*

**AMERICAN-GROWN CABBAGE SEED.**—It is a well-known fact among gardeners that American-grown Cabbage seed will make plants that head up better than those raised from foreign seed. This particularly applies to seed produced on Long Island, from which section our Cabbage seed comes. The past season was again a hard one on cabbage, and new seed is only about one-half crop; as a consequence, much imported and old seed will be thrown on the market. We advise growers to be careful of their source of supply, and warn them against cheap seed.

### Early Varieties.

**Early Jersey Wakefield.** The leading early variety and the best for private or market gardeners' use. We have sold this sort for the past twenty-six years. Our strain is being constantly improved, both in purity and earliness. Oz., 30 cts.;  $\frac{1}{4}$  lb., 85 cts.; lb., \$3.00

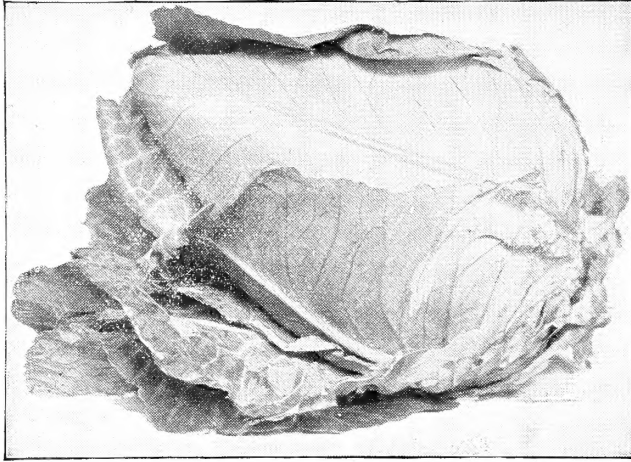
**The Charleston, or Large Wakefield.** (*See cut.*) Selected stock. Large solid heads, of good quality, a few days later than Early Jersey Wakefield; specially recommended for institutions and market gardeners, producing fully twice as much per acre as the early variety. The strain we offer is of exceptional purity and cannot fail to give satisfaction, as it combines all the good qualities of an early long-keeping sort which is especially desirable for shipping. Oz. 30 cts.;  $\frac{1}{4}$  lb., \$1.00; lb., \$3.50.

**Early Winnigstadt.** Good for either early or late use. Oz., 15 cts.;  $\frac{1}{4}$  lb., 50 cts.; lb., \$1.50.

**Early Spring.** (*See cut.*) This variety fills a long-felt need. It is fully as early as the Jersey Wakefield, but the heads are of the round, flat type of Early Summer. It has very few small outer leaves, thus allowing its being planted as close as any variety known. Oz., 30 cts.;  $\frac{1}{4}$  lb., 85 cts.; lb., \$3.00.

**Express.** The earliest of all Cabbages; small, with solid heads. Oz., 15 cts.;  $\frac{1}{4}$  lb., 50 cts.; lb., \$1.50.

**Dreer's Early Drum-head.** A favorite with the market gardeners; a second early, large, round, solid-heading variety. This sort we consider the best for following the large Charleston Wakefield, as it matures about ten days later, and is of the finest quality. Oz., 25 cts.;  $\frac{1}{4}$  lb., 75 cts.; lb., \$2.50.

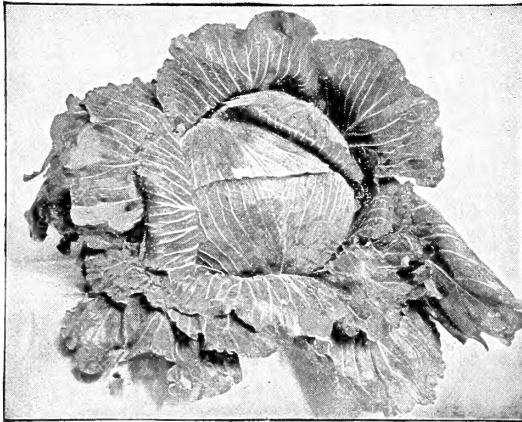


THE CHARLESTON, OR LARGE WAKEFIELD CABBAGE.

**Large York.** A superior early-heading, robust sort. Oz., 15 cts.;  $\frac{1}{4}$  lb., 50 cts.; lb., \$1.50.

**Improved Early Summer.** (*See cut.*) A good second early Cabbage, which matures about ten days after the Jersey Wakefield. It makes a large, solid, flattish head, with short outer leaves, which admit of close planting in the field. It is of good quality, being very tender and free from coarseness. Oz., 20 cts.;  $\frac{1}{4}$  lb., 75 cts.; lb., \$2.00.

**Succession.** A good second early round-headed sort, heads very evenly, and comes in a few days after the Early Summer. It also grows larger than the latter variety. Oz., 25 cts.;  $\frac{1}{4}$  lb., 75 cts.; lb., \$2.50.



EARLY SPRING CABBAGE.

**Selected All Seasons.** (*Vandergow.*) An early Drumhead Cabbage, yielding heads of the largest size. Very desirable for early spring, summer, or fall use. Oz., 20 cts.;  $\frac{1}{4}$  lb., 75 cts.; lb., \$2.00.

**All Head, Early.** The largest heading of the second early sorts, of excellent quality. The deep flat heads are remarkably solid, and very uniform in size, of a very compact growth, having few outer leaves; can be planted as close as the Wakefield sorts. Oz., 25 cts.;  $\frac{1}{4}$  lb., 75 cts.; lb., \$2.50.

**Improved Flat Brunswick.** This is a good variety for market gardeners' use; produces large heads, weighing 15 to 20 lbs. each. The quality is good, and it can be grown either as a second early or late sort; short stems, large solid heads. Oz., 15 cts.;  $\frac{1}{4}$  lb., 50 cts.; lb., \$1.50.



IMPROVED EARLY SUMMER CABBAGE.

**Market Gardeners** should bear in mind that our Cabbage Seed is grown especially for us on Long Island. The strains are being continually improved, and best results will be realized by all who plant it.



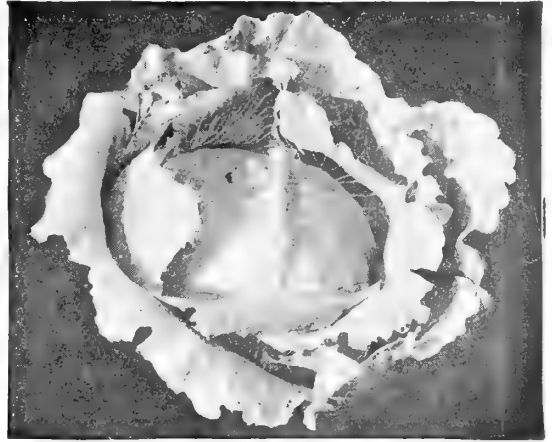
# CABBAGE—Late Varieties

**Dreer's Selected Late Flat Dutch.** (*See cut.*) This excellent strain is the result of many years careful selection, and we consider it the finest strain of Late Flat Dutch Cabbage on the market. The heads are flat, and grow remarkably large, even, very solid, and are of fine texture; stems grow short and the quality of the cabbage is very fine. It is a sure-heading sort, as nearly every plant can be depended upon to produce a fine, large head. It is also a good keeper. Market gardeners and farmers who grow for profit are using this variety very largely, and report satisfactory and profitable crops. Oz., 25 cts.;  $\frac{1}{4}$  lb., 75 cts.; lb., \$2.25.

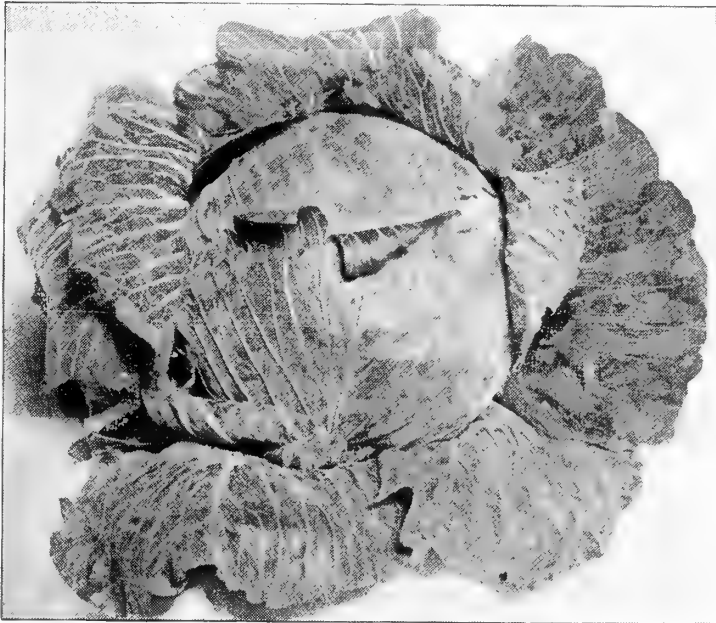
**Golden Sugar Winter.** (*See cut.*) This excellent variety was first introduced in Europe several years ago, and soon gained in favor. It is entirely distinct in character and color, has a very hard head and a short stem; its special feature is the golden color after being put up, which makes it very attractive compared to the ash-gray color usual among winter cabbage. This variety is medium late, and is perfectly solid at maturity, and does not crack. Color of foliage, dark green. Oz., 30 cts.;  $\frac{1}{4}$  lb., \$1.00.

**Lupton.** A new winter variety of excellent quality and distinct character; a little earlier than the Flat Dutch, but will maintain shape and solidity for storing. It originated on Long Island with our cabbage seed grower, and is a strong, healthy variety and a reliable header. Oz., 25 cts.;  $\frac{1}{4}$  lb., 75 cts.; lb., \$2.25.

**Danish Ball Head** (*Hollander*). This is the medium-sized, hard white cabbage that is received from abroad during the early spring months, and even after the long journey across the ocean it arrives in splendid condition. It is a medium or late variety, but is used mostly as a winter cabbage and comes from the pits, in late spring, in fine condition. Oz., 20 cts.;  $\frac{1}{4}$  lb., 65 cts.; lb., \$2.25.



GOLDEN SUGAR WINTER CABBAGE.

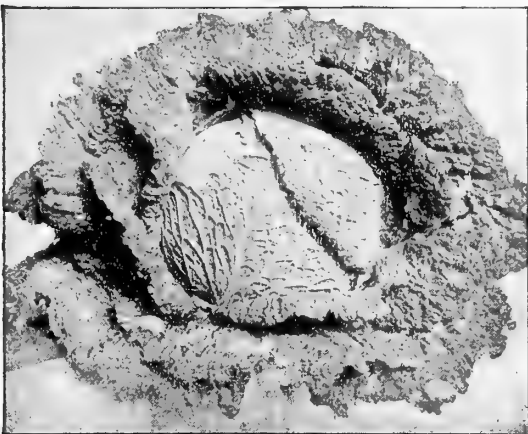


DREER'S SELECTED LATE FLAT DUTCH CABBAGE.

## Large Late Drumhead.

A favorite winter variety, largely planted by growers who make a specialty of shipping cabbage, as it stands transportation well. The heads grow to very large size and heavy weight. They are solid, of good quality and texture, and have very few loose leaves, allowing of planting closely in the field. Oz., 20 cts.;  $\frac{1}{4}$  lb., 65 cts.; lb., \$2.00.

**Louisville Drumhead.** This is a popular variety in the Southwest; of large size, solid and a good keeper. It is a reliable sort and heads up well. Oz., 20 cts.;  $\frac{1}{4}$  lb., 65 cts.; lb., \$2.00.



PERFECTION DRUMHEAD SAVOY CABBAGE.

## Savoy Cabbage.

**Dreer's Crystal Summer Savoy.** A fine new sort; medium size; heads nearly round, deeply curved and very tender. Oz., 25 cts.;  $\frac{1}{4}$  lb., 75 cts.; lb., \$2.50.

**Perfection Drumhead Savoy.** (*See cut.*) Of superior quality; the largest solid-heading Savoy, possessing the rich flavor of the cauliflower. The plants are strong and vigorous, and withstand the ravages of the cabbage worm better than other sorts. The inside of this cabbage is pure white. Oz., 25 cts.;  $\frac{1}{4}$  lb., 75 cts.; lb., \$2.50.

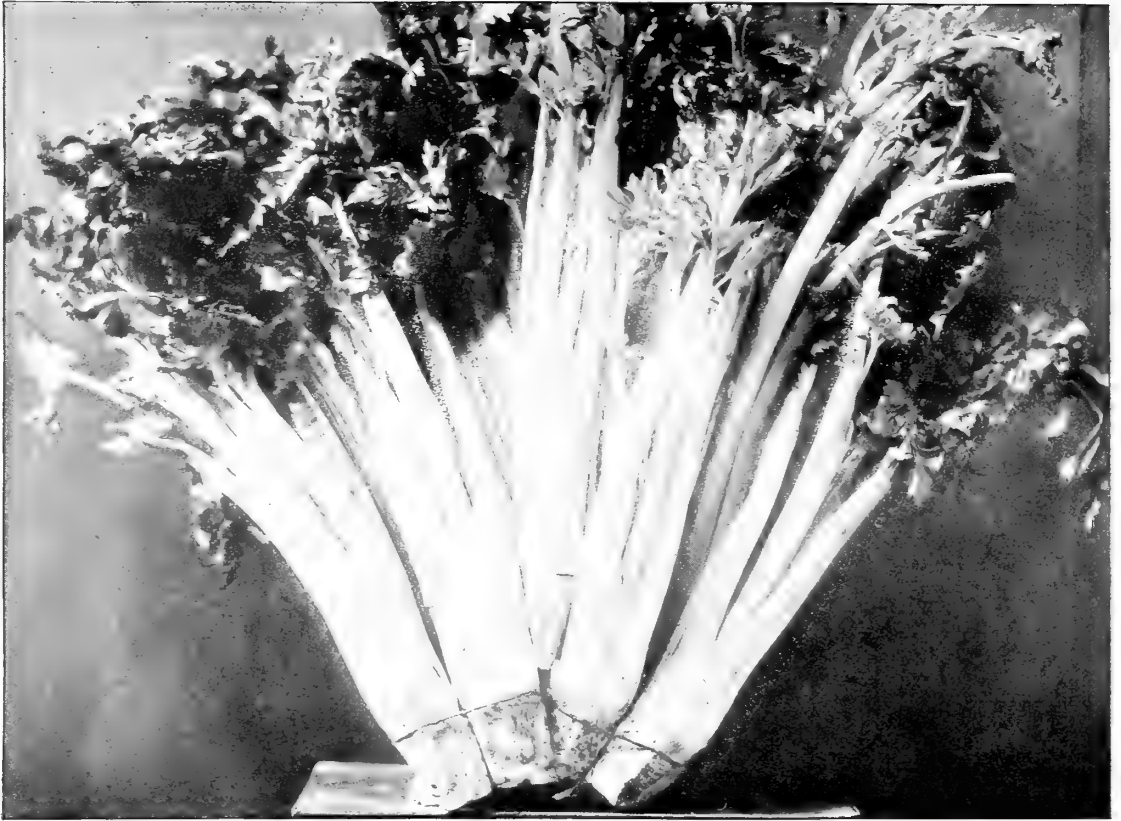
## Red Cabbage.

**Red Dutch Erfurt.** Oz., 20 cts.;  $\frac{1}{4}$  lb., 60 cts.; lb., \$2.00.

**Red Dutch Drumhead.** Oz., 20 cts.;  $\frac{1}{4}$  lb., 60 cts.; lb., \$2.00.

**Mammoth Rock Red.** Oz., 25 cts.;  $\frac{1}{4}$  lb., 75 cts.; lb., \$2.50.

**CABBAGE PLANTS.** (*See page 27.*)



DREER'S MONARCH CELERY.

**CELERY—Ger. Cellerie.**

**Dreer's Monarch.** (*See cut.*) A decided acquisition in green Celery, producing large stalks, and magnificent bright golden-yellow heart. The stalks are very solid, brittle, and of most delicious celery flavor, and when properly grown it is entirely free from stringiness. It is a very desirable celery for the market gardener, as it is a remarkably good keeper, and when bunched ready for market presents a handsome appearance. Oz., 35 cts.; ¼ lb., \$1.00; lb., \$3.50.

**Winter Queen.** This variety was first introduced several years ago, and has proved a valuable sort, particularly on account of its excellent winter-keeping qualities. It grows a very thick, solid and heavy stalk, and has a large heart. It is a close compact grower, and when blanched is a creamy-white color. Oz., 35 cts.; ¼ lb., \$1.00; lb., \$3.50.

**Shumacher.** We have been selling this splendid variety to satisfied customers for several years past, and believe that we have the purest strain that is offered. The stalks grow to an immense size, and are perfectly solid and crisp. It has a firm and beautiful golden heart, and the flavor is first-class. Oz., 20 cts.; ¼ lb., 60 cts.; lb., \$2.00.

**Golden Self-Blanching.** An early, beautiful, and in every way desirable sort, requiring but little labor to blanch. The heart is a rich golden yellow, with light yellowish-green outer leaves. American grown seed. Oz., 30 cts.; ¼ lb., 85 cts.; lb., \$3.00.

**Originator's Golden Self-Blanching.** (French grown seed.) We have secured a stock of seed from the originator in France. This produces a more solid stalk than American seed, and is far superior in every way. Oz., 40 cts.; ¼ lb., \$1.50; lb., \$5.00.

**White Plume.** We offer a choice strain of this valuable and popular variety. The White Plume is unsurpassed for fall and early winter use, requiring very little earthing up to blanch it. Oz., 25 cts.; ¼ lb., 75 cts.; lb., \$2.25.

**Golden Half-Dwarf.** An excellent half-dwarf variety, stalks large and full; the heart is golden-yellow, turning to a light color when blanched. Very solid, rich flavor and good keeper. Oz., 20 cts.; ¼ lb., 50 cts.; lb., \$1.75.

**Giant Pascal.** A superior keeping sort. The stalks are large, thick, solid, crisp and of rich nutty flavor; it blanches easily and quickly, and retains its freshness a long time. Oz., 20 cts.; ¼ lb., 50 cts.; lb., \$1.75.

**Perfection Heartwell.** One of the very best varieties in cultivation; stalks long and thick, very compact, crisp and fine flavor. Oz., 20 cts.; ¼ lb., 50 cts.; lb., \$1.75.

**Varieties of Celery.**

	oz.	¼ lb.	lb.
Large White Solid . . . . .	20	50	\$1 50
Boston Market . . . . .	20	50	1 50
Sandringham Dwarf White . . . . .	20	50	1 50
New Golden Rose, Self-Blanching 30	1 00	3 00	
Dwarf Rose . . . . .	20	70	2 25
Pink Plume . . . . .	20	70	2 25

**CELERIAC.**

Apple-Shaped . . . . .	15	35	1 25
Giant Smooth Prague . . . . .	15	40	1 50

**CELERY PLANTS.** (*See page 27.*)

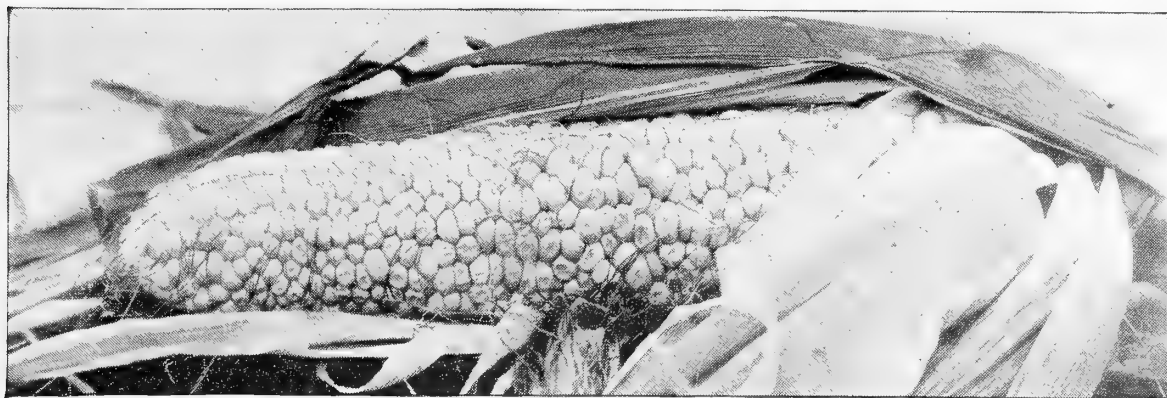
**COLLARDS.**

Creole, or Southern . . . . .	10	20	75
-------------------------------	----	----	----

**CORN SALAD.**

Large Seeded (5 lbs. or more, at 35 cts. per lb.) . . . . .	5	15	40
---	---	----	----





ZIG-ZAG EVERGREEN SWEET CORN.

## CORN—Sweet or Sugar. (Ger. Maiz.)

**Metropolitan.** This variety of extra early Sweet Corn is far superior to the well-known Early Cory, although but a few days later. It grows about 5½ feet high; ears set low, and is free from smut. Produces 2 to 3 large ears to the stalk, usually about 9 inches long, and have 10 to 12 rows of deep grains, even to extreme tip. It is sweet and sugary and the ears are covered with a strong husk, which makes it a valuable variety for shipping. Qt., 30 cts.; 4 qts., 70 cts.; pk., \$1.00; bu., \$4.00.

**Early Champion.** Medium early in ripening, and produces large ears which generally have about twelve rows of beautiful white, milky grains, which are very tender and sweet, and remain so for quite a period. This is a good variety for the market gardener to grow, as besides having so many good qualities, it is very productive. Qt., 25 cts.; 4 qts., 60 cts.; peck, 90 cts.; bu., \$3.50.

**Early Evergreen.** For many years the Stowell's Evergreen has been the most popular Sweet Corn. A Michigan grower, knowing this, has repeatedly made selections for earliness and the result is the "Early Evergreen." It ripens about ten days earlier, and produces ears a trifle shorter than the "Stowell's," but the quality is equally as good. It is a splendid variety to come in between the early and late sorts. Qt., 25 cts.; 4 qts., 60 cts.; peck, 90 cts.; bu., \$3.50

**Kendel's Early Giant.** This early variety of Sweet Corn is of recent introduction. Ears large, eight to ten inches long, pure white grains, which are very sweet and tender. Ready for use in sixty to seventy days after planting. Qt., 25 cts.; 4 qts., 60 cts.; peck, 90 cts.; bu., \$3.50.

**Dreer's First of All.** For a number of years past we have been offering this as one of the earliest Sweet Corns. It produces ears of medium size, very full, sweet, and of a most delicious flavor. Qt., 20c.; 4 qts., 50c.; pk., 85c.; bu., \$3.25.

**Adams' Extra Early.** Hardest and earliest variety for table use; can be planted earlier than any other. Qt., 20 cts.; 4 qts., 50 cts.; peck, 65 cts.; bu., \$2.50.

**White Cob Cory.** An improved variety of the Cory Corn with uniformly *white cobs*. Qt., 20 cts.; 4 qts., 50 cts.; peck, 75 cts.; bu., \$3.00.

**Crosby's Early.** Qt., 20 cts.; 4 qts., 50 cts.; peck, 75 cts.; bu., \$3.00.

**Potter's Excelsior.** Qt., 20 cts.; 4 qts., 50 cts.; peck, 75 cts.; bu., \$3.00.

**Stabler's Early.** Qt., 20 cts.; 4 qts., 50 cts.; peck, 75 cts.; bu., \$3.00.

### General Crop and Late.

**Zig-Zag Evergreen.** (*See cut.*) Of recent introduction. A very sweet Corn, ripening earlier than Stowell's Evergreen, and in quality fully its equal. The grains are same shape as "Stowell's," but are arranged on the cob in a zig-zag manner, hence its name. Qt., 20 cts.; 4 qts., 50 cts.; peck, 85 cts.; bu., \$3.25.

**Triumph.** Ears large, productive. Qt., 20 cts.; 4 qts., 50 cts.; peck, 75 cts.; bu., \$3.00.

**Egyptian.** A fine, large variety. Qt., 20 cts.; 4 qts., 50 cts.; peck, 75 cts.; bu., \$3.00.

**Little Gem.** (*Ne Plus Ultra or Shoe Peg.*) An old but excellent variety. Qt., 20 cts.; 4 qts., 50 cts.; peck, 85 cts.; bu., \$3.25.

**Country Gentleman.** (*See cut.*) An improvement on the Little Gem. Qt., 20 cts.; 4 qts., 50 cts.; peck, 85 cts.; bu., \$3.25.

**Roslyn Hybrid.** A medium-large variety. Qt., 20 cts.; 4 qts., 50 cts.; peck, 75 cts.; bu., \$3.00.

**Stowell's Evergreen.** One of the sweetest; ears large, deep-grained, of excellent quality. Qt., 20 cts.; 4 qts., 50 cts.; peck, 75 cts.; bu., \$3.00.

**Mammoth Sugar.** The largest late sort. Qt., 20 cts.; 4 qts., 50 cts.; peck, 75 cts.; bu., \$3.00.

**Black Mexican.** A black-grained variety. Qt., 20 cts.; 4 qts., 50 cts.; peck, 75 cts.; bu., \$3.00.

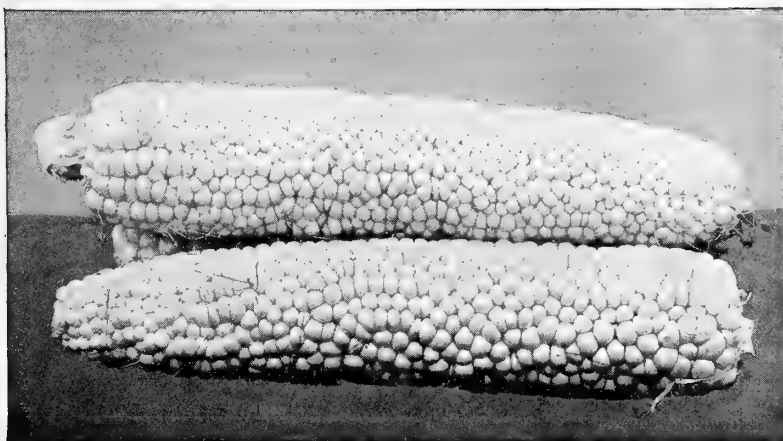
**Pop-Corn.** (*On the ear only.*)

**White Rice.** Best white. Lb., 20c., by mail; 10 lbs., 60c., by express.

**White Pearl.** Smooth-grained ears. Lb., 20c., by mail; 10 lbs., 60c., by express.

**Queen's Golden.** Lb., 20c., by mail; 10 lbs., 60c., by express.

**FIELD CORN.** All the leading reliable varieties. (*See page 28.*)



COUNTRY GENTLEMAN SWEET CORN.



IMPROVED ARLINGTON WHITE SPINE CUCUMBER.

## CUCUMBER.—Ger. Gurken.

**The "Cumberland."** This handsome cucumber is a cross of Parisian Pickle and Peerless White Spine, making an ideal variety for table use and for pickling. The vines are of strong, vigorous growth and very productive. The fruits are of handsome appearance and desirable size, very straight, firm, solid and crisp. The color is a rich pea-green, and flavor very fine. Oz., 25 cts.;  $\frac{1}{4}$  lb., 60 cts.; lb., \$2.25.

**Improved Arlington White Spine.** (See cut.) A magnificent strain of the White Spine which has been improved by careful selection, for forcing in hot-houses and frames. Oz., 10 cts.;  $\frac{1}{4}$  lb., 20 cts.; lb., 60 cts.

**Improved Early White Spine (Bennett's).** This is a favorite variety with market gardeners, and produces fine large cucumbers. Oz., 5 cts.;  $\frac{1}{4}$  lb., 15 cts.; lb., 50 cts.

**Emerald.** Of rich dark-green color during the entire period of its growth. The vines are exceedingly productive, fruits set early and are very handsome, long and straight, entirely free from spines. Oz., 15 cts.;  $\frac{1}{4}$  lb., 25 cts.; lb., 80 cts.

**Early Frame, or Short Green.** Excellent for table use or pickling. Oz., 5 cts.;  $\frac{1}{4}$  lb., 15 cts.; lb., 50 cts.

**Early Russian.** One of the earliest; the fruit is small and produced in pairs. Oz., 5 cts.;  $\frac{1}{4}$  lb., 15 cts.; lb., 50 cts.

**Early Cluster.** A very early sort, well adapted for forcing or open ground. Oz., 5 cts.;  $\frac{1}{4}$  lb., 15 cts.; lb., 50 cts.

**Nichol's Medium Green.** For early forcing, late sowing for pickling. Oz., 5 cts.;  $\frac{1}{4}$  lb., 15 cts.; lb., 50 cts.

**Green Prolific.** One of the best pickling varieties, dark green, tender, crisp. Oz., 5 cts.;  $\frac{1}{4}$  lb., 15 cts.; lb., 50 cts.

**Chicago Pickle.** Largely used by pickle manufacturers; of medium size; a prolific bearer. Oz., 5 cts.;  $\frac{1}{4}$  lb., 15 cts.; lb., 50 cts.

### English Forcing Cucumbers.

**Covent Garden Favorite, Rochford's Market, Lockies' Perfection.** In packets of 10 seeds each, 20 cts.; per 100 seeds, \$1.75.

**Duke of Edinburgh, Sion House Improved, Telegraph (Rollison's).** In packets of 10 seeds each, 15 cts.; per 100 seeds, \$1.40.

### DANDELION. Ger. Bardeblum.

**Broad-leaved.** Oz., 30 cts.;  $\frac{1}{4}$  lb., \$1.00; lb., \$3.50.

**Improved Thick-leaved.** An improved thick-leaved variety. Oz., 35 cts.;  $\frac{1}{4}$  lb., \$1.25; lb., \$4.00.

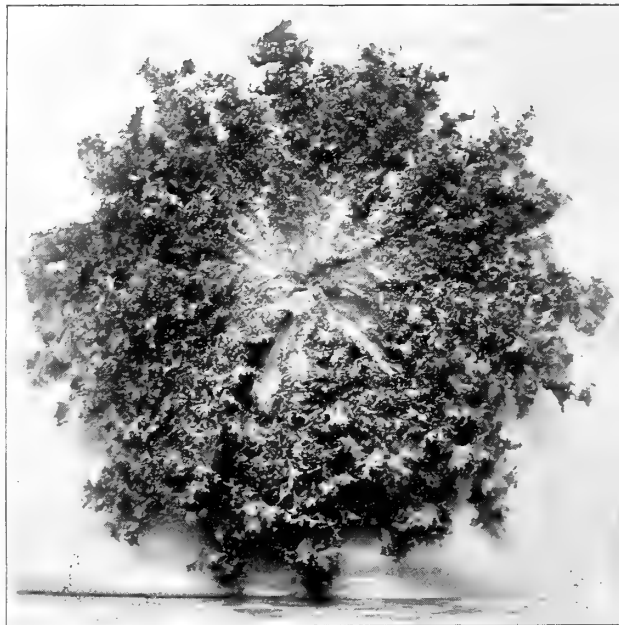
**Long Green (Jersey Pickle).** The leading long variety for pickling; fruit dark green. Oz., 5 cts.;  $\frac{1}{4}$  lb., 15 cts.; lb., 50 cts.

**Everbearing.** The peculiar merit of this variety is that the vines continue to flower and produce fruit in every stage of growth until killed by frost. It is of small size, very early. Oz., 10 cts.;  $\frac{1}{4}$  lb., 20 cts.; lb., 60 cts.

**Cool and Crisp.** A strain of White Spine, somewhat like the Arlington, but longer and more cylindrical. Very attractive. Oz., 5 cts.;  $\frac{1}{4}$  lb., 15 cts.; lb., 50 cts.

**Small Gherkin, or Burr.** Known as the West India or Jerusalem Pickle. Oz., 10 cts.;  $\frac{1}{4}$  lb., 25 cts.

**Japanese Climbing.** Medium size, well-formed, dark green color. Oz., 10 cts.;  $\frac{1}{4}$  lb., 30 cts.



DREER'S GIANT FRINGED ENDIVE. (See page 11.)

**EGG PLANT. Ger Eierpflanz.****New York Improved Large Purple.**

(*Dreer's selected.*) Our selected strain of this leading variety is vastly superior to most seed sold under the name of New York Improved. The seed is grown by us in New Jersey, and is of strong germination. The plants grow very healthy, are of low-spreading habit, and extremely prolific. The fruits are large, and free from thorns; color a beautiful dark purple. Very attractive. Oz., 25 cts.;  $\frac{1}{4}$  lb., 85c.; lb., \$3.00.

**Black Pekin.** Fruit purplish-black, round to globular, large, solid, smooth and glossy; very prolific, early, and of fine flavor. Oz., 25 cts.;  $\frac{1}{4}$  lb., \$1.00; lb., \$3.00.

**Early Long Purple.** The earliest and hardiest; very productive; fruit 6 to 10 inches long. Oz., 20 cts.;  $\frac{1}{4}$  lb., 60 cts.; lb., \$2.00.

**EGG PLANTS.** See *Vegetable Plants*, p. 27.

**ENDIVE. Ger. Endivie.****Dreer's Giant Fringed Oyster Endive.**

(See illustration on page 10.) This is the largest and most attractive variety grown; the pure white heart shows in beautiful contrast to the bright green of the broad stems. Oz., 15 cts.;  $\frac{1}{4}$  lb., 50 cts.; lb., \$1.75.

**Green Curled Winter.** Standard sort for fall and winter crop. Oz., 15 cts.;  $\frac{1}{4}$  lb., 35 cts.; lb., \$1.25.

**White Curled.** (*Self-blanching.*) Leaves pale green, grows to a large size, always crisp and very tender. Oz., 15 cts.;  $\frac{1}{4}$  lb., 35 cts.; lb., \$1.25.

**Broad-leaved Batavian. (Escarolle.)**

Leaves broad, light green, nearly plain, used in stews and soups. Oz., 15 cts.;  $\frac{1}{4}$  lb., 40 cts.; lb., \$1.40.

**GARLIC.** (See *Onion Sets*, page 15.)

**HORSE RADISH.** (See *Vegetable Plants*, p. 27.)

**KOHL RABI. Ger. Kohlrabi.**

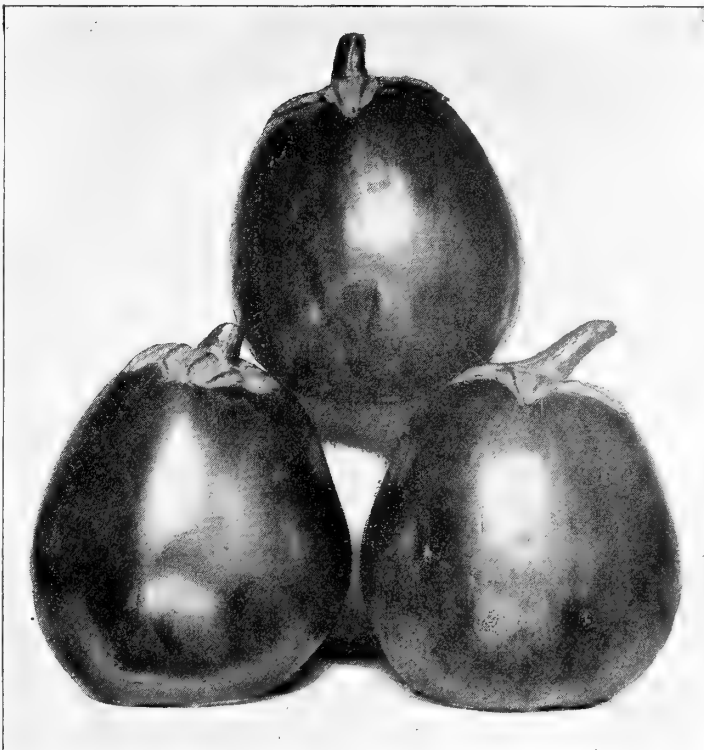
**Earliest Frame Green Vienna.** Best for forcing.

Oz., 25 cts.;  $\frac{1}{4}$  lb., 80 cts.; lb., \$3.00.

**Earliest Erfurt.** A white, tender variety, with a smooth short top; the best variety for out-door culture. Oz., 25 cts.;  $\frac{1}{4}$  lb., 75 cts.; lb., \$2.50.

**Early White, or Green Vienna.** Flesh white and tender; best for market, table use, or forcing; very short top. Oz., 20 cts.;  $\frac{1}{4}$  lb., 50 cts.; lb., \$1.75.

**Early Purple Vienna.** Bluish-purple, similar to the above except in color. Oz., 20 cts.;  $\frac{1}{4}$  lb., 50 cts.; lb., \$1.75.



DREER'S NEW YORK IMPROVED LARGE PURPLE EGG PLANT.

**KALE, or Borecole.**

**Ger. Krauskohl.**

**Dreer's Imperial Long Standing.** A beautifully curled and crimped sort, of strong, vigorous habit, perfectly hardy, attractive appearance, and a bright green color. Oz., 10 cts.;  $\frac{1}{4}$  lb., 20 cts.; lb., 60 cts.; 5 lbs., \$2.75.

**Dwarf Green Curled German.** Leaves yellowish green, very compact and beautifully curled. Oz., 10 cts.;  $\frac{1}{4}$  lb., 25 cts.; lb., 70 cts.

**Dwarf Curled Scotch.** Leaves bright green, curled, very tender and fine flavored. Oz., 10c.;  $\frac{1}{4}$  lb., 25c.; lb., 70c.

**Sea Kale.** Grown for its blanched shoots, which are cooked like asparagus. Pkt., 10 cts.; oz., 20 cts.;  $\frac{1}{4}$  lb., 65 cts.

**LEEK. Ger. Porro.**

**Large American Flag.** Large, hardy, and of excellent quality. Oz., 15 cts.;  $\frac{1}{4}$  lb., 40 cts.; lb., \$1.40.

**Giant Carentan.** This is the favorite market variety, large thick stem, of mild flavor and attractive appearance. Oz., 15 cts.;  $\frac{1}{4}$  lb., 40 cts.; lb., \$1.40.

**Musselburg.** Grows to a very large size; hardy and of excellent quality. Oz., 15 cts.;  $\frac{1}{4}$  lb., 40 cts.; lb., \$1.40.

**London Flag.** An old and popular sort. Oz., 10 cts.;  $\frac{1}{4}$  lb., 30 cts.; lb., \$1.00.

**English Milltrack Mushroom Spawn.**

Per brick, 15 cts. (by mail, 25 cts.); 1 dozen bricks, \$1.50; 25 lbs., \$2.00; 100 lbs., \$6.00; 1000 lbs., \$55.00 (250 lbs. at the 1000 lb. rate).

**French Spawn.**

Loose, in boxes, per 3 lb. box, \$1.15 by express.



A PLATE OF WELL-GROWN MUSHROOMS.

Copyrighted 1898  
by HENRY A. DREER.

# LETTUCE (Ger. Salat.)



DREER'S IMPROVED DEACON LETTUCE.

**Mignonette.** Heads small, compact, leaves slightly curled, edges tinged brown, splendid quality. Oz., 15 cts.;  $\frac{1}{4}$  lb., 45 cts.; lb., \$1.75.

**Salamander.** An excellent spring, summer and fall variety, forming good-sized heads. Oz., 15 cts.;  $\frac{1}{4}$  lb., 40 cts.; lb., \$1.25.

**Improved Deacon (Dreer's).** (See illustration) One of the best summer cabbage sorts; very crisp, large and light in color. Oz., 10 cts.;  $\frac{1}{4}$  lb., 30 cts.; lb., \$1.00.

**Sensation.** This variety is remarkable for its character of forming close, hard heads, even in an early stage of growth. Color yellowish-green, quality very fine, being crisp and tender. Oz., 15 cts.;  $\frac{1}{4}$  lb., 35 cts.; lb., \$1.50.

**Wonderful.** The large, white heads resemble cabbage in their solidity, and frequently weigh 2 and 3 pounds each. The quality is superb, being crisp, rich and tender. It withstands the heat well. Oz., 20 cts.;  $\frac{1}{4}$  lb., 60 cts.; lb., \$2.00.

**DREER'S Improved Hanson.** This superior Lettuce, which we introduced twenty-nine years ago, is the best summer heat-resisting sort. The heads grow to a remarkable size, and are sweet, tender and crisp. For out-door culture it is unequalled. Oz., 15 cts.;  $\frac{1}{4}$  lb., 35 cts.; lb., \$1.25.

**Silver Ball.** An excellent variety, as well for early spring and summer use as for winter forcing. The heads are silvery white, very firm and compact. Oz., 15 cts.;  $\frac{1}{4}$  lb., 30 cts.; lb., \$1.00.

### Varieties of Lettuce.

The following varieties are so well known as to not need description:

	Oz.	$\frac{1}{4}$ lb.	lb.
California Cream Butter . . . . .	10	30	\$1 00
Early White Cabbage . . . . .	10	30	1 00
Golden Queen (Forcing) . . . . .	15	35	1 25
Denver Market . . . . .	10	30	1 00
Yellow-Seeded Butter . . . . .	10	30	1 00
Defiance . . . . .	10	30	1 00

### Varieties of Romaine or Cos. Lettuce.

Kingsholm Cos. . . . .	15	35	\$1 25
Paris White Cos. . . . .	15	35	1 25
Trianon, Self-Folding Cos. . . . .	15	35	1 25

**Big Boston.** Resembles Boston Market, but nearly twice as large; desirable for forcing and for spring and fall out-door planting. Oz., 15 cts.;  $\frac{1}{4}$  lb., 40 cts.; lb., \$1.50.

**Boston Market.** (*White Seed.*) Hardy and crisp; one of the best for forcing. Oz., 10 cts.;  $\frac{1}{4}$  lb., 30 cts.; lb., \$1.00.

**Black-Seeded, Tennisball.** Forms a close, hard head, with few outer leaves. Oz., 10 cts.;  $\frac{1}{4}$  lb., 30 cts.; lb., \$1.00.

**Hittinger's Belmont Forcing.** An improvement on the Boston Market, larger in size, crisp and tender quality. Oz., 15 cts.;  $\frac{1}{4}$  lb., 45 cts.; lb., \$1.75.

**Emperor Forcing.** Very early, small. Oz., 15 cts.;  $\frac{1}{4}$  lb., 35 cts.; lb., \$1.25.

**Early Curled Simpson.** (*Silesia.*) Forms a close, compact mass of leaves; very early, excellent for forcing. Oz., 10 cts.;  $\frac{1}{4}$  lb., 30 cts.; lb., \$1.00.

**Black-Seeded Simpson.** Produces a compact mass of leaves, light color, nearly double size of ordinary Simpson. Oz., 15 cts.;  $\frac{1}{4}$  lb., 35 cts.; lb., \$1.25.

**Grand Rapids Forcing.** Matures quickly; large size, handsome appearance; crisp and tender. Oz., 15 cts.;  $\frac{1}{4}$  lb., 30 cts.; lb., \$1.00.

**Early Dutch Butter, Spotted.** Producing fine large heads of excellent quality, and one of the best forcing and market sorts; also stands the heat well in summer. Oz., 15 cts.;  $\frac{1}{4}$  lb., 35 cts.; lb., \$1.25.

**Dreer's "All Heart."** This new and distinct Cabbage Lettuce is excellent for spring and summer use, as it stands intense heat. It is of a yellowish-green color, and forms a solid heart, even before it is half grown. It is of superior flavor. Oz., 40 cts.;  $\frac{1}{4}$  lb., \$1.50.

**Mammoth Salamander** (see illustration). Grows about double the size of Salamander. Oz., 20 cts.;  $\frac{1}{4}$  lb., 60 cts.; lb., \$2.00.



DREER'S MAMMOTH SALAMANDER LETTUCE.

**MUSKMELONS**—Ger. Cantalupe.

**Jenny Lind.** The earliest variety; excellent flavor. Oz., 10 cts.;  $\frac{1}{4}$  lb., 20 cts.; lb., 50 cts.

**Golden Jenny.** A small, highly-prized early variety; good shipper. Oz., 10 cts.;  $\frac{1}{4}$  lb., 20 cts.; lb., 50 cts.

**Netted Gem.** Globular shape, uniform in size; flesh light green, of very fine flavor; a popular variety with market gardeners. Oz., 10 cts.;  $\frac{1}{4}$  lb., 20 cts.; lb., 60 cts.

**Rocky Ford.** This delicious melon is of the Netted Gem type, oval in shape and beautifully netted. It has been improved at Rocky Ford, Colorado, a section noted for its fine muskmelons, and from this point they have been shipped in carload lots to every city in the United States, thus gaining a national reputation for the "Rocky Ford." The melons average about 5 inches in length, and are of most delicious flavor; flesh is smooth grained and light green color. This is the most popular variety of muskmelons grown, and in season will be found on the tables of all the leading hotels and restaurants. The seed we offer is of the true oval type so highly prized by the growers at Rocky Ford, Colorado. Oz., 10 cts.;  $\frac{1}{4}$  lb., 30 cts.; lb., 80 cts.

**Jersey Belle.** A green-fleshed melon of Jenny Lind type, but double the size. The melons are flat with heavy ribs and coarse netting; flavor very good. Oz., 10 cts.;  $\frac{1}{4}$  lb., 20 cts.; lb., 60 cts.

**Newport.** A small melon, but of superior quality. In size, shape and appearance it is of the original Jenny Lind type. Oz., 10 cts.;  $\frac{1}{4}$  lb., 20 cts.; lb., 60 cts.

**Norfolk Button.** A type of the old Jenny Lind. Some melons have button at blossom end. Early and good quality. Oz., 10 cts.;  $\frac{1}{4}$  lb., 20 cts.; lb., 60 cts.

**Hackensack.** One of the best, of large size and attractive appearance; very productive and of excellent flavor. Sometimes called Turk's Cap, and for years was considered the favorite. Oz., 10 cts.;  $\frac{1}{4}$  lb., 20 cts.; lb., 50 cts.



GENUINE ROCKY FORD MUSKMELONS.

**Extra Early Hackensack.** A careful selection from the Hackensack, with fruit much like its parent in shape and quality of the flesh, but ready for market 10 days earlier. Oz., 10 cts.;  $\frac{1}{4}$  lb., 20 cts.; lb., 60 cts.

**Montreal Market.** Largest of the nutmeg varieties; uniform in shape; netted; flesh green; quality remarkably good. Oz., 10 cts.;  $\frac{1}{4}$  lb., 20 cts.; lb., 50 cts.

**Green Citron.** Medium size, deeply netted, nearly round. Oz., 10 cts.;  $\frac{1}{4}$  lb., 20 cts.; lb., 50 cts.

**Cassabah.** Large, oblong, green flesh, very sweet. Oz., 15 cts.;  $\frac{1}{4}$  lb., 50 cts.; lb., \$1.50.

**Bay View.** Oz., 10 cts.;  $\frac{1}{4}$  lb., 20 cts.; lb., 50 cts.

**Irondequoit.** (See cut.) This is a superb, orange-fleshed variety. Its form is nearly round, slightly flat at each end, and the melons grow to a good size for market. Oz., 10 cts.;  $\frac{1}{4}$  lb., 30 cts.; lb., 80 cts.

**Osage Gem.** The exterior of this melon somewhat resembles the Netted Gem, but interior is more like the Miller's Cream and Paul Rose, the flesh being a rich salmon color, very thick, solid and of fine flavor. Oz., 15 cts.,  $\frac{1}{4}$  lb., 35 cts.; lb., \$1.00.

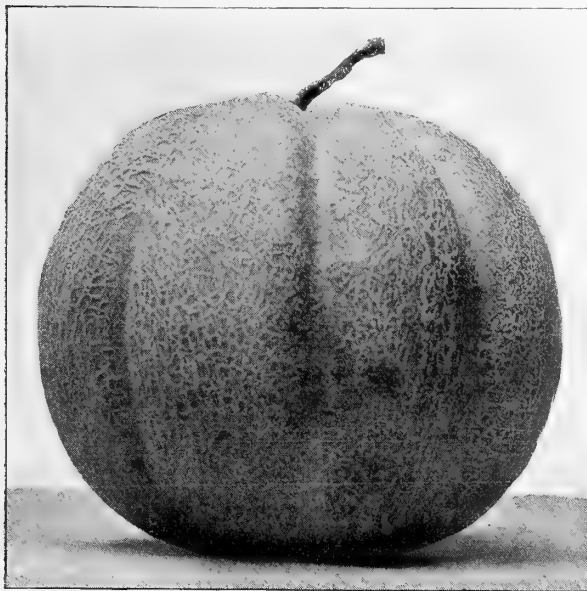
**Kinsman Queen.** Those fond of the orange-fleshed melons will be delighted with this variety. The melons are heavily ribbed, skin pale green, flesh two inches thick and flavor delicious. Oz., 10 cts.;  $\frac{1}{4}$  lb., 20 cts.; lb., 60 cts.

**Paul Rose.** Flesh thick, firm and beautiful; deep salmon or orange color, deliciously sweet and melting. Oz., 10 cts.;  $\frac{1}{4}$  lb., 30 cts.; lb., 80 cts.

**Miller's Cream, or Osage.** A remarkably good variety, of large size and delicious flavor. The fruits are large and round, with light green, netted skin, and thick, sweet, salmon-colored flesh. Oz., 10 cts.;  $\frac{1}{4}$  lb., 20 cts.; lb., 60 cts.

**Perfection, or Princess.** Melons are nearly round in shape, skin a dark green and flesh-orange color. In flavor this variety is most delicious and sweet; a good variety for market. Oz., 10 cts.;  $\frac{1}{4}$  lb., 20 cts.; lb., 50 cts.

**Emerald Gem.** A small, very early melon, form globular; flesh-salmon colored; the flavor is exceptionally fine—solid and thick, exterior dark green. The ribs are marked, but skin is not netted. Oz., 10 cts.;  $\frac{1}{4}$  lb., 20 cts.; lb., 60 cts.



IRONDEQUOIT MUSKMELON.





HOOSIER KING WATERMELON.

# WATERMELONS — Ger. Wassermelone.

**Cole's Early.** A splendid extra early variety, suitable for home market, but on account of its thin rind is not a good shipping melon. They grow to medium size, skin is green, with light stripes; flesh rich dark red, luscious and sweet. The vines are strong growers, and very prolific. Oz., 10 cts.; ¼ lb., 20 cts.; lb., 60 cts.

**Nabob.** A fine variety, shape of Kolb Gem, but different color, being mottled. Grow to weigh 50 to 60 lbs. each, with thin firm rind. Two average-sized men have stood, bearing their whole weight on a "Nabob" weighing 30 lbs., without cracking the rind or injuring the melon. They are of most delicious quality, sweet, luscious and melting. The Melons stand shipping a long distance. Oz., 10 cts.; ¼ lb., 20 cts.; lb., 60 cts.

**Hoosier King.** (See cut.) Large, oblong shape, skin striped light and dark green. The flesh is brilliant red, very solid, sweet and luscious; the rind is thin, but tough, making it a good variety for shipping. The beautiful markings of the "Hoosier King," together with desirable shape, make it attractive and salable. Oz., 10 cts.; ¼ lb., 20 cts.; lb., 60 cts.

**Wonderful, or McIver Sugar.** In our trials of Watermelons the "Wonderful" proved to be one of the sweetest of all. It not only grew to large size, but ripened up uniformly and made fine, solid melons. It originated with a melon grower in North Carolina, and is only of recent introduction outside of its native clime, but grows satisfactorily in all districts where watermelons will ripen. It is a very sweet, solid-fleshed sort, often grows to the length, of 2 feet, and from 12 to 16 inches in diameter. The rind is marked with broad bands of yellowish green, shading to deep green; shaped oblong; is entirely stringless, and free from hard core. We consider it an acquisition. Oz., 10 cts.; ¼ lb., 20 cts.; lb., 60 cts.

**Sweet-Heart.** An entirely distinct and handsome new Watermelon. Vine vigorous and productive, ripening early. Fruit large, oval, very heavy, uniformly mottled light and dark green. Flesh bright red, solid and very tender, melting and sweet. The melons retain their good quality for a long time after ripening; is sure to become a popular variety. Oz., 10 cts.; ¼ lb., 20 cts.; lb., 60 cts.

**Dixie.** A cross between the Kolb Gem and old-fashioned Mountain Sweet, surpassing the former in earliness, productiveness, and shipping qualities, and fully equaling the latter in quality and fine flavor. Oz., 10 cts.; ¼ lb., 20 cts.; lb., 50 cts.

**Jordan's Gray Monarch, or Long Light Icing.** A variety of Icing melon producing large oblong melons. Color of skin, very light green. Quality fully equal to Dark Icing. Oz., 10 cts.; ¼ lb., 20 cts.; lb., 60 cts.

**Dark Icing.** The flavor of this variety cannot be excelled. It is very solid, rind very thin, and highly prized as a shipper; seed white. Oz., 10 cts.; ¼ lb., 15 cts.; lb., 50 cts.

**Iron-Clad.** Of large size and very solid. The rind, though quite thin, is remarkably strong, thus rendering it an excellent shipping sort. It is of a most delicious flavor. Oz., 10 cts.; ¼ lb., 20 cts.; lb., 50 cts.

**Kleckley Sweets.** Shape oblong, skin dark green, rind thin, heart large, meaty and luscious flavor. Oz., 10 cts.; ¼ lb., 20 cts.; lb., 60 cts.

**Kolb Gem.** This melon grows to a very large size, and is an excellent shipper. Of a delicious sugary flavor; bright red flesh, firm and solid. Oz., 10 cts.; ¼ lb., 20 cts.; lb., 50 cts.

**Seminole.** An early Watermelon, of large size and delicious flavor. Flesh a vivid crimson color; crisp and sugary. Oz., 10 cts.; ¼ lb., 20 cts.; lb., 50 cts.

**Florida Favorite.** Medium size, striped alternately light and dark green, flesh deep red, crisp and deliciously sweet. Earlier than Kolb Gem. Oz., 10 cts.; ¼ lb., 20 cts.; lb., 50 cts.

## Well known varieties of Watermelon

striped Gypsy, or	Oz.	¼ lb.	lb.
Georgia Rattlesnake . . . . .	10	15	50
Ice Cream . . . . .	10	15	50
Black Spanish . . . . .	10	15	50
Mountain Sweet . . . . .	10	15	50
Boss . . . . .	10	15	50
Cuban Queen . . . . .	10	15	50

## MUSTARD.

White London . . . . .	5	10	25
Chinese . . . . .	10	25	80

## MARTYNIA.

Martynia Proboscidea . . . . .	25	75	\$2 50
--------------------------------	----	----	--------

# Dreer's Choice Onion Seed

**NEW ONION SEED.** We offer none but new seed of all varieties, grown from selected bulbs and critically tested. It is of strong germination and will produce grand crops. We caution onion growers against old seed which will be offered by unscrupulous parties, as the crops of some varieties were short the past season, and much old seed will be sold as new.

**Yellow Globe Danvers.** (*See cut.*)

A standard sort and one of the most desirable; an excellent keeper and very productive. Our strain of this variety is the true globe shape, and not of the flat type. Onion growers throughout the country prefer this type of onion to all others, and it is with this in view that the bulbs from which our seed is grown are specially and carefully selected as to shape. It is the best paying onion that is grown for general crop, and will be the leading variety for years. Oz., 10 cts.;  $\frac{1}{4}$  lb., 35 cts.; lb., \$1.10; 5 lbs. or more, at \$1.00 per lb.

**Southport Yellow Globe.** (*Connecticut grown.*)

A very large, handsome, globular-shaped yellow-variety, very productive, of mild flavor. This is also a favorite variety with the onion grower. The outer skin is a beautiful pale yellow; the bulbs are of a beautiful globe shape, and good keepers. The Connecticut-grown seed of this variety is far better than that grown in other sections, and will produce larger and better crops. Oz., 15 cts.;  $\frac{1}{4}$  lb., 40 cts.; lb., \$1.25; 5 lbs. or more, at \$1.10 per lb.

**Philadelphia Yellow Dutch, or Strasburg.** A

leading market variety; a good keeper and well flavored; bright straw-colored skin and somewhat flattened shape. The onions grow to a good size and are rather flat. This variety is largely grown for sets on account of its excellent keeping qualities, and the ready sale of same during the spring months. Oz., 10c.;  $\frac{1}{4}$  lb., 35c.; lb., \$1.10.; 5 lbs. or more, at \$1.00 per lb.

**Rhode Island Yellow Cracker.** An extra early variety, popular in the Rhode Island markets. An excellent sort to raise where the seasons are short. We believe that when this variety is better known it will rank among the most popular sorts. It is a good keeper and also a good seller. Oz., 15 cts.;  $\frac{1}{4}$  lb., 40 cts.; lb., \$1.35.



YELLOW GLOBE DANVERS ONION.

**Australian Brown Onion.** This onion is of recent introduction, and its extraordinary keeping qualities have made it a favorite variety with those who have planted it. The bulbs grow to good marketable size and are very hard and solid. They ripen earlier than either the yellow Danvers or Red Wethersfield, are beautiful brown color and mild flavor. A good thing in their favor is the fact that the crop runs uniform in size and shape; nearly every plant produces a fine onion. When better known, this variety will be used extensively by onion growers, as its good keeping qualities are bound to make a favorable impression. Oz., 10c.;  $\frac{1}{4}$  lb., 35c.; lb., \$1.15.

**Prizetaker.** (*See cut.*) This is the large pale yellow onion that is offered for sale in the fruit stores and markets in the fall.

It grows to a very large size; flesh white, of mild and delicate flavor. The large onions are raised first year from seed, and with ordinary culture produce enormous crops. The onions sometimes go over 5 lbs. each in weight where good soil and culture is given them. Each year the demand for pure seed of this beautiful onion grows larger, and the onions always meet with a ready sale on the markets. Our seed is pure and the genuine Prizetaker. Oz., 10 cts.;  $\frac{1}{4}$  lb., 35 cts.; lb., \$1.15.

**Southport White Globe.** (*Connecticut grown.*)

Pure white color, mild flavor, and equally as good for keeping as the yellow sort. It is an enormous yielder, sometimes producing as much as 1300 bushels to the acre, and always sells at high prices. It is best to dry these onions in a shady place, and one where they will get plenty of air. Our seed of this splendid variety is very fine, and raised from selected bulbs, and is much better than ordinary seed offered by other houses. Oz., 20 cts.;  $\frac{1}{4}$  lb., 60 cts.; lb., \$2.00.

**White Pearl.** One of the earliest varieties, pure white, mild flavor and attractive. Not a good keeper, but its quick growth makes it a good sort to grow for early market. Oz., 20c.;  $\frac{1}{4}$  lb., 65c.; lb., \$2.25.

**White Onion, for Bunching.** Sow seed latter part of spring; keep cultivated during summer, and in the fall cover lightly with litter. As soon as snow is off, rake off litter and dead tops, and the onions will soon show themselves; they will be ready for pulling about the time that ordinary sets are being planted. They do not make much bottom, and are distinctively a bunch Onion. Oz., 25 cts.;  $\frac{1}{4}$  lb., 80 cts.



GENUINE PRIZETAKER ONION.

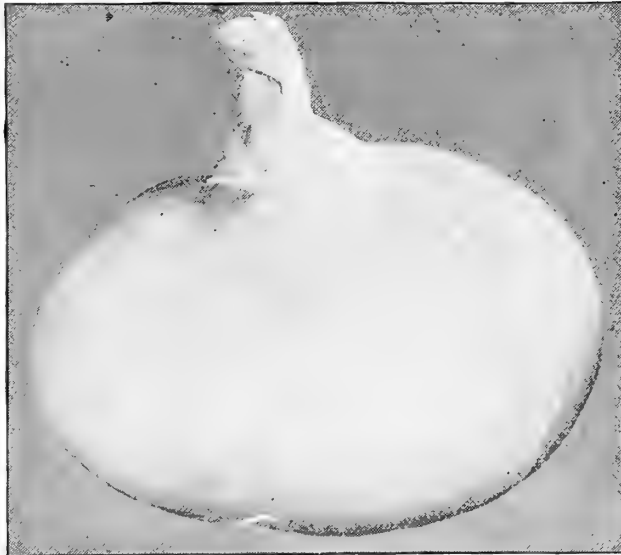


LARGE RED WETHERSFIELD ONION.

**Large Red Wethersfield.** (*See cut.*) A leading variety in the Eastern States, grows to full size the first season from seed; almost round, large, deep-red; keeps well. This is one of the leading market onions and produces good crops of large onions which are of desirable mild flavor. Oz., 10 cts.;  $\frac{1}{4}$  lb., 35 cts.; lb., \$1.15.

**Extra Early Red.** Earlier than the Wethersfield and somewhat smaller, close grained and a good keeper. It is somewhat the shape of the Cracker onion, but hardier. Oz., 10 cts.;  $\frac{1}{4}$  lb., 30 cts.; lb., \$1.00.

**Southport Red Globe.** (*Connecticut grown.*) Good size, beautiful globe-shaped, a good keeper and of superior quality. This variety is very popular on the market as a red sort. Oz., 15 cts.;  $\frac{1}{4}$  lb., 40 cts.; lb., \$1.25.



WHITE PORTUGAL, OR SILVER SKIN ONION.

**White Portugal, or Silver Skin.** (*See cut.*) This variety is one of the leading white sorts, and is of beautiful shape and very mild flavor. The bulbs are flat in shape and mature early. It is a splendid variety for both family use and the market gardener, and is very largely used for growing sets on account of its fine shape when small, and also for its good keeping qualities. It is also extensively used as a pickling onion, for which purpose it seems to be finely adapted. Oz., 20 cts.;  $\frac{1}{4}$  lb., 60 cts.; lb., \$2.00.

**White Queen.** A rapid-growing variety of mild flavor. This is the earliest onion grown; they are very mild, pure white, and splendid for pickling. They grow small and can be sown thickly. Oz., 20 cts.;  $\frac{1}{4}$  lb., 65 cts.; lb., \$2.25.

**Mammoth Silver King.** This variety is noted for the extra large size onions it produces the first season from the seed. It is a large flat variety, averaging 5 to 6 inches in diameter. The skin is pure white and flesh remarkably tender and pleasing to the taste. Oz., 15 cts.;  $\frac{1}{4}$  lb., 60 cts.; lb., \$2.00.

**White Barletta.** An extra early small white onion; similar to White Queen, and makes bulbs about  $1\frac{1}{4}$  to  $1\frac{1}{2}$  inches in diameter; in shape flattened on top. It is a good keeper, and as a pickling variety it is unexcelled. Oz., 20 cts.;  $\frac{1}{4}$  lb., 65 cts.; lb., \$2.25.

**Large Red Tripoli.** Large, red, flat; free from strong aroma, and keep well during winter, Oz., 15 cts.;  $\frac{1}{4}$  lb., 40 cts.; lb., \$1.35.

**Bermuda White.** (*Teneriffe stock.*) The Bermudas are the earliest onions in the market, and are grown extensively in the South; matures earlier than the red. The outer skin is of straw color and flesh pure white. Oz., 20 cts.;  $\frac{1}{4}$  lb., 65 cts.; lb., \$2.50.

**Bermuda Red.** (*Teneriffe stock.*) Similar to the white, but with deep red skin. These are on the market very early in the spring and are grown profitably in the South. The quality is very good. Oz., 20 cts.;  $\frac{1}{4}$  lb., 65 cts.; lb., \$2.50.

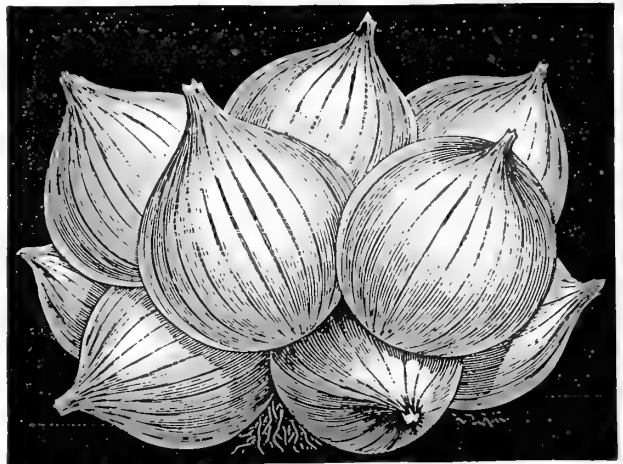
## Choice Onion Sets.

Prices subject to market changes.

Postage on Onion Sets 10 cents per quart additional.

Onion Sets should be planted out as early in the spring as the ground is dry enough to work; plant them in rows one foot apart, with sets 3 or 4 inches apart in the row.

	Qt.	$\frac{1}{2}$ pk.	Pk.	Bu.
Yellow Onion Sets	\$0 15	\$0 50	\$0 80	\$3 00
White Onion Sets	20	65	1 00	3 50
Red Onion Sets	20	65	1 00	3 50
White Potato (Multiplier)	20	65	1 00	3 50
Yellow Potato Onions	20	65	1 00	3 50
Egyptian, or Perennial Tree	20	60	1 00	3 25
Shallots	25	75	1 50	4 50
Garlic.	Lb., 25 cts.; 5 lbs., \$1.00.			



WHITE POTATO, OR MULTIPLIER ONIONS.



**OKRA, or Gombo.**—*Ger. Safran.*

**Dreer's Improved Long Green Okra.** (*See cut.*) A very desirable sort for market gardeners; of medium height; very productive. This is the finest strain of Okra that can be procured, and was the best among the many varieties we grew at our experimental grounds. The pods are produced abundantly and grow very long, and remain extremely tender for a long time; they are also entirely free from hard ridges. Oz., 10 cts.;  $\frac{1}{4}$  lb., 20 cts.; lb., 50 cts.

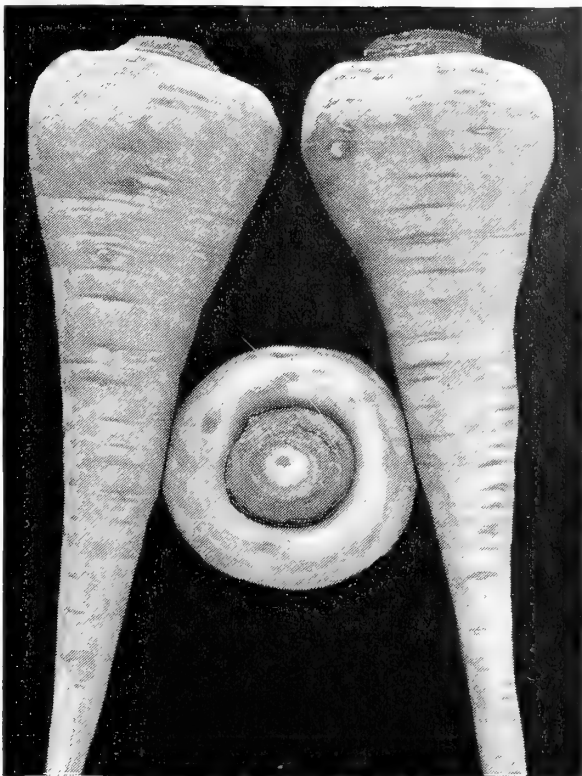
**Dreer's Little Gem.** The best of the dwarf sorts. Pods long, slender, and of light green color. Oz., 10 cts.;  $\frac{1}{4}$  lb., 20 cts.; lb., 60 cts.

**White Creole** (*White Velvet*). This variety is largely grown in the South, and is preferred by many to the green-podded sorts; is considered more tender and of better flavor. Pods free from ridges. Oz., 10 cts.;  $\frac{1}{4}$  lb., 15 cts.; lb., 50 cts.

**PARSNIP.**—*Ger. Pastinake.*

**Large Sugar, or Hollow Crown.** The illustration shown herewith shows the beautiful shape of our strain of this vegetable, also the true hollow crown. It is the best variety for market gardeners to grow. The roots are long, very smooth, white, tender, sugary, and of excellent flavor. This strain was made by careful selection of roots growing to an ideal shape and having the distinct hollow crown. We have been improving it for some years past and now have it nearly perfect, the roots growing very uniform in size and shape. The quality is all that could be desired, being sweet and sugary. It is a much heavier cropper than the old Hollow Crown parsnip. Oz., 5 cts.;  $\frac{1}{4}$  lb., 15 cts.; lb., 50 cts.; 5 lbs. for \$2.25.

**Student, or Guernsey.** A good, half-long, variety, very sweet and of fine flavor. Oz., 5 cts.;  $\frac{1}{4}$  lb., 15 cts.; lb., 40 cts.



LARGE SUGAR, or HOLLOW CROWN PARSNIP.

**PARSLEY.**—*Ger. Petersilie.*

**Dreer's Dwarf Perfection.** This is a fine and most valuable Parsley. The habit is regular and compact, and the exquisitely fine and prettily curled leaves are set so closely that the form of the plant is almost semi-globular. The color is a wonderful bright pea-green, and flavor surpasses all other Parsley. This variety combines the qualities of a fine culinary herb with those of a beautiful decorative plant, and is equally valuable for garnishing purposes and borders. Seed very scarce this year and we can only supply in packets, price, per pkt., 15 cts.; 2 pkts. for 25 cts.

**Dwarf Extra Curled Perpetual.** Leaves tender, crimped and very curly, of a bright green color, and very ornamental. Oz., 10 cts.;  $\frac{1}{4}$  lb., 20 cts.; lb., 60 cts.

**Champion Moss Curled.** A distinct variety of unequalled merit, beautifully crimped and curled. Oz., 10 cts.;  $\frac{1}{4}$  lb., 20 cts.; lb., 60 cts.

**Fern Leaved.** Nothing better for garnishing could be desired. Stands the winter if covered before frost. Oz., 10 cts.;  $\frac{1}{4}$  lb., 25 cts.; lb., 75 cts.

**Half Curled.** A medium curled variety for garnishing and seasoning. Oz., 10 cts.;  $\frac{1}{4}$  lb., 20 cts.; lb., 50 cts.

**Dreer's Summer Green.** Market gardeners desire a special strain of Parsley for summer use, one that will stand the extreme heat during the hot months of July and August. We are pleased to offer this variety as one especially adapted for the purpose. It is a strong and vigorous grower, and produces large, finely curled leaves of a beautiful dark green color, which it holds for a long time after all other varieties have turned yellow. We can recommend this new variety, as we are confident that it will give satisfaction. Oz., 15 cts.;  $\frac{1}{4}$  lb., 25 cts.; lb., 90 cts.

**Turnip Rooted, or Hamburg.** The fleshy root resembles a parsnip, and is used for flavoring soups, stews, etc. Oz., 10 cts.;  $\frac{1}{4}$  lb., 20 cts.; lb., 50 cts.



DREER'S IMPROVED LONG GREEN OKRA.

Ounces and  $\frac{1}{4}$  lbs. are sent by mail postpaid at prices given in this catalogue. When larger quantities are wanted, add 8 cts. per lb. for postage if seeds are desired sent by mail, otherwise we send by freight or express at purchaser's expense.

## Dreer's Selected Garden Peas.—Ger. Erbsen.



THE "THOMAS LAXTON" PEA.

### Extra Early Varieties.

#### Dreer's Extra Early Electric.

This is a variety of the green-seeded Alaska type, but a great improvement, being much earlier than the Alaska and bearing larger pods. The vines grow from 2½ to 3 feet high, and are literally loaded down with pods, which are crowded with the large peas, closely shouldered in pod. It is very uniform in growth, and usually produces pods containing seven or eight peas. The quality is excellent, remaining tender until fully matured. As an "Extra Early" for the market gardener we can recommend this variety very highly. Qt., 25 cts.; 4 qts., \$1.00; peck, \$1.50; bu., \$6.00.

#### Dreer's Eureka Extra Early.

One of the earliest and most prolific extra early varieties, which has given the best results wherever grown, and is a standard for earliness and fine quality. It is an extremely even cropper, and can be gathered clean in two pickings. For a late fall crop it has few equals; height 20 inches. Qt., 25 cts.; 4 qts., 90 cts.; peck, \$1.35; bu., \$5.25.

**Daniel O'Rourke.** Good early sort for market gardeners and private use. Qt., 20 cts.; 4 qts., 75 cts.; peck, \$1.25; bu., \$5.00.

**Dreer's Extra Early Pioneer.** Pods of medium size, containing 4 to 6 full, plump peas of fine flavor. The attractive appearance of the pods makes it a good seller, and the quality is all that could be desired. It will suit the most critical market. Qt., 20 cts.; 4 qts., 75 cts.; peck, \$1.25; bu., \$5.00.

**Alaska.** An extra early round pea. Of good flavor, and bearing pods of a dark green color, which are well filled and ripen uniformly; height 2 feet. Qt., 25 cts.; 4 qts., \$1.00; peck, \$1.50; bu., \$6.00.

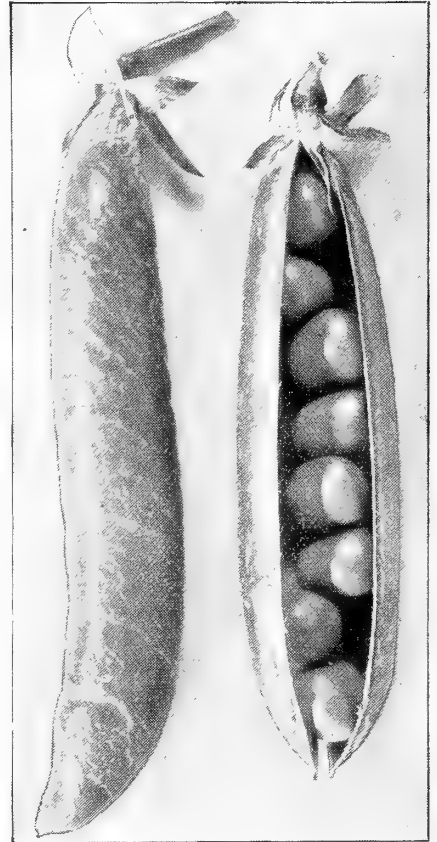
**Lightning.** A very early pea, bearing in great profusion long, well-filled pods, containing peas of a bright green color, well flavored, sweet and of good size; height 2 feet. Qt., 25 cts.; 4 qts., \$1.00; peck, \$1.50; bu., \$6.00.

**The "Thomas Laxton."** (See cut.) Two years ago we received a small sample of this Pea for trial from England, from the originator, Mr. Thomas Laxton. We were very much pleased with the results, and found it to be extremely early, ripening fully as early as the well-known "Gradus" and producing pods and peas fully as large. The plant is a very hardy and strong grower, producing the extra large size pods in abundance. The quality is delicious and cannot be surpassed by any other variety. The "Thomas Laxton" will mature fully as early as any of the extra early smooth peas, and being a wrinkled sort is much sweeter. When this variety is thoroughly introduced it will command equal attention with the "Gradus." Qt., 45 cts.; 4 qts., \$1.50; peck, \$3.00; bu., \$12.00.

**Gradus, or Prosperity Pea.** (See cut.) This fine, extra early, combines the finest quality with extreme earliness, and is also very productive. The smooth varieties of Extra Early Peas have heretofore filled their place in a way, as they could be planted very early; but there has been the need of an "extra early" which would also have that sweetness and fine flavor of the wrinkled varieties. "Gradus," fills this want. Vines 2½ feet in height, and very prolific, bearing pods fully as large as Telephone, usually containing from 8 to 10 large peas. Qt., 45 cts.; 4 qts., \$1.50; peck, \$3.00; bu., \$12.00.

**Nott's Excelsior.** An improvement on American Wonder, being as early, if not a little earlier, and the pods are decidedly larger and many more of them to the plant. It grows about half taller than American Wonder; height 14 inches. Qt., 30 cts.; 4 qts., \$1.10; peck, \$1.75; bu., \$7.00.

**American Wonder.** A very fine, extra early, wrinkled variety. Quite productive. The flavor and quality of the peas are excellent, and its dwarf habit of growth makes it a desirable sort; height, 10 inches. Qt., 30 cts.; 4 qts., \$1.10; peck, \$1.75; bu., \$7.00.



GRADUS, OR PROSPERITY PEA.

## PEAS—EARLY VARIETIES—Continued.

**Surprise Pea.** This excellent variety has been carefully tested beside the very earliest of the smooth peas, and found to be earlier. The vines grow about two feet high, and do not require any support; they are literally loaded down with pods, which, while not so large, are well filled with beautiful peas of most delicious quality, tender and sweet, much more so than any of the smooth Extra Earlys. Qt., 30 cts.; 4 qts., \$1.10; peck, \$1.75; bu., \$7.00.

**Blue Beauty.** Bears a profusion of excellent peas; 18 inches. Qt., 25 cts.; 4 qts., \$1.00; peck, \$1.65; bu., \$6.50.

**Premium Gem.** A fine flavored, dwarf, wrinkled variety; height 18 inches. Qt., 25 cts.; 4 qts., \$1.00; peck \$1.65; bu., \$6.50.

**Little Gem.** A dwarf first early, green wrinkled marrow; 1½ feet. Qt., 25 cts.; 4 qts., \$1.00; peck, \$1.65; bu., \$6.50.

**Duke of York.** A splendid early wrinkled pea, similar to the Telephone. Qt., 25 cts.; 4 qts., \$1.00; peck, \$1.50; bu., \$6.00.

**Second Early and Medium Varieties.**

**Ameer Pea.** This variety of blue-seeded pea is distinct. It is an early variety, and, like all other round, smooth-seeded peas, is quite hardy. The vines, which grow from 3 to 4 feet high, are very thrifty and good bearers. The pods are dark green. Qt., 30 cts.; 4 qts., \$1.10; peck, \$1.75; bu., \$7.00.

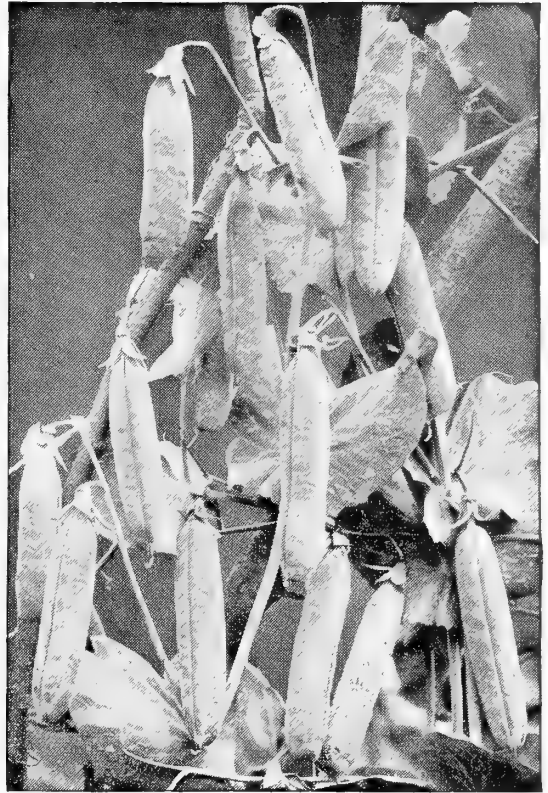
**Advancer.** A fine market variety, prolific, long pods; 2 feet. Qt., 25 cts.; 4 qts., 90 cts., peck, \$1.20; bu., \$4.75.

**Filbasket.** Hardy, prolific, pods well filled. Height, 2½ feet. Qt., 25 cts.; 4 qts., 90 cts., peck, \$1.20; bu., \$4.75.

**Shropshire Hero.** A grand second early wrinkled pea, producing well-filled pods; 2½ feet. Qt., 25 cts.; 4 qts., 90 cts.; peck, \$1.20; bu., \$4.75.

**Abundance.** It ripens about one week after the earliest kinds; 1½ feet. Qt., 25 cts.; 4 qts., \$1.00; peck, \$1.40; bu., \$5.50.

**Heroine.** A medium early, green, wrinkled pea, large curved, showy pods; height 2 to 2½ feet. Qt., 25 cts.; 4 qts., \$1.00; peck, \$1.40; bu., \$5.50.



THE SURPRISE PEA.

**General and Late Varieties.**

**Carter's Daisy or Dwarf Telephone.** This variety is the result of many years' experimenting with the view of producing a pea with dwarf vines, bearing large handsome pods and peas of highest quality, without the long vines of the Telephone, and to grow more dwarf than the Stratagem. It is of dwarf, stocky habit, healthy, vigorous growth and very productive. In season, medium, from 5 to 7 days earlier than Stratagem. The pods are long, frequently measuring 5 inches in length, broad, straight, rounded or curved at the end, remarkably well filled, often containing nine or ten peas, color pale green, thick and of good lasting quality for market purposes. Qt., 35 cts.; 4 qts., \$1.30; peck, \$2.25; bu., \$9.00.

**Pride of the Market.** A medium early dwarf pea of vigorous habit and very productive. The pods are large, of a medium green color. The quality of this pea is excellent, being sweet and tender; 1½ feet. Qt., 25 cts.; 4 qts., \$1.00; peck, \$1.50; bu., \$6.00.

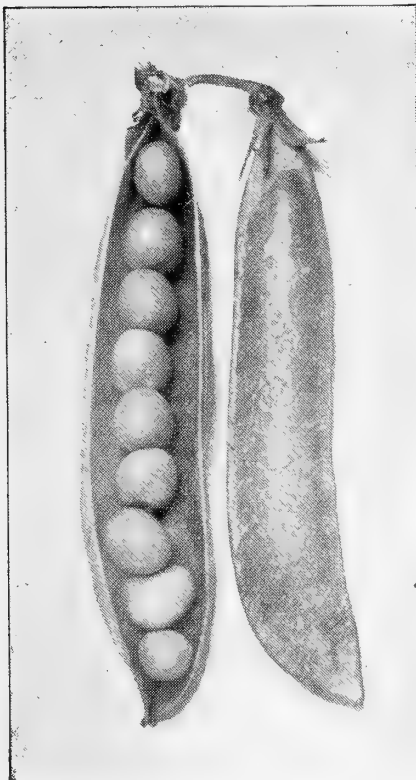
**Improved Stratagem.** In this improved variety all the good qualities of the old Stratagem are highly developed. Pods of immense size filled with very large dark green peas of the finest quality. Vines grow strong and healthy and produce large crops. Qt., 25 cts.; 4 qts., \$1.00; peck, \$1.50; bu., \$6.00.

**Telephone.** Immensely productive and of the finest quality. Vines very strong. The pods are of large size, and peas of a pale green color, closely packed in the pod, and of a most delicious flavor. This variety has become quite a favorite; 4 feet. Qt., 25 cts.; 4 qts., \$1.00; peck, \$1.50; bu., \$6.00.

**Long Island Mammoth.** A very productive variety, of dark glossy long pods, well filled; a very desirable second early for market gardeners' use. Qt., 25 cts.; 4 qts., 90 cts.; peck, \$1.35; bu., \$5.25.

**Everbearing.** A first-class pea for summer and autumn use, pods 3 to 4 inches long, and contain 6 to 8 peas of a rich flavor; very sweet and tender; 2 feet. Vines throw out numerous branches, thus prolonging its bearing season. Qt., 25 cts.; 4 qts., 90 cts.; peck, \$1.25; bu., \$5.00.

**Champion of England.** The most popular wrinkled variety in cultivation, of delicious flavor; a profuse bearer; 5 feet. Qt., 25 cts.; 4 qts., 90 cts.; peck, \$1.25; bu., \$5.00.



AMEER PEA.

# PEAS—General and Late Crop.

(CONTINUED.)



GIANT SUGAR PEA.

**Telegraph.** A strong grower, producing large pods, containing 10 to 12 large peas in each. Peas, when cooked, are of a deep green color and of very fine flavor. Qt., 25 cts.; 4 qts., 90 cts.; peck, \$1.35; bu., \$5.25.

**Yorkshire Hero.** A splendid wrinkled marrow for market and kitchen gardens; 2½ feet. Qt., 25 cts; 4 qts., 90 cts.; peck, \$1.25; bu., \$5.00.

**Juno.** Late wrinkled pea, with large, straight pods filled with delicious dark green peas of large size. Qt., 25 cts.; 4 qts., 90 cts.; peck, \$1.25; bu., \$5.00.

**Blue Imperial.** A favorite summer variety; good bearer, and of fine flavor; height 3 feet. Qt., 20 cts.; 4 qts., 75 cts.; peck, \$1.15; bu., \$4.50.

**Large White Marrowfat.** Large well-filled pods; 5 feet. Qt., 15 cts; 4 qts., 50 cts.; peck, 90 cts.; bu., \$3.50.

**Black-eyed Marrowfat.** Productive and bear well-filled pods; 4 feet. Qt., 15 cts., 4 qts., 50 cts.; peck, 90 cts.; bu., \$3.50.

## SUGAR PEAS (Edible Pods).

**Giant Sugar.** (*See cut.*) As the name implies, this is a mammoth podded variety, larger than Melting Sugar. Cooked like string beans, pods and all, they make a delightful dish, very sweet, sugary and melting. The vines, which grow to a height of 3 feet, are strong and healthy, and produce an abundance of the tender succulent pods. Qt., 45 cts.; 4 qts., \$1.75; peck, \$2.50.

**Mammoth Melting Sugar.** Qt., 35 cts.; 4 qts., \$1.30; peck, \$2.25.

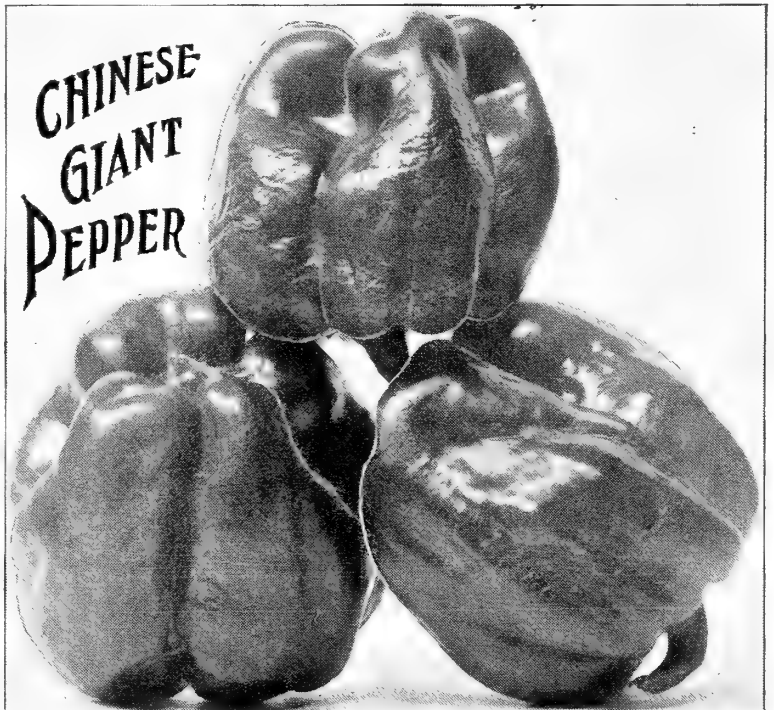
**Dwarf Gray Seeded Sugar.** Qt., 30 cts.; 4 qts., \$1.10; peck, \$2.00.

## PEPPER.—Ger. Pfeffer.

**Chinese Giant.** (*See cut.*) This variety is of recent introduction, and the enormous size of the peppers a surprise to all who grow them. The plants are strong and healthy in growth, about 2 feet high when fully grown, and the extremely large fruits begin to set close to the bottom of the plant. The peppers are much larger than Ruby King, and of a bright scarlet color. The flesh is quite thick and very mild, in fact the sweetest pepper we know of. They require a long season of growth before the peppers are fully ripe, therefore the plants should be set out as early as practicable. Sold in packets only. Pkt., 15 cts.; 2 pkts., 25 cts.

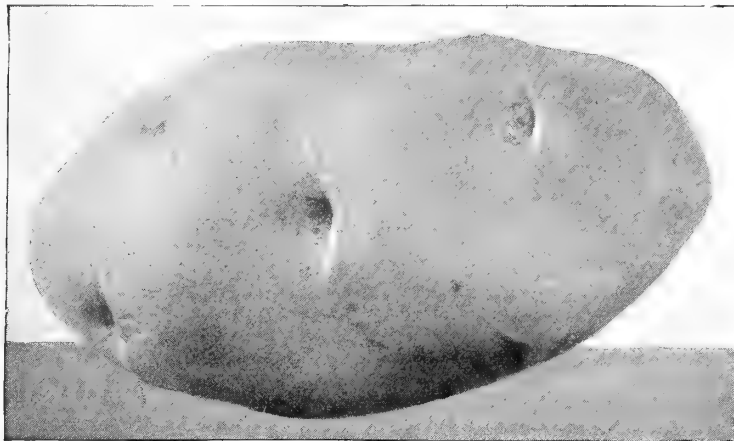
## Varieties of Pepper.

	Oz.	½ lb.	1 lb.
Large Bell, or Bullnose . . . . .	20	60	\$2 00
Ruby King . . . . .	25	75	2 50
Long Red Cayenne . . . . .	20	60	2 00
Large Sweet Spanish . . . . .	20	60	2 00
Golden Dawn . . . . .	25	75	2 25
Procopp's Giant . . . . .	25	90	3 25
Celestial . . . . .	25	75	2 25
Red Japan Cluster . . . . .	25	75	2 25
Red Cherry . . . . .	20	70	2 50
Coral Gem Bouquet . . . . .	30	90	3 25
Small Chili . . . . .	25	75	2 25
Creole, or Bird's Eye. Pkt.,	10 cts.		
Tabasco. Pkt.,	10 cts.		



## SEED POTATOES.

In offering the following varieties of seed potatoes, we wish to say that all our stock has been grown in the far North by experienced potato growers, and is carefully selected for planting purposes, and not such stock as is offered by Commission Merchants.



EARLY BOVEE POTATO.

**Bovee.** (*See cut.*) This is without doubt one of the very earliest potatoes. It is of recent introduction, and its general good qualities have attracted much attention among market gardeners, farmers and potato growers. It is earlier than the Early Rose and a much more productive variety. It is said that in tests made at Experimental Stations, the Bovee has even produced heavier crops than some of the late varieties. The vine is dwarf and stocky, admitting of close planting; the tubers grow close together in the hill, and are generally of uniform marketable size. It is pink, or flesh color and grows very smooth, presenting a fine appearance, and the quality is all that could be desired in a first-class early potato. Pk., 75 cts.; bus., \$2.00; bbl., \$4.75.

**Early Rose.** We sell more of this variety than any other, as it is the leading early sort in almost all sections. Pk. 60 cts.; bu., \$1.60; bbl., \$4.25.

**Early Ohio.** One of the very best early potatoes; it is fit for use before fully ripe. Many growers consider it the most profitable market variety, as it produces well in every section. Pk., 70 cts.; bu., \$1.75; bbl., \$4.50

**Beauty of Hebron.** Early; productive; of excellent quality; a good keeper. Pk., 60 cts.; bu., \$1.60; bbl., \$4.25.

**Burbank's Seedling.** A white skinned, medium early variety, with few eyes; flesh fine grained and of excellent flavor. For many years this variety was a general favorite. Pk., 50 cts.; bus., \$1.40; bbl., \$3.75.

**State of Maine.** Medium early, excellent flavor, cooks dry, is a good keeper and very productive. For many years this was the leading variety planted for winter use, and even yet many farmers will not plant any other variety. Pk., 50 cts.; bu., \$1.40; bbl., \$3.75.

**White Star.** A medium early variety of the best quality and appearance; large, oblong, uniform sized tubers, remarkably productive. Pk., 50 cts.; bu., \$1.40; bbl., \$3.75.

**Rural New Yorker No. 2.** (*See cut.*) A valuable variety of large size, very smooth and a great cropper; in quality unexcelled. The tubers grow extremely solid, making it a splendid keeper, and the vigorous growth of vine enables it to withstand disease, drought and insects. The shipments of "Rural New Yorker" are larger than any other late variety, and the large size of the potatoes and their handsome appearance always command a ready sale at top notch prices. Pk., 50 cts.; bus., \$1.40; bbl., \$3.75.

Our list of varieties, while not large, is made up of what we consider the most reliable sorts, and only such as we can confidently recommend to our customers. We put up 2¾ bushels (165 lbs.) potatoes to barrel, shipping in barrels or sacks, as may suit the case, packing only first-class stock, but cannot assume any risks; therefore all shipments of Potatoes are made strictly on purchaser's responsibility. We usually make shipments in spring, after danger of freezing has passed, but where our customers desire earlier shipment we can accommodate them. An occasional change of seed stock in planting potatoes is very important, and greatly increases the quality and yield. If you have been using the same stock for several years, now is a good time to make a change and infuse new strength into your crop.

Prices quoted are subject to change according to state of market. Where order is accepted by us, however, the price stands, and shipment will be made in due time.

**Carman No. 1.** Intermediate in ripening, and resembles the Rural New Yorker No. 2 in shape, but of much larger size. It also has very few and shallow eyes. The flesh is white and quality perfect. An enormous producer of very large and handsome tubers. We consider this a good variety. Pk., 50 cts.; bus., \$1.40; bbl., \$3.75.

**Carman No. 3.** Originated on the trial grounds of the "Rural New Yorker." It is the best late variety, and one of the greatest yielders; large, oblong, slightly flattened. This potato has a record of having produced over 200 bushels from one barrel of seed. Pk., 50 cts.; bus., \$1.40; bbl., \$3.75.



RURAL NEW YORKER NO. 2 POTATO.

## SWEET POTATOES.

Prices subject to market changes.

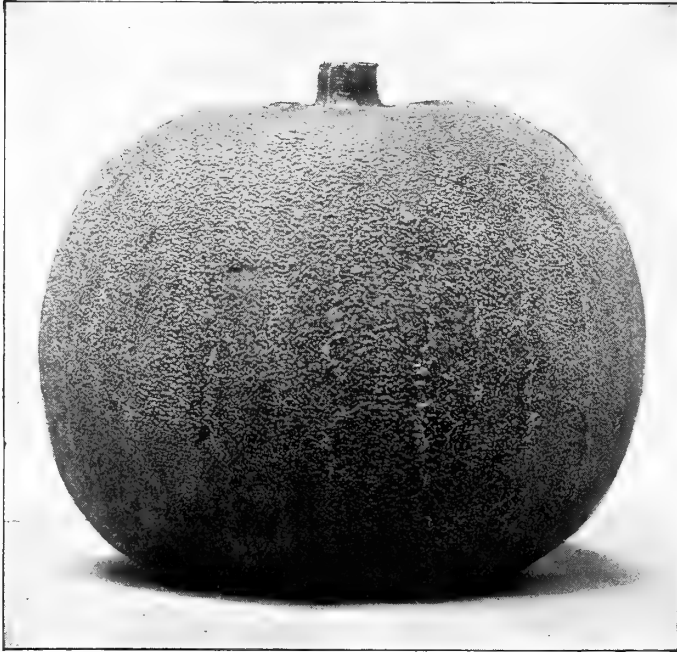
**Yellow Nansemond.** A short, thick variety, very productive, and considered the best for general culture. Pk., 60 cts.; bu., \$1.75; bbl., \$4.50.

**Red Nansemond.** Short, thick and of good flavor; largely grown in some sections in preference to the yellow. Pk., 60 cts.; bu., \$1.75; bbl., \$4.50.

(For SWEET POTATO PLANTS see page 27.)



# PUMPKIN—Ger. Grosse Kürbis.



WINTER LUXURY PUMPKIN.

## RADISH.—Ger. Rettig, oder Radieschen.

**Dreer's Crimson Ball Radish.** (*See cut.*) This is an entirely distinct variety and while of the same shape as the true red turnip radish, the flesh as well as the skin is of a beautiful red color, which is a unique feature. It is a dainty little radish of very mild and pleasing flavor. It is equally as good for forcing as for growing outside, quickly making fine radishes even during the hot summer months. Oz., 20 cts.;  $\frac{1}{4}$  lb., 60 cts.; lb., \$2.00.

**Dreer's Earliest White Globe Forcing.** Beautiful oval shape, transparent ivory-white skin, very small root, small top; flesh white, tender and crisp. Oz., 10 cts.;  $\frac{1}{4}$  lb., 25 cts.; lb., 80 cts.

**Round White Forcing.** This variety matures very early. The radishes are small, of the round or button type, and have small tops. Oz., 10 cts.;  $\frac{1}{4}$  lb., 25 cts.; lb., 80 cts.

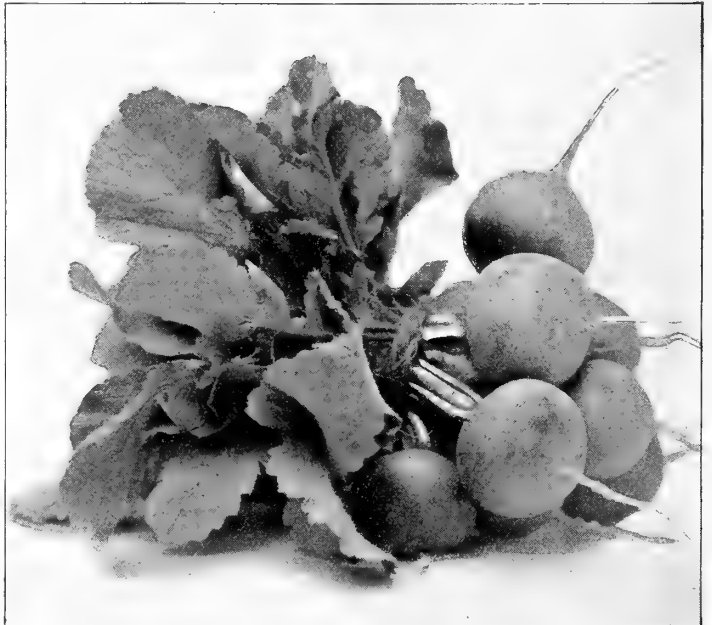
**Felton's Selected White Box.** Perfectly round, smooth skin, pure white, free from sharpness, quick grower, small top. For forcing it is superior. Oz., 10 cts.;  $\frac{1}{4}$  lb., 25 cts.; lb., 75 cts.; 10 lbs. or more at 70 cts. per lb.

**Philadelphia White Box.** Similar to above. Oz., 10 cts.;  $\frac{1}{4}$  lb., 20 cts.; lb., 60 cts.; 10 lbs. or more at 55 cts. per lb.

**Early White Turnip.** An early crisp, turnip-shaped radish. Oz., 10 cts.;  $\frac{1}{4}$  lb., 20 cts.; lb., 60 cts.

**Triumph.** The radishes are globe shape and strikingly handsome, having bright scarlet stripes on a white ground. It is a splendid forcing variety, with short top, small leaves, and matures quickly. Oz., 20 cts.;  $\frac{1}{4}$  lb., 60 cts.

**Golden Dresden.** A round radish, with beautiful golden-brown skin and very small top. It is ready for the table in four weeks from the time of sowing. Flesh white and crisp. Oz., 10 cts.;  $\frac{1}{4}$  lb., 20 cts.; lb., 70 cts.



DREER'S CRIMSON BALL RADISH.

**Winter Luxury.** (*See cut.*) This pumpkin is distinct, both in shape and appearance. Grows round, and the skin, which is golden yellow, is covered with a fine netting. The vines are healthy, and produce large numbers of the beautiful pumpkins, which are of good quality, and keep well during winter. Oz., 10 cts.;  $\frac{1}{4}$  lb., 20 cts.; lb., 60 cts.

**Mammoth Golden Cashaw.** As a general purpose pumpkin, both for making pies and stock feeding, this variety cannot be excelled. It is an improvement on the old light-colored Cashaw. The skin, when pumpkins are matured, being a beautiful golden-orange color. The quality is all that could be desired, being fine grained, sweet, and rich yellow color. Oz., 10 cts.;  $\frac{1}{4}$  lb., 20 cts.; lb., 60 cts.

**Large Cheese.** One of the best for table use; productive, skin orange, flesh yellow and sweet. Grows to fair size, and largely used for stock feeding. Oz., 5 cts.;  $\frac{1}{4}$  lb., 15 cts.; lb., 40 cts.

**Large Yellow Mammoth Potiron** (*King of the Mammoths, Jumbo.*) The largest of all pumpkins; specimens have been grown weighing over 100 pounds. The quality is good. The best pumpkin for showing at Fairs, also used for decoration in windows of restaurants. Oz., 10 cts.;  $\frac{1}{4}$  lb., 35 cts.; lb., \$1.00.

**Cashaw.** Long, yellow, crook-neck, similar to the Crook-Neck Winter Squash; flesh yellow, solid, fine-grained and sweet. Very good for making pies. Oz., 10 cts.;  $\frac{1}{4}$  lb., 20 cts.; lb., 50 cts.

**Large Tours.** A productive variety, which grows to an immense size, often weighing over 100 pounds. The flesh is not very thick, but the quality is good. Oz., 10 cts.;  $\frac{1}{4}$  lb., 20 cts.; lb., 60 cts.

**Tennessee Sweet Potato.** Pear-shaped; flesh thick, cream-white, fine grained, and of excellent flavor. Oz., 10 cts.;  $\frac{1}{4}$  lb., 15 cts.; lb., 50 cts.

**Large Yellow Field.** For feeding stock.  $\frac{1}{4}$  lb., 10 cts.; lb., 30 cts.; 10 lbs., \$2.50.



DREER'S SELECTED CARDINAL GLOBE RADISH.

## RADISH—Continued.

**Dreer's Selected Cardinal Globe.** (*See cut.*) Our seed of this leading forcing radish is the purest on the market, having been continually improved both in color and shape. The radishes grow globular in shape, and are of a most brilliant cardinal-red color. It will stand considerable heat; therefore it is a quick forcer, and the quality is fine, being crisp and tender. It is by far the best variety for forcing, and also does well in open ground. The beautiful appearance and color of this radish make it a good seller. Oz., 10 cts.; ¼ lb., 25 cts.; lb., 80 cts. 5 lbs. or more at 75 cts. per lb.

**Icicle Radish.** (*See cut.*) This variety furnishes something entirely new in the way of long, white radish, as it can be grown in the forcing frames, and makes fine radishes about three and a half inches long and half inch in diameter in three weeks from the time of sowing the seed. These radishes are a beautiful transparent white, have small tops, allowing close planting and are very crisp and brittle. A feature greatly in favor of the "Icicle" is that it remains in good condition while growing for a long time, thus allowing a continuous pulling from same planting, while with other sorts the radishes are liable to get pesty if not pulled at a certain stage of growth. Oz., 15 cts.; ¼ lb., 30 cts.; lb., \$1.00.

### Early Varieties of Radish.

	Oz.	¼ lb.	lb.
Early Scarlet Turnip . . . . .	10	20	60
French Breakfast . . . . .	10	20	60
Cincinnati Market . . . . .	10	20	60
Round Red Forcing . . . . .	10	20	60
Scarlet Frame . . . . .	10	20	60
White-Tipped Scarlet Gem . . . . .	10	20	60
Long Scarlet Short Top . . . . .	10	20	55
Half-long Deep Scarlet . . . . .	10	20	50
Phita. Half-long Scarlet . . . . .	10	20	60
Golden-Yellow Olive-Shaped . . . . .	10	20	60
Scarlet Olive-Shaped . . . . .	10	20	60

### Summer Radishes.

**Beckert's Chartier.** Crimson, shading white, crisp and tender. Oz., 10 cts.; ¼ lb., 20 cts.; lb., 60 cts.

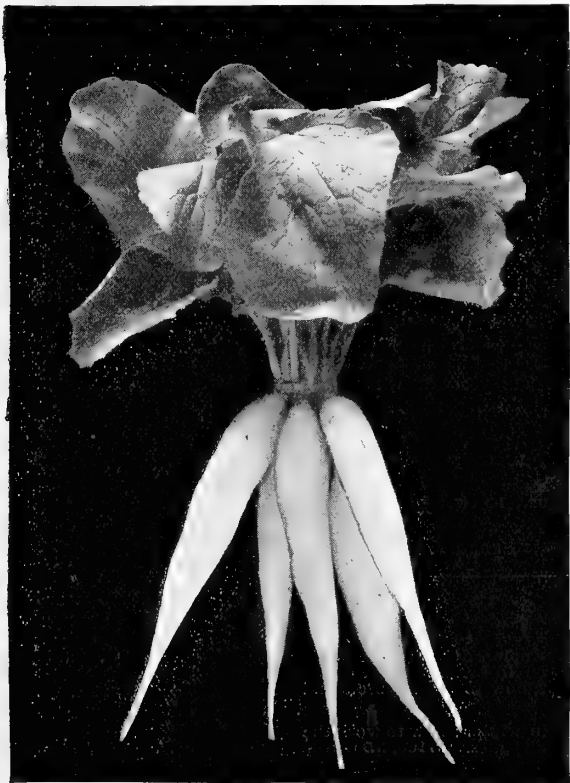
**Large White Summer.** Large, turnip-shaped. Oz., 10 cts.; ¼ lb., 20 cts.; lb., 55 cts.

**Long White Vienna.** (*Lady Finger.*) Beautiful in shape; skin and flesh are pure snow-white; crisp and of rapid growth. Oz., 10 cts.; ¼ lb., 20 cts.; lb., 55 cts.

**White Strasburg.** Of a pure white color, very brittle and of mild flavor. Oz., 10 cts.; ¼ lb., 20 cts.; lb., 55 cts.

**White Delicacy.** An improvement on the White Strasburg, being earlier, more evenly shaped, and smaller top; grows into full size and perfect shape during the hottest weather; for out-door early fall sowing it is sure to make a crop of uniform white radishes, which are in quality first-class; a profitable market gardener's sort. Oz., 10 cts.; ¼ lb., 25 cts.; lb., 75 cts.

**Large Yellow Summer.** Like White Summer, except in color. Oz., 10 cts.; ¼ lb., 15 cts.; lb., 50 cts.



ICICLE RADISH.

## RADISH—Continued.

### WINTER VARIETIES.

#### Krewson's Oblong Black Spanish.

(See cut.) For a number of years we have made a specialty of this improved black radish, supplying it in large quantities, not only to gardeners around this city, but throughout the entire country, particularly among the German gardeners, who know so well what a good winter radish should be. It is an improvement on the Round Black Spanish, growing longer and of much more perfect form. It grows very solid and is of crisp, mild flavor. Oz., 10 cts.;  $\frac{1}{4}$  lb., 25 cts.; lb., 90 cts.

**Scarlet China.** One of the best fall and winter varieties, a favorite with market gardeners. Oz., 10 cts.;  $\frac{1}{4}$  lb., 20 cts.; lb., 60 cts.

**Round Scarlet China.** A new variety of the China Winter Radish. Root round, of a fine scarlet color. Oz., 10 cts.;  $\frac{1}{4}$  lb., 30 cts.; lb., 80 cts.

**Round Black Spanish.** This radish grows to a fair size, is round in shape and considered one of the best for winter use. Oz., 10 cts.;  $\frac{1}{4}$  lb., 15 cts.; lb., 50 cts.

**Long Black Spanish.** Grows long in shape, is of good flavor and used by those who prefer a long radish to a round sort. Oz., 10 cts.;  $\frac{1}{4}$  lb., 15 cts.; lb., 50 cts.

**Long White Spanish.** Also grows long, as its name implies, but is of white color. Flavor is all that could be desired in a winter radish. Oz., 10 cts.;  $\frac{1}{4}$  lb., 20 cts.; lb., 60 cts.

**California White Winter.** Grows from 10 to 12 inches long, is very solid and of good quality. A good keeper. Oz., 10 cts.;  $\frac{1}{4}$  lb., 20 cts.; lb., 60 cts.



KREWSON'S OBLONG BLACK SPANISH RADISH.

### SALSIFY, or Vegetable Oyster—Ger. Hafer-Wurzel.

**Mammoth Sandwich Island.** (See cut.) This variety grows here to a very large size, nearly twice as large as the Long White, and resembles a good-sized parsnip. It is pure white and very mild and delicately flavored, and is very popular. Oz., 10 cts.;  $\frac{1}{4}$  lb., 35 cts.; lb., \$1.25.

**Long White.** This is the old original type of Salsify. It grows to a fair size and for a long time was the favorite variety and is still used by many who consider its flavor very fine. Oz., 10 cts.;  $\frac{1}{4}$  lb., 30 cts.; lb., \$1.00.

**Long Black, or Scorzonera.** Resembles the above and cultivated in the same way. Oz., 20 cts.,  $\frac{1}{4}$  lb.; 60 cts.; lb., \$1.75.

### SORREL.

**Large-Leaved Garden.** Cultivated for its acidity and much used in salads. The improved varieties, when well grown and cooked the same as spinach, make a healthy and palatable dish. Sow in drills early in spring and thin the seeding to 6 to 8 inches apart in the row. Commence cutting in two months; plants continue to bear four years. Pkt., 5 cts.; oz., 10 cts.;  $\frac{1}{4}$  lb., 30 cts.; lb., \$1.00.

### RHUBARB.

**Linnæus.** Early, large, tender, and very fine. Pkt., 5 cts.; oz., 10 cts.;  $\frac{1}{4}$  lb., 35 cts.; lb., \$1.25.

**Victoria.** Very large; the finest cooking variety. Pkt., 5 cts.; oz., 10 cts.;  $\frac{1}{4}$  lb., 35 cts.; lb., \$1.25.

(For RHUBARB ROOTS, see Vegetable Plants, etc., page 27.)

## ...THREE VALUABLE BOOKS...

**OPEN-AIR VEGETABLES.** A small book intended for busy people. It gives the latest methods of the best gardeners—when to begin work, how to treat the soil, how and when to sow seeds, how to manage growing crops, how to treat insects and fungus enemies, etc. Price, 25 Cents.

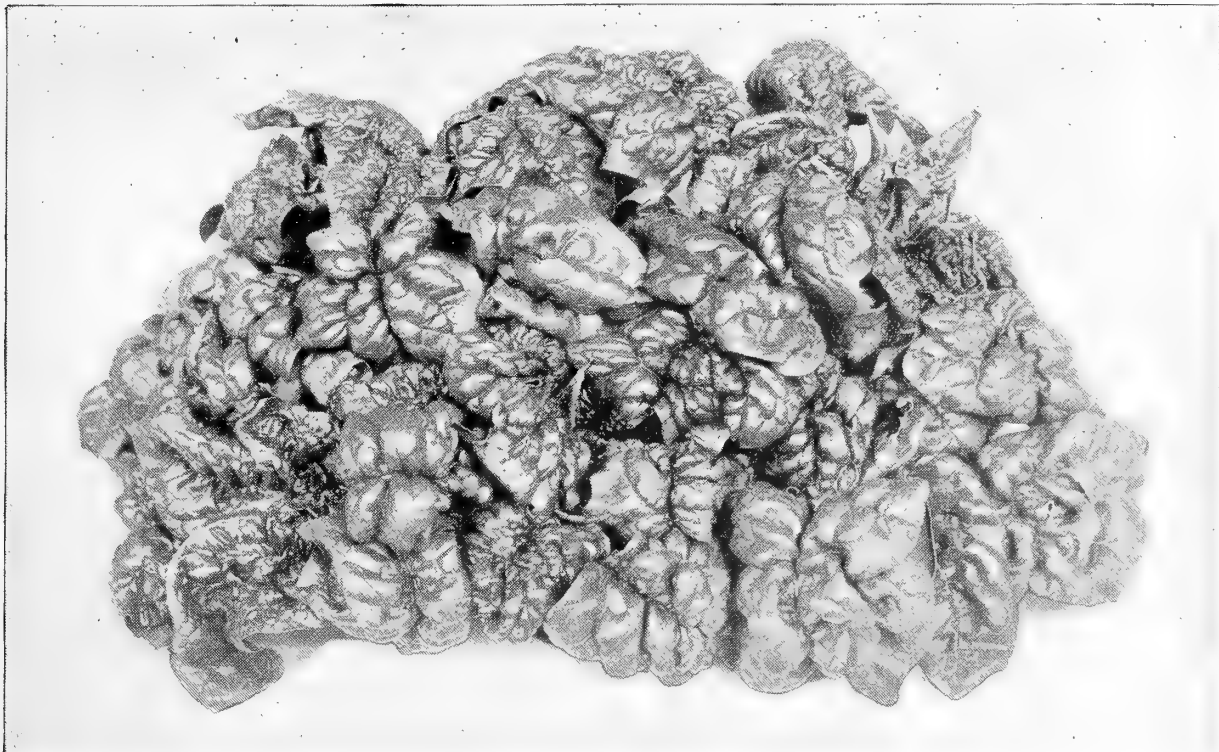
**VEGETABLES UNDER GLASS.** Tells how to grow vegetables in winter; how to work the soil actively and profitably at all times. Price, 25 cents.

**GRASSES AND CLOVERS.** Quotes the views and practices of American and European experts on this most important crop. It has notes on lawns and lawn-making, also has something to say on most of the forage plants. Price, 25 Cents.



SANDWICH ISLAND SALSIFY.





VICTORIA SPINACH.

## SPINACH.—Ger. Spinat.

**Victoria.** This splendid variety is an acquisition to the list of Spinach, its long-standing qualities making it the best variety for sowing in spring. It matures later than the other varieties, but is of remarkably fine texture, of the deepest green, heavily crimped, thick, fleshy leaves, deep red stem; it is now grown extensively by the truckers of our markets, who would not be without the "Victoria." Lb., 20 cts.; bu., \$6.00.

**Dreer's Round Seeded Savoy.** Our strain of Savoy-leaved Spinach is very fine, and extremely hardy. It is beautifully curled and crimped, with thick, fleshy leaves; the best for market purposes, and the best of all sorts for fall sowing. Lb., 20 cts.; bu., \$6.00.

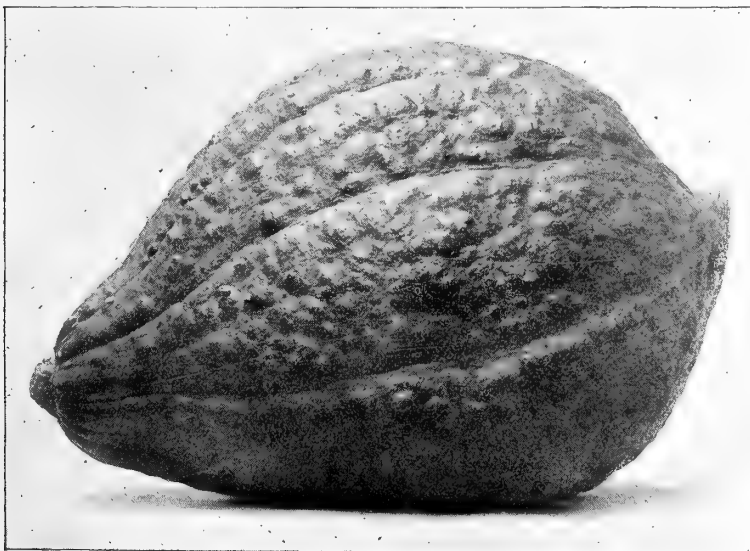
**Long-Standing Round Seeded.** A large, crimped, thick, fleshy Savoy-leaved variety; will stand two weeks longer than the Savoy. Lb., 20 cts.; bu., \$6.00.

**Prickly Seeded.** The hardiest variety, having small leaves; is not so productive as the above sorts. Lb., 20 cts.; bu., \$6.00.

**New Zealand.** This variety endures heat and drought, and is the best for summer use. It produces a large quantity of leaves throughout the season, and can be cut continuously. Oz., 10 cts.; ¼ lb., 25 cts.; lb., 75 cts.

## SQUASH.—Ger. Speise Kürbis.

**Extra Early Jersey White Bush.** This is an improved strain of the old White Bush Squash; matures fully 10 days earlier. It shows less ridge or scallop, being better filled out and containing more flesh than parent variety. Oz., 10 cts.; ¼ lb., 20 cts.; lb., 65 cts.

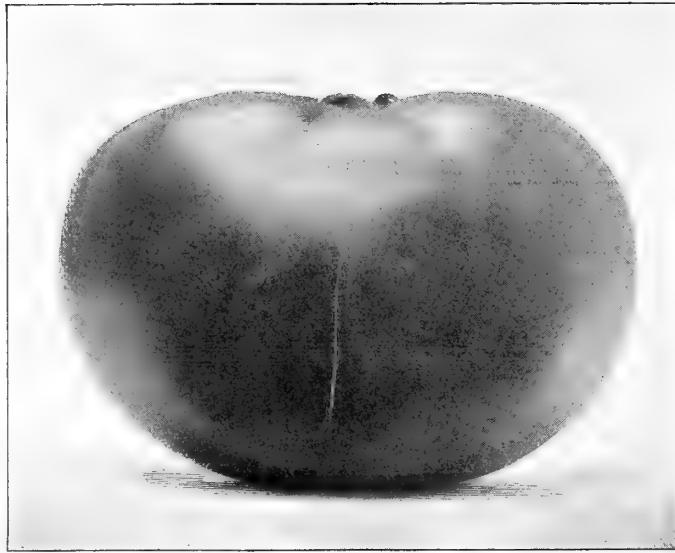


WARTED HUBBARD SQUASH.

### Varieties of Squash.

	Oz.	¼ lb.	lb.
Early White Bush . . . . .	10	15	45
Golden Custard Bush . . . . .	10	20	50
Yellow Summer Crookneck . . . . .	10	20	50
Boston Marrow . . . . .	10	15	45
Hubbard . . . . .	10	20	60
Warted Hubbard . . . . .	10	25	75
Golden Hubbard . . . . .	10	20	60
Golden Bronze . . . . .	15	30	\$1 00
Essex Hybrid, or Turban . . . . .	10	20	60
Fordhook . . . . .	10	20	50
Marblehead . . . . .	10	20	60
Mammoth Chili . . . . .	10	30	90
Faxon . . . . .	10	20	50
Bay State . . . . .	10	20	50
Sweet Nut . . . . .	10	20	50
Pike's Peak, or Sibley . . . . .	10	20	50
Prolific, or Orange Marrow . . . . .	10	20	50
Vegetable Marrow . . . . .	10	25	80
Winter Crookneck . . . . .	10	20	50

# TOMATO—Ger. Liebesapfel.



THE STONE TOMATO.

**Earliest of All.** The earliest red tomato; medium size, brilliant red color and superior flavor. The fruits grow in large clusters and the vines are enormously productive. Pkt., 15 cts.; ½ oz., 25 cts.; oz., 40 cts.

**Lorillard.** (*Forcing.*) A good sort for forcing under glass as well as for out-door culture; bright red, smooth, early. Oz., 25 cts.; ¼ lb., 70 cts.; lb., \$2.25.

**Mayflower.** Excellent for forcing or outside use; medium size; bright red color. Oz., 20 cts.; ¼ lb., 60 cts.; lb., \$2.00.

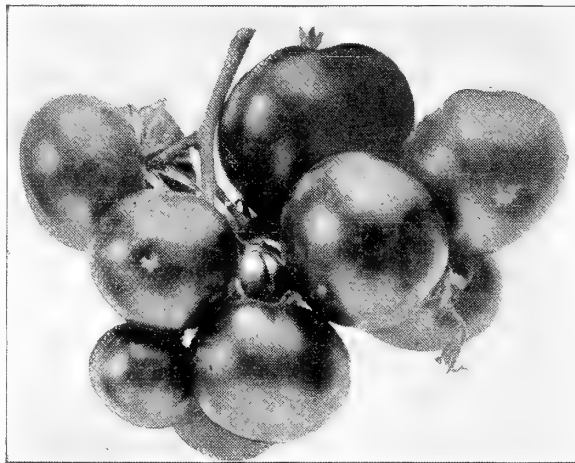
**Atlantic Prize, or Early Ruby.** Splendid extra early variety for general use, of large size, bright red color and smooth. Oz., 20 cts.; ¼ lb., 60 cts.; lb., \$2.00.

**Livingston's Magnus.** A new variety which is a glossy red color, and grows very uniform. It is medium early and of good quality. Oz., 25 cts.; ¼ lb., 80 cts.; lb., \$3.00.

**The Stone.** Dreer's selected stock (*see cut*). Fruit very large and deep; bright scarlet; smooth, ripening evenly to the stem without a crack; exceedingly solid and firm-fleshed, of the finest quality; the best for family use and for canneries. Oz., 20 cts.; ¼ lb., 50 cts.; lb., \$1.75.

**Best of All.** (*See cut.*)

This is strictly a forcing Tomato, superior to either the Lorillard or Mayflower. The vines grow strong and healthy, and produce Tomatoes in heavy bunches at short distances all over the plant. It will produce more weight of fruit to a given space than any other sort, and for this reason is a valuable Tomato to grow for market. The fruits grow to a good size, are very solid and firm, containing but few seeds; color is a beautiful deep scarlet. Pkt., 15 cts.; ½ oz., 25 cts.; oz., 40 cts.



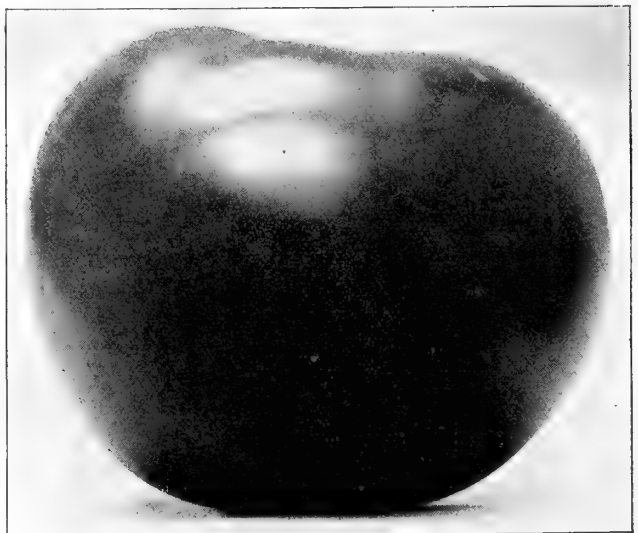
"BEST OF ALL" FORCING TOMATO.

**The Marvel.** (*See cut.*)

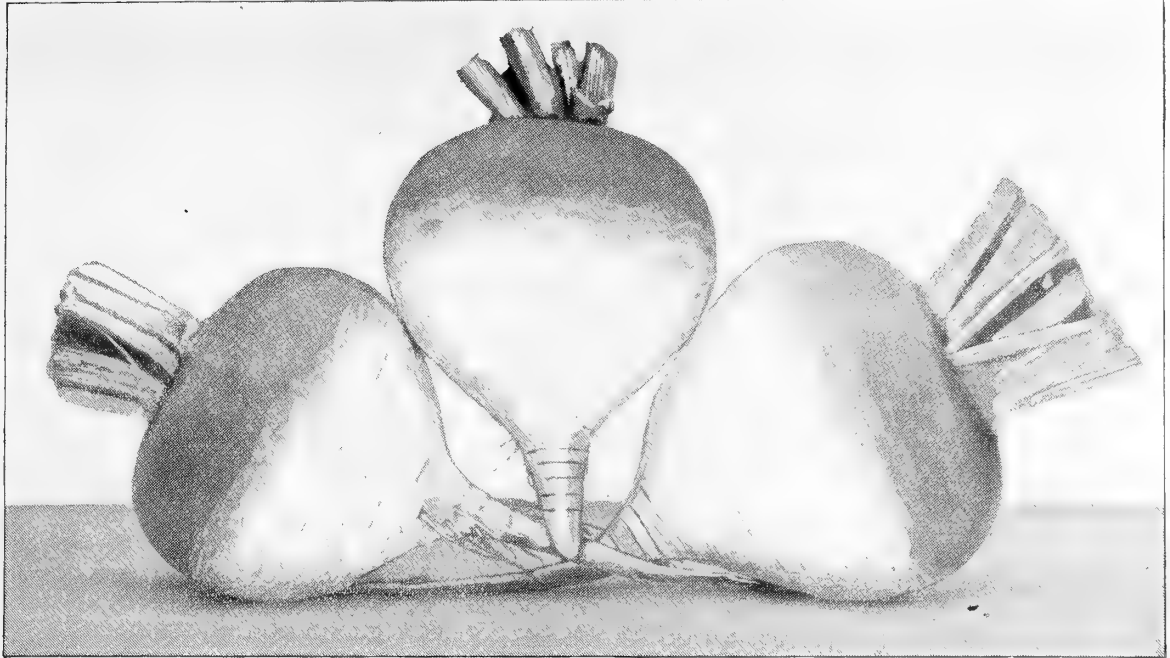
In our trials of tomatoes last summer, this was the most productive among fifty-two varieties. The tomatoes are of medium size and in shape almost round like an apple. They grow in clusters all over the vine which should be furnished with strong support on account of the heavy weight of fruit produced. The color when ripe is a light red, very attractive, and the tomatoes are extremely solid, few seed and of sweet flavor. The tomatoes ripen about medium to late. Pkt., 15 cts.; ½ oz., 30 cts.; oz., 50 cts.; ¼ lb., \$1.75.

**Standard Varieties of Tomato.**

	Oz.	¼ lb.	lb.
Quicksure . . . . .	20	\$0 60	\$2 00
Freedom . . . . .	25	75	2 50
Crimson Cushion . . . . .	25	1 00	3 50
Selected Trophy . . . . .	20	60	2 00
Beauty . . . . .	20	60	2 00
Imperial . . . . .	20	60	2 00
Acme . . . . .	20	60	2 00
Paragon . . . . .	20	60	2 00
Perfection . . . . .	20	60	2 00
Matchless . . . . .	25	75	2 50
Dwarf Champion . . . . .	20	65	2 25
Royal Red . . . . .	20	60	2 00
Buckeye State . . . . .	20	60	2 00
Favorite . . . . .	20	60	2 00
Honor Bright . . . . .	20	65	2 25
Pink Mikado . . . . .	20	60	2 00
Ponderosa . . . . .	35	1 00	3 50
Table Queen . . . . .	20	65	2 25
Golden Queen . . . . .	20	65	2 25
Red Pear-Shaped . . . . .	20	60	
Yellow Plum . . . . .	20	60	
Yellow Pear . . . . .	20	60	
Red Cherry . . . . .	20	60	
Yellow Cherry . . . . .	20	60	
Red Currant . . . . .	20	60	



THE "MARVEL" TOMATO.



PURPLE TOP WHITE GLOBE TURNIP.

**TURNIP.—Ger. Rube.**

	Oz.	¼ lb.	1 lb.
Red Top Strap Leaf	5	15	35
Purple Top White Globe	5	15	35
Extra Early Milan	10	25	75
Purple Top Munich	10	25	75
Scarlet Kashmyr	10	20	50
Early White Flat Dutch	5	15	35
Early White Milan	10	25	75
Early White Egg	5	15	35
Early Snowball	10	20	60
Long White, or Cow Horn	5	15	40
Long White French	10	15	50
Large White Norfolk	5	15	40
Yellow Globe, or Amber	5	15	40
Yellow Aberdeen	5	15	40
Robertson's Golden Ball	5	15	40

**RUTA BAGA.**

Dreer's Improved Purple Top	10	15	50
American Purple Top	5	15	40
Budlong's White	10	20	60
Large White, or Sweet German	10	15	50

**HERBS.**

Anise	10	30	\$1 00
Balm	20	50	1 75
Basil, Sweet	15	35	1 25
Bene	15	35	1 25
Boneset	60		
Borage	10	30	1 00
Caraway	10	25	60
Catnip	40		
Castor Oil-Bean	10	25	60
Coriander	5	20	50
Cumin	10	30	1 00
Dill	5	20	50
Fennel, Sweet	5	20	50
Horehound	20	50	1 75
Lavender	15	35	1 25
Rosemary	25	75	2 75
Rue	10	30	1 00
Saffron	10		
Sage	15	50	1 75
Savory, Summer	10	30	1 00
Savory, Winter	15	40	1 25
Sweet Marjoram (American)	25	85	2 75
Sweet Marjoram (Imported)	10	35	1 25

**HERBS.—Continued.**

	Oz.	¼ lb.	1 lb.
Tansy	35	\$1 25	\$5 00
Thyme, English	30	85	2 75
Thyme, French Summer	25	75	2 50
Wormwood	15	35	1 25

**VEGETABLE PLANTS and ROOTS.**

**Asparagus.** Strong two-year-old roots.

**Conover's Colossal.** 50 cts. per 100; \$4.00 per 1000.

**Dreer's Eclipse.** 60 cts. per 100; \$5.00 per 1000.

**Palmetto.** **Barr's Mammoth.** **Columbian Mammoth White.** 50 cts. per 100; \$4.50 per 1000.

Dreer's Asparagus Circular free on application.

**Cabbage Plants.** For April 1st to May 15th delivery. Early Jersey Wakefield, Early York, Early Winnigstack. 25 cts. per 100; \$1.50 per 1000.

**Cauliflower Plants.** Spring-sown plants, well hardened off in cold frames. Selected early Erfurt, 75 cts. per 100; \$6.00 per 1000.

**Celery Plants.** Ready July 1st. Golden Self-Blanching, Golden Dwarf, White Plume, Giant Pascal, etc., 30 cts. per 100; \$2.50 per 1000.

**Chives.** For flavoring. 75 cts. per doz.; \$5.00 per 100.

**Egg Plants.** Ready May 15th. New York Improved Large Purple. Grown in pots. \$2.50 per 100; \$20.00 per 1000. Transplanted from frames, \$1.50 per 100; \$12.00 per 1000.

**Hop Vine Roots.** 30 cts. per doz.; \$1.50 per 100; \$6.00 per 1000.

**Horseradish Sets.** 50 cts. per 100; \$4.00 per 1000.

**Lavender Plants.** 10 cts. each; \$1.00 per doz.; \$8.00 per 100.

**Lettuce Plants.** Ready in April and May. Dutch Butter, Silver Ball and Hanson. 25 cts. per 100; \$1.50 per 1000.

**Mint.** 50 cts. per doz.; \$3.00 per 100.

**Pepper Plants.** Ready in May and June. From hot-bed. Large Sweet Bell. \$1.00 per 100; \$7.50 per 1000.

**Rhubarb Roots.** St. Martin's, Linnaeus and Victoria. Strong roots, 75 cts. per doz.; \$6.00 per 100.

**Sage (Holt's Mammoth).** A large-leaved variety. It spreads rapidly and never runs to seed. 60c. per doz.; \$4.00 per 100.

**Sweet Potato Plants.** Ready in May and June. 20 cts. per 100; \$1.50 per 1000.

**Tarragon (Estragon).** 15 cts. each; \$1.50 per doz.; \$10.00 per 100.

**Tomato Plants.** Strong transplanted plants, ready May 10th. Stone, Trophy, Paragon, Red Mikado. \$1.00 per 100; \$7.50 per 1000. Transplanted, 20 cts. per doz.; \$1.50 per 100; \$7.50 per 1000. Special prices to buyers of large quantities of plants.

**CORN, FIELD VARIETIES.**

	Pk.	Bu.
Cloud's Yellow Dent . . . . .	50	\$1 60
Early Yellow Canada . . . . .	50	1 60
Early 100-Day Bristol . . . . .	50	1 60
Early Mastodon . . . . .	50	1 60
Pedrick Perfected, Golden Beauty . . . . .	75	2 25
Hickory King (White) . . . . .	60	1 75
Improved Leaming . . . . .	50	1 50
Large White Flint . . . . .	50	1 60

**CORN-ENSILAGE.**

Blount's White Prolific . . . . .	50	1 50
Red Cob Ensilage . . . . .	40	1 25
Southern Fodder Sheep Tooth . . . . .	40	1 25
Sweet Fodder Corn . . . . .	60	1 75

**BARLEY.**

Manshury . . . . .	50	1 25
--------------------	----	------

**OATS.**

Lincoln . . . . .	50	1 25
White Maine . . . . .	50	1 25
Welcome . . . . .	50	1 25

**SPRING WHEAT.**

Saskatchewan Fife . . . . .	75	2 25
-----------------------------	----	------

**RYE.**

Spring Rye . . . . .	50	1 35
----------------------	----	------

**SUNFLOWER.**

Mammoth Russian . . . . .	60	1 75
---------------------------	----	------

**FIELD, FORAGE AND SILO SEEDS.**

If by mail add 8 cents per lb.

	Lb.	10 lbs.	100 lbs.
Dwarf Essex Rape . . . . .	\$0 10	\$0 90	\$7 50
Soja Bean . . . . .	8	60	4 00
Spring Vetches, or Tares . . . . .	8	60	4 00
Winter Vetches, or Tares . . . . .	15	1 30	12 00
Teosinte . . . . .	1 00	9 00	
Velvet Bean . . . . .	8	50	4 00
Wild Rice . . . . .	25	2 00	
Yellow Lupin . . . . .	10	80	7 00

**PEAS FOR FODDER AND GREEN MANURE.**

	Pk.	Bu.
Canada Field Peas . . . . .	40	\$1 50
Southern Black-Eye Cow Peas . . . . .	75	2 25
Wonderful Cow Peas . . . . .	80	2 50

**MISCELLANEOUS SEEDS.**

	Bu.	100 lbs.
Broom Corn, Evergreen . . . . .	\$2 50	\$5 00
Buckwheat, Japanese . . . . .	1 25	
Buckwheat, Silver Hull . . . . .	1 25	
Egyptian, or Pearl Millet . . . . .		10 00
German, or Golden Millet . . . . .	1 50	
Hungarian Millet . . . . .	1 25	
Johnson Grass . . . . .	3 00	11 00
Kaffir Corn . . . . .	3 00	4 50
Sorghum, or Amber Cane . . . . .	2 75	4 75
White Branching Dhoura . . . . .	3 50	6 00

**CLOVER SEEDS.**

Red Clover, medium. Market price; write for price and sample.		
Mammoth Red Clover. " " " " " "		

	Bu.	100 lbs.
Alsike, or Swedish . . . . .	\$12 00	\$18 00
Alfalfa, or Lucerne . . . . .	9 50	15 00
Sainfoin, or Esparsette . . . . .	2 00	9 00
Bokhara Clover . . . . .	17 50	28 00
Japan Clover . . . . .	16 75	25 00
White Dutch Clover . . . . .	15 50	25 00
Yellow Trefoil Clover . . . . .	13 00	20 00
Crimson Clover. Market price; write for price and sample.		



KENTUCKY BLUE GRASS.

**LAWN GRASS SEEDS.**

**Dreer's "Evergreen" Lawn Mixture.**  
The best for making permanent lawns. Per qt., 25 cts. (30 cts. postpaid); peck, \$1.00; bu. (20 lbs.), \$4.00.

**Dreer's Fairmount Park Lawn Mixture.**  
Gives good results wherever planted. 20 cts. per qt. (25 cts. postpaid); peck, 90 cts.; bu. (20 lbs.), \$3.50.

**Dreer's Shady Place Mixture.**  
Fine for shady places. 25 cts. per qt. (30 cts. postpaid); peck, \$1.25; bu. (20 lbs.), \$5.00.

**Dreer's Golf Links Mixture.**  
Peck, 75 cts.; bu. (15 lbs.), \$2.50; 10 bushels and upwards, \$2.25 per bushel.

**Dreer's Putting Green Mixture.**  
Peck, \$1.25; bu. (20 lbs.), \$5.00.

**RE-CLEANED GRASS SEEDS.**

	Bu.	100 lbs.
Kentucky Blue, fancy cleaned . . . . .	\$1 75	\$12 00
Canadian Blue . . . . .	1 75	12 00
Red Top, or Herd . . . . .	1 00	8 00
Red Top, extra re-cleaned . . . . .	6 00	18 00
Orchard Grass . . . . .	2 40	16 00
English Rye Grass . . . . .	2 25	8 00
Italian Rye Grass . . . . .	2 50	10 00
Meadow Fescue . . . . .	4 75	20 00
Tall Meadow Fescue . . . . .	5 00	33 00
Sheep's Fescue . . . . .	2 50	20 00
Fine Leaved Sheep's Fescue . . . . .	5 25	35 00
Hard Fescue . . . . .	2 75	20 00
Meadow Foxtail . . . . .	2 50	30 00
Rough-Stalked Meadow . . . . .	5 00	35 00
Sweet Vernal . . . . . per lb., 80 cts.		
Crested Dogstail . . . . .	9 00	40 00
Awnless Brome, Bromus Inermis . . . . .	2 50	16 00
Bermuda Grass . . . . . per lb., 80 cts.		
Wood Meadow . . . . .	6 00	40 00
Creeping Bent Grass . . . . .	5 50	25 00
Tall Meadow Oat Grass . . . . .	2 50	22 00
Timothy. Market price; write for price and sample.		

**READ DREER'S GRASSES AND CLOVERS.**

A small handbook treating in an interesting way these important subjects; also contains notes on Forage and Root Crops, together with a chapter on Lawn-making and management. Price, 25 cts., by mail, postpaid.

# DREER'S RELIABLE FLOWER SEEDS

Many market gardeners, who are fortunate enough to have their places close to a good-sized town, add considerable to their incomes by growing some of the more popular flowers for sale in pots in Spring, or for bouquets through the Summer. The following list is made up of varieties best suited for this purpose. For a full list see our Garden Calendar for 1902.

The packets offered in this list are what is known as Trade Packets, and contain from three to six times as much seed as the small retail packets.



PÆONY PERFECTION ASTER.



MIGNONETTE MACHEDT.

	Trade pkt.		Trade pkt.
<b>Ageratum</b> , Cope's Pet, dwarfest blue, fine bedder . . .	15	<b>Centaurea</b> candidissima . . . . .	25
Blue Perfection, dark blue, extra fine . . . . .	20	gymnocarpa . . . . .	15
<b>Alyssum maritimum</b> (Sweet Alyssum), per oz., 15 cts.	10	<b>Cobæa</b> scandens, purple . . . . .	10
Tom Thumb, dwarf, compact . . . . .	20	<b>Cosmos</b> , Giant Perfection Crimson . . . . .	15
Little Gem, "White Carpet," very dwarf, " . . . . .	25	Giant Perfection Pink . . . . .	15
<b>Antirrhinum</b> majus, mixed, extra fine strain . . . . .	10	" " white . . . . .	15
<b>Aster</b> , Pæony Perfection, crimson, light blue, purple, bright pink, and pure white. Each . . . . .	30	" " mixed . . . . .	15
finest mixed . . . . .	30	Large Flowering, mixed . . . . .	10
<b>Queen of the Market</b> , white, pink, and purple. Each . . . . .	20	<b>Dianthus Double</b> , Chinensis, mixed . . . . .	10
finest mixed . . . . .	15	" Hedewigii, mixed . . . . .	15
<b>Victoria</b> , pink, scarlet, light blue, purple, and white. Each . . . . .	40	" Snowball, pure white . . . . .	15
finest mixed . . . . .	30	" " Fireball" . . . . .	15
<b>Daybreak</b> , soft pink, very double . . . . .	40	<b>Dracæna</b> indivisa, a fine vase plant . . . . .	10
<b>Simple's Branching</b> , white, pink, purple, crimson, and lavender. Each . . . . .	25	<b>Gaillardia</b> , single mixed . . . . .	10
finest mixed . . . . .	25	Lorenziana, double mixed . . . . .	10
<b>Asparagus</b> Sprengeri, fine for hanging baskets. Per 100 seeds, 30 cts.		<b>Grevillea</b> robusta. Makes nice plants to sell in pots; a quick grower . . . . .	15
<b>Balsam</b> White Perfection, choice strain . . . . .	25	<b>Helianthus</b> , cucumerifolius ( <i>Miniature Sunflower</i> ) . . . . .	10
camellia flowered, mixed, extra choice . . . . .	15	grandiflorus "Stella" . . . . .	10
<b>Bellis perennis</b> (Double Daisy) choicest mixed . . . . .	40	<b>Helichrysum</b> monstrosum, double mixed . . . . .	10
Double Daisy, choicest white . . . . .	40	<b>Heliotrope</b> , finest mixed . . . . .	20
<b>Calendula</b> , Meteor, yellow, striped orange . . . . .	10	Lemoine's Giant Hybrids . . . . .	40
Prince of Orange, darker than Meteor . . . . .	10	<b>Hunnemannia</b> fumarifolia ( <i>Giant Yellow Tulip Poppy</i> ), a fine summer and fall cut flower . . . . .	15
Pure Gold, fine golden yellow . . . . .	10	<b>Ipomœa</b> , grandiflora ( <i>Moon Flower</i> ) . . . . .	15
<b>Candytuft</b> , crimson . . . . .	10	<b>Lantana</b> hybrida, finest mixed . . . . .	10
Empress, fine white, select stock . . . . .	10	<b>Lobelia</b> , Crystal Palace compacta, true . . . . .	30
White rocket . . . . .	10	gracilis, light blue, trailing . . . . .	15
" fragrant . . . . .	10	speciosa (Crystal Palace), dark blue trailing . . . . .	15
mixed . . . . .	10	erinus compacta mixed . . . . .	15
<b>Canna</b> , large flowering, mixed . . . . .	10	<b>Marigold, African</b> , double mixed . . . . .	10
<b>Carnation, Marguerite</b> white . . . . .	30	African El Dorado, very double . . . . .	10
" rose . . . . .	30	<b>French</b> dwarf, mixed . . . . .	10
" scarlet . . . . .	30	" gold striped . . . . .	10
" finest mixed, extra choice . . . . .	20	Legion d'honneur ( <i>Little Brownie</i> ) . . . . .	10
" giant " " " . . . . .	30	<b>Maurandia</b> , Barclayana, purple . . . . .	25
<b>Celosia cristata</b> , Empress, rich crimson . . . . .	25	mixed . . . . .	25
Glasgow Prize, dark crimson . . . . .	25	<b>Mignonette</b> , large flowering . . . . . per oz., 10 cts.	
Queen of Dwarfs, dark rose . . . . .	25	Miles' Hybrid Spiral . . . . . lb. \$1.50	01
		Defiance, very large spikes . . . . . per oz., 50 cts.	15
		Machtet, true select stock . . . . . " 50 "	15



PHLOX DRUMMONDI GRANDIFLORA.



MIXED SWEET PEAS.

**Nasturtium Tom Thumb or Bedding.**

	Oz.	¼ lb.
Chameleon, <i>different colors on one plant</i> . . . . .	10	35
Empress of India, <i>crimson, dark leaves</i> . . . . .	10	35
Golden King, <i>golden yellow</i> . . . . .	10	25
King of Tom Thumbs, <i>scarlet</i> . . . . .	10	25
King Theodore, <i>maroon</i> . . . . .	10	30
rose, <i>soft rose</i> . . . . .	10	20
mixed, <i>best quality</i> , per lb., 40 cts. . . . .	10	15
Liliput mixed, <i>very dwarf</i> . . . . .	10	30

**Nasturtium, Tall or Climbing.**

Chameleon, <i>different colors on one plant</i> . . . . .	15	40
crimson . . . . .	10	20
King Theodore, <i>deep crimson</i> . . . . .	10	25
lemon yellow . . . . .	10	20
orange . . . . .	10	20
rose . . . . .	10	20
mixed, <i>best quality</i> , per lb., 35 cts. . . . .	10	15
Hybrids of Mad. Gunter, per lb., 60 cts. . . . .	10	20

Trade  
pkt.

**Pansy, Dreer's Royal Exhibition, the finest mixture of Pansy offered, large flowers of brilliant colors and fine texture. ⅓ oz., \$1.25**

Dreer's Premium, <i>very choice mixed</i> . . . . .	50
Giant Trimardeau, <i>large flowering, mixed</i> . . . . .	50
English mixed, <i>very fine mixture</i> . . . . .	30
good mixed, <i>good cheap mixture</i> . . . . .	25
	15

**Petunia, Dreer's Superb Double Fringed, 500 seeds, 75 cts.; 1000 seeds, \$1.50.**

Dreer's Superb Single Fringed . . . . .	50
Dwarf Inimitable . . . . .	40
“ Snowball . . . . .	30
striped and blotched, finest mixed . . . . .	20
fine mixed . . . . .	15
	10

**Phlox Drummondii, finest mixed grandiflora, finest mixed nana compacta, mixed**

Pyrethrum aureum ( <i>Golden Feather</i> ) . . . . .	10
Ricinus ( <i>Castor Oil Plant</i> ) Borboniensis, <i>green</i> . . . . .	10

**Ricinus (Castor Oil Plant) Borboniensis, green**

Cambodgiensis, <i>dark foliage</i> . . . . .	15
Gibsoni, <i>red foliage</i> . . . . .	10
Sanguineus, <i>red stalks, green leaves</i> . . . . .	10
Zanzibariensis mixed, <i>immense foliage</i> . . . . .	10
mixed . . . . .	10

**Salpiglosses, large flowering mixed**

Salvia splendens ( <i>Scarlet Sage</i> ) . . . . .	15
splendens “Bonfire” ( <i>Clara Bedman</i> ) . . . . .	30

**Scabiosa, dwarf double mixed**

maxima double mixed ( <i>tall</i> ) . . . . .	40
---	----

**Stocks, large flowering 10-week, finest mixed**

Princess Alice ( <i>Cut and Come Again</i> ) . . . . .	40
	50

**Sweet Peas.**

	Oz.	¼ lb.	Lb.
Apple blossom, <i>blush and pink</i> . . . . .	5	10	25
Blanche Burpee, <i>largest white</i> . . . . .	5	10	30
Blanche Ferry, <i>pink and white</i> . . . . .	5	10	25
Blanche Ferry, <i>extra early, pink and white</i> . . . . .	5	10	25
Captain of the Blues, <i>fine blue and purple</i> . . . . .	5	10	30
Countess of Radnor, <i>delicate lavender</i> . . . . .	5	10	30
Dorothy Tennant, <i>mauve or heliotrope</i> . . . . .	5	10	30
Earliest of All, <i>same color as Blanche Ferry, but a week earlier than the extra early type, fine for forcing</i> . . . . .	5	15	40
Emily Henderson, <i>purest white</i> . . . . .	5	10	30
Her Majesty, <i>brilliant rosy pink</i> . . . . .	5	10	25
Katherine Tracy, <i>brilliant pink</i> . . . . .	5	10	25
Lottie Eckford, <i>white suffused with lavender</i> . . . . .	5	10	25
Lovely, <i>shell pink, extra fine</i> . . . . .	5	10	30
Maid of Honor, <i>white, edged blue</i> . . . . .	5	10	30
Mars, <i>deep scarlet</i> . . . . .	5	10	30
Mrs. Eckford, <i>delicate primrose yellow</i> . . . . .	5	10	30
Mrs. Sankey ( <i>black seed</i> ) <i>pure white</i> . . . . .	5	10	30
Navy Blue, <i>deep violet blue</i> . . . . .	5	15	50
Prima Donna, <i>deep pink, fine</i> . . . . .	5	10	30
Prince of Wales, <i>deep rose</i> . . . . .	5	10	30
Royal Rose, <i>deep rosy pink</i> . . . . .	5	10	30
Sadie Burpee, <i>the new large white</i> . . . . .	5	15	40
Salopian, <i>a grand deep scarlet</i> . . . . .	5	10	25
Shahzada, <i>maroon, shaded purple</i> . . . . .	5	10	25
Stanley, <i>deep maroon</i> . . . . .	5	10	25
Venus, <i>salmon buff</i> . . . . .	5	10	25
Dreer's Peerless Mixture, <i>contains finest varieties, the best mixture possible</i> . . . . .	5	10	30
Eckford's Mixed, <i>made up of named sorts</i> . . . . .	5	10	25
Fine Mixed, <i>good sorts</i> . . . . .			20

Trade  
pkt.

**Sweet William, single mixed**

Double “ . . . . .	10
--------------------	----

**Thunbergia, mixed**

**Verbena, Dreer's Mammoth, white, scarlet, pink,**

purple and striped, each

“ “ “ finest mixed . . . . . 25

**Vinca, rosea, mixed** . . . . . 15

**Zinnia, dwarf double white** . . . . . 10

dwarf double scarlet . . . . . 10

“ “ salmon rose . . . . . 10

“ “ orange . . . . . 10

“ “ canary . . . . . 10

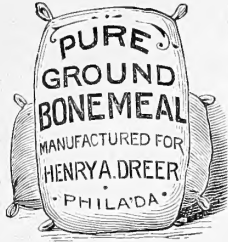
“ “ Jacqueminot, *crimson* . . . . . 15

“ “ mixed . . . . . 10

tall double mixed . . . . . 10



# FERTILIZERS



**Pure Ground Bone.**  
**Pure Bone Meal.** 200 lb. sack,  
 \$3.50; ton, \$30.00.  
**Pure Bone Flour.** 100 lbs.,  
 \$2.25; bag or bbl., 200 lbs., \$4.00;  
 ton, \$36.00.  
**Coarse Bone.** 200 lbs., \$4.00;  
 ton, \$33.00.  
**Button Bone.** 200 lbs., \$3.50;  
 ton, \$30.00.

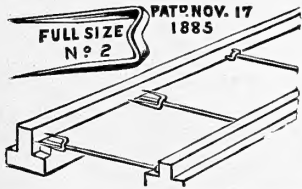
**Dreer's Ammoniated Bone Phosphate.** Sack,  
 200 lbs., \$3.00; ton, \$25.00.

**Guano.** New process, 10 per cent. Bag of 200 lbs., \$4.50;  
 ton, \$43.00.  
**Pulverized Sheep Manure.** 100-lb. sack, \$2.00;  
 ton, \$35.00.  
**Nitrate of Soda.** 50 lbs., \$1.75; 100 lbs., \$3.00; 200  
 lbs., \$5.50; prices for large lots on application.  
**Kainit.** 200 lbs., \$2.00; ton, \$16.00.  
**Canada Unleached Hardwood Ashes.** Per bbl.,  
 \$2.00; per ton, \$18.00.  
**Fish Bone and Potash.** For potatoes, corn and truck.  
 100 lbs., \$2.00; sack, \$3.50; ton, \$30.00.  
**Native Poudrette.** The best prepared manure for the  
 market garden. Per 100 lbs., \$1.50; per ton, \$15.00.

# INSECTICIDES AND FUNGICIDES

**Powdered Sulphur.** For Mildew on Tomatoes under  
 glass. Per lb., 6 cts.; 10 lbs., 50 cts.; 100 lbs., \$3.50.  
**Pure Paris Green.** Per lb., 25 cts.; 10 lbs., \$2.00.  
**London Purple.** Per lb., 20 cts.; 5 lbs., 90 cts.  
**Slug Shot (Hammond's).** 5 lbs., 25 cts.; 100 lbs., \$3.50;  
 bbl., 235 lbs., 3 cts. per lb.  
**Grape Dust.** For Mildew in hot-beds. 5 lbs., 30 cts.  
**Rose Leaf Extract of Tobacco.** 1 gallon, \$1.25;  
 5 gallons, \$4.25.  
**Fostite.** To prevent Fungus on Lettuce, etc. 5 lbs., 50 cts.;  
 25 lbs., \$2.00; 50 lbs., \$3.50; 100 lbs., \$6.50.  
**Tobacco Dust.** Per lb., 5 cts.; 100 lbs., \$2.50.  
**Tobacco Stems.** Bale of about 225 lbs., \$1.50.  
**Whale Oil Soap.** 1, 2 and 5 lbs., 15, 25 and 40 cts.  
**Hellebore, Powdered White.** Per lb., 20 cts.

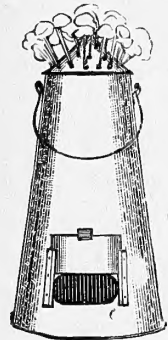
**Lemon Oil.** 1/2 pint, 25 cts.; pint, 40 cts.; qt., 75 cts.;  
 1/2 gallon, \$1.25; 1 gallon, \$2.00; 5-gallon kegs, \$9.00.  
**Kerosene Emulsion.** (A good scale remedy—Paste.)  
 1 lb., 15 cts., makes 10 gallons Spray; 5 lbs., 60 cts., makes  
 50 gallons; 25 lb., \$2.50, makes 250 gallons.  
**Bordeaux Mixture.** (Liquid.) 1 gallon, \$1.00, makes  
 1 bbl.; 1 qt., 40 cts., makes 15 gallons.  
**Bordeaux Mixture, Powell's Improved.** (Dry.)  
 Ready for use by adding water. 1 lb., 15 cts., makes 5 gal-  
 lons; 5 lbs., 60 cts., makes 25 gallons; 10 lbs., \$1.00,  
 makes 50 gallons; 25 lbs., \$2.50, makes 125 gallons.  
**Leggett's Fungiroid.** Bordeaux Mixture in powder.  
 Lb., 15 cts.; 5 lbs., 60 cts.



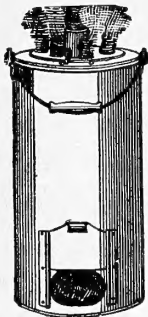
FUMIGATORS.

## Glazing Points.

No rights or lefts. Price  
 per box of 1000, 60c.; by  
 mail, 75c.; in lots of 5000,  
 by express, 55c. per 1000.



EUREKA.



PERFECTION.

No. 1. 1/2 pk. \$1.00  
 " 2. 1 " 1.50  
 " 3. 1/2 bu. 2.00  
 " 4. 1 " 3.00

Send for Dreer's  
 Spray Circular,  
 for information on  
 Spraying and  
 Spraying Apparatus.

This machine  
 will fumigate and  
 vaporize at the  
 same time.

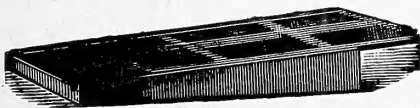


CAHOON BROADCAST  
 SEED SOWER.

Will sow any kind of  
 grain or grass, \$3.25.

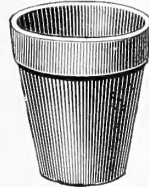


UNIVERSAL  
 GLASS CUTTER.



PLANT BED CLOTH FOR SHADING

**Copper Sulphate.** (Pulverized.) Lb., 15 cts.; 25 lbs.,  
 \$3.00; 100 lbs., \$10.00.



## FLOWER POTS.

Standard flower pots. Full inside  
 measurement, height and width. No  
 charge for barrels or packing. 50 at  
 100 rates; 500 at 1000 rates.

	Per 100	Per 1000		Per 100	Per 1000
1 3/4 inch	\$0 35	\$3 15	4 1/2 inch	\$1 50	\$13 50
2 "	40	3 60	5 "	2 00	18 00
2 1/4 "	45	4 05	5 1/2 "	2 50	22 50
2 1/2 "	55	4 95	6 "	3 00	27 00
2 3/4 "	60	5 63	6 1/2 "	4 00	40 00
3 "	70	6 30	7 "	5 00	50 00
3 1/4 "	85	7 65	8 "	7 00	70 00
3 1/2 "	90	8 10	9 "	10 00	100 00
4 "	1 10	9 90	10 "	13 50	135 00
4 1/4 "	1 25	11 25			

The above prices are subject to 10 per cent. discount for cash  
 with order, or if paid within 30 days.

**Universal Diamond Glass Cutter.** Has a diamond  
 in one corner and a wheel in the other, thus giving a sure cut.  
 The cocoa handle cutter has diamond nearly twice the size of the  
 ebony handle. Cocoa handle, \$3.75; Ebony handle,  
 \$2.50.

Steel wheel cutters, 15 cts. each; \$1.50 per dozen.

## Plant Bed Cloth—For Shading.

Light grade, 4 cts. per yard; per piece of about 65 yards, 3 1/2  
 cts. per yard.  
 Medium grade, 7 cts. per yard; per piece of about 60 yards,  
 6 1/2 cts. per yard.  
 Heavy grade, 10 1/2 cts. per yard; per piece of about 40 yards,  
 10 cts. per yard.

Samples mailed on application.

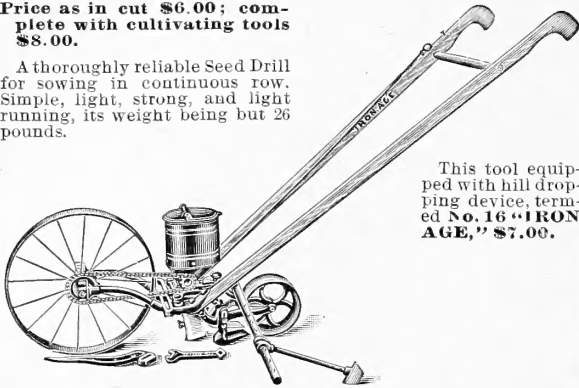
# The "IRON AGE" Garden and Farm Implements

Full description of "IRON AGE" Tools given in special Catalogue mailed on application.

## No. 18 "IRON AGE" Seed Drill

Price as in cut \$6.00; complete with cultivating tools \$8.00.

A thoroughly reliable Seed Drill for sowing in continuous row. Simple, light, strong, and light running, its weight being but 26 pounds.

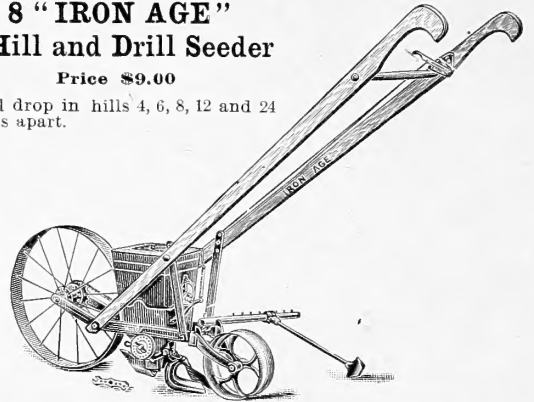


This tool equipped with hill dropping device, termed No. 16 "IRON AGE," \$7.00.

## No. 8 "IRON AGE" Hill and Drill Seeder

Price \$9.00

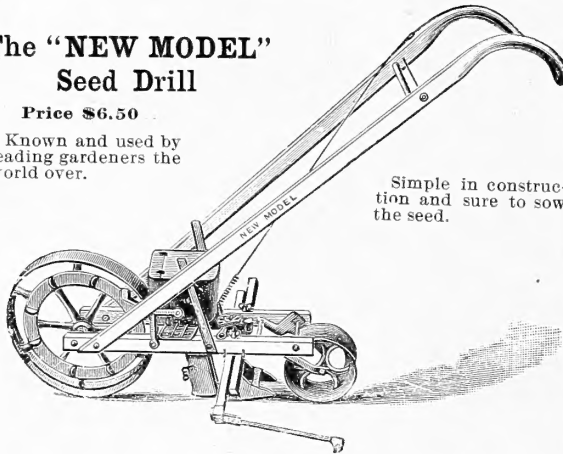
Will drop in hills 4, 6, 8, 12 and 24 inches apart.



## The "NEW MODEL" Seed Drill

Price \$6.50

Known and used by leading gardeners the world over.



Simple in construction and sure to sow the seed.

## The No. 9 "IRON AGE" Single-Wheel Hoe

Price complete \$4.50. No. 10 (Side Hoes only) \$2.75.

A light, strong steady-running tool. None superior.



## The No. 1 "IRON AGE" Double-Wheel Hoe

Price complete \$6.00. With side Hoe only, No. 3, \$3.50.

High wheels, easy running, durable and strong. Can be changed into a Single-Wheel Hoe. Will cultivate astride plants 20 inches high.

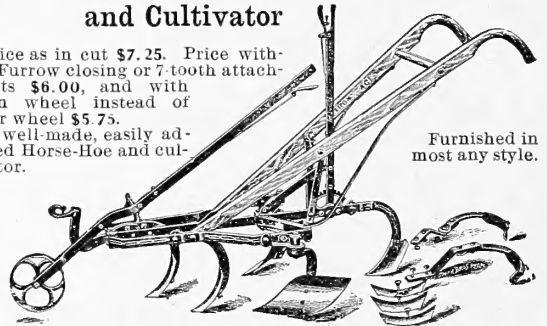


## No. 6 "IRON AGE" Combined Horse-Hoe and Cultivator

Price as in cut \$7.25. Price without Furrow closing or 7-tooth attachments \$6.00, and with plain wheel instead of lever wheel \$5.75.

A well-made, easily adjusted Horse-Hoe and cultivator.

Furnished in most any style.

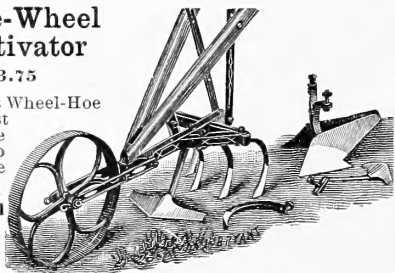


## "Gem" Single-Wheel Hoe and Cultivator

Complete \$3.75

This is an excellent Wheel-Hoe that has stood the test of time, and for the money there is no better tool on the market.

Gem Double-Wheel Hoe complete \$4.50



## The No. 1 "IRON AGE" Combined Harrow and Cultivator

With Wheel, \$4.75. Without Wheel, \$4.25

The teeth are forged with a harrow tooth on one end a cultivator tooth the other. Useful in truck of all kinds, throws little soil, but cultivates thoroughly.



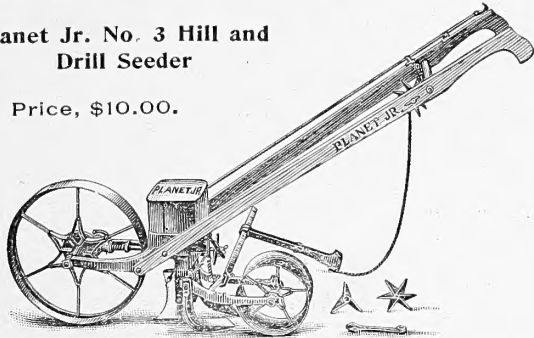


# "PLANET JR." Farm and Garden Tools

Space will not permit our showing and describing all of the Planet Jr. tools, but we will send a fully illustrated catalogue, free for the asking, to any who desire it. Planet Jr. goods are standard machines—the best—and you can rely on getting bottom prices from us.

## Planet Jr. No. 3 Hill and Drill Seeder

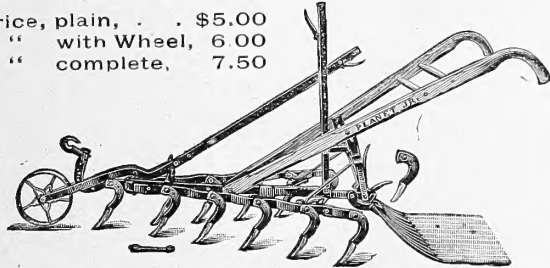
Price, \$10.00.



This drill will sow in a continuous row in the ordinary way with the greatest regularity, but its distinctive feature is that it will drop neatly in hills either 4, 6, 8, 12 or 24 inches apart. It is changed in a moment from hill to drill work; sows equally well whether the hopper is full or contains only a paper of seed, and will not injure delicate seeds, which are so often peeled or crushed by imperfect seeders; the plow is adjustable for depth and opens a very narrow furrow. Capacity two and one-half quarts.

## Planet Jr. Harrow and Cultivator

Price, plain, . . . \$5.00  
 " with Wheel, 6 00  
 " complete, 7.50



This is a market gardeners' tool. It has a high frame and the chisel-shaped teeth cut an inch wide each. The foot lever pulverizer is a capital addition for preparing ground for the seed drill or for plant setting, and controls the depth of the rear teeth. It contracts to 12 inches and expands to 32 inches. It cultivates deep, without throwing earth upon the plants.

## Planet Jr. No. 8 Horse Hoe

Price, \$7.50  
 Without Depth Regulator  
 (order as No. 7), \$7.00



The Planet Jr. Horse Hoe and Cultivator is strongly built, is light and easy to handle. The frame is longer than usual and about one and a half inches higher, making a tool that will not clog easily. The stiff steel hollow standards polish quickly and free themselves readily from obstruction. The depth is under perfect control by means of a new lever wheel and the new depth regulator. The expander is superior to all other forms. The reversible side hoes, as shown in the cut, act as plows or hillers, but when turned end for end the tool becomes a genuine horse hoe, working shallow and close without injury to the roots.

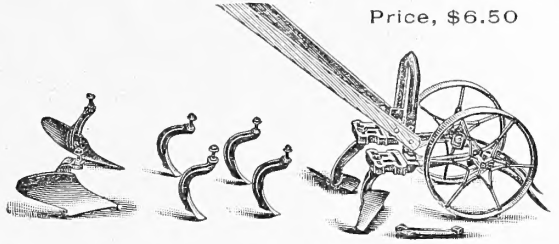
## Planet Jr. No. 9 Horse Hoe and Cultivator

Price, \$6.50

This tool is identical with No. 8, except it has a plain wheel instead of a lever wheel, and depth regulator.

## Planet Jr. No. 12 Double-Wheel Hoe

Price, \$6.50

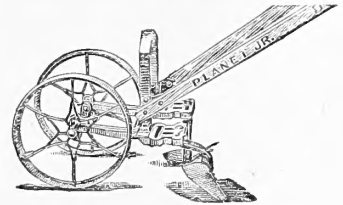


This is identical with the No. 11, except it has a less complete equipment, as shown in the cut, but at a correspondingly less price.

## Planet Jr. No. 13 Double-Wheel Hoe

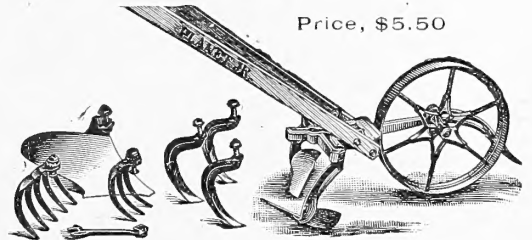
Price, \$4.50

This tool is the No. 12 with 6-inch hoes only. Any or all of the other tools may be added at any time, and are sure to fit.



## Planet Jr. No. 16 Single-Wheel Hoe

Price, \$5.50

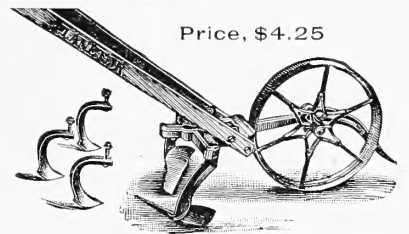


This latest and best Single-Wheel Hoe is light, strong and easy running. The frame changes in height, and the wheel to the other side of the frame, when both sides of the row can be hoed at one passage.

## Planet Jr. No. 17 1/2 Single-Wheel Hoe and Cultivator

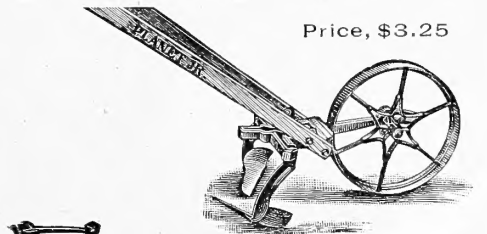
Price, \$4.25

This machine is similar to No. 16, except it has no plow nor rakes, but it has a leaf lifter.



## Planet Jr. No. 18 Single-Wheel Hoe

Price, \$3.25



This tool has the same frame and handles as No. 16, but has one pair of 6-inch hoes only. All the other tools can be added as needed.

