

Historic, archived document

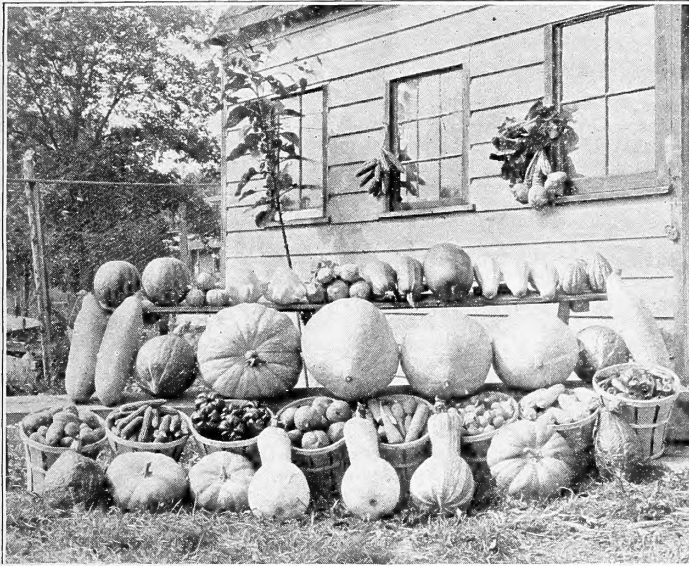
Do not assume content reflects current scientific knowledge, policies, or practices.

62,73

DREER'S



Market Gardeners' Wholesale Price List



A Collection of Vegetables Grown from Dreer's Seeds

RELIABLE

Vegetable Seeds

Garden Requisites

Implements

Fertilizers, Etc.

SPRING EDITION, 1905

HENRY A. DREER

714 Chestnut Street



PHILADELPHIA, PA.

DREER'S RELIABLE SEEDS

FOR MARKET GARDENERS

TO OUR FRIENDS AND PATRONS:

Our many years' experience in the seed business enables us to know just what is needed by market gardeners, and also to supply same, of the best quality. Our trade extends throughout the whole country, and our list of permanent customers includes many of the leading truckers, quite a number of whom are now following in the footsteps of their forefathers, and are depending upon "Dreer's Seeds" each year for their market crops.

In order to keep up the reputation we have made by supplying uniformly high-grade seeds, we are constantly on the alert, giving critical inspection to our growing crops, and, wherever possible, making improvements by careful selections of Stock Seeds.

We hope for a continuance of the patronage of our regular customers, and also at least a trial order from those Market Gardeners who have not as yet planted Dreer's Reliable Seeds.

Very truly yours,

HENRY A. DREER.

Seeds postpaid. At prices quoted in this catalogue, we pay the postage on all orders for ounces and quarter-pounds. Where larger quantity than quarter-pound is ordered, postage must be added at the rate of eight cents per pound, unless the goods are to be sent by freight or express, in which case the purchaser always pays the transportation charges when obtaining goods from railroad or express agent. If Beans and Peas are wanted by mail, add postage at the rate of fifteen cents per quart, and for Sweet Corn add ten cents per quart to prices quoted herein.

Packing. No charge is made for boxes or packing, nor for delivery to freight depots or express offices in Philadelphia.

Special low express rates. As seeds are now taken, when packed in boxes or bags, by leading express companies at a reduction of twenty per cent. from regular merchandise rates, it is a great advantage to those ordering in quantities, such as pounds and quarts, to have their orders shipped by express. Large quantities can be shipped cheapest by freight, but require a longer time in transit. If the manner of shipment is left to us, we will always use our best judgment in the matter and decide to the interest of the customer.

Cash with order. Please send remittance with the order sufficient to cover the whole bill. Remittances should be made by Post-Office Money Order, Drafts on Philadelphia or New York Banks, or Express Money Orders. We disclaim all responsibility when remittances are not made as above directed. Where it is not possible to obtain these, the letter should be registered.

Non-warranty. While we take every precaution to have our seeds pure and of the best quality, we do not give any warranty, express or implied, either as to quality, productiveness, or any other condition, and will not be in any way responsible for the crop. Every order for articles named in this catalogue will be accepted on these conditions only.

Deutsche Correspondenten.— Alle Bestellungen und Correspondenzen in deutscher Sprache werden mit Sorgfa ausgeführt.

Dreer's Reliable Flower Seeds

This department is probably the largest in quantity and variety in the country. Our choice strains of Asters, Carnations, Cyclamens, Pansy, Petunia, Primula, Sweet Peas, Verbena, etc., etc., are well and favorably known to almost every florist and professional gardener throughout the United States and Canada. If you should require any for your own use we would refer you to our Garden Book for 1905, in which will be found a complete list; to those who grow flowers for sale we have a special Florists' Catalogue which is sent only to those who can furnish evidence that they are entitled to it.

Dreer's Select Greenhouse, Bedding and Hardy Plants

No doubt many who get this catalogue know that we are the largest growers of Decorative Flowering and Foliage plants in the country. Our nurseries cover over 100 acres of space, more than seven acres of which are covered by modern greenhouse structures. Over one-half of our Garden Book for 1905 (free on application) is devoted to this part of our business, and whether your wants be Palms, Ferns, or other decorative stock, Cannas, Geraniums, Dahlias or bedding plants, or the old-fashioned hardy Garden Flowers which are now so popular, you can not be better served than from our establishment.

HENRY A. DREER,

LOCK BOX 1618.

714 Chestnut Street,

PHILADELPHIA, PA.



MARKET GARDENERS' ORDER SHEET
FOR DREER'S RELIABLE SEEDS, ETC.
HENRY A. DREER, 714 Chestnut St., Philadelphia, Pa.

PLEASE DO NOT WRITE HERE.

Date,

AMOUNT ENCLOSED.

P. O. Order, \$

Express "

Draft,

Cash,

Postage Stamps,

Credit Note,

Total, \$

Forward by (State whether wanted by Mail, Express or Freight)

Name,

Post Office,

Express Office, (If different from P. O.)

County,

State,

PLEASE NOTE.—We send packets, ounces and $\frac{1}{4}$ pounds by mail post paid, at prices quoted in our Market Gardeners' Wholesale Price List. If larger quantities are wanted by mail, add for postage at rate of 8 cts. per lb. ; otherwise goods will be sent by express or freight, at purchaser's expense. We supply half-pounds at pound rate, half-bushels at bushel rate.

Bushels	Pecks	Quarts	Lbs.	Ozs.	Pkts-	NAME OF SEEDS WANTED	Price

From

.....

.....

PUT
STAMP
HERE

HENRY A. DREER,

SEEDSMAN,

Lock Box 1618,

Philadelphia, Pa.

SEED WAREHOUSE,

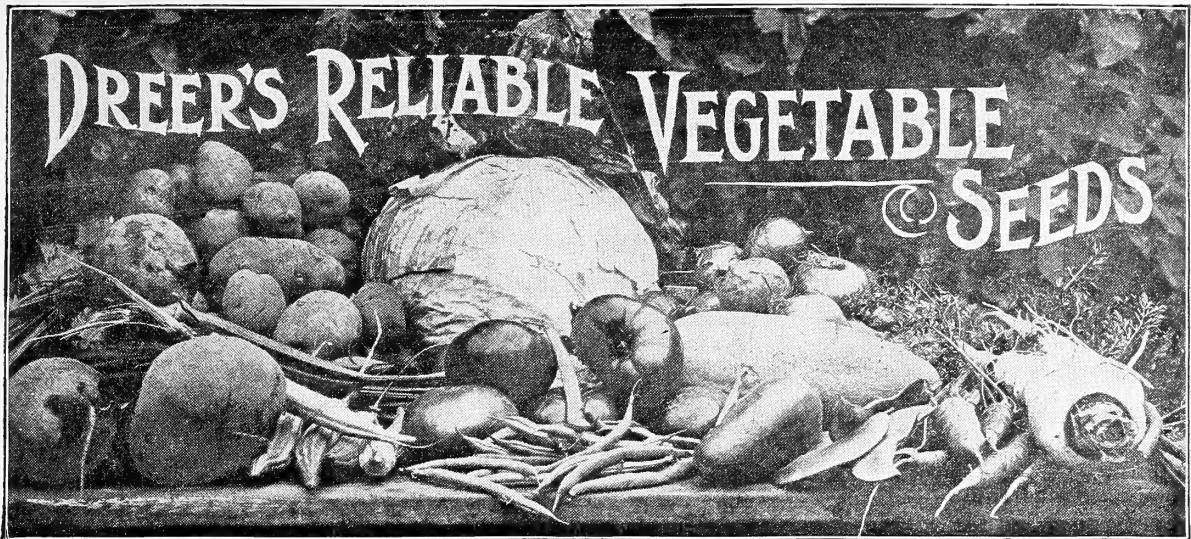
714 CHESTNUT STREET.

Amount forward,

MARKET GARDENERS' ORDER SHEET FOR DREER'S RELIABLE SEEDS, ETC.

Bushels	Pecks	Quarts	Lbs.	Ozs.	Pkts.	NAME OF SEEDS WANTED	Price
						<i>Amount brought forward,</i>	





ARTICHOKE—Artischoke.

Large Green Globe. The best for general culture. Oz., 25 cts.; ¼ lb., 75 cts.

Jerusalem Artichoke. Entirely distinct from the Globe variety, and propagated by and for its tubers. Price of tubers, peck, 75 cts.; bu., \$2.50. Special prices on large quantities.

Artichoke Plants. (See page 27).

ASPARAGUS—Spargel.

Dreer's Eclipse. This variety is the result of most careful selection and "breeding up" to the large type, yet retaining that delicate light green color and tender quality to be desired. The stalks will frequently measure two inches in diameter and twelve to fifteen inches long, and even in this large state are most tender and delicious. Oz., 10 cts.; ¼ lb., 20 cts.; lb., 60 cts.; 5 lbs., \$2.50.

Argenteuil. (See cut.) This attractive variety is largely grown in France for the Paris market, and is greatly admired. The stalks grow to a mammoth size, sometimes weighing as much as 4 ounces each. The head is somewhat pointed and scales with which it is covered are very closely set. It is an early variety and remarkably healthy, being able to resist disease. The stalks cook tender and quality is superb. Oz., 15 cts.; ¼ lb., 30 cts.; lb., \$1.00; 5 lbs., \$4.00.

Barr's Mammoth. A fine, large-stemmed green sort. This variety has been largely grown by truckers in this section and is considered very fine. Oz., 5 cts.; ¼ lb., 15 cts.; lb., 50 cts.; 5 lbs., \$2.25.

Conover's Colossal. Large and productive. One of the standard varieties. Oz., 5 cts.; ¼ lb., 15 cts.; lb., 40 cts.; 5 lbs., \$1.75.

Palmetto. An early, prolific and very desirable variety. Oz., 5 cts.; ¼ lb., 15 cts.; lb., 50 cts.; 5 lbs., \$2.25.

Donald's Elmira. Of mammoth size, fine quality. Oz., 5 cts.; ¼ lb., 15 cts.; lb., 50 cts.; 5 lbs., \$2.25.

Columbian Mammoth White. A desirable variety, producing white stalks of large size and finest quality. Oz., 5 cts.; ¼ lb., 15 cts.; lb., 50 cts.; 5 lbs., \$2.25.

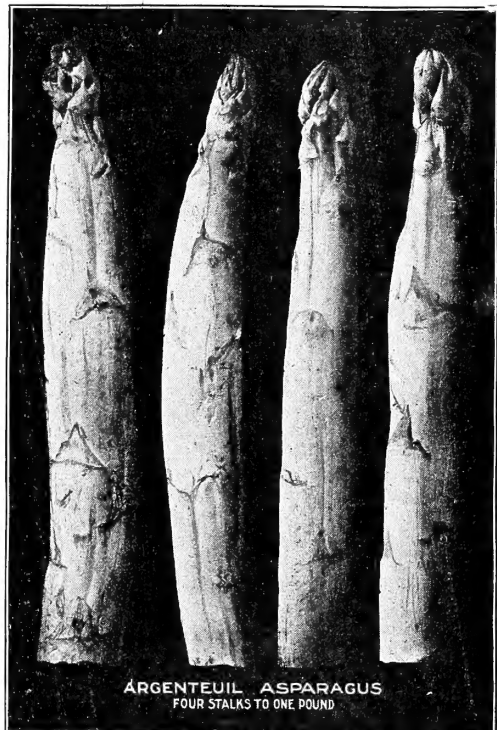
ASPARAGUS ROOTS.

STRONG TWO-YEAR-OLD ROOTS. Add 40c. per hundred extra if sent by mail.

We make a specialty of Asparagus Roots and each year send out many thousands of selected two-year-old roots which have been grown by us at our Nurseries from the choicest selected seed stock. Growers desiring more than one thousand roots should write to us, stating variety and quantity wanted and we will be pleased to give price for same by letter.

Argenteuil. (See cut.) 75 cts. per 100; \$6.00 per 1000.
DREER'S ECLIPSE, Palmetto, Barr's Mammoth, Conover's Colossal, Columbian Mammoth White. Each 50 cts. per 100; \$4.00 per 1000.

Dreer's Special Circular on Asparagus Culture Free.



ARGENTEUIL ASPARAGUS
FOUR STALKS TO ONE POUND

BEANS—Dwarf or Bush.

Ger. Krop-Bohnen.

If wanted by mail add 15 cts. per quart for postage.

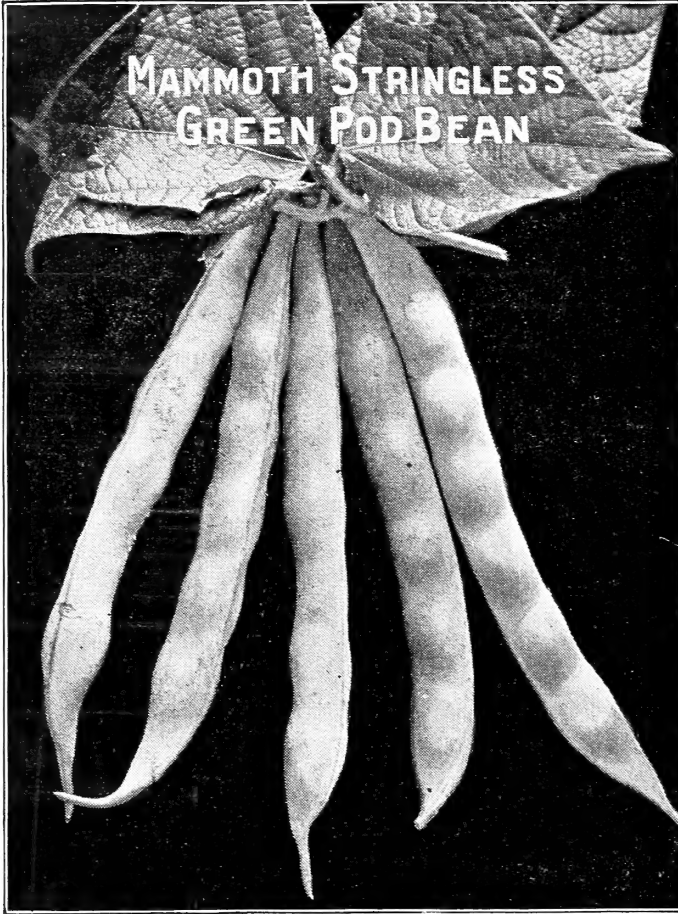
Green Podded Varieties.

Improved Extra Early Red Valentine. Our strain of this popular variety is best, pods are round and fleshy, and are ready to pick, under favorable conditions, in 32 days from germination. Qt., 20 cts.; 4 qts., 75 cts.; peck, \$1.40; bu., \$5.60.

Black Valentine. This variety of green-pod bean is very productive. Pods are extremely long, round and straight, and are quite attractive. The quality is also good. Qt., 30 cts.; 4 qts., \$1.00; peck, \$1.50; bu., \$6.00.

Long Yellow Six Weeks. (Flat pod). Very early and prolific; long green tender pods; mature quickly. Qt., 20 cts.; 4 qts., 75 cts.; peck, \$1.40; bu., \$5.60.

Extra Early Refugee. A profuse bearing variety. One of the very best early sorts. Qt., 20 cts.; 4 qts., 75 cts.; peck, \$1.40; bu., \$5.60.

BEANS—Green Pod; Dwarf or Bush.—Continued.**Mammoth Stringless Green Pod.**

(See cut.) In this variety we offer the finest and earliest green pod stringless Bean it has ever been our pleasure to see growing. The plants are very productive, bearing profusely the large and green pods, which are perfectly round, very fleshy and entirely stringless. In quality it is equal to any variety ever offered, and it is a great improvement in every way over the long time favorite "Round Pod Valentine." Qt., 35 cts.; 4 qts., \$1.25; peck, \$2.00; bu., \$8.00.

Burpee's Stringless Green Pod Bean.

This variety is positively stringless, and remains tender and crisp a long time after maturity. The pods are of pale green, long and straight, perfectly round and meaty, maturing with the earliest of the green-pod varieties. Qt., 35 cts.; 4 qts., \$1.25; peck, \$2.00; bu., \$8.00.

Early Mohawk. The hardiest of the early varieties, also good for autumn picking. Qt., 20 cts.; 4 qts., 75 cts.; peck, \$1.40; bu., \$5.60.

Triumph of the Frames. Splendid for forcing. Pt. 35 cts.; qt., 65 cts.

Varieties for Shell Beans.

	Qt.	4 Qts.	Pk.	Bu.
White Kidney	20	65	\$1 10	\$4 40
White Marrowfat	20	65	1 10	4 40
Boston Pea Bean	20	65	1 10	4 40
Black Turtle Soup	20	65	1 10	4 40
Broad Windsor	30			

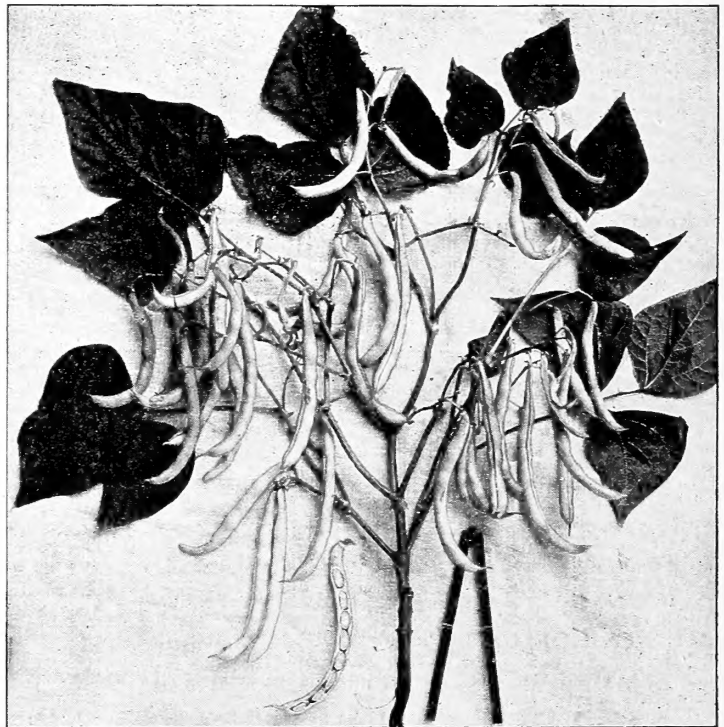
Wax Poddled Varieties.

Currie's Rust-Proof Wax. This variety is rust-proof; pods grow long, flat, are very tender and of the finest quality. It is early and productive. Qt., 35 cts.; 4 qts., \$1.25; pk., \$1.90; bu., \$7.60.

Pencil Pod Black Wax. (See cut.) An improvement on Improved Prolific Black Wax, and without a doubt hardier and more productive. This is occasioned by its containing a little of the Refugee Wax blood, from which parent it also obtains its beautiful, long, round and pencil-like pod. The color of the pod is a rich dark yellow, much handsomer and decidedly more attractive than the ordinary lighter colored Black Wax pod. It is extremely tender and brittle, and while not quite as early as the old style Black Wax, it comes along in season with the regular standard sorts, and remains in good picking condition much longer than the other sorts. Qt., 40 cts.; 4 qts., \$1.40; peck, \$2.10; bu., \$8.40.

Valentine Wax. An improved extra early Valentine Bean, with round wax pods. The pods are very meaty, and with so very little string that they may justly be called stringless. It is remarkably free from rust, and remains a long time without becoming tough. Qt., 40 cts.; 4 qts., \$1.40; pk., \$2.10; bu., \$8.40.

Stringless Refugee Wax. An improvement on Refugee Wax. Plants are of very robust growth and extremely productive, bearing many large pods which are round, pencil-like and usually contain five beans each; they are also stringless. The color is a rich golden-yellow, and the quality is excellent. Qt., 40 cts.; 4 qts., \$1.40; peck, \$2.10; bu., \$8.40.



PENCIL POD BLACK WAX BEAN

BEANS.

Wax Podded Varieties—Continued.

Round Pod Kidney Wax. (See cut). An improved type of the well-known Wardwell's Kidney Wax. The pods are long, straight and extremely handsome. It is fully as early in maturing as the Wardwell's Kidney Wax and the pods remain exceedingly tender, even when well advanced in growth. Qt., 40 cts.; 4 qts., \$1.40; peck, \$2.10; bu., \$8.40.

Wardwell's Kidney Wax. Long, flat pod, of a delicate waxy yellow, stringless and brittle, producing a heavy crop. It is extremely hardy and very robust in growth. Qt., 40 cts.; 4 qts., \$1.40; pk., \$2.10; bu., \$8.40.

Improved Prolific Black Wax. (Cylinder Wax). An improvement on the old Black Wax. Pods waxy yellow, very tender and productive. Qt., 35 cts.; 4 qts., \$1.25; pk., \$1.90; bu., \$7.60.

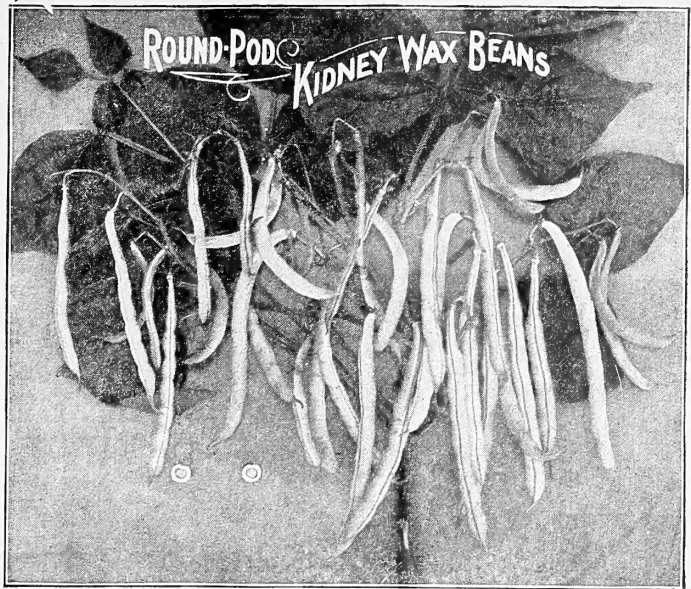
Improved Rust Proof Golden Wax. Pods long, nearly straight, broad, flat and clear yellow. Qt., 35 cts.; 4 qts., \$1.25; pk., \$1.90; bu., \$7.60.

Saddle-Back Wax. Pods large, long, round, very solid, stringless. Qt., 40 cts.; 4 qts., \$1.40; pk., \$2.10; bu., \$8.40.

Scarlet Flageolet or Perfection Wax. The pods are of a rich golden-yellow color and very large, stringless, tender and of fine flavor. Qt., 40 cts.; 4 qts., \$1.40; pk., \$2.10; bu., \$8.40.

Yosemite Mammoth Wax. A giant among beans. Golden Yellow color and absolutely stringless. Qt., 40 cts.; 4 qts., \$1.40; pk., \$2.10; bu., \$8.40.

Davis Wax. Pods flat, very long, white, straight and handsome. Qt., 35 cts.; 4 qts., \$1.25; pk., \$1.90; bu., \$7.60.



BUSH LIMA BEANS.

Wonder Bush Lima (Dreer's). This is without doubt the earliest and best of the Bush Limas. Seed planted on our experimental grounds on June 29th produced fully matured beans on August 17th, just seven weeks from planting. No other Bush Lima Bean has such a record for earliness. The plants grow dwarf, upright and compact, and are completely covered with large pods, many of which contain four beans which are fully as large as Pole Limas. The beans are flat in shape, and fully equal in flavor to the famous Dreer's Improved Lima, so well and favorably known. Qt., 40 cts.; 4 qts., \$1.30; peck, \$2.00; bu., \$8.00.

Dreer's Bush Lima. A dwarf variety of the Dreer's Improved Lima, which has been fixed in its character of a bush bean; it is very prolific, single plants often producing from 150 to 200 pods. Qt., 40 cts.; 4 qts., \$1.30; peck, \$2.00; bu., \$8.00.

	Qt.	4 qts.	Pk.	Bu.
Burpee's Bush Lima . . .	30	\$1 00	\$1 75	\$7 00
Henderson's Bush Lima . .	30	1 00	1 75	7 00

POLE or RUNNING BEANS. WAX POD.

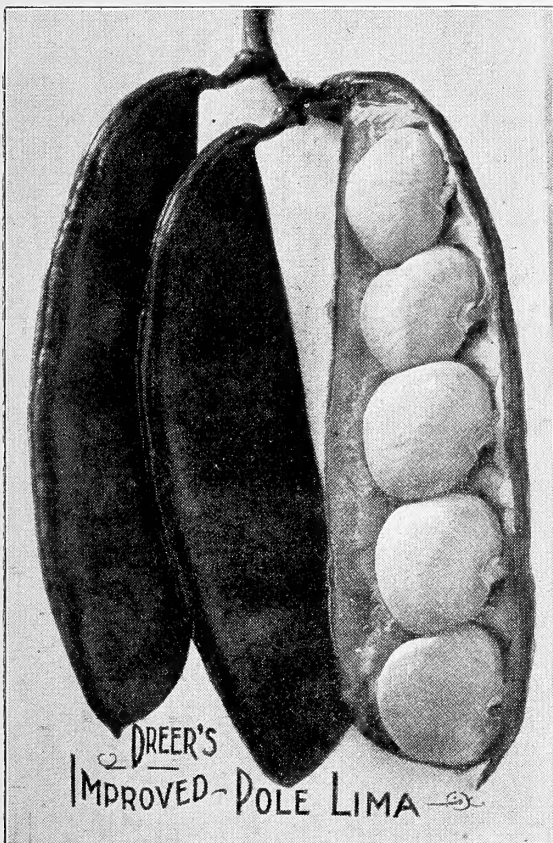
	Qt.	4 qts.	Pk.	Bu.
Golden Cluster	40	\$1 30	\$2 00	\$8 00
Golden Carmine	40	1 30	2 00	8 00

GREEN POD.

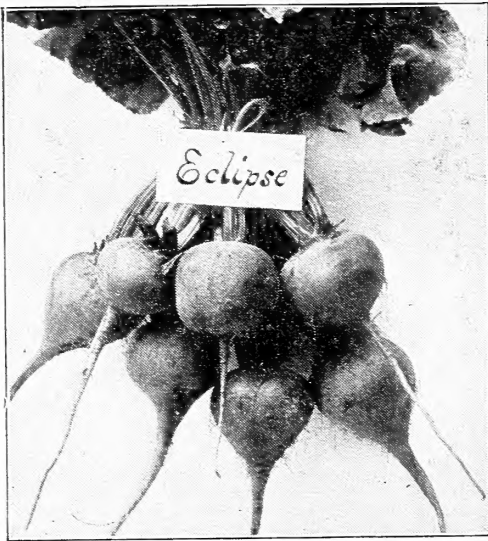
	Qt.	4 qts.	Pk.	Bu.
Horticultural, or Cranberry	25	90	\$1 65	\$6 60
White Dutch Case-Knife	25	90	1 65	6 60
White Dutch Runner	30	1 00	1 75	7 00
Scarlet Runner	30	1 00	1 75	7 00
White Crease Back	25	90	1 65	6 60
Kentucky Wonder	35	1 10	1 90	7 60

POLE LIMA BEANS.

	Qt.	4 qts.	Pk.	Bu.
Siebert's Early	30	\$1 15	\$1 75	\$7 00
Early Jersey	30	1 15	1 75	7 00
Dreer's Improved	40	1 30	2 00	8 00
Ford's Mammoth	40	1 30	2 00	8 00
Large Green	40	1 30	2 00	8 00
King of the Garden	30	1 15	1 75	7 00
Small, or Sieva	30	1 15	1 75	7 00



BEETS—Ger. Salatrube.



Crimson Globe. This beet is remarkable for its smooth skin and fine shape. It is a second early variety, does not grow large and coarse, the matured beets being medium in size and rather oblong in shape. The flesh and skin are both very dark, and quality fine, being sweet and tender. The tops are small and dark in color. We are confident that this beet will please all who plant it. $\frac{1}{4}$ lb. 25 cts.; lb., 75 cts.; 10 lbs., \$7.00.

Dreer's Excelsior. A splendid extra early blood turnip beet, fully as early as the Crosby's Egyptian. $\frac{1}{4}$ lb., 20 cts.; lb., 60 cts.; 10 lbs., \$5.50; bu., \$7.50.

Dreer's Special Cosby's Egyptian Beet. Produced from roots which have had special care in selecting and far superior to the ordinary stock of Crosby's Egyptian Beet. $\frac{1}{4}$ lb., 25 cts.; lb., 75 cts.; 10 lbs., \$6.50; bu., \$10.50.

Crosby's Egyptian. An improved strain of the Egyptian Beet, specially recommended as an extra early sort. It is much thicker than the original strain, of better color and quality, besides being smoother. Tested alongside of many other strains of this popular Beet, ours has always been equal to any. $\frac{1}{4}$ lb., 20 cts.; lb., 60 cts.; 10 lbs., \$5.50; bu., \$7.50.

Early Eclipse. (See cut). Remarkable for its rapid growth, extreme smallness of top, and extra fine quality. Perfectly smooth and round, skin and flesh intense red; very fine grained and sweet. An excellent sort for forcing. $\frac{1}{4}$ lb., 15 cts.; lb., 50 cts.; 10 lbs., \$4.50; bu., \$6.50.

Extra Early Egyptian. One of the earliest, of good quality and medium size; a fine forcer, small top. $\frac{1}{4}$ lb., 15 cts.; lb., 50 cts.; 10 lbs., \$4.50.

Arlington's Favorite Blood. (See cut). A dark-leaved, early blood variety, closely following Eclipse in maturing, but of much darker color and superior quality; perfectly round. $\frac{1}{4}$ lb., 20 cts.; lb., 60 cts.; 10 lbs., \$5.50; bu., \$7.50.

Dewing's Improved Blood Turnip. An improved variety of the Early Blood Turnip, of deep, blood red color; fine form and flavor; an excellent market sort. $\frac{1}{4}$ lb., 15 cts.; lb., 45 cts.; 10 lbs., \$4.00; bu., \$5.50.

Early Blood Turnip. A second early variety, of good quality, blood-red, tender, and good for late keeping. $\frac{1}{4}$ lb., 15 cts.; lb., 45 cts.; 10 lbs., \$4.00; bu., \$5.50.

Edmand's Blood Turnip. Our seed is selected, and is the true type of this beet. It is the best variety to follow after the extra early varieties; flesh dark red and white; good flavor. $\frac{1}{4}$ lb., 15 cts.; lb., 50 cts.; 10 lbs., \$4.50; bu., \$6.00.

Detroit Dark Red. A choice variety of early turnip beet, skin red, flesh bright red. It grows very smooth, globular shape and is tender and sweet. $\frac{1}{4}$ lb. 20 cts.; lb., 60 cts.; 10 lbs., \$5.50; bu., \$7.50.

SUGAR BEETS.

	$\frac{1}{4}$ lb.	lb.	5 lbs.
Klein Wanzleben	10	25	\$1 00
White Sugar Green Top.	10	25	1 00
Imp. Imperial White.	10	25	1 00
Lane's Improved White.	10	25	1 00

MANGEL WURZEL.

	Oz.	$\frac{1}{4}$ lb.	lb.	5 lbs.
Mammoth Long Red	5	10	25	\$1 00
Golden Tankard	5	10	25	1 00
Golden-Yellow Mammoth	5	10	25	1 00
Yellow or Orange Globe	5	10	25	1 00
Red Globe	5	10	25	1 00

BROCCOLI. (Ger. Spargel-Kohl.)

White Cape. Oz., 30 cts.; $\frac{1}{4}$ lb., 90 cts.

BRUSSELS SPROUTS. (Ger. Rosen-Kohl.)

Dreer's Selected Matchless. Oz., 15 cts.; $\frac{1}{4}$ lb., 50 cts.; lb., \$1.50.

Long Island Half-Dwarf. Oz., 20 cts.; $\frac{1}{4}$ lb., 65 cts.; lb., \$2.50.

CARDOON. (Ger. Cardon.)

Large Smooth Solid. Oz., 20 cts.; $\frac{1}{4}$ lb. 75 cts.

Bastian's Early Blood Turnip. Of quick, large growth, fine turnip form and bright red color. $\frac{1}{4}$ lb., 15 cts.; lb., 45 cts.; 10 lbs., \$4.00; bu., \$5.50.

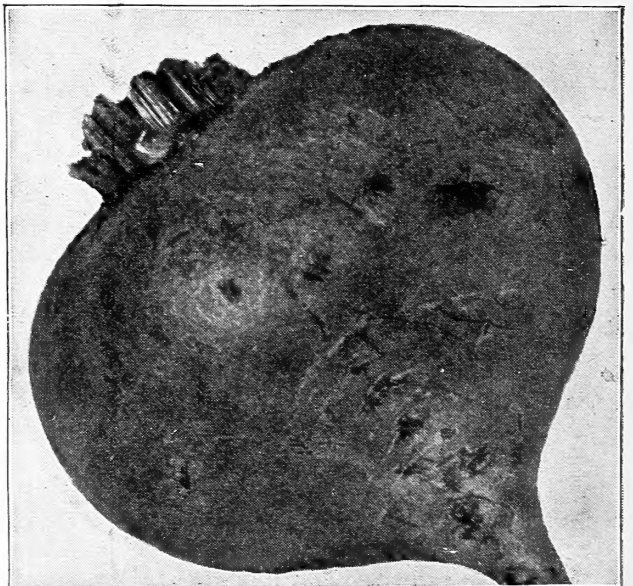
Early Bassano. A very early flat variety, tender, juicy; flesh white and rose-colored; very sweet. $\frac{1}{4}$ lb., 15 cts.; lb., 45 cts.; 10 lbs., \$4.00.

Lentz Turnip. Of similar size and shape to the Bastian turnip; top small; dark red and white; early and profitable. $\frac{1}{4}$ lb., 15 cts.; lb., 45 cts.; 10 lbs., \$4.00; bus., \$5.50.

Bastian's Half-Long Blood. Of light color and excellent quality; a valuable variety to follow Bastian's Extra Early; for winter use sow early in July. $\frac{1}{4}$ lb., 15 cts.; lb., 45 cts.; 10 lbs., \$4.00; bu., \$5.50.

Long Dark Blood. A good late variety for fall and winter use, sweet and tender. $\frac{1}{4}$ lb., 15 cts.; lb., 45 cts.; 10 lbs., \$4.00.

Swiss Chard. The mid-rib is stewed and served like asparagus, and the leaves used same as spinach. $\frac{1}{4}$ lb., 15 cts.; lb. 40 cts.



ARLINGTON FAVORITE BEET

CARROT—Mohr.

Dreer's "Perfect" Forcing Carrot. A perfect half-long variety, of a beautiful bright scarlet color, very crisp, and grows almost without core. The tops are remarkably small, thus allowing the Carrots to be grown very close in the frames. We know of no Carrot that is so desirable for bunching, for which purpose we especially recommend it to market gardeners, believing that it will soon take the place of all other forcing varieties. Oz., 15 cts.; $\frac{1}{4}$ lb., 40 cts.; lb., \$1.25.

Earliest Short Horn. (*See cut.*) The earliest for forcing. Oz., 10 cts.; $\frac{1}{4}$ lb., 25 cts.; lb., 80 cts.

Early Scarlet Horn. Fine grained, good flavor. Oz., 10 cts.; $\frac{1}{4}$ lb., 25 cts.; lb., 80 cts.

Half-Long Nantes. Stump root, orange flesh. Oz., 10 cts.; $\frac{1}{4}$ lb., 25 cts.; lb., 70 cts.

Early Half-Long Carentan. Small tops, good for forcing. Oz., 10 cts.; $\frac{1}{4}$ lb., 25 cts.; lb., 70 cts.

Early Half-Long Scarlet. Pointed root very productive. Oz., 10 cts.; $\frac{1}{4}$ lb., 25 cts.; lb., 70 cts.

Chantenay Half-Long. Medium early, stump root. Oz., 10 cts.; $\frac{1}{4}$ lb., 25 cts.; lb., 70 cts.

Oxheart, or Guerande. Short and thick, good flavor. Oz., 10 cts.; $\frac{1}{4}$ lb., 25 cts.; lb., 70 cts.

Danver's Half-Long Orange. A rich orange red variety, smooth and handsome, producing large crops. An excellent market variety. Tops are medium size, and coarsely divided. Roots taper to a blunt point; flesh sweet, crisp and tender. Oz., 10 cts.; $\frac{1}{4}$ lb., 20 cts.; lb., 70 cts.

Improved Rubicon Carrot. This beautiful half-long carrot was originated in Rhode Island by a reliable grower. It is the result of careful breeding, and in shape and color most desirable. The carrots grow about the same length as the well-known Danvers, but thicker, and are rich dark orange in color. It is an enormous cropper. Oz., 10 cts.; $\frac{1}{4}$ lb., 20 cts.; lb., 70 cts.

Nichol's Imp. Long Orange. Improved strain of Long Orange. Oz., 10 cts.; $\frac{1}{4}$ lb., 20 cts.; lb., 60 cts.

St. Vallery. Rich orange, fine flavor. Oz., 10 cts.; $\frac{1}{4}$ lb., 25 cts.; lb., 70 cts.

Long Orange. Improved, early, productive, fine shape. Oz., 10 cts.; $\frac{1}{4}$ lb., 15 cts.; lb., 55 cts.

Red Altringham. Long roots, light red color. Oz., 10 cts.; $\frac{1}{4}$ lb., 15 cts.; lb., 55 cts.

Large White Belgian. Flesh and skin pure white. Oz., 5 cts.; $\frac{1}{4}$ lb., 15 cts.; lb., 40 cts.

Improved Short White. For stock feeding. Oz., 5 cts.; $\frac{1}{4}$ lb., 15 cts.; lb., 40 cts.



EARLIEST SHORT-HORN CARROT

CAULIFLOWER.

Blumenkohl.

DREER'S Earliest Snowstorm. (*See cut.*) A dwarf variety, with short outer leaves, can be planted close, two feet apart each way. Makes a fine, large and beautiful snowy-white head, much earlier than any other variety. The best variety for forcing. $\frac{1}{4}$ oz., \$1.50; oz., \$5.00; $\frac{1}{4}$ lb., \$15.00.

Dreer's Selected Dwarf Erfurt. Small-leaved dwarf, for forcing or open ground, producing very solid pure white heads of fine quality. $\frac{1}{4}$ oz., 75 cts.; oz., \$2.50; $\frac{1}{4}$ lb., \$8.00.

Early Snowball. An extremely early dwarf variety, producing magnificent white heads of fine quality. $\frac{1}{4}$ oz., 65 cts.; oz., \$2.25; $\frac{1}{4}$ lb., \$7.50.

Early Dwarf Erfurt. An early market variety. $\frac{1}{4}$ oz., 50 cts.; oz., \$1.50; $\frac{1}{4}$ lb., \$5.00

Late Varieties.

Half-Early Paris. Oz., 50 cts.; $\frac{1}{4}$ lb., \$1.50.

Lenormand's Short Stem. Oz., 50 cts.; $\frac{1}{4}$ lb., \$1.50.

Algiers. Oz., 50 cts.; $\frac{1}{4}$ lb., \$1.50.

Veitch's Autumn Giant. Oz., 30 cts.; $\frac{1}{4}$ lb., \$1.00.
Cauliflower and Cabbage Plants. (*See page 27.*)

CHICORY.

Common or Wild. Oz. 10 cts.; $\frac{1}{4}$ lb., 20 cts.; lb., 65 cts.

Large Rooted. Oz., 10 cts.; $\frac{1}{4}$ lb., 20 cts.; lb., 65 cts.

CHELVIL.

Curled Chervil. Oz., 10 cts.; $\frac{1}{4}$ lb., 30 cts.; lb., \$1.00.

CRESS.

(*Ger. Garten und Brunnen Kresse.*)

Extra Curled or Peppergrass. Oz., 5 cts.; $\frac{1}{4}$ lb., 15 cts.; lb., 40 cts.

Upland Cress. Oz., 50 cts.; $\frac{1}{4}$ lb., \$1.50.

Erfurt Water-Cress. Oz., 25 cts., $\frac{1}{4}$ lb., 75 cts.; lb., \$2.50.



DREER'S EARLIEST SNOWSTORM CAULIFLOWER

CABBAGE—*Ger. Kohl.*

AMERICAN-GROWN CABBAGE SEED.—It is a well-known fact among gardeners that American-grown Cabbage Seed will make plants that head up better than those raised from foreign seed.

This particularly applies to seed produced on Long Island, from which section our Cabbage Seed comes, and is grown especially for our critical market gardener trade.

EARLY VARIETIES.

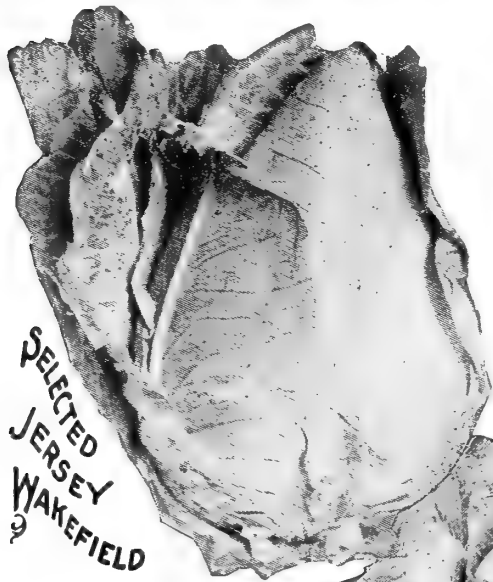
Eureka, or First Early. This flat-headed Cabbage, fully as early in maturing as the well-known Early Jersey Wakefield, must prove extremely valuable to the market gardener. A few years ago an enterprising and careful cabbage grower made a cross with a fine strain of early Jersey Wakefield on the well-known Succession Cabbage, and the result was the production of this splendid variety, which is now thoroughly fixed as to type. It matures fully as early as the Wakefield, and the quality is excellent. The heads are very solid and leaves tender, being entirely free from coarseness. The plants may be set as close in the field as the Wakefield, and can be depended upon to head up well. Oz., 25 cts.; $\frac{1}{4}$ lb., 85 cts.; lb., \$3.00.

Selected Jersey Wakefield. (*See cut.*) A leading early variety for market gardeners' use. Our strain is being constantly improved, both in purity and earliness. There is no cabbage so widely known as the Early Jersey Wakefield. Oz., 25 cts.; $\frac{1}{4}$ lb., 85 cts.; lb., \$3.00.

The Charleston, or Large Wakefield. Large solid heads, of good quality, a few days later than Early Jersey Wakefield.

The strain we offer is of exceptional purity and cannot fail to give satisfaction, as it combines all the good qualities of an early long-keeping sort. Oz., 30 cts.; $\frac{1}{4}$ lb., \$1.00; lb., \$3.50.

Early Winnigstadt. Conical shape; quality very good. This variety is especially adapted for light soils, where it does better than other sorts. Oz., 15 cts.; $\frac{1}{4}$ lb., 50 cts.; lb., \$1.75.



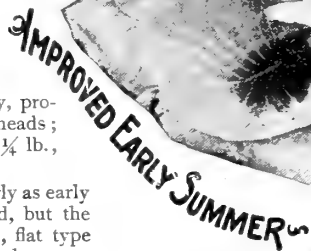
SELECTED
JERSEY
WAKEFIELD

Large York. A superior early-heading, robust sort. Oz., 15 cts.; $\frac{1}{4}$ lb., 50 cts.; lb., \$1.75.

Express. Very early, small, solid head. Oz., 15 cts.; $\frac{1}{4}$ lb., 50 cts.; lb., \$1.75.

Etampes. Very early, producing medium-sized heads; pointed. Oz., 15 cts.; $\frac{1}{4}$ lb., 50 cts.; lb., \$1.75.

Early Spring. Nearly as early as the Jersey Wakefield, but the heads are of the round, flat type of Early Summer. It has very few small outer leaves, thus allowing its being planted very close. Oz., 25 cts.; $\frac{1}{4}$ lb., 75 cts.; lb., \$2.50.



IMPROVED EARLY SUMMER

SECOND EARLY VARIETIES.

Dreer's Early Drumhead. A second early, large, round, solid-heading variety. Good for following Charleston Wakefield; it matures about ten days later. Oz., 25 cts.; $\frac{1}{4}$ lb., 75 cts.; lb., \$2.50.

All-Head Early. The deep, flat heads are remarkably solid, and very uniform in size. Oz., 25 cts.; $\frac{1}{4}$ lb., 75 cts.; lb., \$2.50.

Improved Early Summer. (*See cut.*) A second early Cabbage, which makes a large, solid, flattish head, with short outer leaves. Oz., 25 cts.; $\frac{1}{4}$ lb., 75 cts.; lb., \$2.25.

Succession. A good second early round-headed sort, heads very evenly, and comes in a few days after the Early Summer. Oz., 25 cts.; $\frac{1}{4}$ lb., 75 cts.; lb., \$2.50.

Selected All Seasons (Vandergaw). An early Drum-head Cabbage, yielding heads of the largest size. Oz., 25 cts.; $\frac{1}{4}$ lb., 75 cts.; lb., \$2.50.



DREER'S SELECTED LATE FLAT DUTCH

Improved Flat Brunswick. This variety produces large heads, and can be grown either as a second early or late. Oz., 20 cts.; $\frac{1}{4}$ lb., 65 cts.; lb., \$2.00.

CABBAGE—Late Varieties.

Dreer's Selected Late Flat Dutch. (See cut on page 6.) This excellent strain is the result of many years' careful selection, and we consider it the finest strain of Late Flat Dutch Cabbage on the market. The heads are flat, and grow remarkably large, even, very solid, and are of fine texture; stems grow short and the quality of the cabbage is very fine. It is a sure heading sort, as nearly every plant can be depended upon to produce a fine, large head. It is also a good keeper. Market gardeners and farmers who grow for the market are using this variety very largely, and report satisfactory and profitable crops. Oz., 25 cts.; $\frac{1}{4}$ lb., 75 cts.; lb., \$2.25.

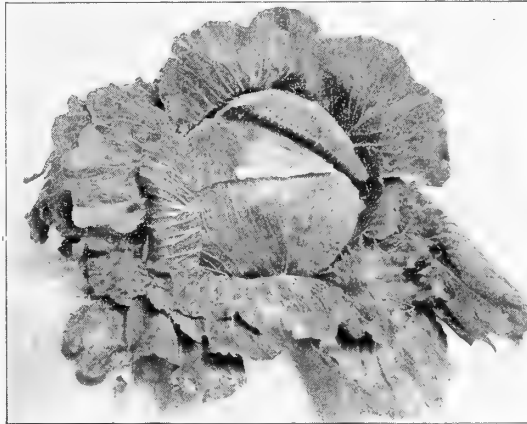
Golden Sugar Winter. (See cut.) This excellent variety was first introduced in Europe several years ago, and soon gained in favor. It is entirely distinct in character and color, has a very hard head and a short stem; its special feature is the golden color after being put up, which makes it very attractive, compared to the ash-gray color usual among winter cabbage. This variety is medium late, and is perfectly solid at maturity, and does not crack. Color of foliage, dark green. Oz., 25 cts.; $\frac{1}{4}$ lb., 75 cts.; lb., \$2.25.



GOLDEN SUGAR WINTER CABBAGE

Lupton. (See cut.) A new winter variety of excellent quality and distinct character; a little earlier than the Flat Dutch, but will maintain shape and solidity for storing. It originated on Long Island with our cabbage seed grower, and is a strong, healthy variety and a reliable header. Oz., 25 cts.; $\frac{1}{4}$ lb., 75 cts.; lb., \$2.25.

Danish Ball Head (Hollander). This is the medium-sized, hard white cabbage that is received from abroad during the early spring months, and even after the long journey across the ocean it arrives in splendid condition. It is a medium or late variety, but is used mostly as a winter cabbage and comes from the pits, in late spring, in fine condition. Oz., 25 cts.; $\frac{1}{4}$ lb., 75 cts.; lb., \$2.25.



THE LUPTON CABBAGE

Large Late Drumhead. A favorite winter variety, largely planted by growers who make a specialty of shipping

cabbage, as it stands transportation well. The heads grow to very large size and heavy weight. They are solid, of good quality and texture, and have very few loose leaves, allowing of planting closely in the field. Oz., 20 cts.; $\frac{1}{4}$ lb., 65 cts.; lb., \$2.00.

Louisville Drumhead.

This is a popular variety in the Southwest; of large size, solid and a good keeper. It is a reliable sort and heads up well. Oz., 20 cts.; $\frac{1}{4}$ lb., 65 cts.; lb., \$2.00.

Surehead. A standard late variety, of Flat Dutch type. A reliable header. Oz., 20 cts.; $\frac{1}{4}$ lb., 65 cts.; lb., \$2.00.

SAVOY CABBAGE.

Dreer's Crystal Summer Savoy. A fine new sort; medium size; heads nearly round, deeply curved and very tender. Oz., 25 cts.; $\frac{1}{4}$ lb., 75 cts.; lb., \$2.50.

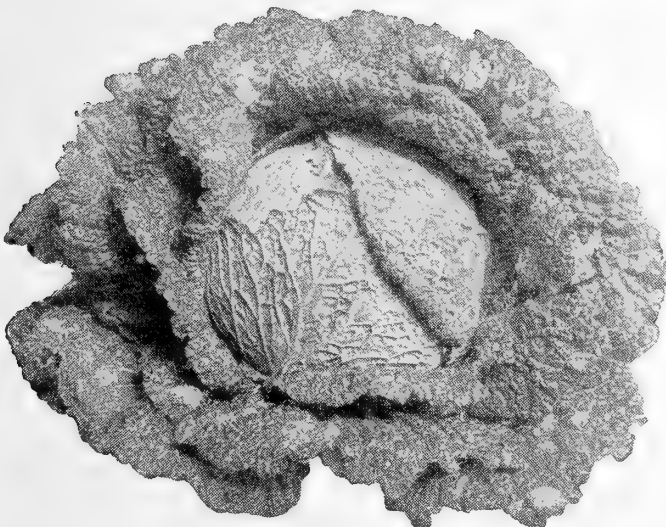
Perfection Drumhead Savoy. (See cut.) Of superior quality; the largest solid-heading Savoy, possessing the rich flavor of the cauliflower. The plants are strong and vigorous, and withstand the ravages of the cabbage worm better than other sorts. The inside of this cabbage is pure white. Oz., 25 cts.; $\frac{1}{4}$ lb., 65 cts.; lb., \$2.25.

RED CABBAGE.

Red Dutch Erfurt. Oz., 20 cts.; $\frac{1}{4}$ lb., 65 cts.; lb., \$2.00.

Red Dutch Drumhead. Oz., 20 cts.; $\frac{1}{4}$ lb., 65 cts.; lb., \$2.00.

Mammoth Rock Red. Oz., 25 cts.; $\frac{1}{4}$ lb., 75 cts.; lb., \$2.25.



PERFECTION DRUMHEAD SAVOY CABBAGE

CABBAGE PLANTS. (See page 27.)

CELERY—Ger. Cellerie.

ORIGINATOR'S GOLDEN SELF-BLANCHING CELERY

Perfected White Plume. (*See cut.*) We offer a choice strain of this valuable and popular variety. The White Plume is unsurpassed for fall and early winter use, requiring very little earthing up to blanch it. Oz., 20 cts.; $\frac{1}{4}$ lb., 60 cts.; lb., \$2.00.

Originator's Golden Self-Blanching. (*See cut.*) (French grown seed.) We have secured a stock of seed from the originator in France. This produces a more solid stalk than American seed, and is far superior in every way. Oz., 35 cts.; $\frac{1}{4}$ lb., \$1.00; lb., \$3.75.

Golden Self-Blanching. An early sort, requiring but little labor to blanch. Heart is rich golden yellow, with light yellowish-green outer leaves. American grown seed. Oz., 25 cts.; $\frac{1}{4}$ lb., 85 cts.; lb., \$3.00.

Giant Pascal. A superior keeping sort. The stalks are very large, thick, solid, crisp and of rich nutty flavor; it blanches very easily and quickly, and retains its freshness a long time. Oz., 15 cts.; $\frac{1}{4}$ lb., 40 cts.; lb., \$1.40.

Golden Half-Dwarf. An excellent half-dwarf variety, stalks large and full; the heart is golden-yellow, turning to a light color when blanched. Very solid, rich flavor and good keeper. Oz., 15 cts.; $\frac{1}{4}$ lb., 40 cts.; lb., \$1.40.

Far Superior, Many Heart. A full-hearted variety, good keeper and fine flavor. Oz., 20 cts.; $\frac{1}{4}$ lb., 60 cts.; lb., \$2.00.

Dreer's Monarch. A decided acquisition in green Celery, producing large stalks, and magnificent bright golden yellow heart. The stalks are very solid, brittle, and of most delicious flavor, and when properly grown it is entirely free from stringiness. It is a very desirable celery for the market gardener, as it is a remarkably good keeper. Oz., 30 cts.; $\frac{1}{4}$ lb., 85 cts.; lb., \$3.00.

Winter Queen. Valuable, particularly on account of its excellent winter-keeping qualities. It grows a very thick, solid and heavy stalk, and has a large heart. Oz., 20 cts.; $\frac{1}{4}$ lb., 60 cts.; lb., \$2.25.

Shumacher. Stalks grow to an immense size, and are perfectly solid and crisp. It has a firm and beautiful golden heart. Oz., 20 cts.; $\frac{1}{4}$ lb., 50 cts.; lb., \$1.75.

Fin de Siecle. Grows very large, stalks solid and crisp. Oz., 20 cts.; $\frac{1}{4}$ lb., 60 cts.; lb., \$2.25.

Pink Plume. A perfect White Plume in character, excepting color, which is a delicate pink. Oz., 20 cts.; $\frac{1}{4}$ lb., 60 cts.; lb., \$2.25.

Dwarf Rose. Oz., 20 cts.; $\frac{1}{4}$ lb., 60 cts.; lb., \$2.25.

Golden Rose, Self-Blanching. Similar to Golden Self-Blanching, except in color; rosy tinge, shading to pale pink at top of stalk; ribs and stem thick and heart blanches to beautiful yellow; fine flavor and a good keeper. Oz., 20 cts.; $\frac{1}{4}$ lb., 60 cts.; lb., \$2.25.

Boston Market, Sandringham, Dwarf White, Perfection Heartwell, Large White Solid, Evan's Triumph, each at oz., 15 cts.. $\frac{1}{4}$ lb., 40 cts.; lb., \$1.40.

CELERIAC.

	Oz.	$\frac{1}{4}$ lb.	lb.
Apple-Shaped	15	35	\$1 25
Giant Smooth Prague	15	40	1 50

CELERY PLANTS. (*See page 27.*)



PERFECTED WHITE PLUME CELERY



CORN—Sweet or Sugar. (Ger. Maiz.)

Dreer's Aristocrat. This variety of early Sweet Corn has been grown for some years past by a gardener who supplies truck to the aristocrats at Newport, R. I. He would not allow any of the seed to get into the hands of his competitors, thus having a monopoly, and as it was the finest sweet corn that came to the market, he found no difficulty in disposing of all he raised. It is an extra early variety, ripening with the Cory; stalks grow four to six feet high and ears are of large size, measuring eight to ten inches in length. Qt., 35 cts.; 4 qts., \$1.00; peck, \$1.50; bu., \$6.00.

Metropolitan. Produces two to three large ears to the stalk, usually about nine inches long, and have ten to twelve rows of deep grains, even to extreme tip. Qt., 30 cts.; 4 qts., 80 cts.; peck, \$1.10; bu., \$4.40.

Early Champion. Medium early in ripening, and produces large ears which generally have about twelve rows of beautiful, white, milky grains, which are very tender and sweet. Qt., 30 cts.; 4 qts., 80 cts.; peck, \$1.10; bu., \$4.40.

Early Evergreen. (See cut.) Ripens about ten days earlier, and produces ears a trifle shorter than the "Stowell's," but the quality is equally as good. It is a splendid variety to come in between the early and late sorts. Qt. 30 cts.; 4 qts., 80 cts.; peck, \$1.10; bu. \$4.40.

Kendel's Early Giant. Ears large, eight to ten inches long, pure white grains, which are very sweet and tender. Ready for use in sixty to seventy days after planting. Qt., 30 cts.; 4 qts., 80 cts.; peck, \$1.10; bu., \$4.40.

Dreer's First of All. For a number of years past we have been offering this as one of the earliest Sweet Corns. It produces ears of medium size, very full, sweet, and of a most delicious flavor. Qt., 30 cts.; 4 qts., 80 cts.; peck, \$1.10; bu., \$4.40.

White Cob Cory. Early as ordinary Cory. The stalks do not grow tall, are very prolific, usually bearing two ears each. Very sweet. Qt., 25 cts.; 4 qts., 65 cts.; peck, \$1.00; bu., \$4.00.

Crosby's Early. A favorite variety, very early, productive, rich, sugary flavor. Qt., 25 cts.; 4 qts., 60 cts.; peck, \$1.00; bu., \$4.00.

Stabler's Early. Of larger size than usual for the early kinds. Twelve to fourteen rows, grains pure white and very sweet. Qt. 25 cts.; 4 qts., 65 cts.; peck, \$1.00; bu., \$4.00.

Adam's Extra Early. Qt., 20 cts.; 4 qts., 50 cts.; peck, 85 cts.; bu., \$3.40.

Early Minnesota. Qt., 25 cts.; 4 qts., 65 cts.; peck, \$1.00; bu. \$4.00.

General Crop and Late.

Stowell's Evergreen, Improved. A popular variety and one of the sweetest; ears large, deep-grained, of excellent quality. For general crop this is one of the best. Qt., 20 cts., 4 qts., 60 cts.; peck, 95 cts.; bu., \$3.80.

Zig-Zag Evergreen. A very sweet Corn, ripening earlier than Stowell's Evergreen, and in quality fully its equal. The grains are same shape as "Stowell's," but are arranged on the cob in a zig.zag manner, hence its name. Qt., 25 cts.; 4 qts., 65 cts.; peck, \$1.00; bu., \$4.00.

Country Gentleman. Ripens about same time as Stowell's Evergreen. Ears medium size, deep grains placed in irregular rows on cob, and deliciously sweet. Qt., 30 cts.; 4 qts., 80 cts.; peck, \$1.10; bu., \$4.40.

Little Gem. (No Plus Ultra, or Shoe Peg.) An old but excellent variety. Qt., 30 cts.; 4 qts., 80 cts.; peck, \$1.10; bu., \$4.40.

Potter's Excelsior, or Sqantum. A splendid second early; bears large ears, 12-rowed, deep grains; usually makes 2 ears to stalk. Qt., 25 cts.; 4 qts., 65 cts.; peck, \$1.00; bu., \$4.00.

Triumph. Ears large, productive. Qt., 25 cts.; 4 qts., 65 cts.; peck, \$1.00; bu., \$4.00.

Egyptian. A fine, large variety. Qt., 25 cts.; 4 qts., 65 cts.; peck, \$1.00; bu., \$4.00.

Mammoth Sugar. The largest late sort. Qt., 25 cts.; 4 qts., 65 cts.; peck, \$1.00; bu., \$4.00.

Black Mexican. Very sweet. Qt., 25 cts., 4 qts., 65 cts.; peck, \$1.00; bu., \$4.00.

Pop Corn.—(On the ear only.)

White Rice. Best white. Lb., 20 cts., by mail; 10 lbs., 90 cts., by express.

Queen's Golden. Large yellow grains. Lb., 25 cts., by mail; 10 lbs., \$1.25 by express.

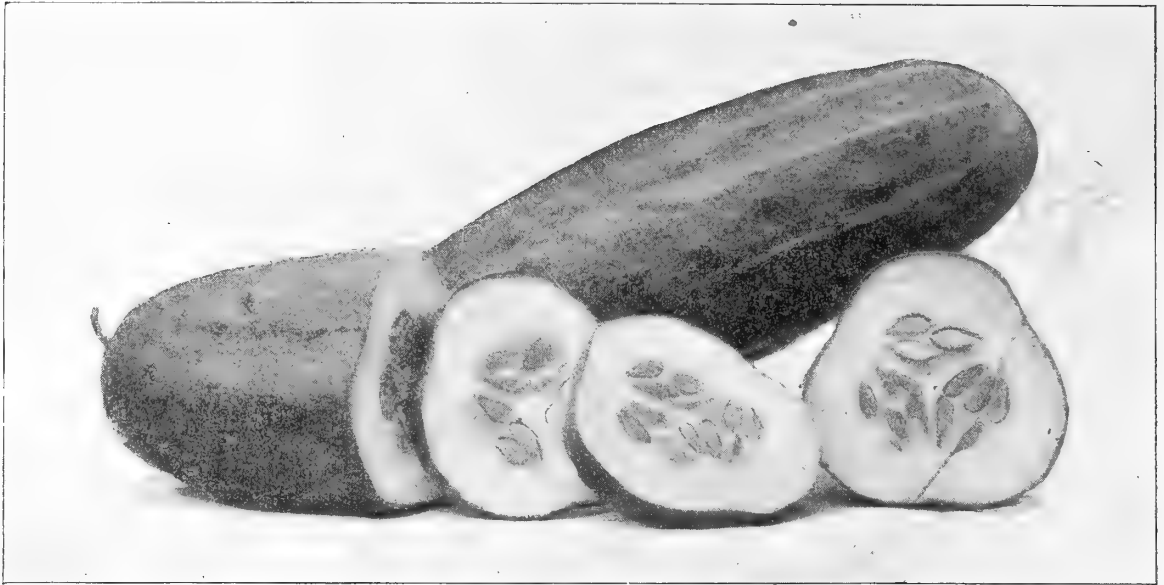
FIELD CORN. (See page 28.)

COLLARDS.

	Oz.	¼ lb.	Lb.
Creole, or Southern	10	20	75

CORN SALAD.

Large Seeded (5 lbs. or more at 35 cts. per lb.)	5	15	40
--	---	----	----



IMPROVED ARLINGTON WHITE SPINE CUCUMBER

CUCUMBER—Ger. GURKEN.

Improved Arlington White Spine. (*See cul.*) A magnificent strain of the White Spine which has been improved by careful selection, for forcing in hot houses and frames. It is very tender and crisp and on account of its color the young fruits are splendid for making pickles. Oz., 15 cts.; $\frac{1}{4}$ lb., 40 cts.; lb., \$1.25.

Improved Early White Spine. (*Bennett's.*) This is a favorite variety with market gardeners, and produces fine large and attractive looking cucumbers. The vine is a strong grower and very productive. The cucumbers are long and straight, dark green in color and very tender. Oz., 10 cts.; $\frac{1}{4}$ lb., 25 cts.; lb., 85 cts.

Early Frame, or Short Green. Excellent for table use or pickling. The vines are productive, fruits small, light green color, crisp and tender. Oz., 10 cts., $\frac{1}{4}$ lb., 25 cts., lb., 85 cts.

Early Russian. One of the earliest; the fruit is small and produced in pairs. Size generally about three inches long, very productive. Oz., 10 cts., $\frac{1}{4}$ lb., 25 cts.; lb., 85 cts.

Early Cluster. A very early sort, well adapted for forcing or open ground. Produces the fruits in clusters, good quality and flavor. Oz., 10 cts.; $\frac{1}{4}$ lb., 25 cts.; lb., 85 cts.

Everbearing. This is a valuable variety, producing pickles and cucumbers until frost kills the vines. It is very productive; fruits of all sizes will be found on the vines at the same time; size is small and well adapted for pickling. Oz., 10 cts.; $\frac{1}{4}$ lb., 25 cts.; lb., 85 cts.

Emerald. A most valuable Cucumber. Has all the good qualities of White Spine, with the additional advantage of having a rich dark green color during the entire period of its growth. The vines are exceedingly productive, fruits set early and are very handsome. When ready for use measure from eight to ten inches in length, and are quite thick through, they are straight and entirely free from spines. In quality this cucumber is very fine, being solid and crisp. It is an excellent variety for shipping. Oz., 15 cts.; $\frac{1}{4}$ lb., 40 cts.; lb., \$1.25.

The "Cumberland." This handsome Cucumber is the result of eight years' careful breeding by one of the leading growers in the United States. It is a cross of Parisian Pickle and Peerless White Spine, the successful combination of these two varieties making an ideal variety both for table use and for pickling. The vines are of strong, vigorous growth and very productive. The fruits, which are of handsome appearance, grow to a desirable size, very straight, firm, solid and crisp. The color is a rich pea green, and flavor very fine, either when eaten sliced or after they have been pickled. Oz., 15 cts., $\frac{1}{4}$ lb., 40 cts.; lb., \$1.25.

Cool and Crisp. A strain of White Spine, somewhat like the Arlington, but longer and more cylindrical. It is early and continues in bearing the entire season. It is splendid for table use. Oz., 10 cts.; $\frac{1}{4}$ lb., 25 cts.; lb., 85 cts.

Green Prolific. This is a very good Pickling variety; dark green; also excellent for slicing. Oz., 10 cts.; $\frac{1}{4}$ lb., 25 cts.; lb., 85 cts.

Chicago Pickle. This variety is largely grown by market gardeners throughout the country. Medium size, pointed both ends, spines very prominent, and color deep green; a prolific bearer and an excellent variety for making pickles. Oz., 10 cts.; $\frac{1}{4}$ lb., 25 cts.; lb., 85 cts.

Nichol's Medium Green. This Cucumber is largely grown for pickle manufacturers. It is also good to use as a Cucumber. Used for early forcing and late sowing. Oz., 10 cts.; $\frac{1}{4}$ lb., 25 cts.; lb., 85 cts.

Long Green. (*Jersey Pickle*). This well-known Cucumber has been greatly improved during late years. Vines are very vigorous in growth and productive. Fruits are long, firm and crisp. The small fruits are used for pickles, and larger ones make excellent sweet pickles. Oz., 10 cts.; $\frac{1}{4}$ lb., 25 cts.; lb., 85 cts.

Japanese Climbing. This beautiful variety is quite an ornament to the garden as it can be grown on a pole or trellis, which it quickly covers. The fruit ripens early and grow to large size. Color of skin is dark green which turns brown when fully ripe. Oz., 10 cts.; $\frac{1}{4}$ lb., 30 cts.; lb., \$1.00.

Chinese Long-Remaining Green. Attains a length of 15 to 20 inches; good quality, solid. Oz., 25 cts.; $\frac{1}{4}$ lb., 80 cts.

Small Gherkin, or Burr. Known as the West India or Jerusalem Pickle. Oz., 15 cts., $\frac{1}{4}$ lb., 50 cts.

English Forcing Cucumbers.

Covent Garden Favorite, Rochford's Market, Lockie's Perfection. In packets of 10 seeds each, 20 cts.; per 100 seeds, \$1.75.

Duke of Edinburgh, Sion House Improved, Telegraph (*Rollinsons*). In packets of 10 seeds each, 15 cts., per 100 seeds, \$1.40

DANDELION. Ger. Bardeblum.

Broad-leaved. Oz., 35 cts.; $\frac{1}{4}$ lb., \$1.25; lb., \$4.00.
Improved Thick Leaved. An Improved thick-leaved variety. Oz., 45 cts.; $\frac{1}{4}$ lb., \$1.40; lb., \$4.50.

ENDIVE—*Ger. Endive.*

Dreer's Giant Fringed. (*See cut.*) *Oyster Endive.* This is the largest and most attractive variety grown; the pure white heart shows in beautiful contrast to the bright green of the broad stems. Oz., 20 cts.; $\frac{1}{4}$ lb., 60 cts.; lb., \$1.75.

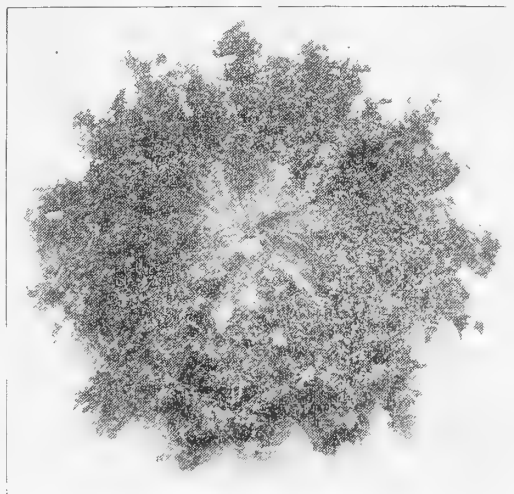
Green Curled Winter. Oz., 10 cts.; $\frac{1}{4}$ lb., 35 cts.; lb., \$1.25.

White Curled. (*Self blanching.*) Oz., 10 cts.; $\frac{1}{4}$ lb., 35 cts.; lb., \$1.25.

Broad-leaved Batavian. (*Escarolle.*) Oz., 10 cts.; $\frac{1}{4}$ lb., 35 cts.; lb., \$1.25.

EGG PLANT—*Ger. Eierpfianza.*

Early Black Beauty. (*See cut.*) This beautiful Egg Plant is a great improvement over the well known and largely grown New York Improved Large Purple. The plants are remarkably healthy in their growth, and produce an abundance of large fruits fully ten days earlier than the New York Improved; in fact we believe that during a season favorable to the growth of vegetables the Early Black Beauty would mature at least two weeks earlier than the New York Improved. In addition to earliness, the rich purplish black color of skin adds greatly to the market value of this new variety; greatly enhancing its beauty and attracting the immediate attention of buyers. The quality is fully as good as New York Improved. $\frac{1}{2}$ oz., 20 cts.; oz., 35 cts.; $\frac{1}{4}$ lb., \$1.15; lb., \$4.50.



DREER'S GIANT FRINGED ENDIVE

New York Improved Large Purple. (*Dreer's selected.*) Our selected strain of this leading variety is vastly superior to most seed sold under the name of New York Improved. The fruits are large, and free from thorns; color a beautiful dark purple. Very attractive. Oz., 25 cts.; $\frac{1}{4}$ lb., 85 cts.; lb., \$3.00.

Black Pekin. Fruit purplish-black, round to globular, large, solid, smooth and glossy. Oz., 25 cts.; $\frac{1}{4}$ lb., 85 cts.; lb., \$3.00.

Early Long Purple. The earliest and hardiest; very productive; fruit 6 to 10 inches long. Oz., 15 cts.; $\frac{1}{4}$ lb., 60 cts.; lb., \$2.00.

Egg Plant Plants. (*See Vegetable Plants, page 27.*)

GARLIC. (*See Onion Sets, page 16.*)

HORSE RADISH. (*See Vegetable Plants, page 27.*)

**KOHL RABI.***Ger. Kohlrabi.*

Earliest Frame Green Vienna. Best for forcing. Oz., 25 cts.; $\frac{1}{4}$ lb., 80 cts.; lb., \$3.00.

Earliest Erfurt. A white, tender variety, with a smooth short top; the best variety for out-door culture. Oz., 25 cts.; $\frac{1}{4}$ lb., 75 cts.; lb., \$2.50.

Early White, or Green Vienna. Flesh white and tender; best for market, table use, or forcing; very short top. Oz., 20 cts.; $\frac{1}{4}$ lb., 50 cts.; lb., \$1.75.

Early Purple Vienna. Bluish-purple, similar to the above except in color. Oz., 25 cts.; $\frac{1}{4}$ lb., 60 cts.; lb., \$2.00.

KALE or Borecole.*Ger. Krauskohl.*

Dreer's Imperial Long Standing. (*See cut.*) A beautifully curled and crimped sort, of strong, vigorous habit, perfectly hardy, attractive appearance and bright green color. Oz., 10 cts.; $\frac{1}{4}$ lb., 20 cts.; lb., 60 cts.; 5 lbs., \$2.75.

Dwarf Green Curled German. Leaves yellowish green, very compact and beautifully curled. Oz., 10 cts.; $\frac{1}{4}$ lb., 20 cts.; lb., 60 cts.

Dwarf Curled Scotch. Bright green, curled, very tender and fine flavored. Oz., 10 cts.; $\frac{1}{4}$ lb., 20 cts.; lb., 60 cts.

Sea Kale. Grown for its blanched shoots, which are cooked like asparagus. Oz., 20 cts.; $\frac{1}{4}$ lb., 60 cts.; lb., \$2.25.

LEEK. *Ger. Porro.*

Dreer's Prizetaker. Stalks long and straight. Large size and mild flavor. Oz., 20 cts.; $\frac{1}{4}$ lb., 50 cts.; lb., \$1.75.

Large American Flag. Large, hardy, and of excellent quality. Oz., 15 cts.; $\frac{1}{4}$ lb., 40 cts.; lb., \$1.40.

Giant Carentan. This is a favorite market variety, large thick stem of mild flavor and attractive appearance. Oz., 15 cts.; $\frac{1}{4}$ lb., 40 cts.; lb., \$1.40.

Musselburg. Grows to a very large size; hardy and of excellent quality. Oz., 15 cts.; $\frac{1}{4}$ lb., 40 cts.; lb., \$1.40.

London Flag. An old and popular sort. Oz., 15 cts.; $\frac{1}{4}$ lb., 35 cts.; lb., \$1.25.

DREER'S IMPERIAL
LONG STANDING KALE

LETTUCE—Ger. Salat.



DREER'S IMPROVED DEACON LETTUCE

- Big Boston.** Resembles Boston Market, but nearly twice as large; desirable for forcing and for spring and fall outdoor planting. Oz., 15 cts.; ¼ lb., 35 cts.; lb., \$1.25.
- Boston Market.** (*White seed.*) Hardy and crisp; one of the best for forcing. Oz., 10 cts.; ¼ lb., 30 cts.; lb., \$1.00.
- Black-Seeded, Tennisball.** Forms a close hard head, with few outer leaves. Oz., 10 cts.; ¼ lb., 30 cts.; lb., \$1.00.
- Hittinger's Belmont Forcing.** An improvement on the Boston market, larger in size, crisp and tender quality. Oz., 15 cts.; ¼ lb., 45 cts.; lb., \$1.50.
- Grand Rapids Forcing.** Matures quickly, large size, handsome appearance; crisp and tender. Oz., 10 cts.; ¼ lb., 30 cts.; lb., \$1.00.
- Emperor Forcing.** Very early, small yellow heads. Oz., 10 cts.; ¼ lb., 35 cts.; lb., \$1.25.
- Early Curled Simpson.** (*Silesia.*) Forms a close, compact mass of leaves; very early, excellent for forcing. Oz., 10 cts.; ¼ lb., 30 cts.; lb., \$1.00.
- Giant Glacier.** (*See cut.*) Heads grow to large size, are solid, crisp and tender. Leaves are beautifully tufted and notched. Oz., 20 cts.; ¼ lb., 50 cts.; lb., \$1.60.

Varieties of Lettuce.

	Oz.	¼lb.	lb.
California Cream Butter	10	30	\$1 00
Mignonette	10	30	1 00
Early White Cabbage	10	30	1 00
Golden Queen (Forcing)	10	35	1 25
Denver Market	10	30	1 00
Yellow Seeded Butter	10	30	1 00
Iceberg	10	30	1 00
Defiance	10	30	1 00
Onondaga	10	30	1 00
Oak-Leaved	10	30	1 00

Romaine or Cos. Lettuce.

Kingsholm Cos.	10	35	1 25
Paris White Cos.	10	35	1 25
Trianon, Self-Folding Cos.	10	35	1 25

LETTUCE PLANTS (*See page 27.*)

Early Dutch Butter, Spotted. Producing fine large heads of excellent quality, and one of the best forcing and market sorts; also stands the heat well in summer. Oz., 15 cts.; ¼ lb., 45 cts.; lb., \$1.50.

Dreer's "All Heart." This new and distinct Cabbage Lettuce is excellent for spring and summer use, as it stands immense heat. It is of a yellowish green color, and forms a solid heart, even before it is half grown. It is of superior flavor. It is also sometimes used for forcing under glass. Oz., 20 cts.; ¼ lb., 65 cts.; lb., \$2.25.

Improved Deacon (Dreer's.) One of the best summer cabbage sorts; very crisp, large and light in color. Oz., 10 cts.; ¼ lb., 30 cts.; lb., \$1.00.

Salamander. An excellent spring, summer and fall variety, forming good sized heads. Oz., 10 cts., ¼ lb., 30 cts.; lb., \$1.00.

Mammoth Salamander. This Lettuce grows about double the size of Salamander. Oz., 15 cts.; ¼ lb., 45 cts.; lb., \$1.50.

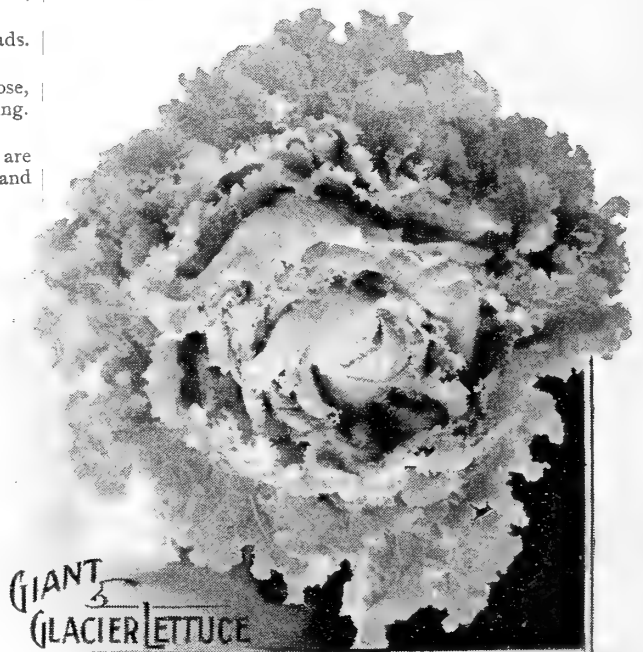
DREER'S Improved Hanson. This superior Lettuce was introduced by us a few years ago, and is the best summer heat resisting sort. The heads grow to a good size, and are tender and crisp. Oz., 10 cts.; ¼ lb.; 30 cts.; lb., \$1.00.

Silver Ball. An excellent variety for early spring and summer use or for winter forcing. Heads silvery white, very firm and compact. Oz., 10 cts.; ¼ lb., 30 cts.; lb., \$1.00.

Black Seeded Simpson. Produces a compact mass of leaves, light color, nearly double size of ordinary Simpson. Oz., 10 cts.; ¼ lb., 35 cts.; lb., \$1.25.

Sensation. This variety is remarkable for its character of forming close, hard heads, even in an early stage of growth. Color yellowish green, quality very fine, being crisp and tender. Oz., 15 cts.; ¼ lb., 45 cts.; lb., \$1.50.

Wonderful. The large white heads resemble cabbage in their solidity, and frequently weigh 2 and 3 lbs. each. The quality is superb, being crisp, rich and tender. It withstands the heat well. Oz., 15 cts.; ¼ lb., 45 cts.; lb., \$1.50.



MUSKMELONS—Ger. Cantalupe.

Jenny Lind. The earliest variety; netted, of small, round size; excellent flavor. This is a favorite early variety. Oz., 10 cts.; $\frac{1}{4}$ lb., 25 cts.; lb., 90 cts.

Golden Jenny. A small, highly-prized early variety; good shipper. This is a great improvement over the Jenny Lind. Oz., 10 cts.; $\frac{1}{4}$ lb., 35 cts.; lb., \$1.00.

Netted Gem. One of the earliest and most prolific small melons. Globular shape, uniform in size; flesh light green, of very fine flavor; a popular variety with market gardeners, as it is very uniform and firm, and will keep for a week after being picked from the vine. It is a very desirable size. Oz., 10 cts.; $\frac{1}{4}$ lb., 25 cts.; lb., 90 cts.

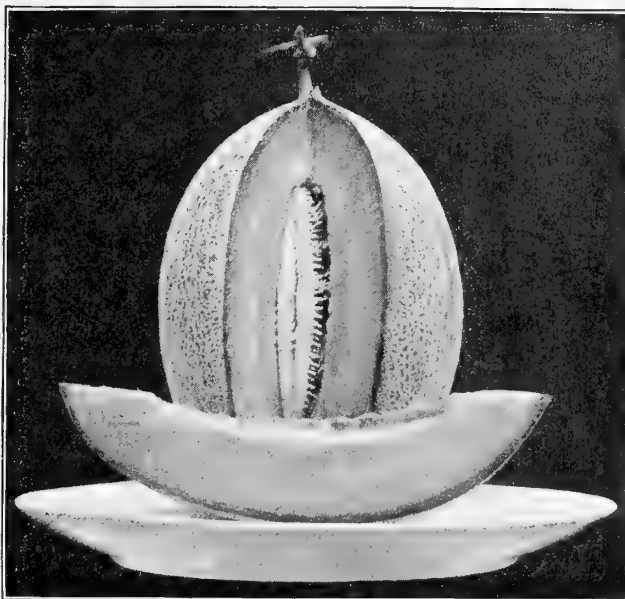
Newport. Small melon, of superior quality. In size, shape, it is of the original Jenny Lind type. Oz., 10 cts.; $\frac{1}{4}$ lb., 25 cts.; lb., 90 cts.

Norfolk Button, or Shipper's Delight. Melons have button at blossom end. Early and good quality. Oz., 10 cts.; $\frac{1}{4}$ lb., 25 cts.; lb., 90 cts.

Extra Early Hackensack. A careful selection from the Hackensack, and with fruit much like the parents in shape and quality of the flesh, but ready for market 10 days earlier; melons are of good size, usually weighing from 5 to 6 pounds each. It is very prolific, the vines grow strong and healthy and remain green for a long time. On account of earliness, it is preferred by growers to the old Hackensack. By careful growing and selection we have this variety at its very best, and consider it a splendid variety for home use. Oz., 10 cts.; $\frac{1}{4}$ lb., 25 cts.; lb., 90 cts.

Hackensack. The melons grow to a large size and are of attractive appearance; very productive, and excellent flavor. Sometimes called Turk's Cap, and for years was considered the favorite muskmelon. The flesh is green, very sweet and sugary. The outer skin is quite heavily netted. It is very productive. Oz., 10 cts.; $\frac{1}{4}$ lb., 25 cts.; lb., 90 cts.

Rocky Ford Improved. This delicious melon has been improved at Rocky Ford, Colorado, a section noted for fine muskmelons, and from this point they have been shipped to every city in the United States. The melons average about 1 $\frac{1}{2}$ lbs. each in weight, and are of most delicious flavor; flesh is smooth grained and light green color. At present this is the most popular variety of muskmelons grown. The seed we offer is of the true oval type. Oz., 10 cts.; $\frac{1}{4}$ lb., 25 cts.; lb., 90 cts.



DEFENDER MUSKMELON

Montreal Market. Largest of the nutmeg varieties; uniform in shape; netted; flesh green; quality remarkably good. This is a famous melon that is shipped by express from Montreal, Canada, to Boston Market, where it brings very high prices. It can be grown on almost any soil with ordinary fertilizing and cultivating. As a melon for growing large specimens there can be no better, and, unlike many of the large sorts, it retains its splendid quality. Oz., 10 cts.; $\frac{1}{4}$ lb., 35 cts.; lb., \$1.00.

Green Citron. Medium sized melon, deeply netted, nearly round, and of delicious flavor. A good variety for market. Oz., 10 cts.; $\frac{1}{4}$ lb., 25 cts.; lb., 90 cts.

Cassabah. Large, oblong, green flesh, very sweet. Oz., 20 cts.; $\frac{1}{4}$ lb., 60 cts.; lb., \$2.00.

Bay View. This melon is capable of growing to very large size. It is of oblong shape, green flesh and good flavor. Oz., 10 cts.; $\frac{1}{4}$ lb., 35 cts.; lb., \$1.00.

Emerald Gem. (*See cut.*) This is without doubt the very finest of the salmon-fleshed sorts. A small very early melon, form globular; flesh salmon-colored; the flavor is exceptionally fine, solid and thick, exterior dark green. The ribs are marked, but skin is generally smooth. The flavor of this melon is delicious, being very sweet, sugary and melting. Oz., 20 cts.; $\frac{1}{4}$ lb., 50 cts.; lb., \$1.75.

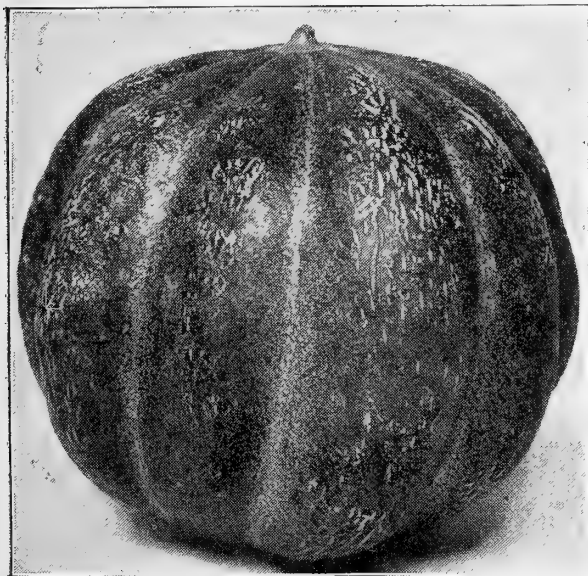
Defender. (*See cut.*) A salmon-fleshed variety, medium size and of excellent flavor. The fruits are oval in shape, slightly ribbed and are covered with a slight netting. The flesh is firm, fine grained, rich, deep yellow, darker than the Osage and better flavor. Oz., 10 cts.; $\frac{1}{4}$ lb., 25 cts.; lb., 90 cts.

Paul Rose. Flesh thick, firm and beautiful; deep salmon or orange color, deliciously sweet and melting. Oz., 10 cts.; $\frac{1}{4}$ lb., 35 cts.; lb., \$1.00.

Miller's Cream, or Osage. A remarkably good variety, of large size and delicious flavor; a favorite among truckers on account of being extremely prolific. The fruits are large and round, with light green, netted skin, and thick, sweet, salmon-colored flesh. Oz., 10 cts.; $\frac{1}{4}$ lb., 35 cts.; lb., \$1.00.

Perfection, or Princess. Grows to a large size, nearly round in shape; skin is dark green, netted; flesh orange, very sweet. Oz., 10 cts.; $\frac{1}{4}$ lb., 35 cts.; lb., \$1.00.

Mango, or Vegetable Orange. This variety produces small yellow fruits, which make very good preserves. Oz., 15 cts.; $\frac{1}{4}$ lb., 40 cts.



EMERALD GEM MUSKMELON

WATERMELONS—*Ger. Wassermelone.*



Blue Gem, or Iceberg. (*See cut.*) Similar in shape to the well known Kolb's Gem, but with darker skin. The melons grow to a large size and the quality is very satisfactory. Flesh a beautiful shade of pink, darker than Kolb's Gem, and deliciously sweet; heart large and flesh extends close to the outer skin. Oz., 10 cts.; $\frac{1}{4}$ lb., 20 cts.; lb., 60 cts.

Alabama Sweet. A large and attractive melon oblong in shape, early in maturing and continues to bear and ripen during a long season. The vines are very healthy and melons are produced in great abundance; color dark green, flesh remarkably firm and of luscious flavor. Oz., 10 cts.; $\frac{1}{4}$ lb., 20 cts.; lb., 60 cts.

Halbert Honey. An oblong melon, skin glossy green and flesh rich crimson, very sweet and tender. It matures early and is a good melon for all sections. Oz., 10 cts.; $\frac{1}{4}$ lb., 30 cts.; lb., 80 cts.

Triumph. Grown extensively in the south. Shape round, skin dark green striped with lighter shade, flesh bright red, splendid flavor and a good shipper. Oz., 10 cts.; $\frac{1}{4}$ lb., 20 cts.; lb., 60 cts.

Cole's Early. A splendid extra early variety, suitable for home market, but on account of its thin rind is not a good shipping melon. They grow to medium size, skin is green with light stripes; flesh rich dark red, luscious and sweet. The vines are strong growers, and very prolific. Oz., 10 cts.; $\frac{1}{4}$ lb., 20 cts.; lb., 60 cents.

Jordan's Gray Monarch, or Long Light Icing. A variety of Icing melon producing large oblong melons. Color of skin, very light green. Quality fully equal to Dark Icing. Oz., 10 cts.; $\frac{1}{4}$ lb., 25 cts. lb., 65 cts.

Wonderful, or McIver Sugar. In our trials of watermelons the "Wonderful" proved to be one of the sweetest of all. It not only grew to large size, but ripened uniformly and made fine, solid melons. It is a very sweet, solid fleshed sort, often grows to the length of 2 feet, and from 12 to 16 inches in diameter. The rind is marked with broad bands of yellowish green, shading to deep green; shaped oblong; is entirely stringless, and free from hard core. We consider it an acquisition. Oz., 10 cts.; $\frac{1}{4}$ lb., 20 cts.; lb., 60 cts.

Kolb's Gem. Of a delicious, sugary flavor, bright red flesh, firm and solid. One of the most productive and best keeping Melons. Oz., 10 cts.; $\frac{1}{4}$ lb., 20 cts.; lb., 60 cts.

Well known varieties of Watermelon.

	Oz.	$\frac{1}{4}$ lb.	lb.
Dark Icing	10	20	\$0 60
Dixie	10	20	60
Seminole	10	20	60
Iron-clad	10	20	60
Striped Gypsy, or Georgia Rattlesnake	10	20	60
Ice Cream	10	20	60
Black Spanish	10	20	60
Mountain Sweet	10	20	60
Cuban Queen	10	20	60
Colorado Preserving	10	25	75

MUSTARD.

White London	5	10	25
Chinese	10	20	60

MARTYNIA.

Martynia Proboscidea	25	70	2 25
----------------------	----	----	------

ENGLISH MILLTRACK MUSHROOM SPAWN.

Per brick, 15 cts. (by mail, 25 cts.); 1 dozen bricks, \$1.50; 25 lbs., \$2.00; 100 lbs., \$6.00; 1000 lbs., \$55.00; (250 lbs. at the 1000 lb. rate.

French Spawn.

Loose, in boxes, per 3 lb. box, \$1.15 by express.

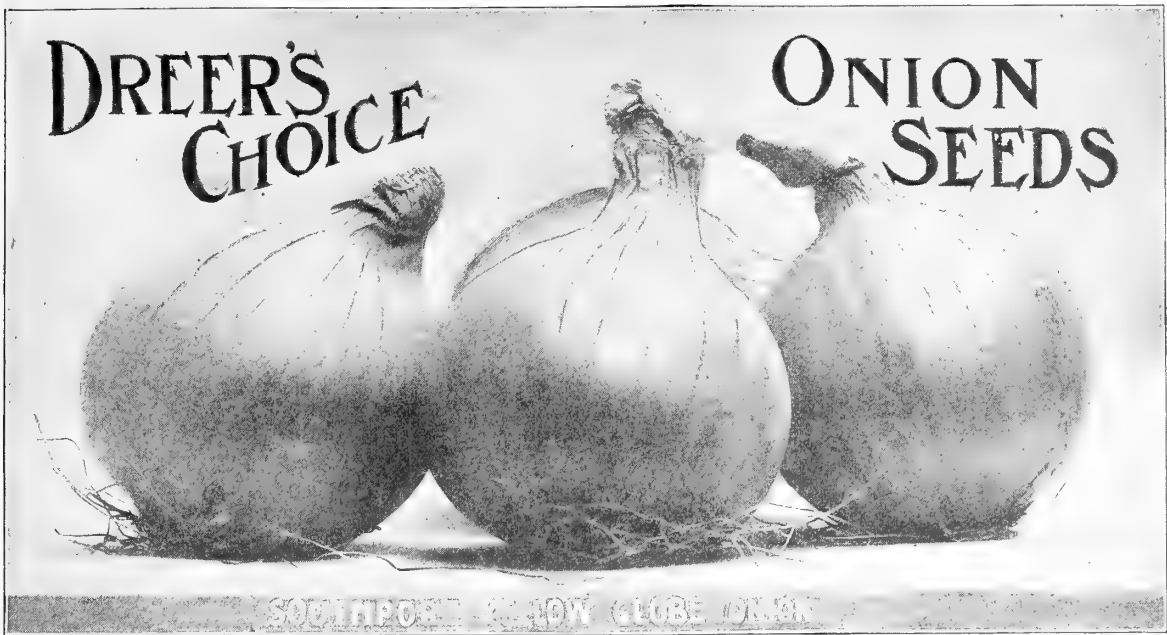
Monte Cristo, or Kleckley Sweets. Where sweetness combined with large size is desired this variety will surely please, as it not only produces melons above the medium size, but has that crisp, sugary flavor so much desired in a watermelon. The vines are of vigorous growth and produce a large crop of melons., which are of good size, oval shape, skin dark green and somewhat mottled. The rind is thin, thus making it undesirable as a variety to ship long distances, but sufficiently tough to stand carrying to nearby markets. The heart is large and solid and flavor all that could be desired. Oz., 10 cts.; $\frac{1}{4}$ lb., 30 cts.; lb., 80 cts.

Sweet-Heart. An entirely distinct and handsome Watermelon. Vine vigorous and productive, ripening early. Fruit large, oval, very heavy, uniformly mottled light and dark green. Flesh bright red, solid and very tender, melting and sweet. The Melons retain their good quality for a long time after ripening; is sure to become a popular variety. Oz., 10 cts.; $\frac{1}{4}$ lb., 20 cts.; lb., 60 cts.

Florida Favorite. Of medium size, striped alternately light and dark green, flesh deep red, crisp and deliciously sweet. Earlier than Kolb Gem by two weeks. Oz., 10 cts.; $\frac{1}{4}$ lb., 20 cts.; lb., 60 cts.



MUSHROOMS GROWN FROM DREER'S SPAWN



Yellow Globe Danvers. A standard sort and one of the most desirable; an excellent-keeper and very productive. Our strain of this variety is the true globe shape, and not of the flat type. Onion growers throughout the country prefer this type of onion to all others, and it is with this in view that the bulbs from which our seed is grown are specially and carefully selected as to shape. It is the best paying onion that is grown for general crop. Oz., 10 cts.; $\frac{1}{4}$ lb., 25 cts.; lb., 90 cts.; 5 lbs., or more, at 80 cts. per lb.

Southport Yellow Globe. (*See cut.*) A large globular shaped yellow variety, very productive, of mild flavor. This is also a favorite variety with the onion grower. The outer skin is a beautiful pale yellow; the bulbs are of a beautiful globe shape, and good keepers. The Connecticut grown seed of this variety is far better than that grown in other sections, and will produce larger and better crops. Oz., 10 cts.; $\frac{1}{4}$ lb., 35 cents.; lb., \$1.10; 5 lb. or more, at \$1.00 per lb.



Philadelphia Yellow Dutch or Strasburg. A leading market variety; a good keeper and well flavored; bright straw colored skin and somewhat flattened shape. The onions grow to a good size and are rather flat. This variety is largely grown for sets on account of its excellent keeping qualities, and the ready sale of same during the spring months. Oz., 10 cts.; $\frac{1}{4}$ lb., 25 cts.; lb., 75 cts.; 5 lb. or more, at 70 cts. per lb.

Rhode Island Yellow Cracker. An extra early variety, popular in the Rhode Island markets. An excellent sort to raise where the seasons are short. We believe that when this variety is better known it will rank among the most popular sorts. It is a good keeper and also a good seller. Oz., 10 cts.; $\frac{1}{4}$ lb., 25 cts.; lb., 90 cts.

Australian Yellow Globe. (*See cut.*) This extra early variety of onion originally came from Australia and as shown in illustration, is globe-shape and quite attractive. The onions grow to a large size and are very solid, skin is deep yellow, flesh white and of very mild flavor. Besides being an extra early onion, it is very productive and a good keeper, thus making it a very valuable variety for those who grow for market, and the handsome appearance of the onion insures quick sales at good prices. Our customers who grow onions from seed would do well by planting this variety, as we are confident that it will please them. Oz., 10 cts.; $\frac{1}{4}$ lb., 30 cts.; lb., \$1.00,

Australian Brown Onion. The bulbs grow to good marketable size and are very hard and solid, and keep well. They ripen earlier than either the Yellow Danvers or Red Wetherfield, are beautiful brown color and mild flavor. A good thing in their favor is the fact that the crop runs uniform in size and shape; nearly every plant produces a fine onion. When better known, this variety will be used extensively by onion growers. Oz., 10 cts.; $\frac{1}{4}$ lb., 25 cts.; lb., 90 cts.

Southport Red Globe. The deep red color of skin and symmetrical form of this onion makes it attractive. It grows to good marketable size and is true globe shape. The quality is good, being of mild flavor and a good keeper. This onion will sell well in such markets as demand the red onion. Oz., 10 cts.; $\frac{1}{4}$ lb., 35 cts.; lb., \$1.15.

Extra Early Red. Earlier than the Wethersfield and somewhat smaller, close grained and a good keeper. It is somewhat the shape of the cracker onion, but harder. It is also used for growing onion sets. Oz., 10 cts.; $\frac{1}{4}$ lb., 30 cts.; lb., 95 cts.

CHOICE ONION SEED—Continued.



PRIZETAKER ONIONS

Large Red Wethersfield. A leading variety in the Eastern States, and in fact in all sections where red onions are grown; it grows to full size the first season from seed; thick through and large, deep red color, keeps well. This is one of the leading market onions and produces good crops of large onions which are of desirable mild flavor. Oz., 10 cts.; ¼ lb.; 30 cts.; lb., 95 cts.

Prizetaker. (*See cut.*) This is the large pale yellow onion that is offered for sale in the fruit stores and markets in the fall. It grows to a very large size; flesh white, of mild and delicate flavor. The large onions are raised first year from seed, and with ordinary culture produce enormous crops. The onions have been grown to weigh over 3 lbs. each in weight, and where good soil and culture is given them they will always grow to a large size. Each year the demand for pure seed of this beautiful onion grows larger, and the onions always meet with a ready sale on the markets. Our seed is pure and the genuine Prizetaker. Oz., 10 cts.; ¼ lb., 35 cts.; lb., \$1.10.

White Portugal, or Silver Skin. This variety is one of the leading white sorts, and is of beautiful shape and very mild flavor. The bulbs are flat in shape and mature early. It is a splendid variety for both family use and the market gardener, and is very largely used for growing sets on account of its fine shape when small, and also for its good keeping qualities. It is also extensively used as a pickling onion, for which purpose it seems to be finely adapted. Oz., 15 cts.; ¼ lb., 45 cts.; lb., \$1.50; 10 lbs. or more at \$1.40 per lb.

Southport White Globe. Pure white color, mild flavor, and equally good for keeping as the yellow sort. It is an enormous yielder, sometimes producing as much as 1300 bushels to the acre, and always sells at high prices. It is best to dry these onions in a shady place, and one where they will get plenty of air. Our seed of this splendid variety is very fine, and raised from selected bulbs, and is much better than ordinary seed offered by some houses. Oz., 15 cts.; ¼ lb., 50 cts.; lb., \$1.75.

White Pearl. One of the earliest varieties, pure white, mild flavor and attractive. Not a good keeper, but its quick growth makes it a good sort to grow for early market. Oz., 15 cts.; ¼ lb., 55 cts.; lb., \$1.85.

White Queen. A rapid growing variety of mild flavor. This is the earliest onion grown; they are very mild, pure white, and splendid for pickling. They grow small and can be sown thickly. Seed of this onion sown outside in open ground in spring will quickly produce bulbs about one inch in diameter; these are set out in the following spring and produce nice large onions. Oz., 15 cts.; ¼ lb., 55 cts.; lb., \$1.85.

Large Red Tripoli. Large, red, flat; free from strong aroma, and keep well during winter. Oz., 10 cts.; ¼ lb., 35 cts.; lb., \$1.35.

Mammoth Silver King. This variety is noted for the extra large size onions it produces the first season from the seed. It is a large flat variety, averaging 5 to 6 inches in diameter. The skin is pure white and flesh remarkably tender and pleasing to the taste. Oz., 15 cts.; ¼ lb., 45 cts.; lb., \$1.60.

White Barletta. An extra early small white onion; similar to White Queen, and makes bulbs about 1¼ to 1½ inches in diameter; in shape flattened on top. It is a good keeper and as a pickling variety it is unexcelled. Being pure white the onion makes quite an attractive appearance when in the glass bottles. Oz., 15 cts.; ¼ lb., 55 cts.; lb., \$1.85.

White Winter Bunching. Sow seed latter part of spring, keep cultivated during summer, and in the fall cover lightly with litter. As soon as snow is off, rake off litter and dead tops; they will be ready for pulling about the time that ordinary sets are being planted. They do not make much bottom, and are distinctively a bunch onion. Oz., 25 cts.; ¼ lb., 80 cts.; lb., \$3.00.

BERMUDA ONIONS.

Bermuda White. (*Teneriffe stock.*) The Bermudas are the earliest onions in the market, and are grown extensively in the South. The white matures earlier than the red. The outer skin is of straw color and flesh pure white. Oz., 25 cts.; ¼ lb., 70 cts.; lb., \$2.75.

Bermuda Red. (*Teneriffe stock.*) Similar to the white; but with deep red skin. These are on the market very early in the spring and are grown profitably in the South. The quality is very good. Oz., 20 cts.; ¼ lb., 65 cts.; lb., \$2.50.

New Onion Seed.—The seed we supply is all new, being crop of 1904, and the vitality is strong. It is grown from selected bulbs, and therefore will produce Onions of the true type.

CHOICE ONION SETS.

Prices subject to market changes.

Postage on Onion Sets 10 cts. Per Quart Additional.

Onion Sets should be planted out as early in the spring as the ground is dry enough to work; plant them in rows one foot apart, with sets 3 or 4 inches apart in the row.

	Qt. 4 Qts.	
Yellow Onion Sets	20 60	} For prices on larger quantities please write.
White Onion Sets	25 70	
Red Onion Sets	20 60	
White Potato (Multiplier)	25 70	
Yellow Potato Onions	20 60	
Egyptian, or Perennial Tree	20 60	
Shallots	25 70	
Garlic. Lb., 20 cts.; 5 lbs., 90 cts.		

OKRA, or Gombo. (*Ger. Safran*)

Perkin's Long-Pod Okra. (*See cut.*) An exceedingly handsome variety of Okra which is a great improvement upon other varieties heretofore grown. The pods are very tender, long, slim and of a beautiful deep green color. The habit of growth of plant is dwarf and it is very productive, the pods covering plant from bottom to top. In flavor this variety cannot be excelled and will greatly please all who are fond of "Gombo Soup." Oz. 10 cts.; $\frac{1}{4}$ lb., 20 cts.; lb., 60 cts.

Dreer's Improved Long Green Okra. A very desirable sort for market gardeners; of medium height. The pods are produced abundantly and grow very long, and remain extremely tender for a long time; they are also entirely free from hard ridges. Oz., 10 cts.; $\frac{1}{4}$ lb., 15 cts.; lb., 50 cts.

Dreer's Little Gem. The best of the dwarf sorts. Pods long, slender, and of light green color. Oz., 10 cts.; $\frac{1}{4}$ lb., 20 cts.; lb., 60 cts.

White Creole. (*White Velvet.*) This variety is largely grown in the South, and is preferred by many to the green-podded sorts; is considered more tender and of better flavor. Pods free from ridges. Oz., 10 cts.; $\frac{1}{4}$ lb., 15 cts.; lb., 50 cts.

PARSLEY—*Ger. Petersilie.*

Dreer's Dwarf Perfection. (*See cut.*) This is a fine and most valuable Parsley. The habit is irregular and compact, and the exquisitely fine and prettily curled leaves are set so closely that the form of the plant is almost semi-globular. The color is a wonderfully bright pea-green, and flavor surpasses all other Parsley. Pkt., 10 cts.; oz., 30 cts.; $\frac{1}{4}$ lb., \$1.00.

Dwarf Extra Curled Perpetual. Leaves tender, crimped and very curly, of a bright green color, and very ornamental. Oz., 10 cts., $\frac{1}{4}$ lb., 20 cts.; lb., 60 cts.

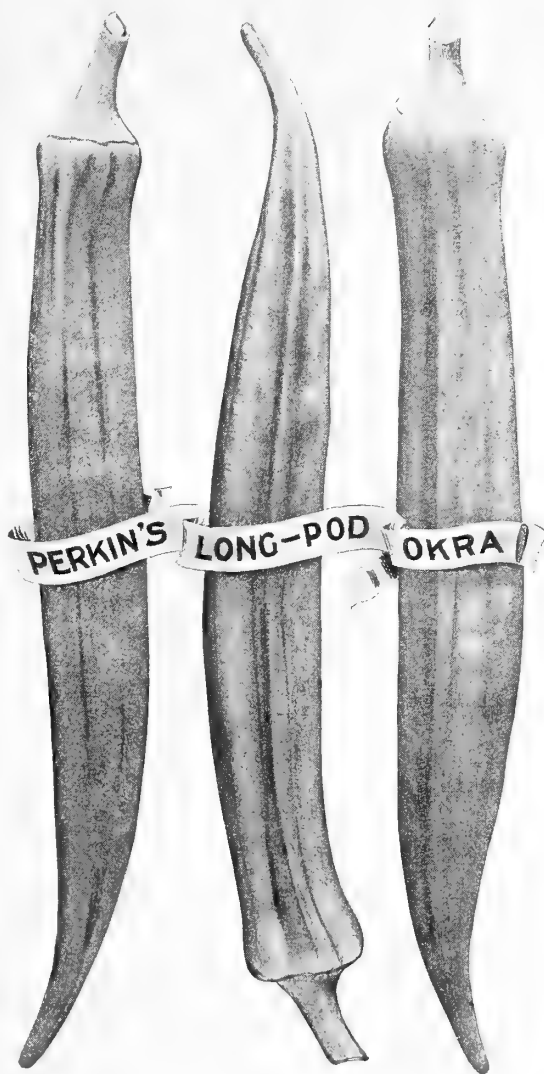
Champion Moss Curled. A distinct variety of unequalled merit, beautifully crimped and curled. Oz., 10 cts.; $\frac{1}{4}$ lb., 20 cts., lb., 60 cts.

Dreer's Summer Green Parsley. Market gardeners desire a special strain of Parsley for summer use, one that will stand the extreme heat during the hot months of July and August. This variety is a strong and vigorous grower, and produces large, finely curled leaves of a beautiful dark green color, which it holds for a long time after all other varieties have turned yellow. Oz., 10 cts.; $\frac{1}{4}$ lb., 25 cts.; lb., 85 cts.

Fern Leaved. Nothing better for garnishing could be desired. Stands the winter if covered before frost. Oz. 10 cts.; $\frac{1}{4}$ lb., 20 cts.; lb., 60 cts.

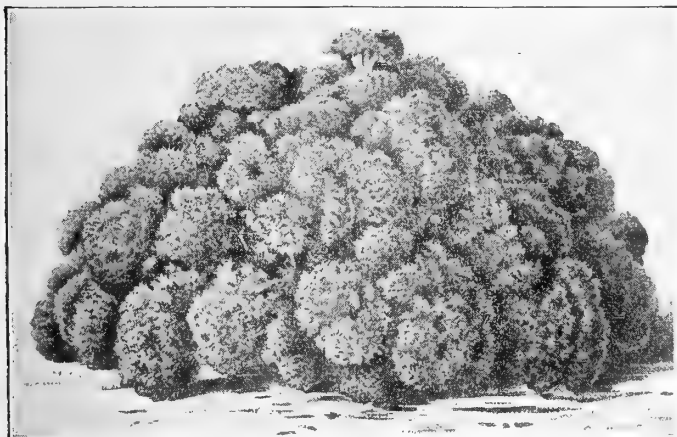
Half Curled. A medium curled variety for garnishing and seasoning. Oz., 10 cts.; $\frac{1}{4}$ lb., 20 cts.; lb., 50 cts.

Turnip Rooted, or Hamburg. The fleshy root resembles a parsnip, and is used for flavoring soups, stews, etc. Oz., 10 cts.; $\frac{1}{4}$ lb., 20 cts.; lb. 60 cts.

**PARSNIP**—*Ger. Pastinake.*

Large Sugar, or Hollow Crown. The roots are long, very smooth, white, tender, sugary, and of excellent flavor. This strain was made by careful selection of roots growing to an ideal shape and having the distinct hollow crown. We have been improving it for some years past and now have it nearly perfect. Oz., 5 cts.; $\frac{1}{4}$ lb., 15 cts.; lb., 50 cts.; 5 lbs. for \$2.25.

Student, or Guernsey. Oz., 5 cts.; $\frac{1}{4}$ lb., 15 cts.; lb., 50 cts.

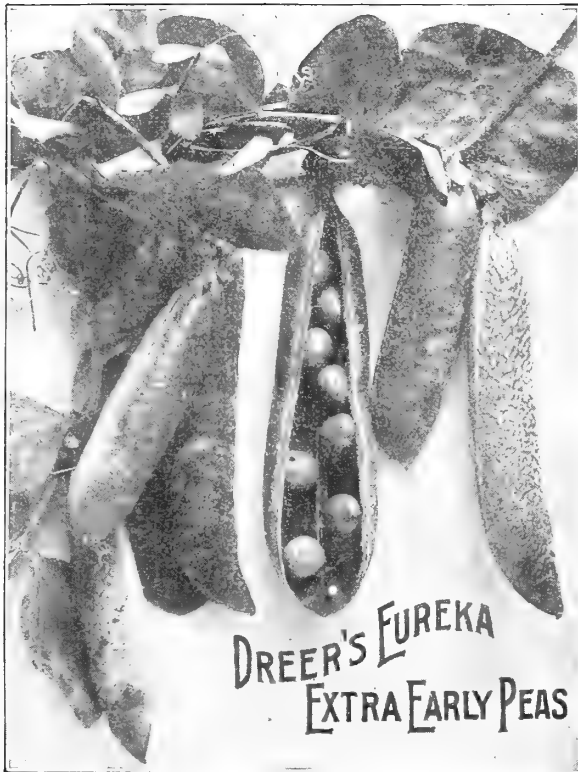


DREER'S DWARF PERFECTION PARSLEY

Growers of Tomatoes for Market

should not fail to read description on page 26, of our new extra early tomato "**Dreer's Earliest Cluster**," offered for the first time this year. It is the earliest tomato yet produced and is also enormously productive. The tomatoes grow in immense clusters, ripen earlier and are of better shape and quality than "Spark's Earliana." Those who plant it this year will have the crop in market at right time for highest prices. Even if you have a favorite variety you should not fail to also plant "Dreer's Earliest Cluster" Tomato.

Dreer's Selected Garden Peas.—Ger Erbsen.



Extra Early Varieties.

If Peas are wanted sent by mail, add 8 cents per pint, or 15 cents per quart for postage.

Dreer's Eureka Extra Early. (See cut.) One of the earliest and most prolific extra early varieties, which has given the best results wherever grown, and is a standard for earliness and fine quality. It is an extremely even cropper, and can be gathered clean in two pickings. For a late fall crop it has few equals; height 20 inches. Qt., 25 cts.; 4 qts., 80 cts.; peck, \$1.30; bu., \$5.20.

Dreer's Extra Early Electric. A variety of the green-seeded Alaska type, but a great improvement, being much earlier than the Alaska and bearing larger pods. The vines grow from 2½ to 3 feet high, and are literally loaded down with pods, which are crowded with the large peas, closely shouldered in pod. It is very uniform in growth, and usually produces pods containing seven or eight peas. The quality is excellent, remaining tender until fully matured. Qt., 25 cts.; 4 qts., 80 cts.; peck, \$1.40; bu., \$5.60.

Dreer's Extra Early Pioneer. Pods of medium size, containing 4 to 6 full plump peas of fine flavor. The quality is all that could be desired; height 20 inches. Qt., 20 cts.; 4 qts., 70 cts.; peck, \$1.25; bu., \$5.00.

Daniel O'Rourke. Good early sort for market gardeners and private use. Qt., 20 cts.; 4 qts., 60 cts.; peck, \$1.00; bu., \$4.00.

Alaska. An extra early round pea. Of good flavor, and bearing pods of a dark green color, which are well filled and ripen uniformly; height 2 feet. Qt., 20 cts.; 4 qts., 60 cts.; peck, \$1.00; bu., \$4.00.

Lightning. A very early pea, bearing in great profusion long, well filled pods, containing peas of a bright green color, well flavored, sweet and good size; height 2 feet. Qt., 20 cts.; 4 qts., 60 cts.; peck, \$1.00; bu., \$4.00.

Blue Beauty. Bears a profusion of excellent peas; 1½ ft. Qt., 25 cts.; 4 qts., 90 cts.; peck, \$1.60; bu., \$6.40.

Duke of York. Pods large, straight, thick, and very dark green; peas green; when ripe large, much wrinkled. It is not a continuous bearer, but furnishes all its pods well together, and on this account is particularly well adapted to market gardeners' use; 2½ ft. Qt. 30 cts.; 4 qts., \$1.00; peck, \$1.65; bu., \$6.60.

Premium Gem. A fine flavored wrinkled variety, an improvement on the Little Gem; pods long, dark green and prolific. Height 1½ ft. Qt., 25 cts.; 4 qts., 90 cts.; peck, \$1.60; bu., \$6.40.

Little Gem. A dwarf first early green wrinkled marrow, very prolific, and of superior flavor; height 1½ ft. Qt., 25 cts.; 4 qts., 90 cts.; peck, \$1.60; bu., \$6.40.

Early Morn. (See cut.) An English variety of the Gradus type, with many desirable qualities. In our trial grounds it matured only a few days later than Gradus and bore large handsome pods in profusion. The peas are large, closely packed in the pod and the flavor is sweet and delicious. Those who know the good qualities of Gradus will not be disappointed in their trial of this new variety. Height 3 ft. Qt., 45 cts.; 4 qts., \$1.50; peck, \$2.80; bu., \$11.20.

The "Thomas Laxton." A few years ago we received a small sample of this pea for trial from England, from the originator, Mr. Thomas Laxton. We were very much pleased with the results, and found it to be extremely early, ripening fully as early as the well known "Gradus" and producing pods and peas fully as large. The plant is a very hardy and strong grower, producing the extra large sized pods in abundance. The quality is delicious and cannot be surpassed by any other variety. The "Thomas Laxton" will mature fully as early as any of the extra early smooth peas, and being a wrinkled sort is much sweeter; height 3 ft. Qt., 45 cts.; 4 qts., \$1.50; peck, \$2.80; bu., \$11.20.



NEW PEA, EARLY MORN

PEAS—EARLY VARIETIES—Continued

If Peas are wanted sent by mail, add 8 cents per pint, or 15 cents per quart for postage.

Gradus, or Prosperity Pea. (*See cut.*) This fine, extra early, combines the finest quality with extreme earliness, and is also very productive. The smooth varieties of Extra Early Peas have heretofore filled their place in a way, as they could be planted very early; but there has been the need of an "extra early" which would also have that sweetness and fine flavor of the wrinkled varieties. "Gradus" fills this want. Vines $2\frac{1}{2}$ feet in height, and very prolific, bearing pods fully as large as Telephone, usually containing from 8 to 10 large peas, which are of superb flavor. The pods hold their attractive and fresh green color for a long time. Qt., 45 cts.; 4 qts., \$1.50; peck, \$2.80; bu., \$11.20.

Nott's Excelsior. An improvement on American Wonder, being as early, if not a little earlier, and the pods are decidedly larger and many more of them to the plant. It grows about half taller than American Wonder; height 14 inches. Qt., 30 cts.; 4 qts., \$1.15; peck, \$1.75; bu., \$7.00.

American Wonder. A very fine, extra early, wrinkled variety. Quite productive. The flavor and quality of the peas are excellent, and its dwarf habit of growth makes it a desirable sort; height 10 inches. Qt., 30 cts.; 4 qts., \$1.15; peck, \$1.75; bu., \$7.00.

Surprise Pea. This excellent variety has been carefully tested beside the very earliest of the smooth peas, and found to be fully as early. The vines grow about two feet high, and do not require any support; they are literally loaded down with pods, which, while not so large, are well filled with beautiful peas of most delicious quality, tender and sweet, much more so than any of the smooth Extra Early. Qt., 30 cts.; 4 qts., 90 cts.; peck, \$1.50; bu., \$6.00.

Second Early and Medium Varieties.

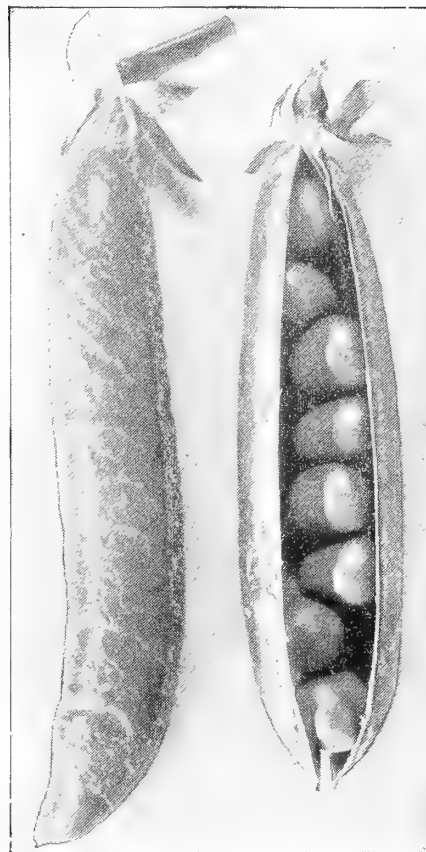
Advancer. A fine market variety, prolific, long pods; 2 ft. Qt., 25 cts.; 4 qts., 75 cts.; peck, \$1.25; bu., \$5.00.

Fillbasket. Hardy, prolific, pods well filled, tender, and of sweet delicious flavor. Height $2\frac{1}{2}$ feet. Qt., 25 cts.; 4 qts., 80 cts.; peck, \$1.40; bu., \$5.60.

Shropshire Hero. A grand second early wrinkled pea, producing well filled pods in great abundance, quality very good; $2\frac{1}{2}$ feet. Qt., 25 cts.; 4 qts., 75 cts.; peck, \$1.25; bu., \$5.00.

Abundance. It ripens about one week after the earliest kinds; pods contain from 6 to 8 large wrinkled peas, which are of excellent flavor; $1\frac{1}{2}$ feet. Qt., 25 cts.; 4 qts., 75 cts.; peck, \$1.25; bu., \$5.00.

Heroine. A medium early, green, wrinkled pea, large curved, showy pods. Height 2 to $2\frac{1}{2}$ feet. Qt., 25 cts.; 4 qts., 80 cts.; peck, \$1.30; bu., \$5.20.



GRADUS, OR PROSPERITY PEA

General and Late Varieties.

Dwarf Champion. The Champion of England has long been a standard variety among truckers, the long vines, however, were an objection, as they required brush or support of some kind. This new variety has all the good qualities of the Champion of England, is hardy and of fine quality, but has less vine and produces larger pods and more of them. The pods are dark green and mature after the early varieties, thus making it a good sort to plant for succession. Qt., 30 cts.; 4 qts., 90 cts.; peck, \$1.50; bu., \$6.00.

Carter's Daisy or Dwarf Telephone. Bears pods as large as Telephone, but vines are dwarf. It is of stocky habit, healthy, vigorous growth and very productive. In season, medium, from 5 to 7 days earlier than Stratagem. The pods are long, frequently measuring 5 inches in length, broad, straight, rounded or curved at the end, remarkably well filled, often containing nine or ten peas, color pale green. Qt., 30 cts.; 4 qts., \$1.00; peck, \$1.75; bu., \$7.00.

Long Island Mammoth. (*See cut.*) A very productive variety, bears dark glossy long pods, well filled; a very desirable second early for market gardeners' use. Qt., 25 cts.; 4 qts., 80 cts.; peck, \$1.30; bu., \$5.20.



PEAS—General and Late Crop—Continued.



TELEPHONE PEAS

Black-eyed Marrowfat. 4 feet. Qt., 15 cts.; 4 qts., 50 cts.; peck, 90 cts.; bu., \$3.60.

SUGAR PEAS (Edible Pods.)

Giant Sugar. Qt., 45 cts.; 4 qts., \$1.75; peck, \$2.50.

Mammoth Melting Sugar. Qt., 35 cts.; 4 qts., \$1.30; peck, \$2.25.

Dwarf Gray Seeded Sugar. Qt., 30 cts.; 4 qts., \$1.10; peck, \$2.00.

Pride of the Market. A medium early dwarf pea of vigorous habit and very productive. The pods are large, of a medium green color. The quality of this pea is excellent, being sweet and tender; 1½ feet. Qt., 25 cts.; 4 qts., 90 cts.; peck, \$1.50; bu., \$6.00.

Champion of England. The most popular wrinkled variety in cultivation, of delicious flavor; a profuse bearer; 5 feet. Qt., 20 cts.; 4 qts., 70 cts.; peck, \$1.15; bu., \$4.60.

Improved Stratagem. Pods of immense size filled with very large dark green peas of the finest quality. Vines grow strong and healthy and produce large crops; 2 feet. Qt., 30 cts.; 4 qts., \$1.00; peck, \$1.95; bu., \$7.80.

Telephone. Large pods, peas of a pale green color, closely packed in the pod, and of a most delicious flavor. This variety has become quite a favorite; 4 feet. Qt., 25 cts.; 4 qts., 90 cts.; peck, \$1.60; bu., \$6.40.

Everbearing. A first-class pea for summer and autumn use; pods 3 to 4 inches long, and contain 6 to 8 peas of a rich flavor; very sweet and tender; 2 feet. Vines throw out numerous branches, thus prolonging its bearing season. Qt., 25 cts.; 4 qts., 80 cts.; peck, \$1.30; bu., \$5.20.

Telegraph. A strong grower, producing large pods, containing 10 to 12 large peas in each. Qt., 25 cts.; 4 qts., 80 cts.; peck, \$1.30; bu., \$5.20.

Yorkshire Hero. Qt., 25 cts.; 4 qts., 80 cts.; peck, \$1.30; bu., \$5.20.

Juno. Qt., 25 cts.; 4 qts., 80 cts.; peck, \$1.30; bu., \$5.20.

Blue Imperial. Qt., 20 cts.; 4 qts., 75 cts.; peck, \$1.15; bu., \$4.60.

French Canner (Petit Pois). Qt., 20 cts.; 4 qts., 75 cts.; peck, \$1.15; bu., \$4.60.

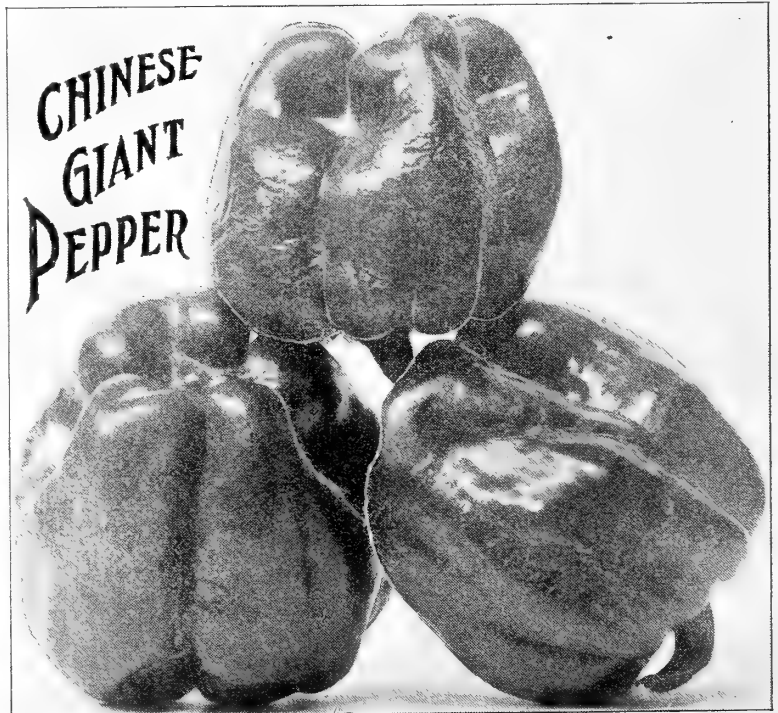
Large White Marrowfat. 5 feet. Qt., 15 cts.; 4 qts., 50 cts.; peck, 90 cts.; bu., \$3.60.

PEPPER *Ger. Pfeffer.*

Chinese Giant. (*See cut.*) This variety is of recent introduction, and the enormous size of the peppers a surprise to all who grow them. The plants are strong and healthy in growth, about 2 feet high when fully grown, and the extremely large fruits begin to set close to the bottom of the plant. The peppers are much larger than Ruby King, and of a bright scarlet color. The flesh is quite thick and very mild; in fact the sweetest pepper we know of. Market gardeners will find this the best variety of sweet pepper, and should plant it largely. Pkt., 10 cts.; ½ oz., 25 cts.; oz., 40 cts.; ¼ lb., \$1.25.

Varieties of Pepper.

	Oz.	¼ lb.	lb.
Large Bell, or Bullnose	.20	50	\$1 75
Ruby King	.20	60	2 00
Long Red Cayenne	.20	60	2 00
Large Sweet Spanish	.20	60	2 00
Golden Dawn	.20	60	2 00
Procopp's Giant	.20	75	2 50
Gelestial	.20	70	2 25
Red Japan Cluster	.20	70	2 25
Red Cherry	.20	75	2 50
Coral Gem Bouquet	.30	90	3 25
Small Chili	.20	70	2 25
Creole, or Bird's Eye.	Pkt.,	10	cts.
Tabasco.	Pkt.,	10	cts.



SEED POTATOES.

We put up 2¾ bushels (165 lbs.) potatoes to barrel, shipping in barrels or sacks, as may suit the case, packing only first-class stock, but cannot assume any risks; therefore all shipments of potatoes are made strictly on purchaser's responsibility. We usually make shipments in spring, after danger of freezing has passed, but where our customers desire earlier shipment we can accommodate them. An occasional change of seed stock in planting potatoes is very important, and greatly increases the quality and yield. If you have been using the same stock for several years, now is a good time to make a change and infuse new strength into your crop. Our list of varieties, while not large, is made up of what we consider the most reliable sorts, and only such as we can confidently recommend to our customers.

IMPORTANT.—Prices of Potatoes are subject to market changes. Potatoes are forwarded by express or freight, as directed, purchaser paying charges. We assume no risk on Potatoes, which are forwarded strictly at purchaser's responsibility.

Dreer's New Early Standard. (See cut.)

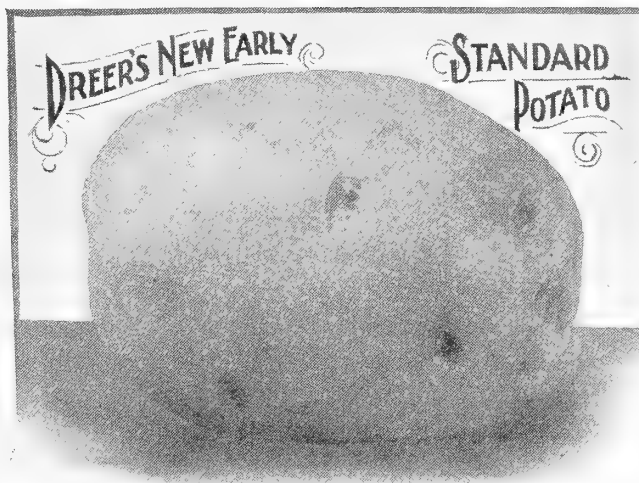
A valuable variety for early crop. The tubers are produced abundantly and are of a uniform large size. The plants are of dwarf compact habit in growth, strong and healthy, always entirely free from blight and disease of any kind and will also withstand almost any amount of drought. When the tubers are matured, the vines die down and never make a second growth. It invariably produces a large crop of beautiful smooth potatoes, which are roundish in shape, beautiful white skin, very smooth and few eyes. The quality is superb, flesh being pure white and cooks very mealy. Peck, 65 cents; bu., \$1.75; barrel, \$4.50.

Bliss' Triumph. Extremely early, round, thin, bright pink skin, white flesh. This variety is largely grown in the Southern States. The second crop is sometimes sold in market as Bermudas during the winter. Peck, 60 cts.; bu., \$1.60; bbl., \$3.75.

Pride of the South, or White Bliss. Similar in shape to Bliss' Triumph. White skin and flesh, extra early and productive. Peck, 60 cts.; bu., \$1.60; bbl., \$3.75.

Bovee. This variety matures its crop extremely early. It is of recent introduction, and its general good qualities have attracted much attention among market gardeners, farmers and potato growers. It is earlier than the Early Rose and a much more productive variety. It is said that in tests made at experimental stations the Bovee has even produced heavier crops than some of the late varieties. The vine is dwarf and stocky, admitting of close planting; the tubers grow close together in the hill, and are generally of uniform, marketable size. It is pink, or flesh color, and grows very smooth, presenting a fine appearance, and the quality is all that could be desired in a first-class early Potato. Peck, 60 cts.; bu., \$1.60; bbl., \$3.75.

Early Rose. We sell more of this variety than any other, as it is the leading early sort in almost all sections. There are many strains of this valuable potato on the market and much inferior seed is sold and planted each year. The stock we supply is the genuine Houlton Rose and was grown in Maine and is strictly first-class. Peck, 50 cts.; bu., \$1.50; bbl., \$3.50.



Early Ohio. An old-time favorite; matures early, and the potatoes are fit for use before fully ripe. Many growers consider it the most profitable early market variety. Peck, 60 cts.; bu., \$1.60; bbl., \$3.75.

Beauty of Hebron. Early, productive; of excellent quality; a good keeper. Peck, 50 cts.; bu., \$1.50; bbl., \$3.50.

Burbank's Seedling. A white-skinned, medium early variety, with few eyes; flesh fine-grained and of excellent flavor. Peck, 50 cts.; bu., \$1.50; bbl., \$3.50.

White Star. A medium early variety of the best quality and appearance; large, oblong, uniform sized tubers, remarkably productive. Peck, 50 cts.; bu., \$1.50; bbl., \$3.50.

State of Maine. A leading variety for winter use. It is medium early, cooks dry and is a good keeper. Pk., 50 cts.; bu., \$1.50; bbl., \$3.50.

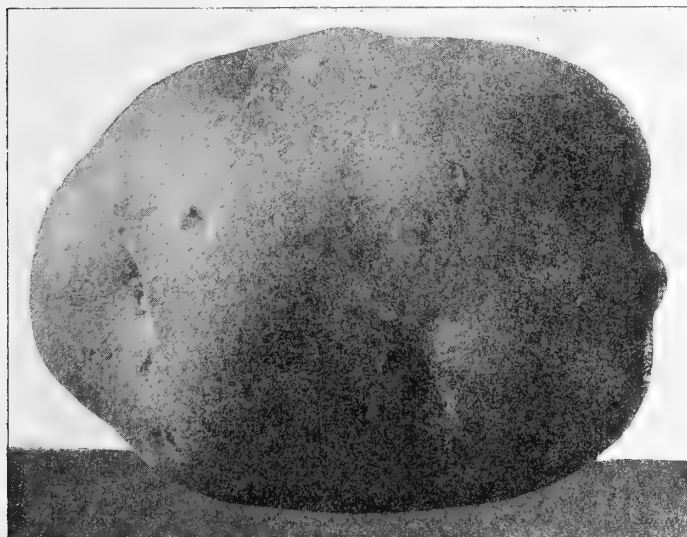
Rural New Yorker No. 2. (See cut.)

A valuable variety of large size, very smooth and a great cropper; in quality unexcelled. The tubers grow extremely solid, making a splendid keeper, and the vigorous growth of vine enables it to withstand disease, drought and insects. Peck, 50 cts.; bu., \$1.50; bbl., \$3.50.

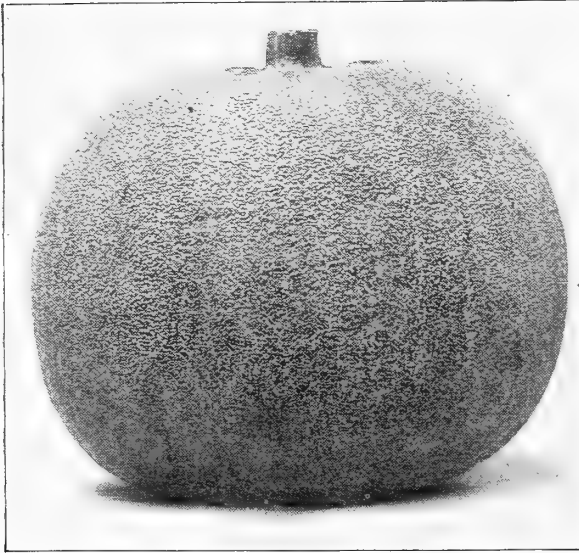
Sir Walter Raleigh. A seedling of Rural New Yorker No. 2 which variety it resembles. Flesh white, fine grained and the potatoes are of large size. It produces heavy crops and is a good variety for those who grow for market. Peck, 50 cts.; bu., \$1.50; bbl., \$3.50.

Carman No. 1. Intermediate in ripening, and resembles the Rural New Yorker No. 2 in shape, but of much larger size. It also has very few and shallow eyes. The flesh is white and quality perfect. Peck, 50 cts.; bu., \$1.50; bbl., \$3.50.

Carman No. 3. This is one of the greatest yielders; large, oblong, slightly flattened. This potato has a record of having produced over 200 bushels from one barrel of seed. Peck, 50 cts.; bu., \$1.50; bbl., \$3.50.



RURAL NEW YORKER NO. 2 POTATO

PUMPKIN—Ger. Grosse Kurbis.

WINTER LUXURY PUMPKIN

Large Tours Pumpkin. A productive variety, which grows to an immense size, often weighing over 100 lbs. The flesh is not very thick, but quality is good. Oz., 10 cts.; $\frac{1}{4}$ lb., 25 cts.; lb., 85 cts.

Winter Luxury. (*See cut.*) This pumpkin is distinct both in shape and appearance. Grows round, and the skin, which is golden yellow, is covered with a fine netting. The vines are healthy, and produce large numbers of the beautiful pumpkins, which are of good quality and keep well during the winter. One of the best for making pies. Oz., 10 cts.; $\frac{1}{4}$ lb., 25 cts.; lb., 85 cts.

Mammoth Golden Cashaw. As a general purpose pumpkin, both for making pies and stock feeding, this variety is very valuable. It is an improvement on the old light colored Cashaw. The skin when pumpkins are matured, being a beautiful golden-orange color. The quality is all that could be desired, being fine grained, sweet, and rich yellow color. Oz., 10 cts.; $\frac{1}{4}$ lb., 25 cts.; lb., 85 cts.

Large Yellow Mammoth Potiron. (*King of the Mammoths Jumbo.*) The largest of all pumpkins; specimens have been grown weighing over 190 pounds. The quality is good. The best pumpkin for showing at Fairs; also used for decoration in windows of restaurants. Oz., 15 cts.; $\frac{1}{4}$ lb., 50 cts.; lb., \$1.75.

Large Cheese Pumpkin. One of the best for table use: productive, skin orange, flesh yellow and sweet. Grows to fair size, and largely used for stock feeding. Oz., 10 cts.; $\frac{1}{4}$ lb., 20 cts.; lb., 60 cts.

Tennessee Sweet Potato. Pear-shaped, flesh thick, white, fine grained and good flavor. Oz., 10 cts.; $\frac{1}{4}$ lb., 25 cts.; lb., 85 cts.

Large Yellow Field Pumpkin. For feeding stock. $\frac{1}{4}$ lb., 10 cts.; lb., 25 cts.; 10 lbs., \$2.00.

RADISH.

Ger. Rettig, oder Radieschen.

Early Varieties.

Dreer's Crimson Ball Radish. This is an entirely distinct variety, and while of the same shape as the true red turnip radish, the flesh as well as the skin is stained a beautiful red color, which is a unique feature. It is a dainty little radish of a very mild and pleasing flavor. It is equally as good for forcing as for growing outside, quickly making fine radishes, even during the hot summer months. Oz., 10 cts.; $\frac{1}{4}$ lb., 25 cts.; lb., 80 cts.

Early Scarlet Turnip. Small top, quick growth, mild and crisp. Largely used for early planting in open ground. Oz., 10 cts.; $\frac{1}{4}$ lb., 15 cts.; lb., 50 cts.

Scarlet Frame. A very early turnip radish; bright scarlet-crimson color; perfectly round, crisp and tender. Oz., 10 cts.; $\frac{1}{4}$ lb., 15 cts.; lb., 50 cts.

Round Red Forcing. One of the earliest and best of the Turnip varieties for forcing, very short-leaved, small top; color of skin dark red, white-fleshed. Oz., 10 cts.; $\frac{1}{4}$ lb., 20 cts.; lb., 60 cts.

Dreer's First and Best Radish. (*See cut.*) An attractive half long radish of very early maturity. The color is rich deep scarlet, size medium, making it very dainty. The tops are small and roots grow uniform in size and shape, tapering to a point. The quality is fine, being delightfully crisp and juicy. We know of no half-long radish that will equal this variety. Oz., 15 cts.; $\frac{1}{4}$ lb., 35 cts.; lb., \$1.00.

French Breakfast. Oblong shape, rapid growth, very mild and tender, beautiful scarlet color tipped with white. Oz., 10 cts.; $\frac{1}{4}$ lb., 15 cts.; lb., 50 cts.

White-tipped Scarlet Gem. Excellent for forcing, short leaves, bright scarlet, with white tip. Oz., 10 cts.; $\frac{1}{4}$ lb., 20 cts.; lb., 60 cts.

Long Scarlet Short Top. Long bright scarlet, with small top. Oz., 10 cts.; $\frac{1}{4}$ lb., 15 cts.; lb., 50 cts.

Half-Long Deep Scarlet. An intermediate sort, for forcing or open ground. Oz., 10 cts.; $\frac{1}{4}$ lb., 15 cts.; lb., 50 cts.

Philadelphia Half-Long Scarlet. Oz., 10 cts.; $\frac{1}{4}$ lb., 15 cts.; lb., 50 cts.



DREER'S FIRST AND BEST RADISH

RADISH—SUMMER VARIETIES—Continued

Crimson Giant. (*See cut.*) This is a new variety, suitable for forcing or early planting out of doors. A remarkable feature of this Radish is that it will grow double the size of other red forcing Radishes and still remain solid, not showing the least sign of becoming hollow. The ordinary forcing Radish, after growing to the size of two or three inches in circumference, and weighing about $\frac{1}{4}$ ounce, becomes pithy and unfit for eating, while the Crimson Giant will grow to six or seven inches in circumference, weigh about one ounce, and still remain solid and juicy, free from all signs of becoming soft. In shape this new Radish is round to oval, and is very attractive. The seed we offer is the true stock of this valuable Radish. Oz., 15 cts.; $\frac{1}{4}$ lb., 35 cts.; lb., \$1 00.

Dreer's Selected Cardinal Globe. (*See cut.*) Our seed of this leading forcing Radish is pure and true, having been continually improved both in color and shape. The Radishes grow globular in shape, and are of a most brilliant cardinal-red color. It will stand considerable heat; therefore it is a quick forcer, and the quality is fine, being crisp and tender. It is a leading variety for forcing, and also does well in open ground. The beautiful appearance and color of this Radish make it a good seller. Oz., 10 cts.; $\frac{1}{4}$ lb., 25 cts.; lb. 75 cts. 5 lbs. or more at 60 cts. per lb.

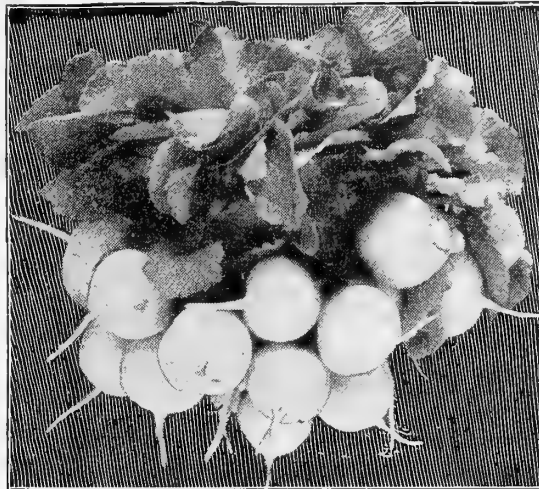
Cincinnati Market. An extra early variety of the Long Scarlet type; of a clear bright red color. Oz., 10 cts.; $\frac{1}{4}$ lb., 15 cts.; lb. 50 cts.

Scarlet Olive Shape. Oz. 10 cts.; $\frac{1}{4}$ lb., 15 cts.; lb., 50 cts.

Dreer's Earliest White Globe Forcing. The earliest white Radish in existence, beautiful oval shape, transparent ivory-white skin, very small root, small top; flesh white, tender and crisp. It is particularly adapted to forcing in greenhouse or hot-bed, also does well in open ground. Oz., 10 cts.; $\frac{1}{4}$ lb., 25 cts.; lb., 80 cts.

Early White Turnip. An early, crisp, turnip-shaped radish. Oz., 10 cts.; $\frac{1}{4}$ lb., 15 cts.; lb., 50 cts.

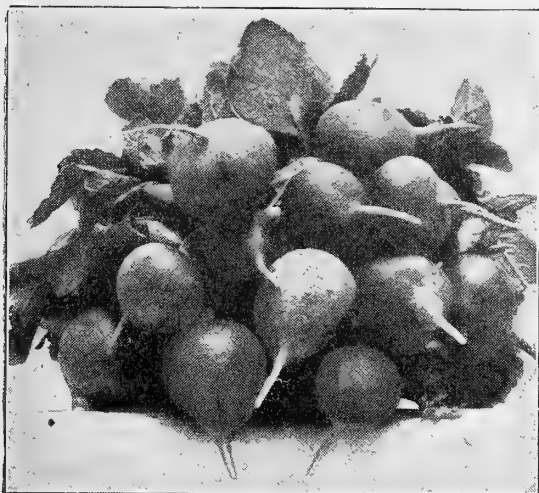
Philadelphia White Box. Oz., 10 cts.; $\frac{1}{4}$ lb., 15 cts.; lb., 50 cts.; 10 lbs. or more at 45 cts. per lb.



DREER'S CRYSTAL FORCING RADISH

Icele Radish. This variety is of great value, as it can be grown in the forcing frames, and makes fine Radishes about three and a half inches in diameter in three weeks from the time of sowing the seed. These Radishes are a beautiful transparent white, have small tops, allowing close planting, and are very crisp and brittle. Oz., 10 cts.; $\frac{1}{4}$ lb., 25 cts.; lb., 80 cts.

Triumph. When mixed in the bunch with Scarlet Radishes it makes a pleasing contrast. The Radishes are globe shape, having bright scarlet stripes on a white ground. It is a splendid forcing variety, with short top, small leaves, and matures quickly. Oz., 10 cts.; $\frac{1}{4}$ lb., 25 cts.; lb., 80 cts.



DREER'S SELECTED CARDINAL GLOBE RADISH

Dreer's Crystal Forcing. (*See cut.*) Quick growth, beautiful shape, small top. This is a very desirable and shapely Radish; in fact, we consider it quite superior to any other white forcing Radish we know of. It is of quick growth and very mild flavor. The tops grow remarkably small, but sufficient to allow of easy tying, when bunching for market. It can also be grown satisfactorily in the open ground, making it a profitable sort for the market gardener to grow. Compared with such white sorts as White Box, Round White Forcing, etc., it is far superior in every way. Oz., 10 cts.; $\frac{1}{4}$ lb., 25 cts.; lb., 80 cts.

Round White Forcing. This variety matures very early. The Radishes are small, of the round or button type, and have small tops. Oz., 10 cts.; $\frac{1}{4}$ lb., 20 cts.; lb. 55 cts.

Felton's Selected White Box. Nearly round, smooth skin, pure white, free from sharpness, quick grower, small top. Oz., 10 cts.; $\frac{1}{4}$ lb., 20 cts.; lb., 60 cts.; 10 lbs. or more at 50 cts. per lb.

Golden Dresden. A round Radish, with beautiful golden-brown skin and very small top. It is ready for the table in four weeks from the time of sowing. Flesh white and crisp. Oz., 10 cts.; $\frac{1}{4}$ lb., 20 cts.; lb., 55 cts.

Golden-Yellow, Olive-Shaped. A very early yellow Radish, for forcing and open ground. Oz., 10 cts.; $\frac{1}{4}$ lb., 20 cts.; lb., 55 cts.

RADISH—SUMMER VARIETIES.



KREWSON'S OBLONG BLACK SPANISH RADISH

Krewson's Oblong Black Spanish. (*See cut.*) For a number of years we have made a specialty of this improved black radish, supplying it in large quantities, not only to gardeners around this city, but throughout the entire country, particularly among the German gardeners, who know so well what a good winter radish should be. It is an improvement on the Round Black Spanish, growing longer and of much more perfect form. It grows very solid and is of crisp, mild flavor. Oz., 10 cts.; $\frac{1}{4}$ lbs., 30 cts.; lb., 90 cts.

Round Black Spanish. This radish grows to a fair size, is round in shape and considered one of the best for winter use. Oz., 10 cts.; $\frac{1}{4}$ lb., 15 cts.; lb., 50 cts.

Long Black Spanish. Grows long in shape, is of good flavor and used by those who prefer a long radish to a round sort. Oz., 10 cts.; $\frac{1}{4}$ lb., 15 cts.; lb., 50 cts.

California White Winter. Grows from ten to twelve inches long, is very solid and of good quality. A good keeper. Oz., 10 cts.; $\frac{1}{4}$ lb., 20 cts.; lb., 55 cts.

RHUBARB.

Linnæus and Victoria. Each, Oz., 10 cts., $\frac{1}{4}$ lb., 35 cts.; lb., \$1.25.

(For RHUBARB ROOTS, see Vegetable Plants, etc., page 27.)

SALSIFY, or Vegetable Oyster.

Ger. Hafer-Wurzel.

Mammoth Sandwich Island. (*See cut.*) This variety grows here to a very large size, nearly twice as large as the Long White, and resembles a good-sized parsnip. It is pure white and very mild and delicately flavored, and is very popular. Oz., 10 cts.; $\frac{1}{4}$ lb., 35 cts.; lb., \$1.10.

Long White. This is the old original type of Salsify. It grows to a fair size and for a long time was the favorite variety and is still used by many who consider its flavor very fine. Oz., 10 cts.; $\frac{1}{4}$ lb., 25 cts.; lb., 85 cts.

Long Black, or Scorzonera. Resembles the above and cultivated in the same way. Oz., 20 cts.; $\frac{1}{4}$ lb., 60 cts.; lb., \$1.75.

SORREL.

Large-Leaved Garden. Cultivated for its acidity and much used in salads. The improved varieties, when well grown and cooked the same as spinach make a healthy and palatable dish. Sow in drills early in spring and thin the seeding to six to eight inches apart in the row. Commence cutting in two months; plants continue to bear four years. Oz., 10 cts.; $\frac{1}{4}$ lb., 30 cts.; lb., \$1.00.

Beckert's Chartier. Crimson, shading white, crisp and tender. Oz., 10 cts.; $\frac{1}{4}$ lb., 20 cts.; lb., 55 cts.

White Chartier. This beautiful long white radish is of same character as the Beckert's Chartier, except that it is pure white. It is a good summer radish. Oz., 10 cts.; $\frac{1}{4}$ lb., 20 cts.; lb., 55 cts.

Long White Vienna. (*Lady Finger.*) Beautiful in shape; skin and flesh are pure snow-white; crisp and of rapid growth. Oz., 10 cts.; $\frac{1}{4}$ lb., 20 cts.; lb., 55 cts.

White Strasburg. Of a pure white color, very brittle and of mild flavor. Oz., 10 cts.; $\frac{1}{4}$ lb., 20 cts.; lb., 55 cts.

White Delicacy. An improvement on the White Strasburg, being earlier, more evenly shaped, and smaller top; grows into full size and perfect shape during the hottest weather. Oz., 10 cts.; $\frac{1}{4}$ lb., 25 cts.; lb., 80 cts.

Large White Summer. Large turnip shaped. Oz., 10 cts.; $\frac{1}{4}$ lb., 15 cts.; lb., 50 cts.

Large Yellow Summer. Like white summer, except in color. Oz., 10 cts.; $\frac{1}{4}$ lb., 15 cts.; lb., 50 cts.

WINTER VARIETIES.

Scarlet China. One of the best fall and winter varieties. Oz., 10 cts.; $\frac{1}{4}$ lb., 20 cts.; lb., 50 cts.

Round Scarlet China. Root round, of a fine scarlet color. Oz., 10 cts.; $\frac{1}{4}$ lb., 25 cts.; lb., 75 cts.

Long White Spanish. Also grows long, as its name implies, but is of white color. Flavor is all that could be desired. Oz., 10 cts.; $\frac{1}{4}$ lb., 15 cts.; lb., 50 cts.

White Chinese, or Celestial. A Chinese production and one of the best white Winter Radishes. It is stump-rooted and grows to a large size. Can be used any time after three inches long. Flesh pure white, firm, solid and tender. It is a good keeper. Oz., 10 cts.; $\frac{1}{4}$ lb., 20 cts.; lb., 55 cts.



MAMMOTH SANDWICH ISLAND SALSIFY

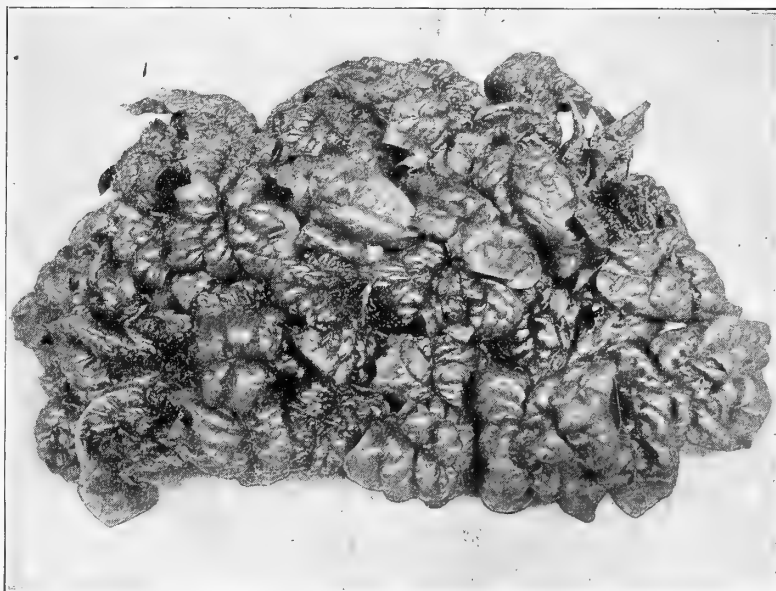
SPINACH—*Ger. Spinat.*

Dreer's Special American Strain of Round Seeded Savoy Spinach. (*See cut.*) Our strain of Savoy-leaved Spinach is very fine and extremely hardy, having been carefully bred up with this important object in view. It is beautifully curled and crimped, with thick, fleshy leaves, which are of beautiful dark green color. This is the best variety for fall sowing. Lb., 20 cts.; 5 lbs., 90 cts.; peck (10 lbs.), \$1.50; bu. (40 lbs.), \$6.00.

Victoria Spinach. This splendid variety is an acquisition to the list of Spinach, its long-standing qualities making it the best variety for sowing in Spring. It matures later than the other varieties, but is of remarkably fine texture, of the deepest green, heavily crimped, thick, fleshy leaves, deep red stem; it is now grown extensively by the truckers of our markets. Lb., 20 cts.; 5 lbs., 90 cts.; pk. (10 lbs.), \$1.50; bu. (40 lbs.), \$6.00.

Prickly Seeded Spinach. The hardiest variety, having small leaves, is not so productive as the above sorts. Lb., 20 cts.; peck (10 lbs.), \$1.50; bu. (40 lbs.), \$6.00.

Long-Standing Round Seeded Spinach. A large, crimped, thick fleshy, Savoy-leaved variety; will stand two weeks longer than the Savoy. Lb., 20 cts.; 5 lbs., 90 cts.; peck (10 lbs.), \$1.50; bu. (40 lbs.), \$6.00.



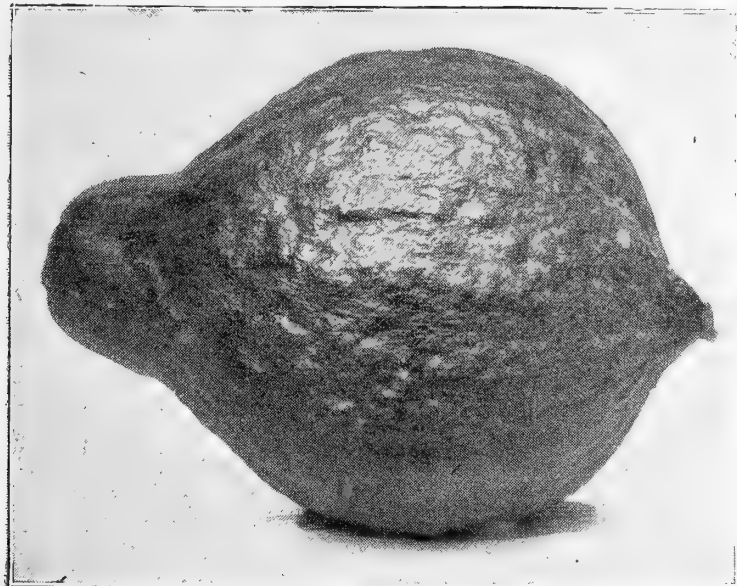
DREER'S ROUND SEEDED SAVOY SPINACH

New Zealand Spinach. This variety endures heat and drought, and is the best for summer use. It produces a large quantity of leaves throughout the season, and can be cut continuously. Oz., 10 cts.; ¼ lb., 25 cts.; lb., 75 cts.

SQUASH—*Ger. Speise Kurbis.*

Extra Early Jersey White Bush. This is an improved strain of the old White Bush Squash, the result of selections which have been made for a number of years by a prominent nearby market gardener. It grows in the bush form, without any inclination to make runners, and is enormously productive. The Squashes mature fully ten days earlier than the old sort, and are of good marketable size. Oz., 10 cts.; ¼ lb., 25 cts.; lb., 85 cts.

Delicious. This new fall and winter Squash is finer-grained and more delicious than the well-known Hubbard. The color of skin is green, with an occasional blue specimen, size about same as Hubbard, weighing from 5 to 10 pounds. For table use, either as a fall or winter Squash it cannot be excelled, the flesh being remarkably thick, fine-grained, sweet and of rich flavor. Oz., 15 cts.; ¼ lb., 50 cts.; lb., \$1 75.



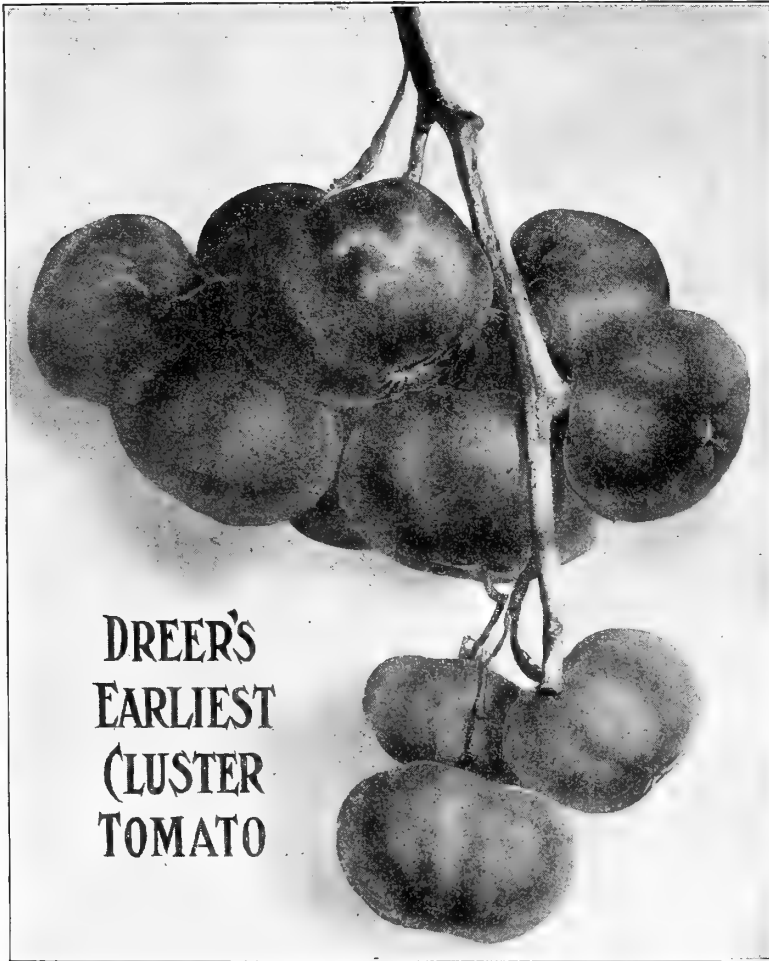
GOLDEN HUBBARD SQUASH

Golden Hubbard. (*See cut.*) Shape same as old-fashioned Hubbard, but skin is rich orange color. The flesh is deep golden-yellow, cooks dry, fine flavor. The keeping qualities are fully equal to the old variety. Oz., 10 cts.; ¼ lb., 25 cts.; lb., 85 cts.

Boston Marrow. A good keeper, of excellent flavor, flesh orange colored and fine-grained. Oz., 10 cts.; ¼ lb., 20 cts.; lb., 65 cts.

	Oz.	¼ lb.	lb.
Early White Bush	10	20	65
Golden Custard Bush	10	20	65
Yel. Sum. Crook-neck	10	20	65
Faxon	10	20	65
Bush Fordhook	10	25	85
Fordhook	10	20	65
Prolific Orange Marrow	10	20	65
Marblehead	10	20	65
Bay State	10	20	65
Essex Hybrid	10	20	65
Pike's Peak, or Sibley	10	25	85
Golden Bronze	10	25	85
Hubbard	10	25	85
Warted Hubbard	10	25	85
Winter Crook-neck	10	20	65
Mammoth Chili	15	40	1 40

TOMATO—*Ger. Liebesapfel.*



**DREER'S
EARLIEST
CLUSTER
TOMATO**

Dreer's Earliest Cluster. (*See cut.*) We believe this to be the earliest tomato ever introduced, and also the most productive extra early variety. It is entirely new and the best in quality of all the extra early tomatoes on the market. The tomatoes are of good size, measuring from 4 to 5 inches in diameter, and are of a bright red color, making an exceedingly handsome appearance. The plants are of quick and healthy growth, and fruits ripen fully a week ahead of "Spark's Earliana;" crowns ripen in 3 to 5 days, while the "Earliana" requires at least 10 days. The tomatoes grow in large clusters; as many as 8 to 12 fully ripe tomatoes can be picked at one time from some clusters. Plants grown during the past Summer produced an average of 72 good size and perfect tomatoes. In quality and flavor this new variety is fully equal to any other extra early variety on the market. We are so thoroughly convinced that this is the most satisfactory tomato for early crop that we advise our customers to plant it this year, knowing full well that the results will be entirely satisfactory. Oz., 50 cts.; $\frac{1}{4}$ lb., \$1.50; lb., \$5.00.

New Dwarf Stone. This tomato resembles the original Stone in color and shape, and what is remarkable for an erect sort, they are practically the same size and equally as productive. It is fully double the size of Dwarf Champion and equally as early. Shape is perfect, with good skin, very solid flesh, ripens evenly and is of excellent flavor. Oz., 30 cts.; $\frac{1}{4}$ lb., 85 cts.; lb., \$3.50.

Chalk's Early Jewel. Ripens nearly as early as "Spark's Earliana;" the fruits are more solid. Color bright scarlet and quality good. Oz., 40 cts.; $\frac{1}{4}$ lb., \$1.25; lb., \$4.50.

Livingston's Globe. A new early variety, globe shape and large size. Color glossy rose, tinged with purple. Seed sold in packets of 40 seeds. Pkt., 20 cts.; 3 pkts., 50 cts.; 7 pkts., \$1.00.

Spark's Earliana. An extra early variety. Fruits smooth and bright red. Largely grown by New Jersey growers, who get the tomatoes in market very early. Oz., 30 cts.; $\frac{1}{4}$ lb., \$1.00; lb., \$3.50.

Lorillard (Forcing). A good sort for forcing under glass as well as for out-door culture; bright red, smooth, early. Oz., 30 cts.; $\frac{1}{4}$ lb., 80 cts.; lb., \$3.00.

Mayflower. Excellent for forcing or outside; medium size; bright red color. Oz., 20 cts.; $\frac{1}{4}$ lb., 65 cts.; lb., \$2.25.

Atlantic Prize, or Early Ruby. Splendid extra early variety for general use, of large size, bright red color and smooth. Oz., 20 cts.; $\frac{1}{4}$ lb., 65 cts.; lb., \$2.25.

Ponderosa. This is one of the largest varieties; although somewhat irregular in shape, it is good, particularly for stewing. Oz., 45 cts.; $\frac{1}{4}$ lb., \$1.25; lb., \$4.50.

The Stone. Dreer's selected stock. Fruit very large and deep; bright scarlet; smooth, ripening evenly to the stem without a crack; exceedingly solid and firm-fleshed of the finest quality; a fine variety for market gardeners also for canning. Oz., 20 cts.; $\frac{1}{4}$ lb., 60 cts.; lb., \$2.00.

	Oz.	$\frac{1}{4}$ lb.	Lb.
Frogmore Selected (Forcing).			
$\frac{1}{2}$ oz., 20 cts.	35	\$1	25
Best of All (Forcing).	$\frac{1}{2}$ oz., 20 cts.	35	1 25
Earliest of All	30	80	\$3 00
Quicksure	20	65	2 25
Selected Trophy	20	65	2 25
Beauty	20	65	2 25
Imperial	20	65	2 25
Acme	20	65	2 25
Paragon	20	65	2 25
Perfection	20	65	2 25
Enormous	30	75	2 75
Matchless	30	75	2 75
Freedom	30	75	2 75
The Marvel	30	80	3 00
Magnus	30	80	3 00
Honor Bright	20	65	2 25
Crimson Cushion	45	1 25	4 50
Dwarf Champion	30	80	3 00
Royal Red	30	75	2 75
Buckeye State	30	75	2 75
Favorite	20	65	2 75
Pink Mikado	30	75	2 75
Table Queen	30	75	2 75
Golden Queen	25	70	2 50
Red Pear-Shaped	20	60	
Yellow Plum	20	60	
Yellow Pear	20	60	
Red Cherry	20	60	
Yellow Cherry	20	60	
Red Currant	20	60	

TURNIP—Ger. Rube.

	Oz.	¼lb.	Lb.
Red Top Strap Leaf	5	15	\$0 35
Purple Top White Globe	5	15	35
Extra Early Purple Top Milan	10	15	50
Purple Top Munich	10	15	50
Scarlet Kashmir	10	15	50
Early White Flat Dutch	5	15	35
Early White Milan	10	20	70
Early White Egg	5	15	45
Early Snowball	5	15	45
Long White, or Cow Horn	5	15	45
Long White French	5	15	45
Large White Norfolk	5	15	40
Yellow Globe, or Amber	5	15	40
Yellow Aberdeen	5	15	40
Robertson's Golden Ball	5	15	40

RUTA BAGA.

Dreer's Improved Purple Top	10	15	50
American Purple Top	5	15	40
Budlong's White	10	20	60
Large White, or Sweet German	5	15	45

HERBS.

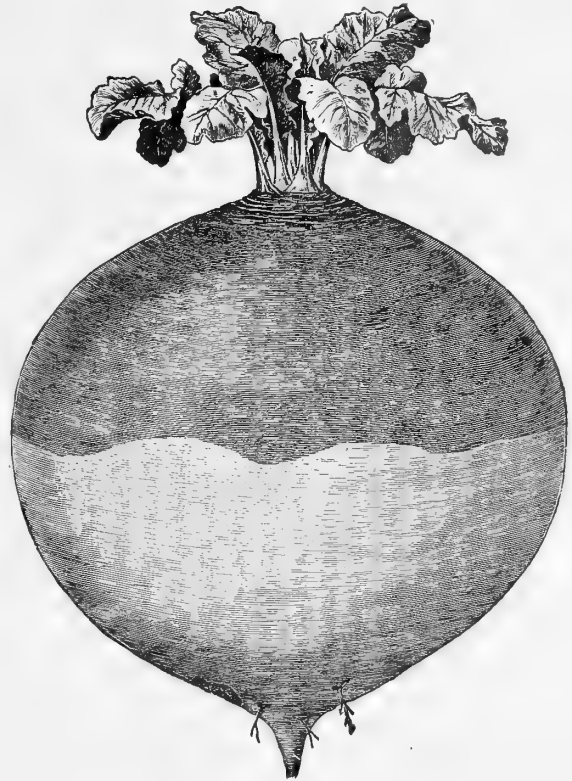
Anise	10	20	60
Balm	25	50	1 75
Basil, Sweet	15	30	1 00
Bene	10	25	75
Boneset	50		
Borage	10	25	75
Caraway	10	20	50
Catnip	45	1 50	
Castor-Oil Bean	10	15	40
Chamomile	65	2 40	
Coriander	10	20	50
Cumin	10	20	60
Dill	10	20	50
Fennel, Sweet	10	20	50
Horehound	20	60	2 00
Lavender	15	30	1 00
Rosemary	25	75	2 50
Rue	10	40	1 50
Saffron	10	20	60
Sage	10	35	1 25
Savory, Summer	10	25	75
Savory, Winter	15	40	1 50
Sweet Marjoram (Imported)	10	30	1 00
Tansy	25	80	
Thyme, English	20	65	2 25
Thyme, French Summer	20	65	2 25
Wormwood	20	65	2 25

MISCELLANEOUS SEEDS.

	Bu.	100 lb.
Broom Corn, Evergreen		\$6 00
Buckwheat, Japanese	\$1 25	
Egyptian, or Pearl Millet		10 00
German, or Golden Millet. (Write for price.)		
Hungarian Millet. (Write for price.)		
Kaffir Corn, Red	3 50	5 00
Sorghum, or Amber Cane		5 00
White Branching Dhoura		7 00

CLOVER SEEDS.

Red Clover, medium. Market price; write for price and sample.		
Mammoth Red Clover. " " " " " "		
Alsike, or Swedish. (Write for price.)		
Alfalfa, or Lucerne " " " "		
	Bu.	100 lbs.
Sainfoin, or Esparsette	\$2 00	\$9 00
Bokhara Clover	12 00	20 00
Japan Clover	14 50	24 00
White Dutch Clover	15 00	25 00
Yellow Trefoil Clover	7 25	12 00
Crimson Clover. Market price; write for price and sample.		



DREER'S IMPROVED PURPLE TOP RUTA BAGA

VEGETABLE PLANTS and ROOTS.

Asparagus. Strong two-year old roots.
 Argenteuil (*Violet*). 75 cts. per 100; \$6.00 per 1000.
 Dreer's Eclipse, Palmetto, Barr's Mammoth, Conover's Colossal, Columbian Mammoth White. 50 cts. per 100; \$4.00 per 1000.
 (Dreer's Asparagus Circular free on application.)

Cabbage Plants. Spring-sown, well hardened off in cold frames. For April 10th to May 15th delivery. Early Jersey Wakefield, Early Winnigstadt. 25 cts. per 100; \$1.50 per 1000.

Cauliflower Plants. Spring-sown, hardened off in cold frames. Selected Early Erfurt, 75 cts. per 100; \$6.00 per 1000.

Celery Plants. Ready July 1st, Golden Self-Blanching, Golden Dwarf, White Plume, etc. 30 cts. per 100; \$2.50 per 1000.

Chives. For flavoring. 75 cts. per doz.; \$5.00 per 100.

Egg Plants. Ready May 15th. New York Improved Large Purple. Grown in pots. \$2.50 per 100; \$20.00 per 1000. Transplanted from frames, \$1.50 per 100; \$12.00 per 1000.

Hop Vine Roots. 30 cts. per doz.; \$1.50 per 100; \$6.00 per 1000.

Horseradish Sets. 50 cts. per 100; \$4.00 per 1000.

Lavender Plants. 10 cts. each; \$1.00 per doz.; \$8.00 per 100.

Lettuce Plants. Ready in April and May. Dutch Butter, Silver Ball and Hanson. 25 cts. per 100; \$1.50 per 1000.

Mint. 50 cts per doz.; \$4.00 per 100.

Pepper Plants. Ready in May and June. From hot-bed. Bell or Bull Nose, Chinese Giant, Long Red Cayenne. \$1.00 per 100; \$7.50 per 1000.

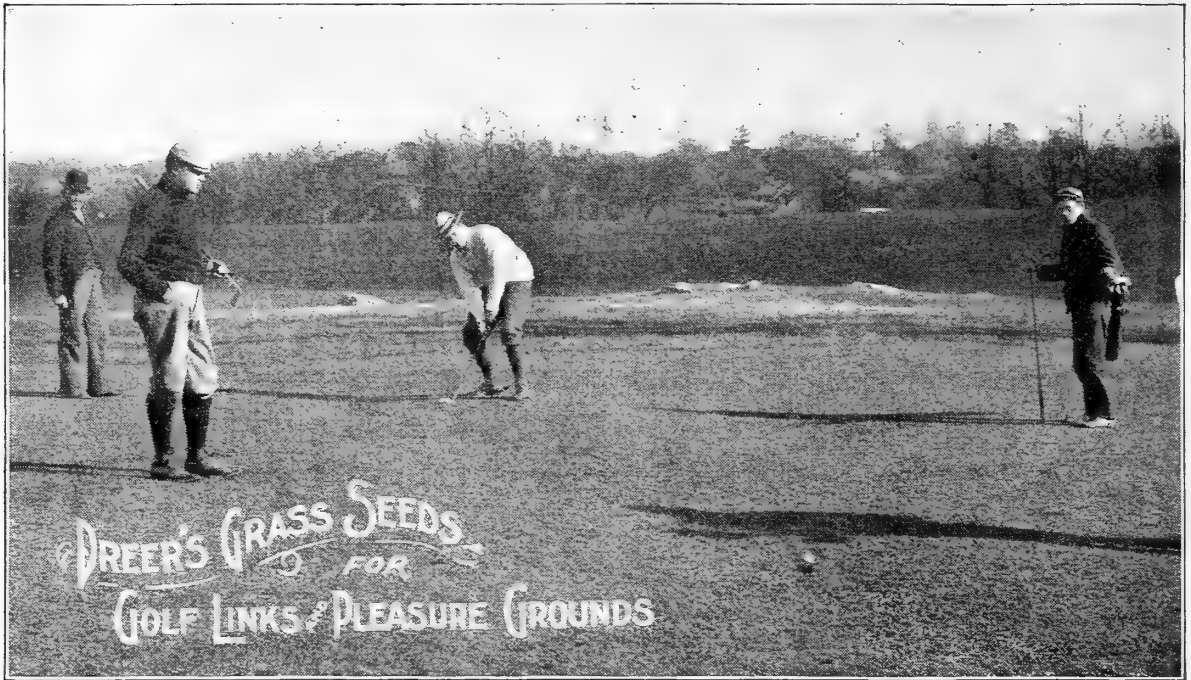
Rhubarb Roots. Myatt's Victoria. Strong roots. 60 cts. per doz.; \$4.00 per 100.

Sage (Holt's Mammoth). A large leaved variety. It spreads rapidly and never runs to seed. 60 cts. per. doz.; \$4.00 per 100.

Sweet Potato Plants. Ready in May and June. 20 cts. per 100; \$1.50 per 1000.

Tarragon (Estragon). 15 cts. each; \$1.00 per doz.; \$8.00 per 100.

Tomato Plants. Strong transplanted plants, ready May 10th. Stone, Dwarf Stone, Trophy, Paragon, Ponderosa, Yellow Plum. \$1.00 per 100; \$7.50 per 1000. Special prices on large lots.



LAWN GRASS SEEDS.

The "Dreer" Lawn Grass.

Our best mixture. Per qt., 25 cts. (30 cts. postpaid); peck, \$1.25; bu. (20 lbs.), \$5.00.

Dreer's "Evergreen" Lawn Mixture.

Produces a good, lasting turf. Per qt., 20 cts. (25 cts. postpaid); peck \$1.00; bu. (20 lbs.), \$4.00.

Dreer's Fairmount Park Lawn Mixture.

Gives satisfaction wherever planted. 15 cts. per qt. (20 cts. postpaid); peck, 90 cts.; bu. (20 lbs.), \$3.50.

Dreer's Shady Place Mixture.

Fine for shady places 25 cts. per qt. (30 cts. postpaid); peck, \$1.25; bu. (20 lbs.), \$5.00.

RE-CLEANED GRASS SEEDS.

	Bu.	100 lbs.
Kentucky Blue, fancy cleaned	\$1 75	\$12 00
Canadian Blue	1 75	12 00
Red Top, or Herd	1 50	10 00
Red Top, extra re-cleaned 32 lbs. to the bu.	4 75	12 00
Orchard Grass	2 50	16 00
English Rye Grass	2 00	8 00
Italian Rye Grass	1 75	9 00
Meadow Fescue	3 25	13 00
Tall Meadow Fescue	6 00	40 00
Sheep's Fescue	2 25	16 00
Fine Leaved Sheep's Fescue	5 25	35 00
Hard Fescue	2 25	16 00
Meadow Foxtail	2 25	30 00
Rough-Stalked Meadow	6 00	40 00
Sweet Vernal per lb., \$1.00		
Crested Dogstail	9 50	40 00
Awnless Brome, Bromus Inermis	2 50	16 00
Bermuda Grass per lb., 70 cts.		
Wood Meadow	6 50	45 00
Creeping Bent Grass	5 25	26 00
Tall Meadow Oat Grass	2 75	25 00
Timothy. Market price; write for price and sample.		

OATS.

	Pk.	Bu.
White Tartar	60	\$1 75
Lincoln	50	1 25
White Maine	50	1 25
Welcome	50	1 25

CORN, FIELD VARIETIES.

	Pk.	Bu.
Eureka	85	\$2 50
Cloud's Yellow Dent	75	2 00
Early Yellow Canada	50	1 60
Early 100-Day Bristol	75	2 00
Early Mastodon	75	2 00
Pedrick Perfected, Golden Beauty	75	2 00
Hickory King (White)	75	2 00
Improved Leaming	60	1 75
Large White Flint	75	2 00

CORN-ENSILAGE.

Blount's White Prolific	60	1 75
Red Cob Ensilage	50	1 40
Southern Fodder Sheep Tooth	50	1 50
Sweet Fodder Corn. Write for price.		

SPRING WHEAT.

Saskatchewan Fife	75	2 25
-----------------------------	----	------

RYE.

Spring Rye	60	1 50
----------------------	----	------

SUNFLOWER.

Mammoth Russian	40	1 50
---------------------------	----	------

FIELD, FORAGE AND SILO SEEDS.

If by mail add 8 cents per lb.

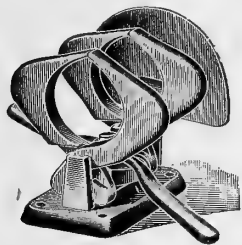
	Lb.	10 lbs.	100 lbs.
Dwarf Essex Rape	\$0 10	\$0 90	\$6 25
Spring Vetches, or Tares	10	60	5 00
Winter Vetches, or Tares	10	95	9 00
Teosinte	80	6 50	
Velvet Bean	8	45	3 75
Wild Rice	35	2 50	

PEAS FOR FODDER AND GREEN MANURE.

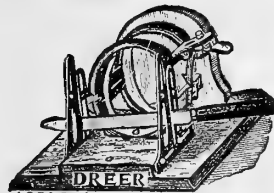
	Pk.	Bu.
Canada Field Peas	50	\$1 75
Southern Black-Eye Cow Peas	75	2 50
Whip-poor-will	75	2 50
Clay	75	2 50
New Era	80	3 00

TWENTIETH CENTURY
ASPARAGUS BUNCHER

Tools, Implements and Sundries.



ASPARAGUS BUNCHER



ALL IRON DIBBLE



IRON POINT DIBBLE



AMERICAN STEEL TROWEL



"DARBY."



ENGLISH ROUND WHETSTONE



VEGETABLE BASKET



PRUNING GLOVE



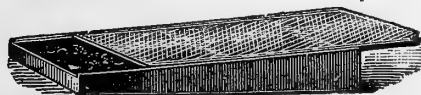
LANG'S WEEDER



PRUNING KNIFE



EUREKA WEEDER



PLANT BED PROTECTING CLOTH

Asparagus Buncher, Dreer's plain, \$1.50.
 " " with knife guard, \$2.00.
 " " 20th Century, all iron, \$3.00.

" Knife, American, plain, 25 and 35 cts.
 Dibbles, all iron, 35 cts.; iron point, 40 cts.;
 brass point, 50 cts.

Garden Reels, iron, small, 50 cts.; large, 75
 cts.; galvanized, large, \$1.25; heavy, double,
 \$2.00.

Garden Lines. Best Italian flax. 150 ft.,
 75 cts.; 180 ft., \$1.00; 240 ft., \$1.25; 300 ft.,
 heavy, \$1.75.

Glass Cutter. Small diamond, \$2.50; large,
 \$3.75. Steel wheel, 15 cts.

Glazing Points, Peerless. Three sizes, No.
 1, for small single thick glass; No. 2, for
 medium double thick glass; No. 2 1/2, for large
 double thick and skylight glass. Price, per
 1000, 60 cts.; postpaid, 75 cts.

Gloves, Buckskin Pruning, \$1.00.

Grass Hooks (Sickles.) English riveted back.
 No. 0 . . . 30 . . . cts. No. 2 45 cts.
 No. 1 . . . 35 . . . " No. 3 55 "

Grass Hooks. American solid, 25 cts.
 " " Little Giant, 40 cts.
 " " Solid English, 30 cts.

Knives, Pruning. American, medium to
 heavy, 50 cts. to 75 cts.

Mole Traps. Reddick, 85 cts.; Olmsted, \$1.40.

Scythes. English lawn, riveted back, best
 steel, 30, 32 and 34 inch, 90 cts.;
 36 inch, \$1.00; 38 inch, \$1.15.

" Waldron English lawn, 36 to 40
 inch, \$1.40.

" American lawn, 75 cts.; Bush,
 short, 75 cts.

Scythe Snath. Improved pattern, 75 cts.

Stones. Darby, 10 cts.; English, 15 cts.;
 German, 10 cts.

Seed Sower. Cahoon, Broadcast, \$3.25.

Trowels. American, 20 and 25 cts.; English,
 steel, strong, 6-in., 35 cts.; 7-in., 40 cts.;
 Cleve's, Angle, 5-in., 15 cts.; 8-in., 25 cts.;

Tomato, 50 cts.; Transplanting, 30 cts.

Weeders. Excelsior, 10 cts.; Lang's, 25 cts.;

Eureka, 25 cts.; Climax, 75 cts.

White Cotton Twine for Pot herbs. Per lb.,
 20 cts.; 10 lbs., \$1.80.

Two-ply Coarse Cotton Twine for general
 use in tying Beets, Carrots, etc. 18 cts. per
 lb.; 5 lbs., 80 cts.

Jute Twine for tying Plants or Vegetables. 12
 cts. per lb.; 100 lbs., \$11.00. Can be supplied
 in 2, 3 and 4-ply.

Mastica. A substitute for putty, \$1.25 per gal;
 5 gallons and over \$1.15 per gal.

Mastica Machine. For applying Mastica,
 \$1.25.

Putty Distributer. For putty or Mastica,
 85 cts.

Raphia. For tying Vegetables. Per lb., 15
 cts.; 10 lbs., \$1.40; 25 lbs., \$3.25; 100 lbs.,
 \$12.00.

Twemlow's English Liquid Putty. 1 gal.
 \$1.25; 3 gals., \$3.75; 5 gals., \$6.00.

Vegetable Basket. For use in vegetable
 garden, 1/2 bu., Oak, 35 cts.; 1 bu., 50 cts.;

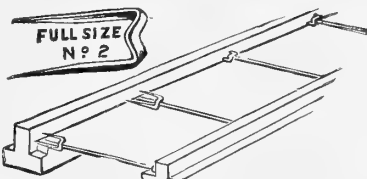
1/2 bu., Oak, Iron-bound, 50 cts.; 1 bu., 65 cts.

Plant Bed Protecting Cloth.

A cheap substitute for glass. Light grade, 4
 cts. per yd.; piece of about 65 yds. at 3 1/2 cts. per
 yd. Medium grade, 8 cts. per yd.; piece of about
 60 yds. at 7 cts. per yd.
 Heavy grade, 10 1/2 cts.
 per yd.; piece of about
 50 yds. at 10 cts. per
 yard.



PAT. MARCH 26, 1901



DREER'S PEERLESS GLAZING POINT

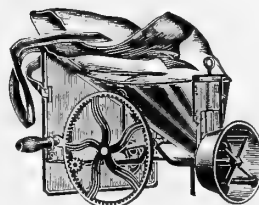


TOMATO TROWEL



TRANSPLANTING TROWEL

CAHOON SEED SOWER



MASTICA MACHINE

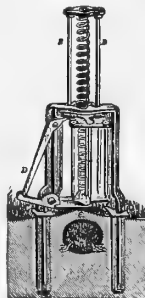


PUTTY DISTRIBUTER



REDDICK

Mole Traps



OLMSTEAD



RAPHIA



SCYTHE



Steel Axe.

Axes, handled, extra heavy . . . \$1 25
 " " heavy . . . 1 00
 " " medium . . . 85



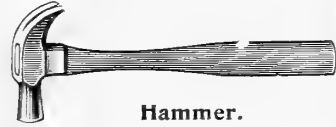
Mattock.

Medium, handled . . . \$0 80
 Heavy, " . . . 90



Steel Pick.

Medium, handled 7/8 . . . \$0 65
 Extra heavy, handled . . . 80



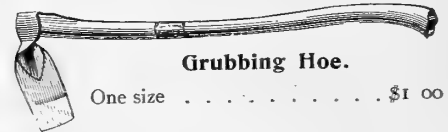
Hammer.

Claw 50 cts.



Warren Hoe.

3 sizes 50 cts., 60 cts., 70 cts.



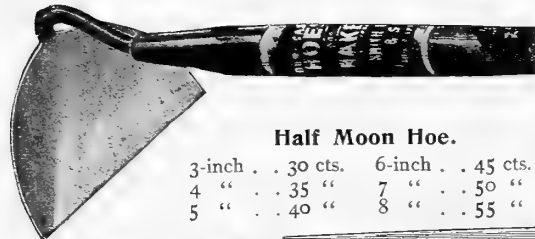
Grubbing Hoe.

One size \$1 00



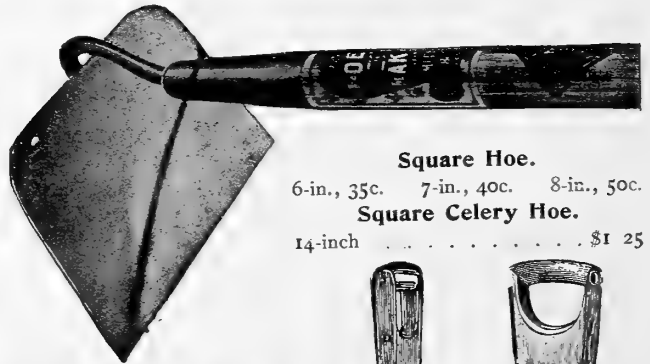
Hatchets.

Medium or heavy, 50 cts.



Half Moon Hoe.

3-inch . . 30 cts. 6-inch . . 45 cts.
 4 " . . 35 " 7 " . . 50 "
 5 " . . 40 " 8 " . . 55 "



Square Hoe.

6-in., 35c. 7-in., 40c. 8-in., 50c.

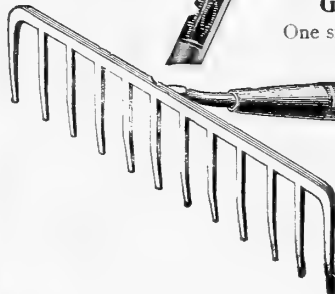
Square Celery Hoe.

14-inch \$1 25



Globe Wooden Rake.

One size, 20 teeth 30 cts.



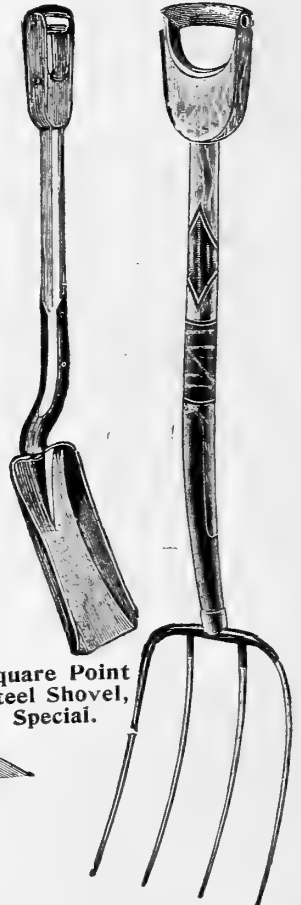
Steel Rakes.

Teeth		Teeth	
8 . . .	\$0 35	14 . . .	\$0 50
10 . . .	40	16 . . .	55
12 . . .			45



Steel Bow Rakes.

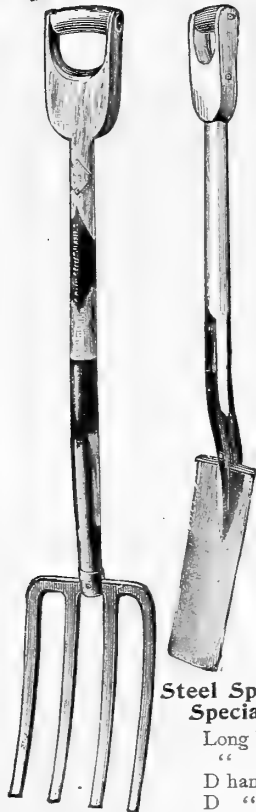
9 teeth . . . \$0 45 13 teeth . . . \$0 55
 11 " . . . 50 15 " . . . 65



Square Point Steel Shovel, Special.

Manure Fork.

4-tine, \$0 75 5-tine, \$0 90
 4 " long handle . . 75
 5 " " " . . 90



Steel Spade, Special.

Long handle, Special \$0 90
 " " Ames' 1 15
 D handle, Special 90
 D " square point, Special 90

Spading Fork.

4-prong . . \$0 85
 5 " . . 1 00

Spades.

Ames' \$1 15 Special \$0 90

SEND FOR CATALOGUE OF TOOLS, POULTRY SUPPLIES, ETC.

PLOWS, HARROWS, ETC.



**A I X Genuine
OLIVER CHILLED PLOW**

The
Best
One
Horse
Plow

With removable Mold Board to make it a good Rooter.

No. A1 X. One horse \$4 50

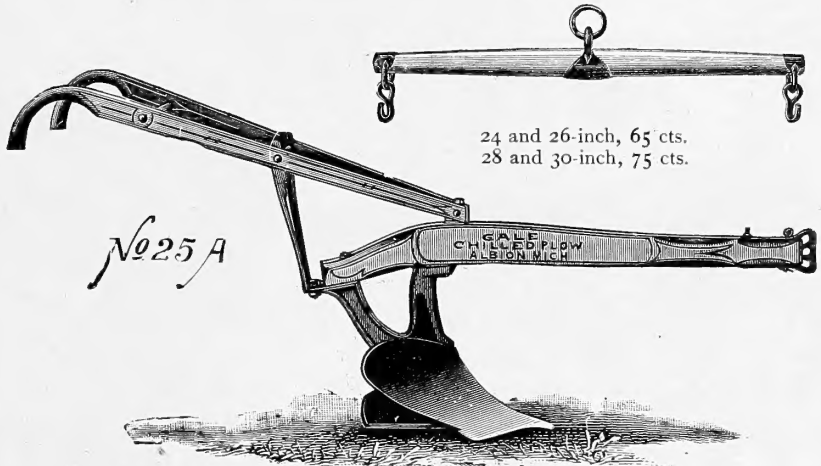


**No. 20. Genuine
OLIVER CHILLED PLOW**

The
Best
Two
Horse
Plow

This is one of the best known plows for farm and garden use.
No. 20. Two-horse \$9 00
Complete with wheel and jointer 12 00
Wheel, \$1.00; Jointer, \$2.00; Shares, 30 and 35 cts.

SINGLETREE.



24 and 26-inch, 65 cts.
28 and 30-inch, 75 cts.

No. 25 A

THE GALE PLOW.

Excellent tool for the market garden, so constructed that it can be worked in narrow space. Light and strong.

No. 25 A. Light one-horse . . \$5 00
No. 20. " two-horse 7 50
Complete with jointer and wheel, 10 50
Shares, 25 cts. and 35

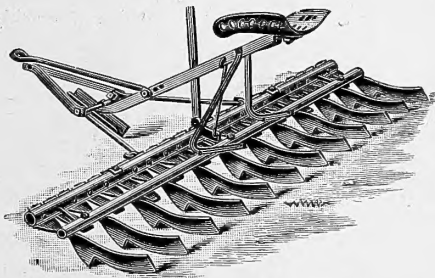
MACHINE OIL.

Will not gum.]

Qt., 30 cts.; 1/2 gal., 50 cts.; gal., 75 cts.; 5 gals., \$3.00.

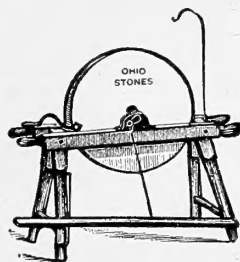
Oilers, with 1/2 pint oil, 20 cts.

Zinc oilers, empty, 15 cts.



ACME PULVERIZING HARROW.

No. 17. 2-horse, 6 ft. 6 in. Cut, Riding \$16 00
No. 23. 2 " 6 " 6 " " " 17 00
No. 21. 2 " 6 " 6 " " Walking 13 00
No. H. 1 " 4 " 4 " " Riding 14 00
No. G. 1 " 3 " 3 " " Walking 9 50
Prices do not include whiffle trees or neck-yoke.



GRINDSTONES.

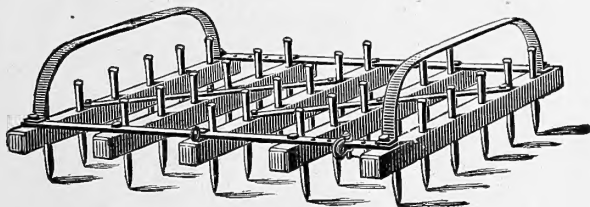
Ohio, mounted on strong frame.
No. 3. 18 in., 50 lbs., \$3 85
No. 2. 20 " 75 " 4 00
No. 1. 24 " 100 " 4 30



WHEELBARROWS.

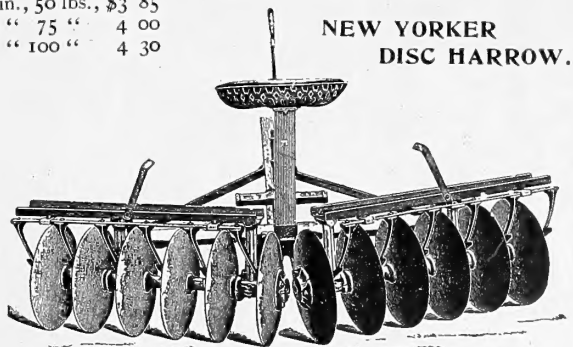
For Farm and Garden.

No. 4, Garden, 2 1/2 in. Tire . . \$3 50
No. 5, " 1 1/2 " " " . . . 4 00
No. 4, " 3 " " broad tire 3 75
No. 5, " 3 " " " " 4 25
Special Greenhouse 4 25



KAIN HARROW.

One of the very best tools for private or market gardeners. The harrows are provided with runners, so they can be easily moved without tearing up walks or roads. 24-tooth, \$6.00; 30-tooth, \$7.00.



**NEW YORKER
DISC HARROW.**

This harrow works equally well in heavy and light soils. 2-horse double tree and neck-yoke, \$24.00; 3-horse evens extra.

SEND FOR CATALOGUE OF TOOLS, POULTRY SUPPLIES, ETC.

Garden and Farm Implements

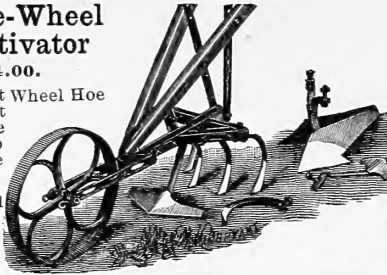
Full description of "IRON AGE" and McWhorter Tools given in special Catalogues, mailed on application

"Gem" Single-Wheel Hoe and Cultivator

Complete \$4.00.

This is an excellent Wheel Hoe that has stood the test of time, and for the money there is no better tool on the market.

Gem Double-Wheel Hoe complete \$5.00

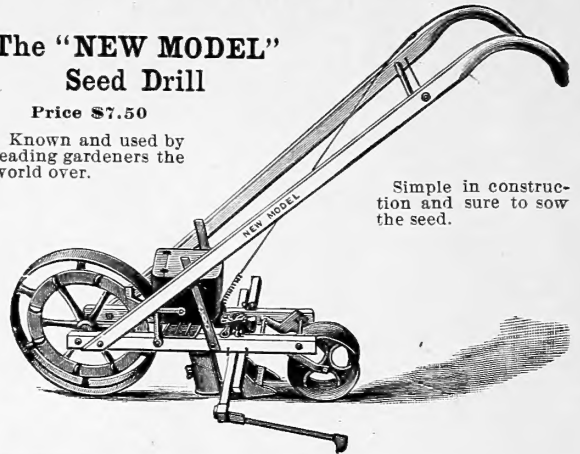


The "NEW MODEL" Seed Drill

Price \$7.50

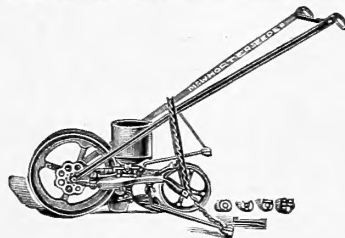
Known and used by leading gardeners the world over.

Simple in construction and sure to sow the seed.



The McWhorter Hill and Drill Seeder

Will sow in a straight, narrow row regularly, or drop in hills. The feed is positive and can be adapted to any kind of seed. The flow of seed is plainly in sight. It leaves the row so that water will not lie on the row. This drill will not clog or choke.



Price, \$10.00.

The "Rival" Hand Cultivator and Plow

Price, \$3.50

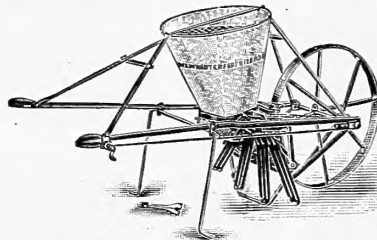
A very powerful hand tool. Will push through heavy soil with little effort. All the tools belonging with it are just those used by the market gardener; easily adjusted and quickly changed.



The McWhorter Improved Fertilizer Drill

This machine is specially adapted for the truck farmer and market gardener. The fertilizer can be spread to 30 inches wide through 8 spouts set uniformly, thus distributing evenly. Easily handled.

Price, \$11.00.



The No. 1 "IRON AGE" Combined Harrow and Cultivator

With Wheel, \$5.45. Without Wheel, \$4.95

The teeth are forged with a harrow tooth on one end, a cultivator tooth the other. Useful in truck of all kinds, throws little soil, but cultivates thoroughly.



The "Lou Dillon" Tandem Cultivator

Tandem Cultivator

Will work from 8 to 16 inches; changed in a moment; shallow, medium or deep cultivation obtained by a simple movement of the foot. This machine is designed to meet the great need among practical gardeners for a hand cultivator that could be moved along the rows at a continuous walk. Seven teeth, rake, plow and weed cutter.

Price, \$7.00



The "AUTO" SPRAY

The best of all automatic sprayers and the most convenient for use in tomato fields or other places where wagon or cart cannot go. Sprays a large area with one charge. Capacity, 4 gallons. Galvanized, \$4.00; Brass, \$5.50. Extension rods, 24-in., 25 cts.



Tin Powder Sifter

For applying all kinds of dry powders, 35 cts. With side handle, 10 cts.



Legget's Champion Powder Gun

Will cover one acre with one pound of Paris Green.

\$7.50



Hotchkiss Powder Gun

Single or double tube.

Will cover one acre with one pound of Paris Green.

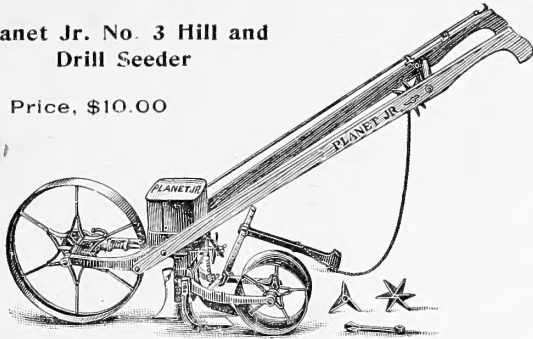
Price, \$5.00

"PLANET JR." Farm and Garden Tools

Space will not permit our showing and describing all of the "Planet Jr." tools, but we will send a fully illustrated catalogue, *free for the asking*, to any who desire it, and we can supply promptly anything ordered. "Planet Jr." goods are standard machines—the best on the market. In sending your order to us, you can rely on getting bottom prices.

Planet Jr. No. 3 Hill and Drill Seeder

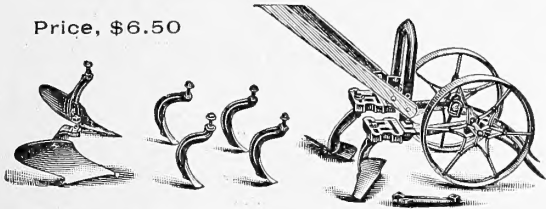
Price, \$10.00



This drill will sow in a continuous row in the ordinary way with the greatest regularity, but its distinctive feature is that it will drop neatly in hills either 4, 6, 8, 12 or 24 inches apart. It is changed in a moment from hill to drill work; the plow is adjustable for depth and opens a very narrow furrow. Capacity two and one-half quarts.

Planet Jr. No. 12 Double-Wheel Hoe, Cultivator and Plow

Price, \$6.50



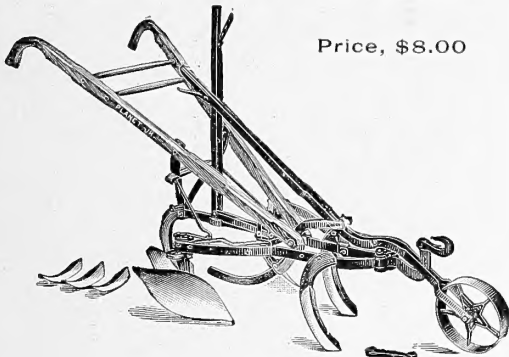
Two acres a day can easily be worked with this implement, and when it is done it will be a better job than three men could have done in the same time with hand hoes, and runs either astride or between the rows.

The No. 12 has a pair of 6-inch hoes, a pair of plows for opening or covering, and a set of 4, all steel cultivator teeth. The tools shown are what gardeners use most, and others can be added as wanted.

No. 13. Same tool as No. 12 but with only one pair 6-inch hoes, \$4.50

Planet Jr. No. 8 Horse Hoe and Cultivator

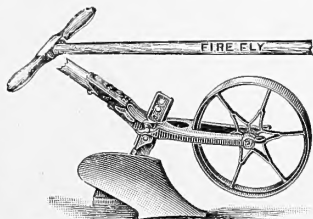
Price, \$8.00



The Planet Jr. Horse Hoe and Cultivator is strongly built, is light and easy to handle. The reversible side hoes, as shown in the cut, act as plows or hillers, but when turned end for end the tool becomes a genuine horse hoe, working shallow and close without injury to the roots.

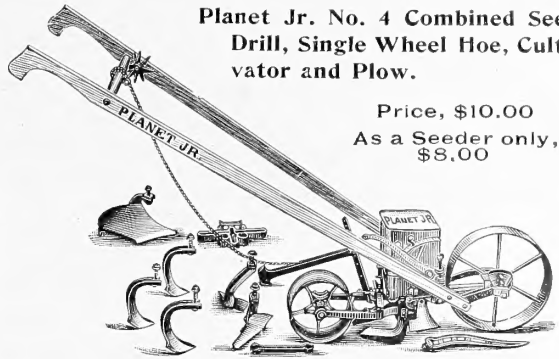
"Fire-Fly" Hand Plow

Invaluable for use in small gardens. Moldboard of tempered and polished steel. The depth is easily and quickly changed. Very useful to plow up chicken yards. \$2.25.



Planet Jr. No. 4 Combined Seed Drill, Single Wheel Hoe, Cultivator and Plow.

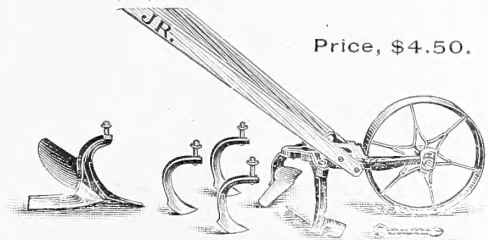
Price, \$10.00
As a Seeder only, \$8.00



This tool combines in a single implement a hill-dropping seeder, a continuous row seeder, a single-wheel hoe, a cultivator and a plow. It sows in continuous rows or drops in hills, 4, 6, 8, 12 or 24 inches apart. It is automatically thrown out of gear and the feed stopped by raising the handles. For use as a cultivator, the drill parts are removed and the tool frame substituted by taking out a single bolt, it is then a perfect single-wheel hoe, with a variety of tools.

Planet Jr. No. 17, Single Wheel Hoe, Cultivator and Plow.

Price, \$4.50.



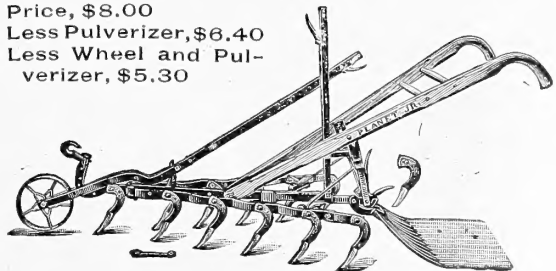
No. 17. Wheel Hoe is suited to all kinds of garden cultivation and all garden crops. You can do more and better hoeing with it in one day than you can do in three days with a hand hoe. The No. 17 has a pair of 6-inch hoes, a plow and a set of cultivator teeth, an outfit sufficient for most garden work.

Other attachments can be added at any time.

No. 16 With plow, two hoes, three cultivator teeth, two rakes and leaf lifter	\$5 35
No. 17½. With two hoes and three teeth	4 25
No. 18. With 6-inch hoes only	3 25

Planet Jr. Twelve-Tooth Harrow, Cultivator and Pulverizer

Price, \$8.00
Less Pulverizer, \$6.40
Less Wheel and Pulverizer, \$5.30

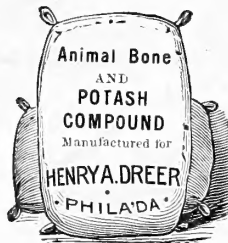


Gardeners cultivate better than formerly. It has been found to pay best. The farmer or gardener is most likely to cultivate best who has the tool best adapted to his purposes. With the Twelve-Tooth Harrow here shown, you go as deep or shallow as you like, come up close to row without injuring plants, cut out all the weeds, stir the soil, and mellow and fine it as with a garden rake. You widen and narrow as you please between 12 and 32 inches. It's a special favorite with strawberry growers, market gardeners and truckers.

FERTILIZERS. For the Farm and Garden.

WE KEEP ONLY THE HIGHEST GRADE.

Prices subject to change without notice. All fertilizers f. o. b. Philadelphia.



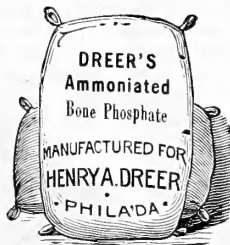
Animal Bone and Potash Compound. (Baugh's.) For all crops. Crops that need Potash are, tomatoes, sweet potatoes, white potatoes, cabbage and onions. Price per sack, of 200 lbs., \$2.50; per ton, \$22.00.

Bone Meal. Specially good for preparing soil for box vegetables, 200 lbs., \$3.25; ton, \$30.00.

Ground Bone. 200 lbs., \$3.25; ton, \$30.00.

Steamed Bone. Contains bone, fleshings and sinew, and is very quick acting, fine for lettuce beds and also root crops under glass. 200 lbs., \$3.25; ton, \$28.00.

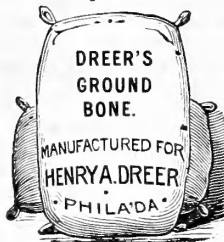
Dreer's Ammoniated Bone Phosphate. Nothing better for broadcasting over land in the spring before plowing, fine for early crops. 200 lb. bag, \$3.00; ton, \$25.00.



Dried Blood Manure. The best known fertilizer for hastening crops in open air or under glass. A very rich food. 100 lbs., \$4.00; 200 lbs., \$7.50.

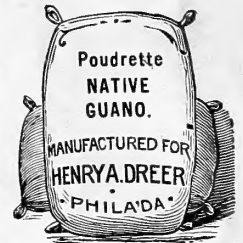
Nitrate of Soda. A fertilizer for all crops. Is very quick in action, and hastens maturity fully two weeks. Being extremely soluble, it should not be applied until plants are above ground, when about 300 lbs. per acre should be sown mixed with wood-ashes or land-plaster. 50 lbs., \$1.75; 100 lbs., \$3.00; 200 lbs., \$5.50. Large quantities, prices on application.

Kainit (Analysis, 12 per cent. actual Potash). Apply at the rate of 1000 lbs. per acre. The only cure for the onion maggot; spread during the winter. 200 lbs., \$2.00; per ton, \$15.00.



Guano. New process, ten per cent. richer than Peruvian Guano. Contains 10 to 11 per cent. Ammonia, 20 to 22 per cent. Bone Phosphate, from 4 to 5 per cent. actual Potash, made exclusively from animal bones. Per 100 lbs., \$2.75; per sack of 200 lbs., \$5.00; per ton, \$45.00.

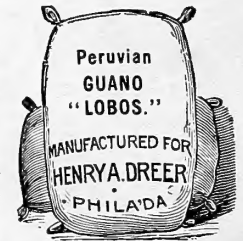
Guano. (Lobos.) 4 per cent. Ammonia, 25 per cent. Phosphoric Acid. Used extensively by market gardeners around large cities. Use 300 to 500 lbs. per acre, mix with loam or plaster, but not with lime, ashes, muck or clay, nor should it come in contact with growing plants when used dry. 200 lbs., \$4.50; ton, \$40.00.



Poudrette. Native Guano. Contains all the elements necessary for plant life; used extensively among market gardeners. Per 100 lbs., \$1.50; 200 lbs., \$2.50; per ton, \$15.00.

Potato Manure. (Special, Baugh's.) Quick results, lasting benefit. 2 per cent. Ammonia, 5 per cent. Av. Ph. Acid, 10 per cent. Potash. Per sack, 200 lbs., \$3.25; per ton, \$28.00.

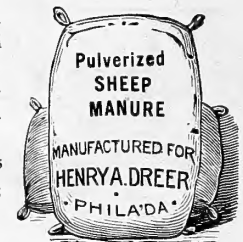
Land Plaster. Excellent for composting, fertilizing or mixing with guano. 100-lb. bag, \$1.00; barrel, 200 lbs., \$1.50; per ton, \$10.00. Carload price on application.



Muriate of Potash. 80 per cent. pure, equivalent to 48 to 50 per cent. actual Potash. A high-grade Fertilizer, and one of the best Orchard Fertilizers known, used largely in Peach cultivation, and as a general Fertilizer. Muriate of Potash and Ground bone stands as a leader. 50 lbs., \$1.75; 100 lbs., \$3.00. Original sacks of 224 lbs., \$5.50.

Salt, Agricultural. For top-dressing asparagus beds. Apply very early in spring, at the rate of 800 to 1000 lbs. per acre. 200 lbs., \$1.50; per ton, \$10.00.

Sheep Manure (Pure Dakota). This is a pure natural manure and the most nutritious food for plants. For vegetable garden, placed directly in hills or drills, it promotes a rapid, steady growth until maturity. As a top-dressing on growing crops it is unequalled. 100 lbs., \$1.75; ton, \$30.00.



INSECTICIDES AND FUNGICIDES.

Arsenate of Lead. 1 lb., 25 cts.; 5 lbs., 90 cts.; 10 lbs., \$1.65.

Bodo. Concentrated Bordeaux Mixture. 5 lbs., 50 cts.; 10 lbs., \$1.00.

Bordeaux Mixture. (Liquid.) 1 gallon, \$1.00, makes 1 bbl.; 1 qt., 40 cts., makes 15 gallons.

Bordeaux Mixture. (Dry.) Ready for use by adding water. 1 lb., 20 cts., makes 5 gallons; 5 lbs., 75 cts., makes 25 gallons; 10 lbs., \$1.25, makes 50 gallons; 25 lbs., \$3.00, makes 125 gallons.

Cattle Comfort. For animals. Qt., 45 cts.; gal., \$1.15; 5 gal., \$5.00.

Copperdine. For fungus and mildew. Lb., 25 cts.; makes 16 gallons of spray; 5 lbs., \$1.00.

Fostite. To prevent Fungus on Lettuce, etc. 5 lbs., 60 cts.; 25 lbs., \$2.25.

Grape Dust. A splendid Mildew remedy. Fine for vegetable houses and frames. 5 lbs., 30 cts.

Hellebore. 1 lb., 20 cts.; 5 lb., 90 cts.

Kerosene Soap. 1 lb., 25 cts.; 10 lbs., \$2.00.

Kerosene Emulsion. (Paste.) 1 lb., 15c.; 5 lbs., 60 cts.

Kill-O=Scale. The best San Jose Scale remedy, good for all Scale. 1 gallon, \$1.50; 5 or 10 gallons, \$1.25 per gallon. Special prices by barrels. One gallon dilutes to 25 gallons of water.

London Purple. Per lb., 20 cts.; 5 lbs., 90 cts.

Powdered Sulphur. Per lb., 6 cts.; 10 lbs., 50 cts.; 100 lbs., \$3.50.

Pure Paris Green. Per lb., 20 cts.; 5 lbs., 90 cts.

Pyrox. Substitute for Bordeaux and Paris Green. 5 lbs., 75 cts.; 10 lbs., \$1.25.

Slug Shot. (Hammond's.) 5 lbs., 25 cts.; 100 lbs., \$3.50; bbl., 235 lbs., \$8.00.

Tobacco Dust. 5 lbs., 20 cts.; 100 lbs., \$2.50.

Tobacco Stems. For cabbage, brussels sprouts, cucumbers, melons and squash. Bale of about 250 lbs., \$1.50.

Tobacco Soap. Dreer's Peerless. The Soap for all insects; use through the season. 1/2 lb., 20 cts.; 10 lb. cans (bulk), \$3.00.

Whale Oil Soap. In 1, 2 and 5 lb. pkgs.; 15, 25 and 40 cts.