

Historic, archived document

Do not assume content reflects current scientific knowledge, policies, or practices.



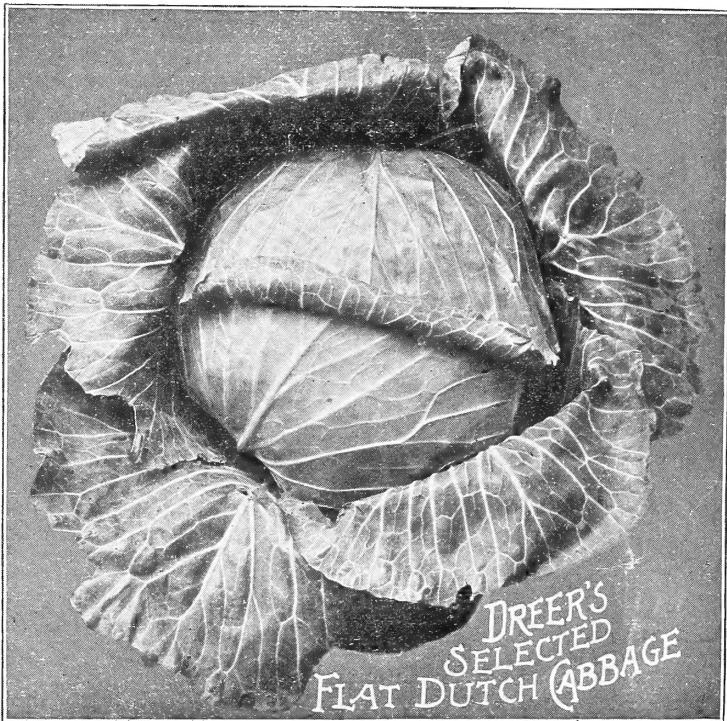
6207
H. W. Tracy Jr.

LIBRARY,
U.S. Department of Agriculture,
Washington, D. C.

SPRING EDITION, 1909

DREER'S

Market Gardeners' Wholesale Price List



RELIABLE

Vegetable Seeds
Flower Seeds
Garden Requisites
Implements
Fertilizers
Insecticides, Etc.

HENRY A. DREER

714 Chestnut Street



PHILADELPHIA, PA.

DREER'S RELIABLE SEEDS

FOR MARKET GARDENERS



Fully realizing the great importance of "Good Seeds" for the market gardener, we have always used our best endeavors to furnish such quality as we would demand ourselves were we growing vegetables for market, and the care given in the production and handling of these seeds has gained for us thousands of customers throughout the United States, many of whom are leaders in the production of vegetables for the markets.

We make careful tests of almost every variety offered by the Seed Trade, and the list of which this special catalogue is comprised represents the cream of the productions of ourselves and the leading seed growers throughout the world, and are the best of their kind.

We hope for a continuance of the patronage of our regular customers, and also at least a trial order from those Market Gardeners who have not as yet planted Dreer's Reliable Seeds.

Very truly yours,

HENRY A. DREER.



Seeds postpaid. At prices quoted in this catalogue, we pay the postage on all orders for ounces and quarter-pounds. Where larger quantity than quarter-pound is ordered, postage must be added at the rate of eight cents per pound, unless the goods are to be sent by freight or express, in which case the purchaser always pays the transportation charges when obtaining goods from railroad or express agent. If Beans and Peas are wanted by mail, add postage at the rate of fifteen cents per quart, and for Sweet Corn add ten cents per quart to prices quoted herein.

Packing. No charge is made for boxes or packing, nor for delivery to freight depots or express offices in Philadelphia.

Special low express rates. As seeds are now taken, when packed in boxes or bags, by leading express companies at a reduction of twenty per cent. from regular merchandise rates, it is a great advantage to those ordering in quantities, such as pounds and quarts, to have their orders shipped by express. Large quantities can be shipped cheapest by freight, but require a longer time in transit. If the manner of shipment is left to us, we will always use our best judgment in the matter and decide to the interest of the customer.

Cash with order. Please send remittance with the order sufficient to cover the whole bill. Remittances should be made by Post-Office Money Order, Drafts on Philadelphia or New York Banks, or Express Money Orders. We disclaim all responsibility when remittances are not made as above directed. Where it is not possible to obtain these, the letter should be registered.

Non-warranty. While we take every precaution to have our seeds pure and of the best quality, we do not give any warranty, express or implied, either as to quality, productiveness, or any other condition, and will not be in any way responsible for the crop. Every order for articles named in this catalogue will be accepted on these conditions only.

Deutsche Correspondenten.—Alle Bestellungen und Correspondenzen in deutscher Sprache werden mit Sorgfalt ausgeführt.

Dreer's Select Greenhouse, Bedding and Hardy Plants

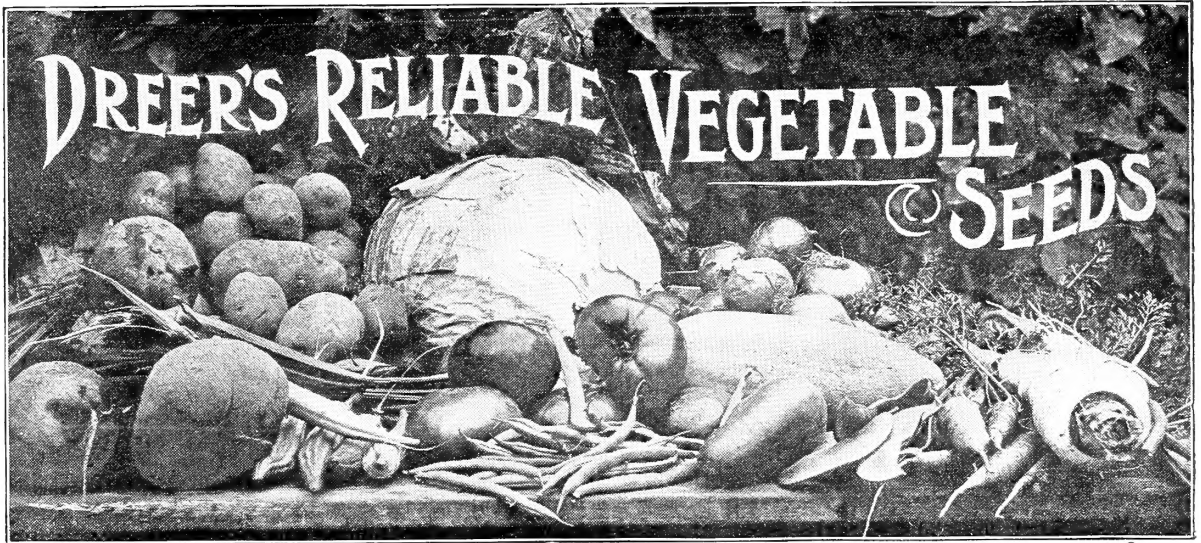
No doubt many who get this catalogue know that we are the largest growers of Decorative Flowering and Foliage plants in the country. Our nurseries cover over 200 acres, more than ten acres of which are covered by modern greenhouse structures. Over one-half of our **Garden Book for 1909**, is devoted to this part of our business, and whether you want Palms, Ferns, or other decorative stock, Cannas, Geraniums, Dahlias, Bedding plants, or the old-fashioned hardy Garden Flowers which are now so popular, you can not be better served than from our establishment. If you are interested in flowers do not fail to write for a copy of our **Garden Book for 1909**, which will be mailed free.

HENRY A. DREER,

LOCK BOX 1618,

714 Chestnut Street,

PHILADELPHIA, PA.



DREER'S SEEDS have been for Seventy-one Years a Standard Among the Best Market Gardeners of this Country for Undoubted Purity and Excellence.

ARTICHOKE—Artischoke.

Large Green Globe. The best for general culture. Oz., 25 cts.; ¼ lb., 75 cts.
Jerusalem Artichoke. Entirely distinct from the Globe variety, and propagated by and for its tubers. Prices of tubers, peck, 75 cts.; bu., \$2.50. Special prices on large quantities.

ASPARAGUS—Spargel.

Dreer's Eclipse. (*See cut.*) This variety is the result of most careful selection and "breeding up" to the large type, yet retaining that delicate light green color and tender quality to be desired. The stalks will frequently measure two inches in diameter and twelve to fifteen inches long, and even in this large state are most tender and delicious. Oz., 10 cts.; ¼ lb., 20 cts.; lb., 60 cts.; 5 lbs., \$2.50.
Argenteuil. This attractive variety is largely grown in France for the Paris market, and is greatly admired. The stalks grow to a mammoth size, sometimes weighing as much as 4 ounces each. The head is somewhat pointed and scales with which it is covered are very closely set. It is an early variety and remarkably healthy, being able to resist disease. The stalks cook tender and quality is superb. Oz., 10 cts.; ¼ lb., 25 cts.; lb., 80 cts.; 5 lbs., \$3.75.
Barr's Mammoth. A fine, large-stemmed green sort. This variety is largely grown by truckers in this section, and is considered very fine. Oz., 5 cts.; ¼ lb., 15 cts.; lb., 50 cts.; 5 lbs., \$2.25.
Conover's Colossal. Large and productive. Oz., 5 cts.; ¼ lb., 15 cts.; lb., 40 cts.; 5 lbs., \$1.75.
Palmetto. An early prolific and very desirable variety. Oz., 5 cts.; ¼ lb., 15 cts.; lb., 50 cts.; 5 lbs., \$2.25.
Donald's Elmira. Of mammoth size, fine quality. Oz., 5 cts.; ¼ lb., 15 cts.; lb., 50 cts.; 5 lbs., \$2.25.
Columbian Mammoth White. A desirable variety, producing white stalks of large size and finest quality. Oz., 5 cts.; ¼ lb., 15 cts.; lb., 50 cts.; 5 lbs., \$2.25.

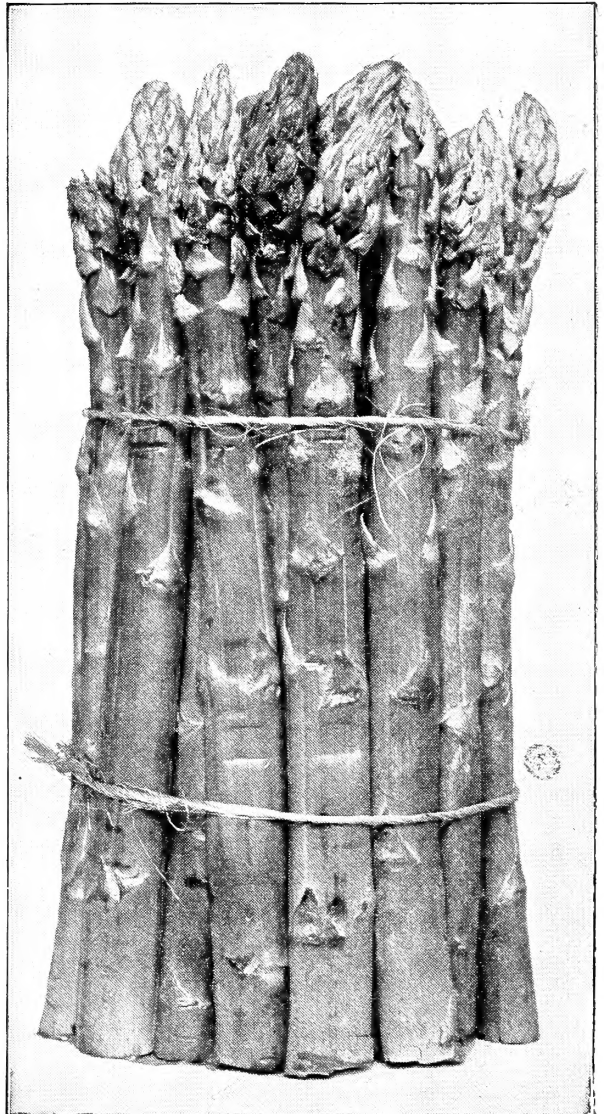
ASPARAGUS ROOTS.

STRONG TWO-YEAR OLD ROOTS. Add 40 cents per hundred extra if sent by mail.

We make a specialty of Asparagus Roots and each year send out many thousands of selected two-year-old roots which have been grown by us at our Nurseries from the choicest selected seed stock. Growers desiring more than one thousand roots should write to us, stating variety and quantity wanted and we will be pleased to give price for same by letter.

Argenteuil. 75 cts. per 100; \$5.00 per 1000.
DREER'S ECLIPSE, Palmetto, Barr's Mammoth, Conover's Colossal, Columbian Mammoth White. Each, 50 cts. per 100; \$4.00 per 1000.

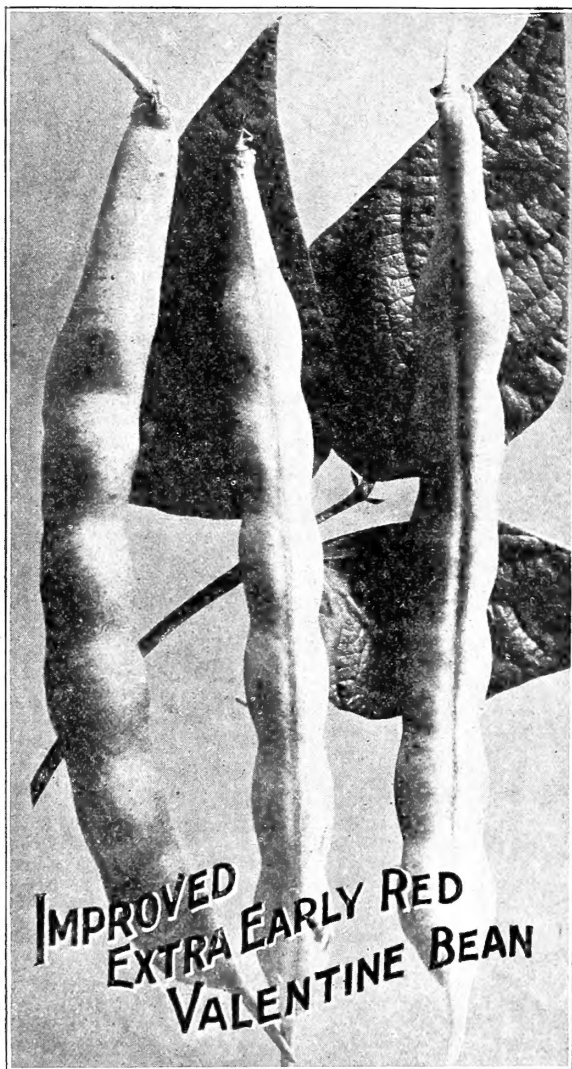
Dreer's Special Circular on Asparagus Culture Free.



DREER'S ECLIPSE ASPARAGUS

BEANS—Dwarf or Bush. *Ger. Krop-Bohnen.*

If by mail, add 15 cents per quart for postage.



Green Podded Varieties.

Improved Extra Early Red Valentine. (*See cut.*)

Our strain of this popular variety is fine; pods are round and fleshy, and are ready to pick, under favorable conditions, in 47 days from germination. The plant grows erect, strong and healthy, with dark green leaves, and produces the pods in large quantities. This variety has long been a favorite with market gardeners for early crop. Qt., 20 cts.; 4 qts., 70 cts.; peck, \$1.15; bu., \$4.60.

Mammoth Stringless Green Pod. This is the finest and earliest green pod stringless Bean it has ever been our pleasure to see growing. The plants are very productive, bearing profusely large green pods, which are perfectly round, very fleshy and entirely stringless. In quality it is equal to any variety ever offered. Qt., 25 cts., 4 qts., 80 cts.; pk., \$1.25; bu., \$5.00.

Burpee's Stringless Green Pod. This variety is positively stringless, and remains tender and crisp a long time after maturity. The pods are pale green, long and straight, perfectly round and meaty. Qt., 25 cts.; 4 qts., 80 cts.; peck, \$1.25; bu., \$5.00.

Bountiful. Very early and continues bearing for several weeks. The pods are very large, rich green color, solid and of good flavor and quality. Qt., 25 cts.; 4 qts., 80 cts.; peck, \$1.25; bu., \$5.00.

Green Pod Varieties—Continued.

Longfellow. An early variety; pods are long, tender and produced in large numbers, and the quality is very good. Qt., 25 cts.; 4 qts., 80 cts.; peck, \$1.30; bu., \$5.20.

Early Mohawk. The hardest of the early varieties, also good for autumn picking. Qt., 20 cts.; 4 qts., 70 cts.; peck, \$1.15; bu., \$4.60.

Long Yellow Six Weeks. (*Flat pod.*) Very early and prolific; long green tender pods; mature quickly. Qt., 20 cts.; 4 qts., 70 cts.; peck, \$1.15; bu., \$4.60.

Extra Early Refugee. A profuse bearing variety. One of the very best early sorts. Qt., 20 cts.; 4 qts., 70 cts.; peck, \$1.15; bu., \$4.60.

Refugee, or 1000 to 1. This variety is medium, or late in maturing, and of very dwarf growth. Pods pale green. Very prolific. Qt., 20 cts.; 4 qts., 70 cts.; peck, \$1.15; bu., \$4.60.

Giant Forcer Bean. A variety of green-podded bean suitable for forcing under glass and also for out-door culture. The pods mature very quickly and are exceedingly attractive both in color and shape. They are large, measure 5 to 6 inches in length, half round in shape, tender and of a delicious flavor. Qt., 35 cts.; 4 qts., \$1.25.

Triumph of the Frames. Pods are flat and grow abundantly on the plant. Good for forcing or growing in frames. Qt., 35 cts.; 4 qts., \$1.25.

Wonder of France, or Green Flageolet. Used for forcing or as a shelled bean. Pods are long, bright green and mature quickly. Qt., 35 cts.; 4 qts., \$1.25; peck, \$2.00.

Varieties for Shell Beans.

	Qt.	4 Qts.	Pk.	Bu.
White Kidney	15	55	\$1 05	\$4 20
White Marrowfat	15	55	1 05	4 20
Boston Pea Bean (<i>Navy</i>)	15	55	1 05	4 20
Michigan Wonder Pea	15	55	1 00	4 00
Black Turtle Soup	15	55	1 05	4 20
Broad Windsor (<i>English</i>)	30	90		

BUSH LIMA BEANS.

Our Lima Beans, both Bush and Pole varieties, are carefully hand-picked and of the best quality.

Wonder Bush Lima Bean. (Dreer's.) An improvement on Burpee's Bush Lima. Seed planted on our experimental grounds on June 29th produced fully matured beans on August 17th, just seven weeks from planting. The plants grow dwarf, upright and compact, and are completely covered with large pods, many of which contain four beans which are fully as large as Pole Limas. Qt. 30 cts.; 4 qts., \$1.00; pk, \$1.75; bu., \$7.00.

Dreer's Bush Lima Bean. A dwarf variety of the Dreer's Improved Lima. It is very prolific, single plants often producing from 150 to 200 pods. The beans grow close together in the pods, producing three to four and sometimes five in a pod, and are thick, sweet and succulent. Qt., 30 cts.; 4 qts., \$1.00; peck, \$1.70; bu., \$6.80.

Fordhook Bush Lima Bean. This valuable new variety is a perfected form of Dreer's Bush Lima, which variety it resembles in form of pod and shape of bean, but both are larger, and the plant is of a strong, upright growth, protecting the pods from contact with the soil and thus preventing rust and rot. It is very prolific, and frequently produces pods containing five beans, which are extremely large, thick through and of fine flavor. Qt., 50 cts.; 4 qts., \$1.75; peck, \$3.00; bu., \$12.00

Henderson's Bush Lima Bean. A dwarf variety of the Sieva or Southern Lima; produces enormous crops. Qt., 25 cts.; 4 qts., 90 cts.; peck, \$1.60; bu., \$6.40.

Burpee's Bush Lima Bean. A true bush form of the Large White Lima; requires no poles. Qt., 25 cts.; 4 qts., 90 cts.; peck, \$1.65; bu., \$6.60.

BEANS—Continued.

If by mail, add 15 cts. per quart postage.

Wax Podded Varieties.

Wardwell's Kidney Wax. (*See cut.*) Long, flat pod, of a delicate waxy yellow, stringless and brittle, producing a heavy crop. It is extremely hardy and very robust in growth. Qt., 25 cts.; 4 qts., 90 cts.; pk., \$1.50; bu., \$6.00.

Improved Rust Proof Golden Wax. Pods long and nearly straight, broad, flat and clear yellow. Qt., 25 cts.; 4 qts., 80 cts.; pk., \$1.40; bu., \$5.60.

Currie's Rust-Proof Wax. This variety is rust-proof; pods grow long, flat, are very tender and of the finest quality. It is early and productive. Qt., 25 cts.; 4 qts., 80 cts.; pk., \$1.40; bu., \$5.60.

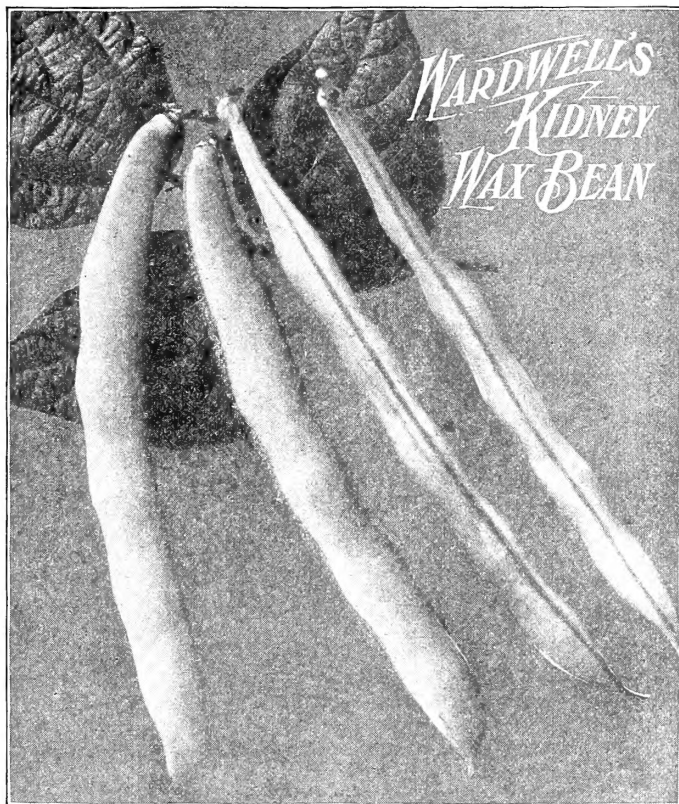
Improved Prolific Black Wax. (*Cylinder Wax.*) An improvement on the old Black Wax. Pods waxy yellow, very tender and productive. Qt., 25 cts.; 4 qts., 80 cts.; pk., \$1.40; bu., \$5.60.

Valentine Wax. An improved extra early Valentine Bean, with round wax pods. Qt., 30 cts.; 4 qts., \$1.00; pk., \$1.75; bu., \$7.00.

Pencil Pod Black Wax. An improvement on Improved Prolific Black Wax. Pods are extremely tender and brittle and remain in good picking condition for a long time. Qt. 25 cts.; 4 qts., 95 cts.; pk., \$1.60; bu., \$6.40.

Saddle-Back Wax. Pods large, long, round, very solid, stringless. Qt., 30 cts.; 4 qts., \$1.00; pk., \$1.75; bu., \$7.00.

Michigan White Wax. A white-seeded Golden Wax Bean of superior quality and attractive appearance. Produces an abundance of large, light golden yellow pods. Qt., 40 cts.; 4 qts., \$1.50; pk., \$2.75.



Round Pod Kidney Wax. An improved type of the well-known Wardwell's Kidney Wax. The pods are long, straight and extremely handsome. Qt., 30 cts.; 4 qts., \$1.00; pk., \$1.60; bu., \$6.40.

Hodson Wax Pod. A new variety; produces large pods in great abundance. Quality very good. Qt., 25 cts.; 4 qts., 90 cts.; pk., \$1.50; bu., \$6.00.

Crystal Wax or Silver Bean. Pods silvery white and very tender. A good and attractive variety. Qt., 25 cts.; 4 qts., 90 cts.; pk., \$1.50; bu., \$6.00.

Davis Wax. Pods flat, very long white, straight and handsome. Qt., 25 cts.; 4 qts., 90 cts.; pk., \$1.50; bu., \$6.00.

POLE or RUNNING BEANS.

	Qt.	4 qts.	Pk.	Bu.
Golden Cluster Wax	35	\$1 25	\$2 00	\$8 00
Golden Carmine Wax	30	1 10	1 90	7 60
Horticultural, or Cranberry	25	90	1 60	6 40
White Dutch Case-Knife	30	1 00	1 75	7 00
White Dutch Runner	30	1 00	1 75	7 00
Scarlet Runner	30	1 00	1 75	7 00
White Crease Back	25	90	1 75	7 00
Kentucky Wonder	25	90	1 75	7 00
Lazy Wife's	25	90	1 75	7 00

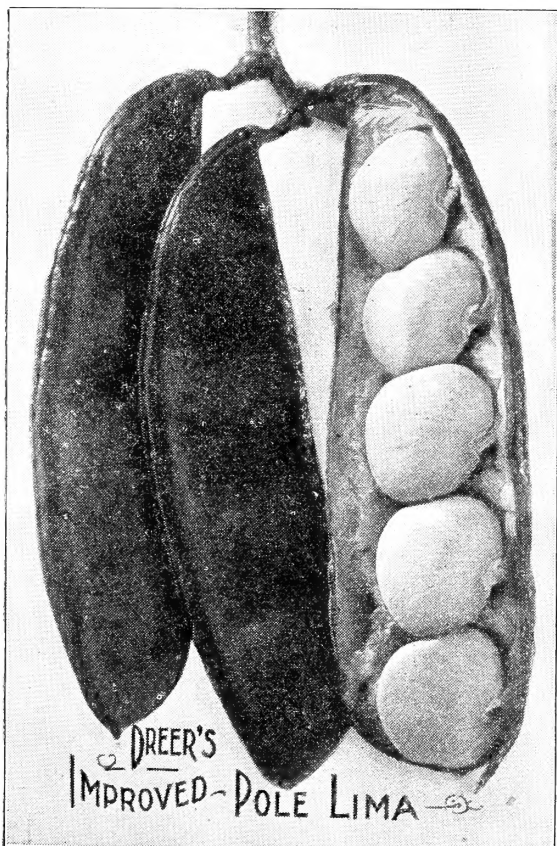
POLE LIMA BEANS.

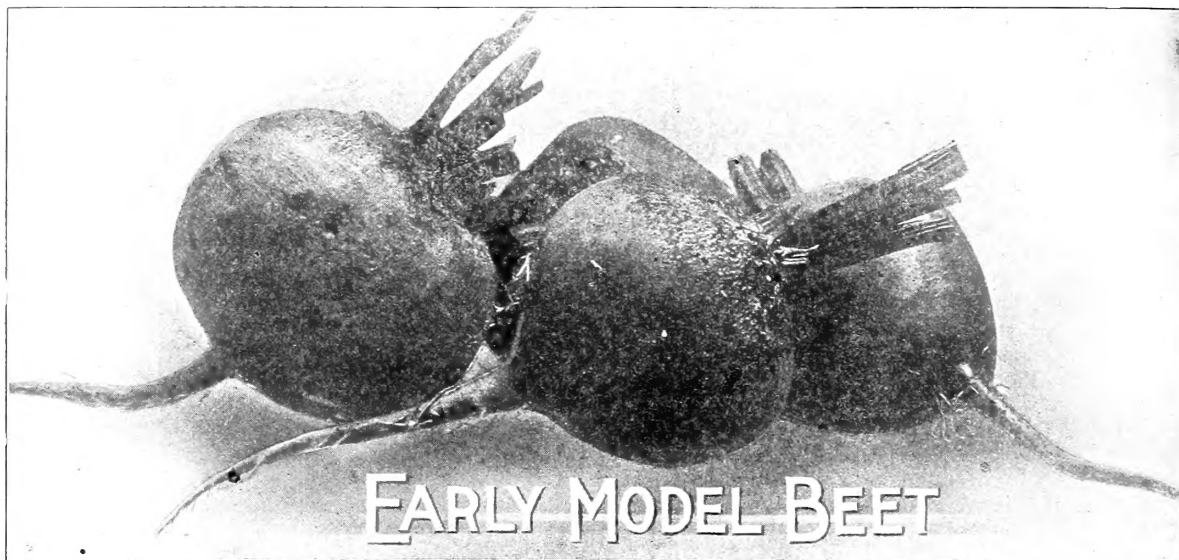
Dreer's Improved Lima. (*See cut.*) A superior variety, of excellent quality and great productiveness. This is without doubt the best variety and will shell out more quarts of beans to the bushel of pods than any other lima bean. Qt., 30 cts.; 4 qts., \$1.00; peck, \$1.75; bu., \$7.00.

Early Leviathan Lima. The earliest variety of pole lima. A good sort where the season is short. Qt., 30 cts.; 4 qts., \$1.00; peck, \$1.75; bu., \$7.00.

Ford's Mammoth Lima. Selection of the large lima. Qt., 25 cts.; 4 qts.; 90 cts.; peck, \$1.65; bu., \$6.60.

	Qt.	4 qts.	Pk.	Bu.
Siebert's Early Lima	25	\$1 00	\$1 75	\$7 00
Early Jersey Lima	25	90	1 65	6 60
King of the Garden	25	90	1 65	6 60
Small Lima, or Sieva	25	90	1 65	6 60





BEETS—*Ger. Salatrube.*

Dreer's Special Crosby's Egyptian Beet. Produced from roots which have had special care in selecting and far superior to the ordinary stock of Crosby's Egyptian Beet. $\frac{1}{4}$ lb., 25 cts.; lb., 75 cts.; 10 lbs., \$6.50; bu., \$10.50.

Crosby's Egyptian. (*See cut.*) An improved strain of the Egyptian Beet, specially recommended as an extra early sort. It is much thicker than the original. $\frac{1}{4}$ lb., 20 cts.; lb., 60 cts.; 10 lbs., \$5.50; bu., \$7.50.

Dreer's Excelsior. A splendid extra early blood turnip beet, fully as early as the Crosby's Egyptian. $\frac{1}{4}$ lb., 25 cts.; lb., 65 cts.; 10 lbs., \$6.00; bu., \$8.25.

Early Model. (*See cut.*) This variety is an excellent selection of blood-red beet, being extremely smooth and of fine color and desirable shape. It is a quick grower and matures very early; a fine variety for forcing. Oz., 10 cts.; $\frac{1}{4}$ lb., 30 cts.; lb., \$1.00; 10 lbs., \$8.00.

Early Eclipse. Remarkable for its rapid growth, extreme smallness of top, and extra fine quality. Perfectly smooth and round, skin and flesh intense red. $\frac{1}{4}$ lb., 15 cts.; lb., 55 cts.; 10 lbs., \$5.00; bu., \$7.00.

Extra Early Egyptian. One of the earliest, of good quality and medium size; a fine forcer. $\frac{1}{4}$ lb., 15 cts.; lb., 50 cts.; 10 lbs., \$4.50; bu., \$6.50.

Arlington Favorite Blood. A dark leaved, early blood variety, closely following Eclipse in maturing, but of much darker color and superior quality. $\frac{1}{4}$ lb., 20 cts.; lb., 55 cts.; 10 lbs., \$5.00; bu., \$7.00.

Detroit Dark Red. A choice variety of early turnip beet, skin red, flesh bright red. $\frac{1}{4}$ lb., 20 cts.; lb., 60 cts.; 10 lbs., \$5.50; bu., \$7.50.

Bastian's Early Blood Turnip. Of quick, large growth, fine turnip form and bright red color. $\frac{1}{4}$ lb., 15 cts.; lb., 45 cts.; 10 lbs., \$4.00; bu., \$5.00.

Early Bassano. A very early flat variety, tender, juicy; flesh white and rose-colored; very sweet. $\frac{1}{4}$ lb., 15 cts.; lb., 45 cts.; 10 lbs., \$4.00.

Lentz Turnip. Dark red and white; early. $\frac{1}{4}$ lb., 15 cts.; lb., 45 cts.; 10 lbs., \$4.00; bu., \$5.00.

Dewing's Improved Blood Turnip. Deep blood red color; fine form and flavor; an excellent market sort. $\frac{1}{4}$ lb., 15 cts.; lb., 45 cts.; 10 lbs., \$4.00; bu., \$5.00.

Crimson Globe. A second early variety, does not grow coarse, the matured beets being medium in size and rather oblong in shape. The flesh and skin are both very dark, and quality fine. $\frac{1}{4}$ lb., 25 cts.; lb., 70 cts.; 10 lbs., \$6.00.

Early Blood Turnip. A second early variety, blood red, tender, and good for late keeping. $\frac{1}{4}$ lb., 15 cts.; lb., 45 cts.; 10 lbs., \$4.00; bu., \$5.00.

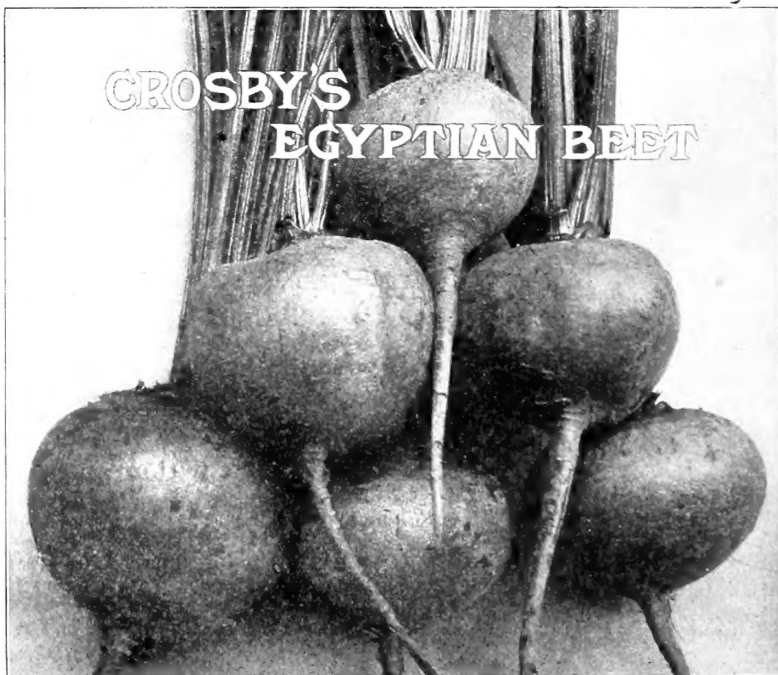
Edmand's Blood Turnip. The best variety to follow after the extra early varieties; flesh dark red and white; good flavor. $\frac{1}{4}$ lb., 15 cts.; lb., 45 cts.; 10 lbs., \$4.00; bu., \$5.50.

Bastian's Half-Long Blood. Of light color and excellent quality; a valuable variety to follow Bastian's Extra Early; for winter use sow early in July. $\frac{1}{4}$ lb., 15 cts.; lb., 45 cts.; 10 lbs., \$4.25; bu., \$5.50.

Long Dark Blood. A good late variety for fall and winter use, sweet and tender. $\frac{1}{4}$ lb., 15 cts.; lb., 45 cts.; 10 lbs., \$4.00.

Swiss Chard Giant Lucullus. $\frac{1}{4}$ lb., 25 cts.; lb., 75 cts.

Swiss Chard, Silver Leaf. $\frac{1}{4}$ lb., 15 cts.; lb., 50 cts.



SUGAR BEETS.

Klein Wanzleben	¼ lb.	lb.	5 lbs.
White Sugar Green Top	10	25	\$1 20
Imp. Imperial White	10	25	1 20
Lane's Improved White	10	25	1 20

MANGEL WURZEL.

Mammoth Long Red	¼ lb.	lb.	5 lbs.
Golden Tankard	10	25	\$1 20
Golden-Yellow Mammoth	10	25	1 20
Yellow or Orange Globe	10	25	1 20
Red Globe	10	25	1 20

BROCCOLI. (Ger. Spargel Kohl.)

White Cape. Oz., 30 cts.; ¼ lb., 90 cts.

BRUSSELS SPROUTS.

(Ger. Rosen-Kohl.)

Dreer's Selected Matchless. Oz., 25 cts.; ¼ lb., 75 cts.; lb., \$2.25.

Long Island Half-Dwarf. Oz., 25 cts.; ¼ lb., 75 cts.; lb., \$2.25.

CARDOON. (Ger. Cardon.)

Large Smooth Solid. Oz., 20 cts.; ¼ lb., 75 cts.



CARROT—Mohr.

Earliest Short Horn. (French Forcing.) Root small, reddish orange, of globular shape and excellent flavor. Oz., 10 cts.; ¼ lb., 25 cts.; lb., 80 cts.

Early Scarlet Horn. (See cut.) A favorite early red summer variety. Oz., 10 cts.; ¼ lb., 25 cts.; lb., 70 cts.

Early Half-Long Carentan. An excellent scarlet variety, without core, for forcing or the open ground. Tops very small, roots cylindrical, with very small neck. Oz., 10 cts.; ¼ lb., 25 cts.; lb., 70 cts.

Dreer's "Perfect" Forcing Carrot. A perfect half-long variety, beautiful bright scarlet color, very crisp, and grows almost without core. Tops are remarkably small, thus allowing the Carrots to be grown close in the frames. We know of no Carrot that is so desirable for bunching, for which purpose we recommend it to market gardeners. Oz., 15 cts.; ¼ lb., 40 cts.; lb., \$1.50.

Early Half-Long Scarlet. A desirable point-root sort, productive and early, coming in between Scarlet Horn and Long Orange. Oz., 10 cts.; ¼ lb., 25 cts.; lb., 70 cts.

Half-Long Nantes. An excellent early half-long, stump-rooted variety; of superior quality. Tops medium size, roots cylindrical, smooth, bright orange; flesh orange, shading to yellow in centre, but no core. This is one of the best of the medium-size Carrots. Oz., 10 cts.; ¼ lb., 25 cts.; lb., 70 cts.

Chantenay Half-Long. Resembling the Nantes, with larger shoulder. Medium early and heavy cropper. Oz., 10 cts.; ¼ lb., 25 cts.; lb., 70 cts.

Danver's Half-Long Orange. (See cut.) A rich orange-red variety, very smooth and handsome, producing large crops. Tops medium size and coarsely divided. Roots taper to a blunt point; flesh sweet, crisp and tender. This is a very attractive carrot and an excellent market variety. Oz., 10 cts.; ¼ lb., 25 cts.; lb., 70 cts.

Improved Rubicon. This beautiful half-long stump-root Carrot is the result of careful breeding. It grows about the same length as the well-known Danvers, but thicker, and is a rich dark orange color. Oz., 10 cts.; ¼ lb., 25 cts.; lb., 70 cts.

Guerande, or Oxheart. A desirable variety on soils too hard and stiff for the longer-growing sorts, as it is not over 5 or 6 inches long; can be pulled by hand. Oz., 10 cts.; ¼ lb., 25 cts.; lb., 70 cts.

St. Valery. A desirable sort, of rich orange color and fine flavor. The roots grow very uniform and large size. Oz., 10 cts.; ¼ lb., 25 cts.; lb., 70 cts.

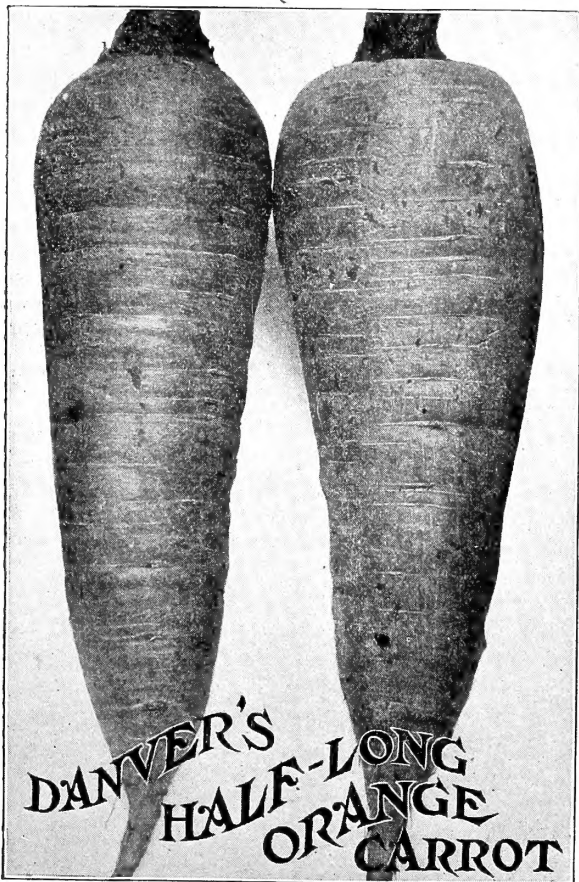
Nichol's Improved Long Orange. This is a very fine selection of the Long Orange Carrot; early, productive, and of fine shape and quality. Oz., 10 cts.; ¼ lb., 20 cts.; lb., 60 cts.

Long Orange. This well-known variety produces a large crop and is much used for feeding stock. Oz., 10 cts.; ¼ lb., 15 cts.; lb., 55 cts.

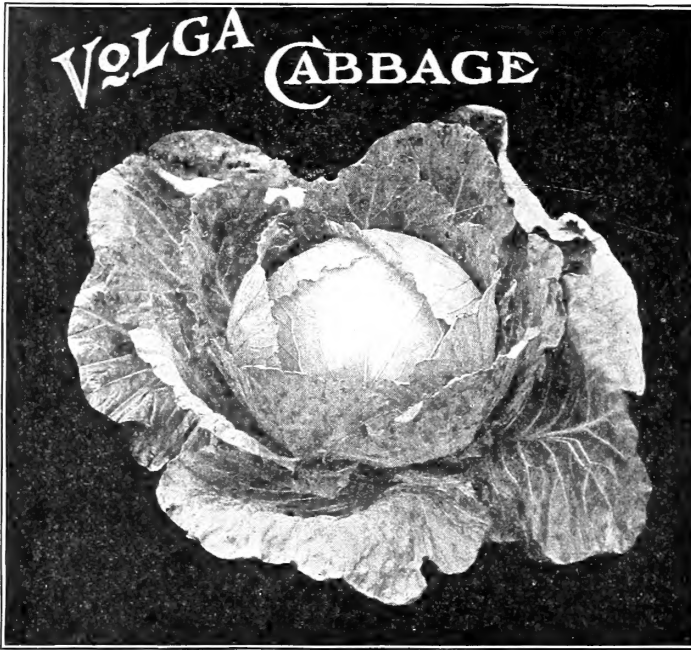
Red Altringham. Grows large, good color and is used for stock feeding. Oz., 10 cts.; ¼ lb., 15 cts.; lb., 55 cts.

Large White Belgian. A large variety, part of which grows above surface of ground. Oz., 5 cts.; ¼ lb., 15 cts.; lb., 40 cts.

Improved Short White. Short, with broad shoulders; light green above ground, white below. Flesh is white. Oz., 5 cts.; ¼ lb., 15 cts.; lb., 40 cts.



CABBAGE—*Ger. Kohl.*



Volga. (*See cut.*) This variety is of recent introduction and has great merit. It is early in maturing, being ready for use only a few days later than Wakefield and makes large round heads which are very solid. It is hardy and will do well in every section where cabbage is grown. Oz., 25 cts.; $\frac{1}{4}$ lb., 75 cts.; lb., \$2.50.

Eureka, or First Early. A flat-headed Cabbage, fully as early in maturing as the well-known Early Jersey Wakefield. The heads are very solid. Oz., 25 cts.; $\frac{1}{4}$ lb., 75 cts.; lb., \$2.25.

Selected Jersey Wakefield. A leading early variety for market gardeners' use. Our strain is being constantly improved, both in purity and earliness. There is no cabbage so widely known as the Early Jersey Wakefield. Oz., 20 cts.; $\frac{1}{4}$ lb., 65 cts.; lb., \$2.50.

The Charleston, or Large Wakefield. Large solid heads, of good quality, a few days later than Early Jersey Wakefield. The strain we offer is of exceptional purity and cannot fail to give satisfaction, as it combines all the good qualities of an early long-keeping sort, and is especially desirable for shipping. Oz., 25 cts.; $\frac{1}{4}$ lb., 75 cts.; lb., \$2.75.

Early Spring. Nearly as early as the Jersey Wakefield, but the heads are of the round, flat type of Early Summer. It has very few small outer leaves, thus allowing its being planted close. Oz., 20 cts.; $\frac{1}{4}$ lb., 60 cts.; lb., \$2.25.

Dreer's Early Drumhead. A second early large, round, solid-heading variety. Good for following the large Charleston Wakefield. Oz., 25 cts.; $\frac{1}{4}$ lb., 75 cts.; lb., \$2.50.

All Head Early. The largest heading of the second early sorts, heads remarkably solid and of excellent quality. Oz., 20 cts.; $\frac{1}{4}$ lb., 60 cts.; lb., \$2.25.

Selected All-Seasons. (*Vandergaw.*) An early Drumhead Cabbage, yielding heads of the largest size. Oz., 20 cts.; $\frac{1}{4}$ lb., 60 cts.; lb., \$2.25.

Improved Flat Brunswick. Produces large heads, weighing 15 to 20 lbs. each. Oz., 20 cts.; $\frac{1}{4}$ lb., 50 cts.; lb., \$1.75.

Early Winnigstadt. Conical-shaped heads; good for early or late use. Oz., 15 cts.; $\frac{1}{4}$ lb., 50 cts.; lb., \$1.50.

Improved Early Summer. (*See cut.*)

A second early Cabbage, which matures about ten days after the Jersey Wakefield. It makes a large, solid, flattish head, with short outer leaves which admit of close planting. It is of good quality, being very tender and free from coarseness. Oz., 20 cts.; $\frac{1}{4}$ lb., 60 cts.; lb., \$2.25.

Succession. A good second early round-headed sort, heads very evenly, and comes in a few days after the Early Summer. Oz., 20 cts.; $\frac{1}{4}$ lb., 60 cts.; lb., \$2.25.

Etampes. Very early, producing medium-sized pointed heads. Oz., 15 cts.; $\frac{1}{4}$ lb., 50 cts.; lb., \$1.50.

Express. Extremely early heads, small, conical shape and very solid. Oz., 15 cts.; $\frac{1}{4}$ lb., 50 cts.; lb., \$1.50.

Large York. A superior, early-heading, robust sort. Oz., 15 cts.; $\frac{1}{4}$ lb., 50 cts.; lb., \$1.50.

Large Late Drumhead. The heads grow to very large size and heavy weight. They are solid, of good quality. Oz., 15 cts.; $\frac{1}{4}$ lb., 50 cts.; lb., \$1.75.

Louisville Drumhead. A popular variety in the Southwest; of large size, solid and a good keeper. Oz., 15 cts.; $\frac{1}{4}$ lb., 50 cts.; lb., \$1.75.

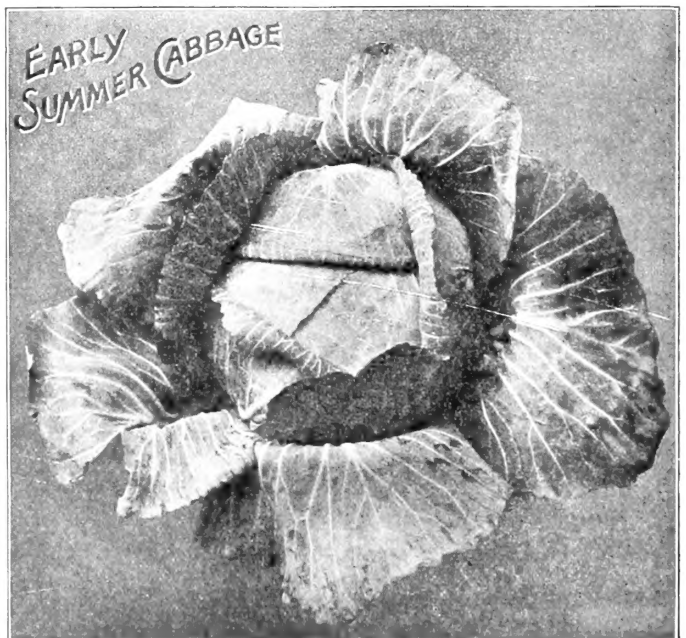
Autumn King. Heads large, good keeper. Oz., 20 cts.; $\frac{1}{4}$ lb., 60 cts.; lb., \$2.00.

Surehead. A late variety of Flat Dutch type. Oz., 20 cts.; $\frac{1}{4}$ lb., 60 cts.; lb., \$2.00.

Danish Ballhead. (*Hollander.*) This is the medium-sized, hard white cabbage that is received from abroad during the early spring months. It is a medium or late variety, but is used mostly as a winter cabbage. Oz., 20 cts.; $\frac{1}{4}$ lb., 60 cts.; lb., \$2.25.

Danish Roundhead. Matures earlier than Danish Ballhead, has shorter stalks and is very hard. The interior leaves are pure white and of sweet flavor. Oz., 25 cts.; $\frac{1}{4}$ lb., 75 cts.; lb., \$2.75.

Golden Sugar Winter. This variety is entirely distinct in character. A special feature is the golden color after being put up, which makes it very attractive. It is medium late, perfectly solid at maturity, and does not crack. Color of foliage, dark green. Oz., 25 cts.; $\frac{1}{4}$ lb., 75 cts.; lb., \$2.25.



CABBAGE—Continued.**Dreer's Selected Late Flat Dutch.**

(See cut.) This excellent strain is the result of many years careful selection. The heads are flat, and grow remarkably large, even, very solid, and are of fine texture; stems grow short and the quality of the cabbage is very fine. It is a sure heading sort, as nearly every plant can be depended upon to produce a fine, large head. It is also a good keeper. Market gardeners and farmers who grow for market are using this variety very largely. Oz., 25 cts.; $\frac{1}{4}$ lb., 75 cts.; lb., \$2.25.

Lupton. A fine winter keeper; heads large and solid, quality good. Oz., 20 cts.; $\frac{1}{4}$ lb., 60 cts.; lb., \$2.00.

SAVOY CABBAGE.

Dreer's Crystal Summer Savoy. Heads nearly round, deeply curved and very tender. Oz., 25 cts.; $\frac{1}{4}$ lb., 75 cts.; lb., \$2.75.

Perfection Drumhead Savoy. Of superior quality; the largest solid-heading Savoy, and has the rich flavor of the cauliflower. The plants are strong and vigorous, and withstand the ravages of the cabbage worm better than other sorts. The inside of this cabbage is pure white. Oz., 25 cts.; $\frac{1}{4}$ lb., 65 cts.; lb., \$2.25.

RED CABBAGE.

Red Delicacy. A fine new variety; heads medium size, leaves closely set. Oz., 30 cts.; $\frac{1}{4}$ lb., \$1.00; lb., \$3.00.

Red Dutch Erfurt. Valuable for pickling. Oz., 20 cts.; $\frac{1}{4}$ lb., 60 cts.; lb., \$2.00.

Red Dutch Drumhead. Produces large heads. Oz., 20 cts.; $\frac{1}{4}$ lb., 60 cts.; lb., \$2.00.

Mammoth Rock Red. Largest and most solid variety. Oz., 25 cts.; $\frac{1}{4}$ lb., 75 cts.; lb., \$2.25.

**CAULIFLOWER.****Blumenkohl.****DREER'S Earliest Snowstorm.**

(See cut.) A dwarf variety, with short outer leaves, and can be planted close, 2 feet apart each way. The best for forcing, always makes a fine, large and exceedingly beautiful snowy-white head, much earlier than any other variety. $\frac{1}{4}$ oz., \$1.50; oz., \$5.00; $\frac{1}{4}$ lb., \$15.00.

Dry Weather Cauliflower. Especially adapted for sections subjected to long dry seasons. Heads large, solid, pure white and of delicious flavor. $\frac{1}{4}$ oz., 75 cts.; oz., \$2.50; $\frac{1}{4}$ lb., \$8.00.

Dreer's Selected Dwarf Erfurt.

Small-leaved dwarf, for forcing or open ground. $\frac{1}{4}$ oz., 75 cts.; oz., \$2.50; $\frac{1}{4}$ lb., \$8.00.

Early Snowball. Makes magnificent white heads of fine quality. $\frac{1}{4}$ oz., 65 cts.; oz., \$2.25; $\frac{1}{4}$ lb., \$7.50.

Early Dwarf Erfurt. An early market variety. $\frac{1}{4}$ oz., 50 cts.; oz., \$1.50; $\frac{1}{4}$ lb., \$5.00.

Late Varieties.

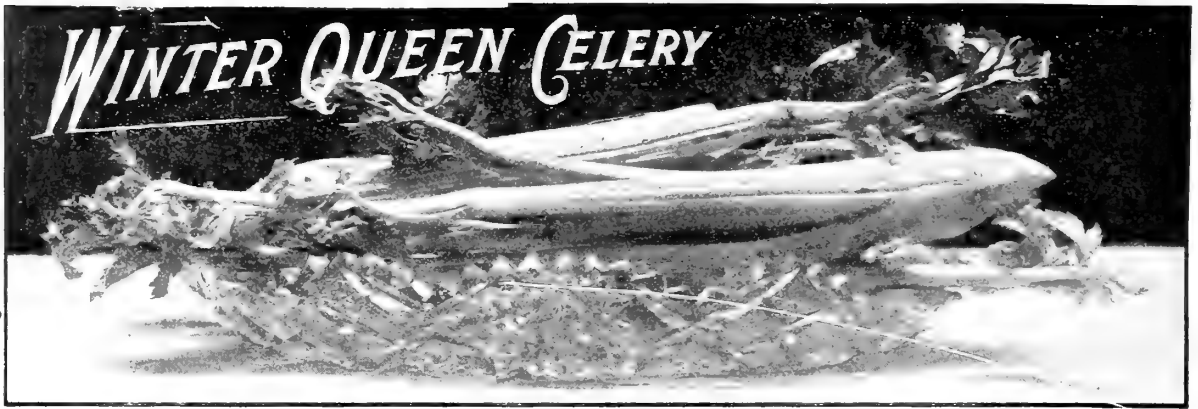
Half-Early Paris. Oz., 50 cts.; $\frac{1}{4}$ lb., \$1.50.

Lenormand's Short Stem. Oz., 50 cts.; $\frac{1}{4}$ lb., \$1.50.

Algiers. Oz., 60 cts.; $\frac{1}{4}$ lb., \$1.75.

Veitch's Autumn Giant. Oz., 30 cts.; $\frac{1}{4}$ lb., \$1.00.

Cauliflower and Cabbage Plants.
(See page 25.)



CELERY—*Ger. Cellerie.*

Perfected White Plume. We offer a choice strain of this valuable and popular variety. The White Plume is unsurpassed for fall and early winter use, requiring very little earthing up to blanch it. Oz., 20 cts.; $\frac{1}{4}$ lb., 65 cts.; lb., \$2.50.

Golden Self-Blanching. An early sort, requiring but little labor to blanch. Heart is rich golden yellow, with light yellowish-green outer leaves. American grown seed. Oz., 25 cts.; $\frac{1}{4}$ lb., 75 cts.; lb., \$2.75.

Originator's Golden Self-Blanching. (French-grown seed.) We have secured a stock of seed from the originator in France. This produces a more solid stalk than American seed, and is far superior in every way. Oz., 40 cts.; $\frac{1}{4}$ lb., \$1.00; lb., \$3.75.

Silver Self-Blanching. (*See cut.*) Similar in growth to Golden Self-Blanching but foliage is like White Plume. Needs no banking other than boards, on each side of plants. Heart is full and solid and both it and stalks are pure white. Oz., 35 cts.; $\frac{1}{4}$ lb., \$1.00; lb., \$3.75.

Golden Half-Dwarf. An excellent half-dwarf variety, stalks large and full; the heart is golden-yellow, turning to a light color when blanched. Very solid, rich flavor and good keeper. Oz., 15 cts.; $\frac{1}{4}$ lb., 40 cts.; lb., \$1.40.

Giant Pascal. A superior keeping sort. The stalks are very large, thick, solid, crisp and of rich nutty flavor. Oz., 15 cts.; $\frac{1}{4}$ lb., 40 cts.; lb., \$1.40.

Dreer's Monarch. A decided acquisition in green Celery, producing large stalks, and magnificent bright golden yellow heart. The stalks are very solid, brittle, and of most delicious flavor, and entirely free from stringiness. It is a very desirable celery for the market gardener, as it is a remarkably good keeper. Oz., 25 cts.; $\frac{1}{4}$ lb., 80 cts.; lb., \$3.00.

Far Superior, Many Heart. A full-hearted variety, good keeper. Oz., 20 cts.; $\frac{1}{4}$ lb., 60 cts.; lb., \$2.25.

Winter Queen. (*See cut.*) Valuable, particularly on account of its excellent winter-keeping qualities. It grows a very thick, solid and heavy stalk, and has a large heart. Oz., 20 cts.; $\frac{1}{4}$ lb., 60 cts.; lb., \$2.25.

Shumacher. Stalks grow to an immense size, and are perfectly solid and crisp. It has a firm and beautiful golden heart. Oz., 20 cts.; $\frac{1}{4}$ lb., 50 cts.; lb., \$1.75.

Fin de Siecle. Grows very large, stalks solid and crisp. Oz., 20 cts.; $\frac{1}{4}$ lb., 50 cts.; lb., \$1.75.

Pink Plume. A perfect White Plume in character, excepting color, which is a delicate pink. Oz., 20 cts.; $\frac{1}{4}$ lb., 60 cts.; lb., \$2.00.

Dwarf Rose. Oz., 20 cts.; $\frac{1}{4}$ lb., 60 cts.; lb., \$2.00.

Golden Rose, Self-Blanching. Similar to Golden Self-Blanching, except in color; rosy tinge, shading to pale pink at top of stalks. Oz., 20 cts.; $\frac{1}{4}$ lb., 60 cts.; lb., \$2.25.

Boston Market, Sandringham Dwarf White, Perfection Heartwell, Large White Solid, Evan's Triumph, each at oz., 15 cts.; $\frac{1}{4}$ lb., 40 cts.; lb., \$1.40.

CELERIAC.

	Oz.	$\frac{1}{4}$ lb.	Lb.
Apple-Shaped	15	40	\$1.50
Giant Smooth Prague	20	50	1.75

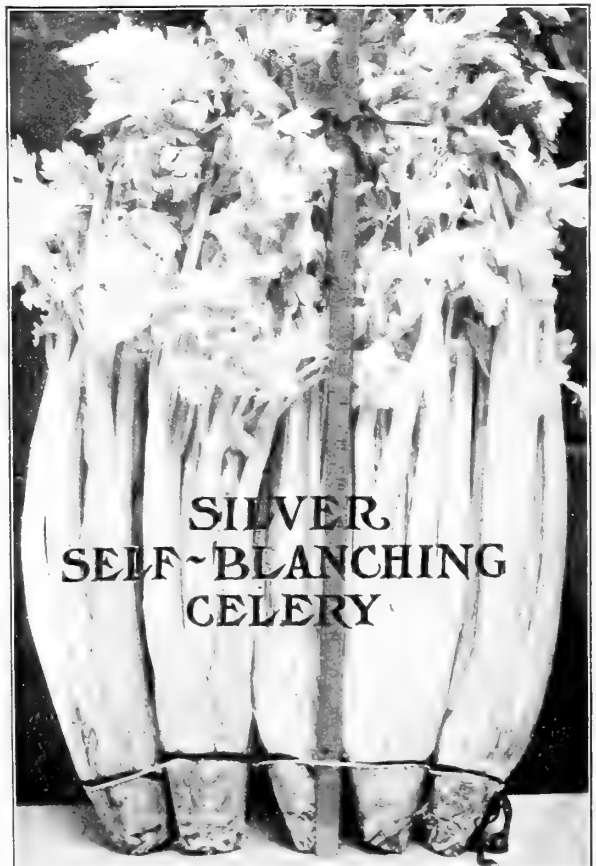
CHICORY.

Common or Wild.	Oz., 10 cts.;	$\frac{1}{4}$ lb., 20 cts.;	lb., 65 cts.
Large Rooted.	Oz., 10 cts.;	$\frac{1}{4}$ lb., 25 cts.;	lb., 80 cts.

CRESS.

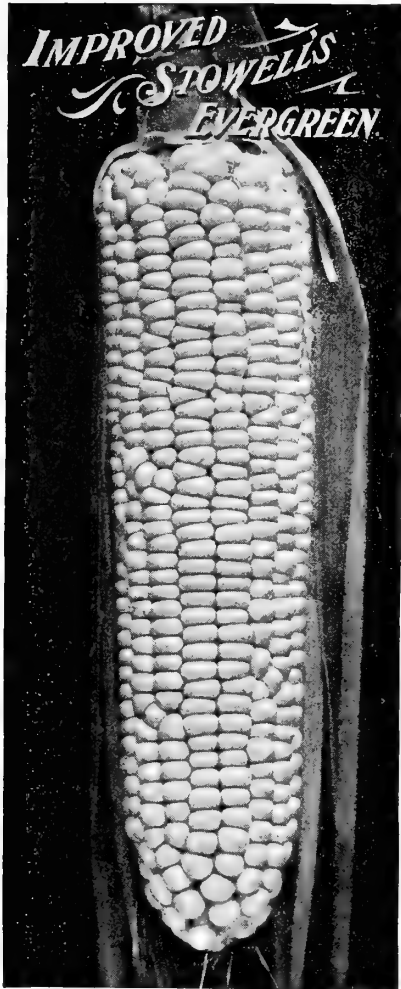
(*German Garten und Brunnen Kresse.*)

Extra Curled or Pepper Grass.	Oz., 5 cts.;	$\frac{1}{4}$ lb., 15 cts.;	lb., 35 cts.
Upland Cress.	Oz., 50 cts.;	$\frac{1}{4}$ lb., \$1.50.	
Water-Cress.	Oz., 25 cts.;	$\frac{1}{4}$ lb., 75 cts.;	lb., \$2.50.



CORN—Sweet or Sugar—Ger. Maiz.

If wanted sent by mail, add 10 cents per quart for postage.



Dreer's Aristocrat. This variety of early Sweet Corn was grown for some years by a gardener who supplies truck to the aristocrats at Newport, R. I. He would not allow any of the seed to get into the hands of his competitors, thus having a monopoly, and as it was the finest sweet corn that came to the market, he found no difficulty in disposing of all he raised. It is an extra early variety, ripening with the Cory; stalks grow four to six feet high and ears are of large size, measuring eight to ten inches in length. Qt., 25 cts.; 4 qts., 80 cts.; peck, \$1.25; bu., \$5.00.

Dreer's First of All. For a number of years past we have been offering this as one of the earliest Sweet Corns. It produces ears of medium size, very full, sweet, and of a most delicious flavor. Qt., 25 cts.; 4 qts., 80 cts.; peck, \$1.20; bu., \$4.80.

White Cob Cory. Early as ordinary Cory. The stalks do not grow tall, are very prolific, usually bearing two ears each. Very sweet. Qt., 20 cts.; 4 qts., 60 cts.; peck, \$1.00; bu., \$4.00.

Crosby's Early. A favorite variety, very early, productive, rich, sugary flavor. Qt., 20 cts.; 4 qts., 60 cts.; peck, \$1.00; bu., \$4.00.

Metropolitan. Produces two to three large ears to the stalk, usually about nine inches long, and have ten to twelve rows of deep grains, even to extreme tip. Qt., 25 cts.; 4 qts., 80 cts.; peck, \$1.15; bu., \$4.60.

Early Champion. Medium early in ripening, and produces large ears which generally have about twelve rows of beautiful, white, milky grains, which are very tender and sweet. Qt., 25 cts.; 4 qts., 80 cts.; peck, \$1.15; bu., \$4.60.

Kendel's Early Giant. Ears large, eight to ten inches long, pure white grains, which are very sweet and tender. Ready for use in sixty to seventy days after planting. Qt., 25 cts.; 4 qts., 80 cts.; peck, \$1.15; bu., \$4.60.

Early Evergreen. Ripens about ten days earlier, and produces ears a trifle shorter than the "Stowell's," but the quality is equally as good. It is a splendid variety to come in between the early and late sorts. Qt., 20 cts.; 4 qts., 70 cts.; peck, \$1.05; bu., \$4.20.

Stabler's Early. Of larger size than usual for the early kinds. Twelve to fourteen rows, grains pure white and very sweet. Qt., 20 cts.; 4 qts., 70 cts.; peck, \$1.05; bu., \$4.20.

Adam's Extra Early. Very early, but not sweet. Qt., 20 cts.; 4 qts., 60 cts.; peck, \$1.00; bu., \$4.00.

Early Minnesota. A splendid early variety. Qt., 20 cts.; 4 qts., 60 cts.; peck, \$1.00; bu., \$4.00.

Peep O'Day. Extremely early, hardy, and can be planted very early in the Spring. Stalks grow three and one-half feet high and bear from two to five ears each. Grains are very sweet and tender. Qt., 25 cts.; 4 qts., 80 cts.; peck, \$1.20; bu., \$4.80.

Golden Bantam. The yellow grains are an indication of hardness and its value for early planting and early maturity. It grows rapidly and produces ears measuring about five inches in length, which are of delicious sweet flavor and very tender. Qt., 25 cts.; 4 qts., 80 cts.; peck, \$1.20; bu., \$4.80.

Golden Dawn. An extra early yellow-grained variety, very productive and remarkably sweet. Stalks 5 feet high and ears free from smut. Qt., 25 cts.; 4 qts., 80 cts.; peck, \$1.20; bu., \$4.80.

Stowell's Evergreen, Improved. (See cut.) A popular variety and one of the sweetest; ears large, deep-grained, of excellent quality. For general crop this is one of the best. Qt., 20 cts.; 4 qts., 60 cts.; peck, \$1.00; bu., \$4.00.

Zig-Zag Evergreen. A very sweet Corn, ripening earlier than Stowell's Evergreen, and in quality fully its equal. The grains are same shape as "Stowell's," but are arranged on the cob in a zig-zag manner, hence its name. Qt., 20 cts.; 4 qts., 70 cts.; peck, \$1.05; bu., \$4.20.

Country Gentleman. (See cut.) Ripens about same time as Stowell's Evergreen. Ears medium size, deep grains placed in irregular rows on cob, and deliciously sweet. Qt. 25 cts.; 4 qts., 80 cts.; peck, \$1.20; bu., \$4.80.

Little Gem. (Ne Plus Ultra, or Shoe Peg.) An old but excellent variety. Qt., 25 cts.; 4 qts., 80 cts.; peck, \$1.20; bu., \$4.80.

Potter's Excelsior, or Squantum. A splendid second early; bears large ears, 12-rowed, deep grains; usually make 2 ears to stalk. Qt., 20 cts.; 4 qts., 70 cts.; peck, \$1.05; bu., \$4.20.

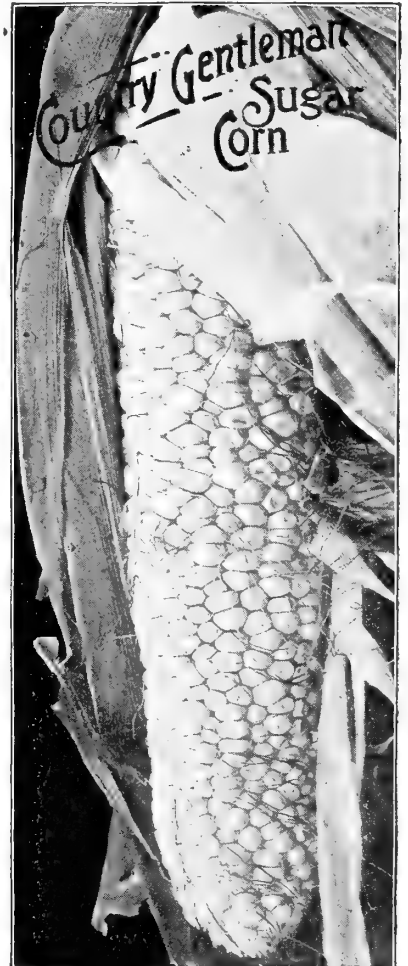
Triumph. Ears large, productive. Qt., 20 cts.; 4 qts., 70 cts.; peck, \$1.05; bu., \$4.20.

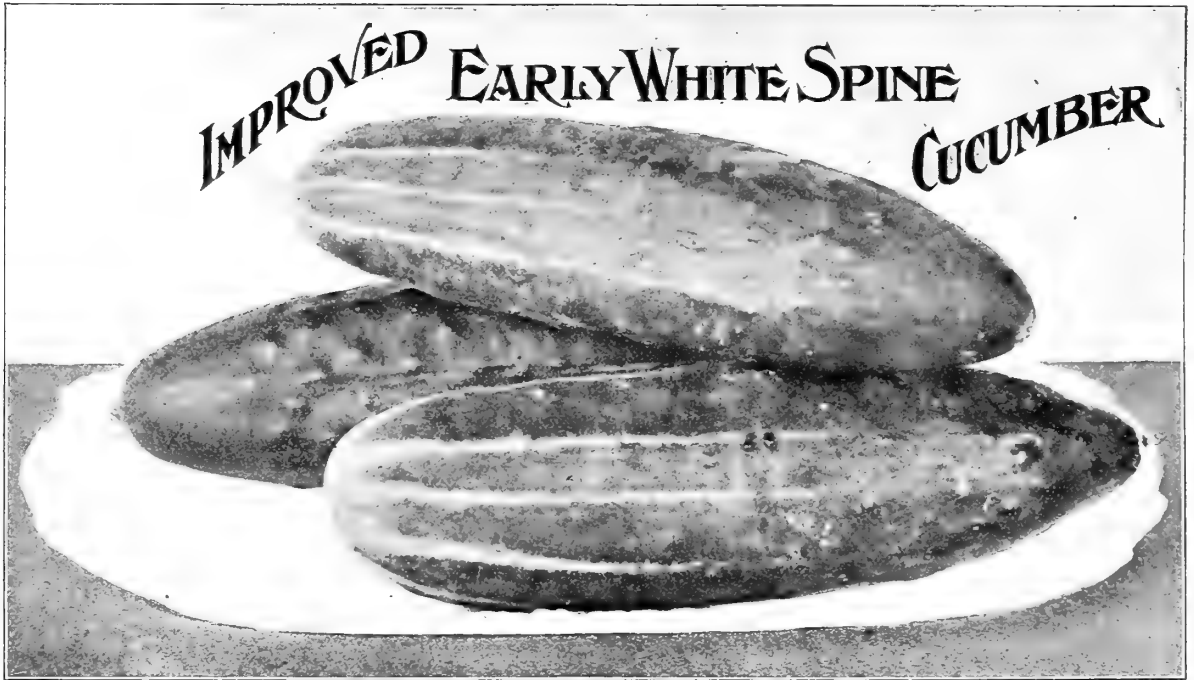
Egyptian. A fine large variety. Qt., 20 cts.; 4 qts., 70 cts.; peck, \$1.05; bu., \$4.20.

Mammoth Sugar. The largest late sort. Qt., 20 cts.; 4 qts., 70 cts.; peck, \$1.05; bu., \$4.20.

Black Mexican. Very sweet. Qt., 20 cts.; 4 qts., 70 cts.; peck, \$1.15; bu., \$4.60.

FIELD CORN. (See page 28.)





CUCUMBER—*Ger. Gerke.*

The Davis Perfect Cucumber. This variety is as early as the white spine and grows to a large size. It is long and slim and of a rich, dark, glossy green color, which it holds until nearly ripe. A good variety for forcing, or growing outside. Oz., 15 cts.; $\frac{1}{4}$ lb., 35 cts.; lb., \$1.25.

Improved Arlington White Spine. A magnificent strain of the White Spine which has been improved by careful selection, for forcing in hot houses and frames; very tender and crisp. It is also a very fine cucumber for growing in the field and produces large fruits in great abundance. Oz., 15 cts.; $\frac{1}{4}$ lb., 35 cts.; lb., \$1.25.

Improved Early White Spine. (*Bennett's.*) (*See cut.*) A favorite variety with market gardeners, and produces fine large and attractive looking cucumbers. The vine is a strong grower and very productive. The cucumbers are long and straight, dark green in color, very tender and of excellent flavor. Oz., 10 cts.; $\frac{1}{4}$ lb., 30 cts.; lb., \$1.00.

Klondike. A splendid variety for slicing. Grows about seven inches long and two inches thick; color dark green, matures early and bears for a long time. Oz., 15 cts.; $\frac{1}{4}$ lb., 35 cts.; lb., \$1.25.

Early Russian. One of the earliest varieties. The fruit is small, only three to four inches long, and being produced in pairs makes it a very productive sort. The quality is very good. Oz., 10 cts.; $\frac{1}{4}$ lb., 25 cts.; lb., 90 cts.

Early Cluster. A very early sort, well adapted for forcing or open ground. Produces the fruits in clusters, good quality and flavor. Oz., 10 cts.; $\frac{1}{4}$ lb., 25 cts.; lb., 90 cts.

Early Frame, or Short Green. A productive variety, plants strong and vigorous, fruits straight but smaller at ends than in middle; bright green color, crisp and tender. Oz., 10 cts.; $\frac{1}{4}$ lb., 25 cts.; lb., 90 cts.

Evergreen. Early and prolific, fruits medium size and dark green. Oz., 10 cts.; $\frac{1}{4}$ lb., 30 cts.; lb., \$1.00.

Early Cyclone. Makes a rapid growth and is very productive. Fruits are short and produced in clusters. Color, rich, dark green. Oz., 10 cts.; $\frac{1}{4}$ lb., 30 cts.; lb., \$1.00.

Green Prolific. This is a very good pickling variety; dark green. Oz., 10 cts.; $\frac{1}{4}$ lb., 25 cts.; lb., 90 cts.

Emerald. A most valuable Cucumber. Has all the good qualities of White Spine, with the additional advantage of having a rich dark green color during the entire period of its growth. Oz., 10 cts.; $\frac{1}{4}$ lb., 30 cts.; lb., \$1.00.

The "Cumberland." This handsome Cucumber is a cross of Parisian Pickle and Peerless White Spine. The vines make a vigorous growth and are very productive. The fruits are of handsome appearance, being of a rich pea-green color, very straight, firm, solid and crisp. A good sort for either pickling or slicing. Oz., 10 cts.; $\frac{1}{4}$ lb., 30 cts.; lb., \$1.00.

Everbearing. A valuable variety, producing pickles and cucumbers until frost kills the vines. Size is small and well adapted for pickling. Oz., 10 cts.; $\frac{1}{4}$ lb., 30 cts.; lb., \$1.00.

Cool and Crisp. A fine strain of White Spine. It is early and continues in bearing the entire season. Oz., 10 cts.; $\frac{1}{4}$ lb., 25 cts.; lb., 90 cts.

Chicago Pickle. Medium size, pointed both ends, spines very prominent, and color deep green; a prolific bearer and an excellent variety for making pickles. Oz., 10 cts.; $\frac{1}{4}$ lb., 25 cts.; lb., 90 cts.

Nichol's Medium Green. Early, good for pickles or slicing. Oz., 10 cts.; $\frac{1}{4}$ lb., 25 cts.; lb., 90 cts.

Long Green. (*Jersey Pickle.*) Fruits are long, firm and crisp. The small fruits are used for pickles, and larger ones make excellent sweet pickles. Oz., 10 cts.; $\frac{1}{4}$ lb., 30 cts.; lb., \$1.00.

Small Gherkin, or Burr. Known as the West India or Jerusalem Pickle. Oz., 10 cts.; $\frac{1}{4}$ lb., 30 cts.

English Forcing Cucumbers.

Covent Garden Favorite, Rochford's Market, Lockies' Perfection. In packets of 10 seeds each, 20 cts.; per 100 seeds, \$1.75.

Duke of Edinburgh, Sion House Improved, Telegraph (*Rollison's.*) In packets of 10 seeds each, 15 cts.; per 100 seeds, \$1.40.

COLLARD.

Creole, or Southern. Oz., 10 cts.; $\frac{1}{4}$ lb., 20 cts.; lb., 75 cts.

CORN SALAD.

Large Seeded. Oz., 5 cts.; $\frac{1}{4}$ lb., 15 cts.; lb., 40 cts. (5 lbs. or more at 35 cts. per lb.)

DANDELION. *Ger. Bardleblum.*

Broad-leaved. Oz., 40 cts.; $\frac{1}{4}$ lb., \$1.25; lb., 4.50

Improved Thick-leaved. An improved thick-leaved variety. Oz., 40 cts.; $\frac{1}{4}$ lb., \$1.25; lb., \$4.50.

EGG PLANT—*Ger. Eierpflanza.*

Early Black Beauty. (*See cut.*) This beautiful Egg Plant is a great improvement over the well-known and largely-grown New York Improved Large Purple. The plants are remarkably healthy in their growth, and produce an abundance of large fruits fully ten days earlier than the New York Improved; in fact we believe that during a season favorable to the growth of vegetables the Early Black Beauty would mature at least two weeks earlier than the New York Improved. In addition to earliness, the rich purplish black color of skin adds greatly to the market value of this new variety, enhancing its beauty and attracting the immediate attention of buyers. The quality is fully as good as New York Improved. $\frac{1}{2}$ oz., 20 cts.; oz., 35 cts.; $\frac{1}{4}$ lb., \$1.25; lb., \$5.00.



New York Improved Large Purple. (*Dreer's selected.*) Our selected strain of this variety is of superior quality. The fruits are large and free from thorns; color a beautiful dark purple. It is productive, and the fruits are attractive. Oz., 30 cts.; $\frac{1}{4}$ lb., \$1.00; lb., \$3.75.

Black Pekin. Fruit purplish-black, round to globular, large, solid, smooth and glossy. Oz., 25 cts.; $\frac{1}{4}$ lb., 85 cts.; lb., \$3.00.

Early Long Purple. The earliest and hardiest; very productive; fruit 6 to 10 inches long. Oz., 20 cts.; $\frac{1}{4}$ lb., 75 cts.; lb., \$2.50.

Egg Plant Plants. (*See Vegetable Plants, page 25.*)

ENDIVE—*Ger. Endive.*

Dreer's Giant Fringed. *Oyster Endive.* (*See cut.*) The largest and most attractive variety grown; the pure white heart shows in beautiful contrast to the bright green of the broad stems. Oz., 20 cts.; $\frac{1}{4}$ lb., 60 cts.; lb., \$1.75.

Green Curled Winter. Blanches well when tied up. Oz., 10 cts.; $\frac{1}{4}$ lb., 30 cts.; lb., \$1.00.

White Curled. (*Self-blanching.*) Large size, leaves pale green. Oz., 10 cts.; $\frac{1}{4}$ lb., 35 cts.; lb., \$1.25.

Broad-leaved Batavian. (*Escarolle.*) Broad, light green leaves. Oz., 10 cts.; $\frac{1}{4}$ lb., 35 cts.; lb., \$1.25.



GARLIC. (*See Onion Sets, page 16.*)

HORSERADISH. (*See Vegetable Plants, page 25.*)

KALE or Borecole. *Ger. Krauskohl.*

Dreer's Imperial Long Standing. A beautifully curled and crimped sort, of strong, vigorous habit, perfectly hardy, attractive appearance and bright green color. Oz., 10 cts.; $\frac{1}{4}$ lb., 20 cts.; lb., 60 cts.; 5 lbs., \$2.75.

Dwarf Green Curled German. Leaves yellowish green, very compact and beautifully curled. Oz., 10 cts.; $\frac{1}{4}$ lb., 20 cts.; lb., 50 cts.

Dwarf Curled Scotch. Bright green, leaves curled. Oz., 10 cts.; $\frac{1}{4}$ lb., 20 cts.; lb., 50 cts.

Sea Kale. Grown for its blanched shoots. Oz., 20 cts.; $\frac{1}{4}$ lb., 60 cts.; lb., \$2.25.

KOHL RABI. *Ger. Kohlrabi.*

Earliest Frame Green Vienna. A splendid variety for forcing. Oz., 25 cts.; $\frac{1}{4}$ lb., 80 cts.; lb., \$3.00.

Earliest Erfurt. A white variety, with a smooth, short top; good for out-door culture. Oz., 25 cts.; $\frac{1}{4}$ lb., 75 cts.; lb., \$2.50.

Early White, or Green Vienna. Flesh white and tender; good for forcing. Oz., 20 cts.; $\frac{1}{4}$ lb., 60 cts.; lb., \$1.75.

Early Purple Vienna. Bluish-purple; matures early. Oz., 20 cts.; $\frac{1}{4}$ lb., 60 cts.; lb., \$1.75.

LEEK. *Ger. Porro.*

Dreer's Prizetaker. Large size and mild flavor. Oz., 20 cts.; $\frac{1}{4}$ lb., 50 cts.; lb., \$1.75.

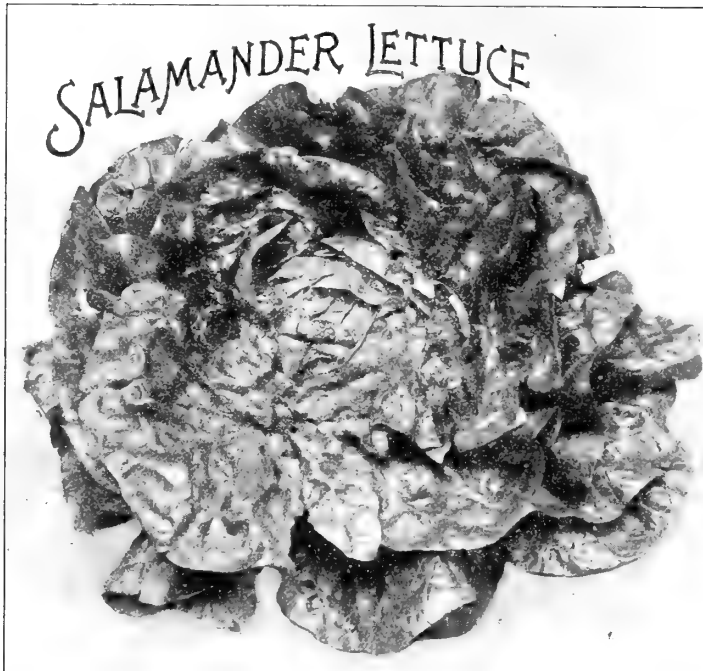
Large American Flag. A popular variety. Oz., 10 cts.; $\frac{1}{4}$ lb., 30 cts.; lb., \$1.00.

Giant Carentan. Large size and very tender. Oz., 15 cts.; $\frac{1}{4}$ lb., 35 cts.; lb., \$1.25.

Musselburg. Grows very large. Oz., 15 cts.; $\frac{1}{4}$ lb., 35 cts.; lb., \$1.25.

London Flag. Makes quick growth; mild flavor. Oz., 10 cts.; $\frac{1}{4}$ lb., 30 cts.; lb., \$1.00.

LETTUCE—Ger. Salat.



Salamander. (*See cut.*) An excellent spring, summer and fall variety, forming good sized heads. The leaves are crimped and thick and it is a good variety for out-door culture. Oz., 15 cts.; $\frac{1}{4}$ lb., 35 cts.; lb., \$1.25.

Dreer's Improved Hanson. This superior Lettuce, which we introduced thirty-six years ago, is the best summer heat-resisting sort. Heads grow to reasonable size, are sweet, tender and crisp. For out-door culture it is unequalled. Oz., 15 cts.; $\frac{1}{4}$ lb., 35 cts.; lb., \$1.25.

Improved Deacon. One of best summer cabbage sorts; very crisp, large and light in color. Largely used for growing in cold frames during winter and spring. Oz., 15 cts.; $\frac{1}{4}$ lb., 35 cts.; lb., \$1.25.

Silver Ball. An excellent variety for spring and summer. Heads silvery white, very firm and compact. Oz., 10 cts.; $\frac{1}{4}$ lb., 30 cts.; lb., \$1.00.

Sensation. Remarkable for its character of forming close, hard heads. Color yellowish green, quality very fine, being crisp and tender. Oz., 15 cts.; $\frac{1}{4}$ lb., 35 cts.; lb., \$1.25.

Wonderful. The large white heads resemble cabbage and frequently weigh 2 and 3 lbs. each. The quality is superb, being crisp, rich and tender. Oz., 15 cts.; $\frac{1}{4}$ lb., 45 cts.; lb., \$1.50.

Iceberg. A curly lettuce, large, solid heads. Oz., 15 cts.; $\frac{1}{4}$ lb., 35 cts.; lb., \$1.25.

Dreer's "All Heart." This distinct Cabbage Lettuce is excellent for spring and summer use, as it stands intense heat. It is of a yellowish-green color, and forms a solid heart, even before it is half grown. It is of superior flavor. It is also sometimes used for forcing under glass. Oz., 20 cts.; $\frac{1}{4}$ lb., 65 cts.; lb., \$2.25.

May King. Can be planted out of doors or under glass and in either case will quickly produce fine heads. The outer leaves are yellowish-green tinged with brown while the inside is rich golden yellow. Oz., 15 cts.; $\frac{1}{4}$ lb., 40 cts.; lb., \$1.50.

Big Boston. (*See cut.*) Resembles Boston Market, but much larger size. Desirable for forcing and spring and fall out-door planting. Oz., 15 cts.; $\frac{1}{4}$ lb., 35 cts.; lb., \$1.25.

Boston Market. (*White Seed.*) Hardy and crisp; one of the best for forcing. Oz., 10 cts.; $\frac{1}{4}$ lb., 30 cts.; lb., \$1.00.

Hittinger's Belmont Forcing. An improvement on the Boston Market. Oz., 15 cts.; $\frac{1}{4}$ lb., 35 cts.; lb., \$1.25.

Black-Seeded Tennisball. Forms a close hard head. Oz., 10 cts.; $\frac{1}{4}$ lb., 30 cts.; lb., \$1.00.

Grand Rapids Forcing. Matures quickly, large and handsome. Oz., 15 cts.; $\frac{1}{4}$ lb., 35 cts.; lb., \$1.25.

Unrivaled. Similar to Big Boston and in some respects it is better for forcing. The variety is not as yet absolutely true, and frequently produces heads a little off the type. Oz., 15 cts.; $\frac{1}{4}$ lb., 35 cts.; lb., \$1.25.

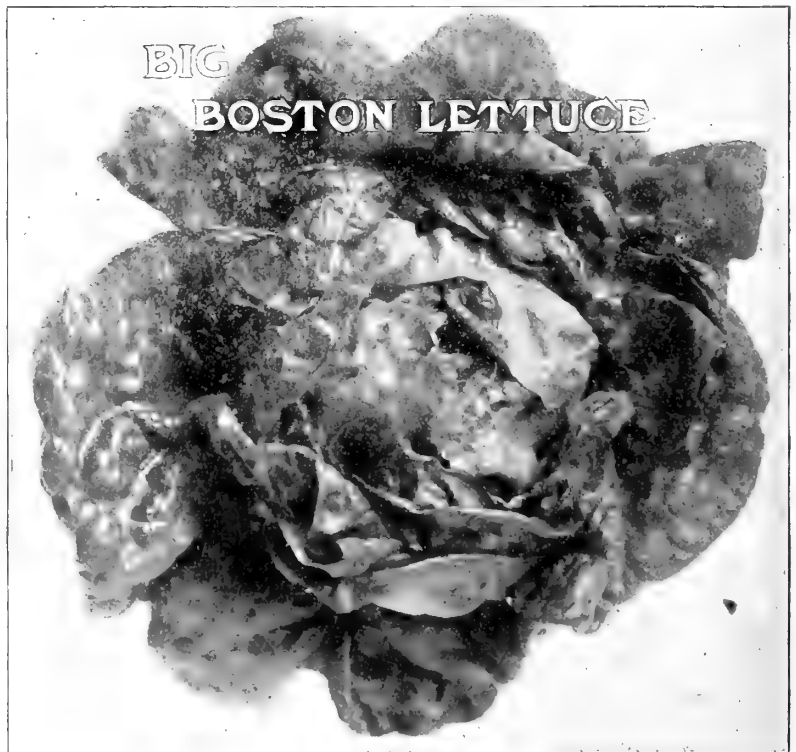
Golden Queen. Very early, small yellow heads. Oz., 15 cts.; $\frac{1}{4}$ lb., 35 cts.; lb., \$1.25.

Early Dutch Butter, Spotted. Produces fine large heads of excellent quality, and one of the best forcing and market sorts; also stands the heat well in summer. Oz., 15 cts.; $\frac{1}{4}$ lb., 40 cts.; lb., \$1.50.

Early Curled Simpson. (*Silesia.*) Forms a close, compact mass of leaves. Oz., 10 cts.; $\frac{1}{4}$ lb., 30 cts.; lb., \$1.00.

	Oz.	$\frac{1}{4}$ lb.	Lb.
Mammoth Salamander.	15	40	\$1 50
California Cream Butter.	10	30	1 00
Yellow Seeded Butter.	10	30	1 00
Black Seeded Simpson.	10	30	1 00
Early White Cabbage.	10	30	1 00
Kingsholm Cos.	10	35	1 25
Trianon, Self-Folding Cos.	10	35	1 25

LETTUCE PLANTS (*See page 25*).



MUSKMELONS—Ger. Cantaloupe.**Rocky Ford Improved.** (*See cut.*)

This delicious melon has been improved at Rocky Ford, Colorado, a section noted for fine muskmelons, and from this point they have been shipped to every city in the United States. The melons average about 1½ lbs. each in weight, and are of most delicious flavor; flesh is smooth grained and light green color. Oz., 10 cts.; ¼ lb., 30 cts.; lb., \$1.00.

Netted Gem. One of the earliest and most prolific small melons. Globular shape, uniform in size; flesh light green, of very fine flavor. Oz., 10 cts.; ¼ lb. 30 cts.; lb., \$1.00.

Jenny Lind. The earliest variety; netted, of small, round size, green flesh excellent flavor. This is a favorite early variety. Oz., 10 cts.; ¼ lb., 30 cts.; lb., \$1.00.

Golden Jenny. A great improvement over the Jenny Lind. Small, but early. Oz., 10 cts.; ¼ lb., 30 cts.; lb., \$1.00.

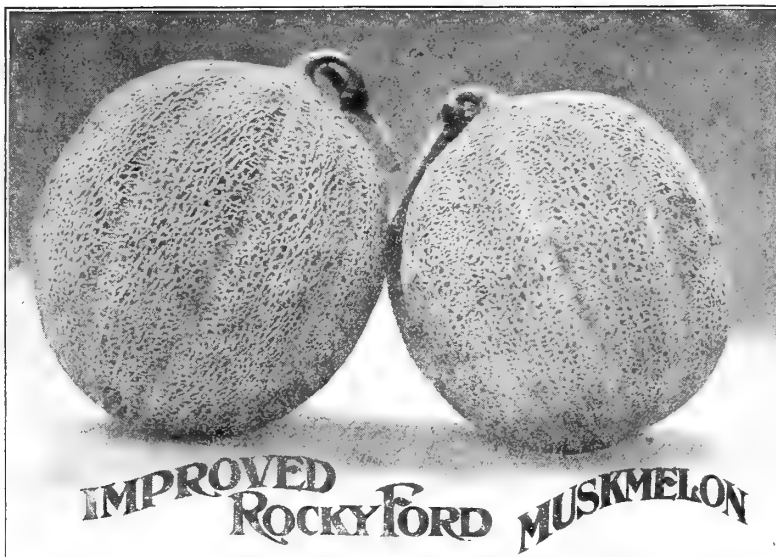
Norfolk Button, or Shipper's Delight. An early green-fleshed variety, having button on blossom end. Oz., 10 cts.; ¼ lb., 30 cts.; lb., \$1.00.

Extra Early Hackensack. A careful selection from the Hackensack, and with fruit much like the parent in shape and color of the flesh, but ready for market 10 days earlier; melons are of good size, usually weighing from 5 to 6 pounds each. Oz., 15 cts.; ¼ lb., 35 cts.; lb., \$1.25.

Hackensack. The melons grow to a large size and are of attractive appearance; very productive, and excellent flavor. The flesh is green, very sweet and sugary. Oz., 15 cts.; ¼ lb., 35 cts.; lb., \$1.25.

Green Citron. Medium sized melon, deeply netted, nearly round, and of delicious flavor. A good variety for market. Oz., 10 cts.; ¼ lb., 30 cts.; lb., \$1.00.

Bay View. This melon is capable of growing to very large size. It is of oblong shape, green flesh and good flavor. Oz., 10 cts.; ¼ lb., 30 cts.; lb., \$1.00.



Jersey Belle. A green-fleshed melon of Jenny Lind type, but double the size. The melons are flat with heavy ribs and coarse netting. Oz., 10 cts.; ¼ lb., 30 cts.; lb., \$1.00.

Montreal Market. Largest of the nutmeg varieties; uniform in shape; netted; flesh green; quality good. It can be grown on almost any soil with ordinary fertilizing and cultivating. Oz., 15 cts.; ¼ lb., 35 cts.; lb., \$1.25.

Hoodoo. This new muskmelon is not large, but has a delicious flavor. The skin is thickly netted and flesh a rich deep orange color. It is about the same size as Rocky Ford, and very attractive. Oz., 25 cts.; ¼ lb., 85 cts.; lb., \$3.00.

Burrell's Gem. (*See cut.*) Similar in size and shape to Rocky Ford, but beautiful dark salmon or orange flesh. The melons grow to a desirable size, are slightly ribbed and closely netted. Skin is thin, flesh deep and of delicious flavor. Oz., 15 cts.; ¼ lb., 40 cts.; lb., \$1.50.

Emerald Gem. A small very early melon, form globular; flesh salmon-colored. The flavor is exceptionally fine, flesh solid and thick, skin dark green. Oz., 20 cts.; ¼ lb., 50 cts.; lb., \$1.75.

Defender. A salmon-fleshed variety, medium size and of excellent flavor. The fruits are oval in shape, slightly ribbed and are covered with a slight netting. The flesh is firm, fine grained, rich, deep yellow. Oz., 15 cts.; ¼ lb., 35 cts.; lb., \$1.25.

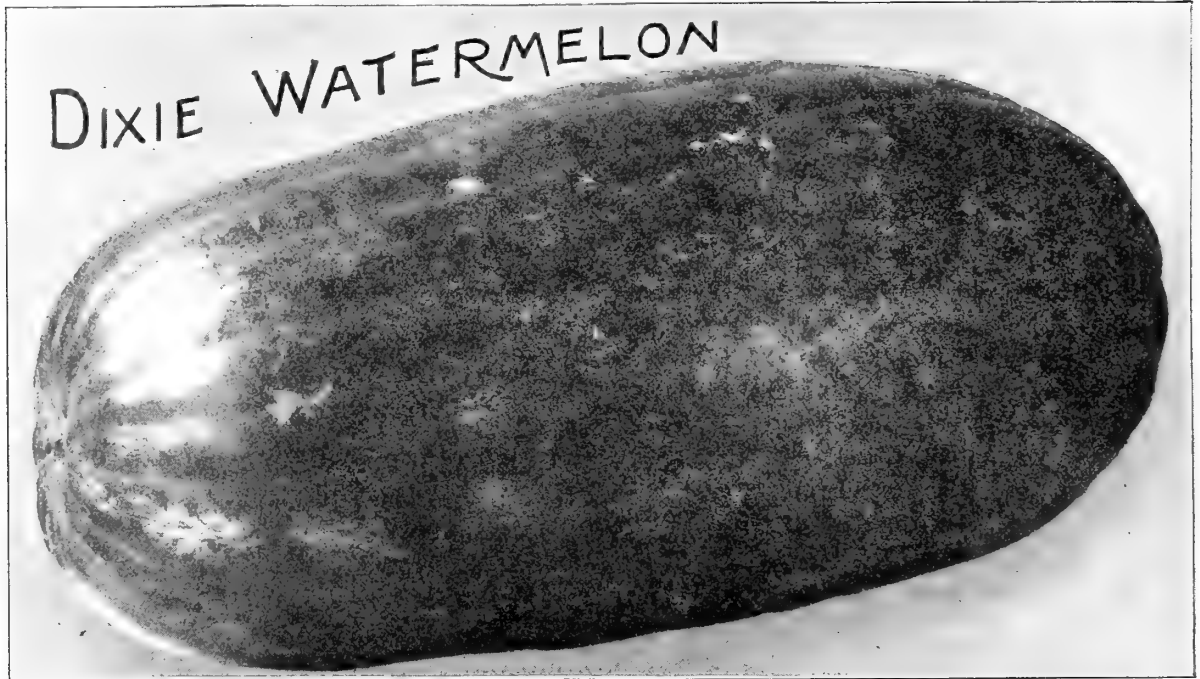
Admiral Togo. An excellent salmon-fleshed muskmelon which grows to a nice size for serving in halves. The flesh is thick juicy and of fine flavor. Oz., 15 cts.; ¼ lb., 35 cts.; lb., \$1.25.

Miller's Cream, or Osage. Large size and delicious flavor. The fruits are round, with light green, netted skin, and sweet, thick salmon-colored flesh. Oz., 15 cts.; ¼ lb., 35 cts.; lb., \$1.25.

Paul Rose. Flesh thick, and firm; deep salmon color, deliciously sweet. Oz., 15 cts.; ¼ lb., 35 cts.; lb., \$1.25.

Kinsman Queen. The melons are heavily ribbed, skin pale green, flesh orange color, two inches thick and good flavor. Oz., 15 cts.; ¼ lb., 35 cts.; lb., \$1.25.





WATERMELONS—Ger. Wassermelone.

Harris' Earliest. An extra early melon, oval shape and of very fine quality. Skin mottled and striped, flesh bright red; very tender and sweet. It grows to a good size for so early a melon. Oz., 10 cts.; ¼ lb., 30 cts.; lb., \$1.00.

Cole's Early. A splendid extra early variety, suitable for home market, but on account of its thin rind is not a good shipping melon. They grow to medium size, skin is green with light stripes; flesh rich dark red, luscious and sweet. Oz., 10 cts.; ¼ lb., 25 cts.; lb., 80 cts.

Blue Gem, or Iceberg. Similar in shape to the well-known Kolb's Gem, but with darker skin. Melons grow to a large size and the quality is very satisfactory. Flesh a beautiful shade of pink, darker than Kolb's Gem, and deliciously sweet. Oz., 10 cts.; ¼ lb., 25 cts.; lb., 80 cts.

Seminole. An extra early watermelon, of large size and delicious flavor. Flesh is vivid crimson color; crisp and sugary. Oz., 10 cts.; ¼ lb., 20 cts.; lb. 70 cts.

Florida Favorite. Of medium size, striped alternately light and dark green, flesh deep red, crisp and deliciously sweet. Earlier than Kolb Gem by two weeks. Oz., 10 cts.; ¼ lb., 20 cts.; lb. 70 cts.

Kolb's Gem. Of a delicious, sugary flavor, bright red flesh, firm and solid. One of the most productive and best keeping melons. Oz., 10 cts.; ¼ lb., 20 cts.; lb., 70 cts.

Snowbound. Oblong in shape, good size and delicious quality. The flesh is bright pink in color and of remarkably sweet flavor. Oz., 10 cts.; ¼ lb., 30 cts.; lb., \$1.00.

Jordan's Gray Monarch, or Long Light Icing. A variety of Icing Watermelon, producing large, oblong Melons. Color of skin very light green. Quality good. Oz., 10 cts.; ¼ lb., 20 cts.; lb., 70 cts.

Alabama Sweet. A large and attractive melon, oblong in shape, early in maturing and continues to bear and ripen the Melons during a long season. Color dark green, flesh remarkably firm and of luscious flavor. Oz., 10 cts.; ¼ lb., 25 cts.; lb., 80 cts.

Halbert Honey. A large and attractive Melon, oblong shape; rind dark green, flesh crimson; very sweet and tender. Oz., 10 cts.; ¼ lb., 25 cts.; lb., 80 cts.

Sweet-Heart. Vine vigorous and productive, flesh bright red, solid and very tender, melting and sweet. Oz., 10 cts.; ¼ lb., 25 cts.; lb., 80 cts.

Watson. A large oblong melon with dark green skin, thin, but tough rind and bright red flesh, which is sweet and delicious. It will make a good shipping variety. Oz., 15 cts.; ¼ lb., 50 cts.; lb., \$1.50.

Dixie. (See cut.) A cross between the Kolb Gem and old-fashioned Mountain Sweet, surpassing the former in earliness, productiveness and shipping qualities, and fully equalling the latter in quality. Oz., 10 cts.; ¼ lb., 25 cts.; lb., 80 cts.

Monte Cristo, or Kleckley Sweets. Where sweetness combined with large size is desired this variety will surely please, as it has that crisp, sugary flavor so much desired. Oval shape, skin dark green and somewhat mottled. Oz., 10 cts.; ¼ lb., 25 cts.; lb., 80 cts.

Sugar Stick. Oblong in shape and fair size. The skin is mottled green and white, flesh bright red, heart large and very sweet. Oz., 10 cts.; ¼ lb., 25 cts.; lb., 80 cts.

Wonderful, or McIver Sugar. Very sweet, solid flesh, large, oblong shape, and fine quality. Oz., 10 cts.; ¼ lb., 25 cts.; lb., 80 cts.

	Oz.	¼ lb.	Lb.
Striped Gypsy, or Ga. Rattlesnake	10	20	70
Dark Icing	10	20	70
Ice Cream	10	20	70
Nabob	10	20	70
Black Spanish	10	20	70
Mountain Sweet	10	20	70
Cuban Queen	10	20	70
Iron-clad	10	20	70
Colorado Preserving	10	30	85

MUSTARD.

White London	5	15	30
Chinese	10	20	50

MARTYNIA.

Martynia Proboscidea	25	60	2 00
----------------------	----	----	------

ENGLISH MILLTRACK MUSH-ROOM SPAWN.

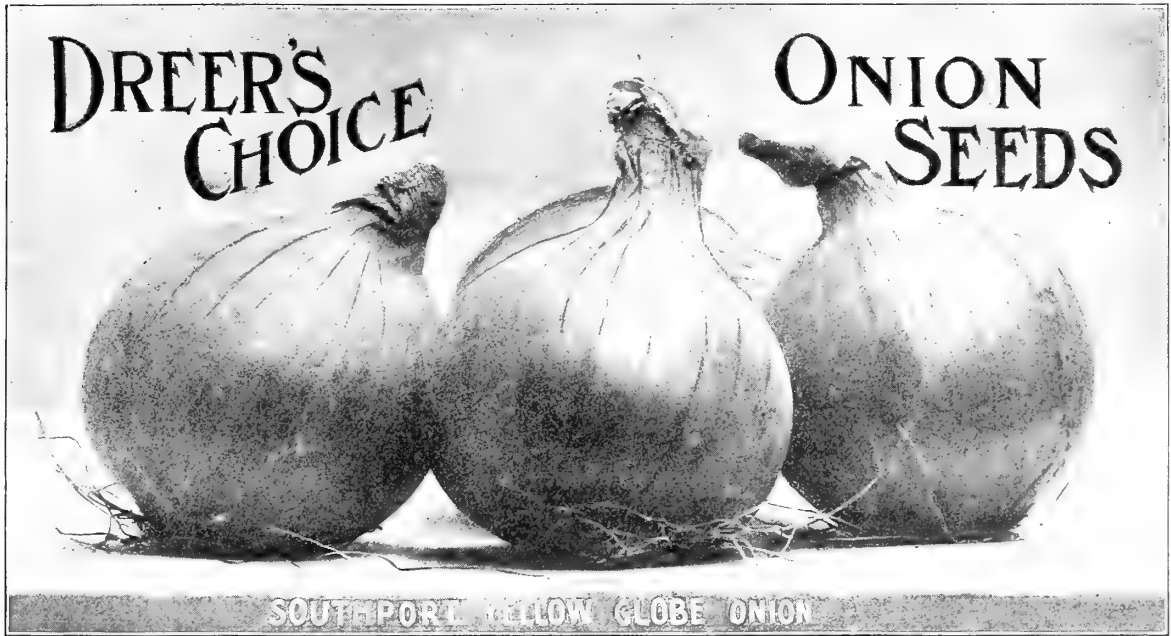
Per brick, 15 cts. (by mail, 25 cts.); 1 dozen bricks, \$1 40; 25 lbs., \$2.00; 100 lbs., \$6.00; 1000 lbs., \$55.00. (250 lbs. at the 1000 lb. rate.)

PURE CULTURE SPAWN.

Per brick, 20 cts. (by mail, 35 cts.); 5 bricks, 90 cts.; 10 bricks, \$1.50; 25 bricks, \$3.50; 50 bricks, \$6.50.

French Spawn.

Loose, in boxes, per 3-lb. box, \$1.15 by express.



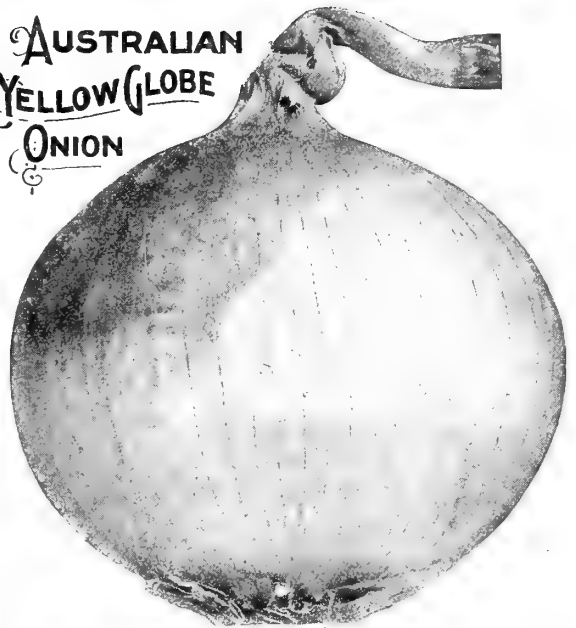
Yellow Globe Danvers. A standard sort and one of the most desirable; an excellent-keeper and very productive. The onions are globe shape and grow to a good, salable size. Onion growers throughout the country prefer this type of onion to all others. Oz., 15 cts.; $\frac{1}{4}$ lb., 45 cts.; lb., \$1.50; 5 lbs., or more, at \$1.40 per lb.

Southport Yellow Globe. (*See cut.*) A large globular shaped yellow variety, very productive, of mild flavor. The outer skin is a beautiful pale yellow; the bulbs are of a beautiful globe shape, and good keepers. Oz., 15 cts.; $\frac{1}{4}$ lb., 45 cts.; lb., \$1.60; 5 lbs. or more at \$1.50 per lb.

Philadelphia Yellow Dutch or Strasburg. A leading market variety; a good keeper and well flavored; bright straw colored skin and somewhat flattened shape. This variety is largely grown for sets on account of its excellent keeping qualities. Oz., 15 cts.; $\frac{1}{4}$ lb., 45 cts.; lb., \$1.50; 5 lbs. or more, at \$1.40 per lb.

Rhode Island Yellow Cracker. An extra early variety, popular in the Rhode Island markets. A good keeper and an excellent sort to raise where the seasons are short. Oz., 15 cts.; $\frac{1}{4}$ lb., 40 cts.; lb., \$1.50.

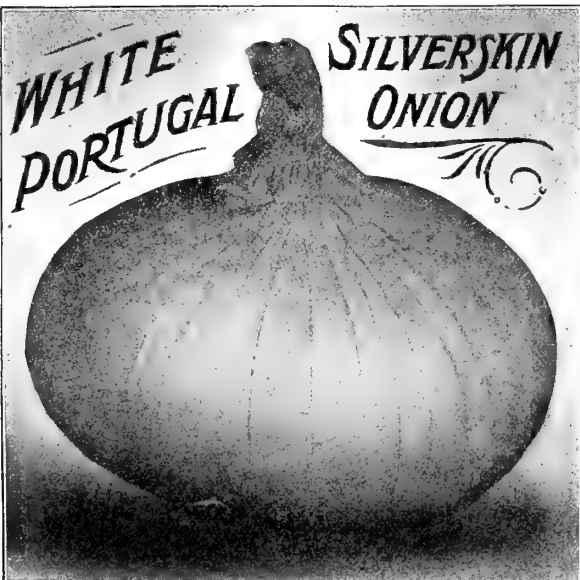
**AUSTRALIAN
YELLOW GLOBE
ONION**



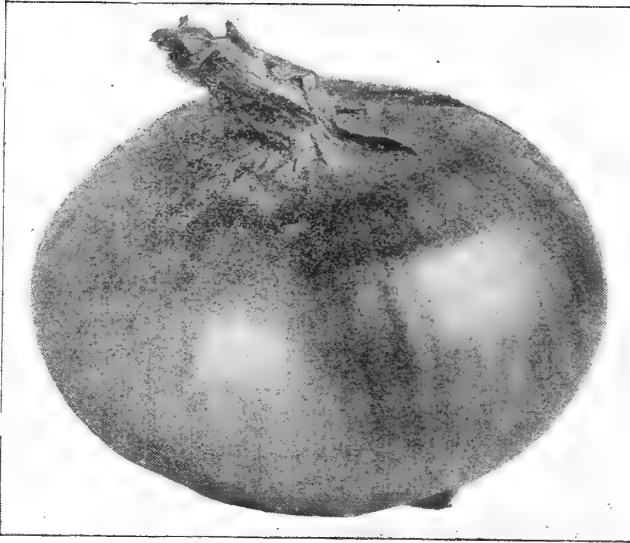
Australian Yellow Globe. (*See cut.*) This extra early variety of onion originally came from Australia. It is a beautiful globe-shape and quite attractive and a splendid keeper. The onions grow to a large size and are very solid, skin is deep yellow, flesh white and of very mild flavor, Oz., 15 cts.; $\frac{1}{4}$ lb., 50 cts.; lb., \$1.75.

Prizetaker. This is the large pale yellow onion that is offered for sale in the fruit stores and markets in the fall. It grows to a very large size; flesh white, of mild and delicate flavor. The large onions are raised first year from seed, and produce enormous crops. Oz., 15 cts.; $\frac{1}{4}$ lb., 50 cts.; lb., \$1.75.

White Portugal, or Silver Skin. (*See cut.*) One of the leading white sorts, beautiful shape and mild flavor. The bulbs are flat in shape and mature early. It is a splendid variety for the market gardener, and is largely used for growing sets on account of its fine shape when small, and also for its good keeping qualities. It is also extensively used as a pickling onion. Oz., 20 cts.; $\frac{1}{4}$ lb., 60 cts.; lb., \$2.25; 10 lbs., or more, at \$2.15 per lb.



Choice Onion Seed—Continued.



LARGE RED WETHERSFIELD ONION

Large Red Wethersfield. (*See cut.*) A leading variety in some localities, and in fact in all sections where red onions are grown. It grows to full size the first season from seed, is thick through and large, deep red color, keeps well. This is one of the leading market onions and produces good crops of large onions which are of mild flavor. Oz., 15 cts.; ¼ lb., 50 cts.; lb., \$1.75.

Extra Early Red. Earlier than the Wethersfield and somewhat smaller, close grained and a good keeper. It is also used for growing onion sets. Oz., 15 cts.; ¼ lb., 50 cts.; lb., \$1.75.

Southport Red Globe. The deep red color of skin and symmetrical form of this onion makes it attractive. It grows to good marketable size and is true globe shape. Oz., 15 cts.; ¼ lb., 50 cts.; lb., \$2.00.

Australian Brown Onion. The bulbs grow to good marketable size and are very hard and solid, and keep well. They ripen earlier than either the Yellow Danvers or Red Wethersfield, are beautiful brown color and mild flavor. A good thing in their favor is the fact that the crop runs uniform in size and shape; nearly every plant produces a fine onion. Oz., 15 cts.; ¼ lb., 40 cts.; lb., \$1.50.

CHOICE ONION SETS.

Prices subject to market changes.

Postage on Onion Sets 10 cents Per Quart Additional.

	Qt.	4 Qts.	
Yellow Onion Sets	15	55	} For prices on larger quantities please write.
White Onion Sets	20	70	
Red Onion Sets	20	70	
White Potato (Multiplier)	20	70	
Yellow Potato Onions	15	55	
Egyptian, or Perennial Tree	15	55	
Shallots	25	75	
Garlic. Lb., 20 cts.; 5 lbs., 90 cts.			

OKRA, or Gombo—Ger. Safran.

Perkin's Long-Pod Okra. (*See cut.*) An exceedingly handsome variety of Okra. The pods are very tender, long, slim and of a beautiful deep green color. Oz., 10 cts.; ¼ lb., 15 cts.; lb., 45 cts.

Dreer's Improved Long Green Okra. The pods are produced abundantly and grow very long, and remain extremely tender for a long time. Oz., 10 cts.; ¼ lb., 15 cts.; lb., 45 cts.

Dreer's Little Gem. The best of the dwarf sorts. Oz., 10 cts.; ¼ lb., 20 cts.; lb., 60 cts.

White Creole. Oz., 10 cts.; ¼ lb., 20 cts.; lb., 60 cts.

Southport White Globe. Pure white color, mild flavor, and equally good for keeping as the Yellow Globe. It is an enormous yielder, and always sells at high prices. It is best to dry these onions in a shady place and give plenty of air. Oz., 20 cts.; ¼ lb., 70 cts.; lb., \$2.50; 10 lbs. or more at \$2.40 per lb.

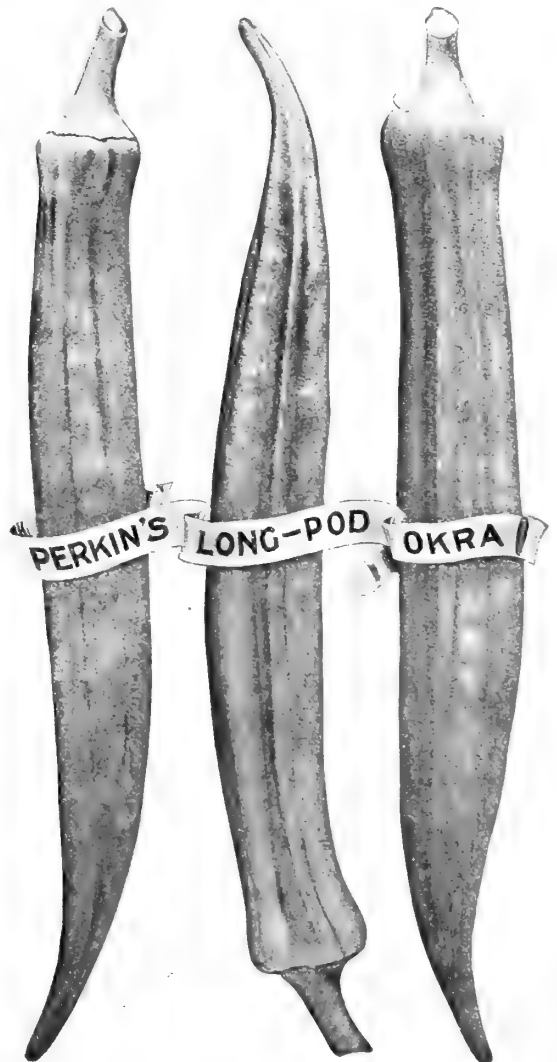
White Pearl. One of the earliest varieties, pure white, mild flavor and attractive. Not a good keeper, but its quick growth makes it a good sort to grow for early market. Oz., 15 cts.; ¼ lb., 55 cts.; lb., \$2.00.

White Queen. This is the earliest onion, very mild, pure white, and splendid for pickling. Oz., 15 cts.; ¼ lb., 55 cts.; lb., \$2.00.

Mammoth Silver King. Produces large onions first year from seed. The skin is pure white and flesh remarkably tender and pleasing to the taste. Oz., 15 cts.; ¼ lb., 55 cts.; lb., \$2.00.

White Barletta. A small extra early white onion; similar to White Queen, and makes bulbs about 1 ¼ to 1 ½ inches in diameter; in shape flattened on top. Oz., 15 cts.; ¼ lb., 55 cts.; lb., \$2.00.

White Winter Bunching. Sow seed latter part of spring, keep cultivated during summer, and in the fall cover lightly with litter. As soon as snow is off, rake off litter and dead tops. They do not make much bottom, and are distinctively a bunch onion. Oz., 25 cts.; ¼ lb., 80 cts.; lb., \$3.00.



PARSNIP—*Ger. Pastinake.*

Large Sugar, or Hollow Crown. (*See cut.*) The roots are long, smooth, white, tender, sugary, and fine flavor. Oz., 5 cts.; $\frac{1}{4}$ lb., 15 cts.; lb., 45 cts.; 5 lbs., \$2.00.

Student, or Guernsey. Oz., 5 cts.; $\frac{1}{4}$ lb., 15 cts.; lb., 45 cts.; 5 lbs., \$2.00.

PARSLEY—*Ger. Petersilie.*

Dreer's Dwarf Perfection. This is a fine and most valuable Parsley. The habit is irregular and compact, and the exquisitely fine and prettily curled leaves are set so closely that the form of the plant is almost semi-globular. The color is a wonderfully bright pea-green, and flavor surpasses all other Parsley. Oz., 25 cts.; $\frac{1}{4}$ lb., 80 cts.; lb., \$3.00.

Dreer's Summer Green Parsley. Market gardeners desire a special strain of Parsley for summer use, one that will stand the extreme heat during the hot months of July and August. This variety is a strong and vigorous grower, and produces large, finely curved leaves of a beautiful dark green color, which it holds for a long time after all other varieties have turned yellow. Oz., 10 cts.; $\frac{1}{4}$ lb., 25 cts.; lb., 85 cts.

Dwarf Extra Curled Perpetual. Leaves tender, crimped and very curly, of a bright green color, and very ornamental. Oz., 10 cts.; $\frac{1}{4}$ lb., 20 cts.; lb., 60 cts.

Champion Moss Curled. Beautifully crimped and curled. Oz., 10 cts.; $\frac{1}{4}$ lb., 20 cts.; lb., 60 cts.

Fern Leaved. Used for garnishing. Oz., 10 cts.; $\frac{1}{4}$ lb., 20 cts.; lb., 60 cts.

Half Curled. A medium curled variety for garnishing and seasoning. Oz., 10 cts.; $\frac{1}{4}$ lb., 20 cts.; lb., 50 cts.

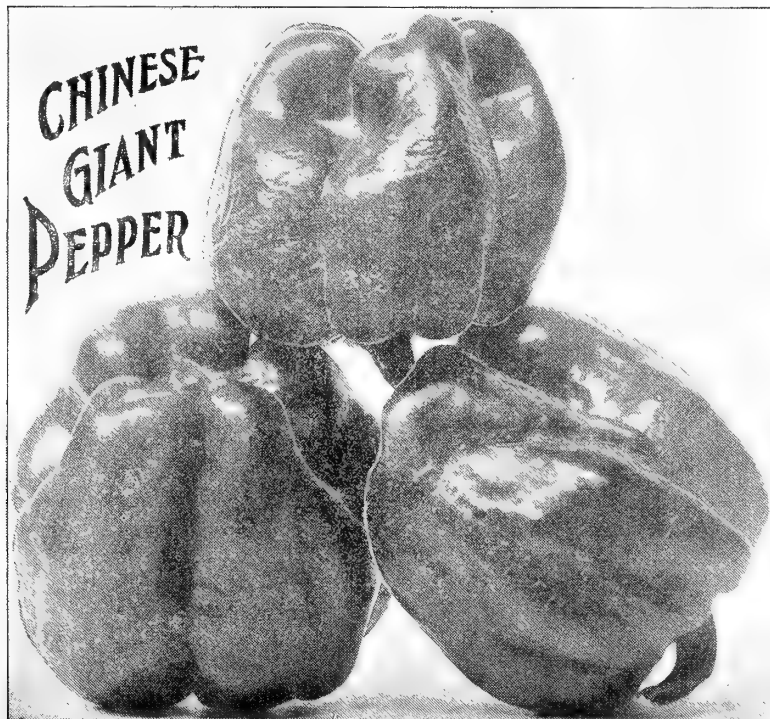
Plain, or Single. Leaves are plain and of fine flavor. Oz., 10 cts.; $\frac{1}{4}$ lb., 15 cts.; lb., 35 cts.

Turnip Rooted, or Hamburg. The fleshy root resembles a parsnip, and is used for flavoring soups, stews, etc. Oz., 10 cts.; $\frac{1}{4}$ lb., 15 cts.; lb., 50 cts.

**PEPPER**—*Ger. Pfeffer.*

Chinese Giant. (*See cut.*) Plants grow strong and healthy, about 2 feet high, and the peppers are much larger than Ruby King and of a bright scarlet color. The flesh is quite thick and very mild; in fact, the sweetest pepper we know of. $\frac{1}{2}$ oz., 30 cts.; oz., 50 cts.; $\frac{1}{4}$ lb., \$1.50; lb., \$5.50.

Ruby Giant. A new variety of Mango Pepper which is of a very desirable size and shape for stuffing. It is a cross of Ruby King and Chinese Giant, and grows to a large size. The shape is similar to Ruby King, and the flesh is very mild. $\frac{1}{2}$ oz., 25 cts.; oz., 40 cts.; $\frac{1}{4}$ lb., \$1.25; lb., \$4.00.



Neapolitan. Grows about 3 inches long, but not as thick through as "Bull Nose;" the flesh, however, is very thick and remarkably sweet. $\frac{1}{2}$ oz., 20 cts.; oz., 35 cts.; $\frac{1}{4}$ lb., 80 cts.; lb., \$3.00.

Ruby King. Good variety for mangoes and pickling; very sweet. Oz., 20 cts.; $\frac{1}{4}$ lb., 65 cts.; lb., \$2.25.

Large Bell, or Bull Nose. Large early variety, mild flavor, thick and fleshy. Oz., 20 cts.; $\frac{1}{4}$ lb., 60 cts.; lb., \$2.00.

Long Red Cayenne. The pods are long and slender; bright red color and very pungent. Oz., 20 cts.; $\frac{1}{4}$ lb., 60 cts.; lb., \$2.00.

Large Sweet Spanish. A large mild variety. Oz., 20 cts.; $\frac{1}{4}$ lb., 60 cts.; lb., \$2.00.

Small Chili. Red conical pods, about 2 inches long, very hot and prolific. Oz., 20 cts.; $\frac{1}{4}$ lb., 60 cts.; lb., \$2.00.

Red Japan Cluster. Peppers small, thin and very hot. Oz., 20 cts.; $\frac{1}{4}$ lb., 60 cts.; lb., \$2.00.

Coral Gem Bouquet. Bears many small bright-red peppers. Oz., 35 cts.; $\frac{1}{4}$ lb., 80 cts.; lb., \$3.00.

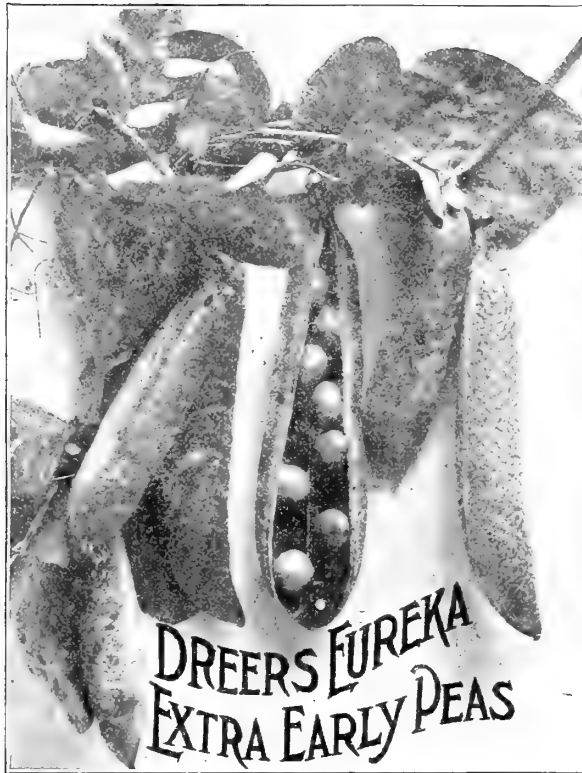
Tabasco. Peppers small and very hot. Pkt., 10 cts.; oz., 35 cts.

Golden Dawn. A mild and sweet yellow pepper; quite attractive. Oz., 20 cts.; $\frac{1}{4}$ lb., 60 cts.; lb., \$2.00.

PEPPER PLANTS. (Page 25).

Dreer's Selected Garden Peas—Ger. Erbsen.

If Peas are wanted sent by mail, add 15 cents per quart for postage.



Extra Early Varieties.

Dreer's Eureka Extra Early. (*See cut.*) One of the earliest and most prolific extra early varieties, which has given the best results wherever grown, and is a standard for earliness and fine quality. It is an extremely even cropper, and can be gathered clean in two pickings. For a late fall crop it has few equals; height 20 inches. Qt., 30 cts.; 4 qts., \$1.00; peck, \$1.50; bu., \$6.00.

Dreer's Extra Early Electric. A variety of the green-seeded Alaska type, but a great improvement, being much earlier than the Alaska and bearing larger pods. The vines grow from 2½ to 3 feet high, and are literally loaded down with pods, which are crowded with the large peas, closely shouldered in pod. It is very uniform in growth, and usually produces pods containing seven or eight peas. The quality is excellent, remaining tender until fully matured. Qt., 30 cts.; 4 qts., \$1.00; peck, \$1.50; bu., \$6.00.

Dreer's Extra Early Pioneer. Pods of medium size, containing 4 to 6 full plump peas of fine flavor. The quality is all that could be desired; height 20 inches. Qt., 20 cts.; 4 qts., 75 cts.; peck, \$1.40; bu., \$5.60.

Daniel O'Rourke. Good early sort for market gardeners' and private use. Qt., 20 cts.; 4 qts., 75 cts.; peck, \$1.40; bu., \$5.60.

Alaska. An extra early round pea. Of good flavor, and bearing pods of a dark green color, which are well filled and ripen uniformly; height 2 feet. Qt., 30 cts.; 4 qts., \$1.00; peck, \$1.50; bu., \$6.00.

Lightning. A very early pea, bearing in great profusion long, well filled pods, containing peas of a bright green color, well flavored, sweet and good size; height 2 feet. Qt., 30 cts.; 4 qts., \$1.00; peck, \$1.50; bu., \$6.00.

Premium Gem. A fine flavored early wrinkled variety, an improvement on the Little Gem; pods long, dark green and prolific. Height 1½ ft. Qt., 25 cts.; 4 qts., 80 cts.; peck, \$1.45; bu., \$5.80.

Little Gem. A dwarf first early green wrinkled marrow, very prolific, and of superior flavor; height 1½ ft. Qt., 25 cts.; 4 qts., 80 cts.; peck, \$1.45; bu., \$5.80.

Nott's Excelsior. An improvement on American Wonder, being as early, if not a little earlier, and the pods are decidedly larger and many more of them to the plant. The peas are very large and are closely crowded in the pod. Height 14 inches. Qt., 30 cts.; 4 qts., \$1.00; peck, \$1.60; bu., \$6.40.

American Wonder. A very fine, extra early, wrinkled variety. The flavor and quality of the peas are excellent, and its dwarf habit of growth makes it a desirable sort; height 10 inches. Qt., 25 cts.; 4 qts., 80 cts.; peck, \$1.55; bu., \$6.20.

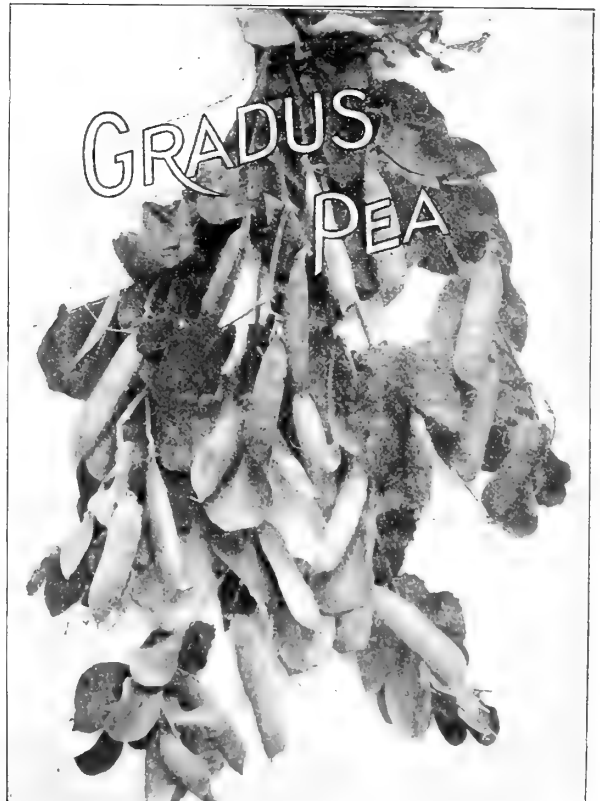
Sutton's Green Gem. An excellent variety, bearing large dark green pods and maturing nearly as early as American Wonder. Grows only 12 to 14 inches high, but is more productive than many of the taller-growing sorts. Qt., 35 cts.; 4 qts., \$1.25; peck, \$2.00; bu., \$8.00.

Surprise Pea. The vines grow about two feet high, and do not require any support; they are literally loaded down with pods, which, while not so large, are well filled with beautiful peas of most delicious quality, tender and sweet. Qt., 30 cts.; 4 qts., \$1.10; peck, \$1.75; bu., \$7.00.

Early Morn. An English variety of the Gradus type with many desirable qualities. The peas are large, closely packed in the pod, and the flavor is sweet and delicious. Qt., 35 cts.; 4 qts., \$1.25; peck, \$2.00; bu., \$8.00.

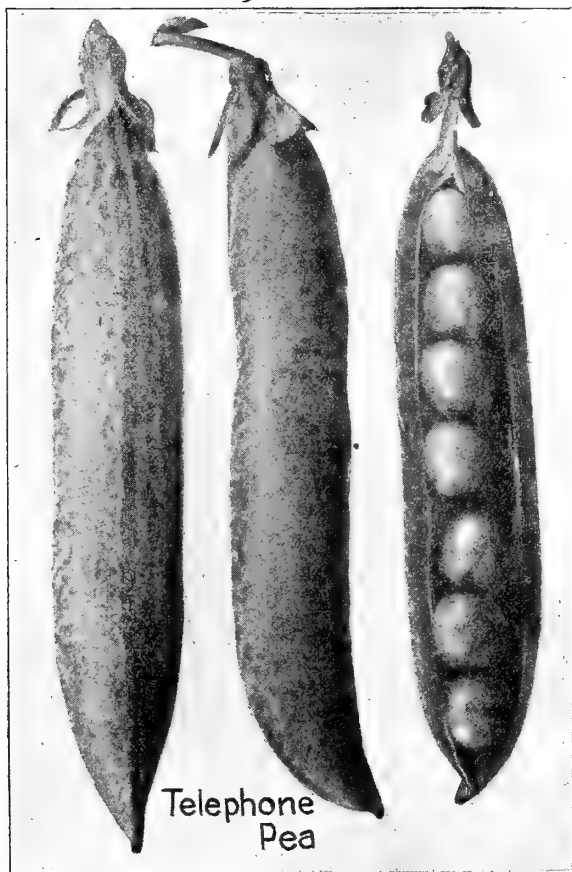
Gradus, or Prosperity Pea. (*See cut.*) This extra early pea combines the finest quality with extreme earliness, and is also very productive. Vines 3 feet in height, and very prolific, bearing pods fully as large as Telephone, and usually containing from 8 to 10 large peas. Qt., 35 cts., 4 qts., \$1.25; peck, \$2.00; bu., \$8.00.

The "Thomas Laxton." A fine, large, extra early English wrinkled pea. The plant is a very hardy and strong grower, producing the extra large size pods in abundance, and the quality is delicious; height 3 feet. Qt., 35 cts.; 4 qts., \$1.25; peck, \$2.00; bu., \$8.00.



Dreer's Selected Garden Peas—Continued.

If Peas are wanted sent by mail, add 15 cents per quart for postage.



General and Late Varieties.

Carter's Daisy or Dwarf Telephone. A cross of Stratagem or Telephone, pods as large as latter variety, but vines more dwarf than Stratagem. Color pale green, of lasting quality. Qt., 35 cts.; 4 qts., \$1.25; peck, \$1.90; bu., \$7.60.

Telephone. (See cut.) Large pods, peas of a pale green color, closely packed in the pod, and of a most delicious flavor; 4 feet. Qt., 30 cts.; 4 qts., \$1.10; peck, \$1.75; bu., \$7.00.

Improved Stratagem. Pods of immense size, filled with very large dark green peas of the finest quality. The vines grow strong and vigorous; height, 2 feet. Qt., 30 cts.; 4 qts., \$1.10; peck, \$1.75; bu., \$7.00.

Pride of the Market. Pods are large, of a medium green color. The quality of this pea is excellent, 1½ feet. Qt., 30 cts.; 4 qts., \$1.10; peck, \$1.75; bu., \$7.00.

Everbearing. A first-class pea for summer and autumn use; pods 3 to 4 inches long, and contain 6 to 8 peas of a rich flavor; very sweet and tender; 2 feet. Qt., 25 cts.; 4 qts., 80 cts.; peck, \$1.50; bu., \$6.00.

Champion of England. A popular wrinkled variety, of delicious flavor; a profuse bearer; 5 feet. Qt., 20 cts.; 4 qts., 70 cts.; peck, \$1.30; bu., \$5.20.

Dwarf Champion. The Champion of England has long been a standard variety, the long vines, however, were an objection. This new variety is hardy and of fine quality, but has less vine and produces larger pods and more of them. Qt., 25 cts.; 4 qts., 80 cts.; peck, \$1.45; bu., \$5.80.

Telegraph. A strong grower, producing large pods, containing 10 to 12 large peas in each. Peas, when cooked, are of a deep green color and of very fine flavor. Qt., 25 cts.; 4 qts., 80 cts.; peck, \$1.40; bu., \$5.60.

Long Island Mammoth. (See cut.) A very productive variety, bears dark glossy long pods, well filled. Qt., 25 cts.; 4 qts., 80 cts.; peck, \$1.40; bu., \$5.60.

Large White Marrowfat. Large, well-filled pods; 5 feet. Qt., 15 cts.; 4 qts., 50 cts.; peck, 90 cts.; bu., \$3.60.

Black-eyed Marrowfat. Qt., 15 cts.; 4 qts., 50 cts.; peck, 90 cts.; bu., \$3.60.

Sugar Peas. (Edible Pods.)

Giant Sugar. Qt., 45 cts.; 4 qts., \$1.75; peck, \$2.50.

Mammoth Melting Sugar. Qt., 35 cts.; 4 qts., \$1.30; peck, \$2.00.

Second Early and Medium Varieties.

Lincoln. A new English Pea which produces an abundance of large, deep green pods and large peas of excellent quality. The vines make a strong growth and produce the pods in pairs, literally covering the plant; height, 1½ feet. Qt., 35 cts.; 4 qts., \$1.25; peck, \$2.00; bu., \$8.00.

Advancer. A fine market variety, prolific, long pods. Height, 2 feet. Qt., 25 cts.; 4 qts., 80 cts.; peck, \$1.40; bu., \$5.60.

Fillbasket. Hardy, prolific, pods well filled, tender, and of sweet delicious flavor. Height, 2½ feet. Qt., 25 cts.; 4 qts., 80 cts.; peck, \$1.30; bu., \$5.20.

Heroine. A medium early, green, wrinkled pea, large curved, showy pods. Height, 2 to 2½ feet. Qt., 25 cts.; 4 qts., 80 cts.; peck, \$1.50; bu., \$6.00.

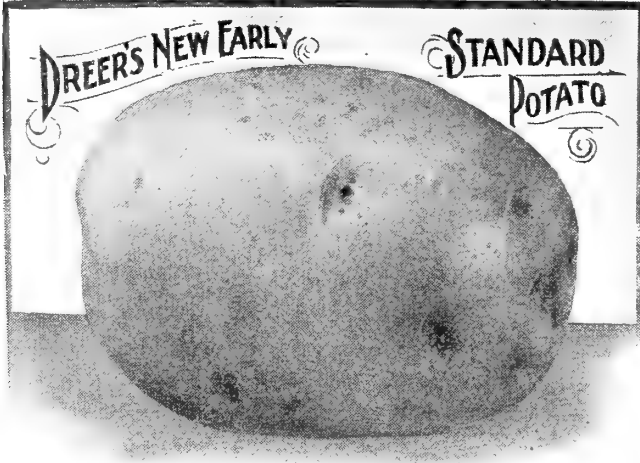
Abundance. It ripens about one week after the earliest kinds; pods contain from 6 to 8 large wrinkled peas, which are of excellent flavor; 1½ feet. Qt., 30 cts.; 4 qts., \$1.10; peck, \$1.75; bu., \$7.00.

Shropshire Hero. A grand second early wrinkled pea, producing well filled pods; 2½ feet. Qt., 25 cts.; 4 qts., 80 cts.; peck, \$1.50; bu., \$6.00.

Yorkshire Hero. A splendid wrinkled marrow; 2½ feet. Qt., 30 cts.; 4 qts., 90 cts.; peck, \$1.50; bu., \$6.00.



SEED POTATOES.



IMPORTANT.—Prices of Potatoes are subject to market changes. Potatoes are forwarded by express or freight, as directed, purchaser paying charges. We assume no risk on Potatoes, which are forwarded strictly on purchaser's responsibility. If wanted shipped in barrels, add 30 cents each extra, otherwise we ship in sacks. Full sacks contain $2\frac{3}{4}$ bushels.

Dreer's New Early Standard. (*See cut.*) A valuable variety for early crop. The tubers are produced abundantly and are of a uniform large size. The plants are of dwarf compact habit in growth, strong and healthy, entirely free from blight and disease of any kind. Peck, 80 cts.; bu., \$2.35; sack, \$5.50.

Bliss' Triumph. Extremely early, round, thin, bright pink skin, white flesh. Often sold in market as Bermuda potato. Peck, 75 cts.; bu., \$2.25; sack, \$5.00.

Pride of the South, or White Bliss. White skin and flesh, extra early and productive. This is an attractive potato. Peck, 75 cts.; bu., \$2.25; sack, \$5.00.

Bovee. This variety matures its crop extremely early. It is pink, or flesh color, and grows very smooth, presenting a fine appearance, and the quality is all that could be desired in a first-class early Potato. Peck, 75 cts.; bu., \$2.25; sack, \$5.00.

Early Ohio. An old-time favorite; matures early, and the potatoes are fit for use before fully ripe. Many growers consider it the most profitable early market variety. Peck, 70 cts.; bu., \$2.00; sack, \$4.75.

Irish Cobbler. One of the first varieties of potatoes to be ready for market, and therefore will command high prices. The skin is creamy-white, sometimes netted, which is an indicator of good quality; eyes are strong, well developed, and but slightly indented. The flesh is white and of fine flavor. Peck, 70 cts.; bu., \$2.00; sack, \$4.75.

Early Rose. We sell more of this variety than any other, as it is the leading early sort in almost all sections. The stock we furnish is northern grown, and has been carefully grown. Peck, 70 cts.; bu., \$2.00; sack, \$4.75.

Beauty of Hebron. Early, productive; of excellent quality; a good keeper. Peck, 60 cts.; bu., \$1.80; sack, \$4.50.

State of Maine. Medium early, splendid flavor, cooks dry, is a good keeper and very productive. Peck, 60 cts.; bu., \$1.80; sack, \$4.50.

White Star. A medium early variety of fine quality and appearance; large, oblong, uniform-sized tubers, remarkably productive. Peck, 60 cts.; bu., \$1.80; sack, \$4.50.

Burbank's Seedling. A white-skinned, medium early variety, with few eyes; flesh fine-grained and of excellent flavor. Peck, 60 cts.; bu., \$1.80; sack, \$4.50.

Rural New Yorker No. 2. A valuable variety of large size, very smooth and a great cropper; in quality unexcelled. The tubers grow extremely solid, making a splendid keeper, and the vigorous growth of vine enables it to withstand disease and insects. Peck, 60 cts.; bu., \$1.80; sack, \$4.50.

	Peck.	Bus.	Sack.
Carman No. 1	60	\$1 80	\$4 50
Carman No. 3	60	1 80	4 50
Sir Walter Raleigh	60	1 80	4 50

PUMPKIN—*Ger. Grosse Kurbis.*

Winter Luxury. This pumpkin is distinct, both in shape and appearance. Grows round, and the skin is covered with a fine netting. The vines are healthy and productive and pumpkins are of fine quality. Oz., 10 cts.; $\frac{1}{4}$ lb., 25 cts.; lb., 80 cts.

Mammoth Golden Cashaw. (*See cut.*) A general purpose pumpkin, good for making pies and stock feeding. It is an improvement on the old light colored Cashaw. The skin when pumpkins are matured, being a beautiful golden-orange color. Flesh, fine grained, sweet, and rich yellow color. Oz., 10 cts.; $\frac{1}{4}$ lb., 25 cts.; lb., 80 cts.

Quaker Pie Pumpkin. A fine variety for making pies. Pear shape, skin cream yellow. Oz., 10 cts.; $\frac{1}{4}$ lb., 25 cts.; lb., 80 cts.

Large Yellow Mammoth Potiron. (*King of the Mammoths, Jumbo.*) The largest of all pumpkins; specimens have been grown to weigh over 150 pounds. The best pumpkin for showing at Fairs. Oz., 15 cts.; $\frac{1}{4}$ lb., 40 cts.; lb., \$1.50.

Tennessee Sweet Potato. Oz., 10 cts.; $\frac{1}{4}$ lb., 20 cts.; lb., 60 cts.

Large Cheese Pumpkin. Oz., 10 cts.; $\frac{1}{4}$ lb., 20 cts.; lb., 60 cts.

Large Tours Pumpkin. Oz., 10 cts.; $\frac{1}{4}$ lb., 25 cts.; lb., 80 cts.

Large Yellow Field Pumpkin. $\frac{1}{4}$ lb., 10 cts.; lb., 25 cts.; 10 lbs., \$2.25.

Sugar, or New England Pie. An excellent variety for pies. The pumpkins are not large, but are very sweet, fine grained and of best quality. Skin deep orange and flesh rich yellow. Oz., 10 cts.; $\frac{1}{4}$ lb., 25 cts.; lb., 85 cts.



RADISH—Ger. Rettig, odor Radieschen.

Dreer's Selected Cardinal Globe. (See cut.)

The radishes grow globular in shape, and are of a most brilliant cardinal-red color. It will stand considerable heat; therefore it is a quick forcer, and the quality is fine, being crisp and tender. It is by far the best variety for forcing, and also does well in open ground. The beautiful appearance and color of this radish makes it a good seller. Oz., 10 cts.; $\frac{1}{4}$ lb., 25 cts.; lb., 75 cts.; 5 lbs. or more at 60 cts. per lb.

Earliest Red May. This variety produces the small, round radishes in a short time, and can be used for forcing or outside planting. Oz., 10 cts.; $\frac{1}{4}$ lb., 30c.; lb., \$1.00.

Earliest White May. Similar to the "Red May," except in color, which is pure white. The top is small, and the radishes are of fine form and excellent flavor. Oz., 10 cts.; $\frac{1}{4}$ lb. 30 cts.; lb., \$1.00.

Crimson Giant. This is a new variety, suitable for forcing or early planting out of doors. A remarkable feature of this Radish is that it will grow double the size of other red forcing Radishes and still remain solid, not showing the least sign of becoming hollow. In shape this Radish is round to oval, and very attractive. Oz., 10 cts.; $\frac{1}{4}$ lb., 30 cts.; lb., \$1.00.

Dreer's Crimson Ball. This is an entirely distinct variety, and while of the same shape as the true red turnip radish, the flesh as well as the skin is of a beautiful red color, which is a unique feature. Oz., 10 cts.; $\frac{1}{4}$ lb. 30 cts.; lb., \$1.00.

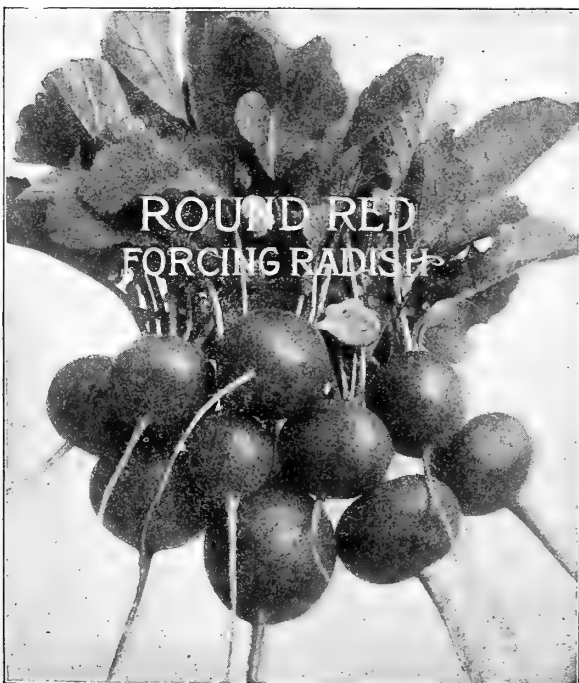
Scarlet Frame. A very early turnip radish; bright scarlet crimson color; perfectly round, crisp and tender. Oz., 10 cts.; $\frac{1}{4}$ lb., 25 cts.; lb., 60 cts.

Round Red Forcing. (See cut.) One of the earliest and best of the Turnip varieties for forcing, very short-leaved, small top; color of skin dark red, white-fleshed. Oz., 10 cts.; $\frac{1}{4}$ lb., 30 cts.; lb., 75 cts.

Early Scarlet Turnip. Small top, quick growth, mild and crisp. Largely used for early planting in open ground. Oz., 10 cts.; $\frac{1}{4}$ lb., 20 cts.; lb., 50 cts.

French Breakfast. Oblong shape, rapid growth, very mild and tender, beautiful scarlet color tipped with white. Oz., 10 cts.; $\frac{1}{4}$ lb., 20 cts.; lb. 50 cts.

White-tipped Scarlet Gem. Excellent for forcing, short leaves, bright scarlet with white tip. Oz., 10 cts.; $\frac{1}{4}$ lb., 25 cts.; lb., 65 cts.



Cincinnati Market. An extra early variety of the Long Scarlet type; of a clear bright red color. Oz., 10 cts.; $\frac{1}{4}$ lb., 20 cts.; lb., 50 cts.

Philadelphia Half-Long Scarlet. Oz., 10 cts.; $\frac{1}{4}$ lb., 20 cts.; lb., 50 cts.

Dreer's First and Best Radish. An attractive half long radish of very early maturity. The color is rich deep scarlet, size medium, making it very dainty. The tops are small and roots grow uniform in size and shape, tapering to a point. The quality is fine, being delightfully crisp and juicy. We know of no half-long radish that will equal this variety. Oz., 10 cts.; $\frac{1}{4}$ lb., 30 cts.; lb., \$1.00.

Long Scarlet Short Top. Long, bright scarlet, with small top. Oz., 10 cts.; $\frac{1}{4}$ lb., 20 cts.; lb., 50 cts.

Half-Long Deep Scarlet. Intermediate, for forcing or open ground. Oz., 10 cts.; $\frac{1}{4}$ lb., 20 cts.; lb., 50 cts.

Scarlet Olive Shape. Oz. 10 cts.; $\frac{1}{4}$ lb. 20 cts.; lb. 50 cts.

Icicle Radish. This variety is of great value, as it can be grown in the forcing frames, and makes fine radishes about three and a half inches long and half inch in diameter in three weeks from the time of sowing the seed. Oz., 10 cts.; $\frac{1}{4}$ lb., 25 cts.; lb., 65 cts.

Dreer's Crystal Forcing. Quick growth, beautiful shape; small top. This is a very desirable and shapely Radish; in fact, we consider it quite superior to any other white forcing Radish. Compared with such white sorts as White Box, Round White Forcing, etc., it is far superior. Oz., 10 cts.; $\frac{1}{4}$ lb., 30 cts.; lb., 80 cts.; 5 lbs., \$3.50.

Dreer's Earliest White Globe Forcing. The earliest white Radish in existence, beautiful oval shape, transparent ivory-white skin, very small root, small top. Oz.; 10 cts.; $\frac{1}{4}$ lb., 30 cts.; lb., 80 cts.

Round White Forcing. Matures very early, small, of the button type. Oz., 10 cts.; $\frac{1}{4}$ lb., 25 cts.; lb., 60 cts.

Felton's Selected White Box. Perfectly round, smooth skin, pure white. Oz., 10 cts.; $\frac{1}{4}$ lb., 20 cts.; lb., 60 cts.; 5 lbs. or more at 50 cts. per lb.

Philadelphia White Box. Oz., 10 cts.; $\frac{1}{4}$ lb., 20 cts.; lb., 50 cts.; 5 lbs. or more at 45 cts. per lb.

Early White Turnip. An early, crisp, turnip-shaped radish. Oz., 10 cts.; $\frac{1}{4}$ lb., 20 cts.; lb., 50 cts.

Golden Dresden. A round radish, with beautiful golden-brown skin and very small top. Oz., 10 cts.; $\frac{1}{4}$ lb., 25 cts.; lb., 65 cts.

Golden-Yellow Olive-Shaped. A very early yellow radish. Oz., 10 cts.; $\frac{1}{4}$ lb., 25 cts.; lb., 65 cts.

RADISH—Continued.



SUMMER RADISHES.

White Chartier. This beautiful long white radish is of same character as the Beckert's Chartier except that it is pure white. It is a good summer radish, matures in about six or seven weeks from time of sowing and is of mild flavor. Oz., 10 cts.; $\frac{1}{4}$ lb., 20 cts.; lb., 50 cts.

White Delicacy. An improvement on the White Strasburg, being earlier, more evenly shaped, and smaller top; grows into full size and perfect shape during the hottest weather. Oz., 10 cts.; $\frac{1}{4}$ lb., 30 cts.; lb., 80 cts.

White Strasburg. Of pure white color, very brittle and of mild flavor. This variety is largely used by market gardeners for summer planting, as it will do well at that season. Oz., 10 cts.; $\frac{1}{4}$ lb., 20 cts.; lb., 50 cts.

Beckert's Chartier. A long radish, crimson, shading to white at tip, crisp and tender. This variety remains solid, even after it has grown to a large size. Oz., 10 cts.; $\frac{1}{4}$ lb., 20 cts.; lb., 50 cts.

Long White Vienna. (*Lady Finger.*) Beautiful in shape; skin and flesh are pure snow-white; crisp and of rapid growth. Oz., 10 cts.; $\frac{1}{4}$ lb., 20 cts.; lb., 50 cts.

Large White Summer. Large turnip shaped. Oz., 10 cts.; $\frac{1}{4}$ lb., 20 cts.; lb., 50 cts.

Large Yellow Summer. Like white summer, except in color. Oz., 10 cts.; $\frac{1}{4}$ lb., 20 cts.; lb., 50 cts.

WINTER RADISHES.

Krewson's Oblong Black Spanish. An improvement on the Round Black Spanish, growing longer and of much more perfect form. It grows very solid and is of crisp, mild flavor. Oz., 10 cts.; $\frac{1}{4}$ lb., 30 cts.; lb., 80 cts.

Scarlet China. One of the best fall and winter varieties. Bright rose color. Oz., 10 cts.; $\frac{1}{4}$ lb., 20 cts.; lb., 50 cts.

Round Scarlet China. Root round, of a fine scarlet color. Oz., 10 cts.; $\frac{1}{4}$ lb., 25 cts.; lb., 70 cts.

White Chinese, or Celestial. (*See cut.*) A Chinese production and one of the best white Winter Radishes. It is stump-rooted and grows to a large size. Can be used any time after three inches long. Flesh pure white, firm, solid and tender. It is a good keeper. Oz., 10 cts.; $\frac{1}{4}$ lb., 25 cts.; lb., 80 cts.

Long White Spanish. Grows to about eight inches in length, skin and flesh both are white and milder than the black variety. Oz., 10 cts.; $\frac{1}{4}$ lb., 20 cts.; lb., 50 cts.

Round Black Spanish. A good variety and keeps well. Oz., 10 cts.; $\frac{1}{4}$ lb., 20 cts.; lb., 50 cts.

Long Black Spanish. A late sort but very hardy and grows to medium size. Oz., 10 cts.; $\frac{1}{4}$ lb., 20 cts.; lb., 50 cts.

California White Winter. This variety grows to an immense size. Flesh is white and it keeps well. Oz., 10 cts.; $\frac{1}{4}$ lb., 20 cts.; lb., 50 cts.

RHUBARB.

Linnæus and Victoria. Each oz., 15 cts.; $\frac{1}{4}$ lb., 35 cts.; lb., \$1.25.

(For RHUBARB ROOTS, see Vegetable Plants, etc., page 25.)

SALSIFY, or Vegetable Oyster.

Ger. Hafer-Wurzel.

Mammoth Sandwich Island. (*See cut.*)

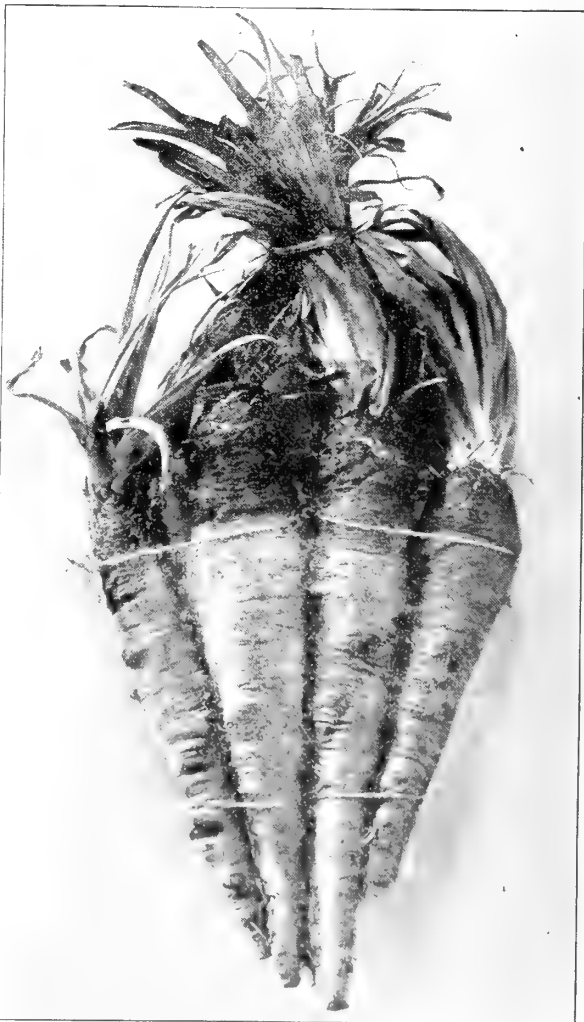
This variety grows to a very large size, and resembles a good-sized parsnip. It is pure white and very mild and delicately flavored, and is very popular. Oz., 15 cts.; $\frac{1}{4}$ lb., 35 cts.; lb., \$1.25.

Long White. This is the old original type of Salsify. It grows to a fair size and for a long time was the favorite variety and is still used by many who consider its flavor very fine. Oz., 10 cts.; $\frac{1}{4}$ lb., 30 cts.; lb., \$1.00.

Long Black, or Scorzonera. Resembles the above and cultivated in the same way. Oz., 15 cts.; $\frac{1}{4}$ lb., 50 cts.; lb., \$1.75.

SORREL.

Large-Leaved Garden. Cultivated for its acidity and much used in salads. When well grown and cooked the same as spinach makes a healthy and palatable dish. Plants continue to bear four years. Oz., 10 cts.; $\frac{1}{4}$ lb., 25 cts.; lb., 80 cts.



MAMMOTH SANDWICH ISLAND SALSIFY

SPINACH—*Ger. Spinat.*

Dreer's Special American Strain of Round Seeded Savoy. Our strain of Savoy-leaved Spinach is very fine and extremely hardy. It is beautifully curled and crimped, with thick, fleshy leaves, which are of beautiful dark green color. This is the best variety for fall sowing. Lb., 20 cts.; 5 lbs., 90 cts.; peck, \$1.40; bu. (40 lbs.), \$5.60.

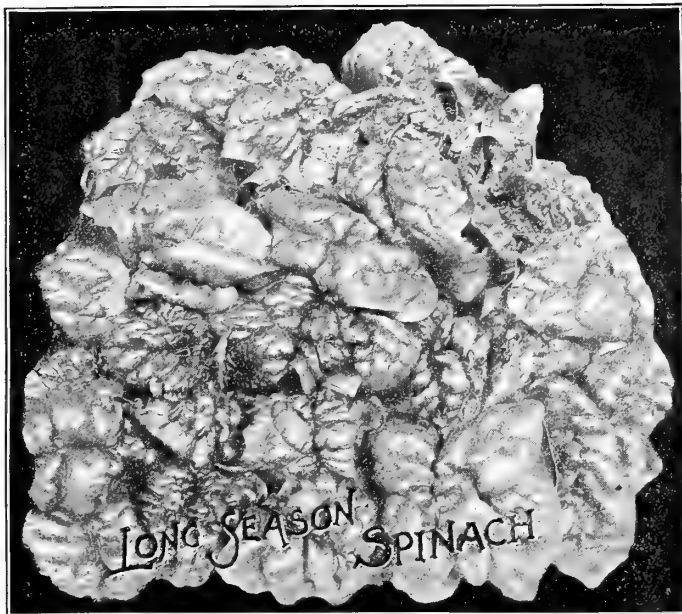
Victoria. Matures later than the Savoy, but is of remarkable fine texture, deepest green color, heavily crimped, thick, fleshy leaves, deep red stem. Lb., 20 cts.; 5 lbs., 90 cts.; peck, \$1.40; bu. (40 lbs.), \$5.60.

Long Season (*See cut.*) This variety will do well during the summer months when other varieties run to seed. Sowing can be made in early spring and followed monthly with further sowings. The leaves are a rich dark green color, very thick, crumpled and of splendid quality. Lb., 30 cts.; 5 lbs., \$1.25; peck, \$2.00; bu. (40 lbs.), \$8.00.

Long-Standing Round Seeded. A large crimped, thick fleshy, Savoy-leaved variety. Lb., 20 cts.; 5 lbs., 90 cts.; peck (10 lbs.), \$1.40; bu. (40 lbs.), \$5.60.

Prickly Seeded. A small leaved hardy variety. Lb., 20 cts.; peck, \$1.40; bu. (40 lbs.), \$5.60.

New Zealand. This variety endures heat and drought. Oz., 10 cts.; ¼ lb., 25 cts.; lb., 70 cts.

**SQUASH**—*Ger. Speise Kurbis.*

Extra Early Jersey White Bush. (*See cut.*) An improved strain of the old White Bush Squash, the result of selections which have been made for a number of years by a prominent market gardener. It grows in the bush form, and is enormously productive. The Squashes mature fully ten days earlier than the old sort, and are of good marketable size. Oz., 10 cts.; ¼ lb., 25 cts.; lb., 80 cts.

Early White Bush. A good variety for market or shipping. Oz., 10 cts.; ¼ lb., 20 cts.; lb., 60 cts.

Golden Custard Bush. Same size and shape as White Bush, but golden yellow color. Oz., 10 cts.; ¼ lb., 25 cts.; lb., 70 cts.

Yellow Summer Crook-neck. Early, productive and of good quality; skin orange yellow. Quality excellent. It grows in bush form and produces an abundant crop. Oz., 10 cts.; ¼ lb., 20 cts.; lb., 60 cts.

Giant Crook-neck. Early, productive and of good quality; skin orange yellow. Larger than yellow Summer Crook-neck, grows in bush form and produces an abundant crop. Oz., 10 cts.; ¼ lb., 25 cts.; lb., 80 cts.

Delicious. Finer grained and more delicious than the well-known Hubbard. The color of skin is green, with an occasional blue specimen, size about same as Hubbard. Oz., 10 cts.; ¼ lb., 25 cts.; lb., 80 cts.

Delicata. Small, orange-yellow striped with green. Early and good keeper. Oz., 10 cts.; ¼ lb., 25 cts.; lb., 70 cts.

Prolific Orange Marrow. Resembles the Boston Marrow, but it is earlier and more prolific. Oz., 10 cts.; ¼ lb., 25 cts.; lb., 80 cts.

Boston Marrow. A good keeper, of excellent flavor, flesh orange-colored and fine-grained; oval form and a popular sort. Oz., 10 cts.; ¼ lb., 20 cts.; lb., 55 cts.

Hubbard. One of the best late table varieties; of large size; flesh fine grained, dry, excellent flavor. And keeps very well during the winter. Oz., 10 cts.; ¼ lb., 25 cts.; lb., 70 cts.

Golden Hubbard. Same shape as old-fashioned Hubbard, but skin golden yellow. It is ready for use earlier than Hubbard, and keeps so well that they can be held over until spring. Oz., 10 cts.; ¼ lb., 30 cts.; lb., 80 cts.

Warted Hubbard. A variety of the Hubbard Squash, with warted skin. The vines grow strong and produce a large number of Squashes, which are of good size and keep well. Oz., 10 cts.; ¼ lb., 25 cts.; lb., 75 cts.

Golden Bronze. This variety of winter Squash is a cross between the Bay State and Boston Marrow. The shape is very much like the latter variety, and the skin, which is a dark grayish color, is wrinkled in the same manner. Oz., 10 cts.; ¼ lb., 25 cts.; lb., 80 cts.

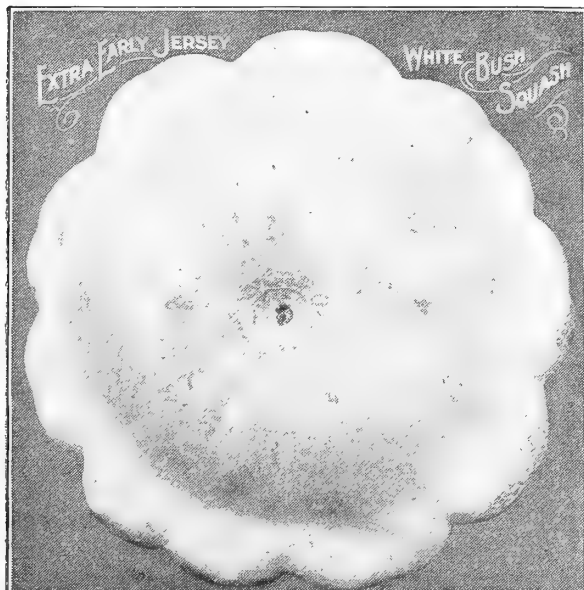
Essex Hybrid. Flesh very thick, rich-colored and solid. Oz., 10 cts.; ¼ lb., 20 cts.; lb., 60 cts.

Pike's Peak, or Sibley. Pale green; flesh thick, solid; very dry. Oz., 10 cts.; ¼ lb., 35 cts.; lb., 80 cts.

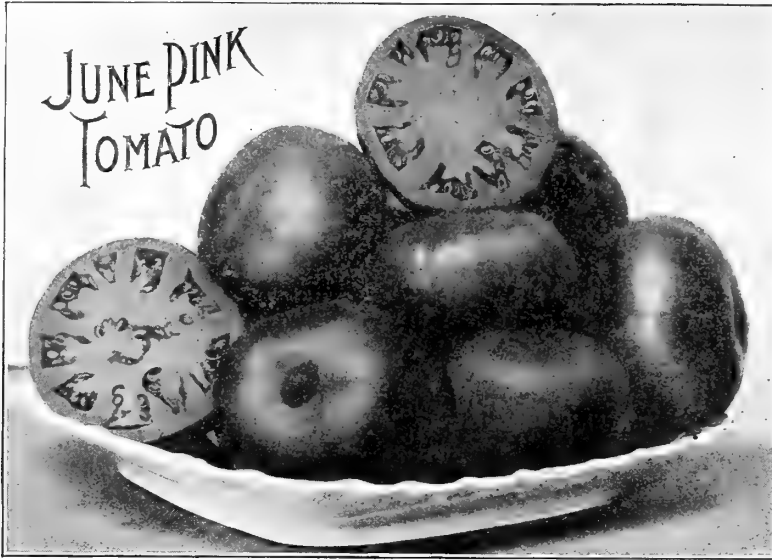
Mammoth Chili. Very large size, rich orange-yellow; flesh thick and of good quality for making pies; also a good sort for feeding stock. Oz., 15 cts.; ¼ lb., 35 cts.; lb., \$1.25.

Marblehead. A good winter squash, very solid and good quality. Oz., 10 cts.; ¼ lb., 20 cts.; lb., 60 cts.

Winter Crook-neck. This is an excellent variety for winter use. A splendid keeper and good quality. Oz., 10 cts.; ¼ lb., 25 cts.; lb., 70 cts.



TOMATO—Ger. Liebesapfel.



June Pink. (*See cut.*) The demand for an early pink tomato will be satisfactorily supplied by this new variety, which really is a pink Spark's Earliana, resembling this variety in every way except in color. It ripens very early, in fact was the first to ripen on our trial grounds. The fruits measure about 3 inches in diameter, are quite deep and continue to ripen until the frost kills the plants. The seed we supply was grown by the originator Oz., 30 cts.; ¼ lb., \$1.00; lb., \$3.25.

Magnus. Medium early, perfect form, grows large and attractive. Oz., 25 cts.; ¼ lb., 75 cts.; lb., \$2.50.

The Stone. (*See cut.*) Dreer's selected stock. Fruit very large and deep; bright scarlet; smooth, ripening evenly to the stem; exceedingly solid and firm flesh and of the finest quality. A fine variety for market gardeners also for canning. Oz., 25 cts.; ¼ lb., 75 cts.; lb., \$2.50.

Dwarf Stone. This Tomato resembles the original Stone in color and shape, and what is remarkable for an erect sort, they are practically the same size and equally as productive.

Comet. (*Forcing.*) A new forcing Tomato. Plants strong and healthy, producing a large crop of medium size tomatoes. Color rich scarlet and quality excellent. ½ oz., 40 cts.; oz., 75 cts.; ¼ lb., \$1.75.

Best of All. (*Forcing.*) This is strictly a forcing Tomato. The vines grow strong and healthy, and produce Tomatoes in heavy bunches at short distances all over the plant. Color is deep scarlet. ½ oz., 20 cts.; oz., 35 cts.; ¼ lb., \$1.25.

Frogmore Selected. A forcing variety of great merit. The plants are healthy and very productive, the fruit growing in large clusters. Shape round, color deep bright red. ½ oz., 20 cts.; oz., 30 cts.; ¼ lb., \$1.00.

Lorillard. (*Forcing.*) A good sort for forcing under glass as well as for out-door culture; bright red, smooth, early. Oz., 25 cts.; ¼ lb., 85 cts.; lb., \$3.00.

Mayflower. Excellent for forcing or outside; medium size; bright red color. Oz., 25 cts.; ¼ lb., 75 cts.; lb., \$2.50.

Spark's Earliana. An extra early variety. Fruits smooth and bright red. Largely grown by New Jersey growers. Oz., 25 cts.; ¼ lb., 80 cts.; lb., \$2.75.

Chalk's Early Jewel. Ripens nearly as early as "Spark's Earliana;" the fruits are more solid. Color bright scarlet. Oz., 25 cts.; ¼ lb., 80 cts.; lb., \$2.75.

Atlantic Prize, or Early Ruby. Splendid extra early variety; bright red color and smooth. Oz., 25 cts.; ¼ lb., 75 cts.; lb., \$2.50.

Paragon. A fine early variety and a heavy bearer; fruit of large size, solid and smooth as an apple. Oz., 25 cts.; ¼ lb., 75 cts.; lb., \$2.50.

Acme. Ripens evenly; of medium uniform size, round, very solid, of a pinkish color. Oz., 25 cts.; ¼ lb., 75 cts.; lb., \$2.50.

Perfection. Larger than Acme, fully as early; deep red in color. Oz., 25 cts.; ¼ lb., 75 cts.; lb., \$2.50.

Favorite. Large size, ripens evenly and early; very prolific. Oz., 25 cts.; ¼ lb., 75 cts.; lb., \$2.50.

Trophy. Large size, smooth, solid and excellent flavor. Oz., 25 cts.; ¼ lb., 75 cts.; lb., \$2.50.

Beauty. Rich glossy crimson, with a slight purple tinge; grows in clusters, large size, smooth and solid. Oz., 25 cts.; ¼ lb., 75 cts.; lb., \$2.50.

Livingston's Globe. An early variety, globe shape and large size. Color glossy rose, tinged with purple. Oz., 30 cts.; ¼ lb., 85 cts.; lb., \$3.00.

Dwarf Champion. An early and distinct variety, medium in size, plant of dwarf and compact growth. Oz., 25 cts.; ¼ lb., 80 cts.; lb., \$2.75.

Freedom. Fruits mature early and continue bearing for a long season. Fair size, smooth, bright, scarlet. Oz., 25 cts.; ¼ lb., 80 cts.; lb., \$2.75.

Enormous. Very large, solid and good flavor. Oz., 25 cts.; ¼ lb., 80 cts.; lb., \$2.75.

Oz., 25 cts.; ¼ lb., 85 cts.; lb., \$3.00.

Trucker's Favorite. A large purple tomato, attractive in shape, very solid. Oz., 25 cts.; ¼ lb., 75 cts.; lb., \$2.50.

Matchless. A large, bright red Tomato, very solid. Oz., 25 cts.; ¼ lb., 75 cts.; lb., \$2.50.

Ponderosa. This is one of the largest varieties; although somewhat irregular in shape, it is good, particularly for stewing. Oz., 30 cts.; ¼ lb., \$1.00; lb., \$3.25.

Standard Varieties of Tomato.

	Oz.	¼-lb.	Lb.
Imperial25	\$0.75	\$2.50
Royal Red25	.75	2.50
Crimson Cushion30	1.00	3.25
Golden Queen25	.75	2.50
Yellow Plum20	.75	
Yellow Pear20	.75	

TOMATO PLANTS. (See page 25.)





TURNIP—Ger. Rube.

	Oz.	¼ lb.	lb.	lb.
Red Top Strap Leaf	5	\$0 15	\$0 35	
Purple Top White Globe (<i>See cut</i>)	5	15	35	
Extra Early Purple Top Milan	10	15	50	
Purple Top Munich	10	15	50	
Scarlet Kashmyr	10	20	55	
Early White Flat Dutch	5	15	35	
Early White Milan	10	20	60	
Early White Egg	5	15	40	
Early Snowball	5	15	45	
Long White French	5	15	35	
Large White Norfolk	5	15	35	
Yellow Globe, or Amber	5	15	40	
Yellow Aberdeen	5	15	40	
Robertson's Golden Ball	5	15	40	

RUTA BAGA.

Dreer's Improved Purple Top	10	15	50
American Purple Top	5	15	40
Budlong's White	10	15	50
Large White, or Sweet German	5	15	40

HERBS.

Anise	10	20	60
Balm	20	50	1 75
Basil, Sweet	10	30	80
Bene	10	25	75
Borage	10	25	75
Caraway	10	20	50
Catnip	40	1	50
Coriander	10	20	50
Cumin	10	25	80
Dill	10	20	50
Fennel, Sweet	10	20	50
Horhound	20	60	2 00
Lavender	15	39	1 00
Rosemary	30	75	2 50
Rue	15	40	1 50
Saffron	10	20	60
Sage	10	35	1 25
Savory, Summer	10	25	75
Savory, Winter	20	50	1 75
Sweet Marjoram (<i>American</i>)	30	1	00 3 75
Sweet Marjoram (<i>Imported</i>)	10	30	1 60
Thyme, English	25	75	2 50
Thyme, French Summer	25	75	2 50
Wormwood	20	60	2 00

VEGETABLE PLANTS and ROOTS

Asparagus. Strong two-year old roots.
 Argenteull (*Violet*). 75 cts. per 100; \$5.00 per 1000.
 Dreer's Eclipse, Palmetto, Barr's Mammoth, Conover's Colossal, Columbian Mammoth White. 50 cts. per 100; \$4.00 per 1000.
 (Dreer's Asparagus Circular free on application.)

Cabbage Plants. Spring-sown, well hardened off in cold frames. For April 10th to May 15th delivery. Early Jersey Wakefield, Charleston Wakefield, Eureka, Early Summer. 25 cts. per 100; \$1.50 per 1000.

Cauliflower Plants. Early Snowball and Selected Erfurt. Spring-sown, hardened off in cold frames. Ready March 15th, to May 1st. 75 cts. per 100; \$6.00 per 1000.

Celery Plants. Ready July 1st. Golden Self-Blanching, Golden Dwarf, White Plume, etc. 30 cts. per 100; \$2.50 per 1000.

Chives. For flavoring. 75 cts. per doz.; \$5.00 per 100.

Egg Plants. Ready May 15th. Black Beauty and New York Improved Large Purple. Grown in pots. \$3.00 per 100; \$25.00 per 1000

Hop Vine Roots. 30 cts. per doz.; \$1.75 per 100; \$15.00 per 1000.

Horseradish Sets. 50 cts. per 100; \$4.00 per 1000.

Lavender Plants. 10 cts. each; \$1.00 per doz.; \$7.00 per 100.

Lettuce Plants. Ready in April and May. Dutch Butter, All-Heart, and Hanson. 25 cts. per 100; \$1.50 per 1000.

Pepper Plants. Ready in May and June. From hot-bed. Bell or Bull Nose, Long Red Cayenne. \$1.00 per \$100; \$7.50 per 1000.

Peppermint. 10 cts. each; 60 cts. per doz.; \$4.00 per 100.

Spearmint. 10 cts. each; 60 cts. per doz.; \$4.00 per 100.

Pennyroyal. 10 cts. each; 85 cts. per doz.; \$5.50 per 100.

Rhubarb Roots. Myatt's Victoria. Strong roots. 60 cts. per doz.; \$4.00 per 100.

Sage (*Holt's Mammoth*). A large leaved variety. It spreads rapidly and never runs to seed. 60 cts. per doz.; \$4.00 per 100.

Sweet Potato Plants. Ready in May and June. 20 cts. per 100; \$1.50 per 1000.

Tarragon (*Estragon*). 15 cts. each; \$1.00 per doz.; \$8.00 per 100.

Tomato Plants. Strong pot grown, ready May 10th. June Pink, Spark's Earliana, Stone, Dwarf Stone, Ponderosa, Yellow Pear, \$1.25 per 100; \$10.00 per 1000. Special prices on large lots.

DREER'S RELIABLE FLOWER SEEDS

Many market gardeners and truckers add considerably to their income by growing a quantity of the popular summer cut flowers and pot plants, such as Asters, Cosmos, Petunias, Salvias, Sweet Peas, etc., etc. On this and the next page we give a short list of the best things which can be used for this purpose. For full descriptive list see our Garden Book for 1909. Copies free on application.



DREER'S "CRIMSON KING" ASTER

Alyssum (Sweet Alyssum).		Tr. pkt. Oz.
Little Gem (Carpet of Snow). Very dwarf	10	30
Tom Thumb . Dwarf erect growth	10	25
Maritimum (Sweet Alyssum). White, trailing	10	15
Antirrhinum (Snapdragon).		
Largely used for cutting, both summer and winter.		
Giant Mixed . Tall growing, very large spikes and flowers,	15	40
Majus Tall Mixed . An extra fine strain	10	20
Half-Dwarf . Mixed colors	10	30

Asters.		
We offer below a select list of the finest sorts for cutting. Our stocks have been grown with the greatest care, and nothing finer can be had at any price.		
Dreer's Superb Late Branching , In 8 separate colors, each	25	\$1 00
Dreer's Superb Late Branching. Finest Mixed	25	75
Crego's Giant Comet. Pure White	50	4 00
Shell Pink	50	4 00
Dreer's Crimson King. Richest crimson	50	4 00
Pink Beauty. Superb Pink	50	4 00
Queen of the Market. In 6 separate colors, each	20	60
Mixed. Very early flowering, extra choice stock	15	50
Violet King. A late flowering violet purple	40	2 00

Calendula. (Pot Marigold.)		
All of these are fine for cutting or for selling, as pot plants.		
Meteor. Yellow striped orange	Oz.	¼-lb.
10	10	30
Prince of Orange. Somewhat darker than above	10	30
Pure Gold. Fine golden yellow	10	30

Carnation.		
The Chabaud and Marguerite come into flower early in summer, supplying a good crop of flowers for cutting up to frost.		
Marguerite, finest mixed	15	\$0 50
Giant Marguerite, mixed. Very large flowering	30	1 25
Chabaud's Everblooming. Mixed colors, fine	30	1 50

Centaurea. (Corn Flowers.)		
Always in good demand as cut flowers.		
Imperialis, finest mixed	10	30
Cyanus, blue. (Corn Flower) 40 cts. per ¼-lb.	10	15
mixed. Various colors 30 cts. per ¼-lb.	10	15
double blue. Extra fine 25	75	
double mixed 60 cts. per ¼-lb.	10	20

Candytuft.		
Valuable for cutting, especially during the spring months.		
Crimson. Deep purplish crimson	10	15
Empress. The finest white, a select stock	10	20
White Rocket. A good white	10	20
Lavender. A good shade	10	15
Mixed. All colors	10	15

Chrysanthemum.

	Tr. pkt. Oz.
Coranarium. Double mixed	10 15
Inodorum plenissimum. Double white	15 50

Cosmos.

Our Mammoth Perfection strain is unequalled in size and other good qualities. For points north of New York we recommend the extra early flowering type.

	Tr. pkt. Oz.
Mammoth Perfection, crimson	15 40
" " pink	15 40
" " white	15 40
" " finest mixed	10 25
Gigantic Flowering Lady Lenox. The largest flowering of all. Color, clear rose pink	20 60
Extra Early flowering, mixed	15 50

Dahlia.

Dahlias have come to the front with a bound as cut flowers, especially the single sorts. As easy to grow from seed as Nasturtiums.

Single Twentieth Century. Flowers of immense size, color deep rosy crimson, passing to white at the tips. 10 cts. per pkt.

	Tr. pkt. Oz.
Giant Perfection. Very large, mixed colors	20 \$0 60
Single Mixed. All colors. A good range of colors	10 30
Double Large Flowering. Saved from show varieties	25 1 00
" Cactus. Best mixed	50 3 00
" Pompon. Small flowering. Mixed colors	30 1 50

Gypsophila. (Baby's Breath.)

Elegans alba grandiflora. Pure white	10 20
Paniculata. White, misty flowers	10 20

Helianthus. (Sunflowers.)

The varieties offered are splendid for cutting.

Cucumerifolius	10 15
" Stella. Very large flowers	10 20
" New Miniature. Mixed	10 25

Marigold.

Are all useful for many purposes.		
African. Tall, double mixed	10	15
" Lemon Queen. Lemon yellow	15	50
" Orange Prince. The finest golden orange	15	50
French, Double Dwarf. Mixed	10	15
" Gold striped. Extra fine	10	20
" Legion d'honneur. (Little Brownie.) A beautiful single sort	10	20

Mignonette.

We especially recommend the Defiance, Goliath and Machet. But all of the varieties offered are good and strictly select stocks.

	Tr. pkt. Oz.
Defiance. Very large spikes. ¼ lb., \$1.25	15 \$0 40
Goliath. Giant spikes, extra fine	25 1 00
Machet. True select stock of this fine sort, ¼ lb., 75 cts.	10 25
Miles Hybrid Spiral. A fine outdoor sort, ¼ lb., 40 cts.	10 15
Large Flowering Pyramidal. ¼ lb., 75 cts.	10 25
Sweet Scented, large flowering. Lb., 40 cts.	10 10

Nasturtiums.

We sell immense quantities of both the Tall and Tom Thumb sorts. They are very effective in window boxes, vases, baskets, etc. We offer but a few sorts here. For complete list, see our Garden Book for 1909.

Tall or Climbing Varieties.

	Oz.	¼-lb.	Lb.
King Theodore. Deep crimson maroon, dark foliage.	10	20	50
Lemon Yellow	10	20	50
Orange. A fine deep shade	10	20	50
Scarlet. Brilliant	15	20	50
Vesuvius. Salmon rose; dark leaved	10	20	50
Mixed. Best quality, 10 lbs., \$3.00	10	15	35

Lobb's Tall Varieties.

Cardinal. Intense geranium-red	10	20	60
Giant of Battles. Sulphur, red blotches	10	20	60
Golden Queen. Pure golden orange	10	20	60
Roi des Noirs. (King of the Blacks.) Very dark	10	20	60
Spittire. Vermilion scarlet	10	20	60
Mixed. Lobb's varieties, fine	10	15	45
Hybrids of Madame Gunter. A splendid strain, containing many fine colors	10	25	75

GRASS AND FIELD SEEDS.

LAWN GRASS SEEDS.

The "Dreer" Lawn Grass.

Our best mixture. Per qt., 25 cts. (30 cts. postpaid); peck, \$1.25; bu. (20 lbs.), \$5.00

Dreer's "Evergreen" Lawn Mixture.

Produces a good, lasting turf. Per qt., 20 cts. (25 cts. postpaid); peck \$1.00; bu. (20 lbs.), \$4.00.

Dreer's Fairmount Park Lawn Mixture.

Gives satisfaction wherever planted. Per qt., 15 cts. (20 cts. postpaid); peck, 90 cts.; bu. (20 lbs.), \$3.50.

Dreer's Shady Place Mixture.

Fine for shady places. Per qt., 30 cts. (35 cts. postpaid); peck, \$1.50; bu., (20 lbs.), \$6.00

RE-CLEANED GRASS SEEDS.

	Bu.	100 lbs
Kentucky Blue, fancy cleaned	\$2 75	\$18 00
Canadian Blue	1 75	12 00
Red Top, or Herd	1 25	10 00
Red Top, extra re-cleaned, 32 lbs. to the bu.	6 75	20 00
Orchard Grass	3 00	20 00
English Rye Grass	2 50	9 00
Italian Rye Grass	2 00	10 00
Meadow Fescue	4 75	20 00
Tall Meadow Fescue	5 00	35 00
Sheep's Fescue	2 25	16 00
Fine Leaved Sheep's Fescue	5 50	38 00
Hard Fescue	2 25	18 00
Meadow Foxtail	3 00	40 00
Rough-Stalked Meadow	5 25	35 00
Sweet Vernal	per lb., 80 cts.	
Crested Dogtail	9 50	40 00
Awnless Brome, Bromus Inermis	2 50	16 00
Bermuda Grass	per lb., 60 cts.	
Wood Meadow	8 50	55 00
Creeping Bent Grass	6 25	30 00
Tall Meadow Oat Grass	2 75	25 00
Timothy.	Market price; write for price and sample.	

CLOVER SEEDS.

Red Clover, medium.	Market price; write for price and sample.	
Mammoth Red Clover.	" " " " " " " "	
Alsike, or Swedish.	(Write for price.)	
Alfalfa, or Lucerne	" " " " " " " "	
White Dutch Clover.	Bus. (60 lbs.)	\$14.40; 100 lbs., \$24.00.
Crimson Clover.	Market price; write for price and sample.	

CORN, FIELD VARIETIES.

	Pk.	Bu.
Cloud's Yellow Dent	75	\$2 00
Early Yellow Canada	75	2 00
Early 100-Day Bristol	75	2 00
Early Mastodon	75	2 00
Pedrick Perfected Golden Beauty	80	2 50
Hickory King (White)	80	2 25
Improved Leaming	75	2 00

CORN-ENSILAGE.

Blount's White Prolific	75	2 00
Red Cob Ensilage	60	1 75
Southern Fodder Sheep Tooth	60	1 75
Sweet Fodder Corn.	Write for price.	

SPRING WHEAT.

Saskatchewan Fife	75	2 50
-------------------	----	------

RYE.

Spring Rye	60	1 75
------------	----	------

SUNFLOWER.

Mammoth Russian	50	2 00
-----------------	----	------

FIELD, FORAGE AND SILO SEEDS.

If by mail add 8 cents per lb.

	Lb.	10 lbs.	100 lbs.
Dwarf Essex Rape	12	\$1 00	\$8 00
Spring Vetches, or Tares	10	60	5 00
Winter Vetches, or Tares	10	95	9 00
Teosinte	65	6 00	
Velvet Bean	10	90	8 25
Soja Bean	15	60	5 25
Kaffir Corn (Red)	15	65	6 00

PEAS FOR FODDER AND GREEN MANURE.

	Pk.	Bu.
Canada Field Peas	\$0 60	\$2 00
Southern Black-Eye Cow Peas	1 00	3 75
Whip-poor-will	90	3 50
Clay	90	3 50
New Era	1 00	3 75

The "Planet Jr."

HORSE AND HAND TOOLS,

are in general use among Market Gardeners.

The **Seed Drills** are the latest improved, and fitted to do all the varied Market Gardener's work. The Hand Cultivators are simple in construction, strong and easily handled.

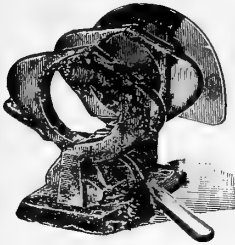
The Horse tools are the strongest that are built, and light, also quickly adjusted to do the different work.

Please see following pages for description and prices of each tool.

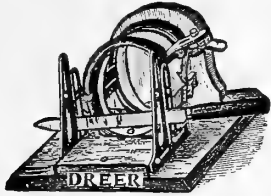


THE "PLANET JR." HAND CULTIVATORS IN USE AT OUR RIVERTON GROUNDS

Tools and Supplies



20TH CENTURY ASPARAGUS BUNCHER



ACME ASPARAGUS BUNCHER



ASPARAGUS KNIFE



ALL IRON DIBBLE



IRON POINT DIBBLE



AMERICAN STEEL TROWEL



"DARBY."



ENGLISH ROUND WHETSTONE



VEGETABLE BASKET



GALVANIZED GARDEN REEL



BUCKSKIN GLOVE



EUREKA WEEDER



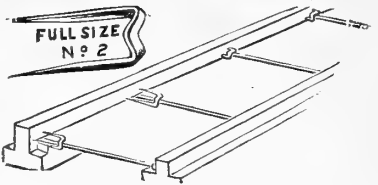
LANG'S WEEDER



ENGLISH AND AMERICAN SCYTHES



PATENTED MARCH 28, 1901



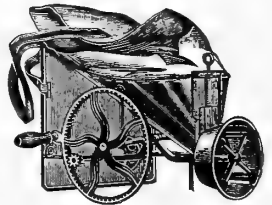
DREER'S PEERLESS GLAZING POINT



TOMATO TROWEL



TRANSPLANTING TROWEL



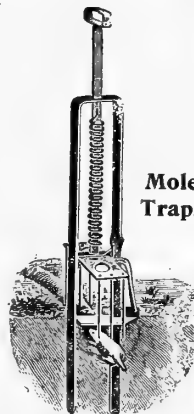
CAHOON SEED SOWER



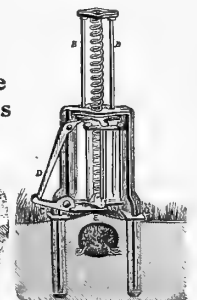
MASTICA GLAZING MACHINE



PUTTY DISTRIBUTER



REDDICK



OLMSTEAD

Asparagus Bucher. Acme, complete, \$1.50

" 20th Century, all iron, \$1.75

" Knife, American, plain, 25 and 35 cts.

Dibbles, all iron, 35 cts.; iron point, 40 cts.; brass point, 50 cts.

Garden Reels, iron, small, 50 cts.; large, 75 cts.; galvanized, large, \$1.25; heavy, double, \$2.00.

Garden Lines. Best Italian flax. 150 ft., 85 cts.; 180 ft., \$1.00; 240 ft., \$1.25; 300 ft., heavy, \$1.75.

Glass Cutter. Small diamond, \$2.50; large, \$3.75. Steel wheel, 15 cts.

Glazing Points, Peerless. Three sizes, No. 1, for small single thick glass; No. 2, for medium double thick glass; No. 2½, for large double thick and skylight glass. Price, per 1000, 60 cts.; postpaid, 75 cts.

Gloves, "Buckskin," heavy . . . \$1.00

Grass Hooks (Sickles.) English riveted back. No. 0 30 cts. No. 2 45 cts.

No. 1 35 cts. No. 3 55 cts.

Grass Hooks, English, 30 cts.; American, 25 cts.; Little Giant, 40 cts.

Mole Traps. Reddick, 85 cts.; Olmsted, \$1.25.

Scythes. English lawn, riveted back, best steel, 30, 32 and 34 inch, 90 cts.; 36 inch, \$1.00; 38 inch, \$1.15.

" Waldron English lawn, 36 to 40 inch, \$1.40.

" American lawn, 75 cts.; Bush, short, 75 cts.

Scythe Snath. Improved pattern, 75 cts.

Stones. Darby, 10 cts.; English, 15 cts.; German, 10 cts.

Seed Sower. Cahoon, Broadcast . . . \$3.25

Trowels. American, 15 and 25 cts.; English, pattern, strong, 6-in., 35 cts.; 7-in., 40 cts.;

Cleve's, Angle, 5-in., 15 cts.; 8-in., 25 cts.;

Tomato, 50 cts.; Transplanting . . . 30 cts.

Weeders. Excelsior, 10 cts.; Lang's, 25 cts.; Eureka, 25 cts.

White Cotton Twine. Fine for Pot herbs. Per lb., 22 cts.

Coarse Cotton Twine for general use in tying Beets, Carrots, etc. 20 cts. per lb.

Jute Twine for tying Plants or Vegetables. 15 cts. per lb.; 12 cts. per lb. by the bbl. Can be supplied in 2, 3, and 4-ply.

Mastica. A substitute for putty. \$1.25 per gal.; 5 gallons and over, \$1.15 per gal.

Mastica Machine. For applying Mastica, \$1.25.

Putty Distributer. For putty or Mastica, 85 cts. Postage, 10 cts.

Raffia. For tying Vegetables. Per lb., 14 cts.; 10 lbs., \$1.25; 100 lbs., \$11.00.

Twemlow's English Liquid Putty. 1 gal., \$1.25; 3 gals., \$3.75; 5 gals., \$6.00.

Vegetable Basket. For use in vegetable garden, ½ bu., Oak, 35 cts.; 1 bu., 50 cts.; ½ bu., Oak, Iron-bound, 50 cts.; 1 bu., 65 cts.

Plant Bed Protecting Cloth.

A cheap substitute for glass. Light grade, 5 cts. per yd.; piece of about 65 yds., at 4¼ cts. per yd. Medium grade, 9 cts. per yd.; piece of about 60 yds. at 8 cts. per yd. Heavy grade, 12 cts. per yd.; piece of about 50 yds. at 11 cts. per yd.



PLANT BED PROTECTION CLOTH

SEND FOR CATALOGUE OF TOOLS, POULTRY SUPPLIES, ETC.



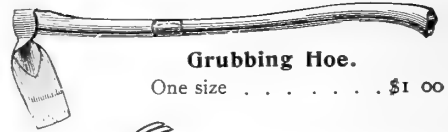
Mattock.

Medium, handled \$0 80
Heavy, 90



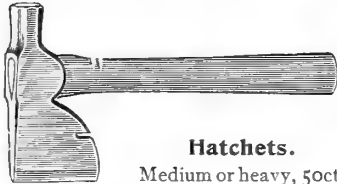
Steel Pick.

Medium, handled \$0 80
Extra heavy, handled 90



Grubbing Hoe.

One size \$1 00



Hatchets.

Medium or heavy, 50cts



Warren Hoe.

3 sizes 60 cts., 65 cts., 70 cts.



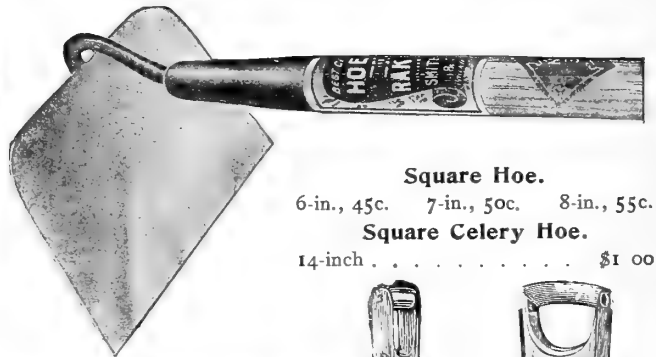
Hammer.

Claw 50 cts.



Half Moon Hoe.

3-inch . . 35 cts. 6-inch . . 50 cts.
4 " . . 40 " 7 " . . 55 "
5 " . . 45 " 8 " . . 55 "



Square Hoe.

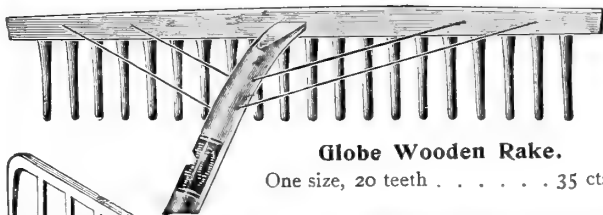
6-in., 45c. 7-in., 50c. 8-in., 55c.

Square Celery Hoe.

14-inch \$1 00



Steel Spade.



Globe Wooden Rake.

One size, 20 teeth 35 cts.



Steel Garden Rakes.

Teeth		Teeth	
8 . . .	\$0 45	14 . .	\$0 60
10 . .	50	16 . .	65
12 . .	55		



Steel Bow Rakes.

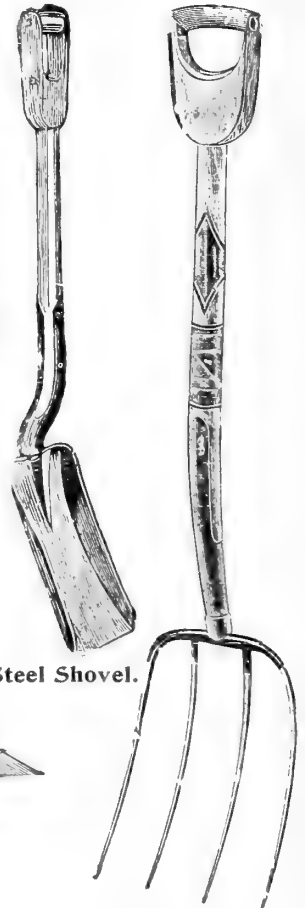
9 teeth . . . \$0 50 13 teeth . . . \$0 65
11 " . . . 60 15 " . . . 70

Shovels.

Long handle, Special \$0 90
" " Ames' 1 15
D handle, Special 90
D " square point, Special 90

Spades.

Special \$0 90
Ames' 1 15



Steel Shovel.

Spading Fork.

4-prong . \$0 90
5- " . 1 10

Manure Fork.

4-tine, \$0 85 5-tine, \$1 00
4 " long handle . 75
5 " " " . 90

SEND FOR CATALOGUE OF TOOLS, POULTRY SUPPLIES, ETC.

PLOWS, HARROWS, ETC.

The Best One-Horse Plow



A 1 X Genuine OLIVER CHILLED PLOW

No. A1 X. One-horse, \$4.75; Steel Beam, \$5.50. With removable Mold Board to make it a good Rooter.
No. A1. One-horse. The most suitable plow for general work, \$4.75; Steel Beam, \$5.50; Shares, 25 cts.

The Best Two-Horse Plow



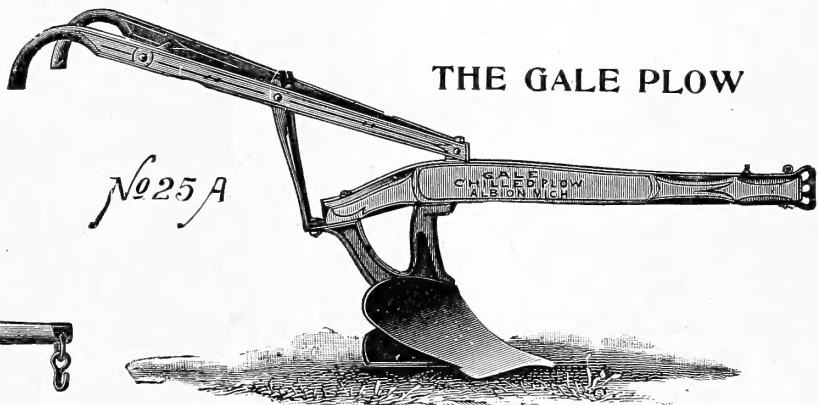
No. 20. Genuine OLIVER CHILLED PLOW

This is one of the best known plows for farm and garden use.
No. 20. Two-horse plain \$10 00
 Complete with wheel and jointer 13 00
 Wheel, \$1.00; Jointer, \$2.00; Shares, 35 cts.

THE GALE PLOW.

Excellent tool for the market garden, so constructed that it can be worked in narrow space. Light and strong.

No. 25 A. Light one-horse . . \$5 50
 No. 20. " two-horse . . 10 50
 Complete with jointer and wheel, 12 50
 Shares, 25 cts. and 35

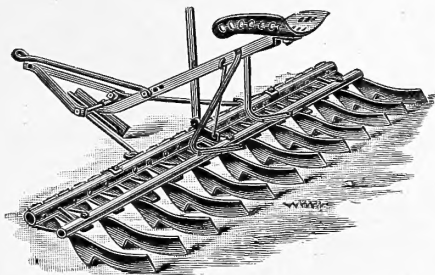


THE GALE PLOW

SINGLETREE.



24 and 26-inch, 65 cts.
 28 and 30-inch, 75 cts.

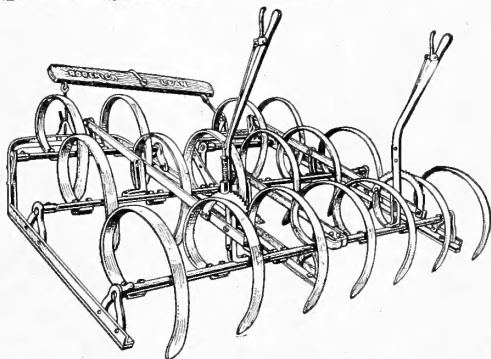


ACME PULVERIZING HARROW.

No. 23. 2-horse, 6 ft. 6 in. Cut, Riding \$11 00
 No. H. 1 " 4 " 4 " " Riding 14 00
 No. G. 1 " 3 " " Walking 9 50
 Prices do not include whiffle trees or neck-yoke.

STEEL FRAME SPRING TOOTH HARROW

The latest improved fitted with runners or wheels.



ONE HORSE.

9 teeth with wheel and handle \$11 50
 11 " " runners and handle 12 75
 11 " " runners and handle 11 75

TWO HORSE.

15 teeth with runner \$16 50
 15 " wheels 18 50



RUBBER HOSE.

We guarantee our hose against any imperfection. Prices include couplings. Sold in 25 or 50 foot lengths.

	Per foot
Challenge 3 ply, 3/4 in.	10
Extra Quality 3-ply, 3/4 in.	12
Chicago Electric, moulded 3/4 in.	16
"Riverton," moulded 3/4 in.	15
"Riverton," moulded 1/2 in.	13

Special prices by the bale of 500 feet.



Legget's Champion Dry Powder Gun.

For applying dry powder such as Paris Green, London Purple, etc. Will cover one acre with one pound of Paris Green. Price, \$7.50.

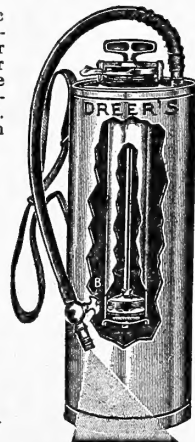
The "Auto" Spray.

The best of all automatic sprayers and the most convenient for use in tomato fields or other places where wagon or cart cannot go. Sprays a large area with one charge. Capacity, 4 gallons. Galvanized. \$4.50; Brass, \$6.75. Extension rods, 24-in., 25 cts.



Tin Powder Duster.

For applying all kinds of dry powders, 35 cents.



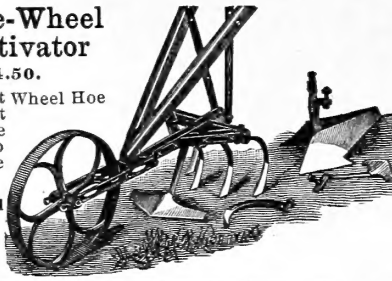
Garden and Farm Implements

"Gem" Single-Wheel Hoe and Cultivator

Complete \$4.50.

This is an excellent Wheel Hoe that has stood the test of time, and for the money there is no better tool on the market.

Gem Double-Wheel Hoe complete \$5.50

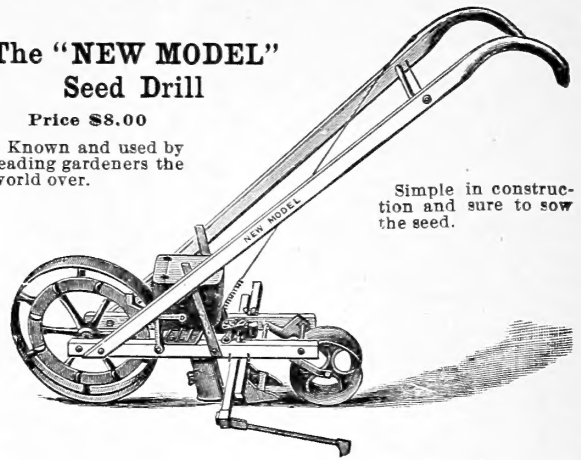


The "NEW MODEL" Seed Drill

Price \$8.00

Known and used by leading gardeners the world over.

Simple in construction and sure to sow the seed.



"Planet Jr." No. 14, Disc Hoe, Cultivator and Plow

Price, \$7.50



This is an ideal tool for working cloddy, lumpy or peaty soil; it breaks and cuts the soil, thus preparing it quickly. A brand new tool.

- No. 13½. Same as above, with Disc Hoe only . . . \$5 50
- " 38. Single Wheel Disc Hoe, Cultivator and Plow 6 50
- " 18½. Single Wheel, with Disc only . . . 4 25

The "Rival" Hand Cultivator and Plow

Price, \$2.50

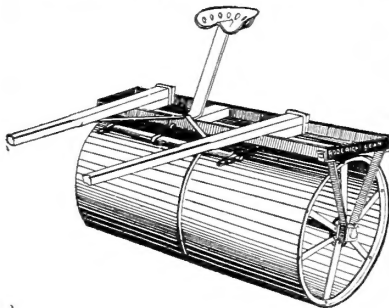


A very powerful hand tool. Will push through heavy soil with little effort. All the tools belonging with it are just those used by the market gardener; easily adjusted and quickly changed.



HORSE STEEL LAND ROLLER.

All Steel Land Roller, specially designed for the market gardener. Being made of steel, it will not break running over rough ground. Supplied with weight box for increasing the weight.



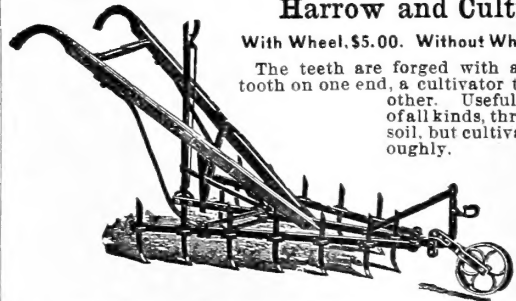
Weighted with Stone. All two Sections.

Diam.	long	Lbs.		
24 in.	4 ft. 9 in.	500	1 Horse	\$22 00
24 in.	5 ft. 5 in.	550	1 "	24 25
24 in.	6 ft.	550	2 "	23 00
24 in.	7 ft.	600	2 "	24 50

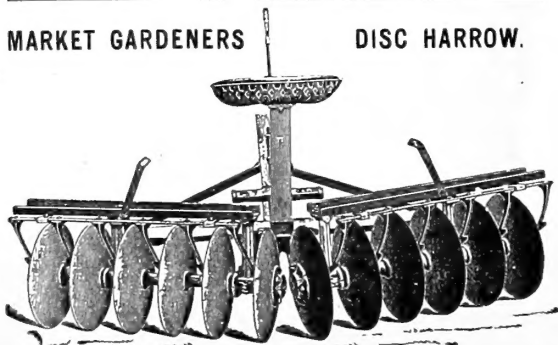
The No. 1 "IRON AGE" Combined Harrow and Cultivator

With Wheel, \$5.00. Without Wheel, \$4.50

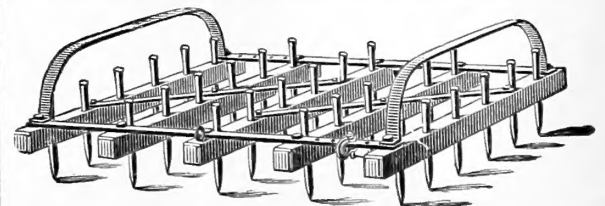
The teeth are forged with a harrow tooth on one end, a cultivator tooth the other. Useful in truck of all kinds, throws little soil, but cultivates thoroughly.



MARKET GARDENERS DISC HARROW.



This harrow works equally well in heavy and light soils. 2-horse with double tree and neck-yoke, \$25.00.



KAIN HARROW.

One of the very best tools for private or market gardeners. The harrows are provided with runners, so they can be easily moved without tearing up walks or roads. 24-tooth, \$6.50; 30-tooth, \$7.00.

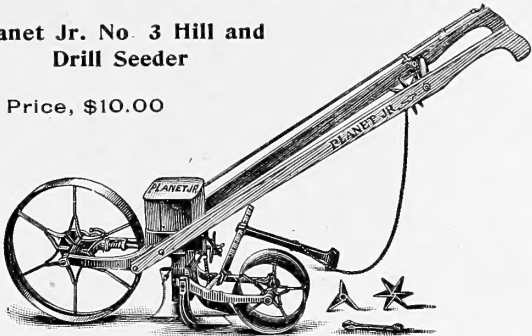
SEND FOR CATALOGUE OF TOOLS, POULTRY SUPPLIES, ETC.

"PLANET JR." Farm and Garden Tools

Space will not permit our showing and describing all of the "Planet Jr." tools, but we will send a fully illustrated catalogue, free for the asking, to any who desire it, and we can supply promptly anything ordered. "Planet Jr." goods are standard machines—the best on the market. In sending your order to us, you can rely on getting bottom prices

Planet Jr. No. 3 Hill and Drill Seeder

Price, \$10.00



This drill will sow in a continuous row in the ordinary way with the greatest regularity, but its distinctive feature is that it will drop neatly in hills either 4, 6, 8, 12 or 24 inches apart. It is changed in a moment from hill to drill work; the plow is adjustable for depth and opens a very narrow furrow. Capacity two and one-half quarts.



Planet Jr. No. 12 Double-Wheel Hoe, Cultivator and Plow

Price, \$6.50

Two acres a day can easily be worked with this implement, and when it is done it will be a better job than three men could have done in the same time with hand hoes, and runs either astride or between the rows.

The No. 12 has a pair of 6-inch hoes, a pair of plows for opening or covering, and a set of 4, all steel cultivator teeth. The tools shown are what gardeners use most, and others can be added as wanted.

No. 13. Same tool as No. 12, but with only one pair 6-in. hoes, \$4.25



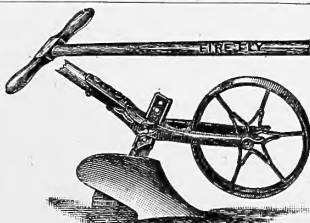
Planet Jr. No. 8 Horse Hoe and Cultivator

Price, \$8.50
Without Depth Regulator
order as No. 7
\$8.00

The Planet Jr. Horse Hoe and Cultivator is strongly built, is light and easy to handle. The reversible side hoes, as shown in the cut, act as plows or hillers, but when turned end for end the tool becomes a genuine horse hoe, working shallow and close without injury to the roots.

"Fire-Fly" Hand Plow

Invaluable for use in small gardens. Moldboard of tempered and polished steel. The depth is easily and quickly changed. Very useful to plow up chicken yards \$2.25.

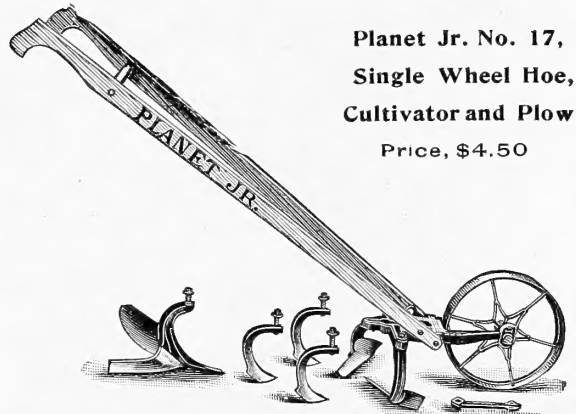


Planet Jr. No. 4 Combined Seed Drill, Single Wheel Hoe, Cultivator and Plow.

Price, \$10.50
As a Seeder only,
\$8.50



This tool combines in a single implement a hill-dropping seeder, a continuous row seeder, a single-wheel hoe, a cultivator and a plow. It sows in continuous rows or drops in hills, 4, 6, 8, 12 or 24 inches apart. It is automatically thrown out of gear and the feed stopped by raising the handles. For use as a cultivator, the drill parts are removed and the tool frame substituted by taking out a single bolt, it is then a perfect single-wheel hoe, with a variety of tools.



Planet Jr. No. 17, Single Wheel Hoe, Cultivator and Plow

Price, \$4.50

No. 17. Wheel Hoe is suited to all kinds of garden cultivation and all garden crops. You can do more and better hoeing with it in one day than you can do in three days with a hand hoe. The No. 17 has a pair of 6-inch hoes, a plow and a set of cultivator teeth, an outfit sufficient for most garden work.

Other attachments can be added at any time.

No. 16. With plow, two hoes, three cultivator teeth, two rakes and leaf lifter \$5 35
No. 17½. With two hoes and three teeth 4 00
No. 18. With 6-inch hoes only 3 00

Planet Jr. Twelve-Tooth Harrow, Cultivator and Pulverizer

Price, \$8.50
Less Pulverizer, \$6.90
Less Wheel and Pulverizer, \$5.70



Gardeners cultivate better than formerly. It has been found to pay best. The farmer or gardener is most likely to cultivate best who has the tool best adapted to his purpose. With the Twelve-Tooth Harrow here shown you go as deep or shallow as you like, come up close to row without injuring plants, cut out all the weeds, stir the soil, and mellow and fine it as with a garden rake. You widen and narrow as you please between 12 and 32 inches. It's a special favorite with strawberry growers, market gardeners and truckers.

FERTILIZERS. For the Farm and Garden.

WE KEEP ONLY THE HIGHEST GRADE.

Prices subject to change without notice. All fertilizers f. o. b. Philadelphia.

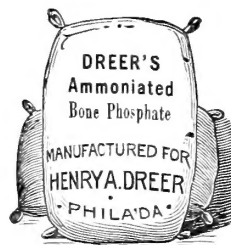


Animal Bone and Potash Compound. (Baugh's.) For all crops. Crops that need Potash are tomatoes, sweet potatoes, white potatoes, cabbage and onions. Price per sack, of 200 lbs., \$3.00; per ton, \$23.50.

Bone Meal. Specially good for preparing soil for box vegetables. 200 lbs., \$3.25; ton, \$30.00.

Ground Bone. Coarser than Bone Meal; does not act as quickly, but lasts longer. 200 lbs., \$3.25; ton, \$30.00.

Dreer's Ammoniated Bone Phosphate. (Special Grass and Grain Fertilizer.) Nothing better for broadcasting over land in the spring before plowing, fine for early crops. 200 lb. bag, \$3.00; ton, \$27.50.



Dried Blood Manure. The best known fertilizer for hastening crops in open air or under glass. A very rich food. 100 lbs., \$3.50; 200 lbs., \$6.25.

Nitrate of Soda. A fertilizer for all crops. Is very quick in action, and hastens maturity fully two weeks. Being extremely soluble, it should not be applied until plants

are above ground, when about 300 lbs. per acre should be sown, mixed with wood-ashes or land-plaster. 50 lbs., \$2.00; 100 lbs., \$3.50. Large quantities, prices on application.

Kainit (Analysis, 12 per cent. actual Potash). Apply at the rate of 1000 lbs. per acre. The only cure for the onion maggot; spread during the winter. 200 lbs., \$2.00; per ton, \$15.00.



Guano. New process, ten per cent. richer than Peruvian Guano. Contains 10 to 11 per cent. Ammonia, 20 to 22 per cent. Bone Phosphate, from 4 to 5 per cent. actual Potash, made exclusively from animal bones. Per 100 lbs., \$3.00; per sack of 200 lbs., \$5.50; per ton, \$50.00.

Peruvian Guano Substitute. 5 per ct. Ammonia, 6 per ct. available Phosphoric Acid, 7 per ct. Potash. Used extensively by market gardeners around large cities for all crops. Use 300 to 500 lbs. per acre, mix with loam or plaster, but not with lime, ashes, muck or clay, nor should it come in contact with growing plants when used dry. 100 lbs., \$2.50; 200 lbs., \$4.50; ton, \$38.00.



Poudrette. Native Guano. Contains all the elements necessary for plant life; used extensively among market gardeners. Per 100 lbs., \$1.25; 200 lbs., \$2.25; per ton, \$15.00.

Potato Manure. (Special, Baugh's.) Quick results, lasting benefit. 2 per cent. Ammonia, 5 per cent. Av. Ph. Acid, 10 per cent. Potash. Per sack, 200 lbs., \$3.25; per ton, \$28.00.

Land Plaster. Excellent for composting, fertilizing or mixing with guano. 100-lb. bag, \$1.00; barrel, 200 lbs., \$1.50; per ton, \$10.00.

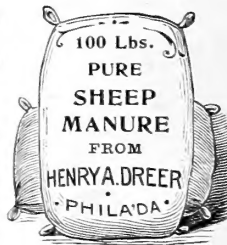


Muriate of Potash. 80 per cent. pure, equivalent to 48 to 50 per cent. actual Potash. A high-grade Fertilizer, and one of the best Orchard Fertilizers known, used largely in Peach cultivation, and as a general Fertilizer. Muriate of Potash and Ground Bone stands as a leader. 50 lbs., \$1.75; 100 lbs., \$3.00. Original sacks of 224 lbs., \$5.75.

Salt, Agricultural. For top-dressing asparagus beds. Apply very early in spring, at the rate of 800 to 1000 lbs. per acre. 200 lbs., \$1.50; per ton, \$10.00.

Dreer's Pure Sheep Manure (Wizard Brand)

This is a pure natural manure and the most nutritious food for plants. For vegetable garden, placed directly in hills or drills, it promotes a rapid, steady growth until maturity. As a top-dressing on growing crops it is unequalled. 100 lbs., \$1.50; 500 lbs., \$7.00; 1000 lbs., \$14.00; ton, 2000 lbs., \$25.00.



INSECTICIDES AND FUNGICIDES.

Arsenate of Lead. 1 lb., 25 cts.; 2 lbs., 40 cts.; 5 lbs., 85 cts.; 10 lbs., \$1.60. Dilute 1 oz. to 1 gallon of water.

Bordeaux Mixture. (Liquid.) 1 qt., 35 cts. 1 gallon, 90 cts.; 5 gallon, \$3.75. 1 gal. makes 1 bbl. liquid.

Bordeaux Mixture. (Dry.) Ready for use by adding water. 1 lb., 20 cts., makes 5 gallons spray; 5 lbs., 75 cts.

Copperine. For fungus and mildew. Lb., 25 cts. makes 16 gallons of spray; 5 lbs., \$1.00 10 lbs., \$1.75.

Copper Sulphate. For early Spraying and making Bordeaux Mixture. 1 lb., 15 cts.; 10 lbs., \$1.25; 25 lbs., \$2.50.

Grape Dust. A splendid Mildew remedy. Fine for vegetable houses and frames. 5 lbs., 30 cts.

Hellebore. For currant worm and sucking insects. 1 lb., 20 cts.; 5 lb., 75 cts.; 10 lbs., \$1.40.

Kerosene Emulsion. (Liquid.) Concentrated, qt., 35 cts.; 1 gal., 90 cts. 5 galls., \$3.75.

Kerosene Emulsion. (Paste.) 1 lb., 15c.; 5 lbs., 60 cts. 25 lbs., \$2.50. 1 lb. makes 10 gallons.

Kil-O-Scale. The best San Jose Scale remedy, good for all Scale. 1 qt., 50 cts.; ½ gallon, 75 cts.; 1 gallon, \$1.25; 5 and 10 gallons, \$1.00 per gallon. Special prices by barrels. One gallon dilutes to 20 gallons of water.

London Purple. Per lb., 20 cts.; 5 lbs., 85 cts.

Powdered Sulphur. Per lb., 6 cts.; 5 lbs., 25 cts.; 10 lbs., 40 cts.; 100 lbs., \$3.50.

Pure Paris Green. Per lb., 35 cts.; 5 lbs., \$1.75.

Slug Shot. (Hammond's.) 5 lbs., 25 cts.; 100 lbs., \$4.00; bbl., 235 lbs., 3½ cts. per lb.

Tobacco Dust. Coarse or fine for dusting or burning, 5 lbs., 20 cts.; 50 lbs., \$1.50; 100 lbs., \$2.50.

Tobacco Stems. For cabbage, brussels sprouts, cucumbers, melons and squash. Bale, \$1.50; ton, \$12.00.

Tobacco Soap. "Dreer's." The Soap for all insects; use through the season. ½ lb., 20 cts.; 10 lbs., \$3.00.

Whale Oil Soap. In 1, 2 and 5 lb. pkgs.; 15, 25 and 40 cts.