

Historic, archived document

Do not assume content reflects current scientific knowledge, policies, or practices.

Given by Mr. H. D. House

APR 9 1943

62.61

FALL OF 1875.

Dutch Bulbs & Flower Roots

Plants for Winter Flowering,

Seeds for Fall Sowing, Etc.



Small Fruits and Sundries,

FOR SALE AT

PETER HENDERSON & Co's
Seed Store,

35 CORTLANDT STREET, NEW YORK.

We guarantee the safe arrival of all packages to any part of the country, and will also hold ourselves responsible for safe arrival of remittances sent us, when made in the form of a Draft, Registered Letter, or Post-office Order. Remittances sent us in any other way are entirely at the risk of the sender.

Orders from unknown correspondents must invariably be accompanied by a remittance, or satisfactory city references.

Be careful to write your name and address distinctly.

PRESS OF MUNROE & METZ. 60 JOHN STREET, NEW YORK.

Hyacinths.

TREATMENT OF THE HYACINTH.

HERE are few bulbs so well adapted to pot culture as the Hyacinth, and none that require less care, or give more satisfaction in their management. They will grow in almost any light, sandy soil, but where the highest cultivation is aimed at, they should be planted in a mixture composed of one-half decomposed turfy loam, with the remainder equal parts of well-rotted manure and leaf mould, well incorporated together. The pots used should be about six inches in diameter for single bulbs; where a massive effect is desired, two, three, or five bulbs, in pots of proportionate size, produce a fine display. In potting, fill in the soil rather loosely to the rim, press down the bulb so that about one-third of it remain above the surface of the soil: the pot should then be struck smartly on a bench, so as to give the soil the proper degree of firmness, which will bring it down to an inch or so below the rim of the pot; water freely to still further settle the soil. The pots should now be placed in some situation where it is cool and dark, so as to encourage a strong development of roots before the bulb starts at the top; such a situation may be formed by covering the pots with four or five inches of sand in a cool cellar, under the stage of a greenhouse, or in a cold vinery, still enveloping them in soil or sand. If none of these conveniences are at hand, the pots may be placed in a trench, in the open ground, covered over with soil, and sufficient litter placed above that to keep out the frost, so that they can be got at when wanted. Hyacinths thus treated will have made sufficient roots in from eight to ten weeks to admit of their being brought to the light. As they begin to grow, water should be freely given, so that the earth may be moistened to the bottom of the pot, for if stinted in water while growing, the flowers will be smaller and less brilliant in color. The difference of a week or fortnight between the periods of potting will produce a corresponding difference in the periods of bloom.

TO GROW IN GLASSES.

Dark colored glasses are the best, the roots being impatient of light. The bulbs should be so placed that only the base of each touches the water; the glasses should then be removed to a cool, dark place until the roots have reached the bottom, when they may be exposed to the light. The water should be changed once in three or four weeks. Care should also be taken that they are not exposed to the frost, or the glasses may be broken, and the roots of the Hyacinth to some extent injured. As a general rule, single Hyacinths succeed better in glasses than double ones.

TO GROW IN BEDS AND BORDERS.

Hyacinths may be planted in the open ground at any time from September to December. To have them in the highest degree of perfection, it is necessary that the soil be well manured. Plant the bulbs from three to four inches deep, and from eight to ten inches apart. They will be benefitted by a covering of two or three inches of decayed leaves or straw, to prevent the action of severe frosts; this should be removed as the plants begin to grow.

TO GROW IN MOSS, SAND, &c., &c.

The Hyacinth is capable of being grown in a greater variety of ways than almost any other flower. It will grow freely in almost any medium capable of retaining moisture, and will generally produce as fine spikes of bloom when grown in sand, moss, or water, as when planted in the richest compost. Porcelain, terra-cotta, stone or china vases, glass bowls or dishes, in fact anything that will contain moisture may be used to advantage, and with gratifying results. Fill the vessel with moss or sand, upon which arrange the bulbs in any form that taste may suggest. Crocuses, Snowdrops, Jonquils, and Scillas, may be grown in the same manner, and are frequently used to fill up the spaces and as margins to large vessels filled with Hyacinths. Care must be taken to keep the sand or moss constantly moist. Keep in a cool, dark place, for about a fortnight, until the roots get well started, before exposing to the light.



Amaryllis Formosissima.
(Jacobean Lily.)
Page 8.



Anemone, Single.
Page 9.

Choice Named Hyacinths.

DOUBLE RED, various shades.

	<i>Each.</i>		<i>Each.</i>
ACTEUR, rose shaded with deep pink, large bells.....	\$0 20	GROOT VOORST, delicate blush, fine truss, very double, and compact ...	\$0 25
ALIDA CATHERINA, satin rose, very double.....	25	LORD CASTLEREAGH, light rose, fine, spike	25
BOUQUET TENDRE, brilliant red, fine truss.....	25	PANORAMA, bright red, long handsome	25
BOUQUET ROYAL, light rose, dark eye, very double.....	30	PERRUQUE ROYAL, salmon rose, large handsome bells.....	40
CZAR NICHOLAS, clear rose, large bells and spike.....	20	PRINCESS ROYAL, dark red, purple eyes, very fine.....	25
COMTESSE DE LA COSTE, delicate rose, with purple eye, neat and compact truss.....	30	REGINA VICTORIA, salmon rose, truss large and compact.....	25

DOUBLE WHITE, various shades.

	<i>Each.</i>		<i>Each.</i>
A LA MODE, pink eye, good truss.....	\$0 30	LA VIRGINITE, pale blush, large bells, and spike.....	\$0 25
ANNA MARIA, blush, with violet eye, good truss.....	25	MISS KITTY, violet eye, large bells.....	30
COURONNE BLANCHE, pure white.....	35	PASSE VIRGO, early, with purple eye..	25
DUCHESS DE BEDFORD, pure white.....	25	PYRENE, white, green tips.....	25
LA DEESSE, yellowish white, fine shap'd bells.....	30	SCEPTRE D'OR, pure white, large bells, fine truss.....	25
LA TOUR D'AUVERGNE, pure white, fine large truss.....	30	PRINCE OF WATERLOO, large and very double, beautiful spike.....	40

DOUBLE BLUE, various shades.

	<i>Each.</i>		<i>Each.</i>
ALBION, dark blue, compact, handsome spike.....	\$0 35	LORD WELLINGTON, dark porcelain, fine spike.....	\$0 25
BLOCKSBERG, beautiful clear porcelain large bells, fine truss.....	30	MURILLO, light blue, fine bells.....	40
BRIDE OF LAMMERMOOR, lilac, good spike.....	30	MIGNON VON DRYFHOUT, violet, compact truss.....	30
GENERAL ANTINCK, dark porcelain, shaded lilac, fine spike.....	25	OTHELLO, violet black, distinct and fine	30
GRAND VEDETTE, rich blue, fine truss	30	PASQUIN, porcelain, fine form.....	25
		PASSETOUT, clear porcelain, neat compact truss.....	30
		PRINCE FREDERIC, beautiful dark lilac	30



Bulbocodium Vernum.

Page 9.



Calla Æthiopica.

Page 16.

Choice Named Hyacinths,

(Continued.)

DOUBLE YELLOW, various shades.

	<i>Each.</i>		<i>Each.</i>
BOQUET D'ORANGE, reddish yellow, short compact truss.....	\$0 30	JAUNE SUPREME, splendid deep yellow, very fine spike.....	\$0 40
GOETHE, cream colored, large bells, fine truss.....	30	PIET HEIN, pale yellow.....	30
LOUIS D'OR, delicate straw colored, moderate truss.....	40	VAN SPEYK, salmon yellow, splendid spike.....	50

SINGLE RED, various shades.

	<i>Each.</i>		<i>Each.</i>
AGNES, dark red, large bells and fine spike.....	\$0 25	MADAME HODSON, delicate pink, striped deep red, fine full truss.....	\$0 25
AMY, deep crimson, fine truss.....	20	MARS, fine deep red, green tips.....	20
DIEBITSCH SABALHANSKI, brilliant red, fine spike.....	25	NORMA, satin pink, large bells, handsome spike.....	25
JENNY LIND, shaded red, good truss.....	30	ROBERT STEIGER, bright crimson, very fine.....	25
LA DAME DU LAC, beautiful rose, large compact truss.....	30	SULTAN'S FAVORITE, beautiful rose, large handsome spike.....	30
L'AMI DU CŒUR, bright red, good truss.....	20		
LORD WELLINGTON, blush, striped light carmine, fine large bells.....	30		

SINGLE WHITE, various shades.

	<i>Each.</i>		<i>Each.</i>
ALBA SUPERBISSIMA, pure white, large truss, fine.....	\$0 30	LA CANDEUR, pure white, neat, compact truss.....	\$0 30
CLEOPATRA, rosy white, superb truss.....	25	MADAME TALLEYRAND, pure white fine form.....	30
ELFRIDA, creamy white, fine.....	25	QUEEN VICTORIA, pure waxy white, large handsome spike.....	30
GRAND VAINGUEUR, pure white, very fine truss.....	30	REINE BLANCHE, pure white, good truss.....	35
GRANDEUR A MERVEILLE, beautiful blush, fine truss.....	25	SEMIRAMIS, creamy white.....	25
GRAND VEDETTE, pure white, large bells.....	30	VOLTAIRE, white, shaded rose, good spike.....	25



Crown Imperial.

Page 10.



Eucharis Amazonica.

Page 16.

Choice Named Hyacinths,

(Continued.)

SINGLE BLUE, various shades.

	<i>Each.</i>		<i>Each.</i>
ARGUS, beautiful blue, with white eye.....	\$0 30	GRAND LILAC, beautiful silvery lilac, large compact truss.....	25
BARON VAN TUYLL, violet blue, large and compact truss.....	25	MIMOSA, dark purple, fine spike.....	30
BLEU MOURANT, deep blue, compact truss.....	25	ORONDATUS, porcelain blue, fine compact truss.....	25
CHARLES DICKENS, porcelain, splendid truss.....	25	PRINCE OF SAXE-WEIMAR, dark shaded blue.....	30
COURONNE DE CELLE, azure blue, compact truss.....	30	REGULUS, porcelain blue, shaded white, splendid bells.....	30
EMICUS, dark blue, white centre.....	25	UNCLE TOM, violet black, white centre, fine.....	40

SINGLE YELLOW, various shades.

	<i>Each.</i>		<i>Each.</i>
ADONIA, pale yellow, good form.....	\$0 25	HEROINE, light yellow, tipped with green, fine spike.....	\$0 25
ALIDA JACOBA, deep canary yellow, compact truss.....	30	KING OF HOLLAND, pale yellow, compact truss.....	30
GOLD SCEPTRE, rich golden yellow, fine flower.....	30	LA PLUIE D'OR, primrose color.....	30

Mixed Hyacinths,

FOR THE GARDEN.

THIS class is formed of smaller bulbs, from the named varieties in the above sections, and mixed in various shades of each color, thus affording a diversity of feature well suited for miscellaneous groups in flower borders.

	<i>Each.</i>	<i>Per Doz.</i>	<i>Per 100.</i>		<i>Each.</i>	<i>Per Doz.</i>	<i>Per 100.</i>
Single Red.....	\$0 15	\$1 25	\$10 00	Double Red.....	\$0 15	\$1 25	\$10 00
“ Blue.....	15	1 25	10 00	“ Blue.....	15	1 25	10 00
“ White.....	15	1 25	10 00	“ White.....	15	1 25	10 00
“ All colors.....	12	1 25	9 00	“ All colors.....	12	1 25	9 00



Ixia.
Page 10.



Jonquil, Campenelle.
Page 12.

Tulips.

(Continued.)

EARLY DOUBLE TULIPS.

	Each	Pr doz		Each	Pr doz
BONAPARTE, brownish red. . .	\$0 5	\$0 50	PEONY GOLD, golden yellow.	\$0 8	\$0 75
DUC VAN THOL, red and yellow. . .	5	50	PEONY RED, deep red.	8	75
DUKE OF YORK, rose, border'd white.	8	75	PURPLE CROWN, dark velvety crimson.	8	75
GLORIA SOLIS, crimson, with yellow margin.	5	50	REX RUBRORUM, bright crimson scarlet.	8	75
LA CANDEUR, pure white.	10	1 00	ROSINE, bright rose.	5	50
MADAME BONAPARTE, red and yellow.	5	50	TOURNESOL, scarlet, margined yellow.	8	75
MARIAGE DE MA FILLE, white, striped violet rose. . .	15	1 50	YELLOW ROSE, bright yellow. .	5	50

FINEST MIXED DOUBLE VARIETIES, 50 cents per doz., \$3.50 per hundred.

LATE FLOWERING GARDEN TULIPS.

This group differs from the above by their taller growth and later bloom. The leading colors are pure white, and golden yellow ground tints, with diversely beautiful flamed, striped and feather-like margins.

	Per Doz.	Per 100.
BIZARRES, yellow ground, feathered crimson, purple or white, choice mixed. . .	\$0 75	\$5 00
BYBLOEMENS, white ground, flaked lilac, purple or black, choice mixed.	1 00	8 00

PARROT TULIPS.

These are very singular and striking flowers, of large size and brilliant colors, forming very effective groups for the flower borders or front of shrubberies.

	Per doz.	Per 100.
PARROT, finest mixed colors.	\$0 50	\$3 00
" Red.	75	4 00
" Variegated.	75	4 00
" Yellow.	75	4 00

MIXED TULIPS.

Fine mixed double or single Tulips for borders; many beautiful colors.

50 cents per dozen; \$3.50 per hundred.



Jonquil, Double.

Page 12.



Narcissus Bulbocodium.

Page 14.

Crocus.

ONE of the earliest flowers of Spring, and a universal favorite, being dwarf, and compact in growth, and varying in all the essential shades of color for producing harmony of effect, either separately or blended together, in groups, or as margins to flower borders, &c.

They may be planted from October to December in ordinary rich garden soil, placing the bulbs about two inches deep, each group or line being planted in its own relative color, or otherwise in blended varieties as taste may prefer. They will improve in beauty for some years, if not disturbed.

CROCUS IN COLORS.

	Per Doz.	Per 100.
BLUE, mixed shades.....	\$0 20	\$1 00
VARIEGATED, or STRIPED mixed.....	20	1 00
WHITE, mixed.....	20	1 00
LARGE YELLOW, very fine.....	20	1 00
CLOTH OF GOLD, golden yellow, small flowers.....	20	1 00
ALL COLORS, mixed.....	15	75

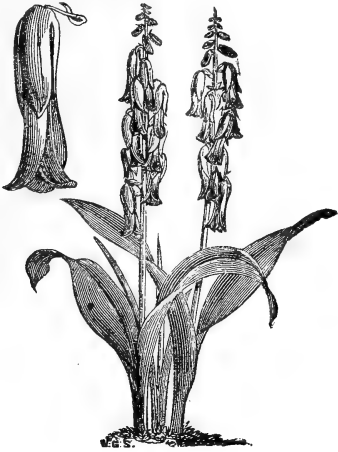
NAMED VARIETIES.

	Per Doz.	Per 100.		Per Doz.	Per 100.
ALBION, large striped white and blue.....	\$0 30	\$1 50	DAVID RIZZIO, dark purple, large.....	\$0 30	\$1 50
BARON BRÜNNOW, dark blue, fine.....	30	2 00	QUEEN VICTORIA, pure white.....	30	1 50
NE PLUS ULTRA, blue and white.....	30	1 50	SIR WALTER SCOTT, striped blue and white, fine.....	30	2 00

Amaryllis.

THE Amaryllis are remarkable for their beautiful flowers, and the rapidity with which they develop. They require a good garden soil, and should be grown in-doors.

	Each.
AMARYLLIS ATAMASCO, changing from white to pink.....	\$0 20
" FORMOSISSIMA (Jacobean Lily).....	40
" PURPUREA (<i>Valotta Purpurea</i>), scarlet, very fine.....	75
" AULICA, crimson, with green stripes, very fine.....	2 50
" JOHNSONII, crimson, striped white, large and handsome.....	2 50
" REGINA, orange, splendid.....	2 50



Lachenalia Pendula.
Page 16.



Leucojum Vernum. (Spring Snowflake.)
Page 16.

Anemones.

THESE are highly ornamental hardy tubers, admirably adapted for producing a successive display of splendid groups or masses. The flowers are larger than the Ranunculus, and resemble a semi-double Hollyhock.

Like the former they are dwarf and compact, six to eight inches in height, but differ in having much richer foliage, and yield a longer continuation of bloom. The colors include the most brilliant scarlet, red, blue, dark rose, and variously striped, and are exceedingly effective for display from February until July. If planted from October until December, they will bloom successively during the early spring months; and those planted in February and March will bloom from April until July.

ANEMONE, finest named sorts.....	\$1 00 per doz.
“ finest mixed double	50 “
“ finest mixed single.....	50 “
“ single scarlet.....	50 “

Arum.

A GENUS of very picturesque and ornamental plants, comprising some of the most fantastic productions in the vegetable kingdom. They are quite hardy, and will succeed in common garden soil.

ARUM DRACUNCULUS (Dragon Arum), flowers brown, one foot long, stem beautifully marbled, leaves handsome, resembling a small palm.....	<i>Each.</i> \$0 25
ARUM MACULATUM (Spotted Arum), leaves spotted dark green.....	25

Bulbocodium Vernum.

(Spring Colchicum.)

A CHARMING early Spring blooming plant, in flower two weeks before the Crocus. Purple, very attractive and beautiful.

8 cents each, 75 cents per doz.



Lilium Candidum.
Page 12.



Lilium Lancifolium.
Page 12.

Crown Imperials.

STATELY, old-fashioned, Spring-blooming plants, with clusters of pendant bell-shaped flowers, surmounted with a tuft of green leaves; very effective in mixed borders, shrubberies and centres of beds. They succeed well in any soil. Plant the bulbs about four inches deep, and one foot apart.

	<i>Each.</i>		<i>Each.</i>
Double Red.....	\$0 90	Single Yellow.....	\$0 90
Double Yellow.....	1 25	Gold-leaf.....	50
Single Red.....	40	Mixed varieties.....	25

Dahlias.

OUR list of Dahlias embraces perhaps the finest collection in the country, comprising every shade of color, from purest white to darkest crimson. For list of names, with descriptions, see Spring Catalogue of Plants. Dry roots ready in October.

30 cents each; \$3 per dozen.

Ixiàs and Sparaxis.

VERY beautiful little Winter flowering plants. From four to six should be planted in a pot, and they should be protected from frost till the pots are well filled with roots, when they may be set on the shelves of the greenhouse, and watered regularly, and they will flower well. They will grow well in a south border in the open air, planted from five to six inches deep in a light sandy soil, and to be covered with dry litter in severe weather.

IXIAS, finest mixed.....	\$0 75
SPARAXIS, finest mixed.....	1 00



Lilium Superbum.
Page 13.



Lilium Tigrinum.
Page 13.

Gladiolus.

FINEST HYBRIDS. (Ready for delivery 1st of November.)

WE have a large assortment of these magnificent Summer-flowering bulbs, which we offer at the following exceedingly low rates. The first plantings may be made about the latter end of April, or first week in May, and will bloom in July, and by making successive plantings every two weeks to the middle of July, they can be had in perfection until the 1st of November.

12	Choice Flowering Bulbs, without names.....	\$1 50
12	“ “ “ with names.....	2 50
50	“ “ “ without names.....	4 50
50	“ “ “ in twenty-five named sorts.....	5 50
100	“ “ “ without names.....	8 00
100	“ “ “ in twenty-five named sorts.....	10 00

Grape Hyacinths, etc.

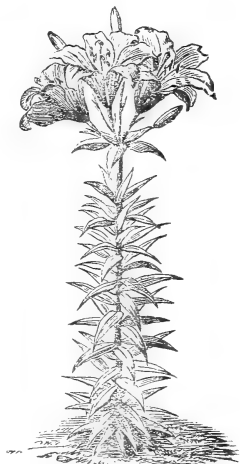
THESE are very pretty Spring-flowering plants, well adapted for pot or border culture, and succeed well in ordinary garden soil. The Feathered Hyacinth, with its large feathery-looking flower spikes, and the little Grape Hyacinth, with tiny flower-bells compactly set together, are interesting objects in the Spring flower-garden.

MUSCARI BOTRYOIDES (Grape Hyacinth), blue.....	Each.	Per Doz.
“ MONSTROSUM (Feathered Hyacinth), purple blue.....	\$0 08	\$0 75
	10	1 00

Iris.

A CLASS of very beautiful flowering bulbs, which are deserving of more extended cultivation; their rich and varied colors of blue, violet, purple, lilac, white and yellow, render them exceedingly attractive in any situation; they are of the easiest culture, growing freely in any ordinary garden soil. The bulbs should be planted early, as they do not keep well out of ground.

IRIS, finest mixed English.....	Each.	Per Doz.
“ finest mixed Spanish.....	\$0 05	\$0 50
“ Pavonia (Peacock Iris).....	05	40
“ Persica, dwarf Persian Iris.....	10	1 00
“ Germanica, herbaceous perennial.....	15	1 50
	10	1 00



Lilium Umbellatum.

Page 13.



Tritonia.

Page 16.

Jonquils.

PRETTY yellow flowers, varieties of the Narcissus, having a most agreeable fragrance. They are cultivated in pots, or the open ground; the bulbs being small, four or five may be planted in a five-inch pot.

	Each.	Per Doz.
LARGE DOUBLE, sweet-scented.....	\$0 25	\$2 50
SINGLE, sweet-scented.....		50
CAMPERNELLE, single.....		50

Lilies.

(Ready in October.)

THESE beautiful plants are becoming yearly more popular as their merits become more widely known, and certainly no class of plants are more deserving of extended cultivation; they are perfectly hardy, and of the easiest culture, and many of the varieties are possessed of the most delicious fragrance. They are admirably adapted for pot culture, or for the decoration of the greenhouse or conservatory, and will flourish in almost any soil or situation. After once planting, they require very little care, and should not be disturbed oftener than once in three years, as established plants bloom more freely than if taken up annually.

LILIUM AURATUM (the Golden-rayed Lily of Japan), strong flowering roots. 50 cents each; \$5 per dozen.

LILIUM AURANTIACUM, orange yellow. 40 cents each; \$4 per dozen.

LILIUM CANDIDUM, large snow-white fragrant blossoms, 3 to 4 feet high. 20 cents each; \$2 per dozen.

LILIUM FORTUNEI, a very showy and attractive variety, growing to the height of 6 or 7 feet, flowers of a rich deep orange, spotted with black. 40 cents each; \$4 per dozen.

LILIUM HUMBOLDTII, a splendid variety from California, with drooping flowers, of a bright golden yellow, spotted with scarlet; the plant is of stately habit, growing from 5 to 7 feet high. 60 cents each; \$6 per dozen.

LILIUM LANCIFOLIUM ALBUM, pure white. 50 cents each; \$5 per dozen.

LILIUM LANCIFOLIUM ROSEUM, rose spotted. 25 cents each; \$2.50 per dozen.

LILIUM LANCIFOLIUM RUBRUM, white, with crimson spots. 25 cents each; \$2.50 per dozen.

LILIUM LANCIFOLIUM MONSTROSUM ALBUM, pure white, immense clusters of flowers. 60 cents each; \$6 per dozen.

LILIUM LANCIFOLIUM MONSTROSUM RUBRUM, red-spotted, immense clusters of flowers. 50 cents each; \$5 per dozen.



Muscari Botryoides
(Grape Hyacinth.)
Page 11.



Muscari Monstrosum,
(Feathered Hyacinth.)
Page 11.

Lilies,

(Continued.)

- LILIUM LANCIFOLIUM PUNCTATUM, white, spotted with delicate salmon. 75 cents each; \$7 per dozen.
- LILIUM LONGIFLORUM, large snow-white, trumpet-shaped flowers, very fragrant, 1 to 1½ feet. 15 cents each; \$1.50 per dozen.
- LILIUM MARTAGON (Turk's Cap), various colors, 3 feet high. 30 cents each; \$3 per doz.
- LILIUM PHILADELPHICUM, flowers bright red, spotted with black, very beautiful. 30 cents each; \$3 per dozen.
- LILIUM SUPERBUM, orange red, flowers in pyramids of from twenty to fifty in number, 6 to 8 feet high. 25 cents each; \$2.50 per dozen.
- LILIUM TIGRINUM (Tiger Lily), orange red, spotted black. 15 cents each; \$1.50 per doz.
- LILIUM TIGRINUM SPLENDENS, flowers twice the size of the old variety, and of a deeper color, 5 to 8 feet. 40 cents each; \$4 per dozen.
- LILIUM TIGRINUM FLORE PLENO, a very splendid variety of the Tiger Lily, rising from 4 to 5 feet in height, of almost gigantic vigor in growth, with large paniculate racemes of bright orange-red double flowers, richly marked with black spots. 75 cents each; \$7 per doz.
- LILIUM UMBELLATUM, orange scarlet, very showy and free-flowering. 50 cents each; \$5 per dozen.
- LILIUM WASHINGTONIANUM, a new variety, from California, and one of the most beautiful Lilies yet introduced, flowers erect, pure white, with bright scarlet spots, and very fragrant. 60 cents each; \$6 per dozen.

Lily of the Valley.

(Convallaria Majalis.)

ONE of the most charming of Spring flowering plants, producing in profusion its delicate bell-shaped, delightfully fragrant white flowers. It will thrive in any common soil, and will do well in shady situations where few other plants will succeed. Fine clumps, 50 cents each; \$5 per dozen.

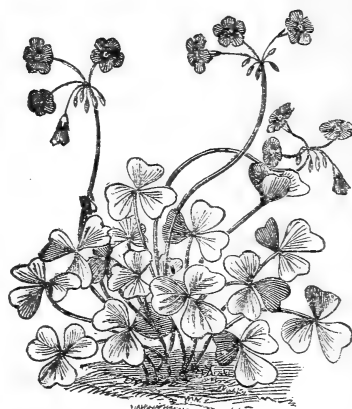
Oxalis.

A CLASS of highly interesting plants, particularly adapted to pot culture, being of neat, dwarf habit, and compact growth; pot in light porous soil, and protect from frosts.

OXALIS, in named varieties.....	\$0 10 each.	\$1 00 per doz.
“ fine mixed.....	05 “	50 “



Ornithogalum Umbellatum.
Page 16.



Oxalis.
Page 13.

Poylanthus Narcissus.

BEAUTIFUL early Spring flowers, producing large clusters of white, yellow, and citron-colored flowers of the most delicious fragrance, which render them very attractive as ornaments to the parlor or conservatory. They may be planted any time from October to January, singly in pots, or where masses of flowers are desired, two, three, or four in a pot; if planted in the open borders, manage in the same manner as the Hyacinth, but as they are not so hardy, should be planted five inches under the surface, and be protected from severe frosts.

	Each.	Per Doz.		Each.	Per Doz.
GRAND PRIMO, white citron cup.....	\$0 15	\$1 50	STATES GENERAL, lemon, with yellow cup.....	\$0 15	\$1 50
GROOT VOORST, white, with yellow cup.....	15	1 50	MIXED VARIETIES.....	15	1 25
SOLEIL D'OR, yellow, with orange cup.....	15	1 50	DOUBLE ROMAN, white and yellow, very fragrant; if planted early will flower about Christmas.....	10	1 00

Border Narcissus.

ADMIRABLY adapted for garden decoration in the early Spring months, and valuable additions to the table and sitting-room bouquet. They are easily cultivated, quite hardy, very showy and fragrant, and are excellent for forming groups or masses, and for mixed borders in the flower garden.

DOUBLE VARIETIES.

	Per doz.		Per doz.
ALBA PLENA ODORATA, pure white, very double and sweet.....	\$0 75	ORANGE PHENIX, large golden yellow, very double.....	\$0 75
INCOMPARABLE, yellow and orange, large and fine.....	50	VON SION, double yellow Daffodil.....	50
		MIXED DOUBLE VARIETIES.....	50

SINGLE VARIETIES.

	Per doz.		Per doz.
CAMPERNELLE.....	\$0 50	BULBOCODIUM (Hoop Petticoat Narcissus).....	40 cents each..\$3 00
TRUMPET MAJOR.....	10 cents each.. 75	MIXED SINGLE VARIETIES.....	50
POETICUS (Pheasant's Eye), pure white, cup edged with red, beautiful.....	50		



Scilla Campanulata.
Page 15.



Scilla Siberica.
Page 15.

Ranunculus.

FOR symmetry in form and brilliancy in color, in almost all the varieties and hues which are recognized among flowers, the Ranunculus is probably unequalled by any other. For its culture, it requires a good depth of rich garden soil. From October to December is the best period for planting (and in the early Spring months for succession), in drills across the bed two inches deep, and each drill six or eight inches apart. After planting the tubers firmly with the claws downward, cover them with one inch of sand previous to the final cover of soil. As a protection from severe frosts, the beds may be covered with a good layer of dry tan, litter or leaf mould.

The Ranunculus forms its roots near the surface, and therefore is unable to withstand a dry and parched soil; hence it is essential to water them freely.

RANUNCULUS, double Persian, finest mixed.....25 cents per doz.
" double Turban, finest mixed.....50 " "

Scillas.

VERY beautiful early Spring flowering bulbs, of dwarf habit, from six to eight inches in height, with gracefully pendent, bell-shaped blossoms. They are quite hardy, and easily cultivated, growing in any good light soil; very suitable for growing in pots.

SCILLA AMCENA, fine blue.....75 cents per doz.
" CAMPANULATA, blue, bell-shaped blossoms.....75 " "
" PRECOX, dark blue.....75 " "
" SIBERICA, blue.....75 " "

The Snowdrop.

THIS, the earliest of Spring-flowering bulbs, is universally admired for its elegant snow-white drooping blossoms, They succeed well in any soil, and should be planted where they are to remain, as they bloom best if not disturbed.

	Per Doz.	Per 100.
SINGLE SNOWDROP (<i>Galanthus nivalis</i>).....	\$0 25	\$1 75
DOUBLE " (<i>Galanthus nivalis</i> fl. pl.).....	50	3 50



Winter Aconite.
Page 12.



Tritoma Uvaria.
Page 12.

Spring Snowflake.

(*Leucojum Vernum.*)

A BEAUTIFUL early blooming plant, resembling the Snowdrop, but of taller growth, flowers pure white, with a green spot on each of the petals. 20 cents each; \$2.25 per dozen.

Winter Aconite.

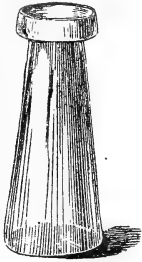
(*Eranthis Hyemalis.*)

ONE of the earliest Spring flowers, freely producing its yellow blossoms in the months of January and February. 50 cents per dozen.

Miscellaneous Bulbs and Roots.

	Each.	Per Doz.
CALADIUM ESCULENTUM.....	\$0 30	\$3 00
" Fancy varieties.....	50	4 50
CALLA ÆTHIOPICA, Lily of the Nile.....	30	3 00
" NANA, Dwarf Ethiopian Lily.....	50	4 50
EUCHARIS AMAZONICA, for greenhouse culture.....	75	
LACHENALIA PENDULA, red and yellow, pretty.....	50	5 00
MADEIRA VINE, feathered white.....	10	1 00
ORNITHOGALUM UMBELLATUM (Star of Bethlehem).....	30	3 00
TIGRIDA CONCHIFLORA, orange, spotted black.....	25	2 25
" PAVONIA, scarlet, spotted yellow.....	25	2 25
TRICYRTIS GRANDIFLORA, hardy herbaceous plant.....	50	4 50
TRITOMA UVARIA, extra strong roots.....	40	4 00
TRITONIA AUREA, orange, very pretty.....	15	1 50
TROPEOLUM JARRATTI, scarlet, yellow and black, beautiful.....	75	
TUBEROSES, Double, flowering roots.....	15	1 50
" New Pearl.....	30	3 00

HYACINTH GLASSES.



No. 1.

No. 1. Belgian (Old Pat'rn).

BLUE.....	.25	cts. each.	\$2 50	per doz
GREEN.....	.25	"	2 50	"
PURPLE.....	.25	"	2 50	"
CLEAR GLASS.	.25	"	2 50	"



No. 2.

No. 2. American.

BLUE.....	.30	cts. each.	\$3 00	pr doz
GREEN.....	.30	"	3 00	"
PURPLE.....	.30	"	3 00	"
CLEAR GLASS..	.30	"	3 00	"

No. 3. Vase Shaped Belgian.



No. 3.

BLUE.....	.30	cents each.	\$3 00	per dozen.
GREEN.....	.30	"	3 00	"
PURPLE.....	.30	"	3 00	"
CLEAR GLASS..	.30	"	3 00	"



No. 4.

Belgian. (New Pattern.)

AMBER, plain.....	.40	cents each.	\$4 50	per dozen.
" engraved.....	.50	"	5 00	"
CLEAR GLASS, enameled				
flowers.....	.40	"	4 00	"

No. 4. Large Bohemian.

	<i>Each Pr doz</i>			<i>Each Pr doz</i>	
BLUE OR GREEN, plain.....	\$0 50	\$5 00	RUBY, plain.....	\$0 60	\$6 00
" " gilt.....	75	7 50	" gilt.....	75	7 50
" " enameled... ..	75	7 50	" engraved.....	75	7 50

Triple Hyacinth Glasses,

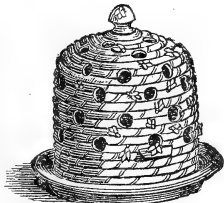
FOR GROWING THREE HYACINTHS.

BLUE, GREEN AND PURPLE.....	\$2 00	each
-----------------------------	--------	------

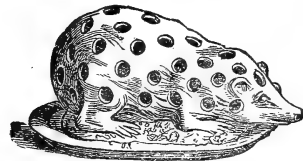
Hyacinth Supports.

These are of wire, and maintain the flower in an upright position. .20 cts. each. \$2 00 per doz.

CROCUS POTS.



BEE HIVE.



HEDGE HOG.

HEDGE HOG PATTERN, grey, light and dark brown.....	\$1 25	each.	\$12 00	per doz
BEE HIVE PATTERN, grey, light and dark brown.....	1 25	"	12 00	"
" decorated with gold and silver bees.....	1 75	"	18 00	"

Choice Florist Flowers.

(For Sowing in August and September.)

We can confidently recommend the Seeds enumerated in the following list, which have been selected from first quality flowers only, grown by the most experienced cultivators.

	Per Pkt.
ANTIRRHINUM, Turner's extra choice mixed, from the finest flaked, mottled, and striped varieties in cultivation.....	\$0 25
AURICULA, from prize flowers.....	25
AZALEA INDICA, finest mixed from a choice collection.....	25
BALSAM, double white and mixed.....	10
BELLIS PERENNIS (Double Daisy), finest mixed.....	25
CALCEOLARIA, herbaceous, saved from the finest formed and most beautifully marked varieties.....	50
CARNATION, choice bizarre and flake, from stage flowers, extra fine..	50
CHRYSANTHEMUM, large flowered and pompone, choice double.....	25
CINERARIA, extra choice mixed colors, saved from a first-class collection.....	50
CLIANTHUS DAMPIERI, brilliant scarlet, with intense black spot in the centre of each flower.....	25
COBEA SCANDENS, purple climber.....	10
COCKSCOMB, dwarf, crimson and yellow.....	10
EPACRIS, finest hybrid varieties, mixed.....	50
ERICA, choice varieties, mixed.....	25
GERANIUM, zonale, splendid mixed.....	25
GERANIUM (Pelargonium), fancy, extra fine, from prize flowers.....	50
GERANIUM (Pelargonium), large flowered, choicest varieties.....	50
GLADIOLUS, from our own collection.....	25
GLOXINIA, choice, erect and drooping varieties, mixed.....	50
HELIOTROPE, finest mixed.....	10
HOLLYHOCK, from choicest named flowers only.....	25
LANTANA, saved from named varieties.....	15
MIMULUS, finest blotched and spotted hybrids.....	25
PANSY, choicest mixed, from English show varieties.....	25
PANSY, Belgian or French fancy, choice mixed.....	50
PETUNIA HYBRIDA, finest striped and blotched varieties, mixed.....	25
PETUNIA HYBRIDA FLORE PLENO, finest double mixed.....	50
PHLOX, perennial, mixed varieties.....	25
POLYANTHUS, very choice, saved from the finest gold-laced flowers..	25
POTENTILLA, double flowering, finest mixed.....	25
PRIMULA SINENSIS FIMBRIATA, beautiful and distinct varieties..	50
PRIMULA SINENSIS FIMBRIATA, double red and white.....	1 00
SALVIA SPLENDENS, bright scarlet, very profuse blooming.....	25
SWEET WILLIAM, finest Auricula-eyed.....	10
SWEET WILLIAM, double flowering, finest mixed.....	10
STOCKS, a splendid assortment of all the best varieties.....	25
TRITOMA UVARIA, orange red, very brilliant.....	25
VERBENA HYBRIDA, saved from our own unrivalled collection.....	25
WALLFLOWER, improved varieties, mixed.....	10

Grass Seeds for Fall Sowing.

(For forming new lawns, about four bushels per acre are required.)

	Per qt.	Per Bush.
Lawn Grass. Finest mixed. This mixture is composed of choice select- ed grasses, of neat, compact growth, and will produce a fine sward...	25c.	\$5 00
Lawn Grass. Second quality, fine mixed.....	20c.	4 00
Timothy	20c.	4 50
Orchard Grass	15c.	3 00
Ky. Blue Grass. Extra clean.....	15c.	3 0 0
Red Top	15c.	2 00
White Clover	60c.	per lb.
Red Clover	15c.	"

Vegetable Seeds for Fall Sowing.

(Free by mail, on receipt of price.)

	Per oz.	Per ¼ lb.	Per lb.
CABBAGE, Henderson's Early Summer, New, the best			
Early Cabbage in cultivation.... Per packet, 50 cents			
“ Early Jersey Wakefield (<i>True</i>).....	\$1 00	\$3 00	\$10 00
“ “ York.....	20	50	1 50
“ “ Large York.....	20	50	1 50
“ “ Winningstadt.....	30	1 00	3 00
“ “ Dutch (<i>True</i>).....	1 00	3 00	10 00
“ “ Ox Heart.....	30	1 00	3 00
“ “ Schweinfurt.....	60	2 00	6 00
“ “ Fottler's Improved Brunswick.....	75	2 50	8 00
“ “ Wymen.....	1 00	3 00	10 00
CAULIFLOWER, Earliest Paris..... Per packet, 25 cents	1 00	3 50	12 00
“ Half-Early Paris, or Nonpareil “ 25 “	1 00	3 50	12 00
“ Early Dwarf Erfurt, “ 25 “	1 50	5 00	18 00
“ Extra Dwarf Early Erfurt, “ 50 “	10 00		
CORN SALAD, Lamb's Lettuce or Petticus.....	15	30	1 10
ENDIVE, Green Curled.....	20	75	2 00
KALE, Dwarf Curled, German Greens or “Sprouts”.....	15	40	1 25
LETTUCE, Curled Simpson.....	30	1 00	3 00
“ Black Seeded Butter.....	30	1 00	3 00
“ Boston Market (<i>True</i>).....	30	1 00	3 00
“ Hardy Green.....	30	1 00	3 00
“ Brown Dutch.....	30	1 00	3 00
RADISH, Black Spanish.....	10	30	1 00
“ White Spanish.....	10	30	1 00
“ Rose Colored, Chinese Winter.....	20	60	2 00
SPINACH, Round Leaf.....	10	20	50
“ Prickly.....	10	20	60

RHUBARB ROOTS.

Purchasers will find it greatly to their advantage to plant in the Fall. The plants we offer are particularly fine, and if planted any time from the 1st of October to the middle of November, an excellent crop will be had next season. A dozen roots are sufficient for an ordinary family.

Linneus.—Early, very productive, of excellent spicy flavor, and the least acid of all the varieties. 25 cents each; \$2 per dozen.

ASPARAGUS ROOTS.

Plant in rows three feet apart, and let the plants be one foot apart in the rows, taking 15,000 to an acre.

	Per 100.	Per 1000.
COLOSSAL, two year old roots.....	\$1 50	\$12 00
“ one year old roots.....	1 00	8 00

MUSHROOM SPAWN.

Mushrooms may be grown in a warm cellar or shed in Winter, or in the open air in Summer. Take partially dry fresh horse manure, and lay it in a heap to ferment; turn and mix it well every few days, and when well and equally fermented, which will be in from ten to fifteen days, it may be made into a bed four feet wide and about two feet deep, mixing it well together, and beating or treading it firmly. As soon as the temperature of the bed falls from 75 degrees to 50 degrees, the spawn may be inserted in pieces about the size of a walnut, about two inches deep and six inches apart. Cover with loamy soil about two inches deep, and beat it down evenly and firmly. Finish off with a covering of clean straw or hay about a foot thick. Water when necessary with luke-warm water, and expect mushrooms in from four to six weeks. Per pound, 15 cents; eight pounds for \$1.

LIST OF SMALL FRUITS.

STRAWBERRY PLANTS.

CULTIVATION.—Planted in Fall, from the middle of October to middle of November is the best time, as the roots are then well ripened and better able to bear transplanting than if taken up in September, when the plants are still growing, and the roots soft and easily damaged by exposure. Strawberries may be grown on any soil that will produce corn or potatoes. A light clay loam, well enriched with rotten barnyard manure, is the most favorable soil for most varieties. As soon as the plants are received, open the package or box *at once*, and, if possible, plant the same day. If the ground is not ready, or for other causes the planting has to be delayed, untie each bundle and heel in the plants in a shady place, or cover with damp moss and keep in a cool cellar until ready for planting. In the garden, plant in rows 18 inches apart, by 12 inches in the rows; after every third row, leave a space of two feet instead of 18 inches for a path. In the field, for cultivation by horses, the rows should be three feet apart. After the beds are marked out, make, with a hoe or a trowel, a hole for each plant, large enough to admit all the roots of the plant without crowding or bending them over. Then spread the roots in the hole and then fill up the hole to the crown of the plant, but no more. If the ground is very dry, it is best to plant towards evening, and to water the plants well. To secure healthy plants and a bountiful crop of fruit, the year after planting, the plants should not be allowed to bear the first season; the runners must be cut off before the tips take root, and the grounds kept loose and free from weeds. When lasting cold weather sets in, in this latitude about the last week in November, the plants should be covered with straw or leaves, or salt hay, or any other light material, to the depth of one or two inches. This mulch is not removed until after the bearing of the plant. In the Spring, when the strawberry leaves start, open, with a pointed stick or the hand, the mulch over the crown of each plant. No other care is required before bearing. After the last picking the mulch is to be taken away altogether, and the beds cultivated as during the previous season. A strawberry bed managed in this way will last three to four years, so that, in order to secure a full supply of berries every season, a new bed should be laid out every second year.

VARIETIES.

Neuman's Prolific.—This is the celebrated "Charleston Strawberry," which created so much astonishment in the Northern markets. Its introduction into cultivation in the Southern States has made the strawberry season in the Northern cities two weeks earlier than formerly—berries of this variety having been offered for sale in New York in the month of March. The plant is very prolific and hardy at the North, as well as at the South. The berries are of good size and quality, firm, and have every requisite necessary for a first-class market fruit. Price, \$3 per dozen; \$20 per hundred

	Per Doz.	Per 50.	Per 100.	Per 1000.
	\$1 00	\$3 00	\$6 00	
BLACK DEFIANCE (New).....				
CHAMPION (New, berry of the largest size and very productive).....	1 00	3 00	6 00	
CHARLES DOWNING.....	50	1 00	1 50	\$10 00
DOWNER (<i>Downer's Prolific</i>).....	50	1 00	1 50	10 00
GREEN PROLIFIC.....	50	1 00	1 50	10 00
JUCUNDA.....	50	1 00	2 00	15 00
KENTUCKY.....	50	1 00	1 50	15 00
LENNIG'S WHITE.....	50	1 00	2 00	15 00
MONARCH OF THE WEST.....	1 00	3 00	6 00	
NICANOR.....	50	1 00	1 50	10 00
PRESIDENT WILDER.....	50	1 00	2 00	15 00
SETH BOYDEN.....	50	1 00	1 50	10 00
TRIOMPHE DE GAND.....	50	1 00	1 50	10 00
WILSON (<i>Wilson's Albany</i>).....	50	1 00	1 50	10 00

STRAWBERRIES, LAYERED IN POTS.

The plan of layering Strawberry runners in small pots, enables them to be planted with perfect safety at any time during Summer or Fall. Plants so grown and set out any time before the end of September, will give a full crop next season. 100 such plants will give as much fruit as 1,000 will, if plucked from the nursery in the usual way, without being layered in pots.

The varieties we offer that we layer in pots, are —

	Per Doz.	Per 100.
CHAMPION.....	\$2 00	\$12 00
WILSON'S.....	1 00	6 00
LENNIG'S WHITE.....	1 50	10 00
SETH BOYDEN.....	1 50	10 00
JUCUNDA.....	1 50	10 00
PRESIDENT WILDER.....	1 50	10 00
MONARCH OF THE WEST.....	1 60	10 00

From careful observation and many years' practical experience, we recommend for general cultivation the following varieties of Strawberries:

For Heavy Soil.

For Light Soil.

Early.

Nicanor.

Downer.

Medium, or Main Crop.

Wilson, Charles Downing.

Wilson, Charles Downing.

Late.

Triomphe de Gand, Juconda.

Seth Boyden, Green Prolific.

Latest.

Kentucky.

Kentucky.

CURRENTS.

(Ready Oct. 1st.)

	Each.	Per Doz.	Per 100.
Cherry. Dark red, the best variety for market.....	\$0 25	\$1 50	\$10 00
Versailles. Best for table use.....	25	1 50	10 00
White Grape. The best white currant.....	25	1 50	10 00
Black Naples. Valuable for jams and jellies.....	25	1 50	10 00

Two-year old bushes of the above-named varieties, 40 cents each; \$4 per dozen.

Three-year old, bearing bushes, 50 cents each; \$5 per dozen.

GOOSEBERRIES.

(Ready Oct. 15th.)

Houghton's Seedling. A vigorous and very productive variety, not affected by mildew, Probably the best American Gooseberry. 25 cents each; \$2 per dozen: \$12 per hundred.

RASPBERRIES.

Red Varieties.

	Per Doz.	Per 100.
Clarke. Berries light crimson, very sweet and high-flavored.....	\$1 00	\$4 00
Hudson River Antwerp. Very productive and excellent.....	1 00	6 00
Philadelphia. Very hardy and productive.....	1 00	4 00

Black Varieties.

Doolittle's Black Cap. Large, sweet, and juicy.....	1 00	4 00
Mammoth Cluster. The largest black Raspberry.....	1 00	5 00

Yellow Varieties.

Brinckle's Orange. Large, sweet, and delicious.....	2 00	10 00
---	------	-------

BLACKBERRIES.

(Ready Oct. 15th.)

	Per Doz.	Per 100.
Dorchester. Flavor sweet and rich.....	\$1 00	\$4 00
Kittatinny. Very large, and of excellent flavor.....	1 00	4 00
Lawton. Very large, juicy and sweet.....	1 00	4 00
Wilson's Early. Flavor rich and good; ripens early.....	1 00	4 00

GRAPES.

(Ready October 15th.)

- Concord.** Black, large berry, sweet and aromatic. This is, without exception, the most valuable grape for general cultivation. It succeeds on all soils, ripens in every season, is healthy and hardy, and gives bountiful crops under almost any kind of treatment. 1-year old vines, 25 cents each; \$2 per dozen. 2-year old vines, 50 cents each; \$4 per dozen.
- Croton.** Bunch large, berry of medium size, light yellowish green, translucent, and in appearance and quality equal to the foreign grape; one of the earliest. 1-year old vines, 75 cents each; 2-year old vines, \$1.50 each.
- Delaware.** Red, bunches compact, berries small, sweet, and of most exquisite aroma. For quality there is no American grape to equal it. 1-year old vines, 50 cents each; 2-year old vines, 75 cents each.
- Diana.** Red, bunches very compact, berries of average size; ripens with the Delaware; sweet and aromatic. 1-year old vines, 50 cents each; 2-year old vines, 75 cents each.
- Early Black.** Resembles the Concord in style of growth and berry, ripening two weeks earlier. 1-year old vines, 50 cts.; 2-year old vines, 75 cts. each.
- Iona.** Red, berries medium, of first quality for the table as well as for making wine. 1-year old vines, 50 cents each; \$5 per dozen. 2-year old vines, 75 cents each; \$7 per dozen.
- Martha.** White, berries large, very sweet, with a fine spicy aroma; vine healthy and hardy; the best white grape for general cultivation. 1-year old vines, 75 cents each; \$7 per dozen. 2-year old vines, \$1 each; \$10 per dozen.
- Rogers, No. 9.** An excellent variety, berries medium, bunches rather small, color light bronze; a good bearer. 1-year old vines, 50 cents each; 2-year old vines, 75 cents each.
- Rogers, No. 15.** Berries large, of a bronze color, bunches of good size and form; the best light grape of any. 1-year old vines, 50 cents each; 2-year old vines, 75 cents each.
- Rogers, No. 17.** Resembles the preceding in size and general characteristics, but darker in color. 1-year old vines, 50 cents each; 2-year old vines, 75 cents each.
- Rogers, No. 22.** A splendid white grape, tinged with pink, of medium size, delicate flavor, the bunches well formed and compact; vine perfectly hardy, and free from mildew. 1-year old vines, 50 cents each; 2-year old vines, 75 cents each.
- Rogers, Bronze.** A berry above the medium, bunches large, well formed; berry very sweet. 1-year old vines, 50 cents each; 2-year old vines, 75 cents each.
- Rogers, No. 41.** An improvement on the Concord, berry of the same size, bunch larger and better formed, berries sweeter. 1-year old vines, 50 cents each; 2-year old vines, 75 cents each.
- Rogers, No. 44.** A splendid sort, berries large, black, bunch well shaped and compact, a good bearer, berry remaining on the vine a long time; a splendid sort. 1-year old vines, 50 cents each; 2-year old vines, 75 cents each.
- Walter.** Berries medium, reddish, compact, ripens early, continues to grow sweeter by hanging on the vine. This is the only American raisin grape. 1-year old vines, 75 cents each; 2-year old vines, \$1.50 each.
- Clinton, Salem, Isabella, Rentz, Norton's Virginia, Ives, Catawba; Rogers, No. 1, No. 3, No. 4, No. 19, No. 38.** 1-year old vines, 50 cents each; 2-year old vines, \$1 each.

Winter Flowering Plants,

FOR PARLOR OR GREENHOUSE.

Last season our "Specially Prepared Winter Flowering Plants" were so satisfactory to our customers, that we have great pleasure in again offering a still richer collection, at rates much reduced from last year. This we can well afford to do, as our facilities for propagating and growing plants are not surpassed by any other on this continent. Our Greenhouses now cover upwards of two acres, solid in glass structures, employing steadily fifty hands throughout the year.

The plants, with few exceptions, are such kinds as can be easily grown in any ordinary Parlor, Sitting-Room or Green-House, where the night temperature will average 55 degrees. There are a few Tropical plants included in the list that will not do well at a less temperature than 65 degrees at night—these are marked thus * to distinguish them.

We can either send by Mail or by Express, as desired, only when sending by Mail a smaller size plant is sent; but whenever it is practicable, we strongly advise that plants be sent by Express; for, though the purchaser is required to pay Express charges (which are usually moderate from our light system of packing,) yet he always buys cheaper—quality of plants considered—than when plants are sent by mail free.

In packing, all plants are taken from the pots to ensure lightness and safety in packing, and when received, they should be re-potted in a size larger pots than they have been grown in, or in boxes of earth an inch or two deeper than the pot they have been grown in.

Bulbs, Seeds, or any other article offered in this Catalogue, can be sent with plants in same package when desired.

I have just written a New Book, which is now in press, and which I name

Gardening for Pleasure!

I have endeavored to make it so plain that any one entirely ignorant of gardening matters may easily understand it; it is intended to embrace the entire subject of garden operations—Flowers, Fruits and Vegetables. The price of the book is \$1.50. To all purchasers of \$10 worth of Plants, Bulbs, or Seeds in *one order*, it will be sent gratis. When the book is not wanted, the value will be sent in extra Plants or Seeds.

Peter Henderson.

35 Cortlandt Street, New York.

List of Winter Flowering Plants.

	<i>Each.</i>	<i>Per Doz.</i>
ARDISIA CRENULATA, scarlet berries.....	\$1 00	\$9 00
AZALEA INDICA, in variety.....	50	4 50
ABUTILON, 4 varieties.....	25	2 25
AGERATUM, 6 varieties.....	25	2 25
*BEGONIA SAUNDERSONI, flowers scarlet crimson.....	25	2 25
* " WELTONIENSIS, flowers rich shade of pink.....	25	2 25
" ALBA, flowers pure white, produced freely.....	25	2 25
" PARVIFLORA, flowers white, habit neat.....	25	2 25
" Six other desirable rare sorts.....	30	3 00
*BOUVARDIA DAVIDSONII, pure white, fine form.....	} 1st size 50	4 50
" ELEGANS, bright carmine.....		
" LEIANTHA, dazzling scarlet.....		
" JASMINOIDES, pure white, fragrant.....		
" LADY HYSLOP, blush.....	} 2d size 25	2 25
CARNATION DEGRAU, white, dwarf habit.....	} 1st size 50	4 50
" LA PURITE, carmine.....		
" MRS. WILSON, large bright scarlet.....		
" EDWARDSII, pure white, large and perfect flower.....		
" LOUISE LENOIR, dark crimson.....	} 2d size 25	2 25
CALLA ÆTHIOPICA NANA, a dwarf variety of the well known Calla.....	30	3 00
CHRYSANTHEMUMS, POMPONE, Large flowering and Japanese , a large variety, comprising upwards of 100 sorts.....	30	3 00
CLERODENDRON BALFOURI, scarlet petals, white sepals, splendid.....	30	3 00
CYCLAMEN PERSICUM, invaluable for winter blooming.....	60	6 00
CUPHEA PLATYCENTRA, (Cigar Plant).....	25	2 25
CATALONIAN JESSAMINE, pure white, fragrant, blooming from Oct. to May.....	25	2 25
CAPE JESSAMINE, two sorts.....	50	2 25 4 50
CAMELLIA JAPONICA, double white.....	1 00	9 00
" " in variety.....	1 00	9 00
CHOROZEMA VARIA, crimson and orange-flowered.....	30	3 00
*EUPHORBIA JACQUINÆFLORA.....	50	4 50
" SPLENDENS, scarlet.....	50	4 50
ERANTHEMUM ANDERSONII, flowers crimson and white.....	30	3 00
" PULCHELLUM, blue.....	30	3 00
" IGNEUM, leaves dark green, veined with yellow.....	30	3 00
EUPATORIUM ANGUSTIFOLIUM, white, flowering from Dec. to Jan.....	25	2 25
" ELEGANS, white, flowering from Jan. to Feb.....	25	2 25
" RIPARIUM, white, flowering from Feb. to March.....	25	2 25
*EPIPHYLLUM TRUNCATUM, (lobster-leaved Cactus,) 4 sorts.....	50	4 50
FUCHSIA SPECIOSA, the most popular winter-flowering sort.....	25	2 25
" CARL HALT, corolla crimson, striped white, extra.....	25	2 25
" PURITANI, corolla white, sepals dark crimson.....	25	2 25
" ELM CITY, corolla maroon, sepals crimson.....	25	2 25
" BRILLIANT, corolla bright scarlet, sepals white.....	25	2 25
" MRS. MARSHALL, corolla carmine, sepals white.....	25	2 25
GERANIUM ZONALE, 25 distinct varieties.....	25	2 25
" SCENTED, a large variety of the best sorts only.....	25	2 25
" DOUBLE, 12 best sorts.....	25	2 25
" GOLD, SILVER and BRONZE, 12 sorts.....	30	3 00
" PELARGONIUM, 50 sorts.....	30	3 00
" IVY-LEAVED, 12 sorts.....	25	2 25
HELIOTROPES, 8 best winter-flowering kinds.....	25	2 25
HIBISCUS, 3 sorts, orange, crimson, and variegated.....	25	2 25

	<i>Each.</i>	<i>Per Doz.</i>
HOYA CARNOSEA, "Wax Plant".....	\$0 30	\$3 00
HABROTHAMNUS ELEGANS, carmine.....	25	2 25
" COCCINEA, new scarlet.....	50	4 50
KONIGA MARITIMA, (variegated Sweet Alyssum).....	25	2 25
LANTANAS, 25 varieties.....	25	2 25
LIBONIA FLORIBUNDA, scarlet and yellow.....	25	2 25
LASIANDRA MACRANTHA, violet-colored, winter flowering.....	50	3 00
LINUM FLAVUM, golden yellow.....	25	2 25
MYOSOTIS, (Forget-me-not,) 4 varieties.....	25	2 25
MAHERNIA ODORATA, deliciously fragrant, yellow.....	25	2 25
MONOCHÆTUM ENSIFERUM.....	50	4 50
POINSETTIA PULCHERRIMA, large scarlet bracts. .25 cents to \$3 00 each.		
PRIMULA, (Chinese Primrose,) double white.....	1 00	9 00
" Single, red and white.....	50	4 50
PLUMBAGO CAPENSIS, beautiful light blue.....	30	3 00
" LARPENTÆ, dark blue.....	30	3 00
STEVIA COMPACTA, flowers white, produced in abundance from November to December.....	25	2 25
TORENIA ASIATICA, Gloxinia like, blue flowers.....	25	2 25
TUBEROSES, double ..	15	1 50
VIOLETS, BLUE NEAPOLITAN, double.....	30	3 00
" WHITE " " 	30	3 00
" MARIE LOUISE, " 	30	3 00

The Leading WINTER FLOWERING ROSES are

ROSES, SAFRANO, orange.....	}	1st size	1 00	9 00
" BELLA, white.....				
" ISABELLA SPRUNT, yellow.....	}	2d size	50	4 50
" BON SILENE, carmine.....				
" DUCHESS DE BRABANT, rosy blush.....	}	3d size	25	2 25
" DOUGLAS, purplish crimson.....				
" YELLOW TEA, canary.....	}	1st size	1 00	9 00
" Set of Twelve NEW TEA, figured in colored plate of last Spring.....				

MISCELLANEOUS PLANTS.

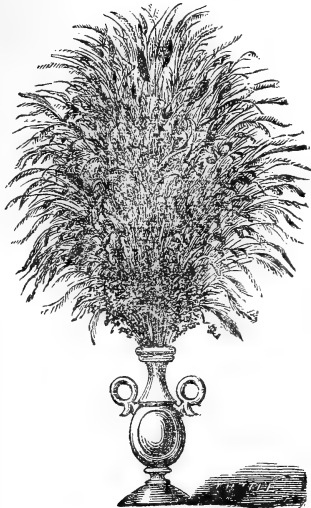
	<i>Each.</i>	<i>Per Doz.</i>
AMPELOPSIS, (Virginia Creeper,) 3 sorts, hardy.....	\$0 25	\$2 25
ALTERNANTHERA, 4 varieties, leaves crimson, yellow and green.....	25	2 25
ACHYRANTHES, 3 varieties.....	25	2 25
ARTEMISIA STELLARIANA and ARGENTEA, downy white.....	25	2 25
ANEMONE JAPONICA, ALBA and RUBRA, white and red, hardy.....	25	2 25
AKEBIA QUINATA, hardy climber, fragrant brown flowers.....	25	2 25
ALTHEA VARIEGATA, variegated leaved "Rose of Sharon," hardy.....	50	4 50
BRYOPHYLLUM CALYGINUM, curlicorn and interesting plant.....	25	2 25
CALADIUMS, Fancy, many beautiful varieties..... per set of 24, \$7 50	50	4 50
CALYCANTHUS FLORIDUS, Hardy, "Strawberry Shrub".....	25	2 25
CENTAUREA CANDIDA, white-leaved plants.....	30	3 00
*COLEUS, Golden and Velvet, 24 sorts.....	25	2 25
COCCOLOBA PLATYCLADA, curious flat stems.....	25	2 25
*CISSUS DISCOLOR and AMAZONICA.....	30	3 00
CINERARIA ACANTHIFOLIA, white leaved.....	30	3 00
DEUTZIA GRACILIS, white, hardy ..	25	2 25
" CRENATA, alba and purpurea, hardy.....	25	2 25
DIANTHUS QUERTERII, hardy, "German Pink,".....	25	2 25

	<i>Each.</i>	<i>Per Doz.</i>
*DRACÆNA TERMINALIS, 1st size.....	\$1 00	\$9 00
“ “ 2d size.....	50	4 50
“ DRACO.....	1 50	
“ FERREA.....	1 50	
“ BRASILIENSIS.....	2 00	
“ INDIVISA.....	3 00	
ERIANTHUS RAVENNÆ, hardy, 1st size.....	50	4 50
“ “ 2d size.....	25	2 25
EICHEVERIA SECUNDA GLAUCA, METALLICA GLAUCA and SPLEN- DENS, (House Leek).....	25	2 25
FERNS, 12 beautiful sorts.....	30	3 00
*FITTONIA ARGENTEA and GIGANTEA, leaves netted white, green and red	25	2 25
HYDRANGEA HORTENSIS, OTAKSA and PANICULATA GRANDIFLORA hardy.....	30	3 00
“ ARGENTEA JAPONICA, hardy, leaves variegated.....	50	4 50
HARDY HERBACEOUS PLANTS, 50 sorts.....	25	2 25
HONEYSUCKLES, 4 sorts, hardy.....	30	3 00
IVY, German.....	25	2 25
“ English.....	25	2 25
LYCOPODIUM (Mosses).....	25	2 25
LOBELIAS, 6 sorts.....	25	2 25
“ Double Blue, (new).....	30	3 00
LEMON VERBENA.....	25	2 25
LAVANDULA CRISTATA.....	25	2 25
LYSIMACHIA NUMULARIA AUREA, (Moneywort) New.....	25	2 25
MESEMBRYANTHEMUMS, “Wax Pink,” 4 sorts.....	25	2 25
“ CORDIFOLIUM VAR., variegated Ice Plant.....	30	3 00
PANICUM VARIEGATUM, Ornamental Grass.....	25	2 25
PILEA SERPÆFOLIA and REPTANS ALBA.....	25	2 25
*PERISTROPHE ANGUSTIFOLIA VARIEGATA, leaves golden yellow and green.....	25	2 25
PALMS, 3 sorts.....	50	4 50
PAMPAS GRASS.....	50	4 50
PASSIFLORA, (Passion Vine,) 5 sorts.....	3 00	3 00
PEPEROMIA MACULOSA.....	30	3 00
PHYSIANTHUS ALBENS, white flowering climber.....	30	3 00
PHLOXES, hardy, 25 sorts.....	25	2 25
PEDILANTHUS PADIFOLIUS, “Slipper Plant,”.....	30	3 00
POLYGONUM FILIFORME ELEGANS, FOL. VAR., a new variegated foli- aged hardy herbaceous plant.....	30	3 00
ROSES, MONTHLY, comprising upwards of 50 leading sorts, which may be now planted out in the open ground in the Southern States, 1st size	50	4 50
2d size.....	25	2 25
“ HYBRID PERPETUAL, hardy, which may now be planted out in the Northern States, 1st size, extra strong.....	75	6 00
2d size, good plants.....	50	4 50
3d size, smaller.....	25	2 25
“ HARDY CLIMBING.....	50	4 50
SAXIFRAGA SARMENTOSA, “Aaron’s Beard,”.....	25	2 25
SANCHEZIA NOBILIS, leaves veined and marbled with yellow.....	30	3 00
SEDUMS, (Stone Crop) 24 sorts.....	25	2 25
SMILAX, (Myrsiphyllum Asparagoides).....	25	2 25
TALINUM PATENS VARIEGATA, (Basella Rubra).....	25	2 25
TRADESCANTIA, 35 sorts, (Wandering Jew,).....	25	2 25
VINCA MAJOR and ELEGANTISSIMA.....	25	2 25
WISTARIA ALLENII, New, Hardy Climber.....	\$0 50, \$1 00, \$4 50, 9 00	

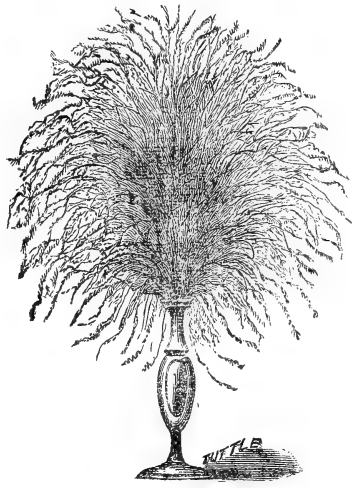
Please address all orders for WINTER FLOWERING PLANTS to

PETER HENDERSON, Florist,

35 Cortlandt Street, New York.



GRASS BOUQUET.



FEATHER GRASS BOUQUET.

ORNAMENTAL GRASS BOUQUETS, IMMORTElLES, &c.

(All can be sent free by mail on receipt of price.)

The ornamental Grass Bouquets are composed of natural grasses, dyed in various colors, and very beautifully arranged. The colors are particularly bright and durable, and the bouquets form beautiful ornaments for filling vases in the parlor or sitting-room, retaining their shape and beauty for several years.

ROUND PYRAMIDAL GRASS BOUQUETS. (German.)

14 inches high.....	\$0 50	24 inches high.....	\$1 25
18 " ".....	60	28 " ".....	1 50
22 " ".....	1 00	30 " ".....	2 00

ENGLISH GRASS BOUQUETS.

Small size.....	\$0 75	Large size.....	\$1 00
-----------------	--------	-----------------	--------

FEATHER GRASS BOUQUETS.

These Bouquets are composed entirely of Feather Grass (*stipa pennata*), and are exceedingly graceful and beautiful; various colors.

18 inches high.....	\$0 60	24 inches high.....	\$2 00
20 " ".....	1 00	28 " ".....	3 00
22 " ".....	1 50		

Feather Grass, natural color, 30 cents per bunch.
 " green, yellow, orange, magenta, each in separate colors, 50c. per bunch.

WILLOW BASKETS OF EVERLASTING FLOWERS.

5 by 5 inches.....	\$0 75
5½ by 8 ".....	1 00
6 by 10 ".....	1 50

FRENCH IMMORTElLES.

In original bunches, as imported. (See Cut.)

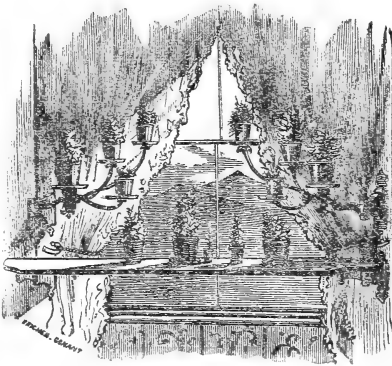
White.....	.75	cents per bunch.
Black.....	.75	" "
Green.....	.75	" "
Golden Yellow.....	.50	" "
Blue.....	.75	" "
Orange.....	.75	" "
Magenta.....	.75	" "
Lilac.....	.75	" "
Mixed.....	.75	" "

Bromus, a beautiful grass, plain.....each \$0 25
 dyed in separate colors....." 40

French Green Moss,....." 30
 per doz. 3 00



ORNAMENTAL Flower-Pot Brackets.



WINDOW WITH BRACKETS.

Especially adapted for window-gardening. The brackets are movable, so that they may be swung to any position desired. They are strongly made of iron, tastefully bronzed..

No.		Each.
1.	Single Bracket, with 5-inch tray...	\$0 50
2.	" " 6 " " " " " " " "	60
3.	Bracket for two pots, 5 and 6-inch trays.....	1 60
4.	" " three pots, 5 and 6-inch trays.....	2 00
5.	" " four pots (see cut), 5 and 6-inch trays....	2 25
6.	" " four pots, new pattern, gilt, very handsome.	3 50

IMPROVED BRASS GARDEN SYRINGES



Length of barrel $13\frac{1}{2}$ in., diameter $1\frac{1}{8}$.

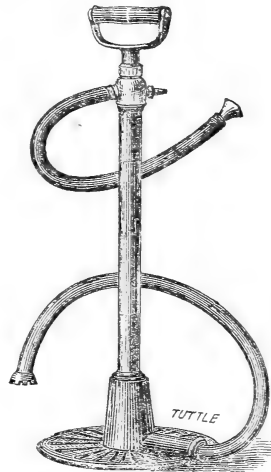
Of various sizes and patterns, applicable for all horticultural purposes in the Conservatory, Forcing-house, and Garden; fitted with caps or roses for ejecting water in one stream, or dispersing it in the most gentle manner. or with great force, when required.

- No. 00. Unpolished, one spray rose, adapted for throwing whale oil soap, liquid tobacco, etc... \$3 00
 " 2. Ladies' Syringe, small size, with three roses.. 5 00
 " 5. Best conical valve Syringe, large size, with one stream and two spray roses..... 9 00
 " 7. Same as No. 5, but having a knuckle-joint turning in all directions, for washing the under surface of the leaves of plants, cleaning them from insects, etc..... 11 00

THE EXCELSIOR PUMP.

This compact pump is particularly useful for greenhouse and garden work. It is light, portable, easily worked, and very effective, and has the further merit of throwing a continuous stream. Its value is enhanced by the fact of its utility not being confined to Horticultural purposes, for, from its power, it will be found to be of great service in case of fire.

Price, \$10 each.



INSECT EXTERMINATORS.

Whale-Oil Soap. Excellent for destroying and preventing insects on plants, vines, etc. 2-lb. package, 35 cents; 5-lb. box, 80 cents; 10-lb. box, \$1.50.

Gishurst Compound. An English preparation, highly recommended for preventing and destroying *Red Spiders*, *Scale*, *Mealy Bug*, *Thrip*, *Green and Brown Fly*, etc.; also, for Winter dressing, and washing walls, frames and sashes of greenhouses. Price per box, \$1.

Jacques' Sapo Tabacum, or Tobacco Soap. A universal remedy for the pests of gardens and nurseries, etc. The most convenient and cheap specific for the destruction of insects, parasites, and their eggs, infesting plants; also, ticks and other vermin on sheep and domesticated animals. Price, 50 cents per lb.; 5 lbs. for \$2.

Tobacco Dust. Per lb., 10 cents.

FANCY EARTHENWARE POTS.

Painted and Varnished in Imitation of Rustic Work.

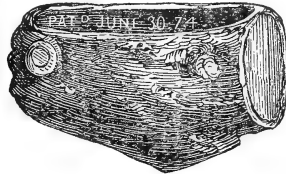
They are exceedingly useful and ornamental. Nos. 1 and 2 are Hanging Pots, with which are furnished small brass chains for suspending them, Plants thrive remarkably well in these pots. Nos. 3, 4 and 5, Table or Shelf Pots, for Bulbs or Plants. These make very handsome winter ornaments planted with Hyacinths, Tulips, and other seasonable Bulbs or Plants.



No. 1.

Hanging Pot.
(Rustic or Fancy.)

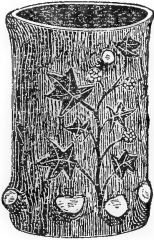
7 inch.....	\$0 70	each.
8 ".....	85	"
9 ".....	1 00	"



No. 2.

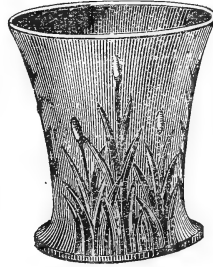
Hanging Pot.
(Log Pattern.)

7 inch.....	\$0 80	each.
8 ".....	90	"
9 ".....	1 00	"



No. 3.

Rustic Bulb Pot.
70 cents each.



No. 4.

Window Pot. (Rush Pattern.)
75 cents each.

No. 5.

Painted Pots, with Saucers attached.

(Cut not shown)

5 inch.....	30 cents.	6 inch.....	40 cents
7 inch.....	55 cents.	8 inch.....	60 cents.

NOYES' HAND WEEDER.

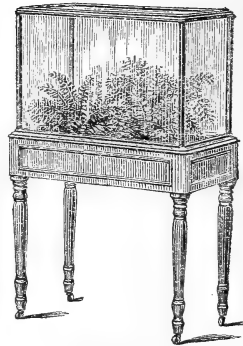


This is a convenient, cheap and useful little implement for clearing away weeds, working between plants, dressing pots, and for other small work, where a large hoe could not easily be used. Price, 40 cents each.

WARDIAN CASE OR FERNERY.

The **WARDIAN CASE** is made of Black Walnut, finished in a thorough manner to correspond with the best furniture. It is admirably adapted to grow Ferns and other plants suited to this treatment, which, being under glass, are free from dust, and require but little care. Price, \$25. Packing, \$1 extra.

A movable zinc-lined tray contains the soil, and the glass top can be removed entire, or the lid raised on its hinges. The legs disconnect, and are placed inside the tray, for packing, and the glass top is securely packed by itself in a tight case.



WARDIAN CASE.

4 ft. high, 2½ ft. long, 18 in. wide

SMALL WARDIAN CASE.

We have also a smaller sized **WARDIAN CASE**, without legs, fifteen by twenty inches, with square corners; finished in the best manner. Price, \$15. Packing, 75 cents.

BULB TABLE.

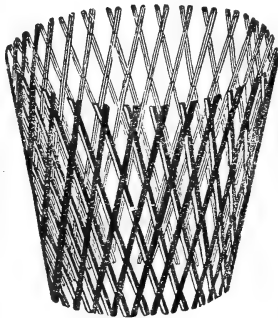
A convenient article for a Plant or Bulb Table is shown by the above cut, *without* the glass top, and is recommended for growing Bulbs and Plants during the Winter, either directly in the tray or in pots. Price, \$12.

FLOWER HOLDERS.

For button-hole bouquets for the coat or dress, a varied assortment. In three styles. Prices, 15, 25 and 35 cents each.

EXPANDING POT COVERS.

For ornamenting common Flower Pots.



EXPANDING POT COVER.

Painted, in colors.

5 inches high.....	Each. 15c.	7 inches high.....	Each. 25c.
6 " " ".....	20c.	8 " " ".....	30c.

Polished, in colors.

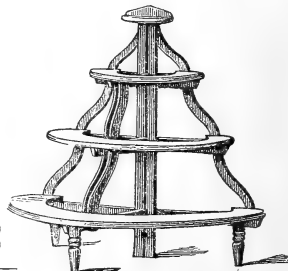
5 inches high.....	Each. 20c.	7 inches high.....	Each. 30c.
6 " " ".....	25c.	8 " " ".....	35c.

Polished with Stud Nails, in colors.

5 inches high.....	Each. 40c.	7 inches high.....	Each. 50c.
6 " " ".....	45c.	8 " " ".....	55c.

FOLDING PLANT STAND.

This is a cheap and substantial article, and is unequalled in compactness for shipping. The frame and shelves are packed separately—the former folding together, and the shelves fitting one within another, making a small and compact package for transportation.



4 shelf Stand, 3½ feet high, 40 inches wide.....	Price. \$4 00
5 " " 5 " " 48 " " ".....	5 00

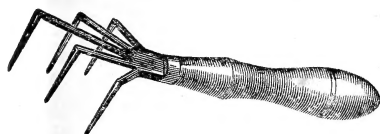
Price List of Garden Trellises sent on application.



Rustic Hanging Baskets.

(Our Rustic Baskets are particularly well made, have deep bows, and as will be seen are very low in price.)

8 inches in diam.....	\$1.25 each.
9½ " " ".....	1.50 "
11 " " ".....	2.00 "
11½ " " ".....	2.50 "



Patent Excelsior Weeding Hook.

The only instrument that can be used to advantage among small and tender plants. This instrument will work well among rows of seedlings, among ornamental plants, or in any place where freedom from weeds is desired. It removes the weeds with far greater rapidity than in the usual manner, without injuring the plants or soiling the hands, and is in all respects one of the best instruments ever offered for this purpose. Price, 30 cents; by mail, 40 cents.

Merriman's Rat and Mole Trap.

This has been pronounced by those who have examined and tested its merits, to be the most ingenious and practical article of the kind ever brought before the public. It is just the thing that has long been needed by those who are annoyed by those troublesome pests, ground moles and rats. Price, \$1.

WISS'S HAND PRUNING SHEARS.



These are very efficient instruments, and leave the branch which has been cut, as smooth as if a knife had been used. They will always be found useful in the graperies and in pruning small fruit vines, &c.

No. 1, large size, \$2.25; No. 2, medium size, \$2; No. 4, small size, \$1.50.

THERMOMETERS.

7 inch, 50c.; 8 inch, 75c.; 10 inch, \$1.00; 12 inch, \$1.50.

WOLFF'S MARKING INK PENCILS.

Black, Blue or Red. The cheapest made for producing an indelible mark upon wood labels for garden purposes. 20 cents each.

TROWBRIDGE'S GRAFTING WAX.

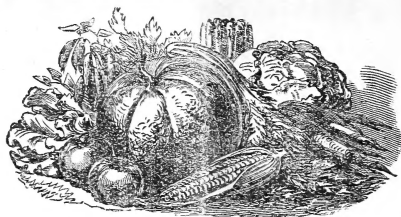
In 1-lb., ½-lb., and ¼-lb. packages. 40 cents per lb.; 15 cents per ¼ lb.

TYING MATERIALS.

CUBA BAST, best imported.....	\$1 00	per lb
BASS BARK, best quality.....	30	" "
RAPHIA, very strong.....	1 00	" "

PLANT AND TREE LABELS.

	Per 100	Per 1000
GARDEN AND POT LABELS, 4 inches long	\$0 20	\$1 25
" " " " 5 " " "	25	1 50
" " " " 6 " " "	30	2 00
" " " " 8 " " "	60	5 00
" OR NURSERY, " 12 " " "	75	6 00
TREE LABELS, notched or pierced, 4 inches	20	1 25



OUR ANNUAL DESCRIPTIVE CATALOGUE
OF
VEGETABLE AND FLOWER SEEDS
FOR 1876,

Will be published January 1st,

Containing a select list of the best and most popular varieties of GARDEN and FLOWER SEEDS in cultivation, with practical directions for their culture and treatment. Also a complete list of Horticultural Implements and Miscellaneous Garden Requisites. Also a Catalogue of

NEW, RARE AND BEAUTIFUL PLANTS,

Comprising a complete assortment of VERBENAS, GERANIUMS, ROSES, FUCHSIAS, CHRYSANTHEMUMS, LILIES, GLADIOLUS, DAHLIAS, &c., &c. Profusely Illustrated with many Fine Engravings, and a BEAUTIFUL COLORED PLATE.

A New Book, now in Press.

GARDENING FOR PLEASURE.

BY

Peter Henderson

This will be found to fill a place which neither of the author's previous works—"Gardening for Profit" or "Practical Floriculture"—have properly filled, these being mainly for Commercial Gardeners. The present work has been written in compliance with the request of hundreds of our amateur patrons, and it is hoped that the subject has been made so plain, that the most inexperienced cultivator can make his gardening operations—whether of fruits, flowers or vegetables—a success, whether his area of soil be confined to a rod or an acre, or to a few plants in a parlor, or to a fully appointed conservatory. It is fully illustrated.

Price, Post-paid, - - - \$1.50.

GARDENING FOR PROFIT.

New and Revised Edition.

A work devoted to Vegetable Gardening. Its teachings are our personal experience of over twenty years of growing vegetables for the great market of New York; and though mainly written for the market gardener, hundreds of amateurs and private gardeners have thanked us for its publication. Since the first edition, printed in 1866, upwards of FIFTY THOUSAND COPIES have been sold.

Sent Post-paid, price \$1.50.

PRACTICAL FLORICULTURE.

New Edition.

Descriptive of the modes of Commercial Floriculture, as practiced in the vicinity of New York, the subjects on which it mainly treats are: Landscape Gardening; Designs for Flower Gardens; Planting of Flower Gardens; Greenhouse Structures; Mode of Heating; Cold Frames; Hot Beds; Soils for Potting; Temperature and Moisture; Culture of the Rose, Tuberoses, Verbena and Violet; Propagation of Plants by Seeds, Cuttings, &c.; Parlor and Window Gardening; Hanging Baskets; Packing Plants; Plants by Mail; Formation of Rock Work; Construction of Bouquets, Baskets, &c.; Culture of Winter-Flowering Plants; Insects; Profits of Floriculture; Diary of Operations, &c.

Price by Mail, Post-paid, - - - \$1.50.

All Purchasers of the above Books have their names entered on our Lists, and will receive our Catalogues of Seeds and Plants annually, free of charge.

