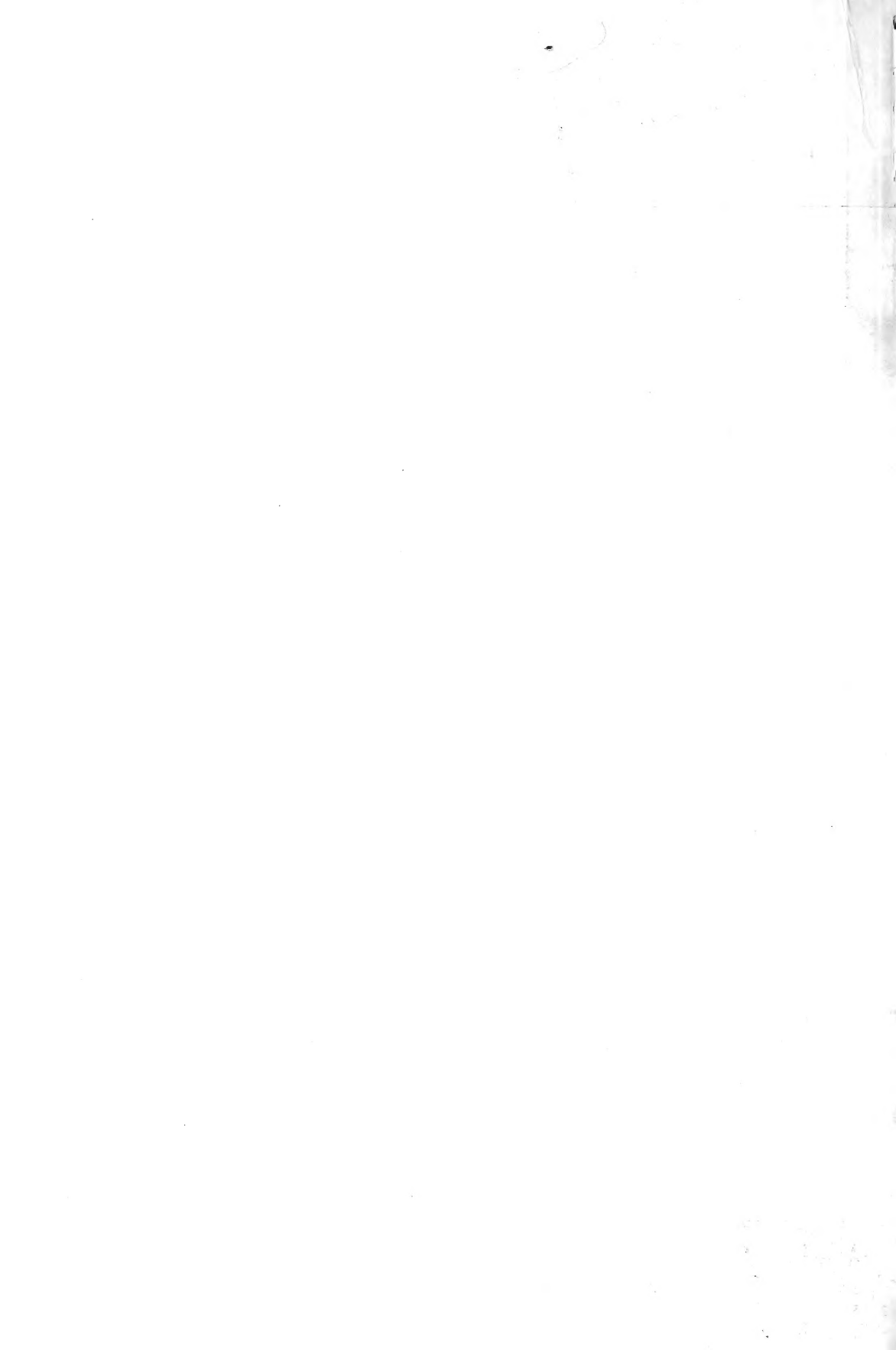


## Historic, archived document

Do not assume content reflects current scientific knowledge, policies, or practices.

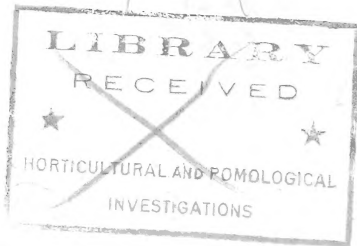


ANNALS, MCH 95

12/31

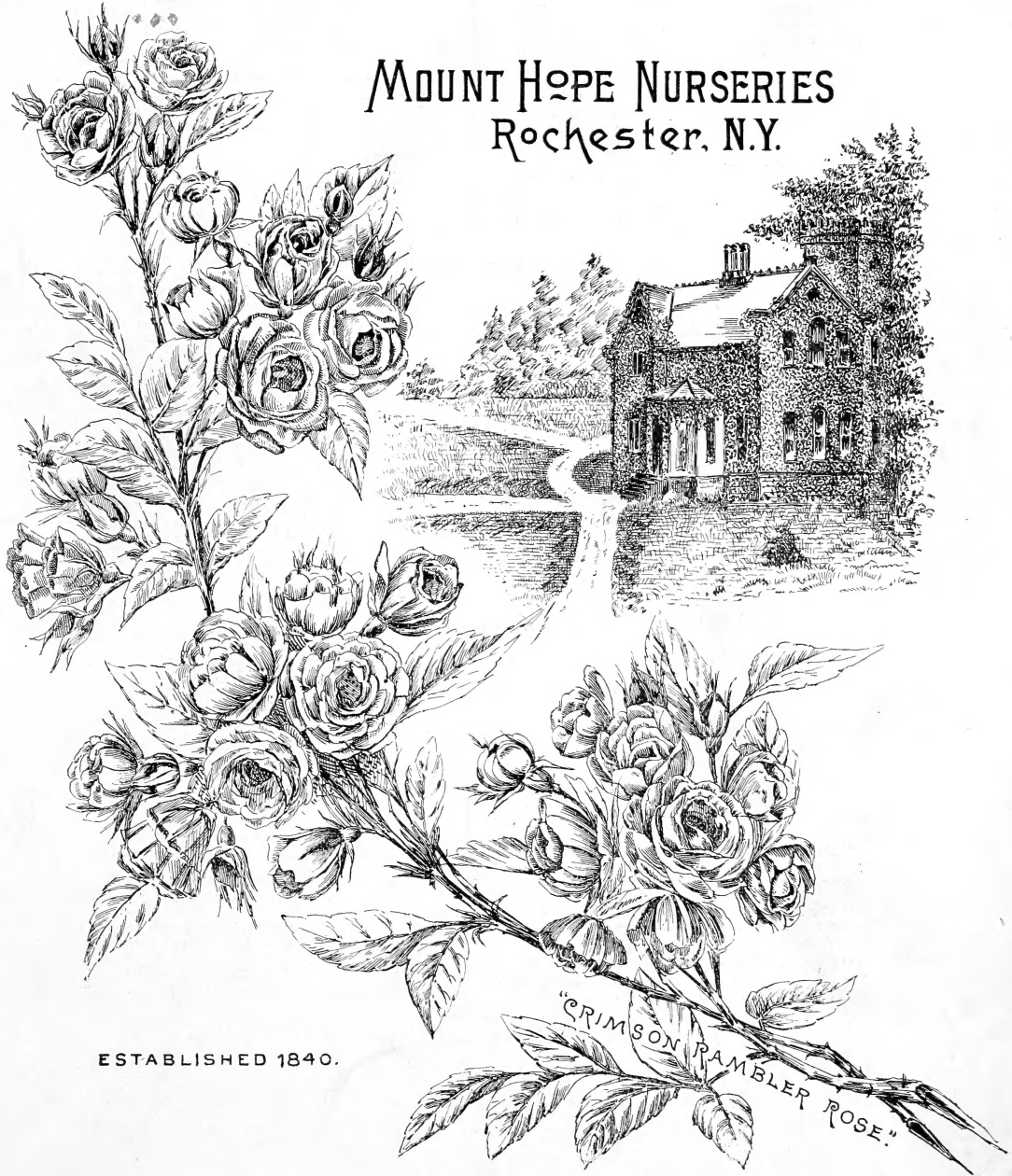
62.61

SUPPLEMENTARY CATALOGUE.  
(1895)



# ELLWANGER & BARRY

MOUNT HOPE NURSERIES  
Rochester, N.Y.



ESTABLISHED 1840.

"CRIMSON RAMBLER ROSE."

## Catalogues and other Publications.

The following catalogues are sent as soon as issued to all customers of two and three years' standing, whose names are on our books, and to all others who may apply.

GENERAL CATALOGUE (published Spring, 1894,) of Fruit and Ornamental Trees, Shrubs, Evergreens, Small Fruits, Clematis, Hardy Plants, Roses, etc. (160 pages) containing brief hints on transplanting, distances for planting the various trees, and other useful information. This edition has been prepared with great care and at large expense; the descriptions are complete and correct, and the illustrations are mostly from photographs of specimens in our collection. We trust that it will serve not merely as a price-list, but will prove a useful hand-book. A list of the best novelties to date is given separately.

### AN INDISPENSABLE CATALOGUE.

"The General Catalogue of Messrs. Ellwanger & Barry, Mount Hope Nurseries, Rochester, N. Y., is a solid octavo pamphlet of over 150 pages, closely printed and profusely illustrated. We have found the publications of this house particularly accurate botanically, on which account it is always a pleasure to refer to them for the spelling of a name or distinguishing between varieties that are confused with each other; and of course all readers know of the high excellence of the plants of every kind that the Mt. Hope Nurseries have been supplying now for more than fifty years. Altogether the Catalogue is indispensable to persons who need any publication of the class to which it belongs."—*Cultivator and Country Gentleman*, March 1, 1894.

CATALOGUE OF POT-GROWN STRAWBERRY PLANTS AND HOLLAND BULBS, issued in July.

WHOLESALE CATALOGUE OR TRADE LIST, issued semi-annually (January and July).

### "Barry's Fruit Garden,"

By the late P. BARRY,

Is a book for all, from the most extensive orchardist to the owner of a city lot. Price \$2.00, by mail, postpaid.

### A New Edition of "The Rose."

By the late Henry B. Ellwanger, with introduction by Geo. H. Ellwanger. New and revised edition, with the list of varieties carried out to date, and an essay on "Old and New Roses."

Price, \$1.25, by mail, postpaid.

### "The Garden's Story."

(5th Edition.)

BY GEORGE H. ELLWANGER.

16mo. cloth, gilt top. Price, postpaid, \$1.50. With head and tail pieces by Rhead.

"A dainty, learned, charming and delightful book."—*New York Sun*.

## What is said of the Mount Hope Nurseries:

### PRESS COMMENTS:

"Stand at the head of the Nursery business in this country."—*Michigan Farmer*.

"Has done more in the interests of pomology and horticulture than any other American firm."—*Rural New Yorker*.

"The Mount Hope Nurseries have given Rochester a National reputation."—*Rochester Post Express*

"A great Nursery, standing as it does at the head of all other establishments of the kind in this country."—*Vick's Magazine*.

"The renowned Nurseries."—*American Agriculturist*.

"Their great Nursery widely known both in Europe and America."—*Country Gentleman*.

"These famous Nurseries, the most complete in this country."—*Modern Cemetery*.

"One of the most complete establishments of its kind in the world."—*Arkansas Farmer*.

"The most complete Nurseries on the American continent."—*American Rural Home*.

## Premiums and Medals awarded to us in 1893 and 1894.

It has been our practice to make an exhibit of Fruit annually at the State and County Fairs in different parts of the country. In 1894 we received 89 First Premiums. At the World's Columbian Exposition we were awarded several medals for exhibit of Trees, Shrubs and Fruits.

# NOVELTIES AND SPECIALTIES.

Besides the extensive collections of general nursery stock which we offer, we have a number of new trees and plants which we take pleasure in bringing to the notice of our patrons. Some have not been tested here—to such the description of the originator is given.

NOTE THE REDUCTION IN PRICES.

## **New Seedling Apple, Barry.**

A fine new seedling apple. It was raised in our nurseries several years ago and has been thoroughly tested, so that we have no hesitation in recommending it to our customers as a novelty of sterling merit. Fruit oblate conical, yellow ground marbled with carmine on sunny side; flesh firm, crisp, acid; quality good. A great keeper, lasting in perfection till June. Tree a vigorous grower. 50c.

## **The Bismarck Apple.**

Introduced from New Zealand. "Very large, remarkably handsome and showy; flesh yellow, tender, juicy; quality good; extremely hardy and prolific and bears early. Season, November to February." 50c.

## **Eliot's Early Pear.**

Originated by James Dougall, Canada, said to be a cross between Madeleine and Doyenne d'Ete. "Medium size, pyriform; borne in clusters of three to six; skin yellowish green striped with red; handsome; flesh juicy, vinous, excellent; tree a strong grower." A handsome and good early pear, recommended by Mr. Carman of the *Rural New-Yorker*, who has fruited it. Top-worked trees. \$1.00.

## **The Koonce Pear.**

Originated in Illinois. "Medium to large, very handsome; spicy, juicy, sweet, very good. Season very early. Tree vigorous, free from blight, and a better grower than Kieffer." 50c.

## **New Fall Pear, Lady Clapp.**

A seedling raised by the late Lemuel Clapp. A large, very handsome pear. Clean, smooth skin, beautiful yellow when ripe; flesh very juicy, melting, vinous; quality first rate. Ripens from middle to end of September, following the Bartlett, and a good sort to succeed that variety on account of its size and fine color, which is the same as Bartlett. A splendid pear and a decided acquisition to the list of varieties ripening at that season. Tree a vigorous grower. \$1.00.

## **New Fall Pear, Madame Hemminway.**

A handsome and showy new American pear, skin entirely covered with a dull russet; flesh melting, moderately juicy and flavor good, rather sweet. A promising variety. Ripens middle of September. \$1.00.

## **New Late Winter Pear, Dorset.**

Another seedling raised by the late Lemuel Clapp. It is a very handsome and showy late-keeping pear. Large, golden yellow ground, with bright red on sunny side; flesh juicy, melting, sweet, of good quality. Keeps and ships well and is a valuable late pear. Ripe in February, but keeps in perfection till May. Tree a vigorous grower. \$1.00.

## **New Winter Pear, Fred Baudry.**

A large, handsome, fine-flavored late winter pear. Size medium to large; oblong pyriform; color yellow, with occasional blotches of russet; flesh yellow, tender, buttery, juicy, slightly gritty at core, solid and no evidence of rot; quality very good to best, a distinct flavor. Ripe a little after Josephine of Malines. A valuable late winter pear. \$1.00.

## **New Winter Pear, Olivier Des Serres.**

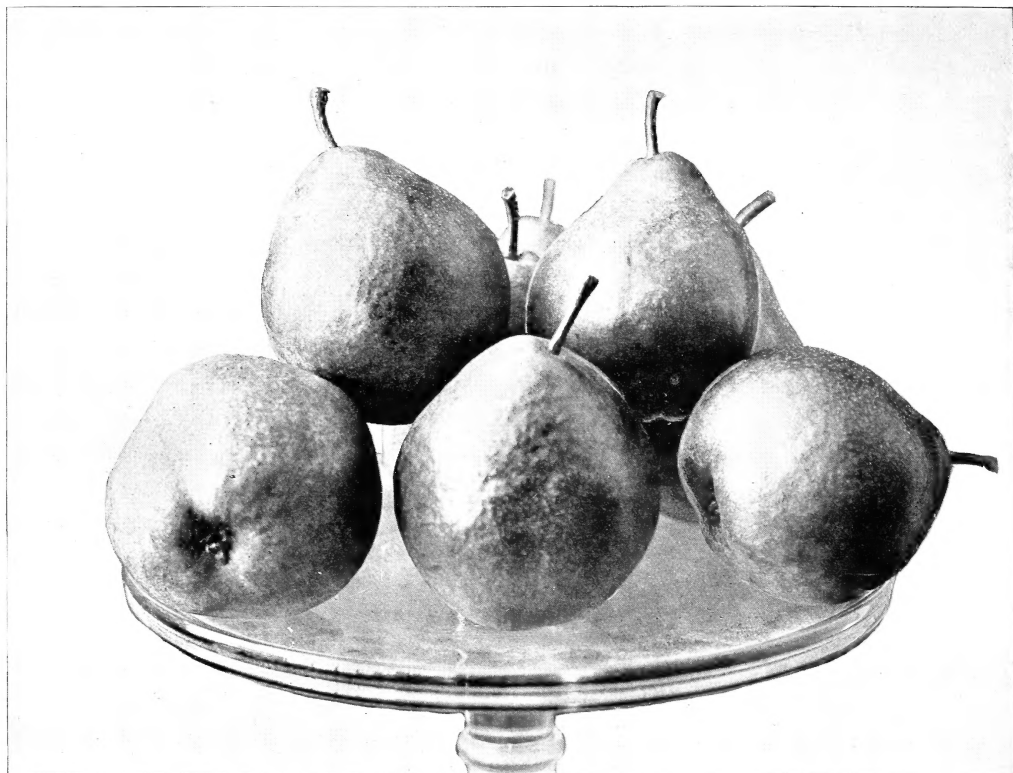
A valuable late-keeping winter pear, ripening about the same time as the Josephine of Malines, and perhaps keeping longer, say till first of March. The fruit is of good size, roundish, averaging larger than Josephine. Flesh tender, juicy, melting; flavor distinct, excellent. In quality it ranks as very good to best. As the number of late-keeping, high-flavored pears is not large, this variety will be received favorably. \$1.00.

## **The Worden Seckel Pear.**

A seedling of the Seckel raised by Mr. Sylvester Worden, the originator of the now famous Worden Grape. Fruit medium size, borne in clusters, juicy, buttery, fine-grained, with a flavor and aroma fully equal to that of its parent, which it surpasses in size, beauty, and keeping qualities. Ripens in October, but will keep in good condition till December. \$1.00.

## **The Abundance Plum.**

Of Japanese origin. Fruit large and beautiful; amber, turning to a rich, bright cherry; flesh light yellow, juicy, tender, sweet; exceedingly productive. Season very early. 50c.



NEW WINTER PEAR, DORSET. (Reduced.)

#### **The Burbank Plum.**

Also of Japanese origin. Large and beautiful; clear cherry red; an abundant bearer, valuable market variety. Ripens early in September. 50c.

#### **The Dunlap Plum.**

A remarkably handsome, large yellow plum, resembling the Yellow Egg, but ripening early; cling, juicy, sweet, very good. 75c.

#### **The Giant Prune.**

Raised by Mr. Luther Burbank, of California. "Of immense size, as its name implies; firm, rich, sweet, delicious; prolific. Tree a strong, handsome grower." \$1.00.

#### **The Lafayette Plum.**

A valuable late variety, medium to large, roundish, purple, quality good. Ripens last of September. 75c.

#### **The Monarch Plum.**

Very large, roundish oval; dark purplish blue, freestone, of excellent quality; an abundant bearer. \$1.00.

#### **The Purple Reine Claude Plum.**

*(Reine Claude Violette.)*

Medium size, roundish, purple, delicious flavor; one of the best for the table. Ripens middle of September. 75c.

#### **The Red June Plum.**

An early ripening Japanese Plum; medium to large, roundish conical, purplish red, handsome; flesh yellow, quality good. \$1.00.

#### **The Wickson Plum.**

Another of Mr. Burbank's celebrated hybrids, and considered by him one of the finest. "Very large, glowing carmine, with a heavy white bloom; flesh firm, sugary, delicious, stone small. Remarkable for its long-keeping qualities. Tree of vigorous, upright growth." 75c.

### The Willard Plum.

Of Japanese origin. "Medium size, dark red, freestone, quality fair. Tree a strong grower, hardy and productive." 50c.

### The Youngken's Golden Cherry Plum.

This is the earliest plum to ripen here; small, round, greenish yellow, handsome, very slender stalk, half an inch long, sweet and juicy; cling; valuable on account of its earliness. 75c.

### The Champion Peach.

A new early peach; large, handsome, creamy white with red cheek; sweet, rich, juicy; freestone. Hardy and productive. 25c.

### The Crosby Peach.

Fruit medium roundish, slightly flattened, bright orange yellow, splashed with streaks of carmine on sunny side; good in quality. Ripens between Crawford's Early and Late. 25c.

### The Elberta Peach.

Originated in Georgia a few years ago, and has proved to be one of the most valuable of the newer varieties. Orchards in New York State bore this year for the first time, and produced fruit which surprised and delighted the grower. The fruit is large, handsome, with golden yellow skin, covered with a bright crimson blush. Flesh yellow, juicy; quality good, though not quite equal to Crawford. A peculiarity of the Elberta is that the fruit can be gathered before it is ripe, and it will ripen up without rotting. It bears transportation well, and, taken all in all, is a variety of great promise. 25c.

### The Columbus Gooseberry.

This is one of the most valuable introductions of recent years in small fruits, and it fully sustains the high opinion first formed of it. It was introduced by us a few years ago. The fruit is of largest size, handsome, of a greenish yellow color, and the quality is excellent. The plant is vigorous and productive and does not mildew. It merits a place in every garden. 25 cents each, \$2.50 per doz.

The editor of the *Rural New-Yorker* says: "It is the *best* variety yet introduced and seems close to a perfect Gooseberry for our climate."

*Triumph Gooseberry.* Reduced to 25 cents each, \$2.50 per doz.

*Winchell Grape.* Reduced to 50 cents each.

### The Red Jacket Gooseberry.

A new red gooseberry of the American type, and which is highly recommended. 25c. each.

### The Wilder Currant.

A new red currant, fruit large, fine-flavored, great yielder, very profitable for market. 25c. each.

### The Early King Blackberry.

Fruit of medium size and good quality, plant hardy and productive. The first variety to ripen here, and particularly valuable on that account. 50c. per doz.

### The Eldorado Blackberry.

A valuable new variety; fruit medium size, jet black, melting, sweet and rich; plant hardy and very productive. 75c. per doz.

### The Rathbun Blackberry.

A promising new variety. Berries extra large, jet black, quality good. Said to be perfectly hardy. 25c. each, \$2.50 per doz.

### The Columbian Raspberry.

Fruit very large, dark red, bordering on purple; plant a very strong, robust grower, hardy and very productive. \$1.00 per doz.

### The Eureka Raspberry (Black Cap).

A comparatively new variety; very large, glossy black, juicy, rich; hardy and very productive. We regard it as a valuable, very early variety. 50c. per doz.

### Gault Perpetual Raspberry (Black Cap).

Large and firm; rich flavor. Plant a vigorous grower and extremely hardy. Said to be a true perpetual. 10c. each.



COLUMBUS GOOSEBERRY.

FROM A PHOTOGRAPH OF A PLANT IN OUR NURSERIES.



**The Kansas Raspberry (Black Cap).**

A valuable second early variety; very large, handsome, firm, and of excellent quality; very hardy and productive. One of the best Black Caps. 50c. per doz.

**The Loudon Raspberry.**

A new red raspberry which originated at Janesville, Wis. Said to be a seedling of the Turner crossed with Cuthbert. Large, broadly conical, beautiful red. Ripens about with Cuthbert, continuing later, and in quality fully as good as that variety. 75c. per doz.

**The Miller Raspberry.**

A variety from New Jersey. Berry as large as Cuthbert, round, bright red, does not fade; very firm. Begins to ripen with the earliest. Perfectly hardy. 50c. per doz.

**The Superlative Raspberry (Bunyard's).**

A splendid new foreign red raspberry. Very large, fine color, firm and of best quality. We have tested it in our grounds, and commend it to all who desire the *largest, handsomest, and choicest fruit*. One of the best novelties in this line. One of our customers in Russia informs us that of all the European varieties he has tested, the Superlative has proved to be the best. 10c. each, \$1.00 per doz.

**A New Fruit—The Logan Berry.**

A decided novelty, being a hybrid between a blackberry and a raspberry. Fruit as large as the blackberry and of same shape; color dark red when fully ripe; partakes of the flavor of the blackberry and raspberry; pleasant, mild, vinous. 50c. each.

**New Strawberry McKinley.**

Introduced by us. This variety has been thoroughly tested in our grounds, and we consider it a superior strawberry, being remarkable for its size, shape, color, and quality. Berry large; roundish, inclining to conical, but sometimes flattened or coxcombed; color crimson; flesh firm, and quality very good. The plant is vigorous, healthy, and a great yielder; flowers bi-sexual or perfect. Season medium to late. We can confidently recommend it for garden and market culture. 50c. per doz.; \$1.50 per 100.

*Brandywine and Marshall Strawberries reduced to 40c. per doz.; \$1.00 per 100.*

**New Chestnuts.**

*Numbo, Paragon, and Ridgely* are new varieties which produce large edible fruit. \$1.00 each.

## New and Rare Ornamental Trees.

**Acer circinatum.**

*(Round-leaved or Vine Maple.)*

A rare and pretty species from Oregon of slow growth; forms a low round-headed branching tree. Resembles the Japanese varieties. The autumn coloring is fine. \$1.00.

**Acer Heldreichii.**

A fine new species of upright growth. Foliage large, dark green, and deeply lobed. We regard it as a valuable introduction. \$1.00.

**Acer—platanoides O. Stoll.**

A variety of the Norway Maple, of upright growth; foliage large, round, dark bronze, hanging downward on very long stalks. One of the finest new trees. \$1.00.

**Acer—platanoides undulatum.**

A new variety of the Norway Maple, of erect habit and vigorous growth. Foliage very dark green, the edges curiously cut and curled. A distinct and beautiful tree. \$1.00.

**Acer—polymorphum nigrum.**

A fine variety of Japan Maple, similar to *atropurpureum*, except that the foliage is much darker, almost black. \$3.00.

**Acer—polymorphum scolopendrifolium rubrum.**

Another very choice Japan Maple, with long leaves deeply cut, color reddish purple. \$3.00.

**Acer—pseudo platanus foliis atropurpureus.**

(*Dark purple-leaved Sycamore Maple.*)

A distinct and beautiful tree; the coloring is more pronounced than in the common purple Sycamore Maple. \$1.00.

**Acer—pseudo platanus bicolor.**

A fine variety of the Sycamore Maple, foliage distinctly marked green and yellow. \$1.00.

**Acer—pseudo platanus nervosum.**

A distinct and beautiful variety. Large, handsome foliage, dark, purplish green, marked with yellow, on the upper side; reddish purple underneath. \$1.00.

**Acer—pseudo platanus foliis purpureis, Prince Handjery.**

A dwarf growing variety of the Sycamore Maple. Foliage purplish, deeply lobed. Distinct and fine. \$1.00.

**Acer—pseudo platanus, Simon Louis Freres.**

A charming variety of the Sycamore Maple. Foliage large, green, distinctly marked with white; leaf stalks reddish. Very distinct and beautiful. Should be planted in somewhat shaded position. \$1.00.

**Acer—rubrum Drummondii.**

A variety of the Scarlet Maple, of dwarf habit, but a strong, compact grower; foliage very large, reddish above, silvery beneath. \$1.00.

**Acer—saccharinum monumentalis.**

(*Monumental Sugar Maple.*)

A fine variety of the Sugar Maple, of pyramidal, compact habit; the foliage of the second growth is of a brilliant crimson, which, contrasted with the rich green of the older foliage, produces a charming effect. Distinct and handsome. \$1.00.

**Amygdalus—Davidiana alba.**

(*White-flowered Almond.*)

Flowers single white, and appearing as they do before the leaves, are very showy. The first tree to flower in spring, and hence particularly desirable on that account. 50c.

**Betula—alba nana pendula.**

(*Dwarf Weeping White Birch.*)

A very desirable tree, forming a round head when young; the branches take on a drooping habit as the tree grows older, eventually touching the ground in graceful festoons. \$1.00.

**Betula—Cunninghamii pendula.**

(*Cunningham's Weeping Birch.*)

A pendulous form of our common White Birch, which promises to be of more graceful habit than Young's Weeping. \$1.00.

**Cratægus—oxyacantha coccinea pendula.**

(*Weeping Single Scarlet Thorn.*)

A variety of the Scarlet Thorn, with drooping branches. An acquisition. \$1.00.

**Fagus—sylvatica purpurea rosea marginata.**

(*Rose-margined Purple-leaved Beech.*)

A charming variety of the Purple-leaved Beech, with beautiful rose-margined leaves. A distinct and fine novelty; but as the foliage burns it should have a shaded position. Small trees. \$3.00.

**Fagus—sylvatica purpurea pendula.**

(*Purple-leaved Weeping Beech.*)

Similar in habit of growth to the Weeping Beech. Foliage deep purple. Very rare. \$5.00.

**Fagus—sylvatica Zlatia.***(Golden-leaved Beech.)*

A grand new variety and a valuable addition to the list of Beeches. Foliage large, golden yellow. Makes a fine contrast when planted with the Purple-leaved Beech. Small trees. \$5.00.

**Fraxinus excelsior foliis aureis.***(Golden-leaved Ash.)*

A handsome variety of the European Ash. Foliage bright yellow. Very effective. \$1.50.

**Juglans—ailanthifolia.***(Ailanthus-leaved Walnut.)*

A valuable Walnut, producing excellent fruit. Foliage long, very ornamental. Bears when quite young. 75c.

**Liriodendron—tulipifera fastigiata.***(Pyramidal Tulip Tree.)*

A distinct and handsome variety of the Tulip Tree; of erect pyramidal growth. Promises to be a great acquisition. \$1.00.

**Bechtel's Double-flowered American Crab.***(Pyrus angustifolia.)*

One of the most beautiful of the many fine varieties of flowering Crabs. Tree of medium size, covered in early spring with large beautiful double fragrant flowers of a delicate pink color. From a distance the flowers have the appearance of small Roses. A great acquisition, and certain to become very popular as soon as known. Blooms when quite young. \$1.00.

**Populus trichocarpa.**

A fine new Poplar with long oval leaves, dark green above, silvery beneath, of very vigorous growth. \$1.00.

**Pyrus Malus—Scheideckeri.***(Double-flowered Crab.)*

A fine variety recently introduced from Germany. Flowers quite double, red in bud, changing to pink or rose color. \$1.00.

**Pyrus Malus pendula—Eliza Rathke.***(Weeping Crab.)*

A Flowering Crab, with a decidedly pendulous or weeping habit. Distinct. \$1.00.

**Salix—Babylonica ramulis aureis.***(Golden-barked Babylonian Willow.)*

A novel and distinct variety of the well-known Babylonian Willow, with bright golden bark in winter. Habit same as the type. \$1.00.

**Tilia Americana Moltkei.**

A variety of the American Linden, raised in Germany, and described as the quickest growing of any of that family. \$1.00.

**Tilia Mandshurica.**

A new species of Linden, with large green leaves margined with yellow, the edges of leaves lobed or cut; young growth reddish; a vigorous grower. \$1.00.

**Tilia Mongolica.**

From the mountains near Peking, China. A small or medium-sized tree with small foliage, whitish underneath, and with red and yellow bark. \$1.00.

**Ulmus—Americana nana.***(Dwarf American Elm.)*

A variety of the American, very dwarf and compact. \$1.00.

**Ulmus—campestris Koopmanni.***(Koopman's English Elm.)*

A variety of the English Elm, of dense pyramidal form, with small green leaves. \$1.00.

**Ulmus—campestris Ruepelli.***(Rueffel's English Elm.)*

Another variety of the English Elm, of handsome, compact form; grows perfectly symmetrical without pruning. \$1.00.

**Ulmus—campestris umbraculifera.**

Still another variety, quite similar to above. All are valuable when trees of formal habit of growth are desired. \$1.00.



BECHTEL'S NEW DOUBLE-FLOWERED AMERICAN CRAB.  
Beautiful large semi-double rose-colored flowers, some of them measuring two inches in diameter.  
FROM A PHOTOGRAPH OF FLOWERS PRODUCED IN OUR NURSERIES.

**Ulmus—fulva Heyderi.**

A variety of the Slippery Elm. Foliage very large, light green. Distinct. \$1.00.

**Ulmus—montana nana.**

(*Dwarf Scotch Elm.*)

A variety of Scotch Elm. Habit very dwarf. \$1.00.

**Ulmus—parvifolia.**

A Japanese species. Foliage small, dense, dark green, edges cut. Very distinct. \$1.50.

## New and Rare Evergreen Trees.

**Abies (Picea) concolor.**

(*Silver Fir of Colorado.*)

Without doubt the finest of the Rocky Mountain evergreens. Tree of graceful habit; broad, handsome foliage, bluish above, silvery beneath. A grand tree, very distinct and exceedingly rare as yet. Transplanted trees two feet in height. \$3.00.

**Juniperus—Alpina nana aurea.**

(*Douglas' Golden Juniper.*)

Of spreading growth like the type, with bright golden foliage throughout the year; a distinct and charming novelty. \$1.00.

**Juniperus—Virginiana elegantissima.**

A distinct and beautiful variety of the Red Cedar, with golden bronze foliage, particularly attractive in winter, when the golden bronze of the young growth is contrasted with the dark green of the older. \$1.00.

## New and Rare Ornamental Shrubs.

**Aralia—spinosa.**

(*Hercules Club.*)

This is a native plant, valuable for producing tropical effects. 50c.

**Caryopteris mastacanthus.**

(*Blue Spiræa.*)

A pretty autumn-blooming shrubby plant, producing clusters of beautiful blue fragrant flowers in great profusion from September until frost. Dies to the ground here in winter. 50c.

**Corylus—avellana aurea.**

(*Golden-leaved Filbert.*)

A rare and beautiful shrub. Foliage large, bright golden color. Appears to fine advantage planted with the Purple-leaved Filbert. \$1.00.

**Deutzia hybrida Lemoinei.**

A hybrid obtained by Mons. Lemoine of France by crossing the well-known *Deutzia gracilis* with *Deutzia parviflora*. Flowers pure white, borne on stout branches, which are of upright growth. Habit dwarf and free-flowering. A decided acquisition. \$1.00.

**Deutzia—parviflora.**

From Northern China. A stout shrub with upright stems covered in early June with creamy white flowers, prettily arranged in large corymbs. One of the most beautiful of all the *Deutzias*. 50c.

**Elæagnus longipes.**

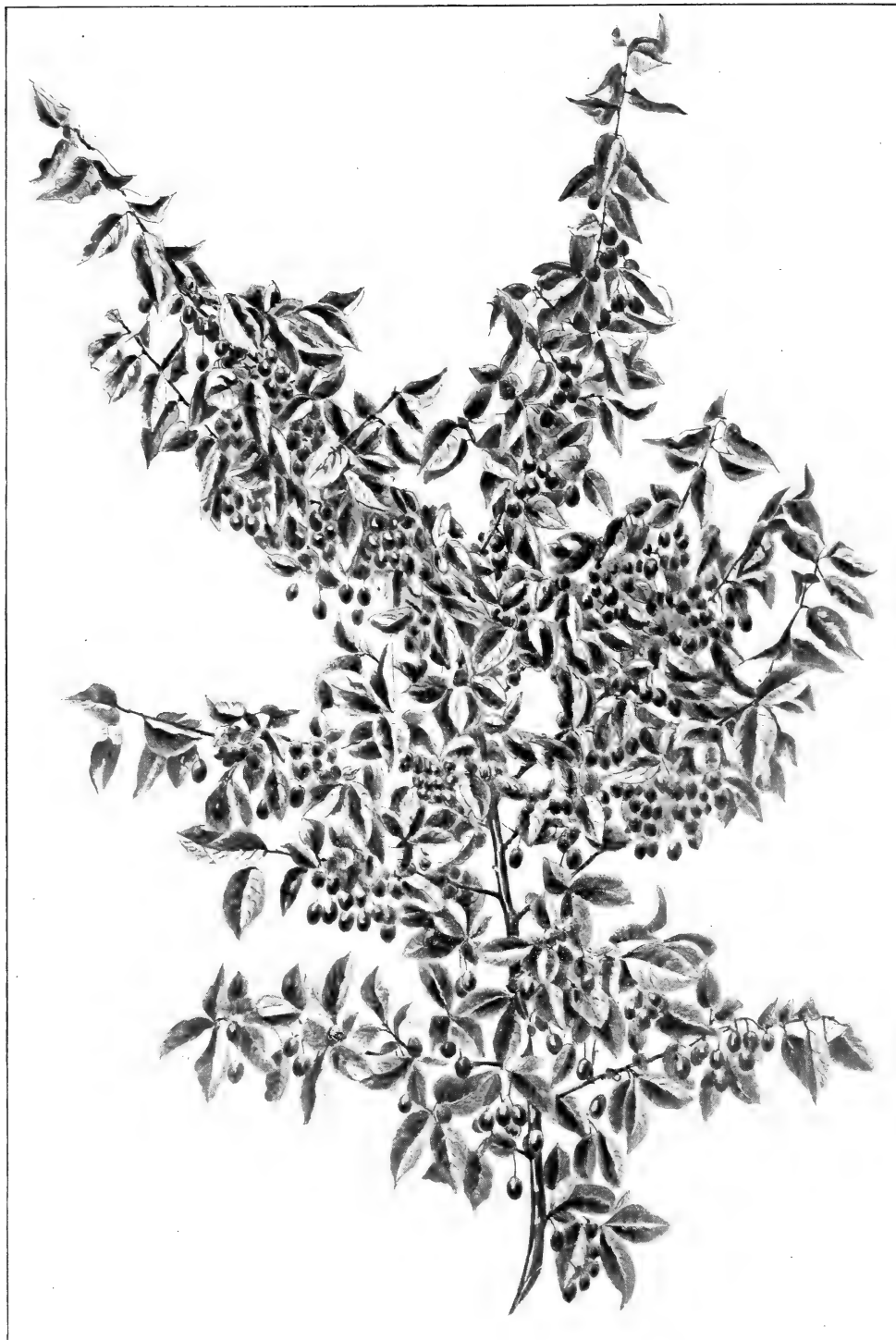
(*A rare and beautiful Japanese Shrub.*)

This is a remarkably beautiful new hardy shrub from Japan. In July the plant is covered with bright red berries of large size and edible, the flavor being pungent and agreeable. Laden with fruit the bush is highly ornamental, and the fact that the leaves remain fresh till late in the autumn gives it additional value for garden decoration. We regard it as the coming shrub, destined to widespread popularity as soon as known. 50c.

**Hibiscus Syriacus—Jeanne d'Arc.**

(*Double White Althæa.*)

This is one of the best new shrubs. Flowers pure white, double; plant a strong grower. Valuable for florists' work. 50c.



ELÆAGNUS LONGIPES.

One of the finest new hardy shrubs ; fruit handsome and edible.

**Hypericum Moserianum.**

A charming shrub of dwarf habit, producing large single yellow flowers in great profusion during the summer. 50c.

**Ligustrum Ibota.**

(*Chinese Privet.*)

A valuable new shrub, native of China and Japan. Flowers large, white, very fragrant, produced in great profusion; leaves long and shining; one of the hardiest of the Privets and distinct. A charming shrub which will be prized for its fragrant flowers, as well as for its handsome foliage. 50c.

**Lonicera—Tartarica splendens.**

(*Bush Honeysuckle.*)

A fine variety of the Tartarian Honeysuckle; flowers large, dark rose, with darker center. A variety of merit. 50c.

**Lonicera—Ruprechtiana.**

(*Bush Honeysuckle.*)

A fine variety from Manchuria, particularly valuable for its showy red fruit. 50c.

**Lonicera Morrowii.**

(*Japan Bush Honeysuckle.*)

Another fine variety, also valuable for handsome red fruit. 50c. *Bella albida* and *bella candida* are also good varieties, and very showy when covered with their brilliant red fruit. 50c each.

**Philadelphus—Lemoinei erectus.**

(*Lemoine's Erect Syringa or Mock Orange.*)

A charming variety of the *Syringa* or *Mock Orange* of upright growth; flowers small, yellowish-white, fragrant, completely covering the plant. 50c.

**Prunus Laurocerasus Schipkaensis.**

(*Hardy Laurel.*)

This is a valuable new evergreen shrub, with large, broad, shining, deep green leaves, similar in appearance to the beautiful Laurel or Bay Tree, so highly prized for house decoration. We have had this new shrub in our nurseries for some years, and it has withstood the severest winters without injury, and we regard it as a very-valuable addition to the list of choice shrubs. Small plants. \$2.00 each.

**Rhus Cotinus atropurpureus.**

(*Dark Purple-flowered, Purple Fringe.*)

Similar in appearance and habit of growth to the old variety, except that the flowers are of a dark reddish purple, quite distinct. 75c.

**Sambucus racemosus plumosus foliis aureis.**

(*Cut-leaved Golden Elder.*)

A charming novelty, with beautiful, fern-like, golden foliage, which retains its showy color through the season. \$1.00.

**Sambucus—nigra rotundifolia.**

(*Round-leaved Elder.*)

A distinct variety with round, dark green foliage; holds its foliage late. 50c.

**Spiræa Anthony Waterer.**

A fine new dwarf Spiræa with dark crimson flowers, darker than Spiræa Bumalda. One of the finest shrubs of recent years. 50c.

**Spiræa Mongolica.**

A fine variety. White flowers in May; small foliage; distinct. 50c.

**Lilacs—Lemoine's Great Novelties.**

Double-flowered and single-flowered, the latest introductions of the celebrated French raiser, Lemoine. We have taken great pains to secure the choicest of his collection, and can now offer fine plants of these great novelties. We advise every one of our patrons to secure these acquisitions, the most remarkable and valuable additions to the list of hardy flowering shrubs made in many years. See General Catalogue. Our general collection of Lilacs is undoubtedly the largest in this country, and contains upwards of one hundred varieties, and is being added to each year.

**Viburnum tomentosum.**

The single form of the beautiful Japan Snowball, *Viburnum Plicatum*; flowers pure white, borne along the branches in flat cymes, in the greatest profusion early in June. Perfectly hardy, vigorous, and free-blooming. Very desirable. \$1.50.



NEW DOUBLE LILAC.

**Clematis—Madame Edward Andre.**

A grand novelty. Flowers large, of a beautiful bright velvety red, very free-flowering, and continuous bloomer. \$1.00.

**Bignonia grandiflora.**

*(Large-flowered Trumpet Creeper.)*

A rare and beautiful variety of the Trumpet Creeper. Flowers very large, salmon color, center yellow, striped red; fine. 75c.

**Single Herbaceous Pæonies.**

We have a fine collection embracing the choicest varieties to be obtained in this country and Europe. Now that single flowers are so popular, these will be found invaluable; they cover a wide range of color, and blossom early. Selected varieties. \$1.00 each.



## New Hardy Plants.

### Achillea—The Pearl.

(*Yarrow.*)

Small, double white flowers, covering the plant in July. Invaluable for borders. One of the prettiest flowering plants and should be in every garden. 25c.

### Japan Double Anemone—Whirlwind.

A variety of the well known Japan Anemone, producing double white flowers in great profusion in the autumn. One of the finest fall-flowering perennials. Hardy. 25c.

### Rudbeckia, Golden Glow, or Summer Chrysanthemum.

A large, showy plant, attaining in good soil a height of six to eight feet the same season planted. Flowers three and one-half inches in diameter, double, well formed, and of a deep golden yellow color, resembling yellow Chrysanthemums, and borne on long stems which render them suitable for cutting. Plants bloom profusely from July till September. One of the best novelties in hardy flowering plants. 25c.

## New Roses.

### The Wonderful New Japanese Rose,

### Crimson Rambler.

By far the most important and valuable acquisition of recent years.

The Crimson Rambler is unquestionably an acquisition, a novelty of high order, and most distinct in its characteristics. It is a running or climbing rose of vigorous habit, strong and rapid growth, with handsome, shining foliage, and produces in marvelous abundance clusters of the brightest crimson semi-double roses. Its clustered form, its brilliancy, the abundance of its bloom, and the great length of time the flowers remain on the plant without falling or losing their brilliancy, are qualities which will make this new claimant for admiration an assured favorite. For verandas, walls, pillars, and fences it is a most suitable plant. If grown in beds and pegged down it produces marvelous heads of bloom, or it can be grown in bush form and thus become a most striking object. We planted this rose out doors, along with Hybrid Perpetuals and other hardy roses, and the plants came through the winter even better than many of the hardy varieties, remaining fresh and green to the very tips. But it is not only for out-door use that it is valuable; it can also be employed most satisfactorily for decorating in-doors when grown in pots. We are satisfied that this is the greatest rose novelty of recent years. Dormant field-grown plants. 50c.

### Pink Rambler.

(*Euphrosine.*)

“In vigorous growth and profusion of bloom this equals *Aglaia*; the color is bright red, the half-open buds being brilliant carmine; when fully open the numerous yellow anthers give the flowers a charming effect.” 50c.

### White Rambler.

(*Thalia.*)

“In growth, etc., this is similar to the preceding, only the color is pure white, and the umbels much larger.” 50c.

### Yellow Rambler.

(*Aglaia.*)

“Of vigorous climbing habit, with beautiful light green foliage; the flowers are borne in large pyramidal trusses, similar to *Crimson Rambler*, with 50 to 150 individual blooms; the color is bright yellow; the flowers are full, of beautiful shell-shaped form, with a strong tea perfume.” 50c.

### Rosa Multiflora Japonica.

A charming species of climbing habit introduced from Japan more than a century ago, but only recently brought to notice. It is exceedingly free-blooming and towards the end of June the plant is covered with great clusters of small white, single, sweetly fragrant flowers, in which the golden-colored anthers make a charming contrast with the snowy-white petals. It is extremely hardy and grows rapidly. 50c.

**Paul's Carmine Pillar.**

Flowers very large, single, bright rosy carmine, and produced abundantly. Grows ten to twelve feet in a season. 75c.

**Rosa setigera.**

(*The Michigan or Prairie Rose.*)

This is not a new rose by any means, but it seems to have been lost sight of for a number of years. Now that single roses are so popular, this variety will be much sought after. It is a climber and when trained over a veranda makes a beautiful display. Large single flowers, of a deep rose color. 50c.

One of the handsomest of single roses.—*Garden and Forest.*

**Champion of the World.**

This valuable rose originated in Vermont and is a cross between *Hermosa* and *Magna Charta*. The flowers are large, double, of a rich, deep, rosy pink, and very fragrant. It is a vigorous grower and free bloomer, quite as hardy as *Hermosa* and other roses of that class. An acquisition for bedding out for summer flowers. 50c.

**Lorna Doone—Bourbon.**

A new rose raised by Wm. Paul & Son. Large, full, and globular; color magenta-carmine, shaded with scarlet; handsome and very sweet; of vigorous growth. A valuable addition to late-flowering roses. 75c.

**Belle Siebrecht—Hybrid Tea.**

(*Syn Mrs. W. J. Grant.*)

A valuable new rose. Color imperial pink of the richest shade; flowers large, beautifully formed and long, tapering shape, with high center, and when half blown the petals reflex in a graceful manner; sweetly perfumed. A vigorous grower, with large, glossy foliage of leathery texture. 50c.

**Marjorie—Hybrid Tea.**

Flowers medium size, exquisite form. Color white, suffused with salmon pink; flowers full and freely produced throughout the season. A charming variety. 75c.

**Souvenir du President Carnot—Hybrid Tea.**

Flowers very large and full, bud long in the way of *Niphetos*; color rosy flesh, shaded white at the edges of the petals; form perfect. Growth vigorous; very free-flowering; a valuable variety. 50c.

**Maman Cochet.—Tea.**

A new Tea Rose which has proved to be an acquisition. Flowers large, full, clear carmine rose, shaded with salmon yellow. Plant very vigorous and free-flowering. One of the best Tea Roses of recent introduction. 50c.

**Princess Bonnie—Tea.**

A fine new rose; flowers large, semi-double; outside petals rich, solid crimson, more vivid than *Jacqueminot*, while the inner side of the center ones at the base is streaked with white; possesses a rich fragrance. Plant vigorous and constant bloomer. 50c.

**Mosella—Polyantha.**

This is a beautiful Polyantha, with well-formed very double camellia-like flowers, borne in clusters of two to five; the petals are white at the outside, with a yellow ground, and the center is a yellowish-rose color. 50c.

**‡Lord Penzance's Hybrid Sweet Briars.**

Apart from their extreme beauty they are most interesting, being crosses between common Sweet Briar and various other roses. It is certain they are a great acquisition. Like their parent, the common Sweet Briar, the foliage is deliciously scented. The flowers are single and of the most beautiful tints. 75c each.

**Amy Robsart**—Lovely deep rose.

**Anne of Geierstein**—Dark crimson.

**Brenda**—Maiden's blush or peach.

**Catharine Seyton**—Rosy pink.

**Edith Bellenden**—Pale rose.

**Flora M'Ivor**—Pure white blushed rose.

**Green Mantle**—Bright pink.

**Jeanie Deans**—Scarlet crimson.

**Julia Mannering**—Porcelain pink.

**Lady Penzance**—Beautiful soft tint of copper.

**Lord Penzance**—Soft shade of fawn or ecru.

**Lucy Ashton**—Pretty white blooms with pink edges.

**Lucy Bertram**—Deep crimson.

**Meg Merrilies**—Crimson.

**Minna**—Pure white.

**Rose Bradwardine**—Beautiful clear rose.



CRIMSON RAMBLER ROSE.

FROM A PHOTOGRAPH OF A SINGLE BRANCH WHICH CONTAINED 21 CLUSTERS WITH 364 INDIVIDUAL FLOWERS. GROWN IN OUR NURSERIES.

**Pink Soupert—Polyantha.**

A new rose, identical with the famous Clothilde Soupert, its progenitor, with the exception of color of flower, which is a deep pink similar to Hermosa. It is a continuous bloomer; each branch terminates with a cluster of flowers. Single plants when but six months old under ordinary treatment often produce fifty perfect flowers. Succeeds in open ground. 50c.

**Belle Poitevine—Hybrid Rugosa.**

A new Hybrid Rugosa Rose of a deep rose color. Flowers semi-double. 75c.

**Calocarpa—Hybrid Rugosa.**

Rose color, single, very sweet; brilliant foliage in autumn. 75c.

**Schneelicht—Hybrid Rugosa.**

A climbing variety with snow-white flowers, perfectly formed. 75c.

**Blanc Double de Coubert—Double White Rugosa.**

A new variety of Rugosa Alba with double, pure white flowers, possessing a delightful fragrance. A distinct and beautiful Rose. 75c.

**Cooling's Single Crimson Bedder.**

A charming addition to the single and garden Roses; quite distinct; semi-dwarf habit; color glowing crimson; flowers very large and produced in clusters. 75c.

## New Hybrid Perpetual Roses.

**Bladud.** Flowers large, very full, and globular; outside petals silvery white, center pale blush pink. 75c.

**CLIO.** Raised by Wm. Paul & Son, the celebrated English rose growers. Flowers large, of fine globular form, flesh color shaded in the center with rosy pink; growth vigorous; handsome foliage. One of the finest new roses. 75c.

**Ellen Drew.** A sport from Duchesse de Morny, color light silver pink with peach shading, very distinct. In size, substance, and habit of growth it is similar to the parent variety. 75c.

**Helen Keller.** Flowers large, of most perfect form, and fragrant. Color brilliant rosy cerise. A vigorous grower and very free bloomer. A most distinct and lovely rose. 75c.

**Haileybury.** Round in form; color cerise-salmon; very vigorous and perpetual. 75c.

**Laurence Allen.** Flowers large, full with high center; color clear soft pink with lighter shading; growth strong and erect; early and free-flowering; fragrant. 75c.

**Marchioness of Downshire.** Color beautiful satin pink shaded with rose; flowers large and full; petals of great substance; of vigorous growth and free-flowering. 75c.

**MARCHIONESS OF LONDONDERRY.** A new White Hybrid Perpetual, and one of the best introductions of the Messrs. Dickson & Sons of Newtownards, Ireland. Flowers of great size, measuring seven inches across, perfectly formed, and carried on stout stems. Color ivory white; petals of great substance, shell-shaped and reflexed; free-flowering; highly perfumed; growth vigorous and foliage very handsome. One of the finest roses. Awarded the gold medal of the National Rose Society of England. We have had this variety in flower for several seasons, and regard it as a decided acquisition to the list of hardy white roses. 50c.

**Mavourneen.** Flowers large, full, and perfectly formed; color delicate, silvery flesh-white, shaded rose at base of petals. In every respect a lovely rose. 75c.

**Mrs. Arthur Wilson.** Color bright silvery pink, shaded rose. 75c.

**MRS. R. G. SHARMAN CRAWFORD.** Raised by Dickson & Sons, of Newtownards, Ireland. Color deep, rosy pink, outer petals shaded with pale flesh, white at base of petals; flowers large, of perfect imbricated form, and freely produced, flowering from early summer until late in autumn. Growth vigorous. Awarded gold medal of the National Rose Society of England and many first-class certificates. A valuable addition. 75c.

**Mrs. Harkness.** (H. P.) Large double flowers; color a beautiful blush. Fine. \$1.00.

**Paul's Early Blush.** (H. P.) Flowers large, double; color light silvery blush. Vigorous. A beautiful rose. \$1.00.

**Paul's Single White.** (H. P.) Large single white flowers. Very free. \$1.00.



MARCHIONESS OF LONDONDERRY.

Best new hardy white rose.

FROM A PHOTOGRAPH OF A FLOWER GROWN IN OUR NURSERIES.

**Souvenir de Madame Eugene Verdier.** Growth very vigorous; flowers very large and full color, bright rose. 75c.

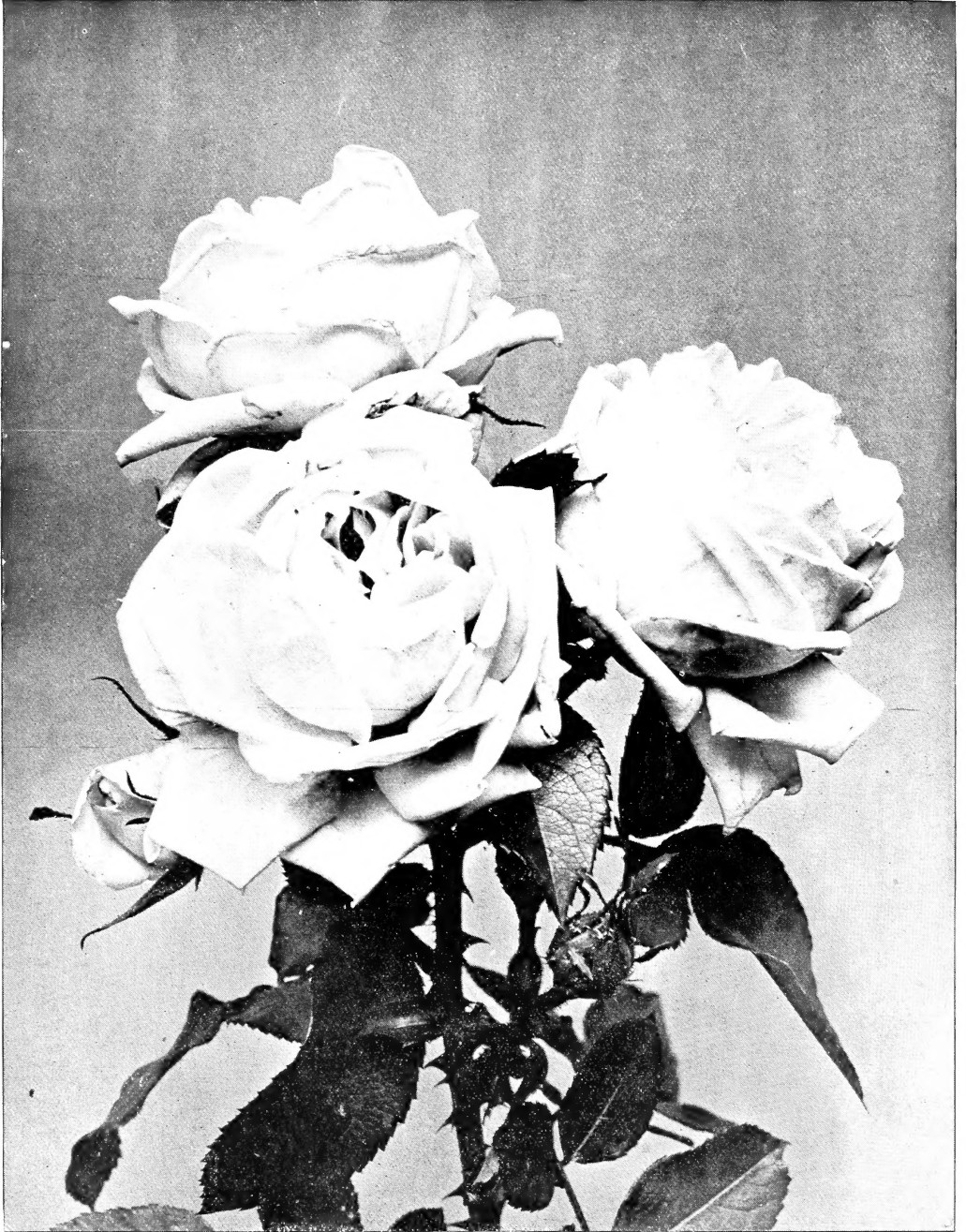
**Tom Wood.** Color cherry red, petals large, shell-shaped, and of immense substance, flowers very large, full, and perfectly formed; growth vigorous and of free branching habit, flowering freely and continuously from early summer until late in the autumn; foliage distinct. 75c.

## The Newest Roses.

*Plants Ready April 15th.*

The following are offered with the *raiser's descriptions*, and are the latest productions of celebrated European and American growers.

The letters following name of variety signify to which class it belongs: (T.) Tea, (H. T.) Hybrid Tea, (H. P.) Hybrid Perpetual.



NEW H. P. ROSE, CLIO.

FROM A PHOTOGRAPH OF FLOWERS GROWN IN OUR NURSERIES.

**Alex. Dickson & Sons' Pedigree Seedling Roses.**

**Countess of Caledon.** (H. T.) Flowers large, of perfect form; color rich carmine rose; vigorous habit; free-blooming. Awarded gold medal of the National Rose Society of England. \$1.00.

**Miss Ethel Richardson.** (H. P.) Flowers very large, imbricated form with high center; color almost pure white, with pale flesh center. Moderate growth, free-flowering. A valuable exhibition rose. \$1.00.

**Robert Duncan.** (H. P.) Flowers large, perfectly formed; color bright rosy lake; vigorous growth; flowering abundantly. \$1.00.

**Climbing Kaiserin Augusta Victoria.** (H. T.) A climbing sport of great vigor, identical in every respect (growth excepted) with the normal type. \$1.00.

**New Roses by Other Raisers.**

**Antoine Rivoire.** (H. T.) Flowers large, full, rosy flesh on a yellow ground, shaded with bright carmine; beautiful pale green foliage; plant vigorous. A lovely rose. \$1.00.

**Beaute Lyonnaise.** (H. T.) Flowers very large and full, white tinted with pale yellow; a vigorous grower and a beautiful rose. \$1.00.

**Coronet.** (H. T.) Flowers very large and very double; color deep rich carmine in bud, soft clear pink when open; very fragrant and free-blooming. Plant a vigorous grower. \$1.00.

**Chedane Guinoisseau.** (Rugosa.) Flowers very large, very full; color fine satiny rose; flowers in clusters and continues till frost. \$1.00.

**Captain Hayward.** (H. P.) Flowers very large; color bright carmine crimson; vigorous and free-flowering. \$1.00.

**Duke of York.** (China.) Flowers large; color varies between rosy pink and white, tipped with deep rosy pink; vigorous grower. \$1.00.

**Duchess of York.** (H. P.) Pale pink flushed with rose; very free. \$1.00.

**Empress Alexandra of Russia.** (T.) Flowers very large, full and globular; color rich lake red shaded with orange and fiery crimson; vigorous growth; free-blooming. \$1.00.

**Emilie Gonin.** (T.) Flowers very large and full; color white, tinted orange yellow; large petals bordered with rosy carmine. \$1.00.

**Enchantress.** (T.) Flowers large, full, and globular; color creamy white, slightly tinted with buff in center; vigorous. \$1.00.

**Exposition de Provins.** (H. P.) Flowers very large, very full; color beautiful velvety red; vigorous. \$1.00.

**Ferdinand Batel.** (H. T.) Flowers large, very full; color varying from pale rosy flesh on a ground of yellow nankeen to yellow nankeen orange. \$1.00.

**Ferdinand Jamin.** (H. T.) Flowers large, full, globular; color rosy carmine, shaded salmon. \$1.00.

**General Billot.** (T.) Flowers large; color pale violet amaranth, reflex of petals crimson; very vigorous. \$1.00.

**Grand Duchess Victoria Melita.** (H. T.) Flowers large and full, buds long, color creamy white, with light gold center. Very vigorous and free-flowering.

**Gruss an Teplitz.** (H. T.) Flowers large, full, and of beautiful cup-shape; color brightest scarlet crimson. Vigorous; very free-flowering. \$1.00.

**Irene Watts.** (China.) Full, long-pointed bud; color delicate china rose, varying from salmon white to pale pink. \$1.00.

**Jubilee.** (H. P.) Flowers very large; color described as intense crimson maroon red; fragrance strong and lasting. Plant very vigorous; large, dark green foliage. \$1.00.

**La Prosperine.** (Hybrid Multiflora.) Flowers medium size, rosy peach, center tinted orange yellow; borne on long stems; valuable for cutting; fragrant; of vigorous growth. \$2.00.

**Lilliput.** (Polyantha.) Small rosette-shaped flowers in bunches; color bright cerise carmine, flushed with crimson. Distinct; very free and perpetual. \$1.00.

**Madame Cadeau-Ramey.** (H. T.) Flowers large, full, of perfect form; color rosy flesh, shaded with yellow at the base, and bordered with rosy carmine. \$1.00.

**Madame Louis Gravier.** (T.) Flowers large, very full; color light salmon-tinted orange yellow, bordered rosy carmine; vigorous. \$1.00.

**Madame Jules Grolez.** (H. T.) Flowers large, full; color beautiful china rose. \$1.00.

**Mlle. Alice Furon.** (H. T.) Flowers large, globular; color yellowish white. Vigorous; very free. \$1.00.

**Mlle. Helena Cambier.** (H. T.) Flowers large and very full; color varying from rosy flesh to salmon or rosy copper; free-flowering. Very vigorous, bushy, and erect growth. \$1.00.

**Merric England.** (H. P.) Flowers large, color rosy crimson, striped silvery blush. Distinct. \$1.00.

**Mrs. Frank Cant.** (H. P.) Flowers are large, very full, perfectly formed, and produced abundantly. Color beautiful clear pink, the edge and back of petals silvery white, while the base of the petals are fully two shades deeper in color. Growth erect and vigorous. \$1.00.

**Muriel Grahame.** (T.) A sport from Catharine Mermet, similar in habit of growth. Color pale cream, faintly flushed with rose. Distinct. \$1.00.

**Oskar Cordel.** (H. P.) Flowers very large, full, round, cup-shaped; color bright carmine, very rich; sweetly scented and free-flowering. \$1.00.

**Philemon Cochet.** (Bourbon.) Flowers very large and full, well formed, slightly globular; color bright rose. \$1.00.

**Queen Mab.** (China.) Color soft rosy apricot, center shaded with orange, outside tinted rosy and violet. Vigorous and free-blooming. \$1.00.

**Rev. Alan Cheales.** (H. P.) Flowers very large, pæony-shaped; color pure lake, with reflexed silvery white, shaded back petals. Very vigorous and free. \$1.00.

**Rose Apples.** (Rugosa.) Flowers semi-double, with large petals; color pale carmine rose, blooming in immense clusters during summer and autumn. Vigorous. \$1.00.

**Souvenir de Pierre Leperdrieux.** (Rugosa.) Flowers double, in immense clusters; color bright vinous red. Very vigorous; superb foliage; abundant fruits. Very ornamental. \$1.00.

**Venus.** (H. P.) Flowers large, full and well formed; color dark velvety purple. \$1.00.

**Waltham Standard.** (H. P.) Flowers brilliant carmine shaded with scarlet and violet. Fragrant; of vigorous growth and fine foliage. \$1.00.

**White Cochet.** (T.) A sport from *Maman Cochet* and identical with that variety except that the flowers are pure white. \$1.00.

## Hybrid Wichuriana Roses.

The habit of these New Roses is the same as the *Rosa Wichuriana* or Memorial Rose.

**Manda's Triumph.** Large clusters of double pure white flowers, two inches in diameter, and sweetly scented. Growth free; luxuriant foliage. 75c.

**Pink Roamer.** Flowers single in close heads, nearly two inches in diameter; color bright rich pink, orange red stamens; fragrant. 75c.

**South Orange Perfection.** Perfectly formed, double flowers in great profusion, about one and a half inches in diameter; color soft blush pink at the tips, changing to white. 75c.

**Universal Favorite.** Double flowers of a beautiful rose color, about two inches in diameter; fragrant. The most vigorous of the set. 75c.

## Other Roses.

Not New, but Popular at the Present Time.

**Austrian Yellow.** Single flowers, rich golden yellow. 50c.

**Austrian Copper.** Flowers single, brilliant coppery red, outside of petals dull gold. Very effective. 50c.

**Moschata Alba.** Large single white flowers, slightly tinged pink. A distinct, pretty flower. 50c.