

Historic, archived document

Do not assume content reflects current scientific knowledge, policies, or practices.

THE PLANT DISEASE REPORTER

Issued By

Division of Mycology and Disease Survey



Supplement 89

Crop Losses from Plant Diseases in the United States

1934

December 15, 1935



BUREAU OF PLANT INDUSTRY

UNITED STATES DEPARTMENT OF AGRICULTURE

ESTIMATES OF CROP LOSSES FROM DISEASES IN THE UNITED STATES - 1934

Compiled by

Jessie I. Wood

Plant Disease Reporter
Supplement 89

December 15, 1935

CONTENTS

Foreword	2
Graphic Summary of Losses, 1925-34	3-13
Wheat	3
Oats	4-5
Corn	5-6
Peach	13
Potato	7-8
Sweet Potato	9-10
Apple	11-12
Tabular Summary of Losses, 1934	14-45
Wheat	14
Barley	16
Rye	18
Oats	19
Field Corn	20
Sweet Corn	22
Sweet Potato	23
Potato	24
Tomato	26
Snap Bean	30
Dry Bean	33
Green Peas	34
Cotton	36
Sugar Beet	37
Apple	38
Pear	40
Peach	41
Cherry	42
Grape	43
Strawberry	44

FOREWORD

These estimates of crop losses for the year 1934 have been computed and are presented in the same way as in previous years (Plant Dis. Repr. Suppl. 83. 1932).

In addition to the tables showing reduction in yield for 1934, a graphic summary of losses during the ten years from 1925 to 1934 is furnished. This summary does not include all the crops or diseases for which loss estimates are given. The choice was made on the basis of a sufficient number of States reporting for a sufficient number of years to make a comparison possible. Some diseases showed so little variation from year to year that no graphs were prepared, although adequate estimates were available.

Besides the yearly fluctuation in loss, the graphs show the averages for the two overlapping ten-year periods 1920 to 1929 and 1925 to 1934. The earlier average is the higher in most cases, although sometimes so little higher that there is practically no difference. Exceptions are oat smuts, corn smut and ear rot, potato tipburn and leaf roll, and sweet potato stem rot, where the first ten-year period shows less loss, and wheat leaf rust, stem rust and crown rust of oats, and peach leaf curl, where the average is the same for both periods.

WHEAT

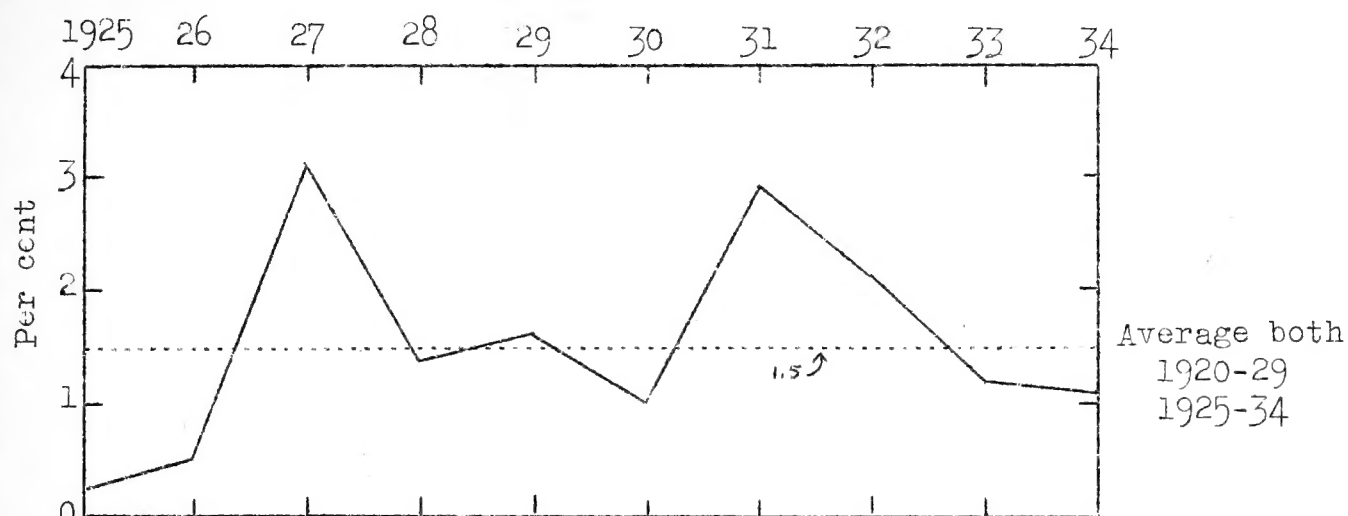


Fig. 1. WHEAT: Losses from leaf rust, 1925-34, and averages for the 10-year periods 1920-29 and 1925-34.

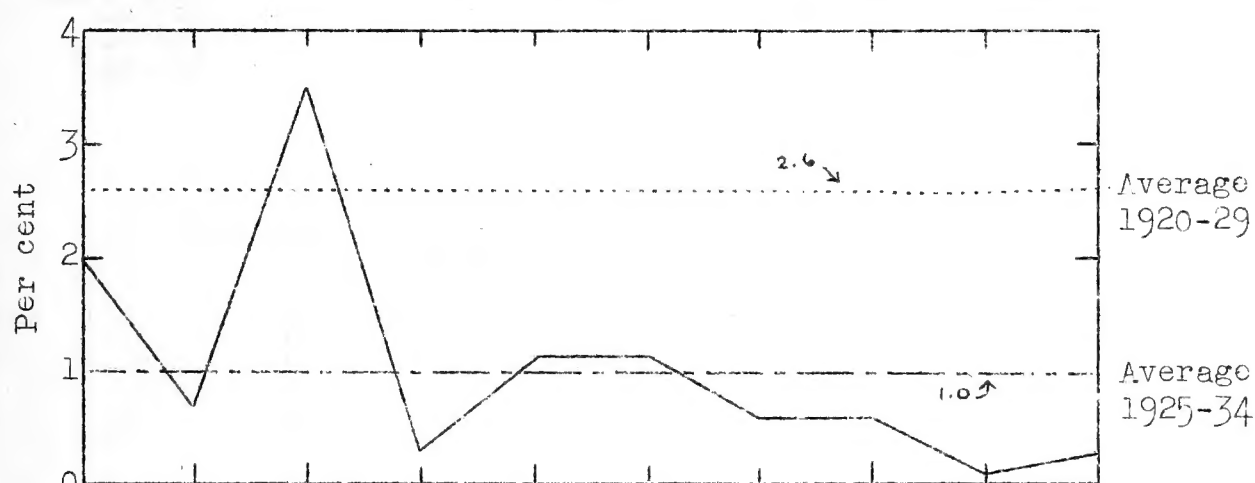


Fig. 2. WHEAT: Losses from stem rust, 1925-34, and averages for the 10-year periods 1920-29 and 1925-34.

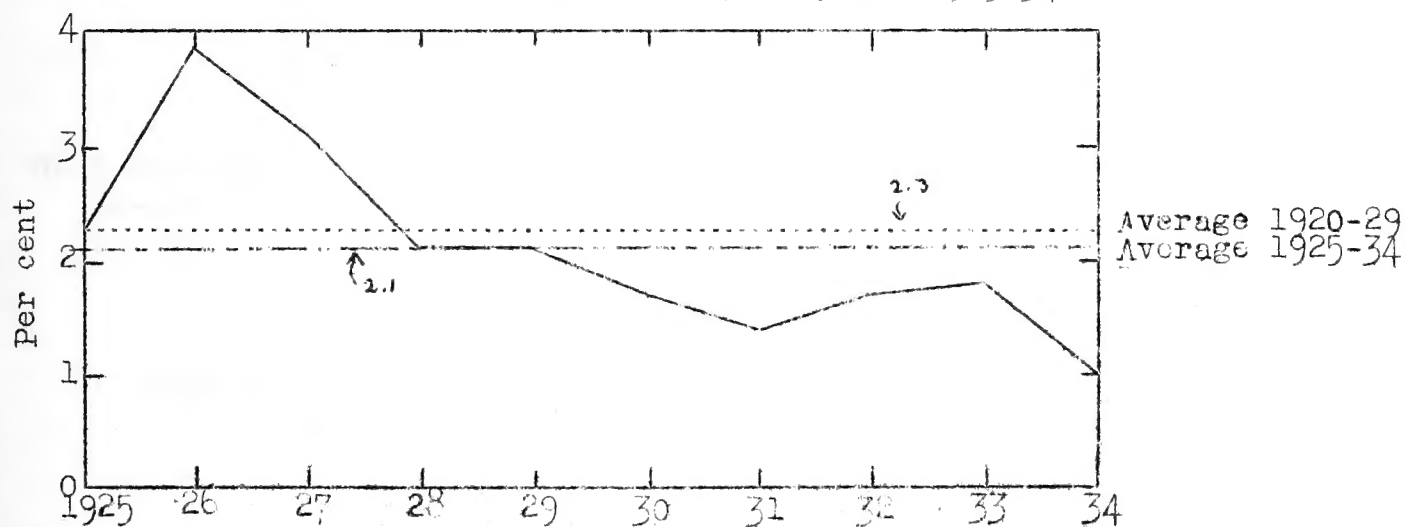


Fig. 3. WHEAT: Losses from bunt, 1925-34, and averages for the 10-year periods 1920-29 and 1925-34.

OATS

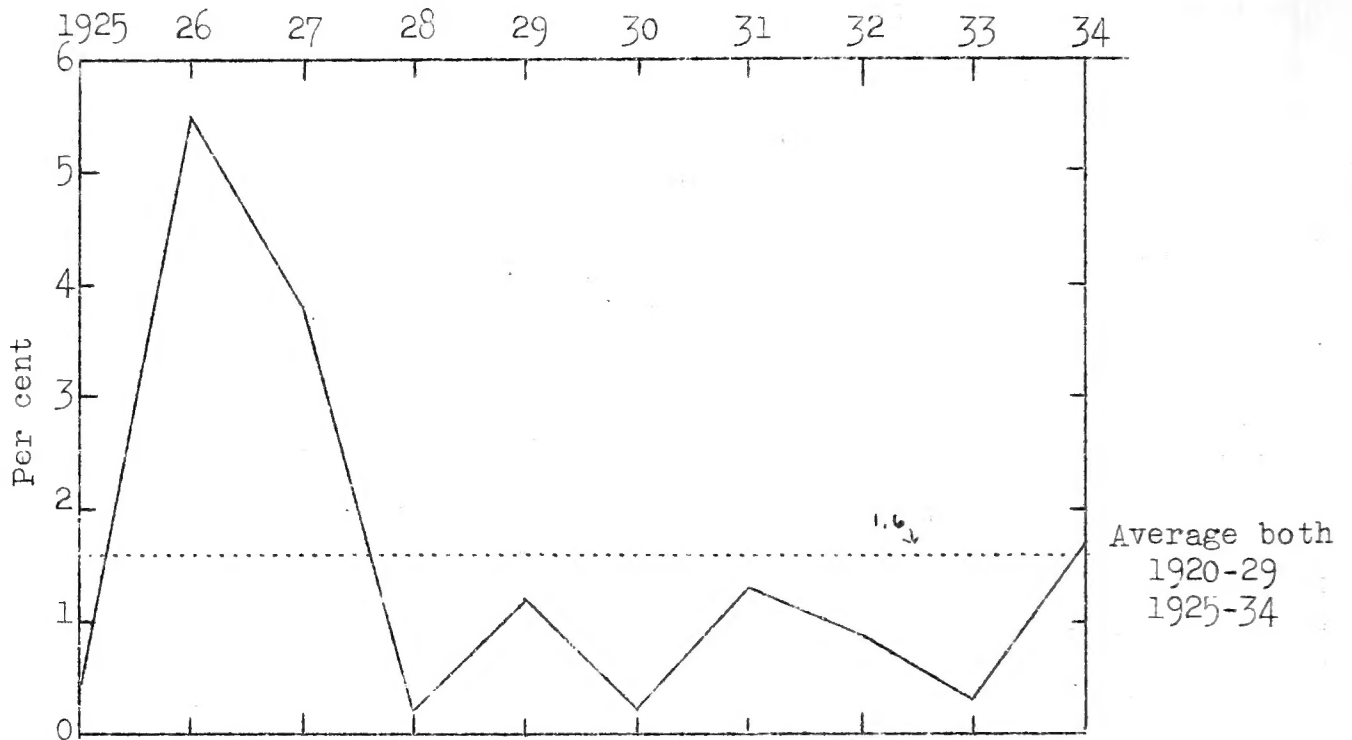


Fig. 4. OATS: Losses from stem rust, 1925-34, and averages for the 10-year periods 1920-29 and 1925-34.

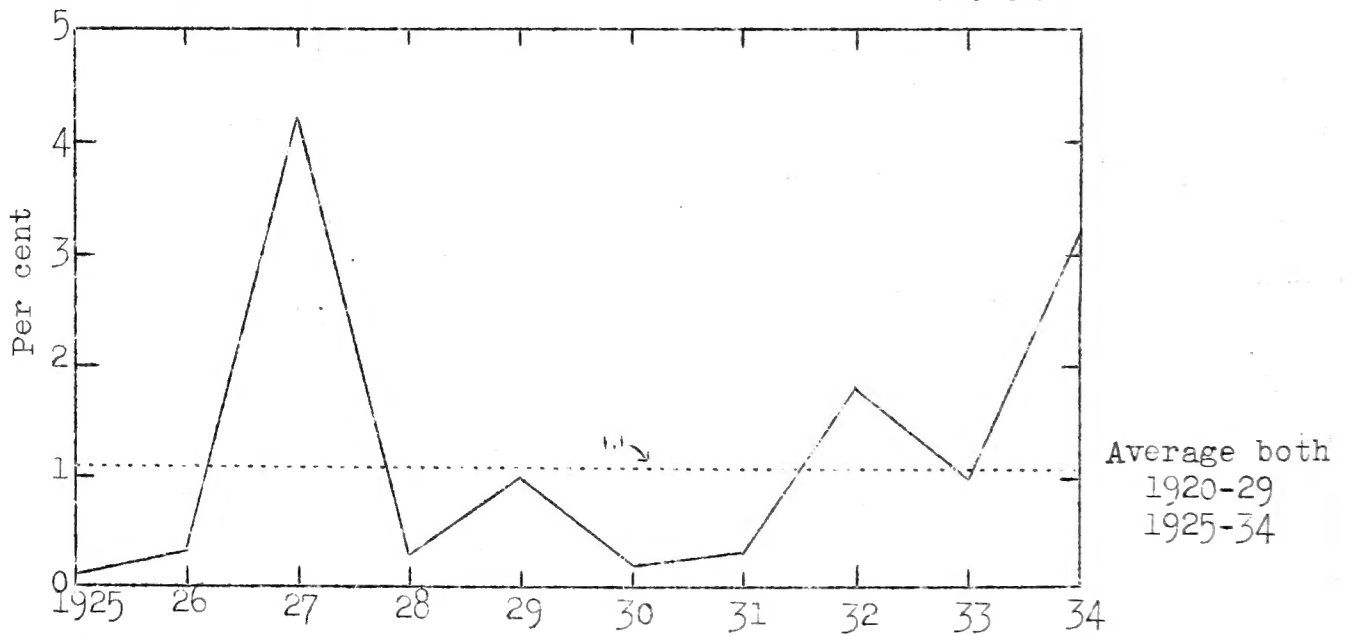


Fig. 5. OATS: Losses from crown rust, 1925-34, and averages for the 10-year periods 1920-29 and 1925-34.

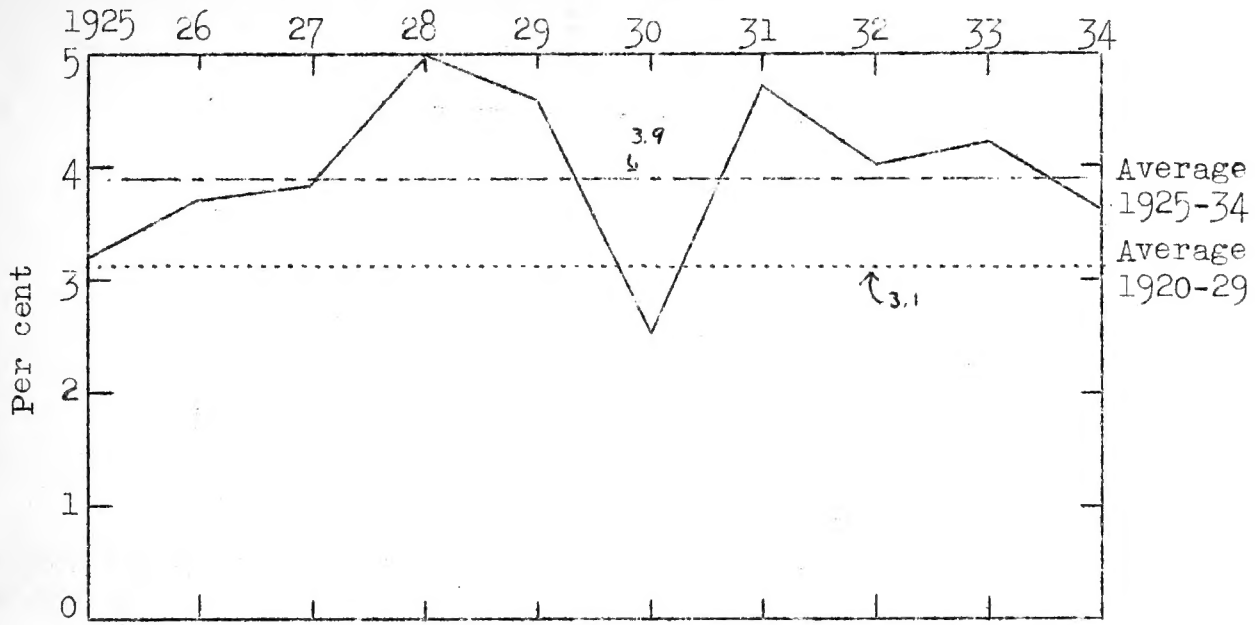


Fig. 6. OATS: Losses from smut, 1925-34, and averages for the 10-year periods 1920-29 and 1925-34.

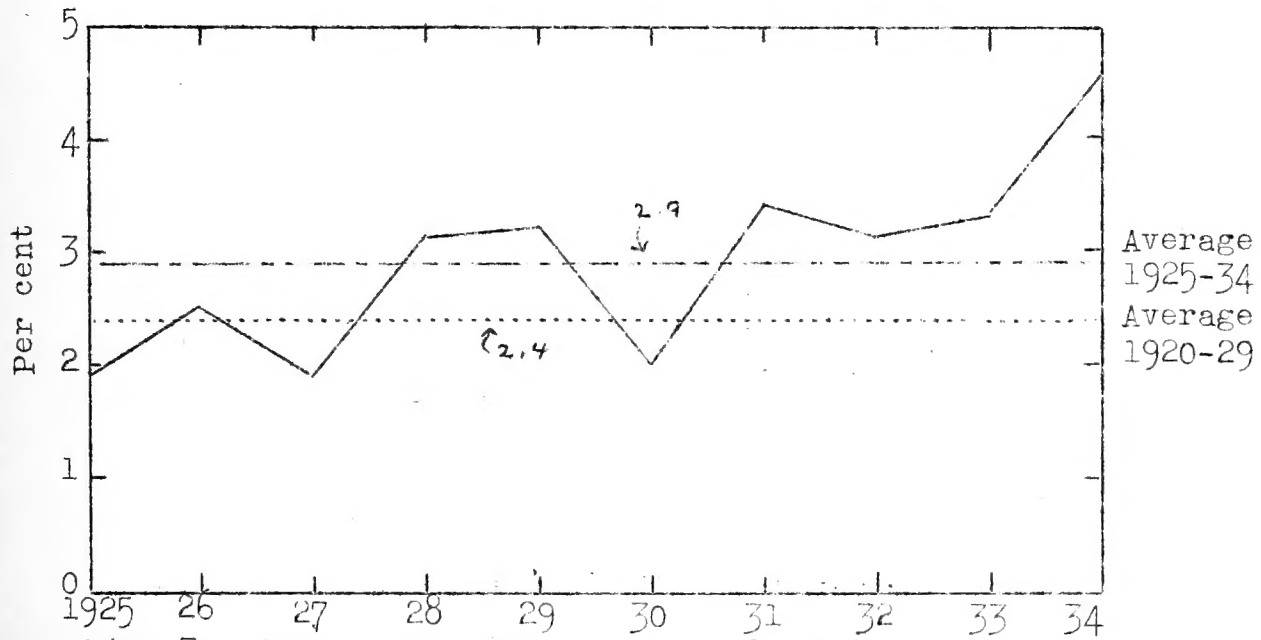


Fig. 7. CORN: Losses from smut, 1925-34, and averages for the 10-year periods 1920-29 and 1925-34.

CORN

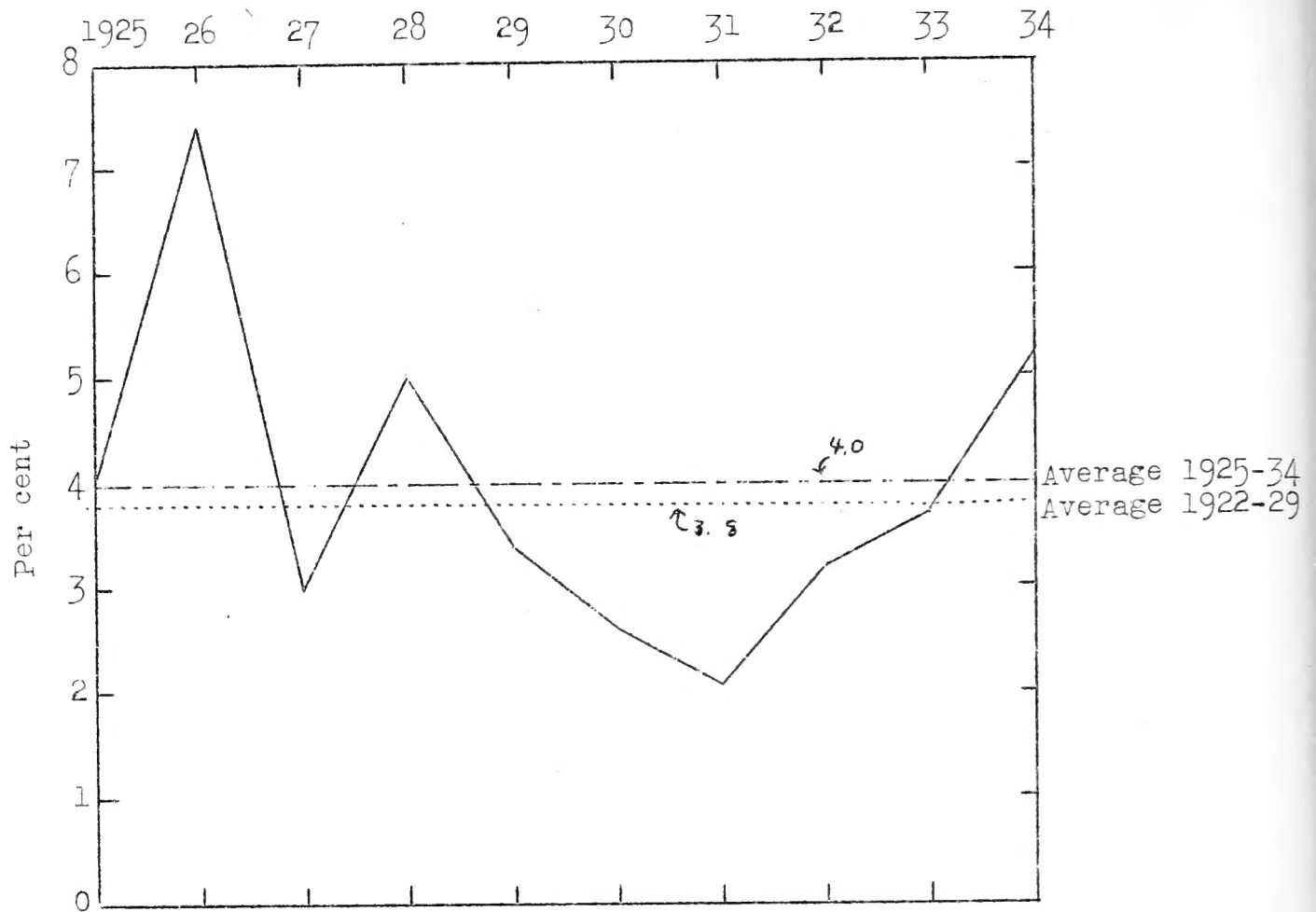


Fig. 8. CORN: Losses from ear rot, 1925-34, and averages for the 10-year periods 1920-29 and 1925-34.

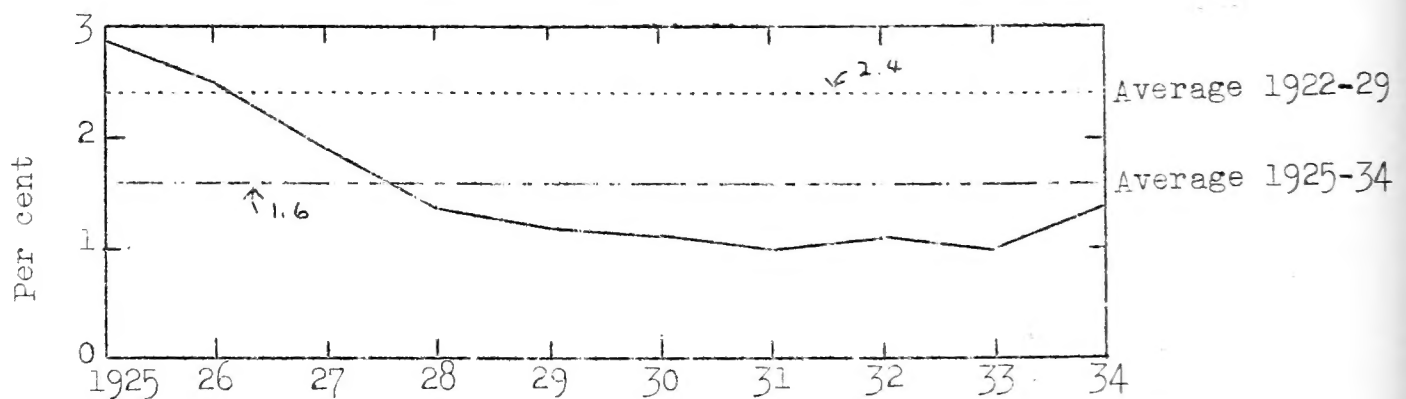


Fig. 9. CORN: Losses from root rot, 1925-34, and averages for the 10-year periods 1920-29 and 1925-34.

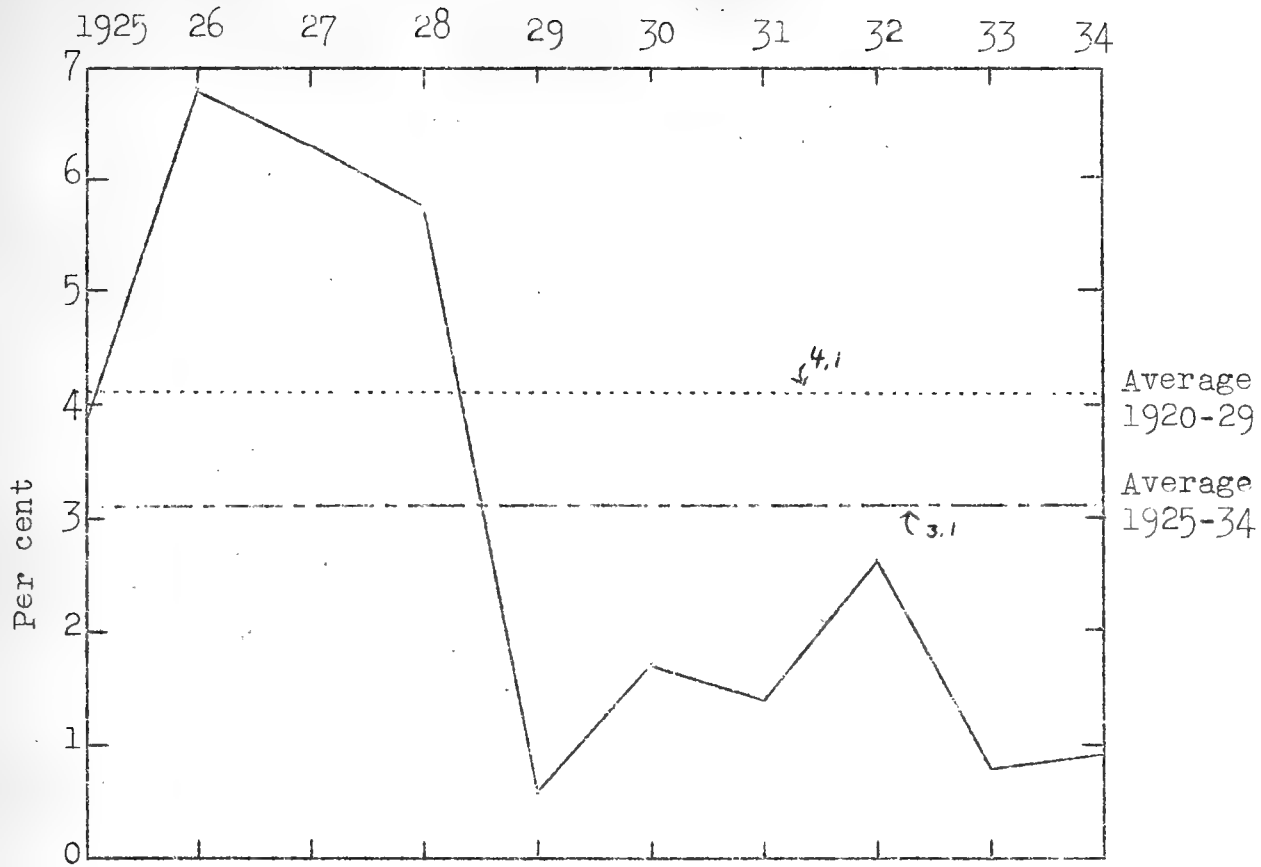


Fig. 10. POTATO: Losses from late blight, 1925-34 and averages for the 10-year periods 1920-29 and 1925-34.

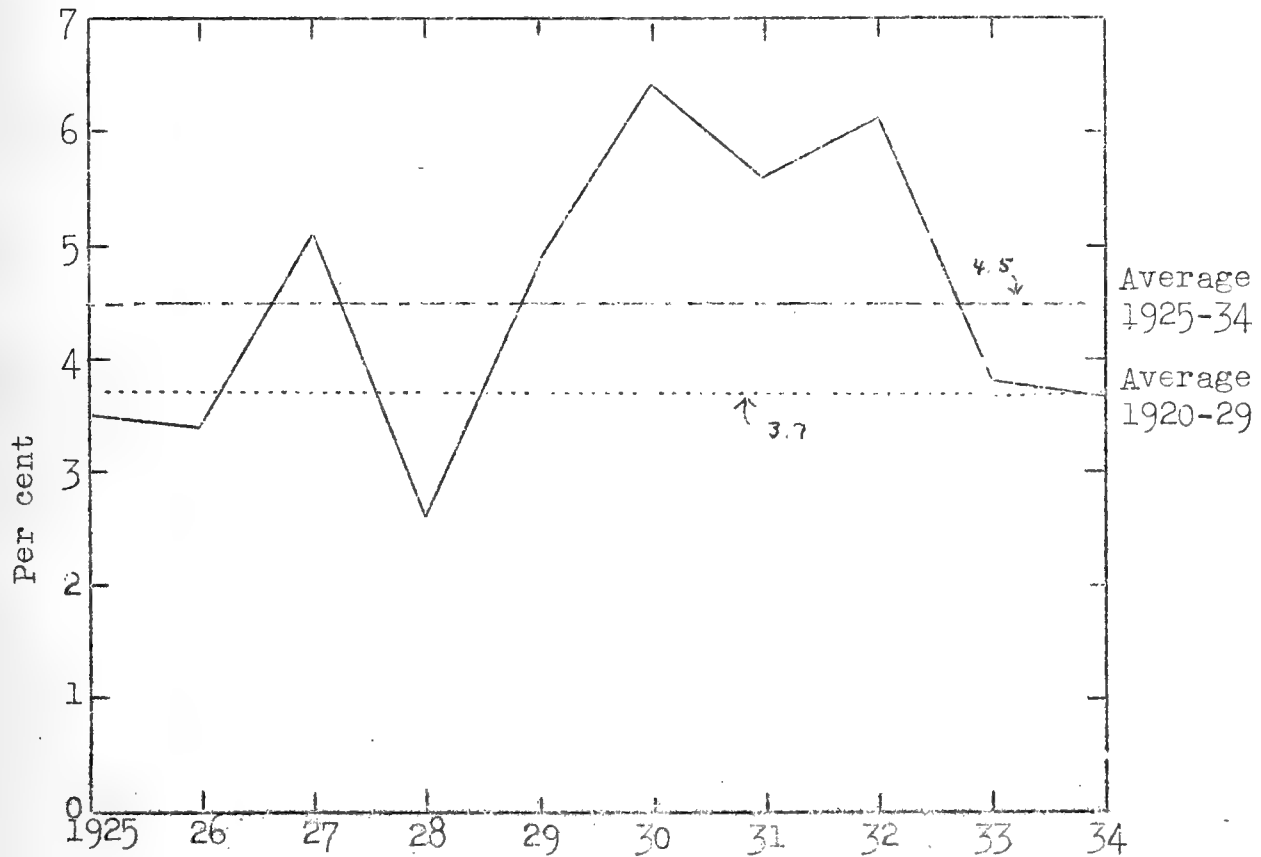


Fig. 11. POTATO: Losses from tipburn and hopperburn, 1925-34, and averages for the 10-year periods 1920-29 and 1925-34.

POTATO

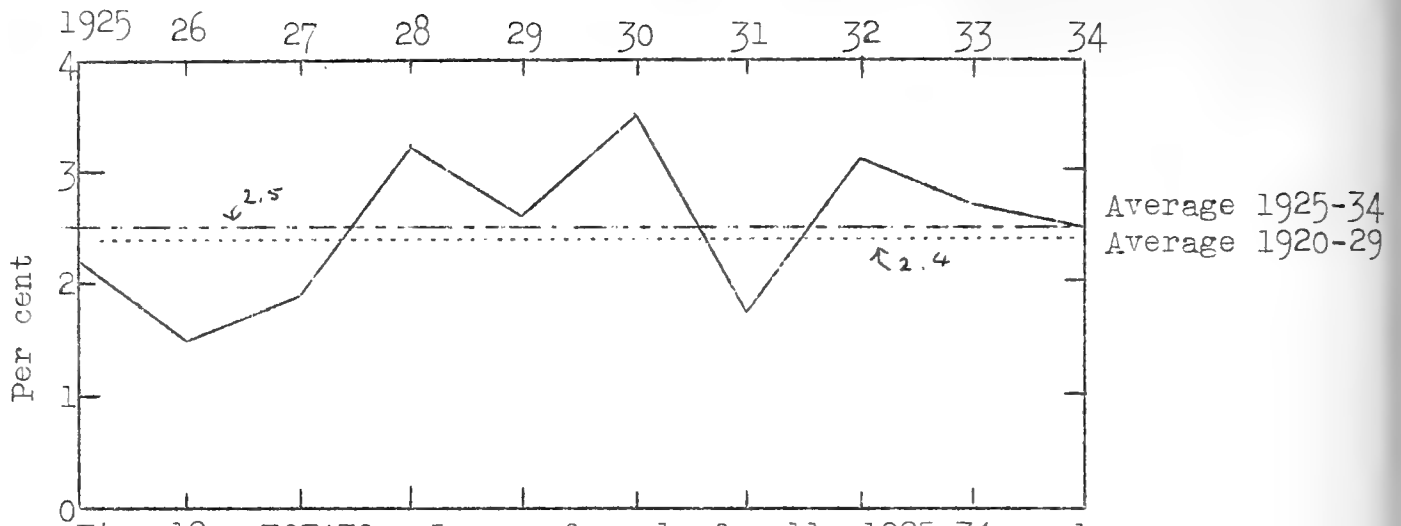


Fig. 12. POTATO: Losses from leaf roll, 1925-34, and averages for the 10-year periods 1920-29 and 1925-34.

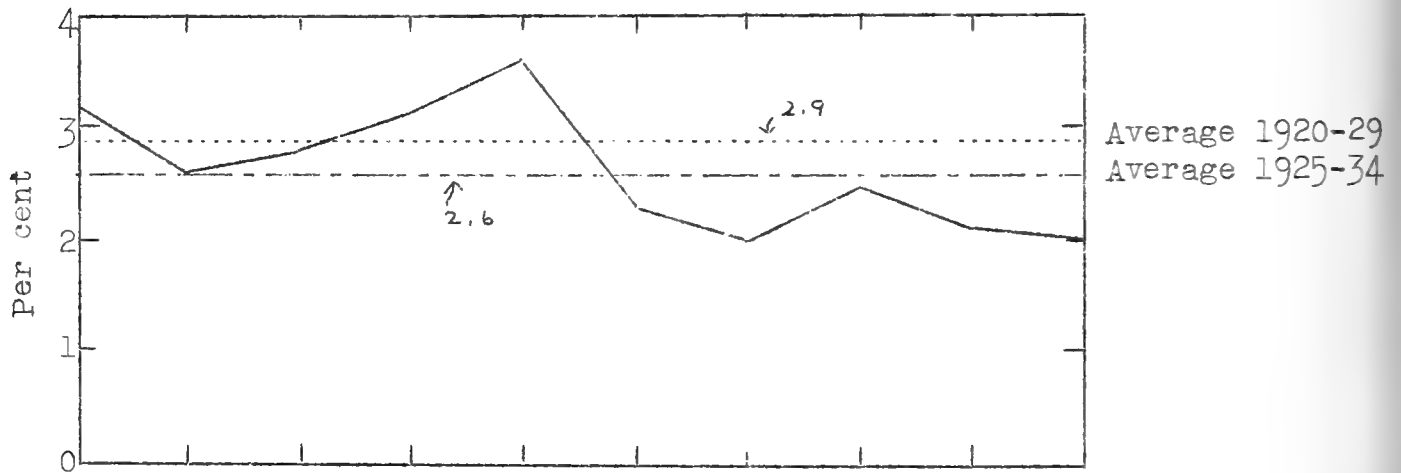


Fig. 13. POTATO: Losses from mosaic, 1925-34, and averages for the 10-year periods 1920-29 and 1925-34.

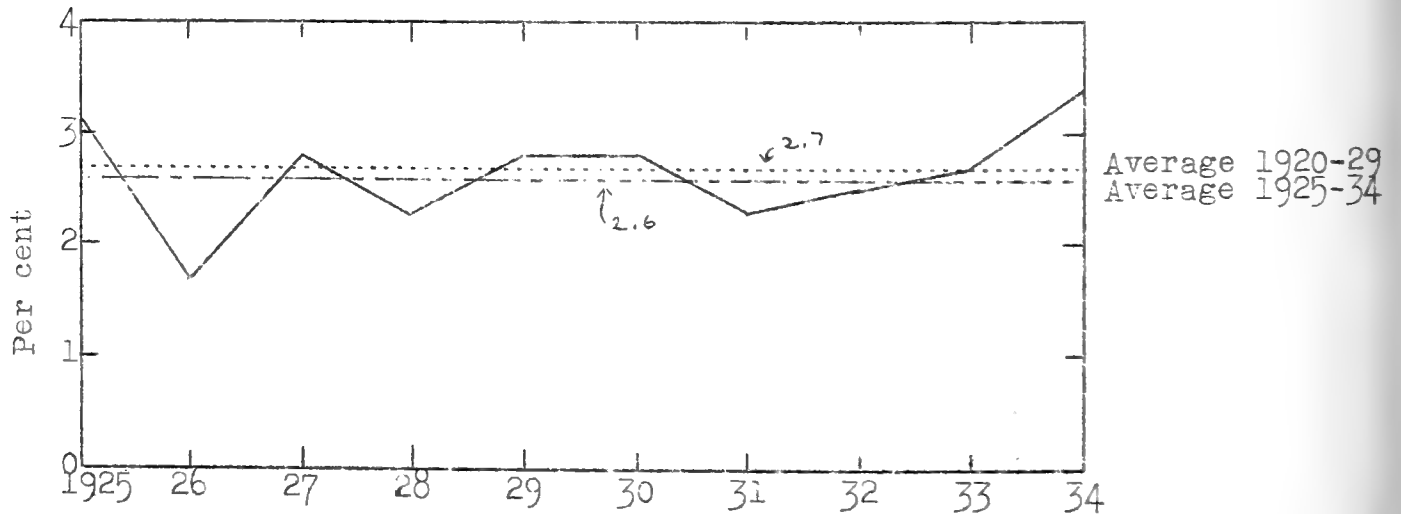


Fig. 14. POTATO: Losses from Rhizoctonia, 1925-34, and averages for the 10-year periods 1920-29 and 1925-34.

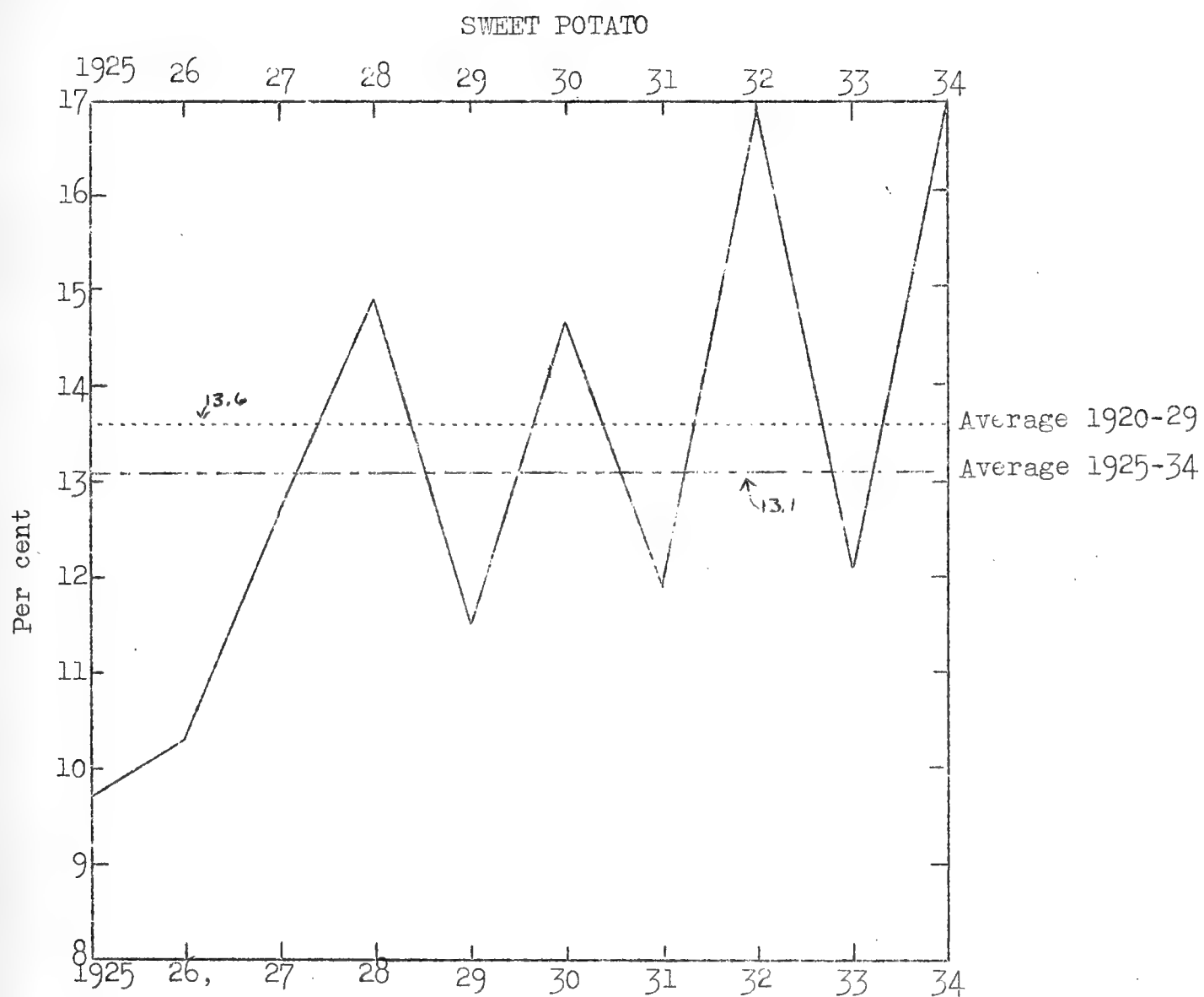


Fig. 15. SWEET POTATO: Losses from storage rot, 1925-34, and averages for the 10-year periods 1920-29 and 1925-34.

SWEET POTATO

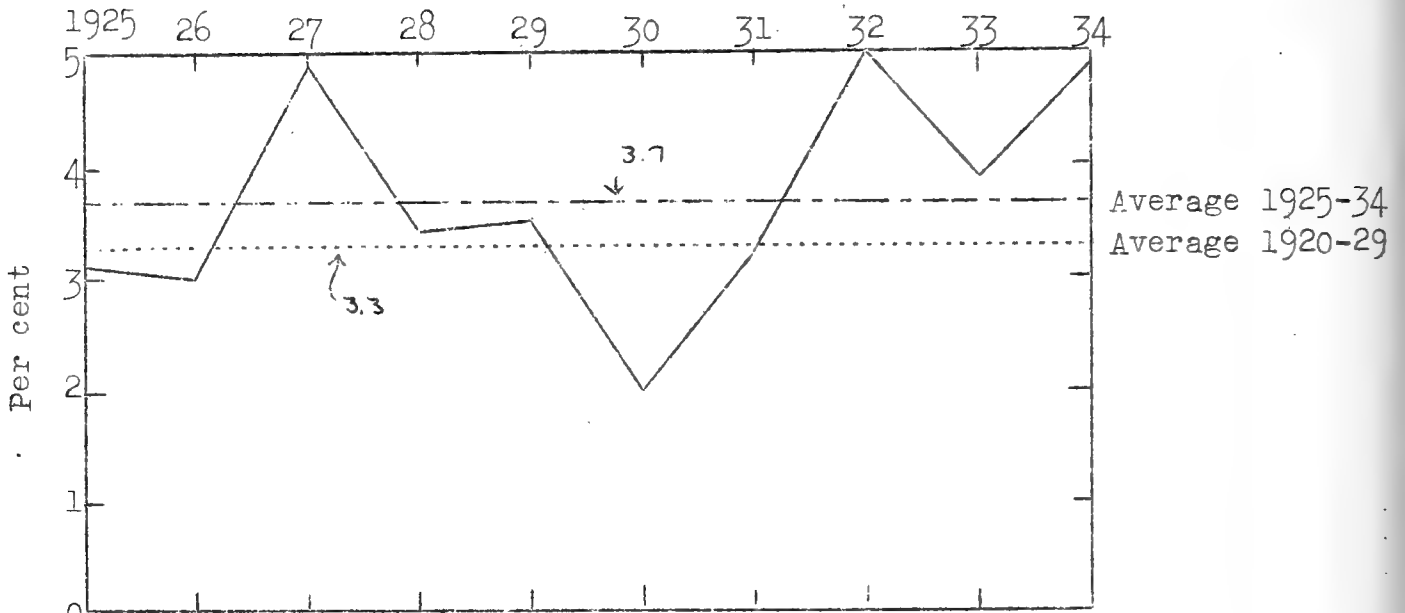


Fig. 16. SWEET POTATO: Losses from stem rot, 1925-34, and averages for the 10-year periods 1920-29 and 1925-34.

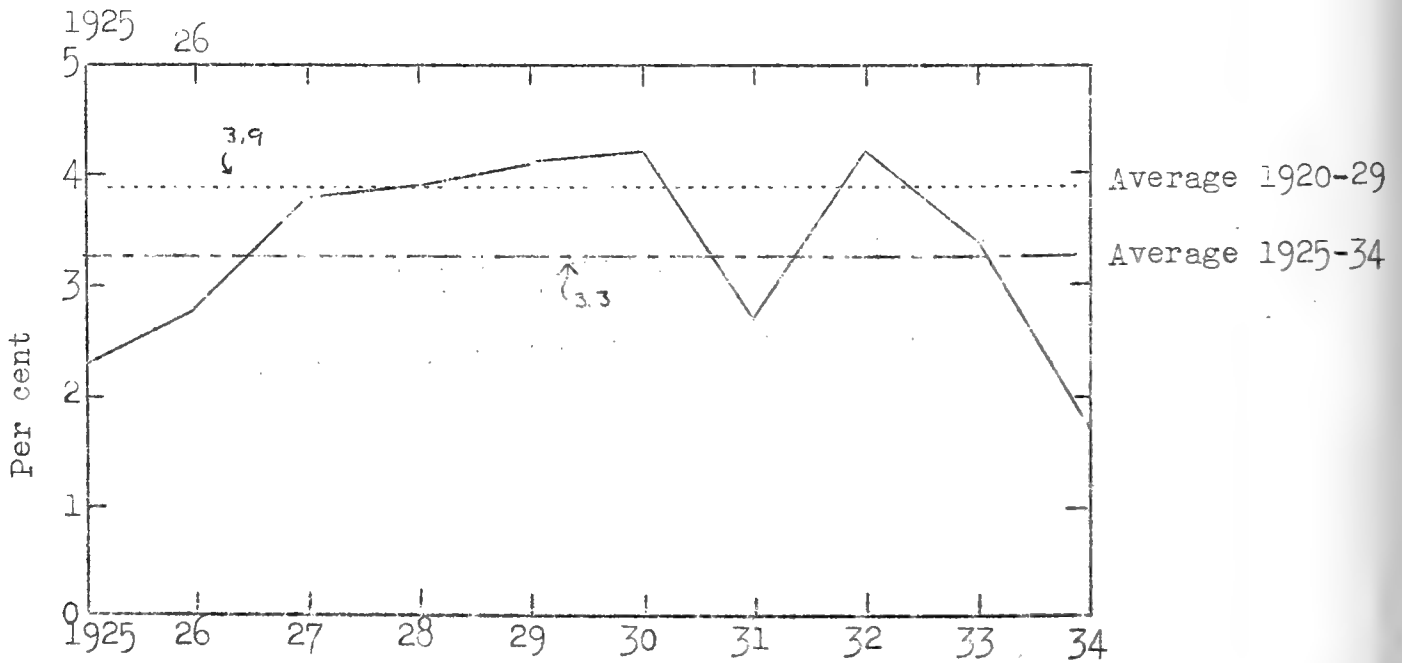


Fig. 17. SWEET POTATO: Losses from black rot, 1925-34, and averages for the 10-year periods 1920-29 and 1925-34.

APPLE

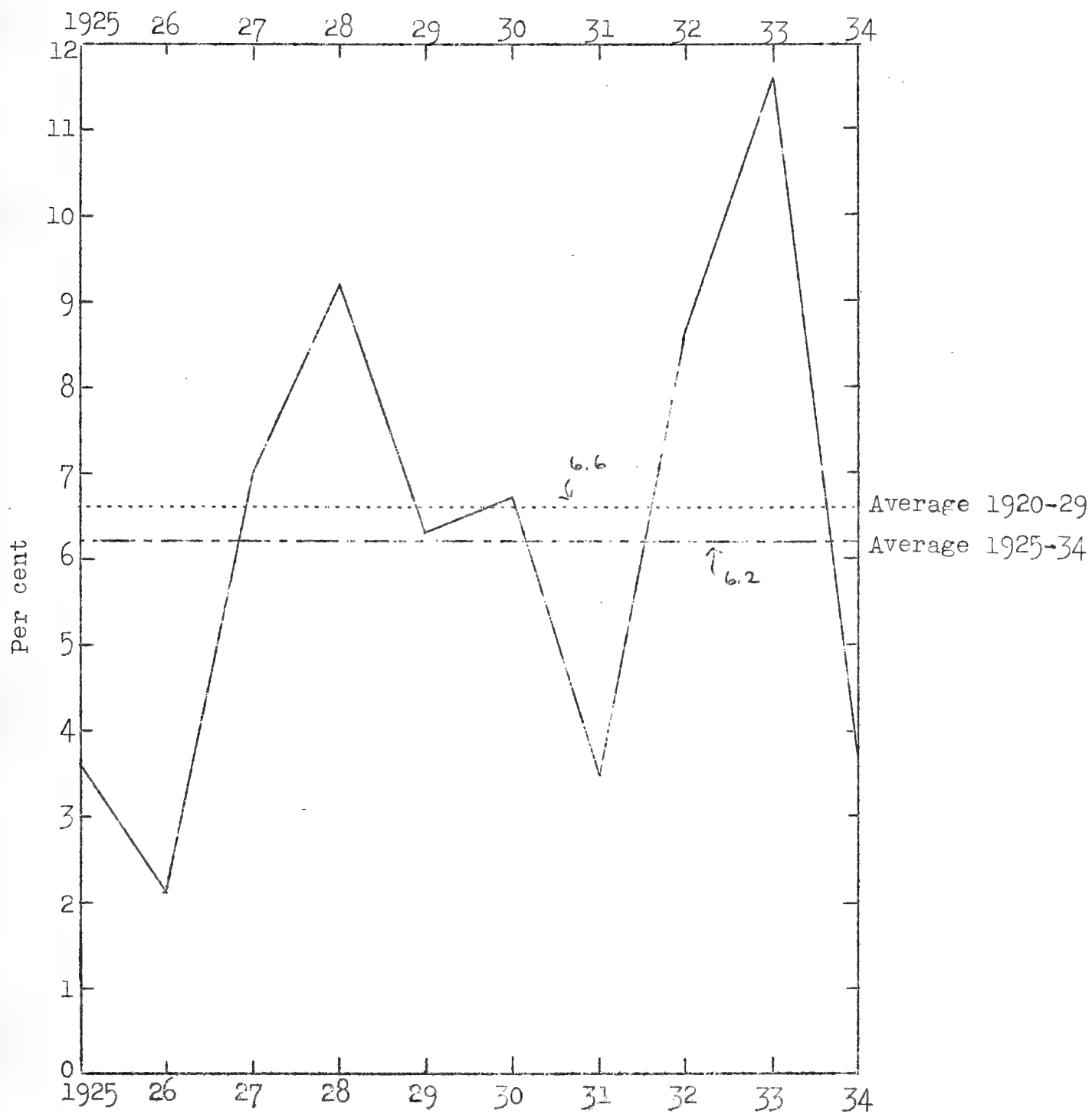


Fig. 18. APPLE: losses from scab, 1925-34, and averages for the 10-year periods 1920-29 and 1925-34.

APPLE

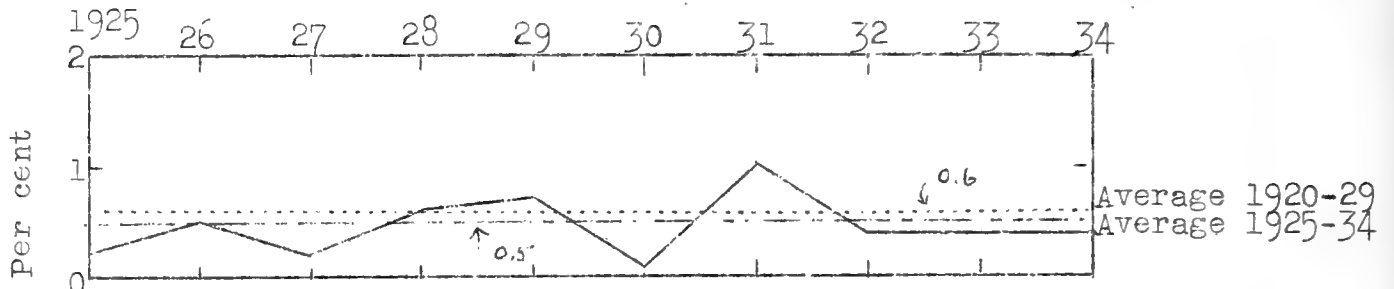


Fig. 19. APPLE: Losses from bitter rot, 1925-34, and averages for the 10-year periods 1920-29 and 1925-34.

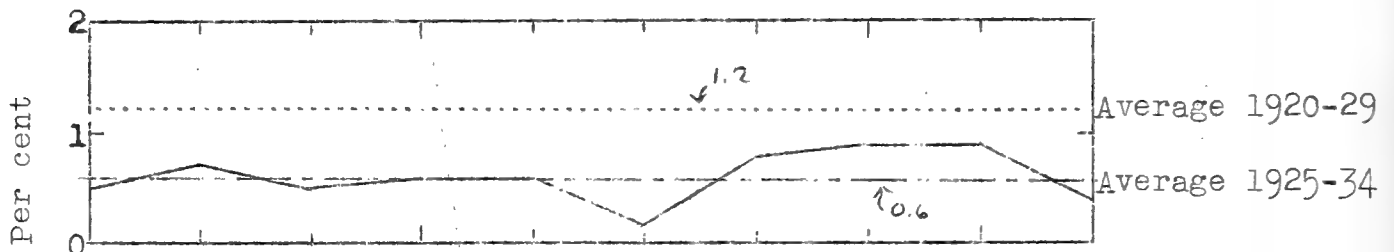


Fig. 20. APPLE: Losses from black rot, 1925-34, and averages for the 10-year periods 1920-29 and 1925-34.

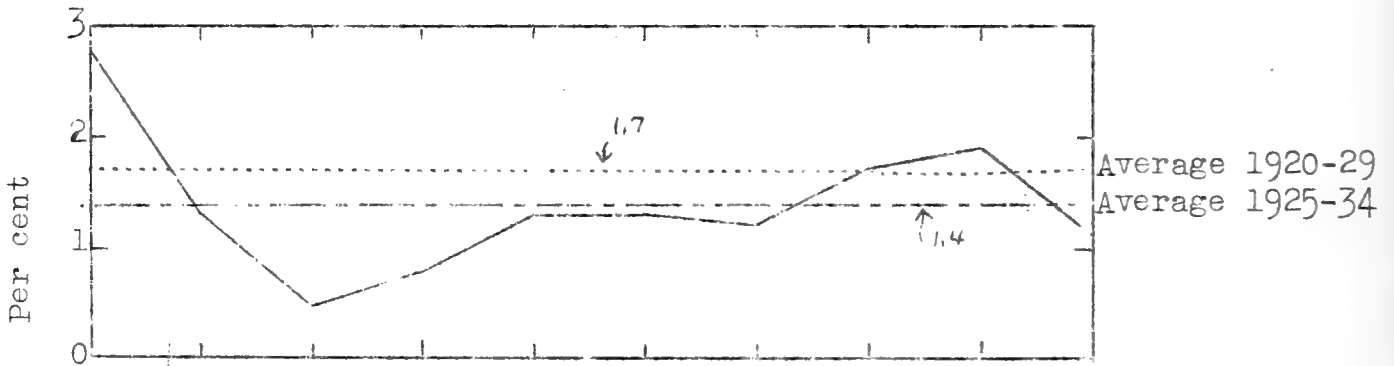


Fig. 21. APPLE: Losses from blight, 1925-34, and averages for the 10-year periods 1920-29 and 1925-34.

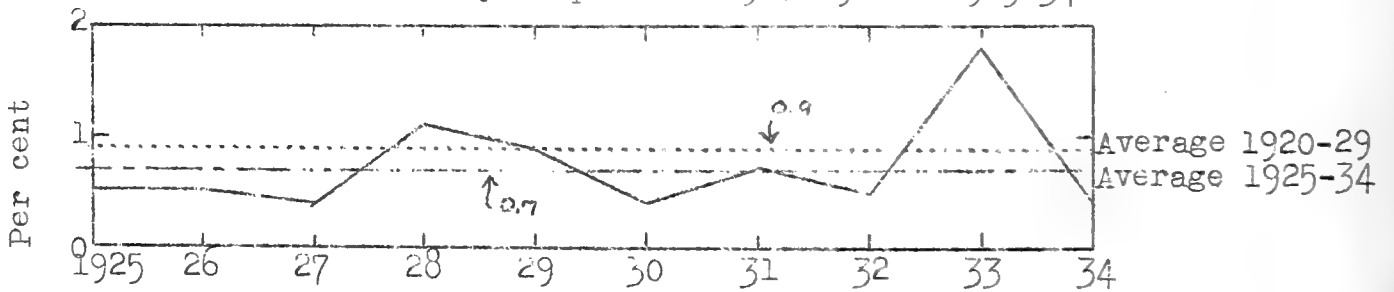


Fig. 22. APPLE: Losses from rust, 1925-34, and averages for the 10-year periods 1920-29 and 1925-34.

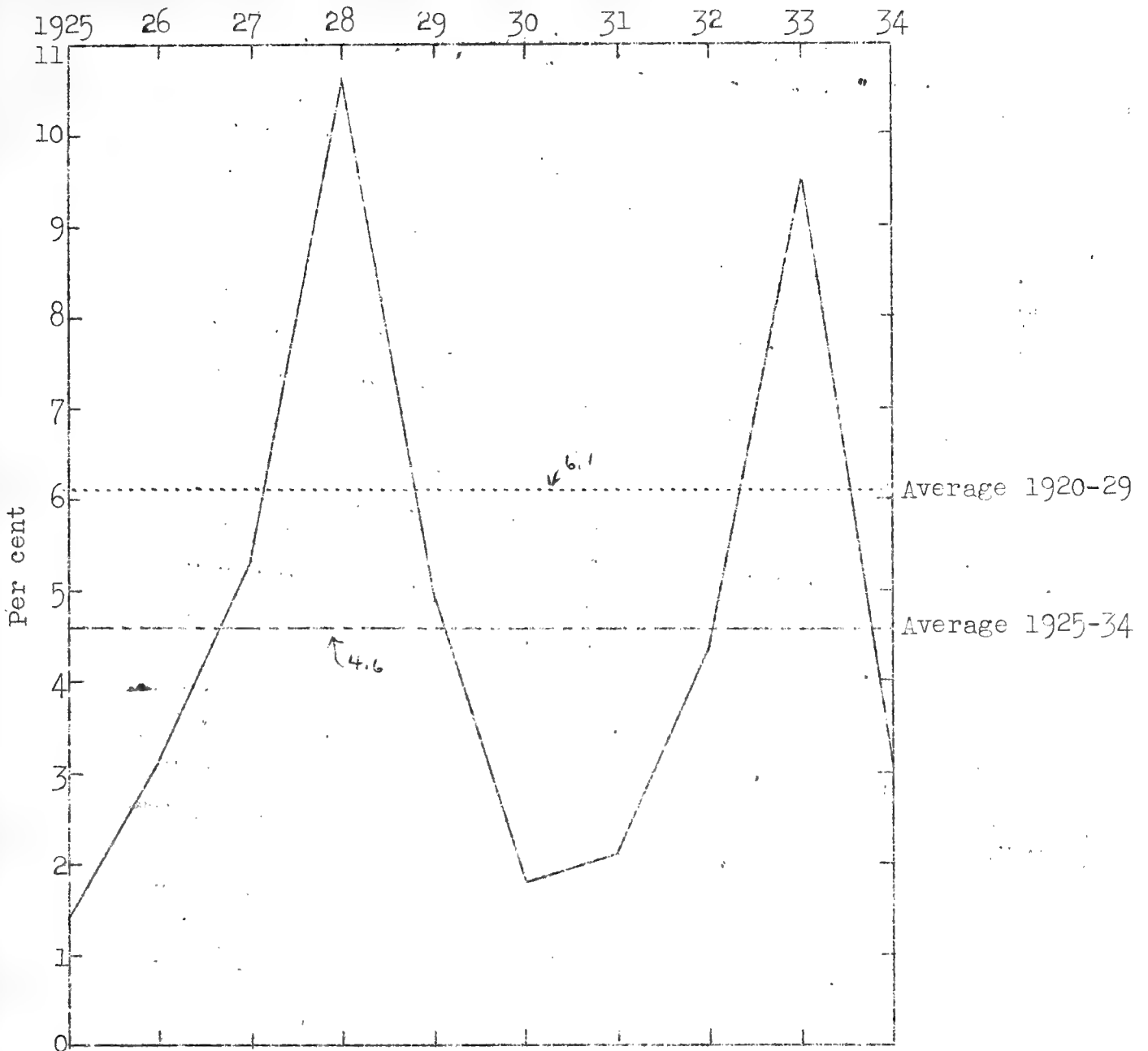


Fig. 23. PEACH: Losses from brown rot, 1925-34, and averages for the 10-year periods 1920-29 and 1925-34.

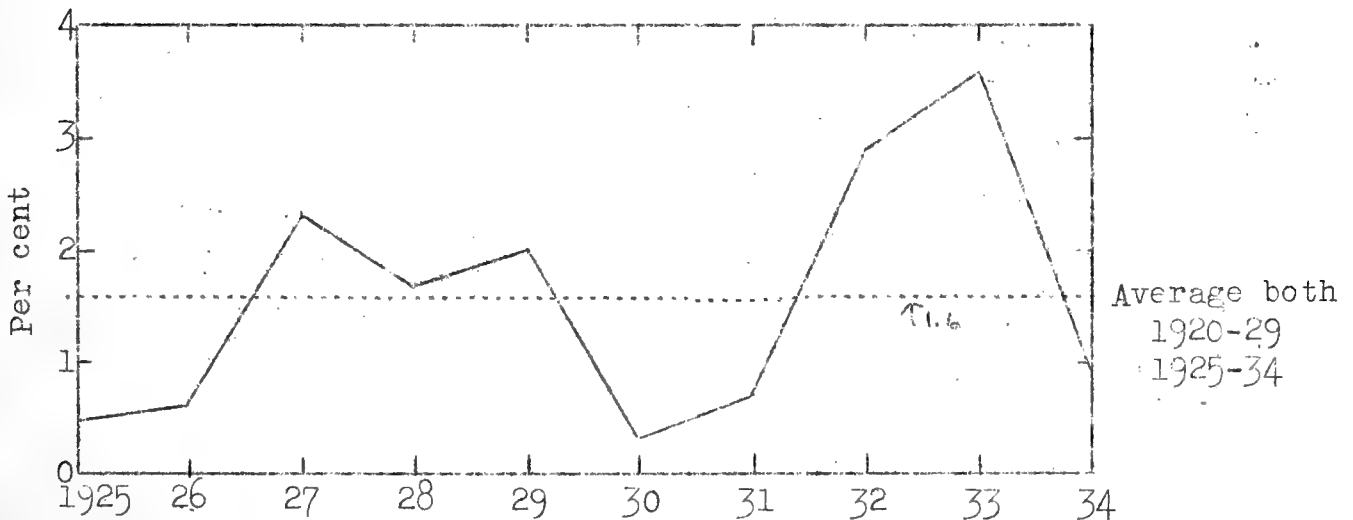


Fig. 24. PEACH: Losses from leaf curl, 1925-34, and averages for the 10-year periods 1920-29 and 1925-34.

Estimated reduction in yield of wheat due to diseases, 1934

: Production:		: Estimated reduction in yield of wheat due to diseases											
State	: 1,000 Bushels	: Leaf Rust	: Stem Rust	: Bunt	: Loose Smut	: Foot Rots	: All Diseases	: Leaf Rust	: Stem Rust	: Bunt	: Loose Smut	: Foot Rots	: All Diseases
	: %	: %	: %	: %	: %	: %	: %	: %	: %	: %	: %	: %	: %
Me.	120	-	-	-	-	-	-	-	-	-	-	-	-
Mass.	4,416	+ :10.	+ :10.	-	-	-	-	-	-	-	-	-	-
N.Y.	1,127	-	-	-	-	-	-	-	-	-	-	-	-
N.J.	14,759	-	-	-	-	-	-	-	-	-	-	-	-
Pa.	33,401	+ :0.5	+ :10.	+ :1,783	+ :1.3	+ :232	+ :2.4	+ :428	+ :11	+ :1,000	+ :17.2	+ :3,067	+ :1,000
Ohio	32,152	-	+ :0.5	+ :172	+ :1.5	+ :517	+ :1.	+ :344	+ :344	+ :1,000	+ :3.	+ :1,033	+ :1,000
Ind.	29,495	-	+ :0	+ :622	+ :1.	+ :328	+ :1.	+ :328	+ :328	+ :1,000	+ :2.	+ :656	+ :1,000
Ill.	11,120	-	+ :2.	+ :0	+ :0.7	+ :218	+ :1.	+ :311	+ :311	+ :1,000	+ :5.2	+ :1,618	+ :1,000
Mich.	1,647	-	+ :t	+ :t	+ :2.5	+ :291	+ :1.5	+ :175	+ :175	+ :1,000	+ :4.5	+ :524	+ :1,000
Wis.	12,534	-	+ :t	+ :t	+ :0.5	+ :68	+ :t	+ :136	+ :136	+ :1,000	+ :1.	+ :1,018	+ :1,000
Iowa	3,028	-	+ :t	+ :t	+ :0	+ :0	+ :t	+ :t	+ :t	+ :1,000	+ :t	+ :t	+ :1,000
Mo.	21,281	-	+ :t	+ :t	+ :5.	+ :678	+ :0.5	+ :136	+ :136	+ :1,000	+ :136	+ :1,018	+ :1,000
N. D.	21,196	-	+ :t	+ :t	+ :2.	+ :448	+ :1.5	+ :356	+ :90	+ :112	+ :5.4	+ :1,210	+ :1,000
S. D.	15,838	-	-	-	+ :t	+ :t	+ :t	+ :t	+ :t	+ :1,000	+ :t	+ :t	+ :1,000
Nebr.	79,700	-	-	-	+ :t	+ :t	+ :t	+ :t	+ :t	+ :1,000	+ :t	+ :t	+ :1,000
Kans.	1,539	-	+ :16	+ :16	+ :1.	+ :810	+ :0.3	+ :243	+ :243	+ :1,000	+ :1.6	+ :1,296	+ :1,000
Del.	7,934	-	+ :448	+ :448	+ :t	+ :269	+ :1.5	+ :134	+ :134	+ :1,000	+ :11.5	+ :1,030	+ :1,000
Md.	8,092	-	+ :165	+ :165	+ :t	+ :t	+ :t	+ :t	+ :t	+ :1,000	+ :2.	+ :165	+ :1,000
Va.	1,974	-	+ :23	+ :23	+ :5.	+ :70	+ :2.	+ :46	+ :46	+ :1,000	+ :15.	+ :348	+ :1,000
W. Va.	4,340	-	+ :107	+ :107	+ :5.	+ :161	+ :1.	+ :54	+ :54	+ :1,000	+ :19.	+ :1,019	+ :1,000
N. C.	765	-	+ :143	+ :143	+ :15.	+ :5	+ :1.	+ :10	+ :10	+ :1,000	+ :19.5	+ :187	+ :1,000
S. C.	756	-	+ :112	+ :112	+ :12.	+ :t	+ :3.	+ :28	+ :28	+ :1,000	+ :19.	+ :177	+ :1,000
Ga.		-	+ :112	+ :112	+ :12.	+ :t	+ :3.	+ :28	+ :28	+ :1,000	+ :19.	+ :177	+ :1,000

Estimated reduction in yield of wheat due to diseases

State	Production: 1,000 Bushels	Scab % : 1,000 Bushels	Leaf Rust % : 1,000 Bushels	Stem Rust % : 1,000 Bushels	Bunt % : 1,000 Bushels	Loose Smut % : 1,000 Bushels	Foot Rots % : 1,000 Bushels	All Diseases % : 1,000 Bushels
Ky.	4,250	-	-	0	-	-	-	-
Tenn.	3,392	t	-	t	-	141	-	4. : 141
Ala.	66	-	-	-	-	-	-	-
Ark.	297	-	-	-	-	-	-	-
Okla.	37,348	-	-	-	-	-	-	-
Tex.	25,749	t	5. : 1,423	1. : 285	-	285	0.5 : 142	9.5 : 2,705
Mont.	28,174	0	t	0	3. : 916	214	4. : 1,221	7.7 : 2,351
Idaho	18,696	-	-	-	-	-	-	-
Wyo.	1,041	-	t	0	1. : 11	21	-	3. : 32
Colo.	5,776	t	0	0	t	-	t	1. : 58
N. Mex.	711	-	-	-	-	-	-	-
Ariz.	1,000	-	-	-	-	-	-	-
Utah	3,147	-	-	-	-	-	-	-
Nev.	336	-	-	-	-	-	-	-
Wash.	37,346	0	t	t	1.5 : 572	+	t	2. : 763
Oreg.	12,544	0	6. : 878	t	2. : 293	+	3. : 439	11.5 : 1,683
Calif.	8,384	-	-	-	-	-	-	-
U. S.	496,469	0.2 : 848	1.1 : 5,517	0.3 : 1,440	1. : 5,382	0.6 : 2,999	0.5 : 2,491	4.2 : 21,125

Estimated reduction in yield of barley due to diseases, 1934

: : : Estimated reduction in yield of barley due to diseases										
State	: Production :									
	1,000	Stripe		Spot Blotch		Loose Smut		Covered Smut		
	Bushels	1,000	1,000	1,000	1,000	1,000	1,000	1,000	1,000	
	%	Bushels	%	Bushels	%	Bushels	%	Bushels	%	Bushels
Maine	120	-	-	-	-	-	-	-	-	-
Vt.	108	-	-	-	-	-	-	-	-	-
Mass.		t	+	-	-	t	+	t	+	
N.Y.	3,969	-	-	-	-	-	-	-	-	-
N.J.	27	-	-	-	-	-	-	-	-	-
Pa.	1,734	1.7	35	1.5	31	3.3	68	5.6		115
Ohio	332	-	-	-	-	1.	3	1.		3
Ind.	273	-	-	-	-	-	-	-	-	-
Ill.	884	t	+	t	+	t	+	t	+	
Mich.	3,384	0	0	t	+	0.5	17	0.5		17
Wis.	19,266	0.5	101	t	+	2.5	506	t		+
Minn.	24,115	0.5	128	t	+	1.	255	1.		255
Iowa	5,712	t	+	1.	58	1.	58	t		+
Mo.	220	-	-	-	-	-	-	-	-	-
N. D.	7,119	0.2	15	t	+	0.5	36	0.6		44
S. D.	1,778	-	-	-	-	-	-	-	-	-
Nebr.	2,700	-	-	-	-	-	-	-	-	-
Kans.	1,988	t	+	-	-	0.3	6	t		+
Del.		-	-	-	-	-	-	t		+
Md.	627	0.5	3	-	-	1.	7	5.		35
Va.	882	-	-	-	-	-	-	-	-	-
W. Va.	80	1.	1	-	-	2.	2	2.		2
N. C.	272	2.	6	1.	3	5.	16	0.5		2
S. C.		t	+	-	-	-	-	-	-	-
Ga.		-	-	-	-	-	-	7.		+
Ky.	210	-	-	-	-	-	-	-	-	-
Tenn.	323	-	-	-	-	-	-	-	-	-
Okla.	1,265	-	-	-	-	-	-	-	-	-
Tex.	2,457	0.1	3	t	+	1.	26	1.		26
Mont.	2,214	1.	23	t	+	1.	23	2.		46
Idaho	4,288	-	-	-	-	-	-	-	-	-
Wyo.	774	1.	8	-	-	2.	16	1.		8
Colo.	3,024	t	+	-	-	t	+	t		+
N. Mex.	120	-	-	-	-	-	-	-	-	-
Ariz.	638	-	-	-	-	-	-	-	-	-
Utah	837	-	-	-	-	-	-	-	-	-
Nev.	140	-	-	-	-	-	-	-	-	-
Wash.	1,770	-	-	-	-	-	-	-	-	-
Oreg.	2,597	-	-	t	+	-	-	-	-	-
Calif.	22,682	-	-	-	-	-	-	0.2		5
U. S.	118,929	0.4	323	0.1	92	1.3	1,039	0.7		558

State	Estimated reduction in yield due to diseases							
	Scab		Stem Rust		Other Diseases		All Diseases	
	: 1,000 :		: 1,000 :		: 1,000 :		: 1,000 :	
	%	Bushels	%	Bushels	%	Bushels	%	Bushels
Maine	-	-	-	-	-	-	-	-
Vt.	-	-	-	-	-	-	-	-
Mass.	0	0	2.	+	-	-	5.	+
N.Y.	-	-	-	-	-	-	-	-
N.J.	-	-	-	-	-	-	-	-
Pa.	0.5	10	t	+	3.	62	15.6	321
Ohio	2.	7	0.1	1	0.6	2	4.7	16
Ind.	-	-	0	0	-	-	-	-
Ill.	1.	9	0	0	t	+	1.	9
Mich.	t	+	0.5	17	0.2	7	1.7	58
Wis.	1.8	364	t	+	-	-	4.8	971
Minn.	t	+	2.	510	1.	255	5.5	1,403
Iowa	0	0	t	+	-	-	2.	116
Mo.	-	-	-	-	-	-	-	-
N. D.	0	0	t	+	1.	73	2.3	168
S. D.	-	-	t	+	-	-	-	-
Nebr.	-	-	-	-	-	-	-	-
Kans.	-	-	-	-	-	-	0.3	6
Del.	-	-	-	-	-	-	t	+
Md.	3.	21	-	-	0.5	3	10.	69
Va.	-	-	-	-	-	-	-	-
W. Va.	-	-	-	-	2.	2	7.	7
N. C.	2.	6	t	+	3.	9	13.5	42
S. C.	-	-	-	-	-	-	t	+
Ga.	-	-	-	-	5.	+	12.	+
Ky.	-	-	-	-	-	-	-	-
Tenn.	-	-	-	-	-	-	-	-
Okla.	-	-	-	-	-	-	-	-
Tex.	0.1	3	0.1	3	2.	51	4.3	112
Mont.	0	0	0	0	-	-	4.	92
Idaho	-	-	-	-	-	-	-	-
Wyo.	-	-	0	0	-	-	4.	32
Colo.	-	-	0	0	-	-	t	+
N. M.	-	-	-	-	-	-	-	-
Ariz.	-	-	-	-	-	-	-	-
Utah	-	-	-	-	-	-	-	-
Nev.	-	-	-	-	-	-	-	-
Wash.	0	0	-	-	-	-	-	-
Oreg.	-	-	t	+	4.	108	4.2	113
Calif.	-	-	-	-	-	-	-	-
U. S.	0.5	420	0.7	531	0.7	572	4.4	3,535

1934 - RYE

Estimated reduction in yield of rye due to diseases, 1934

State:	:Produc- tion : : 1,000 : :Bushels:	Estimated reduction in yield due to diseases											
		Smut		Ergot		Leaf Rust		Stem Rust		Other Diseases		All Diseases	
		:1,000:	:1,000:	:1,000:	:1,000:	:1,000:	:1,000:	:1,000:	:1,000:	:1,000:	:1,000:		
		: % :	: Bush- : els :	: % :	: Bush- : els :	: % :	: Bush- : els :	: % :	: Bush- : els :	: % :	: Bush- : els :	: % :	: Bush- : els :
Mass.:	:	0	0	1.	+	2.	+	4.	+	-	-	7.	+
N.Y.:	250	-	-	-	-	-	-	-	-	-	-	-	-
N.J.:	342	-	-	-	-	-	-	-	-	-	-	-	-
Pa.:	1,344	t	+	t	+	6.	91	t	+	5.	76	11.	167
Ohio:	819	-	-	0.1	1	1.	8	0	0	1.	8	2.1	17
Ind.:	1,495	-	-	-	-	-	-	0	0	-	-	-	-
Ill.:	630	3.2	21	t	+	0.3	2	t	+	1.	7	4.5	30
Mich.:	1,314	0	0	t	+	t	+	t	+	t	+	0.3	4
Wis.:	1,768	t	+	1.	18	t	+	t	+	t	+	1.	18
Minn.:	2,474	t	+	t	+	0	0	0	0	t	+	t	+
Iowa:	348	-	-	-	-	-	-	0	0	-	-	-	-
Mo.:	120	-	-	-	-	-	-	-	-	-	-	-	-
N.D.:	1,030	0	0	0.6	6	0	0	t	+	0.5	5	1.1	11
S.D.:	328	-	-	-	-	-	-	0	0	-	-	-	-
Nebr.:	728	-	-	-	-	-	-	0	0	-	-	-	-
Kans.:	176	-	-	-	-	-	-	-	-	-	-	-	-
Del.:	90	-	-	-	-	t	+	-	-	-	-	t	+
Md.:	300	-	-	-	-	-	-	-	-	-	-	-	-
Va.:	550	-	-	-	-	-	-	-	-	-	-	-	-
W.Va.:	120	t	+	t	+	t	+	-	-	-	-	t	+
N.C.:	495	-	-	-	-	t	+	-	-	5.	26	5.	26
S.C.:	60	-	-	-	-	-	-	-	-	-	-	-	-
Ga.:	84	-	-	-	-	1.	1	-	-	-	-	1.	1
Ky.:	138	-	-	-	-	-	-	-	-	-	-	-	-
Tenn.:	82	2.	2	-	-	-	-	-	-	-	-	2.	2
Okla.:	54	-	-	-	-	-	-	-	-	-	-	-	-
Tex.:	33	t	+	0	0	1.	+	1.	+	0.5	+	2.5	1
Mont.:	210	-	-	-	-	-	-	0	0	-	-	-	-
Idaho:	36	-	-	-	-	-	-	-	-	-	-	-	-
Wyo.:	72	-	-	-	-	-	-	0	0	-	-	-	-
Colo.:	176	-	-	t	+	-	-	0	0	-	-	t	+
Utah:	15	-	-	-	-	-	-	-	-	-	-	-	-
Wash.:	119	0	0	-	-	-	-	-	-	-	-	-	-
Oreg.:	240	-	-	t	+	0.3	+	-	-	0.2	+	0.5	1
U. S.:	16,040	0.2	23	0.2	25	0.9	102	t	+	1.1	122	2.5	278

Estimated reduction in yield of oats due to diseases, 1934

State	Production: 1,000 Bushels	Estimated reduction in yield due to diseases							
		Smuts		Stem rust		Crown Rust		All diseases	
		%	Bushels	%	Bushels	%	Bushels	%	Bushels
Maine	4,680	-	-	-	-	-	-	-	-
N. H.	273	-	-	-	-	-	-	-	-
Vt.	1,769	-	-	-	-	-	-	-	-
Mass.	160	15.	29	2.	4	t	+	17.	33
R. I.	64	-	-	-	-	-	-	-	-
Conn.	300	-	-	-	-	-	-	-	-
N. Y.	23,408	-	-	-	-	-	-	-	-
N. J.	1,452	-	-	-	-	-	-	-	-
Pa.	24,915	8.9	2,531	t	+	0.5	142	12.4	3,526
Ohio	25,994	2.	537	0.5	134	0.5	134	3.1	832
Ind.	18,225	-	-	0	0	-	-	-	-
Ill.	33,319	4.5	1,813	0.5	201	0.5	201	17.3	6,969
Mich.	28,717	2.	590	0.5	147	0	0	2.6	766
Wis.	65,352	5.	3,443	0.1	69	t	+	5.1	3,512
Minn.	72,703	2.	1,564	5.	3,909	0	0	7.	5,473
Iowa	61,250	4.	2,552	t	+	0	0	4.	2,552
Mo.	13,585	-	-	-	-	-	-	-	-
N. D.	8,886	0.5	45	t	+	t	+	1.5	135
S. D.	3,384	-	-	t	+	-	-	-	-
Nebr.	8,568	-	-	t	+	-	-	-	-
Kans.	16,094	2.	328	0	0	0	0	2.	328
Del.	132	t	+	-	-	t	+	t	+
Md.	1,320	5.	69	t	+	t	+	5.	69
Va.	2,398	3.	74	-	-	-	-	3.	74
W. Va.	2,052	5.	114	-	-	2.	46	10.	228
N. C.	3,519	5.	196	1.	39	1.	39	10.	391
S. C.	6,596	10.	785	1.	79	5.	393	16.	1,257
Ga.	6,384	5.	340	-	-	1.	68	6.	408
Fla.	104	-	-	-	-	-	-	-	-
Ky.	1,650	-	-	-	-	-	-	-	-
Tenn.	1,335	-	-	-	-	-	-	-	-
Ala.	2,090	-	-	-	-	-	-	-	-
Miss.	651	-	-	-	-	-	-	-	-
Ark.	2,046	2.	44	t	+	5.	110	7.	154
La.	500	-	-	-	-	-	-	-	-
Okla.	20,150	-	-	-	-	-	-	-	-
Texas	32,466	3.	1,353	4.	1,804	20.	9,018	28.	12,626
Mont.	7,344	5.	387	0	0	0	0	5.	387
Idaho	4,488	-	-	-	-	-	-	-	-
Wyo.	1,743	2.	36	t	+	-	-	2.	36
Colo.	2,280	t	+	0	0	t	+	t	+
N. M.	345	-	-	-	-	-	-	-	-
Ariz.	288	-	-	-	-	-	-	-	-
Utah	832	-	-	-	-	-	-	-	-
Nev.	46	-	-	-	-	-	-	-	-
Wash.	6,800	t	+	t	+	-	-	t	+
Oreg.	5,904	0.4	53	10.	1,324	35.	4,633	55.4	7,334
Calif.	2,254	-	-	-	-	-	-	-	-
U. S.	528,815	3.6	16,883	1.7	7,710	3.2	14,784	10.1	47,090

1934 - FIELD CORN

Estimated reduction in yield of field corn due to diseases, 1934

State	Production: 1,000 Bushels	Estimated reduction in yield due to diseases													
		Smut		Root Rots		Ear Rots		Stalk Rots		Diplodia		Bacterial		All Diseases	
		%	: Bushels	%	: Bushels	%	: Bushels	(except Diplodia): % : Bushels	(except Diplodia): % : Bushels	%	: Bushels	%	: Bushels	%	: Bushels
Maine	656	-	-	-	-	-	-	-	-	-	-	-	-	-	-
N. H.	615	-	-	-	-	-	-	-	-	-	-	-	-	-	-
Vt.	2,814	-	-	-	-	-	-	-	-	-	-	-	-	-	-
Mass.	1,517	2.	32	t	32	t	+	+	16	1.	16	t	+	5.	80
R. I.	410	-	-	-	-	-	-	-	-	-	-	-	-	-	-
Conn.	2,132	-	-	-	-	-	-	-	-	-	-	-	-	-	-
N. Y.	21,286	-	-	-	-	-	-	-	-	-	-	-	-	-	-
N. J.	7,138	-	-	-	-	-	-	-	-	-	-	-	-	-	-
Pa.	52,896	5.	3,306	t	488	10.	6,612	5.	3,306	t	+	t	+	20.	13,224
Ohio	92,203	3.	2,927	0.5	488	-	-	-	-	2.	1,951	-	-	5.5	5,366
Ind.	94,141	1.	1,029	1.	1,029	4.5	4,630	t	+	2.	2,058	t	+	8.5	8,746
Ill.	146,760	8.	20,243	4.	10,121	13.5	34,160	15.	37,955	1.5	3,796	t	+	42.	106,275
Mich.	33,408	4.	1,411	0.5	176	0.2	71	-	-	0.3	106	0.1	35	5.3	1,870
Wis.	73,904	3.	2,584	0.1	86	1.	861	9.9	8,527	0.1	86	0	0	14.2	12,230
Minn.	76,619	4.	3,368	t	+	5.	4,210	+	+	+	+	0	0	9.	7,578
Iowa	201,480	7.	16,400	-	-	3.	7,028	-	-	4.	9,371	-	-	14.	32,799
Mo.	26,482	-	-	-	-	-	-	-	-	-	-	-	-	-	-
N. D.	4,904	2.	102	-	-	0.5	25	1.	51	-	-	0	0	3.5	178
S. D.	12,722	-	-	-	-	-	-	-	-	-	-	-	-	-	-
Nebr.	21,363	-	-	-	-	-	-	-	-	-	-	-	-	-	-
Kans.	10,576	1.	108	1.	108	t	+	t	+	-	-	t	+	2.	216
Del.	4,864	t	+	1.	49	-	-	-	-	-	-	-	-	1.	49
Md.	16,995	t	+	10.	1,999	5.	1,000	-	-	-	-	0	0	15.	2,999
Va.	35,794	-	-	-	-	-	-	-	-	-	-	-	-	-	-
W. Va.	12,128	3.	413	2.	276	3.	413	3.	413	1.	138	t	+	12.	1,653

: Production :		: Estimated reduction in yield due to diseases :												
State	1,000 Bushels	Smut	Root Rots	Ear Rots	Stalk Rots	Diplodia	Bacterial Wilt	All Diseases	1,000 Bushels	%	1,000 Bushels	%	1,000 Bushels	%
N. C.	47,580	1.0	3.0	3.0	1.0	1.0	1.0	1.0	1.0	1.0	1.0	1.0	1.0	1.0
S. C.	20,760	0.5	5.0	5.0	1.0	1.0	1.0	1.0	1.0	1.0	1.0	1.0	1.0	1.0
Ga.	39,270	5.0	0.5	0.5	3.0	3.0	3.0	3.0	3.0	3.0	3.0	3.0	3.0	3.0
Fla.	6,390	0.5	0.5	0.5	0.5	0.5	0.5	0.5	0.5	0.5	0.5	0.5	0.5	0.5
Ky.	62,832	-	-	-	-	-	-	-	-	-	-	-	-	-
Tenn.	58,894	-	-	-	-	-	-	-	-	-	-	-	-	-
Ala.	47,950	-	-	-	-	-	-	-	-	-	-	-	-	-
Miss.	40,121	-	-	-	-	-	-	-	-	-	-	-	-	-
Ark.	15,398	1.0	-	-	-	-	-	-	-	-	-	-	-	-
La.	16,248	-	-	-	-	-	-	-	-	-	-	-	-	-
Okla.	11,644	-	-	-	-	-	-	-	-	-	-	-	-	-
Tex.	45,873	1.0	0.1	0.1	0.5	0.5	0.5	0.5	0.5	0.5	0.5	0.5	0.5	0.5
Mont.	665	t	-	-	-	-	-	-	-	-	-	-	-	-
Idaho	1,520	-	-	-	-	-	-	-	-	-	-	-	-	-
Wyo.	655	1.0	-	-	-	-	-	-	-	-	-	-	-	-
Colo.	3,368	1.0	-	-	-	-	-	-	-	-	-	-	-	-
N. M.	1,088	-	-	-	-	-	-	-	-	-	-	-	-	-
Ariz.	490	-	-	-	-	-	-	-	-	-	-	-	-	-
Utah	304	-	-	-	-	-	-	-	-	-	-	-	-	-
Nev.	40	-	-	-	-	-	-	-	-	-	-	-	-	-
Wash.	1,122	t	0.0	0.0	0.0	0.0	0.0	0.0	0.0	0.0	0.0	0.0	0.0	0.0
Oreg.	1,852	-	0.1	0.1	0.1	0.1	0.1	0.1	0.1	0.1	0.1	0.1	0.1	0.1
Calif.	2,850	-	-	-	-	-	-	-	-	-	-	-	-	-
U. S.	1,380,718	4.6	55,526	1.4	17,259	5.2	63,982	4.3	52,874	1.5	18,616	0.1	1,602	17.5
														213,570

1934 - SWEET CORN

Estimated reduction in yield of sweet corn due to diseases, 1934

State	Production: Short Tons	Estimated reduction in yield due to diseases							
		Smut		Bacterial Wilt		Diplodia		All Diseases	
		Short	Short	Short	Short	Short	Short	Short	Short
		%	Tons	%	Tons	%	Tons	%	Tons
Maine	39,200	-	-	0	0	-	-	t	+
N. H.	2,200	-	-	-	-	-	-	-	-
Vt.	2,800	-	-	-	-	-	-	-	-
Mass.		5.	+	1.	+	2.	+	8.	+
N. Y.	33,600	4.	1,400	t	+	-	-	4.	1,400
Pa.	9,200	5.	667	20.	2,667	5.	667	31.	4,134
Ohio	39,900	1.	416	3.	1,247	-	-	4.	1,663
Ind.	50,000	-	-	5.	2,632	-	-	5.	2,632
Ill.	89,200	-	-	5.	4,695	-	-	5.	4,695
Mich.	4,500	1.	47	3.	141	t	+	4.2	197
Wis.	27,400	5.	1,457	t	+	1.	291	6.	1,748
Minn.	81,300	5.	4,371	0	0	1.	874	7.	6,119
Iowa	51,300	-	-	-	-	-	-	-	-
N. D.		2.	+	0	0	0	0	3.	+
Nebr.	1,200	-	-	-	-	-	-	-	-
Kans.				t	+			t	+
Del.	6,000	t	+	-	-	-	-	1.	60
Md.	43,600	1.	493	1.5	739	9.	4,434	11.5	5,666
W. Va.		2.	+	5.	+	3.	+	12.	+
Tenn.	5,300	-	-	-	-	-	-	-	-
Texas		1.	+	3.	+	1.	+	7.1	+
Mont.		t	+	0	0	0	0	1.	+
Colo.		2.	+	-	-	-	-	2.	+
Oreg.		-	-	-	-	-	-	t	+
**Other States	8,900	-	-	-	-	-	-	-	-
U. S.	495,600	2.	8,851	2.7	12,121	1.4	6,266	6.3	28,314

*Production figures are of sweet corn for manufacture.

**Other States include: Colorado, Idaho, Kansas, Kentucky, Missouri, Montana, Oklahoma, Oregon, South Dakota, Virginia, Washington, Wyoming.

1934 - SWEET POTATO

Estimated reduction in yield due to diseases

State	Estimated reduction in yield due to diseases									
	Production:	Stem Rot		Black Rot		All Diseases		Storage Rots		
	1,000 Bushels	1,000 Bushels	1,000 Bushels	1,000 Bushels	1,000 Bushels	1,000 Bushels	1,000 Bushels	1,000 Bushels	1,000 Bushels	
	%	%	%	%	%	%	%	%	%	
Conn.		-	-	t	+	t	+	-	-	
N. J.	2,015	-	-	-	-	-	-	-	-	
Pa.		-	-	t	+	1.	+	2.	+	
Ind.	440	30.	189	t	+	30.	189	-	-	
Ill.	560	-	-	-	-	-	-	-	-	
Iowa.	180	20.	46	2.	5	22.	51	-	-	
Mo.	561	-	-	-	-	-	-	-	-	
Kans.	325	7.	25	1.	4	8.	29	2.	7	
Del.	810	1.	8	0.5	4	3.5	29	-	-	
Md.	750	1.5	12	t	+	7.	56	11.	83	
Va.	3,910	7.	301	1.	43	9.	387	5.	196	
W. Va.		-	-	t	+	t	+	-	-	
N. C.	8,856	3.	295	2.	197	10.	984	20.	1,771	
S. C.	4,428	t	+	t	+	t	+	30.	1,328	
Ga.	7,120	-	-	-	-	-	-	-	-	
Fla.	1,800	1.	22	5.	110	18.	395	20.	360	
Ky.	1,805	-	-	-	-	-	-	-	-	
Tenn.	6,180	15.	1,091	t	+	15.	1,091	-	-	
Ala.	7,614	-	-	-	-	-	-	-	-	
Miss.	7,526	-	-	-	-	-	-	-	-	
Ark.	1,620	2.	34	2.	34	4.	68	10.	162	
La.	5,840	1.	60	t	+	2.	120	-	-	
Okla.	770	-	-	-	-	-	-	-	-	
Tex.	3,300	0.5	20	8.	324	18.5	749	10.	330	
Colo.		t	+	-	-	t	+	t	+	
Calif.	990	-	-	-	-	-	-	-	-	
U. S.	67,400	4.9	2,103	1.7	721	9.7	4,148	17.	4,237	

Estimated reduction in yield of potato due to diseases

State	Production: 1,000 Bushels	Estimated reduction in yield due to diseases							
		Mosaic		Leaf Roll		Late Blight		Rhizoctonia	
		%	Bushels	%	Bushels	%	Bushels	%	Bushels
Maine	56,280	2.	1,324	1.5	993	1.	662	7.5	4,966
N. H.	1,665	-	-	-	-	-	-	-	-
Vt.	2,720	-	-	-	-	-	-	-	-
Mass.	2,560	5.	191	5.	191	4.	153	7.	267
R. I.	540	-	-	-	-	-	-	-	-
Conn.	2,625	-	-	-	-	-	-	-	-
N. Y.	32,550	2.	910	3.	1,366	3.	1,366	5.	2,276
N. J.	9,050	-	-	-	-	-	-	-	-
Pa.	34,000	3.	1,407	10.	4,690	2.	938	3.	1,407
Ohio	11,445	-	-	5.	728	t	+	2.	291
Ind.	6,200	-	-	-	-	-	-	-	-
Ill.	2,704	-	-	-	-	0	0	-	-
Mich.	34,304	0.5	211	1.	421	0	0	1.	421
Wis.	31,320	t	+	0	0	0	0	t	+
Minn.	23,380	5.	1,601	+	+	0	0	4.	1,281
Ia.	4,851	-	-	-	-	-	-	3.	167
Mo.	1,380	-	-	-	-	-	-	-	-
N. D.	5,940	1.	63	1.	63	0	0	0.6	38
S. D.	1,290	-	-	-	-	0	0	-	-
Nebr.	3,450	-	-	-	-	0	0	-	-
Kans.	1,480	t	+	-	-	0	0	5.	80
Del.	720	0.5	4	+	+	-	-	t	+
Md.	3,267	2.	75	2.	75	1.5	56	4.	150
Va.	13,433	2.	299	2.	299	0	0	t	+
W. Va.	3,120	4.	184	5.	229	t	+	6.	275
N. C.	10,672	2.	248	3.	372	t	+	2.	248
S. C.	2,625	t	+	0	0	0	0	3.	82
Ga.	1,360	3.	52	-	-	0	0	5.	87
Fla.	3,250	1.	39	+	+	6.	234	4.	156
Ky.	4,480	-	-	-	-	-	-	-	-
Tenn.	4,320	-	-	-	-	0	0	-	-
Ala.	3,760	-	-	-	-	-	-	-	-
Miss.	1,344	-	-	-	-	-	-	-	-
Ark.	2,624	-	-	-	-	0	0	-	-
La.	2,948	3.	95	-	-	0	0	1.	32
Okla.	2,760	-	-	-	-	0	0	-	-
Tex.	3,780	0.1	4	t	+	t	+	2.	87
Mont.	1,610	5.	95	t	+	0	0	5.	95
Idaho	19,240	-	-	-	-	0	0	-	-
Wyo.	1,000	2.	35	-	-	0	0	2.	35
Colo.	5,700	t	+	t	+	0	0	2.5	153
N. M.	490	-	-	-	-	0	0	-	-
Ariz.	180	-	-	-	-	0	0	-	-
Utah	1,040	-	-	-	-	0	0	-	-
Nev.	210	-	-	-	-	0	0	-	-
Wash.	7,290	7.5	591	+	+	t	+	t	+
Oreg.	5,720	-	-	-	-	-	-	-	-
Calif.	8,610	-	-	-	-	-	-	-	-
U. S.	385,287	2.	7,428	2.5	9,427	0.9	3,409	3.4	12,594

1934 - POTATO (Continued)

Estimated reduction in yield due to diseases

State:	Blackleg		Fusarium Wilt		Tipburn and Hopperburn		Early Blight		Scab		All Diseases	
	%	: Bushels:	%	: Bushels:	%	: Bushels:	%	: Bushels:	%	: Bushels:	%	: Bushels:
Maine:	1.	662	0	0	0	0	-	-	2.	1,324	15.	9,931
N.H.:	1.	17	-	-	-	-	-	-	-	-	1.	17
Vt.:	-	-	-	-	-	-	-	-	-	-	-	-
Mass.:	t	+	t	+	8.	306	2.	76	1.	38	33.	1,260
R.I.:	-	-	-	-	-	-	-	-	-	-	-	-
Conn.:	-	-	-	-	-	-	-	-	-	-	-	-
N.Y.:	t	+	t	+	10.	4,552	t	+	3.	1,366	28.5	12,974
N.J.:	-	-	-	-	-	-	-	-	-	-	-	-
Pa.:	t	+	2.	938	3.	1,407	t	+	0.5	234	27.5	12,897
Ohio:	0.2:	29	1.5:	218	8.	1,165	2.	291	0.5:	73	21.4:	3,115
Ind.:	-	-	-	-	-	-	-	-	-	-	-	-
Ill.:	-	-	-	-	-	-	-	-	-	-	-	-
Mich.:	2.	843	1.6:	674	5.	2,107	0.5:	211	5.	2,107	18.6:	7,838
Wis.:	0	0	0	0	t	+	0	0	5.	1,666	6.	1,999
Minn.:	t	+	4.	1,281	8.	2,562	2.	641	2.	641	27.	8,648
Iowa:	-	-	-	-	-	-	-	-	10.	558	13.	725
Mo.:	-	-	-	-	-	-	-	-	-	-	-	-
N. D.:	1.	63	1.5:	94	0.2:	13	t	+	t	+	5.3:	334
S. D.:	-	-	-	-	-	-	-	-	-	-	-	-
Nebr.:	-	-	-	-	-	-	-	-	-	-	-	-
Kans.:	t	+	t	+	-	-	-	-	1.	16	8.	128
Del.:	-	-	-	-	-	-	t	+	t	+	1.	8
Md.:	t	+	2.	75	0.5:	19	0.5:	19	t	+	13.	488
Va.:	1.	149	t	+	3.	448	t	+	2.	299	10.	1,494
W. Va.:	2.	92	3.	138	7.	321	t	+	t	+	32.	1,468
N.C.:	1.	124	t	+	2.	248	1.	124	-	-	14.	1,736
S.C.:	t	+	0	0	-	-	1.5:	41	-	-	4.5:	123
Ga.:	8.	140	-	-	5.	87	1.	17	-	-	22.	383
Fla.:	0.5:	19	t	+	0	0	0.5:	19	0.5:	19	16.5:	642
Ky.:	-	-	-	-	-	-	-	-	-	-	-	-
Tenn.:	-	-	t	+	-	-	25.	1,440	-	-	25.	1,440
Ala.:	-	-	-	-	-	-	-	-	-	-	-	-
Miss.:	-	-	-	-	-	-	-	-	-	-	-	-
Ark.:	-	-	-	-	15.	463	-	-	-	-	15.	463
La.:	t	+	-	-	-	-	0.5:	16	-	-	6.5:	206
Okla.:	-	-	-	-	-	-	-	-	-	-	-	-
Tex.:	0	0	1.	44	0.5:	22	0.5:	22	8.	348	13.1:	571
Mont.:	t	+	2.	38	t	+	t	+	t	+	15.	285
Idaho:	-	-	-	-	-	-	-	-	-	-	-	-
Wyo.:	t	+	3.	53	-	-	t	+	1.	18	43.	755
Colo.:	-	-	3.5:	215	-	-	t	+	1.	61	7.	429
N.M.:	-	-	-	-	-	-	-	-	-	-	-	-
Ariz.:	-	-	-	-	-	-	-	-	-	-	-	-
Utah:	-	-	-	-	-	-	-	-	-	-	-	-
Nev.:	-	-	-	-	-	-	-	-	-	-	-	-
Wash.:	t	+	t	+	-	-	t	+	t	+	7.5:	591
Oreg.:	-	-	-	-	-	-	-	-	-	-	-	-
Calif.:	-	-	-	-	-	-	-	-	-	-	-	-
U. S.:	0.6:	2,138	1.0:	3,768	3.7:	13,720	0.8:	2,917	2.3:	8,768	19.	70,948

1934 - TOMATOES FOR MANUFACTURE

Estimated reduction in yield of tomatoes due to diseases, 1934

State	Estimated reduction in yield due to diseases																
	Production: Septoria			Fusarium			Early Blight			Blossom-end			Curly-top			All Diseases	
Short	Blight	Wilt	Short	Wilt	Rot	Short	Rot	Short	Short	Short	Short	Short	Short	Short	Short	Short	Short
Tons*	%	Tons	%	Tons	%	Tons	%	Tons	%	Tons	%	Tons	%	Tons	%	Tons	%
N. Y.	119,200	t	+	t	1.5	1,912	3.5	4,462	0	0	6.5	8,286					
N. J.	122,800	-	-	-	-	-	-	-	0	0	-	-					
Pa.	34,300	5	2,287	1	3	1,372	8	3,659	0	0	25	11,434					
Ohio	78,500	1	924	5	1	924	5	4,618	0	0	15	13,855					
Ind.	315,400	-	-	-	2	6,437	-	-	0	0	2	6,437					
Ill.	11,100	1	148	5	-	-	1	148	0	0	25	3,700					
Mich.	17,300	t	+	3	t	+	t	+	0	0	3.5	628					
Wis.	-	t	+	0	1	+	0	0	0	0	1	+					
Iowa	7,700	-	-	-	-	-	-	-	0	0	-	-					
Mo.	1,400	-	-	-	-	-	-	-	0	0	-	-					
Del.	51,800	1	523	t	t	+	-	-	0	0	1	523					
Md.	184,100	1	2,597	0.5	5	12,983	t	+	0	0	29.1	75,561					
Va.	43,500	t	+	7	1	494	-	-	0	0	12	5,931					
W. Va.	-	2	+	2	t	+	3	+	0	0	10	+					
S. C.	-	t	+	5	2	+	5	+	0	0	15	+					
Ga.	-	10	+	3	-	-	-	-	0	0	13	+					
Fla.	-	0	+	2	3	+	t	+	0	0	16	+					
Ky.	8,600	-	-	-	-	-	-	-	0	0	-	-					
Tenn.	16,200	-	-	35	-	-	-	-	0	0	35	8,723					
Ark.	1,600	-	-	-	-	-	2	33	0	0	2	33					
La.	-	t	+	5	2	+	1	+	0	0	14	+					

1934 - TOMATOES FOR MANUFACTURE (Continued)

		Estimated reduction in yield due to diseases													
: Production:		Septoria		Fusarium		Blossom-end		Early Blight		Rot		Curly-top		All Diseases	
State	Short	Short	Blight	Wilt	Short	Short	Short	Short	Short	Short	Short	Short	Short	Short	Short
	Tons*	%	Tons	%	Tons	%	Tons	%	Tons	%	Tons	%	Tons	%	Tons
Tex.		2.	+	3.	+	13.	+	15.	+	0.	+	0.	+	28.	+
Colo.	11,000	t	+	t	+	t	+	t	+	t	+	t	+	1.	111
Utah	23,000	-	-	2.	773	-	-	-	-	30.	11,597	40.5	15,656	+	
Wash.		0	0	-	-	-	-	t	+	25.	+	25.	+	25.	+
Oreg.		0	0	-	-	-	-	-	-	25.	+	25.	+	25.	+
Calif.	291,500	-	-	-	-	-	-	-	-	-	-	-	-	-	-
**Other:															
States:	50,600														
U. S.	1,389,600	0.6	6,479	1.9	20,607	2.3	24,122	1.2	12,920	1.1	11,597	14.3	150,878		

*Short tons 2000 lbs.

**Including Connecticut, Florida, Georgia, Idaho, Kansas, Louisiana, Mississippi, Nebraska, New Mexico, North Carolina, Oklahoma, Oregon, South Carolina, Texas, Washington, West Virginia, Wisconsin.

1934 - TOMATOES FOR MARKET (Continued)

State	Estimated reduction in yield due to diseases															
	Production: 1,000 *Bushels	Septoria Blight	Fusarium Wilt	Blossom-end: Rot	Curly-top	All Diseases	Septoria Blight	Fusarium Wilt	Blossom-end: Rot	Curly-top	All Diseases	Septoria Blight	Fusarium Wilt	Blossom-end: Rot	Curly-top	All Diseases
	: 1,000	: 1,000	: 1,000	: 1,000	: 1,000	: 1,000	: 1,000	: 1,000	: 1,000	: 1,000	: 1,000	: 1,000	: 1,000	: 1,000	: 1,000	: 1,000
	%	%	%	%	%	%	%	%	%	%	%	%	%	%	%	%
Miss.	1,380	-	-	-	-	-	-	-	-	-	-	-	-	-	-	-
Ark.	81	-	-	-	-	-	-	-	-	-	-	-	-	-	-	-
La.	160	t	5.	9	2.	4	2.	2.	0	14.	2	0	0	0	0	26
Tex.	3,374	2.	3.	141	3.	141	3.	703	0	28.	1,313	0	0	0	0	+
Mont.		0	t	+	0	0	t	+	t	t	+	t	t	t	t	+
Colo.	238	t	t	+	t	+	t	+	t	1.	2	+	+	+	+	2
Utah	114	-	2.	3	-	-	-	-	-	30.	53	-	-	-	-	53
Wash.	357	0	-	-	-	-	-	-	-	25.	119	+	+	+	+	119
Oreg.	166	0	-	-	-	-	-	-	-	25.	55	-	-	-	-	55
Calif.	2,890	-	-	-	-	-	-	-	-	-	-	-	-	-	-	-
U. S.	18,080	0.8:	120 : 4.7:	699 : 2.2:	324 : 5.4:	805 : 1.5:	224 : 20.5:	3,063								

*Bushels of 53 pounds.

1934 - SNAP BEANS FOR MARKET (Continued)

		Estimated reduction in yield due to disease											
: Production:		: Bacterial :		: Mosaic :		: Root Rot's :		: Rust :		: Other :		: All :	
State :	1,000 :	Anthracnose :	Blight :	Mosaic :	Root Rot's :	Rust :	Other :	Diseases :	Diseases :	Diseases :	Diseases :	Diseases :	Diseases :
*Bushels :	1,000 :	% :	% :	% :	% :	% :	% :	% :	% :	% :	% :	% :	% :
	Bushels:	Bushels:	Bushels:	Bushels:	Bushels:	Bushels:	Bushels:	Bushels:	Bushels:	Bushels:	Bushels:	Bushels:	Bushels:
Ala.	74	-	-	-	-	-	-	-	-	-	-	-	-
Miss.	321	-	-	-	-	-	-	-	-	-	-	-	-
Ark.	24	-	-	-	-	-	-	-	-	-	-	-	-
La.	585	1.	6.	39	2.	13	9	1.	4	9.	58	44	24
Tex.	395	0	5.	22	2.	9	9	t	+	10.	44	+	24
Mont.		0	t	+	4.	+	+	t	+	5.	+	+	+
Colo.	181	0	8.	16	2.	4	4	t	+	12.	+	+	+
Wash.		0	t	+	t	+	+	0	0	15.	0	0	0
Calif.	754	-	-	-	-	-	-	-	-	-	-	-	-
U. S.	13,486	1.	4.1:	494	0.4:	473	0.9:	102	3.5:	418	13.9:	1,645	1,645

* Bushels of 30 pounds.

1934 - SNAP BEANS FOR MANUFACTURE

Estimated reduction in yield of snap beans due to diseases

State	Production Short Tons	Estimated reduction in yield due to diseases										
		Anthracnose		Bacterial Blight		Mosaic		Root Rots		All Diseases		
		Short Tons	%	Short Tons	%	Short Tons	%	Short Tons	%	Short Tons	%	
Maine:	2,300	-	-	-	-	-	-	-	-	-	-	-
N. Y.:	12,200	0.5	64	4.	511	t	+	t	+	4.5	575	
Pa. :	2,000	5.	118	2.	47	0.5	12	6.	142	15.5	367	
Ohio :		1.	+	3.	+	0.5	+	-	-	4.5	+	
Ind. :	4,300	-	-	-	-	-	-	-	-	-	-	
Ill. :		1.	+	4.	+	10.	+	-	-	17.	+	
Mich.:	5,800	.0	0	5.	307	t	+	0.5	31	5.5	338	
Wis. :	7,800	0	0	t	+	1.	79	0	0	1.	79	
Minn.:		t	+	1.	+	2.	+	t	+	4.	+	
Kans.:		0	0	0	0	-	-	-	-	-	-	
Del. :	1,600	t	+	-	-	-	-	0.5	8	0.5	8	
Md. :	9,800	t	+	1.5	154	0.5	51	2.5	257	4.5	462	
Va. :		0	0	1.	+	-	-	2.	+	3.	+	
W. Va.:		3.	+	3.	+	1.	+	3.	+	11.	+	
S. C.:	300	0	0	1.	3	1.	3	5.	17	9.	30	
Ga. :		3.	+	-	-	-	-	5.	+	13.	+	
Fla. :		1.	+	5.	+	t	+	4.	+	16.	+	
Tenn.:	1,400	-	-	-	-	-	-	-	-	-	-	
Miss.:	2,100	-	-	-	-	-	-	-	-	-	-	
Ark. :	1,800	-	-	-	-	-	-	-	-	-	-	
La. :	600	1.	7	6.	40	-	-	2.	13	9.	60	
Tex. :		0	0	5.	+	2.	+	2.	+	10.	+	
Mont.:		0	0	t	+	4.	+	1.	+	5.	+	
Idaho:		0	0	-	-	3.	+	-	-	3.	+	
Wyo. :		0	0	3.	+	2.	+	t	+	5.	+	
Colo.:	1,000	0	0	8.	91	2.	23	2.	23	12.	137	
Utah :	1,400	0	0	-	-	-	-	-	-	-	-	
Wash.:	1,700	0	0	t	+	t	+	t	+	15.	300	
Oreg.:	4,600	0	0	-	-	-	-	-	-	-	-	
Calif.:	2,200	0	0	-	-	-	-	-	-	-	-	
*Other:												
States:	4,500											
U. S.:	67,400	0.4	189	2.6	1,153	0.4	168	1.1	491	5.3	2,356	

*Including Alabama, Florida, Georgia, Idaho, Illinois, Iowa, Kansas, Kentucky, Minnesota, Missouri, Montana, Nebraska, New Hampshire, New Jersey, Ohio, Oklahoma, Texas, Vermont, Virginia, West Virginia, Wyoming.

1934 - DRY BEANS

Estimated reduction in yield of dry beans due to diseases, 1934

State	Reduction in yield due to diseases										
	Produc-	Anthrac-		Bacterial		Mosaic		Root Rots		All Diseases	
	tion	nose		Blight							
*1,000:	:1,000:	:1,000:	:1,000:	:1,000:	:1,000:	:1,000:	:1,000:	:1,000:	:1,000:	:1,000:	:1,000:
bags	%	Bags	%	Bags	%	Bags	%	Bags	%	Bags	%
Maine	62	-	-	-	-	-	-	-	-	-	-
Vt.	18	-	-	-	-	-	-	-	-	-	-
N.Y.	891	0.5	5	4	37	t	+	-	-	4.5	42
Mich.	3,244	0	0	5	172	t	+	0.5	17	5.5	189
Wis.	23	0	0	t	+	1	+	0	0	1	+
Minn.	21	t	+	1	+	2	+	t	+	4	1
Nebr.	68	-	-	-	-	-	-	-	-	-	-
Mont.	174	0	0	t	+	4	7	1	2	5	9
Idaho	1,342	0	0	-	-	3	42	-	-	3	42
Wyo.	250	0	0	1	3	2	5	t	+	3	8
Colo.	279	0	0	2.5	8	t	+	5	15	7.5	23
N. M.	66	0	0	-	-	-	-	-	-	-	-
Ariz.	40	0	0	-	-	-	-	-	-	-	-
Oreg.	6	0	0	-	-	-	-	-	-	-	-
Calif.	3,675	0	0	-	-	-	-	-	-	-	-
U. S.	10,159	t	5	3.4	220	0.8	54	0.5	34	4.8	314

*Bags of 100 pounds.

1934 - GREEN PEAS FOR MARKET

Estimated reduction in yield of green peas for market

State	Production *Bushels	Estimated reduction in yield due to disease									
		Bacterial Blight	Fusarium Wilt	Ascochyta Blight	Root Rots	All Diseases					
		%	%	%	%	%	%	%	%	%	%
		Bush- els	Bush- els	Bush- els	Bush- els	Bush- els	Bush- els	Bush- els	Bush- els	Bush- els	Bush- els
Mass.		1.	+	1.	+	1.	+	25.	+	30.	+
N. Y.	456	t	+	t	+	t	+	0.5	2	0.5	2
N. J.	200	-	-	-	-	-	-	-	-	-	-
N. D.		-	-	t	+	0	0	t	+	t	+
Md.	14	0.2	+	0.5	+	0.2	+	3.5	+	4.4	+
Va.	72	-	-	-	-	-	-	-	-	-	-
N. C.	228	1.	3	2.	5	2.	5	2.	5	9.	23
S. C.	120	-	-	-	-	-	-	25.	40	25.	40
Ga.		10.	+	-	-	10.	+	15.	+	35.	+
Fla.	461	t	+	1.	5	2.	10	1.	5	8.	40
Ala.	10	-	-	-	-	-	-	-	-	-	-
Miss.	138	-	-	-	-	-	-	-	-	-	-
La.	64	-	-	-	-	-	-	-	-	-	-
Texas	65	t	+	0	0	0	0	2.	1	3.	2
Idaho	170	-	-	1.	2	-	-	2.	4	3.	6
Colo.	673	3.	22	-	-	3.	22	2.	15	8.	59
Ariz.	126	-	-	-	-	-	-	-	-	-	-
Wash.	798	t	+	t	+	-	-	t	+	t	+
Oreg.	48	-	-	-	-	-	-	-	-	-	-
Calif.	3,849	-	-	-	-	-	-	-	-	-	-
U. S.	7,442	0.8	25	0.4	12	1.2	37	2.3	72	5.5	172

*Bushels of 30 pounds.

1934 - GREEN PEAS FOR MANUFACTURE

Estimated reduction in yield of green peas for manufacture

State	Estimated reduction in yield due to disease										
	Production	Bacterial Blight		Fusarium Wilt		Ascochyta Blight		Root Rots		All Diseases	
	Short	Short	Short	Short	Short	Short	Short	Short	Short	Short	
	Tons	%	Tons	%	Tons	%	Tons	%	Tons	%	Tons
Maine	2,330	-	-	-	-	-	-	-	-	-	-
N. Y.	13,280	t	+	t	+	t	+	0.5	67	0.5	67
Pa.	3,000	-	-	t	+	t	+	20.	750	20.	750
Ohio	1,540	-	-	-	-	-	-	1.	16	1.	16
Ind.	2,610	-	-	-	-	-	-	-	-	-	-
Ill.	2,070	1.	22	1.	22	-	-	5.	111	7.	155
Mich.	6,390	0	0	t	+	t	+	1.	65	1.	65
Wis.	71,120	t	+	0.5	359	0	0	0.5	359	1.	718
Minn.	5,800	-	-	-	-	-	-	-	-	-	-
Del.	3,010	-	-	-	-	-	-	-	-	-	-
Md.	14,850	0.2	31	0.5	78	0.2	31	3.5	544	4.4	684
Mont.	2,620	1.	32	0	0	t	+	16.	505	17.	537
Idaho		-	-	1.	+	-	-	2.	+	3.	+
Wyo.		t	+	-	-	t	+	2.	+	2.	+
Colo.	3,430	3.	112	-	-	3.	112	2.	75	8.	299
Utah	11,020	-	-	-	-	-	-	-	-	-	-
Wash.	9,030	t	+	t	+	-	-	t	+	t	+
*Other States	12,670										
U. S.	164,770	0.1	197	0.4	459	0.1	143	1.9	2,492	2.5	3,291

*Including California, Idaho, Iowa, Kansas, Nebraska, New Jersey, Oklahoma, Oregon, Tennessee, Virginia, Wyoming.

Estimated reduction in yield of cotton due to diseases, 1934

State	Production : 1,000 : Bales	Estimated reduction in yield due to diseases											
		Anthracnose	Angular Leaf Spot	Wilt	Root Knot	Malnutrition	All Diseases						
		: 1,000	: 1,000	: 1,000	: 1,000	: 1,000	: 1,000	: 1,000					
		%	%	%	%	%	%	%					
Ill.		t	+	1.	+	0	0	0	0			2.	+
Mo.	245	-	-	-	-	-	-	-	-			-	-
Va.	39	1.	+	1.	+	-	-	-	-	1.	+	3.	1
N. C.	650	t	+	3.	26	5.	43	3.	26	10.	86	24.	207
S. C.	695	5.	39	2.	16	2.	16	2.	16	-	-	11.	87
Ga.	995	5.	53	1.5	16	-	-	-	-	-	-	6.5	69
Fla.	28	-	-	-	-	-	-	-	-	-	-	-	-
Tenn.	412	3.	13	-	-	-	-	-	-	-	-	3.	13
Ala.	965	-	-	-	-	-	-	-	-	-	-	-	-
Miss.	1,145	2.	25	2.	25	3.	37	-	-	-	-	7.5	93
Ark.	875	t	+	1.	10	5.	49	2.	20	3.	29	11.	108
La.	488	2.	12	3.	17	4.	23	-	-	3.	17	16.	92
Okla.	325	-	-	-	-	-	-	-	-	-	-	-	-
Texas	2,395	1.	27	1.	27	1.	27	1.	27	t	+	12.	326
N.M.	92	-	-	-	-	-	-	-	-	-	-	-	-
Ariz.	110	-	-	-	-	-	-	-	-	-	-	-	-
Calif.	255	-	-	-	-	-	-	-	-	-	-	-	-
Other	17												
U. S.	9,731	1.9	169	1.6	137	2.2	195	1.0	89	1.5	132	11.5	996

1934 - SUGAR BEET

Estimated reduction in yield of sugar beet due to diseases, 1934

Estimated reduction in yield due to diseases												
State	Production	Nematode		Curly-top		Leaf Spot		Phoma Rot		Other Diseases		All Diseases
	Short	%	Short	%	Short	%	Short	%	Short	%	Short	%
	Tons	Tons	Tons	Tons	Tons	Tons	Tons	Tons	Tons	Tons	Tons	Tons
Ohio	329	0	0	0	0	1.	3	1.	3		2.	6
Mich.	1,081	0	0	0	0	t	+	2.	22	t	+	2.1
Wis.	162	0	0	0	0	t	+	t	+	-	-	t
Minn.		0	0	0	0	1.	+	t	+	t	+	1.
Nebr.	550	-	-	-	-	-	-	-	-	-	-	-
Mont.	768	-	-	t	+	t	+	1.	8	1.	8	2.
Idaho	298	-	-	-	-	-	-	-	-	-	-	-
Wyo.	434	t	+	-	-	-	-	-	-	t	+	-
Colo.	1,569	-	-	-	-	-	-	-	-	-	-	-
Utah	261	-	-	-	-	-	-	-	-	-	-	-
Wash.		-	-	15.	+	0	0	-	-	-	-	15.
Oreg.		-	-	75.	+	-	-	-	-	-	-	75.
Calif	1,596	-	-	-	-	-	-	-	-	-	-	-
Other:												
States:	579											
*U. S.:	7,627											

*Not enough information to calculate losses for the country.

Estimated reduction in yield of apples due to diseases

State	Estimated reduction in yield due to diseases							
	Production:	Bitter Rot		Black Rot		Blotch		
	1,000	1,000		1,000		1,000		
	Bushels	%	Bushels	%	Bushels	%	Bushels	
Maine	556	-	-	-	-	-	-	
N. H.	312	-	-	-	-	-	-	
Vt.	255	-	-	-	-	-	-	
Mass.	1,435	1.	16	3.	49	0	0	
R. I.	97	-	-	-	-	-	-	
Conn.	356	-	-	-	-	-	-	
N. Y.	11,844	-	-	-	-	-	-	
N. J.	2,070	-	-	-	-	-	-	
Pa.	8,554	0.1:	11	2.	213	0.2:	21	
Ohio	4,032	2.	84	0.2:	8	0.1:	4	
Ind.	1,020	0.1:	1	t	+	0.1:	1	
Ill.	2,162	0	0	0.5:	11	0.5:	11	
Mich.	6,464	0	0	t	+	0	0	
Wis.	1,204	0	0	t	+	t	+	
Minn.	339	0	0	0	0	0	0	
Iowa	962	-	-	-	-	t	+	
Mo.	1,534	-	-	-	-	-	-	
N. D.		0	0	0	0	0	0	
S. D.	34	-	-	-	-	-	-	
Nebr.	209	-	-	-	-	-	-	
Kans.	783	-	-	t	+	t	+	
Del.	688	t	+	0.5:	4	t	+	
Md.	1,102	2.	26	t	+	0.5:	6	
Va.	9,275	1.	112	t	+	t	+	
W. Va.	3,630	t	+	t	+	t	+	
N. C.	3,525	2.	92	t	+	2.	92	
S. C.	244	3.	8	0.5:	1	-	-	
Ca.	874	5.	57	3.	34	-	-	
Ky.	934	-	-	-	-	-	-	
Tenn.	1,748	-	-	2.5:	52	t	+	
Ala.	588	-	-	-	-	-	-	
Miss.	133	-	-	-	-	-	-	
Ark.	1,715	0	0	-	-	0	0	
La.	12	-	-	-	-	-	-	
Okla.	348	-	-	-	-	-	-	
Tex.	134	t	+	t	+	t	+	
Mont.	358	0	0	0	0	0	0	
Idaho	3,312	0	0	0	0	0	0	
Wyo.	28	0	0	0	0	0	0	
Colo.	1,354	0	0	0	0	0	0	
N. M.	1,240	0	0	0	0	0	0	
Ariz.	63	0	0	0	0	0	0	
Utah	554	0	0	0	0	0	0	
Nev.	36	0	0	0	0	0	0	
Wash.	32,300	0	0	-	-	0	0	
Oreg.	4,938	0	0	-	-	0	0	
Calif.	6,500	0	0	-	-	0	0	
U. S.	119,855	0.4:	407	0.4:	372	0.1:	135	

State	Cedar Rust		Blight		Scab		All Diseases	
		1,000		1,000		1,000		1,000
	%	Bushels	%	Bushels	%	Bushels	%	Bushels
Maine	-	-	-	-	-	-	-	-
N. H.	-	-	-	-	-	-	-	-
Vt.	-	-	-	-	-	-	-	-
Mass.	3.	49	2.	33	3.	49	12.5	204
R. I.	-	-	-	-	-	-	-	-
Conn.	-	-	-	-	-	-	-	-
N. Y.	-	-	-	-	-	-	-	-
N. J.	-	-	-	-	-	-	-	-
Pa.	0.5	53	1.	107	15.	1,600	19.8	2,112
Ohio	0.1	4	0.5	21	1.	42	4.1	171
Ind.	-	-	2.	21	0	0	2.2	23
Ill.	t	+	0.5	11	1.	22	2.5	55
Mich.	0	0	t	+	1.	66	2.	132
Wis.	t	+	2.	25	1.	12	3.	37
Minn.	t	+	t	+	t	+	t	+
Iowa	-	-	-	-	0	0	t	+
Mo.	-	-	-	-	-	-	-	-
N. D.	t	+	1.5	+	t	+	1.5	+
S. D.	-	-	-	-	-	-	-	-
Nebr.	-	-	-	-	-	-	-	-
Kans.	-	-	t	+	t	+	t	+
Del.	t	+	t	+	4.	29	5.5	40
Md.	0.5	6	3.	38	5.	64	14.	178
Va.	2.	224	1.	112	8.	894	17.	1,901
W. Va.	1.	38	t	+	2.	76	5.	190
N. C.	1.	46	10.	458	3.	137	23.	1,054
S. C.	-	-	2.	5	t	+	7.	18
Ga.	-	-	10.	114	5.	57	23.	262
Ky.	-	-	-	-	-	-	-	-
Tenn.	-	-	5.	105	5.	105	16.5	346
Ala.	-	-	-	-	-	-	-	-
Miss.	-	-	-	-	-	-	-	-
Ark.	-	-	-	-	t	+	t	+
La.	-	-	-	-	-	-	-	-
Okla.	-	-	-	-	-	-	-	-
Tex.	t	+	2.	3	0	0	7.	10
Mont.	0	0	1.	4	1.	4	2.	8
Idaho	0	0	-	-	-	-	-	-
Wyo.	0	0	-	-	-	-	-	-
Colo.	0	0	t	+	0	0	t	+
N. M.	0	0	-	-	0	0	-	-
Ariz.	0	0	-	-	0	0	-	-
Utah	0	0	-	-	0	0	-	-
Nev.	0	0	-	-	0	0	-	-
Wash.	0	0	t	+	1.	333	3.	999
Oreg.	0	0	t	+	2.	106	7.	372
Calif.	0	0	-	-	-	-	-	-
U. S.	0.4	420	1.1	1,057	3.7	3,596	8.3	8,112

Estimated reduction in yield of pear due to diseases

State	Production: 1,000 Bushels	Estimated reduction in yield due to diseases							
		Blight		Scab		Leaf Blight		All Diseases	
		%	Bushels	%	Bushels	%	Bushels	%	Bushels
		1,000	1,000	1,000	1,000	1,000	1,000	1,000	1,000
Maine	2	t	+	-	-	-	-	t	+
N. H.	5	-	-	-	-	-	-	-	-
Vt.	3	-	-	-	-	-	-	-	-
Mass.	35	7.	3	1.	+	-	-	8.	3
R. I.	6	-	-	-	-	-	-	-	-
Conn.	14	-	-	-	-	-	-	-	-
N. Y.	1,011	-	-	-	-	-	-	-	-
N. J.	74	-	-	-	-	-	-	-	-
Pa.	385	12.	56	1.	5	3.	14	17.	80
Ohio	394	0.5	2	0.1	+	-	-	0.6	2
Ind.	178	-	-	-	-	-	-	-	-
Ill.	641	5.	34	t	+	t	+	5.	34
Mich.	745	1.	8	t	+	0	0	1.	8
Wis.		1.	+	2.	+	0	0	3.	+
Iowa	74	-	-	-	-	-	-	-	-
Mo.	298	-	-	-	-	-	-	-	-
Nebr.	20	-	-	-	-	-	-	-	-
Kans.	145	t	+	-	-	-	-	t	+
Del.	17	t	+	-	-	5.	1	5.	1
Md.	94	1.	1	0.5	+	4.	4	5.5	5
Va.	194	5.	10	t	+	t	+	6.	12
W. Va.	25	8.	2	2.	1	-	-	10.	3
N. C.	218	15.	40	-	-	1.	3	19.	51
S. C.	84	-	-	-	-	-	-	-	-
Ga.	185	-	-	-	-	-	-	-	-
Fla.	67	-	-	-	-	-	-	-	-
Ky.	184	-	-	-	-	-	-	-	-
Tenn.	285	20.	71	-	-	-	-	20.	71
Ala.	326	-	-	-	-	-	-	-	-
Miss.	323	-	-	-	-	-	-	-	-
Ark.	158	-	-	-	-	-	-	-	-
La.	69	5.	4	-	-	t	+	10.	8
Okla.	171	-	-	-	-	-	-	-	-
Texas	303	4.	13	0	0	0	0	9.	30
Idaho	52	-	-	-	-	-	-	-	-
Colo.	307	t	+	0	0	0	0	t	+
N. M.	49	-	-	0	0	-	-	-	-
Ariz.	11	-	-	0	0	-	-	-	-
Utah	53	-	-	0	0	-	-	-	-
Nev.	6	-	-	0	0	-	-	-	-
Wash.	4,042	t	+	1.	41	-	-	1.	41
Oreg.	2,470	3.	81	2.	54	0	0	8.	216
Calif.	9,751	-	-	-	-	-	-	-	-
U. S.	23,474	3.0	325	0.9	101	0.2	22	5.2	565

Estimated reduction in yield of peach due to diseases

State	Estimated reduction in yield due to diseases										
	Production	Leaf Curl		Brown Rot		Virus Diseases		Scab		All Diseases	
	: 1,000 Bushels	: %	: Bushels	: %	: Bushels	: %	: Bushels	: %	: Bushels	: %	: Bushels
Maine		t	+	t	+	-	-	-	-	t	+
Mass.	2	2.	+	t	+	t	+	t	+	2.	+
R. I.	2	-	-	-	-	-	-	-	-	-	-
Conn.	2	-	-	-	-	-	-	-	-	-	-
N. Y.	41	-	-	-	-	-	-	-	-	-	-
N. J.	22	-	-	-	-	-	-	-	-	-	-
Pa.	442	8.	48	15.	90	1.	6	1.	6	26.	156
Ohio	228	t	+	1.	2	-	-	1.	2	2.1	4
Ind.	192	t	+	-	-	-	-	t	+	-	-
Ill.	528	0.5	3	1.	5	t	+	t	+	1.5	8
Mich.	423	0	0	t	+	0.5	2	t	+	0.5	2
Iowa	53	-	-	-	-	-	-	-	-	-	-
Mo.	468	-	-	-	-	-	-	-	-	-	-
Nebr.	5	-	-	-	-	-	-	-	-	-	-
Kans.	90	-	-	-	-	-	-	-	-	-	-
Del.	64	t	+	5.	3	t	+	1.	1	6.	4
Md.	82	t	+	0.5	+	t	+	0.5	+	1.	1
Va.	414	t	+	t	+	t	+	-	-	2.	8
W. Va.	110	t	+	1.	1	-	-	t	+	2.	2
N. C.	2,312	0.5	14	5.	137	-	-	3.	82	15.5	425
S. C.	1,610	t	+	1.5	26	-	-	5.	86	6.5	112
Ga.	5,610	1.	61	2.	122	-	-	5.	305	8.	488
Fla.	68	-	-	-	-	-	-	-	-	-	-
Ky.	434	-	-	-	-	-	-	-	-	-	-
Tenn.	2,325	-	-	10.	258	-	-	0	0	10.	258
Ala.	1,089	-	-	-	-	-	-	-	-	-	-
Miss.	781	-	-	-	-	-	-	-	-	-	-
Ark.	1,848	2.	38	0.5	9	-	-	0	0	2.5	47
La.	198	-	-	-	-	-	-	-	-	-	-
Okla.	612	-	-	-	-	-	-	-	-	-	-
Tex.	1,287	t	+	0.5	7	t	+	3.	42	8.5	119
Idaho	93	-	-	0	0	-	-	0	0	-	-
Colo.	1,260	0	0	t	+	t	+	0	0	t	+
N. M.	123	-	-	0	0	-	-	0	0	-	-
Ariz.	48	-	-	0	0	-	-	0	0	-	-
Utah	558	-	-	0	0	-	-	0	0	-	-
Nev.	6	-	-	0	0	-	-	0	0	-	-
Wash.	1,200	1.	12	1.	12	-	-	0	0	2.	24
Oreg.	314	3.	10	2.	7	-	-	0	0	7.	24
Calif.	20,460	-	-	-	-	-	-	-	-	-	-
U. S.	45,404	0.9	186	3.1	679	t	8	2.4	524	7.7	1,682

1934 - CHERRY

Estimated reduction in yield of cherry due to diseases

State	Production: Tons	Estimated reduction in yield due to diseases							
		Brown Rot		Leaf Spot		Other Diseases		All Diseases	
		%	Tons	%	Tons	%	Tons	%	Tons
Mass.		20.	+	t	+	-	-	20.	+
N. Y.	19,220	-	-	-	-	-	-	-	-
Pa.	6,344	10.	813	10.	813	2.	163	22.	1,789
Ohio	3,660	t	+	t	+	-	-	t	+
Ind.		t	+	t	+	-	-	t	+
Ill.		2.	+	t	+	-	-	2.	+
Mich.	26,560	t	+	1.	268	t	+	1.	268
Wis.	4,400	t	+	3.	136	-	-	3.	136
Kans.		t	+	-	-	-	-	t	+
Del.		5.	+	10.	+	-	-	15.	+
Md.		2.	+	1.	+	-	-	3.	+
Va.		1.	+	2.	+	-	-	3.	+
W. Va.		2.	+	t	+	t	+	3.	+
N. C.		20.	+	t	+	2.	+	22.	+
Mont.	750	0	0	t	+	-	-	t	+
Idaho	2,982	0	0	-	-	-	-	-	-
Colo.	5,920	t	+	-	-	-	-	-	-
Utah	3,850	-	-	-	-	-	-	-	-
Wash.	13,500	5.	711	t	+	-	-	5.	711
Oreg.	9,620	7.	811	5.	580	5.	580	17.	1,971
Calif.	16,000	-	-	-	-	-	-	-	-
Twelve States:	112,806	3.3	2,335	2.6	1,797	1.1	743	7.0	4,875

1934 - GRAPE

Estimated reduction in yield of grape due to diseases
east of Rocky Mountains

State	Production: Tons	Estimated reduction in yield due to diseases					
		Black Rot		Other Diseases		All Diseases	
		%	Tons	%	Tons	%	Tons
Maine	7	-	-	-	-	-	-
N. H.	29	-	-	-	-	-	-
Vt.	11	-	-	-	-	-	-
Mass.	307	8.	27	t	+	8.	27
R. I.	171	-	-	-	-	-	-
Conn.	1,023	-	-	-	-	-	-
N. Y.	49,400	-	-	-	-	-	-
N. J.	2,464	-	-	-	-	-	-
Pa.	18,981	12.	2,649	2.	441	14.	3,090
Ohio	22,720	2.	464	t	+	2.	464
Ind.	2,812	-	-	-	-	-	-
Ill.	5,658	1.	57	-	-	1.	57
Mich.	61,145	t	+	1.	618	1.	618
Wis.	274	1.	3	-	-	1.	3
Minn.	194	-	-	t	+	t	+
Iowa	5,060	-	-	-	-	-	-
Mo.	7,540	-	-	-	-	-	-
Nebr.	1,216	-	-	-	-	-	-
Kans.	2,574	t	+	-	-	t	+
Del.	2,430	20.	608	-	-	20.	608
Md.	614	15.	108	t	+	15.	108
Va.	1,692	15.	317	5.	106	20.	423
W. Va.	944	5.	52	5.	52	10.	104
N. C.	4,640	10.	546	5.	273	15.	819
S. C.	829	25.	276	-	-	25.	276
Ga.	738	15.	148	10.	98	25.	246
Fla.	1,026	10.	128	10.	128	20.	256
Ky.	1,113	-	-	-	-	-	-
Tenn.	1,110	50.	1,110	-	-	50.	1,110
Ala.	641	-	-	-	-	-	-
Miss.	228	-	-	-	-	-	-
Ark.	16,640	t	+	-	-	t	+
La.	44	-	-	-	-	-	-
Okla.	2,112	-	-	-	-	-	-
Texas	1,595	5.	92	8.	147	13.	239
	217,982	4.3	6,585	1.2	1,863	5.5	8,448

1934 - STRAWBERRY

Estimated reduction in yield of strawberry due to diseases, 1934

		Estimated reduction in yield due to diseases											
Production:		Black Root				Other				All			
State	1,000 *Crates	Leaf Spot 1,000 %	Leaf Scorch 1,000 %	Dwarf 1,000 %	and Root Rots 1,000 %	Diseases 1,000 %	Diseases 1,000 %	Diseases 1,000 %	Diseases 1,000 %	Diseases 1,000 %	Fruit Rots 1,000 %	Fruit Rots 1,000 %	Fruit Rots 1,000 %
Maine		1.	+	0	-	-	-	-	-	1.	+	-	-
Mass.		2.	+	+	9.	+	12.	+	+	23.	+	4.	+
N. Y.	505	-	-	-	-	-	-	-	-	-	-	-	-
N. J.	540	-	-	-	-	-	-	-	-	-	-	-	-
Fa.	260	6	-	0	8.	23	1.	3	32	11.	32	-	-
Ohio	189	+	0	0	-	-	-	-	+	0.1.	+	-	-
Ind.	74	-	-	-	-	-	-	-	-	-	-	-	-
Ill.	320	+	-	-	5.	17	-	-	17	5.	17	-	-
Mich.	285	+	+	0	1.	3	t	+	3	1.	3	-	-
Wis.	173	+	+	0	25.	58	-	-	58	25.	58	-	-
Minn.		2.	+	0	1.	+	2.	+	+	5.	+	-	-
Iowa	66	-	-	-	-	-	-	-	-	-	-	-	-
Mo.	720	-	-	-	-	-	-	-	-	-	-	-	-
N. D.		t	-	0	-	+	1.	+	+	1.	+	-	-
Kans.	16	-	-	0	-	-	-	-	-	-	-	-	-
Del.	352	-	-	-	-	-	-	-	-	-	-	-	-
Md.	652	1.	8	-	15.	118	-	-	134	17.	134	-	-
Va.	732	5.	44	-	10.	88	-	-	150	17.	150	-	-
N. C.	476	+	6	2.	10.	57	3.	17	91	16.	91	8.	38
S. C.	39	-	-	-	-	-	-	-	-	-	-	-	-
Ga.	27	-	-	-	-	-	-	-	-	-	-	-	-
Fla.	675	0	+	1.	1.5	12	12.5	99	119	15.	119	-	-

1934 - STRAWBERRY (Continued)

		Estimated reduction in yield due to diseases														
:Production:		: Leaf Spot :		: Leaf Scorch :		: Dwarf :		: Black Root :		: Other :		: All :				
State	1,000	%	Crates	1,000	%	Crates	1,000	%	Crates	1,000	%	Crates	1,000	%	Crates	Fruit Rots
*Crates																Crates
Ky.	533	-	-	-	-	-	-	-	-	-	-	-	-	-	-	-
Tenn.	1,048	-	-	-	-	-	-	-	-	-	-	-	-	-	-	-
Ala.	220	-	-	-	-	-	-	-	-	-	-	-	-	-	-	-
Miss.	77	-	-	-	-	-	-	-	-	-	-	-	-	-	-	-
Ark.	1,518	-	-	-	-	-	-	-	-	-	-	-	-	-	-	-
La.	1,242	10.	148	5.	74	0.5	7	0.5	7	-	-	-	16.	236	15.	186
Okla.	76	-	-	-	-	-	-	-	-	-	-	-	-	-	-	-
Texas	184	1.	2	0.5	1	0	6	3.	6	5.	10	9.5	19	19	-	-
Mont.	t	t	+	0	0	0	+	5.	+	6.	+	11.	+	+	-	-
Colo.	-	-	-	-	-	0	0	t	+	-	-	t	+	+	-	-
Utah	43	-	-	-	-	-	-	-	-	-	-	-	-	-	-	-
Wash.	638	-	-	0	0	0	55	7.5	55	5.	36	12.5	91	91	-	-
Oreg.	595	2.	15	0	0	0	38	5.	38	15.	114	22.	167	167	-	-
Calif.	989	-	-	-	-	-	-	-	-	-	-	-	-	-	-	-
U. S.	13,264	3.0	223	1.4	107	0.3	26	6.4	482	3.7	279	14.8	1,117	1,117	-	224

*24-quart crates, 36 pounds.

