




ZUG MEMORIAL LIBRARY  
ELIZABETHTOWN COLLEGE  
ELIZABETHTOWN, PENNA.

**REFERENCE  
MATERIAL**

**FOR**

**LIBRARY  
USE ONLY**



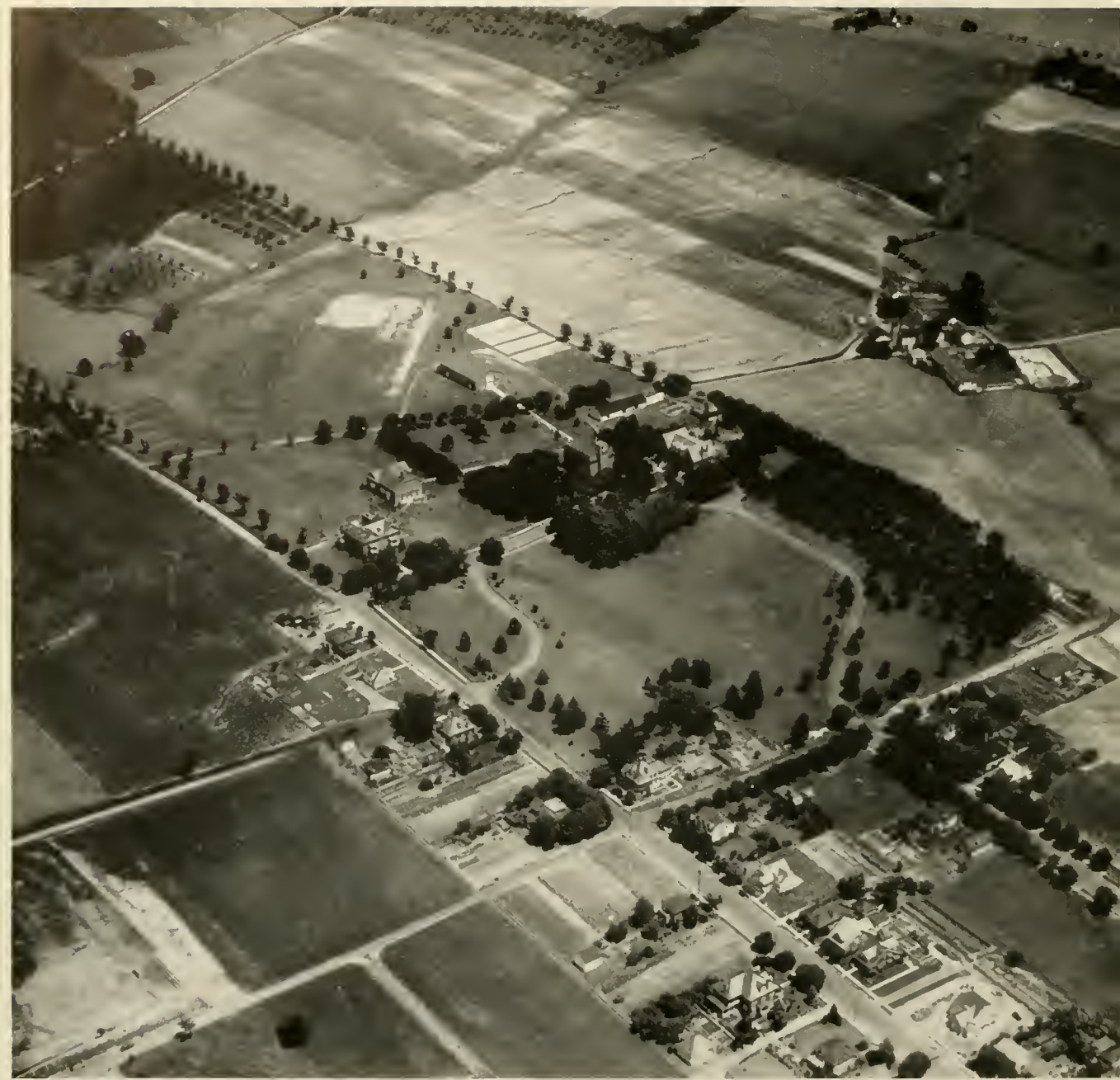
Digitized by the Internet Archive  
in 2011 with funding from  
LYRASIS members and Sloan Foundation

<http://www.archive.org/details/etonian19401941eliz>



# F O R E W O R D

**T**O RECALL friendships made, to recount happenings experienced, the Classes of 1940 and 1941 present this, our fourteenth publication of the ETONIAN, that we may realistically portray life here at college, and furnish a more permanent record of pleasant times at E-town.



KENNETH LEISTER, *Editor*

CURTIS GERHART, *Business Manager*

*The 1940-41*

# ETONIAN

*Published by*

THE JUNIOR AND SENIOR  
CLASSES OF

ELIZABETHTOWN COLLEGE

Elizabethtown, Pennsylvania

ZUG MEMORIAL LIBRARY  
ELIZABETHTOWN COLLEGE  
ELIZABETHTOWN, PENNA.

*Volume Fourteen*

## Dedication

**D**R. H. K. OBER for forty-two years served as a teacher and as an administrator in education ranging from the grades to higher education. For thirty-seven years he was associated with Elizabethtown College, in turn serving as teacher, treasurer and business manager, president, member and chairman of the Board of Trustees.

His zeal and enthusiasm, his active participation in affairs of community, church and school, as well as his unselfish service to his fellow man have left an indelible imprint in the history of the church and in the development of the college.

In respectful memory we dedicate this issue of ETONIAN to Dr. Ober.





DR. H. K. OBER

**Administration**

**Faculty**





# THE COLLEGE



RALPH WIEST SCHLOSSER, Litt D.  
*President*

## The President

RALPH WIEST SCHLOSSER, Litt.D.  
*President and Professor of English and Philosophy*

Pd.B., Elizabethtown College, 1907  
A.B., Ursinus College, 1911  
A.M., Ursinus College, 1912  
Litt.D., Ursinus College, 1932  
A.M., Columbia University, 1922  
Completed Ph.D. Requirements at Columbia University, 1929-1930  
Graduate Student, University of Pennsylvania, 1934-1935  
Instructor, preparatory studies, Elizabethtown College, 1908-1911  
Professor of English, Spanish and French, 1911-1918  
Professor of English, 1922  
Dean and Professor of English, 1922-1927

# President's Message

## "Making Life Count"

**F**OUR years in college constitute the most significant years of a young person's life. During this period of time one should receive a balanced training in the art of living. It should result in building a vigorous body, a wholesome social outlook, and a sound spiritual insight.

To make life count one must know the basic facts of the world in which he lives. Without such knowledge judgments will be formed that have no relation to practical living. To make a contribution to the solution of the problems of any age one must be acquainted with many fields of human interest and have an integrated knowledge of these fields. One must be a *knower*.

The social order can be promoted, however, only as one puts knowledge into practice. Because of the varied tasks the world offers, it is evident that there is work for all to do. But to each there is a specific task for which one is best fitted. In the selection of one's work, native aptitudes should be carefully considered so that work may be done in the most efficient manner. To do work that is necessary, and to labor in a project for which one has special fitness, is to be happy. One must be a *doer*.

But life is not counting for the most to those who are not guided by high moral values. Our pleasures, our tasks, our leisure, our studies—everything must be evaluated by the best standards to bring about a better world order. Life becomes rich only in proportion as one has learned to appreciate the best that art, literature, music, and science has to offer. One must be an *appreciator*.

To *know*, to *do*, to *appreciate* represents the symmetrical life. College affords the supreme opportunity to youth to develop this type of life. It is hoped that every student of Elizabethtown College may go forth determined to make life count.

"To be or not to be  
That's the question."

R. W. SCHLOSSER

# BOARD OF TRUSTEES

## OFFICERS

R. P. BUCHER, *President*

J. E. TRIMMER, *Vice-President*

A. C. BAUGHER, *Secretary*

J. Z. HERR, *Treasurer*

## TRUSTEES

R. P. BUCHER, Quarryville, Pa.

J. E. TRIMMER, Carlisle, Pa.

A. C. BAUGHER, Elizabethtown, Pa.

F. S. CARPER, Palmyra, Pa.

JOSEPH W. KETTERING, Elizabethtown, Pa.

G. HOWARD DANNER, Abbottstown, Pa.

JOSEPH N. CASSEL, Fairview Village, Pa.

C. E. GRAPES, Chambersburg, Pa.

R. P. ROYER, Denver, Pa.

MICHAEL KURTZ, Richland, Pa.

RUFUS K. EBY, Palmyra, Pa.

A. P. WENGER, Ephrata, Pa.

WALTER A. KEENEY, Gettysburg, Pa.

# FACULTY



A. C. BAUGHER

*Dean and Professor of Chemistry*

Ph.B., Elizabethtown College, 1907  
A.B., Elizabethtown College, 1922  
B.S., Franklin and Marshall College, 1928  
M.S., University of Pennsylvania, 1928  
Graduate Student, Columbia University  
Graduate Student, University of Pennsylvania,  
1934-1935  
Ph.D., New York University, 1937  
Professor of Chemistry and Physics, 1922-  
1928



FORREST G. WELLER, A.M.

*Professor of Sociology*

A.B., Manchester College, 1925  
A.M., University of Chicago, 1927  
Graduate Student, University of Chicago, 1926-1927, 1930,  
1932-1934, 1937-  
Member, American Society of Sociology  
Member, American Academy of Political and Social Science



GUY R. SAYLOR, A.M.

*Professor of Romance Languages*

Graduate, Millersville State Normal School, 1922  
A.B., Elizabethtown College, 1926  
A.M., University of Pennsylvania, 1932  
Graduate Student, University of Pennsylvania, 1934-1937  
Principal, Lititz High School, 1927-1929  
University of the Sorbonne, Paris, 1939



REBEKAH S. SHEAFFER, A.M.

*Dean of Women and Professor of English*

A.B., Ursinus College, 1919  
A.M., Columbia University, 1929  
Graduate Student, University of Pennsylvania, 1934-1937  
Principal of Woodstown, N. J., High School, 1921-1928  
Cambridge University, England, 1939

T. K. MUSICK, D.C.S.

*Professor of Commercial Education and Accounting*

M.Accts., Piedmont College, 1913  
D.C.S., Lincoln College, 1922  
Graduate Student, University of Pennsylvania, 1934-1935  
Instructor of Commercial Education, University of Virginia,  
1924-1927





MARTHA MABTIN, A.B.

*Associate Professor of Bible*

A.B., Elizabethtown College, 1924

Graduate Student, University of Pennsylvania, 1934

Director Vacation Bible Schools, 1921-1928



RAYMOND P. G. BOWMAN, Ph.D.

*Professor of Secondary Education*

B.S., Bridgewater College, 1923

M.S., University of Virginia, 1930

Ph.D., University of Virginia, 1938

Member, National Educational Association

Member, Phi Delta Cappa and Pi Gamma Mu

Principal, Linville-Edom High School, Virginia, 1924-1935

Instructor University of Virginia, 1935-1936



LUELLE MAY BOWMAN, A.M.

*Professor of Typewriting and Shorthand*

A.B., University of Denver, 1918

A.M., Columbia University, 1928

Graduate Student, University of Pennsylvania, 1934

Instructor, State Normal School, Slippery Rock, 1920-1925



GEORGE S. SHORTESS

*Dean of Men and Professor of Biology*

A.B. in Science, Johns Hopkins, 1922

A.M., Columbia University, 1930

Graduate Student, University of Pennsylvania, 1934-1935

Graduate Student, Johns Hopkins University, 1936-1939

Author, "Laboratory Directions in General Biology"

## FACULTY



# FACULTY

LAVINIA ROOP WENGER, A.M.

*Professor of History and Elementary Education*

A.B., Western Maryland College, 1911  
A.M., University of Pennsylvania, 1929  
Graduate Student, University of Pennsylvania, 1931  
Professor, Delaware Public Schools, 1925-1929



DONALD M. HILL, Ph.D.

*Professor of Mathematics and Physics*

B.S., Juniata College, 1929  
Ph.D., Rutgers University, 1935  
Member, American Physical Society and Sigma Xi



LUELLA FOGELSANGER BREITIGAN, A.M.

*Professor of Commercial Education*

A.B., Juniata, 1926  
A.M., Columbia University, 1933  
Graduate Student, Columbia University, 1934-1935



LEWIS DAY ROSE, A.M.

*Librarian and Professor of German*

A.B., Ursinus College, 1911  
A.M., University of Pennsylvania, 1932  
Graduate Student, University of Pennsylvania, 1931  
Member, American Library Association  
Member, Modern Language Association



# FACULTY



EPHRAIM GIBBEL MEYER, A.M.

*Professor of Voice and Director of Music*

A.B., Elizabethtown College, 1924

Student, American Conservatory of Music, 1921

A.M., Columbia University, 1930



GERTRUDE ROYER MEYER

*Instructor in Piano*

Graduate in Music, Western Maryland College, 1913

Student, Peabody Music Conservatory, 1913-1917

Graduate Student, Columbia University, 1925-1927



I. R. HERR, A.B.

*Coach of Athletics*

A.B., Franklin and Marshall College, 1916

Graduate Student, University of Pennsylvania, 1931

Supervisor Physical Education, North Braddock, 1919-1921



MARY B. REBER, B.E.

*Instructor in Art*

B.E., Elizabethtown College, 1905

Art Student, Albright College

Instructor in School Art Supervision

J. Z. HERR, B.E.  
*Treasurer and Business Manager*



EFFIE L. SHANK  
*Secretary to the Dean*



LEONA REINHOLD WEAV  
*Bookkeeper*



DOROTHY METZLER  
*Secretary to President and Treasurer*



## FACULTY

*President* . . . . . ERNEST G. KING  
*Vice-President* . . . . . OSCAR S. WISE  
*Secretary* . . . . . LENA M. BRIGHTBILL  
*Treasurer* . . . . . MERLE K. HECKLER





# SENIORS

# SENIORS



ROBERT S. ADAMS

Reamstown, Pa.

*A.B. in Liberal Arts*

Candles 3, 4, Sec.-Treas. 3; Y. M. C. A. 3, 4, Sec. 3; Choir 1, 2, 3, 4; Zeta Sigma Pi 1, 2, Pres. 3; Student Volunteers 1, 2, 3, 4; Ministerium 1, 2, 3, 4.

"Bob" is a short chap with large possibilities. In an argument he has the fight of a northern bobcat. His extracurricular activities, especially his vocal contributions, have made him prominent on the campus. The ministerial profession can well be proud to claim him.



NORMAN J. BAUGHER

Hershey, Pa.

*A.B. in Liberal Arts*

Y. M. C. A. 1, 4, Treas. 2, Pres. 3; Student Volunteers 1, 2, 3, 4; Ministerium 2, V.-Pres. 3, Pres. 4; Basketball 1, 2, Capt. 3; Tennis 1, Capt. 2, 3; Class Pres. 2; Candles 2, 3, 4; Student Senate 1, 2, Treas. 3, Pres. 4.

Preacher, scholar, and athlete, this is a combination rare, but being all of these, "Chick" made his contribution to E-town on the platform, behind the desk, and on the court. He was a student leader and what he did he did with a purpose. Such qualities point toward the making of a successful churchman.



LENA MAE BRIGHTBILL

Myerstown, Pa.

*B.S. in Commercial Education*

Y. W. C. A. 1, 2, 3, Y Cabinet 4; Basketball, Varsity 4, 2, 3, Capt. 4; Athletic Association 1, 3, Sec. 2, 4; Athletic Council, Sec. 2, 3; Commerciantes 1, 3, 1, Sec. 2; Student Council 4, Sec. 3; Girls' Basketball, Mgr. 4, 2; Class Sec. 4.

The captain of our varsity basketball team, a skillful pianist, and an artistic seamstress, Lena is well known on the campus. We shall not forget our graceful Eppie in "Silas Marner." As you go out into the Commercial teaching field, we wish you much success and happiness.



PEARL M. BROCK

Philadelphia, Pa.

*B.S. in Commercial Education*

Commerciantes 1, Sec. 2, 3; Sock and Buskin 2, 3; Y. W. C. A. 2, 3; *Etownian* Staff, Reporter 3.

This ambitious, dark-haired lass hails from Philadelphia. Pearl is neat in her work as well as in her appearance. She is training for the Commercial field, and has had several months of experience this year in accounting work at Harrisburg. With your keen determination, we predict success, Pearl!

# SENIORS

KATHRYN BRUBAKER

Sheridan, Pa.

*B.S. in Elementary Education*

Choir 1, 2, 4; Y. W. C. A. 1, 2, 4; Sock and Buskin 4; Student Volunteers 1, 2, 4.

Glad are we that this merry Schaefferstown lassie has come back to us this year. Kitty's laughter and her fun-loving spirit have won for her a place in our hearts. May the cheerfulness that has endeared her to us contribute to her success in life.



LUKE EBERSOLE

Hershey, Pa.

*A.B. in Liberal Arts*

Y. M. C. A. 1, 4, Sec. 2, V.-Pres. 3; Chorus 1, 2, Pres. 3; Student Volunteers 1, 3, Treas. 2, Pres. 4; Candles 2, 3, Pres. 4; Sock and Buskin 2, 3, 4; Ministerium 1, 2, 4, Sec. 3.

Much of the success of E-town's top-notch Volunteer Conference was due to this lad from Hershey. His booming bass voice is equally effective in solos and sermons. His ready wit, his optimism, and his sincerity will make him a success in the ministry.



CURTIS A. GERHART

Wernersville, Pa.

*B.S. in Commercial Education*

Y. M. C. A. 1, 2, 3; Commercialistas 1, 2, 3, 4; *Elonian*, Bus. Mgr. 3, 4; Soccer 2, Co-Capt. 3, 4; Basketball 1, 2, 3, 4.

"Curt," also known as "Droopy Drawers," belongs to that group known as the "salt of the earth"—in other words, a good Dutchman and a staunch Democrat. He has been very active on the hill, and has become well known and well liked by all. Our best wishes go with you, "Curt."



GEORGE L. HARTING

Stevens, Pa.

*A.B. in Liberal Arts*

Junior Varsity Basketball 1; Ministerium 1, 2, 3, 4; Y. M. C. A. 3; Choir 2.

George is one of the six ministers that our class is proud to possess. If he is not well known to the students at large, it is because he has been a pastor for the past two years. We wish him Godspeed in all his work.



MERLE K. HECKLER

Windber, Pa.

*B.S. in Economics*

Student Council 2, 3, Pres. 4; Athletic Assoc., Pres. 4; Y. M. C. A. 1, 2, 4, Treas. 3; Commercial 1, 2, 3, Treas. 4; Class Treas. 3, 4; Basketball 1, 2.

When the males of the campus come out in their bright feathers, they always look to see what "Joe" is wearing. His ability to select attractive clothes makes him the idol of good dressers. He thrives on football, fiction, movies, and finance.



GALEN V. JONES

Aurora-on-Cayuga, N. Y.

*B.S. in Commercial Education*

Commercial 1, 2, 3, 4; Y. M. C. A. 1, 2, Treas. 4; Sock and Buskin 3, Pres. 4; Student Council 4; Baseball 1, 2; Basketball 1, 2, 3, 4; Soccer 3, 4; Freshman Class, Treas. 1; Junior Class, V.-Pres., 3.

Galen's love for work is something to envy. His strong determination and his wisdom have gained for him the applause of us all. Galen's lovable personality and his unlabored, natural charm place him high in our esteem. Whether it be on the athletic field or at work, Galen gives his best.



JAMES S. KIEFER

Elizabethtown, Pa.

*A.B. in Liberal Arts*

Choir 1, 2, 3, 4.

Being a day student, "Jim" was rather long in identifying himself at E-town outside of classes, but having learned to know him, his ideals, his purposes, and his sincerity in carrying them out, we have no doubt that his life will not be lived in vain.



ERNEST G. KING

Richland, Pa.

*B.S. in Economics*

Class Pres. 3, 4; Commercial 1, 2, 3, 4; Y. M. C. A. 1, 2; Sock and Buskin 3, 4; Chorus 2, 3; Soccer 3, 4; Athletic Mgr. 1, 2, 3, 4; Athletic Council 3.

This well-mannered young man is aptly named. His magnetic personality and his prowess as class president destine him to become a leader in both social and financial circles.



**SENIORS**





ARTHUR V. KULP

Mt. Joy, Pa.

*B.S. in Economics*

Commerciantes 1, Treas. 2, V.-Pres. 3, Pres. 4; Soccer 2, 3, 4; *Etonian*, Adv. Mgr. 2, Assist. Bus. Mgr. 3, Bus. Mgr. 4; Candles 3, 4; Class Treas. 2; Y. M. C. A. 1, 3.

Aiming high—that's Art, "the" accountant of the Class of '10. His outstanding executive ability will put him on top in life as it has in college. To a conscientious worker who goes wholeheartedly about his tasks, we wish the utmost in future happiness and success.



W. KENNETH LEISTER

McAlisterville, Pa.

*B.S. in Commercial Education*

*Etonian*, Editor 3, 4; Commerciantes 1, 2, 4, Treas. 3; Y. M. C. A. 1, 2, 3, 4; Candles 3, 4; *Etonian*, Circulation Mgr. 2; Soccer 2, 3, 4.

When we want something done, well done, and on time, we go to Ken. Who can forget him for his fine work as editor of the *Etonian*. His quiet, unassuming attitude and pleasing personality make him a real friend to those who know him. Luck, Ken, in your profession of teaching!



HERBERT C. LEFEVER

York, Pa.

*B.S. in Secondary Education*

Student Council 1, Sec. 3; Baseball 1, 2, 3, 4.

Well liked by his associates who are attracted by his regular eruptions of dry, cynical humor at opportune moments, Lefever is a typical "Science Man," never divulging more than necessary, and that under pressure; this is accompanied by unexcitable reserve. Herb is a true lover of baseball and prefers the "hot corner."



LESTER E. MANBECK

Bethel, Pa.

*B.S. in Secondary Education*

Y. M. C. A. 1, 2, 3, V.-Pres. 4; Sigma Zeta 2, Sec. 3, Master Scientist 4; International Relations Club 1, 2, 3, V.-Chmn. 4; Baseball 1, 2, 3, 4; Basketball 1, 2, 3, 4; Soccer 2, 3, Co-Capt. 4.

This amiable Berks Countian, with the New York accent, is the chemist of the 1940 class. His broad smile, whether in the class room, in the laboratory, or on the athletic field, is indicative of a sunny personality which should go far toward making him a success in his prospective vocation as a science teacher.

# SENIORS

# SENIORS



GRACE E. MILLER

Lititz, Pa.

*B.S. in Elementary Education*

Choir 1, 2, 4; Y. W. C. A. 1, 2, 4; Student Volunteers 1, 2, 4.

Her merry laugh and friendly smile, her sympathetic and sincere Christian character, have won for Grace a place in the hearts of the students. Grace has proved herself a dependable worker in classes and in extra-curriculars. Her friendliness will bring her success in every activity of life.



BEATRICE M. MYERS

Hanover, Pa.

*A.B. in Liberal Arts*

*Etowian* Staff 1, 2, 3, News Editor 4; Student Volunteers 1, 2, Corr. Sec. 3, V.-Pres. 4; Y. W. C. A. 1, 2, Sec. 3, Cabinet 4; Sock and Buskin 3, V.-Pres. 4; Student Council 3, Pres. 4.

Mental ability, hard work, and a kind heart have made "Beatie" a leader on the hill. Some will remember her as a good student; others, as an efficient leader; but her friends will remember her as a jovial and happy comrade, and a lover of France.



DALE WINTON SMITH

Windsor, Pa.

*B.S. in Commercial Education*

One year at Catawba College. Commereiantes 3, 4; Y. M. C. A. 2, 3 4; Varsity Baseball 2, 3, 4; International Relations Club 3.

From Catawba College comes this soft-spoken young man to our campus. Not only his financial connections and athletic ability, but also his efforts toward bettering cultural conditions have marked him as an outstanding member of our class. A cosmopolite, he will not become lost among the masses!



HELEN SUMMY

Manheim, Pa.

*Secretarial*

Graduate of Lebanon Valley College. Sock and Buskin 4; Student Volunteers 4.

Although Helen has been with us but one year, her musical prowess, dramatic faculties, and charm have captured our hearts. Her natural propensity for social mingling and her happy laugh insure her a hearty welcome everywhere. May you sing your way to the success and happiness which we hope will be yours always, Helen.

# SENIORS

C. DONALD WASER

Manheim, Pa.

*B.S. in Science*

One year Franklin and Marshall College. Varsity Basketball 2; Varsity Baseball 2; Ministerium 3, 4.

"Don," or "Red" as he is known, came to us from Franklin and Marshall. His wit and ear will not soon be forgotten. Some day Don will be making his contribution to society as a doctor. He is also interested in the ministry.



L. JOHN WEAVER

Lancaster, Pa.

*B.S. in Elementary Education*

Student Volunteers 1, 2, Treas. 4; Sock and Buskin 1, 2, 4; Tennis Team 2; Y. M. C. A. 1, 2, 4; Ministerium 4; Candles 4.

Here is enthusiasm, energy, and school spirit personified. John has convinced E-towners that he is possessed with potential leadership qualities. His versatility is manifested by the fact that he is represented in various activities and clubs on the campus. Success is thine, if thou spendest thine energy economically.



GRACE WENGER

Bareville, Pa.

*B.S. in Elementary Education*

Y. W. C. A. 1, 2, V.-Pres. 3, Pres. 4; Student Volunteers 2, 4, V.-Pres. 3; Student Senate, Sec. 3, V.-Pres. 4; Student Council 1; *Etownian* 2; *Etonian* 2, 4; Debating 1.

Here we have the class jewel. Gracie is a girl endowed with all the admirable qualities of gems, for she is sweet, kind, and generous; one of those staunch, loyal, hard-to-find sort of friends, and an excellent neighbor. She is our class valedictorian, having well deserved the honor. May the future bring forth all your highest hopes and aspirations.



PAUL B. WILSON

Hummelstown, Pa.

*B.S. in Secondary Education*

*Etownian*, Reporter 4; Baseball 1, 2, 4; Student Volunteers 2, 3, 4.

Our "Villson," also called the "Woodchuck," made himself much evident by his method of eating "Farmer's Specials," interest in math, EA's, and the fair as well as the unfair ladies. He will long be remembered as the only E-town player to hit minus .482 due to his two hits for Pharmacy in '38; also by participating quite violently in intramurals.



# SENIORS



OSCAR S. WISE

Philadelphia, Pa.

*B.S. in Secondary Education*

One year at Temple University. *Etownian*, Reporter 1; International Relations Club 3, Cabinet Member 4; Y. M. C. A. 3, 4; Class V.-Pres. 1.

The Great Ossie with his innumerable problems has proved a fount of never-failing entertainment and fatherly advice for the many who have sat at his feet, especially for other members of the EA's. Borrower of money, teller of tales, student of history, expounder at length, cutter of classes—our worthy sage will be carried far by the sheer force of his personality.

## Class History

**F**OUR years have passed since sixty-nine timid Freshmen thrilled to the first glad weeks of college life. Four years ago they drowned in hard work the first traces of nostalgia. Since then, under the leadership of Madiera, Baugher, and King, the class has made for itself a place on the campus. Athletic heroes, dramatic stars, fluent preachers, able musicians, and reliable workers in every organization—these are the contributions the Class of 1940 has made to college life. The tug-of-war, the Freshman party (we captured the invading Sophs), hikes, programs, and banquets helped the first year to pass rapidly. Another year brought heavier schedules and increased responsibilities. At the end of that year many of our elementary students secured teaching positions. Before we parted we celebrated our achievements at a house party at Mount Gretna.

The next year, with diminished numbers, we renewed our work. A year of frantic activity in classes and extra-curriculars, and then—we were Seniors! Our last year brought us some new classmates, experienced teachers who had decided to finish their college course. This year, with its classes, parties, and dormitory fun, was made especially interesting by the production of the class play, "Silas Marner." At last came May, apple-blossoms, and graduation.

"Not of the sunlight,  
Not of the moonlight,  
Not of the starlight!  
O, young Mariner,  
Down to the haven,  
Call your companions,  
Launch your vessel,  
And crowd your canvas,  
And, ere it vanishes  
Over the margin,  
After it, follow it,  
Follow the Gleam."

—TENNYSON



## SENIOR CLASS PLAY

### “Silas Marner”

**G**EORGE ELIOT'S lone weaver of Raveloe came to life this year when the Senior Class presented John Ravold's adaptation of "Silas Marner." The play was given on February 16, under the direction of Miss Rebekah Sheaffer.

As "Silas Marner," Ernest King was transformed, by an unjust accusation, from a straightforward, friendly youth to a selfish miser. Finding "Eppie" at his hearth, after he had lost his gold, restored his faith in mankind and in God. The rôle of the golden-haired "Eppie," at three stages in her life, was played by Judy Cassel, Patsy Hill, and Lena Brightbill. Carl Raffensberger played the part of little "Aaron Winthrop," "Eppie's" playmate. Kenneth Leister played the part of "Aaron" as a young man. Gay scenes in the mansion of "Squire Cass" introduced the pleasure-loving Casses and the well-bred Lammeters. Pictures of nineteenth-century village life added to the humor of the play.

On March 15 the Seniors repeated the production for the benefit of the recreation project which is being sponsored by the clubs of the town.

*President* . . . . . ROSS H. COULSON  
*Secretary* . . . . . ANNA CARPER  
*Treasurer* . . . . . EARL S. SMITH





# JUNIORS

# JUNIORS



JEANETTE BARNES

Elizabethtown, Pa.

*B.S. in Elementary Education*

A Cappella Choir 1, 2, 3; Y. W. C. A. 1, 2, 3; Student Volunteers 2, 3.

Jeanette is the song-bird of our class. Although she is a day-student, she is always found in the dorm in the midst of all the fun and pranks. But Jeanette also has a more serious nature which we are certain she will display to perfection as an elementary teacher.



ROY BORGER

West Catasauqua, Pa.

*B.S. in Commercial Education*

Two years at Muhlenberg College. Comerciantes 3.

Roy, a Transcendentalist (?), completed his first two years at Muhlenberg College. It's difficult to find a more care-free fellow at E-town, and the business world will undoubtedly welcome some of his unique ideas in the form of labor-saving devices and his cosmopolitan personality.



RUTH CAMERON

Millerstown, Pa.

*B.S. in Elementary Education*

Y. W. C. A. 1, 2, 3; Student Volunteers 1, 2, 3; Basketball 1, 2, 3; Sock and Buskin 2, Sec.-Treas. 3; Student Senate, Sec. 3; Cheerleader 2; *Etonian*, 3.

Ruth, a studious girl, greets everyone with her ready smile. She likes to have a good time and, therefore, when we have parties we can always depend on her to be there and help us. We are sure that Ruth will win the admiration of all of her future pupils.



ANNA CARPER

Pahmyra, Pa.

*A.B. in Liberal Arts*

Y. W. C. A. 1, Cabinet 2, V.-Pres. 3; Student Volunteers 1, 2, 3; Sock and Buskin 2, 3; Choir 1, 3, Sec. 2; *Etownian* 1, 2, 3.

Anna is well known as being jolly and friendly to all. Her pleasing personality and willingness to work has won her many friends. She has proved to be efficient in her school-work. We wish her success and happiness through life.



# JUNIORS

ROSS HAROLD COULSON

Hanover, Pa.

*B.S. in Elementary Education*

Basketball 1, 2, Co-Capt. 3; Tennis 1; Y. M. C. A., Sec. 3; Senate 2, Treas. 3; Junior Class, Pres. 3; Candles 3.

Athletic and amative, this warbling son of Hanover represents a composite of geniality, affableness, and traits therewith pertaining. Enemy to none, friend to all, Ross rests on a pedestal accessible to few. Administrative offices have gravitated to him with rhythmic regularity, and rightfully so, for in conscientious application to a task Ross is unsurpassed.



CURTIS DAY

New Freedom, Pa.

*B.S. in Science*

Baseball 1, 2, Co-Capt. 3; Soccer 1, 2, 3; Y. M. C. A. 1, 2; Student Council 3; Junior Varsity Basketball 3.

"Dreamy" is the boy who can coin words and expressions for every occasion, but he would not be himself if he didn't finish all his gestures with a series of flourishes. He plays baseball with great enjoyment. "Dreamy" is often dejected, but never permanently, which should add to his prospective happiness.



DORA VICTORIA ENGLE

Cochranville, Pa.

*B.S. in Elementary Education*

Two years at Eastern Mennonite School. Y. W. C. A. 3; Student Volunteers 3.

Dora is the reserved girl who joined our class this year after having attended E. M. S. Although she may seem quiet, those who know her will say that she always has her bag of tricks ready. Nature study and elementary work seem to be her chief interests.



JEANETTE ESPENSHADE

Palmyra, Pa.

*B.S. in Commercial Education*

Student Volunteers 1, 2, 3; International Relations Club 2; Choir 2, 3; Y. W. C. A. 1, 2, 3; Commercial 2, 3.

Since Jeanette has been with us for three years, we found her to be a friendly conversationalist. We certainly will remember her jolly laugh and her gray Chevrolet. Jeanette is taking the Commercial Course, and two years from now we can see her teaching in this field. We wish you the best of success, Jeanette!



WILMER FRIDINGER

Lineboro, Md.

*B.S. in Commercial Education*

Soccer 1, 2, 3; Basketball 1, 2, 3.

"Wilbur" has deservedly earned for himself the title of the college strong man. When this blond wave of destruction swings into action in the gym or on the athletic field, the opposition gains a new respect for E-town's prowess. Always a good fellow and interesting companion, "Fridy" is broadening his exploits to include the social room.



LEAH GODFREY

Red Lion, Pa.

*B.S. in Elementary Education*

Student Council 3; Y. W. C. A. 1, 2, 3; Student Volunteers 1, Rec. Sec. 2, Corr. Sec. 3, Dept. Mgr. 3; Choir 1, 2, Sec. 3; Girls' Varsity Basketball 1, 2, 3.

Always willing, always working, accurately describes Leah's personality. She is an all-round girl who enjoys sports, activities, and music. The class extends their best wishes to her in pursuing her career as an elementary school teacher, in which we are sure success will be hers.



ANNA GRAYBILL

Hershey, Pa.

*B.S. in Elementary Education*

Y. W. C. A. 1, 2, 3; A Cappella Choir 2.

Anna travels from Hershey every day to continue her training for an elementary teacher. At times she is very quiet and studious, but she is always ready to take part in fun, which she often starts herself. To Anna—Success—from us.



BETTY GROUPE

Middletown, Pa.

*A.B. in Liberal Arts*

Y. W. C. A. 1, 2, 3; *Etownian*, Reporter 1, 2, 3; *Etonian*, Junior Editor 3.

A paramount cog in the Junior set-up is this erudite, unassuming and gracious Miss from Middletown. Despite her daily 18-mile treks, Betty has managed to project her geniality, her likableness, and her tacit effectiveness into the life-blood of the campus.



**JUNIORS**



RUTH L. HOLLINGER

Lititz, Pa.

*B.S. in Elementary Education*

Y. W. C. A. 1, 2, 3; Student Volunteers 2, 3.

Her gay laughter can be heard ringing through the halls at all times. She is an industrious student but she is ever present where there is fun and gayety. As a teacher in the primary grades, we know she will be tops. Here's wishing you the best of everything, Ruth!



MARGUERITE E. HOOVER

Lineboro, Md.

*B.S. in Elementary Education*

Y. W. C. A. 1, 2, Cabinet 3; Student Volunteers 1, 2, 3; Student Council, Sec. 3; Basketball 1; Cheerleader 1, 2; A Cappella Choir 3; Sock and Buskin 1, 2, 3; *Elownian*, Reporter 1, 2, 3.

Peggy—the dark-haired, brown-eyed lass who can be very active in outside affairs with no loss to her scholastic standing. With her charm and ability she cannot fail to succeed in whatever life holds for her.



PERRY W. HULL

Waynesboro, Pa.

*B.S. in Commercial Education*

Commerciantes 2, 3; Athletic Mgr. 1, 2, 3; Y. M. C. A. 1, 2.

Perry is a very efficient hall proctor. His good classwork has proved to be the result of stick-to-it-iveness, which is but one trait of his interesting personality. Perry is eager to win and we feel sure he will.



JEANNE KAUFFMAN

York, Pa.

*B.S. in Commercial Education*

Commerciantes 2, 3; Sock and Buskin 2, 3; Y. W. C. A. 1, 2, 3; Student Volunteers 3.

Meet one of the neatest girls of our class—Jeanne. She always makes a nice appearance which will be a decided asset when she becomes a Commercial teacher. Jeanne will surely accomplish much if she can instill in her pupils the traits we have found and admired in her.

# JUNIORS

# JUNIORS



HAROLD E. KETTERING

Mechanicsburg, Pa.

*A.B. in Liberal Arts*

Two years at Messiah Bible College. Student Volunteers 3; Y. M. C. A. 3; Chorus 3; Ministerium 3.

Unobtrusive, even to the meekest of the meek, and seldom ruffled, even by the heights of physical and mental torment, this soft-spoken, unassuming transfer has bettered the spiritual life of the campus because of his presence.



ERNEST LEFEVER

York, Pa.

*B.S. in Secondary Education*

Y. M. C. A. 1, 2, Pres. 3; *Elounian* 1, Feature Editor 2, Assoc. Editor 3; International Relations Club 1, 3, Pres. 2; Sophomore Class, Pres.; Candles 2, 3; Student Volunteers 1, 2, 3; Ministerium 2, 3.

Prophet, ascetic, humorist, furious and assiduous workman, technical artist, master of some, servant of all—Ernie has come down out of the York County hills to be the sleepless conscience of our class. Work camps, slums, share-croppers, co-ops and Pendle Hill—little has escaped his keen observations. Success? President of E-town College at 50, Moderator of Annual Meeting at 51, excommunicated at 52, millionaire at 53.



CHARLOTTE MARY MARKEY

York, Pa.

*B.S. in Commercial Education*

Y. W. C. A. 1, 2, 3; Sock and Buskin 3; A Cappella Choir 1; Student Volunteers 3; Commereiantes 2, 3.

Charlotte, the dark-haired, friendly girl from York, can usually be found where there is dancing, laughter, and gaiety. She is training for the commercial field. Here's wishing you success in life!



ARLENE E. MILLER

Lebanon, Pa.

*B.S. in Elementary Education*

Y. W. C. A. 2, 3; Student Volunteers 2, 3; A Cappella Choir 2.

Arlene is one of the rare people who can go about her work in a quiet, unobtrusive manner, and accomplish much. The world needs more people like this and we're sure Arlene will find a place in it for her talents.

# JUNIORS

LORRAINE H. MILLER  
Fredericksburg, Pa.  
*B.S. in Elementary Education*

Y. W. C. A. 1, 2, 3; A Cappella Choir 1; Student Volunteers 1, 2, 3.

Lorraine is one of the most willing workers of our class. She always attacks a task with an enthusiasm and thoroughness which brings her out on top. Add to this her genuine love of the elementary work, and it can be readily seen that Lorraine will succeed as an elementary teacher.



ESTHER A. MOORE  
Lebanon, Pa.  
*B.S. in Elementary Education*

Chorus 2; Y. W. C. A. 2, Treas. 3; Student Volunteers 2, Rec. Sec. 3.

She has been an excellent waitress for the entire three years. With a dynamic personality, Esther has a cheery "Hello" or a pleasant "Good-morning" for everyone. Esther is small but oh! she will go a long way with the school she has just received.



LOWELL REIDENBAUGH  
Lititz, Pa.  
*A.B. in Liberal Arts*

*Elownian* 1, Sports Editor 2, 3; *Etonian*, Sports Editor 3; Student Council 2, 3; Y. M. C. A. 1, 2, 3; Candles 3.

Authority on sports, speaker in "tongues," champion of the Red Sox, defender of Lititz, and sports editor *par excellence*, Reidy has made Room 309 the recreational center of the boys' dorm. Tutoring his roommate, buying a newspaper, or belittling Fridigan—all became secondary to his immeasurable service to the school in convincing the newspapers and the public that E-town has a place in the Sun.



AUSTIN RUTH  
Hanover, Pa.  
*B.S. in Secondary Education*

Tennis 2, 3; Athletic Mgr. 2, 3; Class V.-Pres. 3.

Being *ex officio* member of the Student Council, Austy was always on the carpet. In spite of that, he was an ever-present help to the athletic teams. His ambition in life is to dish out to the younger generation some of the culture he has absorbed from dear old "ahra mommy."



THEODORE M. SHECKART

Bainbridge, Pa.

*B.S. in Elementary Education*

*Etonian* Staff, Asst. Bus. Mgr. 3.

"Ted" is the likable comedian of the Class of '41. His untiring interpretations will long be remembered by many. When we think of Ted we always think of his good will and loyalty. He is industrious and sincere as he pursues his goal, which we know he will attain.



EARL SAMUEL SMITH

Red Lion, Pa.

*B.S. in Commercial Education*

Y. M. C. A. 1, 2, 3; *Commerciantes* 1, 2, 3; *Sock and Buskin* 2, 3; *Class Treas.* 1, 2, 3; *Etonian*, *Circ. Mgr.* 3.

Smith is one of E-town's foremost Thespians, an active member of the *Sock and Buskin* Club. However, Earl intends to become a pedagogue of commerce and we are confident that his future will exemplify success.



MILDRED E. SNODGRESS

Woodbine, Pa.

*B.S. in Commercial Education*

Y. W. C. A. 1, 2, 3; *Commerciantes* 1, 2, 3; *Sock and Buskin* 2, 3; *Student Volunteers* 2, 3.

"Mil" has a definite awareness of where she is going. Her positive likes and dislikes, frankly expressed, leave one in no doubt as to the quality of the underlying character. Here's wishing you success, Mildred, as you enter the field of commercial education.



JOHN HOWARD SPEIDEL

Philadelphia, Pa.

*B.S. in Business Administration*

Choir 1, 2, 3; *Sigma Zeta* 2, V.-Master Scientist 3; *Etounian* 2, Asst. Bus. Mgr. 3; *Etonian*, Freshman Editor 1; *Class Pres.* 1; *Junior Varsity Basketball* 1, 2, 3; Y. M. C. A. 2, *Cabinet* 3.

"Johnny" is the illustrious day student who hails from the Masonic Homes. He always has a smile and a cheery "Hi Ya!" for everyone he meets. "Johnny" is destined to go places in this world. We wish him everlasting luck.



**JUNIORS**



EMORY EWING STOUFFER

Progress, Pa.

*B.S. in Commercial Education*

Student Council 1; Basketball 1, 2, 3; Baseball 1, 2, 3; Soccer 1, 2, 3; Commeciantes 1, 2, 3; Sock and Buskin 2, 3; Y. M. C. A. 1, 3.

As a target of numerous, impertinent and unmerited reflections on his influential athletic connections this monicker-laden product of Harrisburg has successfullly buffeted all and crashed the bon ton of baseball, basketball and soccer. Always obliging and seldom despondent Stouffer embraces those traits paramount to an enviable personality.



MARY JANE STRITE

Middletown, Pa.

*B.S. in Commercial Education*

Y. W. C. A. 1; Commeciantes 1, 2; Basketball 1, 2, 3.

Basketball and Jane just can't be separated. For three seasons our modest forward illuminated the phantom trail. With her industry and sincerity, supplemented by her jolly smile, Jane has won her place on the campus. These same traits in no small degree spell a life of success and happiness.



CHARLES C. WALKER

Gap, Pa.

*A.B. in Liberal Arts*

Y. M. C. A. 1, Cabinet 3; International Relations Club 1, 2, Pres. 3; Candles 2, 3; *Etownian*, Circ. Mgr. 2, Adv. Mgr. 3; *Etonian*, Assoc. Editor 3; Choir 1, 2; Soccer 1, 2; Baseball 1, 2; Basketball 3, Mgr. 1, 2.

Monger of legerdemain, ecmnesia and deerepit jocosity, this zoilean "harlequin from 'Hiatus'" has verbigeratedly avalanched a plethora of encomium on his costard with his encephalic disturbances. Intumescent with intellect this pasquinading panacea has branded himself a droll *par excellence*, an iconoclast of the first magnitude and an all-round machinator non pareiled.



WILLIAM G. WILLOUGHBY

Harrisburg, Pa.

*A.B. in Liberal Arts*

Student Volunteers 1, 2, 3; Ministerium 3; *Etownian* 1, 2, Editor 3; Candles 2, 3.

"Dear Editor," with his dreams of a better E-town, has drawn and returned fire from many angles. Recreation facilities, daily newspaper in the library, freedom of the press—Bill Quixote has attacked the windmill repeatedly. This hobo from New Mexico contends that he will have more success in a democracy. Selah.

# JUNIORS

# JUNIORS



CHARLES E. WILSON Three Springs, Pa.  
*B.S. in Commercial Education*

Closely-knit, bushy-browed, and with a scrutiny on the profits, Wilson brings to the campus a cross-section of Huntingdon County drolleries. Although denied the prime requisites for athletic perfection, Wilson has been blessed with a will to win and appreciates finesse in all athletic endeavors.



BETH L. WINGER S. Rhodesia, S. Africa  
*B.S. in Elementary Education*

Two years at Messiah Bible College. Student Volunteers 3.

Grantham indeed blessed us richly when it sent Beth to us at the beginning of our junior year. She has a most charming, gracious, and likable personality and it didn't take her long to find a place among us. With her intelligence and charm she is destined to go far.

STANLEY DISNEY Elizabethtown, Pa.  
*B.S. in Commercial Education*

Basketball 1, 2, Co-Capt. 3; Baseball 1, 2, Co-Capt. 3; Soccer 1, 2, 3; Commercial 2, V.-Pres. 3; Sock and Buskin 3.

Introducing "Diz," the man of wit, joviality, and the pleasing personality, hailing from Elizabethtown. "Diz" is a shark at business matters as well as a spectacular baseball and basketball star. As a business executive, or as a star in the Big League, he is sure to win applause.

WILLIAM B. ELSASSER Cocolamus, Pa.  
*B.S. in Elementary Education*

Y. M. C. A. 1, 3.

Bill is the artist, swing pianist, and industrious worker of the Elementary Clan. Although he is always busy, he can always find time to help one of his classmates. Keep up the good work, Bill, for success is bound to result from such perseverance.



# JUNIOR CLASS HISTORY

**I**T WAS September, 1937, when the largest class that had ever entered Elizabethtown College arrived on the campus—sixty-six strong. We were heartily welcomed with a series of social events, but after the first exciting week in this new environment, we discovered that there was also a more serious side to this business of college—that of settling down to lessons and respecting Freshman regulations. We managed to survive all these and come out victorious with a Freshman Party which was settled peacefully with the Sophomores. We were ably steered through the course of this first year by President John Speidel, Secretary Betty Forney, and Treasurer Earl Smith, with Prof. Meyer as Adviser.

As Sophomores, our biggest event was the house-party at Mt. Gretna, which was chaperoned by Prof. and Mrs. E. G. Meyer. Ernest Lefever became our new President while the other officers remained the same.

And then we came into our third year in these "storied halls" with thirty-six noble survivors, and we realized that we were fast nearing the end of our journey. For some this was to be the last year of their college experiences, for they would enter into the field of elementary teaching at the end of the year. Ross Coulson and Anna Carper were elected President and Secretary respectively, and Earl Smith was chosen to juggle our accounts, for his third term. This year was to bring the responsibilities of a Junior-Senior Banquet and of helping to edit and finance the yearbook.

Throughout our three years here, we have given of our best to every organization and activity on the campus. In basketball we have been well represented by Co-Captains Ross Coulson and Stan Disney, Wilmer Fridinger and Emory Stauffer. Co-Captains Disney and "Dreamy" Day, and Emory Stauffer have been outstanding on the baseball team. William Willoughby deserves much credit for his fine work this year as editor of the *Etownian*. To name every person in our class who has been active would make the list too long, for everyone has done his share, wherever his place has been. Many of our Juniors hold outstanding positions in some of the other organizations, to which they have contributed much.

So with a feeling of satisfaction we pass over our three years at Elizabethtown College and look forward with a great deal of pleasure to our final, and what we hope will be our best year.

*President* . . . . . RALPH PARRETT  
*Vice-President* . . . . . DALE FREY  
*Secretary* . . . . . SARA HERR  
*Treasurer* . . . . . RACHEL KURTZ





# SOPHOMORES

# SOPHOMORES

**G. ROBERT ACKER**  
 New Monmouth, N. J.  
*B.S. in Elementary Education*  
 One year at Eastern Biblical  
 Seminary  
 Soccer 2  
 Y. M. C. A. 2  
 Student Volunteers 2  
 International Relations Club 2  
 A Cappella Choir 2  
*Elonian* 2



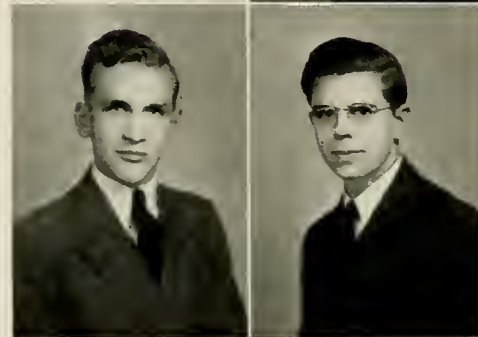
**HARRY BERBERIAN**  
 Elizabethtown, Pa.  
*Pre-Medical*  
 Sock and Buskin 2  
 Athletic Trainer, 1, 2  
 Y. M. C. A. 1, 2

**JANET BOYD**  
 Elizabethtown, Pa.  
*A.B. in Secondary Education*  
 Sock and Buskin 2  
*Elownian* 2  
 Sigma Zeta 2



**RUFUS DOUPLE**  
 Harrisburg, Pa.  
*Business Administration*  
 One year at Franklin and  
 Marshall College

**J. STANLEY EARHART**  
 Mt. Joy, Pa.  
*B.S. in Commercial Education*  
*Elownian*, Reporter 1, 2  
 Student Volunteers 1, 2  
 Comerciantes 1, 2  
 Y. M. C. A., Cabinet 2



**RICHARD ECKROTH**  
 Elizabethtown, Pa.  
*B.S. in Science*  
 Tennis 1, 2  
 Chorus 1, 2

**ELWOOD LEROY FAUTH**  
 Red Lion, Pa.  
*B.S. in Commercial Education*  
 Comerciantes 1, 2  
 Student Council, Sec. 2  
*Elownian*, Circ. Mgr. 2



**DALE L. FREY**  
 Chambersburg, Pa.  
*B.S. in Commercial Education*  
 Comerciantes 1, 2  
 Athletic Mgr. 1, 2  
*Elownian* 1  
 Class V.-Pres. 2  
 Student Senate 2  
 Y. M. C. A. 1  
 Soccer 1

WILLIAM GIBBLE  
Manheim, Pa.

*B.S. in Commercial Education*  
Commerciantes 1, 2



ELIZABETH GINGRICH  
Lebanon, Pa.

*B.S. in Elementary Education*  
Chorus 1, 2  
Sock and Buskin 1, 2  
Student Volunteers 1, 2  
Y. W. C. A. 1, 2



SARA E. HEINDEL  
York, Pa.

*B.S. in Elementary Education*  
Y. W. C. A. 1, 2  
Student Volunteers 1, 2  
Choir 1, 2



H. MARLIN HEISEY  
Palmyra, Pa.

*B.S. in Elementary Education*



BEVERLY HENRY  
Everett, Pa.

*Secretarial*  
Y. W. C. A. 1, 2  
Commerciantes 2  
Basketball 2



ALMA HERR  
Elizabethtown, Pa.

*B.S. in Commercial Education*  
Y. W. C. A. 1, 2  
Commerciantes 1, 2  
Basketball 1, 2  
Choir 1, 2



SARA HERR  
Peach Bottom, Pa.

*B.S. in Commercial Education*  
Y. W. C. A. 1, Sec. 2  
Commerciantes 1, 2  
Basketball 1, 2  
Class Sec. 2



RACHAEL E. KURTZ  
Leacock, Pa.

*B.S. in Elementary Education*  
Sock and Buskin 1, 2  
Girls' Basketball Team 1, 2  
Chorus 2  
Y. W. C. A. 1, 2  
Student Senate 2  
Class Treas. 2



## SOPHOMORES

# SOPHOMORES

LEWIS M. MANBECK

Lewistown, Pa.

*Secretarial*

Class Pres. 1

Soccer 1

Commerciantes 2



BEN MUSSER

Columbia, Pa.

*B.S. in Science*

Choir 1, Treas. 2

Sigma Zeta 2



J. RALPH PARRETT

Elizabethtown, Pa.

*Pre-Dental*

Choir 1, Pres. 2

Sigma Zeta 1, Recorder-

Treas. 2

Class Pres. 2

Candles 2



JANET M. PFALTZGRAFF

York, Pa.

*B.S. in Elementary Education*

Chorus 1, 2

Volunteers 1, 2

Y. W. C. A. 1, 2

Student Council 2



PAUL E. REED

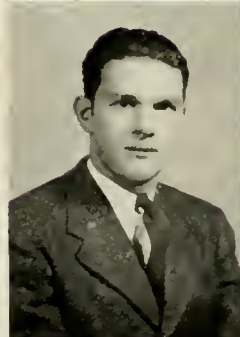
Tower City, Pa.

*B.S. in Science*

Basketball 1, 2

Soccer 1, 2

Y. M. C. A. 1



GARLAND S. RITZ

York, Pa.

*B.S. in Science*

Y. M. C. A. 1, 2



KENNETH R. SHAFFER

Spring Grove, Pa.

*B.S. in Science*

Y. M. C. A. 1, 2

Athletic Mgr. 1, 2



RUTH SHAW

Stewartstown, Pa.

*B.S. in Commercial Education*

Commerciantes 2

Soek and Buskin 2

Student Volunteers 1, 2

Y. W. C. A. 1, 2



# SOPHOMORES

LOUISE SMITH

Hallam, Pa.

*B.S. in Commercial Education*

Y. W. C. A. 2

Commerciantes 2

Student Volunteers 2



ANNA E. SNYDER

West Chester, Pa.

*Secretarial*

Y. W. C. A. 1, 2

Commerciantes 2

Basketball 1, 2

*Etonian*, Sophomore Editor 2

MARY EVELYN TRACY

Hanover, Pa.

*B.S. in Elementary Education*

Student Volunteers 2

*Etonian* Staff 2

Y. W. C. A. 1, 2

## Sophomores Not Photographed

RETTY GROVE, Harrisburg, Pa.

ROBERT EUGENE HOFFNER, Elizabethtown, Pa.

HARRY HORNING, Elizabethtown, Pa.

WILLIAM I. C. KNIGHT, Highspire, Pa.

EUGENE R. SHIRK, Elizabethtown, Pa.

## Class History

**H**ALF a hundred new faces appeared in the fall of 1939 on the campus of Elizabethtown College; thus began the Class of '42 to be "Educated for Service."

Welcomed with a week of social activity, we were suddenly forced into a current of work and study. We gradually became adjusted to school customs and were organized as a class. In all the school activities we, as Freshmen, were loyal supporters, willing workers, eager participators.

Only twenty-nine faces could be counted as Sophomores this fall on College Hill. Again the class, with Dr. Musick as supervisor, elected officers. Ralph Parrett is our distinguished President. He holds that same office in the A Cappella Choir and is honored by his membership in the select group of Candles. Our other capable officers are Dale Frey, Sara Herr, and Rachel Kurtz.

The talent of several worthy Sophomores deserves special mention. Rachel Kurtz appears again as a basketball player, an excellent actress, and a member of the Student Senate. Sara Herr is a conscientious commercial student, an officer on the "Y" Cabinet, and appears with four others of her class in girls' varsity basketball.

Our class contributes eight to the choir. Our President, Elizabeth Gingrich, Janet Pfaltzgraff, Benn Musser, and Richard Eckroth frequently appear as soloists.

Mary Tracy, an "A" student, is the scholastic genius of our number. Janet Boyd excels in science studies and in drama. The *Etonian* staff includes the above girls, Stanley Earhart, and Elwood Fauth, the Circulation Manager.

In athletics we list Eugene Shirk, pride of the basketball quintet, and in baseball an excellent mound performer; Paul Reed, varsity basketball player; Robert Hoffner, home-run hero and pitcher; Richard Eckroth, ace in tennis; and Robert Acker, a capable soccer player. Forget not Kenneth Shaffer and Dale Frey, exceptionally reliable athletic managers.

The Class of '42 is original. As our group social function, a class banquet was held at Diff's on April 17. Because of Sophomore willingness, cooperation, and enthusiasm, the program of individual talent will long be remembered as the highlight of our second year.

Although we are not so great in number, you must admit, fellow students, we have thus far generously contributed our talent to each event. The quality of our service must, and does, compensate for the quantity of servers. Within the next two years our ranks will be still further depleted. Those who remain, we know, will uphold the standards already set, and in 1942 will emerge a small, but illustrious class, "Educated for Service."

*President* . . . . . STEWART B. KAUFFMAN  
*Vice-President* . . . . . R. RICHARD ANDERSON  
*Secretary* . . . . . CATHARINE CURRY







# FRESHMEN



DOROTHY BAUGHER  
 Elizabethtown, Pa.  
*B.S. in Commercial Education*  
 Cheerleader  
 Basketball  
 Student Volunteers  
 Commereiantes  
 A Cappella Choir  
 Y. W. C. A.

ELSIE C. BECKER  
 Manheim, Pa.  
*Secretarial*  
 Student Volunteers  
 Y. W. C. A.



ERMA BELL  
 Hummelstown, Pa.  
*B.S. in Commercial Education*  
 Commereiantes  
 Girls' Varsity Basketball  
 Girls' Junior Varsity Basketball  
 Y. W. C. A.

HAROLD Z. BOMBERGER  
 Lebanon, Pa.  
*A.B. in Liberal Arts*  
 Ministerium  
*Elounian*, Reporter  
 Student Volunteers



H. B. BOMBERGER, JR.  
 Lebanon, Pa.  
*B.S. in Science*

JANET M. BURNS  
 Lancaster, Pa.  
*Secretarial*  
 Commereiantes  
 Y. W. C. A.  
 Cheerleader



PAULINE CAMPBELL  
 Holtwood, Pa.  
*B.S. in Elementary Education*  
 Y. W. C. A.  
 Student Volunteers

GENEVA COLEMAN  
 Millersburg, Pa.  
*Secretarial*  
 Y. W. C. A.  
 Student Volunteers  
 Chorus  
 International Relations Club

# FRESHMEN

# FRESHMEN

CATHARINE E. CURRY

Palmyra, Pa.

*Secretarial*  
Basketball  
Cheerleader  
Commerciantes  
Choir  
Student Volunteers  
Y. W. C. A.  
Class Sec.

JEAN G. DAUM

Columbia, Pa.

*B.S. in Elementary Education*  
Choir  
Y. W. C. A.



JAQUELINE  
DIFFENDERFER

Middletown, Pa.

*B.S. in Science*  
Student Senate  
A Cappella Choir  
Y. W. C. A.  
Student Volunteers  
Sigma Zeta  
Girls' Basketball, Mgr.

ESTHER EVANS

Lancaster, Pa.

*B.S. in Elementary Education*  
Choir  
Student Volunteers  
Y. W. C. A.



JOHN GOODYEAR

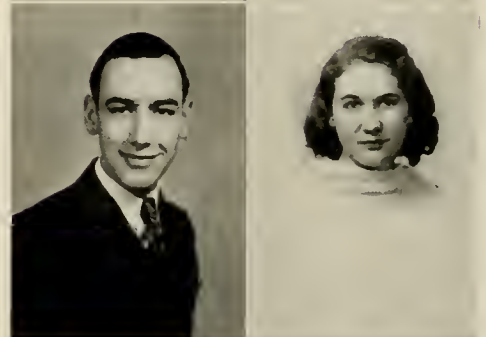
Harrisburg, Pa.

*B.S. in Secondary Education*

MARIAN GROFF

Lancaster, Pa.

*A.B. in Liberal Arts*  
Student Volunteers  
Chorus  
International Relations Club  
Y. W. C. A.



VIVIAN JEAN GROSH

Mount Joy, Pa.

*Secretarial*  
Chorus  
Commerciantes  
Y. W. C. A.

LILLIE MAE GUMPHER

New Cumberland, Pa.

*B.S. in Commercial Education*  
Commerciantes  
Student Council  
Y. W. C. A.



# FRESHMEN



EMMA A. HACKMAN  
Lititz, Pa.

*Secretarial*  
Girls' Junior Varsity Basketball  
Student Volunteers  
Y. W. C. A.  
Commerciantes  
Choir

JOAN HARRIES  
Marietta, Pa.

*B.S. in Elementary Education*  
Y. W. C. A.  
Choir



ESTHER HEAGY  
Manheim, Pa.

*A.B. in Liberal Arts*  
Choir  
Student Volunteers

GRACE HOLLINGER  
Hershey, Pa.

*B.S. in Science*  
Y. W. C. A.



JOYCE HOWE  
New Cumberland, Pa.

*Secretarial*  
Commerciantes  
Basketball  
*Elownian*  
Y. W. C. A.  
*Elonian*, Freshman Editor

STEWART B. KAUFFMAN  
Reading, Pa.

*A.B. in Liberal Arts*  
Student Volunteers  
Ministerium, Sec.-Treas.  
Freshman Class Pres.



HARVEY S. KLINE  
Lebanon, Pa.

*A.B. in Liberal Arts*  
Student Volunteers  
Student Council  
Ministerium

RICHARD LONGENECKER  
Lititz, Pa.

*B.S. in Science*  
Athletic Mgr.

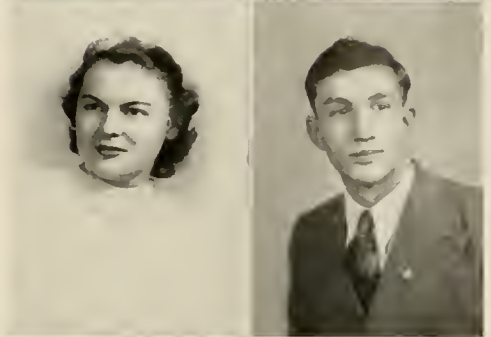
RUFUS B. McDANNEL  
Elizabethtown, Pa.  
*B.S. in Science*

IRA C. MEYER  
Hershey, Pa.  
*B.S. in Elementary Education*  
Student Volunteers  
Chorus  
Y. M. C. A.  
Athletic Mgr.  
Soccer



MARY M. MYER  
Stevens, Pa.  
*Secretarial*  
Basketball  
Commerciantes  
Student Volunteers  
A Cappella Choir  
Y. W. C. A.  
Cheerleader

CARROLL POSEY  
Woodbine, Pa.  
*B.S. in Secondary Education*  
Soccer  
Junior Varsity Basketball  
Baseball



BURNELL K. REBERT  
Hanover, Pa.  
*B.S. in Commercial Education*  
Soccer  
Junior Varsity Basketball  
Tennis

RAY G. REPLOGLE  
Martinsburg, Pa.  
*A.B. in Liberal Arts*



VERA BLINN SHOOP  
Elizabethtown, Pa.  
*A.B. in Liberal Arts*  
A Cappella Choir  
Y. W. C. A.

MARY JANE SLYDER  
Dillsburg, Pa.  
*B.S. in Commercial Education*  
Commerciantes  
Y. W. C. A.



# FRESHMEN

# FRESHMEN



AUDREY A. TARBERT  
York, Pa.  
*Secretarial*  
Commerciantes  
Y. W. C. A.  
Student Volunteers  
International Relations Club

WILLIAM TRIEST  
Harrisburg, Pa.  
*B.S. in Science*



DORIS L. TURNBULL  
York, Pa.  
*Secretarial*  
Commerciantes  
Y. W. C. A.  
Student Volunteers

LILLIAN WANNER  
Gap, Pa.  
*Commercial Education*  
Y. W. C. A.  
Student Volunteers  
Commerciantes



MAXINE LANDIS WEAVER  
Robesonia, Pa.  
*Secretarial*  
Commerciantes  
Y. W. C. A.  
Basketball

ROMAINE WEIGLE  
Elizabethtown, Pa.  
*B.S. in Elementary Education*  
Y. W. C. A.  
A Cappella Choir



JANE WITHERS  
Mount Joy, Pa.  
*B.S. in Secondary Education*  
Y. W. C. A.  
A Cappella Choir

ARLENE G. ZIEGLER  
Telford, Pa.  
*Secretarial*  
Commerciantes  
Chorus  
Basketball  
Student Volunteers  
Y. W. C. A.

# FRESHMEN

## Freshmen Not Photographed

GEORGE ALTHOUSE, JR., Ephrata, Pa.

R. RICHARD ANDERSON, Spry, Pa.

MARY JANE BLOUCH, Harrisburg, Pa.

EVELYN DEIMLER, Harrisburg, Pa.

EDMUND W. DUCKWORTH, Lancaster, Pa.

ROBERT D. KINGSBURY, Steelton, Pa.

JANE E. LARSON, Elizabethtown, Pa.

PAUL F. LEICHT, Elizabethtown, Pa.

WILBUR W. RAFFENSBERGER, Elizabethtown, Pa.

EUGENE B. RISSER, Harrisburg, Pa.

LEROY J. SPAHR, Middletown, Pa.

ROBERT H. UPDEGRAFF, Royalton, Pa.

JOHN W. WAGGONER, Thompson-town, Pa.

ROBERTA ZOLL, Harrisburg, Pa.

## Class History

FIFTY-THREE bewildered-looking Freshmen appeared on the Elizabethtown campus in this fall of 1939 to be greeted by a week full of social activities. Tea was served every afternoon and days were devoted to "learning the ropes." The following week-ends were livened up for the rather home-sick newcomers by hikes, skating parties, a scavenger hunt, a fall outing, picnics, and such, to temper the "readin' and 'ritin' and 'rithmetie'" over which they labored during the week.

As these new arrivals became accustomed to their environment and lost some of their self-consciousness and inferiority complexes, it appeared that the social life on the campus would be considerably enlivened by their presence, and whenever there was mischief afoot, the call arose, "Look for the Frosh!"

But it was soon proved that they did not major in fun and frivolity. They also took prominent parts in the campus athletics, with Wilbur Raffensperger, "Gene" Risser, Ira Myer, George Althouse, and Carroll Posey on the soccer team, "Raffey" and "Pork" Leicht playing varsity basketball, and Burnell Rebert, Carroll Posey and George Althouse on the J. V.'s. The girls, too, took their part in basketball, with "Cass" Curry, Mary Myer, and Erma Bell on the varsity, and Arlene Ziegler, Emma Hackman and "Dot" Baugher as J. V.'s. "Jackie" Diffenderfer and Posey did their share as Freshman managers. In the spring Robert Updegraff, Posey, George Althouse, and "Pork" Leicht kept up the class reputation by swinging a mean bat on the baseball team, and "Doc" Kingsbury and "Pork" Leicht were racket wielders in the tennis matches.

For those "Rah, rah, rah, rah's" that contributed to the excitement of all successful or unsuccessful athletic encounters, the students were led by a cheerleading team of four Freshmen, "Dot" Baugher, Janet Burns, "Cass" Curry, and Mary Myer. And the shouting was whole-hearted, as our blue-and-gray-garbed cheerleaders could compete with the best.

Still the varied talents of these paragons, the Freshmen, had not been exhausted. Academic honors played a prominent part in their schedules. The school presented to this class one athletic scholarship, six ministerial, and twenty academic awards.

Now we are extremely proud of the achievements of our Freshman Class of '43, and predict, if we do say it ourselves, that it will do worth-while things in the world after donating its share of laughter and tears to the campus of Elizabethtown.

**Publications**

**Organizations**

**Student Government**







# ACTIVITIES



## The Etonian Staff

### EDITORIAL STAFF

<i>Editor</i> . . . . .	W. KENNETH LEISTER
<i>Associate Editor</i> . . . . .	CHARLES C. WALKER
<i>Athletic Editor</i> . . . . .	LOWELL REIDENBAUGH
<i>Senior Editor</i> . . . . .	GRACE WENGER
<i>Junior Editor</i> . . . . .	BETTY GROUPE
<i>Sophomore Editor</i> . . . . .	ANNA SNYDER
<i>Freshman Editor</i> . . . . .	JOYCE HOWE
<i>Snapshot Editor</i> . . . . .	G. ROBERT ACKER
<i>Cartoonist</i> . . . . .	WILLIAM G. WILLOUGHBY

### BUSINESS STAFF

<i>Business Manager</i> . . . . .	CURTIS A. GERHART
<i>Assistant Business Manager</i> . . . . .	THEODORE SHECKART
<i>Circulation Manager</i> . . . . .	EARL S. SMITH
<i>Assistant Circulation Manager</i> . . . . .	RUTH CAMERON



# The Etownian

## BOARD OF CONTROL

J. Z. HERR

MISS REBEKAH SHEAFFER

## EDITORIAL STAFF

<i>Editor</i> . . . . .	W. G. WILLOUGHBY
<i>Associate Editor</i> . . . . .	ERNEST LEFEVER
<i>News Editor</i> . . . . .	BEATRICE MYERS
<i>Sports Editor</i> . . . . .	LOWELL REIDENBAUGH

## REPORTERS

ANNA CARPER	JANET BOYD
BETTY GROUPE	PEARL BROCK
MARGUERITE HOOVER	HAROLD BOMBERGER
STANLEY EARHART	OSCAR WISE
JOYCE HOWE	MARY TRACY

PAUL WILSON

## BUSINESS STAFF

<i>Business Manager</i> . . . . .	ARTHUR KULP
<i>Assistant Business Manager</i> . . . . .	HOWARD SPEIDEL
<i>Advertising Manager</i> . . . . .	CHARLES WALKER
<i>Circulation Manager</i> . . . . .	ELWOOD FAUTH



## The Commerciantes

### OFFICERS

<i>President</i>	ARTHUR KULP
<i>Vice-President</i>	STANLEY DISNEY
<i>Secretary</i>	PEARL BROCK
<i>Treasurer</i>	MERLE HECKLER

**T**HE aim of the Commerciantes is to make "better men and women for better business." The Club was organized in 1932 and strives to foster both the business and social developments of its members. It sponsors trips to the various metropolitan centers to get a first-hand glimpse into "big business," and also for entertainment. Many skating parties and other social programs are sponsored by the Club, and these serve to develop the social contacts of the students and to produce finer and cleaner business relationships.

In its monthly meetings, the Club endeavors to engage speakers qualified to talk on the most important phases of the modern business world, such as accounting, court reporting, insurance, modern educational methods and facilities, etc. Such discussions are intended to stimulate the interest and ambition of the students and are an integral part of the Club's proceedings.



## Student Volunteers

### OFFICERS

<i>President</i> . . . . .	LUKE EBERSOLE
<i>Vice-President</i> . . . . .	BEATRICE MYERS
<i>Recording Secretary</i> . . . . .	ESTHER MOORE
<i>Corresponding Secretary</i> . . . . .	LEAH GODFREY
<i>Treasurer</i> . . . . .	JOHN WEAVER
<i>Faculty Adviser</i> . . . . .	MISS MARTIN

**T**HE Student Volunteers is an outstanding religious organization on the Campus. The purpose of each member "is to devote my life without reserve in bringing a saving knowledge of Christ to all men, and to work continually, earnestly, and intelligently at whatever cost toward this end."

The Volunteers sponsor bi-weekly programs on the campus for the students. Deputation teams were sent out to a majority of the churches of eastern and southern Pennsylvania. The themes of the programs given by the teams were centered about the principles of Christian living.

Through their deputation work and their "Annual Drive," the Volunteers, as a group, contribute yearly to the work which the Bittingers started in Africa.

The highest point in this year's activities was being host to the United Student Volunteer Conference, the theme of which was "To Serve the Present Age."



## Y. M. C. A.

### OFFICERS

<i>President</i> . . . . .	ERNEST LEFEVER
<i>Vice-President</i> . . . . .	LESTER MANBECK
<i>Secretary</i> . . . . .	ROSS COULSON
<i>Treasurer</i> . . . . .	GALEN V. JONES
<i>Faculty Adviser</i> . . . . .	DR. D. M. HILL

**T**O FACILITATE Freshman adjustment, to promote social life, to help in forming a creative philosophy of life among the male students—these are the aims of the Y. M. C. A.

Through a Big Brother plan and Freshman Week activities the newcomers of 1939-40 were welcomed to the Elizabethtown campus. Hikes, parties, and other events were sponsored in co-operation with the Girls' Y. The men are looking forward to the use of a gameroom which is being furnished in the basement of the Boys' Dorm.

During the year the following periodicals were regularly received in the Y Room: *The Christian Science Monitor*, *Life*, *The Christian Century*, *Newsweek*, *The Readers Digest*, *The American Magazine*, and *Popular Mechanics*. Our horizons were further broadened by a variety of speakers who challenged us with new ideas. We were fortunate to have with us men like Dr. Chahner Faw, now in Nigeria; Anthony Lehner of the Pennsylvania Farm Bureau Coöperative; Rev. L. C. T. Miller, and Dr. Desmond Bittinger, who was recently elected to the faculty of McPherson College in Kansas.

But the wheel has come full circle with regard to the College Y's. About a decade ago, under considerable pressure, the two present organizations were formed. Since that time it has become increasingly apparent that the functions of these organizations could be realized more fully in an integrated association, which we wholeheartedly recommend. We are looking forward to a more effective program under the new set-up whatever it might be.



## Y. W. C. A.

### OFFICERS

<i>President</i> . . . . .	GRACE WENGER
<i>Vice-President</i> . . . . .	ANNA CARPER
<i>Secretary</i> . . . . .	SARA HERR
<i>Treasurer</i> . . . . .	ESTHER MOORE
<i>Faculty Adviser</i> . . . . .	MRS. LAVINIA WENGER

**I**N FULFILLING its purpose, to enrich the lives of its members and to make fuller life possible for all people, the Y. W. C. A. has become a vital part of life on College Hill. Informal parties, bi-monthly meetings, and teas have drawn the girls into closer friendship through work and play.

In an endeavor to promote religious life on campus, the "Y" has coöperated with other organizations in weekly prayer meetings and in chapel programs.

Holiday seasons found the "Y" busy with special programs. The Thanksgiving Supper, the secret friends of Valentine Week, the "Coach-and-Four" Tearoom, and the Easter sunrise service and breakfast were sponsored by the Y. W. C. A.

At Christmas the girls shared their cheer with a group of town children in a Christmas party.

The annual Mother and Daughter Banquet marks the climax of the activities of the year. At this time the girls welcome their mothers to a pageant and a banquet.



## Sock and Buskin

### OFFICERS

<i>President</i> . . . . .	GALEN JONES
<i>Vice-President</i> . . . . .	BEATRICE MYERS
<i>Secretary-Treasurer</i> . . . . .	RUTH CAMERON

**A**N UNDERSTANDING of life, poise, self-confidence, and appreciation—these are the qualities the club tries to develop.

This year the club presented several one-act plays. In November the club presented "The Naked Truth" and "The Lepers," two of the St. Francis of Assisi plays, before the National Student Volunteer Convention.

Last year the club decided to join with several surrounding colleges in presenting plays before high schools in the county. As a result the Sock and Buskin presented Booth Tarkington's "Trysting





## Sock and Buskin

Place" before four high schools—Mt. Joy, Elizabethtown, Landisville, and Rothsville. Before the East Strasburg high school assembly the club presented three historical impersonations—Henry V of England, Catherine of France, and Marie Antoinette.

The club decided to join the national fraternity, the Alpha Psi Omega.

In March several members attended the Annual All-State Dramatics Conference at Penn State. There they enjoyed seeing the play "The World We Live In" and seeing how excellent stage effects can be produced with little money.

For their annual production the club has selected, this year, "Cat-o'-Nine Tails," a mystery play by Laurence G. Worcester. After the play was presented, Sock and Buskiners entertained former members at an informal reception in the social room.



## Sigma Zeta

### OFFICERS

<i>President</i> . . . . .	LESTER E. MANBECK
<i>Vice-President</i> . . . . .	JOHN SPEIDEL
<i>Secretary-Treasurer</i> . . . . .	RALPH PARRETT
<i>Faculty Adviser</i> . . . . .	PROF. G. S. SHORTESS

**T**HE Theta Chapter of the Sigma Zeta, organized in 1933 as the first nationally recognized honor society on the Hill, attempts to give those students who are interested in the exact sciences a broader foundation in their chosen fields. It strives to promote the student's appreciation for science, to give practical application of it in life, and to present to the members recent scientific developments. In working toward these goals the club holds monthly meetings, develops projects for improvement of the science department of the college, and yearly sponsors trips to places of scientific interest.

Since the birth of the club it has participated in a national bird-banding project. This activity has been temporarily discontinued, and such projects as the construction of a microprojector and the improvement of our developing room have been undertaken. It is the purpose of the club this year to build a telescope, which may be used by the science department in a study of the celestial bodies.



## The Ministerium

### OFFICERS

<i>President</i> . . . . .	NORMAN J. BAUGHER
<i>Vice-President</i> . . . . .	JOHN WEAVER
<i>Secretary</i> . . . . .	STEWART KAUFFMAN

**T**HE Ministerium is an organization of active and honorary members. The active members are those students who are interested in the work of the ministry or work closely allied to the ministry under church supervision. Members of the faculty who are ministers are eligible to honorary membership in The Ministerium.

The purpose of the organization shall be to maintain a high respect for the calling of the ministry; to lend encouragement to persons interested in the ministry as a life calling; to seek constantly opportunity for practical experience in the preparation for the ministry; and to foster a sound, academic, pre-theological training.

During this past year several of the members of The Ministerium were elected to the ministry by their home congregations. The chief activity during the year was to occasionally furnish speakers for several of the local churches.



## The Candles

**T**O MAKE friends, be one." This is the motto of The Candles. Originally founded as a social organization, the club has now developed to serve a dual purpose: to develop friendships through association in social activities, to crystallize student opinion through regular discussion of pertinent campus problems. Members are selected from the three upper classes on the basis of their scholarship, leadership, and service to the College.

Each spring the club holds its crowning event of the year, the Candle Homecoming. At this social gathering, Candles, past and present, mingle together perpetuating those friendships formed while at College.



## The A Cappella Choir

### OFFICERS

<i>President</i>	.....	RALPH PARBETT
<i>Secretary</i>	.....	LEAH GODFREY
<i>Treasurer</i>	.....	BEN MUSSER
<i>Director</i>	.....	PROF. E. G. MEYER

**T**HE college A Cappella Choir is an active organization composed of students who desire to develop a deeper appreciation of music with those around them. It has furnished to musically interested students an enjoyment that will long be remembered.

This choir was organized in 1934 by Professor Meyer, and each year has been singing in about fourteen churches of eastern and southern Pennsylvania. This year's programs begin with the theme song, "Upward We Look, O God of All Our Days," and consist of thirteen selections by Cruger, Sanderson, Bach, and others.

The members of the choir have selected "The Holy City," by Gaul, as their second-semester production this year. One of the scriptures which suggests the first part of this sacred cantata is, "Here we have no continuing city." The second part was suggested by the words "I saw a new heaven and a new earth." With the exception of two hymns, a verse from Milton, and three verses from "Te Deum," the words are entirely scriptural.

The choir realizes that the work of directing is no easy task and wishes to extend to Professor Meyer their sincere thanks for his untiring efforts, and to Mrs. Meyer for her able assistance at the piano.



## Women's Student Council

*President* . . . . . BEATRICE MYERS  
*Vice-President* . . . . . LENA BRIGHTBILL  
*Secretary* . . . . . MARGUERITE HOOVER  
 LEAH GODFREY . . . . . JANET PFALTZGRAFF  
 LILLIE MAE GUMPIER

## Men's Student Council

*President* . . . . . MERLE K. HECKLER  
*Secretary* . . . . . ELWOOD FAUTH  
 GALEN JONES . . . . . CURTIS DAY  
 LOWELL REIDENBAUGH . . . . . HARVEY KLINE



## STUDENT SENATE

*President* . . . . . NORMAN J. BAUGHER

### MEMBERS

*Seniors* . . . . . GRACE WENGER  
 . . . . . MERLE HECKLER

*Juniors* . . . . . ROSS COULSON  
 . . . . . RUTH CAMERON

*Sophomore* . . . . . DALE FREY

*Freshman* . . . . . JACQUELINE DIFFENDERFER

**T**HE Student Association is the formal name given to the student body of the school. All students are automatically members of the Association upon their entering school.

The Association is organized into a President and a Student Senate comprised of representatives of the Senior, Junior, Sophomore, and Freshmen classes. This body of representatives is the official representative body of the Student Association, and all complaints, criticisms or petitions that are meant to reach the administration should come from the students and go to the administration through this body.

During this school year the Senate has sponsored the traditional fall outing, the Thanksgiving Banquet, the Hallowe'en Party, and the St. Patrick's Day Social.

**Soccer**  
**Basketball**  
**Baseball**  
**Tennis**







# S P O R T S



*Back Row, Left to Right: Managers Frey and Hull, Althouse, Day, Meyer, Posey, Co-Captains Manbeck and Gerhart, Leister, Kulp, Rebert, Jones, Coach Herr.*  
*Front Row: Acker, Reed, King, Stouffer, Disney, Fridinger, Raffensperger.*

## SOCCKER

**E**RECTED on a six-strata Senior bedrock, Coach Herr's revised soccer edition of '39 never shook itself entirely loose from the dust of mediocrity, and from bell to bell lolled in the trough of the commonplace. Two victories, three defeats and one tie briefly bridge the six games. The wins came through the courtesy of Blue Ridge and Cornwall High School, the tie at the expense of Mt. Joy A. A. and the defeats through the superiority of Maryland State Teachers, Franklin and Marshall, and Bloomsburg.

Buttressed by Co-Captains Gerhart and Manbeck, King, Jones, Kulp, and Leister, all Seniors, Fridinger, Day, Disney and Stouffer, a quartet of Juniors, the automaton at an early date heedlessly wandered into Charybdean waters, was sucked in and spewed forth with three maculae on its escutcheon.

Mt. Joy weathered myriad down-field drives and gained a 1-1 tie. Cornwall High School underwent a 2-1 subjection, and Maryland State plowed its way to a 2-0 triumph. Franklin and Marshall lowered the bloodgates and snatched a 6-0 victory. Bloomsburg sponsored a 2-1 reversal, and Blue Ridge was decimated in a 3-1 Blitzkrieg.

# GIRLS' VARSITY BASKETBALL

**U**NDER the combined auspices of Mary Jane Strite, Captain Lena Brightbill, and Erma Bell on the down-floor premises, and Ruth Cameron, Leah Godfrey, Anna Snyder, Rachel Kurtz and Catherine Curry at the sentry posts, the Blue and Grey colors in 1940 rose to heights tantamount to those of '39. For the second successive year the final calculations revealed 8 wins and 2 defeats. But whereas the setbacks of a season ago were inflicted by Thompson Business School, those of '40 were dealt in a boisterous fashion by East Stroudsburg.

Tucked away in the 39-40 safari were the continuance and cessation of a victory streak that extended through thirteen games, at the end of which East Stroudsburg made a premature entrance and derailed the entourage with a 44-17 upheaval.

Striking its scoring summit with a 57 against the Alumnae, and plumbing the depths with a 16 in the second East Stroudsburg encounter, the Blue and Grey averaged a highly respectable 33 points for its ten games.

Coach Herr unveiled his sextet somewhere in the dawn of December, it promptly setting about to administer a 47-17 subjection of Lebanon Business College. Hurdling every obstacle it chanced upon, the sextet rolled into February on the crest of a two-year thirteen-game victory streak, compiled at the expense of Upsala, Mt. Joy, Penn Hall, Lebanon Valley, Taylor Business School of Philadelphia (twice), Alumnae (twice), Lebanon Business College, St. John's Parish of Reading (twice), West Lampeter A. A., and Moravian.

At this stage East Stroudsburg asserted its rights to top honors and fashioned for itself a brace of victories. Lebanon Valley, however, genuflected in the season's finale to provide the Phantomettes with a .800 average and a two-year record of 16 victories and 4 defeats.

Scoring: Strite 158, Brightbill 76, Bell 60, A. Herr 19, S. Herr 12, Curry 3, and Baugher 2.



*Left to Right: Coach Herr, Manager Diffenderfer, Brightbill, Myer, S. Herr, Curry, Cameron, Bell, Godfrey, Strite, Snyder, Kurtz.*



*Back Row, Left to Right: Manager King, Gerhart, Walker, Reed, Leicht, Manager Ruth.  
Front Row: Fridinger, Stouffer, Co-Captain Coulson, Coach Herr, Co-Captain Disney Shirk, Raffensperger.*

## MEN'S VARSITY BASKETBALL

WHEN Armageddon hurls its wrench into the machinery of Time and seals forever the basketball annals of Elizabethtown College, one page of those gilt-edged archives will, in all likelihood, carry this laconic summation:

1939-40     7 victories, 9 defeats

Under those bare, gelid figures reclines a panorama of celestial exhilaration and Stygian dejection, one tinged by individual successes and tainted with individual short-comings. Enclosed therein is a gamut of a coach's trials and tribulations, his thrills and triumphs.

Reposing therein are the long-lingering recollections of an over-time Juniata defeat, a last-minute field-goal that stilled Susquehanna, and that cogent overthrow of the sempiternal Nemesis Maryland State.

Buoyant also as those thrills is a series of disappointments that went a long way toward preventing a counterpoise on the records. There was the two-point subjugation inflicted by Pharmacy, a 15-point victory claimed by Bridgewater, and the recovery Moravian made of its bearings when defeat hovered leeringly above it.

## MEN'S VARSITY BASKETBALL, continued

All these and many others, plus all ramifications, serve as components of a season that allotted the Blue and Grey 7 wins, 9 losses, and third place in the Pennsylvania Conference, to the topside of Juniata and astern of Moravian and Susquehanna.

The Blue and Grey struck its first impasse in the guise of Bucknell's Bisons on December 7 in a 55-32 setback. Then followed the disheartening 32-30 reversal by Pharmacy. Bridgewater afforded a 40-37 victory, but Albright absconded with a 60-49 verdict. Moravian then took its first step toward the league diadem with a 42-23 win. Pharmacy cradled a 45-43 defeat and Susquehanna's defense turned diaphanous in the waning seconds to permit a 36-35 Ghost overthrow.

Juniata's laccid palisades allowed an overtime 47-43 victory and Gallaudet withered before a 42-32 drive. Bridgewater greased the chutes for a 47-32 debacle but Gallaudet took a 29-25 quietus. Maryland's comatose defense allowed a 49-34 triumph, but Susquehanna shattered all Blue and Grey championship visions with an ill-timed 49-42 victory.

Juniata ventilated the Ghost defense with a 51-32 rout. Moravian's battered crenelations survived a sustained Phantom assault and squeezed through to a 59-50 victory, and American U. recited its requiescat on March 11 with a 43-38 reversal.

Before the season had drawn its second wind the cognoscenti were unanimous in appraising this 39-40 machine as one of the best of Coach Herr's régime. From four lettermen and a nondescript host of question marks he moulded a eurythmic mechanism that never once betrayed its purpose.

In the colorful duo of Shirk and Disney, Coach found offensive strength that merited recognition on the league's all-star teams. In the placid and effective Ross Coulson there was a Gibraltar of defensive strength also given league recognition. In the low-slung Wilmer Fridinger and the voluble Emory Stouffer was discovered a sangfroid that evidenced itself time and again.

Behind the starting quintet there operated a troupe of serviceable performers. Wilbur Raffensperger sprung full-panoplied from the high school ranks; Paul Reed, a tricky speedster from Tower City, Paul Leicht, valuable at guard or center, Curtis Gerhart, the only Senior to merit the spangles and Charles Walker, a sure shot from almost any point.

Scoring for the season: Shirk 191 (equalling Rudisill's record of 37-38), Disney 136, Raffensperger 127, Coulson 62, Fridinger 43, Stouffer 35, Reed 19, Leicht 10, Gerhart 6, Walker 6.



*Left to Right: Coach Herr, Manager Diffenderfer, A. Herr, Myer, Curry, Henry, Ziegler, Baugher, Bell, Hackman.*

## GIRLS' JUNIOR VARSITY BASKETBALL

**T**HE palms that usually accompany the niching of the best athletic record hereabouts this year gravitate to the Phantomette Juniors. Projected into competition but four times, the sextet manipulated a similar number of victories, twice pressed to the limit, once by Drumore High School in a 25-24 imbroglio and on a second occasion by Marietta High School in a 19-15 set-to. Elizabethtown High School and the Elizabethtown town team withered in a 22-9 and 46-4 heat wave.

Composed of starlets either shades removed from varsity rating or varsity players not yet in possession of a letter, the troupe evidenced ample protection to its "big sisters" for the duration of their college careers.

Hinging on Catherine Curry, Erma Bell, Alma Herr and Mary Myer, the platoon, aside from exhibiting an anticipated series of rough edges, made manifest all the paramount qualities of a rising team.

There was scant chance of shattering the Herr-Curry-Bell triumvirate when the margin narrowed and time was scarce. Yet on such limited occasions Dot Baugher and Beverly Henry were beckoned and justified all faith entrusted to them.

Supplementing Mary Myer at the defensive points were two more Freshmen that merited more than passing notice, Emma Hackman and Arlene Ziegler.

Scoring: Herr 40, Curry 38, Bell 23, Baugher 7, Henry 2.

# MEN'S JUNIOR VARSITY BASKETBALL

**F**IASCOES and successes, with an exuberant touch of the former, commingled through the basketball season of 39-40 to emblazon upon the Junior Varsity register 4 wins and 6 defeats.

Hershey Junior College was the first to vent its spleen with a 13-23 reversal. Cornwall High School submitted 32-23 but Elizabethtown High School rampaged to a 47-16 victory.

Patton Trade succumbed 29-25 and Hershey Junior College romped to a 59-47 decision. Rothsville High School drove to a 34-19 triumph and Elizabethtown High School was quelled 38-23.

The Rotary Playoffs delivered a brace of setbacks, a 38-35 defeat by Elizabethtown High School and a 40-32 subjugation by the Elizabethtown Stars. The University of Pennsylvania School of Veterinary added the season's finis under a 50-21 deluge.

Around Curt Gerhart, Les Manbeck, Paul Leicht, Dixie Walker, Galen Jones, Johnny Speidel, Curt Day and Carroll Posey, Coach Herr fashioned an outfit that on occasions wallowed through the mire of indifference and despondency and on others rose to peerless heights.

Leading the scoring parade was Walker with his 72. His 23 points against Hershey Junior College, to all knowledge, established a campus record. Following were Leicht's 60, Gerhart's 44, Manbeck's 25, Speidel's 23, Jones' 22, Posey's 20, Day's 16, Reed's 15, Duckworth's 13, Fridinger's 7, Heckler's 3 and Althouse's 2.



*Back Row, Left to Right: Posey, Althouse, Manager Hull, Coach Herr, Walker, Rebert.  
Front Row: Day, Speidel, Captain Gerhart, Manbeck, Jones, Leicht.*

# BASEBALL

**A** BASEBALL structure, detruncated by the sheepskin scythe of '39, and a mediocre Freshman influx merged to unveil lacklustre vistas at the threshold of the 1940 season. The infield, three huge craters decorating its surface, presented the most onerous problem.

Where Hal Saylor, he of the iron nerve and baseball cunning, once crouched behind the plate, that perennial rookie, Les Manbeck, and Wilbur Raffensperger, the Bellwether of Freshman athletes, have emerged from the heterogeneity to provide twofold protection at the pay station.

Intact, despite adverse winds that howled around it, the pitching corps stands as a welcomed sedative for a coach's sheep-counting nights. In Day, Shirk, Disney and Hoffner there is a quartet ready to silence any contumacy of any sort and at any period.

Alternating at the reception corner, at one time the stamping grounds of a certain Elmer Gleim, are Disney and Shirk, two performers whose value may be adjudged by their continual appearances in the lineup.

Down by the keystone, Emory Stouffer has transferred allegiances from his former shortstop post and established residence by the midway station. To his right cavorts the nimble Carroll Posey, possessor of a wealth of possibility but leaning at times toward the erratic.

Saluting his fourth campaign, Herb Lefever, the mechanical and the nonchalant, rounds out the inner cordon at third base.

The outer patrol brought one new recruit for '40 duty, the fleet and adept Bobby Updegraff, substituting his exploits for those of Sammy Jones.

Bobby Hoffner, he of the spectacles and pillaging bat, returns to his pasture in center field and the devastating Dale Smith merited a return engagement in right.

Early returns of early games are as follows:

Elizabethtown 10	Shepherd Teachers 3
Elizabethtown 3	American U. 7
Elizabethtown 6	Towson Teachers 3
Elizabethtown 9	P.M.C. 1
Elizabethtown 4	Moravian 9



*Back Row, Left to Right:* Posey, Wilson, Raffensperger, Hoffner, Leicht, Fridinger, Shirk, Smith, Updegraff, Coach Herr.  
*Front Row:* Althouse, Stouffer, Co-Captains Disney and Day, Lefever, Manbeck.





*Back Row, Left to Right: Speidel, Gibble, Ruth, Kingsbury.  
Front Row: Weaver, Eckroth, Leicht.*

## TENNIS

**V**IOLENTLY struck by a succession of plagues that ranged anywhere from graduation to a persistent case of hold-outitis, the tennis team, by whatever combination composed, opened the season an almost entirely revised troupe from a year ago. Dislodged by the sheepskin purge were A. J. Risser and Jim Martin, both of tennis accountability and unrelenting in their tenacity. Add to this that Chick Baugher and Luke Ebersole found interests in other fields and the situation assumes a darker hue.

Taking up part of the slack, however, was the advent of Paul Leicht. Of no small repute in high school clay-court circles, Leicht was a welcomed addition to the racket ranks.

Projected on the tennis screen were Austin Ruth and Dick Eckroth, the only 39 holdovers, the aforementioned Leicht, Johnny Speidel and Johnny Weaver, Bill Gibble and Bob Kingsbury.

Only one new team, Millersville, forced its way into the current schedule. The remainder of the placard parallels that of a season past, with Moravian, Juniata and Susquehanna impanelled twice and Lebanon Valley and Kutztown once.

After weather conditions prevented the fulfillment of the first engagement against Lebanon Valley, Moravian put in its appearance and sent the Blue and Grey upon the declivious paths with a 6-3 defeat. Leicht and Eckroth accounted for two singles victories and then combined to make off with a doubles match.

## Campus Donated Building

On the evening of October 31, 1938, a small building of Gothic architecture was presented to Elizabethtown College. Perhaps it was a gift from the gods, many speculated, or possibly some public-spirited philanthropist saw the need of a new college library. Many and diverse were the stories which enshrouded the mysterious coming of this stately structure, but at any rate we did know that it was there, appropriately placed in the vicinity of other buildings of similar design. At a subsequent meeting of the powers that be the problem of naming the building was discussed at great length. After considering such suggestions as "Perry Hall," "Mooch Castle," and others, it was finally decided to christen the pavilion "Reidy Memorial Hall" in honor of its probable donor. Regarding the probable use of the new hall came much bitter controversy. Some said it had been intended to be a new library, while others claimed that it should have been the much-needed music building. The latter used as their argument the fact that the very design and construction of the hall was conducive to the best acoustical effects. A number of other uses were suggested, but no conclusion ultimately reached. As did the ancient Trojan horse disappear, so did this esteemed structure vanish into oblivion, but the legend will live on in the annals of the school.





# FEATURES

# Fall



Established 1868

# MILLER & HARTMAN

*Wholesale Grocers*

LANCASTER, PENNSYLVANIA

*Coming Home*



Compliments of

R. P. ROYER

DENVER, PENNSYLVANIA

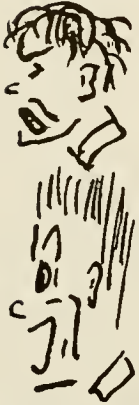




*Frosh  
Arrives*



*Soph  
Absorbs*



*Junior  
Plugs*

*Senior Comes  
Upon the  
World*

# MUSSER FARMS DAIRY



*Milk + Cream + Ice Cream*



COLUMBIA, PENNA.

*For Finer, Fresher Foods  
For Prompt and Courteous Service*



## WENGER BROS.

ON THE SQUARE

ELIZABETHTOWN, PENNA.

PHONE: 267

STOP IN AT . . .

## THE SKY GRILL

*"It's the Refreshing Thing to do"*

MODERN SODA SERVICE

Operated by CENTRAL Cut-Rate DRUGS

W. K. WINTERS

*45 South Market Street*



*Fridy, the Fearless Forward*

# *Elizabethtown College*

*Elizabethtown, Pennsylvania*



A STANDARD STATE ACCREDITED COLLEGE

REGULAR A. B. COURSES

FINANCE AND COMMERCE COURSES

PRE-MEDICAL AND PRE-LAW COURSES

B. S. COURSES

PROFESSIONAL COURSES FOR TEACHERS

SECRETARIAL COURSES

## *Some Advantages of Elizabethtown College*

A beautiful College Campus, overlooking the town and valley.

A splendid place for young people to be in school.

An expansive lake offers opportunity for boating and skating.

Modern Gymnasium and Athletic Field.

Intercollegiate Debating and Athletics.

Expenses very moderate . . . below that of many Liberal Arts Colleges.

Industry, thoroughness, loyalty, and thrift are emphasized.

Well-trained and efficient teachers of strong personality.

Personal interest taken in every student.



*Faculty members receive their training in the  
following Universities:*

PENNSYLVANIA

COLUMBIA

CHICAGO

VIRGINIA

JOHNS HOPKINS

NEW YORK

RUTGERS



Intersession . . . . . May 28— June 15, 1940

Summer School . . . . . June 17— July 27, 1940

Fall Semester Opens . . . . . September 9, 1940

HENRY H. KOSER  
*President*

OWEN HERSHEY  
*Treasurer*

HENRY B. GIBBEL  
*Secretary*

(INCORPORATED SEPTEMBER 17, 1888)

# Lititz Agricultural Mutual Fire Insurance Co.

LITITZ, LANCASTER COUNTY, PENNSYLVANIA

1888 - - - - 1940

INSURANCE IN FORCE . . . . . \$100,000,000.00

ASSETS . . . . . 737,991.77

*Somebody Takes a Bath  
in the Lake*



CHRYSLER

PLYMOUTH

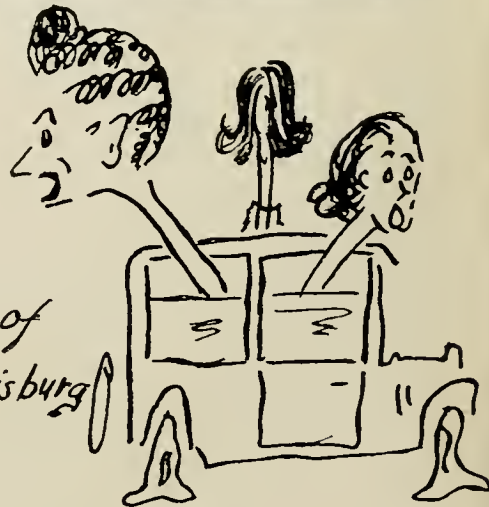
*R. H. Forney*

40 NORTH MARKET STREET

*Elizabethtown, Pa.*

WATCH FOR THE "AMOCO" SIGN

*Lewis Town  
instead of  
Lewisburg*





# Winter ~



# SQUEALING

A ONE-ACT PLAY

DRAMATIS PERSONAE. Cop.  
Excited Man  
SCENE . . . . . Copper's Beat  
downtown  
TIME . . . . . 2:37 A.M.

## CURTAIN

(Officer found walking beat and whistling cheerfully)

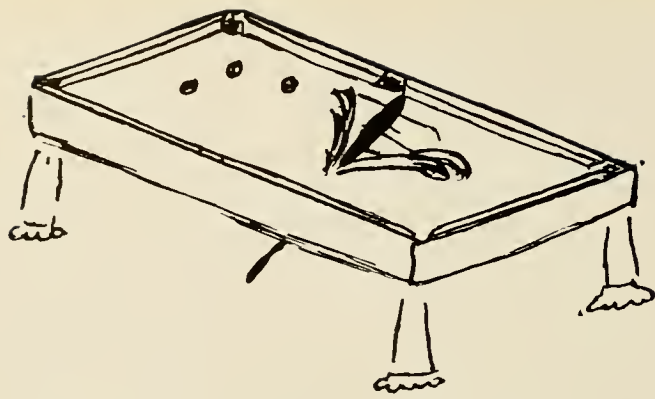
Enter Excited Man

*Excited Man:* "Officer, there are several men trying to break into the back of that department store. Do your duty."

*Copper:* "Why you little tattletale, you!"

(Takes out blackjack and promptly beats man into pulp.)

## CURTAIN



*After Reed is Finished*

# D. H. MARTIN

CLOTHIER AND FURNISHER

CENTER SQUARE

ELIZABETHTOWN, PA.

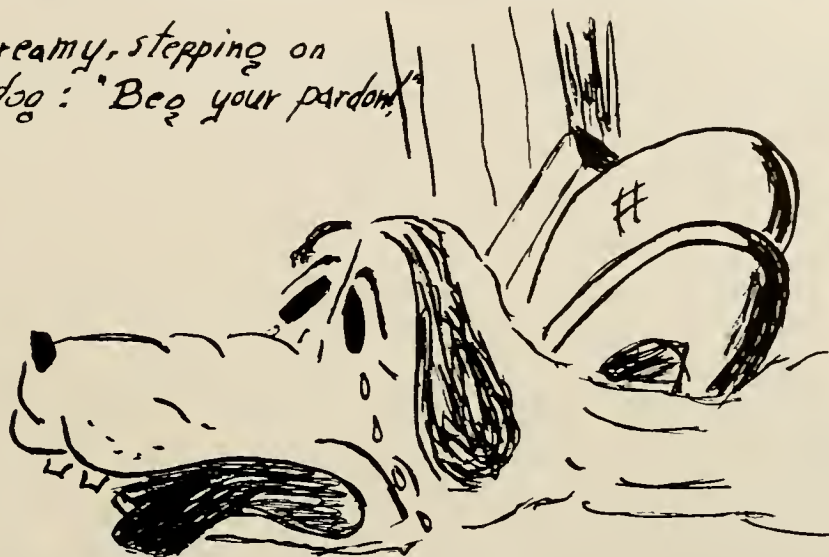


BUY  
MEADOW GOLD BUTTER

ALWAYS GOOD

B. D. S. Company, Distributors  
LANCASTER, PA.

*Dreamy, stepping on  
dog: "Beg your pardon!"*



KODAKS

STATIONERY

DORSHEIMER'S

"On the Square"

SPORTING GOODS

CONFECTIONERY

CUT FLOWERS

POTTED PLANTS

WEST END GREENHOUSE

"Say it with Flowers"



H. A. MERKEY

MANHEIM, PENNSYLVANIA

JOHN M. MILLER

LITITZ, PA.

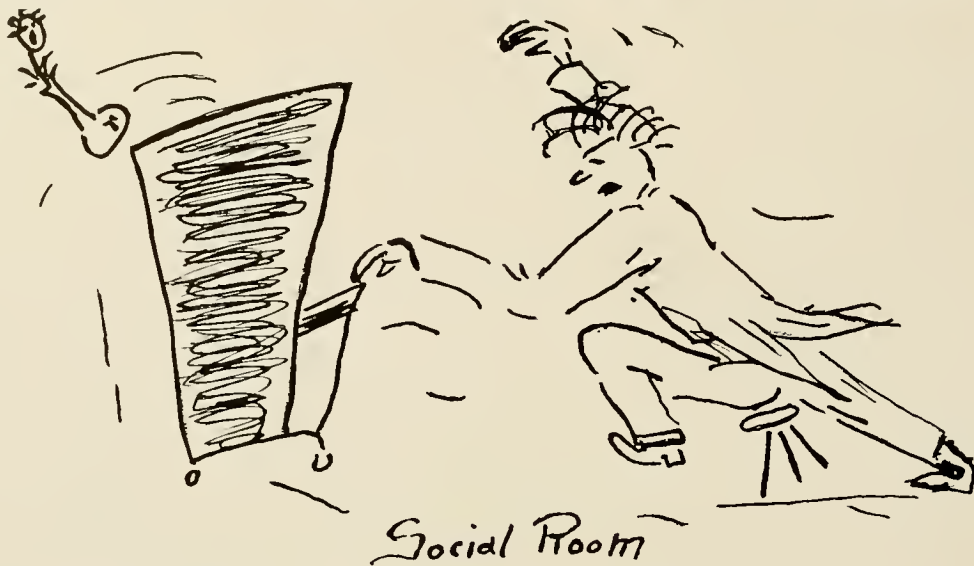
*Auto*

*Fire*

Union Central Life Insurance

Compliments of . . . MOOSE THEATRE

On the Square — Elizabethtown, Penna.



ELIZABETHTOWN PLANING MILL

ELIZABETHTOWN, PENNA.



*Lumber • Millwork*  
*Builders' Supplies*  
*Coal*

PHONE No. 3

54 BROWN STREET

24-HOUR SERVICE - - - Phone: Elizabethtown 226

## NEWCOMER'S SERVICE STATIONS

Richfield Gasoline

Richlube Motor Oils

Rich-Heat Fuel Oil

ELIZABETHTOWN, PENNA.

BRANCHES:

Mt. Joy, Penna.

Ephrata, Penna.

Stonybrook, Penna.

York, Penna.

## BRANDT'S GROCERY

CENTER SQUARE  
ELIZABETHTOWN, PA.

## LEO KOB

*Plumbing and Heating  
Contractor*

## MILTON F. EBERLY

*Furniture of Character*

AT

*Reasonable Prices*



Route 3 - - - Phone: 930-R-12  
ELIZABETHTOWN, PENNA.

OUR LOCATION SAVES YOU MONEY

## Chapel Strike





## Duplicate Photographs

Of The Portraits Appearing In This Book Can  
Be Obtained Up To September 1 At Specially  
Reduced Prices.

*Your Official Photographer*

# WATT & SHAND

PORTRAIT STUDIO · LANCASTER, PENNA.

# Spring ~



# Methods of Attracting Students To Etown College

## 1. Use of Hypnotism



## 2. Discover Oil Wells



## 3. Serve Farmer's Specials every day



## Theme Songs

1. PERRY HULL  
"Lights Out"
2. CURTIS DAY  
"Deep in a Dream"
3. BOB ANDERSON  
"A Little Bit Independent"
4. GENE SHIRK  
"I Must See Annie Tonight"
5. BILL WILLOUGHBY  
"I'm Gonna Sit Right Down  
And Write Myself a Letter"
6. ERNEST KING  
"Come, Thou Almighty King"
7. WILBUR FRIDIGAN  
"Ferdinand the Bull"
8. MRS. GARMAN  
"Who Put the Overalls in  
Mrs. Murphy's Chowder?"
9. MISS SHEAFFER  
"God Send Us Men"
10. J. Z. HERR  
"With Plenty of Money and  
You"
11. ROY BORGER  
"Oh, How I Hate to Get Up  
in the Morning"
12. DR. BOWMAN  
"Carry Me Back to Old  
Virginny"
13. PROFESSOR WELLER  
"In Old Chicago"
14. JANE STRITE  
"I've Got a Dale with a  
Dream"
15. DOROTHY BAUGHER  
"They Go Wild, Simply Wild  
Over Me"
16. ROSS COULSON  
"On the Sentimental Side"
17. CATHERINE CURRY  
"The Man I Love (Is Big  
and Strong)"



# "JAHN & OLLIER AGAIN"



This crest of service and quality is the hallmark of America's largest Yearbook designing and photoengraving organization.

## JAHN & OLLIER ENGRAVING CO.

Makers of Fine Printing  
Plates for Black and Color  
Artists and Photographers

817 W. WASHINGTON BLVD.  
CHICAGO, ILL.

**F. METTFETT & BRO.**

*Where Quality Counts*

SEA FOOD FRUIT VEGETABLES  
PREPARED SEA FOOD

Northern Market House  
Lancaster, Pennsylvania

**SHENK & TITTLE**

*Everything for Sport*

313 Market Street  
HARRISBURG, PENNA.

*Leap Year*



**BARR'S**

*Since 1892*  
**FLOWER SHOP**  
116 N. Queen St., LANCASTER, PA.

**FLOWERS**

**SHEARER'S FURNITURE  
STORE**

*"The Largest Furniture Store Between  
Lancaster and Harrisburg"*

35 - 37 S. Market St.  
ELIZABETHTOWN, PENNA.  
Phone: 12-W

Wholesale and Retail Candies

**KULP'S CONFECTIONERY  
and NEWS AGENCY**

STATIONERY AND GREETING CARDS

39 East Main Street, MT. JOY, PA.

→ ————— ←  
**PENSUPREME ICE CREAM**  
→ ————— ←

**FLORY'S QUALITY MEATS  
GROCERY**

23 High Street  
Phone: 24-M Elizabethtown, Penna.

●  
*Let Us Meet Your Needs*

PARTY SUPPLIES

KODAKS

**Gephart's Art Shop and  
Book Store**

26 West High Street  
Elizabethtown, Penna.

STATIONERY

GREETING CARDS

*Gifts for All Occasions*

**HASSINGER & RISSER, Inc.**

*Oldsmobile and  
Pontiac*

ELIZABETHTOWN, PENNA.

**MUMPER'S DAIRY**

*You can whip our Cream but  
you can't beat our  
Milk*

ELIZABETHTOWN, PENNA.

**AUNT SALLY'S KITCHEN**

WISHES

The Classes of 1940 and 1941  
The Best of Success  
and Happiness

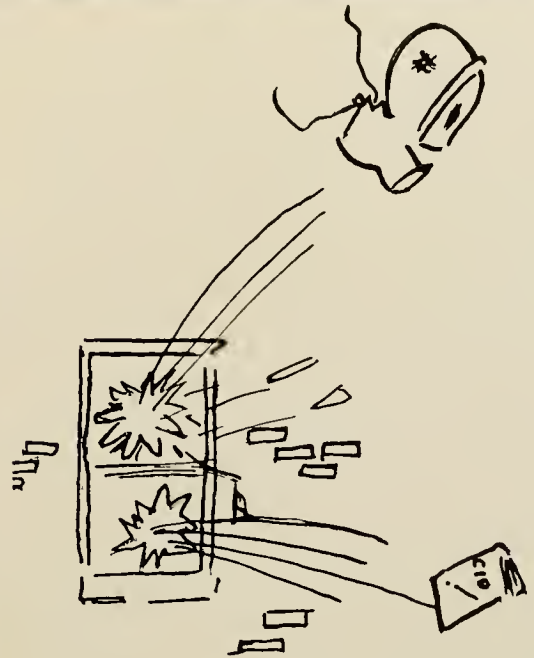
*Courteous Fountain Service*

**D. L. LANDIS**

INSURANCE AND NOTARY PUBLIC

23 S. Market Street

ELIZABETHTOWN, PENNA.



*The Great Ossie*

To the 1942-43 Editor of  
**The Etonian**

Annuals that have been a credit to your alma mater were supervised by your predecessors. From the very first number they have endeavored to foster the ambitions of the graduates, and uphold the standards of your institution.

THE MOUNT PLEASANT PRESS

(printer of this edition), likewise has high standards to maintain. To this end we place at your service a staff of experienced designers, supported by capable craftsmen in every department of this modern printing establishment.

Our representative will be pleased to discuss the 1942-43 edition with you. An interview will incur no obligation. Will you write us, or telephone for an appointment?



J. HORACE McFARLAND CO.  
**Mount Pleasant Press**

Telephone: 6235

HARRISBURG, PENNA.







