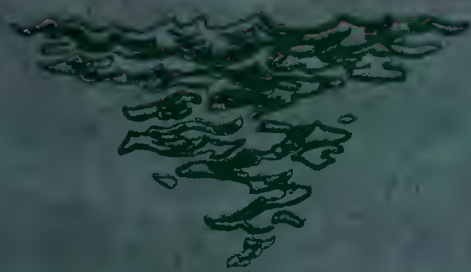


Porthole

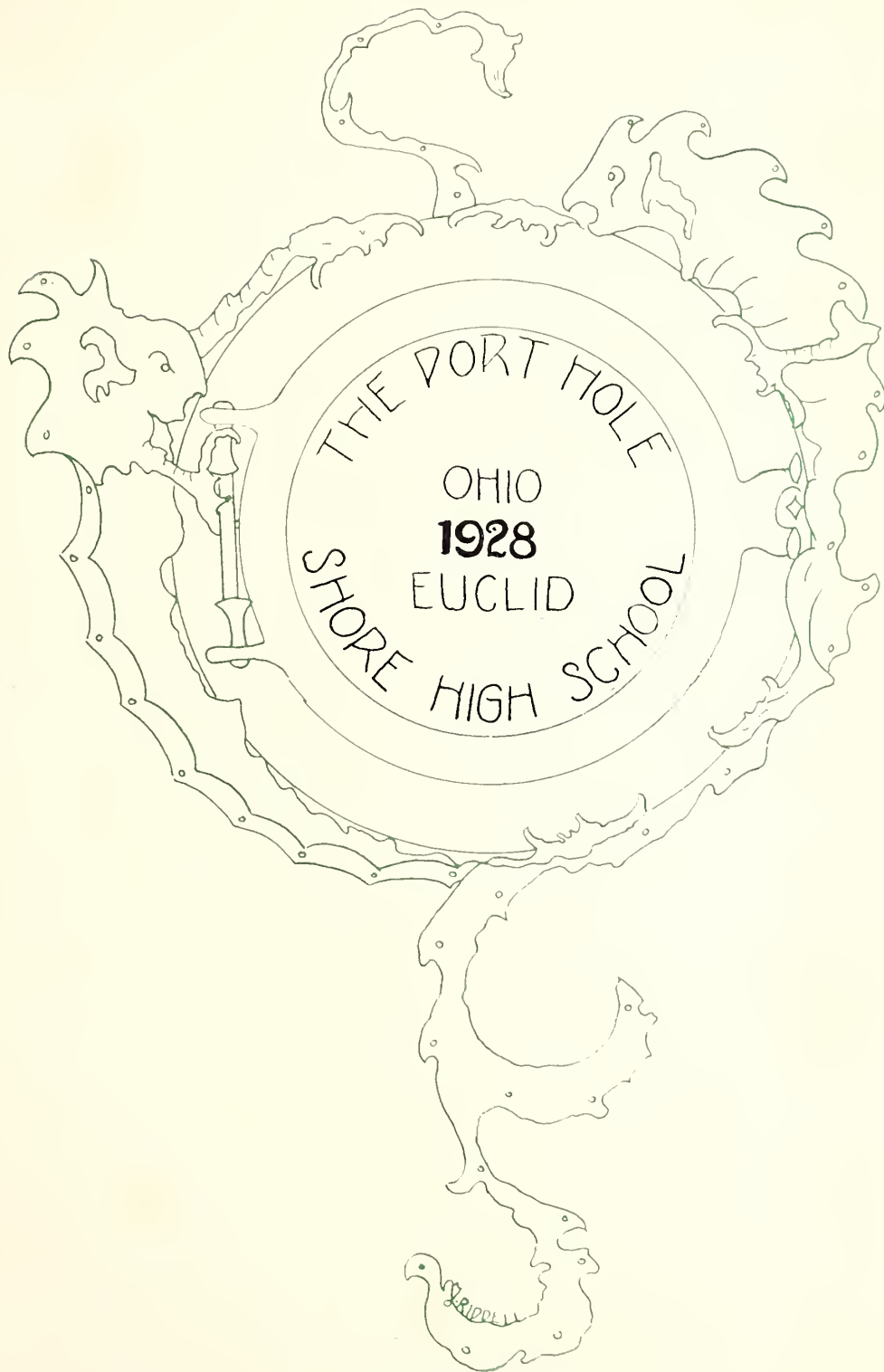




PRIVATE LIBRARY
—OF—
H. W. SPANGLER

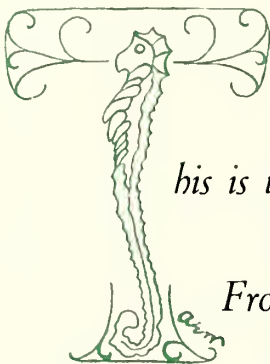
Section _____

Volume _____



VOLUME III

THE PORTHOLE



Foreword

*his is the story of things that be,
And of things that were at Shore,
From fall of year to first of June,
A friendly, varied lore.*

*Plunge in deep as divers do
Who walk the floor of the sea
And traverse land yet unexplored
Of things that were and be!*

*This is the tale of a modern school
With ways both new and old;
Of things that be and things that were,
Let the story now be told.*

THE PORTRAIT



We, the class of '28, dedicate this book
to our sponsor

MISS LUCILLE AINGWORTH

in appreciation of the constant help and
guidance she has been to us



Shore High School



A Winter Scene

THE PORTRAIT



WILBERT A. FRANKS
Superintendent of Euclid Schools

THE PORTFOLIO



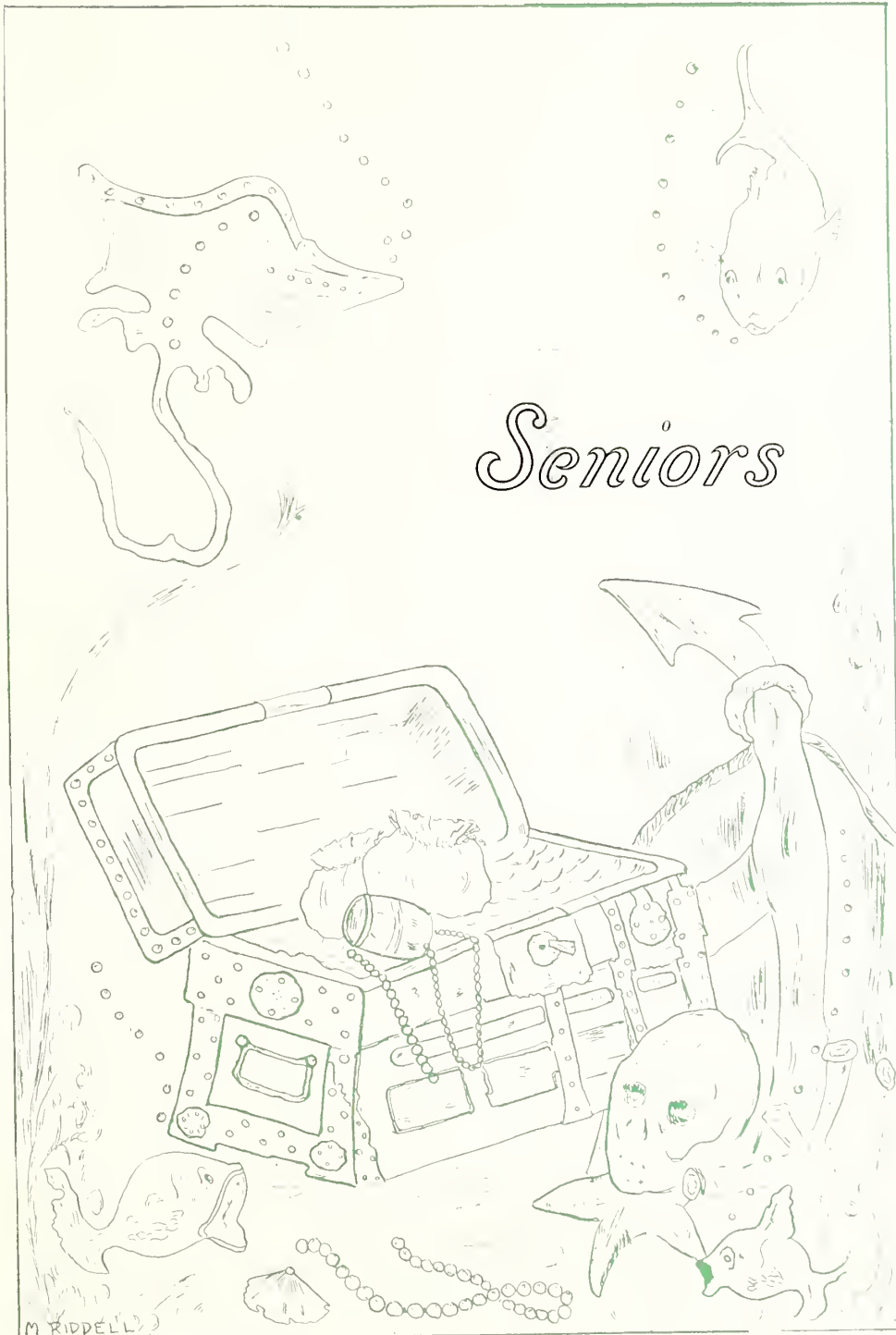
DANIEL E. METTS
Principal of Shore High School

THE PORTFOLIO

Faculty

METTS, DANIEL E.	Principal
<i>Wooster College, B.A.; Columbia University, M.A.</i>	
AINGWORTH, LUCILLE	Domestic Art
<i>Western Reserve College for Women, A.B.; Columbia University</i>	
CASE, FORD L.	Manual Training
<i>Wooster College; Ohio University; Ohio State</i>	
CRAMPTON, MARY R.	Secretary to the Principal
<i>University of Michigan, A.B.</i>	
CRONE, MABEL E.	Mathematics
<i>Oberlin College, B.A.</i>	
DARST, LOUISE	Commercial Subjects
<i>Miami University; Oberlin College, B.A.</i>	
DOUTT, GENAVIEVE	Latin, French
<i>Beaver College, B.O.; Southern College, A.B.; Columbia University</i>	
FAETKENHIEUER, MAUDE	Music
<i>Western Reserve University, A.B.</i>	
HENRY, GRACE	Art
<i>Cleveland School of Art</i>	
KNOX, HARLEY J.	English, History, Civics
<i>Coe College, B.A.; Iowa State College</i>	
KROHN, HELENE	English
<i>Wooster College, B.A.</i>	
LEO, CARL	Orchestra, Band, Boys' Glee Club
<i>Northwestern University; American Conservatory of Music, B.M.</i>	
MITCHELL, LEONA	History, Economics, Social Problems
<i>Ohio State University, B.S.</i>	
ROSENBERGER, HETTY E.	Domestic Science
<i>Western Reserve College for Women, B.S.; University of Chicago; Columbia U.</i>	
SPANGLER, HARRY W.	Science
<i>Heidelberg University, B.A.</i>	
SWARTZ, CLARE E.	English
<i>Wellesley College, B.A.; University of Chicago</i>	
TAYLOR, EULALIA	Nurse
<i>Reynolds Memorial Hospital, Glendale, West Virginia</i>	
WALKER, MARY	Physical Culture
<i>Oberlin College, A.B.</i>	
WILLIAMS, JANE	Commercial Arithmetic, Latin
<i>Denison University, Ph.B.</i>	
WHITESIDE, STANLEY L.	Science
<i>Ohio State University, B.A.</i>	
VAN DEUSEN, HOWARD	Coach





THE PORTHOLE



*Among sunken ships and treasure chests
There's a flash of living things!
A doughty dolphin dashes by
As if he were borne on wings.*

*A friend he is to those who dwell
On the mystic floor of the sea,
Protector kind and sovereign, too,
Of things that were and be.*



THE PORTHOLE

Senior Class Officers



THEODA LUIKART

*"And everywhere that Sodie went,
Her smiles were sure to show."*

Class President III, IV; Class Secretary I.
Glee Club I, II, III, IV; Librarian IV.
Music Appreciation Team II.
Camera Club III, IV; Secretary IV.
Cheerleader's Club II, III.
Leaders' Club III, IV; President III, IV.
Porthole Staff IV; Assistant Photograph
Editor.
Basketball IV.

EDMUND BUDNICK

*"Give us the lad whose happy life
Is one perpetual grin."*

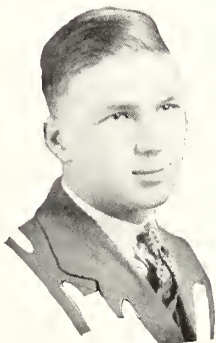
Class Vice-President IV.
Shore Breezes Staff I, IV.
Porthole Staff; Associate Circulating Manager
III; Associate Business Manager IV.
Football IV.
Manager of Track Squad.



WARREN BORGSTEADT

"Silence is a true friend who never betrays."

Class Secretary-Treasurer IV.
Football III, IV.
Manager of Basketball Team III.
National Athletic Honor Society III, IV.
Baseball III.



THE PORTRAIT



BRADFORD ABBOTT

*This chap was new at Shore this year,
And very friendly with the girls 'round
here.*

Entered from Collinwood IV.
Port Hole Staff; Associate Literary Editor IV.
Glee Club IV.
Basketball IV.
Senior Play IV.

LUCILE BRIGLEB

*"You've heard of me often, you will not
deny,
I toot a cornet in the band of Shore
High."*

Gym Leaders' Club IV.
Orchestra IV.

HOMER BARTLETT

*Sleep is apt to overtake him;
He complains that classes wake him.*

Entered from Columbus North High IV.
Baseball IV.
Track IV.

CLAIRE COWIN

*"There's the height of endeavor and the
height of care;
But heard you aught of the height of
Claire?"*

Entered from Glenville III.
Glee Club IV.
Gym Leaders' Club IV.

THE PORTRAIT

HAROLD BOOK

*A "Book" is the ever-burning lamp of
accumulated wisdom.*

Glee Club I, II, III, IV; Leader IV;
Operetta I, II, III, IV.
Football IV; Cheerleader II.
Shore Breezes Staff IV.
Port Hole Staff; Business Manager IV.
Student Council II; Vice President III.
Class President I, II.
National Athletic Honor Society IV.
National Honor Society IV.
Senior Play; Salutatorian.

DORIS EDEN

*Always quiet and meek,
When spoken to, she will speak.*

Entered from East High III.
Camera Club IV.
Gym Leaders' Club IV.

KESTER DISSETTE

*I slept, and dreamed that life was
beauty;
I woke, and found that life was duty.*
Glee Club III, IV; Operetta III.

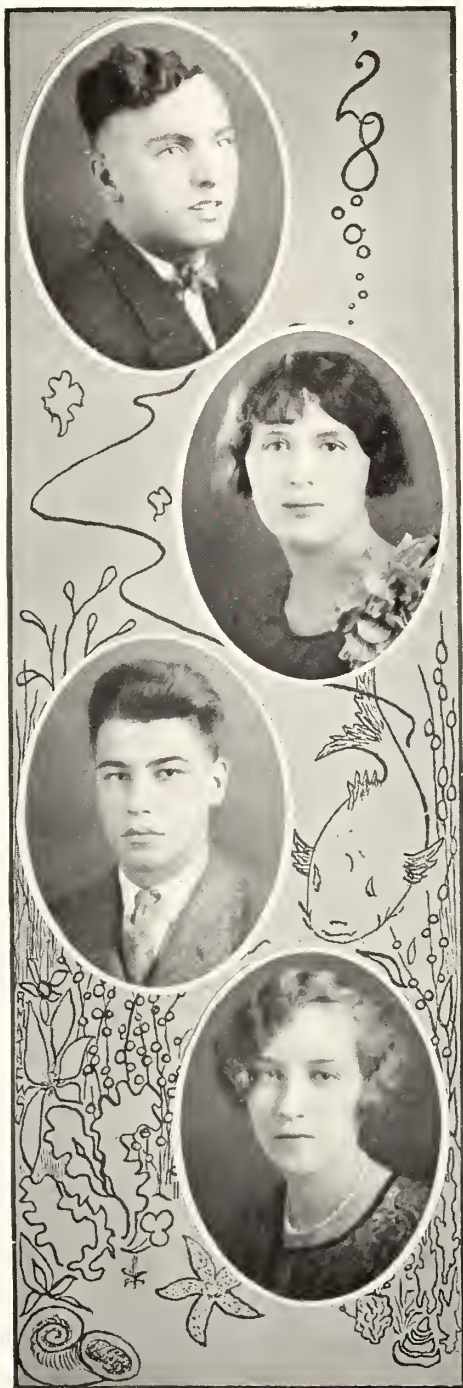
MARTHA GRANGER

*"Existence is a merry treat,
And every speech a jest."*

Glee Club III, IV.
Cheerleaders' Club IV.
Shore Breezes Staff III.
Camera Club IV.
Senior Play IV.



THE PORTRAIT



LEE GRAND JACKSON

*Sly Cupid and his mischievous dart
Have given this boy a weakness of heart.*

Football I, II, III, IV; Captain IV.
Baseball II, III, IV.
Class Secretary II.
Operetta IV.

ELEANOR HART

*"An opera star she aspires to be,
In voice and build she's right, you see.*

Glee Club I, II, III, IV; Operetta III, IV.
Advertising Committee III, IV.
Vice-President of Class I.
Gym Leaders' Club III, IV.
Cheerleaders' Club I.
Senior Play IV.

ELMER KURRLE

*The "minute" man who hits the mark
without any preparation.*

Shore Breezes Staff IV.
Student Council IV.
Glee Club I.
Football III, IV.
National Athletic Honor Society III, IV.
Senior Play IV.

ELEANOR JACK

*"Shoot if you will this young, blond
head,*

I'll still retain my bob!" she said.
Entered from Collinwood IV.
Camera Club IV.

THE PORTRAIT

JACK LATOUR

*It's heard so oft our cardrums hum
With Jack's perpetual "Got some gum?"*
Shore Breezes Staff IV.
Port Hole Staff IV.
Baseball IV.
Senior Play IV.

BERTHA KIESELBACH

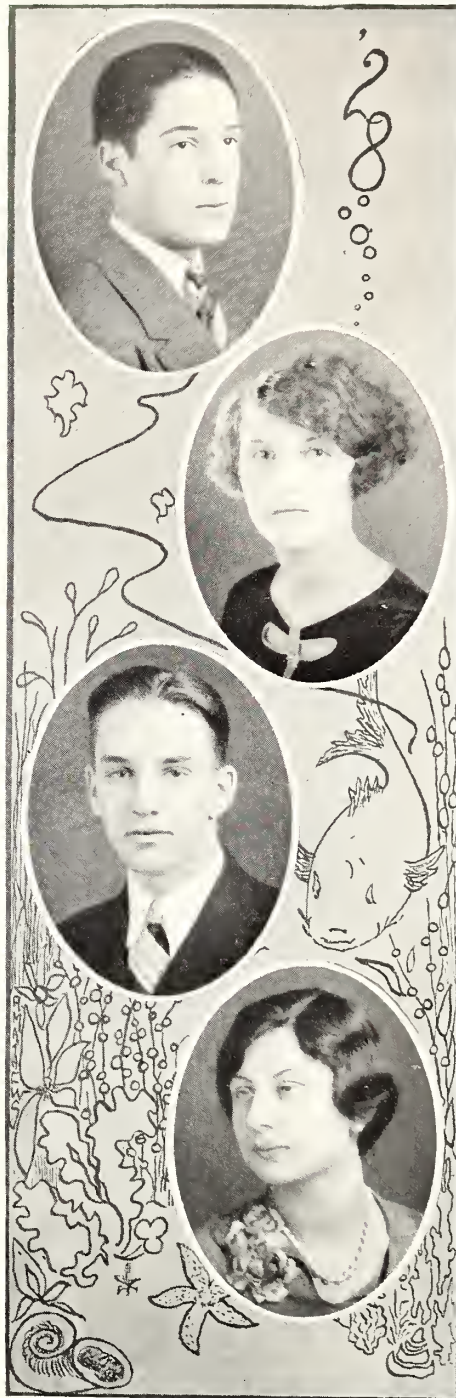
*In classroom, in corridor, wherever she's
found,
She's sure to be giggling with mirth
profound.*
Cheerleaders' Club IV.
Gym Leaders' Club III.
Glee Club II, III, IV.
Music Appreciation Team I.

FORDYCE LUIKART

*To be a great politician he aspires,
Perhaps a president before he retires.*
Glee Club I, II, III, IV; Operetta
III, IV.
Student Council I, II, III, IV; Presi-
dent IV.
Port Hole Staff; Assistant Business
Manager IV.
Advertising Committee II, III.
National Athletic Honor Society IV.
Football Manager III.
Basketball IV.
Baseball II, III, IV; Captain IV.
National Honor Society IV.
Valedictorian.

GOLDIE KOVACIC

*"Honor and reverence, and the good
repute
That follows faithful service as its
fruit."*
Glee Club I, II, III, IV; Leader IV;
Operetta II, III, IV.
Gym Leaders' Club; Secretary IV.
Vice-President of Class II, III.
Orchestra I, II, III.
Senior Play.



THE PORTHOLE



EDWARD OSBORNE

"'Tis jolly to be wise."

Class Secretary-Treasurer II.
Football I, II, III, IV; Captain IV.
Basketball I, II.

AGNES LACH

*"From Collinwood this young miss hails,
Though just arrived, away she sails."*

Entered from Collinwood IV.
Camera Club IV.

CHARLES SEZON

This chap has a smiling view of life.

Football IV.
Basketball IV.
Port Hole Staff III, VI; Associate Business Manager IV.
Captain of Track Squad.

ALICE MATHEWS

*A cute little miss, just like Mary,
Believes in being quite contrary.*

Glee Club I, III, IV; Treasurer IV.
Music Appreciation Team II, III, IV.
Camera Club III.
Advertising Committee II, III.
Shore Breezes Staff III, IV.
Port Hole Staff III, IV; Art Editor IV.
Class Secretary-Treasurer III.
Basketball Manager IV.
Gym Leaders' Club III.
Scenery Painter IV.

THE PORTRAIT

JOSEF SIMONS

*Neighbors don't mind if Joe stays home
As long as he plays his saxophone.*

Entered from East Tech IV.
Orchestra IV.
Band IV.
Senior Play IV.

ELIZABETH RAEBURN

*"Nine for the team! Come on! Let's
go!"*

*Yes, she leads us in cheers at Shore,
you know.*

Port Hole Staff III, IV; Editor-in-Chief
IV.
Student Council III, IV; Vice President
IV.
Gym Leaders' Club III, IV; Vice Presi-
dent IV.
Cheerleaders' Club III, IV; Secretary-
Treasurer IV.
Shore Breezes Staff III, IV.
Music Appreciation Team III.
Glee Club III, IV.
Camera Club III.
Cheerleader III, IV.
National Honor Society IV.

FREDERIC WATKINS

*The cheerleaders houl; the crowd 'most
splits;*

We want a basket - - Y-e-a Fritz!!!

Basketball III, IV; Captain IV.
Football III, IV.
Baseball II, III, IV; Captain III.
Shore Breezes Staff IV.
Glee Club I.
Orchestra I.
National Athletic Honor Society.

MARIE RIDDELL

*This little miss whose blue eyes beam
Has a perky manner and thoughts that
dream.*

Entered from Cleveland Heights II.
Port Hole Staff; Assistant Art Editor
IV.
Camera Club II, III, IV.
Music Appreciation Team II, III.
Gym Leaders' Club III, IV.
Cheerleaders' Club III, IV.
Senior Play IV.



THE PORTHOLE



PHILIP WICHERN

*"Music and knowledge are his by the score,
Who else on the earth would want to have more?"*

Orchestra II, III, IV.
Band IV.
Glee Club IV.
Senior Play IV.

MARY ELIZABETH RYDER

*"If we were all like this little miss,
Rules on conduct wouldn't exist."*

Camera Club IV.
Advertising Committee IV.
Cheerleaders' Club IV.
Glee Club I, II, IV.

VICTOR ZELLE

*"I 'shoot' each movie at Shore," says he.
What a perfect marksman he must be!*

Football IV.
Basketball Manager IV.
National Athletic Honor Society IV.
Port Hole Staff IV.
Movie Operator III, IV.
Baseball Manager.

CLARA SCHMIDT

*"So bright a day; it's quite a pity
We can't take pictures. Oh, Yes,
there's Schmitty!"*

Camera Club III, IV; President IV.
Cheerleaders' Club IV.
Gym Leaders' Club III, IV.
Port Hole Staff III, IV; Photograph
Editor IV.
Music Appreciation Team II, III.

THE

PORTFOLIO

RUTH SYLVESTER

*To be high in scholarship most of the
year
Is a distinction that doesn't occur often
here.*

Gym Leaders' Club III, IV.
Camera Club III, IV.
Music Appreciation Team II, III.
Distinguished Roll IV.

MARGUERITE TESKA

*"Little girls should be seen, but seldom
be heard;"
But to try that in class-rooms is truly
absurd.*

Gym Leaders' Club III.
Orchestra II, III, IV.
Glee Club IV.
Camera Club III, IV.
Cheerleaders' Club IV.

SENIOR HONOR STUDENTS

Valedictorian.....Fordyce Luikart
Salutatorian.....Harold Book



THE PORTHOLE

Senior Class Will

We, the Senior Class of 1928, being of sound mind and memory, do hereby make, ordain, declare, and publish this as our last will and testament, hereby revoking all former wills made by us.

*F*irst—We direct that our past debts be forgiven us.

Second—We give to our close friend and adviser, Miss Aingworth, thirty-five votes of thanks, showing our appreciation for her splendid work as our adviser.

Third—We give authority to every teacher to use us as an example when setting a standard for his students.

Fourth—We hereby appoint Will Rogers as executor of our last will and testament.

We, the "class of '28", do hereby bequeath the following:

Watkins and Luikart—their basketball ability to Alex Lorimer and Clifton Alger.

Eleanor Hart and Lucille Brigleb—their plumpness to Mildred Stein and Stella Noch.

Bradford Abbott—his "loving" ways to Rudolph Hoffart.

Clara Schmidt—her collection of snapshots to the police to be used in divorce courts and in the rogues' gallery.

Claire Cowin—her altitude to Margaret Lucas.

"Mercury" Borgsteadt—his fleetness of foot to Robert March.

Harold Book—his marvelous dramatic ability to Theodore Conrad.

Elizabeth Raeburn—her collection of "yell books" and megaphones to Shore's future cheerleaders.

Goldie Kovacic—her beauty and sweet disposition to next year's seniors. (They need it.)

Jack Latour—his gum wrappers to Mr. Stray.

The two "Curleys", Elmer and Jackson—their football ability to Clifford Bantel and Jack Whittle.

Alice Mathews—her shortness to Robert Yeomans, the mighty Napoleon of future years.

Ruth Sylvester—her excellent grades to Willard Duff.

Edmund Budnick—his cheery disposition to the present and future teachers.

In witness whereof we set our hand and seal this day of February 21, 1928.

WITNESSES:

CHARLES LINDBERGH,

NANCY MILLER, *Princess of India.*

THE PORTHOLE

Captain Applejack

An Arabian Night's Adventure in three acts

Presented by the Senior Class, May 25, 1928

CAST OF CHARACTERS

Poppy	Marie Riddell
Who is the niece of	
Mrs. Whatcombe	Eleanor Hart
Who is the sister of	
Ambrose Applejohn	Harold Book
Who longs for adventure and finds it in the mysterious appearance of the Russian countess	
Anne Valeska	Goldie Kovacic
Whose husband is the notorious bandit	
Ivan Borolsky	Jack Latour
Who encounters in his plan of robbery two other adventurers	
Mrs. Pengard	Martha Granger
And her husband	
Mr. Pengard	Joe Simons
Johnny Jason	Elmer Kurrle
A real estate agent who frustrates the thieves by the aid of	
Dennett	Bradford Abbott
A policeman	
Lush	Philip Wichern
The butler	



MISS GENEVIEVE DOUTT, *Director of Senior Play*



Find answers to---



--These puzzles on page 62

THE PORTHOLE

National Honor Society

We are proud of the little framed charter which hangs in the main corridor and enables Shore High pupils to be enrolled as members of the National Honor Society. To become a member of this nation-wide society, a pupil must rank high in four qualifications, namely scholarship, leadership, service, and character.

Those who are elected as members are presented with small gold pins, upon which are engraved the torch of knowledge and the four letters, S.L.S.C., representing the four qualities for which they stand.

To belong to a society of this kind should mean much to a member. When an outsider who knows nothing about the organization inquires as to the significance of the little gold pin, the wearer can proudly say "I earned that as an all-around student in my high-school days."

Although this society is a new organization in our school, the charter having been granted to us in 1925, it already claims as its members a number of Shorites, past and present.

They are as follows:

Aitken, Irene, '25
Brigleb, Carl, '25
Kinney, Laura, '26
Mann, Lillian, '26

Aitken, Russell, '27
Anderson, Kenneth, '27
Kovacic, Emily, '27
Schubert, Betty, '27

Book, Harold, '28
Kovacic, Goldie, '28
Luikart, Fordyce, '28
Raeburn, Elizabeth, '28

To Bob or Not to Bob

To bob, or not to bob; that is the question:
Whether 'tis easier for the head to suffer
The jabs and pricks of a sharp-tipped hairpin,
Or to take shears against a mop of tresses,
And by a few snips end them? To bob, to shingle;
To cut, perchance quite short; aye, there's the rub;
For with the close-clipped shingle, regrets may come
When we a haircut need, yet find we lack
The price of a cut. E. R.

Irritations of a Senior

Lower-classmen who stop for a long, drawn-out conversation in front of a drinking fountain, in a doorway, or in front of the bulletin box.

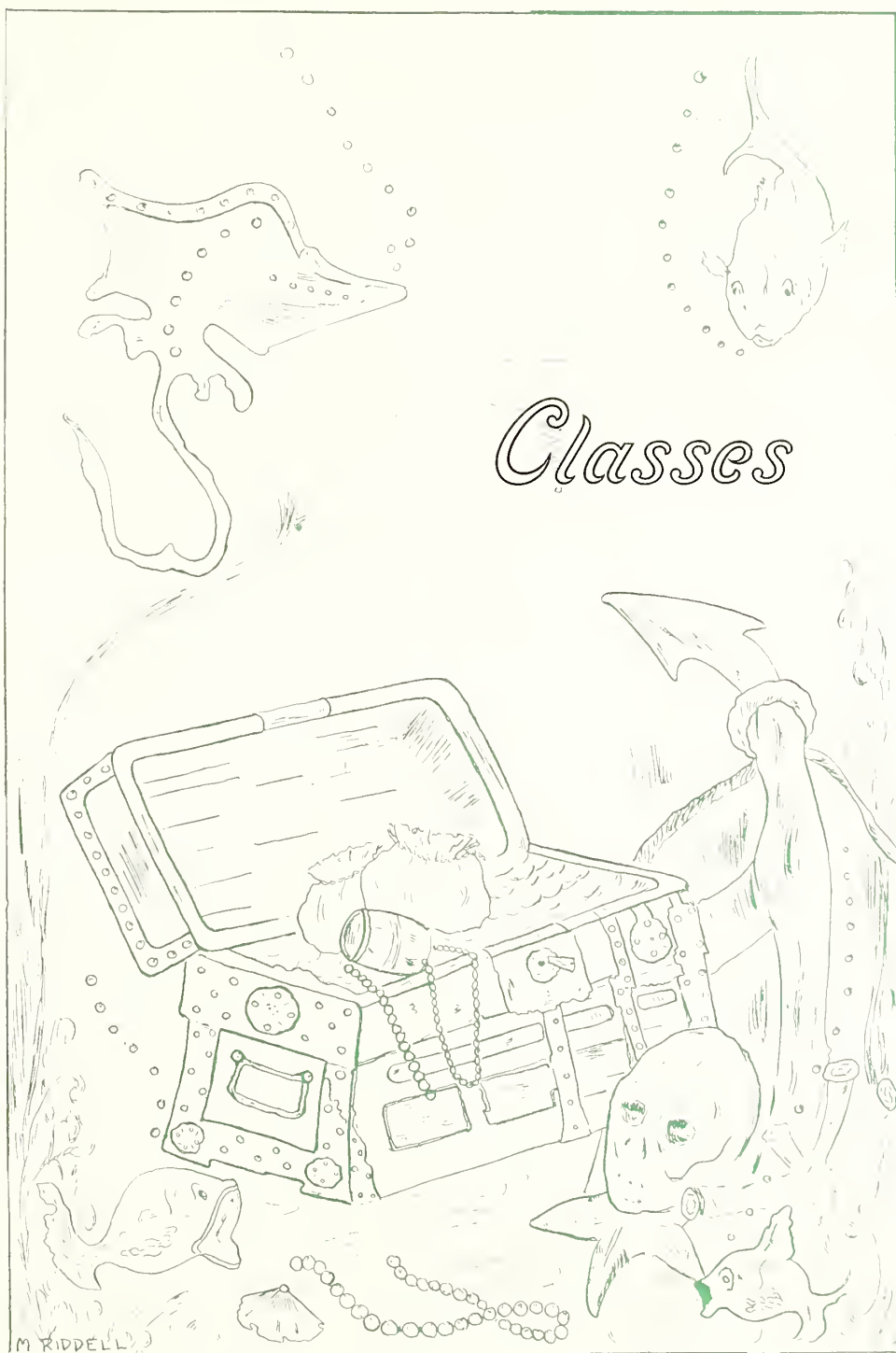
Budding young sculptors who leave samples of their work on class-room desks.

People who walk casually out of the gym in the last few moments of a tie-score game.

The person that suggests a strike on the next day's assignment and then turns up the following day—the only one with his lesson prepared.

The forgotten locker key that rests innocently at home on the dresser.

Freshmen in general.



THE POREHOLE



*Suppose the crabs are busy juniors,
The sophs, balloon fish, so!
Then jelly fish must freshmen be;
Now let the story go!*

*In land untried beneath the sea
Where wrecks of ships abide
A busy life of many sorts
Stirs bravely with the tide.*

*The persistent crab holds on with a grip,
Declaring his right of way;
"Balloon fish, you, with inflated sides,
You ought to get pinched, I say."*

*The jelly fish knows its lowly place
And shrinks into the sand.
"No backbone at all," balloon fish snorts,
"Than I, there's none more grand!"*

THE PORTRAIT



11A Class

OFFICERS

<i>President</i>	FLORENCE PFEIL
<i>Vice President</i>	MARIAN AHLMAN
<i>Secretary</i>	JEAN WILSON
<i>Treasurer</i>	MARGARET OGILVIE
<i>Student Council Members</i>	{ DOROTHY GETLER RALPH BONNEMA ELSIE TAYLOR
<i>Sponsor</i>	MISS HELENE KROHN
<i>Class Colors</i>	ROSE AND GRAY

Ahlman, Marian
Bantel, Clifford
Bonnema, Ralph
Borgsteadt, Charlotte
Bricel, Frank
Carney, Bernice
Cimperman, Alice
Clement, Rachel
Conrad, Theodore

Getler, Dorothy
Grdina, Edith
Hart, Hanna
Hauschild, Betty
Herman, Norman
Krenn, Walter
Larick, Helen
Mathews, Lucy
McCormick, Paul

Miller, Daniel
Mertek, Jennie
Morris, Chester
Ogilvie, Margaret
Pearson, John
Petrovsky, Janet
Pfeil, Florence
Repka, Ruth
Signorette, Lenore

Snetsinger, Kenneth
Spencer, Helen
Stein, Mildred
Stray, Helen
Taylor, Elsie
Vidugeris, Philomena
Whittle, Jack
Wilson, Jean

THE PORTRAIT



11B Class

OFFICERS

<i>President</i>	CHARLES SCHUBERT
<i>Vice President</i>	ROBERT YEOMANS
<i>Secretary</i>	BEATRICE HIRSCH
<i>Treasurer</i>	WERNER CROZIER
<i>Student Council Members</i>	{ BEATRICE HIRSCH CHARLES NASO
<i>Sponsor</i>	MISS MABEL CRONE
<i>Class Colors</i>	GREEN AND GOLD

Clark, Genavieve
Cowin, Jeanette
Cross, Geraldine
Crozier, Werner
Getler, Henry
Gillman, Wilma
Hassell, Eleanor

Hirsch, Beatrice
Householder, Ellsworth
Kisthardt, Lucille
Lavell, Ralph
Lemon, Marie
McDonald, Ruth
Merchant, Margaret

Naso, Charles
Schubert, Charles
Stephens, Eva
Test, Walter
Yeomans, Robert
Yuchuck, John
Zetterloff, Olga

THE PORCHOL



10A Class

OFFICERS

<i>President</i>	GEORGE SCHEERER
<i>Vice President</i>	RICHARD PROUDFOOT
<i>Secretary</i>	MARGARET LUCAS
<i>Treasurer</i>	MAY KRESSIN
<i>Student Council Members</i>	{ ROBERT MARCH DOROTHEA MARTENS
<i>Sponsor</i>	MISS LEONA MITCHELL
<i>Class Colors</i>	BLUE AND GOLD

Barber, Dale
Borgsteadt, Richard
Christopher, Juanita
Green, Walter
Herman, Marjorie
Kinkopf, Josephine
Knight, Jeanette
Krsnik, Edward
Kressin, May

Longo, Josephine
Lucas, Margaret
Lusher, Marabell
McKinda, Genavieve
Manzelman, Sarah
March, Robert
Martens, Dorothea
Mason, Edward
Noch, Stella
Ogilvie, Helen

Plantz, Garnet
Proudfoot, Richard
Reidel, Lester
Scheerer, George
Shally, Ludwig
Trudeau, Irene
Vidrick, Anton
Willkomm, Marie
Wissman, Viola

THE PORTRAIT



10B Class

OFFICERS

<i>President</i>	SCOTT CRAMPTON
<i>Vice President</i>	ROBERT PARKS
<i>Secretary</i>	LUCILLE RIDDELL
<i>Treasurer</i>	ADELE HICKS
<i>Student Council Member</i>	LUCILLE RIDDELL
<i>Sponsor</i>	MR. STANLEY WHITESIDE
<i>Class Colors</i>	CRIMSON AND WHITE

Alger, Clifton
 Bineckley, John
 Cameron, Rachel
 Childers, William
 Clymer, William
 Crampton, Scott
 Devor, Leslie
 Domitor, Margaret
 Duff, Willard
 Geiger, John
 Gezann, Arthur

Gill, Jack
 Griffiths, Myrtle
 Hicks, Adele
 Hoprich, Katherine
 Hunter, Pauline
 Jehlicka, Louise
 Judkins, Edwin
 Klaus, Rosie
 Lauderbach, Edgar
 Macey, James
 Miller, Stuart

Parks, Robert
 Parmalee, Richard
 Riddell, Lucille
 Schink, Nettie
 Stepanevich, Lilyan
 Stevens, Orves
 Trattar, Violet
 Thomas, Ralph
 Waterwash, Antoinette
 Wichern, Carl
 Zivkovic, Marie

THE PORTRAIT



9A Class

OFFICERS

<i>President</i>	JOHN BRIGLEB
<i>Vice President</i>	JANE WITMER
<i>Secretary</i>	HOWARD COOK
<i>Treasurer</i>	WILLIAM LOCKARD
<i>Student Council Member</i>	LEROY COLLINS
<i>Sponsor</i>	MISS JANE WILLIAMS
<i>Class Colors</i>	PURPLE AND GOLD

Amidich, Emilie
 Andrews, Charles
 Armocida, Bernice
 Black, Margaret
 Bowles, Lillian
 Brigleb, John
 Brott, Mildred
 Bukovec, Charles
 Bukovec, Frances
 Camplejohn, Reed
 Centner, Bernice
 Cerjan, Anna

Clavey, Arvilla
 Clines, Margaret
 Collins, Leroy
 Cook, Howard
 Cowin, Mary
 Disanto, Evelyn
 Fox, Eli
 Grdina, Florence
 Herzog, Philip
 Hill, Esther
 Johnson, Evadua
 Latour, Dick
 Lee, Mary

Lockard, William
 Malovrh, Sophie
 Mantel, George
 Mertek, Rudolph
 Mortimer, Irma
 Overacre, Catherine
 Pilla, Lucy
 Podnar, Matthew
 Pyle, May
 Rose, Charles
 Seidel, Ruth
 Sezon, Emma
 Sharnas, Helen

Sintick, Helen
 Skyrance, Pauline
 Stenger, Ethel
 Taylor, Patricia
 Testa, Carl
 Traub, Lawrence
 Triman, Alvin
 Vedder, Erma
 Wilms, Edward
 Witmer, Jane
 Zelle, Dorothy
 Zook, John

THE PORTRAIT



9B Class

OFFICERS

<i>President</i>	RUTH NASON
<i>Vice President</i>	GRETCHEN SCHWAN
<i>Secretary</i>	LE VERNE SPENCER
<i>Treasurer</i>	HELEN DOUGLAS
<i>Student Council Member</i>	MARY YEOMANS
<i>Sponsor</i>	MR. KNOX

Angelone, Pasquolino
 Bauer, Anna
 Bonnema, Wesley
 Boyence, Mary
 Bricel, Florence
 Carlson, Lennart
 Carney, Margaret
 Davirro, Antoinette
 Douglas, Helen
 Drenik, Frances
 Frabotta, Pasquolino
 Fioritto, Ralph
 Gardner, Geraldine
 Grill, Alice
 Guarino, Vincent
 Hadyk, John

Hartman, Hilda
 Hartzel, Mary
 Haslin, Arline
 Hoffart, Rudolph
 Ischay, Harry
 Jamison, Virginia
 Karls, Harold
 Kekic, Julia
 Koller, Frank
 Koren, Frank
 Kucich, Anton
 Lane, Gertrude
 Laturell, Ralph
 Laurich, Bertha
 Lorimer, Alexander
 Metzger, Catherine

Montana, Isabella
 Morris, George
 Murray, Katherine
 Nason, Ruth
 Nosse, Louis
 Parenti, Angelo
 Parmele, Helen
 Passeralo, Florence
 Patterson, Surlene
 Peck, Caroline
 Pellerin, Margaret
 Poje, Stonko
 Preskar, Pauline
 Pyle, Freda
 Rauth, Otto
 Roeder, William

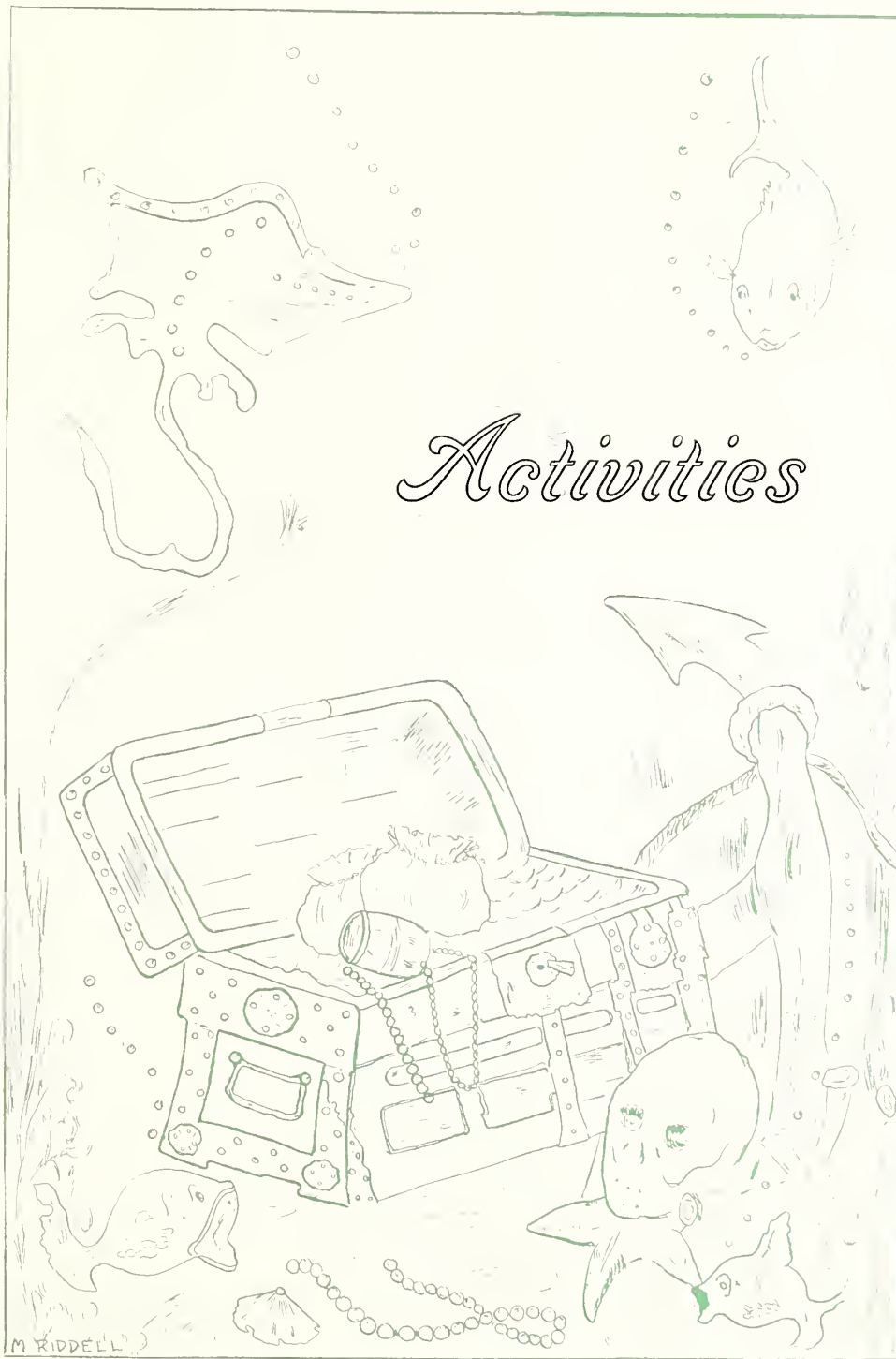
Sava, Mary
 Schwan, Gretchen
 Sinkovic, Rose
 Spencer, Le Verne
 Spino, Frances
 Sullivan, Marjorie
 Tegel, Frank
 Tichner, Sanford
 Turk, Antonia
 Ulepik, Rose
 Vehr, John
 Wachtell, Lester
 Wacker, Grace
 Wagner, Frances
 Willkomm, John
 Ycomans, Mary

THE PORTRAIT

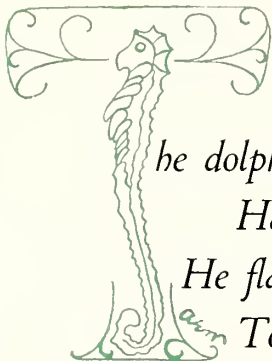


When Shorites Turn S-Kittenish!





THE PORTHOLE



he dolphin looked through the old port-hole
Half buried in sand and weeds;
He flapped his gill and swished his tail
To see such lively deeds!

A dart! a splash! a fish swims by;
Glorious, he leads the way.
Others follow like lightning streaks;
It's a school of fish at play!



THE PORTHOLE



Orchestra

Leaders..... { MR. LEO
MR. CASE

Pianists..... { MARGARET LUCAS
FLORENCE PFEIL

Clifford Bantel *First Violin*
John Binckley *Saxophone*
Ralph Bonnema *Melophone*
Lucille Brigleb *Cornet*
Lennert Carlston *Euphonium*
Leroy Collins *First Violin*
John Geiger *Second Violin*
Myrtle Griffis *Second Violin*

Alex Lorimer *Melophone*
Paul McCormick *Bass*
Richard Parmele *Clarinet*
John Pierson *Drums*
Joe Simons *Clarinet, Alto Saxophone*
Marguerite Teska *First Violin*
Carl Wichern *Cornet*
Philip Wichern *First Violin, Euphonium*

THE PORTRAIT



Girls' Glee Club

OFFICERS

<i>Leader</i>	GOLDIE KOVACIC
<i>Secretary</i>	ELEANOR HART
<i>Treasurer</i>	ALICE MATHEWS
<i>Librarian</i>	THEODA LUIKART
<i>Director</i>	MISS FAETKENHEUER

Ahlman, Marian
 Borgsteadt, Charlotte
 Bucovec, Frances
 Clark, Genevieve
 Cimperman, Alice
 Cowin, Claire
 Cowin, Jeannette
 Getler, Dorothy
 Granger, Martha
 Herman, Marjorie
 Hicks, Adele
 Hirsch, Beatrice
 Hauschild, Betty
 Kieselbach, Bertha
 Kressin, May
 Lemon, Marie



Martens, Dorothea
 Mathews, Lucy
 McKinda, Genavieve
 Noeh, Stella
 Petrowsky, Janet
 Pfeil, Florence
 Raeburn, Elizabeth
 Repka, Ruth
 Ryder, Mary
 Schmidt, Clara
 Stephens, Eva
 Spencer, Helen
 Taylor, Elsie
 Teska, Marguerite
 Willkomm, Marie

Miss Faetkenheuer

Director of Music in Euclid Schools

THE PORTFOLIO



Boys' Glee Club

Director.....MR. LEO

OFFICERS

Leader.....HAROLD BOOK

Secretary-Treasurer.....CLIFFORD BANTEL

Librarian.....RALPH BONNEMA

Abbott, Bradford
Alger, Clifton
Crampton, Scott
Dissette, Kester
Getler, Henry

Gill, Jack
Householder, Ellsworth
Lorimer, Alex
Luikart, Fordyce
McCormick, Paul

Miller, Daniel
Naso, Charles
Pearson, John
Scheerer, George
Schubert, Charles

Snetsinger, Kenneth
Whittle, Jack
Wichern, Philip
Yeomans, Robert

"Sweethearts"

Victor Herbert's *Sweethearts*, given by the combined glee clubs, April 14, was an unusually excellent performance.

The loud applause of the large audience proved the success of this well-enacted operetta.

Much credit is due Mr. King and Miss Faetkenheuer as directors of the performance.

The cast was as follows:

SylviaEleanor Hart

FranzHarold Book

LianeHelen Spencer

CarlAlex Lorimer

Dame PaulaGoldie Kovacic

Von TrompJack Whittle

SlingsbyRobert Yeomans

CanicheCharles Naso

Six White Geese.....Marian Ahlman, Genevieve Clark, Betty Hauschild,

Ruth Repka, Elsie Taylor, Marie Willkomm

THE PORTHOLE



Port-Hole Staff

1928

Editor-in-Chief

ELIZABETH RAEBURN

Business Manager

HAROLD BOOK

Associate Literary Editors

BRADFORD ABBOTT

HELEH LARICK

HELEN SPENCER

MARIAN AHLMAN

FLORENCE PFEIL

Associate Photograph Editors

THEODA LUKART

DOROTHY GETLER

Art Editor

ALICE MATHEWS

Photograph Editor

CLARA SCHMIDT

Associate Business Managers

CHARLES SEZON

FORDYCE LUKART

JENNIE MERTEK

JACK LATOUR

VICTOR ZELLE

EDMUND BUDNICK

Associate Art Editors

MARIE RIDDELL

GOLDIE KOVACIC

In publishing the third volume of the *Port-Hole*, this year's staff feels deep gratitude to Miss Clare Swartz, founder of the *Port-Hole* and faculty adviser during its three years of being. Under her direction the staff has learned many things. Courtesy in business dealings, promptness in meeting obligations, and a spirit of fairness toward all departments of the school—these have been the policy of the staff through her sponsorship.

Now as this book goes to press, the staff expresses appreciation of her work with and for them.

THE PORTRAIT



Student Council

OFFICERS

President.....FORDYCE LUIKART
Vice President.....ELIZABETH RAEBURN
Secretary-Treasurer.....ELSIE TAYLOR
Sponsor.....MR. METTS

This year's Student Council was made up of thirteen members, each class being represented by one or more members. This organization, sponsored by the Principal, met weekly. Its purpose was to discuss the problems of the school and suggest ways of handling situations.

The Student Council's achievements this year include arranging the program of the installation of class officers and installing a systematic seating arrangement for the classes during assemblies in the gymnasium.

The general policy of the Student Council has been to secure the cooperation of the student body with the faculty and Student Council.



Shore Breezes

Shore Breezes, official news organ of Shore, is completing the fifth year of its existence. Like most five-year olds, it has outgrown its infancy and is growing so steadily in importance that it may soon have to change its "mimeographed" dress for a "printed" one. (Prints are quite the fashion this season.)

Published every Tuesday with the help of Miss Louise Darst and the typing department, this four-page paper has carried to the community through two hundred and fifty subscribers piping hot news of school affairs.

Editor-in-Chief
Helen Lariak

Associate Editor
Florence Pheil

Artists
Clara Schmidt
Marie Riddell

Sports Editor
Harold Book

Reporters
Marian Ahlman
Helen Spencer

Faculty Adviser
Miss Clare Swartz

Circulation Manager *Mimeographers*
Jennie Mertek

Typists
Elmer Kurrle
Elizabeth Raeburn
Marie Riddell
Frederic Watkins

Bradford Abbott
Clifton Alger
Edmund Budnick
Reed Camplejohn
Jack Latour
Stuart Miller
Victor Zelle





THE ORATOR



INVITING -



"Perry" - but not "Fair-y"



OH!
What a Baby



P A C E S



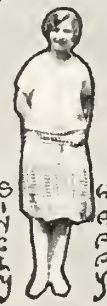
A Substituted



A Doggy Picture



She "rides" home.



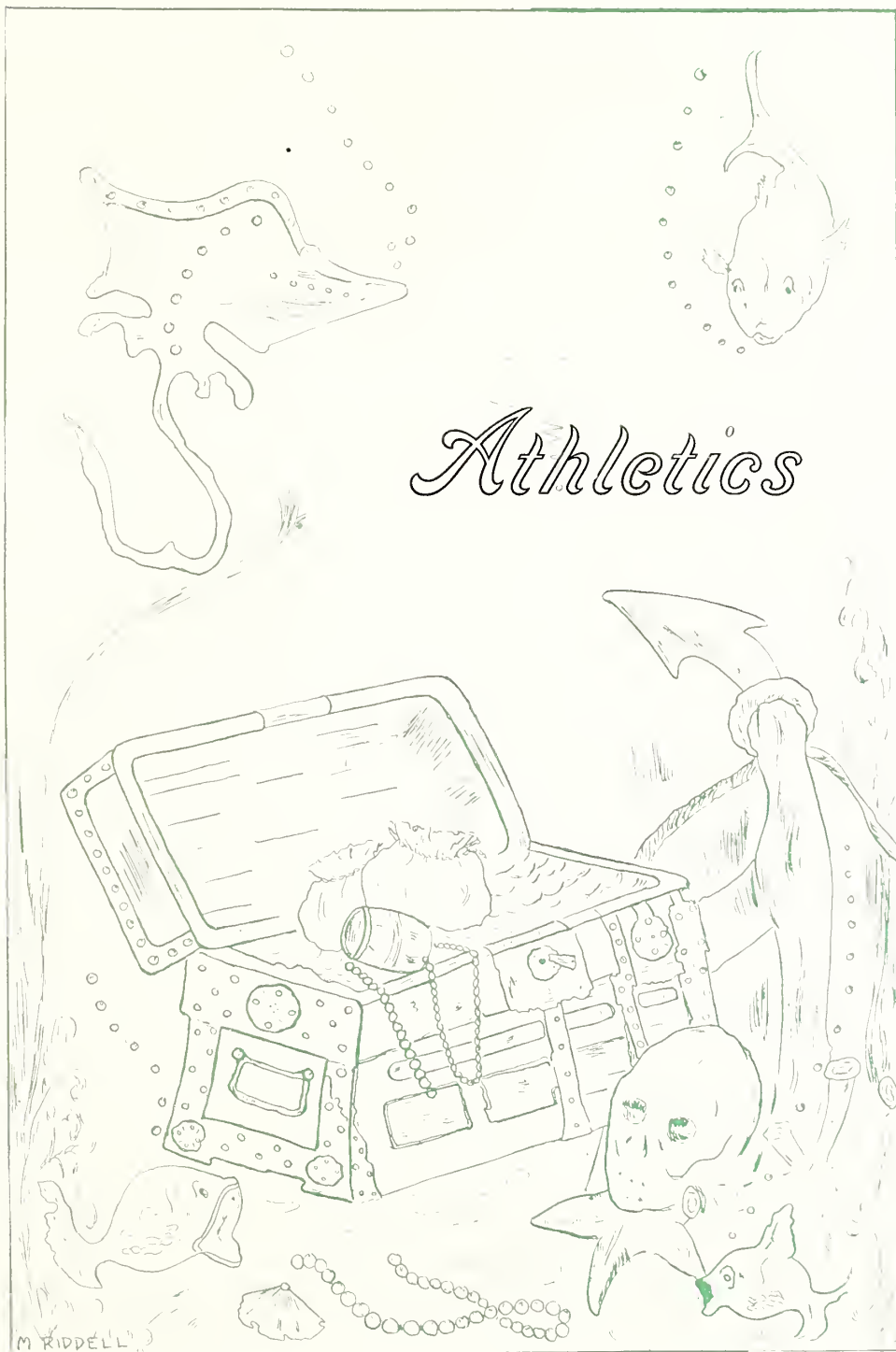
S I N C E R E



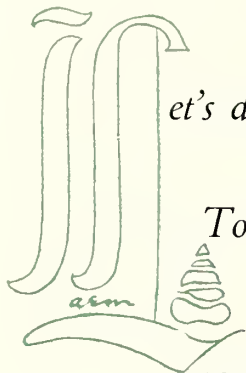
It's catching.



A Giggling Trio



THE PORCHOLIE



*et's dive beneath the surface, now;
The fish are on their way
To watch a well-matched swimming meet---
The talk of all the day.*

*Each swimmer steels himself against
His opponent of the fray,
Makes up his mind to win the prize
In a good clean sportsman's way.*

*The race is on! How fast they go!
Ah! this will put to test
Athletic skill, and we shall see
Whose art will prove the best.*



THE PORTRAIT



Football

Back Row—L. or R.: Coach Van Deusen, Ralph Bonnema, Walter Kiem, Norman Herman (Manager), Harold Book, Warren Borgsteadt, Mr. Metts.

Front Row—L. to R.: Victor Zelle, Edmund Budnick, Fritz Watkins, Lee Grand Jackson (Capt.), Elmer Kurrle, Robert Yeomans, Charles Schubert.

Our football season was extremely hard. As the boys "didn't choose to run" for first place, they did the next best thing and carried off the "Cellar" championship honors.

It is a known fact that when a school loses, by graduation, about ninety percent of its football material, the next year's team is sure to be in sore straits. Shore was in just such a position last fall. Most of the material was green, and the squad averaged only one-hundred thirty pounds per man. Captain Jackson, the most promising man on the team, was injured in a practice game and was laid up for the rest of the season. In the backfield there were two "letter men", Watkins and Schubert. On the line there were three letter men, Kurrle, Borgsteadt, and Yeomans. Every game was played against unsurmountable odds, namely weight and experience. Yet in spite of these facts, no one ever saw eleven men try harder. They would arise from the disappointment of one defeat and make a desperate effort in the following game. This same team held the joint Conference Champs nearly scoreless for three quarters. They scored on the powerful Longwood eleven. We spectators must remember that,

"What though the field is lost, all is not lost."

(Continued on page 58)

THE PORTHOLE



Alice Mathews (Manager). Coach Van Deusen. Miss Aingworth
L. to R.: Lucy Mathews, Mildred Stein, Florence Pfeil, Dorothy Getler (Captain),
Juanita Christopher, Theoda Luikart.

Girls' Basketball Review

The girls' basketball season for 1928 was the best that Shore has had for some time. Only two letter girls, Dorothy Getler, captain, and Lucy Mathews, remained, about which to construct a team. At the first call for basketball forty girls responded and, after considerable thinning out, a squad of fifteen girls worked strenuously and were well prepared for their opening game which was with Euclid. The Euclidites were defeated by a 39-16 count. The following two games were lost to Bedford and Fairport. But, in the remaining games of the season, excellent guarding, passing, and shooting, and the Shore spirit brought the biggest ends of the scores to Shore. Such teams as Maple Heights and Brush High fell under the powerful Shore sceptre. The sextet consisted of

Florence Pfeil.....	R. F.	Lucy Mathews.....	L. G.
Juanita Christopher.....	L. F.	Mildred Stein.....	R. G.
Dorothy Getler.....	C.	Theoda Luikart.....	C. G.

Dorothy Getler, the captain of the team, and Alice Mathews, manager, worked conscientiously and filled their posts well.

Credit for the nice work of the team is due to Mr. Van Deusen and to Miss Aingworth, the coaches.

THE PORTHOLE



Coach Van Deusen, Victor Zelle (Manager), Mr. Metts
L. to R.: Fordyce Luikart, Walter Kremm, Fritz Watkins (Captain), Frank Briel,
Bradford Abbott.

Basketball Review

A green basketball squad reported to coach Van Deusen at the beginning of the season. Captain Watkins was the only veteran. Realizing their inexperience, the squad worked hard at fundamentals and scrimmage. After three weeks of hard practice, the varsity that was picked defeated the alumni team.

Shore then started her conference season and lost the first five games to Euclid, John Marshall, Shaker Heights, West Commerce, and Longwood. Yet there is some glory in these defeats. The latter teams were playing their best brand of basketball of the season at the time our team coped with them.

After this bad start, Shore came back fighting valiantly to the end. Five games in the last two weeks resulted in three victories. Brush was defeated twice and Euclid Central once. Rocky River beat our team twice. The second Brush and the the Rocky River games were at the tournament.

Shore had some bad luck in losing players. In the middle of the season a very capable guard, Scott Crampton, was out on account of illness. Shore received another blow in the second Euclid game, when our star guard, Abbott, badly sprained his ankle and was out for the tournament.

Although the basketball season was not so successful as it might have been, it

(Continued on page 52)

THE PORTHOLE

Athletic Education

In Grecian times the mastering of athletic feats was an important part of a student's training. From childhood his body was kept fit for the most trying physical ordeals. In much the same way, physical education in public schools of today helps to keep the mind and body healthy. In modern times, however, there is one distinctive difference. Not only boys, but girls as well, participate in the physical activities of the school.

Shore's athletic activities vary. There is physical education for everybody. Twice a week the boys under Mr. Case and the girls under Mrs. Walker take part in lively sports during their gym classes.

Some years hence the girls who now enjoy the opportunity of taking gymnasium under the direction of Mrs. Walker will mark as one of their chief enjoyments the varied games in the gym. Among these contests have been the volley ball games. For the tournament one team from each gym class was chosen. Every Tuesday after school one team played against another until each team had been matched against every other class group. Excitement ran high, and good sportsmanship marked every game.

The foul-shooting contests at noon helped to keep alive the awakened interest in sports. These free-throw contests were held for the purpose of weeding out the champion foul-shooters of both the junior and senior highs. The contests, sponsored by Mr. Brose, were open to every one who wished to try his skill at making baskets. Both boys and girls took a lively interest in them. Fordyce Luikart and Bernice Carney caged the honors in the senior high, while John Tippen and Ruth Nason (now of the 9B class) of the junior high proved their superior skill.

National Athletic Honor Society

Boys who have earned at least one athletic letter and have been above the school average in scholarship for the past three years are eligible to the National Athletic Scholarship Society. This organization is one of newest in our school, the charter having been granted in 1927.

The members, up to date, are the following:

Eugene Fryan '27	Frederic Watkins '28
Harold Book '28	Victor Zelle '28
Warren Borgsteadt '28	Ralph Bonnema '29
Edmund Budnick '28	Walter Kremm '29
Elmer Kurrle '28	Charles Schubert '30
Robert Yeomans '30	



THE PORTHOLE

Track Squad

F. L. CASE.....	<i>Coach</i>	E. BUDNICK.....	<i>Manager</i>
C. SEZON.....	<i>Captain</i>	G. MORRIS.....	<i>Manager</i>

(Points scored to date)

H. Bartlett.....	36 $\frac{3}{4}$	N. Herman.....	41 $\frac{1}{2}$
J. Latour.....	23 $\frac{1}{2}$	W. Crosier.....	41 $\frac{1}{2}$
C. Morris.....	18 $\frac{1}{2}$	W. Test.....	33 $\frac{3}{4}$
J. Gill.....	11	C. Schubert.....	33 $\frac{3}{4}$
L. Jackson.....	10	W. Borgsteadt.....	31 $\frac{1}{2}$
T. Conrad.....	8	D. Borgsteadt.....	21 $\frac{1}{4}$
P. Wichern.....	7 $\frac{1}{4}$	D. Barber.....	2

The above points were made in the C. A. C. meet at the Public Hall and in the following dual meets:

Euchid Central	59	Shore	44
Mentor	49	Shore	48
Brush	51	Shore	56
Longwood	50	Shore	57

The results of the following scheduled meets were incomplete at press time.

Medina	Shore
Greater Cleveland Conference.....	Shore
(At Shaker Field)	
Lakewood Relays	Shore
Lakewood District Meet	Shore

Cheerleading

No team is complete without its rooters, and no group of rooters is complete without its cheerleaders.

A Cheerleading Club was organized by Miss Doult, from which two cheerleaders for the games were picked. During the season these two leaders kept the rooting a-going. Shore has been complimented quite a few times by opposing schools on its success in rooting. So we chalk up one more point toward success in athletic circles.

Basketball Review

(Continued from page 49)

could have been much worse. After all is said and done we know that the team tried hard and played cleanly from beginning to end.

This year's varsity was as follows:

Fritz Watkins.....	Forward	Walter Kremm.....	Center
Fordyce Luikart.....	Forward	Bradford Abbott.....	Guard
Dick Borgsteadt.....	Forward	Scott Crampton.....	Guard
Frank Brice.....	Center	Howard Cook.....	Guard
Victor Zelle.....	Manager		

THE PORTHOLE

Baseball

MR. VAN DEUSEN.....Coach
 FORDYCE LUIKART.....Captain
 VICTOR ZELLE.....Manager

Shore won its first victories in baseball this year. The team worked hard every night at practice and showed the benefit of the hard practice at the games. The opening game with Bedford found the following line-up:

Watkins	SS	Podnar	3B	Briel	1B
Luikart	2B	Jackson	CF	Abbott	RF
Gezann	C	Borgsteadt	LF	Lauderbach	LF

After the Belford game Coach Van Deusen found a few changes necessary. Borgsteadt, our veteran pitcher of last year, replaced Bartlett on the mound, and Lauderbach alternated with Briel in holding down first base. The ticket sales were placed in the hands of the team members, and a marked improvement was shown in attendance.

Schedules and scores to date.

April 13	Shore	7	at	Bedford	6
April 20	Shore	17	at	Brush	6
April 27	Euclid	14	at	Shore	5
May 7	Shore		at	Euclid	
May 11	Brush		at	Shore	
May 18	Shore		at	Bedford	

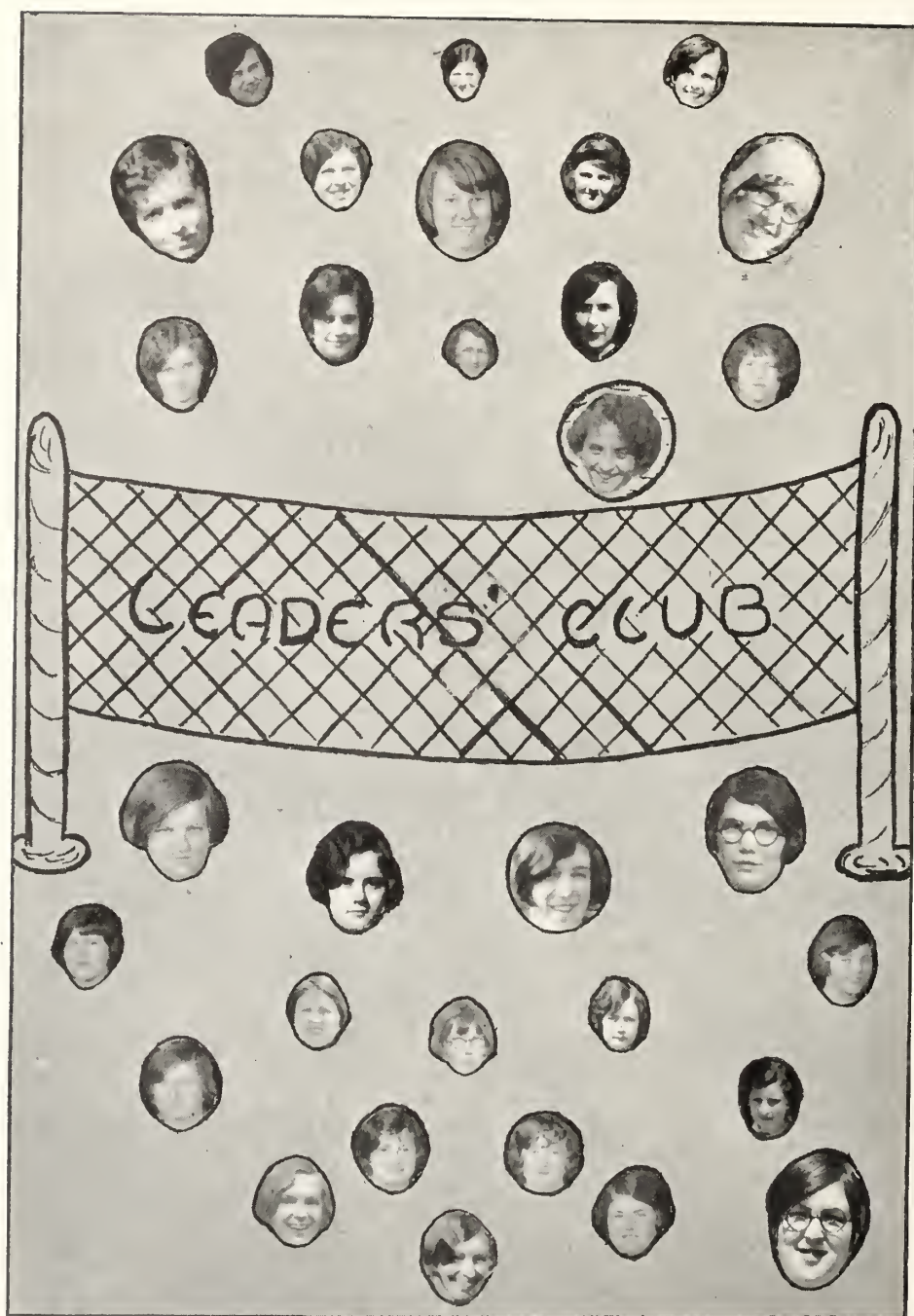
Leaders' Club

President.....THEODA LUIKART
 Vice President.....ELIZABETH RAEBURN
 Secretary.....GOLDIE KOVACIC

The Leaders' Club, comparatively new at Shore, is an organization made up of junior and senior girls who take gym. The purpose is to create more interest in gym work. Each member is responsible for making the gym period as interesting as possible.

The girls are assigned various duties which help to keep order in class. Each month a girl is assigned a different duty. One girl takes attendance, one teaches class, while another inspects the class and checks up on girls who are not properly dressed for gym work. This system not only lifts a load from Mrs. Walker's shoulders, but it gives the girls a special pride in knowing that they are partly responsible for the execution of an enjoyable year of work and play in the gymnasium.

The club has been under the splendid supervision of Mrs. Walker.



THE PORTHOLE

Cleveland Music Memory Contest

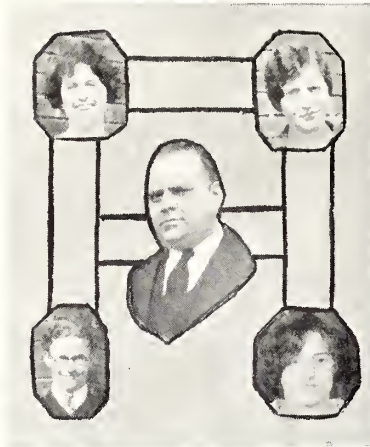
The Cleveland Music Memory Contest was organized in 1920 by the Cleveland Orchestra for the promotion of interest in good music, especially the Symphony.

The contest has been open to Senior and Junior Public and Private Schools, and to Adult Clubs of Northern Ohio.

Shore entered the contest in 1926 and won fourth prize in 1927 together with thirteen gold pins for perfect scores.

The form of the contest was changed this year. Added to that of former years was recognition of dance form, composers' style, idiom of expression, and the different instruments of the Orchestra.

Shore did very well in spite of the greater difficulty, coming home with fourth place and having beaten such schools as Glenville, Longwood, and Cleveland Heights.



Advertising Committee

Clement, Rachel
Cook, Howard

Hart, Eleanor
Kinkopf, Josephine

Ryder, Mary
Vidugeris, Philomena

Do you want to know what's going on? why, when, and where it's going on? Ask the advertising committee.

All advertising at Shore is done by this committee, which consists of five girls and one boy. Posters for movies and athletics are printed and distributed by them. They, also, are responsible for the handbills that are scattered broadcast over the neighborhood each week. You buy your tickets for the movies and games from this committee and then hand them right back to the same people when the tickets are collected.

The personnel of our advertising staff, which is sponsored by Mr. Spangler, all thoroughly enjoy their work. There are only two of its members graduating this year. With the majority of its old members left, we can look forward to another successful season.





THE PORTHOLE

Football

(Continued from page 47)

Those boys who played must remember that,

“The harder you fall
The higher you bounce.
Come up with a blackened eye:
It's not the fact that you're whipped that counts,
But how did you fight, and why.”

Ends: Walter Kremm, Ralph Bonnema.

Tackles: Harold Book, Edmund Budnick, Victor Zelle.

Guards: Scott Crampton, Warren Borgsteadt, Robert Yeomans.

Center: Elmer Kurre.

Backfield: Lee Grand Jackson, Charles Schubert, Richard Borgsteadt, Fritz
Watkins.

Manager: Norman Herman.

An Unusual Visitor

We had a rather shy visitor
One day in the halls at Shore.
He listened to our English class
As he sat at the open door.

Miss Swartz went on as usual.
Oh yes! She saw him there.
And though he waited ten minutes or more,
She didn't seem to care.

Perhaps his appearance wasn't so nice.
And anyway that doesn't matter.
For when Jack Latour stood up to recite
In came our guest, pitter-patter.

He came in with his head up high,
Stopped short before his choice.
And wagged his tail so happily.
He had heard his “master's voice.”

G. K.

Do you realize that half the girls that go to Shore are *driven* to school?

THE PORTHOLE

OUR ADVERTISERS

Their generous patronage has guaranteed the financial success of this year's Port-hole.

The staff thanks these patrons and urges students to enjoy business relations with them.

A. Azman

Mrs. Bluem

F. F. Book

Boulevard Barber Shop

Brooks Coal and Supply

A. J. Budnick and Co.

Cass Drug Co.

Carney-Strong, Inc.

Clair Marcelle

J. B. Clark

Clover Farm Stores Co.

Dille Rd. Lumber Co.

C. T. Downer

Dyke School of Business

East Shore Community Club

Mr. C. R. Ely

Euclid Fuel and Supply

Mr. M. L. Fisher

Guenther's Art Galleries Co.

Herff Jones Co.

Kibbler Co.

John Klaus

La Salle Theater

J. F. Linnert Dairy

A. Logar

Luikart Agency

Mervis Drug Co.

Moss Drug Co.

Nottingham Drug Co.

Nottingham Hardware Co.

Nottingham Savings & Banking Co.

E. O. Rauchfleisch

Roberts Hardware Co.

Schwarz Electric Co.

William E. Schwarz

The Scoop Printing Co.

Spencerian School

Floyd Stein

Harry W. Stein

Stevenson Oil and Chemical Co.

The Upson Walton Company

Mr. H. Van Deusen

Frank Vesel

Wickliffe Lumber Co.

Wilcox Commercial School

J. E. Youngklaus

Compliments
of
EAST SHORE
Community
• Club •



Meetings:
1st and 3rd Tuesday of each month

Shore High is Equipped with
The latest type
8-tube "FADA" radio
supplied by

THE UPSON-WALTON COMPANY

738 West Superior Avenue
(Perry-Payne Building)
CLEVELAND



"A firm fifty years young"
A good place to buy your
"FADA" and "RCA"

RADIO SETS and PARTS
CANOES and PADDLES
JOHNSON OUTBOARD MOTORS
Boat Supplies of All Kinds

- Also at 1310 W. 11th St., in Cleveland
- And at 737 W. Jackson Blvd., Chicago
- And at Frick Building, Pittsburgh
- And at 295 Broadway, New York City

Wire and Manila Rope, Turnbuckles, Oars
Brattice Cloth for Mines

To Identify Our "Babies"

1. Rarely does she smile as she did when this picture was taken. Her initials are M. T.
2. & 4. They came in not so long ago from Collinwood. They are A. L. and E. J.
3. Yes, of course you know "Mercury".
5. How she toots that horn in Shore's orchestra!
6. She is the Art Editor of the Porthole.
7. That "thrifty" senior!
8. Did you ever see her without a kodak in her hand?
9. She is Martha, though not like her namesake of Biblical times.
10. Although he is not the H. B. with the melodious voice, his initials, nevertheless, are H. B.
11. How well she carried the lead in "Sweethearts"!
12. The better half of No. 17.
13. Mr. Metts' secretary from Spencerian.
14. We are proud of our yearly Distinguished Roll member.
15. A musical man. Even in study hall he studies music.
16. Quite high living for this young miss—5' 8".
17. He "shoots" the movies.
18. Both brains and beauty combined in this young miss.
19. Every one knows the "plumber". Surely, you must!
20. He graduates at last!
21. We would not have had this fine Annual but for her fine supervision as editor-in-chief.
22. Can't you see him run down the field with the "pigskin" under his arm?
23. She hailed from East last year. She is D. E.
24. He is our Student Council President.
25. She has such pretty curly hair, and she's such a tiny thing.
26. A real basketball star. He, too, came from Collinwood just this year.
27. How we girls envy his lovely complexion!
28. T. L. is destined to be a gym teacher. Just watch her at practice, and you will soon find out.
29. Now, let me introduce the champion "gum bummer" of Shore.
30. And last but not least, here is our worthy Varsity Basketball Captain of '28.

IN ENGLISH CLASS

Miss Swartz: Scott, where would you go to find the 200 books in the library?

Scott (amused): I'd go to mother.

At the try-outs for senior play, the seniors had to read the following line:

"My husband, an Oriental seer and psychic."

One senior: This is my husband, an Oriental steer.

Another: This is my husband, an Oriental seer and side-kick.

***“Oil Is
Cheaper
Than Steel”***



**STEVENSON OIL
& CHEMICAL
COMPANY**

EUCLID, OHIO

A. LOGAR
DRY GOODS of QUALITY

928 East 222nd St.,
EUCLID, OHIO

THE STORE OF
“Satisfactory Service”

We Sell

The New McCall Pattern—
“It’s Printed”

146 E. 212 St. KEnmore 1177-M

F. F. BOOK

B U I L D E R
A P P R A I S E R
R E A L T O R
N O T A R Y P U B L I C

1126 Williamson Bldg. CHerry 4529

*Compliments of
Beachland
Pharmacy*

670 East 185th St.

E. O. RAUCHFLEISCH

**NOTTINGHAM
HARDWARE CO.**

The Community Store

**BUILDERS HARDWARE
A SPECIALTY**

18708 St. Clair Ave. Cleveland, O.
KEnmore 0665

KEnmore 3260-M

JOHN KLAUS

DELICATESSEN

and

CONFECTIONERY

614 East 185th St.

Clover Farm Stores Co.

22064 Lake Shore Blvd.

KEnmore 2367

Free Delivery Service

L. TICHNER, Manager

Phones:
MAin 5011
KENmore 1619-W

Hours:
9:30 A.M. to 4:30 P.M. and by ap-
pointment Wednesday and Saturday
evenings at residence
58 East 219th St.—7 to 8:30 P.M.

DR. CHARLES T. DOWNER
OPTOMETRIST

Special Attention to Straightening Crossed Eyes by Non Operative Methods
691 THE ARCADE
CLEVELAND

THE
EUCLID SHORE HIGH GRADUATE

wishing to prepare for a business position quickly or desir-
ing a complete business course of college grade may obtain
it at

DYKE SCHOOL OF BUSINESS

1001 HURON RD.

Cleveland

SUperior 0180

SUperior 0181

MEMBER NATIONAL ASSOCIATION OF ACCREDITED COMMERCIAL SCHOOLS

FLOYD B. STEIN, Inc.

Paving and Sidewalk Contractors

Steam and Domestic Coal of All Kinds

YARD and OFFICE:

BABBITT ROAD AND NICKEL PLATE R. R.

We have a Coal for Every Need . Let Us Take Care of You

Thought To Be Worth While Must Complete Itself In Action

*Set a goal for yourself in the Commercial World.
Prepare yourself for it, and you will attain the goal.*

We Guarantee Good Positions to Graduates of Our
Private Secretary and Business Administration Courses.

WILCOX COMMERCIAL SCHOOL

10014 Euclid Ave.

Ulmer Bldg., Public Square

Compliments of

C. R. ELY

Mayor

Compliments of

M. L. FISHER

Justice of the Peace

KEnmore 0687

Roberts Hardware Co.

676-682 East 185th Street
CLEVELAND

Quality - - - Service

NOTTINGHAM DRUG CO.

EXPERT PRESCRIPTION SERVICE

East 187th and St. Clair Ave.

KEnmore 0066



Phone: Office and Yard
KENmore 0721 Babbitt Rd. and
 N. Y. C. R. R.

The Euclid Fuel & Supply Co.

Dealers in Quality Coal

**Specializing Pocahontas Anchor
and Kentucky Block**

L. E. STEVENS, Mgr. NOBLE, O.

THE WICKLIFFE LUMBER CO.

**LUMBER, SASH and DOORS
MULE HIDE ROOFING**

Not a Kick in a Million Feet

OWN YOUR OWN HOME

LUIKART AGENCY

Insurance . . . Real Estate

Notary Public

BE
SU
RE



WHEN YOU INSURE

L. E. LUIKART

L. J. LUIKART

18605 ST. CLAIR AVE., CLEVELAND, OHIO

Compliments of

A. AZMAN

Noble Confectionery

Candy—Cigars—Soft Drinks

23931 St. Clair Avenue

Compliments of

JOHN E. CASS, Ph. S.

Pharmacist

791 E. 185th St.

KENmore 2877

HERE'S
A
REASON



J. E. YOUNGKLAUS

Curtains, Draperies and Slip Covers

ORDER WORK A SPECIALTY
... ANTIQUES RESTORED ...

1558 E. 105th St.

GARFIELD 0655

La Salle Theatre

185TH AT KILDEER

Presents

The Pick of the
World's Greatest

Photoplays and Vaudeville Attractions

Always a Good Show

"A Store of Service"

FRANK VESEL

Meats and Groceries
of Quality

787 E. 185th St.

Kenmore 0123-M

H. J. MERVIS

Prescriptionist

Mervis Drug
Company

638 East 185th Street

"It pays to look well"

Boulevard Barber Shop and Beauty Parlor

at 22072 Lake Shore Blvd.

H. S. WINTERS

MRS. FROST

Beauty Parlor Hrs.

10 to 6 or by appointment

Kenmore 0600

HIS
MASTER'S
VOICE



CLAIR MARCELLE, *Photographers*

to the Senior Class of 1928

Clair Marcelle

1720 EUCLID AVENUE - - CLEVELAND

Telephone MAIN 4296

STUDIOS AT

New York

Chicago

Cleveland

Philadelphia

Akron

Detroit

Brooklyn

After High School - -

THEN WHAT?

Business today is offering exceptionally fine opportunities to young people who are especially qualified. Among the many reasons for securing these qualifications at the Spencerian School of Commerce, Accounts and Finance are:

A wide range of courses.

A nation-wide reputation for excellence in training young men and women.

Modern school buildings located in the heart of Cleveland on spacious grounds.

Twenty courses of study, including four college degree courses.

A placement bureau that receives several hundred calls a month and serves Spencerian graduates without charge.

If you are in doubt as to your future occupation, we have a vocational chart that may be of great assistance to you in settling this momentous question. Ask for it.

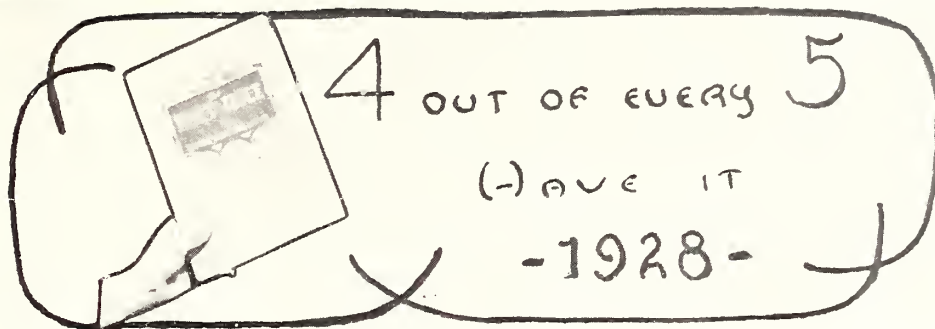
Bulletins and full information will be mailed upon request.

**Address E. E. MERVILLE, President, Dept. H
Spencerian School of Commerce, Accounts and Finance**

Founded 1848

3201 EUCLID AVE.—3200 CHESTER AVE.

PRospect 4500



THE DILLE ROAD LUMBER COMPANY

Lumber Specialties

Corner Nottingham Rd. and Nickel Plate R. R.

KEnmore 0592-0593

HOW MANY BUCKS

Has A Brone?

You won't have any
if you don't Save 'em

The
**Nottingham
Savings and
Banking Co.**

St. Clair at Nottingham Rd.

Phone: KEnmore 0011

J. F. Linnert

DAIRY

331 East 185th Street

KEnmore 0222

HERFF-JONES CO.

Incorporated

*Manufacturing Jewelers
and Stationers*

534-546 South Meridian St.
Indianapolis

Official Jewelers of Shore High School

Representative:
EARL J. BEHM
CEdar 2210



**GUENTHER'S
ART GALLERIES**

1725 EUCLID AVENUE

*Leading Print Sellers
and Frame Makers*

We have the largest line of school
pictures in the country and give
liberal discounts to the schools

Compliments of

J. B. CLARK

THE BOULEVARD FLORIST

J. BLUEM

*Flowers for All Occasions
Funeral Work... Wedding Flowers*

KENmore 0615

22630 Lake Shore Blvd. Euclid, O.

THE
**BROOKS COAL & SUPPLY
COMPANY**

Builder's Supplies and Concrete Block

East 200th St. and St. Clair Ave.
Thru Subway

KENmore 1050

Phone: RAndolph 3289

Residence Phone: KENmore 0238-M

Estimates Furnished

A. J. BUDNICK & CO.

**Plumbing and Heating
Contractors**

Jobbing a Specialty

976 E. 250th St. EUCLID, O.

Carney-Strong, Inc.

Builder's Supplies

23776 St. Clair Ave.

Compliments

Moss Drug Co.

21939 Lake Shore Blvd.

Quality - Courtesy - Service

KEnmore 0935

GRADUATION
CONGRATULATION
CARDS

The
Scoop Printers

808 East 152nd Street

Res. 100 E. 219 St. KEnmore 0918-M

Schwarz Electric Co.

Electric Construction

Wiring and Supplies
High-Grade Line of Fixtures

Corner of East 222nd St. and
Lake Shore Blvd.

G. E. SCHWARZ Cleveland, O.

Compliments of

H. Van Deusen

Notice of the dental clinic had been sent to the parents of the children in a certain grade. The parents were asked to sign if they wished their children's teeth filled or removed. Here is a note from one parent:

"I have read the note behind this which is to fill and remove teeth, but Bobby has his first teeth yet which have to fall off by themselves. I have seen a doctor about it and he said you needn't bother because they are supposed to fall and get new ones."

Compliments

of

H. W. STEIN

“ F U R S ”

Scarfs, Coats or Trimmings

Cost Less

at

**The Wm. E. Schwarz
Fur Company**

1900 Euclid Avenue

PProspect 2194 CLEVELAND, O.

No Sales!

No Cut Prices!

No Charge Accounts!

No Bunk of Any Kind!

Kibler gives you the biggest value your money can buy
—Every day of the year—at the lowest possible price.

Taking a small profit—giving a big value—making many sales—Kibler offers you the opportunity to wear better clothes for less money.

Compare!

COMPARE!
Kibler
Clothes

To An Idler

Tell me not, in mournful numbers,
“We are here in school to shirk;”
For the boy is tired who slumbers
During class while others work.

School is real! School is earnest!
3:15 is not your goal!
Be alert to all that comes, as
Quickly past you moments roll.

Seems that some folks must be happy
Since “Ignorance is heav’nly bliss;”
And we note that some folks’ motto
Apparently must run like this:

“Other idlers all remind us
We must hinder more and more.
And, departing, leave behind us
Initials on the desks of Shore.”

Let not that then be *your* motto!
Boost instead for a fine big Shore!
And you’ll find you’ll profit if
You idle less and study more.

E. R.

Autographs



