





THE
PORTHOLE
OF
1929

PUBLISHED BY

SHORE
HIGH SCHOOL
EUCLID, OHIO

VOLUME IV

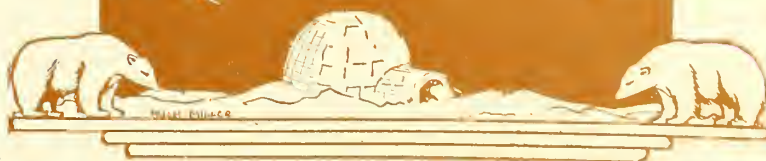


Table of Contents

	PAGE
<i>School</i>	7
<i>Seniors</i>	II
<i>Classes</i>	23
<i>Activities</i>	35
<i>Athletics</i>	49
<i>Ad-vertising</i>	63



FOREWORD

THIS is a review of a busy, successful year at Shore. It is primarily a Senior yearbook, a publication which, as the years go by, should keep alive in the minds of the graduating class memories of their classmates. We chose the frozen Arctic as our art theme because it is one of the few lands of romance and mystery left to beckon the modern youth.

If our book carries to the homes of the community an interesting account of the year's work and play at Shore, and some day is the source of a few moments of happy contemplation for our fellow students, then we shall be indeed rewarded.

RALPH MYERS,
Editor-in-Chief





Miss Clare E. Swartz

*In sincere appreciation of the help
you have been to us in the class room and in
the production of our school publications, we dedicate
to you this Porthole of 1929*

"The public school is the cornerstone of the American republic.

Our liberties are dependent upon the intelligence of our people.

It is, therefore, the duty of the government to develop the public schools to the highest degree of efficiency."

Carmi A. Thompson

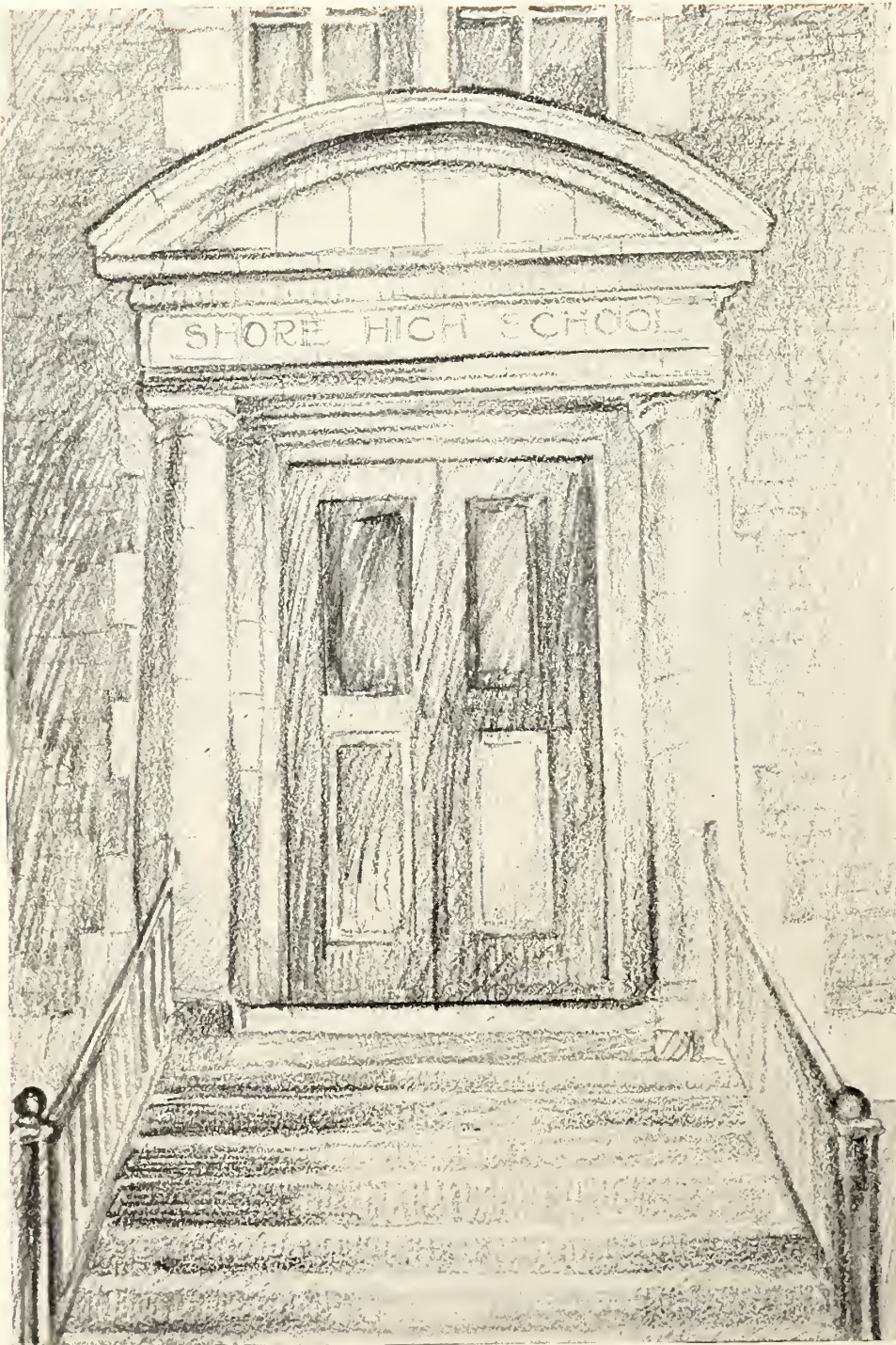


Carmi Thompson

We have, residing within the shadow of our school, a man of renown, Colonel Carmi A. Thompson. Colonel Thompson is statesman, politician, soldier, business man, traveler,—lending his great mind often in the service of his country. Some of the notable public positions he has attained are Treasurer of the United States, Secretary to President Taft, member of the House of Representatives, and Special Commissioner to make a survey of the economical and internal conditions of the Philippines.

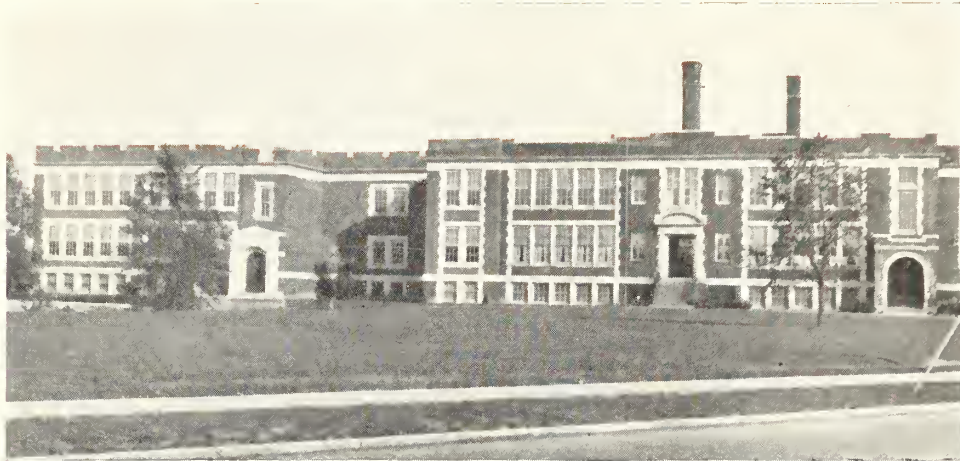


THE PORTHOLE



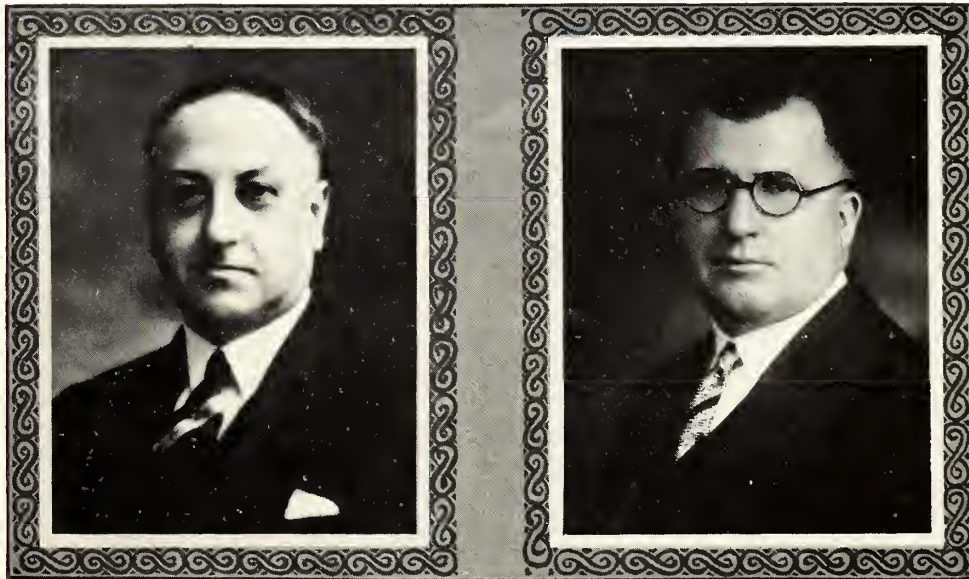


THE PORTHOLE



Shore is growing by leaps and bounds under the guidance of Superintendent Wilbert A. Franks. He is a man who is very ably fitted for his position as chief executive of Euclid's public schools.

Little need be said about our Principal, Daniel E. Metts, for he has long since won his place in the hearts of our community. The humblest freshman or the worthiest senior knows him as "Pal". What more need be said?



W. A. FRANKS, *Superintendent*

D. E. METTS, *Principal*



THE PORTHOLE





THE PORTHOLE



Faculty

METTS, DANIEL E.

Principal

Wooster College, B.A.; Columbia University, M.A.

AINGWORTH, LUCILLE

Domestic Art

Western Reserve College for Women, A.B.; Columbia University.

BROSE, EARL M.

Manual Training, Physical Culture

Ohio University, B.S.

CAMPBELL, PERA

English, Social Problems, Economics

Defiance College, A.B.; University of Wisconsin; Ohio State.

CART, LILLIAN

History, Commercial Subjects

Western Kentucky State Normal College.

CASE, FORD L.

Orchestra, Band, Boys' Coach, Manual

Training, Mechanical Drawing

Wooster College; Ohio University; Ohio State.

CRAMPTON, MARY R.

Librarian

University of Michigan, A.B.

CRONE, MABEL E.

Mathematics

Oberlin College, B.A.

DARST, LOUISE

Commercial Subjects

Miami University; Oberlin College, B.A.

DOUTT, GENAVIEVE

Latin, French

Beaver College, B.O.; Southern College, A.B.; Columbia University.

HENRY, GRACE

Art

Cleveland School of Art.

KNOX, HARLEY J.

Science, Commercial Arithmetic

Coe College, B.A.; Iowa State College.

KROHN, HELENE

English

Wooster College, B.A.

LAWS, MAUDE F.

Director of Music

Western Reserve University, A.B.

LEO, CARL

Orchestra, Band

Northwestern University; American Conservatory of Music, B.M.

REHIBERG, BARBARA M.

Music

Miami University, Graduate in Music; Western Reserve University.

ROSENBERGER, HETTY E.

Domestic Science

Western Reserve College for Women, B.S.; University of Chicago; Columbia University.

RUSSELL, ESTHER M.

Girls' Coach, History

Bowling Green State Normal College; University of Wisconsin.

SPANGLER, HARRY W.

Science

Heidelberg University, B.A.

SWARTZ, CLARE E.

English, Journalism

Wellesley College, B.A.; University of Chicago.

TAYLOR, EULALIA

Nurse

Reynolds Memorial Hospital, Glendale, West Virginia.

WHITESIDE, STANLEY L.

History, Science

Ohio State University, B.A.

WILLIAMS, JANE

Latin, Commercial Arithmetic

Denison University, Ph.B.

WALKER, MARY

Physical Culture

Oberlin College, A.B.



THE PORTHOLE



*Robert Louder, Clifton Alger, Mr. Daniel E. Metts (Principal), Leroy Collins, Richard Abbott,
Robert March, Marion Thomas, Ralph Bonucema, Genevieve Clark, George Scheerer,
Ruth Nason, Dorothea Martens, Beatrice Hirsch, Miss Jane Williams (Faculty Adviser), Dorothy
Getler, Alice Cimperman, May Pyle.*

Student Council

OFFICERS

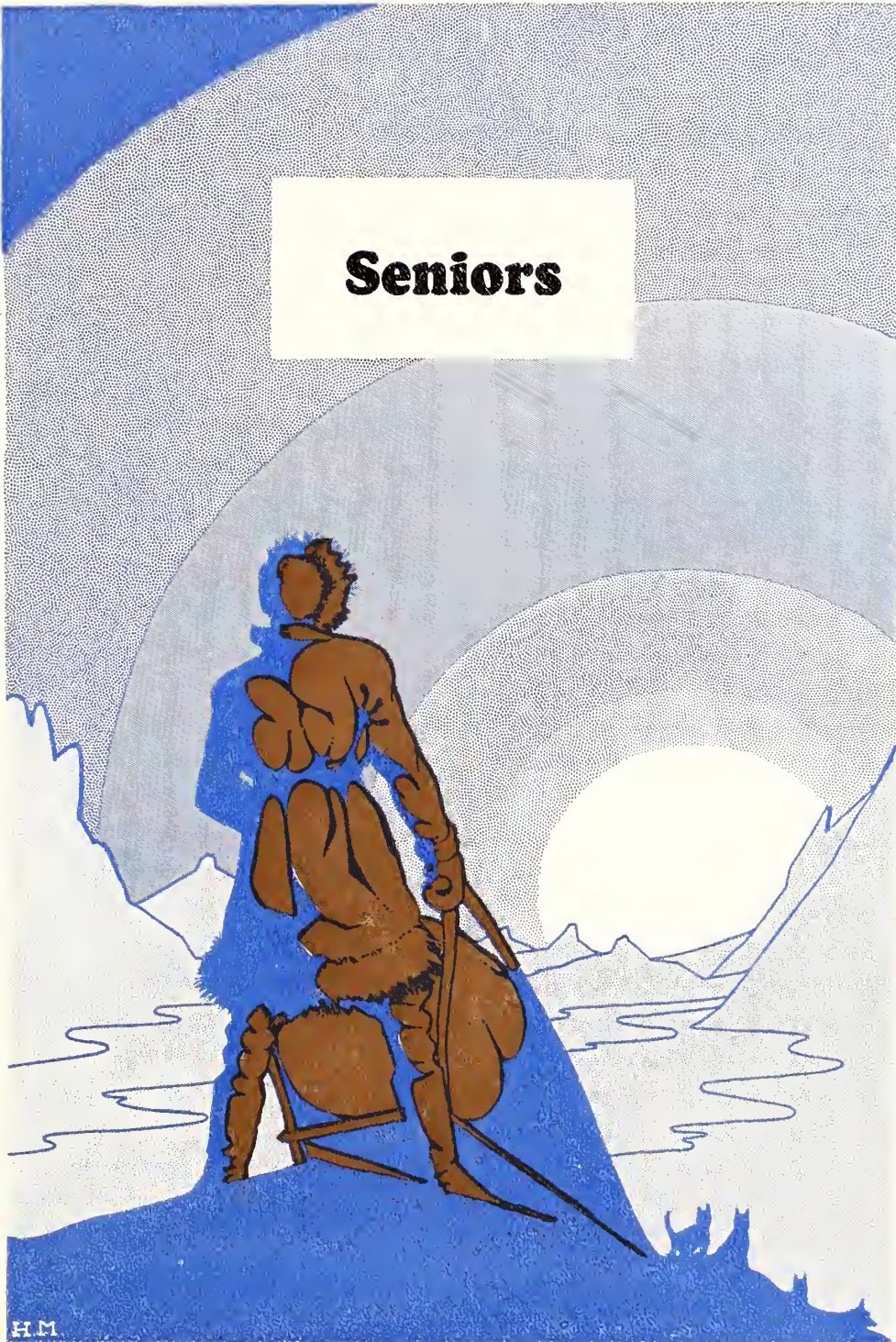
DOROTHY GETLER	<i>President</i>
ALICE CIMPERMAN	<i>Vice President</i>
BEATRICE HIRSCH	<i>Secretary</i>
DOROTHEA MARTENS	<i>Treasurer</i>
MISS JANE WILLIAMS	<i>Faculty Adviser</i>
MR. DANIEL E. METTS	<i>Faculty Adviser</i>

The Student Council has been the medium through which students and Principal have cooperated to keep school affairs running smoothly, and to make the past year one of steady progress.

Members of the Council have assisted during the mid-year changing of classes, at fire-drill, during the taking of the pictures for the Annual, and in seating the student body at assemblies.

This year's project is a handbook, containing a self-appraisal questionnaire for students.

Seniors





THE PORTHOLE



CLASS OFFICERS

ELSIE TAYLOR.....	President	PHILOMENA VIDUGERIS.....	Secretary
FLORENCE PFEIL.....	Vice President	HELEN STRAY.....	Treasurer
MISS HELENE KROHN.....		Faculty Sponsor	

ELSIE TAYLOR

*Diligent and busy in her senior days,
To underclassmen charming in her ways.*

Student Council I, III; Sec'y-Treas. III.
Class President II, IV.
Glee Club II, III, IV; Sec'y-Treasurer IV.
Operetta II, III, IV.
Leaders' Club IV.
Shore Breezes IV.
French Club IV.
Camera Club IV

FLORENCE PFEIL

*Gentlemen prefer blondes they say, and yet
We know one who prefers this brunette.*

Vice President II, IV; Class President III.
Varsity Basketball III, IV.
Leaders' Club III, IV.
Glee Club II, III, IV.
Operetta IV.
Orchestra I, II, III, IV.
French Club IV.
Porthole Staff III, IV; Assoc. Editor IV.
Shore Breezes III, IV.
National Honor Society

PHILOMENA VIDUGERIS

*Always a-burrying, never at rest,
The efficiency of Phil is of the best.*

Class Secretary IV.
Leaders' Club III, IV.
Porthole Staff IV; Photograph Editor IV.
Shore Breezes IV.
Advertising Committee III, IV.
Camera Club.
National Honor Society

HELEN STRAY

*Pretty treasurer of the class, she was accustomed
to say,
"Where is that money you promised me today?"*

Class Treasurer IV.
Glee Club IV.
Operetta IV.
Leaders' Club III, IV.
Camera Club.



THE PORTHOLE



29



MARIAN AHLMAN

Student Council III.
Glee Club II, III, IV; Librarian IV; Oper-
etta III, IV.
Porthole Staff III, IV.
Shore Breezes II, III, IV.
Basketball IV.
French Club IV; Secretary IV.
Leaders' Club III, IV; Secretary IV.
National Honor Society
Senior Play

*An "almond" takes some time to grow,
And our Ahlman still has far to go.*



CLIFFORD BANTEL

Glee Club II, III, IV.
Band III, IV.
Orchestra I, II, III, IV.
Cheerleader III, IV.

*Though he takes life in his easy way,
He'll be a Rubinoff some day.*



BERNICE CARNEY

Entered from Perry High School.
Leaders' Club III, IV.

*From Perry hails this charming miss;
To us she brought much cheerfulness.*



RALPH BONNEMA

Student Council III, IV.
Glee Club III, IV; Operetta, III, IV.

*He passes in, he passes out,
And wonders what it's all about.*



ALICE CIMPERMAN

Student Council IV; Vice President IV.
Glee Club II, III, IV; Leader IV; Oper-
etta II, III, IV.
Leaders' Club III, IV.

*Alice is lucky, for naught does she lack;
If other things fail her, she always has
Jack.*



THE PORTHOLE



JOHN CONVERSE

Entered from Collinwood High School.
Glee Club I, II, IV; Operetta IV.
Senior Play

*In spite of his name he cares not to
converse
But to playing a banjo, he is never averse.*

RACHEL CLEMENTS

Leaders' Club III, IV.
Advertising Committee III, IV.
Porthole Staff IV.
Shore Breezes IV.
Camera Club.

*Happy go-lucky and pretty,
Jolly, modest, and witty.*

NORMAN HERMAN

Glee Club IV; Operetta IV.
Football Manager III.
Track I, II, III; Captain II.

*Hermes ran on winged feet,
So did Norman, slim and fleet.*

JEANNETTE COWIN

Glee Club III, IV; Operetta III, IV.
Leaders' Club III, IV.
Basketball Manager IV.

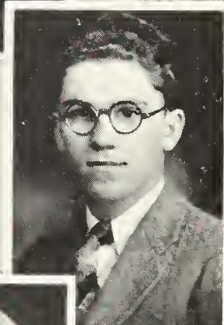
*A laugh so unique, there's not another
one yet
As bearty and hale as the one of Jeannette.*

WALTER KREMM

Basketball III, IV; Captain IV.
Football III.
Track III, IV.

*He shoots the baskets, our Walter Kremm—
Not so his words; he goes "a-beem!"*

29





THE PORTHOLE



DOROTHY TLER

Student Council III, IV; President IV.
Glee Club III, IV; Operetta III, IV.
Leaders' Club III, IV; President IV.
Porthole Staff III.
Basketball II, III, IV; Captain III.

*On the basketball floor she is all agility,
We know too well we'll miss her ability.*

PAUL McCORMICK

Entered from Green River Institute.
Glee Club III, IV; Secretary-Treasurer IV.
French Club IV.
Orchestra III, IV; Secretary-Treasurer IV.
Band III, IV; Secretary-Treasurer IV.
Football III.

*Toot! toot! toot! sounds the tuba of Paul
And big as he is, it covers him all.*

EDITH GRDINA

Entered from Collinwood High School.
Shore Breezes IV.

*Our typist shy, but dependable
In work and play commendable.*

HAROLD MEIRERT

Entered from Collinwood High School.
Glee Club IV.

*Well versed in the shy art
Is our little Meirert.*

HANNA HART

Glee Club I, II, III; Operetta I, II, III.
Leaders' Club III, IV.
Shore Breezes IV.

*Strong when going, hard to start,
That's our little Hanna Hart.*



THE PORTHOLE



DANIEL MILLER

Glee Club I, II, III, IV; Leader IV; Operetta I, II, III, IV.
Senior Play

*Oh, he can sing, good-looking Dan!
What if we can't? we know he can.*

BETTY HAUSCHILD

Glee Club II, III, IV; Operetta II, III, IV.
Leaders' Club III, IV.
Porthole Staff IV.
Shore Breezes IV.
Orchestra IV.

*Betty is a clever wren;
And how she plays that violin!*

HUGH MILLER

Entered from Franklin High School, Los Angeles, California.
Glee Club IV; Operetta IV.
Porthole Staff IV; Art Editor IV.
Shore Breezes IV.

*In art we know he does excell;
And with a trombone he does as well.*

HELEN LARICK

Glee Club IV; Operetta IV.
Leaders' Club III, IV.
French Club IV.
Porthole Staff III, IV.
Shore Breezes II, III, IV.
National Honor Society

*A maiden shy, reserved, and sweet,
Yet one could scarcely say "petite."*

ROBERT MILLER

Entered from Franklin High School, Los Angeles, California.
Basketball IV.
Baseball IV; Track IV.

*Football, basketball, baseball, and track—
What will we do without Bobby back?*





THE PORTHOLE



LUCY MATHEWS

Class Secretary-Treasurer I, II.
Glee Club II, III, IV; Operetta II, III, IV.
Basketball II, III, IV.
Leaders' Club III, IV.
Porthole Staff IV.

"Sweet personality, full of rascality."

CHESTER MORRIS

Entered from East Tech.
Track III, IV; Captain IV.
Porthole Staff IV.
Movie Operator IV.
Football Manager IV.
Stage Property Manager III, IV.
National Athletic Honor Society
National Honor Society

*Track, movies, stage, and "spot"
This boy for Shore did quite a lot.*

JENNIE MERTEK

Basketball Manager IV.
Leaders' Club III, IV.
Porthole Staff III, IV.
Shore Breezes III, IV.
French Club IV.
Camera Club.

*Her eyes shine and sparkle—it's a beautiful
look
That comes to her face as she reads her
book.*

JOHN PEARSON

Glee Club II, III, IV; Operetta II, III, IV.
Orchestra III, IV.
Band III, IV.
Advertising Committee II.

*There isn't much to this little man,
But he does his bit wherever he can.*

MARGARET OGILVIE

Leaders' Club III, IV.
Class Treasurer III.

*She carries herself with dignity and ease,
Reserved, with ever a smile to please.*



THE PORTHOLE



JACK WHITTLE

Cheerleader IV.
Glee Club III, IV; Operetta III, IV.
Porthole Staff IV.
Shore Breezes IV.
Band IV; Drum Major.
Entered from Glenville III.

*Jack may have a weakness of heart
But that does not hinder him in lover's art.*

JANET PETROWSKY

Glee Club III, IV; Operetta III, IV.
Leaders' Club III, IV.
French Club IV.
Camera Club.
Senior Play

*A little miss who is very talkative;
Some folks find her quite provocative.*

RUTH REPKA

Glee Club II, III, IV; Operetta III, IV.
Leaders' Club III, IV; Vice President IV.
Porthole Staff IV.
Camera Club

*She lingers at noon, she lingers at night;
Why does she linger? Homer? That's
right!*

LEONORA SIGNORETTI

Leaders' Club III, IV.
French Club IV; Treasurer IV.
Shore Breezes III.
Porthole Staff IV.
Camera Club IV.
Senior Play

*There isn't a girl who is any sweeter
Than this one who writes poetry by the
meter.*

HELEN SPENCER

Student Council II; Secretary II.
Glee Club II, III, IV; Operetta II, III, IV.
Porthole Staff III.
Shore Breezes III.
French Club IV.
Leaders' Club III, IV.
National Honor Society
Senior Play

*Here's to the girl with fiery hair
Whose radiant smile we could not spare.*

nineteen





THE PORTHOLE



29



MILDRED STEIN

Glee Club IV; Operetta IV.
Basketball III, IV; Captain IV.
Leaders' Club III, IV.

*Basketball captain, a wiz at guard,
In every game "Milly" played hard.*



JEAN WILSON

Entered from Villa Angela.
Leaders' Club III, IV.
Class Secretary III.
Orchestra IV.
Spelling Champion III.
Camera Club

*In corridor and classroom, sweet and sedate,
And our best speller was Jean in 1928.*



MARY ZAGAR

Entered from Villa Angela.
Leaders' Club.

*A sweet little lady with snappy brown
eyes,
She can steal a man's heart whenever she
tries.*



THE PORTHOLE



GENAVIEVE DOUTH
Director of Service Play

The Intimate Strangers

A Comedy in Three Acts

by

BOOTH TARKINGTON

Presented by the Senior Class, May 24, 1929

CAST OF CHARACTERS

Mr. Ames.....	ROBERT McCULLEY
Who is left deserted in a lonely way station because of a storm meets	
Isabel Stuart.....	HELEN SPENCER
who has also been isolated there.	
They are rescued by	
Florence.....	MARIAN AHLMAN
a modern young flirt and	
Johnnie White.....	DANIEL MILLER
her boy friend, who drives them to Isabel's home, where they meet	
Aunt Ellen.....	LEONORA SIGNORETTI
the grand-niece of Isabel. Isabel employs the help of	
Mattie.....	JANET PETROWSKY
the maid, in her attempt to intrigue Ames.	
Station-Master.....	JOHN CONVERSE
Henry.....	JOHN PEARSON
the butler.	



THE PORTHOLE



The Ballad of the Chevy Chased

A galloping wind, a cold March day,
Two other characters—no more:
A handy creek, a Chevrolet,
Owned by Stanley of Shore.

The wind did howl till trees bowed down
Before its mighty strength;
The rain did pelt and swamp the yard
To the very doors at length.

So Mister Wind swept on and on
And cried in fiendish glee,
“Ah, ha, today’s my day for fun,
There’s dastard work for me!”

Poor little Chevy—all alone
And buffeted by the storm,
What could he do? No brakes were on!
The wind began to perform!

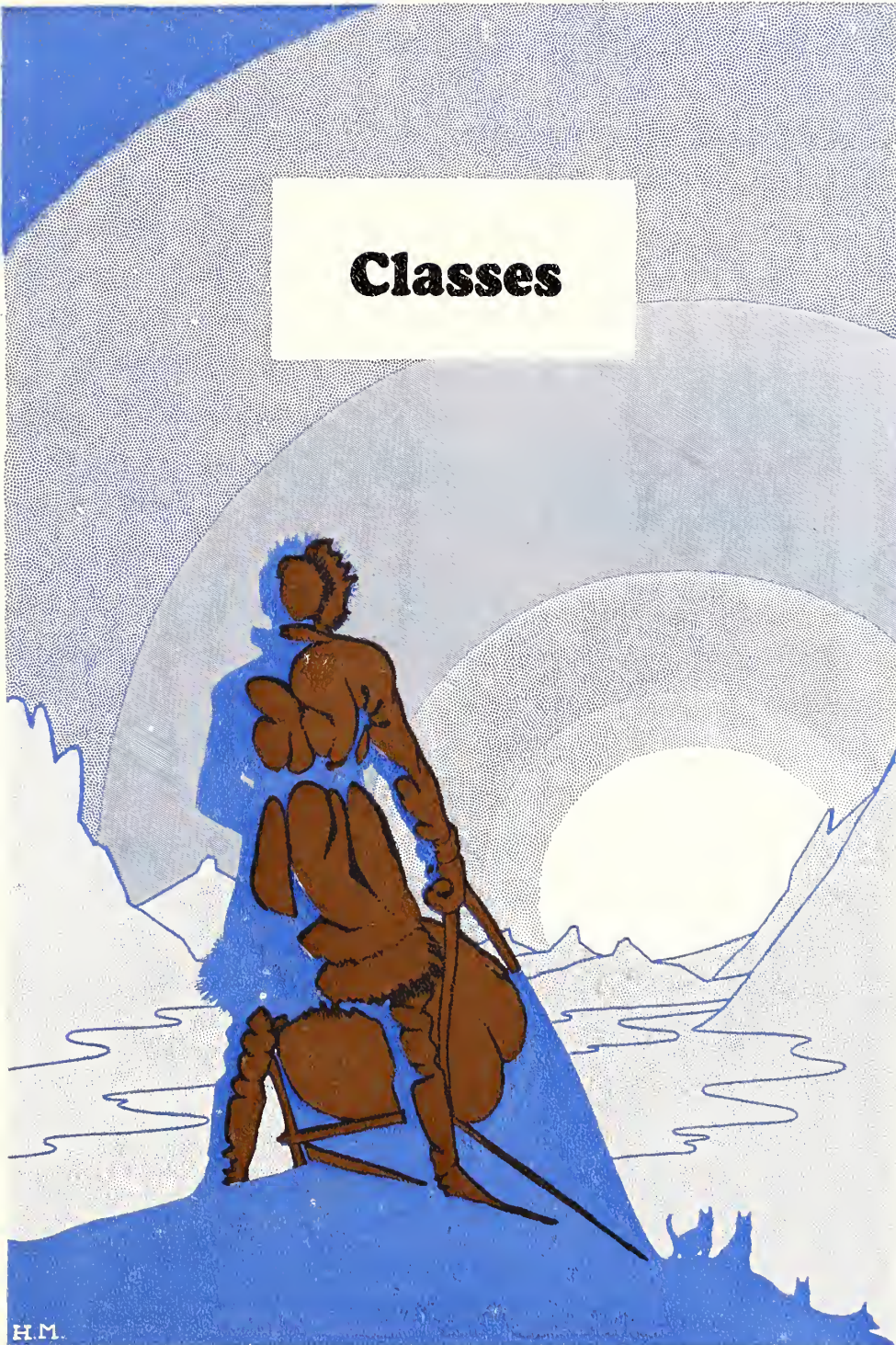
He puffed, he blew, and almost wrecked
His windbag with the strain;
He started Chevy a lively dance
And soon the creek was gained.

Old Chevy took a dive and hung
Nose down—he had no choice—
Awaiting the touch of his master’s hand
And the sound of his master’s voice.

Oh, fortunate Mr. Whiteside,
Of luck you need no more,
For the water of the creek was drained
Just several days before.

FLORENCE PFEIL

Classes





THE PORTHOLE



12B Class

OFFICERS

CHARLES SCHUBERT	<i>President</i>
CHARLES NASO	<i>Vice President</i>
HENRY GETLER	<i>Secretary</i>
ELLSWORTH HOUSEHOLDER	<i>Treasurer</i>
GENEVIEVE CLARK	<i>Student Council Member</i>
BEATRICE HIRSCH	<i>Student Council Member</i>
MISS ESTHER RUSSELL	<i>Sponsor</i>

MEMBERS

Clark, Genevieve
Crozier, Werner
Farrell, Leslie
Getler, Henry

Hirsch, Beatrice
Householder, Ellsworth
Kisthardt, Lucille
McDonald, Ruth
Merchant, Margaret

Myers, Ralph
Naso, Charles
Schubert, Charles
Test, Walter



THE PORTHOLE



11A Class

OFFICERS

RICHARD PROUDFOOT.....	<i>President</i>
ANTON VIDRICK.....	<i>Vice President</i>
DOROTHY TURK.....	<i>Secretary</i>
MARGARET LUCAS.....	<i>Treasurer</i>
ROBERT MARCH.....	<i>Student Council Member</i>
DOROTHEA MARTENS.....	<i>Student Council Member</i>
GEORGE SCHEERER.....	<i>Student Council Member</i>
MISS MABEL CRONE.....	<i>Sponsor</i>

CLASS COLORS—*Blue and Gold*

MEMBERS

Christopher, Juanita
Conrad, Theodore
Goodwin, James
Green, Walter
Kinkopf, Josephine
Knight, Jeanette
Kressin, May
Krsnik, Edward
Lemmon, Marie

Longo, Josephine
Lucas, Margaret
Lusher, Marabell
March, Robert
Manzelman, Sarah
Martens, Dorothea
Noch, Stella
Ogilvie, Helen
Plantz, Garnett
Powell, Norman

Proudfoot, Richard
Riedel, Lester
Scheerer, George
Turk, Dorothy
Vidrick, Anton
Williams, Kenneth
Willkomm, Marie
Wissman, Viola
Zivkovic, Marie



THE PORTHOLE



11B Class

OFFICERS

SCOTT CRAMPTON	<i>President</i>
RACHEL CAMERON	<i>Vice President</i>
LUCILLE RIDDELL	<i>Secretary</i>
ADELE HICKS	<i>Treasurer</i>
CLIFTON ALGER	<i>Student Council Member</i>
ROBERT LOWDER	<i>Student Council Member</i>
MISS LUCILLE AINGWORTH	<i>Sponsor</i>

MEMBERS

Alger, Clifton
Cameron, Rachel
Crampton, Scott
Devor, Leslie
Duff, Willard
Gezann, Arthur
Gill, Jack
Herman, Marjorie
Hicks, Adele

Hoprich, Katherine
Hunter, Pauline
Judkins, Edwin
Longo, Otto
Lowder, Robert
Macey, James
Miller, Stuart
Musser, Harold
Parks, Robert

Riddell, Lucille
Shalley, Ludwig
Siddall, Edmund
Stepanovich, Lilyan
Stevens, Orves
Thomas, Ralph
Trattar, Violet
Waterwash, Antoinette
Wiehern, Carl



THE PORTHOLE



10A Class

OFFICERS

WILLIAM WINSLOW	President
SHERIDAN HORWITZ	Vice President
LAWRENCE TRAUB	Secretary
MARGARET PELLERIN	Treasurer
MAY PYLE	Student Council Member
LEROY COLLINS	Student Council Member
MR. KNOX	Sponsor

MEMBERS

Amidich, Emilie
Anderson, Elizabeth
Andrews, Charles
Armocida, Bernice
Binckley, John
Bonnema, Wesley
Brigleb, John
Brott, Mildred
Bukovec, Charles
Bukovec, Frances
Camplejohn, Reed
Centner, Bernice
Clavey, Arvilla
Clines, Margaret
Clymer, William
Collins, Leroy
Coughlin, Colette
Cowin, Mary
Felker, Genevieve
Fox, Eli

Grdina, Florence
Grill, Alice
Gehring, Esther
Hill, Esther
Horwitz, Sheridan
Jamison, Virginia
Johnson, Evadna
Kruser, Katherine
Latour, Richard
Lauderbach, Edgar
Lockard, William
Lorimer, Alex
Mantel, George
Miller, Mildred
Mortimer, Irma
O'Donnell, Ann
Overacre, Catherine
Palko, John
Parmalee, Richard

Pilla, Lucy
Pyle, May
Redden, Richard
Rose, Charles
Seidel, Ruth
Sharnas, Helen
Speidel, Lynn
Stenger, Ethel
Testa, Carl
Tomazic, Victoria
Traub, Lawrence
Triman, Alvin
Vedder, Erma
Wegman, Virginia
Wilms, Edward
Winslow, William
Witmer, Jane
Witt, Ruth
Zelle, Dorothy
Zook, John



THE PORTHOLE



10B Class

OFFICERS

GRETCHEN SCHWAN *President*
FRANCES NEMEC *Secretary-Treasurer*
RUTH NASON *Student Council Member*
MISS JANE WILLIAMS *Sponsor*

CLASS COLORS—*Blue and Gray*

MEMBERS

Bauer, Anna
Bixler, Ruth
Boyence, Mary
Bricel, Florence
Burgert, Robert
Carlson, Lennart
Carney, Margaret
Disanto, Evelyn
Douglas, Helen
Drenik, Frances
Elecker, Fred
Fish, Elizabeth
Hartman, Hilda
Hartzel, Mary

Haslin, Arline
Haven, Gerard
Himpleman, John
Ischay, Harry
Keipert, Helen
Lane, Gertrude
Morris, George
Murray, Katherine
Musser, Melvin
Nason, Ruth
Neely, Lenore
Nemec, Frances
Nosse, Louis
Peck, Caroline

Pellerin, Margaret
Poje, Stonko
Pyle, Freda
Roeder, William
Rogers, Violet
Schwan, Gretchen
Spencer, LeVerne
Sullivan, Marjorie
Tegel, Frank
Tichner, Sanford
Wacker, Grace
Wagner, Frances
Webster, Evelyn
Willkomm, John

twenty-nine

English Historical Society



THE PORTHOLE



9A Class

OFFICERS

KENNETH BENDING	President
GERTRUDE WAGNER	Vice President
DUANE LARICK	Secretary
EUNICE GILSON	Treasurer
RICHARD ABBOT	Student Council Member
MARION THOMAS	Student Council Member
MR. STANLEY WHITESIDE	SPONSOR

CLASS COLORS--*Black and Gold*

MEMBERS

A to M (inclusive)

Abbott, Richard
Bain, Corliss
Barber, Paul
Bending, Kenneth
Bixler, Helen
Bluhm, Alma
Bonnema, Mary
Boyence, Alex
Browning, Victoria
Byrne, Robert
Cambria, Thomas
Cimperman, John
Covert, William
Cowin, Ruth
Crozier, Wayne

Davis, Frank
Daw, William
Dezman, Louis
Doherty, Marian
Donohue, Glenn
Drenik, Helen
Egger, Milton
Ettenger, Marguerite
Fioretti, Ralph
Fox, Stephen
Gilson, Eunice
Green, Melvin
Hall, William
Hart, Jack
Harwood, Eugene
Harwood, Orville

Hermle, Helen
Howard, Jack
Jagodnik, Anton
Jarc, Mary
Korthals, John
Kroetz, Harold
Larick, Duane
Lauderbach, Clarence
McAuliffe, Mary Louise
McCahan, Bernard
McMillan, Elizabeth
Malovrh, Louise
Mason, William
Mihevic, Marie
Moffet, Marian



THE PORTHOLE



9A Class

N to Z (inclusive)

Nason, Edith
Nelson, Alvar
Nelson, Herbert
Neurohr, Lillian
Nolan, Mary
Norris, Norma
Palko, Agnes
Nosse, John
Parenti, Angelo
Passerello, Florence
Patterson, Surlene
Podosky, Angela
Poje, Louise

Rake, Helen
Saunders, Ella May
Serino, Joe
Shimrock, Mike
Siddall, Iris
Spearman, Ruth
Stein, Howard
Stockall, Dudley
Strakol, George
Stray, William
Strunk, John
Sturm, Anton
Sylvester, Jack

Teska, Eleanor
Thomas, Lena
Thomas, Marion
Tiffany, George
Tippen, John
Traub, Fred
Triman, Eugene
Turk, Adeline
Wachtell, Lester
Wagner, Gertrude
Will, Valeria
Williams, Irene
Wruck, Ailene



THE PORTHOLE



9B Class

OFFICERS

ANTON KINKOPF	<i>President</i>
ZVONIMAR HRIBAR	<i>Vice President</i>
ELIZABETH VIDUGERIS	<i>Secretary</i>
JOSEPHINE GERJEVICH	<i>Treasurer</i>
DONALD McDONALD	<i>Student Council Member</i>
MISS PERA CAMPBELL	<i>Sponsor</i>

CLASS COLORS—*Blue and White*

MEMBERS

Antonucci, Dominic
Baressi, Frank
Bukovec, Rose
Cameron, Beatrice
Charles, Meryl
Childers, Mary Ellen
Fairley, William
Frissell, Dorothy
Gerjevich, Josephine
Haberle, Steve
Hartman, Edward
Hoprich, John
Hribar, Zvonimar

Janitz, William
Jehlicka, Edward
Johnson, Annie
Kinkopr, Anton
Kuckenmeister, Helen
Lasch, Lucille
McDonald, Donald
Meissner, Donald
Metzger, Frank
Miskerich, Annie
Murphy, Lenore
Nahtigal, Frank
Nemec, Matthew
Nosse, Anna

Parisi, Catherine
Parisi, Jennie
Phillips, Jean
Plummer, Martha
Ramoni, Tony
Stewart, Duane
Tousley, Rene
Smith, Louise
Spelko, Frank
Vidugeris, Elizabeth
Waterwash, Carrie
Yancer, LaVonne
Zupancic, Stephania



THE PORTHOLE





THE PORTHOLE



Third Annual Spelling Match

For the past three years, a spelling contest has been held at the close of the first semester to determine the champion speller in the high school. The last two contests were old-fashioned, oral "spell downs", but this year a five-minute dictation was read, and the student writing this paragraph with the fewest mistakes was named champion.

Each English class was represented. The class champions were seated at desks on the stage before the assembly. Miss Swartz, Supervisor of the English Department, read the paragraph from Eugene Wright's book, *The Great Horn Spoon*.

Irma Mortimer, a sophomore, won the championship.

The class champions were:

- 12A Jean Wilson
- 12B Ellsworth Householder
- 11A Richard Proudfoot
- 11B Adele Hicks
- 10A Irma Mortimer—Champion
- 10B Betty Fish
- 9A Lena Thomas

In 1928 Jean Wilson won the championship, and in 1927 Emily Kovacic held the honors.

A Freshman's Song at Graduation

TUNE: "Sweethearts on Parade"

Single file they come down the aisle,
The Seniors on parade;
I can't help sigh as they pass me by
The Seniors on parade;
I'd love to join the line, but they bar me,
For it takes many credits to join their army;
How I pine just to fall in line
With the Seniors on parade.

E. T.

Literary Programs

Literary programs are a bi-monthly occurrence at Shore. They were established for the purpose of giving students a chance to appear in public.

Miss Douth, the faculty manager of these assemblies, arranges the calendar in which are programs by each department, speeches by faculty members and by outsiders, and musicales.

Activities







THE PORTHOLE



Band

OFFICERS

JACK WHITTLE	<i>Drum Major</i>
PAUL McCORMICK	<i>Secretary-Treasurer</i>
FORD L. CASE	<i>Faculty Director and Manager</i>
CARL LEO	<i>Music Supervisor and Director</i>

MEMBERS

Cornets—

Clifford Bantel
Robert Burger
Carl Wichern

Trombone—

William Mason

Helicon—

Paul McCormick

Saxophones—

John Binckley
Orves Stevens
Frank Davis

Alto Horns—

Ralph Bonnema
Leroy Collins
Alex Lorimer

Baritone—

Lennart Carlson

Drums—

John Pearson
Dudley Stockall

Clarinets—

John Bukovic
Herbert Nelson

Shore Band has completed its second successful year under faculty supervision. The band has played during the last year at all home football and basketball games, and at some games that were away from home.

Mr. Leo is our music director and supervisor. Mr. Case, faculty director and manager, has given, voluntarily, his services to the school.



THE PORTHOLE



Spelling
Champ



Come an' get 'em



Ja, dis iss Paul



Lapchic
and
Shrimp



The Music Masters



Fun, Huh?



On a skate



THE PORTHOLE



Girls' Glee Club

OFFICERS

ALICE CIMPERMAN	Leader
ELSIE TAYLOR	Secretary
MAY KRESSIN	Treasurer
MARIAN AHLMAN	Librarian
MRS. MAUDE LAWS	Instructor

MEMBERS

Ahlman, Marian	Herman, Marjorie	Pfeil, Florence
Anderson, Elizabeth	Hicks, Adele	Pilla, Lucy
Bixler, Ruth	Hirsch, Beatrice	Repka, Ruth
Brott, Mildred	Jamison, Virginia	Spencer, Helen
Bukovec, Frances	Kressin, May	Stein, Mildred
Cimperman, Alice	Larick, Helen	Stepanovich, Lilyan
Clark, Genevieve	Lemmon, Marie	Stray, Helen
Clavey, Arvilla	Martens, Dorothea	Taylor, Elsie
Cowin, Jeannette	Mathews, Lucy	Tomazic, Victoria
Getler, Dorothy	Miller, Mildred	Willkomm, Marie
Grill, Alice	Noch, Stella	Witmer, Jane
Hauschild, Betty	Petrowsky, Janet	Zivkovic, Marie



THE PORTHOLE





THE PORTHOLE



Boys' Glee Club

OFFICERS

DANIEL MILLER *Leader*
PAUL MCCORMICK *Secretary-Treasurer*
JACK WHITTLE *Librarian*

MEMBERS

Margret Lucas, *Pianist*

Myers, Ralph
Meiert, Harold
McCulley, Robert
Miller, Hugh
Bantel, Clifford
Lorimer, Alex
Winslow, William

Crampton, Scott
Householder, Ellsworth
Converse, John
Herman, Norman
Naso, Charles
Algers, Clifton
Vidrick, Anthony

Pearson, John
Bonnema, Ralph
Snetsinger, Kenneth
Gill, Jack
Getler, Henry
Speidel, Lynn
Scheerer, George



THE PORTHOLE



*Mary Bonnema, Helen Hermle, Angela Podosky, Lenore Murphy, Helen Kuckenmeister, Elizabeth Vidugiris,
Mary Cowin, Adeline Turk, Lena Thomas, Ella May Saunders, Irene Williams, Mary Nolan,
Marguerite Ettinger, Mary Louise McAuliffe, Marion Thomas, Eunice Gilson, Mrs. Maude Lewis (Instructor).*

Choral Club

MARION THOMAS	Leader
EUNICE GILSON	Secretary
MARY S. McAULIFFE	Librarian
MAUDE LAWS	Director



THE PORTHOLE



Orchestra

OFFICERS

CARL LEO	<i>Director</i>
FORD L. CASE	<i>Faculty Manager</i>
CLIFFORD BANTEL	<i>President</i>
PAUL MCCORMICK	<i>Secretary-Treasurer</i>

MEMBERS

First Violins—
Clifford Bantel
Leroy Collins
Joe Serino
John Tippen

Clarinets—
John Bukovic
Herbert Nelson

Melophones—
Ralph Bonnema
Alex Lorimer

Trombone—
William Mason

Sonsaphone—
Paul McCormick

Second Violin—
Betty Hauschild
Jean Wilson
Richard Abbott
John Pearson

Saxaphones—
John Binckley
Orves Stevens
Frank Davis

Euphonium—
Lennart Carlson

Drums—
Dudley Stockall

Piano—
Margaret Lucas

Shore Orchestra, organized two years ago with a membership of five, now has an enrollment of twenty. During the last year, the orchestra has progressed very rapidly under the supervision of Mr. Leo, and the voluntary direction of Mr. Case.



THE PORTHOLE



Shore Breezes



Shore's weekly newspaper, the Shore Breezes, first organized in 1923, is edited by the class in journalism, under the supervision of Miss Clare Swartz. The journalism department is new at Shore this year and has raised the *Breezes* to a higher standard than it has ever attained in the past. This four page mimeographed publication, edited every Tuesday, is a charter member of the National Scholastic Press Association. Occasionally a twelve page Special Edition is published, a sort of literary number, containing the journalistic effusions of the school.

It is through the efforts of Miss Darst and the typing department that the printing of our paper is made possible. The paper has a circulation of two hundred and fifty copies.

Typists

Rachel Clements
Edith Grdina
Hanna Hart

Lucille Kisthardt
Philomena Vidugenis

Mimeographers

Clifton Alger
Frank Bricel
John Brigleb
Charles Bukovec

Reed Campeljohn
Scott Crampton
Ellsworth Householder
Jack Whittle

Journalism Class

Marian Ahlman
Frank Bricel
Ellsworth Householder
Helen Larick
Dorothea Martens
Paul McCormick
Hugh Miller

Ralph Myers
Florence Pfeil
May Pyle
Elsie Taylor
Dorothy Turk
Jack Whittle
Mary Zagar

All American Honor Rating—Superior is the way Shore Breezes was scored in the national newspaper contest sponsored by the National Scholastic Press Association in January.



THE PORTHOLE



Porthole Staff

OFFICERS

RALPH MYERS	<i>Editor-in-Chief</i>
FLORENCE PFEIL	<i>Associate Editor</i>
JENNIE MERTEK	<i>Business Manager</i>
PHILOMENA VIDUGERIS	<i>Photograph Editor</i>
HUGH MILLER	<i>Art Editor</i>
CLARE E. SWARTZ	<i>Faculty Adviser</i>

Assistant Associate Editors

Marian Ahlman
Helen Larick
May Pyle

Assistant Photograph Editor

Ruth Repka

Assistant Art Editor

Chester Morris

Assistant Business Managers

Lucy Mathews
Jack Whittle
Betty Hauschild
Robert McCulley
Rachel Clements
Leonora Signoretti
May Kressin
Clifton Algers
Mildred Stein
Walter Kremm
Ralph Thomas
Dorothea Martens



THE PORTHOLE



Our Cafeteria

Well planned, appetizing lunches, eaten in the cool of the cafeteria, make a pleasant break in the day's routine, and the material wants of the students are taken care of by an efficient staff. Varied and seasoned menus are planned by Miss Rosenberger and cooked under her supervision by her assistants.

The present cafeteria system was organized when Miss Rosenberger came to Shore in the fall of 1922. During winter, those lunching at school average 500 daily, receipts \$75, while in the warmer months the receipts average \$65 daily, about 450 availing themselves of this convenience.

Mr. Whiteside: Miss Grill, what do we mean by hybridizing?

A. G.: Well, you take a bit of one tree and put it with another tree, and you get a new kind of tree.

Mr. Whiteside: And is that how we get the pineapple?

Shore's Leaders' Club

OFFICERS

DOROTHY GETLER	<i>President</i>
RUTH REPKA	<i>Vice President</i>
MARIAN AHLMAN	<i>Secretary-Treasurer</i>
MARY WALKER	<i>Sponsor</i>

Shore's Leaders' Club has been organized for two years. It is composed of junior and senior gym girls, the purpose being to train the members in responsibility and leadership, and to create more interest in gym work. The club now numbers thirty-five girls. At the meetings, which are held every other Thursday after school, the girls are assigned various duties which help to keep order in class. Some of the members must check up on the number of gym girls taking showers, others on attendance, and still others on outfits. This system relieves Mrs. Walker of much worry.

One class, from September to February, under the guidance of leaders, always had perfect outfits, had no tardiness, and had 87% of the girls taking showers regularly.

In addition to the Leaders' Club, squads in all the gym classes have been organized, each one trying to make the highest number of gym points by doing specified things.

And the result? Better, finer gym work with plenty of fun and enthusiasm.



THE PORTHOLE



The FRENCH CLUB



THE PORTHOLE



National Honor Society

Membership in the National Honor Society is something of which to be proud. To become a member in this nation-wide organization one must rank high in four cardinal qualities: scholarship, leadership, service, and character.

When a person is elected to membership, he is presented with a small gold pin in the shape of a keystone on which is engraved the torch of knowledge and the four significant letters: S. L. S. C.

The charter was granted in 1925.

SHORE MEMBERS

Aitken, Irene	'25	Kovacic, Goldie	'28
Brigleb, Carl	'25	Luikart, Fordyce	'28
Kinney, Laura	'26	Raeburn, Elizabeth	'28
Mann, Lillian	'26	Ahlman, Marian	'29
Aitken, Russell	'27	Larick Helen	'29
Anderson, Kenneth	'27	Morris, Chester	'29
Kovacic, Emily	'27	Pfeil, Florence	'29
Schubert, Betty	'27	Spencer, Helen	'29
Book, Harold	'28	Vidugeris, Philomena	'29

Next!

Significant word! It has meant something to every one of us. How well I remember one day being told, "May, you were *only* going to play tennis on Saturday afternoon, weren't you? Well, you'd better run into town and have that tooth taken out instead, I think." Of *course* Saturday dawned brilliantly, of *course* the courts were in perfect condition, of *course* the 2:33 train to town didn't have an accident, and of *course* the dentist hadn't died in the night.

I sat down in the waiting-room, skimmed disgustedly over a two-years-old *Literary Digest*, and stared dejectedly out into the hot street, where a cat basked in a patch of sun and licked its paws lazily. Hollow tone echoed along the hall, a door banged, and the footsteps of a penitent, newly released from the torture-chamber, sounded outside and died away in the distance. "Next!" I got up, licked my tongue lovingly round my tooth, and tried to remember a hymn about guardian angels as I climbed into that dreadful chair. I wondered vaguely if guillotines had seats, as the dentist fiddled among his thumb-screws and things, smiling kindly at me. The hypocrite!

Now he was coming. Heavens! Need he really stretch my mouth quite so wide? Wow! He speared my gum with his poisoned-arrow thing, and started to dig up my tooth. What a brute the man was! After a moment, the pain grew less. This wasn't so bad. I shut my eyes, and tried to remember that little twist of the wrist that made your service so deadly. It would be almost impossible to return a serve like that. Well, there would still be time to play after tea, if I caught the 4:10 train home.—"Now then!" I washed out my mouth vigorously, stepped down a little stiffly, smiled more politely at the dentist, and walked down the hall. As I passed, I looked in at the waiting-room door, and glanced patronizingly at the luckless victim who sat thumbing the antique *Literary Digest*. Came in hollow tones behind me, "Next!" I smiled callously as I thought of the victim upstairs, and my spirits soared as I banged the door and sprinted down the street.

MAY PYLE

Athletics





THE PORTHOLE



Boys' Football Squad

*Eli Fox, Clifton Alger, Coach Ford L. Case, Walter Green, Jack Gill, William Clymer (Manager).
Coach Earl M. Brose, George Scherer, Arthur Gezann, William Winslow, Walter Test, Carl Testa,
Chester Morris (Manager).
Lynn Speidel, Scott Crampton, Edgar Lauderbach, Ralph Thomas, Charles Schubert (Captain),
Werner Crozier, Robert Lowder, Ludwig Shally, Anton Vidrick.*

Football

Coach Case and his grid warriors underwent a tough season last fall. After losing the first two games to Shaker and Euclid Central, the team upset the dope bucket by holding the big Green of Longwood to a scoreless tie.

They soon lapsed back into the lose column, however, and finished the season by suffering defeats at the hands of West Commerce, Marshall, and Brush. The majority of these losses were by very decided margins.

The Shore gridders, most of them green men and hopelessly outweighed, although fighting a losing battle, always kept the Old Shore spirit and fought hard for the Green and White until the final whistle sent them on their ways.

Despite the defeats the school's athletics are on the up-grade, and Shore will undoubtedly be heard from in the near future. One remarkable instance is the fact that not one of last year's football men is being graduated this year and so Coach will have a squad of veterans with which to work next year.



THE PORTHOLE



CAPTAIN SCHUBERT '30 Halfback—134 lbs.

Smiling little Chuck Schubert, playing his third year for the Green and White, gave all he had in his great task of leading a losing team. You could count on Chuck's being in the thick of every play.



SHALLY '30

Tackle—150 lbs.

Shally filled his position with ease and came to be feared by the opposition. He will be back to play next year.

THOMAS '31

Quarter—130 lbs.

In Ralph, Shore had a very capable quarterback. He passed, punted, and carried the ball, and his ability in directing the team was noted by many.

GEZANN '31

Tackle—167 lbs.

Art loomed up as the main bulwark of the Green's forward wall. He seemed to take a peculiar delight in tearing huge holes in the enemy's line and in other ways astounding and depressing the opposition.

CROZIER '30

Halfback—138 lbs.

Hitting his stride late in the season, Werner developed a style that will make him a valuable man next year. Besides being a competent defensive back, Werner passes and blocks well.





THE PORTHOLE



FOX '31

Halfback—110 lbs.

Right now all Eli lacks of being a great gridder is about sixty pounds of brawn. All the other requirements he has; he is fast, gritty, and smart. Watch out for him in the seasons to come.

SPEIDEL '31

Tackle—150 lbs.

When the call of the gridiron is sounded next year, expectant eyes will be turned upon Lynn. He served his apprenticeship in a fine manner last season, being especially adept in the art of place-kicking.

COOK '31

Quarter—115 lbs.

The loss of Toots will be greatly felt by the Shore grid warriors in the coming season. He played a fast, smart brand of football last fall.

VIDRICK '30

End—140 lbs.

With last season's experience back of him Tony should make a valuable wing man next year. His good work in the West Commerce game won for him a place in the hearts of his schoolmates.

LAUDERBACH '31

Fullback—142 lbs.

Ed supplied us with most of last season's thrills. He was either on the tossing or receiving end of the season's successful passes. Besides featuring in the aerial game he is a good defensive man. His good work in the Longwood game will not soon be forgotten.

CRAMPTON '31

Center—150 lbs.

Scott's work in the difficult position of center was commendable. His passing accuracy and consistency won for him the respect of his teammates and the admiration of the Shore rooters.

YEOMANS '30

Tackle—148 lbs.

Bob Yeomans, after having bolstered up the Shore line for three seasons, has left us for the sunny South. Bob made his share of the tackles and looked good on the offensive.

LOWDER '31

Guard—115 lbs.

Fighting Bob Lowder was the only Shoreite to gain All Conference recognition. Bob's flashy defensive work and fighting spirit drew favorable comment in every fray.

TEST '30

End—136 lbs.

Babe held down his wing position in a fine manner last season. He should make a name for himself in scholastic grid circles next fall.



THE PORTHOLE



Ralph Meyers, Kenneth Bending, Robert McCulley, Coach Ford L. Case, Hugh Miller, Wesley Bonnemina, Carl Testa, Arthur Gezann (Manager), Edgar Landerbach, Scott Crampton, Frank Bricel, Walter Test, Robert Miller, Assistant Coach Earl M. Brose, Robert Lowder, Angelo Parenti, Walter Kremm (Captain), Norman Powell, Richard Latour.

Boys' Basketball Squad

Another season has passed and again Shore is on the bottom rung of the Greater Cleveland Conference championship ladder. Our hard cage season has, however, helped to develop some men of fine character and promote a sense of good sportsmanship that goes to build up the true Shore spirit. Coach Case and his charges worked hard throughout the season, always trying, always hopeful, always enthusiastic, but their best efforts were of no avail before the onslaughts of the powerful Conference quintets.

Coach Case carried a squad of about twelve men, of whom the following received the varsity "S": Krem (Captain) c, Test rg, Miller lg, Bricel rf, Parenti lf, Crampton lg, Powell lf, Latour rf, Gezann mgr.

Shore dropped the first five Conference games to Euclid Central, John Marshall, Shaker, West Commerce, and Longwood, but managed to close the season with a victory over Brush. Nevertheless, our cagers fared a little better in their independent tilts, beating Maple Heights, Euclid Central, Alumni, and Wickliffe while they dropped games to Cuyahoga Falls, and Kenmore.

The enthusiasm and loyalty of the student body the entire season was remarkable.



THE PORTHOLE



Garnett Plantz, Violet Rogers, Marie Willkomm, Esther Hill, Ann O'Donnell, Mary Bonnema, Jennie Mertek (Manager), Ruth Nason, Rachel Clements, Miss Esther Russell (Coach), Beatrice Hirsch, Marian Ahlman, Jeannette Cowin (Manager), Lucy Mathews, Dorothy Getler, Mildred Stein (Captain), Kelly (Mascot), Florence Pfeil, Juanita Christopher, Josephine Kinkopf.

Girls' Basketball Squad

Coach Russell's girl cagers gained undisputed possession of the greater Cleveland Championship toga by running rough shod over all local opposition and trouncing the highly touted Catholic League Champs, Holy Name, in two games. Miss Russell's call for netmen was answered by a wealth of material in the lettermen Pfeil, Getler, Christopher, Mathews, and Stein, and several good new girls: Kinkopf, Ahlman, and Clements.

The girls had no great difficulty in piling up a 52 point score against Maple Heights' 26 markers in the opening game.

In the second, Euclid Central felt the strength of the Green cagers in the form of a 23 to 11 defeat.

The Rocky River maidens had to forfeit their game to Shore when part of their team got lost in the storm that raged that night.

The return game with Maple Heights was a heart breaker for our netmen when the final gun found the two teams in a 22 to 22 deadlock.

Stinging under the lash of the Heights game, the girls wrecked their vengeance on the Alumnae in the next fray.

(Continued on page 75)



THE PORTHOLE



Baseball

The weather man has been winning most of the ball games this spring, and much rain has hindered Coach Case's work on the diamond. To date Shore has played two games. They beat the Alumni 11 to 2, and lost to Euclid Central by the score of 5 to 8. A game with Brush was postponed on account of rain.

With Capt. Gezann behind the plate, Bob Miller, Bricel, and Lauderback on the pitching staff (these men also work in the infield when not on the mound) H. Miller, Testa, Brigleb, Thomas, and Powell working in the infield, and Fox, Parenti, Wilms, Myers, and Test, in the outer garden, Coach Case has the makings of a ball club that can well hope to finish pretty near the top of the Lake Erie League standing.

The games yet to be played are:

April 26	Bedford at Shore
May 3	Brush at Shore
May 9	Shore at Brush
May 10	Shore at Bedford
May 17	Shore at Euclid Central

Track

Coach Case has a wealth of material out for track this spring. He carries a squad of about seventeen good men and is confident that they will pull through the season in much better form than the teams of the past few seasons. To date, his squad consists of the following men: Crozier, Duff, Gill, Herman, Louder, C. Morris, G. Morris, H. Miller, R. Miller, Kremm, Test, Parenti, Thomas, Schubert, Redden.

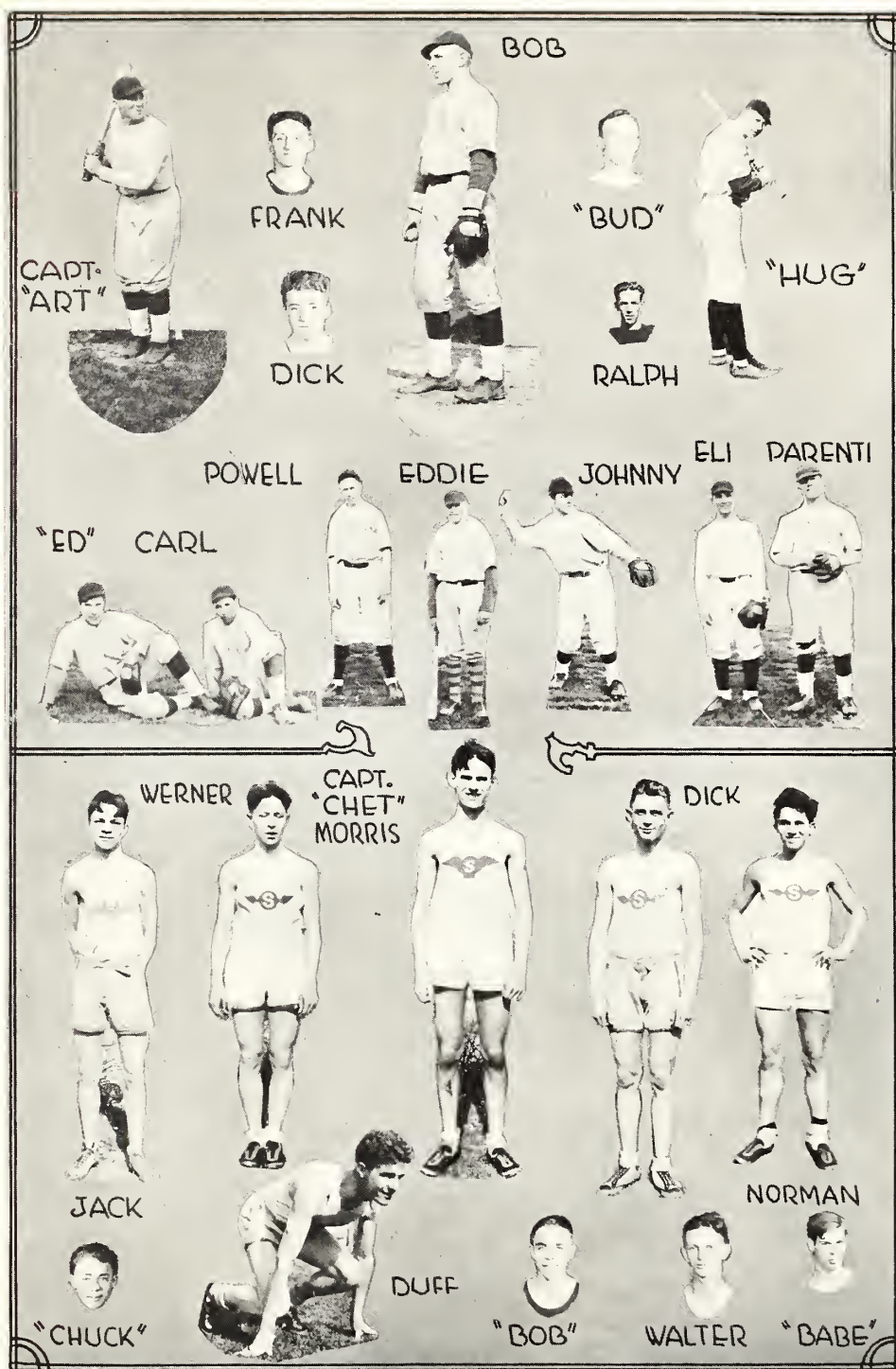
Shore has, so far, run in only one of the scheduled meets, but their showing in this, a dual meet with Orange High, speaks well for the team. They defeated Orange by a 75 to 32 score. Bob Miller led the scoring in this meet with 12 $\frac{1}{4}$ points.

The schedule is as follows:

Shaker-Euclid Central-Shore at Shaker.....	April 30
Longwood-Euclid Central-Shore at Shore.....	May 2
Brush-Shore at Shore.....	May 7



THE PORTHOLE





THE PORTHOLE





THE PORTHOLE



The Advertising Committee

PHILOMENA VIDUGERIS, *Chairman*

RACHEL CLEMENTS

JOSEPHINE KINKOPF

REED CAMPLEJOHN

ANTON KINKOPF

H. W. SPANGLER, *Sponsor*

Who advertises all Shore's picture shows, dances, games, and entertainments? Who distributes a vast amount of advertising material throughout the community, and who is always on hand to sell and collect tickets? It is—the Advertising Committee.

This committee meets regularly every Monday during the sixth period. They are no idlers, for they spend their time stamping posters and tickets, and planning their campaigns and advance sales of tickets.

There will be three or four vacancies on the committee for next year. Applications for these places are in order at any time.

Needed: Two Sophomores and one Junior who are willing to work.

National Athletic Honor Society

For those boys who have earned at least one letter in athletics and have been above the school average in scholarship there is reward in the National Athletic Honor Society. This association, up to date, includes the following members from our school:

Eugene Fryan '27

Harold Book '28

Warren Borgsteadt '28

Edmund Budnick '28

Elmer Kurrle '28

Frederic Watkins '28

Victor Zelle '28

Ralph Bonnema '29

Walter Kremm '29

Charles Schubert '30

Robert Yeomans '30

Chester Morris '29

Anton Vidrick '30

Scott Crampton '31

Robert Lowder '31

THE SPORT WRITER'S CONCEPTION OF HOW THE FOOTBALL PLAYERS TALK:

Coach Case: All right, you grid warriors, I want to see some determined marches goal-ward in this afternoon's tussle. Toss the pigskin around a bit, and limber up for the oncoming tilt.

Thomas: I am going to check the onslaught of our powerful opponents, throwing them for countless losses.

Schubert: Crashing off tackle and skirting the wings for numerous gains, I will baffle the Red Clad Warriors with my dazzling footwork.

Louderbach: The vaunted aerial attack, from myself to Test, will account for more than one of the "Big Green's" markers.

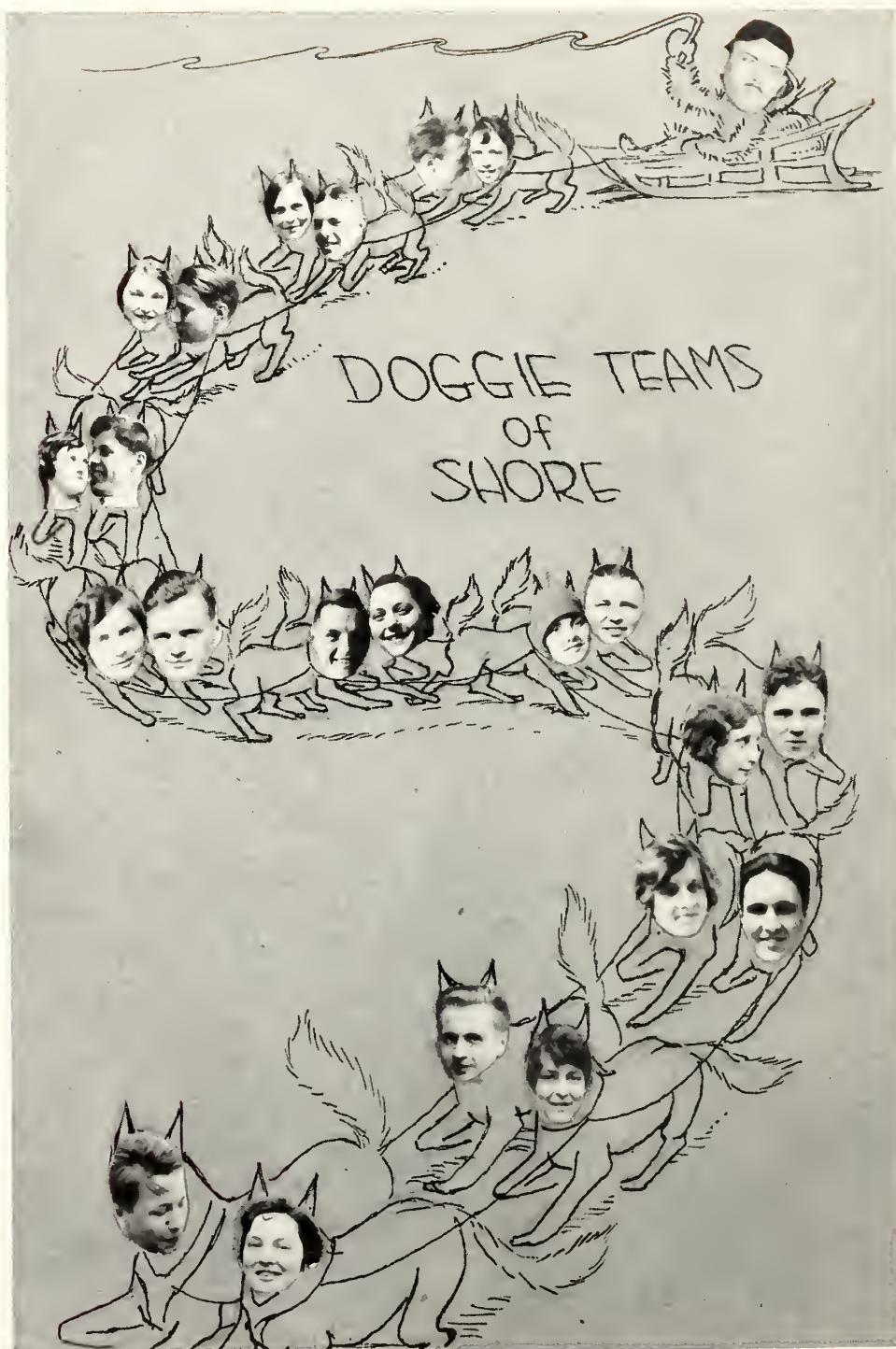
Gezann: I intend to loom up as a big Cog in Mentor Case's defensive machine, turning back play after play, and appearing to pop up from everywhere to down the enemy ball carrier.

Etc., Etc., Etc.

R. M.



THE PORTHOLE





THE PORTHOLE





THE PORTHOLE



OUR ADVERTISERS

*are Shore boosters. Remember them when making
your purchases*

Frank Bern
Boulevard Barbecue
Boulevard Barber and Beauty Shoppe
Bluem Boulevard Florist
Boulevard Park
Brooks Coal Company
City Ice and Fuel
J. B. Clark
Clover Farm Stores
Dille Road Lumber Co.
The Dutch Mill
Dyke School of Commerce
East Shore Community Club
C. R. Ely
Euclid Cash Market
Euclid Kiwanis Club
Euclid Village Dry Cleaning
M. L. Fisher
Guenther's Art Galleries
Mr. and Mrs. A. W. Henn
Herff-Jones Co.
The Adam Hoffman Co.
J. F. Holcomb and Co.
Nick Joszt
Johnson-Stowell Co.
The Kibler Co.
John Klaus
J. F. Linnert
Moss Drug Co.

Jas. McElroy
Moss Point Recreation Co.
The Neal Fireproof Storage Co.
The L. J. Neff Coal and Supply Co.
Nottingham Savings and Banking Co.
The Odell Construction Co.
Ody's Confectionery
Penn-Sylvania Oil and Gas Co.
Henry F. Pfisterer
Real Hardware Co.
Reliable Jewelry
Roberts Hardware Co.
Harry H. Robinson, M.D.
Rosebrook Motor Sales
Schwartz Electric Co.
Scoop Printers
Shumaker Service Station
H. W. Spangler
Spencerian Commercial School
Floyd B. Stein Inc.
H. A. Sterkel Co.
Stevenson Oil and Chemical Co.
Edward H. Stanton
Frank A. Thomas
Trudy's Beauty Salon
Tucker's Garage
The Upson Walton Co.
Wickliffe Lumber Co.
Wissman Garage

Compliments
of
EAST SHORE
Community
Club



MEETINGS:
1st and 3rd Tuesday of each month

SHIP CHANDLERS

—Rigging Dep't

—Sail Loft

The Upson-Walton Company

“Fada” and “RCA” Radio Sets

DEPARTMENT AT

738 Superior Ave., West

(Perry-Payne Building)

Phone Main 7444



JOHNSON OUTBOARD MOTORS

OUTBOARD BOATS

BOAT OARS and PADDLES

BOAT SUPPLIES

Also at 1310 W. 11th St.

WIRE and MANILA ROPE



Makers of

The complete line of—

TACKLE BLOCKS (Wood and Steel)

TURNBUCKLES and Fittings

BRATTICE CLOTH for MINES

Appointed Photographer

For the Graduating Class

1929

Frank Bern

1632 Euclid Ave.



MAin 2230

Cleveland, Ohio

Compliments of

M. L. FISHER

Justice of the Peace

Compliments of

C. R. ELY

Mayor

FRANK A. THOMAS

and
Associates

CIVIL ENGINEERS & SURVEYORS

Euclid, Ohio

Roberts Hardware Co.

676-682 East 185th St.
CLEVELAND, OHIO

KEenmore 0687



THE
SOB
SISTERS



ZIEGFELD'S OWN



BIG GYP - SIES



O SOLE MIO



PAVLOWA



JEANNE



ESTHER



THE
NINE
MUS-KEETERS



The Value of Knowledge lies in its Application
 It is not so much what we earn today as what we save today
 That determines our position tomorrow



THE NOTTINGHAM
SAVINGS & BANKING CO.
 OF CLEVELAND
 St. Clair Ave. at Nottingham Road

GLenville 8736

**Rosebrook
 Motor Sales**

REPOSSESSED CARS

All Makes and Models

Terms as Low as \$5 Down

810 E. 152nd Street

CLOVER

FARM STORES CO.

23900 Lake Shore Blvd.

KEn. 0022

MEATS -:- GROCERIES

WE DELIVER

Compliments

Moss Drug Co.

21939 Lake Shore Blvd.

Quality - Courtesy - Service

KEnmore 0935

Res. 100 E. 219 St. KEnmore 0918-M

Schwarz Electric Co.

Electric Construction

Wiring and Supplies

High-Grade Line of Fixtures

Corner of East 222nd St. and
 Lake Shore Blvd.

G. E. SCHWARZ Cleveland, O.

Spencerian has "IT".

Every month between two and
 three hundred firms ask for "IT".

Drop us a line, or telephone for "IT".



SPENCERIAN SCHOOL

Commerce — Accounts — Finance

3201 Euclid Avenue - Prospect 4500 - Cleveland, Ohio

"For quality and service."

Euclid Village Dry Cleaning & Tailoring

22040 Lake Shore Blvd.

Men's suits made to order

We specialize on remodeling
and relining ladies and gents
garments

We are experts on furs

We call for and deliver



KEnmore 2767

Compliments of

Odell Construction Co. *—Sewer Builders—*

275 East 218th St. KEnmore 1293-J

Canfield Quality Products

Complete Lubrication

Courteous Service



Shumakers Service Station

685 East 185th St.

A country school board was visiting a school, and the principal was putting them thru their paces.

"Who signed the Magna Charta, Robert?" he asked.

"Please, sir, it wasn't me," whimpered the youngster.

The teacher, in disgust, told him to take his seat.

But an old country gentleman on the Board was not satisfied, so he said, "Call that boy back. I don't like his manner. I believe he did do it."

Marg: I maintain that love making is just the same as it has always been.

Martha: How do you know?

Marg: I just read about a Greek maiden who sat and listened to a lyre all night.

Mary: I can't find a single pin anywhere. Where do you suppose they all go to?

Jane: It's hard to tell, because they're pointed in one direction and headed in another.

The Dille Road Lumber Company

Lumber Specialties

KEnmore 0592-0593

Corner of Nottingham Rd. and Nickel Plate R. R.

Shore High Graduate Fourth Member of Family to Attend Dyke School



Just two years ago Alice Smith graduated from SHORE HIGH SCHOOL. Today she is secretary to the manager of the Smythe Building, with an interesting job and a promising future. Miss Smith attributes her success to the Dyke School, where she had her stenographic training.

Three other members of Miss Smith's family had chosen Dyke School in which to prepare for business careers. Miss Smith is glad she followed the precedent they established.

"There is no sliding over things at the Dyke School", Miss Smith explains. "They exact a fine discipline and create a business-like atmosphere, helpful in maintaining their high standards."

Would not YOU, another SHORE HIGH graduate, be interested in learning more about Dyke School? Our new bulletin will be mailed upon request.

D Y K E SCHOOL OF COMMERCE

1001 Huron Rd.
CLEVELAND, OHIO

Compliments

of

MR. AND MRS. A. W. HENN

Compliments of

**Guenther's
Art Galleries**

Boulevard Barbecue

17448 Lake Shore Blvd.



"Just around the corner" from Euclid Beach, where the Shore Girls' Basketball Team took "time out" to eat.

Prof: My talk today is going to be on Liars. How many of you have read the tenth chapter? All hands went up.

Prof: Good! You're the group I want to talk to, there is no tenth chapter.

Senior: (over phone) Hello, Central. Want a date?

Miss Central: Sure.

Senior: So do I. Give me Main 3-5-7-8.

TUCKER'S GARAGE

*Auto Repairs :: Batteries and Tires
Towing Service*



22301 Lake Shore Blvd., Opposite Bliss Rd.

L. P. TUCKER

KEenmore 0373

NICK JOSZT

LIVE and HOME DRESSED
POULTRY EVERY SATURDAY

520 East 200th St.

KENMORE 0838

Compliments of

Moss Point Recreation Co.

BILLIARDS BOWLING
ICE CREAM PARLOR

Ladies Free Bowling
Friday Afternoon

22054 Lake Shore Blvd.

"It pays to look well."

Boulevard Barber Shoppe and Beauty Parlor

22072 Lake Shore Blvd.
H. S. Winters Catherine Trickey

Beauty Parlor Hours
9:30 to 5:30 or by appointment

KEenmore 3343

Graduation

AND

Congratulation Cards

THE SCOOP PRINTERS

814 East 152nd St.



HERFF-JONES COMPANY

Manufacturing Jewelers and Stationers

EARL J. BEHM
Ohio Representative

2556 East 83rd Street
CEdar 2210

J. R. Holcomb & Co.

CARL R. DIETSCH
ROBT. H. ADAMS

General School Supplies

1518 St. Clair Avenue
MAin 3732 Cleveland, Ohio

*It's always the best
at*

Hoffman's

Six Stores in Greater Cleveland

Serving
FINE CANDIES
ICE CREAM—TASTY PASTRIES
Get it at Hoffman's

To An Ancestor

They lead me to the mantelpiece,
And show to me your pictured face.
"Why don't you try to copy *him*? - -
He never got into disgrace".

And then they leave me standing there;
I stretch out all my five feet two,
And reach up for your photograph,
To get a closer look at you.

O, did you *never* do things wrong?
Get P's, and red marks, on your card?
Or smash the kitchen window-pane
When you played baseball in the yard?

They *say* you never did these things,
But yet, you know, I sometimes think,
When they recount your virtuous ways
I see you give a wicked wink.

M. P.

BOULEVARD PARK
Homes and
Homesites



Johnson-Stowell Co.
21272 Lake Shore Blvd.

Compliments of

J. B. CLARK

H. F. Pfisterer

Plumbing and Heating

58 E. 219 Street
Office Phone KEnmore 1643

TRUDY'S *Beauty Salon*

22050 Lake Shore Blvd.
GERTRUDE MAEULEN, *Prop.*

Office Hours
9 to 6 or by appointment

KEn. 3468

Res. KEn. 0759-J

“Oil Is Cheaper Than Steel”



STEVENSON OIL & CHEMICAL COMPANY

EUCLID, OHIO

FLOYD B. STEIN, Inc.

Paving and Sidewalk Contractors



Steam and Domestic Coal of All Kinds



YARD and OFFICE:

BABBITT ROAD AND NICKEL PLATE R. R.



We have a Coal for Every Need

Let Us Take Care of You

Compliments

Five Points Leading Jeweler

RELIABLE JEWELRY

Eli Biernkront

950 East 152nd Street

Cleveland, Ohio

CASH—CREDIT

EUCLID CASH MARKETS

Choice Meats and Poultry

16502 Euclid Ave.

66 East 185th St.

15522 Euclid Ave.

13945 Euclid Ave.

Stop 10 Euclid

20068 Lake Shore Blvd.

22102 Lake Shore Blvd.

The Only
Real Hardware Store
In Cleveland



Wall Paper, Paints, Varnishes,
 Glass and Builders' Hardware

Kenmore 0451 729 East 185th St.

JOHN KLAUS

DELICATESSEN

and

CONFECTIONERY

614 East 185th St. Kenmore 3125

J. F. Linnert
DAIRY

331 East 185th Street
 Kenmore 0222

Kenmore 0718



Edward A. Stanton

Authorized Dealer

CARS AND TRUCKS

20941 Euclid Ave.

SAVE WITH ICE

The most economical refrigerant

THE CITY ICE & FUEL

SERVICE EVERYWHERE

J. H. Wissman's
GARAGE

24200 Lake Shore Boulevard

Kenmore 0725

Euclid, Ohio

The Boulevard Florist

J. BLUEM

Flowers for All Occasions

FUNERAL WORK
 WEDDING FLOWERS

22630 Lake Shore Blvd. Kenmore 0615
 EUCLID, OHIO

Compliments of

Dr. Harry H. Robinson
22050 Lake Shore Blvd.
Suite No. 7

KEn. 3271 KEn. 0935

ODY'S
Confectionery

TOBACCO :: SWEETS
SCHOOL SUPPLIES

21935 Lake Shore Blvd.

Girls' Basketball (Continued)

After easily defeating the Euclid Central girls for the second time, the Shore basketeers got their real test in the game with Holy Name, the Catholic league stars. These, however, were dispatched in the same easy style that the girls had shown all season. The final score was 28 to 11.

Then came the climax when the girls' squad took a trip down State to meet the Wapakoneta girls, who held the strong claim to the state championship. The Wapakonetas nosed out a 17 to 15 victory to mar Shore's perfect, undefeated record.

Shore girls were able to score 276 points against their opponents 127 points total. The girls' individual scores are as follows:

	Goals	Fouls	Total
Florence Pfeil, Forward	42	12	96
Dorothy Getler, Center	37	10	84
Juanita Christopher, Forward	36	3	75
Lucy Mathews, Guard	—	—	—
Josephine Kinkopf, Guard	—	—	—
Mildred Stein, Guard	—	—	—
Ruth Nason, Forward	2	0	4
Marian Ahlman, Forward	6	5	17
Rachel Clements, Guard	—	—	—
Total	121	57	276

Compliments of

**H. A. Sterkel
Company**

*Real Estate
Insurance*

22009 Lake Shore Blvd.
KENmore 0384

**The L. J. Neff Coal and
Supply Co.**

COAL — COKE
BUILDERS' SUPPLIES

18430 NOTTINGHAM ROAD

KENmore 0082 KENmore 0083

—|||—

Compliments

of the

Euclid Kiwanis

Club

—|||—

The
Neal Fireproof Storage Company

Local and Long Distance Moving
Packing Shipping Storage

Phone for Estimate

East End Branch
Cedar 1444

Mr. A. W. Neal,
Kenmore 1025-J

DINE AND DANCE

at

Dutch Mill

Stop 25, Euclid Ave.

Wickliffe, Ohio

No Sales!

No Cut Prices!

No Charge Accounts!

No Bunk of Any Kind!

Kibler gives you the biggest value your money can buy
—every day of the year—at the lowest possible price.

Taking a small profit—giving a big value—making many sales—Kibler offers you the opportunity to wear better clothes for less money.

Compare!

COMPARE!
Kibler
Clothes

"WE HURRY"



**The
Wickliffe Lumber
Company**

The Brooks Coal and Supply Co.

DUSTLESS POCAHONTAS COAL

920 East 200th Street
Thru Subway from St. Clair Ave.

KEnmore 1050

PAINTING

INTERIOR AND EXTERIOR

Only Grade A Materials Used

Prices Reasonable

ESTIMATES GLADLY GIVEN

H. V. Spangler

PHONE: KEnmore 1034-W

KEnmore 0059

JAS. McELROY

Landscape Gardening

Trees, Shrubs, Perennials for Sale — Flowers for All Occasions

Cor. Lake Shore Blvd.
and East 174th Street

CLEVELAND, OHIO

The Penn-Sylvania Oil & Gas Company

3000 E. 55th Street

Telephone Broadway 2920 and 2921

Distributors of HYVIS MOTOR OIL

Way Back When—

Willy Goldfeder was covering Shore's athletic activities for The Cleveland News, and, incidently, Shore was in a habit of winning the majority of the said activities.

One evening the members of the football team and their girl friends had convened, as was the custom in those days at the home of a young co-ed to celebrate the victory of the afternoon. Shore had beaten Valley City High in a very decided manner.

Willy Goldfeder, as usual, was there with bells on. And as the evening wore on, it suddenly dawned upon William that he had forgotten to report the game to The News. In fact, he had not even remembered to get Valley City's line-up. What was he to do?

You can be assured that there were suggestions enough; but the one that appealed to our young journalist's sense of humor the most was Hack McGrath's idea to put the Shore girls' names in the place of the conquered gridders. Well, that was not so bad, but Bill had to add his little contribution. And he did.

The next day's papers caused no little concern among the Shore faculty circle when they read:

Referee—Doutt

Umpire—Swartz

Headlinesman—Spangler.

No one but Mr. Metts and Mr. William Abraham Goldfeder can tell what occurred in the office that next Monday morning.

A country school board was visiting a school, and the principal was putting them thru their paces.

"Who signed the Magna Charta, Robert?" he asked.

"Please, sir, it wasn't me," whimpered the youngster.

The teacher, in disgust, told him to take his seat.

But an old country gentleman on the Board was not satisfied, so he said, "Call that boy back. I don't like his manner. I believe he did do it."

Marg: I maintain that love making is just the same as it has always been.

Martha: How do you know?

Marg: I just read about a Greek maiden who sat and listened to a lyre all night.

Mary: I can't find a single pin anywhere. Where do you suppose they all go to?

Jane: It's hard to tell, because they're pointed in one direction and headed in another.

Autographs





