

~~FOR~~

O

R

E

CASTLE

1

9

3

~~5~~

The FORE CASTLE

1935

Published
by the
Senior Class of
SHORE HIGH SCHOOL
Euclid, Ohio

STAFF

Sponsors

Miss Vernon

Literary

Miss Mitchell

Business

and Photography

Sports Editor

James Fowler

Literary Staff

Marjorie Webster

Marie Winch

Margery Richter

Circulation Managers

William Peck

Marion Saisall

Assistant Manager

Mary McKee



THIS view of the entrance to Shore is a study in strength and stateliness. Within these walls, destinies of hundreds are guided. Daily through these doors pass students in quest of higher learning, ever mindful of the splendid opportunities available.



WILBERT A. FRANKS

For fifteen years Superintendent Franks has devoted his time to guiding the destiny of our school. His deep interest in Shore students is exemplified by his many efforts in our behalf.

DANIEL E. METTS

Principal for seventeen years, Daniel E. Metts has worked untiringly to secure up-to-date equipment and competent instruction for Shore. During these years the school has had marked progress.



FACULTY

LUCILLE AINGWORTH,
English.

MERYL BAUMER,
*Speech; Journalism; History;
Business English.*

JOHN F. BECK,
LOLA BEVINGTON,
Directors of Music.

JUANITA BOUCHER,
English.

PERA CAMPBELL,
English; Algebra.

FORD L. CASE,
*Head of Physical Education
Department.*

MARY R. CRAMPTON,
Librarian.

MABEL CRONE,
Algebra; Science.

LOUISE DARST,
Commercial.

MARIE DAVIS,
History.

ADELINE DELAMATER,
French; Latin.

MABEL L. FALBERG,
Head of English Department.

DOROTHY GILL,
Director of Girls' Athletics.

DANIEL E. METTS,
Principal.

LEONA F. MITCHELL,
Social Science.

WANDA MYERS,
Commercial.

J. CALVIN OLDT,
*Bookkeeping; Commercial
Arithmetic.*

ROBERT PHILLIPS,
Chemistry; General Science.

JOHN J. POHTO,
*Mechanical Drawing and Manual
Training.*

HETTY ROSENBERGER,
Home Economics.

ROBERT A. SHUPP,
Geometry; Advanced Algebra.

H. W. SPANGLER,
Biology; General Science.

NORMA VERNON,
English.

ERVIN K. WAX,
History; Commerce and Industry.

STANLEY L. WHITESIDE,
History; Physics.

JANE A. WILLIAMS,
Latin.



STUDENT COUNCIL

THE Student Council at Shore is gradually becoming more and more important. Throughout the past year it has sponsored the hall guard system, monitor duty and candy sales in the cafeteria, the Football Parade, noonday dancing, and the sale of tickets for a number of school affairs.

It is a member of the Inter-School Council of the Cleveland area and has sent representatives regularly to the meetings of this organization. In this way the Council, under the supervision of Miss Falberg, is always informed of new plans which are being used in other schools.

CLASS OFFICERS

February—

Raymond Ernst—President
 Betty Fowler—Vice President
 Helen Nolan—Secretary
 Robert Daw—Treasurer

Sponsor—

John Pohto

June—

Jack McMillan—President
 Jeanette Miller—Vice President
 Betty Bandlow—Secretary
 William Sixt—Treasurer

Sponsors—

Pera Campbell
 Harry Spangler
 Jane Williams

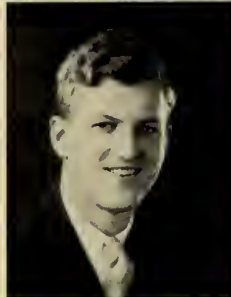
Betty Fowler—Friendship Club 2-3-4; President of Class 3; Vice President of Class 4; Senior Play 4; Glee Club 4; Nat'l Honor Society 4.



Arthur Disanto—Band 1-2; Basketball Manager 1; Football 1-2-4; Basketball 3-4; Student Council 1-4; Student Council President 4; Glee Club 4; Senior Play 4.



Richard Weinschrider — Basketball 1-2-3-4; Baseball 1-2-3-4; Student Council 4; Class President 1-2; Class Treasurer 1-4; Nat'l Athletic Honor Society 4; Nat'l Honor Society 4; Senior Play 4.



Mary Femec—Friendship Club 4; Glee Club 4; Class Secretary; Nat'l Honor Society 4.

Barbara Blase—Glee Club 3-4; Student Council 3-4; Operetta 4; Senior Play 4; Friendship Club 2-3-4.



Edward Tomsic — Entered from Collinwood 4; Student Council 4; Senior Play 4.

Jack Halligan



Florence Andrews—Stage Manager; Senior Play 4.

Sarah Ettenger—Senior Play 4.



Raymond Ernst — Basketball 2-3; Track 2; Football 3; President of Class 4; Student Council 1; Nat'l Honor Society 4; Secretary of Class 2; Salutatorian.

John Blake—Football 3; Basketball 2-3; Track 3-4; Stage Crew 3-4; Chairman of Crew 4.



Katherine Syracuse—Shore Breezes 4; Glee Club 1; Nat'l Honor Society 4; Valedictorian.

Arion Piper



Helen Nolan—Student Council 1; Friendship Club 4; Class Secretary 4.

Matilda Cherne



Joe Bukovec—Stage Crew 3-4;
Baseball 4; Wrestling 3.

William Peck—Football 3-4; Base-
ball 2-3-4.



Elizabeth Metzger.

Phyllis Miller—Senior Play 4.



Alvin Fasnacht

Burton Carlson — Band 1-2-3-4;
Orchestra 2-3-4; Operetta 2-3.



Florence Felker—Glee Club 1-2-3-
4; Friendship Club 1-2-3-4; Drum
Major 2; Cheer Leader 2-3; Senior
Play 4; Operetta 1-2-3-4.

Dorothy Field.



Rose Mihelich—Class Secretary 3;
Class Treasurer 2-3.



Robert Daw—Track 3-4; Wrestling
3-4; Glee Club 2-3-4; Varsity "S"
Club 4; Class Treasurer 4.

Betty Bandlow—Friendship Club 2-3-4; Social Chairman 4; Megaphone 2; Advertising Committee 3; Debate 1; Prom Committee 3; Class Secretary 1-2-3-4; Girl's Athletic Club 4; President 4.



William Sixt—Entered from Wilkensburg High (Pa.); Football 4; Track 4; Class Treasurer 4.

Eugene Miller—Football 1-3-4; Basketball 1-3-4; Track 3-4; Student Council 4.



Grace Ecclestone—Friendship Club 2-3-4.

Edith Hill—Class Treasurer 1; Student Council 3; Friendship Club 2-3-4; President 4.



Raymond Critzer—Glee Club 2-3-4; Student Council 1; Class Vice President 2.

Fred Gonso—Glee Club 2-3-4; Operetta 2-3-4; A Cappella Choir 4.



Dorothy Jehlicka—Friendship Club 3-4; Girl's Athletic Club 4.

Anna Rankin—Friendship Club 2-3-4; Glee Club 3-4; Operetta 3-4; Girl's Athletic Club 4.



Henry Smith—Student Council 1; Football 1-3-4; Varsity "S" Club 4.

Thomas Howald—Glee Club 2-3-4; Operetta 2-3-4; Student Council 3-4; President 4; A Cappella Choir 4.



Mary Fayen—Accompanist Glee Club 4; Operetta 4; Friendship Club 2-3-4; Girl's Athletic Club 4; Vice President 4.

Isobel McKay—Friendship Club; 2-3-4; Glee Club 3-4; Operetta 3-4; Girl's Athletic Club 4.



Joe Shimko—Baseball Manager 3; Wrestling 3-4.

Magdalene Schukaitis.



James Barr—Class Treasurer 2-3.

Fred Burrows—Wrestling 4.



Grace Gehring—Shore Breezes Staff 1-2; National Forensic 2-3-4; Class Vice President 3; Student Council 3; Glee Club 3-4; Operetta 3-4; Girl's Athletic Club 4.

Miriam Dreher—Friendship Club 2-3-4; Leader's Club 3; Girl's Athletic Club 4; Treasurer 4.



Joseph Ferrara—Glee Club 1-2-4; Operetta 1-2-4; Football 2-3-4; Basketball 2-3-4; Shore Breezes 4; Varsity S Club 3-4.

James Fowler—Football Mgr. 1-2; Football 3-4; Wrestling 2-3-4; Capt. 4; Mgr. 1; Track 2-3-4; Shore Breezes 1-2-3-4, Bus. Mgr. 2-3-4; Cheer Leader 1-2-3-4; Student Council 3-4; Vice Pres. 4; Sr. Year Book 4; Varsity S Club 2-3-4.



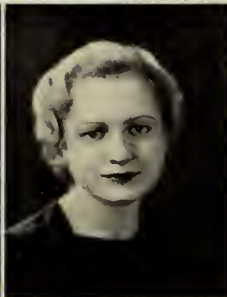
Jeanette Miller—Student Council 1; Friendship Club 2-3-4; Glee Club 2-3-4; Operetta 2-3-4; Girl's Athletic Club 4; Class Vice President 4.

Betty Tench—Glee Club 1-2-3-4; Operetta 1-2-4; Advertising Committee 2-3-4; Student Council 2.



Richard Houston.

Norman Gerner.



Dorothy Koren—Glee Club 3, 4; Operetta 3-4; Friendship Club 4; Shore Breezes Staff 4.

Helen Fox—Glee Club 4; Girl's Athletic Club 4.



Kenneth Sabine—Entered from Shaw; Student Council 4; Junior Prom Committee 3; Shore Breezes Staff 3-4.

Marjorie Webster—Glee Club 2-3-4; Friendship Club 2-3-4; Operetta 2-3-4; Senior Yearbook Staff.



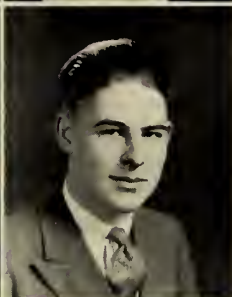
Edward Rush—Glee Club 3-4; Football 4; Wrestling 3-4.

Edmond Rossodivita—Track 2-3-4.



Marian Saisall—Glee Club 1-2-3-4; Friendship Club 2-3-4; Operetta 1-2-3-4; Girl's Athletic Club 4; Shore Breezes Staff 1-2; Circulating Manager 2; Prom Committee.

Hester Tankard—Entered from Aurora High; Shore Breezes Staff 4; Glee Club 4; Operetta 4.



Robert Wilber

Stephen Rudy—Glee Club 2-3-4; Operetta 2-3-4; A Cappella Choir 4; Shore Breezes Staff 4; Track 4.



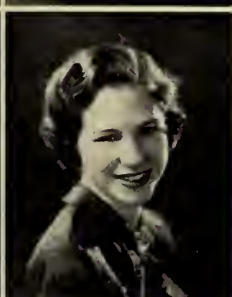
Fern Gessner—Advertising Committee 1; Friendship Club 2-3-4; Prom Committee 3; Girl's Athletic Club 4.

Ruth Frissell—Friendship Club 2-3-4; Shore Breezes 2-3; Gym Assistant 4.



Jack McMillan—Class President 1-2-3-4; Freshman Football; Freshman Basketball; Wrestling 4; Baseball 4.

Betty Baehr—Library 1-2-3-4.



Mary Waterwash—Leaders Club 3; Girl's Athletic Club (Secretary).

Emily Nemeć—Glee Club 2-3-4.



Mildred Buettner—Friendship Club 3-4; Scribblers Club 3; Glee Club 4; Girl's Athletic Club 4.

Marie Winch—Entered from St. Vincents; Scribblers Club 3; Debate 2; Shore Breezes; Friendship Club 2-3-4; Girl's Athletic Club 4; Senior Yearbook Staff.



Eugene Gunderson—Wrestling 4.

Charles Rath—Glee Club 1-2-3-4; Operetta 1-2-3-4; Shore Breezes Staff 3; A Cappella Choir 4.



Jean Massena—Glee Club 1-2-3-4; Operetta 1-2-3-4; Friendship Club 3-4.

Jean Rath—Friendship Club 2-3-4; Glee Club 2-3-4; Operetta 2-3-4; French Club 3; Dance Director 2-3-4; Girl's Athletic Club 4.



Glenn Sears—Band 1-2-3-4; Orchestra 1-2-3-4.

Stephen Hadyk — Student Council 2; Basketball Manager 4; Shore Breezes Staff 4.



June McKone—Girl's Athletic Club 4.

Helen Fleck — Glee Club 2-3-4; Friendship Club 4; Shore Breezes 2; Operetta 2-3-4; Girl's Athletic Club 4.



Willard Riebe—Basketball 1-2-3-4; Baseball 3; Football 4; Student Council 4.

Merle Miller.



Dorothy Sullivan—Friendship Club 4.

Vida Stanford—Friendship Club (4)



Joseph Dezman—Basketball 2-3-4; Track 2-4; Baseball 3.

Doris Weir—Glee Club 2-3-4; Girl's Athletic Club 4; Operetta 2-3-4.



Bill Webster—Glee Club 3-4; Operetta 3-4; Class Secretary 4.

James Paul—Glee Club 3; Operetta 3; Freshman Football; Student Council 3-4.



Betty Theller—Transferred from Monticello.

Margaret Moeller — Glee Club 4; Operetta 4; Friendship Club 4.



Thomas Fitzgerald—Basketball 3-4; Varsity "S" Club 3-4.

La Verne Harwood—Football 1-2-3-4; Basketball 2-3-4.



Gertrude Davy — Friendship Club 3-4; Glee Club 2.

Elsie Hartman — Girl's Athletic Club 4.



Walter Wohlgemuth — Baseball Manager 2; Baseball 3.

Howard Taylor—Entered from Western Reserve Academy 3; Glee Club 3; Shore Breezes 4; Operetta 3; Track 3-4; Varsity "S" Club 4; Scribblers Club.



Marie Zook—Glee Club 2-3-4.

Dorothy Sternberg.



Dominic D'Avirro.

Dorothy Seibold—Glee Club 1-2-3-4; Friendship Club 2-3-4; Operetta 2-3-4; A Cappella Choir 4; Girl's Athletic Club 4.

Clarence Daniel — Band 1-2-3-4; Orchestra 1-2-3-4; Student Council 4.

Alice Hoffinger — Friendship Club 2-3-4; Glee Club 4; Operetta 4; Girl's Athletic Club 4.

Albin Urankar.

Margery Richter—Glee Club 2-3-4; Operetta 2-3-4; Girl's Athletic Club 4; Year Book Staff 4.

Albert Tegel—Football 4.

Dorothy Gnidovec—Orchestra 2-3-4; Jr. Glee Club 1.



Wilber Pike—Glee Club 1; Operetta 1; Student Council 1-2-3; Band 1-2-3-4; Track 1-2-3-4; Freshman Football.

Agnes Moon—Entered from Collinwood 4; Friendship Club 4.

John Mezgec — Baseball 2-3-4; Track 4.

Mary Coprich — Glee Club 3-4; Friendship Club 3-4.

Reinald Winters—Freshman Football 1; Band 1-2-3; Orchestra 3-4; Glee Club 1-2-3-4; Operetta 2-3-4.

Agnes Trivisonno—Girl's Athletic Club 4; Glee Club 3-4; Operetta 3-4; Shore Breezes (Typist) 4.

Ralph Pfaff.

Mary McKee—Glee Club 1-2-3-4; Operetta 1-2-3-4; Friendship Club 2-3-4; Leaders Club 3-4; Girl's Athletic Club 4.



Orval Clark—Band 1-2-3; Orchestra 1-2-3; Glee Club 4; Wrestling 3-4; Student Council 3.

Robert Lang—Advertising Club 2-3-4; Shore Breezes Staff 2-3-4; Debating 3-4.



Margaret Boseck—Orchestra 1-2-3-4; Friendship Club 3-4.

Mildred McCormick—Orchestra 1-2; Band 1-2-3.



John Warren—Entered from Utica, N. Y. 2; Advertising Committee 2-3-4 Student Council 3 (Treasurer); Track 2-3; Debate 2-3-4; Scribblers Club 3; Varsity "S" Club 4.

William Fairley—Glee Club 1-2; Operetta 2; Wrestling 2; Varsity Club 2-3-4.



Angela Hirsch—Glee Club 1; Girl's Athletic Club 4.

Emerson Hirsch—Class Vice President 1; Megaphone Club 1; Basketball Manager 1; Band 1-3-4; Orchestra 1-3-4; Basketball 3; Football Manager 4.



Charles Hopson—Debating 1; Shore Breezes Staff 3-4.

John Da Mico.



Helen Doyle—Glee Club 2-3-4; Friendship Club 2-3-4.

Richard Weybrecht—Debate 3-4.



MUSIC

DURING the past year Shore's musical organizations have contributed much to the life of the school. Much value has come to members of the Glee Clubs, Orchestra, Band and newly organized a cappella choir from the splendid training of Miss Bevington and Mr. Beck who have given their services so faithfully and effectively. Much pleasure has been given by the musical organizations to both the student body and the general public. The Band has been faithful in attendance at all football and basketball games.

Commencements, concerts, class plays, Operetta and Gala Night performances have given the public an opportunity to enjoy the musical talent of Shore pupils.

Membership in any of the school music organizations does much to teach an appreciation of the better things in music as well as a knowledge of lighter and more popular compositions.

FRIENDSHIP CLUB

THE largest group at Shore is the Friendship

Club, which numbers over one hundred mem-

bers. Miss Campbell directs the activities of the

Club, which is a social, cultural, and charitable

organization. Edith Hill is president and Betty

Bandlow, social chairman.





BASKETBALL

SHORE, coached by Ford L. Case, accomplished the seemingly impossible. They finished their regular playing season with ten wins and no defeats. The team averaged over thirty points a game and held their opponents to the remarkably low average of fourteen points. This is Shore's third Eastern Conference Championship in four years. Shore is the third team in the history of the Cleveland area to finish their season undefeated. Dick Weinschreider was Captain until he graduated at mid-year. Bill Riebe was Captain the last semester and finished as high point man for the season. La Verne Harwood was the sensational "find" of the season for the other forward. Eugene Miller, Tom Fitzgerald, Joe Ferrara, and Joe Dezman were other Varsity Seniors to distinguish themselves on the Championship team.

FOOTBALL

THE football squad was the greenest to come along for many years. Yet, they won four and lost four and finished third in Eastern Conference competition, losing only to the strong Shaker team and to Central's experienced squad. The Senior letter men were Captain La Verne Harwood, Bill Peck, Eugene Miller, Bill Riebe, Joe Ferrara, Ed Rush, Henry Smith, Bill Clark, and Jim Fowler.

WRESTLING

WITH only two letter men back to make up this year's team, Coach John J. Pohto managed to construct a fairly good team from the Sophomore candidates. This year's graduation toll will only take two of them, leaving a good balance for the year to come. The two who have finished their wrestling careers at Shore are Captain Jim Fowler, undefeated in his seven matches and ranked as a topnotcher in the 115-lb. class, and Orval Clark, 135 lbs., who was lost to the team after five matches due to an injury.

TRACK

AFTER winning the Eastern Conference track Championship for the first time, Shore's track squad was riddled by graduation. Those who are to be back are Eugene Miller, Howard Taylor, and Ed Rossodivita.

"Doc" Wax, from University of Illinois, assisted in football; coached the Reserve Basketball squad; assisted in track. "Doc" was director of arrangements for first East Side Wrestling Tournament and made it a real success.

NAME	DISPOSITION	OCCUPATION	LIKES BEST	EVENTUALLY
Bob Lang	indellible	talking	debating	auctioneer
Jean Massena	smiling	"Don"	English	Mrs.
Mildred McCormick	retiring	telling stories	airplanes	aviatrix
Alice Hofinger	felicitous	remaking hats	Port Clinton and Toledo	mannequin
Mary McKee	busy	asking questions	homework	teacher
Dorothy Koren	industrious	typing	dancing	secretary
Angela Hirsch	flirtatious	most anything	males	movie actress
Wilber Pike	unswerving	collecting money	"sass"	sheriff
Jean Rath	lovable	dancing	ice cream	Broadway
Willard Riebe	bashful	basketball	sauerkraut	coach
Edward Rush	nonchalant	being late	odd sweaters	politician
June McKone	sensible	cooking	lunch period	poetess
James Paul	steady	dozing	mechanical drawing	engineer
Emily Nenec	amiable	basketball	cake	torch singer
Grace Gehring	hilarious	dreaming	back scratching	gum unwrapper
Stephen Rudy	likable	grinning	operettas	elevator boy
Ed Rossodivita	uncertain	pole vaulting	girls	lawyer
Margery Richter	incredible	being bored	"Gehring"	French professor
Charles Rath	whimsical	singing	"Good News"	Fred Waring
Anna Rankin	practical	reading	Sports	gym teacher
Ralph Paff	quiescent	poet	Miss Campbell	sailor
Wallace Pepin	uncertain	skating	fishing	orator
Agnes Moon	shy	blushing	goldfish	music
Margaret Moeller	cheerful	going to library	sewing	designer
Merle Miller	casual	smirking	swimming	aviator
Jeanette Miller	reserved	sliding around corners	diving	old maid
Eugene Miller	unfathomable	trackster	"Ed Wynn"	mathematician
John Mezgec	rambling	baseball player	baseball	historian
Isobel McKay	restless	"Alan"	Latin	bride
Jack McMillan	frivolous	class president	six-day bike riding	wrestler
Dorothy Jehlicka	dictatorial	combing her hair	boys	beautician
Tom Howald	incidental	sarcasm	Ping Pong	minister
Dick Houston	moody	dancing instructor	"Mae West"	actor
Charles Hopson	autonomous	speaking French	Cowboys	Western Union
Emerson Hirsch	friendly	his nerve	Saturday night	professor
Edith Hill	audacious	Friendship Club	football stars	author
La Verne Harwood	coy	tenth period	athletics	knife thrower
Elsie Hartman	quiet	studying	Russel	gigolette
Stephen Hadyk	blase	basketball manager	dogs	trapeze artist
Sabine, Kenneth	carefree	putting on the Ritz	art work	punching holes in doughnuts
Saisall, Marian	lively	strolling around	ask her!	model
Sears, Glenn	quizzical	punning	tickling the ivories	piano tuner
Shimko, Joe	gentle	selling gold bricks	hard tack	salesman
Shukaitis, Magdalene	cheerful	typing	everybody	matron
Siebold, Dorothy	friendly	dancing	who knows?	hula-hula dancer
Sixt, William	mild	collecting money	Jeannette Miller	miser
Smith, Henry	retiring	playing football	lunch period	embalmer
Stanford, Vida	quiet	studying	reading	librarian
Sternberg, Dorothy		basketball	watching the clock	Mrs.

NAME

DISPOSITION

OCCUPATION

LIKES BEST

EVENTUALLY

Sullivan, Dorothy	robust	typing	Earl Stick	Housfrau
Tankard, Hester	quaint	being demure	French	bride
Taylor, Howard	nonchalant	reading	his girl friends	auto racer
Tegal, Albert	smiling	hand work	his "Ma"	minister
Tench, Betty	exuberant	dating	"Him"	Mrs.
Theller, Betty	vulnerable	gabs	males	school teacher
Trivisonno, Agnes	charitable	homework	French	nurse
Urunkar, Albin	quiet	studying	chemistry	magician
Warren, John	gabby	talking	to teach his teacher	politician
Waterwash, Mary	shy	blushing	grocery store	clerk
Webster, Marjorie	fickle	looking stylish	a wrestler	Katherine Cornell
Webster, Bill	windy	gossiping	girls	Walter Winchell
Weir, Doris	breezy	singing	Dick Finan	blues singer
Weybrecht, Richard	reserved	debating	to be alone	street-car conductor
Wilbur, Robert	sardonic	doing nothing	to drawl	butter and egg man
Winch, Marie	temperamental	arguing with Mr. Whiteside	raspberry ice	Ph.D.
Winters, Reinald	agreeable	most anything	his bass voice	opera star
Wohlgenuth, Walter	hilarious	gabbing	sauer-kraut	fisherman
Zook, Marie	reticent	playing piano	fancy collars	music teacher
Baehr, Betty	uncertain	librarian	her boy friend	Mrs.
Bandlow, Betty	changeable	athletic club	basketball heroes	Olympic athlete
Barr, James	affable	kibitzing	pink elephants	bell-hop
Benes, Alex	roguish	cracking jokes	chess	mechanic
Boseck, Margaret	busy	powdering her nose	Joe Penner	violinist
Buettner, Mildred	coy	chewing gum	drawing girls	second Gladys Parker
Burrows, Fred	pleasant	eating	maple syrup	safe-cracker
Clark, Orval	sunny	breezing 'round	speeding	crooner
Coprich, Mary	serene	keeping quiet	to study	missionary
Critzer, Ray	happy-go-lucky	dancing	the ladies	gigolo
Da Mico, John	dynamic	talking	Il Duce	Communist
Daniel, Clarence	amiable	helping Mr. Beck	clarinets	elevator-boy
Da Virro, Dominic	quiet	musician	accordion	steel magnate
Davy, Gertrude	flirtatious	rolling her eyes	spearmint gum	gold digger
Dezman, Joe	intellectual	basketball	social problems	scientist
Dreher, Miriam	natural	Rainbow Girls	college men	physical ed. teacher
Ecclestone, Grace	peaceful	gadding with Ruth	dill pickles	private secretary
Fairley, Bill	cheery	looking important	himself	author
Fayen, Mary	lovable	being sweet	coca-cola	concert pianist
Ferrara, Joe	authoritative	athletics	comfort	dance-hall proprietor
Fleck, Helen	studious	helping people	weddings	seamstress
Fowler, Jim	variable	wrestling	a blonde	manager of Londres
Fox, Helen	jolly	basketball	Joe Gombach	wrestling fan
Frizzell, Ruth	peppy	looking cute	Dale Winslow	housewife
Gerner, Norman	dignified	drawing	his pipe	bachelor
Gessner, Fern	sweet	being nice to all	won't tell	aviatrix
Gonso, Fred	smiling	pianist	orchestras	composer
Gunderson, Eugene	reserved	walking	to wiggle his ears	train caller
Fitzgerald, Tom	sophisticated	"doggling" it	Helen	peanut vendor
Doyle, Helen	joyful	athletics	food	chef
	sunshiny	auto rides	solon's	Mrs. "Gundy"

