

the log
1 9 3 9

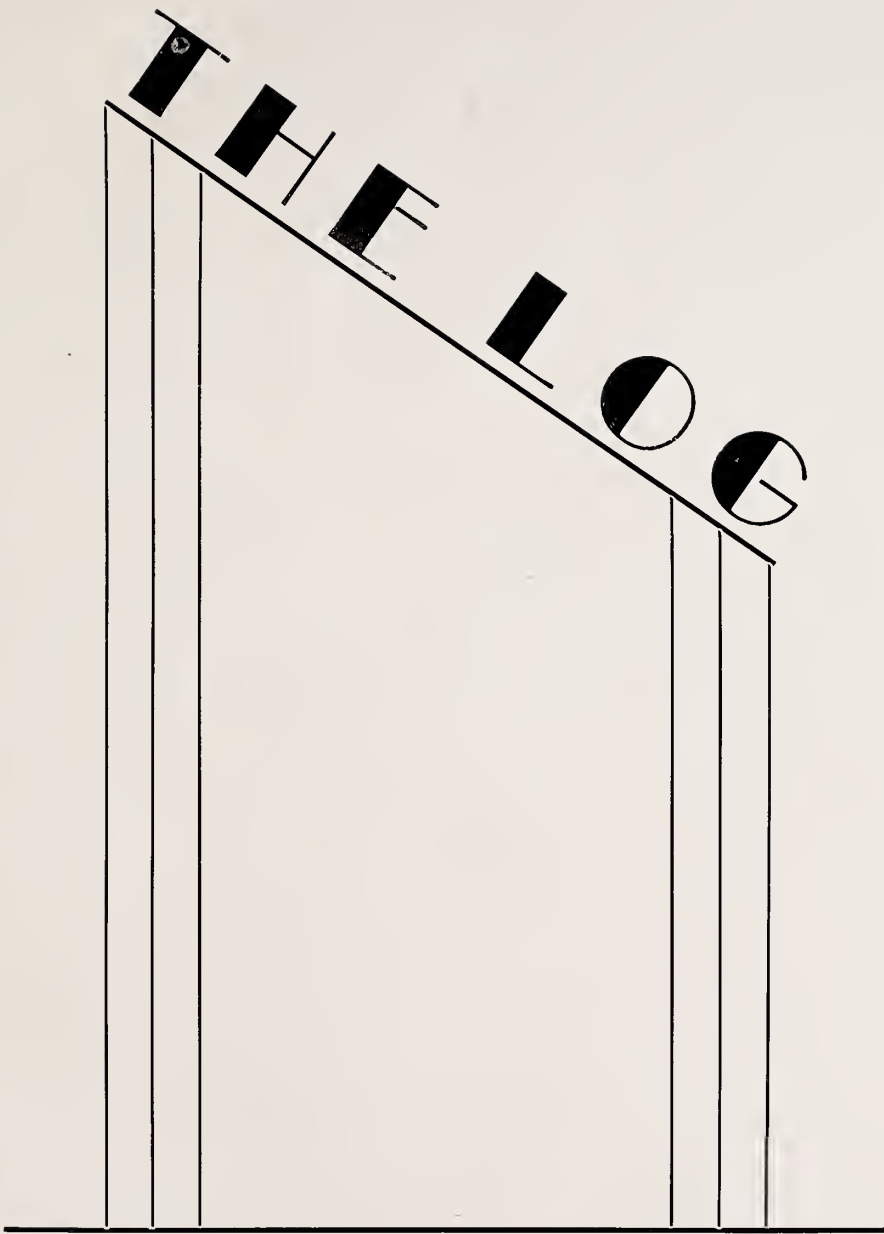


To
Mr. Hecker
with the compliments of
Shore School.
Leonard E. Loos,
Principal.



Digitized by the Internet Archive
in 2012 with funding from
Euclid Public Library

<http://archive.org/details/euclidshorehighs1939unse>



Foreword . . .

To bring back fond memories of the past and to afford many hours of entertainment in the future is the purpose of this Log.

Herein, are gathered the faces of your classmates, some of whom have won distinction through their attainments in athletics, through activities, and scholarship.

If, in years to come, you can sit in an arm chair and spend an enjoyable hour or two with this annual, recognizing your old friends and watching them parade by in a silent panorama of their activities, the members of the Annual Board will feel amply repaid for their efforts.

We wish to make known at this time our appreciation for the cooperation of our faculty advisers, Mr. James Card, who scrutinized our copy for mistakes and criticisms; Mr. Robert Finch, for his fine work in financing this annual; and, Mr. Lester E. Angene, whose unceasing and excellent management of the Log was invaluable. Not to be forgotten are Mr. Robert Phillips and Mr. Roy Hinch, who through their excellent cooperation completed the fine work done on the photography in this book.

The staff also wishes to thank all those students who have made helpful contributions in both writing and photography.

P R E S E N T I N G



THE LOG BOOK
of 1939

Shore High School

PUBLISHED BY THE MEMBERS
OF THE
SENIOR CLASS

Contents . . .

SUPERVISION AND INSTRUCTION

WE WHO DEPART

THOSE WE LEAVE BEHIND

PASTIMES AND PLEASURES

OUR CONTRIBUTIONS IN SPORTS

DAY BY DAY AT SHORE



Supervision and Instruction

THE IDEALS AND PURPOSES of the principal and his staff help our school to grow in service to youth. In this section we express, in general, the school's educational outlook. We introduce the staff of the Shore School and officials of the Euclid Public Schools.

The Principal's Office



LEONARD E. LOOS

For his untiring efforts in promoting our welfare, in successfully inculcating principles and duties of citizenship, and in fostering a spirit of friendship and cooperation, we, the senior class, thank Principal Leonard E. Loos. We will all remember the many unfailing attempts he has made to better our interests and associations.

In our office at Shore can be found three excellent workers who are continually typing reports, filing records, receiving callers, recording expenses, or answering telephone calls. These girls are Miss Philomena Vidugenis, the principal's secretary; Miss Dorothy Stray, stenographer and telephone operator, and Mrs. Crampton, clerk. Their effort and management are to be commended.



Left to Right—Philomena Vidugenis, Dorothy Stray, and Mrs. Crampton.

Comprehensive Services of Shore School



Shore School offers a program of studies that is broad and designed to meet the needs, interests, and abilities of all who seek to continue their education. The work is no longer strictly academic and limited in scope to the college preparatory studies. While students who so choose are well prepared for college, the first and most fundamental purpose of the school is to prepare students for life—life in its broad, cultural setting.

Shore may well be called a comprehensive school. The public mind is accustomed to think of school life as consisting mostly of class-room instruction. This no longer gives a fair picture of the purposes and operation of a modern school. Because of the broad mission of the high school, the educational program is thought of as including not only classes but the opportunities of club and home-room activities, assemblies, personal counseling in matters of career and life adjustment, athletics, musical activities, dramatic and other artistic ventures, etc.

Instead of using only textbooks and lectures for instruction, the school makes wide use of visual education, especially through the showing of movies and the participation of educational tours.

In this brief space only the general problem of planning and supervision can be suggested. It may be pointed out that the work of the principal of the school and his staff has two main purposes:

1. Maintaining an educational program of high standard.
2. Constantly studying the possibilities for improving the program of the school.

In maintaining an educational program of high standard, the school strives not only for scholarship in certain fields but for the development of character and personality in students as individuals and for the promotion of cooperative group life among students. Shore School has constantly maintained a service of educational guidance, especially through the agency of the home-room. In this group, each student receives the advice and counsel of a teacher who is well acquainted with him and thoroughly familiar with his educational record and ambitions.

The educational program of the schools, since it tries to provide a whole and wholesome life for young people, encourages the formation of student clubs for the development of special interests and for cooperative participation.

The spirit of helping and guiding pupils is associated with all of the supervisory and instructional activities of the school and no one activity is considered

apart as guidance. This follows the theory that there is more learning from practice than from preaching.

Shore School considers the physical activities of the students in intramural and interscholastic athletics as exceptional opportunities for teaching people how to live well. In fact, conscious effort has been applied to maintaining a wise balance of physical and mental activities. This is in keeping with the motto inscribed over the arch of Shore Auditorium: "Dedicated to the youth of this city for the development of mind and body."

In constantly improving services for students, certain new plans have been tried or adopted. For the last two years, students interested in attending colleges or other schools of higher learning have had the opportunity to be helped with their plans by taking part in the career and college program held each January. At these programs, many representatives of colleges have been available for consultation.

During the current year, a Life Purpose Week program was introduced. The theme of this event was "Let Us Have a Purpose and a Plan."

Students have commented that some young people change their plans for a career every time they see a different profession or occupation depicted in the movies. Although the field of occupational choice is a wide one, there was an opportunity during the Life Purpose Week for each student to get a general idea of the broad fields of opportunity and to make headway in choosing a career.

Throughout the year personal counseling is afforded the student by his home-room teacher, the deans, the principal, and representatives of agencies outside of the school who are consulted.

The home-room is the core of the school organization. It gives every student a chance to meet at least once each day with a teacher who is interested in him for a longer time than a single course requires. In the home room, pupils have plentiful opportunities for civic, social, and character-developing activities.

Home-room activities foster school spirit. Sportsmanship, fair play and other good habits are developed. Furthermore, desirable personality traits are developed by the experiences in these groups.

In all classes and activities Shore School practices "guidance." In its many activities, Shore School strives best to serve the student and his community. The following pages tell in part how this is done.



The Personnel Staff



MR. PEAKE



MISS ALBRECHT

Mr. Peake, dean of boys, is available for conferences on vocational and career problems. He, also, promotes home room programs, supervises attendance and assists in scheduling.

Miss Albrecht, dean of girls, affords personal counseling in the high school and assists in the elementary school. Like the dean of boys, she maintains records about students and professionally considers their problems.

Mr. Vorhees, director of pupil personnel, is the man for the "main office" who checks up on all attendance cases referred to him by the school. He, also, assists various organizations in social service projects.



MR. VORHEES

Euclid Public School Officials



This legislative and policy-forming body, the Board of Education, has done much in the way of the advancement and progressiveness of Shore High. It is to them that we direct compliments for their praiseworthy work.

To Dr. E. C. Grover, Superintendent of Euclid Schools, goes our deep appreciation for his unending interests in the improvement of our school during our brief stay with it. His helpful suggestions and additions have made school life more pleasant, as well as interesting for us.



DR. E. C. GROVER

Instructional Departments



ENGLISH

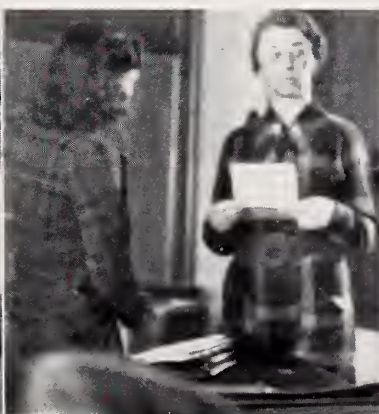
Composition . . . Poetry . . . Drama . . . English and American Literature, everything in the way of writing and speaking—that is a course in English. The love of one's country comes forth in the speaking of her tongue. Rare gems of poetry, a good book and the true appreciation of it; culture and refinement, intelligence and foresight—all these are attained, when with an open mind one takes a course in English.



MISS AINGWORTH
English 9



MR. ANGENE
English 11, 12



MISS CAMPBELL
General English
10A English

The World of the "Unknown"



MISS TEMPERTON
Algebra, Trigonometry,
Geometry



MR. HINCH
Algebra, English



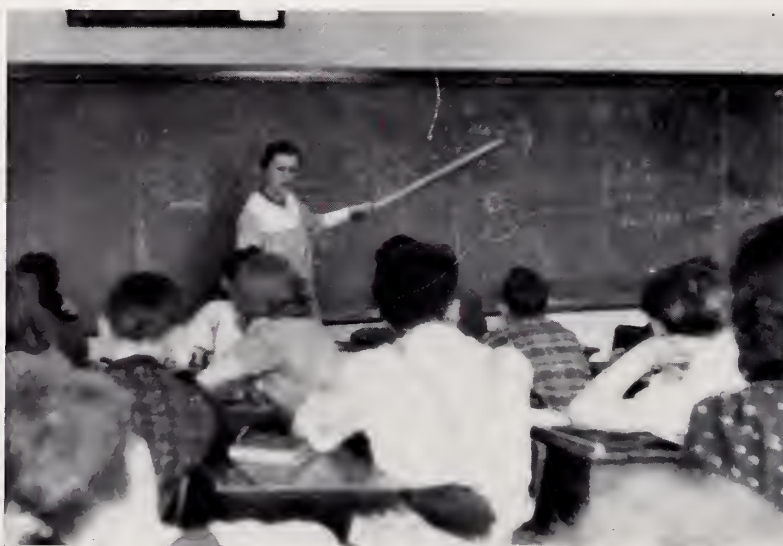
MISS WOODWORTH
Mathematics 7, 8



MRS. WILSON
General Mathematics,
Mathematics 7

More and more apparent does the universality of mathematics become to the student as he sees its application in his daily work, whether working out a page plan for the Log, counting calories for a well-balanced meal, or any of the numerous tasks which may be listed. The school offers expert training in algebra, plane and solid geometry, and trigonometry, so that the student may add to his mathematical training.

A student majoring in math, studies algebra in the first year of high school, plane geometry in his sophomore year; in the junior year he chooses between a full year of algebra or a half year of algebra and a half year of solid geometry; in the senior year, he may elect trigonometry, solid geometry or advanced algebra, provided he has studied the proper prerequisites.



MATHEMATICS

The World of Business



COMMERCIAL DEPARTMENT

This department offers an intensely valuable course as interesting as any which the high school provides. Subjects which will be of definite value to the students in the business world are taught fully and efficiently in this department. Some of the newer additions to the department are Ediphones, Calculators, Book-keeping Machines, Filing Systems, and the latest Ditto and Mimeograph Machines. Four semesters of shorthand and typewriting are an important division of the Commercial Department as well as four semesters of Business, two semesters of Bookkeeping, and two of Office Practice.



MISS DARST
Shorthand,
Office Practice



MR. FINCH
Business,
Bookkeeping



MISS PHYBERS
Shorthand, Typing

For Better Homes



MISS LEMON
Clothing



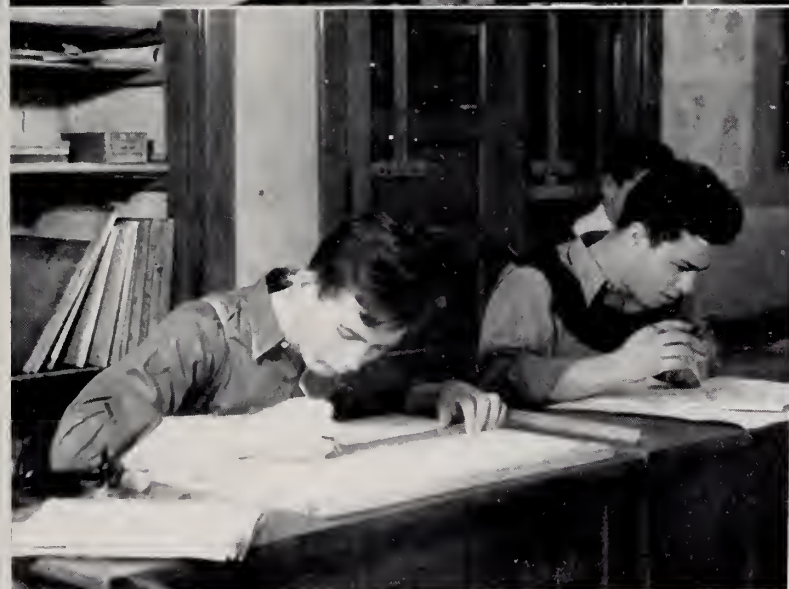
MISS ROSENBERGER
Cooking

HOME ARTS

The Home Arts Department constitutes an important part of our set-up in the high school. In the various classes the girls are taught to plan, prepare, and serve meals and to make their own clothing. In addition, they study home management, budgeting, and art as related to home and clothing. The girls learn to make better use of their leisure time, energy, and money, and learn the fundamentals of good home making.



With A Nail and A Hammer



INDUSTRIAL ARTS

An interesting feature included in these arts is mechanical drawing. This study is interesting to all who have any talent for drawing. The work consists of drawing geometrical figures and designs; practice in the drawing of machine parts and architectural figures. In Shop students make various articles of use and of picturesque design. Many of these articles are later used in the homes of the boys who make them. Industrial Arts gives a background for work in later life.



MR. POHTO
Mechanical Drawing, Mathematics 8



MR. CASE
Industrial Arts



MR. WINTERS
Industrial Arts

Past, Present, and Future

TOP ROW—

MR. WHITESIDE—
American History
Social Problems

MR. VAUGHN
Social Studies
Economics
Journalism
Social Problems

MR. SCHWEGLER
World History
Social Studies 9



BOTTOM ROW

MISS DAVIS
English
Social Studies 7, 8

MR. BANDLOW
American History

MISS PIERSON
English 7
Social Studies

To awaken the young people of today and help them fulfill their duties to their community and country, Social Studies are taught in the high schools. "Why bother to study the past—the future and the present are the most important." This is the remark often heard but one finds that in order to make the present and the future all it should be, a study of past mistakes must be made thus to avoid making them again.



SOCIAL STUDIES

Aid To Man



SCIENCE

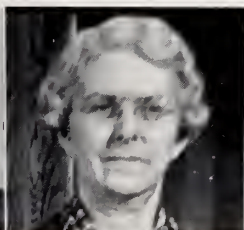
The world of today is a world of Science. . . . Science is the backbone of existence—these are the thoughts of people today. Chemistry, once thought "witch's magic," now essential to our mechanized world which it has made possible. Biology, once thought a wicked practice, now a tool of man to prevent disease and plague. In order to fully appreciate its uses and value Science is brought into our schools to be better understood and to send future helpers of humanity into the world.



MR. PHILLIPS
Physics, Chemistry, Science



MR. SPANGLER
Science 7, 9; Biology



MISS CRONE
Science 7, 8; Algebra 9



MISS STAUFFER
Science



MR. GEBHART
Biology, Science 9

Strokes of Genius



MISS WENDELBURGH
Art and Ceramics

ART

Vivid, splashing colors used cleverly on bits of manila and behold before your eyes a scene is depicted and you pause to admire an artist's creation. A lump of clay—a finely shaped vase—ceramics class. Art appeals to eyes and has a restful effect on those who help to make it as well as those who see it. As the poet expresses himself in verse so does the artist in paint or crayon and the molding of a mass of clay into a thing of beauty.

VOCAL EXPRESSION

If art is appreciated through seeing then surely music is appreciated through hearing, whether that music be made by instrument or by voices. Few are talented with a beautiful voice and few are born knowing how to play a violin but through training and practice these things are achieved. Music has an important place because it helps develop a sense of rhythm and harmony.

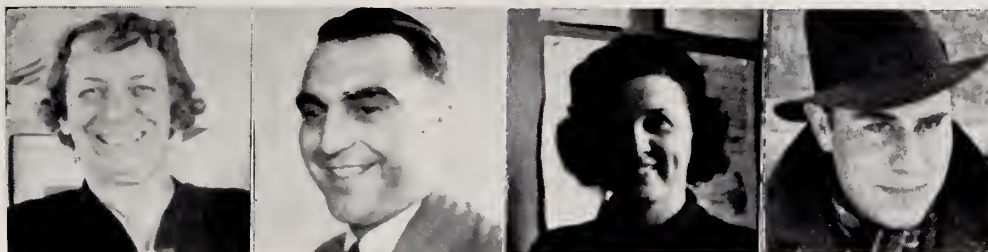


MR. RAISH



MUSIC

It's All "Greek" to Some of Us



MISS WILLIAMS
Latin

MR. VACCARIELLO
General Language
Social Studies, English

MISS DELAMATER
French, English

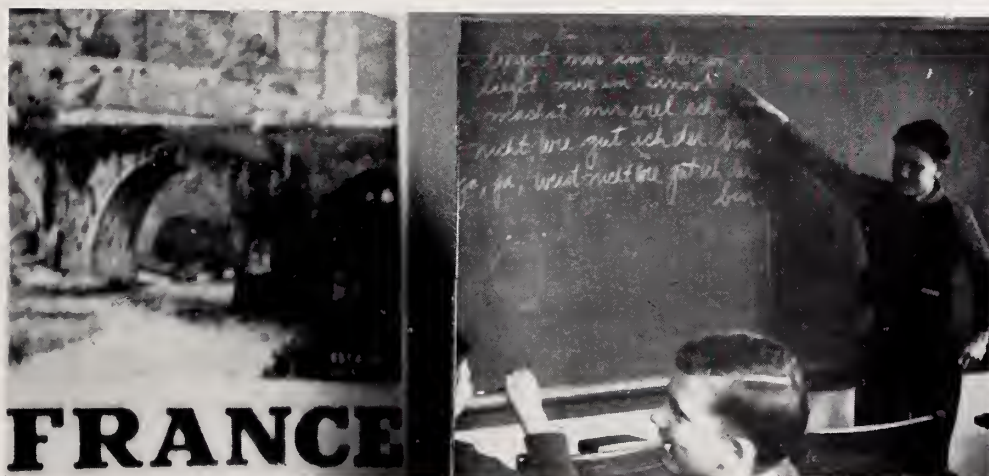
MR. CARD
German, Speech, Dramatics

FOREIGN LANGUAGES

When our own unruly language has been conquered, we set out to find new languages to explore. Whether it be Latin, German, or French matters not, for each has a definite benefit and a definite use.

Latin, long known as a dead language because it is not spoken by a race, is the basic foundation of most languages and therefore of utmost value. French and German give a wider and broader knowledge of the world without, and what better way is there to learn to know one's fellowmen than by learning their history and customs while studying their language!

Now more than ever before, there is a need for the better understanding of our neighbors across the ocean. One of the finest ways is to study a foreign language.



A Sound Mind In A Sound Body



HEALTH

Health is essential to the well-being and happiness of any individual. Instruction and advice is given to the students concerning physical and mental health. The students learn not only the care and preservation of the body but also about prevention of disease and what to do in case of illness.



DR. NAMÉN

PHYSICAL EDUCATION

Two well-known spots in our school are our gymnasiums. The boys and girls each boost their own. They spend many active and interesting hours applying their time in various sports of skill and strength. The gyms provide a splendid opportunity for healthful athletics and exercise. The entire student body gives annually a public exhibition of their skills.



MISS HORVATH



MR. SWACKHAMER
Physical Education



MR. SCHMIDT
Physical Education,
Social Studies 8



MISS GILL
Physical Education

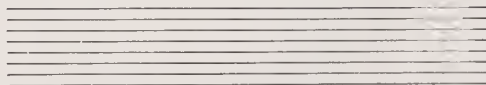
Graduates 1939

We Who Depart

The height of high school ambition—to have attained the rank of Senior! And now that our time has come there is the sadness of parting—longing regrets for neglected opportunities.

The prom, senior pictures, senior banquet, graduation, annual, senior play—what a whirl were those last few months!

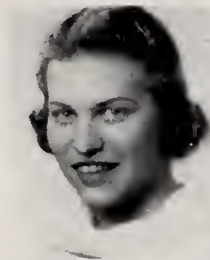
Basketball, football, baseball (and we did have good teams, didn't we?)—with regret we leave them behind to face the future—awesome in its spirit of desired and veiled ambitions.



January Graduates

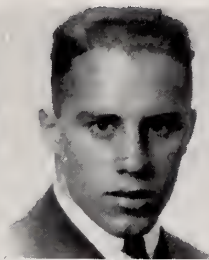
EDITH BACKWINKEL

Friendship Club 2, 3, 4; Girls' Leaders Club 4; Orchestra 1, 2, 3, 4.



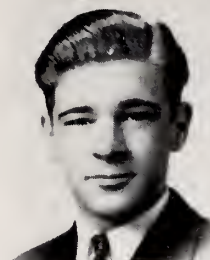
HAROLD BEZDEK

Football 1, 2, 3; Basketball 1, 3; Hockey 3, 4; Baseball 4; Track 1, 4; Hi-Y 3.



DONALD BORGER

Band 4; Robed Choir 3, 4; Annual Staff 4; President of Chorus 4; Boys' Leaders Club 3.



ROSE BUSER

Glee Club.



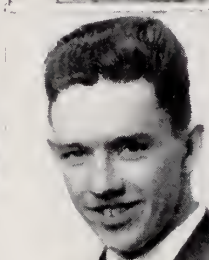
MARY LOU CAMPBELL

Friendship Club 2, 3, 4; G.A.C. 1, 3, 4; Glee Club 1, 2, 3, 4; Class Secretary, 2, 3, 4.



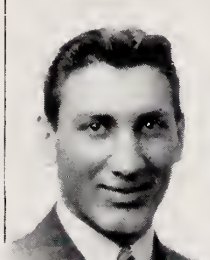
RONALD CARRIE

Baseball.



JOHN CHRISTOPHER

Hi-Y 2, 3; Shore Breeze Staff 3.



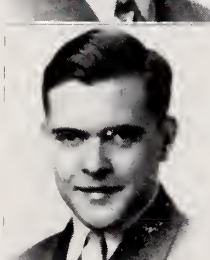
MARIE DITRICH

Friendship Club 3, 4; Glee Club 1.



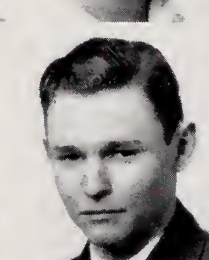
JACK DOW

Wrestling 3, 4; Hi-Y 4; Band 3, 4; Orchestra 3; President of Chorus 2, 3, 4; Robed Choir 3, 4; Class Vice President 1; Class President 3, 4; Student Council 2, 3.



ROBERT FISHER

Football Mgr. 4; Hockey 4; Baseball 3, 4; Hi-Y 4.



LOIS FRIEDRICK

Friendship Club 2, 3, 4; G.A.C. 1, 2, 3; Prom Committee.



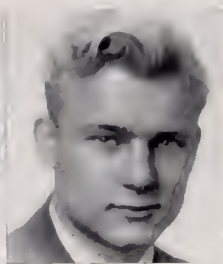
VERA GOLE

Friendship Club 4; Chorus 2; Glee Club 3.



KATHERINE GOMMEL

Friendship Club 2, 3, 4; G.A.C. 2, 3, 4; Girls' Leaders Club 4; Prom Committee 3; Annual Staff 4; Class Officers, V. Pres. 4; Student Council 2, 3, 4.

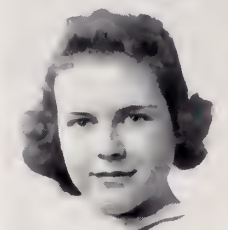


JACK GROSSMAN

Football 3, 4; Hockey 4; Track 3.

ELLEN HARPER

G.A.C. 3, 4; Girls' Leaders Club 4.

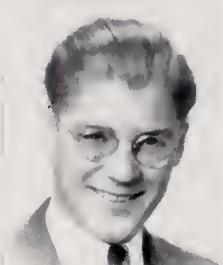
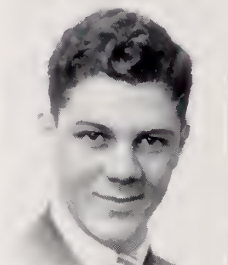


PHYLLIS HARRIS

G.A.C. 3, 4; Glee Club 1, 4.

WALTER HEHR

Hi-Y 3, 4; Hockey; Baseball.

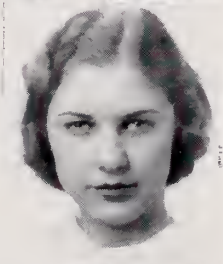
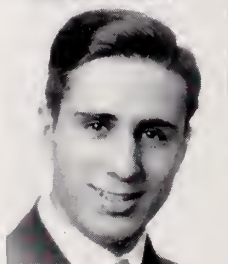


FRANK KLAUVON

Wrestling 1, 2, 3; Baseball 2, 3.

FRANK MONTANA

Football 2, 3, 4; Basketball 2, 3, 4; Baseball 2, 3, 4; Hi-Y 2, 3, 4; Student Council 1, 3, 4; Class Officers, President 1; V. President 3.



CONSTANCE NARVELEIT

Friendship Club Sec. 2; V. Pres. 3, Pres. 4; G.A.C. 2, 3, 4; Girls' Leaders Club 4; Prom Committee Chairman of Refreshments 3, Class Officers Sec. 2, Student Council 3, 4.

MAXINE OHL

Friendship Club 2, 3, 4; G.A.C. 2, 3; Glee Club 1, 2, 3, 4; Robed Choir 3, 4; Shore Breeze Staff 3, 4; Prom Committee 3.

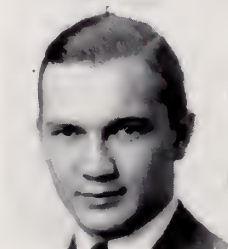


DORIS O'NEILL

Friendship Club 2, 3, 4; G.A.C. 3, 4; Shore Breeze Staff 4; Student Council 2.

EMIL PODNAR

Football 1; Basketball 1; Baseball 4; Hi-Y 3, 4; Student Council 1.

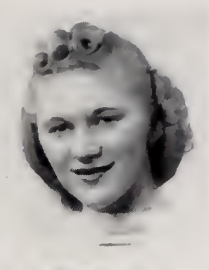
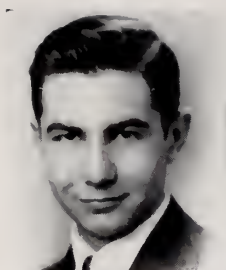


JOHN RAGBORG

Hockey 3, 4; Hi-Y 4; Prom. Committee 3; Class President 1, 2.

HENRY ROYER

Basketball 1, 3, 4; Hi-Y 2.

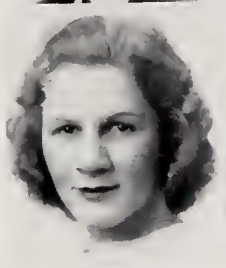


DOROTHY SELEPAK

Friendship Club 2; G.A.C. 2, 3;
Girls' Leaders Club 4; Chorus 2;
Class Treasurer 4.

GARNET SULZER

Glee Club 4.

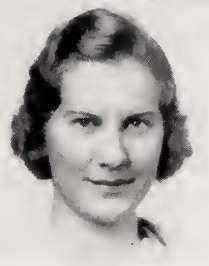


JEAN VIJANDE

Friendship Club 3, 4; Orchestra
1; Glee Club 2; Student Council
2.

LAVERNE WACHTELL

Friendship Club 2.



ELIZABETH WEIR

G.A.C. 1, 2; Glee Club 1, 2, 3;
Robed Choir 3, 4.



June Graduates

BETTY ANDERSON

Friendship Club 2, 3, 4; Secretary 4; Shore Breeze 2, 3, 4; Business Manager 3, 4; G.A.C. 1, 2, 3, 4, Treasurer 2, 3, President 4; Glee Club 1, 2; Cheerleading 3; Kent 2; Annual Staff 4; Prom Committee 3; Leaders' Club 4; Senior Play 4.



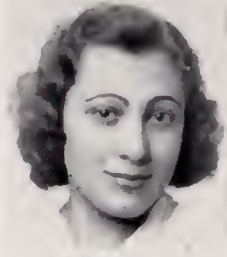
RUTH ANDREWS

Friendship Club 2, 3, 4; Ring Group 4; G.A.C. 2, 3; Chorus 4; Glee Club 4.



MARY BARRESI

Friendship Club 1; Dancing Club 2; G.A.C. 1; Glee Club 4; Chorus 1.



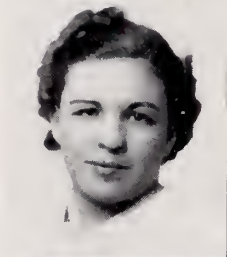
LOIS BERGLUND

Glee Club 1, 2; G.A.C. 1, 2, 3, 4; Friendship Club 2, 3, 4; Ring Group 3, Treasurer 3; Chorus 3, 4.



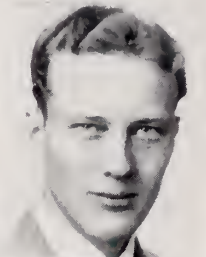
DORIS BERNER

G.A.C. 1, 2, 3, 4; Glee Club 3; Friendship Club 2, 3, 4; Chorus 4, Secretary 4; Robed Choir 4; Shore Breeze 3.



ROBERT BEUTLER

Hi-Y 3; Band 1, 2, 3, 4; Glee Club 4.



SHIRLEY BLOOD

Entered from Collinwood High 4; Friendship Club 4; Glee Club 4; G.A.C. 4.



ROBERT BRANDT

Entered from Cathedral Latin 3; Hockey 4; Hi-Y 4; Engineers Club 3; Whirlo Club 4.



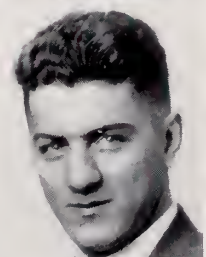
RUTH BUDNICK

Friendship Club 2, 3, 4; Glee Club 1; Dancing Club 2.



CARLO CAMPITELLI

Shore Breeze 1; Student Council 4; Treasurer 4; Football 2, 3; Gym Exhibition 3, 4; Chorus 1, 2, 3; Band 1; Freshman Football; Whirlo Club 4; Vice President 4; Operetta; Student Council Advisory Board.



PEGGY CAMPLEJOHN

Shore Breeze 1, 2; Leaders' Club 4; G.A.C. 1, 2, 3, 4, Secretary 4; Friendship Club 2, 3, 4; Inter-Club Councilor 3, Vice-President 4; Annual Staff 4; Prom Committee 3; Senior Play 4.



MARY JANE CAMPBELL

Friendship Club 3; G.A.C. 1; Band 1; Glee Club 1; Student Council 1.



MAY CARLGREN

Chorus 2, 3, 4; Treasurer 2; Glee Club 2, 3; Robed Choir 4; Friendship Club 2, 3, 4; Treasurer 4; Ring Group Chairman 4; Ring Group 3, 4; Secretary 3; G.A.C. 1, 2, 3, 4; Vice-President 4; Leaders' Club 4; Kent 2; Assistant Editor of Log 4; Senior Play 4.

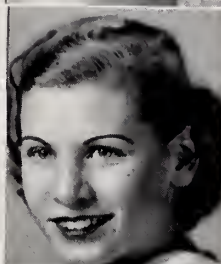
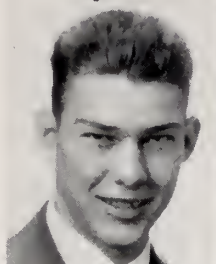


MARILYN CASE

Band 2, 3, 4; Secretary Orchestra 1, 2, 3, 4; Glee Club 1; Annual Staff 4; Leaders' Club 4; Prom Committee 3; Breeze Staff 3, 4; Friendship Club 2, 3, 4; G.A.C. 1, 2, 3, 4; Vice President 3; Senior Play 4.

BRUCE CLARKE

Basketball 1, 2, 3, 4; Track 1, 3, 4; Football 4; Tennis 4; Prom Committee 3; Band 1, 2, 3; Orchestra 1, 2, 3, 4; Hi-Y 3, 4; Student Council 3; Class Treasurer 1, 2; Ring Committee 4.



BETTY COWIN

G.A.C. 1; Leaders' Club 3; Chorus 4.

BLANCHE CROCKETT

Glee Club 3; Treasurer 3; Chorus 4; G.A.C. 1, 2, 3, 4; Leaders' Club 4; Student Council 4; Shore Breeze 3, 4; Friendship Club 2, 3, 4.

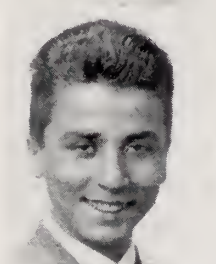


BETTY DANIELS

Student Council 1, 2, 3; Photography Club 1; Friendship Club 2, 3, 4; Glee Club 3; Class Secretary 2; Class Treasurer 3; Ring Group 4.

CARMEN DAVIRRO

Dancing Club 2; Auto Club 3.

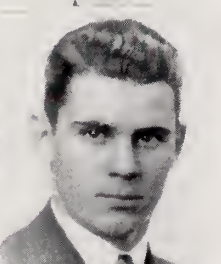


MARGARET DAVIS

G.A.C. 1, 2, 3, 4; Vice President 3; Glee Club 2; Friendship Club 2, 3; Chorus 3; Recreation Club 3; Travel Club 4; Treasurer 4; Leaders' Club 4.

MAY DAVIS

G.A.C. 1, 2, 3, 4; Glee Club 2, 3; Friendship Club 2, 3, 4; Chorus 4; Leaders' Club 4; Ring Group 4; Kent 1, 2; Robed Choir 4.



JOSEPH DEMPSEY

Football 1, 3, 4; Basketball 1, 2, 3, 4; Track 1, 2; Tennis 3, 4; Baseball 4; Class President 1, 2, 3, 4; Hi-Y 3, 4; Treasurer 4; Prom Chairman 3; Jr. Hi-Y President 3; Ring Committee 4; Picture Committee 4.

DICK DICKSON

Hi-Y 4.



MARTHA DRAGANIC

Dancing Club 2; Charm Club 4; Dancing Club 4.

GILBERT ETTENGER

Band 3, 4; Dancing Club 3;
Printing Club 4; Drama Club 4.

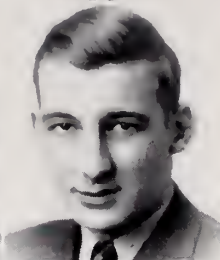
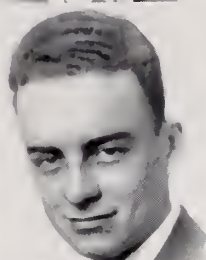


BETTE FIER

Band 3, 4; Orchestra 2, 3, 4;
Shore Breeze Staff 3; Annual
Staff, Editor 4; Chorus 2, 3;
Kent 2; Cheerleader 2; Senior
Play 4; Dance Band 2, 3; Sec.
of Whirlo Club.

BILL FINNERTY

Printing Club; Shore Breeze
Staff; Photography Club; Auto-
mobile Club.

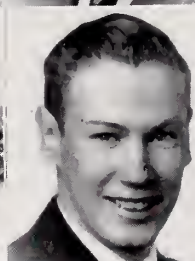
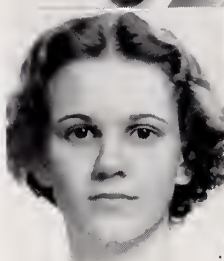


JACK FLAMMANG

Track; Advisory Board, Student
Council; Band, President; Or-
chestra; Hi-Y; Dance Band; Le-
gion Orator Award; Dramatics;
Gym Leaders' Club.

DOROTHY FOX

Girls' Leaders Club 4; Ad. Com-
mittee 4; Glee Club 3; Chorus 2.

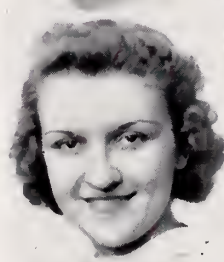


GEORGE FULLER

Printing Club 4; Auto Club 3;
Basketball Manager 3; Stage
Club 2; Shore Breeze Staff 4.

ADELINE GEIGER

Friendship Club 2, 3, 4; G.A.C.
4; Glee Club 3; Robed Choir 4;
Shore Breeze Staff 4; Prom
Committee 3; Annual Staff 4;
Ad Committee 4; Chorus 4.



PAUL GEORGE

Football 1, 3, 4; Track 2, 3, 4;
Student Council 3; Class Secre-
tary 4; Hi-Y 3, 4; Camera Club
2; Prom Committee 3; Senior
Play.

MERYL GOODHEAD

Shore Breeze Staff 3, 4; Annual
Staff 4; G.A.C. 4; Friendship
Club 2, 3, 4; Glee Club 3; Cho-
rus 4.

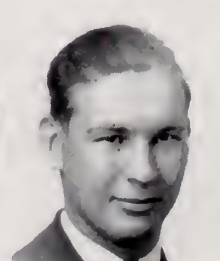
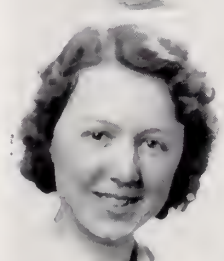


MARGOT GRANEY

Friendship Club 2, 4; G.A.C. 4;
Kent 2; Shore Breeze, Staff Edi-
tor 4; Shore Breeze Staff 3, 4;
Senior Play.

ANNE GREGORIN

Friendship Club 2, 3, 4; G.A.C.
1, 2, 3, 4; Girls' Leaders Club
4; Glee Club 3; Chorus 4; Shore
Breeze Staff 3, 4; Annual Staff
4.

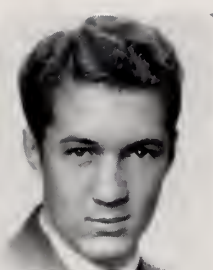


GEORGE GREVE

Hi-Y 3, 4; Football 1, 3, 4;
Prom Committee 3; Class Treas-
urer 4; Adv. Manager of Log 4;
Football Manager 2; Movie
Booth 1, 2; Picture Committee
4; Senior Play.

BETTY GRONDA

G.A.C. 1; Drivers' Club 2; Drama Club 2; Women's Vocation Club 3.

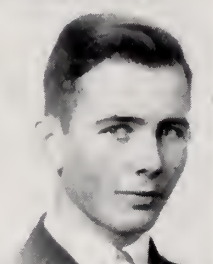
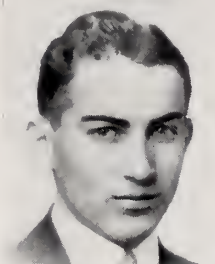


JACK GROSSMAN

Entered from Willoughby High Junior Year, Hi-Y 3.

RALPH HARPER

Ad Committee 4; Student Council 4; Track 3, 4; Drama Club 3; Hi-Y 4.

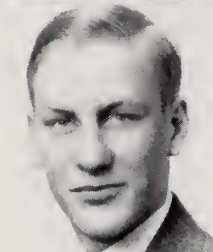


NEAL HARVEY

Drama Club 3, 4; Senior Play 4.

HAZEL HAWLEY

Band 1, 2, 3, 4; Choir 2; Orchestra 1, 2, 3, 4; Recreation Club 3, 4; Photography Club 2; Theory and Harmony Club 4; Sec. of Band 4.

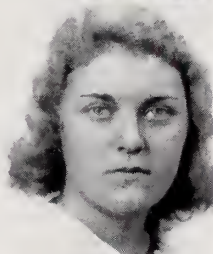
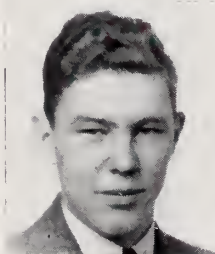


ROBERT HAYES

Football 1, 3, 4; Basketball 1, Wrestling 2, 3; Track 3; Hi-Y 4.

EDWARD HEGLAU

Baseball 2, 3, 4; Hockey 3, 4; Football 3, 4; Student Council 4; Hi-Y 3, 4; Prom Committee 3.

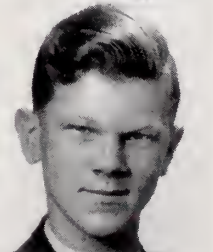


BETTY HEISS

Friendship Club 2, 3, 4; G.A.C. 1, 2, 3, 4; Glee Club 1, 2, 3; Shore Breeze Staff 4; Prom. Committee 3; Annual Staff 4; Ad Committee 3; A Capella Choir 1; Senior Play 4.

BILLIE HELPHREY

Entered from Collinwood 3; G.A.C. 4; Friendship Club 3, 4; Program Chairman 4; Shore Breeze Staff 3, 4; Prom Committee 4; Senior Play 4; Ad Committee 4; Secretary of Auto Club 3.

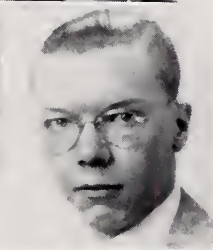
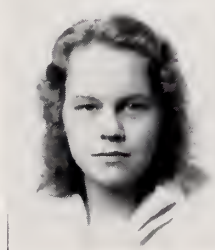


JOHN HENN

Entered from Princeton High School Senior year, Band 4; Orchestra 4; Hockey Manager 4; Photography Club 4; Secretary and Treasurer.

BETTY HUNT

Glee Club 4; Robed Choir 4; Dramatics Club 4; President; W.G.A.R. Speech Contest 4.



ROBERT HUSTON

Wrestling 4; Annual Staff 4; Senior Play 4; Student Council 1; Camera Club 2, 3, 4.

FRANCES JANITZ

Friendship Club 4; Shore Breeze Staff 4; Prom Committee 3; Class Officers Secretary 2; Popular Orchestra 3.

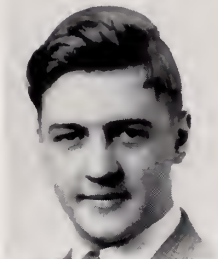


ROBERT JASON

Dancing Club 3; Baseball 2, 3, 4; Hi-Y 3, 4; Prom Committee 3; Chorus 2; Class Officers Treasurer 3.

DANIEL JOHNSTONE

A Capella Choir 2; Chorus 1, 2; Robed Choir 4; Ad Committee 4; Movie Booth 1, 2, 3, 4.



GEORGE KALIOPE

Dancing Club 1, 2; National Rifle Club 4; Class Officer Treasurer 3.

FRANCES KARDOS

Friendship Club 1, 2, 3, 4; G. A. C. 1, 2.



DOROTHY KEMPTER

Friendship Club 2, 3, 4; G.A.C. 1, 2.

BETTY KILLEEN

Friendship Club 2, 3, 4; Banquet Committee 4.



ANNE KOCMAN

Dancing Club 2, 3; Whirl Club 4; Typing Club 3; G.A.C. 1, 2; Girls' Leaders Club 4.

JANE KOVACICH

Dancing Club 3; A Capella Choir 2; Drama Club 4; Robed Choir 3, 4; Glee Club 2; Chorus 2, 3, 4.

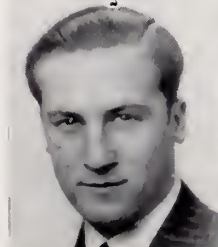


CORNELIA KUCHENBACKER

Friendship Club 2, 3, 4; G.A.C. 1, 2, 3, 4; Girls' Leaders Club 4; Band 1, 2, 3, 4; Orchestra 1, 2, 3, 4; Shore Breeze Staff 4; Annual Staff 4; Class Officers Pres. 1.

JOSEPH LIPOVEC

Track 1; Football 1, 2; Basketball 1, 3, 4; Baseball 3, 4; Shore Breeze Staff 4.

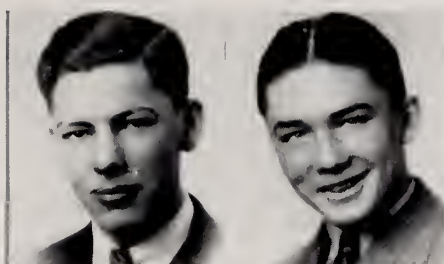


ANTOINETTE MARKUM

Girls' Leaders Club 4; G.A.C. 1, 2; Whirl Club 4; Typing Club 3; Dancing Club 2, 3.

EDWARD MARSHALL

Wrestling 4; Kent 1, 2; Annual Staff, Business Manager 4; Ad Committee 4; Student Council President 4.



ROBERT MATTHEWS

Wrestling 3; Track 3; Hi-Y 3, 4.

ELEANOR MAYO

G.A.C. 1, 2, 3, 4; Glee Club 3, 4; Prom Committee 3; Charm Club 3; Dancing Club 2, 3, 4.

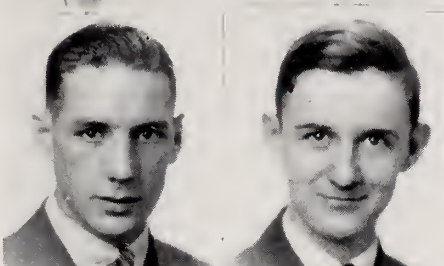


BETTY McCOY

Cheerleader 3, 4; Chorus 3, 4; Friendship Club 3, 4; G.A.C. 1, 2, 3, 4; Glee Club 3, 4; Assistant Editor of Shore Breeze 2, 3, 4; Annual Staff 4; Senior Play.

OTIS McKEON

Football 1, 2, 3, 4; Basketball 1, 2, 3, 4; Hi-Y 4; Shore Breeze Staff 3, 4; Banquet Committee 4.

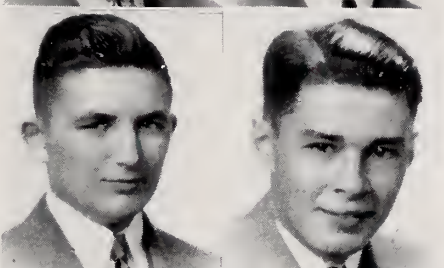


BRYAN MOFFET

Basketball 2, 3; Mgr. 4; Dancing Club 2, 3, 4; Hi-Y 4.

WILLIAM MOORE

Football 1, 2, 3, 4; Basketball 1, 3; Hockey 3, 4; Baseball 2, 3, 4; Hi-Y 3, 4; Chorus 3; Shore Breeze Staff 3, 4; Prom Committee 3; Class Secretary 3; Student Council 1, 3.

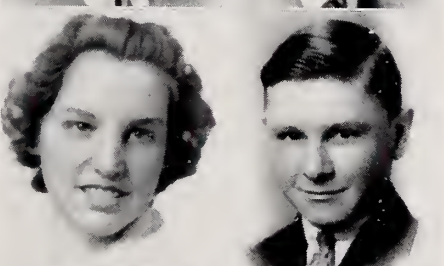


JAMES MOULTON

Ad Committee 2, 3, 4; Student Council 1, 2; Prom Committee 3; Wrestling 4; Hi-Y 4; Annual Staff 4.

VIRGINIA NEMEC

Entered Senior Year; Friendship Club 4.



TONY O'BREZA

Football Manager 1; Shore Breeze Staff 3; Class Officer 1.

VERNA OHL

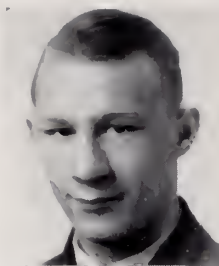
Friendship Club 2, 3; Glee Club 2, 3, 4; Shore Breeze Staff 4.



BETTY JO PATTON

Friendship Club 2, 3, 4; Prom Committee 3; Class Vice President 3.

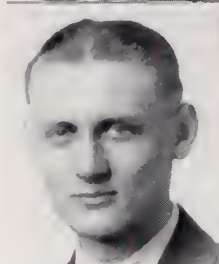
NICK PEROVICH
Student Council 2.



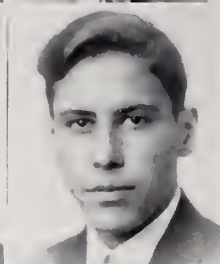
ALBERT PHILLIPS
Football 4; Dance Orchestra 2,
4; Baseball 4; Orchestra 1, 2,
3, 4.



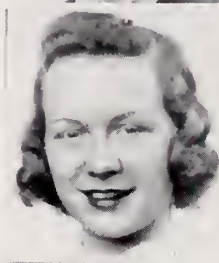
MILAN PLUTT
Football 4; Track 3.



JOSEPH RAMONA



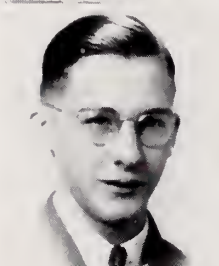
BETTY RAY
Friendship Club 2, 3, 4; G.A.C.
2, 3, 4; Glee Club 1, 2, 3; Shore
Breeze Staff 1; Prom Committee
3; Annual Staff 4; Ad Commit-
tee 1, 2, 3, 4; Senior Play.



STANLEY REARICK
Wrestling 1, 2; Track 1; Hi-Y
2, 3, 4; Shore Breeze Staff 4;
Student Council 1; Movie Booth
3, 4; Senior Play.



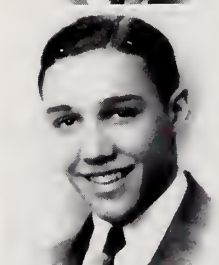
HARRY REEVES



EDNA RILLIE
Drama Club 3, 4; Friendship
Club 3; G.A.C. 4; Band 4; Glee
Club 3; Shore Breeze Staff 4;
Chorus 4.



ALBERT ROOSMA
Wrestling 2, 3, 4; Class Vice
President 4; Ad Committee 2,
3, 4.



DOROTHY ROW
Friendship Club 3, 4; G.A.C. 1,
2, 3, 4; Girls' Leaders Club 4;
Shore Breeze Staff 4.



GRACE SAMPSON
Friendship Club 2, 3, 4; G.A.C.
1.



HELEN SAVCHAK
Friendship Club 2; Glee Club 4.



JACK SCHLAEGER

Hockey 4; G.A.C. 1, 2.



CLARA SCHLOBACH

Friendship Club 2, 3, 4; G.A.C. 4; Annual Staff 4; Ad Committee 3, 4; Banquet Committee 4.



LOIS SEMPLE

Friendship Club 2, 3, 4; G.A.C. 2, 3, 4; Girls' Leaders Club 4; Secretary and Treasurer; Class Officer Treasurer 2; Shore Breeze 4; Senior Play 4.



MARY SHIMKO

Annual Staff 4; Dram. Club 4; Treas. 4; Whirlo 4; Shore Breeze 1; Annual Staff 4; Jr. Chamber of Commerce 2; Auto Drivers' Club 3; Bus. Club 3.



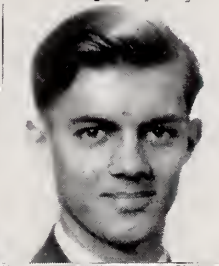
TOM SHIMROCK

Basketball Manager 2; Track 2, 3, 4; Hi-Y 3, 4.



GEORGE SKROBOT

Basketball 3; Wrestling 2; Baseball 3, 4; Class Officer 2.



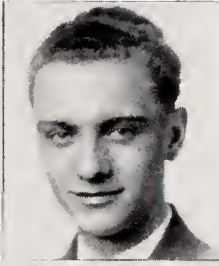
RUTH SLIFE

Radio Club 2; G.A.C. 1, 2, 3, 4; Recreation Club 2; Friendship Club 4; Shore Breeze Staff 2, 3, 4; Girls' Leaders Club 2, 3, 4; President 4; Sec. 3.



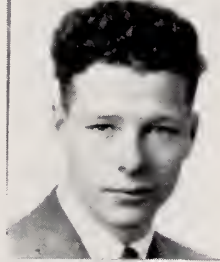
PHIL SOLESKI

Glee Club 1, 2.



JOHN SMITH

Wrestling 3; Hockey 4; Hi-Y 3, 4.



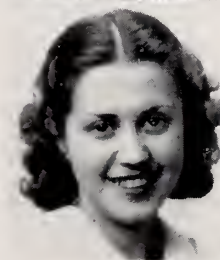
JAMES SMITH

Hockey 3, 4; Hi-Y 3, 4.



DOROTHY SMITH

Friendship Club 2, 3, 4; G.A.C. 3, 4; Shore Breeze Staff 4.



ROBERT SNOIDGRASS

Hockey 4; Student Council 3; Class Officer 2.



RAYMOND STOCKER

Band 3, 4; Orchestra 1, 2, 3, 4; Concert Master 2, 3, 4; Movie Booth 2, 3, 4; Slide Operator 2, 3, 4; Drama Club 4; Camera Club 3; Stage Work 3, 4; Student Council 4.



BETTY STROUP

Friendship Club 3, 4.



SHIRLEY SUGARMAN

Friendship Club 2, 3; G.A.C. 2; Glee Club 2.



JEAN TENCH

G.A.C. 4; Girls' Leaders Club 4; Glee Club 1, 2, 3; Robed Choir 3, 4; Shore Breeze Staff 4; Annual Staff 4; Student Council 1; Drama Club, President 4.



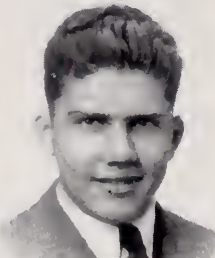
MILDRED VICKERMAN

Hiking Club 2; Chorus 1, 2, 3, 4; Dancing Club 1, 2; Recreation Club 3; Friendship Club 4; G.A.C. 3, 4; Glee Club 1; Robed Choir 3, 4; Senior Play 4.



WILLIAM WADE

Football 3, 4; Wrestling 3, 4; Track 4; Hi-Y 3, 4.

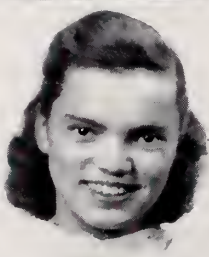


JOHN WARD



VIRGINIA WHITCOMB

Friendship Club 3, 4; President 4; G.A.C. 3, 4; Shore Breeze Staff 3, 4; Prom Committee 3; Ad Committee 1, 2, 3, 4; Senior Play 4.



GEORGE WHITTLES

Movie Booth 1, 2, 3, 4; Hi-Y 3; Senior Play 4.



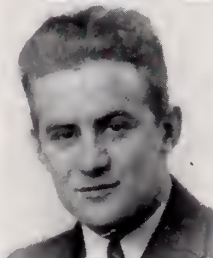
ALICE WILSON

Friendship Club 2, 3, 4; Glee Club 1, 2, 3, 4; Robed Choir 3, 4.



KEITH WILSON

Football 1, 4; Baseball 3; Hi-Y 4.



EVELYN RAPP

Friendship Club 2, 3, 4; G.A.C. 1, 2, 3, 4.



ALBENA NOSEE

G.A.C. 1, 2; Girls' Leaders Club 4; Dancing Club 3; Whirl Club 4.

Those Not Having Pictures

LEROY DOUGLASS

Hi-Y 4.

JOSEPH MUHVIC

Drama Club 4.

KENNETH HARPER

Orchestra 3, 4; Band 2, 3, 4.

LARRY GNIDOVEC

ELEANOR MIESE

ROBERT SERRE

Entered last part of Senior Year
from Assumption High, Wind-
sor, Ontario, Canada.

GERTRUDE JEFFS

Drama Club 4; Cheerleader 4;
Athletics 4; School Play 4; Cap
and Gown Committee 4; Sr. As-
sembly Committee 4. Entered
from Seattle, Washington, in
Senior Year.

RAE SCHLUND

Friendship Club 2; G.A.C. 2;
Glee Club 1; Shore Breeze Staff
3; Vocation Club, Vice-President.



Those We Leave Behind

Here are our underclassmen, but they will be Seniors some day too! Until then, however, they are busy working hard, having fun and looking forward to the day when some Freshman will say—"Yes, they are Seniors." Then it will be their turn to take over the leadership of the school and help the new underclassmen on their way to Seniorship. We who are graduating take with us fine memories of friends who will be "filling our shoes."



MR. HINCH'S HOMEROOM

First Row, Left to Right—M. Bezdek, D. Swech, D. Daniel, W. Giesse, A. Baraga, B. Giampoli, A. Bockel, T. Calabrese, F. Calabrese, E. Brezic.

Second Row—H. Mazick, V. Zust, J. Dale, B. Grove, R. Dickson, H. Riebe, E. Orivitz, E. Savchak.

Third Row—Mr. Hinch, W. Witt, E. Bronaka, W. Channell, W. Zwerlein, W. Grossman, A. Loncar, R. Rhodes, A. LoRe, J. Carrie.





MR. SCHWEGLER'S HOMEROOM (*Top*)

First Row, Left to Right—I. Fitzpatrick, I. Granm, M. Coffee, B. Buell, N. Fiddes, C. Armocida, J. Blew, J. Allender.

Second Row—P. Dailey, E. Dreer, M. Cox, M. Golinar, I. Borlick, B. Bohatka, C. Baressi, H. Gole, M. Schwegler.

Third Row—D. Ewell, M. Elliott, A. Bracklaw, D. Grove, R. Berry, R. Bogotay, A. Campitelli, W. Ditrich, F. Gole.

MR. ANGENE'S HOMEROOM

First Row—Mr. Angene, J. Kelly, J. Morris, H. Hug, E. Luikart, M. Horn, W. McDougall, V. Long, E. Gibson.

Second Row—R. Miller, F. Meunier, S. Metz, M. McKeon, D. Huber, J. Kirchner, C. Mezzacappa, E. Holly, V. Knezevich.

Third Row—W. Grover, D. Novine, R. Lloyd, M. Nemic, W. Jackshaw, B. Janes, E. McKimmy, W. Kier.

MISS CAMPBELL'S HOMEROOM

First Row—M. Wenning, M. Vandervoort, R. Wallin, Miss Campbell, A. Papouchek, D. Zdara, C. Wentling.

Second Row—F. Perme, M. Zgonc, D. Wurster, L. Siers, M. Witt, B. Shafer, I. Telich.

Third Row—K. Welter, J. Wolfford, D. Somrak, R. Wismer, E. Walter, E. Saisell, G. Widling.

MISS DARST'S HOMEROOM

First Row, Left to Right—R. Conrad, J. Davies, E. Fier, J. Coupe, B. Follis, R. Felker, A. Blasko, H. Kovacich.

Second Row—R. Clare, W. Hartman, H. Lustig, J. Christopher, B. Homovich, D. Burns, E. Fox.

Third Row—W. Hill, W. Larick, W. Beutler, J. Iacobacci, W. Lebet, P. Brennan, Miss Darst.

MR. SPANGLER'S HOMEROOM

First Row—E. Skoff, M. Queen, E. Matheke, C. Rand, M. Waltermire, E. Popvich, L. Uran-
kar, M. Whitcomb, H. Von Hoff, D. Schroeder, P. Syracuse, R. Vojsack.

Second Row—C. Simpson, M. Rosenberg, R. Wright, R. Patrick, L. Wachtell, J. Town,
J. Weir, M. Yuska, E. Miese, N. Matteo, S. Parisi, C. Malz, W. Palko.

Third Row—J. Wilson, E. Starina, J. Pardy, G. Mason, R. Randall, J. Maldovan, F. Mac-
Namara, J. Roberts, R. Wellington, R. Shramm, E. Shaughnessy, Mr. Spangler.



MISS AINGWORTH'S HOMEROOM (*Top*)

First Row, Left to Right—G. Horen, M. Driver, M. Dempsey, R. Gill, H. Hanks, R. Edmunds, J. Ashley, J. Hadyk, J. Doughty, M. Andrews.

Second Row—M. Brigleb, G. Berner, B. Cox, N. Blackwell, M. Gates, G. Blood, H. Harper, P. Dickson, E. Lugoshan, L. Baker, Miss Aingworth.

Third Row—F. Arko, C. Hranilovich, R. Hunt, G. Hannaford, G. Donkin, N. Gorg, E. Dekker, L. Blase, V. Fuderer, B. Castelli.

MISS DELAMATER'S HOMEROOM

First Row—Miss Delamater, J. Lore, G. Massitt, D. Moeller, B. Kay, H. Loranger, E. Lamb, J. Millin, B. Martin.

Second Row—I. Jasbeck, P. Newport, D. King, M. Mazick, E. Kordic, T. McWilliams, J. Kirchner, R. Long, R. Moore, J. Nelson.

Third Row—M. Mulligan, N. MacDougall, J. Miller, M. Inda, R. Lotz, F. Knauss, W. Murray, D. Metts, L. Janezic, J. Nebe.

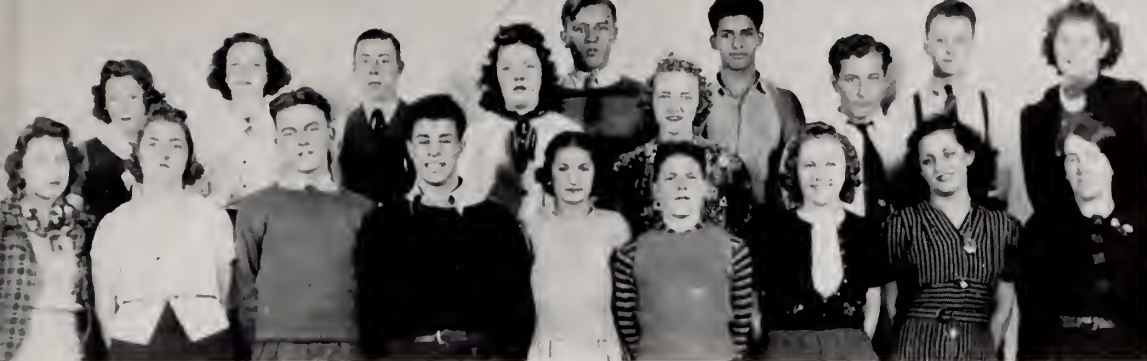
MR. WHITESIDE'S HOMEROOM (*Bottom*)

First Row—T. Weatherhead, D. Stranahan, M. Zgonc, F. Yerman, R. Patton, S. Walette, L. Praznovsky, R. Steffenhagen, E. Oliver, W. Robinson.

Second Row—M. Stopar, H. Yuska, J. Roberts, L. Ziegler, J. Staples, L. Zimmerman, G. Schmidt, S. Parratt, R. Roosma.

Third Row—P. Rosa, J. Shimrock, P. Twohig, R. O'Dell, N. Scott, J. Sokach, L. Straka, J. Waterwash, Mr. Whiteside.





MISS PHYPER'S HOMEROOM

First Row, Left to Right—M. Gole, B. Campbell, R. Finnerty, L. Craft, C. Barresi, H. King, B. Bozic, A. Iacobacci, Miss Phypers.

Second Row—C. Coupe, H. Henry, H. Coburn, M. Boles, E. Baughman, T. Amato, Y. Alexander.

Third Row—J. Bergoch, A. Bolon, J. Hodgson.

MR. WINTER'S HOMEROOM

First Row, Left to Right—B. Miller, A. Johnson, D. Lioce, J. Passerello, E. Barkhaner, M. LaBar, V. Soules, F. Krauss, D. Sullivan.

Second Row—L. Phillips, J. Pretnar, R. Popek, M. Parziale, R. Krielach, H. Weybrecht, W. Zelman, R. Smith, T. Lamacchia.

Third Row—B. Lipovic, J. McKinda, G. Shakaitis, J. Montana, G. Schmitt, B. Steverding, W. Tiber, R. Kitcham, E. Cicemas.



MISS ROSENBERGER'S HOMEROOM

First Row, Left to Right—J. Arko, G. Drautz, C. Bill, B. Brodbent, B. Clausen, G. Bohatka, D. Carlone, D. Cobb, J. Cox, J. Casson.

Second Row—E. Adams, T. Drazanic, J. Coulter, P. Cowin, E. Barina, A. Celizic, M. Berus, L. Curto, M. Cannon, A. Doberdruk, J. Adams, J. Barile, D. Di Santo, W. Clover, T. Credico.

MISS PIERSON'S HOMEROOM

First Row, Left to Right—E. Langa, P. Gibbons, M. Garapic, B. Kuchenbacker, P. Herman, G. Lardner, I. Ledinsky, D. Garapic, J. Hay.

Second Row—R. George, P. Hardy, D. Lesh, E. Heyne, H. Huston, J. Iacobacci, D. Grossman, E. Karlovic, L. Lardner.

Third Row—T. Lasky, W. Gabrenya, T. Gole, J. Hayden, E. Holcamp, Wm. Ettenger, H. Falkenstein, R. Jacoby, W. Guhl, W. Krivoy, P. Lang.

MISS TEMPERTON'S HOMEROOM

First Row, Left to Right—W. Russell, M. McCarthy, F. Nevar, W. Maroney, R. McKenna, J. McCandless, C. Munnings, A. Roberts.

Second Row—C. Reading, R. Matheke, J. Munier, B. Reiche, R. Parisi, N. McKimmy, V. Mijacek, R. Perovich, F. Pierce, E. Roloff.

Third Row—A. Repasky, G. Novince, E. Pibernik, K. Rood, H. Nelson, H. Noch, J. Murray, P. Pfeiffer.

MRS. WILSON'S HOMEROOM

First Row, Left to Right—B. Schlaeger, P. Zerby, E. Uppole, J. Warwick, L. Zdara, A. Sugarman, P. Zeroff, M. Sullivan, B. Tenny, J. Von Hof, B. Wilson.

Second Row—M. Walter, F. Smaltz, L. Tomsic, J. Skok, M. Wasserman, J. Watt, P. Tucker, J. Vickerman, F. Zupancic, D. Wickson, B. Wesley.

Third Row—B. Schafer, T. Sadler, J. Watson, L. Zaitz, M. Trivisonno, R. Schlund, D. Tinker, W. Dorrington, R. Wightman, F. Stepic.



MR. POHTO'S HOMEROOM

First Row, Left to Right—Mr. Pohto, C. Frabatto, R. Coffey, W. Durkee, F. Bergoch, T. Bullard, P. Darby, J. Hawks, D. Dietrich.

Second Row—S. Barresi, P. Blasko, M. Dvorak, N. Donahue, R. Calabrese, A. Hess, L. Davirro, G. Dinwoodie.

Third Row—G. Burns, D. Burns, J. Hueser, F. Hess, H. Fuderer, R. Haak, J. Daye, A. Fischer.

MR. FINCH'S HOMEROOM

First Row, Left to Right—P. Jacobacci, M. Perry, M. Masite, P. Malin, N. Lavo, D. Jennings, A. Lebet, M. McKee, E. Little, F. Roher.

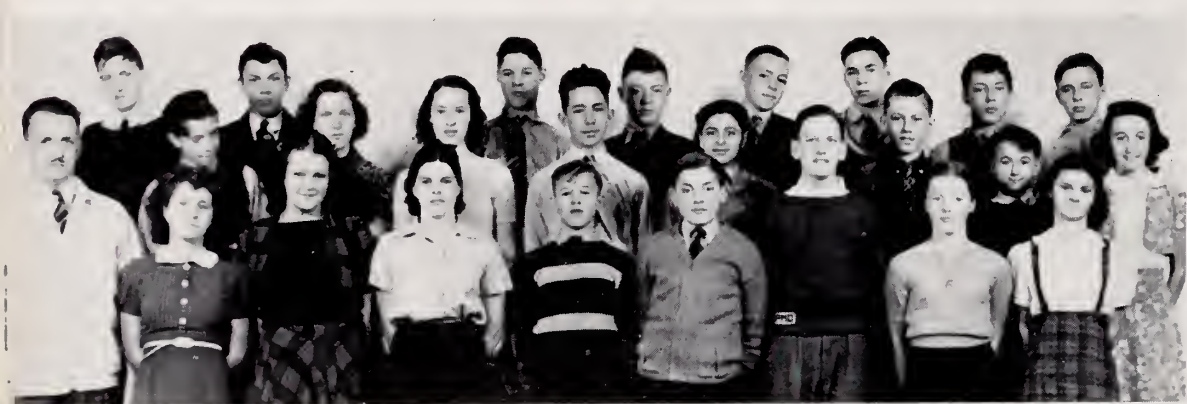
Second Row—W. Jevnikar, V. Janezic, W. Richardson, E. Mals, H. Roth, L. Mezzacappa, J. Horn, E. Korasin, G. Merrett, G. Hodge, L. Lardner, L. Runion.

Third Row—E. Meyer, K. Raupach, T. Mizner, R. Jones, J. Knific, R. Munnings, E. Moody, M. Sill, B. Merritt, A. Royer.

MISS CRONE'S HOMEROOM

First Row, Left to Right—J. Schafer, O. Straka, H. Lloyd, W. Winters, E. Wurster, J. Town, S. Swech, B. Wassum, B. Waltermire.

Second Row—J. Tartino, P. Yan, P. Wise, W. Wier, H. Thompson, J. Wallace, M. Watkins, J. Wilde, A. Heata.





Pastimes

and

Pleasures



Makers of Friendships True and



FRIENDSHIP CLUB

Friends galore in this happy group of friendly faces! They set forth on a treasure hunt to discover the hidden gems of a valuable hidden school year. Recognition services launched the club on its pursuit of friends . . . spending a whole week-end at Mary Eells Camp, an adventure never to be forgotten . . . an uproarious time at the Hallowe'en Party as movies were taken here

HI-Y

The Hi-Y members started out the school year with their annual tournaments; these tournaments were not only among themselves but also with other Hi-Y's. As usual they were a great success as is anything these boys do. Musty smells . . . old clothes . . . scratchy hay . . . hamburgers and the boys found themselves on a "Hay Ride" with Friendship girls with them. Did they have fun? Around Hallowe'en time the boys again got together and held



Holders of Memories Dear



FRIENDSHIP CLUB (Continued)

and there . . . quiz bees on Wednesday afternoons . . . prizes to brainsters. Christmas came around and the Friendship club and Hi-Y club got together and emerged with a semi-formal dance. Miss Campbell has guided the girls throughout their club activities in keeping their ideals and goals, objects to be acquired.

HI-Y (Continued)

a "weiner roast" only somebody made off with some of the pies. The boys did their part when they combined with Friendship club for the semi-formal dance, anyway the girls thought so. Mr. Schwegler is the leader of this club and you have only to ask the boys if you desire to hear him heaped with praise. These boys are going far in the world making good young men.



We Couldn't Do Without Them



STUDENT COUNCIL

In each homeroom in the school the Student Council is represented by a member and this member brings the room's suggestions for the betterment of the school to the Student Council meetings. Here the suggestions are discussed and voted upon and if the suggestion is voted worthy, the Councilors proceed to enforce it. This year as many years before, the Student Council has played an important part in school activities. They conducted the "Vocational Guidance Week" and have run a series of after school dances. The Council is under the supervision of Miss Aingworth.

AD. COMMITTEE

Have you bought your "Booster's Tag" to the football game? Have you bought your ticket to the Senior Play? With a barrage of "Have you's" we find the everbusy Ad. Committee members greeting you in the halls. They see to it that you hear and see about everything ahead of time. Shore needs boosters and these students make good leaders. Mr. Spangler is the guiding Booster in this Committee.



Familiar Strains



CHORUS

Who has number seven . . . that's my music folio . . . Mr. Raish, somebody has taken some music out of here . . . singing . . . music . . . two synonymous words but oh! what a combination they spell when they stand for our first period Chorus. But not only do they signify a group of fifty voices, they also represent the interesting musical programs in assemblies, when we have heard the familiar strains of southern melodies. Friday ordinary rehearsals stop and fearless members have chances to show off in front of their fellow classmates.

GLEE CLUB

Two traditions . . . one depending upon the other . . . Shore High's Christmas music and Shore High's Girls' Glee Club. Well do we appreciate their value . . . the haunting refrain of "Pale Moon" . . . floating through the air . . . rehearsals for "Gala Nite" and many more delightful programs.



Voices On High



ROBED CHOIR

Early morning rehearsals . . . black robes . . . starched white collars . . . 30 voices . . . the P.-T. A. musical program . . . Gala Nite . . . bidding farewell to the seniors with the familiar strains of "The Rosary" . . . and last but not least, the annual concert with the band. Then to make the world all right the choir meets with other choral groups at Bedford to end the joyous season. Add all of these together and the sum equals that outstanding organization—the Robed Choir.



As The Baton Is Raised



ORCHESTRA

Ever faithful . . . ever needed . . . this could be the definition of our school orchestra. At more serious programs given we find the orchestra playing favorite classical pieces whether the stirring "Triumphal March of the Priests" from Aida, or the light and airy "Tales of Vienna Woods." The orchestra's greatest importance comes at Commencements.

BAND

Sleet . . . wind . . . hail . . . a football game . . . it means nothing to the band, always there . . . spurring on the fight . . . boosting the team and proud as Dean Tinker "struts his stuff" in the sparkling new uniform. As a climax of their successful season, the annual band concert is held in April. . . . So let's give three cheers for "Old Faithful," our band!



The Girl Athlete

GIRLS' SPORTS

A flash of a blade . . . a bouncy white ball . . . the quiver of an arrow . . . the girls of Shore High competing with each other in Sports. Laughter . . . keep competition . . . a loser in the game but a winner in spirit . . . all this speaks for the modern girl athlete. Straight and graceful bodies are built, minds are trained to be quick and alert while still having fun in sports such as Archery, Fencing, Ping Pong, Basketball, Volleyball, and many more.



The Boy Athlete



BOYS' SPORTS

The same is true of Boys' Sports as is of Girls' Sports, except that more strength and force is shown by the boys as . . . a dash around the field . . . the show of intricate holds of the wrestler . . . or the deft flick of the wrist of the fencer. From Ping Pong to Boxing one finds a champion. Shore High is proud of its good Sportsmen!

We Who Keep the Log Rolling

Editor-in-Chief—Bette Fier

Assistant Editor—May Carlgren

Organizations Editor—Mary Shimko

Sports Editor—Cornelia Kuchenbacher

Art Editor—Marilyn Case

Special Writers—Betty Hunt, Betty McCoy

Typists—Adeline Geiger, Meryl Goodhead

Photographers—Bob Huston, Bud Borger, Anthony LoRe, Fred McNamara

Business Manager—George Greve

Advertising Manager—Jim Moulton

Subscriptions—Betty Gommel, Clara Schlobach,

Betty Ray, Peggy Camplejohn, Betty Anderson

Faculty Advisers—Mr. Angene, Mr. Finch, Mr. Card

Faculty Photographers—Mr. Phillips, Mr. Hinch



First Row—Mr. Card, Mr. Finch, M. Goodhead, A. Geiger, B. Fier, M. Carlgren, C. Kuchenbacher, M. Case, Mr. Phillips.

Second Row—B. Hunt, B. McCoy, C. Schlobach, B. Heiss, B. Anderson, P. Camplejohn, B. Ray, Mr. Angene.

Third Row—J. Tench, E. Marshall, R. Huston, J. Moulton, G. Greve, J. Lipovec, F. McNamara, Mr. Hinch.

Printed This Year!

SHORE BREEZE

Vol. XVII

1939

Gebhart Junior I

The
of March
Gebhart,
History
Mr.
of manki
the edg
there to
Mr.
blems of
This wa
ways--of
and not
Mr.
illustra
talked
screen
and it
sembly



lor play
oned un-
voidable

girls'
ung man
en he
charming
return to
leads
and Bet-

of the
stern Re-
esent it
in before
e purpose

s to de-
characters
eive any
the stu-

Trip to Washington Is Still Uncertain

The grand prize winner
ceive a silver medal; the four run-
ner ups, a bronze medal.
To enter just give your name to

Helpful
students give.

SHORE BREEZE STAFF

EDITOR.....Margot Graney

ASSISTANT EDITOR.....Betty McCoy

REPORTERS: Betty Daniels, Bill Moore,
Verna Ohl, Anne Gregorin, Edna
Rillie, Betty Heiss, Otis McKeon,
Betty Anderson, Helen Von Hoff,
Jean Kodger, Dick Dickson, Lois
Semple, Joe Lipovec, Cornelia
Kuchenbacker, Milan Plutt, Charles
Armocida.

TYPISTS: Billie Helphrey, Blanch
Crocket, Anne Gregorin, Jean
Tench, Virginia Whitcomb, Doro-
thy Row, Dorothy Smith.

TYPESETTERS: George Fuller, Bill Fin-
nerty.

MAKEUP EDITORS: Adeline Geiger,
Meryl Goodhead.

PHOTOGRAPHER: Fred McNamara.

BUSINESS MANAGER: James Dailey.

CIRCULATION MANAGER.....Betty Anderson

Subscriptions received and deliveries made by Student Council Homeroom
representatives.

FACULTY ADVISERS: Mr. Vaughn, Mr. Card, Miss Phypers.

Clubs and Clubs

GIRLS' LEADERS CLUB

Our most recent club to join the frivolous group. The girls are leaders in every way . . . new suits of white material are worn by members only. . . . These girls help conduct Gym classes and competitive tournaments. At Christmas they held a party which was successful in every way. All these happy hours are given to the credit of Miss Gill's untiring cooperation with these youthful athletes.

BOYS' LEADERS CLUB

These boy leaders are the equivalent of the girl leaders and they also help conduct Gym classes. The older boys wear shirts which tell that they are in the club; the younger boys wear a shield which says, "Shore Leader." These boys played an important part in this year's Gym exhibition.

G. A. C.

The Girls' Athletic Club sponsors all tournaments after school and all members receive points according to the tournaments they are in, and after reaching the number of points, they are entitled to a letter. This letter is white set on green and every member receiving one is proud of it. It usually rewards the work of four years of high school, Freshman year through Senior year.

DRAMATIC CLUB

One more week 'til the production is to go on . . . worry . . . anxiety . . . then . . . relief! Yes, you guessed it . . . we're talking about the Dramatic Club and "The Queen's Husband" . . . and also, not to be slighted. . . . "The Man In the Bowler Hat," Gala Nite's "A Happy Journey." But it isn't all play rehearsals and hard work. . . . Remember the fun at the dance on St. Patrick's day? . . . Under the able direction of Mr. Card . . . these have been the contributions given to us by the 1938-39 Dramatic Club . . . so more power to them in continuing their share of contributions.

TRAVEL CLUB

Buenos Aires . . . the dashing sheiks of French Morocco . . . Calcutta, the land of rumbling herds . . . the gentle, rolling waters of the Waikiki beach and back to room No. 221 in less than an hour. Thus journey the members of our "Travel Club" with Miss Delamater, the stewardess. Between brief respites the members bring their weaving and embroidery and try their hand at that.

AVIATION CLUB

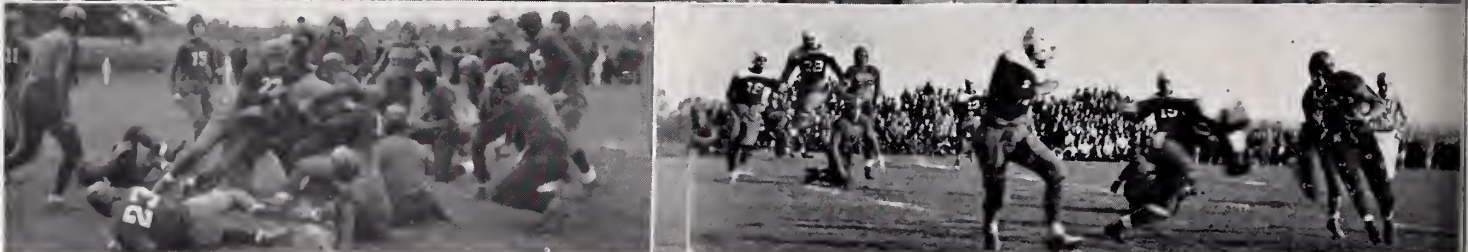
"Men with Wings" . . . Oh, yeah? Horns, maybe, but not wings. Seriously, though, these air-minded boys study and speculate the future of aviation and all its possibilities as an even-more-modern-means of transportation, and aviation as a future career. Thus does Mr. Spangler guide these pliable minds in his Aviation Club.

BUSINESS CLUB

What dress shall I wear? Do these blazer socks match my plaid tie? Which finger do you strike the "A" with on the typewriter? Are abbreviations ever correct? (Not when I use them.) These and many more such questions are answered during Miss Darst's and Mr. Finch's Business Club meetings.

Many other clubs meet on the Wednesday after noon but these are but a few representatives of the variety and the usefulness of the various clubs.





The Fighting Admirals

More than ever, this year Shore students are proud of the fighting Admirals, who won their first undisputed Eastern Conference Football Championship title. Close to sixty enthusiastic boys turned out at the call of Fall Football practice and from these boys, Coach Schwegler picked his winning team.

Sailing On To Victory

(Continued from last page)

The Admirals traveled to Canton Lehman for their first game, where they were honorary guests at Lehman's dedication of their new stadium and night lighting system. That night, the Shore boys failed to bring home a victory—however, Curto made up for the loss by bringing back a nice black eye.

Shore journeyed to Brush to launch its first conference game attack and was met with warm weather and clean play. Brush was kept on the defense throughout the game. In spite of our aggressive team, the pigskin was carried over the line only once by our boys.

Coming home for their next game, our confident team swamped Bedford under a great aerial attack. Maldovan received a serious leg injury and was missed from the team for the remainder of the season.

Next, the Admirals romped over Garfield, away, and sank all of the hopes of Garfield's winning the championship. Our staunchy backfielder, Joe Dempsey, appeared for the first time this season in play, after his summer injury.

With little snow and bitterly cold weather, Shore met its one undefeated opponent of last year—Mayfield. This game evened up last year's defeat of the Admirals and also, gave our second team a chance to play (including Bob Berry after a call from the band for him).

(Continued on next page)

(Continued from last page)

The Shore eleven next encountered Maple Heights, away. Two excellent runs were made of about forty and fifty yards by Joe Dempsey and Paul George, respectively, of which each resulted in touchdowns. Shore came out of this genuine "dust bowl" game victorious.

To end the gridiron season, the Admirals trounced their traditional rival under a deluge of thirty-nine points, allowing one—and the only one of the season—touchdown to Euclid Central.

First Row, Left to Right—A. Papouschek, R. Bogotay, G. Greve, A. Bocke, J. Maldovan, W. Palko.

Second Row, Bottom—J. Grossman, B. Clarke, R. Fanta, K. Wilson, P. George.



(Continued from last page)

The following is the 1939 Football season schedule:

*Canton Lehman.....	26	Shore.....	6
Brush	0	Shore.....	6
Bedford	0	Shore.....	25
Garfield	0	Shore.....	13
Mayfield	0	Shore.....	33
Maple Heights	0	Shore.....	40
Euclid Central.....	6	Shore.....	39
<hr/>		<hr/>	
Conference Total.....	6		156
*Non-Conference game.			

First Row—O. McKeon, M. Plutt, L. Palko, E. Heglaw.

Second Row—W. Moore, W. Wade, J. Dempsey, A. Bracklow, F. Montana.



The Wearers of the Blue and Gold

Riebe, Harvey.....Forward
 Dempsey, Joseph.....Forward
 Clarke, Bruce.....Center
 Montana, Frank.....Guard
 McKeon, Otis.....Guard
 Lipovec, Joseph.....Forward
 Blasko, August.....Forward
 Royer, Henry.....Center
 Curto, Joseph.....Guard

Rockel, Allan.....Guard
 Maldovan, John.....Forward
 Papouschek, Anton.....Forward
 Heglaw, Edward.....Center
 Dietrich, William.....Center
 Schwartz, George.....Center
 Shaugnessy, Emmett.....Guard
 Moffet, Bryan.....Manager

Ford L. Case—Coach

Henry Schmidt—Asst. Coach

Glenville . . . For the second straight year, the tar-blooders fell before Shore's smooth working Admirals. Mayfield . . . The green and white of Mayfield fell before the fast breaking tactics of the Shore team to the tune of 59 to 20. Harvey Riebe dropped in twenty points to tie the Shore record set by his brother, Mel, in 1931. Maple Heights . . . The Admirals beat a powerful Heights quintet in stride. Central . . . Shore won the first leg on the beautiful new American Legion trophy by smothering the Lions 69 to 26. Capt. Frank Montana whisked the net for twenty markers to tie the Shore record held jointly by Mel and Harvey Riebe. Mentor . . . The smooth working combination of Riebe-Dempsey-Clarke-McKeon-Montana played its last game together by trouncing Mentor 59-16 the next night after the Central game. Brush . . . The Admirals trailing 15-3 at the half, staged one of the most brilliant rallies seen on any court in years walloping the Brown and Gold 29-8 the second half, to come in easy victors with a score of 32-23.



First Row, Left to Right—F. Montana, A. Bockel, O. McKeon, J. Dempsey, H. Riebe, J. Curto, B. Clarke.

Second Row—J. Lipovec, A. Papouschek, E. Shaugnessy, E. Heglaw, W. Dietrich, A. Blasko, B. Moffet, Mr. Case.

Third Row—J. Christopher, J. Town, T. Weatherhead, J. Robinson, G. Schwartz, W. Zwierlien, R. Berry, R. Palko, D. Metts.

It's a "Case" of "Netting" Victories



BASKETBALL (Continued)

Bedford . . . This team was downed in a close contest, 29-27, at Bedford. The game was marked by long range shooting by the home team and the game was not decided until Joe Curto, Admiral guard, looped in a double decker from far out to decide the victor. Garfield . . . Garfield and Shore came up to the last league game without defeats to pack in the largest crowd to see a basketball game in the history of Shore Basketball. Garfield's classy quintet was able to put on a finishing drive to win in the last four minutes of play to cop their first Eastern Conference crown. Fairport . . . The Blue and Gold Admirals surged back to whip a powerful Fairport five for their first defeat in 16 games to the tune of 40-30. Ed Heglaw at center and Joe Curto at guard played good defensive roles to assist the dependable scoring combination of Riebe and Dempsey.

N.E.O. SECTIONAL TOURNAMENT

Shore held the Sectional Tournament for the second consecutive year, only to have their own team draw the Fairport team, by a queer quirk of fate, and be eliminated by the team they had beaten by ten points a week before. Joe Dempsey and Harvey Riebe acted co-captains the second semester and made probably the best pair of running mates at forwards to wear the school colors in recent years.

The Familiar Blue Light



First Row—W. Moore, W. Palko, J. Smith, R. Schroeder, J. Hannaford, R. Brandt, W. Murray, D. Nickson.

Second Row—Ossie Asmundsen, L. Palko, D. Ewell, P. Twohig, E. Heglaw, J. Smith, J. Henn.

Shore is mighty proud of its 1938-1939 Hockey squad of which each puckster proved of some value to the team.

1938-1939 HOCKEY SQUAD

Ossie Asmundsen—Coach

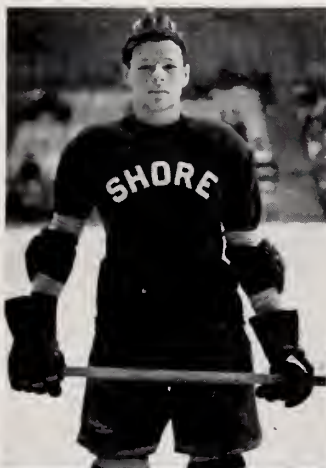
Robert Phillips—Assistant Coach

Ed Heglaw.....	Left Wing	DeForest Ewell.....	Center
Dick Schroeder.....	Center	Bob Brandt.....	Left Wing
Bob Fisher.....	Right Wing	Jack Schlaeger.....	Left Wing
Jim Smith.....	Left Defense	Paul Twohig.....	Left Defense
Jack Smith.....	Right Defense	Darrel Wickson.....	Left Wing
Bill Moore.....	Right Defense	Jack Blattau	Center
John Ragborg.....	Left Defense	Bill Murray.....	Center
Lenny Palko.....	Right Wing	Jack Hannaford	Goalie
Bill Palko.....	Right Wing	John Henn.....	Manager
Jack Grossman.....	Right Wing		

The Admiral pucksters moved into their second hockey season with five lettermen and an enthusiastic group of new players. Skating off to a surprise victory over Cathedral Latin, and easily trouncing Holy Name, the icers next staged their hardest fought battle against Shaker, only to meet their first defeat. The pucksters carried the fighting spirit of Shore with them and masterfully slid through the season with only three defeats by Shaker, Cleveland Heights, and Shaw, and tied two matches with University and East High.

Shore was eliminated in the first round of play-offs by East High, whom they had held to a scoreless tie in a previous game. This was the final blow to an almost perfect hockey season, but before the play-offs our pucksters held second place in both divisions, tying the leaders of the Metropolitan division.

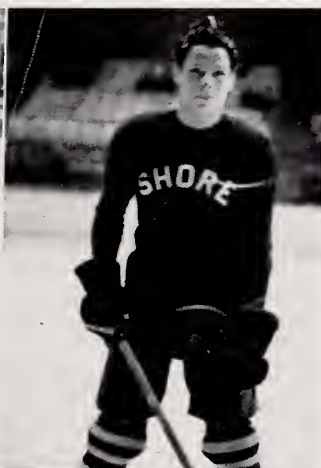
J. SMITH



P. PALKO



J. SMITH



L. PALKO



R. SCHROEDER



J. HANNAFORD

Presenting the Boys Who "Set the Pace" at Shore



First Row—R. Grossman, A. Bracklow, J. Maldovan, L. Palko, P. George, M. Plutt, R. Matthews, R. Wellington.

Second Row—Mr. Case, W. Larick, W. McDongall, T. Shimrock, R. Harper, W. Channell, J. Flammang, W. Zweirlien.

Shore's hopes for a successful track season look fair, due to the fact that Shore tied with Brush and Bedford in the C. A. C. Indoor Meet.

The following is Shore's 1939 Track Meet schedule:

*April 26—Garfield	7	Shore.....	111
May 1—University		Shore.....	
*May 3—Bedford		Shore.....	
May 6—Mentor Relays at Mentor			
May 8—Brush		Shore.....	
May 10—Brush		Shore.....	
May 15—Bedford		Shore.....	
*May 17—Alumni		Shore.....	
May 20—District Meet			
May 23—Eastern Conference Preliminaries			
May 24—Eastern Conference Finals at Bedford			
May 26-27—State Meet			
*June 7—Central		Shore.....	
(Junior High American Legion Meet)			

*Home Meets.

Pitching . . . Slugging . . .Fielding

At Coach John Pohto's first call for candidates, seventy-five willing boys turned out for baseball. It was the biggest turn-out in the history of Shore's sports.

The squad was later reduced to twenty-five, of whom three were letter-men, Harvey Riebe, Elmer Weinschreider, and Capt. Frank Montana.

Joe Curto and Bob Jason turned out to be two of the best pitchers in the Metropolitan League. Their steady pitching did much in the way of contributing to Shore's fine season.

The dependable slugging of Riebe, Weinschreider, and Montana were other highlights on offense. Some good fielding by Bezdek and Heglaw featured the outfield on defense .

Shore won the championship of the Eastern Division of the Metropolitan League and were semi-finalists in the district play-offs, losing to Cleveland Heights.

The following was the 1938 schedule of baseball:

Brush	6	Shore.....	4	Mayfield	0	Shore.....	4
Euclid Central	1	Shore.....	8	Brush	3	Shore.....	4
Collinwood	8	Shore.....	7	East Tech	7	Shore.....	1
Mayfield	4	Shore.....	13	Latin	4	Shore.....	5
Benedictine	4	Shore.....	6	Benedictine	3	Shore.....	5
John Adams	7	Shore.....	5				



Matmen of Shore



Even though Shore's matmen got off to a late start this year, they did well for themselves. Under Coach Pohto and Captain Bill Wade the grapplers soon made up for lost time by taking second place in the Conference. This year's team was composed of seventeen muscular boys.

Shore had three home matches and traveled to the opponents' mats four times, making a total of seven matches. The matmen won four of their matches and placed four boys in the City Wrestling Tournament. Bill Wade won fourth place in the heavyweight division; Lenny Craft, fourth place in the 165-pound division; Al Roosma, second place in the 145-pound division, and Al Bracklow took second place in the 155-pound division.

Here is the 1938-39 Wrestling Schedule:

Shaker	29	Shore.....	15
Central	29	Shore.....	12
University	12	Shore.....	15
*Parma	9	Shore.....	35
Garfield	31	Shore.....	10
*Shaker	7	Shore.....	31
*Central	12	Shore.....	23

*Home Matches.

Day by Day at Shore

SEPTEMBER hath XXX remarkable days:

30. The heavens will weep. But all the rain in the world won't keep Shore from fighting even though the stars prophesy victory for the Green and White.

OCTOBER hath XXXI days:

1. Here at last we have a get-together for the Friendship Club at Mary Eells Camp.
4. Our regular dashing football heroes playing the Post Graduate football players who came back to learn how to play football.
5. Our first *Shore Breeze* issue was printed.
6. Generally clean and mild in ocean region. Faculty seamen and sea-women attending a nautical party will encounter pleasant weather.
7. Shore puts on her war paint; "Beat Bedford!" in pep assembly proclaims aloud her bloody war cry.
10. Mr. Peake will address the Senior Class on Vocations.
12. Some of the Seniors taking an afternoon off to go and see "You Can't Take It with You."
13. Miss Darst's Business Girls' Club went to visit the Addressograph-Multigraph Company.
17. Volley ball teams got well under way in the new gym.
20. Recognition services for the Friendship Club.
21. Garfield tribe takes a whipping at the hands of Shore High.
24. A mathematical genius displayed his abilities before the breathless student body in assembly.
26. Playhouse stages a play called "Ditch Diggers" for the benefit of the Community Fund.
27. Mayfield takes a trouncing from old Shore High. Friendship Club girls get together for a grand Halloween Party.
28. No School! Teachers in Suburbs go to Cleveland for the annual teachers' convention.



Day by Day at Shore

NOVEMBER hath XXX days:

2. Drama Club gave a play in Assembly.
3. W.P.A. swing band will play for the students presided over by the Student Council.
4. Maple Heights takes a whipping from the Admirals.
9. The Automobile Club gives an assembly on "Preventing Accidents."
10. Football Rally at Shore's field for the Shore-Central game.
11. Shore wins from Euclid Central but Central spoiled Shore's chances of a scoreless season in the Eastern Conference.
14. General Assembly on "Let us have a purpose and a career."
- 15-18. Conferences on vocations for all of the Senior High.
16. The Federal Music Project Band gave a splendid concert in assembly.
24. Shore gives thanks—no school for four days.

DECEMBER hath XXXI days:

2. Tag dance honors our football players.
3. Our Hockey Team starts off with a bang! Today marks their second victory.
7. One of the hockey boys interviewed their coach, Ozzie Asmundson.
10. Our first defeat in hockey. Shaker is the victor.
12. Girls' Leaders Club chose basketball teams and had pictures taken later.
13. Chorus sings for P.T.A. Colored swing band plays during the ninth and tenth periods.
14. A few Gala Night acts being given in Assembly.
15. Austin Wiley plays for the Friendship and Hi-Y Clubs.
16. Admirals boost game with Glenville.
21. Colorful Christmas Pageant given in Assembly. Friendship-Hi-Y formal dance given. School closes for the appreciated two-weeks vacation.
28. Shore wins another hockey game.

Day by Day at Shore

JANUARY hath XXXI days:

4. Basketball plays explained to all in assembly.
6. Shore cagers win from Mayfield.
7. Shore pucksters defeat West.
10. January graduating class has its banquet. What a night!
11. Shore has college night for Seniors and their parents.
12. Friendship Club enjoys a Farewell Party given to departing Seniors.
13. Withstanding the jinx of Friday 13, our cagers won their game with Maple Hts.
16. Quite stormy out; teachers decide to parallel the weather with a similar blizzard of report cards.
26. Shore wrestlers attack Parma.

FEBRUARY hath XXVIII days:

1. Drama Club presents "Queen's Husband."
11. Hockey team wins from Collinwood.
20. A special assembly for information on fire drills.

MARCH hath XXXI days:

1. Half a day off due to the Teachers' Convention.
10. Musical quartette entertains student body, also fencing exhibition.
25. Shore given hockey crown to victor East.
31. Students rejoice as Easter holidays emerge with lovely weather.

APRIL hath XXX days:

1. April Fool's day is shouted at everyone else who forgot it. Shore track team participates in Arena meet.
21. Orchids to the cast of the Senior Play "Charm School." It certainly was a hit!

B R A W N ' S
CONFECTIONERY
and DAIRY STORE

Ice Cream
Sodas and
Sundaes

High Grade
Candies
and Pastries



22078 Lake Shore Blvd. Ken. 1035

MOHAWK HARDWARE
STORE

WALL PAPER . . PAINTS . . VARNISHES

RADIO TUBES . . GLASS

BUILDERS' HARDWARE



Telephone KEnmore 0451
729 E. 185th St. Corner Mohawk

Kenmore 0585

COMPLIMENTS OF
NOTTINGHAM
DEPARTMENT STORE

"SHOES AND FURNISHINGS
FOR THE ENTIRE FAMILY"



Leonard Mandel 18607 St. Clair Ave.
Proprietor Cleveland, Ohio

At the "SQUIRE SHOP"

Complete Seasonal Outfits

For Men and Young Men



1. ANNE GREGORIN

2. ADELINE GEIGER

HAROLD FURNITURE
COMPANY

An Uptown Store with Downtown
Service



708 East 185th Street

Budget Terms KEnmore 6840

Ken. 0665

NOTTINGHAM
HARDWARE COMPANY

"The Community Store"

PAINTS . . GLASS . . RADIO
BUILDERS' HARDWARE

WARREN MILLER 18708 St. Clair Ave.
CLEVELAND



"MOTHER, MAY WE HAVE MORE?"

EUCLID DAIRY CO.

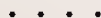
Ken. 0515 515 E. 200th St.

22. DORIS BERNER

Kenmore 5630 TAILOR & FURRIER

The . . .
Knowlton Cleaners

2-HOUR ODORLESS DRY CLEANING



20020 Lake Shore Blvd.

Vestments for Choir and Pulpit
The C. E. WARD COMPANY
NEW LONDON, OHIO

Graduation Caps and Gowns
Band Uniforms
Gowns for School Choirs and Glee Clubs

* * * *

Write for Free Catalogs

Prescriptions Drugs Candies

* * * *

FIFTY-TWO
STANDARD DRUG STORES

The *Standard* for Pure Drugs
since 1899

Toiletries Sodas Cigars

COMPLIMENTS

W. E. STEVENSON

* * *

**Lanny's
Sandwich Shoppe**

* * *

3. MAXINE OHL

4. MERYL GOODHEAD

FROM A FRIEND

YOU VISIT
ALMOST DAILY!

LA SALLE

RADIO and REFRIGERATION

For Graduation Gifts
See Herb Fitzgerald

635 E. 185th

Ke. 1313

COMPLIMENTS

of

EPICURE BOEGAM

* * *

22281 Lk. Sh. Blvd.

Ke. 4425

* * *

BETTY'S BEAUTY SHOPPE

All Branches of Beauty Culture

Kenmore 2548

606 E. 185th St.

* * *

48 Years in Business

THE UNION SAVINGS AND
LOAN COMPANY

232 Superior Avenue, N. E.

Founded 1891

Real Estate Loans—3% Interest on
Savings Deposits

* * * *

Deposits Insured up to \$5,000.00 by the
Federal Savings and Loan Insurance
Corporation

* * * *

Member Federal Home Loan Bank
System

Printing

GREETING CARDS
PHOTOGRAPHIC SUPPLIES
PHOTO FINISHING
ENLARGING AND COLORING

EUCLID NEWS-JOURNAL

675 East 185th St.

Ke. 5730

◆◆◆

COMPLIMENTS

of the

ANNUAL STAFF

◆◆◆

11. BETTY HUNT

12. EDNA RILLIE

13. CORNELIA KUCHENBACHER

KENMORE 4005

SALLY SHOPPE

Suits . . Coats . . Dresses
Hosiery . . . Accessories
Sport Attire

21910 Lake Shore Blvd.
EUCLID, OHIO

Ken. 0624

"Tell us when and where . . .
We'll be there."

WICKLIFFE LUMBER CO.

LLOYD ROAD

Your Country Cousin
HARLEY L. CLARKE

COMPLIMENTS

.. of ..

A FRIEND

Herff-Jones Company

DESIGNERS AND MANUFACTURERS

of

SCHOOL AND COLLEGE JEWELRY
GRADUATION ANNOUNCEMENTS
MEDALS, CUPS AND TROPHIES

INDIANAPOLIS, IND.

JEWELERS TO SHORE HIGH SCHOOL

15. SHIRLEY SUGARMAN

15. DOROTHY ROW

16. BETTY DANIELS

S M I T H ' S *Barbecue and Restaurant, Inc.*

serves

G O O D F O O D

LUNCHES

DINNERS

22305 L. S. Blvd.

Ken. 2792

JOHN VIDRICK

JOHN POLSON

19. VERNA OHL

20. MILDRED VICKERMAN

21. VIRGINIA NEMEC

Eddies' Service Stations, Inc.

22259 LAKE SHORE BLVD.

Texaco Gasoline Texaco, Kendall and Valvoline Motor Oils

Lubrication . . Mohawk Tires . . Exide and Willard Batteries

Cars Called for and Delivered

PHONE KENMORE 4227

5. HELEN SAVCHAK

6. BETTY JO PATTON

7. BETTE FIER

Purpose

"TO FIND AND GIVE THE BEST"

FRIENDSHIP IS THE GEM OF LIFE

THE FRIENDSHIP CLUB

17. HAZEL HAWLEY

18. BLANCHE CROCKETT

COMPLIMENTS

of the

Student Council

8. JEAN TENCH 9. FRANCES KARDOS 10. MAY and MARGARET DAVIS

INTERESTING PORTRAITS

PRICES QUOTED ON QUANTITIES OF
3 OR MORE

The Newman Studio

PHOTOGRAPHERS

1706 Euclid Avenue

MA 2333

Addressograph . . . Multigraph

SPEEDS UP THE "PAPER WORK"
OF BUSINESS ON ALL FRONTS

15

Addressograph and Multigraph supply an essential need in every business. Their value has been endorsed through constantly increasing use, over a long period of years, in every class of business enterprise.

Addressograph . . . for **speed** and **accuracy** in the routine copying of names and data on various forms used in every business; for protection against error, delay and waste. Multigraph . . . for convenient and economical duplicating of a wide variety of business forms and communications necessary to carry on business and increase sales of its products or services.

In any business or profession you choose, you will find that Addressograph and Multigraph Methods provide advantages to ease the burden of daily routine—protect your interests as well as those of your employer—help you progress.

Addressograph-Multigraph Corporation

CLEVELAND, - - - - - OHIO

COMPLIMENTS OF THE

Shore Hi-Y Club

Boosters' Column

THE AMERICAN SHOE REPAIRING BEN MALIN

BEACHLAND BEAUTY SHOP

MOSS POINT HARDWARE

BEACHLAND PHARMACY

MR. AND MRS. J. SUGARMAN

DR. AND MRS. M. J. CLUCKER

TUCKER SHOES

HARBAK'S PASTRY SHOPPE

WRIGHT STORE, 696 E. 185th

JOE GORG

LOWE'S TOGGERY





