




1759

THE **FALCON**  
1959



Digitized by the Internet Archive  
in 2011 with funding from  
University of North Carolina at Chapel Hill

<http://www.archive.org/details/falcon1959sain>

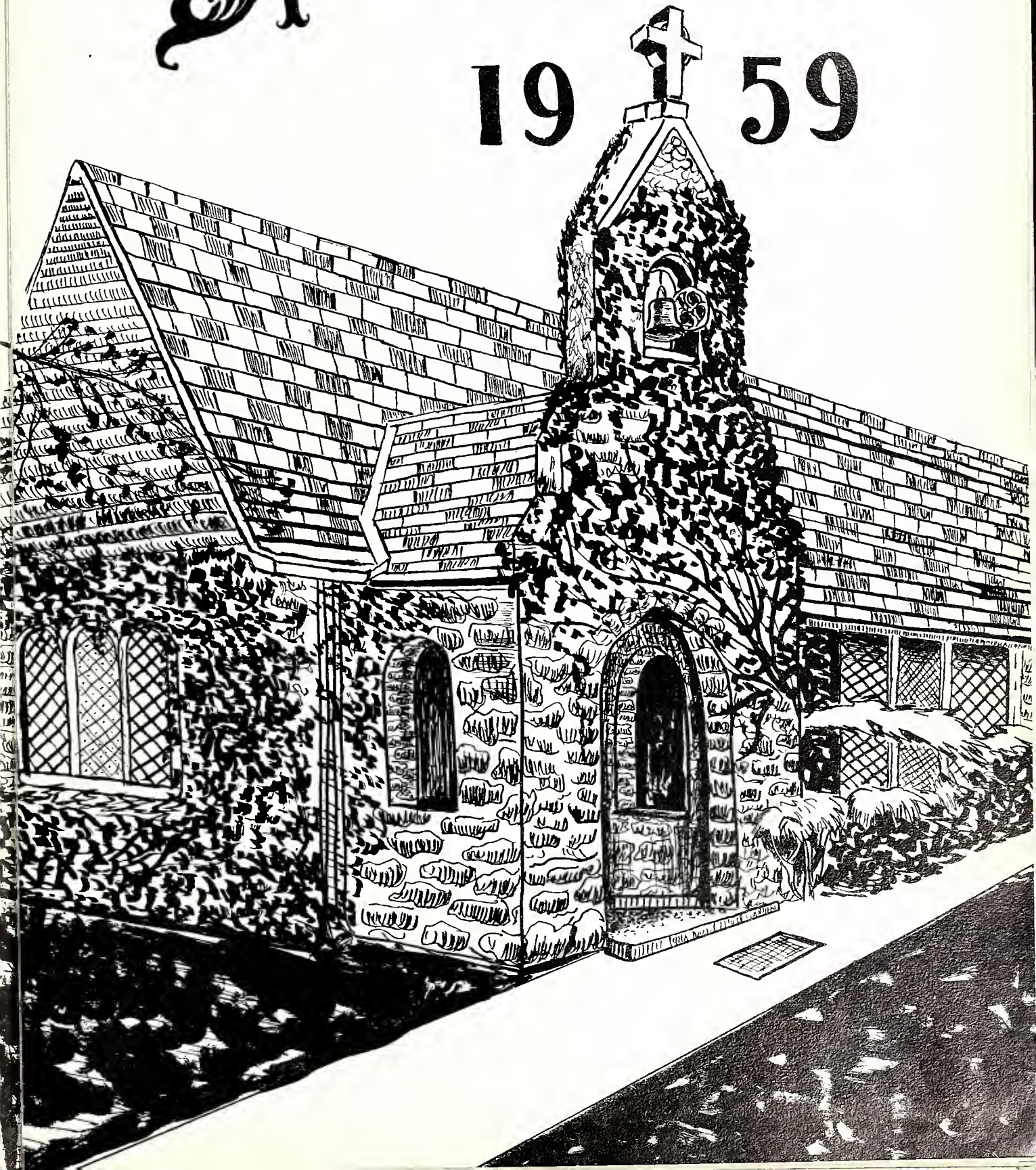






# The Falcon

1915









Editor	★ ★ ★ ★ ★ ★ ★ ★ ★ ★	RICHARD LACEY
Co-Editors	★ ★ ★ ★ ★ ★ ★ ★ ★ ★	Thelma Becton - Marlon Portier
Business Manager	★ ★ ★ ★ ★ ★ ★ ★ ★ ★	GEORGE FLEMMING
Senior Advisor	★ ★ ★ ★ ★ ★ ★ ★ ★ ★	Mr. Charles H. McLendon



# FOREWORD

---

The "1959 Falcon" sums up in brief, if not entirely, four unforgettable years of studying and living at what has been called "The Big Family School." You will cherish the memories of these years for the remainder of your life.

It is hoped that, as you peruse these pages, you will relive happily the past. If this is possible, then our efforts will not have been spent in vain.

Courage and perseverance have been a magical talisman by which many of our difficulties have disappeared and our obstacles have vanished into the air.

Richard Lacey



**THE EDITORS**



# TABLE OF CONTENTS



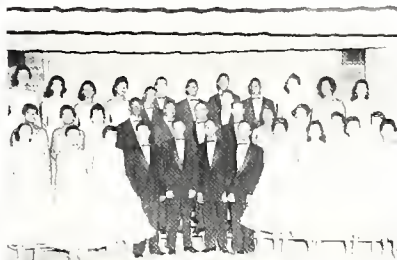
FACULTY

SENIORS



UNDERCLASSMEN

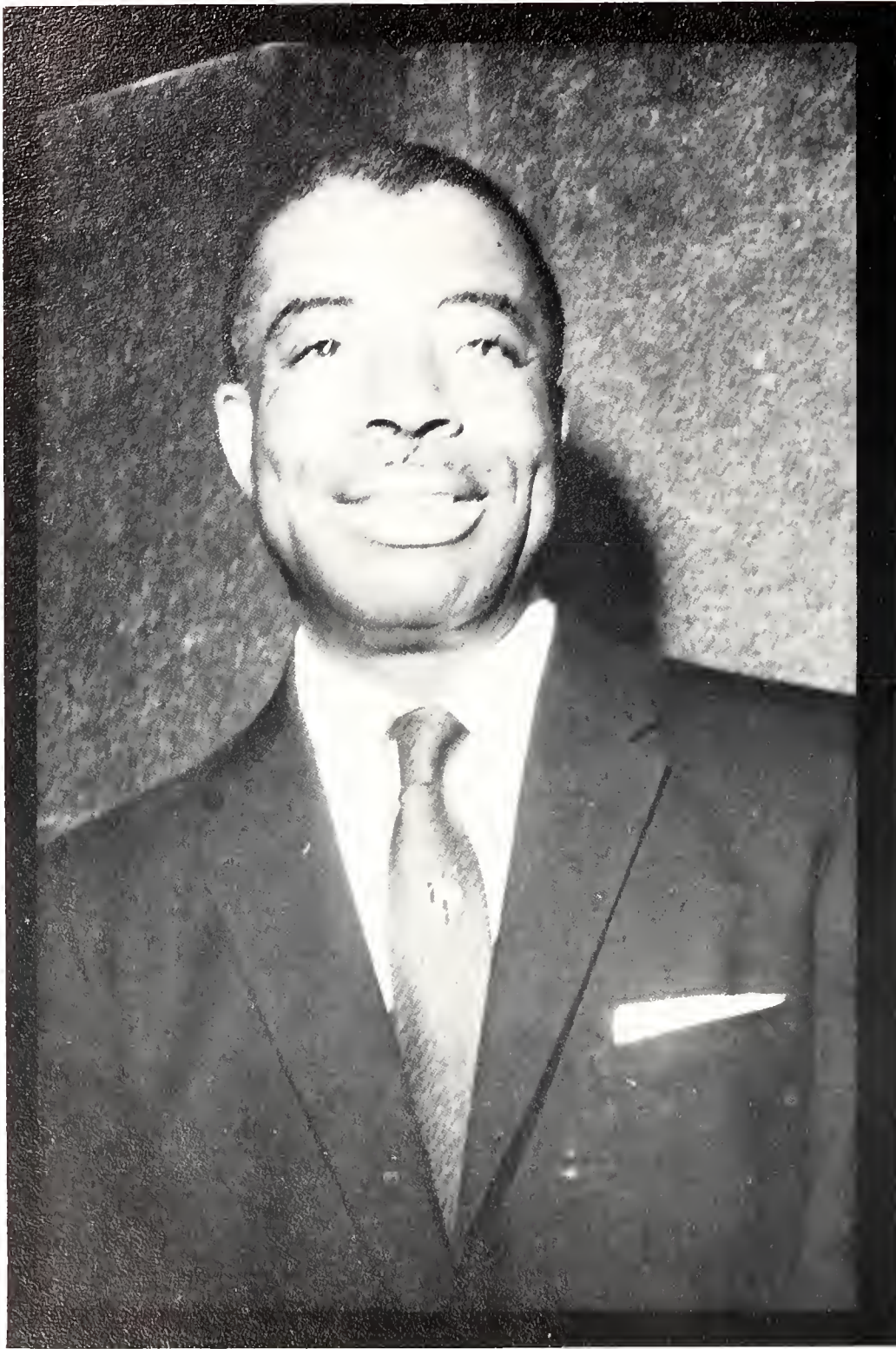
ORGANIZATIONS



GREEKS

SPORTS





# DEDICATION

To you, Mr. Taylor, we the members of the 1959 graduating class proudly dedicate the '59 edition of the Falcon.

Many years from now when we take a retrospective view of our years spent here at St. Augustine's, there will always be many events and people that will come to our minds. You are one of those persons. Our four years here have not been wasted. We have had many memories and experiences—some pleasant, some not so pleasant, but in spite of this we remember you.

This yearbook is a condensation of our thoughts, deeds, and efforts. We consider it to be the fruits of our labor, our most prized possession. Although we offer to you what we consider our best, it is very insignificant in comparison to the love and service you have so graciously rendered to our "Dear Ole Alma Mater".

Because many years, experiences, and tremendous efforts, as well as labor, have gone into the formation of this book, we dedicate it to you in appreciation of your many unselfish efforts rendered over many years.

We really appreciate your every endeavor to encourage, stimulate and guide us to achieve greater heights, and you shall always be to us a personality whom we shall try to emulate.

May the beacon light of God's many blessings be focused upon you, and may health and happiness always be yours.

THE SENIOR CLASS





BENSON LIBRARY

HERE ARE THE PLACES WHERE WE STUDY.....





CHAPEL

.....WHERE WE PRAY





HUNTER BUILDING



PENICK HALL  
OF SCIENCE

WHERE WE WORK.....





ATKINSON HALL

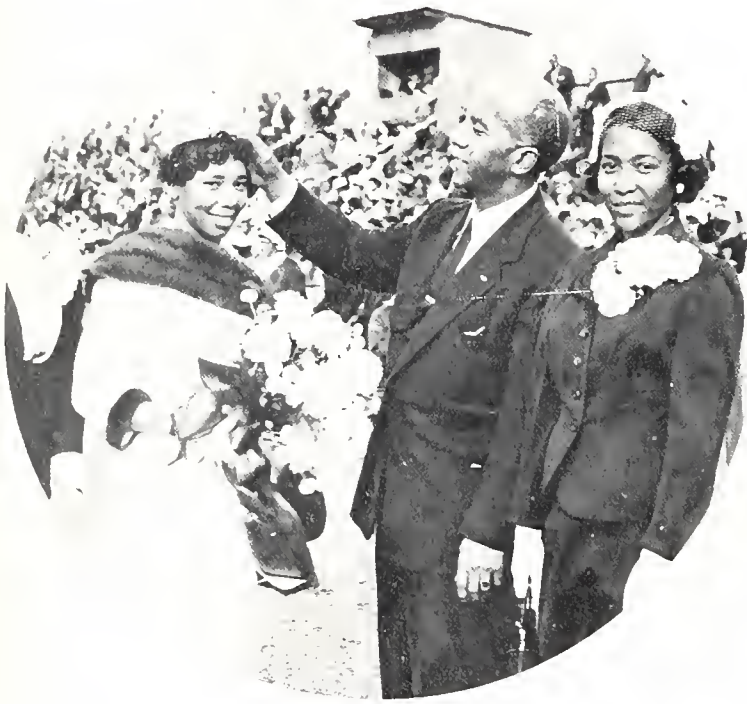


DELANY BUILDING

..... AND WHERE WE LIVE



HERE ARE THE  
MOMENTS  
WE'LL CHERISH



MISS  
ST AUGUSTINE'S

HOMECOMING





# OUR QUEEN'S.....CORONATION

Receiving  
Her  
Blessing



Her  
Crowning



With Her Court





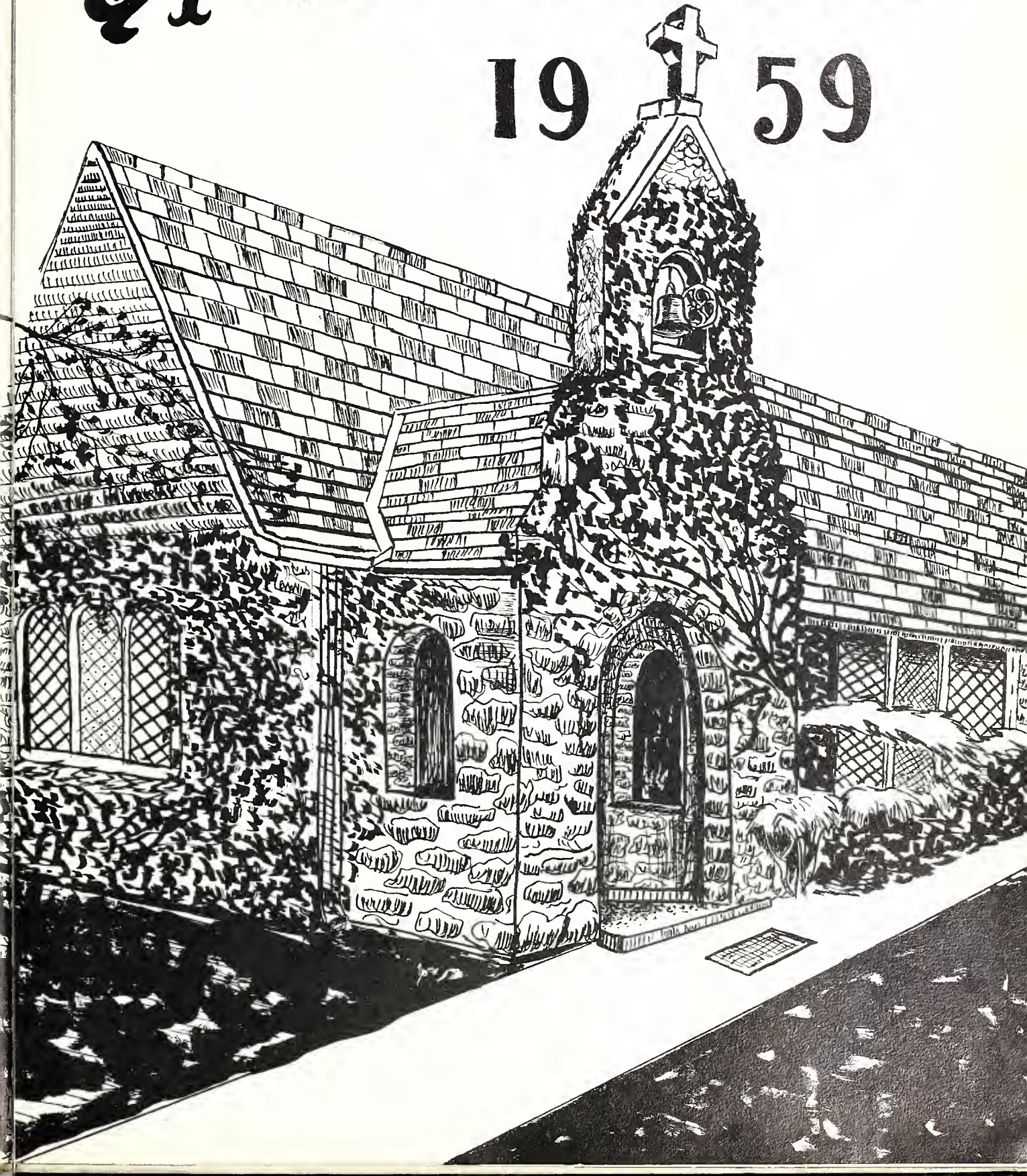
WHEN THE SNOW FELL





# Faculty

19 1 59







## PRESIDENT'S MESSAGE

Dear Senior Class:

Please accept my sincere congratulations as you prepare to join the ranks of many loyal Alumni of Saint Augustine's College. You have wrought well! You have undergone spiritual, intellectual, and physical training. The Faculty and Staff have striven to inculcate in you those high ideals of Christian education that are so indispensable to the well-rounded citizen.

Keep ever before you the "Two Great Commandments."

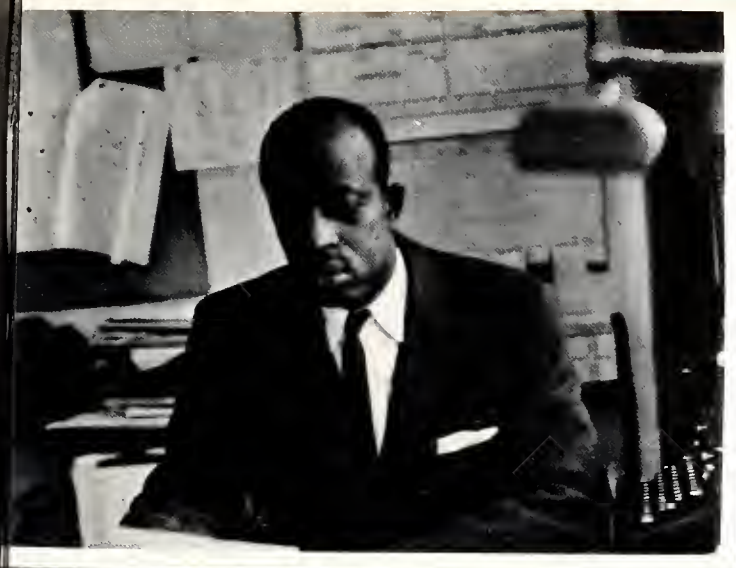
Best wishes.

Very truly yours,

*James A. Boyer*  
James A. Boyer,  
President

JAB:mdv





## DEAN'S MESSAGE

To the Members of the Class of 1959

I wish to commend you for your efforts for bringing into fruition this excellent yearbook. I am sure that the hardships and sacrifices encountered or the fellowship established in reaching this goal will all in the end tend to make you a more worthwhile contributing member of our society.

As you leave these hallowed walls of Saint Augustine's, I hope you will carry with you renewed vigor and a greater determination to uphold her high ideals and help extend the frontiers of knowledge. Remember, too, your Alma Mater needs your support—both moral and financial. Don't wait to get rich to help her, but as you become increasingly able, remember that Saint Augustine's got you started along the way.

Best wishes.

*Prezell R. Robinson*  
Prezell R. Robinson, Dean

## REGISTRAR'S MESSAGE

Office of the Registrar  
To the Members of the  
1959 Graduating Class:

I wish to congratulate you upon your achievement in your respective fields.

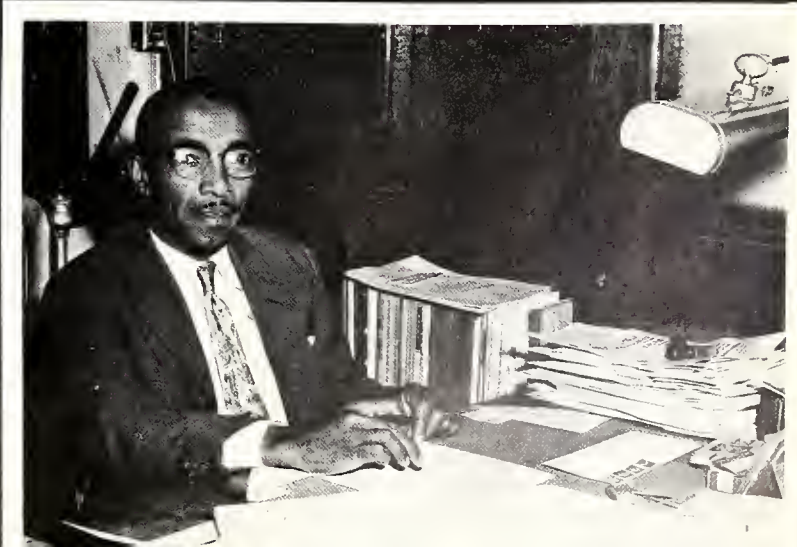
As alumni of Saint Augustine's College, it is my sincere hope that you will be found in the vanguard of all movements seeking to improve the welfare of mankind everywhere, that you will pledge yourselves to maintain exacting high standards in your respective community life, and that you will manage well the circumstances which you encounter day by day. Most of all, I sincerely hope that you will continue your education in order that you may continue to grow in wisdom, in understanding and in usefulness.

With best wishes, I remain

Sincerely yours,

*Igal E. Spraggins*

Igal E. Spraggins  
Registrar





**JOHN M. HOLLOWAY**  
Business Monoger, B.S.C.



**REGINALD L. LYNCH**  
Assistant Dean, B.A., M.A.



**THE REV. JOSEPH N. GREEN, JR.**  
College Choploin  
A.B., S.T.B.

## FACULTY



**IRENE L. DICKENS**  
Dean of Women, B.A.



**CHRISTOPHER C. GRAY**  
Dean of Men, B.A., B.D.



**SELEAH B. CLARK**  
Residence Hall Directress  
B.A.



**AMANDA F. GARRIS**  
Residence Hall Directress  
B.A.

**MAUDE P. SMITH**  
Residence Hall Directress



**PURDIE ANDERS**  
Director of Publicity  
B.A., M.S



**MURIEL B. WALKER**  
Head Librarian, M.S.







**JO INA DELANEY**  
Handcrafts, B.A., M.S.



**IRENE E. WINGATE**  
Business, B.S., M.A.



**MABEL B. WRIGHT**  
Commerce, B.S.C., M.A.

## FACULTY



**RICHARD E. BALL,**  
Business, B.S., M.B.A., LL.B.



**CHARLES H. McLENDON**  
Education, B.S., M.A.



**GORDON L. WEST**  
Education, B.S., M.A.



**DORIS E. BALL**  
Elementary Education  
B.S., M.A.

**MARCUS H. BOULWARE**  
English, A.B., M.A., Ph.D.

**ANNE P. TOLIVER**  
English, A.B., M.A.

**JULIA B. DELANY**  
Speech and English  
B.A., M.A.





**LULU H. ROBINSON**  
English and Bible  
B.S., M.R.E.



**JOHN L. COPELAND**  
English and French  
A.B., M.A.



**ERNESTINE B. SAUNDERS**  
French and German  
B.A., M.A.

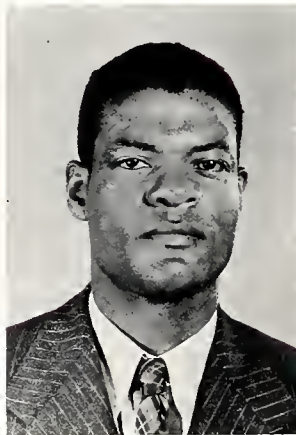
## FACULTY



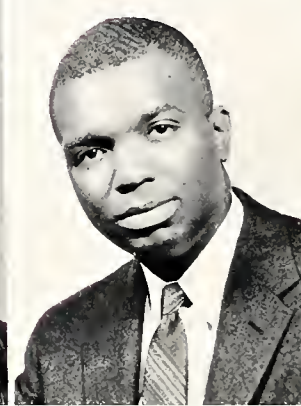
**MARGARET B. BUGG**  
Greek, B.A.



**ELMER C. SCHWERTMAN**  
History, B.A., M.A., Ph.D.



**JAMES H. BOYKIN**  
Political Science, B.A., M.A.

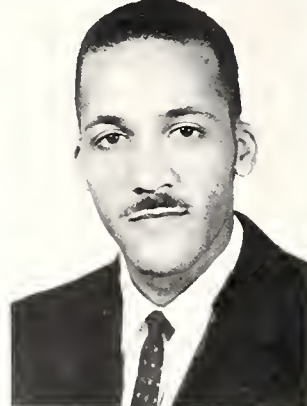


**THOMAS A. THORNLEY, III**  
Music, B. Mus.

**ALFRED W. GRAUER**  
Music, B.M., B.S., M.A.



**EDWARD F. RAYFORD**  
Music, B.A.



**CARRIE Z. MATTHEWS**  
Assistant Registrar, B.S.C.







**PANDORA Y. DURHAM**  
Secretary and Switchboard  
Operator  
Certificate in Typing and  
Shorthand



**CARL W. SMITH**  
Assistant Director of  
Counseling and Guidance  
B.A.



**JOSEPHINE F. GILES**  
Secretary to Director of  
Public Relations  
Certificate in Typing and  
Shorthand

## FACULTY



**LEOLIA SPAUGH**  
Director of Subsistence, B.A.



**IDA H. BOYKINS**  
Supervisor of College Inn  
B.A.



**BERNICE B. TAYLOR**  
Superintendent of Grounds  
B.S.



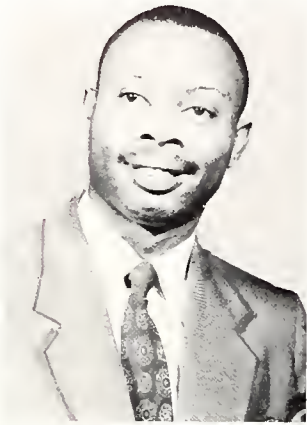
**JOHNNY ALSTON**  
Assistant Director of  
Subsistence

**MILLIE D. VEASEY**  
Secretary to the President  
B.A.

**MARGARET M. WALLACE**  
Secretary, B.A.

**YEOLA S. SCIVOLLY**  
Secretary to the Business  
Monoger, Certificate





**RICHARD B. MATTHEWS**  
Mathematics, B.S., M.S.

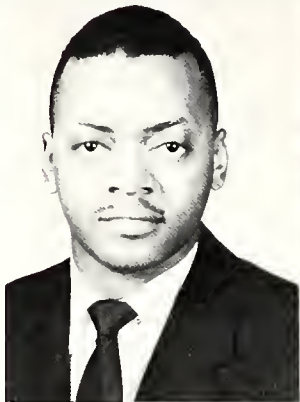


**LILLIAN P. CUMMINGS**  
Chemistry, B.S., M.S.

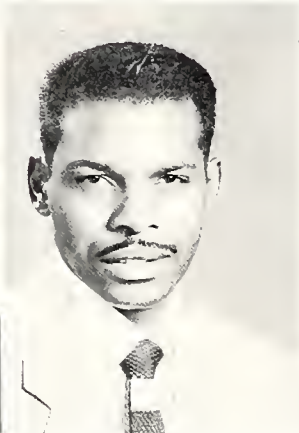


**NIRMAL K. SINHA**  
Sociology  
B.A., M.A., M.S., Ph.D.

# FACULTY



**GEORGE R. WALKER, JR.**  
Physical Education  
B.S., M.S.



**JESSE CLEMENTS**  
Physical Education, B.A.



**ROBERT H. JACKSON**  
Physical Education  
B.S., M.P.E.



**OPHELIA M. IRVING**  
Assistant Librarian  
B.A., M.A.

**CATHERINE H. WINTERS**  
Assistant Librarian, M.L.S.



**MARGARET A. GLASCOE**  
Supervisor of Laundry, B.A.



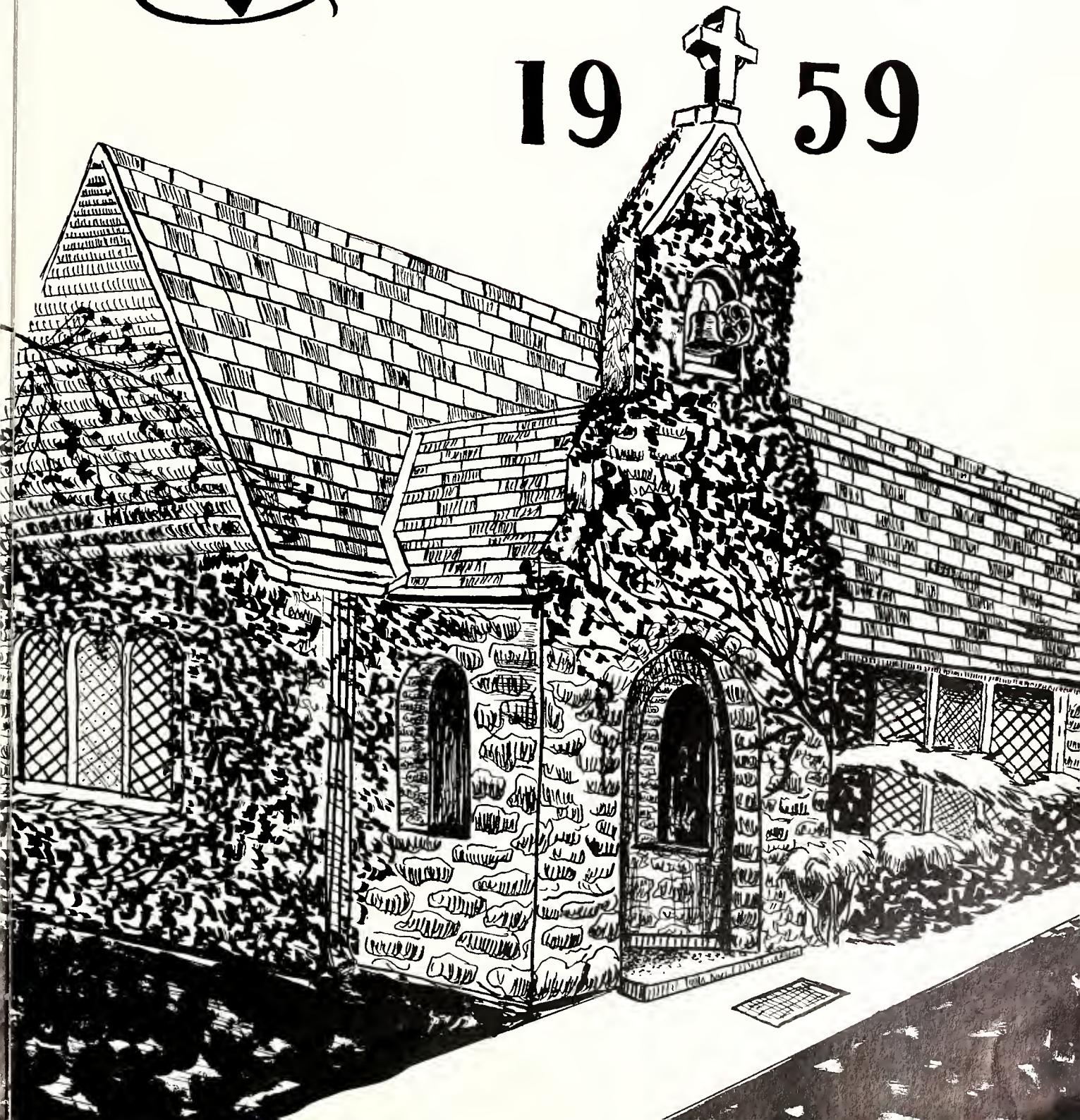
**RUTH B. WALKER**  
Assistant Registrar, B.A.





# Seniors

19 † 59





# CLASS HISTORY

On September 13, 1955, 138 proud, but mature young men and women registered at Saint Augustine's College as Freshmen. Like freshmen usually are, green is exactly what these freshmen were not. We adjusted ourselves gracefully and quickly. As the year began to move onward, we advanced accordingly. Class officers elected to lead us were: President, Robert Royster; Vice-President, Jacquelyn Johnson; Secretary, Pocahontas Jones; Assistant Secretary, Jane Blakely; and Treasurer, William Woods. Chosen to represent us at Homecoming and other similar events during the year were Yvonne Hart and Jane Blakely, Miss Freshman and the freshman attendant to Miss Homecoming.

Thelma Becton, Stafford Sweeting, and George Flemming represented us on the Student Council. Freshmen in the dramatics club who made outstanding performances were Patricia Briscoe, Richard Lacey, and Theodore Catchings. We gave to the choir, Arline Tilley, Jane Blakely, Helen Braxton, Mary Williams, Jacquelyn Johnson, Gladys Ford, Joseph Gray, Walter Gilford, Theodore Catchings, Richard Lacey and Marlon Poitier. Never could we leave out those who represented us so well in sports. In football, Jesse Lucious, Mark Harvey, Freddie Davis, Joseph McNeil, and Lester Spease. In basketball, Albert Stirrup, Robert Hicks and Freddie Davis. A number of us pledged sororities and fraternities our second semester. With our class being well represented on the dean's list both semesters, the door of our freshman year closed quietly.

With the turning of the leaves in September 1956, we returned as Sophomores. As always happens, we lost some members but gained others to replace them. We started the year with a bang. Class officers were: Stafford Sweeting, Joseph Gray, Pocahontas Jones, Helen Braxton, and Theodore Barnes. Student Council members were Tal-

madge Hunt, Thelma Becton, and Helene Spencer. Again we were well represented in all phases of sports and the college choir. Patricia Briscoe was chosen "Miss Sophomore Class", attended by Thelma Becton and Opal Boyd. Mildred Tetterton was Sophomore attendant to Miss St. Augustine's. Also to be recognized is Yvonne Hart who was chosen Sweetheart of Omega Psi Phi Fraternity. As the year passed on, we didn't seem to mind because we were excited and anxious to see what it would be like to be Juniors. As the summer passed, and September 1957 finally arrived, we returned to Dear Ole St. Augustine's. Again we lost and gained some classmates. Making this adjustment, we progressed rapidly. This was to be one of our best years. We started the year off under the leadership of our capable officers, Joseph Gray, Theodore Barnes, Helene Spencer, Pocahontas Jones, and Stafford Sweeting. We had big plans in mind with the Junior-Senior prom coming up as the main event. Homecoming was again a gala event. Juniors who took special part in the activities besides the members of our class on the football team were Ann Wilson, Miss Junior Class attended by Lena McLean, Barbara Ellis, and Edwinna Wilson. Yvonne Hart was again chosen Miss Omega Psi Phi and Pocahontas Jones, Miss Alpha Phi Alpha. Other interesting features during the year included the annual meeting of the North Carolina Student Education Association at which two of our very own were chosen President and Secretary. They were George Flemming and Helene Spencer, respectively. Honor Societies anyone: Our class was well represented. Theodore Barnes, Thelma Becton, Joseph Gray, and Delores Rogers were initiated into Alpha Kappa Mu Honor Society. Into Beta Kappa Chi were Joseph Gray. Clinton Dugger and Harriet Malone were initiated into Sigma Rho Sigma, and Jane Blakely, Hel-



# CLASS HISTORY

ene Braxton, Gladys Ford, Walter Gilford, and Delores Rogers were initiated into Phi Kappa Alpha. Mary Burnette and J. Kenneth Major, Jr., represented us at the North Carolina Student Legislature Assembly. The Junior-Senior prom climaxed our year, and surely it was not one that will be soon forgotten. With so much excitement, the year soon ended, and we were slowly nearing our goal. Expectantly, we awaited our return in September 1958. As was expected, the summer seemed to pass slowly because we were so anxious to return. Quite a few of us were lucky enough to work together during the summer, but the old familiar excitement of seeing each other was still in the air when we returned as sophisticated seniors. Right away, the class started work, led by Joseph Gray, Theodore Barnes, Helene Spencer, Thelma Becton, and Marlon Poitier as editors, and George Flemming as Business Manager. Again at Homecoming we were represented everywhere. Charles Boler was captain of the 1958-59 FALCONS. Others on the football team were Mark Harvey, Joseph McNeil, Freddie Davis, Jesse Lucious, Marion Brown, Lester Spease, and Albert Huey. Pocahontas Jones reigned beautifully as Miss Saint Augustine's. As the floats passed, seniors were everywhere. On the senior class float were Arline Tilley, Dorothy Cooke and Harriet Malone. On the Omega-Delta float were Yvonne Hart and Thelma Becton, and on the Alpha-AKA float rode Helene Spencer and Barbara Thomas. The choir toured the southern belt, all the way to Miami, Florida. Seniors attending were Gladys Ford, Barbara Thomas, Jane Blakely, Harriet Malone, Mary Williams, Helen Braxton, Irene Hill, Wanda Copeland, Joseph Gray, Theodore Catchings, Walter Gilford, Richard Lacey, and Marlon Poitier. Helene Spencer reigned as May Queen with senior attendants Jane Blakely and Naomi Crandol. Ben-

jamin Redmond did a wonderful job of keeping us well informed of the news. He was Editor of THE PEN, our school paper. Catherine Arline was chosen to represent our class at the Student Legislature. Theodore Barnes, Joseph Gray, Clinton Dugger, Mary Burnette, Harriet Malone, Barbara Thomas and Robert Taylor were inducted into Who's Who in American Colleges and Universities.

At prom time, our own Miss Senior Class, Arline Tilley and attendants Thelma Becton, Dorothy Cooke, and Harriet Malone took a bow. The leadership in our class was outstanding in all respects and all organizations. These are just a few of the organizations that had senior presidents:

Student Council	Clinton Dugger
College Choir	Joseph Gray
Alpha Kappa Mu	
Honor Society	Delores Rogers
Beta Kappa Chi	Joseph Gray
Phi Kappa Alpha	Delores Rogers
Sigma Rho Sigma	Clinton Dugger
Alpha Phi Alpha	Walter Gilford
Delta Sigma Theta	Thelma Becton
Kappa Alpha Psi	Charles Young
Alpha Kappa Alpha	Mary Burnette
Phi Beta Sigma	George Flemming
Altar Guild	Maxine McKenzie
Big Sister's Club	Thelma Becton
Inter-dormitory Council	Patricia Briscoe
N. C. Student N. E. A.	George Flemming
Pan-Hellenic Council	Mark Harvey
Dramatics Club	Richard Lacey

Certainly we are happy to reach our goal, but we must say that the four years slipped past almost before we had time to realize it. We truly hope that we have given to St. Augustine's as much as we will take with us when we depart from these familiar grounds where we got our start in life for our individual professions.

Class Historian, Thelma R. Becton

# SENIOR CLASS OFFICERS

President  
**Joseph W. Groy III**

Vice-President  
**Theodore Barnes**

Business Manager  
**George Flemings**

Not Shown:

Secretary  
**Helene Spencer**

Assistant Secretary  
**Thelma Becton**

Treasurer  
**Jesse Lucious**





# A PRAYER FOR GRADUATES

O Lord of all learners and all teachers, fountain and source of all wisdom, all knowledge and all truth; Grant that being nourished by the healthful spirit of thy grace, upon harvest we may yield the same fruits in hundred fold; Make us an instrument of thy love, wisdom, knowledge, and truth; May we in our chosen walks of life, serve with all virtue. Grant that in our being instructors, we may instruct in the way of truth and beauty; that in our being ministers, we may minister in all humility; that in our being doctors, we may doctor in humbleness of heart; that in our being nurses, we may nurse in loving kindness and care; and, in our being lawyers, we may practice the true laws of all humanity; Bless us in our several callings, Oh Father of all professions and humanity.

And now great teacher and master, grant us wisdom, grant us courage for the living of these days; Bless us and guide us as we graduate from school life to life's school; Preserve our going out and our coming in from this time forth and for evermore; for the sake of Him who graduated from a life of human quest to a life of all and everlasting wisdom, Jesus Christ, thy Son, our Lord. Amen.

J. Kenneth Major, Jr.

CATHERINE ARLINE  
Sociology—B.A.

Social Science Club, Pyramid Club, Student NEA, Church School Teacher, Pen Staff, Dramatic Club, Big Sisters Club, Ushers Guild, Social Committee.



THOMAS A. BANKS  
Chemistry—B.S.

Natural Science Club.

THEODORE BARNES  
Business Education—B.A.

Vice-president of Senior Class, Alpha Kappa Mu, Pan-Hellenic Council, NEA, Yearbook Staff, Canterbury Club, Campus Calendar, Who's Who, Phi Beta Sigma Fraternity.



## THE SENIOR

THELMA BECTON  
Business Education—B.A.

Alpha Kappa Mu, NEA, Delta Sigma Theta Sorority, Altar Guild, Student Council, Pan-Hellenic Council, Pen Staff, Annual Staff, Big Sister's Club, Canterbury Club, Church School Teacher, Campus Calendar.



HERBERT BARROW  
General Science and Biology—B.S.



JANE B. BLAKELY  
Music—B.A.

Delta Sigma Theta Sorority, Phi Kappa Alpha, NEA, Big Sister's Club, Charm Club, Chair.



CHARLES BOLER  
Physical Education—B.A.  
Football, Track, Member of N.B.A.



ALICE BOWEN  
Business Education—B.A.  
Canterbury Club, Big Sister's Club,  
NEA.

HELEN BRAXTON  
Music—B.A.

Alpha Kappa Alpha Sorority, Phi  
Kappa Alpha, Altar Guild, Student  
NEA, Big Sister's Club, Charm Club,  
Annual Staff, Pan-Hellenic Council,  
Choir, Library Staff.



## CLASS OF 1959



PATRICIA BRISCOE  
Elementary Education—B.A.  
Pen Staff, Inter-dormitory Council,  
Dramatic Club, Big Sister's Club,  
Student NEA, Art Club.

WILMA J. BRYANT  
Physical Education—B.A.

Canterbury Club, Pen Staff, Altar  
Guild, Student NEA, Social Science  
Club, Big Sister's Club, Cheerleader.



LUCILLE BUNN  
Elementary Education—B.A.  
Canterbury Club, Altar Guild, Art  
Club, Big Sister's Club, Social  
Science Club, Dramatic Club, Charm  
Club.

MARY E. BURNETTE  
Elementary Education—B.A.

Alpha Kappa Alpha Sorority, Art Club, Big Sister's Club, Student NEA, Who's Who, Inter Dormitory Council, Student Council.



THEODORE CATCHINGS  
Pre-Med—B.S.

College Choir, Dramatic Club, Alpha Phi Alpha Fraternity, Natural Science Club.

DORIS CHAPMAN

Business Administration—B.A.

Big Sister's Club, Student NEA, Social Science Club, Art Club, Canterbury Club, Charm Club.



## THE SENIOR



EUNICE CLIFFORD  
Sociology—B.A.

Canterbury Club, Social Science Club, Big Sister's Club.

CECIL COBLE  
Social Studies—B.A.  
Social Science Club, Student NEA.



DOROTHY COOKE  
Business Administration—B.A.

Big Sister's Club, Canterbury Club, Student NEA, Altar Guild, Pen Staff, Inter - Dormitory Council, Charm Club, Social Science Club.



NAOMI CRANDOL  
Biology—B.S.

Social Science Club, Big Sister's Club, Altar Guild, Canterbury Club, Student NEA Pyramid Club.



RUTH CRANDOL  
Business Administration—B.A.

Big Sister's Club, Canterbury Club, Charm Club, Social Science Club, Student NEA.

BOBBY CROSSLING  
Mathematics—B.S.

Sphinx Club, Social Science Club, Student NEA.



## CLASS OF 1959



FREDDIE L. DAVIS  
Physical Education—B.A.

Football, Koppa Alpha Psi Fraternity.

HOMER DEBNAM  
Music—B.A.

Student NEA.



EARL DIXON  
Biology—B.S.

Social Science Club, Student NEA.

CLINTON DUGGER  
Sociology—B.A.

Student Council President, Sigma Rho Sigma, Who's Who, President Veteran's Club, Canterbury Club, Social Science Club, Lay Reader.



MARTHA DUNN  
Elementary Education—B.A.

Student NEA, Charm Club, Zeta Phi Beta Sorority, Big Sister's Club.

BARBARA ELLIS  
Elementary Education—B.A.

Student NEA, Charm Club, Big Sister's Club.



## THE SENIOR

GEORGE FLEMMING  
Business Education—B.A.

State President Student NEA, President Phi Beta Sigma Fraternity, Business Manager of Senior Class, Canterbury Club, Pan-Hellenic Council, Campus Calendar.



LETITIA FIELDS  
Elementary Education—B.A.

Student NEA, Charm Club, Big Sister's Club.



GLADYS FORD  
Music—B.A.

Chair, Altar Guild, Canterbury Club, Student NEA, Phi Kappa Alpha, Big Sister's Club, Ivy Leaf Club.



MADLINE GARRISON  
Business Education—B.A.

Delta Sigma Theta Sorority, Student  
NEA, Canterbury Club, Big Sister's  
Club, Campus Calendar, Library  
Staff.



ALMETA GARY  
Elementary Education—B.A.

Student NEA, Charm Club, Big Sister's  
Club.

WALTER GILFORD  
Music—B.A.

Alpha Phi Alpha Fraternity, College  
Chair, Phi Kappa Alpha, Pan-Hel-  
lenic Council.



## CLASS OF 1959



REBECCA GOLDSTON  
Business Education—B.A.

Delta Sigma Theta Sorority, Student  
NEA, Charm Club.

JOSEPH GRAY  
Pre-Med—B.S.

President of Senior Class, President  
of College Choir, Alpha Kappa Mu  
and Beta Kappa Chi Honor Societies,  
Canterbury Club, Layreader, Natural  
Science Club, Alpha Phi Alpha Fra-  
ternity.



YVONNE HART  
Elementary Education—B.A.

Delta Sigma Theta Sorority, Omega  
Psi Phi Fraternity Sweetheart, Stu-  
dent NEA, Big Sister's Club, Canter-  
bury Club.

DELORES HARVEY  
Business Education—B.A.

Alpha Kappa Alpha Sorority, Big Sister's Club, Student Council, Dramatic Club, Student NEA.

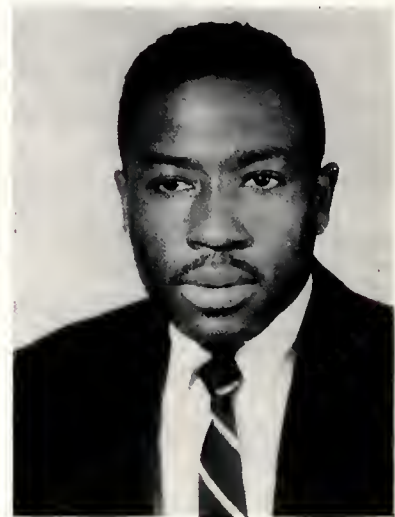


MARK HARVEY  
Physical Education—B.A.

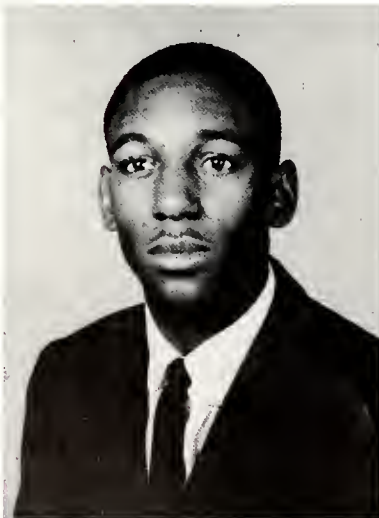
Kappa Alpha Psi, Football, Track, Athletic Council, Yearbook Staff, President of Pan-Hellenic Council.

ALGARAY HENDERSON  
Biology—B.S.

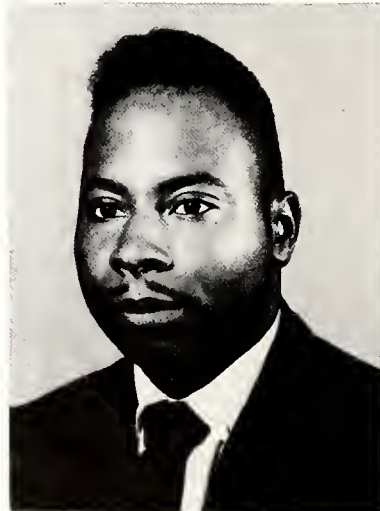
Student NEA, Social Science Club.



## THE SENIOR



ROBERT HICKS  
Physical Education—B.A.  
Student NEA, Basketball.



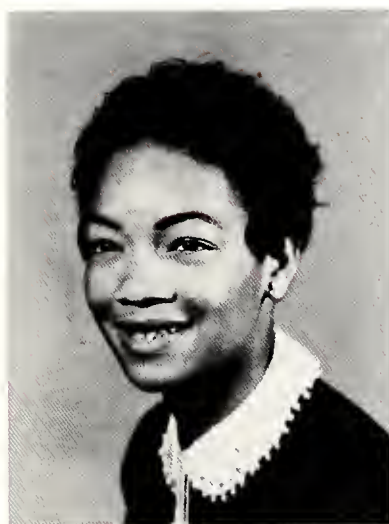
JIMMIE HOOKER  
Physical Education—B.A.  
Student NEA.



ALBERT HUEY  
Physical Education—B.A.  
Football, Basketball, Student NEA, Track.



TALMADGE HUNT  
Business Administration—B.A.  
Omega Psi Phi Fraternity, Student  
Council, Pen Staff, Student NEA.



CHARLOTTE JENKINS  
Physical Education—B.A.  
Alpha Kappa Alpha Sorority, Stu-  
dent NEA, Canterbury Club, Big Sis-  
ter's Club, Physical Education Club.

JEROME JONES  
Business Administration—B.A.  
Kappa Alpha Psi Fraternity, Bas-  
ketball.



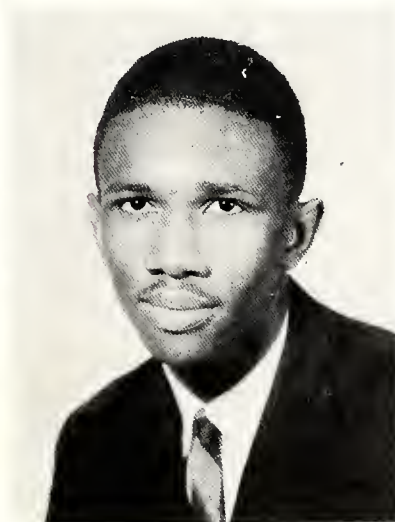
## CLASS OF 1959



POCAHONTAS JONES  
Business Education—B.A.  
Alpha Kappa Alpha Sorority, Miss  
"St. Augustine's" 1958-59, Big Sis-  
ter's Club, Alpha Phi Alpha Frater-  
nity Sweetheart, Pen Staff, Campus  
Calendar, Canterbury Club, Annual  
Staff, Yearbook Staff.

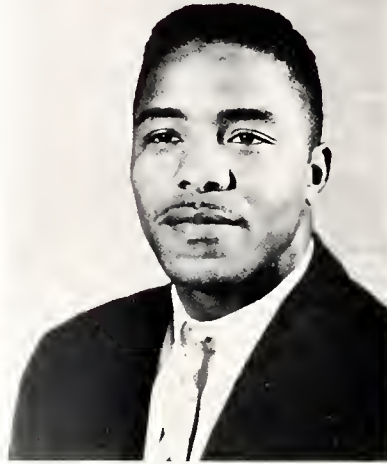
RICHARD LACEY  
Pre-Theological—B.A.

Editor "59" Falcon, President of  
Dramatic Club, College Chair, Can-  
terbury Club, Layreader, Social  
Science Club, Pen Staff, Alpha Phi  
Alpha Fraternity, Pan - Hellenic  
Council.



HARRY LEAZER  
Physical Education—B.A.  
Student NEA, Canterbury Club.

MARY LITTLE  
Elementary Education—B.A.  
Student NEA, Charm Club.



JAMES MADISON  
Physical Education—B.A.  
Student NEA, Physical Education  
Club, Veterans Club.

JESSE LUCIOUS  
Physical Education—B.A.  
Student NEA, Treasurer of Senior  
Class, Pen Staff, Scrollers Club,  
Physical Education Club, Football,  
Track, Yearbook Staff.



## THE SENIOR



JAMES K. MAJOR  
Pre-Theology—B.A.  
Layreader, Canterbury Club, Alpha  
Phi Alpha Fraternity, Social Science  
Club.

HARRIET MALONE  
Social Studies—B.A.  
Sigma Rho Sigma Honor Society,  
Alpha Kappa Alpha Sorority, Altar  
Guild, Big Sister's Club, Inter-dorm-  
itory Council, Social Science Club,  
Who's Who.

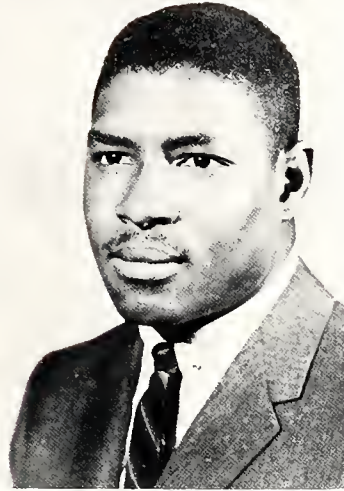


MAXINE MCKENZIE  
Sociology—B.A.  
Inter-dormitory Council, Canterbury  
Club, Altar Guild, Social Science  
Club.

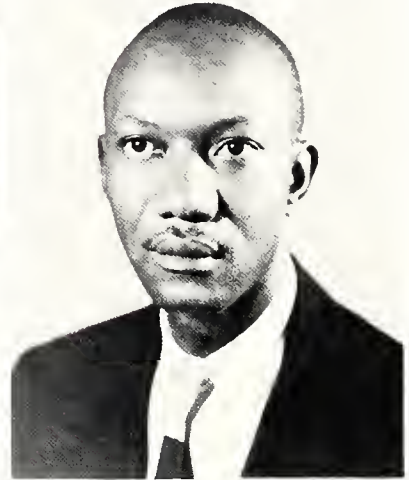


LENA M. McLEAN  
General Science—B.S.

Natural Science Club, Altar Guild,  
Student NEA, Big Sister's Club,  
Charm Club, Canterbury Club,  
Church School Teacher, Annual  
Staff, Library Staff.



HENRY MONTOGUE  
Physical Education—B.A.  
Student NEA, Physical Education  
Club, Social Science Club.



JOSEPH McNEIL  
Physical Education—B.A.  
Football, Kappa Alpha Psi Frater-  
nity, Physical Education Club.

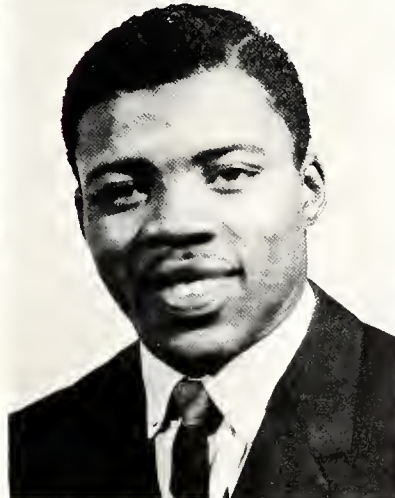
## CLASS OF 1959



NATHAN PERRY  
Biology—B.S.  
Kappa Alpha Psi Fraternity, Natural  
Science Club, Student NEA.



CECIL PERRY  
Mathematics—B.S.  
Kappa Alpha Psi Fraternity, Natural  
Science Club.



VELMA PERRY  
Elementary Education—B.A.  
Student NEA.

MARLIN S. POITIER  
English—B.A.

College Choir, Conterbury Club, Lay-  
reader, Student NEA.



NORETTE RAY  
Sociology—B.A.

Pyramid Club, Social Science Club,  
Conterbury Club, Inter-dormitory  
Council.

BENJAMIN REDMOND  
Business Administration—B.A.

Student NEA, Editor of Pen, Campus  
Colendor, Conterbury Club, Year-  
book Staff.



## THE SENIOR

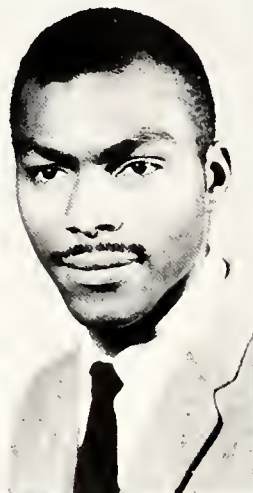


DELORES ROGERS  
English—B.A.

Alpha Kappa Mu and Phi Kappa  
Alpha Honor Societies, Student NEA.

WILLIAM ROGERS  
General Science—B.S.

Student NEA, Natural Science Club,  
Social Science Club.



GEORGE SANDERS  
Business Education—B.A.

Student NEA President.



SIMON SHORT  
Music—B.A.

Vice-president of College Choir, Student NEA, Canterbury Club, Veterans Club.



HELENE SPENCER  
Business Education—B.A.

Alpha Kappa Alpha Sorority, Secretary of State NEA, Big Sister's Club, May Queen 1958-59, Campus Calendar, Annual Staff, Social Committee, Class Secretary.

JEANETTE SWANN  
Elementary Education—B.A.  
Student NEA, Charm Club, Art Club.



## CLASS OF 1959

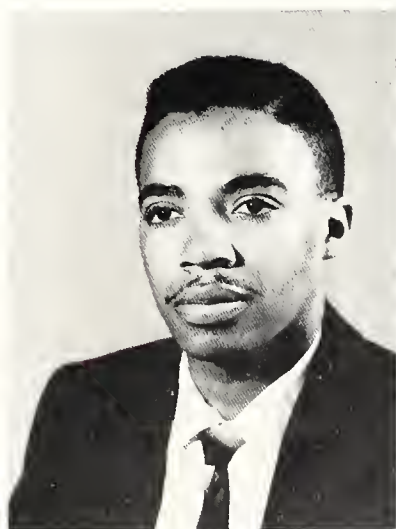
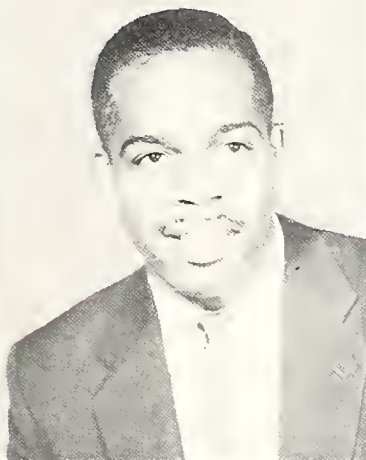


MURIEL SWANN  
Elementary Education—B.A.

Alpha Kappa Alpha Sorority, Student NEA, Charm Club, Art Club.

STAFFORD SWEETING  
History—B.A.

Layreader, Canterbury Club, Social Science Club, Veterans Club.



ROBERT TAYLOR  
English—B.A.

Student NEA, Phi Kappa Alpha and Alpha Kappa Mu Honor Societies.

BARBARA THOMAS  
Physical Education—B.A.

Alpha Kappa Alpha Sorority, Big Sister's Club, Who's Who, Charm Club, Choir, Student NEA, Interdormitory Council, Physical Education Club.



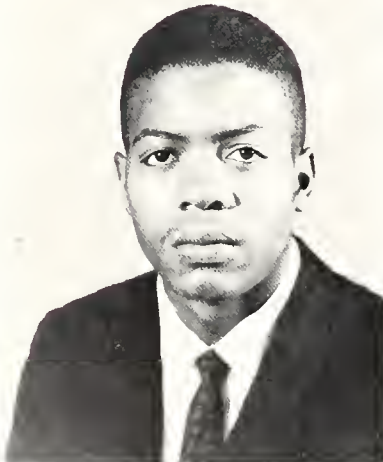
ARLENE TILLEY  
Biology—B.S.

Alpha Kappa Alpha Sorority, Natural Science Club, Big Sister's Club, Canterbury Club, Choir, Charm Club, Yearbook Staff, Student NEA.

DELOIS WADE  
French-English—B.A.  
Student NEA, Charm Club.



## THE SENIOR



BOBBY WHITAKER  
Physical Education & Biology—B.S.  
Student NEA.

ANNIE WILKS  
Elementary Education—B.A.  
Art Club, Canterbury Club, Student NEA, Big Sister's Club, Charm Club.



MARY L. WILLIAMS  
Physical Education—B.A.  
Student NEA, Chair, Big Sister's Club.



MYRTLE WINSTEAD  
Elementary Education—B.A.

Delta Sigma Theta Sorority, Student NEA, Big Sister's Club, Canterbury Club, Art Club, Social Science Club, Charm Club.



EDWINNA WILSON  
Biology—B.S.

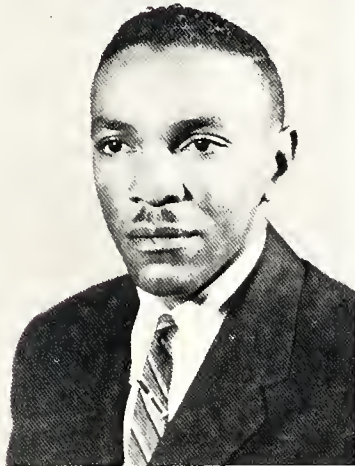
Natural Science Club, Charm Club, Pyramid Club, Annual Staff, Big Sister's Club, Student NEA.

ANN WILSON  
Elementary Education—B.A.

Student NEA, Penn Staff, Big Sister's Club, Art Club, Charm Club, Annual Staff, Social Science Club,

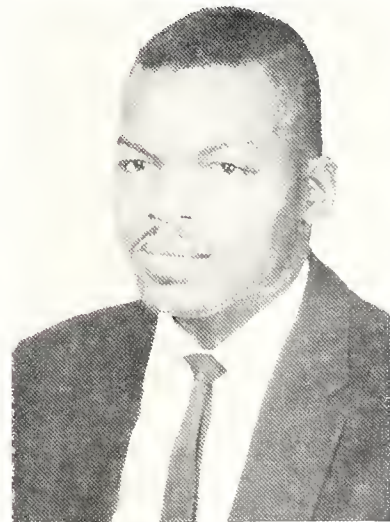


## CLASS OF 1959



WILLIAM WOODS  
Mathematics—B.S.  
Student NEA, Veterans Club.

LETTIE YARBOROUGH  
Elementary Education—B.A.  
Charm Club, Art Club, Student NEA.



HUBERT ROGERS  
Elementary Education—B.A.  
Art Club, Social Science Club, Student NEA.



MISS SENIOR





# CLASS POEM

Even if we knew at the time, saying, This  
is a time I will remember,  
It would not be the strong time, the long  
times, not even the  
rattled days, the everything-went-  
wrong-today times.

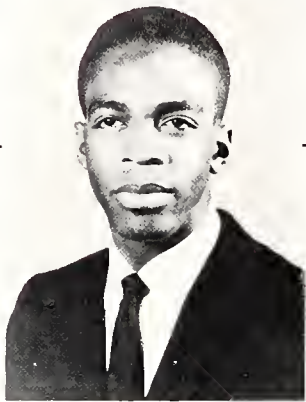
It might be much committed, built up big,  
and big bulletin-boarded,  
And still not be the gold time, the have  
and hold, the good old  
told long after, and told, and told, and  
told-again time.

It's probably the anytime, the many times,  
the time and time again time,  
The no particular time at all and I can't  
remember-when time  
that you'll remember the best, some after-  
ten, now-and-then time.

Some day a coat recalls, or by the way you  
wore your hair, or trees bare,  
But, not a he and she were there, not a  
who and who was there time,  
a really-care time, and I remember-  
exactly-where time.

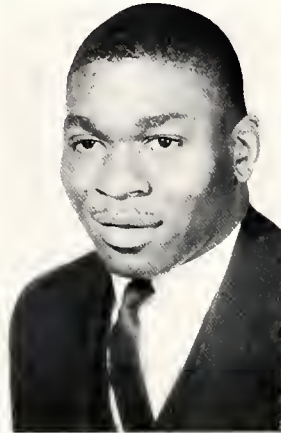
The times that we remember longest are  
the times we never knew we knew.  
The in-the-meantimes, the before and  
after teens times, the seen  
and lost, the tick click quick, the in-  
between times.

THE SENIOR SUPERLATIVES



Most Studious

Most Poetic



Most Popular

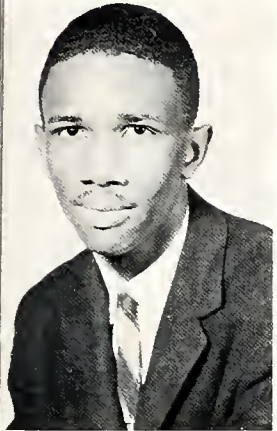


Most Musical





Most Dramatic



Friendliest



Most Cooperative

Best All-Around



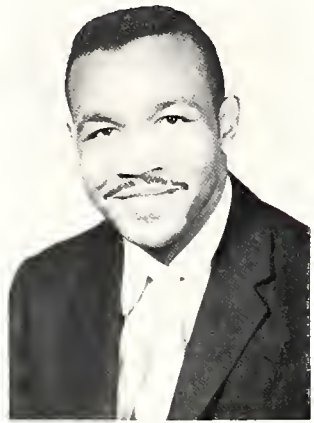
THE SENIOR SUPERLATIVES

THE SENIOR SUPERLATIVES



Most Dignified

Neatest



Most Handsome

Wittiest



Most Talkative





Best Dressed



Most Artistic



Most Attractive

Most Likely to Succeed

Quietest



THE SENIOR SUPERLATIVES

# CLASS WILL

We, the graduating class of 1959, being of sound mind and memory, do make, publish, and declare this our last will and testament. To our dear Alma Mater, we pledge our love and devotion. To the administration, faculty, and staff we bequeath our sincere love and appreciation for the guidance, kindness and justice you so graciously have given us.

To the Junior Class, our succeeding and rightful heirs, we leave our position as seniors, our wisdom, our scholastic ability, our insight in hopes that they will be used with much dignity and honor.

To the Sophomore Class, adhere no matter what obstacles might confront you.

To the Freshman Class, we leave the courage and endurance which you will need to travel the long road that leads to the senior crest.

I, **Clinton Dugger**, will my place in the social stratification of Sociology courses to Geneva Wilkins.

I, **Pocahontas Jones**, will to any deserving junior girl my position as "Miss Saint Augustine's" and my ability to meet my future husband on the campus of Saint Augustine's to my Soror, Cora Brooks.

**Wilma Bryant** leaves to Herman Scott and George Watson her devoted love.

I, **Patricia Briscoe**, will my position in the Dramatics Club to my homegirl, Helen Gordan, and hope she will enjoy it as much as I did.

I, **Edwinna Wilson**, will to my little sister, Clarice Pridgen, my coolness and my place in the Pyramid Club. To James Bridges, all of my love.

I, **Wanda Copeland**, will to Lillian Daniels my room in Tuttle Building. To Lamar Brown, my never dying love.

I, **Lena M. McLean**, will my position in the Library to Erma Knight. To Loretta Johnson, my promptness.

I, **Albert Huey**, will to Monty Frizell the success of keeping a cool head; and to Fred Jones, those wonderful hands of mine.

I, **Naomi Crandol**, will my ability to make friends to Mary Branch and Angela Moore. To James Bridges and George Jones, my home in the Science Building.

I, **Mary Burnette**, will to all Elementary Education Majors my ability to burn midnight oil in order to reach a successful goal. To Lillian Daniels, my position in Alpha Kappa Alpha Sorority.

I, **Joseph McNeil**, will to my two homeboys, Lassiter and Roundtree, my position on the football team; and to James Piggie, my love for Kappa Alpha Psi.

**Doris Chapman** wills to Francis Duck her love for St. Augustine's College; and her seat in Mr. Ball's Economics class to Vestie Smith.

**Dorothy Cooke** wills to her homegirl, Patricia Fields, her room in Tuttle Building.

**Annie Wilkes** wills her pleasing personality and ability to get along with her room-



# CLASS WILL

mates to Nancy Hollins. Gwendolyn Evans and Estelle Hall; she wills to Curtis Murray her sincere love.

**Gladys Ford** wills to Wilba Willups her undying love for Saint Augustine's Choir.

I, **Charlotte Jenkins**, will to my special little sisters, Carolyn Upperman and Donna Logan, my place on the Dean's List; to Walter Puryear, my admiration forever.

**Madeline Garrison** wills her place in Delta Sigma Theta to her little sister, Lynette Moore; and her love for Saint Augustine's College, to her homegirl, Juanita M. Williams.

**Herbert Barrow** wills to Herbert Burrows the ability to get the correct mail.

I, **Myrtle Winstead**, leave to one of my instructors, Dr. E. C. Schwertman many thanks and appreciation for guiding me and giving me all advice and instructions in his social studies classes. To Hubert Avery my "Undying love."

**Martha Dunn** wills her undying love for Zeta Phi Beta Sorority to all her sorors; and to Mrs. Ball, her heartfelt thanks for the faith and encouragement in assisting her in the field of Elementary Education.

I, **Harry Leazer**, will James Dean the ability to have a steady girl.

I, **Nathan Perry**, will to all the Kappas that are left behind the ability to keep their most noble brotherhood with all the brothers of Kappa Alpha Psi, and my sincere thanks to all the people of St. Augustine's

College who have helped me through my college years.

To Dr. Schwertman, **Catherine Arline** leaves her deepest appreciation and gratitude for his constructive guidance and kindness to her in social studies. To Charles Young, she leaves her position in the Social Science Club; and to her homegirl, Lynette Moore, luck and success always.

**Thelma Becton**, wills to her little sister, Ramona Dillard, her position at St. Augustine's College; to Mrs. I. E. Wingate and the Business Department much luck and success in all their endeavors, and many thanks to Mrs. I. E. Wingate; to Ethel Wooten her position in Delta Sigma Theta Sorority; and to all remaining sorors, courage to work hard that they might make Gamma Rho Chapter a success.

**Robert Hicks** wills to Carl Rice the ability to keep his mouth shut; to Spotwood, his position on the basketball team.

**Henry Montague** wills to Donald Thompson his best wishes in becoming an all-American football player next fall.

I, **Richard E. Lacey**, will my never dying love for Alpha Phi Alpha Fraternity to William Saunders, and my ability to go around in circles to Herman Scott; to Ann Sawyer, my love for "ALPHA"; and to Skip her daughter.

**Helene Spencer** leaves to all Education majors a sincere desire to make the Student NEA more than just a nome. To her soror,

# CLASS WILL

Jean Catchings, she leaves her position as secretary to Mr. McLendon, and a "Keep Off" sign to be worn by Herbert Burrows as a warning to all young ladies.

I, **Lucille Alice Bunn**, will to my sister, Sarah J. Bunn, luck, ability and dignity, and hope that her Freshman year will be as enjoyable and productive as mine. To Paul Hampton I will my undying love for St. Augustine's College.

**Bobby Whitaker** wills Donzo Tomlinson his Be-Bop Cap because the red cap does not suit him. To Wallace Parham, the ability to keep I.P. from catching M.E.H.

**Almeta Gory** wills her speaking voice to Barbara Dunn. Harriet Malone wills to her little sister, Lillian Daniels, her place on the Dean's List and Who's Who. To Geneva Wilkins, her room in Tuttle Building.

To my little brothers Charles Willis and William Saunders, I, **Joseph Gray**, will a small portion of my love for Alpha Phi Alpha. To James Schumpert, my position in Beta Kappa Chi, and to the men in Atkinson Hall, the ability to keep their rooms as clean as 120.

To Ester Hayes, **Letitia Fields** wills her seat in chapel.

I, **Freddie L. "Joey" Davis**, will Linwood Sharpe number 82 and the ability to run.

**Mary L. Williams** wills her profound interest in the choir and her last smiles to her home girl, Dorothy Walker. She also wills her position in Physical Education classes to

Shirley Murrell.

**Yvonne Hart** wills to Ruth Haynes her position in Delta Sigma Theta Sorority.

**Ann Wilson** wills to her two homegirls, Ruth Haynes and Elizabeth Olds, room 19 in Tuttle Building. To her two little sisters, Barbara Chestnut and Vera Kirk, her love for Saint Augustine's.

To Hilda Dawson, **Delores Harvey** wills the ability to be "Miss Saint Augustine's College; and her love goes to Jerome Jones.

I, **Robert Taylor**, will my sincere thanks and appreciation to Mrs. Saunders and Mr. Lynch for their guiding me through my four years in college. To Geraldine Perry, I leave my ability to speak French. To any one who deserves it, I leave my place on the honor roll.

I, **Barbara Ellis**, will to my cousin, Margaret Hawkins, my ability to do my student teaching at the grammar school from which I graduated. To all other freshmen, I leave my ability to become a senior; and to all those who have helped me in my field, I give my sincere thanks.

In witness whereof, we, the class of 1959, do here-unto set our hands and seal this the 25th day of May, one thousand, nine hundred and fifty-nine.

Witnesses:

Helen Braxton

Lena McLean

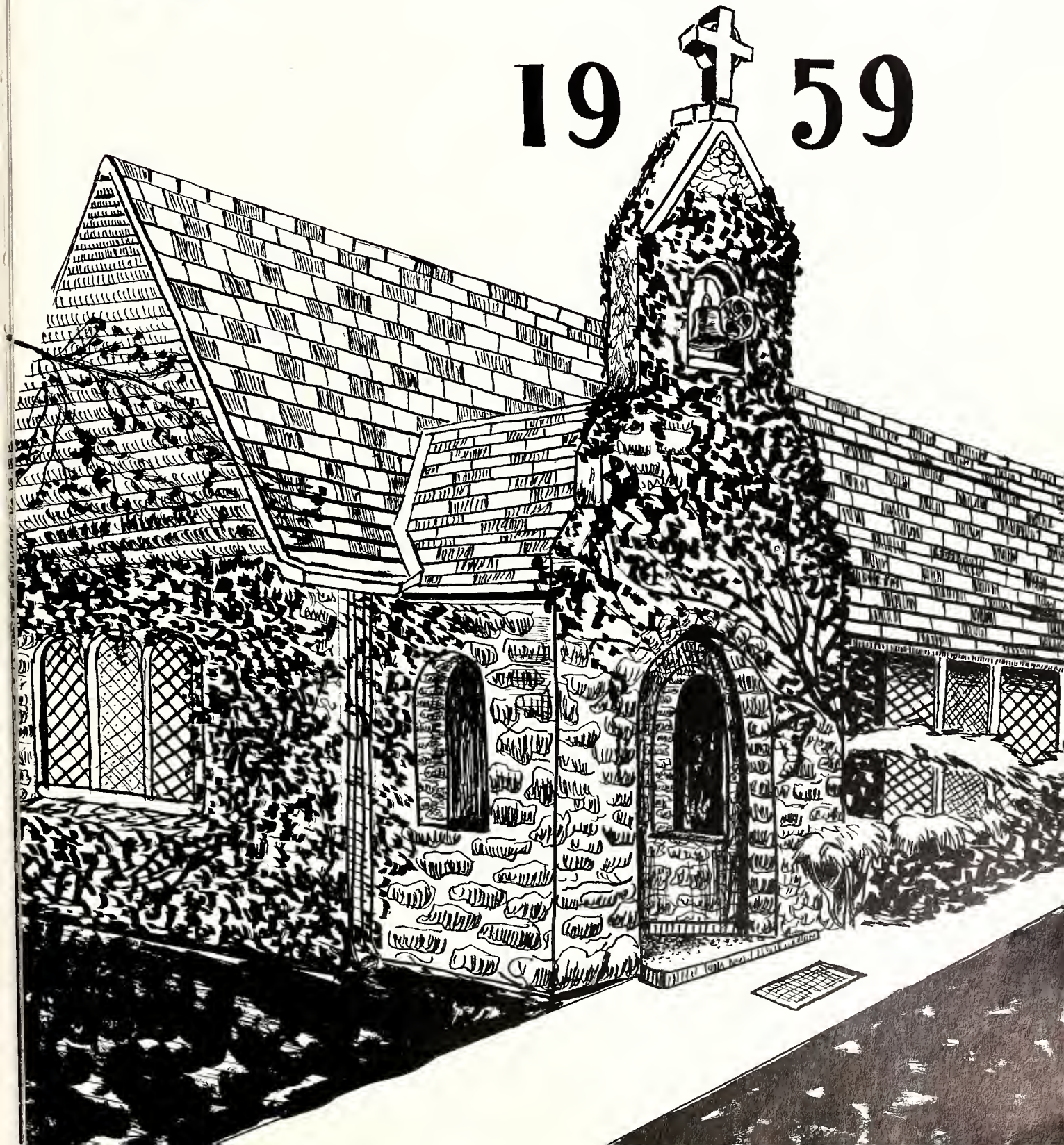
Ann Wilson

Edwinna Wilson



# Underclassmen

19 † 59





# JUNIOR CLASS OFFICERS

**Herman Scott**  
President

**Hilda Dowson**  
Secretary

**Harold Bing**  
Vice-President

**James Piggee**  
Treasurer

**Loretto Johnson**  
Assistant Secretary

**Cornelius Freeman**  
Business Manager





# JUNIORS 1959



Geraldine Avery  
Hubert Avery  
Harald Bing



Charity Bingham  
Vandary Baney  
James Bridgers



Cara Brooks  
Herbert Burrows  
Jeon Catchings

Edward Craig  
Henry Cunningham  
Lillian Daniels  
Kenneth Davie



Patricia Davis  
Hilda Dowson  
Jashua Edwards  
Jean Elliott



# THE JUNIOR

Bettie Ellis  
 Nomon Flournoy  
 Cornelius Freemon



Monty Frizzell  
 Grace Gray  
 Morgoret Hortsfeld



Ruth Haynes  
 Mory Hinton  
 Thelmo Hudgins



Mildred Hunter  
 Thomas Jockson  
 Vero Jenkins  
 Loretta Johnson



Richard Johnson  
 Frederick Jones  
 Hozeline Jones  
 Helen Jordon



# CLASS OF 1959



Walter Kenan  
Ermo Knight  
Reginald Landeau



Otis McNair  
Curtis Means  
Ranold Mitchell



Marvenie Maare  
Gladys Murphy  
Shirley Murrell

Geraldine Perry  
James Piggee  
Rachel Rayford  
Clara Reid



Nancy Rhice  
Emma Sanders  
James Schumpert  
Herman Scatt



# JUNIORS

## 1959

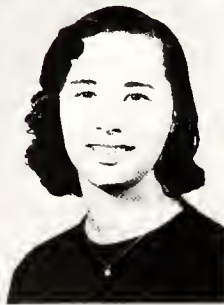
Linwood Sharpe  
Charles Smith  
Vestie Smith



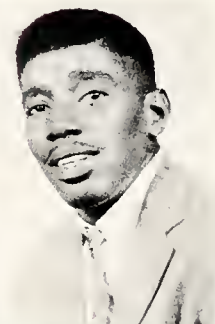
Bobby Stroman  
Yvonne Tatum  
James Taylor



Danold Thompson  
Martha Umstead  
William Vick  
Dorothy Walker



George Watson  
Geneva Wilkins  
Ethel Wooten  
Bernice Williams



Irene Williams  
James Wilson  
Dorothy Best  
Albert Cash



# SOPHOMORE CLASS OFFICERS

**George Johnson**  
President

**Borbara Brown**  
Secretary

**Robert Vaughn**  
Vice-President

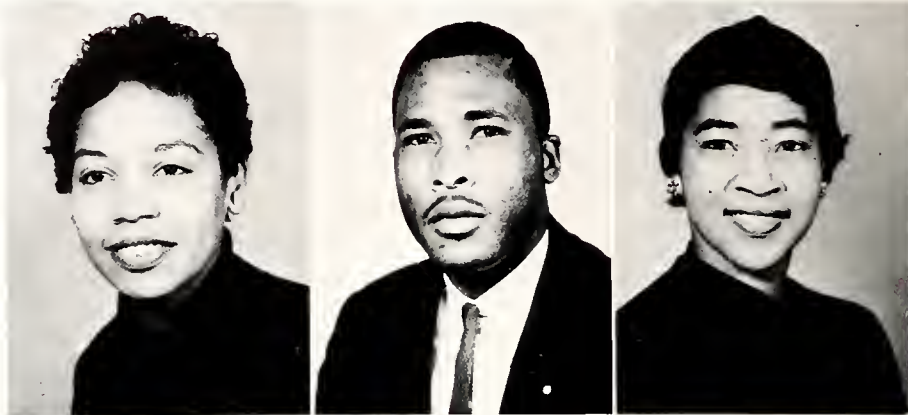
**Army Dee Little**  
Business Manager

**Curtis Riddick**  
Treasurer

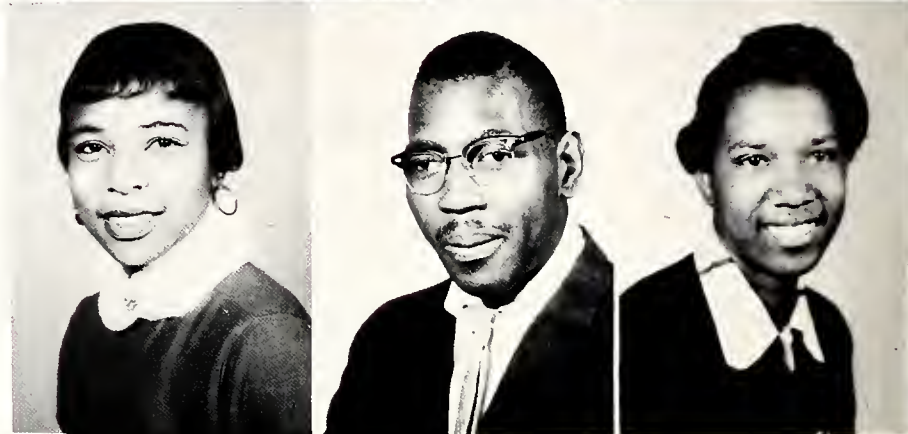


# THE SOPHOMORE

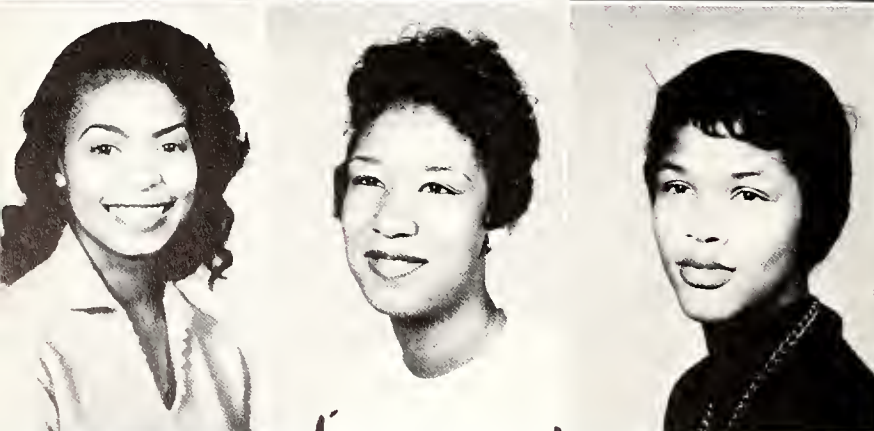
Shirley Baldwin  
 Wilfred Barry  
 Barbara Brawn



Willette Debose  
 Kenneth Echals  
 Gwendalyn Evans



Joyce Flowers  
 Shirley FASTER  
 Gloria Gardner



Lula Hagans  
 Estella Hall  
 Alice Hannibal



# CLASS OF 1959



Flora Horlee  
Sodie Harris  
Rebecca Harrison

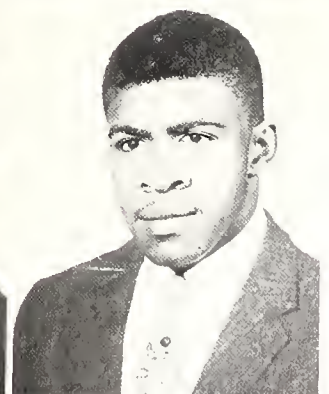


Curtis Hort  
Nancy Hollins  
Johnny Jackson

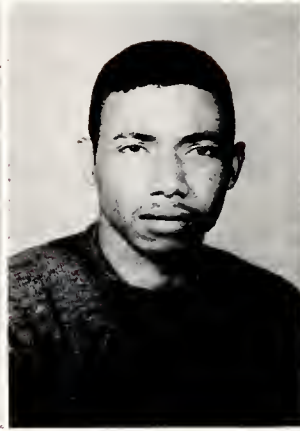
Gloria Johnson  
Janice Johnson  
Joyce Johnson



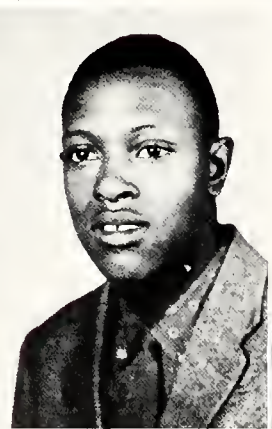
Vera Kirk  
Mory Moore  
Curtis Murrey



Omega Nixon  
 John Redfearn  
 Elventa Richardson



Ella Sampson  
 William Sonders  
 Ann Sawyer  
 Eddie Schumpert



Helen Tate  
 Robert Vaughn  
 Borbora Wolker



Lorene Williams  
 William Wright  
 Spottswood Bolling



# FRESHMAN CLASS OFFICERS

**Charles Haywood**  
President

**Doretha Jones**  
Secretary

**Claudia Thompson**  
Vice-President

**Juanita Marshall**  
Assistant Secretary

**Henry Moss**  
Treasurer







THE FRESHMAN CLASS





## INTELLECT AND BEAUTY TOO

Charles Haywood, their "Prexy" expounds.

-Carol Upperman poses in snow.

# FRESHMAN IN THE SPOTLIGHT

## THE FRESHMAN RECEPTION LINE





# FRESHMAN IN THE SPOTLIGHT



Dr. Patti aids them in a scientific endeavor.



At Art Exhibit

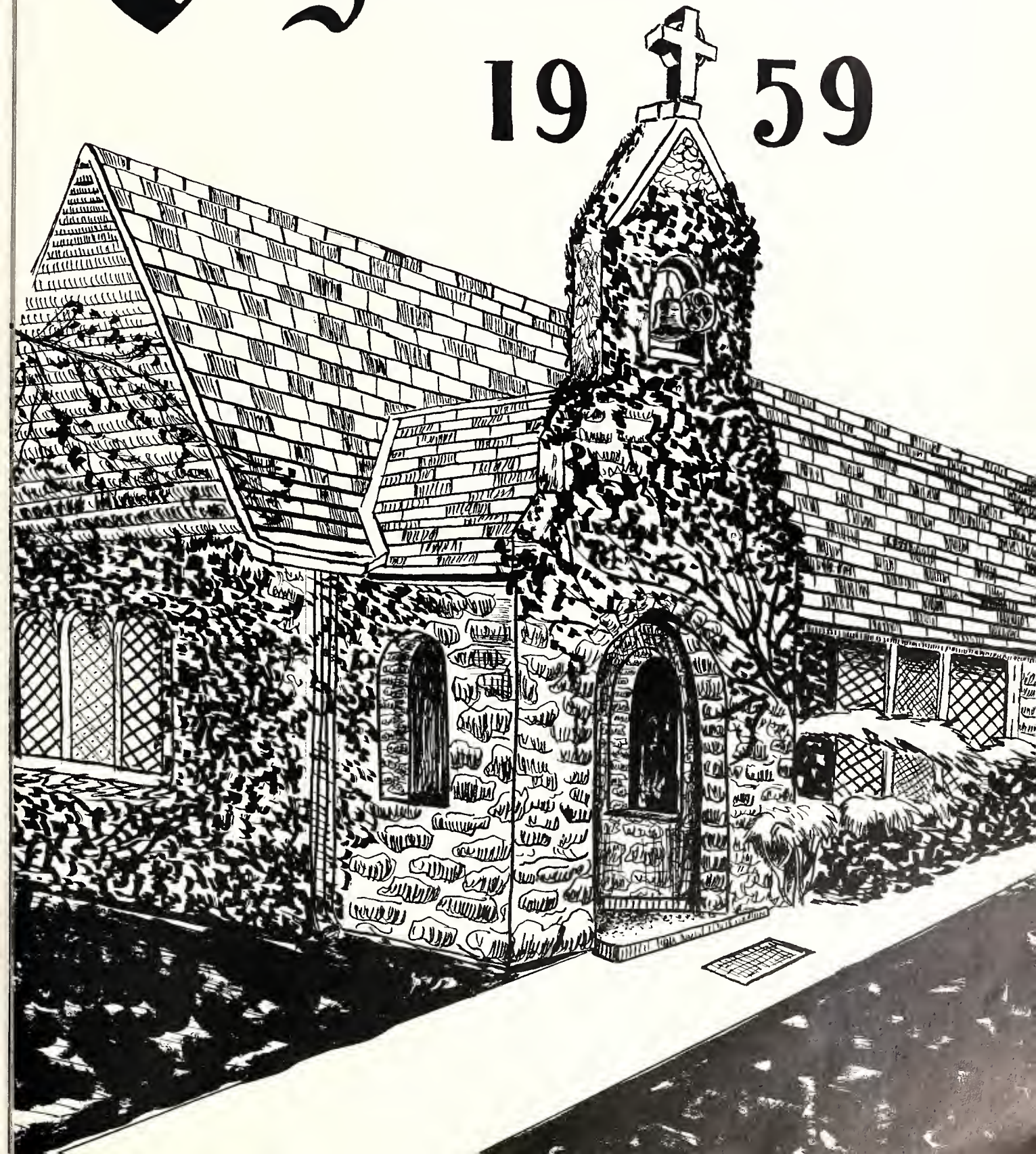
Caught during the Freshman Campus Tour with guide Shirley Baldwin





# Organizations

19 † 59





# CAMPUS SUPERLATIVES



President of  
Student Council



President of  
Canterbury Club

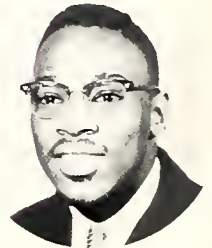


Miss U.N.C.F.?

President of  
Sigma Gamma Rho



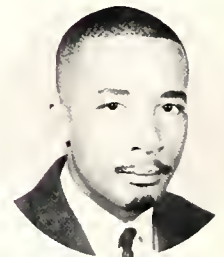
President of  
Junior Class



Sweetheart of Omega Psi Phi



President of  
Zeta Phi Beta



President of  
Omega Psi Phi

President of  
Alpha Phi Alpha



President of Alpha  
Koppo Alpha

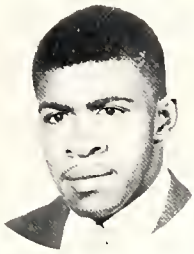


President of  
Phi Beta Sigma





# CAMPUS SUPERLATIVES



President of  
Art Club

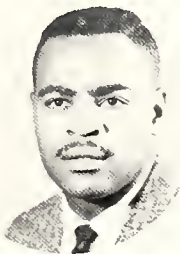


President of  
Social Science Club

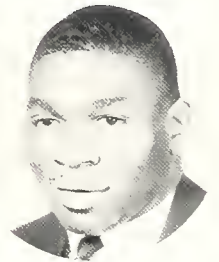


Sweetheart of Alpha Phi Alpha

Captain of  
Football Team



President of the  
Pan-Hellenic  
Council



Miss Senior Class



Editor of the Pen

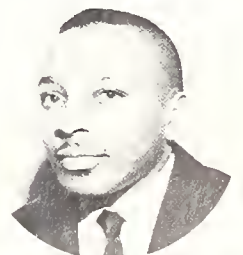


President of Choir



President of the  
Dramatics Guild

President of the  
N.E.A.



# THE STUDENT COUNCIL



CLINTON DUGGER  
President



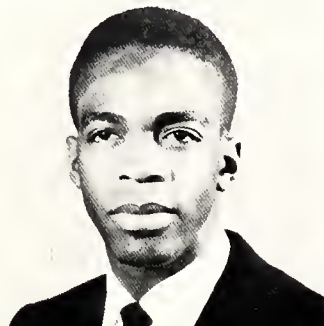
NANCY RHICE  
Vice-President





# WHO'S WHO IN AMERICAN COLLEGES AND UNIVERSITIES

**Theodore Barnes:** a major in Business, is the Vice-President of the Senior Class, a member of Alpha Kappa Mu and active in multiple other organizations.



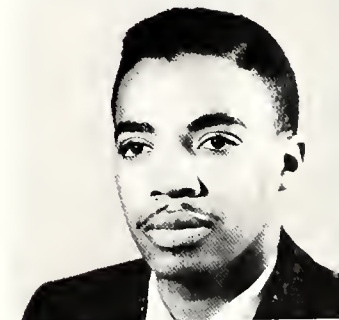
**Clinton Dugger:** a major in Sociology, the President of our Student Council is a man of many attributes, he is also President of Sigma Rho Sigma.

**Mary Burnette:** a major in Elementary Education, she is Basileus of Alpha Kappa Alpha Sorority and really a young lady around the campus.



**Harriet Malone:** a major in Sociology, has received this honor because of the contributions she has made in her sojourn here at St. Aug. She is a member of Sigma Rho Sigma.

**Joseph Groy:** a major in Science, is the able President of both the Senior Class and the College Choir. He is also a member of Alpha Kappa Mu and Beta Kappa Chi.



**Robert Taylor:** a major in French and English, was selected to this group because of his scholastic achievements. He is a member of Phi Kappa Alpha.

**Borbora Thomas:** a major in Physical Education, was selected to this select group because of her academic excellence. She is also active around the campus.



# ALPHA KAPPA MU

Alpha Kappa Mu was established at St. Augustine's in May, 1950. Membership is based upon character, leadership, and a cumulative scholastic average of 2.30.

## OFFICERS

President.....Delores Ragers  
Secretary....Thelma Becton  
Treasurer..Theodore Barnes



# SIGMA RHO SIGMA

Sigma Rho Sigma, honor society for social science majors, was established at St. Augustine's in 1954. Membership is based on character, leadership, a 2.00 average in social science.

## OFFICERS

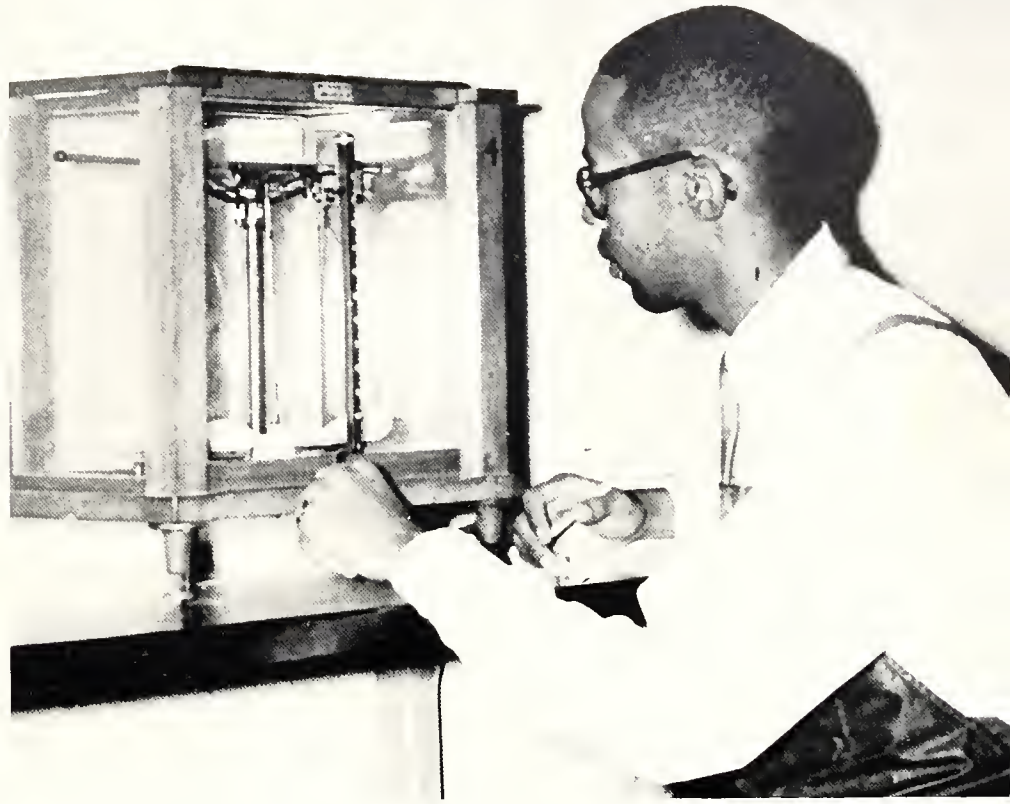
President...Clinton Dugger  
Secretary....Harriet Malone





# BETA KAPPA CHI

Beta Kappa Chi, Science honor society, was established at St. Augustine's in 1951. Membership is based upon character, leadership, and a 2.00 average in Science.



# PHI KAPPA ALPHA

Phi Kappa Alpha, Humanities honor society was established at St. Augustine's in 1954. Membership is based on character, leadership, and a 2.00 average in the Humanities.

## OFFICERS

Officers: Delores Rogers — President, Jane Blakeley — Vice-President, Helen Braxton — Secretary, Robert Taylor — Treasurer.





Thelma Becton  
Co-Editor



Richard E. Lacey  
Editor



Marlon Poitis  
Co-Editor

## THE "59"

This the 1959 "Falcon" was assembled with a two-fold purpose utmost in our minds. First, that it might sum up, in brief if not in entirety, four unforgettable years—

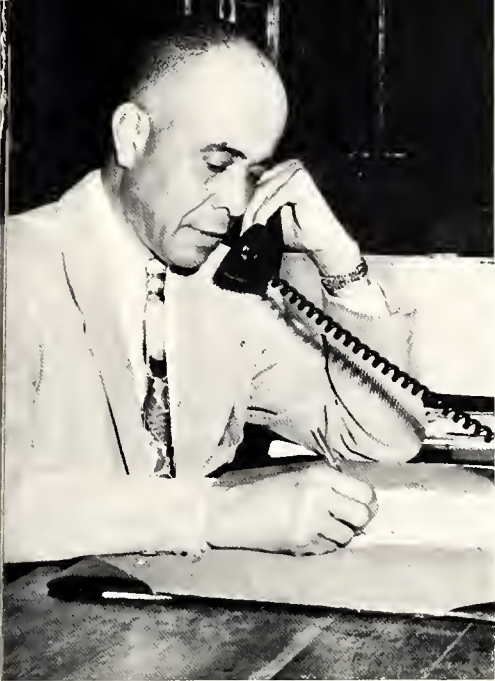
years filled with memories that we shall cherish for the duration of our lives. Secondly, that it might present to us a means of reliving the past—in the future.

### STAFF MEMBERS

Left to right: Helen Braxton, Ann Sawyer, Leno McLean, Ann Wilson, Naomi Crandall, Catherine Arline.







Charles McLendon  
Advisor



Bobby Stroman  
Artist

## FALCON STAFF

If in the days to come, in perusing these pages you should relive some of the moments of happiness and sorrow which have become so much a part of the hearts of your

class and ours. Then our efforts will not have been in vain, and this will have been a worth while endeavor.

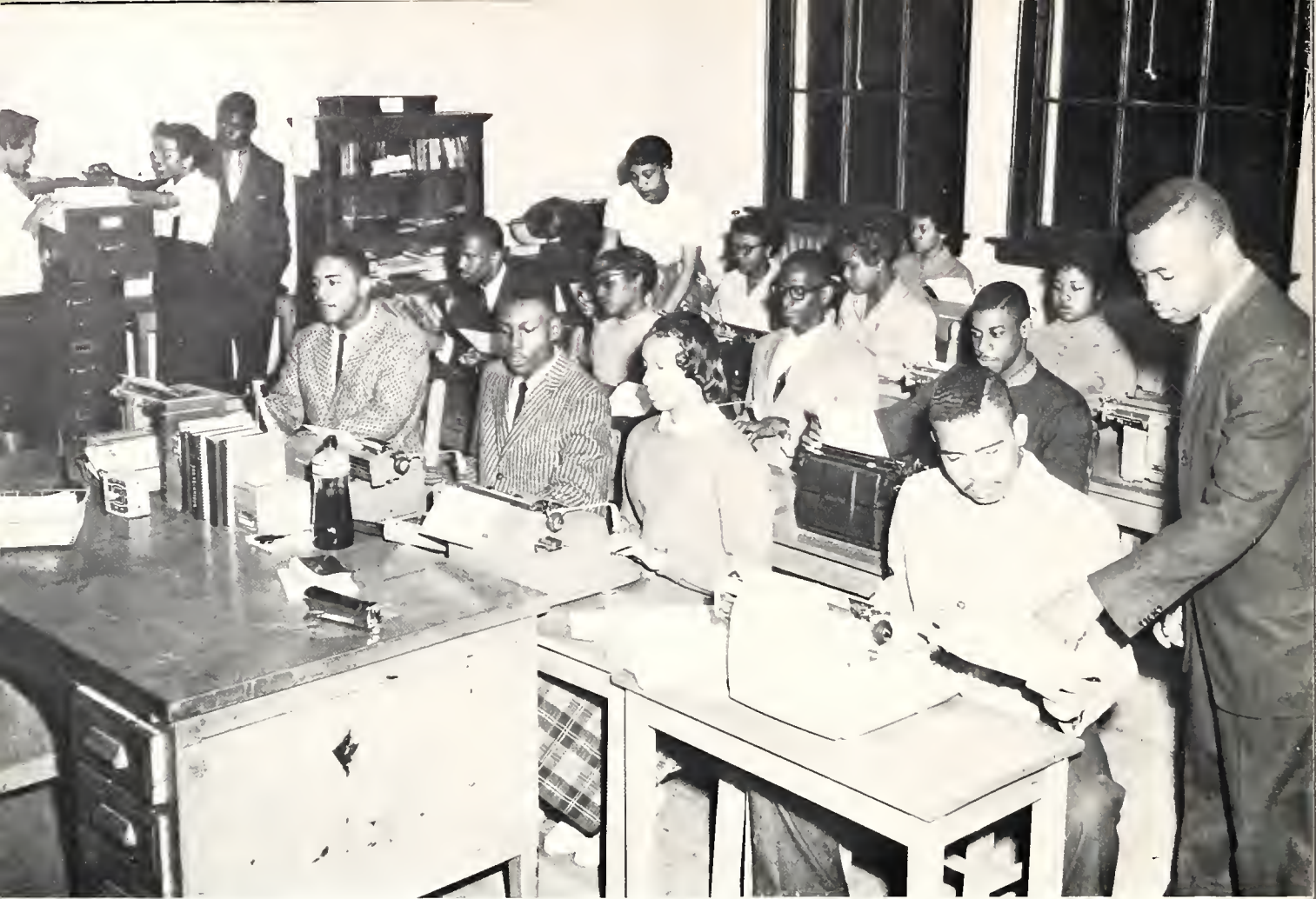
### TYPIST

Dorothy Cooke, Yvonne Hart, Pocahontas Jones, and Edwinno Wilson.

### BUSINESS STAFF

Jesse Lucious  
Mark Horvey





## PEN STAFF



Benjamin Redmond  
Editor



Henry Cunningham  
Co-Editor





**CURTAIN CALL**  
**After**

The Living Room, a play by Graham Greene

# ST. AUGUSTINE'S COLLEGE PLAYERS

The St. Augustine's College Players offers to those interested a chance to display their abilities and to acquire practical experience in acting, writing, producing, and the many other varied aspects of the theater.

**Officers:** left to right; Joseph Gray—I.D.A. representative, Lula Hagons—Librarian, Richard Lacey—President, Gloria Gardner—I.D.A. representative, Carl Smith—Director.







In Concert

Forty-five of the finest voices on campus carry their songs from the campus to parts of New England and the south. Many tiring hours are spent under the guidance of the director, Mr. J. C. Maore, and the accompanist Mr. T.

A. Thornley, in preparing a representative repertoire for the club and its divisions, the small ensemble, chapel choir, and the concert choir.

# ST. AUGUSTINE'S COLLEGE CHOIR

The Chapel Choir



In Action at Thanksgiving







Layreaders Guild

## ALTAR GUILD

Preparing the Altar



Receiving Instructions



# ART CLUB

This group, composed basically of Art and Elementary Education majors, seeks to instruct its members and expose them to all the areas of the Fine Arts.



# CAMPUS CALENDAR STAFF

The purpose of the Campus Calendar Staff is to serve as an informative source for the entire student body in regards to weekly events. By the pasting of calendars listing these events prior to their occurrence.







This organization serves as the spearhead in the counselling of the young ladies in the Freshman Class and is composed of the young ladies in the Senior Class.

## BIG SISTERS CLUB

## CHARM CLUB

Composed of the entire female population of the Freshman Class, this organization instructs them in the desirous attributes of womanhood.







## NATURAL SCIENCE CLUB

### OFFICERS

Left to right: James Davis—  
President, Shirley Baldwin—Treasurer,  
Flora Harley—Secretary, Herbert  
Barran—Vice-President.







## CANTERBURY CLUB

The Canterbury Club is an Episcopal student organization basically however any student enrolled in the college is eligible and welcomed to the group.

Activities include bi-weekly meetings on Sunday evenings, invited guest speakers, the annual Sadie Howkins Dance, and multiple other group activities.



## NEA

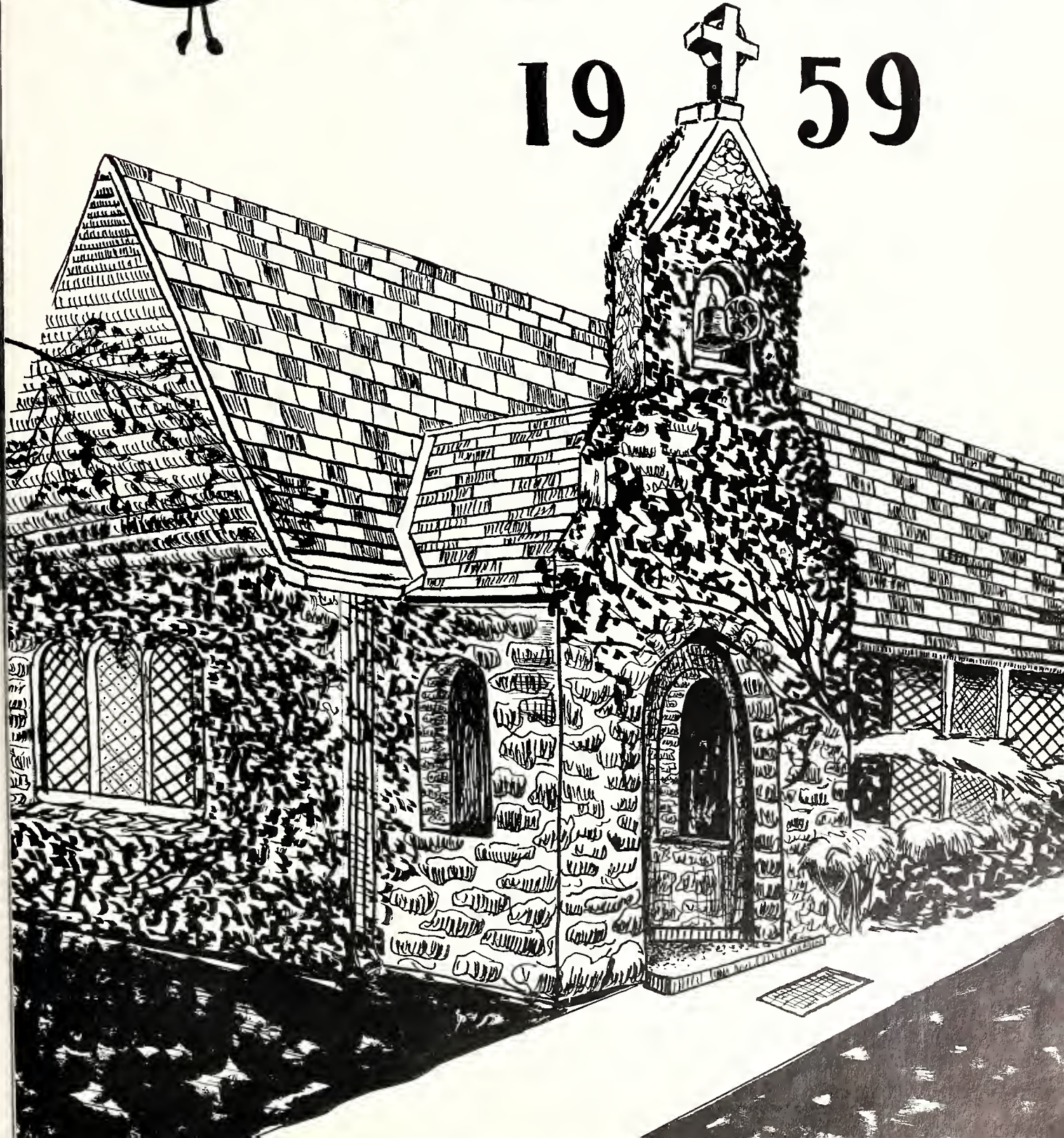
The NEA, or National Education Association, replaced the Future Teachers of America at St. Augustine's in the school year of 1957 and 1958. It has as its main purpose the instruction and familiarizing of each of its individual members in the rising and ever changing trends in all the areas of education.

Our chapter here on campus is fortunate to have as its members the state President and Secretary—George Flemmings and Helene Spencer.



# Greeks

1959







Before their session.

## THE PAN-HELLENIC COUNCIL



This group made up of two representatives from each Greek letter organization has as its purpose the organization of all Greek functions. The approval of dates for probation, and the acceptance of all Greek proposals.



# GAMMA XI CHAPTER

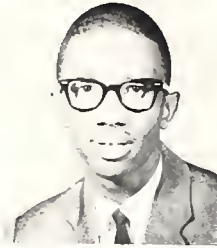


# ALPHA KAPPA ALPHA SORORITY

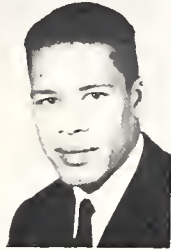
# GAMMA PSI CHAPTER



**WALTER GILFORD**  
President



**RICHARD LACEY**  
Vice-President



**THEODORE CATCHINGS**  
Dean of Pledges



## SWEETHEART



**REGINALD LANDEAU**  
Secretary



**JOSEPH GRAY**  
Historian



**J. KENNETH MAJOR**  
Chaplain

**MACON  
JONES**  
Treasurer  
(not shown)

**HERBERT  
HORTON**  
(not shown)

## ALPHA PHI ALPHA FRATERNITY

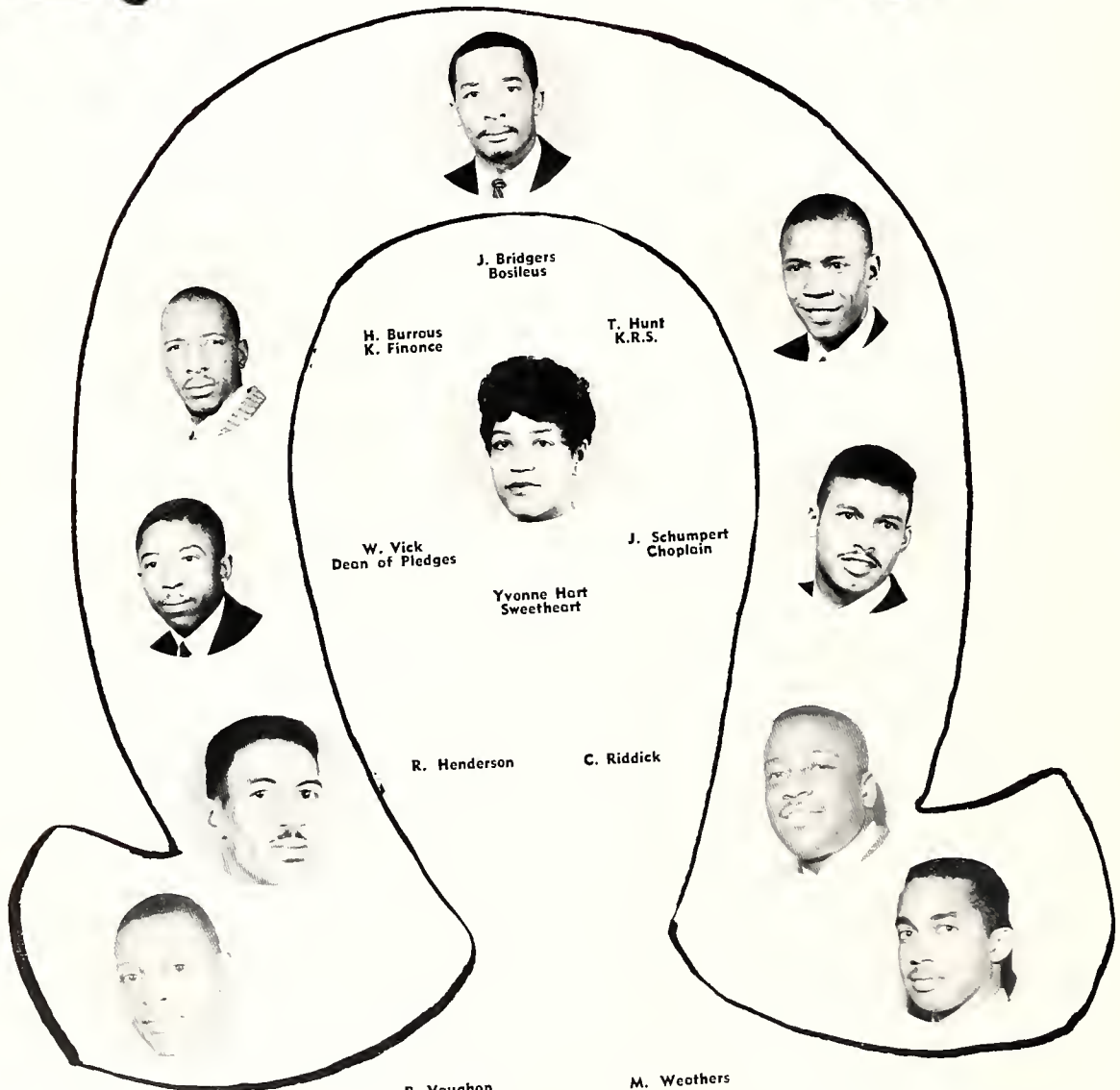


# GAMMA RHO CHAPTER



# DELTA SIGMA THETA SORORITY

# Omega Psi Phi



## KAPPA EPSILON CHAPTER

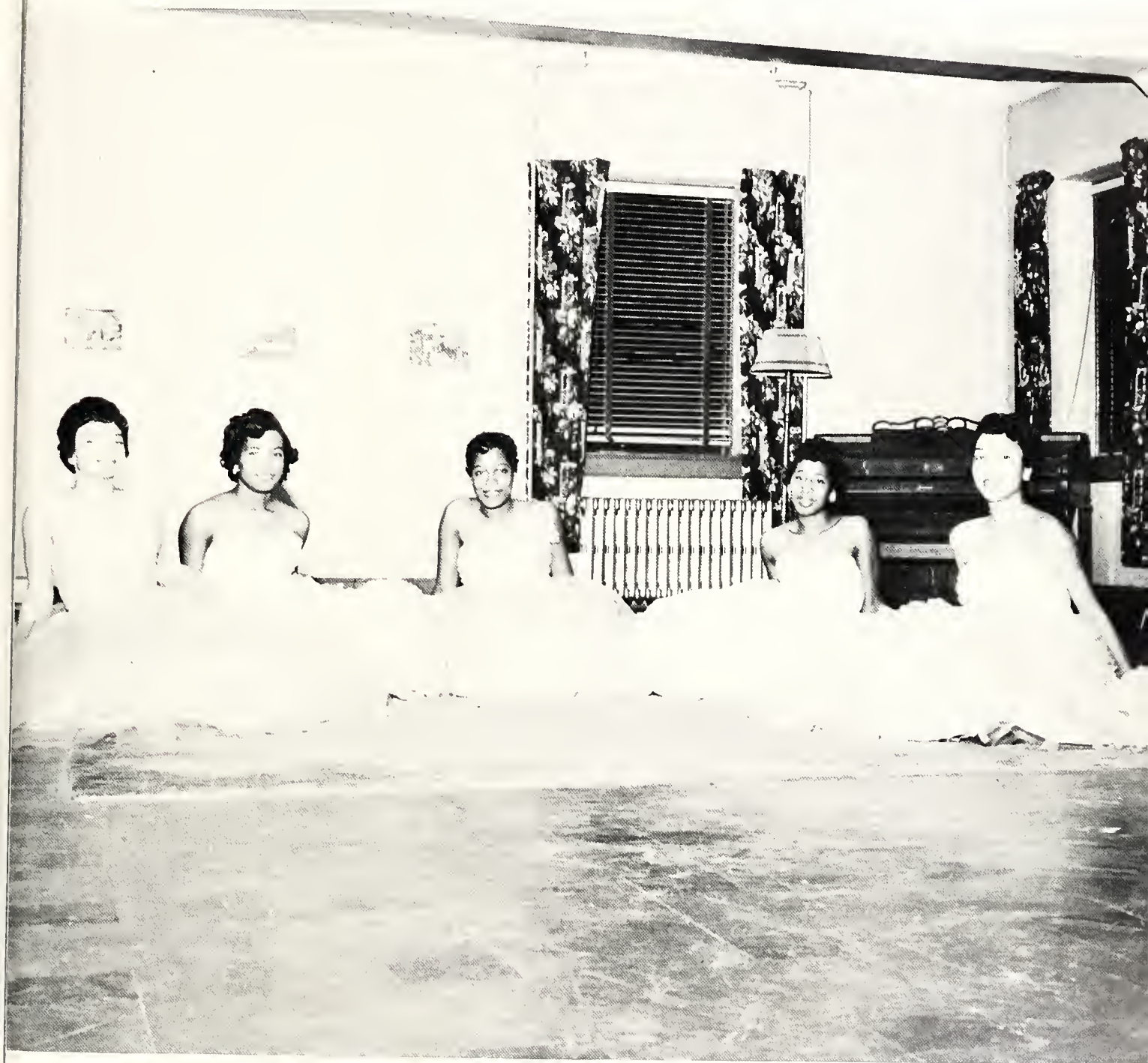
**Founders of Fraternity**

- Egar A. Love
- Oscar T. Cooper
- Frank Coleman
- Ernest E. Tust

Fraternity Founded 1911  
 K.E. Chapter Founded 1948



# ZETA PHI BETA SORORITY



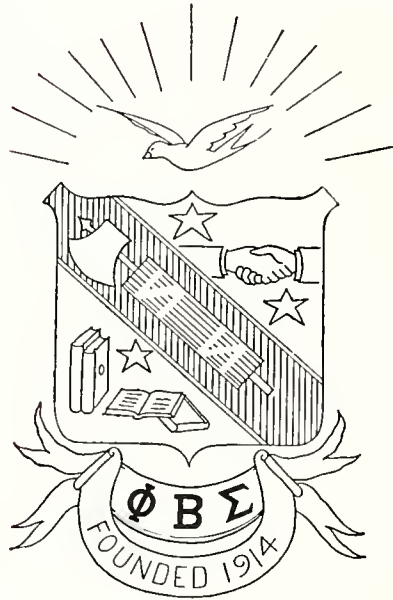


George Flemmings  
President

# PHI BETA SIGMA FRATERNITY



Theodore Barnes  
Secretary-Treasurer



Miss Sigma

Left to Right: Gladys Murphy, Patricia Davis, Geraldine Perry.





# SIGMA GAMMA RHO SORORITY



MOTTO: "Greater Service, Greater Progress"

# KAPPA ALPHA PSI FRATERNITY

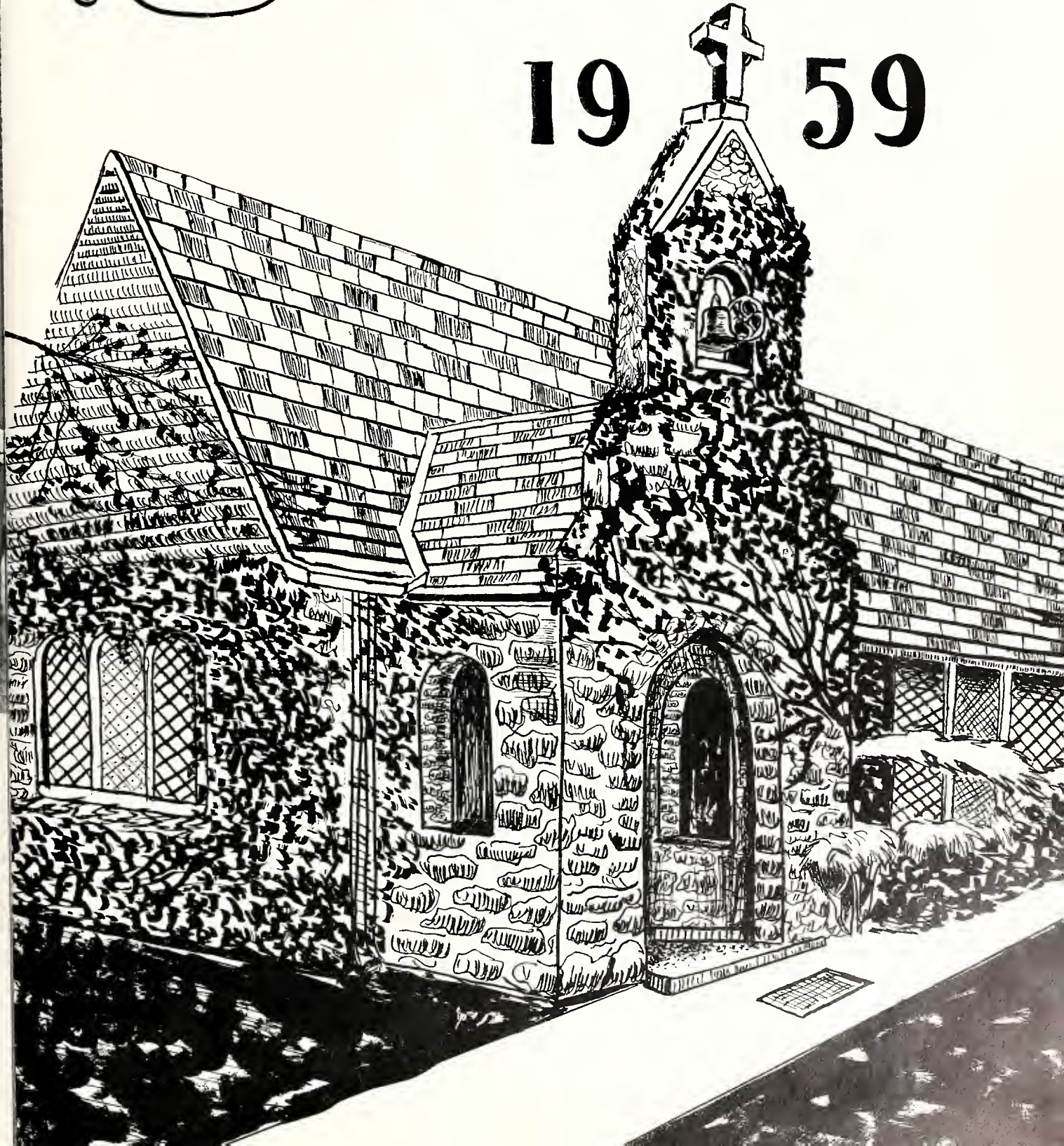


## GAMMA OMICRON CHAPTER



# Sports

19 1 59







## THE COACHING STAFF

Jackson

George Walker  
Head Coach

Jesse Clements

## THE CHEERING SQUAD







## BASKETBALL TEAM

It is an old axiom in sports that while building around the inexperienced and the young often makes the road a bit tougher and longer, nevertheless if enough talent is present, then the end results will prove all the difficulty to be worthwhile.

That enough patience was used this year is evident from the way the coaching staff stayed with the youngsters to the game in the roughest spots. That enough talent is present in regards to the team is evident from some of the bright streaks that highlighted the season, such as our two victories over Shaw. The ingredients to make that axiom come true have been found. Next year the axiom will be proved to be right.

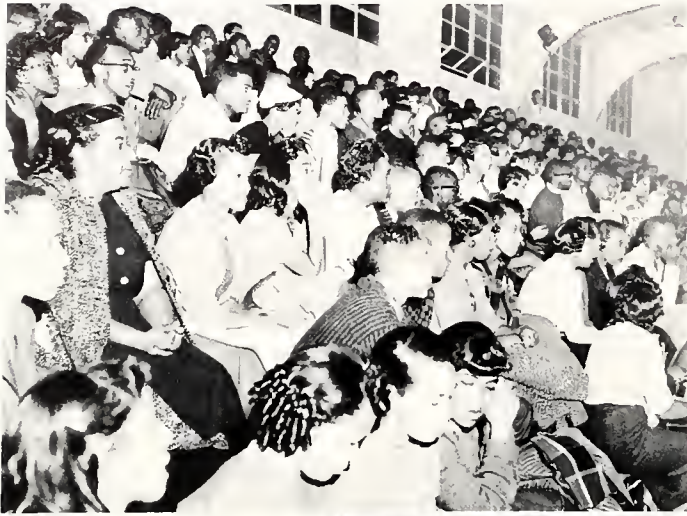
### TEAM

Spotswood Balling  
 Spencer Walker  
 Edward Cottrell  
 Robert Hicks  
 Lewis Belcher  
 Archie Smith  
 Rederick Henderson

George Jones  
 Bobby Smith  
 Jesse Owens  
 Charles Willis  
 Elray Hobbs  
 Raytino Epps  
 Alfred Glover  
 William Baxter



# BASKETBALL



St. Aug. fans cheer team to victory over Shaw.



Little Miss Green Cheers for the team.

Captain Jones blocks path of Shaw dribbler.







## FOOTBALL TEAM

This year the football picture looked its best in quite some time. As Coach Walker voliantly attempted to put St. A back on the football map and succeeded with a season of two losses and six wins, losing only to our old rivals Shaw and North Carolina College.

With an octet of seniors returning and engineering the team this was accomplished and our hats go off to them—Charles Boler, their captain, Jesse Lucious, Mork Harvey, Joseph McNeil, Freddie Davis, Lester Spease, Albert Huey, and Marion Brown. Mention must be made of the play calling of Robert Bridges and the running of Donald Thompson, two juniors, also.





During a sweaty scrimmage  
 Captain Boler and his Quarter-  
 back scrutinize the team with  
 Coach Walker.



One of the many long and  
 tiring sessions which led to mul-  
 tiple victories.



The departing Seniors  
 (They hope)

One of the many spark plugs  
 Donald Thompson

Joey Davis  
 They'll miss him!





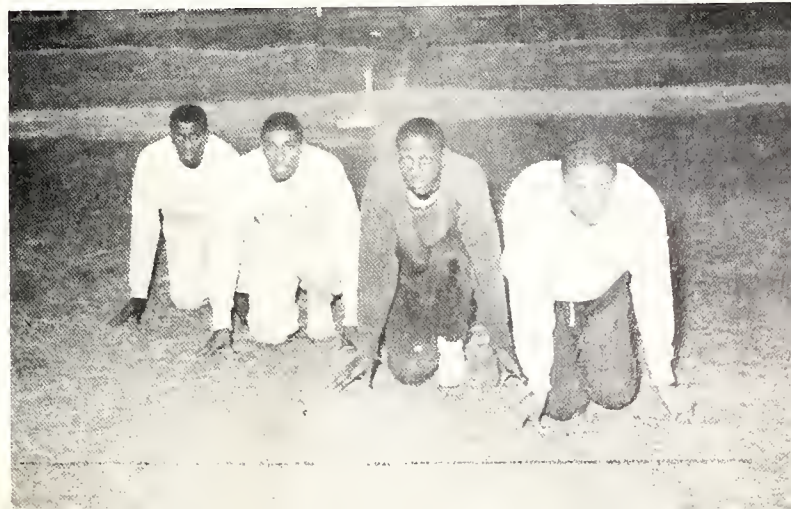


## TRACK TEAM

This years track outlook is a colorful one with most of last years team of both the field and track events returning. Last season was a fairly successful one for the team and with that year of experience under their belts nothing but the best should evolve this season.

### RELAY TEAM

**Left to right:** James Pigeo, Frederick Jones, Albert Roundtree, Richard Johnson.



**IRVING-SWAIN PRESS, INC.**

"Quality Printing"

**Circulars—Programs—School Newspapers**

Dial TE 2-4374

303 S. East Street

Raleigh, N. C.

Day Phone  
TE. 2-8305

Res. Phone  
TE. 2-2936

Compliments  
of

Say It With Flowers

**COMMUNITY FLORIST**

**325 No. Tarboro Road**

C. A. Byrd, Prop.

Raleigh, N. C.

**CENTRAL DRUG STORE**

**PRESCRIPTIONS**

Drugs Cosmetics

R. E. Wimberley Pharm. Chemist

601 E. Davie St. Raleigh, N. C.

**Dial TE. 2-8084**

**STEAK DINNER SEAFOOD**

**WEBSTER-HICK GRILL**

Edenton St. Idlewild Ave.

DIAL TE 2-9280

Chicken In The Basket

Compliments  
of

**CAPITAL ICE & COAL  
COMPANY**

DIAL TE 2-5589

**THE GLOBE**

Corner Wilmington & Exc. St.

**CLOTHING FOR MEN & BOYS**

Raleigh, N. C.

1898



**M. F. BOOKER & SON**

To Make Your Clothes  
Like New  
Is Our Business

**Phone TE. 2-7076**

1603 Oakwood Avenue

Compliments  
of

**JOE'S SPORT SHOP**

**Men's Clothing**

205 S. Wilmington St.

Raleigh, N. C.

DIAL 1156

Compliments  
of

**BAKER'S SHOE SHOP**

110 E. Hargett St.

Raleigh, N. C.

**DIAL 9260**

Quality

Service

Compliments  
of

**COLLEGE PARK GROCERY**

Marvin W. Thrape

**DIAL 4794**

Top

Quality  
Raleigh, N. C.

Goods

Compliments  
of

**PEPSI-COLA BOTTLING CO.**

3705 Hillsboro Street

Raleigh, N. C.

Dial 1071

## PATRONS

Mr. and Mrs. Jolly Bunn

Mr. and Mrs. W. H. Williams

Mr. and Mrs. C. N. Coble

Mr. and Mrs. Henry McLean

Mrs. Lettie Ringo

Mrs. Illinois Prickett

Mrs. Irma Arline

Mrs. Mary E. Arline

Mr. and Mrs. Shephard Burnett

Mr. and Mrs. Herman J. White

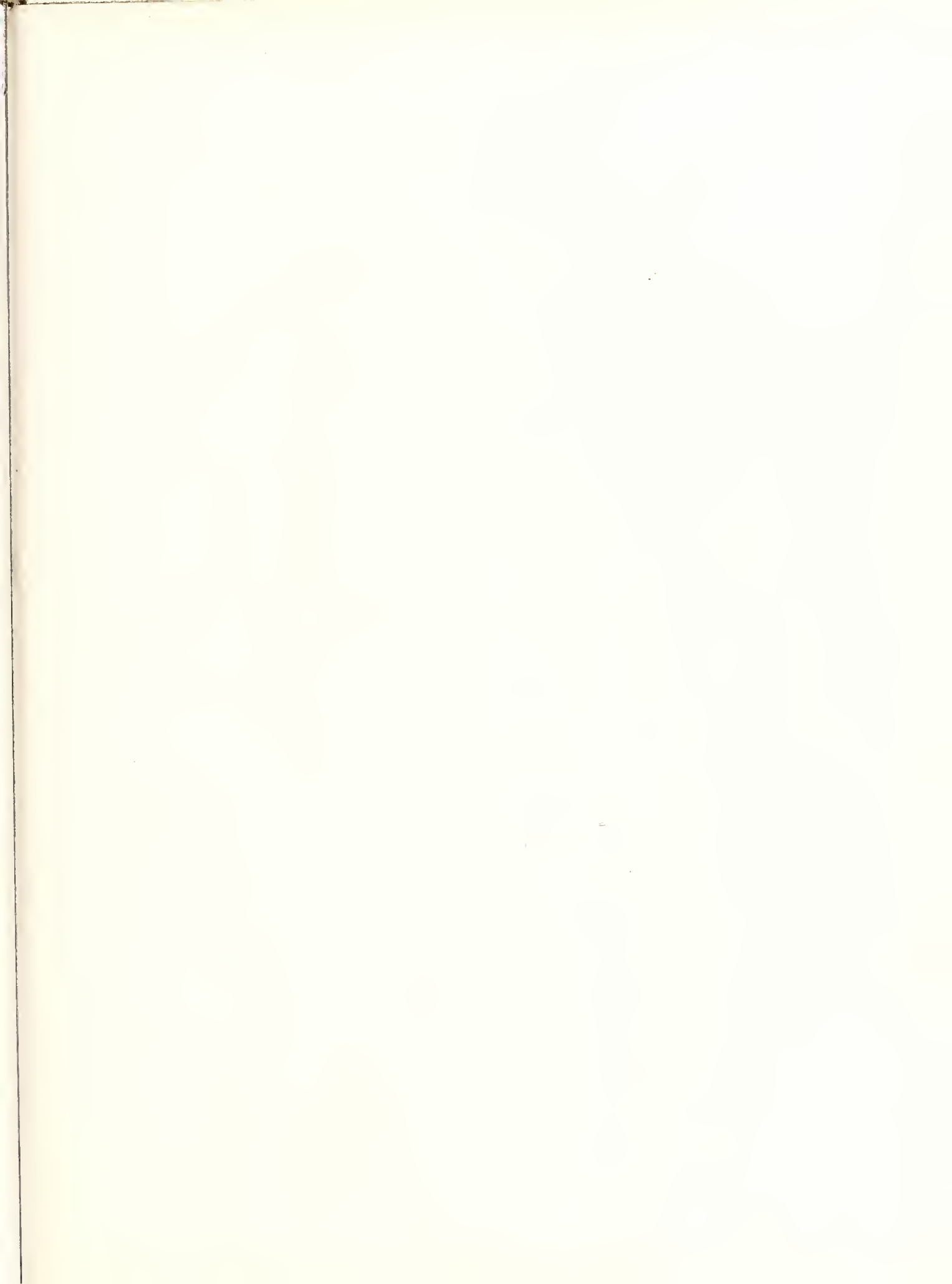
Mrs. Martha F. Dunn

Miss Inez Middleton

Mr. and Mrs. Russell Wilson

Mr. and Mrs. Sidney Taylor

















DEIMAR  
MADE IN GERMANY