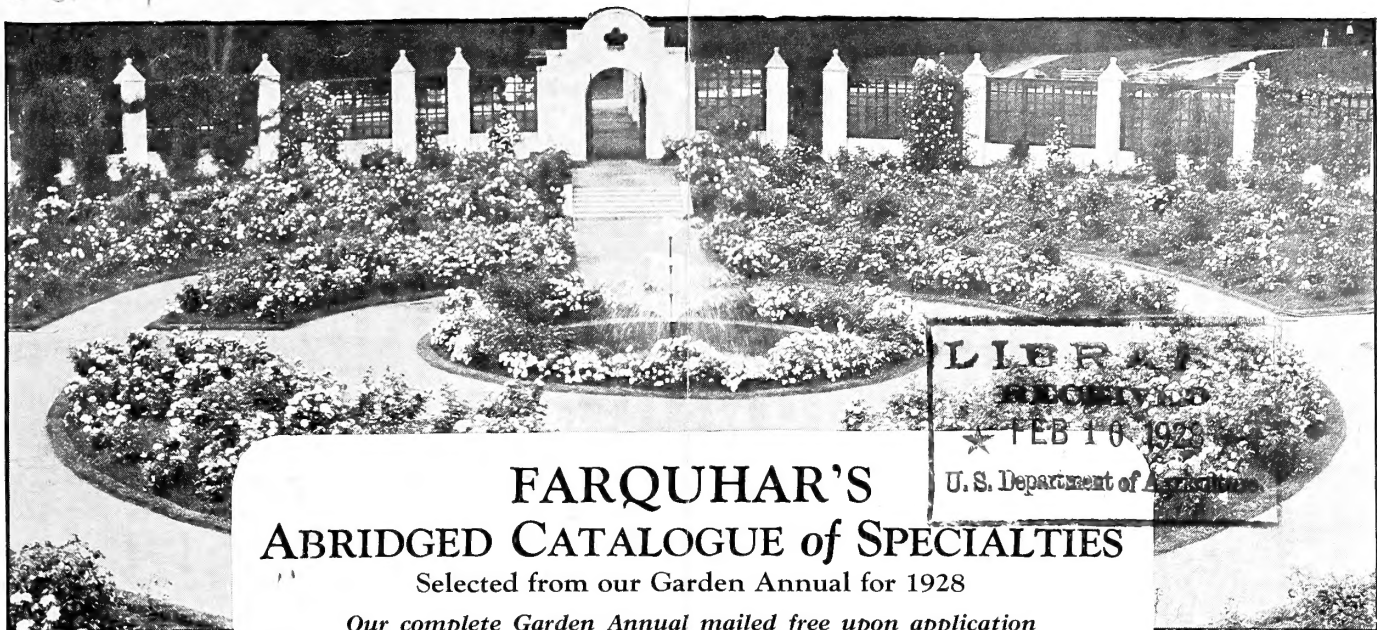


Historic, archived document

Do not assume content reflects current scientific knowledge, policies, or practices.



62,39



FARQUHAR'S ABRIDGED CATALOGUE of SPECIALTIES

Selected from our Garden Annual for 1928

Our complete Garden Annual mailed free upon application

R. & J. FARQUHAR COMPANY, 6 South Market St., BOSTON, MASS.

HYBRID TEA ROSES FARQUHAR'S SPECIAL COLLECTION

Miss Lolita Armour. (Howard & Smith, 1919.) Big, globular buds and cup-like blooms filled full of curled petals; golden pink and copper, paling at times to pinkish fawn and gold. Extremely beautiful.

Los Angeles. (Howard & Smith, 1916.) Shell-like buds and splendidly formed flowers of glowing salmon-pink and gold, intensely fragrant. One of the most beautiful Roses.

Red Radiance. (A. N. Pierson, 1916.) A light crimson sport of Radiance, which it resembles in all particulars, and many consider it superior to that variety in blooming qualities.

Radiance. (John Cook, 1908.) It seems scarcely necessary to describe this most popular Rose in America. The blooms are large, silvery pink and deep rose, fragrant, and borne with exceptional freedom on a very strong plant. Perhaps the easiest variety to grow which produces blooms of good cutting quality.

Ophelia. (W. Paul & Son, 1912.) One of the most popular Roses ever grown, having pearly white blooms of inexpressibly lovely form. In cool weather it is tinted with gold and pink, somewhat like Mme. Butterfly.

Lady Ashtown. (Alex. Dickson & Sons, 1904.) Golden pink buds opening to high-pointed blooms of excellent shape and fine fragrance. One of the standard varieties which is in every experienced Rose-grower's collection.

Mme. Butterfly. (E. G. Hill, 1918.) One of the Roses which everybody must have, with buds and blooms having fine durable texture, and the color a mixture of pink, cream, and gold, of exquisite beauty.

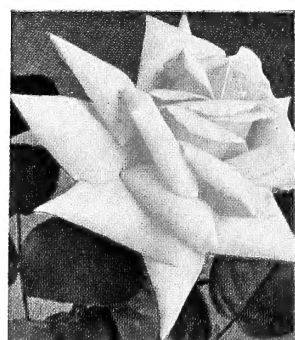
Souvenir de Claudius Pernet. (Pernet-Ducher, 1920.) Light lemon-yellow buds of exceptional form, sometimes paling to white at the edges and deepening to gold in the center. A very free-flowering, true yellow variety, which likes full sunshine and warm, dry weather. \$1.50 each.

The above Special Collection of 8 Roses, one plant of each, for \$7.50 postpaid. Individual plants, \$1.00 each, \$9.00 for 10, except where otherwise priced.

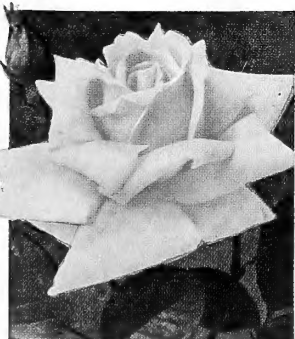
In our Garden Annual we offer a complete list of the BEST in Roses.



Miss Lolita Armour



Lady Ashtown



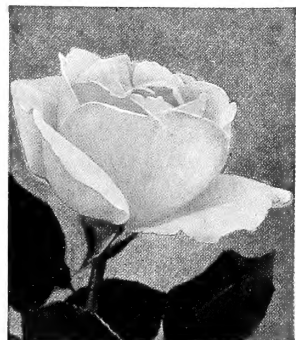
Los Angeles



Mme. Butterfly



Red Radiance



Radiance



Ophelia



Souv. de Claudius Pernet

NEW AND RARE ORNAMENTAL SHRUBS

All Shrubs and Hardy Perennials are F. O. B. Boston. No Charge for Packing

AZALEAS

All the Azaleas we grow are hardy and are particularly attractive when planted in groups about an estate on the edges of woods or tall shrubby borders, but they can also be planted singly or in beds. Azaleas, like Rhododendrons, do not thrive in a lime soil and are greatly benefited by the use of leaf-mold or peat.

calendulacea. *Flame Azalea.* This showy plant is covered in June with masses of flowers, varying from pale yellow to deepest orange. \$3.50 each; \$32.50 for 10.

canadensis (*Rhodora canadensis*). An excellent low-growing variety for moist places, and covered with lavender flowers in May. \$2.00 each; \$18.00 for 10.

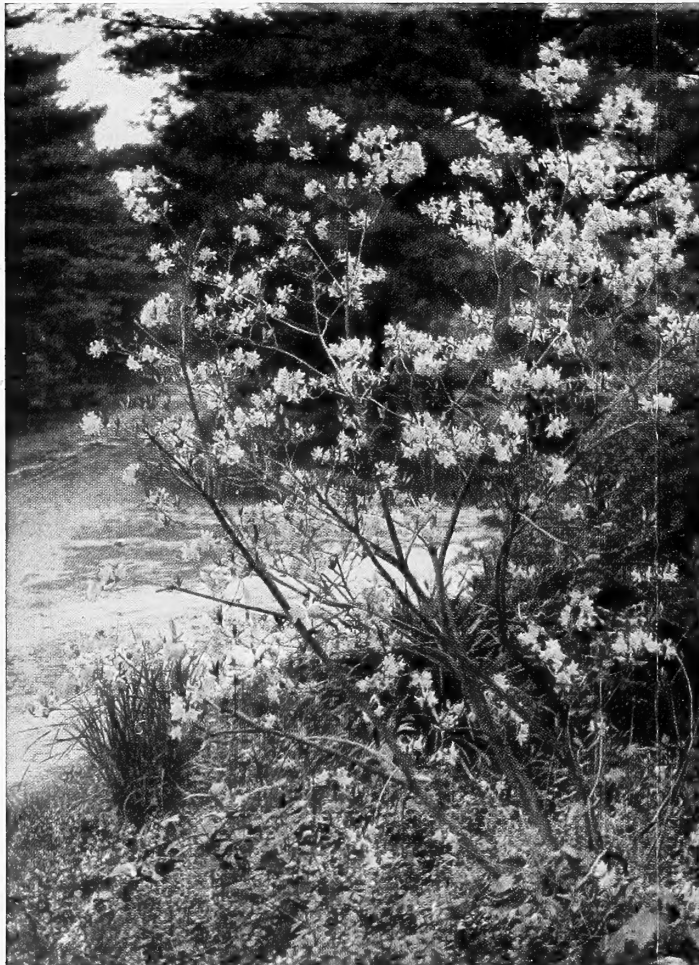
japonica. *Japanese Azalea.* One of the handsomest of all hardy Azaleas, having relatively stout, erect shoots, each terminating in a large, globose cluster of orange-red to flame-red funnel-shaped flowers, each about 2½ inches across. \$4.50 each.

Kämpferi. *Torch Azalea.* This charming and wonderfully floriferous Japanese shrub has scarlet flowers and is absolutely hardy. It is one of the very finest of the introductions to our gardens from Japan. 1½ to 2 ft., \$3.50 each, \$32.50 for 10; 2 to 2½ ft., \$4.50 each, \$42.50 for 10.

mucronulatum (*Rhododendron mucronulatum*). The first of all the Azaleas to open its blossoms and one of the loveliest of spring-flowering shrubs. It is a twiggy bush from 3 to 5 feet tall, and it clothes itself in a wealth of rose-pink to rosy red flowers. \$3.50 each.

Schlippenbachi. *Royal Azalea.* One of the earliest and most charming spring-flowering hardy shrubs. In general appearance this new plant resembles *Azalea indica*, having the same general habit of growth, or perhaps somewhat more upright. The flowers are of the same size and bright pink in color, of a shade hardly to be expected in an outdoor hardy shrub. \$5.00 each.

Vaseyi. *Pinkshell Azalea.* A graceful shrub of easy culture, and perhaps the most profuse bloomer of all the native Azaleas. Its pink flowers appear in May before the foliage. It is of slender, erect habit and in cultivation becomes more spreading, but retains its charming light-stemmed growth. In autumn the foliage usually turns a bright crimson, which adds greatly to its value. \$3.50 each; \$32.00 for 10.



Azalea Vaseyi

COTONEASTER

An interesting and very ornamental group of plants producing quantities of colored berries which are very attractive during the fall months.

acutifolia villosula. *Peking Cotoneaster.* A graceful shrub growing to about 10 feet in height, with small red flowers, followed by red berries which eventually turn black. In autumn the foliage turns a very bright red shade. Plants from 3½-in. pots, \$1.00 each; \$9.00 for 10.

divaricata. A very ornamental shrub of erect, spreading, and much-branched habit, with leaves turning crimson in the fall. It bears a profusion of scarlet fruits which are retained through the winter. Plants from 3½-in. pots, \$1.00 each; \$9.00 for 10.

horizontalis. *Rock Cotoneaster.* Though by no means a new plant, this rare and perfectly hardy Cotoneaster deserves to be widely planted. It is semi-prostrate in habit, grows 3 to 4 feet tall, and forms a dense bush many yards through. The fruits are bright scarlet, changing to crimson, and the small leaves, which are dark green and almost round, are retained late into the fall, and even up to Christmas. It is suitable for planting in rocky positions and anywhere that dwarf-growing shrubs are required. \$1.00 each; \$9.00 for 10.

LONICERA

Korolkowi floribunda. This valuable Bush Honeysuckle is one of the gems of a lovely group of hardy shrubs. It is a vigorous grower, of graceful habit, with twiggy branchlets and bluish gray-green leaves. The striking blooms are a beautiful pink shade, and are produced in utmost profusion, producing an effect, from a short distance, of brilliant pink floating on thin mists. \$2.00 each.

Maacki podocarpa. This magnificent, hardy, quick-growing shrub has long sprays of white flowers and scarlet fruits which ripen in September and remain on the plant far into the winter. The leaves are retained very late and the contrast between green leaves and scarlet berries is extraordinarily beautiful. \$2.00 each.

PHILADELPHUS

A charming race of shrubs with deliciously fragrant flowers.

Conquete. A very desirable variety, producing double white flowers in such profusion as to cause the slender arching branches to greatly droop. Strong plants, 75c. each; \$6.00 for 10.

ivalis. *Snowbank Mock Orange.* A new, very free-flowering hardy variety, making a strong quick growth and producing the largest flowers of any single sort. Strong plants, \$1.25 each; \$11.50 for 10.

Virginal. *Virginal Mock Orange.* One of the most beautiful of the Mock Oranges. It produces large, double-crested, pure white flowers which are sweetly scented. A tall and vigorous grower. Strong plants, \$1.00 each; \$9.00 for 10.

SPIRÆA HENRYI

A new and magnificent midseason-flowering Spirea from China. It is of vigorous, erect habit, with spreading, arching branches on the upper side of which, from each leaf-axil, arise 6-inch broad heads of pure white flowers. So freely are the blossoms borne that the whole bush, in bloom, is a bouquet of white. This perfectly formed shrub grows about 8 feet tall and even more in diameter, and is one of the finest and most beautiful of the early summer-flowering shrubs hardy in New England. 2½ to 3 ft., \$2.50 each.

VIBURNUM CARLESI

Fragrant Viburnum

A Korean plant of recent introduction, bearing large corymbs of sweet-scented white flowers, resembling the bouvardia. A most desirable shrub. 1 to 1½ ft. \$2.50 each.

ABIES

holophylla. *Korean Silver Fir.* This is the common Silver Fir of Korea, and one of the handsomest of the Asiatic species. It is broadly pyramidal in habit, densely branched to the ground, with bright green, lustrous foliage. Introduced by E. H. Wilson of the Arnold Arboretum in 1917, this new Korean Fir has proved perfectly hardy in and around Boston and is a valued addition to the limited number of Silver Firs that will thrive in the New England climate. 18 to 24 in., \$5.00 each.

Veitchi olivacea. *Green-cone Veitch Fir.* This new variety is one of the aristocrats of the Silver Fir family. It makes a broad, pyramidal growth, ideal for use where a stately lawn specimen is desired. The foliage is a beautiful olive-green shade, quite lustrous and silvery underneath, and the green cones are particularly ornamental. It was introduced in 1917 for the Arnold Arboretum by E. H. Wilson, and has proved very hardy. 18 to 24 in., \$5.00 each.

Our complete Catalogue for 1928 will be mailed free upon application



Kolkwitzia amabilis

Copyright 1928 by Jackson & Perkins Co., Newark, N. Y.

Kolkwitzia amabilis

An abelia-like, free-growing shrub of extreme hardiness, from 5 to 7 feet tall and as much through, with ascending, arching stems, soft hairy leaves, and tubular pink flowers with mottled orange throats. The flowers are borne twenty to fifty together, in rounded clusters which are produced in great abundance throughout the whole length of the branch, and in June the whole bush is a shower of pure pink. The flowers are followed by curious cobwebby fruits which are quite attractive. Absolutely hardy and very free-growing, this new and rare Chinese shrub is considered by its introducer, E. H. Wilson, one of the finest exotic plants ever brought into American gardens. Pot-grown plants, \$2.00 each; strong field-grown plants, \$4.00 each.

Spiraea trichocarpa

(NEW)

This is a perfectly hardy species from Korea. It is of broad, spreading habit, growing from 4 to 6 feet tall, and even more in diameter. It has arching stems which, in season, are covered with dome-like clusters of snow-white flowers. The blooms come later than the well-known *S. Vanhouttei*. 1½ to 2 ft., \$1.50 each; 2 to 2½ ft., \$2.50 each.



Copyright 1928 by Jackson & Perkins Co., Newark, N. Y.

Spiraea trichocarpa

HARDY PERENNIAL PLANTS

WE OFFER HERE ONLY A FEW OF THE NEWER VARIETIES

For a complete list of Hardy Plants write for our Garden Annual for 1928. Mailed free upon application

AQUILEGIA

Mrs. Scott Elliott's Strain of Long-Spurred Hybrids

The delicate and refined beauty of these hybrids, together with their graceful form, has added much to the popularity of this grand strain, which contains many new and lovely shades. 40c. each; \$3.00 for 10; \$24.00 per 100.

ASTERS (Michaelmas Daisies)

The new varieties of Hardy Asters we offer below have been propagated from stock imported from Europe, where, in recent years, the Aster has received great attention. We have selected the following six sorts from a collection of 12 new varieties being offered in our Garden Annual this season. All are of exceptional merit. Visitors at our Nurseries in Dedham during September and October were enthusiastic over this wonderful collection.

Barr's Pink. A tall-growing variety of branching habit, with large, bright pink flowers.

Ethel Ballard. A lovely shade of light pink; very free. Mid-season.

Grey Lady. Exquisite shade of lavender-pink; large, semi-double flowers.

Little Boy Blue. A charming variety with bright blue, semi-double flowers.

Sam Banham. Pure white, with yellow centre; very large trusses.

Wonder of Colwall. Very large, semi-double flowers of clear lavender.

Collection of the above 6 varieties, 1 plant of each, for \$2.75
Individual plants, 60 cts. each; \$5.00 for 10.

JAPANESE FLOWERING CHERRIES

We offer in our Garden Annual for 1928 six beautiful named varieties.
Price \$4.50 each

HARDY CHRYSANTHEMUMS

Late in the autumn, when most other flowers have passed for the season, the Hardy Chrysanthemums provide a wonderful display of color until very late in the fall. For cutting they have few equals, the colors including many of the autumnal shades.

Excellence. Dark red; very double.

Gloire de France. Silvery pink, cream centre.
Very lovely.

Marie Antoinette. Rich deep pink.



Hardy Chrysanthemums

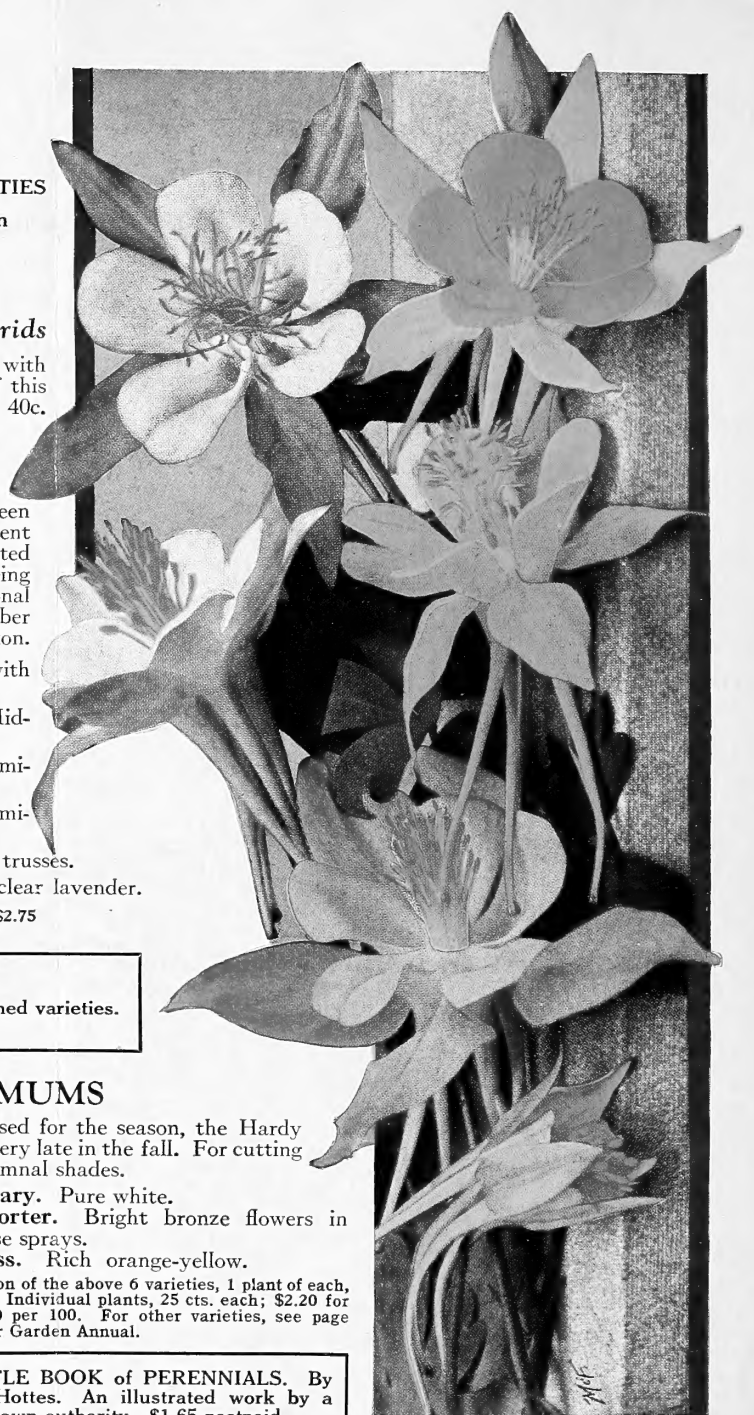
Mrs. Peary. Pure white.

Mrs. Porter. Bright bronze flowers in profuse sprays.

Windlass. Rich orange-yellow.

Collection of the above 6 varieties, 1 plant of each, for \$1.25. Individual plants, 25 cts. each; \$2.20 for 10; \$18.00 per 100. For other varieties, see page 115 of our Garden Annual.

LITTLE BOOK OF PERENNIALS. By A. C. Hottes. An illustrated work by a well-known authority. \$1.65 postpaid.



Aquilegia, Mrs. Scott Elliott's Strain

CAMPANULA (Canterbury Bells)

Campanula Medium. Canterbury Bells. Our strain of Canterbury Bells is unexcelled. We grow them in separate colors, **Blue, Mauve, Pink, White,** and **Mixed.** \$2.40 for 10; \$18.00 per 100.

Campanula Medium Calycanthema. Giant Cup and Saucer Canterbury Bells. The large cup-and-saucer-shaped flowers are extremely handsome. Separate colors, **Blue, Mauve, Pink, White,** and **Mixed.** \$2.40 for 10; \$18.00 per 100.

DELPHINIUM (Larkspur)

Hollyhock Strain. A magnificent new race of hardy Larkspurs producing enormous spikes of bloom in many new and beautiful shades, ranging from pale blue to deep indigo-blue and royal purple, with many intermediate pastel tones of mauve, pink, and lavender shadings. The flowers are very large and in both single and double forms. For exhibition purposes they are unsurpassed. \$1.00 each; \$9.00 for 10; \$80.00 per 100.

Farquhar's Prize-Winner Strain. These improved hybrids, with their tall, handsome spikes, are very effective. The plants are of strong growth with enormous spikes of large flowers in a complete range of beautiful colors, including both light and dark blue, mauve, pink, and lavender. 50 cts. each; \$4.50 for 10; \$40.00 per 100.

PERENNIAL PLANTS
continued

DIGITALIS
Giant Shirley

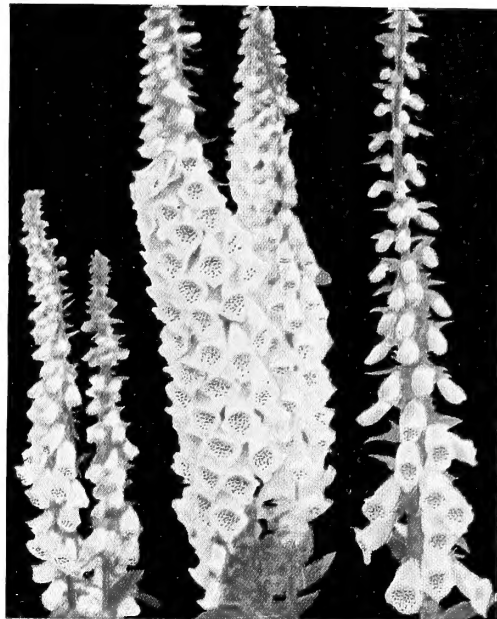
This magnificent race of giant Foxgloves originated in the gardens of the late Rev. W. Wilkes and has since been improved and now outclasses all others. The plants grow from 5 to 6 feet high, with enormous spikes of bloom, the colors ranging from white to deep rose, many being beautifully blotched and spotted. 35c. each; \$3.00 for 10; \$25.00 per 100.

DIANTHUS
Arenarius

Pure white, fragrant, fringed flowers with a distinct carmine ring in the centre. It is sometimes called the "sand-loving". Pink and is useful for rock-garden planting. 30c. each; \$2.40 for 10.



Hardy Aster. See page 4.



Digitalis, Giant Shirley

GYPSOPHILA, Bristol Fairy

A new hardy double white Baby's Breath with flowers two or three times larger than any ordinary double Gypsophila. It is of remarkably free and branching habit, nevertheless it retains the gracefulness of the type, and is unexcelled among hardy perennials for cutting. It grows to a height of 3 to 4 feet. \$1.25 each; \$11.50 for 10.

HELENIUM, Autumn Glow

A gorgeous variety, and quite distinct, having masses of large, golden yellow flowers with underside of petals rich wallflower-red. Blooms in September and grows 4 feet high. 40c. each; \$3.50 for 10.

NEW HARDY PHLOXES

Mrs. Noordewick. Huge masses of bright rosy red flowers, with white centres. Vigorous and free blooming.

Milly (Mrs. Milly van Hoboken). Immense panicles of large, showy bright pink flowers, suffused with mauve.

Mrs. E. Brown. Large flowers of an exquisite shade of mauve with a decided pink eye.

Any of the above Phloxes, 40 cts. each, \$3.50 for 10

LUPINS, Farquhar's Regal Hybrids

Beautiful new hybrids producing handsome spikes of self or bicolor flowers in a wide range of color, including pink, fawn, purple, yellow, mauve, and blue shades. They can be supplied in mixture only. 50c. each; \$4.50 for 10; \$40.00 per 100.

POLYANTHUS, Munstead Strain

(*Primula Polyantha*)

A superb strain of Bunch Primroses producing immense heads of yellow and white flowers. Very showy for spring bedding. 40c. each; \$3.50 for 10; \$30.00 per 100.

VIOLA

Jersey Gem. A superb new variety with pure violet-blue flowers, deliciously fragrant, borne on long stems, and continues to bloom all summer. 40c. each; \$3.50 for 10; \$30.00 per 100.

Cornuta. Fragrant, mauve-colored flowers produced throughout the summer. 30c. each; \$2.50 for 10; \$20.00 per 100.

Cornuta alba. White form of the preceding. 30c. each; \$2.50 for 10; \$20.00 per 100.

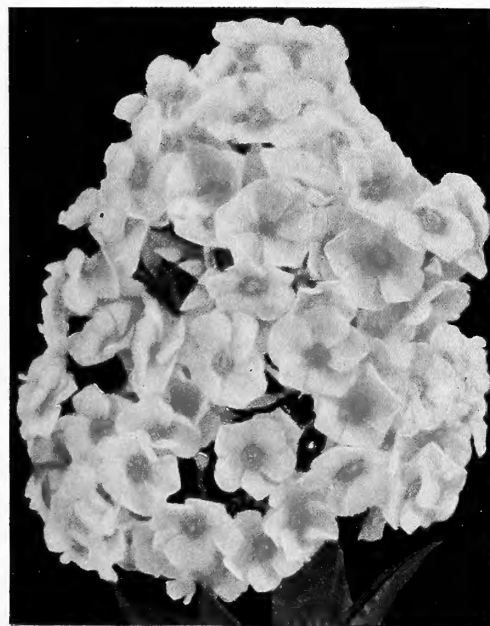
Cornuta atropurpurea. Deep violet-blue flowers of sweet fragrance. 30c. each; \$2.50 for 10; \$20.00 per 100.

BUXUS

microphylla koreana. *Korean Box.* Seldom exceeding 2 feet in height, the Korean Box is an upright shrub of twiggy habit, with small, more or less wedge-shaped leaves. Native of central Korea, where the rivers freeze solid, it has proved hardy in Massachusetts. Plants from 3½-in. pots, \$2.00 each.

microphylla japonica. *Japanese Box.* A very hardy species of bushy and compact habit. The leaves are roundish and of a bright glossy light green color. Fine for formal planting. \$1.50 each; \$14.00 for 10.

sempervirens angustifolia. This narrow-leaved form of the common Box is upright of habit, growing 4 to 6 feet tall and keeps to dark green color through the winter months. \$1.50 each; \$14.00 for 10.



Hardy Phlox, Milly



Viola, Jersey Gem



FARQUHAR'S INVINCIBLE ANTIRRHINUMS

1. **Mauve Beauty.** Lovely rosy mauve. | 3. **Salmon Beauty.** Rich salmon color. | 5. **Grenadier.** Velvety crimson.
 2. **Sunset.** Orange and yellow. | 4. **Wild Rose.** Lovely pale pink. | 6. **Autumn Glow.** Rich velvety copper.

Collection of one pkt. each of the above 6 varieties for \$2.50; separately, pkt. 50 cts.

ALYSSUM. Free-blooming annuals with very sweetly scented white flowers. Suitable for beds and borders.

maritimum Benthami. *Sweet Alyssum.* 1 ft. Pkt. 10c.; oz. 50c.; ¼ lb. \$1.50.

White Fleece. A dwarf variety of great beauty, with masses of fragrant white flowers. Very desirable for dwarf beds and edgings. 4 in. Pkt. 15c.; ¼ oz. 35c.; oz. \$1.00; ¼ lb. \$3.50.

ANCHUSA, Farquhar's Annual Blue. A very showy variety, with rich dark blue flowers borne on long stems. Excellent for bees. 1½ ft. Pkt. 15c.; ¼ oz. 75c.

BALSAM. Balsams are increasing in popularity for the summer garden. They are excellent plants for emergency use because they grow so quickly that they may be sown quite late, and they transplant easily, even in full bloom. If set out 2 feet apart, they develop much larger sprays of bloom. Splendid for table decoration. 1½ ft.

Farquhar's Prize Mixed. This strain is unsurpassed in variety and brilliancy of color. Pkt. 25c.; ¼ oz. \$1.00.

CANDYTUFT, Giant White Perfection. A greatly improved strain of Giant White Candytuft, producing immense spikes of pure white flowers. It is the finest variety for greenhouse culture, the large trusses frequently measuring 6 inches in length, and is unsurpassed for outdoor bedding. Pkt. 15c.; ¼ oz. 60c.; oz. \$2.00.

ASTER, Crego's Giant. A magnificent Aster of the Comet type. Well branched, with long, strong stems and large, loose, feathery heads. 2 ft. **Pure White, Purple, Crimson, Shell-Pink, Rose, Lavender, and Mixed.**

Each of the above colors and Mixed, pkt. 15 cts.; ½ oz. 75 cts.; ¼ oz. \$1.25
 Collection of one pkt. each of 5 Separate Colors, our selection, 60 cts.

California Giant. Superb Asters of the Crego type. The immense flowers resemble Japanese Chrysanthemums and are borne singly on rigid, upright stems; unsurpassed for table decoration. The petals are beautifully twisted and interlaced. 2½ ft. **Light Blue** (beautiful color), **Dark Purple** (rich shade), **Peach Blossom** (very delicate shade), **White, Rose** (charming bright rose-pink), **Mixed.**

Each of the above colors and Mixed, pkt. 50 cts.
 Collection of 5 Separate Colors, \$2.00

Farquhar's Giant Single, Early-flowering. *Soubcote Beauty.* An improved type of the original single Aster. Valuable for indoor decoration, having long, gracefully curved petals and yellow centres. Closely resemble single chrysanthemums. 1½ ft. **Pure White, Light Blue, Scarlet, Pink, Dark Blue, and Mixed.**

Each of the above colors and Mixed, pkt. 15 cts.; ¼ oz. \$1.00.
 Collection of one pkt. each of 5 Separate Colors, our selection, 75c.

FARQUHAR'S RELIABLE FLOWER SEEDS, continued

We prepay postage on all Flower Seeds at prices quoted

CALLIOPSIS (Coreopsis). Charming, free-flowering hardy annuals, blooming early and continuing until frost. The flowers are showy in the garden and most useful for cutting. 1 to 2 ft.

Crimson and Gold. Showy crimson flowers, broadly margined with deep yellow. 2 ft. Pkt. 15c.; ¼oz. 50c.

Morning Star. A pure lemon-yellow form of the preceding. Exceptionally useful for cutting. 2 ft. Pkt. 25c.; ¼oz. 75c.

Collection of 5 Separate Varieties, our selection, 60 cts.

CENTAUREA imperialis. *Giant Sweet Sultan.* The flowers are of enormous size, fragrant, and of most charming colors. They are superb for cutting. 2 ft. **Blue, Lavender, Rose, Pink with White Centre, White, and Special Mixture.**

Each of the above colors and Mixed, pkt. 15 cts.; ¼oz. 75 cts.
Collection of 5 Separate Varieties, 60 cts.

Cyanus, Farquhar's Double Blue. A selection of the old-fashioned Bachelor's Button, producing a large percentage of beautiful double flowers. **Farquhar's Double Pink and Farquhar's Double White.**

Each of above colors, pkt. 15 cts.; ¼oz. 50 cts.; oz. \$1.75

CHRYSANTHEMUM, Farquhar's Special Mixture. Double, and single; all the most beautiful annual varieties. Pkt. 25c.; ¼oz. 75c.

CLARKIA. Popular, hardy annuals of easy culture, and in large masses are exceedingly bright and attractive. The long, graceful sprays are valuable for table decoration. 1 ft.

Farquhar's Salmon Queen. Long, graceful sprays of double salmon-pink flowers. Pkt. 15c.; ¼oz. 50c.

DIANTHUS (Indian Pink), Snowdrift. Large, pure white, fringed flowers. Pkt. 15c.; ¼oz. 75c.

Pink Beauty. Double flowers of a charming shade of delicate pink. Fine for cutting. Pkt. 15c.; ¼oz. \$1.00.

Farquhar's Afterglow. Splendid heads of very showy vivid scarlet flowers. Pkt. 15c.; ¼oz. 75c.

Fringed Salmon. Lovely salmon-pink blooms. Pkt. 20c.; ¼oz. \$1.00.

Farquhar's Superb Mixture. This Mixture contains both double and single-flowering varieties of great brilliancy and diversity of colors. Pkt. 25c.; ¼oz. 75c.

MARIGOLD. The African varieties produce large, self-colored blossoms and are very effective in large beds or borders. The French type has smaller flowers and some of the varieties are beautifully striped.

Double African, Giant Orange. 3 ft. The plants are of compact, bushy habit, with enormous flowers of globular form and densely double. Pkt. 25c.; ½oz. \$1.00.

Giant Lemon. Charming shade. Pkt. 25c.; ½oz. \$1.00.

Farquhar's Eldorado Mixture. Enormous flowers. Pkt. 15c.; ¼oz. 50c.; oz. \$1.50.

Double French, Dwarf Scotch Prize. Seed saved from the finest exhibition flowers. 1 ft. Pkt. 25c.; ½oz. \$1.50.

Dwarf Sunlight. Very compact flowers, sulphur-yellow. Pkt. 15c.; ¼oz. 50c.

NASTURTIUM, Dwarf, Rainbow Mixture. This splendid mixture is composed of the very choicest large-flowering varieties in charming combinations of color which for size and beauty of flower are unsurpassed. Pkt. 10c.; oz. 25c.; ¼lb. 75c.; lb. \$2.50.

Tall, Rainbow Mixture. These are the most showy and varied in color of all running Nasturtiums. The Mixture includes many of the choicest named varieties. They are exceedingly fragrant and flower freely until severe frost. Pkt. 10c.; oz. 25c.; ¼lb. 75c.; lb. \$2.25.

NICOTIANA affinis Hybrids. Flowers similar in shape to *N. affinis* and sweetly scented. The colors vary from creamy white to mauve and violet, including also shades of rose. The finest of the section. 3 ft. Pkt. 15c.; ¼oz. 60c.

NIGELLA, Miss Jekyll (Love-in-a-Mist). Interesting hardy annuals, with finely cut foliage and curious flowers. The flowers of this attractive variety are a beautiful shade of cornflower-blue, a color seldom seen in annuals. It is unexcelled for cutting. 1½ ft. Pkt. 10c.; ¼oz. 50c.

PETUNIA, Rosy Morn. Light pink with white throat; a lovely shade. Pkt. 15c.; ¼oz. \$1.50.

White Pearl. Pure white. Excellent for borders or edgings. Pkt. 15c.; ¼oz. \$1.50.

Violet Queen. Rich deep violet-blue. Pkt. 50c.

Farquhar's Ruffled Giants, Mixed. Very large flowers having the edges deeply ruffled or fluted. Large pkt. 50c.; small pkt. 25c.

PHLOX DRUMMONDI. This is one of the finest annuals, being hardy, easy of cultivation, and making an effective and brilliant display as a summer bedding plant. The flowers are of long duration and of most gorgeous and varied colors. 1 ft. **Blood-Red, Blue** (slaty blue with white eye), **Salmon-Pink, Yellow, Scarlet** (White eye), **Delicate Pink, Brilliant Rose** (Dark Eye), **Brilliant Scarlet, Crimson** (with White Star), **White.**

Each of the above colors, pkt. 10 cts.; ¼oz. 85 cts. Collection of 10 Separate Varieties, 75 cts. Collection of 6 Separate Varieties, 50 cts.

Farquhar's Special Mixture. Contains all the finest and most brilliant colors. Pkt. 10c.; ¼oz. 60c.; oz. \$2.00.

POPPY, Farquhar's Peerless Mixture. This Mixture consists of a combination of the finest double and single-flowering Poppies in an endless variety of the most brilliant and delicate colors. When planted in large beds they produce a gorgeous display. Pkt. 15c.; oz. 50c.; ¼lb. \$1.50.

Carnation-flowered. The flowers of this variety are very double and finely fringed. 2 ft. **Farquhar's Pink** (A fine light shade). Pkt. 15c.; ¼oz. 40c.

Farquhar's White Swan (Pure white). Pkt. 15c.; ¼oz. 40c.

Farquhar's Selected Shirley Mixed. A greatly improved strain of this lovely race of single Poppies, with shining flowers of silky texture, varying in color from pure white and delicate pink to rosy carmine and deep crimson, many of them being beautifully striped and edged with white. Pkt. 10c.; ¼oz. 40c.; oz. \$1.25.

ESCHSCHOLTZIA (California Poppy). One of the best annuals, having delicate silvery foliage and large, poppy-like flowers, running chiefly in shades of yellow. It blooms profusely from June until frost, and is beautiful for borders and for large beds. Sow where it is to flower and thin to 6 inches apart. It cannot be successfully transplanted. 1 ft.

Filled Pink. Delicate pink flowers with fluted petals. Pkt. 15c.; ¼oz. 50c.

Mikado. Brilliant orange-crimson. Pkt. 15c.; ¼oz. 75c.

Farquhar's Special Mixture. Including all the new shades. Pkt. 15c.; ¼oz. 50c.; oz. \$1.50.

LARKSPUR. One of the best-known hardy annuals. The beautiful spikes of bloom are extremely graceful and effective. Seeds should be sown as early in the spring as possible, where they are intended to flower.

Invincible. Most valuable for cut-flowers. 2 ft. **Rosy Scarlet, Royal Purple, Pink, Old Rose, Ageratum-Blue, Lilac, White, and Mixed.**

Each of the above colors and Mixed, pkt. 15 cts.; ¼oz. 60 cts.

Butterfly. A dainty annual with bright blue flowers. Splendid for cutting. 1 ft. Pkt. 25c.; ¼oz. \$1.00.

LAVATERA (Annual Mallow). The Lavateras or Annual Mallows are showy and effective plants covered with bloom all summer. Very desirable for large borders and cutting.

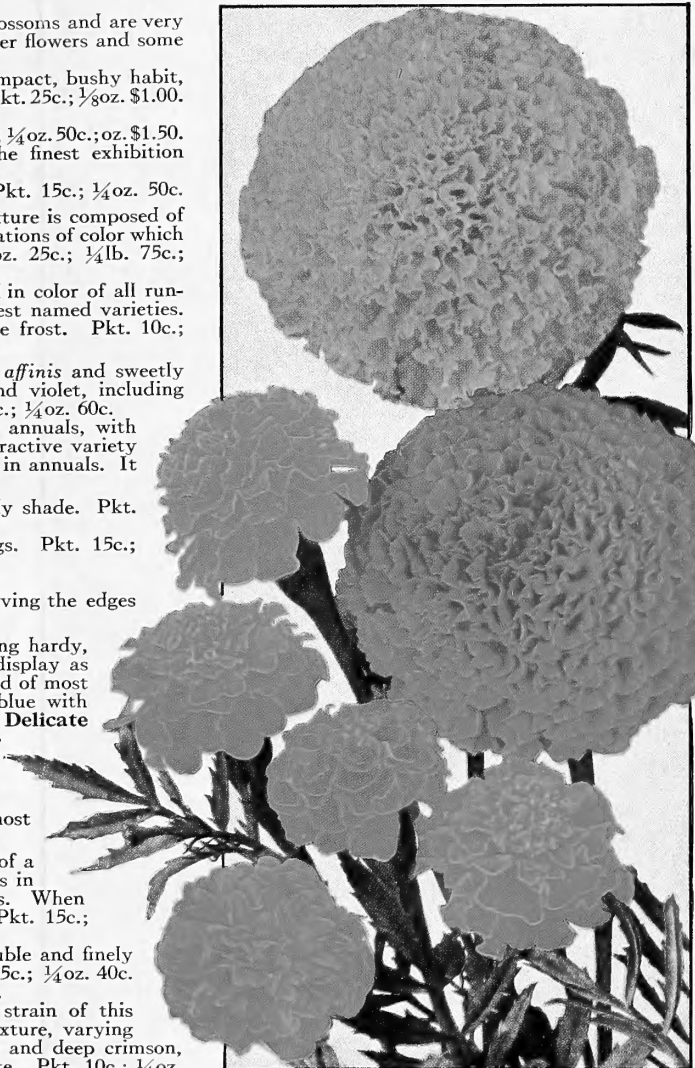
rosea splendens. Large, brilliant rosy pink flowers. Superb for cutting. 3 ft. Pkt. 15c.; ¼oz. 50c.

LUPIN, Farquhar's Pink. Handsome spikes of salmon-pink flowers; particularly useful for cutting, lasting a week or longer in water.

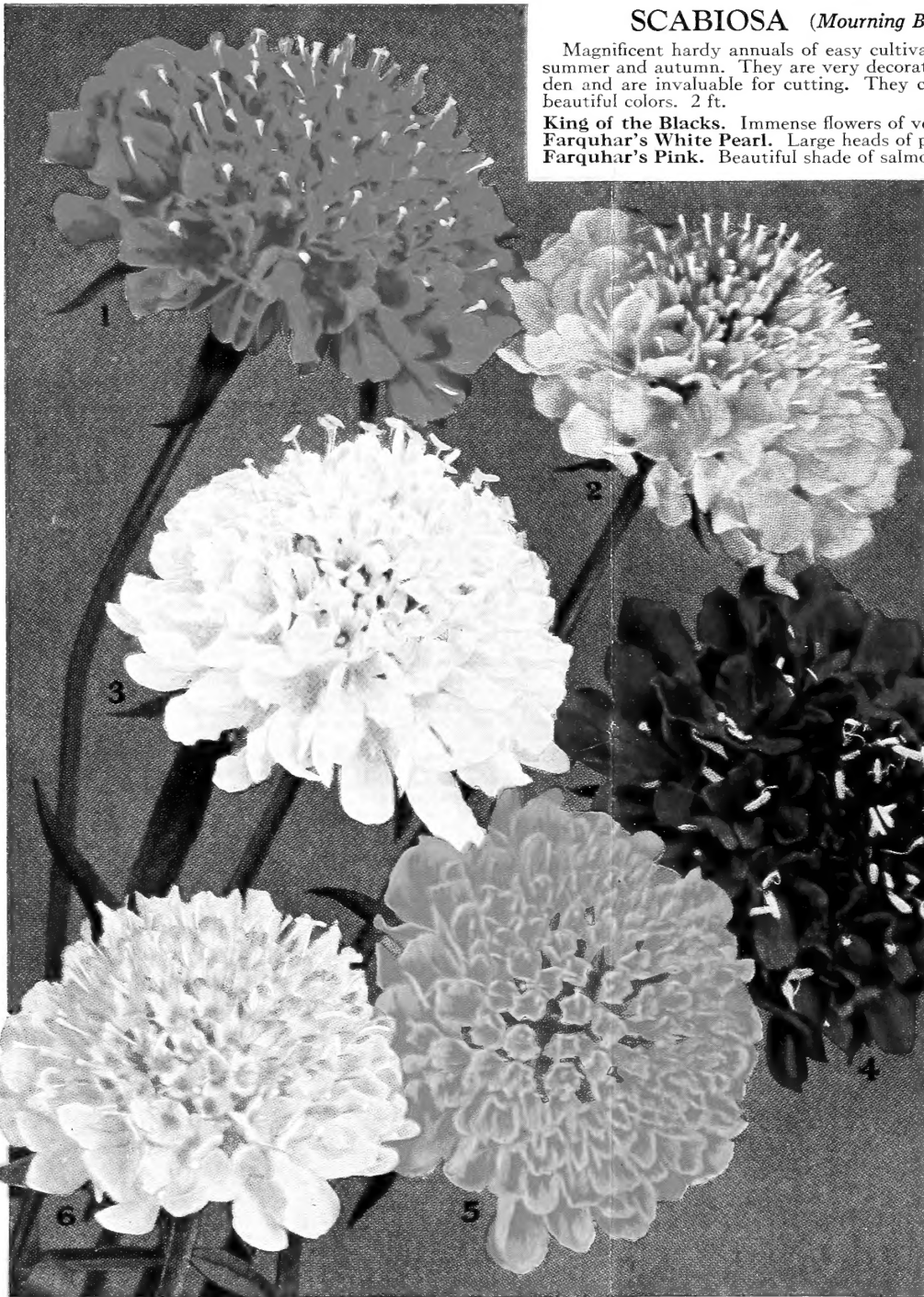
This color is ideal for forcing in the greenhouse. Pkt. 15c.; ¼oz. 50c.

Farquhar's Yellow. A lovely clear yellow Lupin; splendid for cutting. Pkt. 25c.; ¼oz. 75c.

MIGNONETTE, Farquhar's Giant. A robust-growing variety with enormous flower-spikes of a rich reddish green color and delightfully fragrant. Sown outdoors it produces trusses of the largest size and is prized at the summer resorts for cutting. Pkt. 25c.; ¼oz. 60c.; oz. \$2.00.



African and French Marigolds



SCABIOSA (*Mourning Bride; Sweet Scabious*)

Magnificent hardy annuals of easy cultivation, blooming freely through the summer and autumn. They are very decorative for beds or borders in the garden and are invaluable for cutting. They comprise a wide range of rich and beautiful colors. 2 ft.

King of the Blacks. Immense flowers of velvety black-purple.

Farquhar's White Pearl. Large heads of pure white flowers.

Farquhar's Pink. Beautiful shade of salmon. Pkt. 15c.; ¼oz. 60c.

Cherry-Red. An attractive color.

Light Yellow, Lilac (*Azure Fairy*), and **Light Blue.**

Price of any of above varieties, unless otherwise noted, pkt. 10 cts.; ¼oz. 50 cts. Collection of 6 Separate Colors, our selection, 50 cts.

Farquhar's Perfection Mixture. Includes only the finest colors of the large-flowered Scabious in great variety. Pkt. 15c.; ¼oz. 50c.

SALPIGLOSSIS

Exceedingly beautiful half-hardy annuals with large, funnel-shaped flowers, beautifully penciled and veined in rich shades of yellow, crimson, and purple. They flower freely from July until frost, and are invaluable for cutting. 2 ft.

Farquhar's Giant Mixed. Including all the finest colors. Pkt. 25c.; ¼oz. \$1.00.

Large-flowered, Mixed. Many beautiful colors. Pkt. 15c.; ¼oz. 85c.

Collection of 6 Separate Varieties, 60 cts.

VERBENA

The **Giant Varieties** offered below are a magnificent new strain of Verbenas of robust and compact habit, with enormous trusses, the individual florets measuring over an inch in diameter. **Giant Blue,**

Giant Snowdrift (pure white), **Giant Flame Pink,** **Giant Pink,** and **Giant Vivid Scarlet.**

Collection of the above 5 colors, \$1.00. Separately, pkt. 25 cts.

Farquhar's Mammoth Mixed. Includes all the finest colors. Pkt. 25c.; ¼oz. \$1.00.

ZINNIA

Dahlia-Flowered

A new and valuable race of Giant Double Zinnias. The large, magnificent blooms greatly resemble the Decorative dahlia and average from 4 to 5 inches across. A valuable acquisition for cutflowers as well as for garden decoration.

Canary Bird. Delicate shade of primrose-yellow.

Crimson Monarch. Brilliant crimson.

Exquisite. Lovely shade of Tyrian-rose with centre a deeper rose.

Lemon Beauty. Flowers golden yellow on brown—very attractive pastel shade.

Old Rose. A charming shade.

Oriole. Immense orange and gold bicolor changing slightly as it ages.

Scarlet Flame. Bright scarlet with a delightful blending of orange throughout the petals.

Polar Bear. Pure white.

Collection of 6 Separate Varieties, \$1.25; individual pkts. 25 cts.

SCABIOSA,

1, Cherry Red; 2, Lilac; 3, White Pearl; 4, King of the Blacks; 5, Light Yellow; 6, Farquhar's Pink

GIANT-FLOWERING BEAUTY STOCKS

Violet Queen. A lovely shade of light blue.

Queen Alexandra. Lilac-rose; very attractive.

Beauty of Nice. A popular sort with flowers of a delicate flesh-pink color.

Summer Night. Dark violet.

Farquhar's Snowdrift. Pure white.

Crimson King. Rich crimson.

Each of the above colors, pkt. 25 cts.; ¼oz. \$1.00; ¼oz. \$1.75. Collection of 6 Separate Varieties, our selection, \$1.25

FARQUHAR'S COTTAGE GARDEN COLLECTION OF ANNUAL FLOWER SEEDS

Among the thousands of visitors to the seashore and mountain resorts of New England, many come to us inquiring what flower seeds are most suitable for producing a satisfactory and continuous display of flowers in their summer gardens. Our purpose in offering this Collection is to meet this want and to save such purchasers the disappointment of selecting and cultivating varieties quite unsuited to their purpose. It has been our aim to make the assortment large and varied, with ample quantities of the more important flowers. We have also borne in mind the fact that flowers suitable for cutting are preferred, and nearly all are available for bouquets or vase decoration. An unexcelled Collection for continuance and variety of bloom in any "Cottage Garden." Collection includes 23 separate varieties. Postpaid, \$1.50.

FARQUHAR'S RELIABLE VEGETABLE SEEDS

We prepay postage on all Vegetable Seeds listed in ounces, quarter pounds and pounds; for Beans, Peas and Corn see below

BEANS

Farquhar's Rustless Golden Wax. A strong-growing, remarkably productive variety, throwing out long tendrils, but not running. The pods are flat, very tender, and entirely stringless. Pt. 50c.; qt. 90c.; 4 qts. \$3.50.

Bountiful or Improved Six Weeks. One of the best early flat-podded sorts, perfectly stringless, tender and prolific. Pt. 45c.; qt. 85c.; 4 qts. \$3.25.

Full Measure. A desirable variety. The plants are very productive of long, very tender and brittle pods. Pt. 40c.; qt. 75c.; 4 qts. \$2.75.

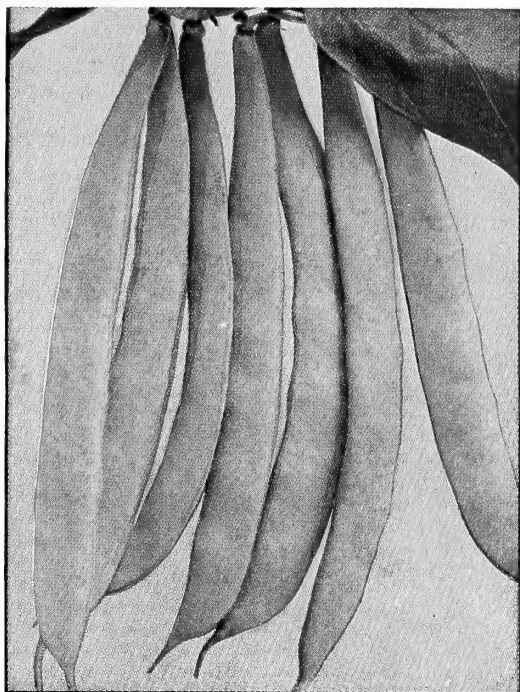
If Beans are wanted by Parcel Post, add for postage 5 cents per pint, 10 cents per quart

BEET

Crosby's Egyptian, Selected. The value of this handsome Beet for an early crop is generally recognized. The roots run very uniform in size and shape, are a rich red color, and very sweet. Our stock of this variety is obtained direct from the originator. Pkt. 15c.; oz. 75c.; $\frac{1}{4}$ lb. \$2.50; lb. \$7.50.

Edmand's Early Blood Turnip, Selected. An improved strain and one of the best for main and late crops. The roots are of medium size, symmetrical in form, very smooth and of dark red color. Excellent keeper. Pkt. 15c.; oz. 50c.; $\frac{1}{4}$ lb. \$1.75; lb. \$6.00.

Detroit Dark Red Turnip. A superior sort for medium and late planting. Top small, upright growing; skin dark blood-red; flesh deep crimson, tender, and very sweet. Pkt. 10c.; oz. 25c.; $\frac{1}{4}$ lb. 75c.; lb. \$2.00.



Bountiful or Improved Six Weeks Beans



Farquhar's Improved Danvers Carrot

CARROT

Farquhar's Improved Danvers. An improved strain of the well-known Danvers Carrot. It grows to a large size, has a full crown, is very smooth with very little core and small tap-root and is of the finest quality. The color is a rich orange-red. Pkt. 15c.; oz. \$1.00; $\frac{1}{4}$ lb. \$3.50.

Selected Chantenay. A superb type of the half-long stump-rooted Carrot, of deep orange-red color, free from core, tender, fine flavored and of excellent quality. Pkt. 10c.; oz. 30c.; $\frac{1}{4}$ lb. \$1.00.

Farquhar's Parisian Forcing. The earliest Carrot in cultivation and one of the most suitable for forcing where small roots are desired. The roots are globe shaped and very mild in flavor. Pkt. 15c.; oz. 75c.

CAULIFLOWER

Farquhar's Earliest Dwarf Erfurt. This strain is grown especially for us by the most reliable grower in northern Europe, where the finest Cauliflower is produced, and we believe there is nothing finer offered. This strain is short-stemmed, small-leaved, with large, finely grained heads, and with reasonable care every plant should produce a fine head. First-size pkt. 50c.; second-size pkt. 25c.; $\frac{1}{4}$ oz. \$1.75; oz. \$6.00.

CELERY

Easy-blanching. A new, very early variety of great merit and good for all seasons. The plants are of vigorous growth, with tender, brittle stalks. A good keeper. Pkt. 15c.; oz. \$1.50.

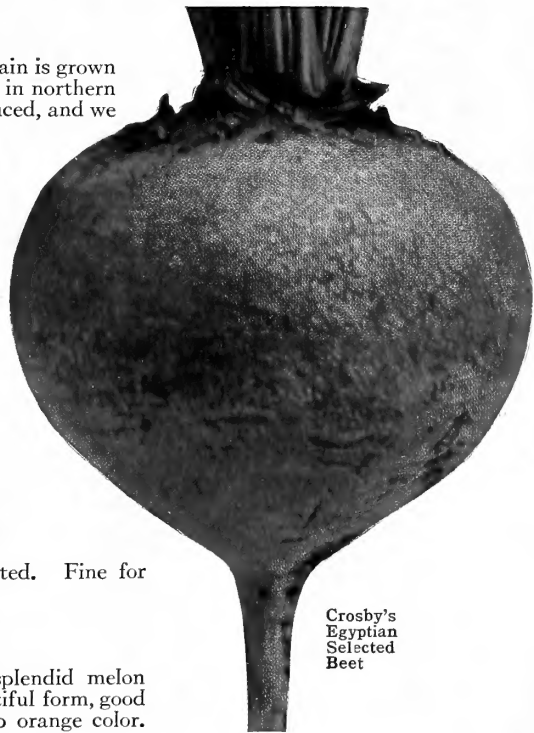
Giant Pascal. *New England-grown.* Plants of strong, vigorous growth, very uniform and remarkably free from soft, pithy stalks. Very solid, crisp, and of fine flavor. Pkt. 25c.; oz. \$1.50.

Crosby's Original Boston Market. The finest flavored variety in cultivation. It is of dwarf, branching habit, blanches perfectly white, and has solid stalks of excellent nutty flavor. A splendid keeper. Fine home-grown seed. Pkt. 25c.; $\frac{1}{2}$ oz. \$1.25.

Farquhar's Selected Red. Crisp, tender, delicious stalks, beautifully rose-tinted. Fine for very late keeping. Pkt. 15c.; oz. \$1.00.

MELON

Farquhar's Honey-Drop. (*Improved.*) For earliness and delicious flavor, this splendid melon is without a rival, and it is, unquestionably, the sweetest and best. It is of beautiful form, good size, and very productive. The flesh is very thick, sweet, melting, and of a deep orange color. Pkt. 15c.; oz. 60c.; $\frac{1}{4}$ lb. \$2.00.



Crosby's Egyptian Selected Beet

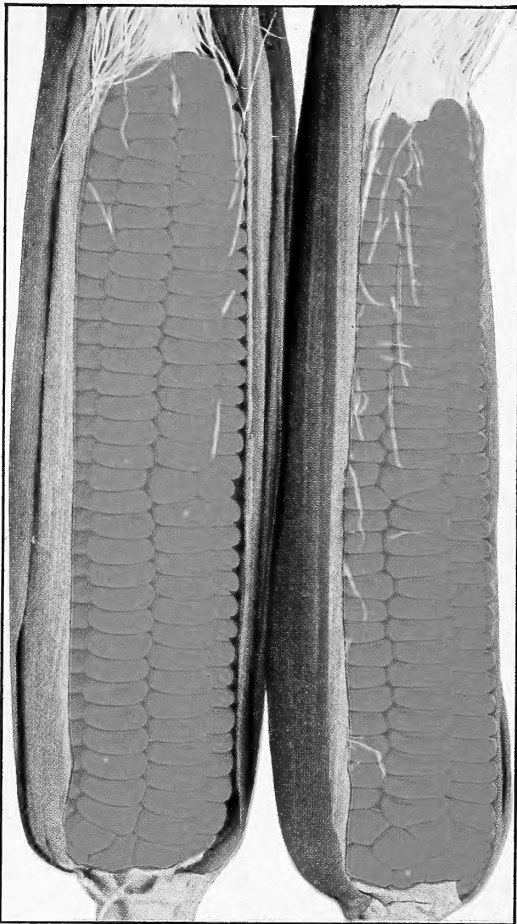
FARQUHAR'S RELIABLE VEGETABLE SEEDS

CORN, Golden Nugget

NEW ENGLAND GROWN

This extra-early variety is of sturdy growth, each plant usually producing three ears about 8 inches in length, with rich golden yellow kernels that are tender and sweet. Pt. 35c.; qt. 60c.; 4 qts. \$2.25.

If Corn is wanted by Parcel Post, add for postage, 5 cents per pint, 10 cents per quart



Golden Nugget Corn



Farquhar's Perfection Cucumber

CUCUMBER

Farquhar's Perfection. The finest type of White-Spine Cucumber in cultivation, and one of the most prolific varieties. The fruits are large, symmetrical in shape, and of a rich dark green color which is permanent. The flesh is pure white, firm, and crisp, with comparatively few seeds, and is unsurpassed for quality. This is an ideal forcing variety and succeeds equally well when planted outdoors. Pkt. 25c.; ¼oz. 50c.; oz. \$1.50; ¼lb. \$5.00.

LETTUCE

May King. The head is of globular shape, hard, and well closed; the leaves are light green, with delicate ribs and lightly waved; interior a clear yellow, very tender and of fine flavor. Pkt. 10c.; oz. 60c.; ¼lb. \$2.00.

Wonderful or New York. A very desirable variety of large size forming solid heads of superb quality, being rich, crisp and tender. This variety is also known as "Los Angeles," where it is grown extensively and shipped to the eastern markets during the winter months. Pkt. 10c.; oz. 75c.; ¼lb. \$2.50.

French Unrivalled. A handsome early Butter-head of extra-choice quality producing compact heads with golden hearts. One of the best varieties for early use. Pkt. 15c.; oz. 75c.

ONION

Farquhar's Selected Yellow Globe Danvers. *Eastern-grown.* The finest type of this favorite American variety, which is more extensively grown than any other Onion. It is of smooth, globular form, with small neck, consequently ripening very early. The solid character of Farquhar's Yellow Globe Danvers makes it one of the best keeping sorts as well as the most popular for market purposes. Pkt. 25c.; oz. \$1.00; ¼lb. \$3.00.

Improved Queen. The earliest of all Onions, and particularly valuable for summer use. It is small, somewhat flat, and of silvery white color. Highly prized for slicing on account of its very mild flavor, and, being small, is popular for pickling. Pkt. 15c.; oz. 75c.; ¼lb. \$2.50.

PEAS

The Pilot. One of the earliest sorts. The vines are very robust and carry a heavy crop of large pods, well filled with richly flavored Peas. Height, 3 ft. Pt. 45c.; qt. 85c.; ½pk. \$3.00.

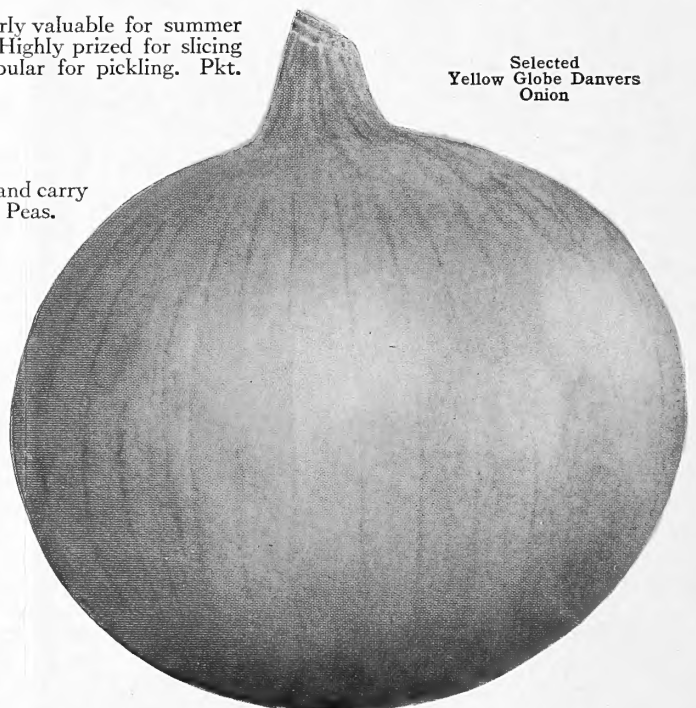
Laxton's Superb. A new, early, semi-wrinkled dwarf Pea, growing about 2 to 2½ feet high and carrying an immense crop of large pods, each containing nine to ten Peas of delicious flavor. It may be sown as early in the season as the smooth sorts. Pt. 55c.; qt. \$1.00; ½pk. \$3.50.

Laxtonian. One of the earliest of the wrinkled Peas. It is robust in habit and bears an abundance of handsome dark green pods well filled with large Peas of fine quality. Height, 1½ ft. Pt. 50c.; qt. 90c.; ½pk. \$3.50.

Admiral Beatty. A new, wrinkled, early Marrowfat, bearing long-pointed pods averaging nine to ten Peas of highest quality. A very heavy cropper. Height, 3½ ft. Pt. 55c.; qt. \$1.00.

Alderman. A valuable variety of recent introduction. The vines are vigorous and average eighteen to twenty pods, each containing seven to ten large Peas of a most delicious flavor. Height, 4 ft. Pt. 45c.; qt. 85c.; ½pk. \$3.25.

If Peas are wanted by Parcel Post, add for postage, 5 cents per pint, 10 cts. per quart



Selected Yellow Globe Danvers Onion

Our complete Catalogue mailed free upon request

FARQUHAR'S RELIABLE VEGETABLE SEEDS

PARSNIP, Farquhar's Market Model

This admirable Parsnip has become very popular both for family use and for exhibition purposes. Its perfect form, smooth skin, and tender white flesh readily give it first place over all others. Pkt. 10c.; oz. 35c.; $\frac{1}{4}$ lb. \$1.25.

RADISH, Farquhar's Early Scarlet Globe

Admirable for forcing or outdoor culture. Deep scarlet; flesh white and tender. Pkt. 10c.; oz. 30c.; $\frac{1}{4}$ lb. \$1.00; lb. \$3.00.

SPINACH, Princess Juliana (New)

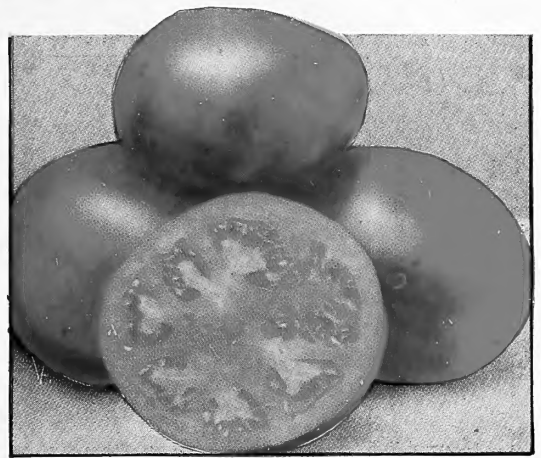
The best second-early variety. Plants grow close to the ground and have dark green, crumpled leaves which retain their crispness for a long time after being cut. Pkt. 10c.; oz. 25c.; $\frac{1}{4}$ lb. 75c.; lb. \$2.00.

SQUASH

Giant Summer Crookneck. An improved type with much larger fruits than the common variety. The plants are of compact growth and the fruits deep golden, heavily warted. Pkt. 10c.; oz. 30c.; $\frac{1}{4}$ lb. \$1.00.

Improved Hubbard. The most popular winter Squash. It is dark olive-green, with very rich, fine-grained, dry flesh. In condition from September to May. Pkt. 10c.; oz. 30c.; $\frac{1}{4}$ lb. \$1.00; lb. \$3.00.

Farquhar's Improved Warren. Similar to Essex Hybrid, but much deeper in color; dry and of excellent flavor. One of the best keeping varieties. Pkt. 10c.; oz. 40c.; $\frac{1}{4}$ lb. \$1.50.



Comet Tomatoes

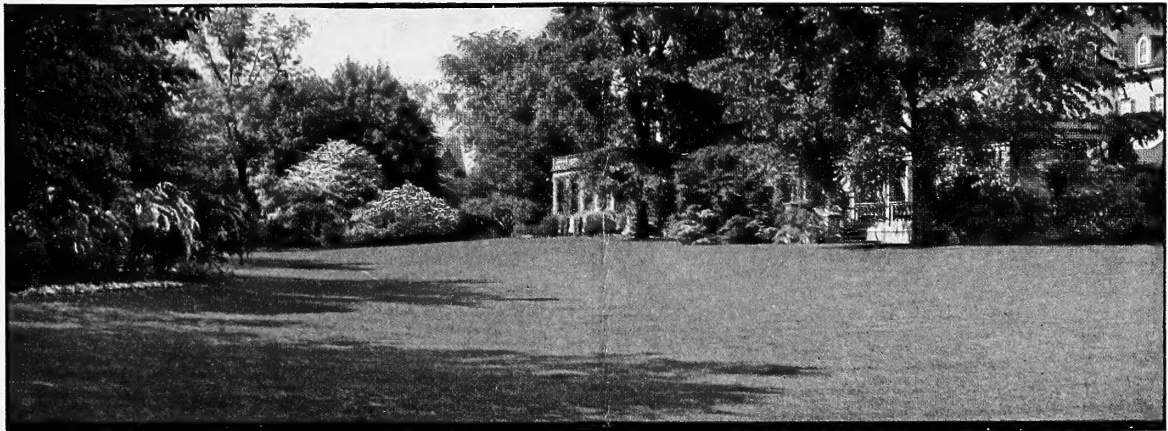
TOMATO

Comet. Imported. This is a splendid variety for either indoors or out. It is very short-jointed, fruiting close up to the stem. The Tomatoes are of good medium size, quite smooth, very solid, and of a deep scarlet color. Pkt. 25c.; $\frac{1}{4}$ oz. \$1.50; oz. \$5.00.

Bonny Best. An extra-early, scarlet, round-fruited variety of very uniform size, smooth, and a heavy cropper. Pkt. 10c.; oz. 50c.; $\frac{1}{4}$ lb. \$1.50.

Stone. Livingstone. Large, scarlet fruits, almost round, very solid and of superb flavor. A fine slicing variety and very prolific. Pkt. 10c.; oz. 40c.; $\frac{1}{4}$ lb. \$1.50.

LAWN GRASS



FARQUHAR'S EVERGREEN LAWN GRASS

A mixture of the finest American and European grasses adapted to lawn-making. The formula for this mixture is the result of a life-time of practical experience in making and maintaining lawns. Neither pains nor expense are spared in obtaining grasses of high vitality and purity. It is our constant aim to make Farquhar's Evergreen Lawn Grass the best, purest and most permanent lawn grass sold. For the formation of new lawns, sow not less than 80 to 100 pounds per acre. One pound will sow a plot 20 by 20 feet or 400 square feet. For renovating existing turf, use one-half of this quantity. (Bus. 25 lbs.) Lb. 60c.; 5 lbs. \$2.90; 10 lbs. \$5.75; 100 lbs. \$55.00. Charges prepaid when cash accompanies the order.

FARQUHAR'S SHADY PLACE MIXTURE

This is a mixture of extra fine grasses adapted for growing in the shade and under trees. We recommend the use of this mixture wherever other grasses have failed to make a close sward on account of shade. Sow at the rate of 1 pound per 300 square feet for a new lawn, or about half that quantity for renovating existing turf. Lb. 60c.; 5 lbs. \$2.90; 10 lbs. \$5.75; 100 lbs. \$55.00. Charges prepaid when cash accompanies the order.

FARQUHAR'S SPECIAL MIXTURE FOR ATHLETIC FIELDS

A special mixture of grasses producing a close, matted turf of great resiliency. The grasses are all fine-leaved, deep-rooting, hardy, and retain their green color even in dry weather. Many of the leading athletic fields in New England are using this Grass Seed Mixture with complete satisfaction. Sow at the rate of 125 to 150 pounds per acre. Lb. 70c.; 5 lbs. \$3.40; 10 lbs. \$6.50; 100 lbs. \$60.00. Charges prepaid when cash accompanies the order.

Other Grass Seed Mixtures for Special Purposes listed on pages 36 to 40 of our Garden Annual for 1928, a copy of which will be mailed free upon request



Farquhar's New and Choice Gladiolus for 1928

Postpaid at dozen rate; when ordered at hundred rate add 25 cts. per 100, if wanted by mail. (Six or more bulbs sold at dozen rate; 25 or more at hundred rate)

FARQUHAR'S SUPER-COLLECTION OF NINE GRAND GLADIOLUS

The varieties offered in this Collection are all of the newer introductions, and for vigor, size, and beauty of bloom they are unsurpassed. A splendid Collection for exhibition purposes.

- | | | |
|--------------------------|-----------------------------|----------------------|
| 1. Shasta | 4. Ethelyn | 7. Richard Diener |
| 2. Roseneil | 5. Kirchoff's Apple-blossom | 8. Dr. F. E. Bennett |
| 3. Mrs. Ella G. Morrison | 6. Kirchoff's Violet | 9. Pollyanna |

All the above varieties fully described on this page. Postpaid
 5 bulbs each of the above 9 varieties (45 bulbs)..... \$15 00
 10 bulbs each of the above 9 varieties (90 bulbs)..... 28 00
 25 bulbs each of the above 9 varieties (225 bulbs)..... 65 00

FARQUHAR'S RAINBOW COLLECTION OF TWELVE CHOICE GLADIOLUS

All well-known, moderately-priced sorts that can be relied upon to produce quality blooms. Each variety is a gem in its color.

- | | | |
|-----------------|-----------------|----------------------|
| Carmen Sylva | Crimson Glow | Mrs. Frank Pendleton |
| Gold | Byron L. Smith | Anna Eberius |
| Pink Wonder | Scarlet Princes | Mary Pickford |
| Mrs. Dr. Norton | Scarlarano | Souvenir |

All of the above varieties are fully described on pages 100-01-02 of our Garden Annual. Postpaid
 5 bulbs each of the above 12 varieties (60 bulbs)..... \$8 00
 10 bulbs each of the above 12 varieties (120 bulbs)..... 15 00
 25 bulbs each of the above 12 varieties (300 bulbs)..... 25 00

- Dr. F. E. Bennett.** An unusual red—the most fiery imaginable—and very large flowers, many open. 50c. each; \$5.50 per doz.; \$45.00 per 100.
- Elora.** Creamy white blooms with rich cream spots in throat on lower petals, overlaid with dainty feathering of American Beauty pink. Very early. 20c. each; \$2.00 per doz.; \$14.00 per 100.
- Ethelyn.** Fine new tall Primulinus variety. Flowers a beautiful shade of orange-yellow, edges of petals tipped with bronze. 35c. each; \$3.50 per doz.; \$25.00 per 100.
- Fern Kyle.** Kunder's massive, creamy white, exhibition variety. A beautiful and exceedingly refined flower. 50c. each; \$5.00 per doz.; \$40.00 per 100.
- Giant Nymph.** A giant in growth and flowers. Light rose-pink blooms with creamy yellow throats. 30c. each; \$3.50 per doz.; \$25.00 per 100.
- Golden Glory.** A large richly colored yellow with beautiful throat blotched red; ruffled and very choice. 20c. each; \$2.00 per doz.; \$14.00 per 100.
- Idamae.** Very large, wide-open ivory-white flowers, with lower petals overlaid yellow and delicate rose penciling in throat. 40c. each; \$4.00 per doz.; \$30.00 per 100.
- Kirchoff's Apple-Blossom.** Picture the variety Mrs. Dr. Norton with its coloring more subdued, and you will have a suggestion of this beautiful new variety. It has tall, slender stems, large flowers always facing front, and color just what the name implies, center being pinkish white shading to apple-blossom. 75c. each; \$7.50 per doz.; \$50.00 per 100.
- Kirchoff's Violet.** A deep rich violet, the largest and most velvety of all the blues. 60c. each; \$6.00 per doz.; \$45.00 per 100.
- Louise.** Large, fully open, bright lavender blooms with wine-colored blotch in throat. 20c. each; \$2.00 per doz.; \$14.00 per 100.
- Marietta.** Flowers delicate shade of light salmon, beautifully blended with light orange, the lower petals shading to a bright burnt-orange. 50c. each; \$5.00 per doz.; \$40.00 per 100.
- Minuet.** New, self-colored, rich lavender, with very large flower of heavy substance. It is believed by many that this variety will become the leader in this color. \$5.00 each.
- Mme. Mounet-Sully.** A handsome white variety with very conspicuous fiery red blotch. 60c. each; \$6.00 per doz.
- Mrs. Ella G. Morrison.** Large flowers of shell-pink with lighter throat. Produces numerous side spikes thus prolonging period of bloom. Very early. 40c. each; \$4.00 per doz.; \$30.00 per 100.
- Mrs. Leon Douglas.** Ground-color begonia-rose, striped with brilliant scarlet; pale lemon lip, slightly speckled ruby. Grows to a height of 5 feet and over. Flowers very large and showy; plant extremely vigorous. 40c. each; \$4.00 per doz.; \$32.00 per 100.

- Muriel.** An extra-good light blue with darker throat-blotch. The large flowers are of good substance, borne on strong spikes. 20c. each; \$2.25 per doz.; \$16.00 per 100.
- Pearl of California.** A strong, upright grower, with flowers of excellent quality, measuring 5 inches in diameter. The long spikes contain 26 to 32 buds, with 8 to 12 open at a time, appearing like a large bouquet. The flower is of the clearest, softest La France-pink blending to a rosy white throat. \$5.00 each.
- Persia.** Great interest was displayed wherever this Gladiolus was exhibited. It is a remarkably colored variety, having perfectly black buds, and blooms extremely deep red of a mahogany tone, so dark as to appear almost black; and, added to this is a wonderful over-spread of the most velvety sheen that glistens like the sparkling dew. 50c. each; \$5.00 per doz.; \$40.00 per 100.
- Pink Lily.** Magnificently ruffled deep rose-pink blooms, well placed on sturdy spikes. 25c. each; \$2.50 per doz.; \$15.00 per 100.
- Pollyanna.** Almost a self-color of rich, clear, golden yellow. The many finely waved blooms are wide open and well placed. A variety of great promise. 35c. each; \$3.50 per doz.; \$25.00 per 100.
- Richard Diener.** Blooms a very live rose-salmon, with creamy yellow centre. 40c. each; \$4.00 per doz.; \$30.00 per 100.
- Roseneil.** Large, amaranth-purple blooms, shading to Tyrian-pink in throat, with deep carmine tongue. It is very much the color of Purple Glory and a decided favorite wherever exhibited. 40c. each; \$4.00 per doz.; \$30.00 per 100.
- Rose Mist.** An unusual Primulinus. It has large old-rose flowers, edged with pallid neutral gray, four to five open at one time, on spikes 40 inches high. 50c. each; \$5.00 per doz.; \$40.00 per 100.
- Saraband.** Very large, wide-open flower of rich velvety bordeaux, with straw-yellow blotch, feathered bordeaux. A fine new variety of very unusual color. 75c. each; \$7.50 per doz.
- Scarlet Wonder.** Giant, rich glowing scarlet-red, self-color flowers. A new introduction of great merit. 35c. each; \$3.50 per doz.; \$25.00 per 100.
- Shasta.** The buds of this variety are cream, but turn to a very clear white upon opening, and the edges are prettily frilled. Strong grower. 75c. each; \$7.00 per doz.; \$50.00 per 100.
- Sweet Lavender.** A lovely combination of light lavender-pink, blending into creamy yellow, with very prominent magenta-red blotch. 25c. each; \$2.50 per doz.; \$15.00 per 100.
- Vaughan's White.** Large, well-expanded, pure white flowers of great substance, with many open at one time on the strong spikes. Earlier and larger than Europa. 50c. each; \$5.50 per doz.

Many other leading varieties offered in our Garden Annual; copy mailed free upon request