

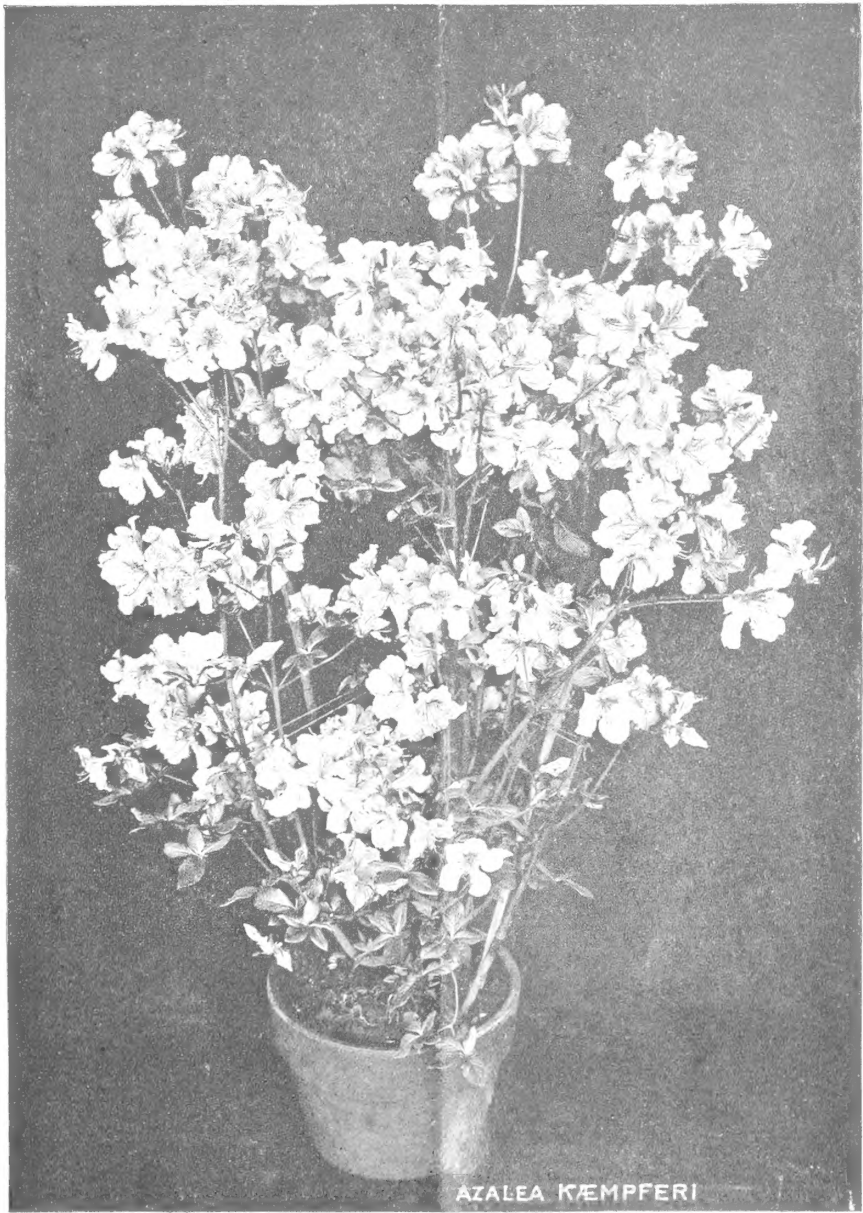
Historic, archived document

Do not assume content reflects current scientific knowledge, policies, or practices.

FARQUHAR'S FORCING PLANTS

SPECIAL IMPORT CATALOGUE

1915



AZALEA KEMPFERI

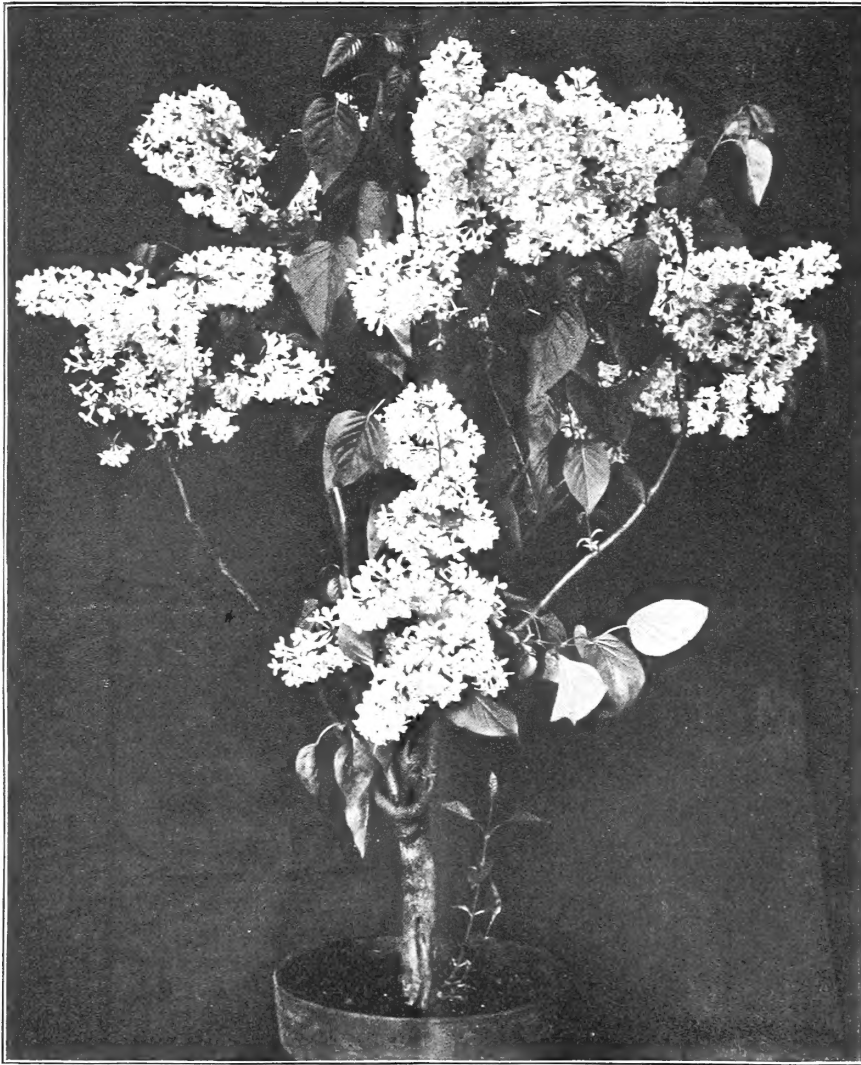
R. & J. FARQUHAR & CO.
6 & 7 SO. MARKET ST., BOSTON, MASS.

FARQUHAR'S FORCING SHRUBS AND PLANTS.

CULTIVATED SPECIALLY FOR EARLY FORCING.

The plants are all well ripened and splendidly set with buds. Orders should be placed at once.

LILACS.



Lilac Marie Legraye

LILACS—Pot-grown for Forcing. (Ready in November.)

Charles X. Dark lilac, single.

Marie Legraye. Pure white, single.

Souvenir de Louis Spæth. Dark purple, single.

Madame Lemoine. Double white.

Mme. Casimir Perier. Double white.

Michael Buchner. Double reddish-lilac.

Strong Bushy Plants, well budded, \$1.75 each; \$18.00 per dozen.

STANDARD LILACS. (Ready in November.)

Charles X.

Marie Legraye.

Madame Lemoine.

Souvenir de Louis Spæth.

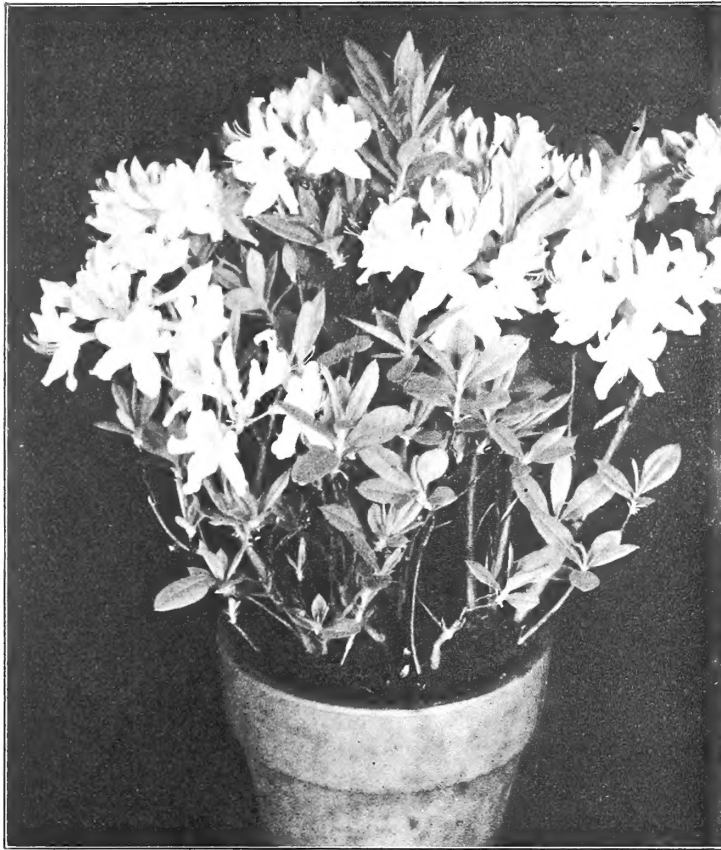
Michael Buchner.

Plants with stems 2½ to 3 feet, fine-bushy heads, well budded, \$2.50 each; \$25.00 per dozen.

NON-WARRANTY. We do not give as to description, quality, productiveness or any other matter, any warranty, express or implied, of any seeds, bulbs, plants, insecticides, fungicides, or fertilizers, which we send out. If the purchaser does not accept the goods on these terms, they are at once to be returned.

R. & J. FARQUHAR & CO.

FARQUHAR'S AZALEAS.



Azalea Mollis.

AZALEA MOLLIS. Ready in November.

These Azaleas are now quite popular for winter decoration and the following collection embraces a full range of colors.

Baron Edmund de Rothschild. Red.

Chevalier A. de Realie. Light yellow.

Consul Pêcher. Light red.

Comte de Gomer. Light red.

Isabella van Houtte. Yellow.

Comte de Papadopoli. Red.

Bushy plants, well set with flower buds, \$1.50 each; \$15.00 per doz.

AZALEA MOLLIS. Standards.

Seedling plants with fine heads, well budded, on stems $2\frac{1}{2}$ to 3 ft.

Colors not separated. \$2.50 each; \$28.00 per doz.

AZALEA KÆMPFERI.

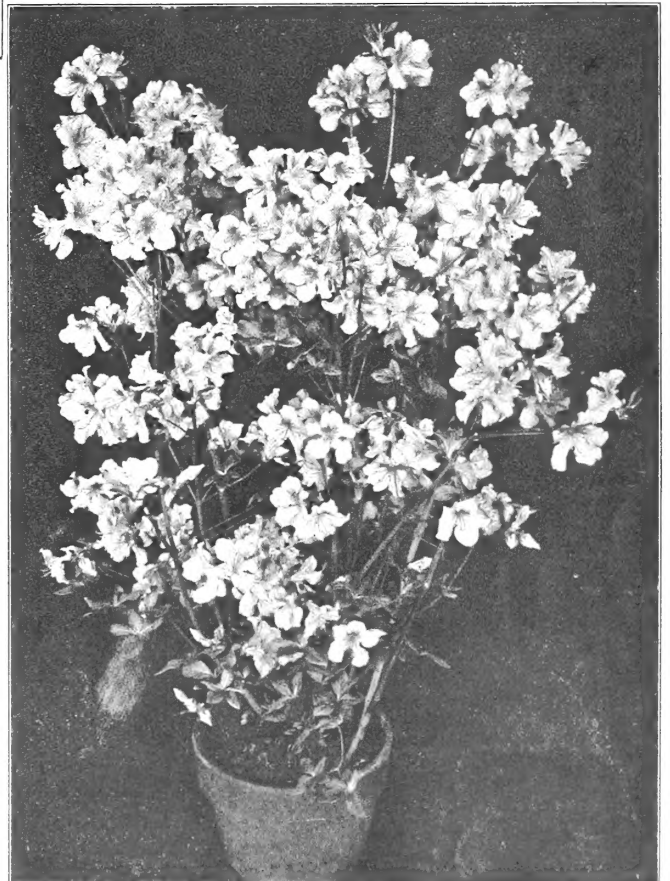
This charming Japanese Azalea can be forced for winter decoration and will make an excellent substitute if it may not even supercede the Belgian varieties of which the supply is doubtful this season. Our exhibit of this variety at the Massachusetts Hort. Society Spring Show was greatly admired and we believe it has a great future as a forcing plant. It forms a much branched bush, twiggy in habit and exceedingly floriferous, the flowers varying in color from orange-scarlet to salmon-red.

(Ready in November.)

Strong bushy plants. \$1.50 each; \$15.00 per doz.

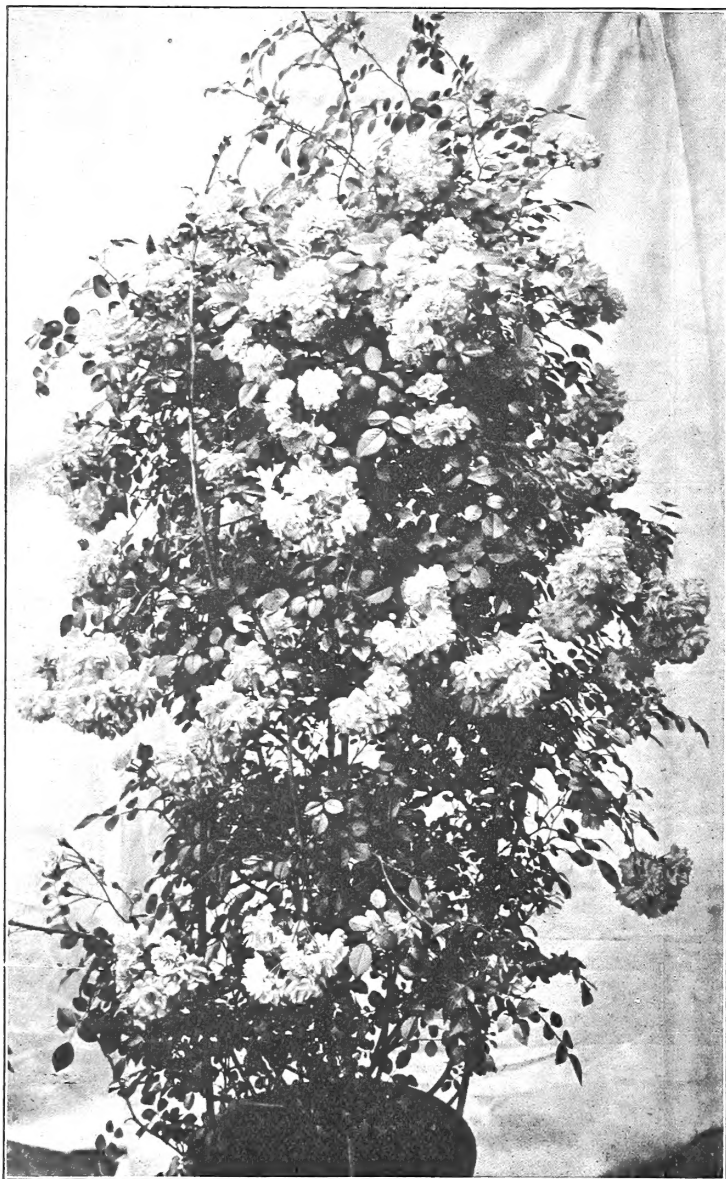
AZALEA INDICA.

The supply of Azalea Indica from Belgium is uncertain owing to the war, but should conditions change before fall, we shall endeavour to procure our usual supply. We have on hand some fine carried-over plants, a list of which will be sent on request.



Azalea Kämpferi. Japanese Azalea.

FARQUHAR'S ROSES FOR FORCING.



Rose Dorothy Perkins.

ROSA POLYANTHA.—Baby Ramblers.

Mme. Norbert Levavasseur. Crimson.

Mrs. Wm. H. Cutbush. Pale pink.

Orleans. Cherry-red.

Jessie. Bright scarlet.

Katherine Zeimet. White.

Cecile Brunner. Bright rose; yellowish centre.

\$1.00 each;
\$10.00 per doz.

ROSES.—Hybrid Perpetual.

Strong, Field-grown plants in variety, \$5.00 per dozen.

ROSES.—Climbing Varieties.

Ready in November.

Our selection will be found to comprise the leading varieties, all of which we can supply in strong bushy plants, specially grown in pots for forcing.

Excelsa. Bright crimson.

Dorothy Perkins. Shell-pink.

Lady Gay. Delicate cherry-pink.

Crimson Rambler. Crimson.

Tausendsehon. Deep rosy-pink.

White Dorothy Perkins. White.

American Pilla.. Large single pink flowers.

\$2.00
each;
\$22.00
per doz.

Marechal Niel. Rich golden yellow. \$2.50 each.

Tausendsehon. Standards. \$2.50 each; \$28.00 per doz.



Rose Baby Rambler.

FARQUHAR'S FLOWERING SHRUBS FOR FORCING.

The following are all pot-grown unless otherwise specified.



Group of Forced Shrubs exhibited by R. & J. Farquhar & Co. at the Spring Show of the Massachusetts Horticultural Society, March, 1914.

Almond Double Pink. Double rose-like flowers covering the slender branches in great profusion. **Strong bushy plants**, \$1.25 each; \$12.00 per doz. **Half Standards**, \$2.00 each; \$20.00 per doz.

Andromeda floribunda. *Lily of the Valley shrub.* (Not pot-grown.) Upright panicles of waxy-white flowers. **Extra strong plants**, \$2.00 each; \$20.00 per doz.

Japonica. (Not pot-grown.) Drooping racemes of white flowers. **Bushy plants**, \$1.50 each; \$15.00 per doz.

Ceanothus Rose Carmine. Very ornamental free-flowering shrub; flowers rosy-carmine. \$1.00 each; \$10.00 per doz.

Cerasus fl. pl. *Double-flowering Cherry.* Double pink flowers of a delicate shade. \$1.25 each; \$12.00 per doz.

J. H. Veitch. Large double rose-colored flowers. \$2.00 each; \$20.00 per doz.

Daphne cneorum. A dwarf shrub producing bright pink, sweet scented flowers. **Strong bushy plants**, 50c. each; \$6.00 per doz.

Deutzia crenata rosea fl. pl. Double pink. 75c. each; \$8.00 per doz.

Graeilis. Pure white flowers. 50c. each; \$5.00 per doz.

Lemoinei. Very large pure white flowers produced in cone-shaped heads. 50c. each; \$5.00 per doz.

Forsythia suspensa. *Weeping Golden Bell.* Pendulous habit; covered with yellow drooping flowers. 75c. each; \$8.00 per doz.

Hydrangea arborescens grandiflora alba. *Snowball Hydrangea.* Splendid variety with large pure white flowers. Not pot-grown. \$1.00 each; \$10.00 per doz.

Hydrangea hortensis. **New Varieties.** In 6 named sorts, 50c. each; \$5.00 per doz.

Hypericum patulum var. Henryi. A very desirable new variety of St. John's Wort of upright growth with masses of clear yellow flowers produced in great profusion. 75c. each; \$7.50 per doz.

Hypericum Moserianum. *St. John's Wort.* Flowers golden yellow. 35c. each; \$3.50 per doz.

Flowering Shrubs continued on Page 6

FARQUHAR'S FLOWERING SHRUBS FOR FORCING.—Continued.



Deutzia crenata rosea fl. pl.

Kerria japonica fl. pl. Corchorus. Double orange-yellow, 75c. each; \$8.00 per doz.

Kalmia latifolia. Mountain Laurel. (Not pot-grown.) Lovely clusters of rose-colored flowers. **Bushy plants**, well budded, \$1.75 each; \$18.00 per doz.

Laburnum Vossi. Lovely yellow flowers in pendulous racemes. **Standards** on 4 feet stems. \$2.00 each; \$24.00 per doz.

Magnolia soulangeana. Not pot-grown. White veined and shaded purple. 4 to 5 feet. \$2.50 each; \$28.00 per doz.

Stellata Halleana. Not pot-grown. 2 to 2½ feet. \$2.50 each; \$28.00 per doz.

Prunus triloba. Double flowering Plum. Large pink semi-double flowers. **Bushy plants**, \$1.00 each; \$10.00 per doz. **Standards**, \$1.50 each; \$15.00 per doz.

Rhododendron Pink Pearl. A beautiful variety with large flower trusses of soft pink. **Bushy plants**, with 8 to 10 buds, \$3.50 each. **Extra heavy plants**, 10 to 12 buds, \$4.50 each.

Boule de Neige. White. 10 to 16 buds. \$2.00 each; \$22.00 per doz.

Madame Wagner. White margined rose. 10 to 16 buds. \$2.00 each; \$22.00 per doz.

Prince Camille de Rohan. Pink and white, 10 to 16 buds. \$2.00 each; \$22.00 per doz.

Spiræa Van Houttei. Pure white flower clusters. 60c. each; \$6.00 per doz.

Anthony Waterer. Brilliant rosy-carmine flowers in dense clusters. 50c. each; \$5.00 per doz.

Wistaria chinensis. Purple } **Bushy plants**, \$1.75 each;
Wistaria chinensis. White } \$18.00 per doz.



Spirea Anthony Waterer

FARQUHAR'S MISCELLANEOUS ROOTS FOR FORCING.

Dielytra spectabilis. *Bleeding Heart.* (Ready in November.)

A well known hardy plant producing long racemes of deep rose-pink pendant flowers. 25c. each; \$2.50 per doz.; \$15.00 per 100.

Helleborus niger. *Christmas Rose.* (Ready in November.)

The Helleborus is almost hardy, and if grown in cold frames with protection from frost will produce its beautiful blossoms freely throughout the winter and spring. The flowers are about three inches in diameter, pure waxy white, shaded with crimson-purple. 50c. each; \$5.00 doz.; \$40.00 per 100.

LILY-OF-THE-VALLEY. Retarded.

We carry in cold storage a large stock of our choicest grades of Lily-of-the-Valley for summer and fall forcing. Put up in cases of 100, 250 and 500. \$3.50 per case of 100; \$6.50 per case of 250; \$12.00 per case of 500.

SPIRÆAS. (*Astilbe*). Ready in November.

NEW VARIETIES.

Spiræa Arendsii. A very desirable class of *Spiræas* for winter forcing, blooming rather later than the *Japonica*.

Rubens. *New.* This variety should prove a most valuable acquisition for forcing being of strong growth and producing long feathery flower panicles of clear pink which color is retained when forced. 50c. each; \$5.00 per doz.

Brunhilde. Feathery panicles of creamy-rose tinged with lilac. 40c. each; \$4.00 per doz.



Spiræa Rubens.



Dielytra spectabilis.

Spiræa Kremhieldi. Salmon-rose; beautiful. 50c. each; \$5.00 per doz.

Pink Pearl. Graceful spikes of pyramidal form; flowers delicate rose. 50c. each; \$5.00 per doz.

Salmon Queen. Flowers salmon-rose. 50c. each; \$5.00 per doz.

STANDARD VARIETIES.

Japonica. Its rich, dark-green, fern-like foliage is surmounted with a profusion of pure white flowers, rising in erect feathery panicles. Large clumps. \$1.25 per doz.; \$8.50 per 100.

Compacta multiflora. (*Grandiflora*.) A variety of *Japonica* of compact growth, and the flowers somewhat larger. \$1.50 per doz.; \$10.00 per 100.

Astilboides floribunda. The habit of growth is dwarf, with erect, long flower sprays of purest white in delicately formed panicles. \$1.50 per doz.; \$10.00 per 100.

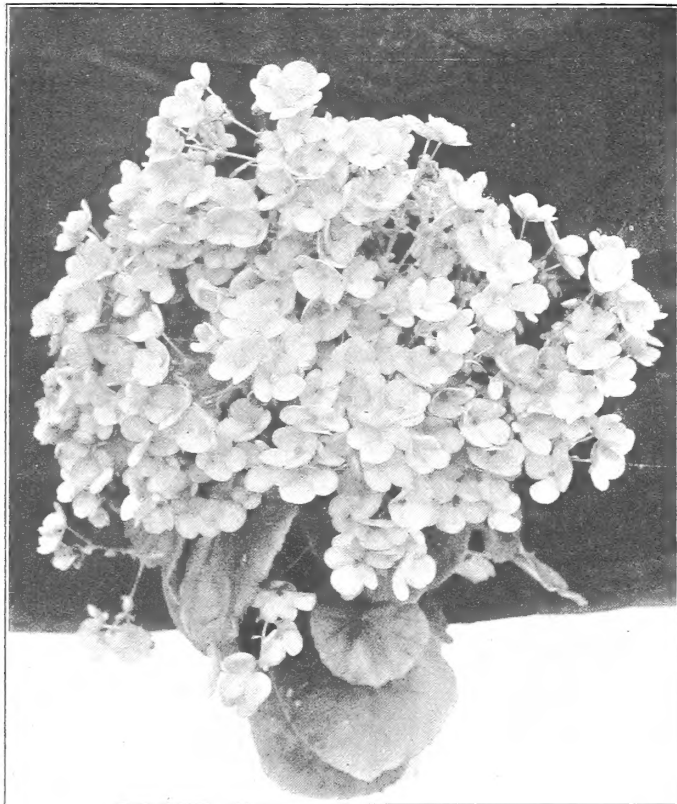
Hybrida Gladstone. A large flowering variety with immense trusses of snow-white flowers borne on long stalks. \$1.50 per doz.; \$12.00 per 100.

Peach Blossom. A splendid variety of branching habit with large showy sprays of delicate pink flowers. \$2.00 per doz.; \$15.00 per 100.

Queen Alexandra. A very beautiful variety producing dense compact spikes of clear pink flowers. It was awarded a Silver Medal by the Massachusetts Horticultural Society. \$2.25 per doz.; \$16.00 per 100.

FARQUHAR'S FOLIAGE and FLOWERING PLANTS

For WINTER DECORATION.



Begonia Glory of Cincinnati.

Allamanda Hendersoni. A strong growing climber; flowers golden yellow. 35c. each; \$3.50 per doz..

Williamsii. Dwarf, compact and bushy. Fragrant pale yellow flowers. 35c. each; \$3.50 per doz.

Antirrhinum majus. *Snapdragon.* (Ready in September.)
White, Pink, Red, Yellow.
Plants from 3½ in. pots, \$1.75 per doz.; \$14.00 per 100.

Ardisia crenulata rubra. Ornamental plants bearing clusters of red berries. 5 in. pots, \$1.75 each; \$18.00 per doz.

Aspidistra lurida, green-leaved. Decorative plants suitable for halls or other shady places. 7 in. pots, \$2.00 each.

lurida variegata. Foliage green, striped with white. 6 in. pots, \$2.00.

Asparagus plumosus nanus. Bright green finely pinnated fern-like foliage; very lasting. Plants from 2½ in. pots, 75c. per doz.; \$5.00 per 100. 3½ in. pots, \$1.50 per doz.; \$12.00 per 100. 5 in. pots, each, 35c.; \$3.50 per doz.

Sprengeri. Drooping feathery sprays; excellent for hanging pots and baskets. Plants from 2½ in. pots, 75c. per doz.; \$5.00 per 100. 3½ in. pots, \$1.50 per doz.; \$12.00 per 100. 5 in. pots, each, 25c.; \$2.75 per doz.

Araucaria excelsa. One of the most graceful and beautiful foliage plants grown. Very serviceable for house and conservatory decoration. Plants 10 to 12 in. high, each \$1.25; 14 to 16 in., \$1.75.

Begonia Gloire de Lorraine. Of all the winter-blooming plants this variety is the most lavish in its production of flowers. The flowers are of a bright salmon-rose color growing in large gracefully drooping panicles.

Plants from 3½ in. pots, \$4.00 per doz.; \$30.00 per 100. 5 in. pots, \$7.50 per doz. 6 in. pans, each \$1.00; \$10.00 per doz.

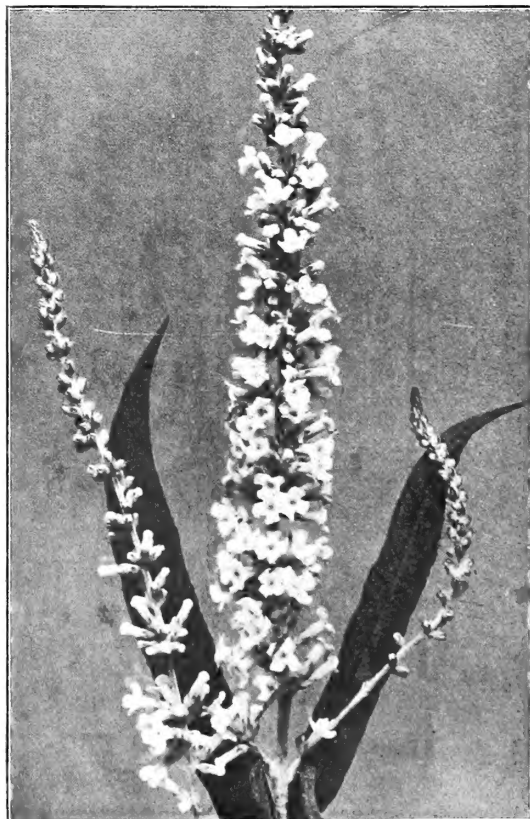
Glory of Cincinnati. A more vigorous type of the Lorraine. Plants from 3½ in. pots, \$5.00 per doz.; \$35.00 per 100. 5 in. pots, \$1.00 each; \$10.00 per doz. 6 in. pans, each \$1.25; \$12.00 per doz.

Bougainvillea glabra. Flowers rich violet-red. Plants in 9 in. pots, each \$7.50 to \$10.00.

Bouvardia. A useful plant for cut flowers. Single White, Single Pink, Single Red. Humboldt White. Strong Plants, 50c. each; \$5.00 per doz.

Browallia speciosa major. (Ready in September.) A beautiful perpetual-flowering variety with bright violet-blue flowers. Plants 3½ in. pots, \$1.75 per doz.

Browallia viscosa. A charming dwarf pot-plant producing masses of bright blue flowers throughout the winter. 20c. each; \$1.75 per doz.



Buddleia asiatica.

FARQUHAR'S FOLIAGE AND FLOWERING PLANTS.—Continued.

Buddleia asiatica. *Winter Lilac.* (Ready in September.) An elegant pot plant suitable for general decorative purposes and cut flowers. The flowers are pure white and deliciously fragrant. Plants in 5 in. pots, 50c. each; \$5.00 per doz.

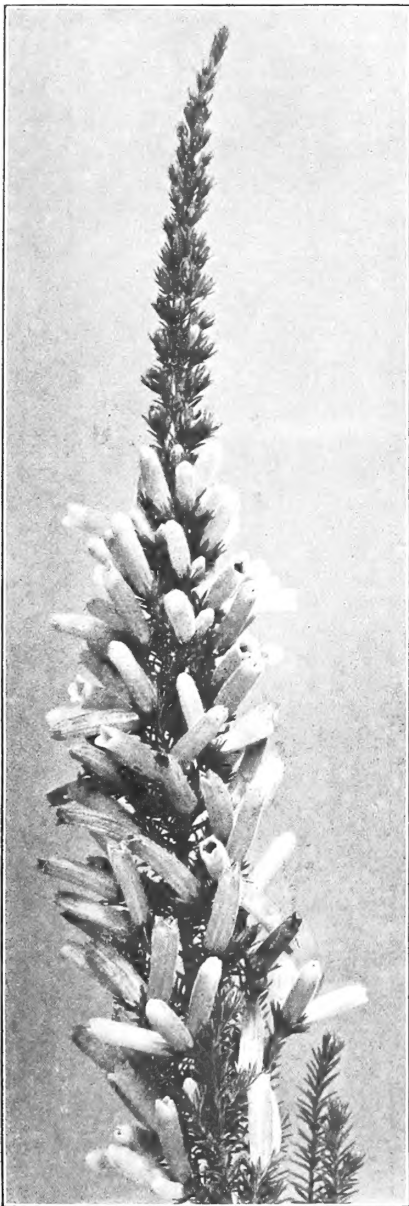
offeinalis. (Ready in September.) An excellent companion to the above, with rose-pink fragrant flowers each with orange eye produced in terminal branched tails.

Plants from 5 in. pots, 50c. each; \$5.00 per doz.

Calceolaria Farquhar's Perfection. (Ready in October.) The flowers of this strain are of large size, of rich and varied colors including self-colors, spotted, blotched and laced.

Plants in 3 in. pots, \$3.00 per doz.

Stuarti. (Ready in September.) Large flowers of bright yellow. Plants in 5 in. pots, 50c. each; \$5.00 per doz.



Erica Wilmoreana King Edward VII.



Cyclamen Farquhar's Giant.

Cineraria Farquhar's Superb strain. (Ready in September.) This strain includes the richest and brightest self-colors as well as perfectly marked, ringed and margined forms of all colors.

Plants in 3½ in. pots, \$1.75 per doz.; \$12.00 per 100. 6 in. pots, for December delivery 75c. each; \$8.50 per doz.

Clerodendron Balfourii. Greenhouse climber; flowers of bright scarlet with creamy-white calyxes. Strong plants, 75c. each; larger plants, \$1.50 to \$2.00 each.

Crassula coccinea. Showy pot plant for the greenhouse with large heads of rosy-red flowers. Strong plants, 35c. each; \$3.50 per doz.

Crotons. In 5 standard varieties, 50c. each; \$5.00 per doz.

Cyclamen Farquhar's Giant. White, Pink, Crimson, Excelsior, White with claret base, Salmon.

Plants from 4 in. pots, \$4.00 per doz.; \$30.00 per 100. 5 in. pots, 60c. each; \$6.00 per doz. 6 in. pots, \$1.00 each; \$10.00 per doz.

Dracaena amabilis. Green, suffused with pink. 75c. each.

Baptistii. Long, broad foliage; cream, red and orange. \$1.00 each.

Godseffiana. A distinct variety forming compact graceful specimens; foliage dark green with irregular, creamy-white spots. 25c. each; \$2.50 per doz.

Massangeana. Leaves green, striped yellow in centre. Strong plants, \$1.00 each; \$10.00 per doz. LARGER PLANTS, \$1.50 each.

Shepherdii. Carmine and green leaves. \$1.00 each.

Terminalis. Foliage olive-green, striped with carmine and pink. Young leaves bright crimson. 50c. each; \$5.00 per doz.

Erica Wilmoreana. Beautiful sprays of long, bell-shaped, delicate pink flowers.

Plants from 4 in. pots, 50c. each; \$5.00 per doz. 5 in. pots, 75c. each; \$7.50 per doz.

Wilmoreana King Edward VII. The flowers of this variety are larger and deeper in color than in the preceding.

Plants from 3½ in. pots, 35c. each; \$3.50 per doz. 4 in. pots, 75c. each; \$7.50 per doz.

Fuchsias. In variety. 6 in. pots, 75c. each; \$8.00 per doz.



Dracæna Massangeana.

Ficus elastica. (*Rubber Plant*).

Plants 1½ to 2 ft., \$1.00 each; \$10.00 per doz.

repens. A small-leaved climbing variety; useful for baskets or covering greenhouse walls.

Strong plants, 30c. each; \$3.00 per doz.

Genista canariensis. A desirable spring-flowering plant producing fragrant bright golden-yellow flowers in great profusion.

Plants in 5 in. pots, 50c. each; \$5.00 per doz. 6 in. pots, 75c. each; \$8.00 per doz.

Geraniums. (Ready in September.) Red, Pink, White.

5 in. pots, 30c. each; \$3.00 per doz.

Heliotrope. (Ready in September.)

Plants in 5 in. pots, 30c. each; \$3.00 per doz.

Hotzia coccinea. *New.* A bushy winter-flowering plant with salvia-like spikes of bright red flowers. 50c. each; \$5.00 per doz.**Ixora Fraseri.** Ornamental bushy greenhouse shrub, producing large corymbes of handsome orange flowers. 50c. and 75c. each.**Jasminum officinalis.**

Plants in 5 in. pots, 60c. each; \$6.00 per doz.

grandiflorum. (*Catalonian Jasmine.*) Very fragrant. 5 in. pots, 60c. each; \$6.00 per doz.**primulinum.** A magnificent species with large bright yellow flowers produced in great profusion during the entire winter. Plants in 5 in. pots, 75c. each; \$7.50 per doz.**Isolepis gracilis.** A useful foliage plant for vases, baskets or the window garden. Strong plants, 25c. each; \$2.50 per doz.**Olea fragrans.** (*Sweet Olive.*) Small white flowers of delightful fragrance. 75c. each.**Marguerite or Paris Daisy.** *Chrysanthemum frutescens.* Ready in October.

Single White	} Plants in 4 in. pots, 20c. each; \$2.00 per doz.
Single Yellow	
Mrs. F. Sander	
	} " " 4 in. " 25c. each; \$2.75 per doz.

Primula chinensis (*Chinese Primrose*) **Farquhar's Giant.** Our Giant strain of Primulas is remarkable for the size and substance of flower. White, Pink, Red, Ruby Queen, Duchess. Plants in 2½ in. pots, \$1.00 per doz.; \$8.00 per 100. 5 in. pots, (For October Delivery), 50c. each; \$5.00 per doz.**malacoides.** (Ready in October.) Flowers pale lavender. Plants in 3½ in. pots, \$1.00 per doz.; \$10.00 per 100.

FERNS.

Cyrtomium Rochfordianum. *New Crested Holly Fern.* The foliage of this beautiful new Fern is of a glossy dark green, the leaflets being waved or undulated on the edges giving the plant a graceful appearance.

Plants in 5 in. pots, 75c. each; \$7.50 doz.

Adiantum hybridum. A very hardy variety producing magnificent fronds.

Plants in 7 in. pots, \$1.75 each.

Nephrolepis exaltata Bostoniensis. *Boston Sword Fern.* One of the best Ferns for conservatory or window cultivation.

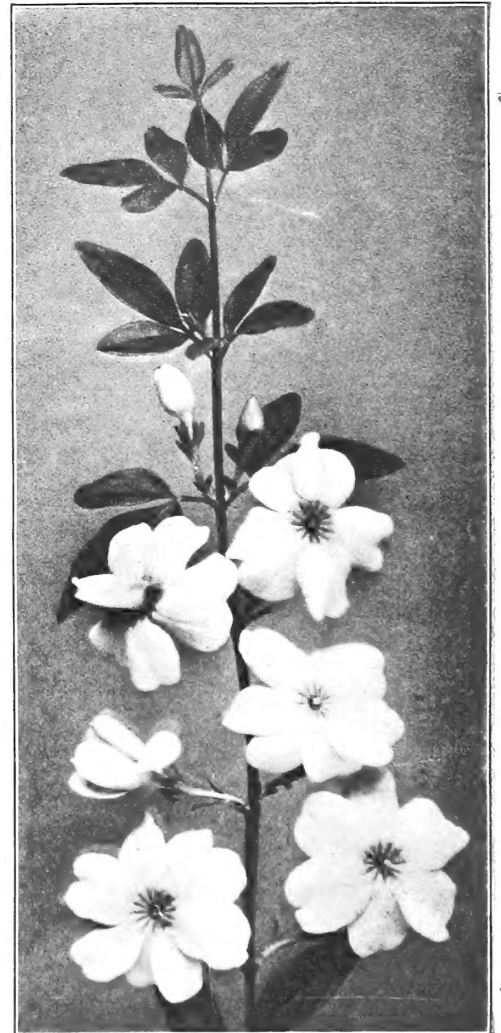
Plants in 5 in. pots, 50c. each; \$5.00 per doz. 6 in. pots, \$1.00 each; \$10.00 per doz. 7 in. pots, \$1.50 each; \$15.00 per doz.

Specimen plants, \$2.00 each and upwards.**Whitmanii.** *Ostrich Plume Fern.* A beautiful crested fern with broad plume-like fronds.

Plants in 5 in. pots, .50c. each; \$5.00 per doz. 6 in. pots, \$1.00 each; \$10.00 per doz.

Ferns for Jardinieres. In variety.

Plants from 2 to 3 in. pots, 75c. per doz.; \$6.00 per 100.



Jasminum primulinum.

FARQUHAR'S FOLIAGE AND FLOWERING PLANTS—Continued.

Pandanus Veitchii. A decorative house plant with graceful foliage, broadly striped with creamy white on a green ground. Plants in 5 in. pots, \$1.00 each.

Panicum variegatum. A trailing plant suitable for hanging baskets or window boxes. Foliage white striped pink. Plants in 3½ in. pots, 25c. each; \$2.50 per doz.

Poinsettia. (Ready in August.)
Plants in 3½ in. pots, \$3.00 per doz. 5 in. pots, \$5.00 per doz.

Plumbago capensis. Light lavender-blue. Plants in 5 in. pots, 50c. each.

Smilax. Strong plants. \$1.00 per doz.; \$6.00 per 100.

Solanum capsicastrum. *Jerusalem Cherry.* Ornamental plants with bright red berries. Bushy plants in 5 in. pots, 50c. each; \$5.00 per doz.

Streptosolon. *Browallia Jamesoni.* An excellent winter-flowering vine with bright orange tubular-shaped flowers. Plants in 4 in. pots, 50c. each; \$5.00 per doz.

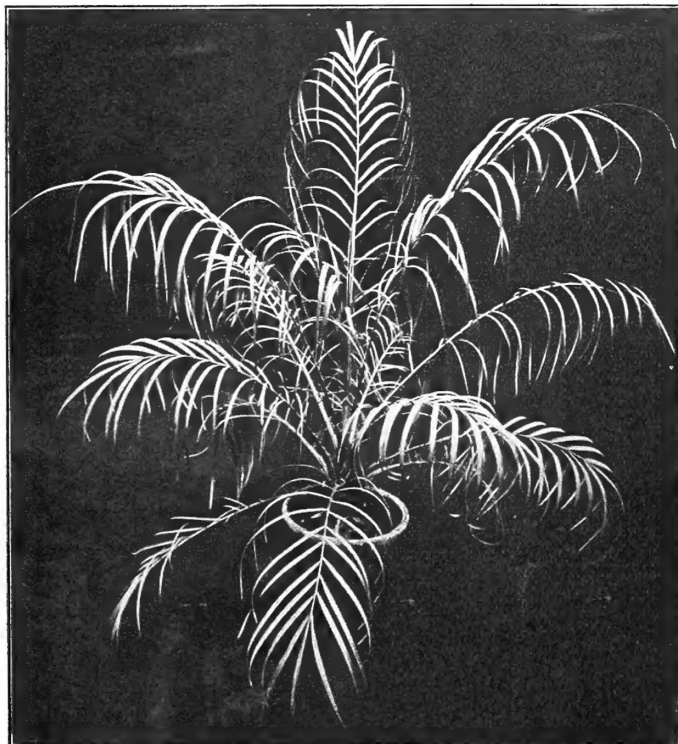
Swainsonia, Rose or White. 5 in. pots, 35c. each; \$3.50 per doz.

Tradescantia zebrina. A useful trailing plant for hanging baskets or window boxes with variegated foliage. Plants in 3½ in. pots, 25c. each; \$2.50 per doz.

Wallflower. Single red or yellow. Strong plants for winter flowering. \$2.50 per doz.



Poinsettia Double Flowered.



Phoenix Rœbelini.

PALMS.

Cocos Weddeliana. One of the finest Palms for table decoration.

Plants in 2½ in. pots, 25c. each; \$2.50 per doz. 3 in. pots, 35c. each; \$3.50 per doz.

Kentia Belmoreana. Of the erect growing feather-leaved Palms, this is the best adapted to house decoration, and one of the most beautiful.

Plants in 3½ in. pots, 50c. each; \$5.00 per doz. 5 in. pots, \$1.25 each; \$12.00 per doz. 6 in. pots, \$2.50 each; \$25.00 per doz. 7 in. pots, \$3.50 each. 8 in. pots, \$5.00 to \$7.50 each. *Larger specimens.* \$10.00 to \$20.00 each.

Forsteriana. This variety is similar to K. Belmoreana but of stronger growth.

5 in. pots, \$1.25 each; \$12.00 per doz. 6 in. pots, \$2.50 each; \$25.00 per doz. 7 in. pots, \$3.50 each. 8 in. pots, \$5.00 to \$7.50 each.

Phoenix Rœbelini. One of the most graceful Palms with fine recurving leaves.

Plants in 4 in. pots, \$1.00 each. 5 in. pots, \$1.75 each.



The Italian Garden constructed by R. & J. Farquhar & Co. at Horticultural Hall, Boston, March, 1912.
The effect was produced by bulbs, winter-flowering plants and shrubs forced for the occasion.

Landscape Gardening.

We now make a specialty of this work, furnishing plans and estimates for the improvement and planting of private estates and public grounds. We have a large assortment (over 100 acres) of the best Hardy Nursery Stock, suitable for the Northern States, embracing trees, shrubs, vines and perennial plants. We have also competent gardeners in our permanent employ for the carrying out of such work. We invite correspondence from those contemplating improvement of their estates.

R. & J. FARQUHAR & CO.