

Historic, archived document

Do not assume content reflects current scientific knowledge, policies, or practices.

FARQUHAR'S

MID-SUMMER CATALOGUE

62
Library
Department of Agriculture
Washington, D. C.
1904



FARQUHAR'S
CHOICE HYBRID COLUMBINES

Oz., \$3.00; 1-4 Oz., \$1.00; Pkt., \$0.25

Strawberry Plants

Forcing Bulbs

PÆONIES

IRISES

HERBACEOUS PLANTS

CONIFERS

SEASONABLE SEEDS

INSECTICIDES

FERTILIZERS

GARDEN SUPPLIES

R. & J. FARQUHAR & CO., 6-7 South Market St., BOSTON, MASS.

POT-GROWN STRAWBERRY PLANTS.



These, if planted in August or September, produce a large Crop the next Summer. Being grown in pots, they may be shipped to a distance and planted with almost no interruption to their growth. The earlier they are planted the larger the first season's crop will be. The plants may be set in beds of three rows one foot apart, and one foot distant in the rows, with a space of two and one-half feet between the outside rows of adjoining beds left for a pathway. They may also be planted in single rows three feet apart, and one foot apart in the rows.

Bi-sexual or staminate varieties, marked S, are self-fertilizing. Pistillate, or imperfect varieties, marked P, require a staminate sort planted near them for fertilization.

POT-GROWN PLANTS. — From 2½ in. pots, well rooted, delivery August 1st to Sept. 15. Per 100, \$3.00; 250, \$7.00; 500, \$12.50; 1000, \$25.00, for all varieties.

BRANDYWINE, S. A large heart-shaped berry perfect in form, bright red in color, with flesh firm, red to the centre, and of rich, spicy flavor. Brandywine is a favorite midseason sort of excellent quality and a great cropper, especially on heavy soils.

CLIMAX, S. A seedling of the old Bubach, medium early, combining large size and fine flavor. It is an enormous bearer, the fruit being medium red, solid, and of fine form. It is highly esteemed for shipping.

CLYDE, S. Medium early; very prolific and excellent market berry; color light red; superior flavor.

EXCELSIOR, S. This is one of the earliest to ripen, and larger than any other early sort. The fruit is of round conical form, glossy, dark-red color, and of sprightly, mildly acid flavor.

GLEN MARY, S. One of the best sorts either for family or market use. It ripens at midseason, the fruit being large with firm flesh of deep red color, all through, and of superior sweet flavor. Glen Mary is a vigorous grower, and one of the best pollenizers to plant with imperfect-flowered or pistillate sorts.

HAVERLAND, P. One of the best sorts for light or medium soils; bearing an abundance of long conical scarlet berries, very uniform in size. Its flavor is strongly aromatic, resembling that of the old Charles Downing.

Continued on Page 3.

NON-WARRANTY. — R. & J. FARQUHAR & Co. give no warranty, express or implied, as to description, quality, productiveness, or any other matter of any seeds, bulbs or plants they send out, and they will not be in any way responsible for the crop. If the purchaser does not accept the goods on these terms, they are at once to be returned.

POT-GROWN STRAWBERRY PLANTS — *Continued.*

MARSHALL, S. The fruit of this remarkable sort is of enormous size, of handsome, glossy, dark-crimson color, and of delicious flavor. It is one of the best midseason berries either for private use or market. It is a vigorous grower, and requires good soil and high cultivation. As it does not thrive in all soils, it should not be planted extensively until its adaptability is ascertained.

MILLER, S. This new sort has the vigor of Marshall or Nick Ohmer. Like these it is popular for exhibition purposes, and has been awarded many prizes for excellence. The berries are very large, bright glossy red, and of regular, roundish-conical form. The flesh is solid, light salmon in color, and of delicious flavor.

MINUTE MAN, P. This is a most valuable addition, inasmuch that *it bears abundantly longer than any other American Strawberry.* The fruit is of medium size, roundish and slightly shouldered, bright scarlet in color; sweet, firm, and without a core. One of the best for private gardens.

NEW YORK, S. One of the best sorts for private gardens. The berries are large, of long, conical form; dark-red color, firm texture, and of remarkably sweet flavor. Midseason.

NICK OHMER, S. Second early, very productive sort, and one of the best for forcing under glass. Berries large, shining, dark red; excellent flavor. It is a strong grower, and succeeds best on rather heavy soil.

PARSON'S BEAUTY, S. A splendid new sort resembling the old Wilson, but larger, ripening very early. It is very productive of delicious dark-red berries. An acquisition both for home and market use.

SAMPLE, P. This fine variety, which is of Massachusetts origin, is probably the most widely grown of all Strawberries for market use. It yields enormously, and the fruit is of large size, long conical form, bright red color, and with firm flesh, of good flavor.

SENATOR DUNLAP, S. A leading Massachusetts grower pronounces this "the best early berry yet grown." It seems to thrive in all kinds of soil, bearing great crops of large, dark-red berries of fine quality.

SPECIAL POT-GROWN PLANTS FOR FORCING.—From 4-inch pots, delivery early in September. Marshall and Nick Ohmer only. Price, \$12.00 per 100.



Marshall Strawberry.

BULBS FOR FORCING AND EARLY PLANTING.



Lilium Candidum.

Lilium Harrisii. The Bermuda Easter Lily.

Very choice, thoroughly ripened bulbs, from the finest stock in Bermuda.

FINE FLOWERING BULBS. 5 to 7 in. circ. Per doz., \$1.00; per 100, \$6.50; per case of 400, \$24.00.
EXTRA LARGE BULBS. 7 to 9 in. circ. Per doz., \$2.00; per 100, \$14.00; per case of 200, \$26.00.
MAMMOTH SIZE. 9 to 11 in. circ. Per doz., \$3.50; per 100, \$25.00.

Lilium Longiflorum. Bermuda Grown.

FINE FLOWERING BULBS. 5 to 7 in. circ. Per doz., \$1.00; per 100, \$6.50; per case of 400, \$24.00.
EXTRA LARGE BULBS. 7 to 9 in. circ. Per doz., \$2.00; per 100, \$14.00; per case of 200, \$26.00.
MAMMOTH SIZE. 9 to 11 in. circ. Per doz., \$3.50; per 100, \$25.00.

Lilium Longiflorum. Japan Grown.

EXTRA LARGE BULBS. 7 to 9 in. circ. Per doz., \$1.00; per 100, \$6.00; per case of 300, \$16.50.
SELECTED BULBS. 9 to 10 in. circ. Per doz., \$1.75; per 100, \$12.00; per case of 200, \$22.00.

We have visited Japan, and now get the best Bulbs produced there.

Lilium Candidum.

These are grown for us in the North of France, and are the large, thick-petalled variety. Bulbs from the Marseilles district have become degenerate and affected by disease. They should be avoided.

MAMMOTH NORTHERN GROWN. Per doz., \$1.50; per 100, \$8.00; per 1,000, \$70.00.

Freesia Refracta Odorata.

LARGE SIZE BULBS. $\frac{1}{2}$ in. diam. and upwards. Per doz., 15c.; per 100, \$1.00; per 1,000, \$8.00.
EXTRA LARGE BULBS. $\frac{5}{8}$ in. diameter and upwards. Per doz., 25c.; per 100, \$1.75; per 1,000, \$12.00.
MAMMOTH BULBS. Per doz., 40c.; per 100, \$2.50; per 1,000, \$20.00.

Calla Lily. Dry Roots.

EXTRA LARGE. $1\frac{3}{8}$ to 2 in. diam. Per doz., \$1.75; per 100, \$12.00.

EXTRA SELECTED. $1\frac{5}{8}$ to $2\frac{1}{2}$ in. diam. Each, 30c.; per doz., \$3.00; per 100, \$20.00.

Allium Neapolitanum.

Per doz., 20c.; per 100, \$1.00; per 1,000, \$7.00.

Roman Hyacinths.

WHITE. EXTRA LARGE.
Per doz., \$1.00; per 100,
\$6.00; per 1,000, \$50.00.

WHITE. MAMMOTH. Per
doz., \$1.25; per 100,
\$7.50; per 1,000, \$65.00.

PINK. Per doz., 75c.;
per 100, \$4.50; per 1,000,
\$40.00.

LIGHT BLUE. Per doz.,
60c.; per 100, \$4.00; per
1,000, \$35.00.

WHITE ITALIAN, OR PA-
RISIAN HYACINTHS.
These are about a fort-
night later than the
Early White Roman
Hyacinths, and the
blossoms somewhat
larger. They are very
useful for forcing, being
fragrant and decorative.
Per doz., 75c.; per 100,
\$5.00; per 1,000, \$45.00.



White Roman Hyacinth.

Narcissus.

PAPER WHITE, LARGE-
FLOWERING. Per doz.,
40c.; per 100, \$1.75; per
1,000, \$12.00.

PAPER WHITE, LARGE-
FLOWERING, EXTRA
LARGE BULBS. Per doz.,
50c.; per 100, \$2.50; per
1,000, \$20.00.

EARLY FRENCH TRUMPET
MAJOR. This Trumpet
Daffodil is now in de-
mand to force for Christ-
mas. Per doz., 40c.; per
100, \$2.50; per 1,000,
\$18.00.

DOUBLE ROMAN. Yellow.
Per doz., 30c.; per 100,
\$1.50; per 1,000, \$10.00.

Oxalis.

GRANDIFLORA ALBA. Pure white. Per doz., 40c.; per 100, \$2.50.

MULTIFLORA ALBA. Pure white. Per doz., 60c.; per 100, \$3.50.

PINK (BOWIEI). Fine home grown. Per doz., 35c.; per 100, \$2.00.

BERMUDA BUTTERCUP. Large yellow. Per doz., 40c.; per 100, \$2.50; per 1,000, \$20.00.

Jonquils.

SINGLE SWEET SCENTED. Per doz., 15c.; per 100, 75c.; per 1,000, \$4.50.

DOUBLE SWEET SCENTED. Per doz., 30c.; per 100, \$2.00; per 1,000, \$16.00.

CAMPERNELLE. Per doz., 20c.; per 100, \$1.00; per 1,000, \$6.00.

RUGULOSUS. Per doz., 20c.; per 100, \$1.25; per 1,000, \$7.50.

Ornithogalum Arabicum.

Per doz., 50c.; per 100, \$2.75; per 1,000, \$20.00.

Dutch Flower Bulbs.

Our importation is one of the largest and the quality the very best coming to the United States.
Our ILLUSTRATED BULB CATALOGUE, ready about September 15th, mailed on application.

DOUBLE PAEONIES.



Paeonia Festiva Maxima.

The Peony is the rival of the rose. The Double Chinese Peonies come in bloom a few days before the hybrid perpetual roses; the flowers last as long; run in the same colors; many of them are delightfully fragrant and, because of their greater size, are much more decorative. Peonies thrive in ordinary garden soil, but attain their best development in strong, deep loam which has been well enriched with barn-yard dressing. Ground bone is perhaps the best commercial fertilizer; it may be used in combination with barn-yard manure or alone.

September is considered the best month to plant Peonies. They should be set at least 2½ feet apart, and strong growing sorts like *Festiva Maxima* would be better if set three feet apart. In planting, the eyes should be set about four inches under the surface. The plants make stronger growth and yield larger flowers when established a year or two in a place; they dislike to be moved.

Although little further care is necessary, Peonies respond readily to good treatment; a mulching of manure during winter, and liberal watering while in bud and blossom, and again during July, when the new eyes are being formed, will add greatly to the size and substance of the flowers.

Insects rarely trouble Peonies; they are among the cleanest of garden plants in this respect.

Roots ready for delivery in September.

The following Double Peonies, each, 30 cents; per dozen, \$3.00.

BARON ROTHSCHILD. Outer petals rose, centre salmon, fragrant.
 BICOLOR. Beautiful large flower, centre petals cream white, fringed; outer petals white tinged rose.
 CAROLINE MATHER. Purple crimson, very dark; large and very double.
 DR. BRETONNEAUX. Large globular flower, deep rose; beautiful.
 L'ELEGANTE. Light pink; very early.
 FESTIVA. White, good flower.
 FORMOSA ROSEA. Pink, centre shaded white, very beautiful.
 FULGIDA. Very deep crimson, good.
 GENERAL BERTRAND. Deep rose, large flower.
 HUMEI CARNEA. Flesh pink, large flower; late.

HUMEI ELEGANS. Rose, strong grower.
 MODISTE GUERIN. Crimson, centre lighter.
 OFFICINALIS RUBRA. Beautiful crimson; early.
 PLENISSIMA ROSEA SUPERBA. Very large and full flower; petals reflexed, pink and salmon, very beautiful.
 PRINCESS MATHILDE. Red.
 ROSEA ELEGANS. Large rosy purple, with lighter centre petals.
 TAGLIONI. Red.
 TRIOMPHE DE PARIS. White and pink, very large full flower.
 TRIOMPHE DU NORD. Violet rose, shaded salmon.
 VICTOIRE LEMOINE. Blush, primrose centre, edged carmine.

One root of each of the above 20 Double Peonies, \$4.00.

The Following Choice Double Peonies, each, 50 cents; per dozen, \$5.00.

ALBA MAXIMA. White inner petals tipped red; very large.
 CANDIDISSIMA. Very full, anemone-formed flower, waxy white; centre yellowish, extra.
 CANARI. Large white outer petals, centre primrose yellow; very handsome.
 DUC DE CAZES. Large outer petals of rich carmine, centre pink, shaded with salmon; several flowers on a stem.
 DUKE OF WELLINGTON. Large full flower, centre light primrose, outer petals blush white.
 EDULIS ALBA. Large white flower with occasional carmine stains on the centre petals.

LOUIS VAN HOUTTE. Large full flower, cherry red, very brilliant; strong grower.
 MADAME DE BREON. Outer petals rosy pink; pale yellow centre, changing to white; extra fine.
 MADAME FURTADO. Deep rosy red; early.
 PERFECTION. Outside petals rosy lilac, inner petals salmon, fragrant.
 POTTSII ROSEA ALBA. Outer petals pink, centre white.
 PRINCESS GALITZEN. Very large pink flower, centre sulphur yellow; late; extra fine sort.
 REINE DES ROSES. Extra large deep pink; very beautiful.

One root of each of the above 13 Choice Double Peonies, \$5.00.

Very Choice Double Peonies.

	Each	Doz.
ALBA SULPHUREA. Large globular flower of exquisite form, pure white, with primrose centre; a grand sort . . .	1.00	10.00
ALEXANDRIANA. Very lovely, large full flower; salmon rose shaded white . . .	1.00	10.00
EUGENE VERDIER. A charming large and broad flower, rose shaded with salmon	1.00	10.00
FESTIVA MAXIMA. Blush white, changing to pure white, centre petals tipped with carmine, flowers very large borne on tall stems; foliage luxuriant and larger than other sorts. One of the very best75	8.00
FRANCIS ORTEGAL. Rich dark crimson, large, fragrant flowers; late	1.00	10.00
JEAN D' ARC. Large full flowers of charming pink color, centre shaded with primrose yellow	1.00	10.00

	Each	Doz.
JOHN RICHARDSON. A strong growing late variety raised by the famous hybridizer whose name it bears; flowers of large globular form, rosy crimson color and pleasant fragrance	2.00	
MADAME DE GALHOU. Rosy red, large and handsome75	8.00
MADAM JULES ELIE. Deep pink, large full flower; of tall growth, late; a remarkably fine sort	1.50	15.00
MADAME DE VERNEVILLE. A very full anemone-formed flower, delicate pink and sulphur, turning to blush white; centre full and very double with large guard petals	1.00	10.00
MARIE LEMOINE. Large, massive blooms of delicate ivory white; late	1.50	15.00
SOLFATERRE. Large pure white outer petals, centre petals narrow, primrose yellow75	8.00

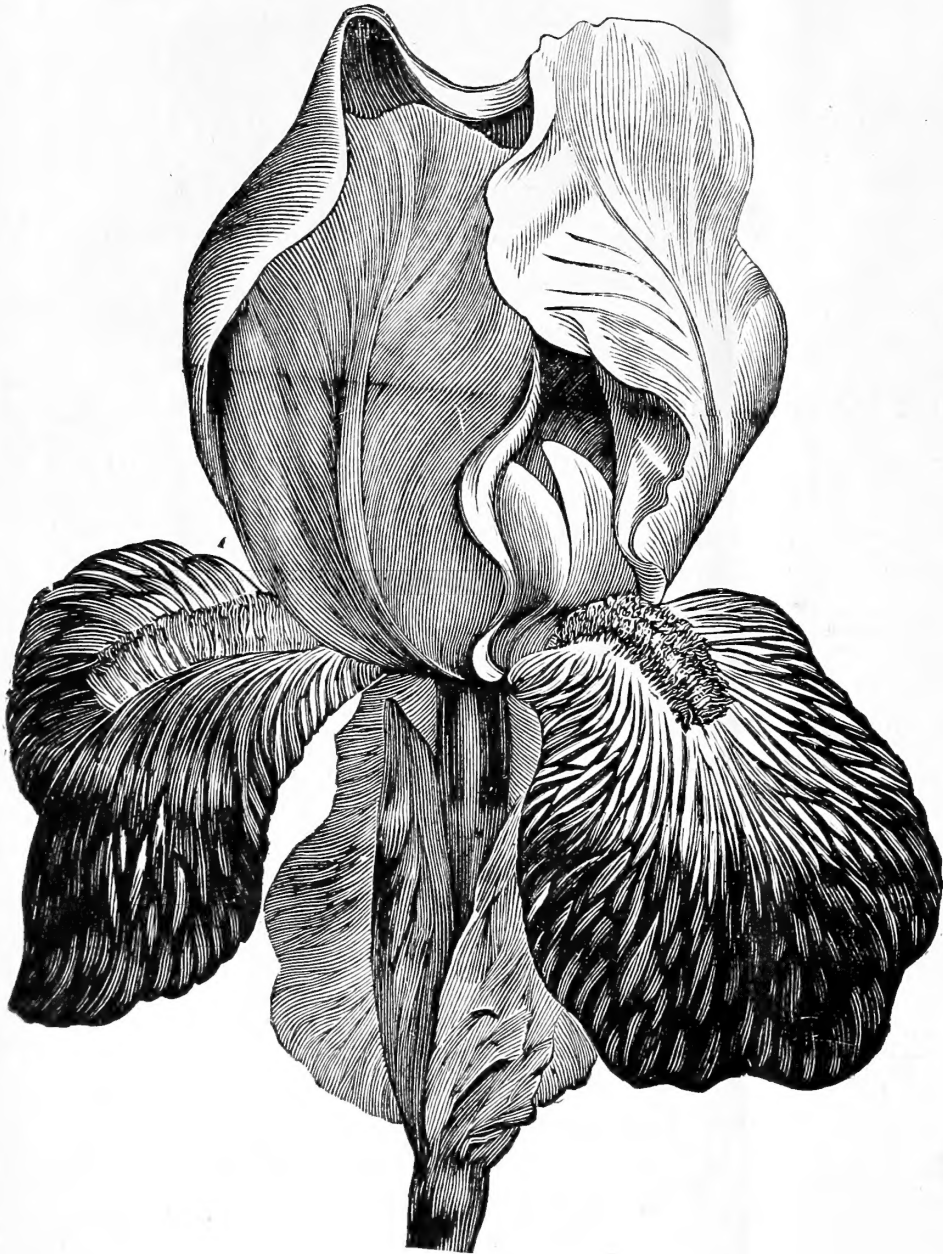
One root of each of the above 12 Very Choice Double Peonies, \$12.00.

IRISES. (*Fleur-de-Lis.*)

Irises require rich soil and abundance of water. The finest blooms are obtained from established clumps; consequently when planted they should remain undisturbed. Set the roots in clumps of three or more, four inches deep, and protect with leaves or other mulch during winter.

In planting groups of Irises it is possible to maintain a succession of bloom from May until late in the summer, by employing the four leading species, Spanish, English, German, and Japanese, which flower in the order they are named. We advise early autumn planting.

GERMAN IRISES. (*Iris Germanica.* *The True Fleur-de-Lis.*)



Iris Germanica.

Per doz., \$2.50; per 100, \$15.00.

In the descriptions (S) is used to signify Standards, or the erect petals; (F) Falls, or the drooping petals.

- FONTARABIE, S. violet-blue, F. rich violet-purple, ht. 1½ ft.
 KHARPUT (syn. asiatica), S. rich blue, F. violet-purple, First-Class Cert. R. H. S., large handsome flower, twice the size of the type, ht. 2½ ft.
 PURPLE KING, full purple, very effective, ht. 2 ft.
 GAZELLE, white, heavily frilled rich mauve, ht. 28 in.
 MADAME CHEREAU, white, elegantly frilled azure blue, very beautiful, ht. 32 in.
 MRS. H. DARWIN (new), F. white, slightly reticulated, violet at base; very beautiful and free-flowering, First-Class Certificate, ht. 2 ft.
 COMTE DE ST. CLAIR, F. deep violet, margined white, showy, ht. 2 ft.
 DUC DE NEMOURS, F. purple, edged white, showy, ht. 27 in.

- MORPHEUS, F. white, heavily traced and tipped violet-purple, ht. 2 ft.
 RETICULATA ALBA, F. violet-purple, edged and reticulated white, ht. 2½ ft.
 VIOTORINE, S. white, mottled blue, F. violet-blue, mottled white, beautiful and rare, ht. 27 in.
 BOCCAGE, S. lavender, F. claret-purple, ht. 2 ft.
 MISS MAGGIE, S. silvery lavender, F. suffused soft rose, very pretty, ht. 2½ ft.
 NATIONALE, S. violet, F. rich dark violet-purple, tall and most effective, ht. 2½ ft.
 HANNIBAL, S. lavender, F. dark purple, handsome, ht. 2 ft.
 KITTIE KINGSBURY, S. lavender, F. rich violet-purple, effective, showy, ht. 27 in.
 ALBERT VICTOR, S. soft blue, F. beautiful soft lavender, large and handsome flowers, sweet-scented, ht. 40 in.
 MANDRALISCAE, rich lavender purple, large and handsome, early, ht. 40 in.
 QUEEN OF MAY, a lovely soft rose-lilac, a very beautiful shade, almost pink, ht. 32 in.
 BRONZE BEAUTY, S. clouded yellow, F. ruby-lavender, crest golden, ht. 28 in.
 DR. BERNICE, S. coppery bronze, F. velvety-crimson, very handsome, ht. 2 ft.
 HARRISON WEIR, S. yellow-bronze, F. velvety-crimson, ht. 22 in.
 JACQUINIANA, S. bright coppery crimson, F. rich maroon, large and handsome, ht. 2½ ft.
 VAN GEERTII, S. clouded lavender, F. purple-black, reticulated white, ht. 34 in.
 AUREA, rich chrome-yellow, beautiful, ht. 2 ft.
 ALBA (Innocenza), S. and F. ivory-white, crest rich golden, a chaste flower, ht. 26 in.
 DARIUS, F. lilac, margined white, beard rich orange, pretty, ht. 17 in. First-Class Cert. R. H. S.
 GRACCHUS, F. crimson, reticulated white, extra fine, early, First-Class Cert., ht. 1½ ft.
 HECTOR, S. soft clouded yellow, F. velvety crimson-black, showy, ht. 2½ ft.
 REGINA, F. white, conspicuously veined lilac and edged primrose-yellow, ht. 20 in.
 ALBICANS PRINCESS OF WALES, pure white, very handsome, early, ht. 2 ft.
 FLAVESCENS, a delicate shade of soft yellow, sweet-scented, a gem for massing, and valued for cutting in May and early June, ht. 2½ ft.
 CIENGIANTI, flowers clear blue, rare and beautiful, profuse bloomer, ht. 1½ ft.
 FLORENTINA, white, fragrant and early, flowers large and valuable for cutting, ht. 2 ft.
 CYPRIANA, very handsome, with large pale blue standards and rich purple-blue falls, late-flowering, ht. 2½ ft.
 SAMBUCINA BEETHOVEN, S. rose-lilac, F. purple with orange crest, showy, ht. 2 ft.

JAPANESE IRISES. (*Iris Kämpferi*.)

In these we find combinations of form and beauty far excelling any other type. The stately flowers are often 8 or 10 inches in diameter, and of wonderfully varied and beautiful colors. They require rich, moist soil.

No.

1. GEKKA-NO-NAMI. Double white.
2. SHISHI-ODORI. Light purple.
3. KUMOMA-NO-SORA. White, shaded light blue.
4. KUMO-NO-OBI. Purple, shaded blue, centre white.
5. HO-O-JO. Velvety crimson, centre white.
6. GEISHO-UI. Double crimson.
7. SOFU-NO-KOI. White, shaded and blotched lavender, double.
8. MANA-DSURU. White, veined with blue, centre yellow.
9. HANA-NO-NISHIKI. Cerise, centre white.
10. YOMO-NO-UMI. White, centre yellow.
11. MEI-RAN. White, shaded and blotched pink.
12. KUMA-FUNJIN. Rich, deep purple, double.
13. TAIHEI-RAKU. Light magenta.
14. HANA-AOI. White, veined and shaded light violet, centre dark violet.
15. ULCHIU. Sky blue, centre white, double.
16. OSHOKUN. Dark purple, centre white.
17. SHIPPO. Light blue, shaded dark blue, centre reddish purple.
18. KUMO-NO-ISHO. Velvety dark red, centre purple.
19. KIMI-NO-MEGUMI. Porcelain blue, veins violet, violet and red centre.
20. KUMO-NO-UYE. Deep purple, double.
21. YEZO-NISHIKI. Light heliotrope, shaded and blotched dark heliotrope.
22. SHISHI-IKARI. Light crimson, maroon centre.
23. ONIGA-SHIMA. Deep purple, centre blue.
24. SANO-WATASHI. Rich purple.
25. YEDO-JIMAN. Dark purple, shaded light purple.
26. SENJO-NO-HORA. Pink, shaded and blotched with light red, bluish centre.
27. O-TORIGE. Violet, maroon centre.
28. SHIVA-TAKI. Pure white.
29. SHIGA-NO-URA-NAMI. Light purple.
30. KAGARIBI. Vermilion.
31. KOSUI-NO-IRO. White, shaded lilac.
32. KOMOCHI-GUMA. Rich purple.
33. KAKU-JAKU-RO. Light violet, centre light blue.
34. MOMIJI-NO-TAKI. Pink, centre purple and maroon.
35. SUCHIU-KWA. White, edged with bright red.
36. YEDO-KAGAMI. Red, shaded light purple.
37. UJI-NO-HOTARU. Light and dark blue, centre purple.
38. SHIMO-YONO-TSUKI. Double white, shaded yellow.
39. TSURUGI-NO-MAI. Purple red, centre dark maroon.
40. ISO-NO-NAMI. Light blue, blotched dark blue.
41. OYODO. Bud porcelain blue, opens white.

Each 25 cents; per doz., \$2.50; per 100, \$15.00. *By mail, add 5 cents each for postage.*



Japanese Iris.

No.

42. BANDAI-NO-NAMI. White, centre yellow.
43. WAKA-MURASAKI. Bright magenta, blotched white.
44. KYODAI-SAN. Navy blue, shaded bronze.
45. KIGAN-NO-MISAO. White, tinged lilac, centre yellow.
46. KOKI-NO-IRO. Bright purple.
47. SAMIDARE. White, centre yellow.
48. TORA-ODORI. White, blotched and shaded blue and lavender.
49. TSURU-NO-KEGOROMO. White, yellow centre.
50. DATE-DOGU. Magenta red.

BEGONIA GLOIRE DE LORRAINE.

Of all Winter-blooming plants, BEGONIA GLOIRE DE LORRAINE and its varieties are the most lavish in their production of flowers. From October until May the plants are so profusely covered with blossoms as to almost conceal the foliage. The flowers are of a bright salmon-rose color, growing in large gracefully drooping panicles.

We can furnish plants of the original form of Begonia Gloire de Lorraine or our improved variety, Nana Compacta, which was awarded a Silver Medal by the Massachusetts Horticultural Society.

Plants from 2¼-inch pots, each, 25c.; by mail, 30c. each; per doz., \$2.50; per 100, \$15.00.
 Plants from 3½-inch pots, each, 40c.; by mail, 50c. each; per doz., \$4.00; per 100, \$30.00.
 Plants in 6-inch pans, each, \$1.00; per doz., \$10.00.

SEEDS OF HARDY PLANTS FOR SUMMER SOWING.

Pansies.



Farquhar's Finest Show Pansies.

	Oz.	Pkt.		Oz.	Pkt.
FARQUHAR'S FINEST SHOW STRAIN, MIXED. Large round flowers of perfect form and massive texture, embracing the finest colors and markings in great variety. Oz., \$12; 1/4 oz., \$3.50; 1/8 oz., \$2.00; pkt. of about 250 seeds, 50c.; pkt. of about 100 seeds, 25c.			ENGLISH AND SCOTCH PRIZE VARIETIES. The characteristics of this strain are the fine velvety texture and bold face-like markings of the flowers . . .	5.00	.25
BUGNOT'S PRIVATE STRAIN. This is the finest strain known; the flowers being of perfect form and richest colors. It should be grown under glass to bring its fine qualities to perfection. Our seed is saved for us each year by M. Bugnot in France. Finest mixed. 1,000 seeds, \$5.00		1.00	SPECIAL MIXTURE. Embracing the leading strains, all grown by specialists in Europe, and including the finest colors and markings in endless variety. This mixture is extensively used by florists	5.00	.25
BUGNOT'S LARGE BLOTCHED. Finely formed flowers of rich and varied colors; mixed	8.00	.25	EXTRA FINE MIXTURE. Large-flowering varieties in fine assortment of colors; excellent for bedding	2.50	.10
CASSIER'S GIANT, FINEST MIXED. An excellent strain for out-door or greenhouse cultivation. The plants are of sturdy growth, producing large round flowers, the petals overlapping and often frilled. The colors are rich and varied	6.00	.25	FINE MIXTURE. Many colors	1.00	.05
			TRIMARDEAU, OR GIANT PANSIES. A vigorous race, producing very large flowers of rich colors, unexcelled for bedding.		
			— PARISIAN STRAIN. FINEST MIXED. Great variety of colors	2.50	.10
			— EMPEROR WILLIAM. Ultramarine blue; the finest blue variety	3.00	.15
			— GOLDEN QUEEN. Pure yellow	3.00	.15
			— GOLDEN YELLOW WITH DARK EYE	3.00	.15
			— KING OF THE BLACKS	3.00	.15

TRIMARDEAU — *Continued.*

— LORD BEACONSFIELD. Violet; upper petals shading to white	Oz.	Pkt.
— RUBY RED. New	3.00	.15
— SNOW QUEEN	8.00	.25
— STRIPED. Great variety of colors	3.00	.15
— WHITE WITH VIOLET EYE	3.00	.15
LARGE-FLOWERED BEDDING PANSIES.		
— COLLECTION OF 12 VARIETIES75
— COLLECTION OF 6 VARIETIES40
— AZURE BLUE	1.25	.10
— BLACK	1.25	.10
— BRONZE	1.25	.10
— CARDINAL. Brightest red	4.00	.25
— EMPEROR FREDERICK. Deep purple edged with scarlet and yellow; centre golden bronze	1.25	.10
— EMPEROR WILLIAM. Deep blue	1.25	.10
— GOLD MARGINED. Purple, golden edge,	1.25	.10
— GOLDEN YELLOW	1.50	.10
— LORD BEACONSFIELD. Violet, upper petals shading to white	1.25	.10
— MASTERPIECE. Petals ruffled; mixed colors	8.00	.25
— MADAME PERRET. Wine colors	3.00	.15
— PRESIDENT CARNOT. Petals violet, broadly bordered with white; extra fine	3.00	.15
— STRIPED. Many colors; showy	1.25	.10
— VICTORIA. Fine deep red	2.00	.10
— WHITE	1.25	.10

TUFTED PANSIES — *Continued.*

FINEST MIXED. Shades of blue, yellow, and white	Oz.	Pkt.
— ADMIRATION. Dark blue; beautiful	1.50	.10
— BLUE PERFECTION. Mauve	2.00	.10
— GRANDIFLORA LUTEA. Splendid yellow	2.50	.10
— WHITE PERFECTION. Free blooming	1.25	.10
	2.00	.10

Daisies.



Favorite spring-flowering perennials, producing charming effects when planted with Pansies, Forget-Me-Nots, or Silene.

FINEST MIXED. Saved from the finest double flowers	Oz.	Pkt.
— ROSE, <i>Longfellow</i>	5.00	.25
— WHITE	6.00	.25
— MAXIMA or GIANT, MIXED. 1/8 oz.,	5.00	.25
— SNOWBALL. Large white. 1/8 oz.,	1.00	.25
	1.00	.25

Forget-Me-Nots.

If sown in July or August in shaded frames, fine plants will be obtained for spring blooming.

FINEST MIXED VARIETIES. Various shades of blue, rose, and white	Oz.	Pkt.
— ALPESTRIS. Bright blue; 6 inches75	.05
— GRANDIFLORA. <i>Eliza Fonrobert</i> . Large bright blue flowers; 1 ft.	1.00	.10
— — ALBA. Large white flowers	1.00	.10
— ROSEA. Large pink flowers	1.00	.10
— VICTORIA. The plants are of dwarf compact growth with multitudes of bright blue flowers in dense umbels	2.00	.10
— DISSITIFLORA. Rich blue; flowers very early; one of the finest; 6 inches	1.25	.25
— PALUSTRIS. <i>True Forget-Me-Not</i> ; bright blue; 9 inches	3.00	.10
— SEMPERFLORENS. Splendid bright blue variety; blooms from early spring until autumn	2.50	.10
— SYLVATICA. A splendid sort for spring bedding, with large bright blue flowers; 9 inches	2.00	.10

Tufted Pansies. *Viola Cornuta.*



Tufted Pansies.

Elegant free-blooming plants for partially shaded beds and borders. They are more hardy than the regular pansies and may be kept growing for years with slight protection during winter. The flowers are not large, but very numerous, of brilliant colors, and are produced throughout the season.

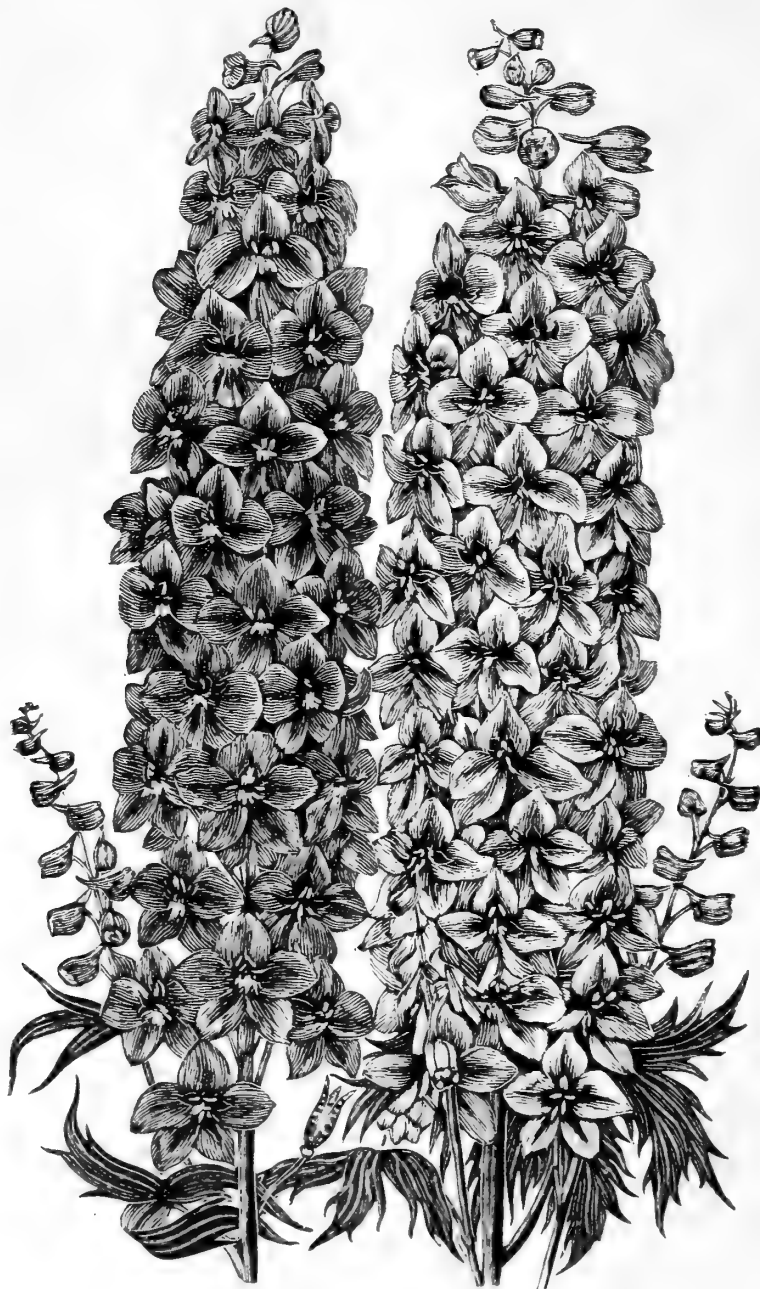
Foxgloves.

This favorite thrives in sun or partial shade. It is excellent for semi-wild effects, naturalizing in woods, and for grouping among shrubs; 3 ft.; June to September.

GLOXINÆFLORA, MIXED. Flowers spotted in the throat	Oz.	Pkt.
— ALBA. White, delicately spotted40	.05
— ROSEA. Pink40	.05
GRANDIFLORA. Yellow30	.05

IVERY'S SPOTTED. <i>Maculata superba</i> . Beautiful spotted flowers of various colors	Oz.	Pkt.
MONSTROSA. The tall spikes have a monstrous saucer-shaped terminal flower	1.25	.10
PURPUREA. Common red Foxglove30	.05
— ALBA. White30	.05
— MIXED. All colors30	.05

Larkspurs.



Larkspur, Farquhar's Selected Hybrids.

FARQUHAR'S SELECTED HYBRIDS. This strain includes the best of the new single and double varieties; the flower spikes being large, varying in color from pearly white to lavender, and from soft azure blue to rich indigo. Finest mixed Oz. 2.50 .25

LEMOINE'S HYBRIDS, FINEST MIXED. A splendid race, including all colors Oz. 1.50 .10

CARDINALE. Scarlet; 3 ft. 1/8 oz. 1.50 .25

CASHMIRIANUM. Large flowers, dark blue; 1 1/2 ft. 1/4 oz. 1.25 .25

CAUCASICUM. Violet, magnificent; 1 1/2 ft. Oz. 1.25 .10

CHINENSIS MIXED. *Grandiflorum*. Shades of blue and pure white; 1 1/2 ft. Oz. .50 .05

CHINENSIS MIXED — *Continued*.

— AZUREUM. Azure blue Oz. .60 .05

— ALBUM. Pure white " .60 .05

ELATUM. *Bee Larkspur*. Blue; 4 ft. " .50 .05

FORMOSUM. Splendid dark blue with white eye; 3 ft. Oz. .75 .10

— CELESTINUM. Light blue 1/4 oz. 1.00 .25

NUDICAULE. Scarlet, 1 to 1 1/2 ft. 1/4 oz. 1.00 .25

— AURANTIACUM. Orange scarlet25

PARRYI. Indigo blue; 3 ft.25

SIBIRICUM HYBRIDUM. Blue; 1 1/2 ft.25

SPECIOSUM. Magnificent bright blue; 3 ft.25

SULPHUREUM. *Zalil*. Tall spikes of sulphur yellow flowers; very beautiful; 4 ft.25



Farquhar's Superb Iceland Poppies.

Iceland Poppies.

FARQUHAR'S SUPERB MIXED. Shades of yellow, scarlet, and white	Oz. 1.25	.10
BRIGHT YELLOW, SINGLE	¼ oz. .50	.10
— — DOUBLE	⅛ oz. .50	.10
PURE WHITE, SINGLE	¼ oz. .50	.10
— — DOUBLE	⅛ oz. .75	.25
BRIGHT ORANGE-SCARLET, SINGLE,	¼ oz. .50	.10
— — DOUBLE25
PRIMROSE YELLOW	¼ oz. .75	.10

Oriental Poppy.

Very showy; flowers orange-scarlet, with black spots. May to July, 3 ft. Oz. 2.00 .10

NEW HYBRIDS. Pink, scarlet, and crimson. Oz. 2.00 .10

BLUSH QUEEN. Pale pink	⅛ oz. .50	.15
PARKMANII. Deep scarlet	⅛ oz. .50	.15

Primrose. *Primula*.

ACAULIS GRANDIFLORA, FINEST MIXED. <i>Large-Flowering Garden Primrose.</i> A splendid strain; flowers of large size and containing bright and beautiful colors25
— YELLOW. <i>Yellow English Primrose</i>25
— CÆRULEA. <i>Blue Primrose</i>25

Polyanthus Primrose.

Primula elatior.

FARQUHAR'S GIANT FANCY. FINEST MIXED. The flowers are of large size supported on stout stems well

above the leaves in splendid clusters. The colors are brilliant, ranging from white to deep maroon; the yellow, rose, and crimson shades being particularly fine	¼ oz. 2.00	.25
FARQUHAR'S GIANT WHITE25
FARQUHAR'S GIANT YELLOW25
FARQUHAR'S BLUE. New50
GOLD LACED. Flowers of brilliant colors with distinct yellow edges	3.00	.10
CHOICE MIXED	1.50	.10

Sweet Williams.

SINGLE, FINEST MIXED. Splendid colors,	Oz. .30	.05
AURICULA-EYED, MIXED COLORS	" .75	.10
DARK CRIMSON. Rich dark shade	" .50	.05
PURE WHITE. Excellent for cut flowers	" .50	.05
DOUBLE FINEST MIXED	" .75	.10

For Seeds of other Biennial and Perennial Plants, see our Spring Catalogue, which will be mailed upon application.

Pink Silene for Spring Bedding.

SILENE PENDULA. DWARF ROSE. This is the variety now so effectively employed in Italian gardens. Wherever solid masses of color are arranged in contrast we usually find the fair Silene queen of the garden during May and June. Seeds may be sown in August or September, and the plants wintered in a cold frame in the same manner as pansies. Oz., 30c.

SEEDS OF PLANTS FOR WINTER BLOOMING.

TO BE SOWN FROM JULY TO SEPTEMBER.



Evans' Boston Giant Mignonette.

Antirrhinum.

	Oz.	Pkt.
TALL WHITE. Excellent for cut flowers60	.05
TALL YELLOW. Clear buff, charming shade60	.05
TALL CORAL RED60	.05

Calendula.

ORANGE KING. Double, deepest orange25	.05
METEOR. Orange, striped with primrose25	.05

Calliopsis.

CORONATA. Pure golden yellow30	.05
DRUMMONDI. Golden yellow, with maroon centre30	.05

Centaurea.

IMPERIALIS. *New Giant Cornflower.*

The flowers are of enormous size, fragrant, and superb for cutting.

— FINEST MIXED. All colors	1.25	.10
— LILAC	1.50	.10
— PINK, WITH WHITE CENTRE	1.50	.10
— ROSE	1.50	.10
— WHITE	1.50	.10

Candytuft.

FARQUHAR'S GIANT WHITE. Magnificent spikes of pure white flowers50	.10
--	-----	-----

Mignonette.

EVANS' BOSTON GIANT MIGNONETTE. Pronounced by our leading florists the "finest Mignonette grown." Oz., \$1.50; 1/4 oz., 50c.; pkt., 25c.

Boston, Mass.

I have used from fifteen to twenty dozen of "Evans' Boston Giant Mignonette" daily, and can say truthfully it is the finest and most fragrant Mignonette grown.

THOMAS F. GALVIN.

MIGNONETTE IMPROVED MACHET. Machet has been acknowledged to be one of the most valuable varieties of large-flowering, sweet-scented Mignonette, for florists' and amateurs' use, ever introduced. The strain now offered has been obtained through careful selection for a number of years by a specialist in Northern Europe. It is of robust growth and very hardy, producing large, broad flower spikes of a reddish-green color and agreeable fragrance. Oz., \$1.00; large pkt., 15c.

Schizanthus.

WISETONENSIS. Beautiful as a pot plant or for cutting; colors ranging from white with yellow centre to pink with brown centre	Oz.	Pkt.	.25
---	-----	------	-----



Farquhar's White Column Stock.

Stock or Gilliflower.

BOSTON FLORISTS' DOUBLE WHITE. Our special strain, producing a high percentage of large double white flowers in beautiful long spikes, excellent for winter cultivation	Oz.	Pkt.
	5.00	.15
FARQUHAR'S IMPROVED CUT-AND-COME-AGAIN. DOUBLE WHITE. A splendid early-flowering perpetual Stock. It is		

of tall branching habit, and when the first blooms have been cut, side branches start out bearing large flower trusses. The flowers are of large size, snowy whiteness, and thick massive form, with a high percentage double.	Oz.	Pkt.
1/8 oz., 1.00	6.00	.25
FARQUHAR'S WHITE COLUMN. This is an early flowering sort, bearing one enormous spike of large double white flowers; 2 ft.	1/8 oz., 2.00	.25
FARQUHAR'S CRIMSON COLUMN.	1/8 oz., 2.00	.25
EAST LOTHIAN. If sown in June or July will make handsome pot plants for conservatory decoration in winter. The plants are of compact habit, producing large, erect Hyacinth-like flower trusses.		
— — CRIMSON25
— — WHITE25
BROMPTON. FINEST DOUBLE MIXED. Excellent for spring blooming if sown in June or July25

Sweet Peas.

MONT BLANC. Large, pure white	Lb.	Oz.
COUNTESS OF RADNOR. Lilac	1.25	.15
BLANCHE FERRY. Pink and white75	.10
KATHERINE TRACY. Pink75	.10

Wallflower.

EARLY PARISIAN. Excellent for winter blooming; flowers continuously; color light brown; fragrant50	.10
BLOOD-RED. Very rich color50	.10
PRIMROSE-YELLOW. Very delicate shade,50	.10
BRANCHING DOUBLE-FLOWERED. Mixed colors	1/4 oz., 1.00	.25



Annual Wallflower.



Hardy Garden Phlox. See page 19.

HARDY PERENNIAL PLANTS.

FOR DELIVERY IN
SEPTEMBER.

September is one of the best months in which to plant Hardy Perennials. Set in well prepared ground and liberally watered on being planted, they usually start into growth in four or five days. Many species which may be planted more safely in Spring have been omitted from this list.

NAME.	Ht. in Ft.	Mo. of Flowering.	Color of Flower.	Use, Soil, Position, Treatment, etc.	PRICE.	
					Each.	Doz.
ACHILLEA AGERATUM. <i>Milfoil</i> . . .	$\frac{3}{4}$	6-8	White . . .	Fine border plant15	1.50
— MILLEFOLIUM ROSEUM. <i>Pink Milfoil</i>	$1\frac{1}{2}$	5-10	Rose . . .	Useful for cutting; sun15	1.50
— PTARMICA FL. PL. "THE PEARL" . . .	$1\frac{1}{2}$	6-10	Pure White . .	One of the best plants for garden effects and cutting15	1.50
— TOMENTOSA. <i>Yellow Yarrow</i> . . .	1	6-8	Deep yellow . .	Effective border plant; sun15	1.50
AJUGA REPTANS RUBRA	$\frac{1}{2}$	5-6	Blue	Dark purple foliage in masses . .	.15	1.50
ALYSSUM SAXATILE COMPACTUM. <i>Gold Dust</i>	1	4-6	Golden yellow .	Showy rock and border plant . .	.15	1.50
ANEMONE JAPONICA	2-3	8-10	Deep rose . .	Invaluable for garden display and cut flowers in autumn. Per 100 { \$10.00 10.00 10.00	.15	1.50
— — ALBA	2-3	8-10	White15	1.50
— — WHIRLWIND	2-3	8-10	White, double		.15	1.50
ARABIS ALPINA. <i>Rock Cress</i>	$\frac{1}{2}$	4-6	White	Borders and rockeries15	1.50
ASCLEPIAS TUBEROSA. <i>Butterfly Weed</i> ,	2	7-9	Deep orange . .	Showy plant for borders and wild gardens; sun15	1.50
ASTER AMETHYSTINUS	3	9-10	Amethyst blue,	Lovely border plant15	1.50
— NOVE ANGLIÆ	4	9-10	Bluish purple,15	1.50
— — — ALBA. <i>New</i>	4	9-10	White15	1.50
— — — ROBERT PARKER	3	10	Light blue . .	Large flowers15	1.50
— — — ROSEA	4	9-10	Pink15	1.50
— UMBELLATUM	4	9-10	White	Flowers in panicles15	1.50
BAPTISIA AUSTRALIS. <i>False Indigo</i>	2	6-7	Dark blue . . .	Border or wild garden15	1.50
— EXALTATA	3	6-7	White15	1.50
BOCCONIA CORDATA. <i>Plume Poppy</i>	4-8	6-8	Creamy white,	Lawn groups and shrubbery15	1.50

HARDY PERENNIAL PLANTS — *Continued.*

NAME.	Ht. in Ft.	Mo. of Flowering.	Color of Flower.	Use, Soil, Position, Treatment, etc.	PRICE.	
					Each.	Doz.
BOLTONIA ASTEROIDES	5-6	8-10	White	Aster-like flowers; borders and shrubberies. Per 100, \$10.00	.15	1.50
— LATISQUAMA	3-4	8-10	Pink15	1.50
CALLA ALBA MACULATA. <i>Spotted Calla</i> ,	2	6-7	White	Beautiful leaves, spotted white10	1.00
CAMPUNALA ALLIARIÆFOLIA	2	6-7	White	Nodding flowers15	1.50
— CARPATICA. <i>Carpathian Bells</i>	$2\frac{3}{4}$	6-9	Blue	Borders and rockeries15	1.50
— GLOMERATA. <i>Clustered Bell-flower</i> ,	$1\frac{1}{2}$	6-9	Violet blue	Borders and wild gardens15	1.50
— PERSICIFOLIA GRANDIFLORA ALBA	2	6-8	White15	1.50
— — — MOERHEIMI. <i>New</i>	1-2	6-8	White, double,	Splendid for cutting25	2.50
— — — CERULEA	2	6-8	Blue	Large salver-shaped flowers15	1.50
CENTAUREA MACROCEPHALA	3	6-8	Golden yellow,	Esteemed for cutting15	1.50
— MONTANA	2	6-8	Violet15	1.50
COREOPSIS GRANDIFLORA	2	6-10	Golden yellow }	Showy, graceful and invaluable for cutting. Per 100, \$10.00	.15	1.50
— LANCEOLATA	2	6-10	Golden yellow }15	1.50
DELPHINIUM. <i>Larkspur</i> FARQUHAR'S HYBRIDS	3-5	6-10	Light azure to dark blue; and from delicate lavender to purple.	Stately decorative plants for masses, beds, and clumps; the tall flower spikes are superb for decorations. Per 100, \$12.00	.20	2.00
DIANTHUS BARBATUS. <i>See SWEET WILLIAM.</i>						
— DIADEMATIC. <i>Diadem Pink</i>	1	6-10	White, pink, and crimson,	Useful for edgings. Per 100, \$6.00,10	1.00
DICTAMNUS FRAXINELLA. <i>Gas Plant</i>	$2\frac{1}{2}$	6-7	Rosy crimson15	1.50
DIELYTRA SPECTABILIS. <i>Bleeding Heart</i>	2	5-6	Pink15	1.50
ECHINOPS EXALTATA. <i>Globe Thistle</i>	3	7-9	Pale blue	Stately plants for clumps20	2.00
EPILOBIUM HIRSUTUM	4	7	Rosy purple15	1.50
ERIGERON SPECIOSUS	$2\frac{1}{2}$	6-10	Purplish lilac,	One of the prettiest and freest blooming perennials. Per 100, \$12.00	.20	2.00
ERYNGIUM ALPINUS AMETHYSTINUM. <i>Sea Holly</i>	2-3	7-8	Amethyst blue	Shrubbery and wild gardens25	2.50
EUPATORIUM FRASERI	2-3	8-10	White	Useful for cut flowers15	1.50
EUPHORBIA COROLLATA	$1\frac{1}{2}$	7-8	White	Valuable for cutting10	1.00



Sweet William.



Lychnis Chalcedonica.



Platycodon Mariesi.



Veronica Longifolia subsessilis.

HARDY PERENNIAL PLANTS—Continued.

NAME.	Ht. in Ft.	Mo. of Flowering.	Color of Flower.	Use, Soil, Position, Treatment, etc.	PRICE.	
					Each.	Doz.
FUNKIA SUBCORDATA GRANDIFLORA. <i>Giant Day Lily</i>	1½	6-8	Pure white . . .	Shrubbery borders, and shade15	1.50
FUNKIA UNDULATA MEDIA VARIEGATED,	1	7-8	Lilac	Leaves variegated green and white, desirable for edgings15	1.50
GAILLARDIA GRANDIFLORA	3	6-10	Red and yellow, . . .	Desirable for cutting15	1.50
GYPSOPHILA PANICULATA	2	7-9	White	Exquisite for cut flowers15	1.50
HELENIUM AUTUMNALE. <i>Helen Flower</i> ,	4	8-10	Pure yellow	Beds and shrubbery clumps15	1.50
— BOLANDERI	2	8-9	Yellow, brown centre	Splendid for cutting15	1.50
— GRANDICEPHALUM STRIATUM	3	7-10	Yellow, striped crimson	Rich and striking flower, very decorative15	1.50
HELIANTHUS MAXIMILIANI. <i>Sun-flower</i>	6	7-10	Yellow15	1.50
— RIGIDUS MISS MELLISH	4	8-10	Orange yellow,15	1.50
— MULTIFLOROUS. <i>Double Hardy Sun-flower</i>	4	7-9	Golden yellow,	Double dahlia-like flowers15	1.50
HEMEROCALLIS AURANTIACA MAJOR	2-3	6-8	Deep orange	Very large flowers50	5.00
— DISTICHA FLORE PLENO	2-3	6-8	Rich orange	Double flowers25	2.50
— FLAVA. <i>Yellow Day Lily</i>	2-3	6-8	Yellow	Fragrant10	1.00
— MIDDENDORFII	1½-2	6-7	Bright yellow,20	2.00
HEUCHERA SANGUINEA	2	6-8	Coral-red15	1.50
HIBISCUS CRIMSON EYE	4	7-8	White, crimson centre	Thrive best in moist soil15	1.50
— MOSCHEUTOS. <i>Swamp Mallow</i>	4	7-8	Pink15	1.50
— — ALBUS	4	7-8	White15	1.50
HYPERICUM MOSERIANUM. <i>St. John's Wort</i>	1	6-10	Golden yellow,	One of the finest plants20	2.00
IRIS ORIENTALES	2	6-7	Violet blue15	1.50
IBERIS SEMPERVIRENS. <i>Evergreen Candytuft</i>	½	4-5	Pure white	Rockeries and edgings15	1.50
LIATRIS PYCNOSTACHIA. <i>Kansas Gay Feather</i>	4	7-9	Rosy purple	Very attractive flower spikes15	1.50
— SPICATA	2½	7-9	Deep purple15	1.50
LUPINUS POLYPHYLLUS. <i>Lupin</i>	3	6-10	Dark blue	Fine for naturalizing.		
— — ALBUS	3	6-10	White	Per 100, \$8.0015	1.50
— — LILACINA	3	6-10	Lilac15	1.50
LYCHNIS CHALCEDONICA	2	6-9	Intense scarlet,	Rich sandy loam15	1.50

HARDY PERENNIAL PLANTS — *Continued.*

NAME.	Ht. in Ft.	Mo. of Flow-ering.	Color of Flower.	Use, Soil, Position, Treatment, etc.	PRICE.	
					Each.	Doz.
LYCHNIS CHALCEDONICA ALBA	2	6-9	White15	1.50
— VISCARIA FL. PL.	1½	6-7	Deep red	Flowers double15	1.50
LYTHRUM ROSEUM SUPERBUM. <i>Rose</i>						
<i>Loose Strife</i>	3	7-9	Deep rose	Naturalizes well15	1.50
MONARDA DIDYMA. <i>Bergamot</i>	2½	7-8	Bright scarlet,	Desirable for wild gardens15	1.50
ŒNOTHERA. <i>Evening Primrose</i>						
— LAMARCKIANA	3	7-9	Yellow	Flowers three to four inches across.		
				Per 100, \$6 00	.10	1.00
— YUNGI	1½	6-9	Bright yellow	Per 100, 6.00	.10	1.00
PENTSTEMON BARBATUS TORREYII.						
<i>Chelone barbata</i>	3	6-9	Scarlet	Border plant, elegant for cutting.		
				Per 100, \$10 00	.15	1.50

PHLOX, HYBRID GARDEN SORTS.

Among hardy herbaceous plants none are more gorgeous and more easily grown than these. They are perfectly hardy, succeeding in any garden soil, and producing magnificent spikes of showy and lasting flowers, year after year, with comparatively little care. 2½ to 3 ft. EACH, .20; PER DOZ., \$2.00; PER 100, \$12.00.

- AMPHITRYON. Lilac, centre white.
- ASTIER REHU. Violet purple; centre white.
- CANDEUR. Pure white; dwarf.
- COCUELICOT. Orange scarlet; centre carmine; brilliant, large flower.
- COLIBRE. Lilac with white edge.
- CONDOR. Pure white, large flower.
- ESPERANCE. Mauve.
- FANTOME. Violet; large white centre.
- HENRY MURGER. Pure white, rose eye.
- LA CYGNE. Pure white.

- LORD RALEIGH. Dark violet.
- ORACLE. Pink, self color.
- ORNAMENT. Salmon rose, dark centre.
- PANTHEON. Brilliant rose.
- RODIN. Lilac with rosy white edge.
- R. P. STRUTHERS. Pink shaded orange, crimson eye
- SNOWDIN. Pure white; dwarf; very early.
- THEBAIDE. Beautiful rose, large and bold flower.
- TORPILLEUR. Bright magenta, enormous flower.
- WILLIAM RAMSAY. Violet, large spike.



Liatris pycnostachia.



Physostegia Virginica.

HARDY PERENNIAL PLANTS — *Concluded.*

NAME.	Ht. In Ft.	Mo. of Flow-ering.	Color of Flower.	Use, Soil, Position, Treatment, etc.	PRICE.	
					Each.	Doz.
PHLOX SUBULATA ALBA. <i>Moss Pink</i>	½	4-5	Pure white	Rockeries and borders10	1.00
— ROSEA	½	4-5	Pink10	1.00
PHYSOSTEGIA VIRGINICA	4	7-9	Rosy lilac	Very ornamental15	1.50
PLATYCODON GRANDIFLORA. <i>Chinese Bell Flower</i>	3	5-10	Violet blue	} Borders; elegant spikes of cupped flowers15	1.50
— ALBA	3	5-10	White			
— MARIESI	1½	5-10	Rich violet	} Borders; cup-shaped flowers 3 inches across15	1.50
— ALBA	1½	5-10	White			
POLEMONIUM COERULEUM. <i>Jacob's Ladder</i>	1	6-7	Deep blue	Borders and shrubberies15	1.50
— ALBUM	1	6-7	White15	1.50
PYRETHRUM ULIGINOSUM. <i>Giant Daisy</i>	4	7-9	White, yellow centre	Useful for cutting15	1.50
RUDBECKIA LANCEOLATA GOLDEN GLOW.	5-6	7-9	Deep yellow	Shrubbery clumps; flowers like double Cactus Dahlias, valuable for cutting. Per 100, \$8.00	.15	1.25
— SUPERBA SUBTOMENTOSA	2	7-9	Lemon yellow, cone purple	Pyramidal form, branching15	1.25
SALVIA AZUREA GRANDIFLORA	2½	8-9	Sky-blue	Free blooming15	1.50
SCABIOSA CAUCASICA	2	6-8	Pale blue	Borders and cutting. Per 100, \$12.00	.20	2.00
SEDUM SPECTABILE VAR. BRAUNI	1½	8-10	Bright rose	Clumps and borders15	1.50
SILPHIUM PERFORIATUM. <i>Cup plant</i>	6	7	Yellow	Borders and shrubberies15	1.50
STELLARIA HOLOSTEA. <i>Stichwort</i>	½	5-7	White	Border or rockery15	1.50
STOKESIA CYANEA	1	7-10	Sky-blue	One of the best native plants; exquisite for cutting15	1.50
SWEET WILLIAM, MIXED. <i>Dianthus barbatus</i>	1½	6-9	White, pink, crimson	Borders. Per 100, \$6.00	.10	1.00
— WHITE				Per 100, 6.00	.10	1.00
— PINK				Per 100, 6.00	.10	1.00
THERMOPSIS CAROLINIANA	5	6-7	Yellow	Wild gardens and shrubberies15	1.50
VALERIANA OFFICINALIS	2	6-7	Purplish white	Fragrant15	1.50
VERONICA AMETHYSTINA	1	5-7	Amethyst blue15	1.50
— INCANA	2	7-9	Violet	Silvery leaves15	1.50
— LONGIFOLIA SUBSESSILIS	2	6-10	Rich blue	One of the best hardy plants, with showy flower spikes a foot long; blooms from June until frost. Per 100, \$12.00	.20	2.00
YUCCA FILAMENTOSA. <i>Adam's Needle</i>	4	6-7	Creamy white	Effective and striking in any position; one of the most decorative hardy plants. Per 100, \$15.00	.25	2.50



Rhododendron.

RHODODENDRONS.

Native Varieties.

MAXIMUM. Suitable for clumps in shady or partially shady situations, also useful to form backgrounds for R. Catawbiense and the Hardy Hybrid sorts. Plants, 3 ft., bushy, each, \$2.50; doz., \$25.00. 4 to 5 ft., bushy, each, \$4.00 to \$5.00; doz. \$40.00 to \$50.00. Carload price on application.

CATAWBIENSE. Very hardy and of compact bushy growth, suitable as a border for R. Maximum and for forming compact clumps. Plants, 2 ft., each, \$1.00; doz., \$10.00.

Imported Varieties.

HARDY HYBRIDS. We import annually a large assortment of the best English-grown, large-flowering, hardy sorts. Fine plants, each, \$1.50; doz., \$18.00; 100, \$125.00. Larger plants, each, \$2.00; doz., \$24.00; 100, \$175.00. Specimen plants, each, \$2.50 and \$3.00; doz., \$30.00 and \$36.00, according to size.

HARDY CONIFERS.



Retinospora Plumosa.

- JUNIPERIS CHINENSIS. *Chinese Juniper*. A handsome, compact bush, branches slightly drooping; foliage dark green; 1½ to 2 ft. . . . 1.50
- AUREA. *Golden Chinese Juniper*. Foliage of the twigs golden yellow; very beautiful; 1½ ft. Doz., \$15.00 1.50
- VAR. SUECICA. *Swedish Juniper*. Grows in the form of a neat, compact column; foliage golden green; 3½ ft. Doz., \$7.5075
- JAPONICA AUREA. Of erect conical habit; golden foliage; 2 to 2½ ft. 2.00
- VIRGINICA. *Red Cedar*. Well-formed, cultivated specimens of this native evergreen are highly ornamental; 2 ft. Doz., \$5.0050
- ALBO VARIEGATA. Foliage variegated. 3 ft. 2.50

- Each.
- ABIES ALBA. *White Spruce*. Valuable for planting near the sea. 3 ft. .75
- BALSAMEA. *Balm of Gilead Fir*. Rich, dark green foliage, silvery underneath. 2 to 2½ ft.75
- CANADENSIS. *Hemlock Spruce*. Dark green foliage, valuable for partial shade. 1 to 1½ ft., bushy, .50
- CONCOLOR. *Colorado Silver Fir*. One of the most beautiful and graceful evergreen trees, growing in symmetrical pyramid form, with long feathery foliage of silvery green color which curves upward. As a lawn specimen it is one of the most decorative trees and it is perfectly hardy. 2 ft., each \$3.50; 3 ft., each \$4.00. Specimens, 4½ to 5 ft., each \$10.00.
- — VIOLACEA. Foliage silvery blue. 3 ft., \$5.00; 4 ft., \$8.00.
- EXCELSA. *Norway Spruce*. Serviceable for screens, shelter, and clumps. 2 to 2½ ft. Per doz., \$3.0030
- 3 to 3½ ft. Per doz., \$5.0050
- — AUREA. *Golden Crested Spruce*. The leaves on the upper sides of the shoots become golden yellow. 2 to 3 ft. Per doz., \$15.00 . . . 1.50
- PUNGENS KOSTERIANA. The finest form of Colorado Blue Spruce. One of the hardiest and choicest Evergreens; foliage steel blue. 1½ ft., each \$2.50; 2½ ft., \$5.00. Larger specimens, each \$7.50 to \$25.00.
- PINUS AUSTRIACA. *Austrian Pine*. A noble tree of rapid growth with massive horizontal branches covered with long, thick, dark green foliage; very hardy. 1½ to 2 ft. Doz., \$4.0050
- 2 to 2½ ft. Doz., \$6.0075
- 4 to 5 ft. Doz., \$20.00 2.00
- MUGHO. *Dwarf Mountain Pine*. An Alpine species extremely valuable for exposed situations, of dwarf, spreading habit, seldom over four feet in height. The foliage is of strong deep green color, and the branching growth of this beautiful bushy Pine makes it exceedingly desirable for lawn clumps, evergreen borders, and terraces. It is one of the best evergreens for planting near the sea; 12 to 15 inches; broad specimens. Doz., \$7.50 . .75

HARDY CONIFERS.—Continued.

<p>PINUS STROBUS. <i>White or Weymouth Pine.</i> Useful for screens, windbreaks, and back- grounds; 3 to 3½ ft. Doz., \$10.00 1.00</p> <p>— SYLVESTRIS. <i>Scotch Pine.</i> One of the best trees for exposed situations; 4 to 5 ft. Doz., \$12.00 1.25</p> <p>RETINOSPORA ERICOIDES. Foliage coppery violet, turns green in winter; 1½ ft. Doz., \$8 0075</p> <p>— FILIFERA. Thread-like, drooping, light green branches; pyramidal form; graceful and beau- tiful; 2½ to 3 ft. Doz., \$16.00 1.50</p> <p>— — AUREA. New. A golden leaved form of the preceding; 2½ ft. 2.00</p> <p>— OBTUSA. A compact, pyramidal tree, dark green foliage, tinted bronze; 3 to 3½ ft. Doz., \$15.00 1.50</p> <p>— PLUMOSA. Forms a handsome pyramid of dense, feathery branches, fine, light green foliage; 2 ft. Doz., \$5.00, each, 60c.; 3 ft. Doz., \$12.00, each, \$1.25; 4 ft. Doz., \$20.00 2.00</p> <p>— — AUREA. One of the best Evergreens, form- ing a pyramid of rich golden foliage which holds its color the year round. It is one of the most brilliant and hardy conifers; 1½ to 2 ft., each, \$1.00; 2½ to 3 ft., each, \$2.00. Larger specimens, \$3 00 to \$20.00.</p> <p>— SQUARROSA GLAUCA. Beautiful, hardy sort, is of a glaucous steel blue color; 2 ft. Doz., \$8.0075</p> <p>3 ft., each, \$2.00; 4 to 5 ft., each, \$4.00; 6 to 7 ft. 7.50</p>	<p>SCIADOPITYS VERTICILLATA. <i>Japanese Umbrella Tree.</i> A beautiful and most desirable Jap- anese evergreen of erect pyramidal growth with large, shining, deep green foliage in umbrella-like whorls. Protection of pine boughs or coarse matting is necessary during winter in Massachusetts. 2½ to 3 ft., each, \$3.00; 4 ft., specimens, each 6.00</p> <p>THUJA OCCIDENTALIS. <i>American Arbor Vitæ.</i> Extremely useful for screens, clumps or lawn specimens. 2½ ft.; heavy. Doz., \$2.5030</p> <p>— — LUTEA. <i>Nootka Sound Cypress.</i> Yellow foliage; 2 to 2½ ft. Doz., \$20.00 2.00</p> <p>2½ to 3 ft. 3.00</p> <p>— — GEORGE PEABODY. Golden yellow, very hardy; 2 ft. 1.50</p> <p>— SIBERICA. <i>Siberian Arbor Vitæ.</i> 2 ft. Doz., \$4.0040</p> <p>— VERVÆNEANA. Very graceful and feathery, golden foliage; extremely hardy; 1 ft. Doz., \$4.0050</p> <p>JAPANESE TABLE-FORMED PINE TREES. These are trained in the form of round tables and are imported in two sizes. They are useful for Japanese and formal gardens. Miniature size, 12 inches high, 18 inches diameter, each, \$1.00. Large size, 36 inches high, 36 inches diameter, each, \$5.00.</p>
--	--

EVERGREEN HEDGE PLANTS.

AMERICAN ARBOR VITÆ. This is one of the hardiest and most reliable hedge plants, thriving in either high or low ground and admitting of being kept closely trimmed, if desired.

1½ to 2 ft. Transplanted, \$10.00 per 100.

2½ to 3 ft. Transplanted; bushy, \$18.00 per 100.

NORWAY SPRUCE. This makes a dense hedge of rapid growth, and one of the best for shelter or protection. It is largely planted for wind-breaks in exposed situations. If the soil is light it should be enriched with old rotten manure.

1½ to 2 ft. Transplanted, \$10.00 per 100.

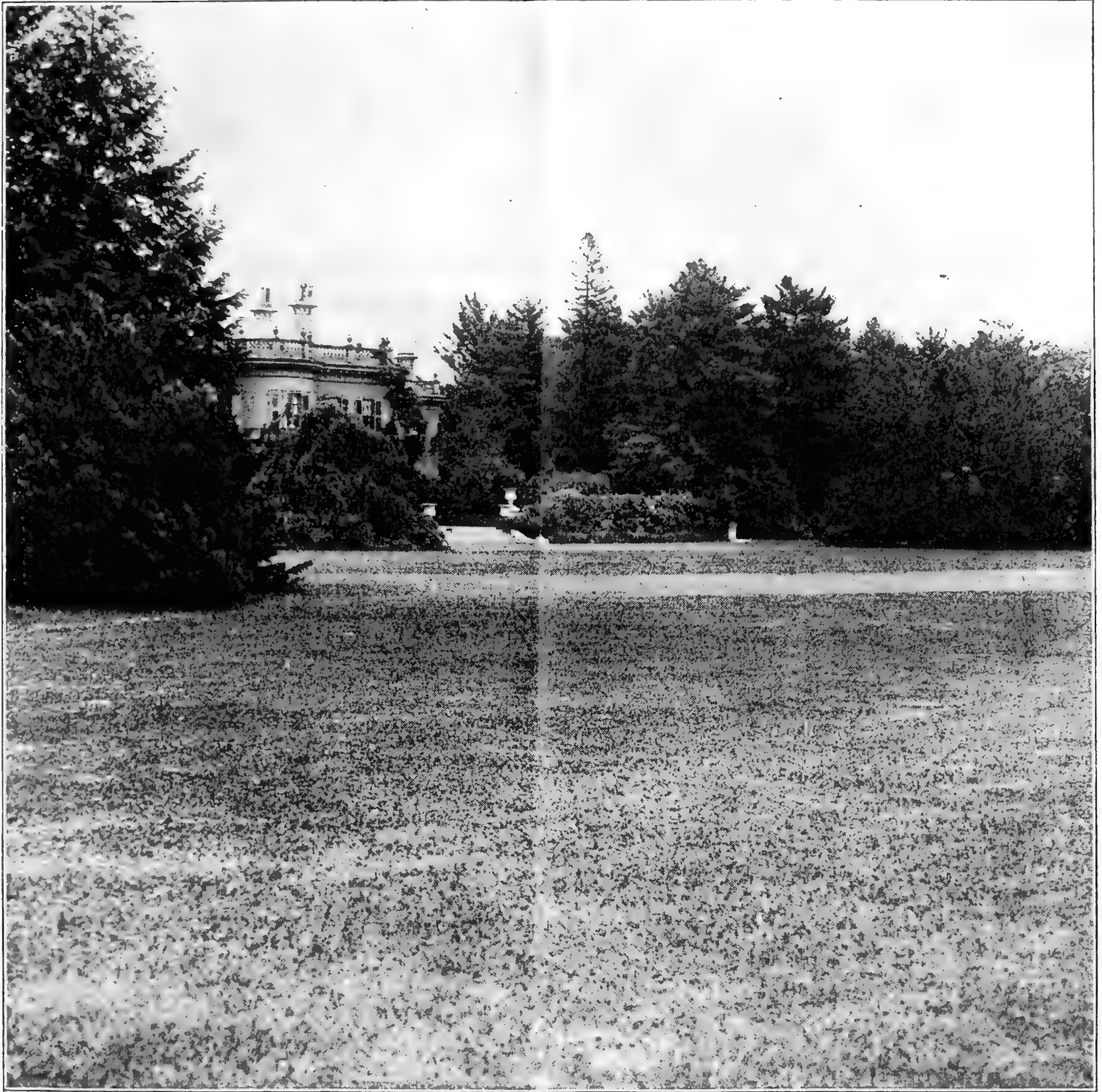
2 to 3 ft. Transplanted, \$25.00 per 100.

BOXWOOD TREES.

PYRAMIDAL. 3 to 3½ ft. Each, \$2.00; doz., \$20.00. 3½ to 4 ft. Each, \$2.50; doz., \$25.00. 4 to 5 ft. Each, \$5.00 to \$6.00.

STANDARDS. 15-inch diam. Each, \$2.00; doz., \$20.00. 18-inch diam. Each, \$3.00; doz., \$30.00. BUSHES, 2½ to 3 ft. Each, \$1.50; doz., \$15.00.

FARQUHAR'S EVERGREEN LAWN GRASS.



A Partial View of the Celebrated Lawn on the Estate of Mr. Walter Hunnewell, Wellesley, Mass., the Product of Farquhar's Evergreen Lawn Grass Seed.

OUR GRASSES FOR LAWNS are celebrated for producing a perfect, rich, deep-green sward from early spring till late in fall. The varieties are specially selected, tested, and blended, and the lawns made from our formulas are unsurpassed anywhere for beauty and color. As a result of our care in invariably furnishing clean, pure, fresh Lawn Seed, our trade in this specialty is enormous. We annually furnish seed for the parks and gardens of Boston, and ship large quantities to Newport, Lenox, Bar Harbor, and other leading summer resorts.

FARQUHAR'S EVERGREEN LAWN GRASS.

Specially reliable mixture of dwarf, hardy, fine-leaved grasses, the growth of which has been *thoroughly tested*.

One quart will sow 300 square feet. Price per quart, 20 cents; by mail, 25 cents.

Four quarts will sow 1,200 square feet. Price, 60 cents; by express only.

One peck will sow 2,400 square feet. Price, \$1.00; by express only.

One bushel (20 lbs.) will sow 10,000 square feet. Price, \$4.00; by express or freight.

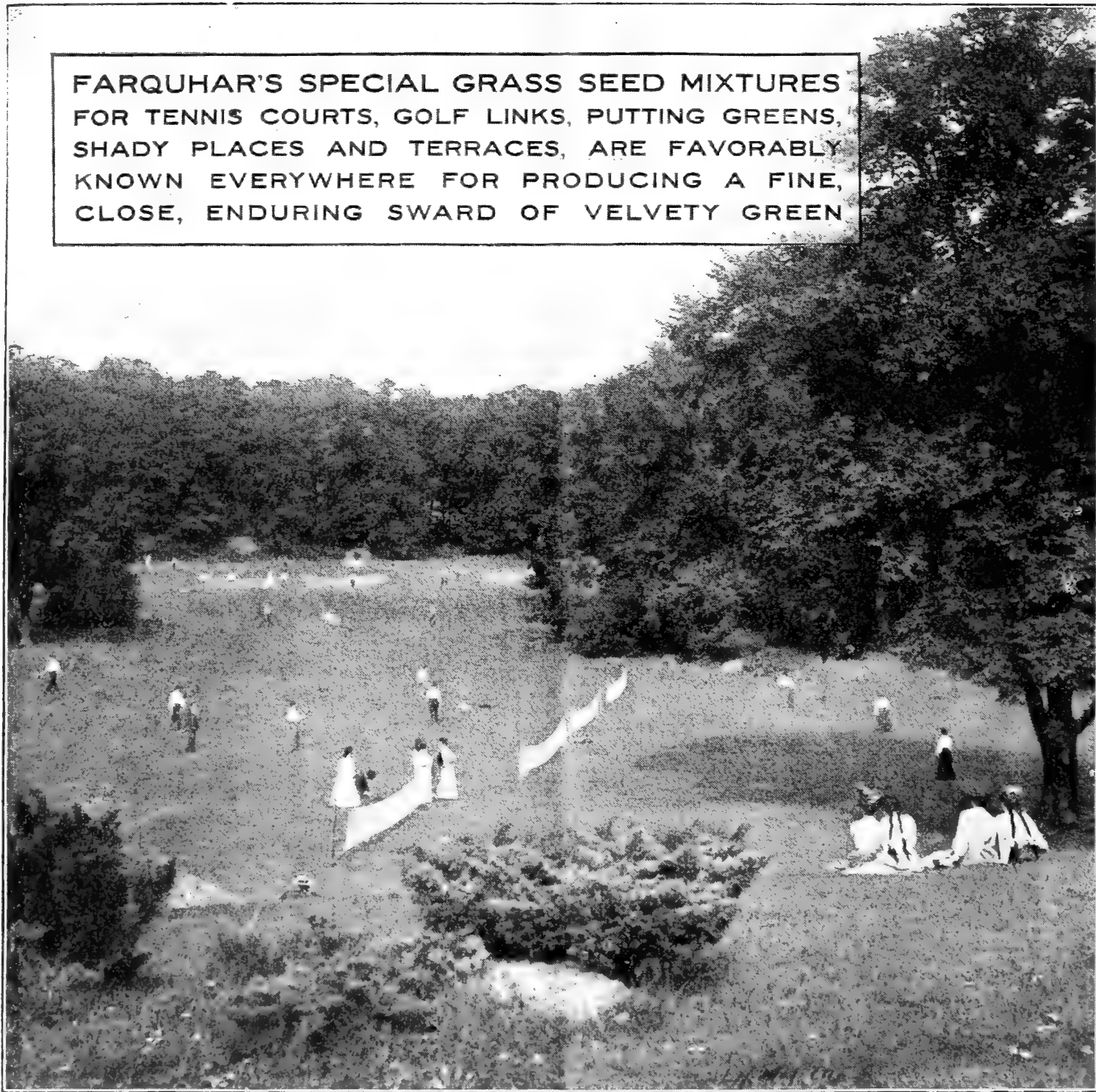
Four bushels (80 lbs.) is sufficient for one acre.

NEW BOSTON PARKS LAWN-SEED.

We have received from Messrs. Olmsted, Olmsted & Eliot their formula used in seeding the beautiful lawns and terraces of Boston's new parks. Franklin Park and the Metropolitan parks have been planned by this firm of eminent landscape architects, and their formula may be accepted as the best which experience can suggest.

62 lbs., sufficient for *one acre* (43,560 square ft.), \$15.00 | 16 lbs., sufficient for *one-quarter acre* (10,890 sq. ft.), \$4.00
 31 lbs., sufficient for *one-half acre* (21,780 sq. ft.), 7.50 | 1 lb., sufficient for 700 sq. ft., \$.30; by mail . . .40

FARQUHAR'S SPECIAL GRASS SEED MIXTURES FOR TENNIS COURTS, GOLF LINKS, PUTTING GREENS, SHADY PLACES AND TERRACES, ARE FAVORABLY KNOWN EVERYWHERE FOR PRODUCING A FINE, CLOSE, ENDURING SWARD OF VELVETY GREEN



SPECIAL GRASS SEED MIXTURES.

Quart., .35; by mail, .45; peck, \$1.50; per bushel of 20 lbs., \$5.00.

FARQUHAR'S MIXTURE FOR SHADY PLACES.

This is a mixture of extra fine grasses adapted for growing in the shade and under trees. We recommend the use of this mixture wherever other grasses have failed to make a close sward.

FARQUHAR'S "GOLF LINKS" MIXTURE.

We have supplied several Clubs with this Mixture, which is the result of a careful study of the requirements for making beautiful Golf Links, and we do not hesitate to say that it has given entire satisfaction.

FARQUHAR'S "PUTTING GREEN" MIXTURE.

The very finest low growing Grasses are contained in this Mixture, and very hardy. This Mixture will produce a beautiful and lasting green turf wherever used, calculated to withstand hard tear and wear.

FARQUHAR'S "TERRACE MIXTURE."

A mixture of strong, deep-rooted Grasses for "banks" or "terraces." Although the Grasses are strong and deep rooted, they will produce a fine green velvety appearance, and also prevent washing away during heavy rains.

HIGH GRADE FERTILIZERS.

Prices subject to change. Net, except where noted, f. o. b. cars Boston.

FARQUHAR'S LAWN AND GARDEN DRESSING.

The best fertilizer in the market for all garden and farm crops. It is as dry and fine as meal; made of dried, finely pulverized blood, bone, potash, and refuse meat. The mixture is in such good mechanical condition that it can be applied conveniently by any one. For gardens and lawns it is most excellent, being not a stimulant merely, but a plant food of lasting, enriching properties. Price, per ton, \$50.00.

10 lbs.,	for about	1,000 square feet,	50 cents.
25 " "	" "	2,500 " "	\$1.00.
50 " "	" "	5,000 " "	1.75.
100 " "	" "	one-fourth acre,	3.00.

FARQUHAR'S VEGETABLE AND POTATO FERTILIZER.

A new brand of extraordinary strength, being a complete fertilizer for vegetables and potatoes. It is very rich in phosphoric acid, potash, and nitrogen. Can be safely used alone. Apply 400 to 600 lbs. per acre, depending upon the previous manuring, cropping, etc., and present condition of the land. Price, per ton, \$40.00; 100 lbs., \$2.50; 50 lbs., \$1.50; 25 lbs., \$1.00; 10 lbs., .50.

PULVERIZED SHEEP MANURE.

PURITY BRAND.

A soluble plant food highly recommended for all purposes where a first-class fertilizer is required. It is a pure natural manure, and has long been recognized as one of the most beneficial. As a top-dressing for lawns it is unequalled, being free from weed-seeds, and extremely stimulating. For lawns, it should be used at the rate of 500 pounds per acre. As a fertilizing agent for plants, indoors and in the open garden, it is one of the very best. Price, ton, \$35.00; half ton, \$17.50; 500 lbs., \$8.75; 100 lbs., \$2.00; 50 lbs., \$1.25; 25 lbs., .75; 10 lbs., .40; 5 lbs., .25; 1 lb., .10.

PURE CANADA UNLEACHED HARDWOOD ASHES.

Ashes lack ammonia and phosphoric acid, but contain potash and lime, which are essential, not only as plant food, but also as sweeteners of the soil and solvents of other plant food ingredients. So far as they supply potash and lime, they are "nature's plant food." These things have been extracted from the soil by the trees, and now we return them in the shape of ashes. Pure wood ashes is one of the best fertilizers for top-dressing lawns, grass lands, and seeding down; also for fruit of all kinds, especially strawberries, peaches, and apples. They are exceedingly valuable for lawns, imparting a rich dark shade of green, destroying insects and bad weeds, particularly moss, which is so common on lawns. 100-lb. bag, \$1.25; 200 lbs., \$2.00; ton, \$16.00. *In car load lots of from 15 to 25 tons, at \$11.00 per ton in bulk or \$13.50 per ton in 100-lb. bags delivered at any freight station in Massachusetts, Vermont, New Hampshire, Rhode Island, Connecticut, and to any station in Maine except points on the Maine Central R.R.*

PURE GROUND BONE

Is made from the best quality of bone, finely pulverized by improved machinery. It is far superior to some ground bone in the market, which is often composed of refuse bones from which the plant-food has been largely removed in manufacturing glue and other products. Analysis: Nitrogen, equal to Ammonia, 3 to 4 per cent.; Phosphoric Acid, 22.80 to 25.23 per cent.; equal to Bone Phosphate, 50 to 55 per cent. Price, 10 lbs., .50; 25 lbs., \$1.00; 50 lbs., \$1.50; 100 lbs., \$2.50; 500 lbs., \$8.00; ton, \$30.00.

INCH BONE FOR GRAPES, ETC.

The very best fertilizer for grape vines, fruit trees, shrubs, and trees of all kinds. The pieces of bone vary from one-fourth inch to one inch in size. Should be used at setting out, mixed with the soil to the depth of a foot or more. Price, in bags or barrels, 2¼ cents per lb.; ton, \$34.00.

SCOTCH SOOT.

A fertilizer and fungicide. One of the best remedies and preventatives for mildew, when mixed with sulphur, at the rate of two-thirds soot, one-third sulphur. As a fertilizer it promotes growth, and heightens color of foliage and flower. Price, 100-lb. bag, \$2.50.

SALT.

Valuable as a top-dressing for asparagus, etc. Apply early in spring. Bag, 140 lbs., \$1.25.

CLAY'S FERTILIZER.

Imported. A safe, lasting, productive, economical fertilizer for all horticultural purposes. A reliable vitalizing medium for conservatory, greenhouse, and garden. Can also be used to prepare and preserve the lawn in splendid condition. Highly recommended by leading horticulturists in the cultivation of flowers, fruit, and vegetables for exhibition, pleasure, and profit in the highest perfection. Original bags, 112 lbs., \$7.00; 56 lbs., \$4.00; 28 lbs., \$2.25; 14 lbs., \$1.25; 7 lbs., .75.

BRADLEY'S XL PHOSPHATE

has been more extensively used than any other brand of fertilizer in the world, and has given universal satisfaction on all crops and under all conditions.

BRADLEY'S POTATO MANURE

For Growing Smooth, Sound Potatoes of the Best Quality without Barnyard Manure.

It is admitted by successful potato growers that a good commercial fertilizer is indispensable in raising potatoes of the best quality and free from rot or scab.

Bradley's Potato Manure is in no sense a theoretical or experimental mixture. It is prepared from formulas which repeated *field-tests* have proven to produce the largest crops of smooth, sound, and handsome potatoes.

It is finely ground and very dry; it will, therefore, work perfectly in any planter.

BRADLEY'S COMPLETE MANURES FOR ALL CROPS.

Specially Adapted to Intensive Farming and Market Gardening.

These manures are the richest and most effective fertilizers sold, as has been abundantly proved by results in the field. They are manufactured from the very best plant-food materials obtainable. In mechanical condition they are unequalled. They drill perfectly in any machine. They are divided into classes, based upon exhaustive field tests, and not upon theoretical experiments of the laboratory, the fault of "special crop fertilizers," in which common sense and practical experience are sacrificed for the sake of theoretical hobbies.

Bradley's Complete Manures are, in the fullest sense, "complete" fertilizers, and the several grades furnish complete plant-food in the best forms for all crops grown.

SPRAYERS.



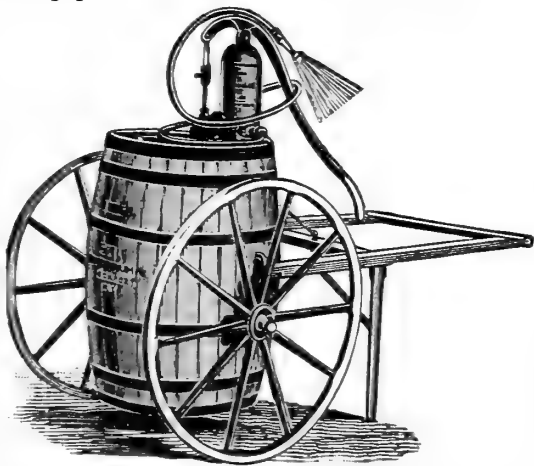
THE EMPIRE QUEEN SPRAYING PUMP. With automatic mechanical agitator. This pump has a seamless brass cylinder two inches inside diameter and eight inches long, brass plunger, with leather bucket, brass lower valves, and brass rod, also a brass screw spout to which hose is attached by a screw coupling. It has a large air chamber, by means of which the spray is strong and continuous.

The Agitator works in connection with cogs from the lever, connecting with a companion gear at the upper end of a steel shaft; at the lower end of the shaft is a horizontal wooden bar, to which are attached two upright paddles.

This pump has a fine brass strainer at bottom of suction pipe which prevents leaves or dirt from getting into pump or nozzle, and it also has a brush on the agitator arm which swings under the strainer, keeps the dirt brushed off, and prevents clogging the pump. **PUMP AND OUTFIT "B."** Empire Queen Pump, with brass screw spout, and agitator complete, also 10 feet of best 3-ply hose, Niagara spray nozzle and couplings, nicely mounted on 50-gallon barrel, the agitator carefully adjusted, the whole apparatus ready for use, price, \$15.00; additional hose, .16 per foot; 5-foot extension pipe, bamboo, brass lined, \$1.00.

THE TRUCK AND BARREL SPRAYER.

This machine consists of our Empire Queen pump mounted on a barrel having a capacity of 32 gallons, together with the cart. The cart has strong iron wheels, 34 inches in diameter, and 37 inches from outside to outside of hubs with tires 3 inches wide; it has strong hardwood handles, and is a very convenient machine for use in small orchards or gardens, where it is impractical to drive a horse. Price, \$23.50.



WOODASON VAPORIZING BELLOWS. (Fig. 16B.) This Bellows throws a spray as fine as mist, rendering the use of insecticides perfectly safe on tender plants. Price, No. 1, \$1.50; No. 2, \$2.00.

THE AQUAPULT HAND FORCE PUMP. (Fig. 81.) Strong and durable; not liable to get out of order. \$4.00.

ADJUSTABLE WATER BARREL TRUCK.

(Figs. 13, 14, 15, and 16.) By a simple arrangement of the axle, the barrel can be detached at pleasure, whether full or empty. Very useful for carrying water to the garden or lawn during dry weather, for emptying cess-pools, and for innumerable other purposes. Price, truck and barrel, complete: wheel, 2½-inch tire, \$10.00, without barrel, \$7.75; wheel, 3½-inch tire, \$10.75; without barrel, \$8.50. The following extra attachments can be supplied for use on the same truck when the barrel is detached, viz.: Hand-cart box, \$3.00; leaf rack, \$5.00; extra barrels with trunions, \$2.75; sprinkler attachment, for barrel, \$3.50.

SPRAYERS.

JOHNSON'S CHAMPION FORCE PUMP. (Fig. 96.) The pump has a sprinkler, straight-stream nozzle, and rubber hose attached. Throws six gallons of water per minute, with ease. Price, \$4.25.

THE FAULTLESS SPRAYER. (Fig. 91.) Throws a spray as fine as mist. No. 2, all brass, each, .75.

SCOLLAY'S RUBBER PLANT SPRINKLER. (Fig. 90.) Made of rubber with flat bottom and a finely perforated, detachable brass top. Very useful for sprinkling, and all purposes where a fine spray is required. Four sizes. .50, .60, .75, and \$1.00; by mail, .10 each extra.

SCOLLAY'S ANGLE RUBBER SPRINKLER. (Fig. 90.) By means of this new device, liquids can be applied to the under side of the leaves. Price, each, \$1.00.

GALVANIZED IRON WATERING POTS.

Made from best quality iron and heavily galvanized after being made. Two copper-faced roses go with each pot for fine and coarse watering. 4 quarts, \$1.50; 6 quarts, spout 21 inches long, \$1.75; 8 quarts, spout 23 inches long, \$2.00; 10 quarts, spout 25 inches long, \$2.25; 12 quarts, spout 25 inches long, \$2.75.

HEAVY TIN WATERING POTS. Nicely painted green. Made of extra strong, double-thick tin, braced and stayed; very substantial. 2 quarts, .60; 4 quarts, .75; 6 quarts, .85; 8 quarts, \$1.00; 10 quarts, \$1.25; 12 quarts, \$1.50; 16 quarts, \$1.75.

GALVANIZED IRON WATERING POTS, FRENCH PATTERN; with brass bale handle. 8 qts., \$2.25; 10 qts., \$2.50.

SYRINGES.

FARQUHAR'S NEW CYCLONE ROSE SYRINGE, with improved self-oiling piston, barrel 16 inches long. Specially designed by us for the application of insecticides *directly upon* insects infesting roses and other plants. As the rose is interchangeable with cap, the spray can be thrown straightaway or at a right angle at pleasure. Price, strong brass, with cap and spray rose, \$3.50; with cap and two spray roses (fine and coarse), \$4.00.

NO. G. GARDEN AND GREENHOUSE SYRINGE. With elbow joint, stream and spray; excellent for applying liquid insecticides; \$5.00.

AA. PARLOR SYRINGE. Fine spray rose. \$1.50.

NO. 5. GARDEN AND GREENHOUSE SYRINGE. Stream and two spray roses; \$7.50.

NO. 7. GREENHOUSE SYRINGE. Stream and two spray roses, and knuckle joint turning in all directions; for applying water or other liquids to the under-surface of the leaves to destroy insects, etc.; \$9.00.

NO. O. GARDEN SYRINGE. For applying liquids, solution, etc.; \$2.50.

NO. C. GARDEN SYRINGE. One stream and one spray rose; \$3.50.

POWDER DISTRIBUTORS.

FRENCH SULPHUR AND POWDER BELLOWS. (Fig. 89.) The best of all powder distributors; excellent for effectually and economically applying Sulphur, Hellebore, etc., to plants. No. 1, \$2.00; No. 2, \$1.60; No. 3, with powder receiver in shank, \$1.50.

POWDER BELLOWS. For applying Hellebore, Sulphur, Slug Shot, etc. Small, .75; medium, \$1.00; large, \$1.25.

SCOLLAY INSECT POWDER-PUFF. A new device for applying insect powder of any kind to plants, etc. Very useful for house-plants and to housekeepers generally. Price, each, \$1.00; by mail, \$1.10.

STAR POWDER GUN. For applying insect powders. Each, .10; by mail, .12.

JUMBO POWDER GUN. (Fig. 92.) Each, .25.

TIN DUSTER FOR PARIS GREEN. For applying Paris Green Mixture, Slug Shot, etc., on potato vines and other plants; bottoms finely perforated. Each, .15.

NORTON PLANT DUSTER. For dusting potatoes, vines, etc. A slight jolting movement distributes the dust. It is made with a cylinder air-chamber projecting above the powder, so that it never clogs. Each, \$1.00.

LAWN MOWERS.

THE VICTORY BALL-BEARING LAWN MOWER.

10-inch wheel, four-bladed reel, construction light; easily run and almost silent. One of the best Mowers ever built.

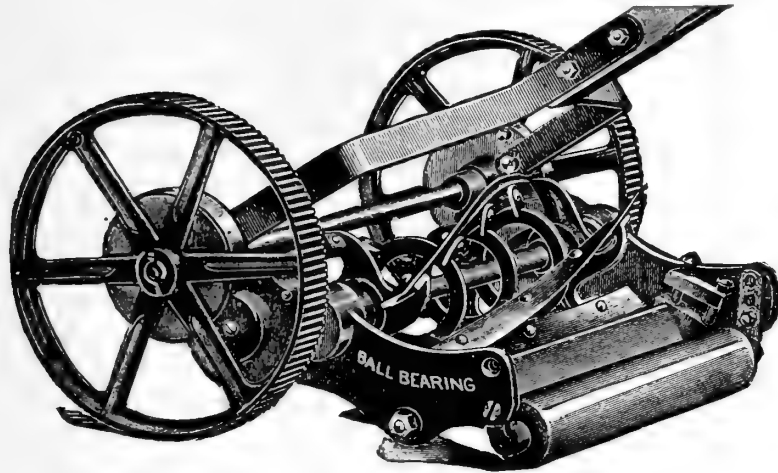
14 in.
\$8.50.

16 in.
\$9.50.

18 in.
\$10.50.

20 in.
\$11.50.

22 in.
\$12.50.



Victory Ball Bearing.

BOSTON, MASS., Dec. 9, 1899.

MESSRS. R. & J. FARQUHAR & Co.,
6 South Market St., Boston:

GENTLEMEN: Last June you furnished me with a 20-inch Ball Bearing Lawn Mower. I was so well pleased with it that I ordered another one in July. My gardener, with the help of a boy, found that he could cut the grass in about half the time he required to do it with the old machines and with more comfort to himself, owing to its being so light to handle and run. It does excellent work, and is easier to run than the old-fashioned 15-inch, and I take pleasure in recommending it in the highest terms. Very truly yours,
(Signed) HOWARD MARSTON.

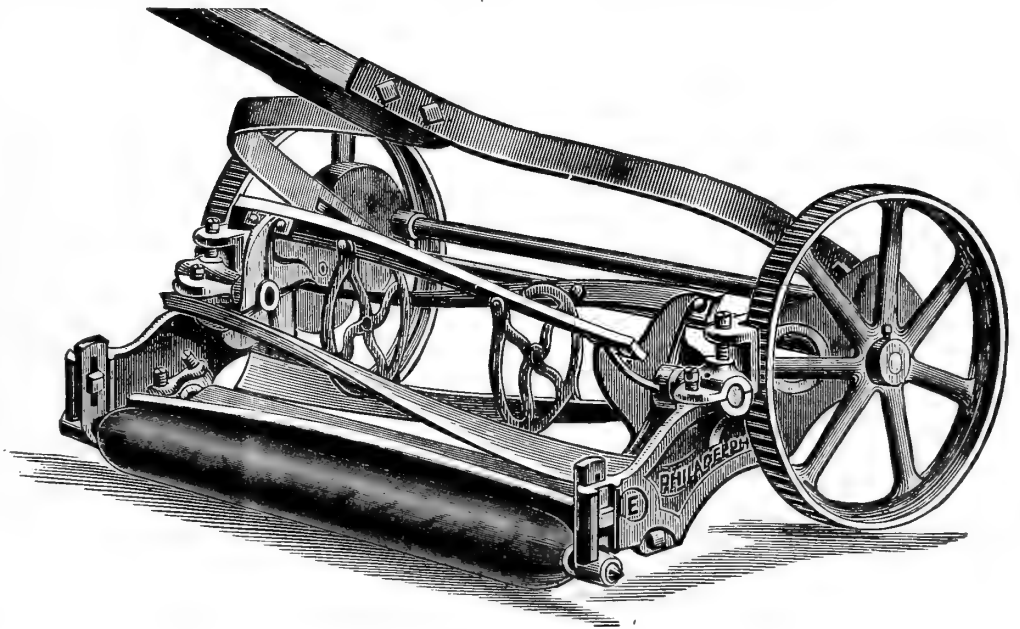
GENUINE PHILADELPHIA LAWN MOWERS.

E HIGH WHEEL.

Four blades, 10-inch wheel, 6½-inch cylinder, train of 3 gears double wheel. One of the lightest draft mowers manufactured; made of iron and steel.

It has one special point of excellence over other mowers of this style, which consists in removing the box caps to the cylinder cutter, and removing the cutter without disturbing the frame of the mower; it therefore has a solid frame, with little trouble in case of repairing same.

15 in. 17 in. 19 in. 21 in.
\$8.25 \$9.25 \$10.25 \$11.25



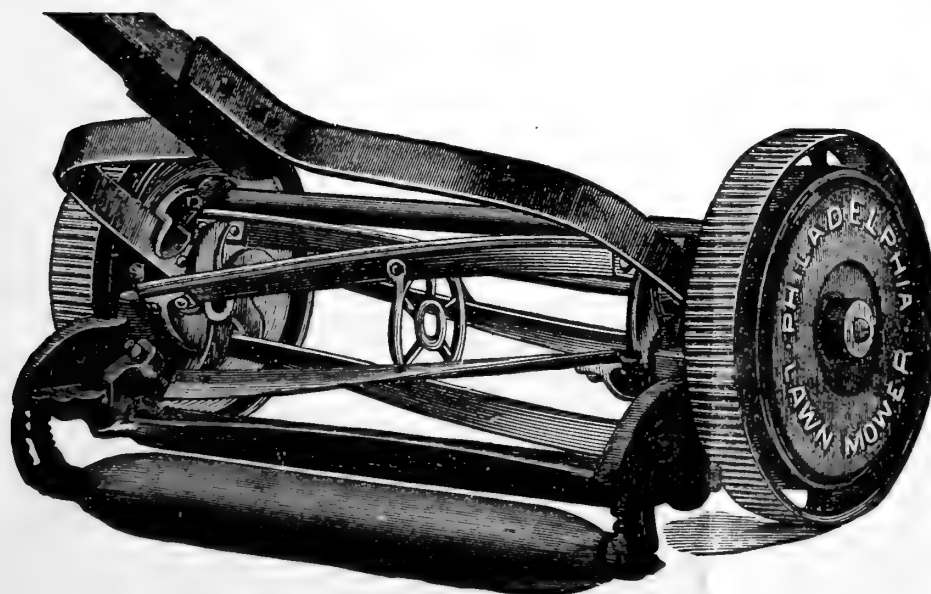
E High Wheel.

STYLE C.

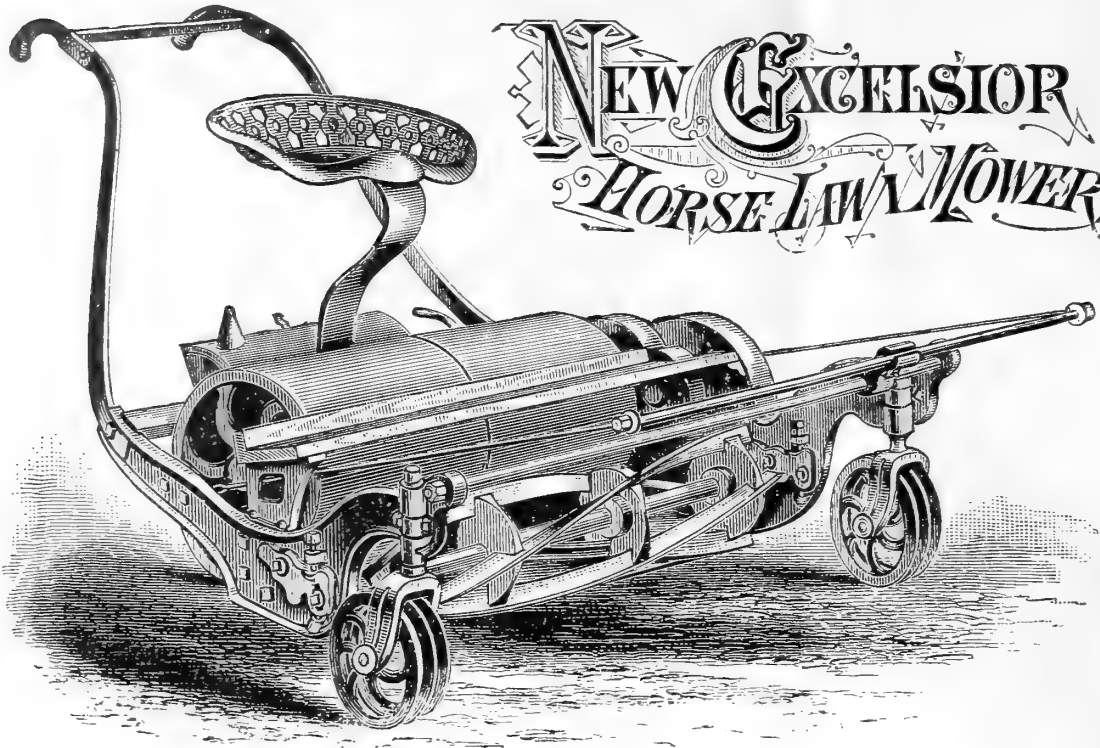
4 Blades, 8½-inch Wheel, 5¼-inch Cylinder, Single Pinion, Geared on both sides.

This is a medium High Wheel Mower which is very popular, for the reason that it has 8½-inch driving wheels and is so geared that with the additional height in wheels it does good work and runs some lighter. It is the same style as some makers put on the market for a high wheel mower.

14 in. 16 in. 18 in. 20 in.
\$6.25 \$7.00 \$7.75 \$8.50.



Style C.



NEW EXCELSIOR HORSE LAWN MOWER

**SHARPENING
AND REPAIRING OF
LAWN MOWERS.**

We employ a practical machinist and attend to all orders promptly. The correct adjustment and replacement of worn-out parts requires skilful hands, and as we give first-class work and make low charges, customers are invited to send their Lawn Mowers for repairs to us. Please send **EARLY IN THE SEASON** so as to be ready to use as soon as wanted. New parts furnished at manufacturers' list price.

NEW EXCELSIOR HORSE LAWN MOWER. Unquestionably the Best Horse Lawn Mower manufactured.

Net Cash Prices.	25-inch cut, without seat or shafts	\$35.00
	25-inch cut, with shafts and side-draught attachment	40.00
	30-inch cut, with seat, shafts, and side-draught attachment	60.00
	35-inch cut, with seat, shafts, and side-draught attachment	72.50
	40-inch cut, with seat, shafts, and side-draught attachment	92.50

No risk. Every Mower fully warranted to give satisfaction. These Mowers are used exclusively by the government and on the largest public parks and lawns in the country.

CHAIN ROLLER MOWER.

BALL-BEARINGS, CHAIN DRIVE, 5 BLADES.

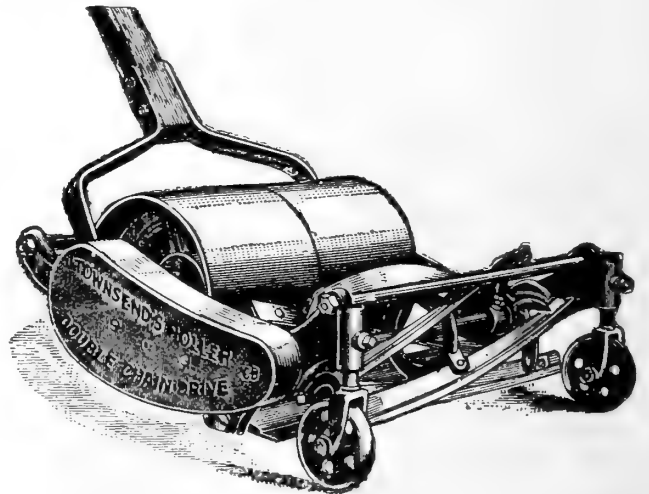
Specially designed for Borders and Golf Greens.

This Mower will cut close enough and clean enough to satisfy the most fastidious golfer.

It will run easier than any other ever built.

It will stay in perfect order longer than any other.

SIZES.	12-in.	14-in.	16-in.	18-in.
PRICES.	\$11.00	\$12.00	\$13.00	\$14.00



PHILADELPHIA GRASS COLLECTOR.

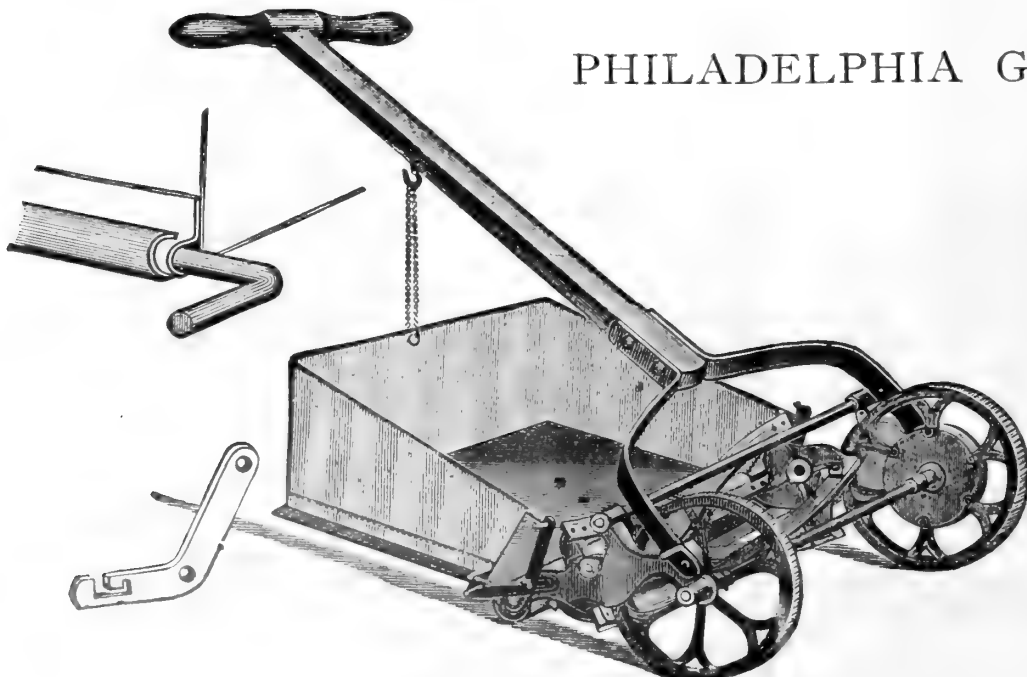
A Galvanized Iron Bottom Collector. Never-rip Cloth Connections. It will fit Philadelphia Mowers only.

LOW WHEEL MOWERS.

14-inch	\$1.60
16 "	1.70
18 "	1.80
20 "	1.90

HIGH WHEEL MOWERS.

15-inch	\$1.70
17 "	1.80
19 "	1.90
21 "	2.00



The
"BOSS"
Roller

HEART DESIGN
Outer edges beveled.
Face silver finished.



ABOUT ROLLING LAWNS.

The benefit derived from the use of a roller on the lawn, especially in the spring, is not fully understood. The action of freezing and thawing causes the ground to heave, and if the sod is not firmly pressed back with a roller before the hot weather begins, the grass is apt to be killed or injured, leaving the lawn full of bare spots.

THE "BOSS" HEART DESIGN HAND LAWN ROLLER.

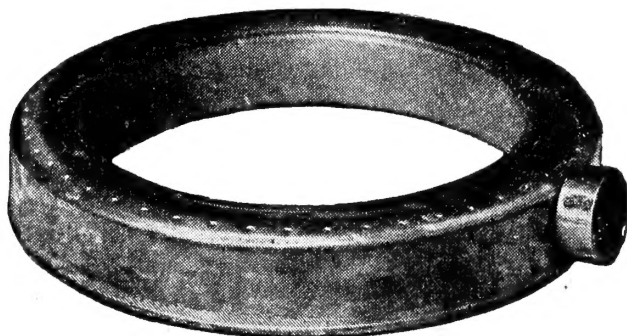
									List Price.	Net Price.
No. 2.	15 inch diameter,	22 inches long, in 3 sections;	7½ inch. face;	200 lbs.	. . .	\$12.50			\$11.25	
No. 4.	20 " " "	20 " " in 2 " "	10 " " "	250 lbs.	. . .	15.50			14.00	
No. 6.	20 " " "	24 " " in 3 " "	8 " " "	300 lbs.	. . .	18.50			16.65	
No. 11.	24 " " "	24 " " in 3 " "	8 " " "	450 lbs.	. . .	27.50			24.75	
No. 15.	28 " " "	30 " " in 3 " "	10 " " "	600 lbs.	. . .	36.50			32.85	

THE BEST LAWN SPRINKLER YET.

Made of Heavy Brass.

Easily moved over the lawn without turning off the water.

No
Rust.
No
Mech-
anism.



No
Fancy
Price.

"Fountain."

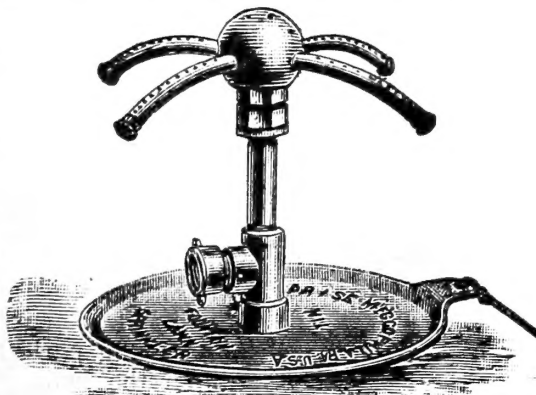
The mist-like spray is a veritable "thing of beauty." Different and better than any other. That's why you should have it. Price, \$1.25 each; by mail, 15c. each extra.

ENTERPRISE LAWN SPRINKLER.

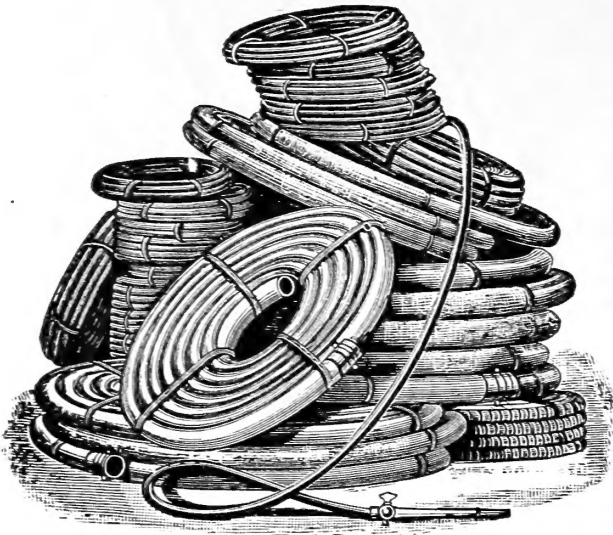
The advantages of our No. 1 Sprinkler are as follows:

Each machine is furnished with a cord or rope, so that the Sprink-

ler may be easily moved, when running, without going near it. The water passes through a Strainer before it enters the small perforations, which are thereby prevented from filling up. The weight of the revolving parts is supported by the water. This reduces wear to a minimum. All parts of the machine are made sufficiently strong for ordinary rough usage, and are interchangeable. The machine is TINNED and NICKEL-PLATED, and is of very handsome appearance. No. 1, \$3.50.



RUBBER HOSE.



We warrant our "Reliable" and "Extra" Brands, which are sure to give satisfaction. Prices on "Reliable" and "Extra" include couplings.

R. & J. FARQUHAR & CO.'S "RELIABLE."

3/4-inch, 3-ply, at .15 per foot; 1/2-inch, 3-ply, at .14 per foot.

R. & J. FARQUHAR & CO.'S "EXTRA."

3/4-inch, 3-ply, at .13 per foot; 1/2-inch, 3-ply, at .11 per foot.

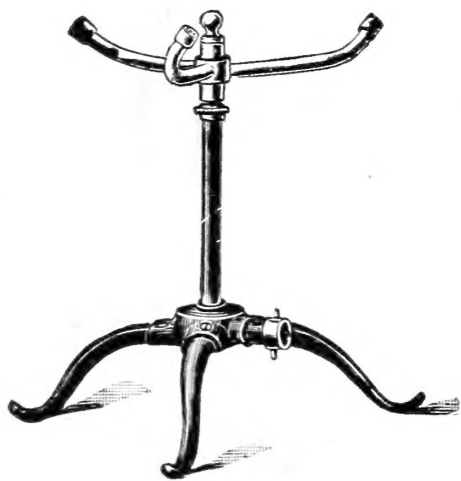
CHICAGO ELECTRIC HOSE. Strong and durable. Manufactured in continuous lengths of 500 feet. Jointless and seamless. 3/4-inch, .16 per foot; 25 and 50 ft. lengths, .18 per foot; couplings, .25 per pair.

COTTON HOSE. Rubber lined, best quality. 3/4-inch, foot, .12; 1/2-inch, foot, .11.

HOSE COUPLINGS. Common set, .25.

LAWN SPRINKLERS.

TWIN COMET LAWN SPRINKLER. (Fig. 95.) The three upper arms revolve rapidly, sprinkling meanwhile, and carrying around a slowly revolving nozzle, which sprinkles the ground for a great distance. Very substantial and durable. Height, 17 inches. Price, \$5.00.



Columbian Lawn Sprinkler.

COLUMBIAN LAWN SPRINKLER. Three-arm; \$1.00 each.

THE STEARNS REVERSIBLE LAWN SPRINKLER. (Fig. 21A.) This Sprinkler is suitable for use with either high or low water pressure; the cap is reversible, and a high or low spray covering a wide area of ground may be secured by simply reversing the cap. .75 each; by mail, \$1.05.

CACTUS LAWN SPRINKLER. (Fig. 87.) With centre spray; indestructible, beautiful, cheap; no revolving parts; can be moved about the lawn without turning off the water. Recommended on account of its simplicity, durability, and beauty. No. 5, for 3/4-inch hose, .85 each; by mail, \$1.15.

JAPANESE LAWN SPRINKLER. (Fig. 84.) Indestructible, beautiful, cheap; adjustable to suit any pressure. This Sprinkler has no revolving parts to leak or wear out. The only Sprinkler that will give satisfaction with a low pressure. No. 12, for 3/4-inch hose, .85 each; by mail, \$1.10.

HOSE MENDERS.

ELECTRIC TAPE FOR MENDING HOSE. If wound around a leaking or weak part it will adhere closely and make the hose as effective as before. It requires no heat, and can be applied in a minute. Comes in the form of a ribbon. Coil, .25; large coil, .50.

HOSE MENDERS, METAL. For 1/2 and 3/4 inch hose; .50 per dozen.

HOSE MENDERS, WOOD. Very useful and durable; .20 per dozen.

THE "COOPER" HOSE MENDER. (Fig. 32.) Hose mended with the Cooper Mender is good as new at the point mended. Menders are made in 1/2 and 3/4 inch in diameter and are three inches long. There are no wires or plyers required, just your two hands are all the tools necessary to make hose perfect. .75 per dozen; by mail, \$1.00.

HOSE MENDERS, HUDSON'S. (Fig. 33.) Whoever uses a hose will require Hudson's Mender, as, with the plyers and bands, it is the cheapest, simplest, and best. It is a metallic tube, made to fit snugly into the end of the hose, where it is held firmly by the soft brass bands, which fit closely around the hose and grooved tube. It is equally valuable for fastening on loose couplings. 1/2-inch hose, .35 doz.; by mail, .10 extra; 3/4-inch hose, .45 doz.; by mail, .10 extra; plyers, .25 each; by mail, .35; bands, .18 per doz. We put the 3/4 and 1/2-inch size in boxes containing 1 pleyer, 6 menders, and 12 wires at .75 per box; by mail, .90. In ordering, please state size desired.

HOSE REELS.

THE "AUBURN" HOSE REEL, SIX-ARM. (Fig. 5.) This Reel has six arms with ratchet drum and will carry one hundred feet of 3/4-inch hose. It is made of white ash. Sides are bent. Wheels 9 inches in diameter. Nicely painted vermilion red, striped, ornamented, and varnished. Very strong and durable. Price, \$2.50.

HOSE REEL, NEW, ALL IRON. (Fig. 4.) A substantial hose reel for garden and lawn use at a low price has long been wanted. The reels are light in weight with high wheels, are constructed entirely of wrought iron pipe and malleable iron, and are almost indestructible. They are entirely frictionless, and have none of the objectionable features so numerous in the ordinary wood reels.

No.	Height of Wheel.	Weight.	Capacity.	Price.
10	21 in.	18 lbs.	100 ft.	\$2.75
20	24 "	22 "	150 "	3.25
30	30 "	32 "	500 "	5.00

HOSE NOZZLES.

THE STOTT NOZZLE. (Fig. 82.) Patented. Each, \$1.25; by mail, \$1.35.

GRADUATING SPRAY HOSE NOZZLE. (Fig. 83.) For rose-bed, hot-bed, lawn, or garden, this sprinkler is superior to any. The water falls in a gentle, rain-like spray without drowning or uprooting the young plants or washing out the earth. One or more should be in the possession of every one who uses a hose. We have them specially made of heavy brass to order. Each, .50; by mail, .60.

FARQUHAR'S SPRAYING NOZZLE. (Fig. 93.) The most substantial and durable nozzle; made of very heavy brass. 3-inch, .50; 4-inch, .75. Shut-off connection for same, .75.

IMPROVED VERMOREL NOZZLE. (Fig. 88.) Arranged with stuffing box to prevent wetting the operator. Fitted for 1/2-inch male end pipe, each, \$1.00; fitted for 3/4-inch hose connection, each, \$1.25.

PUMP, KINNEY'S ATOMIZER. Used to distribute liquid fertilizer or to mix or temper hot and cold water under water pressure. Connect between sections of hose and lower it into the barrel. Each, \$2.00.

PLANT AND TREE LABELS.

(Fig. 16 A.)

	Plain.	Plain.	Painted.
	100.	1,000	1,000
4-in. Wood Pot Label	\$0.15	\$0.50	\$0.70
4 1/2-in. " "15	.60	.80
5-in. " "15	.70	.95
6-in. " "15	.90	1.20
8-in. " Garden Label40	3.00	3.70
10-in. " " "50	3.90	4.80
12-in. " " "60	5.00	6.00
3 1/2-in. Wood Tree Label15	.50	.55
3 1/2-in. " Iron wired15	.80	1.00
3 1/2-in. " Copper "20	1.00	1.20

LARGE BORDER LABEL, WOOD. Length, 16 inches; width, 1 3/4 inches; from 3/8-inch clear stock. If given a light application of white lead, before writing with a hard lead-pencil, the name will be almost imperishable. Per 100, \$2.50; per 1,000, \$20.00.

ZINC GARDEN LABELS.

(Figs. 36 and 37.)

These are unsurpassed, being neat, durable, and indelible. The ink marks a jet black, which remains distinct indefinitely. Use a clean quill pen or pointed stick. Price per 100:

No.	1	2	3	4	5	6	7	13	14	15	20	21
	\$1.25	1.00	1.00	.90	1.15	.75	.65	.60	.50	.60	.75	1.25

FARQUHAR'S IMPROVED INDESTRUCTIBLE LABEL WITH ROD.

We recommend this label as by far the best for permanency. On a strong, neat rod of galvanized iron, eighteen inches long, is attached a label by copper wire passed through a drilled eye at the top of the rod. For trees, shrubs, herbaceous plants, and in fact all purposes for which a lasting label is wanted, it is indispensable. Price, Rods, 100, \$3.50; Labels (Fig. 30), 100, No. 1, 3 3/4 in. x 3/4 in., .75; No. 2, 5 in. x 1 1/8 in., \$1.25.

INDELIBLE INK. For writing on zinc labels; makes a permanently black writing; use a quill or clean steel pen. Small bottle, .20; large bottle, .35.

GARDEN STAKES.

SQUARE, GREEN PAINTED, TAPERING STAKES.

1 1/2 ft. long,	Each,	Doz.,	100,
1 1/2 ft. long,	.02	.15	\$1.00
2 " "	.03	.25	1.50
2 1/2 " "	.04	.30	2.00
3 " "	.05	.60	4.00
3 1/2 " "	.06	.70	4.50
4 " "	.07	.80	5.50
5 " "	.10	1.10	7.50
6 " "	.15	1.35	9.00

SQUARE GREEN PAINTED, TAPERING STAKES, EXTRA HEAVY BLACK POINTS.

4 ft. long,	Each,	Doz.,	100,
4 ft. long,	.10	1.00	\$6.50
5 " "	.15	1.75	12.00
6 " "	.20	2.00	14.00

ROUND, GREEN PAINTED, TAPERING STAKES, LIGHT.

1 1/2 ft. long,	Each,	Doz.,	100,
1 1/2 ft. long,	.02	.20	\$1.20
2 " "	.04	.35	2.30
2 1/2 " "	.05	.50	3.50
3 " "	.06	.65	4.70
3 1/2 " "	.08	.80	5.90
4 " "	.10	1.00	7.20
5 " "	.12	1.20	8.50

MATCH STICKS. Plain Pine, 5/32 in. thick, .15 per 100. \$1.00 per 1,000.

ROUND, GREEN PAINTED STAKES, HEAVY.

Ft.	Each.	Doz.	100.	Ft.	Each.	Doz.	100.
3	.10	\$1.00	\$7.00	5	.15	\$1.75	\$12.20
3 1/2	.10	1.10	8.30	6	.20	2.00	14.80
4	.12	1.35	9.70				

UNPAINTED SQUARE HARDWOOD STAKES.

Ft.	100.	1,000.	Ft.	100.	1,000.
2	\$0.30	\$2.50	4	\$0.60	\$5.00
3	.40	3.50	5	1.00	8.00

GARDEN STAKES — Continued.

GALVANIZED WIRE ROSE STAKES. No. 8 Wire.

Ft.	100.	1,000.	Ft.	100.	1,000.
3	\$1.50	\$12.00	4 1/2	\$2.25	\$17.00
3 1/2	1.75	13.00	5	2.50	19.00
4	2.00	15.00	6	3.00	23.00

CANE STAKES.

These resemble the bamboo, and are strong and durable. Vary in length from six to ten feet. Bundle of about 250, \$2.50; 100, \$1.25.

VERANDA TRELLIS FOR VINES.

(Fig. 9.)

This is by far the most ornamental and substantial Trellis made, and is especially adapted to outdoor use. Made of Wood and Rattan, and painted green.

2 ft. high	Doz.,	Each,
2 ft. high	\$4.00	\$0.40
3 " "	5.00	0.45
4 " "	6.00	0.55
5 " 18 in. wide	9.00	0.75
6 " 18 " "	11.00	1.00
6 " 28 " "	15.00	1.25
7 " 18 " "	13.00	1.15
8 " 18 " "	15.00	1.25
8 " 28 " "	24.00	2.00
9 " 20 " "	18.00	1.50
10 " 20 " "	21.00	1.85
10 " 31 " "	32.00	2.75
11 " 24 " "	25.00	2.25
12 " 24 " "	28.00	2.35
12 " 36 " "	42.00	3.50

FAN TRELLIS FOR VINES.

(Fig. 10.)

1 1/2 ft. high, 7 in. wide at top,	Doz.,	Each,
1 1/2 ft. high, 7 in. wide at top,	\$1.00	\$0.10
2 " 10 " "	1.50	.15
2 1/2 " 13 " "	2.00	.20
3 " 16 " "	4.50	.40
3 1/2 " 21 " "	5.50	.50
4 " 27 " "	6.50	.60
5 " 32 " "	9.00	.80
6 " 38 " "	10.00	.85
7 " 42 " "	12.00	1.00
8 " 46 " "	13.00	1.10

WOOD TOMATO TRELLIS.

(Fig. 11.)

These are made of neatly finished hard wood. Height, two and one-half feet. One and one-half feet square at top, one foot at bottom. Dozen, \$1.85.

THE "HANDY" VINE TRELLIS.

(Fig. 3.) Price, \$2.00 per dozen.

"TWO BARREL HOOP" TOMATO TRELLIS.

Price, \$1.00 per dozen.

THE MODEL EXTENSION CAR-NATION SUPPORT.

(Fig. 7.) \$3.00 per 100; \$27.50 per 1,000.

EXCELSIOR FLOWER SUPPORTS.

(Fig. 8.)

Length.	13 in.	15 in.	16 in.	18 in.	20 in.
Price, per 100	\$1.25	\$1.25	\$1.35	\$1.35	\$1.40

Two lengths form a complete Excelsior Flower Support. When ordering state the two required sizes. The prices quoted are for the single length only.

KRICK'S "PERFECT" FLOWER POT HANDLE AND HANGER. (Fig. 35.)

No. 0.	Will fit from 2 to 3 1/2 to 5 inch pots,	per doz.,	.20
No. 1.	Will fit from 3 1/2 to 5 inch pots,	"	.30
No. 2.	Will fit from 5 to 8 inch pots,	"	.40
No. 3.	Will fit from 8 to 12 inch pots,	"	.50

