

An illustration of two tulips. The top tulip is in full bloom, showing its petals and a stem with a long, pointed leaf. Below it is another tulip, also in bloom, with a similar stem and leaf. The background is a light, textured surface.

Farr's
Quality Bulbs

Bertrand H. Farr
Wyomissing Nurseries
Wyomissing, Pa.

The Wyomissing Bulb List

My list of select Holland Bulbs has been mailed for several years to my friends. Each year I have endeavored to select bulbs that will give the greatest pleasure at blooming time; so, too, I have tried to make the book helpful to the amateur as well as to the experienced grower.

The list has been increased this year by the addition of some of the most desirable novelties, and in one or two cases this is the first season that they have been offered at anything like a reasonable price.

It must be understood that I do not carry these bulbs in stock, and that my importations are governed by advance orders received from my customers before July 1. Thus it is possible for me to offer special selected bulbs at prices no higher than asked by most dealers for ordinary bulbs. To secure the highest-quality bulbs my orders have to be in Europe early in July, and such orders will be filled with the first selection from the fields. Therefore, as a special inducement to order early, I will make a 10 per cent discount on bulb orders received before July 1.

Orders received after July 1 will be filled with select stock, if I can secure it; but the discount will not be allowed on such orders, nor can I guarantee that they will be filled with such high-quality bulbs as will go into earlier orders.

Terms.—Cash, unless otherwise specially arranged. Orders from unknown correspondents without satisfactory commercial rating should be accompanied by a remittance to cover the order, or by bank reference. Please remit by Post-Office or Express Money Order, Registered Letter, or Bank Draft. Parcel Post stamps will be accepted for amounts less than \$1.

The fact that I supply bulbs on special orders (thereby having no unsold surplus) enables me to furnish the very choicest bulbs at prices usually asked for ordinary grades.

The Irises from Wyomissing

The ideal time for planting Irises is in the month of August, for then they have completed their spring growth, and are ready to begin life anew in their new home, soon becoming established and growing into sturdy plants that will bloom freely the following spring and summer.

Irises, as a rule, are sun-loving plants, prefer good drainage, and may be grown in dry soil where little else will thrive. Some varieties thrive in moist ground bordering on streams, while some, like *Iris versicolor*, are perfectly at home at the water's edge. My collection contains several hundred varieties, including many new and rare sorts not to be found elsewhere.

Farr's Hardy Plant Specialties

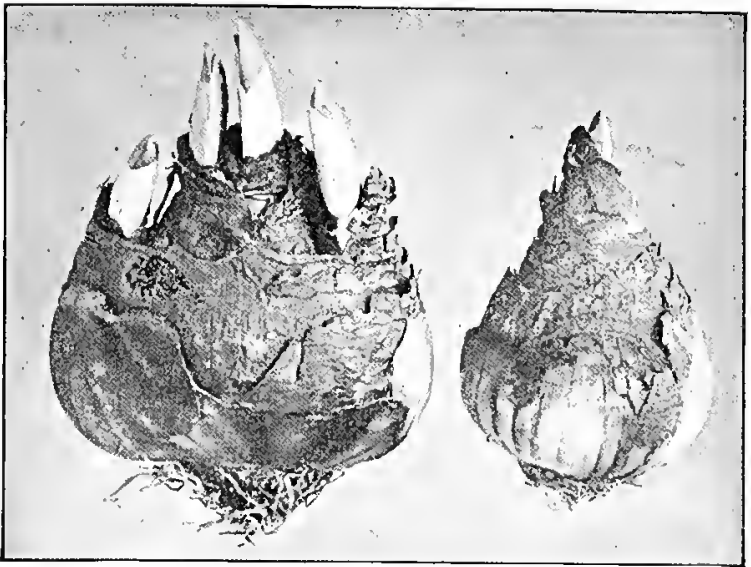
EDITION 1915-1916

This is a text-book of the hardy plants grown here at Wyomissing. Over five hundred varieties of Peonies are accurately described; the hundreds of Irises are classified, and information given about how to grow them.

Other favorites are illustrated and described, including Phloxes, Delphiniums, Poppies, Asters, etc. The book contains twenty-four pages of illustrations (twelve in natural colors reproduced by the Lumiere process).

The new edition has been mailed to all of my customers. I trust your copy reached you safely and will be preserved, as the book is issued only biennially. It is too expensive for general distribution, yet it is my desire to place a copy in the hands of those who are interested in hardy plants.

BERTRAND H. FARR, Wyomissing, Pa.
April, 1915.



Bulbs of Sir Watkin Narcissus. Showing Farr's "Mother Bulb" in comparison with the ordinary first-size bulb

DAFFODILS (Narcissi)

Daffodils will continue to increase every year, and, when naturalized on the lawn, in meadows, or in orchards, they will form great colonies. Daffodils are invaluable for planting among shrubs and in the hardy border, and especially among the peonies, their golden cups making a beautiful contrast with the bright red peony shoots coming out of the ground.

"Mother Bulbs" (often called "double-nose") are bulbs that have reached maturity and are about to break into several smaller bulbs. The "Mother Bulbs" will send up several flower-stems, whereas the ordinary bulbs seldom produce more than one stem. So many of my customers call for "Mother Bulbs" that I have decided not to list the common "first-size" bulbs. However, I can order them if specially requested, at a discount of 20 per cent on prices of "Mother Bulbs."

Single Large Trumpet Narcissi (Ajax)

These are the true Daffodils and produce the largest flowers. Colors range from pure white to darkest yellow.

Not less than six bulbs of any variety at the dozen rate
Albicans. Sulphur-white. 15 cts. for 3, 50 cts. per doz., \$3 per 100, \$25 per 1,000.

Emperor. Deep yellow. One of the largest and finest of the Narcissi. 15 cts. for 3, 50 cts. per doz., \$3 per 100, \$25 per 1,000.

Empress. Large, yellow trumpet with pure white perianth. A splendid companion to Emperor, the two being the most permanent varieties for naturalizing. 15 cts. for 3, 50 cts. per doz., \$3 per 100, \$25 per 1,000.

Glory of Leiden. Sometimes called the King of Daffodils. A new giant-flowered variety of the deepest golden yellow. 50 cts. for 3, \$1.75 per doz., \$12 per 100.

Golden Spur. Rich golden yellow. Double-nose bulbs, 50 cts. per doz., \$3.50 per 100, \$30 per 1,000.

Johnstonii, Queen of Spain (Cyclamen-flowered Daffodil). A miniature form; sulphur trumpet and reflexed, pure white perianth. 10 cts. each, \$1 per doz., \$7 per 100.

King Alfred. An unusually fine yellow Trumpet Daffodil of immense size. Both trumpet and perianth are deep golden yellow. The flower is borne on a tall stem, making it valuable for cutting. 75 cts. each, \$7.75 per doz.

SINGLE LARGE TRUMPET NARCISSI, continued

- Madame de Graaff.** One of the most beautiful pure white varieties. 45 cts. for 3, \$1.75 per doz., \$12 per 100.
- Madame Plemp.** Perianth white, trumpet long and of a deep yellow color. One of the best varieties for border planting. 50 cts. per doz., \$3.50 per 100.
- Princeps.** Sulphur-yellow. One of the earliest varieties and especially adapted for forcing. 10 cts. for 3, 35 cts. per doz., \$1.50 per 100, \$12 per 1,000.
- Victoria.** Golden yellow trumpet, pure white perianth. Flowers very large and extra fine for forcing. 15 cts. for 3, 50 cts. per doz., \$3.50 per 100, \$25 per 1,000.
- Trumpet Maximus.** Deepest golden yellow, with perianth twisted at the tips; trumpet recurved. 15 cts. for 3, 50 cts. per doz., \$2.75 per 100, \$22 per 1,000.
- Weardale Perfection.** One of the most magnificent large-flowering Daffodils; a fitting companion to King Alfred. The perianth is pure white, with sulphur-white trumpet. This is the first year I have been able to offer this variety at a moderate price. 75 cts. each, \$7.50 per doz.

Single Medium Trumpet Narcissi

(Chalice-Cup, or Star Narcissi)

The *Barrii* type is said to be a cross between the Yellow Trumpet and *Poeticus* groups; the crown, or cup, is about one-half the length of the perianth segments.

Incomparabilis types also are crosses between the Yellow Trumpet and *Poeticus* groups, but the crowns are larger than *Barrii*, often three-quarters the length of the perianth. *Leedsii* Narcissi are crosses between the White Trumpet and *Poeticus* groups. The cup, or crown, is white or light yellow, and the perianth is always white.

Not less than six bulbs of any variety at the dozen rate

- Barrii*, Blood Orange.** Lemon-yellow perianth, deep orange cup. 10 cts. each, 75 cts. per doz., \$4.75 per 100, \$40 per 1,000.
- Barrii*, Conspicuous.** Perianth broad; soft yellow in color; shallow, orange-scarlet cup. A splendid variety for the border. Mother bulbs, 25 cts. per doz., \$1.50 per 100, \$12.50 per 1,000.
- Barrii*, Firebrand.** Primrose perianth, fiery red cup. 10 cts. each, \$1 per doz., \$7 per 100, \$60 per 1,000.
- Barrii*, Seagull.** White perianth, canary-yellow cup. 10 cts. each, \$1 per doz., \$7 per 100, \$60 per 1,000.
- Bicolor, Duke of Bedford.** Perianth pure white, trumpet clear, soft yellow. 15 cts. each, \$1.25 per doz., \$9 per 100, \$80 per 1,000.
- Incomparabilis*, Cynosure.** Primrose-yellow perianth, with yellow and orange cup. A showy Daffodil for naturalizing. 25 cts. per doz., \$1.50 per 100, \$12.50 per 1,000.
- Incomparabilis*, Lucifer.** White perianth, orange-red cup. 25 cts. each, \$2.25 per doz., \$15 per 100, \$110 per 1,000.
- Incomparabilis*, Sir Watkin.** (Giant Chalice Flower). A large and well-formed flower, with sulphur-yellow perianth and orange-stained cup. 15 cts. for 3, 50 cts. per doz., \$3.50 per 100, \$30 per 1,000.
- Incomparabilis*, Stella.** Pure white perianth, yellow cup. A good variety for potting. 25 cts. per doz., \$1.50 per 100, \$12.50 per 1,000.
- Incomparabilis*, Will Scarlet.** Fiery orange-red. 50 cts. for 3, \$1.50 per doz., \$10 per 100, \$90 per 1,000.

Ten per cent discount on bulb orders received before July 1

SINGLE MEDIUM TRUMPET NARCISSI, continued

- Leedsii, Duchess of Westminster.** Pure white perianth, with canary-yellow cup tinged with orange on the edges. \$2 per doz., \$12 per 100.
- Leedsii, Evangeline.** Pure white perianth, soft lemon cup. 10 cts. each, 90 cts. per doz., \$6 per 100, \$50 per 1,000.
- Leedsii, Fairy Queen.** Pure white perianth, creamy white cup. 50c. for 3, \$1.75 per doz., \$12 per 100, \$100 per 1,000.
- Leedsii, Mrs. Langtry.** Pure white perianth, with primrose cup. A free-flowering variety, and one of the sorts used extensively for mass plantings on account of its beauty and cheapness. 20 cts. per doz., \$1.25 per 100, \$11 per 1,000.
- Leedsii, M. Magdeline de Graaff.** Long, white perianth, orange-rose cup; very free-flowering, often bearing two blooms to a stem. A particularly beautiful flower for garden planting. 10c. for 3, 30c. per doz., \$2 per 100.
- Leedsii, Queen of England.** Large, pure white perianth, with pale yellow cup. A good variety for mass planting. 20 cts. per doz., \$1.25 per 100, \$11 per 1,000.

Narcissus poeticus

- Almira; syn., King Edward VII.** One of the newer varieties of the Poeticus class. The perianth is white, and the cup light yellow, with a deep red margin. Splendid for forcing or for the garden border. 25 cts. for 3, 80 cts. per doz., \$5 per 100.
- Poeticus.** The well-known "Poet's Narcissus." Pure white perianth and orange cup. Not suitable for forcing, but one of the best for the border or for naturalizing. 15 cts. per doz., 75 cts. per 100, \$6 per 1,000.
- Poeticus, Cassandra.** Broad white perianth, dark red cup. 30 cts. each, \$3.50 per doz., \$20 per 100.
- Poeticus, Horace.** New. Snow-white perianth, blood-scarlet cup; very large. 15 cts. for 3, 45 cts. per doz., \$3 per 100, \$24 per 1,000.
- Poeticus ornatus.** This variety blooms much earlier than the old Poeticus, and can also be used for forcing. The perianth is large and pure white, while the cup is rich yellow with a scarlet margin. 25 cts. per doz., \$1.25 per 100, \$10 per 1,000.

Poetaz Narcissi

A new class of hybrids obtained by crossing *Narcissus poeticus ornatus* with the Polyanthus Narcissi. The result has been a new race, with the hardiness and size of Poeticus, but the blooming habit of the Polyanthus. The Poetaz varieties are suited to house culture or bedding.

- Alsace.** Pure white, with yellow eye. 10 cts. each, \$1 per doz., \$7 per 100.
- Aspasia.** Almost snow-white, with golden yellow eye. 50 cts. per doz., \$3.50 per 100.
- Elvira.** Clear white perianth and rich yellow eye. 50 cts. per doz., \$3.50 per 100, \$30 per 1,000.
- Ideal.** White perianth and deep orange eye. 15 cts. each, \$1.50 per doz. Stock very short this year.
- Irene.** Sulphur-yellow perianth, which changes to primrose, orange eye. 60 cts. per doz., \$4 per 100.
- Klondyke.** Perianth clear yellow, golden yellow eye. \$1.75 per doz., \$12 per 100.
- Santa Maria.** Deep orange-yellow; perianth elegantly twisted. 10 cts. each, 65 cts. per doz., \$4 per 100, \$36 per 1,000.
- Triumph.** Pure white, golden eye. \$1 per doz., \$8 per 100.

Double Narcissi

- Alba plena odorata.** A pure white variety for outdoor planting only. 20c. per doz., \$1.25 per 100, \$8 per 1,000.
- Orange Phoenix.** An excellent variety for forcing. Flowers are large, very double, white with reddish orange center. 30 cts. per doz., \$1.75 per 100, \$15 per 1,000.
- Sulphur Phoenix.** Flowers silvery white, with sulphur-yellow center. 15 cts. for 3, 50 cts. per doz., \$3 per 100, \$25 per 1,000.
- Von Sion.** The most popular double variety for forcing. Flowers unusually large and pure golden yellow. Extra-selected mother bulbs, 15 cts. for 3, 50 cts. per doz., \$3 per 100, \$26 per 1,000.

Polyanthus Narcissi

The Polyanthus Narcissi are not considered so hardy as the other varieties; they may, however, be grown outside if protected, and will produce larger flowers than when grown in the house. The fragrant flowers are produced in large clusters, and come quite early in the season. All of the varieties are valuable for indoor forcing.

- Gloriosa.** White perianth, with orange cup. 15 cts. for 3, 50 cts. per doz., \$3 per 100.
- Grand Monarque.** Perianth clear white, with citron-colored cup. 40 cts. per doz., \$2.50 per 100.
- Grand Soleil d'Or.** Perianth deep yellow, cup shaded orange. 40 cts. per doz., \$2.50 per 100.
- Staten General.** Pure white perianth, cup orange-yellow. 15 cts. for 3, 50 cts. per doz., \$3 per 100.
- Paper White Grandiflora.** Not suitable for outdoor planting, but is one of the most popular sorts for growing indoors. The bulbs may be planted in dishes of water, with pebbles, and can be forced into bloom in from twenty-five to thirty days after planting. The pure white flowers are produced in large clusters on long stems, which make them valuable for cutting. First-size bulbs, 40 cts. per doz., \$2.25 per 100, \$20 per 1,000.

Jonquils

The old-fashioned Jonquils are very fragrant, of medium size, and pure yellow in color. Flowers grow in clusters.

- Single Jonquils.** 15 cts. per doz., 75 cts. per 100, \$5 per 1,000.
- Double Jonquils.** 25 cts. per doz., \$1.75 per 100, \$15 per 1,000.

TULIPS

The great variety of dazzling colors, in every conceivable combination, makes the Tulip the most popular of the spring-flowering bulbs. By planting bulbs of the different classes, a display of bloom may be had for several weeks, beginning first with the early-flowering section and ending with the Darwins.

Tulips may be planted any time from the first of October until the ground freezes, and if the beds are later to be occupied by shallow-rooting plants such as geraniums, coleus, etc., they may be allowed to remain a second year without lifting, merely by removing the tops as soon as they turn yellow.

If necessary, the bulbs may be carefully lifted as soon as they have ceased blooming and heeled in, in an out-



Bizarre Tulip (see page 8)

TULIPS, continued

of-the-way place, until they have completed their growth, when they may be stored in a cool, dry place until fall. Planted in the hardy border and among shrubbery, they may be allowed to remain year after year undisturbed; but they will gradually deteriorate and will, in a few years, have to be replaced.

Single Early Tulips

Unless otherwise noted, all the varieties in this list are equally good for bedding or for forcing

- Artus.** Bright scarlet; extra fine for bedding or forcing. 25 cts. per doz., \$1.50 per 100, \$13 per 1,000.
- Belle Alliance.** Deep scarlet; one of the finest. 35 cts. per doz., \$2.50 per 100, \$23 per 1,000.
- Brilliant Star.** New. An early forcing variety; flowers large, vermilion-scarlet, with yellow base. 75 cts. per doz., \$4.75 per 100, \$40 per 1,000.
- Brunhilde.** New. Flowers very large; petals flamed yellow and margined with white, distinct and beautiful. 15 cts. each, \$1.25 per doz., \$9 per 100.
- Chrysolora.** Very large; extra fine; pure golden yellow. 25 cts. per doz., \$1.75 per 100, \$15 per 1,000.
- Cottage Maid.** Soft pink, suffused with white. 25 cts. per doz., \$1.50 per 100, \$13 per 1,000.
- Cramoisi Brillant.** Bright scarlet. 20 cts. per doz., \$1.20 per 100, \$10 per 1,000.
- Duchesse de Parma.** Large; orange-red. 30 cts. per doz., \$1.75 per 100, \$15 per 1,000.

SINGLE EARLY TULIPS, continued

- Eleanore.** Flowers medium size; purple-violet, with white edge. A handsome variety for bedding. 40 cts. per doz., \$2.50 per 100, \$22 per 1,000.
- Flamingo.** New. Beautiful, dark pink; a sport of White Hawk. Very large flowers of great substance. 60 cts. per doz., \$4 per 100, \$36 per 1,000.
- Goldfinch.** Pure yellow. 25 cts. per doz., \$1.50 per 100, \$13 per 1,000.
- Joost Van Vondel, Red.** Deep cherry-red, feathered white. 35 cts. per doz., \$2 per 100, \$18 per 1,000.
- Joost Van Vondel, White (Lady Boreel).** Very large; extra fine; pure white. 50 cts. per doz., \$3.50 per 100, \$30 per 1,000.
- Keizerkroon.** Very large; brilliant red, bordered deep golden yellow. A grand Tulip in every way, and one of the most durable for permanent planting. 40 cts. per doz., \$2 per 100, \$18 per 1,000.
- La Reine.** White, shaded rosy blush. 20 cts. per doz., \$1.20 per 100, \$10 per 1,000.
- Le Matelas.** New. Splendid, bright pink; very early. 45 cts. per doz., \$3 per 100, \$24 per 1,000.
- Mon Tresor.** Large; pure yellow; one of the earliest and best. 40 cts. per doz., \$2 per 100, \$18 per 1,000.
- Pink Beauty.** New. Rosy pink, slightly shaded white; unsurpassed in size and beauty. 65 cts. per doz., \$4.25 per 100, \$40 per 1,000.
- Pottebakker.** A popular scarlet variety. 35 cts. per doz., \$2 per 100, \$18 per 1,000.
- Pottebakker, White.** A very early white. 40 cts. per doz., \$2.50 per 100, \$20 per 1,000.
- President Lincoln (Queen of Violets).** A desirable variety for bedding and forcing. Flowers large, deep crimson-purple. 50 cts. per doz., \$3.50 per 100, \$30 per 1,000.
- Prince of Austria.** Fine orange-red; very fragrant; one of the best. 35 cts. per doz., \$2.25 per 100, \$18 per 1,000.
- Proserpine.** Rich carmine-rose; very large and early. 60 cts. per doz., \$4 per 100, \$30 per 1,000.
- Queen of the Netherlands.** New. A delicate and attractive shade of pink; very large. 50 cts. per doz., \$3 per 100, \$25 per 1,000.
- Rose Gris-de-lin.** White, shaded delicate pink. 25 cts. per doz., \$1.50 per 100, \$12 per 1,000.
- Rose Luisante.** Beautiful white and rose; very large. 35 cts. per doz., \$2.50 per 100, \$20 per 1,000.
- Sir Thomas Lipton.** Grows about 12 inches tall, bearing a large, cup-shaped flower; deep scarlet with an olive-green tinge at the base. 50 cts. per doz., \$3.50 per 100, \$30 per 1,000.
- Standard Gold.** Red, striped golden yellow. 60 cts. per doz., \$4.50 per 100, \$40 per 1,000.
- Standard Silver.** Deep red, with silvery stripes. 40 cts. per doz., \$2.25 per 100, \$20 per 1,000.
- Thomas Moore.** Fine orange; a splendid bedding sort. 25 cts. per doz., \$1.50 per 100, \$13 per 1,000.
- Vermilion Brilliant.** Intense scarlet; blooms very early, producing a large, well-formed flower; one of the best. 45 cts. per doz., \$3 per 100, \$20 per 1,000.
- White Hawk.** One of the best white varieties, petals slightly fluted. 40 cts. per doz., \$3 per 100, \$25 per 1,000.
- Wouverman.** Fine dark violet. 60 cts. per doz., \$4.25 per 100, \$38 per 1,000.
- Yellow Prince.** Golden yellow; sweet-scented. The leading low-growing yellow Tulip. 25 cts. per doz., \$1.60 per 100, \$13 per 1,000.

Single Early Tulips in Extra-Fine Mixture

This is a choice collection, made up from the best named varieties. The flower-stems are of about the same length, and the blooms come at the same time, important points to be considered when selecting bedding varieties. The mixture is superior in every way to the common mixtures, which I do not recommend. 20 cts. per doz., \$1 per 100, \$9 per 1,000.

Double Early Tulips

As a general rule, double Tulips are not so effective as single Tulips, but the flowers are more durable, and as their season of bloom is somewhat later they serve to prolong the flowering period. With few exceptions they should be used for outdoor bedding only, as they do not force so well as the single varieties.

Alba maxima. Pure white; flower-stems of medium length. 30 cts. per doz., \$1.75 per 100, \$15 per 1,000.

Couronne d'Or (Crown of Gold). Golden yellow, shaded orange; magnificent flower of great beauty and size. One of the best for forcing. 40 cts. per doz., \$2.50 per 100, \$22 per 1,000.

Couronne des Roses. Deep rose; flower of unusually large size. 60 cts. per doz., \$4 per 100, \$35 per 1,000.

El Toreador. Orange-scarlet, petals margined with yellow. 75 cts. per doz., \$4.75 per 100.

Imperator rubrorum. Glowing scarlet; good for forcing. 35 cts. per doz., \$2.25 per 100, \$20 per 1,000.

La Candeur. White; a very fine variety for bedding. 30 cts. per doz., \$1.75 per 100, \$15 per 1,000.

Le Matador. Scarlet; good forcer. 45 cts. per doz., \$3 per 100, \$25 per 1,000.

Lord Roseberry. A splendid variety for early blooming; flowers light pink, borne on long stems. 45 cts. per doz., \$2.75 per 100, \$25 per 1,000.

Murillo. Beautiful, light pink; of medium height. One of the most popular for either house or garden; good for forcing. 30 cts. per doz., \$1.75 per 100, \$15 per 1,000.

Rex rubrorum. Bright scarlet. For bedding. 35 cts. per doz., \$2 per 100, \$18 per 1,000.

Safrano. Stems about 12 inches tall, bearing large flowers of soft yellow. An unusual color in double Tulips. 65 cts. per doz., \$4 per 100, \$32 per 1,000.

Salvator Rosa. Dark pink and white; very large. 30 cts. per doz., \$2 per 100, \$18 per 1,000.

Tournesol. Red, bordered with yellow. 45 cts. per doz., \$3 per 100; \$25 per 1,000.

Vuurbaak. Scarlet; extra-good forcer. One of the leading varieties. 45 cts. per doz., \$2.75 per 100, \$25 per 1,000.

Wilhelm III. Orange-scarlet. A dwarf variety, splendid for bedding alone, or in front of taller sorts. 35 cts. per doz., \$2 per 100, \$18 per 1,000.

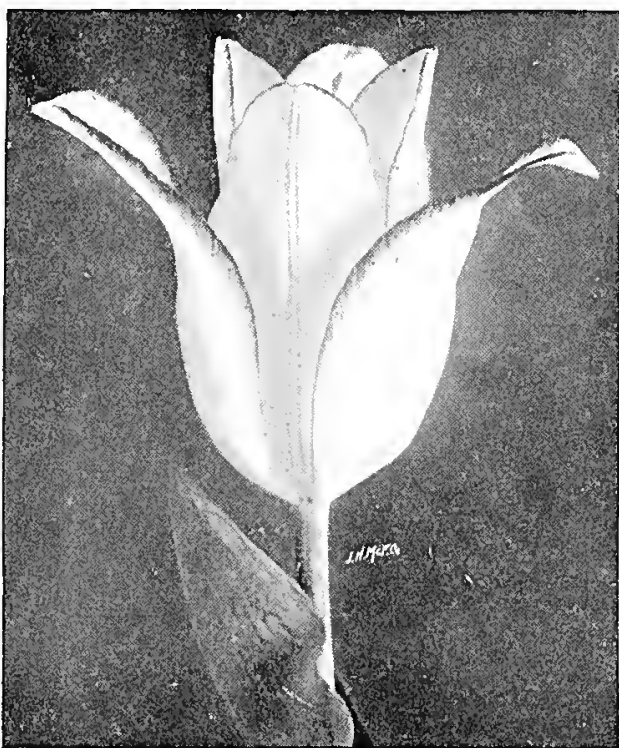
Cottage Tulips

LATE SINGLE, or MAY-FLOWERING

Bouton d'Or (Golden Beauty). Very deep golden yellow, with black anthers; extra fine. 25 cts. per doz., \$1.60 per 100, \$15 per 1,000.

Caledonia. Bright orange-red, with dark stems; beautiful and effective. 25 cts. per doz., \$1.60 per 100, \$15 per 1,000.

Ellen Willmott. Soft creamy yellow; the finest May-flowering Tulip. \$1 per doz., \$6 per 100, \$50 per 1,000.



May-flowering Tulip, Picotee

COTTAGE TULIPS, continued

- Gala Beauty.** A showy variety for beds or borders. Large, golden yellow flowers, blotched and striped with crimson. \$1.75 per doz., \$12 per 100.
- Gesneriana major (Spathulata).** Rich crimson-scarlet, blue-black center. The best in its class. 35 cts. per doz., \$2 per 100, \$18 per 1,000.
- Golden Crown.** Golden yellow, edged red. Increases rapidly; especially recommended for naturalizing. 25 cts. per doz., \$1.50 per 100, \$12 per 1,000.
- Greigi.** Orange-scarlet, foliage spotted with white. \$1.25 per doz., \$10 per 100.
- Isabella (Shandon Bells).** Carmine-rose, shaded white. 30 cts. per doz., \$2 per 100, \$18 per 1,000.
- La Candeur (Parisian White).** White, changing to rose. 35 cts. per doz., \$2.25 per 100, \$20 per 1,000.
- La Merveille.** Salmon-rose, with yellow center. 30 cts. per doz., \$2 per 100, \$18 per 1,000.
- Oculus-solis (Peacock Tulip).** Crimson with black center. \$1 per doz., \$5.50 per 100.
- Picotee (Maiden's Blush).** Pure white; recurved petals, margined rose. One of the best for naturalizing. 30 cts. per doz., \$2 per 100, \$18 per 1,000.
- The Fawn.** Light grayish fawn color. 65 cts. per doz., \$4.50 per 100, \$40 per 1,000.
- Zomerschoon.** Rose, flaked with white. 40 cts. each, \$4 per doz.

Bizarre and Bybloem Tulips

- Bizarres.** Yellow ground, marked with purple, crimson, brown, etc. Mixed colors. 20 cts. per doz., \$1.25 per 100, \$10 per 1,000.
- Violet Bybloems.** White ground, marked with lilac, purple and violet. 30 cts. per doz., \$1.75 per 100, \$15 per 1,000.

Darwin Tulips

These late-flowering Tulips are entirely distinct from all other classes, and the varieties listed here contain many new and beautiful shades. The plants are very vigorous and bear unusually large flowers on long stems. These Tulips are highly recommended for massing in shrubbery or for contrasts in the flower-garden. They may be forced if brought into the heat not earlier than January.

Splendid mixture of all colors, 30 cts. per doz., \$1.75 per 100, \$15 per 1,000

Darwin Tulips—Named Varieties

Not less than three bulbs sold, but these may be taken at the dozen rate

500 bulbs of any one variety at the 1,000 rate, which is ten per cent less than the 100 rate

Anton Roozen. Rose-pink, tinged with apricot at base of petals. \$1 per doz., \$6.50 per 100.

Ariadne. Rosy crimson, shaded scarlet. \$1 per doz., \$6.50 per 100.

Baron de la Tonnaye. A strong-growing variety; flowers bright rose, margined with blush. 50 cts. per doz., \$3.50 per 100, \$30 per 1,000.

Clara Butt. Delicate salmon-pink. 60 cts. per doz., \$4 per 100.

Donders. Deep crimson, with white center. 50 cts. per doz., \$3.50 per 100.

Edmee. Cherry-rose, edged with a lighter shade. A large and beautiful flower. A fine variety for late forcing. 75 cts. per doz., \$5 per 100.

Electra. Soft lilac, margined with white. \$1 per doz., \$7 per 100.

Europe. Scarlet, shaded rose. 65 cts. per doz., \$4 per 100.

Faust. Deep violet-maroon; flower large and of good form. \$2 per doz., \$12 per 100.

Flambeau. Brilliant scarlet, with blue base. 75 cts. per doz., \$4.25 per 100.

Fra Angelica. Deep brownish black. 60 cts. per doz., \$4 per 100.

Gipsy Queen. Dark maroon; large and handsome. 75 cts. per doz., \$4.50 per 100.

Gretchen. Cup-shaped flower; delicate flesh-pink. 50 cts. per doz., \$3 per 100.

Kate Greenaway. A handsome, late-flowering variety. White, with tint of lilac-rose. 40 cts. per doz., \$2.50 per 100.

La Tulipe Noire (The Black Tulip). The darkest of all. Flowers of enormous size, nearly black. 20 cts. each, \$1.75 per doz., \$14 per 100.

Laurentia. Fiery scarlet; an extra-fine, large flower. 55 cts. per doz., \$3.50 per 100, \$30 per 1,000.

Loveliness. Soft rosy carmine. 50 cts. per doz., \$3.50 per 100.

May Queen. Soft lilac-rose, with white center. 50 cts. per doz., \$3.50 per 100.

Mr. Farncombe Sanders. Immense flower of the most brilliant scarlet. One of the best and showiest of the Darwins. 65 cts. per doz., \$4 per 100.

Mr. Nicholson. Deep scarlet. 60 cts. per doz., \$3.50 per 100, \$32 per 1,000.

Mrs. Cleveland. Delicate flesh-color, suffused with rose. \$1 per doz., \$5.75 per 100.

Nauticas. A handsome variety for garden culture or for forcing; purplish rose, with a center of dark violet. 50 cts. per doz., \$3 per 100.

NAMED DARWIN TULIPS, continued

- Negro.** Black; almost as dark as La Tulipe Noire. 75 cts. per doz., \$4.50 per 100.
- Phillippe de Commines.** One of the earliest Darwin Tulips for forcing; color deep, rich purple; borne on long stems. 75 cts. per doz., \$4.50 per 100.
- Pride of Haarlem.** Violet-rose, with blue base; extra-large flowers. 50 cts. per doz., \$3.50 per 100.
- Psyche.** New. An unusually beautiful cup-shaped flower. The outside of the petals is deep rose, while the inside is shaded silvery rose, with light blue base. \$1 per doz., \$7 per 100.
- Reverend Ewbank.** A soft heliotrope or lavender-violet, darkened toward the base. \$1 per doz., \$7 per 100.
- Suzon.** Soft salmon-rose, shading to blush; a good forcing variety. \$1 per doz., \$7 per 100.
- The Sultan.** Velvety black-maroon with bluish base. 50 cts. per doz., \$3 per 100.
- Whistler.** Novelty. Showy maroon-crimson; base of the petals tinted blue. \$1 per doz., \$7.50 per 100.
- White Queen; syn., La Candeur.** Rosy white, changing to pure white. 60 cts. per doz., \$3.50 per 100.
- William Pitt.** Dark crimson, shading to purplish tint on outer petals. 75 cts. per doz., \$5 per 100.
- Zulu.** Purplish black; large flower. Splendid for forcing or for the garden. \$1.25 per doz., \$9 per 100.
- Collection of 25 named varieties, my selection, one bulb of each, \$1.50. Four collections for \$5

Rembrandt Tulips

A new strain of the Darwin Tulips with blotched, feathered, and striped flowers. The colors are not very distinct, and the flowers are most effective when the bulbs are planted in masses. Splendid mixture, 50 cts. per doz., \$3 per 100, \$25 per 1,000.

Parrot or Dragon Tulips

This section of the Tulip family blooms in May; they take their name from the curiously curled and crested flowers which, in the bud state, are supposed to bear some resemblance to the head of a parrot. The colors and markings are very pronounced and distinct.

30 cts. per doz., \$1.75 per 100, \$17 per 1,000

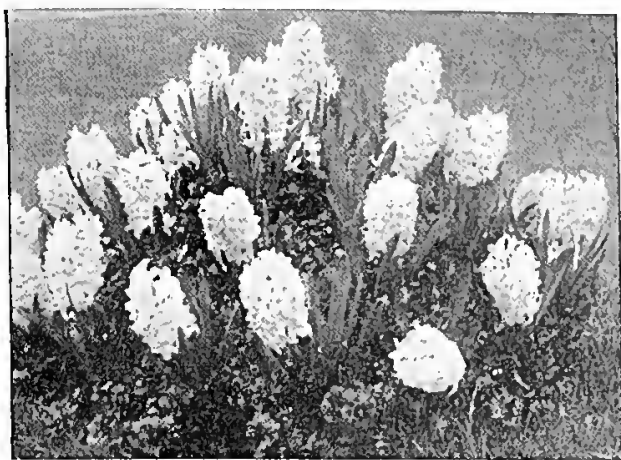
- Admiral de Constantinople.** Scarlet, with black markings.
- Cramoisie.** Brilliant crimson; very large flower.
- Lutea major.** Bright yellow, striped crimson and green.
- Markgraaf von Baden.** Yellow, flamed scarlet.

HYACINTHS

For garden culture, the treatment is about the same as for Tulips, except that the bulbs should be set farther apart—say 6 to 10 inches.

For indoor culture the bulbs may be potted any time from September to December, using a light, rich soil containing plenty of well-rotted cow or sheep manure. Set the bulbs so that the tops are just above the surface.

The pots should then be placed outside, and covered with coal ashes or some litter for a period of ten to twelve weeks, when the bulbs will be thoroughly rooted. Bring them in a few at a time for a succession of blooms as wanted. They should be brought into heat gradually; to place them at once in a room having a high temperature will



Bed of Hyacinths

HYACINTHS, continued

cause them to flower prematurely. They may be stored in a cool cellar until ready to be brought to the light.

If it is desired to grow them in glasses of water, the base of the bulb should barely touch the water. They should then be set in a cool, dark place until the glass is full of roots.

The following list contains none but those varieties which produce the largest and finest trusses of bloom.

First-Size Exhibition Hyacinths

Comparatively few bulbs of this quality come to this country—they are the very finest selections from the stock of several growers, are extra large and solid, and must not be confused with those often sold as "Exhibition Bulbs," which the Hollanders consider as second size. The bulbs here offered are used principally for forcing. I recommend them to all who wish the finest blooms.

Single Hyacinths

Except where noted, 15 cts. each, \$1.50 per doz., \$10 per 100

RED AND ROSE

- Amy. Dark red; early.
- Baron Van Thuyl. Light pink; early
- Cardinal Wiseman. Large, compact spike; dark pink.
- Fabiola. Large trusses; bright rose.
- Gertrude. Splendid, dark pink; large, compact spike.
- Gigantea. Light pink; very compact spike.
- Lady Derby. Fine, delicate pink.
- Moreno. Very heavy truss; bright rose; early.
- Robert Steiger. Deep red.
- Roi des Belges. Extra fine; dark red.
- Rosea maxima. Delicate pink; very large truss.

PURE AND CREAMY WHITE

- Albertine. Pure white; very early.
- Grandeur a Merveille. Blush-white; large, handsome truss.
- La Franchise. Creamy white.
- La Grandesse. Splendid pure white; very large bells; perfect truss. Finest white variety.
- L'Innocence. Very fine; pure white.
- Madam Vanderhoop. Very large bells; almost pure white.
- Mr. Plimsoll. Blush-white; grand spike.

LIGHT AND DARK BLUE SINGLE HYACINTHS

Baron Van Thuyt. Dark blue; very early; compact spike.
 Czar Peter. Light lavender-blue.
 Enchantress. Delicate porcelain-blue; splendid truss.
 Grand Maitre. Deep sky-blue; large, compact spike.
 King of the Blues. Rich dark blue; splendid form; late.
 Lord Derby. Bright porcelain-blue; large, compact spike.
 Menelik. Glittering blue-black; truss large, with good-sized bells. Strong grower. 25 cts. each, \$2 per doz.
 Queen of the Blues. Porcelain-blue; handsome spike.
 Regulus. Bright blue; fine, large bells.
 Schotel. Light blue; large spikes.

VIOLET AND PURPLE

Gretchen. New. Light violet.
 Lord Balfour. Violet; very early; enormous truss.
 Marie. Dark purple.
 Sir William Mansfield. Mauve; splendid truss; one of the best.

YELLOW

Ida. Extra fine; pure yellow.
 King of the Yellows. Pure yellow; one of the best.
 Yellow Hammer. One of the finest; pure yellow.

Second-Size Single Hyacinths

8 cts. each, 85 cts. per doz., \$5 per 100, \$45 per 1,000

These bulbs are practically the same as those sold by most dealers as "First Size." For bedding purposes they are extremely satisfactory and will produce large spikes of flowers, and I specially recommend these extra-select bulbs for outdoor use. I can supply the following varieties, and descriptions will be found in list of first-size bulbs.

RED AND ROSE

Baron Van Thuyt, Cardinal Wiseman, Gertrude, Gigantea, Moreno, Robert Steiger, Roi des Belges, Rosea maxima.

WHITE AND CREAMY WHITE

Albertine, Grandeur a Merveille, La Franchise, La Grandesse, L'Innocence, Madame Vanderhoop.

DARK AND LIGHT BLUE

Baron Van Thuyt, Czar Peter, Grand Maitre, King of the Blues, Marie, Queen of the Blues, Regulus.

Roman Hyacinths

These are the earliest to bloom, and may be had before Christmas if started early enough. Each bulb produces several spikes of pure white flowers. Mammoth bulbs, 8 cts., each 75 cts. per doz., \$5 per 100.

Dutch Miniature Hyacinths

If potted at the same time as Roman Hyacinths they will bloom early in January. Named varieties, \$3.50 per 100, \$30 per 1,000.

Ten per cent discount on bulb orders received before July 1



CROCUS

Crocuses are among the earliest of spring flowers, and are most effective when planted under the sod about the lawn.

They can be strewn thickly over the surface and should be planted just as they fall, merely lifting the sod with a knife or trowel, slipping the bulbs underneath and pressing the sod back into place. Planted in this way they will live for years, and are always a most welcome harbinger of spring. They can also be used in design beds, in which case none but the named varieties should be planted.

Mixed Crocuses, in separate colors, Blue, White, and Striped, or all colors together. 15 cts. per doz., 65 cts. per 100, \$6 per 1,000.

Named Crocus

15 cts. per doz., 95 cts. per 100, \$9 per 1,000, except where noted. Crocuses by mail, 10 cts. per doz. extra.

Albion. Dark violet, striped.

Baron von Brunow. Dark blue.

King of the Whites. Large; snow-white.

Mammoth Yellow. Top roots; extra-heavy. 25 cts. per doz., \$1.25 per 100, \$10 per 1,000.

Mammoth Yellow. First size.

Mont Blanc. White; one of the best.

Purpurea grandiflora. Purple.

Sir Walter Scott. Striped white.

IRIS, Bulbous-Rooted

The following Irises are all species with bulbs or roots, which in most cases ripen and become dormant in summer. All of the species belonging to this group must be planted in the fall. They are perfectly hardy, but many of them bloom so early that they must be planted in a sheltered place where they will be protected from frosts and cutting winds. A few of the species have fleshy rhizomes, the leaves of which do not entirely disappear.

The first to flower are the Reticulata group, including

IRIS, continued

Histrio, Histroides and Reticulata. These early sorts require a heavy loam, without manure, and are impatient of stagnant water. Mingled with a carpeting of Alpine plants, which serve to protect the plants and the long, fragile leaves, they will find a congenial home.

Following these in the order of bloom are the Juno Irises, including Bucharica, Fosteriana, Orchioides, Persica, Pur-sind and Sindjarensis, distinguished by their long bulbs and by the fleshy roots which remain attached to the bulbs, even when dry. Care should be taken that these roots do not become detached.

These varieties require a rich, porous, warm soil, where the roots can ramify freely; they may be left to themselves for several years, if established in congenial quarters.

Iris alata, which belongs to this group, is among the earliest to bloom, and requires the protection of a frost-proof frame in winter. The last to bloom of the bulbous Irises are the Spanish and English varieties, which are the best known and the most popular.

Alata (Scorpion Iris). A winter variety blooming in December or January. A splendid sort for growing indoors; requires protection if planted outside. The flowers are large, mottled blue, with touch of gold on the falls. 15 cts. each, \$1.25 per doz.

Boissieri. Lilac, marked dark blue and yellow. 40 cts. each, \$4 per doz.

Bucharica. Flowers large; satiny white and bright yellow. 45 cts. each, \$4.50 per doz.

Danfordiæ. Bright yellow, with greenish spots. 15 cts. each, \$1.50 per doz., \$10 per 100.

Histrio. Delicate porcelain-blue, charmingly spotted. Very early. 15 cts. each, \$1.25 per doz., \$9 per 100.

Juncea. Bright golden yellow. 10 cts. each, \$1 per doz., \$6 per 100.

Pavonia (The Peacock Iris). A dainty, small, white variety, with a blue triangle on each petal. 35 cts. per doz., \$2.50 per 100.

Persica. A very dainty dwarf variety; color variable, pale blue or green, with numerous dark spots and blotches. Flowers in February and March. 25 cts. each, \$2.50 per doz., \$20 per 100.

Persica (Heldreichi). Lavender and blotches of blue. 35 cts. each, \$3.50 per doz.

Reticulata. One of the earliest. Dark blue; very fragrant. 20 cts. each, \$1.75 per doz., \$14 per 100.

Sindjarensis. A very strong-growing species, bearing several pale blue flowers. A splendid hardy variety; one of the best for outside planting. 35 cts. each, \$3.50 per doz.,

Tuberosa (Snake's Head Iris). Green-flowered. 10 cts. each, \$1 per doz., \$5 per 100.

Iris Hispanica (Xiphium)

These are largely used for forcing, and for this purpose should be sown thickly in flats in September, wintered in a cool place, and brought to heat gradually. For outdoor bedding they are used in great quantities.

Mixture of choicest varieties, unnamed, 12 cts. per doz., 75 cts. per 100, \$5 per 1,000

Named varieties as follows: 15 cts. per doz., \$1 per 100, \$6 per 1,000, except as noted

Belle Chinoise. Yellow.	Chrysolora. Pure yellow.
British Queen. Pure white.	Darling. Light blue.

IRIS HISPANICA, continued

<p>Formosa. Dark blue. King of the Blues. Deep blue. La Tendresse. White and yellow. Louise. White and lilac. Philomela. Blue.</p>	<p>La Reconnaissance. Violet-bronze. 25 cts. per doz., \$1.50 per 100, \$12.50 per 1,000. Snowball. Pure white. Von Humboldt. Blue.</p>
--	---

Iris Anglica (Xiphioides)

These are similar to the Spanish Irises, but have larger flowers and bloom somewhat later.

Superfine mixed varieties, 30 cts. per doz., \$1.75 per 100, \$15 per 1,000

Named varieties as follows: 30 cts. per doz., \$2 per 100, \$19 per 1,000

<p>Adelaine. White, violet spots. Almœna. Light blue. Dandy. Violet.</p>	<p>Grand Lilas. Light blue. Mont Blanc. Pure white; extra choice. Othello. Dark blue.</p>
--	---

Oncocyclus and Regelia Irises

(Cushion Irises)

“Garden plants these can never be; curious, strange, and sad they stand in their somber colors . . . simply beautiful.”

To flower these to perfection is the ambition to which every true Iris enthusiast aspires—and those who delight in attempting difficult things will reap a rich reward should their efforts meet with success. These varieties seem to be the highest development of the Iris.

They are usually short-lived under ordinary cultivation, because of the fall growth which is invariably damaged by frost. The secret of success is in planting them in December, before the ground freezes, and in giving them the abundant supply of lime which is found in their native soil.

This latter can be accomplished by mixing plenty of old mortar in the soil and fertilizing well with bone meal. I grow them in a coldframe, removing the sash as soon as the weather becomes warm; replacing the sash in August before growth begins, to exclude any moisture which would start them to growing again; or they may be lifted and stored in perfectly dry sand, in a warm place.

Atropurpurea. Dark brown. 15 cts. each, \$1.50 per doz., \$10 per 100.

Bismarckiana (Sari Nazarena). Flowers very large; white; falls minutely veined black; standards veined sky-blue. 15 cts. each, \$1.50 per doz., \$10 per 100.

Eggeri. Large flowers; brown, shading to black. 60 cts. each, \$6 per doz.

Gatesii. Gigantic flowers; silvery white, finely splashed and veined purple. Very rare. \$1.75 each.

Korolkowi. Various shades of white, purple and violet, beautifully veined. Mixed varieties, 15 cts. each, \$1.50 per doz., \$10 per 100.

Lorteti. A variety as charming as it is rare. Very large flowers; rosy crimson spots, with pale blue veins on a creamy white ground. \$1.75 each.

Susiana (The Mourning Iris). The best known and easiest of all to flower. Immense blossoms, minutely veined and dotted brown-black on a creamy white ground. Extra-heavy, flowering rhizomes, 20 cts. each, \$2.25 per doz., \$15 per 100.

Regelio-Cyclus Iris

A new race of hardy, free-flowering hybrids of great beauty and of easy culture. Many named hybrids have been raised, having the most beautiful and artistic colors—bronzy shades of old-gold, mahogany and brown, velvety crimson, purple, blue and white.

I offer single specimens at \$1.75 each; or a collection of ten distinct named varieties for \$12; or five distinct named varieties for \$6. Mixture, unnamed, 50 cts. each, \$5 per doz.

Dutch Iris

An entirely new race of Niphion Irises, best described as a giant strain of very early-flowering *Iris Hispanica*, with flowers of enormous size and remarkable substance, in many shades of blue, white and yellow blooming fully a fortnight earlier than the Spanish Iris. Should have some protection from frost in cold climates.

A Collection of Ten Distinct Named Varieties, including many colors and shades, \$1.50; for two collections \$2.50; five collections for \$5. Single bulbs (my selection) 20 cts. each.

Mixed Varieties, 10 cts. each, \$1 per doz., \$7.50 per 100.

HARDY LILIES

With the exception of *Lilium candidum*, which seems to prefer an open position, most Lilies thrive best when planted in a semi-shaded situation, where the ground can be kept cool and moist by the protection of shrubs and a carpet of lawn grass. Planted among shallow-rooting perennials or rhododendrons, they find a congenial situation both as to soil and shelter. The bulbs should be planted from 6 to 8 inches deep, with a little sand or sphagnum moss under the base of each bulb. I do not keep these bulbs in stock, and they will be imported only to supply orders received before August 15.

Brownii. Large trumpet, the inside pure white, the outside shaded chocolate-brown. 75 cts. each, \$7.50 per doz.

Candidum (Madonna Lily). Pure white. Should be planted early for the best results. Extra-size bulbs, 15 cts. each, \$1.50 per doz., \$10 per 100.

Chalcedonicum (Scarlet Martagon). Flowers medium size; bright red, with brown spots. 75 cts. each, \$7.50 per doz.

Colchicum. Flowers in racemes; deep yellow, tinged at base and tips with purple. 35 cts. each, \$3.50 per doz.

Excelsum (Testaceum). Nankeen-yellow, sometimes spotted with small, reddish dots. 50 cts. each, \$5 per doz.

Hansoni (Yellow Martagon). Flowers bright orange, spotted with brownish purple; worthy of a place in every garden. 50 cts. each, \$5 per doz.

Henryi (Yellow Speciosum). Flowers dark reddish yellow, marked with small brown spots. 85 cts. each.

Pardalinum. Similar to Superbum, but a brighter orange-scarlet. 20 cts. each, \$1.75 per doz., \$12 per 100.

Superbum (Turk's Cap). A native variety. Flowers bright reddish orange, spotted with yellow. 15 cts. each, \$1.50 per doz., \$10 per 100.

For Japan Lilies, *L. auratum*, *L. speciosum*, etc., consult my general catalogue, "Farr's Hardy Plants"

Ten per cent discount on bulb orders received before July 1

MISCELLANEOUS BULBS

- ALLIUM Neapolitanum.** White. 20 cts. per doz., \$1.25 per 100, \$10 per 1,000.
- ANEMONES, Poppy-flowered Sorts, Double or Single, in ten named varieties.** 40 cts. per doz., \$2.50 per 100. Double or Single, all colors mixed, 25 cts. per doz., \$1.50 per 100.
- CALOCHORTI (Mariposa or Butterfly Tulips).** Bulbs should be planted in November in well-drained beds of light soil or in coldframes, giving sufficient protection to prevent alternate freezing and thawing. The best for the East are the Globe Tulips, which bear clusters of closed, globular-shaped flowers about an inch in diameter, mostly white or yellow; and the Venusta, with open flowers of white, yellow, rose, and purple.
- Globe Tulips.** Mixed colors, 35c. per doz., \$2.50 per 100.
- Calochorti venusta.** Mixed colors, 50 cts. per doz., \$4 per 100.
- CHIONODOXA (Glory-of-the-Snow).** Among the most beautiful spring-flowering bulbs. Easily naturalized.
- gigantea.** Very large; soft lavender-blue, with white center. 25 cts. per doz., \$1.50 per 100, \$12 per 1,000.
- Sardensis.** Brilliant gentian-blue. 20 cts. per doz., \$1.25 per 100, \$10 per 1,000.
- COLCHICUM autumnale.** Blooms in fall. White, purple and rose. 5 cts. each, 50 cts. per doz., \$3.50 per 100.
- CROWN IMPERIALS.** Spring-blooming plants, bearing drooping, bell-shaped flowers. Mixed red, yellow, and orange. 15 cts. each, \$1.50 per doz., \$10 per 100.
- ERANTHIS hyemalis (Winter Aconite).** Pretty yellow flowers. 20 cts. per doz., \$1 per 100, \$8 per 1,000.
- ERYTHRONIUM (Dog's-tooth Violet).** Thriving in moist, shaded places; handsomely variegated leaves.
- Mixed varieties, 25 cts. per doz., \$1.75 per 100.
- grandiflorum robustum.** Long flowers; bright buttercup-yellow. 50 cts. per doz., \$4 per 100.
- Californicum.** Flowers cream-colored, borne in blusters; foliage mottled white. 40 cts. per doz., \$3 per 100.
- Hendersoni.** Light purple, deep black-maroon center. 50 cts. per doz., \$4 per 100.
- FREESIA refracta alba.** Pure white blooms; splendid for forcing. Selected bulbs, 25c. per doz., \$1.50 per 100.
- FREESIAs, New Hybrids.** A new race of Freesias, similar in habit to *F. refracta alba*, but in beautiful shades and markings of lavender, orange, rose etc.
- Amethyst.** Lavender. 20 cts. each, \$1.75 per doz., \$12 per 100.
- Chapmani.** Orange-yellow. 15 cts. each, \$1.25 per doz., \$8 per 100.
- Rosa Bonheur.** Clear pink. 20 cts. each, \$1.75 per doz., \$12 per 100.
- Tubergeni.** Carmine. 20 cts. each, \$1.75 per doz., \$12 per 100.
- Mixed Varieties. 85 cts. per doz., \$6 per 100.
- MUSCARI Botryoides (Grape Hyacinth).** Clear blue. 15 cts. per doz., 75 cts. per 100.
- Heavenly Blue.** 25 cts. per doz., \$1.35 per 100.
- White.** 20 cts. per doz., \$1 per 100.
- ORNITHOGALUM Arabicum.** 5 cts. each, 40 cts. per doz., \$2.50 per 100.
- SCILLA Sibirica.** Brilliant blue; fine for naturalizing. 20 cts. per doz., \$1.25 per 100, \$10 per 1,000.
- SNOWDROP, Elwes' Giant.** Large-flowered; snow-white, with green tube. 15c. per doz., \$1 per 100, \$7 per 1,000.
- TRILLIUM grandiflorum (Wake-Robin).** For planting in semi-shaded places. 10 cts. each, \$1 per doz., \$7 per 100.
- Almost any variety of Bulbs or Plants not included in this list can be supplied if ordered before July 1.

BERTRAND H. FARR

Wyomissing Nurseries

WYOMISSING, PENNA.

