

NORTH PACIFIC OCEAN  
MARSHALL ISLANDS—NORTHERN PART  
**BIKINI ATOLL**  
(ESCHOLTZ)

Enirikku I. Obs. Spot @ Lat. 11°29'N.—Long. 168°22'22"E.

SOUNDINGS IN FATHOMS  
Height to the approximate level of Lowest Low Water  
HEIGHTS IN FEET ABOVE MEAN SEA LEVEL

For Symbols and Abbreviations, see H. O. Publication No. 1

Natural Scale 1:50,190

TIDAL INFORMATION

Aug 17, 1946  
S-46-383  
I = .130

S-1019  
Aug 7, 1947  
I = .156

I = .460  
Apr 14, 1946  
S-46-51

I = .025  
Apr 11, 1946  
S-46-47

July 13, 1946  
S-46-251  
I = .198

L. P. Schulz

S-46-128  
I = .214

Reef Pools  
S-46-307  
Aug 4, 1946

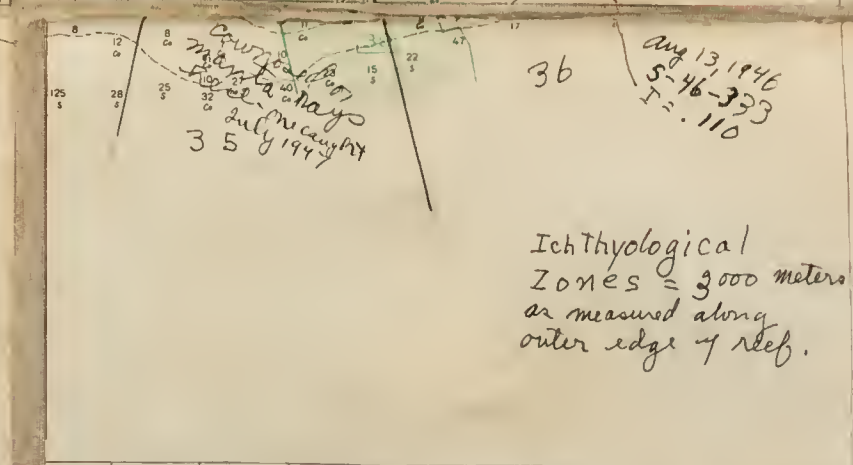
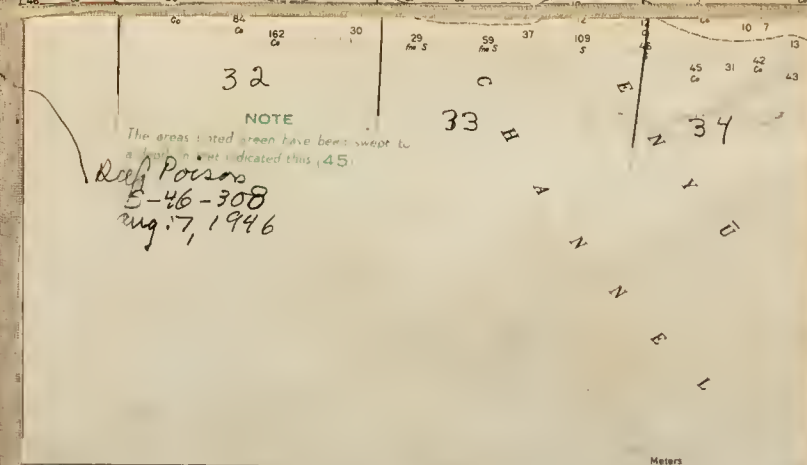
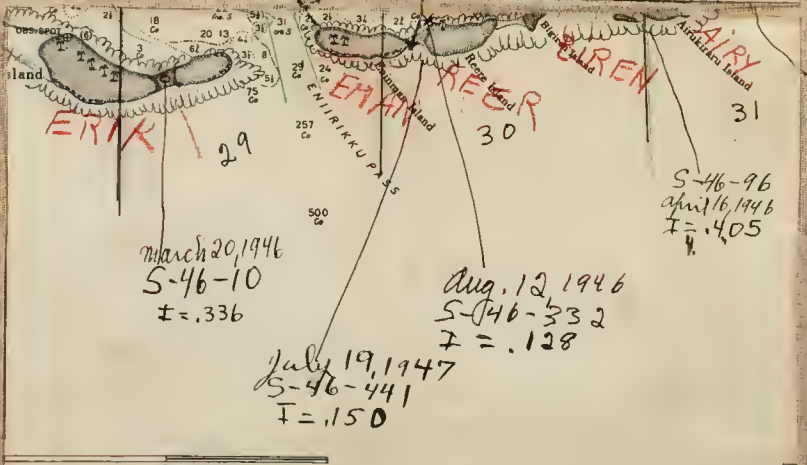
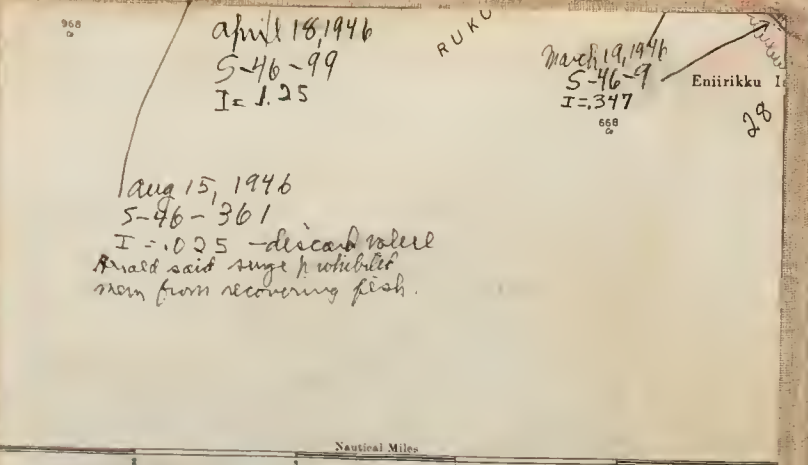
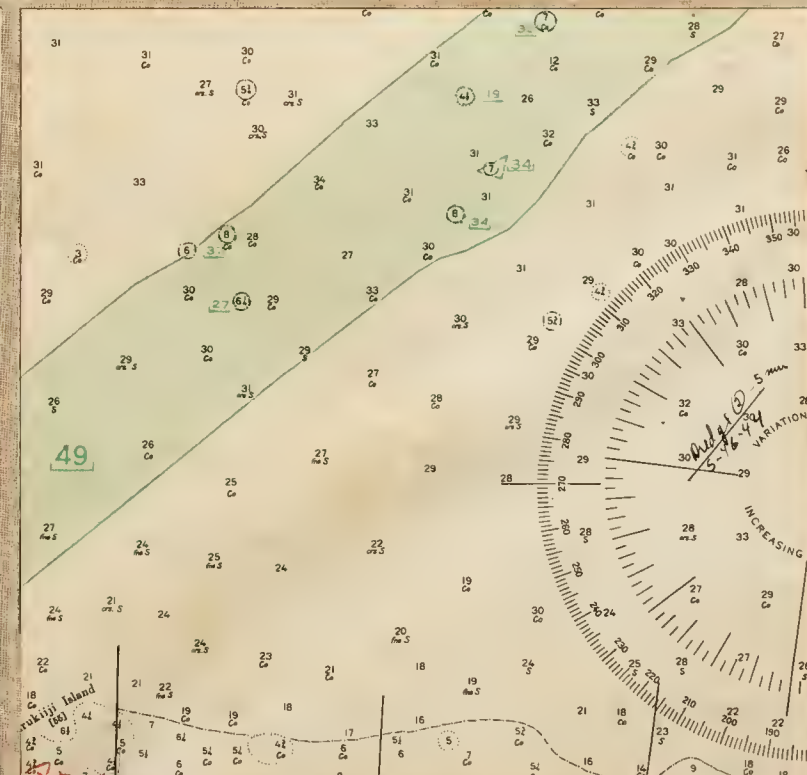
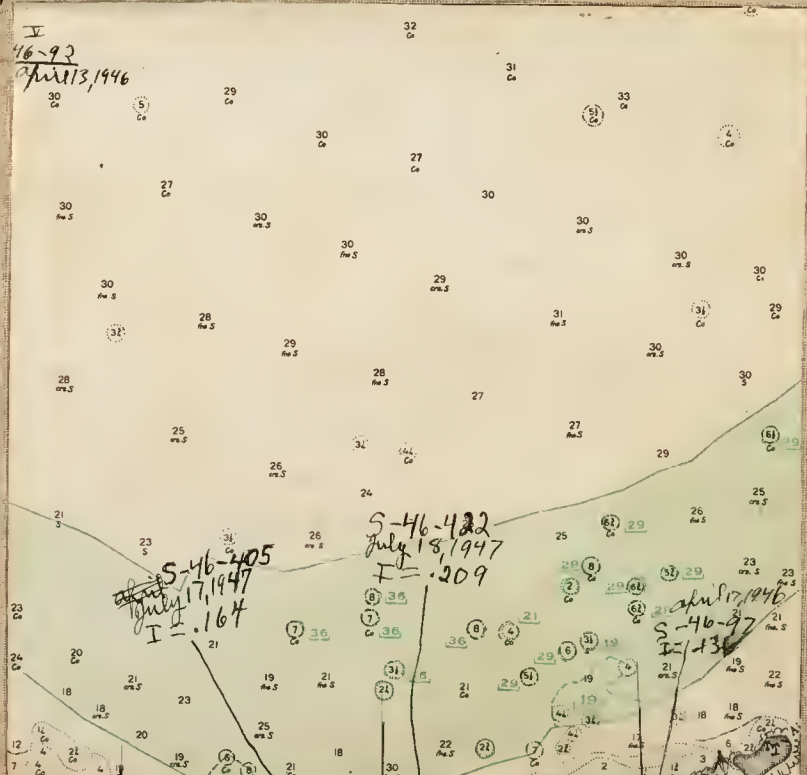
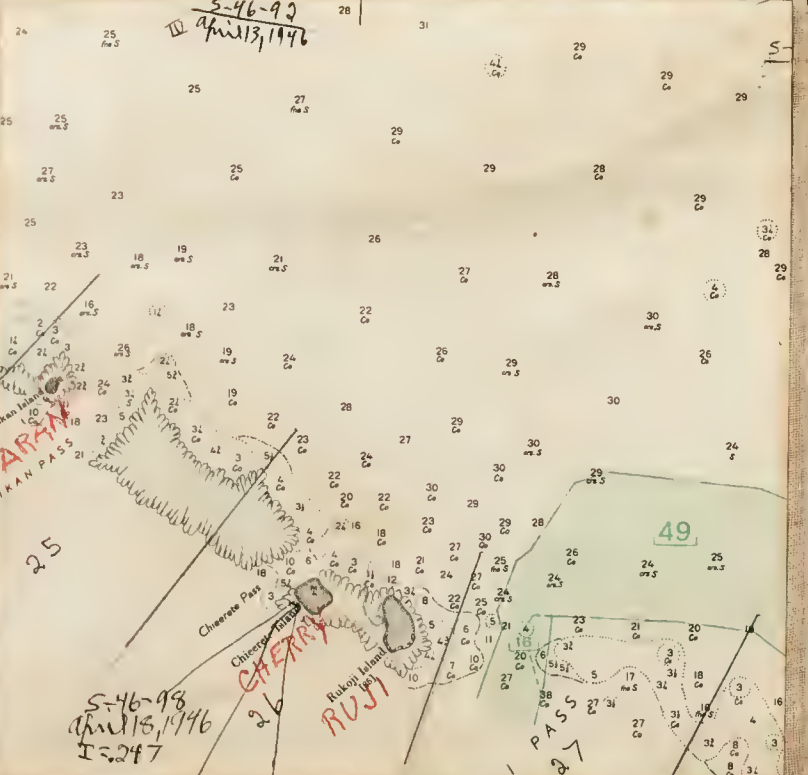
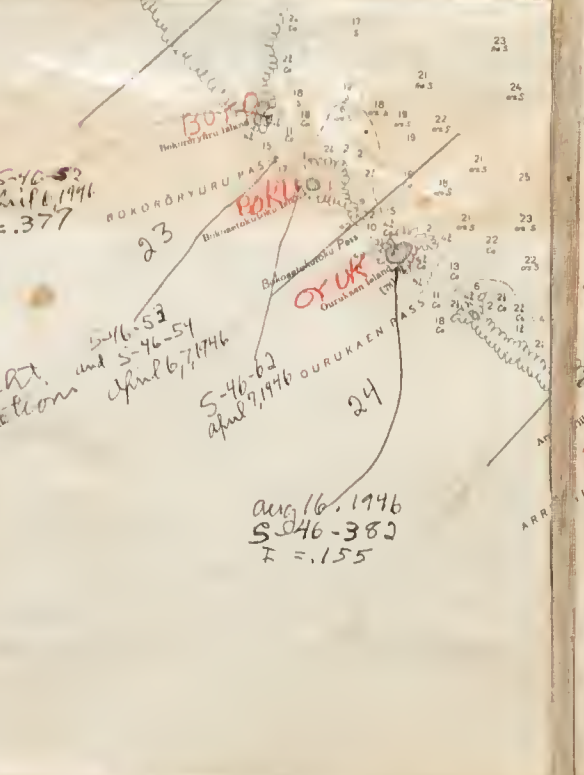
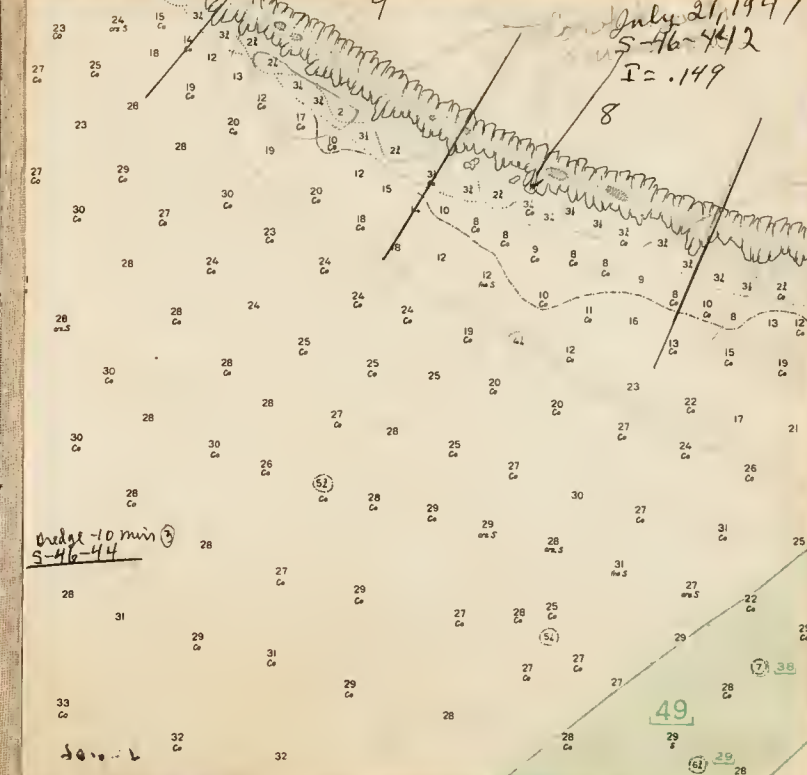
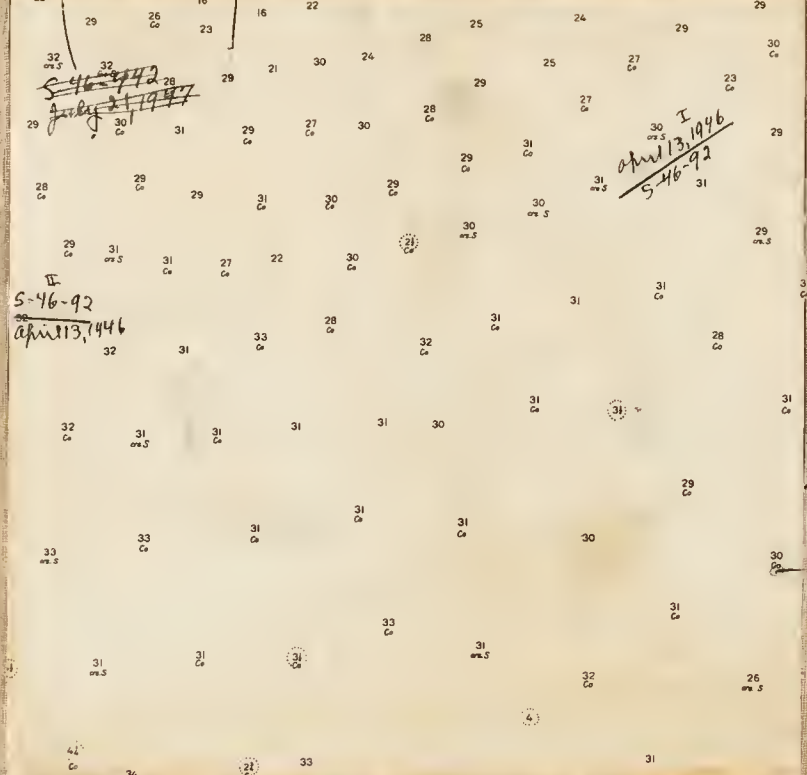
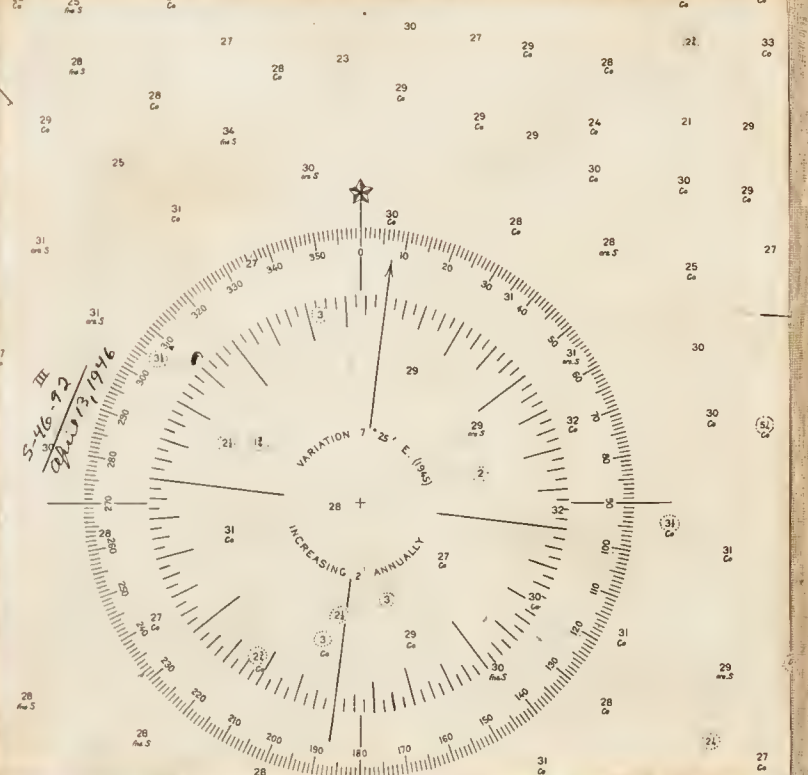
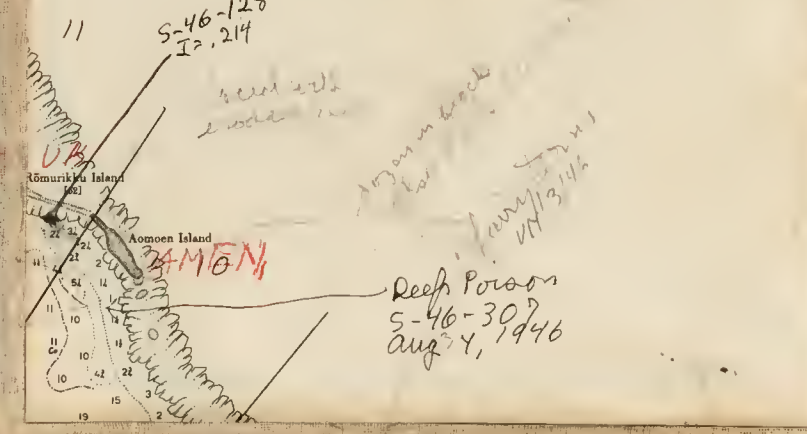
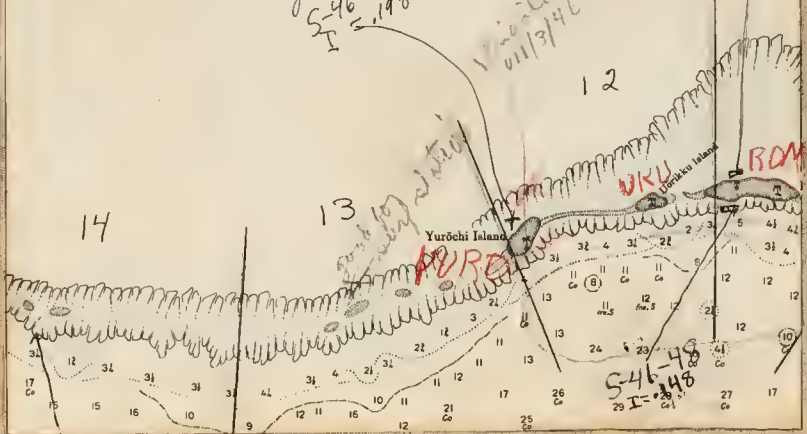
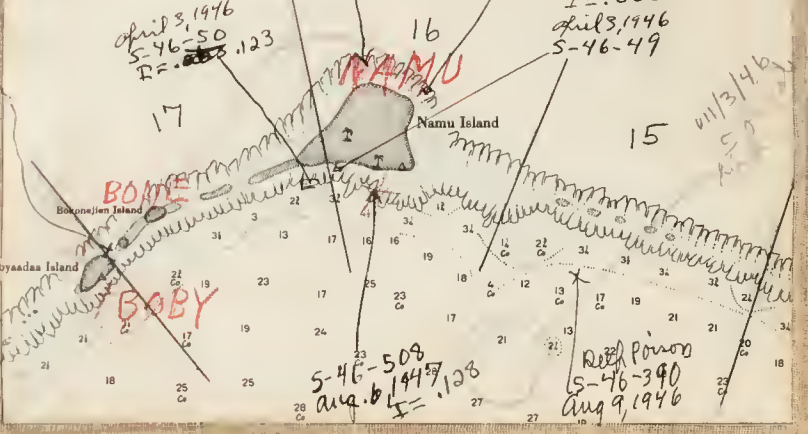


Table with columns for 'SOUNDING', 'DEPTH', 'TEMPERATURE', 'WIND', 'SEA', 'WEATHER', 'TIME', 'DATE', 'LOCALITY', 'REMARKS'. Includes a 'CONVERSION TABLE' for fathoms to meters.

NOTE  
The area listed here has been used to  
indicate the height in feet of reef  
pools.

Ichthyological  
Zones = 3000 meters  
as measured along  
outer edge of reef.

Property of Leonard F. Schuch

BIKINI

Property of  
Leonard F. Schuch

Leonard P. Schultz

NORTH PACIFIC OCEAN  
MARSHALL ISLANDS  
**ENIWETO K ATOLL**  
(BROWN)

Survey in 1944

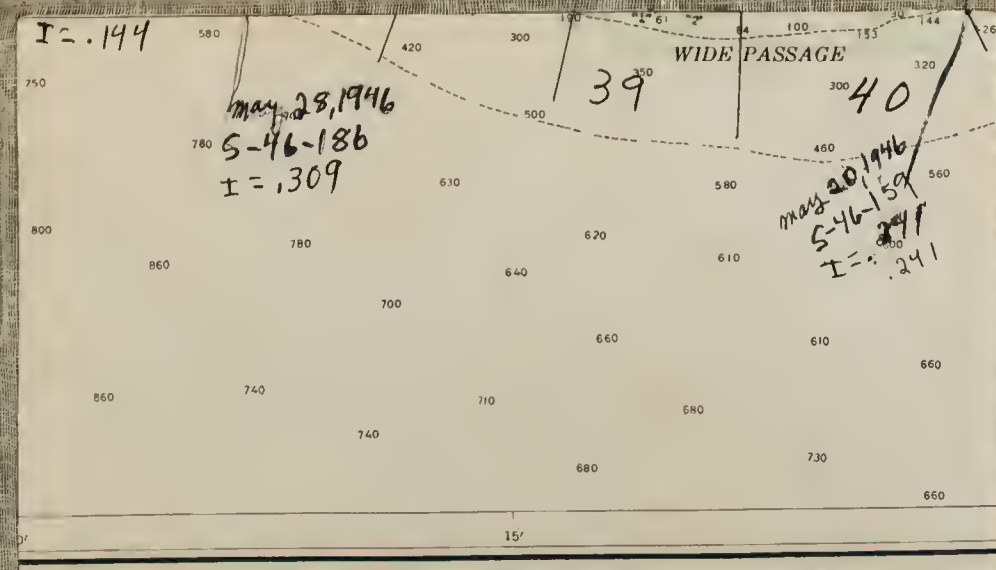
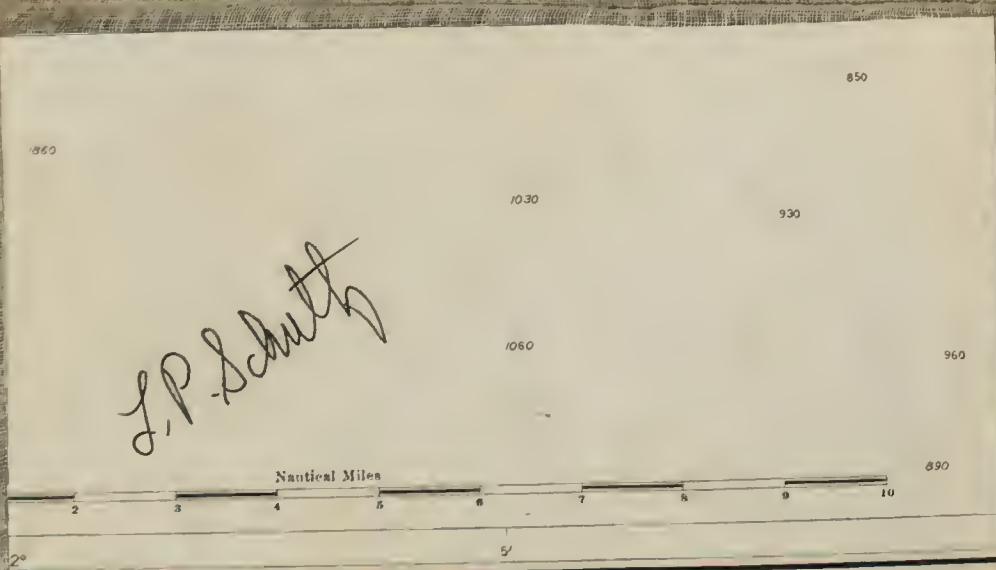
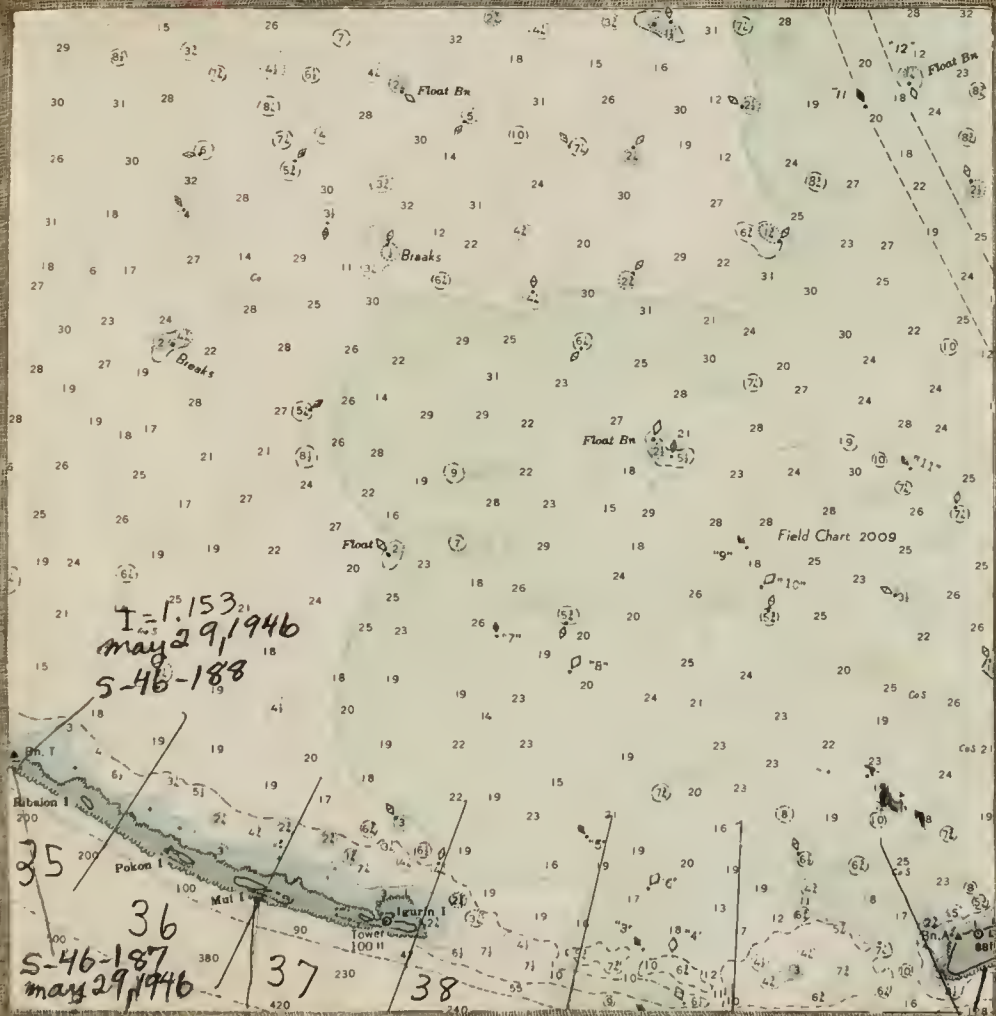
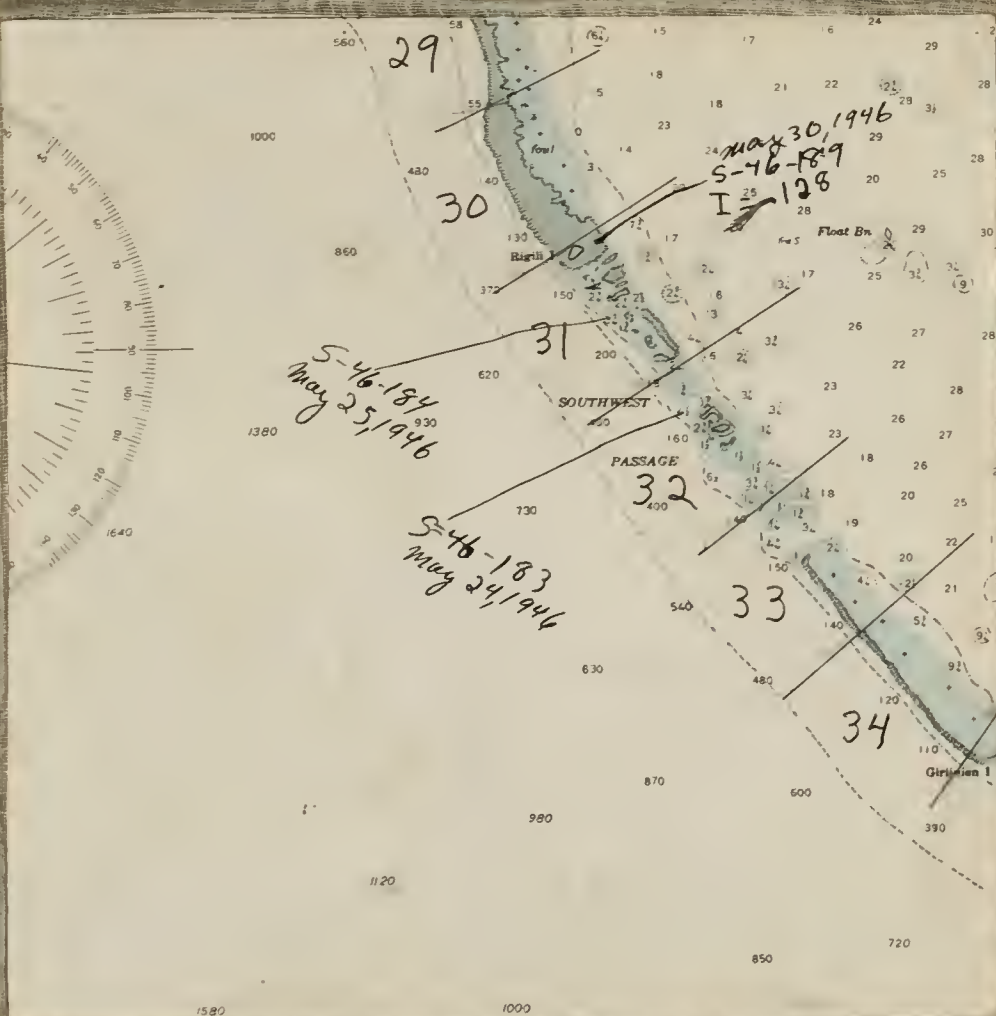
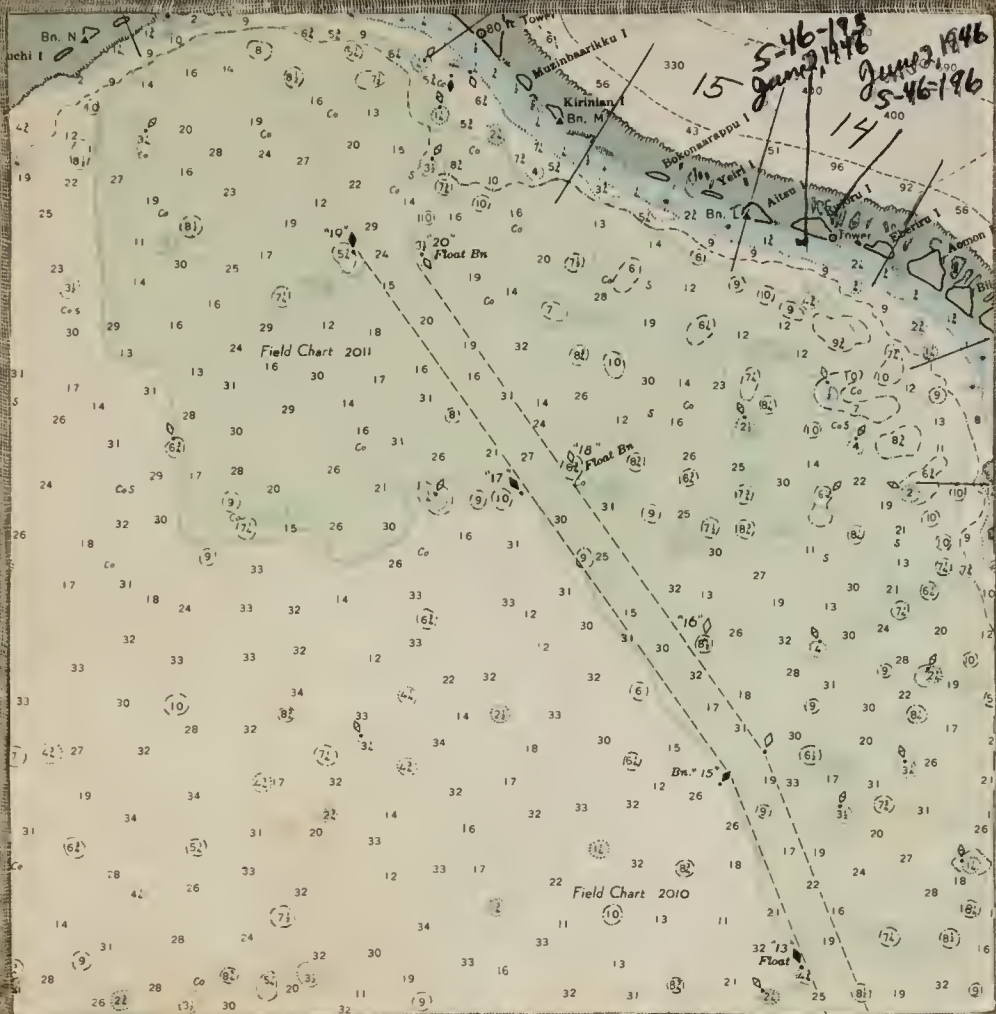
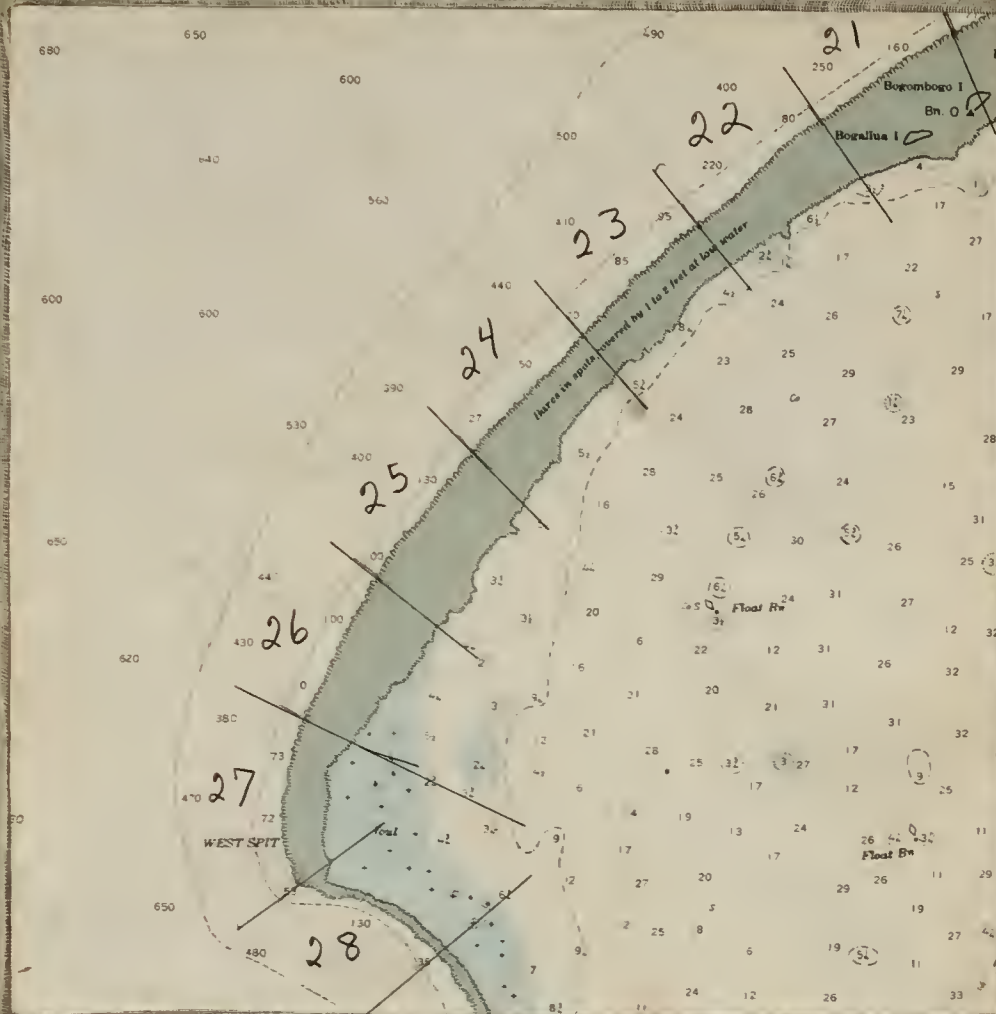
Lat. 11° 32' 02" N. - Long. 162° 22' 04" 00" E.

SOUNDINGS  
reduced to the approximate  
level of Lowest Low Water  
HEIGHTS IN FEET ABOVE  
MEAN SEA LEVEL

IN FATHOMS  
level of Lowest Low Water  
HEIGHTS IN FEET ABOVE  
MEAN SEA LEVEL

For Symbols and Abbreviations  
see H. O. Publication No. 8

Natural Scale  
1:100,000



CAUTION  
Undetected coral heads may exist outside of  
dragged areas.

- Buoys**
- red
  - black
  - black sphere
  - black band
  - white, mac
  - temporary
  - mooring

Year	No.	Paragraph

L.P. Schultz

Nautical Miles

Property of  
Leonard P. Scholtz  
Eniwetok