

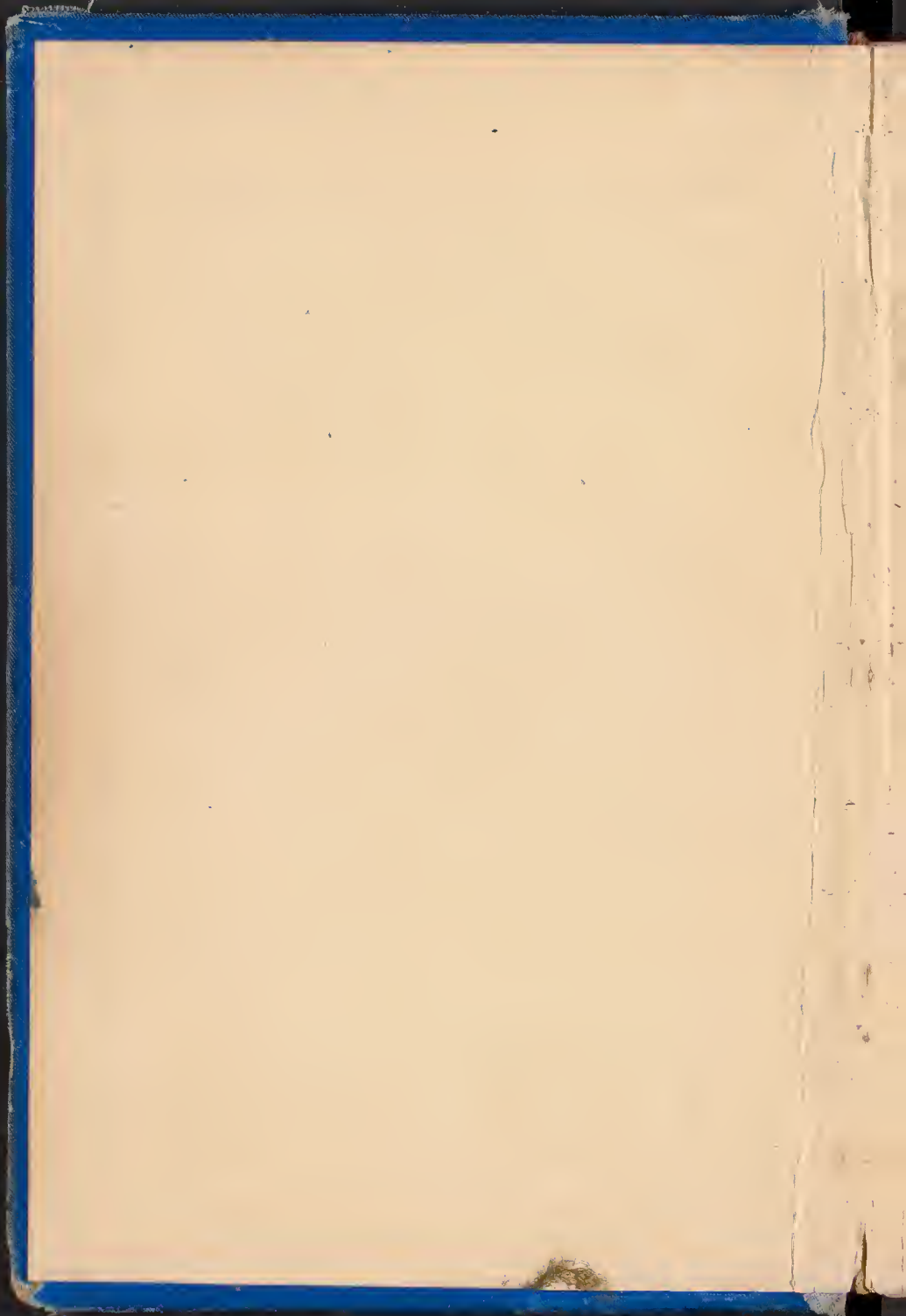
SPECIMEN SEWING

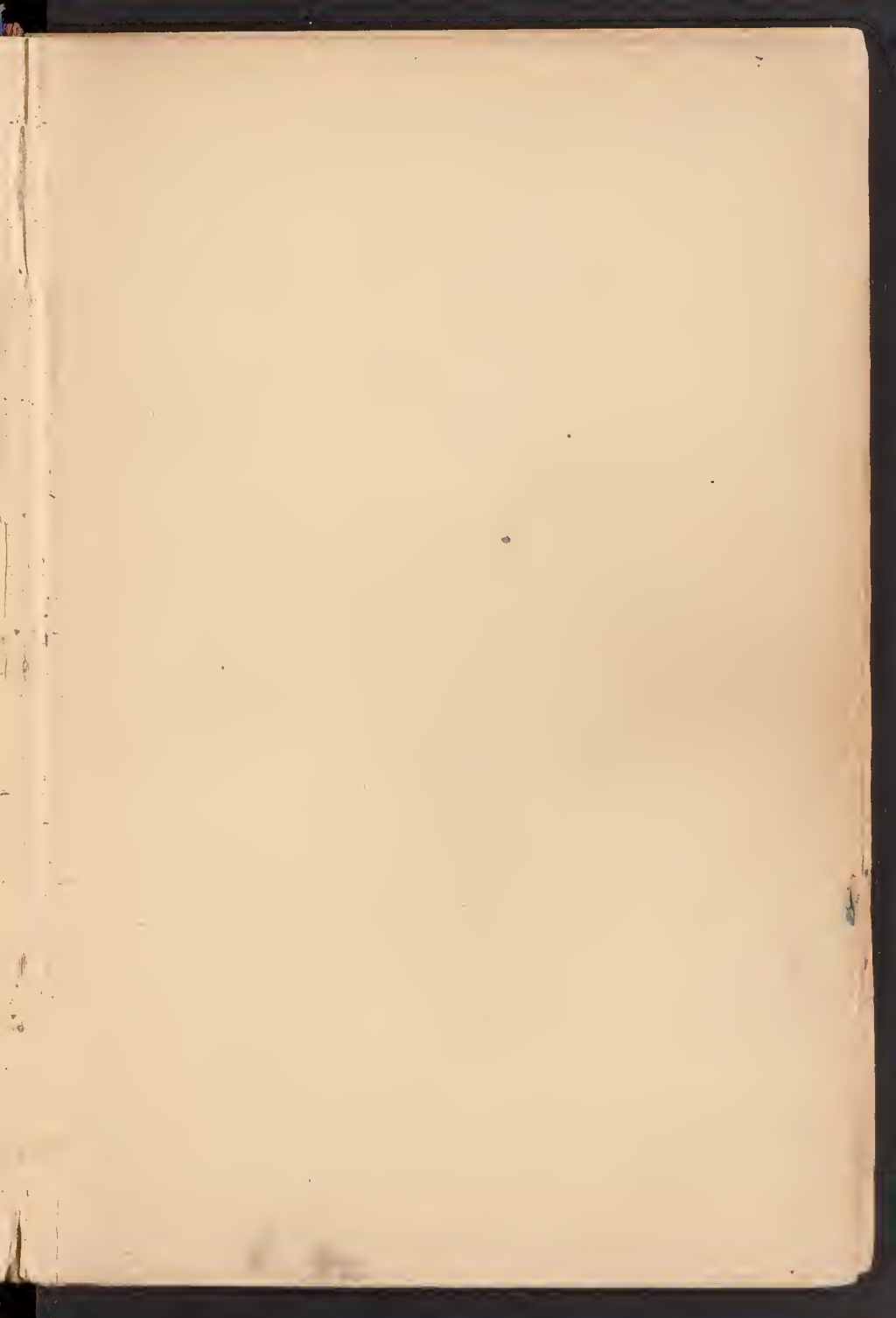
WHEELER & WILSON

MANUFACTURING CO.

BRIDGEPORT.

CONN. U. S. A.





J. B. = Island B. u

S. B. = Stillmans u

B. B. = Bruce's u

Batrachus firmum "A"

Specimens collected in
side stream of Pequonnock
River, just below Factory
Pond, Oct. 20 + 27, 1890,
see dry mounts.

a little later when I
sought some for examination
and preservation in alcohol
it had disappeared.

Batrachospermum #1 ^{no. 1000}
B. Coeruleoens, Sord.

Abundant in Island Brook
near its mouth at Berkshire pond.
First Collected in Dec. 1888.

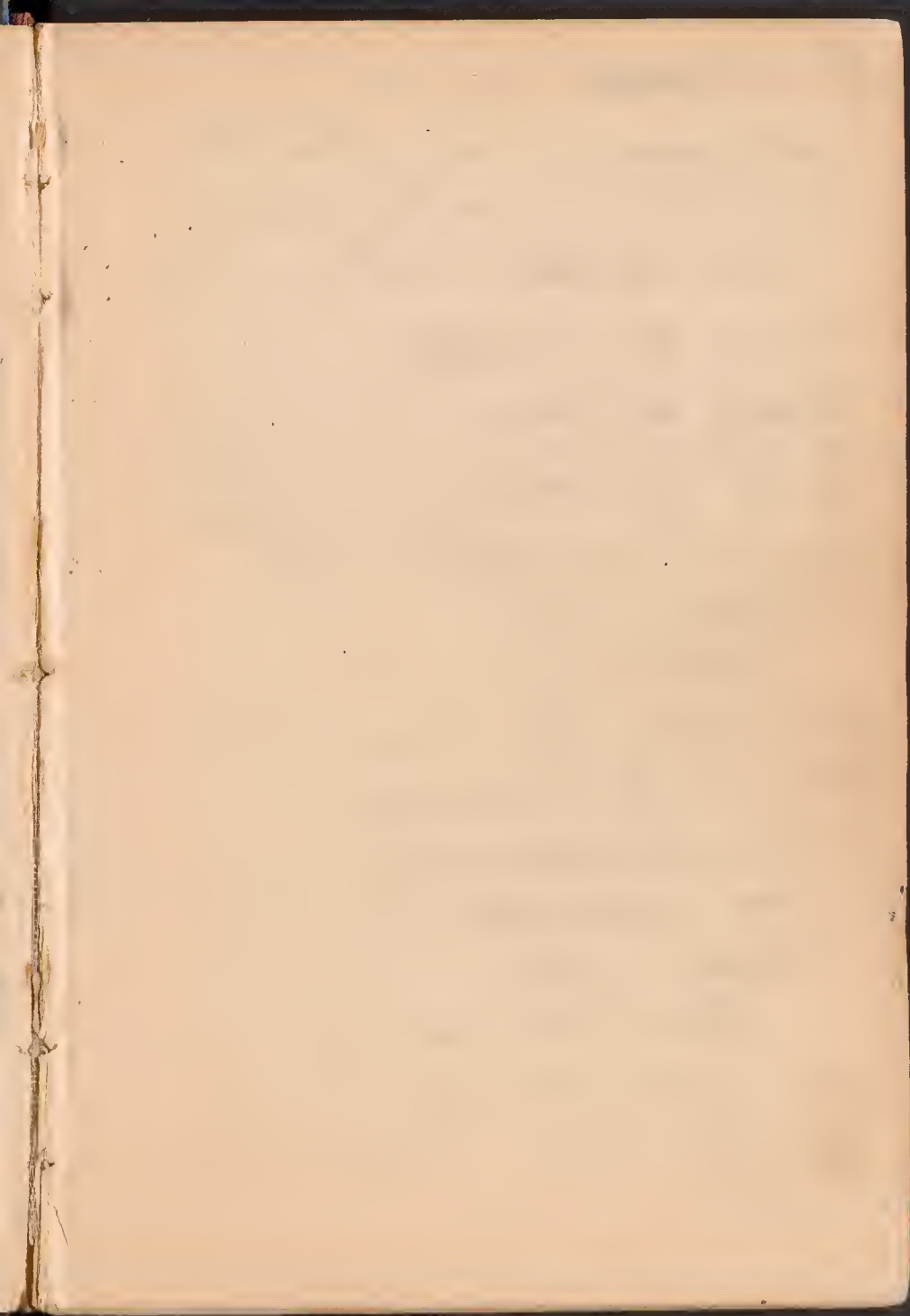
Sept. 7 '89, Collected young
plants on which H. A. Satchell
pointed out trichogynes with
pollinoids attached. - Collected
frequently thereafter till
March '90.

Satchell by his letter of
Oct. 29 '89 says it is
"to all intents & purposes"

B. Coeruleoens, Sord."

See mounts & alcoholic
specimens.

Found this species also
in Ash Creek - in the
mill race below Moody
Pond.



Batrachosepium # 2

The number of specimens
later XI-24-89 are what
I originally numbered "2" -
some of the same are
in alcohol. Some of the
later mounts, appear
to be different.

All from the side stream
of *Agrostis* s. s. s.

See No 4

Satchell says 5-7-'90

No 2 + No A seem to be
near *B. moniforme*
var. *chlorocephalum* S. S. S."

but No A seems to be
quite a different one.

Batrachoseps " 3

Collected near the mouth of
the little stream emptying into
the east side of Berkshire
Mill Pond

XI-24 & XII-8, 1889.

Soon after nearly transferred
there.

See # 7

Ambystoma *maculatum*

Bismarckia peruviana # 4

From Ash Creek, Mill
race below Parry's Pond

XI-17 - XII-15 + XII-25 80

Probably same as # 2

All alcoholic specimens & 22100

B. spm. # 5 + 6

(see letter
Satchell 11-11 1890, and Corbally,
Batrachospermum setosum, Sacc.

See Satchell's letter of March 29th '90.

Collected first (#5) in side stream
of Pequonnock River below West
Wind, Jan. 26 - 90 -

#6 same date in Island Brook
near Cornwall - of former
Colo. Span #5 - but
same thing ^{probably} See comments
for later dates.

Alcoholic specimens & mounts
#5 - all specimens are from side stream of Peq. River
6' from mouth of Pass near Lake Mill
below Factory Brook dam
6'' from Island Brook
see Satchell's various letters

Bedum #7 = #3

BaTrachoperlemm Boyanum, Sri Lanka

See Setchell's letter Feb. 22-90

Collected Feb. 16 '90 and

later in stream emptying
into east side of Berakia
Mill Pond - higher up
stream and near mouth
also in stream

Mar. 16 '90 - collected
in little bit of a stream
running into Pond

Mar. 23 - Collected
little stream crossing Park Ave.
near St. in City

4-4-90 - see note into it

11-11-90 - see note into it

Bat. #8

Apr. 6-90 - found a single
found among No. 6 collected
at outlet of the little Pond
near paper mill, below
Factor Pond Dam.

dichotomously branched
Bat. vagum

Bar 559

Found a single found among
Bars, collected in Bruce's Point
north of Rail way - Apr. 20,
Beautiful bluish green.

Trochogones about this Q Q .

See mount

Found in same collection one additional
small found sent to Satchell

Satchell says

probably Bryann
may be anatinum.

Bar # 10

Bruce's Bay
at R.R. *[Signature]* IV 20-90

11 —

1891

May 11 - Collected in the little
stream running through swamps
near old quarry. B. Gorbule?
F.R. of Pers. None

Schubert writes that
it appears to be B. Gorbule,

see # 21

(distributed as B. Gorbule
in Phytoclonal Herbarium)

All specimens of all kinds
hereafter mentioned on the
plan explained by Sitchell
as that of H.S. Collins

Sunday May 18 - 1890

"Fresh Pond" (very brackish)
Stratford, Conn.

12 - Cladophora Randalphiana, Ag.
abundant on stones etc.

13 - Cladophora — ?

also abundant on stones
+ on green algae
sent to Harvard for determination

14. Monostroma ^{latucosum} ~~quadratum~~ ^{var. ~~quadratum~~} _{var. ~~quadratum~~}

at lower end of the Pond in a small
arm.

My determination confirmed by
Harlow + Sitchell. Heretofore
reported from Cal. + Conn.

See Sitchell's letter
Vol. VI - 4

May 15 - '90. Continued.

From small stream running under
R.R. a little way east of
Stoughton Depot.

15. Batrachium coriuleaceum, Suck
+ perhaps B. virgatum (all "youth")

16. Bat. Bogyanum
from same stream.

Sunday May 25

Fresh Pond - Stoughton

17. } Frantopohlia virgatula, (Norr.) Wardlaw
 } chantraviana " " (") Thurck
on Ruppia maritima.

18. Throstrova qualitativa, ^{Leptodermis} Wardlaw
 (= 14) Wardlaw

On Ruppia, Elgocaps, sedge stems
and anything affording a trace of
attachment.

Fronds of all sizes up to nearly
2 ft long - some over a foot in dia.
Some small ones looking like or. pulchrum.

May 25 - Continued

19. *Cladophora Rudolphiana*, Ag. (=12)

20. " (=13)

May 30 - 90

21. Bat. *Cochlea* (=11)

collected in same spot as on

see Setonella
VI-9-90

May 11 - Hunted the stream
a long way. Could find none
except in the one spot
within space of a yard.

22. Bat. *pyramidale*, Sida

collected on 12

~~*B. moniliforme* var *typicum*~~

Island

23. Bat.

Boat

23 belongs to station "Vests"

24. *Juroneya flavivittata*, Sida

Pegouvouak River

Sunday June 1st 40

25. Glossophonia capillaris, Cunn
floating at Long Beach

26. Ampelina vesata, Sies
on stone - Long Beach

27. Chaetomorpha acuta (Dillw) King
on pebbles - Long Beach

28. Cladophora

on pebbles - Long Beach

Saturday, June 7, 1900
Cook's Point, Point

29. Cladophora

in marsh pools

30. Cladophora
on pebbles and on seaweeds

Sunday, June 8 - '93

21. *Oscillaria* ~~*fruticulosa* Kütz.~~
^{*subfusca* Kütz.}
Quiet water of stream in Strath.

22. *Oscillaria subfusca* Yendo. (?)
Coating stones in swift water
of Farmhill River

Saturday, June 14 - 190
Seaside Park

33 - Enteromorpha curvula (Ag.) J. Agardh
on rocks between tides

34. Ulva albida (Kütz.) Kentz.
on stones in pool + shallow water

35. Cladophora
grows out on rocks, down
between tides

36 - Ulva

Sunday June 15 - '90

Stratton Woods Light
(Middle ground u)

37. Cladophora lanosa
var. uncialis?

38. Cladophora foliata

sp. Porphyra, Chantrelle's virgatula } etc
on Chantrelle's virgatula

Sunday June 16

40. Bat.

(Bat.) Island Brook

41. Junonia fluvialis
Pegnumuck River

42. Cladophora

Sunday, June 29, 1891.

43: Spirulina

Pond below Factory Pond
where Setchell found the same, VII-
last year.

44: Inomya fluviatilis

Island Brook - New Station!

45: Lemanea fusca Booy
var rigida
Island Brook

July 4 - 1890

46. *Ampelisca gracilis*?

^{in marsh}
in pools and on all grass etc
below low water

Orts
flora

47. *Sinterimpha* —

48. *Corium Odorhantoides*

This floats in sheets of various sizes
up to several feet in diameter
on the Marsh pond on Conceit
Point, when there is water
enough - when it is dry
it forms a crust on the
bottom, it contains
many animals - *Lynx* *auratus*
etc

Sunday July 6 - 90
Great Falls of Howe atomic

49. *Chara fragilis*

in the front pool below Lovin's Leap
Great beds of it - fronds up to
2 feet in some in length.
This early for growth

50. *Oscillaria*

in the front pool below Lovin's Leap
fronds up to 2 feet in length
This early for growth

51. *Phormidium favosum*, Gomont
side Gomont

in the front pool below Lovin's Leap
fronds up to 2 feet in length
This early for growth

Sunday July 13 - 91

52. *Callithamnion Borreri*, Ag.
Penfield Reef

53. *Sargassum elegans* Ag.
Penfield Reef

54. *Callithamnion Baileyi*, Ag.
Penfield Reef

55. *Gomnellia Americana* Harv.
Fairweather Is.

56. *Callithamnion*
Fairweather Is.

57. *Fragilaria clausenii*, Ag.
Penfield Reef

July 13 - 90

58. *Cladophora subrepens*

Fair weather island
growing on other algae
below low water

Sunday July 20 - 90

59. *Clathrocystis roseo-pericina*

on *Cladophora expansa* and
in the water and in the sand
beneath - in brackish pond
at Fort Point - Point

60. *Lyngbya aestuarii* Liebm.

forming dense strata
margin of brackish pond
Coast Pt. - Point

61. *Cladophora*

forming dense mats on sandy or
mud bottom between tides -
Cork Pt

62. *Enteromorpha*

Cork Pt

63. *Ceramium strictum*

64. *Fucus spiralis*

Peppercorn Point Cork - Fastry
sand bar

65. *Coellaria*

Island Bank - Cork Pt
S. Ireland

Sunday July 27

Sea side Park

66. *Desmarestia elegans*
67. *Chondria*
68. *Cladophora*
69. *Callithamnion Borreri*
70. *Polydora variegata*
71. *Ceramium strictum*
72. *Ceramium*
73. *Gracilaria mollis*
74. *Gelidium crinale*
75. *Ceramium rubrum*

Aug. 2 - 1890
at S.W. Hackett

76 - *Dicotylethone gracilior*

77 - *Hirtella*

78 - *Cladophora mata*

79 - *Cladophora*

80 - *Cladophora*

81 - *Cladophora furcata*
on *Prunus* *minutiflora*

82 - *Cladophora*
on *Cladophora* *filiformis*

Aug 2 - 90 continued

83: *Chroococcoides planifolium*
growth with parasitic *Siphon* -
Siphon.

84: *Pectrochroocoides pyramidalis*
on rocks in the little stream
running into the wood where
water is cool, still

85: *Adiantum repens*
more of the same

86: *Gutierrezia missouriensis*
growth of above *Gutierrezia*

Aug 3 - 90

87 - *Laminaria longicornis*
Poor specimen washed ashore
Some brown

88. *Amidaria yatai*
floating some brown

Monday

Aug 5 - 90

89 *Mitella flexilis* see *Mitella* 10/21/90
2 red gull in Long Point area

Aug 6

Monday

90. *Laminaria* *lucina*
outlet of *praeclavata* some brown

91 *Laminaria*
some outlet

Conferva

92 *Mitella flexilis* see *Mitella* 10/21/90

93 *Sargassum*
mamillosum, ag. 10/21/90

v 96 - *Amogon* -
stroke, from same stream - " rocks
in swift water.

v 97 - *Stenophleba* *clavata*
same stream

Monday Aug 7 - 90

v 98 *Stenophleba* *clavata*, *Stenophleba*
on rocks, from same stream, in
swift water.

Polypoda *Null*

v 99 *Pezomachus* *orientalis*, f. *orientalis*

v 100 *Cladophora* *arista*, f. *arista*

Stenophleba *clavata*

Thursday, 7, in Aug. 7

in outlet of Lake Superior

✓ 103. *Tumneya* *flaviventris*

✓ 104. *Bat.* *negund?*
goss.

✓ 105. *Bat.*

leaf brown *terrestris*

✓ 106. *Shingya* *marginata*
capitata (?) *semita*

✓ 107. *Nitella* *lydia?*

Friday, Aug. 8 1870

Sea Wall

✓ 108. *Podium* *longipes*, *Fuchs*
in some *fresh* *leaves*

✓ 109. *Clavaria* *fulva*

✓ 110. *Ascomyces*
on *Saxatophora*

Clavaria *fulva*

✓ 111. *Ascomyces*

✓ 112. *Ascomyces* *fulva*

✓ 113. *Rivularia atra*
on water-filled hole of rock

✓ 114. *Ascomyces* *fulva*

✓ 115. *Ascomyces* *fulva*
growing on *Hibosaccium*

✓ 116. *Calothrix* *colorata*

- ✓ 117. *Leontodon affinis*
 ✓ 118. *Polygonum orientale*
 ✓ 119. *Sisymbrium officinale*

✓ 120. ~~*Ralfsia pusilla* (Strong) Foster~~
Ralfsia pusilla (Strong) Foster } ^{Collins}
 on *Stactopodia* ~~in the field~~ } ^{letter of}
 ✓ ~~120. *Ralfsia pusilla* (Strong) Foster~~ } ^{VI-8-91}
 ✓ ~~120. *Ralfsia pusilla* (Strong) Foster~~ } ^{+III-5-93}

✓ 121. *Cladophora repens*
 on rocks in the field.

✓ 122. *Ralfsia densata*, J. Ag.
 in the field

✓ 123. *Sisymbrium* of ~~the field~~
 ✓ 123. *Sisymbrium* of ~~the field~~

✓ 124. *Cladophora*
 in the field

✓ 125. *Ralfsia*

Sunday, Aug-10-'90

- 126 - Layer from base of old reef
by the rock below Dal and
Horse - containing besides
Rhizoclonium - *Intermittentia*,
Lynbya aestivalis
Isocellaria subuliformis
Microcoleus chthonoplastes
Vanaheria Thuretii

- 127 - *Fucus platycarpus*, Thuret
abundant on rocks near
shore of Sorensen Sound, near Hotel Sorensen

128. *Chroococcoides polyzophoniae*
on *Polyzophonia fastigiata*.

Monday Aug. 11 - 60

✓ 129 *Bongia fusca* Purpurea, Lyngb.
In rocks between tide marks at
point east of Seal Harbor.

✓ 130. *Glaucothronia capillans*
In tide pool at west end of Seal
Brace's Cove

✓ 131. - Scrapings from rock, at point
east of Seal Harbor

✓ 132. Turf containing *Vaucheria* *Hortii*
Dicranosolenia *Althausii*
Lyngbya -
From bank opposite of rock
west of - Brace's Cove

✓ 133. *Cladophora exaranea*
From Long Point emptying into Brace's Cove

Tuesday, Aug. 12 - '90

133. *Frontopodia virgatula*, (var.) Taylor
covering old found of Alaria
at sea wall.

Chantreia *Alaria*, *Helix* *persea*
see Collins *Proc. Linn. Soc.* 1903

135. *Arumum hookeri*
on rock between tide marks, Sea Wall.

136. *Calothrix scopulorum*
Sea Wall

137. Scrapings of *Verrucaria* (a lot)
Sea Wall.

This when scraped from the rock
and put into sea water becomes
first red. then brown and a
dark sediment is formed.

138. *Calothrix* ~~sp.~~ *persea*
Sea Wall

139. *Calothrix* ~~sp.~~ *persea*
sea wall

Wednesday Aug. 13 - 90

140. *Enlathra argyrea* (Kütz) Thérin*

very thin coating on old vessel

S. W. Harbor * so thinks Mrs. Collins

and I agree
see his p.c. Aug. 31 - 91

141. *Lynobia aestuaria*?

on mat *Polysiphonia*

Thursday Aug

142.

Little rocky island

Bridgwater Sunday, Aug 24 '90

143. *Limnoria tenuis*, Ag.
floating on river ^{side ground} ~~river~~ ~~bank~~

144. *Limnoria* ^{splendida} ~~undulata~~ ^{Grav.} ~~Grav.~~
on bank of *Regium* ~~river~~
in still pool with heavy
vegetable matter.

145. *Chaetophora Sondersgallii*
Pool below ~~river~~

146. *Batrachium* ~~(near)~~
in ~~river~~ ~~pool~~

Aug 31

147. *Limnoria* ^{young} ~~undulata~~ ^{pulvinata}
side ground
on ~~river~~ ~~bank~~ at ~~river~~
high water mark ~~river~~ ~~bank~~

Sept. 14 - 93

✓ 148. *Adiantum tuberosum*
in *Penstemon*
Fresh Pond

Sunday Sept. 21

Went to Middle Ground Light
(Small Pond) with Dr. Wilson
on the "Duplex" - thence to
Milford Point where we dined

✓ 149. *Sphaerium rotundum* var.
In cracks between rocks
at Middle Ground Light

✓ 150. *Callithamnion*
collected near the light

✓ 151. *Rhizoclonium riparium*
in cracks between rocks

✓ 152. *Phaeocystis gelatinosa*
The *Phaeocystis*
collected near the light

Sept. 21 '90

153. *Calothrix scopulorum*
on Rocks at Middle Island Light

154. *Ceramium arachnoidum*
on *Zostera* of Harry Nixon
Milford Beach

155. *Calothrix crustacea* etc
on small parts of *Ceramium*
Milford Beach - Middle Island Light

156. *Callithamnion*
proliferous on denuded parts
of *Desmarestia aculeata*.
Grows up near the light.

157. *Desmarestia aculeata*
on rocks near the light
at Middle Island Light

Sunday Sept. 28 1908

158. *Psillaria* ?

(= 143) Floating and from ...
Pool below ... Pond

159. *Phymidium* ...
five ...

diameter about 7 ft.
DL Rocks in ...

160. *Trichopteryx* ...

Below dam of ...
Pegunungan ...

Sunday Oct. 5 - 1908

161. *Psillaria* ...

diameter about 55 ft.
West ...

162. *Trichopteryx* ...
diam. abt 15 ft

West ...

163. ...

= 159

Sunday Oct. 5 - 1890

164 = 158 = 143

Oscillaria ~~sp.~~ ? *tennis*

Same place as 158 + 143

165 *Batrachospermum* *gornuliforme*
var. *chloroacum*, ^{Witt}

On stones in the little side stream
of Pagnon creek which flows
down of Factory Pond.

The first Bat. I have found
there this season - could see
none a week ago.

Sunday Oct. 12 '90

166 *Plectonon* *Hillei*

Found at the river - below
granite rocks where rapids
begin - on stones in
swift running water

167 *Plectonon*
Same place as 166 - going south
on rocks

Sunday - Oct. 19 - '90

168. *Lynxbya acicularis*
Boreakish pond at - Corke St
Portland

169. *Bostrychia rivularis*, Harv.
on base of *Spartina*,
Laticornia - in Ansons

170. *Lelesseria Leprieurii*, Mont.
Growing with the *Bostrychia*, above.

Sunday Oct 26 '90

171. *Bostrychia rivularis* Harv.

Among which are occasional fronds
of *Lelesseria Leprieurii*, Mont.

Up near high water mark where the
stems of *Laticornia* are a fine kind of
group *Laticornia* & *Bostrychia* mostly by
the stems of *Spartina*, or what were
left by the retreating tide. Some *Bostrychia*
were brown by the tide.

of these plants, and sometimes the
bottom of the sheath of *Spartina*
and occasionally a little bit of
Fucus, are covered with a fine
mat of *Bostrychia* among which
are scattered fronds of *Desmoureauxia*
Leprieurii,

172. *Desmoureauxia Leprieurii*. Muhl.
(Mica mounts.)

173. *Ceramium* *Cupressiforme* Muhl.
Determination confirmed by Dr. Fensholt
washed under a Bhat net

Station. Nov 1 - 1874
Cork Pt. - 1874

174. *Bostrychia* *maritima* Muhl.

175. *Desmoureauxia Leprieurii*

see 171 + 172

Sunday Nov. 2 - '90
sea side Park - Forest

- ✓ 176 - *Rhabdonia tenera*, Ag.
 evaleucarpica
- ✓ 177 - *Sphaerularia radicans*, N. S. P.
Forming tufts on lumpy bottom
between tide marks
- ✓ 178. *Ceramium*
 Tetrasteres ^{on *Sphaerularia*} *lesum* on outside
 of branches
179. *Hilobrochodonta rosea*

Same *Gonothrix elegans*
in minute quantities on or
among *Sphaerularia radicans*

Saturday Nov. 8
 Crests Pt. - Forest Park

- ✓ 180 *Bryozoa rivularis*
- ✓ 181 *Dilisseria Lapierrei*
 " + *Bryozoa*
- 181^a

Monday Nov. 16 - '90

✓ 182 - July 1889 ^{Manate} ~~Florida~~ ^{Key}

Below Gadsden Co. Fla.

Pogonocherus

✓ 183. *Cherentocaria* *Harmanni*, *Des.*

Pogonocherus

Cherentocaria *Es.*

Pogonocherus

Cherentocaria

Cherentocaria *flexilis*

Batrachospermum *multifidum*

bullet of iron wire

Hardy Pine & Oak - near path - will
on sticks ^{sticks} etc

187 Bat ~~felis~~ ^{Bombay}

growing with oak

188 Bat *manilliformis* var. *oblonga*?

Side stream of
below Gadsden Co. Fla.

Saturday - Nov 22 - 190

Sea-side Park

• 189 = *Callithamnion Rothii*, Lyngb.
young plants forming expansions on rocks
nearly opposite road house

190. *Cladophora*

On stone in shallow pools
left at low water opposite
draining rocks

Sunday - Nov 23

191. *Folypothrix lanata*

Pegnumok River below Hattings
on verticals see

192. *Setonema Cincinnatum*
on rock

193. *Chaetophora*
side of stream of Hattings
below Hattings
see below

Sunday Nov. 23 - '90 continued

1194. *Tetrastoma bullroa*
side stream of Reg. River
below Factory Pond dam
On stones - sticks etc.

1195. *Tetrastoma bullroa*
var. *encrinura*
same place as above

1196. ⁽¹⁰⁾ *Batrachoseps* ~~*leucostictus*~~ *Bryophila*?
outlet of pond below factory Pond

1197-180 *Batrachoseps* ~~*leucostictus*~~
side stream Reg. R.

1198-186 (same as 1197-180)
outlet of pond below factory Pond

Thanksgiving Day
Nov. 27 - 1890

✓ 199 - *Tetrastroma* *lanceolata*

grows on stones on rocks, in
side stream of Og. River below
Fishing Hole Dam, narrow
string like fungus up to the
length of 2 ft. or more

✓ 200. *Chaetophora* *subincolata*

on stones in side stream of Og. River
below Fishing Hole Dam

✓ 201. *Bat. multifidum* var. *...*
side stream Og. R.

✓ 202. *Bat. ~~multifidum~~* *...*
side stream Og. R. on stones

✓ 203. *Boopis* *...*
side stream Og. R.

Sunday - Nov. 30 - '90

✓ 204. *Batrachospermum vagum*
on a stick in pool below
factory Pond

✓ 205. *Chaetophora endriacbolia*
side stream of Peg. or Mack R.

206. Bat. *Bryum*
side stream P. River

✓ 207. Bat. *ovoidiforme*
var. *californicum* ?
Side stream P. R.

✓ 208. *Batrachospora lacunosa*
side stream P. R.

✓ 209. Bat. *ovoidiforme* var. *californicum*
side stream P. R.

✓ 210. Bat. *ovoidiforme* var. *californicum*
side stream P. R.

Sunday - Dec. 7 - 1890

✓ 211. *Chaetophora Endiviacifolia*
side stream Pg. River

✓ 212. Bat. *strigosa*?
outlet of Pool bet. East Pond

✓ 213. Bat. *multiformis* var. *chlorocoma*?
outlet of above pool.

✓ 214. Bat. *ragnum*
Pool below East Pond
on a stick - in still water

✓ 215. Bat. *multiformis* var. *chlorocoma*?
Side stream Pg. R.

Chaetophora lanata, Riv. Pg. River

Sunday Dec. 14 - '90

217 - *Chaetophora endimiacifolia*
Side-stream, Pq. River

218. *Batrachospermum vagum*
On stones in Pool below Factory Pond

219. *Bat. Bryum*
Pool below factory pond
in ditches in still water and
stones in running water at
outlet

220. *Bat. Denticulifera*
in stream
Outlet of above pool

221. *Bat. Denticulifera*
var. *chl.*
Stream of Pq. River

222. *Tetrarhiza* (bulla)
Side stream Pq. R.

Sunday, Dec. 21-90

✓ 223. *Chaetophora indivisibilis*
Side Stream Pg. River

✓ 224. *Batrachospermum vagum*
Pool below Fastey Point

✓ 225. *Bat. moniliformis*
near above
outlet of above pool.

✓ 226. *Bat. moniliformis*
near above
Side Stream Pg. River

227. *Bat.*

(*var.*, apparently *viridula*) ♀
Side Stream Pg. R.

✓ 228. *Bat.*
Side Stream Pg. R.

June - 1890

229. *Saxya elegans* (Kintzing from)
SS Park (same locality)

230. *Phyllitis fasciata*
SS Park

July 4 - '91

231 - *Ceramium Capri-Cornu*
Washed ashore with *Zostera*
B. Spurr Harbor

232. *Ulothrix isogona*
on rocks + wood
B. Spurr Harbor

233. *Leptotheryx*
retrocarious filaments on
2nd carpus - butter of
Yellow Mill Pond - on
the bridge

234. Same collected - July 10

Sunday, Jan'y 11 - '91

235. *Bat. vagum*
Pool below Factory Pond

236. *Isoperanthis, lomerata*
Pool below Factory Pond

237. *Chaetophora endiviacifolia*

side stream of C. Pond
below Factory Pond

Dunbar, Jan. 18 - 1891

238. *Callithamnion Baileyi*
Floating - shore of Sea Side Park
Bridgport

239. *Callithamnion Americanum*
Floating - shore of S.S. Park

240. *Callithamnion* *isogonum*
on rocks at high water
S.S. Park

241. *Porphyra*

242. *Polysiphonia arceolata*
var. *formosa*

Sunday Jan 25 - '91

shores of sea side Park

✓ 243 - *Callithamnion Americanum*

✓ 244 - *Callithamnion Baileyi*

✓ 245 - *Cladophora arcta*

Sunday Feb 1 - '91

Pool below Factory Park

✓ 246, *Isafernaldia glomerata*

✓ 247. *Balochastrea* ?
In streaks

✓ 248. *Psar. Perryannu* } on stalks

✓ 249. *Utricularia* ? } in running stream
outlet of Pool

Feb. 1 - '91 (Saturday)

250. *Porphyra*
Sensill. *bracteata*

251. *Callithamnion* *Sadya's*
S. S. *Rarko*

Sunday, Feb. 15 191

252. *Bak. Boyanum*

253. (*Bak. virgatum*
forma hiemalis)

Brook - where crossed by R.R.
Stratford

Sunday Feb. 22 - 41

Senside Park

✓ 254 - *Porphora*

✓ 255 - *Cladophora arata*

✓ 256 - *Ulothrix isogona*

Saw plenty of *Monostroma goniatum*
also found among a little
Callithamnion Rothii scraped
from a rock, a few tetragonic
fronds.

Sunday March 1 - 91

257. *Drabarnaldia glomerata*

Pool below Factory Pond

258. *Bak. vagum*?

Pool below Factory Pond

259. *Bak. Corbula*?

on sticks in still water
upper part of said pool

260. *Bak. Progamma*

On sticks in running stream
outlet of above pool

261. *Bak. Moulipia* var. *...*

On same sticks with *B. Progamma*

Saturday Mar. 7 - 99

Cook's Point

- ↓ 262. *Monostroma*
in Marsh Pools on Shells etc
- ↓ 263. *Scytosiphon lomentarium*
Marsh Pool
- ↓ 264. *Ulothrix flava* on Snow
- ↓ 265. *Ulothrix lanterna*
on Rocks below Bridge
of Yellow Mill Pond

Sunday March 8 - 1871

Seaside Park

266. *Cladophora arata*

267. *Callithamnion Americanum*

268. *Monostroma Gracillii*

269. *Rhodochorton Rothliei* ⊕

Sunday March 15

270. *Bat virgatum*
Island Brook

271. *Bat. Booyannum*
Island Brook

272. *Bat. Booyannum*
Outlet of pool below Factory Street

273. *Bat. pygmaeum*
On Stones
Side Stream of Highland Brook River
near Factory Pond Dam

274. *Bat.*
On Sticks
Side Stream as above

Sunday Mar 22 - '91

Ash Creek - below Saw Mill

275. Bat. *Bryannus*

276. Bat. *virgatum*

277. Bat.

(cont)

278. Bat.

collected in the little side stream
between the dam

Rock's list

279. *Mnostenoma Gravellei*

280. *Ulothrix isozoma* (below Yellow Mill)
Switzgen

281. *Ascophyllum Mackayi*

Good Friday - Mar. 27 1911

282. *Entamoeba intestinalis*
Fred. J. S. Stratford

283. *Bat. Bryanae*
Stratford
by R. S. L.

284. *Bat. vegetans*
Same place as 283

Monday Mar. 24 '91 (Easter)

285. *Linnæa*
Stillman's Brook

286. *Chaetophora* *indivisa* in
var. *draparnaldoides*
Stream in swamp
west of Stillman's Brook

287. *Tetraspora* *lubrica*
The above stream

288. *Thrombium* —

on abundant of *Chaetophora* &
Linnæa

289. Bat. retrofractum
Side Stream of Peguon
River below Fossil Point
Island. - (Determined as setae!)

290. Chautauquei Hermannii
Some seen, etc. among it
on old grass leaves in
Peguon River

291. Bat. nigra
Island Point

3.26 Apr 4

292 - *Cosbula?* =

50, upper part of
Pool below Faculty Pond

Dichrochloa
11/2/32

293 - *Phyllitis fasciata*
var *canadensis*
on sticks etc. - near hole
Crest Point

(with *Diastichia*)

Sunday Apr. 5 - 91

294. *Phyllitis fasciata* var *canadensis*
S.S. Park

295. *Dicranella* *variosa*
S.S. Park

296. *Polypodium* *variosum*
S.S. Park

Apr. 5. Continued

↓ 297 - *Trione eximiosa*
S. S. Park

Sunday Apr 12 - 7

Southern Park - Park 7

298. *Yucca arida*

↓ 299 *Dromarctia viridis*

↓ 300 *Phyllanthus occidentalis*
var. glaucus

↓ 301 *Callitriche in America*

↓ 302 *Phyllis f. ...*

↓ 303. *...*

Sept 1894

129 *Dichroanthus formicoides*
on *Phyllitis* - Cooke's Point
in marsh woods

130 *Phyllitis* *capitata*
Cooke's Point

Marphyllum Mackenzii
for Mr. Collins - Cooke's Point

131 *Dicranella* *serotina*
Seaside Point

132 *Physiphora* *usculata*
var. *gibbosa*
Seaside Point

133 *Cladophora* *arata*
Seaside Point

134 *Utricularia* *isopora*
Seaside Point

Sunday, Apr. 26 - '91.
u. Fresh Pond - Stratford

310. Monostroma latissimum
at the outlet

311. Enteromorpha intestinalis

Sunday May 3 - '91

312. Dictyosiphon foeniculaceum
Cook's Pond - in Fresh Pond

Collins thinks this is

Dictyosiphon (Coelocnema) Chastainii
Collins

See his letter of Oct. 21 - '92

Saturday, May 7 - '91

Seaside Park

313. *Dromarctia viridis*

314. *Cladophora arcta*

315. *Halosiphia lumbicalis* (Rütz.) ^{Handl.} ¹⁸⁴⁵ ^{Reinke}
~~*C. elachista* n. (Rütz.) Handl.~~
on red corals
in the drifting zone

316. *Ulva linza*

317. *Polysiphonia nigrescens*

318. *Posidonia*

319. *Cladophora*

on stones in shallow pools

320. *Leathesia difformis*
on rocks with *elachista* in the drift

Sunday May 10, '91

"Fresh Pond"

- ↓ 321. *Mnium latissimum*
↓ 322. *Cladophora Rudolphiana*
-

Sunday, May 17 - '91

Sensitive Park

- ↓ 323. *Desmarestia viridis*
↓ 324. *Halothrix laminata*
on *Zostera* with *Limnolobus*
↓ 325. *Cladophora* = 319
on *Sium* in shallow pools
↓ 326. *Polysiphonia nigrescens*
↓ 327. *Leathesia difformis*
on *Zostera*

Wednesday, May 20 '91

Seaside Park

328. *Halothrix lumbicalis*

329. *Cladophora*
= 325

330. *Enteromorpha Linza*

Saturday, May 30 - '91

"Fresh Pond" - Stratford,

331. *Cladophora Rudolphiana*
on pebbles

332. *Ectocarpus* ~~...~~
ingretia + *okupia*

333. *Enteromorpha latissima*

334. *Spirulina tenuissima* or *thurlei*

335. *oscillaria tenuissima?*
The last two together on exp. w. + P. ^{in *oscillaria*} *okupia*

336. *Enteromorpha intestinalis*
with the drying matter

Sunday, May 31 - '91

Seaside Park

✓337 - *Cladophora*
= 329 on stems in herb stream bank

✓338 - *Polysiphonia maculata*

Sunday June 7 '91

Crooks Point

✓339. *Sphaerozoya Carmichaelii*, Kütz.
on mud in margin of stream

✓340. *Cladophora* sp.
in Cladophora to
Brookside Pond

✓341. *Lynbya aestuarii*
Brookside Pond

✓342. *Enteromorpha* sp.
" a " " "

June 7 '91

Saturday June 13-91

Cook's Point

343. *Clathrocyathus roseus* *persicaria*
Princess Pond

344. *Lyngbya aestuarii*
same pond as above

Sunday, June 21-91

345. *Setchellii Spirulina*
Pool below Factory Pond

346. *Nitella flexilis*?

In the above pool and in the
running water of the outlet.

Saturday, June 27 - '91

Still River Station (Lanesville)
Gorge Falls of Nonotomuc

1347 - *Cladophora Callisoma*

On stones in rapids below town dam

1348. *Characandea violacea*

on Lemanea, same place as above

1349. *Cladophora glomerata*?

On stones in swift water
just below the dam at
Siley Mill.

1350. *Lemanea (Saxterina) pubescens*

var. *viridis*
on rocks in the natural dam at
the crest.

Saturday July 4 - '91

1351. *Cladophora gracilis*

In muddy pool below crest

1352. *Cladophora gracilis*?

on stones in rapids

1353. *Lemanea (Saxterina) pubescens*?

on rocks in the natural dam

Sunday July 5 - 1891

354. *Stygnonema mamillatum*
on damp rocks in Mill stream
near South Fork (Cort)

355. *Lernaeid*

in rock in soft water
same place as above

Friday July 10 - 91

356. *Cladophora gracilis*
= 351 in fine sand (road)

357. *Cladophora gracilis?*
= 352 on water in pool

358. *Carpinus stracheyi* (a)
= 353 in water in pool

Sunday, July 12 - 91
Seaside Park - B'port

✓ 359 - *Ceramium strictum* (L.)
on sand covered rocks etc

✓ 360 - *Ceramium rubrum*
var. -

✓ 361. *Laurencia elegans*

✓ 362. *Clathrocyctis rosea*
Collected in small pool -
July 4 - 91

Wednesday, July 15 - 91

✓ 363. *Ceramium strictum*
= 358 = yellowish B'port

✓ 364. *Clathrocyctis*
= 358: 351 - from -

Sunday July 19 - 1891

at Fort Point

1365. *Lasyglossa*

1366. *Cladophma gracilis?* = 35-2 = 357

1367. *Polysiphonia variegata*

1368. *Ceramium* (C)
on *Zostera*

1369. "
on *Zostera*

Thursday July 23 - 1891

at Fort Point

1370. *Grinnellia Americana*
Floating

1371. *Ceramium*

1372. *Carlitha*
Floating

1373. *Polysiphonia variegata*

1374. *Ceramium* (C) = 357 (C)

1375. *Ulva*

Saturday July 25 - 1911

Cook's Point

- ✓ 376. *Saxaefraga*
- ✓ 377. *Polytrichum variegatum*
- ✓ 378. *Ceramium strictum* (c) = 305
- ✓ 379. *Enteromorpha acuta*
on timber at ship yard

Sunday July 26 - 1911

- ✓ 380. *Enteromorpha*
- ✓ 381. *Chondria*
- ✓ 382. *Chondria*
- ✓ 383. *Bostrychia*

Sunday July 29 - 41
Continued

✓ 384. *Grimmella* [unclear]
on shells etc. - Plate [unclear]

385. *Dasys elegans*
Same place as above

386. *Polysiphonia variegata*
Same place as above

Friday, July 31 - 9

Sea Side Park

387. *Grimmella* [unclear]

388. *Dasys elegans*

389. *Polysiphonia variegata*

Sunday Aug. 2 - 2
Penfield Reef

390. Callitriche in 2000
at base of hill on rocky soil
& chrysothrix

391. Callitriche in 2000
at base of hill on rocky soil
covered with it

392. Bay Elm and

Thursday Aug 4 - 7
Sea-side Point

393. Bay Elm and

394. Bay Elm and

395. Bay Elm and

Saturday Aug. 5 - 1911
Seaside Park

1896 - *Dasya elegans*

1897 - *Polypodium virginicum*

1898 - *Gonolobus amurensis*

1899 - *Prophyllia* (S. T. ...)
bleating

1900 - *Lupinus* ...
bleating

Sunday Aug 7 - 92

ruk n. of the beach
the gut

1401 - *Darya elegans*

1402. *Grinnellia americana*
in water shells + stones

1403. *Chondriopsis tenuis*
near Barlyana
on stones below the water
in the gut

Wednesday, Aug. 10 - 92

1404. *Grinnellia americana*
in the water + in the gut

1405. *Darya elegans*
same places as above

1406. *Chondriopsis tenuis*
near Barlyana
= 1403 - same place

Sunday Aug. 10 - 1911

107 - Bat. nigrum

Pool bank of Little Rock River
in Allen's lot

108. *Metopium perfoliatum*

in grasses & weeds

along stream of Little Rock River
south of Factory Park

109. *Metopium perfoliatum*

in woods near
of Factory Park

110. *Metopium perfoliatum*

in woods

in woods near
the mill - Allen

Sunday Aug. 12 - 1911

3.00
Cork's Park

411. *Stranvillea straminea*

412. *Chelidonium*

very rare - probably
in some table at
the Dublin Marsh Pool

Tuesday Aug. 15 - 1911

Sea side Park

413. *Hyssopus officinalis*

414. *Lychnis viscaria*

415. *Dryas octopetala*

416. *Leontodon autumnalis*

At the beach, Aug. 19-89
Cooks Point

417 *Chlorella*
= 412 *Chlorella* sp.

Thursday - Aug. 20-89
Long Beach

↓ 418. *Chlorella* sp.
on stones just below
low-water mark

↓ *Chlorella* sp.
attached to rocks on sandy flats
about low-water mark and
a little below

Sunday - Aug. 23 - '91

↓ 420. *Strophora rhizodes*
see 419

↓ 421. *Chondrobia tenuis*
see 418

↓ 422. *Chondrobia flagelliformis*

↓ 423. *Gracilaria*

Wednesday, Aug. 26 - '91.

Seaside Park

↓ 424. *Polysiphonia variegata*

↓ 425. *Rhabdonia tenuis*

↓ 426. *Gracilaria*

Saturday Aug-29-'91

Cook's Point

427. *Grimellia Americana*

428. *Dasya elegans*

429. *Cladophora*

(= 412 + 417 and form
same pool)

This *C.* shows no disposition
to collapse when taken
from the water but the
fronds stand out stiff
like bristles. I see no
tendency yet for the
fronds to elongate and
form expansions.

430. *Lomentaria uncinata*

431

at the form of _____ - common?
curved branchlets just starting
out. - on *Zostera*

Saturday Aug. 29 - 97

+ Sunday $\frac{30}{30}$

431 - *Ulothrix parietina* (Vauch.) Kütz?
on bark of tree - distant hill
Pembroke St. - B. Port.

432 - See foot of previous page

Wednesday, Sept 2 - 97
Flats on eastern side of
B. Port Harbor north of
B. Port water

433. *Grinnellia Americana*

434. *Rhabdonia tenera*

435. *Lomentaria uncinata*

436. *Champia parvula*

437. *Ceramium striatum*

438. *Polysiphonia* *arctica*

439. *Sargassum planum*

Monday - Sept. 7-'91

"Fresh Pond" - Stratford

5440. *Lyngbya aestuarii*

5441. *Polydora olneyi*

Wednesday, Sept. 9-'91

Stratford Point

5442. *Loxmentaria uncinata*

5443. *Griffithsia Bornetii*

5444. *Rubroia*

on stones etc. - same

Saturday, Sept. 12 - 91

1445. *Cylindrocapsa* ^{reticulata} ~~speciosa~~
in pool below Peat
Pond.

1446. *Chaetoptera* *viridifolia*
Side stream of Peat
River below Peat Pond

1447. *Chaetoptera* *pisiformis*
in above stream

1448. *Chaetoptera* *caespitosum*
on stones in above stream

Sunday, Sept. 13 - 1891
Seaside Park

444. *Lorontaria maculata*

445. *Waxya elegans*

451. *Polysiphonia variagata*

452. " *ditto*
on *Chorda filina*

453. *Rhabdonia tenera*

454. *Ceramium tenuissimum*
on *Rhabdonia* (L. 1841) J. 14.

455. *Calothrix*
" Stump of tree - pe into ashore

456. *Dictyota* - *ditto*
Coasting *dictyota* *dictyota*

Wednesday - Sept. 15 - '91

Cook's Point

457. *Griffithsia* *Burmanniana* ♂
among rocks

458. *Lomentaria* *strigata*
on an army *Griffithia*

Thursday, Sept. 17 - '91

459. *Cylindrocapsa* *formosa* ^{Wright}
in pool below water, sand
see 445

460. *Monticula* *caespitosa*
see 446

Friday Sept. 18 - '91

461. *Cladophora* *peruviana*

462. *Lomentaria* *strigata*

463. *Griffithsia* *Burmanniana*

464. *Lomentaria* *strigata*

Wright

Friday Sept 2
Seattle Park

- 466. *Phragmites*
- 467. *Polysiphonia variegata*
- 468. *Ceramium*
acanthoides
- 469. *Callithamnion ciliatum*
- 470. *Gracilaria*
lemaneiformis

Saturday - Sept 3
Long Beach

- 471. *Ceramium*
- 472. *Gracilaria* ?
- 473. *Callithamnion*
- 474. *Lomentaria*
- 475. *Rhodomela*

Sunday Sept. 27

Went with Dr. Seward to

stations below Falls, and
and Schellville - Stone below
the Falls

afternoon to Brook

Station - some fine material
in the stream. The chief

of Nat. vegetation - Rubus

form of Chautauque with
abundant Conetamphores into
Beds.

Sat. Oct. 3 - 91

Woodmont

476 - Callitriche

477 - Corallina

478 - Polytrichum

479 - fastigiatum

480 - Fern

481 - ...

482 - Callitriche ornata

... on ... entomophora

X-3 - Cement

1/80 - Calculated on stream
on detritum - 1/2 - 1/2 - 1/2

1/11 - [unclear] [unclear]
[unclear]

Sunday Oct. 4 - 9

755 - [unclear] [unclear]
same stream as before

Brought home a stone from
dirt side - stream from which
[unclear] [unclear] [unclear] [unclear]
Chain [unclear] [unclear] [unclear]
and [unclear] [unclear] [unclear] [unclear]
[unclear] [unclear] [unclear] [unclear]
[unclear] [unclear] [unclear] [unclear]
[unclear] [unclear] [unclear] [unclear]
[unclear] [unclear] [unclear] [unclear]

Dundee Oct. 11 - 1891

Went to Strathallan with
with Dr. G. M. Wilson in the valley

✓ 486 - *Gyneria (Luteofusca) confertifolia*
In abundance with a lot
of the *Hydrocotyle*

✓ 487. *Calothrix fulvicincta*

✓ 487½ *Polysiphonia variegata*
on the rocks in the valley

✓ 488. *Agardhiopsis nigrescens*

✓ 489. *Laminaria chrysomela*
fruiting.

✓ 490. *Fucus platyurus*

with occasionally a minute Chlorella
spp (or Chlorella) on Zosteria
with Ceramium etc. etc
also on Polydora nigrescens

497. Gnathochlorella (Desm.) } on Polydora
+ Porphyra spp. } nigrescens

498 - Chlorella spp.

499 - Chlorella spp.

Sunday - Oct. 18 - '91

500 - Fragilaria curvata
abundant to pentagonal - in dg. etc.
below Frying Pan sand

501 - Calothrix Horsfordii n.
on border of ...
below Frying Pan sand

502 - Calothrix ...
... and ...

503 - Calothrix ...

Sunday Oct. 20 - 91

504 Enteromorpha

Scrubbed from rock just below
Yellow Mill bridge - between trees.

505. Bostromia rivularis
Cruick's Point

Very scarce this year, noticed
none till this day, and
very little.

Saturday Oct 21

Beaver Pond

Enteromorpha

507. Porphyra edwardsii

on rocks, very common - very
little like Porphyra, edwardsii

Banyia reflexa, Chant.
var. major, Collins

See Collins's letter of 21-11-91

Sunday, Nov. 1, 1891

✓ 508. ^{High} Calothrix long in water?
(= 50V) on Strus in cave
below Biology Pond

✓ 509. Enteromorpha
= 504, + foam same place

Saturday Nov. 14

Sea Side Park
with Dr. St. G. Setchell

✓ 570. Sphaelaria colobata in ly
on Polythronia virescens

✓ 571. Bangia reflexa
near Major, coll.
on Polythronia negrescens
+ an Fucus

✓ 572. Fucus _____
= 474

Sunday Nov. 15 - '91
with Dr. W. A. Satchell

↓ 573. Calathrix
on bark of dead sticks in pool
below Factory Pond

↓ 574. Dichothrix —
(= 501 + 502)
on stones in Peguonnick Run
below Factory Pond Dam

↓ 575. Chontranisia
on stones in swift water,
bed of Peguonnick River
just below Trumbull line.

↓ 576. Frornaja fluvialis
In great abundance in Peg River
near the old mill just above
Trumbull line - at the falls.

Sunday Nov. 22 - 91

517 - *Stegodonium*? sect 529
Will rise from of *Thryx*.

518 - *Leptothrix* *rigida*?
on grass, ~~in~~ ~~the~~
near ~~the~~ ~~water~~ ~~in~~ ~~the~~ ~~field~~.

519. *Leptothrix* *lucida*
in ~~the~~ ~~water~~.

520. *Tetraspora* *bulbosa* ~~near~~
Cylindrocapsa ~~near~~
on ~~the~~ ~~grass~~ ~~in~~
Panicum ~~near~~
also on other water plants
+ on stones

Thursday, Nov. 26 - '91
Thanksgiving Day

521 - *Tetraneura bulbosa*
(= 520) *Puccinia bulbosa*
see 520

522. *Styrolonium* ---
= 517 (see #529)

Styrolonium tenue
forma nova
Says Mills

523. *Leptostichum* +
+ *Leptostichum* *caeruleum*
with one or two other
kinds of *Leptostichum*
on *Leptostichum* *caeruleum*
Some small *Leptostichum* =

Sunday Nov. 29 - 91

524 - *Artemisia* *Sonchifolia* L.
In ditch by R.R.,
Stratford.

Saturday - Dec. 5 - 91

525 - *Tetraspora bullosa*
var. ~~indurata~~
Parrott's form

Sunday - Dec. 6 - 91

526 - *Bat.* *virgata*
Pool in ~~...~~

527 - *Chaetophora* *indurata*
Stem ~~...~~ *virgata* L.
near ~~...~~

528 - *Drapsarnalia* *glauca* L.
same place as above

Saturday, Dec 12 - '91

529. *Stigodionium tenue*, Kirk
(= 522 + 517) ^{var. n.}

Mill race below Sandy Point
forma nova says Wille
See Collins letter Mar 13 - '99

Sunday Dec 13 - '91

↓ 530. *Gelidium cylindricum*
Gelidium Swartzii
ditto by R.R. Drake
Stratford

531. *Conferva arbuscula*
Francis's rocks

532. *Bangia reflexa*, Cham.
^{var. major, Collins.}
on fronds, Sheela's lane by
Callishan pier, No. 910
Seaside Park

↓ 533. *Halothrix umbellata*
with *var. punctata* etc.
Seaside Park

534. *Ectocarpus confervoides*
minute - on fronds, with 532.

535. *Sphaerularia cirrhosa*, on fronds

✓ 536. *Ulthamaria crassatula*
on various algae + mud covered rocks.

Sunday, Dec. 20. - '91
Sensida Part C

537. ✓ *Phyllitis fasciata*
on stones in tide pool

538. ✓ *Callithamnion Baileyi*
floating

539. ✓ *Gotocampus confervoides*
on fucus - also growing
on various other algae + on zooids

540. ✓ *Cladophora*
on turf of *Sphaerularia* colony
near high water mark

541. ✓ *Bongia reflexa* - *Punctaria*
+
on *Bongia* - not in alcoh.

Friday, Dec. 25 - '91
Seaside Park

542. *Ectocarpus imperoides*^{var.}
on *Spartina* stubs etc., between tides

543. *Ulothrix* *wagnana*
on rocks between tides

Sunday Dec. 27 - '91

544^v - *Calothrix fusca*, B. & Y. *
on *Bar. wagnana*

Pool below Factory Pond

* see Setchell's ~~list~~

of 1-24-92

Sunday, July 3 - 1892

Cooks Point

545. *Bostrychia rivularis*
with *Dilexia Leprieurii*

546. *Phyllitis*

in stones, much as *Stictis* grows
in large pools.

Sunday July 10 - 92

547. *Phyllitis*
near pool Cooks Point

Sunday July 24 - 92

Seaside Park

548. *Ectocarpus confervoides* W
(= 5428) grows in muddy sand
between tides

Sunday, Jan 31 - 92

549[✓]. *Asparanthea glomerata*
Pool below Factory Pond

530[✓]. *Asparanthea plumosa*?
Stems below paper mill
at Factory Pond

Sunday, Feb. 7 - 92

551[✓]. *Asparanthea plumosa*
same place as 550

Sunday, Feb. 14 - 92

552[✓]. *Asparanthea plumosa*

553[✓]. *Chaetophora suduicifolia*

554[✓]. *Asparanthea glomerata*

Same place as above

Sunday Feb 28 '92

555 ✓ *Ulothrix* isogona.
on rocks below yellow
mill bridge

Sunday March 13

556 ✓ Bat. Benjamin
Pond by RR Stratford

Sunday March 27

557 ✓ *Monostroma* Gravellee
Sea Side Park

Dr. W. A. Setchell here.

Went to Stratford in the a.m.
Collected rocks etc.

Saw *Aphanochaete* *va. caerulea* etc, with
on *Hyalotheca vesicularis*.

also what appeared to be

Monostroma orbiculatum etc

Zosteria, sea side park
and *acrostichum* on *Asplenium*.

Sunday Apr. 3 - '92

Woodmow

558. *Ulothrix implexa*, Kütz
mixed with *St. Phosca*
On rocks not far below
high water

559. *Callithamnion* *Andrieuxii*

560. " " *Andrieuxii*

561. *Rhodmela* *Andrieuxii*
rare ground

562. *Polydiplosia* *Andrieuxii*
rare ground

563. *Polydiplosia* *Andrieuxii*

✓ 564 *Chironomus tentans*
C. tentans pair

✓ 565 *Ulothrix ovalaris*
Brookside creek

✓ 566 *Rhodymenia palmata*

Saturday, April 15, 1910

567. *Taraxacum officinale*
(some of it was *officinale*)
Brookside creek - 1st lot
will be coming in

Sunday, Apr. 10-9.

Season Part

↓ 568 - *Drometrina viridis*

↓ 569 - *Halothrix pumilio*
with *Pinnataria* etc.
on *Dactylis*

Wed Friday - Apr. 10-9

570. *Vanochusia* *gambelii*

(including var. *racemosa*)

Below Mill on *Dactylis*

In racemose

Sunday Apr. 17 - '92

✓571. *Yonickia gracilior*
var. *abundant*
strongly marked
Ditch below paper mill
at Factory Pond

✓572. *Conferva frustalis*?
(see 827) ⁵⁵ *abundant* ¹
streamlet running into
Pond's Brook near Hrocar
stable

Sunday Apr. 24 - '92

Desire Park

✓573 - *Desmarestia viridis*

✓574 - *Cladophora cristata*

✓575 - *Punctaria tenuissima*

(*Desmarestia*)

+ with ...

Halimnion

Sunday May 1 - 92

576 - *Funaria* *fl.*
Pegannock River
at about Roundell line.

Sunday May 8 - 92
with Dr. Hitchell

577 - *Nitella* *sp.*
f - pool near stream run into
maine - below Lewis's
Leap - near Lancaster

578 - *Candakia*
Still River - at Bridge near Lancaster

579 - *Phormidium*
in water at Roundell
at above bridge

580 - *Sphaerium*
at Roundell
at Roundell

1581. *Penicillium sesvili*
at frogging dam (Annapolis)

1582 - *Shiroya varians* etc
Riverville near Brookfield

1583. *Ustilago spicifera*, Com.
attached to brook in pond
near stream below Brookfield

1584. *Ustilago tenuis* etc.
on *penicillium* in wall
of Brookfield

1585. *Schizotheca* etc
on *penicillium* etc
in the ally of Brookfield
near Brookfield

Sundays May 24 & 25
Sea side Park

556. *Ulva lactuca*
on Fucus

557. *Halidivium limbatum*
on ~~rocks~~ with *Pinna*

Monday May 25
at Woodbury (Cape Cod)

558. *Callithamnion cruciatum*

559. " *Bairdii*

560. " *Americana*

561. *Cladophora* ^{*hirta*} ~~*claussonii*~~ ^{Agg} *Callithamnion*
on rocks at low water
+ in tide pools.

562. *Fucus vesiculosus*

563. *Balnea varians*

Sunday, May 29 - 1892

"Back Pond" Stratford

v 1794 - *Cladophora* *serotina*

v 1795 - *Spirogyra*

forming - ~~in~~
floating in thick patches -

along with *Cladophora* - (sub-
merged)

bicarpinate - not

Diameter of cell - 37 μ .

Length in " 8 to 22 times

1 or 2 spirals, most

2 or 3 to 10 or more turns.

Rarely 3 spirals.

Monday, May 30,

596. *Glaucocapsa cerisea* Thwaites

on a harpery at

Boat-house (W. side)

597. *Psidium* *Fructuosa*

in ditto ^{near} (near ~~the~~ ^{same} place)

Fructuosa, *Psidium* *Fructuosa*

collected by plants

at Boat-house

598. *Hypocistis* —

at Boat-house

scrapped from stone

work of Boat-house

Friday, June 1

599. *Psidium* *Fructuosa*
all collected from Boat-house

1/42
Sunday, June 5 - 1923
111th St., S. Fork

✓ 600. *Spiraea* — — —

Perhaps a younger state of
wild grass in Fresh Pond
Spiraea

✓ 601 - *Microcarpha* *obovata* ?

Small plant in same
place as *Microcarpha* *obovata* ?

✓ 602 *Plantaginifolia* # 604

Small plant in same
place as *Plantaginifolia* # 604

✓ 603 *Stachys* *serotina* ?
Small plant in same
place as *Stachys* *serotina* ?

604 - *Stachys* *serotina* ?

Sunday June 12 92



605 *Zygonema anomalum*
(mixed with other things)

an occasional pair
of pointing filaments

Below Falding and Linn
in Peppinrock River

606 *Mesocarpus ruber*

Below Falding and Linn

side of Peppinrock River

Winnipeg June 8 - 92

Microspora stagnorum (Krug) ~~de la Sagra~~

604 (= 602) ~~*Aspergillus*~~
with *Corynebacterium bombycina*

Same place as 602 in the Willing

mountain

Saturday June 18 - 92

At Fresh Pond Stratford

Desmouzaea Schousboei, Born

Found a single specimen of
it on a spring of Chara
virginica

v 607 In Desmouzaea (5-15) spores
seem to be forming in some
cells without conjugation
after the manner mentioned
by Dr Barry (Die Conjugation
p. 7 Pl I fig 4) - sometimes
2 spores in one cell - spores
somewhat swollen - spores
(shown apparently nearest maturity)
light buff colored
elliptical.

v 608

Epiphytic on Desmouzaea

Sunday - June 19 - '92

599. Cladophora albida
In some new brackets
Sensida Park - By J. J. J.

600. Ephialtes illustrata, Renke
with some sort of filyzoan
on back and legs of a
spider crab.

Friday, June 24 - '92
Wednesday, Oct. 1 with
Mrs. & Mrs. Ayres Nell & Charlotte

✓ 611. *Chlorophora*
on *Sargassum*

✓ 612. *Enteromorpha erecta*, (L.) J. Ag.
on *Fucus*

✓ 613. *Callithamnion* Bridg.

✓ 614. " *ornatum*

✓ 615. *Lithothamnion laciniatum*
on *Enteromorpha* rock near
low water mark

✓ 616. on *Enteromorpha* near a cutting off
like *Enteromorpha*

Sunday, June 26 - 92

Fresh Pond

Could find no *Spirrogyra* family.

Large quantities on bottom
of pond - Southwesterly part -
apparently young and not
yet having risen to surface.

617. -

on decayed algae - shore of pond

Sunday July 3 - '92

✓ 618 - *Thromidium* _____
on wood work of slope of
dam, Island Fort + etc., by
R.R.

✓ 619. *Sporogon* ⁵⁴*cutida*
sterile ^{resembles S. cellii}
Island Fort etc

✓ 620 *Sporogon* *cutida*
fouling part in miniature
same shades as 619
Island Fort etc

✓ 621 - ~~*Chromococcus* *insignis* (Dor.)
var. *auratus* (Kütz.) Rab. fide Grev.~~
in dripping stone work of
Island Fort dam
(= ~~*Chromococcus insignis*?~~)

* *Chlamydococcus filamentis*
rusty stage - fide Grev.
= Grev.

Monday July 4 - 92

Leaside Brook

622. Dennocarpa Schombrovi?
in minute quantities on Sphacelium
radicans, on which are
also Bangia reflexa.

623. Young Grimmia andersonii
on Fucus vesiculosus

624. Bryopsis plumosa

625. Callithamnion grevillei

Thursday, July 7 - 92

² Fresh Pond, Stratford
with E. N. Johnson

626 - *Spirulina tenuisima*
In large expanded masses
on stalks of *Paspalum*.

Mounts full set for *Spirulina*
Could take it up in pithy line
masses half an inch thick.

more *Spirulina*
~~mounts full set~~

627. *Stilophora rhizodes*

Saturday, July 9 - '92
with H. N. Johnson

628. Stizimma maculiformis Ag
on rocks in canyon west of Point

629. = 621 & from same place

* 630. - Spirapogon ^{nitida} = 69000
in fruit - mounted full set

631. Zat. magnum
Pool below factory Pond - on alder wood

* Dissepiments not replicate.
Cells 75-80 μ wide, 50-100 μ long.

Spirals 5 or 6, making generally $\frac{1}{2}$ - 1 turn
Fertile cells about 75 μ long; females
all much swollen on conjugating side.

Zygospores ellipsoidal, generally
75 μ wide by about 106 μ long.

Always one or more sterile cells
on one or both sides of a conjugating
cell.

x rare exceptions

Sunday, July 10 - '92

632

"Fresh Pond" - Stratford

Spiriozoya

In side pool from which I formerly took best specimens of *Moronegona lativittata*.

Cells generally about 27 or 28 μ in diameter
length generally 3-6 diameters

Stirals 2 or 3 rarely 1. Swims about 3 in cells of full length. Dissepiments not replicate

Zygospores ^{ellipsoidal} 56-87 μ long by 31-37 μ wide

Female cell swollen just enough to contain 2 eggs

With oocillarite which appears to be *O. princeps*

? Whether this is not the same as # 595

Water in this pool (which is now cut off from the main body by a sand bar) may be a little salt. ? whether this is the reason of its freshness.

Thursday July 14 - '92
with Mr. Johnson
at Cook's Point

633. *Gromellia americana*

634. *Dasya elegans*

635. *Polyzophoria variegata*

Saturday, July 16 - '92
Woodmont, with L. N. Johnson

636 Calothrix crustacea
On Enteromorpha & Cladophora
in rock pool - Mounted
complete set for preservation.

637. Ceramium cerasmatum, Kütz
on Fucox

638. Callithamnion boreale

639. Callithamnion — 2

640 Cladophora
on Fucox

Sunday, July 17 - '92

✓641 Calothrix crustacea
on Cladophora repens
Dormer pond at Cook's Point

Tuesday, July 19

✓642 Tetraspora explanata, Ag.
on drifting aboutment of Fasting
Am.

✓643 · Sphaerocysta = (630)
last of the ^{2. and 3. day} season - sent some in
bottle to Setchell at Woods Hall

Wednesday - July 20 '92
with Dr. N. Johnson

644. *Strophra stigrades*
Black Rock shore
645. *Callithamnion Borevii*
Black Rock
646. *Chartrancia virgatula*
on *Zostera*
Black Rock
647. *Chorda filum*
young forms
Benbow Strait
648. *Declania subtrulosa?*
on sandy rocks, Black Rock
649. *Bryopsis plumosa*
Green's Mills Creek
650. *Ectocarpus leptans* Cronquist
on *Zostera*. Black Rock

Thursday - July 21 - 92

with Mr. Johnson

Fresh Pond

651. Rivularia ~~nitida~~ ^{nitida} (= 631)

on bank of Creek, outlet
of Pond

652. Spirogyra (= 632)

from same place as 632,
The water in the pool is brackish
and is cut off from other of the
pond, or creek rather, only when
the water is very low.

Friday, July 22 - 9th
with L. R. Johnson
Took boat to harbor
& the "Gut".

✓ 653. *Gomellia Americana*

✓ 654 *Laurea elegans*

✓ 655 *Polysiphonia variegata*
on Ulva

Sunday, July 24 - 92

656 *Rhizodinium fluitans* ~~Kütz~~ X

Pegnumock River, below
Factory Pond Dam, attached
to stems ^{in stream} growing to length
of 2 or 3 ft.

X *Rhizodinium lacustre*
forma *Americana*, ~~Wetmore~~, Wille

Tuesday, July 25 - 92
with L. R. Johnson

657. *Rhizodinium fluitans*

Same place as # 656

Mounted, full set for
examination

"Cells not swollen with
thin walls rhizoids very scanty,
cells 15-16 μ wide, 15-51 μ long" Wille

Wednesday, July 26-92
with L. N. Johnson

658, Scilla princeps
Parrot's Pond
mountain full set on paper

659 Scilla or Phormidium
Mill Race below Mordy's Pond

660. Phormidium uncinatum
forming furflick or copperish
film on stones - in stream
below dam at Mordy's Pond

661. Chaetophora triicarpa
on stones in Mill Race below
Mordy's Pond.

662. *Hydrocoleum*
on stones
July 28 -
at Mordy's Pond

Friday, July 10 - '92
 At Black Rock Mass
 near Penfield Reef
 (with L. B. Johnson)

663, *Tanachia hiloboloides*, Thur.
 on muddy side of rocks
 below low water

Lynceus nigrescens
 on iron ~~pebbles~~ between
 tide marks
 July 10

Nyctosalanx
fluctuans

665 *Callinectes* *lysenoides*
 665 a " *lysenoides*

666 *Enteromorpha* *flexilis*
 Some of the branchlets end
 in a single row of cells

667 *Gracilaria*
 a little on *Ch. chortoni* &

Friday Aug. 2 - 92

At Peck's Mill? - Putney
with L. N. Johnson.

✓ 668 Pleurozoum divinalis
in fruit - from the
mill pond.

Mounted a full set for
exsic. - including some
of the same material
brought me July 30. by
Mr. Johnson

669, (Rivularia
of rustos
etc

mouth of stream from
above pond, at
base of mountain

Wednesday, Aug 3 - '92
with L. N. Johnson
Mill River near Sank
Darter Rock

✓ 670. *Vancouveria ovata* ~~Hayden~~

Mill River

mounted full set
for *E. S. S. S. S. S.*

✓ 671. *Adiantum*

on *Sagittaria* etc

Mill River

Saturday, August - 1892
Woodmont - with L. H. Gilman

672. *Spyridia filamentosa*

678. *Callithamnion* ~~*horvathi*~~
retrofractum tripartitum

674. " "

675. *Bozopsis plumosa*

676. *Ceramium rubrum*

677. " "

678. *Raffia verrucosa*

679. *Frustrum*

Saturday Aug. 6 - Continued

✓680. *Elachista*

Elachista sp.

Unilocular spore (cell) - lens shape
or conical - 20-25 μ wide
by 40-50 μ long. - has long
erect filament - very long
filament.

✓681. *Champia parvula* (2)

Buenos Ayres 17-9-2
Cooks Point

✓ 582. *Gracilaria coniliformis*

✓ 583. *Desm. Elegans*

✓ 584. *Bostychnia muricata*

W.B. - Found a few filaments of
Beggiatoria alba, *Forma*
var. Marina

among *Synspha aestuarii* on
muddy border of the large
marsh pond.

Monday Aug. 9. - 92
with Mr. Johnson
Fresh Pond. Stratford

685. Purularia filicata
on bank of creek at
outlet of the Pond

Tuesday Aug. 10 - 92
with L. M. Johnson

686. Purularia reticulata

on grass etc. in
pool by Rowton Pond
Near Sprague's Farm.
Mount full set of ground

Saturday - Aug. 13 - 92

with L. M. Johnson

687 - *Enteromorpha aurea*
on stones between tide marks
Long Beach

Mounted full set

688. *Chaetomorpha Linum*

Long Beach near Stratford Point

Mounted full set of this!

689. *Callithamnion*

on Fuca

Long Beach

690. *Callithamnion* ~~sp.~~

Long Beach

691 - *Epidemia* ~~sp.~~

on *Pinnaculus* - Long Beach

a minute ~~sp.~~ with the same

Sunday, Aug. 14 - '92

Went with Dr. Wilson & party
to Millford Point

692 *Enteromorpha Hokkaidii*
good typical specimen
on *Gastrea*, floating.

693. *Sketophora rhizodes*.
floating in abundance along
the shore.

694. *Ceramium rubrum*
var. —
floating

695. *Lomentaria monomata*
floating in abundance

Trwin Lakes - Salisbury Penn
(Camp Pajar)

- Aug. 20 - '92

696

Lower Lake - Salisbury - 8-20

697 - *Scytonema Myrtilloides figuratum**

8-20 + 21

Thickness about 12 μ ; filaments about 30 μ , thin
articles 1/2 - 1 diameter - acropetal

older yellowish brown

heterocysts globose yellow
18 μ in diameter in diameter
globose - 10 μ in diameter

Patches on rocks in Lake

* See Dr. F. S. Collins' paper (Am. Jour. Bot.) 1902

606 ^{two?}
V 698 *Syzygnema* n. *Syzygnema*
on dripping rocks.

filaments about 12 μ thick
about 100 μ long
generally 2 rows of cells - about
10 cells - vegetation cells very numerous bright
shiny green.

V 699 -

gelatinous matting on dripping
Rocks - *Syzygnema* - 8-22
containing *Noctua* - *Calothrix*
a great number of minute green
cells - and peculiar filaments
about 20 μ diameter

V 700. Channels

Water of Fossil Lakes
near Stone in the water
8-20

Aug. 28 - '92
Fresh Pond - Stratford

✓ 701 - *Chaetoceros virgatulus*
on *Rubrica*
Mount full set for E. S. S.

✓ 702 - *Cladophora*

✓ 703 - *Tetraspora subovigibbosa*, Fensholt
↓ + *Calothrix confervicola*
together, on *Rubrica* with *Chaetoceros* etc.
Gelidium generally 1 mm. or less
in height

✓ 704. *Arabaena variabilis*, Nutt. with
Acidoceros princeps
A. littoralis ? + several other small ones
Spirulina tenuis, etc.

Sat. Sept. 3 - 92

↓ 705. (*Chironomus macrogaster*)
Mun. Pad.

(= 621) var. *amens* (Kittz.) Pad.

Fide F.S. Collins

Pool below Factory, Pond Dam

Chironomus plumosus

gustavus stage

↓ 706. *Telyphidius lanata*, Marten

on *Fontinalis*

Pool below Factory

Pond Dam

Sunday, Sept. 4 - '92

With F. S. Collins

707, Entophyesalis goanulosa
Kütz.

on Stones in Fresh Pond
Stratford - Pointed out by Collins

708. Chromoclelea virgatata
on Ruppia F. Pond

709. Amphicoma variabilis
704 ^{also at:} F. P.

709² Mastigocoleus testarum - Lagerheim. on Alum Shell

at Stratford in the pond
along with Rhabdonia
& Gyrodinium

Monday Sept. 5 - 92
with H. S. Pollins

710. *Phoradendron Retzii* (B.) Merr.
^{in cactis}
Stream below paper mill
N. 13 feet

Mounted full set

P. M. at ...

711. *Ocellularia Corallinaria* A.
on *Galidium* etc
about 10 feet

712 *Galidium orinale*

713 *Phyllophora Frankii* Wilson
sides of ...

714. *Calothrix crustacea*
on *Chaetomorpha* etc

715 *Fucus ceramides?*

Saturday, Sept. 10 - 92

✓ 716 *Phormidium* (Retzius) form = #715
(see 710)

Stream below Paper mill
N. B. Pond

✓ 717 *Conferva* ~~*confervoides*~~ ~~*confervoides*~~
with *Microspora*
sides of above stream in *fibulae*
quick water
mountain full set for *Spizella*.

✓ 718 *Arabana* *scillarioides*
and several other *Ku*
Pool below *Ku* *Spizella*

Sweden, Sept. 11 - 92

Brook Pond

719 *Enteromorpha haptocladia*
Some of the branches consist
of a single row of cells, others
some of two rows for a short part.

720 *Ectocarpus terminalis*, Kütz.
on *Confusia* (autocompans)
about 1 ft. high

All about 12 μ or a little more in diameter
2 - 11 times as long. 15 making alternate
or opposite when opposite. The main
filament often enlarged in to a long one
by a hair from the point of branching
Such a hair also frequently
forming the base of a branch
or forming the protuberance of an ordinary
filament - branch 15-25 wide x 60-100 long
Plurilocular *abundant*, terminal and
lateral - the latter generally with
a short side of 1-3 cells.

Filaments much branched at base where
they (and also hairs) spring from an almost
horizontal rhizome.

Tuesday - Sept. 13 - '92

Port San Carlos - west of the "Alcázar"

~~Plazuela Beach~~

721. *Rhabdomma tenera*

722. *Vanteria fulvobolides* Thiers
on shelly sand bottom near westerly
extremity of sand bar running into
harbor from near Plazuela Beach
House ("Alcázar") just below
ordinary low water mark
in abundant tufts over several
square rods

723.

Shells containing

Sunday, Sept 18 - 92

Charles Island

1724 - *Calothrix crustacea*
on rock between tide marks

1725 - *Zygodon Burchia ceramulata*, *Brach*
on *Rhadoria* in pool

1726. *Dactylophora*
on stone

Sunday, Sept. 25 - 92

Fresh Pond

5727. *Gracilaria multicaulis*
in form

5728. *Rindaria nitida*
= 657

5729 *Aphanothera*

forming thick, bushy patches
on shore where out of pond
by water of pond

5730. *Oscillaria*

+ "
in sandy bottom of pond
at shore

Saturday, Oct. 1 - 1922
At Blackdown Beacon

731 - *Callithamnion Baileyi*

732 - An interesting association of
Gemmatrichum elegans

Bangia reflexa

Charitumia

Callithamnion

Enteromorpha

Laurencia

Enteromorpha

Sargassum etc.

and all found *Laurencia*

732 1/2 - *Callithrix acryginia*, Thuret?

Enteromorpha marginata ??

fragments forming a mat on

iron plate between the rocks.

Sunday Oct. 2 - '92
with Dr. Setchell

733 - *Calothrix parvictina*
on stone dam of Factory Pond

Friday Oct. 7 - '92

734. *Calothrix parvictina*
Same place as 733
Mounted full set

735. *Coelothrix nigra?*

 " *orientalis?*

from *Phormidium* like *orientalis*
on rock at above dam

Sunday Oct. 16 - 92
with Dr. Setchell
at Trin Lakes, Salisbury, Con

736 - Gloetrichia Pisum, Thuret
on pondweed in
upper lake

737 - Gloetrichia Pisum
floating ^{with} ~~in~~ lake

738. Cladophora fraxta, Kütz
on stones at shore ~~by~~
Camp Rice on island in upper
lake -

Sunday Oct 14 Continue

↓ 739. *Scytomena Myrobora* or *figurata*

= #697 & collected at same

place (see 739)

↓ 740. *Scytomena Hofmanni*? *argenti*

on old stump shore of
the upper lake

↓ 741. *Folypotaxis*

with #740

↓ 742. - *Calothrix parietina*?

from drifting rock by R12,
between Cinnam & down lake

↓ 742 1/2 *Dicranella* *flavida*?

on stone in *Sp. rock* *near*

Sunday Oct. 23 - 1892

743 ? *Phormidium* ~~abundant~~, Kütz
on NW side of dam below
Hesseltine's Pond, Island Brook

744 ✓ *Phormidium*
on stones - Island Brook

745 ✓ *Phormidium* ?
on the leaves - side stream
of Pequonnock R. - below
Frost's dam - dam
forming vegetation surface

Sunday Oct 23-92 Contin

- ✓ 746 Gleocystis ?
with occasional filaments of
Calothrix fusca ?
+ lobules of Chroococcoides - convergens
In stone abutment of Hading
Pond dam
- 747 Oscillatoria foelichii var. dubia ?
Pool below F. P. dam

Sunday, Oct. 30 - 92

at Forest Pond, Stratford

748 - *Calothrix*
with + apparently parasitic *Chlorella*

on stone

Chlorella

on stone near shore
in an inch or two depth of
water

749, *Entophysalis granulosa*
with minute quantity of what appears
to be a *Dyoclypea* - about 6 or 7 μ .
in diameter - also *Calothrix*
on stone, same place as 748

750 *Chaetoceros rigidus*
on *Ruppia*

Sunday, Oct. 30 - '92

"Fresh Pond" - Continued

751. *Vanostheria dichotoma*
sterile

Immense masses in the
ditto or Cray - outlet
of the pond.

Sunday Nov. 6 - '92

752. *Oscillaria* (= 747)

Pool below F. Pond Dam

753. *Leptothrix* (*Leptothrix*)
with occasional *Dichotoma* etc
on stones, edge of Fresh Pond

754. *Oscillaria*

forming Phormidium-like masses
in stream below Paper mill.
Movements active

Sunday, Nov. 6, Contin. at

755. *Enteromorpha* ^{uniteda,} ^{marginata!}

Very Lecanial - Mostly simple -
consists of one - 2 or several
rows of cells, apparently filaments
agglutinated, sometimes separate
at the summit, into filaments
and thus forming branches -
cells rounded - sometimes wider
than long - up to 12 μ in diameter
scraper from rock at Seaside Park

Tuesday, Nov. 8 - '92

756. *Amphithrix violacea* etc
Calothrix

on stones in creek bed
(with a little *entophyllum* also
granulose)

757 - *Hydrocoleum virgatulum*
in hollow - Seaside Park

Sunday, Nov. 13 - '92

Seneca Park

758 *Phyllitis fasciata*

759 *Rhabdonia tenera*

760 *Lesya elegans*

761 *Monostroma crispum*
abundant on some rocks
off Bolting Park

762. *Ectocarpus confervoides*
Cells in larger filaments 20-30 μ , as long
as wide, in ultimate branches about 12 μ long
several times longer than wide.
Pseudocellar sporangia 18-30 μ in
15-125 μ long. *origi* *sub*
attenuate - on some *Sten. pons* *Adams*

Sunday Nov 27 - '92

Seaside Park

✓ 763 - *Monostroma crepidinum*
Same place as 761

✓ 764 - *Franseria* ~~*var. laterifurcata*~~
or *F. Ceranoides*

✓ 765. *Microchaete*?
with
Zostera — ? (= 762)
from the same strand as
no # 762

✓ 766. *Chlorococcum* *buliginum*, var.
in *Enteromorpha* *marginata*? - on stones
between tide marks

✓ 767. *Enteromorpha* *marginata*
on stones between tide marks

Sunday Dec. 11 - '92
Seaside Park

✓ 768. Dicranocarpha Schrebosi
on Rhododendron rather
abundant

✓ 769. Enteromorpha marginata?
same place as # 767

✓ 770. Pezizococcus fuliginosus?
on Enteromorpha marginata
same place as # 766

Wednesday Dec 14-92

Seaside Park (with Dr. Lacey
of Johns Hopkins)

↓ 771. *Enteromorpha* ^{arabica} *marginata*?
(= 769 + 767)

↓ 772. *Monostroma* *crepidinum*
on rocks near low water

↓ 773. *Pennospora* *fuliginosa* ^{var.}
(= 770 + 766)
Found that this grows on the
stone independently of the *Enteromorpha*

✓ 774. (see 772) *Lynghya* *satellita*
Minute crustaceous algae on
stones between tide marks.
Filaments arising from ^{+ stippling} *Enteromorpha*
marginata? - also some
Pennospora

Thursday, Dec. 15 - 92

775 - *Oscillaria leptotricha*, Kriz.
Pool below Hoag's Pond

776. *Chroococcum coherentum*, Kütz?
with a *Doratomyces*
(*Chlorella fusca* - etc.)
in abundance of H.P. Lane

(see Collins collection)
March 5 - 92
confirming other specimens

Sunday, Dec. 18 - 92

777 - *Enteromorpha* ^{analis} *conspicua*
This is in good condition, yet abundantly infected by *Pleurococcus fuliginosus*. (Completed set for exsicc.)

778. *Pleurococcus fuliginosus*, mostly on *Enteromorpha*
(777 + 778 are from the same lot taken from one stone)

779. (= 774) ^{*Cryptophyta*?} ~~*Synsphaera*~~ *tenerrima* (Wulfen) ^{*tenerrima*}
+ *Pleurococcus fuliginosus*

See Dr. Richard Lott's letter of Dec. 20, 1917

This (calothrix? related to *C. rubra*?) appears to have filaments attached by the apical ends. Can find no terminal hairs. - Has it any chloroanoid substratum except the *Pleurococcus* with which it is associated and upon which it appears to be epiphytic?
Escaped from mycorrhiza Uchida 1885.

Monday, July 2 - 1893
Sausalito Park

~~780 - 779 - 771~~
~~scratched from stem of *P. ...*~~

780 *Laminaria seschaniensis*
in fruit - *Wachobaria*

1781 *Porphyra leucosticta*

Feb. 19 - '93

782. *Antennophora* [?]

Stems blue yellowish
at base

Collins *thins* it E. minima

March 25 - '93

Seaside Park

783. *Isomeris* *viridis*

784 *Polygala* *leucosticta*

Friday - March 21 - 1878
Seaside Park - 12 p.m.

✓ 785. *Cladophora acuta*

✓ 786. *Callithamnion*

✓ 787. *Polysiphonia leucosticta*

788. " *laciniata*

✓ 789. *Fucus evanescentis*

Sunday - April 9 - 1878

✓ 790. *Cladophora*
Seaside Park

✓ 791. *Polysiphonia leucosticta*
Seaside Park

✓ 792. *Cladophora*
Seaside Park

✓ 793. Same as above

✓ 794. *Mn. retromu* *Grevillei*
Cooks Point

✓ 705. *Enteromorpha* *inlectinabris* ?
on rocks near high water
yellow with purple base

Sunday Apr 16 - '93

✓ 796 - *Cladophora* *expansa*
Blackish Pond - Cooks Point
dies through the winter

✓ 797. *Mn. retromu* *Grevillei*
Cooks Point

✓ 798. *Porphyra* *leucosticta*
Cooks Point (on rocks)

✓ 799 - *Ulva* *implicata* (= 794)
on stones near high water
yellow with purple base

Saturday - Apr. 22 - '93
Seaside Park

800 - *Ascophyllum nodosum*

Hermaphrodite - ^{forming} *Asporia*

in same conceptacles with
antheridia - Comparatively
few (*Asporia*) ^{emitina} in same bracket
basin with antheridia, some
arising in the regular way from interior
wall of conceptacle.

Sunday - Apr 23 - '93

1801 - *Monastroma Gravellei*
Cork's Point

1802 - *Phyllitis fasciata*
Shallow beach pools
Cork's Point

1803 - *Enteromorpha Aucklandia*
" Fresh Pond

1804 - *Enteromorpha plumosa*, Knig
Fresh Pond

Friday, Apr. 28 - '93
Seaside Park

5885 - *Fucus truncatus*

Sunday April 30 - '93

5886 *Enteromorpha plumosa*, King
= 5844 (*E. Kütznerii*)

"Fresh Pond" - on pebbles at the shore.

This grows to the length of 2 or 3 feet
in a mass, forming longropy, coarse
peroid strings, attached at base

pebbles (and shells) and floating on
the surface. The lowermost

branches are elongated tips,
when fresh, float in the
air like inflated bladders.

Mounted full set for specimen

Sunday May 7 - 1893

1807. *Phyllitis fasciata*
Cooks Point

1808. *Enteromorpha minima*?
Rocks at Yellow Mill Pond

1809. *Enteromorpha intestinalis*?
Rocks at Yellow Mill Pond
near High Water Mark

1810. *Ulothrix* *cuticularis* *Griffiths*
Yellow Mill Pond

growing on pebbles etc
and floating in long
stringy masses.

Mount set for slide.

Cells diam. 10-15 μ - 1-2 μ thick
long no side, figure division

(= 792 & 111 2)

Sunday, May 14 - '93

811. *Stigera leucium* ~~tenue, var. lubricum~~
~~in Will.~~ (Will.) Ry. Kth.
Cells 1-6 limbus by road!

see velle

Mounted a set for Exsicc.
The little Pond east of Yellow
Mill Pond, near Stigera

Cava
(see Collins letter - Mar. 13 '94)

812. *Punctaria latifolia*
Cooke's Patch

813. *Phyllitis fasciata*
Cooke's Patch

814. *Dicranophorum* (Carliniana?)
on Phyllis, Cooke's Patch

815. *Ulothrix luteolaria* (Mouss.) Stigera
Yellow Mill Pond -

= 714-715 by

Friday May 19 - 1893
Seaside Park

816. *Panicum distachne*

817. *Panicum plantagineum*
On stones just below low water

819. *Scytosiphon lomentaria*

820. *Dictyosphaera geminata*
On *Scytosiphon*

821. *Microcystis Laminaria*

Sunday May 21-93
with Dr. Sittell

822. *Stigolomina* ^{terre var. lubrica} ~~laeviflora~~
same place as 821

✓ 823. *Enteromopha* ^{intermedia} ~~laeviflora~~
^{var. prolifera, Nemk}
Yellow Mill Pond
Some specimens of this were 600 μ long.
see # 829

✓ 824. *Enteromopha aureola*
Fresh Pond, Stratford.

Sunday May 28 - 1893

825. Bat. virgatum
Mount Brook

826. Bat. (moniliform group)
Outlet of Pool below Frading Wood

827. *Combera* ^{*bombycina formadum* Wille} ~~*tristalis*~~
with large gossamer.
Streamlet running into Bruce's Brook
Sturford Ave.
Mounted set for Gypsic

828. *Styrolomina fasciculata* ^{Wille}
answering Wille's description
Bruce's B. Brook
Mounted set for Gypsic

Hydrobia ~~*ultramarina*~~
ultramarina
Mount Brook

Tuesday May 20 - 1893
Decorative Day

✓ 829. *Enteromorpha intestinalis* (L.) Link
var. *prolifera*, Hauck
(= 823) - Yellow Mill Pond

✓ 830. *Cladophora rupestris*
Ponackish Pond
Cort's Point.
Mounted Set for Exsicc.

Sunday June 1 - '93

✓ 831 - *Phormidium*

On stone etc; Ponackish Pond

Sunday June 11th - '93

832 ✓ *Enteromorpha clathrata*
var. *procera*?
Pöppel Harbor

833 ✓ *Enteromorpha*
Pöppel Harbor

Sunday, June 13th - '93

834 ✓ *Bat. Dorniliiforme*

var.
On stems, Side stems *Epilobium*
balsamifolium, etc.

835 ✓ *Bat. vagum*
var.
Pool balsamifolium *Epilobium*
on alga stems

Sunday, July 2 - '93

✓ 836. *Polypodium Rosei* (Sch.) Mitt. ?
In little pond east of "Yellow"
"Conill Pond" - near ~~entrance~~

✓ 837. *Cladophora*
Completely seen for *sibirica*
(= # 357 & 366)
Cooks Pt. - on stones, shells, etc.

✓ 838. *Cladophora*
Cooks Point
immediately in ~~entrance~~ Park

Sunday July 9 - '93

✓ 839. *Callithamnion encrinurus*
Senside Park

1893
Sunday July 16th - Minutalakes
Sutcliffe, Conn.

840 Chara

841 Chara

842 Chara

843 Chara

844 Chara

845 Chara



Thursday July 27 - 1893
Woodmuck

✓ 846. *Mougeotia binariata*
on Spondias

✓ 847. *Bryopsis filiformis*

✓ 848. *Cladophora*

✓ 849. *Chaetomorpha*
on Sertularia or Asaphyllum (Ergst.) Thur

Sunday July 30 - '93

1850. Ocellularia princeps

Fresh Pond. Stratford
abundant - usually in
company with Lophya aestiva

1851. Grinnellia americana
Berk. Harbor

1852. Ocellularia multipunctata
Berk. Harbor

1853. Polyzethonia rugosa
var. Duckii

Sunday Aug. 6 - '93
South Norwalk, -

(Went with Dr. Wilson on Duplex
collected on shore of Smith's Lake)

1854 - *Gomphelia Americana*

1855 - *Sargassum vulgare*

1856 - *Champia parvula*

1857 - *Chondrosiphonia tenuisima*

1858 - *Ceramium striatum*

① Sunday - Aug. 18 - 1895

Port Harbor

859. Gracilaria multiportata

860. Dasya elegans

861. Gromontia etc

shells contain Gromontia polydusis

" a Mastigocoleus testatum

" b Plectonema terebrans

" c Hyllis caespitosa

Saturday - Aug. 19 - '93
" Yellow Mill Pond "

862 - Symphloea fasciculata ?
(= S. Catenellus, Kanak ?)

with Ambracina Tomlinsonii
(Sphaerogyna Carminthalii)

Syringomyces aestuarii

+ Oscillaria

Siphonia + Tanachia

forming mat on debris

like marke — with it are

also what appears to be

Boerhaavia mirabilis

Boerhaavia alba

Friday - Aug 22 - 95

Yellow Mill, ...

Collected ...
shot as 2 but could find
no Symphyla but

86 - Beggiina unguiculata

fairly abundant
generally from 18-20 ft
and an occasional
specimen of Beggiina unguiculata
near Marina

October - Aug. 26 - 1893
Reserve Park

✓ 864 - Chalcid fibretae group
with Polyzoa on shell
of Spider-crab.

✓ 865 Myriapoda palustris group
var. minor group
mostly on leaves
of Saxifraga
group of leaves
of leaves of leaves
of leaves of leaves

✓ 866 Myriapoda palustris group

var. minor group

✓ 867 Myriapoda palustris group

Sunday, Aug. 27, 1893

B'port Harbor

868. *Rhabdonia tenuis*

on sand bar opposite
pleasure beach - in harbor
collected shells containing

869. *Plectonema terebrans* B + F

Wednesday, Aug. 20 - '93
with R. M. Johnson
Fresh Pond

870. *Polycystis glaberrima*, Kütz
in small quantity
with *Anabaena variabilis* etc etc
on decaying algae

871. *Polycystis* -

872. *Polycystis* -

Chicago.

873. *Polycystis* -
Virginia

Sunday Sept 23 - 1900

87 * - *Aspergillus* *strobilifer*
(*Cyrtocarpus* *conspicua* *Penzance*)
on *Agaricus*
yellowish white fr.

✓ 5 specimens *Aspergillus*
yellow white fr.

Sunday Sept 24 - 1900

13 fr on *Marasmius*

✓ 876 *Callithamnium* *conspicua* +

877 *Stella* *reticulata*

Sunday Oct. 8 - '93

Seaside Park

v 878. *Banksia ciliata* etc

Sunday Oct 15 - '93

Seaside Park

579. *Botrychium viridulum*
on turfy shore near high water

580. *Sphaecularia radicans*
on turfy shore near high water

581. *Microcoleus* etc

forming thick mats on turf
near high water

Sunday Oct 22-95
With Dr. W. A. Seton

552. *Sporegnis bellii* :

Pegunook River, Turnbull

553. *Junco fluvialis*

Pegunook River - Turnbull

554. *R. trachoptera* vagans
Took from Hasty Pond

N.B. in outlet of this Pond
found stone with fine
Chironomus bearing gray
Bats. (Bat. Benjamin?)

555. *Calobry* ...
... from stone in
side stream of Pegunook
River, below Hasty Pond

886. *Saillaria*

Forming films on water plant
Below Factory Pond Dam

v 887. *Bangia reflexa*
Sea side Park

We examined this in the
morning and found numerous
filaments unity. A cell
forms a number of spores
which escape from a
lateral protuberance &

The spores frequently lodge
and germinate on filaments
of the *Bangia* giving in
the appearance of branching.

Sunday Nov 29 - '93
Seaside Park
✓ 800. *Banksia repens*
got enough to complete
set for species - and
sent maternal for
set for *Phyostheca* ~~Thunbergii~~
to F. S. Collins.

Sunday Nov 5 - '93
Seaside Park

✓ 809 - *Banksia repens*
No. 1000. ~~Thunbergii~~
Sent to Collins, etc.

London 1841

590. *Cantharia chalybea*
etc.

found in the district of
the outlet of the River

591. *Scyllaria patersonii*

Mixed - Shore of hard rocks

at low water in deep
at about 3 times as long

Sunday - Nov. 19 - '93

1892. *Banzia fusca* - *fulva*
ON ROCKS at Yellow Mill
Bridges - among interstices
at about high water level

Sunday Nov. 20 - '93

1893. *Banzia fusca* - *fulva*
Same place as above
Sunday Nov. 21 - '93
1894. *Banzia fusca* - *fulva* - In dry soil
on rocks at about high water level
1895. *Banzia* *reflexa* -
in soil
1896 *Phyllitia* *parviflora*
var. caespitosa 510

1897

Sunday Dec. 10 - 93

✓ 898 *Plumosea filigera*
on rock between trees - south
of Yellow Mill Pond

✓ 899 - *Enteromorpha* *marginata*?
on piles & rocks - south
of Yellow Mill Pond

✓ 900. *Enteromorpha* *flexilis*
among plants - south of
pond - south of Yellow Mill Pond

Sunday Dec. 17 - '93

901 - *Bacina fusca-hirsuta*
on woodwork in the cove
below Yellow Mill Bridge
Great abundance.

Sunday Dec. 24 - '93

902 - *Batrachospermum vaginatum*
Pool below fast, Point

903. *Valoniopsis peruviana*
on alder stems - in
the above pool

Monday - Xmas - 93

5904. *Plenrocaper fuliginosa*
On rocks below Yellow Mill Pond
Mount set for Xmas,
on mica

5905. *Plenrocaper fuliginosa*
on wooden posts - near
high water mark - below
Yellow Mill Pond
Mount set for Xmas
on paper

Saturday Dec 30 - 93

906. *Plumbaria filiformis*

+
Worm tracks - between tile
marks - Shows below
Yellow with fine

Sunday Dec. 31 - 93

907. *Plumbaria filiformis*

+ 908

Shows of terrace wall - between
tile marks - Shows yellow
with fine

909. *Plumbaria filiformis* -
with the ⁹⁰⁶⁺⁹⁰⁷ *Plumbaria*
very near *Plumbaria*

Monday, March 3 - 1994

709 (= 907 + 908) from same
stones

910 (= 907 + 908) from same
broken fossils

Sunday March 4 - '94
leave Park

911 ✓

112 ✓

Sunday, March 16 - 94

913. *Phacelium*
in *Phacelia*
C. S. P.

914. *Phacelia*
Deser. P.

915. *Phacelia*
in *Phacelia*
C. S. P.

916. *Phacelia*
C. S. P.

917. *Phacelia*
C. S. P.

918. *Phacelia*
C. S. P.

919. *Phacelia*
C. S. P.

920. *Phacelia*
C. S. P.

Sunday March 25 - 94
Sesenta Park

921 - *Desmanthus viridis*

922 - *Panicum plantaginifolium*

Sunday April 1 - 94

Sesenta Park

923 - *Desmanthus viridis*

Sunday April 8 - 94

Pomona Forest

924. *Phoradendron* *serotinum*

Si. ...

925

mi. ...

Sunday April 15 - '94

Seaside Park

926, *Dumortiera viridis*

Sunday April 22 1914

927 *Dumortiera viridis*
Seaside Park

928 *Pumilata plantaginifolia*
Seaside Park

925⁺ *Leptocarpus (Microspora) americana*
stream above paper mill
Lake B. H. S. P.
Mound 224

X *Microspora americana* (Felt) J. E. Smith
type & also forma crassiuscula
Nova forma "celloso-32 p. 110
Lake B. H. S. P.

Sunday, Apr. 29. 94

929. *Phyllis garcia*
Cort. Pin.

930. *Punctaria latifolia*
as it grows on shells
Cort. Pin.

931. *Punctaria latifolia*
as it grows on fractured
Cort. Pin.
located on fractured

Sunday, May 6 - 1894

1932. *Oscillatoria limosa*, Ag.
Berkshire Mill Pond.
On bottom and floating
in patches
mounted set for review.

1933. *Batrachium* *sp.*
Pool below Gately Pond
on old stakes in still
water.
mounted set for review

Sunday, May 13 - '94

934. *Phormidium* *Corium*, Gommit
dam at Muddy's Pond
Mounted set for species

935. *Pinnularia* *flavipes*
on *Fucus* etc. - Seaside Park
Mounted set for species

936. *Pinnularia* *latifolia*
Seaside Park

937. *Dityrosiphon* *fremontianus*
on *Sargassum*
Seaside Park

938. *Dityrosiphon* *sp.*
Seaside Park

Sunday May 2 1894

439. *Lynx baileyi* - 1
+ *Gliresctis* - 1
+ *Peromyscus* - 1
on Mountain - 2
marks - below yellow
bridge - (on same day)

Monday May 3 1894

with stomach etc -
Part of the day
bridge
Lutes
Carnivorous

the same on the same

Monday, May 27, 1914
Continued

✓ 942 - *Microglossa* ~~sp.~~
Corks Pt.

✓ 943 - *Uniflora albida*
var. *refracta*
Corks Point (2) 816

✓ 944 *Polytrichum hyssopus*
var. *fructuosa*
Corks Pt.

✓ 945 *Phormidium* ~~sp.~~
Corks Pt.

✓ 946 *Phormidium* *Petzii*
Corks Pt.

✓ 947 *Phormidium* *unicolor*
Corks Pt.

948-

... ..
... ..
... ..
... ..
... ..
... ..
... ..

949-

... ..
... ..
... ..
... ..
... ..
... ..
... ..

950-

... ..
... ..
... ..
... ..
... ..

Sunday June 17 - 94

951. *Phalaropus lobatus*

Shore of Fresh Pond

Sunday July 1 - 94

952. *Phalaropus lobatus*
in front

Peak Hill - Putney

953. *Phalaropus lobatus*
Shore of Fresh Pond

Wednesday July 4-1914

✓ 907
oscillations
in
curves together
in sandy bottom
porous & rough

Monday July 2 1914

✓ 908
fluctuations
curves 1-2

906
page 1-4
fluctuations
curves

Sunday July 22 - 94

1957. *Calothrix* *harveyi*, Mel

Still water below Gauley Pond

Dam - on stones

Set for Phycol.

1958. *Calothrix* *harveyi*, Mel

Agassiz Pond

below Gauley Pond

1957. *Oscillatoria* *tennis*, Alg.

Still water below

Gauley Pond Dam

Agassiz Pond

Sunday July 29 - 64 -

Port Harlow - near Blenheim

✓ 960. *Gimnelia Americana*

✓ 961. *Dasya elegans*

✓ 962. *Rhabdium tenera*

Friday, Aug. 3 - 64

Cork Harbour

✓ 963. *Gimnelia Americana*

✓ 964. *Dasya elegans*

✓ 965. *Rhabdium tenera*

✓ 967. *Calothrix palustris*
var. subbulva

found

468 - *Plumosa* — water
from the stream near
high water level
near Mill Brook

469. *Callistemon*

from the old bottle from
note of 1907 now taken

Sunda Aug 94

1st Stator = 120000

970. *Soya Glyca*

971. *Grinnellia Americana*

972. *Phytoloma tenera*

July 12 - 1894
Miss G. M. S. Mays

with Setchell & Gardner

973 *Brachytrichia* sp. n.
young on ground

974 *Callithamnion*

975 *Sargassum*

976 *Ceramium* sp. n.

977 *Myrionecta* *pubescens*
on *Sargassum*

978 *Chaetomorpha* *terrestris*
young on ground

979 *Manglicia* *diversimata*

980 *Enteromorpha* *lyellii*

981 *Sphaerocapsa* *viridis*

Aug 12 - 94
Continued

952. *Rivularia nitida*
from March bottom August

953 - *Leptothelium planum*
scraper from stone

954. *Batrachium*
from muddy shore of
small pond near wood bridge

955 *Hypnea microcarpa*
Given one from fresh
material in the laboratory
collected at Washington

956. *Calothrix* (L.) Griffiths
from a quantity of algae
as above

Monday August 13 - 1904
at Parker's Point
Wood's Hill

987. *Calothrix* *serpentina*
scraper from rocks

988 *Polyblastema* *violacea*
on rocks below low water

989. *Polyblastema* *fibrillatum*
on rocks

990. *Champia* *parvula*

991. *Chondrophea* *dactylophora*
growing on *Zostera*, etc

992. *Lomentaria* *marginata*

993. *Polyblastema* *marginata*

Aug. 13 - Continues

994. *Chaetomorpha linum*

995. *Ceramium* (*Waldeniana*?)

996. *Callithamnion Brossii*?

997. " *Baileyi*

998. *Melobesia*

on *Punctaria*

Friday Aug. 14 - '94.

Buzzard's Bay Beach

999 *Gelidium crinale*
on stones below low water

1000 - *Polysiphonia Olneyi*
" " "

See also 1113 + 1114

Wednesday, Aug. 15
at "The Hole" - Woods Hole
with Setchell, Detertout & Pitt.

1001 - *Enteromorpha creata*
on *Sargassum* etc.

1002 - *Hemidictyon multifidum*
on *Sargassum*

1003 - *Chondria tenuis*

1004 - " *laevigata*

1005 - *Ectocarpus siliculosus*

1006 - *Bacillaria paxillifera*

1007 - *Polysiphonia furcillata*

1008 - *Dasya integrans*

1009 - *Hypnea*
laevigata

1916 -

Phoradendron [unclear]
from [unclear] [unclear] [unclear]
[unclear] [unclear] [unclear] [unclear]

2000's 1400
Friday, Aug. 17 - '94
collected in [unclear]

1017. *Polyalthia* *Harveyi*

1018. *Cassipouira*

1019. *Sida* *filamentosa*

1020. *Balfouria* *elliptica*

1021. *Conocarpus* *erectus*
[unclear] [unclear]

1022. *Lythrum* *hyssopifolium*

[unclear] [unclear]

Aug 17 - Continent

1023. *Chaetognathus* seen
in fishing creek

1024 -

from surface of marshy ground

1025. *Isactis plana*

from stones in creek

1026 -

Stratum from marshy ground
collected in a high salt marsh
(near water)

1027 -

Shells scattered
mostly *Actinia* etc
from among rocks near
Bungay, 9th 13th etc
collected during the week

Monday, Aug. 23 - 96

✓ 1028 - *Chromolaena* *terrestris*
var *indica*
In the Gut

✓ 1029 - *Chromolaena* *terrestris* A
In the Gut

Sunday Aug. 26 - 94

At Blue Hole Beach
near ...

Went with Dr. C. Jones
in his launch

✓ 1030. *Callithamnion seirosperrum*
scattered from rocks below
low water

✓ 1031. *Callithamnion Borreri* ?

✓ 1032. *Ectocarpus confervoides*
v. *siliiculosus*

✓ 1033. *Myrogonium*

(= 664) *Nyctoderma* ?

on Iron Piles & Rocks between
two marks

Aug. 26 - Ontario

✓ 1034. *Calothrix* *argyrea*?
on iron piles - generally
in a substratum of
minute entomostraca

Sunday Sept. 9 - '94

With Dr. Setchell

at Fresh Pond - Stratford

✓ 1035. *Hydrocoleum*

forming sheets on the surface of
the water, resting on *Hydrocoleum*
and *Hydrocoleum*

1036. *Lyngbya* *Lagochismini*, var.
on *Lyngbya* (*Lyngbya*)

Sept. 16 - 1944

Dr. Setchell & Don Osier
were here. We went
to Mill River & back
but found nothing of
special interest.

Sept. 22 - 1944

Point Harbor

1037. *Prorocentrum multispinatum*

1038. *Dicillitronia*

on *Commensalis* in
Hull - Cook's Point

Sept. 20 - '94

1039. *Grisebacteria* *californica*?
on substrate of *Sintermopha*
stem in dry drain box
in cave below yellow
wall Porriga

com. 27.

Sept. 7 - 94

Went to Middle Ground
(Stratford Shoals) Light
with Dr. Setchell - in

Dr. Jones' launch with
Dr. Jones, his son and
son's wife.

100. *Lyngbya confervoides*
(Cross & Jeffrey)
on Rocks around the light

101. *Laminaria saccharina*
in fruit

102. *Phyllophora Borradailei*
stratfordensis

103. *Phyllophora membranifolia*
cyathocarpus & *ultrasporia*

104. *Callithamnion* *leptocarpum*

104.5. *Chrysiophora plicata*

105. *Polydora* *gibbosa*

Oct. 7-9 of autumn

1047. *Clavaria* *diploma*?

(= 270 285 - *diploma*
Below yellow *diploma* *diploma*

Oct. 13 - 1894 - Wm L
To June Lake, N. Cal.,
So. California - returning
the 16th

Oct. 14 - Saturday

1048 - *Sayornis myiarchus*
- rocks in the upper
lake near shore -
- submerged - but also
in some extent above
submerged portion.

1049 - *Dichroptera*

Stenomacrus *Schizothorax*

in the sandy submergence

of 1048 -

Sunday - Oct. 1st

1050 - *Stigmenia minutum*?
on submerged rocks in
Plantain Pond

1051 - *Heteropogon* ~~sp.~~
on submerged rocks in
Plantain Pond

1052 - *Stigmenia* ~~sp.~~ ^{parviflora}

Sage's Ravine below
at York - ^{moist} ~~in~~ ~~the~~ ~~field~~

Coleochaete ~~sp.~~ ^{Kützingeri}
also
submerged floating plant

1053 - *Heteropogon* ~~sp.~~
Sage's Ravine - below at York

605. 1942. *Critica*

1954

Mixture of salts from ...
at 12 ...

1050. *Thymus* ...
...
...
...
...

1055. ...
...
...

1057. ...
...
...

Sunday Oct. 21

1058. *Limnaea stagnalis*

Wheat field

near the mill

of a farm, B. District

of the County of York

of the Province of Ontario

Sunday Oct. 28

Deer Park

1059. *Limnaea stagnalis*

forming extensive light colored
chrysalis cases in a
smooth white stone
low water course. Young
well marked

1060. *Limnaea stagnalis*

Coating the top surface

between the mill

and the high water mark

Sunday, Nov. 4-94

1061 - *Calothrix* - common
in stones in side stream
of Pequonnock River
below Hasty Ford Dam

1062 - *Lyngbya sakraea*
from stream below the
Paper Mill at Hasty Ford

Sunday - Nov. 11
with Dr. Mitchell

1063. *Psittidium splendens*
in stream of Pequonnock River
below Hasty Ford Dam
in leaves etc.

Sunday Nov. 18 - '94

1064. *Microspora vulgaris*
Sluggish stream - East End
B'port - near R.R.

Sunday Dec. 9 - '94

1065. *Bongia fusca* - *Impurea*
in stones at Sewing Parle
(with Dr. Setchell)

Sunday Dec. 16 - '94

1066. *Mixotrypa repidum*
in outlet of "Fresh Pond"
Stratford

Sunday Dec. 22 - '94

Collected some plants from
Dec. 22 - 1894 - Sunday

with me - Very cold day -
Went up to Seaside Point -
but found nothing of interest.

Sunday evening we went to
New Haven - and spent
the night with Setchell.

Settled details for issuing
1st fascicle of
Phycosphaera Brasili-Andina,

Tuesday Dec. 25 - '94

Seaside Park

11067 - *new*

11068 - *Phyllitis fasciata*

11069 - In this scraping from
T rock between tide marks -
a little of what appears to be
Lithothamnion with *unilocular* *Sphaeria*
forming.

Friday Feb 30 - 1894

1070 - *Sargassum flourensii*
in creek

Sunday March 10 - 1895
Seaside Park

1071. *Porphyra tenax*
mostly on stones between
tide marks & in pools
1072. *Scytosiphon lomentaria*
stones between tide marks
in pools
1073. *Prorocentrum plantagineum*
on sandy rocks between
tide marks & on algae

Smida, Jan 17 - 1893
with Dr. Setchell
Seneca Park

1074 - *Cladonia coccinea*

1075 - *Calophyma*

Smida, Mar 24 - 1893

Seneca Park

1076 - *Calochortis*

1077 - *Cladonia*
Seneca Park

Sunday, April 7 - 75
with Dr. S. S. S. S.

✓ 1078 *Ficus* *...*
on *...*

Sunday, April 14 - 75
Craw's Point

✓ 1079 - *...*
on *...*

✓ 1080 - *...*
on *...*

✓ 1081 - *...*
✓ 1082 - *...*

Saturday Apr. 20 - 95

Crocks Point

1083, *Protophysa leucosticta*

Sunday Apr. 21 - 95

Seaside Park

1084, *Dramulestia*

1085, *Saylesophus comitatus*
forma *complanatus*

1086, *Fucus*

Friday Apr. 26 - '95

Seneca Park

✓ 1087 - *Scytospium comatae*
~~*S. complanata*~~

✓ 1088 *Scytospium comatae*
typical

✓ 1089 *Pomataea plantaginis*

✓ 1090 *Phyllitis fasciata*

✓ 1091 *Franseria*

✓ 1092 *Franseria*

Sunday, April 28, '95
with Dr. Estabrook

1093. *Urtica variabilis*
forma *marina*, Willd.
fid. rule.

Cash Beach (Point)

Near Black Rock
on bank overlooking high water

Sunday, April 28

Sensine Park

1094 - *Urtica variabilis*

1095. *Urtica variabilis*

Monday May 5 - 95

Wish. S. Collins

Service Party

1000 ft. of ...

The ...

Yach ...

etc) ...

... on the surface

Monday May 5 - 95

...

...

...

...

...

...

Sunday May 12 - 1895
S.S. Park

✓ 1096 - *Homotrichum*

✓ 1097 *Homotrichum*

✓ 1100 - *Homotrichum undulatum*
with undulate s. margin
+ *Homotrichum salinum*
with pluricellular sporangia
Zygotes with 11-12 etc
Estrocarpus confusus etc

1101 *Homotrichum*

Zostera with *Homotrichum*

Sunday May 19 - 95

✓ 1102 *Scytosiphonia lomentaria*
var. *complanata*

Put some in formalin
for Setchell

S.S. Park

Thursday May 23 - 95

SS, Park

✓ 1103. *Halothrix lumbroicis*

✓ 1104. * *Dactyloctenium undulatum*
+ ^{lvs} *Bathium*

Mounted set for Phys.

✓ 1105. *Punctaria Alantigena*

✓ 1106. - Young *Chroococcoides*
on *Zostera*

* *D. undulatum*
among which are usually
simples of *D. Bathium*
commonly associated with
Halothrix lumbroicis, *rotundifolia*,
confervoides, etc. sometimes with
Punctaria latifolia

Sunday, May 26 - '95
at New Peshelke

✓ 1107: *Chaetomorpha aerea*
(in rock-furrows)

✓ 1108: *Cladophora*
in rock-furrows

✓ 1109: Young *Chara glaucifera*
on rocks in furrows

✓ 1110: *Dictyota flexilis*
(*Dictyota*?)
on *Sargassum*
in furrows

Thursday, May 30 - '95

Cove's Park

✓ 1111 - *Punctaria latifolia*

✓ 1112 - *Lentheria difformis*
on *Saxatrua*

Sunday, June 2 - '95

Point Harbor - off. *Transect*

1113 - *Chroococcoides flagelliformis*

✓ 1114 - *Cystodictyon pennellianum*
on *Saxatrua*

✓ 1115 - *Chroococcoides pennellianum*
on *Saxatrua*

✓ 1116 - *Chroococcoides pennellianum*
on *Saxatrua*

✓ 1117 - *Chroococcoides pennellianum*
on *Saxatrua*

Sunday June 16 - 95

1118. Three specimens
long slender

1119. Anabaena tinctura
on a log seen near
high water mark
among structures
along the bank

Spring 1891 - 1892
Alabama

1000
Alabama

Alabama

Alabama

Alabama

Alabama

Sunday, July 13 - 95
W. H. S. S. S. S.

112.
Pool below factory pond
Mounted for Physarum

Sunday, July 14 - 95
Middle Ground (Straiter Shoals) Pond

1127. *Nematium multispinum*
on rocks near low water mark
1128. *Catolopia parvifolia* - in the same place
1129. *Catolopia parvifolia*
on rocks

Catolopia parvifolia
refracta

Monday July 21 1955
Pm.

1120. *Arctostaphylos*
6

Sunday July 28-95

1131 *Dicliothrix bosmanii*
(=1124) collected at
Completed set of 5 Phycoderm
This is also
& not

Sunday Aug. 11-'95

"Fresh Pond" Stratford

1132. *Gutierrezia granulosa*
with *Calothrix* *Sarcinula*
Mounter set for Physci

1133. *Spirulina tenuissima*

1134. *Physiphoria Huey*

Saturday Aug 17-'95

"Fresh Pond" Stratford

1135. *Physiphoria Huey*
From Rocks + Shells
Mounter set for Physci

Sunday, Aug. 18-91

1136. *Chromola tennesseensis*
Long Beach

1137. *Cerastium*
woodhousei

Chromola tennesseensis
Long Beach

1138. *Cerastium rubrum*
Nat. History
Blackhawk

1139. *Cerastium*
Blackhawk

1140. *Callispermum* *Spartz*
Long Beach

Wednesday, August 21 95

Long Beach

1141. *Curonia fastigiatum*

= 1137

~~inches~~

in fruit

mountain set for fly

1142. *Chromolaena*

1143. *Passiflora*

Aug. 24 - '95

Jimm Larkin
with Dr. Setchell

1144. Shells from shore of Lake
Containing

a. Plectonema teretum

b. Gomontia
etc.

1145. Aug 25 -

Nest of Prunella, etc.
on a snag at end of line
Lake out off of 1st R
near station.

5. Many nestings in brush
at the same place
etc. etc. etc.
of the same kind of
nest & birds

Sunday, Sept. 1 - 1875 -

With Dr. G. T. Howell
Shot birds near Shreveport

1146 - *Grinnellia americana*

1147 - *Melospiza leucotis*

1148 - *Phalaena tenebra*

Sunday Sept 8 - 1875

1149 - *Contopus splendens*

Contopus
caprimulgus
caprimulgus
caprimulgus
caprimulgus

July 21/11
P. [unclear] [unclear] [unclear]
with [unclear] [unclear]

[unclear] [unclear] [unclear] [unclear]

1154 [unclear] [unclear] [unclear]
on rocks, chondria etc
Mounted at [unclear] Phyco

1155 [unclear] [unclear] [unclear]
on [unclear] [unclear]

Saturday - Sept. 26 - 1898
with W. C. Stetell
at Lake Saltwell
New York State

1152 - *Jolyptorhiza lunata*
tenues & distincta mixed

1154 - *Chama gymnoflora*

1155 - *Chama rejimata*

1156 - *Mitella tenuifolia*

1157 - *Mitella*

Sunday Sept 29 - '95
With Dr. & others at Mr. Seely

1158 - *Seymouria* *lineata*
in rocks at North Harbor

1159 - *Metachasma* *lobatus*
on stones in brook
at Mr. Carmel

1160 - *Metachasma* *formidulosum*
in same place as 1159

1161 - *Chonetes* *virgatus*
in rocks in brook at North Harbor

1162 - *Chonetes* *virgatus*
Fitch Pond *Chonetes* *virgatus*

Sunday Oct. 6 - '95

Bruce's Berke

1163 - *Oscillatoria tenuis*
var. *retans*

Sunday Nov. 3 - '95

1164 - *Immeria fluvialis*
Pequonock River below
Factory Pond Dam

1165 - *Bat. virgatum*
Same place as 1164

1166 - *Bat. vagum*
Took below Factory Pond

Saturday Nov. 9 - '95
with Mr. F. S. Collins

✓ 1167. *Callithamnion granatum*
on stones - Seaside Park

✓ 1168. *Monostroma Crepidium*
on stones between tide mark
Seaside Park

✓ 1169. *Gonostichum hamosum*
(Thwait) Harold

on *Ruppia* among a
multitude of other things.

Found by Mr. Collins.

Fresh Pond - Stratford

Sunday Dec. 22 - '95

- ✓ 1170 *Stigeodinium flagelliferum*
on stones in swift water
Pegnum/C River - below
factory pond in the main
channel.

Xmas - '95

- ✓ 1171 - same as 1170 and
from the same spot.
Completed set for
Payer.

Sunday Dec. 29 - '95 -

1172. *Ulothrix implexa*
In brackish pond
Seaside Park.

1173. *Vandieria litorea*?

abundant in above
pond - very brackish.

Sunday, Apr. 5 - 1896
with Mr Collins at
Malden, Mass.

✓ 1174. *Batrachium*
deciduum ^{Sight}
(= 181, *Phytolacca Bor. American*)
on stakes & stones in
the same spring mentioned
Phyco. B.-A. - Middlesex
Falls.

✓ 1175. *Lemanea fluviatilis* var. *subtilis*
(Sight) ^{new}
(= #36 *Phyco. Bor.-Am.*)
at the Cascade, Middlesex
Falls, Middlesex, Mass.
(Young plants.)

Sunday Apr. 12 '96
Seaside Park

1176. *Sargassum lomentarium*
var. *complanatum*, Lamour.

Sunday Apr. 19 - '96
Seaside Park

1177. *Vanohemia litorea*
with abundant *Zoogonidia*

1178. *Sargassum lomentarium*
var. *complanatum*,

Monday (1/11) 26 - '96
Seaside Park

1179 - *Draconastria viridis*

Tuesday May 3 - '96
Seaside Park

1180 - *Draconastria viridis*

Saturday, May 9 - '96
at Newport, R. I.
with F. S. Collins

1181 - *Monostroma pulchrum*

1182 - *Gomillei*

1183. *Gloiosiphonia capillaris*

1184, *Spermatozoon* *diversa*

North - May 9 - 96 - Continued

✓ 1185. *Phyllopora diffusa*

✓ 1186. *Melobesia frustulata*

on Chondrus
& *Phyllopora*

✓ 1187. ^{at} *Laminaria digitata*

✓ 1188. *Calothrix scopulorum*

✓ 1189. *Synspha lutea*, common
High up on the cliffs.
Phormidium-like patches

✓ 1190. *Lithothamnion* ———

✓ 1191. *Ectocarpus acidioides*, Present
on *Laminaria*

Sunday May 24 - '96

Crook's Point - B. Point

✓ 1192 - *Penotaria latifolia*

✓ 1193 - *Polysiphonia nigrescens*

✓ 1194 - *Hydrocoleum*, tubular?
forming a gelatinous coating
around old stems of
Spartina in brackish
ditch.

Saturday - May 30 - '96

✓ 1195 = 1194 + from same
place

Sunday May 31 - '96

1196

Enteromorpha aurea
fresh + dried - 51. 1196

Friday June 5 - 16

✓ 1197 *Bacillaria paxillifera*
Pool below Factory Pond Dam

✓ 1198 *Bacillaria*

Coating tops of water plants
at surface of water.

Pool below Factory Pond
Dam. Stratum dark brown

Trichomes about 7 or 8 μ thick
not attenuated at apex, no
compartments, ~~attenuated~~ cells
about as wide as long,
generally

Thursday, July 2 - '96
✓ 1199 - *Phormidium*

Coating the wall of Iron
Watering tank and floating
therein (tank for watering
horses) near Waterbury
Conn.

Sunday - July 19 - '96

Penfield Reef

✓ 1200 - *Rancharia*
(= 663) - on muddy rocks below low water

✓ 1201 *Chorda*

✓ 1202 *Callithamnion Baileyi*

✓ 1203 *Callithamnion*

Sunday July - 26 - '96

1204 - *Chaetophora endocarpia*

Chaetophora endocarpia
Pond - same.

Sunday Aug. 2 - '96

1205 - *Gay's Elymus*

1206 - *Grasshopper*

Pond - same

Monday Aug. 17 - 1896
at Outlet of Ox Bow Lake
Near Lake Pisces - Hamilton
County, N. Y.

1207 - *Batrachospermum vagum*
on stones

1208 - *Bat. radians* ?
on stones

1209 - *Bat.*
on stones

Thursday - Aug 20 - '96

✓ 1210 *Nitella*

Outlet of Ox Bow Lake
Near Lake Pisces

Saturday Aug - 22 - '96

1211 - *Oxallatonia* *prostrata*?

Crating stones in running
water - "Mill Brook"

near Irondequoit Club -
Prosoo

1213 -

Crating stones in
"Mill Brook"

Aug. 24 & 25

✓ 1214. Bat. *var.* *outlet* of *prostrata*
var. prostrata, *line*
(= 1207)

✓ 1215. Bat. *var. prostrata*
= 1208

✓ 1216. Bat. *var. prostrata*
var. prostrata

Aug 24 475 - Arrived
1217 = 1209 Bat -
on Stones

1218 Bat -

1219

Sunday Sept. 20 - 1914
Charles Island

✓ 1220 Rivularia atra
on top of Spartina
^{roots} (var. confluenta)
P.B.A. # 3178

✓ 1221 Callithamnion Barleji

Sunday - Nov. 1

✓ ✓ Rhodoglossum palmata
Long beach - near
Stratton Point - same
water above in abundance
✓ 1222 Callithamnion Barleji
same place as above

Tuesday Nov. 3 - '96

J1224 - *Ralfsia verrucosa*
on Rocks in pools and
on shells of living
mussels in pools.
Mounted a set from
rocks. - Woodmont

Sunday Nov. 8-96
with Mr. Lewis

✓ 1225 - *Scytonema vershami* (Bourk.)
(in *Cinnamomum*, Thuret)
In pool at North Haven, Ct.

✓ 1226. *Microcoleus lacustris*, Furlow
mixed with some of
the above. *Physa* B-d.
Mounted at Fort

✓ 1227. *Schizothrix landwea* (B. & F.)
on vertical surface
of dripping rocks at
East Rock, New Haven.

✓ 1228. *Calothrix parietina*
same place as 1227

Sunday Nov. 15 - '96

✓ 1729. *Oscillatoria tenuis*, Ag.
Bruce's Brook Pond

Sunday Nov. 29 - '96

1230 *Ectocarpus suborymbrosus* ?
Farlow

In brackish pool
Cross' Pond, Bridgeport

Sunday Dec. 6-96

1231. *Chantrea viridula*, Kg.

Chantrea (water)

Coating stones in swift
water, Pequonnock River
near Turnbull line.

Mounted out for Physa

1232. *Amureya limbatilis*, Harv.
Living bottom of Pequonnock
River below the upper
small falls just above Turnbull
line and below.

Sunday Dec. 13-96

1233 - *Cladophora* —
forming mat on sandy
top of *Stachys* mats
etc.
Seward's Park

1234 - *Bongia* pro-jurpura
on rocks about high
water for Seward's Park

1235 - *Rhizolonium tortuosum*
forming filose mats
etc.
Seward's Park

Sunday Dec. 27-96

✓ 1236 *Rhizolonium tortuosum*
= 1235 - same place

