

SPECIMEN SEWING

WHEELER & WILSON

MANUFACTURING CO.

BRIDGEPORT.

CONN. U. S. A.





J. B. - De la Cruz B. v. r. -

S. B. - Stillman u

B. B. - Bond's u

*Batrachoseps formosus* "A"

Specimens Collected in  
side stream of Pequannock  
River, just below Factory  
Pond, Oct. 20 + 27, 1890,  
see dry mounts.

a little later when I  
sought some for examination  
and preservation in alcohol  
it had disappeared.

*Batrachospermum* #1 <sup>no. 1000</sup>  
*B. Coeruleo-cens*, Sord.  
Abundant in Island Brook  
near its mouth at Berkshire pond.  
First collector in Dec. 1888.

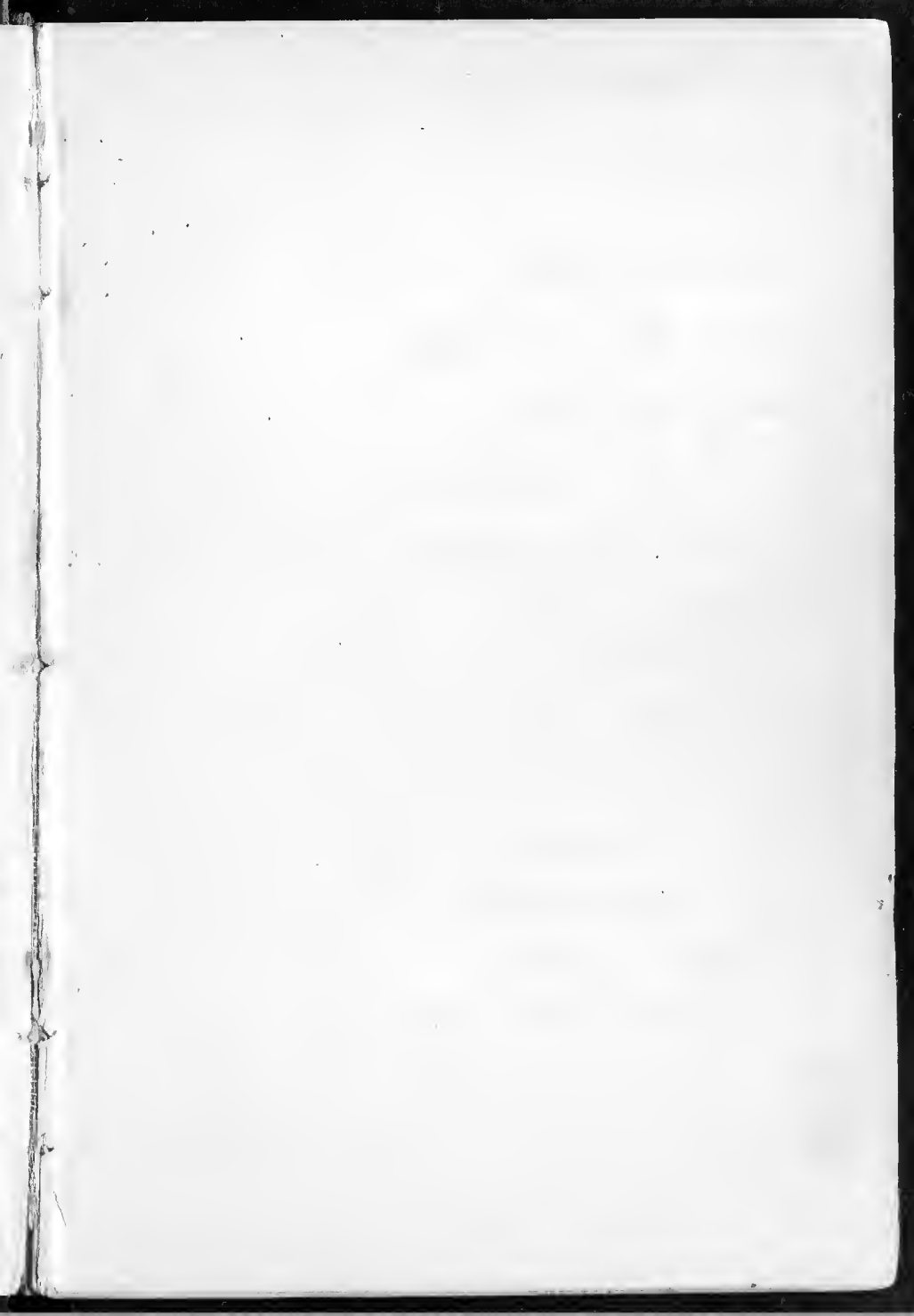
Sept. 7 '89, Collected young  
plants on which H. A. Satchell  
pointed out trichogynes with  
pollinia attached. - Collected  
frequently thereafter till  
March '90.

Satchell by his letter of  
Oct. 29 '89 says it is  
"to all intents & purposes"

*B. Coeruleo-cens*, Sord."

See mounts & alcohol  
specimens.

Found this species also  
in Ash Brook - in the  
mill race below Moody's  
pond.



*Batrachoseps* #2

The  
Dates 81-24-89 are what  
I

some of the same are  
in alcohol. Some of the  
later mounts, are  
to be different.

all from the side stream  
of the main stream.

See Vol 4.

Satchell says 5-7-90  
'No 2 & No 11 seem to be  
near R. *modifera*  
var. *chlorocoma* Gilt.'

but will seem to  
give a different



Batrachoseps # 3

Collected near the mouth of  
the little stream empty into  
the east side of Bawin  
Shull Pond.

XI-24 & XII-8 1889.

Soon after coming home  
from

See = 7

Alouatta palliata

*B. maculosa* #4

From Ash Creek, Mill  
race below David's Pond

XI-17 - XII-15 + XII-15 17

Probably same as #2

*At. ...*

Biform. # 5 + 6

(see letter in ~~collection~~ <sup>see letter</sup> ~~at~~ <sup>at</sup> ~~the~~ <sup>the</sup> ~~top~~ <sup>top</sup> ~~of~~ <sup>of</sup> ~~the~~ <sup>the</sup> ~~box~~ <sup>box</sup> ~~only~~ <sup>only</sup>,  
Batrachospermum ~~at~~ <sup>see</sup> ~~the~~ <sup>letter</sup> ~~in~~ <sup>in</sup> ~~the~~ <sup>the</sup> ~~box~~ <sup>box</sup> ~~only~~ <sup>only</sup>,  
~~see~~ <sup>see</sup> ~~the~~ <sup>the</sup> ~~letter~~ <sup>letter</sup> ~~of~~ <sup>of</sup> ~~March~~ <sup>March</sup> ~~18~~ <sup>18</sup> ~~90~~ <sup>90</sup>.

collected first #5 in side stream  
of Pequonnock River below  
Wind. Ferry. 26 - 90 -

#6 same date in ~~side~~ <sup>side</sup> ~~stream~~ <sup>stream</sup>  
near ~~mouth~~ <sup>mouth</sup> ~~of~~ <sup>of</sup> ~~Pequonnock~~ <sup>Pequonnock</sup>  
Colo. River ~~at~~ <sup>at</sup> ~~the~~ <sup>the</sup> ~~mouth~~ <sup>mouth</sup>  
same thing <sup>probably</sup> see ~~specimens~~ <sup>specimens</sup>  
for later notes.

~~Material~~ <sup>Material</sup> ~~at~~ <sup>at</sup> ~~the~~ <sup>the</sup> ~~mouth~~ <sup>mouth</sup> ~~of~~ <sup>of</sup> ~~Pequonnock~~ <sup>Pequonnock</sup>  
#5 - all specimens are from ~~the~~ <sup>the</sup> ~~stream~~ <sup>stream</sup> ~~of~~ <sup>of</sup> ~~Pequonnock~~ <sup>Pequonnock</sup>

#6 from mouth of Pass ~~near~~ <sup>near</sup> ~~the~~ <sup>the</sup> ~~mouth~~ <sup>mouth</sup> ~~of~~ <sup>of</sup> ~~Pequonnock~~ <sup>Pequonnock</sup>  
below ~~the~~ <sup>the</sup> ~~mouth~~ <sup>mouth</sup> ~~of~~ <sup>of</sup> ~~Pequonnock~~ <sup>Pequonnock</sup>

#7 from Island Brook

see Satchell's letter

Bed no #7 = #3

B. fasciolaris Boryanum, det.

See Satchell's letter Feb. 22-90

Collected Feb. 16 '90. and

later in stream on

into east side of Berkeley

Mill Pond - higher up the

stream and near much

alcoholic specimens

Mar. 16 '90 - collected

in little bit of a stream

in

Mar. 23 - Collected

in stream crossing Park Ave.

Near St. in City

4-4-90 - see also

...

Bat. #8

Apr. 6-90 found a single  
found among N<sup>o</sup> 6 collected  
at outlet of the Little Pond  
near paper mill, below  
Factor Pond Dam.

Dichotomously branched  
Bat. vagum

Bar # 29

Found a single found among  
Bars, collected in Bruce's Park  
North of Rail way - Apr. 20,  
Beautiful bluish green.

Trichogones about this  $\text{O}$   $\text{O}$ .

See mount

Found in same collection one additional  
small found sent to Satchell

Satchell says

probably ~~Bryum~~  
may be *matricaria*.

Bar # 10

Bruce J. Gamm  
at P. O. Box 1, W. 20-90

# 11 —

1872

May 11 - Collected in the little  
stream running through swamps  
near old quarry. B. G. G. G. G. ?  
with Prof. N. N. N. N.

Schubert writes that  
it appears to be B. G. G. G. G.

See # 21

Distributed as B. G. G. G. G.  
in Phosphenes in 1872



All specimens of all Algs  
hereafter enumerated on the  
plan explained by Setchell  
as that of Prof. Collins

Sunday May 18 - 1893

"Fresh Pond" (very brackish  
Stratford, Conn.)

12 - Cladophora Ruxolpinna, Ag.  
abundant in lower str.

13 - Cladophora ?

also abundant in lower str.  
+ on grass along  
sent to Harvard for determination

14. Monostroma laticornis Setchell  
at lower end of the pond in a small  
arm.

My determination in Empedocle  
Harlow + Setchell's. Heretofore  
reported from Canada + Europe

see Setchell's letter  
dated May 1 - 93

May 15- '90 - continued.

From small stream running under  
R.R. a little way east of  
Storford Depot.

15. *Batrachium* *coriulaceum*, Suck  
+ perhaps *virgatum* (all <sup>1</sup> sites)

16. Bat. *Bryarium*  
from same stream.

Sunday May 25

Fresh Pond - Storford

17. } *Frantepohlia virgatula*, (Norr) <sup>Wardlaw</sup>  
*Chantamiae* " " (") <sup>Thurck</sup>  
+ *Ruppia anaridima*.

18. *Thurstonia* <sup>Elford & Smith</sup>  
*quadrivittata*, (Fitzg.) <sup>Wardl.</sup>  
(= 14)

All *Ruppia*, *Elgona*, *sedg* a *sedg*  
and anything appearing in case of  
all the same.

Founds of all sizes up to nearly  
2 ft long - some with a foot or more  
Some small ones with ...

May 25 - Continued

19. *Cladophora Rudolphiana*, Ag. (=12)

20. " (=13)

May 26 - 90

21. Bat. *Cochlearia* (=11)

collected in same spot as on

see Sect. 116  
VI-9-90

May 11 - Hunted the stream  
a long way. Could find none  
except in the one spot  
with shade of a bank.

22. Bat. *Pyramidale*, Sida

with *acrop*

~~*B. moniliforme* var. *typicum*~~

Island

23. Bat.

Island

23 belongs to station "Varto"

24. *Jurmeiya flavicollis*, Sida

*Pegon* var. *Rosa*

Sunday June 1st '90

25. Glossophonia capitata, Penn.  
floating at Long Beach

26. Chlorella sp., Süss.  
on stone - Long Beach

27. Chlorella sp. (Diller) King.  
on pebbles - Long Beach

28. Cladophora

on rocks - Long Beach

---

Saturday, June 7, '90  
Cook's Point, West,

29. Cladophora

in marsh pools

---

30. Cladophora  
on pebbles and on rocks

Monday, June 8 - '91

21. *Oscillatoria* ~~fraxinea~~ <sup>supra fusca</sup> ~~Ridg.~~ <sup>Christ</sup>  
Quick water of stream in strath.

22. *Oscillatoria subsp. n.*

Coating stones in swift water  
of F. Burnhill River.

Saturday, June 14<sup>th</sup> 190  
Seaside Park

33 - Enteromorpha curvula (Ag.) J. Ag.  
on rocks between tides

34, Ulva albida (Kütz.) J. Ag.  
in pools in rocks + shallow water

35. Enteromorpha

36

Ulva

Sunday June 15 - '90

Stratford Shoals Light  
(Middle Island)

37. Cladonia irra lanosa  
var. uncialis?

38. Bolus sp.

39. Porphyra, Chondria virgatula } etc  
on Chondria virgatula

---

39. Porphyra

40. Bat.

(Bat.) Island Brook

41. Dicranella fluvialis  
Pegnumick River

42. Cladonia

8

Sunday, June 24, 1892.

43: Spirulina

Pond below Foster's Pond  
where Setchell found the same, VII-  
last year

44: Inomya fluvialilis

Island Brook - New Station!

45: Lemanea fusca Bory  
var regida  
Island Brook



July 4 - 1890

46. *Alphina gracilis*?

<sup>1 found</sup>  
in ~~pebbles~~ and on all grass etc  
above about water

47. *Interimpha* —

48. *Corium Odontantoides*

This floats in sheets of various sizes  
up to several feet in diameter  
on the Marsh pond on  
Point when there is water  
enough - when it dries  
it forms a crust on the  
bottom, it contains  
many small - *Lynghya aculeata*

Sunday July 6 - 90  
Great Falls of St. Lawrence

49. *Chara fragilis*

in the Great Pool below Lewis's Leap  
Great bed of it - founds up to  
2 feet in diameter in length.  
This early for growth

50. *Oscillaria*

found in the Great Pool  
+ in the Great Pool  
found in the Great Pool

51. *Phormidium* *parvum*, Gomont  
fide Gomont

found in the Great Pool  
Just above the Great Pool

Sunday July - 13 - 90

52. *Callithamnion Borreri*, Ag.  
Penfield Reef

53. *Dasya elegans*, Ag.  
Penfield Reef

54. *Callithamnion Baileyi*, Ag.  
Penfield Reef

55. *Gomnellia Americana* (Ag.)  
Fairweather

56. *Callithamnion*  
Fairweather

57. *Dasya* [unclear], Ag.  
Penfield Reef

July 15 90

58. *Cladophora striatula*

Fair weather sea and  
growing on water surface  
below low water.

Sunday July 20 90

59. *Cladocystis roseo-jeracina*

On *Cladophora siphon* and  
in the water and in the sand  
beneath - in brackish pond  
at the Point - Point

60. *Lyngbya aestuarii* Liebm.

Finding dense strata of  
this in brackish pond  
at the Point - Point

61. *Cyrtia*

forming dense mats on soil, or  
mossy hollow between trees.  
Cort. 13 ft.

62. *Enteromorpha*

*intertexta*

63. *Ceramium strictum*

64. *Fucus* *socialis*

Peppercorn Bay, Port Fairy  
Sand Bay

65. *Callithrix*

Island Bank, Port Fairy  
Cort. 13 ft.

Friday, July 27

Sea Island

66. *Sargassum*

67. *Chondria*

68. *Sargassum*

69. *Callithamnion Borreri*

70. *Polydora variegata*

71. *Chondria*

72. *Ceramium*

73. *Gracilaria*

74. *Gracilaria*

75. *Ceramium*

Aug. 2 - 1890

at S. M. Hart's

76 - *Strophocarpus* sp.

77 - *Hesperis*

78 - *Cladonia* sp.

79 - *Strophocarpus*

80 - *Hesperis*

81 - *Strophocarpus* sp.  
on ground

82 - *Strophocarpus*  
on ground

Aug 2 - 90 Entom.

83: *Ch. Godea glauca*  
mostly with parasitic *Godea* -  
siphon.

84: *P. trichosperma* *Godea* *trichosperma*  
in siphon of *Godea* *trichosperma*  
found in water near *Godea* *trichosperma*  
water near *Godea* *trichosperma*

85: *Godea* *trichosperma*

" " " "

86: *Godea* *trichosperma*  
mouth of siphon *Godea* *trichosperma*



Aug 3 - 90

87 - *Laminaria longicollis*  
*Phaeodactylum* *gracile* *adhaerens*  
Somes - ...

88 - *Laminaria* - ...  
floating *Somes* ...

mesobry

Aug 5 - 90

89 *Mitella* ... 10/21/90  
2 1/2 ft in Long. ...

Aug 6

Monday

90, *Laminaria* *lucida*  
outlet of ...

*Conferva* ...

*flexilis* ... 10

90 *Sargassum* *mamillosum*, ag. (S. 6' ...)

v 96 - *Imagosa* —  
shrub, from same place — " 200 3  
in swift water.

v 97 - *Chrysomelid*  
*Chrysomelid*

Monday May 7 - 90

v 98 - *Chrysomelid*, *Chrysomelid*  
in water, near bridge

*Chrysomelid*

v 99 *Chrysomelid*  
v 100 *Chrysomelid*

with *Chrysomelid*



✓ 122. *Chromolaena odorata*

✓ 116. *Antea*  
in *Sagittaria*

✓ 117. *Antea*

✓ 118. *Antea*

✓ 119. *Rivularia atra*  
in water-filled *Sagittaria*

✓ 120. *Antea*

✓ 121. *Antea*  
growing on *Hessacium*

✓ 123. *Calothrix*

2005 - ...

✓ 117. *Ralfsia* *diffinens*

✓ 118. *Ralfsia* *crucata*

✓ 119. *Ralfsia* *leucosticta*

✓ 120. ~~*Ralfsia* *pusilla* (Strong) Foster~~

~~Collins~~  
Collins  
VI-8-91  
+III-5-93

on *Leptocarpus* ...

✓ 121. *Cladonia* *... ..*

on rocks in low ...

✓ 122. *Ralfsia* *crucata*, J. Ag.

in ...

✓ 123. *Ralfsia* *... ..*

✓ 124. *Ralfsia* *... ..*

✓ 125. *Ralfsia* *... ..*

Sunday, Aug-10-'90

- 126 - Layer from base of oil dump  
by the rock from Duba  
nonzi - containing besides  
Rhizoclema - *intertextura*  
*Lynxbya aestuarii*  
*Isocellaria subuliformis*  
*Microcoleus chthonoplastes*  
*Vanoderia Thumelii*

- 127 - *Fucus platycarpus*, Thwaites  
abundant on rocks near the  
shore of Somoa Sound, near Hotel Verge

128. *Chroococcoides polyphosphae*  
on *Polyphosphaea fastigiata*.

Monday Aug. 11 - 1882

✓ 129. *Boninia fusca-purpurea*, Lyngb.  
In rocks between tide marks at  
point east of Seal Harbor.

✓ 130. *Glaucosiphonia capillaris*  
In tide pool at Seal Harbor, east of  
Bracy's Cove.

✓ 131. - Scrapings from rock, at point  
east of Seal Harbor.

✓ 132. Turf containing *Vaucheria* *hirsuta*  
*Dicranospora* *hirsuta*  
*Lyngbya*  
from bank south of Seal Harbor  
west of Bracy's Cove.

✓ 133. *Cladophora sphenocarpa*  
from Lyngbya matting in Bracy's Cove.

Tuesday, Aug. 12 - '90

133. *Trantophila virgatula*, var. *tricolor*  
erect, old found of Alaria  
at sea wall.

*Chaetomorpha* *...*, *...*  
see below *...* 1903

135. *Arumum cooperi*  
on sea wall, Sea Wall

136. *Calothrix* *capitata*  
Sea Wall

137. Scrapings of *Verrucaria* (a lot)

Sea Wall.  
This when scraped from the rock  
and put into sea water becomes  
fibrillated. The brown mud or  
dark sediment is formed.

138. *...* on sea wall

139. *...* sea wall



Wednesday Aug. 13 - 90

140. *Enallagma albuginea* (Zett.) Shuck<sup>\*</sup>  
thin coating on *U. russellii*  
S. W. Harbor \* so thinks Mrs Collins  
see his pic. Aug. 31 - 91  
and I agree

141. *Lyrebya aestivaria*  
on mat of *Lygostemma*

Thursday Aug

Friday Aug

Bridgwater, Somerset, August 4 '90

143. *Limnoria tenuis*, Ag.  
floating tide ground  
in

4. *splendida* Grav. <sup>Ag.</sup>  
~~limnoria~~ ———— <sup>Ag.</sup> Grav.

in bed of *Pygospio*  
in tide pool with many  
small shells.

145. *Chaetophora sordidifolia*  
Pom. below

6. *Sphaeroceros* (Ag.)

in tide pool

Aug 31

147. *Hymania pulvinata*  
tide ground

in tide pool  
near water

Road

Sept. 14 - 93

148. *Callitriche* *pubescens*  
in *Callitriche*  
Track Pond

---

Sunday, Sept. 21

at Middle Ground light  
smaller island with Dr. Wilson  
on the "Dufflex" - changed to  
Milford Point where we landed

149. *Sphacelium* *reconditum*  
in rocks between islands  
at Middle Ground light

150. *Callitriche*  
collected near the light

151. *Rhizanthus* *ripariorum*  
in rocks between islands

152. *Agropyron* *crepidinum*  
in rocks between islands

Sept. 21 '90

153. *Ceanothus scopulorum*  
on Rocks at Middle Point

154. *Berium arachnoidum*  
on ~~rocks~~ <sup>of Knap's Haven</sup>  
Milford 3 inch

155. *Ceanothus cristata* etc  
in small woods near  
Middle Point

156. *Callitriche*  
common on drained ponds  
& *Callitriche cristata*  
grows up near the light

*Callitriche*  
grows in the woods  
near the light

Sunday Sept. 26

158. *Scilla*

- 143)

*fruticosa*

Pool near *Scilla*

159. *Scilla* *fruticosa*

22 *Scilla* in island *fruticosa*

160. *Scilla*

Below dam

*Scilla* *fruticosa*

Sunday Oct. 5

161. *Scilla* in *Scilla*

100-55 ft.

West *Scilla*

162. *Scilla*

Scilla abt 15 ft  
West *Scilla*

West *Scilla*

163. *Scilla*

= 159

Sund on Oct. 5 - 1890

164 = 158 = 143

Oscillaria ~~sp.~~ ? tenuis

Same place as 158 & 143

165 • Batard ~~sp.~~ dimiliforme  
var. chlorocephala, n. sp.

On stones in the little side stream  
of Bonhomme's spring below  
bank of Factory Pond.

The first Bat. I have found  
there this season - could see  
none a week ago.

Sunday Oct. 12 '90

166 • Plectonogygia halleyi

Small atrophic form - pale

var. halleyi sp. nov.

Found on stone in stream

Drift stream below

167 • same place - 166 - young specimens  
in water

Sunday - Oct. 19 - '90

168. *Synsphyra acuticollis*  
Barrett-Kiskunda & Clarke St.  
Portland

169. *Bostrychia rivularis*, Harv.  
on base of *Spartina*.  
Laticornia & in Husons

170. *Lelesseria Leprieurii*, Mon.  
growing with the *Bostrychia*, above.

---

Sunday Oct 26 '91

171. *Synsphyra rivularis*

Among which are occasional groups  
of *Lelesseria* *iii*, etc.

Up near high water mark where the  
stems of *Synsphyra* are a little larger  
group stems *iii* together mostly in  
the center of *Spartina*, on the  
left by the retreating tide fine *Lelesseria*  
stems *iii* are seen.

of these plants, and sometimes the  
 bottom of the sheath of *Spartina*  
 and occasionally a little bit of  
 grass, are covered with a fine  
 web of *Borrichia* among which  
 are scattered fronds of *Descurainia*  
*Leprieuxii*,

172. *Descurainia Leprieuxii*, Nutt.  
 (Mica me mts.)

173. *Descurainia Leprieuxii*  
~~Washed at home - Bhatara~~

*Descurainia Leprieuxii*  
 (Mica me mts.)

174. *Descurainia Leprieuxii*

175. *Descurainia Leprieuxii*

see 171 + 172



Sunday Nov. 2 - 1908  
East Side Park - Boston

176 - *Chabionia tenera*, Ag.  
on alveolar side

177 - *Sphaerocarpus radicans*, Newb.  
Forming tufts on tiny bottom  
between tide marks

178. *Peranimum*  
*Tetrastemon* ~~ditum~~ <sup>ditum</sup> ~~ditum~~  
of branches

179. *Heterobryonia rosea*

*Peranimum* *elegans*  
in minute ~~tufts~~ <sup>tufts</sup> ~~tufts~~  
among *Sphaerocarpus* ~~tufts~~

Saturday Nov. 5  
Crescent Pt. - Boston Harbor

180 *Gracilaria pinnatifida*

181 *Dilsea* *Lobelia*

181<sup>a</sup>

"

" + *B. setigera*

Dunday Nov. 16 - 9

✓ 152 - July 1884 <sup>planta</sup> ~~planta~~ Antz

Béna ~~planta~~ ~~planta~~

P ~~planta~~

✓ 153. *Chamaecrista* *Harmanni* ~~planta~~

P ~~planta~~

P ~~planta~~

P ~~planta~~

P ~~planta~~

P ~~planta~~

P ~~planta~~

bullet ~~planta~~

having ~~planta~~ on sticks <sup>sticks</sup> ll

✓ 157 ~~planta~~ ~~planta~~

growing with ~~planta~~

~~planta~~ ~~planta~~

five ~~planta~~ below ~~planta~~

Saturday, Nov 21

Sea-side Park

189 = *Callithamnion Rothii*, Lyngb.  
young plants forming colonies  
nearly opposite each other

190. *Cladophora*

On stone in shallow water  
kept at low water  
during the day

Sunday, Nov 22

191. *Fragilaria lanata*

Pequannock River, New Jersey  
on rocks

192. *Sargassum Cincinnatum*

72 West

193. *Charophora*

Six

Below

at

Sunday Nov 23 - 90 continued

1194. *Tetrastroma bullroga*  
side stream of *leg. ...*  
below Tracy Pond  
On *St. ...*

1195. *Tetrastroma* ...  
var. *knob ...*  
same place as above

1196. <sup>(10)</sup> *Batrachosporium* *l. Bryophorum?*  
~~*l. Bryophorum?*~~  
outlet of pond below Tracy Pond

1197-182 *Batrachosporium* *multiforme*  
side stream of *leg. ...*

1198-186 (same as 1197)

Thanksgiving Day  
Nov. 27 - 1890

✓ 199. *Tetracera* *crumena*

Growing on stones directly, in  
side stream of the river below  
Turkey Flat Camp, western  
stream side for 80 yds. the  
length of 2 ft. or more

✓ 200. *Chaetophora subincolata*

in stream in vegetation of  
down stream from camp

✓ 201. *Bat.* *montana* var. *...*  
side stream by 12

✓ 202. *Bryopsis*  
side stream by 10 on stone

✓ 203. *Scapanella* *...*  
side stream by 10.

Sunday - Nov. 30 - '90

✓ 204. *Batrachospermum vagum*  
on a stick in pool below  
factory Pond

✓ 205. *Chaetophora endrioides* in  
side stream of Pig. Creek Run

206. Bat. *Bryum*  
side stream P. Run

✓ 207. Bat. *moniliforme*  
var. *californicum*?  
Side stream P. R.

✓ 208. *Tetrastroma lacustris*  
side stream P. R.

✓ 209. *Batrachospermum* var. *...*  
side stream P. R.

✓ 210. *Batrachospermum* var. *...*

Sunday - Dec. 7 - 1890

✓ 211. *Charitophora Endiviacifolia*  
side stream Pg. River

✓ 212. Bat. *Boyanum*?  
outlet of Pool below *Harat* Pond

✓ 213. Bat. *M. lily* - or *chlorum*?  
outlet of above ponds.

214. Bat. *ragnum*  
Pool below *Harat*  
on a stick - in still water

✓ 215. Bat. *M. lily* or *chlorum*?  
Side of *Harat* Pond.

*Charitophora lanata*, *lily*  
Side of *Harat* Pond

Sunday Dec. 14 - 90

217 - *Chaetophora endimiacifolia*  
Side-stream, Pq. Rivier

218. *Batrachium vagum*  
on stones in Pool below Factory Town

219. *Psilidium*  
Pool below factory, near  
in shade in still water  
stones in running water at  
mill

~~220. *Batrachium*  
in stream  
at foot of mill~~

221. *Batrachium*  
in stream  
stream of factory

222. *Tetrarhiza* (bulla)  
Side stream



Sunday, Dec. 21 - 90

✓ 223. *Chaetophora imbricatula*  
Side Stream Pg. River

✓ 224. *Batrachospermum vagum*  
Pool below Factory Pond

✓ 225. *Bat. moniliforme*  
near above  
outlet of above pool.

✓ 226. *Bat. moniliforme*  
near above  
Side Stream Pg. River

✓ 227. *Bat.*

(1910, U.S. Ill.) ♀  
Side Stream Pg. R.

✓ 228. *Bat.*  
Side Stream Pg. R.

Thomas - 1890

229. *Saxya elegans* (Kintzing) <sup>Wilmington</sup>  
SS Park

230. *Phyllis laevia*  
SS Park

July 4 - '91

231 - *Ceramium Capri-donum*  
Washed ashore with *Zostera*  
Baptist Station

232. *Ulva* *irriguosa*  
on rocks near *Zostera*  
Baptist Station

233. *Leptothrix*  
retrocarious filaments on  
rot carpus - butter of  
yellow mill pond  
the bridge.

234. Same collected - Jan 10

Sunday Jan 11 - '91

235 *Bat. virginica*  
Pool below Fitchy Pond

236, *Asplenium adnigrum*  
Pool below Fitchy Pond

237, *Chaetochloa endiviacifolia*

side of pond  
below Fitchy Pond

Friday, July 12 - 1891

238. *Callithamnion Baileyi*  
Floating - Shore of Sea Side Park  
Bordy Point

239. *Callithamnion Americanum*  
Shore of U.S. Park

240. *Callithamnion*  
on rocks at high tide  
SS Point

241. *Porphyra*

242. *Polysiphonia arceutata*  
var. *formosa*

Sunday Jan 25, '91  
Shore of Sea Side Park

✓ 243 - *Callithamnion Americanum*

✓ 244 - *Callithamnion Baileyi*

✓ 245 - *Cladophora arbuscula*

---

Sunday Feb 1 - '91

Pool below Fractory Pond

✓ 246, *Isaoparmelia glomerata*

✓ 247. *Batrachium* - *regnum*  
In strokes

✓ 248. *Psar. Porrogamum* } In strokes

✓ 249. *Ulothrix* } in *Ulothrix* -  
cutting of 1902

Feb. 14 '91 (Saturday)

250. *Parthenocera*  
S. S. R. 10

251. *Callitarsus*  
S. S. R. 10

Sunday Feb. 15 '91

252. *Bat. Boyanum*

253. *Bat. virgatum*  
forma *hiemalis*  
Brook - where swept by R. R.  
Stralford

Sunday Feb. 22 - 41

Sensive Park

✓ 254 - *Tophya*

✓ 255 - *Cladophora arcta*

✓ 256 - *Ulothrix isogona*

Saw plenty of *Muricea gonialis*

also found among a little

*Callithamnion Rothii* scraped  
from a rock, a few *tetrasporic*  
fronds.

Sunday March 1 - 91

257. *Dubautia glomerata*

Pool below Factory Pond

258. *Baobabium*

Pool below Factory Pond

259. *Baobabium*?

on sticks in still water  
upper part of said pool

260. *Baobabium*

On sticks in running stream  
outlet of above pool

261. *Baobabium* var. *...*

On same site as with *B. Baobabium*



Saturday Mar. 7 - 1911

Cooks Hill

- ↓ 262. *Monsterna*  
in Marsh Pools on Shale etc.
- ↓ 263. *Scytosiphon lomentaria*  
Marsh Pool
- ↓ 264. *Ulothrix* flamma in Ponds
- ↓ 265. *Ulothrix* *argyrea*  
on Rocks below Bridge  
of Yellow Hill Pond

Sunday March 1904  
Seaside Park

266. *Cladophora arata*

267. *Callithamnion Americanum*

268. *Monostroma gracile*

269. *Rhodochorton Rothlie* ⊕

Sunday March 15

270. *Bat virgatum*  
Island Brook

271. *Bat. Bogyanum*  
Island Brook

272. *Bat. Bogyanum*  
Outlet of Lake Umbagog

273. *Bat. pygmaeum*  
On Stones  
Side stream of Umbagog River  
near Factory and Dam

274. *Bat.*  
On Stones  
side stream as above

Sunday Mar 22 - '91

Ash Creek - below Sals Mill

275. Bat. Bryannum

276. Bat. virgatum

277. Bat. (cont.)

278. Bat.

found in the little on - tree -  
bat. am

Chrysomelids

279. Monastroma Gzviliei

280. Ulotiniis isogma (below Yellow Mill  
Milligan)

281. - Ascaophyllum Shaktai

Good Friday - Mar. 27 1911

282. *Entomopha intestinalis*  
Frax. ~~and~~ *Stomatopha*

283. *Bat. Boryanum*  
~~and~~ *Stomatopha*  
by R. D. C.

284. *Bat. Boryanum*  
same as above

Mar. 29 '91 (Easton)

285. Lemanea

Stillman's Brook

286. Chaetophora indurata

van Drapenades

Stream in Swamp

west of Stillman's Brook

287. Fetrastrea lubrica

the above stream

288. Zyrene

on a stream of the same  
Lemna

289. Bat. rotundipennis  
Side stream of Peguon  
River - below Pong Pong  
stream - (Batlet lat as set out)

290. Chautauquei Hermannii  
Side stream of Peguon  
on old grass leaves in  
Peguonok River

291. Bat. nigra  
Island Bank

3rd

Cosbula?

Pool from ...

Dist. ...

293 - Phyllitis, asaria  
var. caesia  
on ...

(with ...)

Sunday Apr. 5 - 91

294. Phyllitis caesia var. caesia

...

295. Dicranella ...

...

296. Polypodium ...



Apr. 5. Continued

↓ 297 - *Tricus* *sp.*  
S. S. Park

---

3000 ft. alt.

S. S. Park - Park B

↓ 298. *Urophora* *sp.*

↓ 299. *Dromacelia* *sp.*

↓ 300. *Phaenocarpa* *sp.*

↓ 301. *Calliphora* *sp.*

↓ 302. *Phytomyza* *sp.*

↓ 303. *Phytomyza* *sp.*

S

125 *Dichroanthus ferrugineus*  
in *Phyllites* ...  
in March woods

130 *Pindacis* ...  
C. K's

*Phyllanthus* ...  
for Mr. Collins - C. K's

135 *Phyllanthus* ...  
C. K's

130 *Phyllanthus* ...  
C. K's

135 *Clatophora* ...  
C. K's

130 *Phyllanthus* ...  
C. K's

Sunday Apr. 20  
u. Fresh Pond - Stratford

310. Monostroma latissimum  
at the outlet

311. Enteromorpha intestinalis

---

Sunday May 31

312. Dictyosiphon foeniculaceum  
Cooks Pond - Stratford

Collins thinks this is

Dictyosiphon (Coelocentrum) foeniculaceum

See his letter of Oct. 21 - 90

Saturday May 9 - '91

Seaside Park

313. *Dromarctia* *redii*

314. *Cladophora* *arota*

315. *Halidryplumbica* *parvifolia* Pike  
~~*C. elochista*~~ in Rib. N. N. N.  
on ...  
in ...

316. *Ulva* *linza*

317. *Polysiphonia* *negunda*

318. *Polysiphonia*

319. *Cladophora*

on stones in shallow water

*Yendoia* *diffusa*  
in ... with ...

Sunday May 10, '91

"Fresh Pond"

✓ 321. *Mnemonema latissimum*

✓ 322. *Cladophora Rudolphiana*

---

Sunday, May 17 - '91

Sensitive Pond

✓ 323. *Dromacrotia viridis*

✓ 324. *Halimolobos lamellosa*

on *Zostera* with *Limnolobus* ~~viridis~~

✓ 325. *Cladophora* = 319

on *Syrinx* in ~~pond~~ ~~pond~~

✓ 326. *Polysiphonia nigrescens*

✓ 327. *Leathesia difformis*

Wednesday, May 20 '91

Seaside Park

328. Halothrix lumbicalis

329. Cladophora  
= 325

330. Enteromorpha Linza

Saturday, May 30 '91

"Fresh Pond" - Stratford.

331. Cladophora rudolphiana  
on pebbles

332. Sclerocarpus  
in grotto + rocks

333. Himantozoa laticarinata

334. Spirulina tenuiserrata or thurillii

335. Oscillaria tenuiserrata?  
The last two together on surface with P. laticarinata

336. Enteromorpha laticarinata

Sunday, May 31 - '91

Seaside Park

✓337 - *Cladophora*

= 329

on stems in herb stems lacerated

✓338 - *Polysiphonia maculata*

Sunday June 7

Crooks Point

✓339. *Sphaerocysta Carmichaelii*, Kütz.

on mud in margin of pond

✓340. *Sphaerocysta Carmichaelii*

in clade in pond  
Brockton Pond

✓341. *Lynceya aestivaria*

Brockton Pond

✓342. *Sphaerocysta Carmichaelii*

" "

" "

Carmichaelii

Saturday June 13-91

Crook's Point

343. *Clathrocyathus roseo-purpureus*  
Prussian Pond

344. *Lyngbya aestivaria*  
same kind as above

---

Sunday, June 21, 91

345. *Setohella Spruella*  
Pool below Factory

346. *Nitella flexilis*

In the above pool and in the  
running water of the outlet.



Saturday, June 27 - '91

Still River Station (Lampsville)  
Great falls of Lampsville

1347. *Cladophora collisoma*

In stones in debris below waterfall

1348. *Chaetoceros* *viridis*

on Lemanea, same place as above

1349. *Cladophora* *formata*?

In stones in swift water  
just below the dam at  
Sleep Mill.

1350. *Lemanea*, *caerulea* sp.

on *Lemanea* *viridis*  
on rocks in the natural dam - at  
the foot.

Saturday July 4 - '91

1351. *Cladophora* *gracilis*

In stream at foot of dam

1352. *Cladophora* *formata*?

on rocks in stream

1353

*Cladophora* *formata*?

Sunday July 5 - 1891

354. *Stigmaria mamillatum*  
on damp rocks in mill-race  
(near Camp Hill road)

355. *Stigmaria*

Same place as above

Monday July 6 - 1891

356. *Stigmaria*  
- 351 -

357. *Stigmaria*  
- 352 -

358. *Stigmaria* (a)  
- 353 -

Sunday, July 12 - 1  
Seaside Park - 3 hort

✓ 359 - *Crasium striatum* <sup>1</sup>  
in sand on rocks etc

✓ 360 - *Crasium rubrum*  
var.

✓ 361 - *Crasium* ~~sp.~~  

---

✓ 362 - *Clathrocybe* ~~sp.~~  
In H - 11  

---

Wednesday, July 15 - 1

✓ 363 - *Crasium striatum*  
= 359 - in water etc

✓ 364 - *Crasium* ~~sp.~~  
= 358: 359 - same

Sunday - July 19 - 1971  
C. F. K. B. P. M. 1

1365. *Lasiacis*

1366. *Cladophora gracilis?* = 35-2 = 357

1367. *Polysiphonia variegata*

1368. *Cladophora* (C)  
on substrate

July 19  
on substrate

Thursday July 23

on substrate

1370. *Gracilaria americana*  
Leathery

1371. *Gracilaria*

1372. *Callithrix*  
Leathery

1373. *Polysiphonia variegata*

1374. *Cladophora*

1375. *Cladophora*

Saturday July 25

Cork Co.

375. *Quercus ilex* L.

377. *Polygonum aviculare* L.

378. *Cerastium arvense* L.

379. *Urtica dioica* L.  
one timber at St. John's

Sunday July 26

380

381. *Urtica dioica* L.

382. *Urtica dioica* L.

July 26

383. *Urtica dioica* L.

Sunday July 21 - 1911

✓ 384. *Grinnellia* sp.  
on shells from the [unclear]

385. *Graya elegans*  
Same place as above

386. *Polysiphonia* sp.  
Same place as above

Friday, July 21 - 1911

Sea Side Park

387. *Grinnellia* sp.

388. *Graya elegans*

389. *Polysiphonia* sp.

Sunday May 5  
Pencil Run

390. Callitris - 2000  
+ 1000  
+ 1000

391. Callitris - 2000  
+ 1000  
+ 1000

392. Day 4/4/00

Thursday August  
Pencil Run

393. Day 4/4/00

394. Callitris - 2000  
+ 1000  
+ 1000

395. Callitris - 2000  
+ 1000  
+ 1000

Saturday Aug. 5 - 1911  
Sausal Park

1896 - *Dasya elegans*

397 - *Polypodium*

... - *Gymnadenioides*

... - *Asplenium*  
...  
...

...  
...



Sunday May 9

Creek N. of the 3rd

401 - *Darya nigra*

402. *G...*

403. *Chama...*  
near Barlyana  
in stones in the  
river

Wednesday May 12

404. *Ginnellia* *Am...*  
in the gut

405. *Darya nigra*  
same stones as above

406. *Chama...*  
near Barlyana

= 403

Sunday Aug. 16 - 1911

1911 - Bar. 1.00

Not much of anything to report  
on other side

1.00 - 1.00  
1.00 - 1.00

1.00 - 1.00  
1.00 - 1.00

1.00 - 1.00  
1.00 - 1.00

1.00 - 1.00

1.00 - 1.00  
1.00 - 1.00

Smithsonian Institution  
Washington, D.C.

1911. [illegible]

[illegible]

Monday [illegible]

1913. [illegible]

1914. [illegible]

1915. [illegible]

1916. [illegible]

At the mouth of the  
Creek

417  
= 412

Monday - day  
long

↓ 415  
on stones just below  
low-water mark

↓  
Thickets on sandy flats  
about low-water mark and  
a little below

Sunday - Aug. 23 - '91

↓ 420. *Strophora rhizodes*  
see 419

↓ 421. *Chondrobia tenuis*  
see 418

↓ 422. *Chondrobia flagelliformis*

↓ 423. *Gracilaria*

---

Wednesday, Aug. 26 - '91.

Seaside Park

↓ 424. *Polysiphonia variegata*

↓ 425. *Rhabdonia tenuis*

↓ 426. *Gracilaria*

Saturday Aug - 29 - '91

Cook's Point

427. *Grimellia Americana*

428. *Dasya elegans*

429. *Cladophora*

(= 412 + 417 and form  
same pool)

This *C. elegans* appears  
to collapse when taken  
from the water but the  
fronds stand out stiff  
like bristles. I see no  
tendency yet for the  
fronds to elongate and  
form expansions.

430 - *Lomentaria uncinata*

432

... in the form of        - common?  
curved branchlets just starting  
out. - on Zosteria

Saturday Aug. 29 - 21

+ Sunday Aug. 30

431 - *Ulothrix parietina* (Kütz.) Kütz.?  
on bark of tree - distant tree  
Pembroke St. - Bkmt.

432 - See foot of previous page

Wednesday, Sept 2 - 21  
Flats on eastern side of  
Pembroke Harbor north of  
Pembroke St.

433. *Grinnellia americana*

434. *Halobionta tenuis*

435. *Grinnellia americana*

436. *Champia parvula*

437. *Grinnellia americana*

438. *Polysiphonia* *arctica*

439. *Grinnellia planata*

Monday - Sept. 7-91

"Fossil Point" station

5440. *Lyngbya aestuarii*

5441. *Lyngbya aestuarii*

---

Wednesday, Sept. 9-91

Stratford Point

5442. *Lyngbya aestuarii*

5443. *Lyngbya aestuarii*

5444. *Lyngbya aestuarii*

in stones

---



Saturday, Sept. 12 - 1914

1445. *Cyrtopogon* <sup>capitulum</sup> ~~capitulum~~  
of <sup>attached</sup> ~~attached~~ <sup>to</sup> ~~to~~ <sup>the</sup> ~~the <sup>rock</sup> ~~rock  
Pond.~~~~

1446. *Chaetopogon* <sup>capitulum</sup> ~~capitulum~~  
Side stream of <sup>the</sup> ~~the <sup>Rock</sup> ~~Rock  
River below <sup>the</sup> ~~the~~ <sup>Rock</sup> ~~Rock~~~~~~

1447. *Chaetopogon* <sup>capitulum</sup> ~~capitulum~~  
in above stream

1448. *Chaetopogon* <sup>capitulum</sup> ~~capitulum~~  
in stream in above stream

Sumbon, Sept. 13-1891

Sea Side Park

451. *Limonium* *...*

1150 *...*

452. *...*

452. *...*

on *...*

453. *Rhabdium* *...*

454. *...* *...*  
on *Rhabdium* *...* July

455. *...*  
in *...* *...*

501 *...* *...*

Tuesday - Sept 15

Cook's Point

457. *Gyiffithsia* *B...*  
Among ...

458. *L...*  
On a ...

Thursday, Sept 17

459. *Cylindrus* *...*  
- cool ...  
see 455

460. *M...*  
see ...

461. *S...*  
see ...

462. *L...*  
see ...

463. *L...*  
see ...

W. H. ...

Callitriche

Callitriche

466. Callitriche

467. Polysiphonia

468. Ceramium

Callithamnion

470. Gratulata

nearby - soft -  
dry beach

472. Callithamnion

473. Callithamnion

474. Lomentaria

475. Rhodoglossum

Sunday Sept 27

Went with Dr. [unclear] to

[unclear] [unclear] [unclear]

See

at [unclear] [unclear] [unclear] [unclear]  
[unclear] [unclear] [unclear] [unclear]  
[unclear] [unclear] [unclear] [unclear]  
of [unclear] [unclear] - [unclear]  
[unclear] [unclear] [unclear] [unclear]  
abundant [unclear] [unclear] into  
[unclear]

Sat, Oct. 3 - 71

[unclear]

476. Callitriche

477. Arctostaphylos [unclear]

478. Polygonum [unclear]

479. Justicia

480. Fern [unclear]

481. [unclear]

482. Cal. [unclear] [unclear] [unclear] [unclear] [unclear]

1875 - Culm. ...

Sunday ...

same str.

Bought home a stone from  
said side-stream from ...  
than ...  
east ...

...

Sumner Oct 1 1891

1 suit to Charles  
with

1150 (1000 - 100) 1000

1150 1000

1150 1/2

1150 ch

1490 1000

Sat in 1911

Seneca Park

July 1911

472 - *Populus* var.

473 - *Abutilon* *terrestris*

474 - \_\_\_\_\_

*Abutilon* *terrestris*

*Abutilon* *terrestris*

*Abutilon* *terrestris*

*Abutilon* *terrestris*

476 - *Populus* *reflexa* var. *marginata*  
~~*Populus* *reflexa* var. *marginata*~~  
*Erigeron* *annuus*  
*Gonolobus* *segetis*



with occasionally a minute Chloridom  
moss (or Chromolaena) on Zostera  
with Ceramium etc. etc  
also on Polysiphonia nigrescens

497. Gnietrichum desm. } on Physalia  
+ Porphyra ciliata } nigrescens  
✓ 498 Callitriche

499 - Callitriche

Surf Scum Oct. 18-19

✓ 500. Polysiphonia curvata  
the white part in the  
below part of the sand

✓ 501. Calothrix Hantzschii  
on bottom of  
sand

✓ 502. Callitriche and Physalia

✓ 503 - Callitriche  
on sand

Sunday Oct 30 - 91

574 Enteromorpha

Scraped from rock just below  
Yellow Mill bridge - between 5th

575. Buettynia rivularis

Crakes unit -

Very scarce this year, noticed  
none till this day. It is  
very little.

Saturday Oct 31

at the beach

at the beach

576. Porphyra

on rocks in the bay  
at the beach

Banyia reflexa, Chant.  
var. major, Collins

See Collins's letter of 2.11.91

Sunday, Nov. 1, 1891

528. <sup>High</sup> *Calothrix* *longicauda*  
(= 502) on stones in cave  
near *Calothrix* *longicauda*

529. *Enteromorpha*  
= 504 & from same place

---

Saturday, Nov. 14

Sea side Park  
with Dr. W. C. Setchell

570. *Sphaerocera* *micrococcoides*  
on *Polysiphonia* *micrococcoides*

571. *Gangia* *reflexa*  
near Major, *reflexa*  
On *Phenacomena* *negressorum*  
& on *Genes*

572. *Fucus* \_\_\_\_\_

Sunday Nov. 15 - '91  
with Dr. W. A. E. Etchell

↓ 573. Calathrix -----  
on bark of dead sticks in pool  
below Hocking Pond

574. Dichothrix --  
(= 501 + 502)  
on stones in Pegnumose Run  
below Hocking Pond Dam

↓ 575. Chironomidia -----  
on stones in swift water,  
bed of Pegnumose River  
just below Trumbull line.

↓ 576. Frormya fluvialis '1  
In great abundance in Peg River  
near the old mill just above  
Trumbull line - at the falls.

Sunday, Nov. 22 - 91

517 - *Stigmodon*? sect 529  
In base of *Thryx*

518 - *Leptocarpus* *dissecta*?  
On grass, *Thryx*  
near *Thryx*

519. *Leptocarpus* *costalis*  
in *Thryx*

520. *Tetraneura* *bulbosus* var.  
on *Thryx* *bulbosus* var. *bulbosus* (1911)  
Prostrate form  
also on other water plants  
& on *Stines*

Thursday, Nov. 26 - 91  
Thanksgiving Day

521 - *Tetraneura bullosa*  
(= 520) *bullosa* <sup>var. *embryonaria*</sup>  
see 520

522. *Styrocolumma*  
= 517 see #529

*Styrocolumma tenue*  
forma nova  
Says Willd

523. *Leptocorona*  
+ *Leptocorona* etc.  
with one or two more  
kinds  
strongly willd.

Sunday, Nov. 29 - 91

524. *Artemisia* *Sonchifolia* L.  
In ditch by R.R.,  
Stratford.

---

Saturday - Dec. 5 - 91

525. *Tetradlea bullosa*  
<sup>var.</sup> *indica* W.  
Parrotts Farm.

---

Sunday - Dec. 6 - 91

526. *Bat.* *virginica*  
Parrotts Farm.

527. *Chaeophora* *indica* L.  
Stem by ditch by the  
Parrotts Farm.

528. *Dracopis* *indica* L.  
Same place as above.

Saturday Dec 12 - '91

529. *Stigeobolus tenuis*, Kütz.  
(= 522 + 517) <sup>name</sup> u.

Will use name *Stigeobolus*  
forma nova says Wille  
See Collins letter - Mar 13 - 99

---

Sunday Dec 13 - '91

↓ 530. *Gyrodinium cylindricum*  
*Gyrodinium Swartzii*  
ditto by S. K. Davis  
Stratford

531. *Chroococcoides*  
*Brevicoccus*

532. *Bangia reflexa*, Cham.  
var. *marina*, Gruber.  
on fronds, *Stigeobolus*  
*Callisphaera*, etc., etc.  
Sewall Park

↓ 533. *Heterothrix* *umbonata*  
with *Stigeobolus*  
S. Park

534. *Ectocarpus*: small *crocod.*  
minute - on fronds, with 532.

535. *Sphaerularia ciliata*, on fronds



✓ 536. *Ulothrix* *cruciatum*  
on various algae + mud covered rocks

Sunday, Dec. 20. - '91  
sencida Port C

537. *Phyllitis* *assida*  
on stones in tide pool

538. *Callithamnion* *Baileyi*  
*floratum*

539. *Gelidium* *confusum*  
On fucus - also growing  
on various other algae + on gullweed

540. *Cladophora*  
on top of *Sphaerocarpus* *californicus*  
near high water mark

541. *Bongia* *reflexa* - *Penicillium* -  
+  
on *Bongia* - not in alcohol.

Friday, Dec. 25 - '91

Seaside Park

542. *Ectocarpus confervoides* <sup>var.</sup>  
on *Spartina* <sup>at</sup> site, between 1160

543. *Ulothrix* <sup>var.</sup>  
on rocks (along tide)

Sunday Dec. 27 - '91

544 - *Calothrix fusca*, B. & G. \*  
on *Bat. vagans*

Pool below Factory Pond

+ see Setchell's ~~...~~

1-24-92

Sunday, Jan. 3 - 1892

Cork's Point

545. *Protosiphia rivularis*  
with *Dilesceria lepicornis*

546. *Phyllitis*

Stems, in water, in Swamp  
- large amount

Sunday, Jan. 10 - 92

547. *Phyllitis*

in soil Cork's Point

Sunday, Jan. 24 - 92

Slade Park

548. *Setchellia confertifolia* <sup>at</sup>  
(Faint) <sup>in</sup> <sup>Swamp</sup> <sup>at</sup> <sup>Slade</sup>  
Stems, in muddy ground

between trees

Sunday, Jan 31 - 92

549<sup>✓</sup> - *Asaphrodia glomerata*  
Pool below Factory Pond

530<sup>✓</sup> - *Asaphrodia plumosa*?  
Stems below paper mill  
at Factory Pond

---

Sunday, Feb. 7 - 92

551<sup>✓</sup> - *Asaphrodia plumosa*  
Same place as 530

---

Sunday, Feb. 13 - 92

552<sup>✓</sup> - *Asaphrodia plumosa*

553<sup>✓</sup> - *Chaetophora rudisifolia*

554<sup>✓</sup> - *Asaphrodia plumosa*

Same place as 552

Sunday Feb 28 '92

555. ✓ *Ulothrix* isograda.  
on rocks below yellow  
mill bridge

Sunday March 13

556. ✓ Bat. *Bryopsis*  
Pond by RR Stratford

Sunday March 27

557. ✓ *Monostroma* *Gravelleei*  
Sea Side Park

Dr. W. A. Setchell here.

Went to Stratford in the a.m.  
Collected mats etc.

Saw *Aphanochaete* *caudata*, with  
on *Hyalotheca vesicularis*.

Also what appeared to be

*Monostroma orbiculare* etc.

Zosteria, sea side park  
and around. Alga.

---

Sunday Apr. 3 - '92

Woodward

558. Ultharia implexa, Kütz  
mixed with Z. macro  
On rocks not far below  
high water

559. Callithamnion Andromeda

560. " " "

561. Rhodanthe Andromeda  
rare

562. Polysiphonia Andromeda  
rare

563. Polysiphonia Andromeda

✓ 564 *Spizella monticola*

565 *Melospiza cinerea*  
P. Marsh Creek

✓ 566 *Melospiza cinerea*

13

567. *Melospiza cinerea*  
P. Marsh Creek  
1911

Seaside Park  
↓ 568 - *Dicranota tenuis*

↓ 569 - *Adelphix lunulata*  
with *Pinatura* etc.  
on *D. tenuis*

---

Apr 7 Friday - Apr 8

570. *Vanochoria* *racemosa*

(Including var. *racemosa*)

Below Mill on *D. tenuis*

*racemosa*



Sunday Apr. 17 - 92

✓ 571. *Ymeria zonata*

var. *aperta* var

strongly marked

Ditch below paper mill  
at tractor, Penn

✓ 572. *Conferva hypolepis* ?

(see 827)

stream - <sup>to</sup> ~~stream~~ into  
Pond Brook near Hroscow  
stable

Sunday Apr. 24 - 92

Swampy Park

✓ 573 - *Desmarestia* var. *?*

✓ 574 - *Cladophora cristata*

✓ 575 - *Pinnatula americana*

stream

with ...

Swampy Park

Sunday May 8 - 92

576 -

*Pezomachus*  
at about [unclear] [unclear]

Sunday May 8 92

with H. [unclear]

577 -

*Rhizoglyphus*  
found near [unclear] in  
[unclear] [unclear] [unclear] [unclear]  
leaf - near Lancaster

578 -

*Leptoglyphus*  
St. [unclear] at Bridge [unclear]

579 -

*Phormidium*  
[unclear] at [unclear]  
at about [unclear]

580 -

*Sphaeropsis*  
[unclear] [unclear] [unclear]  
[unclear] [unclear]

✓ 581. *Trichostema* *severis*  
at spring from [unclear]

✓ 582. *Skenea* *at* [unclear]  
Rocks [unclear]

✓ 583. *Trichostema* *affinis*, [unclear]  
at [unclear] to [unclear] in [unclear]  
near stream from [unclear]

✓ 584. *Trichostema* *tennis* [unclear]  
[unclear] in [unclear]  
at [unclear]

585. *Schizoclema* [unclear]  
[unclear] in [unclear]  
[unclear] [unclear] [unclear]  
[unclear] [unclear] [unclear]

Sensory Park

588. *Cladophora*  
on rocks

589. *Cladophora* *umbellata*  
on rocks with *Pinnularia*

Wednesday May 25  
at Woodbury (Connecticut)

588. *Callistemonium cruciatum*

589. " *Baileya*

590. " *Americanum*

591. *Cladophora* <sup>*hirta*</sup> ~~*glaucescens*~~ <sup>Call.</sup>  
on rocks at low water  
+ in tide pools.

592. *Phaeocystis*

593. *Balanus* *viridulus*

Sunday, June 29 - 1892

"Red Pond" Stratford

v 47 - Chlorophora - *Chlorophora*

v 48 - *Chlorophora*

floating in thick patches  
along with *Chlorophora* -  
etc.

... ..  
... .. 37 ll.

... ..

1 or 2 spirals

2 or 3 to 10 or more

Rarely 3 spirals

Monday, May 30,

596. *Glossop* - a *crispus* Thunb.

at *charit* -

at *charit* (Thunb.)

597. *Asa* - *Fructus*

in *Citok* -

*Fructus* -

*Fructus* -

*Fructus* -

598. *Hypocistis* -

*Fructus* -

*Fructus* -

*Fructus* -

*Fructus* -

*Fructus* -

599. *alluvio* -

6.8

3rd May

11. 10. 11. 12. 13. 14. 15. 16. 17. 18. 19. 20. 21. 22. 23. 24. 25. 26. 27. 28. 29. 30. 31.

600. Spitzbergen

1st May

1st May - 1st May

1st May

1st May

1st May

1st May

1st May

1st May

Sunday June 1, 1892



605 ✓ Zygonema animalium  
(mixed with other things)  
an occasional plant  
of fouling filament

Substratum, water tank  
in Peppinwood, ...

606 ✓ Mesocarpus ...  
Below ...  
side of Peppinwood (River)

Honest ...  
Microcystis stagnorum (Kütz) ...  
604 (= 602) ~~Cyrtocarpus~~ ...  
with ~~Cyrtocarpus~~ ...  
Same place as 602 ...  
Wiley



Saturday June 18 - 92

At Fresh Pond at first

Immocarpus Schousboei, Born

~~Found~~ a single specimen of  
it on a spring of *Chaetoceros*  
*virgatus*

v 607 In *Chaetoceros* (315) spores  
seem to be forming in some  
cells without conjugation  
after the manner mentioned  
by Dreyer (Die Conjugation  
p. 7 Pl. I fig 4) - sometimes

2 spores in one cell - spores  
seem to be swollen - spores  
often apparently round and light  
light buff colored -  
elliptical.

v 658

Epiphytic on *Interostracum*

Sunday June 19 - 1912

59. Clasiphora californica  
in the same place as the  
Sensida Park to the west

60. Epicladia flustrata, Ranke  
with some sort of hairy growth  
on back and legs of a  
shrim crab.

Friday, June 24 - '92  
Woods Hole, Mass., with  
Mrs. J. S. Allen, Dr. J. S. Allen & Charlotte

✓ 611. *Cladophora*  
on fucus

✓ 612. *Interrupha erecta*, (L.) J. Ag.  
on fucus

✓ 613. *Pallidula* in *Fucus*

✓ 614. *u. ornatum*

✓ 615. *Dithammina laevigata*  
low water - 1/2 C

✓ 616. *On* near *low water* - 1/2 C

Sunday June 26 - 92

Fresh Pond

Could find no *Spirrogyra* family.

Large quantities on bottom  
of pond - Southwesterly part  
apparently young and not  
yet having risen to surface.

(617). -

on decayed algae - shore of pond

Sunday July 3 - 1911

✓ 618 - *Plummarium* \_\_\_\_\_  
on west side of slope  
above Island Park, by  
R.S.P.

5619. *Plummarium nitida* <sup>84</sup>  
sterile <sub>dead to water</sub>

5620 *Plummarium nitida*  
forming fruit in <sub>slate</sub>  
dead to water

21 \* ~~*Chlamydococcus filamentis* (Foslie)~~  
~~var. *tenax* (Foslie) Foslie~~

on drift along bank of  
Sawley Pond - dam

~~(= *Desmarestia marginata* :)~~

\* *Chlamydococcus filamentis*  
rusty stage - (Fide Foslie)

= *Desmarestia*

Monday July 4 - 92

Leaside Brook

✓ 622 Dennocarpa Schombrovi?  
in minute quantities on Sphaerium  
radicans, on which were  
also Bangia reflexa.

✓ 623 Young Grimmia in group  
on Fucus vesiculosus

✓ 624. Boopis flavescens

✓ 625. Callithamnion sp.

Thursday July 4 - 92

<sup>2</sup> Fresh Pond Stratford  
with E. W. Johnson

626 - *Spirulina tenuisima*  
In large abundance  
on stalks of *Urtica*.

... ..  
Could take it up in jelly like  
masses half an inch thick.  
*Spirulina*  
... ..

627 *Stilophora rhizodes*

Saturday, July 9 - '92  
with H. N. Johnson.

↓ 628. *Stizimma micromillorum* Ag  
on rocks in stream at Point

↓ 629. = 621 & from same place

↓ 630. \* *Spiraea* <sup>nitida</sup> = *Spiraea*  
in fruit - mounted full set

↓ 631. *Pat. regium*  
Pool below factory, Pond - on alga

\* Dissepiment not replicate.  
Cells 75-80  $\mu$  wide, 50-100  $\mu$  long.

Spirals 5 or 6, making generally  $\frac{1}{2}$  - 1 turn  
forming cells about 75  $\mu$ . long, females  
all much smaller on conjugating side.

Zygotes ellipsoidal, generally  
75  $\mu$  wide by about 106  $\mu$  long.  
always <sup>+</sup> one or more sterile cells  
on one or both sides of a conjugating  
cell.

x rare exception.



Sunday, July 13 - '92

632 " Fresh Pond - Trafalgar

*Spizogona*

In side pool from which specimens taken - fresh specimens of *Morvathomas lativittatum*.

Cells generally about 27 or 28  $\mu$  in diameter

Length generally 3-5 diameters

Stipules 2 or 3 rarely 1. Swims about 3 in cells of full length. Dissepiments not replicate

<sup>ellipsoidal</sup>  
*Zygospores* 56-87  $\mu$  long by 31-37  $\mu$  wide

Femur cell small just in front of center

3  $\mu$  long

With oocillaries which appear to be *O. princeps*

? In water & ... as # 595

Water in this pool (which is now out of the pond) may be a little ...  
? whether this is the reason of its ...

Thursday July 14 - '92

with ...  
at Cook's ...

633. *Gymnodinium* ...

634. *Saxipha* ...

635. *Polydora* ...

Saturday, July 16 - '92  
Woodmont, with L. M. Johnson

636 Calothrix Crustacea  
on Gutierrezia & Cladophora  
in rock pool - mounted  
on slide set for microscopy.

637. Ceramium Cerommatum, Kütz  
on Fucus

638. Callithamnion Boerhaavi

639. Callithamnion — — — ?

640 Cladophora  
on Fucus

Sunday, July 17 - 1912

✓641 Calothrix crustacea  
on *Cladophora* ~~reflexa~~  
Dorrah pond at Crook's Point

Tuesday, July 19

✓642 *Tetrachora explanata*, Ag.  
On drifting aboutment of *Fragaria*  
A.M.

✓643 *Shiroya* = (630)  
Last of the <sup>2. last 18. 1912</sup> season - sent some in  
bottle to Setchell at Woods Hole

Wednesday - July 20-92  
with Dr. W. Johnson

644. *Strophura rhizodes*  
Black Rock shore
645. *Callitriche Bonari*  
Black Rock
646. *Chaetochloa angustata*  
on *Zostera*  
Black Rock
647. *Chorda filum*  
young forms  
Black Rock
648. *Callitriche subtrulosa*  
on sandy beach, Black Rock
649. *Bryopsis plumosa*  
Green's Mills Dock
650. *Ectocarpus replans* *Johnsonii*  
on *Zostera* - Black Rock

Thursday - July 21 - 92

with Mr. Johnson

Fresh Pond

✓ 651. *Rivularia* ~~fruticosa~~ <sup>nativa</sup> (L.)

on bank of creek, outlet  
of Pond

✓ 652. *Microgynia* = 632

from same place as 632,  
the same in the pool in fraction  
and is cut off from the other  
and so is a separate colony, which  
is not the same as 632.

Friday, July 22 - 9<sup>15</sup>  
with L. M. Johnson  
Took boat to harbor  
& the "Gut".

✓ 658. *Gomnellia americana*

✓ *Loxysa elegans*

✓ *Polysiphonia variegata*  
on Ulva

Sunday, July 24

156 *Rhizoglyphus* ~~*flavus*~~ X

Peagom...  
Facing...  
to...  
growing to...  
get.

+ *Rhizoglyphus lacustris*  
forma americana, Killbuck, N.Y.

*Mucor*...

157, ~~...~~

Same as 156

...

Cells not swollen like  
thin walls Rhizoids very scanty,  
cells 15-16 wide, 15-51 long

Wednesday, July 26-92  
with L. N. Johnson

658, *Scallaria princeps*  
Parrot's Pond  
Monday full water

659 *Scallaria* or *Phromidium*  
Mill Race below Mordy's Pond

660. *Phromidium uncinatum*  
forming purpleish or copperish  
line on stones - in stream  
below dam at Mordy's Pond

661. *Chaetophora* *viridissima*  
on stones in Mill Race below  
Mordy's Pond.

322

July 26  
at Mordy's Pond



Friday, July 10 1922

At Beach Park  
near Penfield Reef  
(with L. H. ...)

663, *Tanachia hilobalides* ...

On ...  
below low water

*Lynx nigrescens*

on iron ~~plates~~ between  
live ...

*Hydrobia ulitima*

665 *Callinectes* ...

665 a ...

666 *Enteromorpha* ...

Some of the ...  
in a single row of cells

667 *Homocidus*

a little ...

Friday Aug. 2 - '92

at Peck's Mill in Putney  
with L. M. Johnson.

✓ 668 Plummaria trivittata  
in fruit - from the  
mill pond.

Mounted a full set for  
analysis - including some  
of the same material  
brought over July 30 by  
Mr. Johnson.

669, Rivulosis  
distorta  
etc

mouth of stream from  
above pond, at  
base of mountain

Wednesday Aug 3-92  
with L. N. Johnson  
Mill River near South  
Winter Rock

2670 *Tamachia* color. *Abundant*

Mill River

Mounted full set  
for *Microgaster*

2671 *Microgaster*

*Sagittaria* etc

South River

Saturday, August 10 - 1872  
Woodmont - with E. D. Johnson

672. *Spyridia filamentosa*

673. *Callithamnion* ~~sp.~~  
*retrofractum tripartitum*

674. " "

675. *Bozopsis plumosa*

676. *Graminum* ~~sp.~~

677. " "

678. *Falsaria* ~~sp.~~

679. *Fucus* ~~sp.~~

Saturday, Aug 6 - In Town

✓ 680. *Elachista*

*Elachista*

Unilocular spores (see - see shape)  
or univalve 20-25  $\mu$  wide  
by 100-150  $\mu$  long. - has long  
indented filament -

✓ 681. *Champia* *hirsuta* (C)

Aug 17 - 92  
Cooks Point

✓ 672. *Gracilaria multispinosa*

✓ *Gracilaria elegans*

✓ *Bostychnia muricata*

W.S. - Found a few plants of  
*Gracilaria alba* (Pursh)  
var. *lyalina*

among *Sargassum acrostichum* on  
border of the coral  
reef ponds.

Monday Aug. 9 - 9  
with Dr. M. Johnson  
Fresh Pond - 1st foot

685. Perilobus fractus  
on bank of pond at  
bottom of the first

Tuesday Aug. 10 - 9  
with Dr. M. Johnson

686. Perilobus reticulatus

772 Spores in  
pool by Roberts. near  
near Spruce Point  
Mount full set of specimens

Saturday - Aug. 10 - 92

with Mrs. Johnson

687 - *Entomophloeus curvica*  
on stones between tide marks  
Long Beach

Monday, Oct 11

688. *Chaetomorpha Linum*

Long Beach near Stratford Point  
collected all day this

689. *Callithamnion*

on tuans

Long Beach

690. *Callithamnion*

691 - *Epithemia lactuca*

in tide pool - Long Beach

a minute or so in tide pool



Sunday, Aug. 14 - '92

Went with Dr. Wilson - party  
to Milled Point

692. *Enteromorpha Hokkaidoensis*  
good - typical specimens  
on *Gastrea*, floating.

693. *Strophora rhizodes*.  
floating in abundance along  
the shore.

694. *Ceramium rubrum*  
var. —  
floating

695. *Lomentaria mannata*  
floating

Trwin Lakes - Salween River  
(Camp 512)

- Aug. 20 - '92

696

*Hydrophilus*

697 - *Scaphisoma* *Hydrophilus* *figuratum*\*

8-20-92

Coloration about like; filaments about 20, 100  
whitish 1/2 - 1 diameter - some yellowish

whitish yellowish

yellowish

white

Patches

\* See Dr. Johnson's list - Aug. 20 & 21 1892

6 11 100?   
 Saxtonema n. Saxia   
 on dripping rocks.   
 filaments about 12  $\mu$  thick   
 about 20  $\mu$  long   
 generally branched, sometimes - abn.   
 American   
 its yellowish - vegetation - margins bright   
 streaked.

↓ 070 -   
 Gelatinous matting on dripping   
 Rocks - Saxia California - 8-22   
 containing Hydrocoleum   
 - a mass of minute g.   
 cells - and peculiar filaments   
 about 20  $\mu$  in diameter

↓ 700. Chama   
 Water California   
 near San Diego   
 8-20

Aug. 28 - 92  
Berk. Bot. Garden

✓ 701 - *Cladonia virgatula*

one

Mounting all set for the day.

✓ 702 - *Cladonia*

✓ *Cladonia subcorymbosa*, Thellus

✓ + *Cladonia confervicola*

growing on *Rubus* with *Cladonia* etc.

*Cladonia* generally 1 mm. or less  
in height

✓ 704. *Arabaena* *Arabaena* with

*Arabaena* *Arabaena*

*Arabaena* ? + several

*Spirulina* *Spirulina*

Sat. Sept. 3 - 92

↓ 705. (*Chrysomelid - Oniscorhynchus*)

(-Eel) on *Chrysomelid*

Tides *Chrysomelid*

Pool below *Chrysomelid*, *Chrysomelid*  
*Chrysomelid*

↓ 706. *Chrysomelid lanata*, *Chrysomelid*

on *Chrysomelid*

Pool below *Chrysomelid*

*Chrysomelid*

Sunday, Sept. 4 - 1922

With F. S. Collins

✓ 707. Entophyesalis granulosa  
Kütz.

on Stones in Fresh Pond  
Stratford - Pointed out by Collins

✓ 708. Chromococcia virgatata  
on Ruppia      Fresh Pond

✓ 709. Onobryza granulosa  
= 707      <sup>then coll. by F. S.</sup>

? 709<sup>2</sup> Mastigococcus lecturum - Lagerheim. on Green Shell  
F. S.

---

✓ 710. Ribaldonias  
+ Gyrodinium

Monday Sept 5 - 92  
with H. S. G. & others

710 *Phormidium* - *Rehderi* (B. 1911)  
<sup>in culture</sup>  
Stream below paper mill  
N. S. G. -

Mounted for section

P. M. at 1

711. *Corallina* sp.  
*gelatinosa* (L.)  
about 1/2 - 1/3

712 *Gelidium crinale*

713 *Phormidium* sp.  
sim.

714 - *Chaetomorpha* sp.  
*Chaetomorpha* sp.

715 *Fucus ceranoides*

Saturday, Sept. 10 - 72

716 *Phormidium* (Reignell) Jomard = 71  
(see 710)

Stream below Papermill

N. Papermill

717 *Conferva* ~~*bostrychia*, form *duplex*~~  
with *Microspora*  
sides of above stream in field  
quick water  
mounting set for *Spizella*

718 *Arctostaphylos*  
and several other *Rhiz*  
Papermill



San Diego, Sept. 11 - 92

Rock Pond

719 *Enteromorpha* *hispida*  
Some of the branches consist  
of a single row of cells  
some of the rows for a great part

720 *Ectocarpus terminalis*, Kütz.  
*terminalis* *terminalis*  
about 1 ft. high

All about 12  $\mu$  in a little ...  
is twice as long. ...  
when approximate the main  
filaments of ...  
from the point of branching  
Such a hair ...  
the place of a branch  
or from the part of an ...  
filaments ...

*Plurilocular* *terminalis*  
lateral - the latter generally  
a short side of 1-3 cells.

Filaments much ... where  
they (and also hairs) ...  
... ..

Tuesday - Sept. 13 - '92

Point San Pedro - West of the "Alcázar"

Plensure Beach

721. *Rhabdomma tenera*

722. *Vaneria fulvobalinea* Thiers  
In shelly sand bottom near westerly  
extremity of sand bar running into  
harbor from near Plensure Beach  
House ("Alcázar") just below  
ordinary low water mark  
in abundant tufts over several  
square rods

723.

Shells empty

Sunday, Sept 16 - 9 -

Charles Island

1724 - *Calothrix crustacea*  
on rock between islands

1725 - *Zygodium* *Rhachia* *ceramium*, *Orsch*  
on *Rhachoria* in pool

1726. *Scolecis plana*  
on stone

Sunday, Sept. 21 - 9 -

Fresh Pond

727. *Gracilaria multicaulis*

low ground

728. *Rivularia nitida*

657

729. *Aphanothera*

low ground to patches  
in some where out of pond  
low water of pond

730. *Oscillaria*

+ "

2 - 5 - 10 - 15 - 20 - 25 - 30 - 35 - 40 - 45 - 50 - 55 - 60 - 65 - 70 - 75 - 80 - 85 - 90 - 95 - 100 - 105 - 110 - 115 - 120 - 125 - 130 - 135 - 140 - 145 - 150 - 155 - 160 - 165 - 170 - 175 - 180 - 185 - 190 - 195 - 200 - 205 - 210 - 215 - 220 - 225 - 230 - 235 - 240 - 245 - 250 - 255 - 260 - 265 - 270 - 275 - 280 - 285 - 290 - 295 - 300 - 305 - 310 - 315 - 320 - 325 - 330 - 335 - 340 - 345 - 350 - 355 - 360 - 365 - 370 - 375 - 380 - 385 - 390 - 395 - 400 - 405 - 410 - 415 - 420 - 425 - 430 - 435 - 440 - 445 - 450 - 455 - 460 - 465 - 470 - 475 - 480 - 485 - 490 - 495 - 500 - 505 - 510 - 515 - 520 - 525 - 530 - 535 - 540 - 545 - 550 - 555 - 560 - 565 - 570 - 575 - 580 - 585 - 590 - 595 - 600 - 605 - 610 - 615 - 620 - 625 - 630 - 635 - 640 - 645 - 650 - 655 - 660 - 665 - 670 - 675 - 680 - 685 - 690 - 695 - 700 - 705 - 710 - 715 - 720 - 725 - 730 - 735 - 740 - 745 - 750 - 755 - 760 - 765 - 770 - 775 - 780 - 785 - 790 - 795 - 800 - 805 - 810 - 815 - 820 - 825 - 830 - 835 - 840 - 845 - 850 - 855 - 860 - 865 - 870 - 875 - 880 - 885 - 890 - 895 - 900 - 905 - 910 - 915 - 920 - 925 - 930 - 935 - 940 - 945 - 950 - 955 - 960 - 965 - 970 - 975 - 980 - 985 - 990 - 995 - 1000

Saturday, Oct. 1 - 1922  
At Blackwell's & Benson

731 - *Callithrix aemula* *Baird*

731 - *Anas platyrhynchos*

*Actitis macularia*

*Bonasia repleta*

*Actitis macularia*

*Actitis macularia*

*Actitis macularia*

*Actitis macularia*

*Actitis macularia*

*Actitis macularia*

*Actitis macularia*

732 1/2 - *Callithrix acrygia*, *Thoreau*?

*Enteromorphus marginatus* ??

*Fregata acazusa* a *striata* var.

*Callithrix aemula* *Baird*

Sunday Oct. 2 - '92  
with Dr. Setchell

733 - *Calothrix parvula*  
on stone dam of Factory Pond

---

Friday Oct. 7 - '92

734. *Calothrix parvula*  
same place as 733  
Mounted full set

735. *Calothrix* sp.  
on *Orus*  
from *Phormidium* like  
near rock in stream

Sunday Oct. 16 - 92  
with Dr. Setchell  
at Twin Lakes, Salisbury, Conn.

736 - *Glebotrichia Pisum*, Thicket  
on pondweed in  
upper lake

737 - *Glebotrichia Pisum*  
floating <sup>up</sup> in lake

738. *Cladophora gracilis*, <sup>near</sup>  
on sticks at shoreline by  
Camp Rice on island in upper  
lake -

Sunday Oct 10 Continue

↓ 739. *Seymouria Myochrous* or *figurata*

= #677 & Collected at same

place (see 739)

↓ 740. *Seymouria Hofmanni*? Argonite

on old stump shore of  
the upper lake

↓ 741. *Folypithecis*

with # 740

↓ 742. - *Calothrix parietina*?

from drifting rock by R12,  
between Cinnam & some clacks

↓ 742 1/2 *Seymouria* *glauca*?

Stone in gravel near



Sunday Oct. 23 - 1892

743 *Panicum* *sp.* Kütz  
on ... of ...  
Kewatini ... Island ...

744 on stones ...

745 *Panicum* *sp.*  
in ... side stream  
at ...  
forming vegetation ...

Sunday Oct 23-92 (cont'd)

✓ 746 Glebowcystis ?

with occasional filaments of  
Calothrix fusca?

↳ Globules of Chlorococcoid contents  
on stone abutment of Harry  
Pool-dam

747 Oscillatoria foelichii var. dubia?

Pool below F. P. dam

Tuesday, Oct. 30 - 1922

at Forestburg, Virginia

748 - *Calothrix*

with apparently parasitic

*Leptothrix*

on stone

in an inch or two depth of  
water

749, *Endophysalis* *granulosa*

gives minute quantity of which  
is a *dyocyst* about 6 or 7  $\mu$   
in diameter - also *calothrix*  
on stone, same place as 748

750 *Microcystis* *argentina*

on stone

Sunday Oct. 21 - '92

"Fresh Pond" - Continued

751. *Tanacetaria dichotoma* ?  
sterile

Immense masses in the  
ditch or Crank - outlet  
of the pond.

---

Sunday Nov. 6 - '92

752. *Ocellularia* (E 747)

Pool below Fruit Dam

753. *Leptothrix* *hypnophila*  
with *Dichotoma* sp. etc.  
on stones, edge of pond.

754. *Ocellularia*

forming *Phormidium* - like  
in stream below Paper mill  
Numerous suture

Sunday, Nov. 6, Contin. at

✓755. *Enteromorpha* <sup>usitata</sup> <sub>usitata</sub>

Very peculiar - Mostly simple -  
consists of one - 2 or several  
rows of cells, apparently filaments,  
agglutinated, sometimes separated  
at the summit, into filaments  
and thus forming branches -  
cells round - sometimes wider  
than long - up to 12  $\mu$  in diameter  
scraped from rock at Seaside Park

---

Tuesday, Nov. 6 '92

✓756. *Ampelopsis* *villosa* etc

on stones in tank at  
(with a lot of *Enteromorpha*  
granulosa)

✓757 - *Enteromorpha* *villosa*

E. S.

Sunday, Nov. 13 - '92

Gravelly Park

758 *Phyllitis*

759 *Phyllitis*

760 *Lecyda elegans*

761 *Monostroma crispum*  
Abundant on some rocks  
Gravelly Park

762. *Ectocarpus confervoides*  
Cells in larger filaments 20-30  $\mu$ , as long  
as wide, in ultimate branches about 1/2 as long  
several times longer than wide.  
Plurilocular sporangia 15-30  $\mu$  in dia.  
15-125  $\mu$  in length. 17-20  $\mu$  in width  
alternate - on stem - stems on *Phyllitis*

Sunday Nov 27 - '92

Seaside Park

✓ 763 - *Monostroma crepidinum*  
Same place as 761

✓ 764. *Fucus vesiculosus*  
var. *laterifrons* }  
or *F. Ceranoides* }

✓ 765. *Microcladia*?  
with  
*Zostera* — ? (= 762)  
from the same strombils stump  
as # 762.

✓ 766. *Sargassum* *muticum*,  
on stems of *Halimeda*? - on stones  
between tide marks

✓ 767. *Enteromorpha* *marginata*  
on stones between tide marks

Sunday Dec. 11 - '92  
Seaside Park

✓ 768. Lecanospira Schrebosi  
on Phacelium abundant

✓ 769. Enteromorpha marginata  
Same place as # 767

✓ 770. Rhizoclema fuliginosa  
On Enteromorpha marginata  
Same place as # 766



Wednesday Dec 14-92

Seaside Park (with Dr. Coker  
of Johns Hopkins)

↓ 771. *Enteromorpha* <sup>anther</sup> *marginata*?  
(= 770 + 767)

↓ 772. *Monostroma* *erectum*  
on rocks near low water

↓ 773. *Penicillaria* *fuliginosa*?  
(= 770 + 766)

Found - these alga grow on the  
stone independently of the *Enteromorpha*

✓ 774. (see 771) *Lynghya* *swartzii*

Minute *erectum* *erectum* *erectum*  
stems between the *erectum*  
filaments arising from *erectum*  
*erectum*? - also some  
*erectum* *erectum*

Thursday, Dec. 15 - 92

775 - *Oscillaria leptotricha*, Kütz.?  
Pool below Young's Pond

776. *Chroococcum coherentum*, Kütz.  
with a *Dorococcum*  
*Cylindrocapsa* sp.  
in abundance - 1st Pond

See Collins's collection  
March 15 - 92  
at Young's Pond

Sunday, Dec. 18 - '92

777 - *Enteromorpha* <sup>unidentified</sup> *marginata*  
This is in good condition, yet  
abundantly infested by *Pleurococcus*  
*fuliginosus*. (Completed set for species)

778. *Pleurococcus fuliginosus*, mostly  
on *Enteromorpha*  
(777+778 are from the same  
lot taken from one stone).

779. (= 774) <sup>*Codium* ~~sp.~~</sup> *tenerrima* (Mont.) ~~Mont.~~  
*Pleurococcus fuliginosus*

See Dr. Fisher's letter  
of Dec. 18, '92

This (calosiph? related to *C. rubra*)  
appears to have filaments ~~attached~~  
to the ~~stem~~ <sup>base</sup>. Can find ~~no~~  
terminal hairs. - Has no any  
characteristic substratum except  
the *Pleurococcus* ~~with~~ which  
it is associated and upon which  
it appears to be ~~dependent~~  
Escaped from my Uchida herb.

Monday, July 2 - 1893  
Sausalita Park

~~780 - 779 - 774~~

~~scrapped from above between 775 - 779~~

780 *Commersonia bartramiana*  
in fruit - Wooded area

781 *Porphyra laminata*

July 17

782.

III

pro

?

?

(

100

)

... below yellow ...

Collins thins it E. Minnesota

March 25 '93

Seneca Park

783. *Indovineata viridis*

784 *Polyphya tenax*

Friday, May 21  
Seaside Park - 1-1

✓ 785. *Cladonia arcta*

786. *Cladonia*

787. *Cladonia*

788. *Cladonia laciniata*

✓ 789. *Fraxinaria*

---

Sunday, April

✓ 790

✓ 791. *Cladonia leucosticta*

✓ 792

✓ 793. *Sarcocolla*

✓ 794. *Monostroma Grevillei*  
Cortes Point

✓ 795. *Gelidium* sp. in *Gelidium* ?  
Cortes Point  
yellowish green

---

Sunday Apr 16 - '73

✓ 796. *Sargassum expansa*  
Blackish Point - Cortes Point  
dies through the winter

✓ 797. *Monostroma Grevillei*  
Cortes Point

✓ 798. *Porphyra laminata*  
Cortes Point (in *Monostroma*)

✓ 799. *Ulva* *complexa* (= 792)  
on stones  
yellowish green

Saturday - Apr. 22 - '93  
Senside Park

800 - *Ascophyllum rudessense*  
Harmaphrodite - <sup>young</sup> *Siphonia*  
in same conceptacles with  
antheridia - Comparatively  
young *Siphonia* <sup>sometimes</sup> in same location  
with antheridia, sometimes  
arising in the regular way from within  
wall of conceptacles.

---

Sunday - Apr. 23 - '93

- 1801 - *Monostroma Gracillii*  
Cork's Point
- 1802 - *Phyllitis* young  
Challinor's Pond  
Cork's Point
- 1803 - *Enteromorpha Aucklandia*  
Fresh Pond
- 1804 - *Enteromorpha plumosa*, <sup>Kütz</sup>  
Fresh Pond



Friday Apr. 28 - 1923  
Seward Park

1882 Knowlton and

Friday Apr. 28 - 1923

*Entomorphia plumbea* Kirby

Found *Entomorphia plumbea* on pebbles in a stream. This form is the length of 2 or 3 mm. in a *plumbea* form, long body and curved strongly at the tip. The pebbles are white and float on the surface. The *Entomorphia plumbea* form is very common at the tips when frequent, float in the air like the *Entomorphia plumbea*.

Mounted full set for course

Summer, May, 7 - 1893

1807. *Phyllis fasciata*  
Cooks Point

1808. *Enteromorpha minima*?  
Rock at [unclear]

*Enteromorpha intestinalis*?  
Rocks at [unclear] near high water mark

1810 *Ulva lactuca* [unclear]  
[unclear]

[unclear] [unclear] etc  
and [unclear] in long

strings

[unclear] [unclear]

Cells [unclear] 10-15 u [unclear]  
[unclear] [unclear] division

[unclear] [unclear] 21

Sunday, May 14 - 1933

11. *Stigmaphyllon* ~~puberulum~~ *puberulum*  
Cills 1-6 bluish long and soft.  
see note

200 miles. 2nd of 1933, 1140  
The little Pond near of ...  
Mill Pond ...  
(see letter May 13 1931)

✓ 812. *Panicum latifolium*  
Cook's ...

✓ 813. *Impatiens* ...  
Cook's ...

✓ 814. *Impatiens* ...

✓ 815. *Impatiens* ...  
= ...

Friday May 19 - 1893  
Seaside Park

816. *Panicum distachne*

817. *Panicum plantagineum*  
On stone just below house

819. *Scytosiphon lomentaria*

820. *Dictyosiphonia venularia*  
On *Scytosiphon*

821. *Dictyosiphonia venularia*

Sunday May 21-93  
with Dr. Mitchell

✓ 22. *Stizoloma* ~~*leucophaea*~~ <sup>*leucophaea*</sup>  
St. Louis, Mo. 1891

✓ 23. *Antrenopsis* ~~*leucophaea*~~ <sup>*leucophaea*</sup>  
var. *leucophaea*, Newk.  
Yellow Hill, Ind.  
Some specimens of this are copper color.  
23. 5. 29

✓ 24. *Antrenopsis aureola*  
Fresh Pond - Stratford.

Monday, May 2, 1893

825. *Bat. virgatum*  
Slant Brook

826. *Bat. moniliforme* (Good)  
Outlet of Pond near Tracy, Vt.

827. *Conferva* <sup>*bombeyana* formidularis Lillie</sup>  
~~*confertus*~~  
with *Lyellia* *serpentina*  
Streamlet near Slant Brook  
Staford Ave.  
Mounted set for Lyellie

828. *Styrolonimo fasciculare* (Lillie)  
unusually Weller described  
Bruce's Brook  
Mounted set for Lyellie

Lyellie's cells  
Hollis  
Lyellie

Tuesday May 20 - 1893  
Decorative Day

✓ 829. *Enteromorpha intestinalis* (L.) Lamour.  
var. *prolifera*, Grunsk.  
(= 823) - Yellow Mill Pond

✓ 830. *Cladophora rhombica*  
Wasserkich Pond  
Corks Pond  
Mounted Set for Grunsk.

---

# Sunday June 19 93

✓ 831 - *Phormidium*

In Stone Pond, Boston Bay

Sunday June 11th - 93

832 ✓ *Enteromorpha clathrata*  
var. *procera*?  
B'ham Harbor

833. *Enteromorpha*  
B'ham Harbor

---

Sunday, June 13th - 93

834. *Bat. Dornidiformis*

On Slime, Tide Stone, & ...  
balsa ...

835. *Bat. vagans*  
var.                       
Pool on ... Today ...  
on ...



Sunday, July 2 - '93

✓ 836. *Polysiphonia Rosei* (Gel.) Mitt. ?  
In little pond east of "Yellow"  
"Conill Pt." - near ~~stratification~~

✓ 837. *Cladophora*  
Completely seen for *sicaria*  
(= # 357 + 366)  
Corks Point Mt. - on stones, shells, etc.

✓ 838. *Cladophora*  
Corks Point  
mostly in *Marine Pools*

---

Sunday July 9 - '93

✓ 839. *Callithamnion encrinurus*  
Corks Point

1893  
Sunday July 16<sup>th</sup> - Minutemen  
a  
Salisbury, Conn.

540 Chara

541 Chara

542 Chara

543 Chara

544 Chara

545 Chara

Thursday July 27 - 1893  
Woodstock

✓ 846. *Melospiza cinerea*

*cinerea*

✓ 847. *Boyerdallia*

✓ 848 *Chondestes*

✓ 849. *Chondestes*

on *Sertularia* on *Asafoetida* (Erect) This

Sunday July 30 - '93

1850. Saxillaria princeps

Fresh Pond. Stratford  
Connecticut  
Company of Lymphaeactina

1851. Grimmella americana  
Bethel Maine

1852. Gracilaria multispinosa  
Bethel Maine

1853. Polyidonta angustata  
var. dentata

Sunday Aug. 6 - '93

South Missouri Co. -

(Went with Dr. Wilson on Duplex)

Collected on shore of Smith's Lake

1854 - *Gracillia Americana*

1855 - *Sargassum vulgare*

1856 - *Champia parvula*

1857 - *Chlorococcoides Lemmoniana*

1858 - *Cocconeis striata*

① Sunday - Aug. 18 - 1895

Port Harbor

859. Gracilaria multipartita

500. Dasya elegans

501. Gracilaria etc.

shells contain: Gracilaria polydusis

502. Mastigocapsa testum

503. Plectonema terebrans

504. Hyalina caespitosa

Saturday - Aug. 19 - '93  
Yellow Mill Pond

862 - Symphlocia hexanthalis  
(= S. Catenellus, & note?)

with Amphicoma trinitatis  
(Sphaeromyces Parvithalici)

Synchytrium aestivum  
+ Oscillaria

+ Tanoshuia

forming main on Amphicoma  
the Amphicoma - with it  
also what appears to be

Agaricus mirabilis

Agaricus alba

Fr. ... ..

... ..

... ..  
... .. but ... ..

... ..

... ..  
fairly abundant

... ..

... ..

... ..

... ..  
... ..  
... ..



Page 26 - 1897  
Reading Table

✓ 864 - Spiller Creek  
with Pinyon on west  
of Spiller Creek.

✓ 865 - Spiller Creek  
on Spiller Creek  
with Spiller Creek  
on Spiller Creek

✓ 866 - Spiller Creek  
on Spiller Creek  
with Spiller Creek

Sunday, Aug. 27, 1893

Y3'port Harbor

568. *Rhabdonia tenuis*

Mr. Sanderson - opposite  
Pleasant Beach - in harbor  
collected shells containing

569. *Platynema terebrans* B + F

Widened on, Aug. 30 - '92  
Fresh Pond

870. *Polysystia glaberrima*, Kütz  
with *Anabaena* ~~seriabilis~~  
on ~~...~~

Chicago

✓

March 20th

8. *Caecophanes* ( )

*Caecophanes*

*Caecophanes*

*Caecophanes*

*Caecophanes*

Sunday Sept 21

B. P. N. N.

670. *Caecophanes* +

677. *Shells*

Sunday Oct. 8 - '93

Seaside Park

878. *Banisia acuminata*, etc

Sunday Oct 15 - '93

Seaside Park

879. *Microstichia viridula*

on turfy shore near high water

880. *Sphaerularia*

on turfy shore near high water

881. *Microstichia*

found in thick mats  
on high water

Sunday Oct 22 1925

With Mr. A. Setchell

582. *Sporocarpium bellii*.

Pegnumuk River, Humboldt

583. *Juncus fluviatilis*

Pegnumuk River - Humboldt

584. *R. brachycephalum* var. *novae*  
Zealandiae (Setchell & Gardner)

N.B. in outlet of this pool  
found some small fine  
*Chytridium* bearing many  
Buds. (Bar. Benjamin?)

585. *Calothrix*

collected from stream in  
side stream of Pegnumuk  
River - below Mackay Falls

886. *Syllaria*

Forming films on water-pipe  
Below Factory Pond Dam

v 887. *Bangia reflexa*

Sea side Park

We examined this in the  
evening and found numerous  
filaments bristly. A cell  
forms a number of spines  
which arise from a  
lateral protuberance on

The shores frequently large  
and garrinate are filaments  
of the *Bangia* genus in  
the appearance of branching.

✓ 800. *Bombia aplysa*  
Sufficiently complete  
set for Mexico - con-  
sist of material for  
set for *Physiculus* -  
F. S. Collins.

---

Sunday, Nov 5, '97  
Seaside Park

109 - *Bombia aplysa*  
Sufficiently complete  
set for *Physiculus* -  
F. S. Collins.



52

iii

Chalybeata

973

He

of

11 20

Index

in

since

Sunday - Nov. 11 - 92

1892. *Banisia fusca* - Turbulent  
on rocks. Yellowish  
fruiting - among rocks  
at about high water mark

Sunday Nov. 13 - 92

1893. *Banisia fusca* - Turbulent  
same place as above

Sunday Nov. 14 - 92

1894. *Banisia fusca* - Turbulent  
same place as above

1895. *Banisia fusca*  
same place as above

1896 *Pyralis* *causalis* sp

597

Sunday Dec 11 - 93

598 *Platanus* ...  
rock between ...  
yellow ...

599 *...* ...  
...  
yellow ...

600 *...* ...  
...  
...

Sunday Dec. 17 - '93

901 - *Baiaia fusca-hirsuta*  
on hardwood in the cove  
below Yellow Mill Landing  
Great abundance.

---

Sunday Dec. 24 - '93

902 - *Batrachospermum veyroni*  
Pool below foot, pool

903 - *Chlorococcoides*  
on Albatross stones - in  
the same pool

Monday - Xmas - 93

904. *Plumbaria purpurina*  
On Rocks below Yellow Mill, Ohio  
Mountains 200 ft. base,  
in mica

905. *Plumbaria purpurina*  
On rocks below Yellow Mill  
high water level. Yellow  
Mill, Ohio  
Mountains 200 ft. base  
in mica

Saturday Dec 30 - 93

906. *Pluricarpa* [unclear]

+  
Wooden posts. [unclear]  
marks - Shows [unclear]  
Yellow [unclear]

Sunday Dec. 31 - 93

907. *Pluricarpa* [unclear]

908

Stems of terraced wall -  
five marks [unclear]  
white [unclear]

909. [unclear] nostracura  
with [unclear]  
very nice [unclear]

and

709 (= 907 + 910) / 2 same  
atoms

710 ...  
atoms

---

Sunday March 4 - '94  
Leaving Park

911

...

Sunday, March 2 - 1914

913<sup>v</sup>

*Spizella monticola*

*Spizella monticola*

*Spizella monticola*  
Dec 10 1913

*Spizella monticola*  
in hand, 2000

*Spizella monticola*  
S. S. 1913

*Spizella monticola*  
Zonitina

915. *Spizella monticola*

917. *Spizella monticola*

920. *Spizella monticola*



Sunday March 20 - 1910  
see side page

121 - *Dromastichus n. idio*

122 - *Panotaria planifrons*

Sunday Oct 11 - 1910

see side page

123 - *Dromastichus n. idio*

Sunday Aug 5 - 1910

*Panotaria planifrons*

124 - *Panotaria planifrons*

see side page

125 - *Panotaria planifrons*

Sunday April 15 - '94  
Sea Lion Park

926, *Desmarestia* white

Sunday April 15

927 *Desmarestia*  
white

928 *Desmarestia*  
white

928<sup>a</sup> *Desmarestia* (microspora) white  
stream, clear water  
white B.P. 1  
microspora

X *Microspora* ...  
tube + ...  
Novaforma "allo 30-32 p. ...  
white

Sunday, Apr. 27, 1907

929. *Phyllis gascia*  
Riverside

930. *Pinetaria latifolia*  
as it grows on soil  
Cort's Point

931. *Pinetaria latifolia*  
as it grows on soil  
Cort's Point

Sunday May 6 - 1894

1932. *Boottia limosa*, Ag.  
Berkeley Mill Pond.  
On bottom and floating  
in shallow water.  
Mounts on paper.

1933. *Batrochea* - [unclear]  
Pool below [unclear] Pond  
on [unclear] stalks in still  
water.  
Mounts on paper.

Sunday, May 13 - '94

904. *Phormium tenax*, Gravel  
bank at Muddy's Pond  
Sept 1893
933. *Pumotaria* ~~sp.~~  
on *Fraxinus* etc. - Seaside Park  
Mount Pleasant, since
936. *Pumotaria latifolia*  
Sept 1893
937. *Ditryosiphon fremantleianum*  
or *Scytosiphon*  
Seaside Park
938. *Ditryosiphon*  
Sept 1893

June 20 2 1/2

1931. Lycopodium, ...  
+ Glauca ...  
+ Pellaea ...  
on ...  
Magnolia - below ...  
bridge for ...

...  
...  
...  
...  
...  
...

Nov 13, 1911

942 - *Phormidium*

943 - *Phormidium albida*  
var. *refracta*  
Corks Spring (2) 216

944 - *Phormidium hyessense*  
var. *unclavata*  
Corks Spring

945 - *Phormidium*

946 - *Phormidium*  
Willard

947 - *Phormidium*





Monday July 10 - 9 -

Rest all day,

no work done, and

Monday July 4 - 1947

✓ 1024 oscillations  
in  
u  
v  
Katharine  
P...

---

Monday July 7

✓ 1024 oscillations  
in  
u  
v  
Katharine  
P...

---

July 6

Sunday July 23 - 94

957. (*Valeriana* ...)

Still water below ...  
Lam - on ...  
Set for Phylot.

958 ...

...  
...  
...

959. *Oscillatoria tenuis*, Ag.

...  
...  
...

Sunday July 27 - 1941

Plant Kingdom - New Mexico

960. *Pinnellia* *concolor*

961. *Gayea* *elegans*

962. *Rhaphis* *stricta*

---

Friday July 28 - 1941

Corkin, New Mexico

963. *Pinnellia* *concolor*

964. *Gayea* *elegans*

✓ 965

967. *Carolinia* *fragrans*

from 1 -

468 - *Blennius*

from the work near  
high water level  
greenish brown

469. *Blennius*

from the work near  
high water level

Grinnell's Day 94

Photostictus ...

970. ...

971. Grinnell's American ...

972. ... tenera

Sept 12 - 1874  
1111.9

with several & botanical

70

971. *Callitriche*

972. *Asperula*

976. *Asperula*

977. *Asperula*

*Asperula*

978. *Asperula*

*Asperula*

979. *Menyanthes*

980. *Antennaria*

981. *Splachnaceae*

Aug 12 - 74  
Continued

702. *Rivularia* *reticulata*  
from March bottom

703 - *Leptothorax* *filosa*  
collected from Texas

704. *Batrachium*  
from muddy shore of  
small pond - near house

705 *Hypnea* *microcarpa*  
from one piece of  
material in the laboratory  
collected at ...

706. *Dictyota* *linearis*  
(*Dictyota*)  
from ...



Monday August 13 - 1914

at Parkersburg, West Virginia

WOODS HOLE

157. *Salix humilis*

Common

988. *Polygonum aviculare*

near Parkersburg

158. *Chenopodium album*

989. *Chenopodium album*

991. *Chenopodium dasycarpum*

Common in fields

992. *Limonium carolinianum*

993. *Polygonum aviculare*

Aug. 13 - Continues

994. *Chaetomorpha linum*

995. *Ceramium* (???)

996. *Callithrix* *Bassii*?

997. " *Barleyi*

998. *Melobesia*

on *Punctaria*

---

Tuesday Aug. 14 - '94.

Buzzard's Bay beach

999 *Gelidium crinale*  
on stones below low water

1000 - *Polysiphonia* *Clavel*

See also 1113 + 1114

Wed. Monday, Aug. 15  
at "The Hole" - Woods Hole  
with Setchell, Detertont & Platt.

1001 - *Enteromorpha cretata*  
on *Bostrychia* etc.

1002 - *Hydrocoleum*

1003 - *Champia parvula*

1004 - *Enteromorpha*

1005 - *Ectocarpus*

1006 - *Bostrychia*

1007 - *Enteromorpha*

1008 - *Enteromorpha*

1009 - *Enteromorpha*

1111 = Cult. 1845 301 ...  
with ...  
from ...

1111 - ...

1112 - ...

1113 - ...

1114 - ...

...

...

...

116-

Handwritten notes, possibly a list or description.

1017.

1018.

1019.

1020. Handwritten notes.

1021. Handwritten notes.

1022. Handwritten notes.

Aug 17. - Indiana

1023. *Chaetomium* *sp.*  
in fungus on rock

1024 -  
from surface of *Chaetomium* *sp.*

1025. *Isactis* *filanum*  
from struts in creek

1026 -  
stratum from marshy ground  
near *Chaetomium* *sp.*

1027 -

shell of *Isactis* *filanum*  
from *Chaetomium* *sp.*  
Bing, 1871, 1872 -  
found in the *Chaetomium* *sp.*

Sunday, Aug. 23 - 96

10-8-

*[Faint, illegible handwriting]*

*[Faint, illegible handwriting]*

Sunday Aug. 21. 1910

at 5:30 - 7:00  
morning

Went with Dr. C. Jones  
in his launch

1030. *Callithamnion Deirosperrimum*  
scattered from rocks below  
low water

✓ 1031. *Callithamnion Borreri*

✓ 1032. *Ectocarpus confervoides*  
+ *siliiculosus*

✓  
algae room  
(=664) *Nyctoderma* ?  
on iron pile & rocks between  
live marks



Aug. 26 - ~~Continued~~

✓ 1034, Calceolaria

in iron pipes, especially  
in a concentration of  
minute calceolaria

Sunday Sept. 9 - '94

With Dr. S. S. Hall

at Fresh Pond - St. Augustin

✓ 1035. Calceolaria

forming sheets of calceolaria  
in concentration of  
calceolaria

1036. Calceolaria calceolaria

calceolaria (calceolaria)

Sept 16 - 94

Dr Setchell & son returned  
from here. We went  
to Mill River but  
but found nothing of  
special interest.

---

Sept 22 - 94

Dept. of Labor

1037. *Porcellaria multispinosa*,

1038. *Doculitina*

in *Porcellaria* n. sp.  
from *Porcellaria* n. sp.

Sept. 20 - '94

1039. ... ..  
... ..  
... ..  
... ..  
... ..

cont. 27.

1877-94

Went to Middle Ground  
(Stratford Shoals) Light  
with Dr. Setchell - in

Dr. Setchell's company with  
Dr. Francis Pitts & in  
company with

1. *Lyngbya confervoides*  
Wass. & Grun.

on Rocks in intertidal zone

2. *Laminaria saccharata*  
in fruit

3. *Phyllophora porphyra*  
Stratford

4. *Phyllophora rubra*  
calycularis ← Urasponia

5. *Callithamnion* sp. *lysi*

6. *Chlorella* sp. *pinata*

7. *Polydora* sp. *gemma*

1047 - 7 - 9 of ...

1047. ...

...  
...  
...  
...  
...

Oct. 13 - 1894 - Went  
to Trinity College  
St. S. School  
the 16th

Oct. 14 - Saturday

1048 - *Sagittaria myriophylla*  
- 1049 - the upper  
part of the  
- 1050 - but above  
- 1051 - somewhat  
- 1052 -

1053 - *Dicentra*  
*Styrene* - Schlegel's  
the wand  
of 1048

Sunday - Oct. 1st

1050 - *Stemona* *Armitum*  
on *Andropogon* *terrestris*  
mountain side

*Andropogon terrestris*

to *Andropogon terrestris*

*Andropogon terrestris*

*Andropogon terrestris*

*Andropogon terrestris*

*Andropogon terrestris*

*Andropogon terrestris*

1857 - 1858 - C. ...

1857

Milch und ...  
...

1858 ...

...

1859 ...

1857 ...



Sunday Oct. 21

1058. ... ..

... ..

... ..

Sunday Oct. 26

... ..

1059. ... ..

forming extensive light ...  
... ..  
... ..  
... ..

1060. ... ..

... ..  
... ..  
... ..

Sunday, May 11

1061 - *Callitriche* - common  
in the woods. Flowers  
of *Peperomia* in  
below *Yucca* etc.

1062 - *Callitriche* - common  
from stream below the  
Palace Hill at Washington

---

Sunday - May 11  
with Mr. S. S. Sill

1063 - *Callitriche* - *Callitriche*  
in the woods of *Peperomia* etc. etc.  
below *Yucca* etc. etc.  
in *Callitriche* etc.

Sunday Nov. 18 - '94

1064. *Microspira vulgaris*  
Sluggish stream - East End  
Brent - near Mill.

---

Sunday Dec. 9 - '94

1065. *Bongia fusca* - *Mirpura*  
in Stone at Service Park  
(Ginkgo in Setchell).

---

Sunday Dec. 16 - '94

1066. *Mirpura repidissima*  
in outlet of "Fresh Pond"  
Stratford

December 24  
Cape Cod  
Dec 24

Very cold day  
Went up to Tenney Point  
but found nothing of interest.

Sunday evening we went to  
New Haven and spent  
the night with Setchell.  
Settled details for leaving  
1st fascicle of  
Phylogeny of Boscalis-Andria.

Tuesday Dec. 25 - 94  
Seaside Park

11067 -

11068 - *Phyllothea fasciata*

11069 In this scraping from  
rock between tide marks  
a little of what appears to be  
*Littoridin* and *unilocular* *Strophis*  
forming.

Julian 1870 - 1894

1070 - *...*

May 16 - 1875  
Seaside Park

1071. *Trifolium tenax*  
on stones

1072. *Saxifraga hypnoides*  
on rocks

1073. *Plantago plantaginifolia*  
on rocks

3 miles NW - 17 - 100 -  
with L. S. Schell  
Seneca Park

1074 - *Utricularia* sp.

1075 - *Callitriche* sp.

---

1076 - *Callitriche* sp.

1077 - *Callitriche* sp.

1078 - *Callitriche* sp.

1079 - *Callitriche* sp.

1080 - *Callitriche* sp.

Shin ... 1 - 4 5  
with ...

✓ 108 ...

...  
(...)

1079 -

...

✓ 1080 - Beytriff...

...

1081 - ...

1082 ...

Saturday Apr. 20 - 95

Scenic Park

1053. *Protophormia leucosticta*

Sunday Apr. 21 - 95

Scenic Park

1054. *Dramaticia*

1055. *Dasytrophon conularis*  
*f. var. circumlocutus*

1056. *Protophormia*



Friday April 26 - '95

Seneca Park

1057 - *Scytopus* *ornatus*  
*ornatus*

1058 - *Scytopus* *ornatus*  
*ornatus*

1059 - *Plantago* *plantaginifolia*

1090 - *Phyllitis* *fasciata*

1091 - *Fragaria* *virginiana*

1092 - *Fragaria*

July 20, 1915  
1073. *Urtica variabilis*

*forma Marina, Willd.*  
fidemule.

Near beach  
at [unclear]

near [unclear]

*Urtica variabilis*

1074 - *Urtica variabilis*

1075. *Urtica variabilis*

5 - 1/2 - 1/2 -

...

...

...

...

...

...

...

...

...

1100  
S.S. Park

✓ 1098 *Homalium*

✓ 1099 *Homalium*

1100. *Desmodium*  
with *amblyopogon* & *Stemodia*  
} *Desmodium* *salicifolium*  
with *pl. ...* *spina*  
*Zinnia* with *the ...* etc  
*Ectocarpus* *confertus*

1101 *...*

*Zostera* *...*

Sunday May 19 - 9

*Seymouria* *linearis*  
var. *complanata*  
Put some in *journal*

for Schell

S.S. Park

Thursday May 25 95

SSI Park

✓ 1133. *Halothrix luniformis*

✓ 1134. \* *Dendrotrichum undulatum*  
from <sup>the</sup> Bathen

Mounted set for Page 10.

✓ 1135. *Punctaria plantagina*

✓ 1136. - Young *Chroococcoides*  
on Zostera

\* *D. undulatum*  
among which are usually  
simples of *D. Bathen*  
commonly associated with  
*Halothrix luniformis*, *Lotia*,  
*Confervales* etc. *D. undulatum*  
*Punctaria latifolia*

Sunday, May 26 - '95  
at New Peshawar

1107. *Chaetomium aerew*  
in oak-fruit.

1108. *Clavophora*  
in oak-fruit

1109. Young *Chaetomium glaucogenum*  
on oak-fruit

1110. *Dictyocephalus*  
in oak-fruit  
in oak-fruit

Thursday, July 30 - '25

1111 - *Leptocarpus*

1112 - *Leptocarpus*

1113 - *Leptocarpus*

*Leptocarpus*

1114 - *Leptocarpus*

1115 - *Leptocarpus*

*Leptocarpus*

*Leptocarpus*

Sunday June 16 - 95

At the ...  
...

1119. Unaborn ...  
on ...  
high water ...  
among ...  
...





Handwritten text at the top of the page, possibly a title or header.

Second line of handwritten text.

Third line of handwritten text.

Fourth line of handwritten text.

12

Signature or name



91

11

Pool near junction from  
mounted for Pinguicula

July 14 1915

Middle Ground (Swampy Shrubland)

1127, *Nematode multiplex*

On rocks near the water mark  
1128 - *Calobryum parasitica* in the same

1129 *Calobryum* *fulvum*  
on rocks

all

repeated

Pr.

av.

Sunday July 28-'95

1151 *Dichothrix bosmanni*

(=1124) collected at same place

Chapel Hill - Dept. of Phytochemistry

This is also the same as

1124 in the collection

Sunday Aug. 11 - '95

4742 h 1011' ~~Wagon~~

1132. *Anthophysalis granulosa*  
with *Calothrix saccharum*  
(mountain 600 ft. high)

1133. *Spirulina tenuissima*

1134. *Physiphora Shrevei*

~~Wagon 1011' 17-11~~

"Fresh Pond" Station

1135. *Physiphora Shrevei*  
From Rocks + Shells  
mountain 200 ft. for Physci

Sunday, 1/14. 1854

1136. *Chimaria tenuis* var.  
Long Beach

1137, *Chimaria*  
Long Beach

1138. *Chimaria subtruncata*

Long Beach

1139. *Chimaria*

1140. *Chimaria*  
Long Beach

188. ... .. 95-

Long Beach

189. ... ..

=1137

~~Michigan~~

...

...

192. ... ..

193. ... ..

Aug. 24 - '95

From [unclear]  
with Dr. [unclear]

1144. Shells from [unclear]  
Containing

- a. Plectonima terebant
- b. Gomontia  
etc.

145. Aug 25 -

collected from [unclear],  
on [unclear] [unclear] [unclear]  
take out off [unclear] [unclear]  
[unclear] station.  
[unclear] nesting on [unclear]  
[unclear] [unclear] [unclear]  
[unclear] [unclear] [unclear]  
[unclear] [unclear] [unclear]



Sunday, Sept 1 - 1887 -

W. L. ...  
Shore ...  
Plains ...

1146 - ... American ...

1147 - ...

1148 - ...

Monday - ...

... ..

... ..

... ..

1150

1151

violacea

1156

in woods, Chrysoidea etc  
Mounted at the Phyco

1157

in woods, Chrysoidea etc

with ...  
Saltwater

✓ Jolyprothrix lunata  
tenues & dentata mixed

Chiron gymnosoma

Chiron rejimata

✓ Miltia ...

✓ Miltia

Friday Sept 29 - 195  
With the weather clearing

1158 - *Septimaria*  
at the mouth

1159 - *Septimaria*  
in (some) banks  
at the mouth

1160 - *Septimaria*  
in some places at 1159

1161 - *Septimaria*  
at the mouth

1162 - *Septimaria*  
Fitch *Septimaria*

Sunday Oct. 6 - '95

Brown Hills

1163 - Geothlypis  
var. retusa

---

Sunday Nov. 5 - '95

1164<sup>v</sup> Imraya fluvialis  
Pequannock, near Belvidere  
Factor, Red Bank

1165<sup>v</sup> Bat. virgatum  
Same place as 1164

1166<sup>v</sup> Bat. regium  
Del. & New York, Red Bank

Saturday, Nov. 9 - '95  
with Mr. F. S. Collins

✓ 1167. *Callitriche quadrata*  
on Stone - beside Park

✓ 1168. *Monarda Crepidium*  
on Stone between (wide mark)  
beside Park

✓ 1169. *Gonolobum hammondi*  
(Thwaites) Handel

on *Ruppia* among a  
multitude of other things.  
Found by Mr. Collins.

Fresh Pond - Stratford

Sunday Dec. 22 - '95

✓ 1170 *Stigeoclonium flagelliferum*

on stones in swift water

Pegnumot River - below

factory pond in the main  
channel.

Xmas - '95

✓ 1171 - same as 1170 and  
from the same spot.

Completed set for  
Peyer.

Sunday Dec. 29 - '95 -

1172. *Neottia implexa*

In brackish pond

Seaside Park.

1173. *Vandusia litorea*?

Submerged in brackish  
pond - very brackish.



Sunday, Apr. 5 - 1896  
With Mr. Collins at  
Mabey's, W. Va.

1174. *Batrachium*  
*speciosum* <sup>circled</sup>  
(= 181 *Phytolacca* *Bor.-Am.*)  
Found in  
the same spring and tract  
Phyco. 13-14. - *W. Va.*  
Falls.

1175. *Linnæa* *triflora* <sup>circled</sup>  
(= #36 *Phyco.* *Bor.-Am.*)  
at the same spring, *W. Va.*  
Falls, *W. Va.*  
(Young plants.)

Sunday Apr. 17 - '96  
Seaside Park

1176. *Sargassum bimentatum*  
var. *complanatum*

Sunday Apr. 19 - '96  
Seaside Park

1177. *Vanukona litorea*  
with abundant *Zoogonidia*

1178. *Sargassum bimentatum*  
var. *complanatum*,

May (1/11) 26 - '96  
Seaside Park

1179 - *Desmarestia viridis*

May 3-96  
Seaside Park

1180 *Desmarestia viridis*

Saturday, May 9 - 96  
at Newport, R. I.  
with F. S. Collins

1181 - *Monostroma pulchrum*

1182 - *Gomillei*

1183. *Glossosiphonia capillaris*

1184, *Spermatocystis*

1899 - May 9 - 10 - Central

v 1185. *Melobesia* *subsp. ...*

v 1186. *Melobesia* *frustulata*  
on *Chondrus*  
+ *Porphyra*

v 1187. <sup>at</sup> *Laminaria digitata*

v 1188. *Coccolithus scopulorum*

v 1189. *Synspha lutea*, common  
High up on the cliffs.  
Phormidium-like patches

v 1190. *Lithothamnion* —————

v 1191. *Ectocarpus acidioides*, Rosem  
on *Laminaria*

Sunday May 24 - '96

Crane's Point - B. Point

1192 - *Penotaria latifolia*

1193 - *Polysiphonia nigrescens*

1194 - *Hydrocoleum*, tubular?  
forming a gelatinous coating  
around old stems of  
*Spartina* in brackish  
ditch.

Monday - May 30 - '96

1195 = 1194 from same  
place

1196 Sunday May 31 - '96  
*Enteromorpha divisa*  
fresh & dried - 51. at 1. V

Friday June 5 - 16

✓ 1197 *Scenedesmus*  
Pool below factory, Pandan

✓ 1198 *Scenedesmus*

Coating tops of water plants  
at surface of water.

Pool below factory Pand-  
dam. Stratum dark brown

Trichomes about 7 or 8  $\mu$  thick  
not attached to spines  
Capitate, ~~attached~~ cells  
about as wide as long  
generally

Thursday, July 2 - '96  
✓ 1199 - *Phormidium*

Coating the wall of Iron  
Watering tank and floating  
therein (Tank for watering  
horses) near Waterbury  
Conn.

---

Sunday - July 19 - '96

Penfield Reef

✓ 1200 - *Rancharia*

(= 663) - on muddy rocks below low water

✓ 1201 *Chroococcoides*

✓ 1202 *Callithamnion Bialeki*

✓ 1203 *Callithamnion*

Sunday July - 26 - '96

1204 - *Chaetophora endiviorifolia*

Sp. ...  
Pond ...

---

Sunday Aug. 2 - '96

1205 - *Gay's Elegance*

1206 *Gracillaria ...*

Sp. ...



Monday Aug. 17 - 1896  
at Outlet of Ox Bow Lake  
Near Lake Piseco - Hamilton  
County, N.Y.

1207 - *Batrachospermum vagum*  
on stones

1208 - *Bat. radicans* ?  
on stones

1209 - *Bat.*  
on stones

Thursday - Aug. 20 - '96

1210 *Nitella*

Outlet of Ox Bow Lake  
Near Lake Piseco

Saturday Aug. - 22 - '96

1211 - Oscillatoria, 100m. ?

Crating stones in running  
water - "Mill Brook"  
near Ironbridge Club -  
Pleasant

1213 -

Crating stones in  
"Mill Brook"

Aug. 24 & 25

✓ 1214 Bot. outlet of ...

near ...

(= 1207)

✓ 1215 Bot. ...

(= 1207)

✓ 1216 Bot. ...

fl. ...

Aug 7 4475 - Apartment  
1217 = 1209 Bat -

on Stones

1218 Bat -

1219

Sunday Sept. 25 1916  
Charles Island

✓ 1220 Rivularia atra  
on turf - Spartina  
with *Microgloia*  
P.B.A. # 3178

✓ 1221 Callithamnion

Sunday - Nov. 1

✓ ✓ Rhodomenia palmata  
Long beach - near  
Stratton Point - same  
water above in abundance

✓ 1222 Callithamnion Barleji  
same place as above

Tuesday Nov. 3 - '96

J1224 - *Ralfsia verrucosa*

on rocks in pools and  
on shells of living  
mussels in pools.

Mounted a set from  
rocks. - [unclear]

Sunday, July 8-96  
with Mrs. Lewis

✓ 1225 - *Scytonema asperum* (My.) Boom  
(= *cinereum*, Thuret)  
In pool at North Haven, Ct.

✓ 1226. *Microcoleus lacustris*, Furlow  
mixed with some of  
the above. *Microcoleus*  
*lucicola* (My.) Boom

✓ 1227. *Schizothrix leodiana* (St. J.)  
on vertical surface  
of dripping rocks at  
East Rock, North Haven.

✓ 1228. *Calothrix parietina*  
same place as 1227

Sunday Nov. 28 - 96

1720 *Desulphatium leucum*, Ag.  
Pond in ...

---

Sunday Nov. 29 - 96

1230 *Ectocarpus subcymbrinus* )  
Farlow

In brackish pool

Cross' dam, Biscay Park

Sunday Dec. 6-95

1231. *Chaetrasia viridacea*, Ag.

Coating stands in soft  
water, Piquette, near  
Sawmill line.

Mounted on paper Phycol

1232. *Chaetrasia viridacea* Ag.  
bottom of Piquette  
River below the  
Sawmill just above  
Sawmill line.



Sunday Dec 18 - 95

1233 - *Cladophora*

growing out on sandy

bank of stream

at

Scenic view

Bangor near junction

on river about 1/2 mi

west of Bangor

1235 - *Rhizobolium* *terrestris*

growing on

Sunday Dec 27 - 96

✓ 1236 *Rhizobolium* *terrestris*

= 1235 - same place

