



"PALACIO REAL"

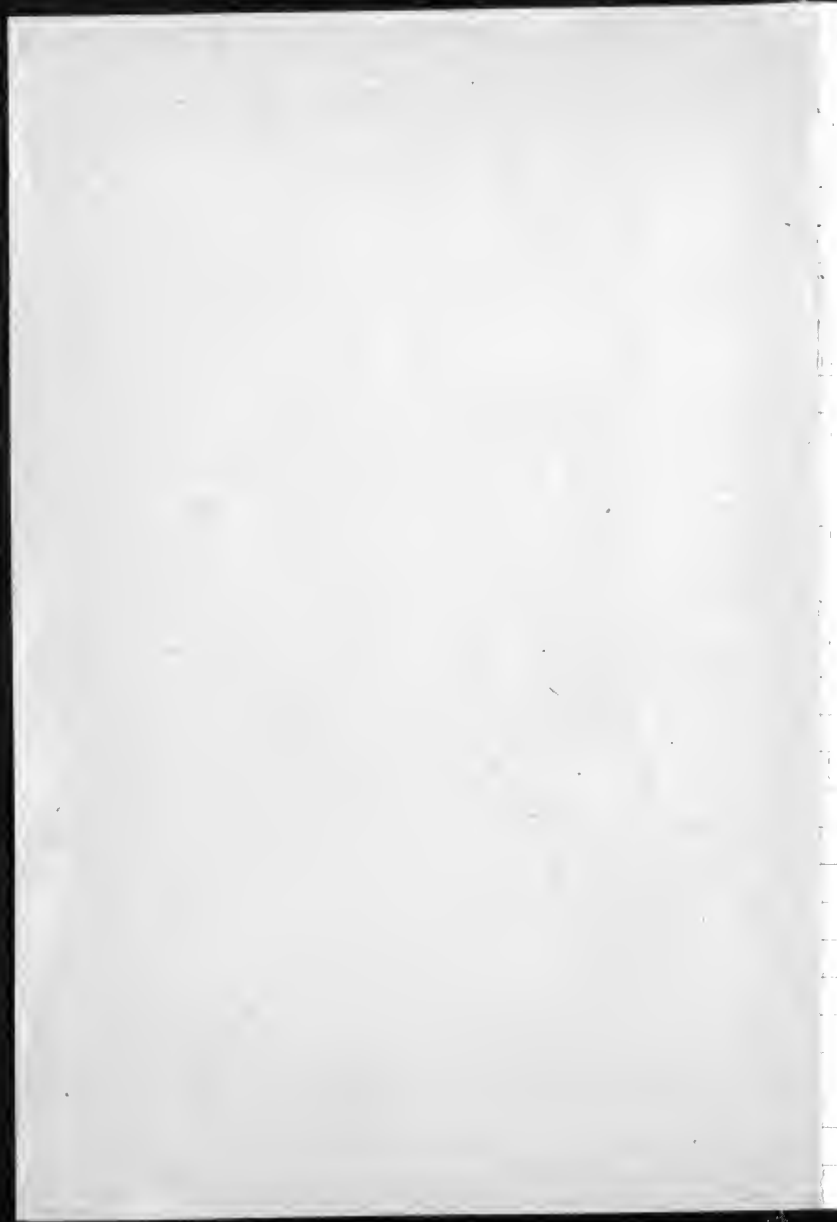
Tipografia. Papelaria, Livraria, etc.

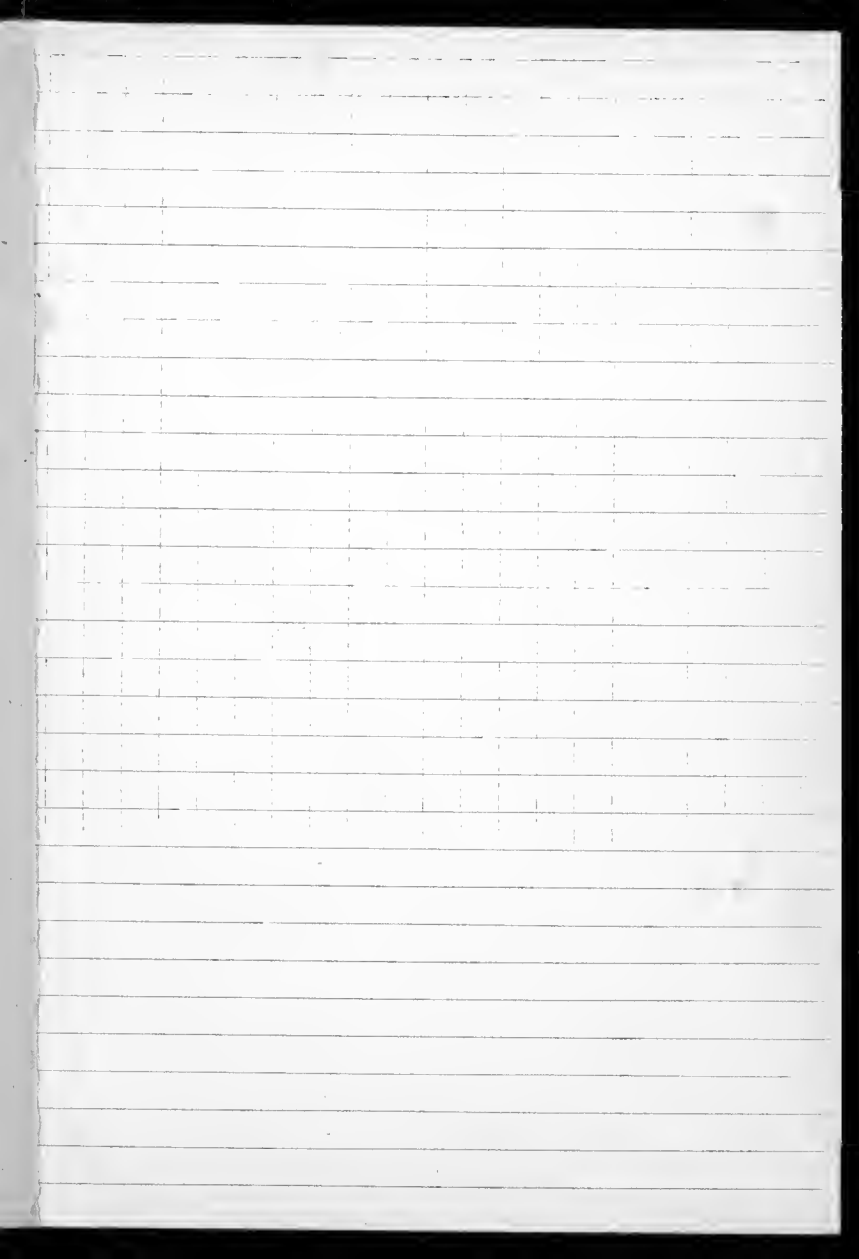
CESAR & CIA.

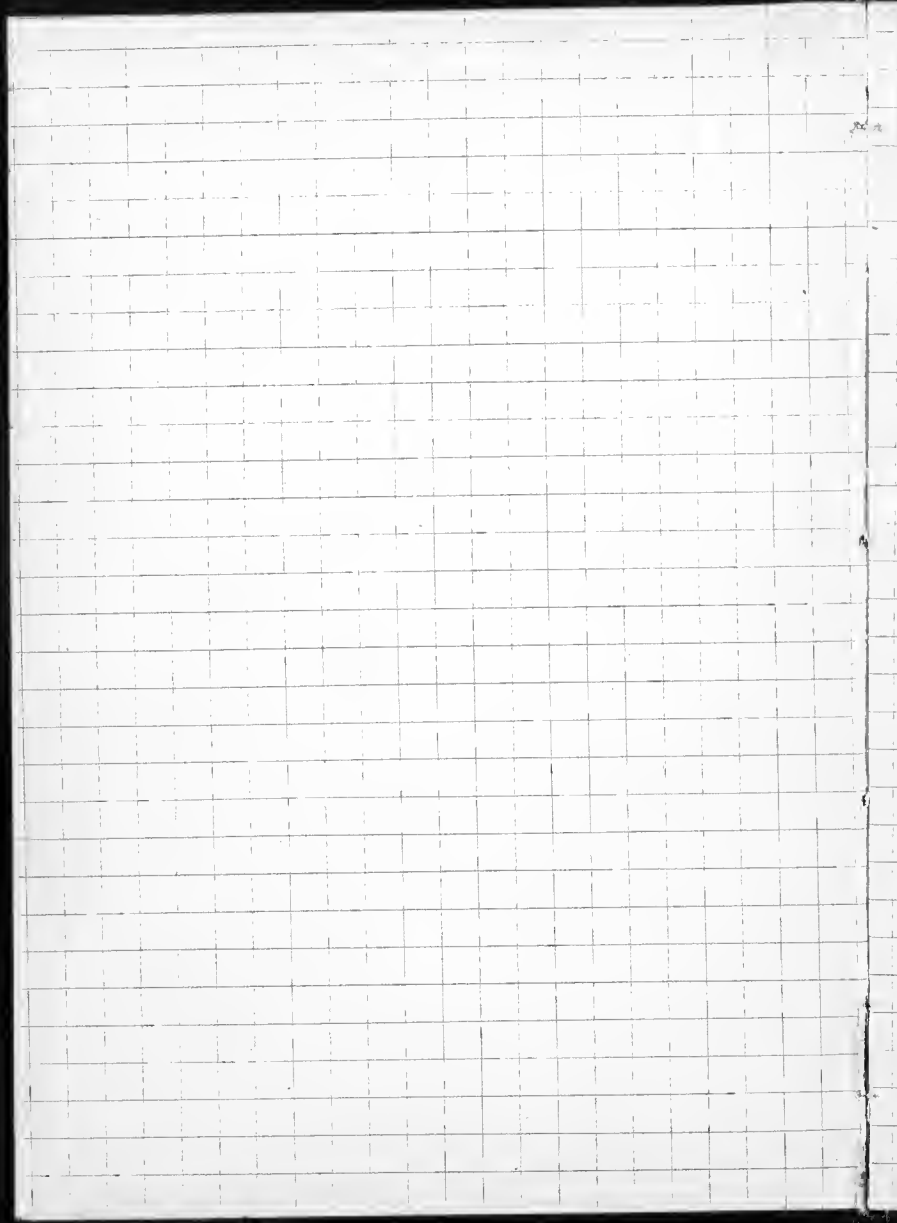
827, Av. 7 de Setembro, 833

MANAUS - AMAZONAS

Reference collection
of the
in the
display -







PLANTAE COLOMBIANAE

No.

R. E. Schultes et F. López

Tukano = ä-s | po-hö
laare amora

(1)

Serra Ularai, above São João. No. 21.

Tukano = nö - fö' - fö' - fö' - nö

(2)

Mura'ama = ä - hö'

(4)

(2)

(2)

(1)

(4)

(2)

S. cordifolia (Des.) Spring.

(2)

Saint Paul.

Nov. 25, 1947

- 9160 Epiphyllum pubescens Barb. Rodr.
 9162 Epiphyllum pubescens Barb. Rodr. 8 1/2 ft.
 Fin. stem, thin, pubescent, green. Sp. pale
 externally dark blood-red, internally scarlet;
 base along-veined. The plant is epiphytic
 in the rocky forest + it is very hardy.
 Fruit - 4-5 cm. diam. green, with
 stripes 8-7 cm. long. The fruit is
 intermediate between the red and
 white but takes much longer to
 ripen.
- 9163 Passiflora gibbiflora (L.) 12-15 ft tall, it
 comes in many forms, the one here is 6-7 ft long
 9164 Justicia gibbiflora (L.) 12-15 ft tall
 fr. green. Tub. 1-2 cm. diam.
- 9165 Passiflora gibbiflora (L.) 12-15 ft tall
 fr. green. Tub. 1-2 cm. diam.
- 9166 Passiflora gibbiflora (L.) 12-15 ft tall
 Fruit dark green. Tub. 1-2 cm. diam.
- 9167 Passiflora gibbiflora (L.) 12-15 ft tall
 fr. green. Tub. 1-2 cm. diam.
- 9169 Passiflora gibbiflora (L.) 12-15 ft tall
 flowers white. Tub. 1-2 cm. diam.
- 9170 Passiflora gibbiflora (L.) 12-15 ft tall
 flowers yellow.
- 9171 Salpiglossis gibbiflora (L.) 12-15 ft tall (trail-
 ing to the ground) on mossy rocks. Tub. 1-2
 cm. diam.
- 9172 Bombay gibbiflora (L.) 12-15 ft tall

(3)

(4)

(1)

(4)

(2)

(8)

(3)

(2)

(2)

(2)

(8)

(4)

9173. Noua pauciflora. Tree 14 m. diameter, 60 ft tall,
ex. wood. Bark soft, thick, smooth brown out-
> side, white inside. Latex white, coagulating to a
stickiness. Heart-shaped leaves, glaucous above,
horizontal to vert. Petioles stout, and apparently
very large. Fruit only slightly swollen. Seeding.

9174. Noua pauciflora. Tree, 14 m. diameter, 60 ft tall.
Bark greenish yellow. Fruit edible.

9175 Noua pauciflora (same as above, apparently).

9176 Noua pauciflora. On forest floor. S. Kochii Her.

9177 Noua pauciflora? (Same as above, apparently).

Sao Gabriel November 23, 1947

> 9178 Noua pauciflora. Tree 14 m. diameter, 60 ft tall,
ex. wood. Bark soft, thick, smooth brown out-
side, white inside. Latex white, coagulating to a
stickiness. Heart-shaped leaves, glaucous above,
horizontal to vert. Petioles stout, and apparently
very large. Fruit only slightly swollen. Seeding.

> 9179 Noua pauciflora. Tree 14 m. diameter, 60 ft tall,
ex. wood. Bark soft, thick, smooth brown out-
side, white inside. Latex white, coagulating to a
stickiness. Heart-shaped leaves, glaucous above,
horizontal to vert. Petioles stout, and apparently
very large. Fruit only slightly swollen. Seeding.

9180 Rubiaceae. Shrub. Flowers white.

9181 Shrub.

9182 Shrub. Fruit yellow.

November 24-26, 1947

> 9183 Micrandra siphonoides

9184 Coum. Enormous tree. Buds greenish.
Fruit edible.

(1)

(3)

(1)

(4)

(1)

(100)

9192 Abuta grandifolia (Aubl.) Sauerl.

(3)

(3)

(8)

9185 Legume. Fl. or stem, blue.

9186 Micrandra siphonioides

9187 Vine

9188 Micrandra siphonioides

9189 Heliconia. 7 ft. high Bracts scarlet, flowers yellow.

9190 Micrandra siphonioides

9191 Bush. Apocynaceae. Flowers yellow. Latex white.

9192 Mimipetrum Vine. Fruit green.

9193 Mouroeia Sm. tree. Flowers pink.

Korapana, Rio Negro (between mouth of Vaupés and San Felipe).
November 30, 1947.

9194 Hevea panzhiensis. Tree 55 ft. tall, columnar, 18 inches in diameter. Latex light yellow, thick, coagulating to a poor rubber. Bark to be used.

NB

Examine to ascertain if dent. cl form, due to
fossil calcification!

Working on rocky (granitic) slab.

9195 Tea leaves & debris etc. also + for get...

(9)

(4)

(7)

(2)

(6)

(2) 9201A Arabidopsis Fl. purple. Medicinal

(1) 9201B. Herb. Composite

(3)

(3)

(4)

(1)

(4)

(2)

9209 (all mica mee-see-da)
mee-see-de-go

(2)

(2)

(3)

(3)

✓ 9200 Moraceae rubra Swartz. Tree 110 ft. tall, per-
fectly smooth, external buttressed, 3 ft. diam. at
base. Bark grey, soft, 1/2 in. thick, red internally,
and on thick part of leaf sheath near Picard-
swartz. Bright red bark of vine.

✓ 9201 Small plant; flowers white.

Monte de Rio Viejo, Rio Negro. December 2, 1947.

✓ 9202 Selaginella deperula Spring.

✓ 9203 Selaginella stellata Spring

✓ 9204 Theophrasta peruviana Cultivated. Small
tree. Stamens and lobes deep red, rest of
flowers pink. Cupu-azul.

✓ 9205 Herrania Camargoana. Sterile.

✓ 9206 Small Phyllanthus? Flowers greenish.

✓ 9207 Fern.

✓ 9208 Banisteria. Vine. Flowers bright yellow.

✓ 9209 Strychnos. Vine. Fruit green.

✓ 9210 Leguminosae. Small tree. Flowers pink to red,
growing out of stem.

Rio Viejo, Castro, Com. de. Dec. 3, 1947
Incastanga -

✓ 9211 Cucurbitaceae crucifera. Sterile. Small tree 35-45 ft. tall,
diameter 1 ft., unbuttressed. Crown small. Leaves large for the spec.
thick, white, rather abundant. Bark externally shaggy,
dark brown, internally bright red; thick, soft. Dominant
tree with 9212 and 9227 on this castanga. Very abundant.

9211F. *A. pauciflora concinna*
no dots on any label.

(2)

(3)

(1)

(1)

(1)

(2)

(2)

(7)

(1)

(1)

(2) 9222A Lecanidacraea. Tree. Flowers white.

(1)

Makara 100-1100 ft range. Makara-garage (3)

9226 Pound low 1000 ft. for fruit part of Makara (1)

bi-ichu-gi Alkaloid neg. (5)

(2) 9227B ↓ Six-year. Shrub. purple.

(1)

- ✓ 9212 *Nauclea guianensis* (Sw.) DC. Small tree 30 ft. tall,
 8 inches in diameter, cylindrical. Lvs. white, thin.
 Leaflets brownish, ovate, 2-3 pairs to the base of petiole.
 Bark externally red-brown, internally white, brittle.
- ✓ 9213 *Passiflora*
- ✓ 9214 *Passiflora* Flowers white
- ✓ 9215 *Epilobium* Flower brown-purple, lvs.
 dark red. Sepals mostly brown. Fragrant.
- ✓ 9216 *Passiflora* Flower yellowish yellow with
 dark brown lines. Sepals scarcely all brown.
- ✓ 9217 *Nauclea guianensis* Leaflets dark green above, pale below,
 brown below. Lvs. ovate, thin, not conspicuously small. Bark
 thick, little, reticulate, dark brown, smooth, internally
 white. Climber, tree 30 ft. tall, 8 in. diam., 8 in. diam.
- ✓ 9218 *Stemodia asperula* Spring
- ✓ 9219 *Stemodia producta* Bah
- ✓ 9220 *Ficus*
- ✓ 9221 *Bursera* Flower white.
- ✓ 9222 *Commersonia bartramia* Small, bushy tree columnar tree
 45 ft. tall; diameter 1 ft. Bark externally shaggy, dark brown, in-
 ternally deep scarlet, thick, soft. Lvs. usually glaucous-
 dark, thick, white. Flowers yellow.
- ✓ 9223 *Passiflora*
- ✓ 9224 *Passiflora* Flowers orange, green.
- ✓ 9225 *Passiflora* Sepals yellow.
- ✓ 9226 *Passiflora* Small tree. Flowers yellow.
- ✓ 9227 *Henrieggia verticillata*. Small tree (one of domi-
 nant species in the caatinga), about 30 ft. tall. Flowers
 showy, pink. Leaves very conspicuous.
- ✓ 9227A *Aptera Saprophyta*. Lavender.

lö-ka'-wé

(4)

(1)

(3)

(1)

(1)

lö-ka'-wé

(4)

(6)

(6)

(6)

(1)

(1)

(3)

(2)

9234 stems boiled in water and acvasto to stop fermentation

(3)

(2)

(2)

(3)

(4)

(6)

(4)

Same locality but along river's edge and on rocks of
cachaera -

- (4) ✓ 9228 Ficus Small tree. Latex white, resinous, extremely
abundant. Leaves coriaceous. Fruit reddish green
with red spots. Fruits eaten by Indians.
- (1) ✓ 9229 Ficus tree. Flowers yellow.
- (1) ✓ 9230 Alismaceae? Grass-like plant arising from
"woody" base enveloped in leaf-bases. Flowers
in heads, white. Curved in capsule.
- (6) ✓ 9231 Malvata. Flowers white to pinkish. Covering
and cemented firmly to granite rocks in rapids.
- (6) ✓ 9232 Isibiquia Small tree. Flowers yellow.
- (1) ✓ 9233 Isibiquia P. Urinaria
- (2) ✓ 9234 Isibiquia P. Urinaria
- (2) ✓ 9235 Small bush. Flowers yellow.
- (3) ✓ 9236 Plumeria Small tree. Flowers white, very fragrant;
latex white. Himatanthus attenuata
(Benth.) W. & A.

Rio Negro, above mouth Xic. December 4, 1947.

- > ✓ 9237 Hevea Benthamiana. Small tree. Leaflets reclinate
(lit. young). Buds whitish. Latex white, thick. Bark red-
brown outside, red inside. Basally swollen.
- 9238 Leguminosae Small tree. Flowers white, spotted with
purple.

Rio Negro, above mouth Duniti December 5, 1947.

- > ✓ 9239 Hevea Benthamiana. Flowers yellow. Leaflets reclinate,
glossy above, latex squandant, white, thick. Tree 70
ft. tall, basally swollen. Bark externally smooth, reddish
brown, internally red, thin, soft.

This tree had at least 250 lbs. of the dried up. It has a remarkably coarse bark inside. The seeds in the capsule are flattened, then bent inward to make a rather little space in which sugar may be added to produce a concentrate-like drink. Note taken at this locality.

Herrania Canariensis diffr. strikingly from all other species in the curious structure of its fruit. The two longitudinal ribs are almost equal and are ≈ 7 forms (as in H. N. 1010, H. Centre casana, and H. full chana), but the transverse ribs (low and inconspicuous in the three species named) are as high or even higher than the longitudinal ribs and are also cultivated. Where the ribs meet, a long, sharply pointed, fleshy spine-like protuberance, the apex of which is usually bent, is formed. This curious structure as well as the large transverse ribs are unknown in any other species. All parts of the fruit are covered with an indument of fine stinging hairs, and this indument is especially dense near the summit of the ridges. In all species known for which the capsule is firm, the fruit dries a bright yellow; in Herrania Canariensis, it ripens a rich scarlet colour. The capsule is usually nearly globose with an abruptly acuminate, in most cases rather conspicuously elongate, tip. There are more or less 25 seeds in each capsule.

Nasaret, Rio Negro Dec. 5, 1947.

Woods. Slender to flower most

- (14) ✓ 9240 Hevea Benthiana - tree 15 ft tall, trunk 4 inches in diameter. Fruit with up to 30 flowers. Flowers dark - purple most of the experiment and most of the petals dark purple in the middle of the tree. Petals perfect, glabrous. Bark shiny black. Leaves pinnately compound, bipinnate, lower leaflets upper ones deeply and irregularly serrate. Fruit "skin", especially young, "leaves de face".
- 9241 Hevea Benthiana. Vines. Flowers yellow - white.

São Tomé (near Hotel Itatiaia) Rio Negro

December 6, 1947.

- (8) ✓ 9242 Hevea Benthiana

- (5) ✓ 9243 Small tree. Flowers white.

- (1) ✓ 9244 Raviflora Vitis. Flowers scarlet.

- (1) ✓ 9245 Oncidium. Flowers yellow. Epiphyte.

- (3) ✓ 9246 Flowers white. Small tree.

- (6) ✓ 9247 Hevea Benthiana

São Tomé, blow Cocui, Rio Negro, Contingia. December 6, '47.

- (3) ✓ 9248 Chelonanthus. Flowers yellowish-green.

Besides these outstanding fruit characters, differences in other structures occur to separate Herrania Camargoana from other species. The flower, which is rather small, has a colour which is unique in the genus. Excepting the exterior of the sepals - bright scarlet - the floral parts are an ashy grey-purple. The ligules are also unique in the genus because they are unrolled, in cross section nearly circular, the basal part of the ligule is greyish purple, but the linear part becomes whitish, often delicately fringed with the grey-purple hue.

The ^{bracts} leaves of Herrania Camargoana, the largest I have seen in the genus, are often curiously "spurred" (due to a thickening of the petiole) and, consequently, slightly erect. This condition is not confined to Herrania Camargoana, but it is sometimes seen in H. verticillata and H. Manac. The margin of the leaflet of H. Camargoana, entire in the lower half but deeply and irregularly serrate in the upper half, appears to be unique.

Amongst the inhabitants of the upper Negro drainage-area who speak Portuguese, Herrania Camargoana is called "cacao ~~de~~ jacaré", an epithet also applied, in other parts of the Amazon Valley, to H. Manac and having reference to the similarity of the ribbed fruit to the back of a crocodile (= jacaré). The Tukano Indians of the region refer to the plant as "ee-so'-fê-ke" which, meaning literally "(ee-so') jacaré (fê-ke) 'annoná", likens the fruit, with its soft pine-like tubercles, to the fruit of Annona muricata as well as to the crocodile.

9265 loc + altitud in coffee or tea + diandra (Kubler)

(3) 9249 Fern

(3) 9250 *Palaemonetes pycnanthemus*

V. Olsson ^{Asawa}
BK prison
to curan

Cocui, Rio Negro - (Brazil)

December 2, 1947

- 6) 9251 *Volcania*. Tall tree. Flowers yellow. Tukang re-té-té
- 3) 9252 Tall tree. Taproot opposite in? Flowers blue-black
- 4) 9253 Medicinal sized tree. Flowers yellow, highly fragrant.
- 5) 9254 Small tree. Leaves common along flood-banks. Flowers in white and red.
- 4) 9255 *Macha*. Tree 75 ft. tall. Fruit not colour. Bark white.

San Carlos, Rio Negro (Venezuela) December 9, 1947

- (4) 9256 *...* Flowers greenish yellow.
- 6) 9257 *Chelonanthus*. Flowers white.
- 4) 9258 *Euphorbia*. Shrub. Flowers white, bracts red.
- 5) 9259 *...* Shrub. Flowers white, bracts yellow.
- (3) 9260 Bush. Flowers white, fruit orange + yellow.
- (3) 9261 *...* Bush. Flowers red.
- (10) 9262 *...* Inga. Bush. Flowers bright yellow.
- 9264 *...* Small tree. Flowers yellow.
- 6) 9265 Small tree. Flowers yellow.
- 6) 9266 *Cenchrus*. Tall tree, 80 ft. tall, Petioles, columnar.
- 9267 *...* Tree. Bark rough, dark in color. Bark white. Flowers yellowish cream in color, fruit red. Bark is corky.
- 6) 9267 Tree. Flowers white. Bark impregnated with guaiac resin.
- 4) 9268 *...* Along banks. "Incaense" type.
- 4) 9269 Bromeliad. Bracts red. Epiphyte. No true roots.
- 4) 9270 Vine. Flowers on long spikes, each flower with a conspicuous red spur on cup. Wood very hard.

9277 *Ferdinandusa alisarantia*

Bark section
bitter papuapiper

9291A *Ferdinandusa apiculata*? Tree columnar, 60 ft. tall.
Leaves horizontal beneath with blackish pilosity.
Latex abundant, yellow. Bark smooth, rather lustrous
yellow outside.

- (6) 9272 *Solanum*. Flowers purple.
- 9273 In all tree, fruit mostly.
- 9274 Herb. Flowers & leaves dark green.
- 9275 *Solanum*. Flowers white.
- 9276 *Bursera*. Flowers white. Fruit green.
- (4) 9277 *Bursera*. Flowers white.
- (2) 9278 *Bursera*. Flowers white.
- (1) 9279 *Bursera*. Small tree, fruit green.
- 9280 *Bursera*. Flowers white.
- (5) 9281 *Mimosa*. Flowers white.
- (3) 9282 *Bursera*. Flowers white.
- (3) 9283 *Xylocarpus*? Flowers yellow.
- (5) 9284 *Cinnamomum*. Slightly bitter, columnar tree 5 ft. tall. Bark shaggy, thick, reddish white. Bark has a resinous, pinkish latex, sparse, white, resinous. Flowers yellow, with a strong fragrance. Fruit, said to be eaten.
- (3) 9285 *Hura* (*? hura*) Tall, columnar tree up to 70 ft. high, diameter 11 inches. Bark thin, brittle, externally yellowish brown, internally white. Latex yellow, abundant, does not harden to a thick crust, as in *Hura crepitans*.
- (4) 9286 *Bursera*. Flowers white.
- (3) 9287 *Bursera*. Flowers white.
- (3) 9288 *Hura* (*? pauciflora*) Shrub.
- (6) 9289 Treelet. Fruit red, on stems.
- (6) 9290 Treelet. Flowers yellowish white.
- (3) 9291 *Sida*.
- (1) 9292 *Rapanea*. Parasite on *Cinnamomum*.
- (3) 9293 *Loranthaceae*. Parasite on *Cinnamomum*.

9294a *Trinita?*

9302 *Handwritten text, possibly a name or location.*

9312 Bern room to purify house after illness.

20

(3)

(5)

(4)

(6)

- 10) 9305 *...* Home range
- 11) 9306 *...*
- 12) 9307 *...*
- 13) 9308 *...*
- 14) 9309 *...*
- 15) 9310 *...*
- 16) 9311 *...*
- 17) 9312 *...*
- 18) 9313 *...*
- 19) 9314 *...*
- 20) 9315 *...*
- 21) 9316 *...*
- 22) 9317 Large tree, wood hard. Flowers white.
- (3) 9318 *...* (Flowers white?)
- 23) 9319 Vine 4-6 ft. Flowers yellow. Apricot
- (5) 9320 *Bom.* Terrestrial in huge colonies in castings, suberose case 6 ft. tall.
- (4) 9321 *Bromel.* Terrestrial, solitary in castings. Spikes up to 10-11 ft. tall.
- (4) 9322 *Bush.* Flowers pink.
- (4) 9323 *Clusia.* Large bush. Fruit along with sepals and petals persistent and with 5 Δ remains of stamens, $\frac{1}{2}$ cm. each side, elevated. Common in Castings.
- (6) 9324 *Cunuria Spruceana.* Tree about 80 ft. tall, buttressed to 3 ft, above buttresses columnar. Bark dark red-brown, smooth, hard. Pith cream-white, thin, sparse. Flowers with shades of *Hevea* flowers, yellow. Leaves very leucous above.

Very nice - 17/10/17

- (2) 9325 *Stem...* Flowers white.
- (13) 9326 *Ericaceae?*
- (5) 9327 Small tree large tree. Fruit red. Flowers white
 somewhat quantity of green and red.
- (6) 9328 Tree. Fruit small. Flowers white.
- (1) 9329 *Utricularia*? Flowers white.
- (2) 9330 Large tree with Anthurium?
- (3) 9331 *Hevea* *apiculata*. Tree 35 ft. tall, clump on.
 Leaflets tripartite to erect; Bark milky brown,
 smooth. Latex yellow. Spindle.
- (3) 9332 *Papaya?* Flowers white *Calathea scuminata*
 Steyererm.
- (4) 9333 *Hevea* tree on pine coating, 9 ft. tall, flowers
 greenish, beneath black filices. Latex
 yellow. Bark gray, checked. Tree columnar.
- 9334 *Banana?* Flowers white.
- (1) 9335 *Fern.*
- (3) 9336 *Psychotria* *crucifera*.
- (3) 9337 *Lycopodium*.
- (1) 9338 Sedge (Cattling edge).
- (3) 9339 Tall shrub.
- (5) 9340 *Tree* *Stem* *white*.
- (2) 9341 Small tree on mountain. Flowers greenish.
- (3) 9342 *Banana* *sp.* *very* *conspicuous*
 3 ft. tall. *very* *conspicuous*
- (2) 9343 *Banana* *sp.* *Flowers* *white*
- (4) 9344 *Banana* *sp.* *Flowers* *white*
- (4) 9345 *Epiphytic orchid*. Flowers white, the
 white delicately pink tinged, lip yellow,
 spotted brown. Very erect.
- (4) 9346 *Banana* *sp.* 10 ft. high. Flowers white
 (a few) *dark* (and white).

- (1) ✓ 9331A *Rapanea*? Flowers white *Calathea acuminata*
 Stueyerm.
 (1) ✓ 9332A *Rapanea* *crassipes*
 (1) ✓ 9334A *Rapanea* *crassipes* Flowers yellow, brown stripes, *Stueyerm.*
 (2) ✓ 9341A *Rapanea* Flowers yellow
 (2) ✓ 9342A *Rapanea* 8 ft. tall
 (4) ✓ 9342A *Rapanea* Fruit yellow, green. Tall bush.
 (2) ✓ 9343 *Rapanea* 2 ft. tall. Flowers white.

- (2) ✓ 9343A *Cunila Spruceana*
 (1) ✓ 9344 *Cunila* *crassipes*
 (1) ✓ 9345 Tall 1 ft. *Cunila* *crassipes* Flowers white.

Grassland on San Juan (C. & S.) Dec. 13, 47

- (2) ✓ 9346 Palm. *Chorizanthe* 15 ft. tall. Leaf 1 m.
 (6) ✓ 9347 Bush. Flowers yellow, green. Along road
 bank
 (3) ✓ 9349 *Nauclea* Tree 35 ft. tall, diameter 14 in.
 Bark light brown. Lenticles white. Wood soft, light
 (6) ✓ 9348 Tree. Flowers white
 (3) ✓ 9350 Bush. Flowers reddish.
 (3) ✓ 9351 *Bumelia* small tree. *Cunila*. Flowers red.
 (5) ✓ 9352 *Cunila Spruceana*. Tree 85 ft. tall with
 narrow buttress. Flowers yellow. Lenticles
 white. Bark smooth, light brown. Wood soft.
 Bark thin, hard, brittle, smooth + reddish outside.
 (1) ✓ 9353 Low plant. Flowers fragrant, purplish.
 (6) ✓ 9354 *Cunila crassipes* Tree 60 ft. tall, column-

9357 *juai-jara* *ammelle-jara*. Seed's *providus*
for *worm* in *stone* etc.

9359 *Ru...* *Soft* *zab...* *...*
Dark *hard*, *thin*, *...* *...*
... *...* *...* *...* *...*
... *...* *...* *...* *...*
... *...* *...* *...* *...*

9367 *Photograph* *abundant* *with* *in* *the*
ground *near* *the* *entrance* *to* *the*
Patrol *Station* *along* *the* *tree* *with* *the*

>

>

>

>

Cessimpelos andromorpha PDC

- (4) 9366 *Vernonia* Word. exco. d. 70. ...
 long spike ...
- (4) 9367 *Phoradendron* ... tree 45 ft. tall,
 smooth, ...
- (3) 9369 ...
- (6) 9368 ... tree 70 ft.
 tall, ...
- (6) 9370 ...
- (5) 9371 *Bombyx*, Small tree 12 ft. tall, flowers
 ...
- (3) 9372 ... flowers pink, 4 ft. tall.
- (6) 9373 ... tree ...
 ...
- (5) 9374 Small tree 15 ft. tall, fruits green.
- (6) 9375 *Quercus* ... tree
 ... 80 ft. tall. Flowers yellow ...
- (1) 9376 *Vernonia* ... flowers green ...
- (2) 9377 *Demissa* ...
- (6) 9378 *Tanacetum*? Enormous tree. Flowers bluish
 purple.

9380A Large tree, 60 ft. tall, columnar, dbh net 2.15 inches. Trunk
dark reddish brown outside, reddish inside, flimsy, soft.
Latex very slow, thick, amber, t. Peltate rachiate,
~~whitish~~ ^{whitish} ~~pink~~ * beneath. In fruiting, floe-bai kv.
* but trunked, sapflow, slightly reddish.

December 18, 1947.

What I now take to represent *H. unguis* is the tree which was
found represented by the *H. unguis* in the flood-plain
of the Caño Tucumayo on Caño. Because an examination
of some other herbaria disclosed that *H. unguis* in
flower as det. at it nearly 10 years in the flowering
month, I resolved not to go to the type locality
until next month. There still are very many problems
to work out with respect to this concept and that of *H.*
speciosa.

Hereabouts there are several types of "caatinga". There
is the open formation with very low, scrubby, vegeta-
tion (*Chusquea* spp., *Bombax coriaceum*, *Bombax* sp. (9371)
and several tall bromeliads), growing on fine, deep, white
sands; this type is exceedingly dry, receiving only rain
as a benefactor. Separating these isolated open caa-
tingas are large areas of what I have called caa-
tinga-forests. There is no open forest, supporting many

phytes. This, then, characterizes the presence of H. minor in both the open, dry caatinga and in the wet caatinga. (NB: The wet caatinga must not be confused with the egipcio or more extensive pernambuco type.) H. minor in both of these formations is a small shrub, showing many of the xerophytic adaptations of H. nitida to Woods desert conditions: somewhat coriaceous leaflets, reclination to its extreme, folding along the midrib, and whitish grey, thick, little and cracked bark. But H. minor (or what is a larger form of it) is also present in the caatinga-floresta, where it grows tall (to 15 ft.) and stout (diameter of 15 inches), but where it still has small leaflets, usually obovate (but not infrequently partly hormioid) and excessively small capsules (folding down remaining of sheath valve). Here, it grows prominently with H. litsea. I suspect that this form is what Woods described as H. gicculata, which would be a variety of litsea, and that H. minor is the smaller form of the same concept. Very long, single black hairs, some 2 mm. long, are present on most leaflets of this concept - both in the caatinga-floresta as well as in the dry and wet caatingas. H. litsea here looks entirely hormioid and has the leaflets strongly erect and large capsules and seeds as well as a yellowish bark and larger size. Howley described H. minor as having leaflets "glaberrima". Some of the leaflets - and very frequently so - lack hairs, but this is due clearly to their having been lost, for the same tree at may have both glabrous and hairy glabrous leaflets. The tendency to lose the hairs is odd, because it has nothing to do with age, as indicated by very adult leaves - in

fact really ready to be used - which are extraordinarily
 close beneath. I get a probably the cause is the super-
 faciality of the leaf. A leaflet can readily be made
 glabrous by striking it with the finger, and, indeed, I
 have noticed that even in the botanical press, many
 leaflets lose much of their dense hairiness. Therefore, it
 is not possible that *Hance's* type of *H. minor* had lost
 its pubescence, and that *H. speculata* was a truly glabrous
 specimen. *H. speculata* has flowers which indicate
 it is very close to *H. latera*, a group which is more
 like to *H. hancei*, however, than the *minor-speculata*
 complex, as I have noted it (as yet the only one)
 approaching closely to *H. hancei*.

- (4) ✓ 9402 *Morantia*? Flowers purple.
 F. Coe ~~sp. Carl~~ Rio Negro, Peru Dec. 18, 1927.
 (5) • 9403 ~~*Hancea*~~ *Leucanthera*? Flowers yellow, 15 lines
 ✓ *H. hancei*
 ✓ 9404 *Leucanthera* ↓

- (4) • 9405 *Cephaelis*? Floral bracts purple.
 (5) • 9406 *S. hancei* bush. Flowers white.
 (2) • 9407 *Ruellia* bush. Flowers white.
 (1) • 9408 *Anthurium*. Fruit spikes orange. 2 1/2 ft. tall.

Region around Mt. Coqui. December 24, 1947

- (2) 9409 *H. hancei*. Lateral bracts. Flowers deep purple.
 9409 *H. hancei*. *Colombia*

1947

The discussion of the "is" the same in the eastern
 the King's Court causes some uncertainty
 and certain... the problem
 that... the...
 previous...
 the...
 large...
 house, despite of...
 sphere...
 the...
 the...
 the more abundant...
 need of...
 industry, this greatly complicated by the descrip-
 tion of the...
 an...

9122 *Cephalopoda* ... *Tulane*

- (5) 9410 Vine. Fruit + ...
 (1) 9411 Small tree. Buds yellow.
 (1) 9412 Shrub. Flowers white.
 (3) 9413 Plant in vine. Flowers yellow.
 (6) 9414 Make a small tree with ... later
 (6) 9415 Small tree. ... white
 (1) 9416 Small tree. Flowers pink.

Cerro de Cocui, Rio Negro, Venezuela. Feb. 23-23, 1947

- (6) 9417 Cumana ... flowers
 ... 102 ft tall, ... 7-10
 ft, ... 15 ft. Bark thick, hard, outside, relative-
 ly smooth, ...
 ... leaves glossy, ...
 ...
- (3) 9418 Miconia ... 65-
 70 ft tall. Crown ... Bark thick, ...
 ... smooth, internally
 white. Later ...
 above very dark green. Sterile. ...
 ... growing with # 9417.
- (4) 9419 ...
- (5) 9420 Micrandra ... 7-12, ...
 ... Bark ...
 ... 1 cm thick. Latex thick,
 white, ...
Aracaceae
- (3) 9421 Ficus ... Sterile, latex white.
 (2) 9422 Bush. Acanthaceae. Flowers red.

S. Kochii Hieron.

9440 Med-men belief latex for fungal skin infections

9440 *Hymatanthus alternatus* (Vahl) Woodson

9450 Tree 100 ft. tall, diameter above 10 ft. buttresses 2 1/2 ft. Leaves dark green, shiny above; dull pale green below.

Flowers yellow. Lvs. thick, white, scant. Bark smooth, reddish brown, 1/2 cm thick on buttresses.

9423 Arthrum, Terrestrial.

(1) 9424 Terrestrial (ep. on rocks) orchid. Flowers yellow.
Inflorescence 5 ft. tall.

(3) 9425 Small Piper.

(3) 9426 Fern.

(4) 9427 Ferns.

(1) 9428 Selaginella, On wet rocks. S. cordifolia (Desf.)

(5) 9429 Small tree. Fruit white.

Spring.

(4) 9430 Delonixia, Carpeting ramus on rock slopes.

(6) 9431 Small treelet. Flowers white.

(4) 9432 Bush. Fruit red-pink.

(4) 9433 Bush. Flowers purple. Melastomaceae.

(5) 9434 Bush. Flowers yellow, sepals purple-brown.

(5) 9435 Clusia, Bush. Fruit ripening deep red.

(2) 9436 Rush. Flowers white.

(3) 9437 Senecio. Flowers grey-purple.

(3) 9438 Melastomaceae, Bush.

(2) 9439 Sobralia. White. 5 ft. tall.

(3) 9440 Plumeria. Flowers white, latex white.

tree 30 ft. at summit of mountain

(4) 9441 Begonia. Flowers white.

(2) 9442 Small tree. Fruit yellow, edible pulp.

(3) 9443 Aroid.

(4) 9444 Small tree. Psychotria. Ape purplish pink.

(2) 9445 Clusia, Large bush. Fruit green.

(3) 9446 Grass

(1) 9447 Santana Camara. Flowers orange.

(3) 9448 Grass

(3) 9449 Fern

(6) 9450 Cunila Spiceana

~~9457~~ *M. spicatus*

9457 Herb sample. Leaf sample.

Dec. 24, 47

9458
"zyca" in Colombia and Venezuela.

- 9) ✓ 9451 *Micrantha siphonoides*. Buttressed tree 80 ft. tall, columnar, trunk to 4 inches. Pith is nearly as a thick, spongy, smooth, reddish brown at base, sparse. Lateral veins white, sparse. Flowers yellow, faintly fragrant. Bark is reddish brown.
- 3) ✓ 9452 *Hevea apiculata* Steud. Columnar tree 30 ft. tall, diameter 6 inches. Bark smooth, reddish brown inside, thin, hard, latex cream-colored, thick, leaflets ~~10~~ ~~12~~ ~~14~~ ~~16~~ ~~18~~ ~~20~~ ~~22~~ ~~24~~ ~~26~~ ~~28~~ ~~30~~ ~~32~~ ~~34~~ ~~36~~ ~~38~~ ~~40~~ ~~42~~ ~~44~~ ~~46~~ ~~48~~ ~~50~~ ~~52~~ ~~54~~ ~~56~~ ~~58~~ ~~60~~ ~~62~~ ~~64~~ ~~66~~ ~~68~~ ~~70~~ ~~72~~ ~~74~~ ~~76~~ ~~78~~ ~~80~~ ~~82~~ ~~84~~ ~~86~~ ~~88~~ ~~90~~ ~~92~~ ~~94~~ ~~96~~ ~~98~~ ~~100~~ ~~102~~ ~~104~~ ~~106~~ ~~108~~ ~~110~~ ~~112~~ ~~114~~ ~~116~~ ~~118~~ ~~120~~ ~~122~~ ~~124~~ ~~126~~ ~~128~~ ~~130~~ ~~132~~ ~~134~~ ~~136~~ ~~138~~ ~~140~~ ~~142~~ ~~144~~ ~~146~~ ~~148~~ ~~150~~ ~~152~~ ~~154~~ ~~156~~ ~~158~~ ~~160~~ ~~162~~ ~~164~~ ~~166~~ ~~168~~ ~~170~~ ~~172~~ ~~174~~ ~~176~~ ~~178~~ ~~180~~ ~~182~~ ~~184~~ ~~186~~ ~~188~~ ~~190~~ ~~192~~ ~~194~~ ~~196~~ ~~198~~ ~~200~~ ~~202~~ ~~204~~ ~~206~~ ~~208~~ ~~210~~ ~~212~~ ~~214~~ ~~216~~ ~~218~~ ~~220~~ ~~222~~ ~~224~~ ~~226~~ ~~228~~ ~~230~~ ~~232~~ ~~234~~ ~~236~~ ~~238~~ ~~240~~ ~~242~~ ~~244~~ ~~246~~ ~~248~~ ~~250~~ ~~252~~ ~~254~~ ~~256~~ ~~258~~ ~~260~~ ~~262~~ ~~264~~ ~~266~~ ~~268~~ ~~270~~ ~~272~~ ~~274~~ ~~276~~ ~~278~~ ~~280~~ ~~282~~ ~~284~~ ~~286~~ ~~288~~ ~~290~~ ~~292~~ ~~294~~ ~~296~~ ~~298~~ ~~300~~ ~~302~~ ~~304~~ ~~306~~ ~~308~~ ~~310~~ ~~312~~ ~~314~~ ~~316~~ ~~318~~ ~~320~~ ~~322~~ ~~324~~ ~~326~~ ~~328~~ ~~330~~ ~~332~~ ~~334~~ ~~336~~ ~~338~~ ~~340~~ ~~342~~ ~~344~~ ~~346~~ ~~348~~ ~~350~~ ~~352~~ ~~354~~ ~~356~~ ~~358~~ ~~360~~ ~~362~~ ~~364~~ ~~366~~ ~~368~~ ~~370~~ ~~372~~ ~~374~~ ~~376~~ ~~378~~ ~~380~~ ~~382~~ ~~384~~ ~~386~~ ~~388~~ ~~390~~ ~~392~~ ~~394~~ ~~396~~ ~~398~~ ~~400~~ ~~402~~ ~~404~~ ~~406~~ ~~408~~ ~~410~~ ~~412~~ ~~414~~ ~~416~~ ~~418~~ ~~420~~ ~~422~~ ~~424~~ ~~426~~ ~~428~~ ~~430~~ ~~432~~ ~~434~~ ~~436~~ ~~438~~ ~~440~~ ~~442~~ ~~444~~ ~~446~~ ~~448~~ ~~450~~ ~~452~~ ~~454~~ ~~456~~ ~~458~~ ~~460~~ ~~462~~ ~~464~~ ~~466~~ ~~468~~ ~~470~~ ~~472~~ ~~474~~ ~~476~~ ~~478~~ ~~480~~ ~~482~~ ~~484~~ ~~486~~ ~~488~~ ~~490~~ ~~492~~ ~~494~~ ~~496~~ ~~498~~ ~~500~~ ~~502~~ ~~504~~ ~~506~~ ~~508~~ ~~510~~ ~~512~~ ~~514~~ ~~516~~ ~~518~~ ~~520~~ ~~522~~ ~~524~~ ~~526~~ ~~528~~ ~~530~~ ~~532~~ ~~534~~ ~~536~~ ~~538~~ ~~540~~ ~~542~~ ~~544~~ ~~546~~ ~~548~~ ~~550~~ ~~552~~ ~~554~~ ~~556~~ ~~558~~ ~~560~~ ~~562~~ ~~564~~ ~~566~~ ~~568~~ ~~570~~ ~~572~~ ~~574~~ ~~576~~ ~~578~~ ~~580~~ ~~582~~ ~~584~~ ~~586~~ ~~588~~ ~~590~~ ~~592~~ ~~594~~ ~~596~~ ~~598~~ ~~600~~ ~~602~~ ~~604~~ ~~606~~ ~~608~~ ~~610~~ ~~612~~ ~~614~~ ~~616~~ ~~618~~ ~~620~~ ~~622~~ ~~624~~ ~~626~~ ~~628~~ ~~630~~ ~~632~~ ~~634~~ ~~636~~ ~~638~~ ~~640~~ ~~642~~ ~~644~~ ~~646~~ ~~648~~ ~~650~~ ~~652~~ ~~654~~ ~~656~~ ~~658~~ ~~660~~ ~~662~~ ~~664~~ ~~666~~ ~~668~~ ~~670~~ ~~672~~ ~~674~~ ~~676~~ ~~678~~ ~~680~~ ~~682~~ ~~684~~ ~~686~~ ~~688~~ ~~690~~ ~~692~~ ~~694~~ ~~696~~ ~~698~~ ~~700~~ ~~702~~ ~~704~~ ~~706~~ ~~708~~ ~~710~~ ~~712~~ ~~714~~ ~~716~~ ~~718~~ ~~720~~ ~~722~~ ~~724~~ ~~726~~ ~~728~~ ~~730~~ ~~732~~ ~~734~~ ~~736~~ ~~738~~ ~~740~~ ~~742~~ ~~744~~ ~~746~~ ~~748~~ ~~750~~ ~~752~~ ~~754~~ ~~756~~ ~~758~~ ~~760~~ ~~762~~ ~~764~~ ~~766~~ ~~768~~ ~~770~~ ~~772~~ ~~774~~ ~~776~~ ~~778~~ ~~780~~ ~~782~~ ~~784~~ ~~786~~ ~~788~~ ~~790~~ ~~792~~ ~~794~~ ~~796~~ ~~798~~ ~~800~~ ~~802~~ ~~804~~ ~~806~~ ~~808~~ ~~810~~ ~~812~~ ~~814~~ ~~816~~ ~~818~~ ~~820~~ ~~822~~ ~~824~~ ~~826~~ ~~828~~ ~~830~~ ~~832~~ ~~834~~ ~~836~~ ~~838~~ ~~840~~ ~~842~~ ~~844~~ ~~846~~ ~~848~~ ~~850~~ ~~852~~ ~~854~~ ~~856~~ ~~858~~ ~~860~~ ~~862~~ ~~864~~ ~~866~~ ~~868~~ ~~870~~ ~~872~~ ~~874~~ ~~876~~ ~~878~~ ~~880~~ ~~882~~ ~~884~~ ~~886~~ ~~888~~ ~~890~~ ~~892~~ ~~894~~ ~~896~~ ~~898~~ ~~900~~ ~~902~~ ~~904~~ ~~906~~ ~~908~~ ~~910~~ ~~912~~ ~~914~~ ~~916~~ ~~918~~ ~~920~~ ~~922~~ ~~924~~ ~~926~~ ~~928~~ ~~930~~ ~~932~~ ~~934~~ ~~936~~ ~~938~~ ~~940~~ ~~942~~ ~~944~~ ~~946~~ ~~948~~ ~~950~~ ~~952~~ ~~954~~ ~~956~~ ~~958~~ ~~960~~ ~~962~~ ~~964~~ ~~966~~ ~~968~~ ~~970~~ ~~972~~ ~~974~~ ~~976~~ ~~978~~ ~~980~~ ~~982~~ ~~984~~ ~~986~~ ~~988~~ ~~990~~ ~~992~~ ~~994~~ ~~996~~ ~~998~~ ~~1000~~ ~~1002~~ ~~1004~~ ~~1006~~ ~~1008~~ ~~1010~~ ~~1012~~ ~~1014~~ ~~1016~~ ~~1018~~ ~~1020~~ ~~1022~~ ~~1024~~ ~~1026~~ ~~1028~~ ~~1030~~ ~~1032~~ ~~1034~~ ~~1036~~ ~~1038~~ ~~1040~~ ~~1042~~ ~~1044~~ ~~1046~~ ~~1048~~ ~~1050~~ ~~1052~~ ~~1054~~ ~~1056~~ ~~1058~~ ~~1060~~ ~~1062~~ ~~1064~~ ~~1066~~ ~~1068~~ ~~1070~~ ~~1072~~ ~~1074~~ ~~1076~~ ~~1078~~ ~~1080~~ ~~1082~~ ~~1084~~ ~~1086~~ ~~1088~~ ~~1090~~ ~~1092~~ ~~1094~~ ~~1096~~ ~~1098~~ ~~1100~~ ~~1102~~ ~~1104~~ ~~1106~~ ~~1108~~ ~~1110~~ ~~1112~~ ~~1114~~ ~~1116~~ ~~1118~~ ~~1120~~ ~~1122~~ ~~1124~~ ~~1126~~ ~~1128~~ ~~1130~~ ~~1132~~ ~~1134~~ ~~1136~~ ~~1138~~ ~~1140~~ ~~1142~~ ~~1144~~ ~~1146~~ ~~1148~~ ~~1150~~ ~~1152~~ ~~1154~~ ~~1156~~ ~~1158~~ ~~1160~~ ~~1162~~ ~~1164~~ ~~1166~~ ~~1168~~ ~~1170~~ ~~1172~~ ~~1174~~ ~~1176~~ ~~1178~~ ~~1180~~ ~~1182~~ ~~1184~~ ~~1186~~ ~~1188~~ ~~1190~~ ~~1192~~ ~~1194~~ ~~1196~~ ~~1198~~ ~~1200~~ ~~1202~~ ~~1204~~ ~~1206~~ ~~1208~~ ~~1210~~ ~~1212~~ ~~1214~~ ~~1216~~ ~~1218~~ ~~1220~~ ~~1222~~ ~~1224~~ ~~1226~~ ~~1228~~ ~~1230~~ ~~1232~~ ~~1234~~ ~~1236~~ ~~1238~~ ~~1240~~ ~~1242~~ ~~1244~~ ~~1246~~ ~~1248~~ ~~1250~~ ~~1252~~ ~~1254~~ ~~1256~~ ~~1258~~ ~~1260~~ ~~1262~~ ~~1264~~ ~~1266~~ ~~1268~~ ~~1270~~ ~~1272~~ ~~1274~~ ~~1276~~ ~~1278~~ ~~1280~~ ~~1282~~ ~~1284~~ ~~1286~~ ~~1288~~ ~~1290~~ ~~1292~~ ~~1294~~ ~~1296~~ ~~1298~~ ~~1300~~ ~~1302~~ ~~1304~~ ~~1306~~ ~~1308~~ ~~1310~~ ~~1312~~ ~~1314~~ ~~1316~~ ~~1318~~ ~~1320~~ ~~1322~~ ~~1324~~ ~~1326~~ ~~1328~~ ~~1330~~ ~~1332~~ ~~1334~~ ~~1336~~ ~~1338~~ ~~1340~~ ~~1342~~ ~~1344~~ ~~1346~~ ~~1348~~ ~~1350~~ ~~1352~~ ~~1354~~ ~~1356~~ ~~1358~~ ~~1360~~ ~~1362~~ ~~1364~~ ~~1366~~ ~~1368~~ ~~1370~~ ~~1372~~ ~~1374~~ ~~1376~~ ~~1378~~ ~~1380~~ ~~1382~~ ~~1384~~ ~~1386~~ ~~1388~~ ~~1390~~ ~~1392~~ ~~1394~~ ~~1396~~ ~~1398~~ ~~1400~~ ~~1402~~ ~~1404~~ ~~1406~~ ~~1408~~ ~~1410~~ ~~1412~~ ~~1414~~ ~~1416~~ ~~1418~~ ~~1420~~ ~~1422~~ ~~1424~~ ~~1426~~ ~~1428~~ ~~1430~~ ~~1432~~ ~~1434~~ ~~1436~~ ~~1438~~ ~~1440~~ ~~1442~~ ~~1444~~ ~~1446~~ ~~1448~~ ~~1450~~ ~~1452~~ ~~1454~~ ~~1456~~ ~~1458~~ ~~1460~~ ~~1462~~ ~~1464~~ ~~1466~~ ~~1468~~ ~~1470~~ ~~1472~~ ~~1474~~ ~~1476~~ ~~1478~~ ~~1480~~ ~~1482~~ ~~1484~~ ~~1486~~ ~~1488~~ ~~1490~~ ~~1492~~ ~~1494~~ ~~1496~~ ~~1498~~ ~~1500~~ ~~1502~~ ~~1504~~ ~~1506~~ ~~1508~~ ~~1510~~ ~~1512~~ ~~1514~~ ~~1516~~ ~~1518~~ ~~1520~~ ~~1522~~ ~~1524~~ ~~1526~~ ~~1528~~ ~~1530~~ ~~1532~~ ~~1534~~ ~~1536~~ ~~1538~~ ~~1540~~ ~~1542~~ ~~1544~~ ~~1546~~ ~~1548~~ ~~1550~~ ~~1552~~ ~~1554~~ ~~1556~~ ~~1558~~ ~~1560~~ ~~1562~~ ~~1564~~ ~~1566~~ ~~1568~~ ~~1570~~ ~~1572~~ ~~1574~~ ~~1576~~ ~~1578~~ ~~1580~~ ~~1582~~ ~~1584~~ ~~1586~~ ~~1588~~ ~~1590~~ ~~1592~~ ~~1594~~ ~~1596~~ ~~1598~~ ~~1600~~ ~~1602~~ ~~1604~~ ~~1606~~ ~~1608~~ ~~1610~~ ~~1612~~ ~~1614~~ ~~1616~~ ~~1618~~ ~~1620~~ ~~1622~~ ~~1624~~ ~~1626~~ ~~1628~~ ~~1630~~ ~~1632~~ ~~1634~~ ~~1636~~ ~~1638~~ ~~1640~~ ~~1642~~ ~~1644~~ ~~1646~~ ~~1648~~ ~~1650~~ ~~1652~~ ~~1654~~ ~~1656~~ ~~1658~~ ~~1660~~ ~~1662~~ ~~1664~~ ~~1666~~ ~~1668~~ ~~1670~~ ~~1672~~ ~~1674~~ ~~1676~~ ~~1678~~ ~~1680~~ ~~1682~~ ~~1684~~ ~~1686~~ ~~1688~~ ~~1690~~ ~~1692~~ ~~1694~~ ~~1696~~ ~~1698~~ ~~1700~~ ~~1702~~ ~~1704~~ ~~1706~~ ~~1708~~ ~~1710~~ ~~1712~~ ~~1714~~ ~~1716~~ ~~1718~~ ~~1720~~ ~~1722~~ ~~1724~~ ~~1726~~ ~~1728~~ ~~1730~~ ~~1732~~ ~~1734~~ ~~1736~~ ~~1738~~ ~~1740~~ ~~1742~~ ~~1744~~ ~~1746~~ ~~1748~~ ~~1750~~ ~~1752~~ ~~1754~~ ~~1756~~ ~~1758~~ ~~1760~~ ~~1762~~ ~~1764~~ ~~1766~~ ~~1768~~ ~~1770~~ ~~1772~~ ~~1774~~ ~~1776~~ ~~1778~~ ~~1780~~ ~~1782~~ ~~1784~~ ~~1786~~ ~~1788~~ ~~1790~~ ~~1792~~ ~~1794~~ ~~1796~~ ~~1798~~ ~~1800~~ ~~1802~~ ~~1804~~ ~~1806~~ ~~1808~~ ~~1810~~ ~~1812~~ ~~1814~~ ~~1816~~ ~~1818~~ ~~1820~~ ~~1822~~ ~~1824~~ ~~1826~~ ~~1828~~ ~~1830~~ ~~1832~~ ~~1834~~ ~~1836~~ ~~1838~~ ~~1840~~ ~~1842~~ ~~1844~~ ~~1846~~ ~~1848~~ ~~1850~~ ~~1852~~ ~~1854~~ ~~1856~~ ~~1858~~ ~~1860~~ ~~1862~~ ~~1864~~ ~~1866~~ ~~1868~~ ~~1870~~ ~~1872~~ ~~1874~~ ~~1876~~ ~~1878~~ ~~1880~~ ~~1882~~ ~~1884~~ ~~1886~~ ~~1888~~ ~~1890~~ ~~1892~~ ~~1894~~ ~~1896~~ ~~1898~~ ~~1900~~ ~~1902~~ ~~1904~~ ~~1906~~ ~~1908~~ ~~1910~~ ~~1912~~ ~~1914~~ ~~1916~~ ~~1918~~ ~~1920~~ ~~1922~~ ~~1924~~ ~~1926~~ ~~1928~~ ~~1930~~ ~~1932~~ ~~1934~~ ~~1936~~ ~~1938~~ ~~1940~~ ~~1942~~ ~~1944~~ ~~1946~~ ~~1948~~ ~~1950~~ ~~1952~~ ~~1954~~ ~~1956~~ ~~1958~~ ~~1960~~ ~~1962~~ ~~1964~~ ~~1966~~ ~~1968~~ ~~1970~~ ~~1972~~ ~~1974~~ ~~1976~~ ~~1978~~ ~~1980~~ ~~1982~~ ~~1984~~ ~~1986~~ ~~1988~~ ~~1990~~ ~~1992~~ ~~1994~~ ~~1996~~ ~~1998~~ ~~2000~~ ~~2002~~ ~~2004~~ ~~2006~~ ~~2008~~ ~~2010~~ ~~2012~~ ~~2014~~ ~~2016~~ ~~2018~~ ~~2020~~ ~~2022~~ ~~2024~~ ~~2026~~ ~~2028~~ ~~2030~~ ~~2032~~ ~~2034~~ ~~2036~~ ~~2038~~ ~~2040~~ ~~2042~~ ~~2044~~ ~~2046~~ ~~2048~~ ~~2050~~ ~~2052~~ ~~2054~~ ~~2056~~ ~~2058~~ ~~2060~~ ~~2062~~ ~~2064~~ ~~2066~~ ~~2068~~ ~~2070~~ ~~2072~~ ~~2074~~ ~~2076~~ ~~2078~~ ~~2080~~ ~~2082~~ ~~2084~~ ~~2086~~ ~~2088~~ ~~2090~~ ~~2092~~ ~~2094~~ ~~2096~~ ~~2098~~ ~~2100~~ ~~2102~~ ~~2104~~ ~~2106~~ ~~2108~~ ~~2110~~ ~~2112~~ ~~2114~~ ~~2116~~ ~~2118~~ ~~2120~~ ~~2122~~ ~~2124~~ ~~2126~~ ~~2128~~ ~~2130~~ ~~2132~~ ~~2134~~ ~~2136~~ ~~2138~~ ~~2140~~ ~~2142~~ ~~2144~~ ~~2146~~ ~~2148~~ ~~2150~~ ~~2152~~ ~~2154~~ ~~2156~~ ~~2158~~ ~~2160~~ ~~2162~~ ~~2164~~ ~~2166~~ ~~2168~~ ~~2170~~ ~~2172~~ ~~2174~~ ~~2176~~ ~~2178~~ ~~2180~~ ~~2182~~ ~~2184~~ ~~2186~~ ~~2188~~ ~~2190~~ ~~2192~~ ~~2194~~ ~~2196~~ ~~2198~~ ~~2200~~ ~~2202~~ ~~2204~~ ~~2206~~ ~~2208~~ ~~2210~~ ~~2212~~ ~~2214~~ ~~2216~~ ~~2218~~ ~~2220~~ ~~2222~~ ~~2224~~ ~~2226~~ ~~2228~~ ~~2230~~ ~~2232~~ ~~2234~~ ~~2236~~ ~~2238~~ ~~2240~~ ~~2242~~ ~~2244~~ ~~2246~~ ~~2248~~ ~~2250~~ ~~2252~~ ~~2254~~ ~~2256~~ ~~2258~~ ~~2260~~ ~~2262~~ ~~2264~~ ~~2266~~ ~~2268~~ ~~2270~~ ~~2272~~ ~~2274~~ ~~2276~~ ~~2278~~ ~~2280~~ ~~2282~~ ~~2284~~ ~~2286~~ ~~2288~~ ~~2290~~ ~~2292~~ ~~2294~~ ~~2296~~ ~~2298~~ ~~2300~~ ~~2302~~ ~~2304~~ ~~2306~~ ~~2308~~ ~~2310~~ ~~2312~~ ~~2314~~ ~~2316~~ ~~2318~~ ~~2320~~ ~~2322~~ ~~2324~~ ~~2326~~ ~~2328~~ ~~2330~~ ~~2332~~ ~~2334~~ ~~2336~~ ~~2338~~ ~~2340~~ ~~2342~~ ~~2344~~ ~~2346~~ ~~2348~~ ~~2350~~ ~~2352~~ ~~2354~~ ~~2356~~ ~~2358~~ ~~2360~~ ~~2362~~ ~~2364~~ ~~2366~~ ~~2368~~ ~~2370~~ ~~2372~~ ~~2374~~ ~~2376~~ ~~2378~~ ~~2380~~ ~~2382~~ ~~2384~~ ~~2386~~ ~~2388~~ ~~2390~~ ~~2392~~ ~~2394~~ ~~2396~~ ~~2398~~ ~~2400~~ ~~2402~~ ~~2404~~ ~~2406~~ ~~2408~~ ~~2410~~ ~~2412~~ ~~2414~~ ~~2416~~ ~~2418~~ ~~2420~~ ~~2422~~ ~~2424~~ ~~2426~~ ~~2428~~ ~~2430~~ ~~2432~~ ~~2434~~ ~~2436~~ ~~2438~~ ~~2440~~ ~~2442~~ ~~2444~~ ~~2446~~ ~~2448~~ ~~2450~~ ~~2452~~ ~~2454~~ ~~2456~~ ~~2458~~ ~~2460~~ ~~2462~~ ~~2464~~ ~~2466~~ ~~2468~~ ~~2470~~ ~~2472~~ ~~2474~~ ~~2476~~ ~~2478~~ ~~2480~~ ~~2482~~ ~~2484~~ ~~2486~~ ~~2488~~ ~~2490~~ ~~2492~~ ~~2494~~ ~~2496~~ ~~2498~~ ~~2500~~ ~~2502~~ ~~2504~~ ~~2506~~ ~~2508~~ ~~2510~~ ~~2512~~ ~~2514~~ ~~2516~~ ~~2518~~ ~~2520~~ ~~2522~~ ~~2524~~ ~~2526~~ ~~2528~~ ~~2530~~ ~~2532~~ ~~2534~~ ~~2536~~ ~~2538~~ ~~2540~~ ~~2542~~ ~~2544~~ ~~2546~~ ~~2548~~ ~~2550~~ ~~2552~~ ~~2554~~ ~~2556~~ ~~2~~

>

9460 Bark sample. Leaf sample.

>

>

9464

>

>

9466

>

✓ 9457 H. realista. Cummins tree about 7 ft. tall, diameter
to 14 inches. Bark outside smooth, whitish, inside
white, soft, thin. Latic yellow, thick. Leaflets erect,
dark green above, pale beneath. Latic yellowish green.

✓ 9460 Miconia diversicaulis. Burton tree 100 ft.
tall, 3/2" diameter at base, columnar, with spiraling
grooves. ~~Small leaves in main crown.~~
Fruit small. Fruit yellowish, but turning green. Latic
very thick, white, coagulating into light or dirty
pinkish mass, not abundant. Bark below
buttresses a reddish brown, above greenish, rather dry
smooth, much thick in places, deep scarlet inside.
Soft wood hard, white, grain very noticeable.
Alara sinage da castinça.

(4) ✓ 9461 Hemecolobium

Latic yellowish. Latic erect.

(3) ✓ 9462 Inocarpus Vain.

(1) ✓ 9463 Smilax tripes. Procumbens? Fruit yellowish,
tipped with red.

(5) ✓ 9464 Cunila crassipes

(3) ✓ 9465 Hoya spiculata. Leaflets erect, beneath (some)
black-floose, above very dark green, not lustrous.
Tree columnar 65 ft. tall, diameter 7 inches.
Small crown. Bark smooth, red-brown outside,
white inside. Latic thick, light yellow.

(6) ✓ 9466 Cunila Spruceana

Couma nitida (Mert.) Meall.

9407 Takas mountain, Jalapa, Guatemala
with 2 seeds.

7

9473 Resin packed in a paper bag, Jalapa, Guatemala

1947

(cc) 9467 *Cordia* ...
• 2 1/2 ft. diam., 25 ft. tall
✓ Bark smooth, bluish, smooth to checked outside, gray
and black with ...
thick, ...
green above, pale below ...

11 9468 *...*
✓ ...
...
...
...

(3) ✓ 9469 *Small tree* ...

(4) ✓ 9470 *...*
...
...

(3) ✓ 9471 *...* Epiphytic flowers red.

(5) ✓ 9472 *...*

(2) ✓ 9473 *...*

(3) ✓ 9474 *...*

(3) ✓ 9475 *Pittacanthus* Parasitic. Flowers red at base,
yellow at tip. Fruit ...

(1) ✓ 9476 *Vicia*. Fruit red, exallgreen.

(4) ✓ 9477 *Small tree* Fruit ...

(1) ✓ 9478 *Small tree*. Fruit ...

(6) ✓ 9479 *...* Climbing tree 55 ft.
... 16 ft. Flowers yellow, tube white.
Bark smooth, thin, reddish brown. Legume white.

(1) ✓ 9480 *Ground*. Epiphytic. Flowers showy, all parts a velvety purple, lip darker, yellowish at insertion.

"El Masco," Colombia Dec 22, 1947.

Communtalia (Mart) Neell

2200 - 2300 m
under the
off by the

9486 *Communtalia* tree 45 ft. tall, 1 ft. dia. at base. Flowers
fragrant, pink to white, in clusters. Latex extremely
abundant, thick, white. Bark thick, smooth
(slightly cracked) grey-black. Wood white, soft.

On top of Mt. Cocuy, Dec 22

9490 Bark sample.

9492. In leaves report latex can be used to skin.

- (5) ✓ 7481 Small tree. Flowers white.
- (5) ✓ 7482 Small tree. Flowers white.
- (5) ✓ 7483 Small tree. Fruit green.
- (8) ✓ 7484 Hevea. Enormous buttressed tree 110 ft. tall, diameter 3 ft. Flowers greenish yellow. Bk. shaggy, brown. Fruit edible.
- (6) ✓ 7485 Calicia. macrocarpa Small columnar tree 1 1/2 ft. diameter, 50 ft. tall. Crown wide. Flowers pink, fragrant. Latex very abundant, thick, white. Bark on with.
- (6) ✓ 7486 Bourea. macrocarpa C. stipes black grey.
- (100) ✓ 7487 Hevea Benthiana Columnar tree 45-50 ft. tall 19 inches dia. Lvs white, thick, abundant, congested to give pubescent appearance. Flowers yellow, fragrant. Bark smooth, internally brownish red, thin, soft.
- (1) ✓ 7488 Bombay Tree 20 ft tall.
- 7488A H. parviflora on coraci. fr.
Castro, Colombia-Brazilian frontier. Dec. 29, 1947.
- (10) ✓ 7489 Hevea minor. Flowers yellow with definite red stripes inside corolla.

✓ 7490 Hevea minor Flowers yellow, fragrant.
pedic. var. coraci

(3) ✓ 7491 Strychnos. Sterile.

(2) 7492 Vernonia. Flowers orange, calyx white. Spicifera.

(12) ✓ 7493 Hevea minor. Flowers yellow with red stripes inside. Stamens lemon yellow.

Abouadavia geminata
(R.S.) Muell.

>

>

>

>

(1)

(1)

(3)

(5)

(4)

(1)

(3)

(1)

(5)

(1)

(2)

(4)

(5)

(4)

- (15) ✓ 9494 Hevea minor. Flowers yellow, striped with red.
- (10) ✓ 9495 Hevea minor. Flowers yellow, striped with red.
- (3) ✓ 9496 Cephaelis? Bract red, flowers white.
- (5) ✓ 9497 Small tree fern, 6 ft. tall.
- (4) ✓ 9498 Lycopodium.
- (1) ✓ 9499 Gonocarpus?
- (5) ✓ 9450 White-flowering sedge.
- ✓ 9501 Hevea minor
- (1) ✓ 9502 Peperomia. Slender trunk, 15 ft. tall. Leaves
at tip.
- (2) ✓ 9503 Piperaceae, 7 in. h.
- (1) ✓ 9504 Sedge.
- (2) ✓ 9505 Rapateae. Flowers yellow.
- (4) ✓ 9506 Lycopodium.
- (5) ✓ 9507 Bryophyte?
- (4) ✓ 9508 Hevea minor. Capsules.

9517 *Cruciferae* Hal. periderm root, used to
to allimate dogs

9520 *Clusia micrantha* Mart.
to leache, recently =
the latex.

9521 - The bark of this plant is rasped and placed at
the entrance to armadillo holes. This animal eats
the bark and is killed by it. Other uses of the
plant are "strong poison" to man, Raikheha

9524 - "Jarai-jarai" very bitter and burning taste
"tatu" - timber and a wood of winter.
"tatu" = armadillo
very appropriate.

- (2) ✓ 9509 Orchid. Flowers pink-lavender.
- (5) ✓ 9510 Bush.
- (6) ✓ 9511 Bush. Fruit capsule red, seed blue. Photo.
- (3) ✓ 9512 Small bush. Flowers white.
- (5) ✓ 9513 Low bush. Flowers white. Fruit red.
- (2) ✓ 9514 Lycopodium.
- (4) ✓ 9515 Fruit green.
- (5) ✓ 9516 Small tree 20 ft. Umbelliferae or Asaliaceae?
Leaves highly aromatic when crushed.
- (6) ✓ 9517 Bushy tree 20 ft. Leguminosae.
- (5) ✓ 9518 Bush.
- (10) ✓ 9519 Hevea minor. Flowers yellow. Tree columnar, diameter 6-7 inches, height 25 ft. Crown small. Leaflets coriaceous, marginate, strongly reclinate, slightly folded along midrib, ~~linear-lanceolate~~. Latex extremely yellow (the yellow is not there even when), thick, abundant. Wood white. Bark rather ^{gray and} yellowish outside, white inside, smooth, thin, soft. Tree tapped!
- (7) ✓ 9520 Clusia. Guomoc tree 75 ft. tall, 18 inches diameter, columnar. Wood reddish towards center, yellow-white nearer surface, very hard. Leaves thick. Flowers extraordinarily showy, purplered, 5 inches across, smelling of rancid butter.
In caatinga.
- (3) ✓ 9521 Clusia. Small bush. Fruit green, striped with red. Berds pinkish.
- (10) ✓ 9522 Selaginella asperula Spring
- (4) ✓ 9523 Selaginella amazonica Spring
- (5) ✓ 9524 Mayra amazonica or grandiflora. Tree let 15 ft. tall. Fruit greenish, papery-dry.
see 9357

→

→

→

→

→

→

→

→

→

→

- (6) ✓ 9525 *Hevea lutea* Cav. Tree 14 inches diameter, 75 ft. tall. Bark thin, smooth, soft, rather yellowish outside, white inside. Lvs. strongly erect, dark green above, pale beneath. Flowers fragrant, yellow, rather near in pairs, thick, rather abundant.
- (1) ✓ 9526 *Orbignia Ekhobita*. Flowers purple, lip deeper than rest, column whitish or yellowish at insertion.
- (1) ✓ 9527 *Podocarpus sp. Spiciferum*. Palm 6 ft tall. Fruit brownish.
- (3) ✓ 9528 *Hevea lutea*. Sterile.
- (5) ✓ 9529 *Hevea lutea*. Sterile.
- (6) ✓ 9530 Tall bush. Leguminosae.
- (5) ✓ 9531 *Morua andersonii* or *grandis*, Cav. 9 ft tall tree.
- (2) ✓ 9532 *Strychnos*. Vain. Sterile.
- (3) ✓ 9533 *Hevea speculata*. Sterile. Small tree. Columnar, slender trunk, height 60 ft. Crown open. Bark thin, soft, yellowish-tan outside, white inside. Lvs. yellow, thick, relatively abundant.
- (3) ✓ 9534 *Hevea speculata*. Sterile.
- (3) ✓ 9535 *Hevea speculata*. Sterile.

Serrinha, Esp. mont. Rio Araguaia

9539 } Tükamara = wě-sö-tě

{ Jacaranda Copaia (Aubl.) D. Don

9541 H. pauciflora var. conica

>

9549 Tukano = ně - tč' - pč' - ma

>

>

(5) ✓ 9547 Hovea Tenuhamana

Imbricaria - forest

(3) ✓ 9547 Hovea Hamata. Sterile. Small tree. Fraxinosa sp.

(2) ✓ 9549 Amorpha sp., Small tree.

(3) ✓ 9550 Hovea apiculata. Sterile. Small, common tree.
35 ft. tall 5-6 inch diameter. Bark smooth, thin,
hard, rate to bark ash-yellow, inside whitish. Lenticles
thin, yellowish. Lenticles erect or nearly horizontal.

(2) ✓ 9551 Mimosa sp. sp.

Opposite, smooth leaf (See also No. 9552), Bin Vegas

(Horned Wood)

January 5, 1948.

✓ 9552 Hovea Hamata. Flowering tree, 10 ft. tall in

(4) Bulb. Lenticles at base of petiole, thick. Bark externally
yellowish-brown, slightly flaking, internally white,
thin. Tree trunk very smooth - 7 inch diameter
40 ft. Crown sparse. Main lenticles erect,
erect - horizontal; main leaves small brown cones,
lenticles ~~erect~~ ~~erect~~ ~~erect~~

(10) ✓ 9553 Ulex sp.. Immense tree 110 ft. tall with wide
spreading crown. Bark 6-8 inches to up to 6 ft. Tree
cane 2 1/2 - 3 ft. Bark dark brown,
shaggy externally, reddish internally, soft, ~~thick~~
1/2 - 3/4 inch. Lenticles sparse, white. Wood in skin
hard, mass, compact, white. Flowers in extremely
dense clusters, falling easily. Sepals greenish, petals
white, anthers broad, apparently adnate.

9555

9556 *Tud...* = *v''-fa'-kō*

9564 One tree grows in the forest in the mountains of the
 mouth of the *Xi*, obviously "cultivated." (But it
 the *xi* is not a *xi* at all, but a *xi* "tree" in the
 sense of the *xi* at this point, the tree grows
 wild in the forest, that there are many and
 that they are in the forest. The *xi* is
 too dry to get to the *xi* at the *xi* and it
 is a *xi* (or *xi*), it would be a 3-*xi* *xi*.
 Because apparently, May and June are the months
 for flowering, I did not wish to - dry to see
 like the *xi*. So the *xi* is not common
 and is not found except in this part of the **7**
Rio Negro.

- (E) ✓9554 Cunila Spruceana. Flowers yellow. Leaves very
dark green, glossy ab. c. Tree 100 ft. tall.
- (5) ✓9555 Quinacaceae. Bush
- (3) ✓9556 Eugenia sp. Tree with sharp edges on crown. Flowers
in dense heads, red. Rosa laurata
- (2) ✓9557 Thymocardin? Flowers white. Tubercles.
- (3) ✓9558 Byrsonima. Bush. Flowers yellow.
- (2) ✓9559 Herb. Flowers white. Isotoma longifolia (L.) Presl.
- (2) ✓9560 Cougl. Eucomia sp., latter to 6 ft. 100 ft.
- (4) ✓9561 Gratiola
- (3) ✓9562 Herb. Flowers white. On flood bank.
- (3) ✓9563 Herb. Flowers white. On flood bank.
- (3) ✓9564 Anacardium sp. Low tree with spreading
crown, no stem, que lid trunk. Old leaves very
thick, coriaceous. Caju-ti. Almendra. Sterile.
- (5) ✓9565 Small tree. Flowers white. Malpighiaceae
- (1) ✓9566 Pasiflora. Vine.
- (1) ✓9567 Bromelid. Epiphytic.
- (2) ✓9568 Bromelid. Epiphytic. Bracts red. Inflorescence white
woolly, leaves scarious, base becoming purple.
- (1) ✓9569 Anturium. Floral axis red.
- (4) ✓9570 Quinaeaceae. Bush
- (3) ✓9571 Hevea minor. Sterile.

(3) ✓9572 Rapanea. Flowers yellow.
Serrinha (a pt. of very high land between San Felipe and
Marcelino, on left bank above mouth of Icama. Rio Negro.
Jan. 7, 1948.

2

3

4

5

6

7

(3) ✓ 9573 Hevea nitida. Leaflets unusually ovate for species, ~~with traces of hairs on under surface of base~~. Almost concolorous, above darker, very glossy. Bark reddish brown, smooth except for a thin papery flake (grey), thin, soft, white inside. Latex thin, white, coagulating with difficulty to a new elastic, sticky mass. Columnar tree 65 ft. tall, 5 inches in diameter. Wood hard, white. Leaflets horizontal. Capsules small.

(3) ✓ 9574 Hevea nitida leaflets horizontal to erect, beneath with slight pubescence. Sterile.

(4) ✓ 9575 Hevea nitida. Leaflets new but mature, ^{stiff} slightly mal-
mate to horizontal; Concolorous, glossy above. Capsules small.

(2) ✓ 9576 Hevea nitida. Unusual le. of shape + size. Leaflets under
neath slightly pilose.

(4) ✓ 9577 Hevea nitida.

(4) ✓ 9578 Hevea nitida.

>

>

>

>

Bark + leaf sample 9586

>

>

>

(2) 9579 Hevea pauciflora. Capsules larger than H. nitida,

(1) 9580 Cunuria Spruceana

✓
"Rosa da mata". Flowers deep purple-red. Cact.

(1) 9582 Euphytica a chid. Buds brownish.

(3) 9583 Hevea nitida Sterile.

(5) 9584 Hevea nitida. Flowers very pale yellow.

(3) 9585 Hevea nitida. In bud.

(4) 9586 Hevea nitida. Flowers pale yellow.

(3) 9587 Hevea nitida. Flowers buds, pale yellow.

(2) 9588 Hevea nitida. Sterile.

✓ São Filipe (below Boca Isena), Rio Negro, Jan. 8, 1948.

(3) 9589 Mekura sized tree. Fruit brown. Latex white.

(4) 9590 Mekura sized tree.

9573 Bark & leaf sample - *H. microphylla* >

- (6) 9591 Hevea microphylla "Linn. in Guinea Tombarani" Tree 60 ft. tall, columnar, diameter 1 ft. Bark smooth but fissile, red-brown, thin, peels easily, hard, much like white. Bark at base is brownish red. Latex white, very watery, not coagulating, etiolated spines in leaflets horizontal, above glaucous, below glaucous, beneath pubescent, slightly glossy, wood soft.
- (3) 9592 Vine.
- 9593 Hevea microphylla Small upright shrubby tree, locally swollen. Basal diameter 9 inches, girth 40 lb. Leaflets horizontal to slightly reclinate. Latex opaque, white, thin, scarcely coagulating. Bark of terminal branches red, smooth; petioles dark brown-red outside, white inside. Fruit hard, pericarp woody. Wood extremely soft, white. Herbage.
- (2) 9594 Bromelia s. Flowers brownish yellow. Epiphytic.
- (2) 9595 Hevea pauciflora. Sterile. Leaflets horizontal to slightly erect, felices underneath, coriaceous.
- (2) 9596 Hevea pauciflora. Leaflets narrow lanceolate, horizontal, slightly pubescent beneath. Sterile.
- (2) 9597 Rapatea?
- (3) 9598 Hevea lutea. Sterile. Climber, arborescent 60-70 ft. tall, diameter 18 in. Bark brownish, outside yellowish brown, inside white, soft, 1/2 cm thick. Latex abundant, thick, very yellow. Leaflets strongly erect, very dark green, not glossy above.
- (1) 9599 Carludivia, Climbing vine, epiphytic.
- (3) 9600 Bush. Flowers white. as strong tree with
- (3) 9601 Bush. Fruit white.
- (1) 9602 Sedge.
- (3) 9603 Leguminosae. Bush. Flowers purple-maroon.

9606 *Parkia auriculata*

Sweet fruit packet, to test
and grow. >

9608

flowers smooth, or. ped. fl. not yellowish. with 6 dark
green lines, thin, flat. no (not flat & long). later
brown, waxy, white, not coagulating. "Kew Garden"
to "Kew Garden" "Kew Garden" >

> 9612 A *Hevea macrophylla* leaf-like tree, branches
swollen, as ped. tapering to base of stem above. Crown small. Height
70 ft. in diameter at base 18 inches. Bark of terminal branches red, smooth;
of branches & stem, thin, 1/3 cm, brown outside, white inside, feeling
leathery, outer thin & waxy, white, not coagulating, sparse. Leaflets horizontal.
Wood soft, white. >

- ✓ 9604 Bush. Fruit red.
- ✓ 9605 Bush. Fruit greenish.
- ✓ 9606 Scandent climber. Flower white.
- ✓ 9607 *Hura mesocephala* La Pol. Tree 10 ft tall, fruit red, flowers white. Bark smooth, grey, thin. Lvs. ovate, 10-15 cm long, 5-7 cm wide, base cuneate, apex acuminate, venation pinnate, primary veins 10-12, secondary veins 15-20, tertiary veins 15-20. Inflorescence terminal, cymes 1-2 cm long, flowers 1-2 cm diameter. Fruit globose, 2-3 cm diameter, green, smooth, persistent calyx 1/2 cm long. Seed 1.5 cm long, 1 cm wide, flattened, brown, smooth.
- ✓ 9608 *Hura mesocephala* La Pol. Tree 10 ft tall, fruit red, flowers white. Bark smooth, grey, thin. Lvs. ovate, 10-15 cm long, 5-7 cm wide, base cuneate, apex acuminate, venation pinnate, primary veins 10-12, secondary veins 15-20, tertiary veins 15-20. Inflorescence terminal, cymes 1-2 cm long, flowers 1-2 cm diameter. Fruit globose, 2-3 cm diameter, green, smooth, persistent calyx 1/2 cm long. Seed 1.5 cm long, 1 cm wide, flattened, brown, smooth.
- Above Rio Felipe (right bank). Rio Negro - bank of Rio Negro Jan 7, 1948.
- (4) ✓ 9609 *Hura mesocephala* La Pol. Tree 10 ft tall, fruit red, flowers white. Bark smooth, grey, thin. Lvs. ovate, 10-15 cm long, 5-7 cm wide, base cuneate, apex acuminate, venation pinnate, primary veins 10-12, secondary veins 15-20, tertiary veins 15-20. Inflorescence terminal, cymes 1-2 cm long, flowers 1-2 cm diameter. Fruit globose, 2-3 cm diameter, green, smooth, persistent calyx 1/2 cm long. Seed 1.5 cm long, 1 cm wide, flattened, brown, smooth.
- (3) ✓ 9610 *Hura mesocephala* La Pol. Tree 10 ft tall, fruit red, flowers white. Bark smooth, grey, thin. Lvs. ovate, 10-15 cm long, 5-7 cm wide, base cuneate, apex acuminate, venation pinnate, primary veins 10-12, secondary veins 15-20, tertiary veins 15-20. Inflorescence terminal, cymes 1-2 cm long, flowers 1-2 cm diameter. Fruit globose, 2-3 cm diameter, green, smooth, persistent calyx 1/2 cm long. Seed 1.5 cm long, 1 cm wide, flattened, brown, smooth.
- (4) ✓ 9611 Bush.
- (5) ✓ 9612 *Hura mesocephala* La Pol. Tree 10 ft tall, fruit red, flowers white. Bark smooth, grey, thin. Lvs. ovate, 10-15 cm long, 5-7 cm wide, base cuneate, apex acuminate, venation pinnate, primary veins 10-12, secondary veins 15-20, tertiary veins 15-20. Inflorescence terminal, cymes 1-2 cm long, flowers 1-2 cm diameter. Fruit globose, 2-3 cm diameter, green, smooth, persistent calyx 1/2 cm long. Seed 1.5 cm long, 1 cm wide, flattened, brown, smooth.
- Opposite Rio Felipe (left bank Rio Negro) Jan 7, 1948.
- (3) ✓ 9613 *Hura mesocephala* La Pol. Tree 10 ft tall, fruit red, flowers white. Bark smooth, grey, thin. Lvs. ovate, 10-15 cm long, 5-7 cm wide, base cuneate, apex acuminate, venation pinnate, primary veins 10-12, secondary veins 15-20, tertiary veins 15-20. Inflorescence terminal, cymes 1-2 cm long, flowers 1-2 cm diameter. Fruit globose, 2-3 cm diameter, green, smooth, persistent calyx 1/2 cm long. Seed 1.5 cm long, 1 cm wide, flattened, brown, smooth.

(4) ✓ 9619A Small rock plant in saps. Flowers violet.

9621 Bark + leaf sample.

1) ✓ 9614 Hevea Benthiana. Sterile. Trunk slightly curved at base; diameter 18 inches; height 50 ft. Leaflets velvety, dark green, glossy above, hairy beneath. Lateral veins white, thick. Bark thin (3/4 in.) red brown, smooth outside, whitish inside.

2) ✓ 9615 Buch.

2) ✓ 9617 Styphelia. Sterile.

~~9618 Styphelia sterilis~~

Lac. Tabaco, P. O. Negro.

January 14, 1948.

2) ✓ 9618 Hevea ~~sterilis~~

Unmounted.

3) ✓ 9619 Hevea sterilis

Sun treelet 12 ft tall.

Macabi, Rio Negro, north of Curucuidi January 17, 48

6) ✓ 9620 Cumara Spicosa. Heavily buttressed tree 85 ft. tall, diameter 2 ft. Bark thin, brittle, brown. Lateral veins sparse, white. Wood fairly soft, compact, white. Leaf shiny on top, light green; pale and dull beneath.

5) ✓ 9621 Alara 4 usia. In flood bank. Columnar tree 100 ft. tall, diameter 2 1/2 ft. Bark very thick, red inside, black and gray blotched outside, smooth but checks finely. Lateral veins thick, non-flowing, white, abundant. Leaves firm, papyraceous.

3) ✓ 9623 Hevea pauciflora var. coriacea. Sterile.

3) ✓ 9624 Hevea lutea. Sterile.

inside, 1/2 inch thick, soft. Wood compact, hard, white with
definitely red heart: s.d. latex relatively abundant, thick,
white, coagulating to good rubber. Leaf thick papery-acc. c.
Arara-serunga da castinga

a juva nova!

✓ 9636 Calamagrostis 100 ft tall, diameter 2 1/2 ft. Wood soft,
white with brown heart: s.d. Bark externally finely checked
but smooth, grey and black blotches. Latex very abundant, thick,
not flowering fully, coagulating to a good rubber. Arara-serunga
Jan. 1, 1948

9636A H. pauciflora var. concreta fl.

Wood sample

Mozambique = arara

✓ 9637A Brossera

✓ 9637B Vicia Ape-cyn arara fl. white. Latex white

Leaf + bark sample

- 10) ✓ 9625 *Macaranga*. Fls. w. 2 sepals, very fragrant.
Tree 110 ft. tall, columnar (above slightly protruding), thick, rounded buttresses to 4 ft., diameter 36-37 inches. Bark outside mostly smooth with a few flaking scales above, reddish brown outside, red
✓ 9626 *Macaranga* ssp. *indica*. Small tree in pine plantation. Stem. Columnar (not buttressed), 35 ft. tall or less; crown small, leaves thick coriaceous. Bark checked, brittle, grey; latex abundant, thick white. Leaves folded along midrib.
✓ 9627 *Epiphytic* - kind. Fls. green or purple, red stig.
✓ 9628 " " Flowers light green, red stig.
✓ 9629 " " Flowers greenish white, white with black dots.
✓ 9630 *Epiphytic* - kind. Black dots.
3) ✓ 9631 Tree. Umbell? Flowers white.
✓ 9632 *Rapanea*. Fls. yellowish.
15) ✓ 9633 *Rapanea*. Fls. white. Fruct. red.
1) ✓ 9634 *Rubraea*. Flowers. Bark. Fls. white.
✓ 9635 *Rapanea*? Flowers white.
6) ✓ 9636 *Miconia*. In flower. Fls. white.

Par Curicuarari, at base of San Ciprián, Jan. 22, 1948

- 5) ✓ 9637 *Cunuria tukensis* sp. nov.
Flowers yellow. Tree 90 ft. tall, 1 1/2 ft. diameter, cal. leaves above 3/4 in. but up to 4 ft. Bark is thick (1/2 in. dia), inside reddish, outside smooth, waxy, with waxy, soft, peeling easily. Crown small. Leaves long ovate, waxy, folded along midrib at st. & latex yellowish, thick, white, sticky, dry for a long time.
7) ✓ 9638 *Cunuria tukensis* sp. nov.
Buttressed tree 65 ft. tall. Crown small. Leaves thickly coriaceous, marginate, reclinate and folded at st. & along midrib. Bark very thick, soft, inside reddish, outside

✓ 9639A Melastomaceae shrub. Fl. white

9639B Micrantha siphonoides

Interchange
9639 and
9642

Compare 9640 and 9642 >
(Both they are siphonoides)

✓ 9644B Cenurus tuberosus

>

✓ 9644D Cenurus Spruceana Flowers yellow, fragrant

>

✓ 9644C Cenurus crassipes

9647A H. pauc. var. consecta fl.

Robes on song, reddish brown. Lateral white, thick, not
completely fused, secret. 20-25 rows thick in primary,
up to 3 or 4 ft. tall.

✓ 9639 *Hevea parviflora*. *Hevea*. Col. ... 45 ft.
tall, diameter 10-12 cm. Bark yellowish, smooth,
yellowish orange to white, ...
Lenticels ... (not
listed), ...

✓ 9640 *Cordia* *cedaripes*, tree 40 ft tall, buttressed,
colony ... diameter 15 cm. Bark
relatively thick (1.5 cm), outside brown, shiny, gray-
ish white, soft to the touch, white, ... leaves
coriaceous. Rubber samples.

✓ 9641 *Cordia* *guianensis* tree 100 ft tall,
barky buttressed to the ...
diameter 2 1/2 ft. above the base. Bark hard, ... thin,
brown outside, ... Lateral white, very
thin ... Rubber.

✓ 9642 *Hevea parviflora*. *Hevea* tree 50 ft tall.
Diameter 13-15 cm. Bark yellowish brown outside,
white inside. Soft, thin ... thick.
Lenticels ... beneath, very
coriaceous. Flowers yellow.

✓ 9643 Epiphytic orchid. Flowers white, fragrant.

✓ 9644 Epiphytic orchid. Flowers honey, purple, variety.

✓ 9644 *H. macrophylla*
Common tree, Rio Negro. January 25, 1948.

✓ 9645 Fern

✓ 9646 Leguminosae. Shrub.

✓ 9647 Shrub.

✓ 9657A Small tree Lauraceae?

✓ 9657B Large tree. Flowers fragrant, purple.
Eperua purpurea

✓ 9648 Cunila Spiceana

✓ 9649 Cunila Spiceana

✓ 9650 Nevea lutea, Sterile

✓ 9651 Bush, Rosaceae, Flowers white. Fruit black.

~~✓ 9651A Orchid, Filices velutis in fl.~~

Cunila Spiceana (cont) ~~Fl.~~ 22-24, 1948

✓ 9652 Tree, Leguminosae, Flowers purple.

✓ 9653 Miconia, In flower

1) ✓ 9654 Matricaria, Flowerless, Bush.

2) ✓ 9655 Rapanea, Flowers yellow.

✓ 9656 Lilium.

3) ✓ 9657 Miconia fulchra

Ilha das Flores, Pico Negro January 28, 1948.

✓ 9658 Cunila crassifolia in fl. + fruit 2.00P

7

7

7

7

7

7

7

9663 Bark and leaf samples. Leaves drawn.

9665 Bark & leaf samples.

✓ 9659 Hevea nitida, Sterile

✓ 9660 Cumera Spruceana

✓ 9661 Hevea nitida, Sterile

✓ 9662 Cumera Spruceana

✓ Base of Sierra Tukano, Rio Napier January 30, 1948
✓ 9663 Cumera tukanorum f. exalata

✓ 9664 Cumera tukanorum f. exalata

✓ Spaneri, Rio Napier
✓ 9665 Hevea rigidifolia

February 2, 1948.

PLANTAE BRASILIENSES

AMAZONAS

No.



Rio Uaupés.

Richard Evans Schultes et Francisco López Jan. 28-Feb. 9, 1948



4) ✓ 9666 Cunuria tukanoorum forma exalata

5) ✓ 9667 Cunuria tukanoorum forma exalata

✓ 9668 Cunuria crassipes

3) ✓ 9669 Cunuria tukanoorum forma exalata

✓ 9670 Epiphytic on lichen. Flowers yellowish brown, striped
with dark maroon.

✓ 9671 Pubescens hookeri. Flowers white, bracts rose.

✓ 9672 Small caespitose tree, Leguminosae.

Swartzia conferta Spr. ex Bth. var. caespitosa Coward

Taracua, Rio Napier.

Feb. 3, 1948.

✓ 9673 Pevea reginaefolia. New leaflets brownish.

✓ 9674 Cunuria crassipes

96817 Leucidium Spruceanum Nicolson

Rio Tequie

1968? 17

H. Benthiana

St. L. Co.

Sagaste - Sagaste

6) 9675 Hevea nitida

3) ✓ 9676 Enormous tree. Flowers highly fragrant, yellow.

7) ✓ 9677 Caribbea. Terrestrial.

1) ✓ 9678 Hevea arabica folia

5) ✓ 9679 Hevea nitida

4) ✓ 9680 Hevea rigidifolia

✓ 9681 Micrandra or Cinnamomum? Fruit green, base
very yellow.

2) ✓ 9682 Treelet 8 ft. Guianense, sterile.

3) ✓ 9683 Hevea lutea. Columnar tree 1 ft. diameter, 60 ft. tall.

3) ✓ 9684 Bush along edge of river.

2) ✓ 9685 Coussoupea. Treelet along edge of river.

3) ✓ 9686 Small tree with stout trunk - 30-25 ft tall,
diameter 15 inches. Bark thick, grey.

9691A *Micrandia siph.*

Castroja - Terra firme

9694 Bark & leaf samples.

- (3) ✓ 9687 Small bush, Flowers red.
- (1) ✓ 9688 Small bush.
- (2) ✓ 9689 Hedge.
- (4) ✓ 9690 *Ficus microphylla* Very small tree 20 ft tall basally woody, slender whip-like stem above swelling. Leaflets horizontal - reclinata. Lvs. thin, waxy, white.
- (4) ✓ 9691 *Ficus microphylla* Tree 25 ft tall with very small crown. Lf. horizontal - recl. Lvs. thin white.
- (3) ✓ 9692 *Ficus microphylla* Sterile.
- (6) ✓ 9693 *Micrandra* - *Cuscuta*, ~~Flowers yellow~~
- (5) ✓ 9694 *Micrandra* - *Cuscuta* ~~Flowers yellow~~ Flowers yellow, whitish cream.
- (5) ✓ 9695 *Micrandra* - *Cuscuta*. Fruit green.
- (2) ✓ 9696 *Hura parviflora*. Sterile. Leaflets reclinata - horizontal.
- ↓
- (6) ✓ 9697 *Cuscuta croceipes*. Flowers yellow; basal glands of ♂ and ♀ flowers bright red.

(4)

(3)

(2)

(2)

(1)

(3)

(2)

(1)

(2)

(2)

(5)

(2)

(2)

(3)

(2)

>

>

>

>

'

'

'

'

'

'

- (2) ✓ 9698 Rubiaceae? Bush Flowers white, very highly fragrant.

Selha das Flores, Rio Negro - Uaupes confluence.
Feb. Jan. 9, 1948.

- (2) ✓ 9699 Hevea pauciflora

- (2) ✓ 9700 Hevea pauciflora

At. Curatensis

9700A C. curatensis

- (2) ✓ 9701 Sm. tree.

✓ 9702 Vismia lanceolata

- (1) ✓ 9703 Hevea minor

✓ 9704 Hevea minor, Sterile.

- (3) ✓ 9705 Dioscorea, Along water edge. Fruit blue.

- (2) ✓ 9706 Inula, Extensive vine.

(2) ✓ 9707 Vernonia in water.

(2) ✓ 9708 Bush.

- (2) ✓ 9709 Curatensis, Bush. Flowers yellow.

(5) ✓ 9710 Leugnia.

(2) ✓ 9711 Small tree. Vochysia

(2) ✓ 9712 Fruit dark red.

(3) n 9713 Loranthaceae

(2) ✓ 9714 Paithacanthus, Fl. red.

Cyrtodactylus 7719

soft red, soft, iridescent tinged with orange
between. Pupae, scarlet under w.

→

→
→

- (1) 9715 Pekola Wiss fasciculatus (Rothb.) Körn.
 (2) 9716 ...
 (1) 9717 ...
 (2) 9718 Bush Crushed lvs rubbed on sprouts + juice.
 (1) 9719 ...
 (1) 9720 ...

Base of Serra Tukanos

- (100) 9721 Cenurus tukanorum

Serra de São Gabriel February 12, 1948.

- (2) 9722 Herrera Camargoana Treelet 12 ft. tall.
 Fruit globose. All 10 long ribs about equal, transverse ribs are high
 only. Projections found at juncture of long & trans. ribs long.
 (2) 9723 Hevea pauciflora

~~Serra de São Gabriel
 9724 Hevea pauciflora
 February 19, 1948
 9725 Hevea pauciflora~~

Near Sp. no.



[Faint, illegible handwritten text]

[Faint, illegible handwritten text]



Rio Uaupis, Near Serra Tukano February 8,
1948.

(1) 9724 Hevea lutea

Tree to 90 ft. Leaf and latex
at base of tree. In
annual fruit.

Rio Uaupis, At base of Serra Tukano February 8,

(1) 9725 Cumarea tokanensis 1948.

(2) 9726 Tiny sedge in sand on rocks.

(1) 9727 Cumarea tokanensis Fruit.

(2) 9727A Cumarea tokanensis Flowers white.

(2) 9728 Trichodes. Leaves covered with rusty.

(2) 9729 Large tree. Fruit gathered for barbecue. Flowers yellow.

(2) 9730 Hevea viridis, Sterile.

São Gabriel

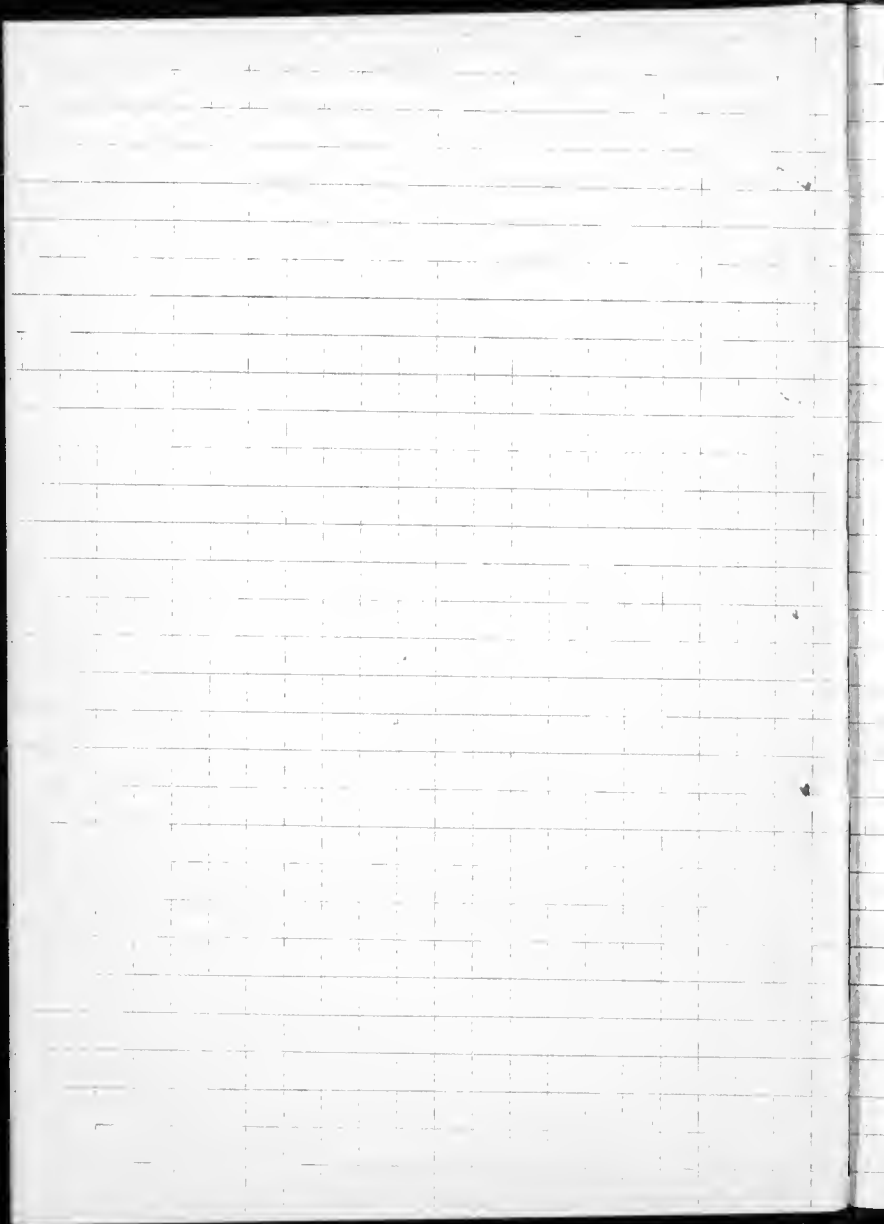
January 28, 1948.

(2) 9731 Urochloa. Flowers yellowish.

(1) 9732 Hevea Camargosa

Manauá March 14, 1948

(3) 9733 Hevea marginata



9734 *Ericaulococcus*.

March 23, 1948. Rio Negro. Palote.

✓ 9735 *Hevea mucicolytica*. Lilioides reclinate. Latex yellowish, very thin & watery.

March 24, 1948. Rio Negro. Aldeia, near Paduanari.

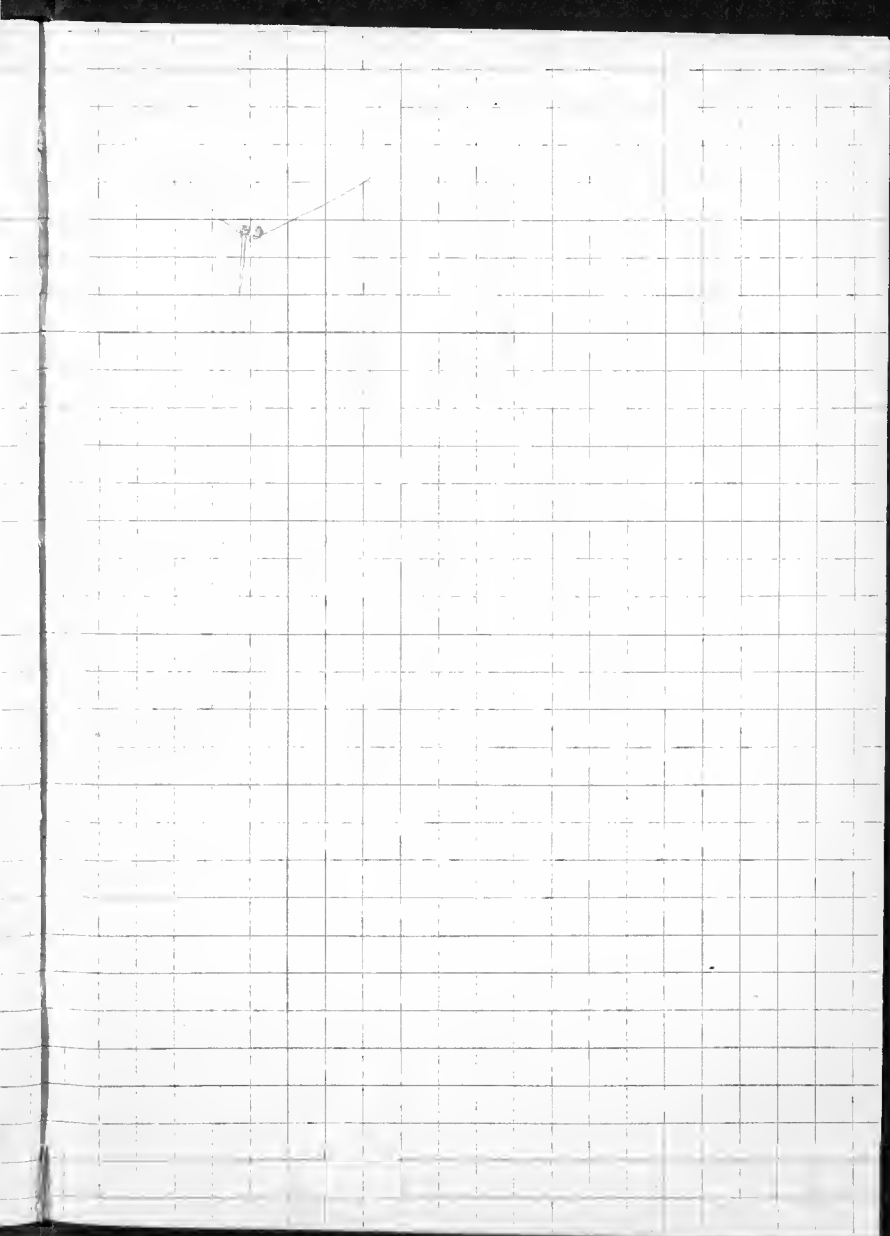
✓ 9736 *Hevea Benthiana* n. sp. Flowers yellow, latex yellowish.

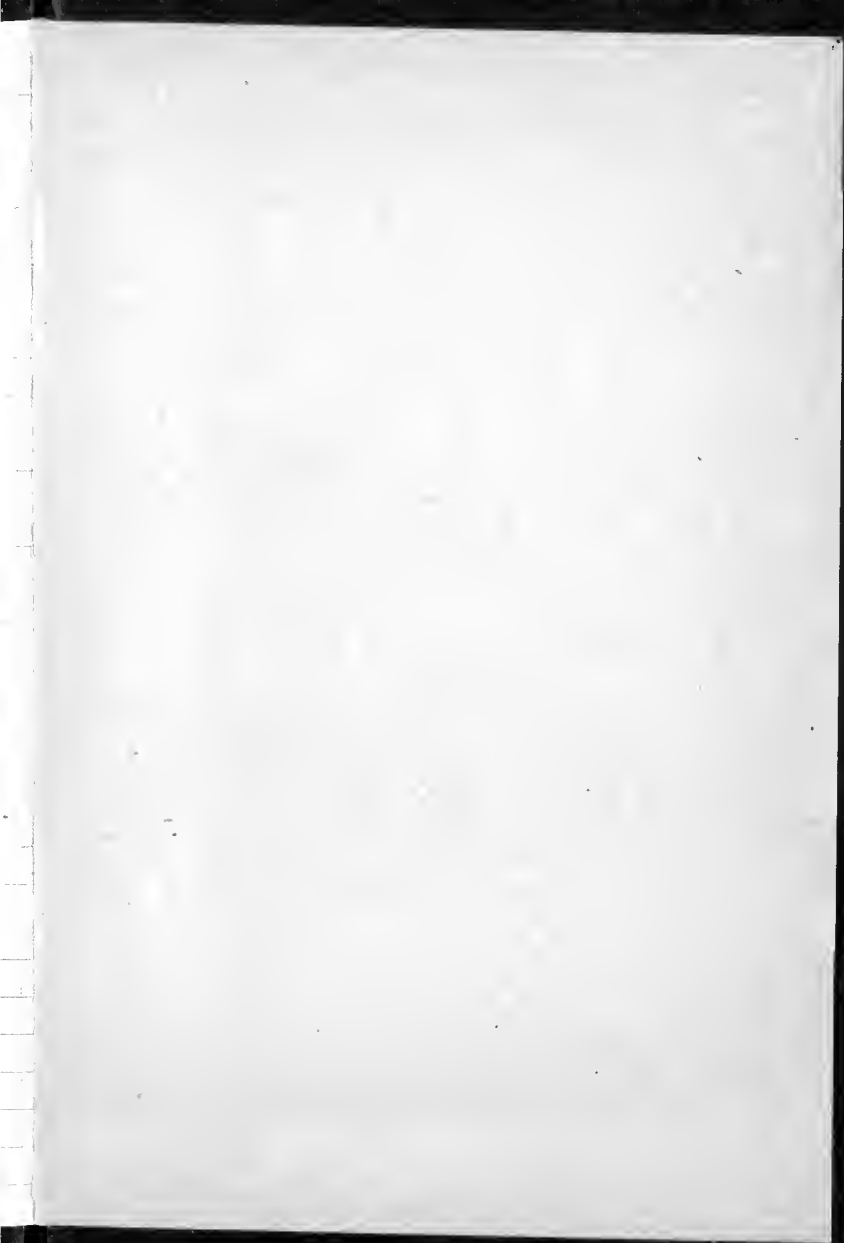
✓ 9737 *Hevea Benthiana* n. sp. Flowers yellow, latex rather yellow.

✓ 9738 *Hevea Benthiana* n. sp. Flowers in rows, latex cream yellow.

Tukano:

plant	yoo-kö'-gö	ooh-tä'-sē
tree	(living)	
shrub	yoo-kö'-puch-tai	
grass	dta'	
wine	da'	meej-see'-da
epiphyte	sa-ta'-po-nē	
fruit	yoo-kö'-deej-ka	
flower	orōi	pl. or'rae
leaf	po-nē	
bark	yoo-kö'-ka-nē-ro	
wood	yoo-kö'-kyān	
stem	orō-ro-dō-po-tē-ka	
trunk	yoo-kö'-dō-po-tē-ka	
branches	dōch-fōch-ner	dōch-pō'-rei'
root	nē-ka-nē'	
seed	kāch-pō'	ooh-tē'-sē'-fa-nē
latex	yoo-kö'-dee	
sap	ko	yoo-kö'-ko
butteress	tsa'-ro	
bud	pa-pee-tai'-nee-or-ro	
seedling	nā-sa'-wee-sē	?
pod	pa-ro	
oil	mē-nē	dee-ro'
	Inga	
pot. ole flambé	yoo-ko-no'	





First paragraph of The 1st Part of Libro 2^{do} by
José Eustacio Rivera "... como los árboles
Arqueología, como los dioses".

