

Osceola Co

Short trip S. & W. from
Dubey - July 22 - P.M.

On the N. side of sec. 24
is fine grove. On the
W. side (at eastward) are large
oak woods, 12-16 in in diam.
about 8 or 10 years & 5 of
them a fine ash grove - 4-6 in
in diam - & 1/2 as high as oaks.
No cattle in this & it is
more or less weedy with young
ash, etc.

A single row of big oaks
extends westward in front of house
& front yard (fence line)
has cypress.

Larch - 8 in, Spruce 8 in, doing
well.

A few elms 8 in in diam
are also doing well.
Westward there is an old oak.

Stricker has young growth
of maple ^{ash} at N. side

A younger grove, very small
trees in south of it. There

are box elder, cotton, ash mixed

The trees
are
small

A row of 3-4 in cottonwood
runs partly on E side & in
brush. Keeps weeds cut
down. Has a part in grass.

On the Rankin place - at SE
corner between road & RR

are 2 rows of large ^{mostly pine} Scotch Pine &
Larch, with low willow hedge
on E. side & tall cottonwoods
west.

- Cottonwood - 8-18 in
- Scotch Pine 12 in dia
- Larch 11 in dia

I could see the Milner grove
but could not locate them
exactly. Cottonwoods are
prominent in those to West &

In all directions from this point - E, SE, S, SW & W. numerous fine groves appear. But all this was prairie.

h NE. of 26 is a grove of an acre or so of balsam of gilead ^{1 1/2 - 2 ft in diam} 10-15 ft high - 8 x 4 ft. Looking well & glaucous on E & W by some of box elder smaller & bitter than balsam of gilead.

Excidentally cultivated.

J. A. Karpen just N. has a young looking grove, part orchard - with large willow hedge on E side.

At NW corner of 26 is
a fine grove mostly
of cottonwoods, with
Ash on S side toward
S. end. Very much like
the first grove mentioned.

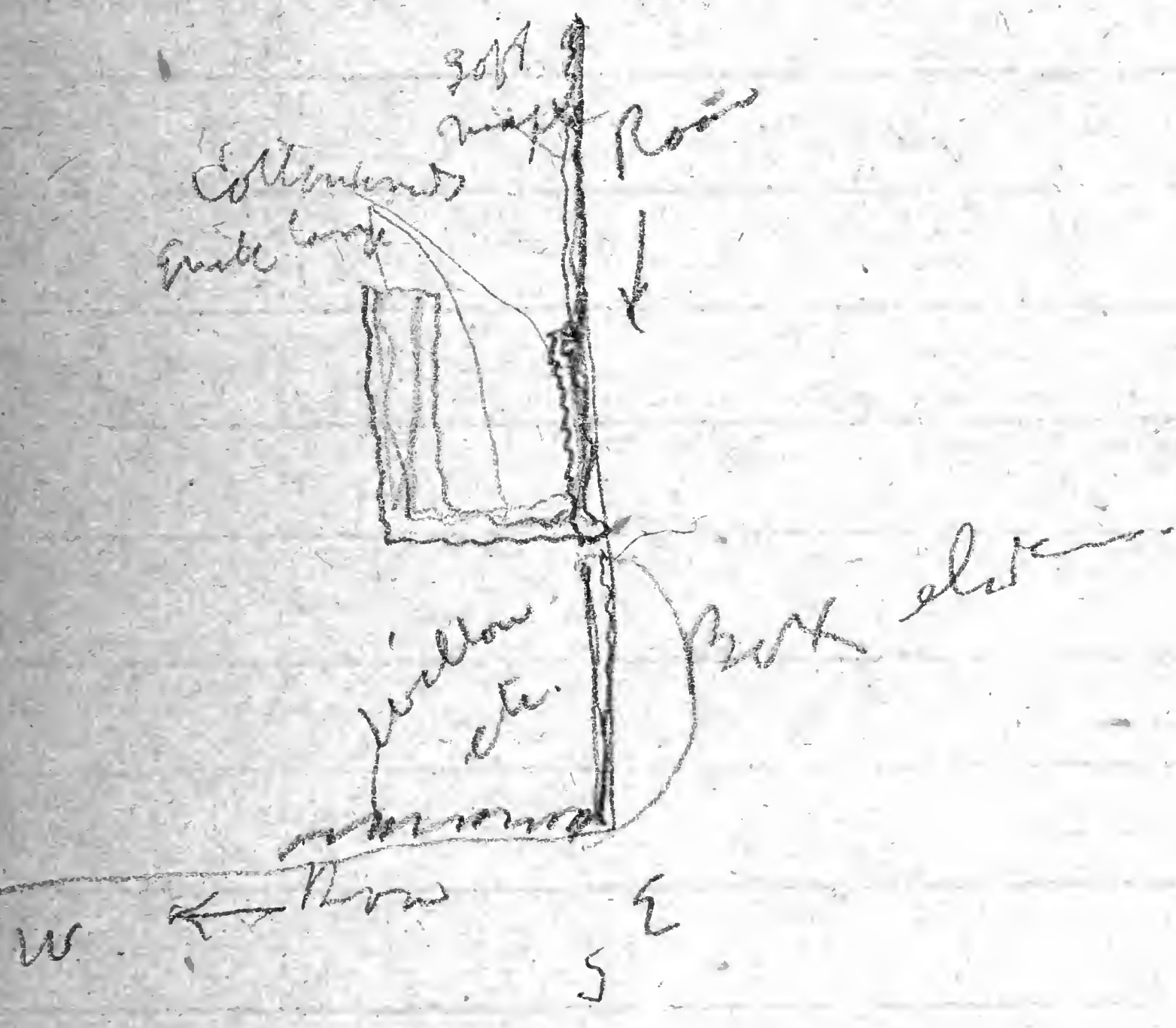
N. of this has mostly very
young grove. Some cottonwood
& box elders.

This is all somewhat
rolling, fine country.

Along S. W. of 26 is a
row of ^{wh.} mulberries - 3-4 in
diam, but dying at top
& branches
Lower part of row
volunteers, unequal, but
mostly doing pretty well,
especially those protected
by a row of box cottonwoods
at base.

In SW. corner of 26. quite a
 dense grove chiefly of
 boxwood - 6-10 in. (height) and
 with a willow hedge on the
 W. & part of south -
 Looks like at least 8 or 10 acres

The grove in 59. of 27 is
 like this:



black soil -

subsoil - yellow clay - 3-4 ft.

no sand -

Very little sand in lower

part (very little) + more

in a while a pocket of sand

at ⁴⁰⁻⁶⁰⁻⁷⁵ 50 ft blue clay.

John Wagner

The box elms at N4 corner
are about 17 yrs old.

The mulberries were heart ~~about~~
past winter -

He thinks box elms helped
by having hops.

Ash & box elms are the trees,

the people pick on ash first

2 or 3 yrs. because grow slow.

But after that grow well

& stand around better than

box elms.

Chestnuts don't do well.

but rot in spots.

Has unusual experience with cottonwood - good when alone, but in groves (in both hills) they die in center if adjacent to other trees)

We think, ask the thing

The Scotch Pine - grove, etc. at RR. These belong to RR Co. & were planted by RR Co. 20-22 yrs. ago. Set them for snow break. They had a gang setting them out one cent, & then later to care for them. These Pines ^{plant} are about 20 yrs old.

~~Every year~~ - must rather have to stand + miss trip to them

Scotch Pine is best

Has young box elder same age & ash taller, but not so wide.

Maple does pretty well, but not as good ash.

Maple (with suckers) makes
best wind break.

~~That grows~~

In dry seasons didn't
notice difference — the
trees stood drought, — didn't
grow quite so much, but
didn't hurt them.

Even in dry weather very heavy
dews.

Strike water at 35 ft

of a drilled well 153 ft — through
blue clay.

23 yrs ago was hardly a tree
in sight.

In NW. 34 & SW. 27, rice
grows mostly up boxes
& cottonwood, with some rows
of willow.

In NW. 34 the cottonwoods are
large 10-14 in & run around
3 sides, mostly at lower than
in lower part.

Kel Johnson mostly cottonwood
at its extreme southern base

Wm Kappes - The younger
grove (some) is of
box elder & soft maple

The side of pin oak (2-5
in) on W. side, willow on
S of W side, on N. of W side
is ash - birch

J Kappes

Big cottonwoods, ash 5-10
in, soft maple & younger
cottonwoods

On the side Campbell place
two nice cottonwood groves
large - a good many acres
6-18 in - many of them
more slender (lower branches
die) - there is a willow
row along river

J. Welcher - Some fruit
trees, mostly cottonwood
in rows & looking well,
Some mulberry, with
cottonwood, 2. of them (done)
doing well. Some willow

All these grove S & W (if
they are numerous) are
thrifty & quite old, but
seem to be mostly cottonwood
& willow

Quinn - large grove -
mostly cottonwood

Groves little mostly
stiff - box elder, willow
cottonwood & some fruit trees

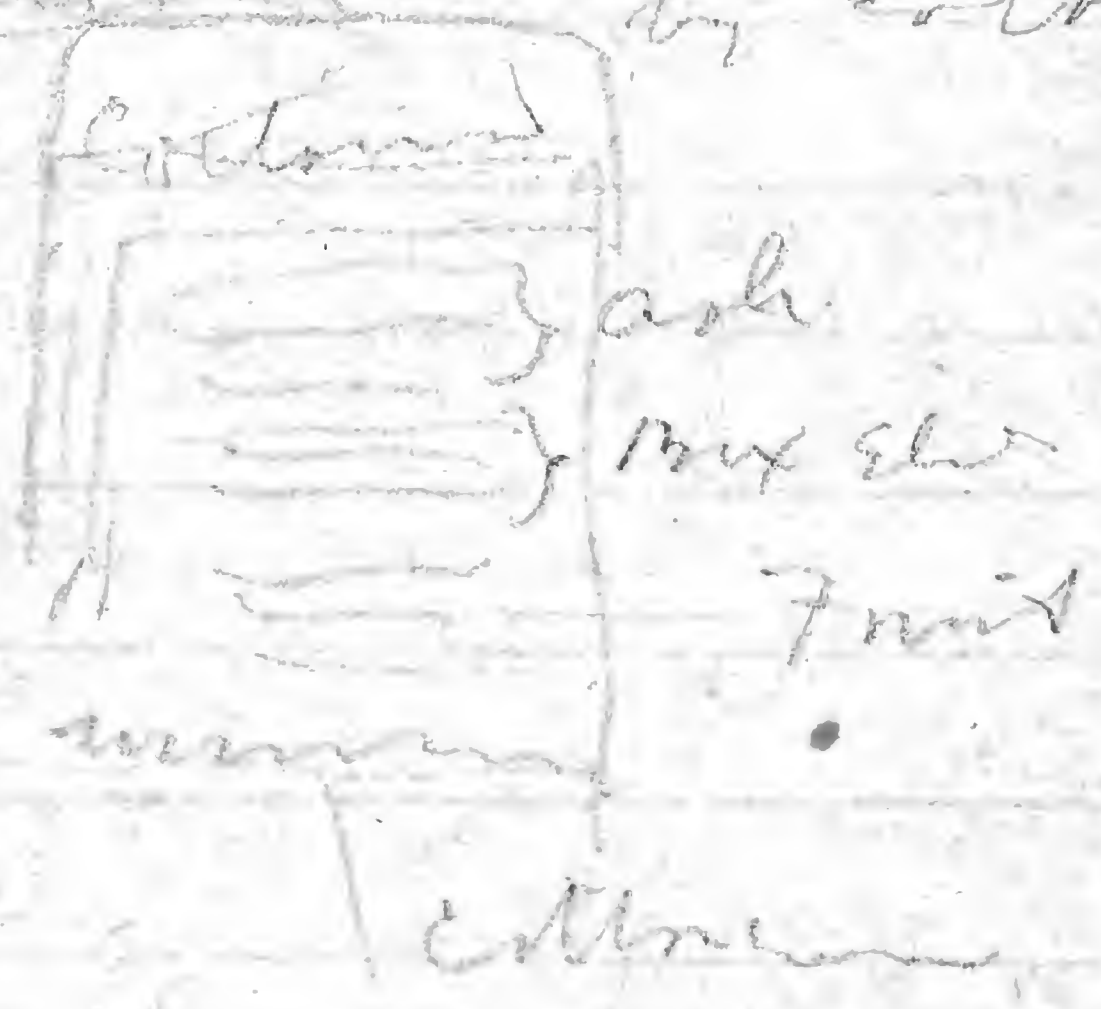
King - willow, box elder &
soft maple - Rather
young grove as well as ^{Poplar} cottonwood

To the NW from NW
corner of sec 30 few
graves are visible

Some land is very young
grove of oaks etc.

A field

Chiefly oaks
oaks, cottonwood
etc. Some fruit trees
surrounded at the
distance by cottonwood



Ash beating box etc
6-12 ft high

Cottonwood in the presence
of etc - 2 ft or high

Q. V. SW. Pullman.

~~Q. V. SW~~

A nice little grove of
 trees on outside
 next soft maple &
 birch, ash

Big elder stumps, with
 ash.

Ash - 3-8 ft high.

Soft maple 3-6 "

Big elder - 4-10 ft.

From N. W. 22 corner
 numerous groves NW N.
 NE

Some about like timber
 country.

Mitchell

A fine grove. Chiefly
 cottonwood mixed with
 ash -

Cottonwood in outside pine,
 10-15 in diameter.

Ask good to 8-13

Box Elder some 8-10

Some soft maple 8-10

Some willow 8-10

Some mixed pine
not troubled by

cattle & insects

Some 20 yrs. after pt. horizontal
was a tree in sight

The main group of W. was
about 20 yrs.

The maples are 37 yrs
old.

Maples - 27

Black loam - about 4 ft

2 1/2 1 1/2 1 1/2	}	Sand - some (some wet) 1 1/2 ft
		& a little iron pyrite
		yellow clay & some pebbles

Hard yellow clay -
(8 or 100 ft)

thinks soft maple but
don't like to see them
to they look out & don't grow up

Tree hard maple, but
couldn't make them grow
Walnut does well

Ash - now nursing but
slow growth -

Has young row 6 or
7 of ash & elm.

Elm does well in aspect
for

He trims his trees up
didn't care for young ones
but cut young ^{& weeds} & let in
his

Wants protection for fruit
on S & E side
up & leave above
to wind

Some boulders near
surface - angular reddish
& black granular
For 9 by boulder on
blair & name of the

Rentline

a grove - mostly cottonwood
+ some maple

As we cut 22 a grove
of large cottonwood (some
not smaller) + a few
good sized balsam of gilead
at edge - some maple
maple - low shrub

Took a stroll about Sibley
Sunday evening.

Sibley was planted in 1872,
and the oldest trees were
planted in 1873.

Saw maples -

Larch - 10 in.

Box Elder 10-15

Cottonwood, - 20-22 in

Spruce 7

Maple - 18-24 in

Arbor vitae 4-5

Mountain ash 5-7 in

(The preceding)
 There are mostly the oldest
 trees.

In the court house yard are
 mostly some birches
 4-6 in, & a few ash 4-6
 in, & a few tubbles, 8 in.
 But the town is well
 supplied with nice groves
 & rows of trees. Looks
 very like home.

Trees all do well in town
 & as I noticed yesterday
 in Wethersburg, Vt.

White Birch (7-12 in)

A few Black Birch 7 in

The greater of the old trees
 consist of cottonwood, Box Elder
 & maple.

A few small elm & Scotch
 Pine.

A good many ash as high as
 7 in.

A few willows & of course apple
 & cherry.

one cedar 4 in
one hard maple (newly). 4 in
a few walnuts 2-4 in
2 or 3 Scotch Pine 12 in,
some dogwood 4-7 in,
looking well.

Auditor Reynolds of Otsego
county says:
Farmers seem to think that
exemptions ought to run
another 10 yrs. anyway. Much
treeless land yet in N. & E.
part of county.
There was fraud, but a great
deal of good was done, & much of
present groves due to that
law.
It should be made more
stringent.

Osceola

18

Trip W. & SW.

Wj. Miller grove is quite
large & cottonwood seems to make
up large part of it. Also
willow hedge along W. & S. sides.

Hill's seems to also be largely
cottonwood.

~~Also Klasha~~

Strom - mostly cottonwood 6-8
in. & in 8 & 10. box elder, good
used. Cottonwood in grove
dying out some.

A Klasha has old
grove of cottonwood 8-12 in. box
elder, maple & walnuts along
fence west side.

The Java Land co's young
grove is chiefly chiefly
ash. ~~But~~ ~~examined~~ ~~chiefly~~
Some willow along creek.

The region to this point is
comparatively flat, with low
hills in it.

W. W. are rows & rows
of trees - almost unbroken
line along horizon not much
over a mile away.

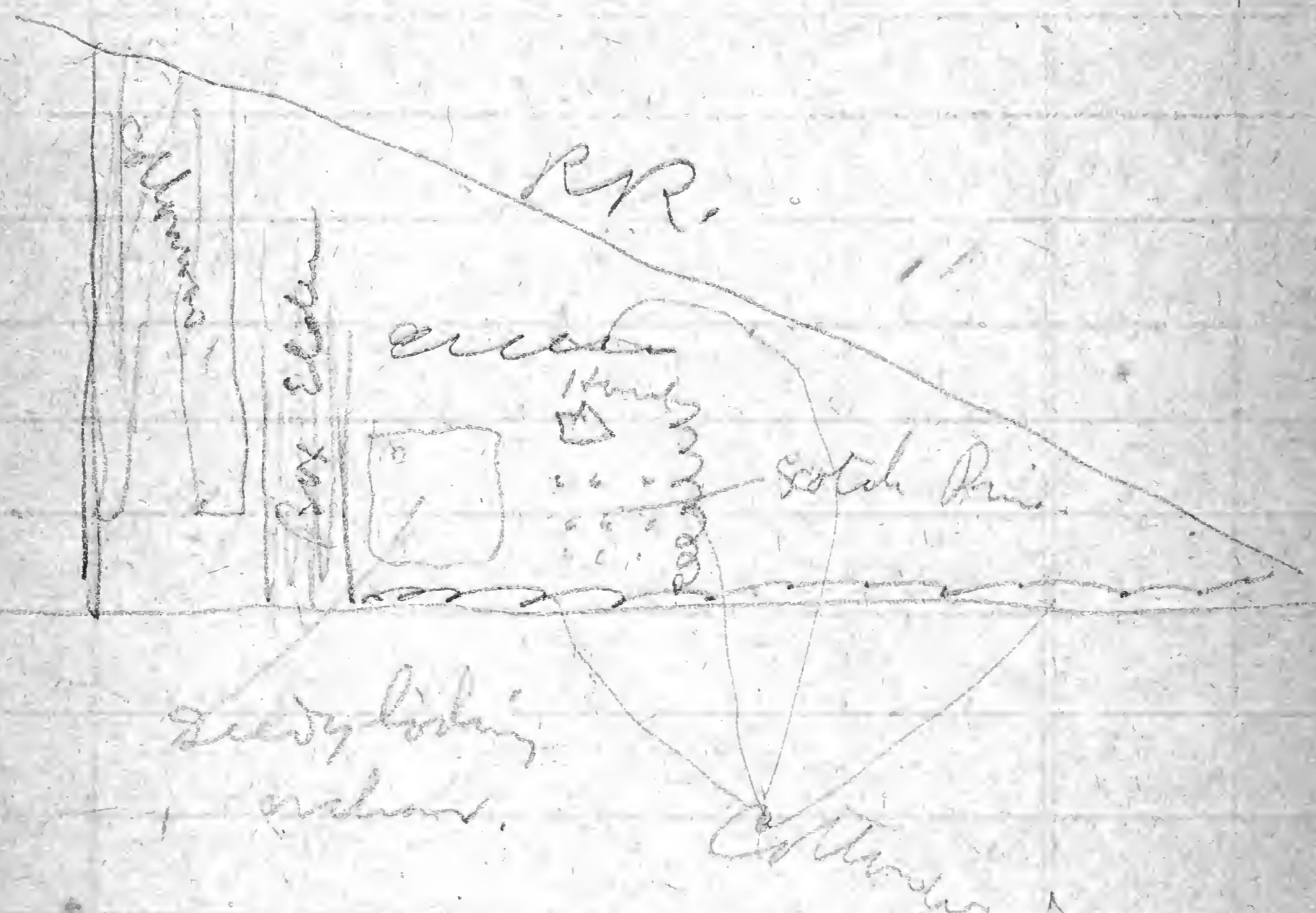
Subsoil clay with some sand
& sometimes sand pockets -
sand on ridges. There
is water almost everywhere
from 8-16 ft.
all trees do well. An
old settler says best
plants boxelder & whiteash.

Blake - quite large trees
mostly cottonwood, willow
as far as I can see.

Bourland. Large cottonwoods in
rows - doing well - 10-16 in.
A nice grove of Scotch Pine
8 ft high. 8-10 in. - doing well

Box Elders. Some west look
ready & some are dying but
thin 10 in. looks fairly
well.

A grove of Cottonwoods west
has named our north gate.



Littlechild's grove consists of
Cottonwood, Box elder &
sugar maple, chiefly.
They are medium sized
Country W. of RR becomes
slightly higher & a little more
rolling

In N.E. of P. a maple 201
grove of mostly large cottonwood
(Chocoma inside)

Moet - young grove chiefly
box-elder - cottonwood & soft
maple - last part showing

Wright - has rather old
grove of cottonwood,
box-elder & willow.
Schultz is young & as far
as I could see box-elder
& cottonwood - quite young &
evidently not well kept.

Enter Galena Park
from the west.

10th Century has in
dense grove of soft maple
with several runs of
the elder on roadside &
some willow.

But Elm are dying
some

A slight knoll only
in a sort of valley.

Big elder 4-12'

Soft maple 4-7'

We Ruben

mostly cottonwood, some
box elder, ash

medium sized trees -
look well!

The grove S. is similar,

Rubens grove S. 17

in young + woods

A maple 20 ft high, a
box elder.

In 800 ft. A large space
(at least 5 ft) of high water
ground - outer bank of
river - a small mouth
The house is E. of
the trees - just west
of water is a fine
row of plants - 6 ft in
(height) - some trees
A few Scotch Pine (8 in),
some young, some
young, box elder, also
A fine place. (No. 23)

Starbuck - a fine
opening more of soft
mud, in elder + ash
still doing equally well

J. Elder

Mostly cottonwood & willow
Two quite large & bushy

C. Miller

a fine grove of cottonwood
ash & soft maple & by all
the two latter are very
small.

The minor cottonwoods are
a fine one under

the water course at branch

ash, cottonwood, box elder

maple, cottonwood, birch

ash, 3 rows of cottonwood

box elder, yucca

a fine grove - some very small
box elder white spruce

Spatterdock very fine

groves are mostly

Fewer groves small (young)

box elder white spruce

Does seem to have
a fine growth of
hanger

Huisanias

Some of collected
6-10 in
thinner cut

J. Kapp Ash in
young growth
Cotton wood, maple,
ash, birch, but young
at (X) a delicate
growth of soft maple,
Bunches of drying
some collected with

Upper Kappes growth
willow W & N.
Ash, Walnut and
all looking very

Young grove yet 26

As far as I could see
(at low getting dark)
the remaining groves N.
to RR. were chiefly
oak wood (mostly large) &
box-elder, maple & willow.

29

Exp. S. & E. from S. by
July 25-1899

JR Morris - A splendid
grove with 2-4 rows of
cottonwood on N. & W. &
a dense mass chiefly of
ash (some catalpa in
thicket) - 1 1/2-3 in.

A fine dense growth,
really two dense.

This is in slight bend &
on slope.

Inward middle of ash grove
has a dense grove of catalpa
& also walnuts - all
doing well.

Rows 4 ft apart & close in
rows.

The eastern part is all
walnut - 3-5 in, & trees in
splendid condition.

Three walnut rows on E. & W.

and are 12 ft apart & 4 ft
in the row

They have bushes cut so that
they form a dense thicket

Walnuts planted 15 yrs ago

Plants in place

Ash small trees

has commenced to grow

Catalpas bridge back

Right where trees are

planted is considerable

gravel on ridge ^{some clay} + sand

But farther from creek - less

gravel (or no gravel)

more than box elder best for shade trees

Cypresses New growth ^{4-5 weeks}

clean & healthy - Maple some

ash & box elder well on

way

Maples for most part 4-6 in

Cypresses lower growth

a straighter lot mostly

of other kinds dying out

is no good. Prunus says
they were planted out on
prunus 20 yrs ago he
believed even without breaking
& have been left to grow
None are over 8 or 10 in. in
girth. A few maple
& box elder in the better

In the Land. co. A nice grove
of small (10-15 ft high) box
elders, doing well
corn plants between them

Box & Benjamin

Chiefly box elder of two ages.
The larger part is thinning & trees are
8-10 ft (some maple).

The smaller part is less than
2-6 ft & looks neglected
brown up with the trunk etc
a few cottonwoods in the area
may be

At 2. Cottonwood, willow & box
 elder & a few maples
 all look neglected. - no haws,
 hies, rather large (mature)
 A few ash. These look the
 best in this neglected grove.

At 4. willow & cottonwood (4-6)
 looking bright, willow along road, etc

At 7. a small grove of young ash
 look well - a few box elder

The Harvey grove is fine
 there are maples & ash 5-7 in
 & ~~some~~ cottonwoods on the opposite side
 of willows along fence.

The ash & maples are fine &
 the grove is well kept.

The Flynn grove is made up of
 small stuff that hardly
 projects above the weeds & grass.

In road at O. [unclear] 31
same [unclear]

Greenfield? of largely cottonwood
(3-16 in) & willow in dense [unclear]
rows & lines.

N.W. Greenfield grove contains
trees 12-25 ft. high (except
cottonwood on S. (a strongly [unclear]
grove) which are 20-30 ft. high
The grove (upper) contains box
oak, ash, willow, & cottonwood.
Lower quite well, the ash
holding its own.

Near E. There seem to be chiefly
cotton (small) & large cottonwood
~~in grove, but~~

McHull has a grove of ^{some} ~~old~~ ^{oak} ~~wood~~ ^{oak}
Cottonwood (large) - some
at [unclear]. Also maple & willow
Can see some grass within

O. Gillis has very young
of oak some grass & some pine
also young [unclear] [unclear]

also hollow, as far as cotton and
 box-elder along road
 as partly kept place

Johannes grove chiefly
 young (quite) box-elder

At (a) is where grove covered &
 chiefly of box-elder, Sycamore,
 Cottonwood & probably ash
 medium sized trees. Willows
 along w. line to corner.

The country to this point
 has been somewhat
 rolling, and much

Mrs. E. Clayton

writes along N & E.
 The west side of grove, east
 of road, very maple, in
 good condition (quite done)
 The E. side of grove, ash

... also ...
for the ...

on a flat ...
Worcester ...

Have good ... with all
their trees ...

Last ... walnut & ash ...
winter - Walnut & ash ...
in N. part of ...

Walnuts born in 8 yrs. from
seed. Nuttlets also grow
in the grove but haven't
borne yet. The ash & walnut
grove is about 12 yrs. (?)

Have two layers walnuts
in yards - 8 in. (these 16 yrs. old
were little slips.)

Large Prof. Eldon & ...
Of late yrs. he has put out
only ash, box-elder & maple,
& she doesn't know which he
likes best.

... cottonwood ...
... the ...
... the ground,

Brown pine & cedar 34

Ash were numerous, stock &
also also,
Some of his maples box old's
(later ones) he has grown
from seed.

A few hard maples, - those
which were in farm when they came
are 8 in in diam. But they don't look
well ^{well} ^{leaves} ^{over} ^{you}
Catalpa 1 tree - freeze a little,
but not of late years.

Cultivate for first year you
(plant with corn) & then
be mulched then;

Has a few Scotch pine 2-4 in
well started

Willow 12 in, a large
elm - 10 in.

The young grove w. of house
consists of ash, maple, box
& also all other woods.

The grave No. of
Geo. Schlicht

Inside a grave of ^{ground} ~~grave~~
buried in soft earth
~~Willow~~ on S & E

Iowa Land Co

Common & by the way
Doing nicely. Medium
sized trees (young)

Geo. Schlicht

a grave of young box-elder
2-7 ft high - Doing pretty
well

affairs of
of woods

At 6 am so cotton wood grave
(giving out) and some more

some
Maple

ash & poplar on E end

Crimes think each best

European Walnut do well too

Green flat ground

Surface soil 4 ft

In work yellow clay with

lime nodules & some sand &
gravel

14th June
 Willow; cottonwood (chiefly)
 & 30% maple. Large

Foley - ~~at the~~
 young box down + cotton
 wood 6-18 ft.

Key - some of
 rather old box down

From turning pt. S.W.
 There are very few
 groves visible S.W. &
 fewer S.E.

J. F. Hughes
~~at the~~ a large grove of
 ash - 3-4 mi. On W. side
 willows on S. cottonwood
 Some small, tufted maples.
 Cottonwoods all along road 3 mi.
 Few groves visible S. + S.E.

~~At the~~ Dr Folsom

W. part of zone of cottonwood
& maples - Quite old

In middle, S. of house is
quite a big grove of
Lombardy Poplars 12-18 in
diam & beginning to look ugly
as the soil within N.E. a very
grove of maples.

Dr. J. Ford
~~Dr. J. Ford~~

The E part of grove is old
cottonwoods. The W part
is young stuff - can't see what

Southward - few trees

Enter Baker Traps

Stanford

A good view on a fine
big cottonwood (trunk) &
a big part caught of
Baker's 3.6 in - good, some
mistle hatched, a few
small walrus & elm, etc.
Several eggs & mixed lot

West Ab

E. Bay

Rather large cottonwood,
~~some~~ maple & wild

E. Bay - Willow & cotton

Gillies

A lot of young stuff, low,
can't see it well.

S, S.E., E. & N.E. from
the S.E. turning N. are
about the same

Several houses without
trees visible. Can see for
1/2 mi. E. & S.E.

Ambleton

Diast of deep, green in old
Others was a hollow
Areas has young ash &
some boxelder, cottonwood
& willow

Upper willow grove
small stuff mostly
box-elder

Dick Frey - a vine grove
The 90 samples & willows in
the upper the old
There are two lines of
Ambleton (branches dying in
some, better than protected
by snow
nice section & a strip of
elm - 6-10 ft. wide

Frey has mostly young stuff
cottonwood, boxelder, maple of
2 or 3 ages. Some pines

Thence again from
base of hill with some
cottonwood, also fruit

~~all along the way for a
mile or from center
of the hill crops are equally
on the ridge which is
most of the distance. In a few
places small apple trees
of one place small bushes~~

The above is O.K.
Don't cross out

Fannie Bushley

a grove of small apple
maple, cottonwood, etc.
rather large for young grove
on ridge

Clark House young grove
thick with small - some young
trees 3-7 ft tall

a few little spruce ^{and}
growing. Larger maples
& willows on the north.
One higher ground

wardenbury - chiefly low
elder ^{medium sized}
vine grove, kept clean,
but surrounding grass.

Pebbles show on ridges along the
mile just passed.

Enter Harrison Traps

From here (a little west on ridge)
I could see a great distance
S, SE, E, NE & N. & the
country is singularly
divided up into (of groves)

patches here yellow clay (oh, yes,
with little sand or gravel)

(talked to farmer at NW
corner of intersection)
He said boxelder & ash
were best trees & that
the thinnings would be (or may be)

place) would do well -
 be thought. The trees
 were planted 40 years ago

Weyer has these Russian
 poplar, ash, box elder
 a white willow (?) (spring)

(This is *Asterina*? or what)
 (See spec. of this of Poplar)

Rus. Poplar - 2 1/2 - 3 in
 (White willow?) - 2 - 3 in (makes dense
 fence row) - ash &
 box elder - 6 - 12 ft.

Box Elder little larger than
 ash.

Wm. Edam -

Small stuff - some very small
 Box Elder, maple, willow, cottonwood,
 in the younger lot, box elder &
 ash.

Box elder makes up the bulk
 of the

N. Eden - small grove
of young stuff

The "May City" country
opened only about 6-8 yrs

J. B. Baumann has planted
a young grove on ridge
& slope off the
Ocheyedan valley.

E. Baumann's grove is on
river side E of canyon.
Both show gravel & small
boulders in the bank are
right on top of Boulder
light colored granite.
The grove is willow, maple
& box elder.

Boulders were more numerous
on the N. ridge N. of town.

May 21. Harvest of the
in night.

The whole Ochevidan flat
valley (as far as I can
see & that is a good many
miles each way) is almost
absolutely treeless.

Christianson

has a grove of little firs
that can hardly be seen
against the compressed
beyond, a baby grove.

As far as I can see N
& S. There are almost
no groves, & westward
they appear only on the
distant horizon beyond the
Ochevidan valley.

The several ridges on this
side (N & S) show to some
at the top.

a little way down
 one more ridge - saw at
 top - on it in young (and
 from side) a little group of
 tufted mushrooms - tops of
 many dying - thought
 they are young
 At foot of hill (west)
 is a head of rounded
 (mostly) light granite
 boulders - some are roughly
 gathered up by someone

Weight

Elim; box didn't work at all
 regarding 9000
 Elim's borehole from factory
 Fulwood - clay with gravel
 water at 13 ft.
 On, small
 When went through blue clay (10 ft
 thick - thicker in depth) then
 some gravelly clay (above)

The green ash
box-elder, cherry, maple &
along fence willow
They have also just
planted a few walnuts.

The box-elder, cherry have
rather the best of it in growth
but, the ash is doing well too.

The old gentleman said and
was "mudding row", but
there were a good many rocks
in it.
Besides, a few as I can see
(2 miles) it is rather rough
I am called.

H. V. Anderson - Willow &
small ash (with big vigorous
leaves) all neglected,
on knoll.

Up of the dehydrated
the holes have been

large boulders right
top & sides
...
... layers gravel stuff
... considerable clay

Stuffer house - a young
father & mother some of
cottonwood, box elder & willow
On it is

Fulton - a young house

Stevens -
... medium, green, maple
... a few cottonwood, etc.

The country is beginning
to improve slightly
about as now - will
except for S.W.

Outdoor - usual, near
on the...

Enter E. Polunna
Kobry - small box elder
protected on W. by willows
On. deep light soil

Cajac

young stuff standing along
Maple, Lombardy poplar, birch
cottonwood, ash - water
all doing fairly well, but
neglected
along road

Cajac gave us 2 or 3
+ fruit, under good trees
Cottonwood, box elder must be
made out a nice grove

M. P. Johnson

very good grove of box elder
11-13 in. need growing buds
a row of small cottonwood
inside (West)
Cajac

Protrusion could appear as
one or more to be observed

Two quite a good amount
Remains of plant 3-5 in
I don't think they look
particularly fine
Very thin; people
Medium sized
on ridge.

At the same time
on the side a fine column
of green. These scattered
and green under the
also looked yellow
from the top.

Some fruit a fine amount
of some other. They are fine
and very good
On the other side
Some good of the
some other.

Walter's Pathway Lane
Cottonwood & some Lombard

At 1/2 mile to your
high cottonwoods with
a number of small
green aspens / 16
Yellow hedges with some
medium maples, a few
incumbent, to be a very
growing in the protection
of cottonwoods & maples
An ridge

At 1/2 a young grove
Cottonwood, maple, etc. etc.

Jawa Land Co. Small
box elders 3-10 ft. &
these will well kept
on ridge

Miller - a nice row
pretty well along, etc.

Which contained
 older one. Found
 on ridge

C. Warner

Small boxelder maple
 plants now in oak,

Small
 Mostly on ridge

52

Grave had a grove; the
center is small & 3
small cottonwoods mostly,
just started.

The grove at house of E.
is larger & has cottonwood,
but also other trees,
nearly all are healthy.

From a knoll W. of
Twp. line, looking due
south a little west of S.
are numerous groves.

C, Krahling W. grove
mostly boxed - fine
dense grove - some willow &
cottonwood. Good looking
grove.

The E. grove is younger
cottonwood - 2-3 in. in diameter.
Box elder -

maples - no good.

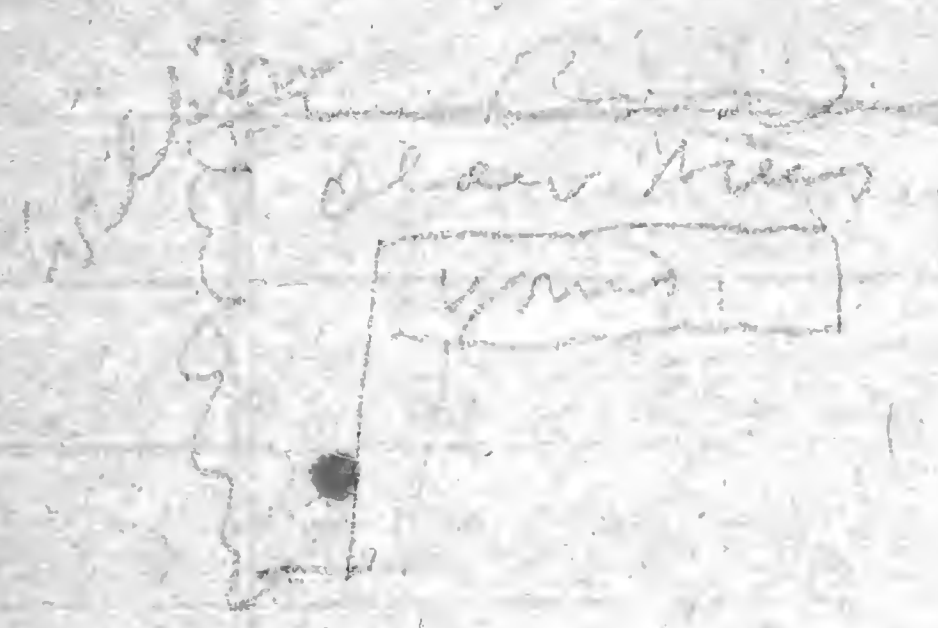
A young grove, fair

In NW. ¹¹ is a fine
grove, on S + E almost
all ash - mostly in fine
condition - quite large.
On W. side box elder &
cottonwood & maple

In SE. SW. 12 a grove
of large cottonwood &
box elder (there on S)
but both are dying

25

Prof. Van... the



2-7 m

The young only
2-4 ft high

Roller bridge on NW W

Interview on Trailing

Thin black loam 2 ft
below bed of trail. They
fine takes water - not
steady.

But fine in box above
Only all night, but too slow
Soft sample do not do well,
Cotton wood are not good

Serve at first as protection
for the trap

Passes his own box above
sample - that sample does not
do. Water 50-130.

But surface... after the

5 ft as a well 300 ft.

In S. E. of Hill Dale Gap
is a medium sized grove
of trees. Some cottonwoods
are scattered & a few
large ash.

At X (N. of the grove) is a
small exposure of gravel
on side of slope in the
road.

Addressed a hollow
square of large cottonwoods.

From S.W. turning point
few groves are visible
to S & SW & W, but
S.E. they are plentiful.

Kendricks - mostly boxelder
(6-8 in), some willow &
cottonwood on N.

A few small Catalpas
in the square.

Lower than a river
a little S. of schoolhouse
then on gravel exposed in
road, some small boulders,
mostly light colored, some
dark blue.

The ~~upper~~ Kemp grove
is heavily of big boulders
some nearly a foot in diam
Some gourd shaped ash, of which
I on the south a row of
large cottonwood. Also
a good arch on S.
grove below

The lower Kemp ~~grove~~
is heavily of big boulders
of soft purple 4-7 in diam
of some ash - some large

Cassens grove is very
young at present when
small firm trees. Look
like the 3 specimens
69

Wilmington has a nice grove
mostly ash 20-50 in looking well
& bearing fruit abundantly
with it in some soft maple
Coccoloba & cottonwood
some of it better
Hops are in, but ash stand
it well.

J. H. Kruger, S.

Rather young grove
looks well from a
distance.

The groves in lower part
of 27 & 28 (marked on plat)
contain considerable nice
ash & a large part of
cottonwood, some yellow
boxelder.

From S.E. corner of 28 very
few groves visible to SW.
89 of W. The country to
is again flatter, some groves

There were some young trees
in some. At a place he has
several rows (a row) of cotton
wood. Then several rows of elm,
then a row or two of maple
& then several rows of box-elder.
Cottonwood much the largest, next
box-elder, scarcely more than
1/2 as tall, but bushier, &
elm are not doing so well.
They have the branched twigs
(or trunks) so characteristic
of poplars trees.

Klaahsen's is a rather
young grove. Can make
out some cottonwoods

J. Klanger has young grove
of box-elder & willows
along hedge on W. side.

looking, walnuts

Polley's grove looks
well. As far as I
can see it contains
cottonwood & birch
& there is at W. a walnut
grove, now 10 in dia, but trees
not over 8-15 ft. ^{in diameter} ~~some~~ ^{at} ~~all~~ ^{along}.
A few ash - slow growers

Koopermans is a vigorous
grove, the W. & S. part
much younger. The older grove
contains maples & cottonwoods at W. &
a fine ash grove with (6-8 in)

(Cherry, Plum & Apples)
Subsoil is clay (boy didn't
know how deep, but well
is 26 ft & all clay. He
didn't know whether any
gravel with clay.

There is a little gravel
on some of the ridges.

The grass in Grand Rapids
are mostly on knolls &
set 20

Part of blights, not common,
many rather low

From my point of view, south
very few grasses could
be seen to N. & NW.
A few more are also
west, but it is not a
country rich in grass.

In N.E. of 10 is a small
grove of young ash &
box elders. The ash
are doing well, but
box elders are thin & have
a little more vigor.

Bettenga has a thick
young grove of cottonwood
box elder & a few maples
with a few healthy

grove. Some cottonwood
Ash, cottonwood, willow & box elder
in alternating rows (E & W)

N. of willow is a grove of
Ash with big cottonwoods
on fence row & another
inside. Ash looks
fine on both sides &
quite holds it own on
W. side with box elder

Schelling - cottonwood - box elder

& some ash.

Pattern 20, - not present

Lammann - Pattern young grove
of box elder, maple & willow
doing well

Schelling on S. side, has
young grove, chiefly of
Ash - 2-4 in - in pretty
good condition. Some
cottonwoods along road

~~St. Joseph~~ It is so to about
~~2 miles~~ 2 miles long, top being
much sand & gravel near
top. Of surface soil
about 2 ft. Ash &
box elder are best trees
in his opinion.
Another saw that there were
in place 4 or 5 or even
more feet of clay & in
some places - on the edge
the sand & gravel came to top.
I saw a few boulders on
ridge W. of S.E. cor. of sec. 2.
They are light granite.
The sand farther through
ash best; box elder next

Slight row of north
ash trees (4-6 in +) on S. side.
A part of the row is large
oak trees.

Row of willows on W. side, for
a short distance.

On W. side of road he has
a finer looking medium row

Polypus ground
Some ground box-elder
scout 4-8 in

Then a grove of honey-
locust 3-5 in in diam.
Growing well but not quite
uniformly. Then a
small grove of soft maple
4-6 in diam. all looking
well.

Willows along fence. Not
with any maples & cottonwoods
best.

Hindt has a very young
grove. Can't make it
out.

Kleber - grove quite young,
mostly box-elder. Those on
N. side are over 2-4 ft. high.
The others 6-10 ft.

A few small ash & maples also.

Met a farmer on road. He
lives at corner W. He says
that there is in this part

Handwritten notes at the top of the page, including the word "Hand" and some illegible scribbles.

Handwritten notes in the middle section, including the word "Handwritten" and other illegible text.

Handwritten notes in the lower middle section, including the word "Handwritten" and other illegible text.

Handwritten notes in the lower section, including the word "Handwritten" and other illegible text.

Handwritten notes at the bottom of the page, including the word "Handwritten" and other illegible text.

as well, and great quantities
found.

The East Woodbury Grove
is of large cottonwoods,
some have started dying out.
This is oldest grove I've
seen today.

The West Woodbury ^(a grove) grove
has eastern part of large
cottonwoods, & where they
have died out a few
walnuts have been planted,
not the best.

The same thing you rather
like place at E. end up
over a ridge. There are
cottons & cottonwoods all along
& also an orchard - quite
good sized, with cottons
on E. & S.

Wednesday, the midland of
pines is chiefly spruce.

From corner of trap. M & M
are a few scattered pines
in all of them. Cottonwood
seems to be prominent.

Structure of the
low ground of young spruces
S. N. found to be ^{of spruce} ~~one~~ ^{kind}
Maples 12-18 ft high trunk
in part of lower on N side
low, a few spruces with
spruce ^{not} doing uniformly
well, and a row of young
elms 4-12 ft high, doing
pretty well. But they are
6 or 7 yrs old (from Larchmont
nursery) & the one under
protection of the maple
grove, in all the ground,
12 ft away.
The maple grove is in a
69 low place & doesn't do

On knoll
Murray have a few
cedars - 8 ft high in
front yard

The grove on N. is partly
ash & partly maple with
a willow hedge on E. side

The Ash looks well; maple
not so well. willow vigorous
all 15-18 ft. high

The $\frac{1}{4}$ S. Shulte. On knoll.

A nice grove of large
box elder (chiefly on outside
& ash). The box elder
are 5-6 in. in dia. & ash
about 4-5, but even taller
than box elders.

The young shrubs have
been cut in places

A good many ash

A few large cottonwoods

Some other plants

Shulte has a grove of small
mostly very good box elder.

89 On knoll.

F. R. H. ...
you ...
usually ...

Keep's place
young ...
of some ...
Both growing well
No trouble during dry
Cattle ...
A few soft maple ...
about day when ...
came 2 yrs ago. Mc ...
them & they are doing well
But this has been a good
year for trees.

But hayr ...
they grow affe ...
Said about -

The Daughters of ...
are young of ...
...
very well ...

On N. side are a large
number of cottonwoods
5-10' in diam.

On E. side rows of maples
& small shrubs.

A few walnut S of
cottonwoods - standing out in
a single row and not
doing well.

Fetters & Adrian year
are growing young
thing.

Nelson - chiefly Loxelia
10-12 ft. high dense.

standing at W. of 20
in Liberal traps.

For at least 2 in. S, SE
& almost E. There are
practically no groves
some N. for a mile
not a good ground
country.

A. McGuire - ground not so
well kept as the other
Some cottonwood (taller than
all else); rows of maple
some beeches of some
ash rows, like just
McGuire's in size.
Also a number of trees
set out on yard, some
good, but not uniform.

E. McGuire - mostly cottonwood
3-5 in. - not very well
cared for, but growing.
N.E. side has a young grove
of small ash, box elder maple
chiefly ash.
A few scrubby little spruce
also.

John Doyle

Has fine grove of ash (4-6 in.)
west of house, protected on W.
side by willow hedge

Spence 5-7 in.

all in all about like
Jas. McGinnis - look very
well

Miss damage (some in
mulcher) - & nice crop in.

Have reader saw at about
6 ft (this is near creek)

allows no cattle (some hay)

5. give & it shows it to

Maxwell - 5-8 in

Walnuts - fine rows in that
west part - must be 15-20 rows
wide - 6-8 in diameter.

Fine trees

(The W end of the grove on
ground is a little open in part
& has some & later walnuts)

The whole aspect of the
valley has been changed
by Pat McGinnis example.

Maples chiefly in the row, &
also some elms.

The maples & walnuts 1872.

Most of the grove about
~~Summer~~ ^{Spring} of 1872 - some seed.

Planted nuts for walnuts.

Covered nuts over winter & planted
in Spring.

The maples have been out
about 10 yrs. -

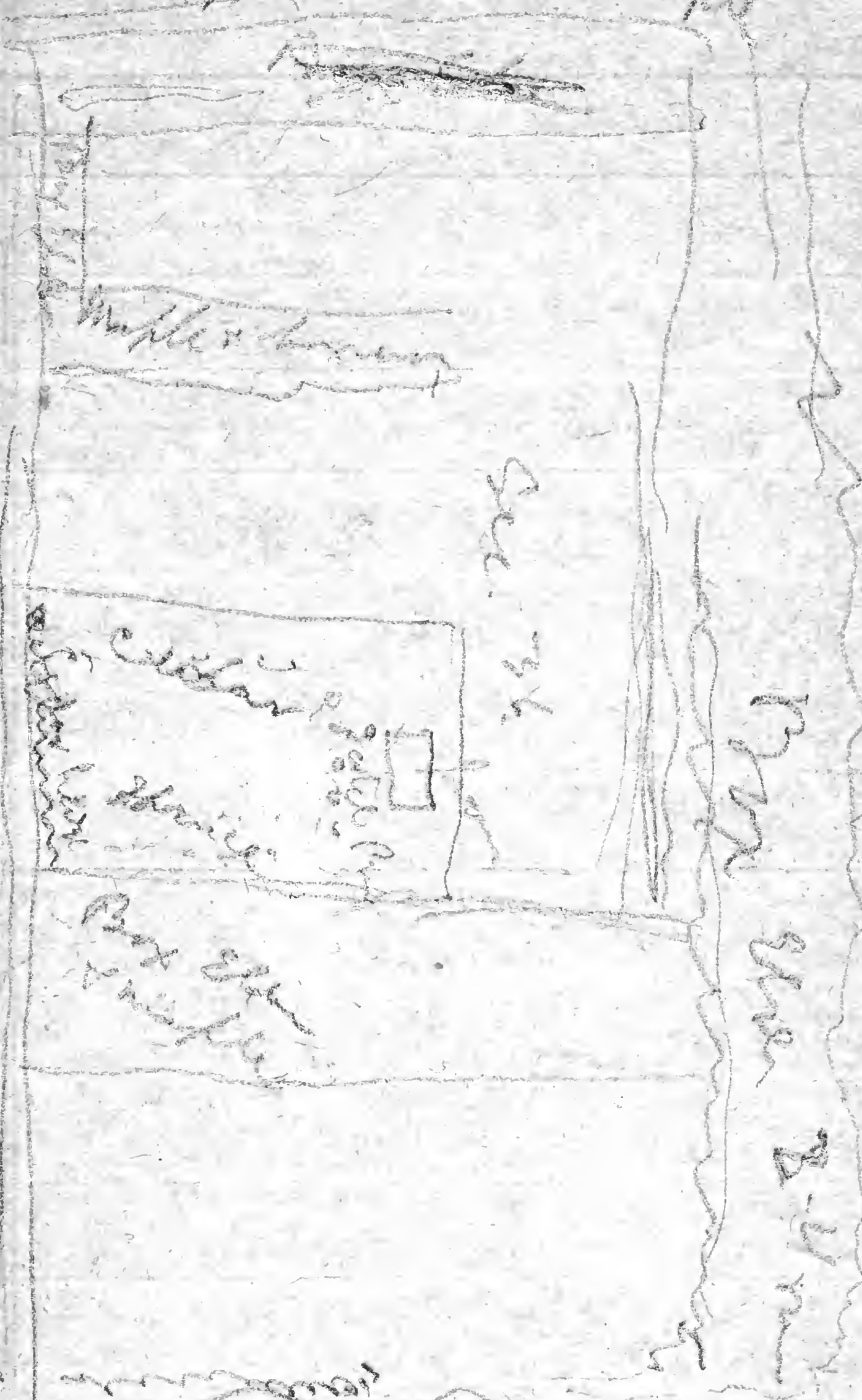
Box Elder & Soft Maple gone out
in dry seasons - & now look
stagnant.

Walnuts do best in a body
grove.

Stock damages grove, especially
walnut.

Some complaints of worms getting
on ash, but none here.
Have had willow-worms.

Washburn & Co.



Washburn & Co.

Sec. 46

Bldg

Cottages

Shed

Barn

Washburn & Co.

Washburn & Co.

Sec. 1

Washburn & Co.

Washburn & Co.

The best elms are in N+3
rows 4 ft apart & in dense thin
vary from 3-7 or 8 in
grove has about 16 rows,
ground clear underneath
& trees evidently well
cultivated.

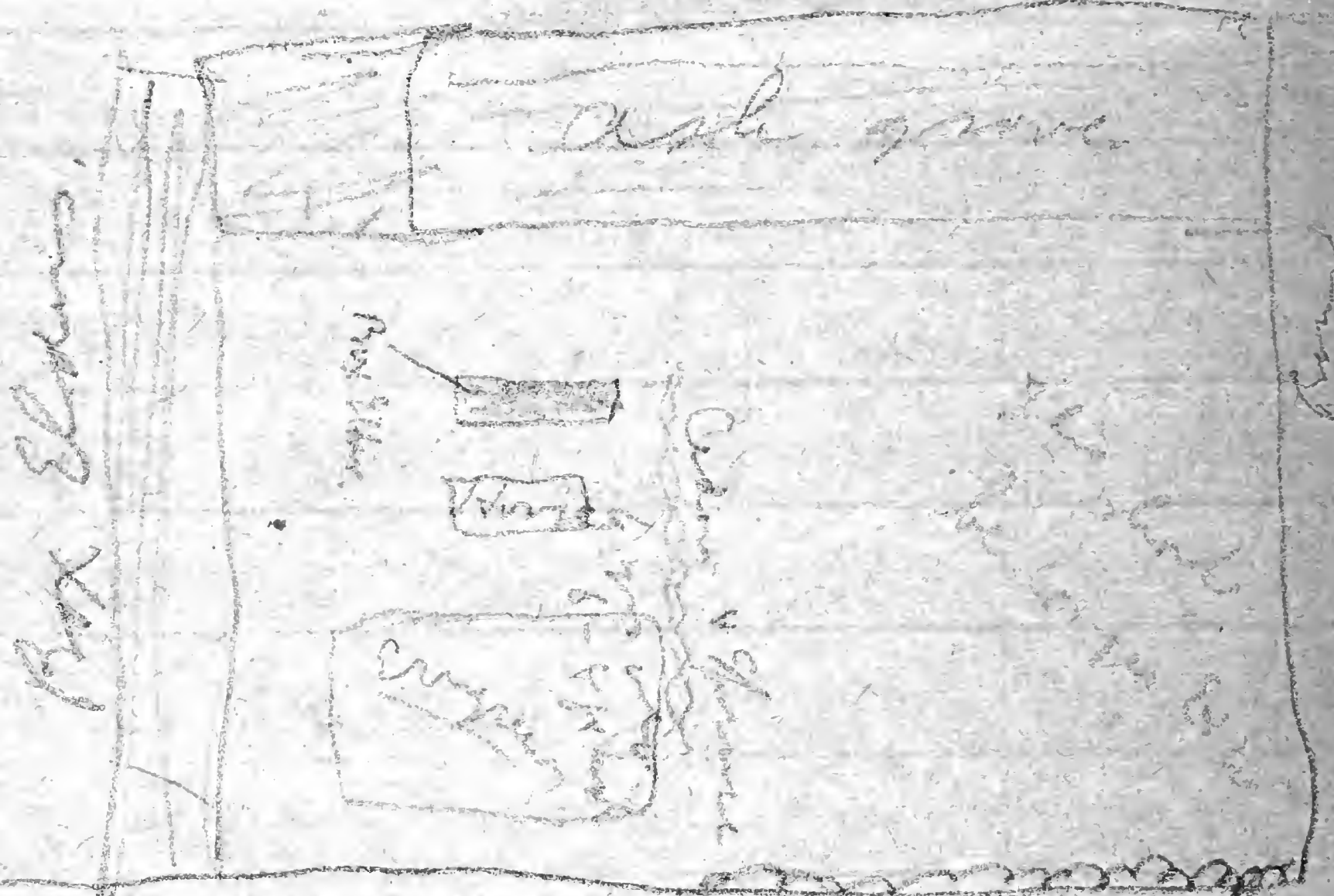
The average diameter is about
4 or 5 in. A dense woodlot
This grove is on the lower
part of a long gentle
slope. Clay subsoil.

Post. Machine

The grove in sec. 1 of Garfield
is a fine ash grove - 3-4 in
Probably 15-20 rows running E-W
Some
rows from
500 -
Looks vigorous & uniform
rows somewhat weedy, but not bad.
Also a few walnuts - 3-5 in. of
nearly equal size with ash.
Some of the walnuts on outside of grove
are dead.
Saw trees are not so far along as
young trees which were planted
Some in Spring

ash trees 5 x 8.

Gas McNamee



Remains of 5000

Very few weeds in the grove

The trees are 25-30 ft high

The lower branches in a grove below that die soon

(Might be thinned a little now)

There are 18 w 20 rows running E & W.

Cultivated the first 3 yrs & thin only out weeds (if not always there)

The evergreen I. of hemlock are about 10-15 yrs old

5000 Pine 6-7 in in girth

Canadian spruce (1/2) but don't sell

Large 6-6 in & not as vigorous

as Pine but don't sell

Spruce as tall as Pine but

9 1/2 in girth & don't sell

The East ^{part} of the place
ash grove 12 yrs old - from
spontaneous seedlings of neighbors
Box Elders were planted (rows)
right where they grow.

Ash stands drought best.
Has cattle in ash grove, but
only a few affected.

Thinks it hurts grove, & some
extent to turn cattle in.

Apples & cherries don't do well.
Dutch Pine does well, & Norway
Spruce, & European Larch.
White Pine don't do well.
Cedar does well.

Elm does well, though he has
none now. Any natural trees

There are 4 acres in the U. ash ^{12 yrs old} grove
& another grove - other 1/4 that has 1/4
(younger). 4-5 1/2 in. in diam.

The central part has been most
affected by cattle & horses. The trees are
more slender (rather) & less vigorous.
This is a fine grove.

I can probably see 3. grade
to county line or beyond, but
the river much less than
to where I can see
the last row of sections 5. the
same rows.

Subsided yellow clay - but
1/2 way down the slope just west
of creek, w. of SE sec. 2
surface top is exposure
of drift, with numerous boulders
many of them fine quartzite.

The Emma Murphy grave is
a strangely irregular affair

Mc Carbray

Extensive on W. side a row of 10 in
them on ~~the~~ side then alternating
rows of cottonwoods & more
less tufted maples, last row
30 ft high

A dense grove - with more or
less grass, but even recently
cleared between rows of trees

There is a similar smaller grove
just west across road.

Makes a fine dense grove

Mc Carbray has another smaller
grove down the road a little ways

Standing toward E. of S. W. corner
of sec. 2 Garfield Twp
Looking S. S. E. there
are no groves except
on the distant horizon.
Several miles distant judge

Trip S. & E. July 21-9

Along my course (on river bottom)
to the N. side of A. there are
no groves & more some houses
Extreme as a ridge shuts off
view. The valley is broad.

Air on _____ has a medium
and grove - about 1/2 as much
of A.

Blackholly has cottonwoods N & W
I then a lot of smaller ash
planted intentionally. The ash
but thrifty. On a lower ridge

Ed. Munn has a small grove
W. of house. First on W. side
of Primaries to 8 in. Then
smaller ones - 12-18 ft high
South on top of hill

Wesley has cottonwoods (4-8 in)
on N. & W. of grove. & Wesley
has also a maple wood (some on
08 low benches on top of hill)

ash, but in looking very
well indeed.
Eastward on N. E. of house
is a small grove of
small boxwood, crataegus &
ash

of the hill
N. W. a little E. appear
several thorny groves

Blough - Cotton woods
prominent &
bottoms (low) along
N. side.

In section 5 - off cemetery
is a large grove of
large cotton wood
This wood side illustrates
fully that outer trees
grayer while inner are
a good many dead (a part)
(20) trees are standing
(see a photo)

Shubra

An orange young grove
of cottonwood, maple &
Birch

the small fruit trees are
dying (in part)

J. Glasshoff - mostly
doze elms 10-12 ft high
& a row of larger cottonwood
(twice as high) on 3 sides

The Klabin grove is a high
willow hedge on N & W
but above it (a little) projected
cottonwoods (etc.)

Jane Merrill (that is only
small)
a row of birch of
Boxelders.

Jane Merrill has willow
hedge, some cottonwood

584 - Jane grove of

And to understand how the
Hans to start in again.

Cottonwoods - well managed -

have grown better.

Find cottonwoods - many

that are well as in some

places one year killed a

lot of cottonwoods -

(like scale on young trees)

Bisbee - young stuff -
hardly shows above the
barley in front.

Ida Manner

On N. side a row of willows

then several rows of

cottonwoods, then the

larger part of grass -

ash - all looks well

& prosperous -

Cottonwoods are 50% + higher

than ash willow between,

in height.

Wm. Brewster

~~Common~~ Maple, willow &
some other - quite young
not much of a grove

Sarge's E. grove is of
young ash - evidently
planted not long ago &
quite large tree at that
Parks -

Pine Glider & ash &
cottonwood

Museum man from Darwin
& Cornhill Bluffs introduced
ash -

found on a knoll & saw
where well is struck
clean sand at 6 ft
& went ~~through~~ ^{into} sand
14 or 15 - & didn't get
to bottom -

As seen in the field
the grove in the sand
knoll with some hard
to start, as was told.

Nov 18

Corn

a nice little grove of maples
on the west side of road & ash on
east side.

Can see under maples &
ash, but pretty thick

Dr. Messier

in muddy spring grove

All my course through
Logan trap was
occupied by grove trees
& about 1000 ft. in depth.
The few groves are spring

maples. Did amount to
rather small box-elder

7 say, an older grove than
any for 1/2 day miles but
Cottonwoods 3-5 ft.

The closer to millow

this much of a grove
though better than the one

J. Rattan

Small group of young sheep
had 2 or 3 others about
around them.

Henderson

Small herd down, with
a couple.

- Jorgensen

1 male, base station

= 1 female (young)

=

McCarty Boys Elderly

1 male
1 female same color

all young sheep

70 N. of cabin with

cash change

Hager young sheep

1 male 1 female

Looking W. of 2nd boundary
no. 3, 3.5, 4, 5. They
are almost no grass

Stiegelmann has some new
young samples, the first
and his front yard quite
a grove of spruce - looks
well.

Reinhardt

a young grove

(Fell's willows run by
sec. 21.)

P. Wiegus - small

stiff - box - door

+ some fruit -

Thos. Sykes - small

columns - tall ones

box doors - columns - 1/2 yard

L 8

on the side

White Birch (common)
— don't go well

Some wild cherry
(young) look fine

On what is now park
E. of house - a fine
group of Spruces (of
William Planting)

Standing a little E. of
Yew. line (on my case)
Looking toward Larchwood
— seen as if I was
looking into forest
country. The plants
has been, several & shows
what influence one may
have.

In & near Larchwood evergreen
(cedar Scotch Pine & Spruce
and quite commonly
plants)

Pinus ponderosa
plants in 42 64 ft
high -

Don't take well except
in the grove - won't
transplant

Have ball pine also

providence & ash stems

dry season, well

Spencer among engineers
did even better a little
than Scotch Pine

In original plot were 16
blocks, each 250 ft. (strata
64 ~~50~~ ft) - 4 rows of
trees around each tree
trees - 25 - 30 ft. about

Don't know of the origin

Quercus. Pine - 8 ft
from June - tree

Calcutta - 2 per left
8 in -

Swatch Pine 8-12 in

Spine - 4-6 in doing
well -

Larch 7-9 in -
does -

Art needs only 1-2 ft
them be

Have Raspberries, wild cranberries

A few white Pines - small
not successful

Must be at least 20 acres

Mr. Zell set out
Box Elder

Some 18 in or more in

Some 18 in or more in

Some

Maple 12 ~~24~~ in.

So well of

Ash This best tree -

Cottonwood

7

Prunus - good trees
now 10-12 in in diam.

Yelm - 18-24 in.

quite abundant & so well

Cedars - 5 in.

Blocks - The museum
dock was set out by Mr
Engel - William in early 60's
Plants - ash, but tree

The Scotch Pine specimens
these are some about 4-5 in
of the length of the dock
3-5 in.

Also Spruce - 3-5 in
during quite well
Lunch the tallest - then
Scotch Pine, then Spruce

Catalpas a few -
a few only do.

A man by the name of ^{Joseph} Fell
planted all the willows
east of Larchwood for about
6 sections - (and also about
the ^{same} ~~same~~ west) about
the willows were near a
road and many have been
destroyed purposely.

Mr. Fell also set out ^{some} ~~some~~
evergreens, maples etc.
The rows of willows extend about
3 miles west - there are trees that
I saw from train. In all 6
sections were no set out

L. E. J.
Mr. Mc Gillivray now has
charge of the (Sykes) old
Fell property - some
W. of Larchwood -
Joseph Fell had about 20,000 A.
C. Holder entered it - (1869),
In 1873 Holder transferred ^{most of it}
Fell, & planter willows set
out - trees set around

(was Rawley's) ^{but not}
In the N. $\frac{1}{2}$ of sec 29 there
is a grove of young
oaks, - mostly box-wood
some without circumferences
of

The ground slopes towards
east, & on W. is highest
part of the trees
are dead, or dying
near the land eastward
on several large trunks
1 ft in diameter
they look well

In S. $\frac{1}{2}$ of sec. 29 a small
grove with several trunks
6-8 in, these are rather
the worse for wood, but having

Warrens some near
Larchwood is all
young stuff, doesn't seem
to be.

N. of town on W. side is
a large willow hedge of
which the W. part is dead.

Pelham Has a mixture
of willow, hazel, alder
& some ash (young) shrubs.
It is a jolly mixture, in
pretty good condition.
The young hazel seen on
S. is neglected & they were
in a waist high

all along the two miles
E. of Larchwood see below
I saw the following

Standing near bases S. E. or
looking S. E. S. & S. W. for
miles there are almost no
groves. Later in a
smaller valley down into
valley
bases.

More or less of
slope (slight)

The next grove is wholly ash - 2-5
in and uniform, but mostly
young. Evidently respects
woods exist - high -
On end are more trees.

Scholarman

Some ash 2-3 in, & tallows
also few cottonwoods
Rather young, but doing
well.

There is (or was) quite a
grove of cottonwoods, W. of
Scholarman, 4-8 in.

This all is probably remarkably well
9/10 better than a line's well, in
10 months, they are small.

Chris Kruger. A thriving
grove chiefly of ash,
some box-elder mixed in
alternate rows, a number of
walnuts + some cottonwood.

The walnuts are mostly in outline
of grove but are doing pretty
well, being 3-4+ in diam
& look quite as large as the
ash or box-elder.

The ash measure 3-5 in diam
are the finest part of the
lot.

One elm is 5-6 in diam &
looks well.

The grove was at first
cultivated (stock raising?)
but now is neglected,
nevertheless it looks well
& thrifty.
Grove on hill.

Southward the ground slopes
down a little. This part
of grove is wild, overgrown
with weeds, etc. & neglected.
The S. grove is very open &
has evidently had cutting
in it. It consists of rows
of ash trees near the fence
(3-5 rows) & tall spruce woods
& box-elders outside.

The ash is in good condition
The whole makes quite a
grove - 15 a.
The box-elder are everywhere
dying.

Standing near the S.W. cor. of sec.
20, & looking N.W. & N. by N.W.
I can see large groves, in
fact it looks like a timber
country.

While S. westward as far as
I can see there are almost
no groves.

(Brown) (Boggs) grave
is rather young

The box elders through sec 20
100-46 are dying (along Road
in middle; N+S

Carter About
12 years
25
Mr Carter's collection

for the most part look well
they have been thinned in
places by dying & by
cutting, but on the whole
are bright & nice.

They change the aspect of
the country.

Woods his old place on
the N9. of sec. 20-100-46.

The north part of grave consists
largely of box-elders & ash (some
box-elder). The box-elders are
dying out & are a bad lot; while
the ash are finer, & much
taller than the best box-elder.

This part of grave is in a bushy

Catalpas, Fraxinifera
black walnut - Fraxinifera
Lutzera has about 1
Acres of walnuts, & those
on slopes do best.
His ash are the finest thing
on the place.

J. F. Holshorn (says N. V.)
has a mixed grove, ash, white
oak, hickory, etc.

Ash stands more about from
cattle than any other tree.
His were where cattle would
lie down a row when
small, & yet have grown
into trees 4-6 in diam
& look well. A few only
were killed.

Inside NW 22. cottonwoods by Elmer
Brenner got - N. side cotton
E. side cotton
00 / Grove mostly cottonwoods.

He knows of Marston
Evergreen - Scotch Pine (3) - some
& more Norway Spruce, & a
lost part of the spruce
Scotch Pine do better -
Elm - has some 20 in diam
do well.

Has Almond, willows, box elder.

(Hornets eat elm, but not
ash. Rabbits eat elm more than
will eat more elm. Has
some from seed.

He thinks exemption should
be allowed. Says after 10 yrs or
great many cut their trees
they have stopped planting.

The numerous trees in the
neighborhood attract attention
of prospectors & thinks this
fine country.

Stopped at H. H. Hildbrand

The 7 or 8 sections in the neighborhood were owned by (Carter or Carter) & the cottonwoods were planted about 18-21 yrs. ago.

It is a fine protection in winter, "draws rain" & in every way is a good thing.

He thinks ash by far best, elm next. In dry years ash, elm & wild plum stand it best.

Cottonwoods must be in ground. An ash 15 yrs old is 8 in diameter & a fine tree - Several pine seedlings on the place.

Seedlings planted, a man 4 miles N. (in Minn.) tried oak (wh) & found them growing at first.

subsoil clay - no sand no gravel	
soil - 2 ft black	water (surface)
13 ft yellow clay	25-40 ft
60 ft blue clay	to 100 ft
	100-200

Schedule for
H.M. - July 22
to 23

See above instructions
(You will be able to easily follow the
+ for details, name in last column
columns, 1 on 2, 2 on 3, etc.)

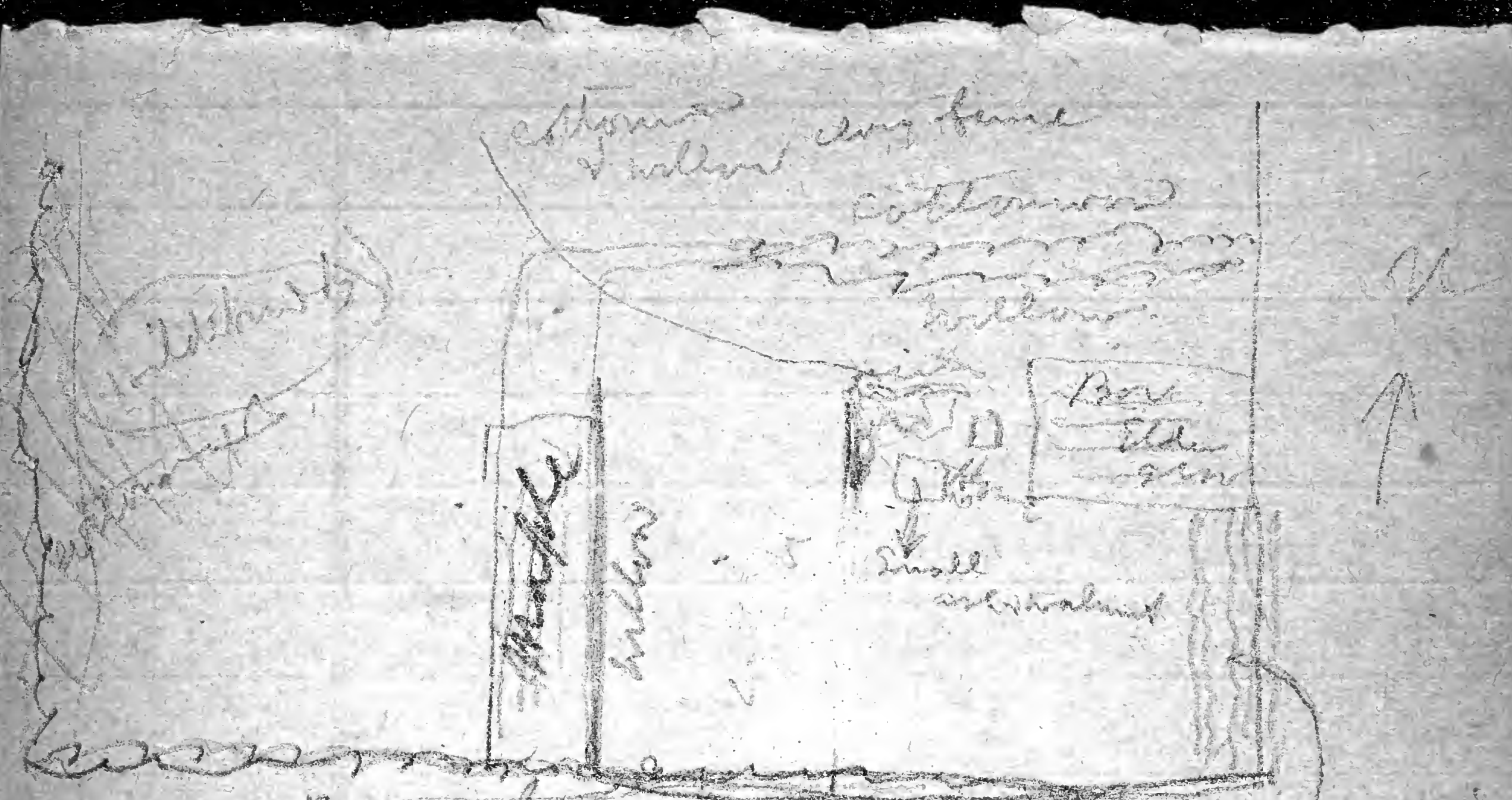
W. H. H. (21) King
around whole place from 8:00 am
a few days.

Monday - grass near
the church & stadium.

At 10:00 am small rollers (grass)
+ see longer instructions

When one has finished
drying out - 20-25 to
at least 100 with grass.

W.A. B. note of rollers on M. note
one of rollers on M. note
Miller's Experience



Row of big cottonwoods - 15 yrs old - 10" / 4 in diam
 Box Elder - one down cut.

4 or 5 rows of box elder,
 willow, with ^{white} walnut & elm
 mixed in. (most walnut)

The walnut along E. side show
 mingled with other trees do well.
 They are 3-6 in in diam.
 One stump is about 5-6 in & only
 fair. It's out at the edge
 quarter 6 in in wood & several
 show well. The walnuts are
 in pretty good condition though
 the whole thing is perfect
 Maples (16 yrs) are about 20 in
 (2 x 4) & bushier & heavier are about
 1/2 grown & some that

Withrock -

Has 20 Maples (16-17 yrs)
& cottonwoods 30 yrs.

He has planted ash (from seedlings) - & thinks they are best for this country.

Box Elders no good in dry years. Last crab tree in dry year. Has some walnuts were here when he came.

He has some vines with willow (1 yr) & elm. These do better.

Everything ^{Cedars} don't do well, can't start them - has 2 out of 25, 7 yrs ago.

But cattle were turned in where walnuts are.

Subsoil - yellow clay (so hard that 2 yrs ago he couldn't pick it with a spade) 7 yrs ago made

another cistern & pushed this out with potato fork.

12 ft. - Has well 85 ft. deep but not much water.

133-160 ft. - In drilled well

Reynolds's tenant says the cottons
die out & are no good in this
country.

Harlem - mostly large trees
Cottonwoods - over a ft. - have
much thinned out in center of
& also trees ^{any other} in grove,
grove, while rules ^{are} not so
pretty well. near here are
maples 8-9 in diam & ash
(oaks) - at least 7 or 8 in.
Some trees, but shows
neglect. The whole grove
has been neglected in this
respect, no new trees being
re-set

W. of grove a nice little
orchard - trees not cared for
however - 12 yrs. old.

Trees 5-6 in. in diam.

They planted very green at school
home, but only one lived.

Cottonwoods - 10-14 in diam

Some drying

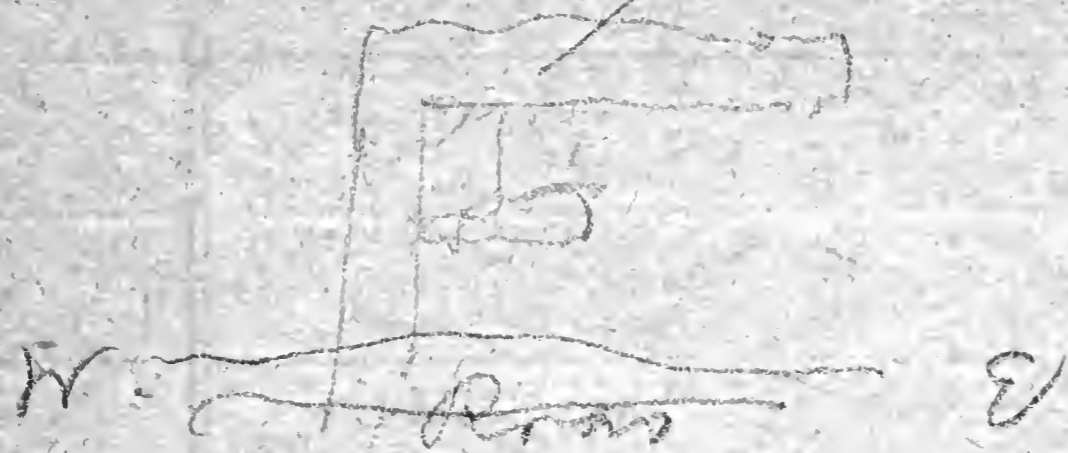
Box elder - 8 in. dry

a row of big cottonwoods, mostly
in good shape extends along
road N. from home

Standing near the middle of the
N. side of sec. 10 in Riverside Twp
& looking N. E. & East - very
few groves are in sight for
miles -

The upper Riparian zone
has willows on E. side & west
quite a grove of ash, - now
thinned & neglected. Some
trees - 6-7 in diam. & taller
than box elder & willow hedge
on west limit

Egbert.



On outside - cotton woods -

Irregular lot of maples & box
elders, etc. not well cared for
straggly.

Along W. side of SW. of No. 29 is
a row of ash trees 1-2 1/2 in diam
& doing quite well. They are
planted close together to form
hedge row & hence some are
crowded - & they are unequal in
development, - but are doing well.

Reynolds

Maple & Box Elders from seed
& cotton wood from springs
were planted by former owner
in this neighborhood. Box-elders & Soft
Maple now planted mostly from
nursery stock.

Sober & gravel I could see in
no more, but couldn't see
other end of section).

The older settlements (over 1/4 in
diam) are dying off. Only a few
left.

Prox Elder took in W. part (the
older) about 4-6 in diam. The
whole thing looks strongly like
large ash but the box shows
in front of house - number of C of
elder given is a grove of about
5 rows of ash, planted about
20 ft apart. They are 1 1/2 in
diam, & 10-12 ft high & look
well - surrounded by grass just
now.

They were replanted from old grove
where they came up from seed -
they were not out & not cared for.
They look fairly well, but could
be improved.

on hull

Parkwood Aug. 1900

9 H. Lott,

Has some sort of frame
on Wanda and also a
certain box which is
smaller ash. All doing pretty
well. Also some maple
needed replanting badly.
And well care for in first
place and don't
estimate 4-7
Some ash only 3 ft. - other 5 ft. high
But others small & tangled

Wood The upper part (W.) of
grove is a scrubby looking lot
of gettin' out (decaying out) &
box elms.
S. he has some, brighter green
of maple. Not much wood
Reynolds says wood has some
waxiness that did well

Wobles has a little group
of small chaps - probably
at least 10 - they are small

Belzer - small box - sides
10 ft high &
in inside some cottonwood
about twice as high.
A young pine -

Thursday 27 Nov. 1908
Boronia -

Looking East & also
NW. There are very few
groves. Country
undulating - & with
very little swamp in the
draw - only.

G. Clason

On N. side a good grove of
cottonwoods - 3-5 in.

On W. side willow hedges.

On South - grove of

Box Elders 3-4 in.

Pro. Boronia - a
little patch of
freedom - all I could
see, though I could
look over whole place.

In grass - with young
grove: maple, cottonwood

Rate

On N side about 9
rows of cottonwood 3-6
some replanted

On S side - a willow hedge
20 ft or more high

Several rows of cottonwood
of the alternating rows of
box elder & ash - 4-5 ft
in diam. The ash
are fine & in growth
quite equal the box-elders

grove
the
is
note
a

Quite a number of little
walnuts - 3-4 ft. high are
planted among the
cottonwoods on the N side
They are doing well

Norman

a nice grove with
cottonwoods on outside
intermittent in, & alternately
rows of box elder

Box Elder 3-4 ft
E / Cottonwood 4-6 ft

(all this about 5th of
Fall from ...)

Cushoff ...
... thrifty ...
...
Smith

Hardens has a healthy
looking grove chiefly
of cottonwood & box elder

The former much taller
but older 3-5 in. thick - ^{some} _{putty down a little grass}

In 25 is a grove mostly
of good sized cottonwood.

In 36 - a grove seemingly
mostly of cottonwood.

But containing ^{some} _{3-4 in.} ⁴ cottonwood
8 in. also ash like
box elder, & some smaller
... all doing well
... the place
... of ...

Meyers. The ground is large &
plentiful - contains cotton
& some stuff (Meyers stuff)
This is a good ground.

Wicks cottons - 3.5 in
below the ground -
Meyers that
cottons are better.

Lampert has fine
ground of cottons 3-7
inches down on the
ground. The soil is small
and a few plants
small but growing well.
I added some 4.5 in in
the

Schmidt & Kahl both
have cottons in the
better also perhaps
in the field - the latter
is the better ground
a large part of the time
and the better ground

Klam Kroger
Cotton wood around
Pine Glen

Cottonwood 2-3 in diam
but down small (leafy)
cottonwood, which = about
12-15 ft.

Berry

Cottonwood along road 3-5 in
more than four, but
seem to be soft & empty

Klam Kroger (on 34)

Cottonwood & branches
quite small, but
growing larger than
his other pines

Meyer

Row of cottonwood
3-5 in.

Frank Dell

Group of evergreens
well-started
on hill
Dutch Oven

Emms Day



Height 4-5 ft

Stem 6 ft

A few withers & on it.

And some cottonwoods over-topping
everything

Wes | Emms -

Little bits of Ash trees

2-6 ft. - leaning

Alberta

Water spray gone
cottonwood petals
but very rich

6/11

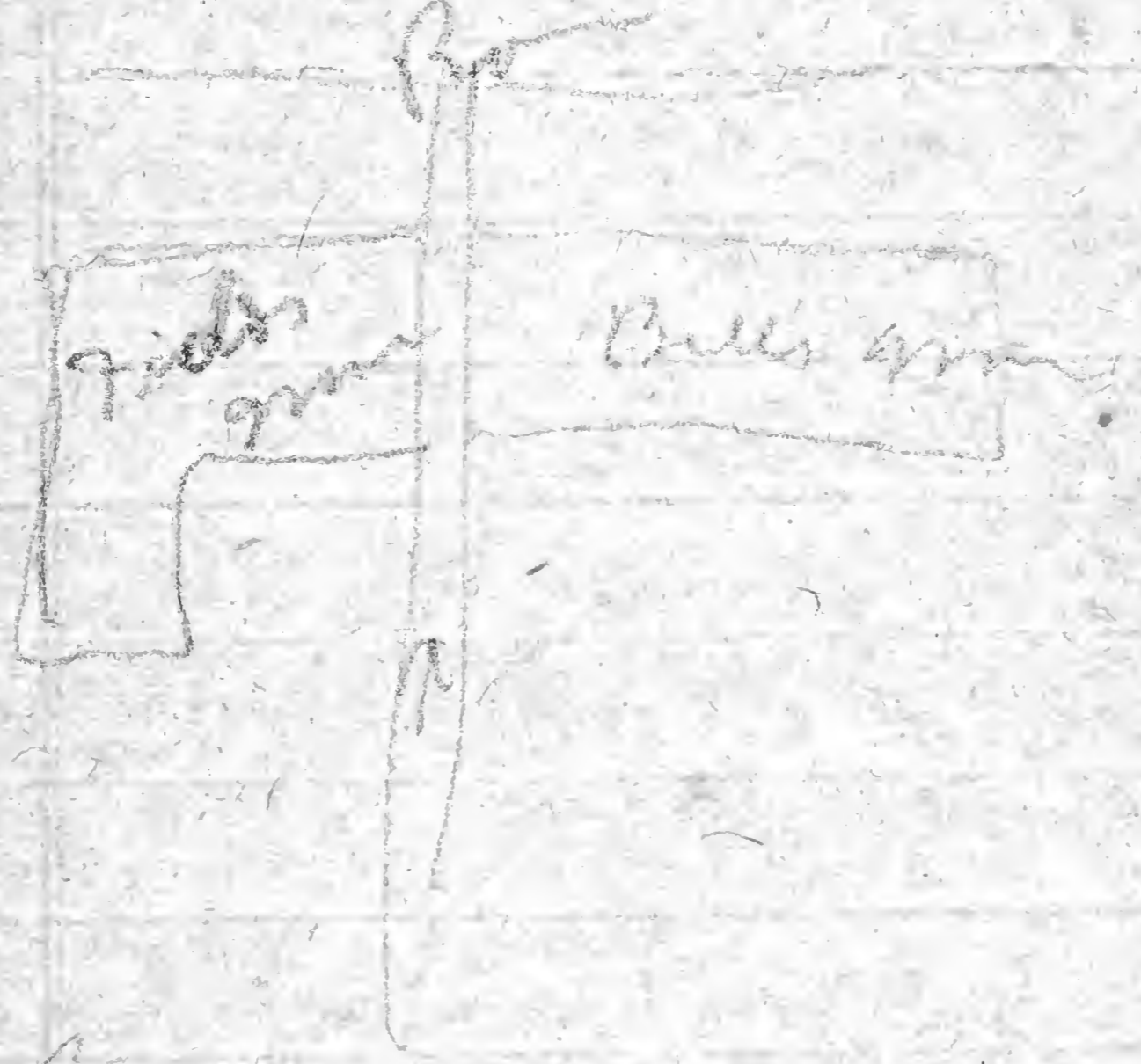
Box elder ~~with many~~ nursery -
seed only

Dry grass bar -
wishes he had made pit than out
thru by box elder & other filled along
and the nursery

John Bell - Grove on hill level
same as field

At N. box elder dense grove
over 4-5 1/2 in

This is a great grove, but
hops have been in it



He had some nursery, also
they are doing just
rate - they are plants
in grove among his
box elder, etc -
The grove is uniformly
rigorous

SM Dell

cottonwood - 5-7 in.

Populus 2-4 in.

Some small maples

Some of them by the way
This is on slight bank

J. 7. Feds - On the side, clumps
of little maples 8-12 ft high
about 6 rows each
some little box elders
alternating (also 1 row of little
ash.)

Then 5 rows of ash 2-3
in in diam + 10-15 ft high

Then 5-3 rows of hollow (clump)
then cottonwoods 4-8 in.

Some of the cottonwoods are dying
ash looks well - some
willows do well,

Then 5 rows of Box elders
quite a size.

The weeds have been cut, but
ragweed is again growing
ash, the maple from yesterday
6 rows the other maple died success

some cottonwoods & 4 rows of them mostly
of some by the way
of some by the way
of some by the way

some of the
of some by the way

Kroger -

Cultivated 1st yr. & then mulched
with straw.

Box Elder - nursery trees

Cottonwood from nursery

Willows don't do so well

Planted walnuts among
other trees, but - too thick.

Box Elder is best he says

Cottonwood don't last

Walnuts 3 in. diam. grow

as fast as box elder

Planted walnut from nursery

in fall.

Soil - black loam - 1-2 ft

Yellow clay - without sand

overall -

At another place west planted

elm & ash - & both grow as

fast as any tree. Drier

same as these trees

Had trouble with crayfish

One two ^{had} started + 6 trees

gone nursery, I fear.

About 8 yrs. old

O.C. 1

Box Elder & Cottonwood

Cottonwood

Cottonwood 1-8 in.

a Glabrous 4-6 in in
diam is pretty numerous
Tree - Don well.

Soft maple - 8-10 in.

There are also nice apples
Tree - 4-6 in diam, & bearing
apples.

This place is lower than
nearly all of those which
I visited. Groves mostly
on high places.

A strude some rather
straggling. Better willows &

Cottonwood are along river
Back of willow hedge is a
grove of maples. 3-4 in.

Box Elder 3-5 in.

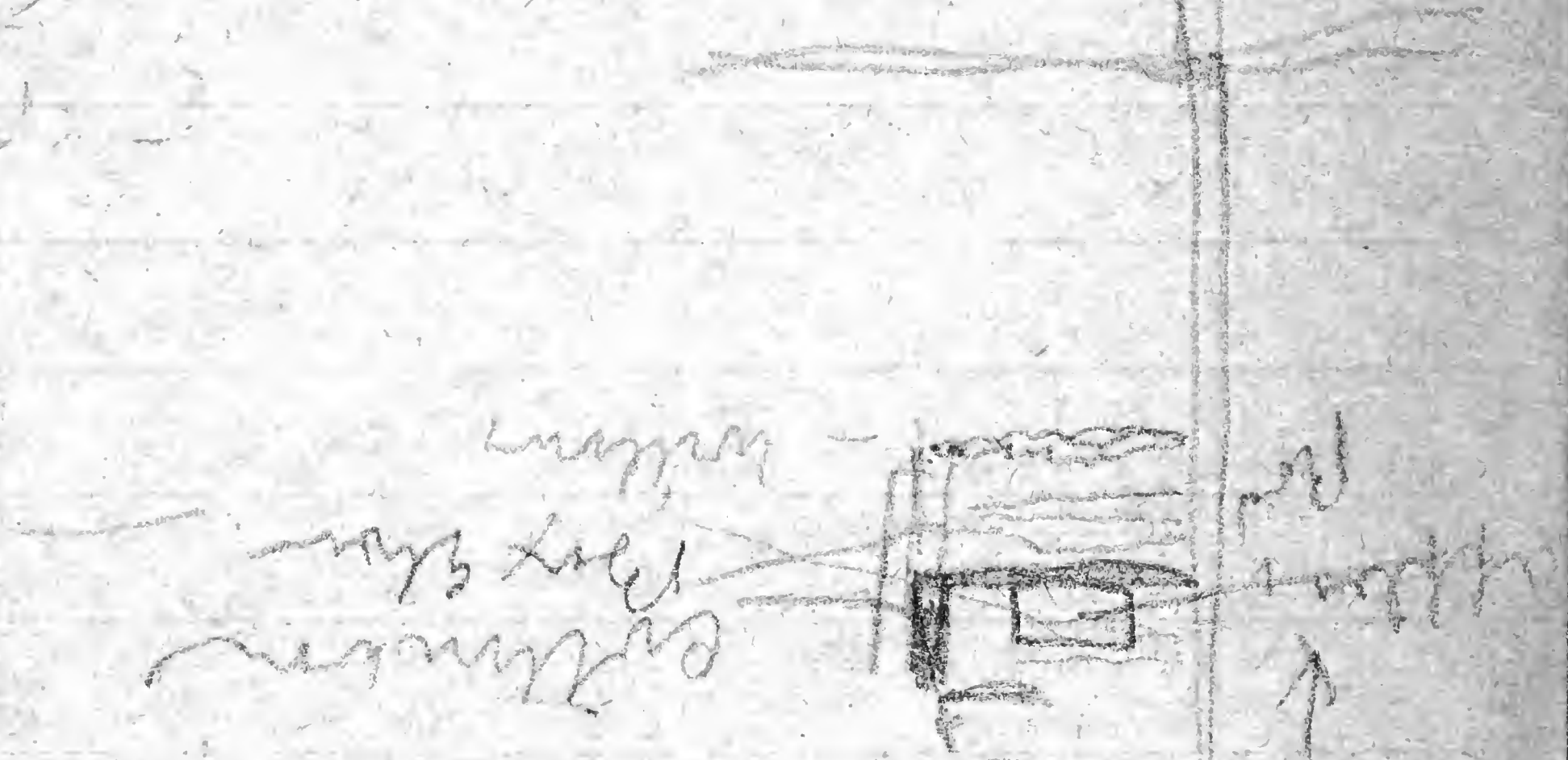
The willow hedge is dense.
This place is on slight elevation
& grove runs partly
into low ground.

A. Thode

A few young Gleditsias 3-4
feet in height well
collected since 3-5 in diameter
& tall. Box Elders 4-6 in
of thickness.
also a few small ash

growing well.
The ~~W. part~~ ^{W. part} ~~is~~ ^{is} ~~more~~ ^{more} ~~in~~ ⁱⁿ ~~the~~ ^{the}
distance is a young W. part
The W. part (greater part) seems
to be collected (quite large)
& S. is lower stuff.

N. Porter - grow



The hollows on the N. are as
much as 5 in, but are mostly
clustered.

Box Elders 4-6 in.
10 5 /

Joe Mulhall

This is a double trellis row

A row of vines growing upon a
single row of vines. It is a form that
I have seen 2 or 3 times in
all over the

I saw no trees at all on the
Fr. Hill piece,

~~There is a very large
number of grape vines~~

~~The main part of the farm is
Cogan Top.~~

Mostly boulders - 3-5 ft
diam. A good many
smaller trees with dense tops
& branches - a few out of
one oak tree in the lot is
larger than the box above
A willow hedge on the side
is dense, chestnuts 12-15 ft high

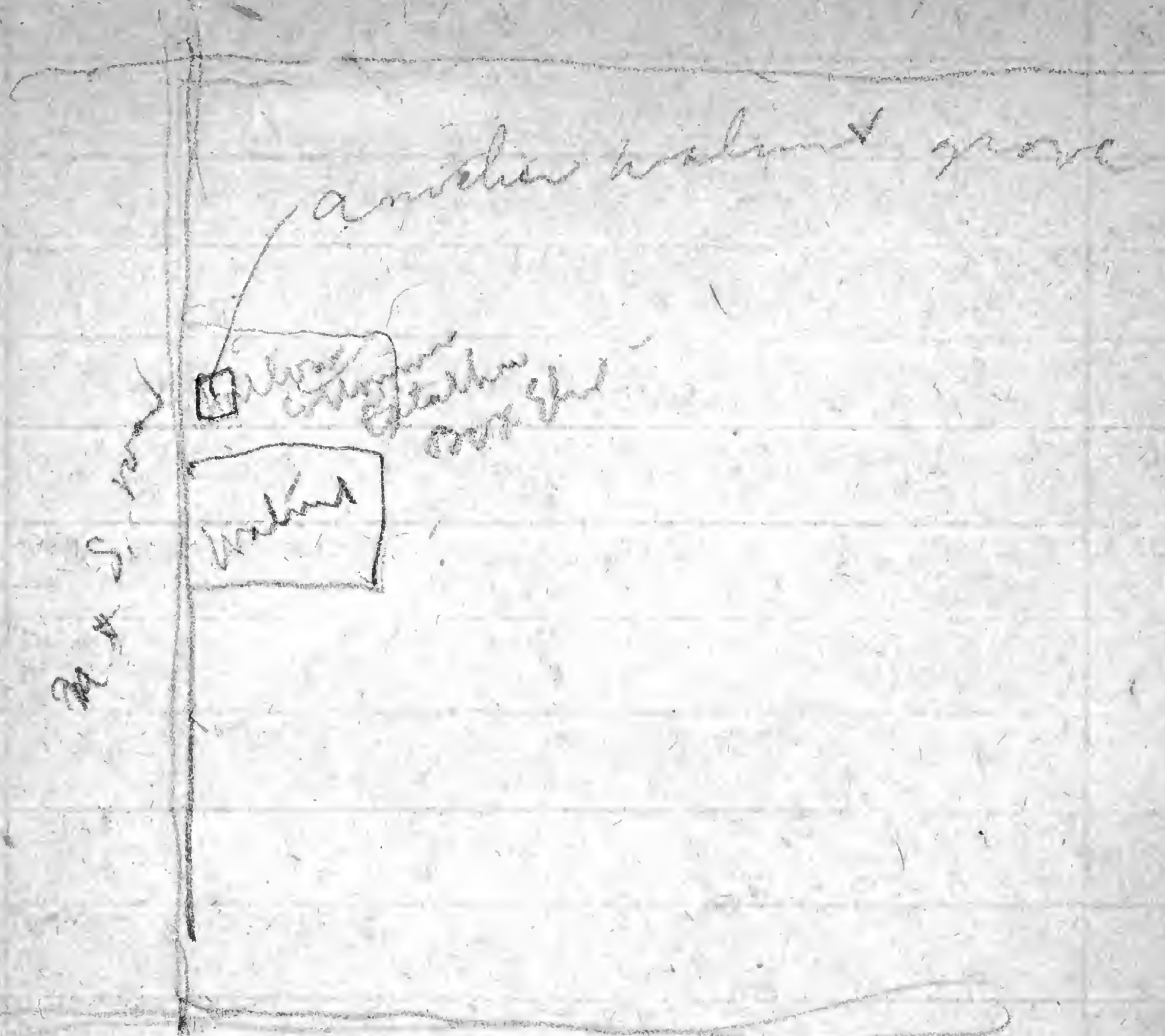
571

He thinks apples will be ill
might be a good 7 or 8 ft apart
Every year about the middle
of 2 small trees 4-6 ft of
same age as walnuts.
Can't do anything with the
Pines. Tried 4 times -
thinks should be replanted,
but more strict. Thinks
it would encourage better care
of trees.

Mr. Albertson in an old settler
has been on this place 10 yrs.
Soil - 1 1/2 black loam
Subsoil - gray clay (probably
bluish loam) and some gravel.
The gravel angular and from
water 10 ft - in low place north,
& another well 20 ft -
Catalpa, see sketch.
Cottonwood 5-6 ft in in stem.

a few maples - a gully in pine
west of road mostly gray loam
& some ash. Drains fairly well.

another walnut grove



garden

Thinks Boxelder best for
 rapid growth
 He thinks walnut very best in
 our

Has some small ash but hasn't
 had experience yet.

Walnuts don't do so well in
 lines, - but in groves.

207 /

Rabbits & mice bark through
Ice does not damage
Cottonwoods 20 ft apart in
rows do well about 10 ft in
groves

Edna catalpa in fruit down
Walnuts are first rate
There are at least 400-500
8 ft each way

The walnuts - show white under
even ice (not affected)
They are 3-5 in diam.

A cottonwood tree 5 yrs old in nearly
10 in diam
Cottonwood from things - 6 yrs
Some nursery stock + some from
seed. Plant green house in fall
in fumigant like potato
The seed make better plants,
No cattle allowed
Mulched several times + keep
away weeds

The Harrohan group consists
largely of cottonwoods of
some species in U. & S.
Cottonwood large & give
thrust

In NW. of Sec. 12 is a small
grove of young *Populus*, *Alnus*
nutans (reable?) young
well, but not yet ^{very} as high
as trees of the other grove

The scattered groves W. & N.E.,
from N.E. cor. 11. seem to be
of the usual type - cottonwoods
predominant & prominent &
"box elder" also in evidence,

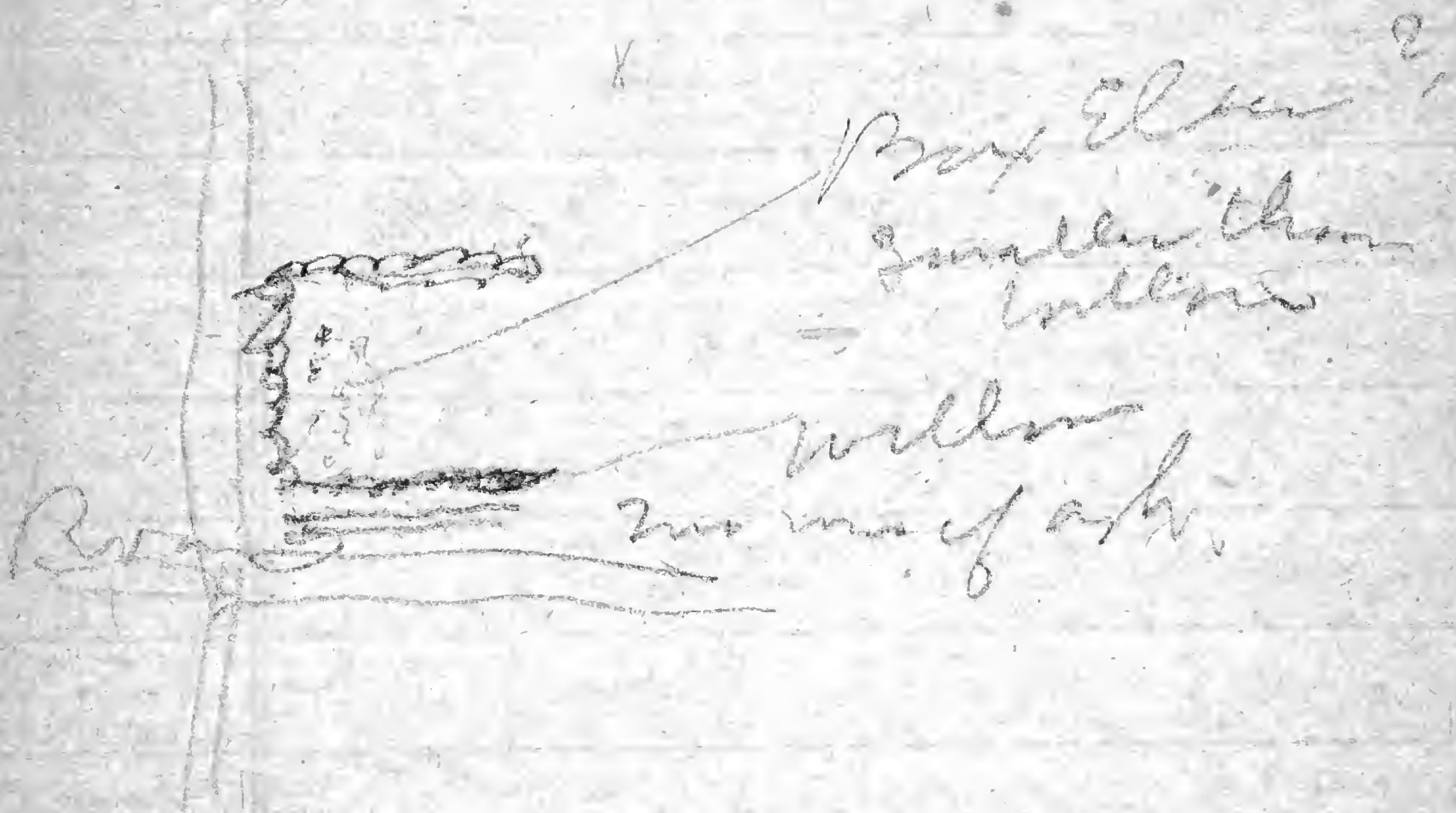
Alberta (sec. 11.) - (old growth)
Cottonwoods & box elder 3 yrs.
East side

The older grove - about 5 yrs.
(Chalivants)

Cultural-like zone - can't cultivate
Cottonwood

The main thing is to get the best
you can do - windbreak
think trees might be a
little longer for planting.

Low-Ridge



Ash. 1/2 - 2 in diam. 7-12 ft
willow layers - done here
Ash kept very clean - Dying
well.

Shorelines - maple boxes
young yet - maple bundles.

Toward the west the cottonwoods
are smaller & reflected.

Albertson - mostly cottonwoods
7 or 8 in. & less than
No special care taken, but
evidently no cattle allowed.

Watson's & McMillan's groves
from a distance show appearance
of cottonwoods - other what is
evidently box elder (smaller).
Both groves look vigorous.

Toward the S. from N.W. on 24 & 9th
there are few groves -
more toward the west, but they
seem to be rather thin &
straggly for the most part, &
in all cottonwoods predominate,
a few willows may may be
seen here & there.

The upper 1/4 marked 10 follows
has young ash & box elder

6 of 1

Richland Top

John Johnson. This is a
mixture

cottonwood 8-12 in. on the edge
S. some willows along road
Box Elder -

Ash - are inside mixed with
Cottonwoods - (14 or 19 year old)

Maple -

(Going to turn hay in & destroy
young box elder -

Cottonwoods died out during
dry years - the others
don't die

Let it run wild for years

(~~The~~ Country orchard (set out last
Spring) (the next to 15 A.)

a few Scotch Pine & Norway Spruce
do well (the boy says)

Have some young bladders - grew
well had older trees but cut

them down & forked zopher's got

up and in roots & destroyed some.

Ash average 4 in. (4-6) so plenty

have been cut through. The
latter look much better

Entrance of the river is
far as I can see there
are not many groves.
The country is somewhat
hilly - the S. of N. W. W.
following a broad valley
between it seem to be
uninterrupted.

A. Lind has a neglected grove
of cottonwood & box elder.
The cottonwood are 3-4 ft in
diam. Box elders much smaller
had much account.

Along the road to Schickham
at N. W. cor. of 19. - the river
is cut off from S. E. of sections
by a ridge. Northwest there
is a fine view, the country
being undulating, & N. & W.
with very few groves.

There is an old neglected
grove of Oak, Cottonwood, & Maple
Cherry in Sec. 23. Wooded &
generally neglected.

Acacia Nashe - small grove near
stone ranch.

P. Maltin - mostly Cottonwood,
at least on one side. They
look a little smaller than
Wagels.

Enderis - seems to be mostly
Cottonwood. Smaller than
than Wagels.

Ju/har de in 14 has quite a
grove in which Cottonwood are
prominent.

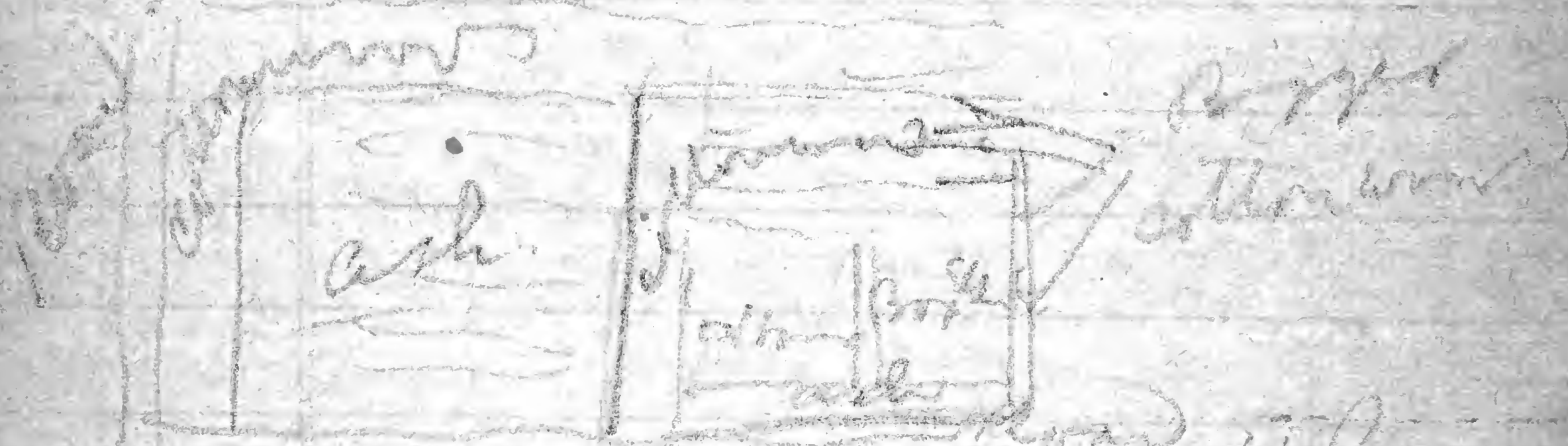
Perminy has some small
box, cherry & some better ash.
The box ches are mixed
with steam, & the ash.

Orange (Orange)

Cottonwoods 3-5 in diam
fruit well

W part of grove mostly
ash - a large part, several
acres - trees 3-5 in
diam well

Box Elder 4-6 in diam well
grove now with scant
evidence of ragweed (fruit)



A Row of ash about 4 ft
diam of the cottonwoods on the
place are 8-12 in diam
Cattle in grove now about
3 yrs.

Cultivated like corn as being
as he wants - how the
pulls out weeds - after
mowed grass -
Went when back I had time
to get what pulled as was
1181

Redwood & scrubby - lot.
Not with wintering.

Magel -

Box Elder - small trees

- 1 ft. high.

Cottonwood - from twigs

Ash - from small trees

(1 ft. about 3')

Many trees -

Evergreen - Spruce - 4 would not

grow ^{only 1 small} with wintering.

Some hills, coal trees

What died out mostly were

cottonwoods.

On the new ground 19. - all

locusts - all growing

Some of trees were planted in

fall & some in Spring of

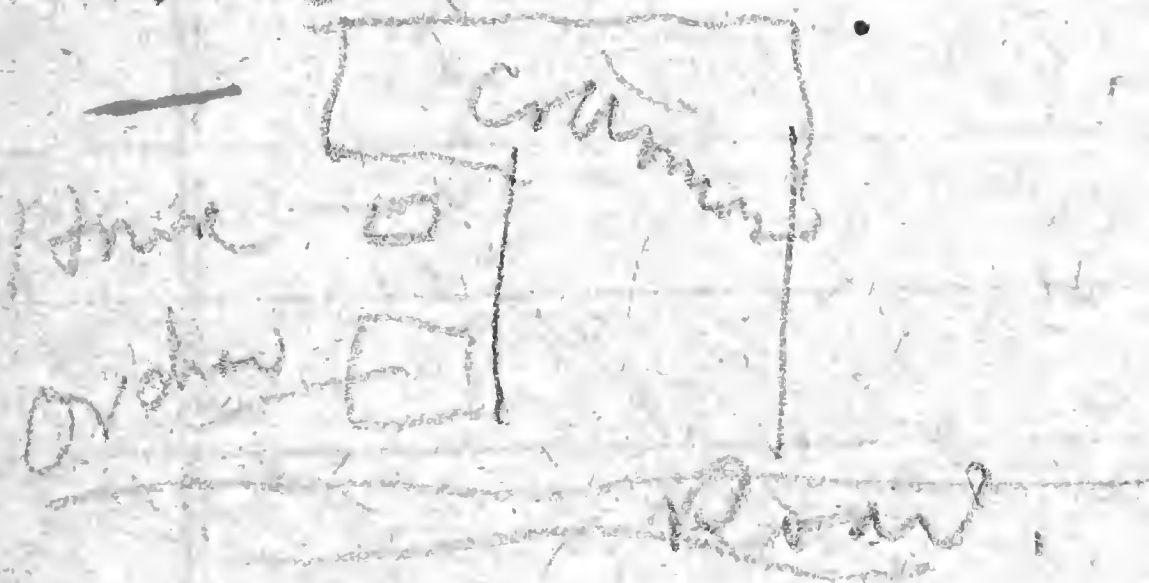
following year - will be

15 in fall that 1st were

planted -

W. Hunt - Small grove of low
decid. columnar, smaller than
Paniculatus, but thinnier.

Lelia Frerichs - 15-18 rows of
columns = 8 ft -
Some alternate rows have been
cut away - 6-10 m. in
spring well - ground imperforately
bare, but few tufts of small
veg weed (grass)
Started small orchard south



N. Frank - Small grove of
small columnar - look
well - probably 20 ft high

- Kahil - a lot of late stuff
columns - boxcar sized
starting -
9 2 1

Meyer found some trouble in
 starting his trees on account of
 dry weather - box elder & maple
 coffee nut
 Box elder ^{simplex} from seed

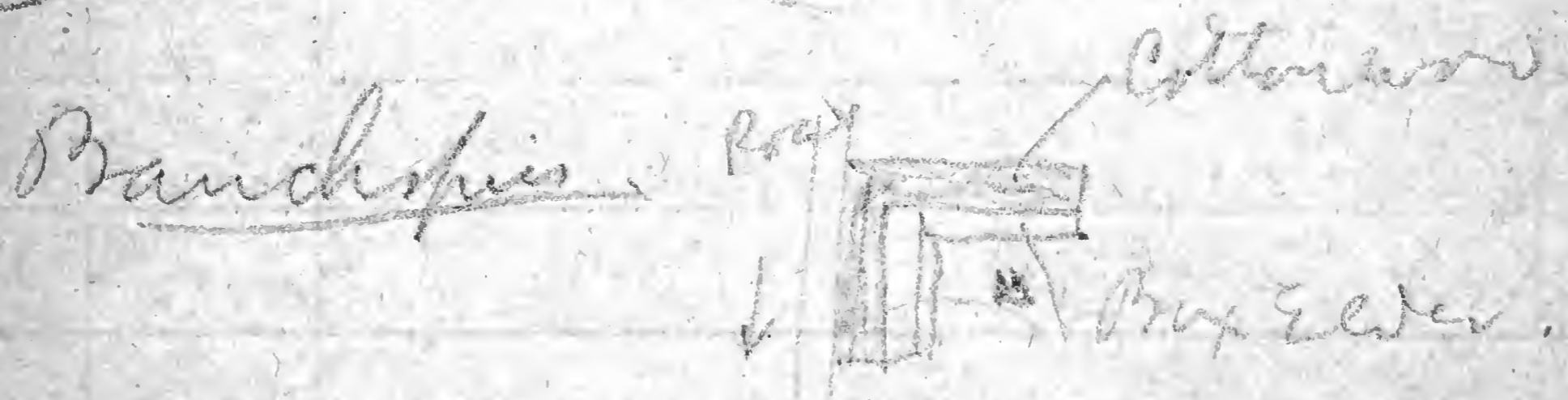
& Cottonwood from Europe -
 Planted in 1887 - & replanted
 about 9 yrs ago. Lost a
 good many in replanting -

cuttrivald 1st - 10 yrs - between rows
 mulched only last year -
 yellow clay subsoil - no gravel or
 sand - 15-20 ft

No sand or gravel ridges in this
 part of country.

Planted Pines (Scots) & Norway Spruce
 & failed. Trees thin dry years
 can't start them <sup>& Meyers says orchards
 won't do either</sup>

Cottonwood
 Box elder
 Maple
 Coffee nut

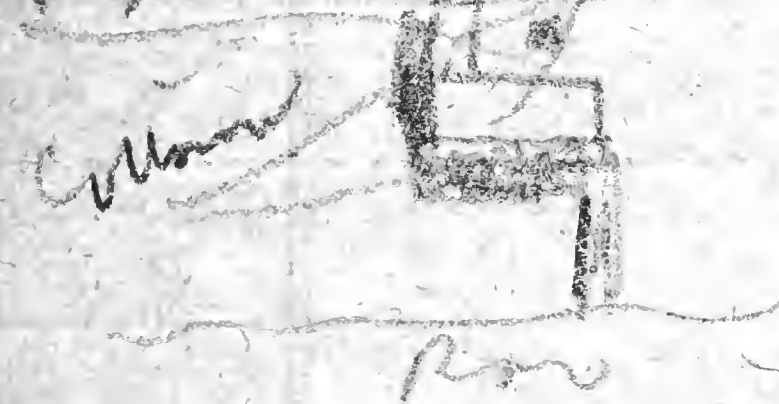


The Cottonwood are 3-6 in diam
 box elder 2 1/2 - 4 in
 The grove is planted in
 1887

Cottonwood seen from
view from distance. Not so
flourishing

W. G. Meyer - a lot of little
stuffs - not over 5 or 6 ft high
a very few 10 ft or more.
Looks like brood cotton

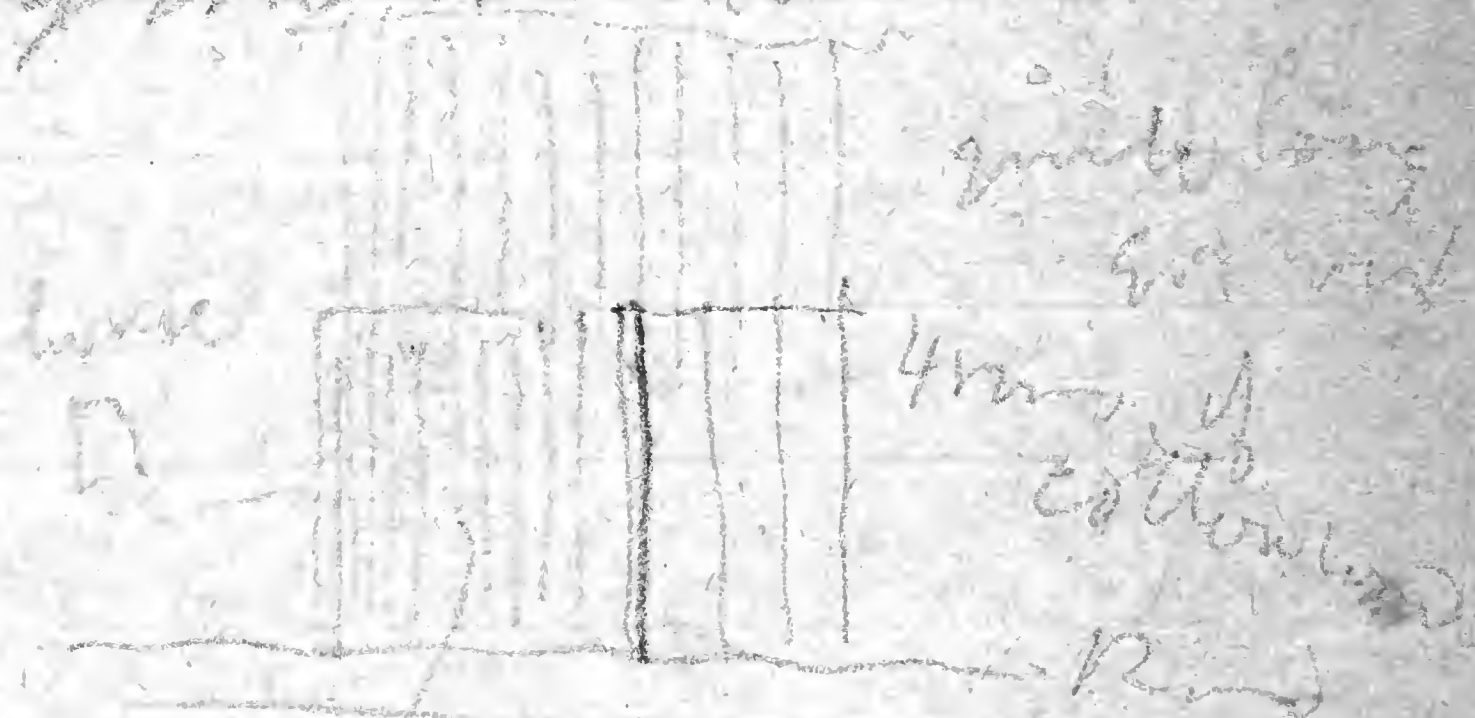
A. Munsell



Country Cotton
3-6 in - bushes
fairly well
a few boxes also

4-5 in - grow well

P. Meyer



about 10 rows of
Box Elder 2-5 in - some evidently
replanted

Cottonwood - 5-7 in - some evidently
replanted - about
rows 12 ft apart - trees

The grove has been replanted
has a little pine Baywood

3 days - The rows fine - 8' 9' ft.
high - at least 3 in diam - fine
uniform.

Cottonwoods 10 yrs - old

Box Elder 9 "

Cottonwoods no life in them -
During day remain Box Elder
suffered most, but only tops -
nots lived - are coming on now -
says Ash is best for this
country

(Says Murray Ashes were planted
in row & no care taken
When present rowers went on had
to break row -

Planted 12 or 13 yrs ago.

The row of Cedars is fine. These
are planted just S. of the
~~Cottonwoods~~

Cedar row 1 ft to 1.5 m & Murray
stock.

Reservoir Cottonwoods

probably Box Elder - look
stunning from a distance

W. J. Horcher
Chiefly
O. E. I.

10 rows of
Cottonwood 72 inches tall as high
or broader

The main tree - tried White
Pine - but didn't succeed - they
cultivate around them - His other
evergreens were mulched & not
disturbed - He thinks they would
make an grove.

Subsoil loam & then below yellow
clay & gravel - at well about
93 ft to blue clay -
Strike water first at 93 ft
well is 230 deep into lower of
gravel & sand -

Scotch Pine - 6 yrs - about 2 ft
high - nursery stock -
3 1/2 - 5 in - these not in seed
better -

Spruces very variable - some small
& some large - but about are in
taller than Pines - about 4 in
Cultivated (away from tree) &
mulched around tree (with straw) &
more mulched
more at bark

Abundant in Western
 the country from here to
 Park Rapids is somewhat
 hilly.

From Roseburg eastward + S.E.
 beyond road only a few small
 groves are visible.

Murray About 8 rows of
 ash - extending along road as
 far up as I could see.

The trees vary from 3-5 in
 are for the most part thin.
 They are interrupted however -
 should have been replanted.
 Planted 7 ft apart + rows
 evidently too dense, + should
 have been thinned out.

at least 15-16 rows deep.

MeKe-



Box Elder 3-5 in diam - doing

11 rows well, but logs mostly from

cedar. Tree 6 ft each way

6 ft cottonwood 3-5 in 8 ft each way

There are also box elders 6-8 in
good crop -

Not cared for now.

The evergreens in front yard were
transplanted from garden, but are
much smaller - "soil must be cut
away from these in lawn, or they
would die" (quoted) -

During dry season some of the Pines
in front yard died, but not in
garden back of house ("I am sure").

The cottonwoods, a good many
died during dry season - large
alders & the few maples stood
if well -

A few cedars in the front yard
are looking thrifty.

On this place blue clay (without
gravel) on high place 20-25 ft.

On low place 4-5 ft. There
is "yellow stuff" near top (loam)
& then clay & gravel.

From Riverburg S. the surface
steps to river which has
a lot of sand & gravel.

Lynn co

Driving S. from Rock Rapids - from
along sec. 9 - looking E & S.E. there
are almost no groves in sight
though I can see a long ways.

On right hand, in Wenzel is a
fine grove of Ash from 2 1/2 - 5 in
in diam. In good condition, though
not uniformly dense. Also a
couple of rows of cottonwoods - 8-12 in
diam. & of course overtopping everything.

Foss has nice little grove mostly
ash - about same as Wenzel's (or
rather younger & smaller).

Ash groves!

Stokes - largely neglected grove of
small cottonwoods 4 or 5 in in diam.

Hard Cottonwoods (small) some nearly
1 ft in diam. - others 3-6 in.

There are also some brown willows
in back part. (E.)

Rosenberg - have some nice
Scotch Pines (a few dying) - about
3/4 - 5 in in diam. - rows of
cottonwoods - at least some nearly

1 1/2 in diam. -
E 41

Native trees at Rock Rapids
July 14-1899.

- ✓ Hackberry - common.
- ✓ Am. Elm " some nearly
3 ft. in diam
- ✓ Wh. Ash. - rather "
- ✓ Box Elder " "
- ✓ Salix longifolia - ~~not~~ common.
- ✓ Soft Maple - rather common.
- ✓ Salix amygdaloides " "



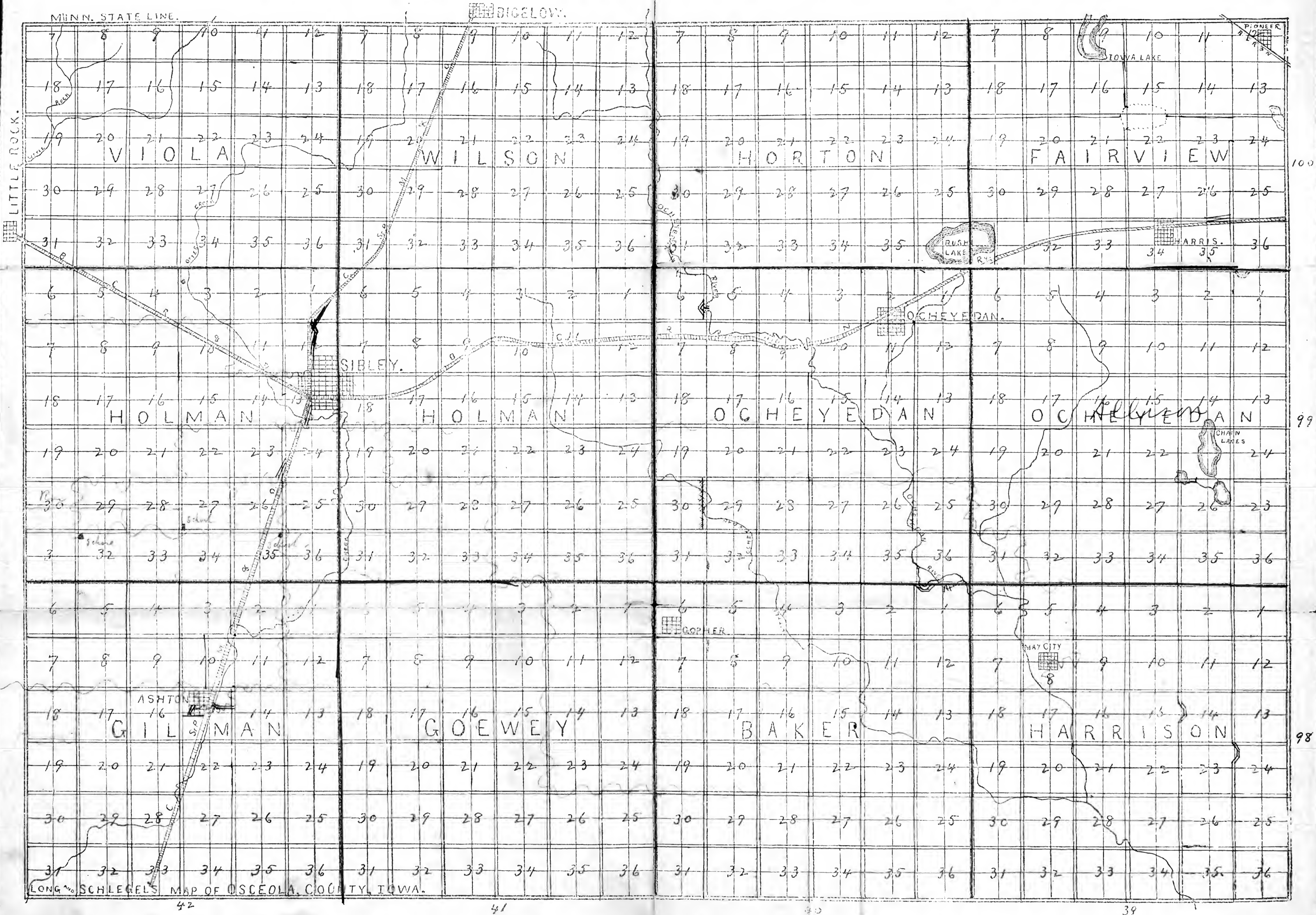
1111

Lyon
Asuka



LONG & SCHLEGEL, Sibley, Iowa.

Sibley platted
1872



COME TO OSCEOLA COUNTY, IOWA.

LAND! LAND!
**LONG &
 SCHLEGEL**

Have a choice list of Wild and Improv-
 farms for sale in Osceola county, Ia.,
 and Brookings county, So. Dak.



Write or call on us at

SIBLEY, OSCEOLA COUNTY, IA.



"In all that is good Iowa affords the best."

FRANK J. LONG. GEO. G. SCHLEGEL.

Long & Schlegel,
 ABSTRACTERS.
Real Estate, Loan
 AND
Insurance Brokers,
 Sibley, Osceola County, Iowa.

WE BUY AND SELL

Farm Mortgages,
Loan Money,
 ON APPROVED SECURITY.

We have a choice list of northwestern Iowa
 and eastern South Dakota land
FOR SALE
 At low prices and easy terms of payment.

Sibley is the county seat of Osceola county, Iowa, and boasts of a population of about two thousand. As a class, our citizens are the best, and any town the size of Sibley can well feel proud if they can say as much. Two of the best railway systems of the west are in Sibley. The well-known route of the B. C. R. & N. runs almost directly east and west through the center of the county, and that popular route, the C. St. P. M. & O., which is a part of the great Northwestern system, passes almost due north and south through the western part of the county. Sibley has the good fortune of being exceedingly well located, and is near to the best markets in the west and has good railroad facilities.

The location of a town is a great object to the farmer as well as to the manufacturer, when seeking a new location. By referring to a map, one will see that Sibley is surrounded by five or six of the largest and most thriving cities in the west.

Among the private enterprises we have a Steam Flour and Feed Mill, 4 Steam Grain Elevators, 3 Grain Warehouses, 3 Newspapers, 3 The Gazette, Tribune and Sibley Herald, 3 Lumber Yards, 4 Coal Dealers, 3 Mammoth General Stores, each carrying large and well

SIBLEY.

and has not been found wanting." Remember, farther, that good health is the foundation of all happiness. Examine a map of America and notice the location of Northwestern Iowa.

OSCEOLA COUNTY is bounded on the north by Nobles county, Minnesota; on the east by Dickinson county, Iowa; on the south by'Brien county and on the west by Lyon county. As a body of land, it is unequalled by any on earth. He who is in search of a home need seek no further. Her advantages of soil are unequalled anywhere, west or north. It is true, all of Iowa is covered by a deep, rich, black loam soil, but in some parts of the state, where it is rough and rolling, it is subject to constant washouts, resulting from heavy rains. The land of Osceola county is gently rolling, but not enough so in any part to cause such washouts, but sufficiently for perfect and thorough drainage. The roads are as near perfect the year around as can be found anywhere, as we are free from the muddy season that lasts from six to eight weeks in Illinois and the southeastern part of this state. It is conceded by all who are acquainted with the facts, that all the land lying west of Missouri Valley, is much richer and better than can be found in any other part of the state.

It is with pleasure that we take advantage of every possible opportunity to direct the homeseeker to what we believe to be the best general purpose country on earth. It is universally conceded that Iowa is first among the agricultural and stock-raising states of the Union. This means that Iowa is favored by nature above all the other states for agricultural pursuits.

In the matter of railroads, Iowa stands first among the states in number of miles. This fact naturally makes better markets by bringing the producer and consumer closer together.

Hence Iowa is the peer, if not superior, to all the other states and territories considered from whatever stand-point you may.

In years past Iowa has offered wonderful inducements to the homeseeker. The extreme northwestern part of Iowa has been neglected, to a certain extent, and its advantages overlooked. Twelve years ago it first began to attract the attention of the homeseeker, and its beautiful laying land, the depth and richness of the soil, and the fact of its being a general purpose country, is calling among us a vast army of home seekers coming from the less favored parts of Iowa.

Why go to the antipodes for a home where there are no advantages of church and school, of markets and civilization, where the country is unexplored and crops uncertain, when you can do as well, nay better, all things considered, by locating in Northwestern Iowa.

OSCEOLA COUNTY

in the world, and it is so of the animal kind—disease among our live stock is practically unknown.

In years to come, to be a citizen of Iowa will be greater than to be a king. Civilization is here to stay. Come among us and you will have the benefits of intercourse with intelligent neighbors.

You, your children and your posterity will have the privileges of church and school, blessings, the value of which cannot be estimated in dollars and cents.

Remember, farther, that good health is the foundation of all happiness. Examine a map of America and notice the location of Northwestern Iowa.

NORTHWESTERN IOWA

Her Advantages to the Home-seeker.

NORTHWESTERN IOWA.

Osceola County.

If you want a farm on which to live and make it your home, Osceola county offers superior advantages. If you want a farm as an investment—and for a safe investment—Osceola county offers land that is continually advancing in value, and will pay a good rate of interest on the investment in the meantime. If you want to speculate Osceola county offers you excellent opportunities. Land that today can be bought at from \$30 to \$40 an acre, will in ten years have advanced to \$50 and \$60. The speculation is the advance in price. In the meantime you are not losing the use of your money. The land will rent for enough to bring you a fair rate of interest on what you pay for it, and you get from 40 to 50 per cent. advance in a short time. Is not this a pretty safe kind of speculation?

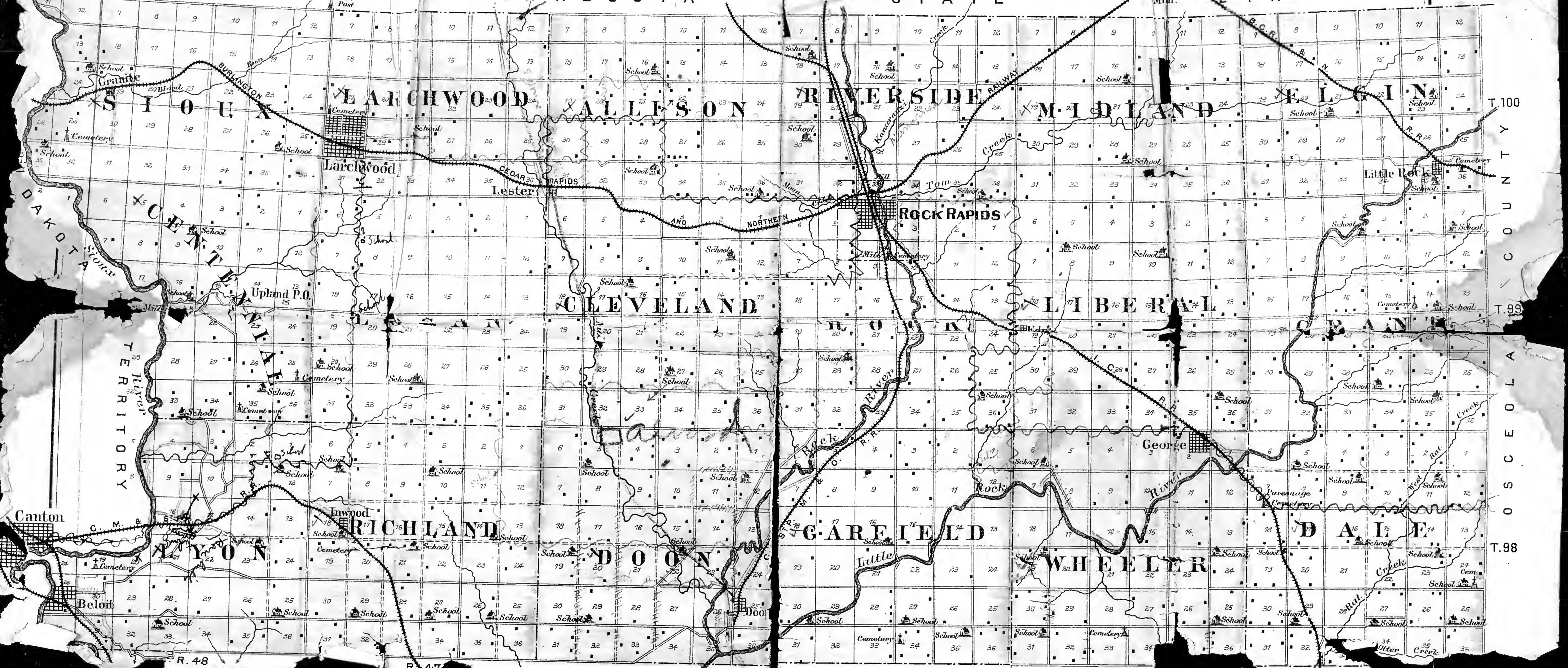
Write to us, or come and see us, our country will bear inspection. There is nothing better in the state, or in the whole wide world, and we are sure you

DAKOTA TERRITORY

MINNESOTA

STATE

LINE



T. 100

T. 99

T. 98

DAKOTA

TERRITORY

COUNTY

OUSA

COUNTY

Canton

Beloit

R. 48

R. 47

R. 46

R. 45

R. 44

R. 43

O U X

C O U N T Y

R. 43