

NECKER

F.F.S.

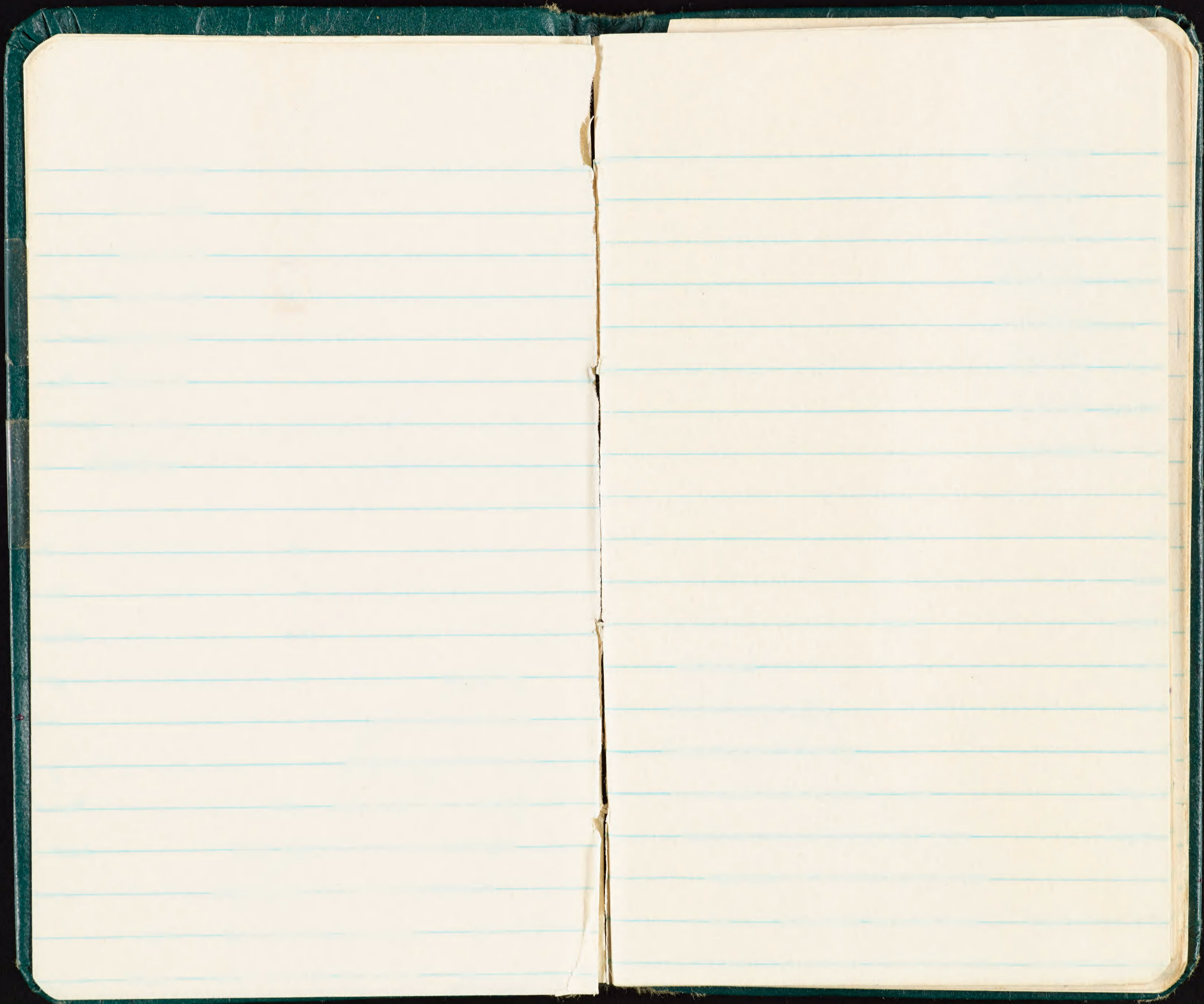
LS 5

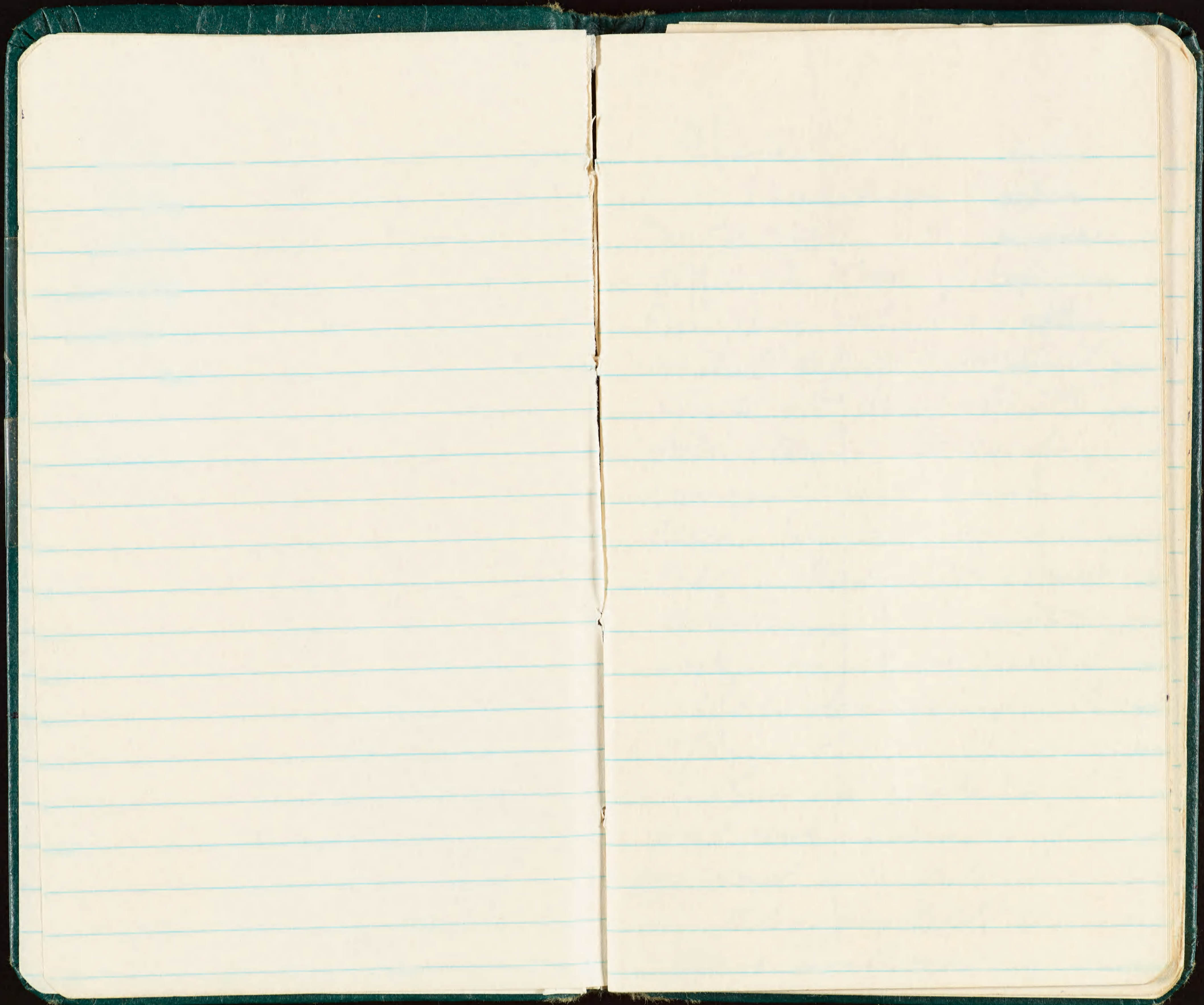
SEPT. 1964

FLEET

*inda*

✓ ADP  
@ PPT  
Done





9/25 -

Landed on Nacker  
Is @ 0900 - Much more  
difficult than Nihoa.  
Everything wet. Gene got  
washed out of rubber boat.  
Jack got dumped into  
water trying to land.  
Everyone got knocked  
down by waves on rock  
ledge. Many cuts & bruises.  
Hole ripped in rubber  
boat - must be patched  
before transferring rest  
of gear.

Saw 12 seals: 6 ad ♀  
6 ad. unk. Remains of  
one dead subadult.

Blue-gray Noddy common.  
Jaeger, Tern, Brown.

635-20501

02 RTTB imm  
03 ad  
04 coc  
05 "

793-29104

06 imm  
07 coc  
08 coc  
09 imm  
10 coc  
11 "  
12 "  
13 ad orb  
14 coc  
15 ad orb  
16 coc

saw 1 Bm B. adult +  
at least 2 BFB imm. See  
1 RFB ad on nest. Cur  
Noddy abundant.

Island is U shaped  
center of U is thick bay -  
probably was crater of volcano.  
Landing made @ West cove  
at base of U.

~~Saw 2 ad. BFB.~~

~~at 1150 counted 15 ad RTTB~~

Left island afternoon  
of 9/26 @ 1300. Jack  
fell in water getting off.  
Purchased beer in boat.  
Webb fell in twice.

340  
37

RT (12) IIIIIIIIIII

~~RTD~~ III III +5

~~III III I~~

1 BBT min

(25)

ad III

(2 N. eggs on cliff  
face 6 in nests,  
plentiful bare rock)

(RTB over three  
cup deep water (mudlet?)  
fish 8" long w/ head  
digested: 2" deep x 1" wide)

(4)

(16)

(5)

(16)

(12)

(2)

(100)

(24)

(33)

(9)

freq

III

III

III

(1)

(40)

(30)

(5)

min.

III

III

(17)

(6)

III

III

246

20

135

66

85

23

375

loc.

III

III

III

(15)

(12)

nest.

III

III

20

215

12

29

8

84

(8)

(17)

(20)

(8)

~~RFB~~

(Obs. 6 or 12 Am. N.  
chasing @ f. J. w/ fish in  
will - ~~water~~ 5 min)

~~BFB~~

~~Roost after eating~~

~~Bar B. turn~~

9/28

793-29164 → 200 com N.  
WAF

635-20517 in

18 "

19 down

↓  
20 WT nesting

↓

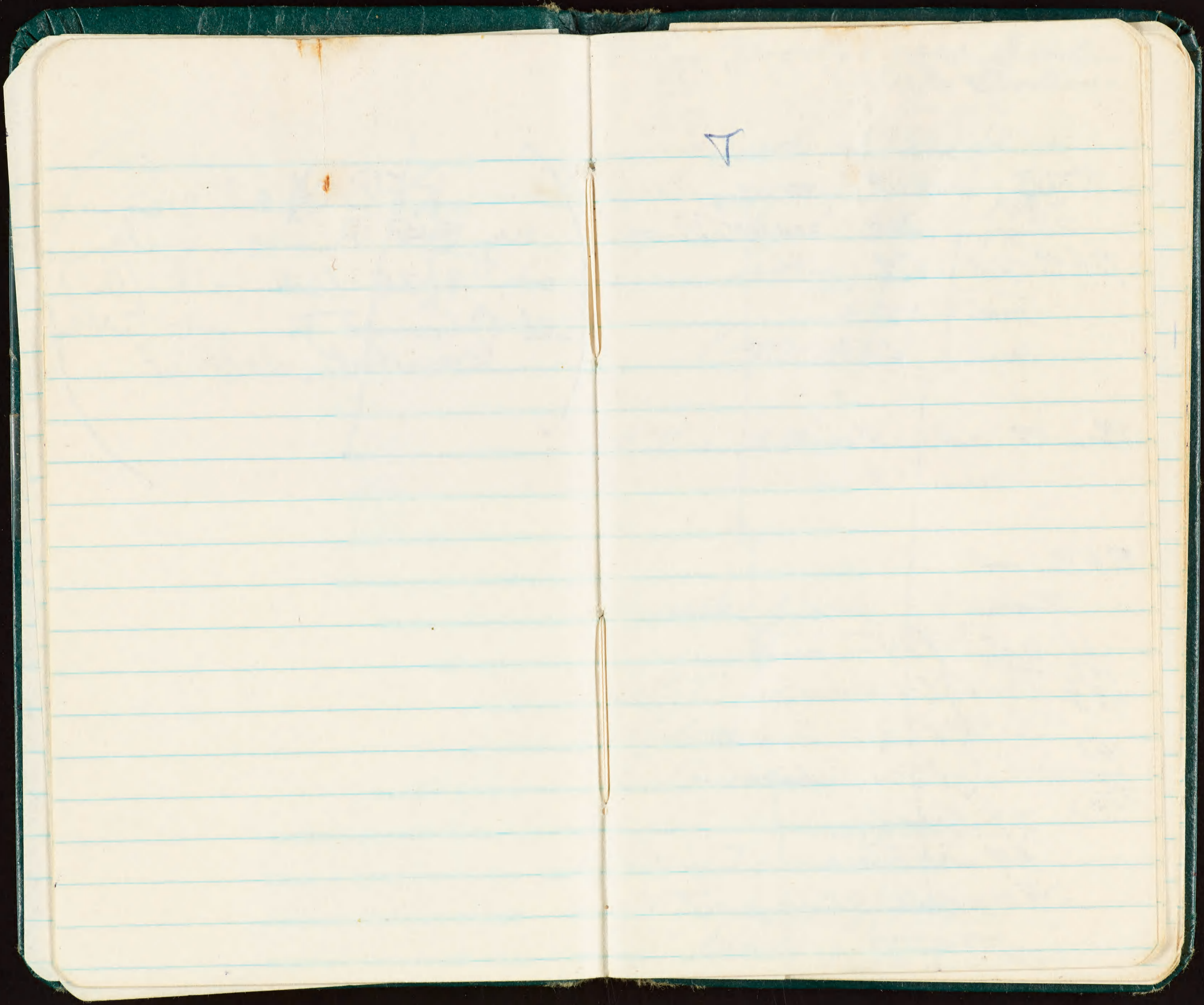
40

BGNONE

( Obs. ad. G-T. feed flying  
young. Called young &  
themselves by repeated squawks  
transferred single minnow  
like fish from bill to bill.



RFB ~~had~~ seen  
my ~~BF~~ B.L. on Archer  
on 9/26 (sitting & then flew)  
w Orange toy on the fact of  
somewhat weathered.



7

Pop GST,

126  
63  

---

189

1100 = 15

RNTB (400 = 9; 1500 = 3; 1600 = 1)

25 young birds = 100 <sup>150</sup> ~~sterile~~

BFB ad. = 58

imm. = 57

local = 6

Bm. B. ad = 8

imm = 3

RFB. ad.

~~imm.~~

161

322

---

483

161

2

---

322

ad = (74 on nests  
(27) on eggs  
(22) on chicks  
(25) unknown

23 locals

64 immatures

84 adults unoccupied

Am. Noddy = 2000 locals  
1000 immatures  
few eggs.

Frig. ad = (934)

imm = 375

local = 84

nests = 8

467 175  

---

642

(1500-1800)

RT = 23 seen

GP = 3

Hawaiian Noddy = 200-300  
(one on egg)

GBT = 2 imm, 3 ad.

Bulwer's P. = 75-100 (?)

S.T. = saw 4 ad. in queuing

(eggs to immatures)  
Fairy Tern = 400-500

WT = 1500 downy chicks  
(some w body tracks in)

BG Noddy = 400-500  
(eggs & immatures)

NECKER

~~635-20501-19 2953~~

9/25

635-20501 imm.

2 ad

3 imm

4 loc.

5 "

6 imm.

7 "

8 loc

9 imm

10 loc

11 "

12 "

13 ad. on E

14 loc

15 ad on E

16 loc.

17 imm

18 "

9/26 →

19 "

20 meeting wedgetail

21

22

23

24

25

↓

40

9/25 NECKER

793-29,04 → 63 Am. N. local

9/26 - 64-200 Com. N. loc.

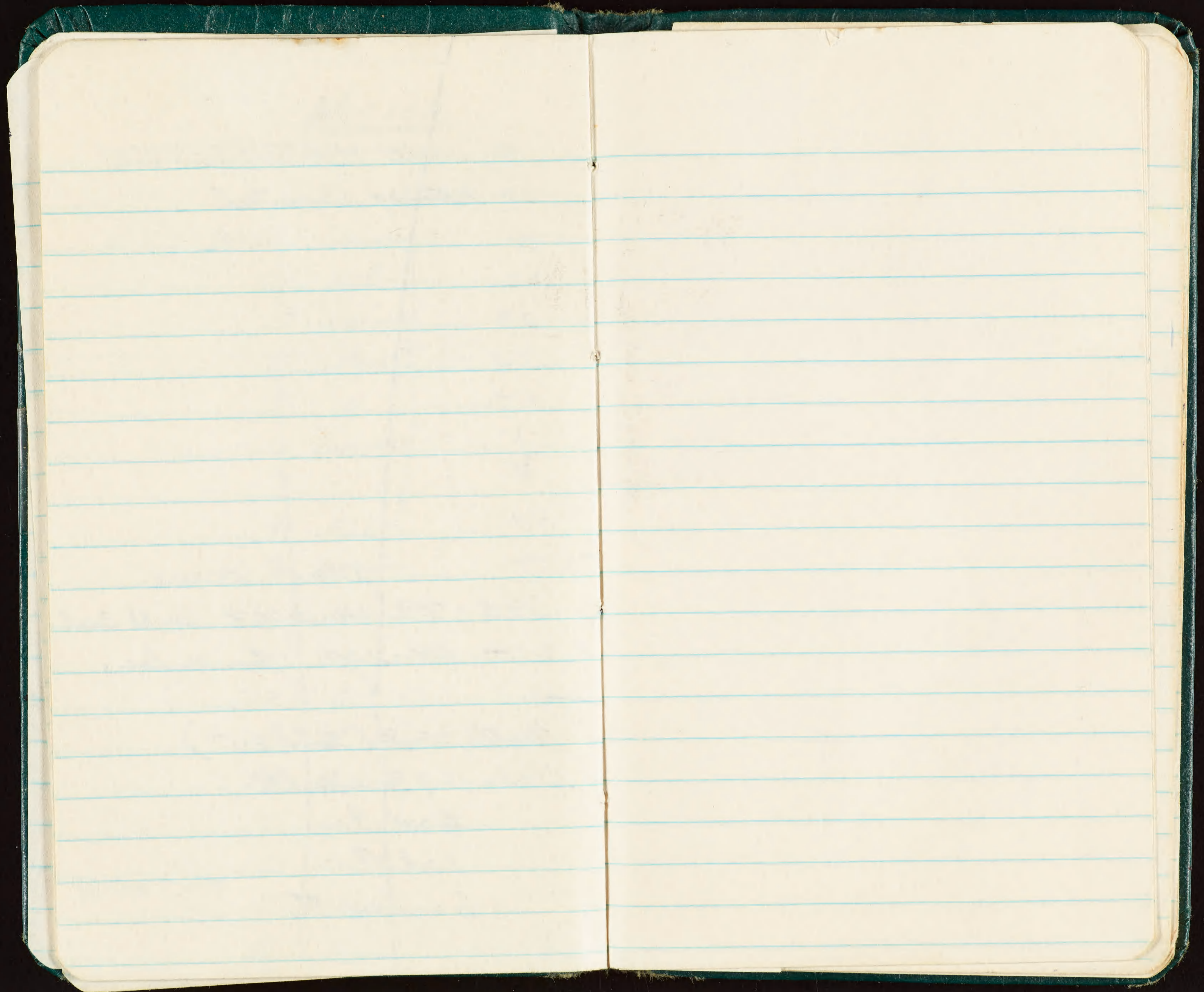
turtles = 2 (36" & 24")

Seals = 13 adults

6 ad ♀

1 ad ♂

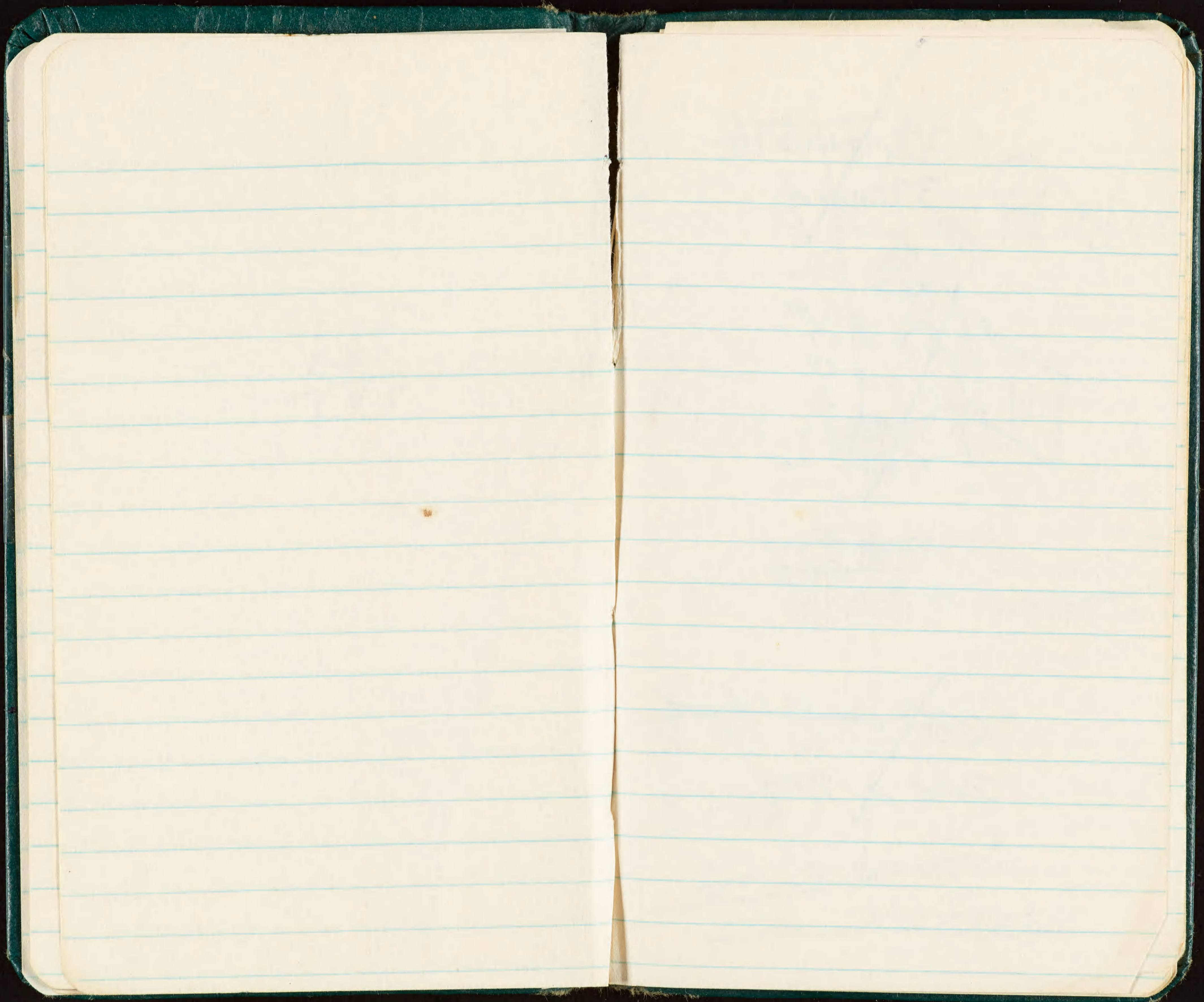
6 unk adults



2.95  
2.50  

---

5.45



~~4 large turtles  
3 tagged~~

~~5 ad ♂  
2 ad ♀  
3 ad ♀  
1 imm ad~~

~~500  
600~~

~~100 in N chiro  
300 RT~~

This FES

BFB imm IIII (21) IIII IIII IIII

44 ad (2)

22 loc (1)  
66 (75)

REB ad IIII (11)  
imm (1)

RT IIII (45) (27) 15

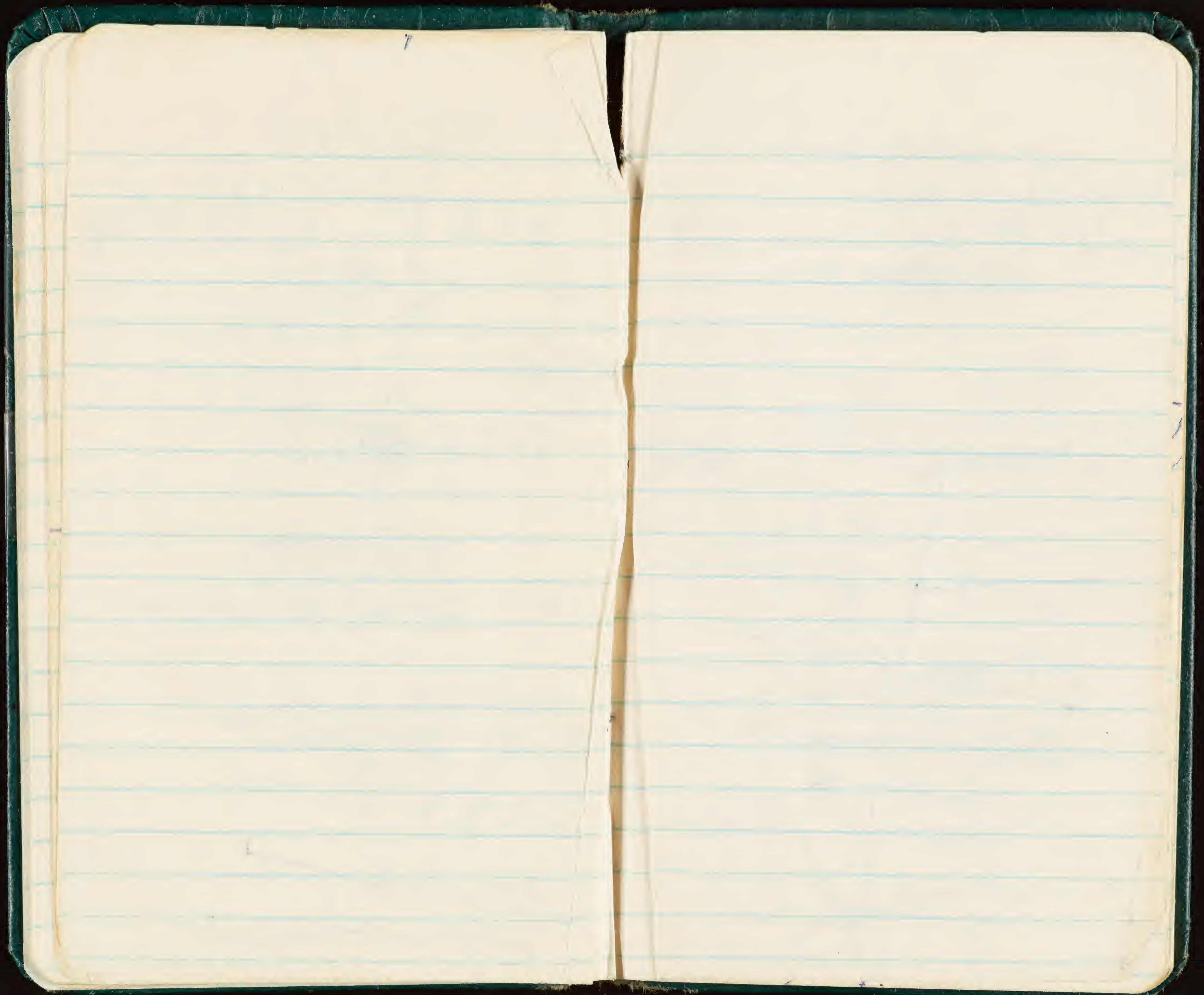
~~Am N. 200 @ stud.~~

~~GP (7)~~

~~20+ turtle pits~~

~~17 dead hatchlings~~





Erignathus

imm III IIII

ad II

unk ~~IIII~~ IIII

17

1352

~~RTIB~~

171

523

175

~~GP II~~

698

~~RT III IIII~~

~~CoB.T. imm 3f~~

~~ST 3~~

~~5 dead~~

Whale State

(4)

~~RFB~~

~~imm~~

~~ad~~

~~loc II~~

(7) (8)

~~Erignathus~~

~~imm~~

~~ad I~~

~~loc~~

~~RFB ad II~~

~~imm IIII~~

(10) (3) (10) (24) (9)

(10)

~~C.N. = 400~~

~~W.T. = max of 1000~~

~~Seals: 8 ad ♂~~

~~6 unad. 3 " ♀~~

~~1 wh. pup 1 y. ♂~~

~~3 wh. y. 2 y ♀~~

9/26

Whale + Skate

C.N

793-29301

local

03



10

N



17

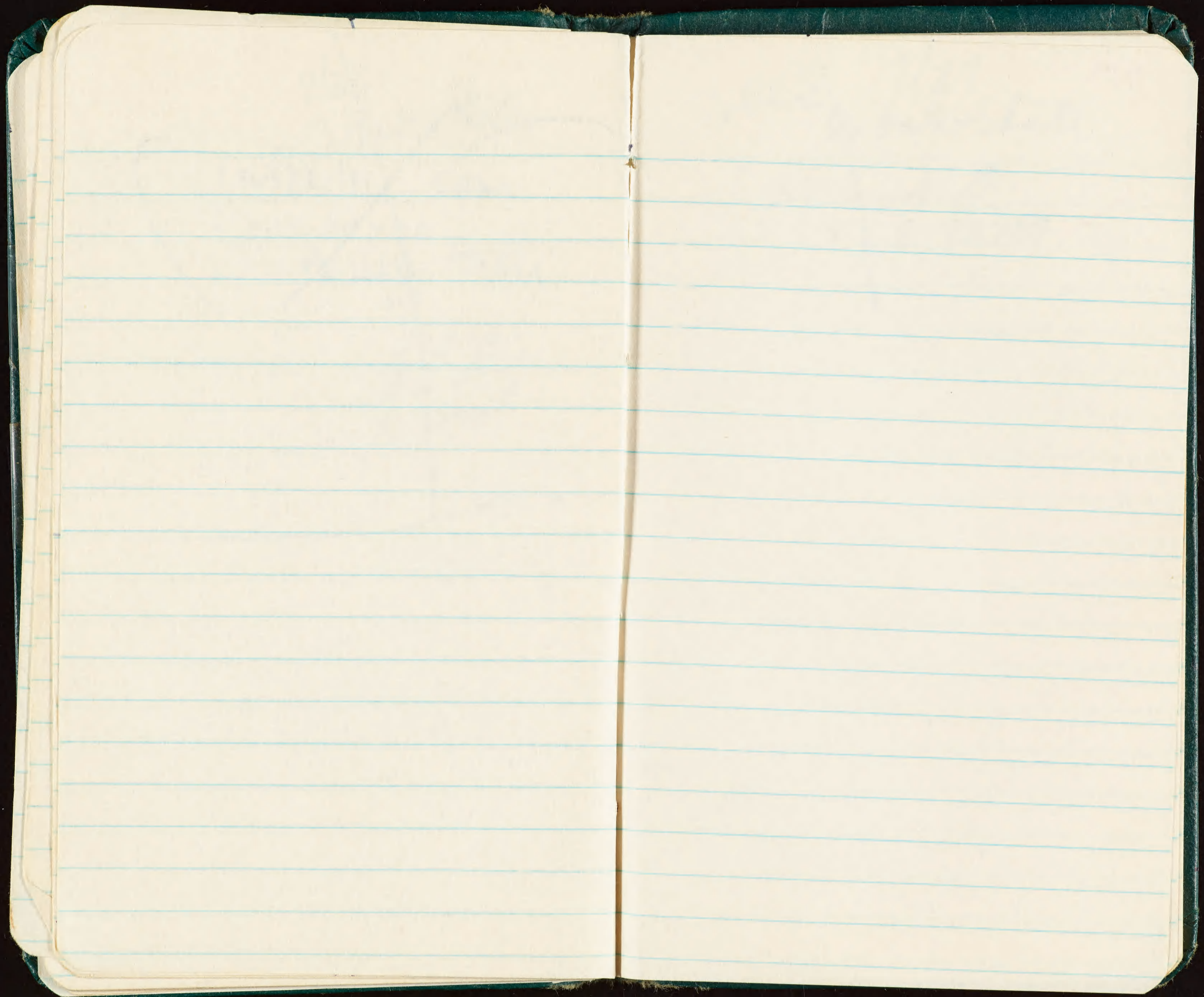
local

1995

III (8ka)

N.N.

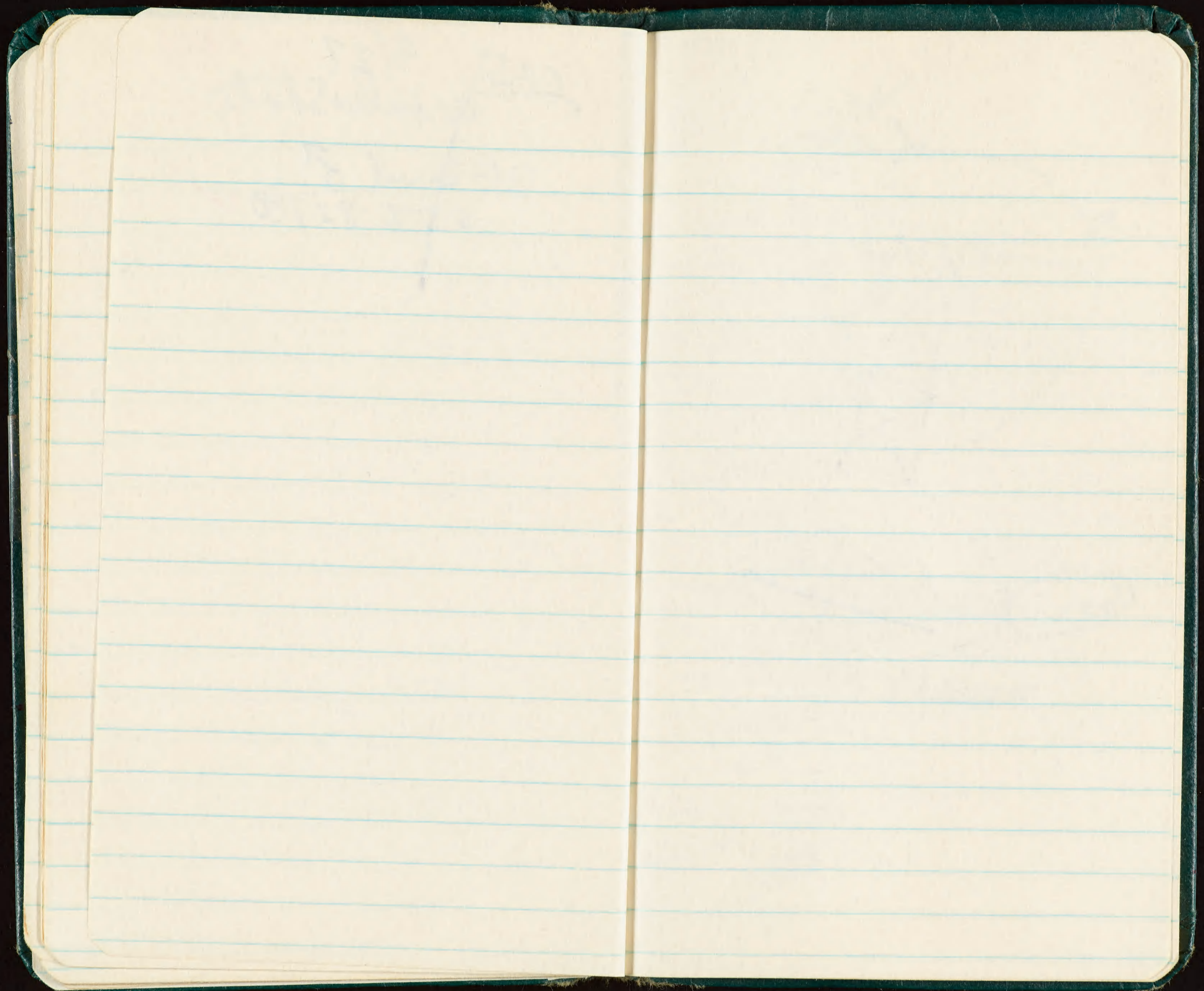
III



~~EFS~~ 9/27 ✓ ADP  
w/ bale + Skato

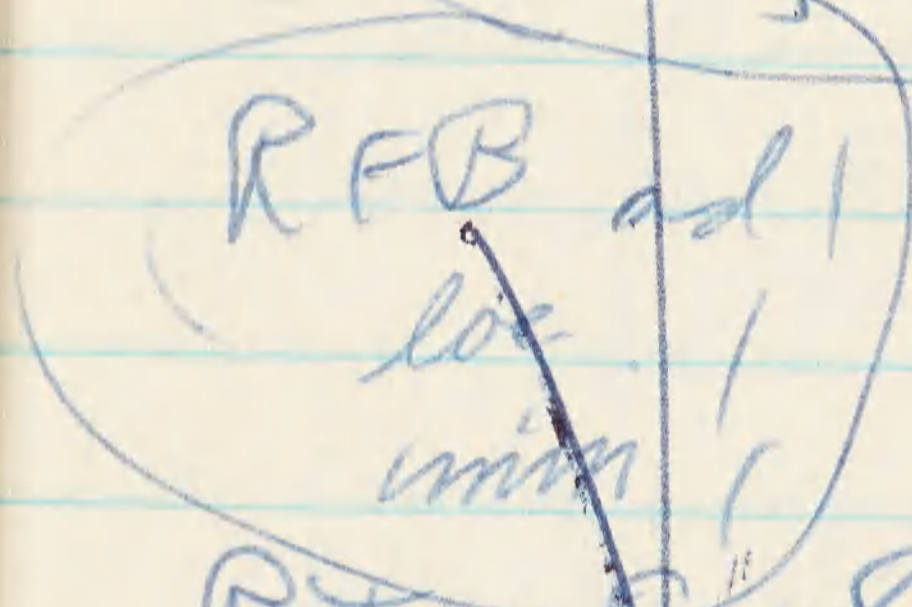
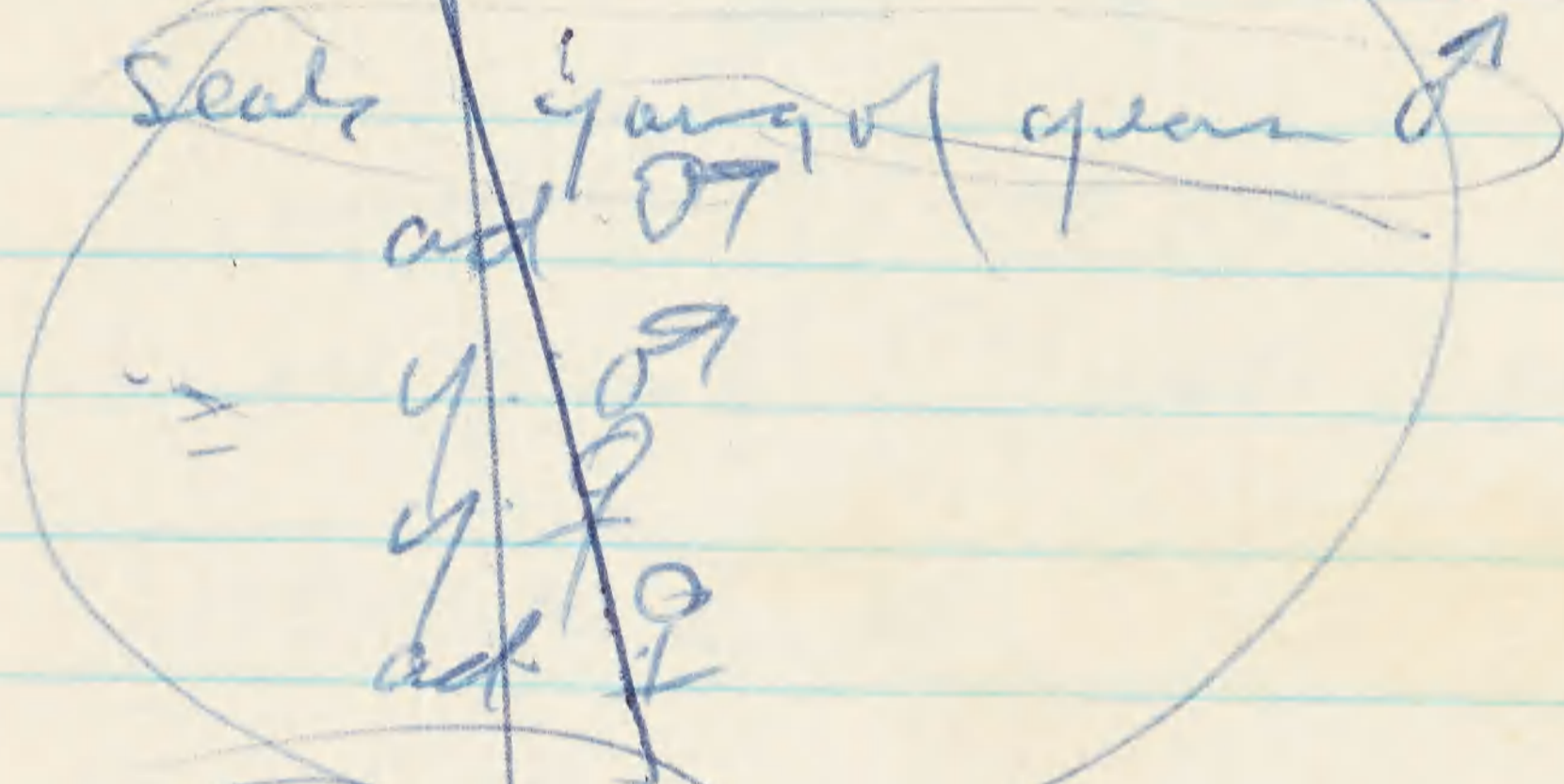
BFB ad ♂

558-82780 ✓





Crin = 12 East  
~~term Is.~~



RT 48 + 20 (130)

GP (10) 37 plover

WT (1)

~~CN = 300~~

~~WT = 1000~~

~~ST = 3~~

L.P. Pin -

~~60~~ ~~←~~ 75-100 ct

14 Brn B. (2 imm 2 ad)

150-200 C.N.

15 King

one seal.

Several Porpoise  
followed boat in fog



7  
Tem

G.P. = (15)

RT = 18 + (35)

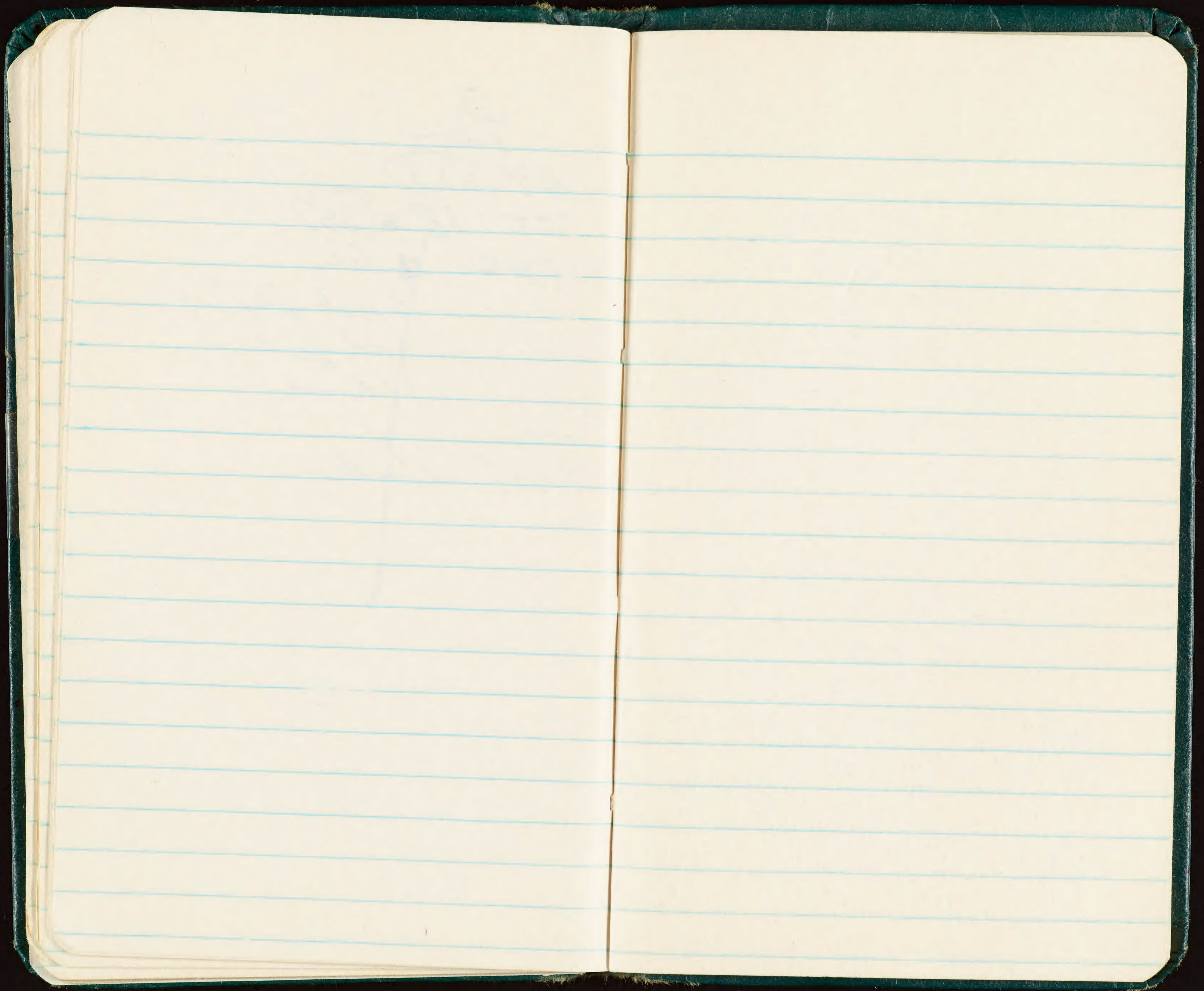
RNB = 1 loc.

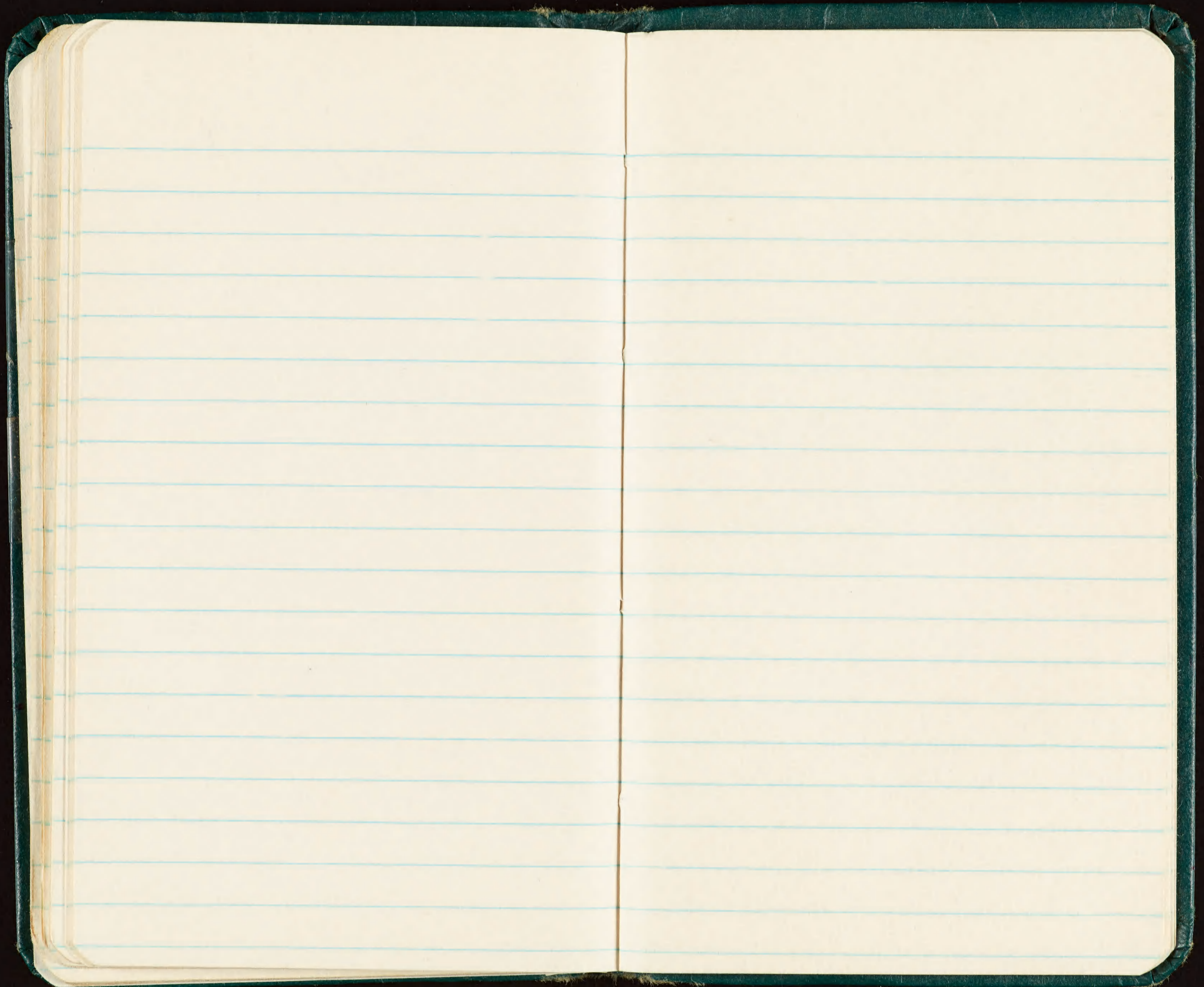
3 ad flying

1 ad w c.

1 chick

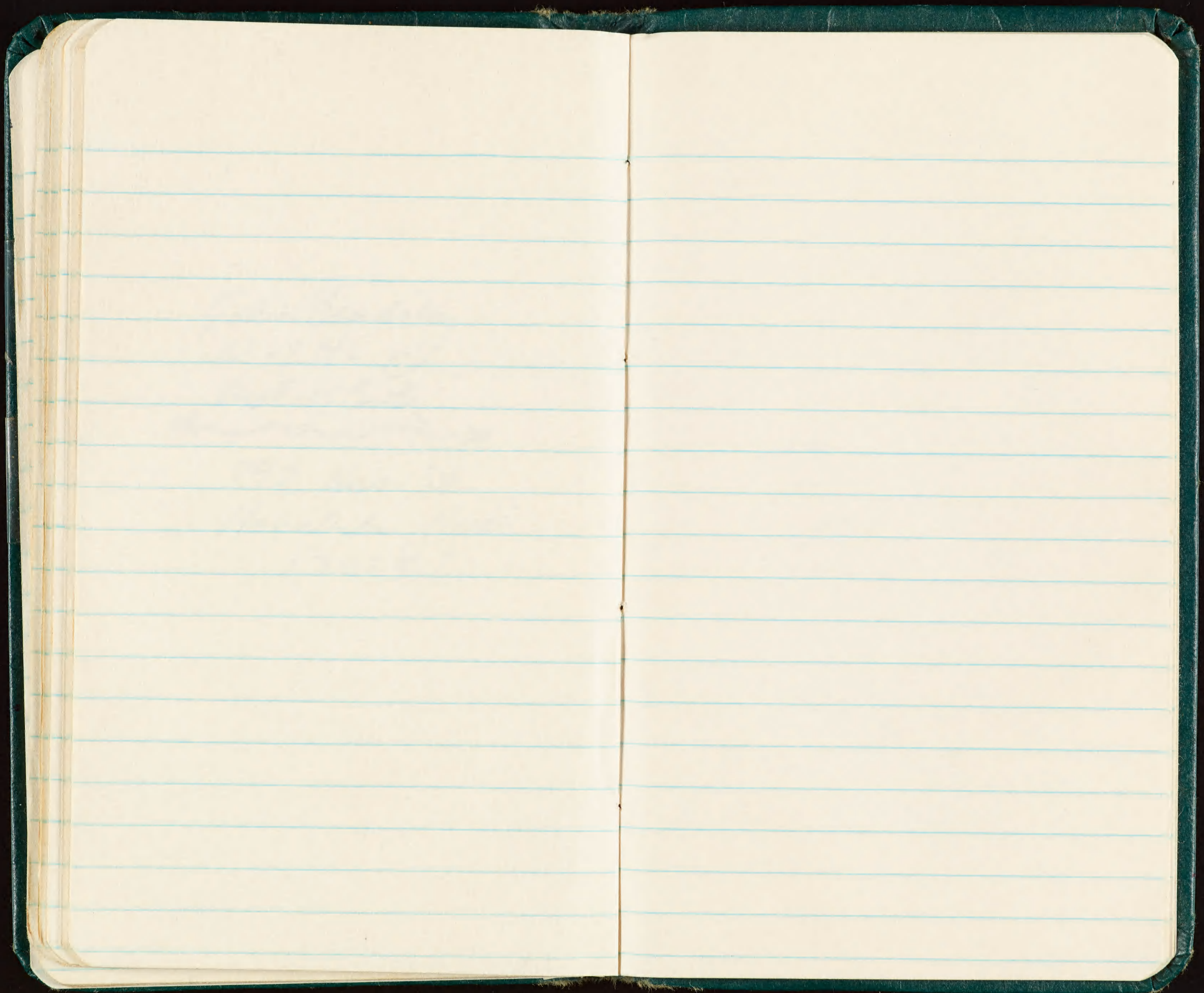
1 WT. chick

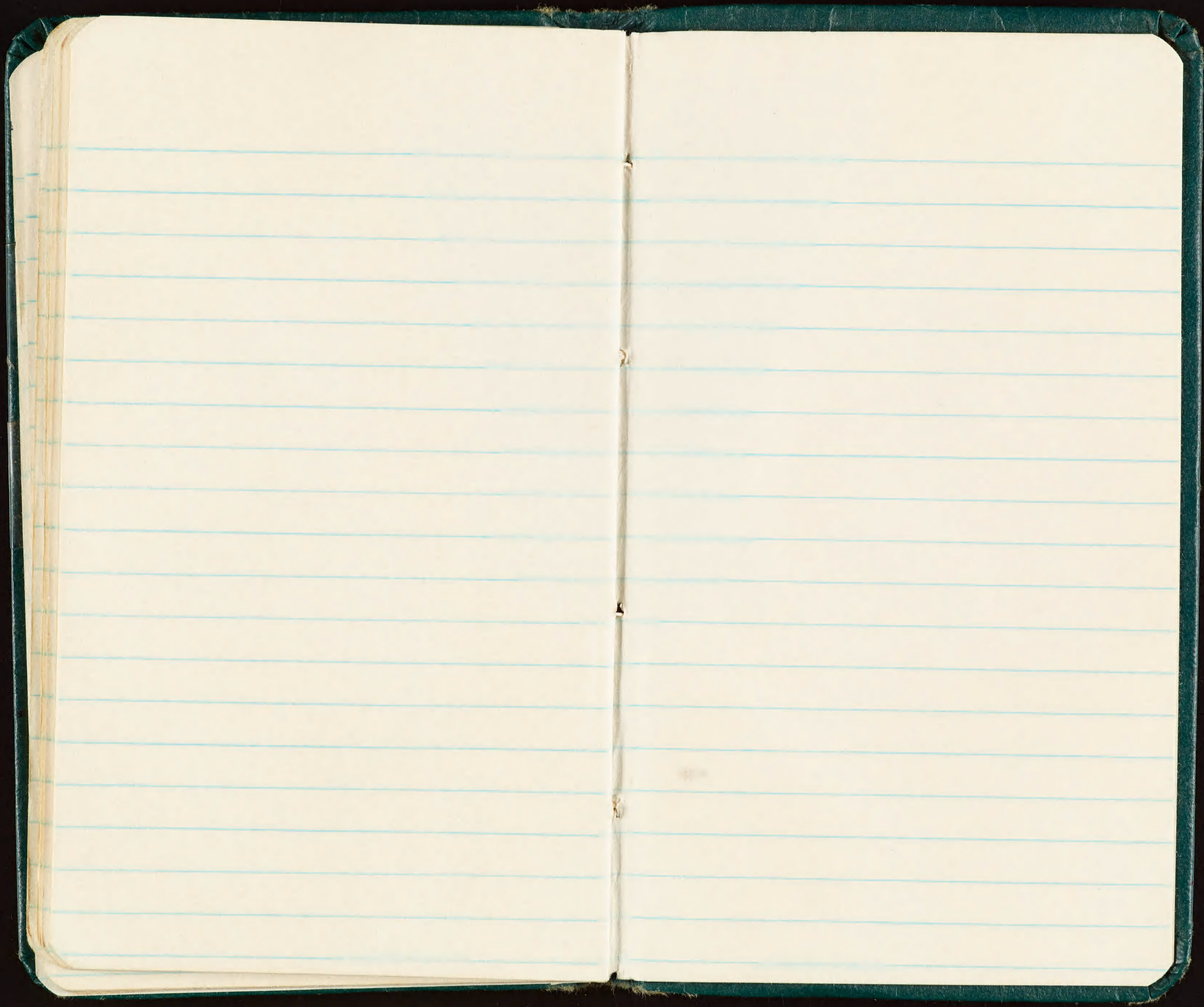


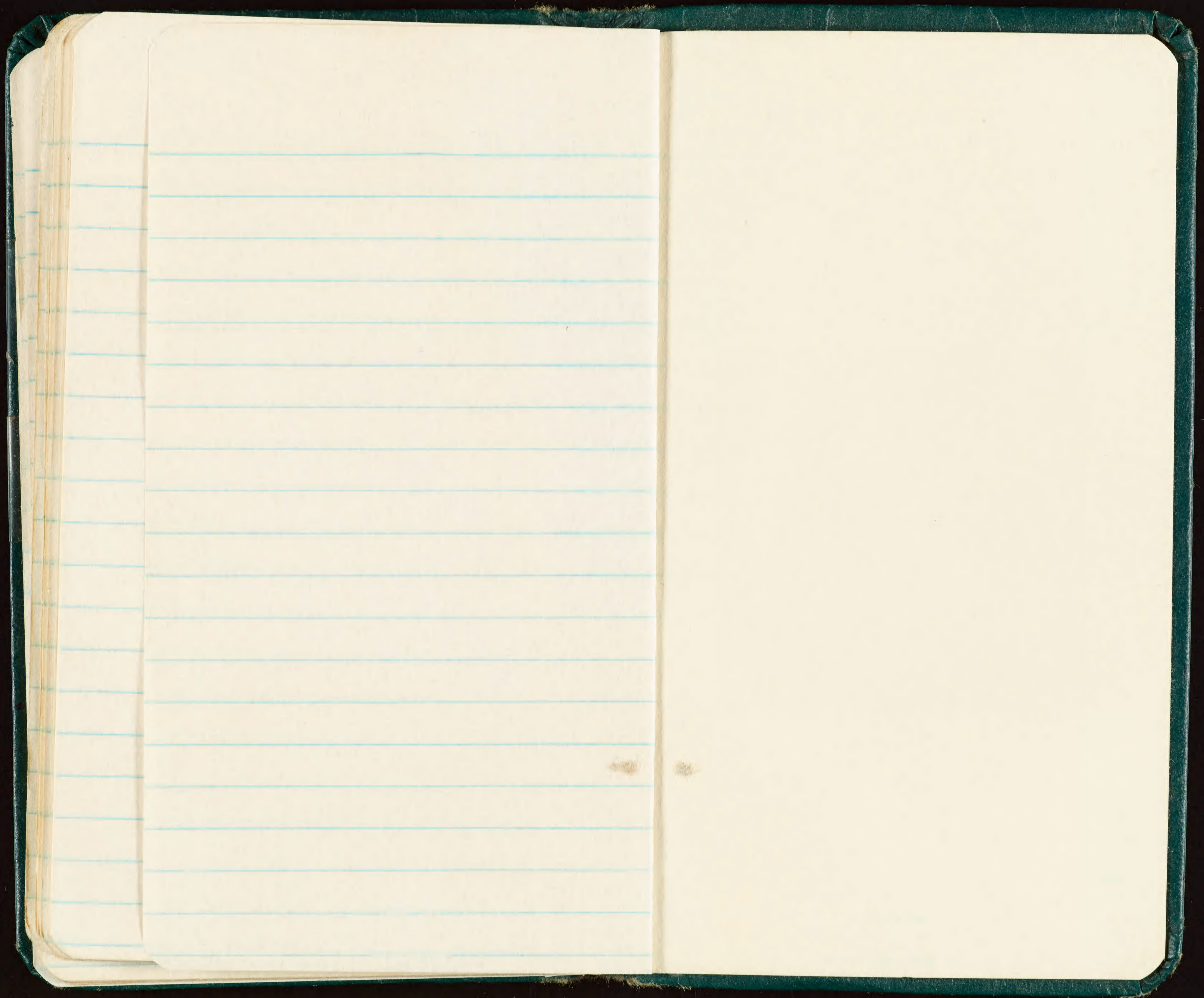


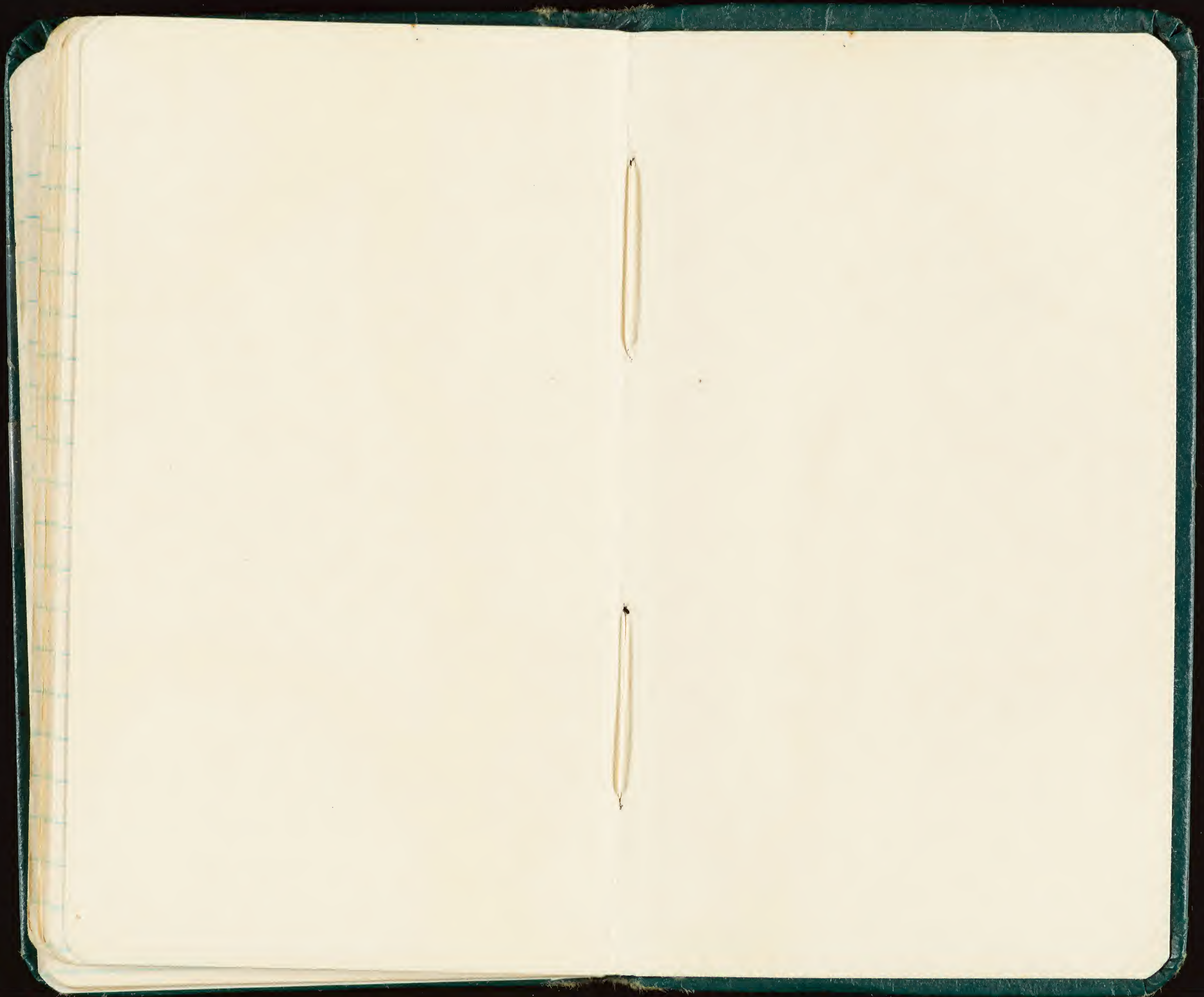
John Beardsley  
U. of H. C  
Dept. of Ent.  
←~~~~~→

892 Koa St.  
Honolulu, Hawaii  
(310287)











7530-222-0078  
FEDERAL SUPPLY SERVICE