



July 8, 1944 2 pm.

From church yard at
Angahuan.

30

F 240



July 8, 1944. 2 PM.

From church yard at

Angahuan.

30



July 7, 1944
Lava flow entering San Juan,
From the Cerro de la Capella.

87

F 234



July 7, 1944

F 236 b

87.



F 254

Aug. 18, 1944

San Juan Lava flow

74



July 7, 1944

F 231

30



July 7, 1944

30

54.



Aug. 17, 1944

Campamento La Cañonera,
part of panorama taken
from Zapicho, flow

→ ~~La Cañonera~~

F245





July 7, 1944

Paricutin, with column of
steam, very little ash. Note the
lighter colored zone on the
west slope, dry ash on the
damp cone, ejected the night
before.

87

F 229



July 7, 1944

87



July 7, 1944

87



July 7, 1944

48



July 7, 1944

48

F. 236a



July 7, 1944

F

F 233

30



July 7, 1944.



F242

Aug. 17, 1944

F242

79



Aug. ¹⁷ #6, 1944

F242

~~2d. picture~~

ht

F242



~~Oct.~~

Aug. 17, 1944

Shows well the character

of the smoke column

62



Aug. 17, 1944

Graben in Zapicho flow.
Pinnacles and great
lava of Campamento
flow beyond.

Halley



Aug. ¹⁷~~18~~ 1944

Excursion on old Zapicho

flora. The spurs and
range lava in background
to the Campanero lava.

lit



July 8, 1944.

From San Juan -
Justo road.

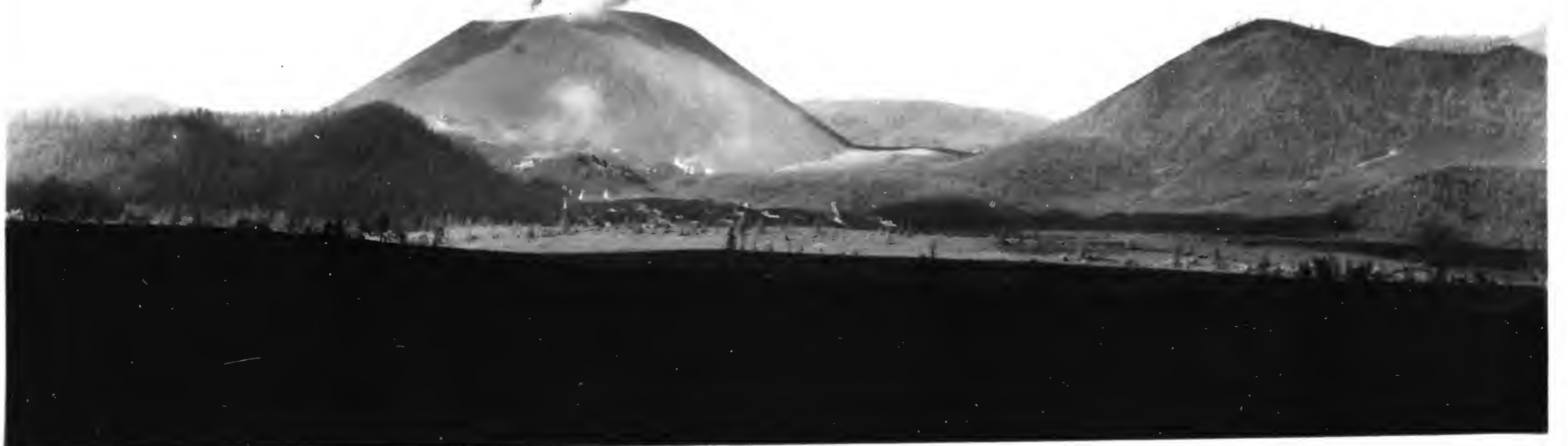
40



July 8, 1944

From San Juan -
Zuñiga road.

F 238 a



July 8, 1944

From Don Juan
Zivosto sword.

F 238 b

40



July 8, 1944

From Dan Swan -
Zivisto road.

34



July 8, 1944

From San Juan.
Yucata road.

24



July ~~#~~ 8, 1944

From San Juan -
Zurita road.

F 238c



Nov. 26, 1944

#11

B

F 2579

68

5IA 2009-0993



SIA2009-0994

Aug. 18, 1944

~~Fraser~~

71

F255-

CHURCH in

PARANGARICUT, CO



Aug. 16, 1944

2d. picture of panorama

30

F2411



Aug. 16, 1944:

SIA2009-0995

40

F241



July 8, 1944

From San Juan -
Zinco road.

40

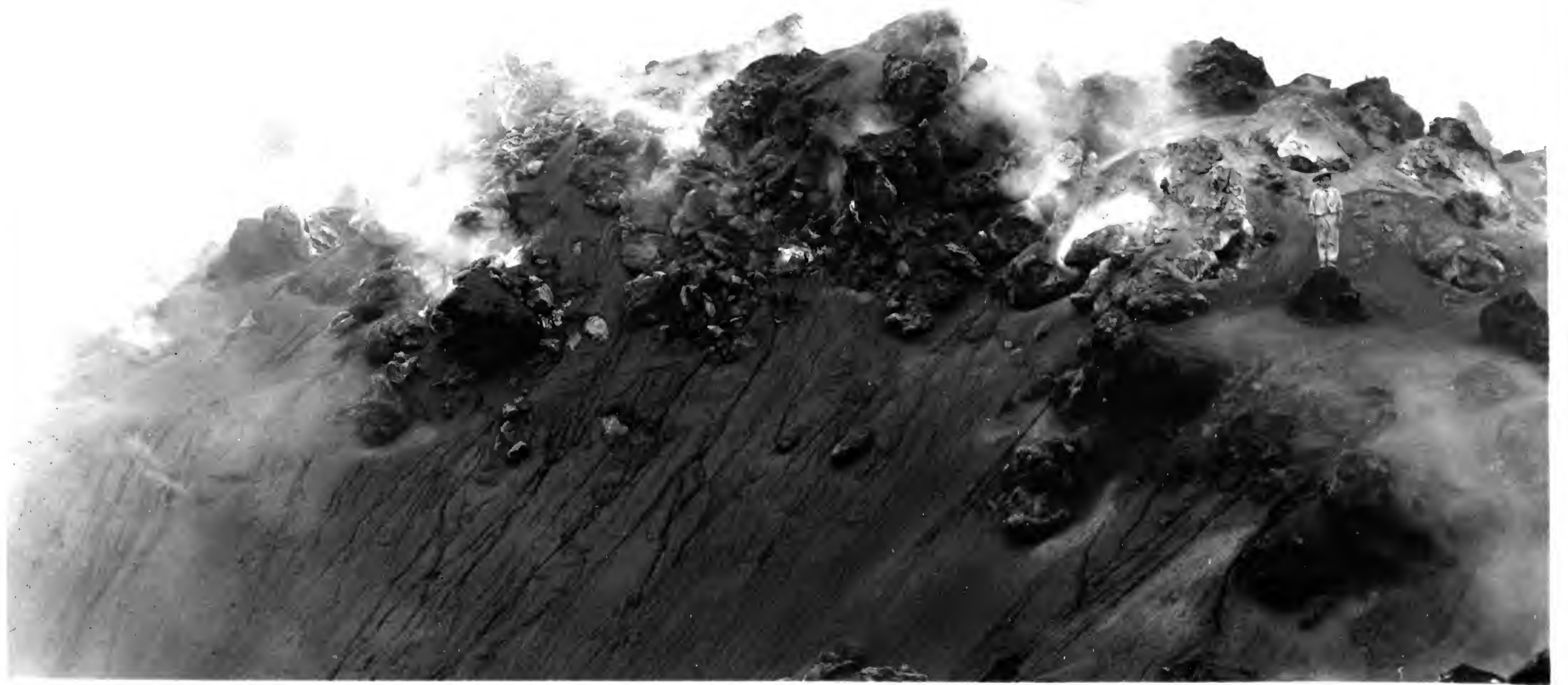


July 8
From San Juan -
Zaristo road.

SIA 2009-0996

F 238e

40



Aug. 17, 1944

Large fumacole on
Zapicho lava

79

79



F 253

Aug. 17, 1944

George Sumner
Yapicho Lave

Letter

79



Aug. 17, 1944

74

7-248



Aug. 17, 1944

77



July 7, 1944

F230c

Design outlining the temple

F230c

A

48



July 7, 1944

89

